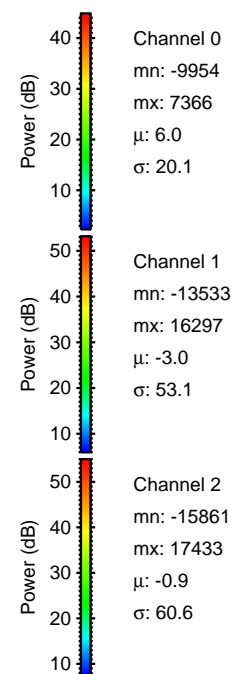
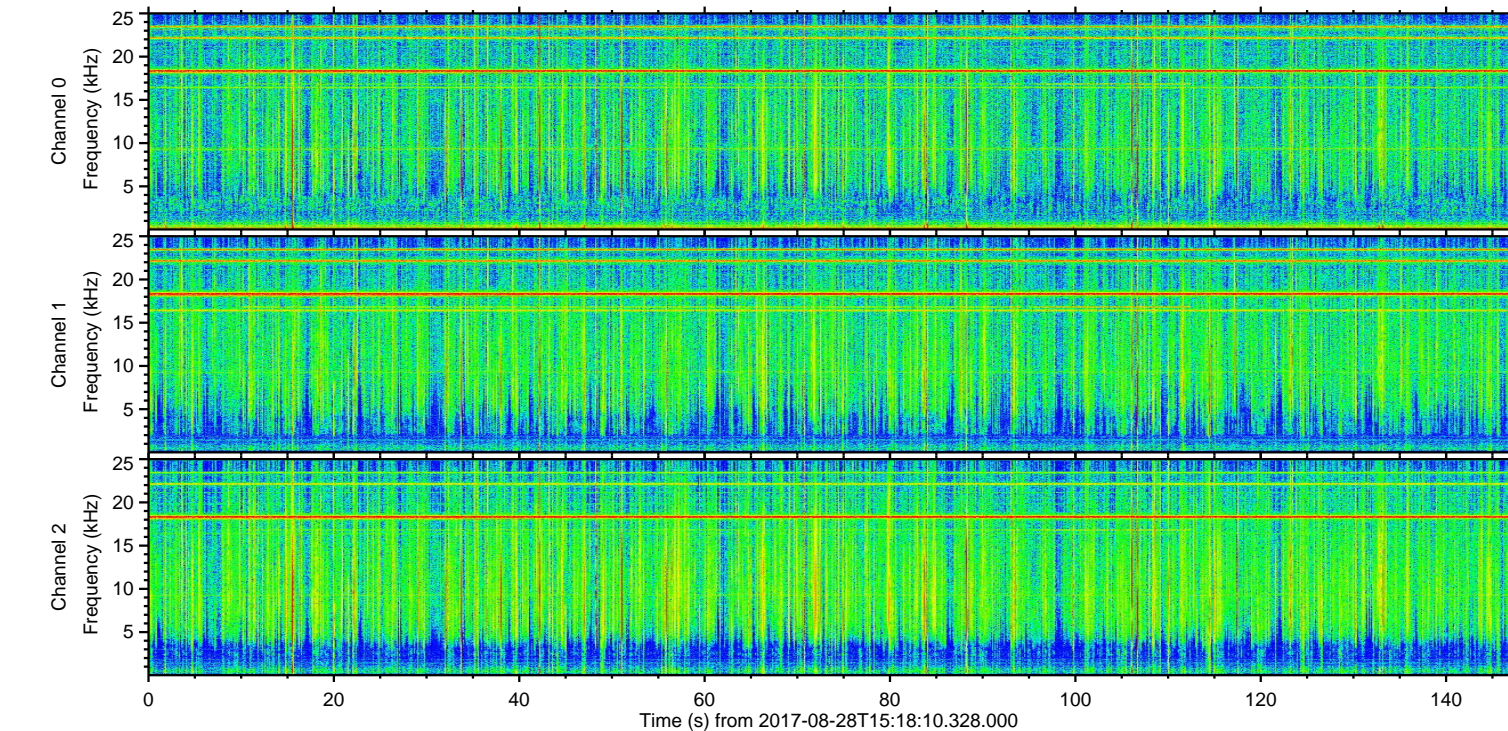
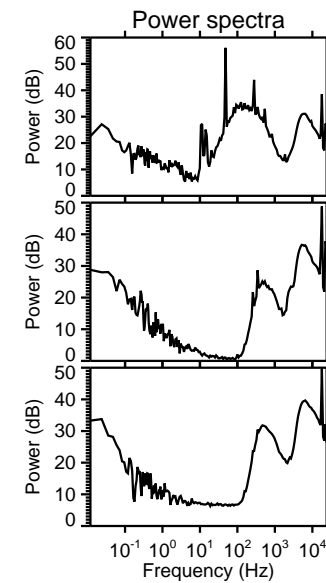
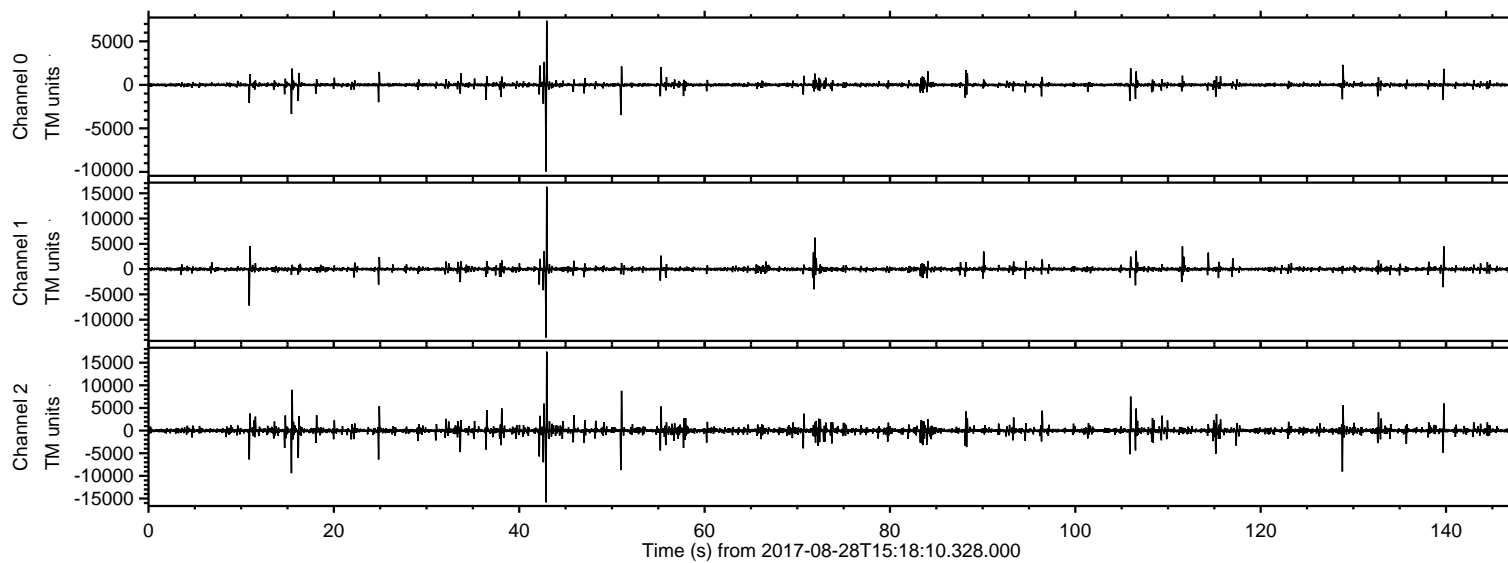
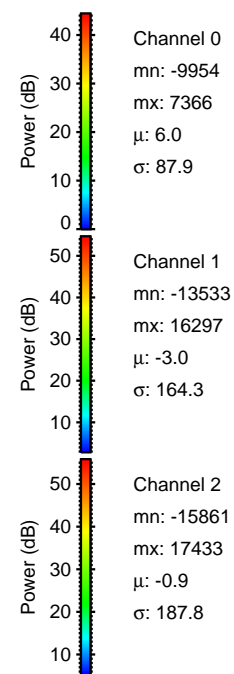
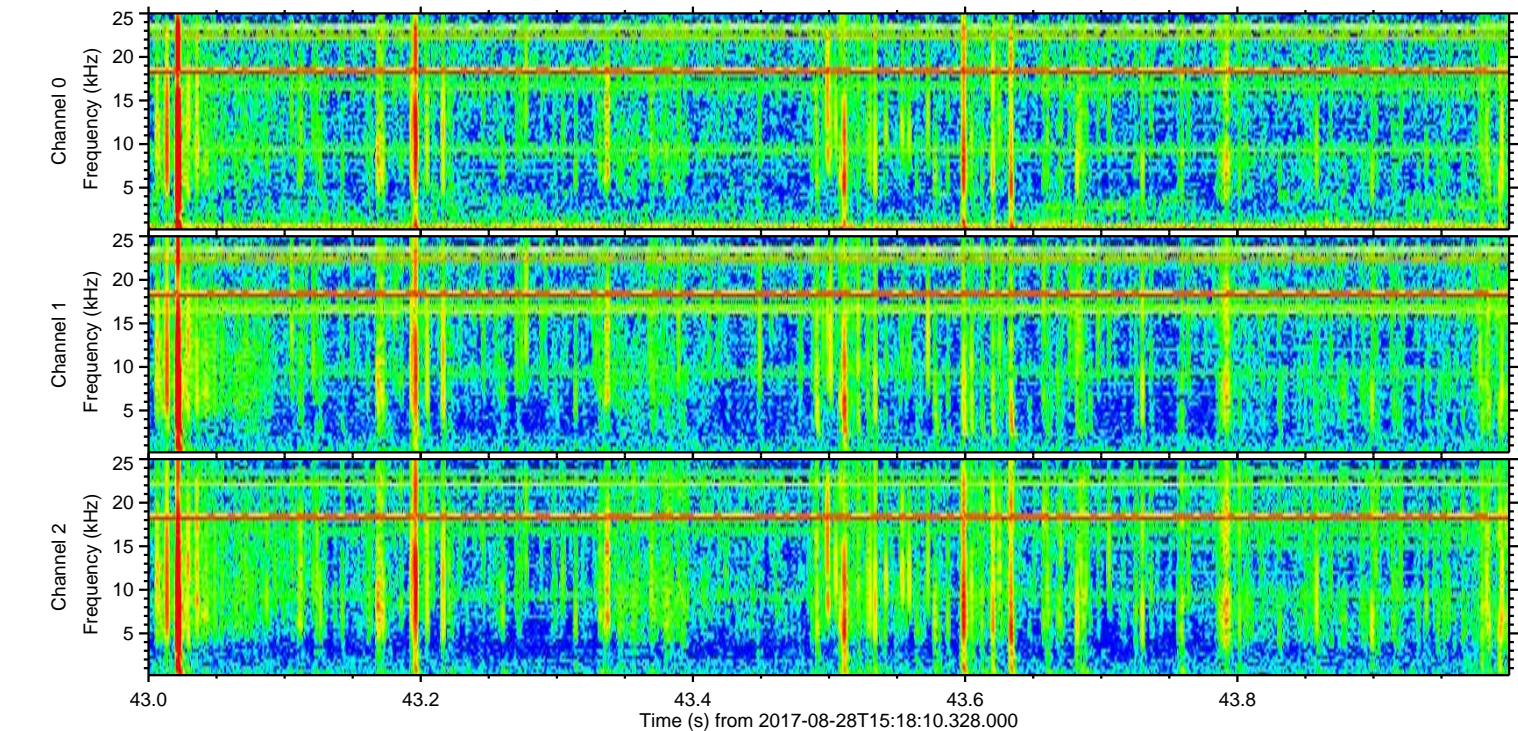
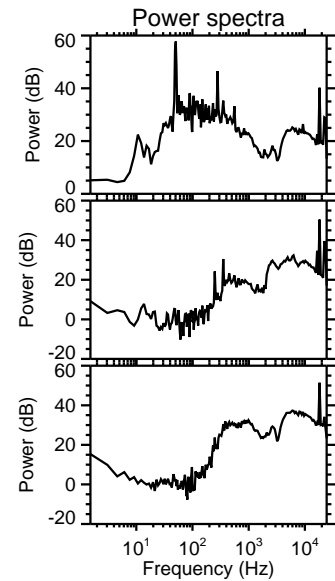
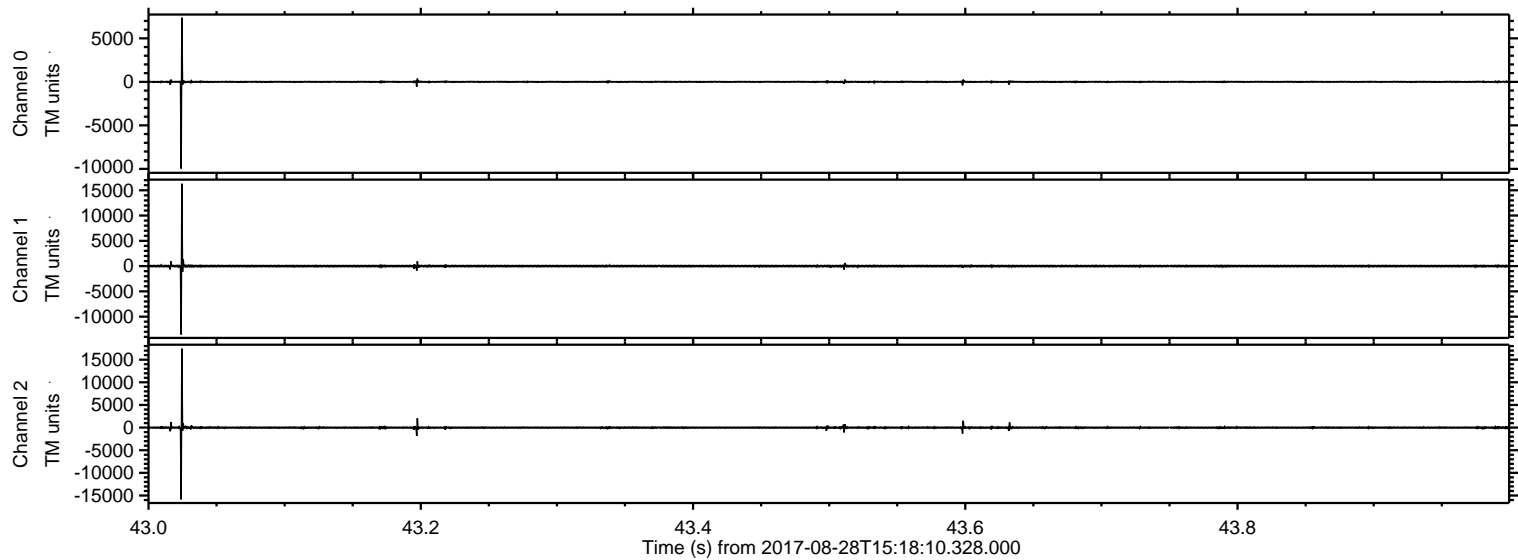


ELMAVAN 3D WAVEFORMS (Measured data sampled at 50 kHz) 51000 packets of 144 samples from 2017-08-28T15:18:10.328.000.

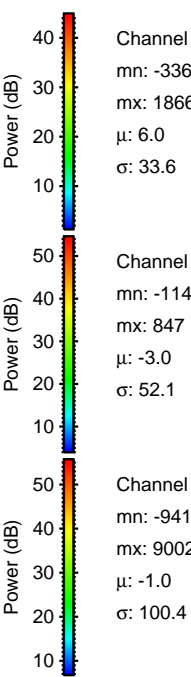
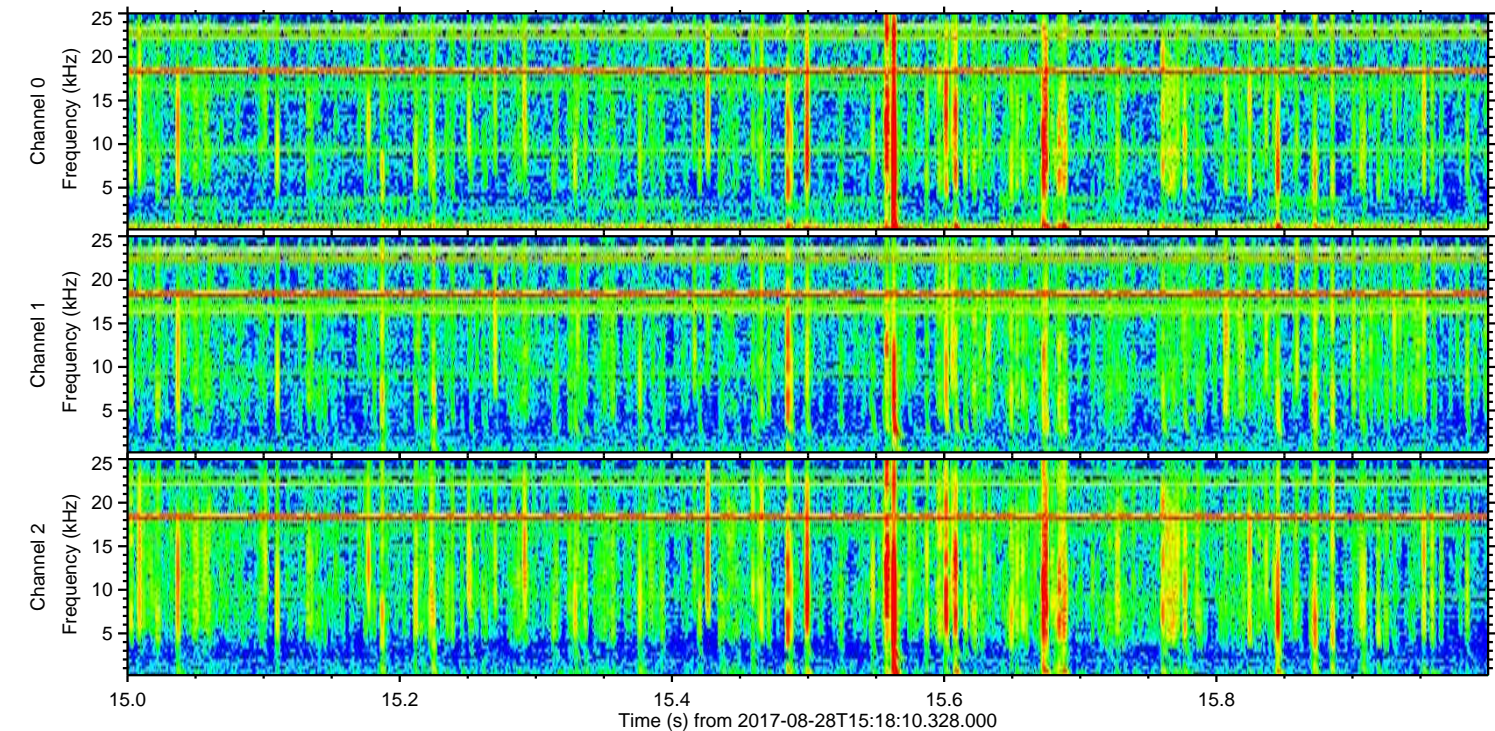
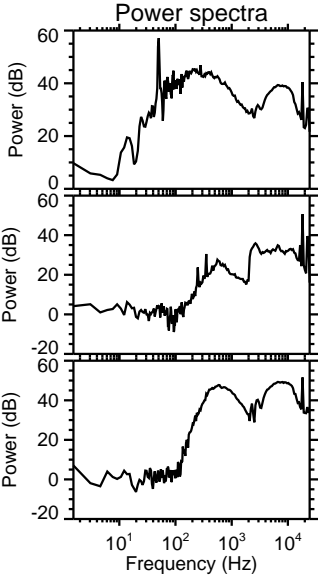
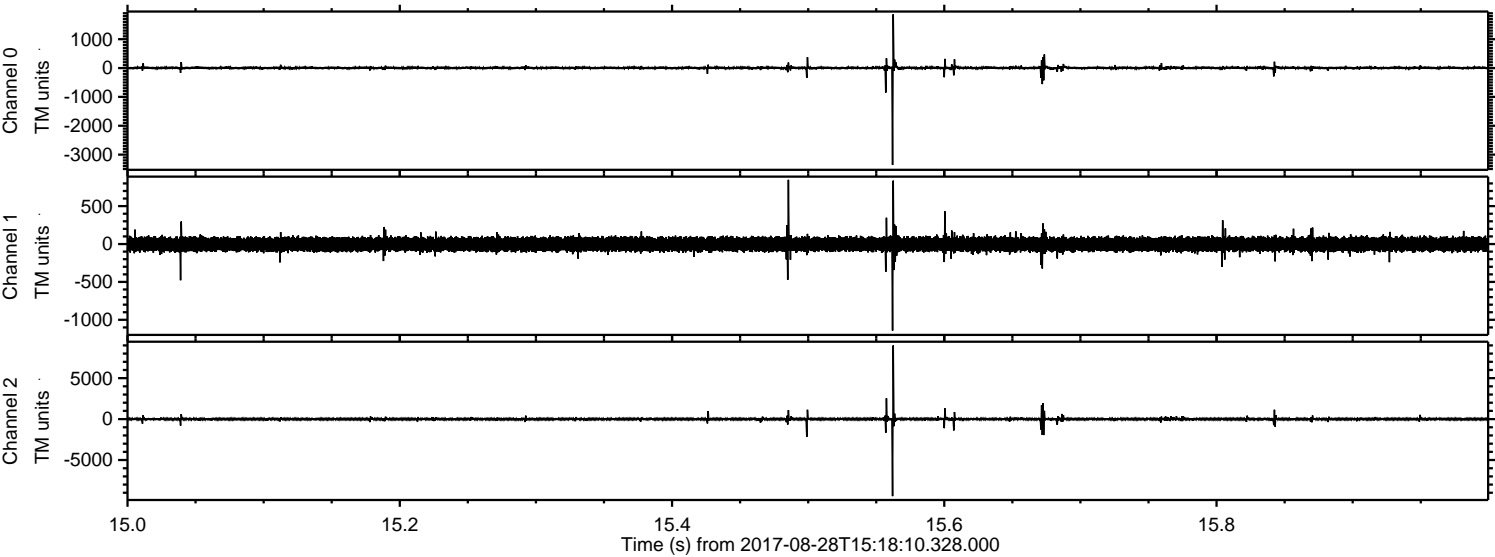
Processed Mon Aug 28 17:26:14 2017 by ELM ver.2012-10-06 from 001__elm20170828_151809__dat00.bin



Processed Mon Aug 28 17:26:21 2017 by ELM ver.2012-10-06 from 001__elm20170828_151809__dat00.bin

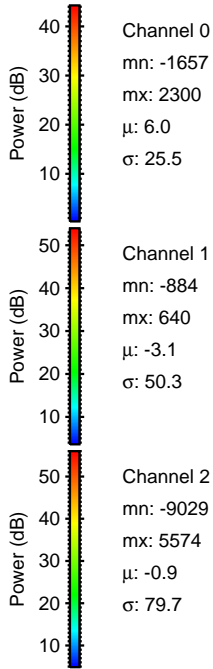
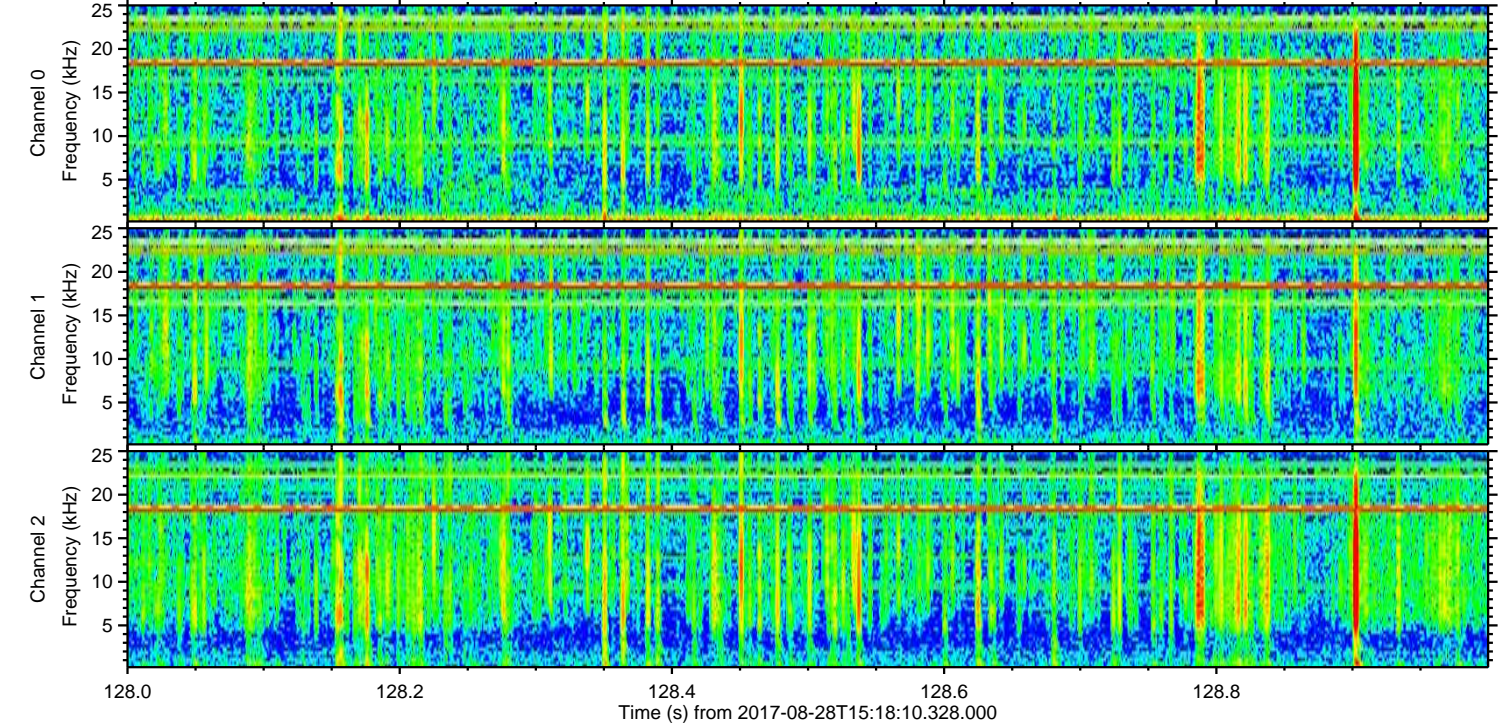
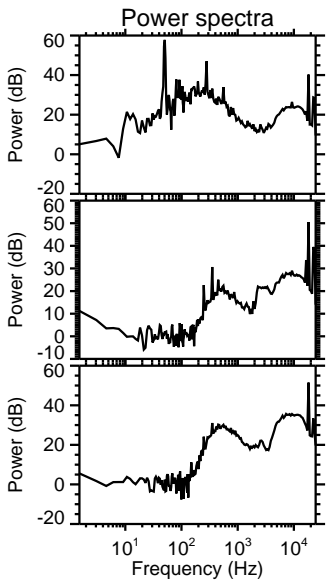
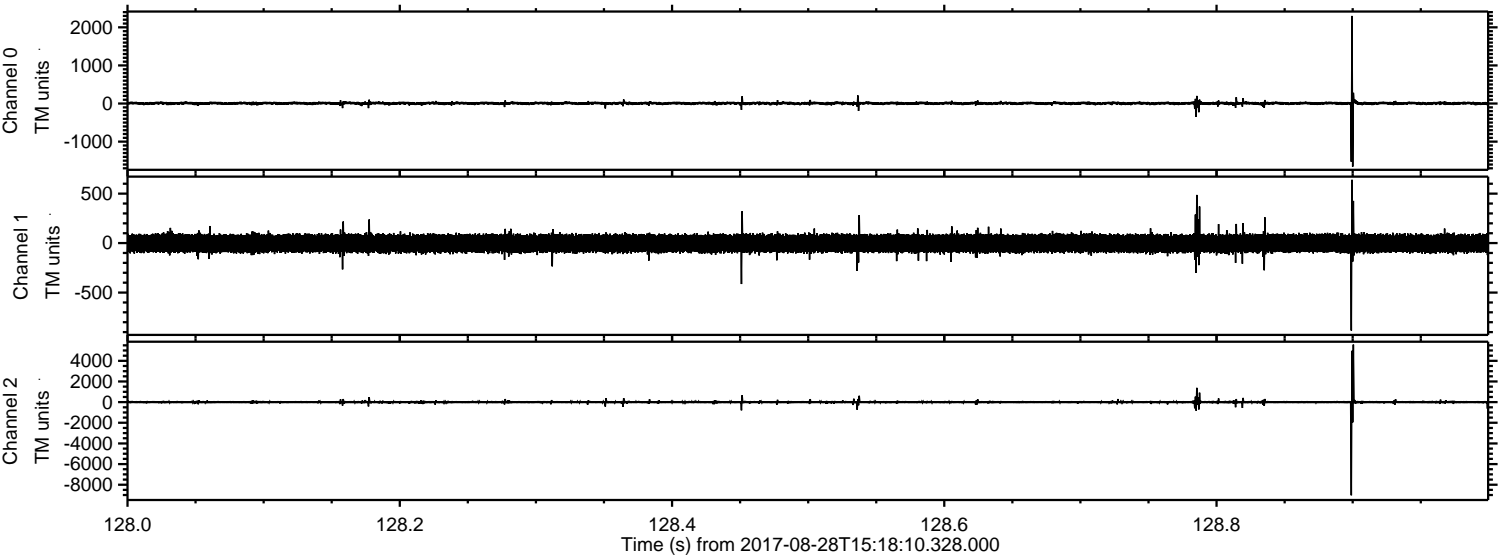


Processed Mon Aug 28 17:26:22 2017 by ELM ver.2012-10-06 from 001__elm20170828_151809__dat00.bin



ELMAVAN 3D WAVEFORMS (Measured data sampled at 50 kHz) 51000 packets of 144 samples from 2017-08-28T15:18:10.328.000. Part 129/147

Processed Mon Aug 28 17:26:22 2017 by ELM ver.2012-10-06 from 001__elm20170828_151809__dat00.bin

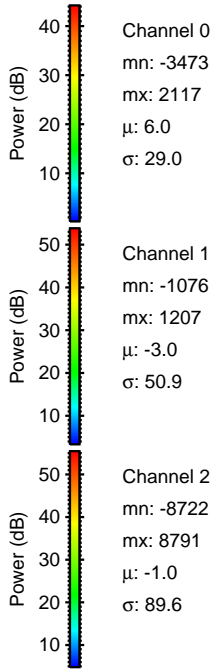
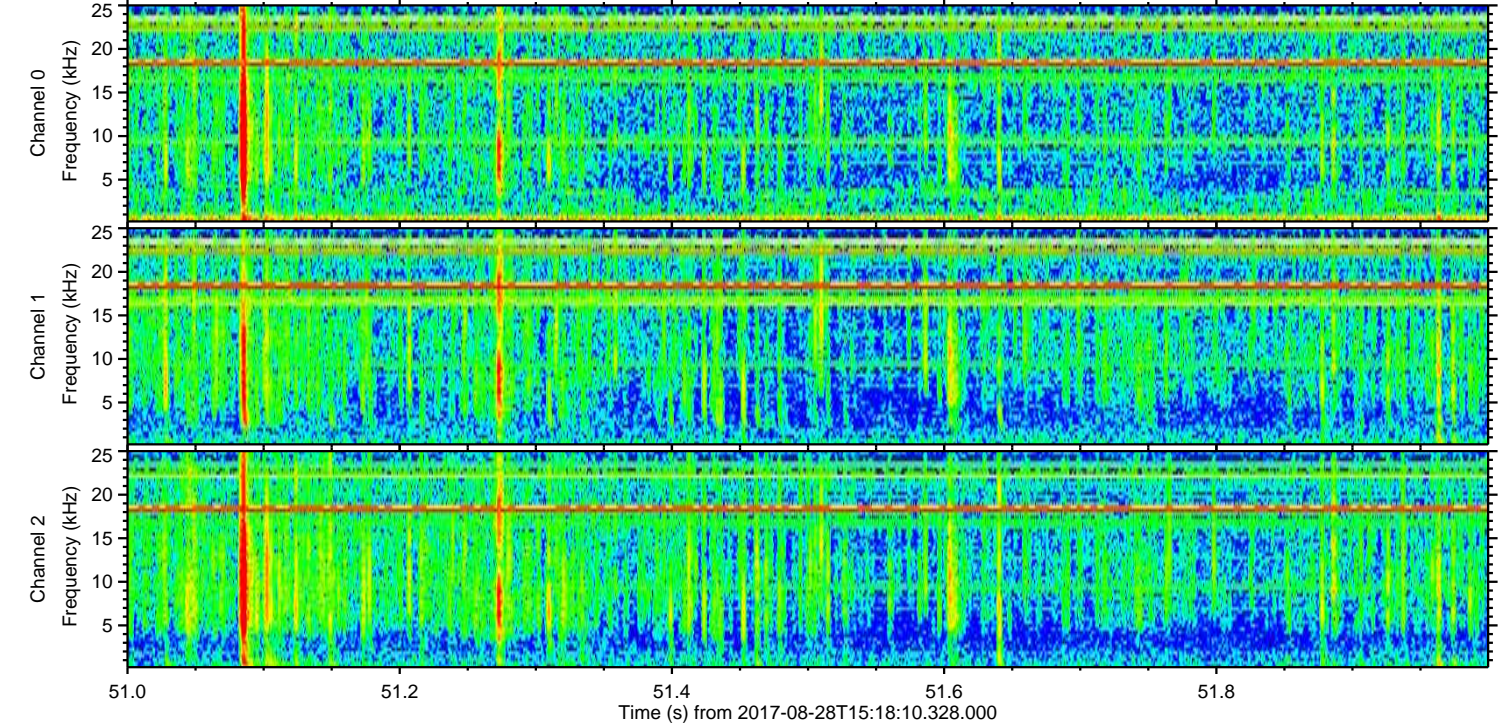
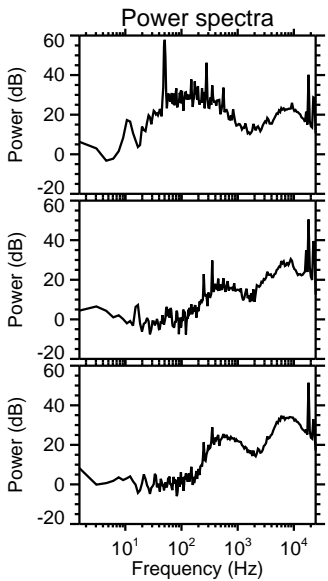
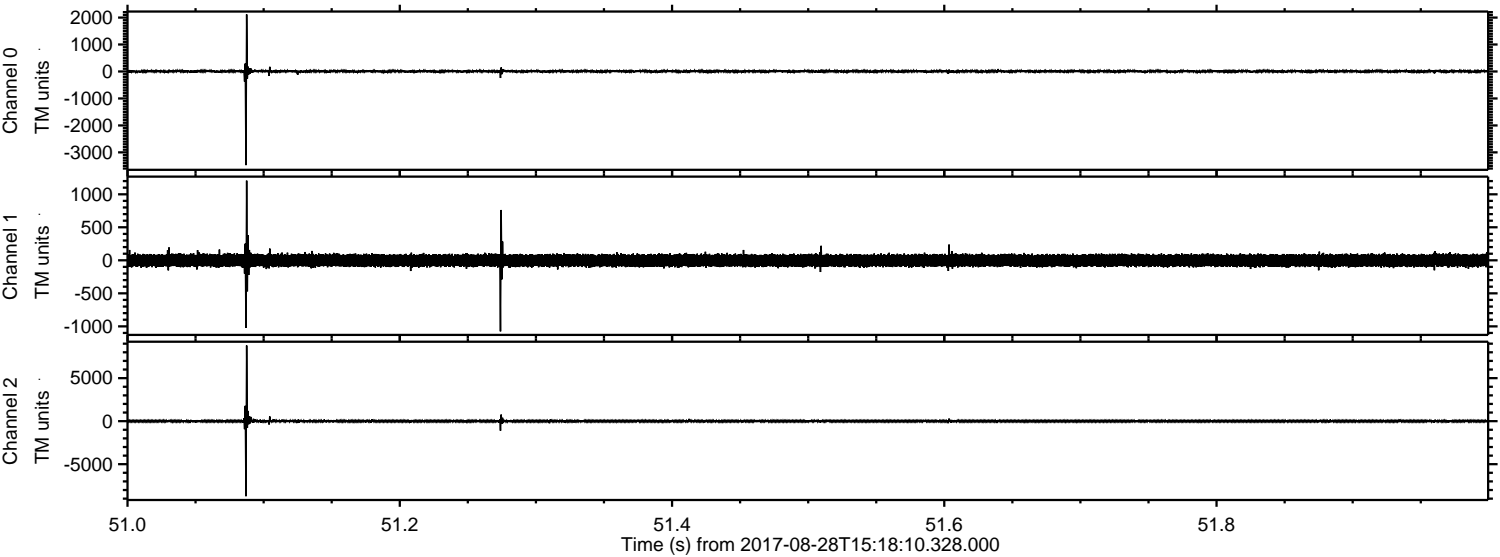


Channel 0
mn: -1657
mx: 2300
 μ : 6.0
 σ : 25.5

Channel 1
mn: -884
mx: 640
 μ : -3.1
 σ : 50.3

Channel 2
mn: -9029
mx: 5574
 μ : -0.9
 σ : 79.7

Processed Mon Aug 28 17:26:23 2017 by ELM ver.2012-10-06 from 001__elm20170828_151809__dat00.bin



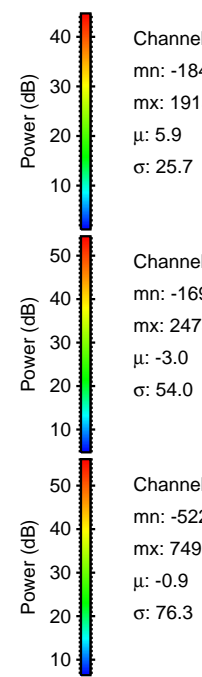
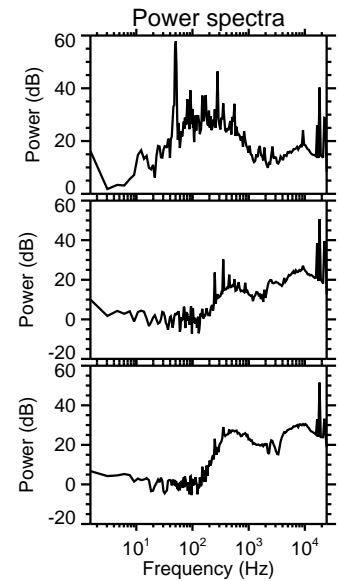
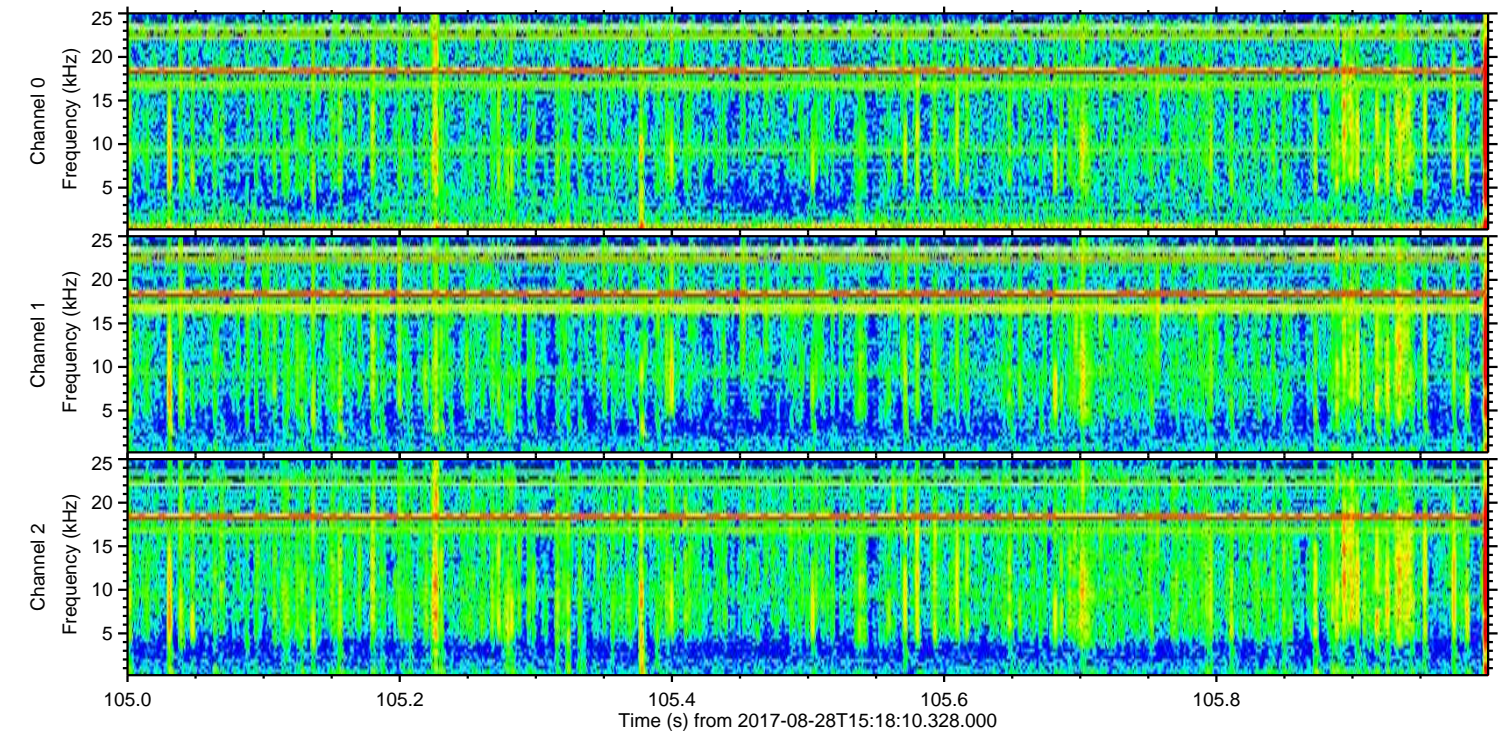
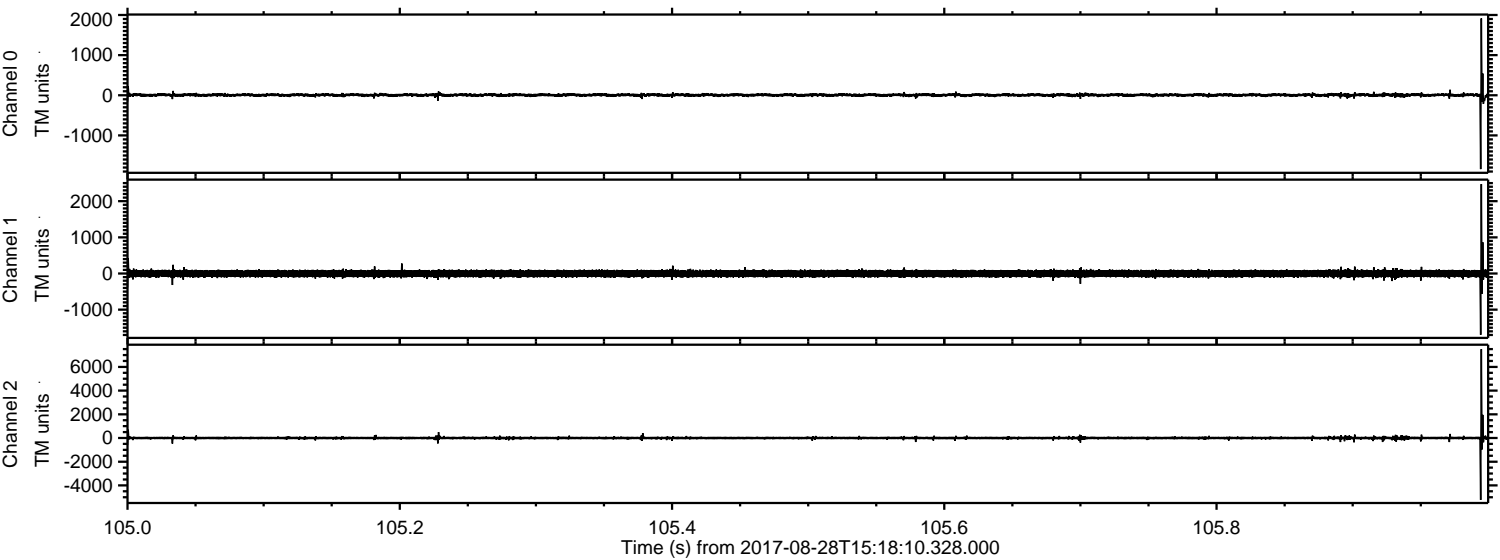
Channel 0
mn: -3473
mx: 2117
 μ : 6.0
 σ : 29.0

Channel 1
mn: -1076
mx: 1207
 μ : -3.0
 σ : 50.9

Channel 2
mn: -8722
mx: 8791
 μ : -1.0
 σ : 89.6

ELMAVAN 3D WAVEFORMS (Measured data sampled at 50 kHz) 51000 packets of 144 samples from 2017-08-28T15:18:10.328.000. Part 106/147

Processed Mon Aug 28 17:26:24 2017 by ELM ver.2012-10-06 from 001__elm20170828_151809__dat00.bin



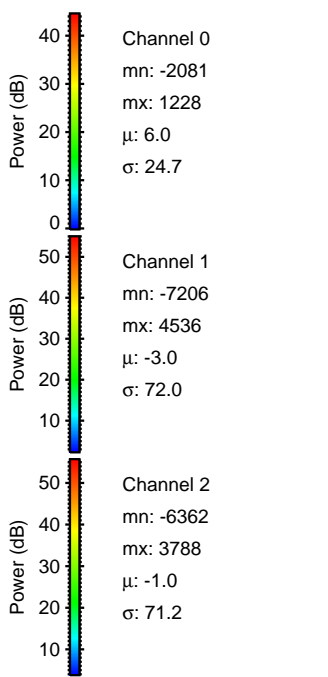
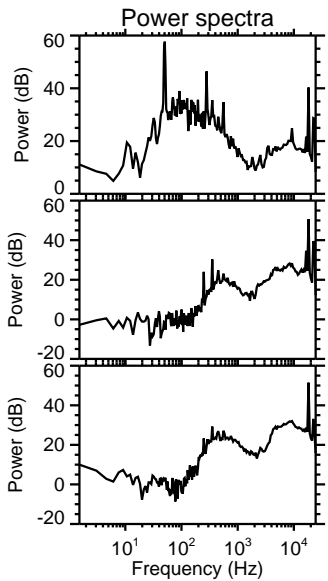
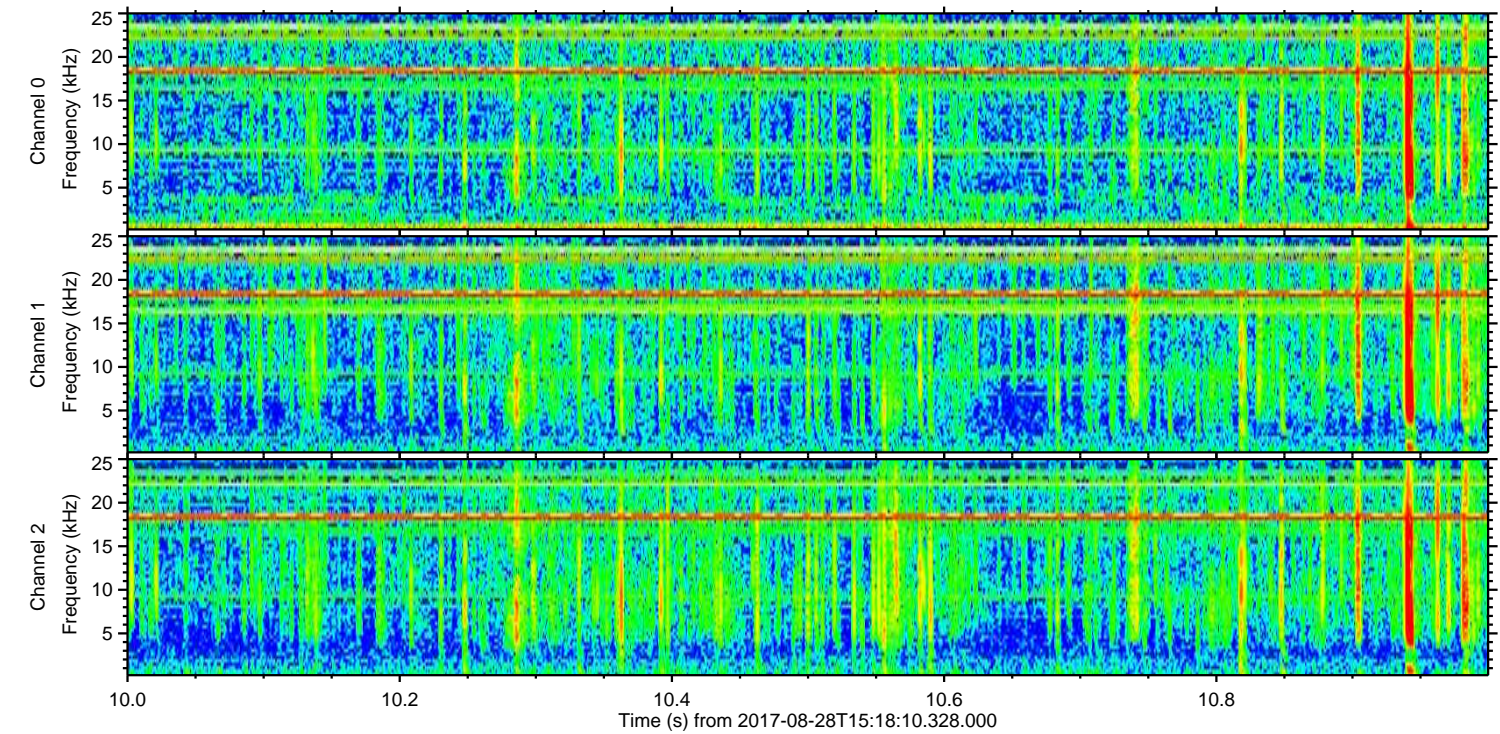
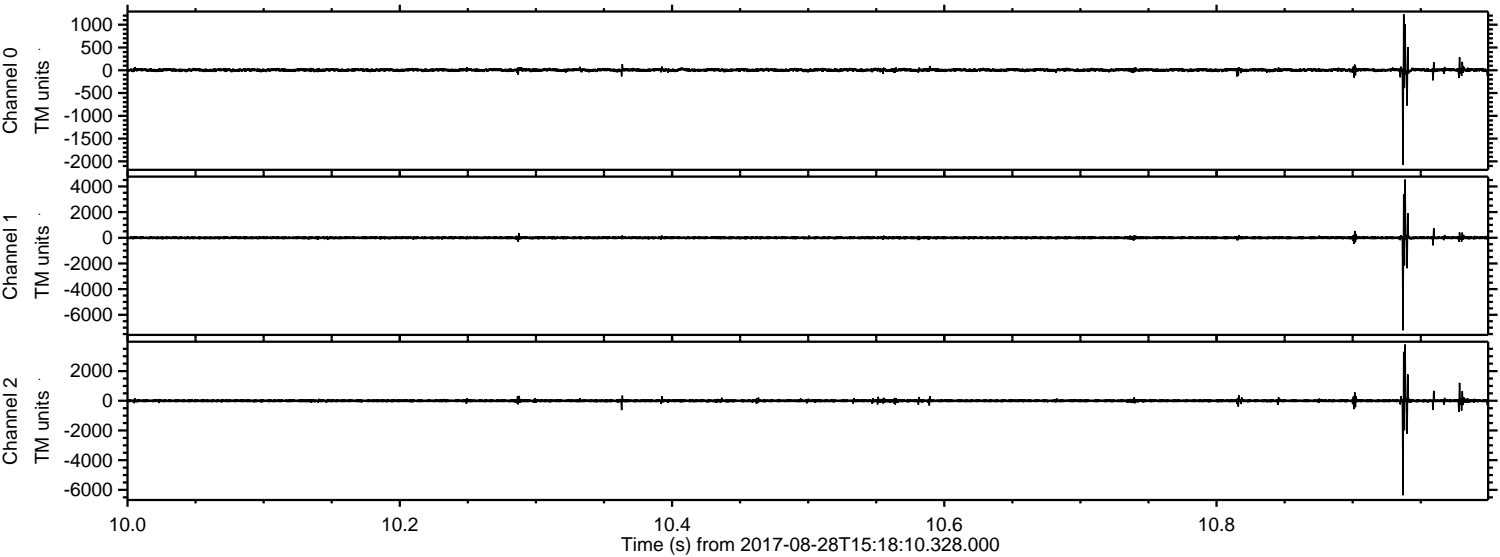
Channel 0
mn: -1840
mx: 1915
 μ : 5.9
 σ : 25.7

Channel 1
mn: -1697
mx: 2473
 μ : -3.0
 σ : 54.0

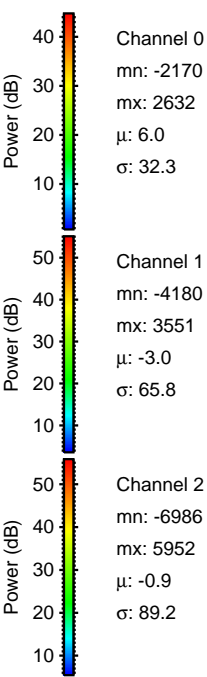
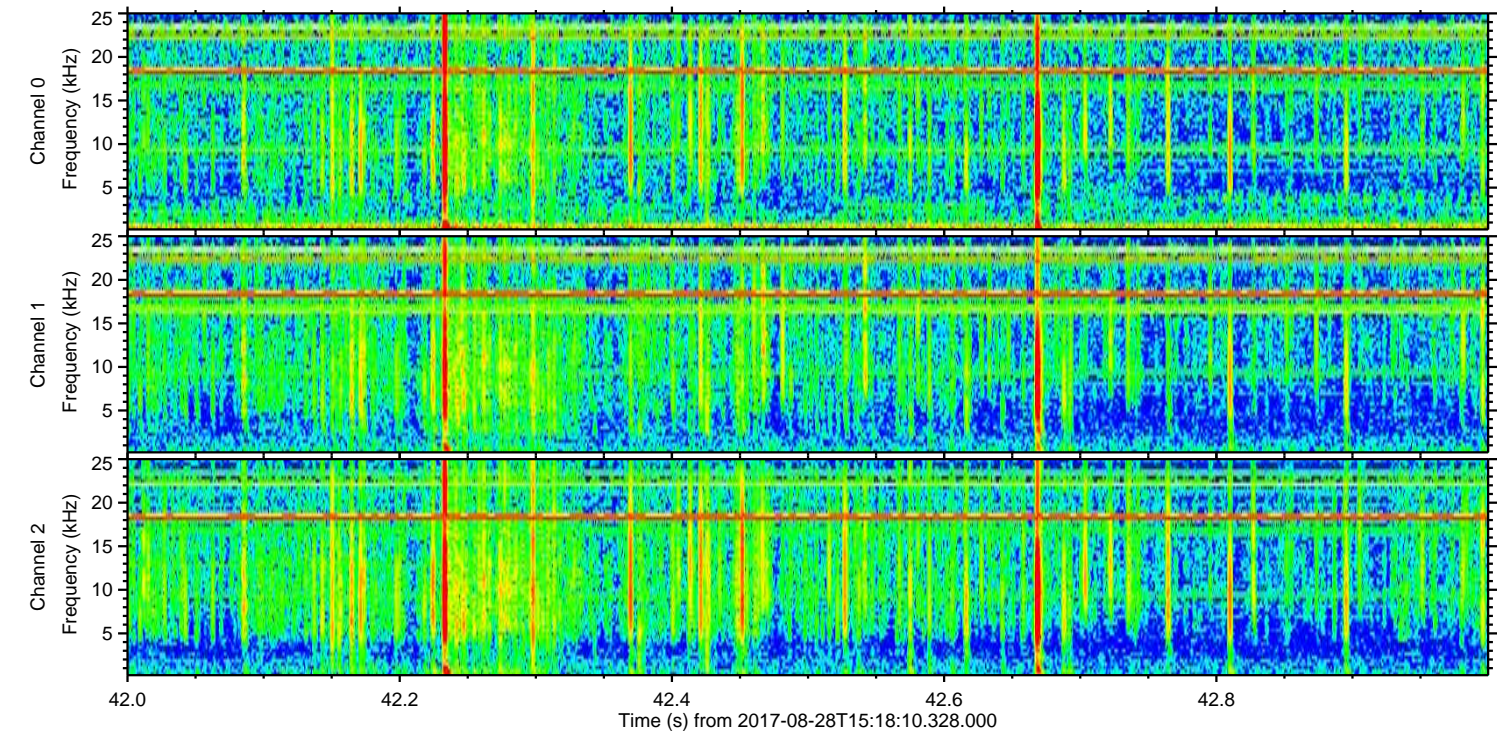
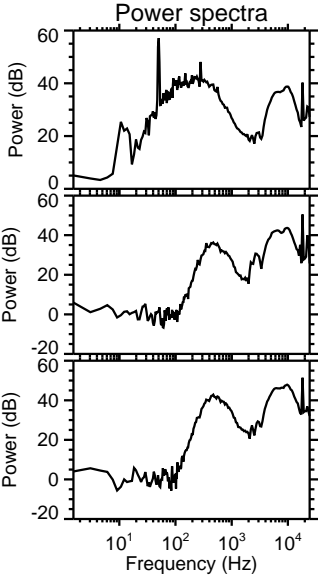
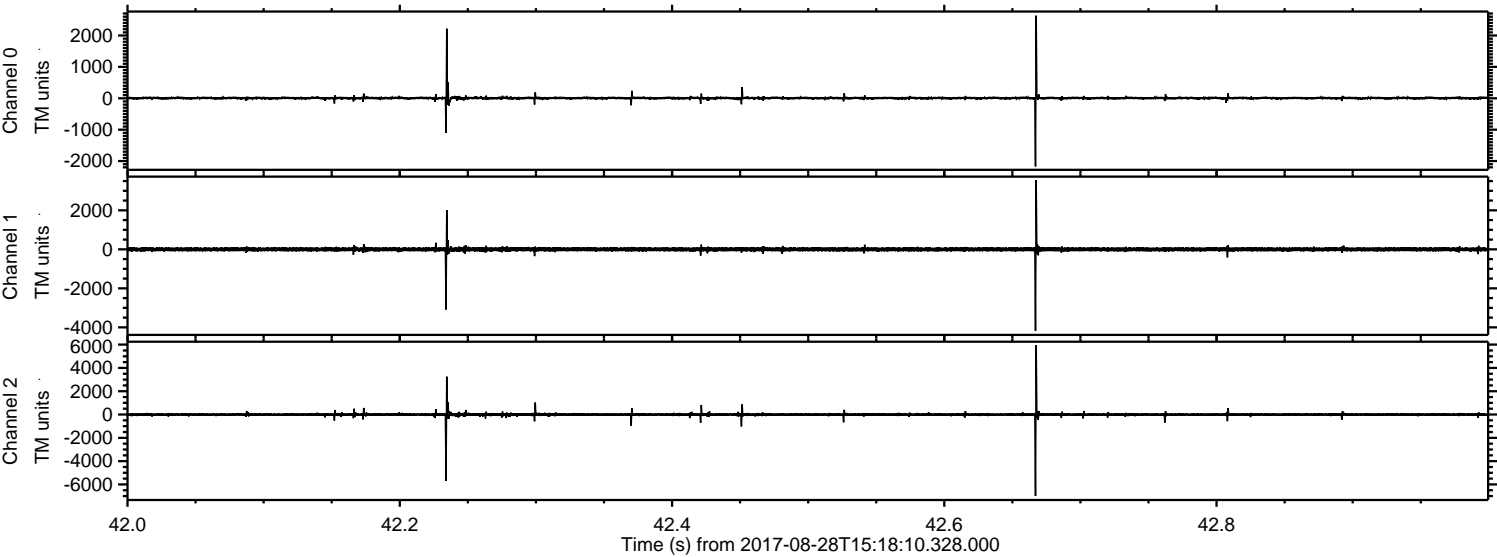
Channel 2
mn: -5225
mx: 7498
 μ : -0.9
 σ : 76.3

ELMAVAN 3D WAVEFORMS (Measured data sampled at 50 kHz) 51000 packets of 144 samples from 2017-08-28T15:18:10.328.000. Part 11/147

Processed Mon Aug 28 17:26:25 2017 by ELM ver.2012-10-06 from 001__elm20170828_151809__dat00.bin



Processed Mon Aug 28 17:26:25 2017 by ELM ver.2012-10-06 from 001__elm20170828_151809__dat00.bin

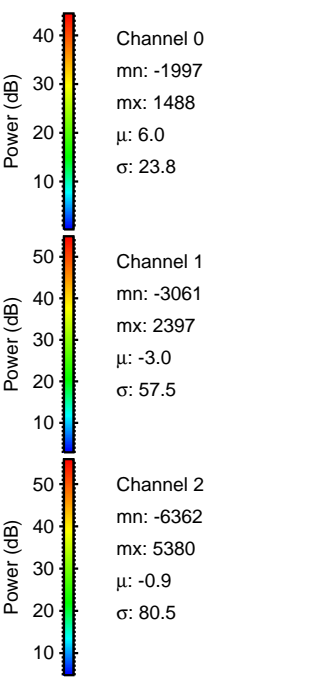
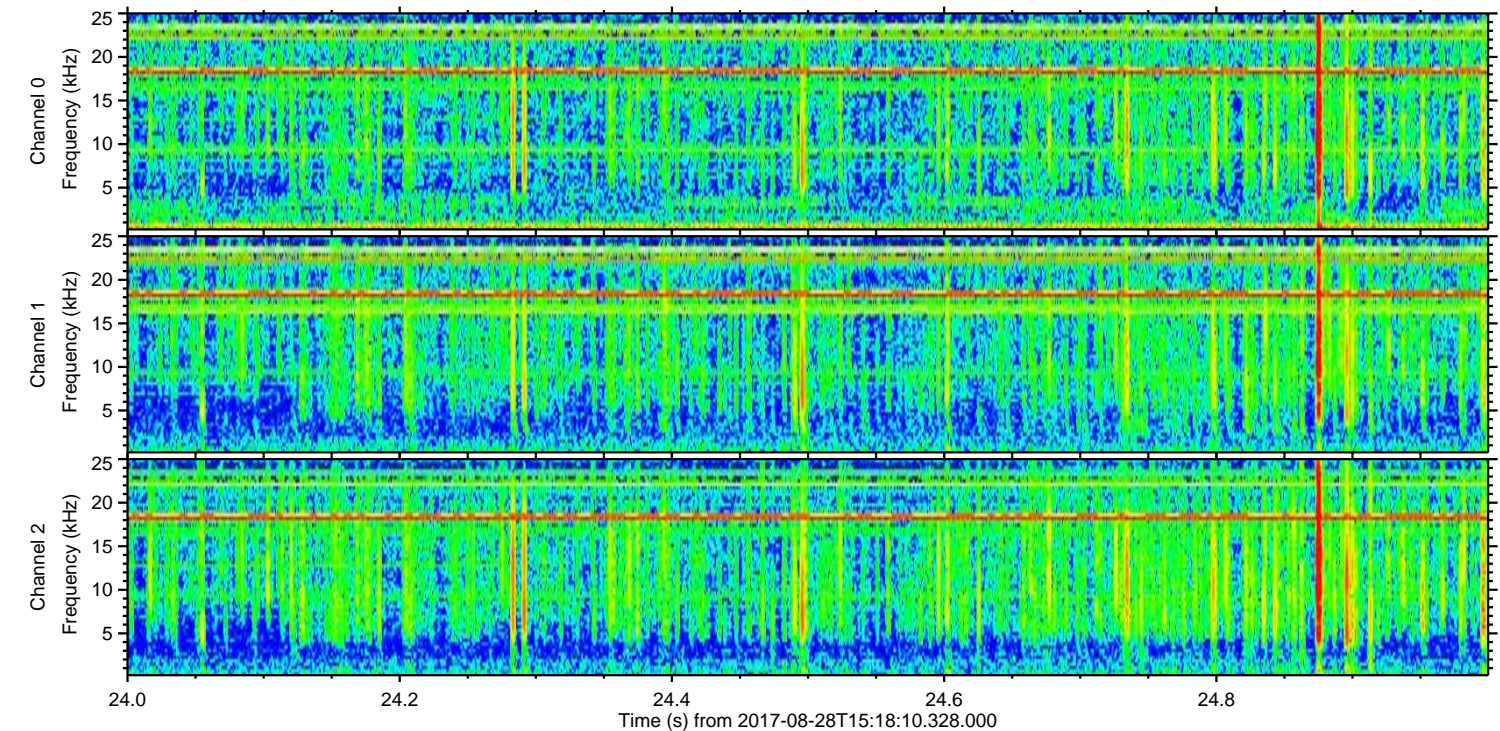
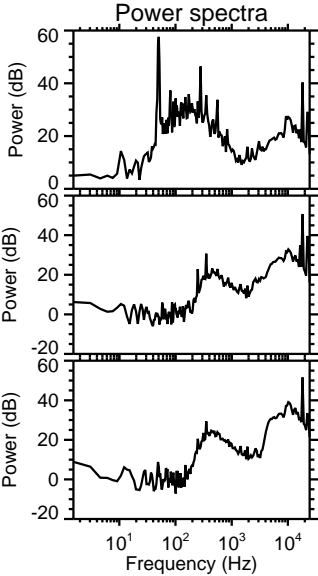
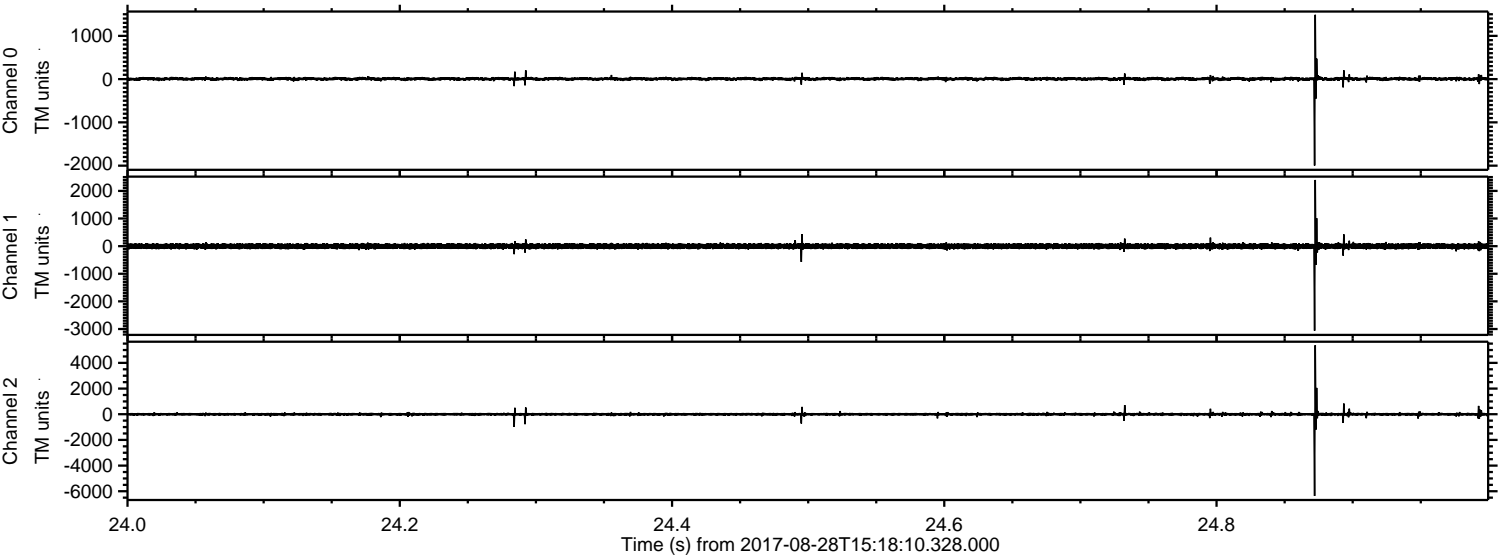


Channel 0
mn: -2170
mx: 2632
 μ : 6.0
 σ : 32.3

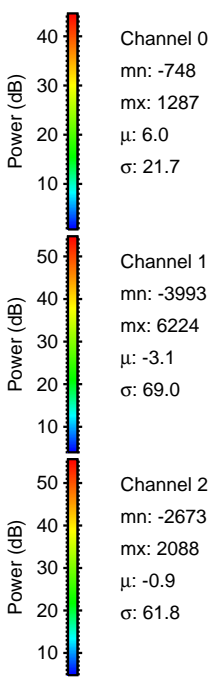
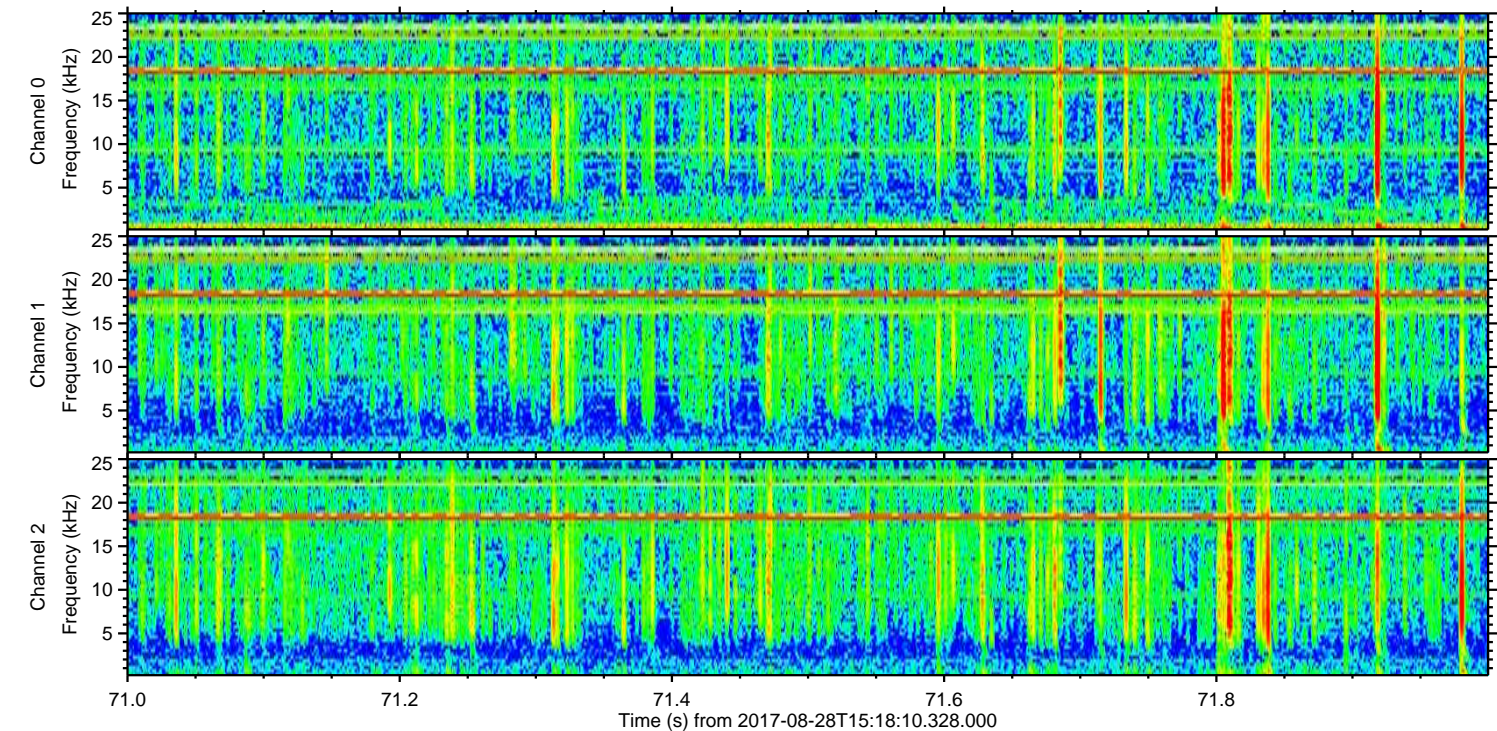
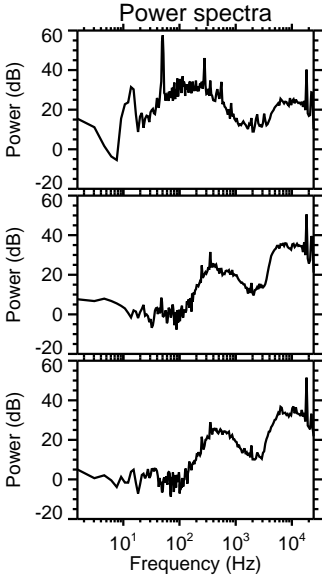
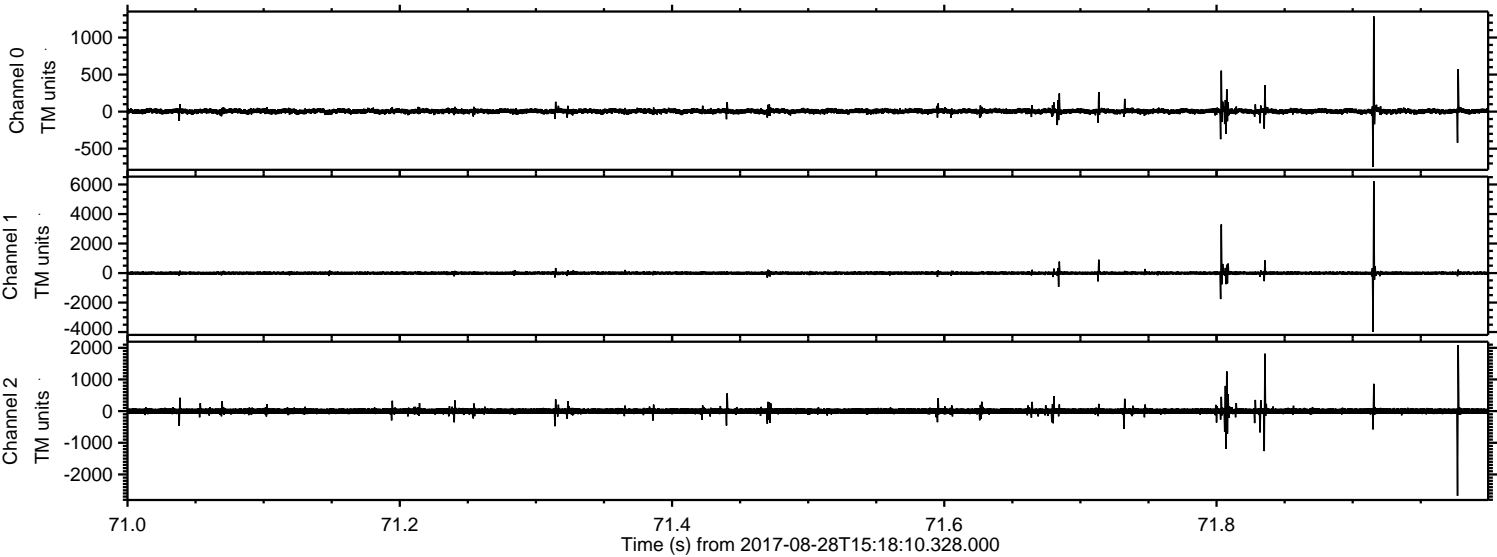
Channel 1
mn: -4180
mx: 3551
 μ : -3.0
 σ : 65.8

Channel 2
mn: -6986
mx: 5952
 μ : -0.9
 σ : 89.2

Processed Mon Aug 28 17:26:26 2017 by ELM ver.2012-10-06 from 001__elm20170828_151809__dat00.bin



Processed Mon Aug 28 17:26:27 2017 by ELM ver.2012-10-06 from 001__elm20170828_151809__dat00.bin



Channel 0
mn: -748
mx: 1287
 μ : 6.0
 σ : 21.7

Channel 1
mn: -3993
mx: 6224
 μ : -3.1
 σ : 69.0

Channel 2
mn: -2673
mx: 2088
 μ : -0.9
 σ : 61.8

