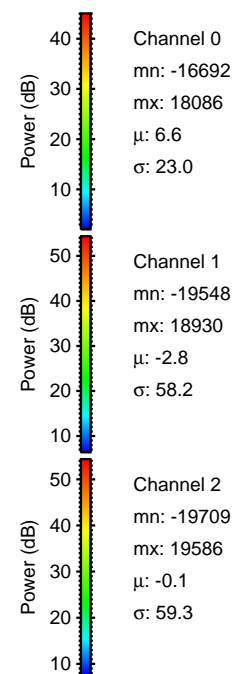
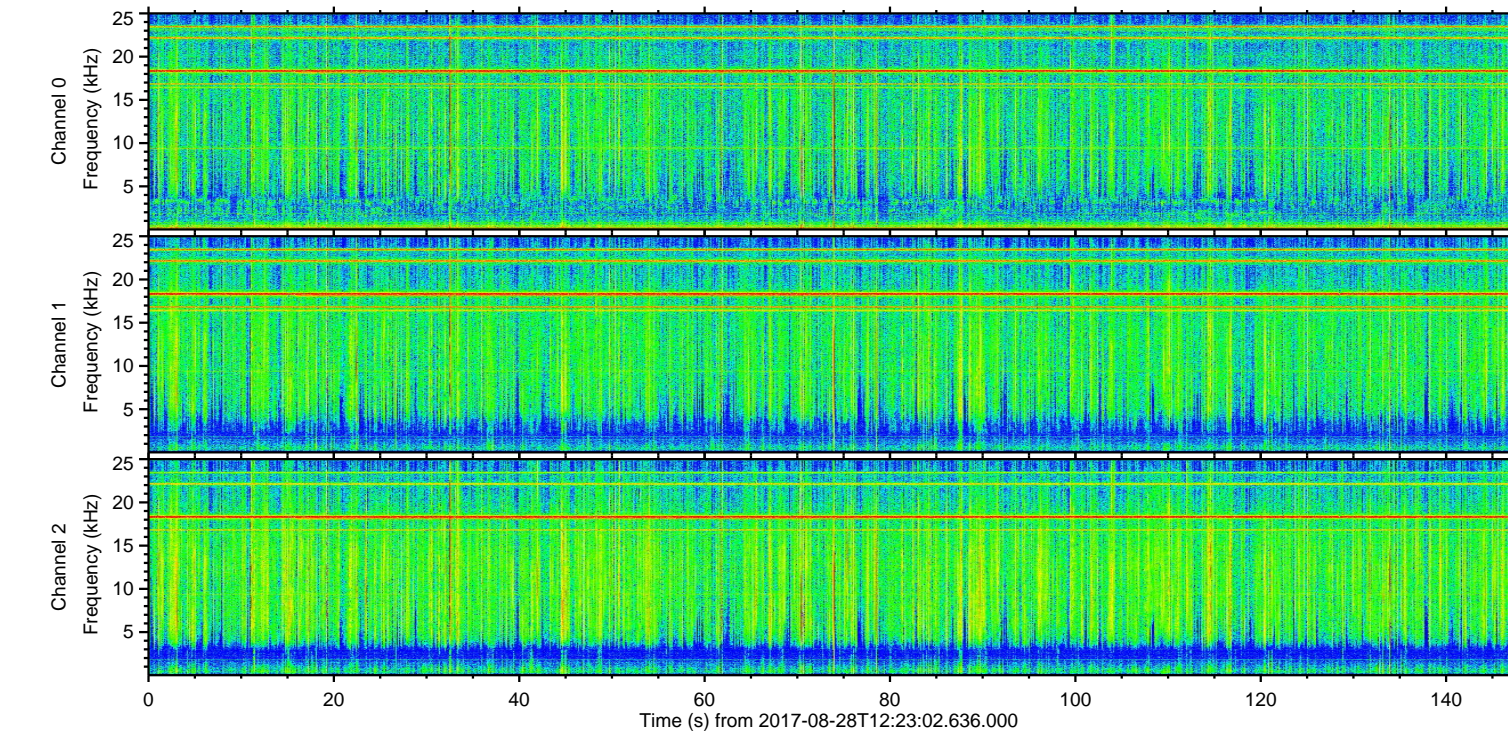
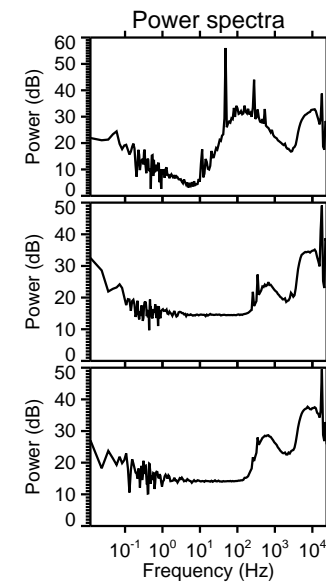
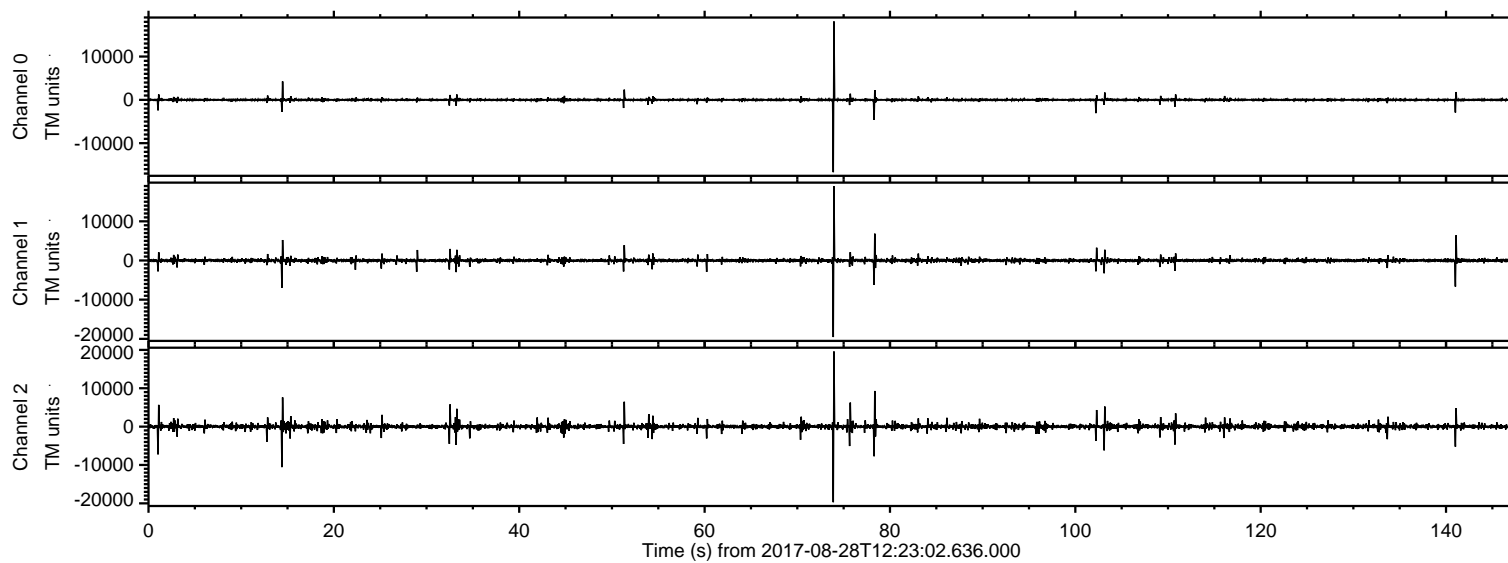
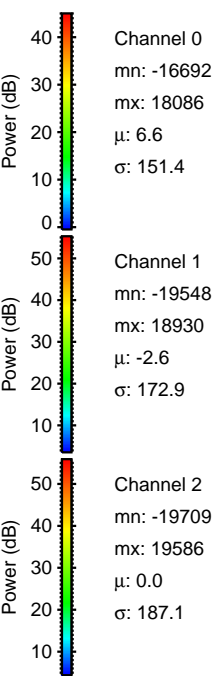
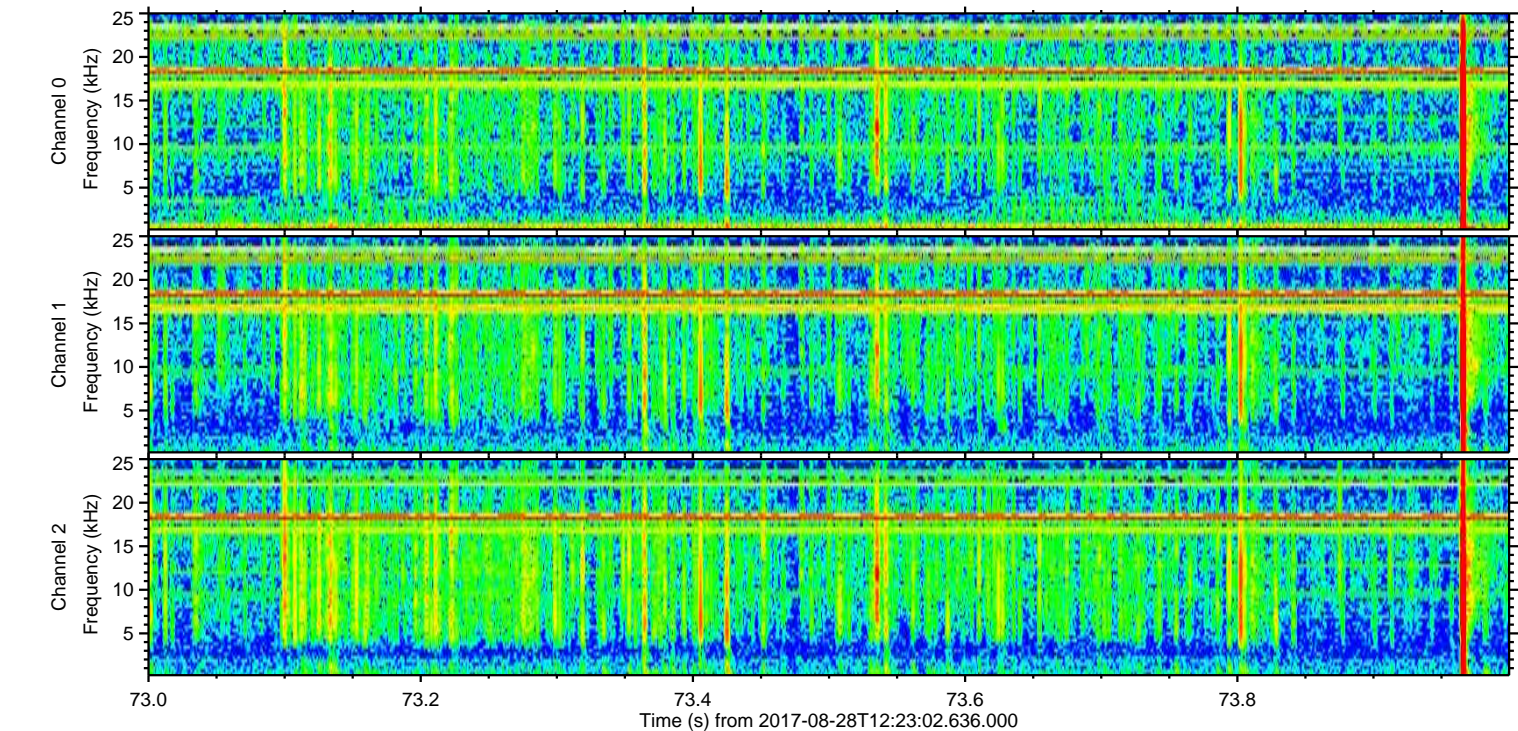
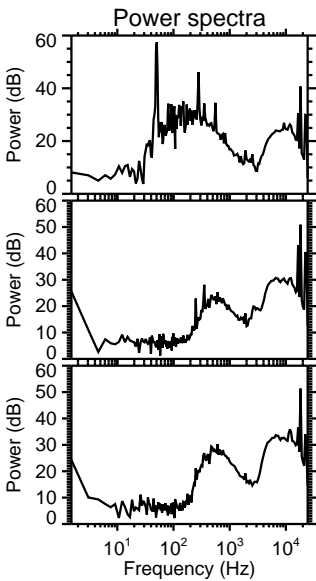
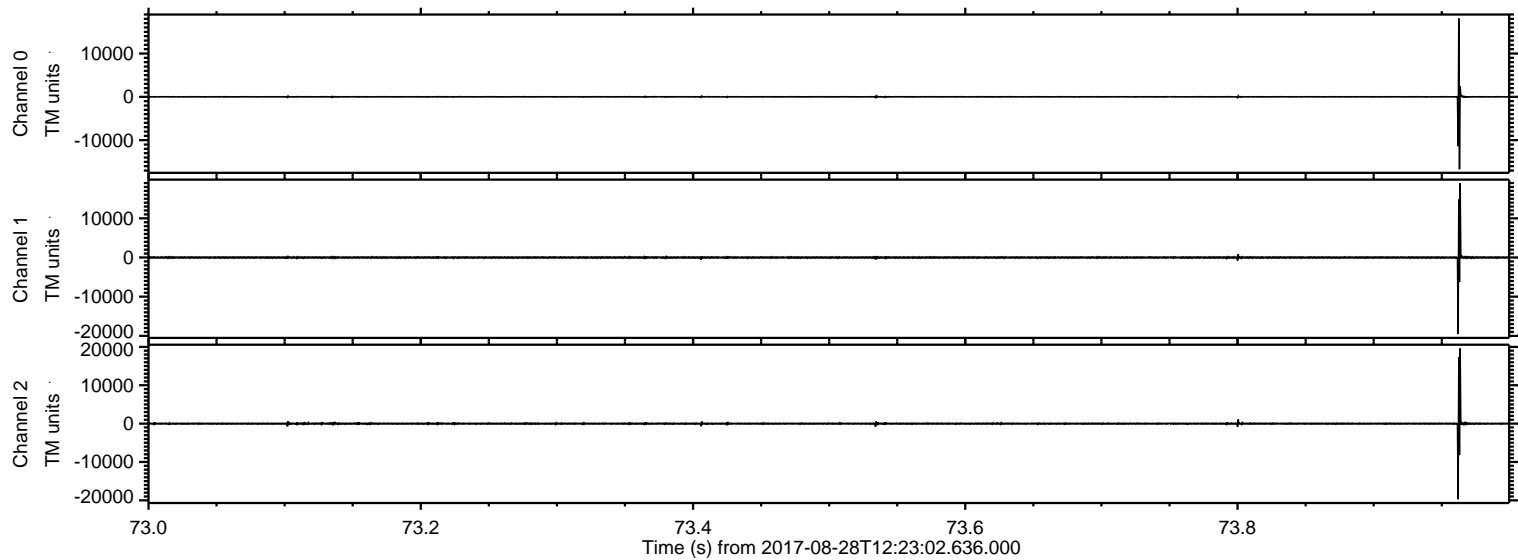


ELMAVAN 3D WAVEFORMS (Measured data sampled at 50 kHz) 51000 packets of 144 samples from 2017-08-28T12:23:02.636.000.

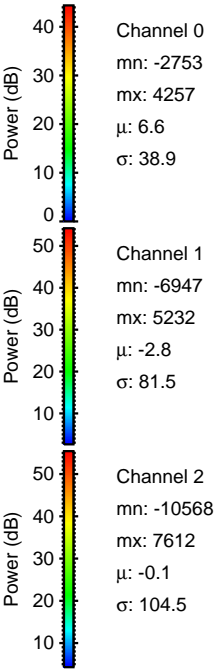
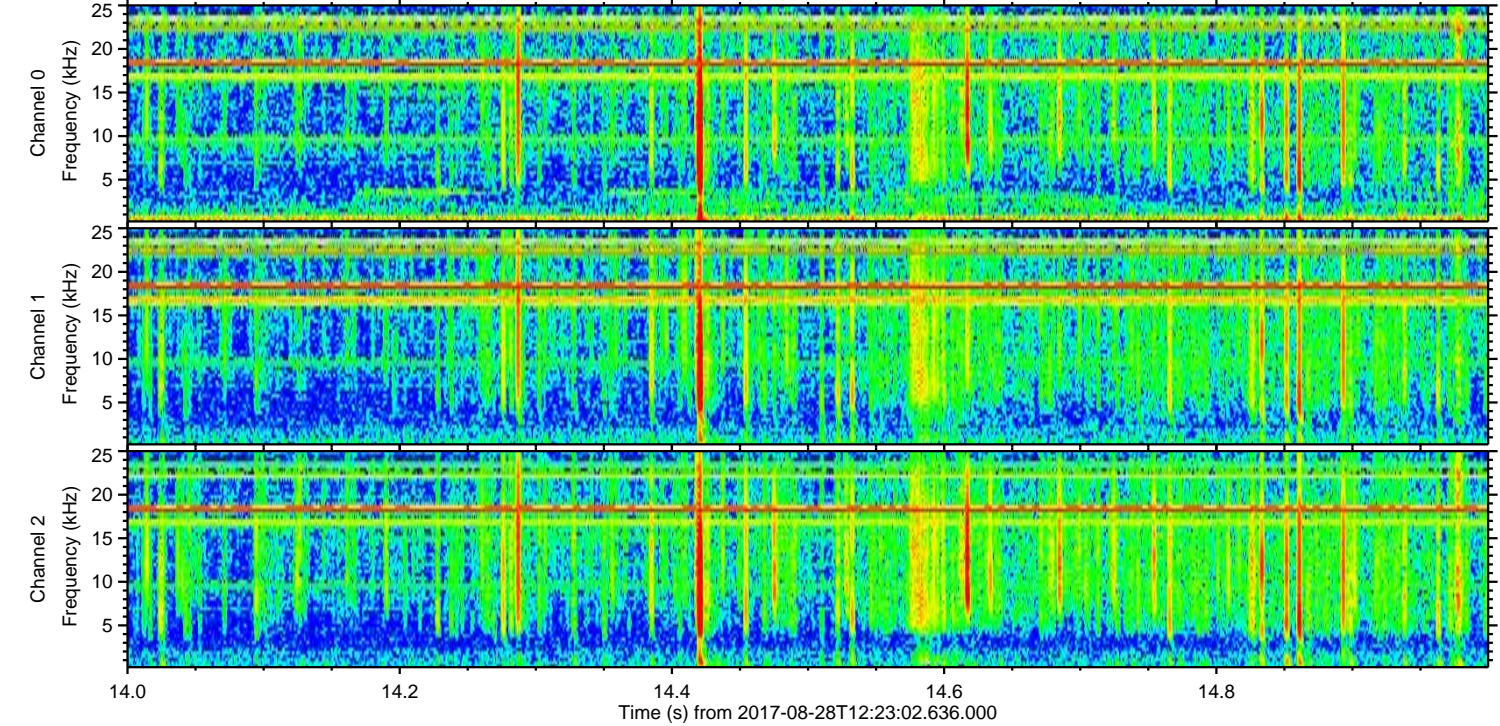
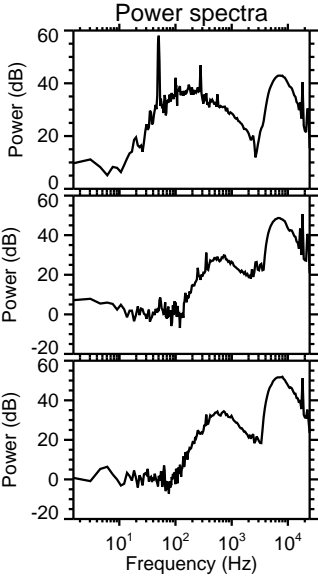
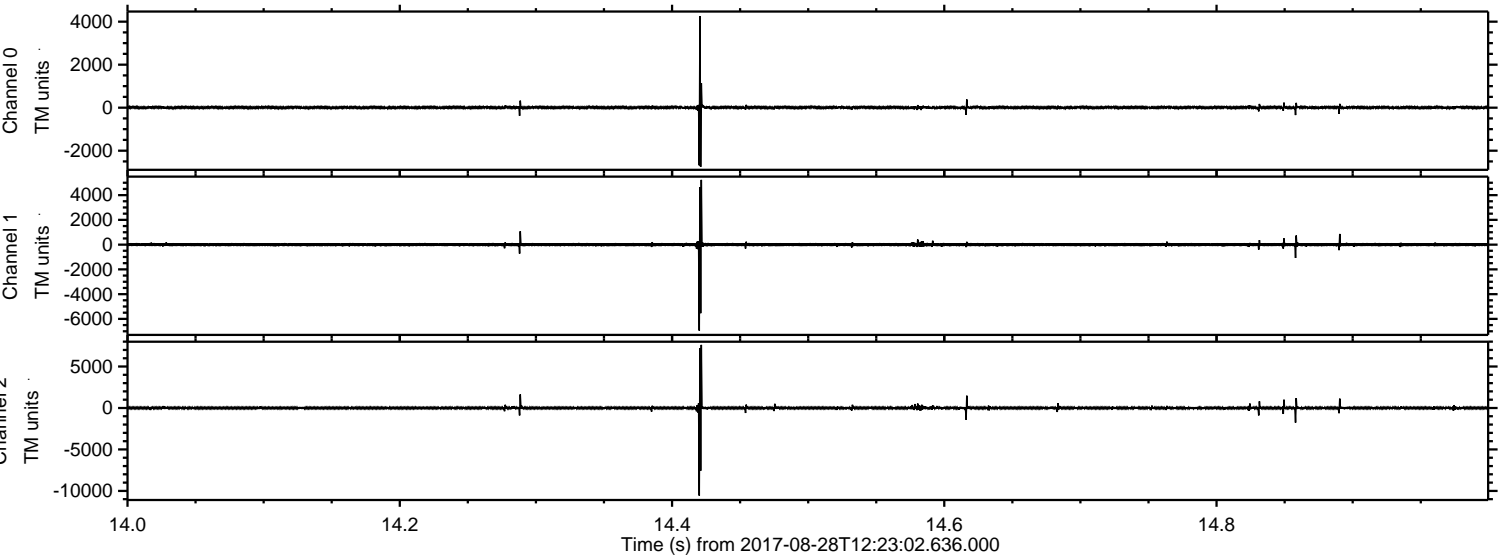
Processed Mon Aug 28 14:30:19 2017 by ELM ver.2012-10-06 from 001__elm20170828_122301__dat00.bin



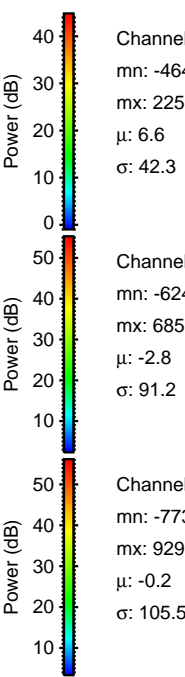
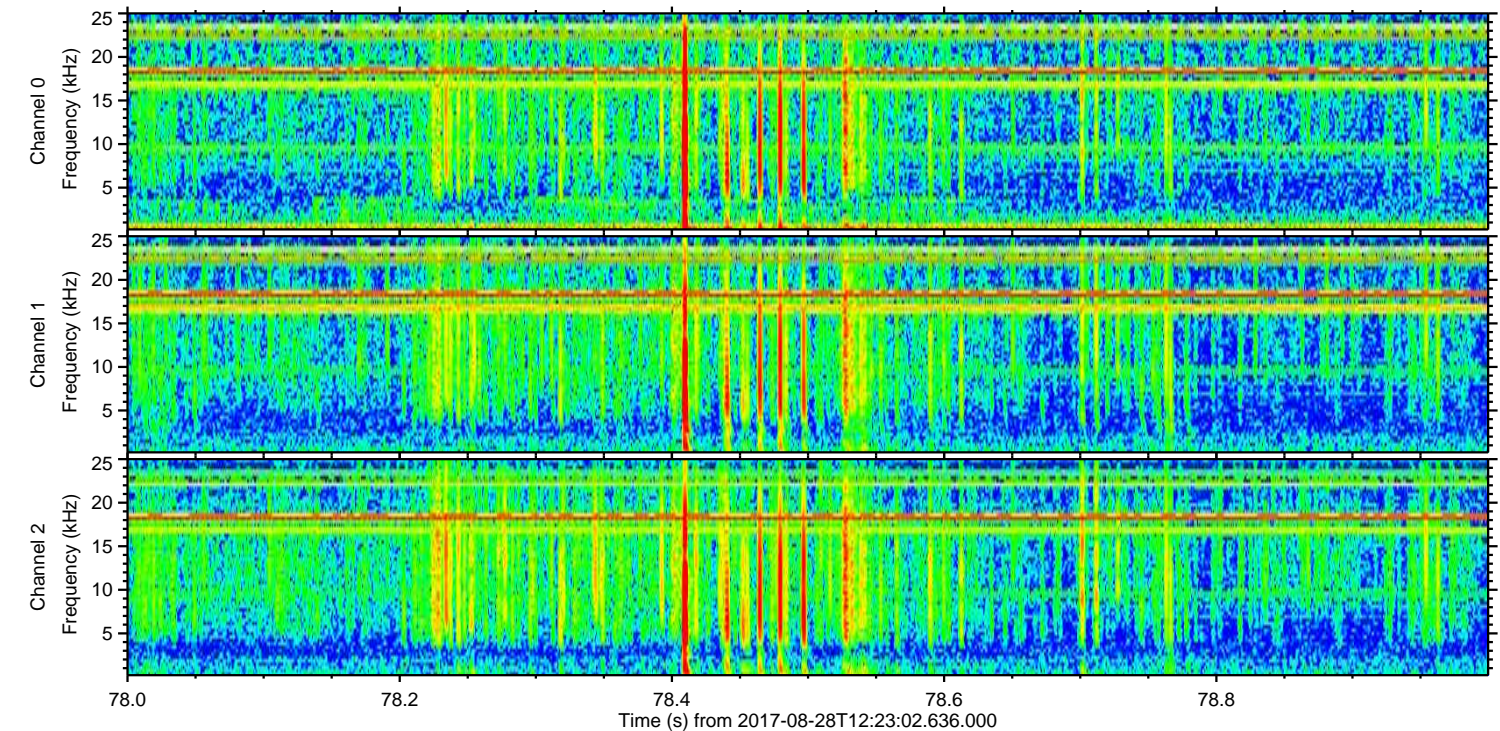
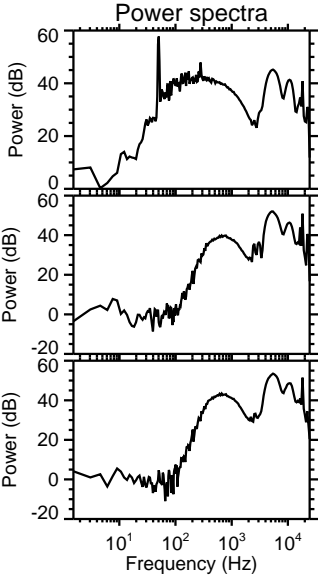
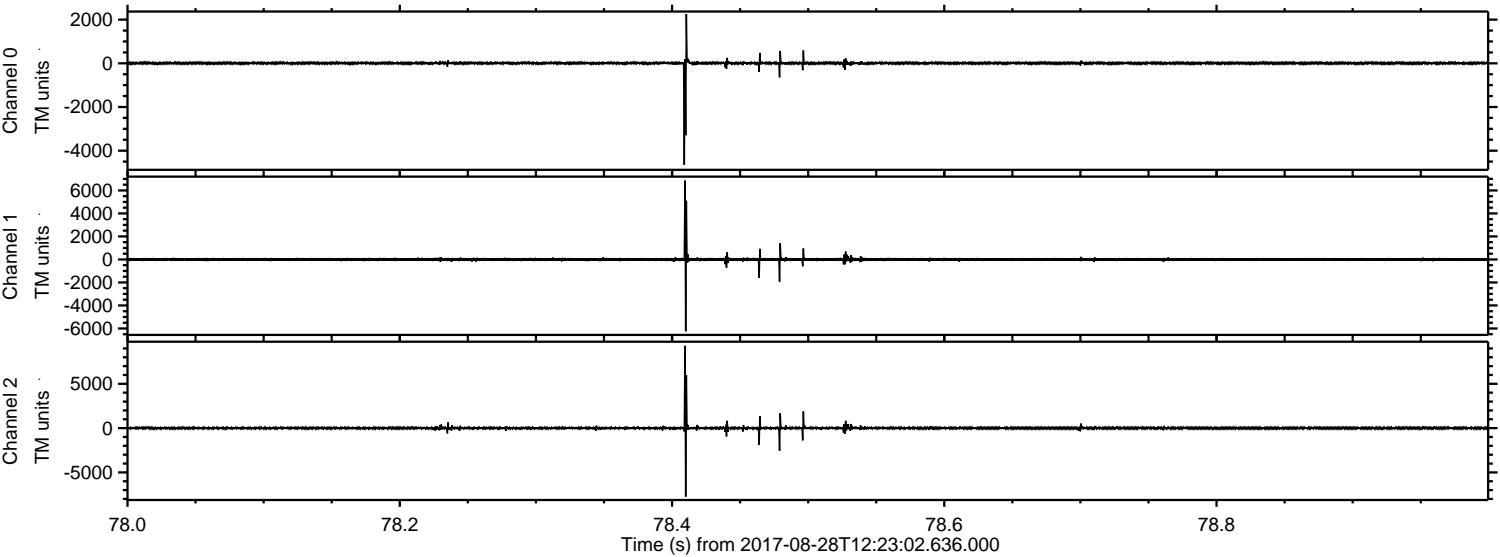
Processed Mon Aug 28 14:30:25 2017 by ELM ver.2012-10-06 from 001__elm20170828_122301__dat00.bin



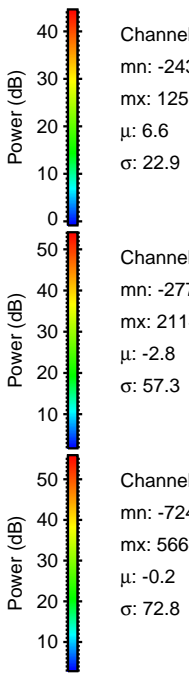
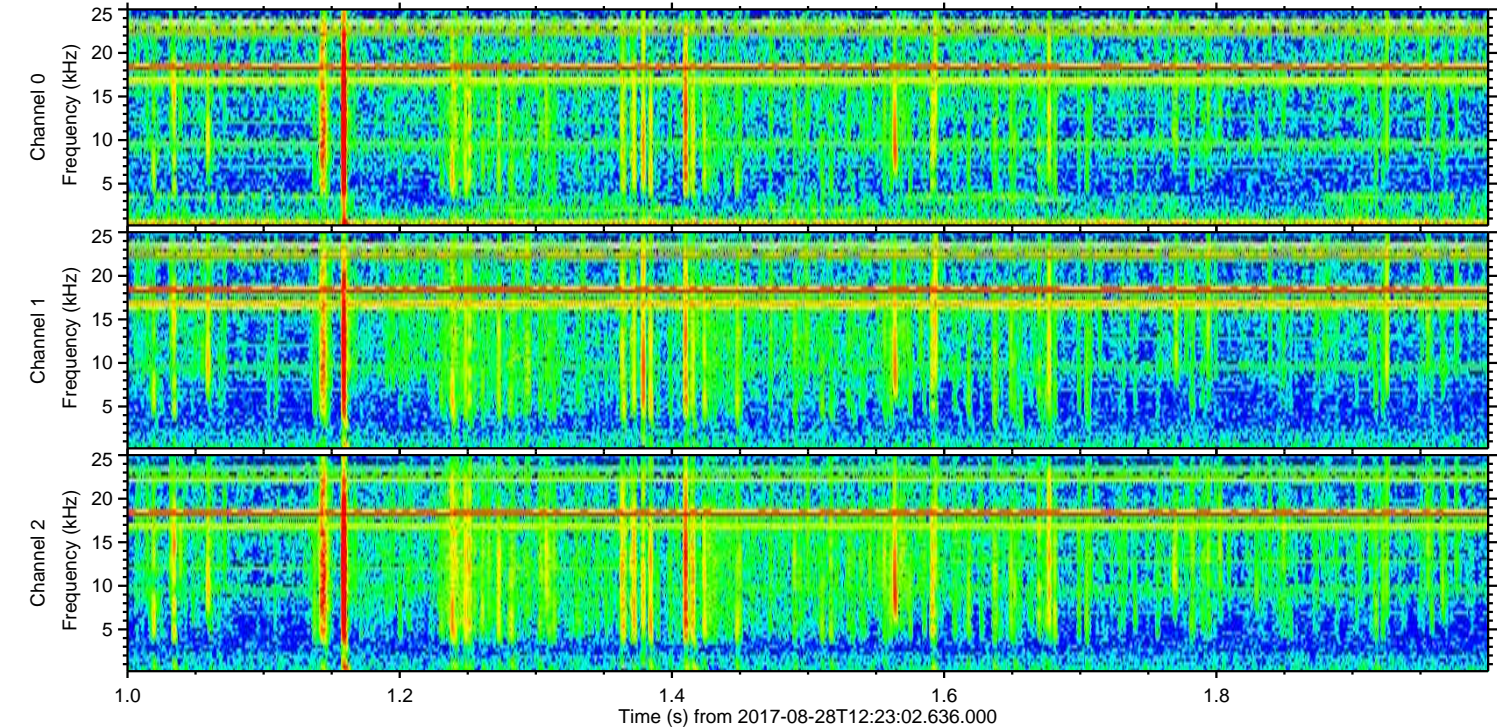
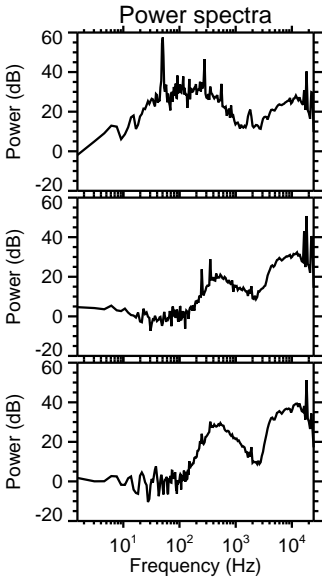
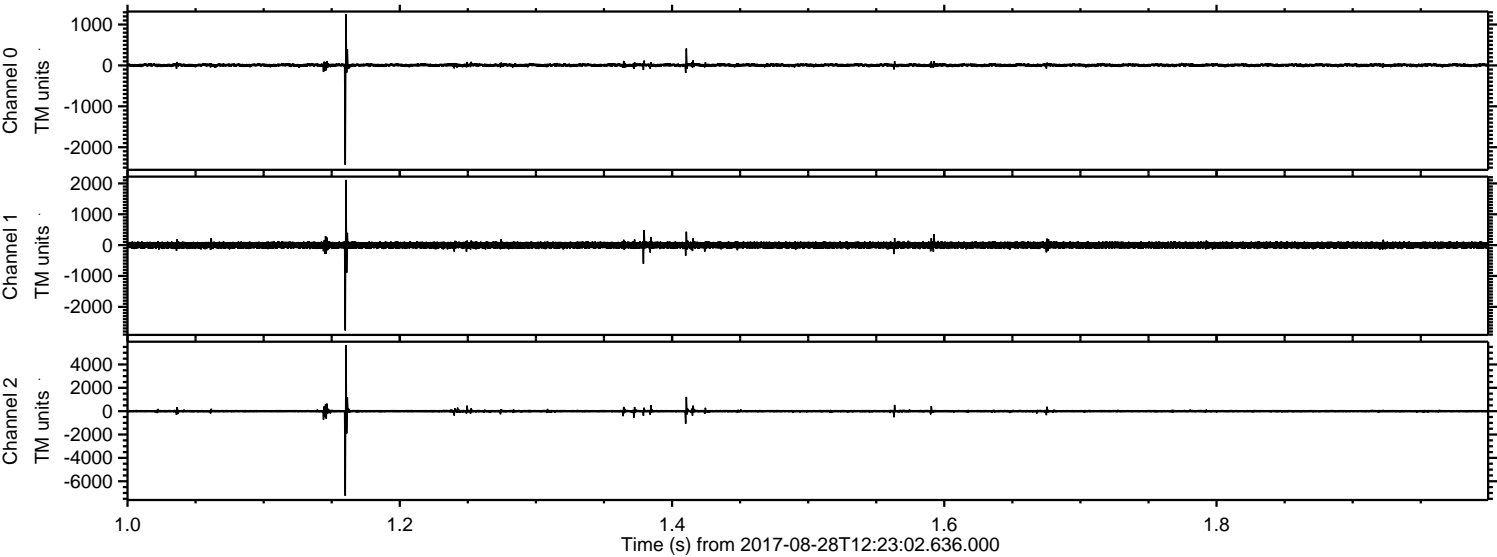
Processed Mon Aug 28 14:30:26 2017 by ELM ver.2012-10-06 from 001__elm20170828_122301__dat00.bin



Processed Mon Aug 28 14:30:27 2017 by ELM ver.2012-10-06 from 001__elm20170828_122301__dat00.bin

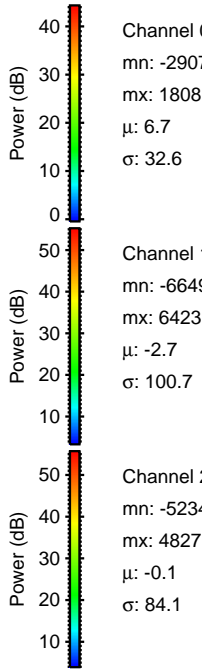
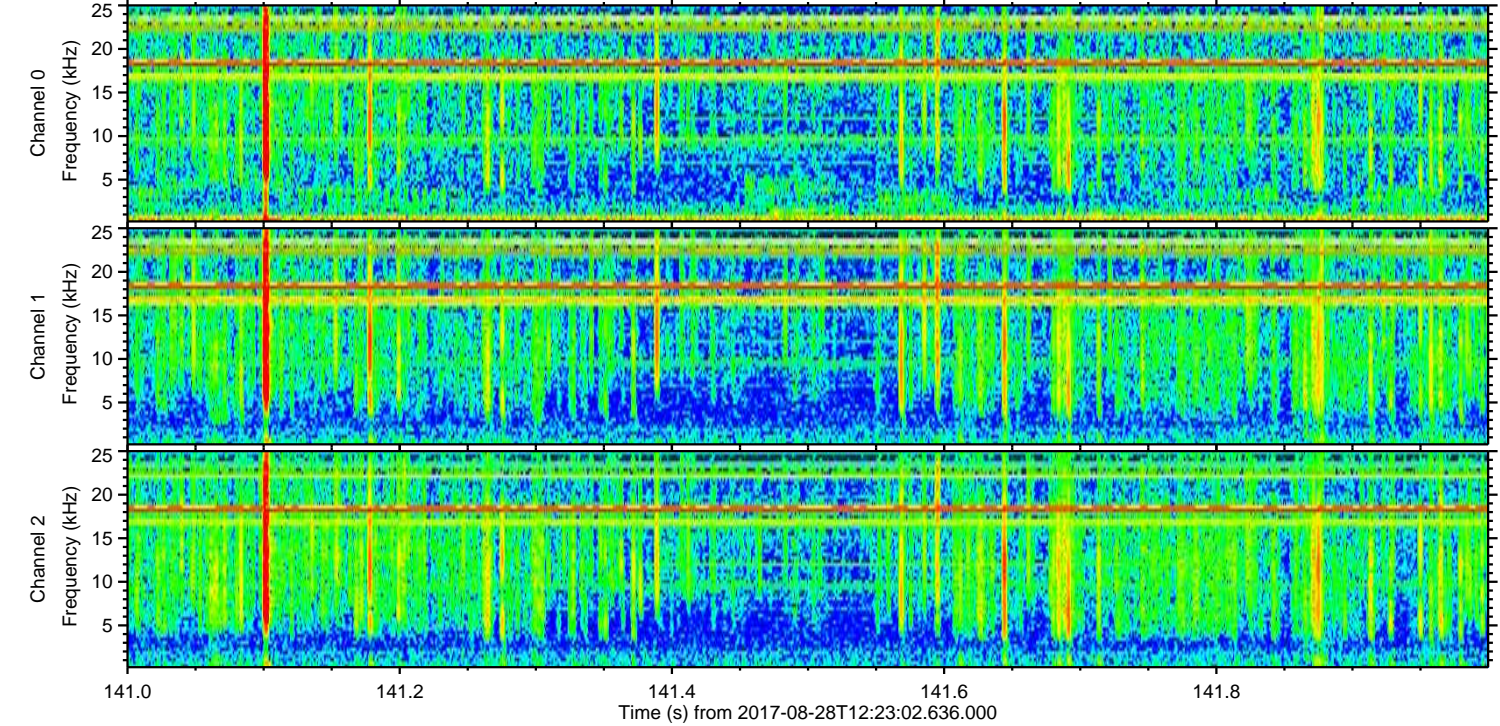
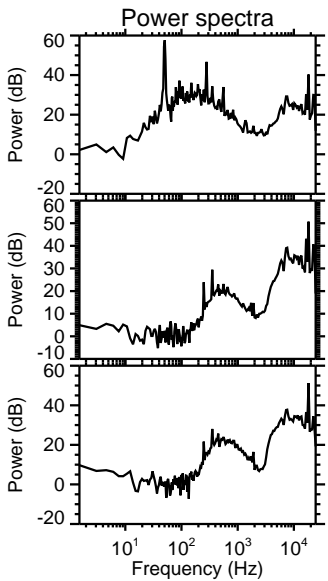
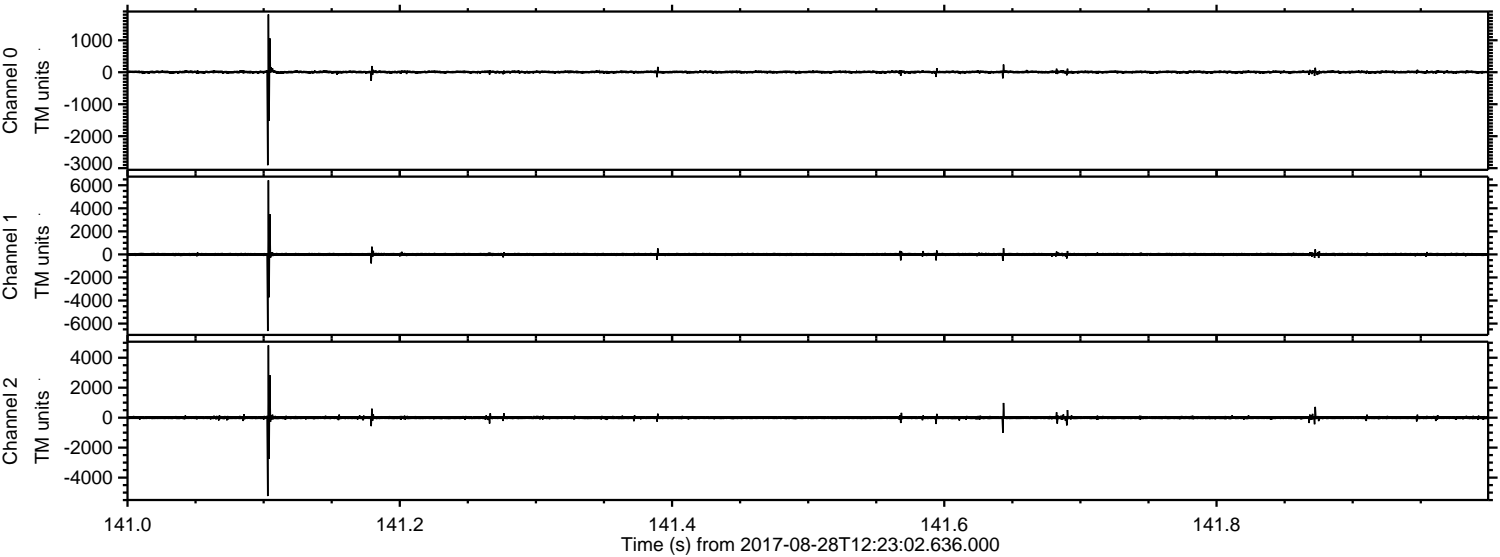


Processed Mon Aug 28 14:30:28 2017 by ELM ver.2012-10-06 from 001__elm20170828_122301__dat00.bin

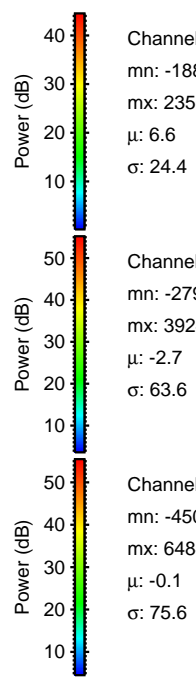
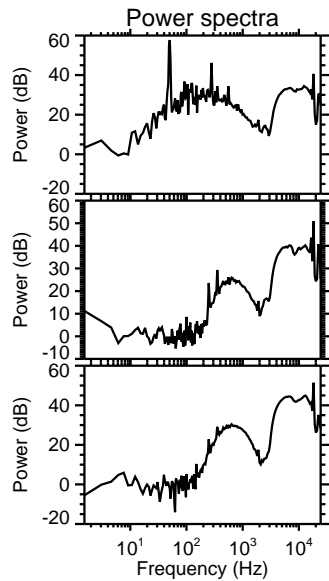
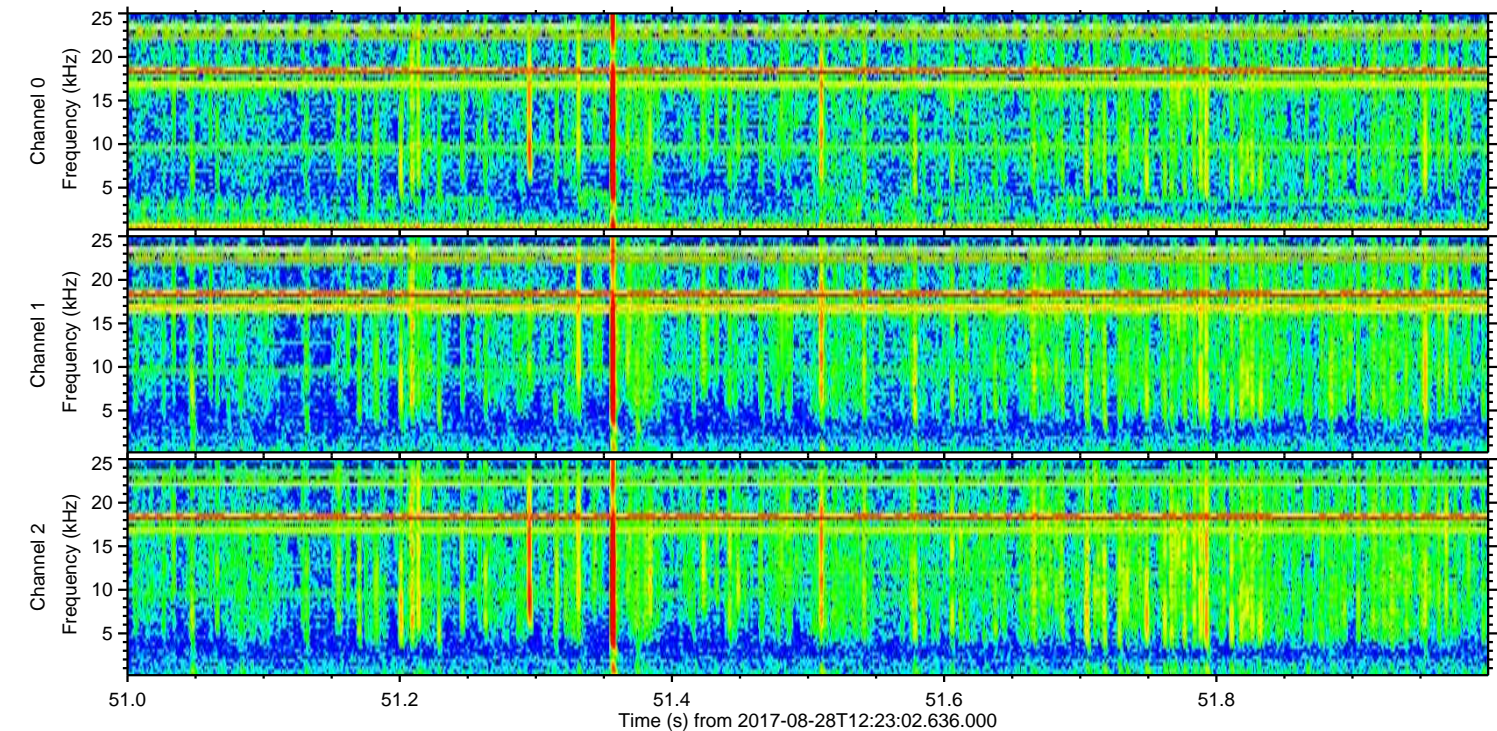
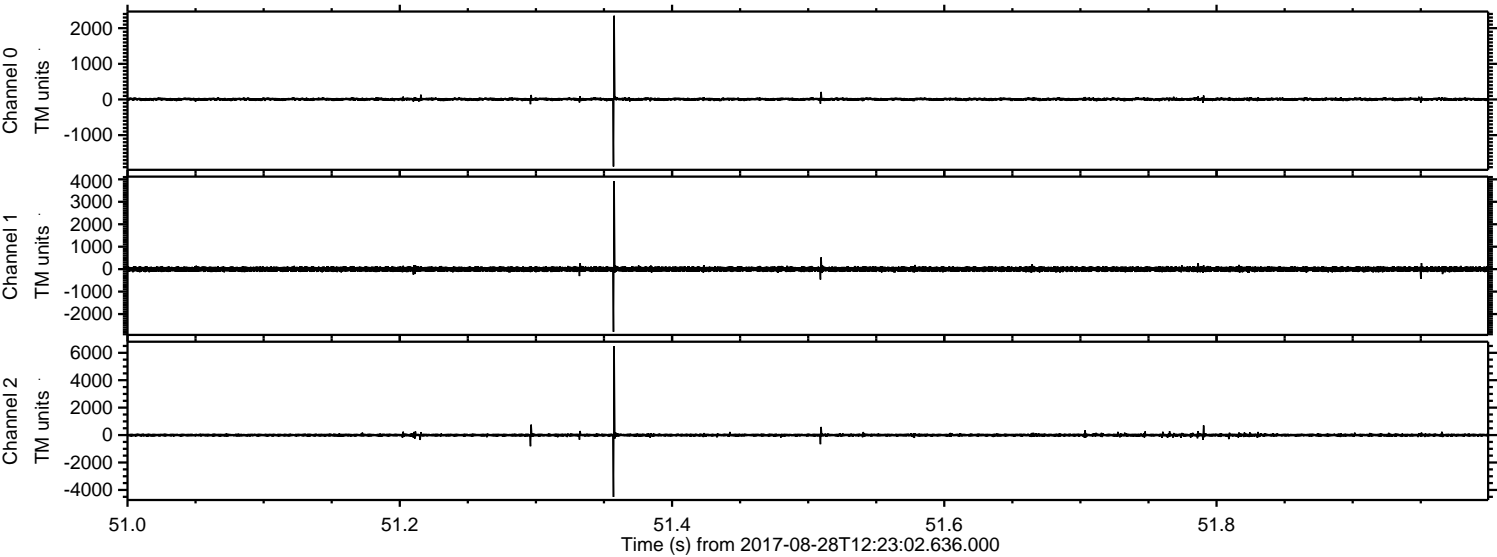


ELMAVAN 3D WAVEFORMS (Measured data sampled at 50 kHz) 51000 packets of 144 samples from 2017-08-28T12:23:02.636.000. Part 142/147

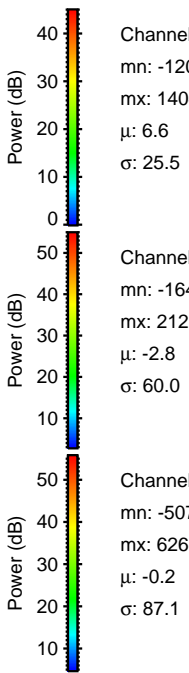
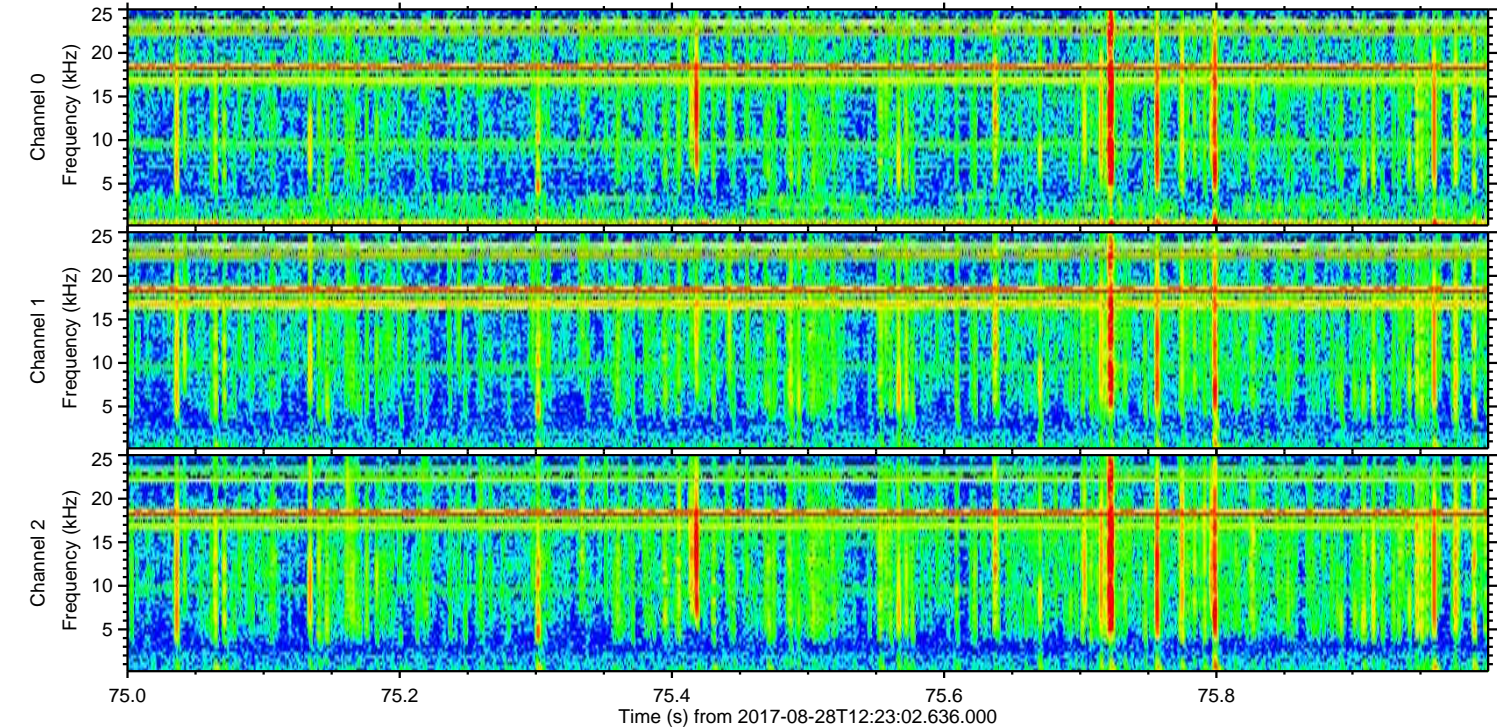
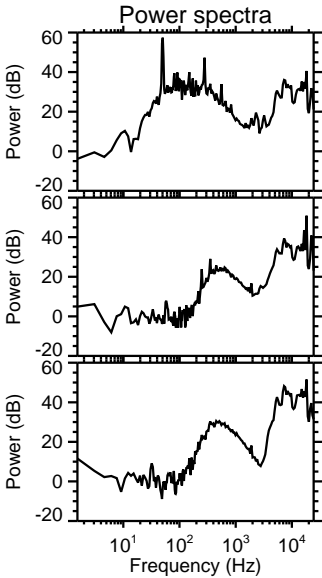
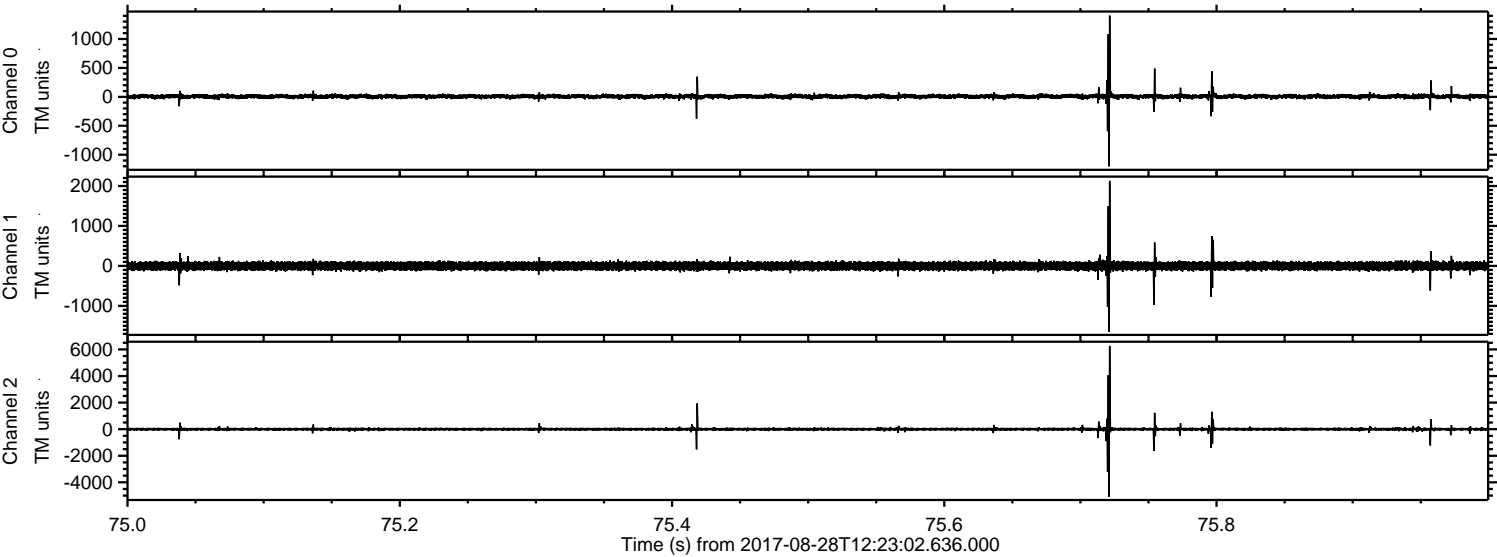
Processed Mon Aug 28 14:30:29 2017 by ELM ver.2012-10-06 from 001__elm20170828_122301__dat00.bin



Processed Mon Aug 28 14:30:29 2017 by ELM ver.2012-10-06 from 001__elm20170828_122301__dat00.bin



Processed Mon Aug 28 14:30:30 2017 by ELM ver.2012-10-06 from 001__elm20170828_122301__dat00.bin



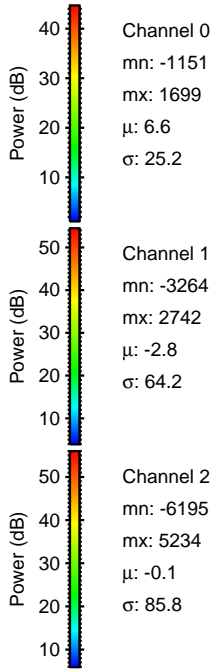
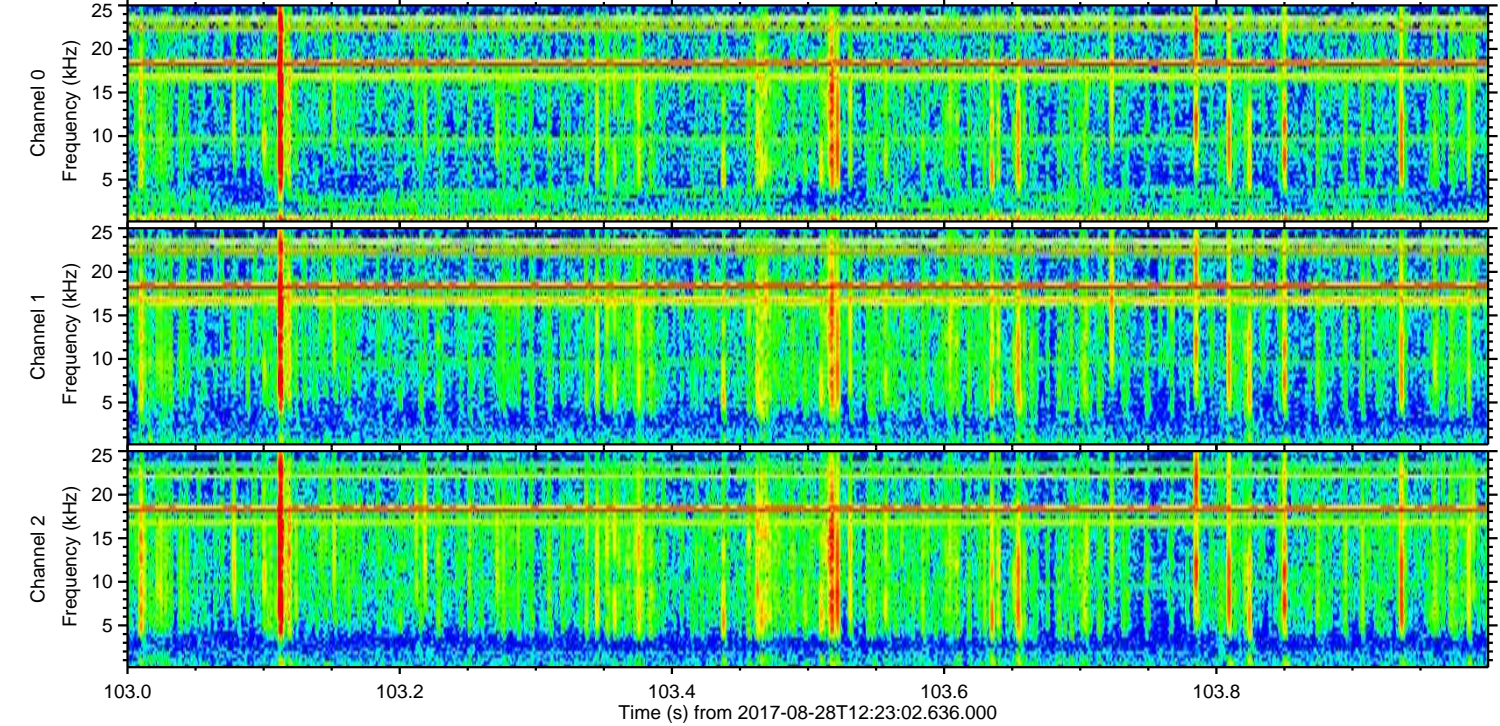
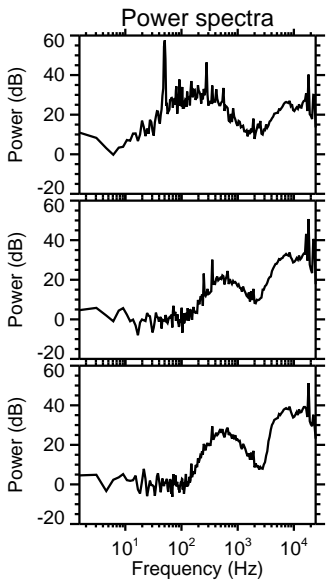
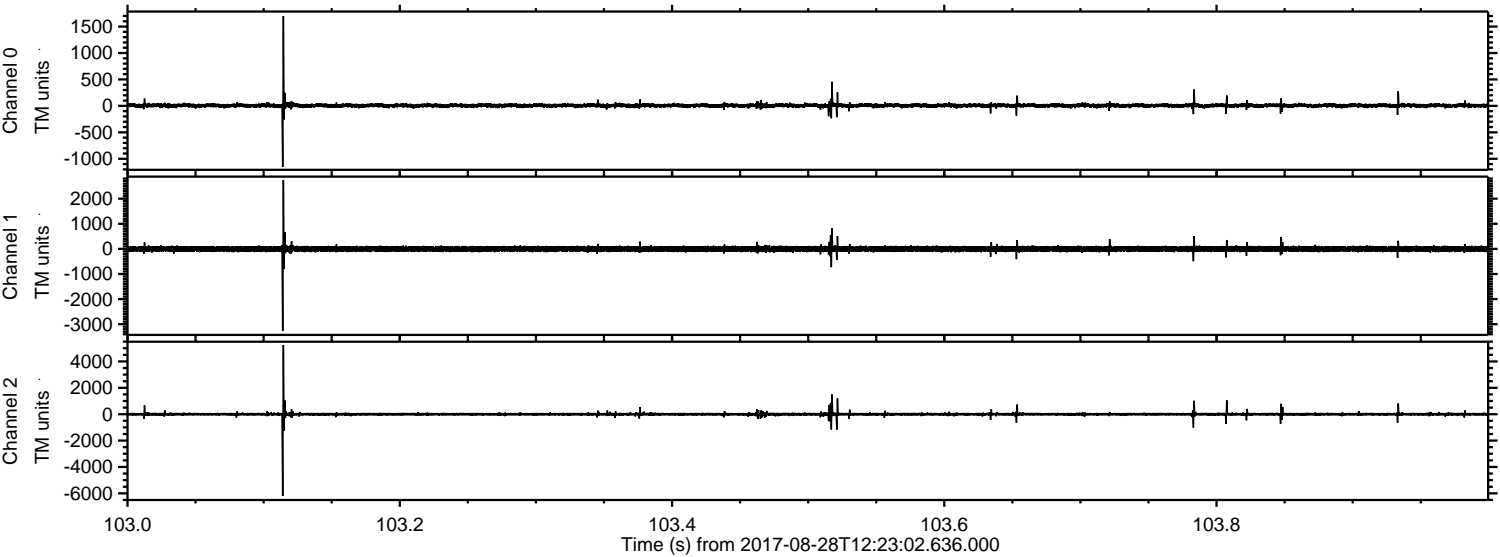
Channel 0
mn: -1201
mx: 1404
 μ : 6.6
 σ : 25.5

Channel 1
mn: -1645
mx: 2128
 μ : -2.8
 σ : 60.0

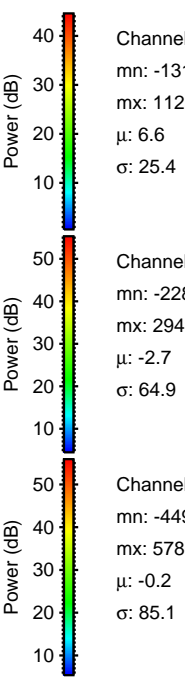
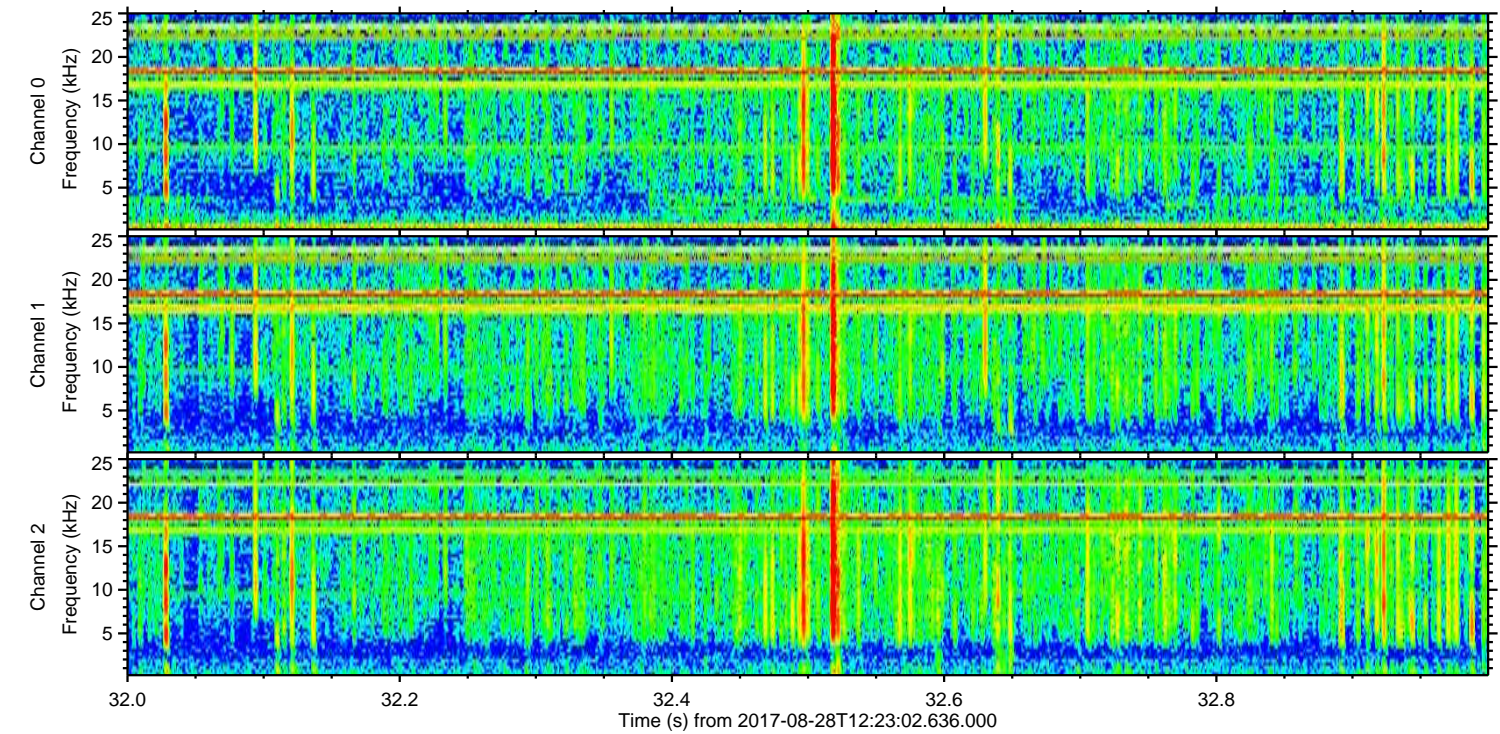
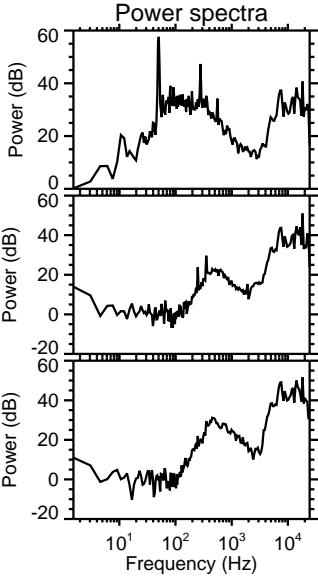
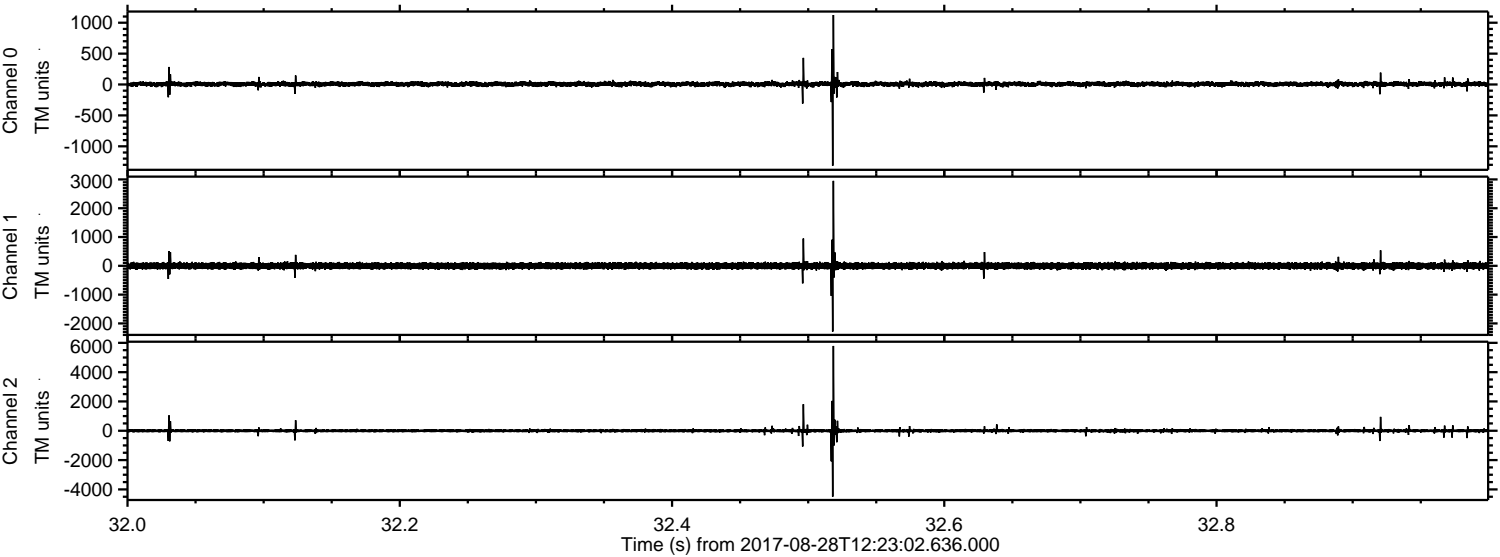
Channel 2
mn: -5075
mx: 6266
 μ : -0.2
 σ : 87.1

ELMAVAN 3D WAVEFORMS (Measured data sampled at 50 kHz) 51000 packets of 144 samples from 2017-08-28T12:23:02.636.000. Part 104/147

Processed Mon Aug 28 14:30:31 2017 by ELM ver.2012-10-06 from 001__elm20170828_122301__dat00.bin



Processed Mon Aug 28 14:30:31 2017 by ELM ver.2012-10-06 from 001__elm20170828_122301__dat00.bin



Channel 0
mn: -1315
mx: 1125
 μ : 6.6
 σ : 25.4

Channel 1
mn: -2285
mx: 2949
 μ : -2.7
 σ : 64.9

Channel 2
mn: -4496
mx: 5786
 μ : -0.2
 σ : 85.1

Processed Mon Aug 28 14:30:32 2017 by ELM ver.2012-10-06 from 001__elm20170828_122301__dat00.bin

