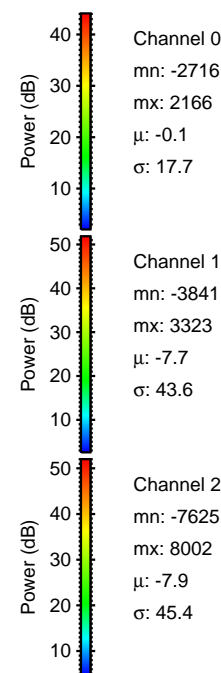
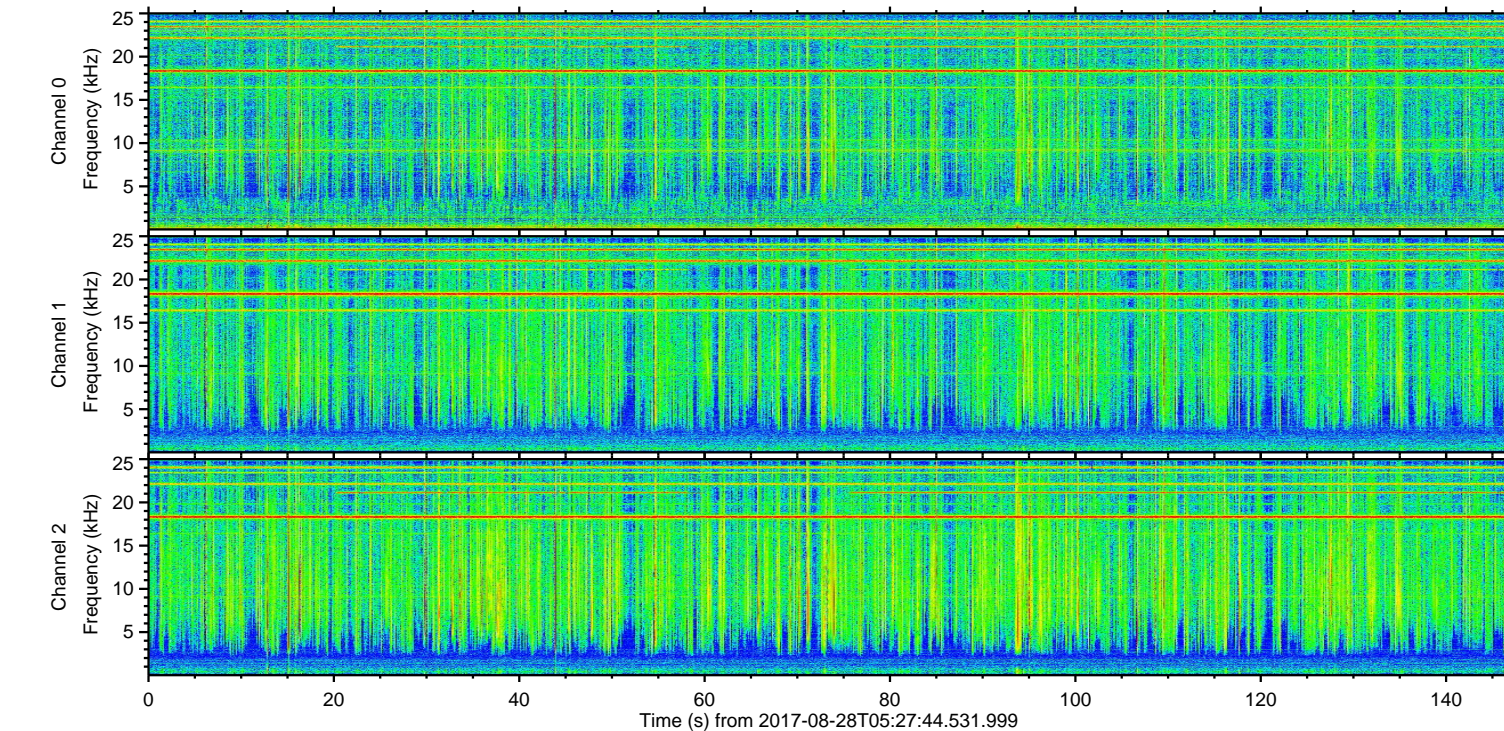
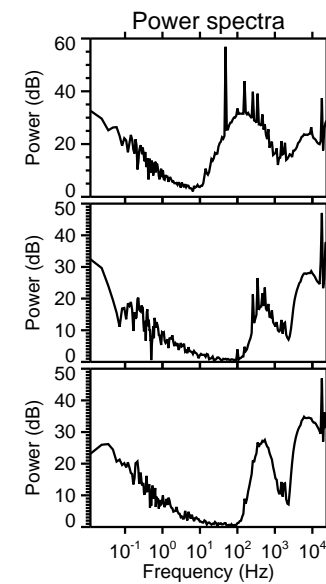
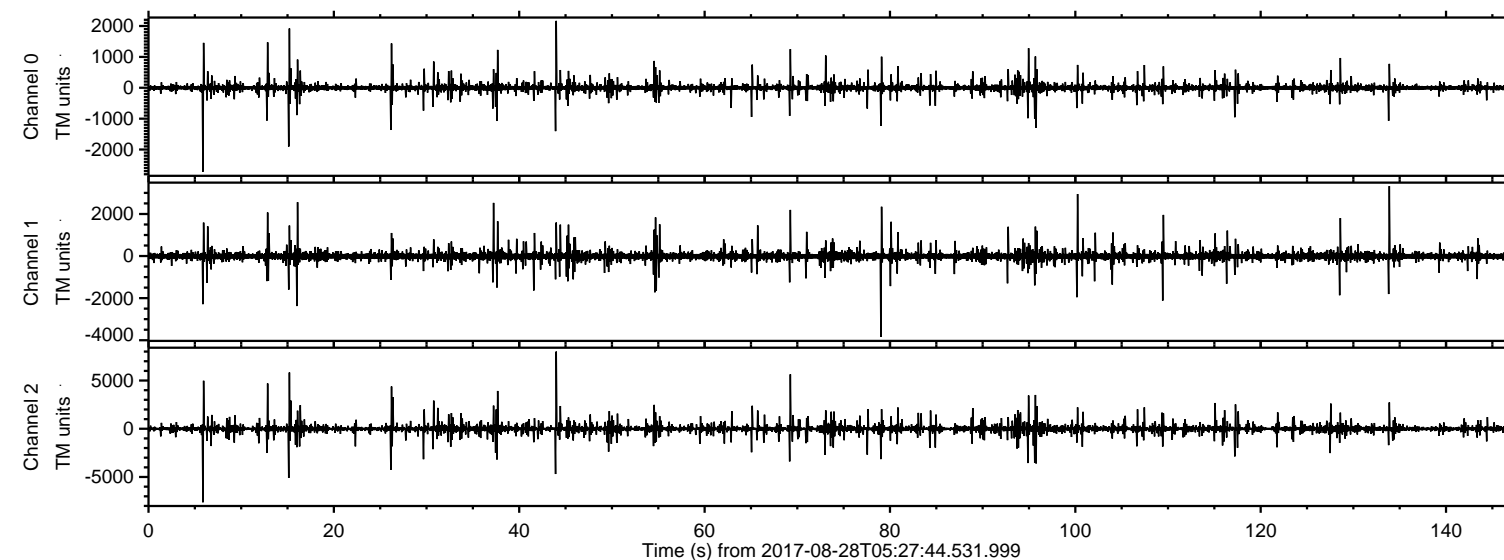
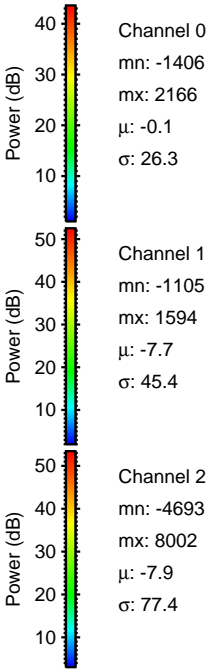
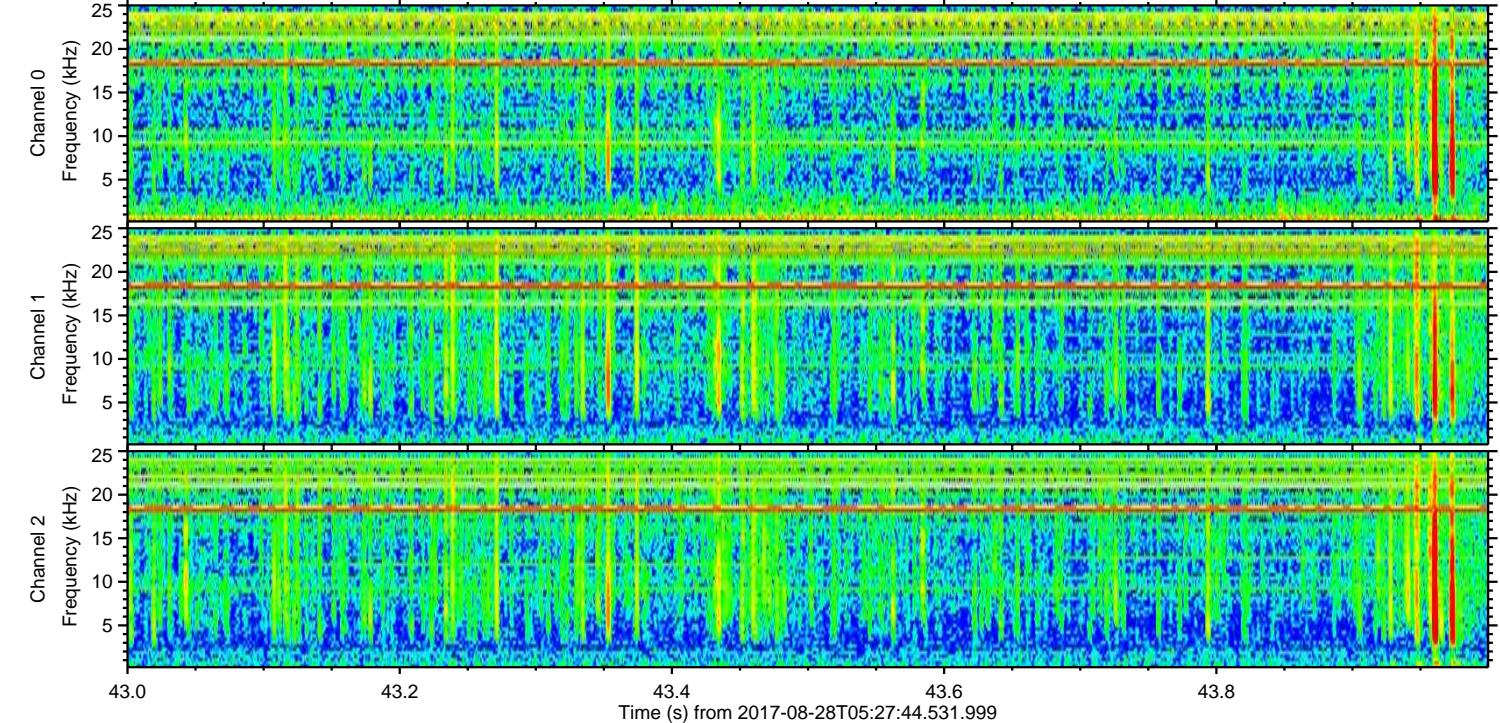
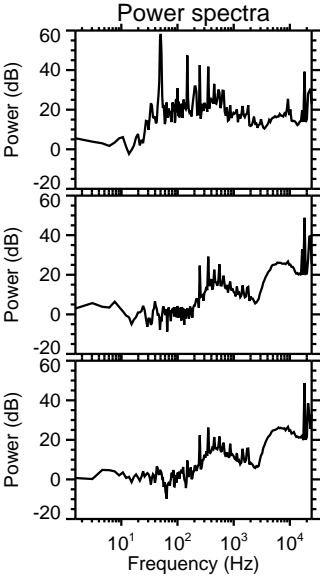
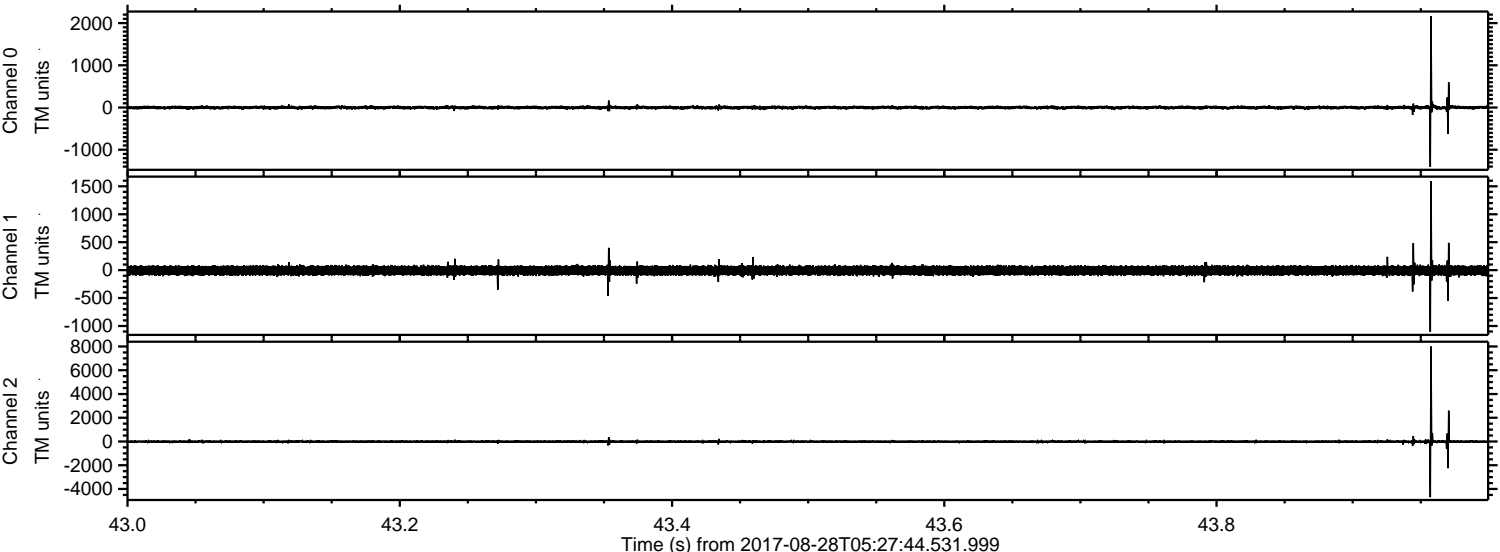


ELMAVAN 3D WAVEFORMS (Measured data sampled at 50 kHz) 51000 packets of 144 samples from 2017-08-28T05:27:44.531.999.

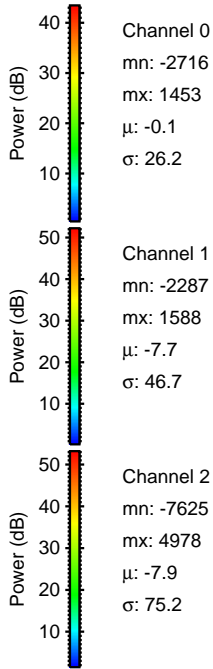
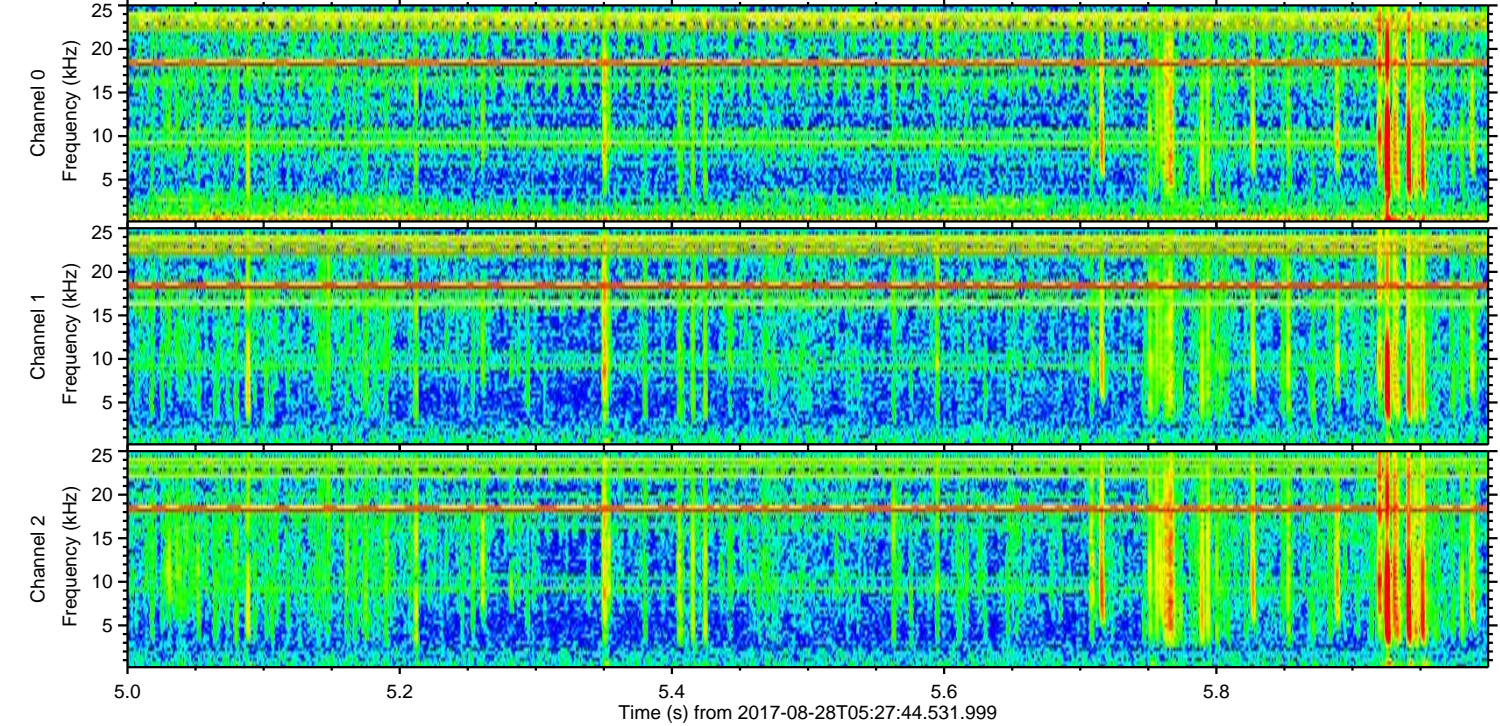
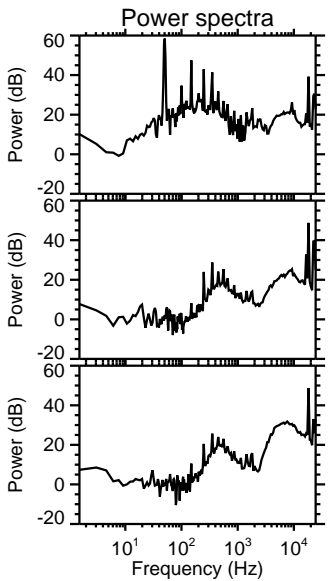
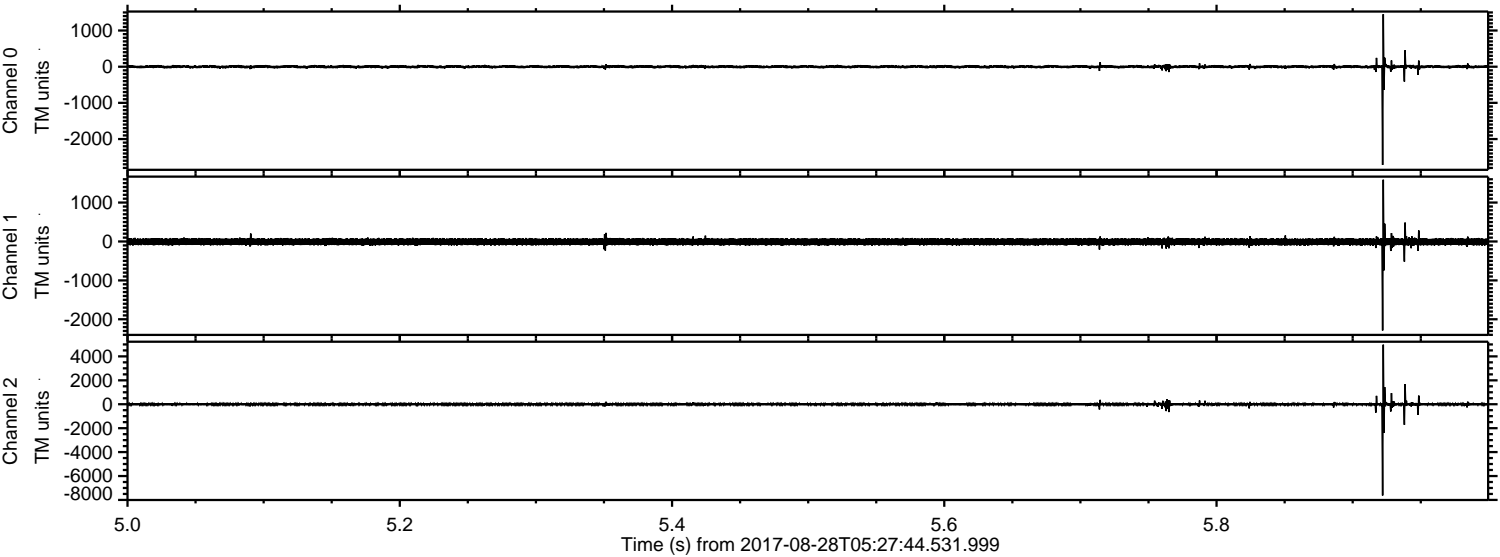
Processed Mon Aug 28 07:35:42 2017 by ELM ver.2012-10-06 from 001__elm20170828_052743__dat00.bin



Processed Mon Aug 28 07:35:48 2017 by ELM ver.2012-10-06 from 001__elm20170828_052743__dat00.bin

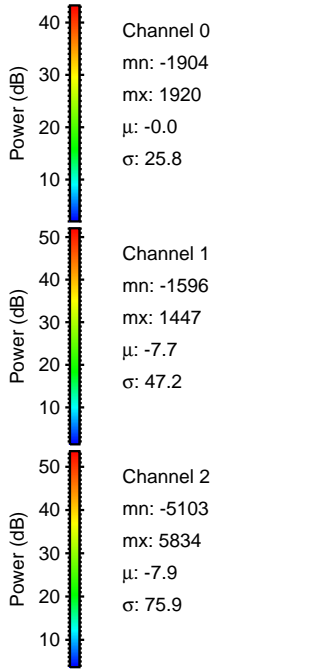
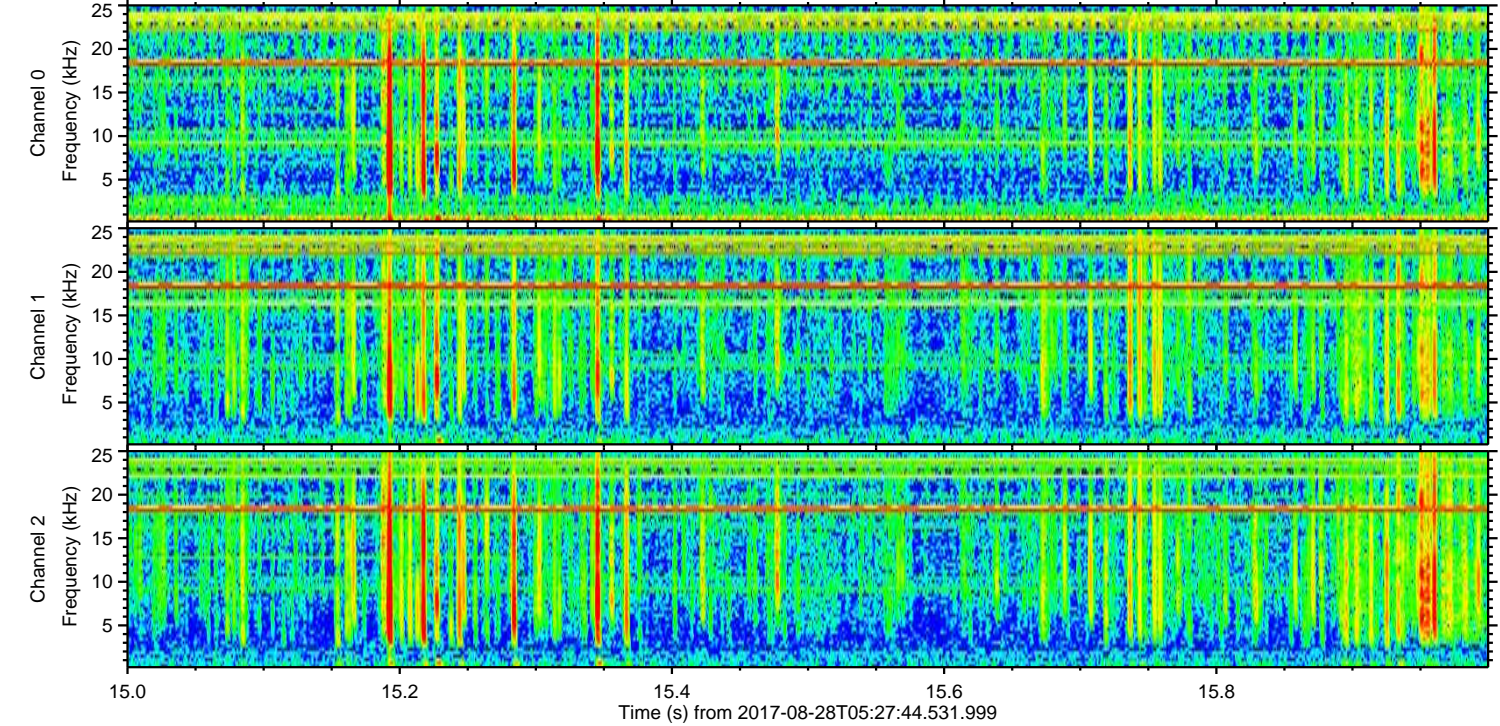
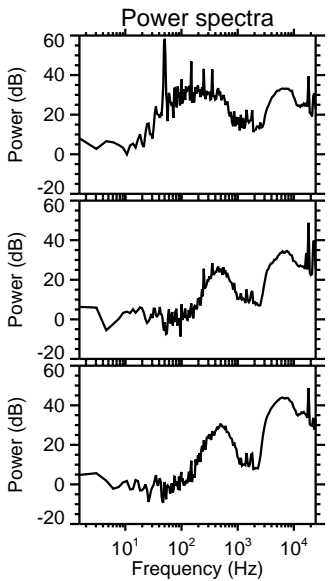
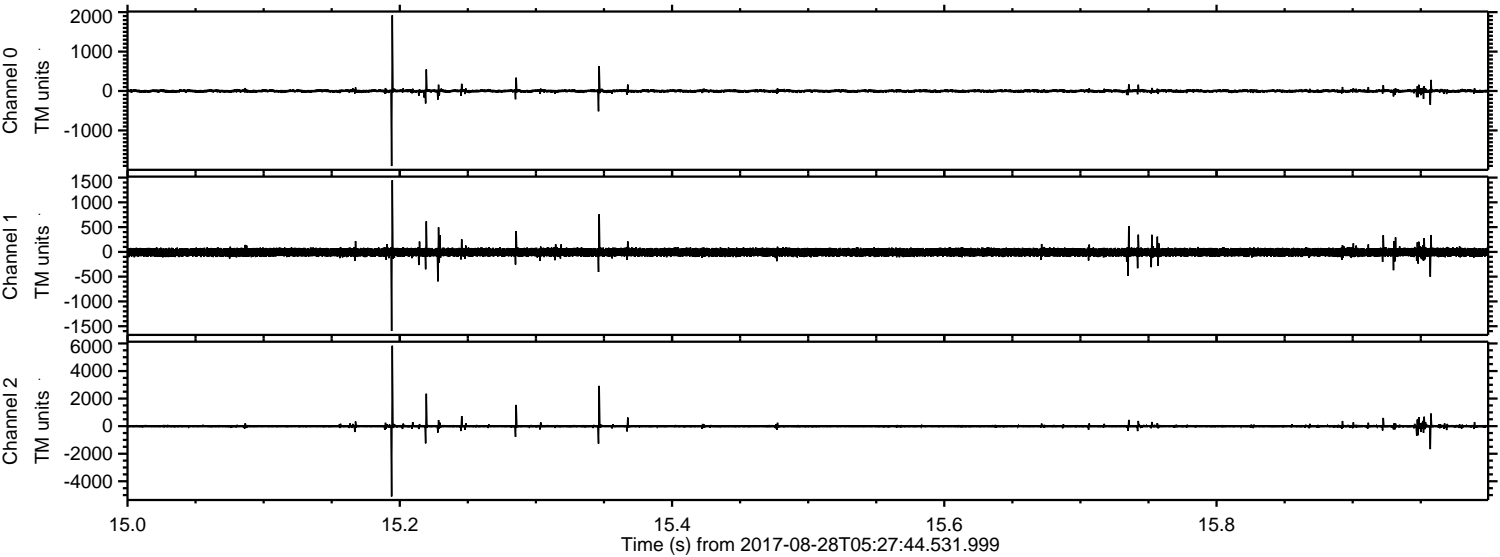


Processed Mon Aug 28 07:35:49 2017 by ELM ver.2012-10-06 from 001__elm20170828_052743__dat00.bin

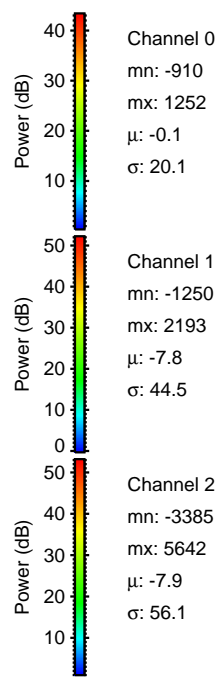
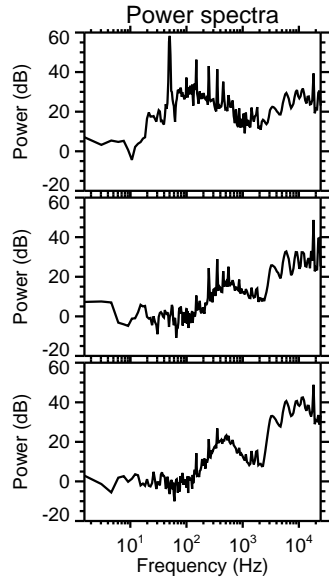
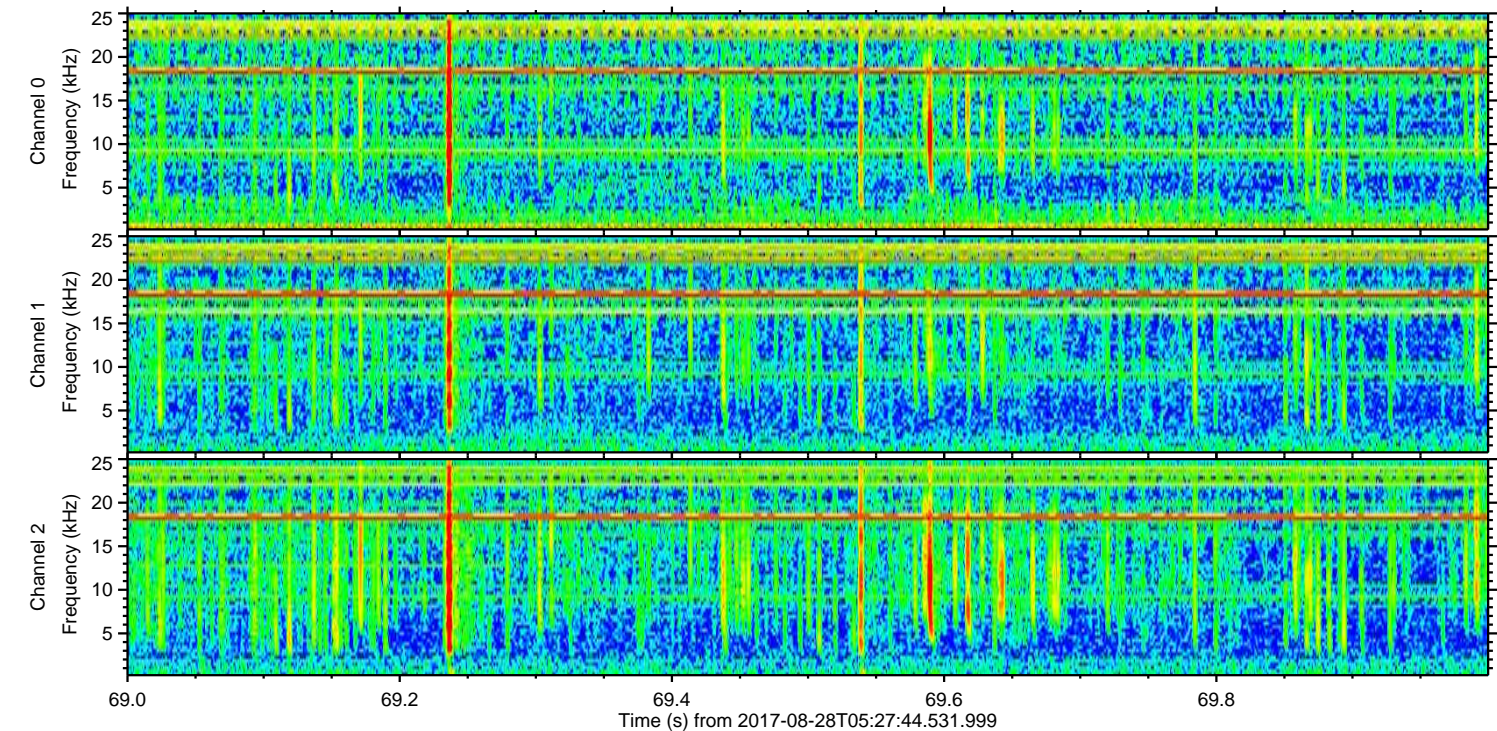
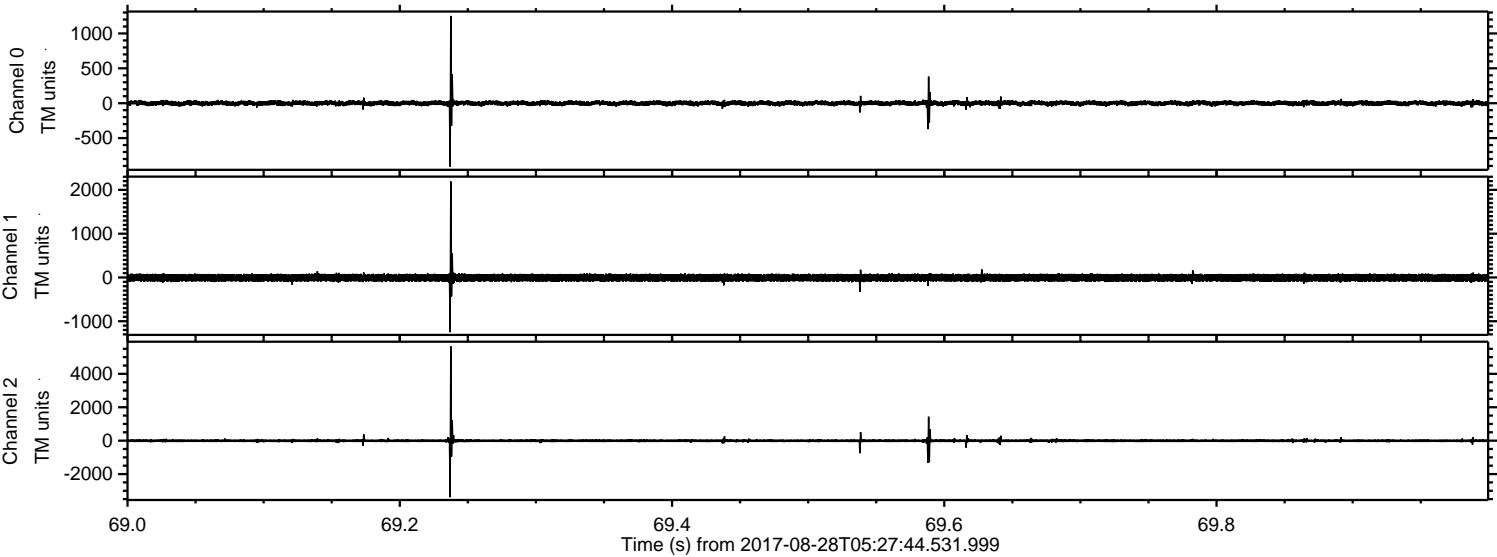


ELMAVAN 3D WAVEFORMS (Measured data sampled at 50 kHz) 51000 packets of 144 samples from 2017-08-28T05:27:44.531.999. Part 16/147

Processed Mon Aug 28 07:35:49 2017 by ELM ver.2012-10-06 from 001__elm20170828_052743__dat00.bin

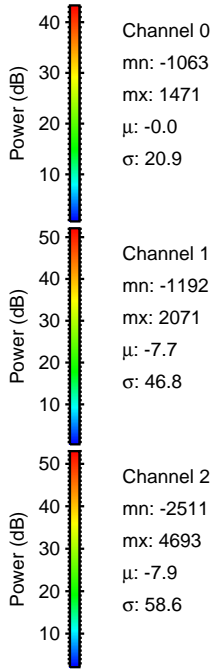
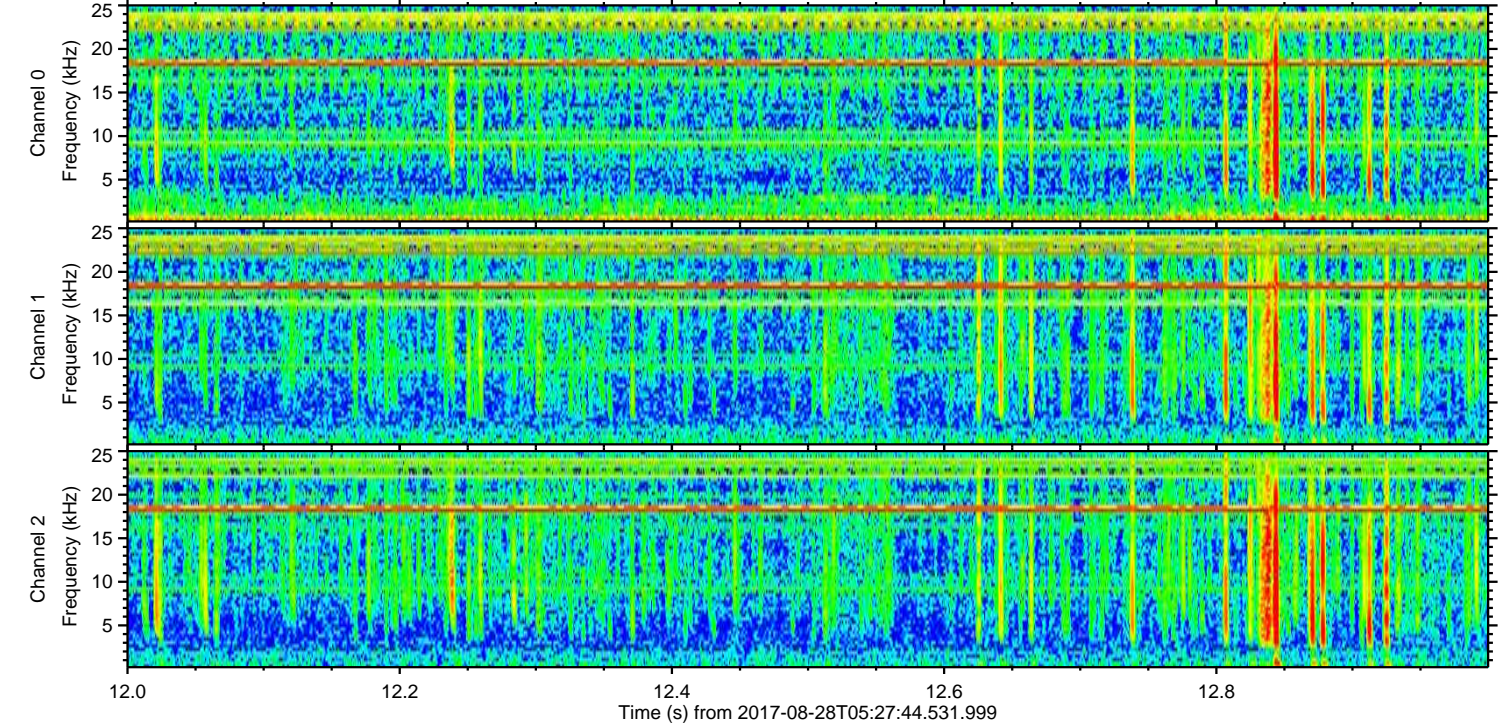
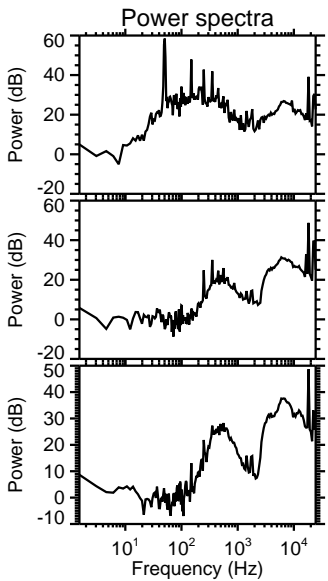
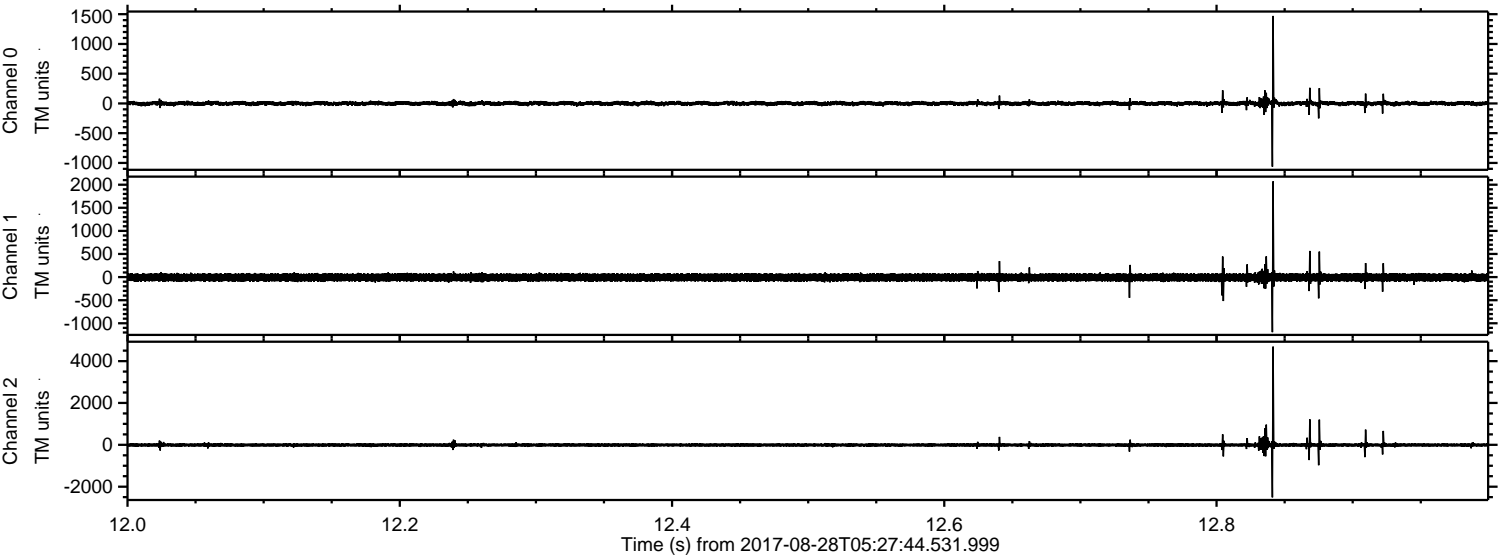


Processed Mon Aug 28 07:35:50 2017 by ELM ver.2012-10-06 from 001__elm20170828_052743__dat00.bin



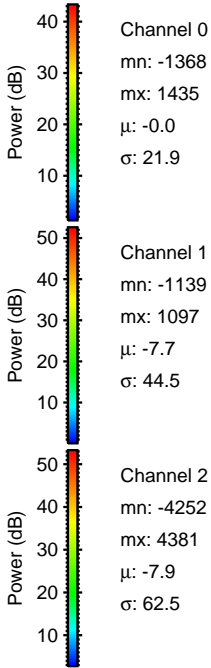
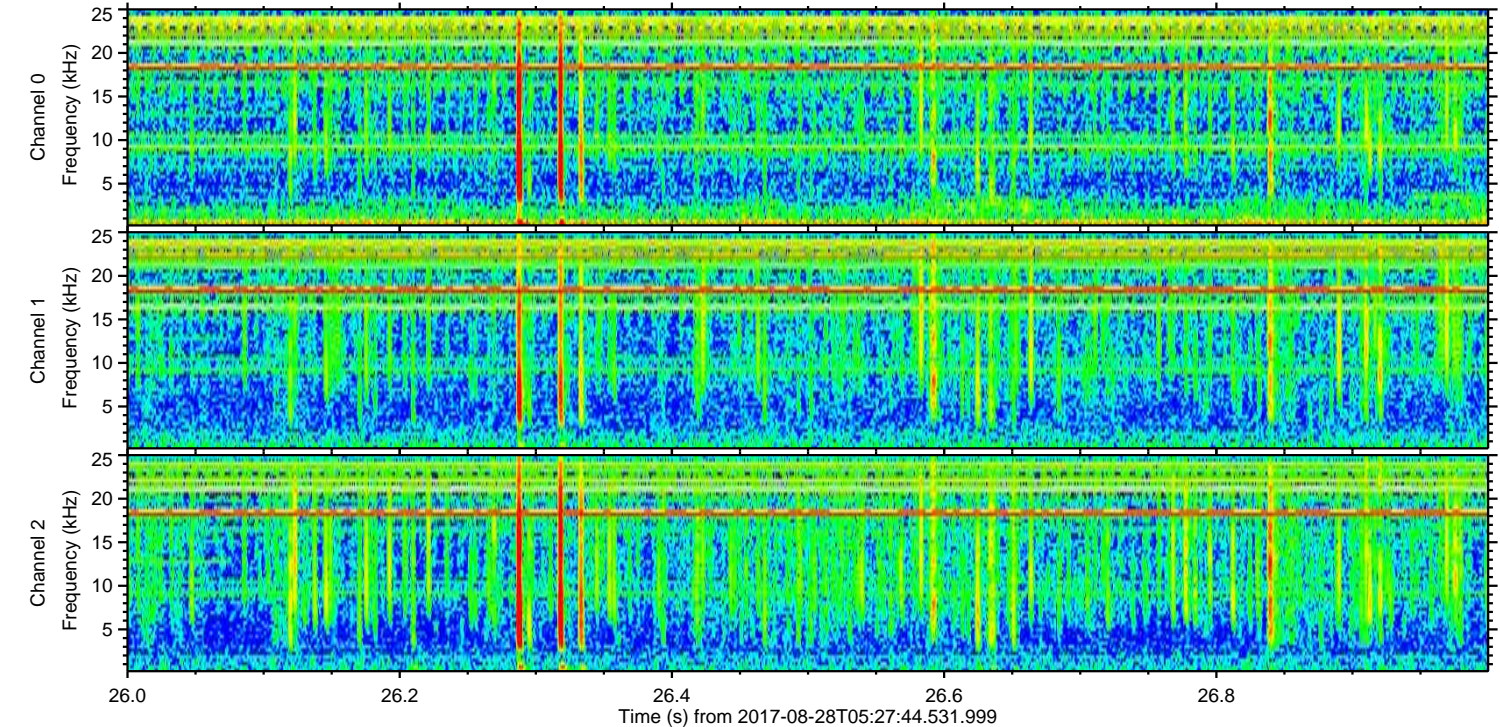
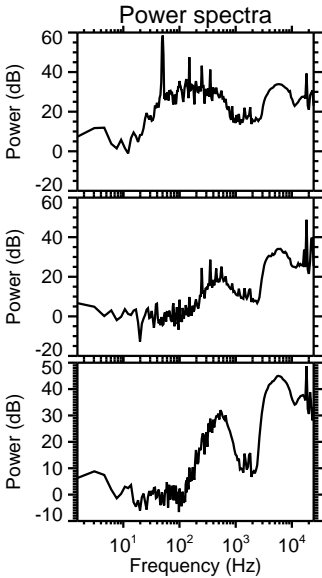
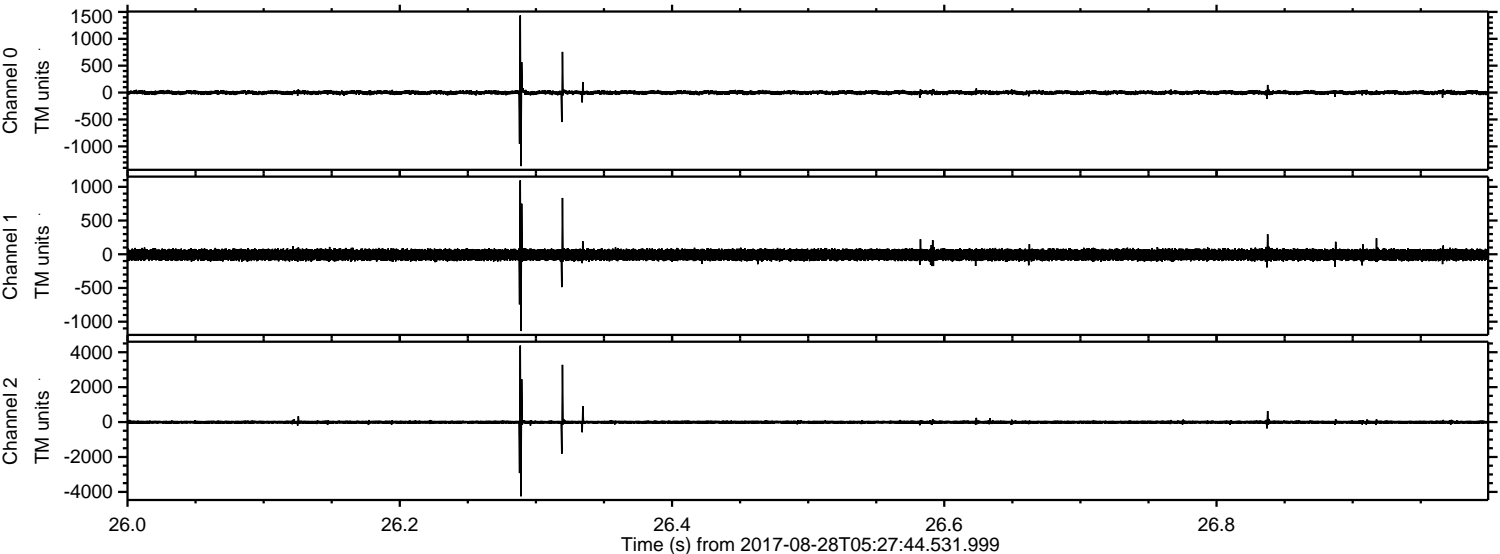
ELMAVAN 3D WAVEFORMS (Measured data sampled at 50 kHz) 51000 packets of 144 samples from 2017-08-28T05:27:44.531.999. Part 13/147

Processed Mon Aug 28 07:35:50 2017 by ELM ver.2012-10-06 from 001__elm20170828_052743__dat00.bin

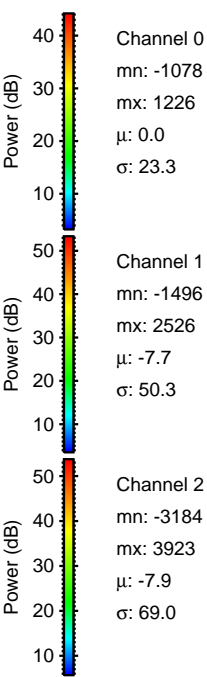
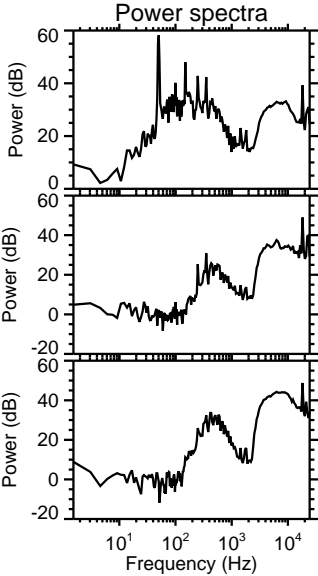
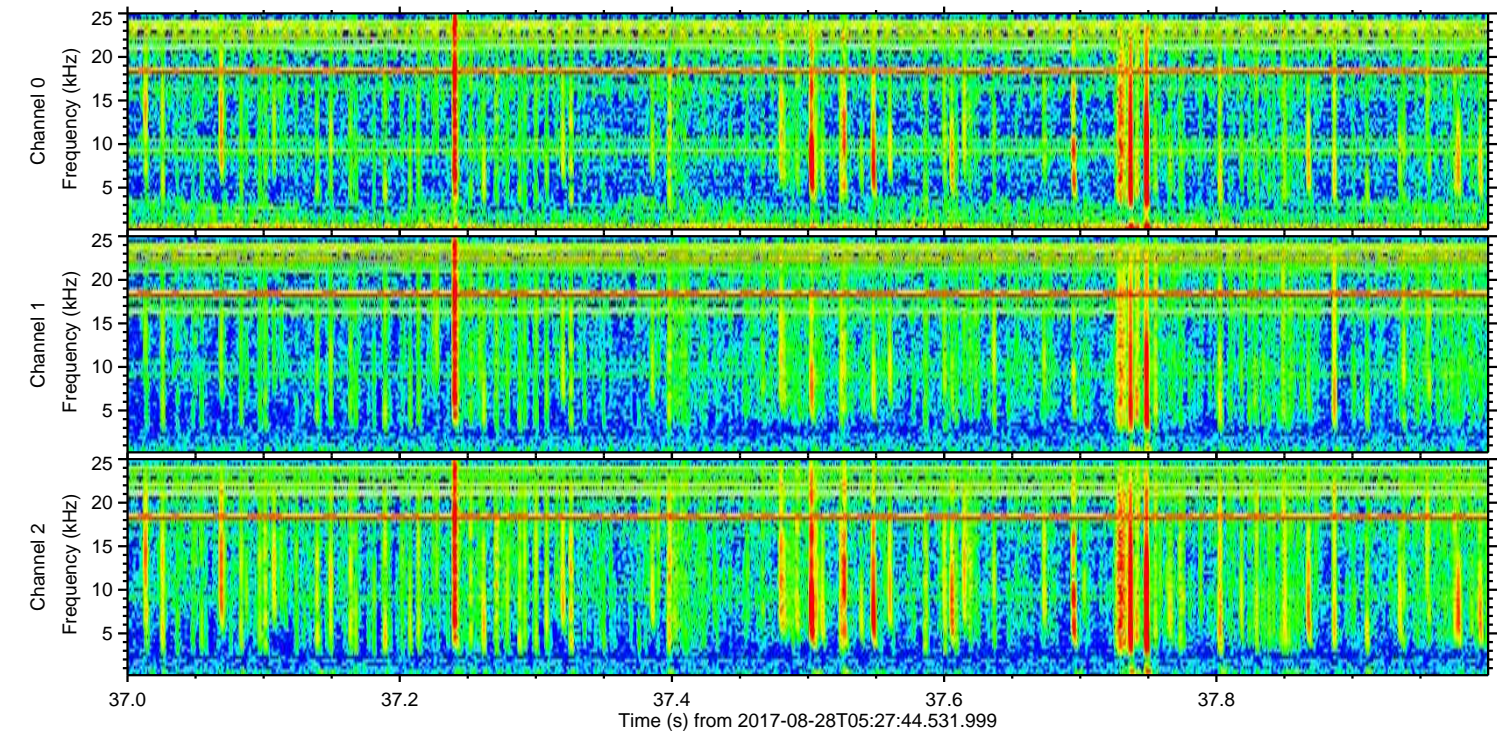
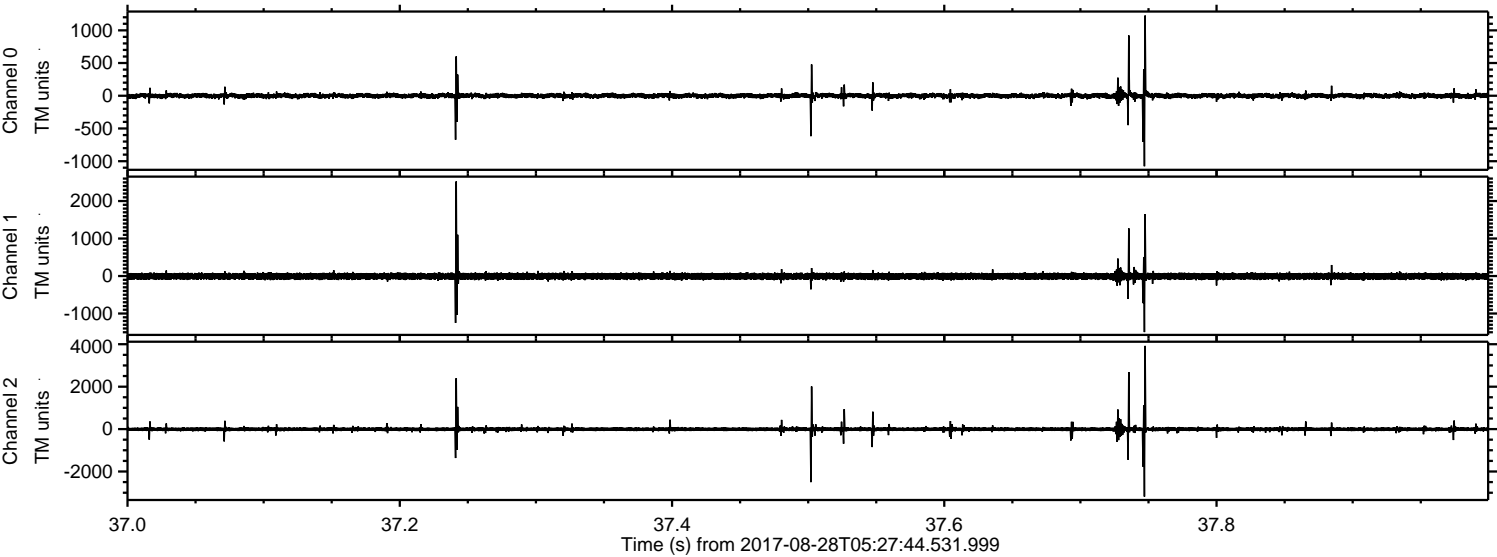


ELMAVAN 3D WAVEFORMS (Measured data sampled at 50 kHz) 51000 packets of 144 samples from 2017-08-28T05:27:44.531.999. Part 27/147

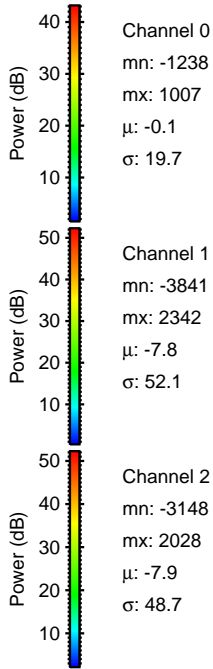
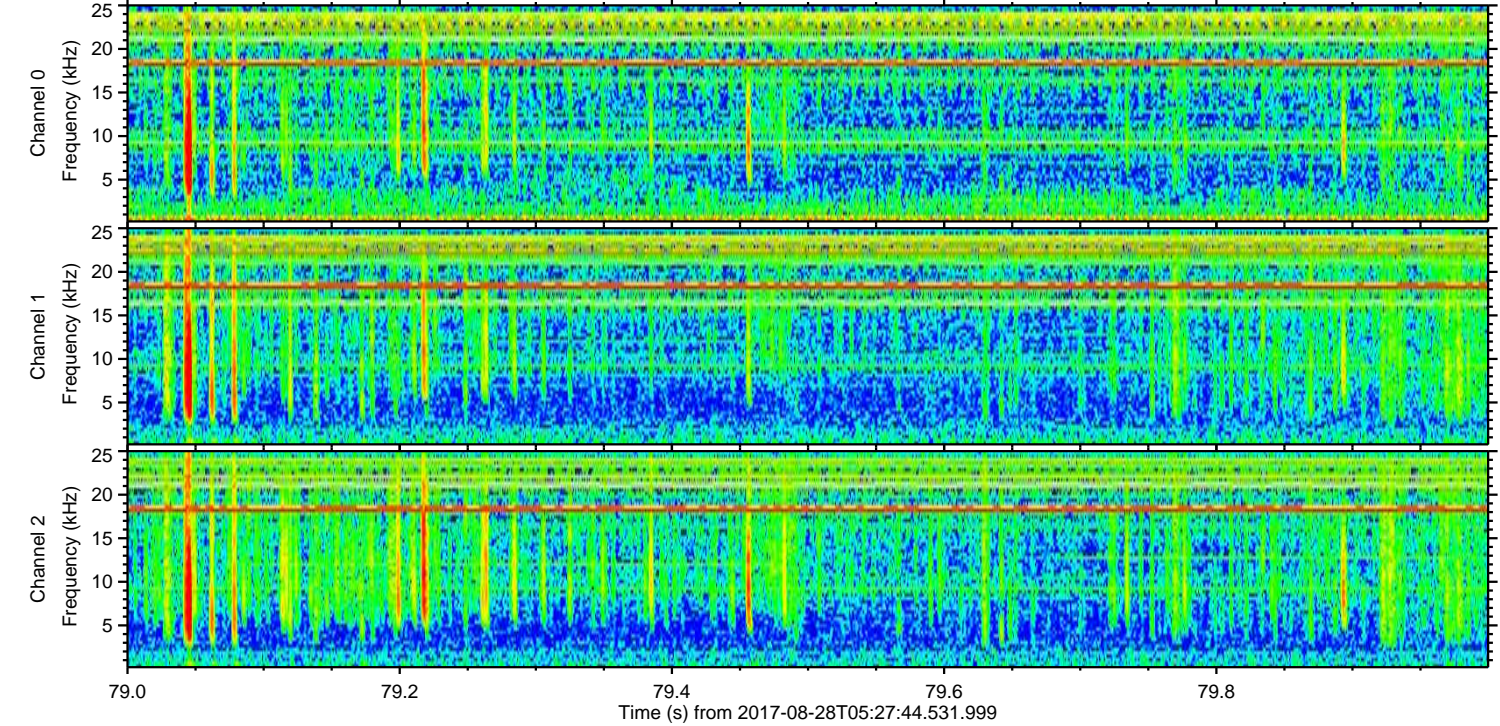
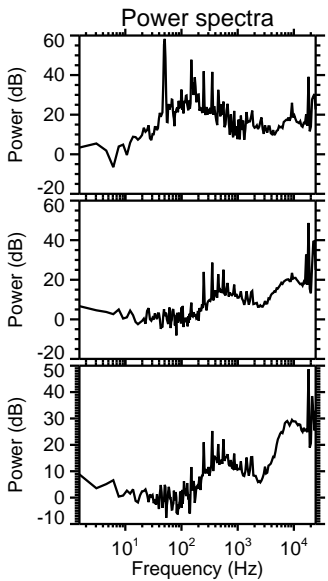
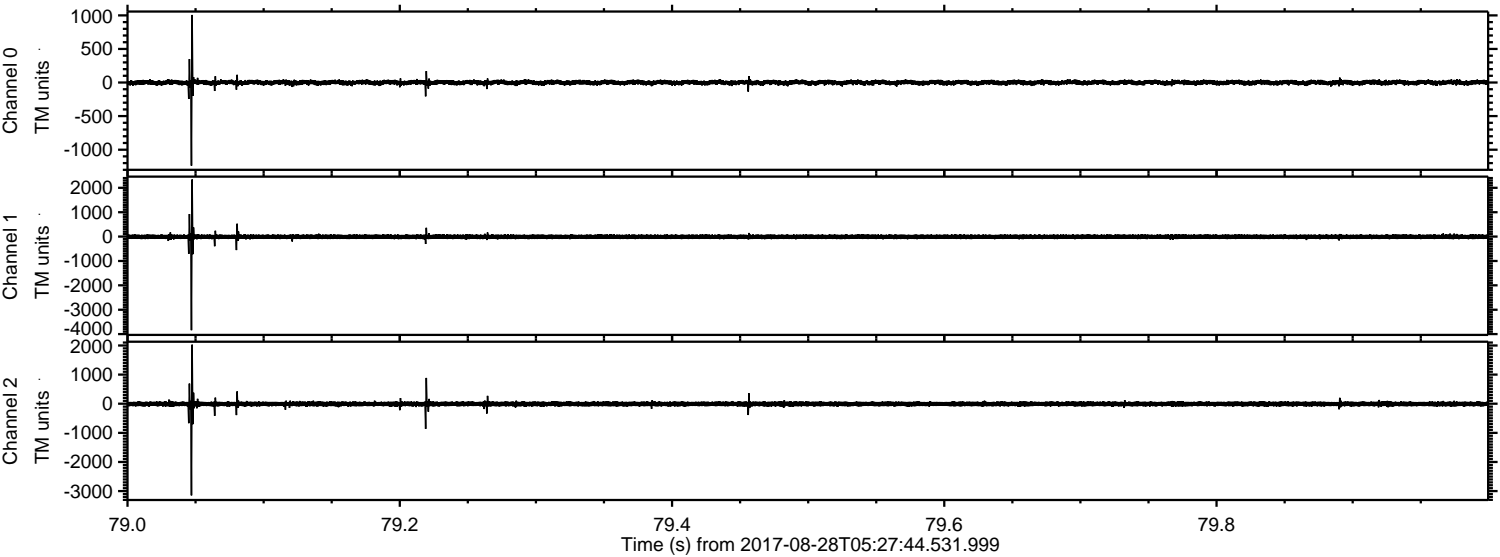
Processed Mon Aug 28 07:35:51 2017 by ELM ver.2012-10-06 from 001__elm20170828_052743__dat00.bin



Processed Mon Aug 28 07:35:52 2017 by ELM ver.2012-10-06 from 001__elm20170828_052743__dat00.bin



Processed Mon Aug 28 07:35:52 2017 by ELM ver.2012-10-06 from 001__elm20170828_052743__dat00.bin

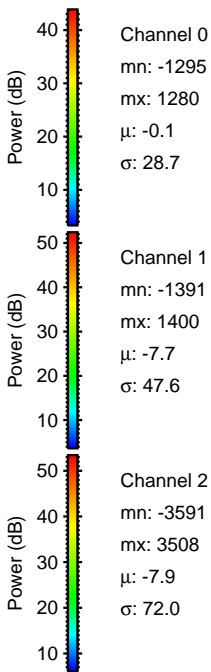
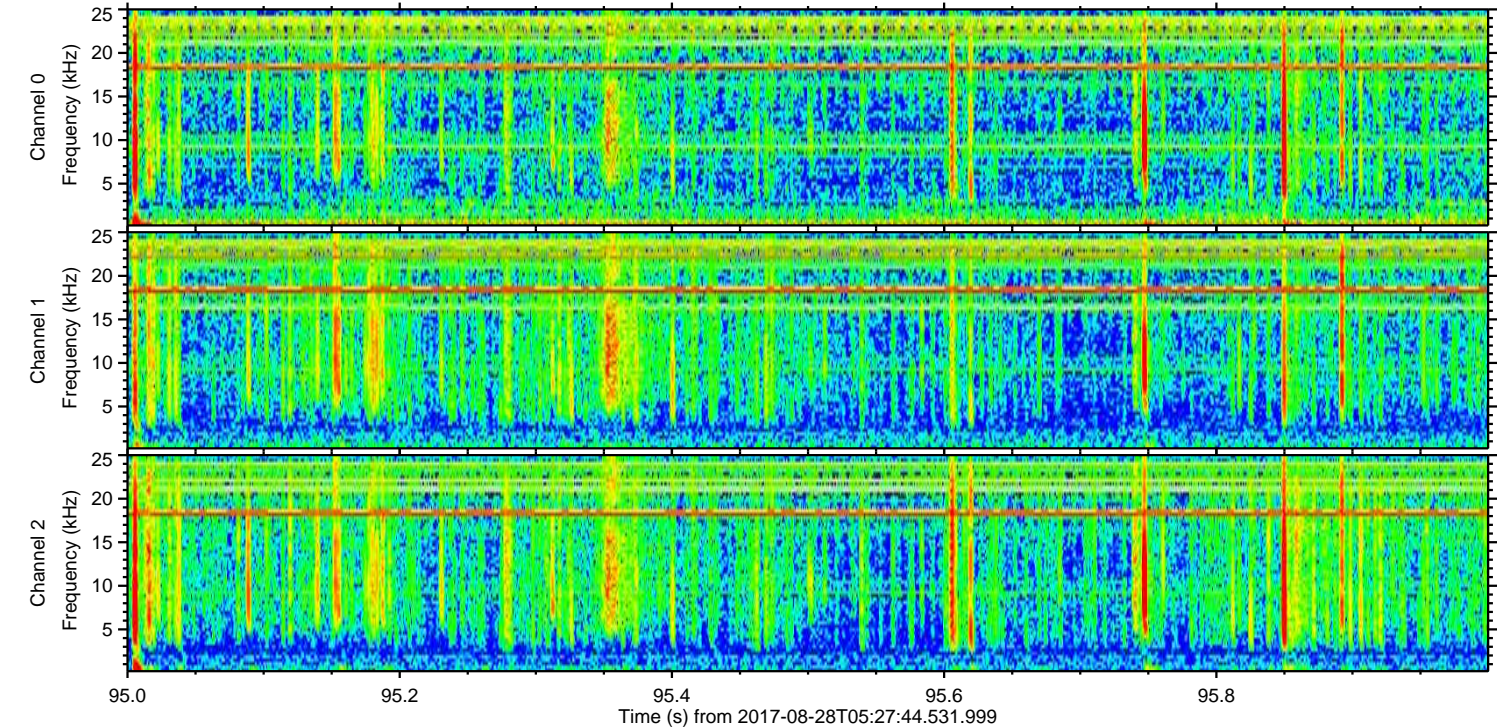
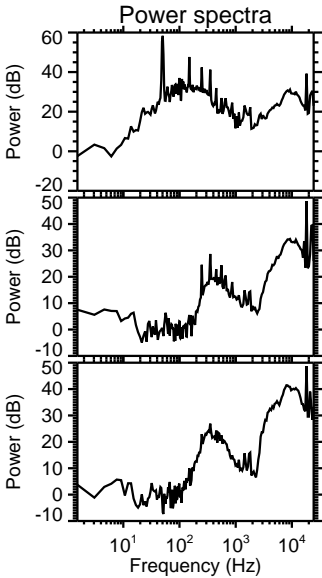
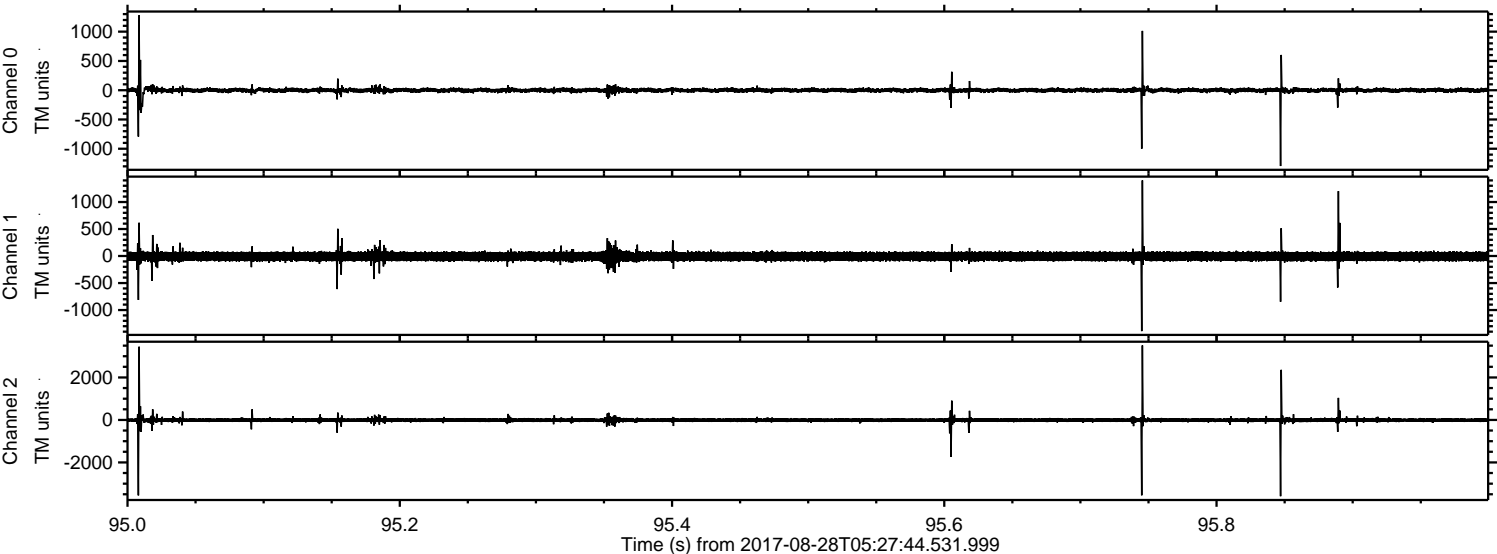


Channel 0
mn: -1238
mx: 1007
 μ : -0.1
 σ : 19.7

Channel 1
mn: -3841
mx: 2342
 μ : -7.8
 σ : 52.1

Channel 2
mn: -3148
mx: 2028
 μ : -7.9
 σ : 48.7

Processed Mon Aug 28 07:35:53 2017 by ELM ver.2012-10-06 from 001__elm20170828_052743__dat00.bin



Processed Mon Aug 28 07:35:54 2017 by ELM ver.2012-10-06 from 001__elm20170828_052743__dat00.bin

