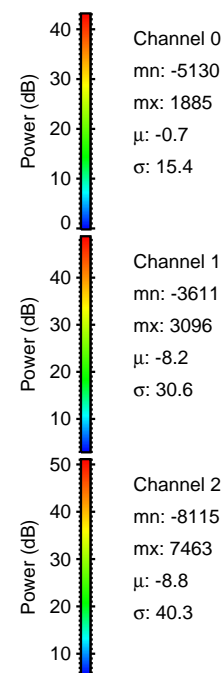
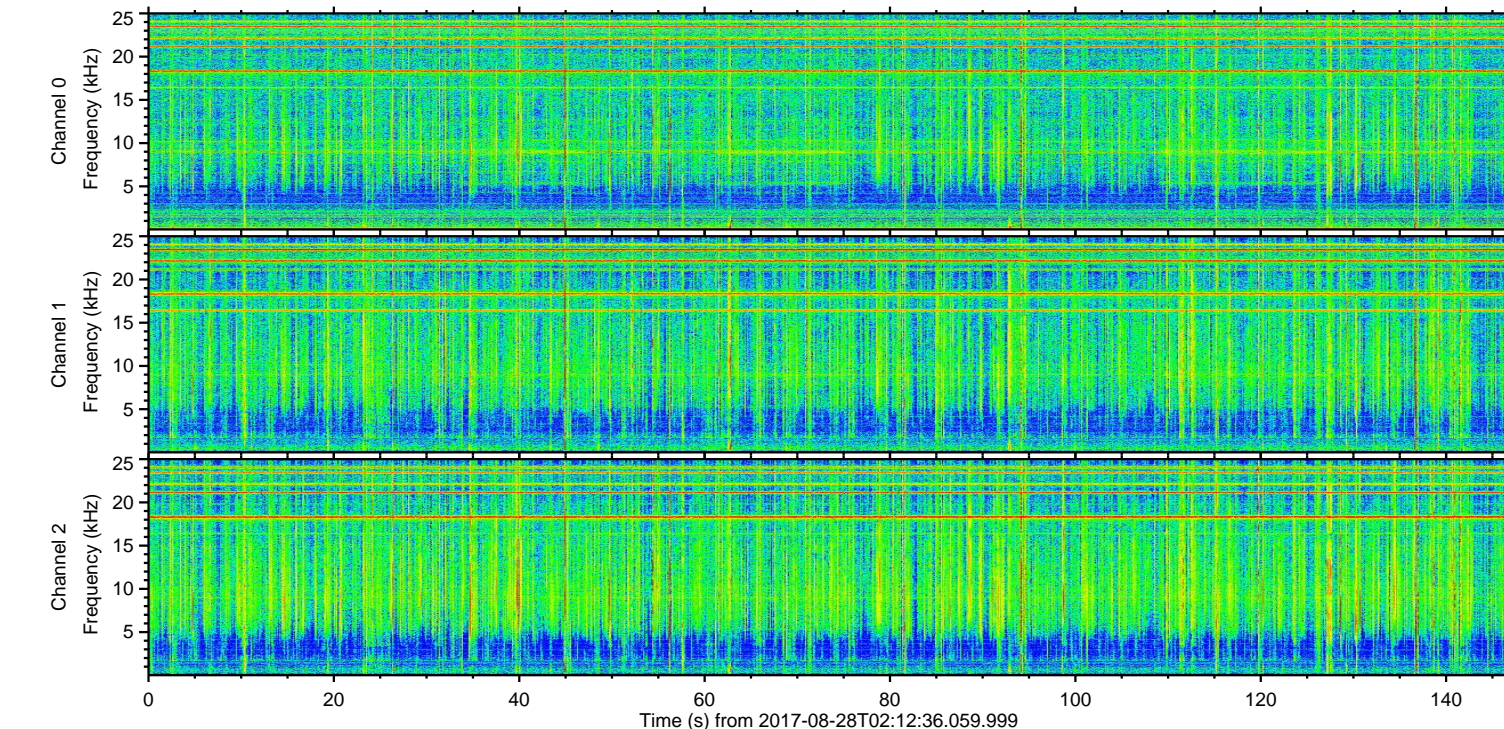
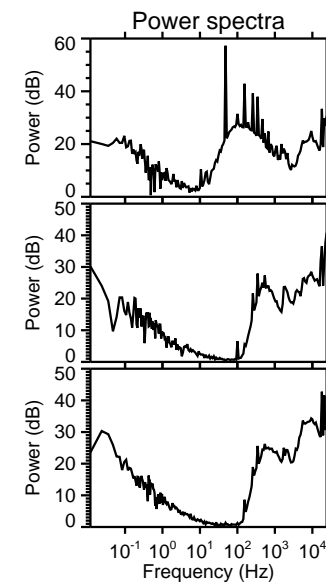
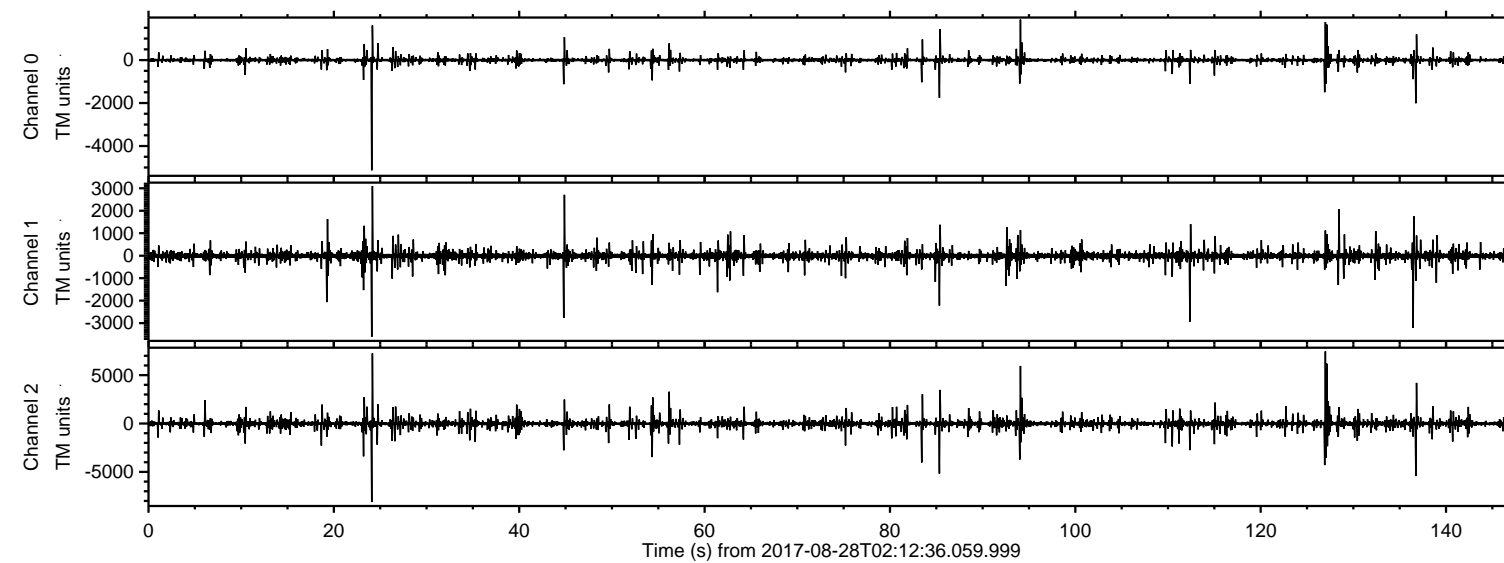


ELMAVAN 3D WAVEFORMS (Measured data sampled at 50 kHz) 51000 packets of 144 samples from 2017-08-28T02:12:36.059.999.

Processed Mon Aug 28 04:20:18 2017 by ELM ver.2012-10-06 from 001__elm20170828_021235__dat00.bin

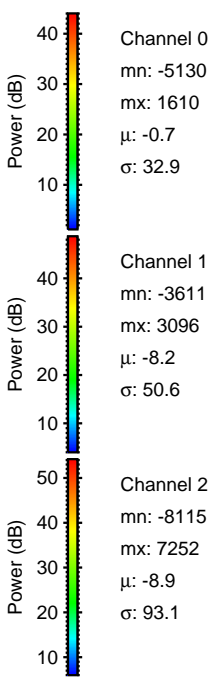
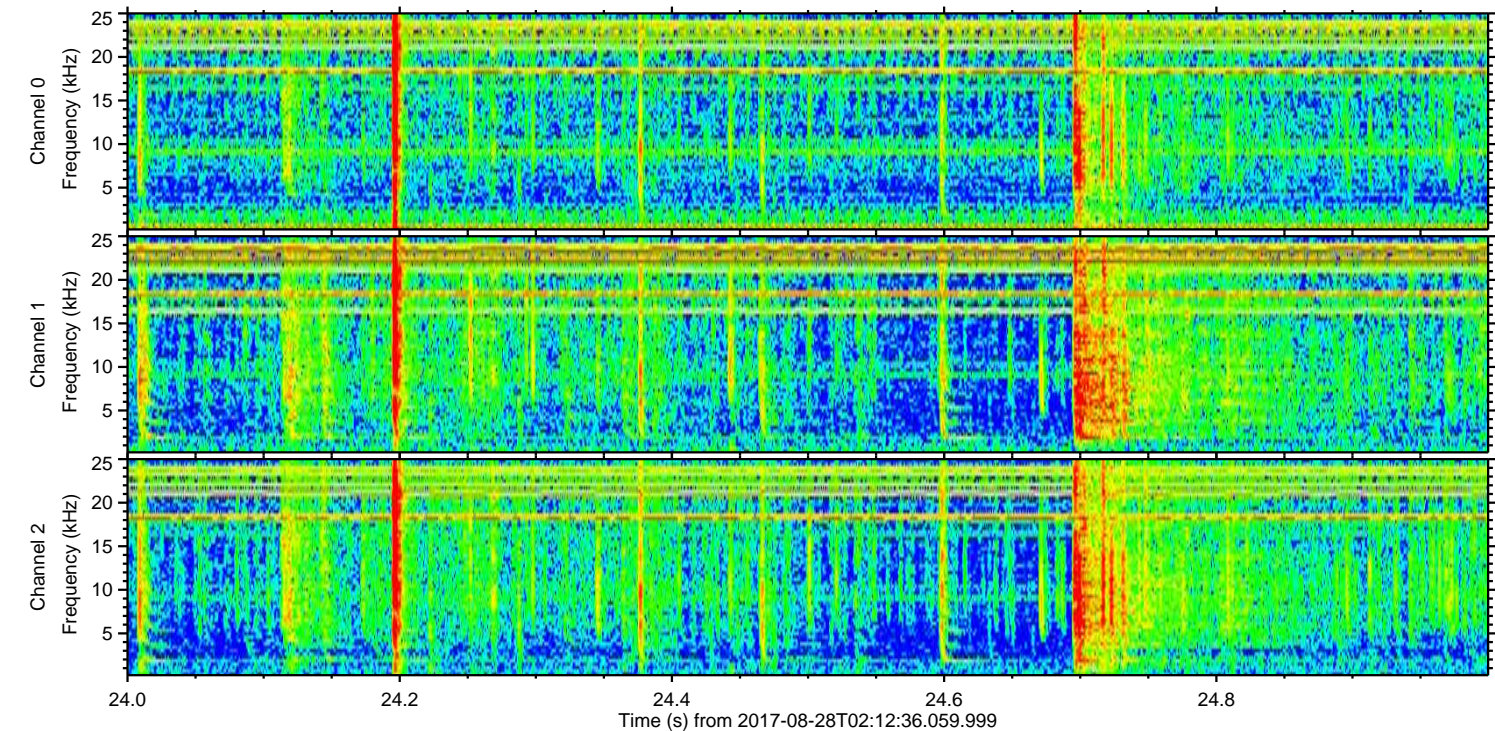
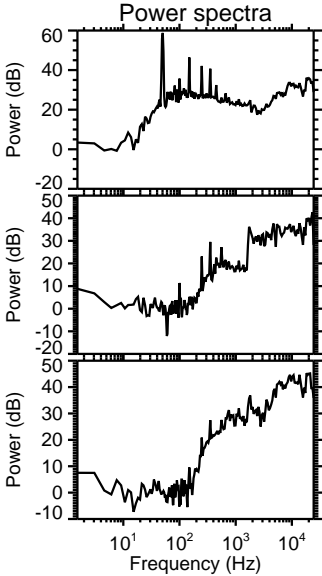
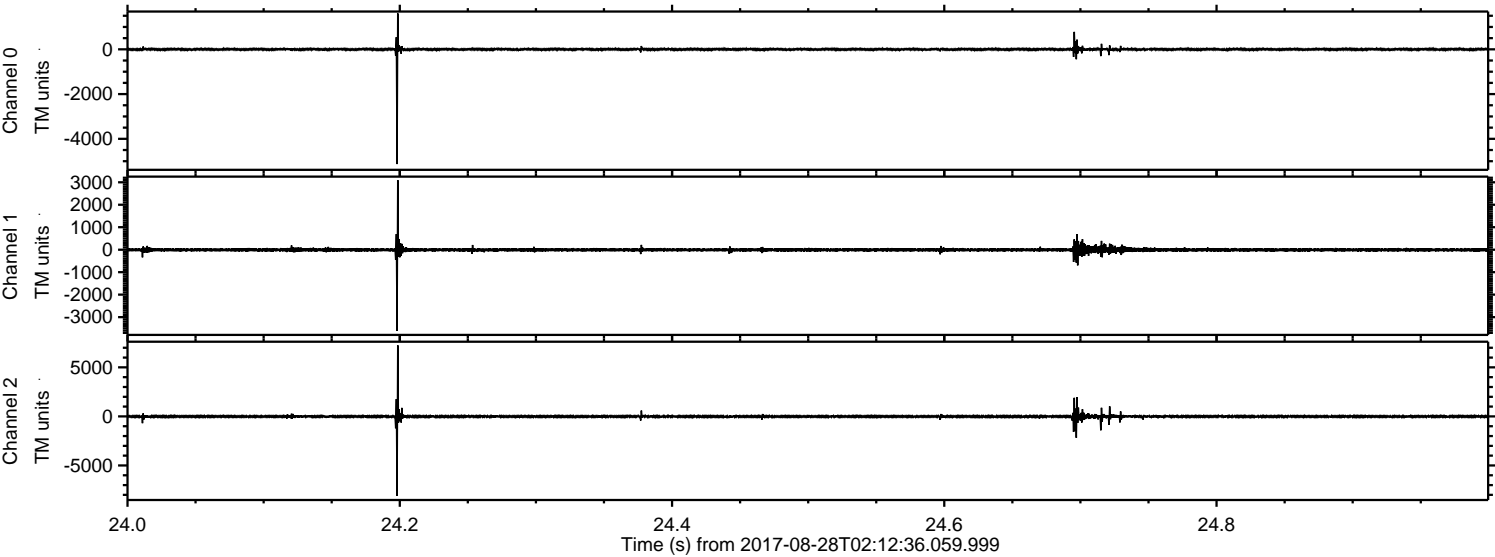


Channel 0
mn: -5130
mx: 1885
 μ : -0.7
 σ : 15.4

Channel 1
mn: -3611
mx: 3096
 μ : -8.2
 σ : 30.6

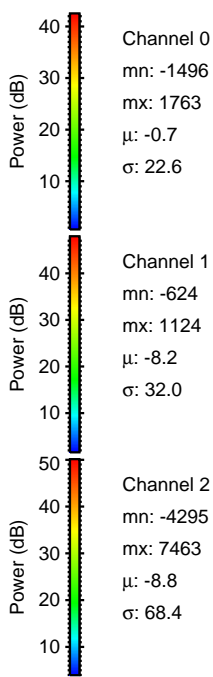
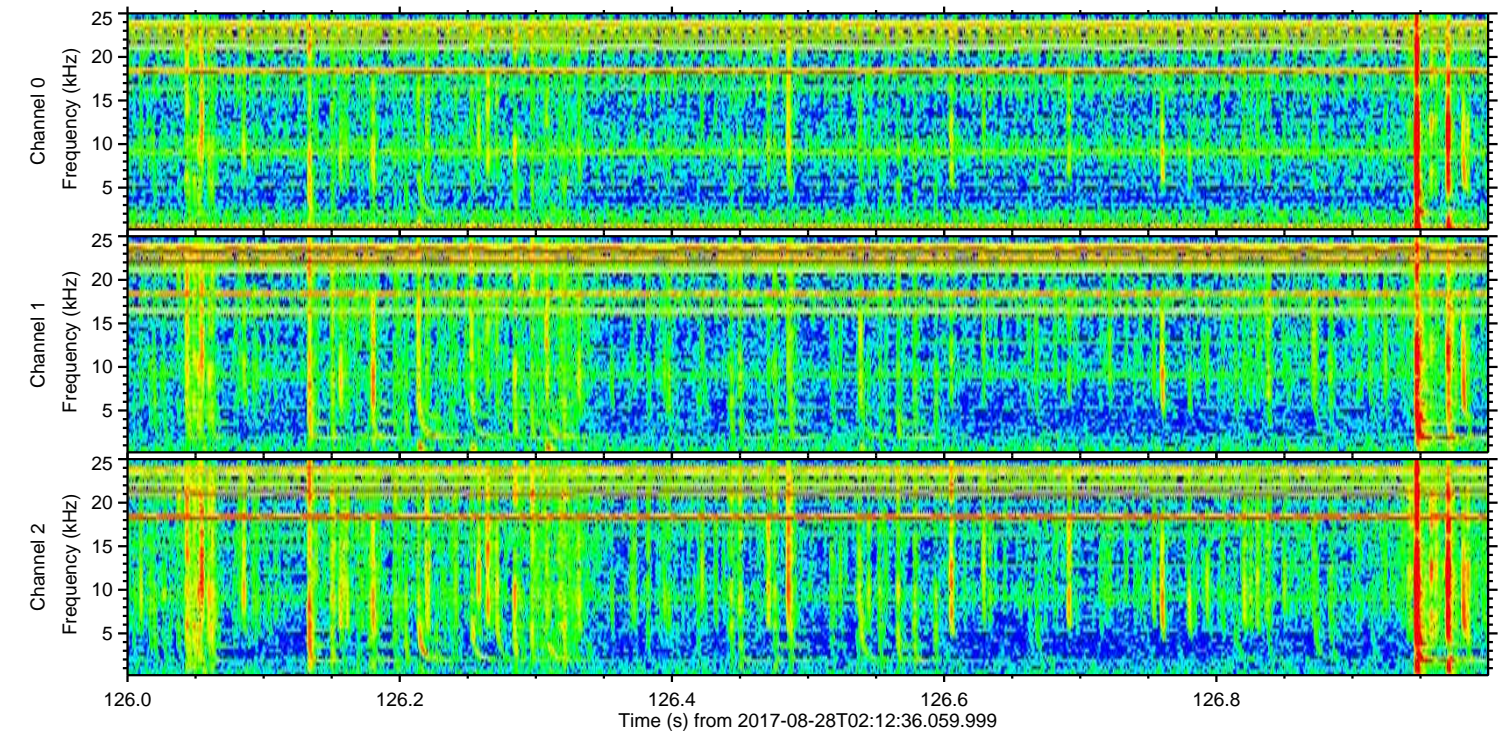
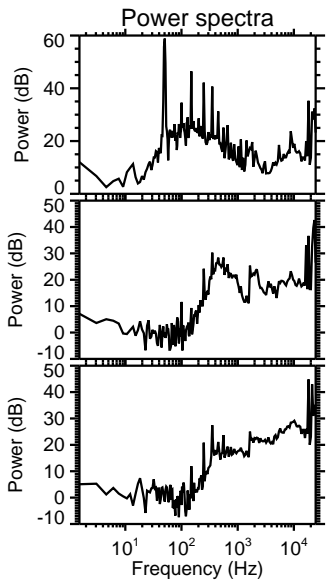
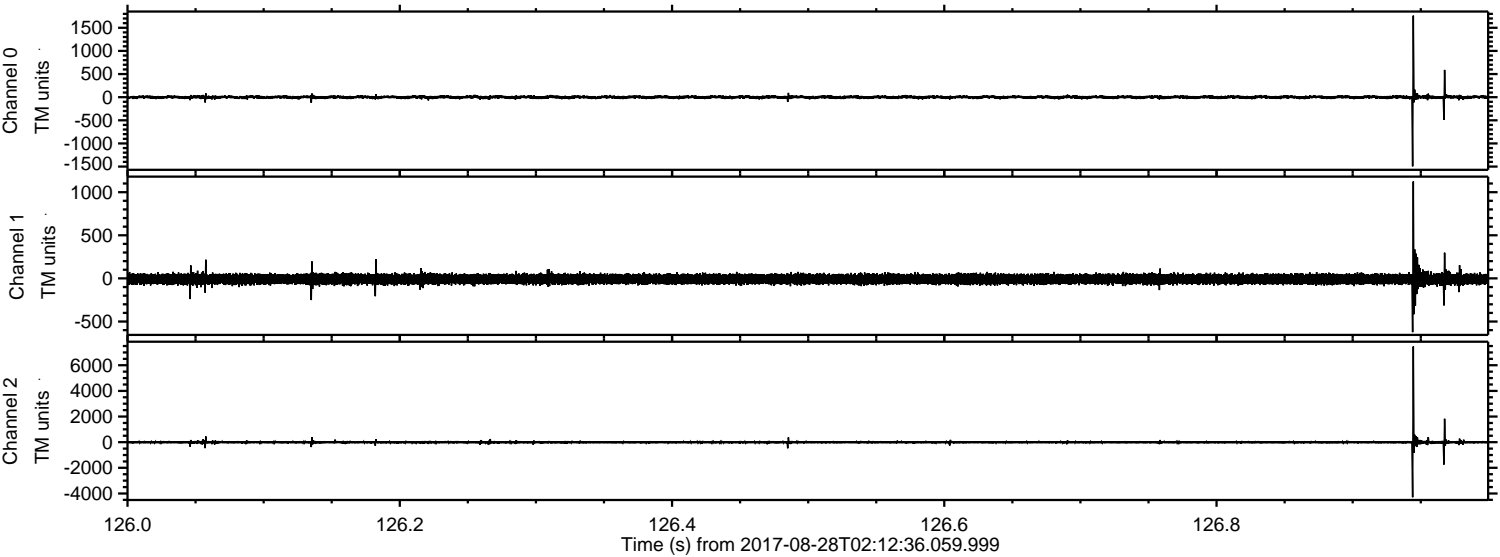
Channel 2
mn: -8115
mx: 7463
 μ : -8.8
 σ : 40.3

Processed Mon Aug 28 04:20:24 2017 by ELM ver.2012-10-06 from 001__elm20170828_021235__dat00.bin



ELMAVAN 3D WAVEFORMS (Measured data sampled at 50 kHz) 51000 packets of 144 samples from 2017-08-28T02:12:36.059.999. Part 127/147

Processed Mon Aug 28 04:20:25 2017 by ELM ver.2012-10-06 from 001__elm20170828_021235__dat00.bin



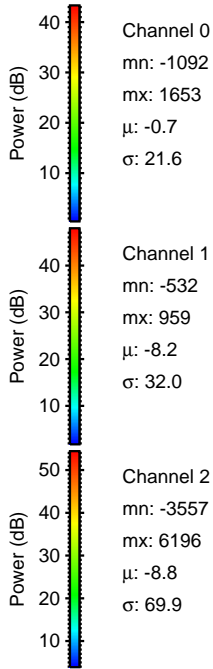
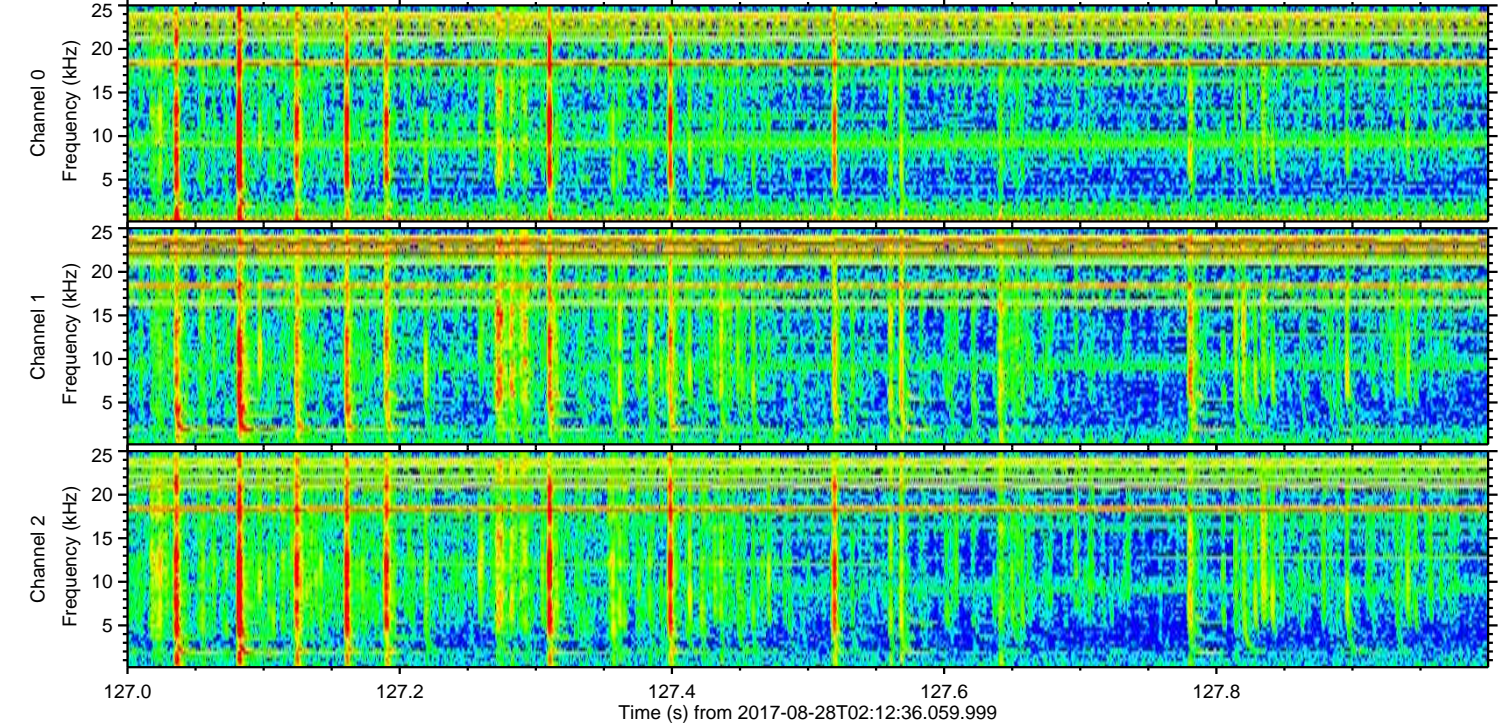
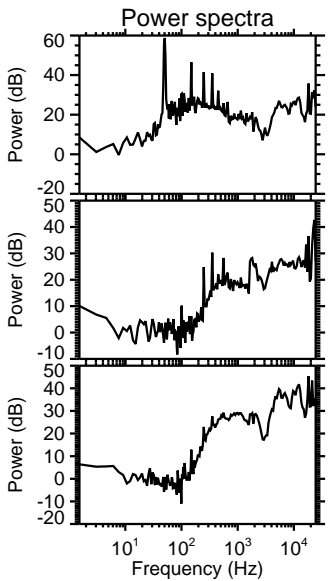
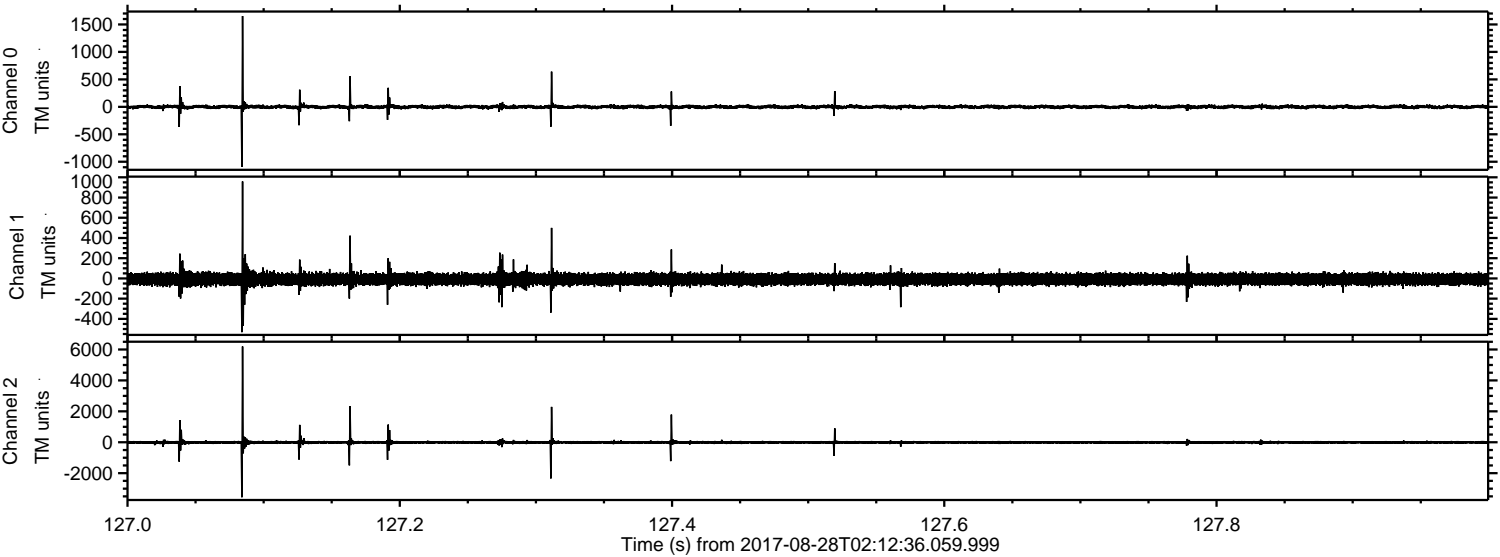
Channel 0
mn: -1496
mx: 1763
 μ : -0.7
 σ : 22.6

Channel 1
mn: -624
mx: 1124
 μ : -8.2
 σ : 32.0

Channel 2
mn: -4295
mx: 7463
 μ : -8.8
 σ : 68.4

ELMAVAN 3D WAVEFORMS (Measured data sampled at 50 kHz) 51000 packets of 144 samples from 2017-08-28T02:12:36.059.999. Part 128/147

Processed Mon Aug 28 04:20:25 2017 by ELM ver.2012-10-06 from 001__elm20170828_021235__dat00.bin

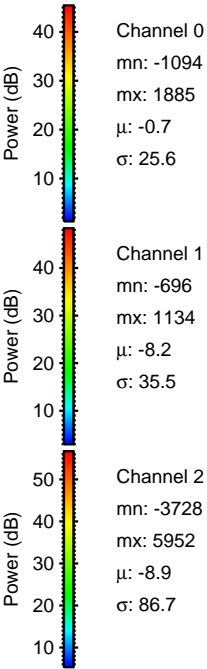
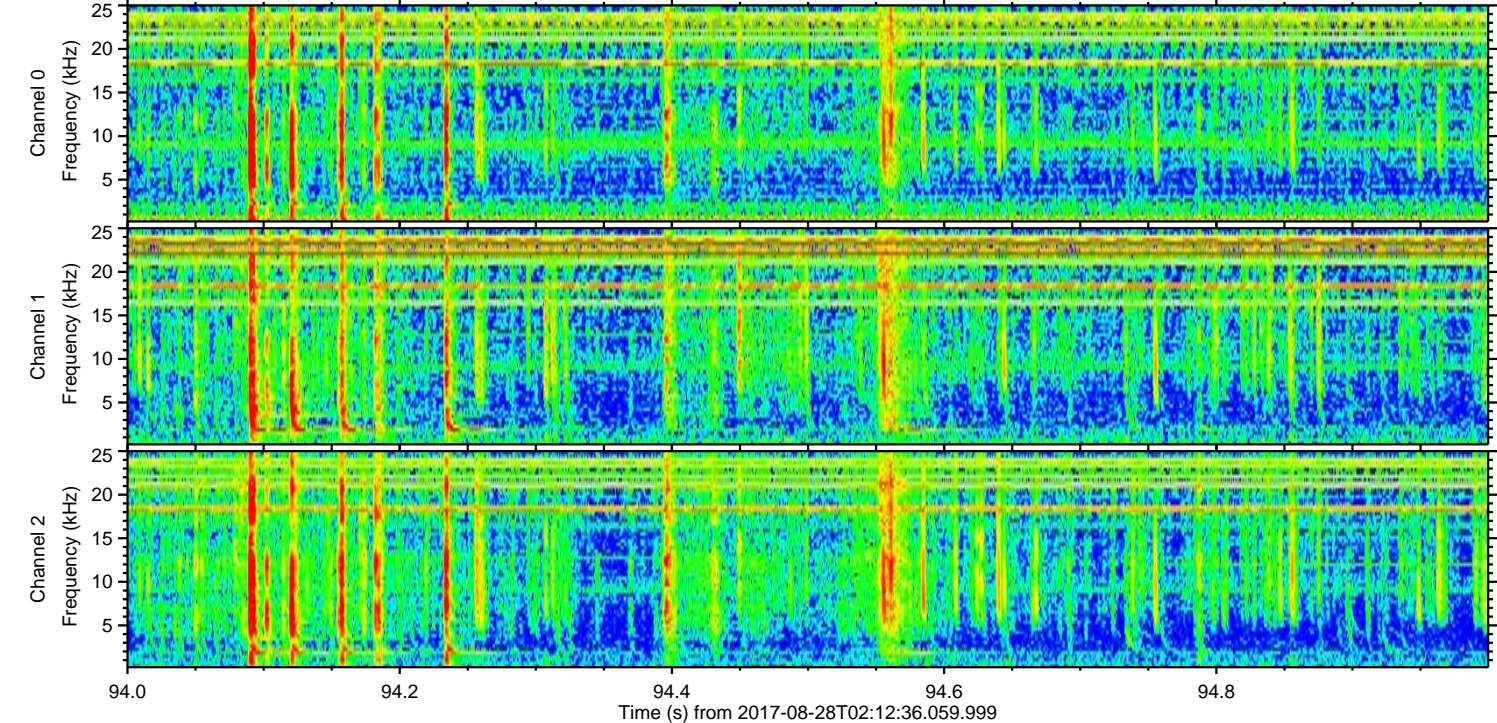
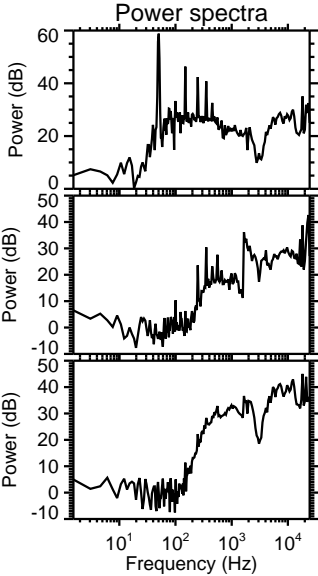
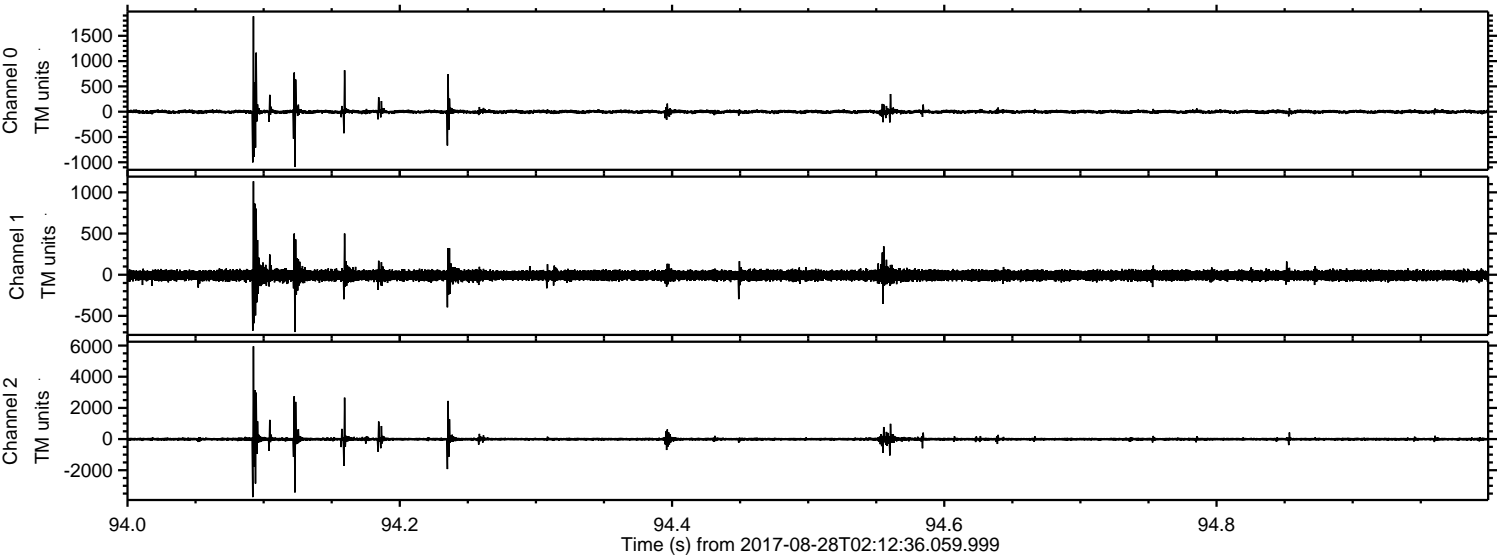


Channel 0
mn: -1092
mx: 1653
 μ : -0.7
 σ : 21.6

Channel 1
mn: -532
mx: 959
 μ : -8.2
 σ : 32.0

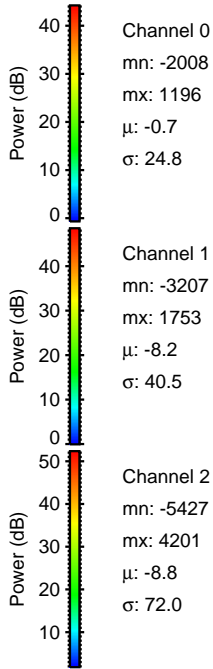
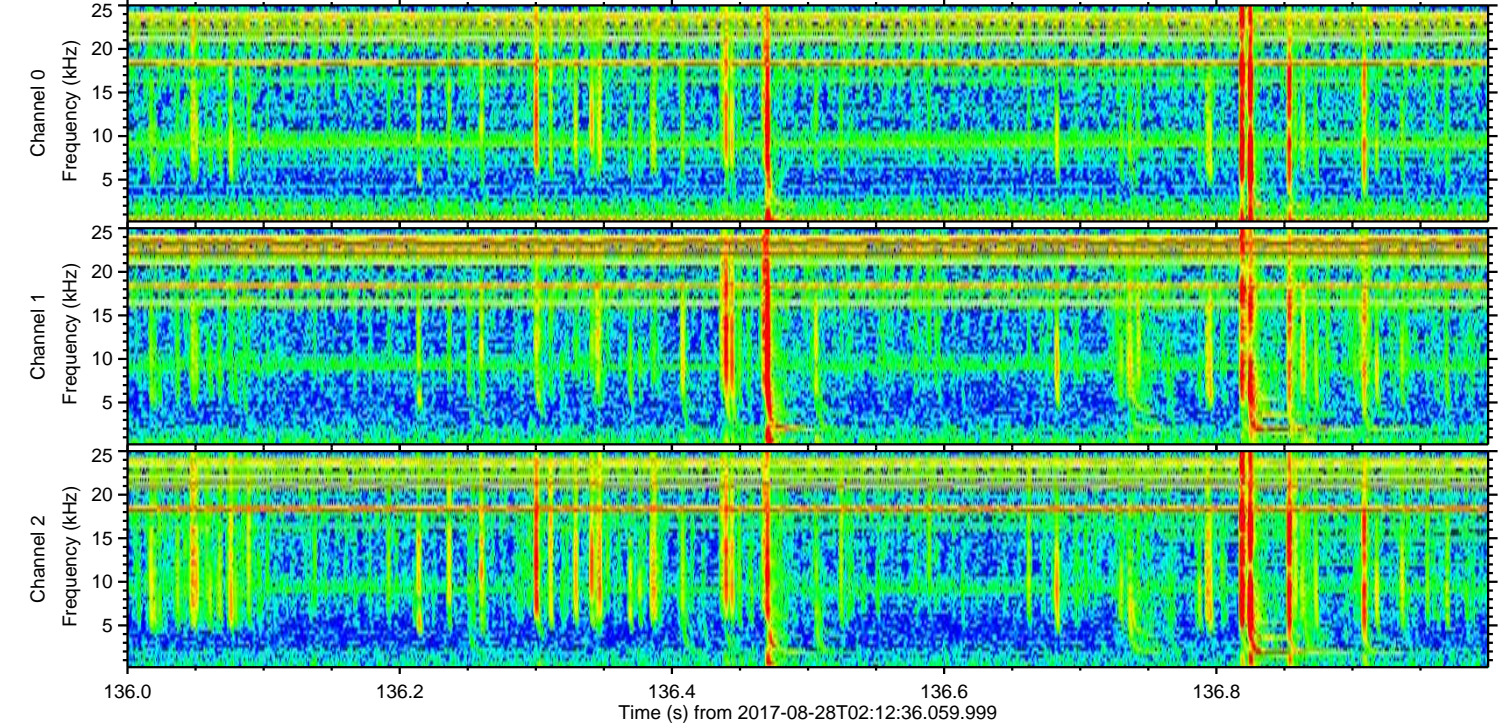
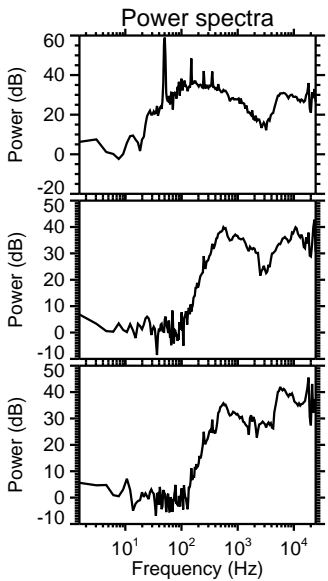
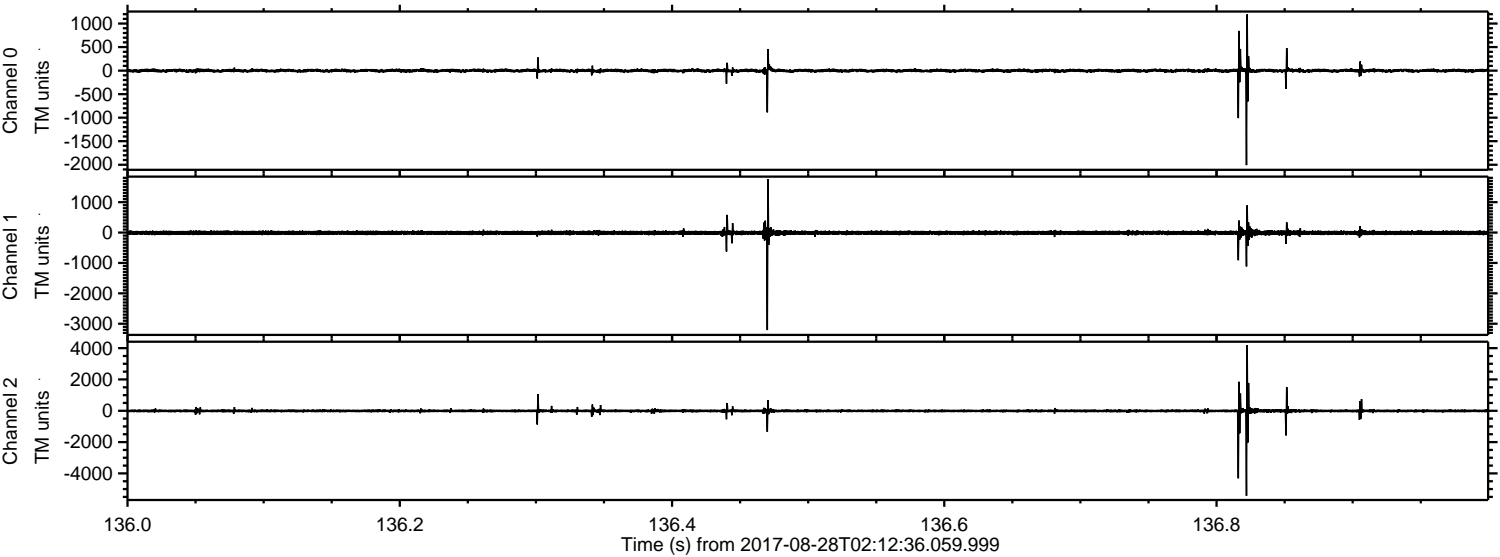
Channel 2
mn: -3557
mx: 6196
 μ : -8.8
 σ : 69.9

Processed Mon Aug 28 04:20:26 2017 by ELM ver.2012-10-06 from 001__elm20170828_021235__dat00.bin

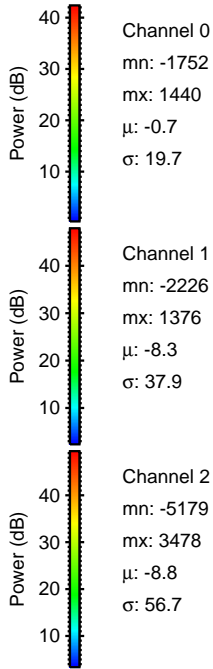
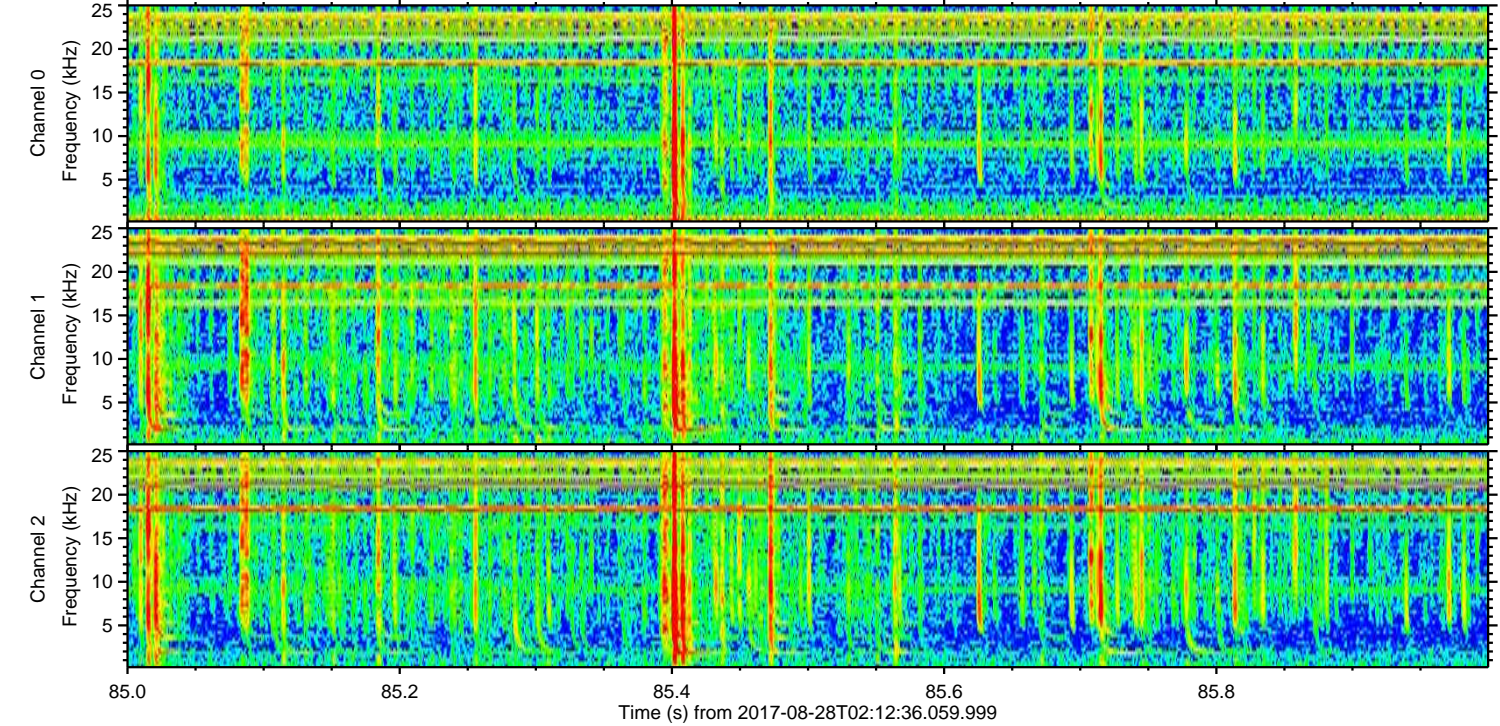
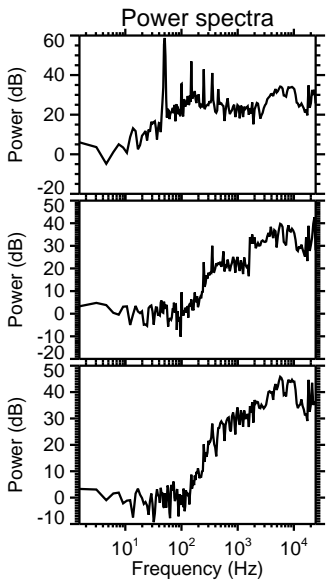
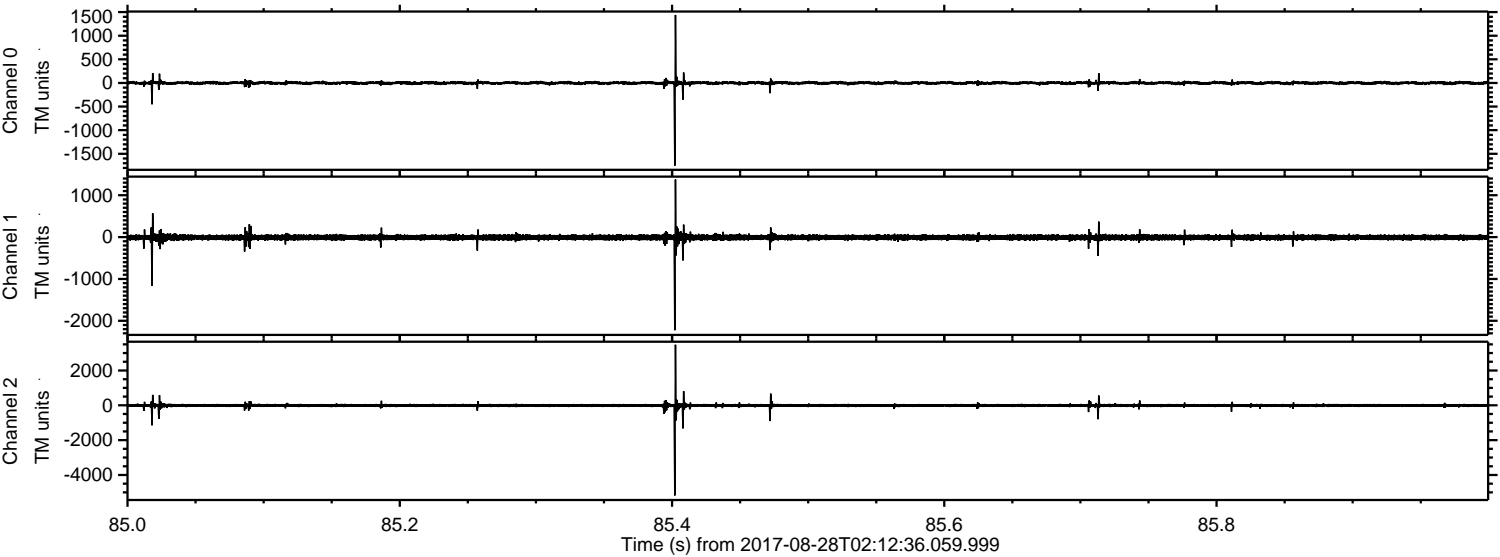


ELMAVAN 3D WAVEFORMS (Measured data sampled at 50 kHz) 51000 packets of 144 samples from 2017-08-28T02:12:36.059.999. Part 137/147

Processed Mon Aug 28 04:20:27 2017 by ELM ver.2012-10-06 from 001__elm20170828_021235__dat00.bin



Processed Mon Aug 28 04:20:27 2017 by ELM ver.2012-10-06 from 001__elm20170828_021235__dat00.bin

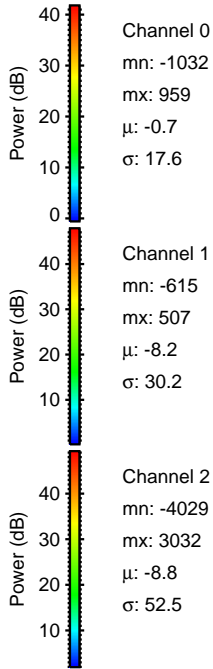
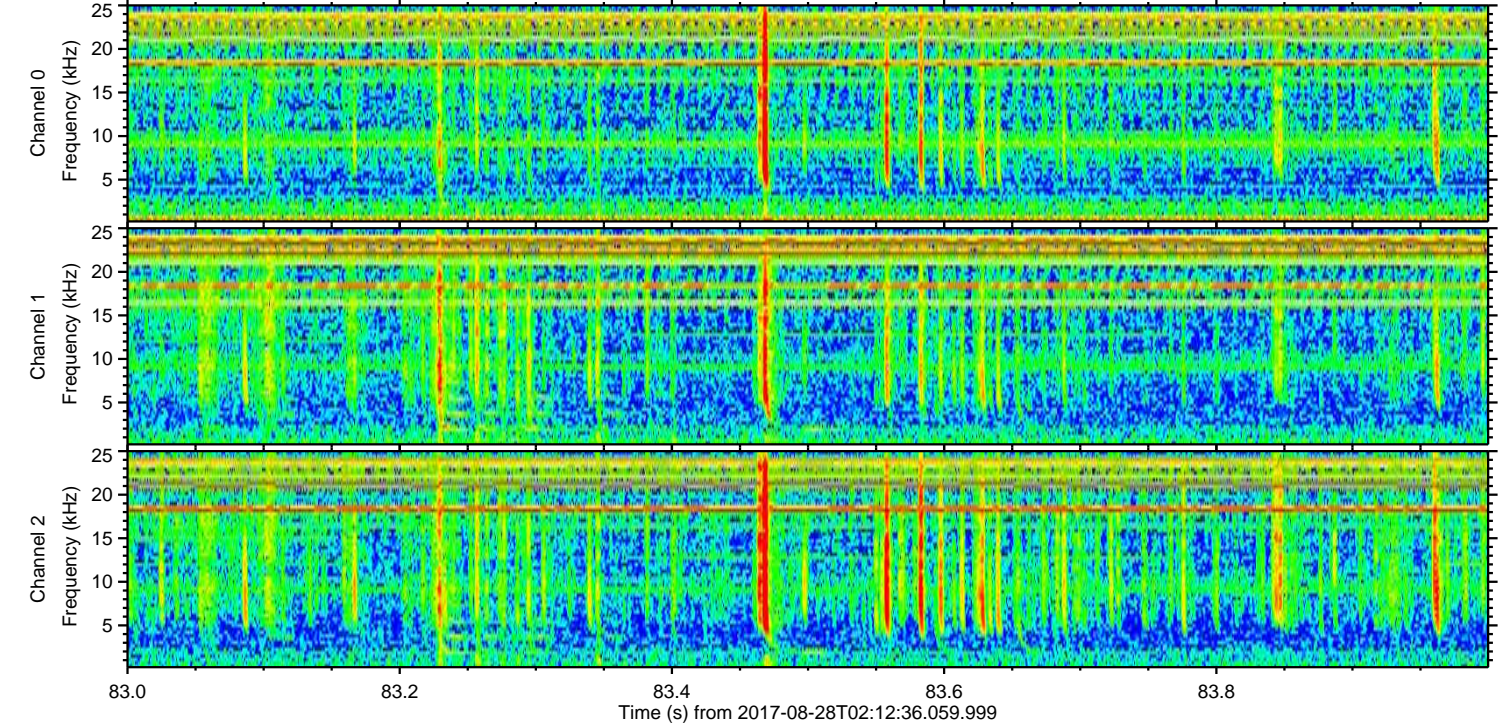
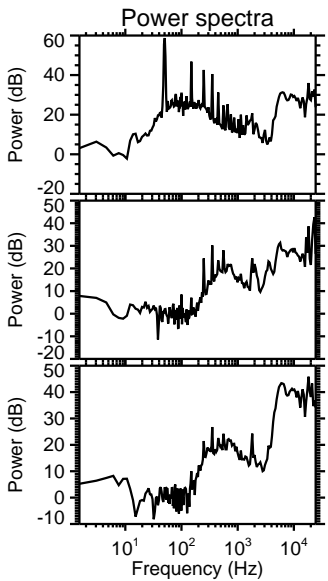
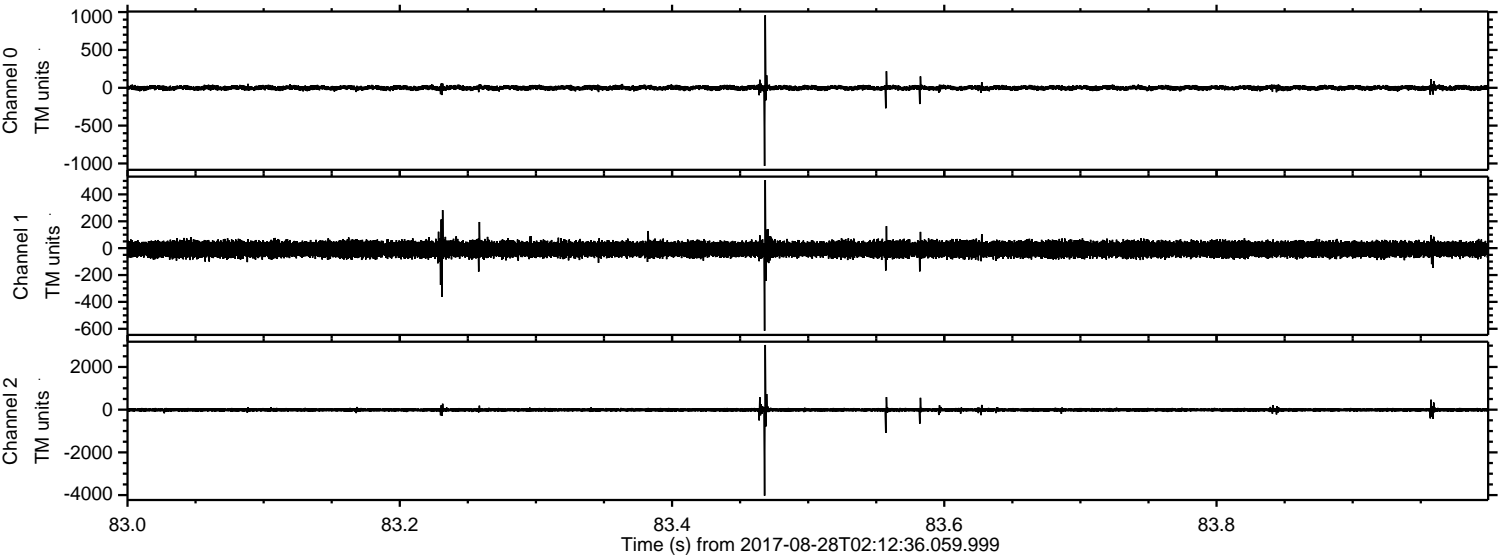


Channel 0
mn: -1752
mx: 1440
 μ : -0.7
 σ : 19.7

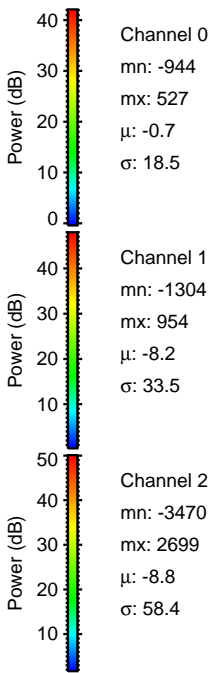
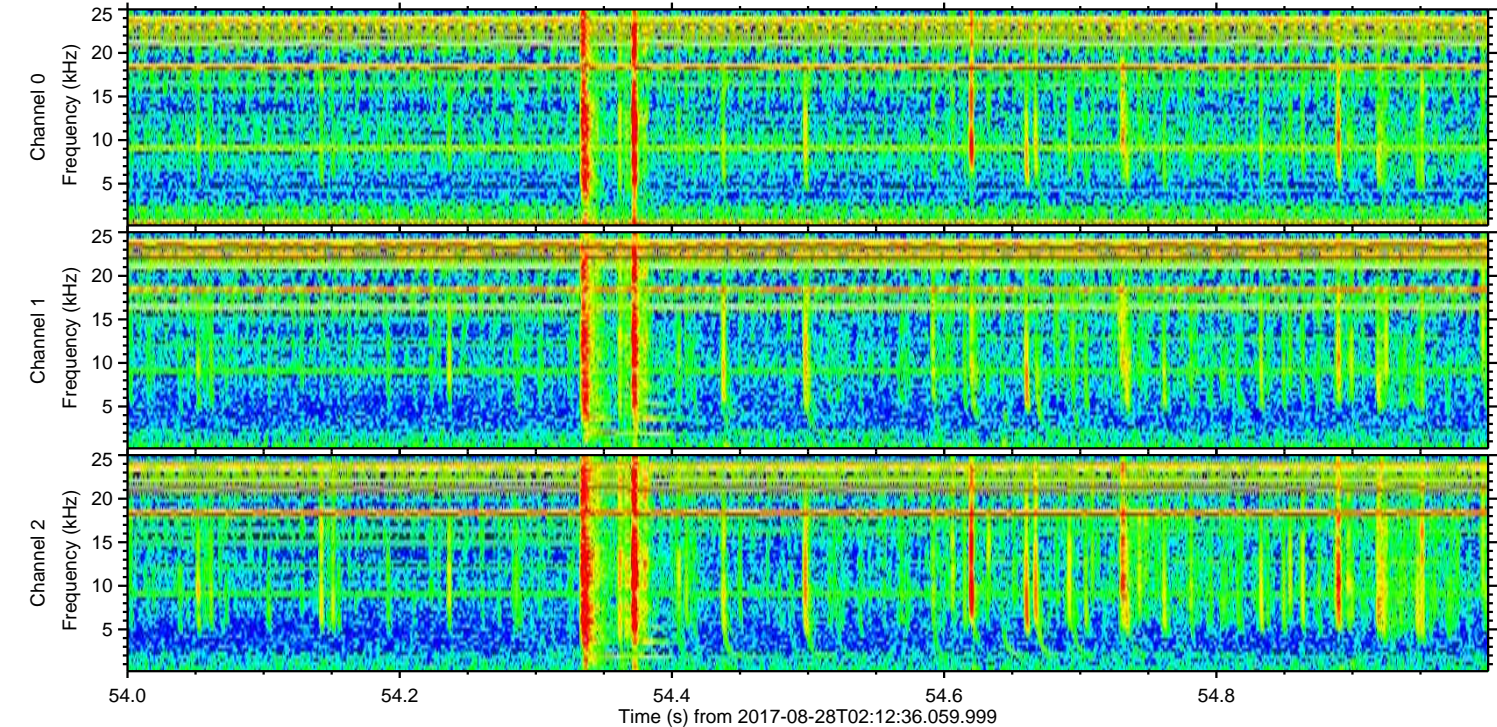
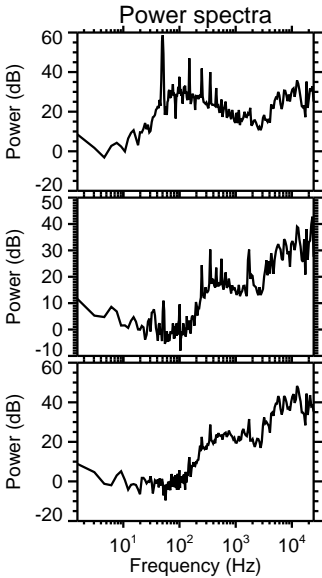
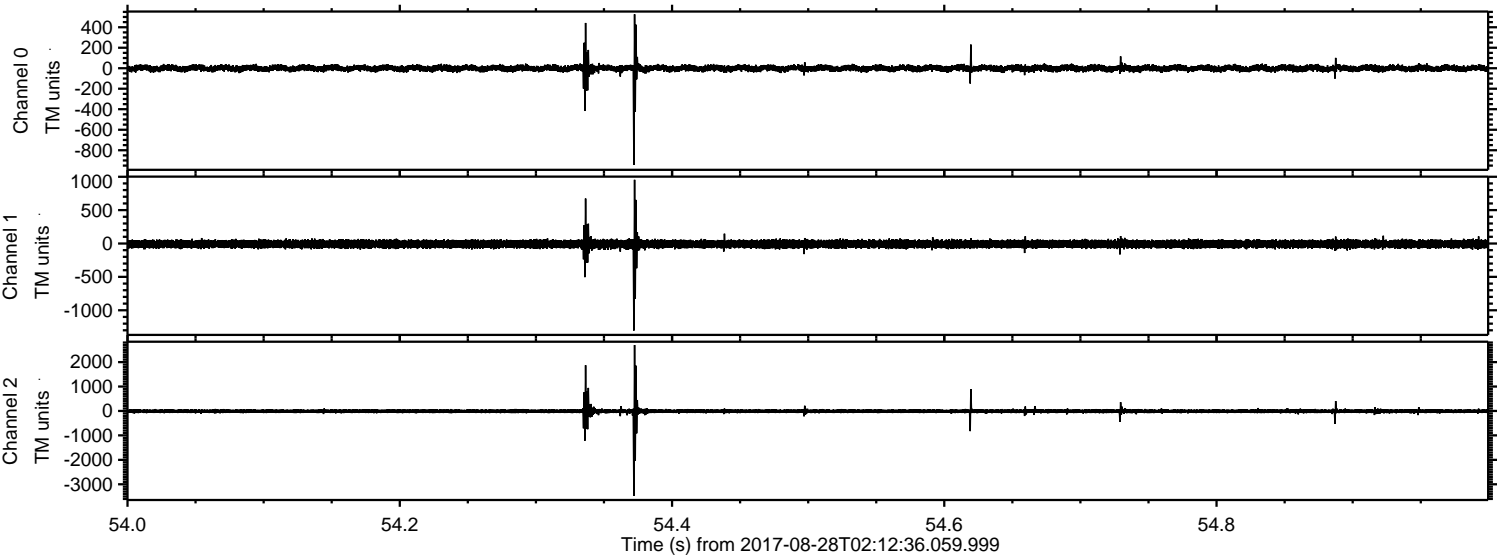
Channel 1
mn: -2226
mx: 1376
 μ : -8.3
 σ : 37.9

Channel 2
mn: -5179
mx: 3478
 μ : -8.8
 σ : 56.7

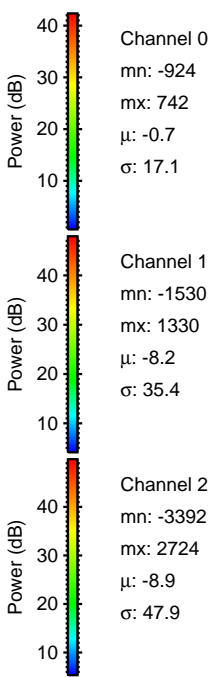
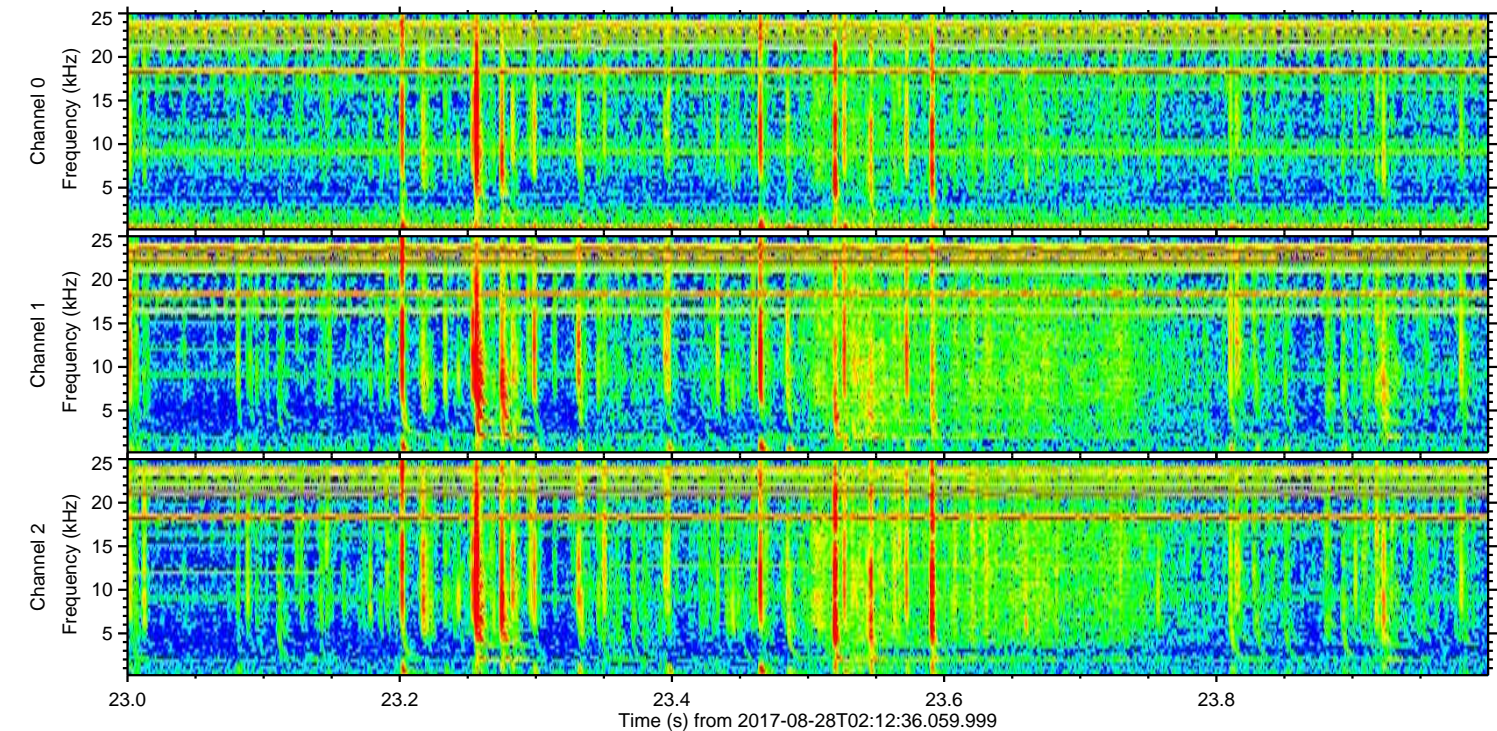
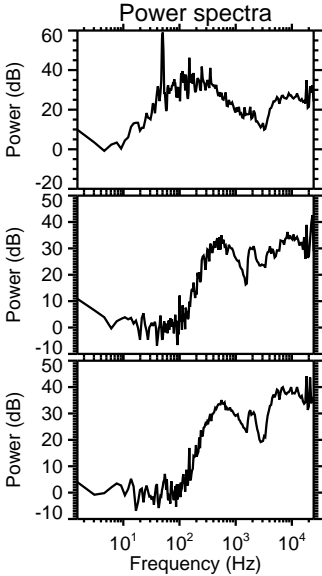
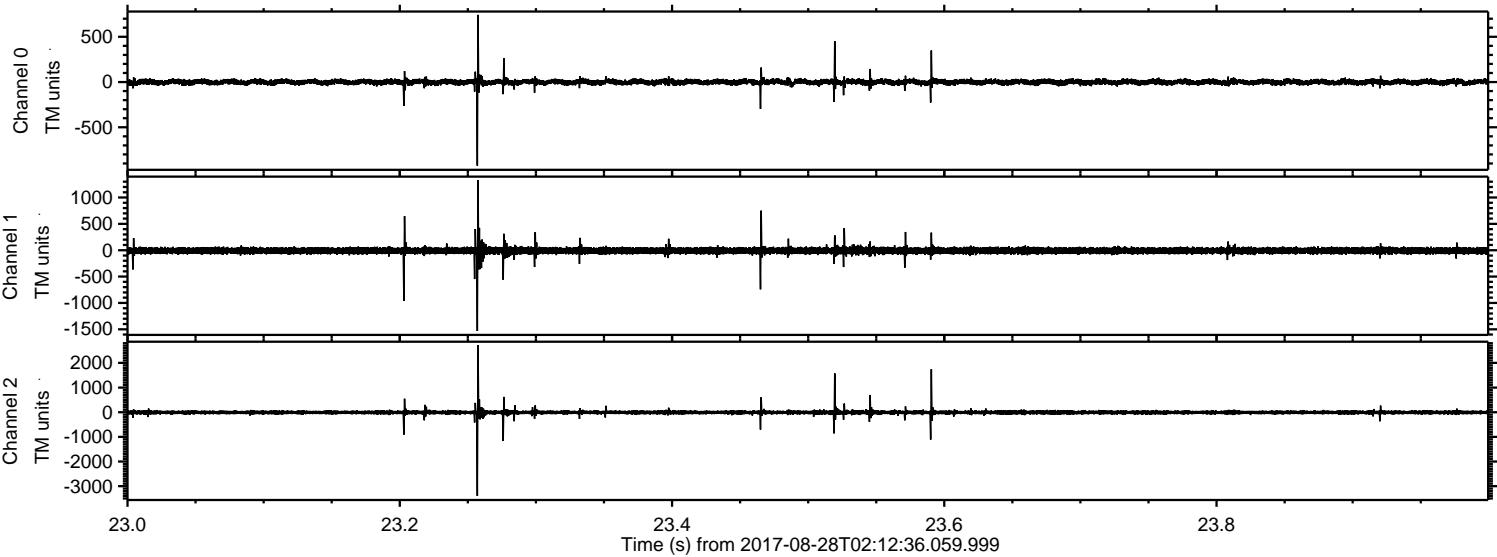
Processed Mon Aug 28 04:20:28 2017 by ELM ver.2012-10-06 from 001__elm20170828_021235__dat00.bin



Processed Mon Aug 28 04:20:29 2017 by ELM ver.2012-10-06 from 001__elm20170828_021235__dat00.bin



Processed Mon Aug 28 04:20:29 2017 by ELM ver.2012-10-06 from 001__elm20170828_021235__dat00.bin



Processed Mon Aug 28 04:20:30 2017 by ELM ver.2012-10-06 from 001__elm20170828_021235__dat00.bin

