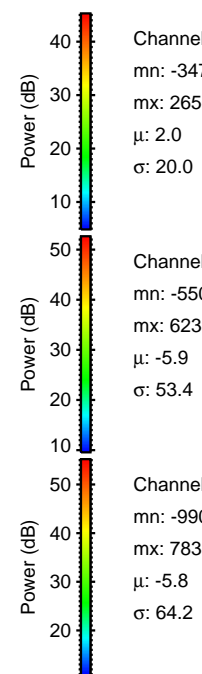
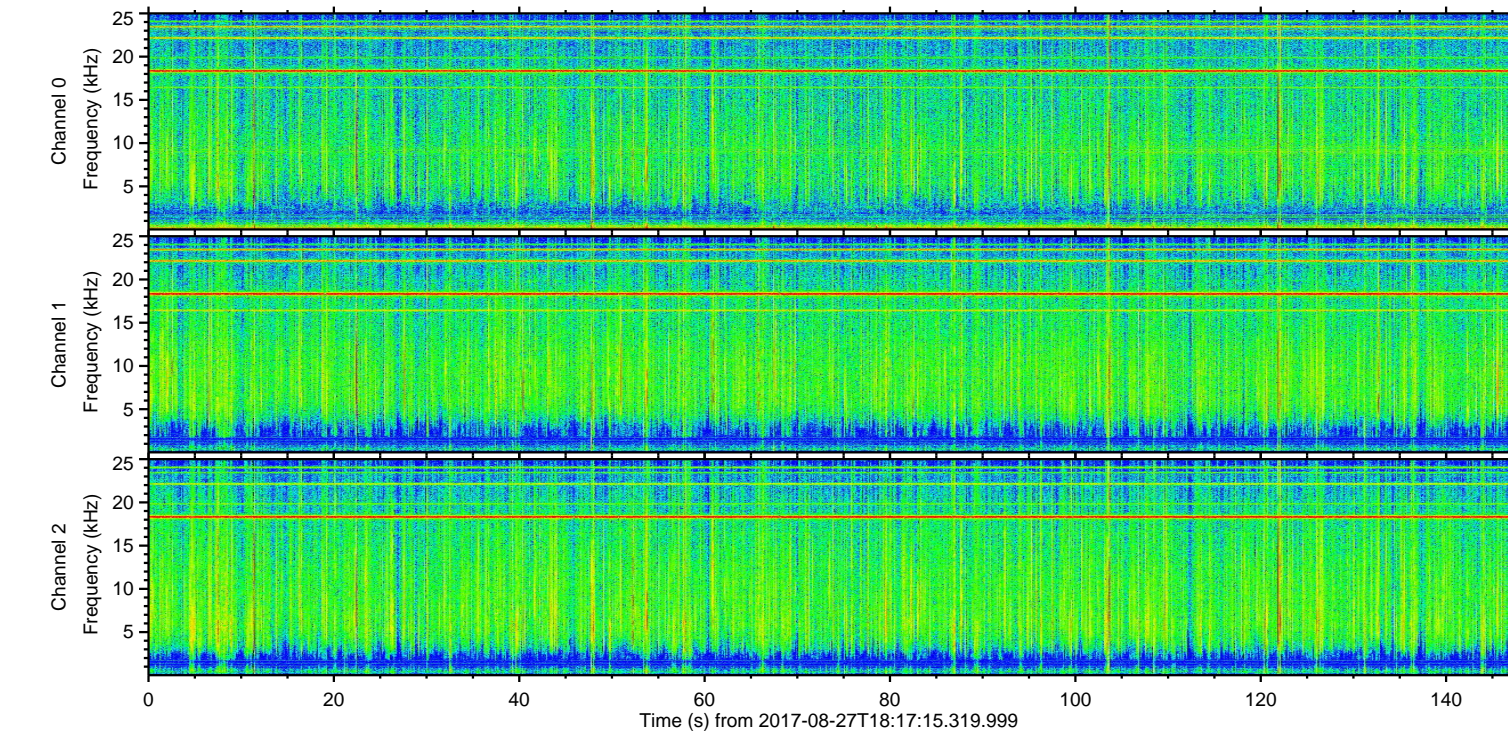
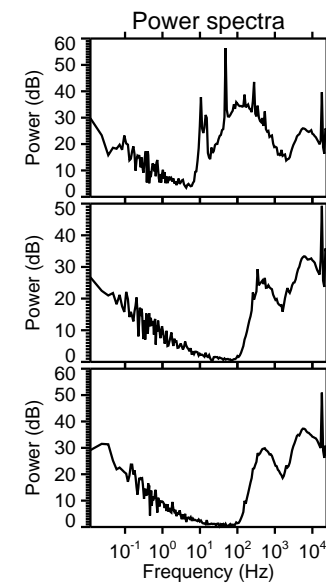
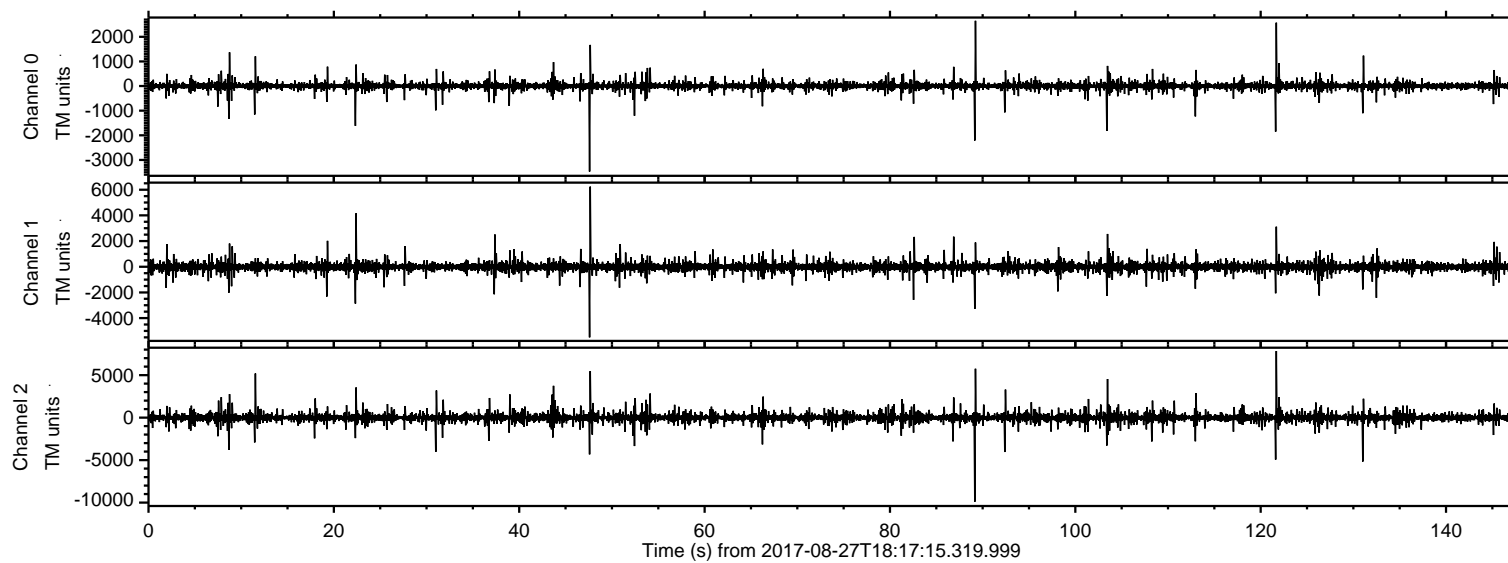


ELMAVAN 3D WAVEFORMS (Measured data sampled at 50 kHz) 51000 packets of 144 samples from 2017-08-27T18:17:15.319.999.

Processed Sun Aug 27 20:24:56 2017 by ELM ver.2012-10-06 from 001__elm20170827_181714__dat00.bin

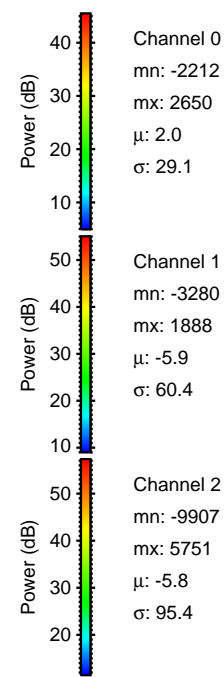
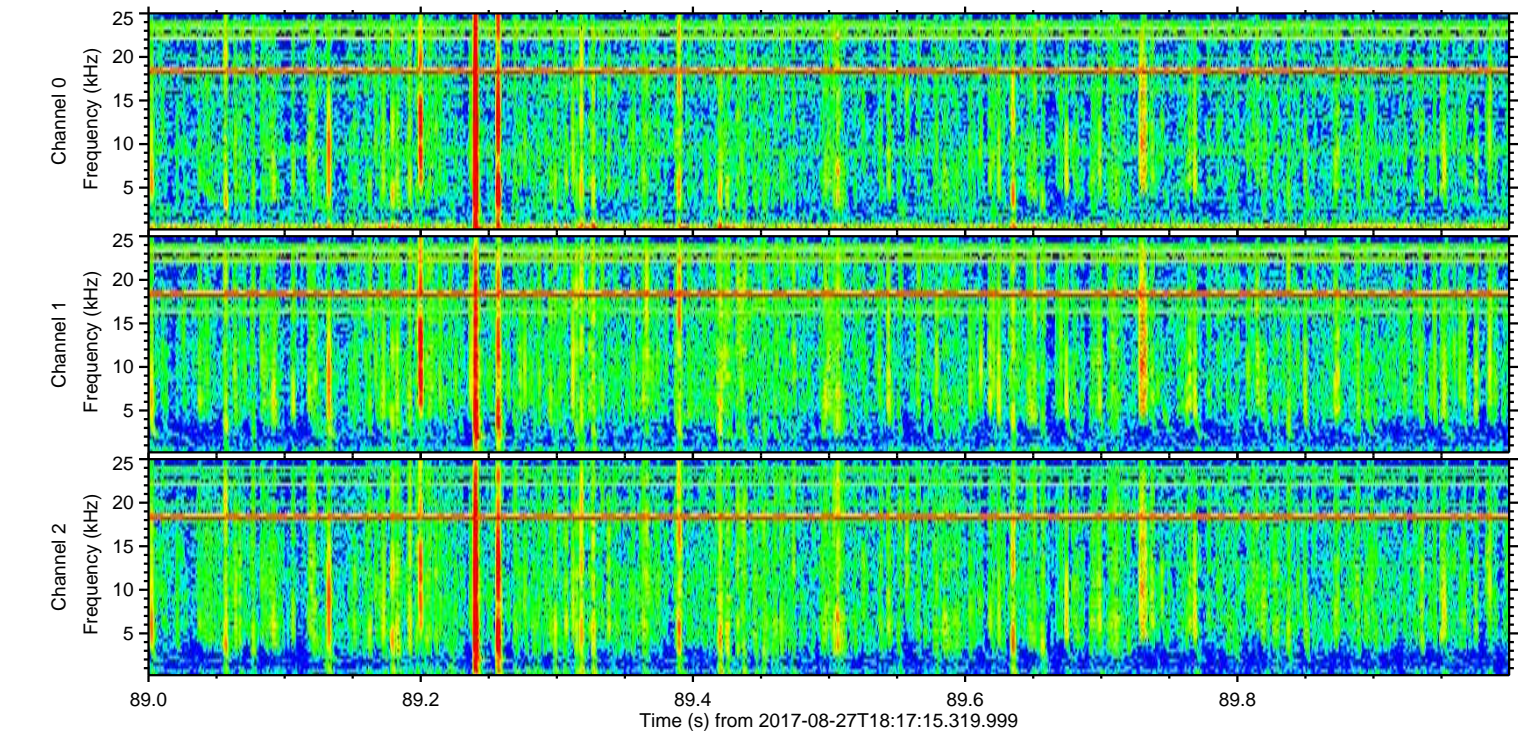
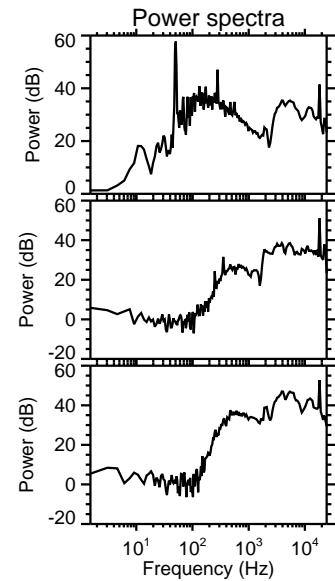
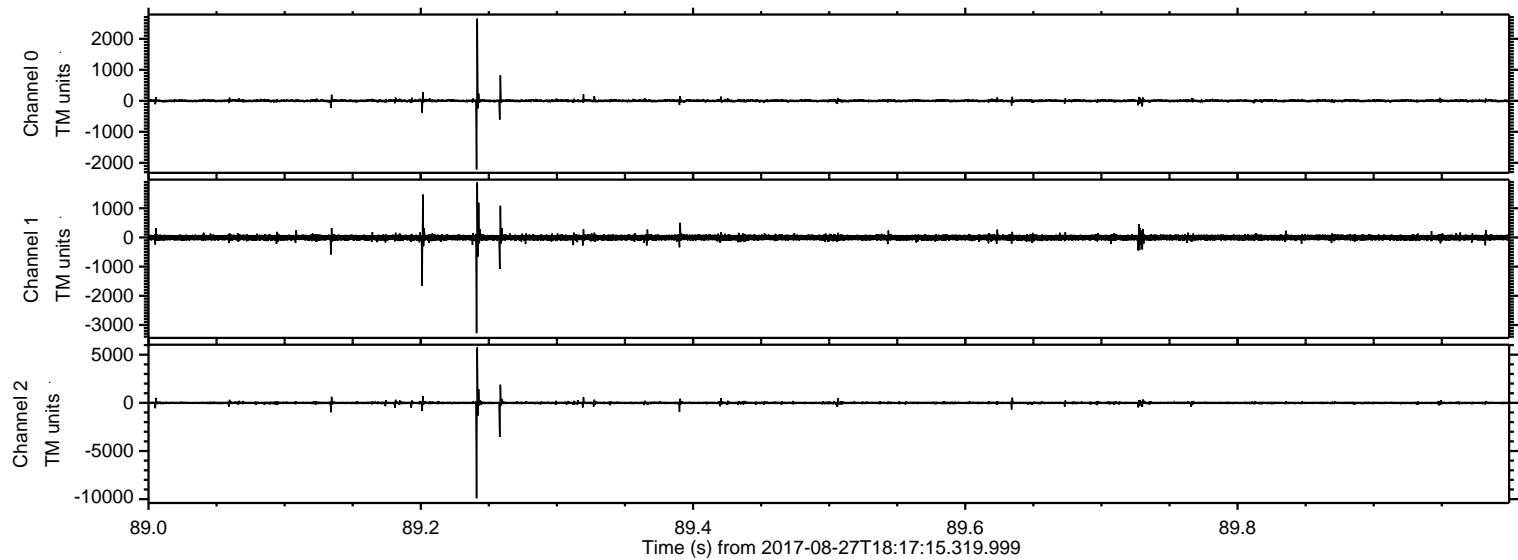


Channel 0
mn: -3472
mx: 2650
 μ : 2.0
 σ : 20.0

Channel 1
mn: -5501
mx: 6239
 μ : -5.9
 σ : 53.4

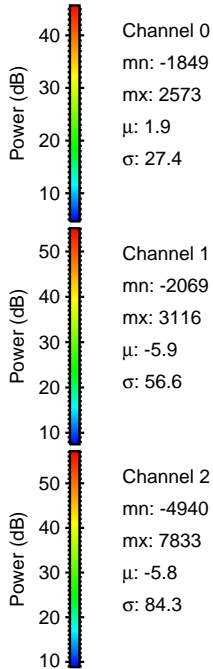
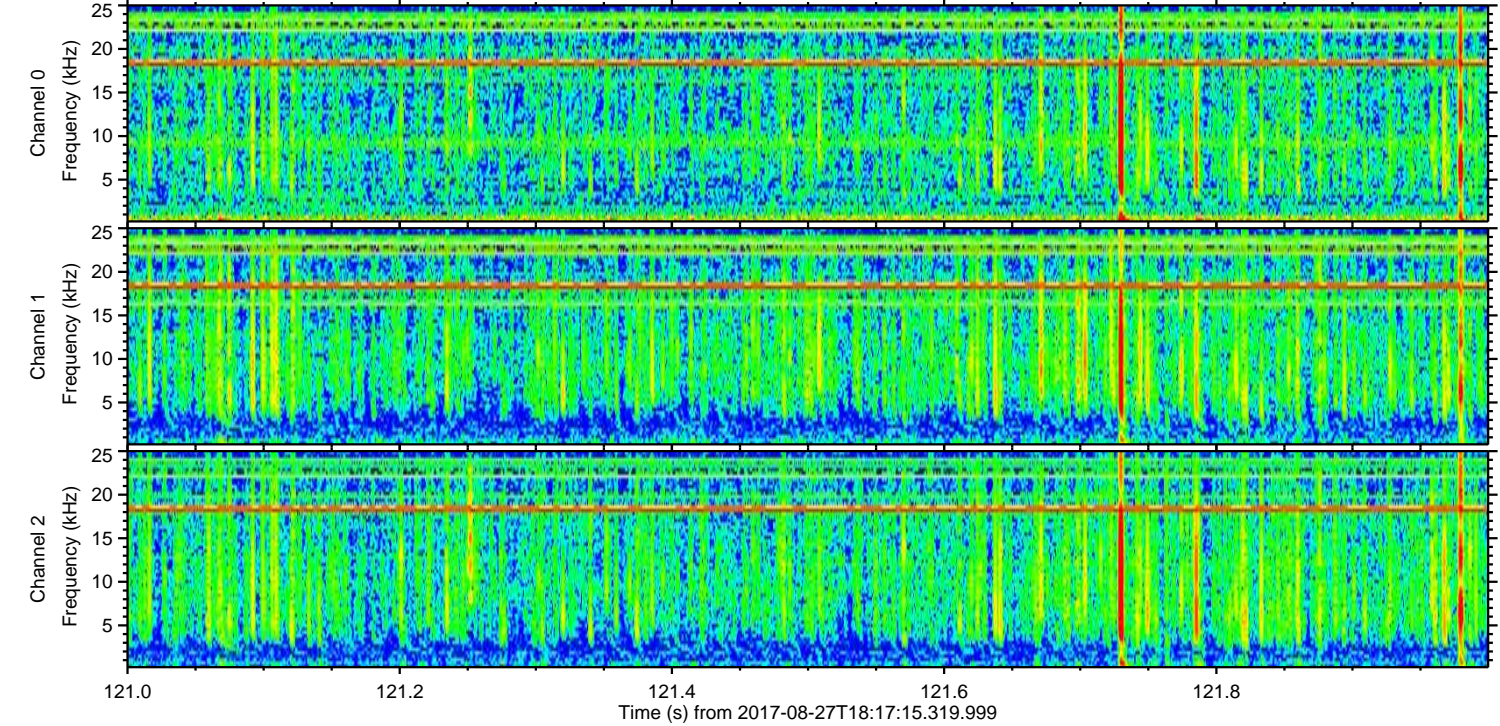
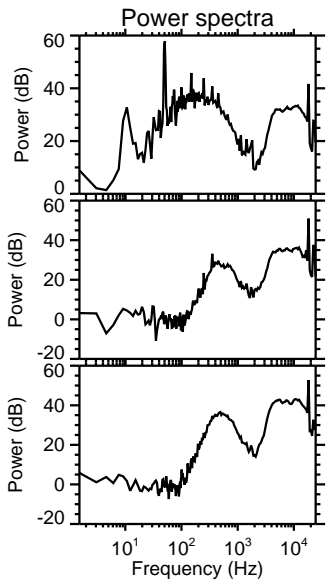
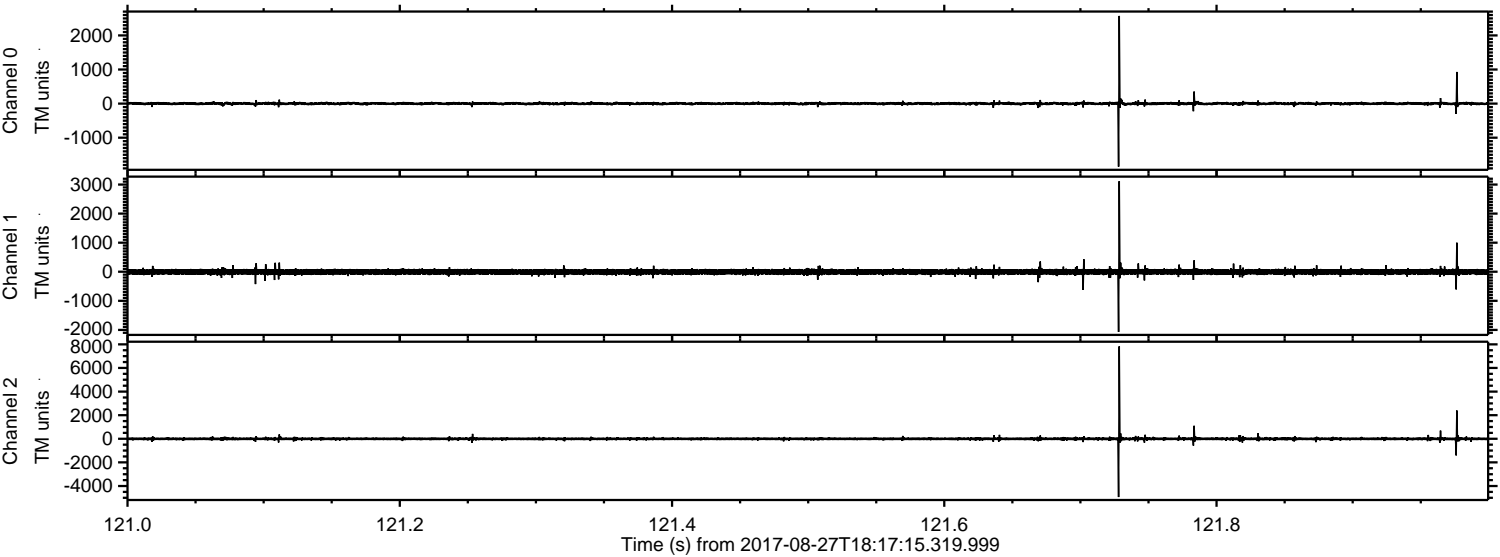
Channel 2
mn: -9907
mx: 7833
 μ : -5.8
 σ : 64.2

Processed Sun Aug 27 20:25:02 2017 by ELM ver.2012-10-06 from 001__elm20170827_181714__dat00.bin

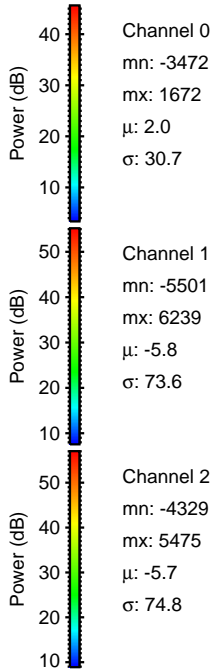
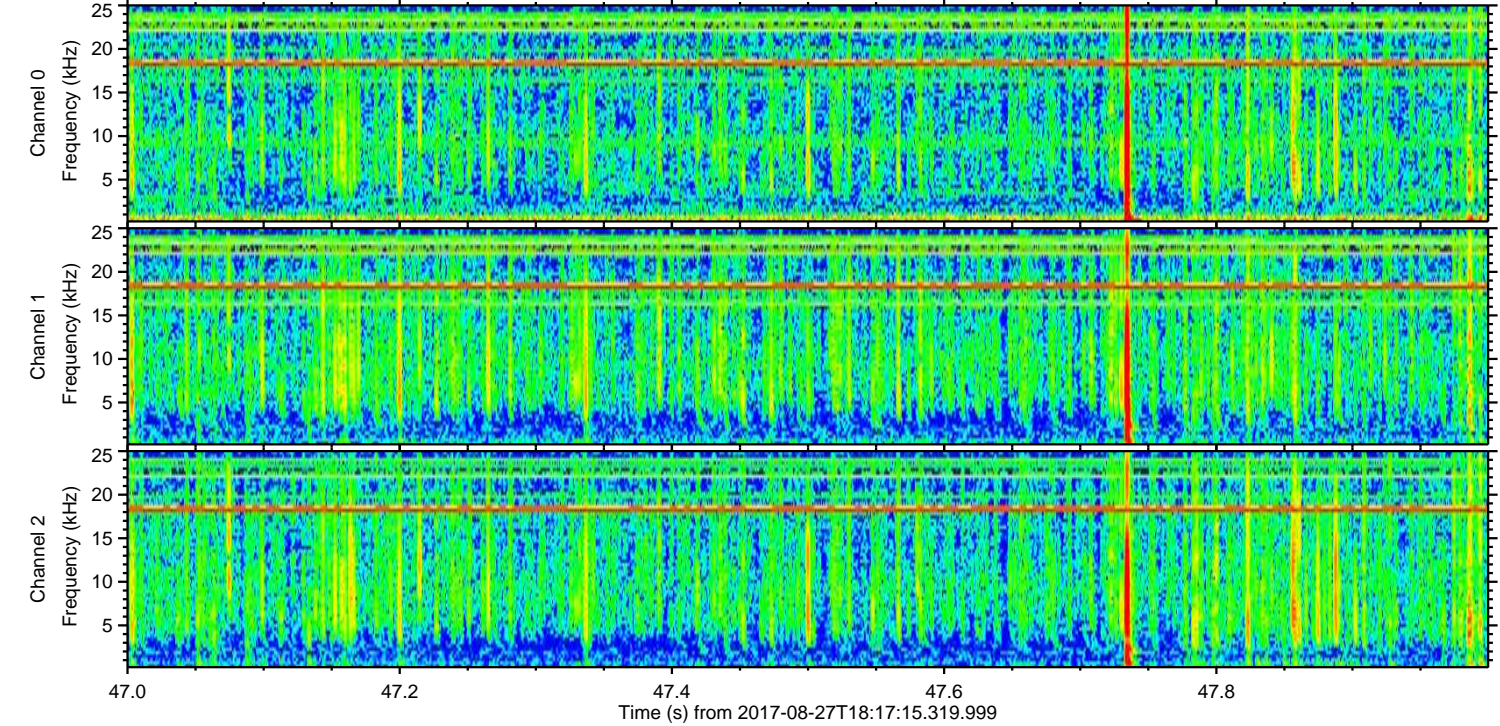
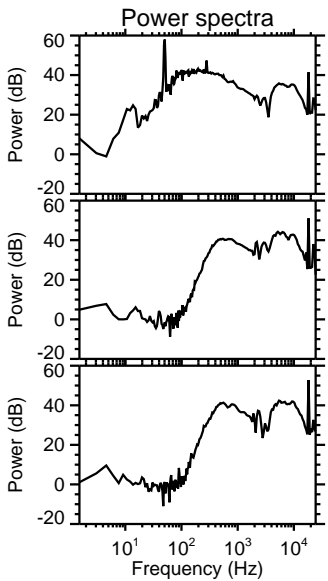
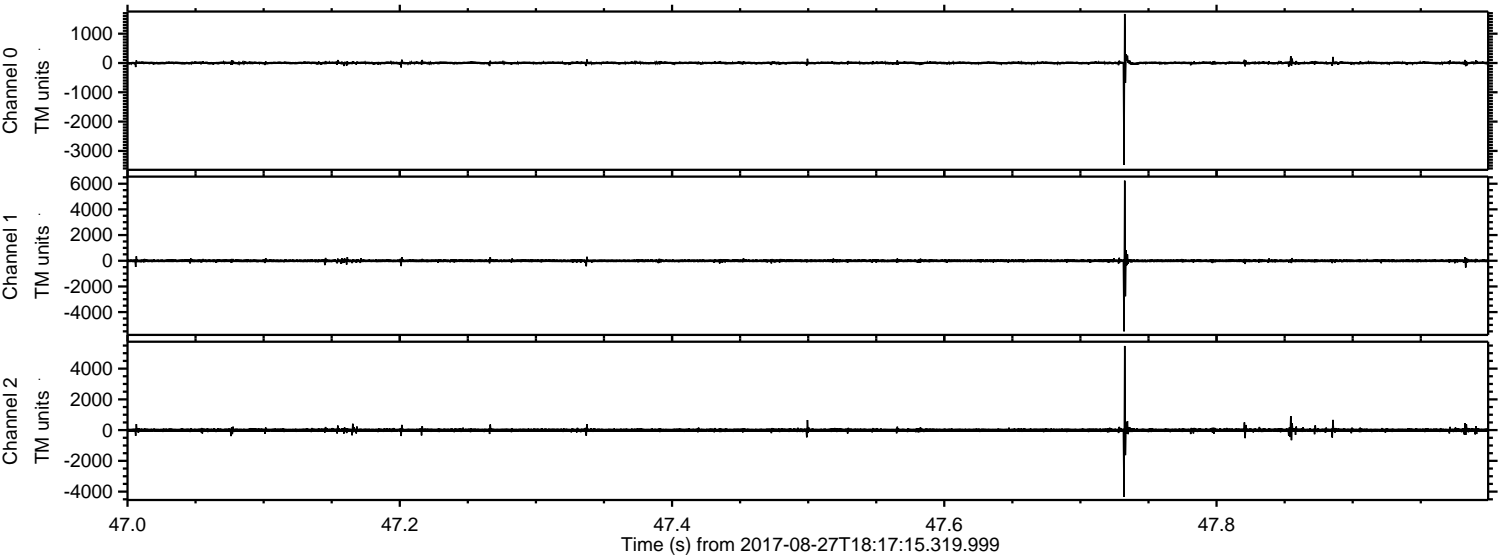


ELMAVAN 3D WAVEFORMS (Measured data sampled at 50 kHz) 51000 packets of 144 samples from 2017-08-27T18:17:15.319.999. Part 122/147

Processed Sun Aug 27 20:25:03 2017 by ELM ver.2012-10-06 from 001__elm20170827_181714__dat00.bin



Processed Sun Aug 27 20:25:04 2017 by ELM ver.2012-10-06 from 001__elm20170827_181714__dat00.bin



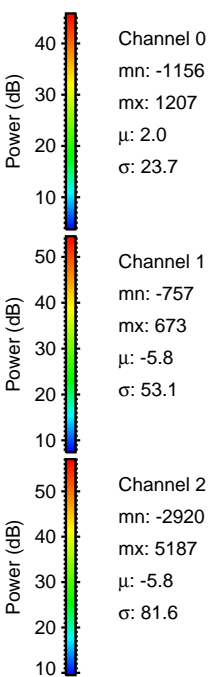
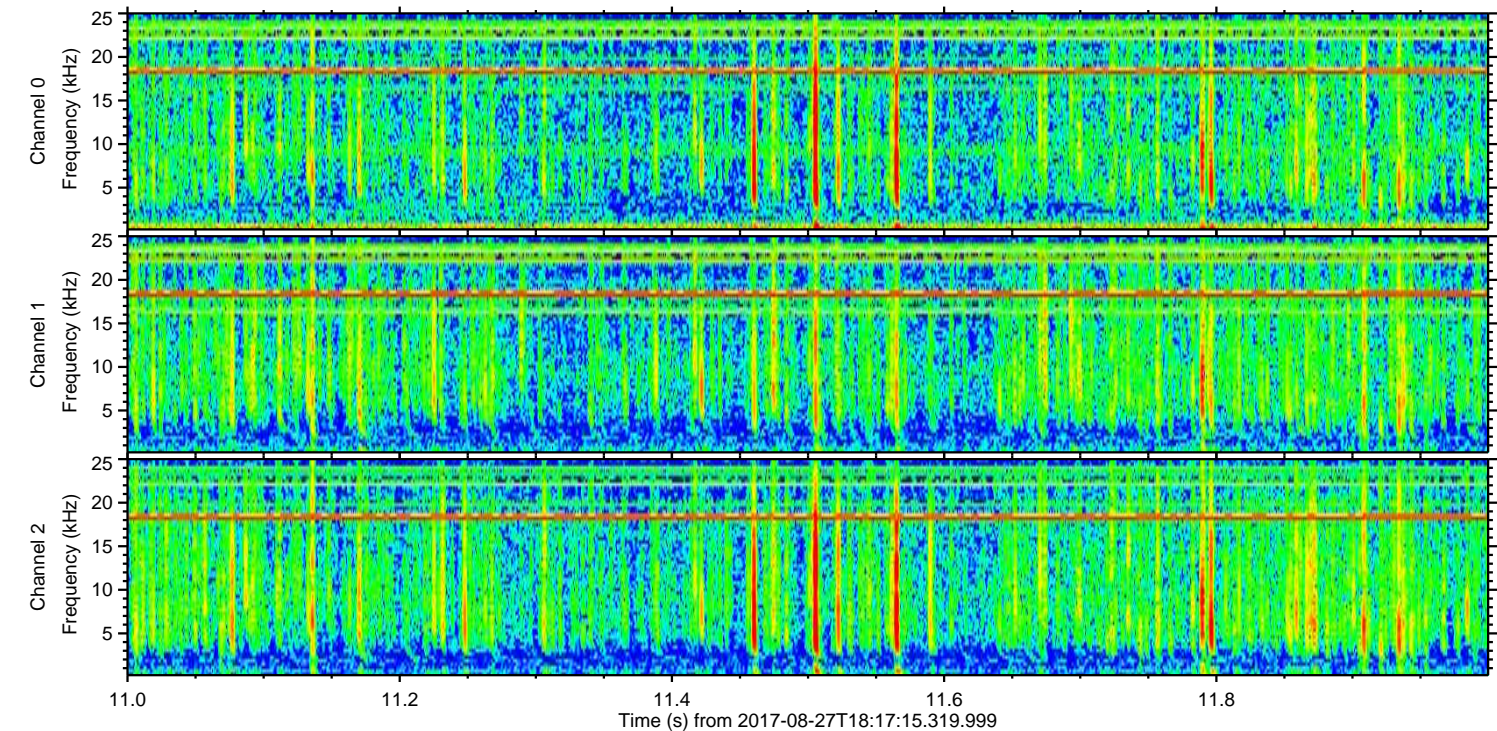
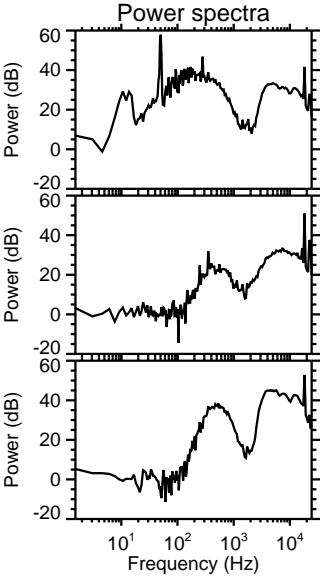
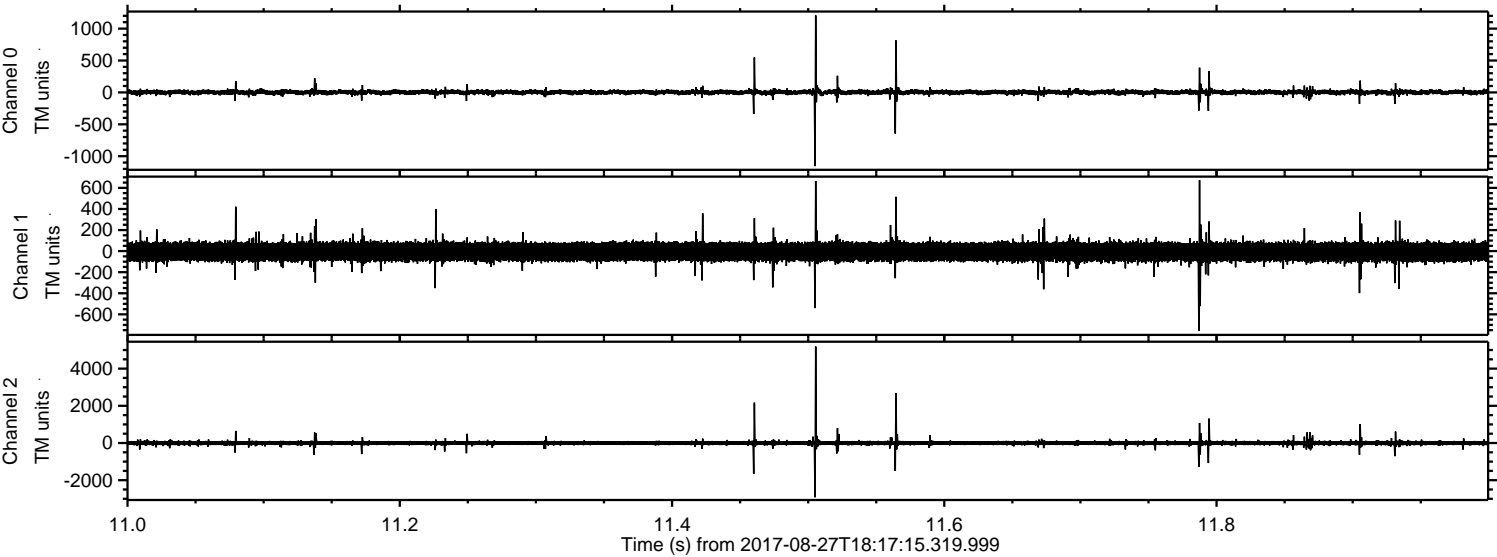
Channel 0
mn: -3472
mx: 1672
 μ : 2.0
 σ : 30.7

Channel 1
mn: -5501
mx: 6239
 μ : -5.8
 σ : 73.6

Channel 2
mn: -4329
mx: 5475
 μ : -5.7
 σ : 74.8

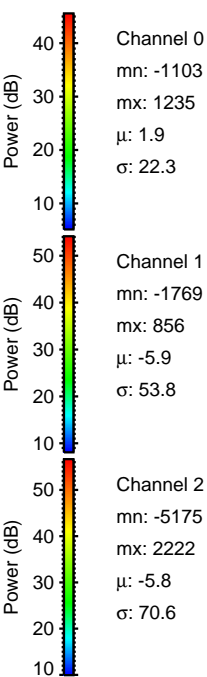
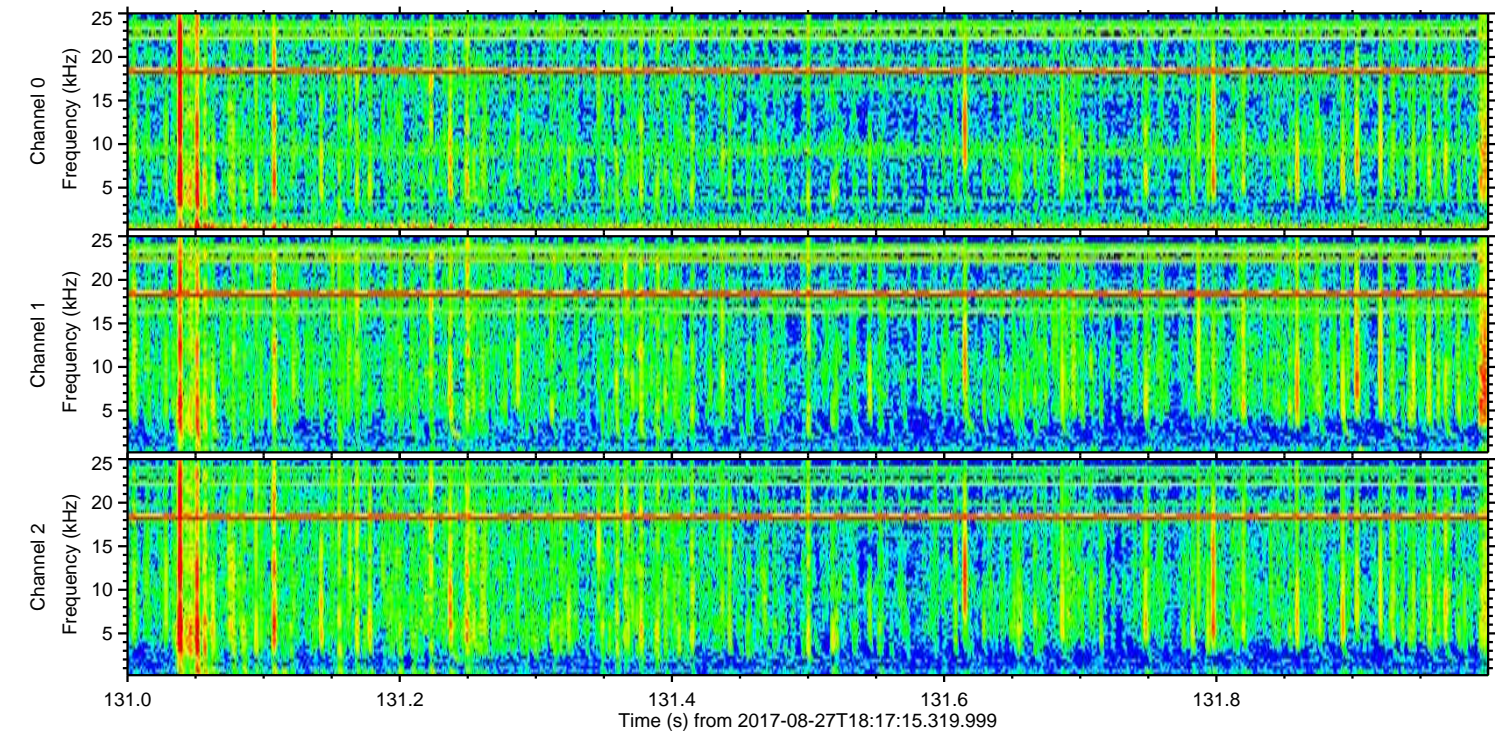
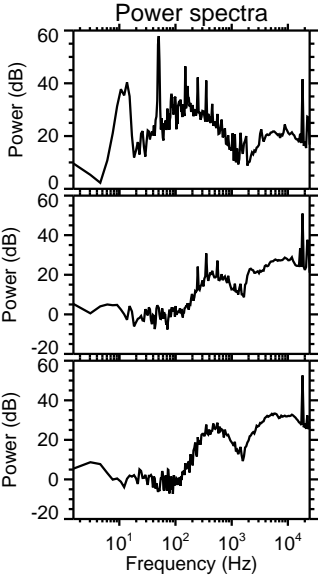
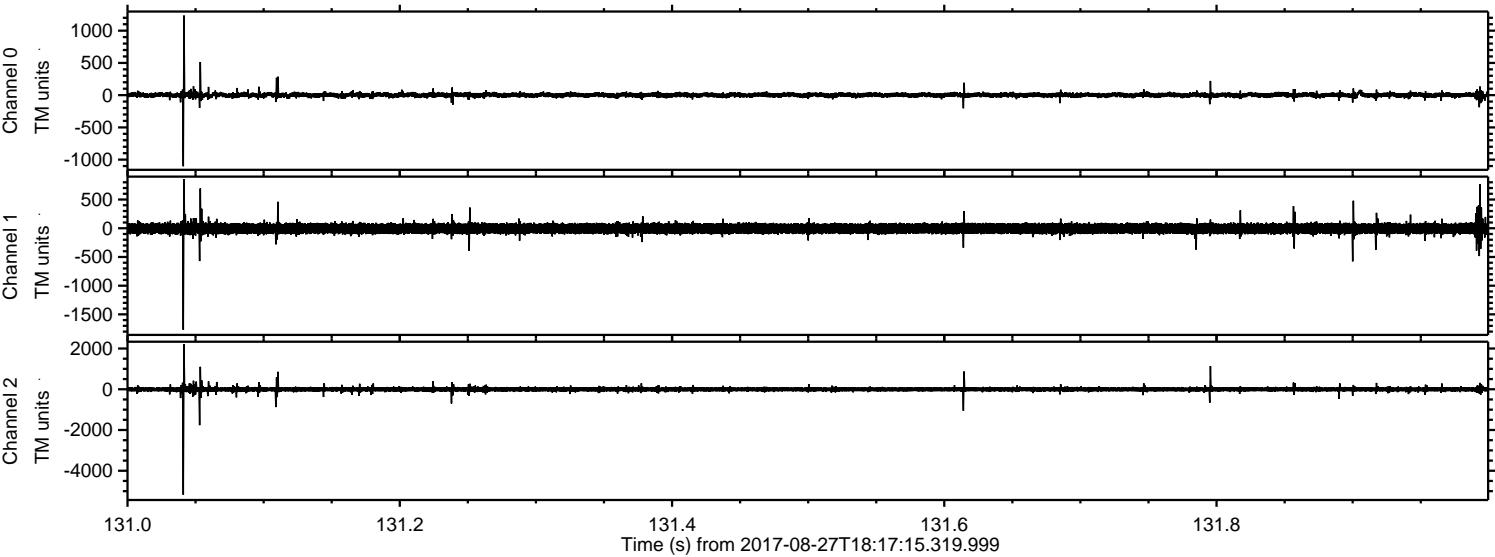
ELMAVAN 3D WAVEFORMS (Measured data sampled at 50 kHz) 51000 packets of 144 samples from 2017-08-27T18:17:15.319.999. Part 12/147

Processed Sun Aug 27 20:25:04 2017 by ELM ver.2012-10-06 from 001__elm20170827_181714__dat00.bin



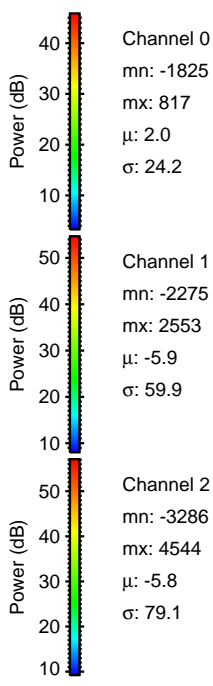
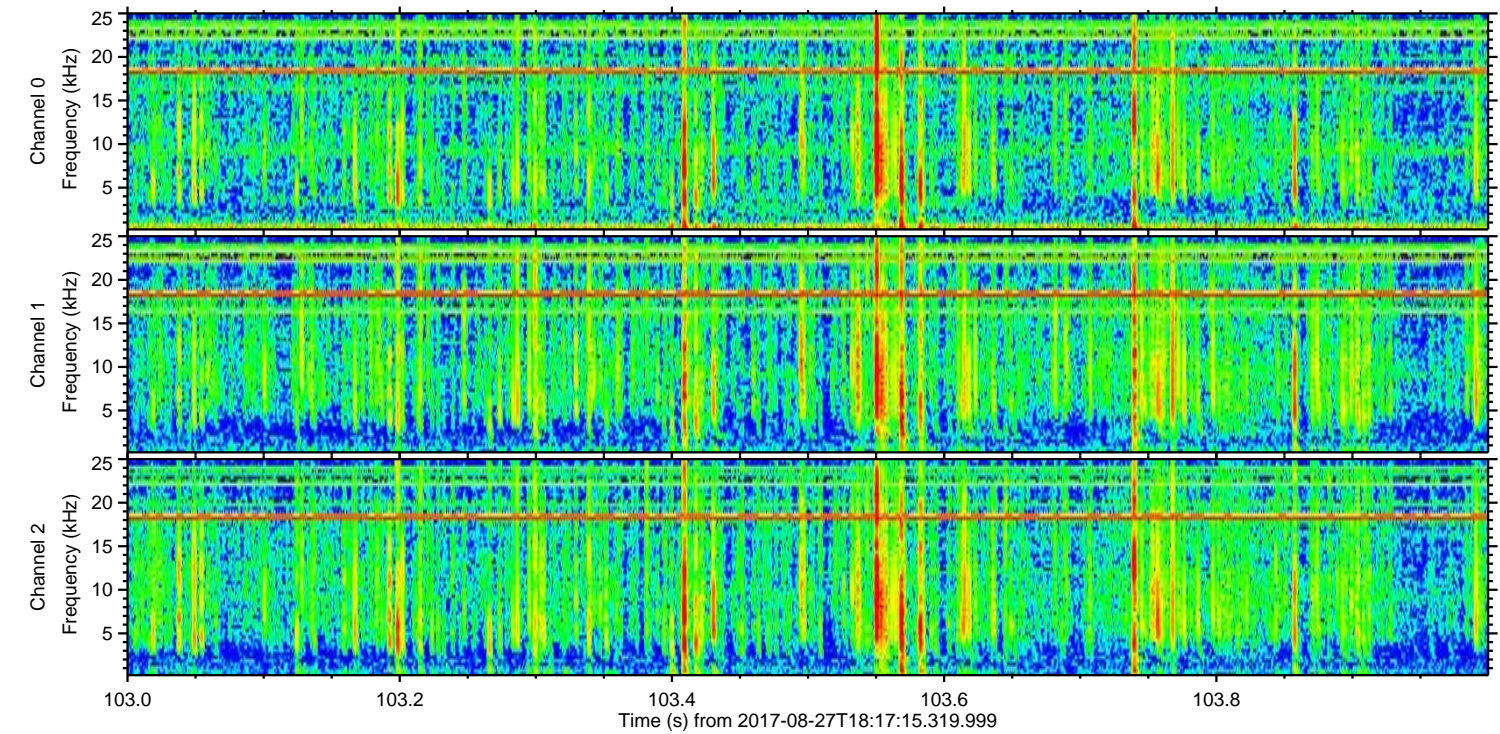
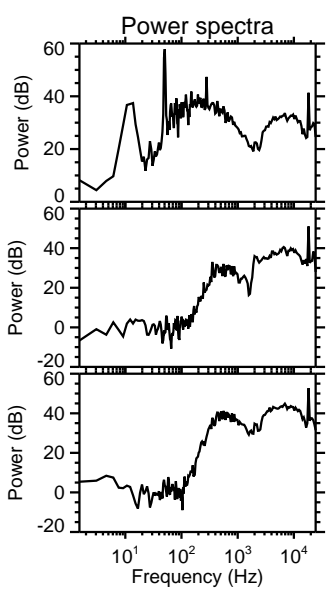
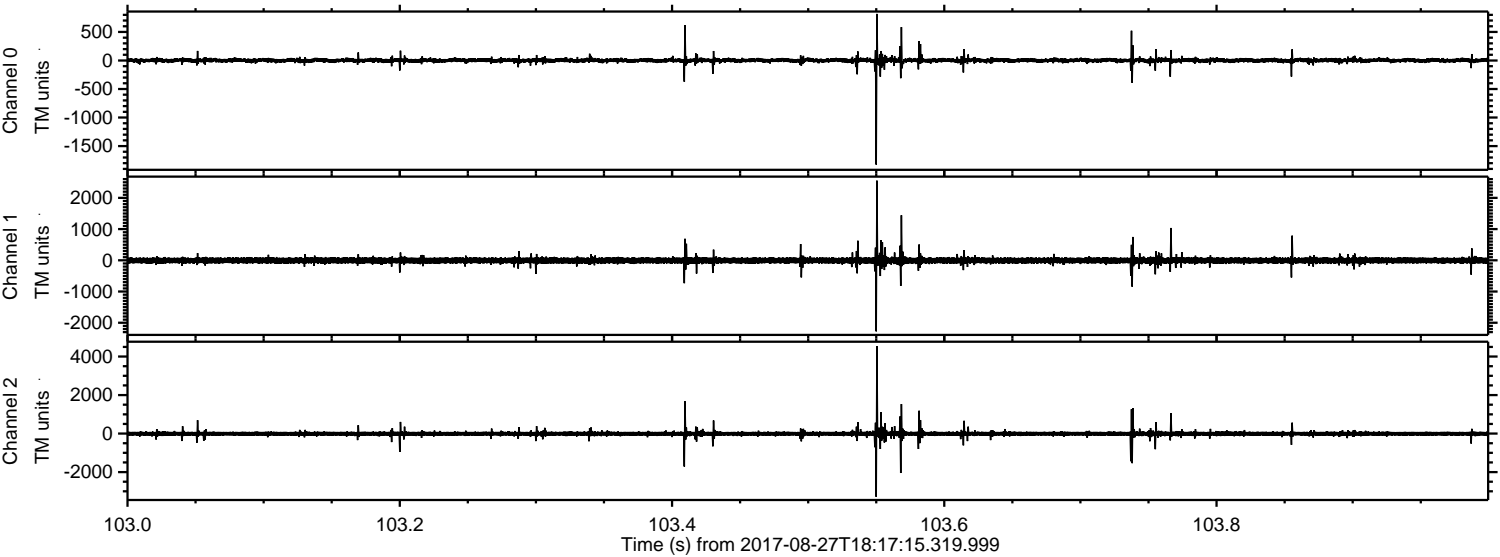
ELMAVAN 3D WAVEFORMS (Measured data sampled at 50 kHz) 51000 packets of 144 samples from 2017-08-27T18:17:15.319.999. Part 132/147

Processed Sun Aug 27 20:25:05 2017 by ELM ver.2012-10-06 from 001__elm20170827_181714__dat00.bin



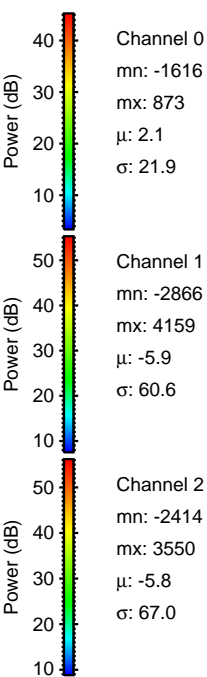
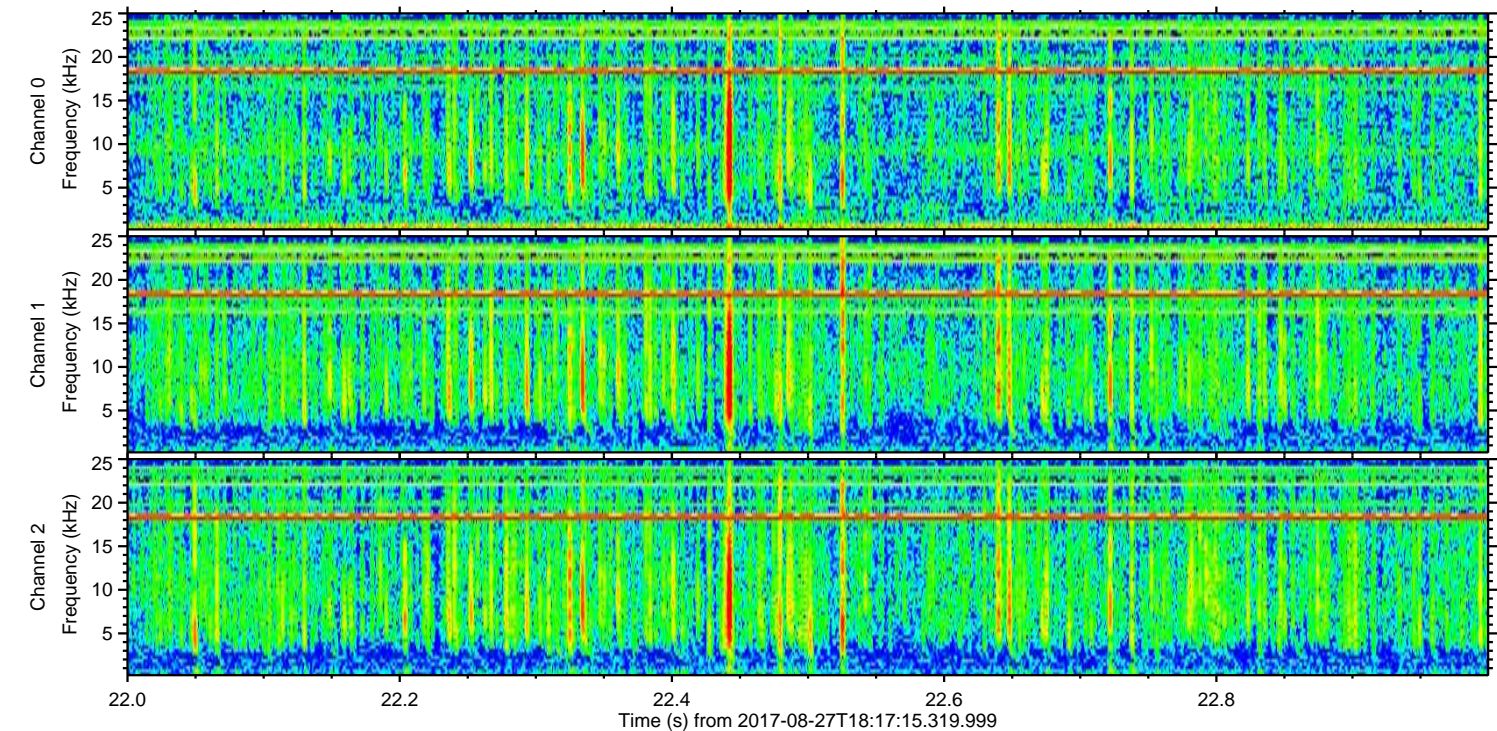
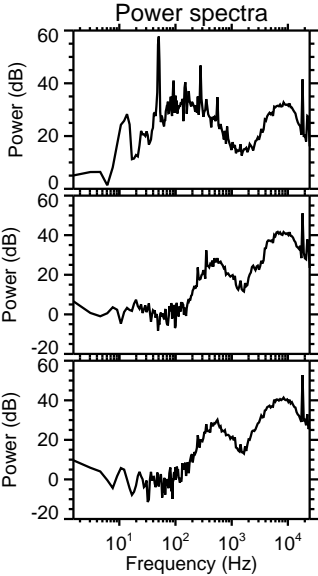
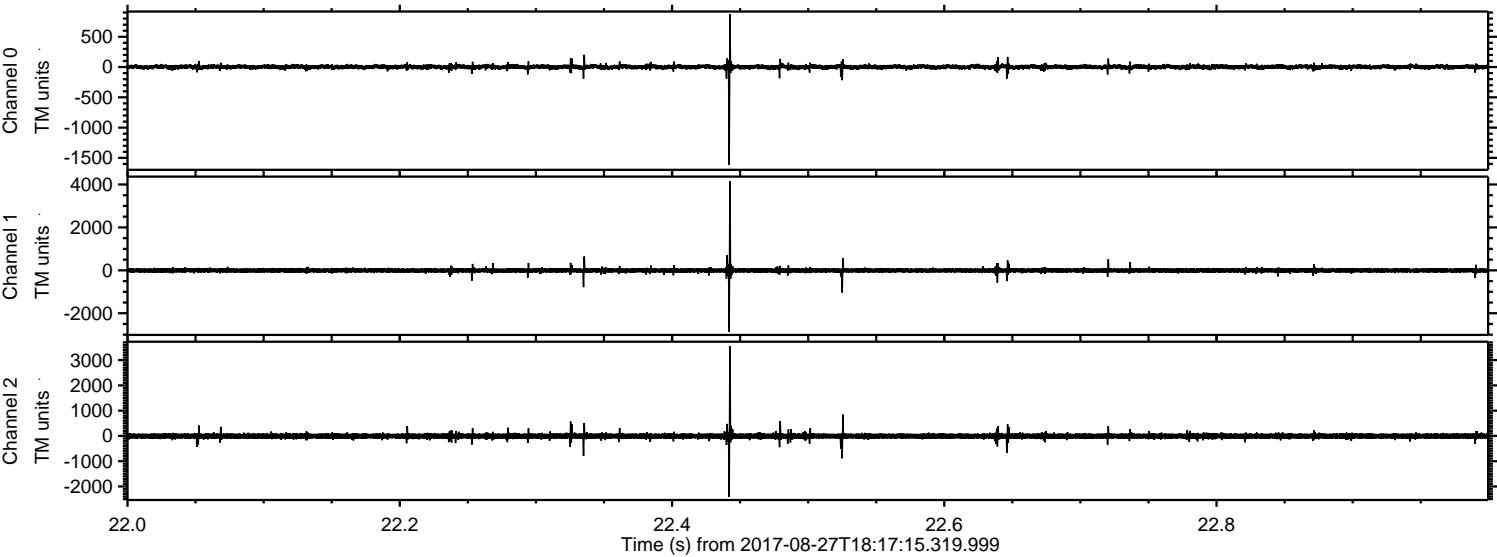
ELMAVAN 3D WAVEFORMS (Measured data sampled at 50 kHz) 51000 packets of 144 samples from 2017-08-27T18:17:15.319.999. Part 104/147

Processed Sun Aug 27 20:25:06 2017 by ELM ver.2012-10-06 from 001__elm20170827_181714__dat00.bin



ELMAVAN 3D WAVEFORMS (Measured data sampled at 50 kHz) 51000 packets of 144 samples from 2017-08-27T18:17:15.319.999. Part 23/147

Processed Sun Aug 27 20:25:06 2017 by ELM ver.2012-10-06 from 001__elm20170827_181714__dat00.bin

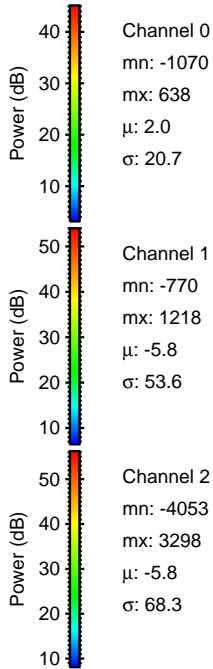
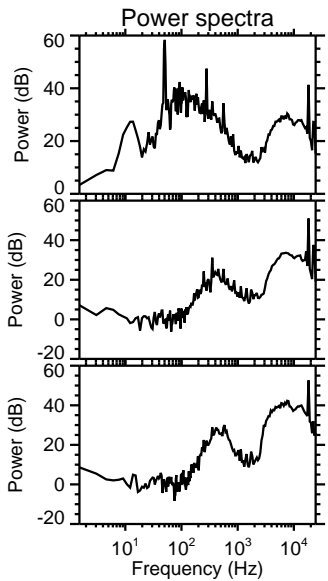
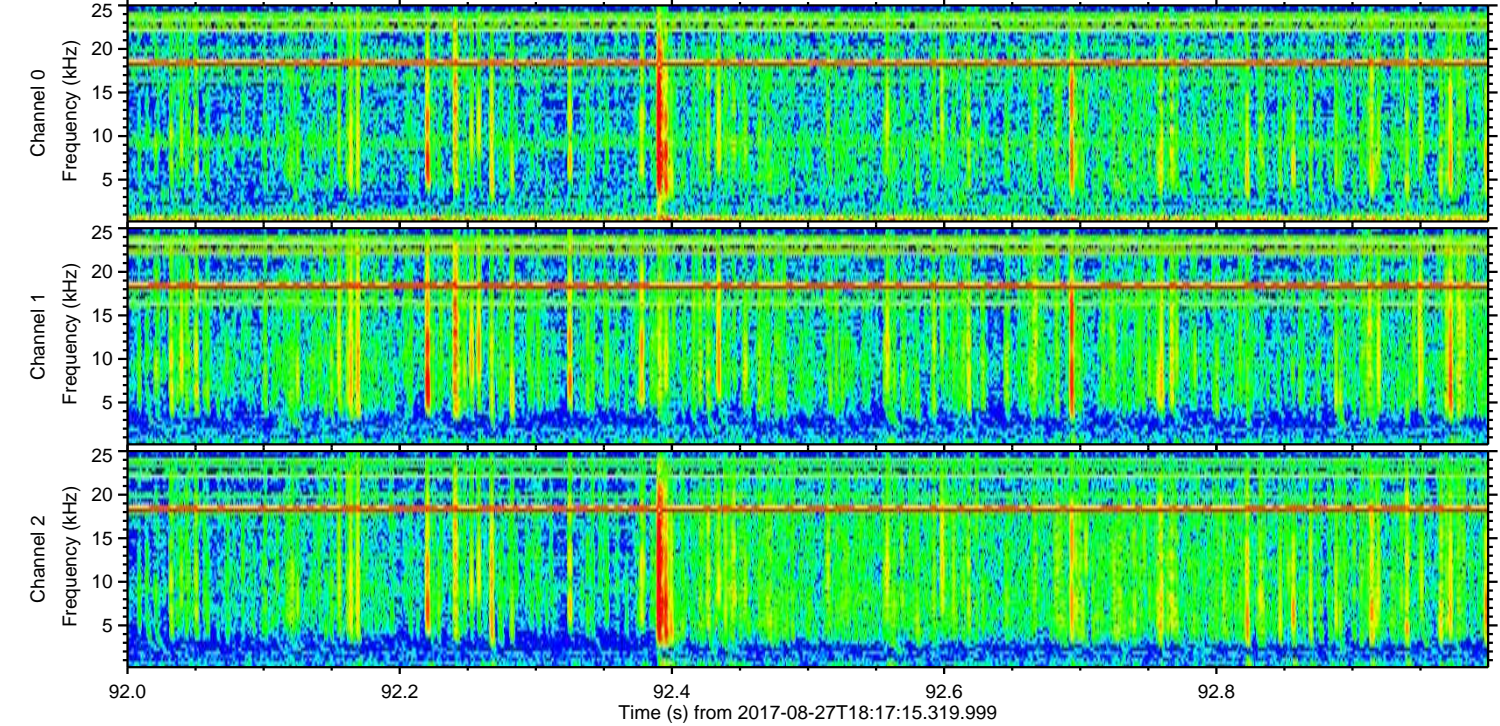
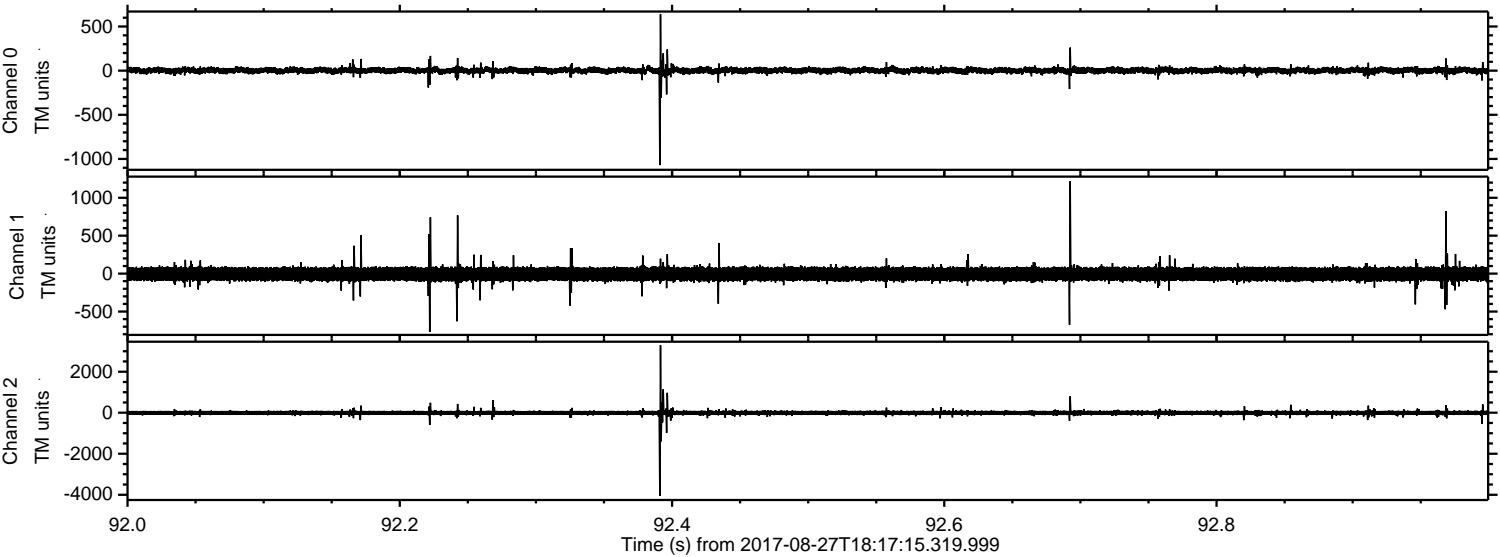


Channel 0
mn: -1616
mx: 873
 μ : 2.1
 σ : 21.9

Channel 1
mn: -2866
mx: 4159
 μ : -5.9
 σ : 60.6

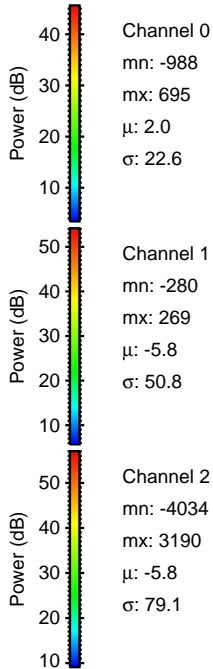
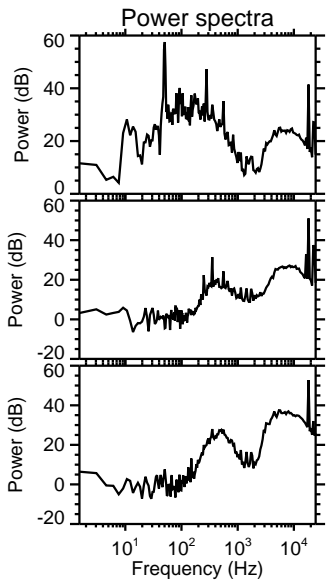
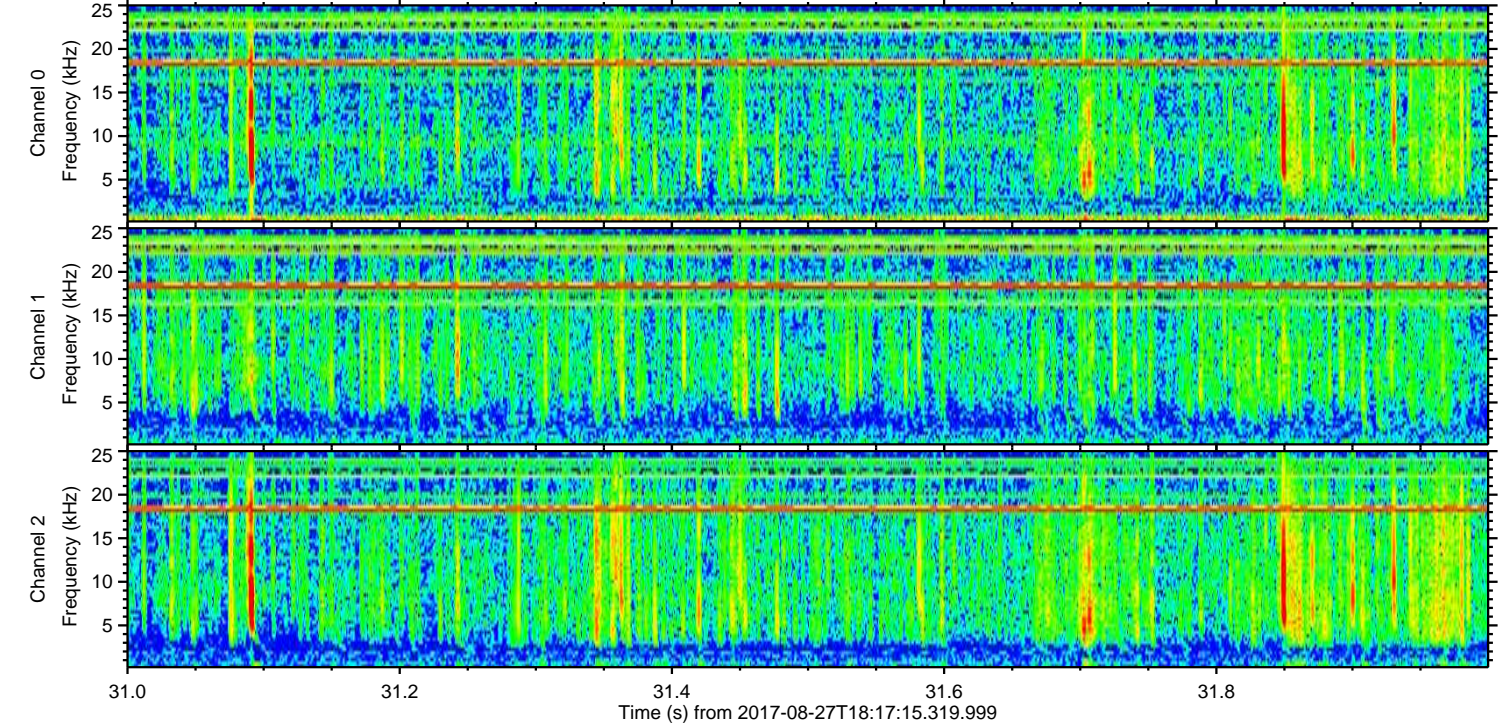
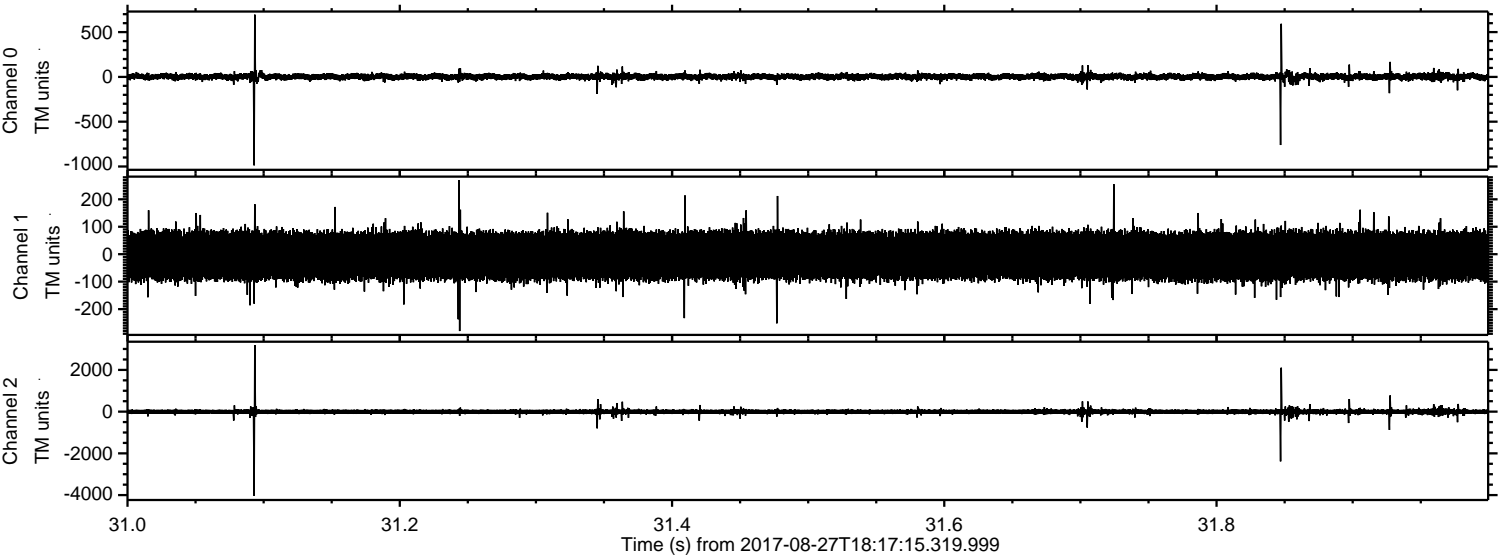
Channel 2
mn: -2414
mx: 3550
 μ : -5.8
 σ : 67.0

Processed Sun Aug 27 20:25:07 2017 by ELM ver.2012-10-06 from 001__elm20170827_181714__dat00.bin



ELMAVAN 3D WAVEFORMS (Measured data sampled at 50 kHz) 51000 packets of 144 samples from 2017-08-27T18:17:15.319.999. Part 32/147

Processed Sun Aug 27 20:25:08 2017 by ELM ver.2012-10-06 from 001__elm20170827_181714__dat00.bin



Power spectra

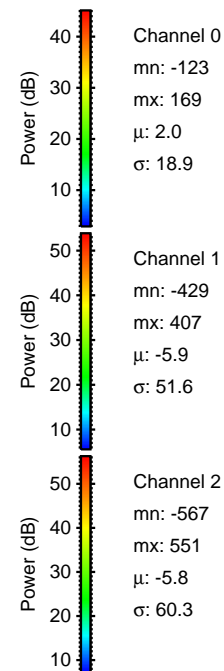
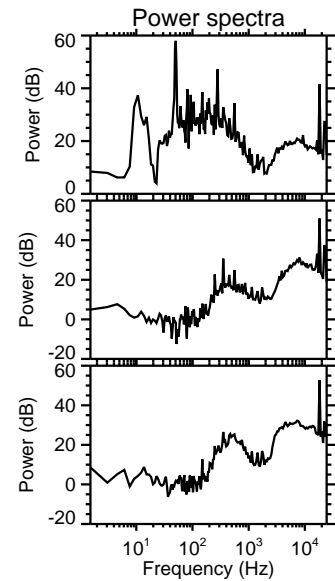
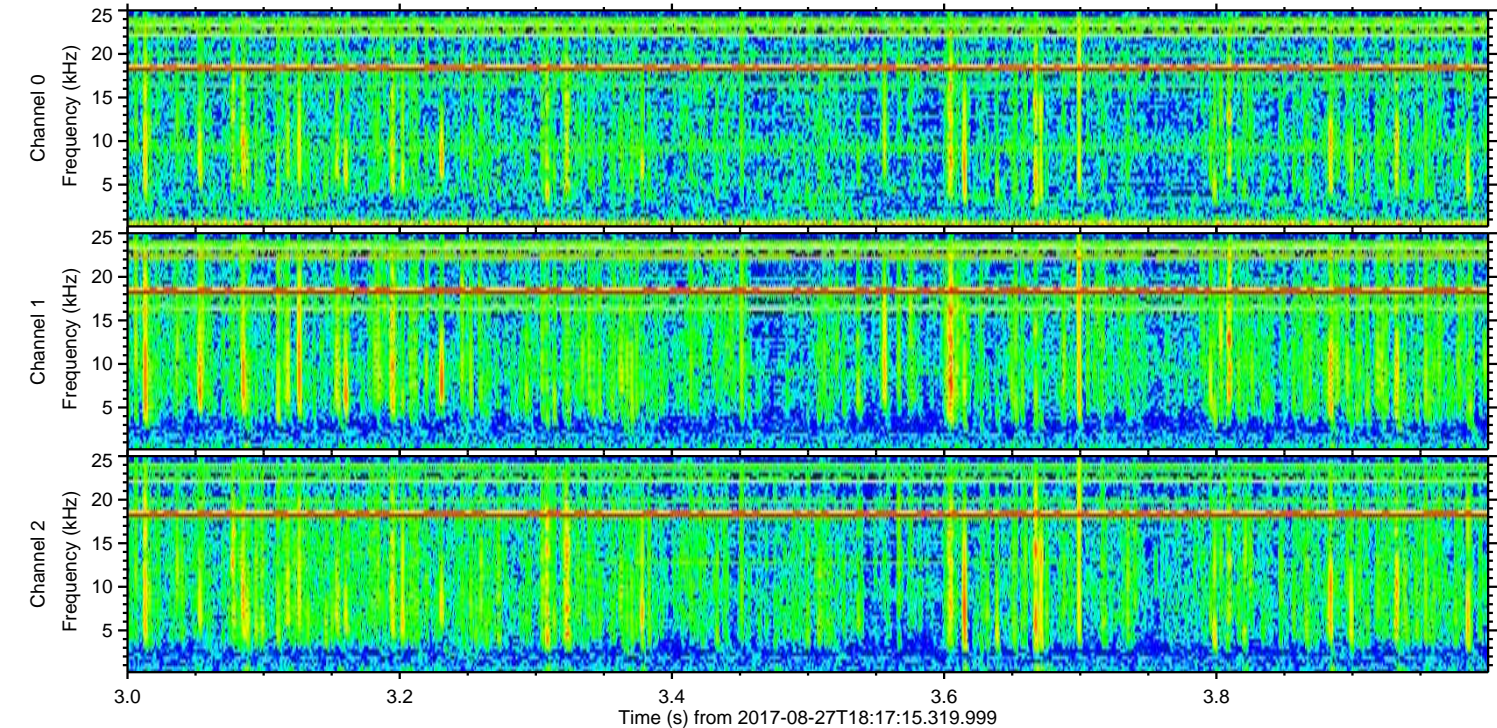
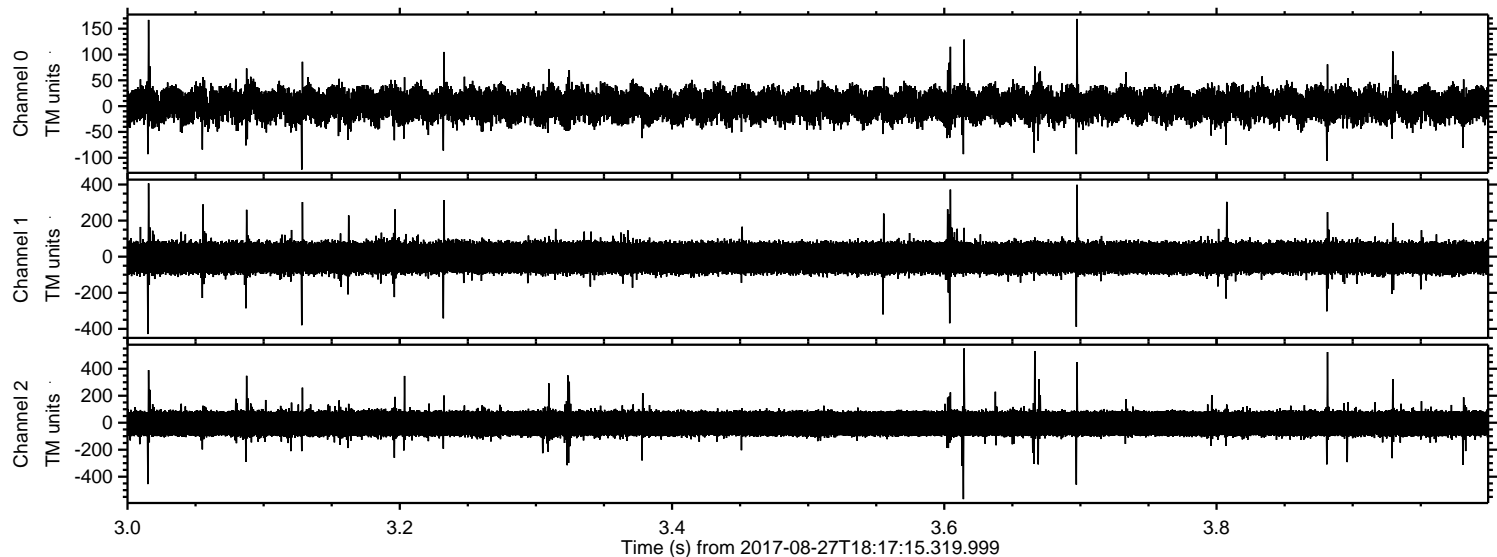
Channel 0
mn: -988
mx: 695
 μ : 2.0
 σ : 22.6

Channel 1
mn: -280
mx: 269
 μ : -5.8
 σ : 50.8

Channel 2
mn: -4034
mx: 3190
 μ : -5.8
 σ : 79.1

ELMAVAN 3D WAVEFORMS (Measured data sampled at 50 kHz) 51000 packets of 144 samples from 2017-08-27T18:17:15.319.999. Part 4/147

Processed Sun Aug 27 20:25:09 2017 by ELM ver.2012-10-06 from 001__elm20170827_181714__dat00.bin



Power spectra

Channel 0
mn: -123
mx: 169
 μ : 2.0
 σ : 18.9

Channel 1
mn: -429
mx: 407
 μ : -5.9
 σ : 51.6

Channel 2
mn: -567
mx: 551
 μ : -5.8
 σ : 60.3