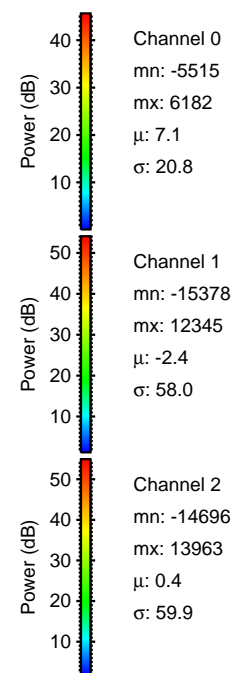
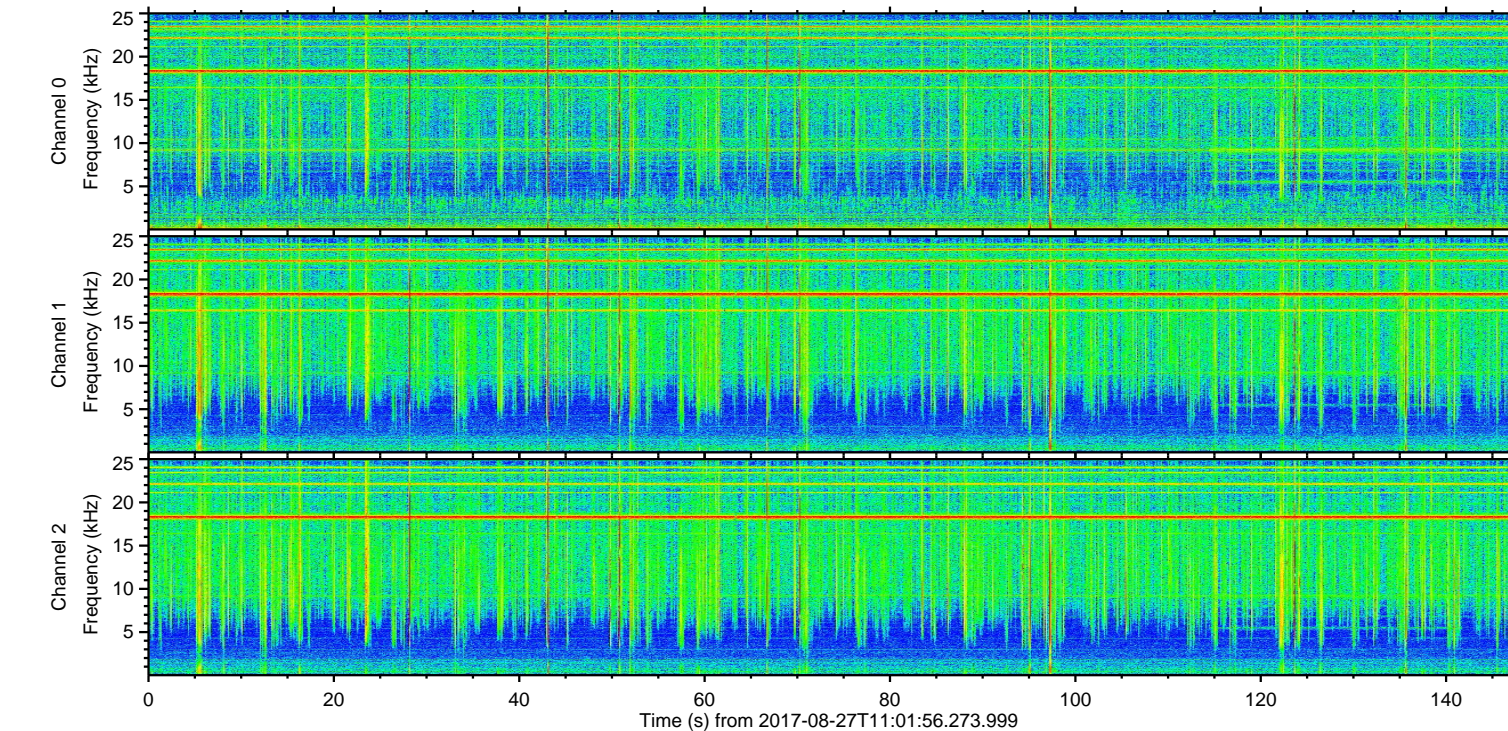
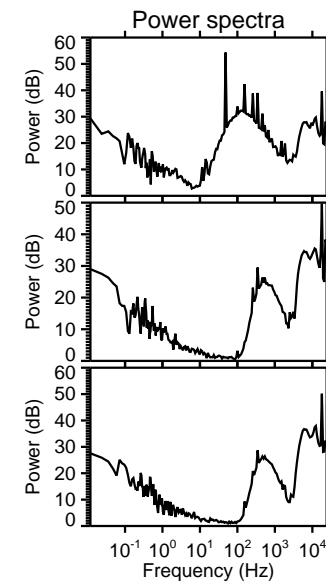
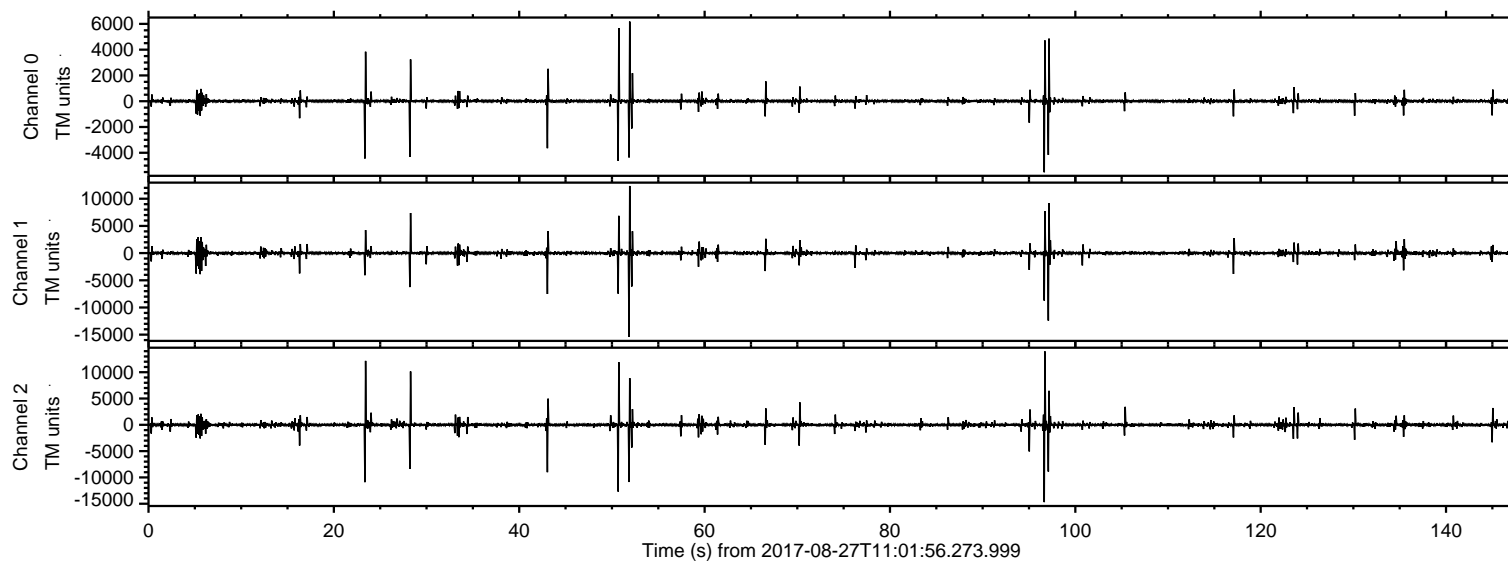


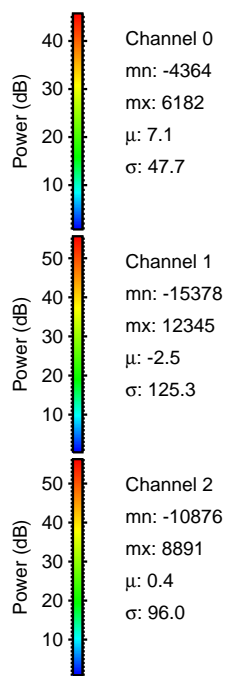
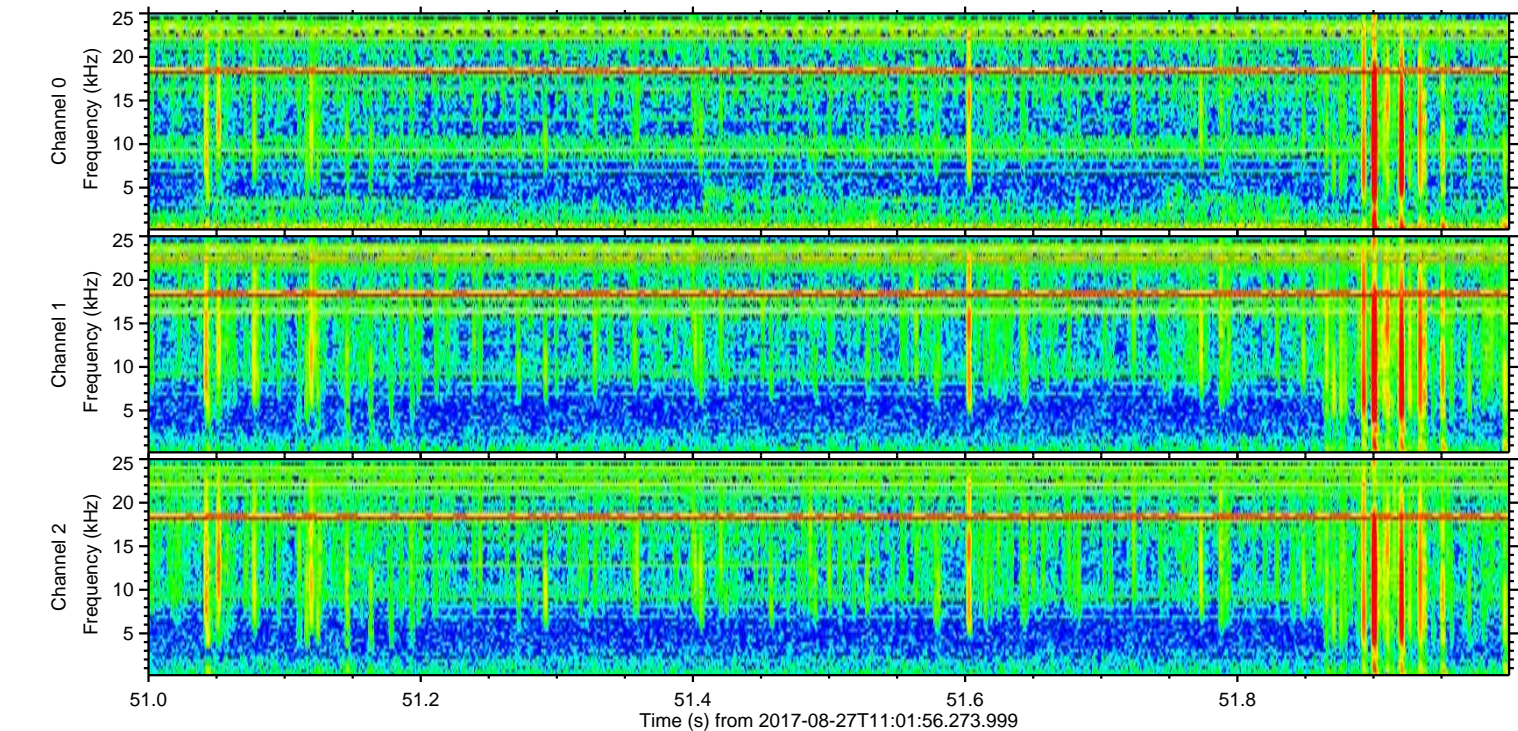
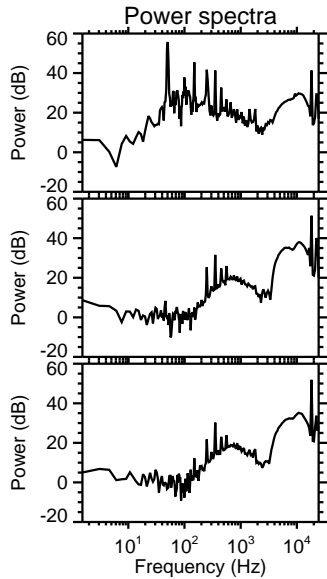
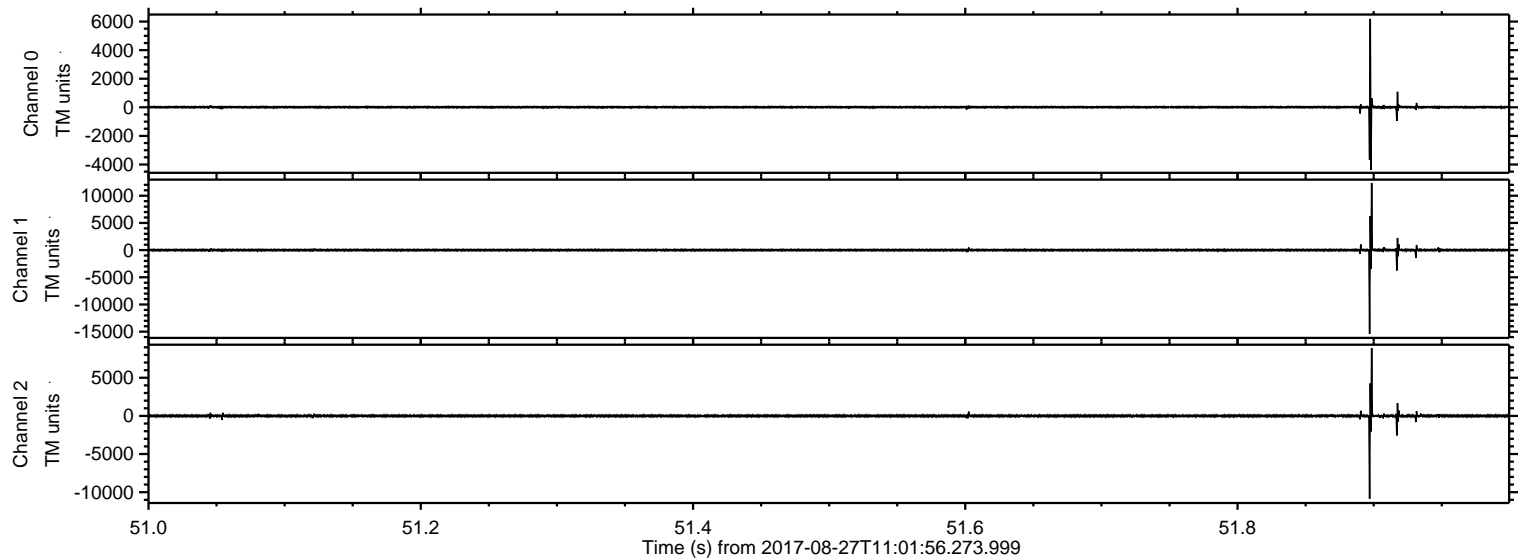
ELMAVAN 3D WAVEFORMS (Measured data sampled at 50 kHz) 51000 packets of 144 samples from 2017-08-27T11:01:56.273.999.

Processed Sun Aug 27 13:09:35 2017 by ELM ver.2012-10-06 from 001__elm20170827_110155__dat00.bin

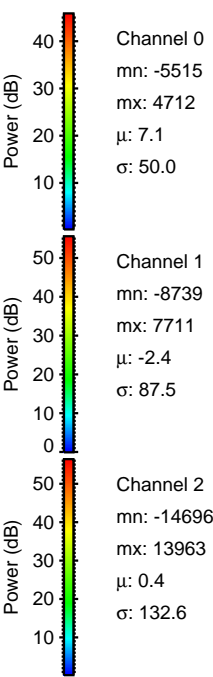
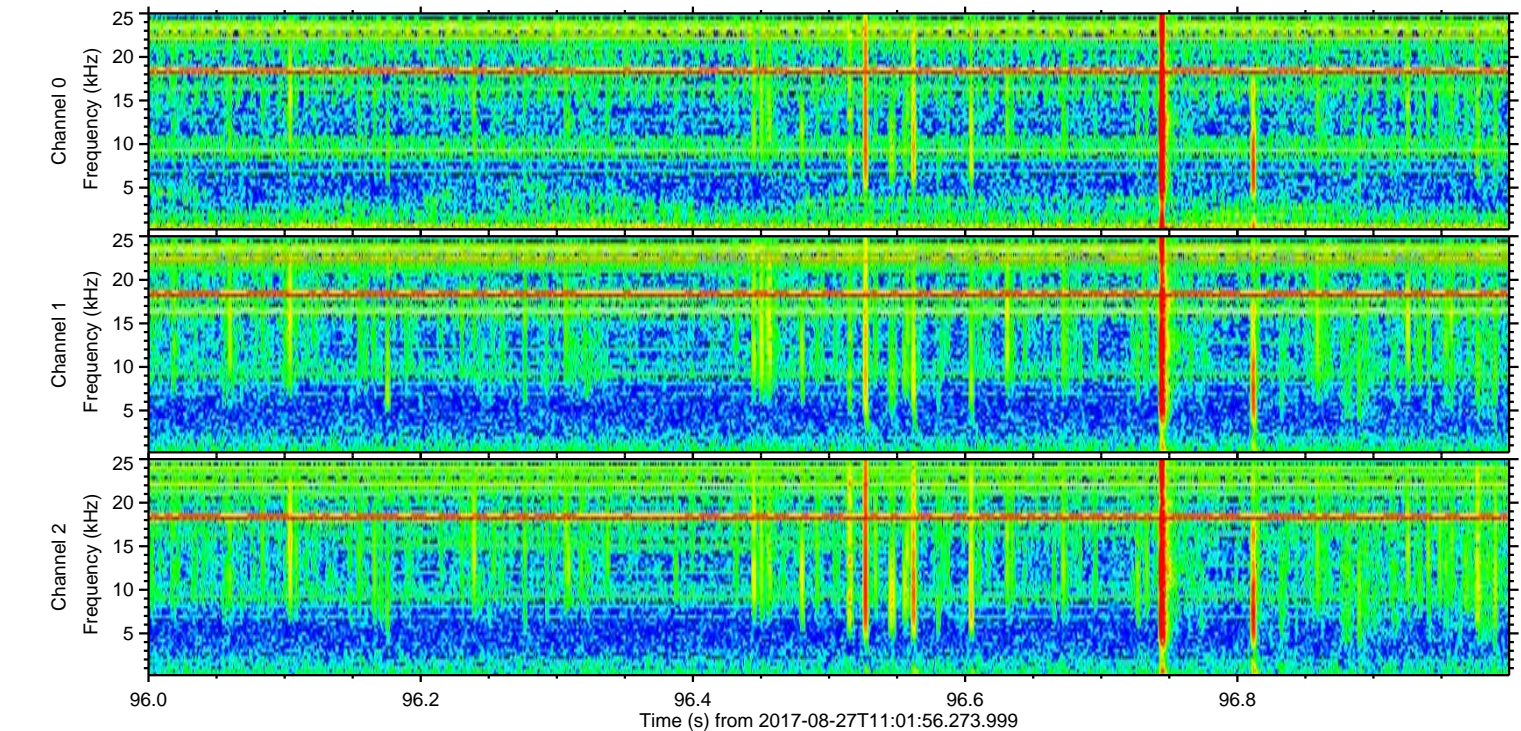
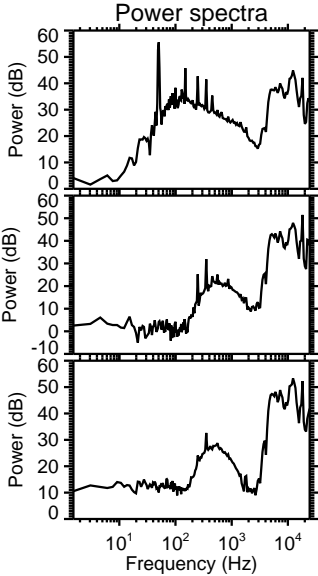
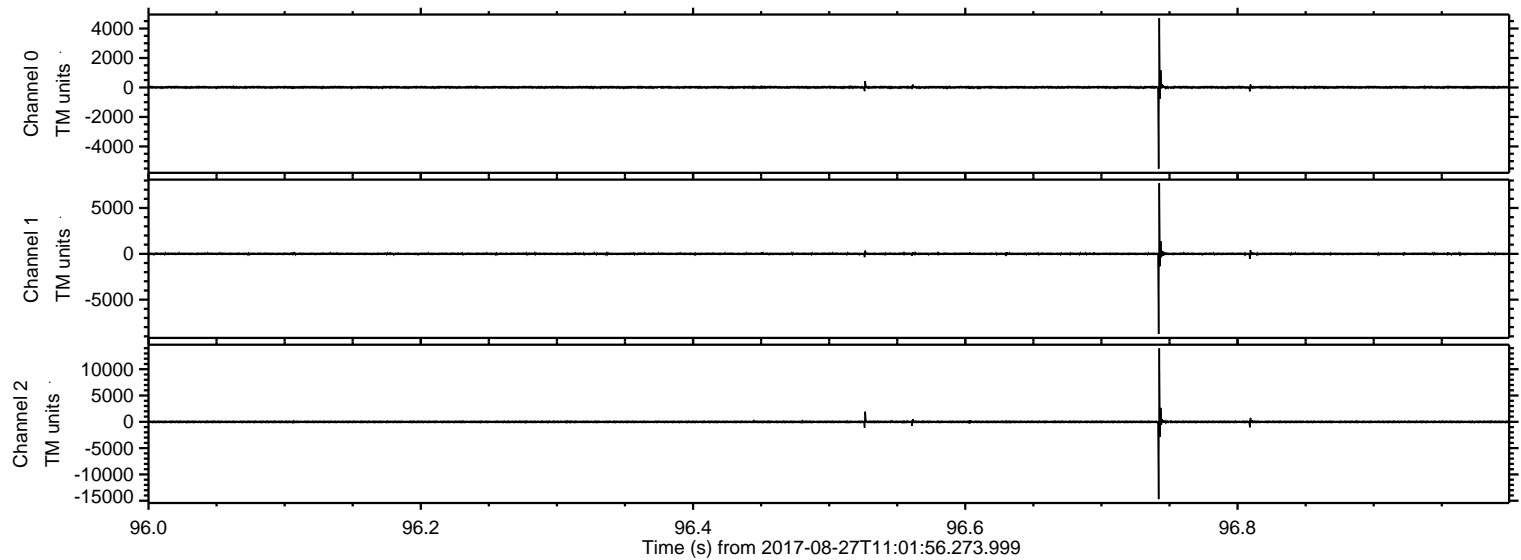


ELMAVAN 3D WAVEFORMS (Measured data sampled at 50 kHz) 51000 packets of 144 samples from 2017-08-27T11:01:56.273.999. Part 52/147

Processed Sun Aug 27 13:09:41 2017 by ELM ver.2012-10-06 from 001__elm20170827_110155__dat00.bin



Processed Sun Aug 27 13:09:42 2017 by ELM ver.2012-10-06 from 001__elm20170827_110155__dat00.bin

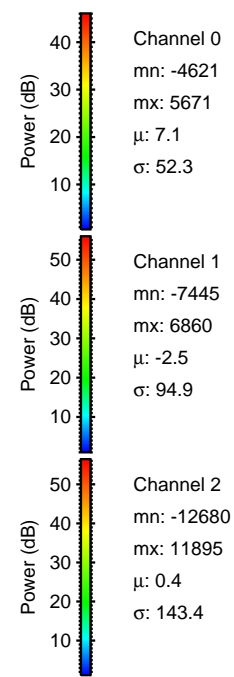
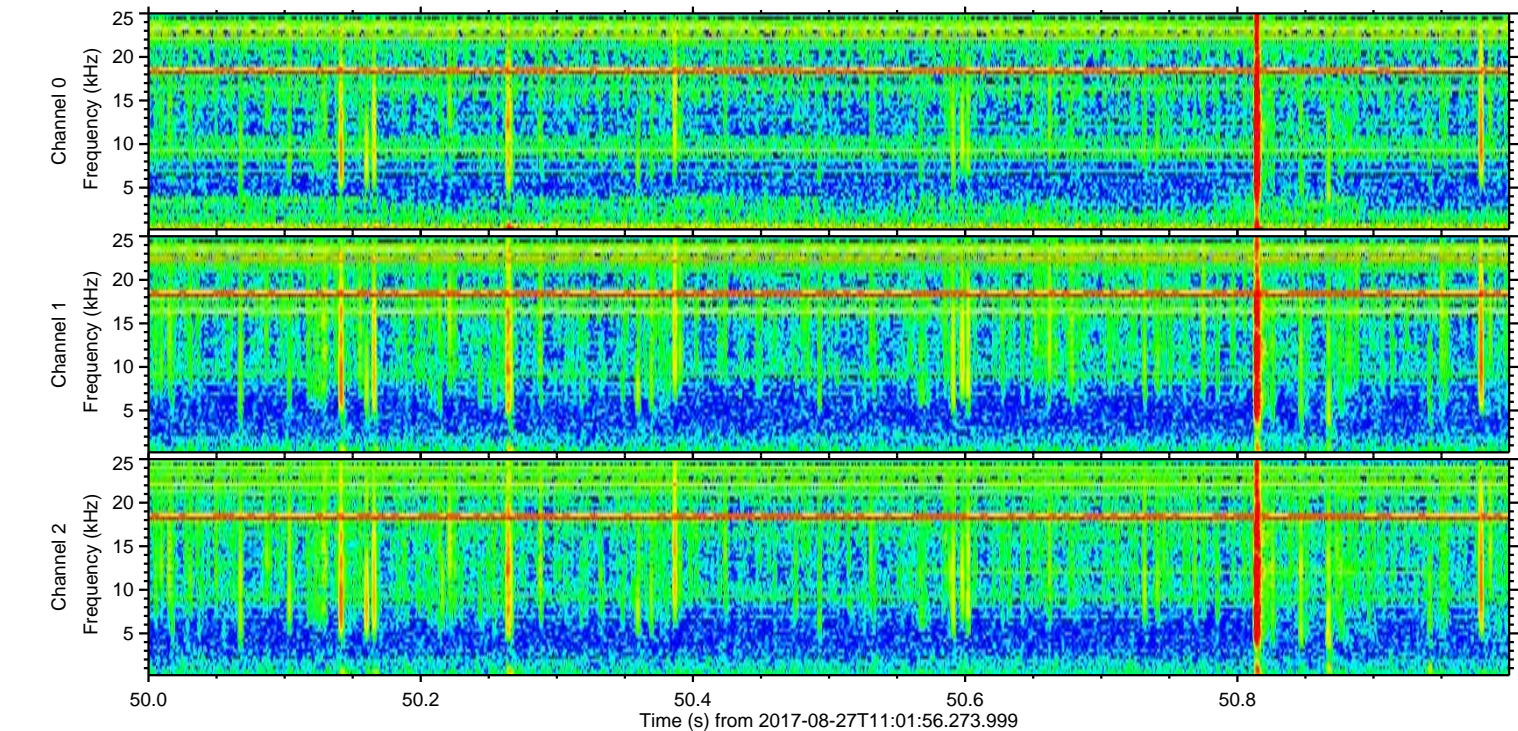
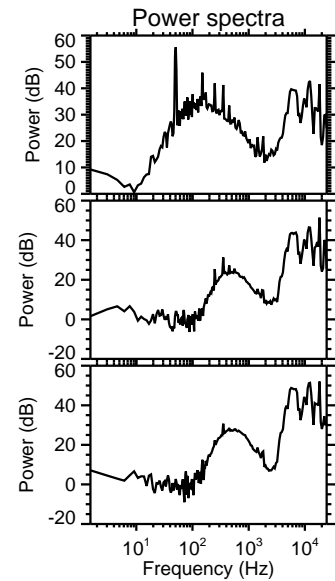
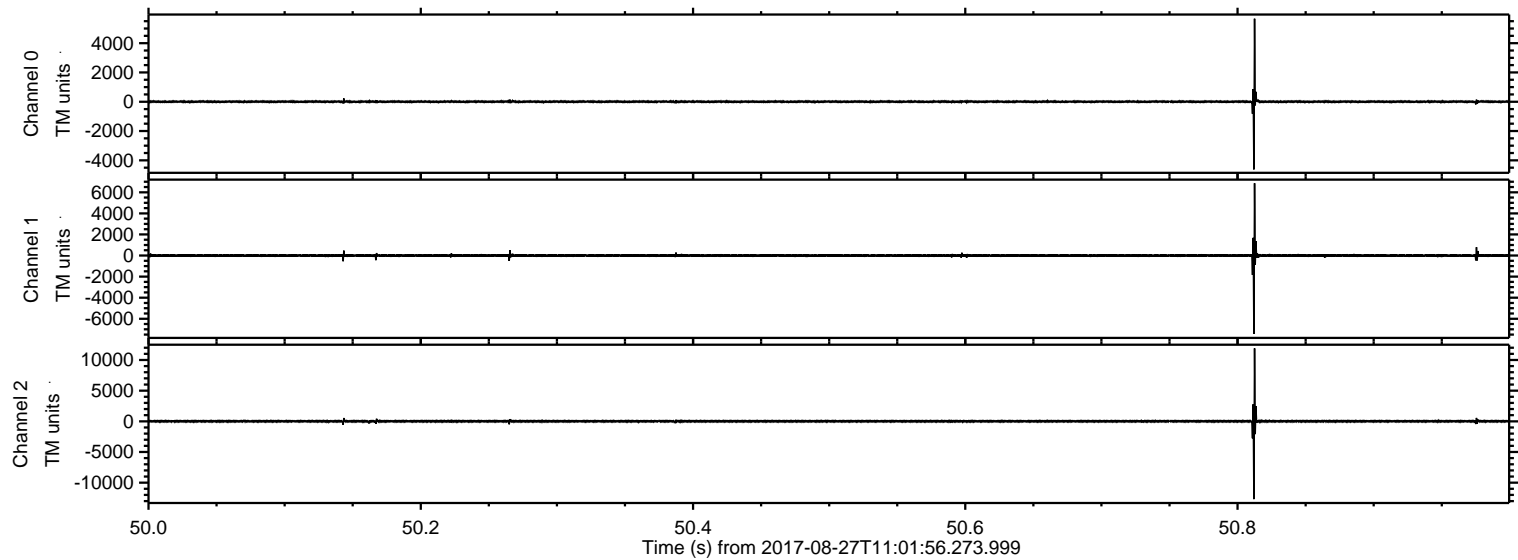


Channel 0
mn: -5515
mx: 4712
 μ : 7.1
 σ : 50.0

Channel 1
mn: -8739
mx: 7711
 μ : -2.4
 σ : 87.5

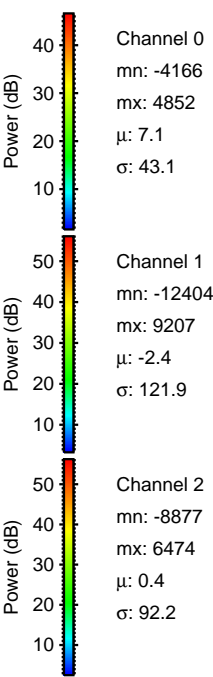
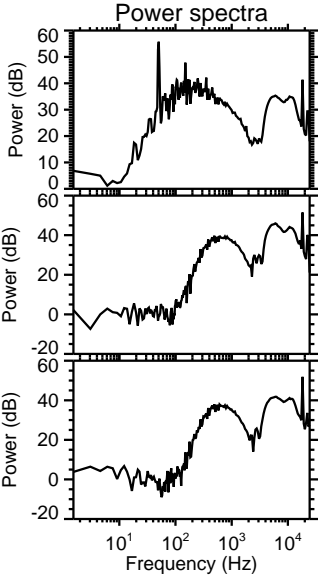
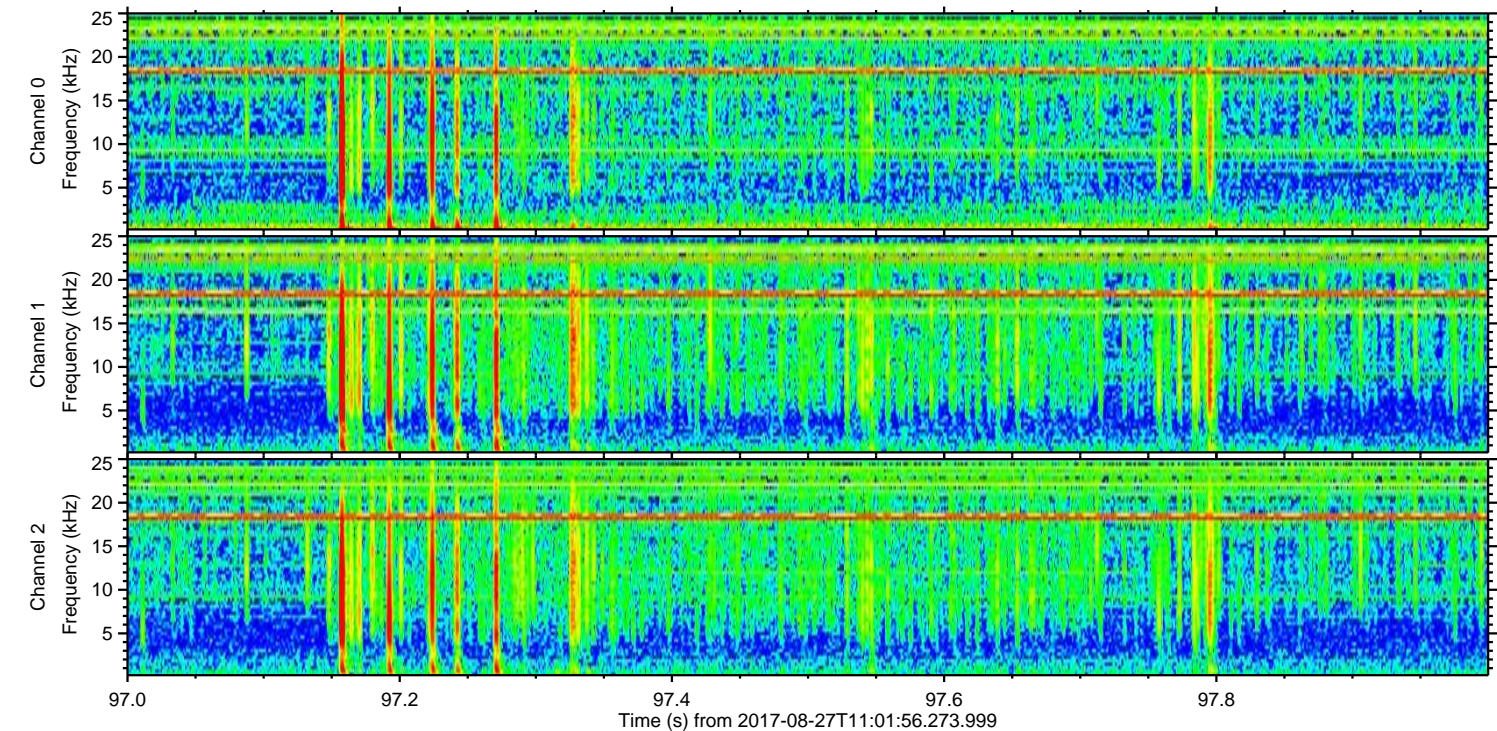
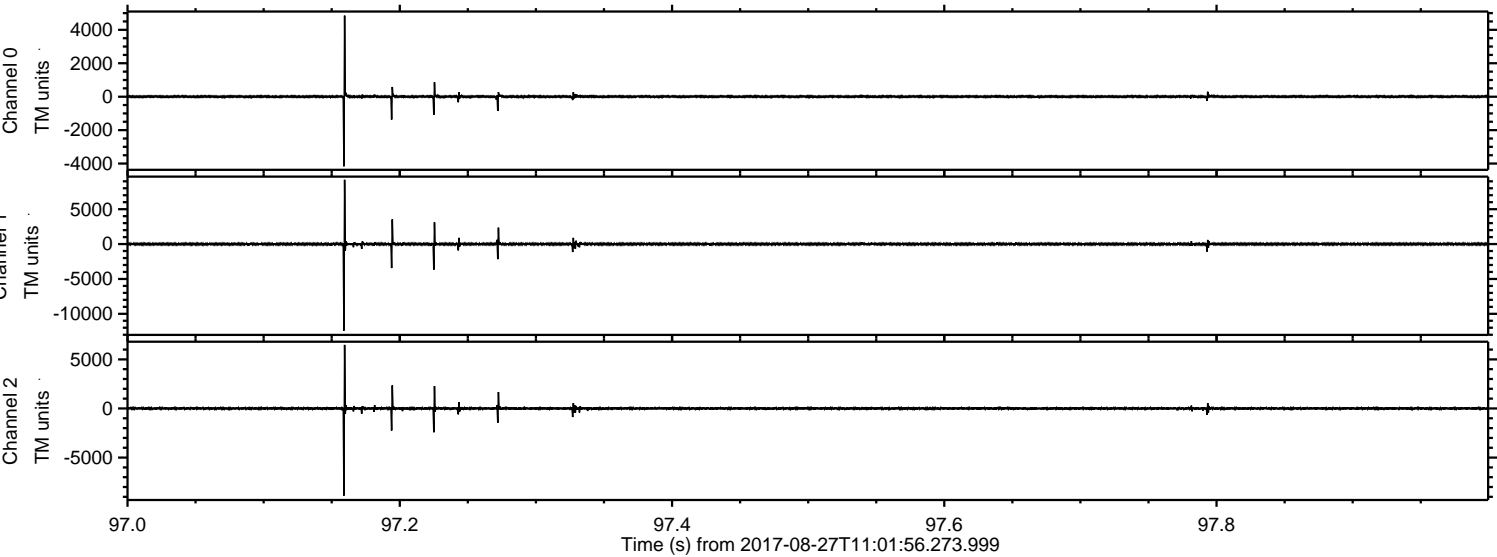
Channel 2
mn: -14696
mx: 13963
 μ : 0.4
 σ : 132.6

Processed Sun Aug 27 13:09:43 2017 by ELM ver.2012-10-06 from 001__elm20170827_110155__dat00.bin

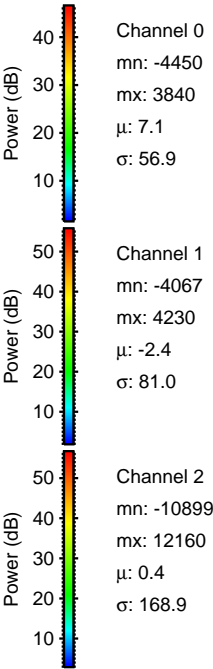
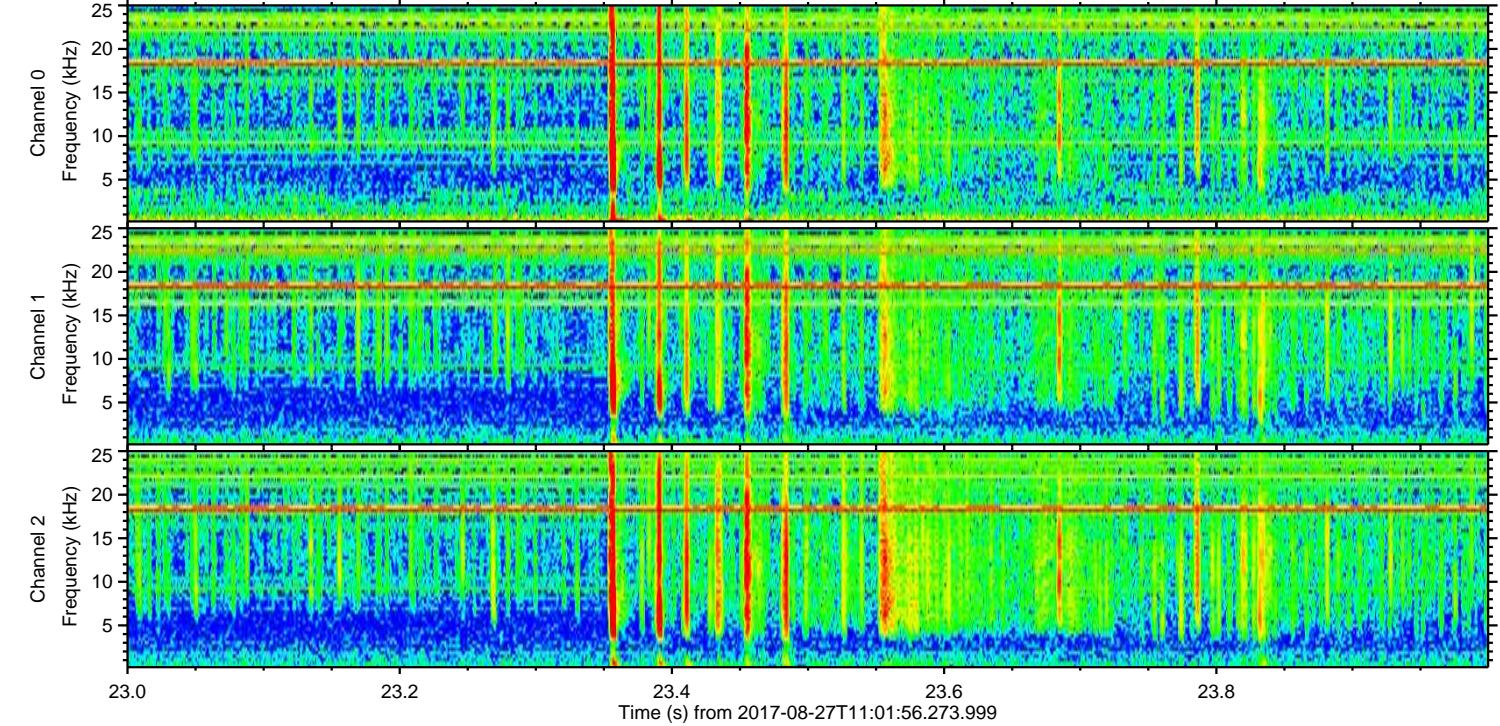
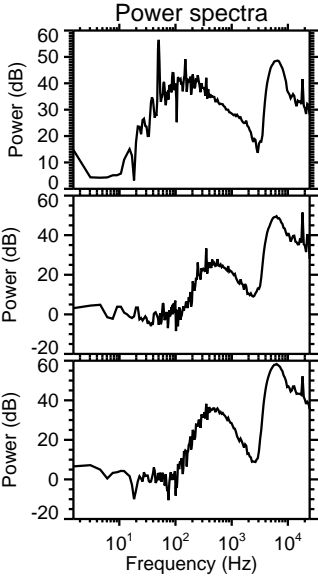
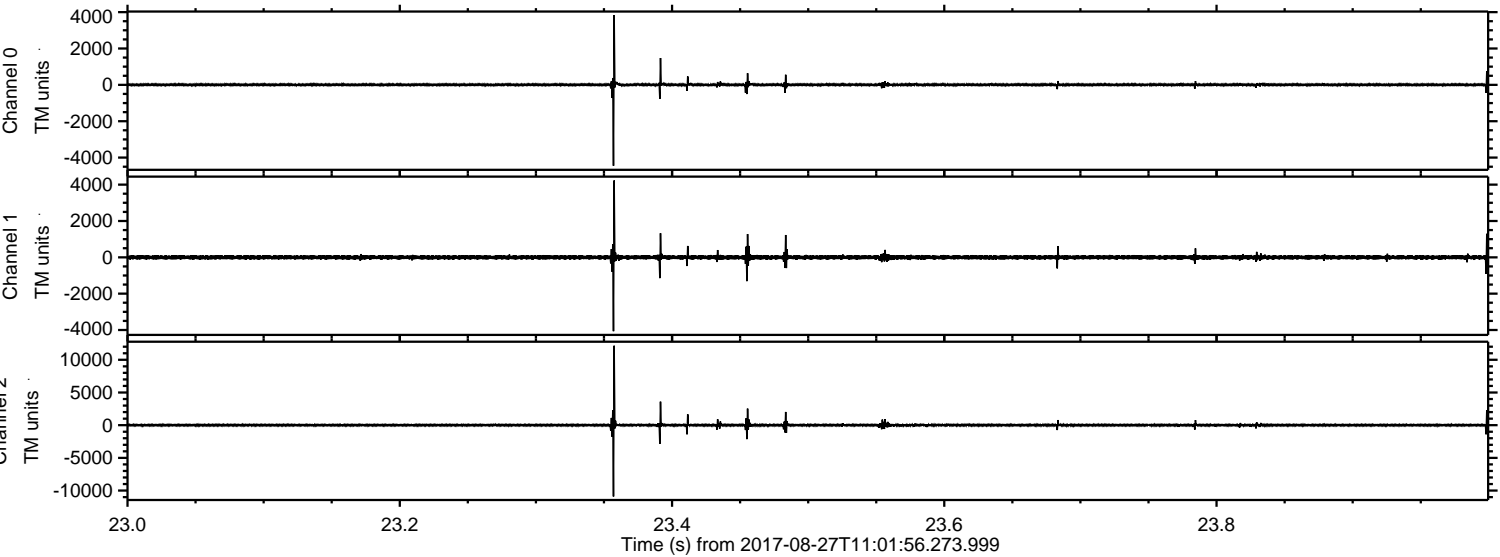


ELMAVAN 3D WAVEFORMS (Measured data sampled at 50 kHz) 51000 packets of 144 samples from 2017-08-27T11:01:56.273.999. Part 98/147

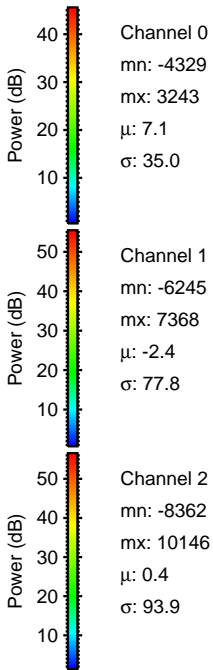
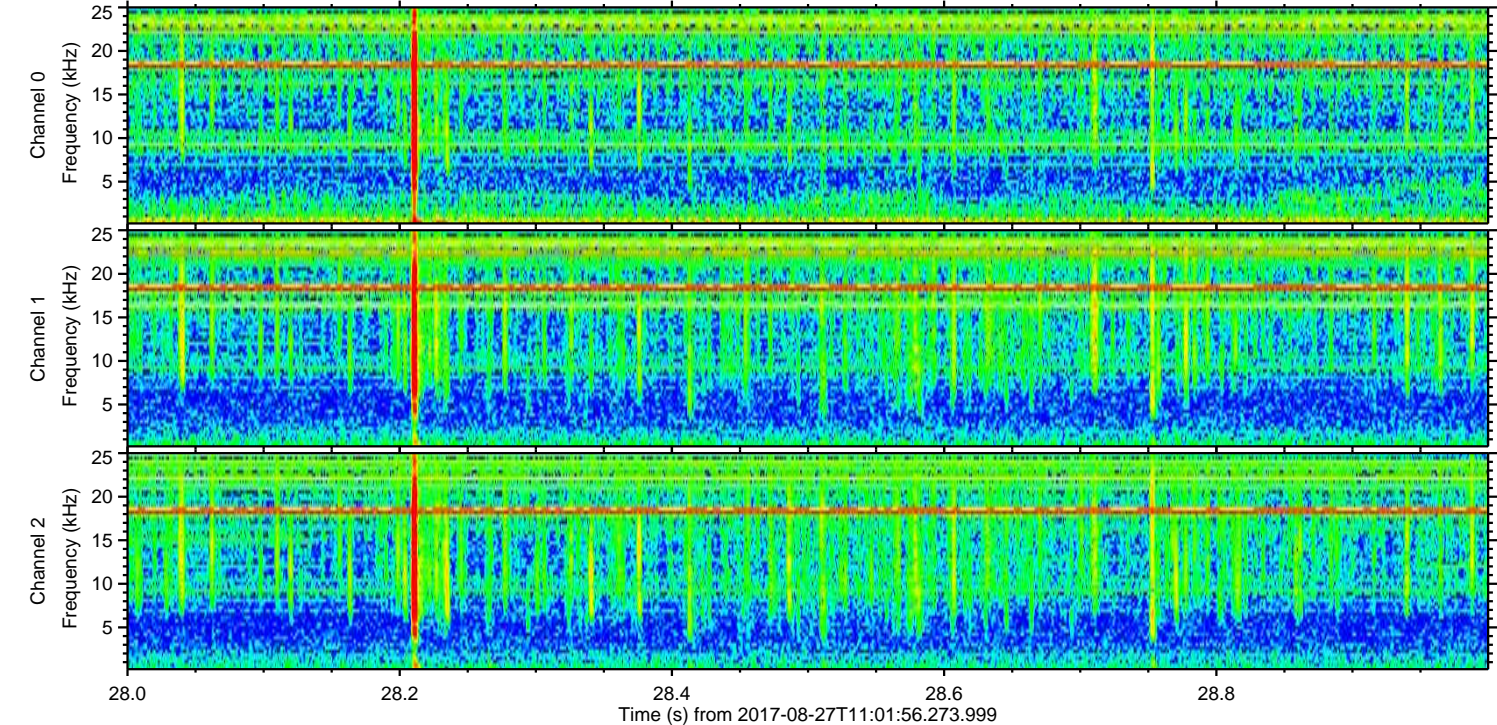
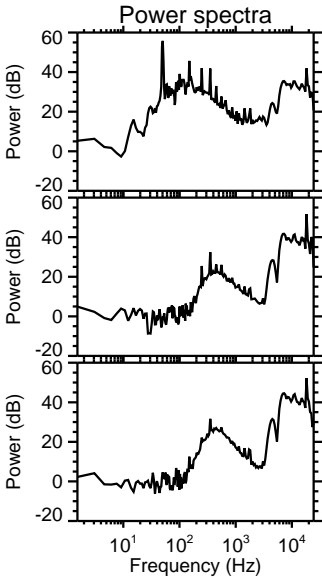
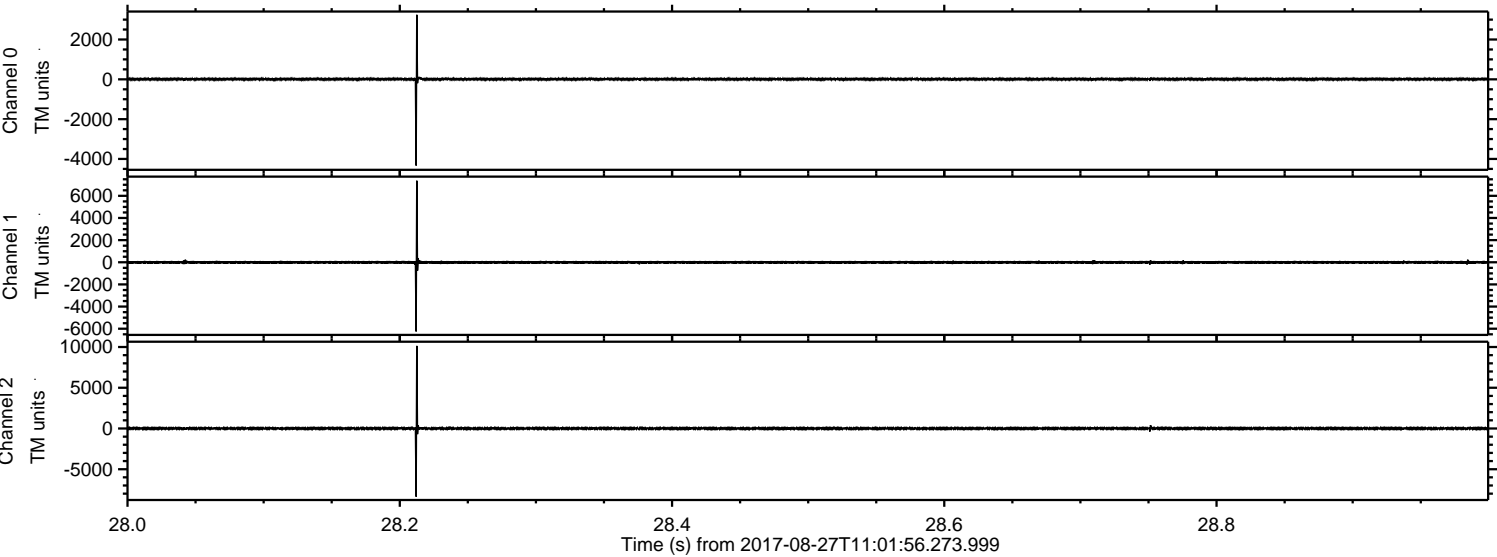
Processed Sun Aug 27 13:09:44 2017 by ELM ver.2012-10-06 from 001__elm20170827_110155__dat00.bin



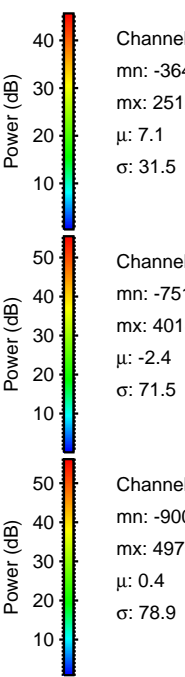
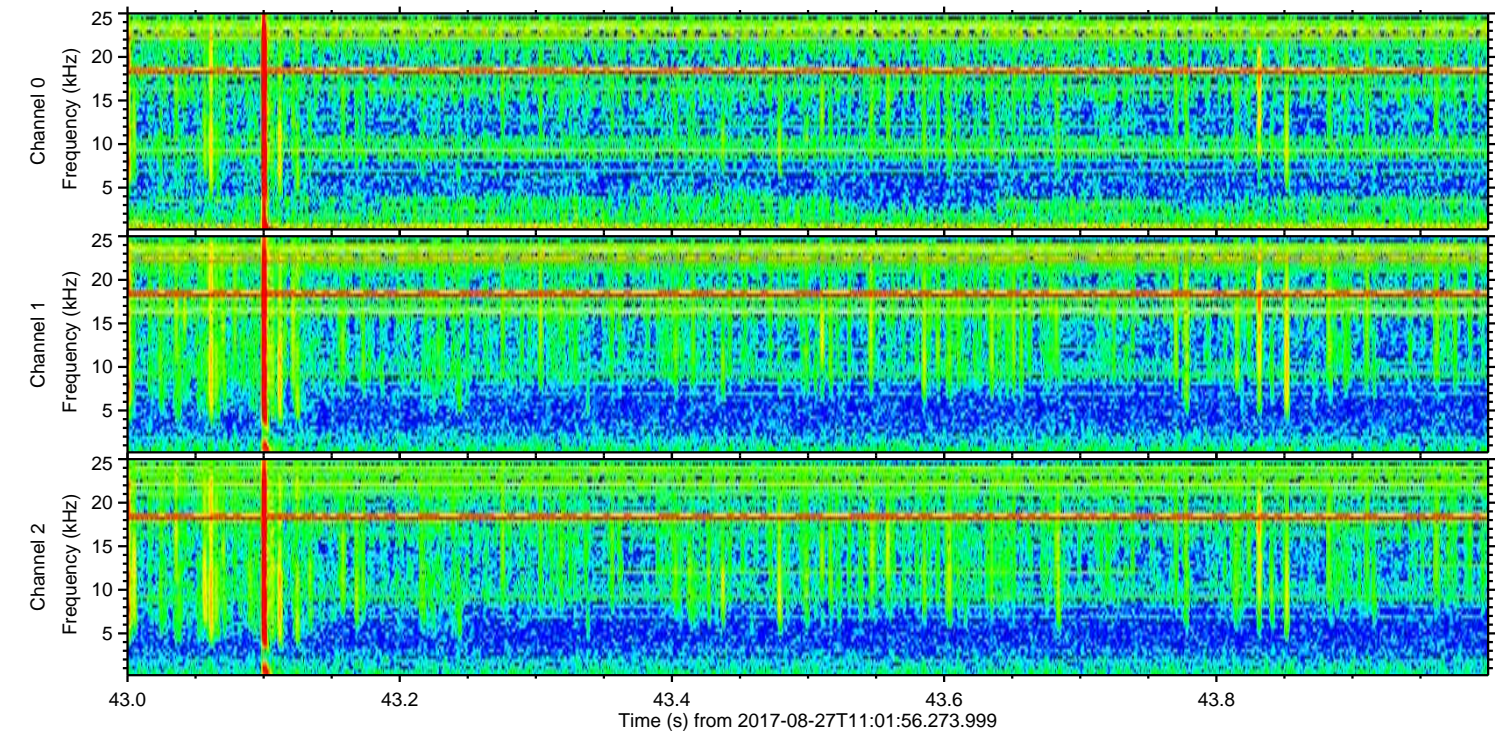
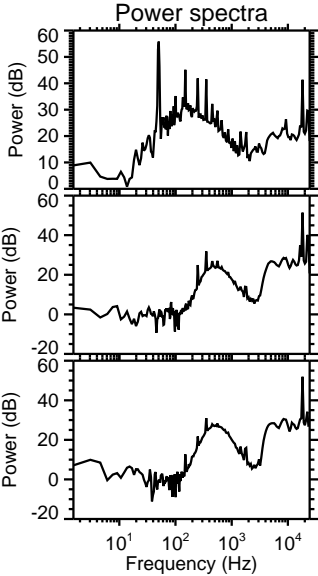
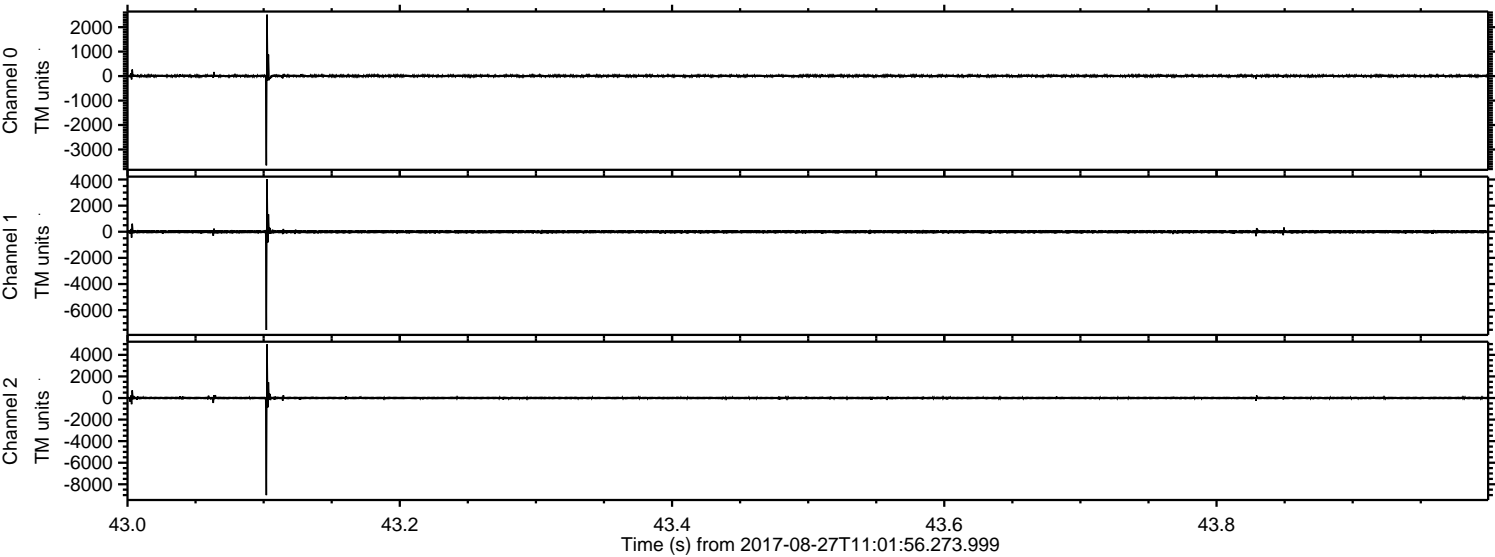
Processed Sun Aug 27 13:09:44 2017 by ELM ver.2012-10-06 from 001__elm20170827_110155__dat00.bin



Processed Sun Aug 27 13:09:45 2017 by ELM ver.2012-10-06 from 001__elm20170827_110155__dat00.bin



Processed Sun Aug 27 13:09:46 2017 by ELM ver.2012-10-06 from 001__elm20170827_110155__dat00.bin

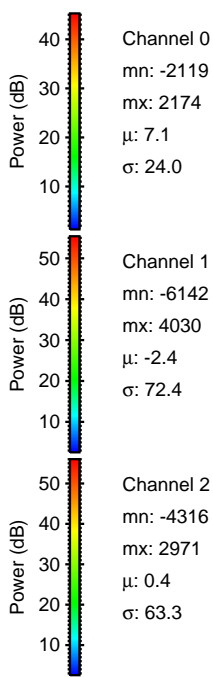
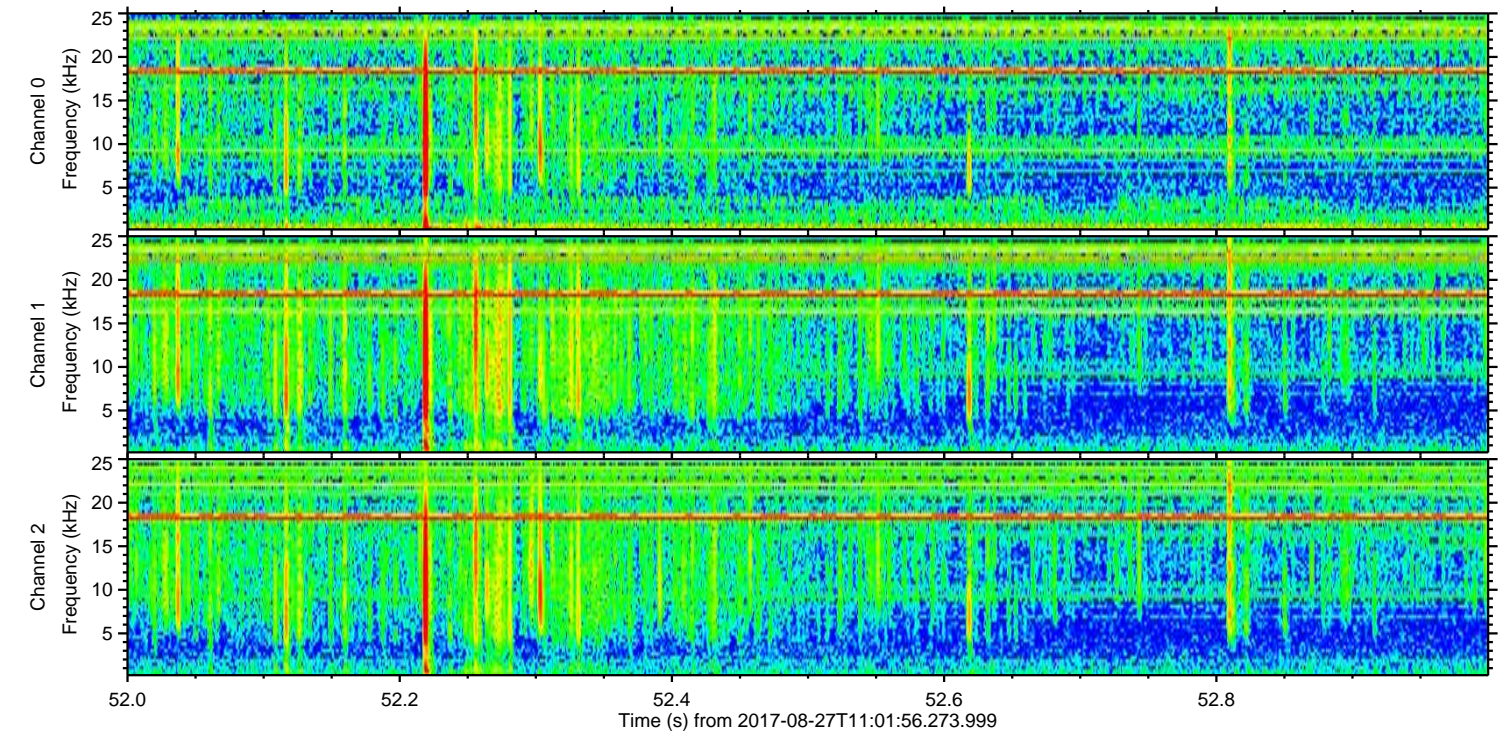
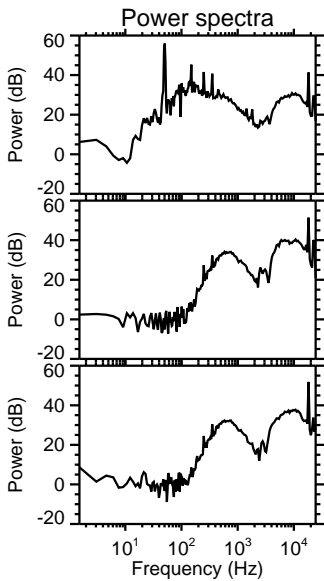
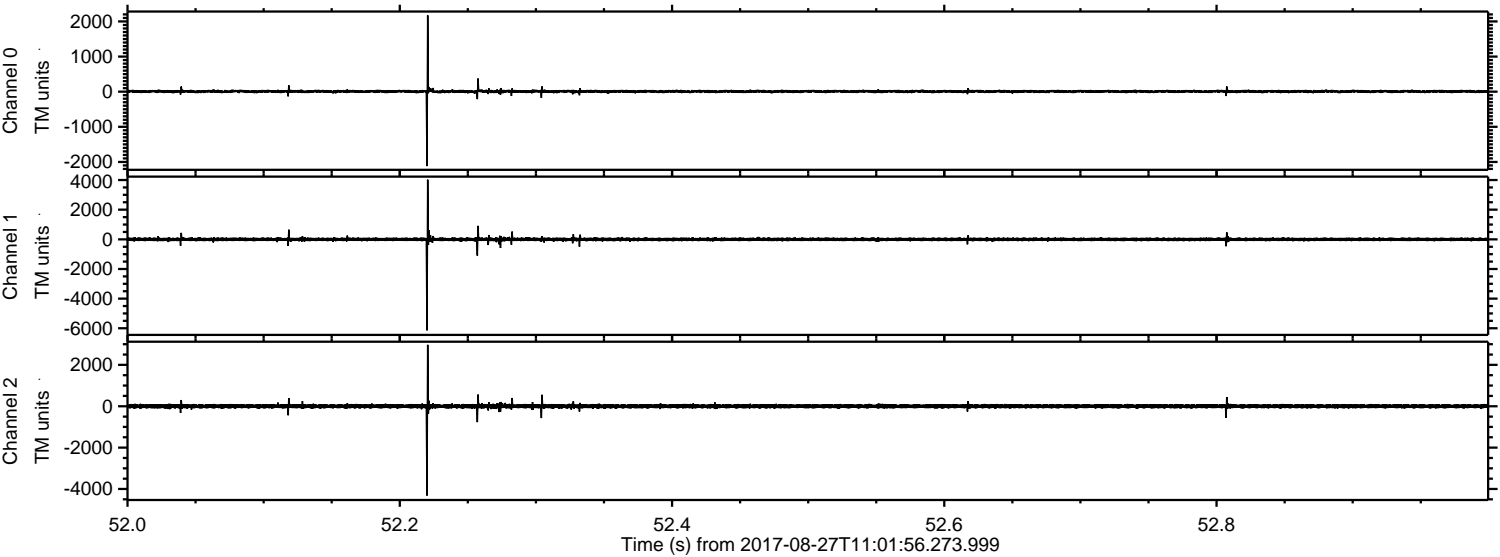


Channel 0
mn: -3649
mx: 2513
 μ : 7.1
 σ : 31.5

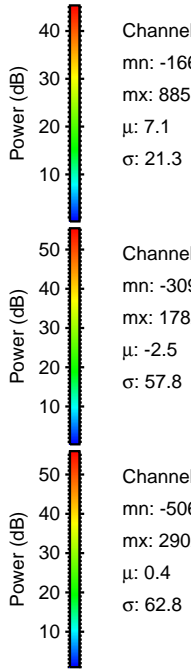
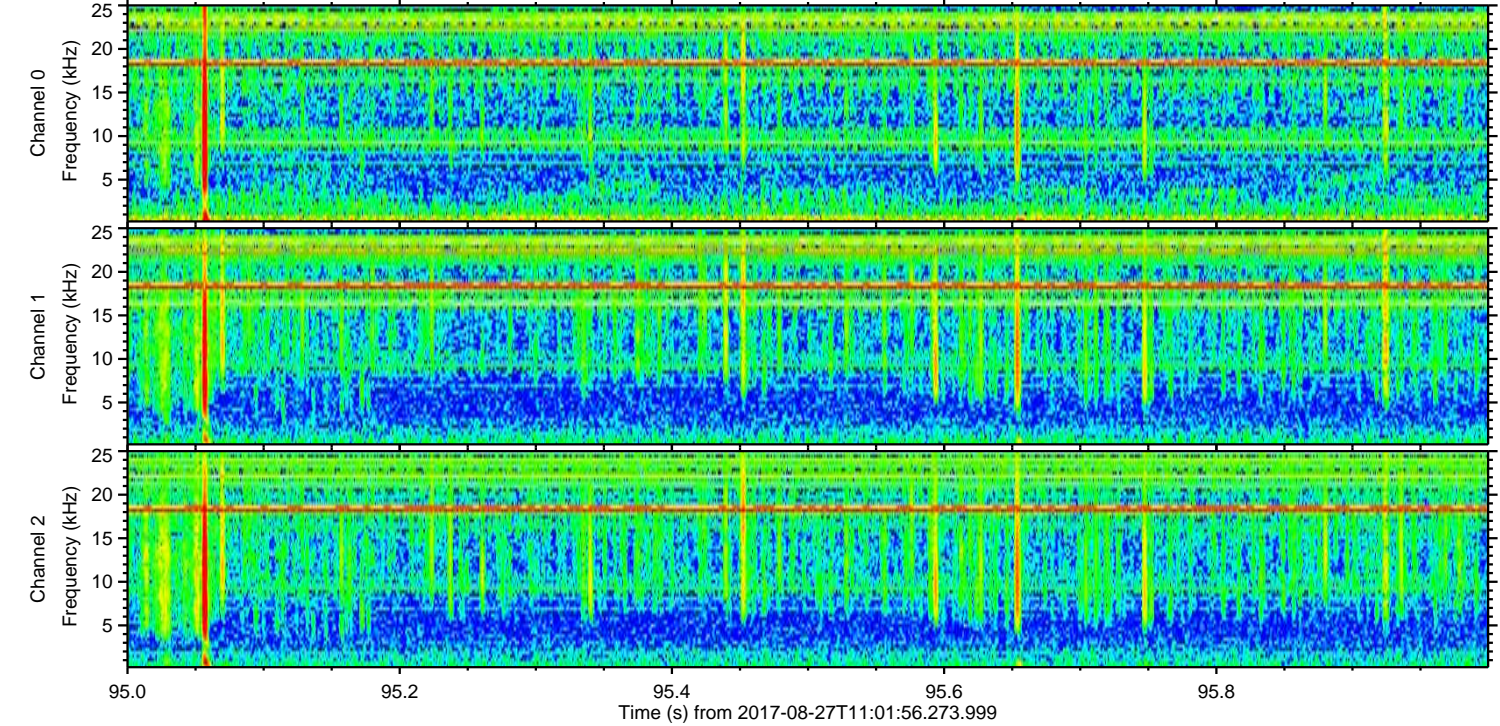
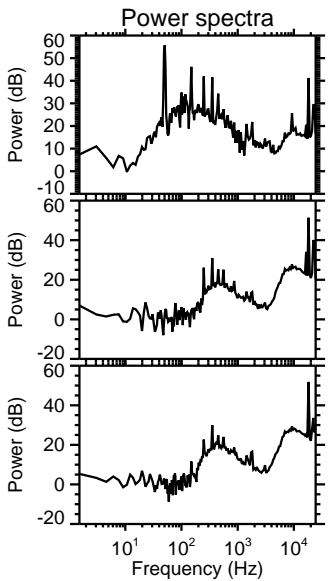
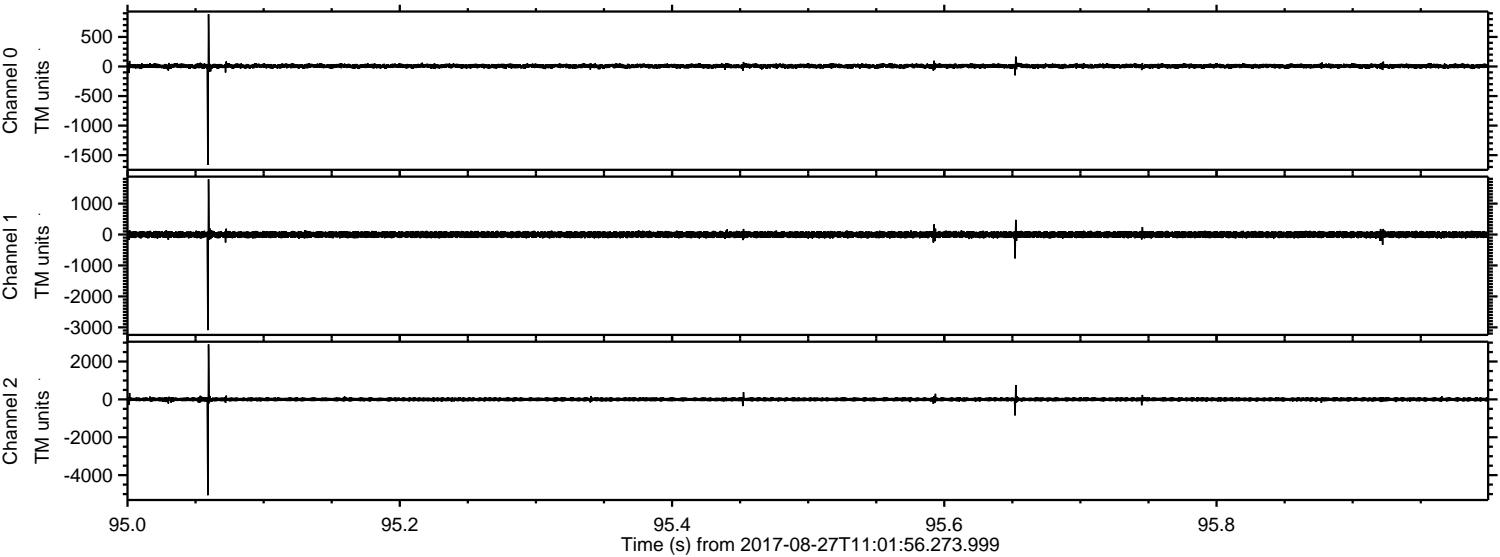
Channel 1
mn: -7519
mx: 4018
 μ : -2.4
 σ : 71.5

Channel 2
mn: -9007
mx: 4970
 μ : 0.4
 σ : 78.9

Processed Sun Aug 27 13:09:47 2017 by ELM ver.2012-10-06 from 001__elm20170827_110155__dat00.bin



Processed Sun Aug 27 13:09:48 2017 by ELM ver.2012-10-06 from 001__elm20170827_110155__dat00.bin



Processed Sun Aug 27 13:09:49 2017 by ELM ver.2012-10-06 from 001__elm20170827_110155__dat00.bin

