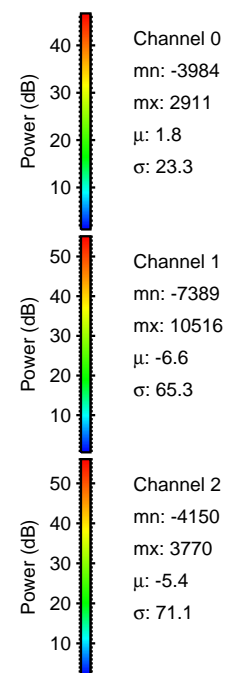
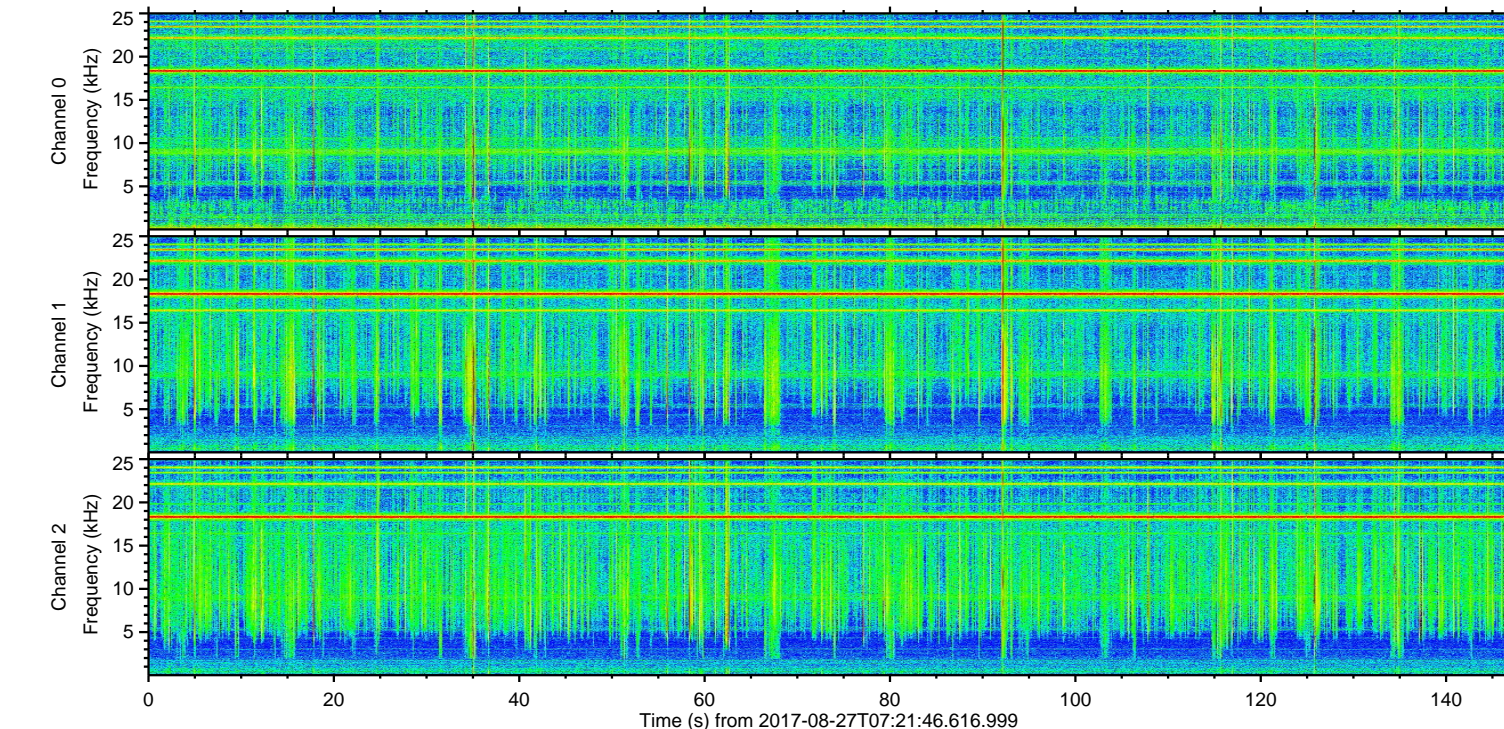
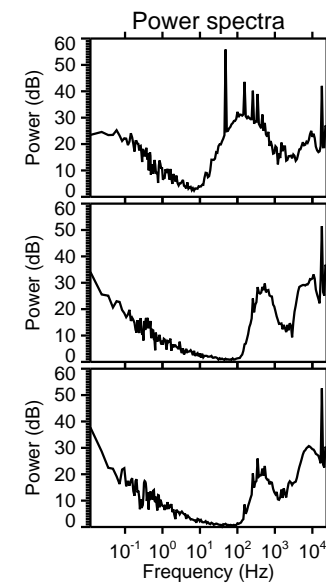
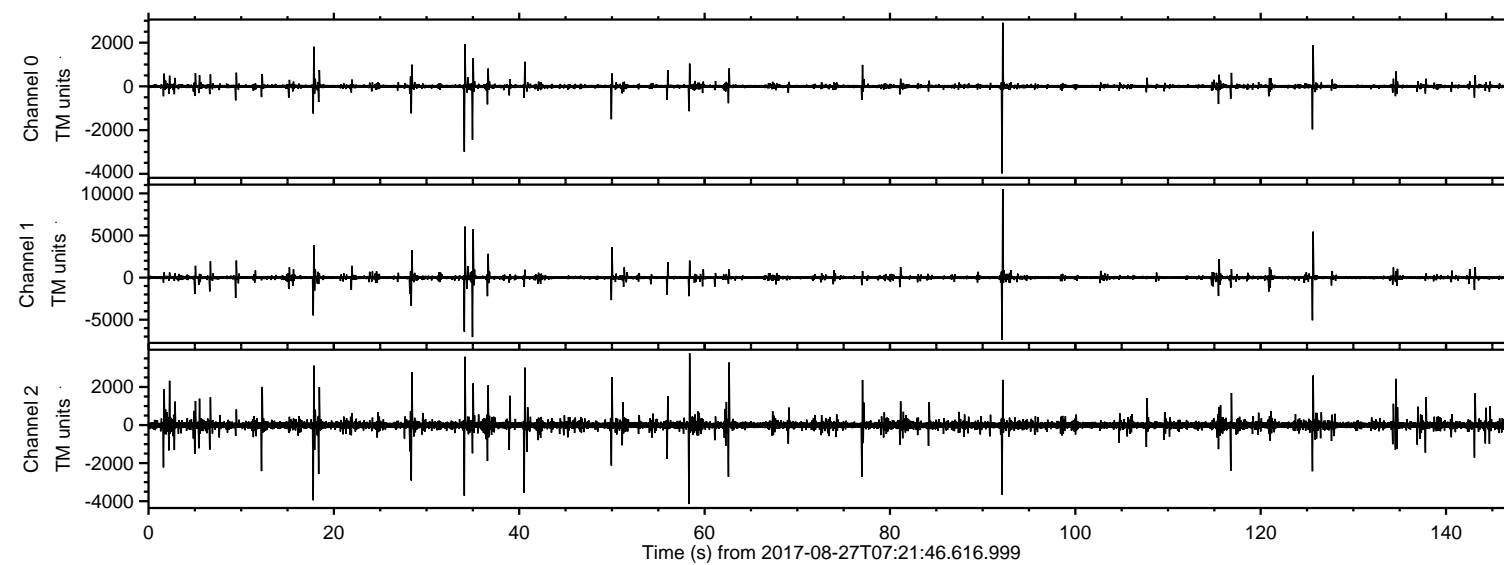
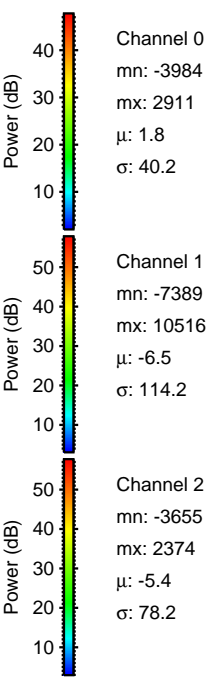
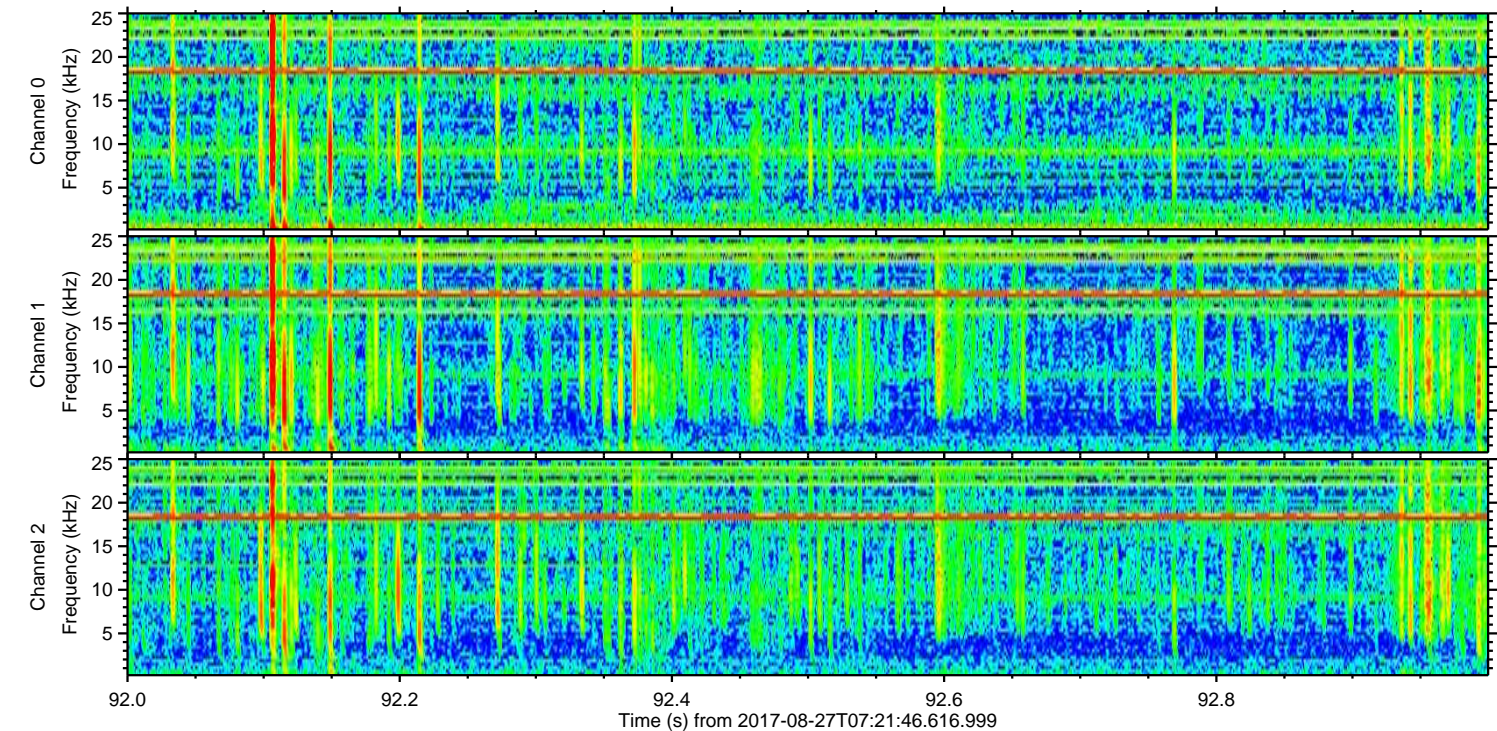
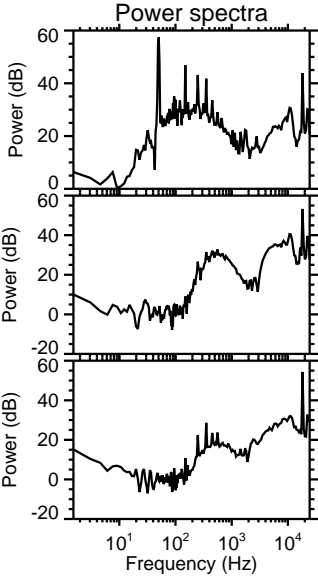
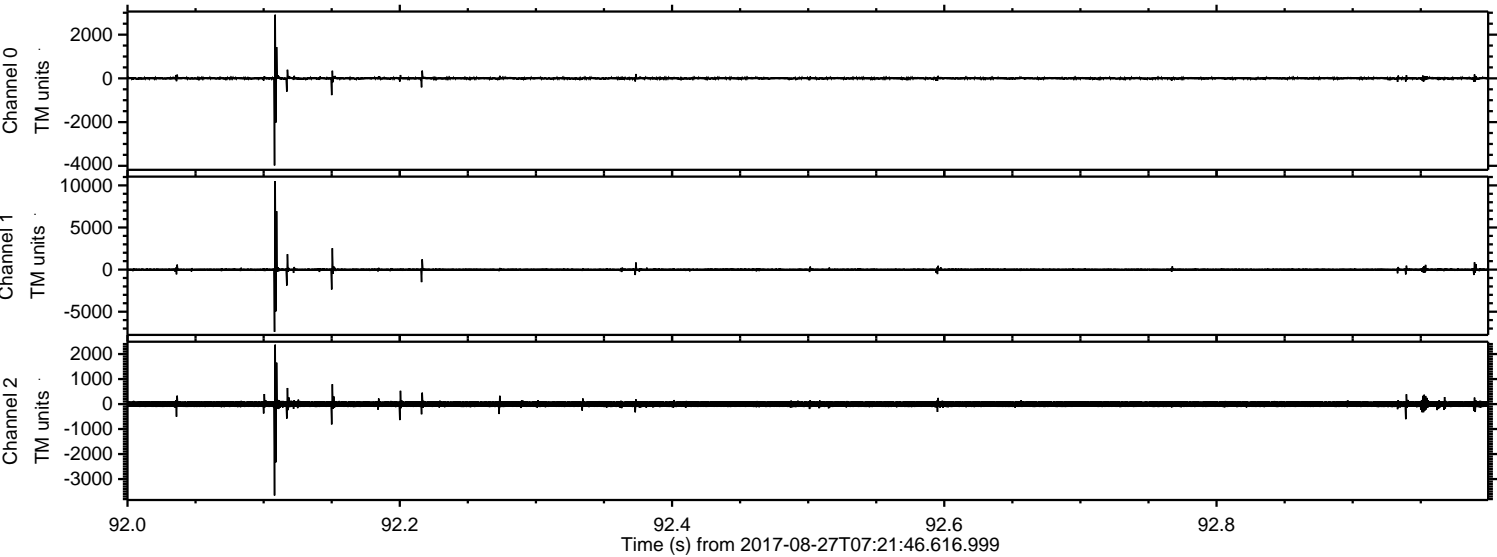


ELMAVAN 3D WAVEFORMS (Measured data sampled at 50 kHz) 51000 packets of 144 samples from 2017-08-27T07:21:46.616.999.

Processed Sun Aug 27 09:29:18 2017 by ELM ver.2012-10-06 from 001__elm20170827_072145__dat00.bin

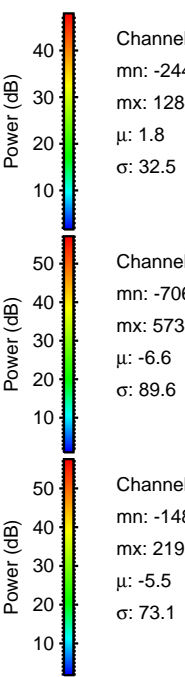
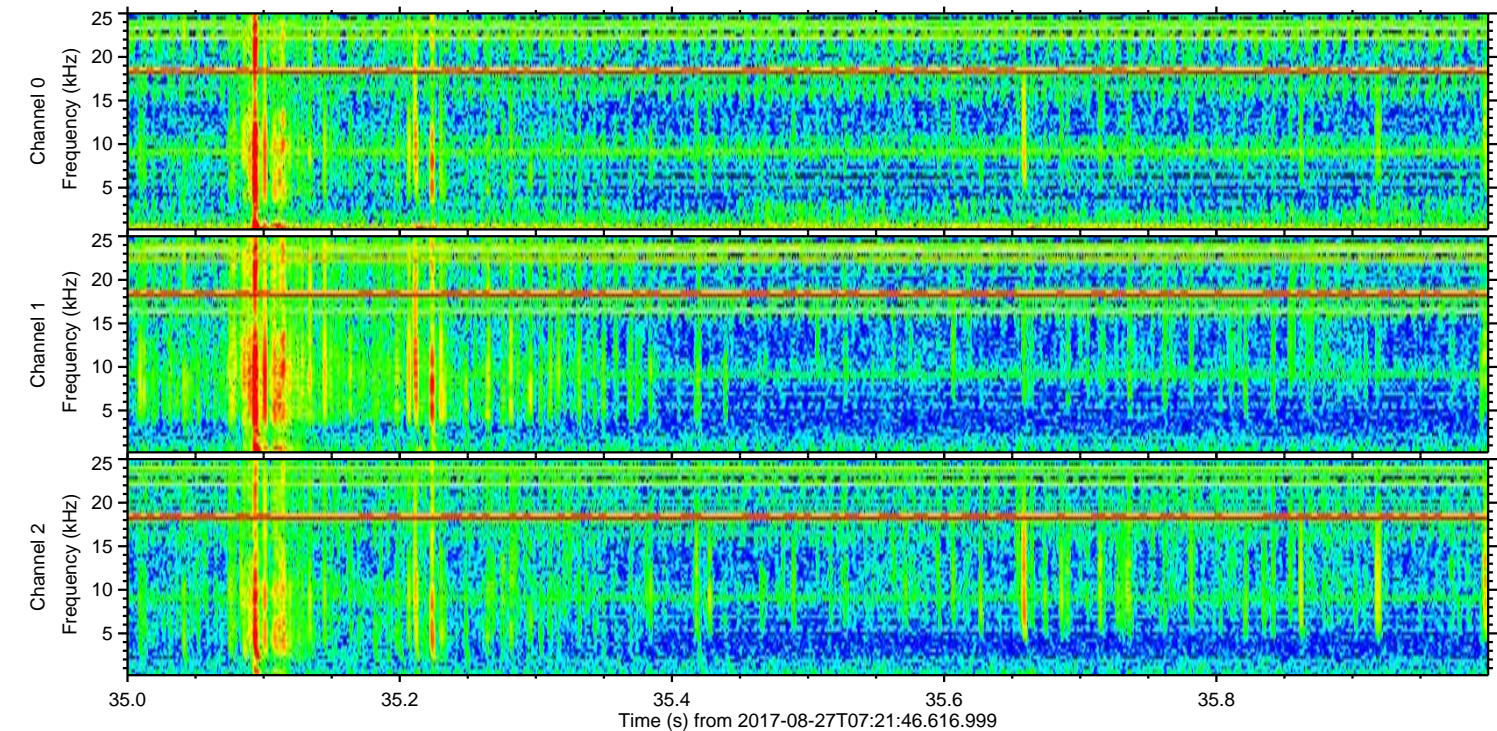
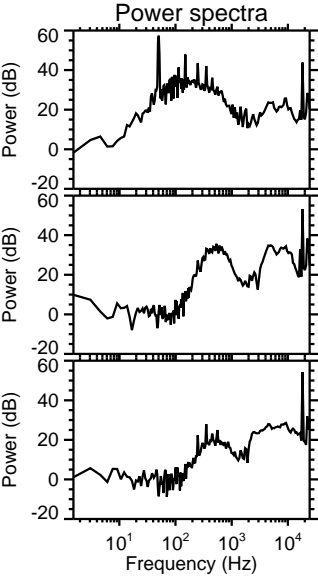
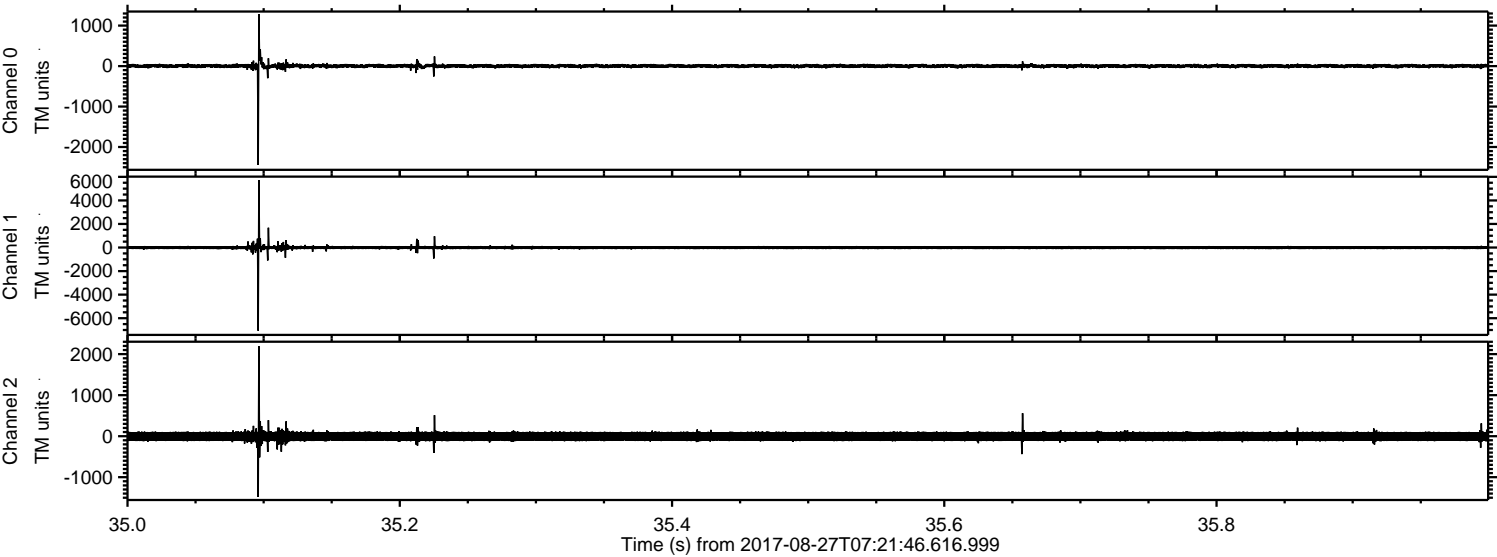


Processed Sun Aug 27 09:29:23 2017 by ELM ver.2012-10-06 from 001__elm20170827_072145__dat00.bin



ELMAVAN 3D WAVEFORMS (Measured data sampled at 50 kHz) 51000 packets of 144 samples from 2017-08-27T07:21:46.616.999. Part 36/147

Processed Sun Aug 27 09:29:24 2017 by ELM ver.2012-10-06 from 001__elm20170827_072145__dat00.bin

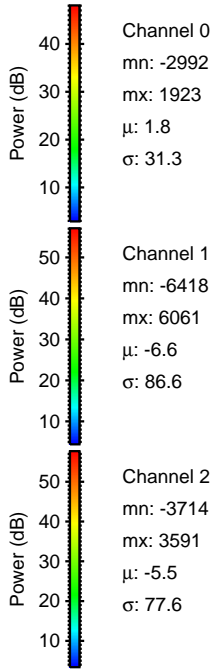
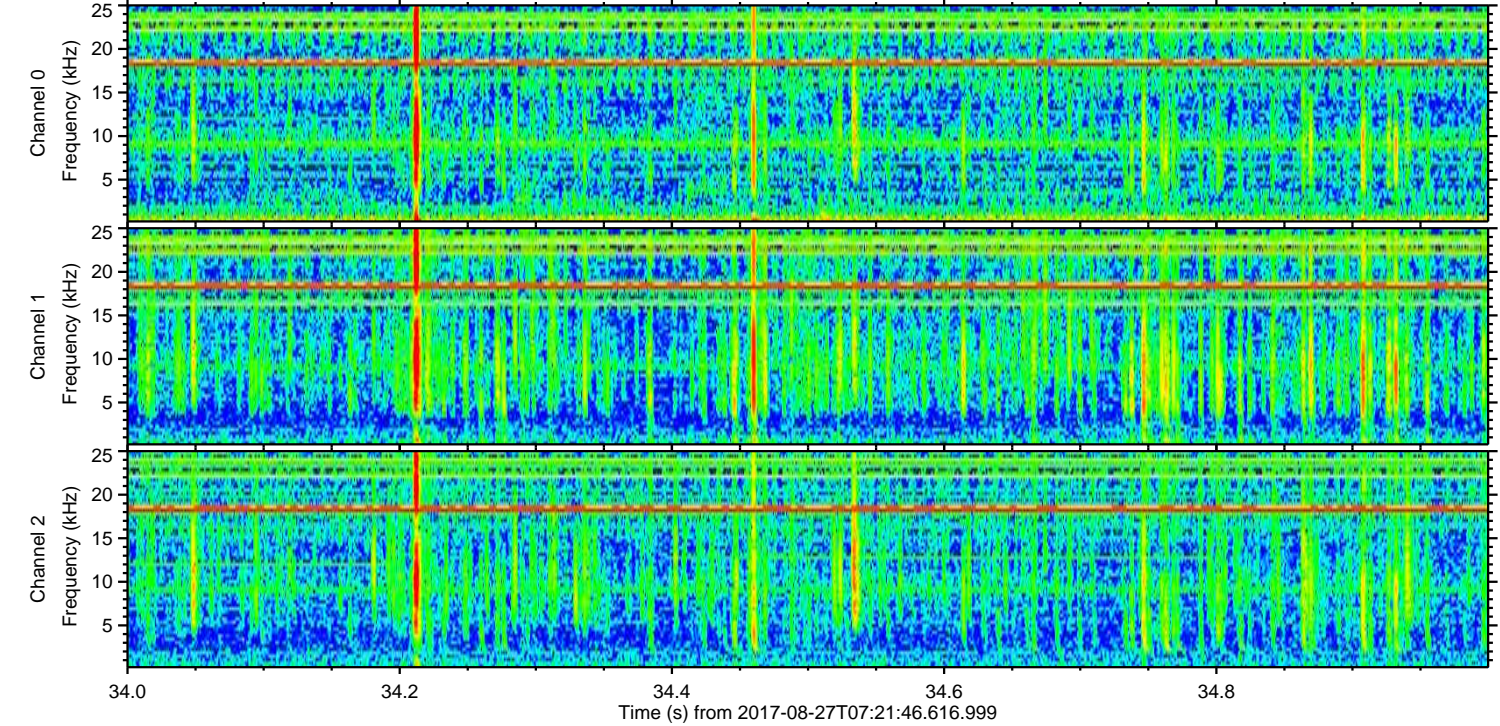
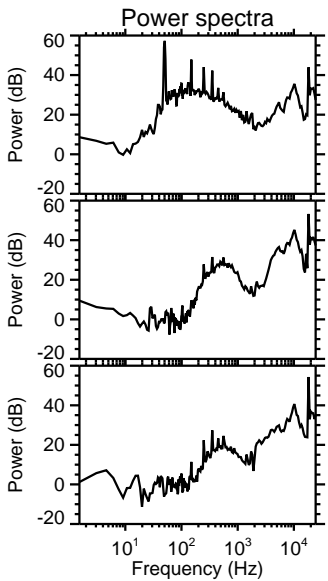
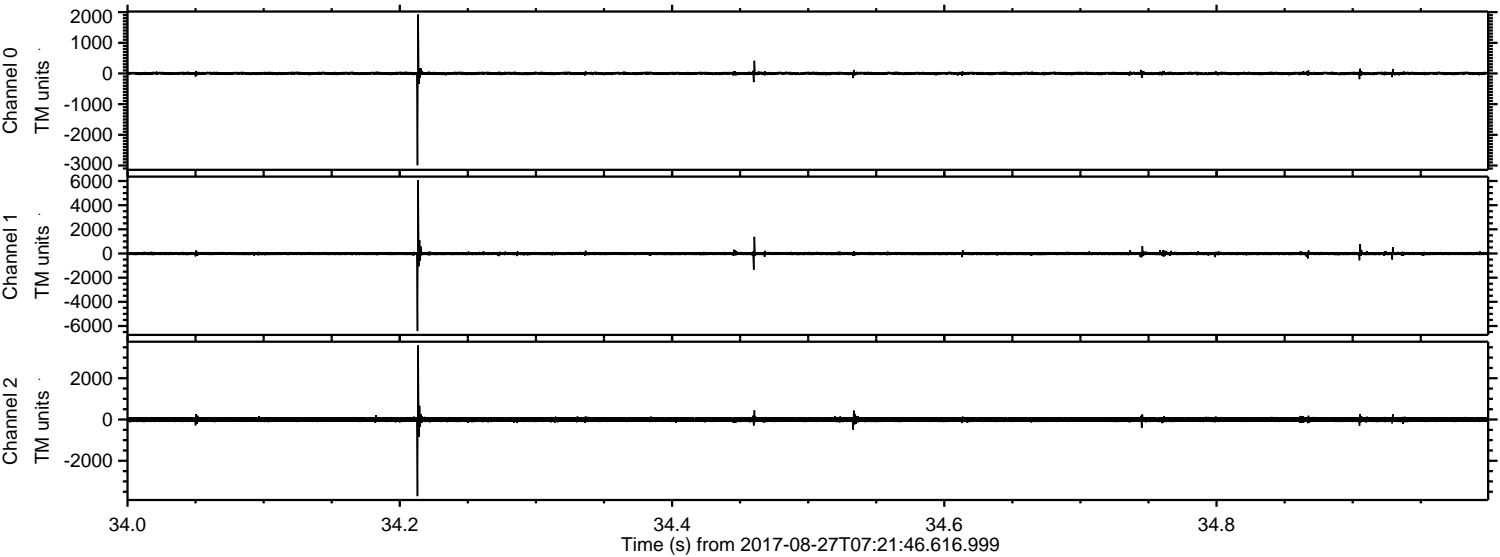


Channel 0
mn: -2442
mx: 1284
 μ : 1.8
 σ : 32.5

Channel 1
mn: -7066
mx: 5734
 μ : -6.6
 σ : 89.6

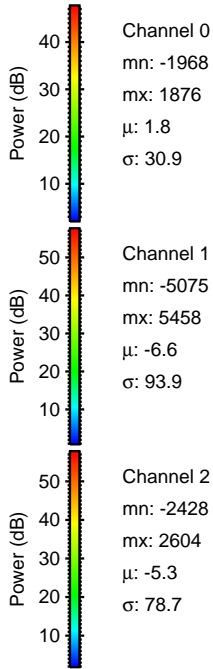
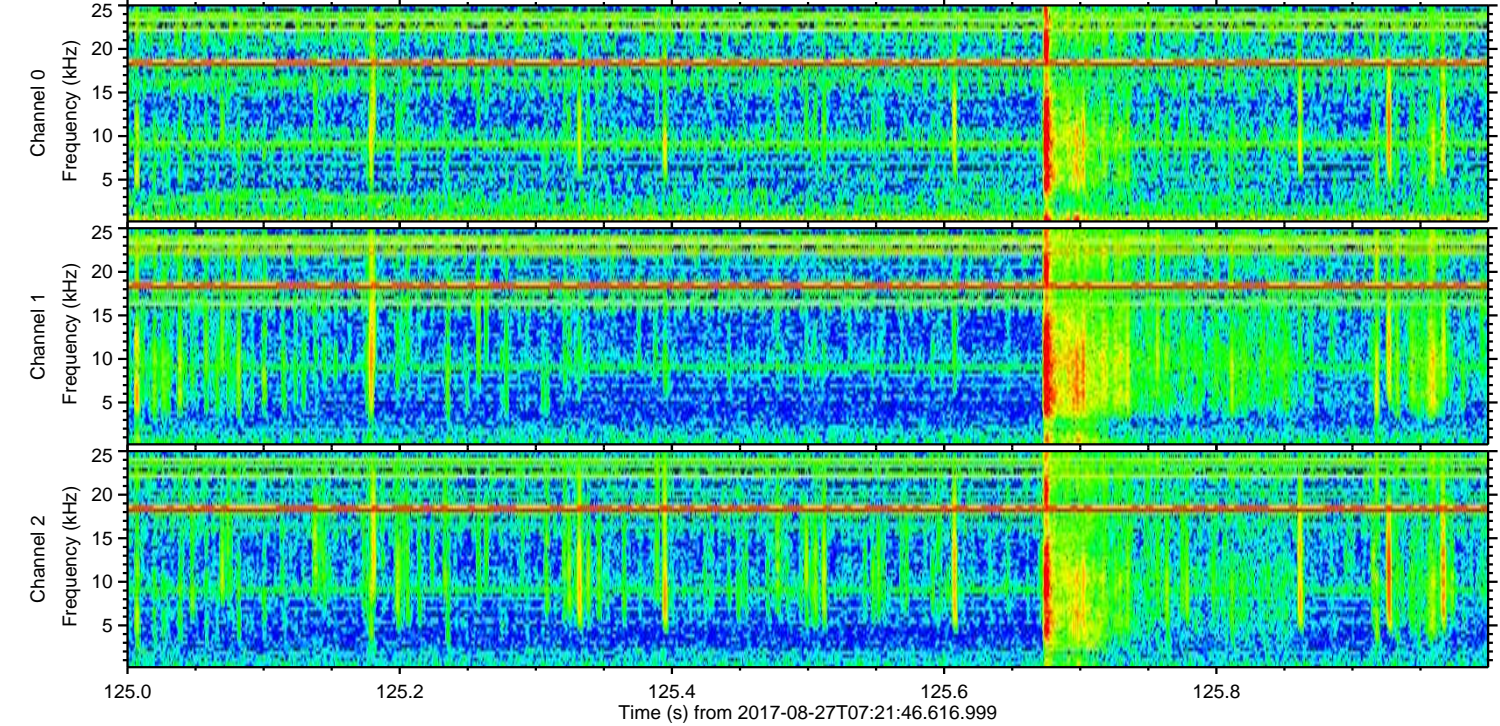
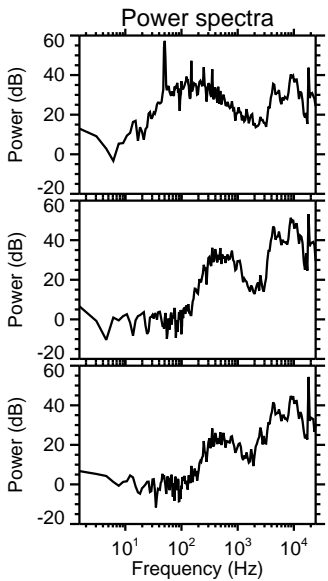
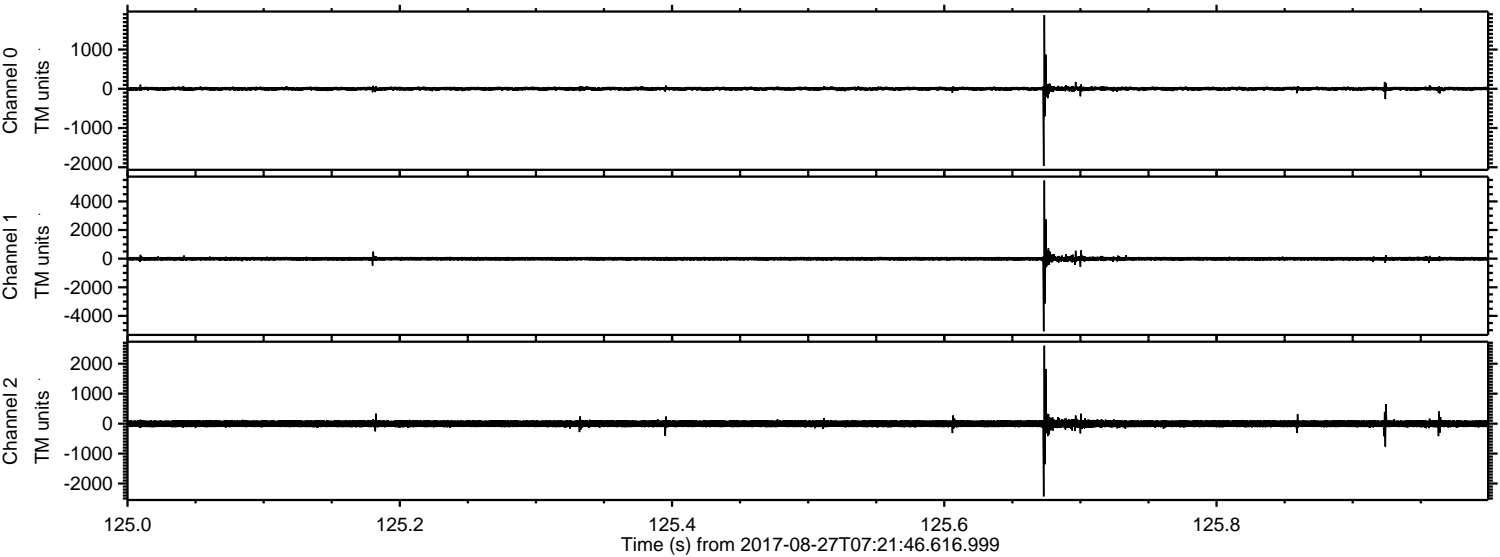
Channel 2
mn: -1482
mx: 2193
 μ : -5.5
 σ : 73.1

Processed Sun Aug 27 09:29:25 2017 by ELM ver.2012-10-06 from 001__elm20170827_072145__dat00.bin

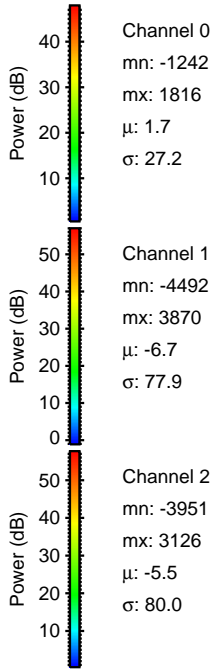
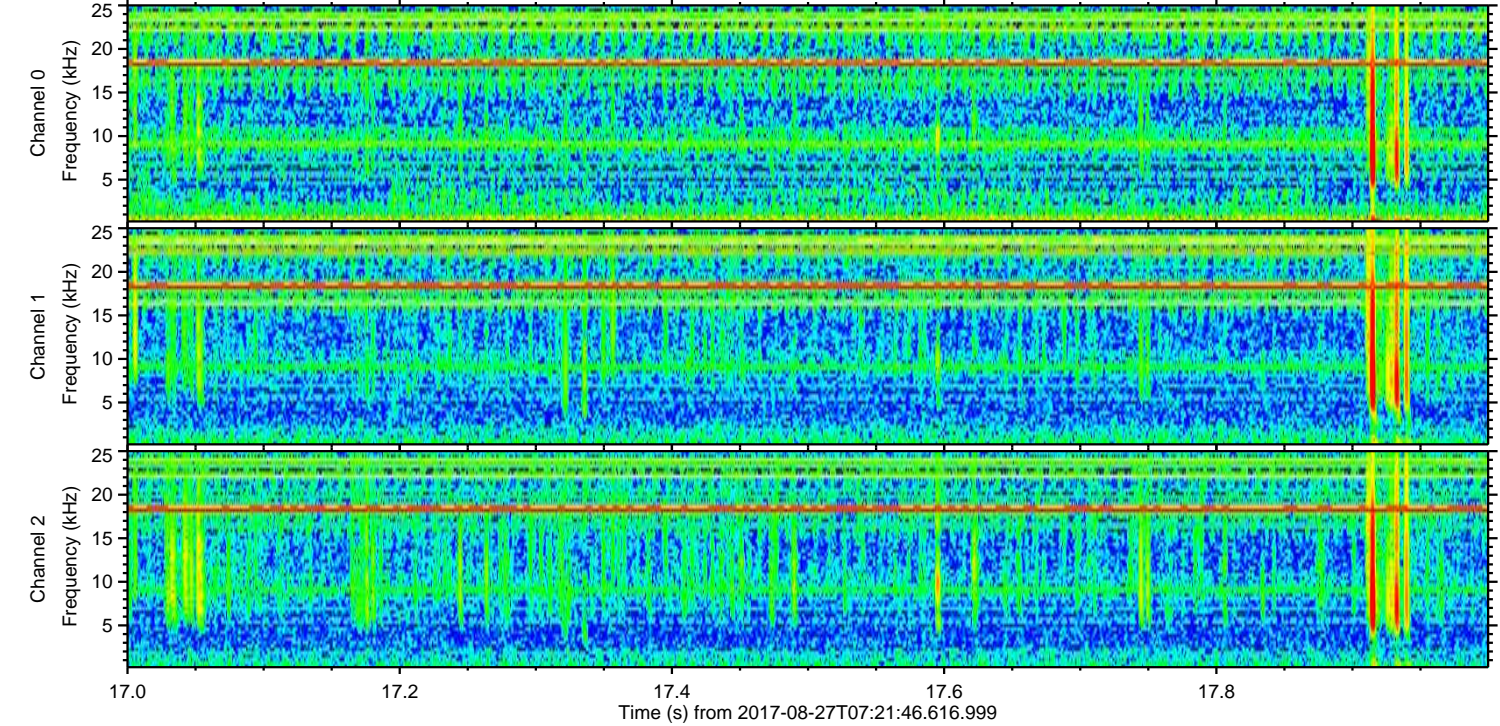
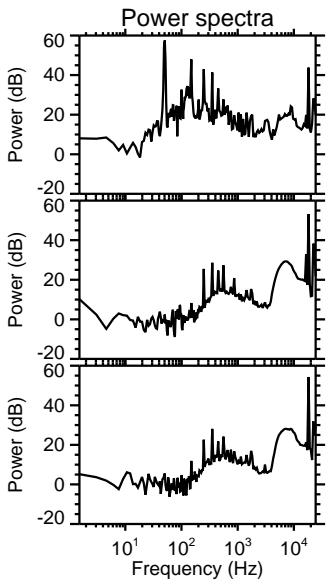
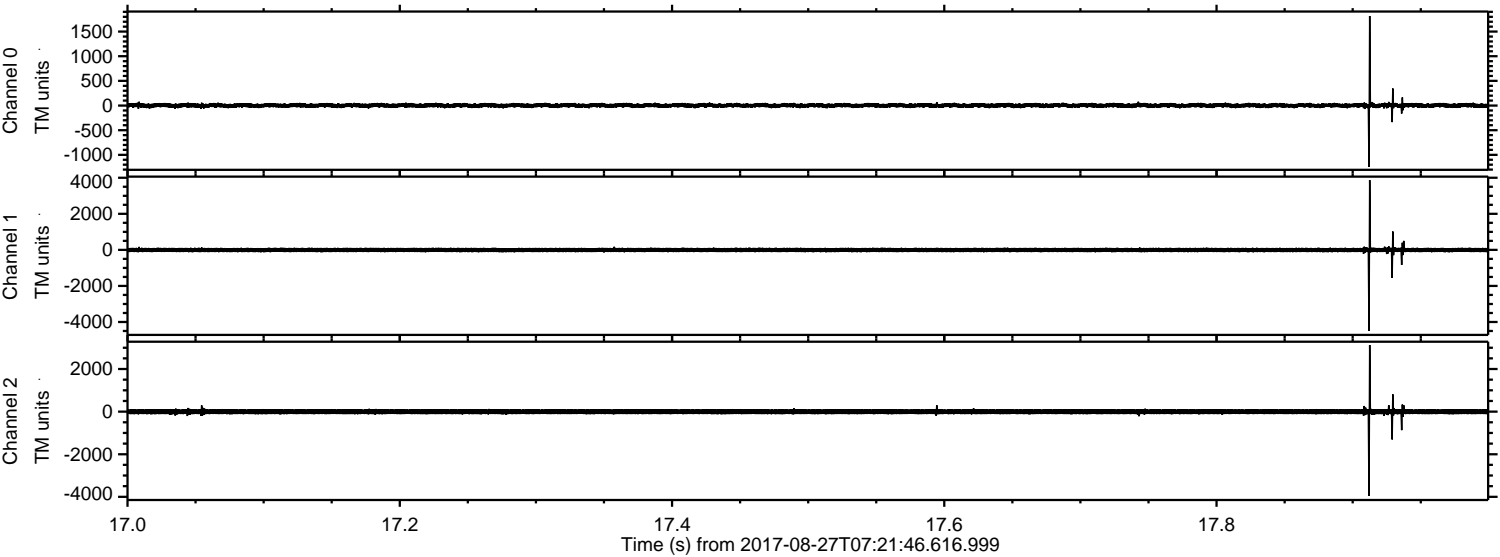


ELMAVAN 3D WAVEFORMS (Measured data sampled at 50 kHz) 51000 packets of 144 samples from 2017-08-27T07:21:46.616.999. Part 126/147

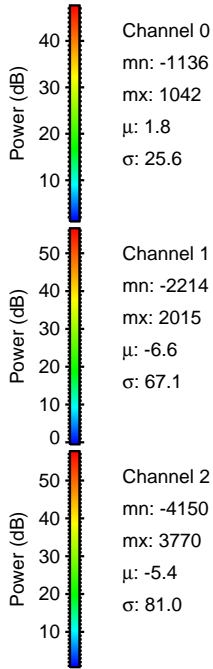
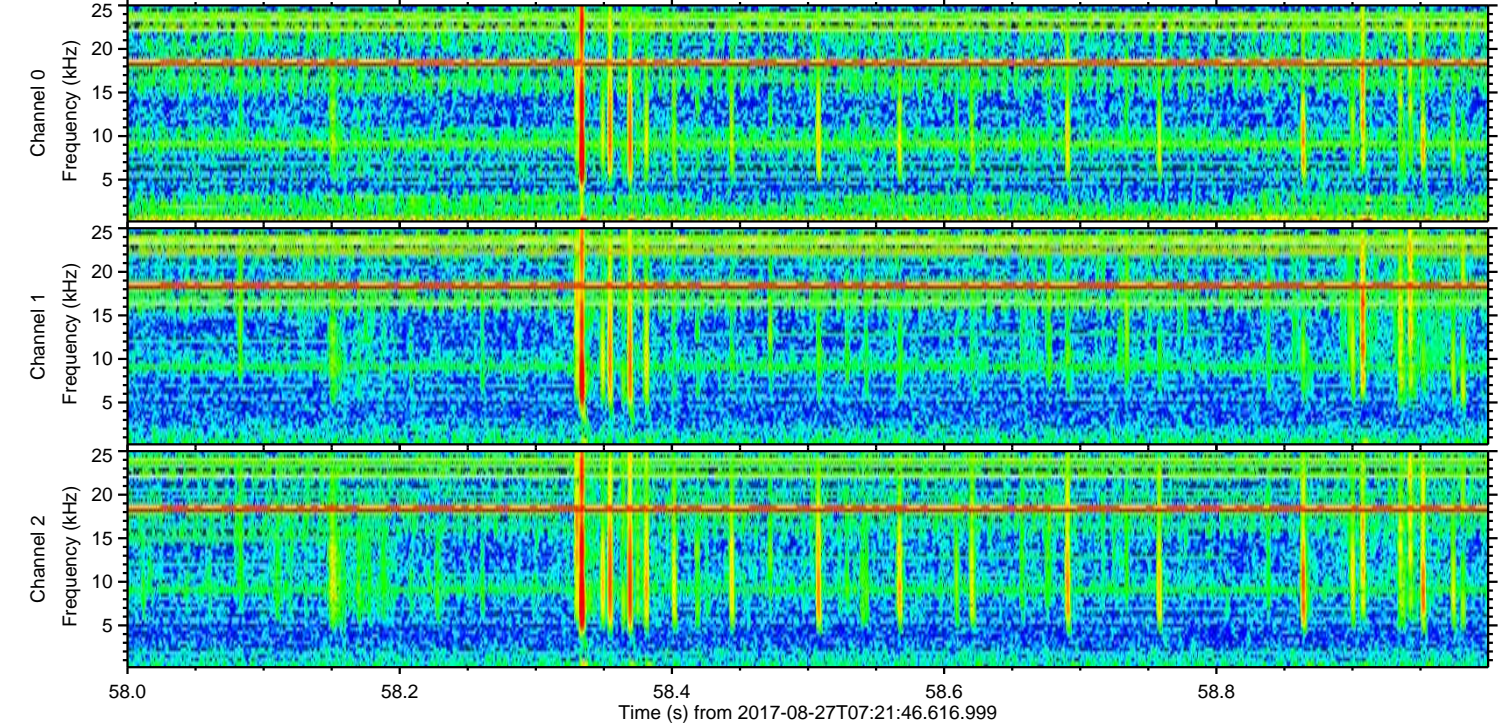
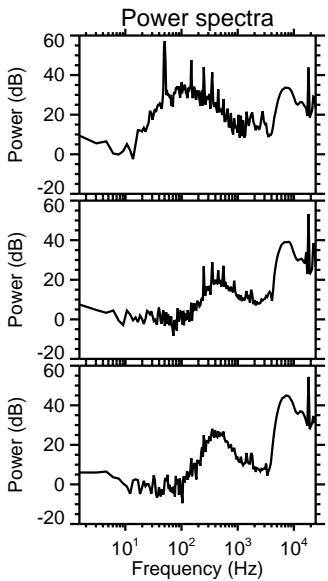
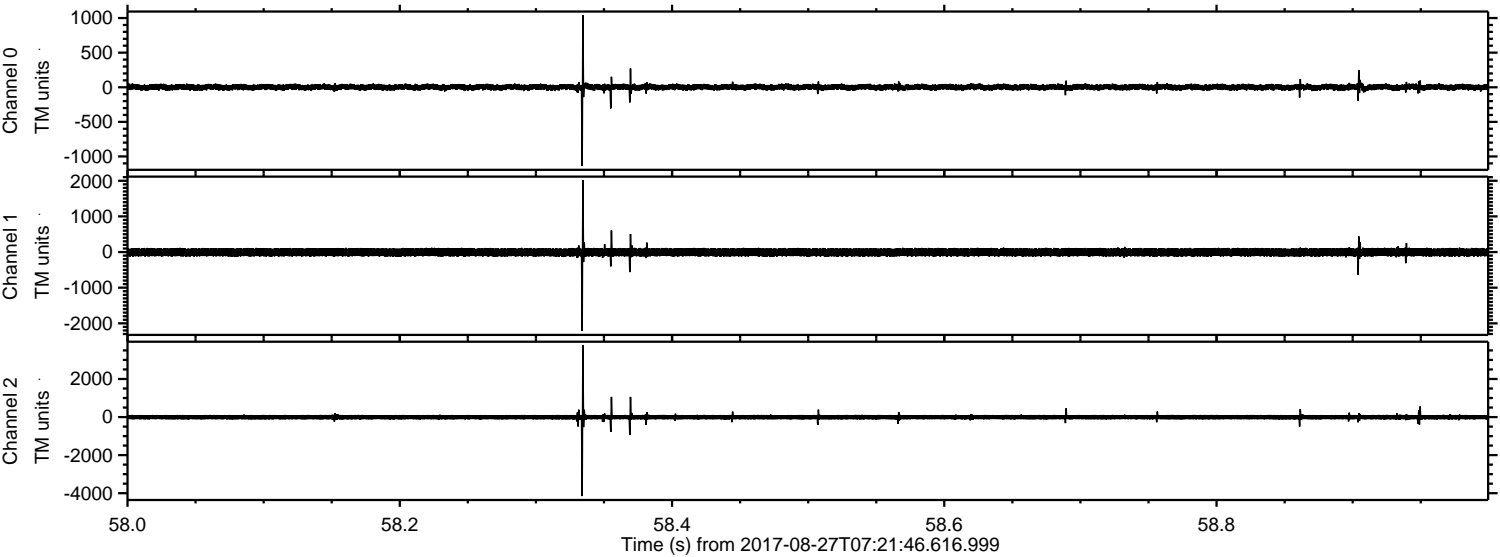
Processed Sun Aug 27 09:29:25 2017 by ELM ver.2012-10-06 from 001__elm20170827_072145__dat00.bin



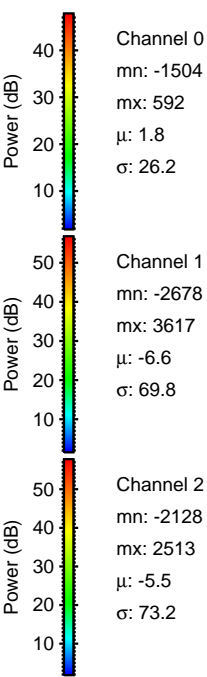
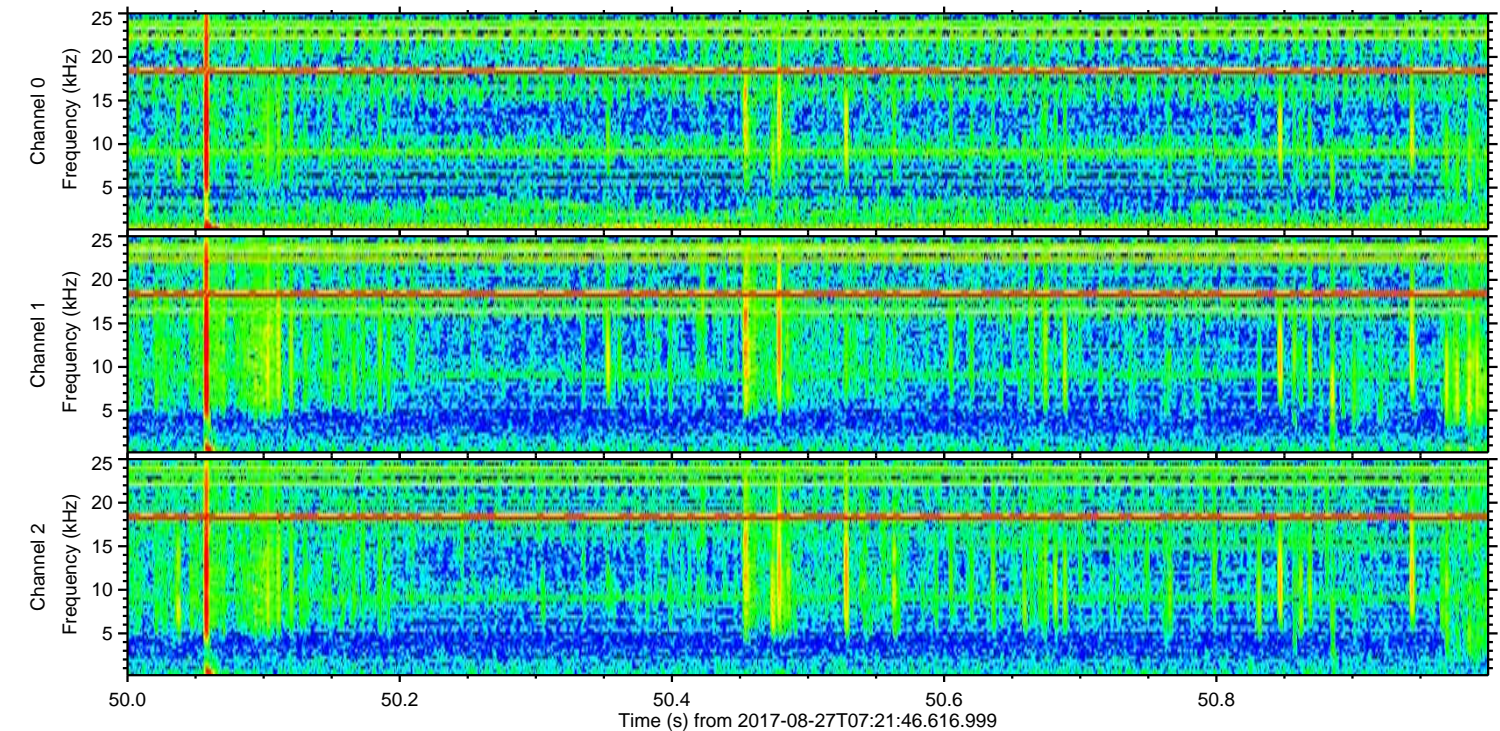
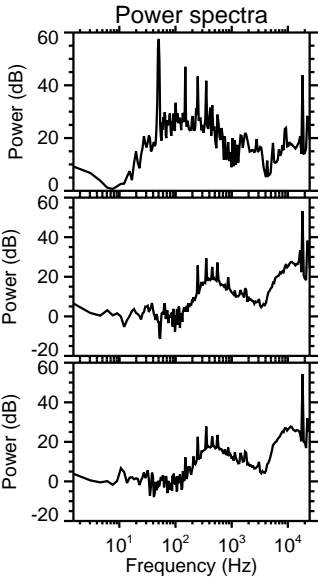
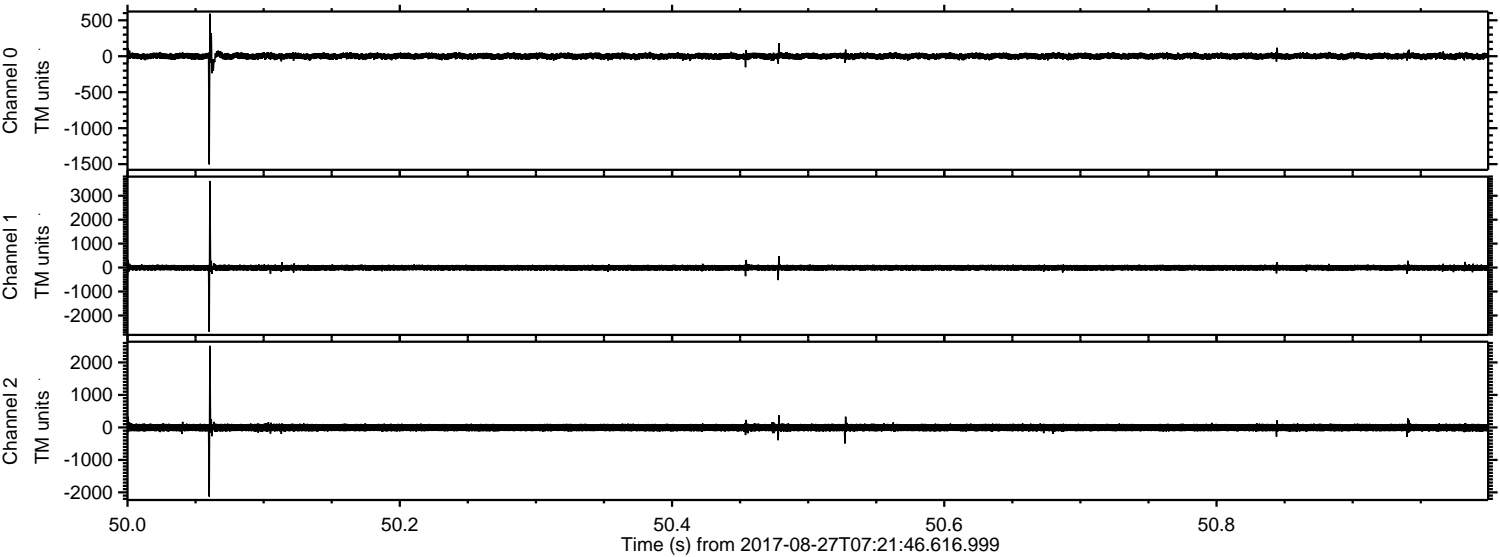
Processed Sun Aug 27 09:29:26 2017 by ELM ver.2012-10-06 from 001__elm20170827_072145__dat00.bin



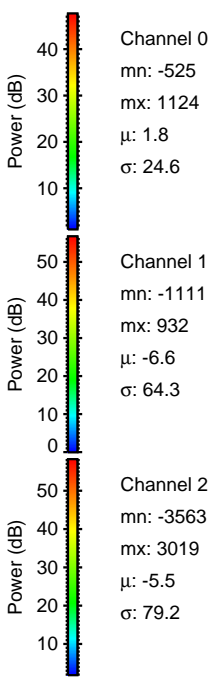
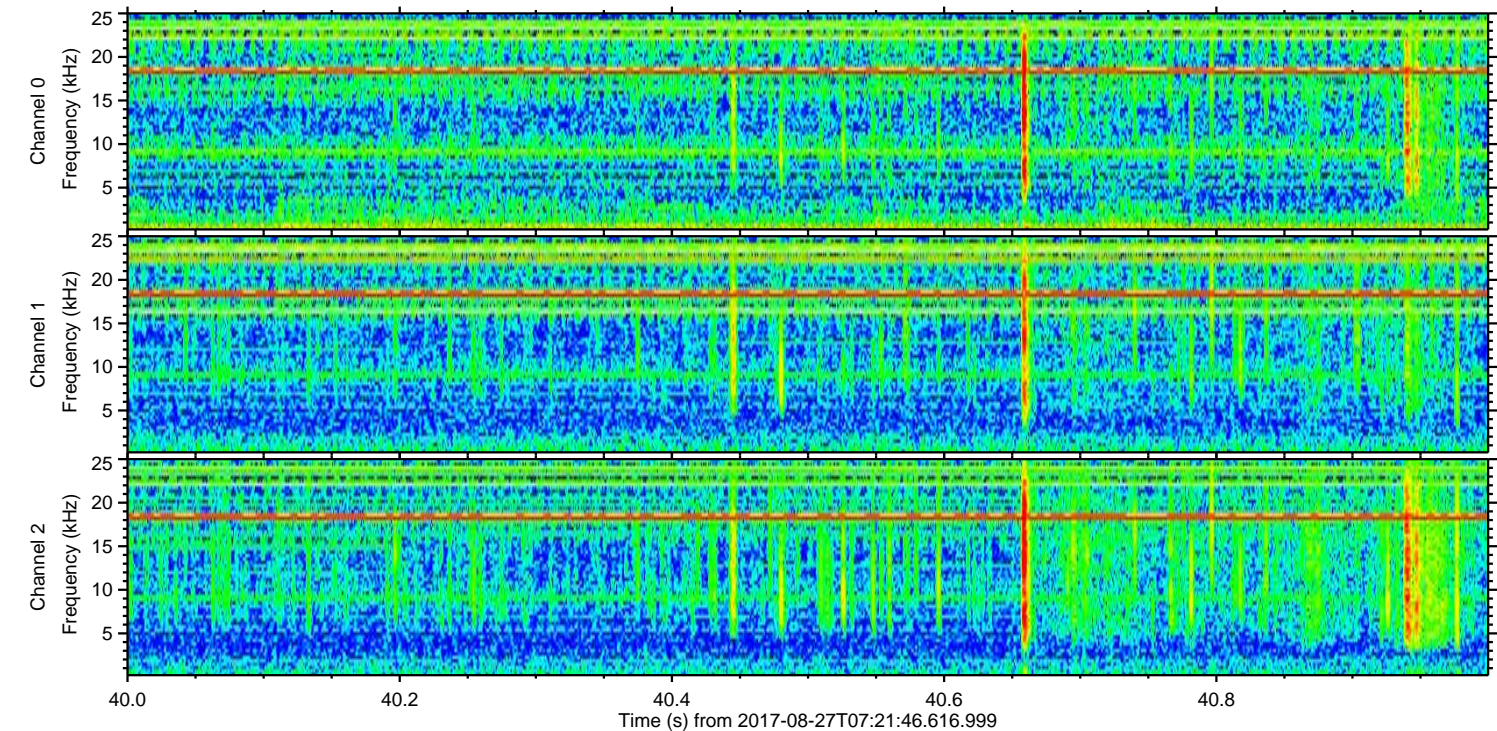
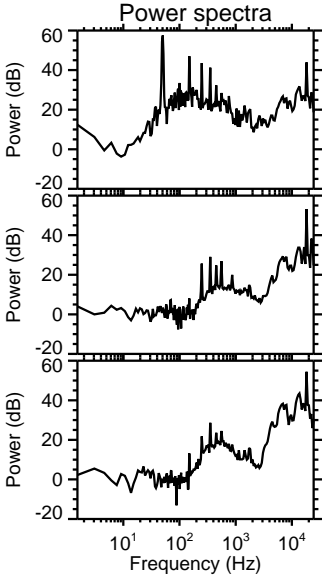
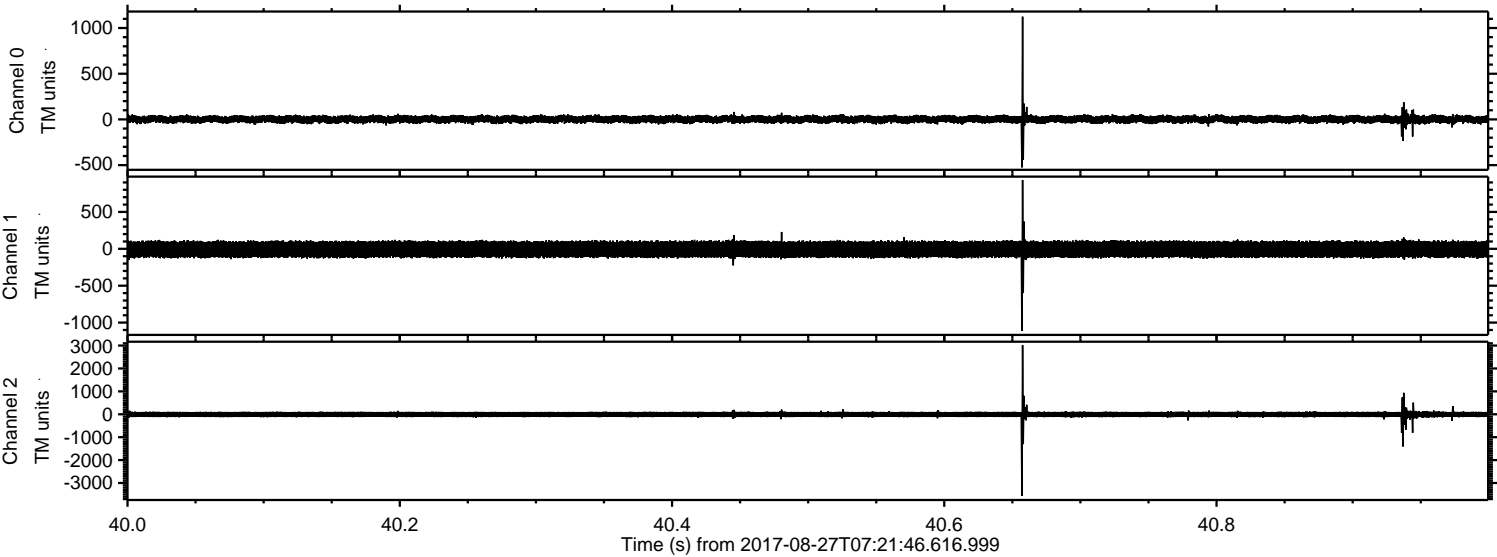
Processed Sun Aug 27 09:29:27 2017 by ELM ver.2012-10-06 from 001__elm20170827_072145__dat00.bin



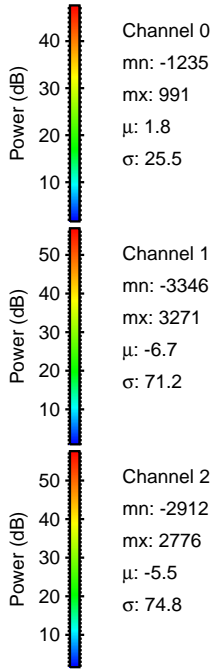
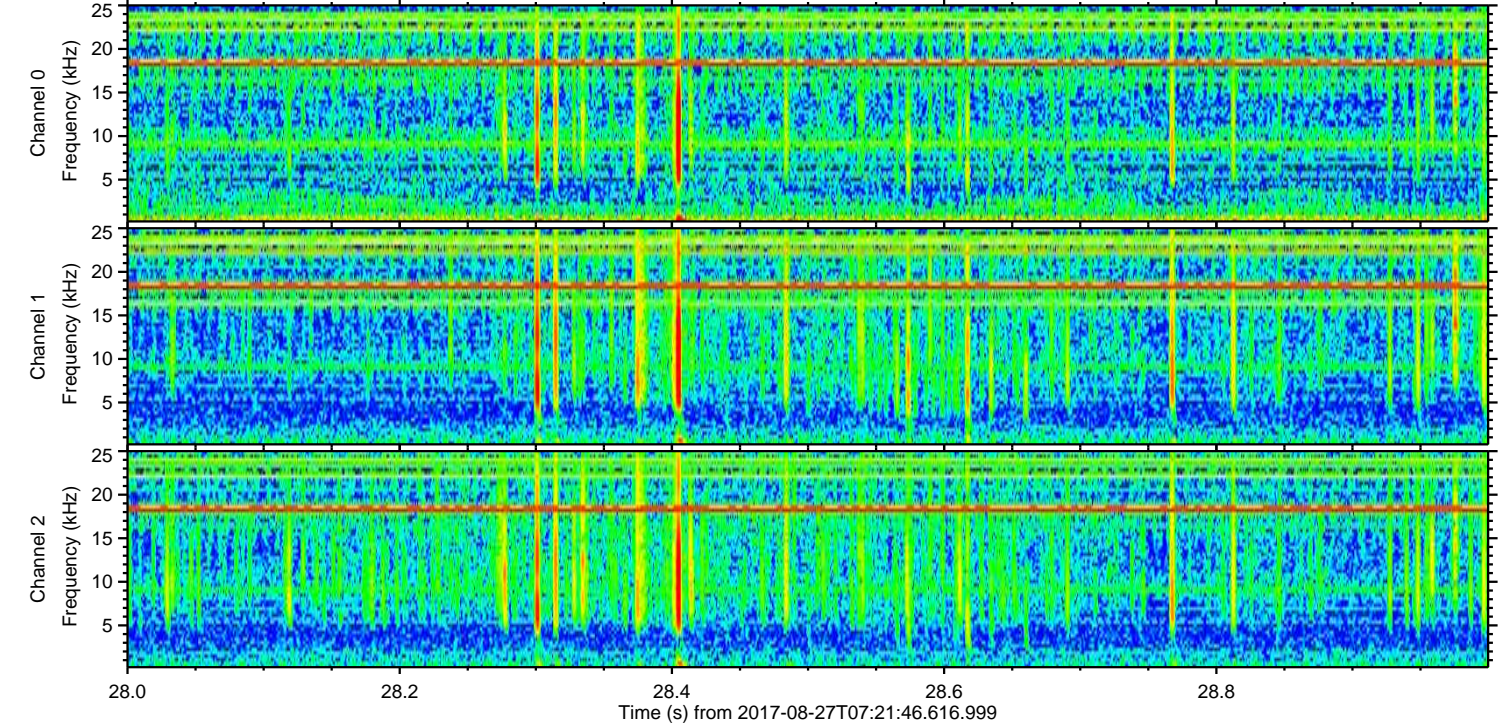
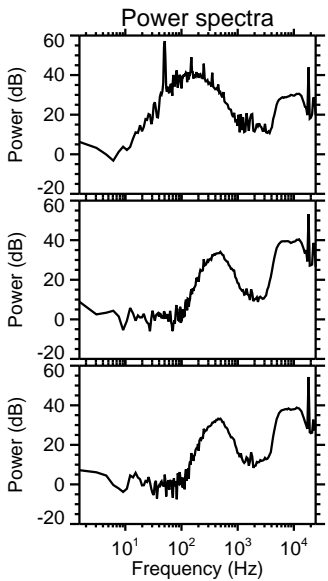
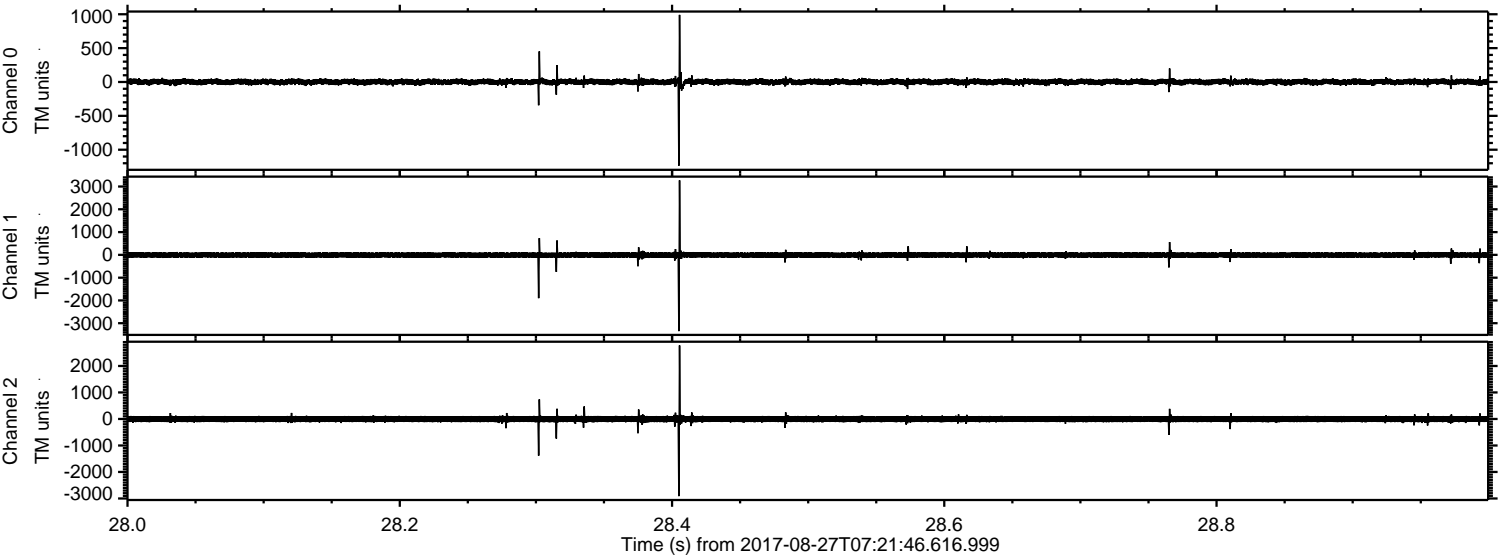
Processed Sun Aug 27 09:29:27 2017 by ELM ver.2012-10-06 from 001__elm20170827_072145__dat00.bin



Processed Sun Aug 27 09:29:28 2017 by ELM ver.2012-10-06 from 001__elm20170827_072145__dat00.bin



Processed Sun Aug 27 09:29:28 2017 by ELM ver.2012-10-06 from 001__elm20170827_072145__dat00.bin



Channel 0
mn: -1235
mx: 991
 μ : 1.8
 σ : 25.5

Channel 1
mn: -3346
mx: 3271
 μ : -6.7
 σ : 71.2

Channel 2
mn: -2912
mx: 2776
 μ : -5.5
 σ : 74.8

