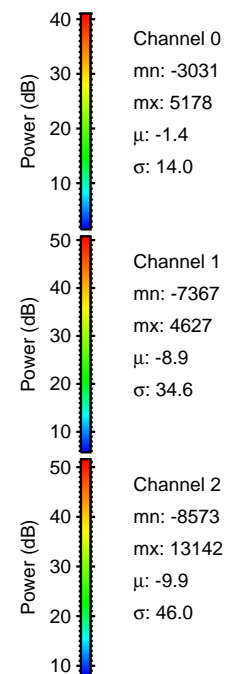
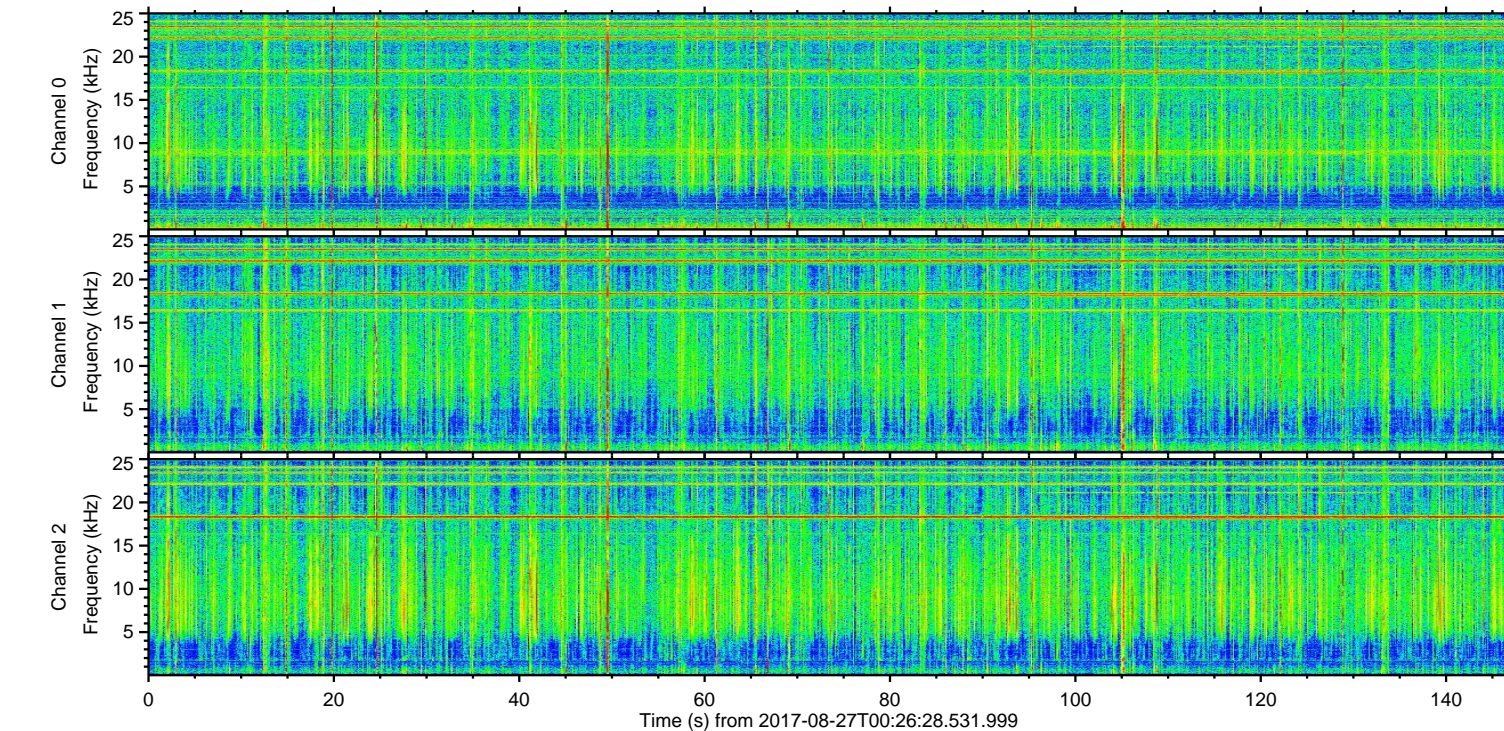
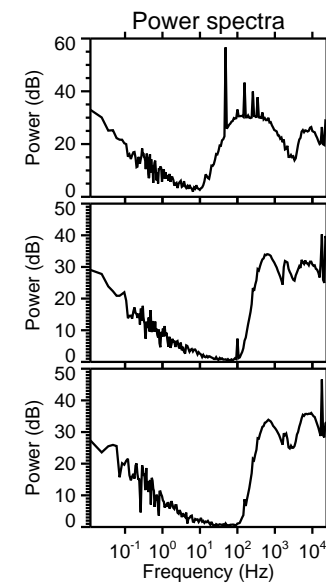
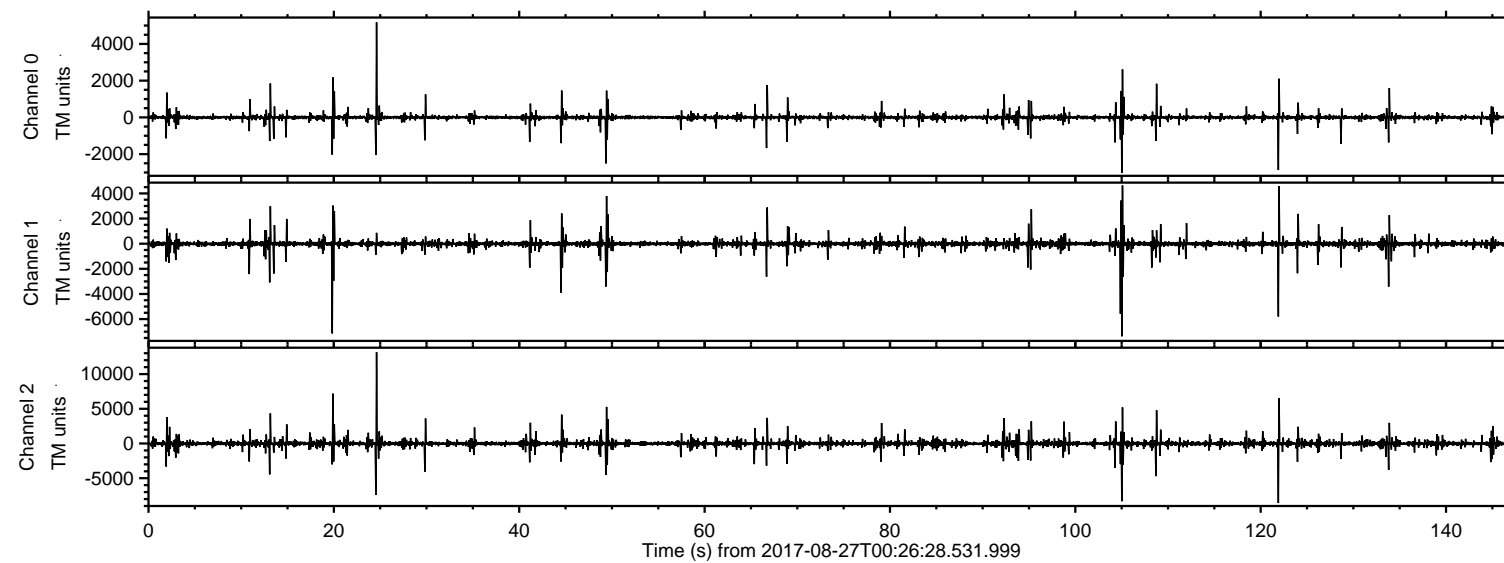


# ELMAVAN 3D WAVEFORMS (Measured data sampled at 50 kHz) 51000 packets of 144 samples from 2017-08-27T00:26:28.531.999.

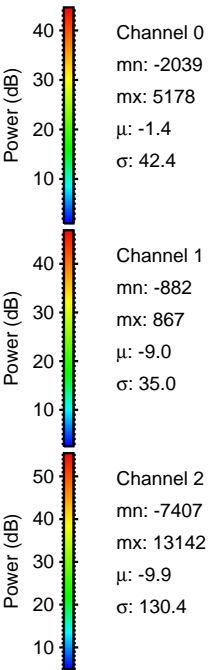
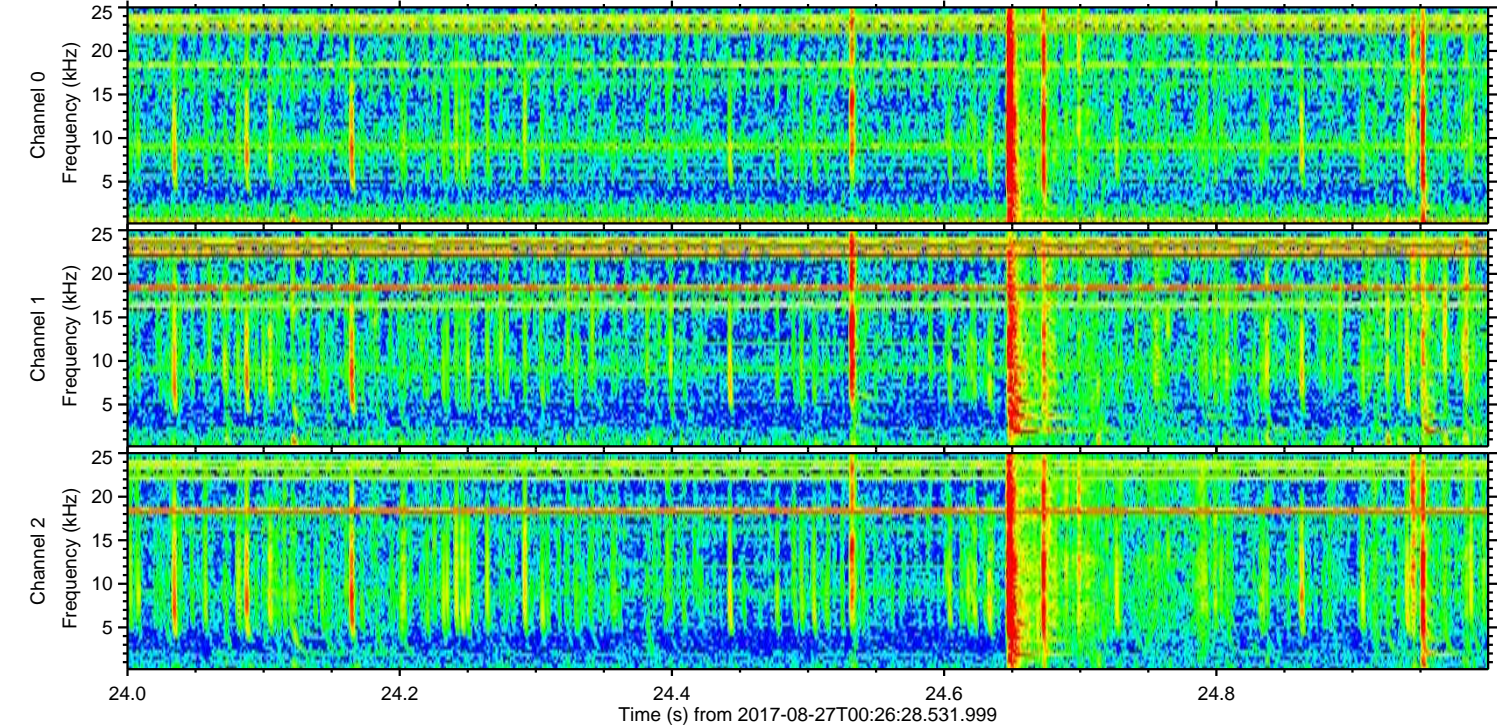
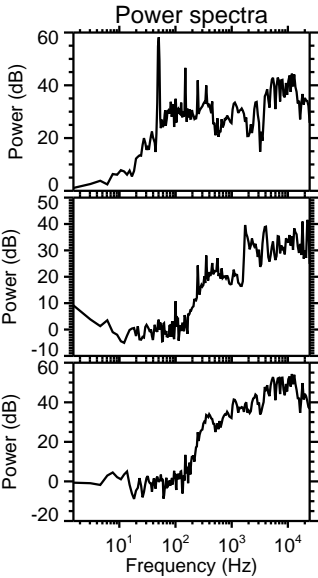
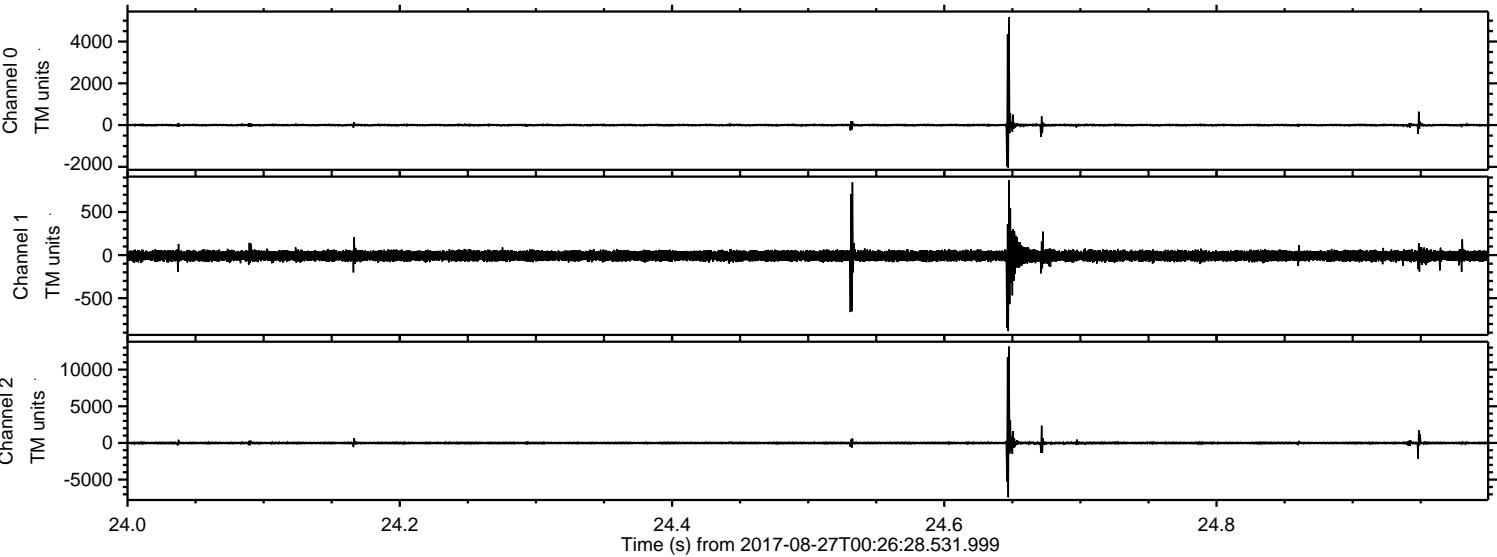
Processed Sun Aug 27 02:34:35 2017 by ELM ver.2012-10-06 from 001\_\_elm20170827\_002627\_\_dat00.bin





ELMAVAN 3D WAVEFORMS (Measured data sampled at 50 kHz) 51000 packets of 144 samples from 2017-08-27T00:26:28.531.999. Part 25/147

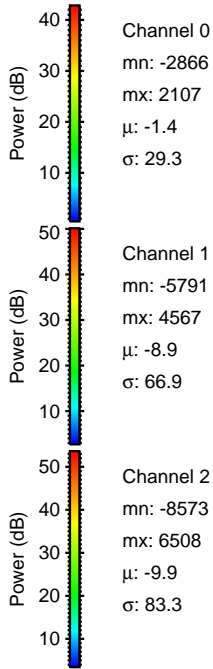
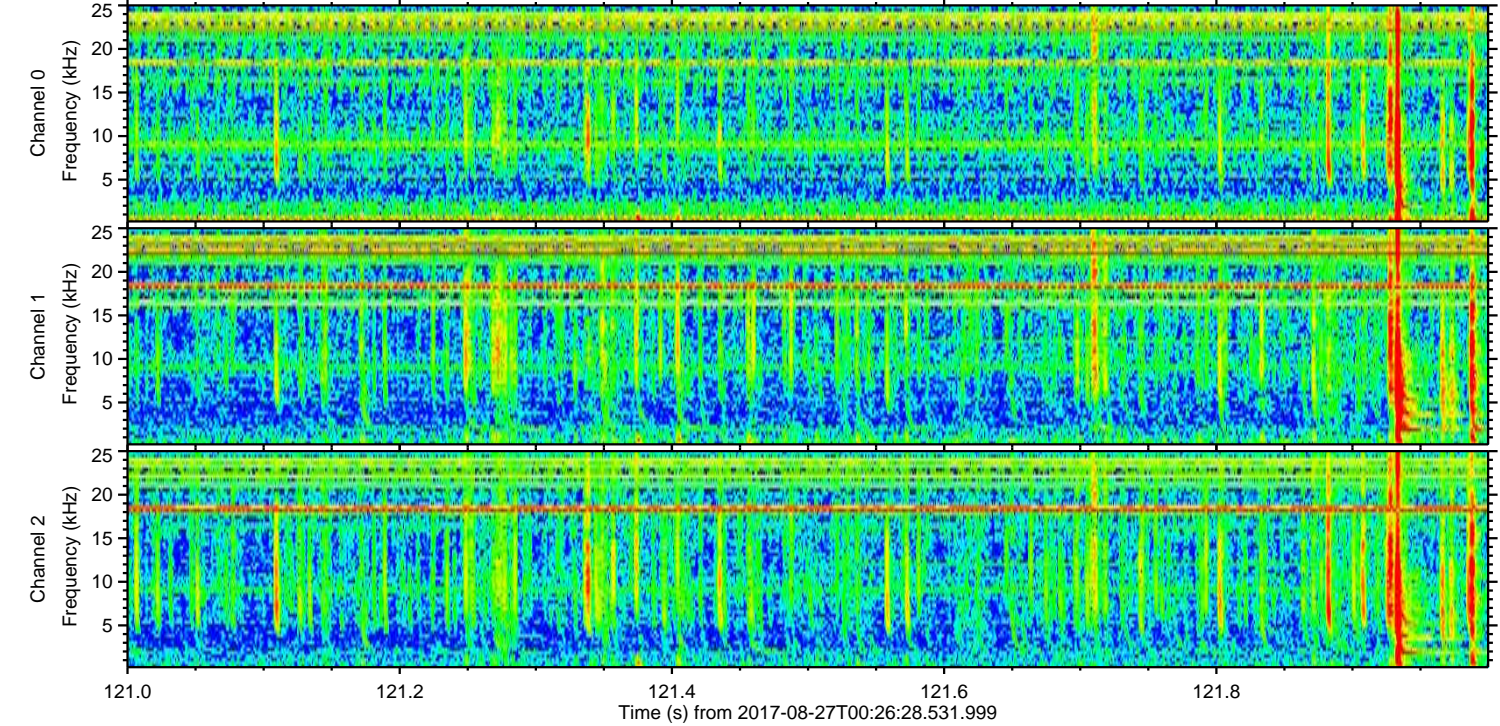
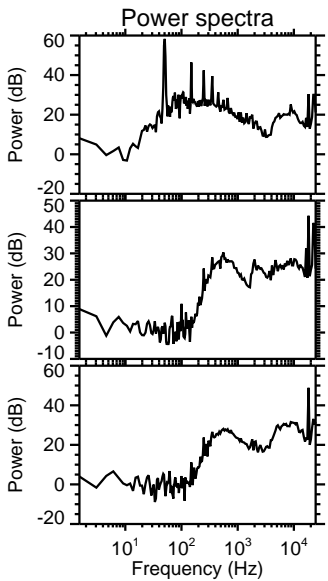
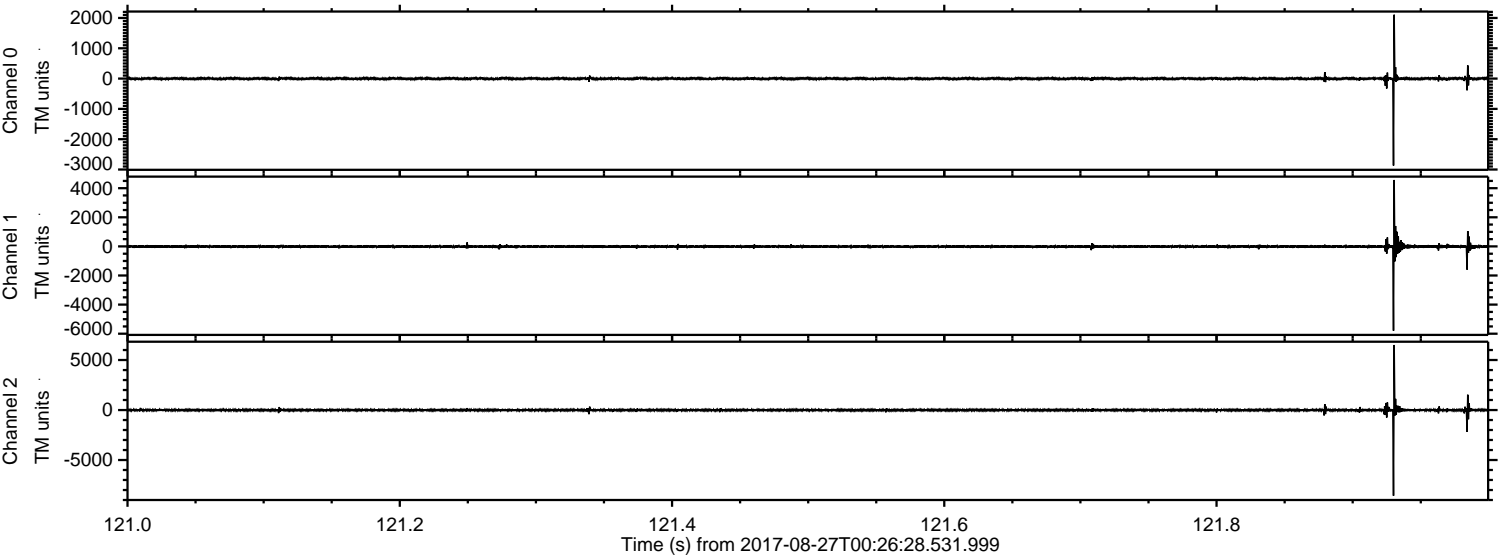
Processed Sun Aug 27 02:34:42 2017 by ELM ver.2012-10-06 from 001\_\_elm20170827\_002627\_\_dat00.bin





ELMAVAN 3D WAVEFORMS (Measured data sampled at 50 kHz) 51000 packets of 144 samples from 2017-08-27T00:26:28.531.999. Part 122/147

Processed Sun Aug 27 02:34:42 2017 by ELM ver.2012-10-06 from 001\_\_elm20170827\_002627\_\_dat00.bin



Channel 0  
mn: -2866  
mx: 2107  
 $\mu$ : -1.4  
 $\sigma$ : 29.3

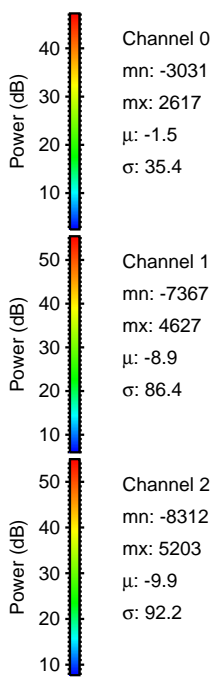
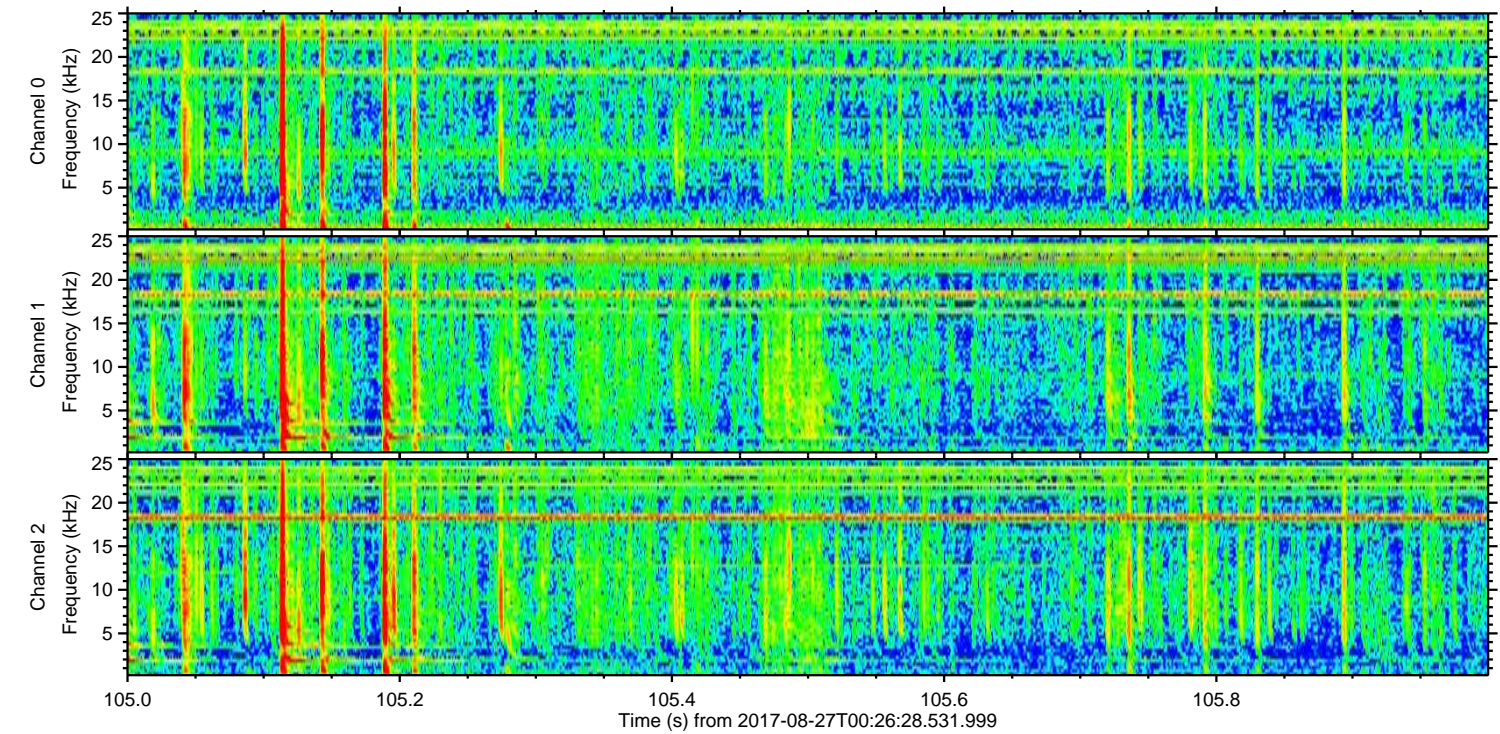
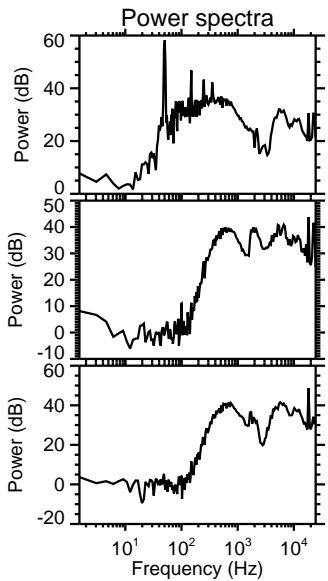
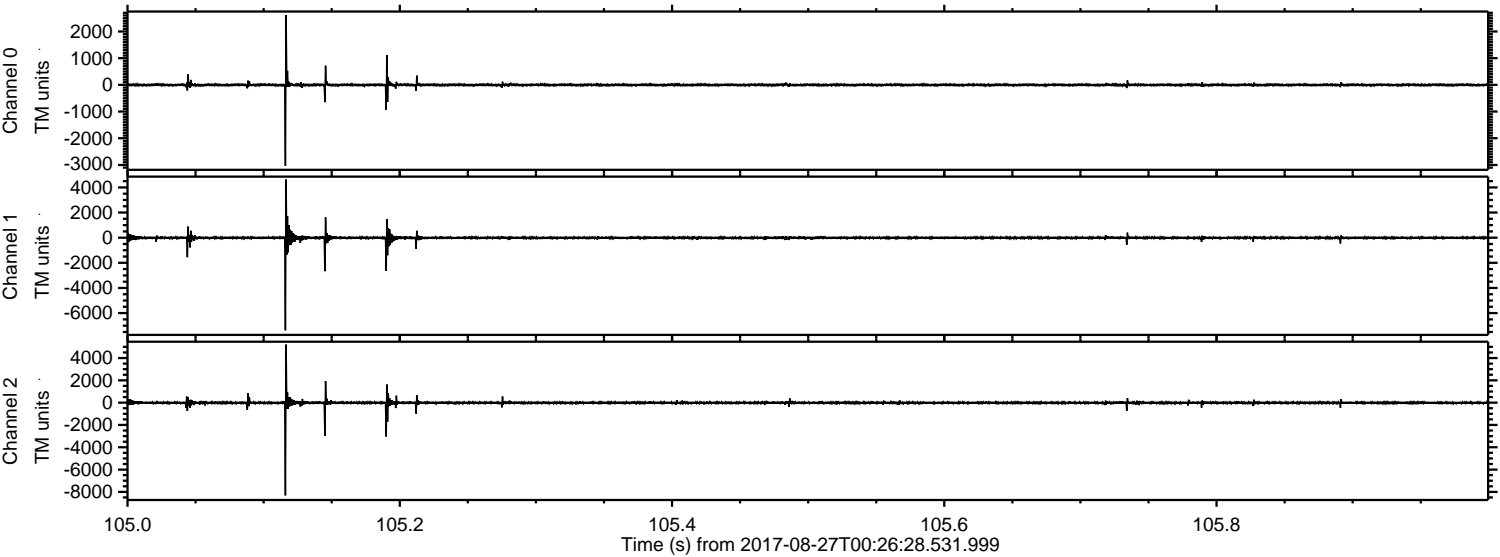
Channel 1  
mn: -5791  
mx: 4567  
 $\mu$ : -8.9  
 $\sigma$ : 66.9

Channel 2  
mn: -8573  
mx: 6508  
 $\mu$ : -9.9  
 $\sigma$ : 83.3



ELMAVAN 3D WAVEFORMS (Measured data sampled at 50 kHz) 51000 packets of 144 samples from 2017-08-27T00:26:28.531.999. Part 106/147

Processed Sun Aug 27 02:34:43 2017 by ELM ver.2012-10-06 from 001\_\_elm20170827\_002627\_\_dat00.bin



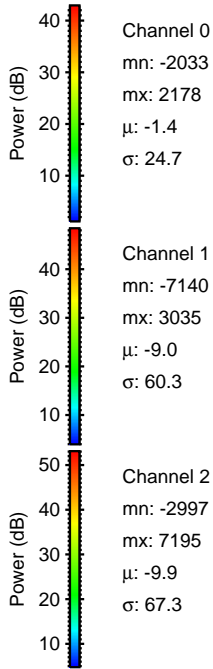
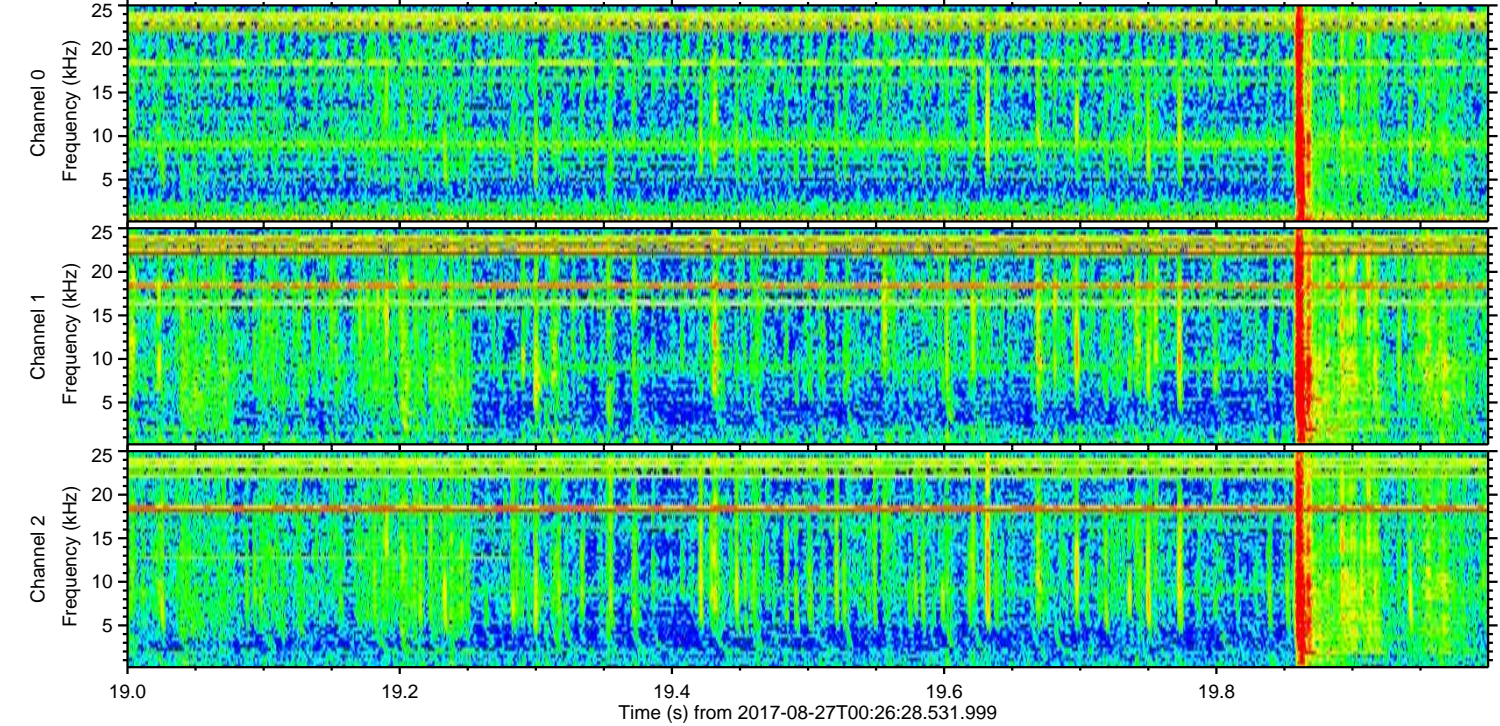
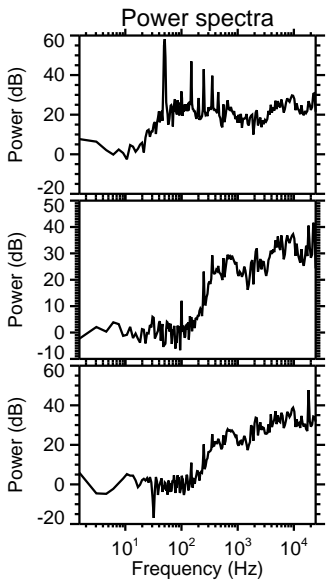
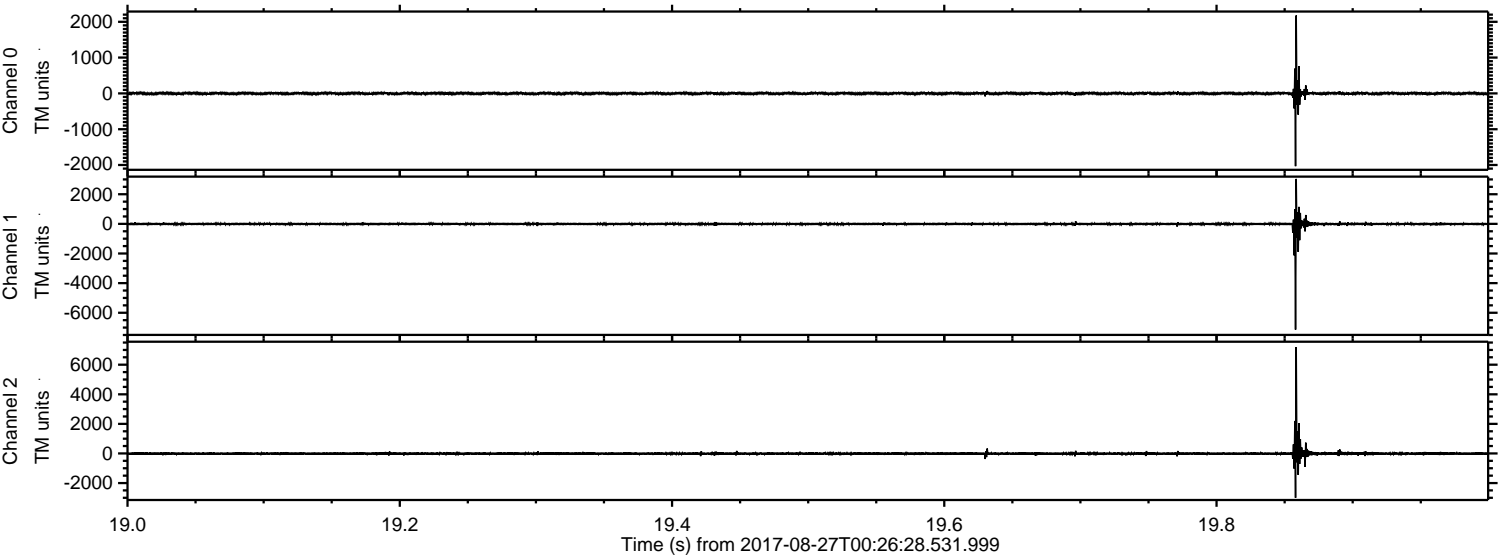
Channel 0  
mn: -3031  
mx: 2617  
 $\mu$ : -1.5  
 $\sigma$ : 35.4

Channel 1  
mn: -7367  
mx: 4627  
 $\mu$ : -8.9  
 $\sigma$ : 86.4

Channel 2  
mn: -8312  
mx: 5203  
 $\mu$ : -9.9  
 $\sigma$ : 92.2



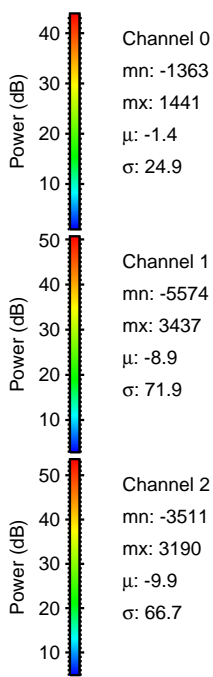
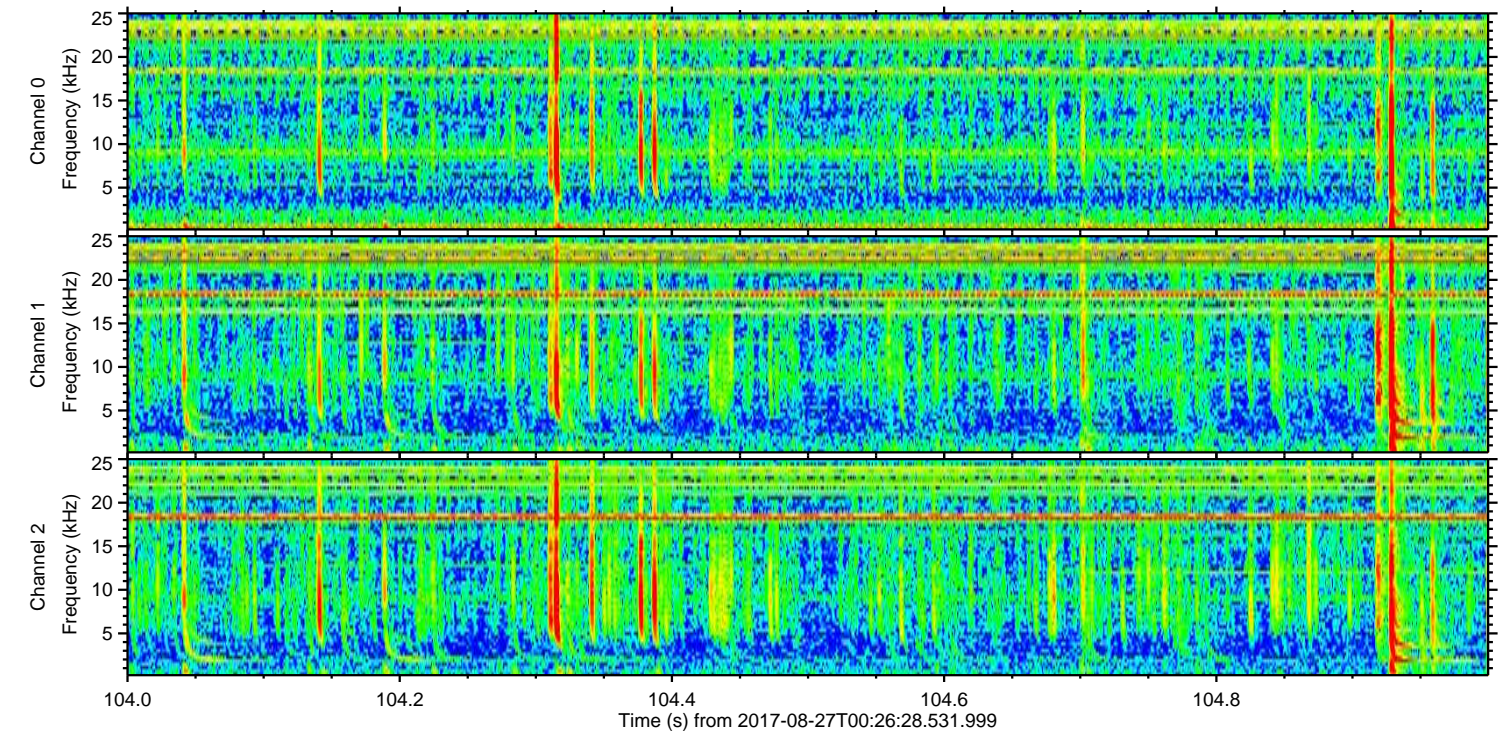
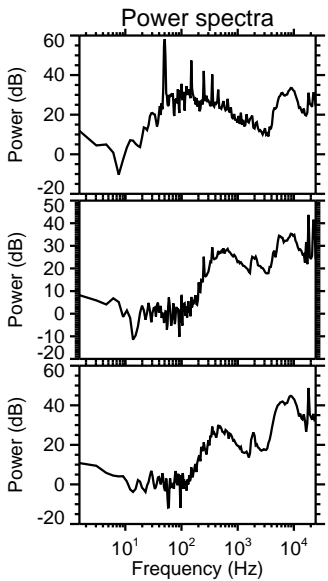
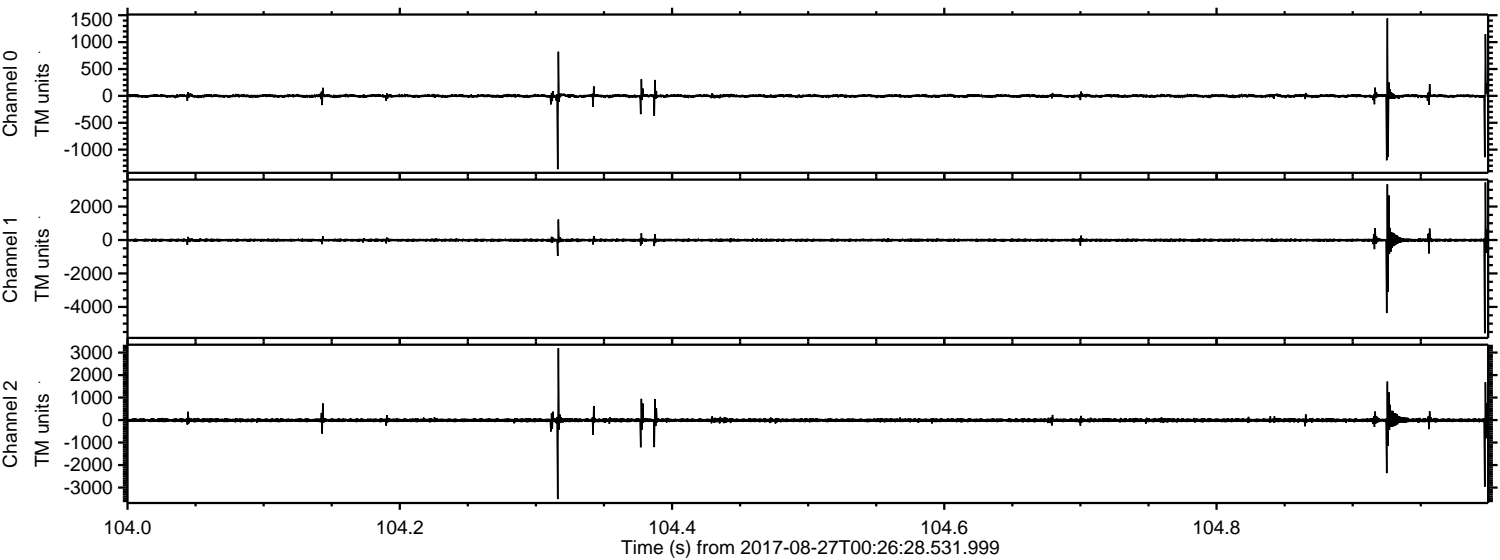
Processed Sun Aug 27 02:34:44 2017 by ELM ver.2012-10-06 from 001\_\_elm20170827\_002627\_\_dat00.bin





ELMAVAN 3D WAVEFORMS (Measured data sampled at 50 kHz) 51000 packets of 144 samples from 2017-08-27T00:26:28.531.999. Part 105/147

Processed Sun Aug 27 02:34:45 2017 by ELM ver.2012-10-06 from 001\_\_elm20170827\_002627\_\_dat00.bin



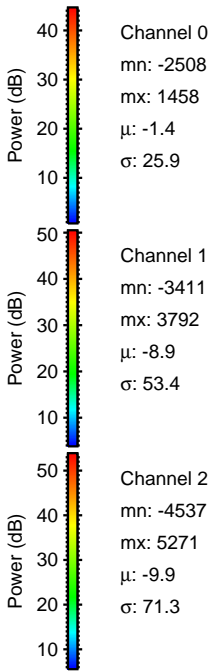
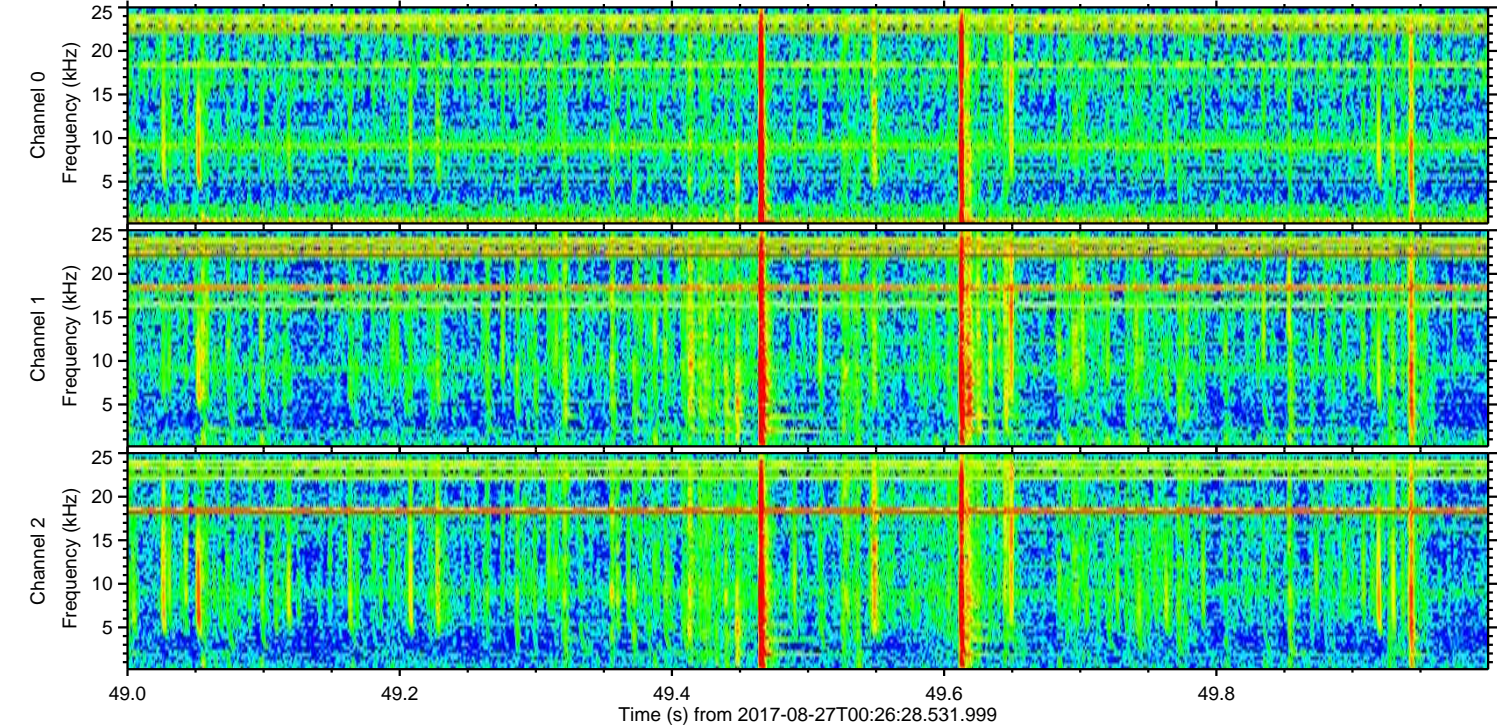
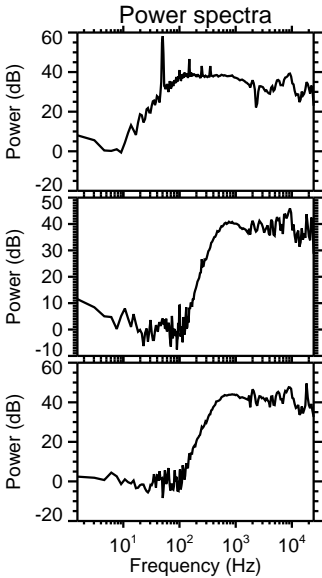
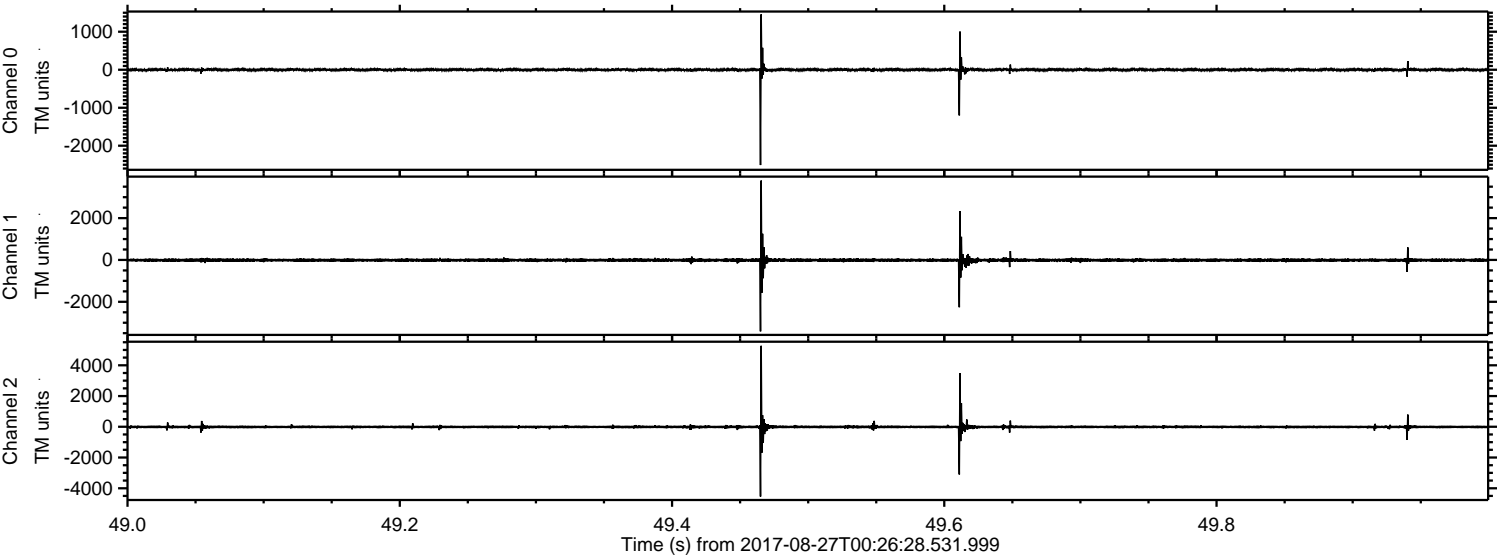
Channel 0  
mn: -1363  
mx: 1441  
 $\mu$ : -1.4  
 $\sigma$ : 24.9

Channel 1  
mn: -5574  
mx: 3437  
 $\mu$ : -8.9  
 $\sigma$ : 71.9

Channel 2  
mn: -3511  
mx: 3190  
 $\mu$ : -9.9  
 $\sigma$ : 66.7



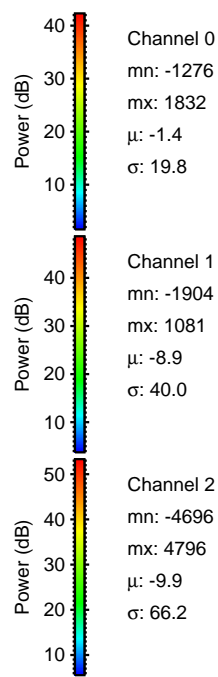
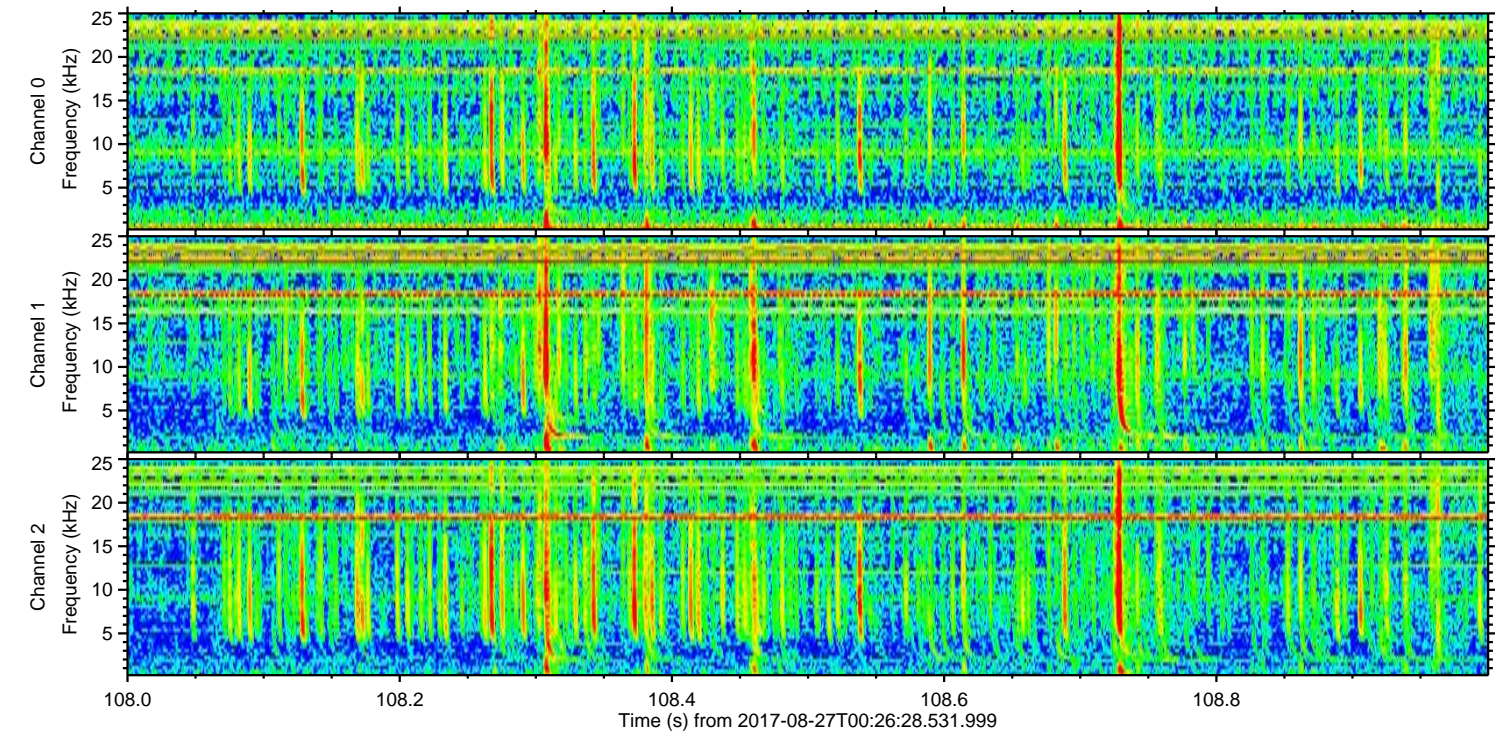
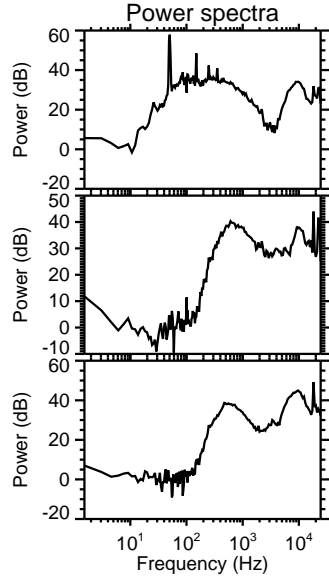
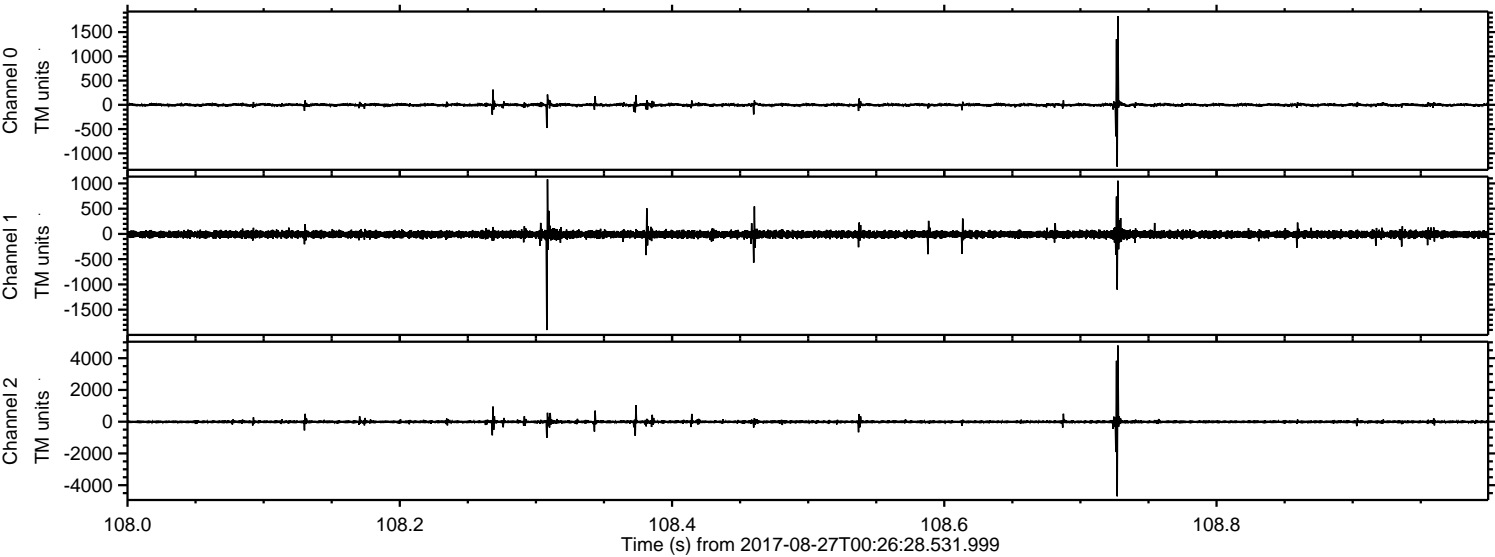
Processed Sun Aug 27 02:34:46 2017 by ELM ver.2012-10-06 from 001\_\_elm20170827\_002627\_\_dat00.bin





ELMAVAN 3D WAVEFORMS (Measured data sampled at 50 kHz) 51000 packets of 144 samples from 2017-08-27T00:26:28.531.999. Part 109/147

Processed Sun Aug 27 02:34:46 2017 by ELM ver.2012-10-06 from 001\_\_elm20170827\_002627\_\_dat00.bin



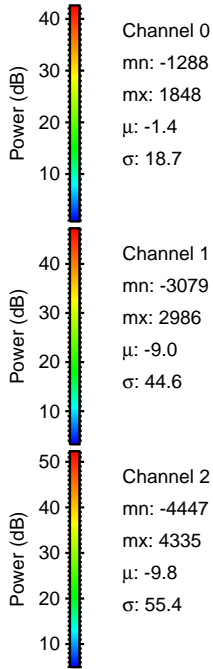
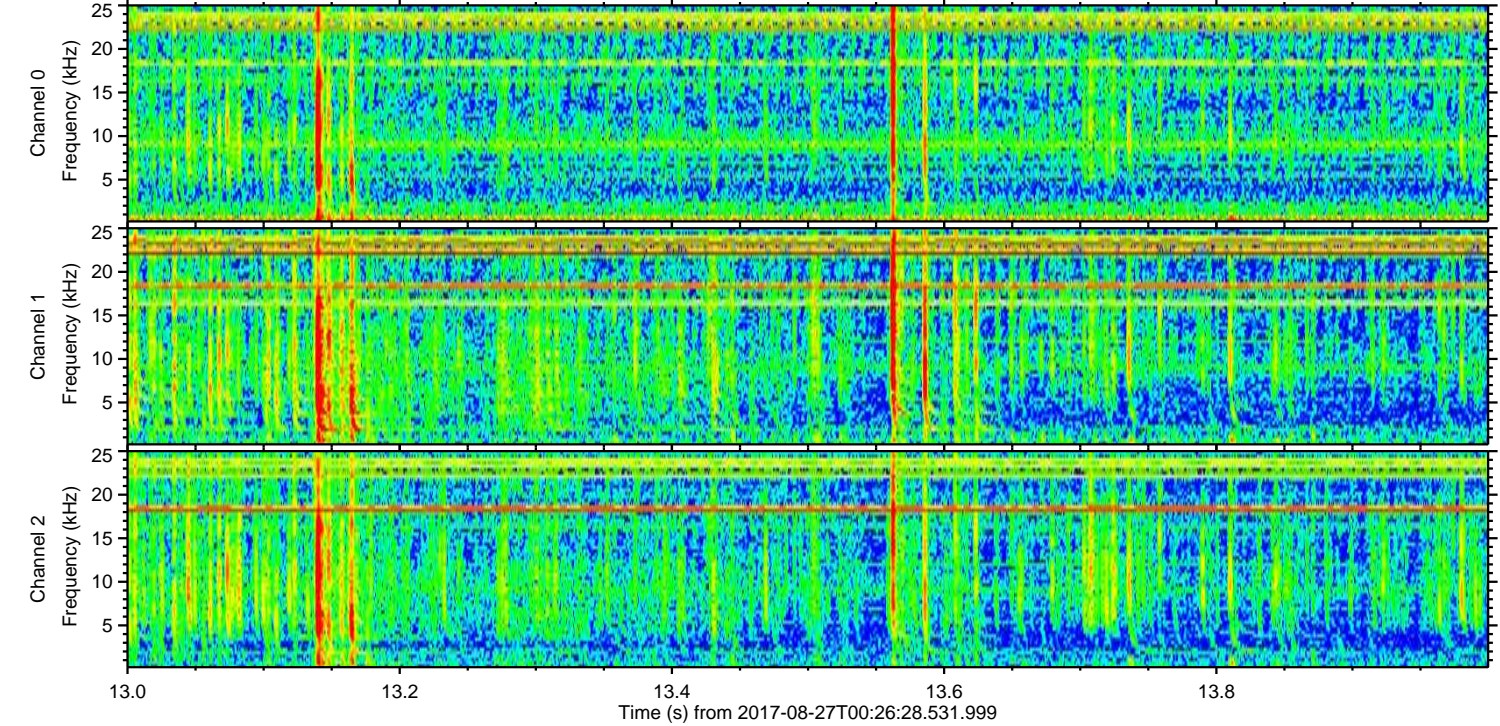
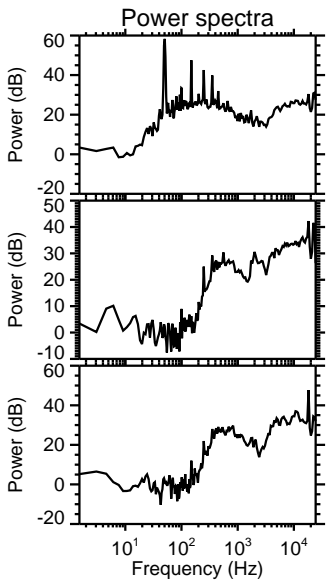
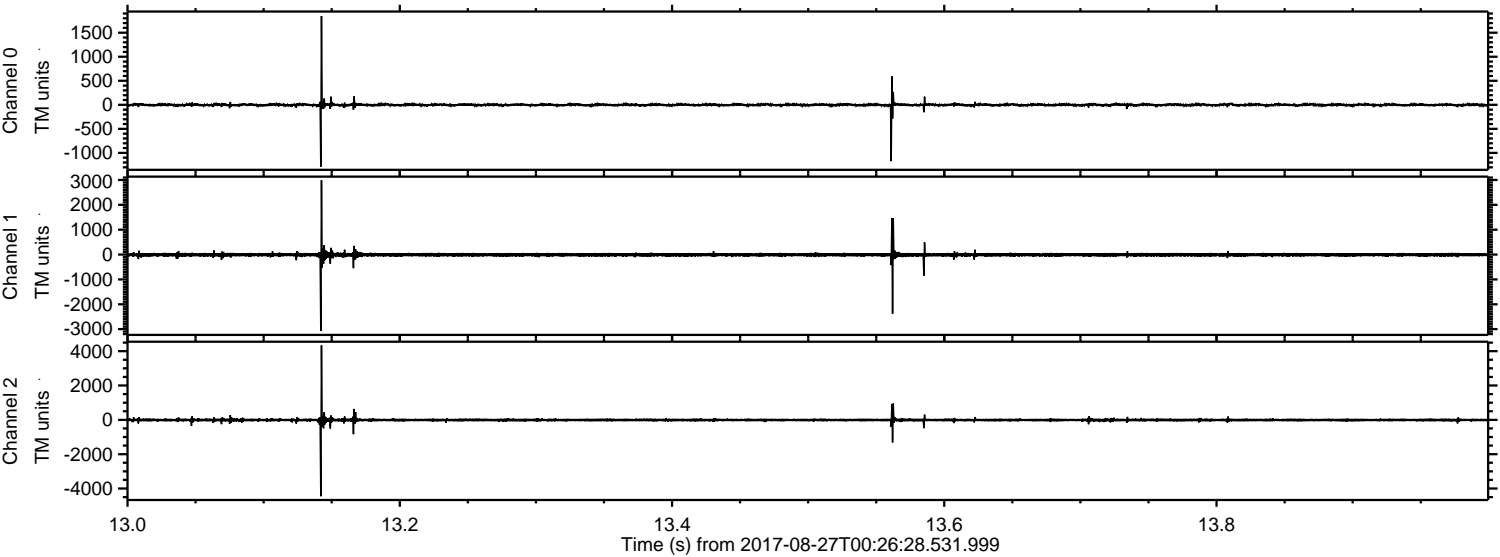
Channel 0  
mn: -1276  
mx: 1832  
 $\mu$ : -1.4  
 $\sigma$ : 19.8

Channel 1  
mn: -1904  
mx: 1081  
 $\mu$ : -8.9  
 $\sigma$ : 40.0

Channel 2  
mn: -4696  
mx: 4796  
 $\mu$ : -9.9  
 $\sigma$ : 66.2



Processed Sun Aug 27 02:34:47 2017 by ELM ver.2012-10-06 from 001\_\_elm20170827\_002627\_\_dat00.bin



Channel 0  
mn: -1288  
mx: 1848  
 $\mu$ : -1.4  
 $\sigma$ : 18.7

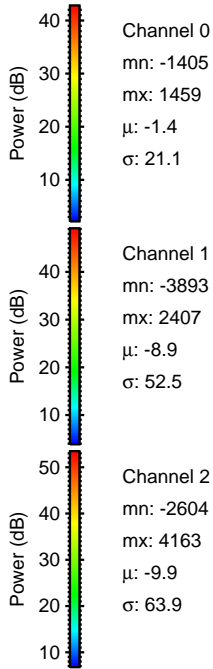
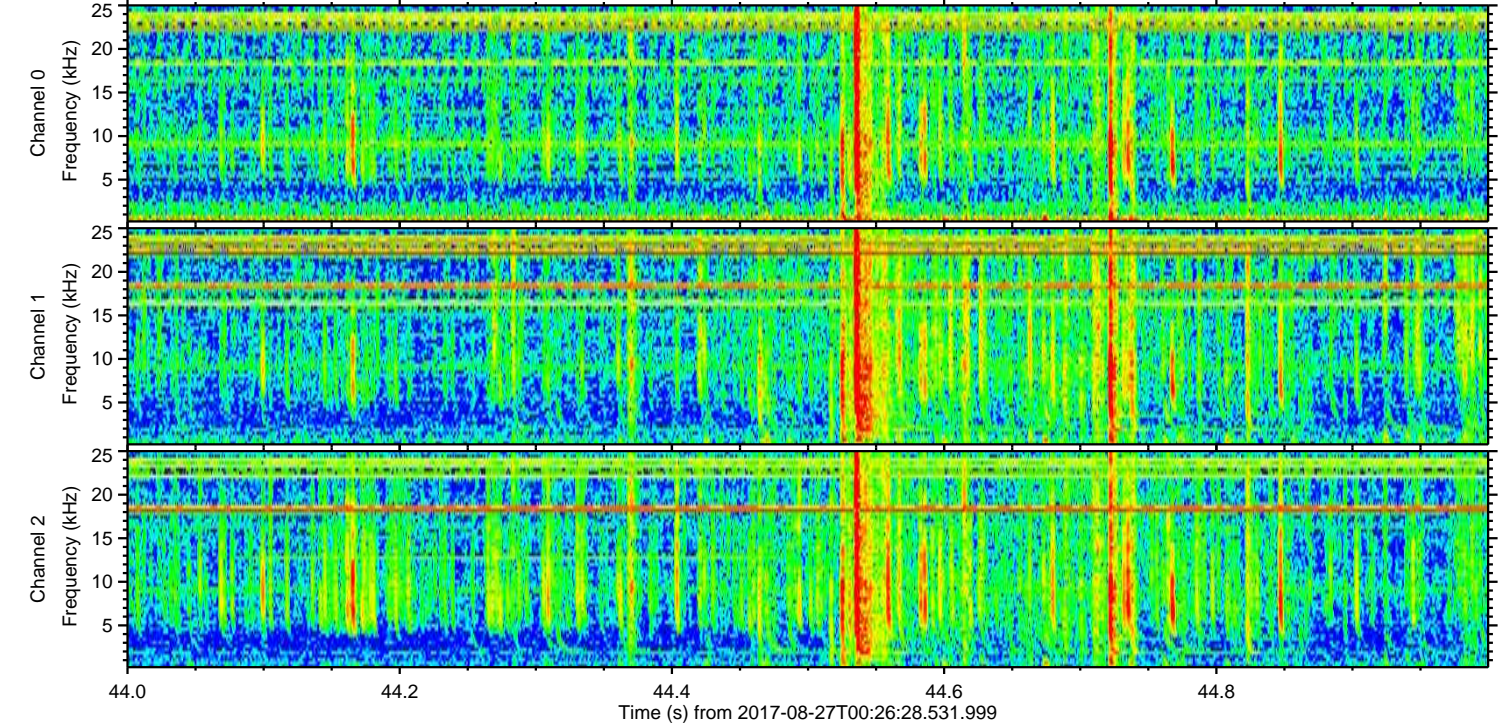
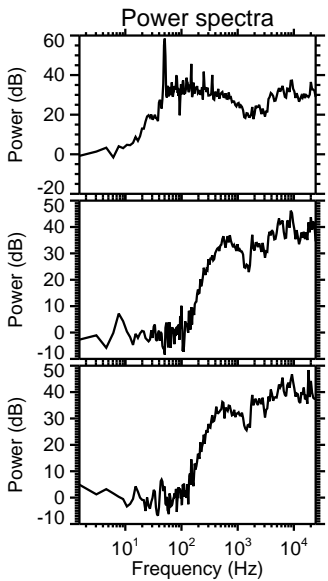
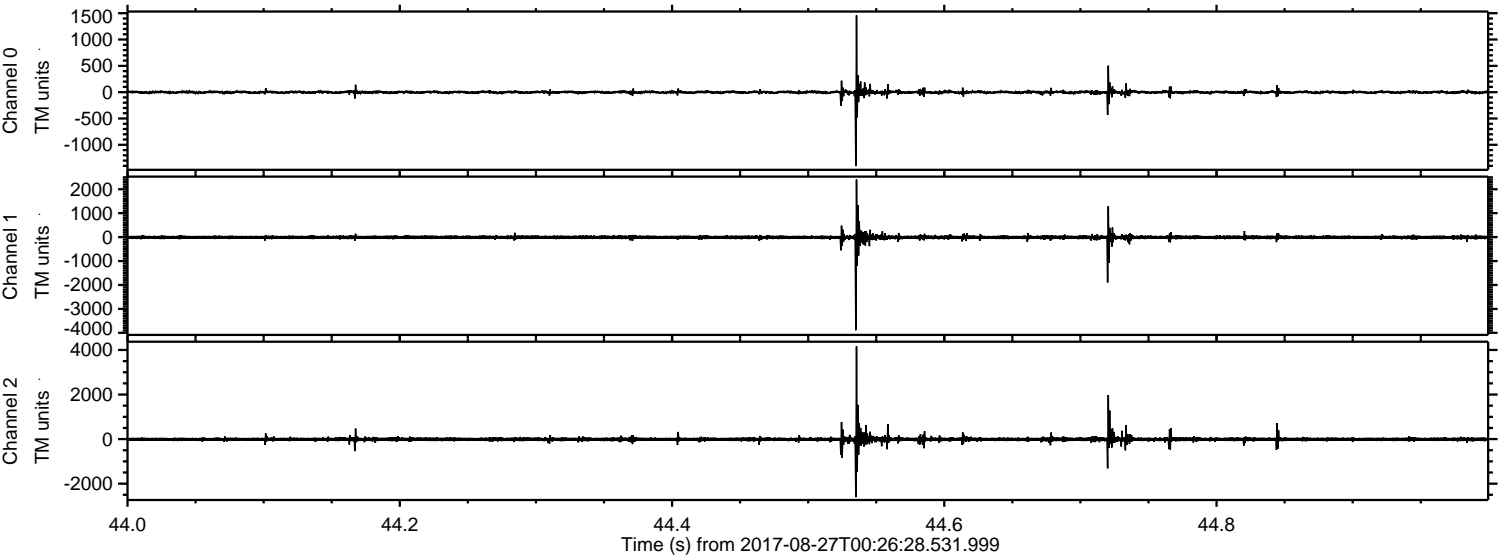
Channel 1  
mn: -3079  
mx: 2986  
 $\mu$ : -9.0  
 $\sigma$ : 44.6

Channel 2  
mn: -4447  
mx: 4335  
 $\mu$ : -9.8  
 $\sigma$ : 55.4



ELMAVAN 3D WAVEFORMS (Measured data sampled at 50 kHz) 51000 packets of 144 samples from 2017-08-27T00:26:28.531.999. Part 45/147

Processed Sun Aug 27 02:34:48 2017 by ELM ver.2012-10-06 from 001\_\_elm20170827\_002627\_\_dat00.bin





ELMAVAN 3D WAVEFORMS (Measured data sampled at 50 kHz) 51000 packets of 144 samples from 2017-08-27T00:26:28.531.999. Part 40/147

Processed Sun Aug 27 02:34:49 2017 by ELM ver.2012-10-06 from 001\_\_elm20170827\_002627\_\_dat00.bin

