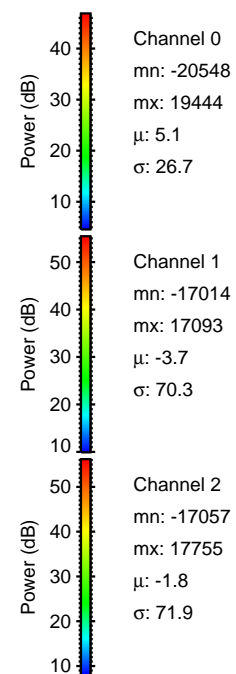
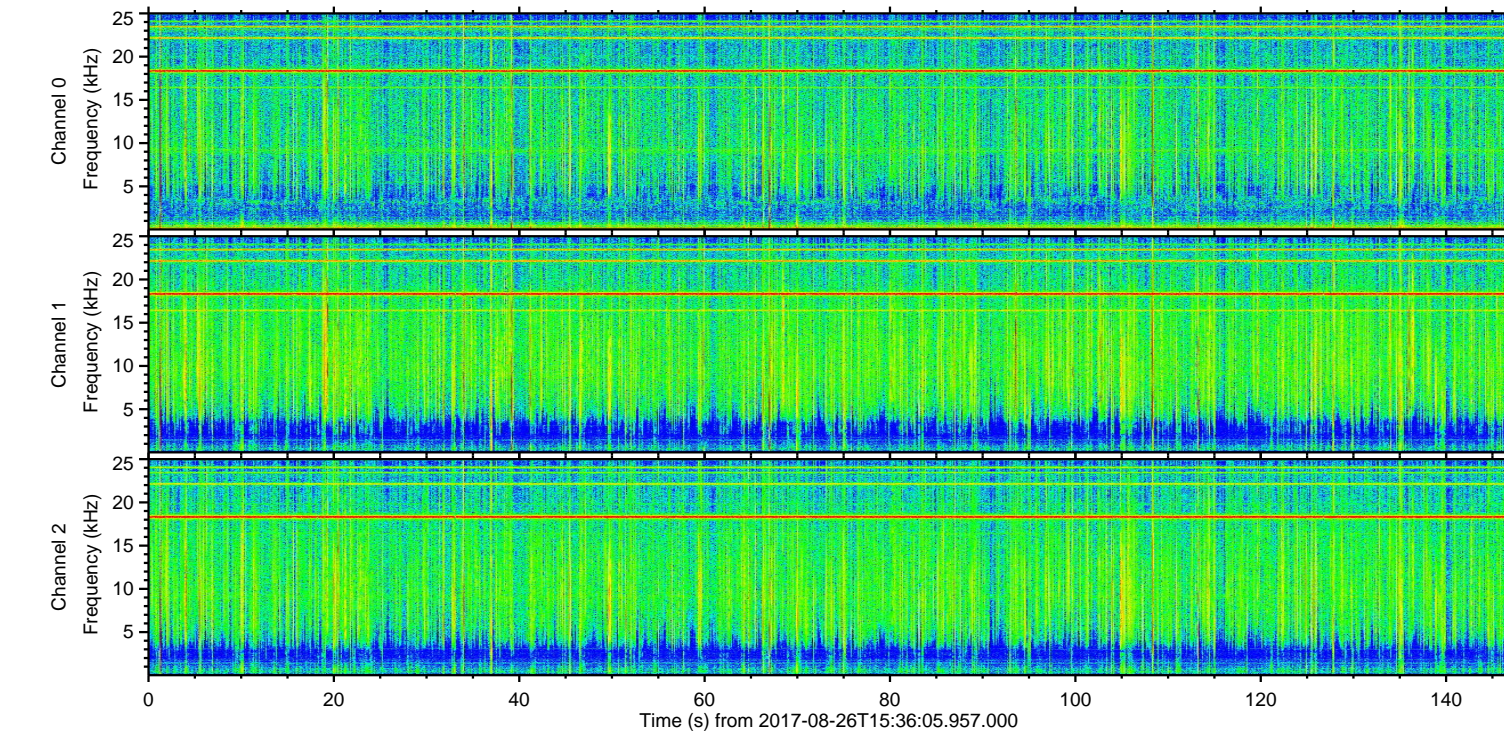
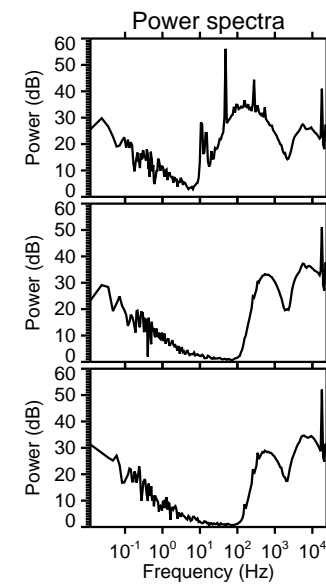
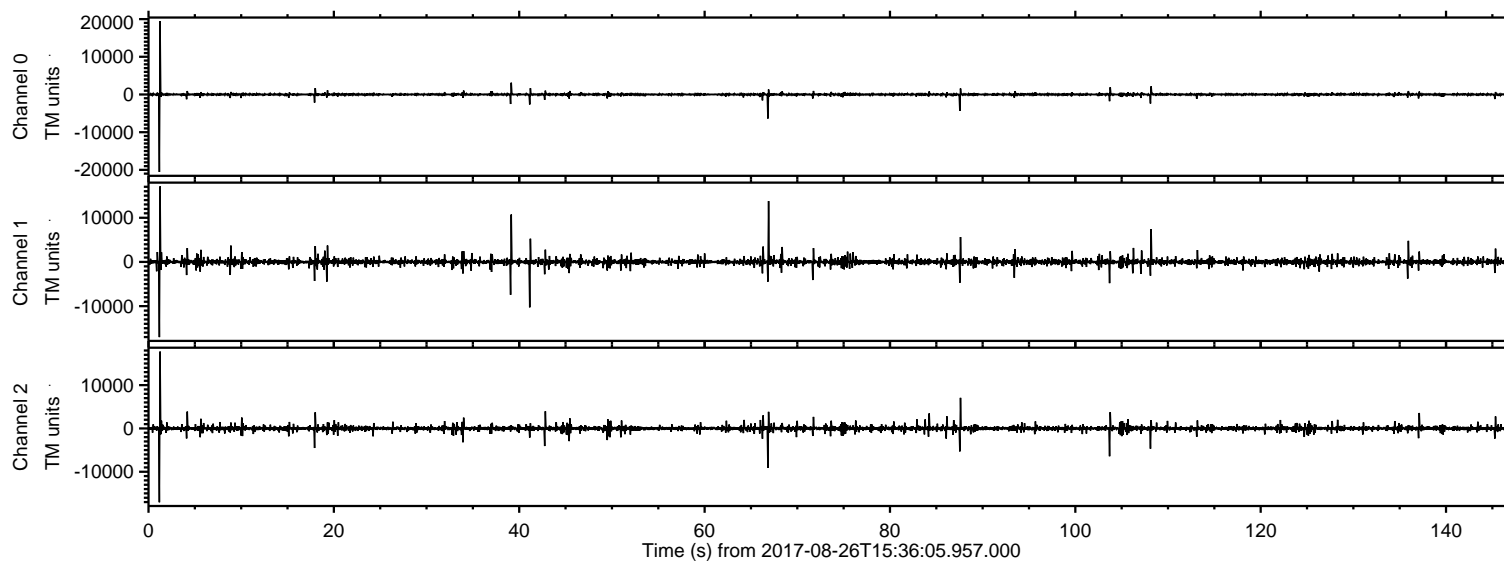


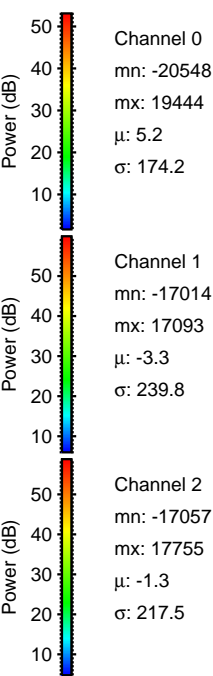
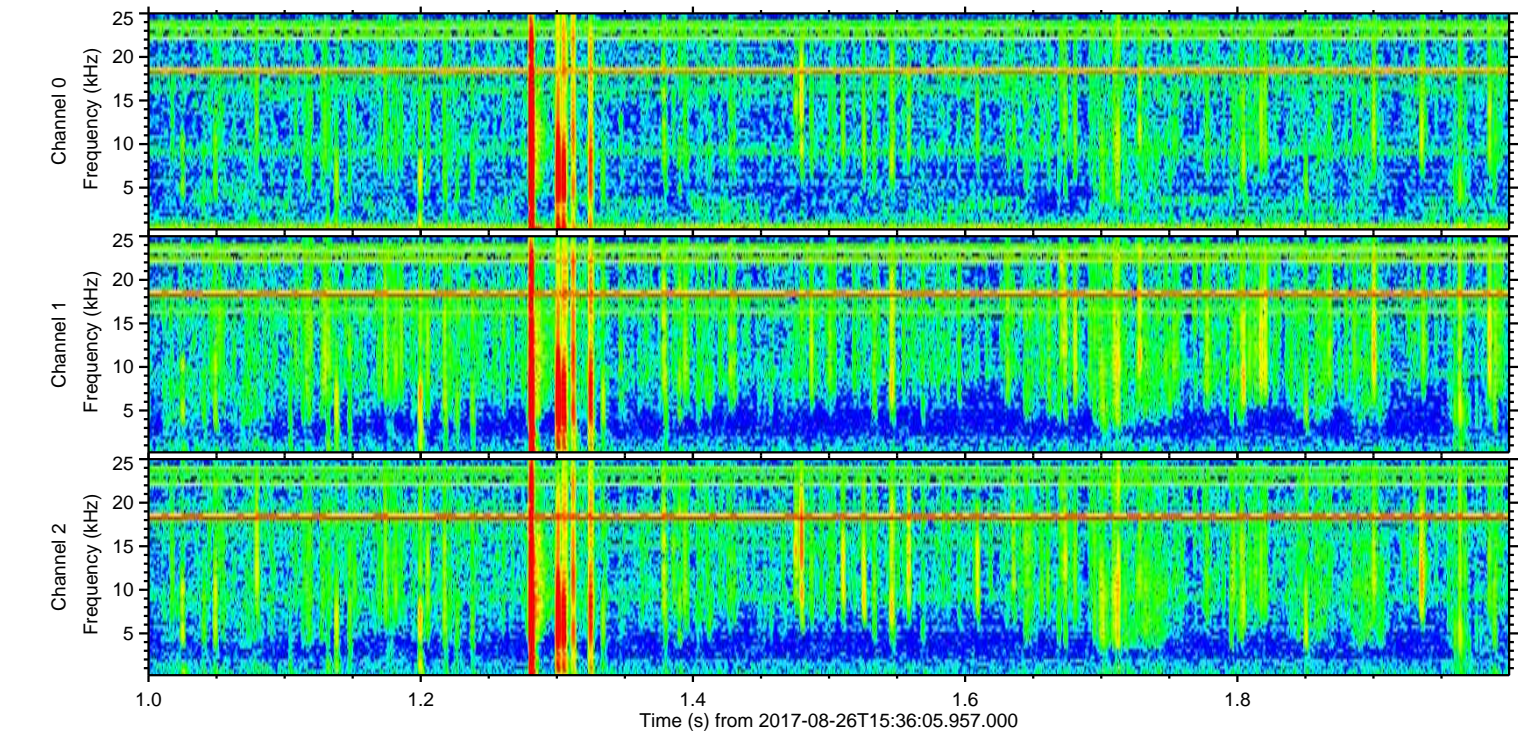
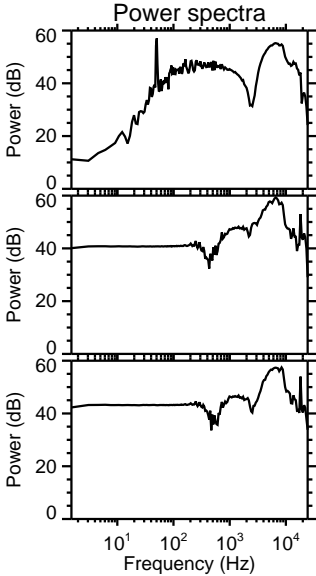
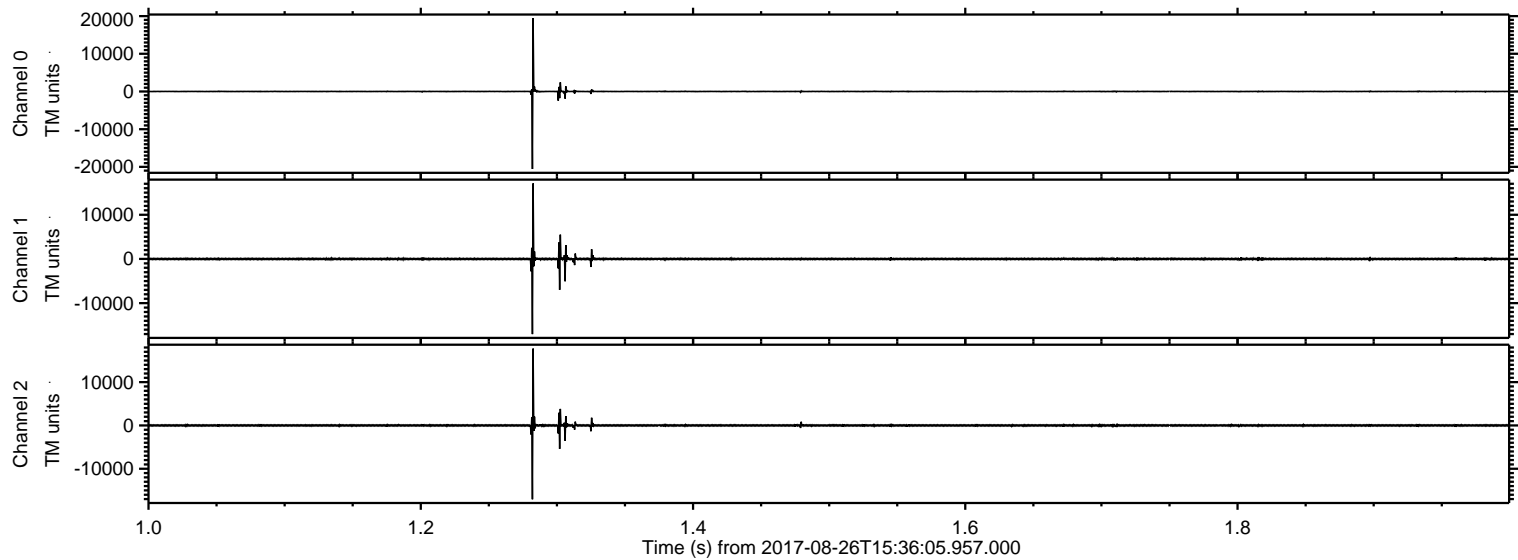
ELMAVAN 3D WAVEFORMS (Measured data sampled at 50 kHz) 51000 packets of 144 samples from 2017-08-26T15:36:05.957.000.

Processed Sat Aug 26 17:43:49 2017 by ELM ver.2012-10-06 from 001__elm20170826_153604__dat00.bin



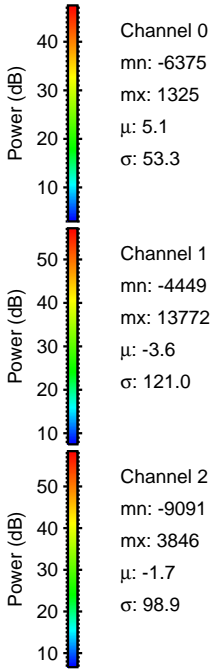
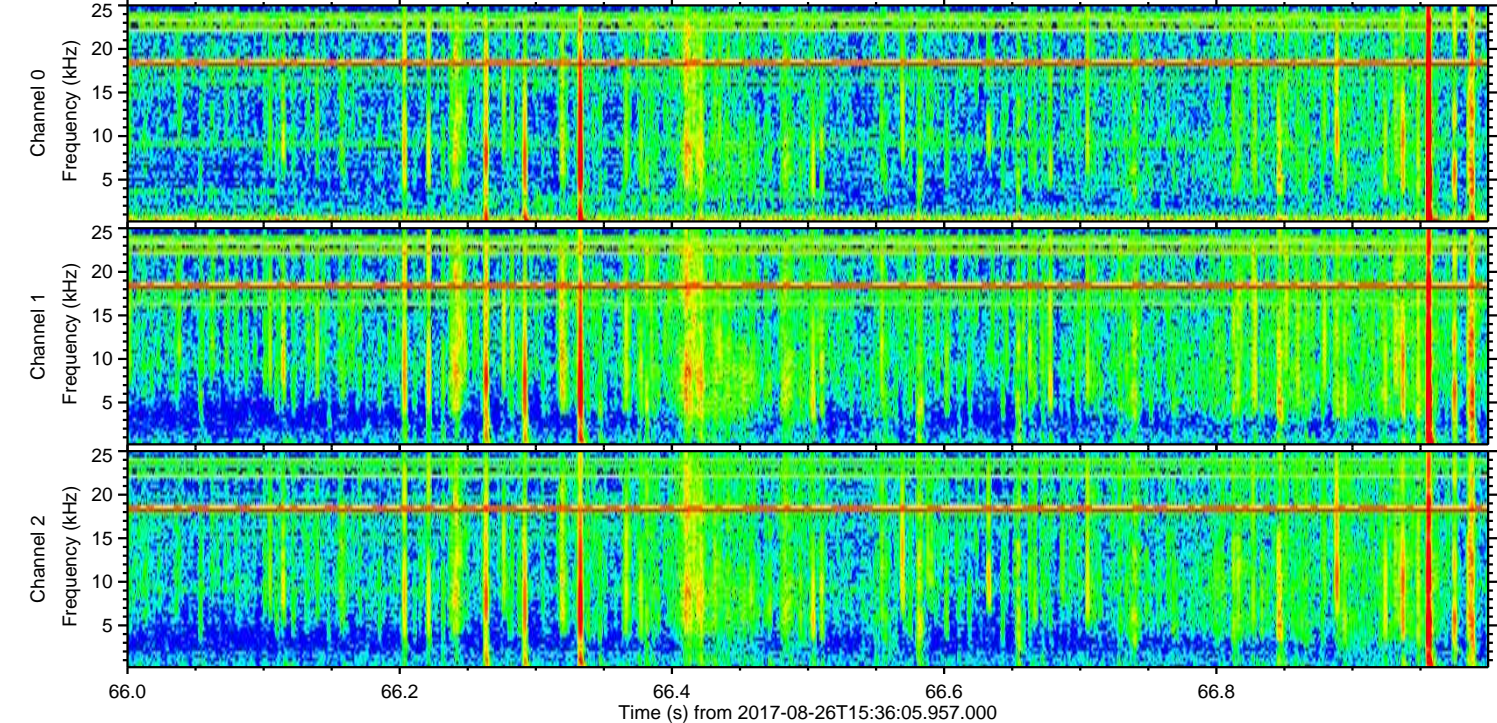
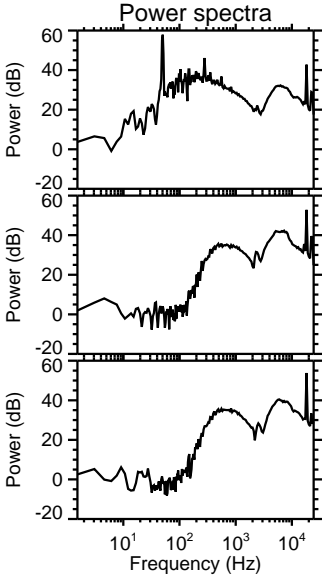
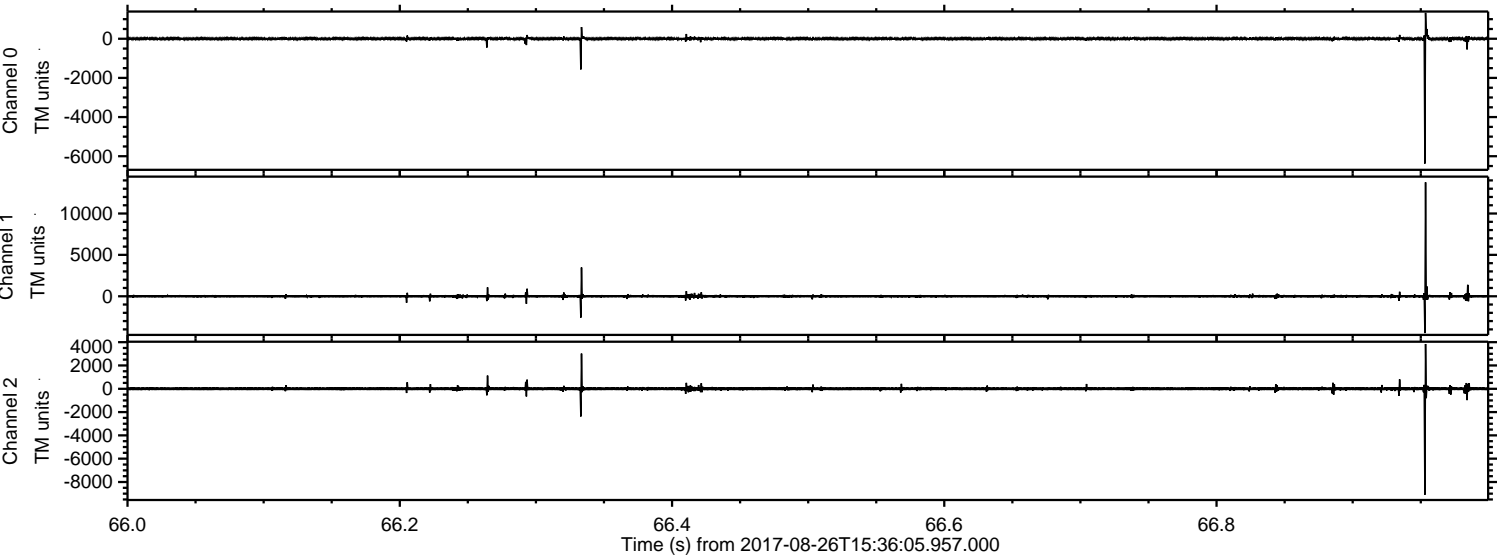
ELMAVAN 3D WAVEFORMS (Measured data sampled at 50 kHz) 51000 packets of 144 samples from 2017-08-26T15:36:05.957.000. Part 2/147

Processed Sat Aug 26 17:43:58 2017 by ELM ver.2012-10-06 from 001__elm20170826_153604__dat00.bin



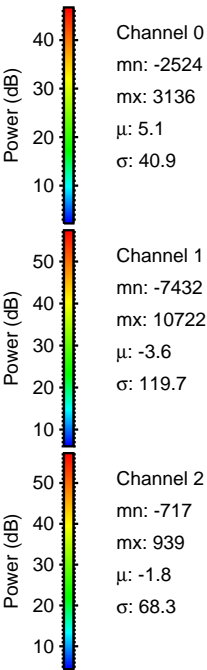
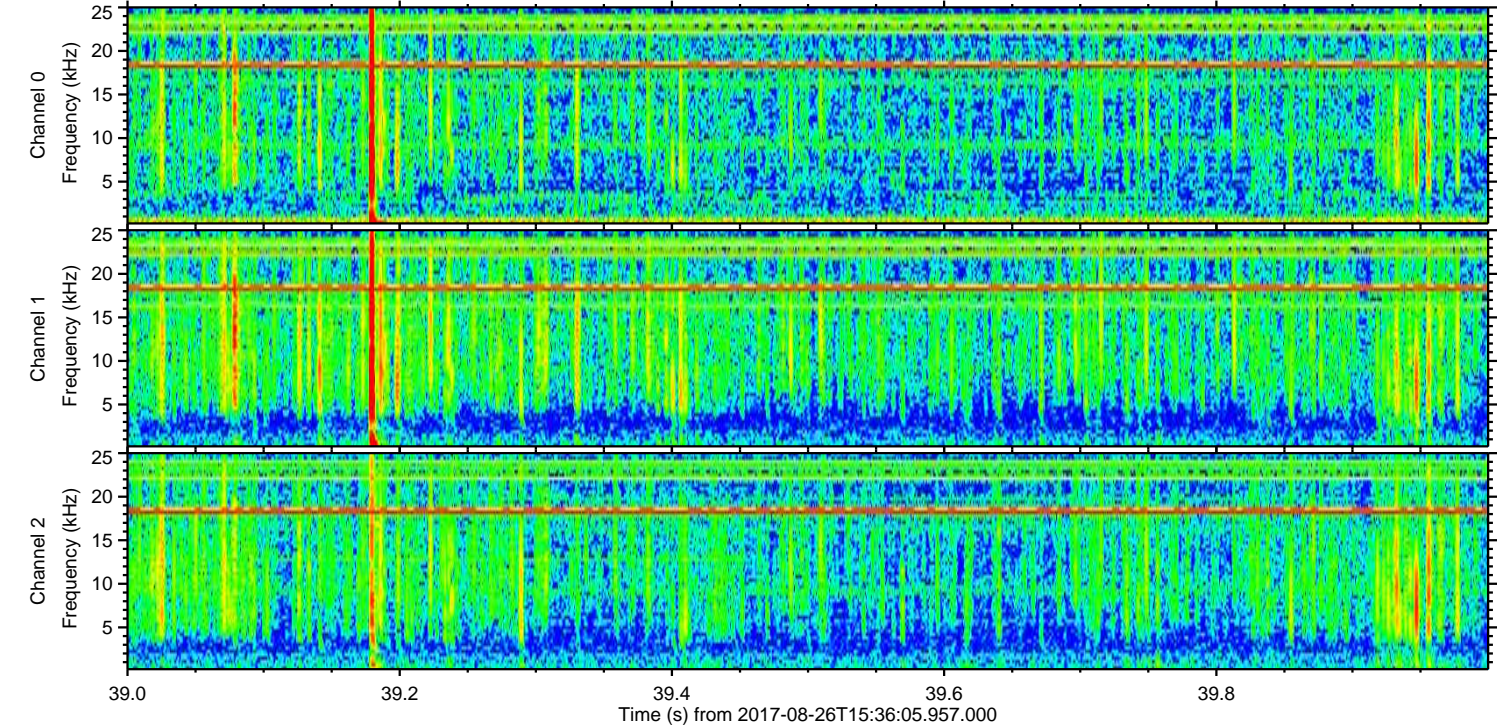
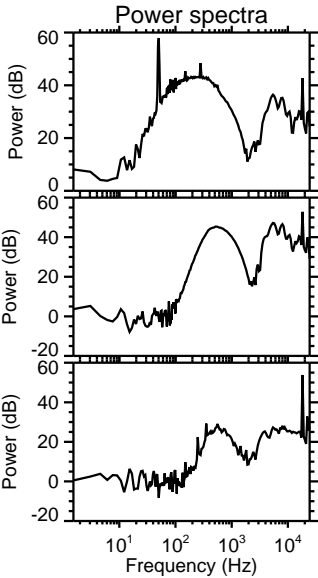
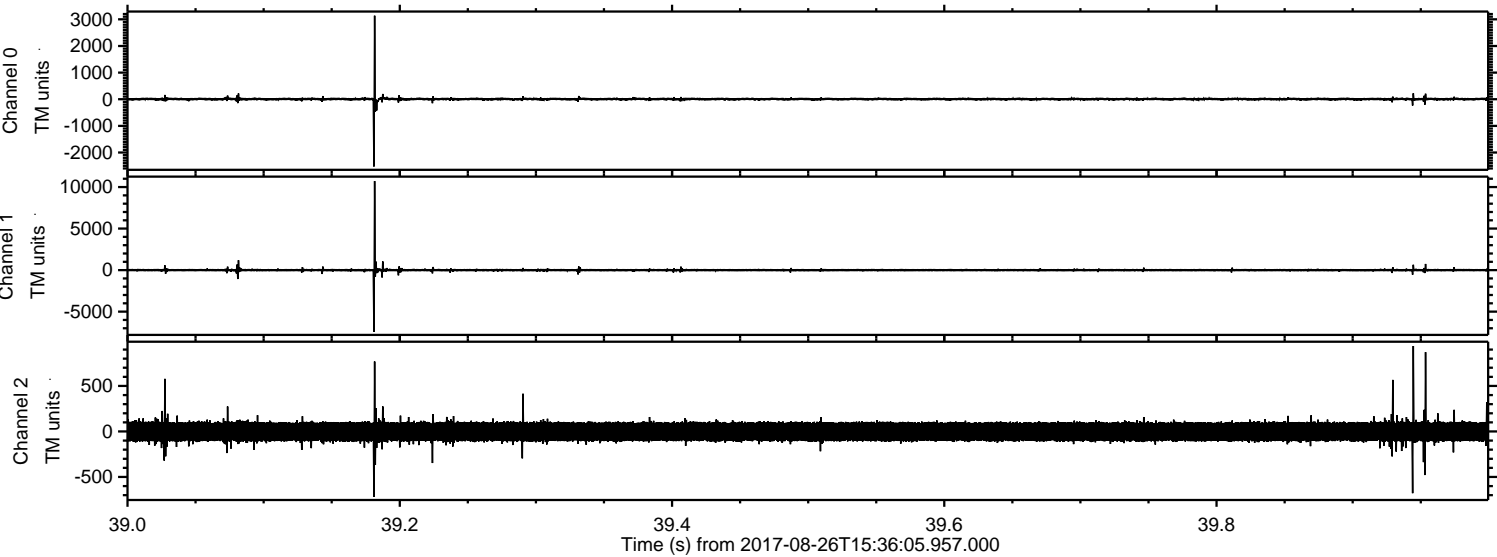
ELMAVAN 3D WAVEFORMS (Measured data sampled at 50 kHz) 51000 packets of 144 samples from 2017-08-26T15:36:05.957.000. Part 67/147

Processed Sat Aug 26 17:43:59 2017 by ELM ver.2012-10-06 from 001__elm20170826_153604__dat00.bin



ELMAVAN 3D WAVEFORMS (Measured data sampled at 50 kHz) 51000 packets of 144 samples from 2017-08-26T15:36:05.957.000. Part 40/147

Processed Sat Aug 26 17:44:00 2017 by ELM ver.2012-10-06 from 001__elm20170826_153604__dat00.bin

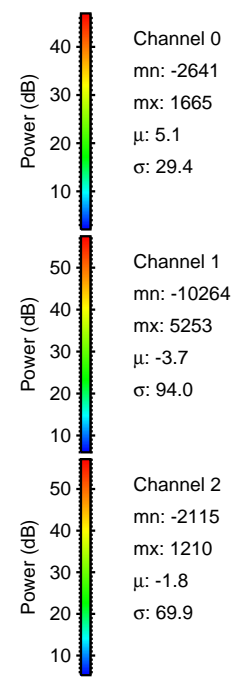
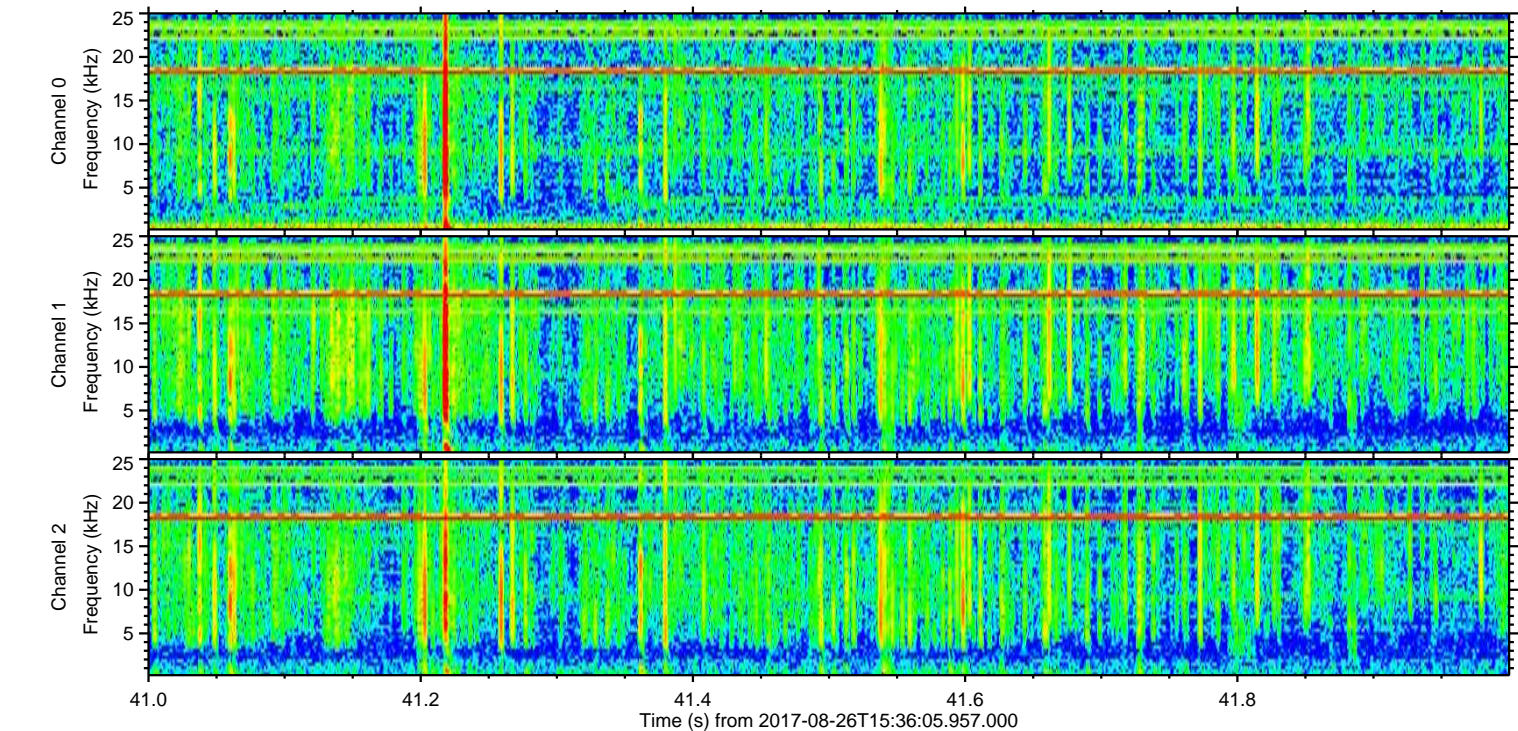
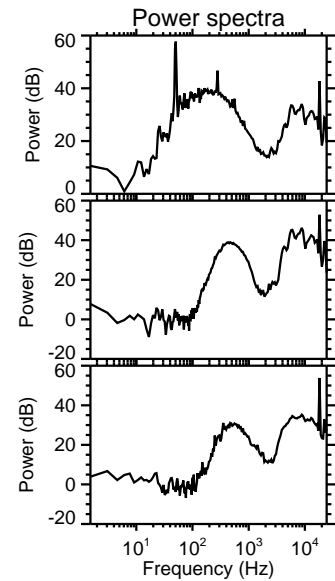
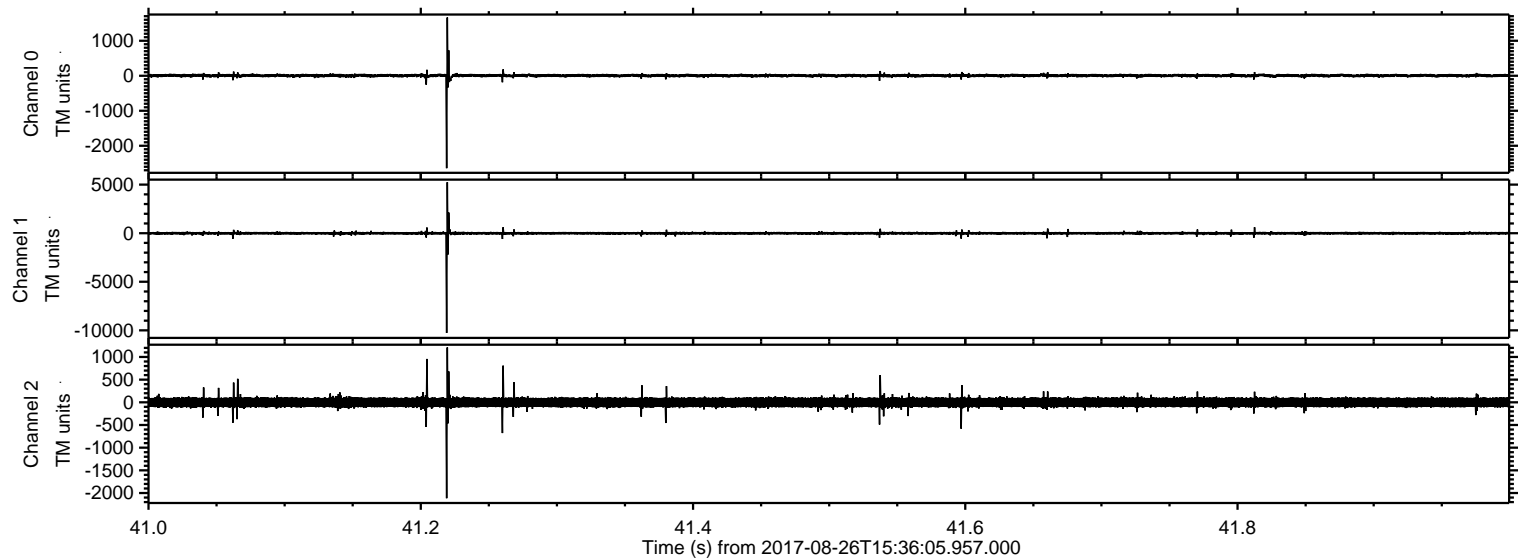


Channel 0
mn: -2524
mx: 3136
 μ : 5.1
 σ : 40.9

Channel 1
mn: -7432
mx: 10722
 μ : -3.6
 σ : 119.7

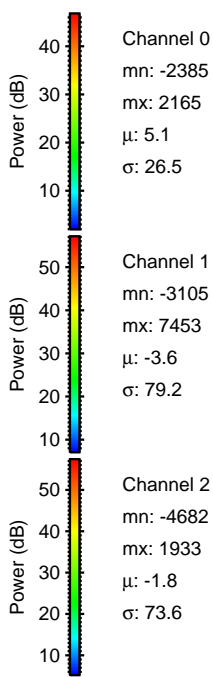
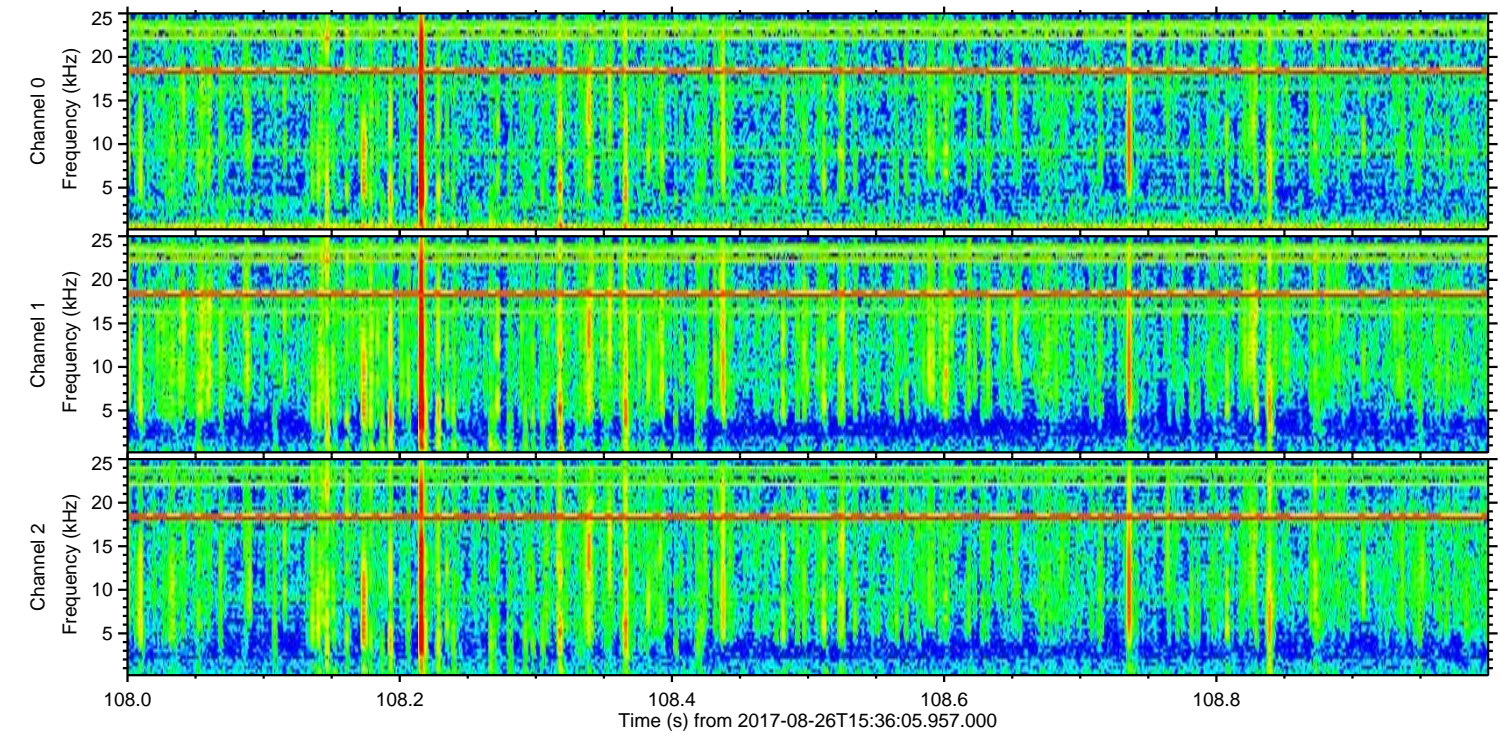
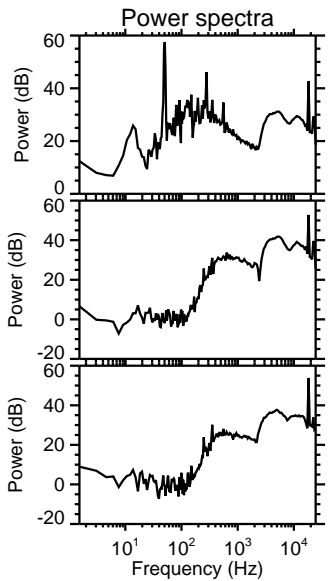
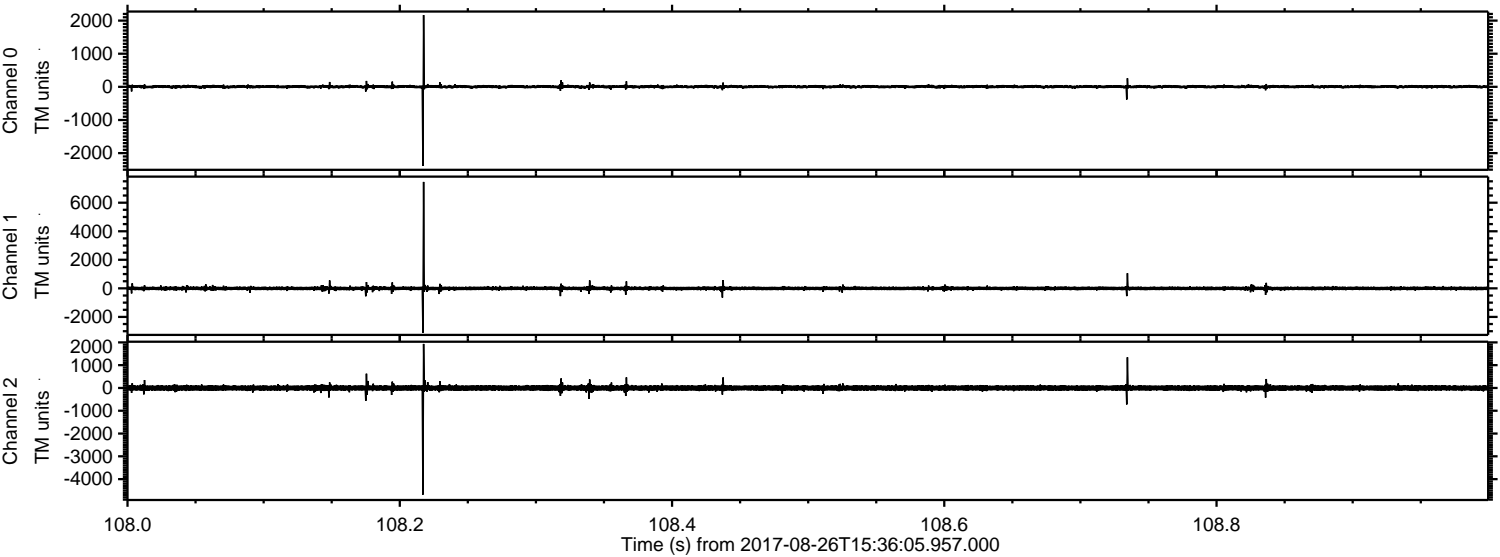
Channel 2
mn: -717
mx: 939
 μ : -1.8
 σ : 68.3

Processed Sat Aug 26 17:44:01 2017 by ELM ver.2012-10-06 from 001__elm20170826_153604__dat00.bin



ELMAVAN 3D WAVEFORMS (Measured data sampled at 50 kHz) 51000 packets of 144 samples from 2017-08-26T15:36:05.957.000. Part 109/147

Processed Sat Aug 26 17:44:01 2017 by ELM ver.2012-10-06 from 001__elm20170826_153604__dat00.bin

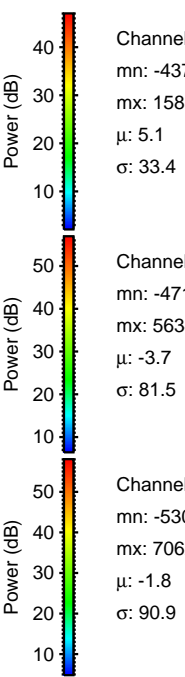
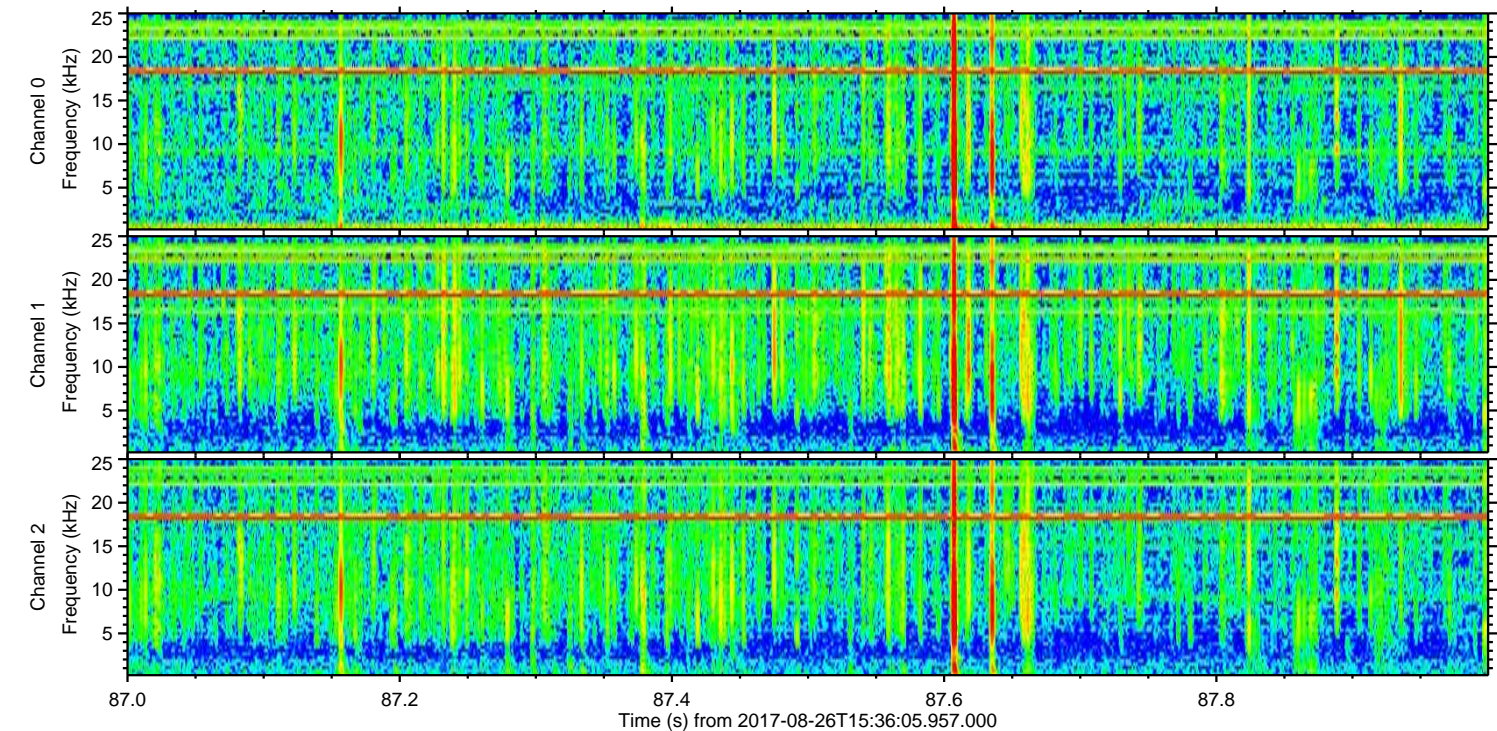
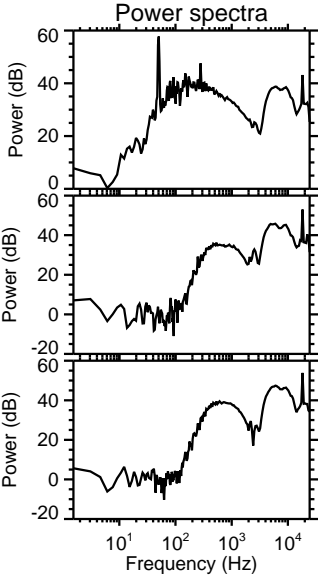
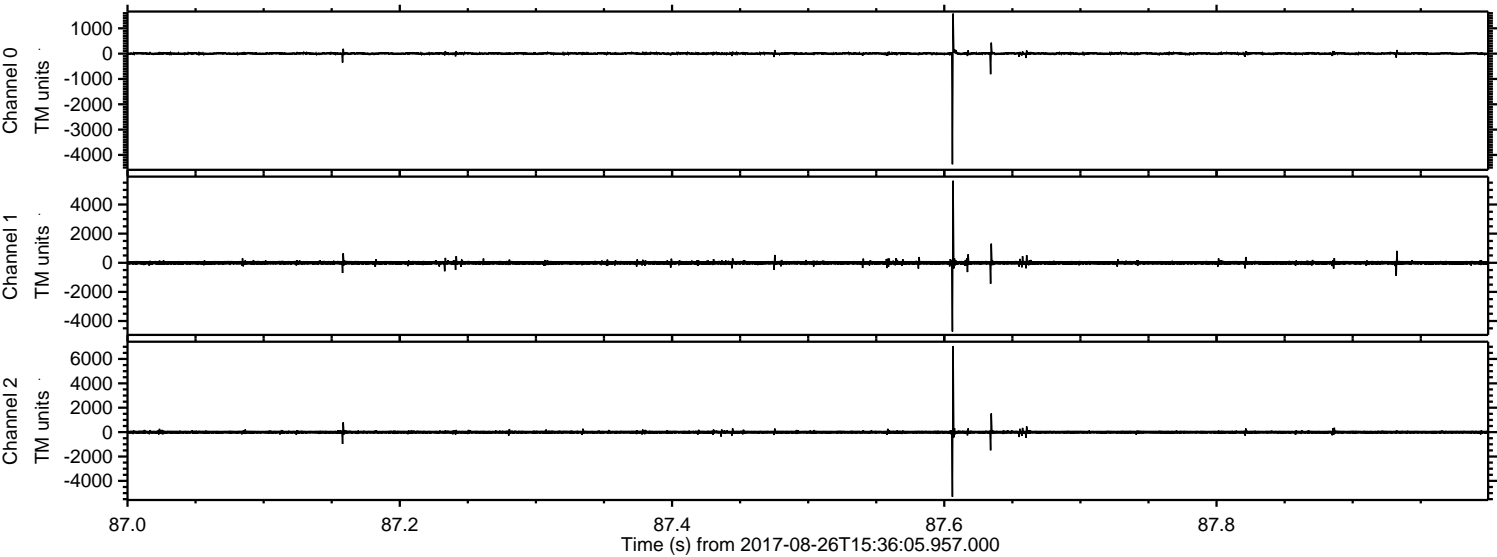


Channel 0
mn: -2385
mx: 2165
 μ : 5.1
 σ : 26.5

Channel 1
mn: -3105
mx: 7453
 μ : -3.6
 σ : 79.2

Channel 2
mn: -4682
mx: 1933
 μ : -1.8
 σ : 73.6

Processed Sat Aug 26 17:44:02 2017 by ELM ver.2012-10-06 from 001__elm20170826_153604__dat00.bin



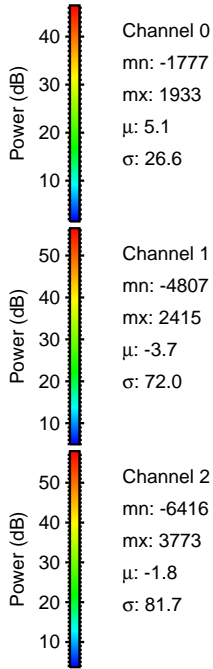
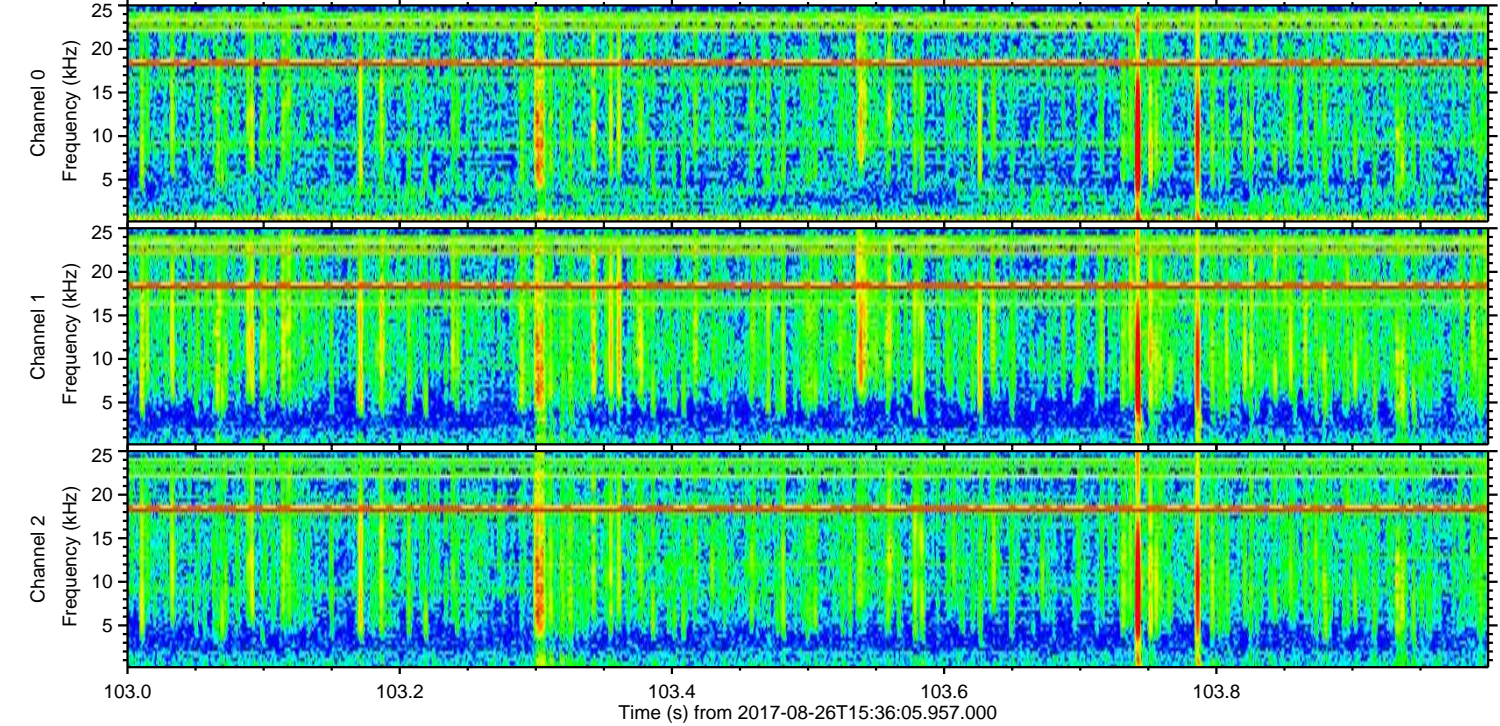
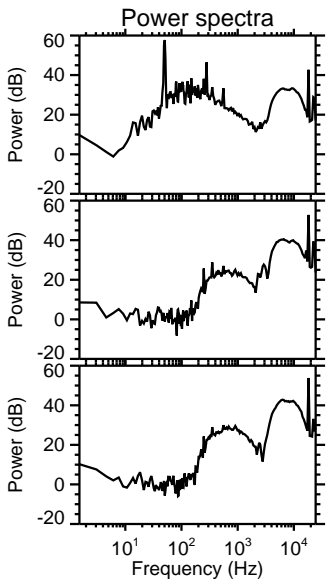
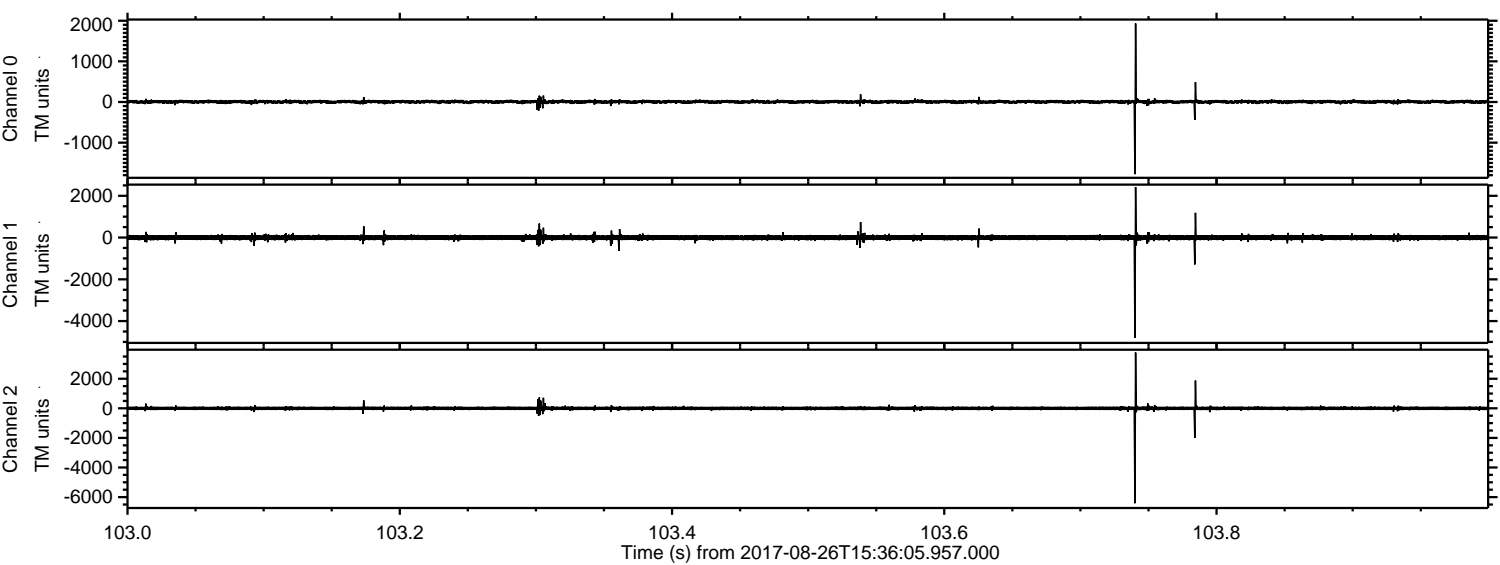
Channel 0
mn: -4370
mx: 1585
 μ : 5.1
 σ : 33.4

Channel 1
mn: -4718
mx: 5634
 μ : -3.7
 σ : 81.5

Channel 2
mn: -5302
mx: 7062
 μ : -1.8
 σ : 90.9

ELMAVAN 3D WAVEFORMS (Measured data sampled at 50 kHz) 51000 packets of 144 samples from 2017-08-26T15:36:05.957.000. Part 104/147

Processed Sat Aug 26 17:44:03 2017 by ELM ver.2012-10-06 from 001__elm20170826_153604__dat00.bin



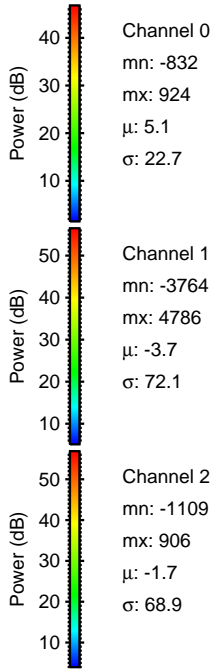
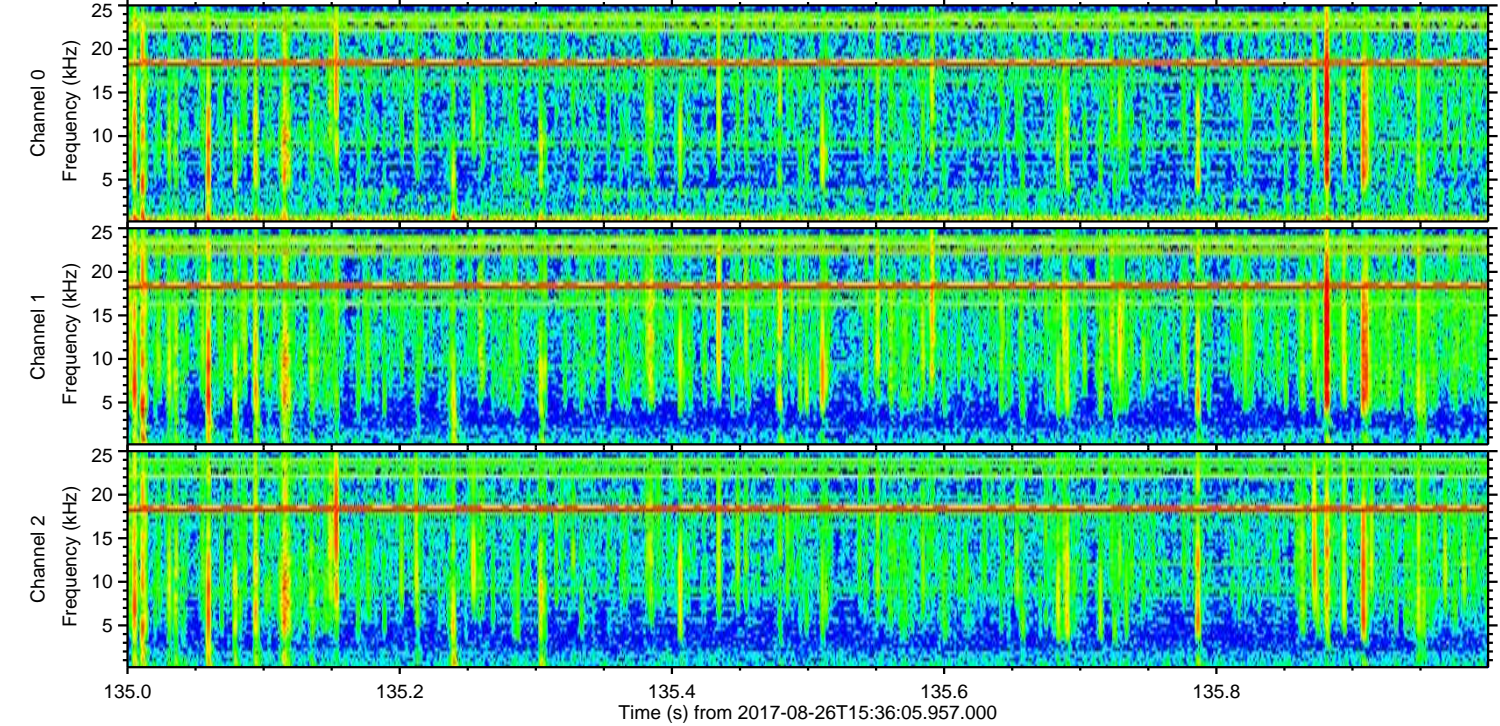
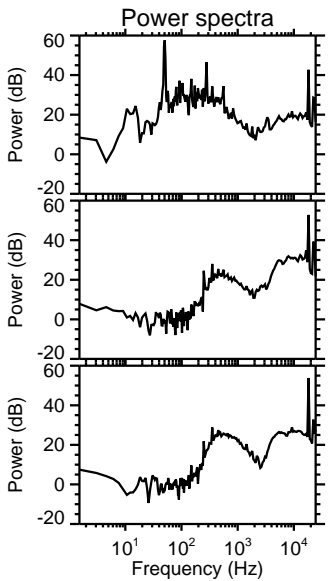
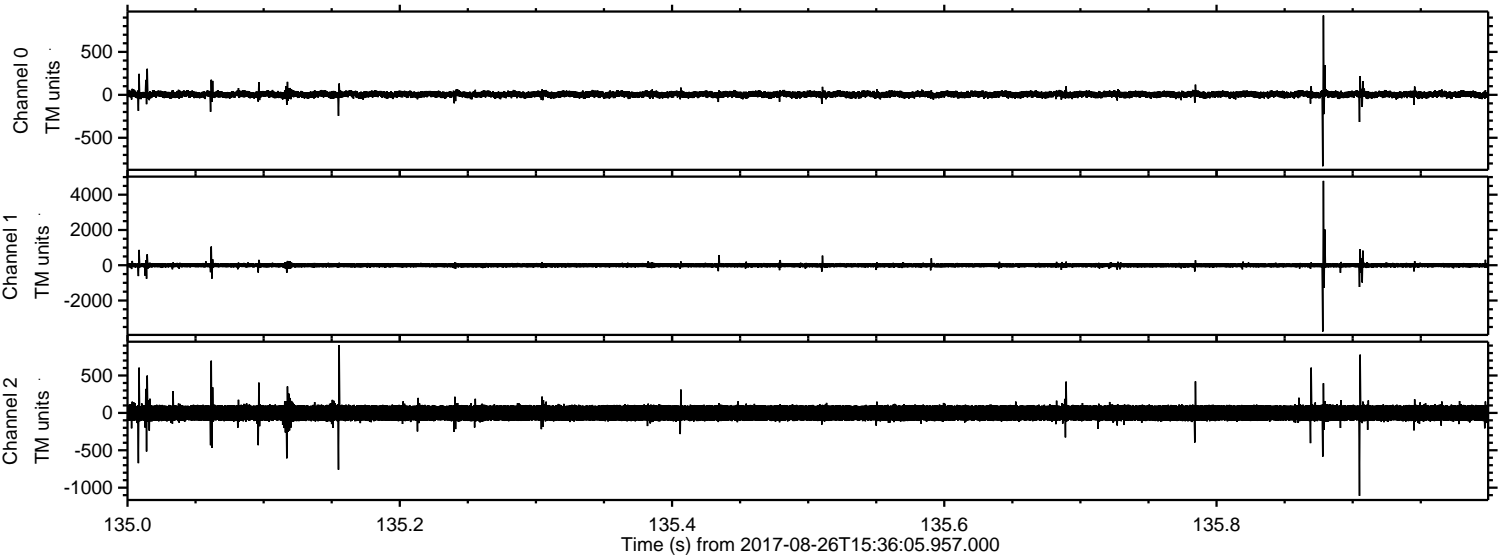
Channel 0
mn: -1777
mx: 1933
 μ : 5.1
 σ : 26.6

Channel 1
mn: -4807
mx: 2415
 μ : -3.7
 σ : 72.0

Channel 2
mn: -6416
mx: 3773
 μ : -1.8
 σ : 81.7

ELMAVAN 3D WAVEFORMS (Measured data sampled at 50 kHz) 51000 packets of 144 samples from 2017-08-26T15:36:05.957.000. Part 136/147

Processed Sat Aug 26 17:44:04 2017 by ELM ver.2012-10-06 from 001__elm20170826_153604__dat00.bin



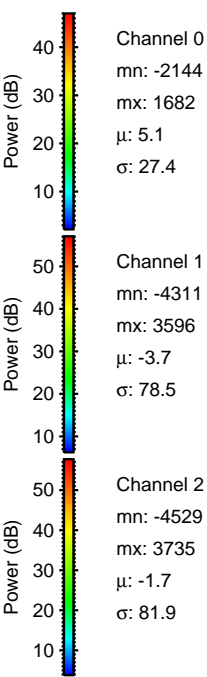
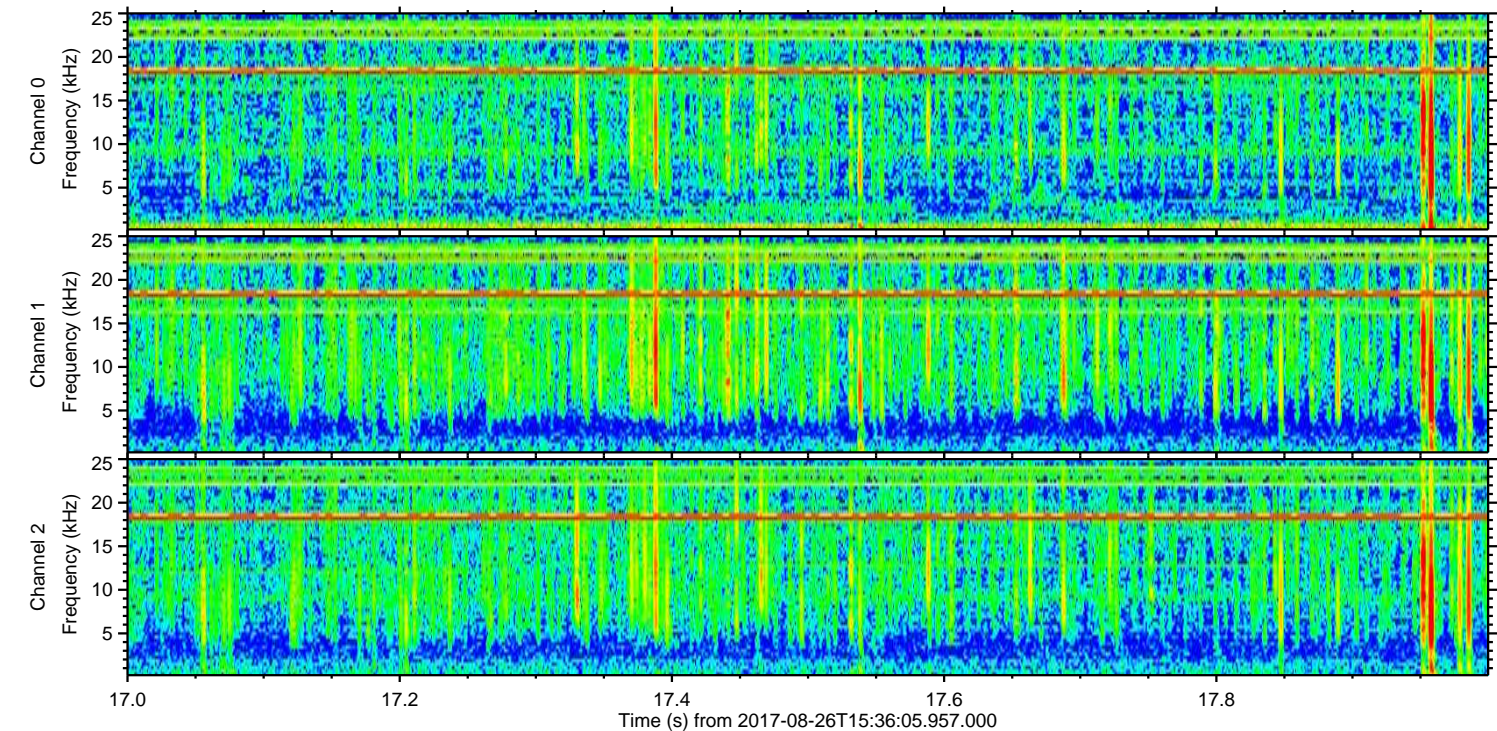
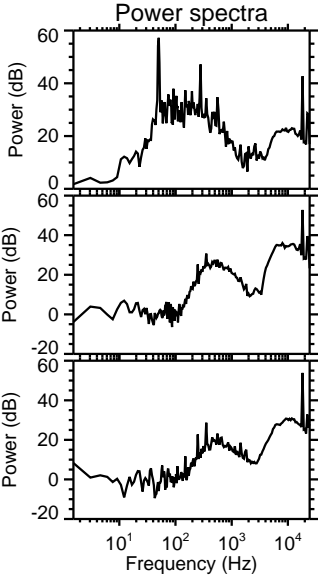
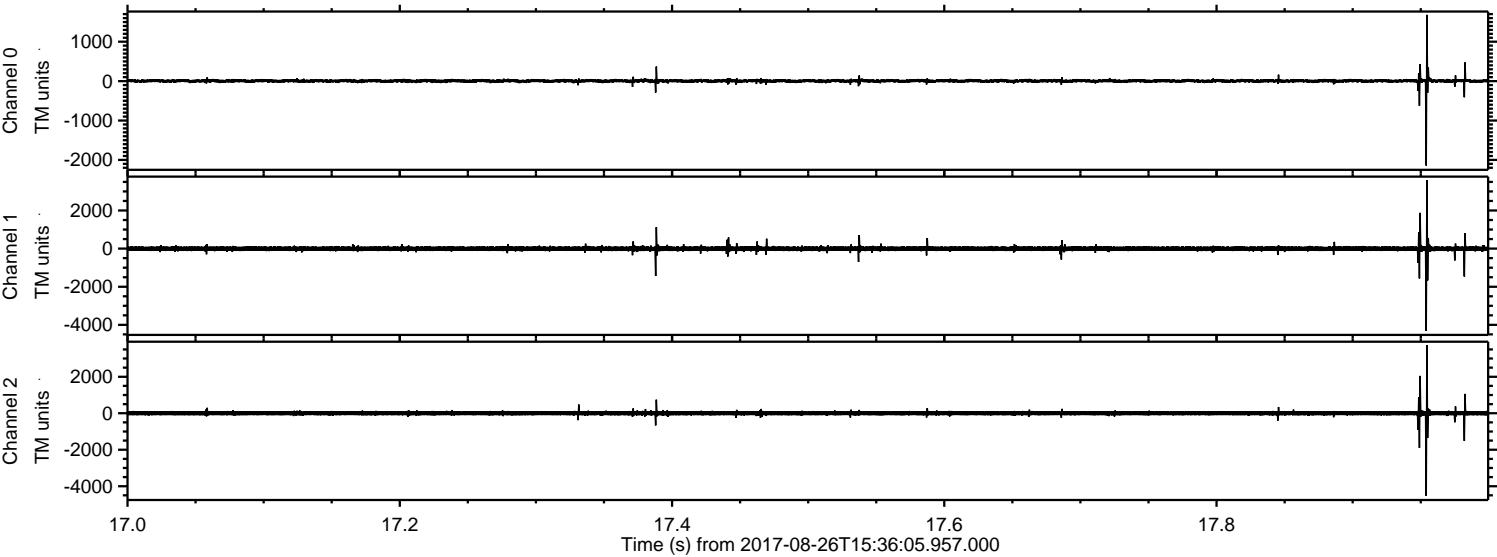
Channel 0
mn: -832
mx: 924
 μ : 5.1
 σ : 22.7

Channel 1
mn: -3764
mx: 4786
 μ : -3.7
 σ : 72.1

Channel 2
mn: -1109
mx: 906
 μ : -1.7
 σ : 68.9

ELMAVAN 3D WAVEFORMS (Measured data sampled at 50 kHz) 51000 packets of 144 samples from 2017-08-26T15:36:05.957.000. Part 18/147

Processed Sat Aug 26 17:44:04 2017 by ELM ver.2012-10-06 from 001__elm20170826_153604__dat00.bin



Processed Sat Aug 26 17:44:05 2017 by ELM ver.2012-10-06 from 001__elm20170826_153604__dat00.bin

