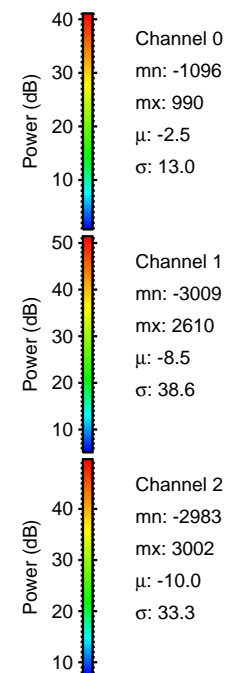
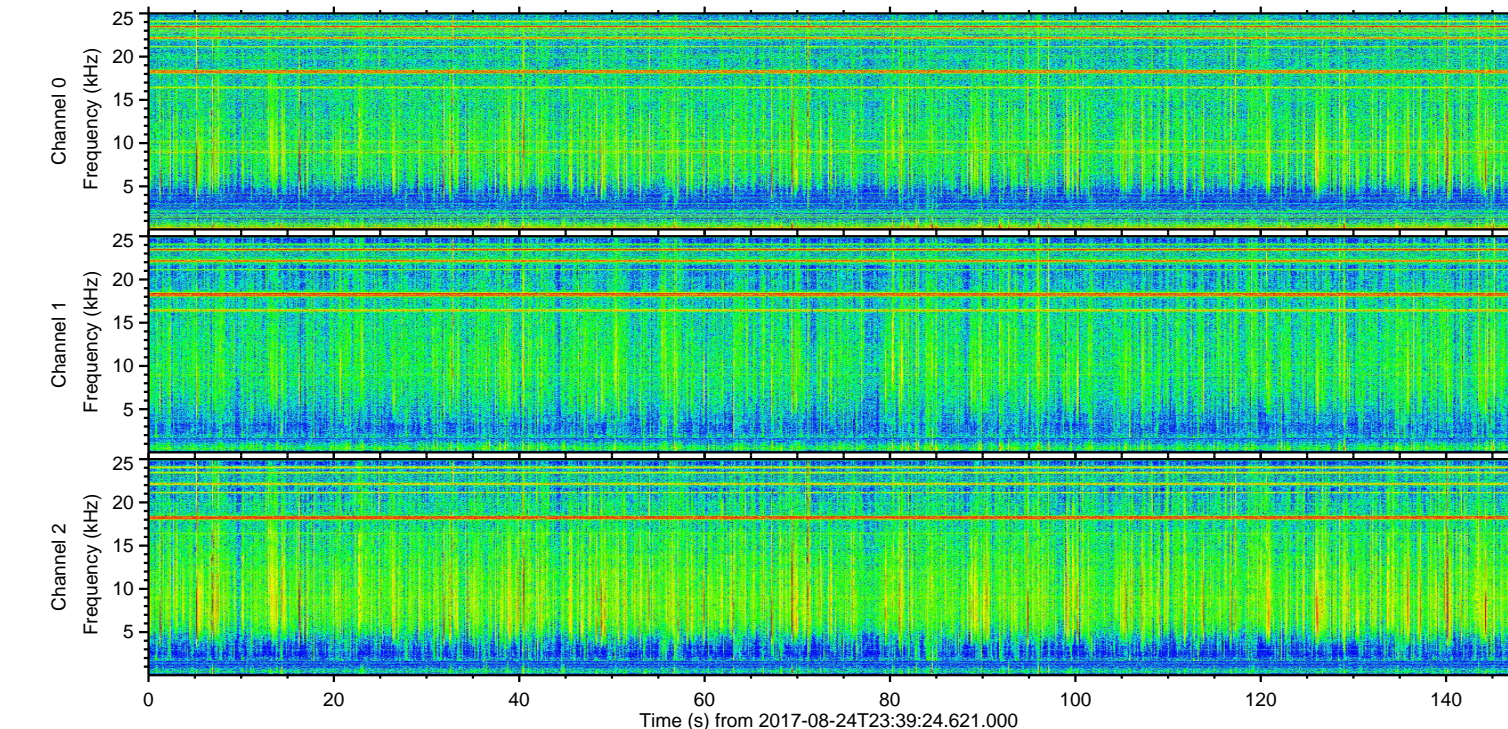
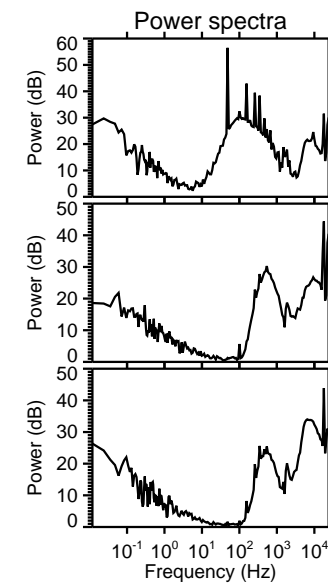
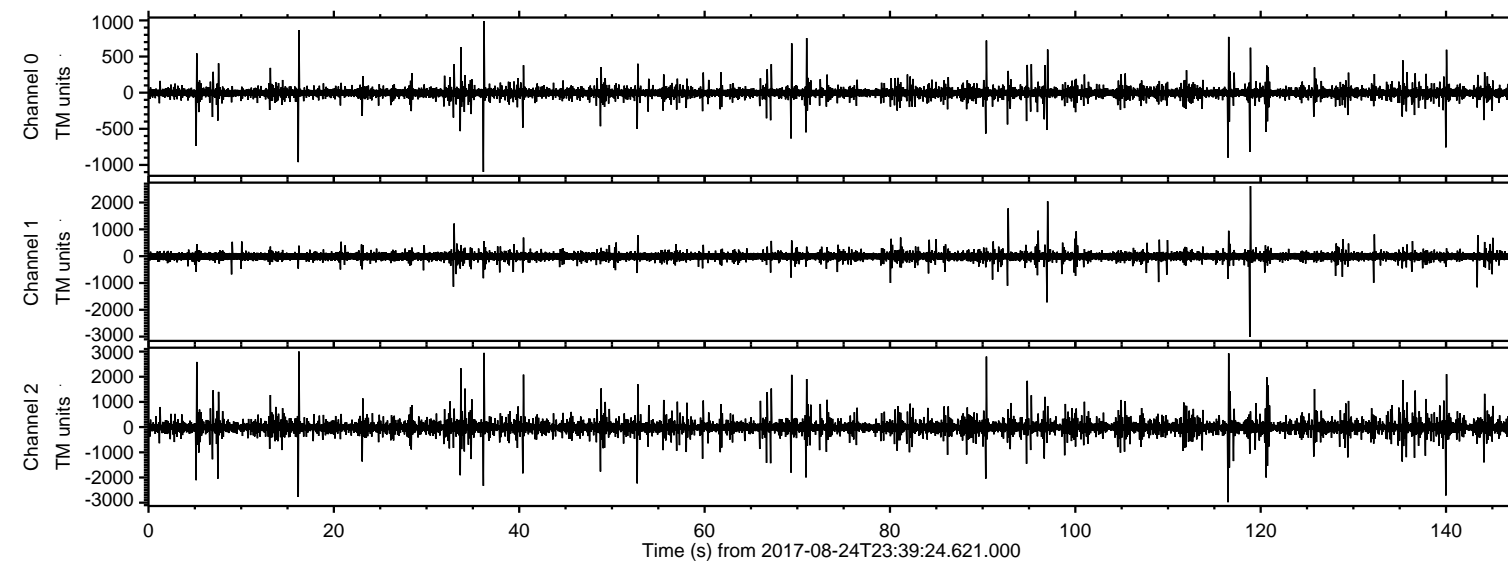


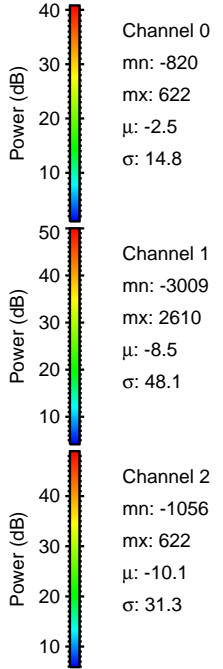
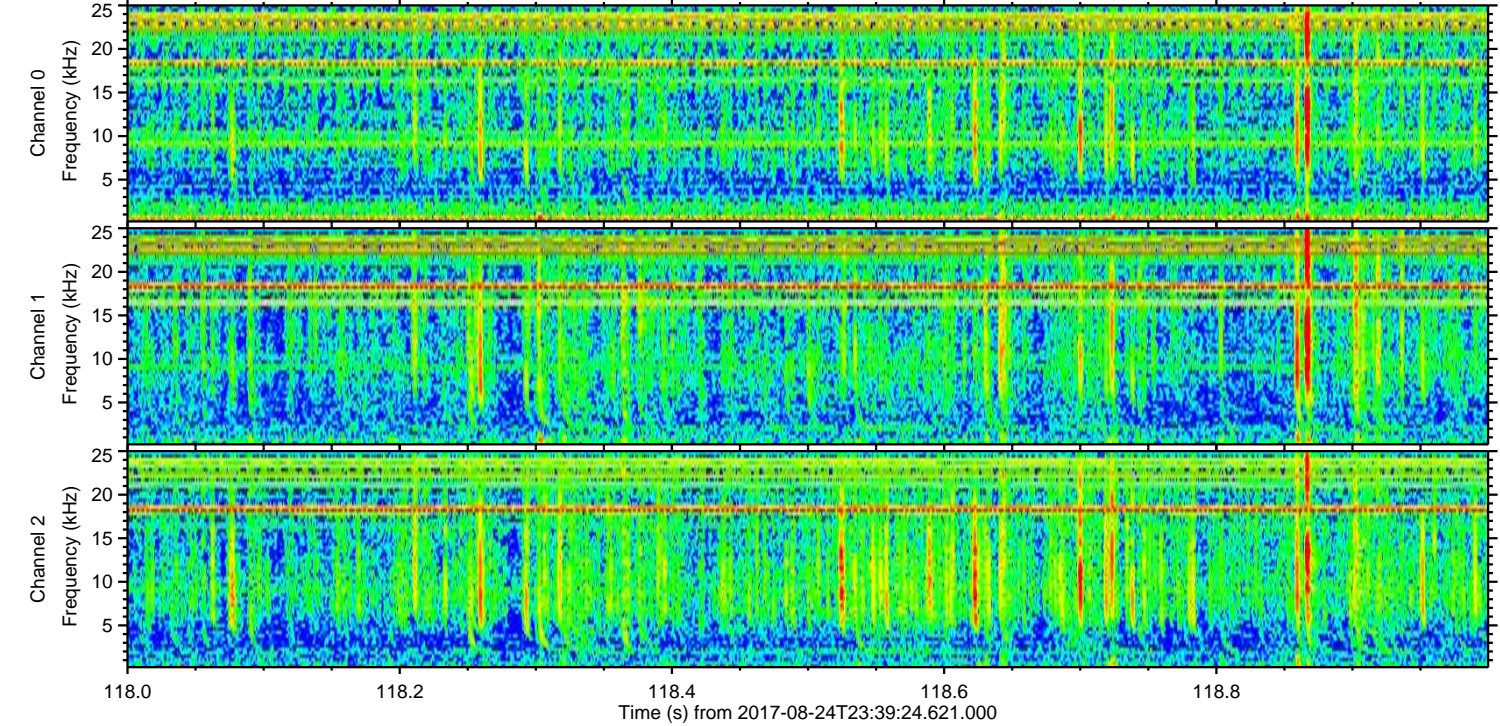
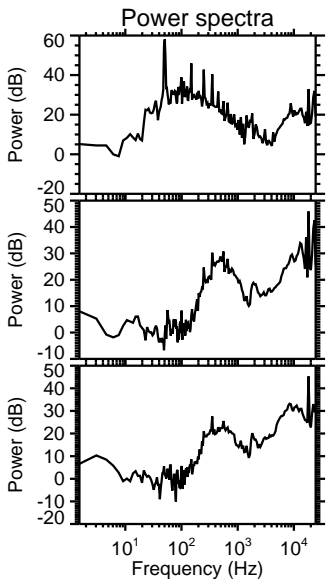
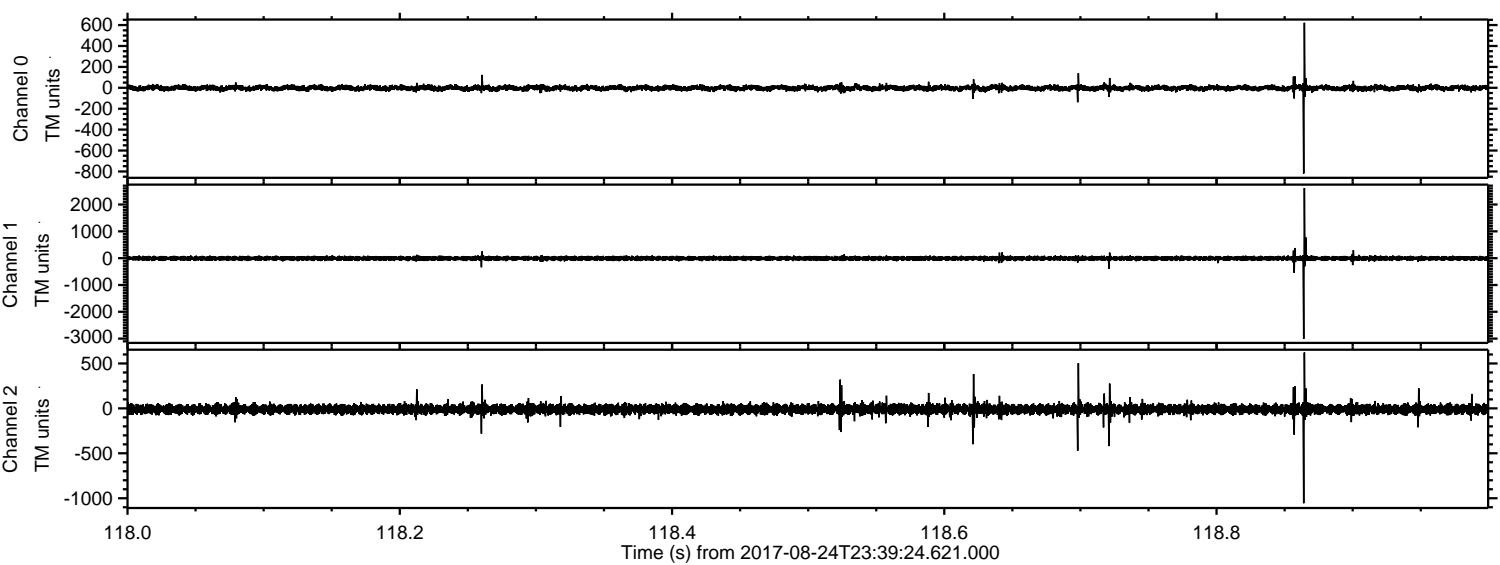
ELMAVAN 3D WAVEFORMS (Measured data sampled at 50 kHz) 51000 packets of 144 samples from 2017-08-24T23:39:24.621.000.

Processed Fri Aug 25 01:47:40 2017 by ELM ver.2012-10-06 from 001__elm20170824_233923__dat00.bin

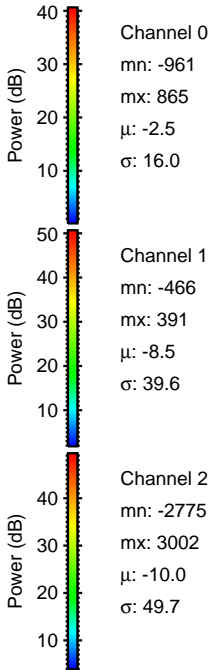
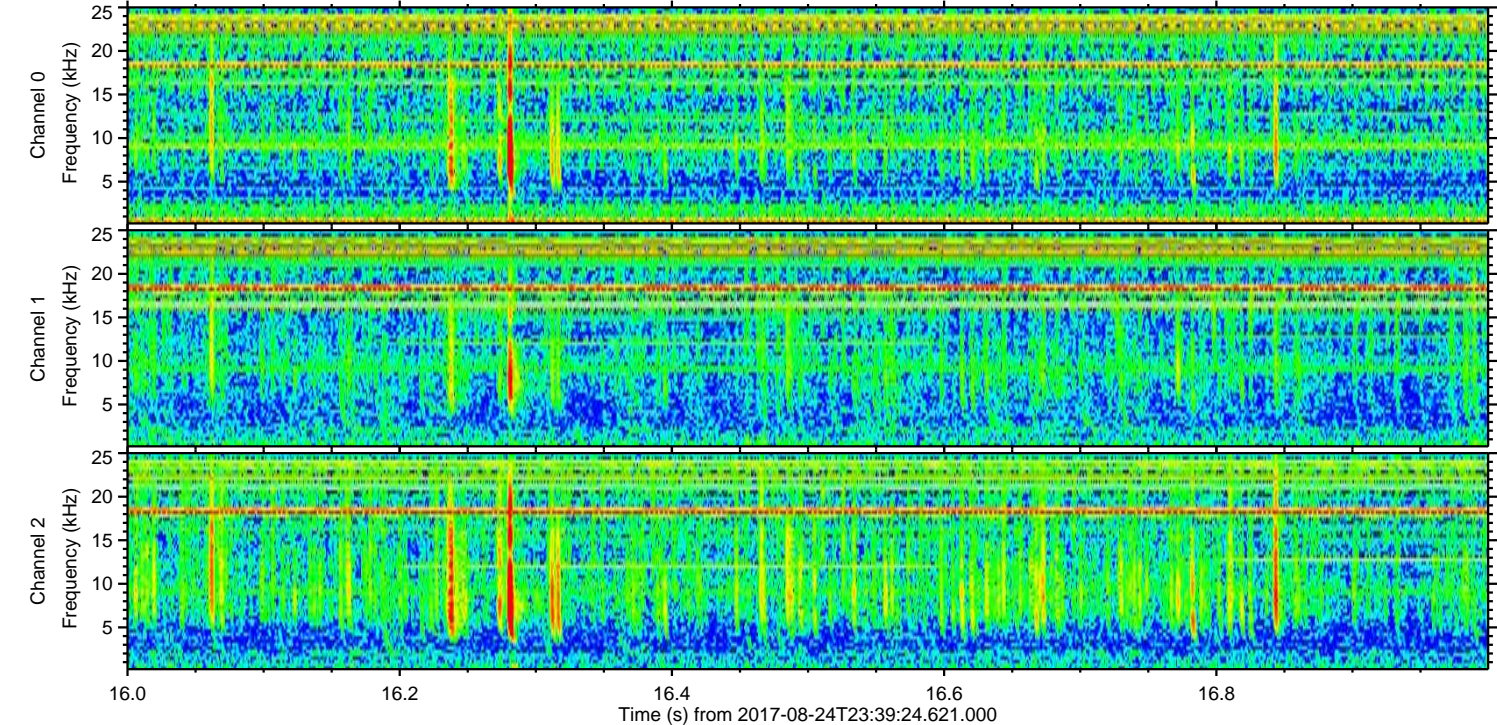
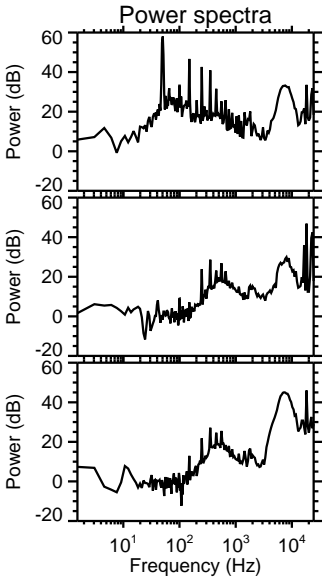
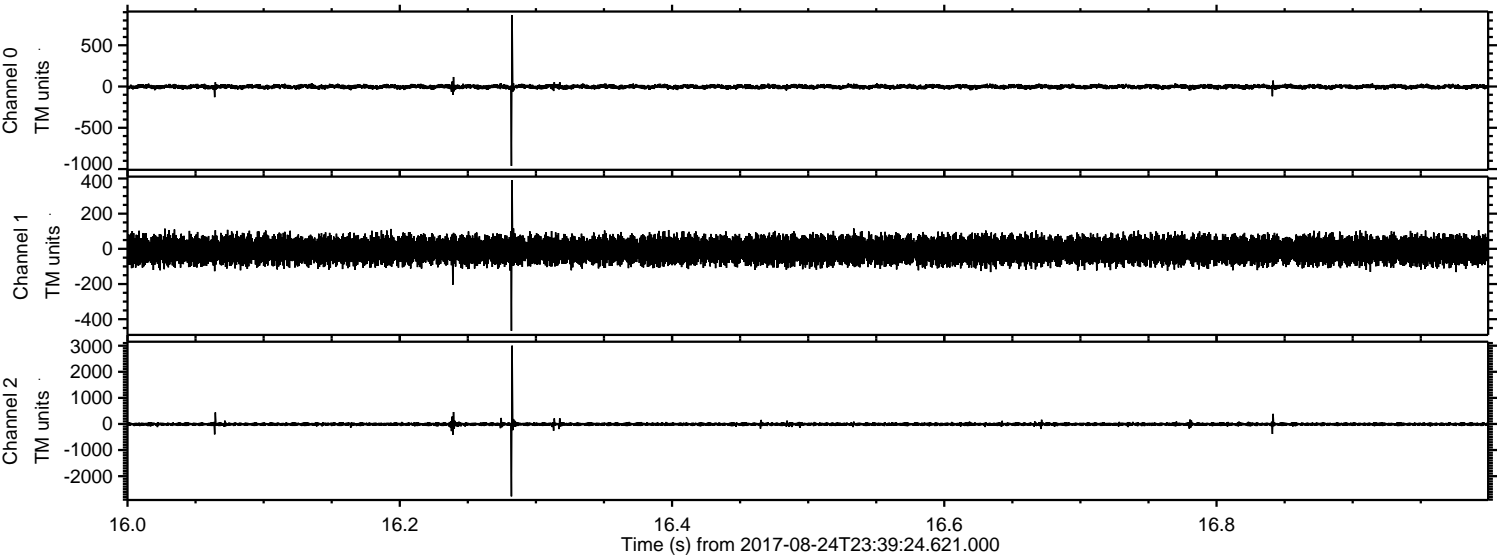


ELMAVAN 3D WAVEFORMS (Measured data sampled at 50 kHz) 51000 packets of 144 samples from 2017-08-24T23:39:24.621.000. Part 119/147

Processed Fri Aug 25 01:47:46 2017 by ELM ver.2012-10-06 from 001__elm20170824_233923__dat00.bin

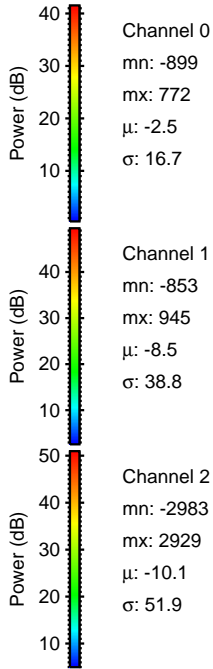
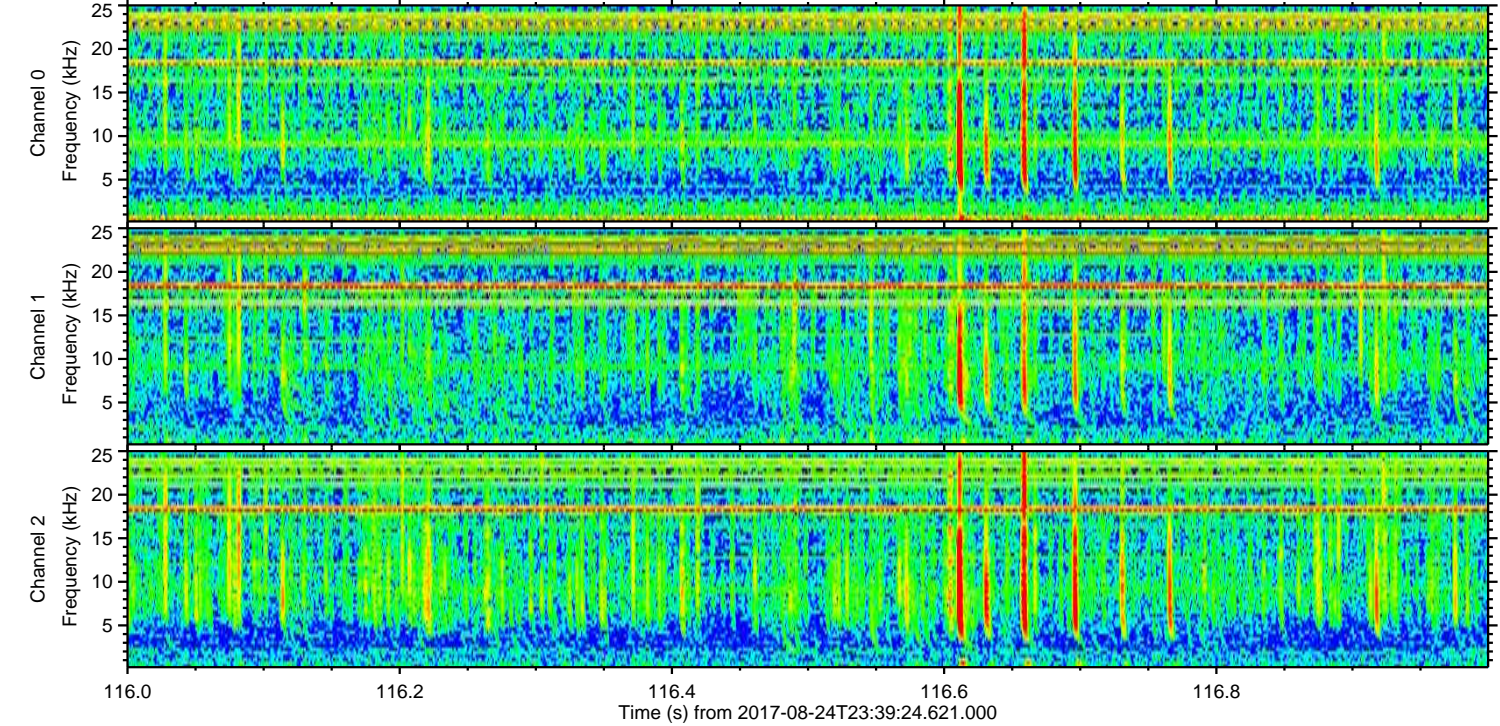
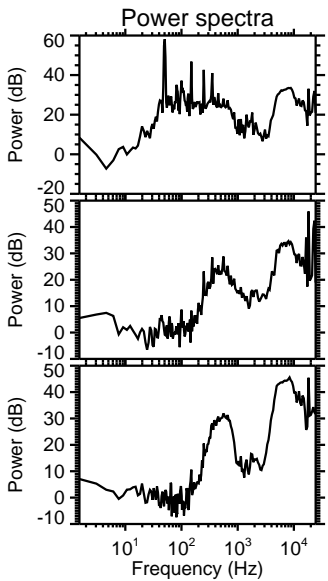
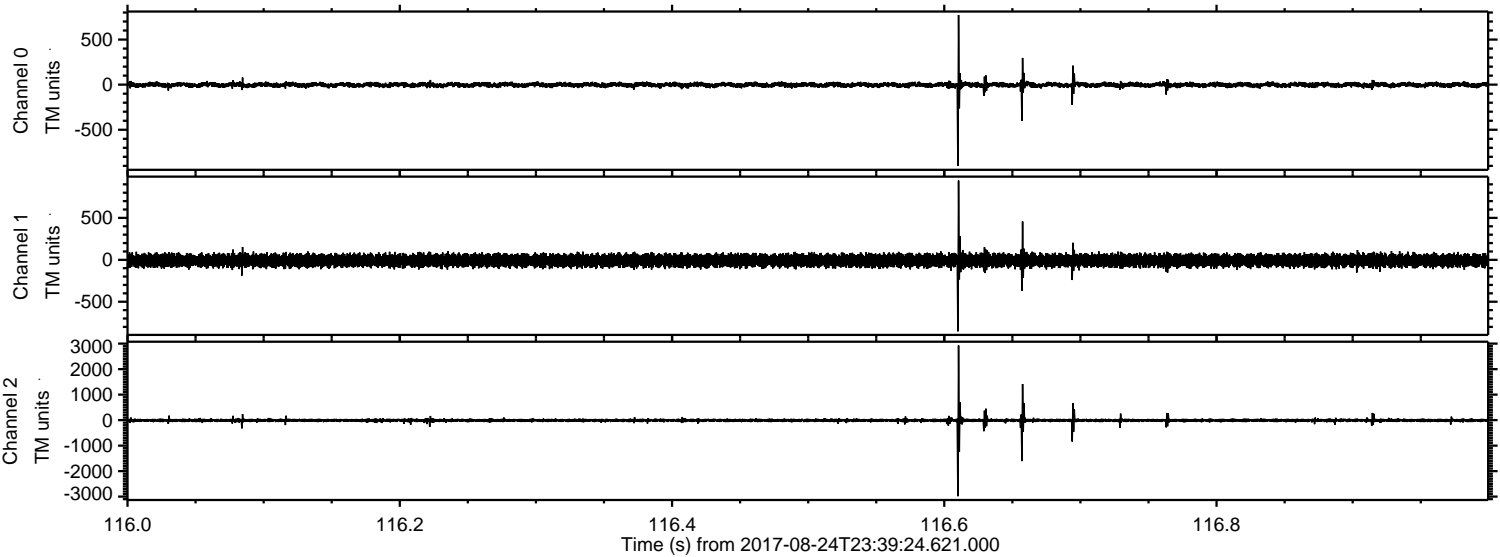


Processed Fri Aug 25 01:47:47 2017 by ELM ver.2012-10-06 from 001__elm20170824_233923__dat00.bin



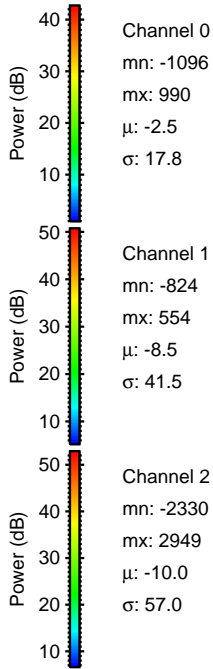
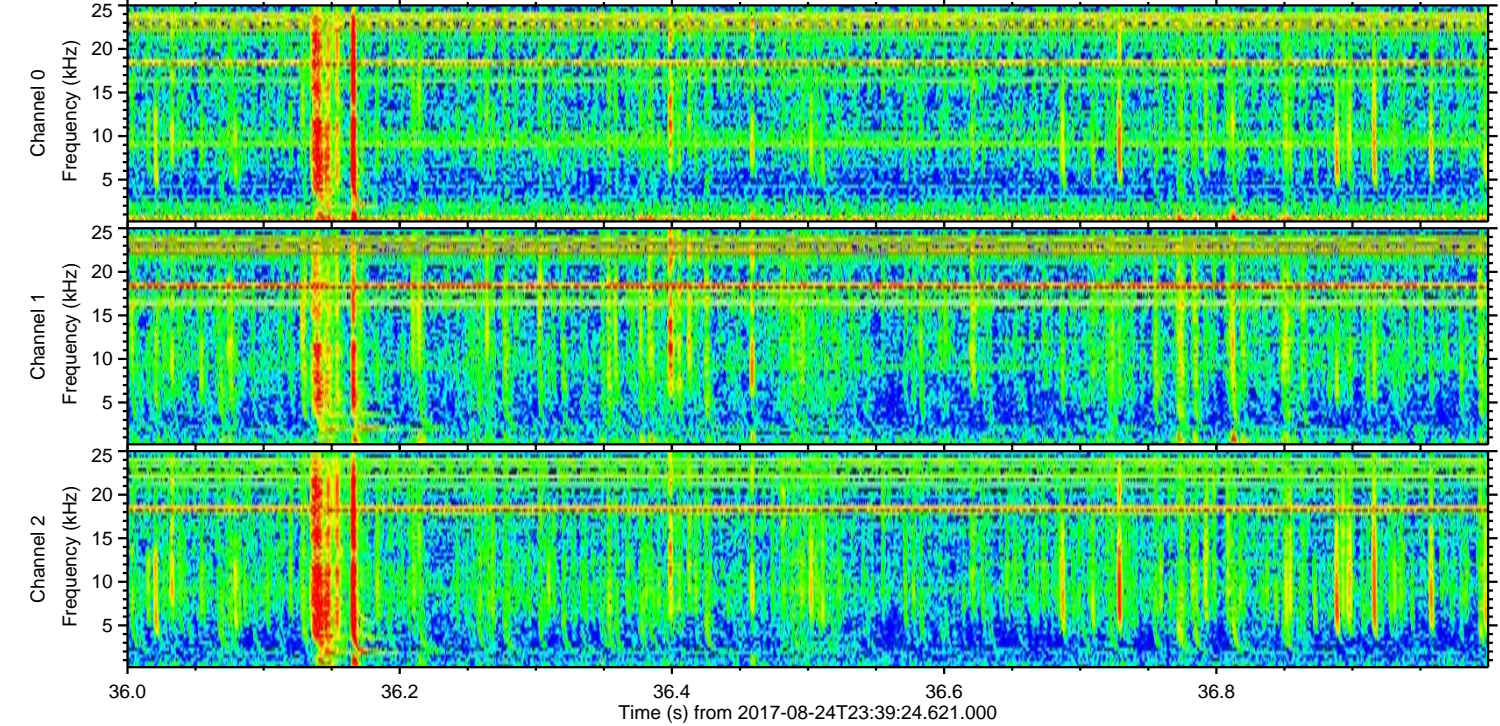
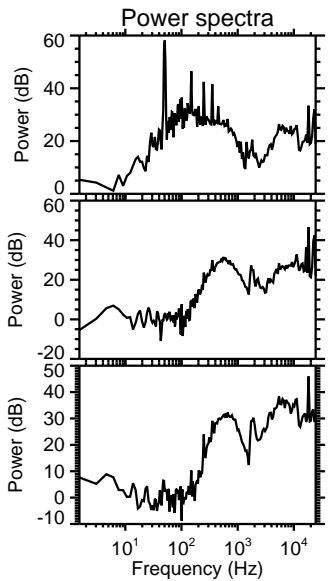
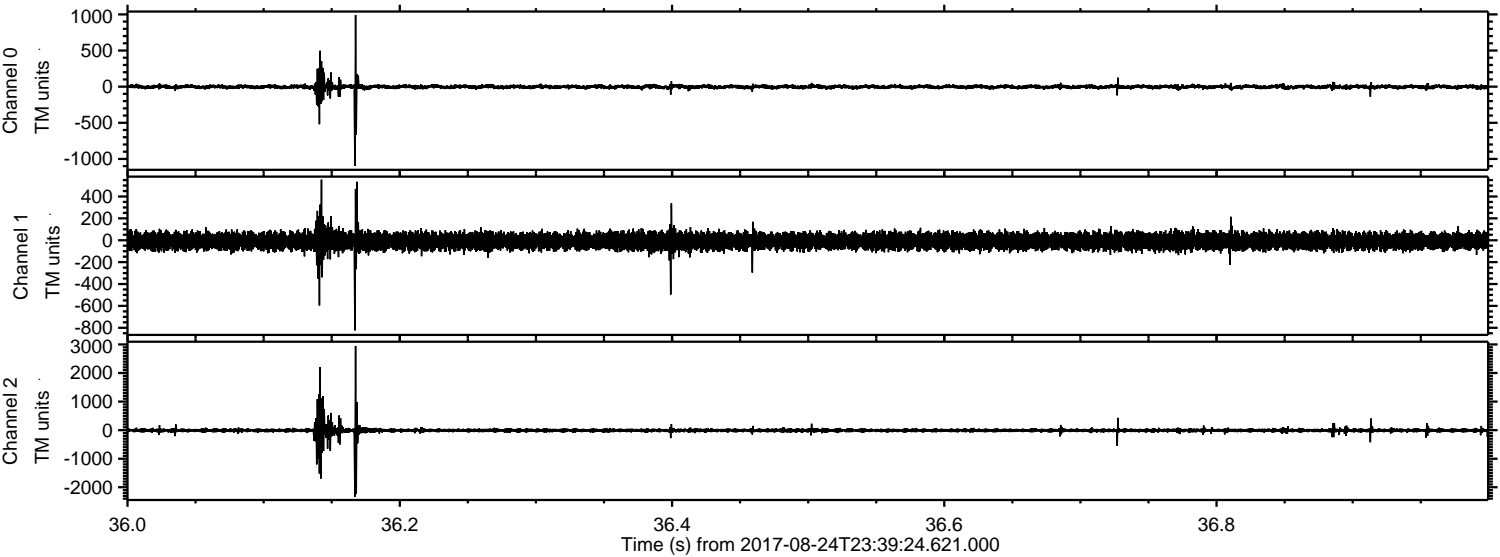
ELMAVAN 3D WAVEFORMS (Measured data sampled at 50 kHz) 51000 packets of 144 samples from 2017-08-24T23:39:24.621.000. Part 117/147

Processed Fri Aug 25 01:47:47 2017 by ELM ver.2012-10-06 from 001__elm20170824_233923__dat00.bin

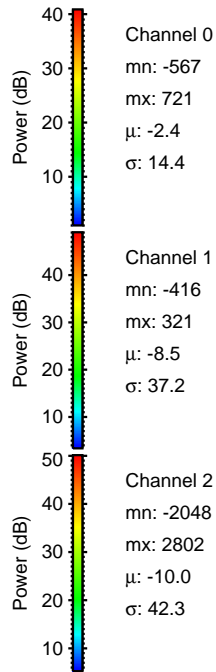
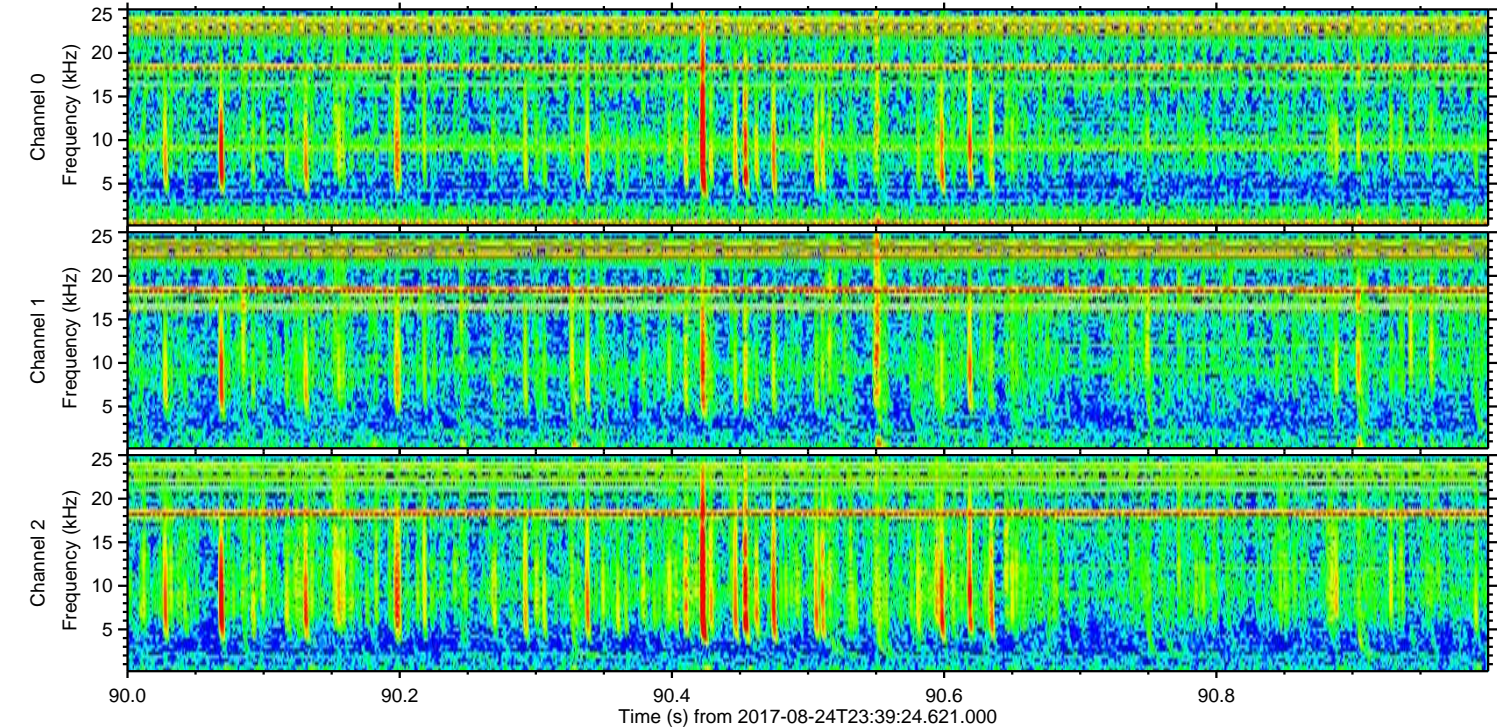
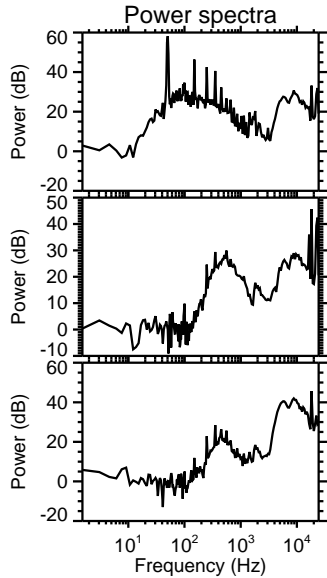
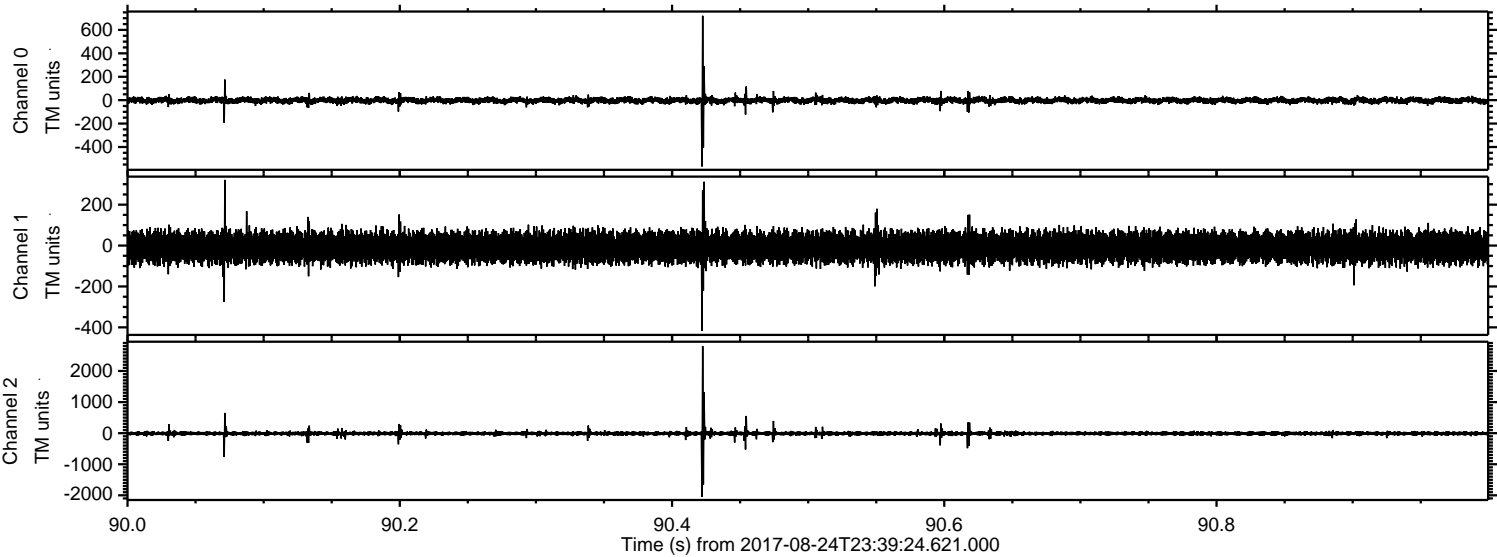


ELMAVAN 3D WAVEFORMS (Measured data sampled at 50 kHz) 51000 packets of 144 samples from 2017-08-24T23:39:24.621.000. Part 37/147

Processed Fri Aug 25 01:47:48 2017 by ELM ver.2012-10-06 from 001__elm20170824_233923__dat00.bin

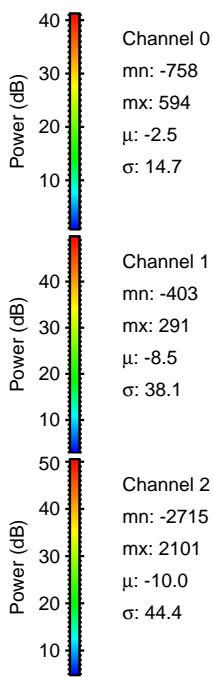
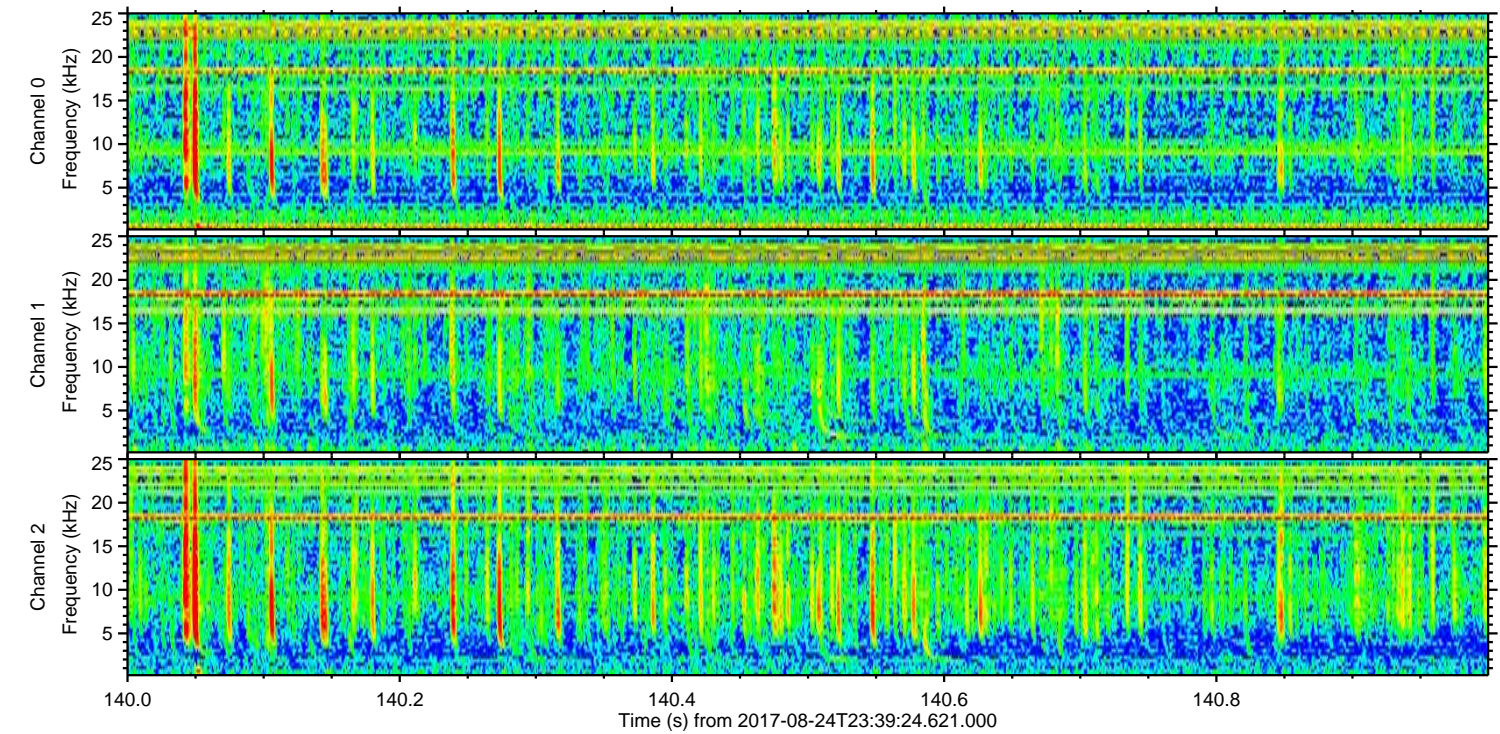
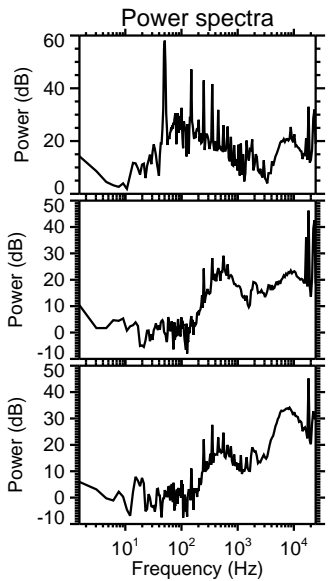
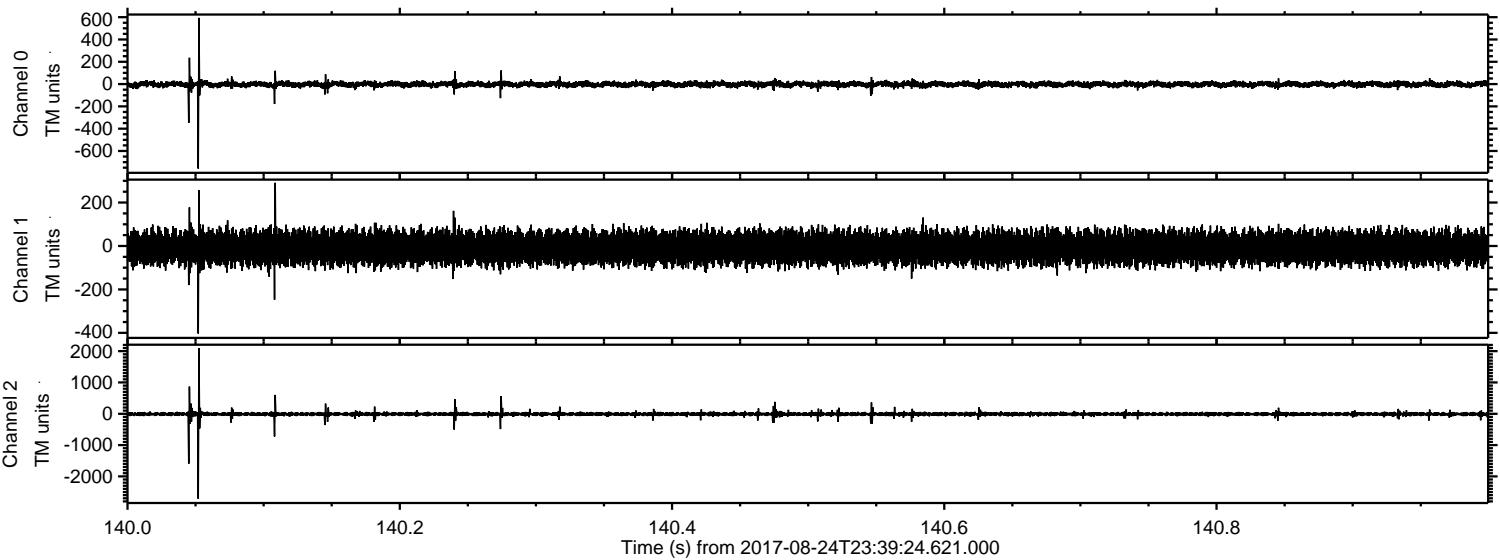


Processed Fri Aug 25 01:47:49 2017 by ELM ver.2012-10-06 from 001__elm20170824_233923__dat00.bin

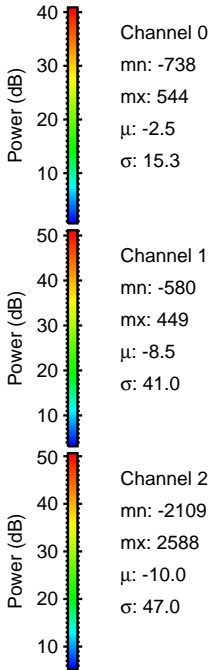
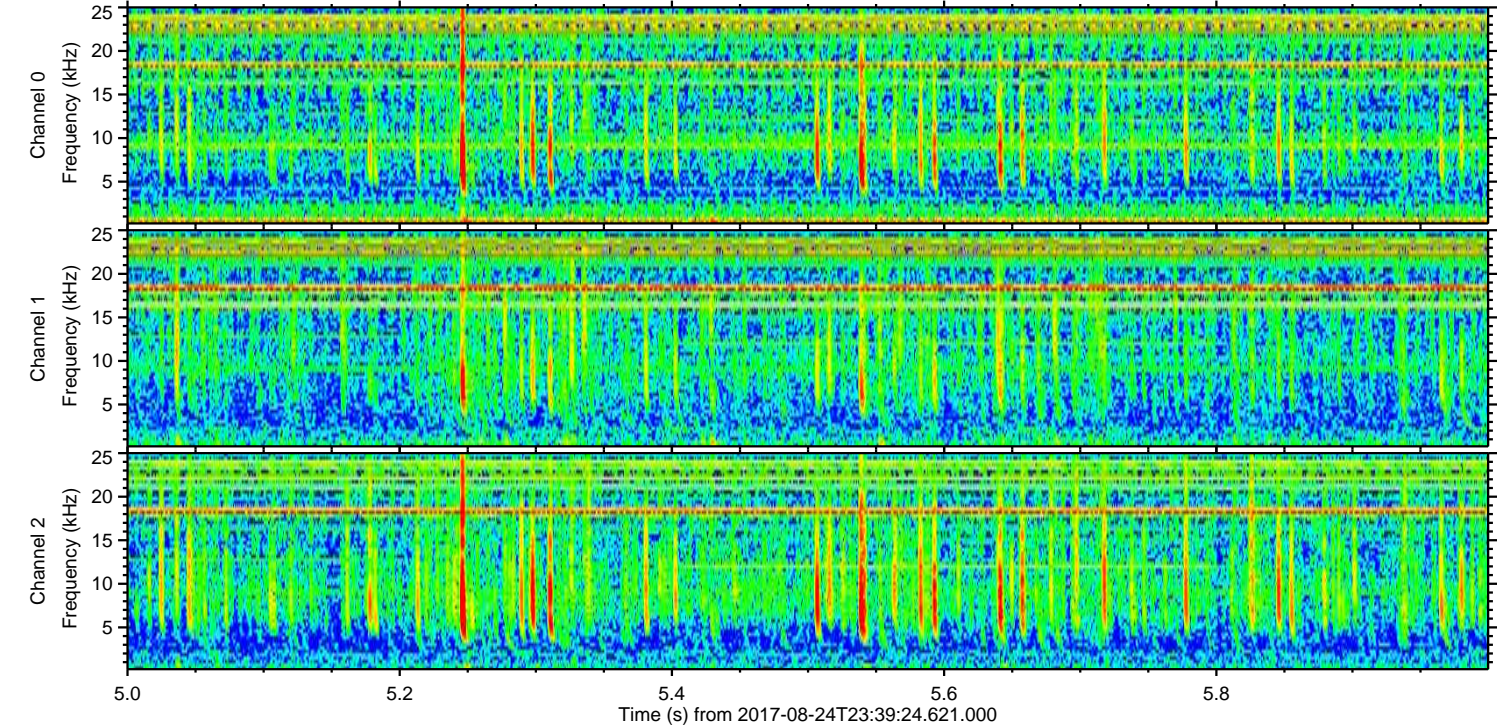
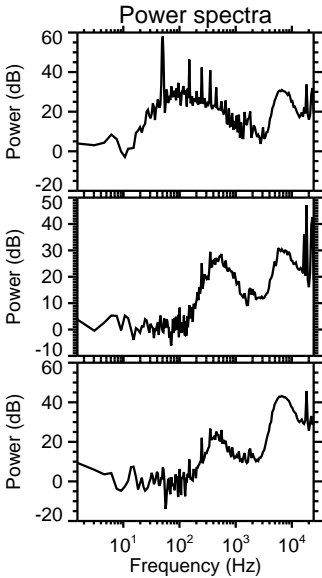
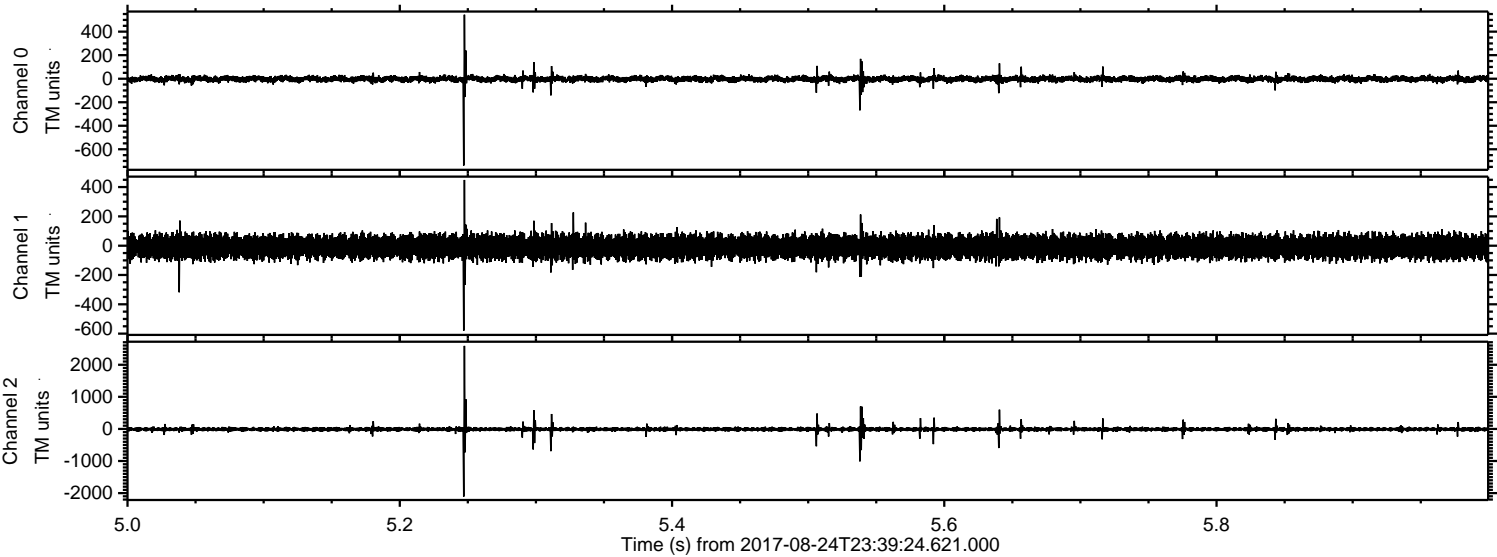


ELMAVAN 3D WAVEFORMS (Measured data sampled at 50 kHz) 51000 packets of 144 samples from 2017-08-24T23:39:24.621.000. Part 141/147

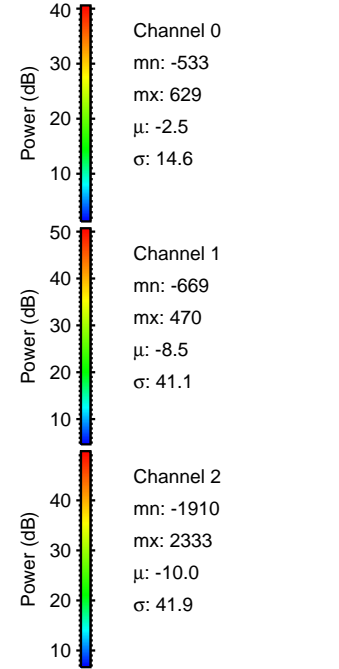
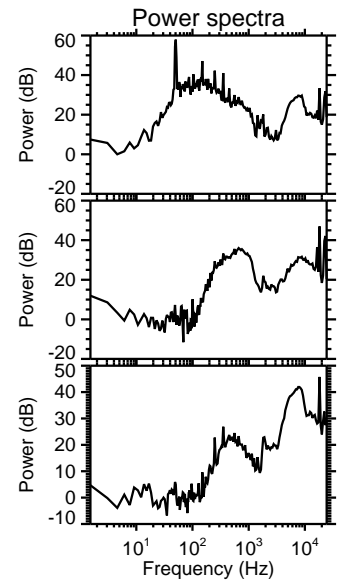
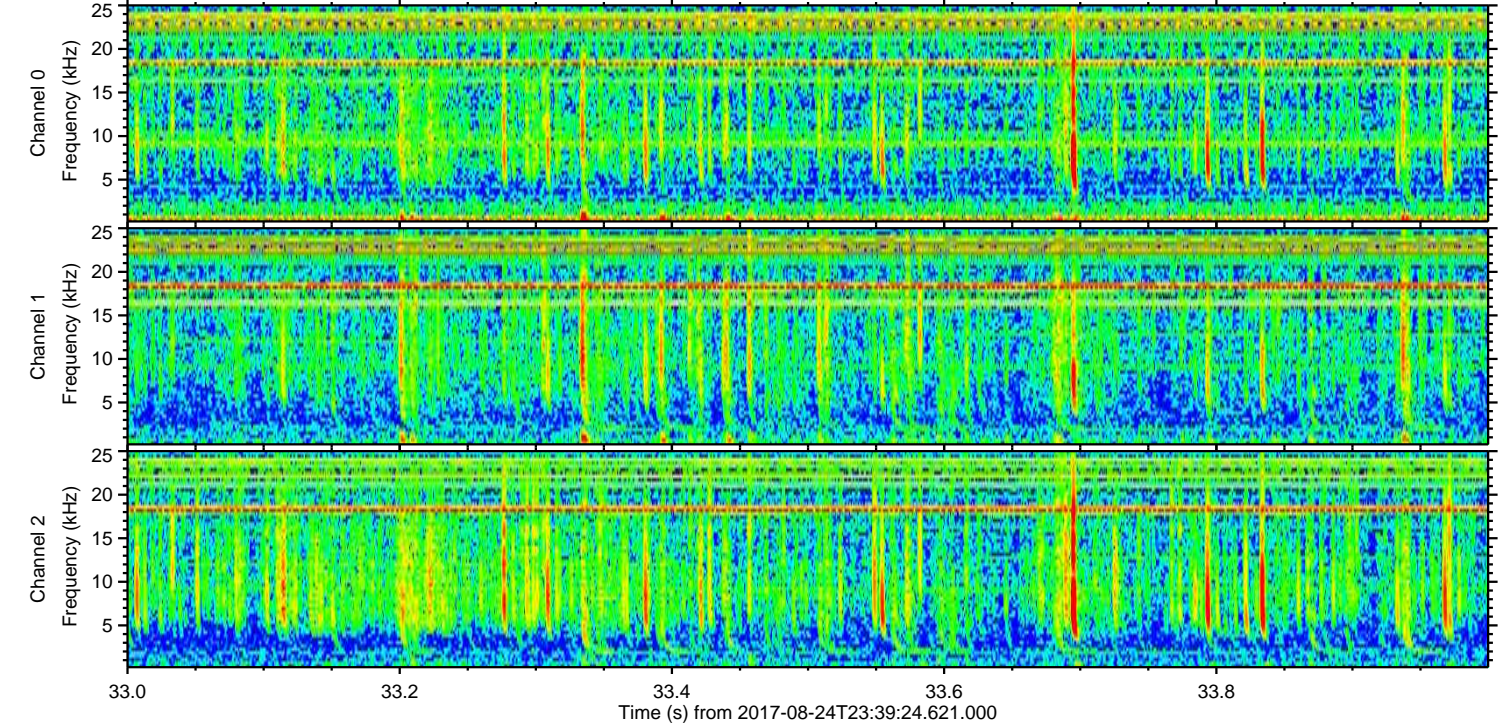
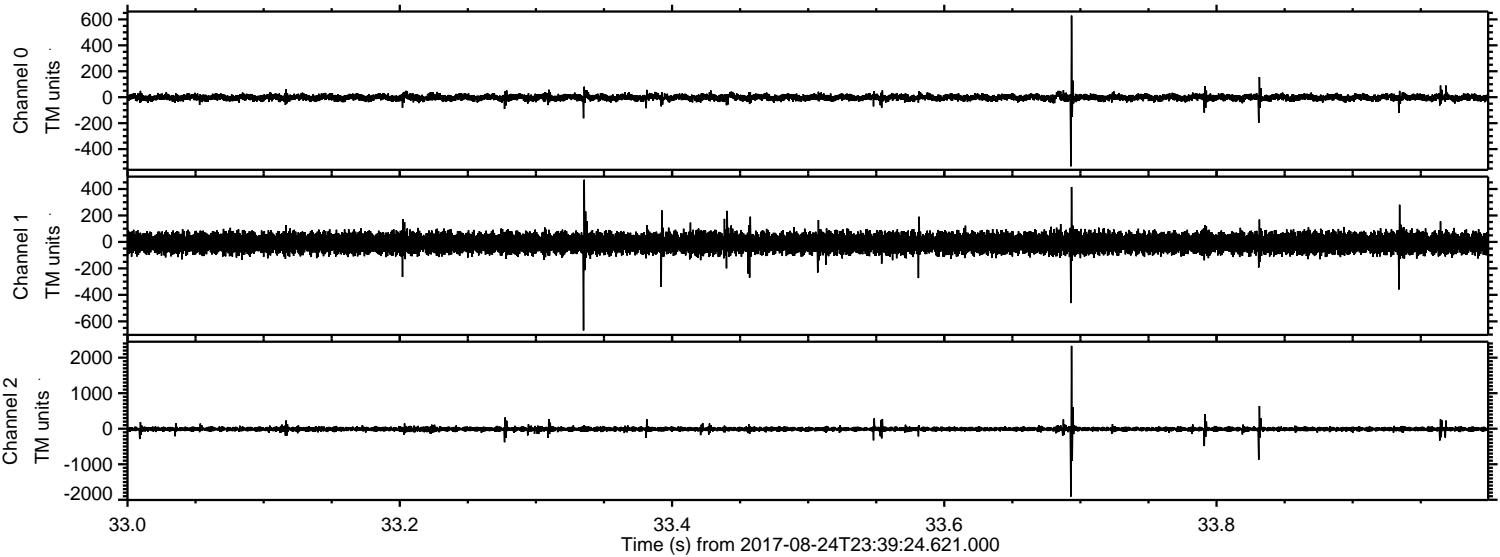
Processed Fri Aug 25 01:47:49 2017 by ELM ver.2012-10-06 from 001__elm20170824_233923__dat00.bin



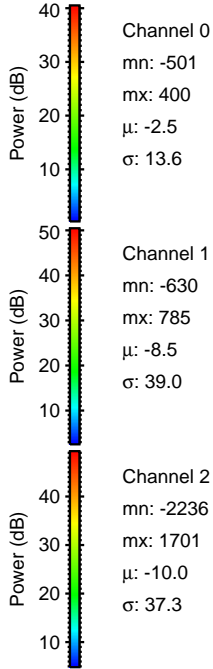
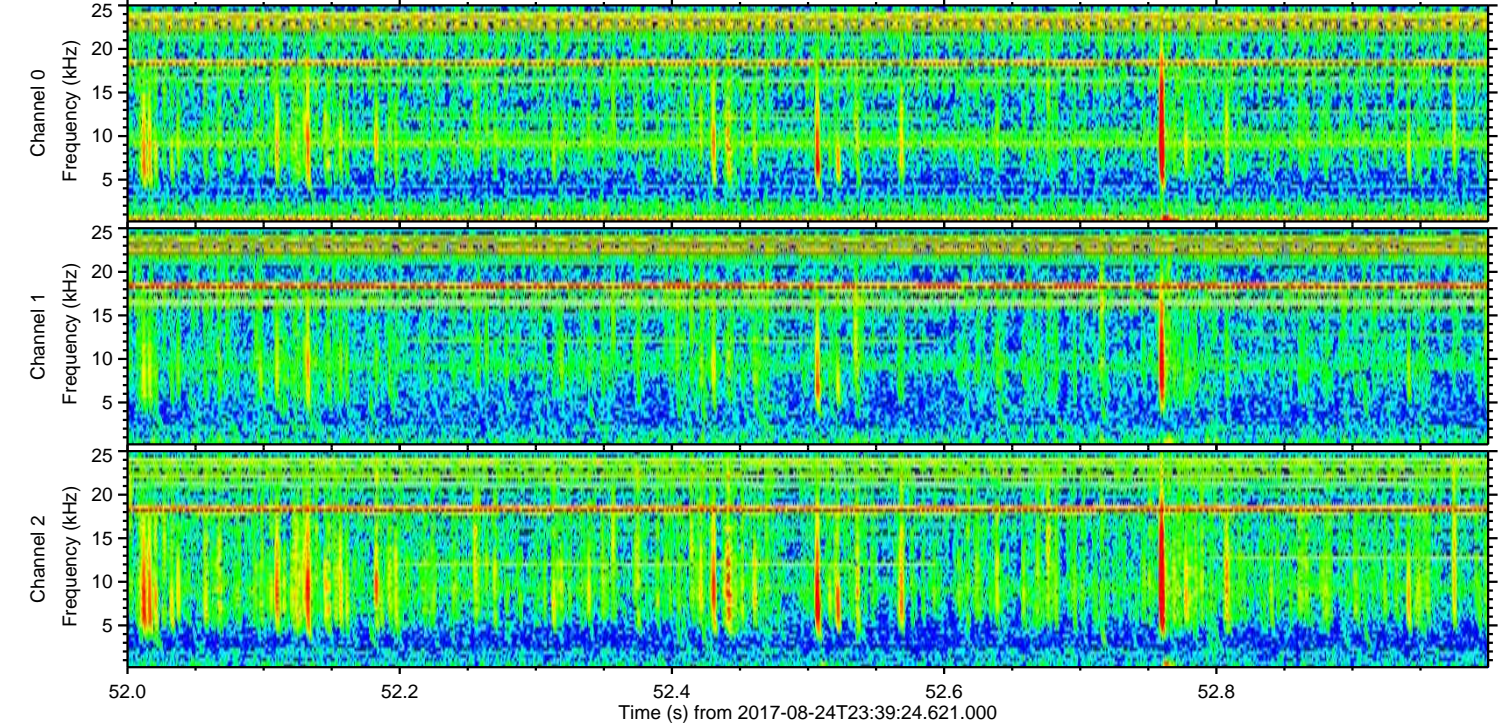
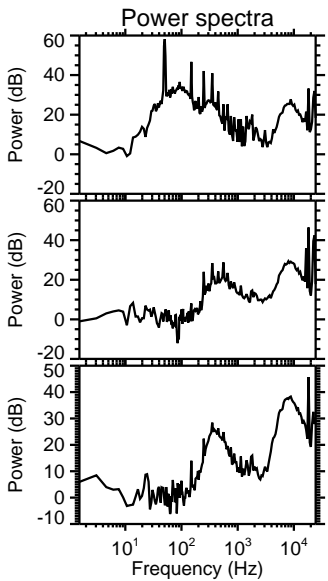
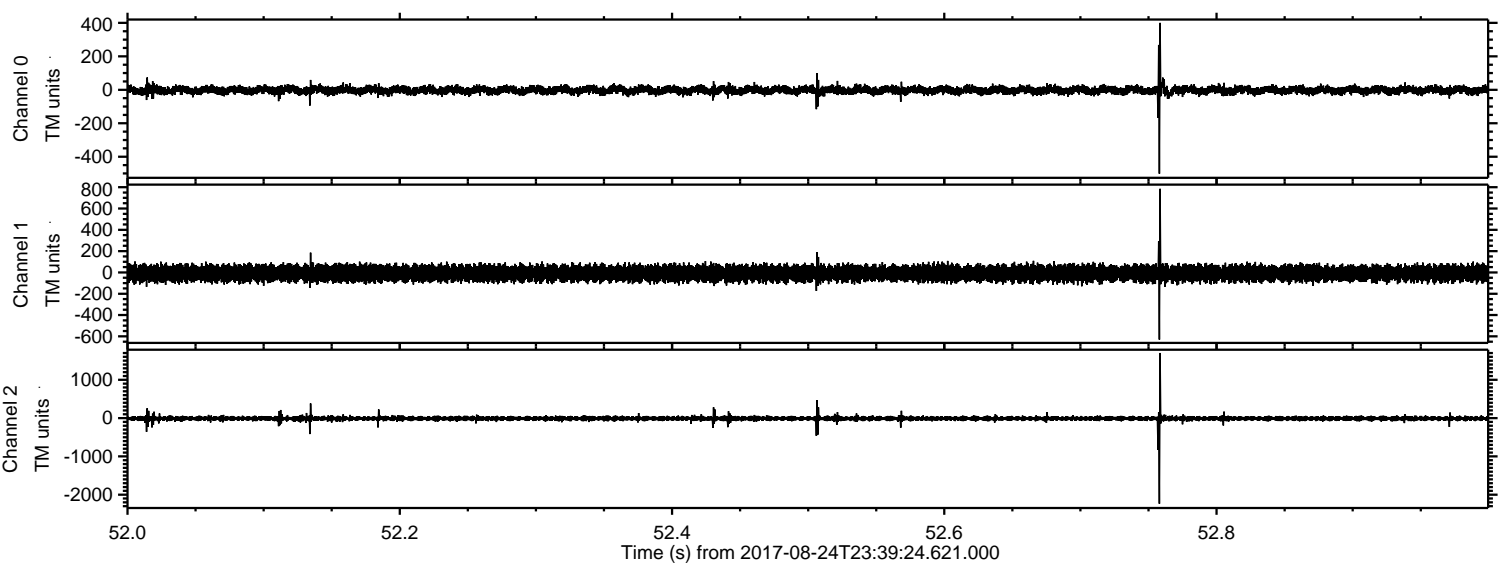
Processed Fri Aug 25 01:47:50 2017 by ELM ver.2012-10-06 from 001__elm20170824_233923__dat00.bin



Processed Fri Aug 25 01:47:51 2017 by ELM ver.2012-10-06 from 001__elm20170824_233923__dat00.bin



Processed Fri Aug 25 01:47:51 2017 by ELM ver.2012-10-06 from 001__elm20170824_233923__dat00.bin



Channel 0
mn: -501
mx: 400
 μ : -2.5
 σ : 13.6

Channel 1
mn: -630
mx: 785
 μ : -8.5
 σ : 39.0

Channel 2
mn: -2236
mx: 1701
 μ : -10.0
 σ : 37.3

