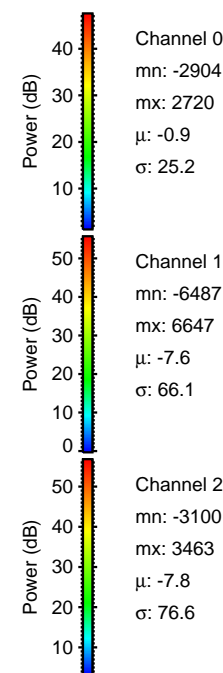
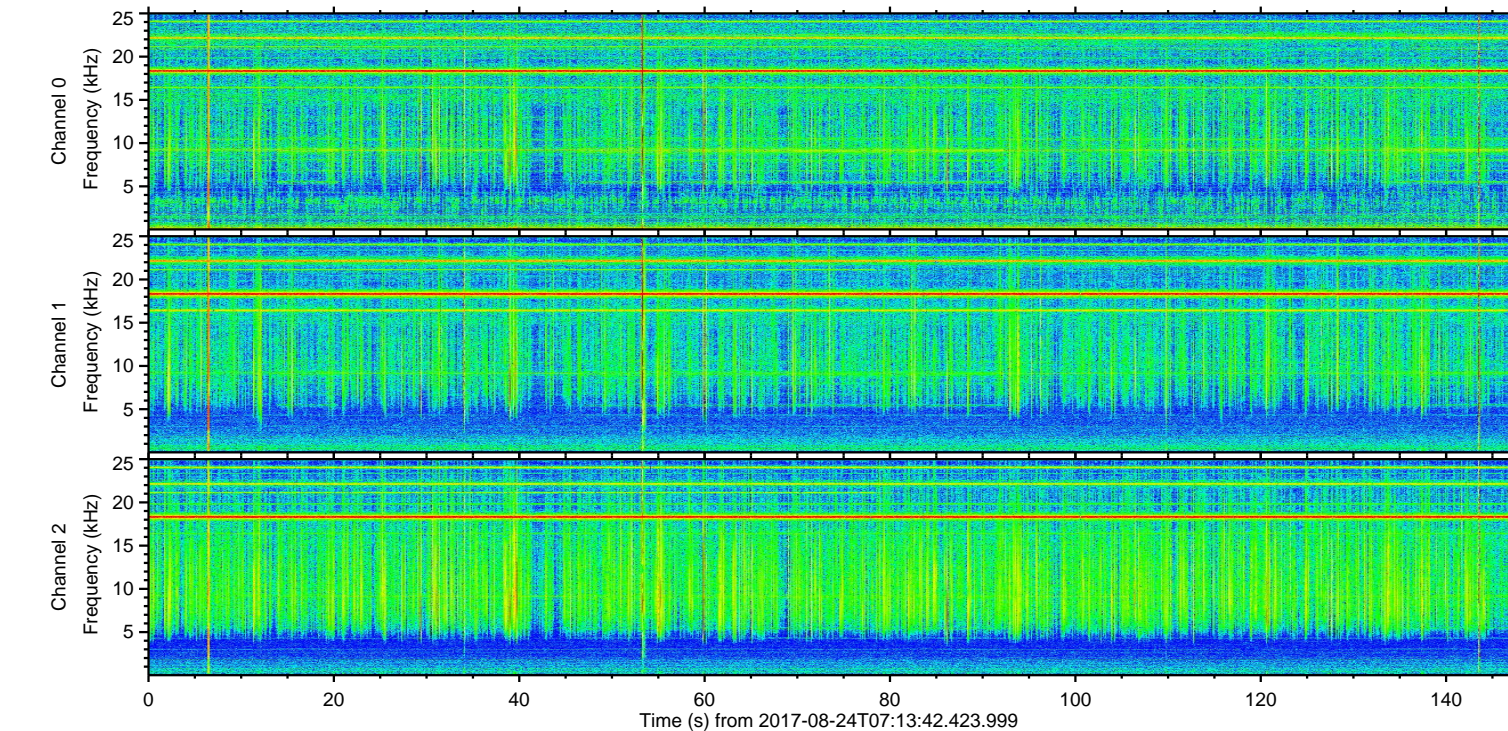
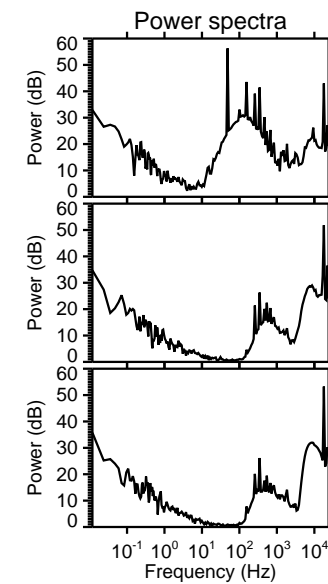
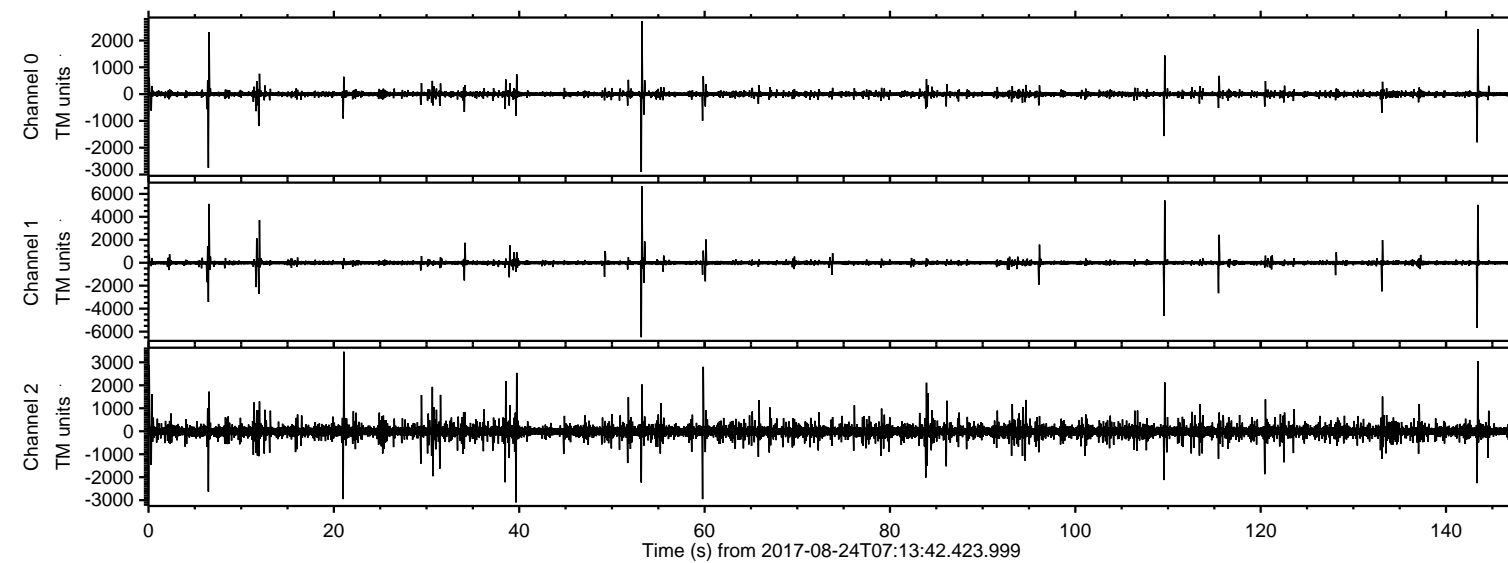
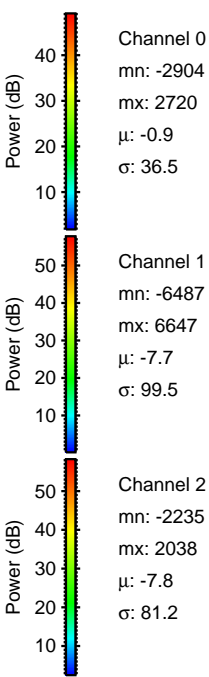
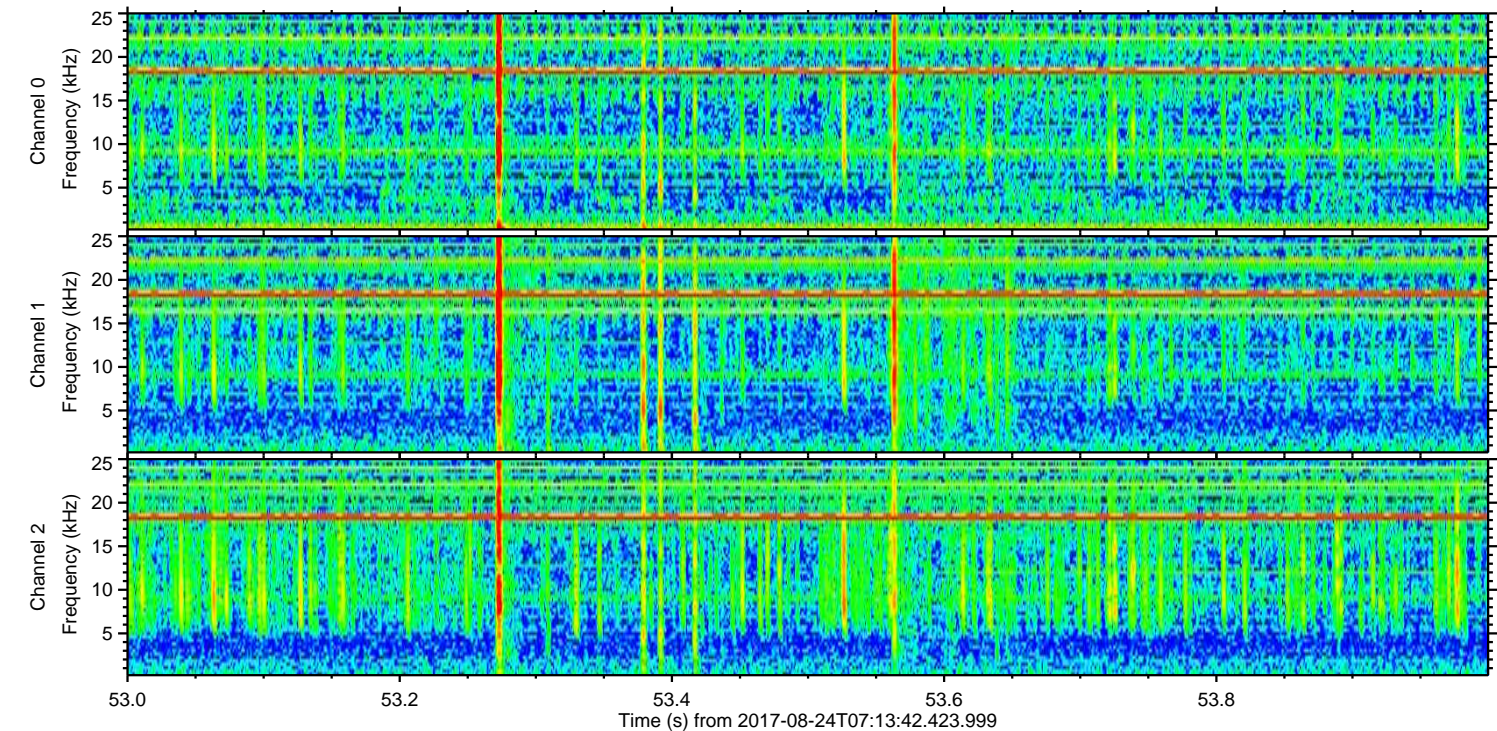
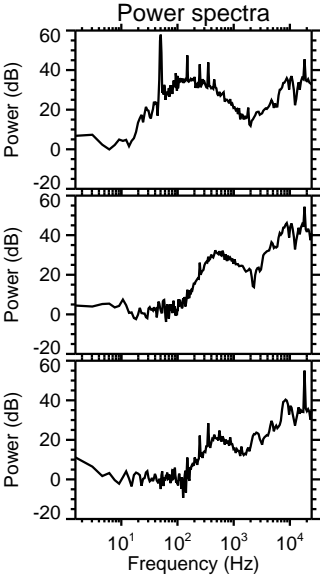
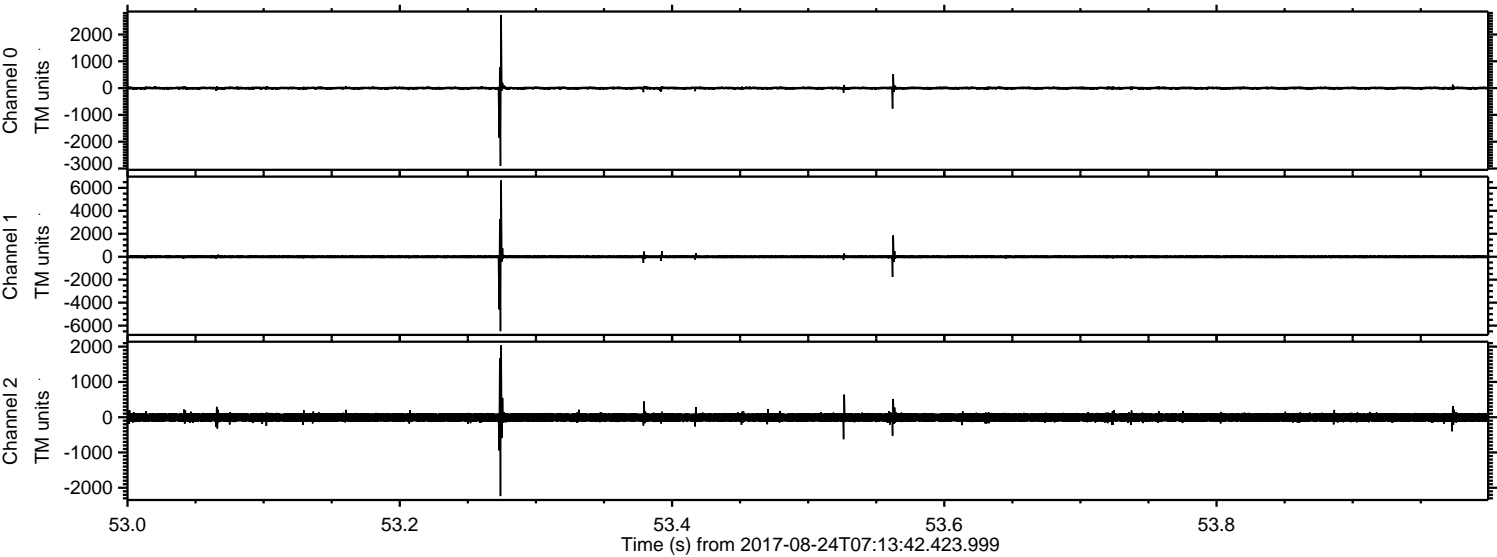


ELMAVAN 3D WAVEFORMS (Measured data sampled at 50 kHz) 51000 packets of 144 samples from 2017-08-24T07:13:42.423.999.

Processed Thu Aug 24 09:21:57 2017 by ELM ver.2012-10-06 from 001__elm20170824_071341__dat00.bin

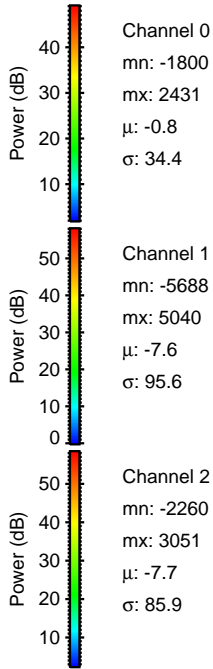
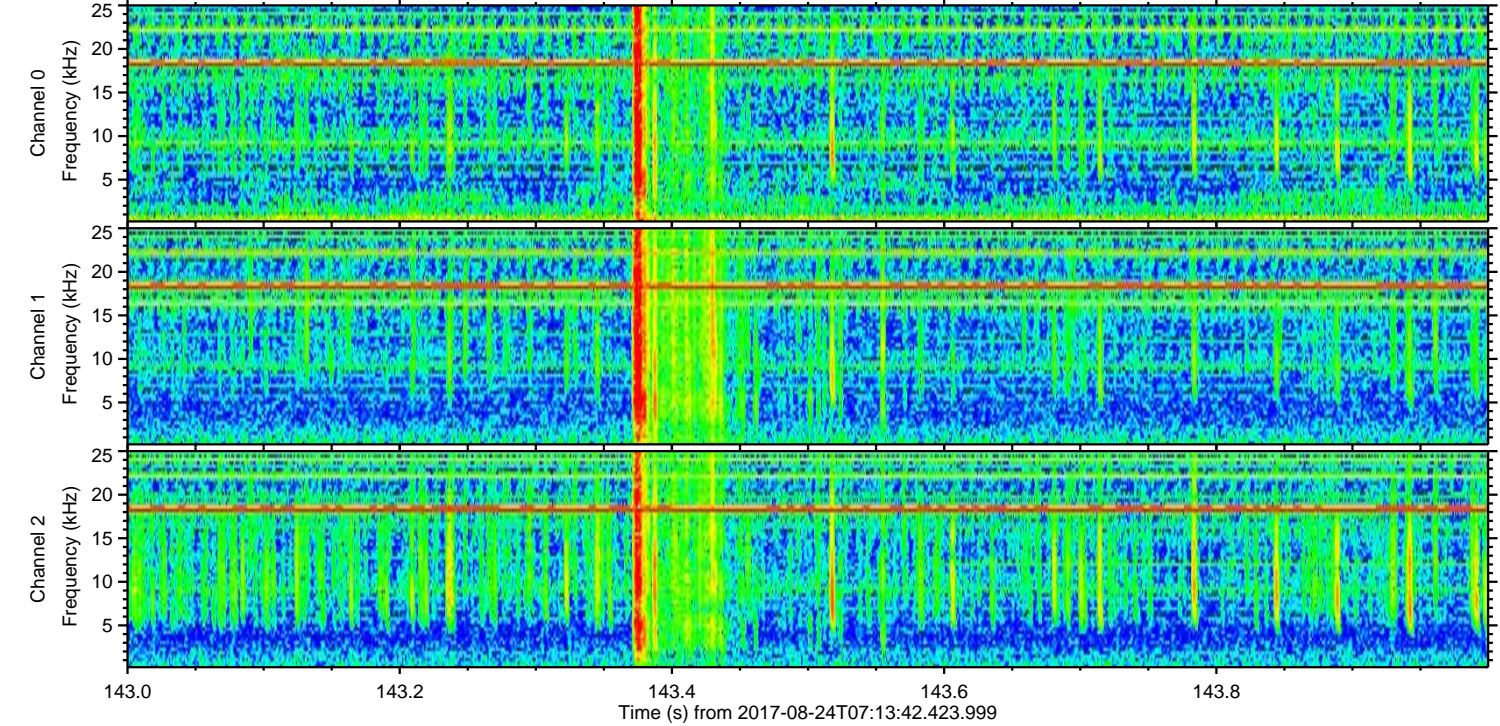
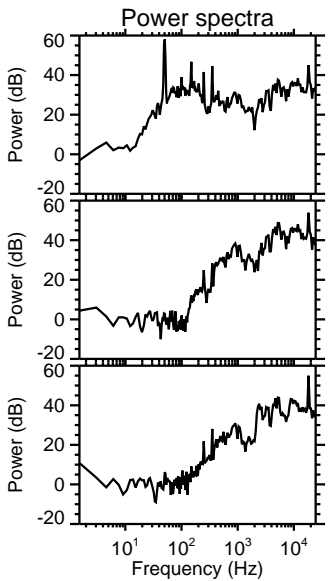
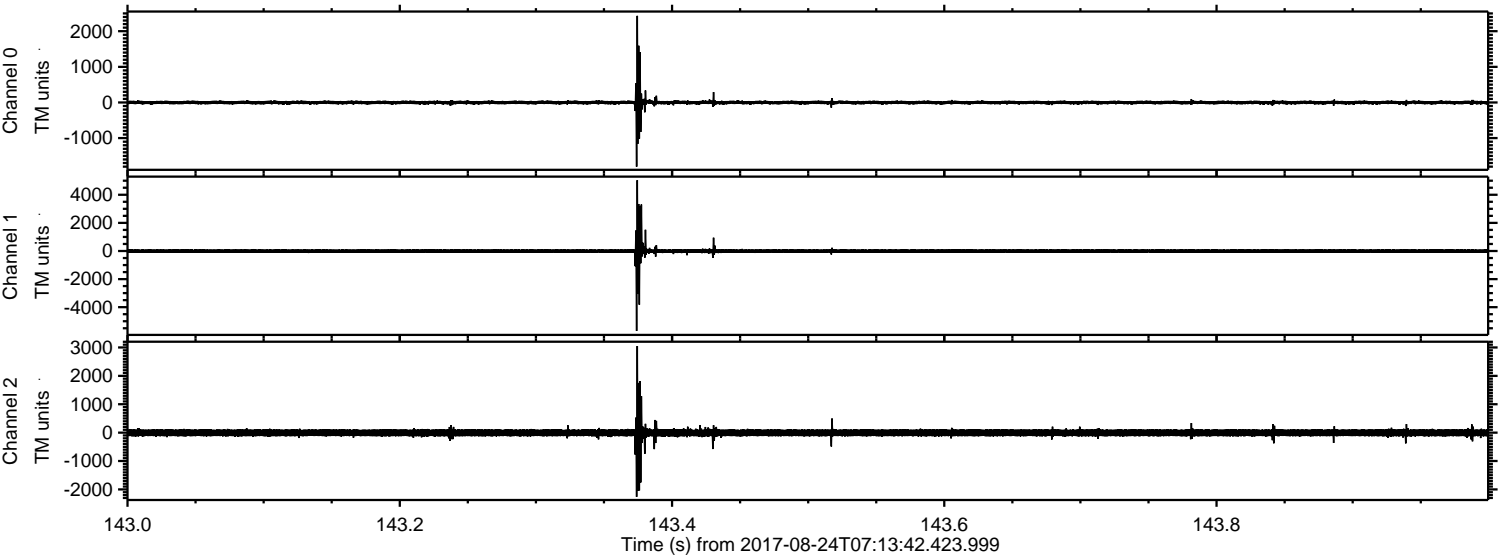


Processed Thu Aug 24 09:22:04 2017 by ELM ver.2012-10-06 from 001__elm20170824_071341__dat00.bin



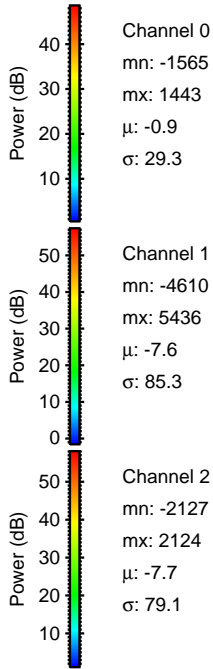
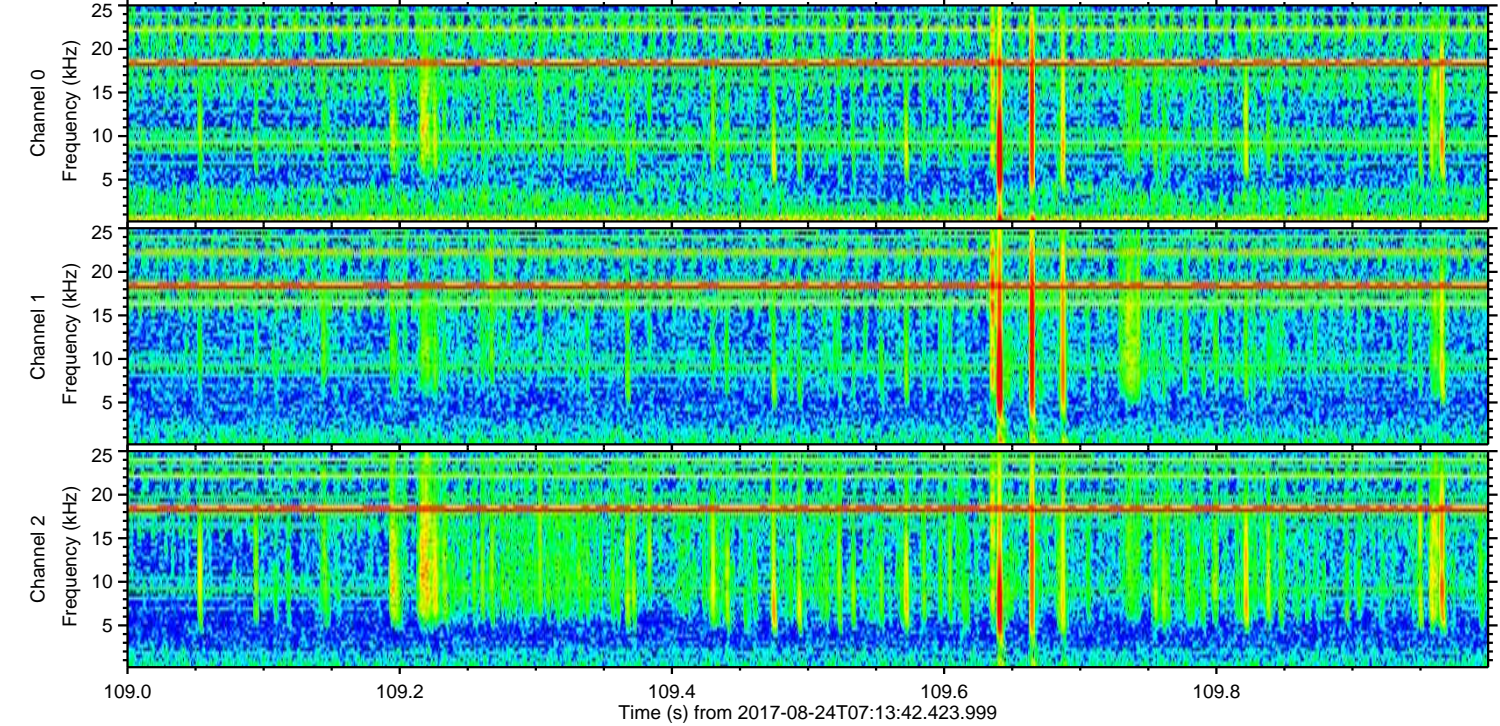
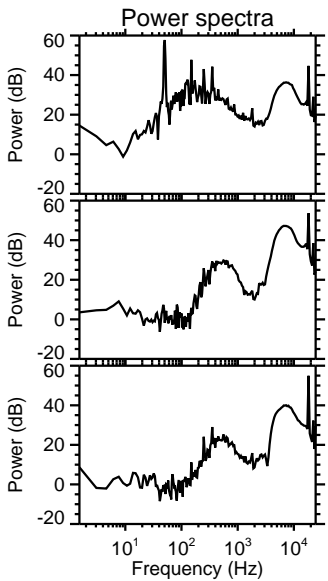
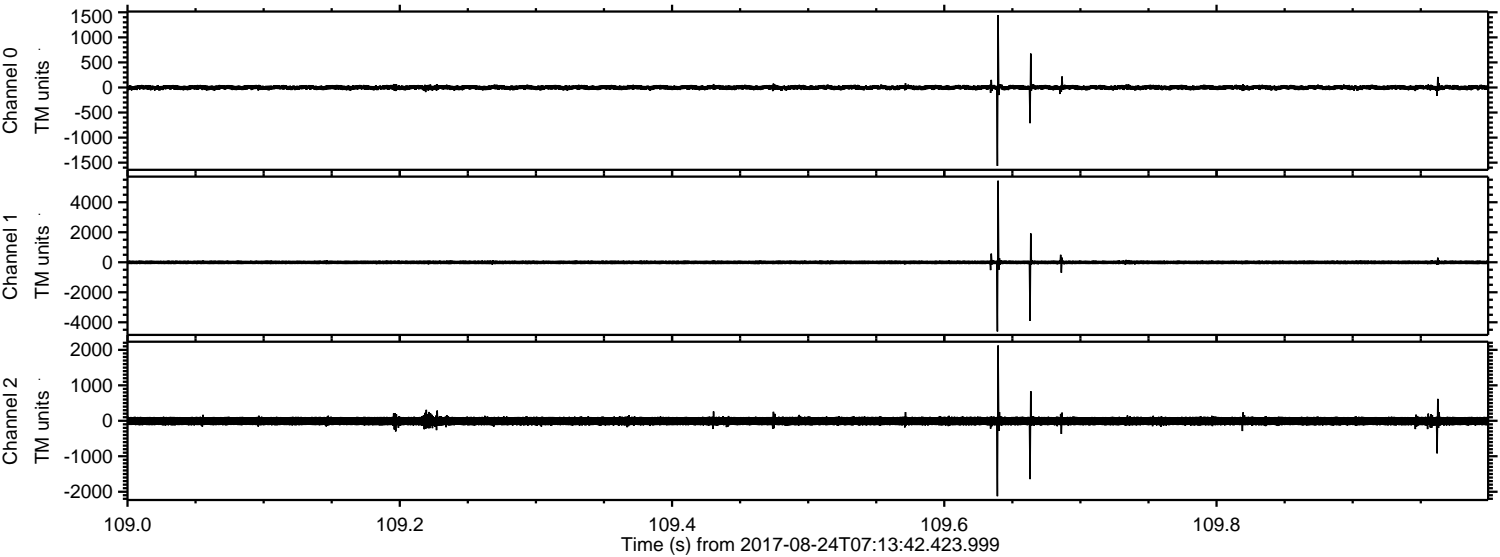
ELMAVAN 3D WAVEFORMS (Measured data sampled at 50 kHz) 51000 packets of 144 samples from 2017-08-24T07:13:42.423.999. Part 144/147

Processed Thu Aug 24 09:22:05 2017 by ELM ver.2012-10-06 from 001__elm20170824_071341__dat00.bin



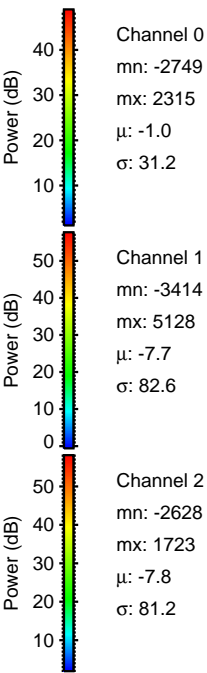
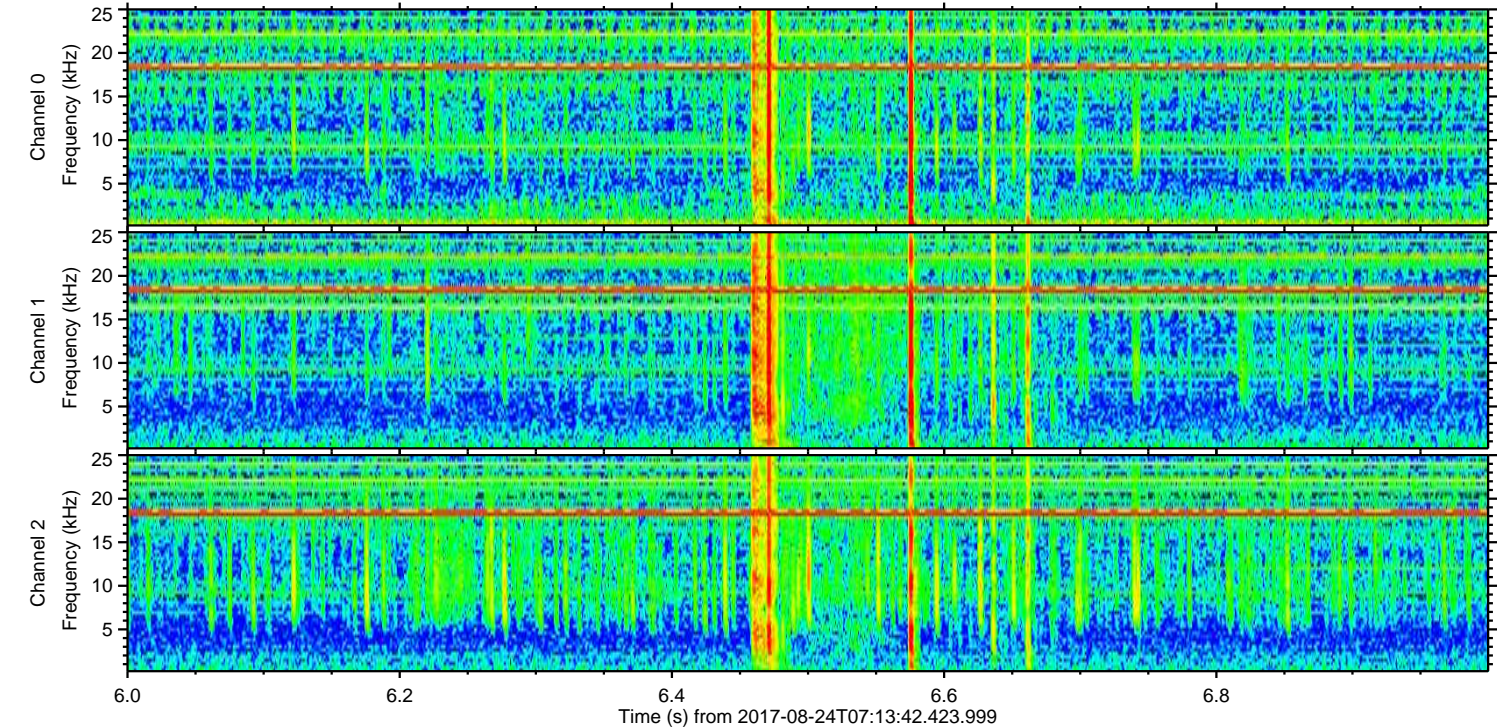
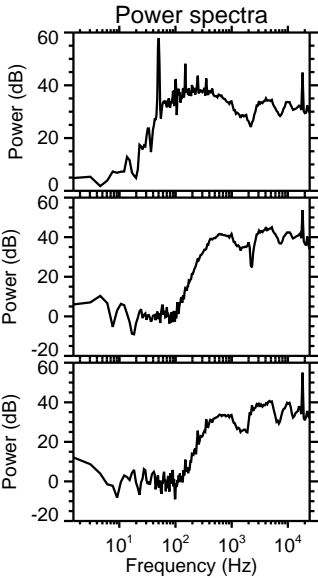
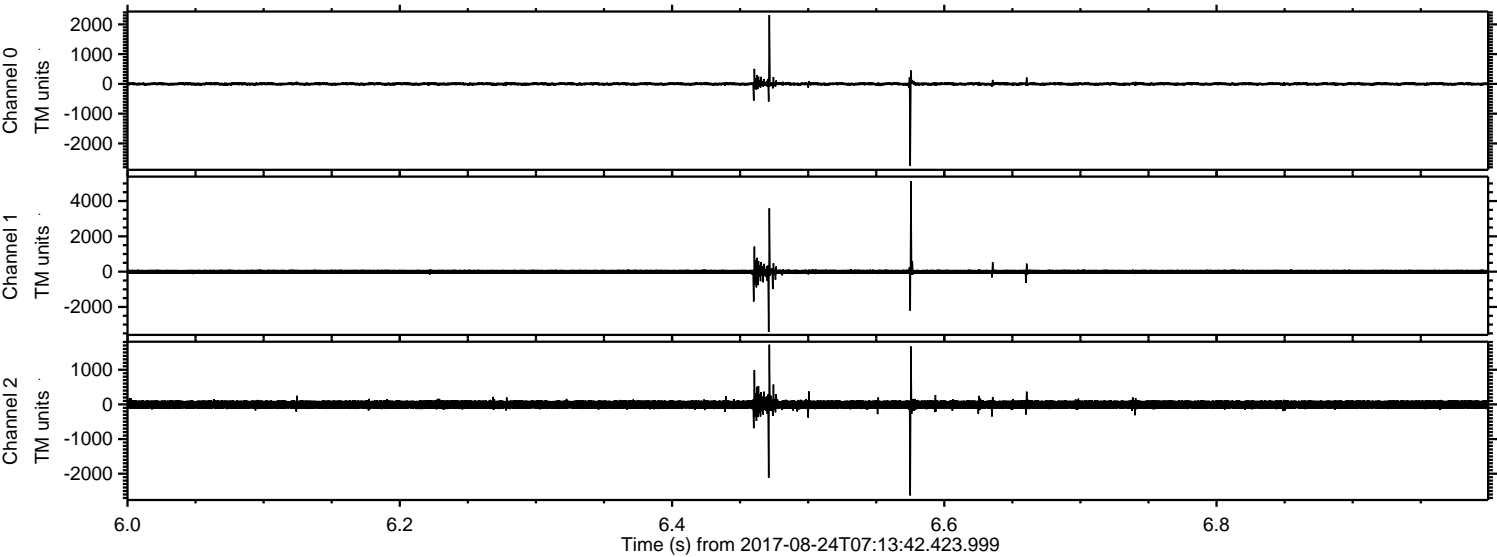
ELMAVAN 3D WAVEFORMS (Measured data sampled at 50 kHz) 51000 packets of 144 samples from 2017-08-24T07:13:42.423.999. Part 110/147

Processed Thu Aug 24 09:22:06 2017 by ELM ver.2012-10-06 from 001__elm20170824_071341__dat00.bin



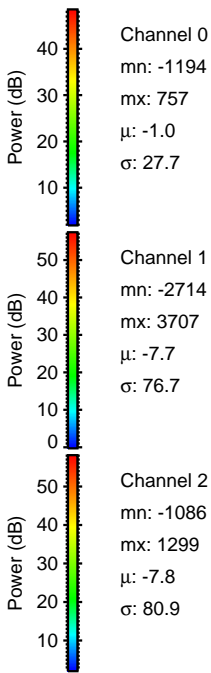
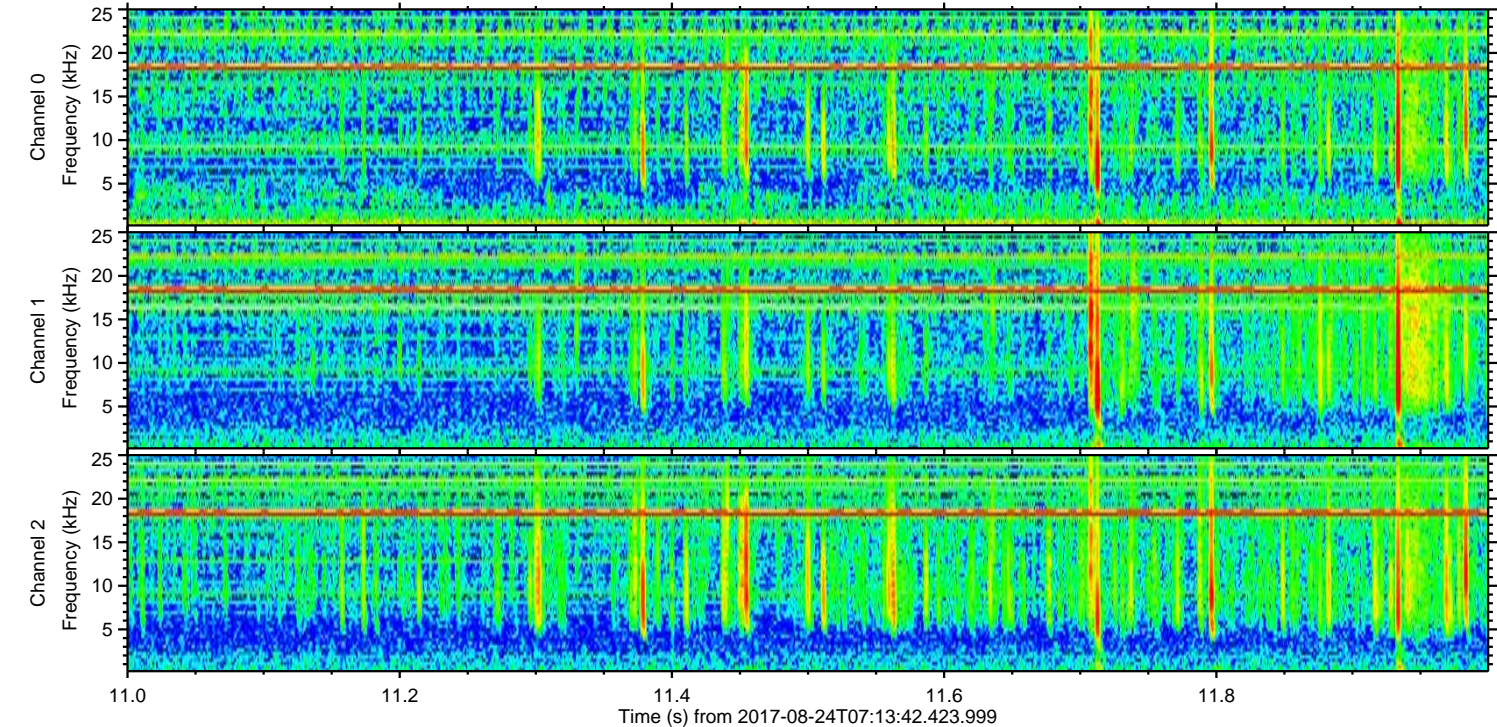
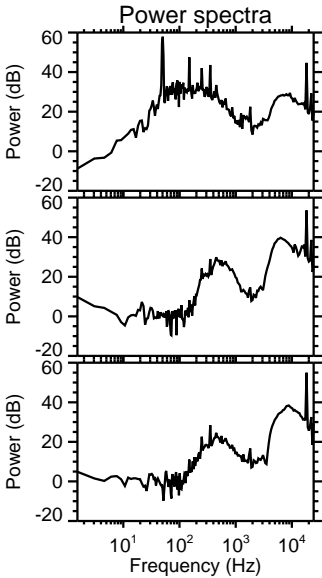
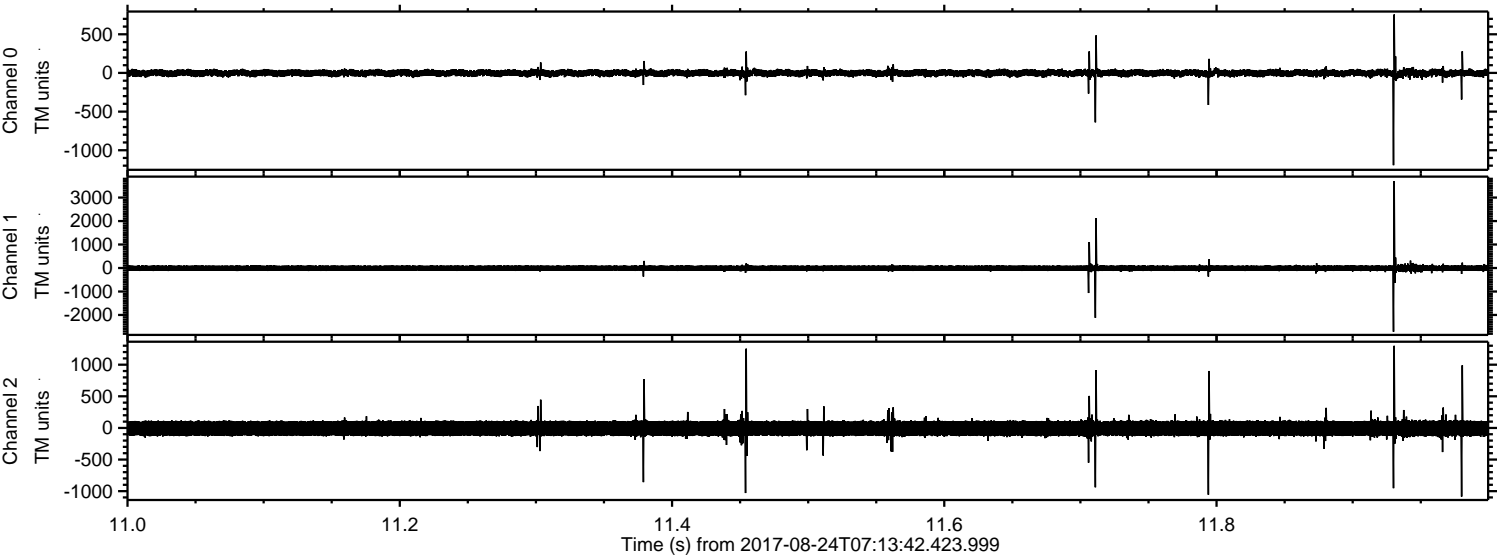
ELMAVAN 3D WAVEFORMS (Measured data sampled at 50 kHz) 51000 packets of 144 samples from 2017-08-24T07:13:42.423.999. Part 7/147

Processed Thu Aug 24 09:22:06 2017 by ELM ver.2012-10-06 from 001__elm20170824_071341__dat00.bin



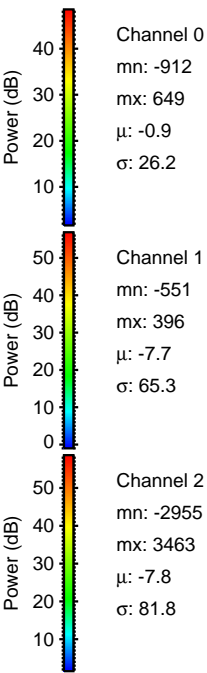
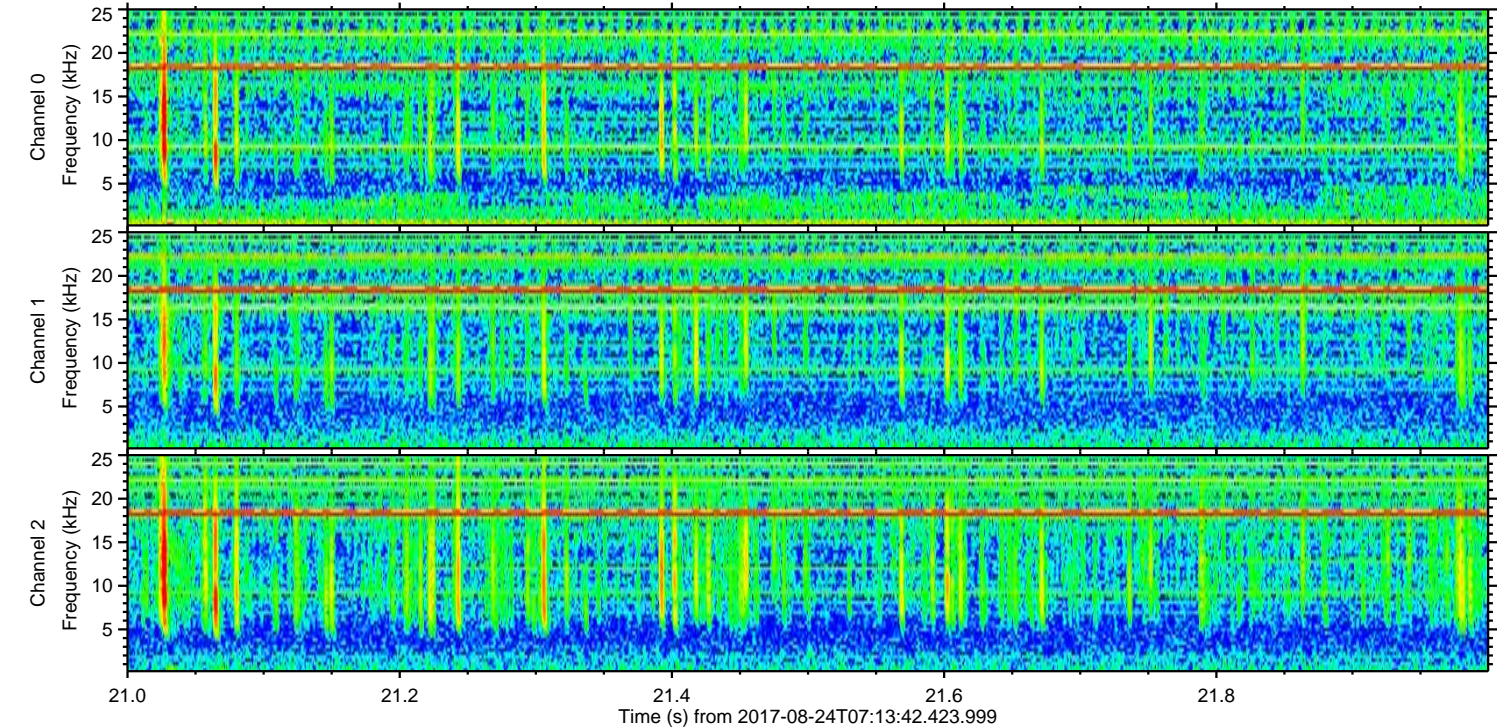
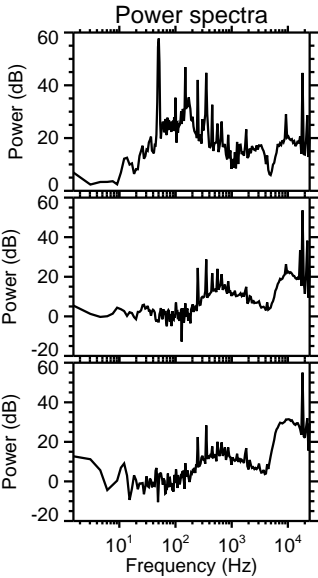
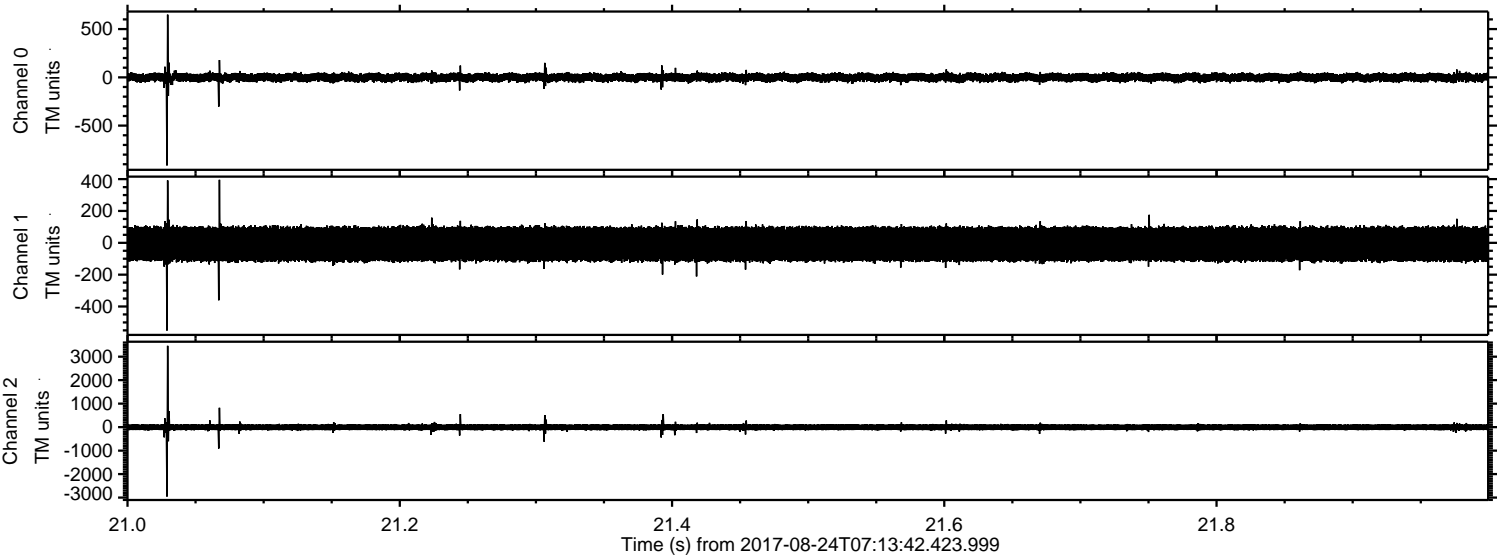
ELMAVAN 3D WAVEFORMS (Measured data sampled at 50 kHz) 51000 packets of 144 samples from 2017-08-24T07:13:42.423.999. Part 12/147

Processed Thu Aug 24 09:22:07 2017 by ELM ver.2012-10-06 from 001__elm20170824_071341__dat00.bin

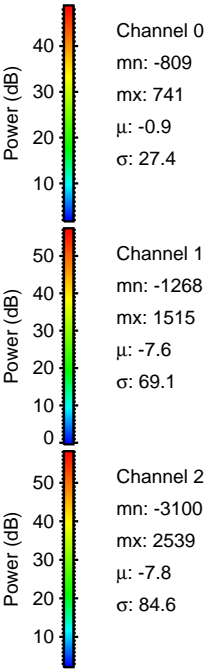
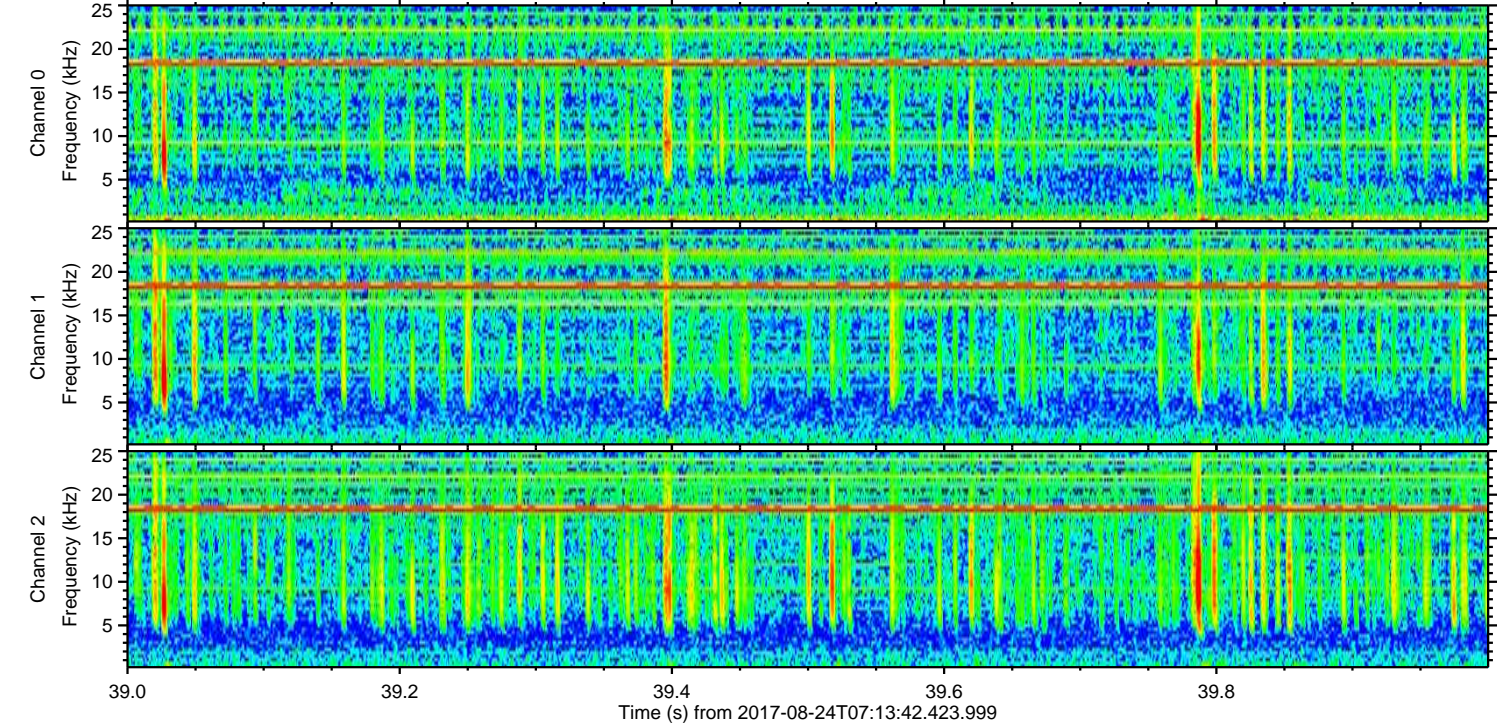
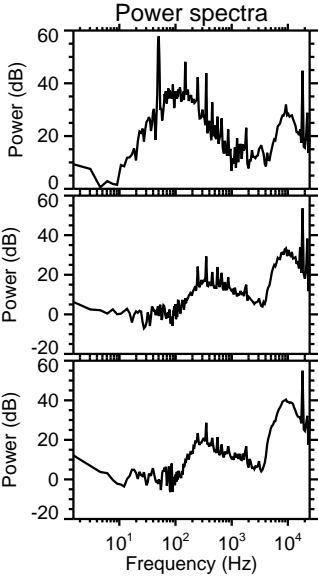
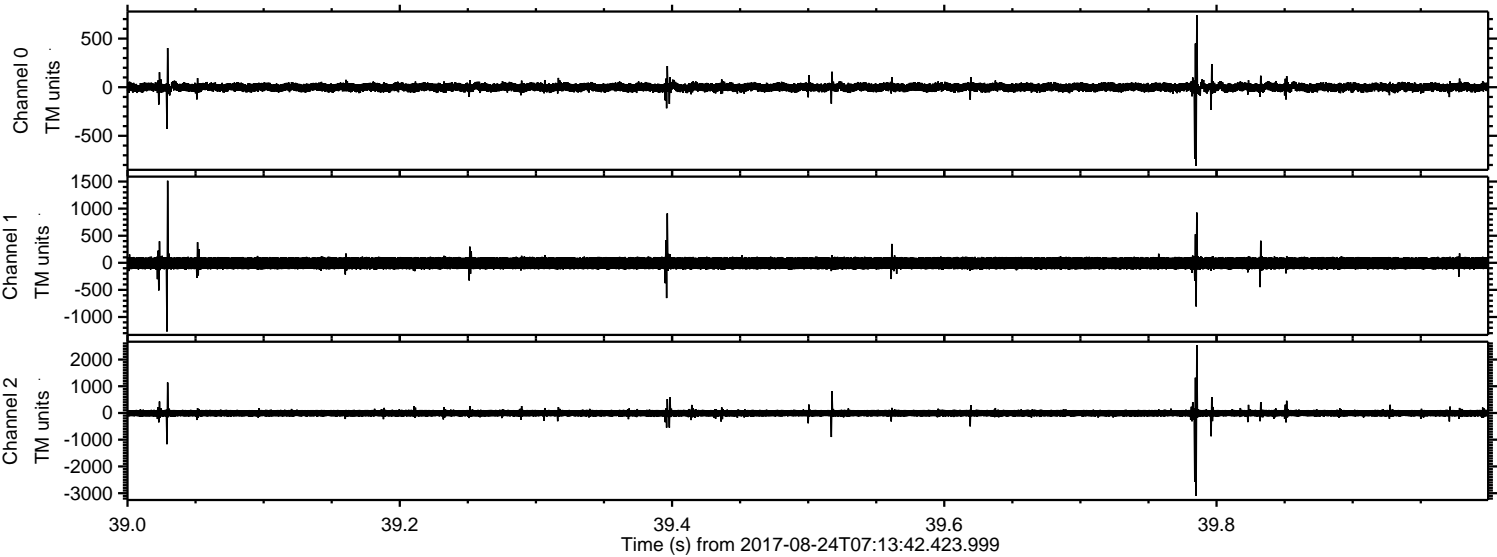


ELMAVAN 3D WAVEFORMS (Measured data sampled at 50 kHz) 51000 packets of 144 samples from 2017-08-24T07:13:42.423.999. Part 22/147

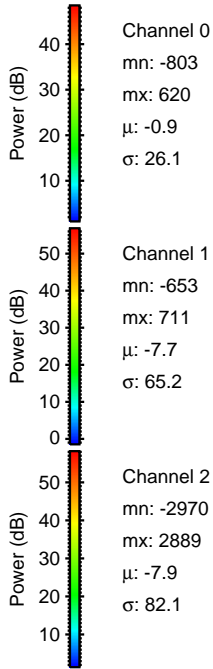
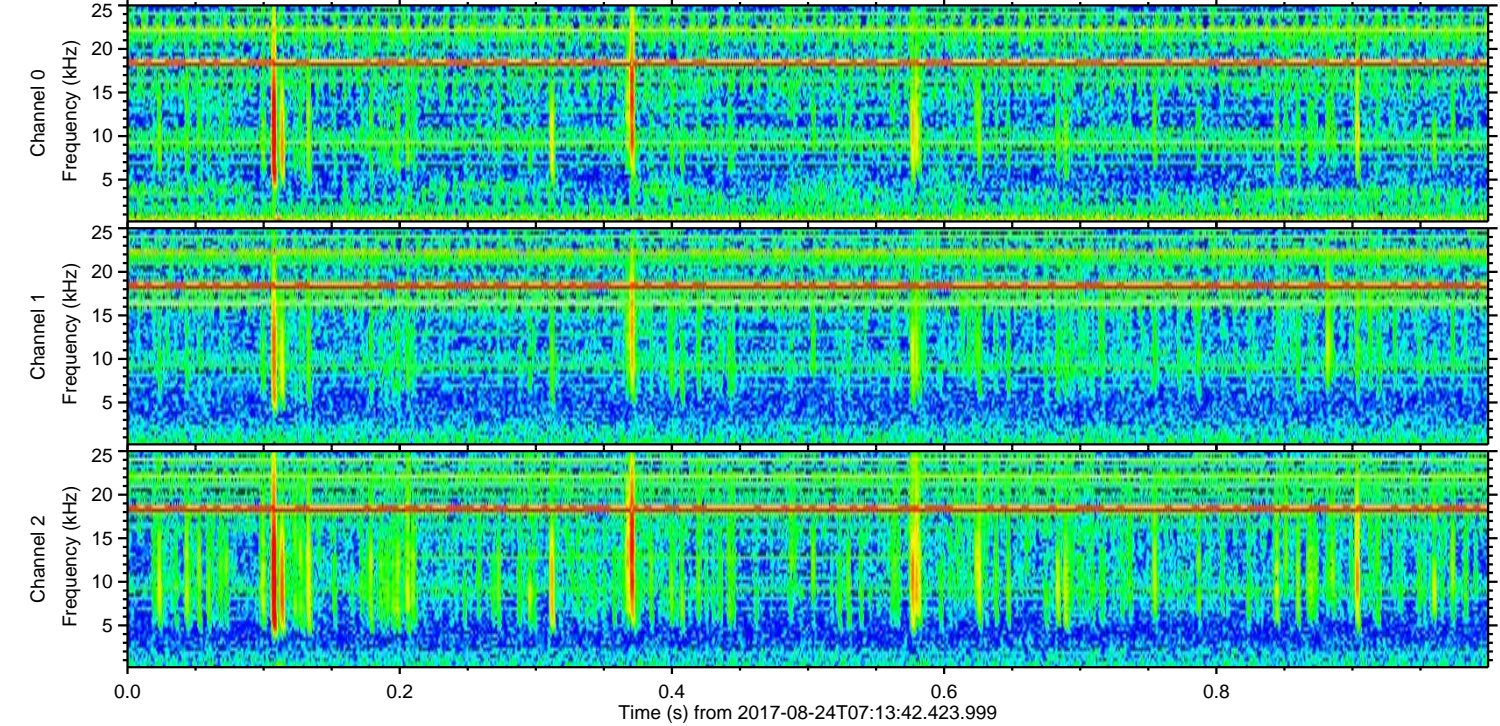
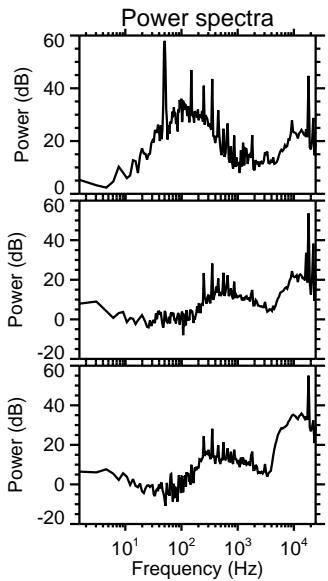
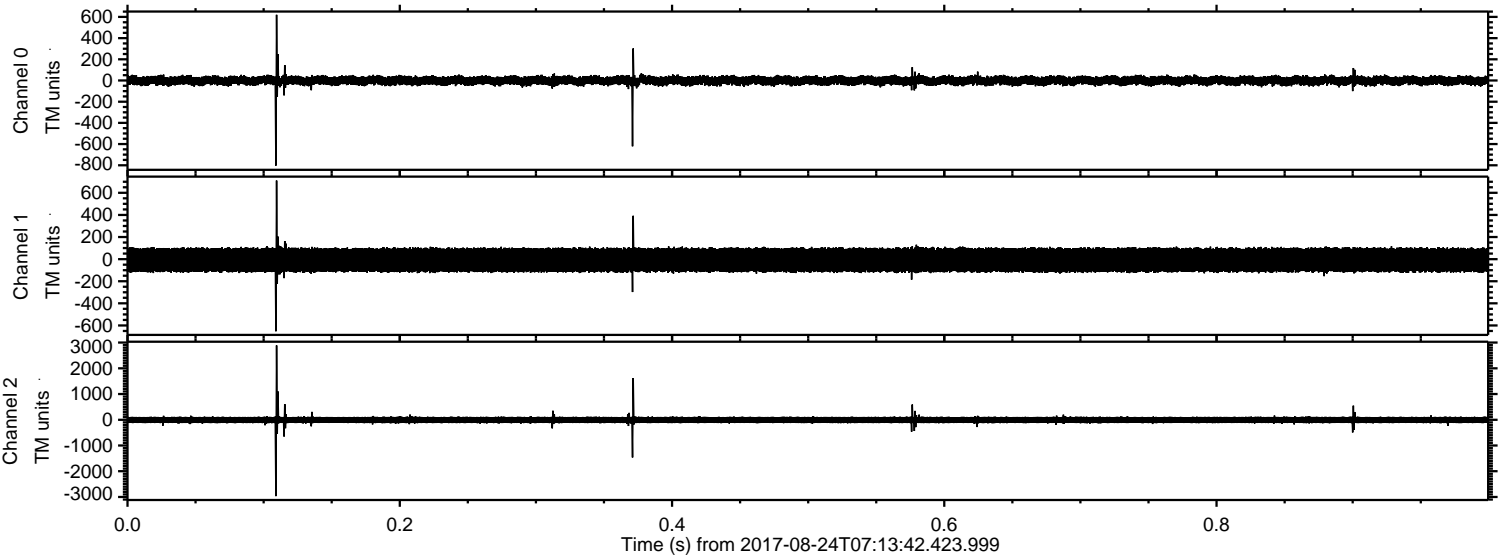
Processed Thu Aug 24 09:22:08 2017 by ELM ver.2012-10-06 from 001__elm20170824_071341__dat00.bin



Processed Thu Aug 24 09:22:09 2017 by ELM ver.2012-10-06 from 001__elm20170824_071341__dat00.bin



Processed Thu Aug 24 09:22:09 2017 by ELM ver.2012-10-06 from 001__elm20170824_071341__dat00.bin

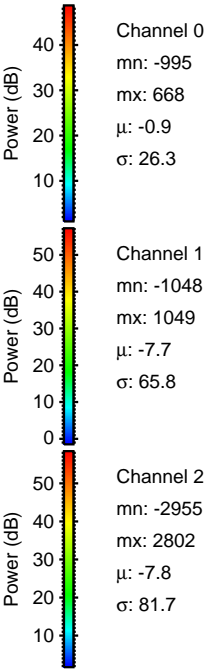
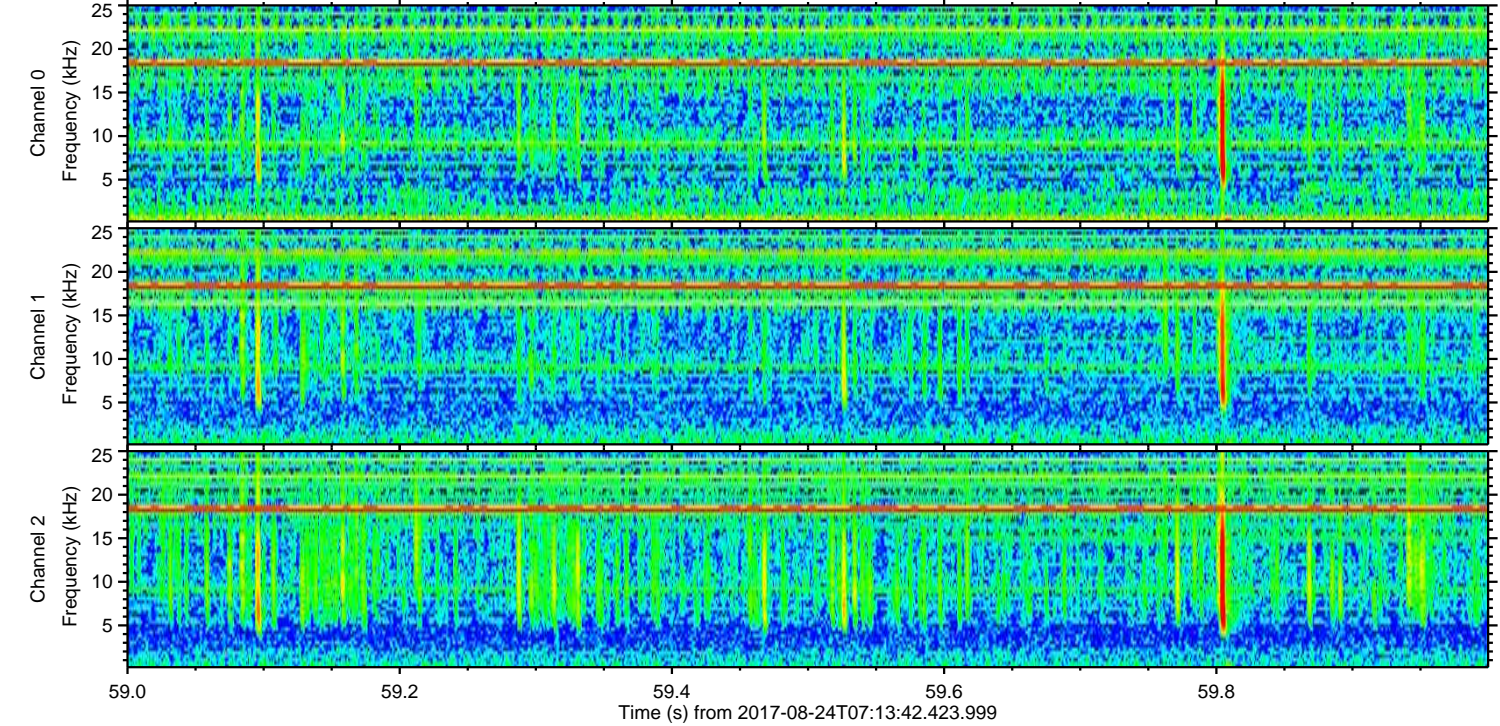
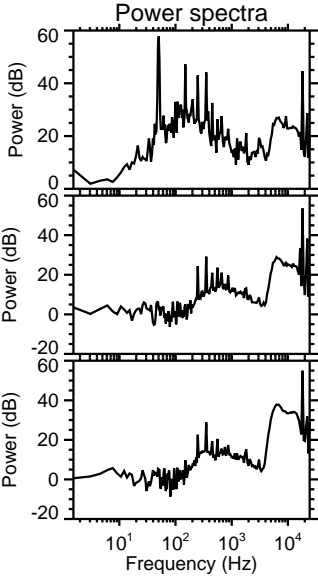
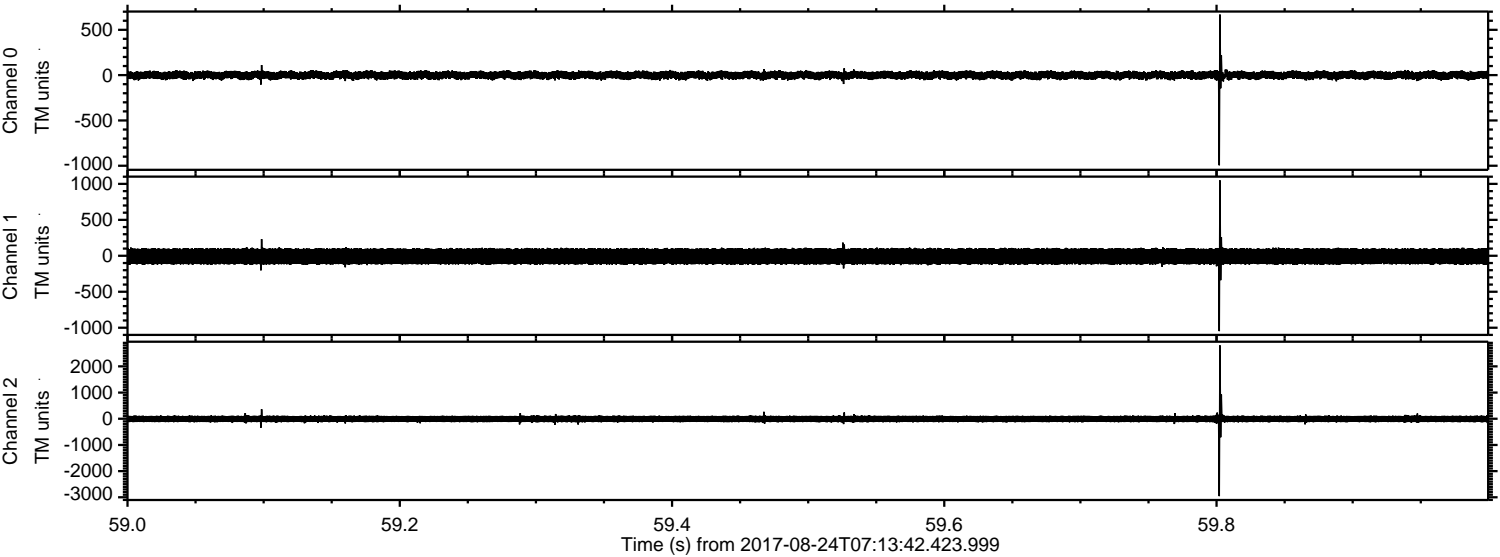


Channel 0
mn: -803
mx: 620
 μ : -0.9
 σ : 26.1

Channel 1
mn: -653
mx: 711
 μ : -7.7
 σ : 65.2

Channel 2
mn: -2970
mx: 2889
 μ : -7.9
 σ : 82.1

Processed Thu Aug 24 09:22:10 2017 by ELM ver.2012-10-06 from 001__elm20170824_071341__dat00.bin



Processed Thu Aug 24 09:22:11 2017 by ELM ver.2012-10-06 from 001__elm20170824_071341__dat00.bin

