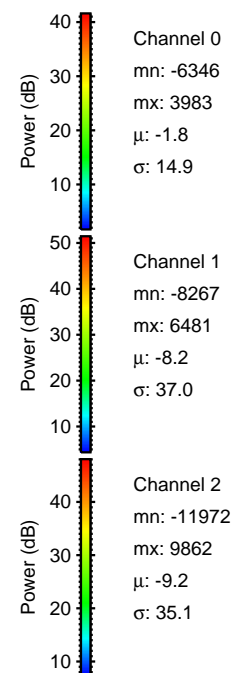
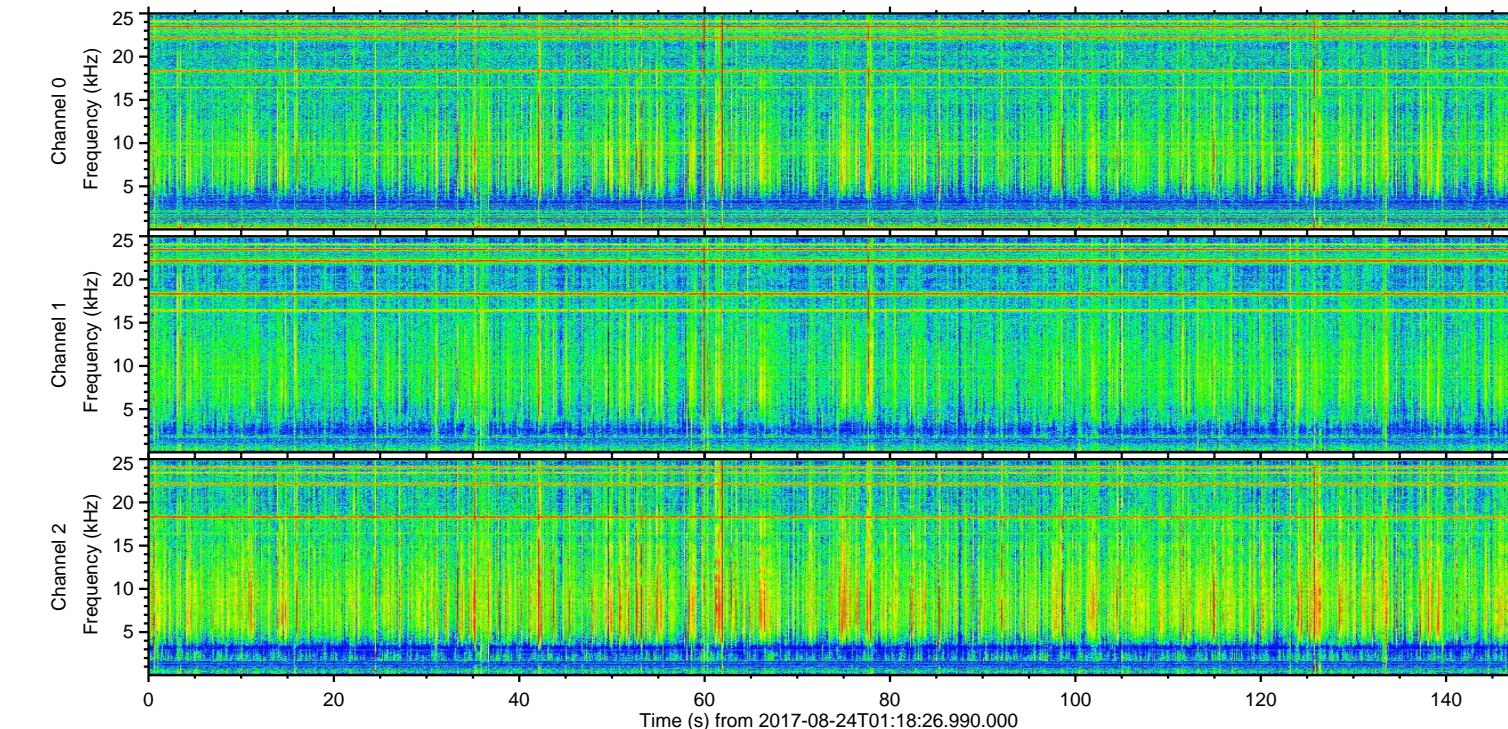
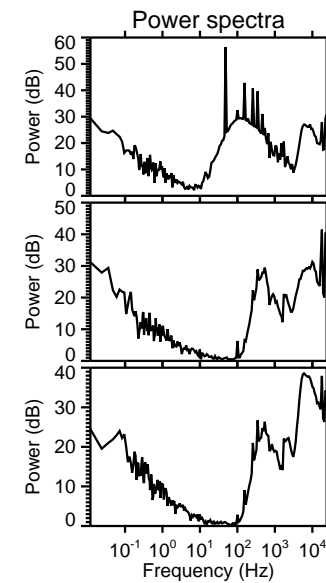
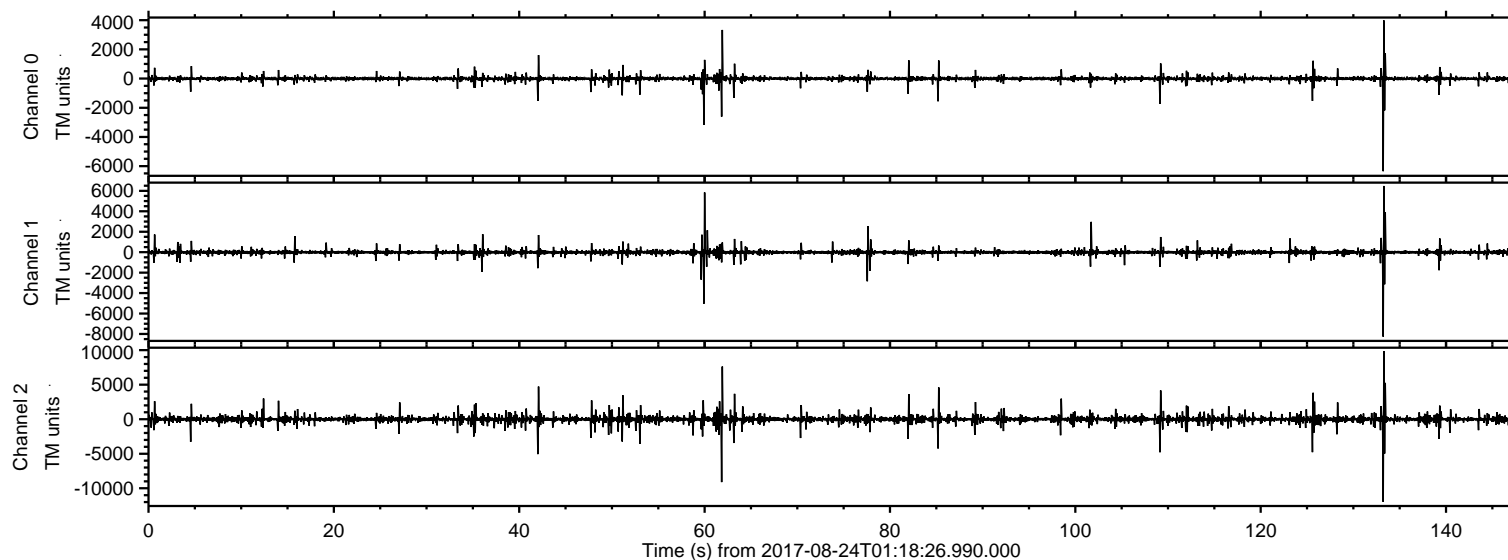


# ELMAVAN 3D WAVEFORMS (Measured data sampled at 50 kHz) 51000 packets of 144 samples from 2017-08-24T01:18:26.990.000.

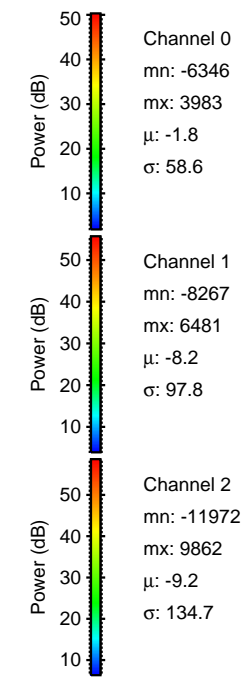
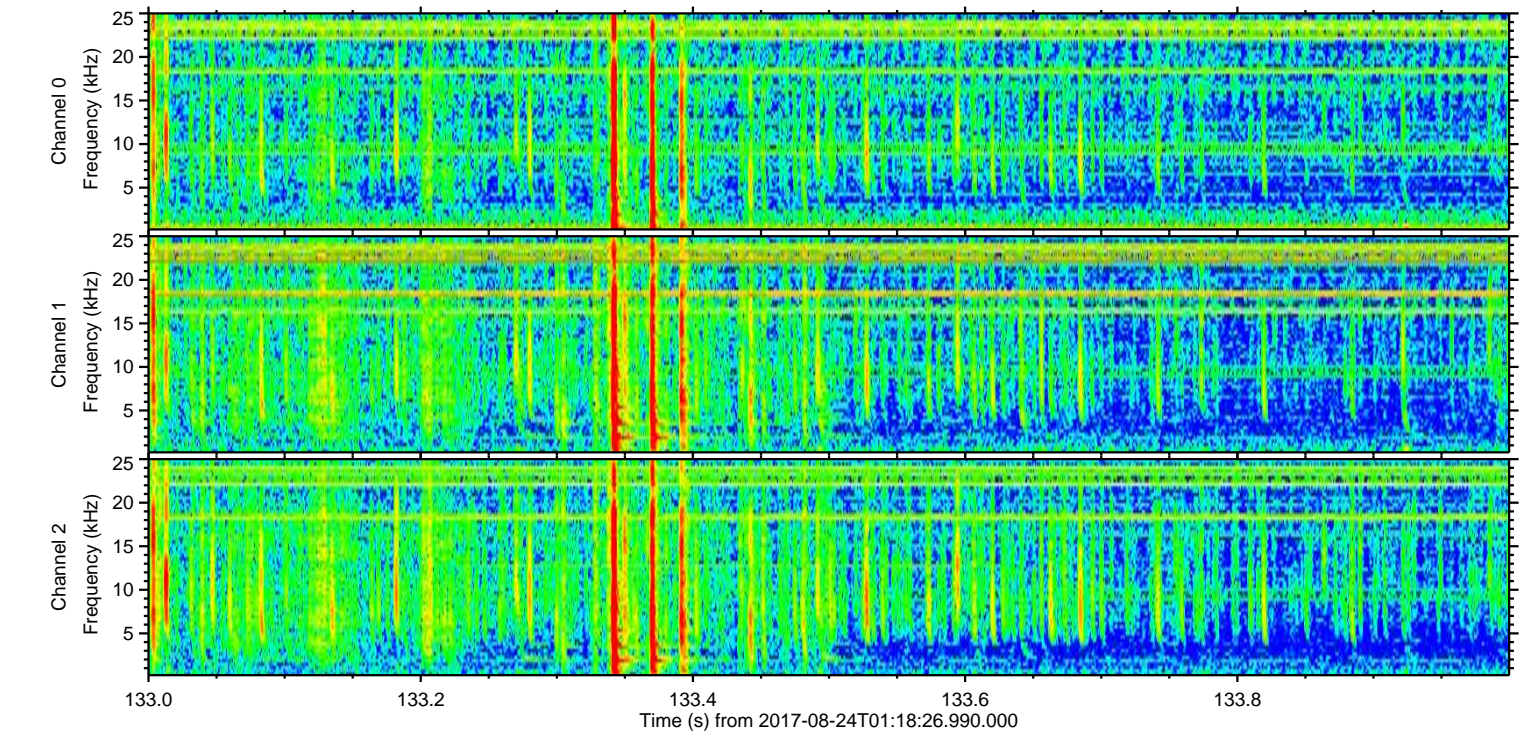
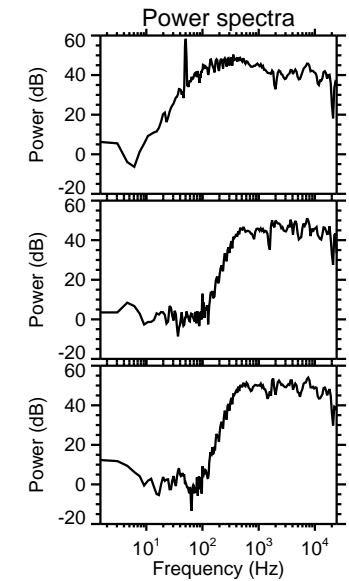
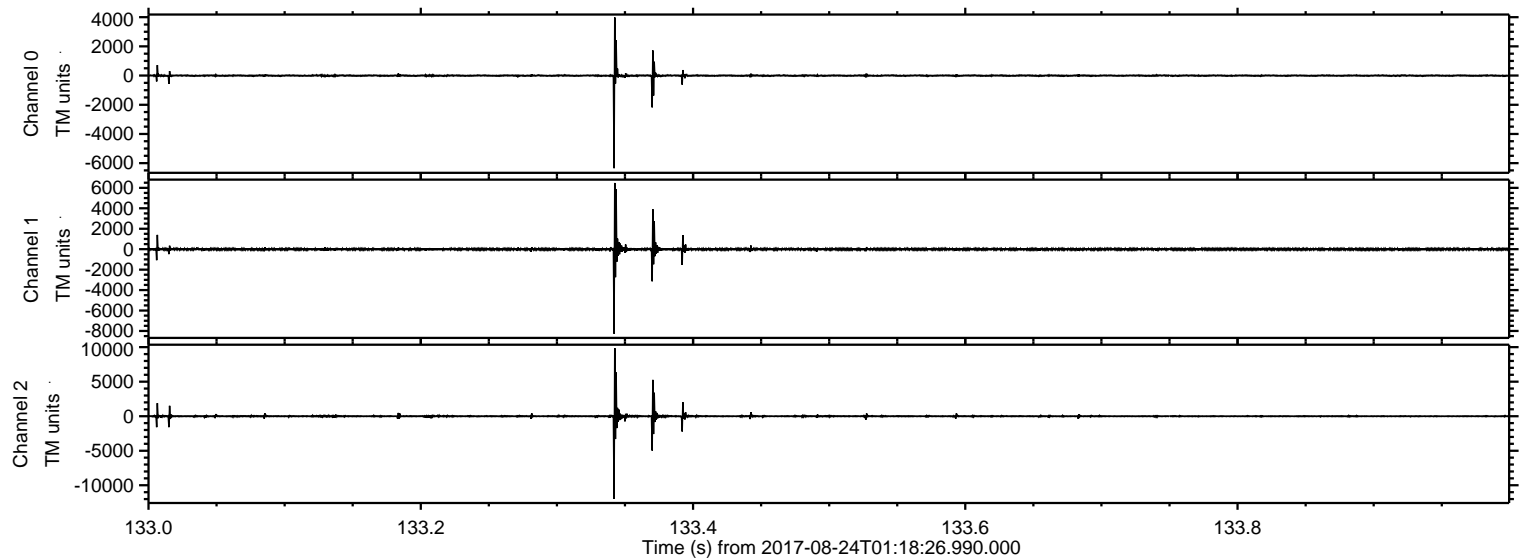
Processed Thu Aug 24 03:25:45 2017 by ELM ver.2012-10-06 from 001\_\_elm20170824\_011825\_\_dat00.bin





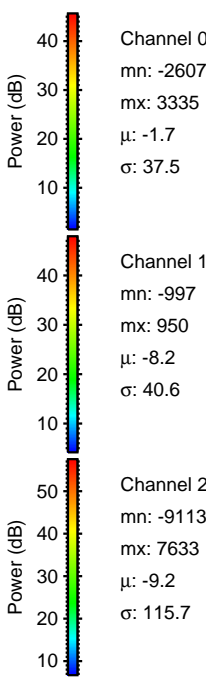
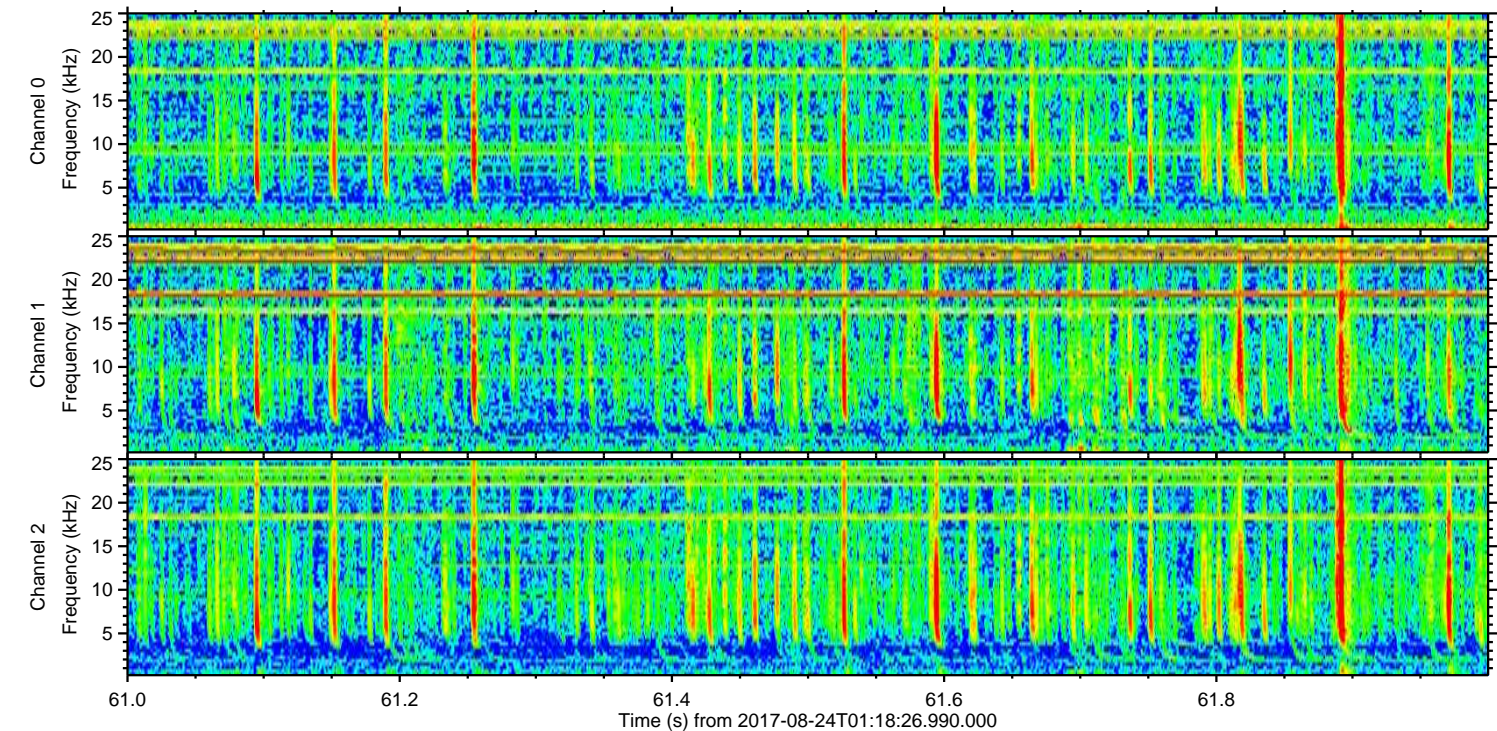
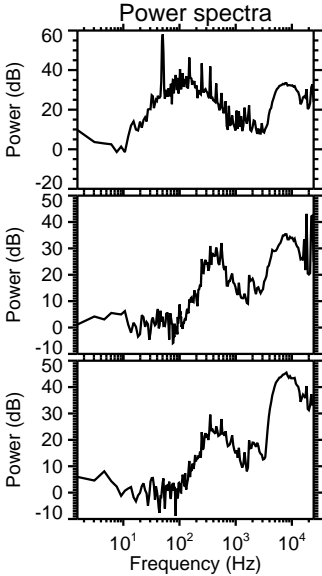
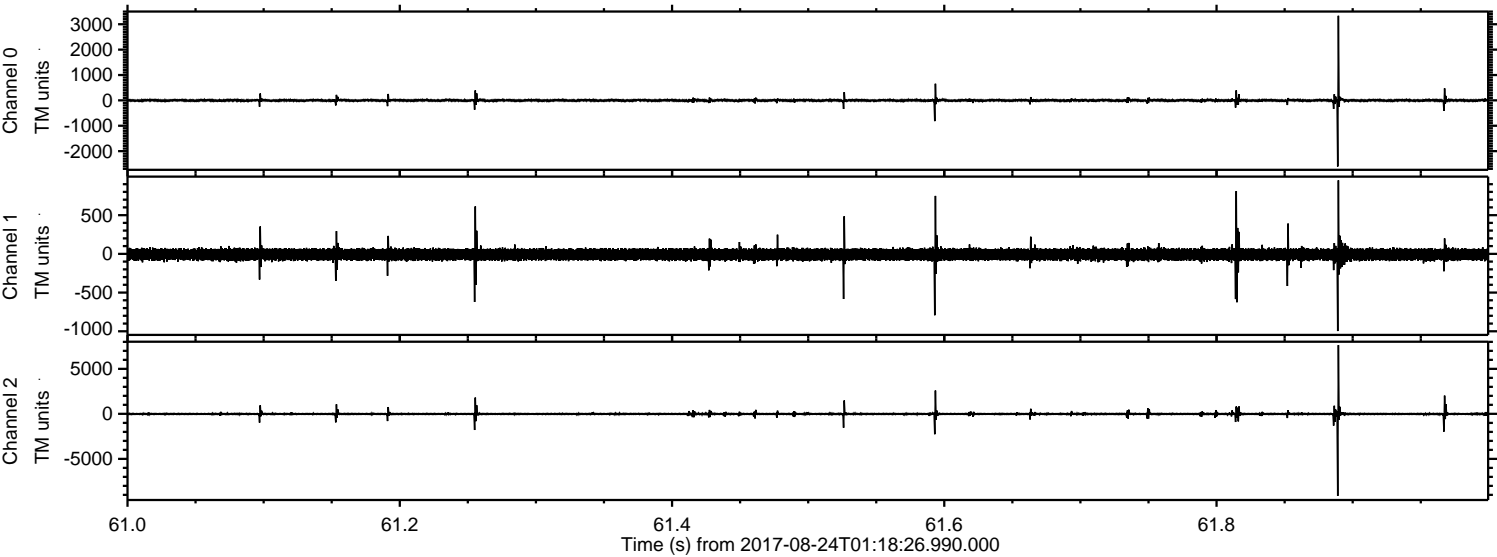
ELMAVAN 3D WAVEFORMS (Measured data sampled at 50 kHz) 51000 packets of 144 samples from 2017-08-24T01:18:26.990.000. Part 134/147

Processed Thu Aug 24 03:25:51 2017 by ELM ver.2012-10-06 from 001\_\_elm20170824\_011825\_\_dat00.bin





Processed Thu Aug 24 03:25:52 2017 by ELM ver.2012-10-06 from 001\_\_elm20170824\_011825\_\_dat00.bin



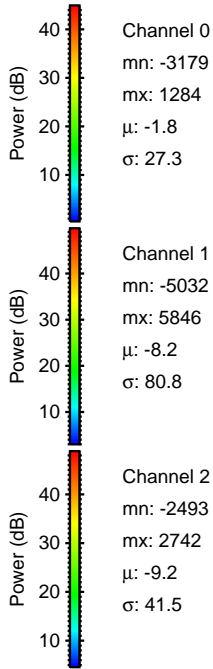
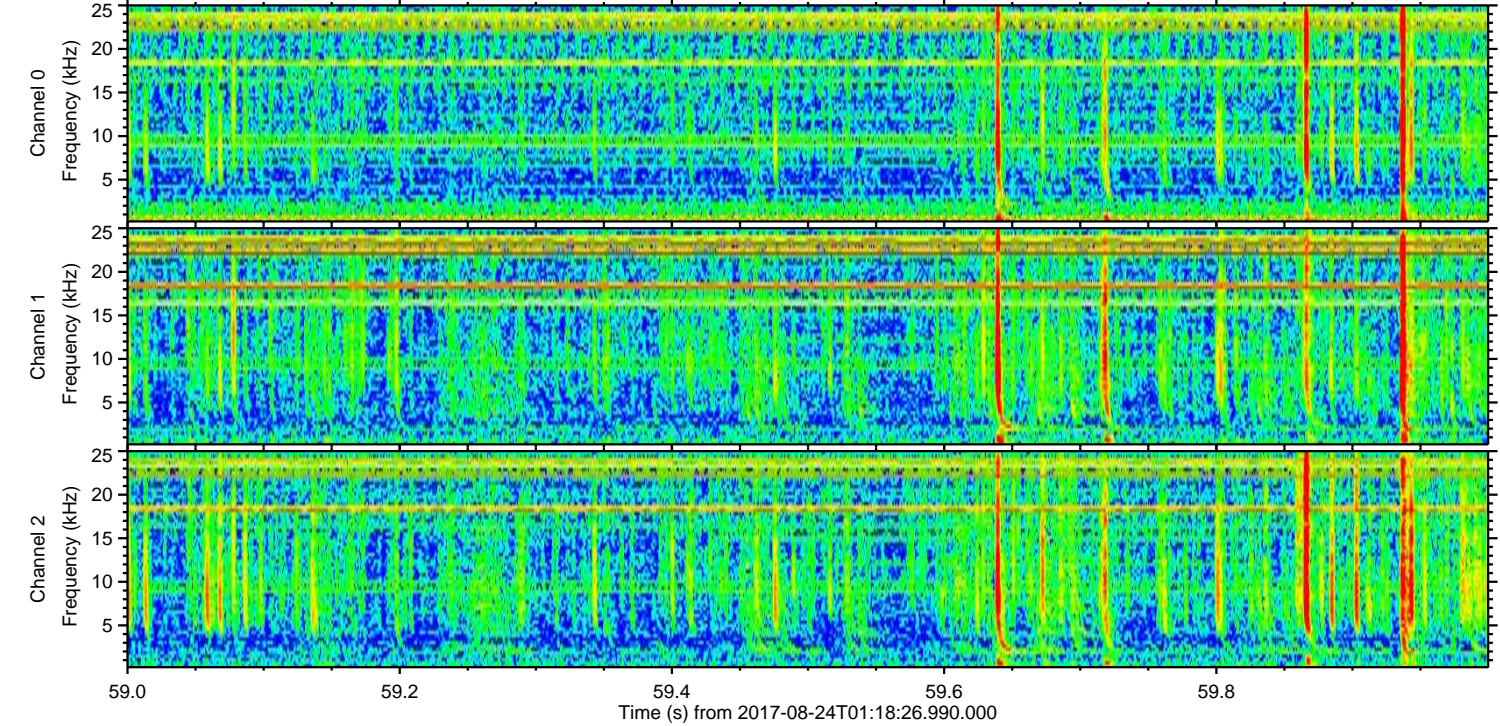
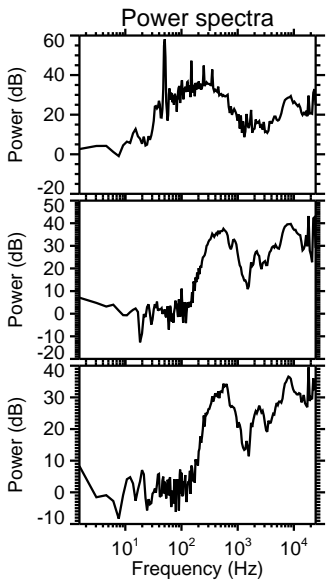
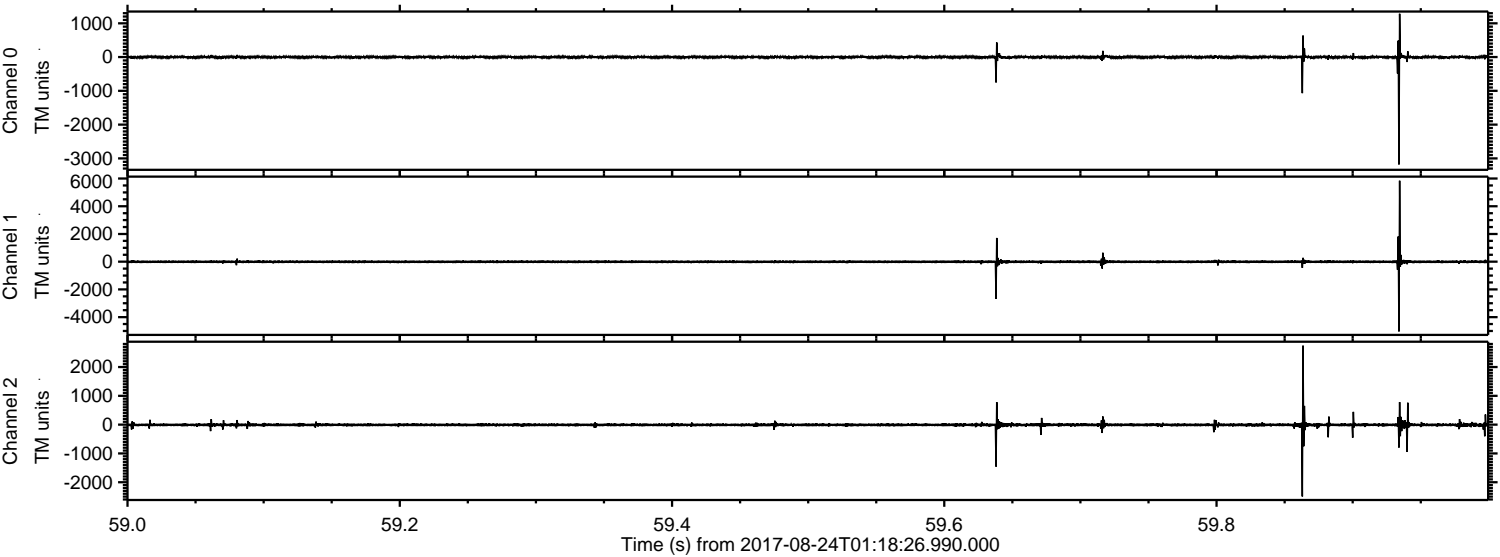
Channel 0  
mn: -2607  
mx: 3335  
 $\mu$ : -1.7  
 $\sigma$ : 37.5

Channel 1  
mn: -997  
mx: 950  
 $\mu$ : -8.2  
 $\sigma$ : 40.6

Channel 2  
mn: -9113  
mx: 7633  
 $\mu$ : -9.2  
 $\sigma$ : 115.7



Processed Thu Aug 24 03:25:53 2017 by ELM ver.2012-10-06 from 001\_\_elm20170824\_011825\_\_dat00.bin



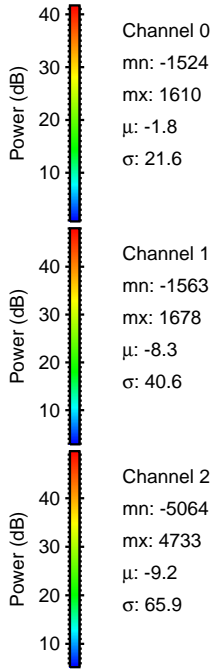
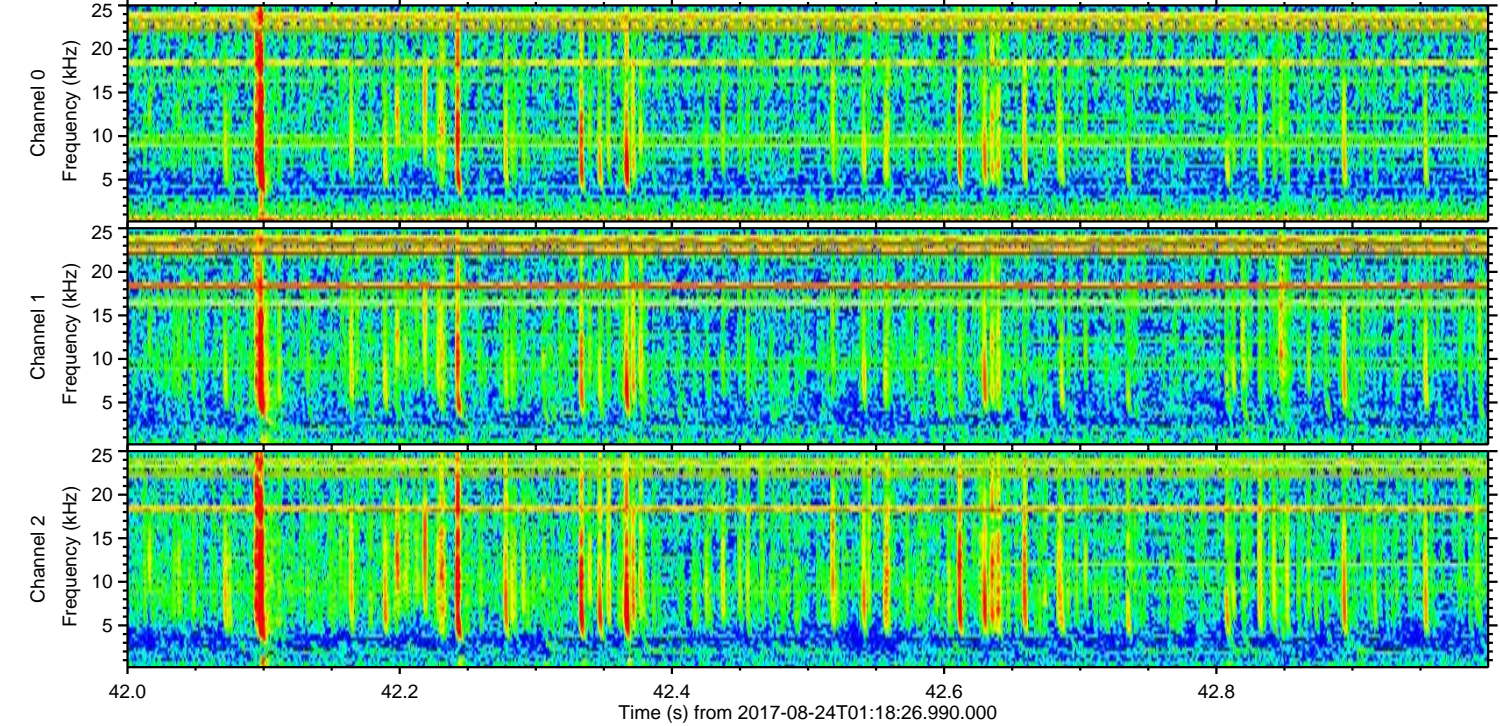
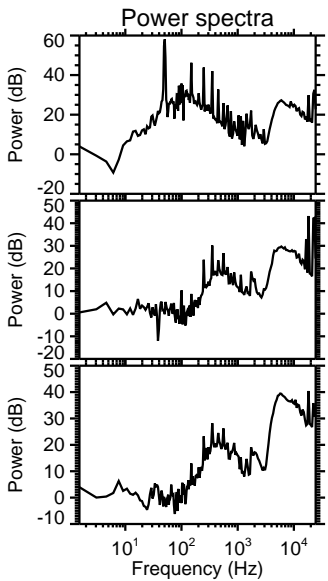
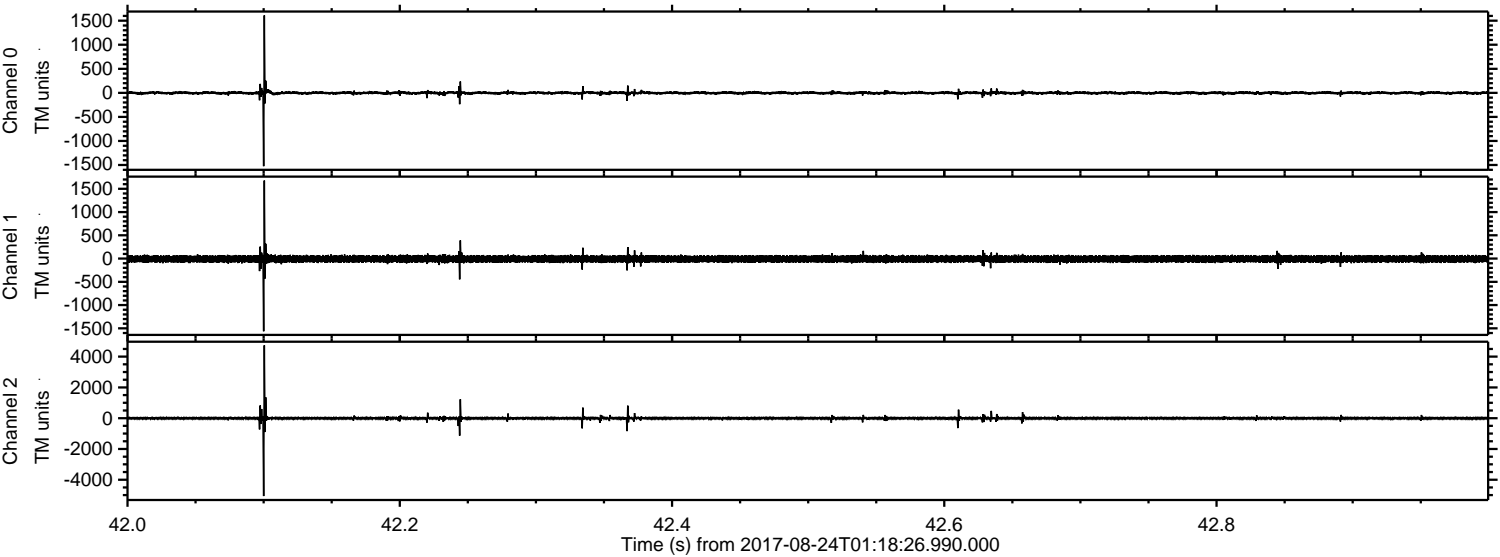
Channel 0  
mn: -3179  
mx: 1284  
 $\mu$ : -1.8  
 $\sigma$ : 27.3

Channel 1  
mn: -5032  
mx: 5846  
 $\mu$ : -8.2  
 $\sigma$ : 80.8

Channel 2  
mn: -2493  
mx: 2742  
 $\mu$ : -9.2  
 $\sigma$ : 41.5



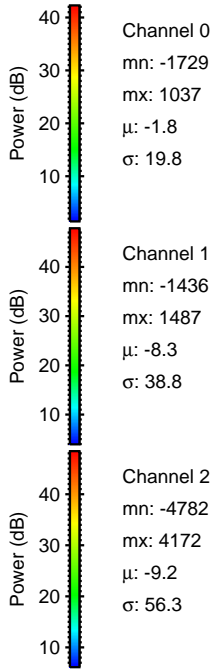
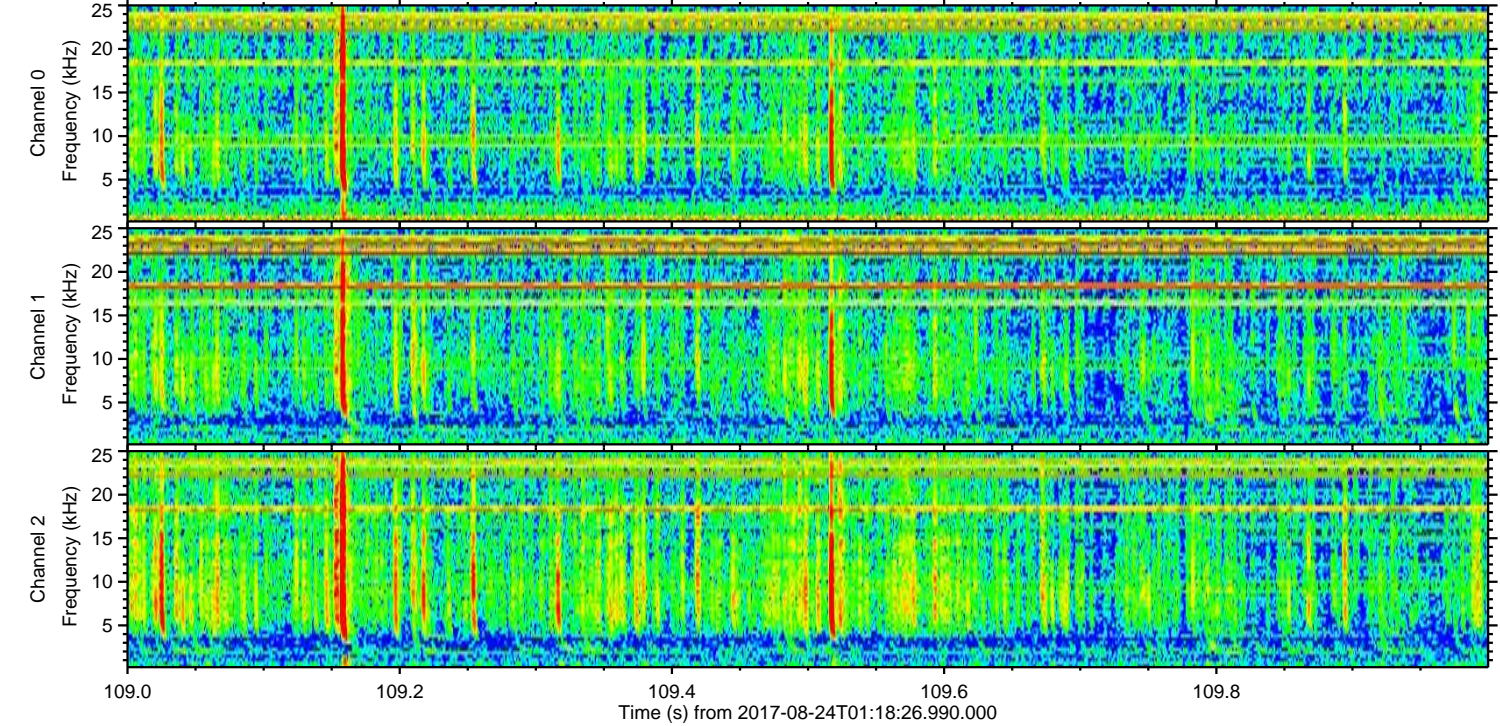
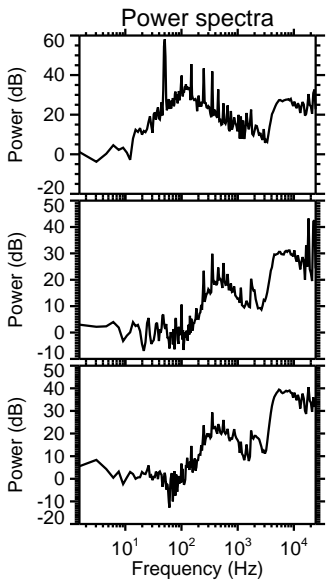
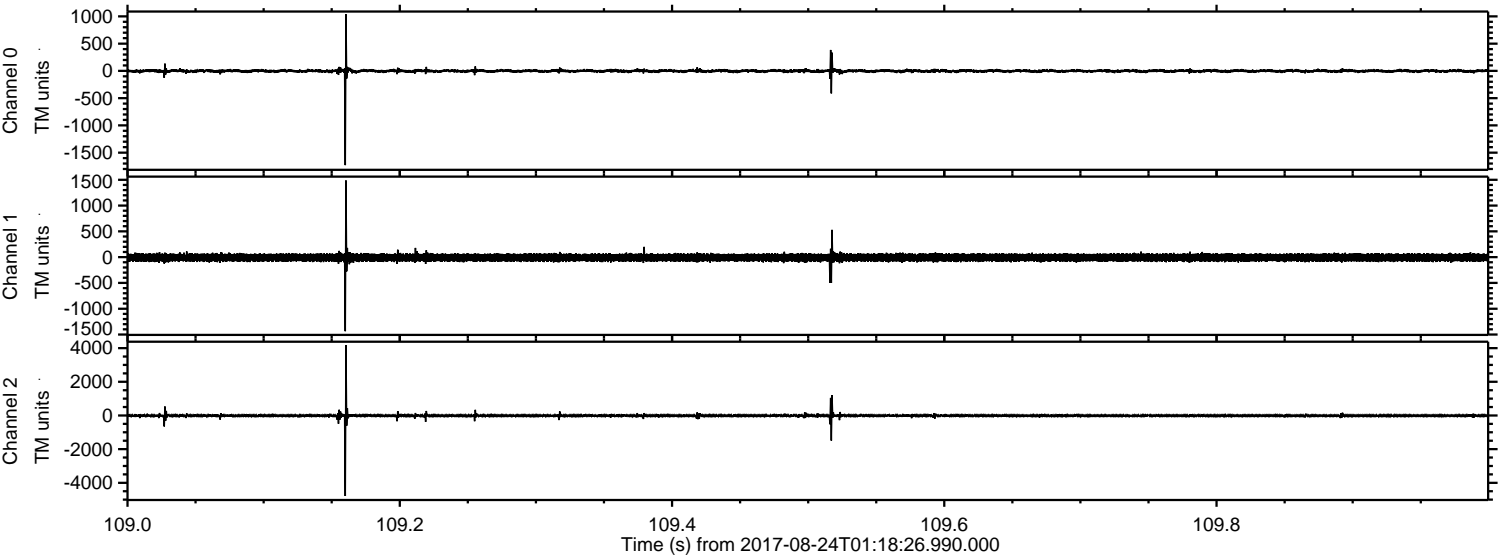
Processed Thu Aug 24 03:25:53 2017 by ELM ver.2012-10-06 from 001\_\_elm20170824\_011825\_\_dat00.bin





ELMAVAN 3D WAVEFORMS (Measured data sampled at 50 kHz) 51000 packets of 144 samples from 2017-08-24T01:18:26.990.000. Part 110/147

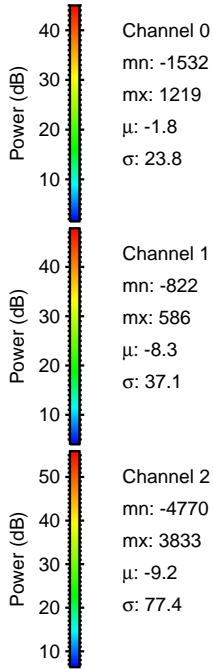
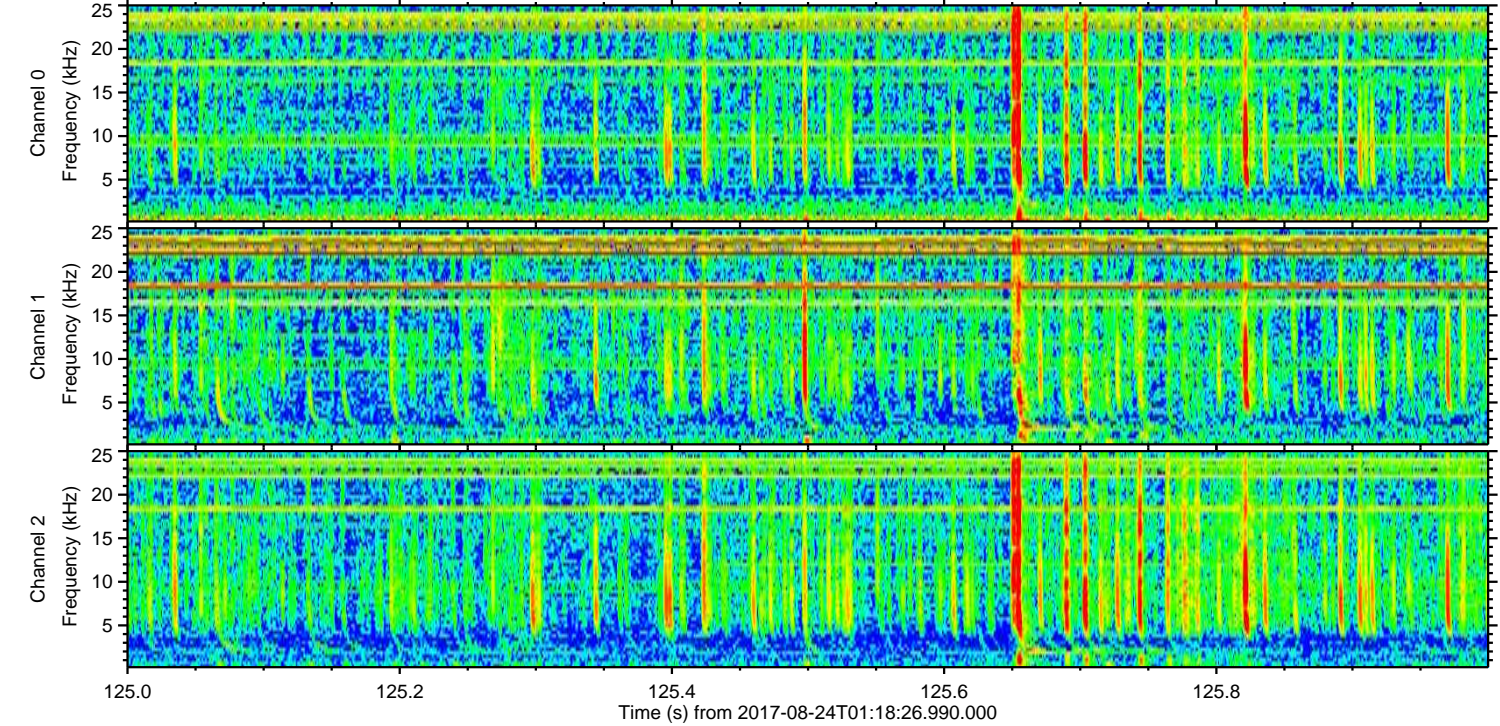
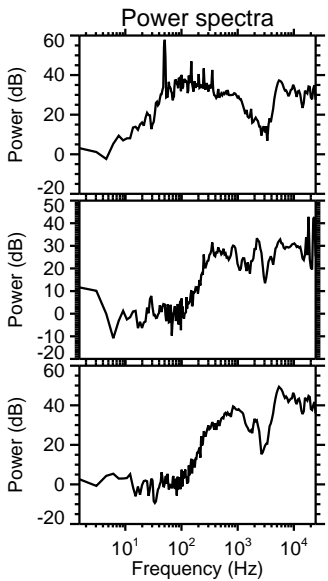
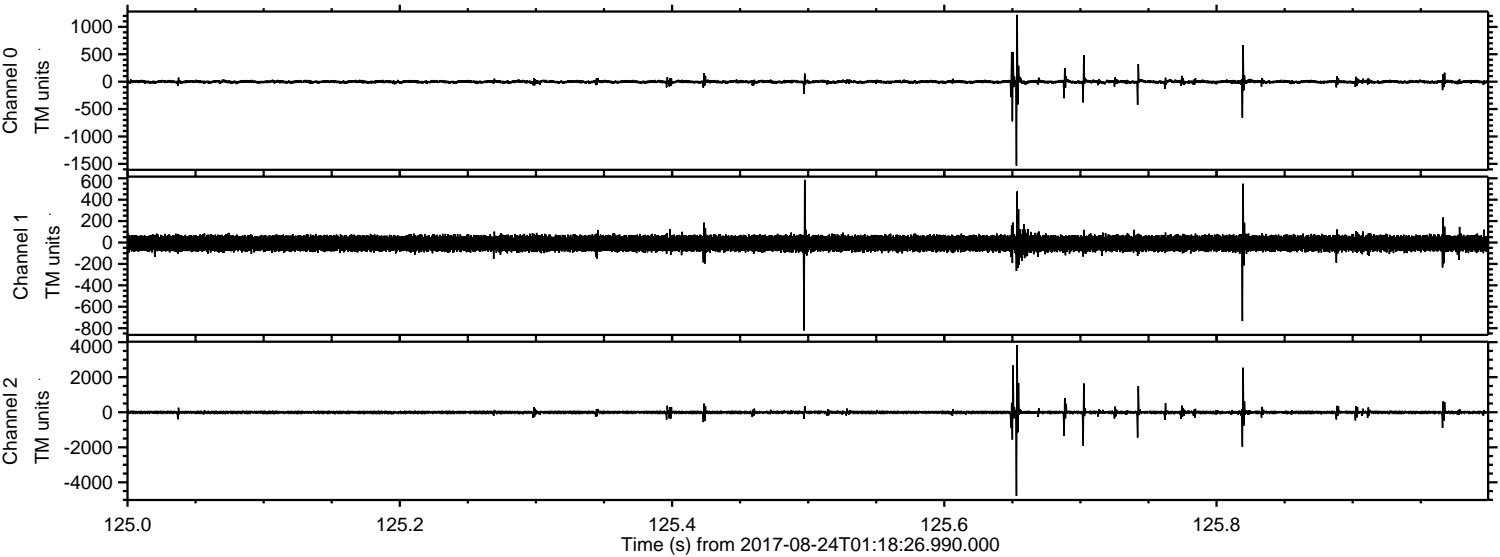
Processed Thu Aug 24 03:25:54 2017 by ELM ver.2012-10-06 from 001\_\_elm20170824\_011825\_\_dat00.bin





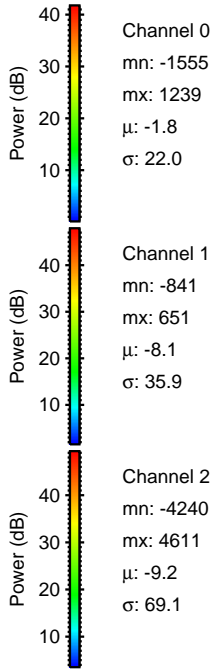
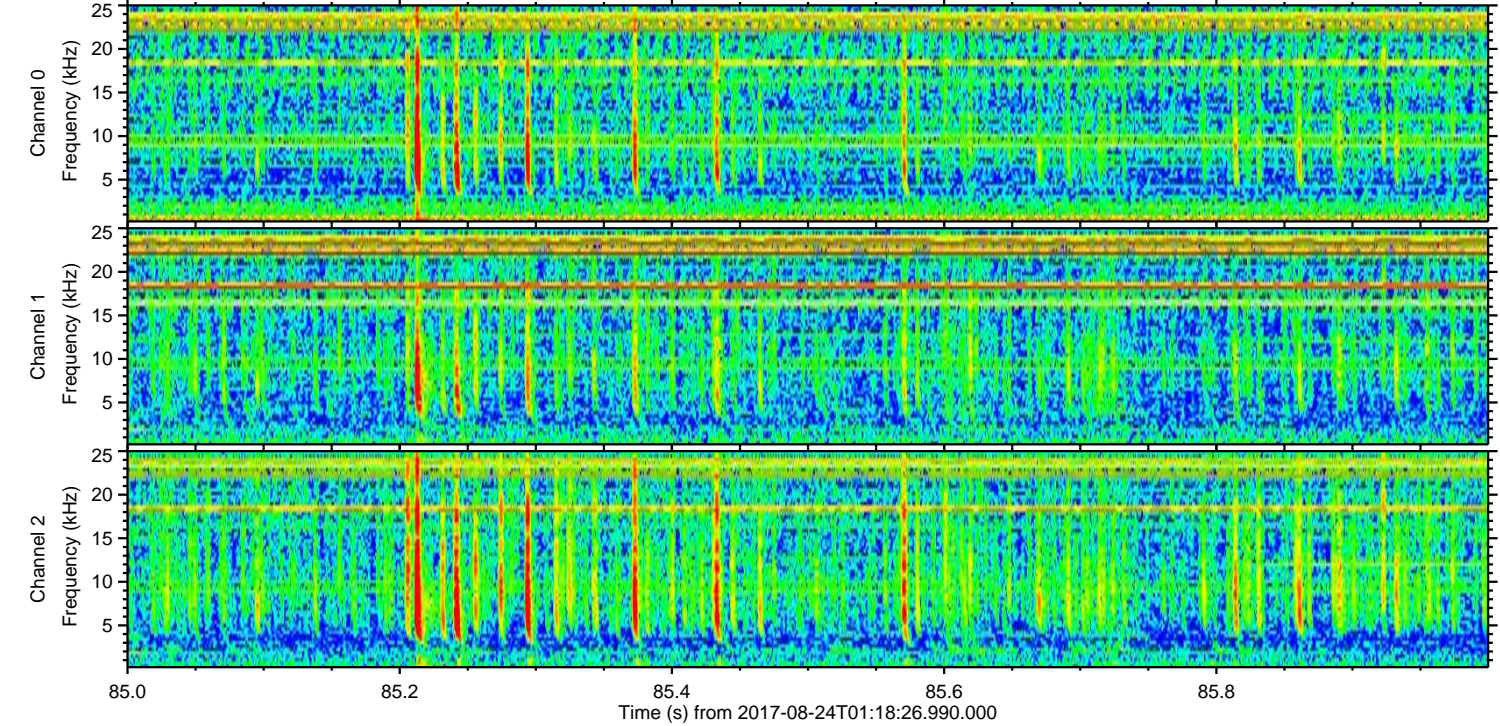
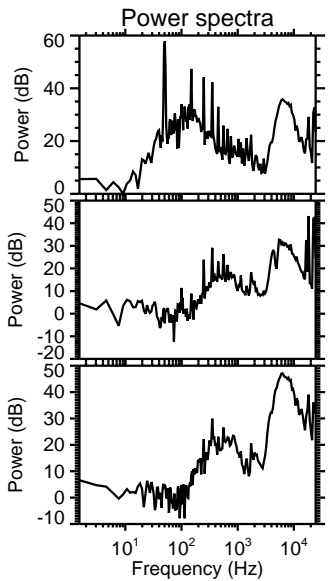
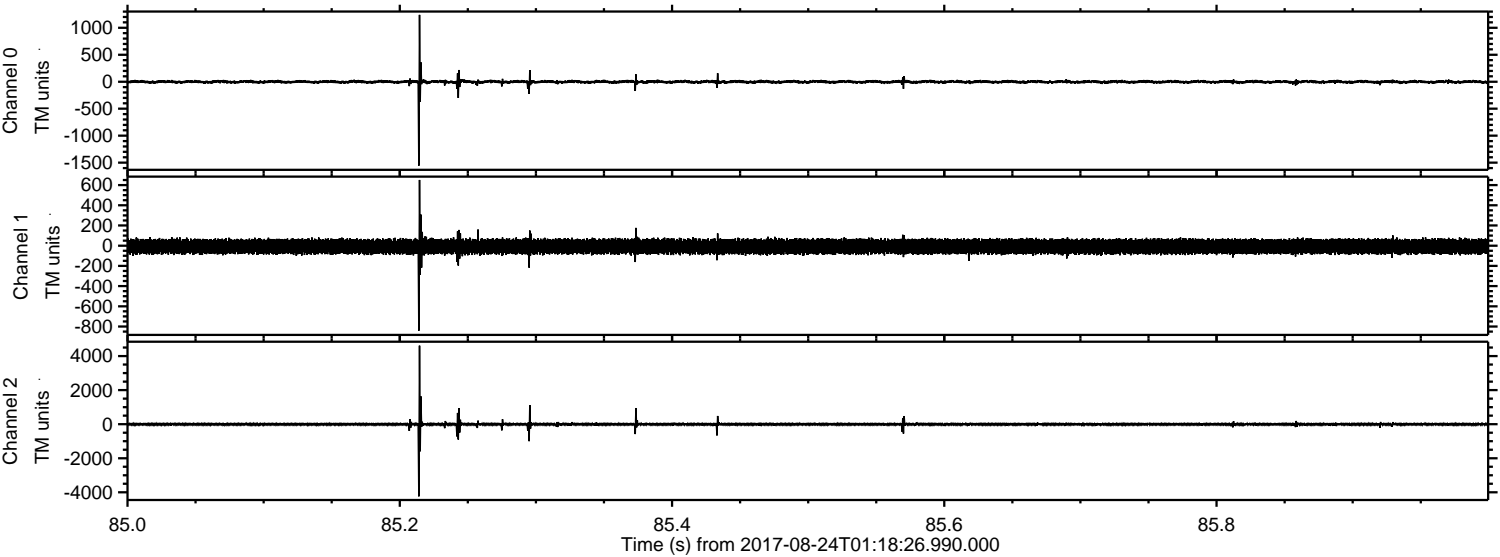
ELMAVAN 3D WAVEFORMS (Measured data sampled at 50 kHz) 51000 packets of 144 samples from 2017-08-24T01:18:26.990.000. Part 126/147

Processed Thu Aug 24 03:25:54 2017 by ELM ver.2012-10-06 from 001\_\_elm20170824\_011825\_\_dat00.bin



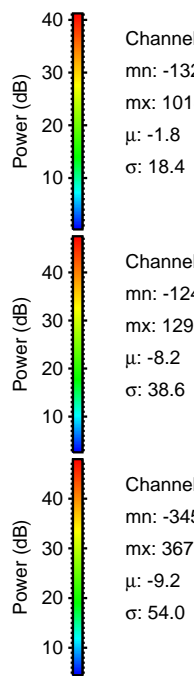
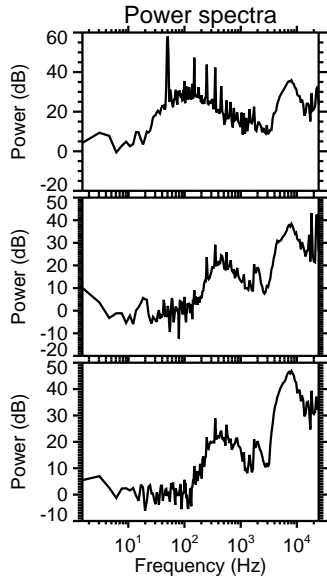
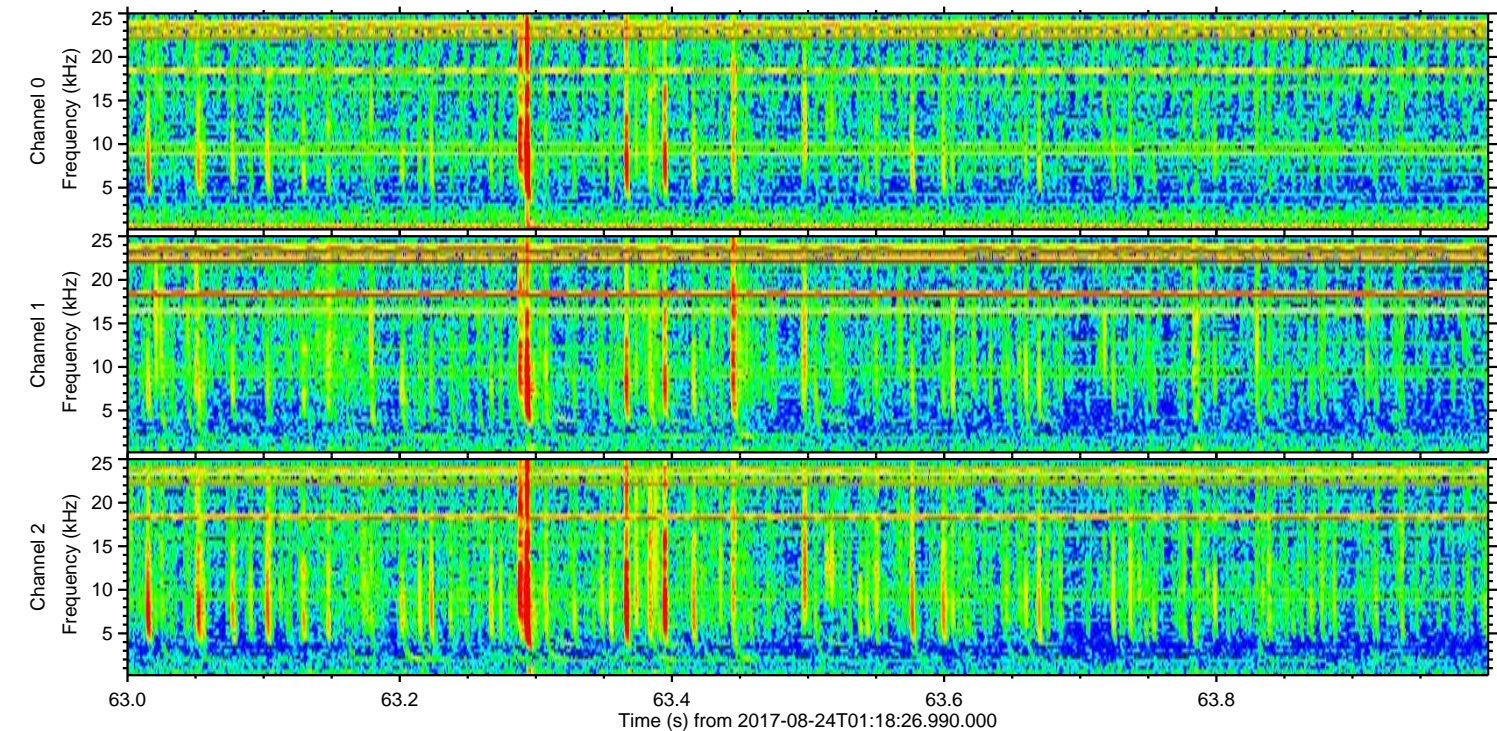
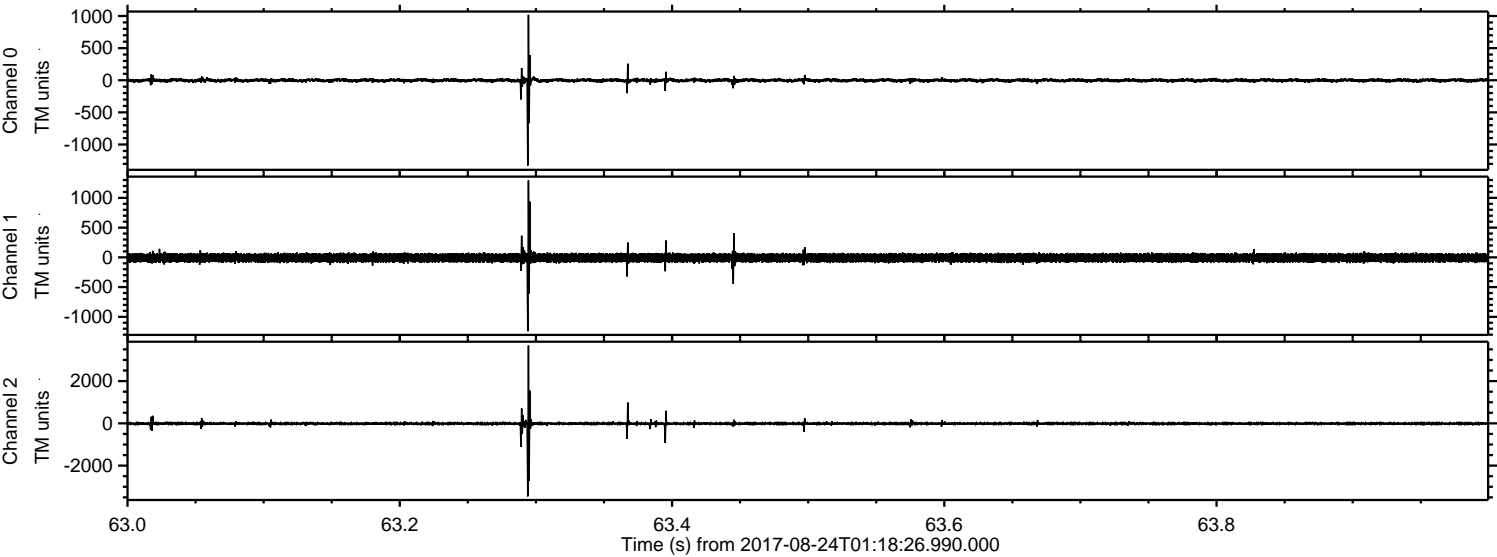


Processed Thu Aug 24 03:25:55 2017 by ELM ver.2012-10-06 from 001\_\_elm20170824\_011825\_\_dat00.bin



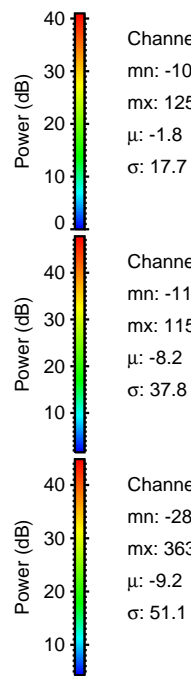
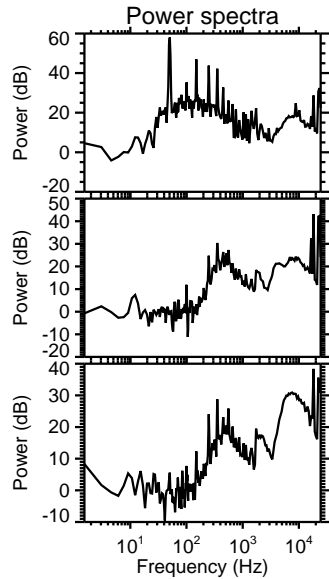
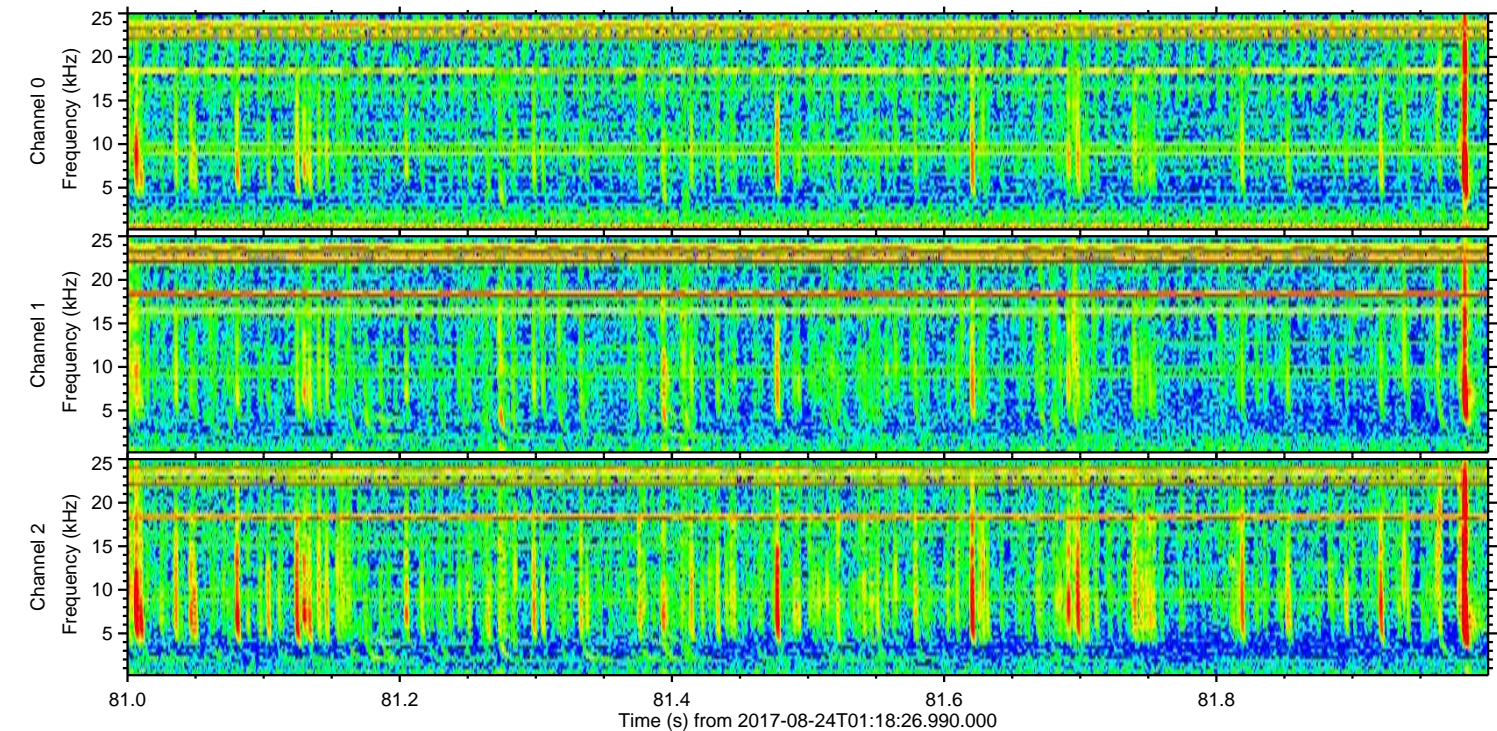
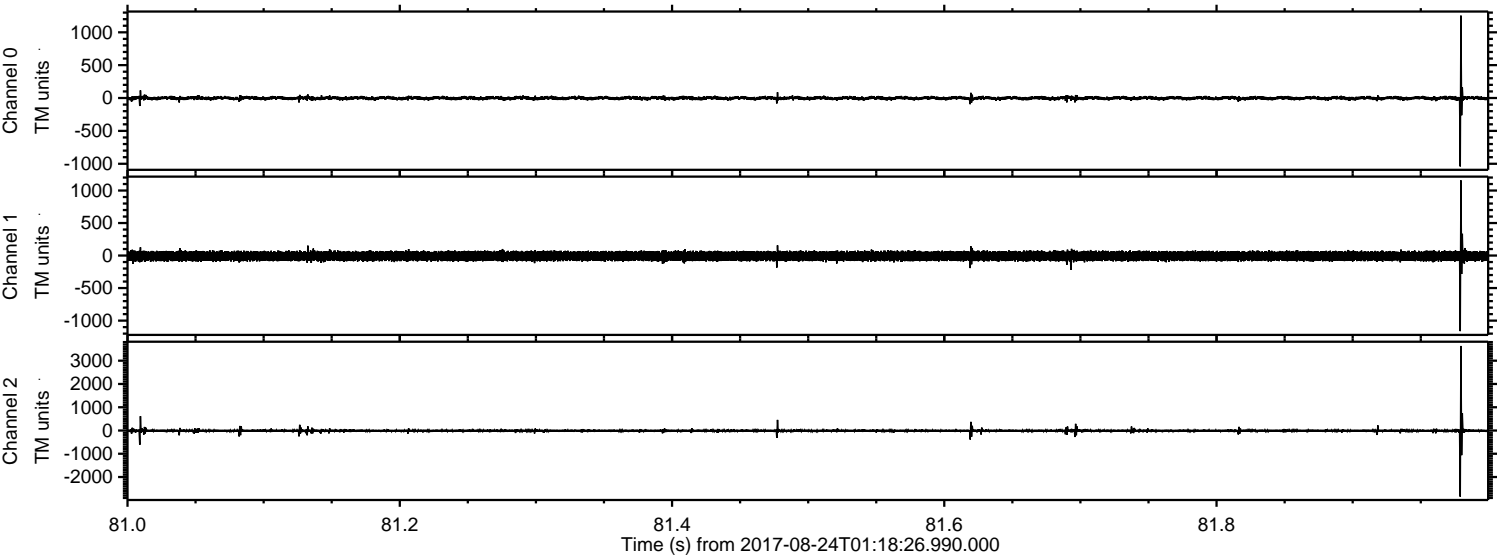


Processed Thu Aug 24 03:25:56 2017 by ELM ver.2012-10-06 from 001\_\_elm20170824\_011825\_\_dat00.bin





Processed Thu Aug 24 03:25:56 2017 by ELM ver.2012-10-06 from 001\_\_elm20170824\_011825\_\_dat00.bin



Channel 0  
mn: -1040  
mx: 1253  
 $\mu$ : -1.8  
 $\sigma$ : 17.7

Channel 1  
mn: -1162  
mx: 1156  
 $\mu$ : -8.2  
 $\sigma$ : 37.8

Channel 2  
mn: -2845  
mx: 3635  
 $\mu$ : -9.2  
 $\sigma$ : 51.1



Processed Thu Aug 24 03:25:57 2017 by ELM ver.2012-10-06 from 001\_\_elm20170824\_011825\_\_dat00.bin

