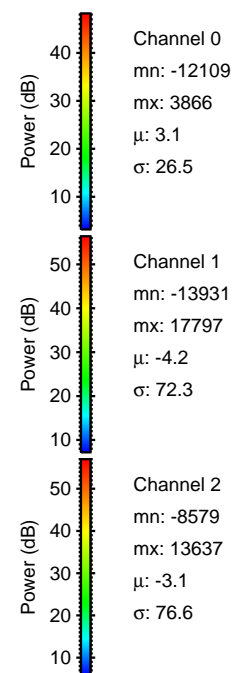
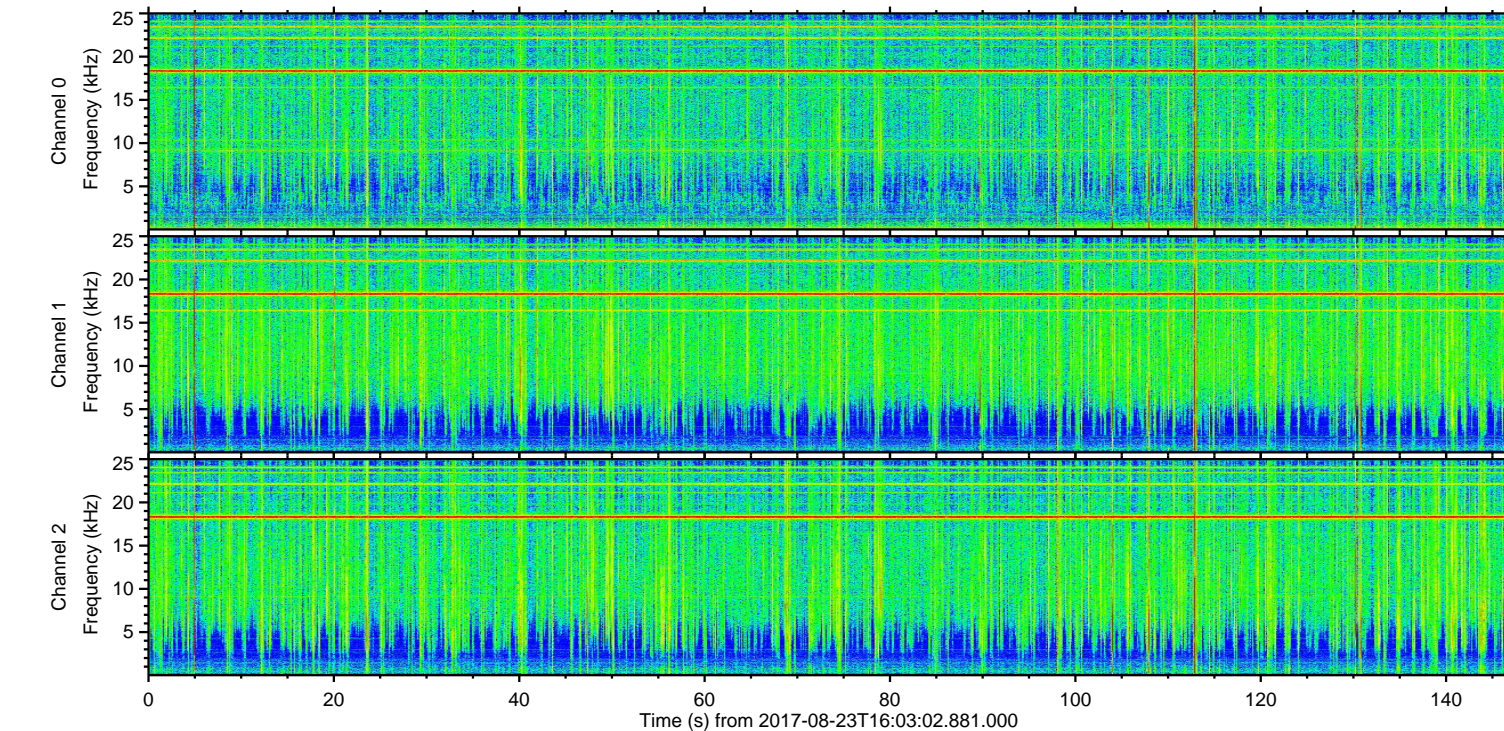
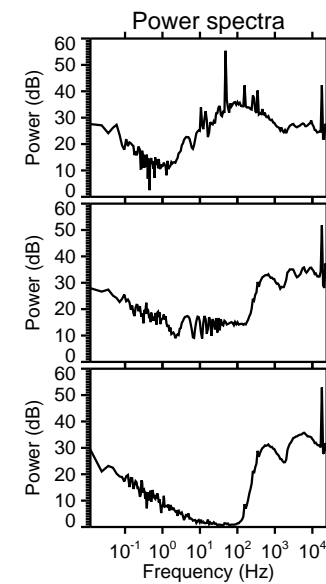
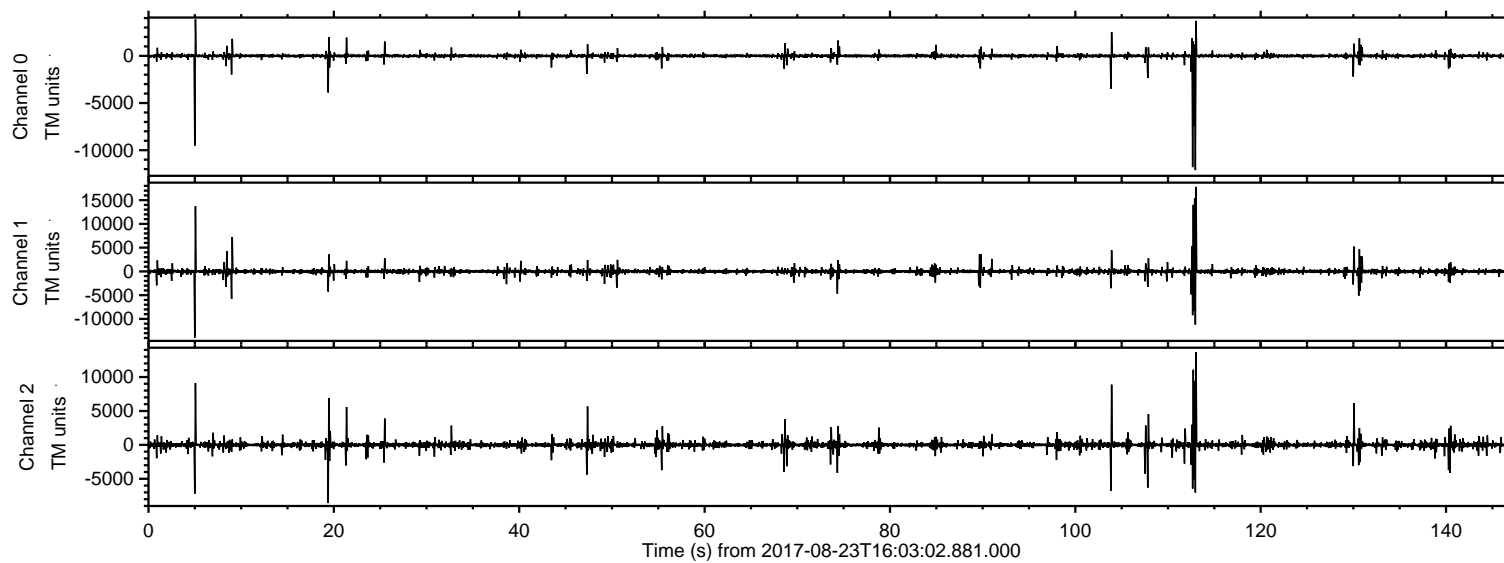


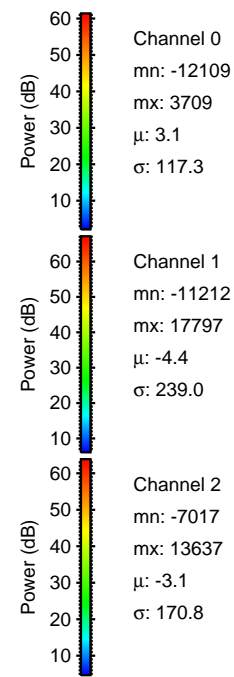
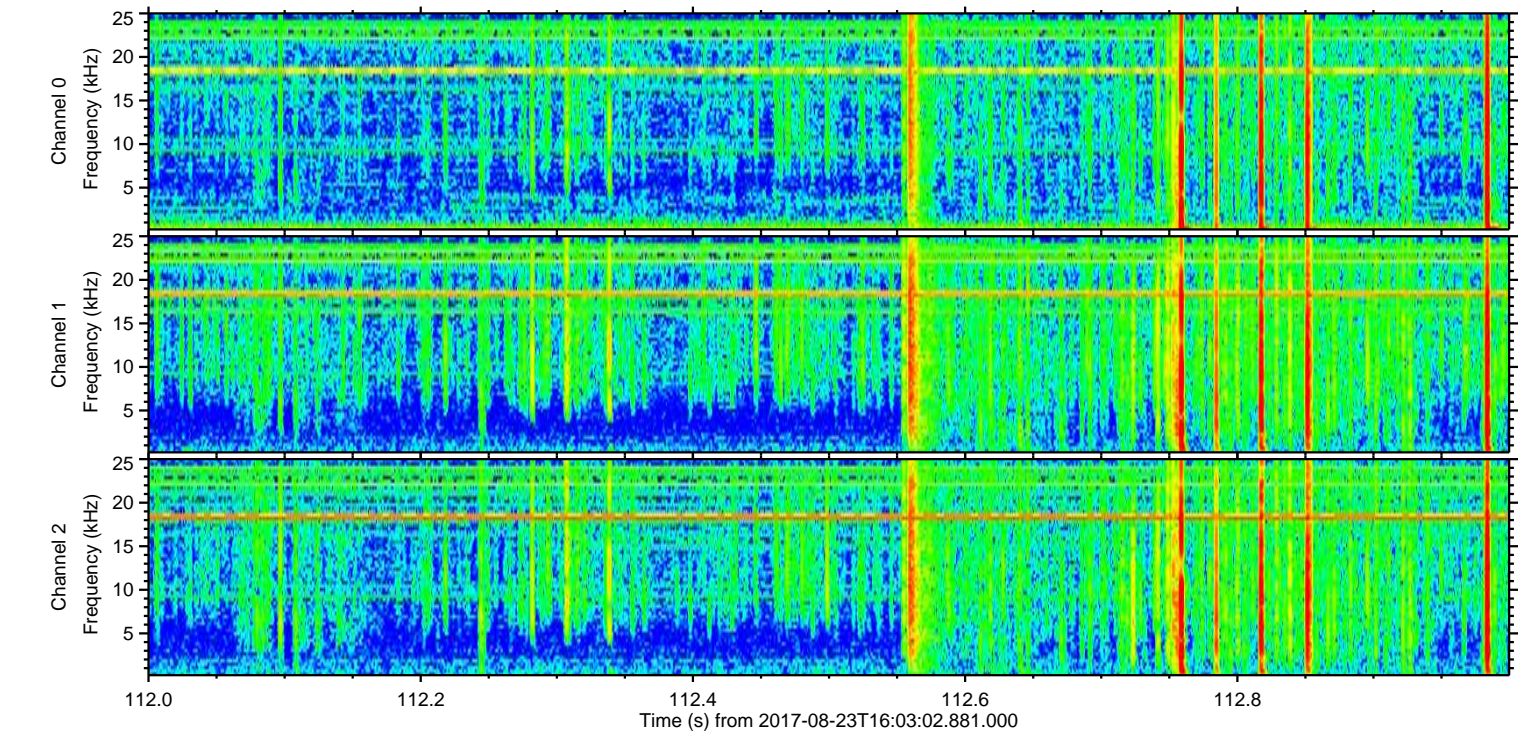
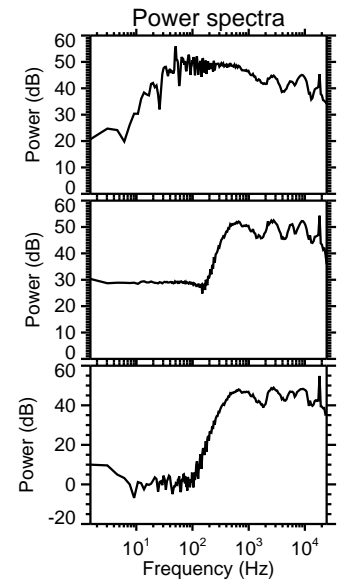
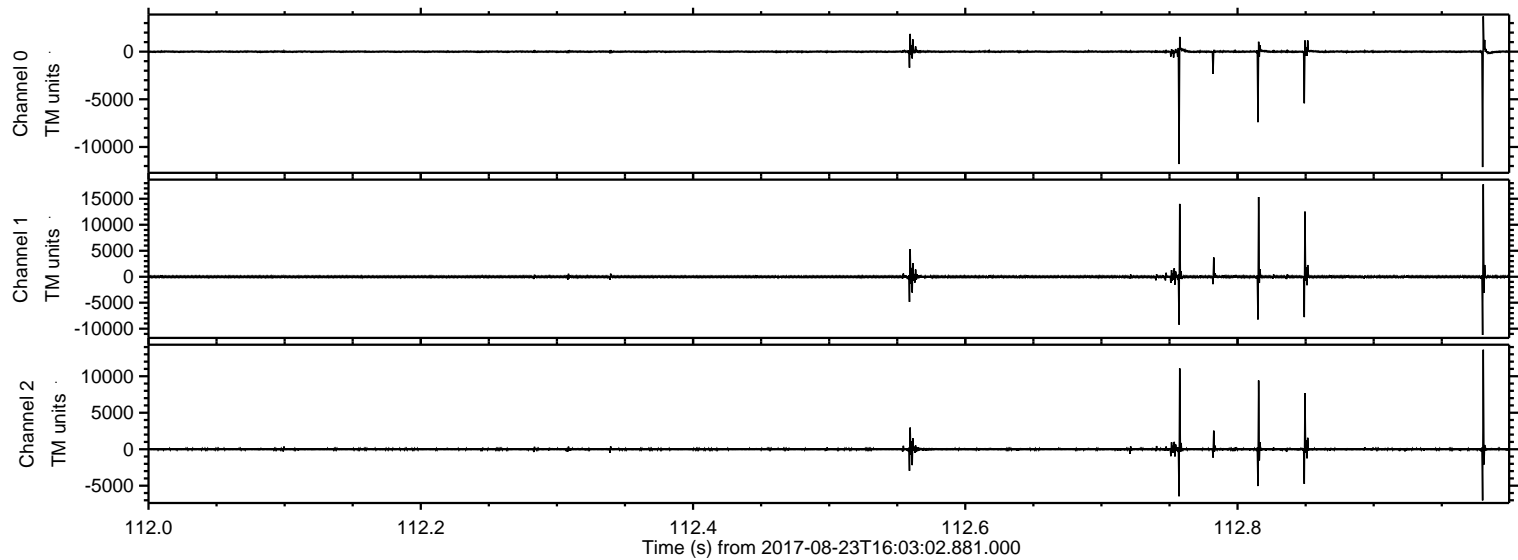
ELMAVAN 3D WAVEFORMS (Measured data sampled at 50 kHz) 51000 packets of 144 samples from 2017-08-23T16:03:02.881.000.

Processed Wed Aug 23 18:10:24 2017 by ELM ver.2012-10-06 from 001__elm20170823_160301__dat00.bin

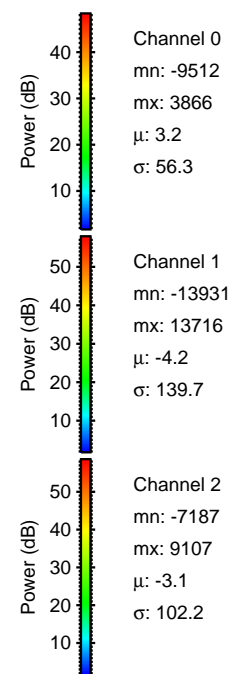
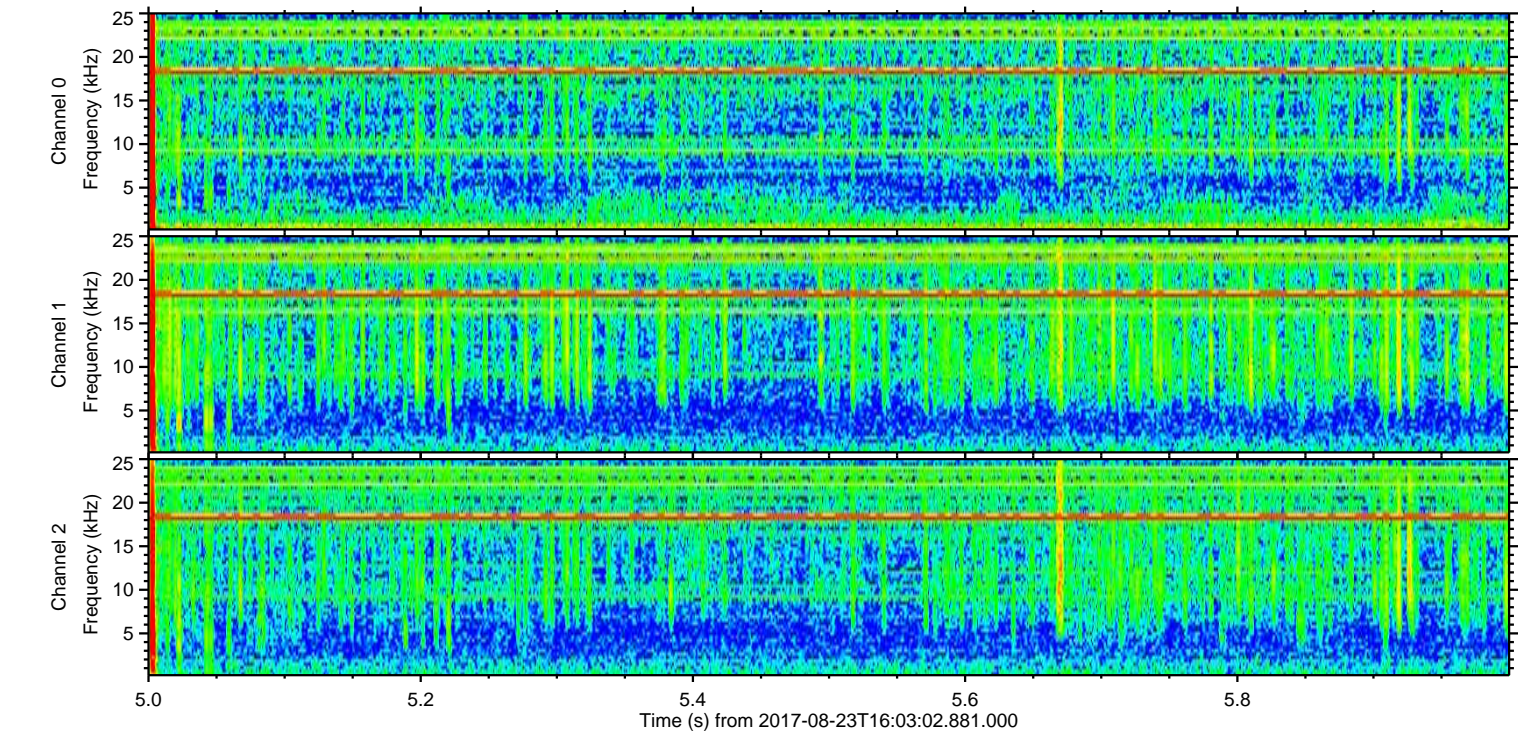
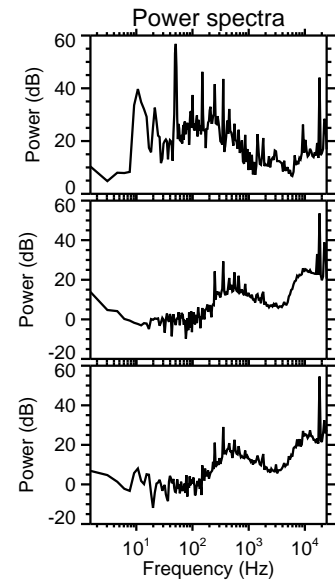
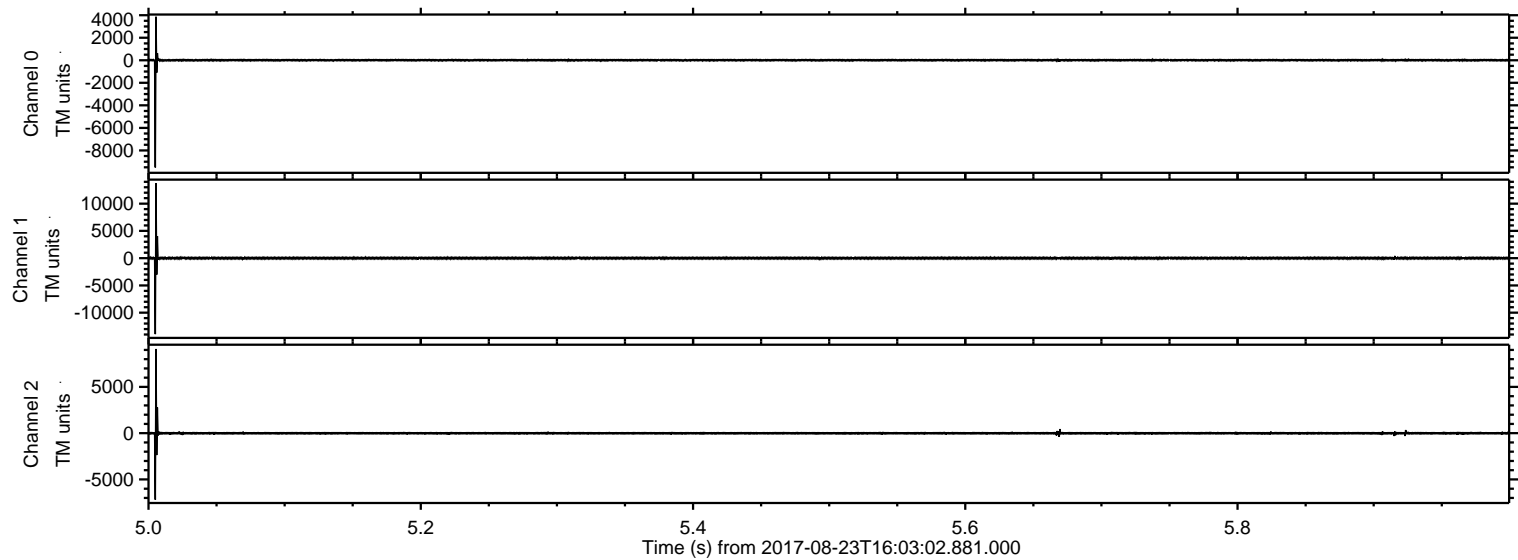


ELMAVAN 3D WAVEFORMS (Measured data sampled at 50 kHz) 51000 packets of 144 samples from 2017-08-23T16:03:02.881.000. Part 113/147

Processed Wed Aug 23 18:10:30 2017 by ELM ver.2012-10-06 from 001__elm20170823_160301__dat00.bin

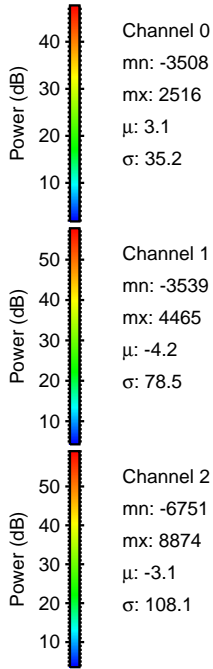
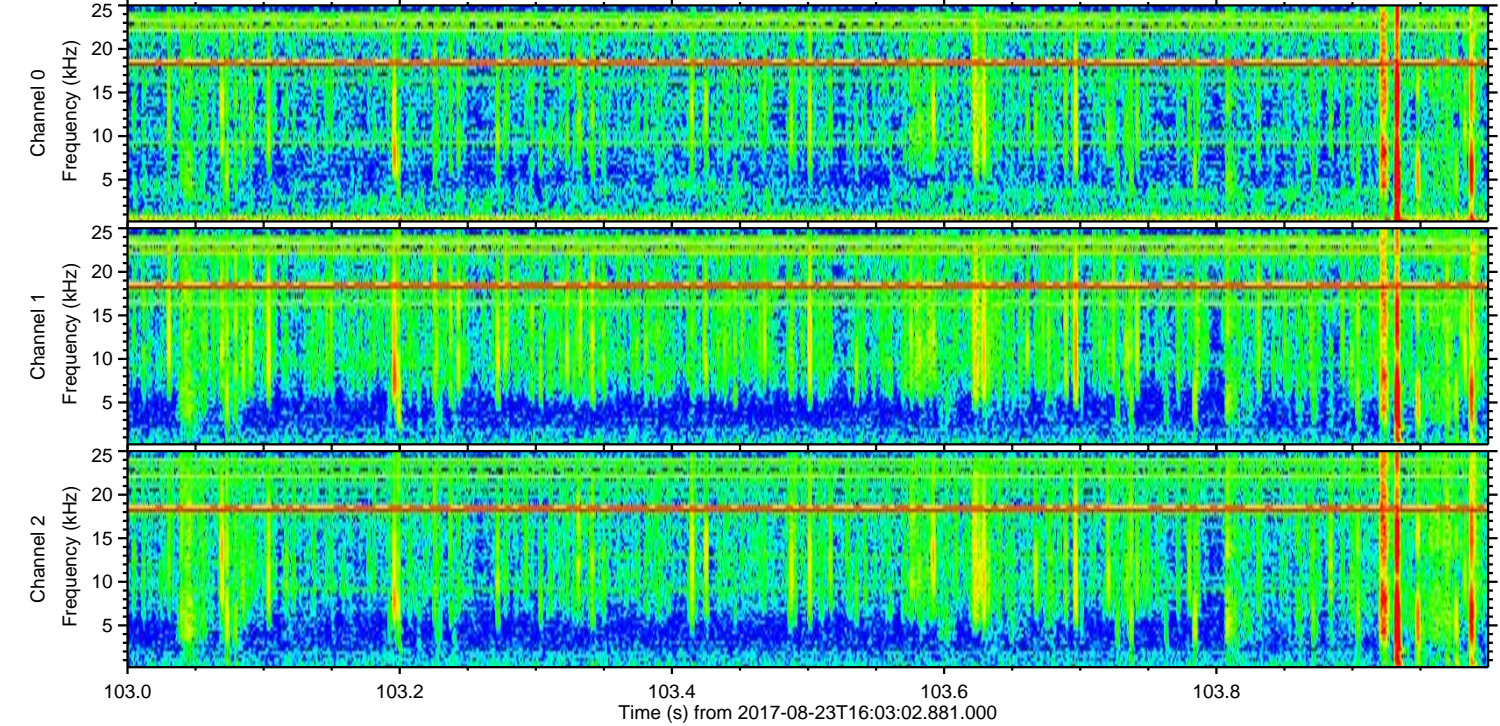
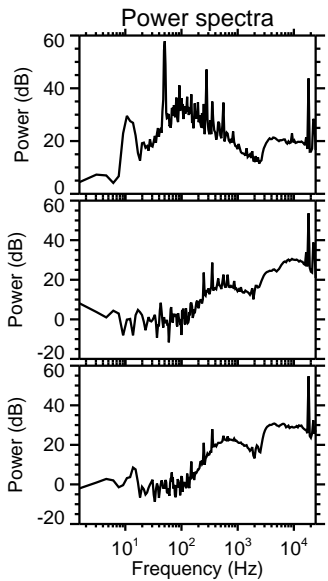
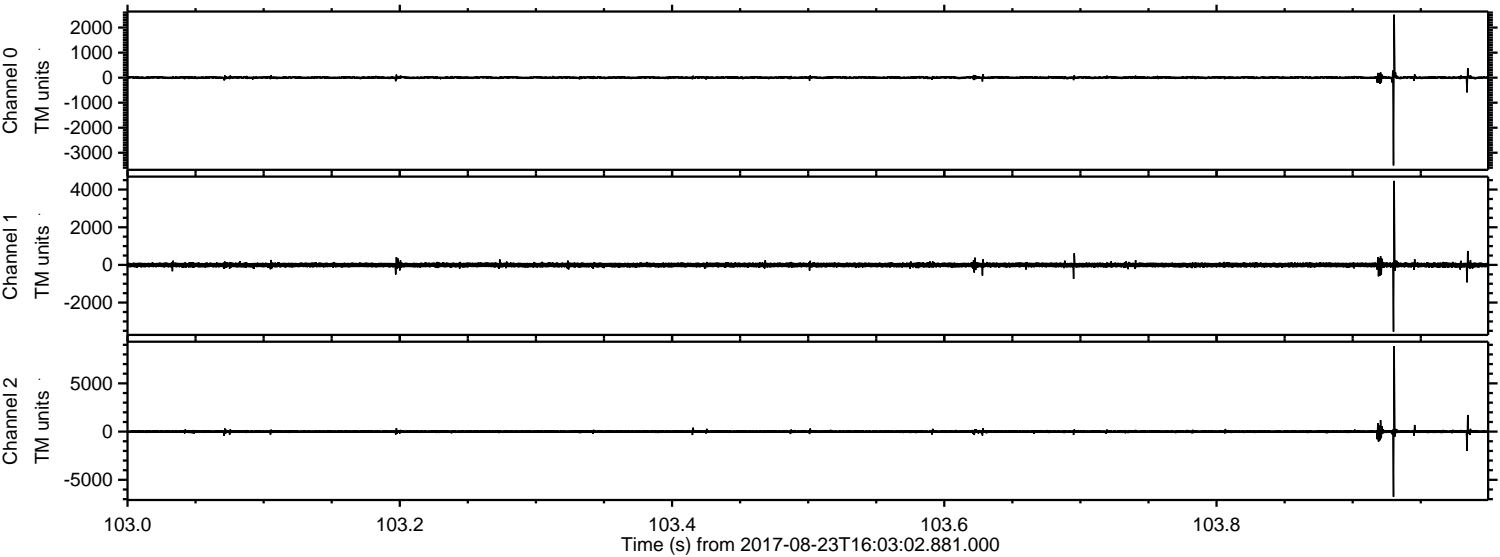


Processed Wed Aug 23 18:10:31 2017 by ELM ver.2012-10-06 from 001__elm20170823_160301__dat00.bin

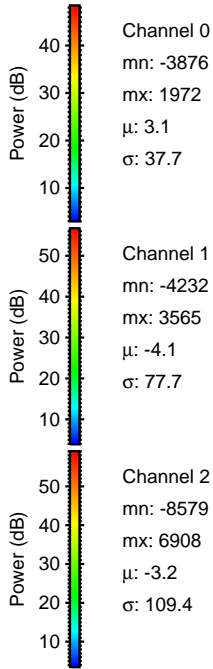
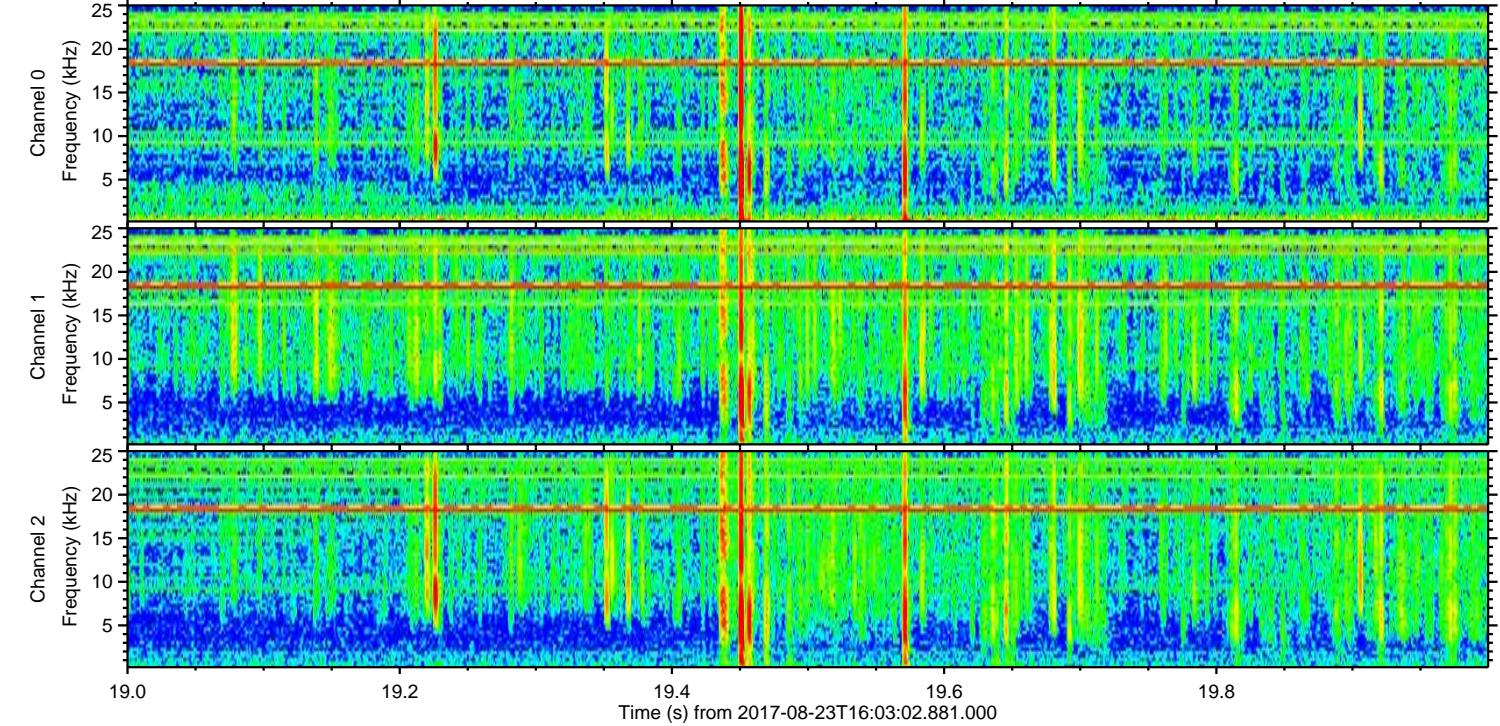
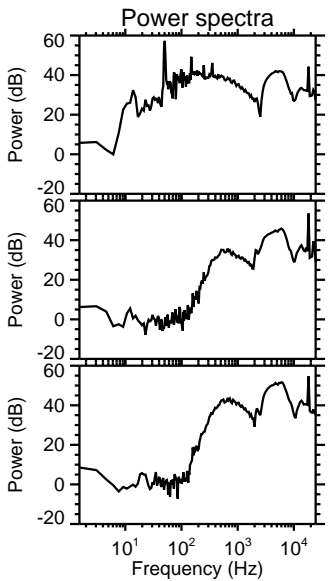
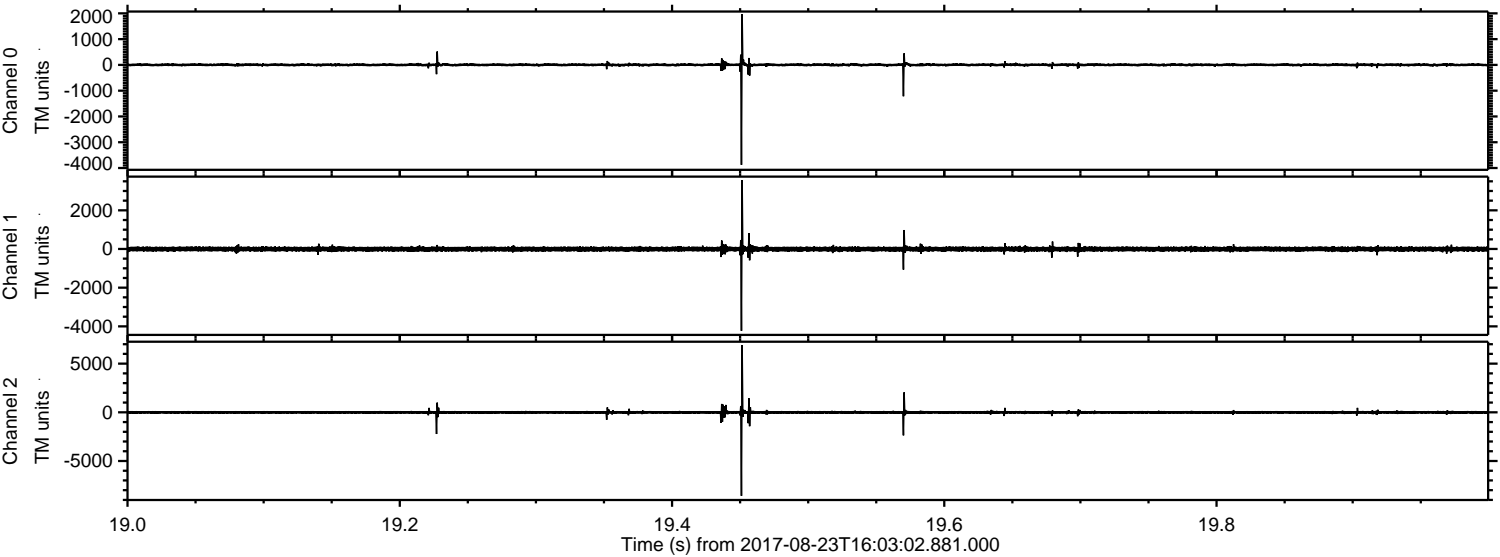


ELMAVAN 3D WAVEFORMS (Measured data sampled at 50 kHz) 51000 packets of 144 samples from 2017-08-23T16:03:02.881.000. Part 104/147

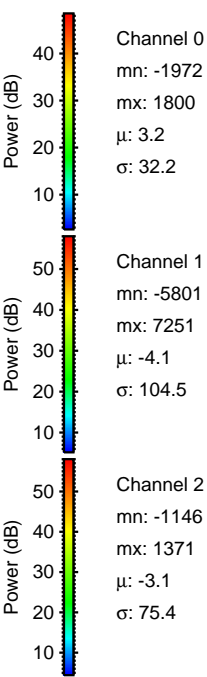
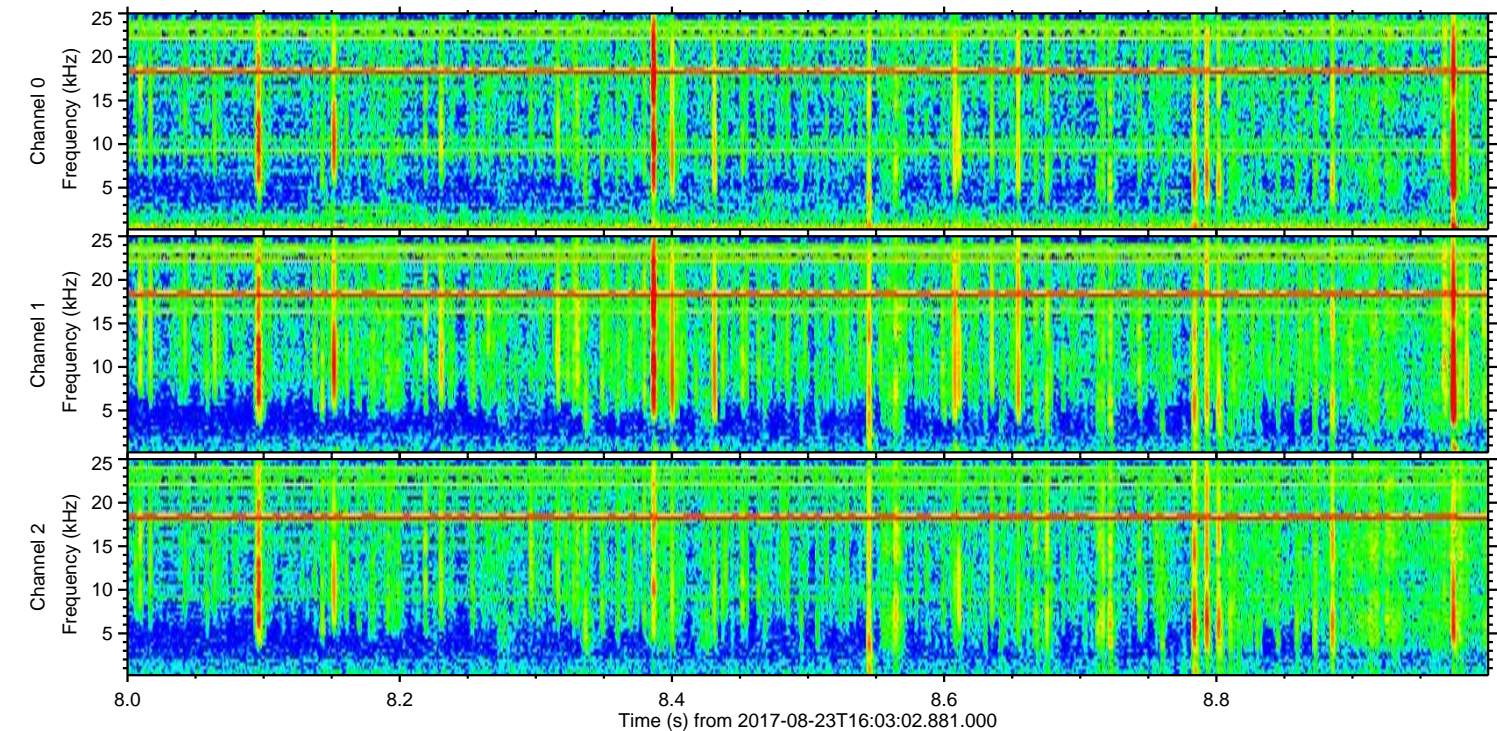
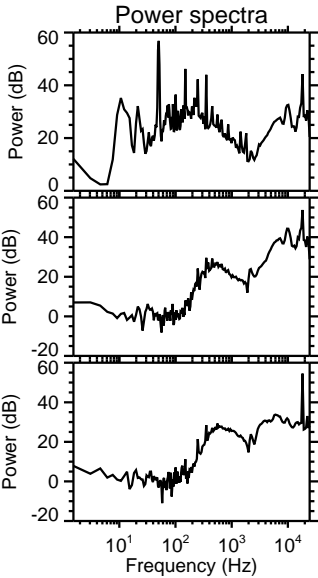
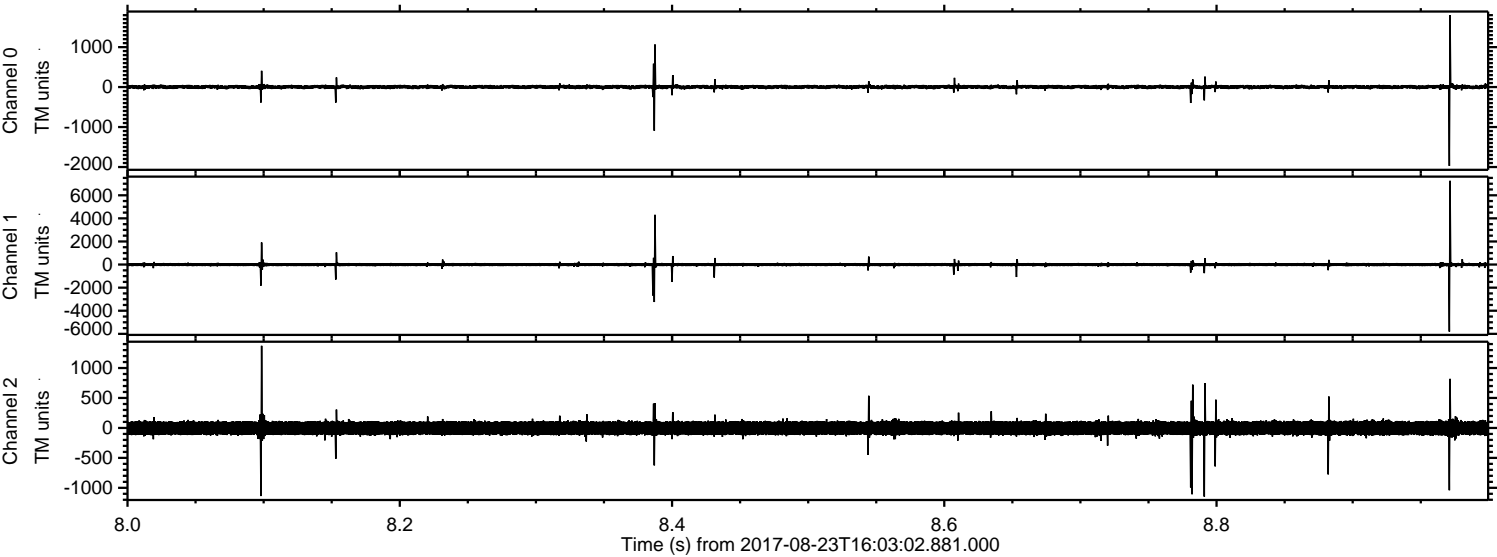
Processed Wed Aug 23 18:10:31 2017 by ELM ver.2012-10-06 from 001__elm20170823_160301__dat00.bin



Processed Wed Aug 23 18:10:32 2017 by ELM ver.2012-10-06 from 001__elm20170823_160301__dat00.bin

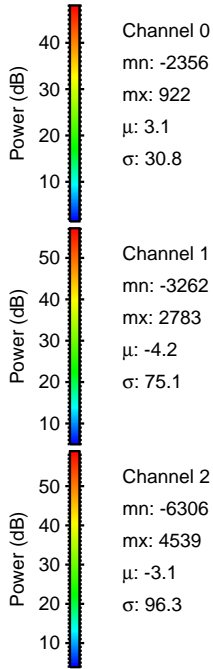
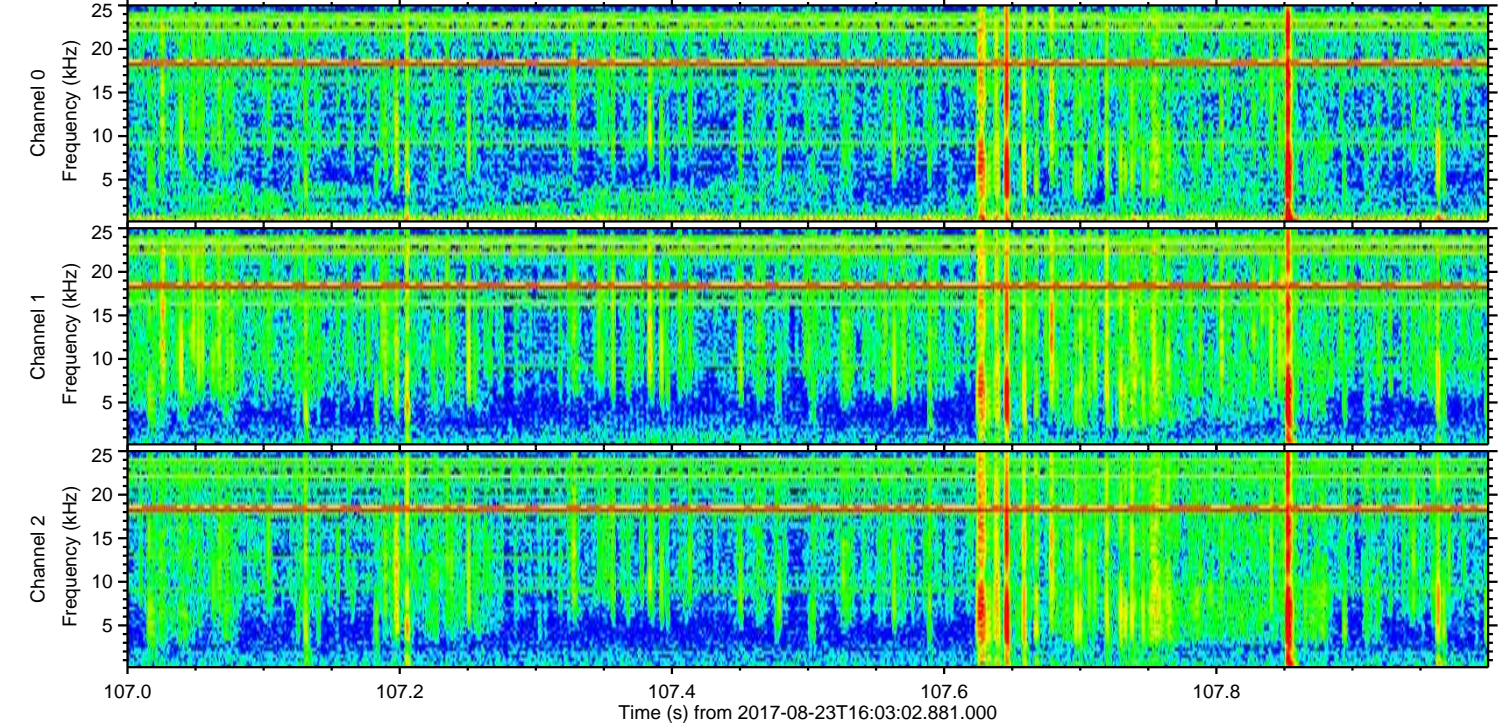
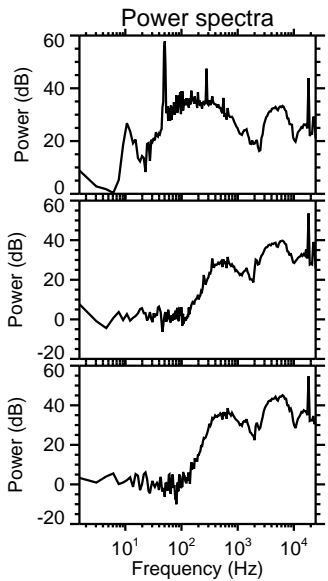
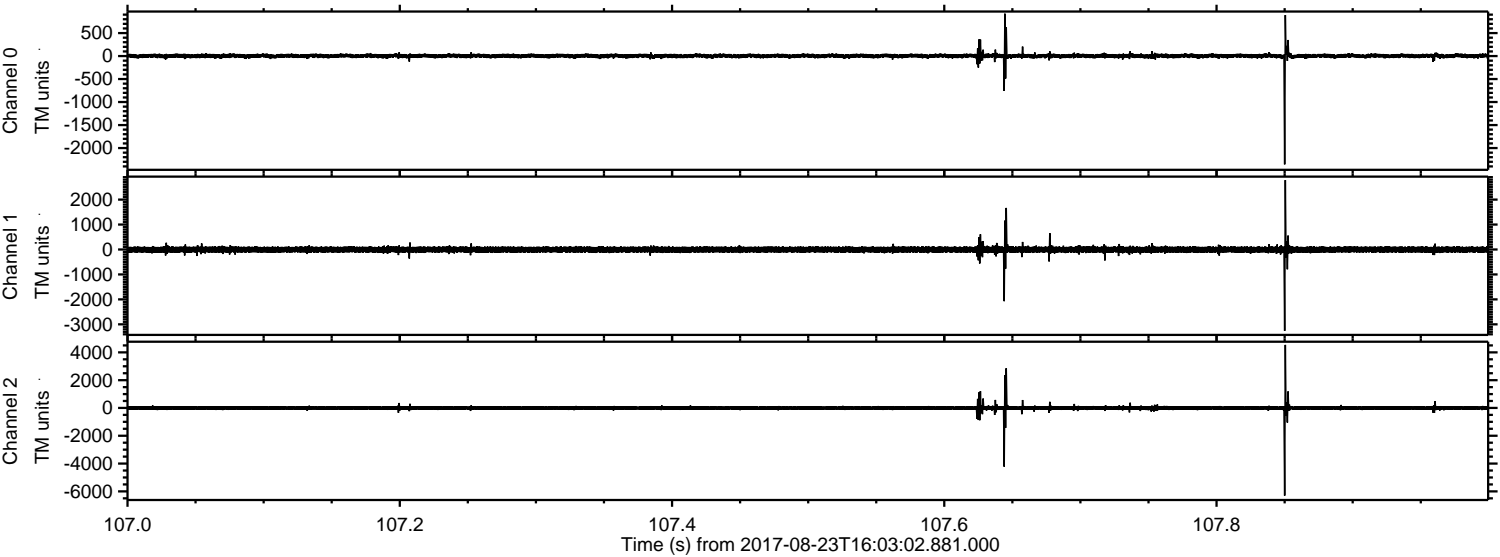


Processed Wed Aug 23 18:10:33 2017 by ELM ver.2012-10-06 from 001__elm20170823_160301__dat00.bin



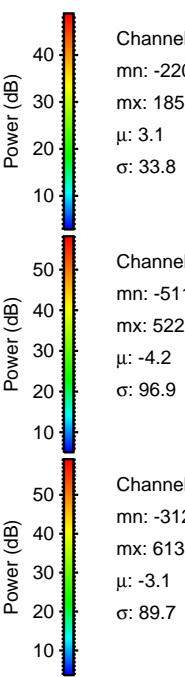
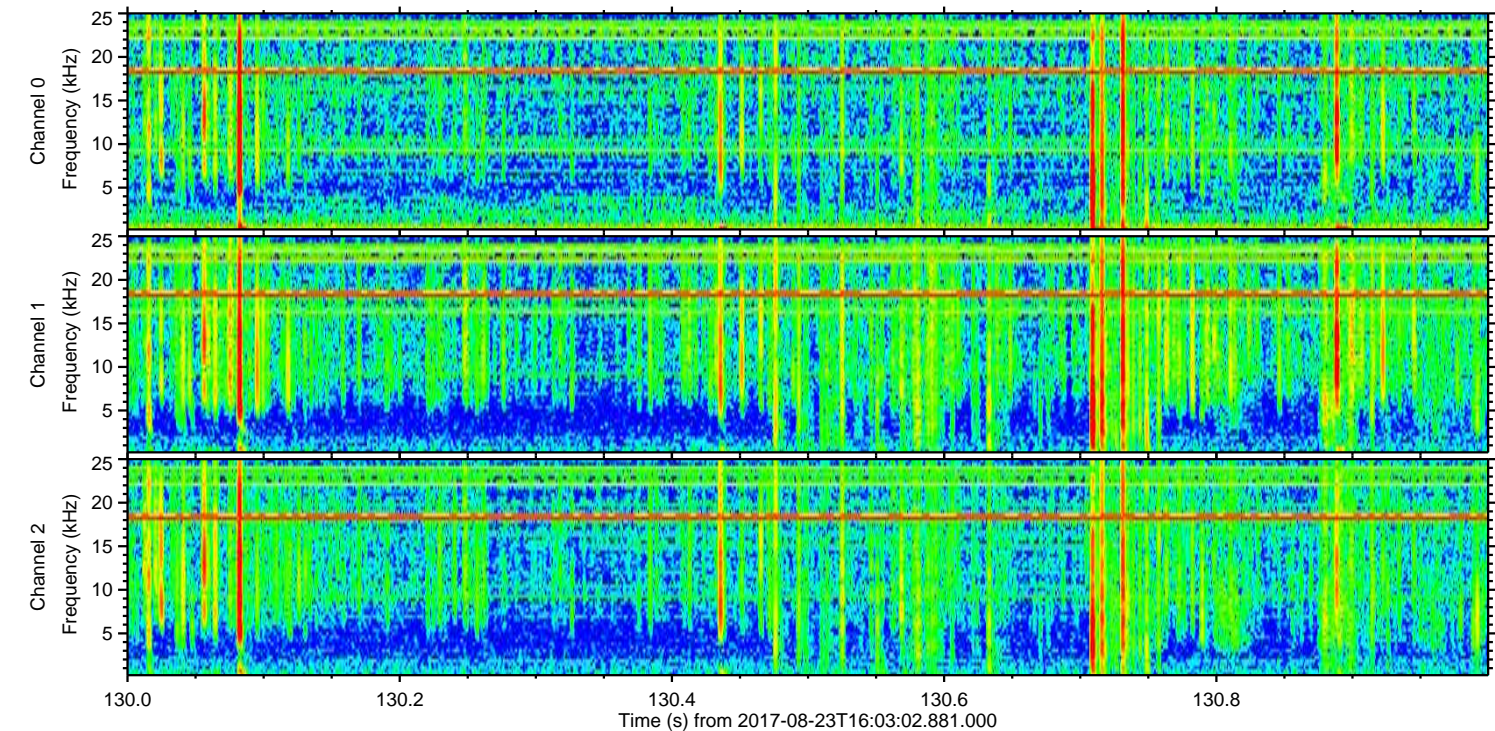
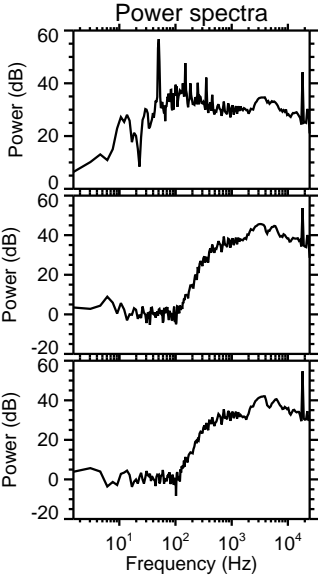
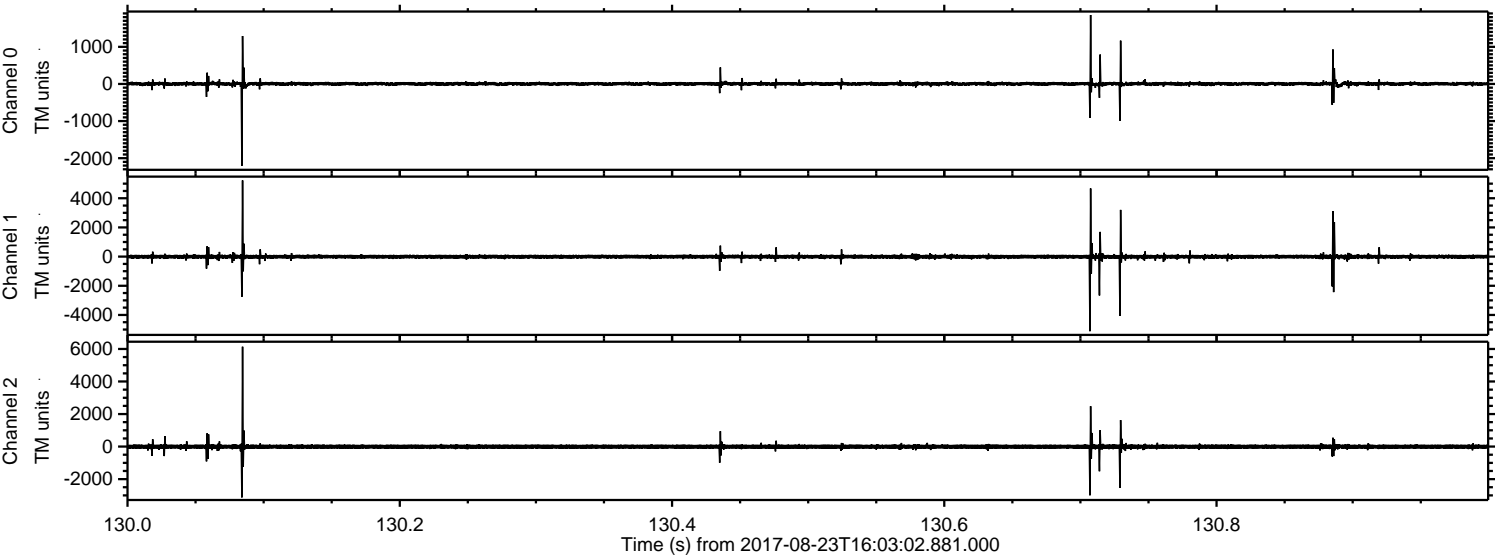
ELMAVAN 3D WAVEFORMS (Measured data sampled at 50 kHz) 51000 packets of 144 samples from 2017-08-23T16:03:02.881.000. Part 108/147

Processed Wed Aug 23 18:10:33 2017 by ELM ver.2012-10-06 from 001__elm20170823_160301__dat00.bin



ELMAVAN 3D WAVEFORMS (Measured data sampled at 50 kHz) 51000 packets of 144 samples from 2017-08-23T16:03:02.881.000. Part 131/147

Processed Wed Aug 23 18:10:34 2017 by ELM ver.2012-10-06 from 001__elm20170823_160301__dat00.bin

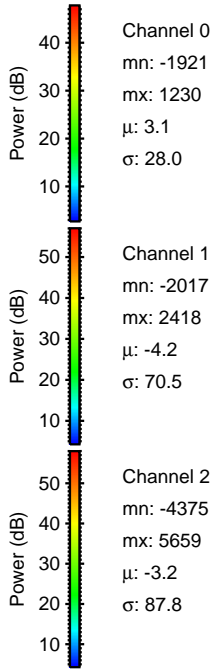
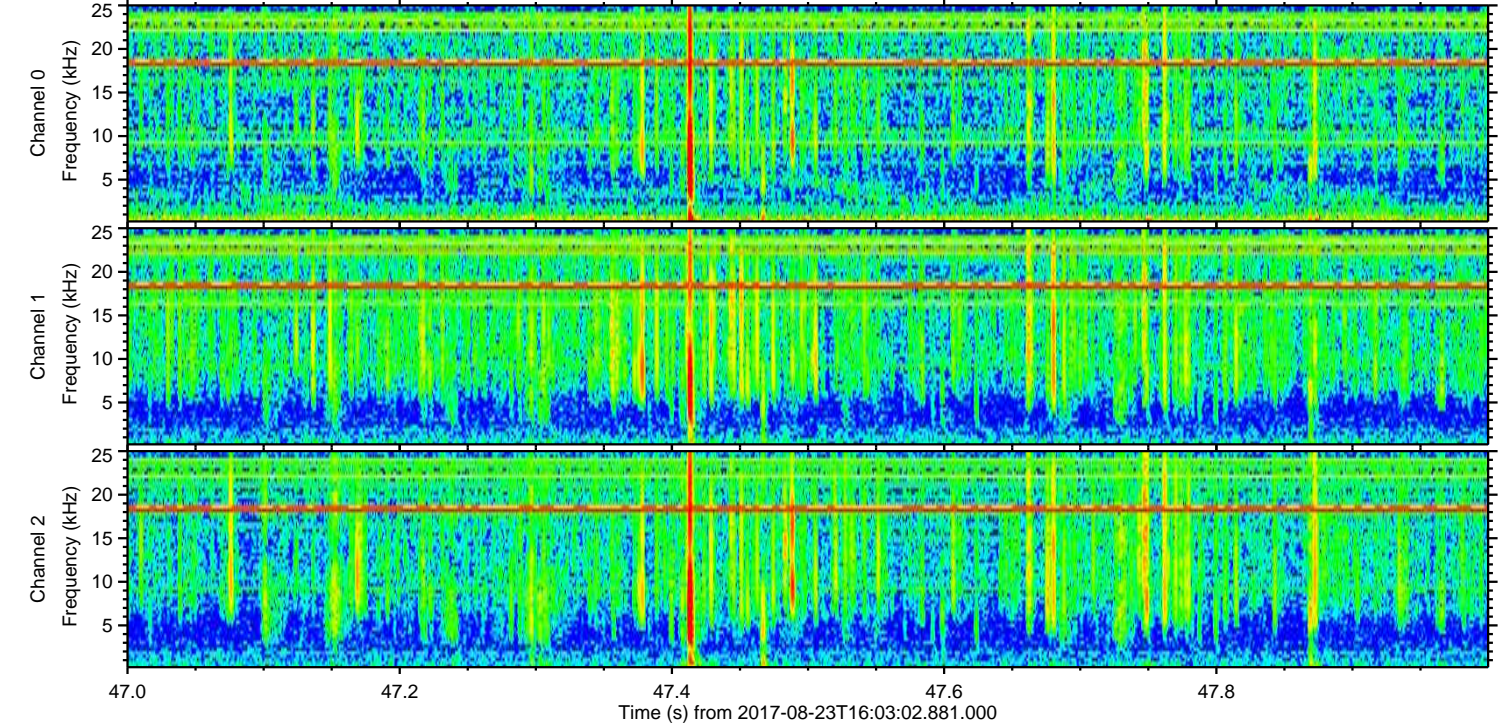
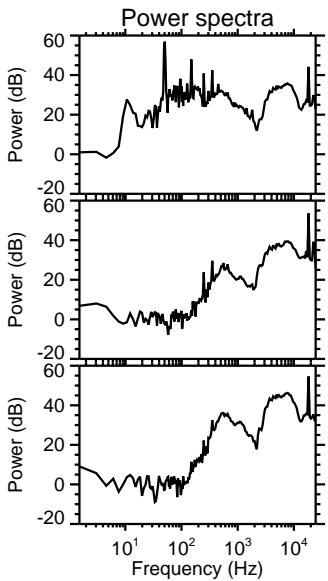
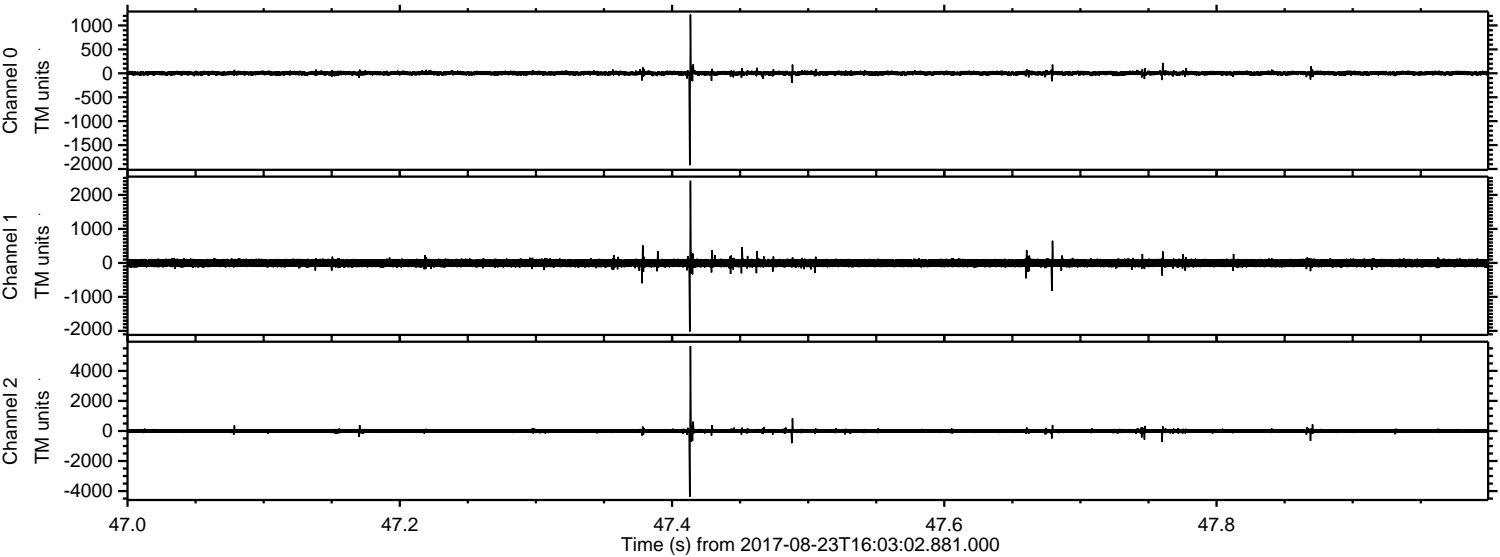


Channel 0
mn: -2204
mx: 1858
 μ : 3.1
 σ : 33.8

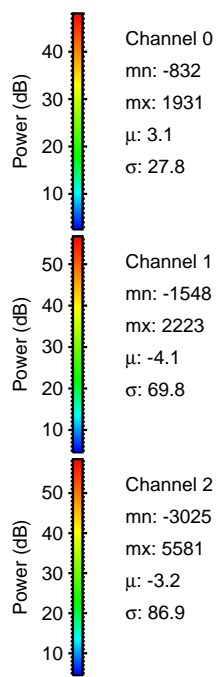
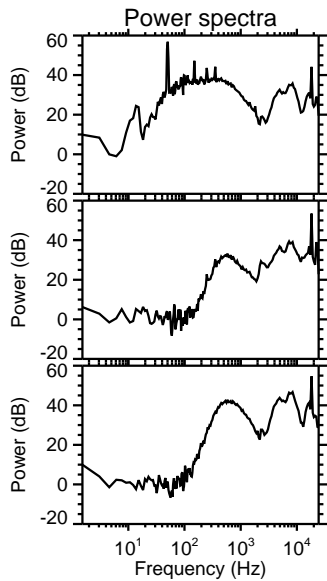
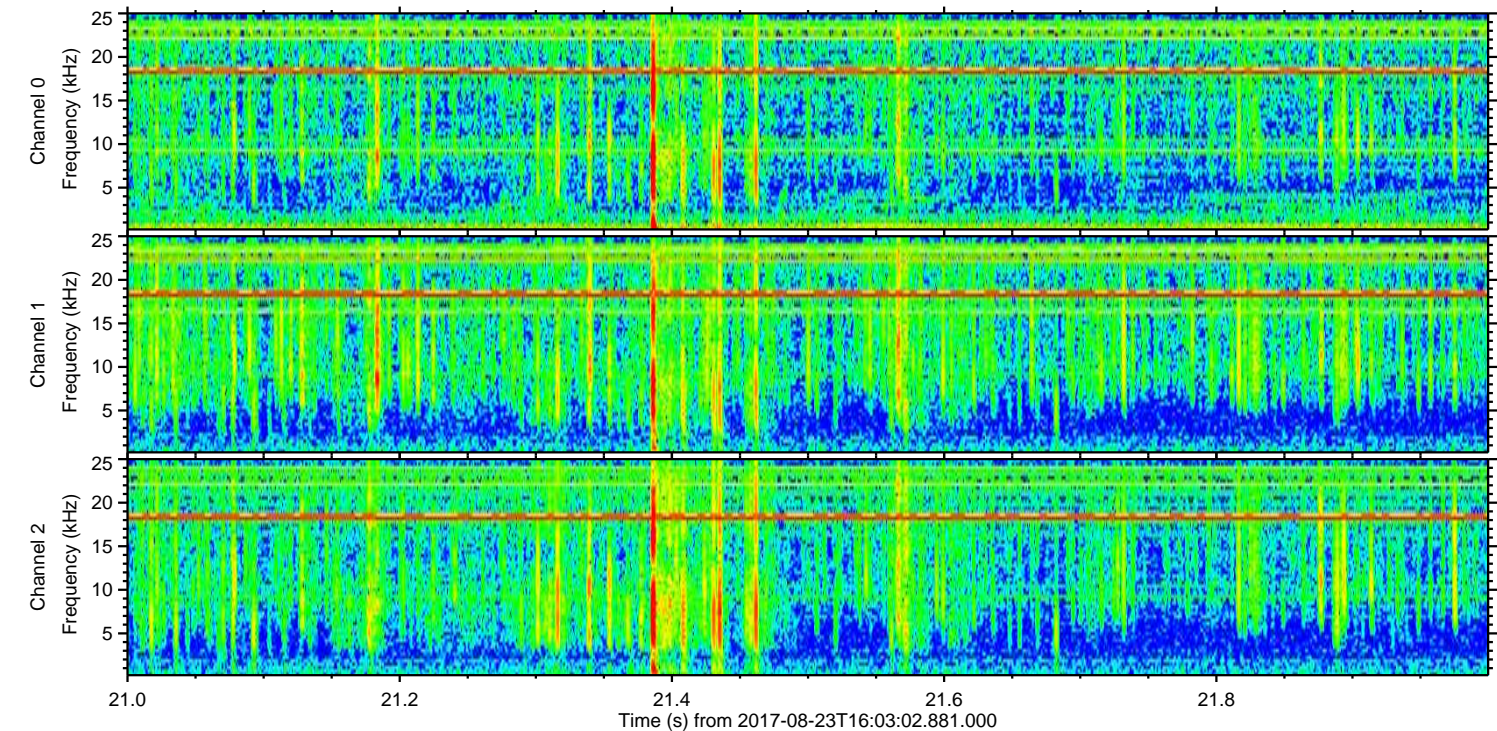
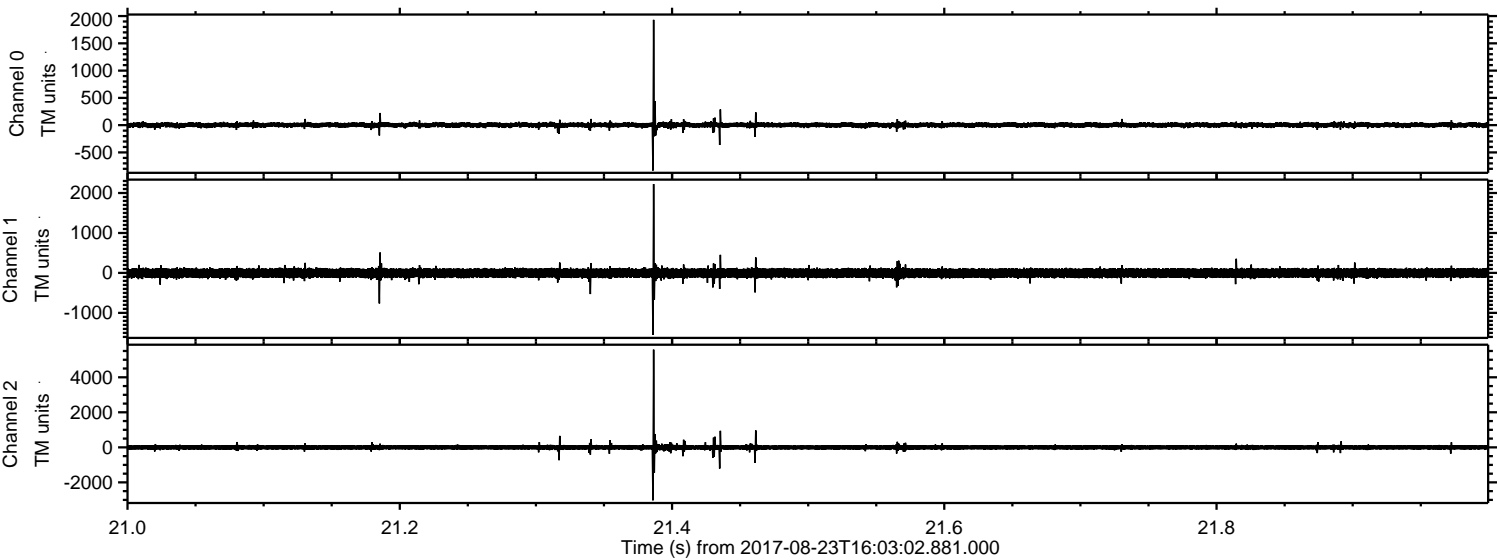
Channel 1
mn: -5113
mx: 5222
 μ : -4.2
 σ : 96.9

Channel 2
mn: -3127
mx: 6138
 μ : -3.1
 σ : 89.7

Processed Wed Aug 23 18:10:34 2017 by ELM ver.2012-10-06 from 001__elm20170823_160301__dat00.bin



Processed Wed Aug 23 18:10:35 2017 by ELM ver.2012-10-06 from 001__elm20170823_160301__dat00.bin



Processed Wed Aug 23 18:10:36 2017 by ELM ver.2012-10-06 from 001__elm20170823_160301__dat00.bin

