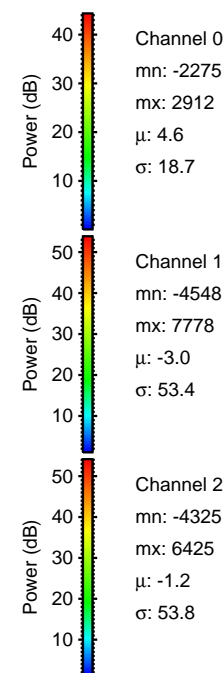
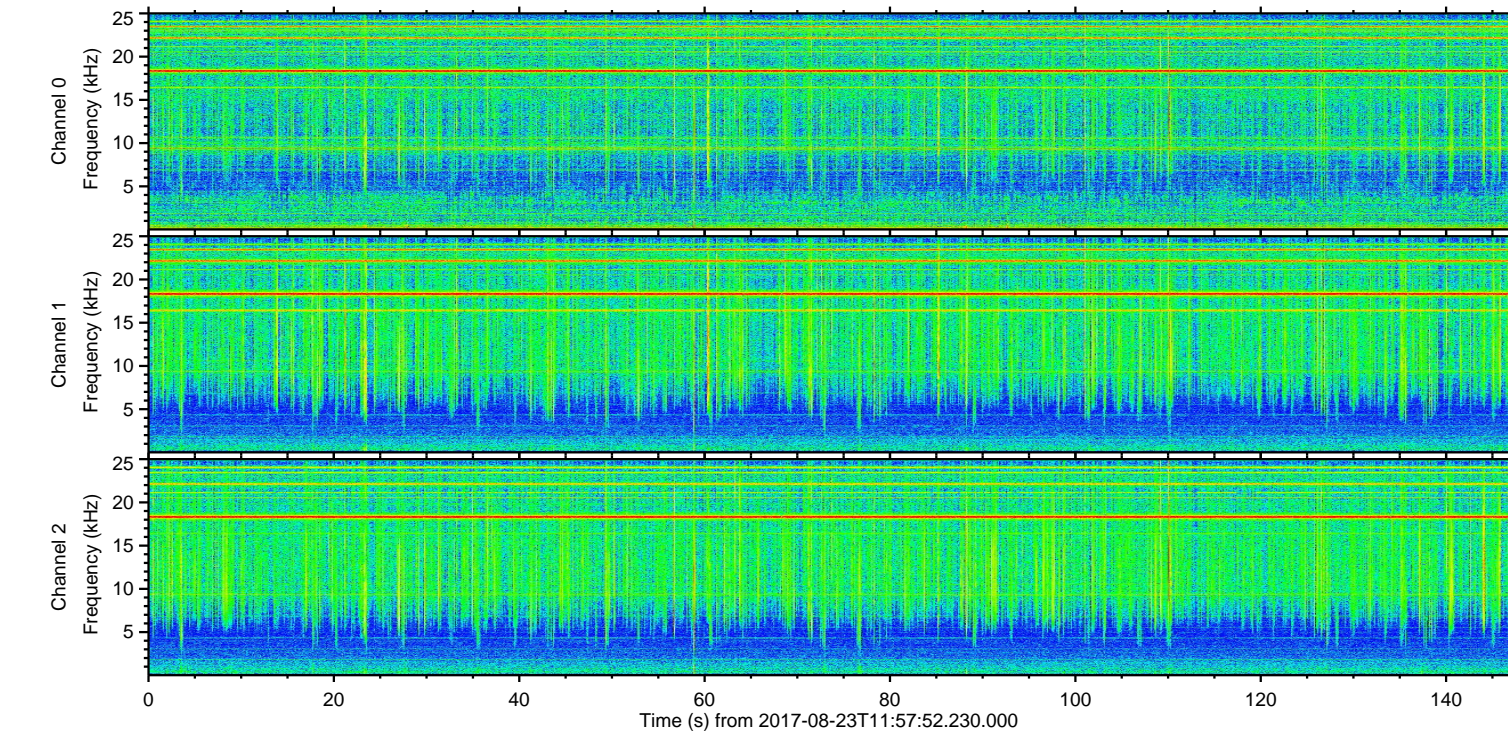
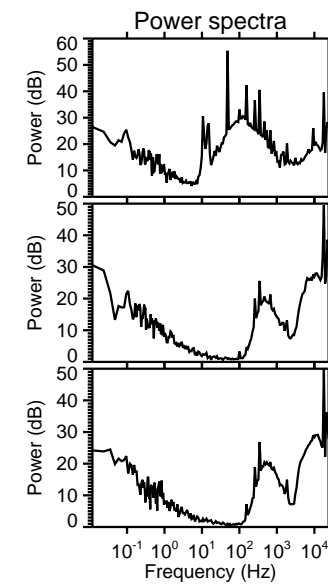
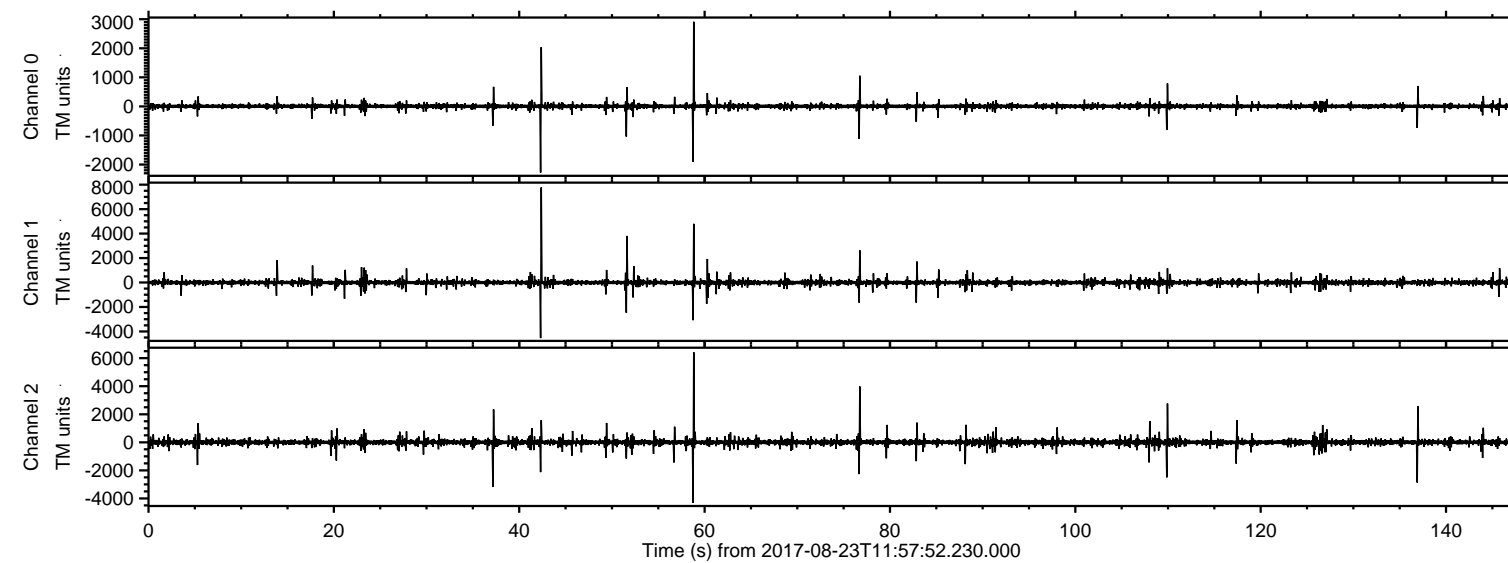
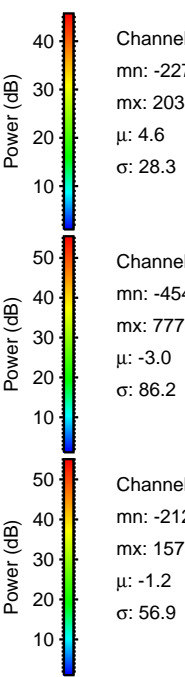
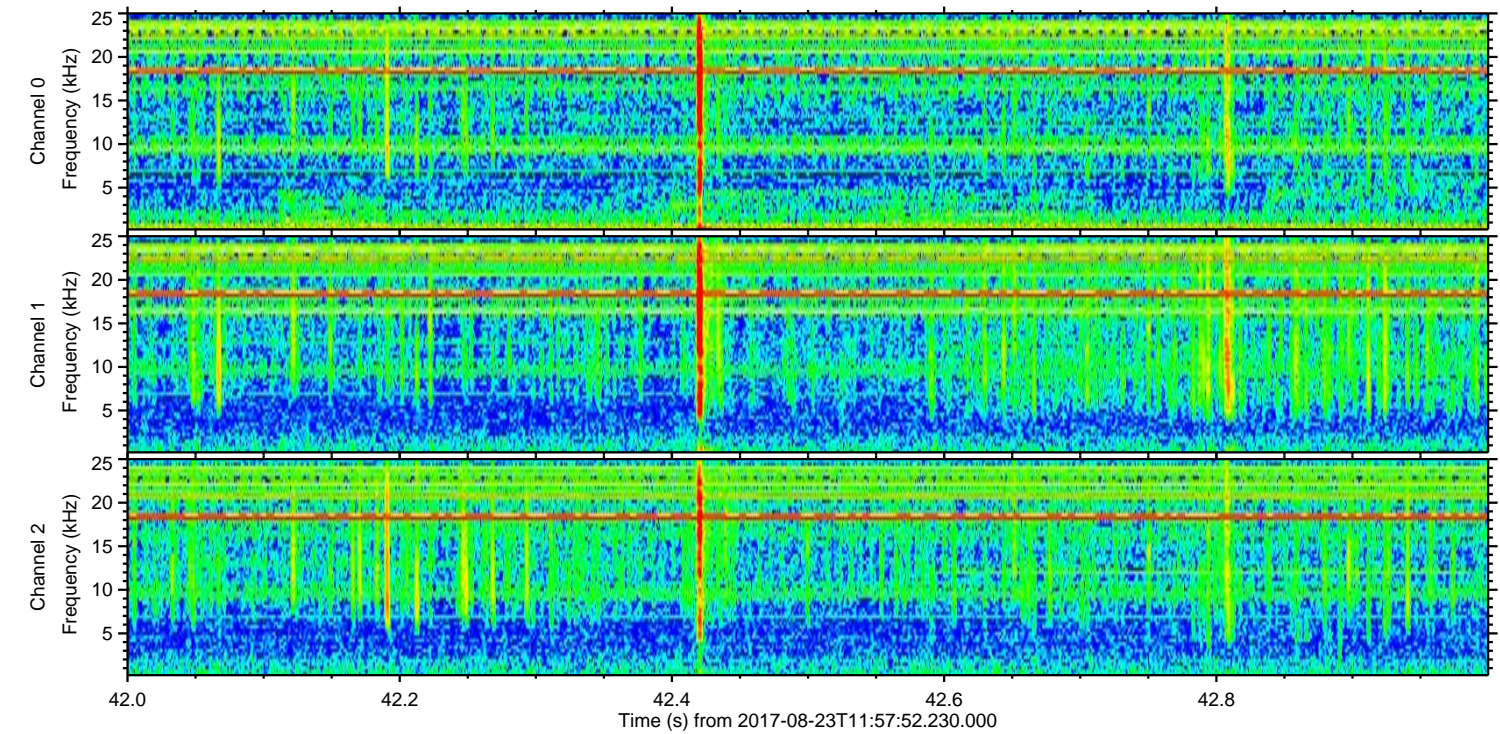
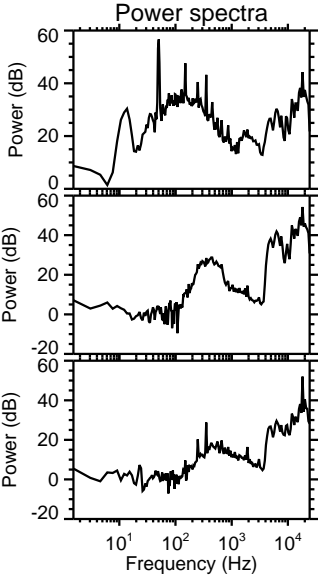
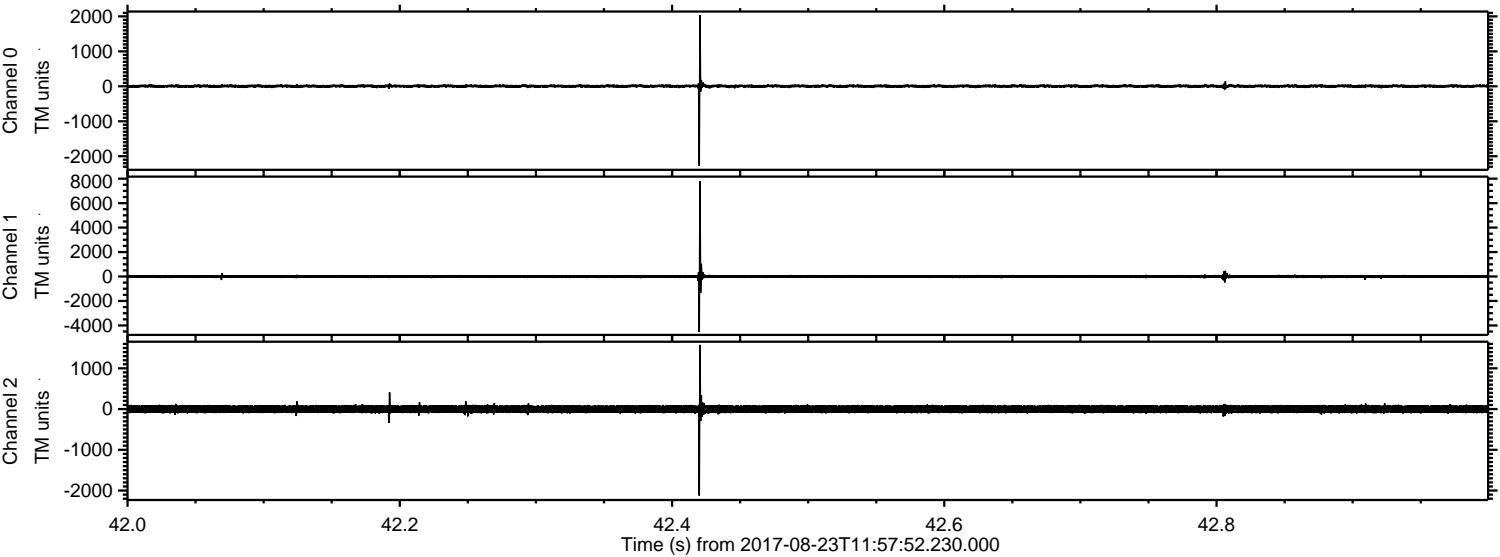


ELMAVAN 3D WAVEFORMS (Measured data sampled at 50 kHz) 51000 packets of 144 samples from 2017-08-23T11:57:52.230.000.

Processed Wed Aug 23 14:05:48 2017 by ELM ver.2012-10-06 from 001__elm20170823_115751__dat00.bin



Processed Wed Aug 23 14:05:54 2017 by ELM ver.2012-10-06 from 001__elm20170823_115751__dat00.bin

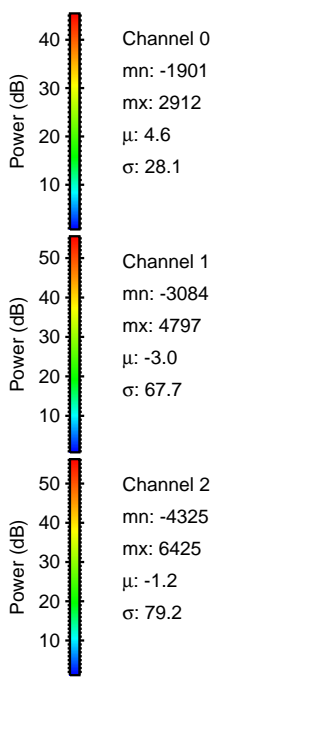
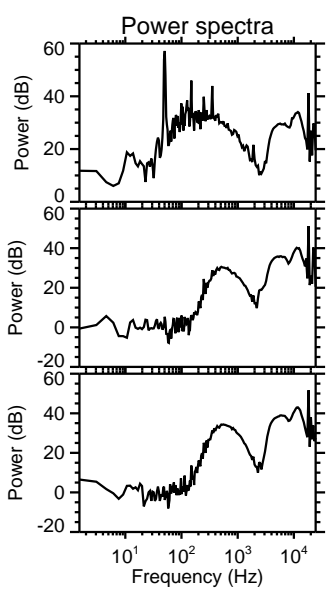
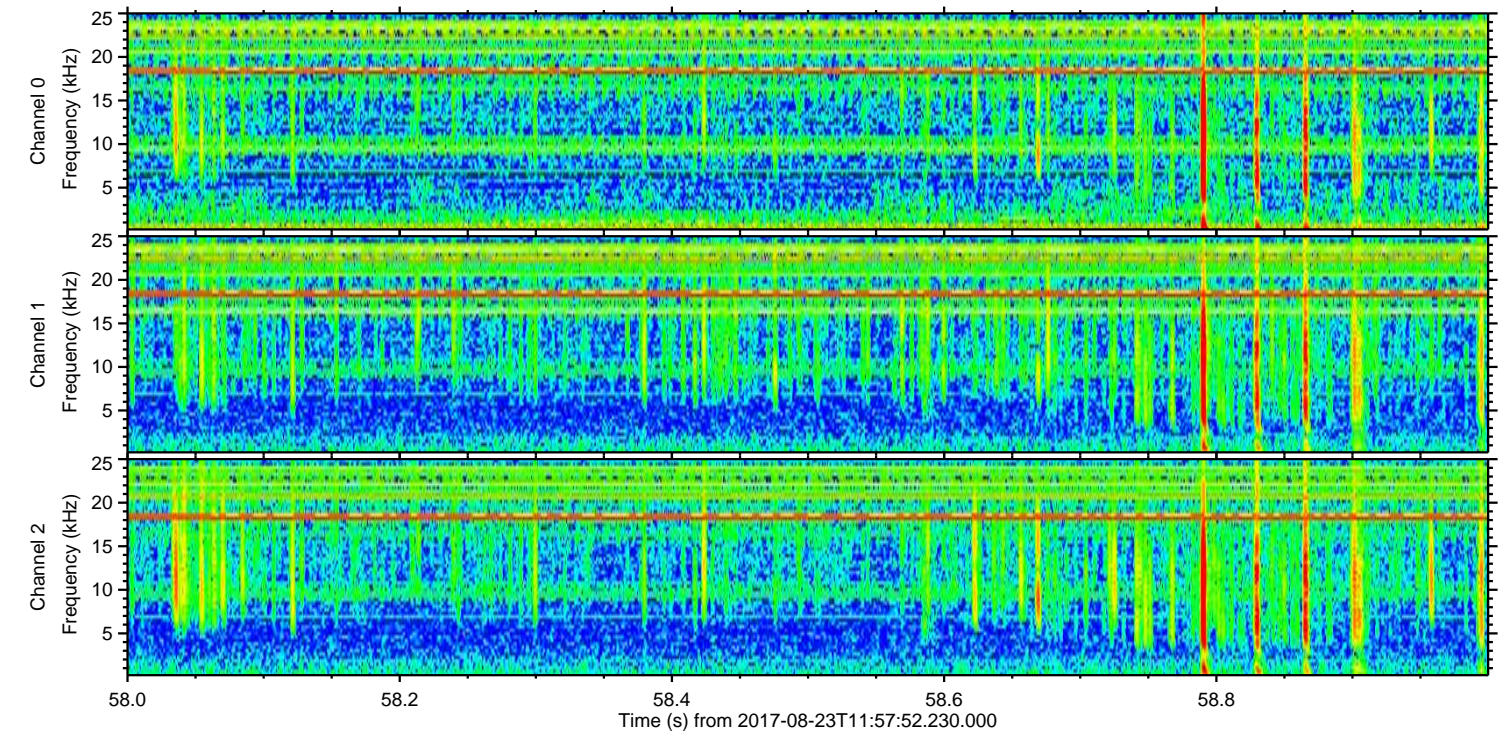
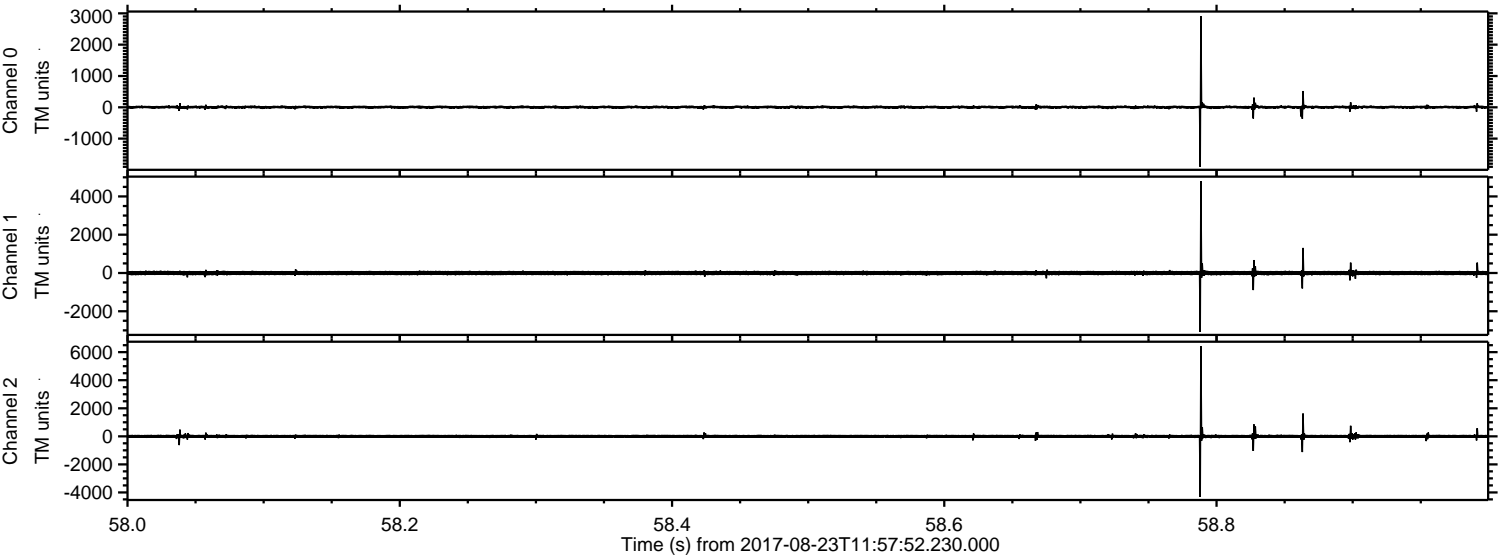


Channel 0
mn: -2275
mx: 2037
 μ : 4.6
 σ : 28.3

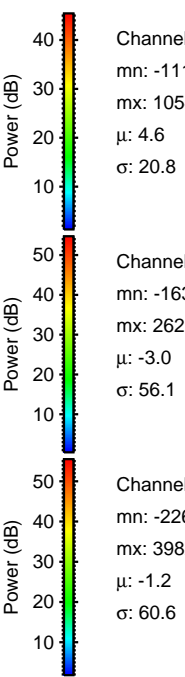
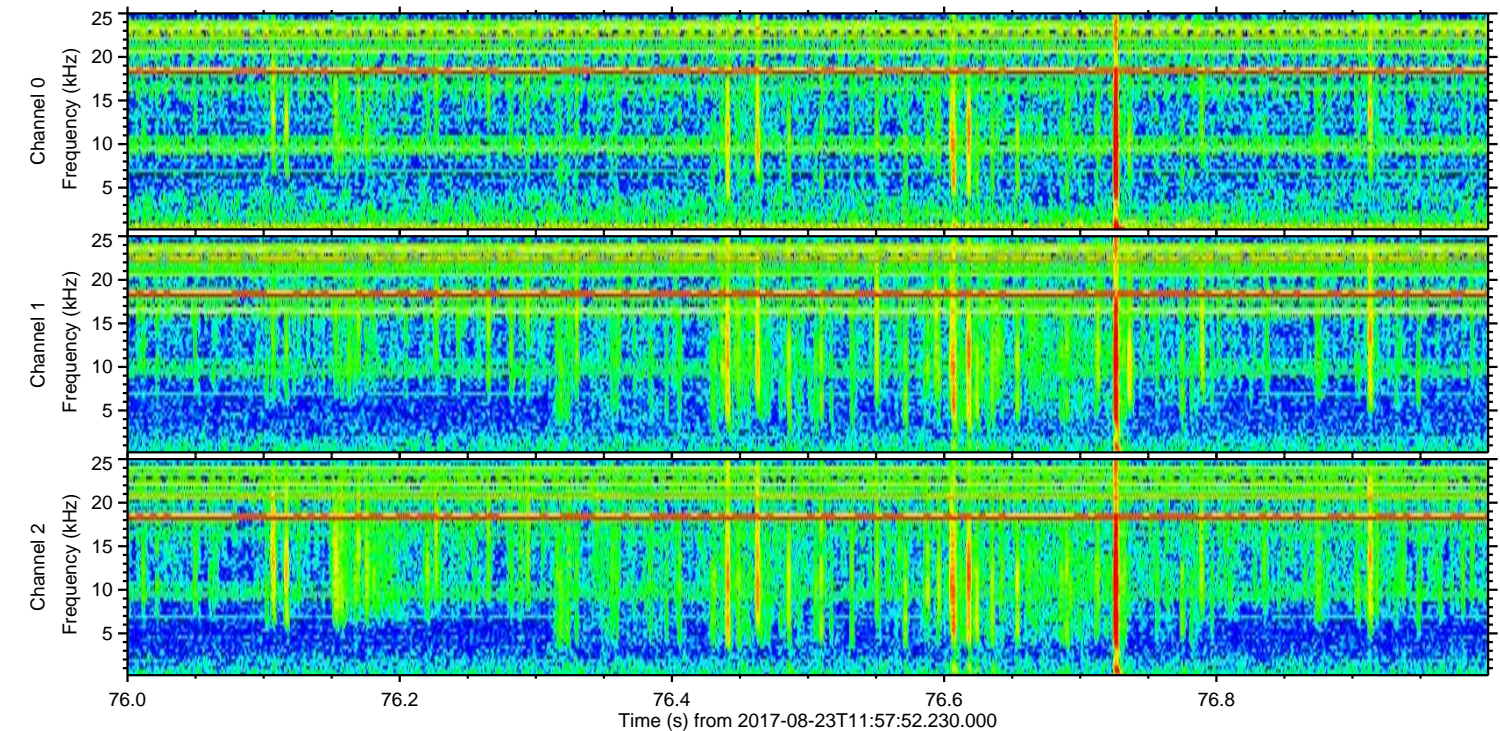
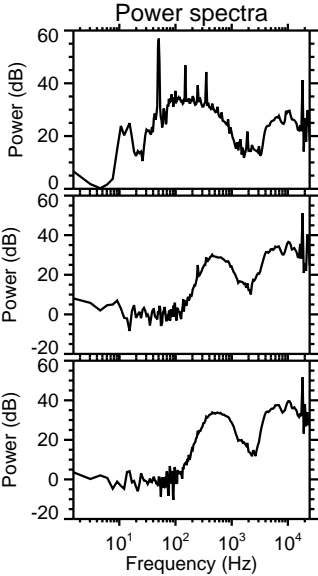
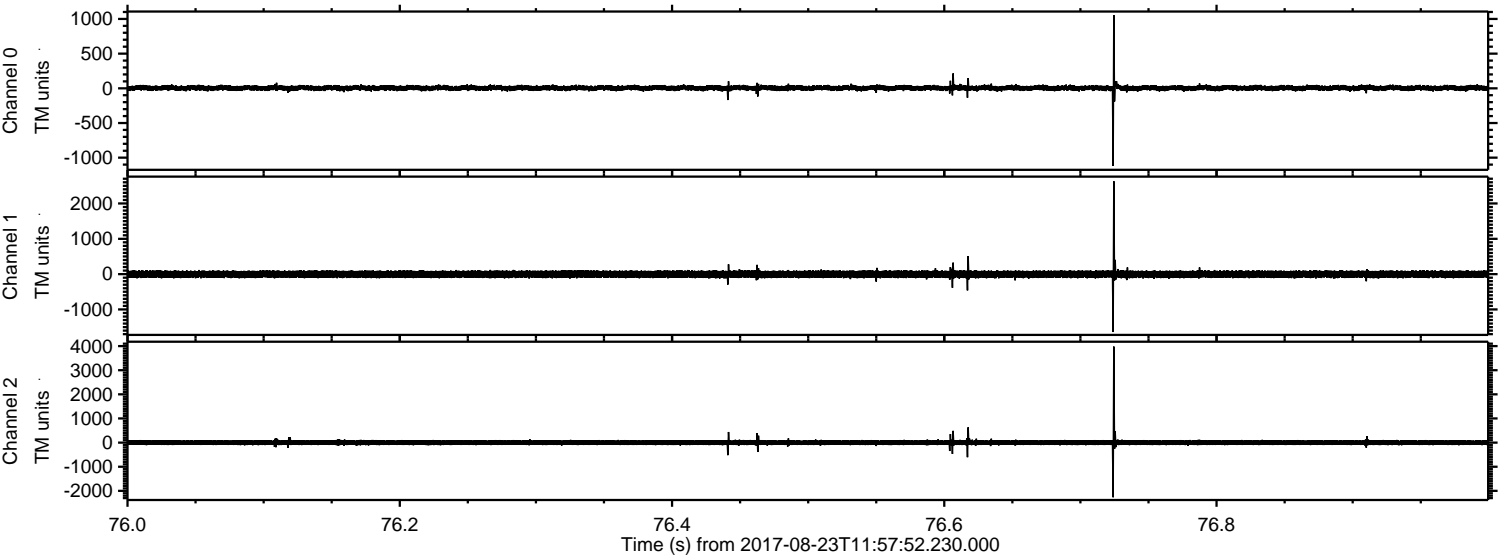
Channel 1
mn: -4548
mx: 7778
 μ : -3.0
 σ : 86.2

Channel 2
mn: -2126
mx: 1575
 μ : -1.2
 σ : 56.9

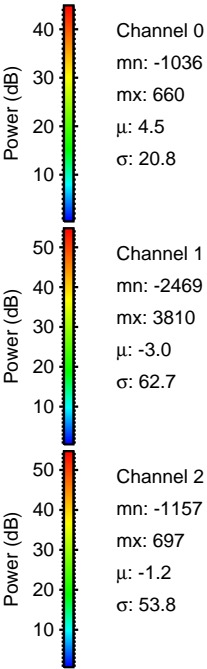
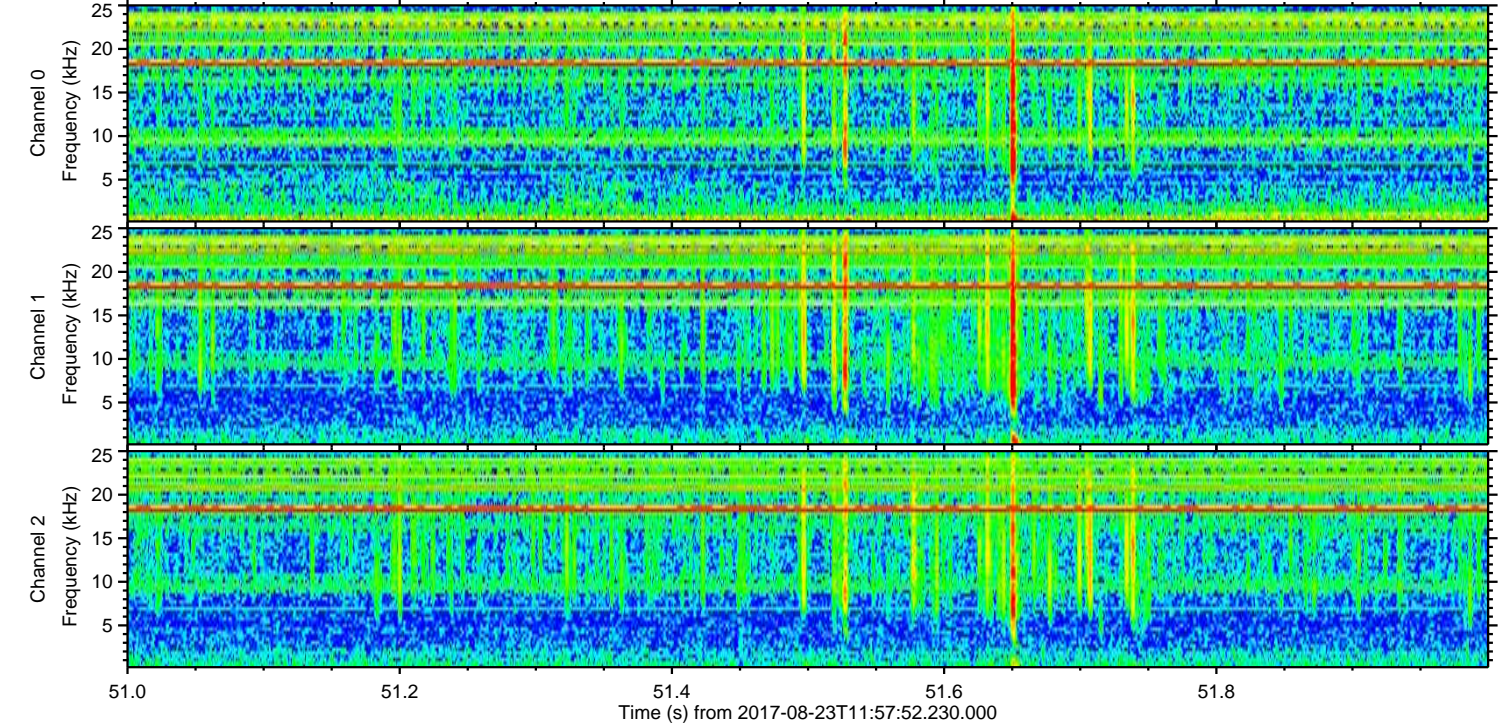
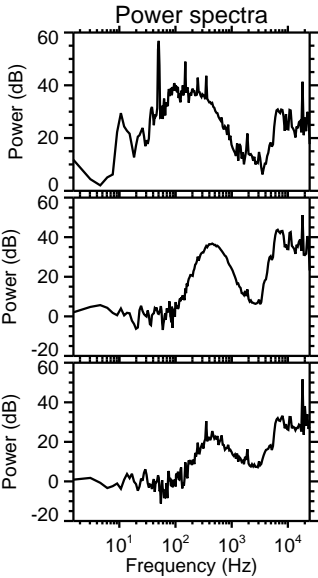
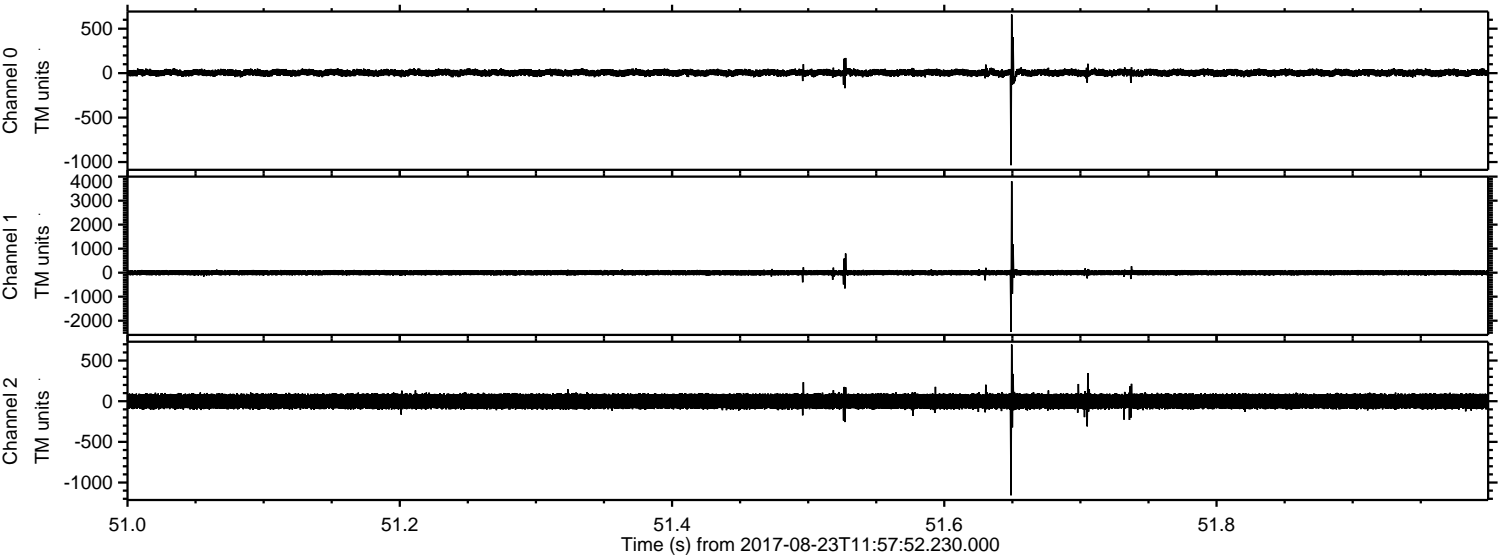
Processed Wed Aug 23 14:05:54 2017 by ELM ver.2012-10-06 from 001__elm20170823_115751__dat00.bin



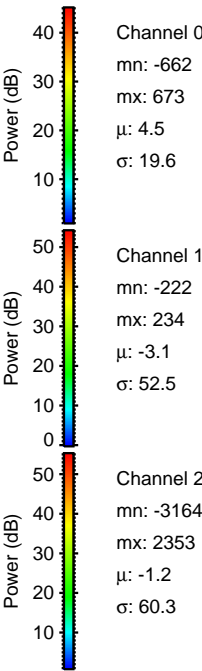
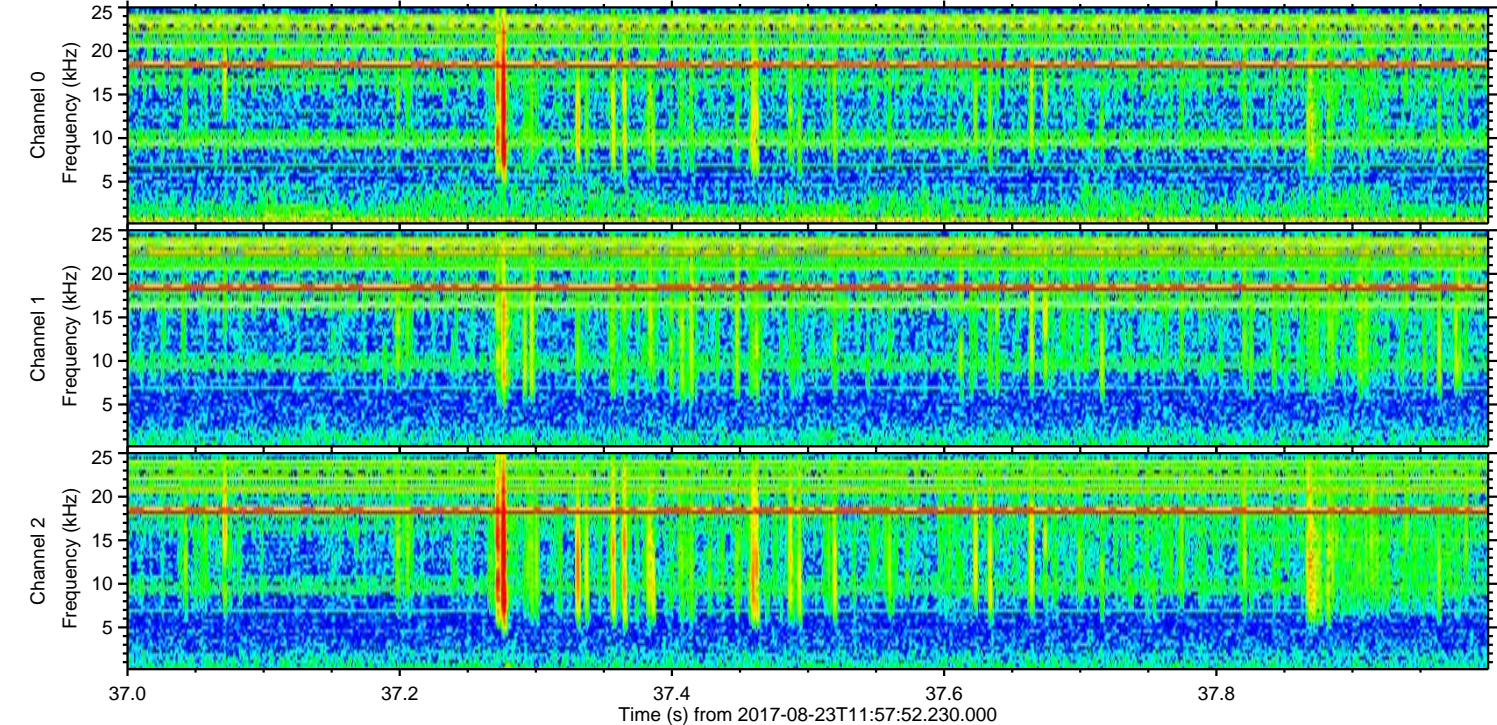
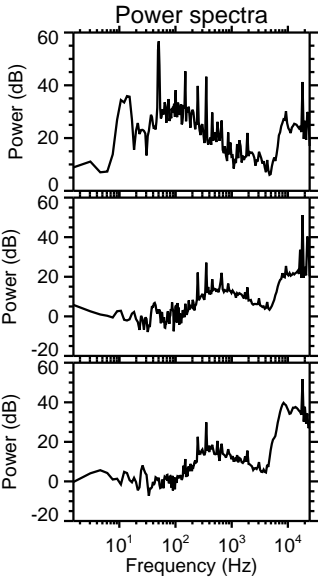
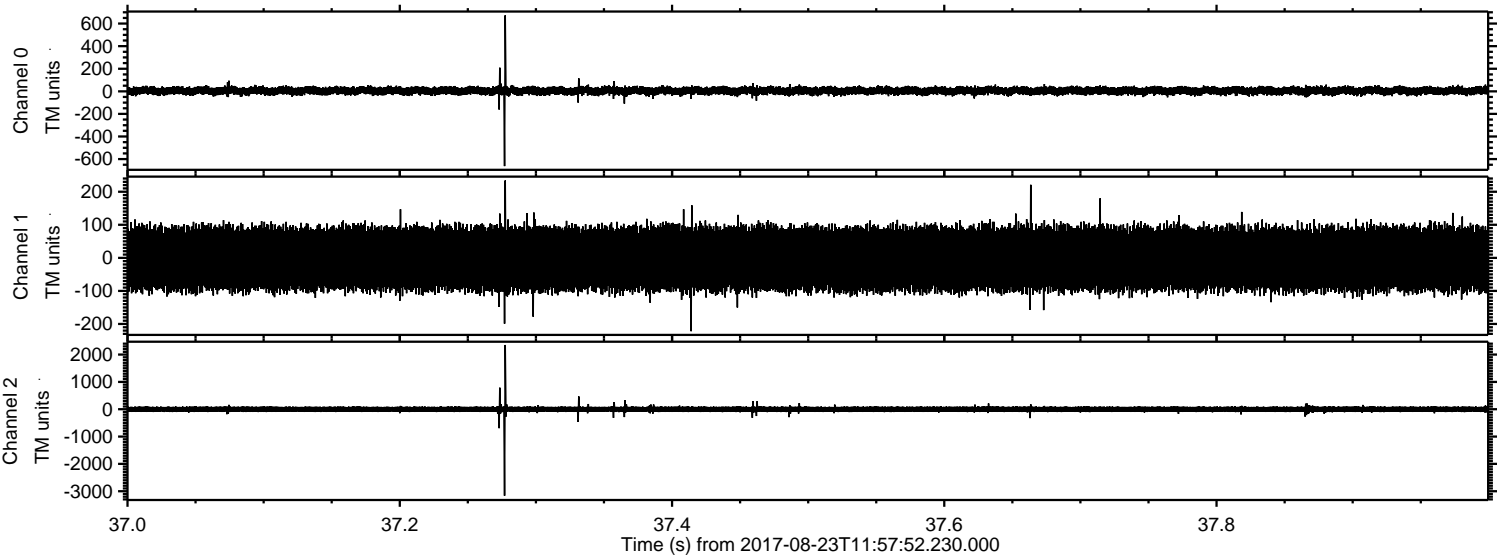
Processed Wed Aug 23 14:05:55 2017 by ELM ver.2012-10-06 from 001__elm20170823_115751__dat00.bin



Processed Wed Aug 23 14:05:56 2017 by ELM ver.2012-10-06 from 001__elm20170823_115751__dat00.bin

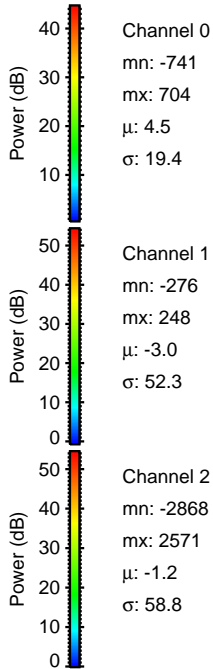
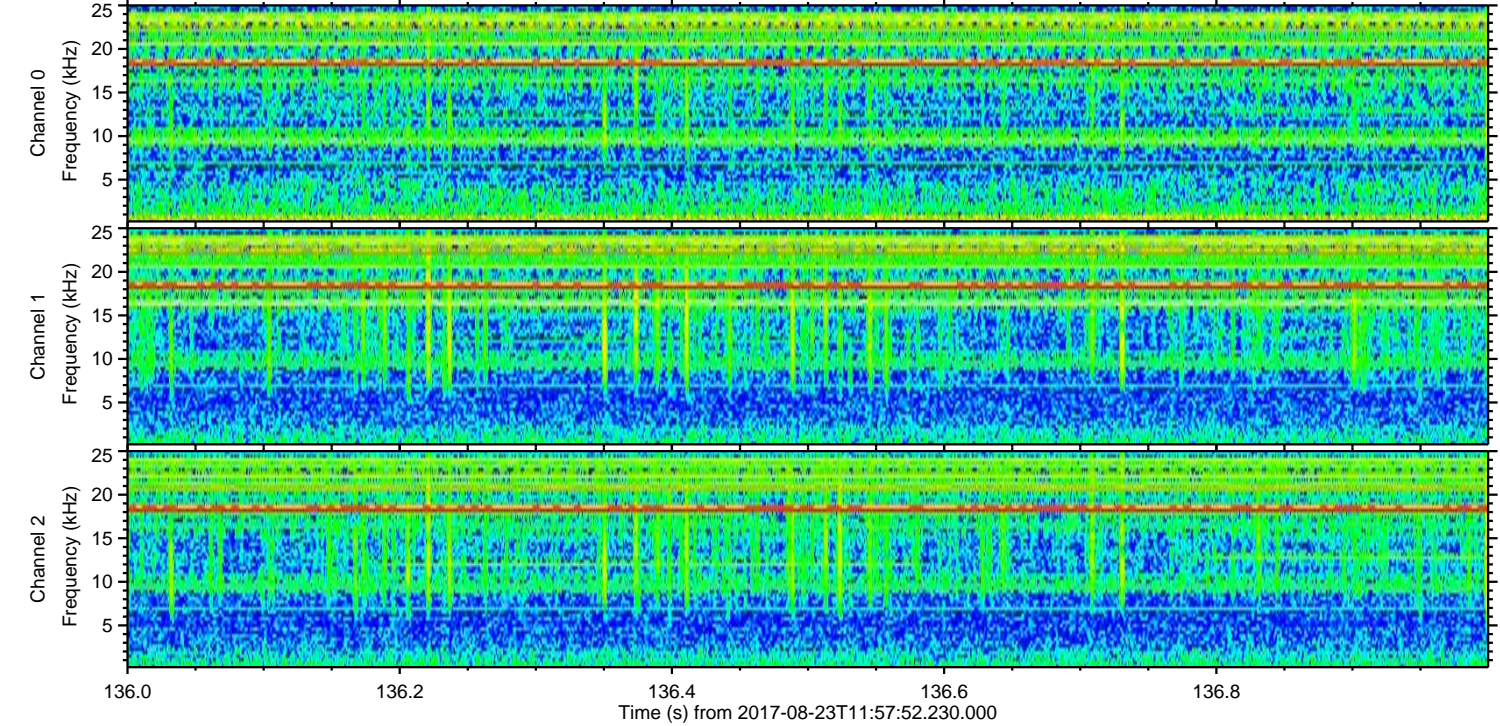
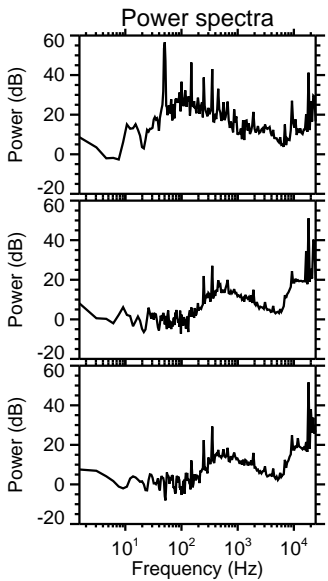
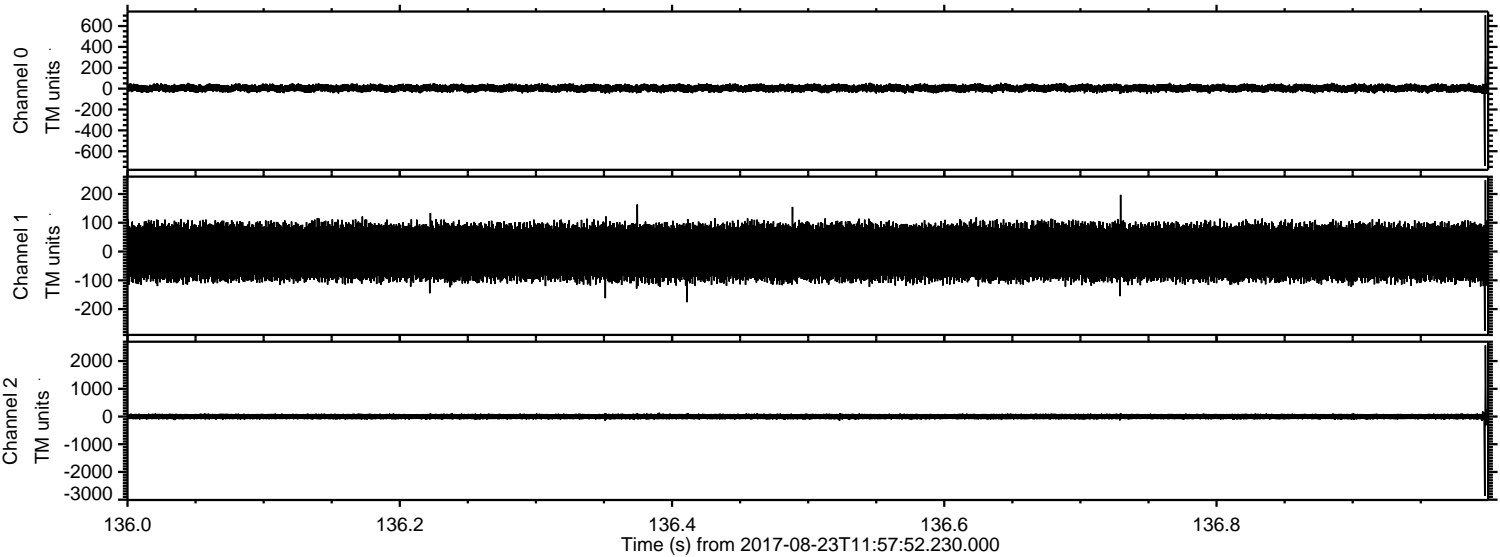


Processed Wed Aug 23 14:05:56 2017 by ELM ver.2012-10-06 from 001__elm20170823_115751__dat00.bin



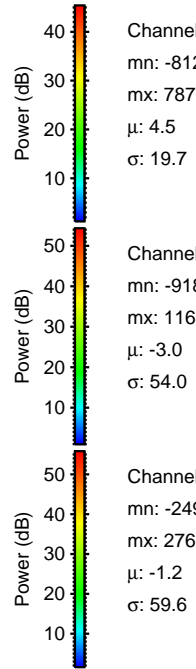
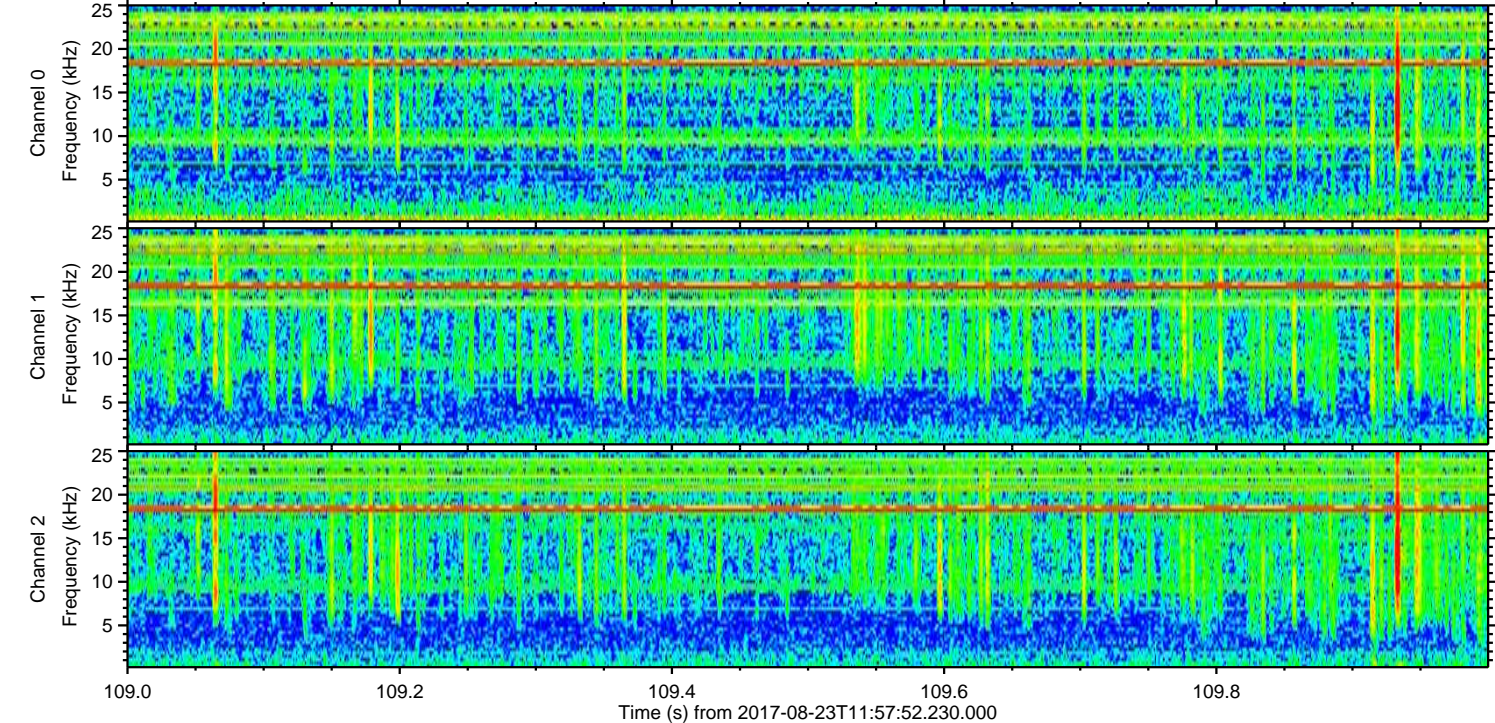
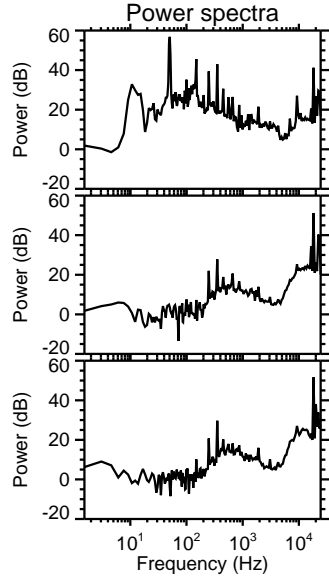
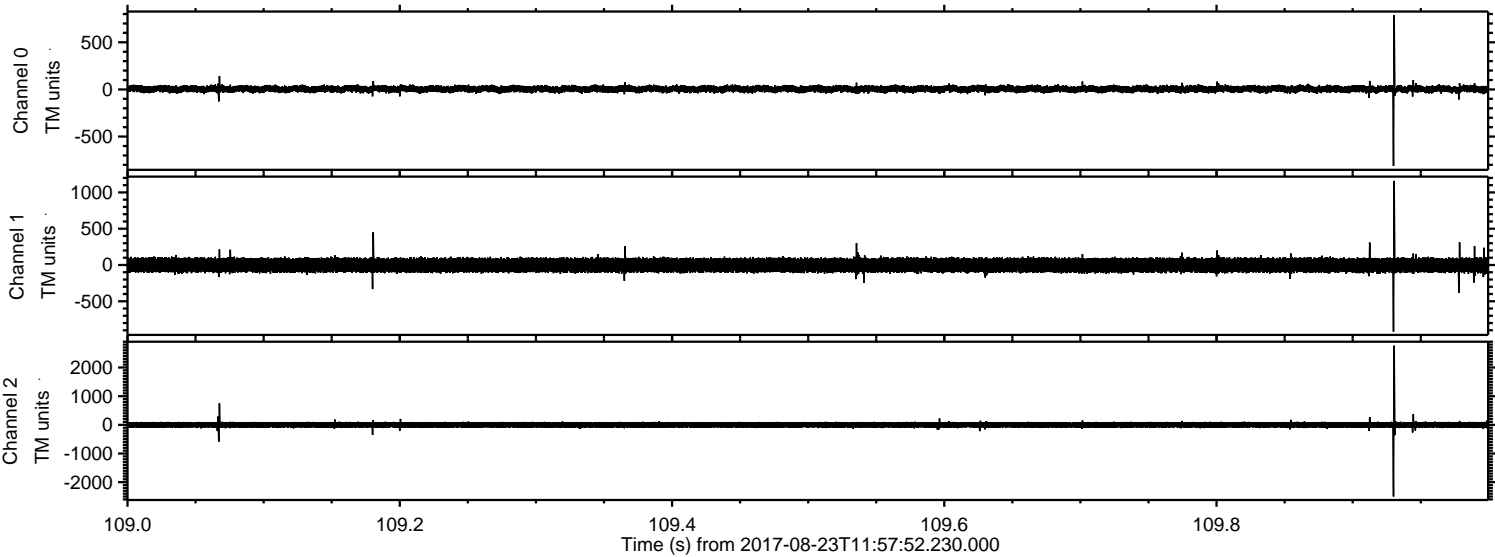
ELMAVAN 3D WAVEFORMS (Measured data sampled at 50 kHz) 51000 packets of 144 samples from 2017-08-23T11:57:52.230.000. Part 137/147

Processed Wed Aug 23 14:05:57 2017 by ELM ver.2012-10-06 from 001__elm20170823_115751__dat00.bin



ELMAVAN 3D WAVEFORMS (Measured data sampled at 50 kHz) 51000 packets of 144 samples from 2017-08-23T11:57:52.230.000. Part 110/147

Processed Wed Aug 23 14:05:58 2017 by ELM ver.2012-10-06 from 001__elm20170823_115751__dat00.bin

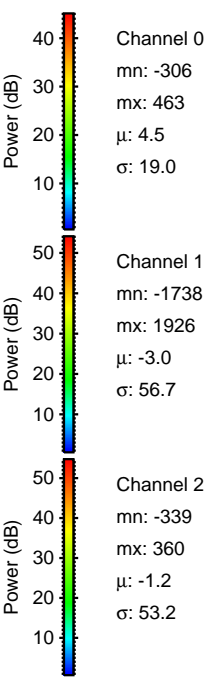
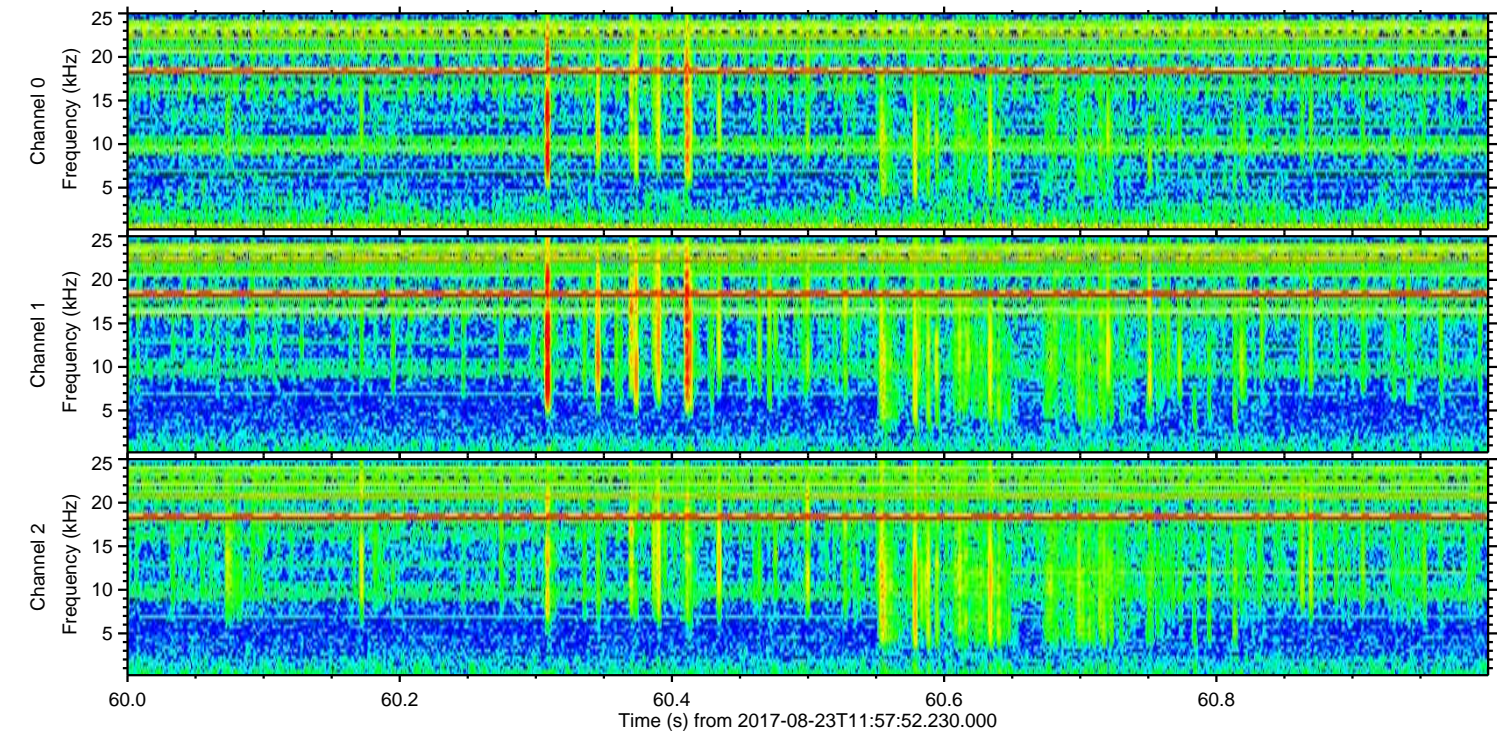
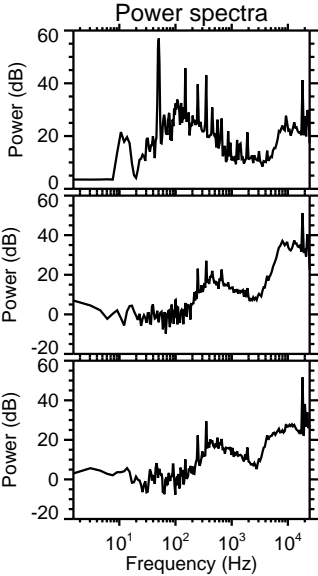
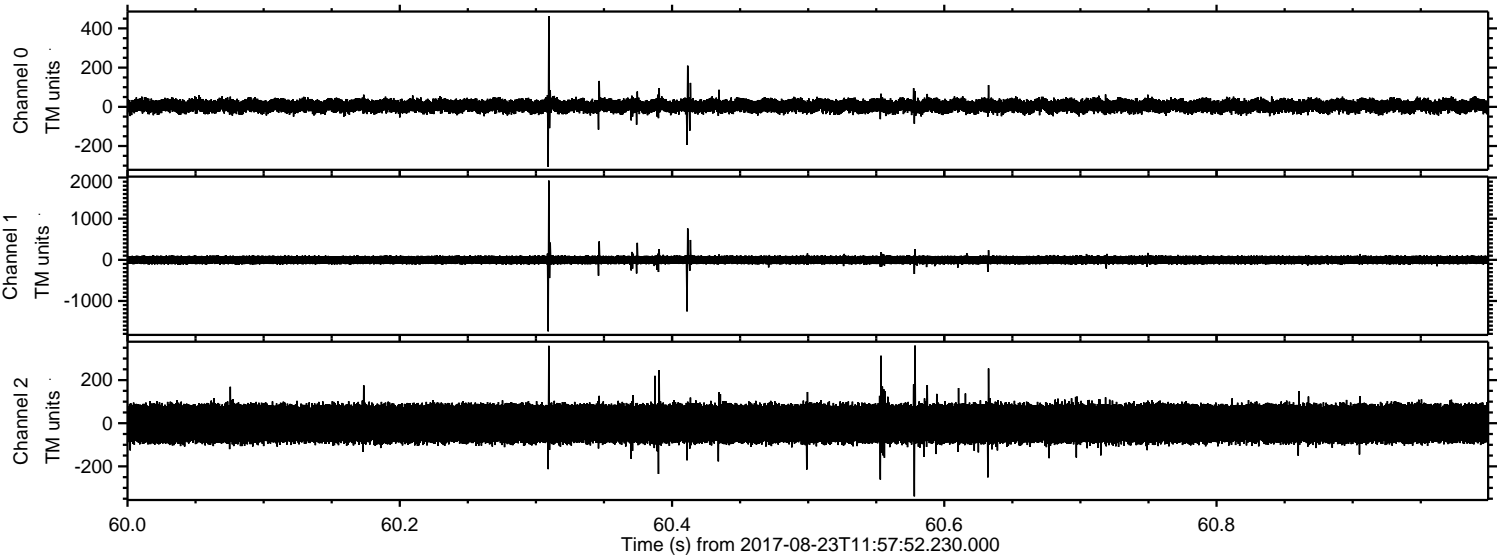


Channel 0
mn: -812
mx: 787
 μ : 4.5
 σ : 19.7

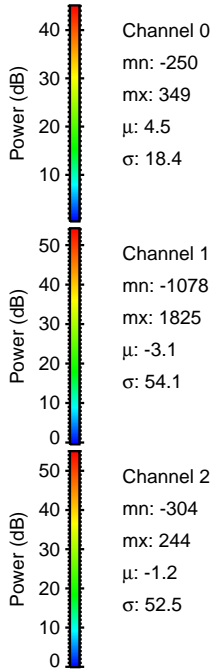
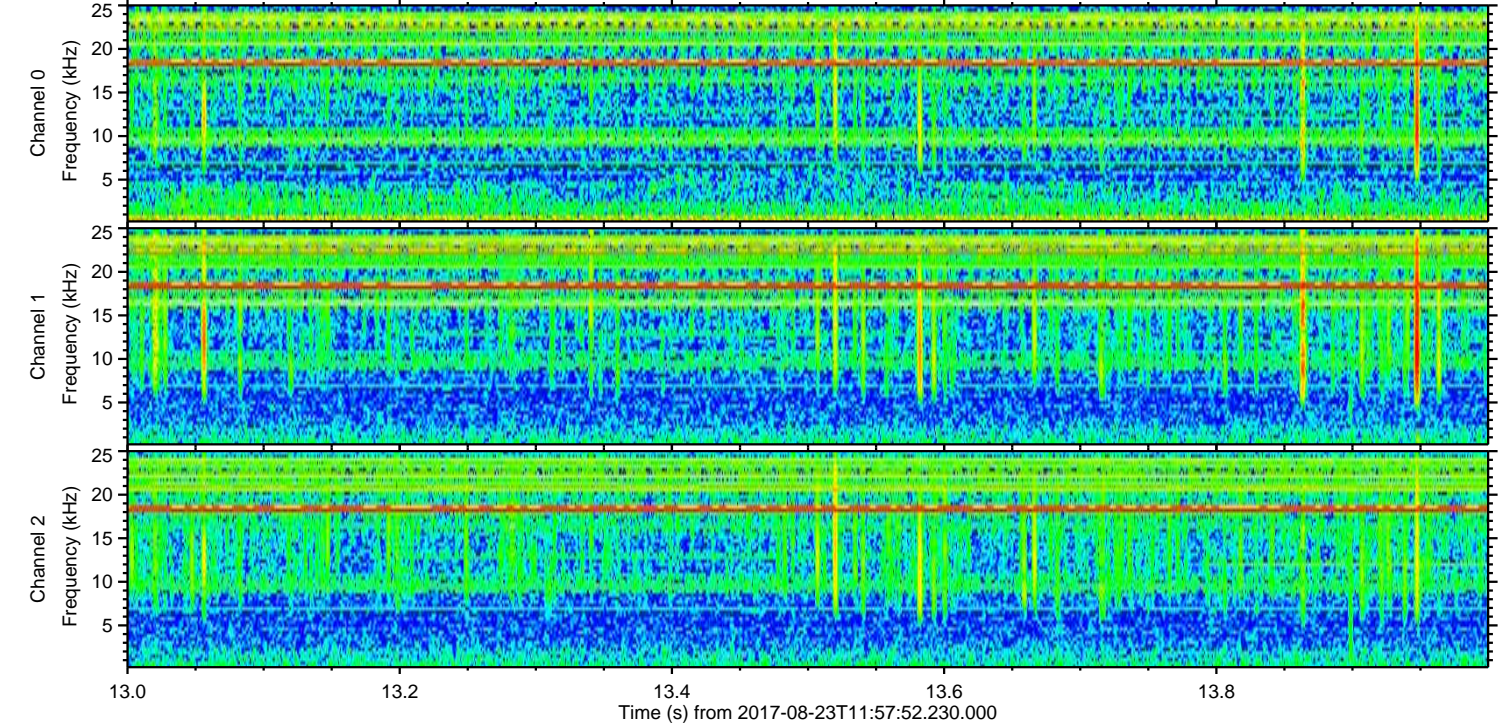
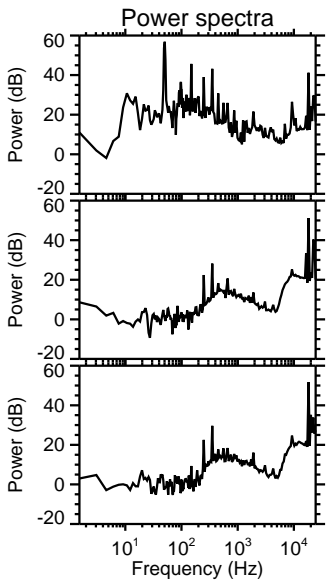
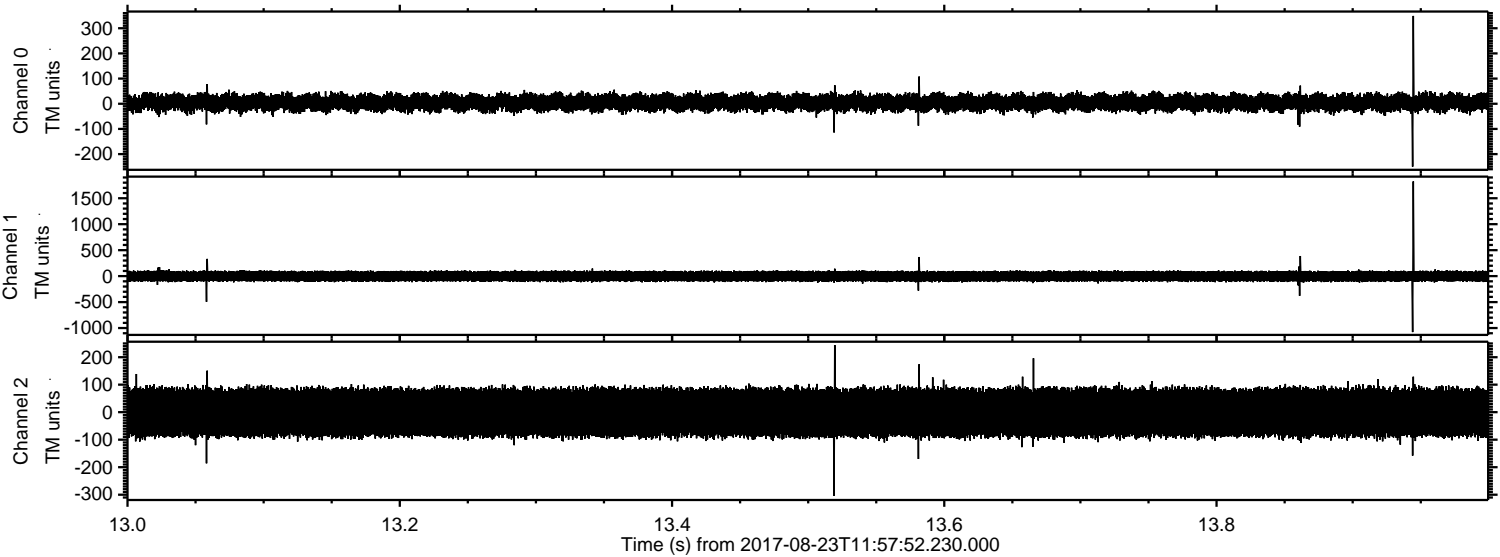
Channel 1
mn: -918
mx: 1160
 μ : -3.0
 σ : 54.0

Channel 2
mn: -2497
mx: 2762
 μ : -1.2
 σ : 59.6

Processed Wed Aug 23 14:05:58 2017 by ELM ver.2012-10-06 from 001__elm20170823_115751__dat00.bin



Processed Wed Aug 23 14:05:59 2017 by ELM ver.2012-10-06 from 001__elm20170823_115751__dat00.bin



Channel 0
mn: -250
mx: 349
 μ : 4.5
 σ : 18.4

Channel 1
mn: -1078
mx: 1825
 μ : -3.1
 σ : 54.1

Channel 2
mn: -304
mx: 244
 μ : -1.2
 σ : 52.5

