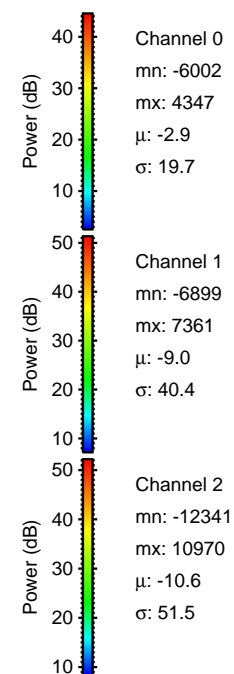
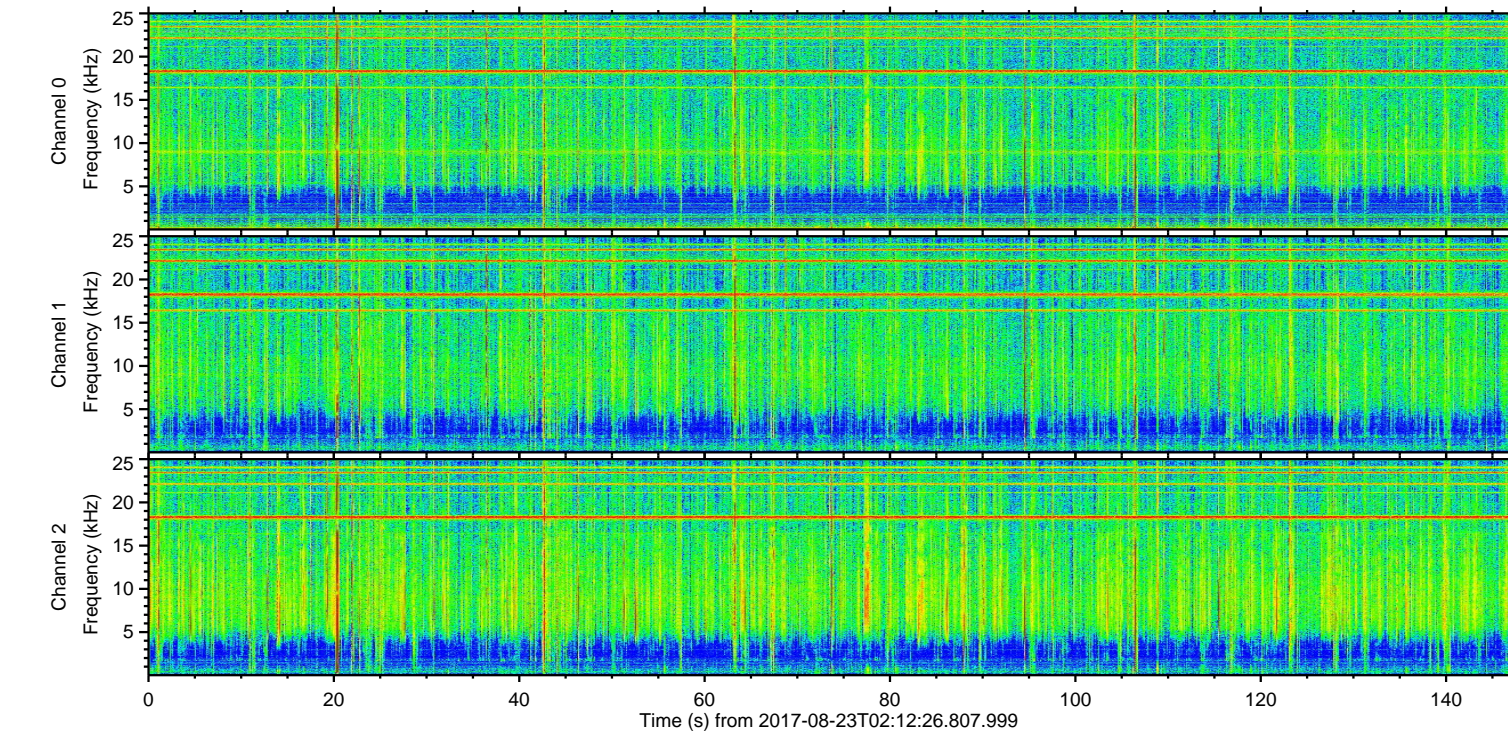
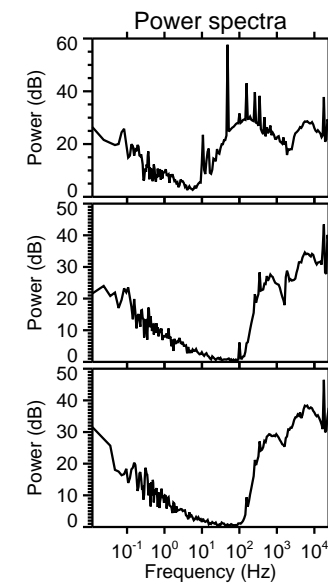
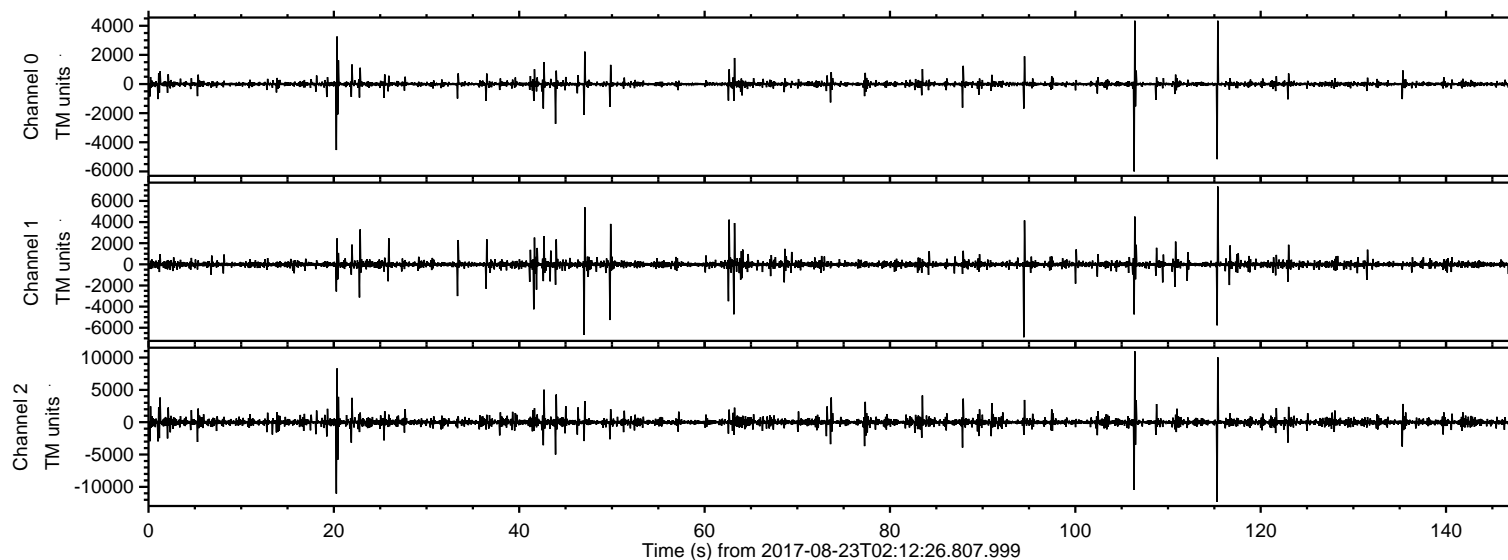


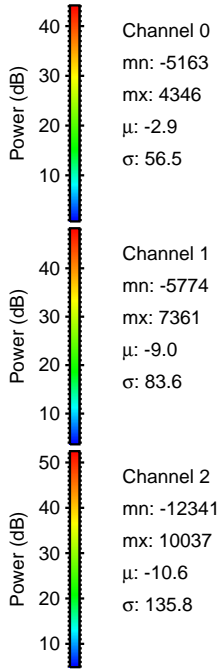
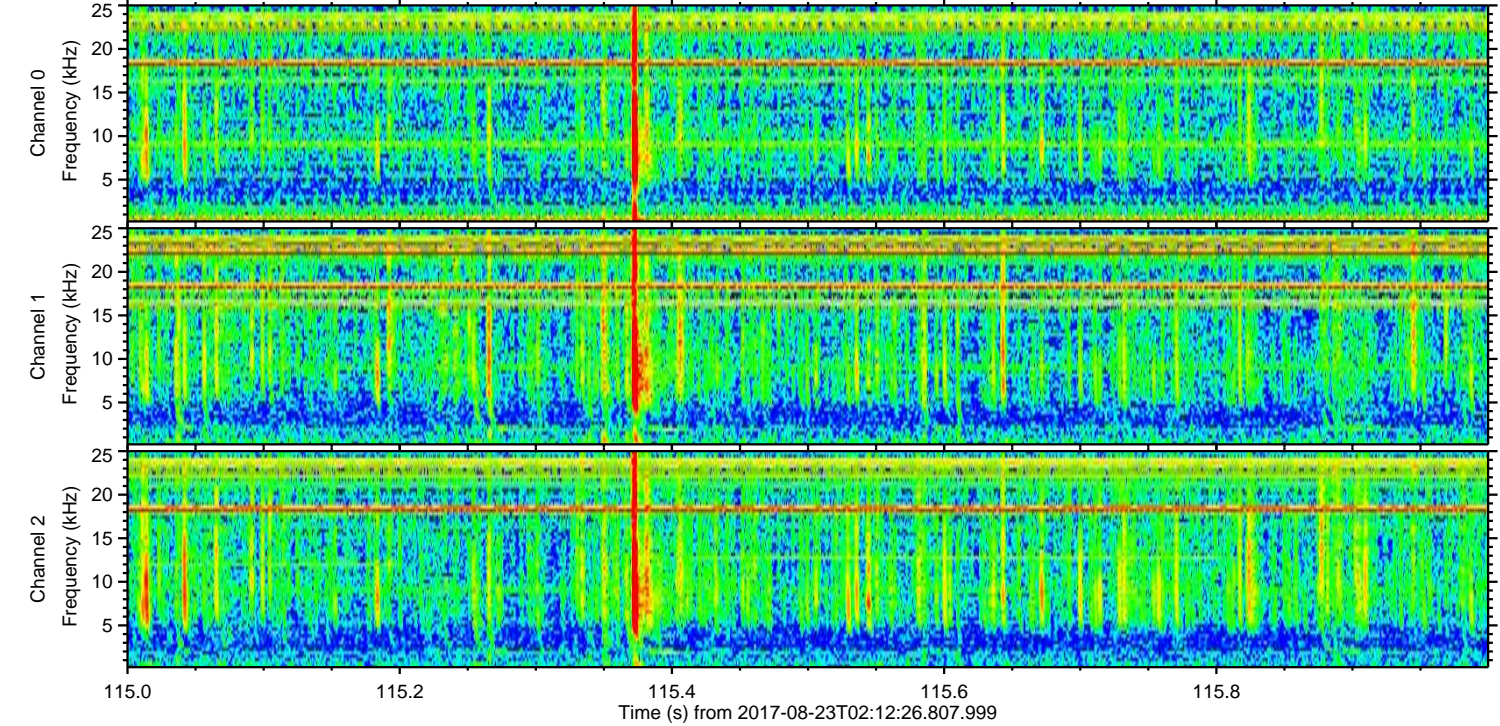
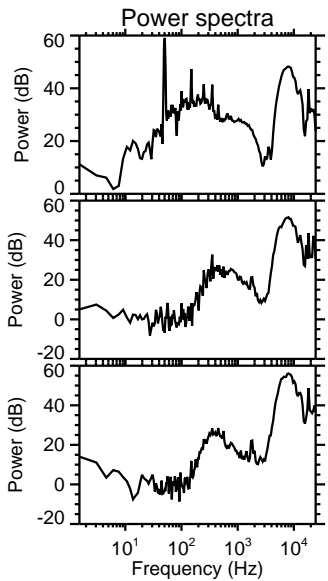
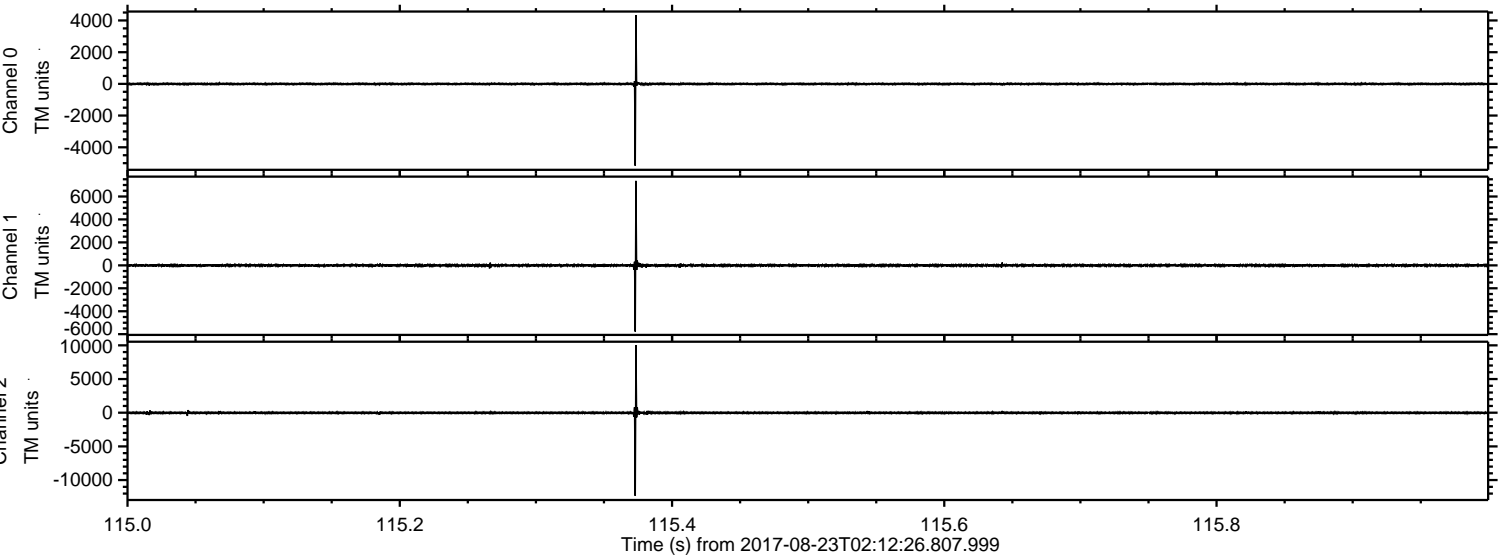
ELMAVAN 3D WAVEFORMS (Measured data sampled at 50 kHz) 51000 packets of 144 samples from 2017-08-23T02:12:26.807.999.

Processed Wed Aug 23 04:20:26 2017 by ELM ver.2012-10-06 from 001__elm20170823_021225__dat00.bin

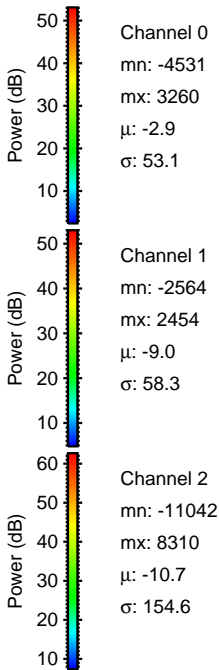
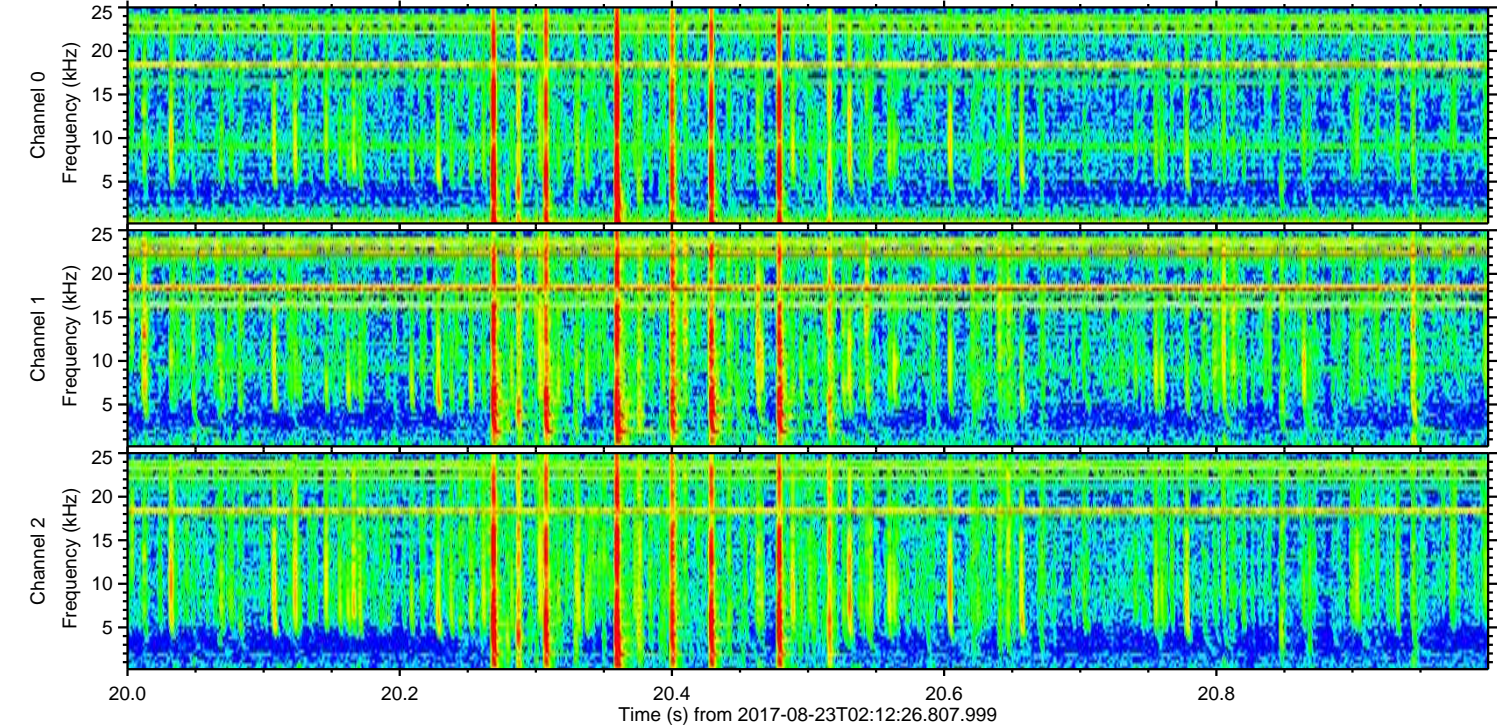
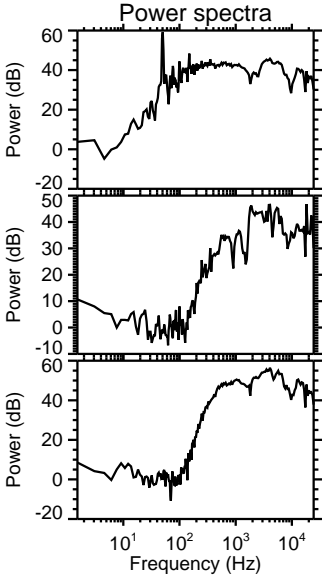
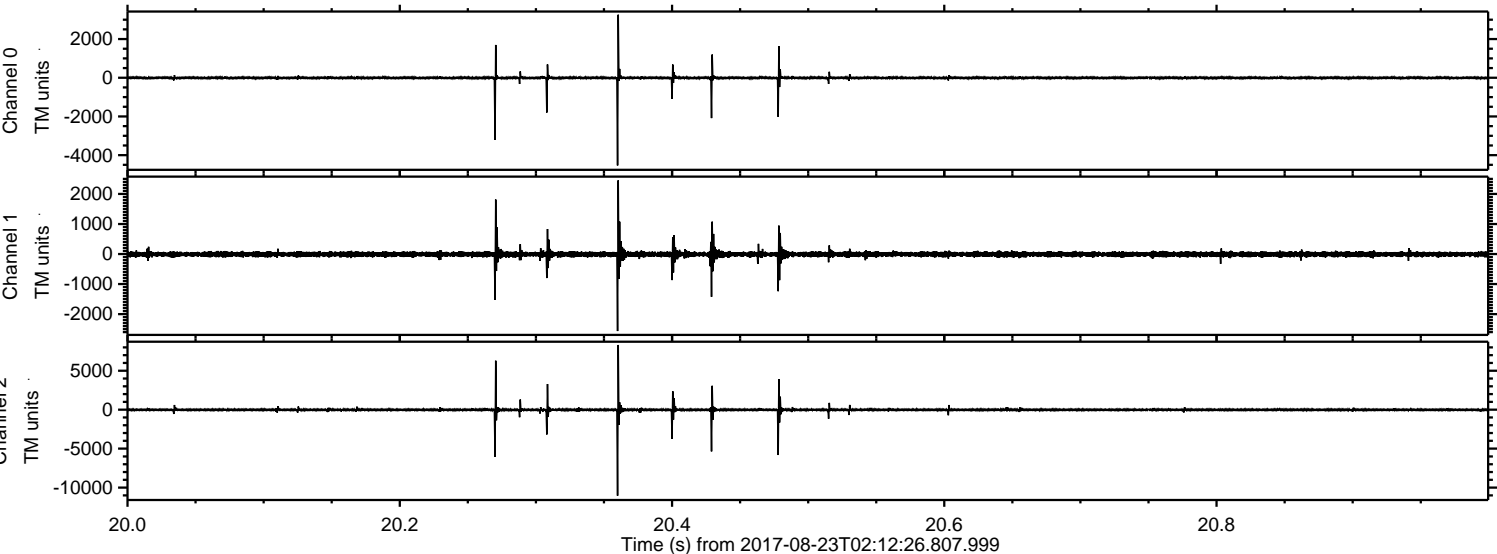


ELMAVAN 3D WAVEFORMS (Measured data sampled at 50 kHz) 51000 packets of 144 samples from 2017-08-23T02:12:26.807.999. Part 116/147

Processed Wed Aug 23 04:20:33 2017 by ELM ver.2012-10-06 from 001__elm20170823_021225__dat00.bin

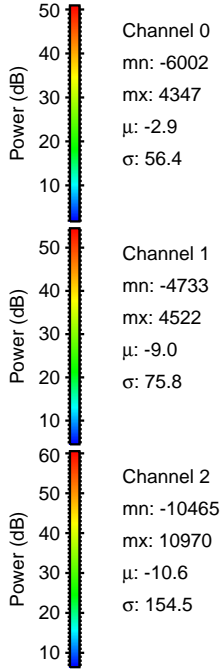
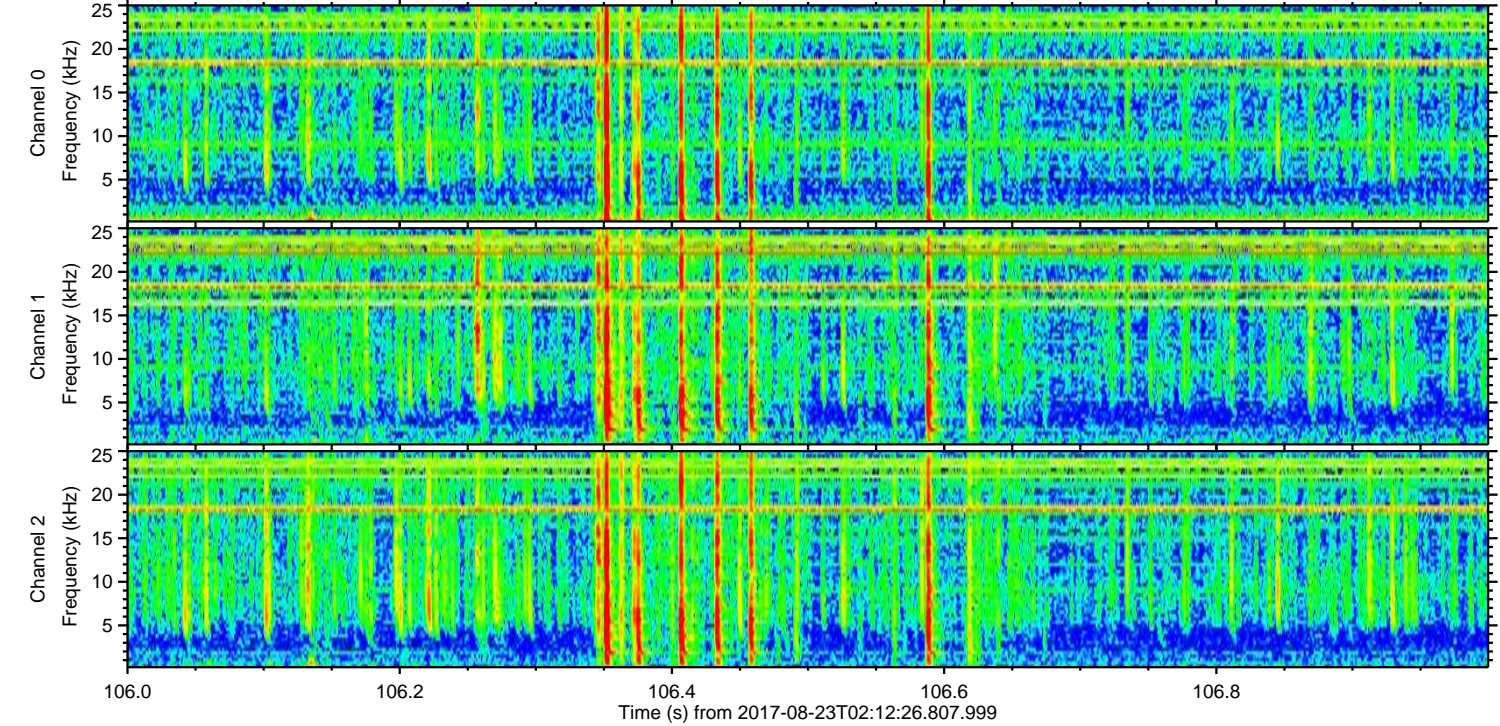
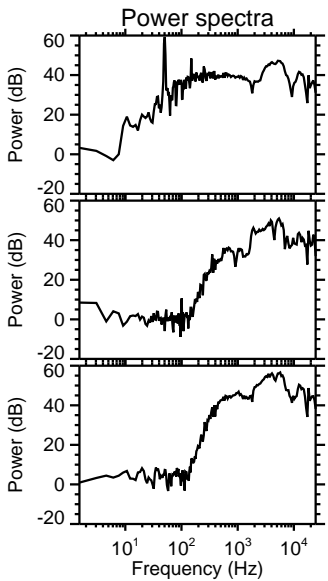
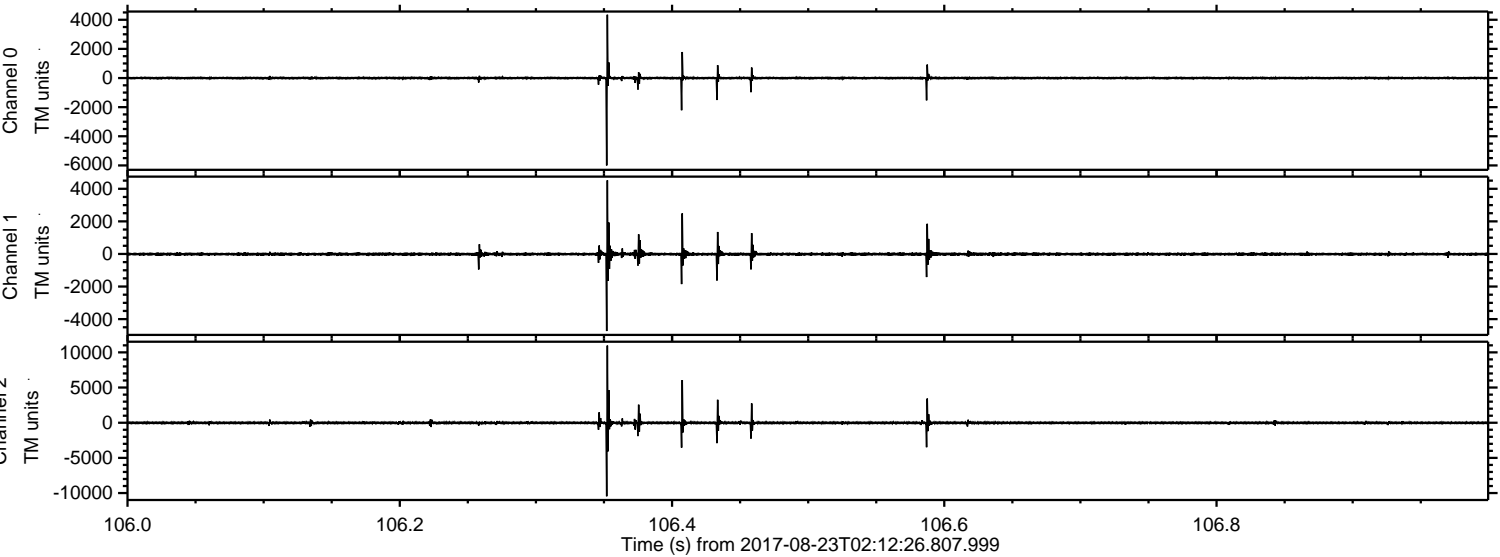


Processed Wed Aug 23 04:20:34 2017 by ELM ver.2012-10-06 from 001__elm20170823_021225__dat00.bin

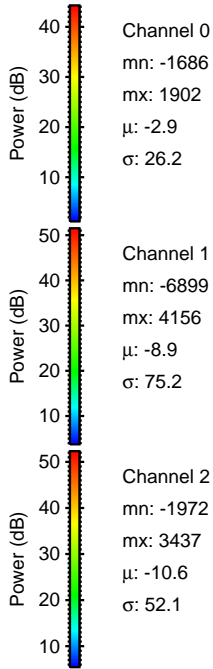
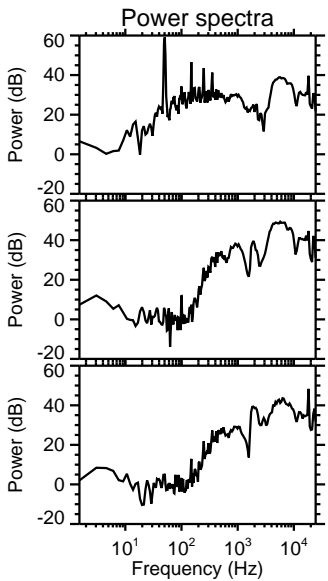
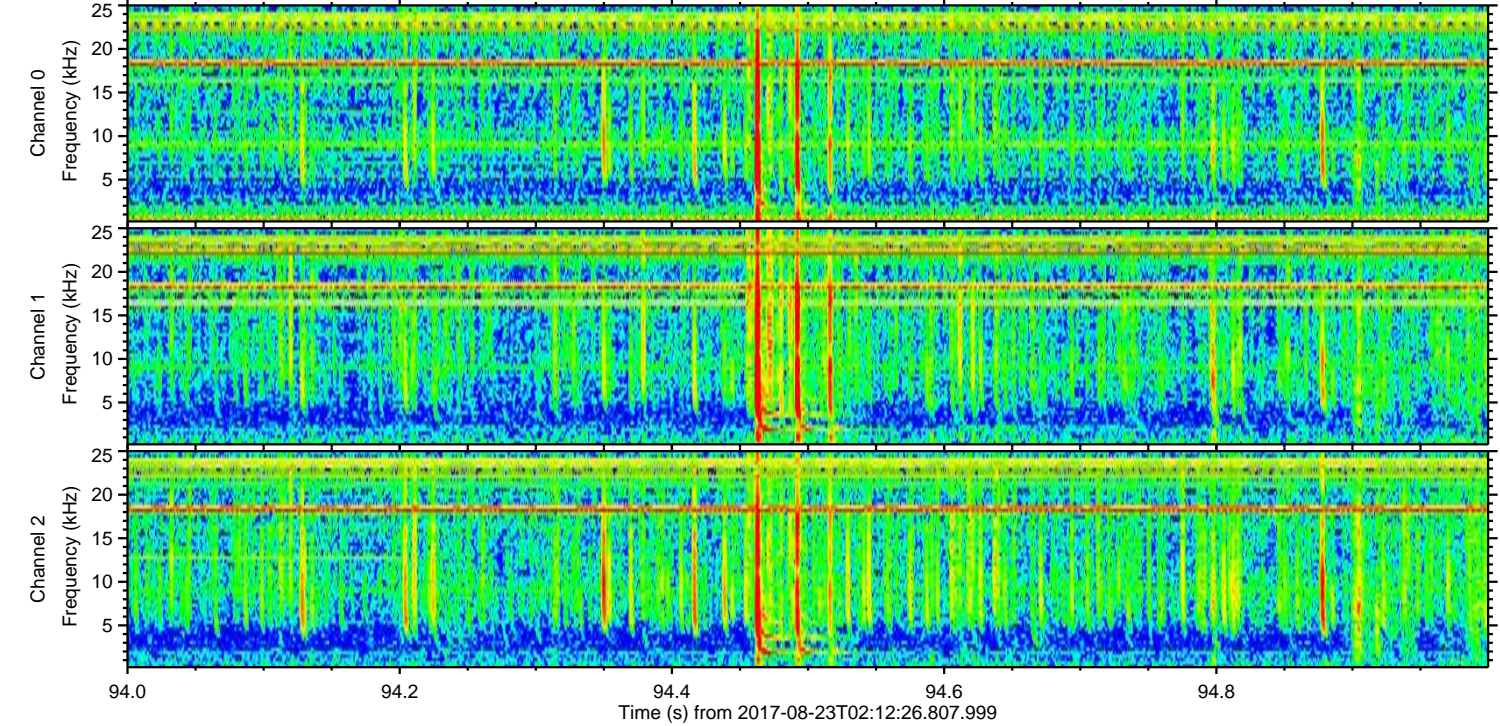
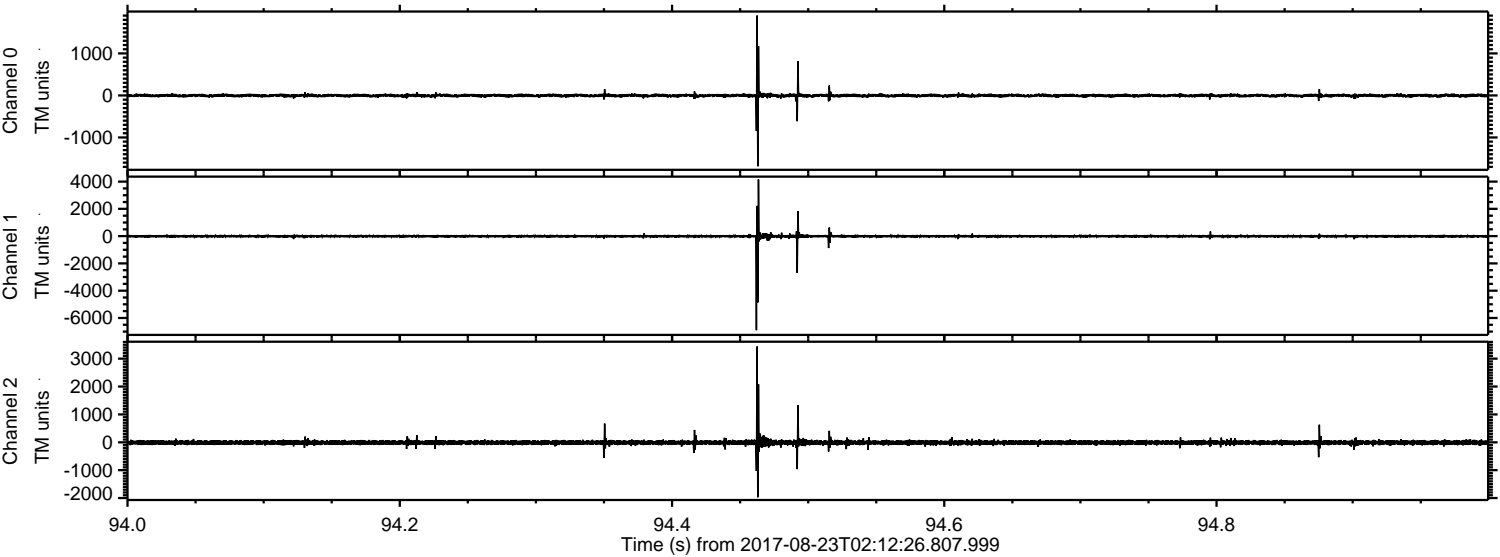


ELMAVAN 3D WAVEFORMS (Measured data sampled at 50 kHz) 51000 packets of 144 samples from 2017-08-23T02:12:26.807.999. Part 107/147

Processed Wed Aug 23 04:20:35 2017 by ELM ver.2012-10-06 from 001__elm20170823_021225__dat00.bin

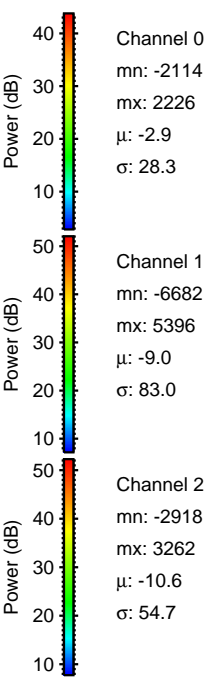
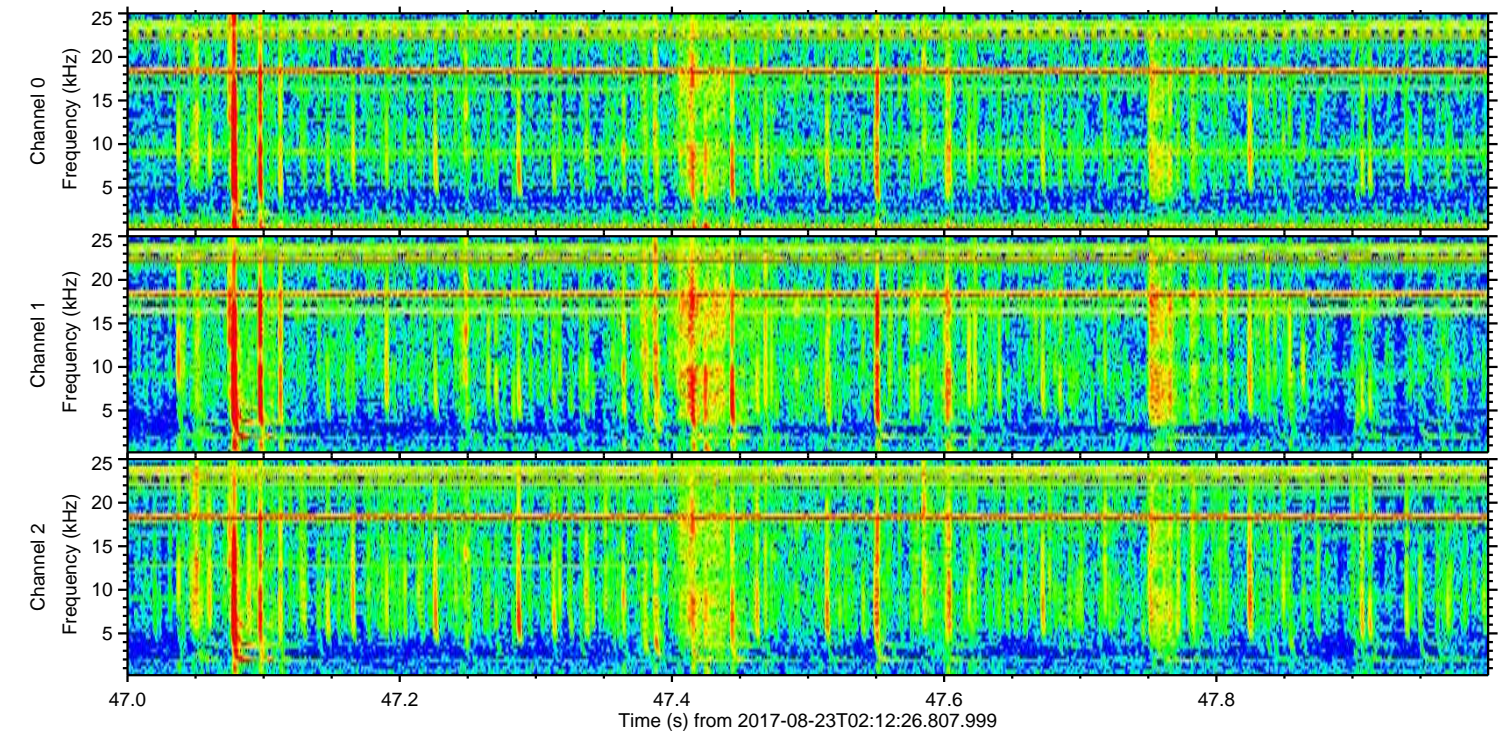
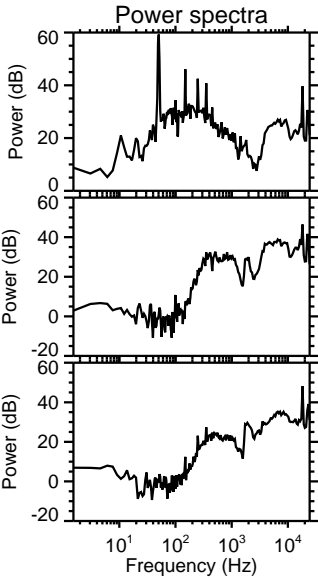
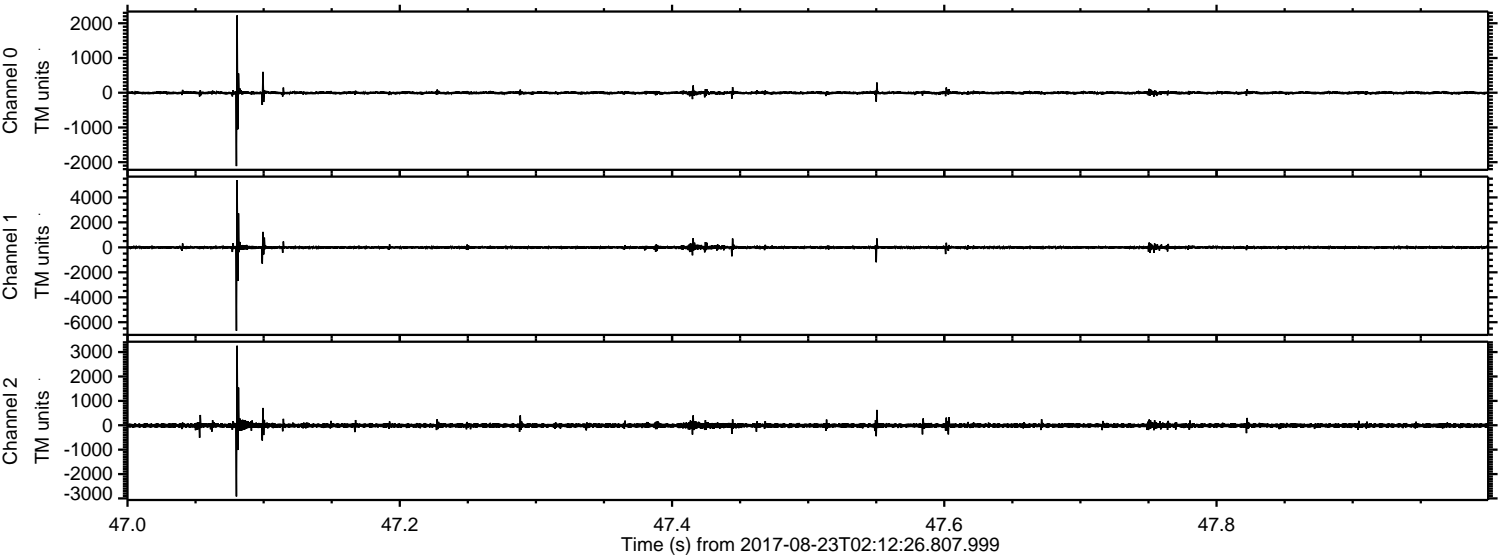


Processed Wed Aug 23 04:20:35 2017 by ELM ver.2012-10-06 from 001__elm20170823_021225__dat00.bin

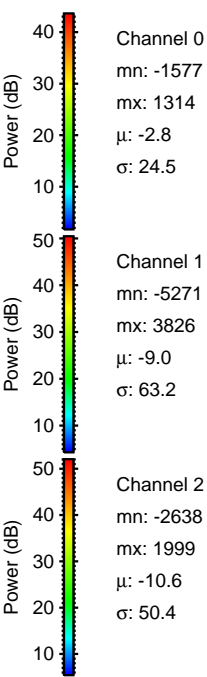
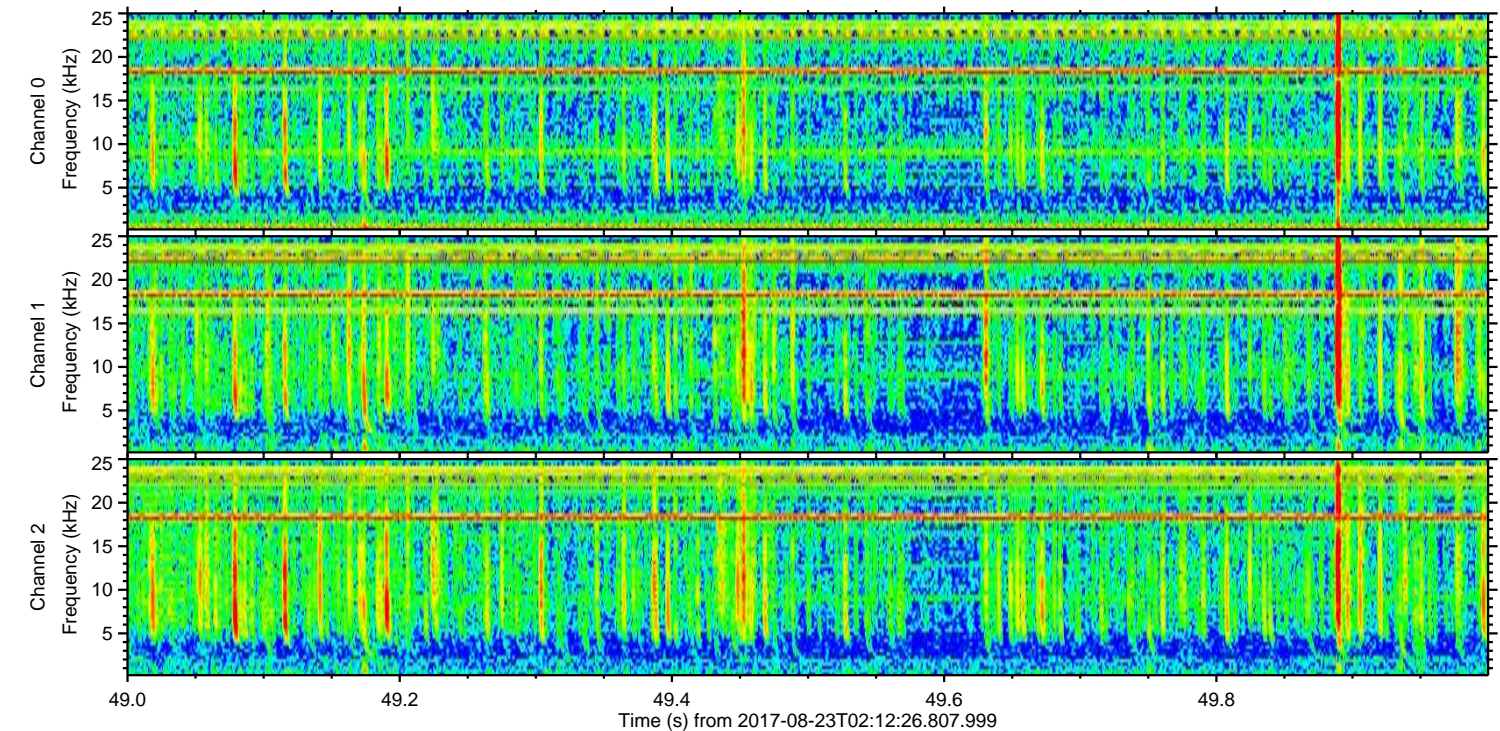
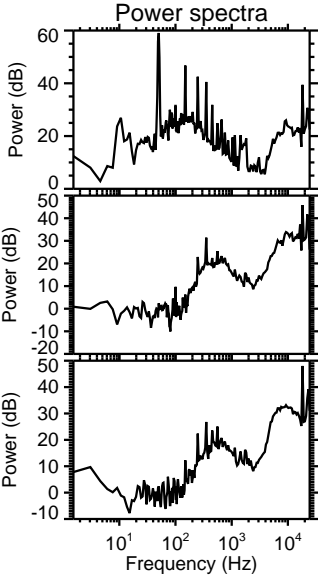
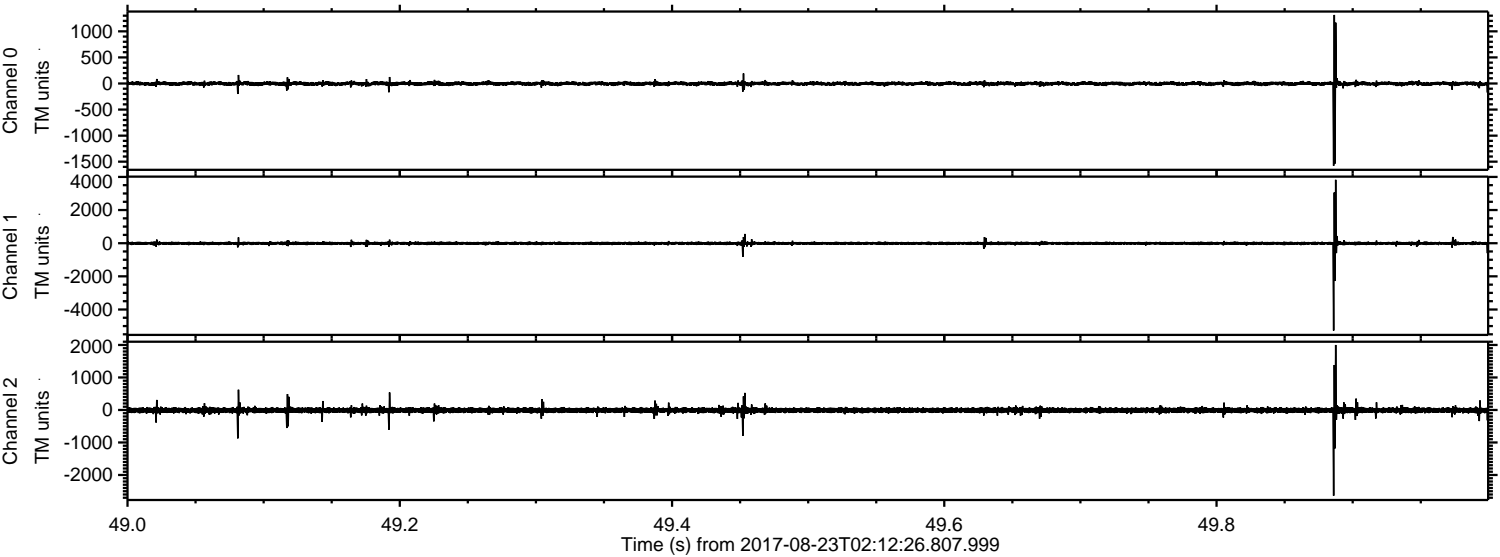


ELMAVAN 3D WAVEFORMS (Measured data sampled at 50 kHz) 51000 packets of 144 samples from 2017-08-23T02:12:26.807.999. Part 48/147

Processed Wed Aug 23 04:20:36 2017 by ELM ver.2012-10-06 from 001__elm20170823_021225__dat00.bin

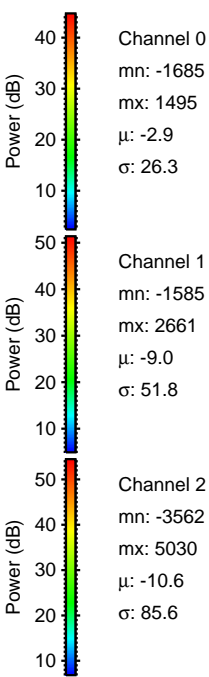
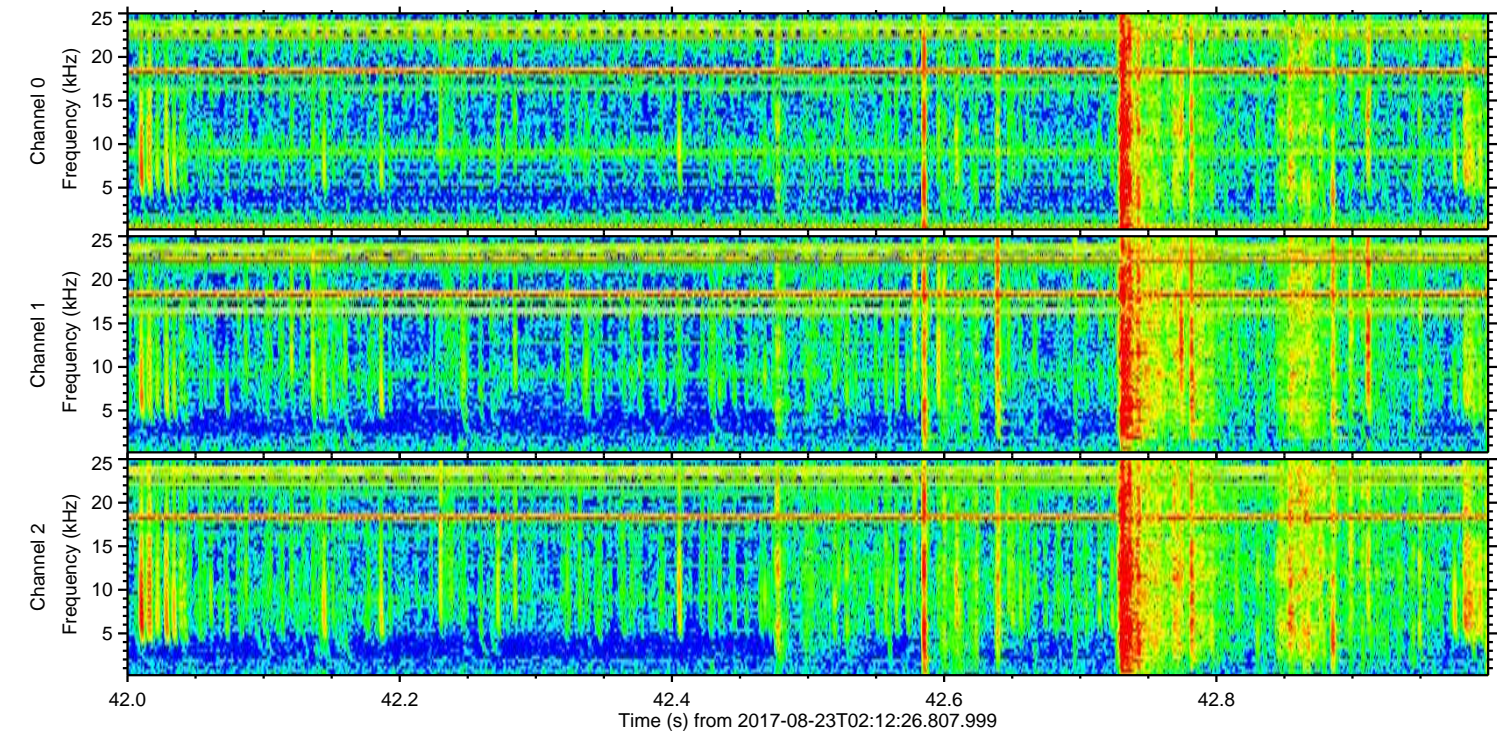
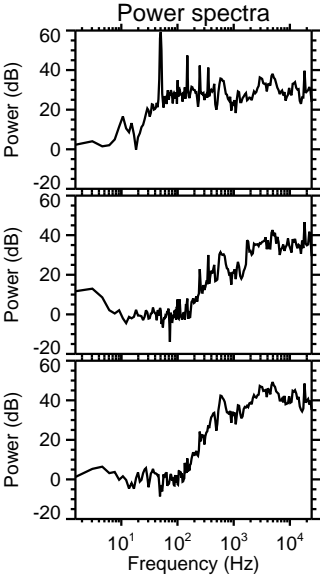
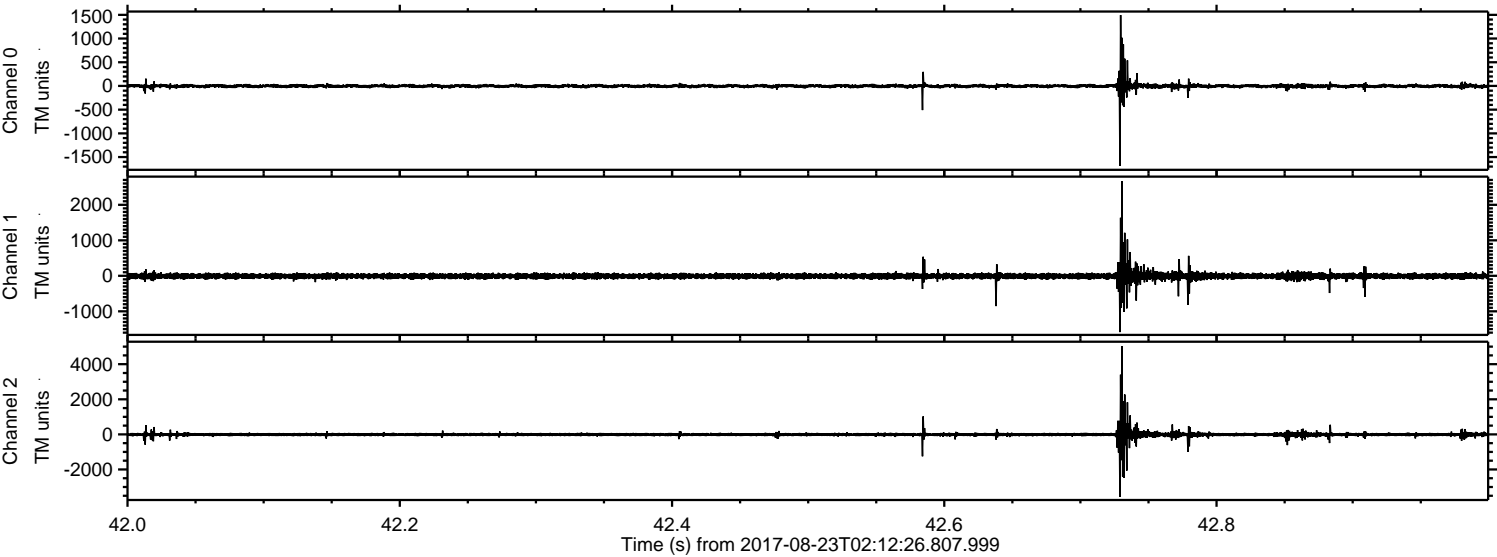


Processed Wed Aug 23 04:20:37 2017 by ELM ver.2012-10-06 from 001__elm20170823_021225__dat00.bin

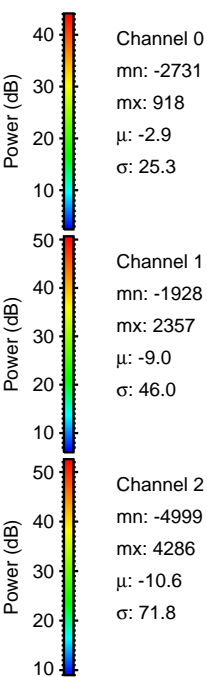
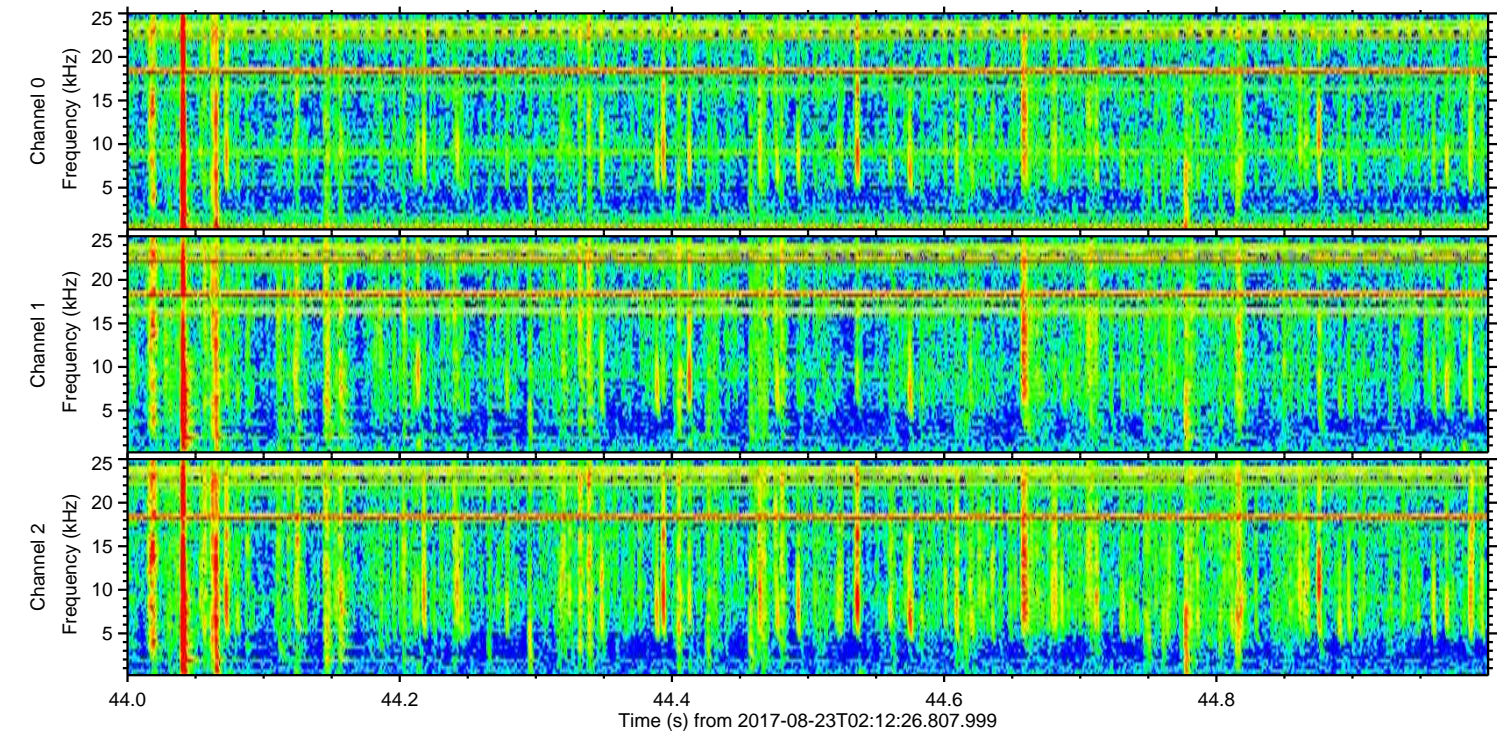
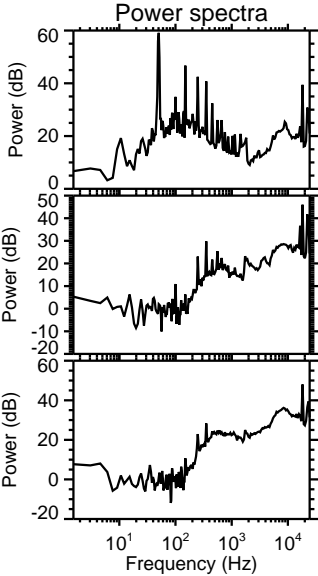
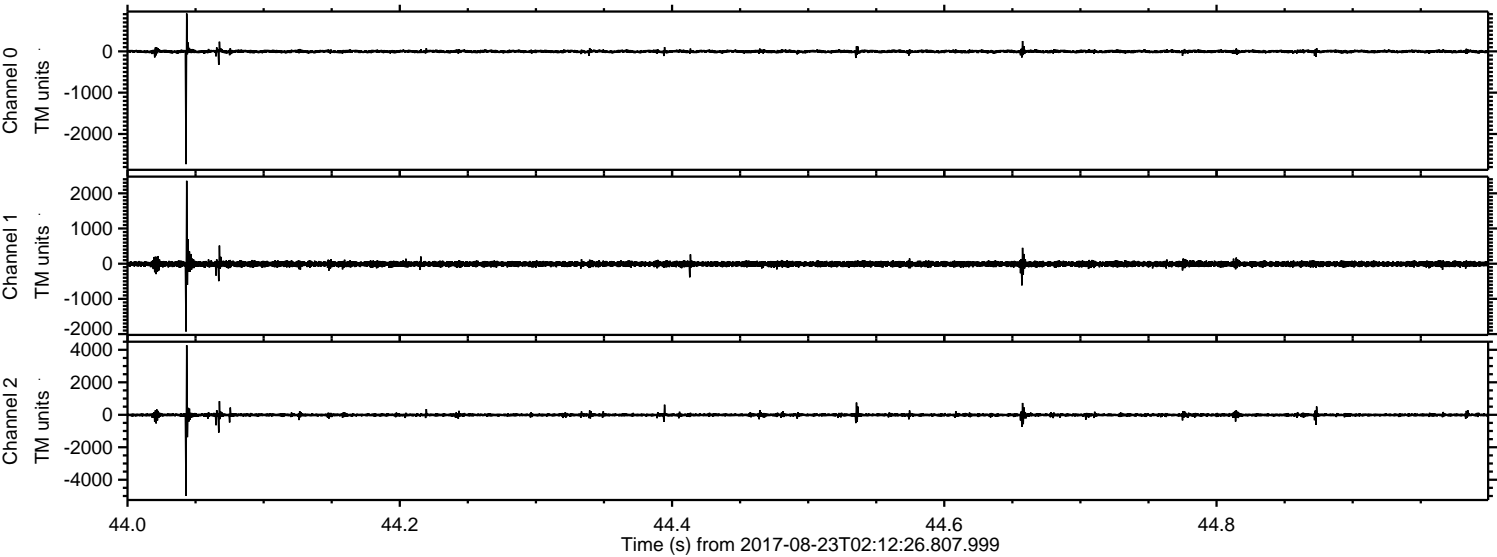


ELMAVAN 3D WAVEFORMS (Measured data sampled at 50 kHz) 51000 packets of 144 samples from 2017-08-23T02:12:26.807.999. Part 43/147

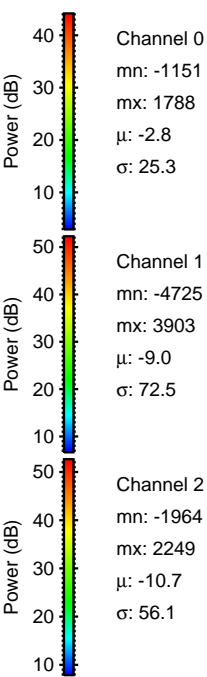
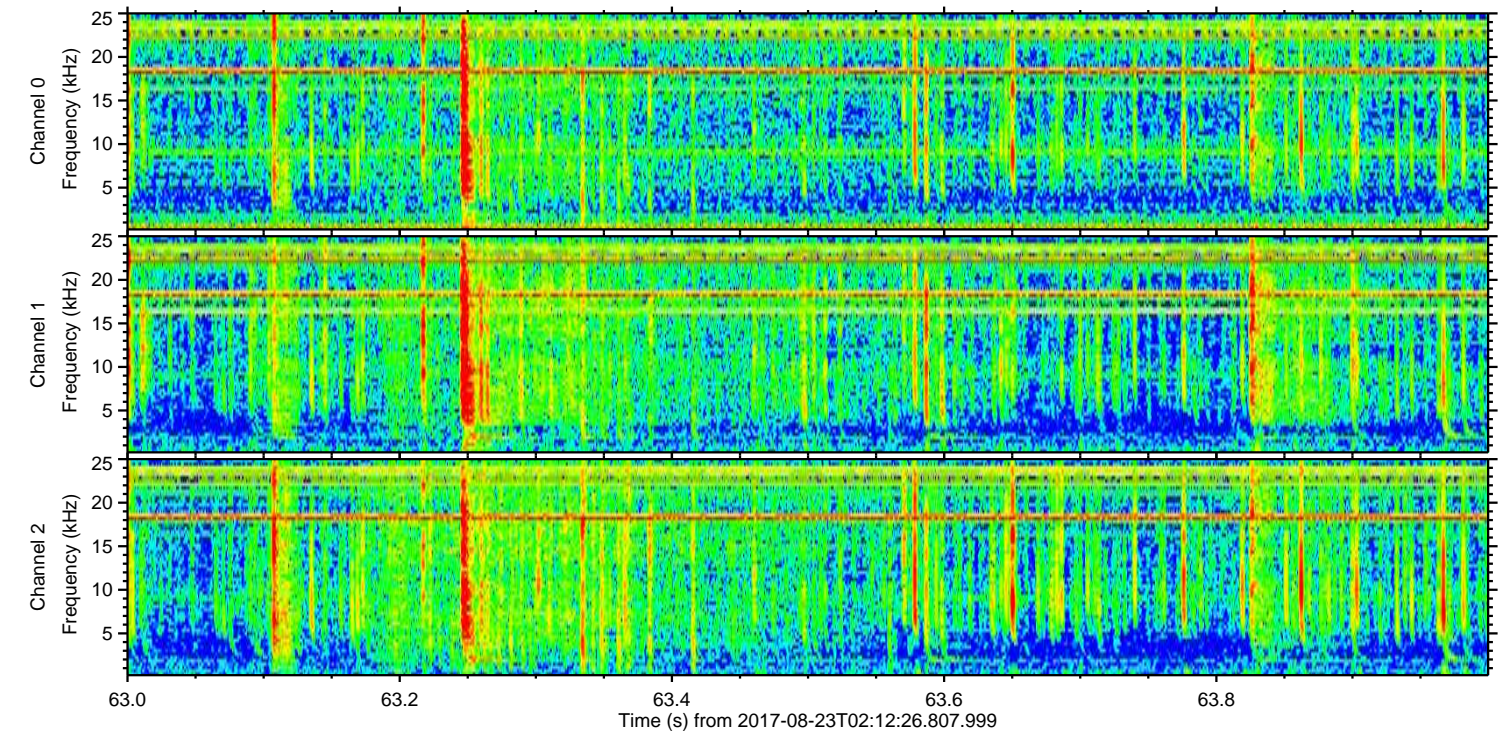
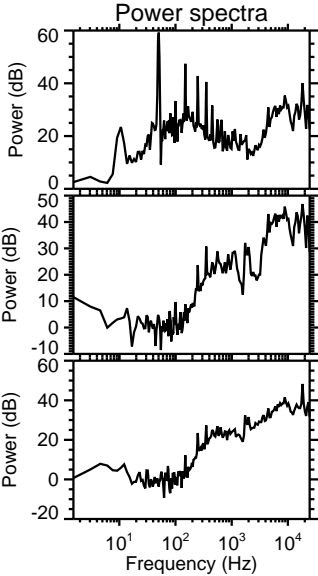
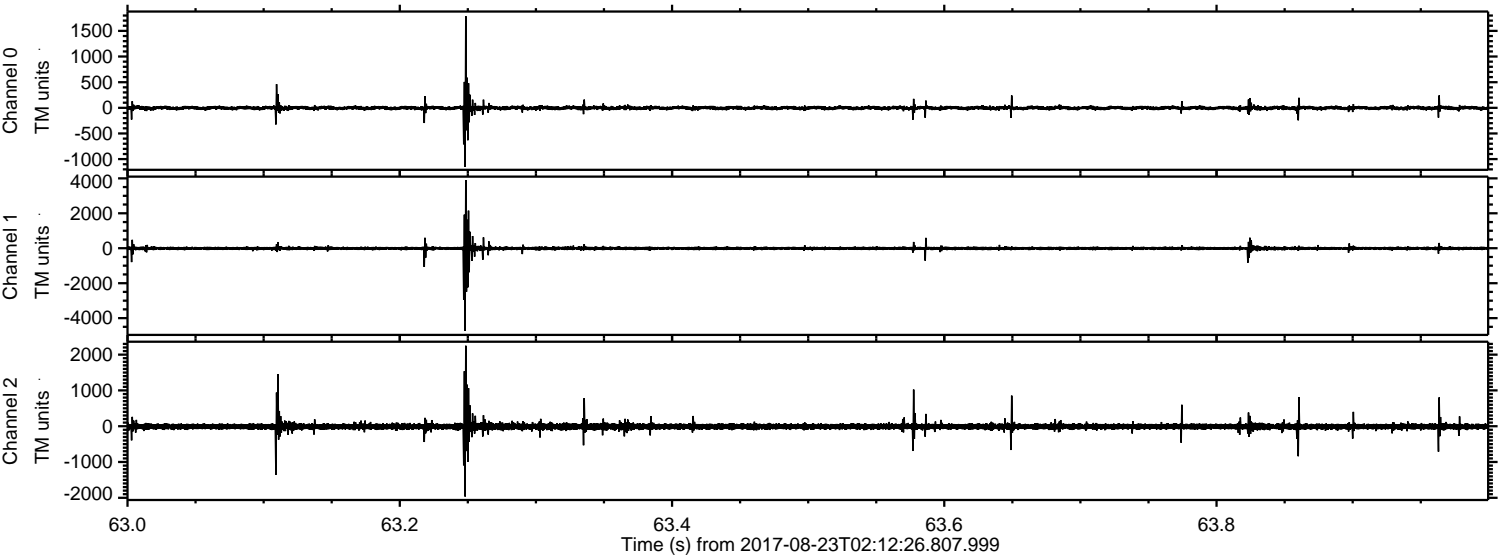
Processed Wed Aug 23 04:20:37 2017 by ELM ver.2012-10-06 from 001__elm20170823_021225__dat00.bin



Processed Wed Aug 23 04:20:38 2017 by ELM ver.2012-10-06 from 001__elm20170823_021225__dat00.bin



Processed Wed Aug 23 04:20:39 2017 by ELM ver.2012-10-06 from 001__elm20170823_021225__dat00.bin



Channel 0
mn: -1151
mx: 1788
 μ : -2.8
 σ : 25.3

Channel 1
mn: -4725
mx: 3903
 μ : -9.0
 σ : 72.5

Channel 2
mn: -1964
mx: 2249
 μ : -10.7
 σ : 56.1

Processed Wed Aug 23 04:20:39 2017 by ELM ver.2012-10-06 from 001__elm20170823_021225__dat00.bin

