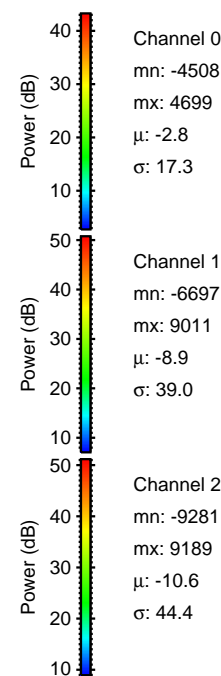
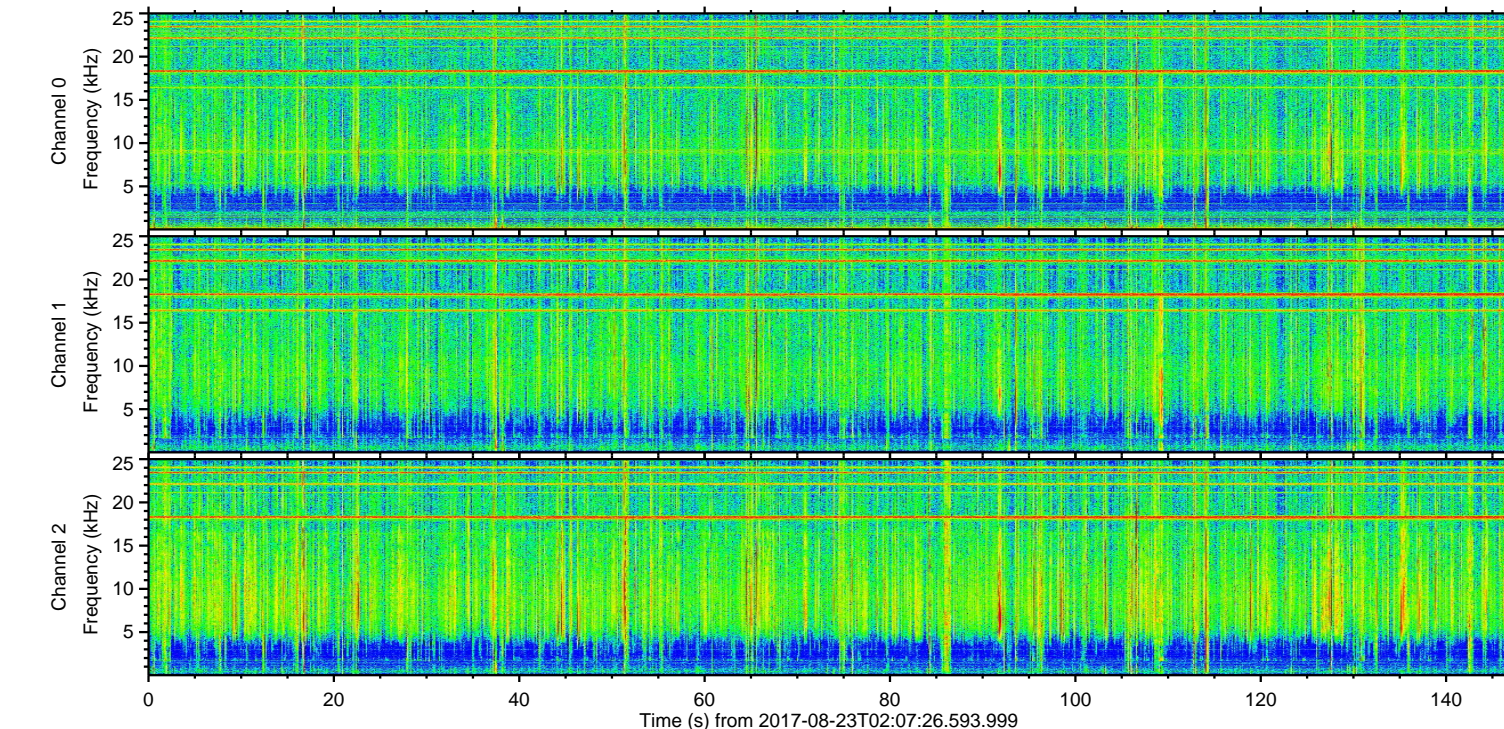
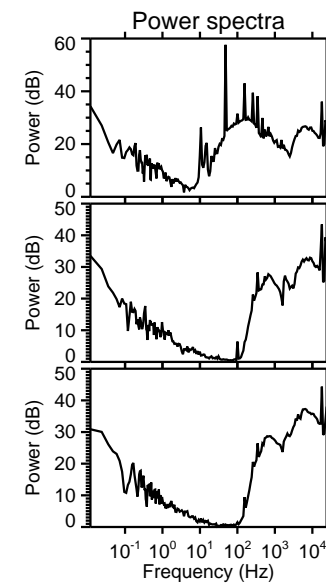
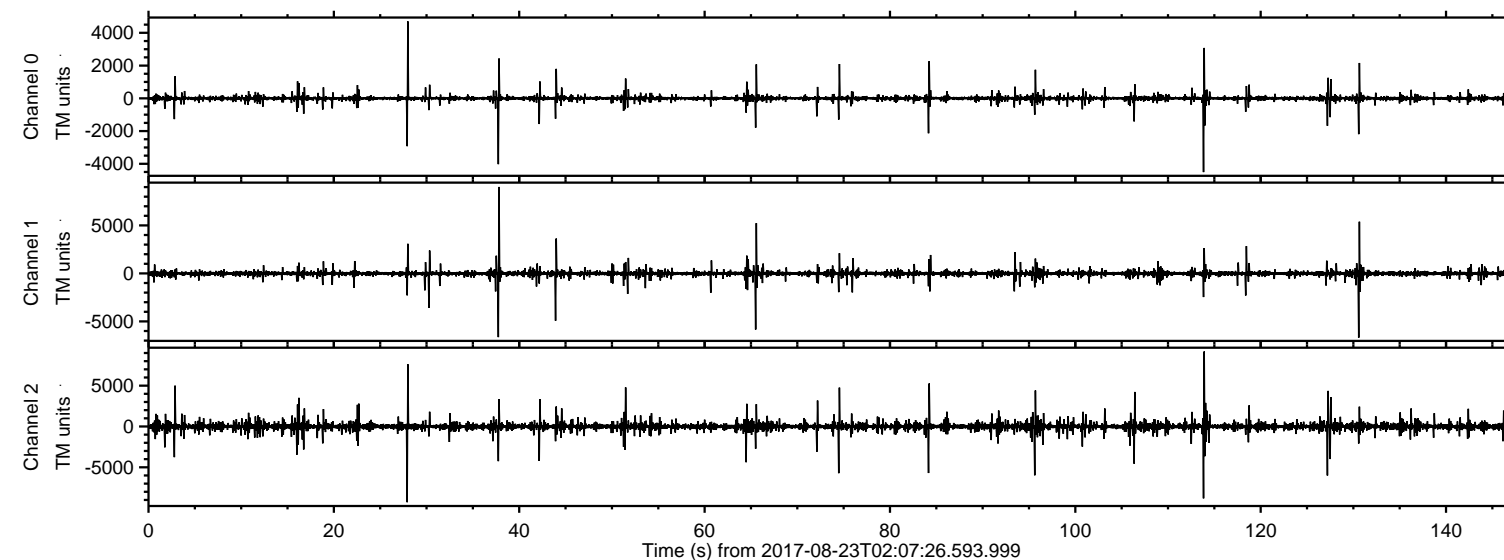


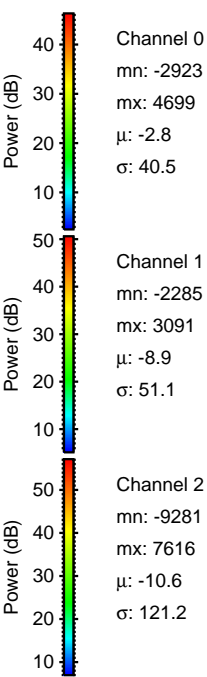
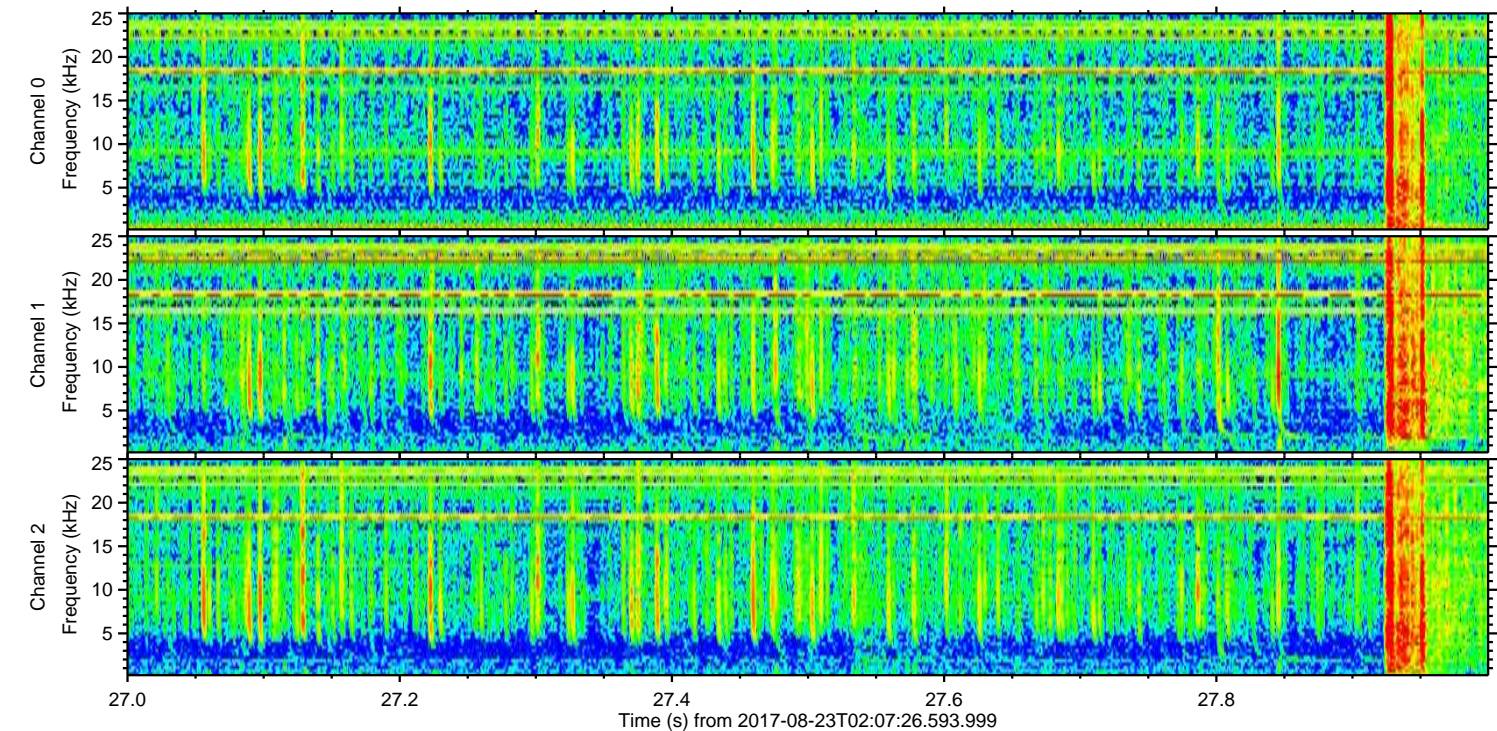
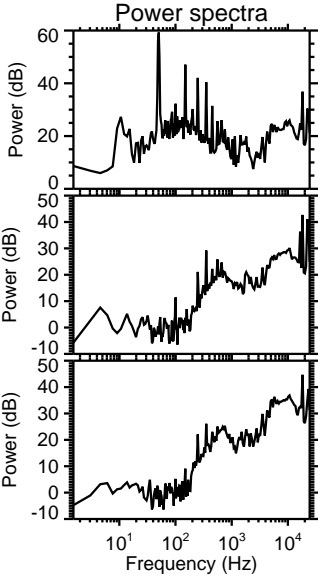
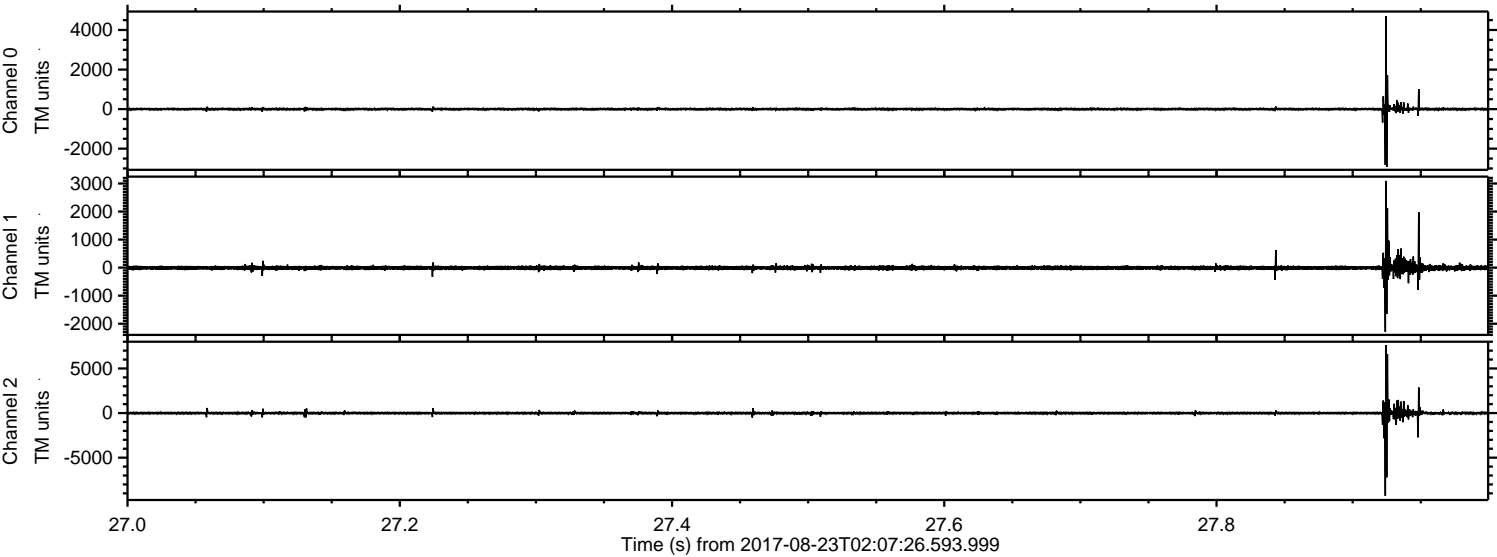
ELMAVAN 3D WAVEFORMS (Measured data sampled at 50 kHz) 51000 packets of 144 samples from 2017-08-23T02:07:26.593.999.

Processed Wed Aug 23 04:15:04 2017 by ELM ver.2012-10-06 from 001__elm20170823_020725__dat00.bin



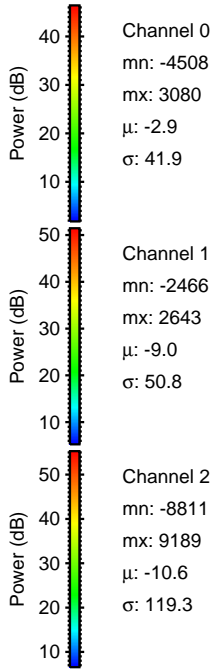
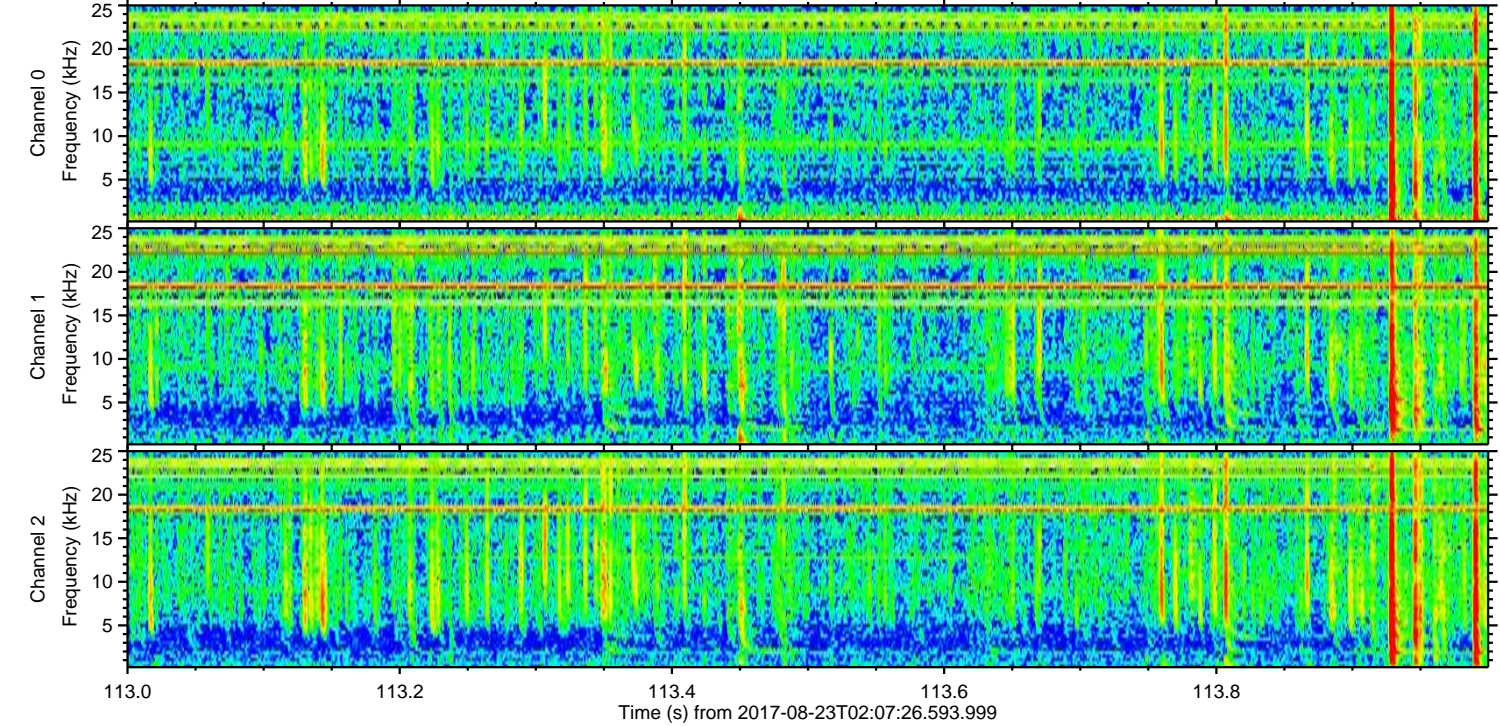
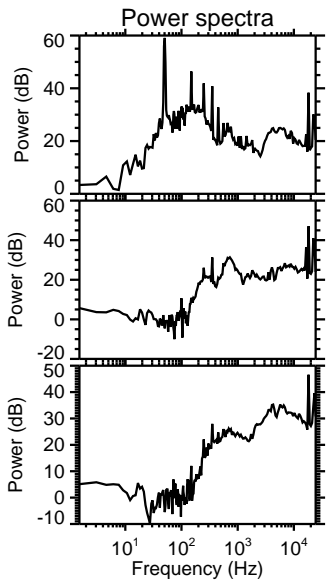
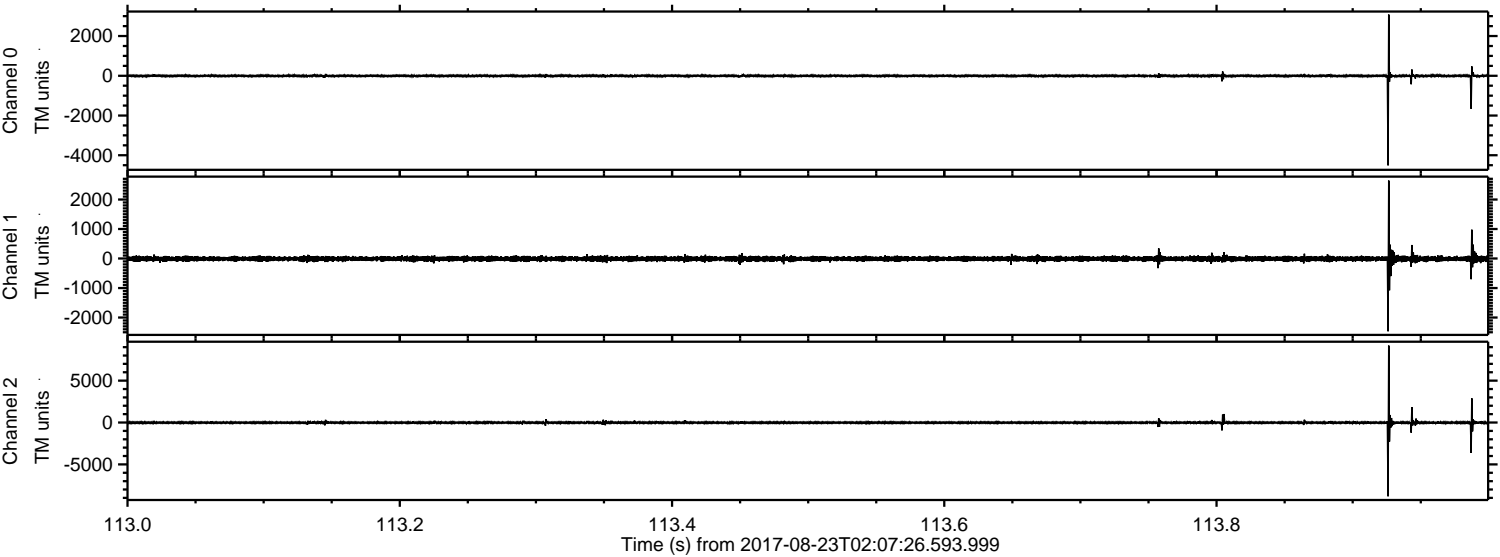
ELMAVAN 3D WAVEFORMS (Measured data sampled at 50 kHz) 51000 packets of 144 samples from 2017-08-23T02:07:26.593.999. Part 28/147

Processed Wed Aug 23 04:15:11 2017 by ELM ver.2012-10-06 from 001__elm20170823_020725__dat00.bin

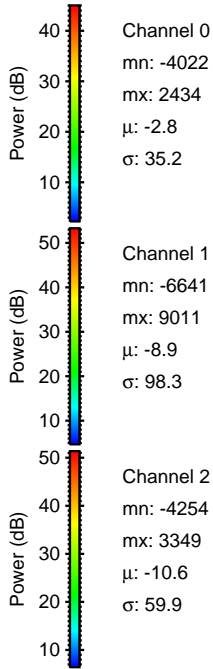
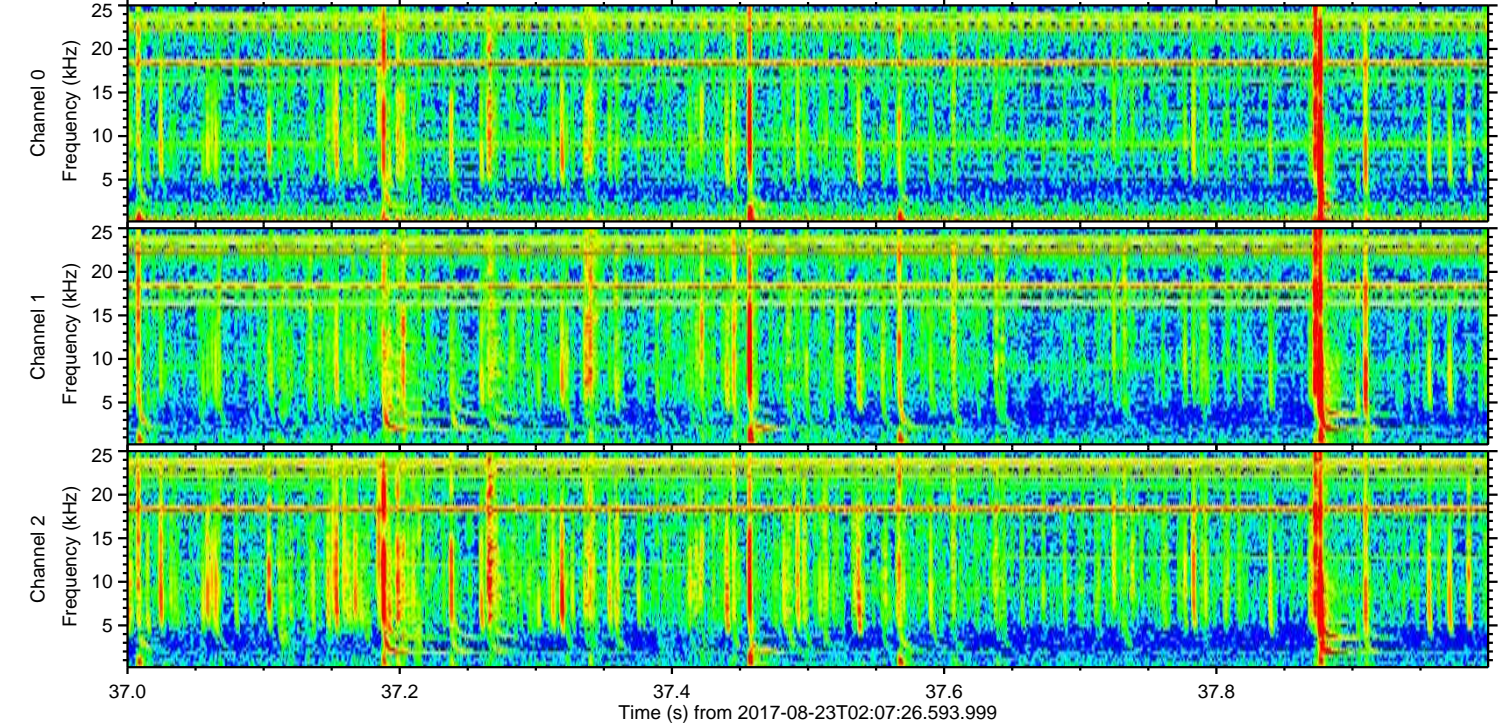
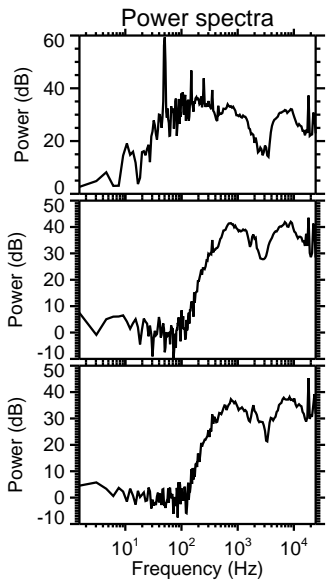
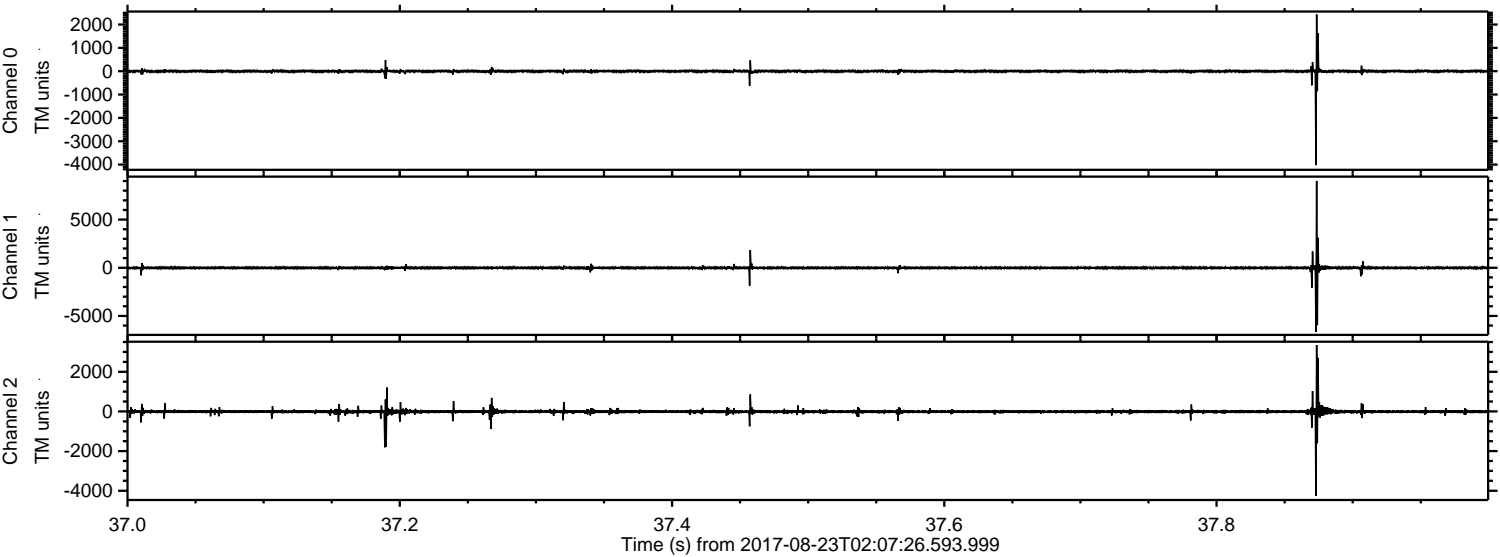


ELMAVAN 3D WAVEFORMS (Measured data sampled at 50 kHz) 51000 packets of 144 samples from 2017-08-23T02:07:26.593.999. Part 114/147

Processed Wed Aug 23 04:15:11 2017 by ELM ver.2012-10-06 from 001__elm20170823_020725__dat00.bin

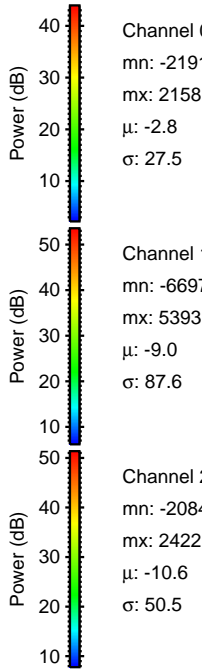
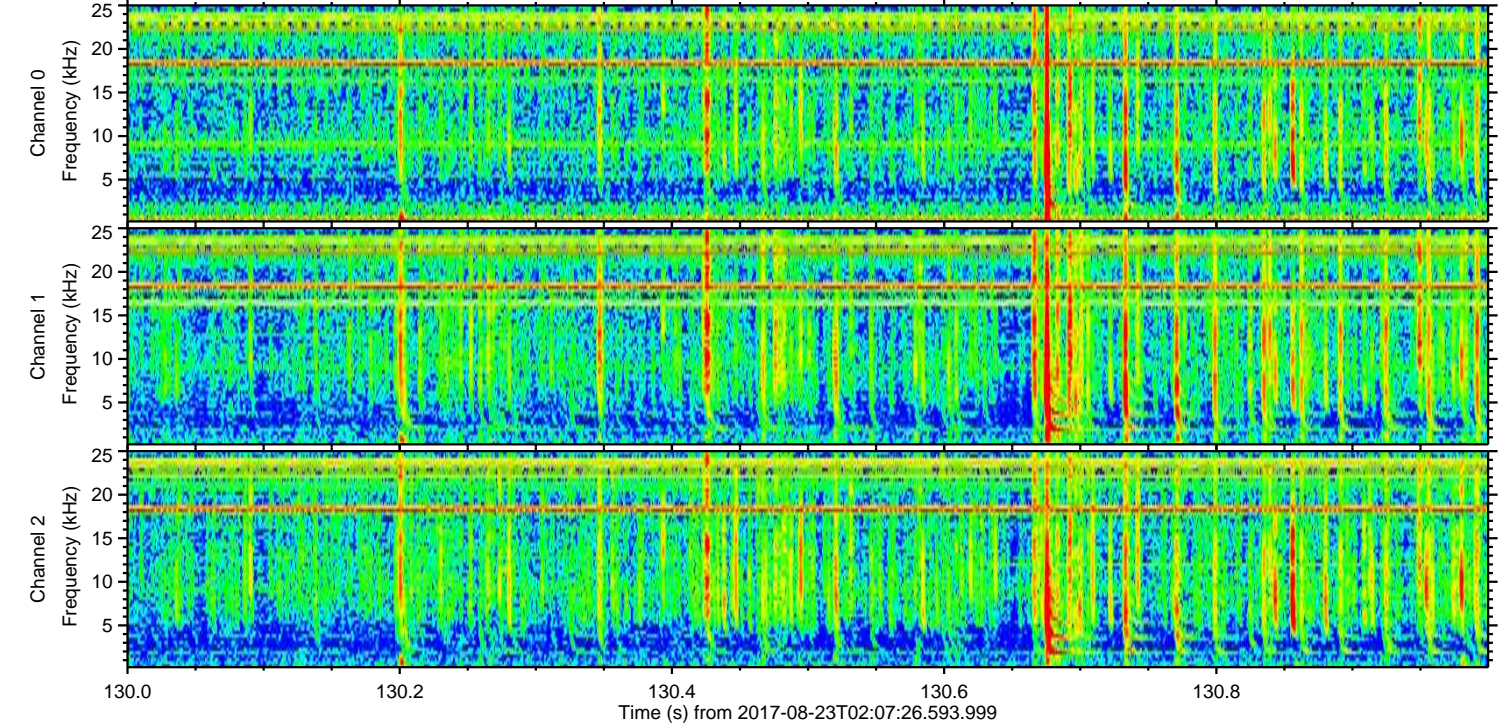
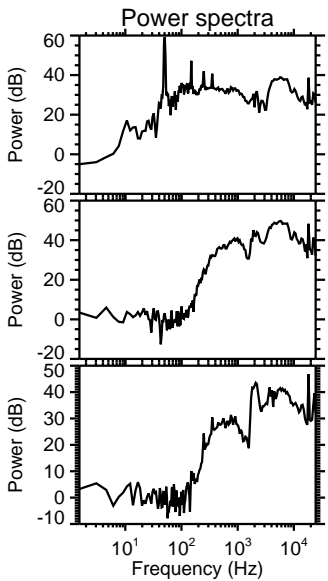
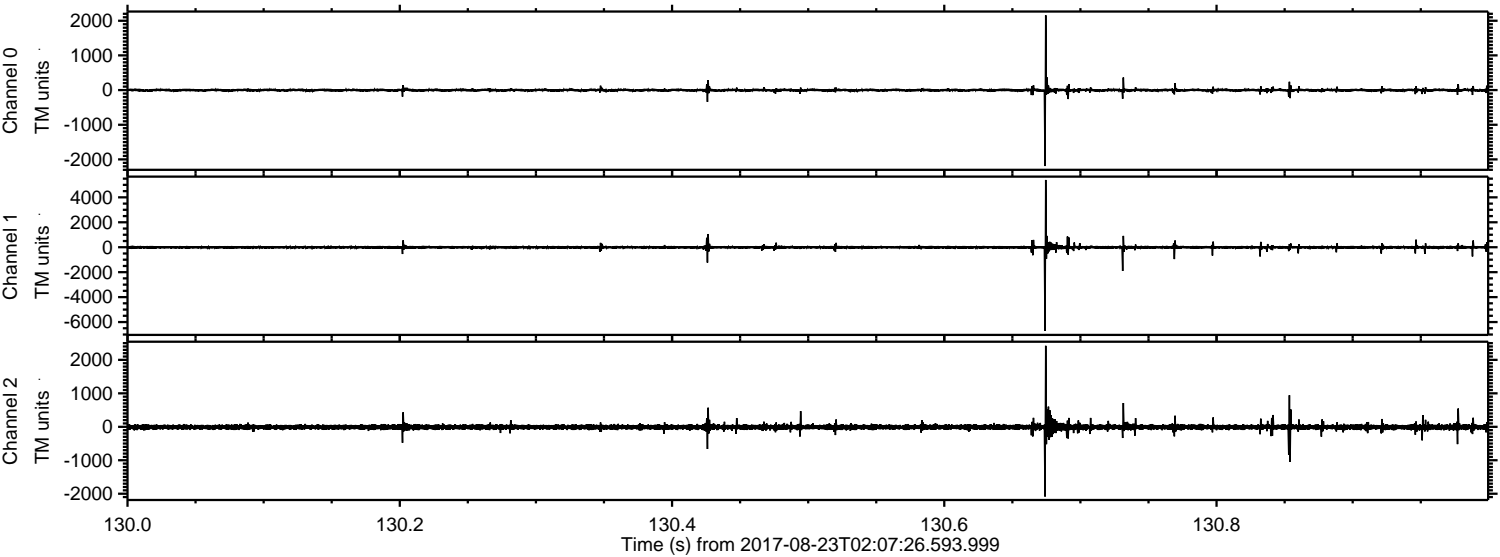


Processed Wed Aug 23 04:15:12 2017 by ELM ver.2012-10-06 from 001__elm20170823_020725__dat00.bin



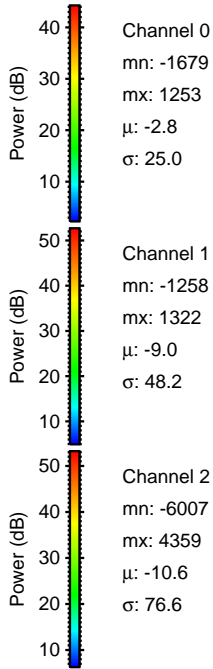
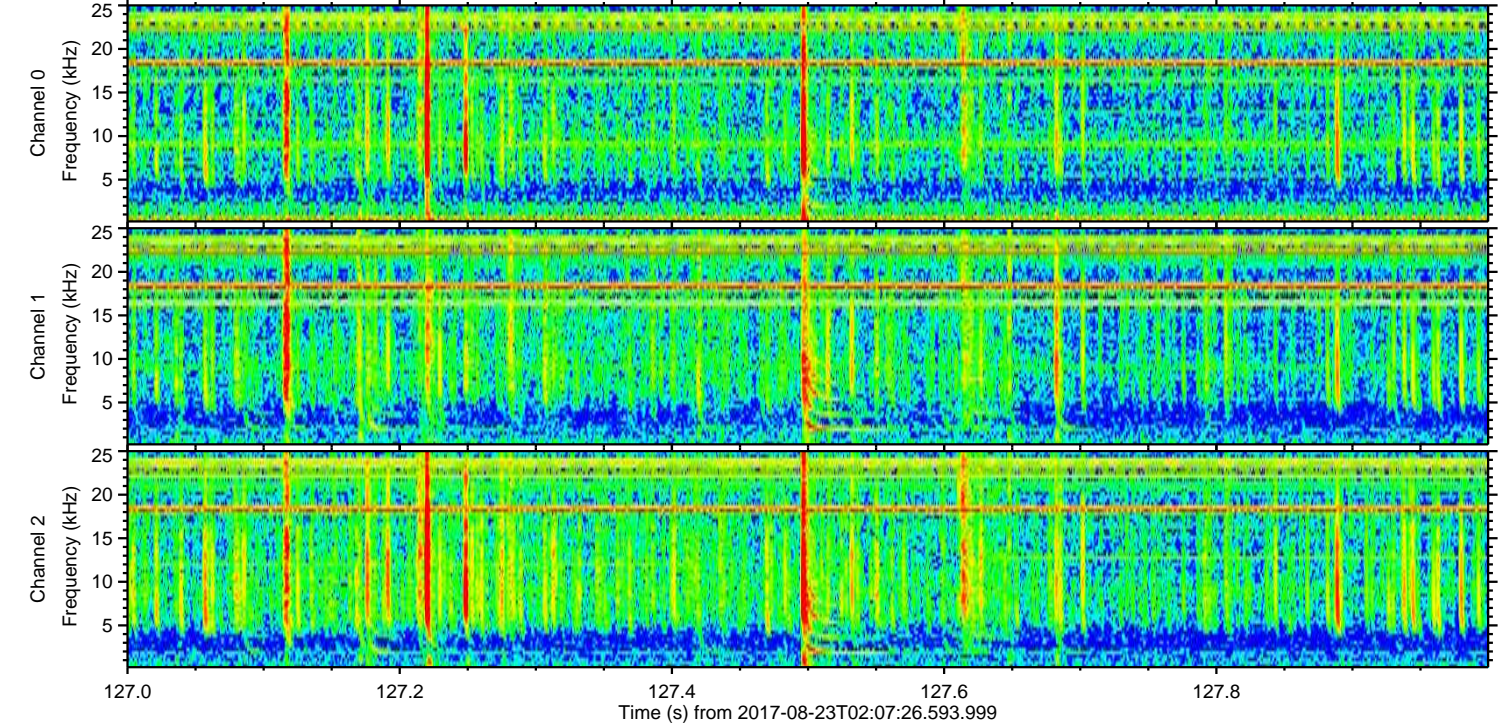
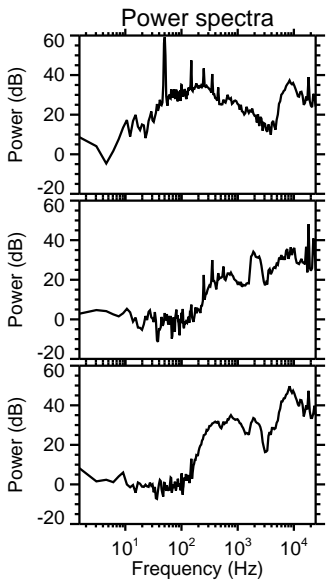
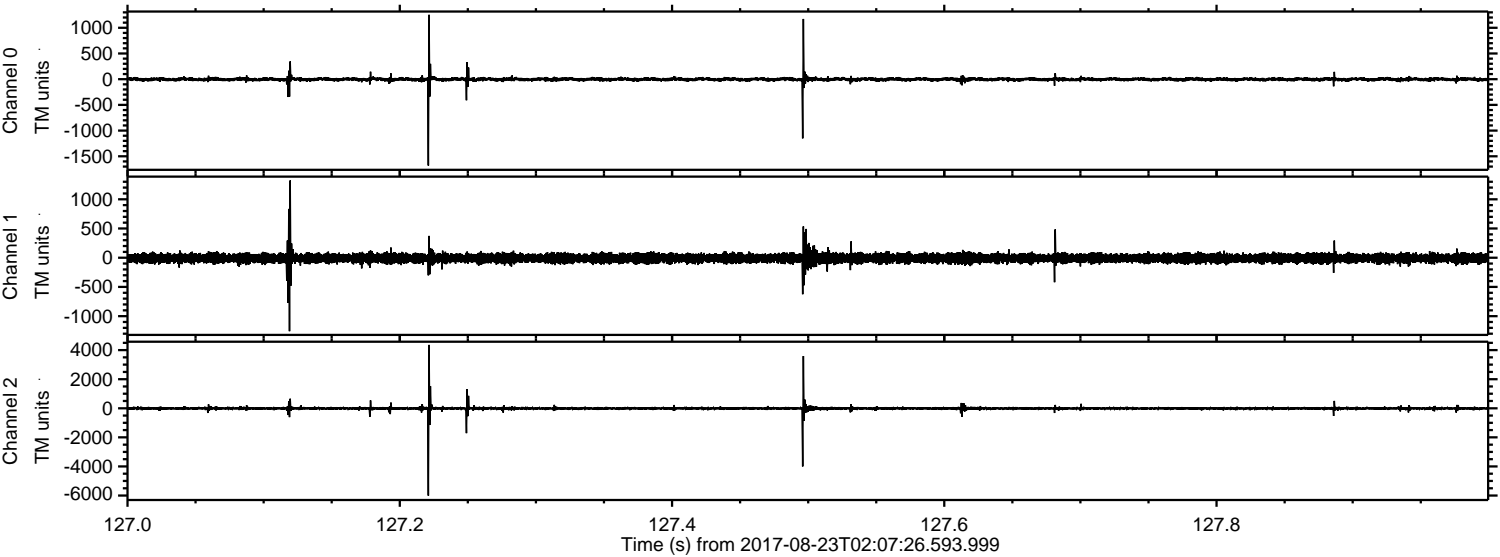
ELMAVAN 3D WAVEFORMS (Measured data sampled at 50 kHz) 51000 packets of 144 samples from 2017-08-23T02:07:26.593.999. Part 131/147

Processed Wed Aug 23 04:15:13 2017 by ELM ver.2012-10-06 from 001__elm20170823_020725__dat00.bin

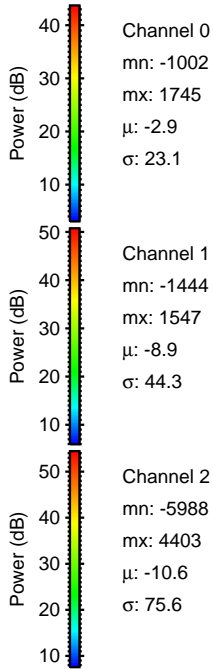
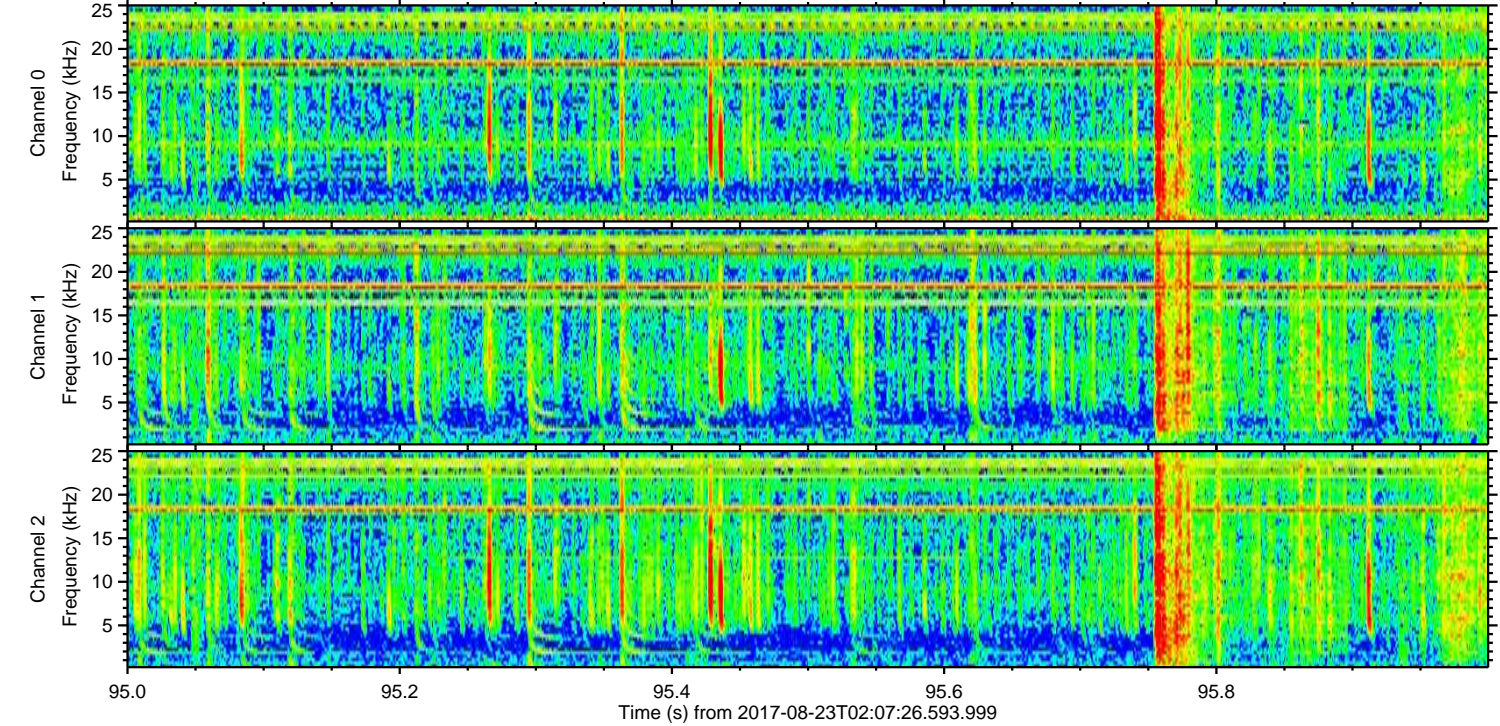
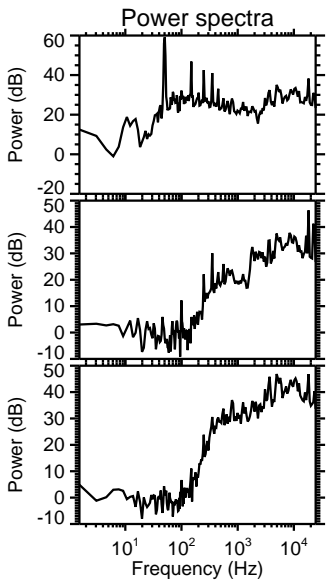
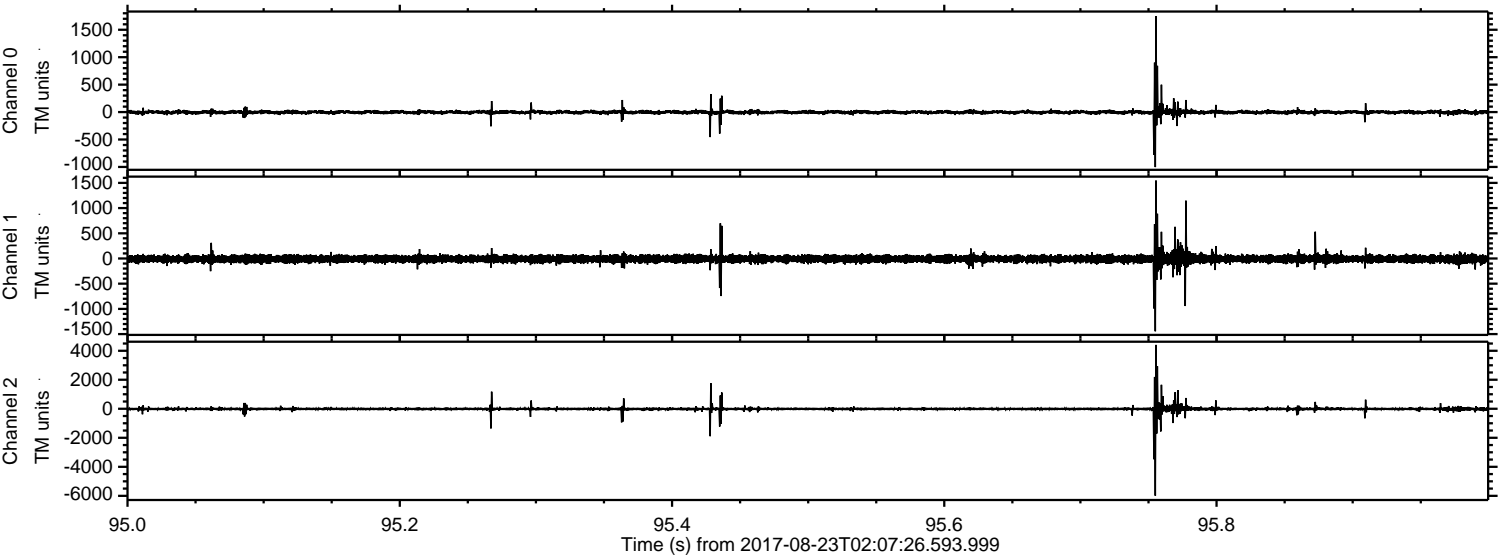


ELMAVAN 3D WAVEFORMS (Measured data sampled at 50 kHz) 51000 packets of 144 samples from 2017-08-23T02:07:26.593.999. Part 128/147

Processed Wed Aug 23 04:15:14 2017 by ELM ver.2012-10-06 from 001__elm20170823_020725__dat00.bin



Processed Wed Aug 23 04:15:14 2017 by ELM ver.2012-10-06 from 001__elm20170823_020725__dat00.bin

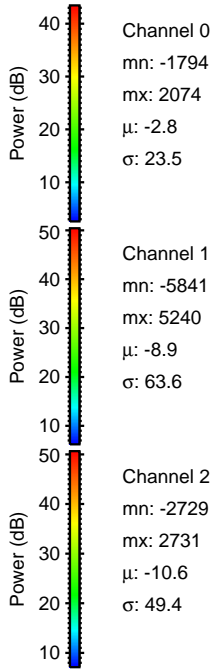
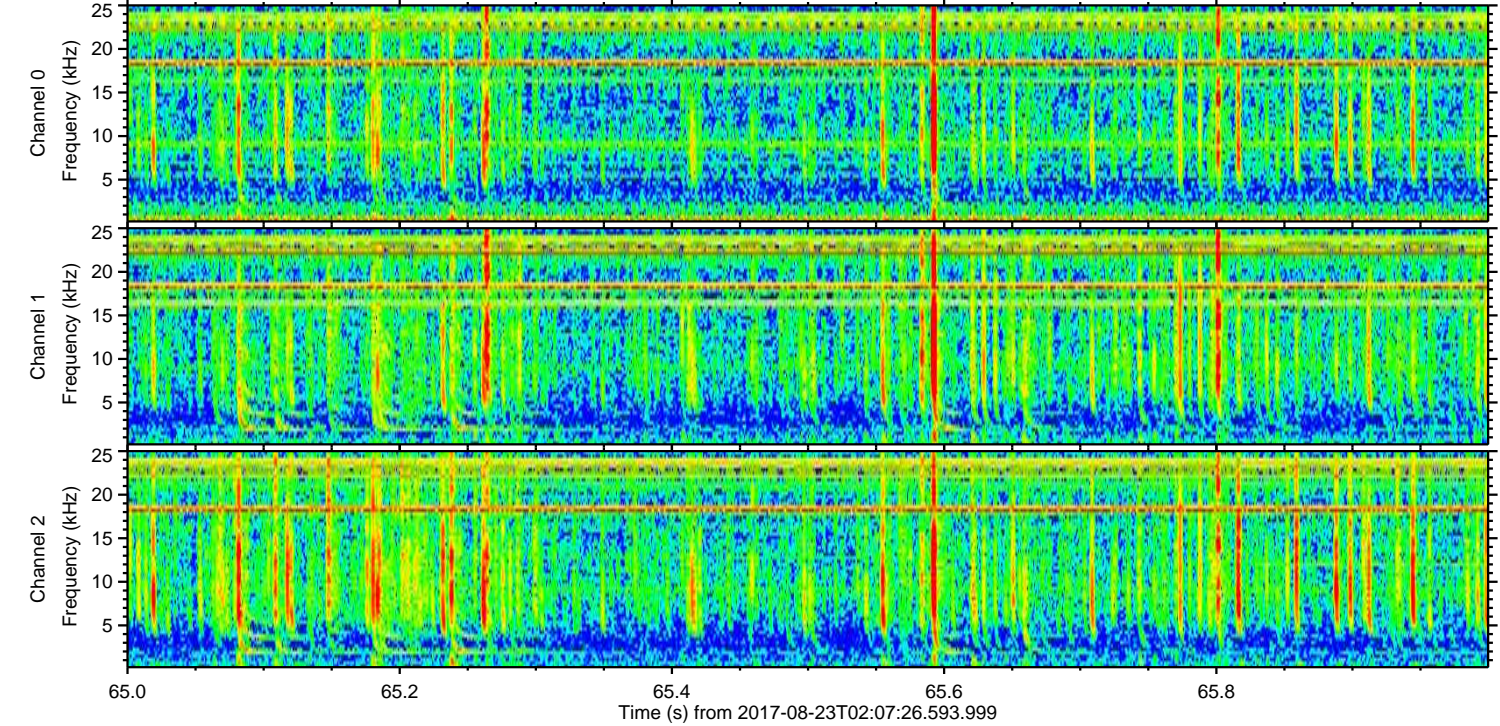
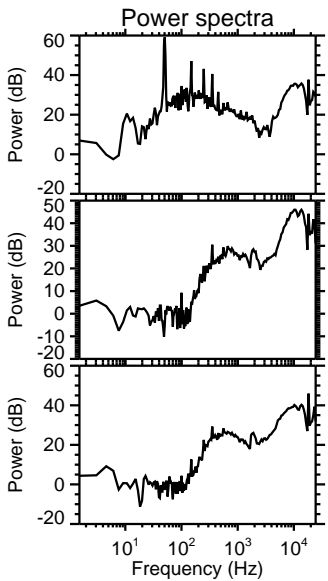
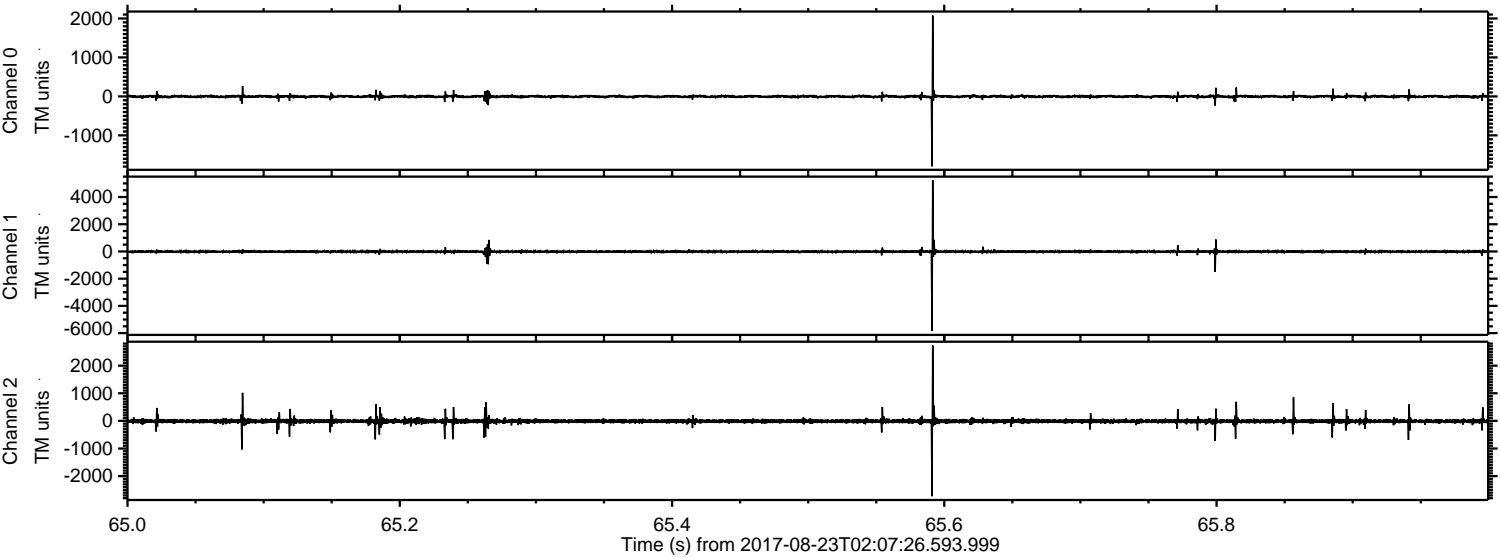


Channel 0
mn: -1002
mx: 1745
 μ : -2.9
 σ : 23.1

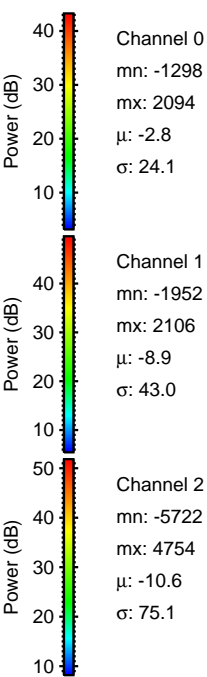
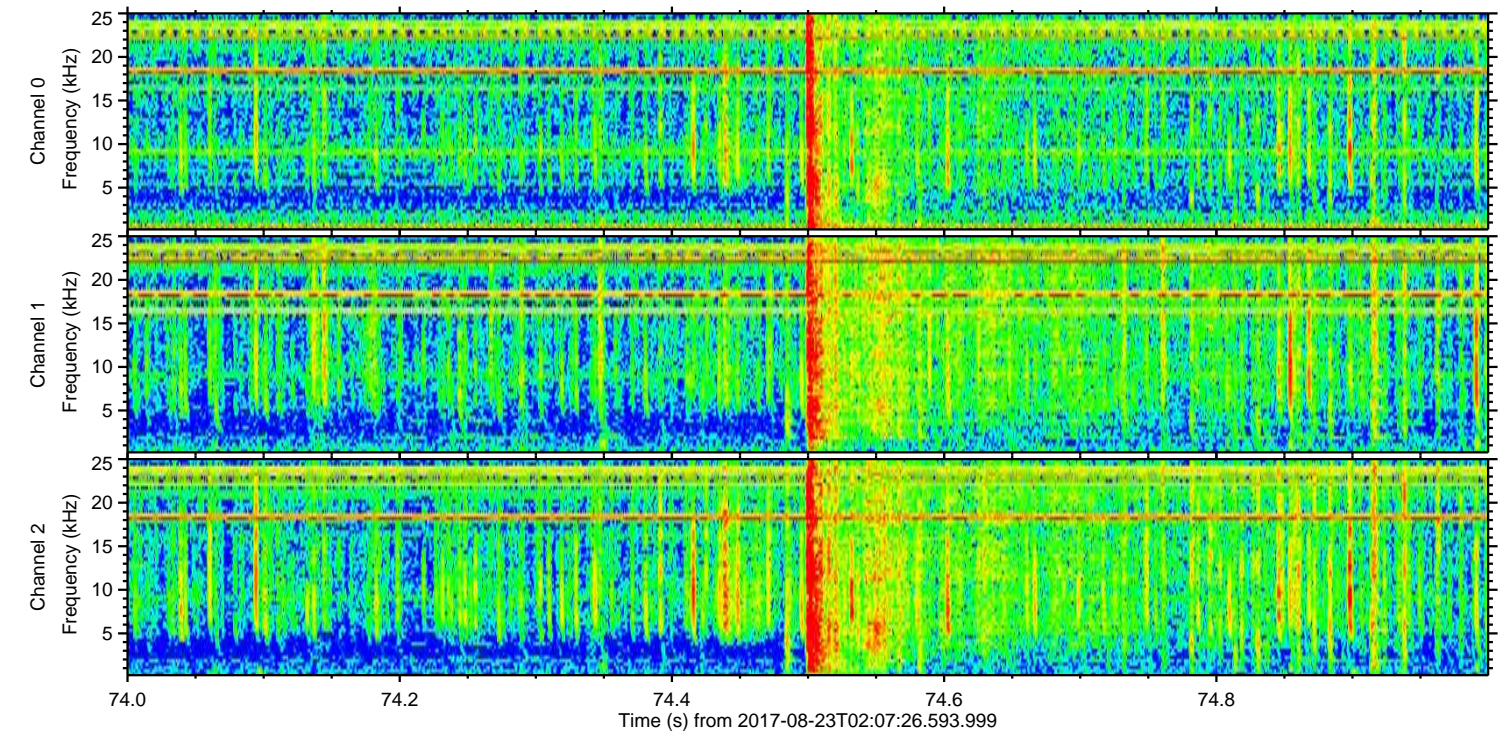
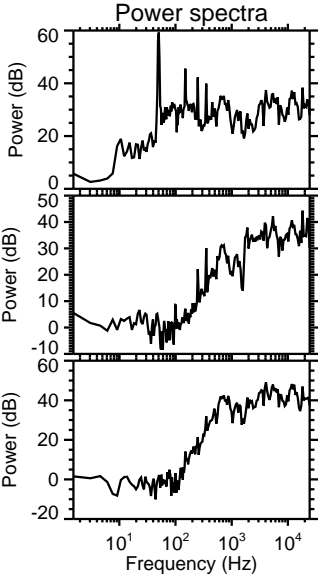
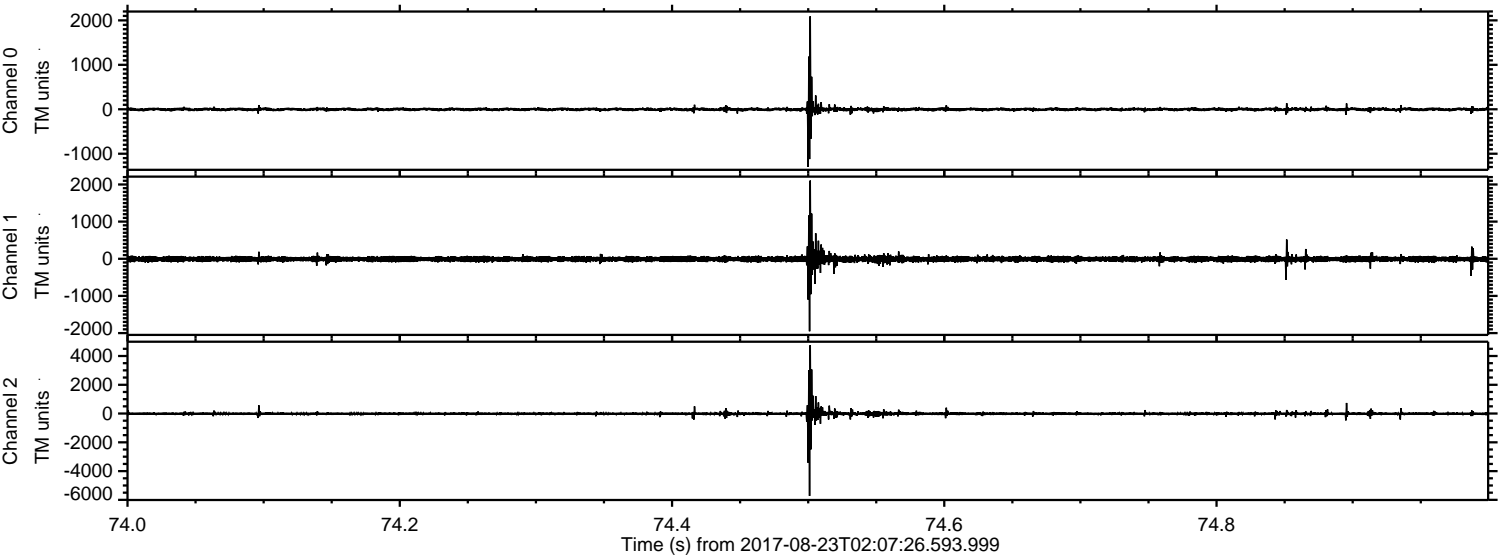
Channel 1
mn: -1444
mx: 1547
 μ : -8.9
 σ : 44.3

Channel 2
mn: -5988
mx: 4403
 μ : -10.6
 σ : 75.6

Processed Wed Aug 23 04:15:15 2017 by ELM ver.2012-10-06 from 001__elm20170823_020725__dat00.bin



Processed Wed Aug 23 04:15:16 2017 by ELM ver.2012-10-06 from 001__elm20170823_020725__dat00.bin

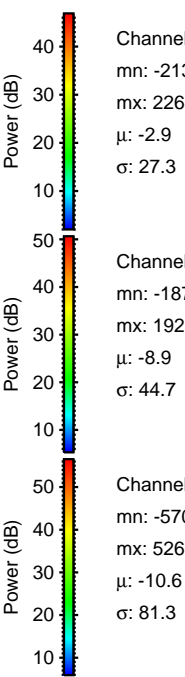
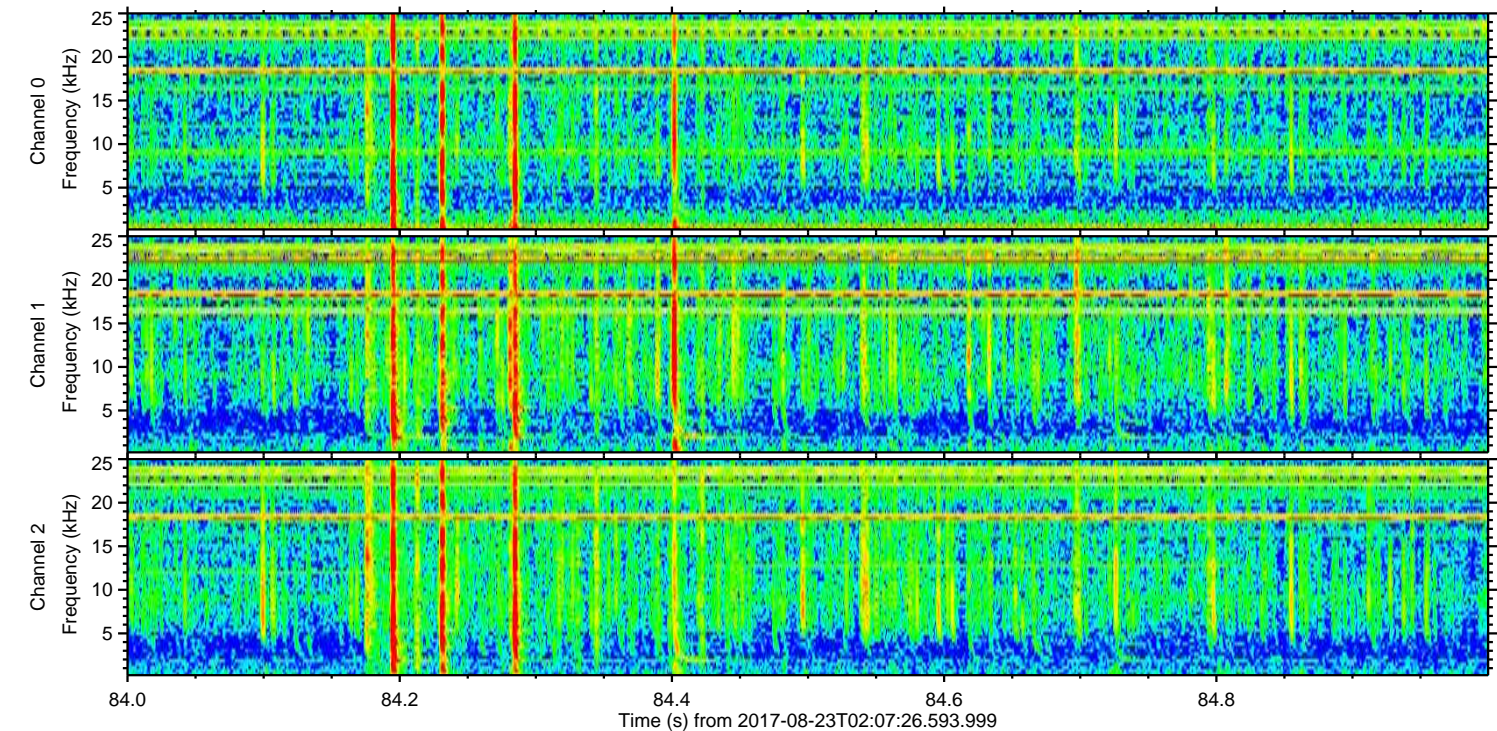
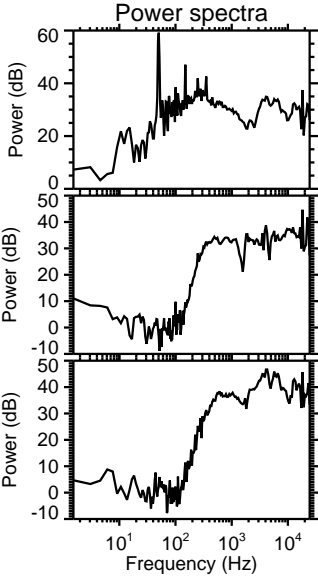
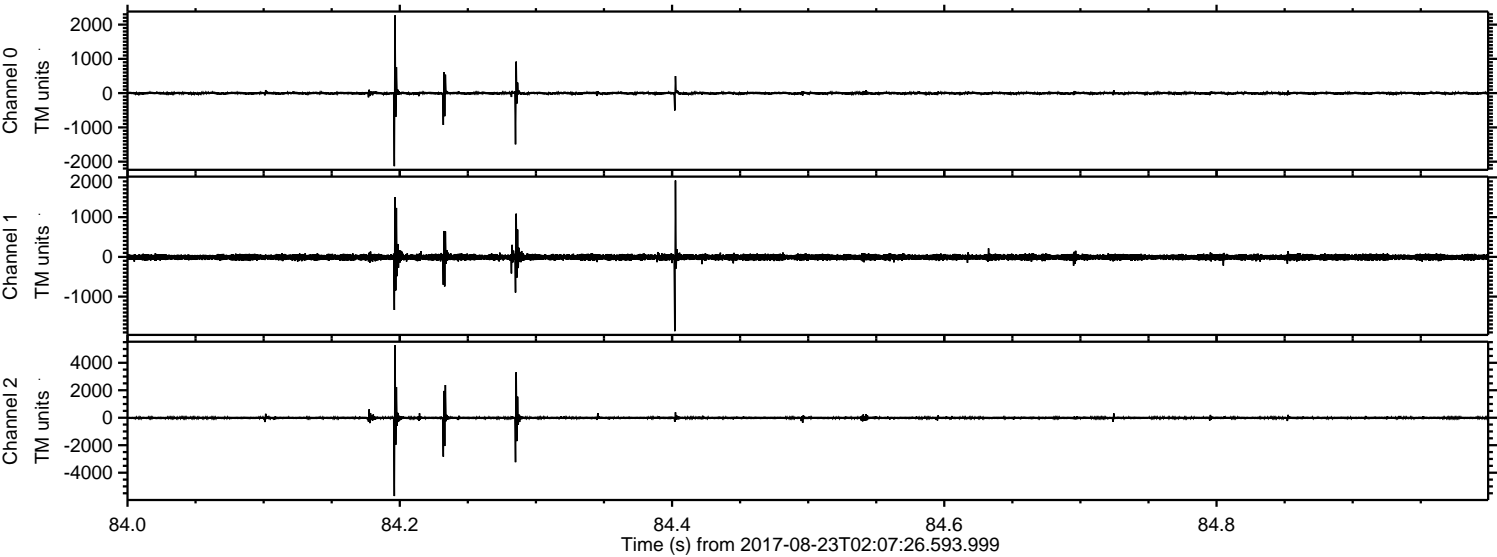


Channel 0
mn: -1298
mx: 2094
 μ : -2.8
 σ : 24.1

Channel 1
mn: -1952
mx: 2106
 μ : -8.9
 σ : 43.0

Channel 2
mn: -5722
mx: 4754
 μ : -10.6
 σ : 75.1

Processed Wed Aug 23 04:15:16 2017 by ELM ver.2012-10-06 from 001__elm20170823_020725__dat00.bin



Channel 0
mn: -2132
mx: 2268
 μ : -2.9
 σ : 27.3

Channel 1
mn: -1870
mx: 1923
 μ : -8.9
 σ : 44.7

Channel 2
mn: -5703
mx: 5269
 μ : -10.6
 σ : 81.3

Processed Wed Aug 23 04:15:17 2017 by ELM ver.2012-10-06 from 001__elm20170823_020725__dat00.bin

