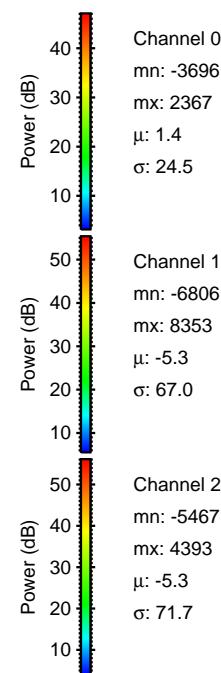
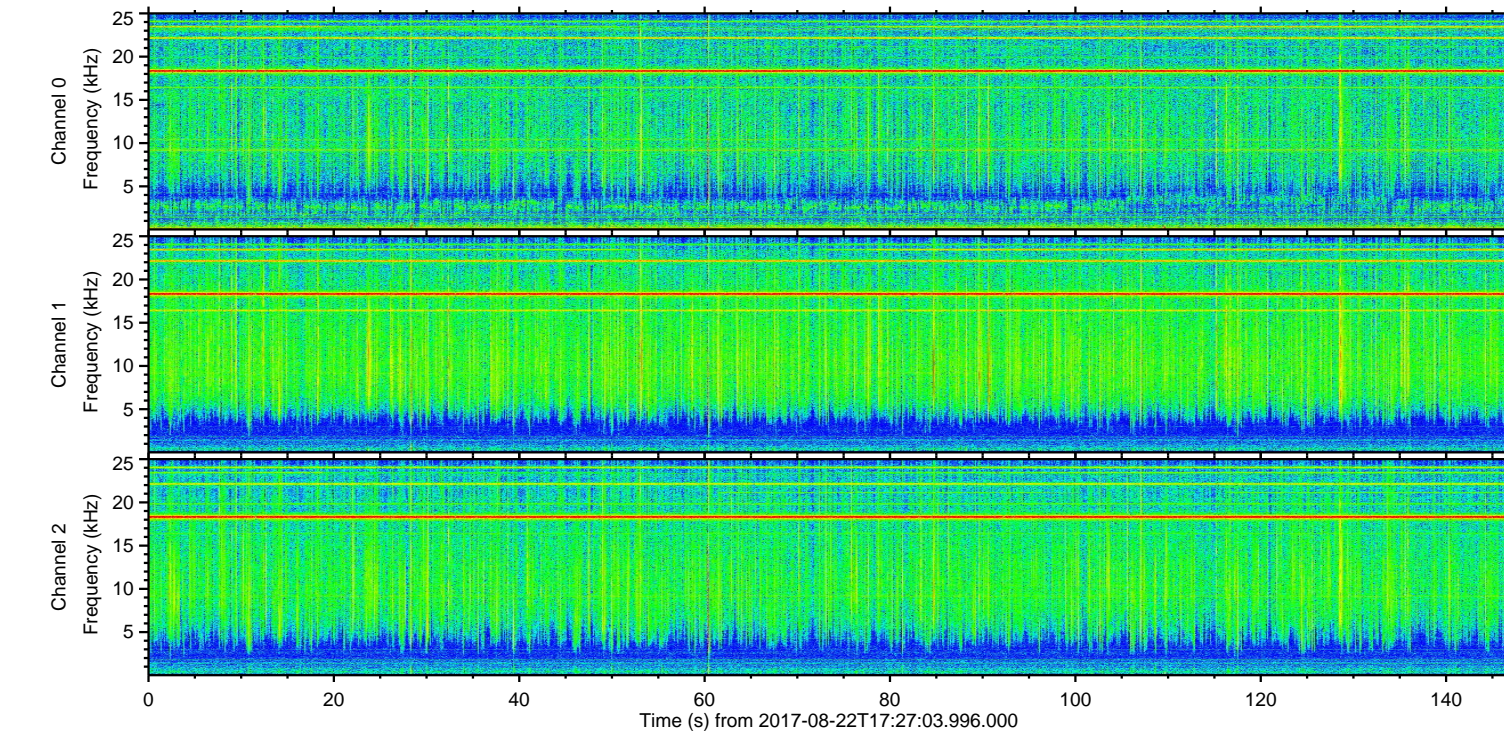
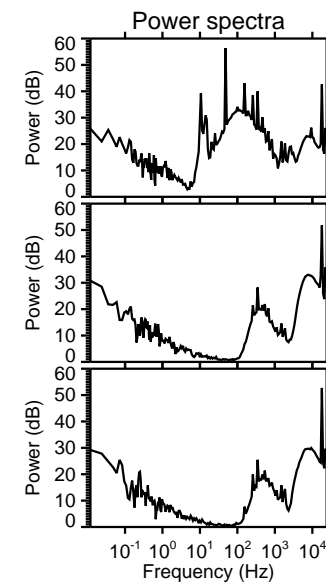
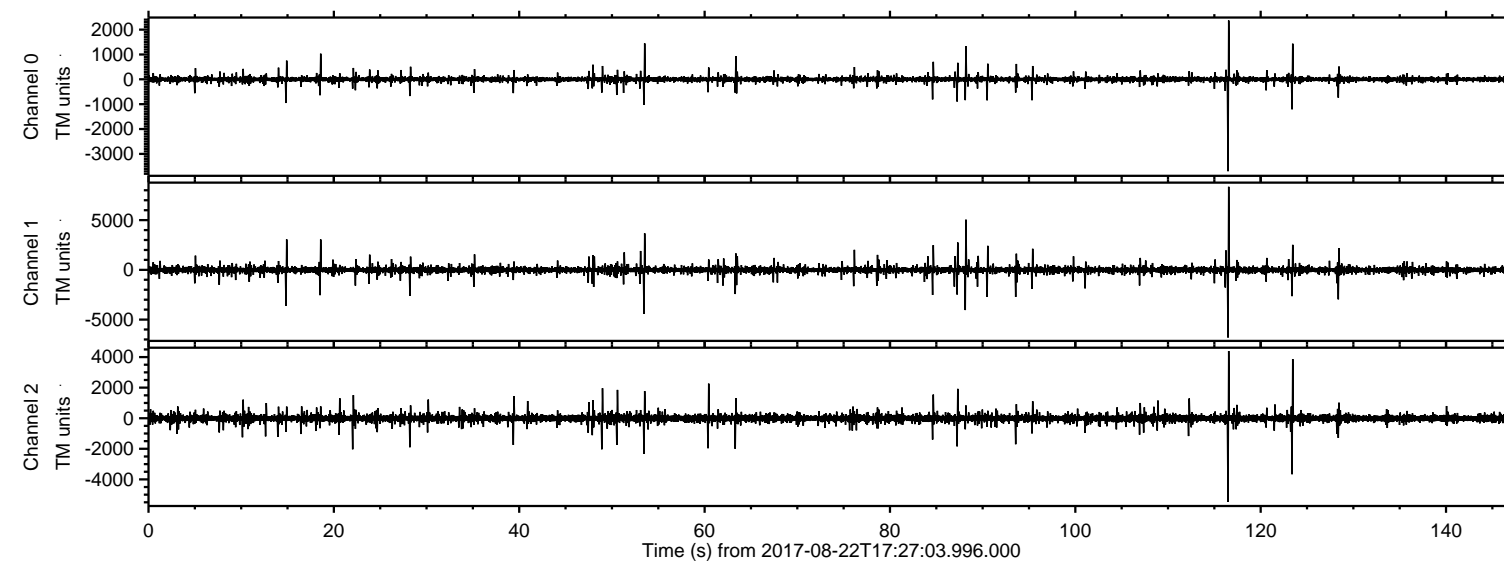


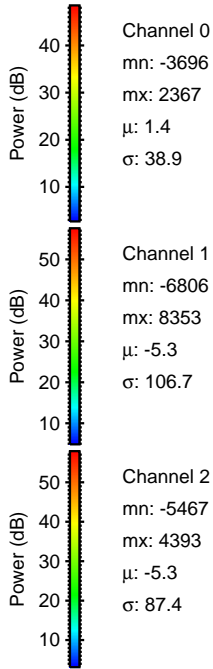
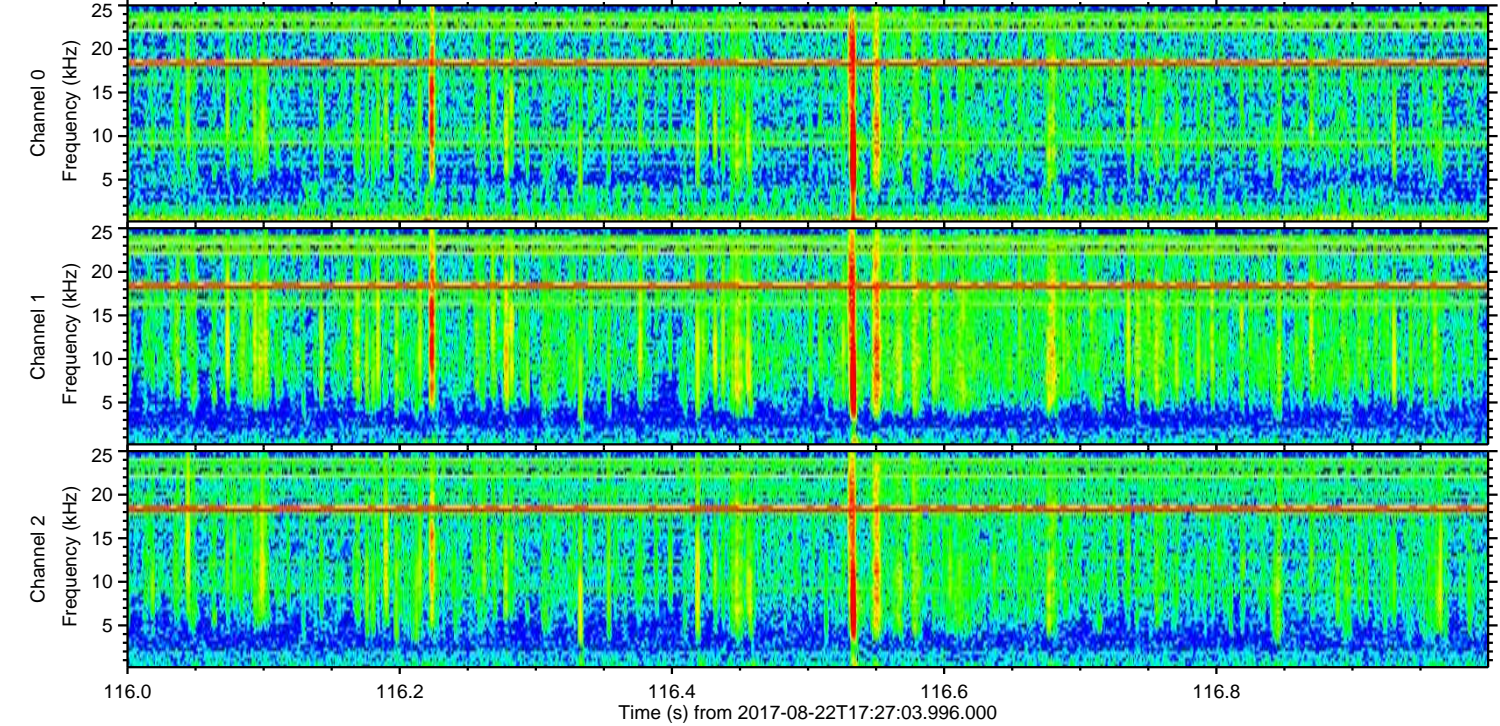
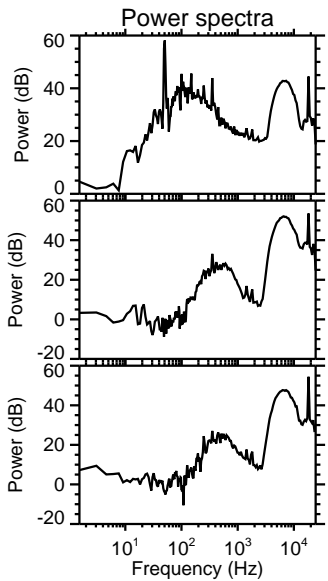
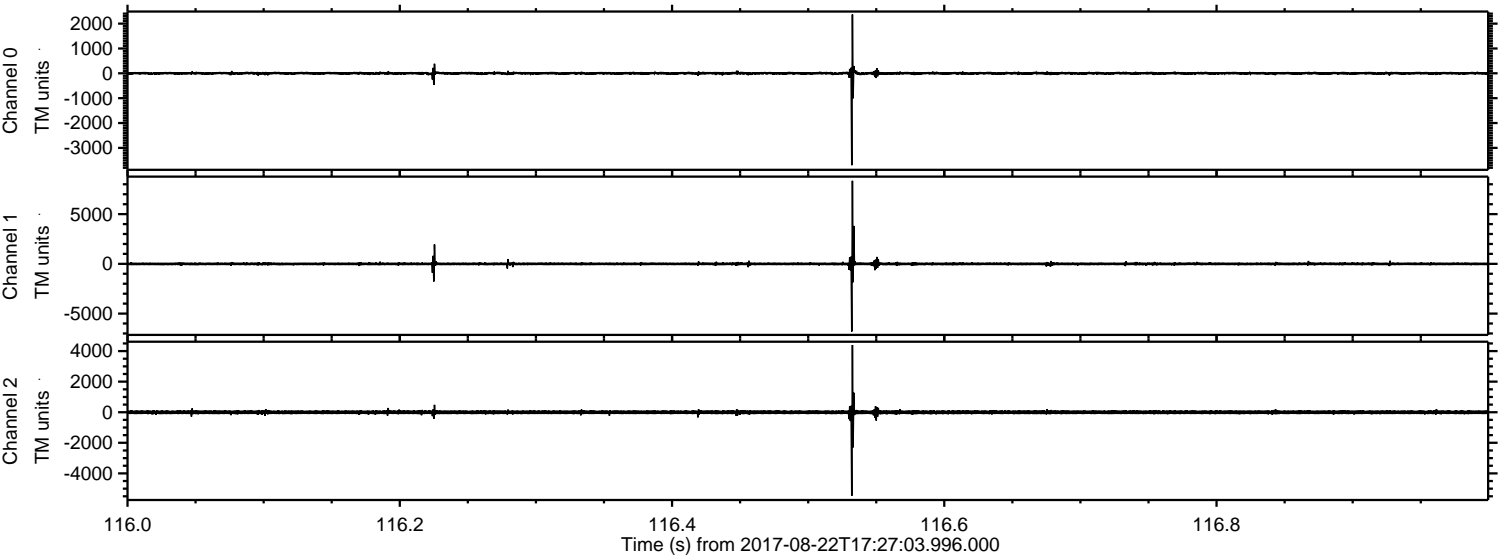
ELMAVAN 3D WAVEFORMS (Measured data sampled at 50 kHz) 51000 packets of 144 samples from 2017-08-22T17:27:03.996.000.

Processed Tue Aug 22 19:35:02 2017 by ELM ver.2012-10-06 from 001__elm20170822_172702__dat00.bin

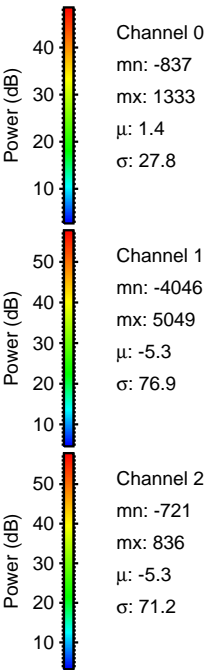
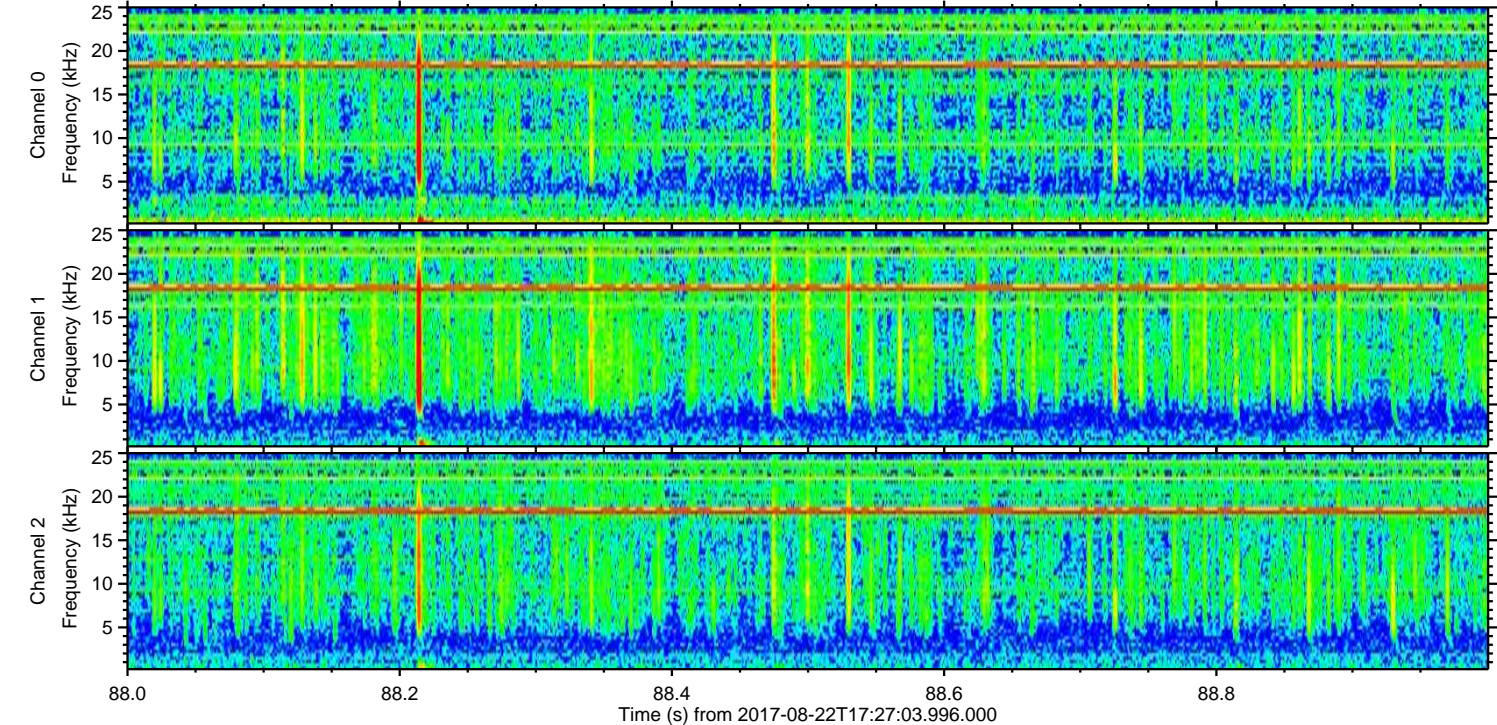
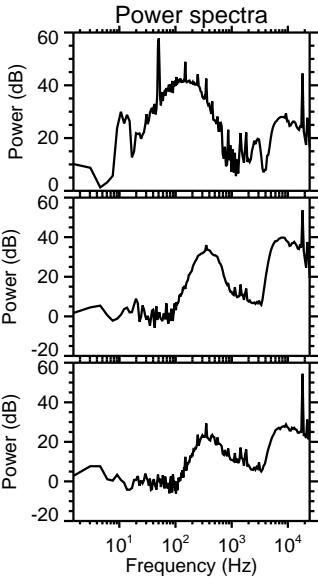
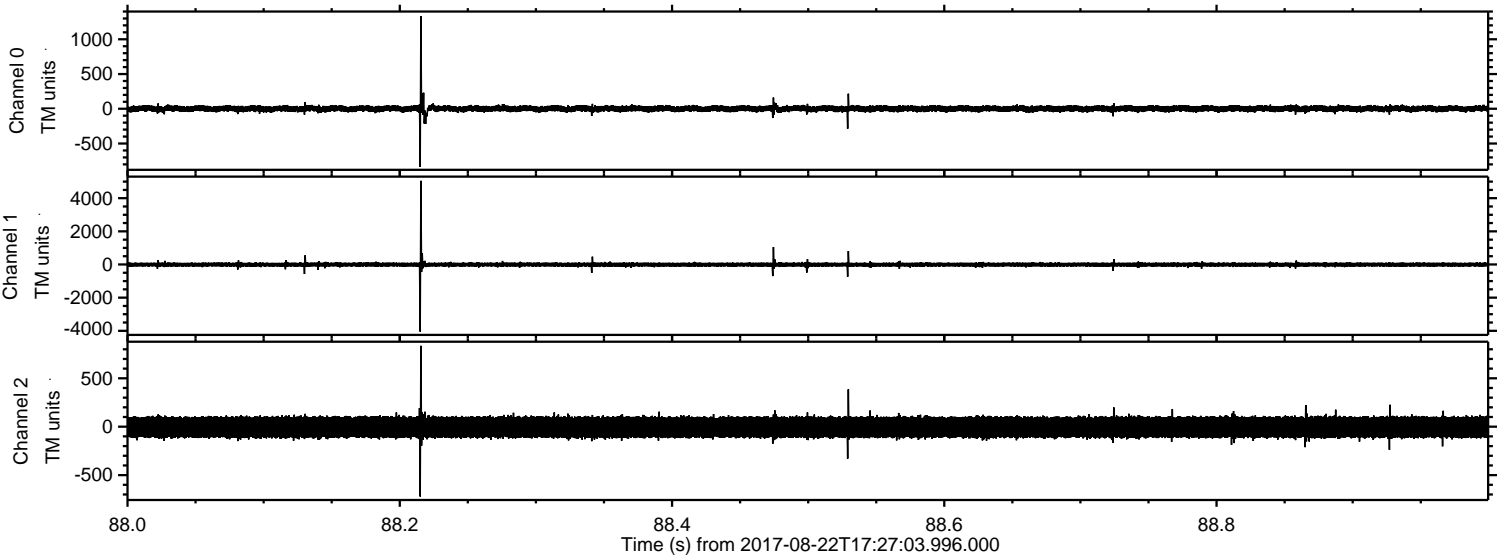


ELMAVAN 3D WAVEFORMS (Measured data sampled at 50 kHz) 51000 packets of 144 samples from 2017-08-22T17:27:03.996.000. Part 117/147

Processed Tue Aug 22 19:35:09 2017 by ELM ver.2012-10-06 from 001__elm20170822_172702__dat00.bin

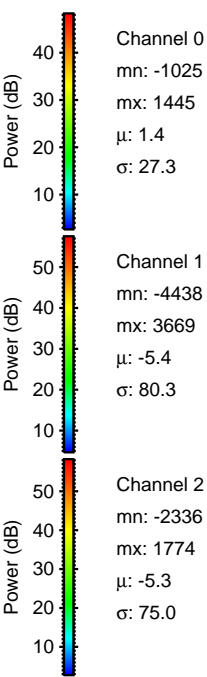
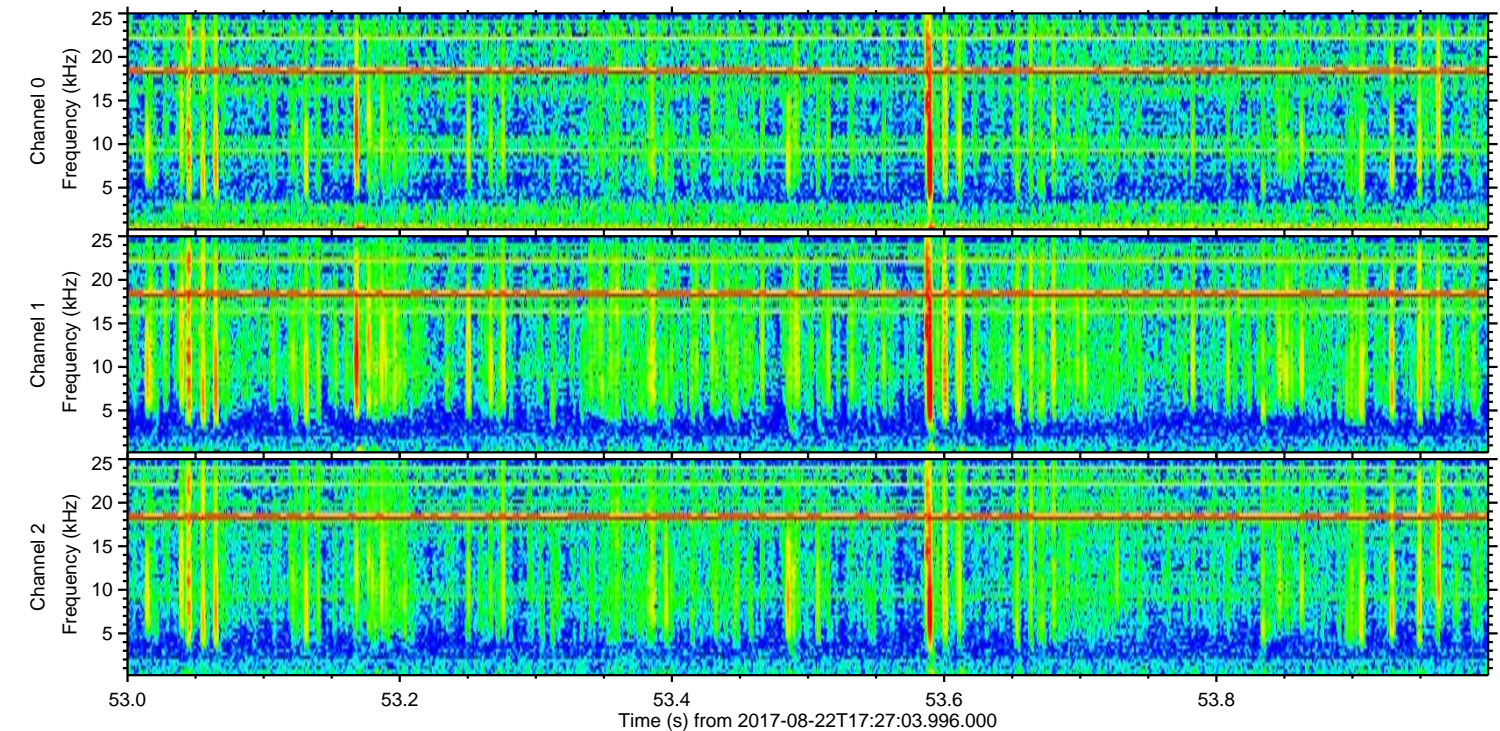
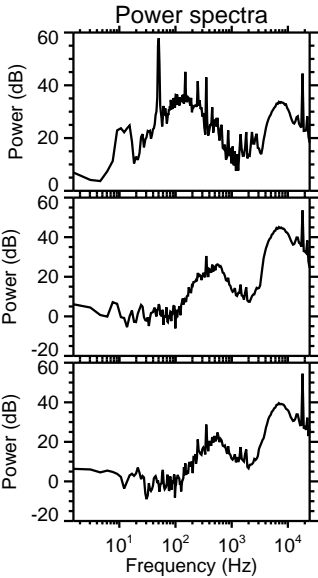
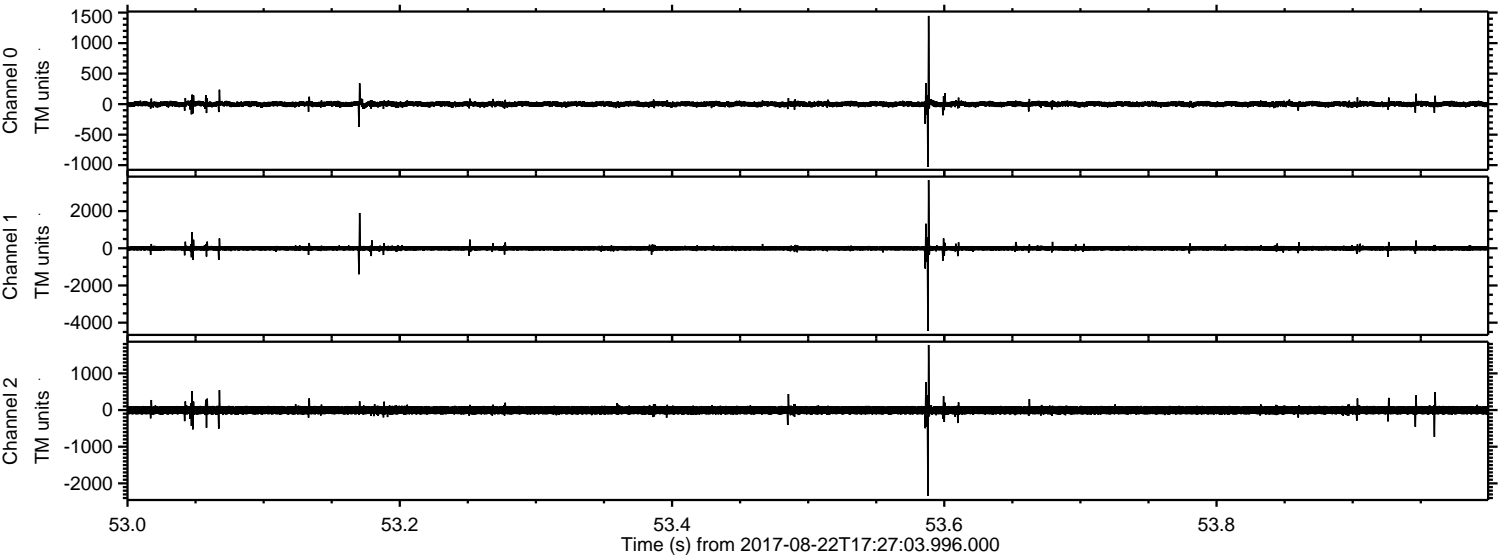


Processed Tue Aug 22 19:35:10 2017 by ELM ver.2012-10-06 from 001__elm20170822_172702__dat00.bin



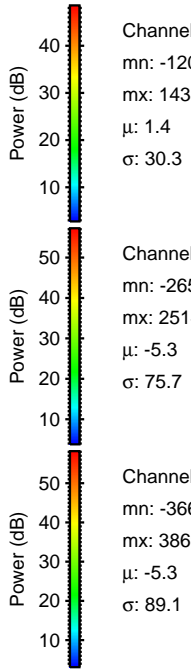
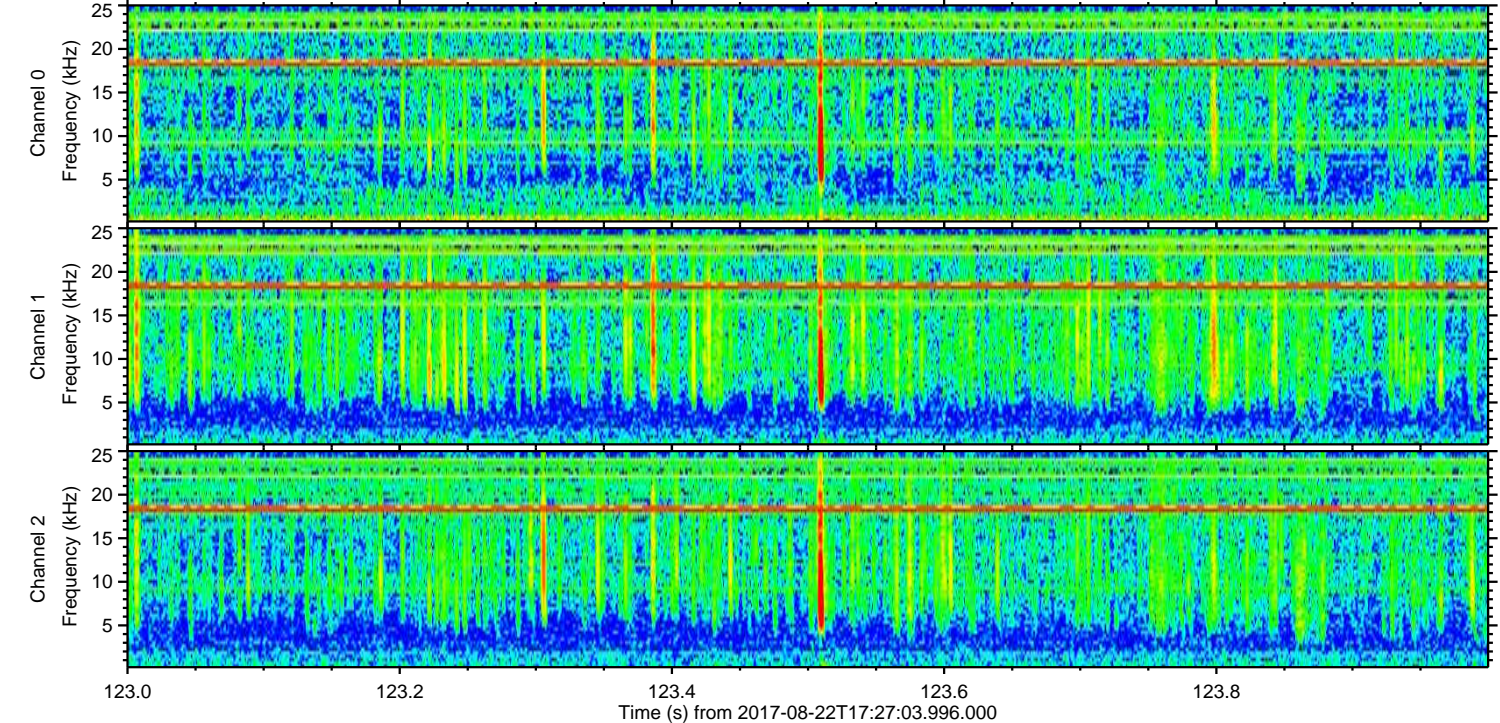
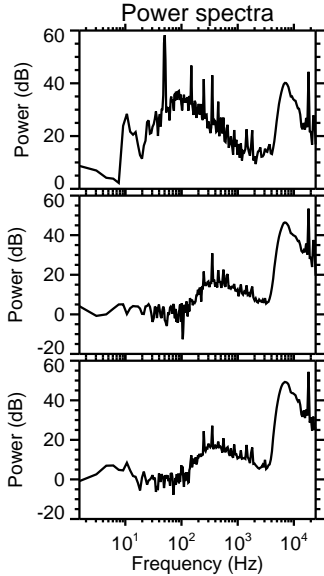
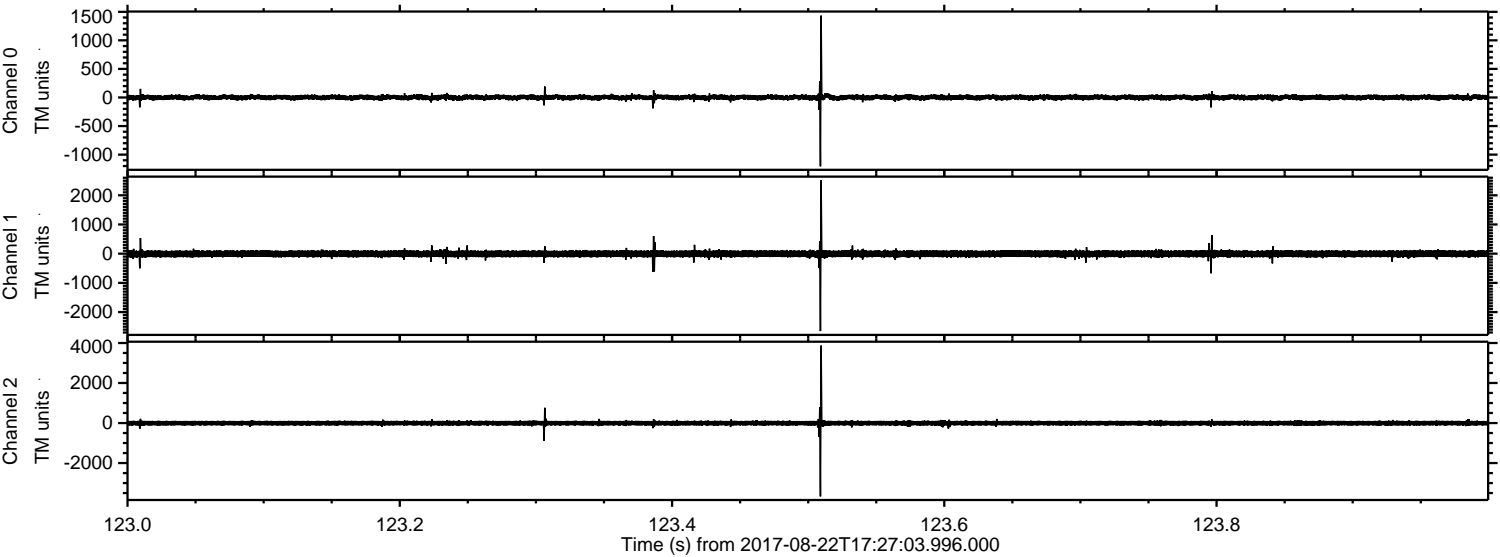
ELMAVAN 3D WAVEFORMS (Measured data sampled at 50 kHz) 51000 packets of 144 samples from 2017-08-22T17:27:03.996.000. Part 54/147

Processed Tue Aug 22 19:35:10 2017 by ELM ver.2012-10-06 from 001__elm20170822_172702__dat00.bin



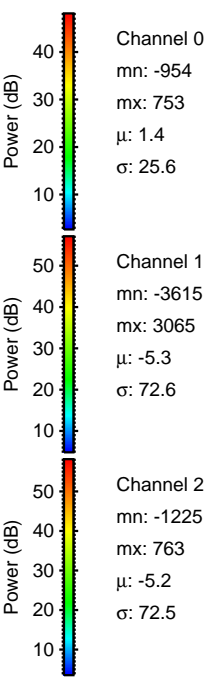
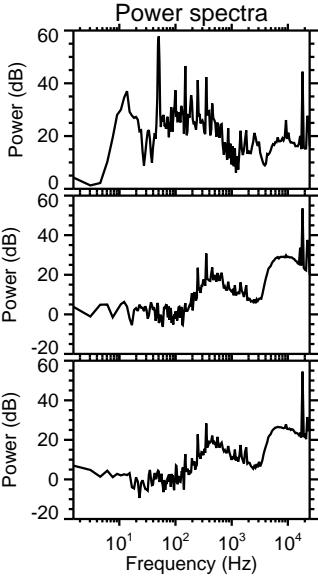
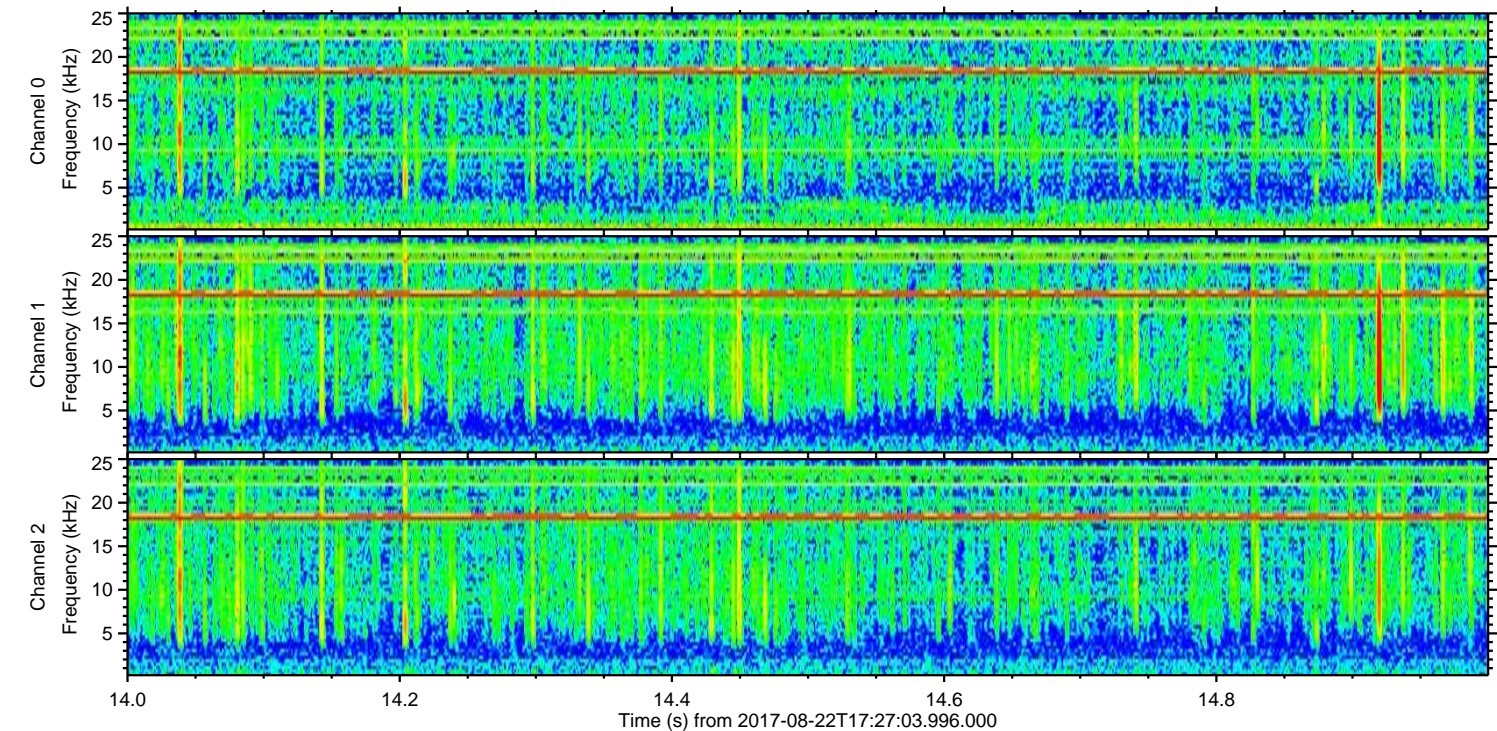
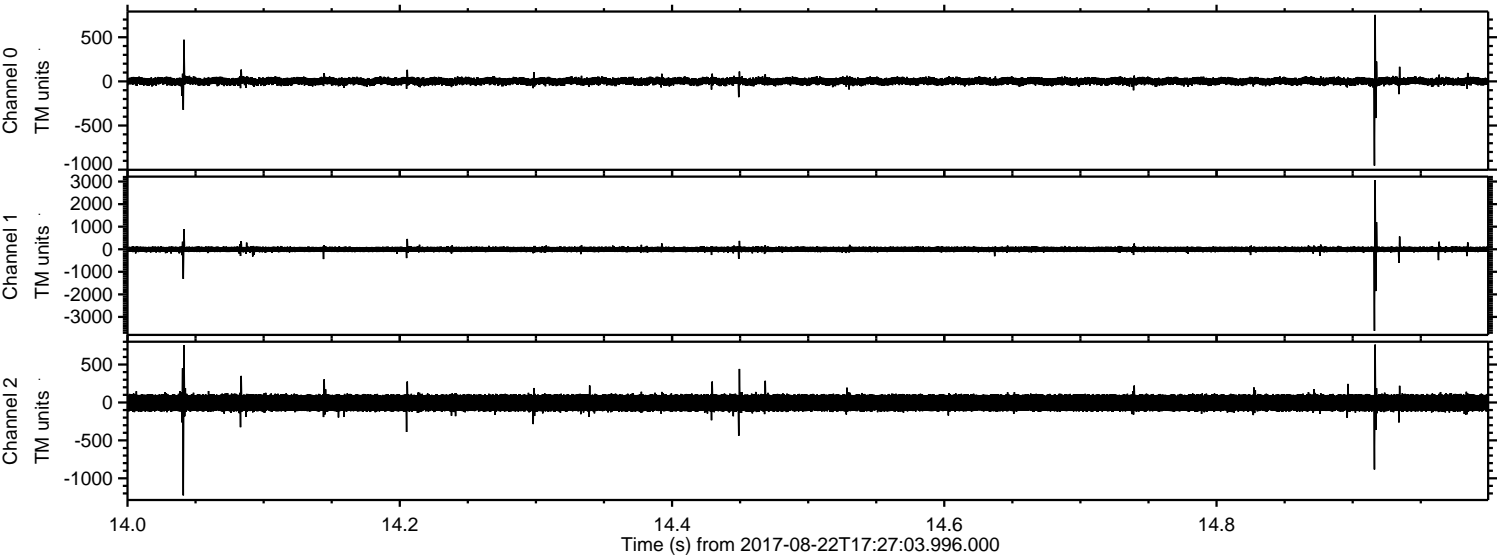
ELMAVAN 3D WAVEFORMS (Measured data sampled at 50 kHz) 51000 packets of 144 samples from 2017-08-22T17:27:03.996.000. Part 124/147

Processed Tue Aug 22 19:35:11 2017 by ELM ver.2012-10-06 from 001__elm20170822_172702__dat00.bin

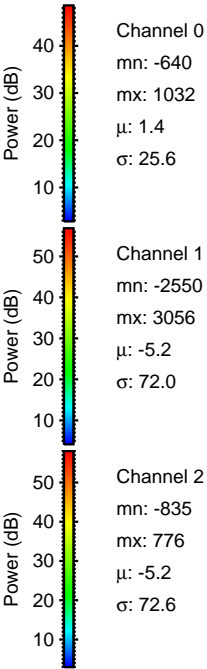
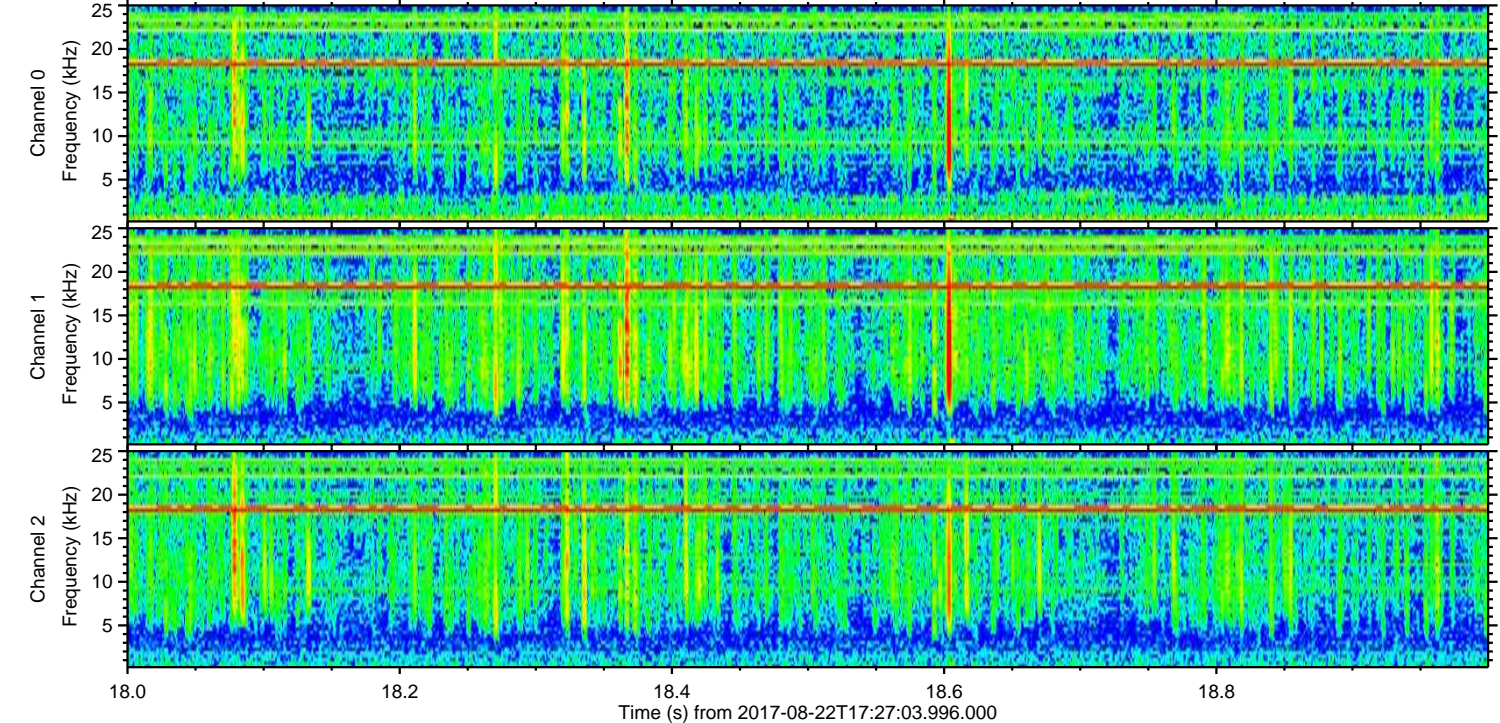
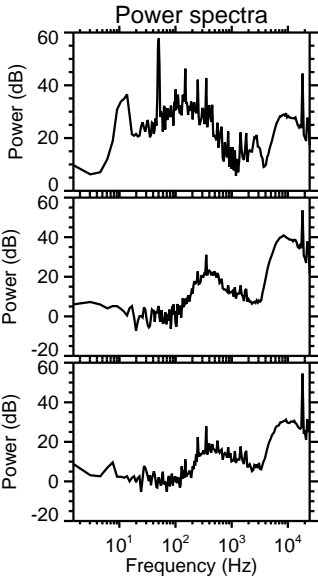
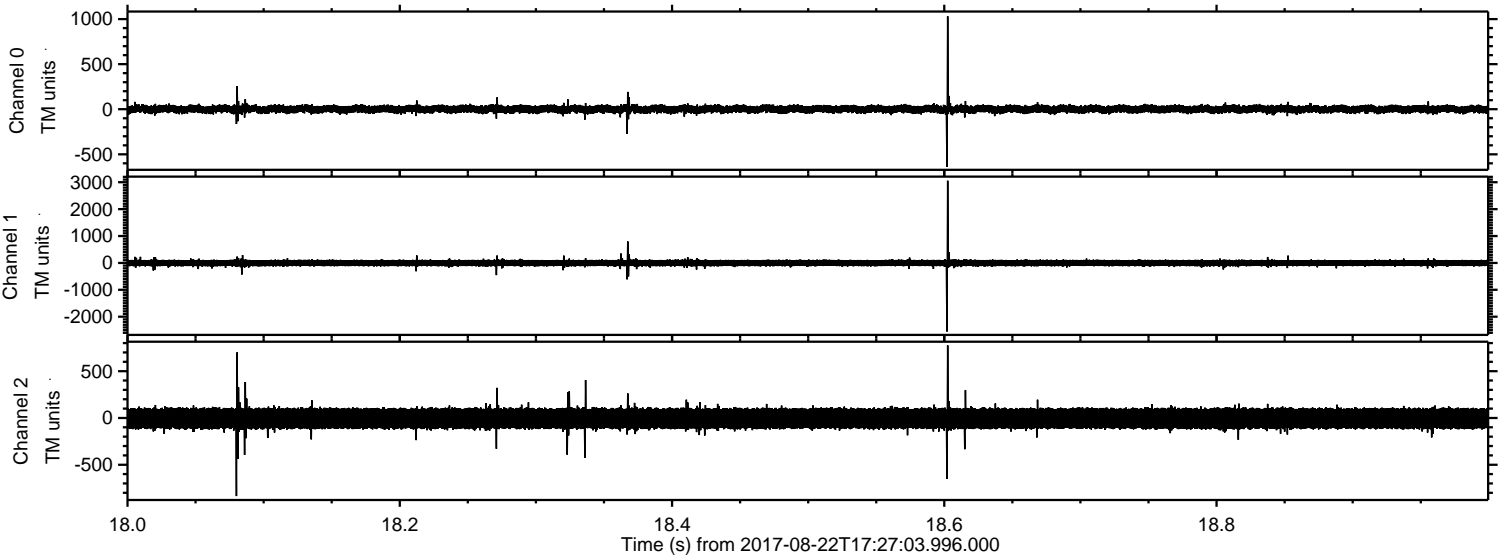


ELMAVAN 3D WAVEFORMS (Measured data sampled at 50 kHz) 51000 packets of 144 samples from 2017-08-22T17:27:03.996.000. Part 15/147

Processed Tue Aug 22 19:35:12 2017 by ELM ver.2012-10-06 from 001__elm20170822_172702__dat00.bin

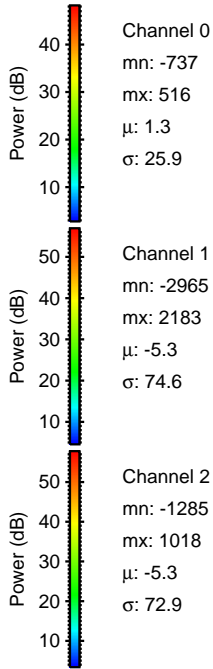
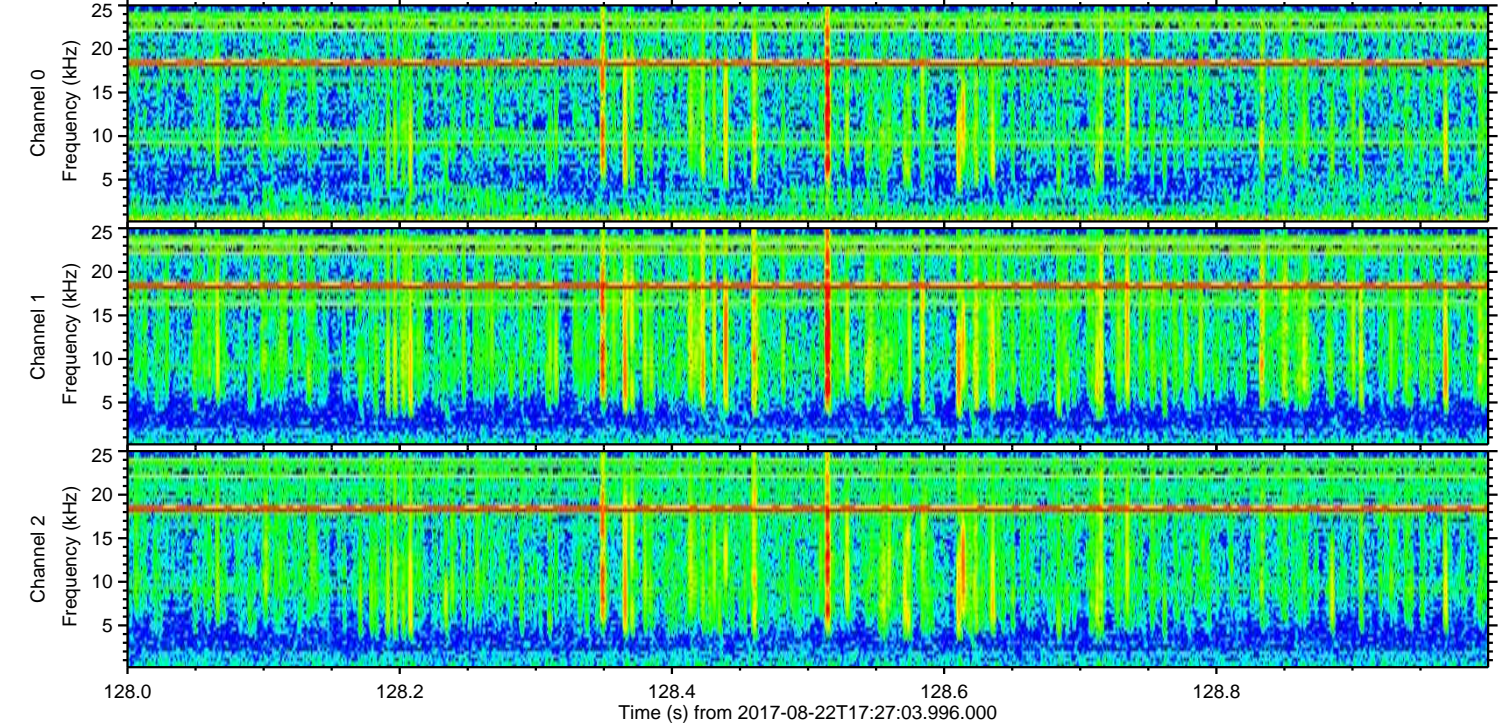
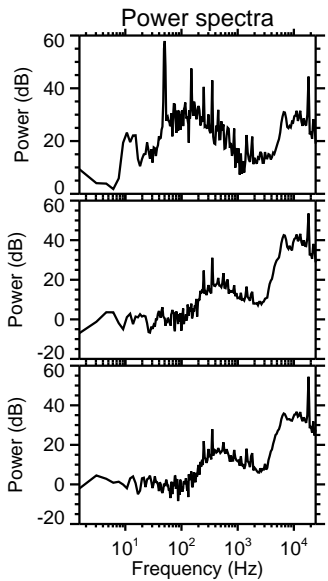
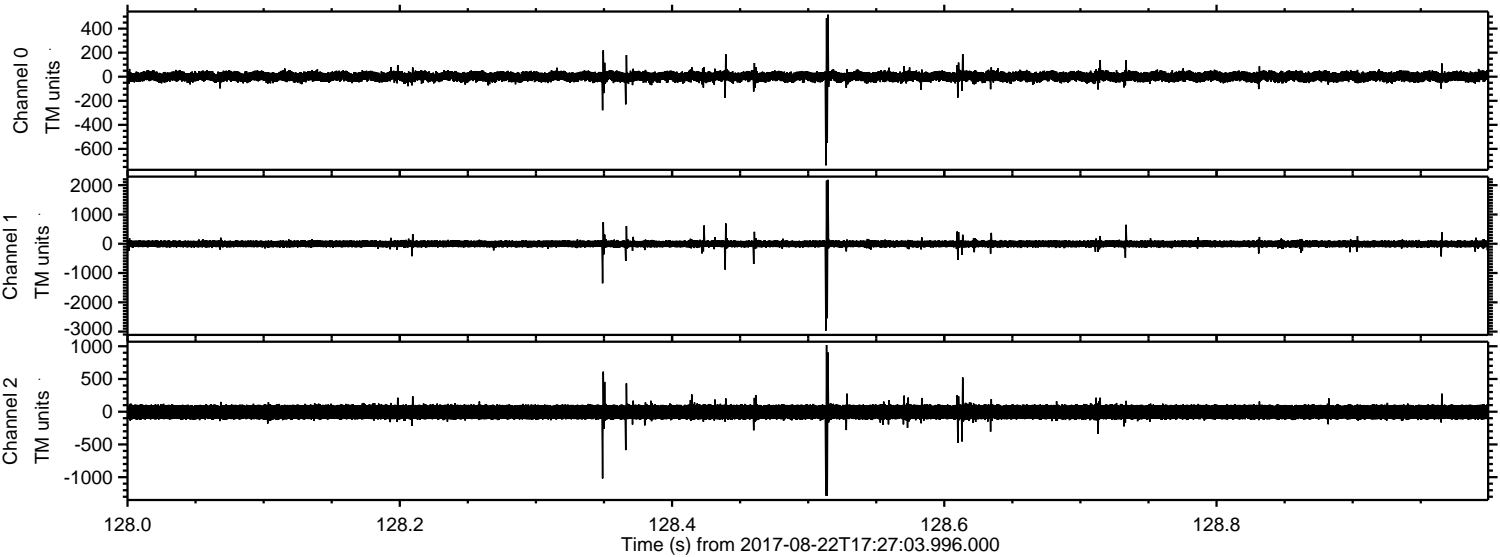


Processed Tue Aug 22 19:35:13 2017 by ELM ver.2012-10-06 from 001__elm20170822_172702__dat00.bin



ELMAVAN 3D WAVEFORMS (Measured data sampled at 50 kHz) 51000 packets of 144 samples from 2017-08-22T17:27:03.996.000. Part 129/147

Processed Tue Aug 22 19:35:13 2017 by ELM ver.2012-10-06 from 001__elm20170822_172702__dat00.bin

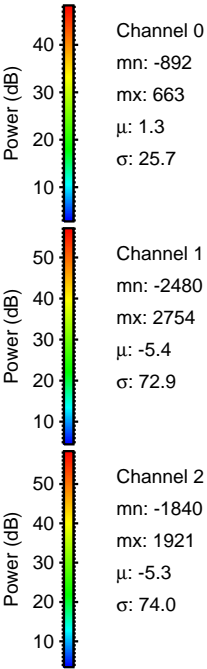
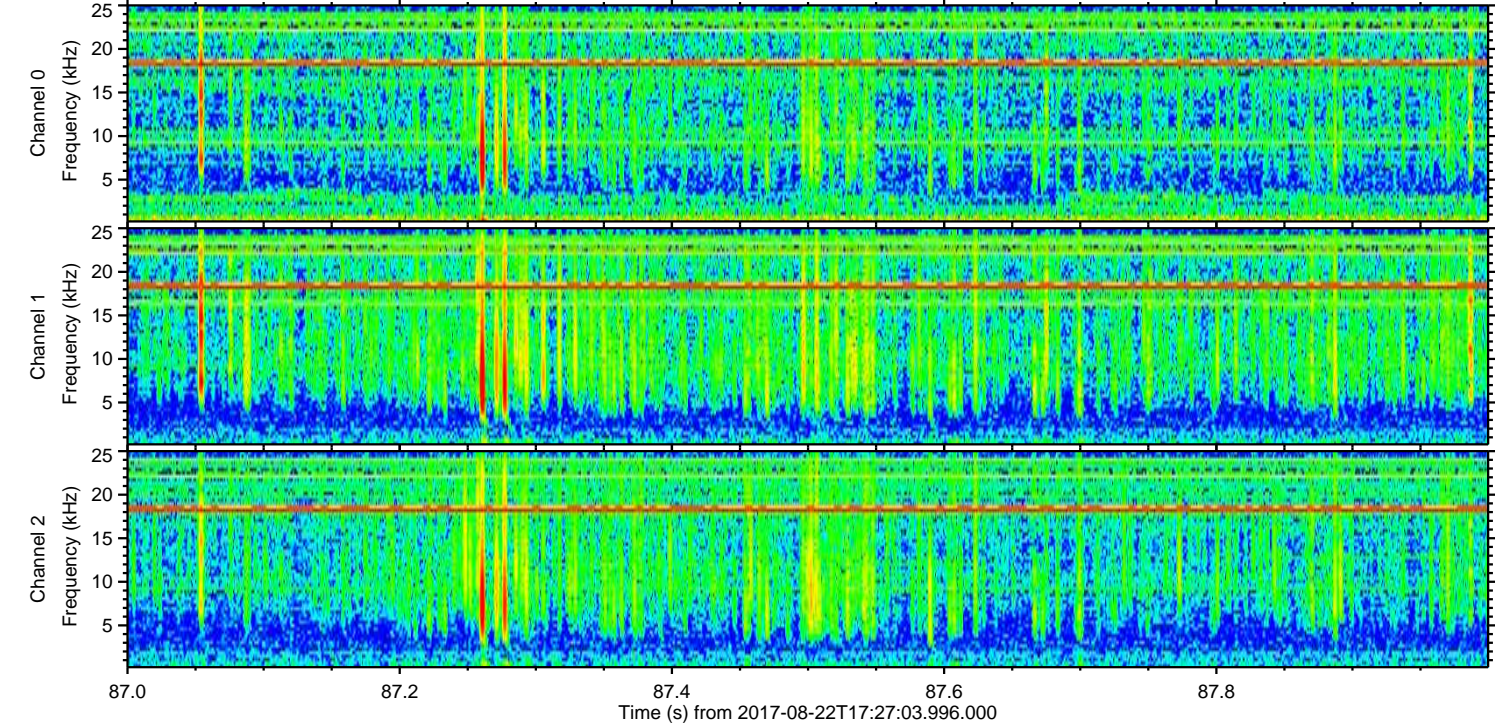
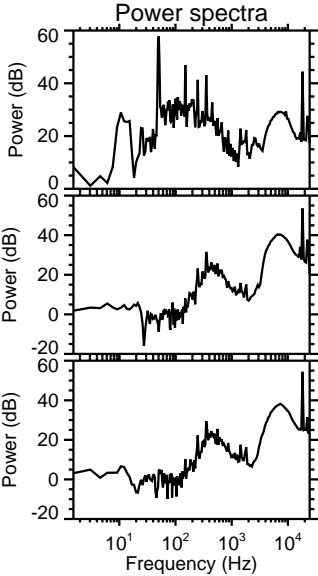
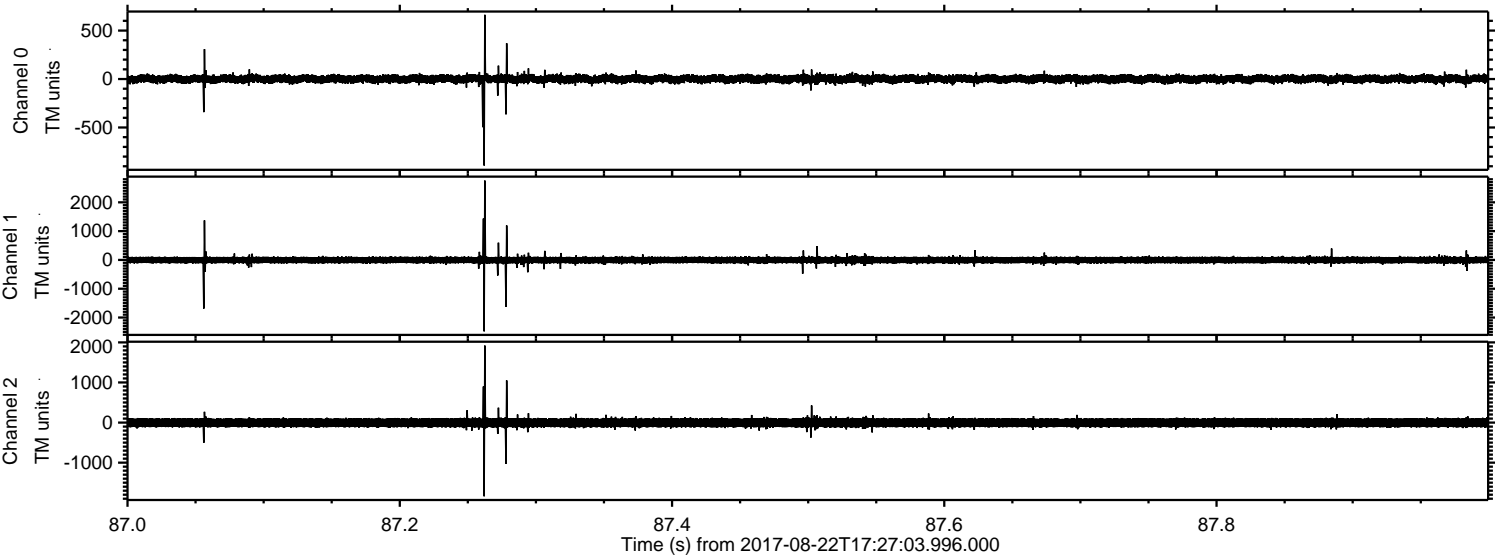


Channel 0
mn: -737
mx: 516
 μ : 1.3
 σ : 25.9

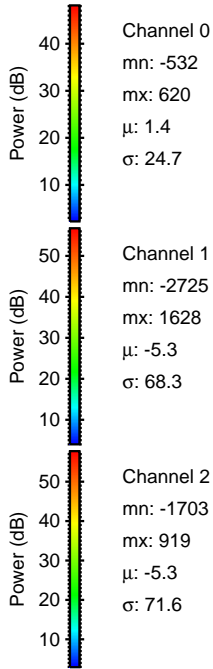
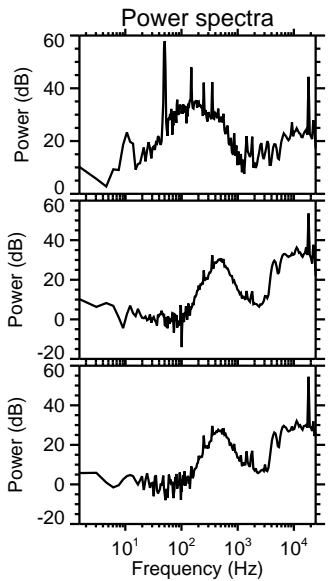
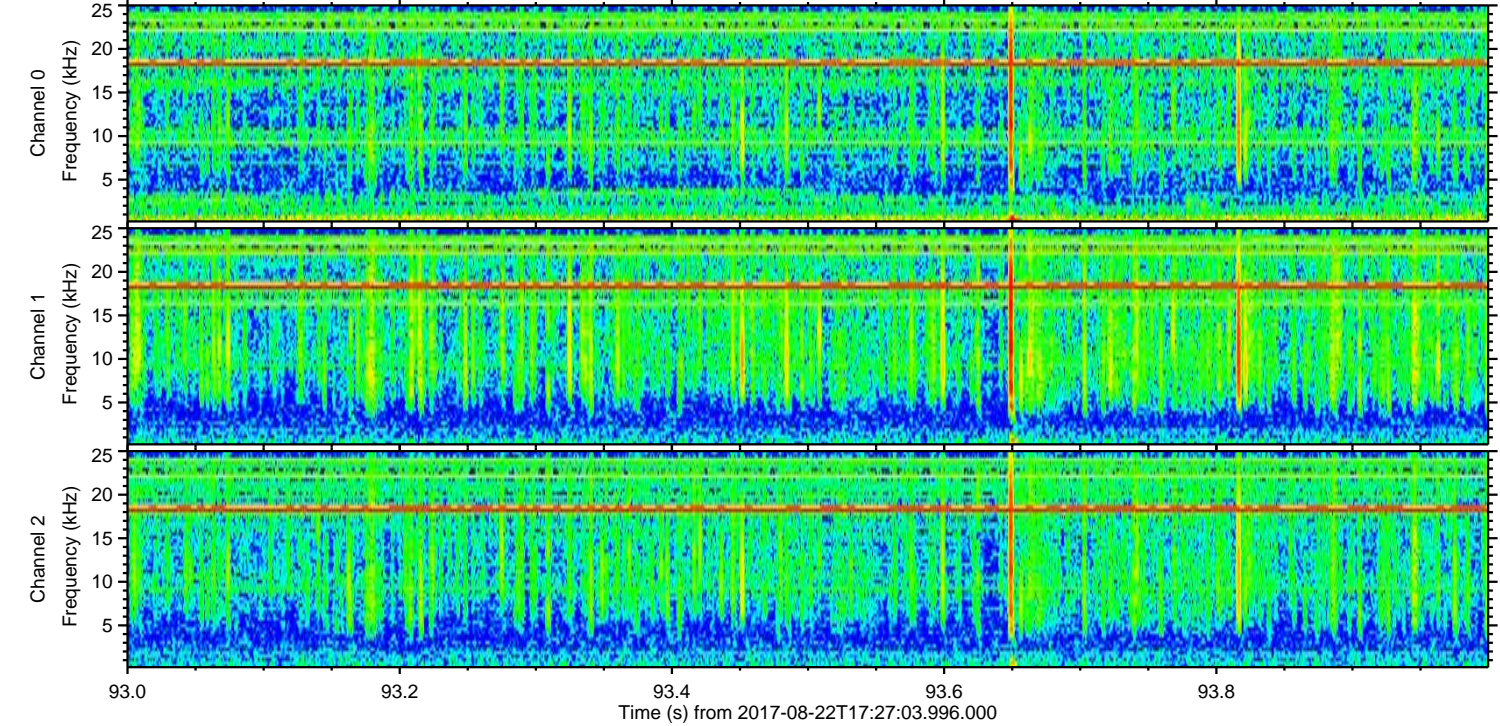
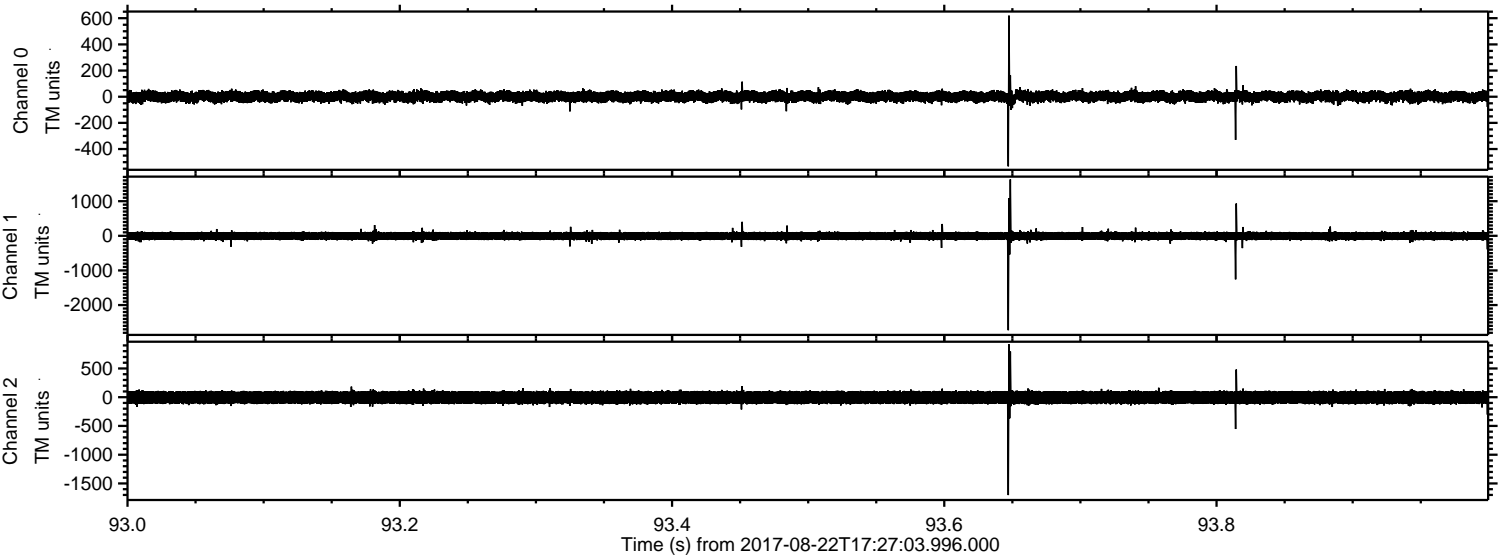
Channel 1
mn: -2965
mx: 2183
 μ : -5.3
 σ : 74.6

Channel 2
mn: -1285
mx: 1018
 μ : -5.3
 σ : 72.9

Processed Tue Aug 22 19:35:14 2017 by ELM ver.2012-10-06 from 001__elm20170822_172702__dat00.bin



Processed Tue Aug 22 19:35:15 2017 by ELM ver.2012-10-06 from 001__elm20170822_172702__dat00.bin



Channel 0
mn: -532
mx: 620
 μ : 1.4
 σ : 24.7

Channel 1
mn: -2725
mx: 1628
 μ : -5.3
 σ : 68.3

Channel 2
mn: -1703
mx: 919
 μ : -5.3
 σ : 71.6

Processed Tue Aug 22 19:35:16 2017 by ELM ver.2012-10-06 from 001__elm20170822_172702__dat00.bin

