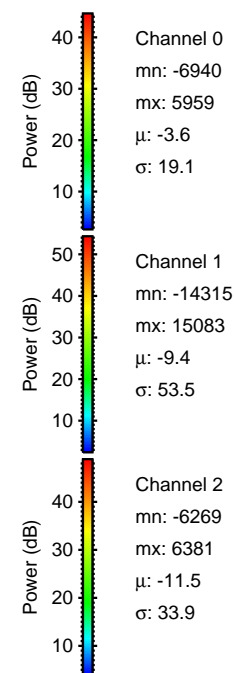
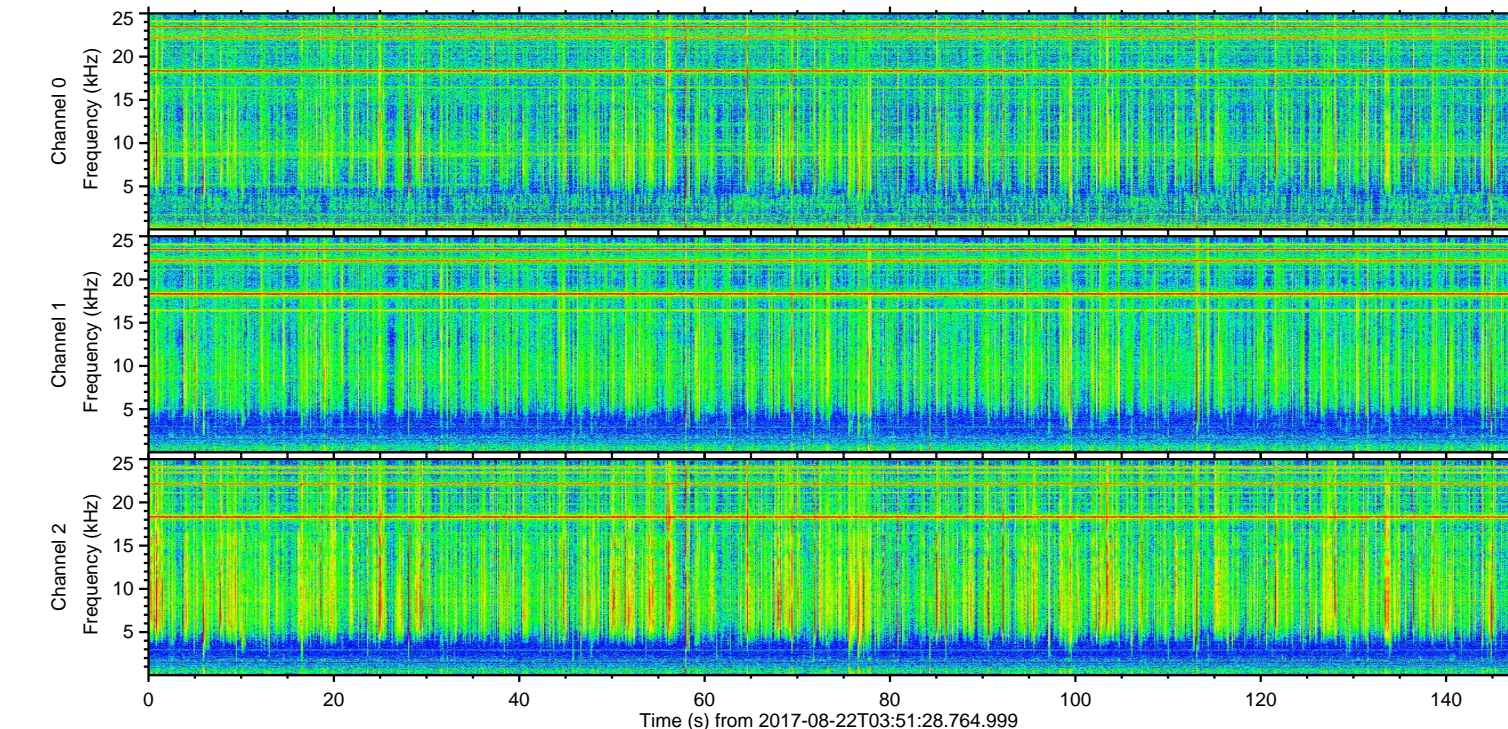
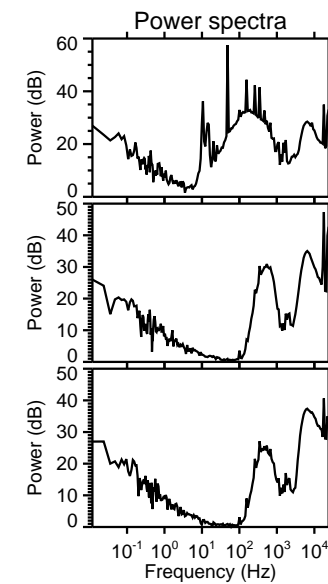
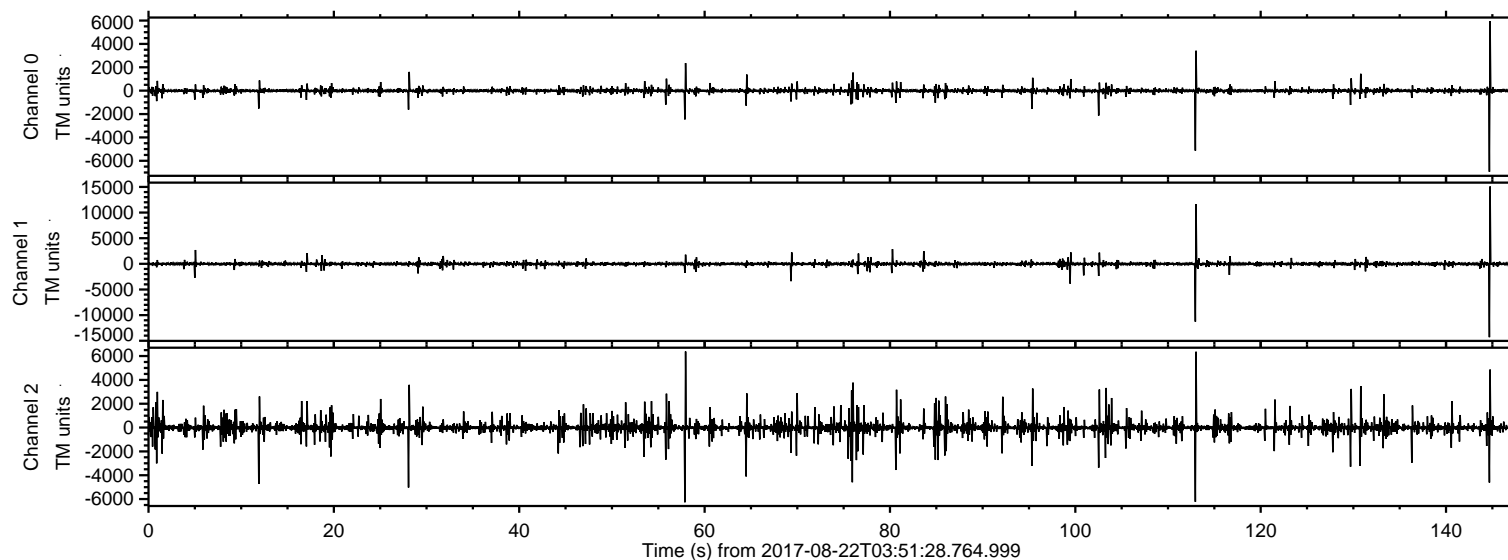


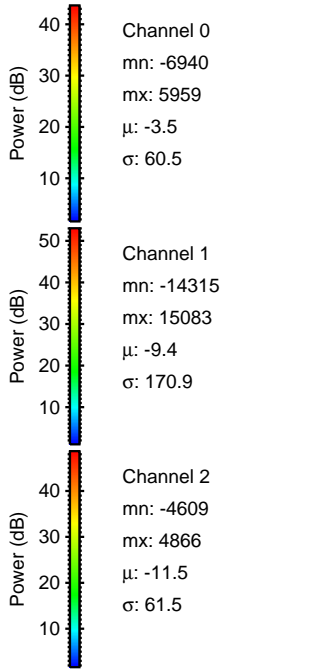
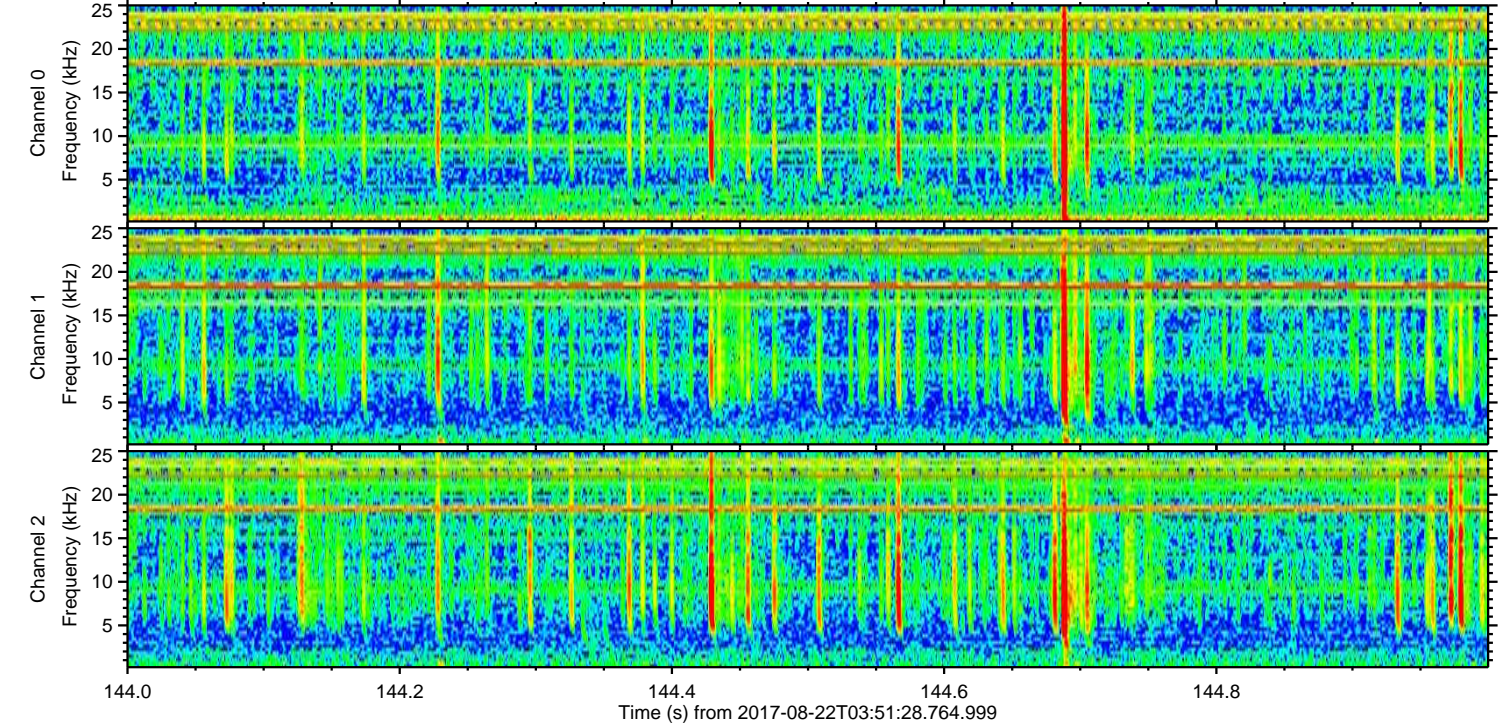
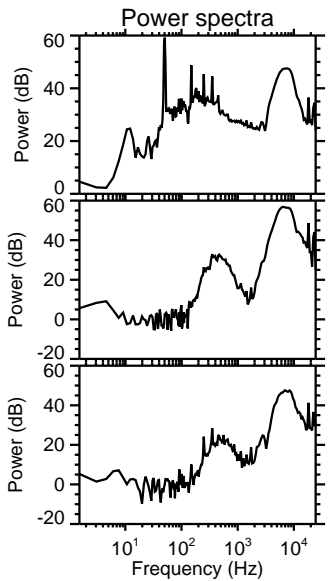
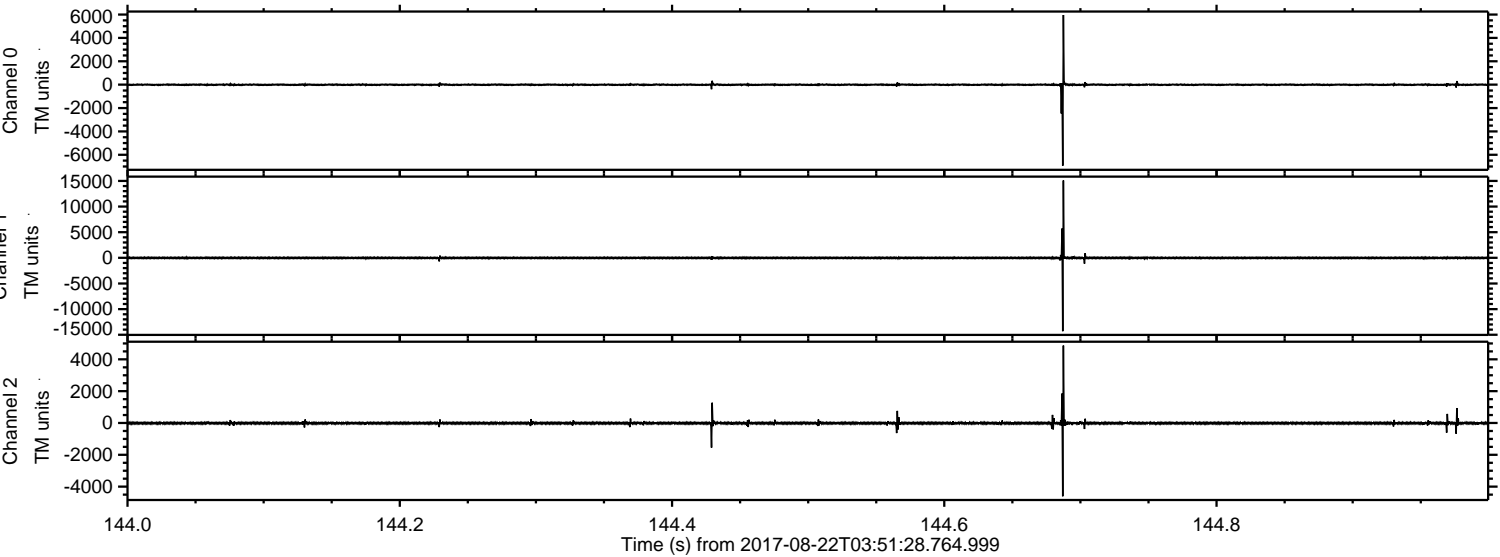
ELMAVAN 3D WAVEFORMS (Measured data sampled at 50 kHz) 51000 packets of 144 samples from 2017-08-22T03:51:28.764.999.

Processed Tue Aug 22 05:58:50 2017 by ELM ver.2012-10-06 from 001__elm20170822_035127__dat00.bin



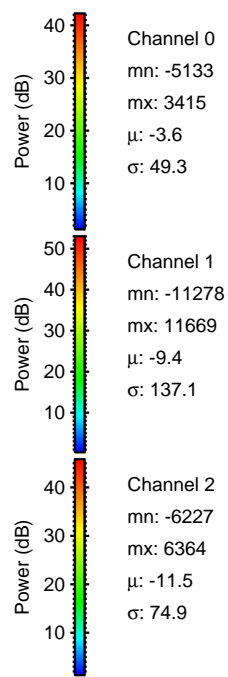
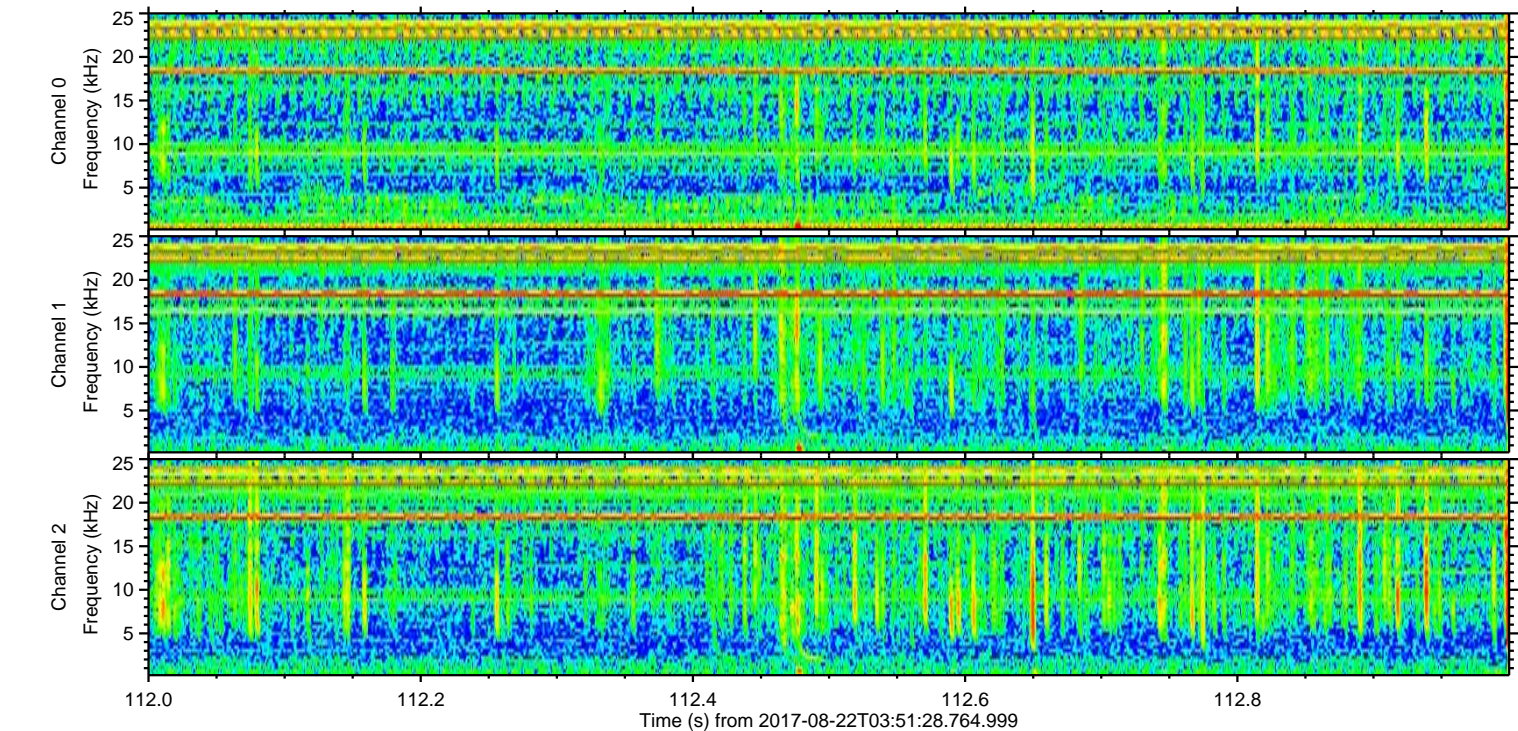
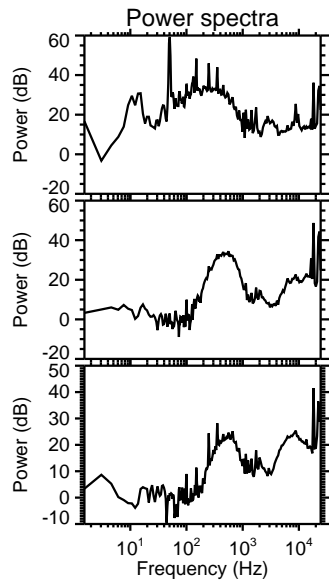
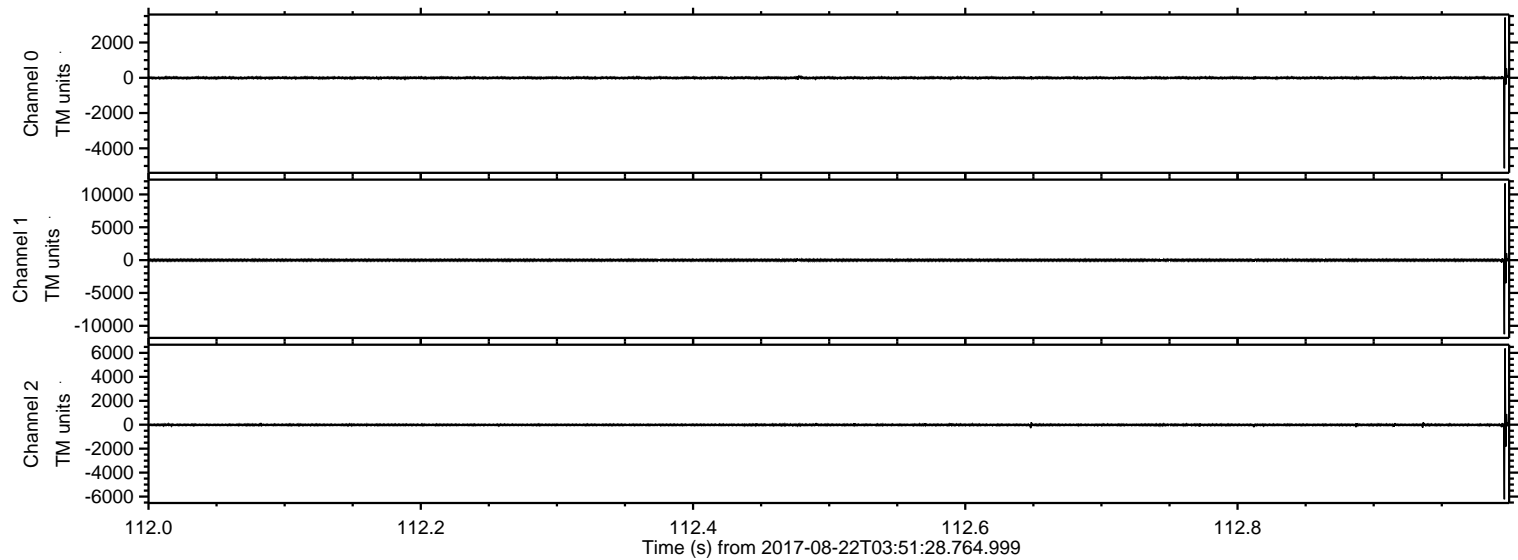
ELMAVAN 3D WAVEFORMS (Measured data sampled at 50 kHz) 51000 packets of 144 samples from 2017-08-22T03:51:28.764.999. Part 145/147

Processed Tue Aug 22 05:58:57 2017 by ELM ver.2012-10-06 from 001__elm20170822_035127__dat00.bin

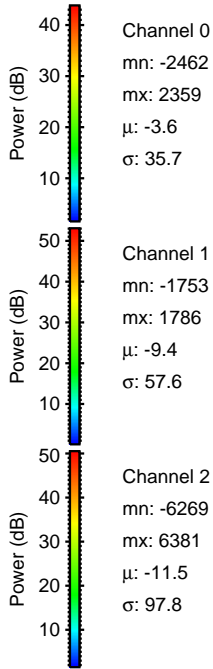
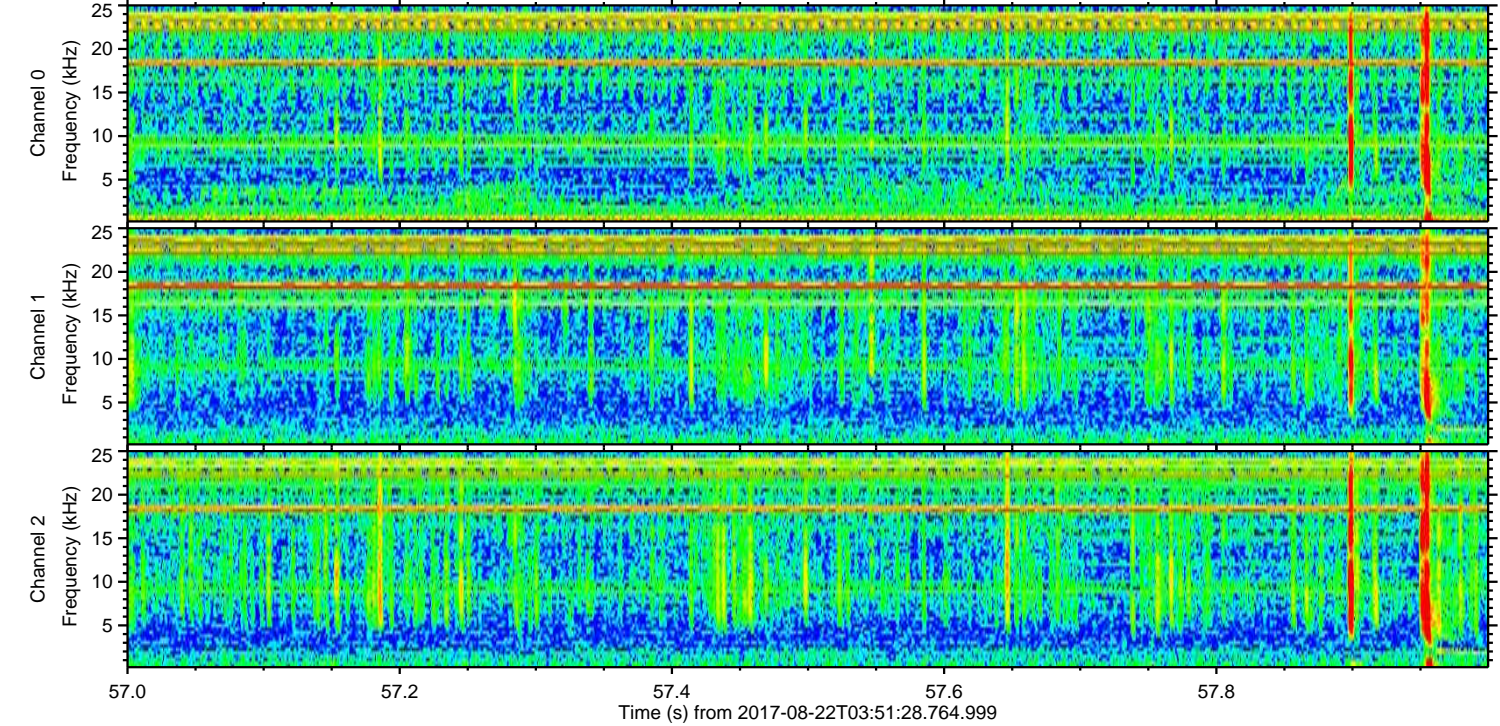
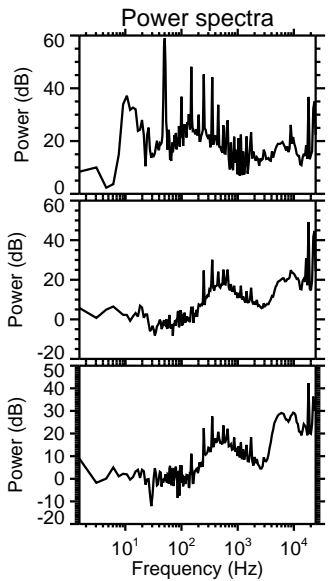
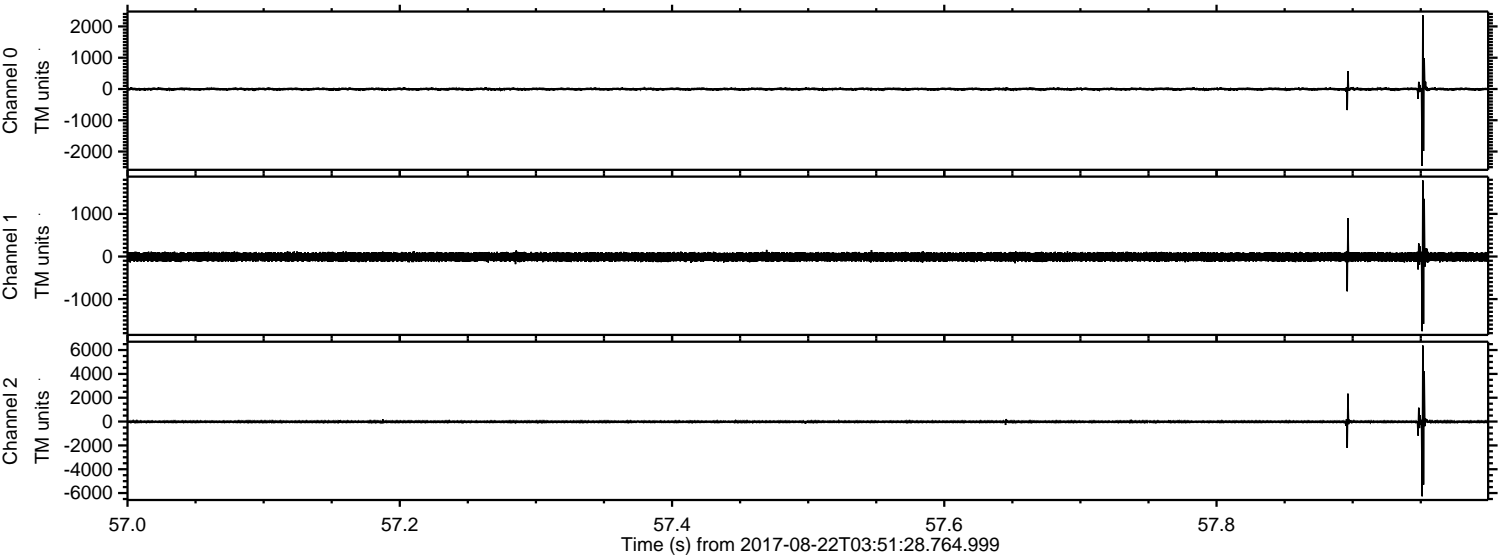


ELMAVAN 3D WAVEFORMS (Measured data sampled at 50 kHz) 51000 packets of 144 samples from 2017-08-22T03:51:28.764.999. Part 113/147

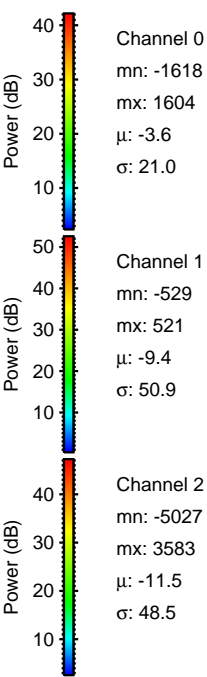
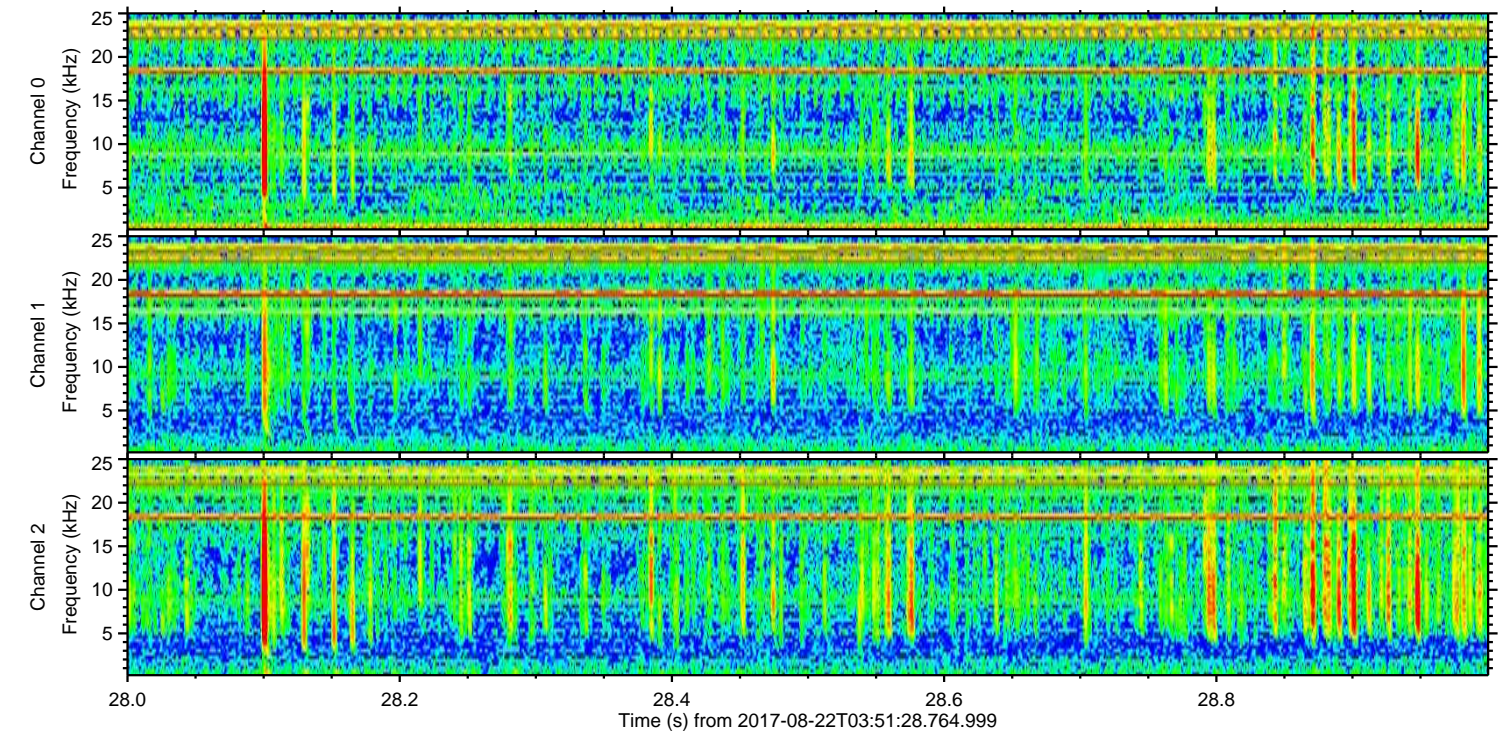
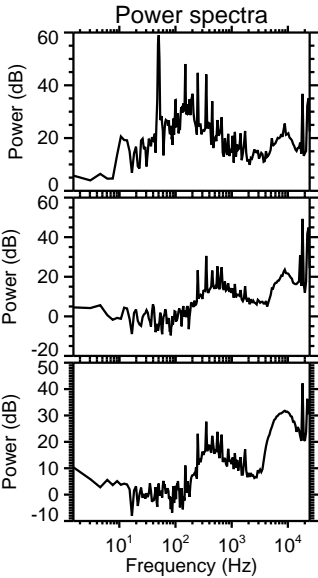
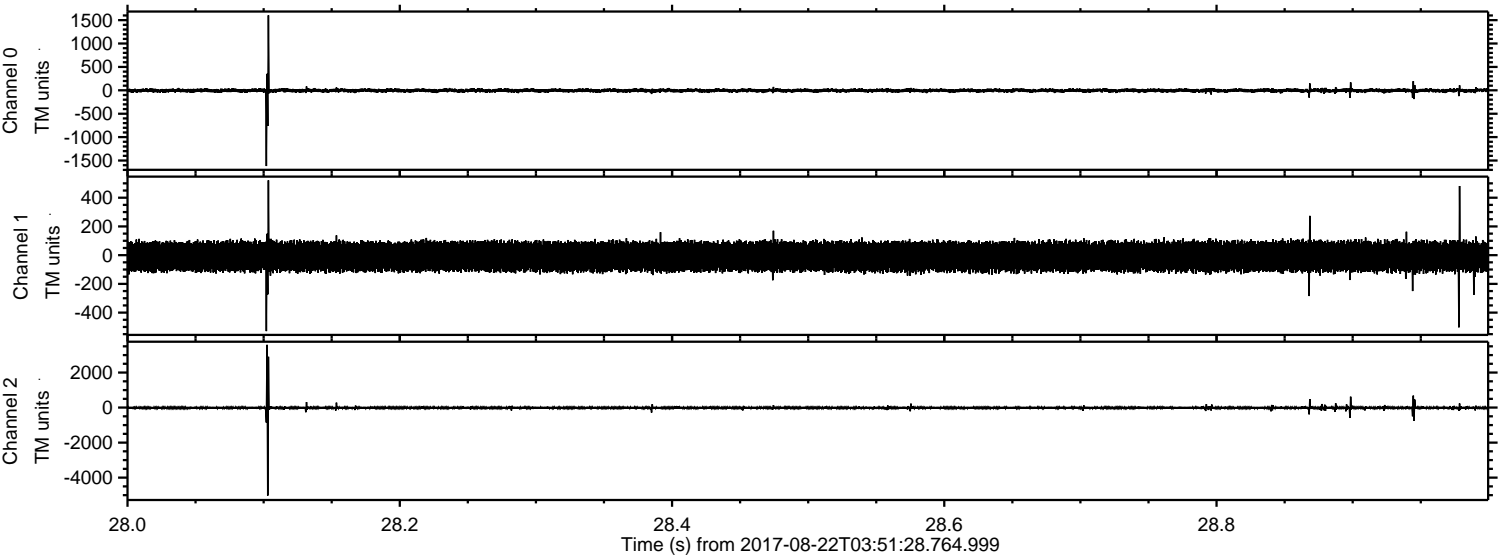
Processed Tue Aug 22 05:58:58 2017 by ELM ver.2012-10-06 from 001__elm20170822_035127__dat00.bin



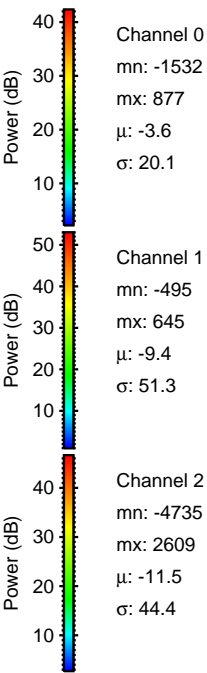
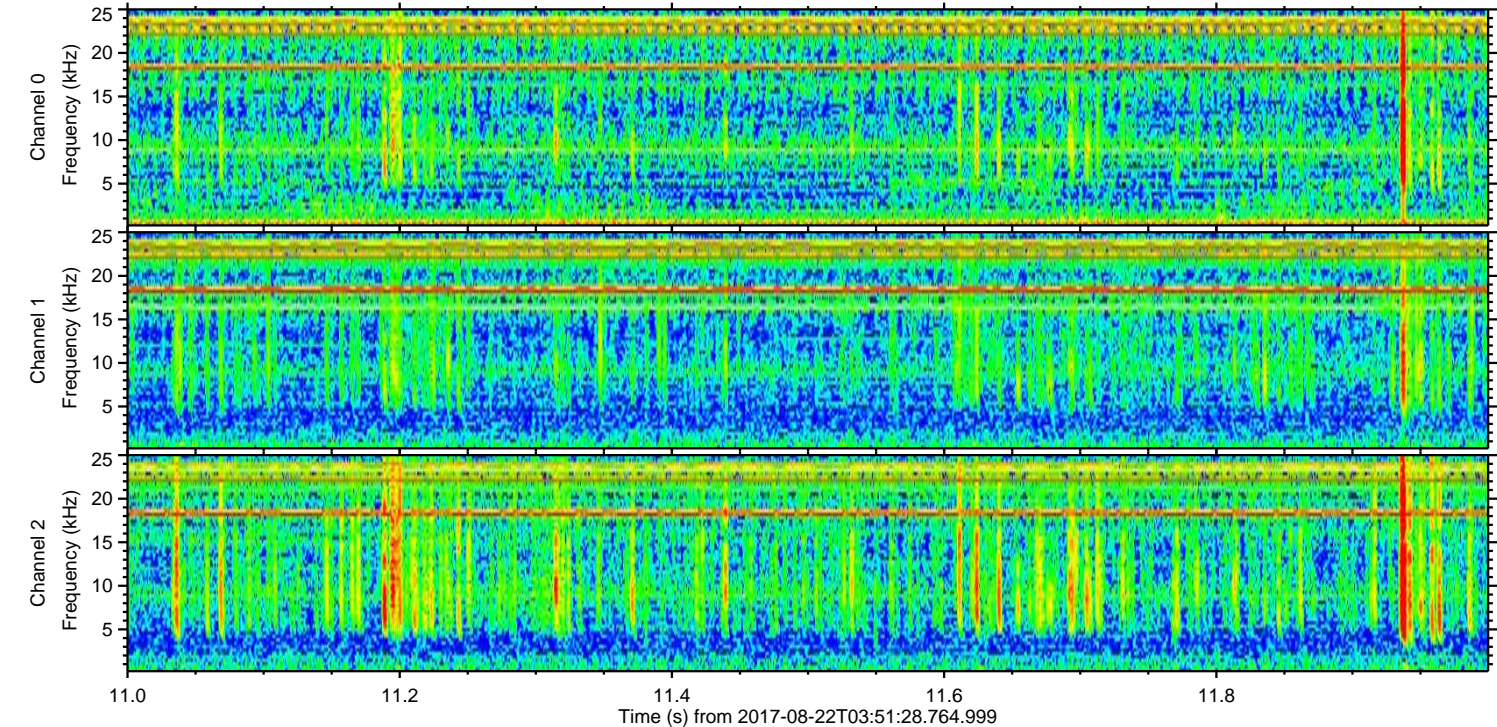
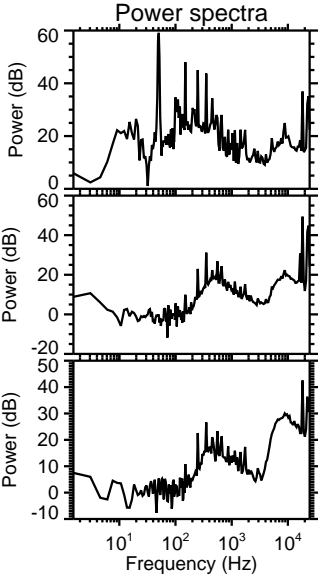
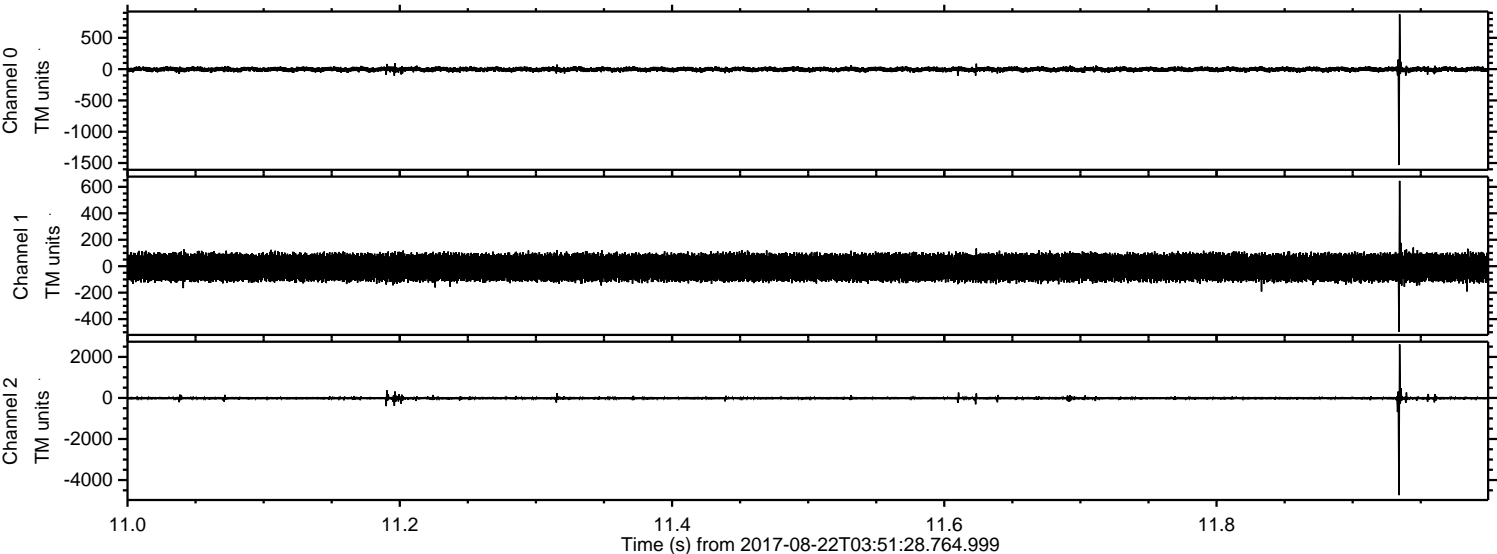
Processed Tue Aug 22 05:58:59 2017 by ELM ver.2012-10-06 from 001__elm20170822_035127__dat00.bin



Processed Tue Aug 22 05:58:59 2017 by ELM ver.2012-10-06 from 001__elm20170822_035127__dat00.bin

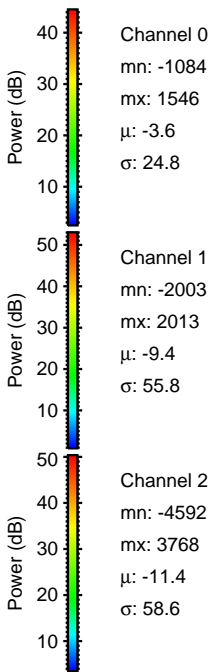
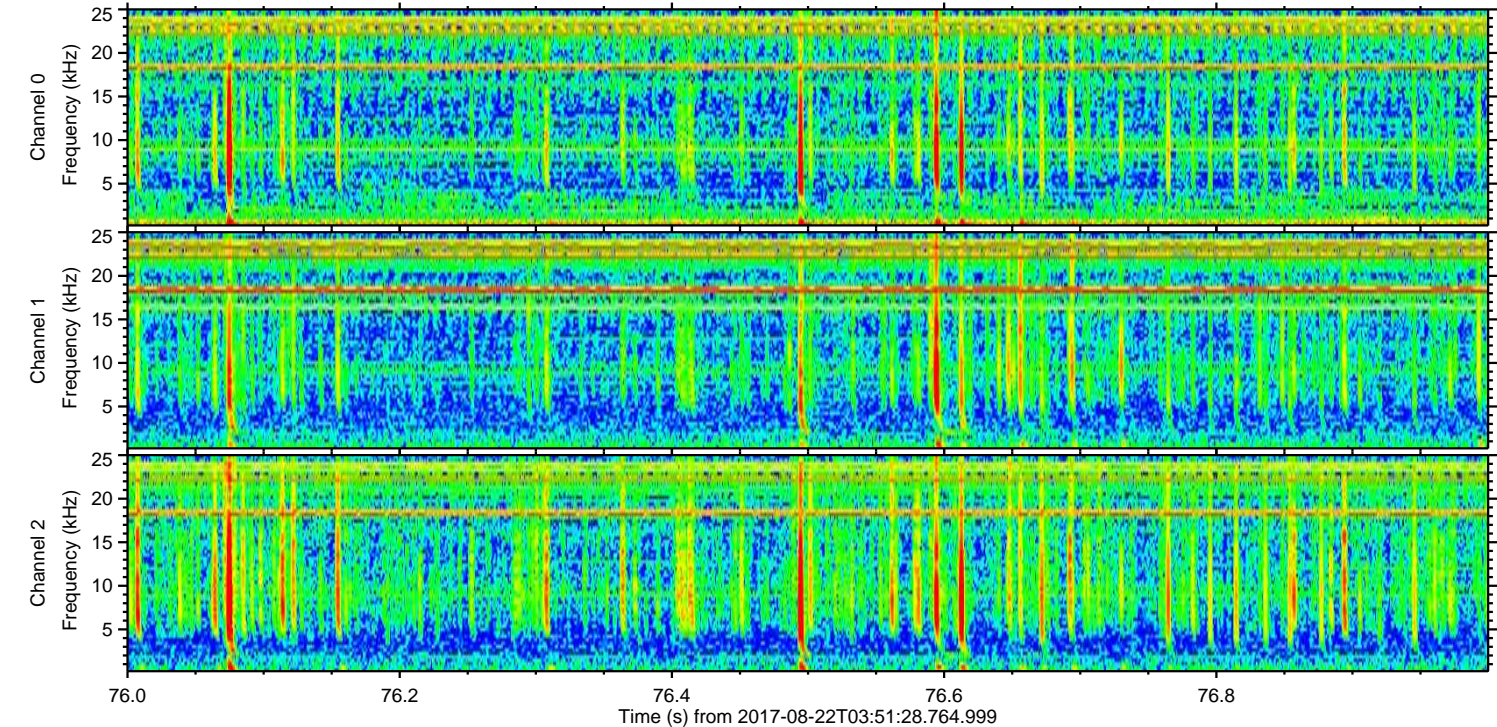
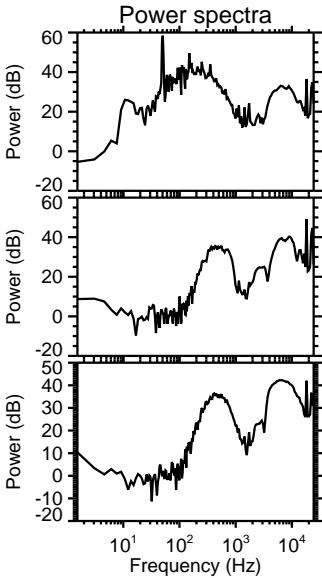
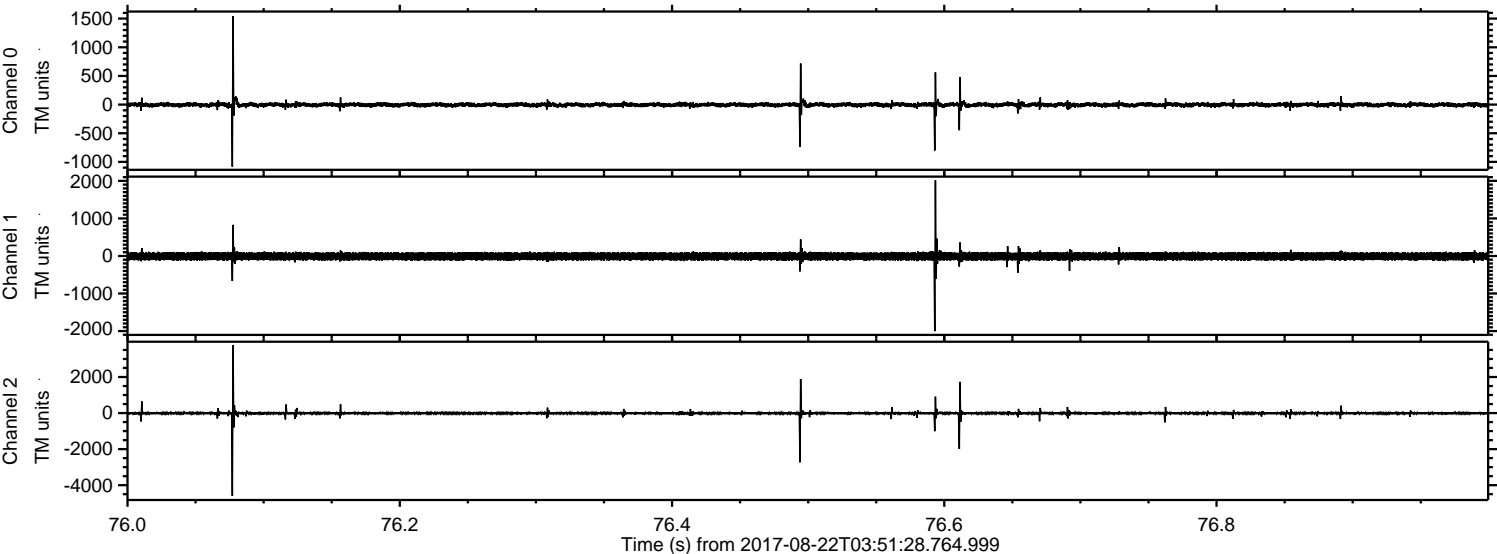


Processed Tue Aug 22 05:59:00 2017 by ELM ver.2012-10-06 from 001__elm20170822_035127__dat00.bin

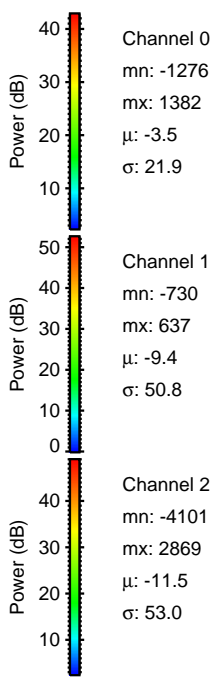
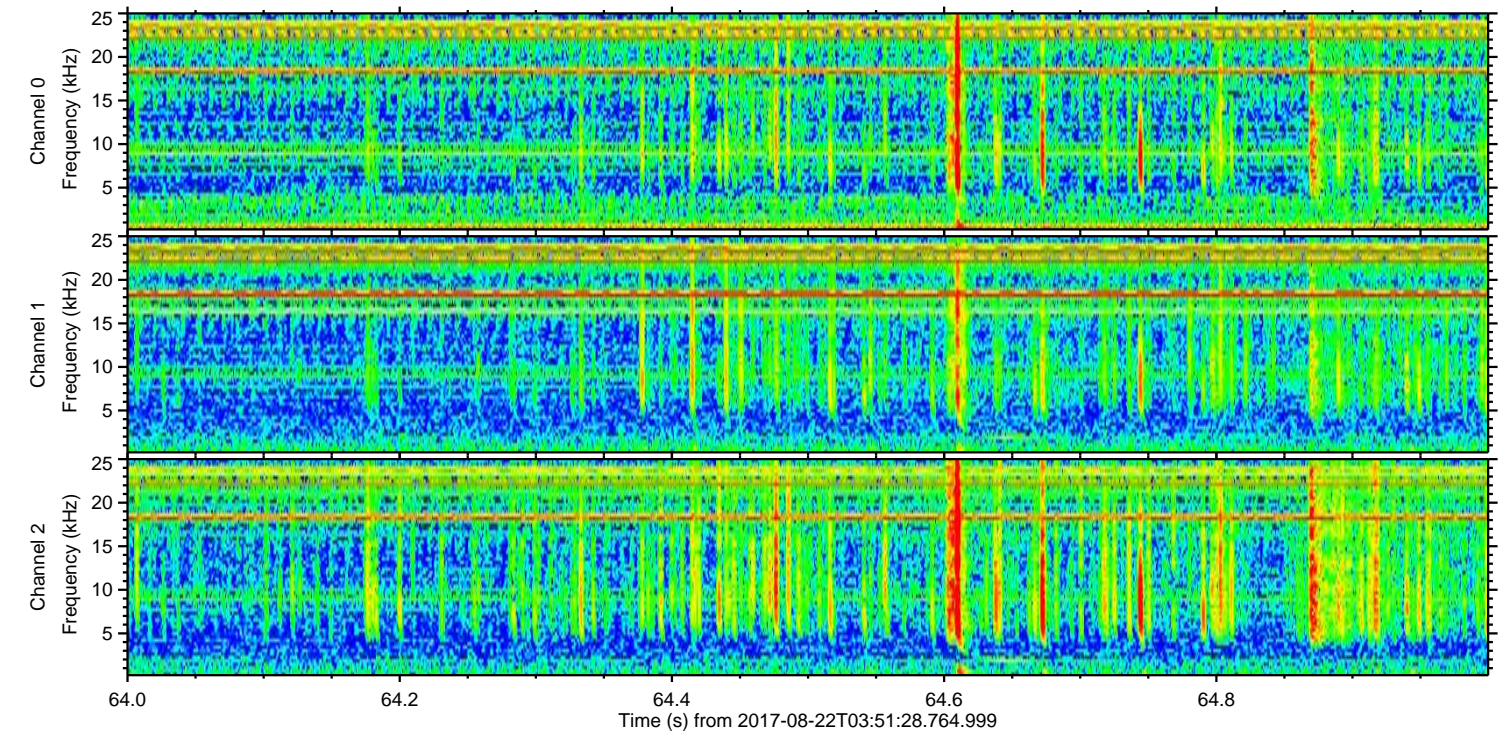
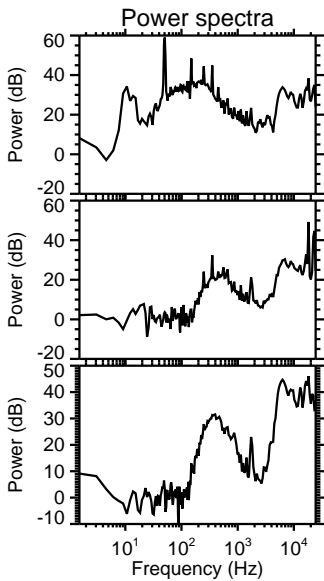
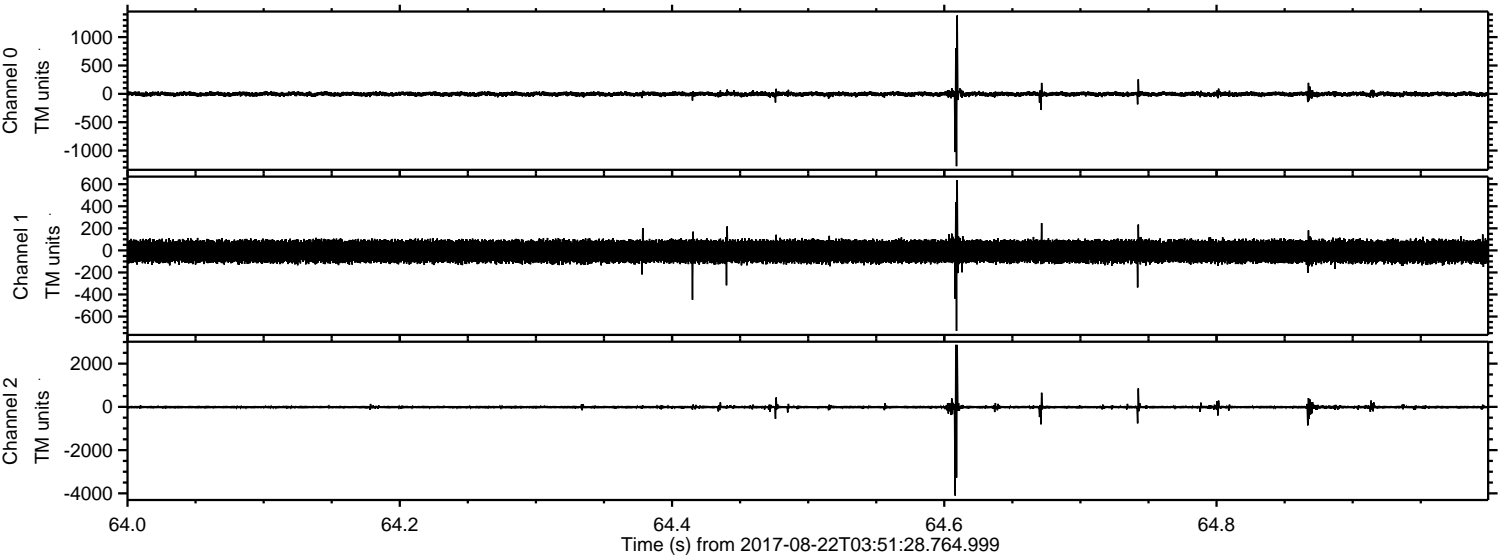


ELMAVAN 3D WAVEFORMS (Measured data sampled at 50 kHz) 51000 packets of 144 samples from 2017-08-22T03:51:28.764.999. Part 77/147

Processed Tue Aug 22 05:59:01 2017 by ELM ver.2012-10-06 from 001__elm20170822_035127__dat00.bin

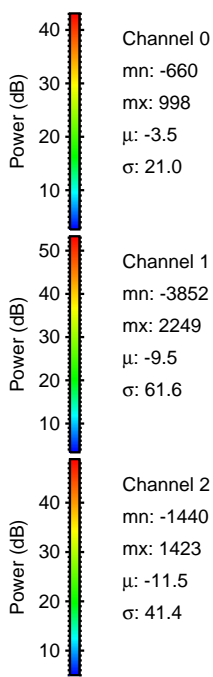
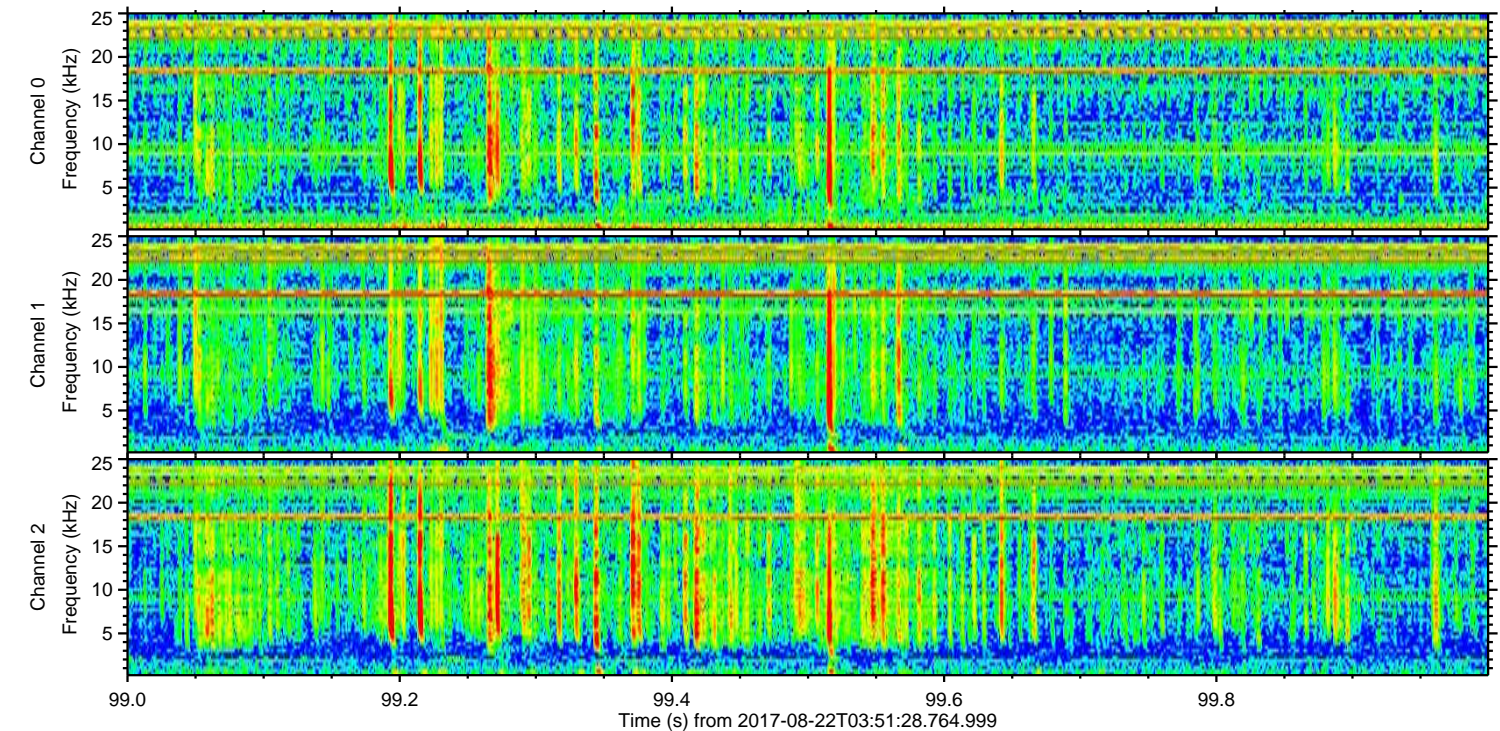
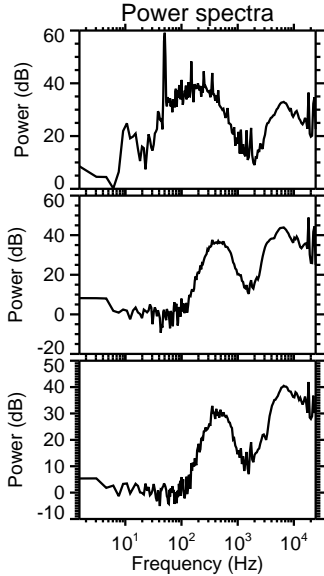
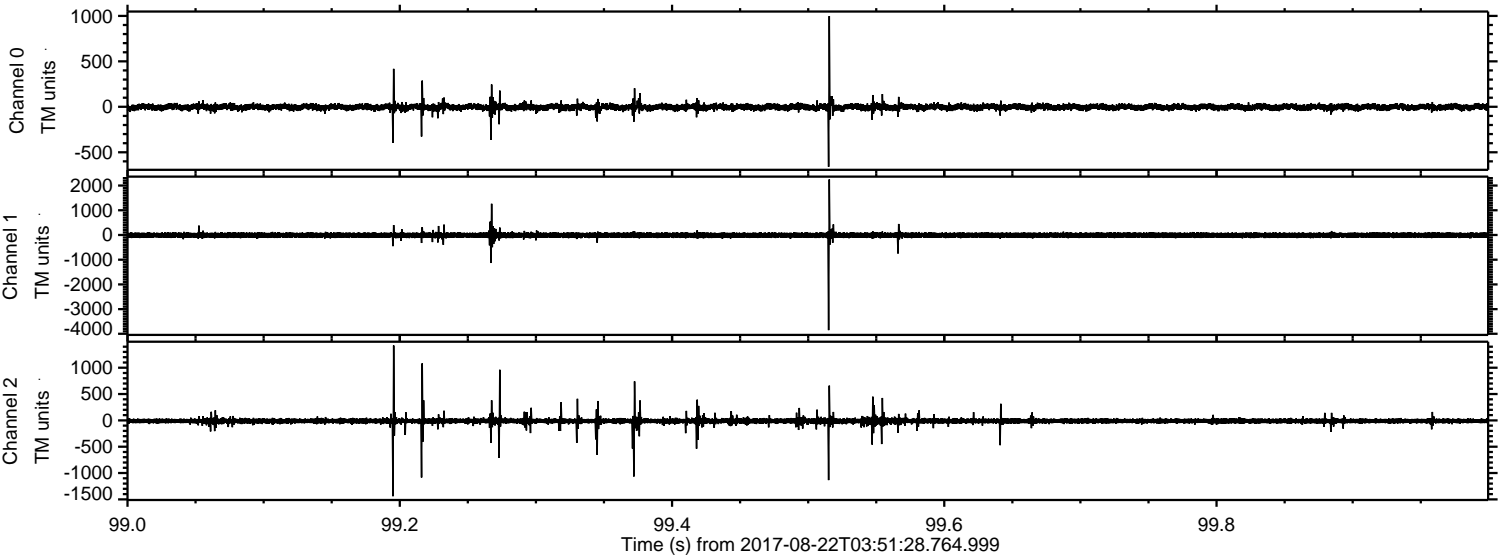


Processed Tue Aug 22 05:59:01 2017 by ELM ver.2012-10-06 from 001__elm20170822_035127__dat00.bin



ELMAVAN 3D WAVEFORMS (Measured data sampled at 50 kHz) 51000 packets of 144 samples from 2017-08-22T03:51:28.764.999. Part 100/147

Processed Tue Aug 22 05:59:02 2017 by ELM ver.2012-10-06 from 001__elm20170822_035127__dat00.bin

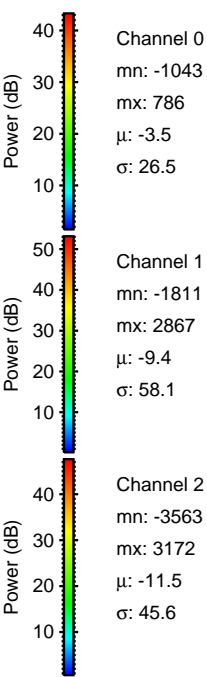
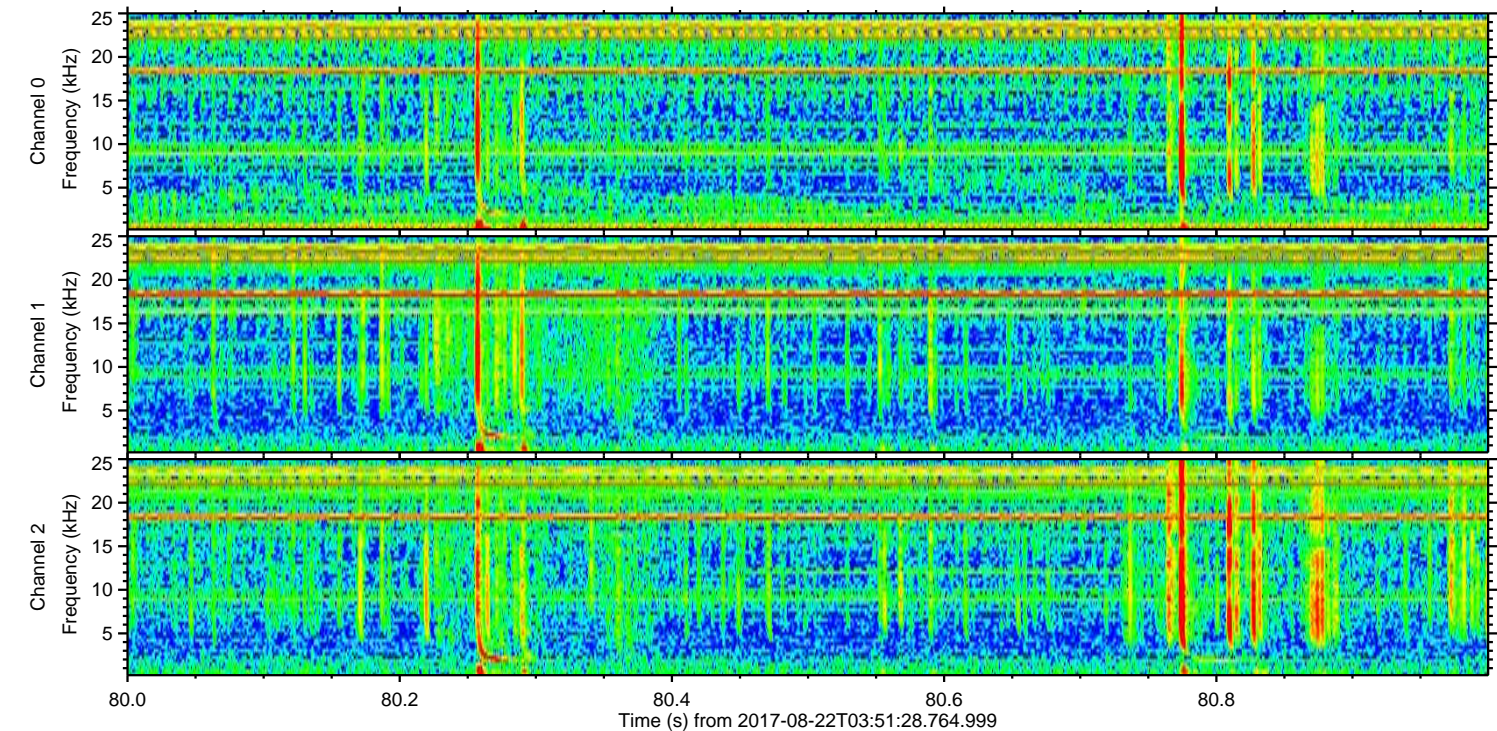
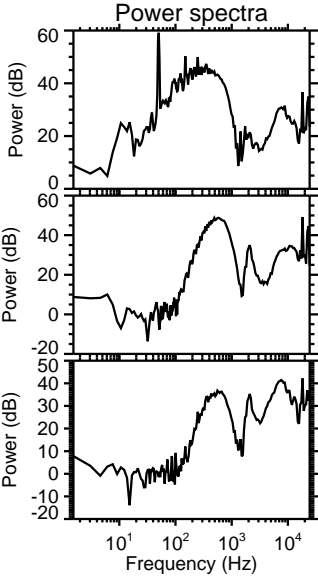
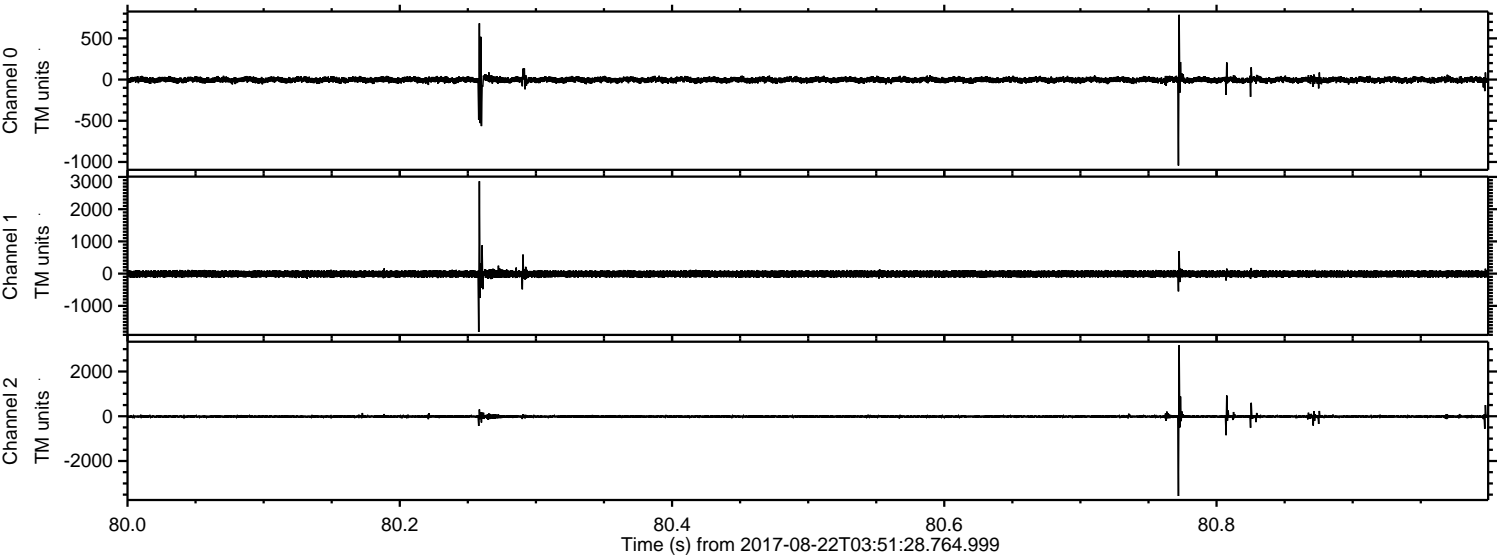


Channel 0
mn: -660
mx: 998
 μ : -3.5
 σ : 21.0

Channel 1
mn: -3852
mx: 2249
 μ : -9.5
 σ : 61.6

Channel 2
mn: -1440
mx: 1423
 μ : -11.5
 σ : 41.4

Processed Tue Aug 22 05:59:03 2017 by ELM ver.2012-10-06 from 001__elm20170822_035127__dat00.bin



Processed Tue Aug 22 05:59:03 2017 by ELM ver.2012-10-06 from 001__elm20170822_035127__dat00.bin

