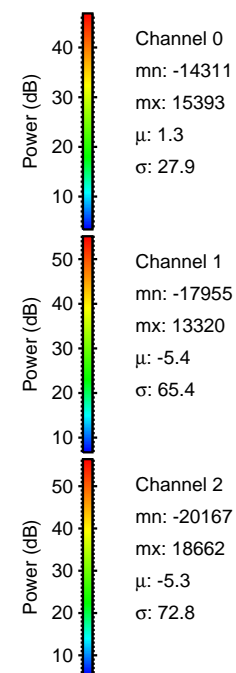
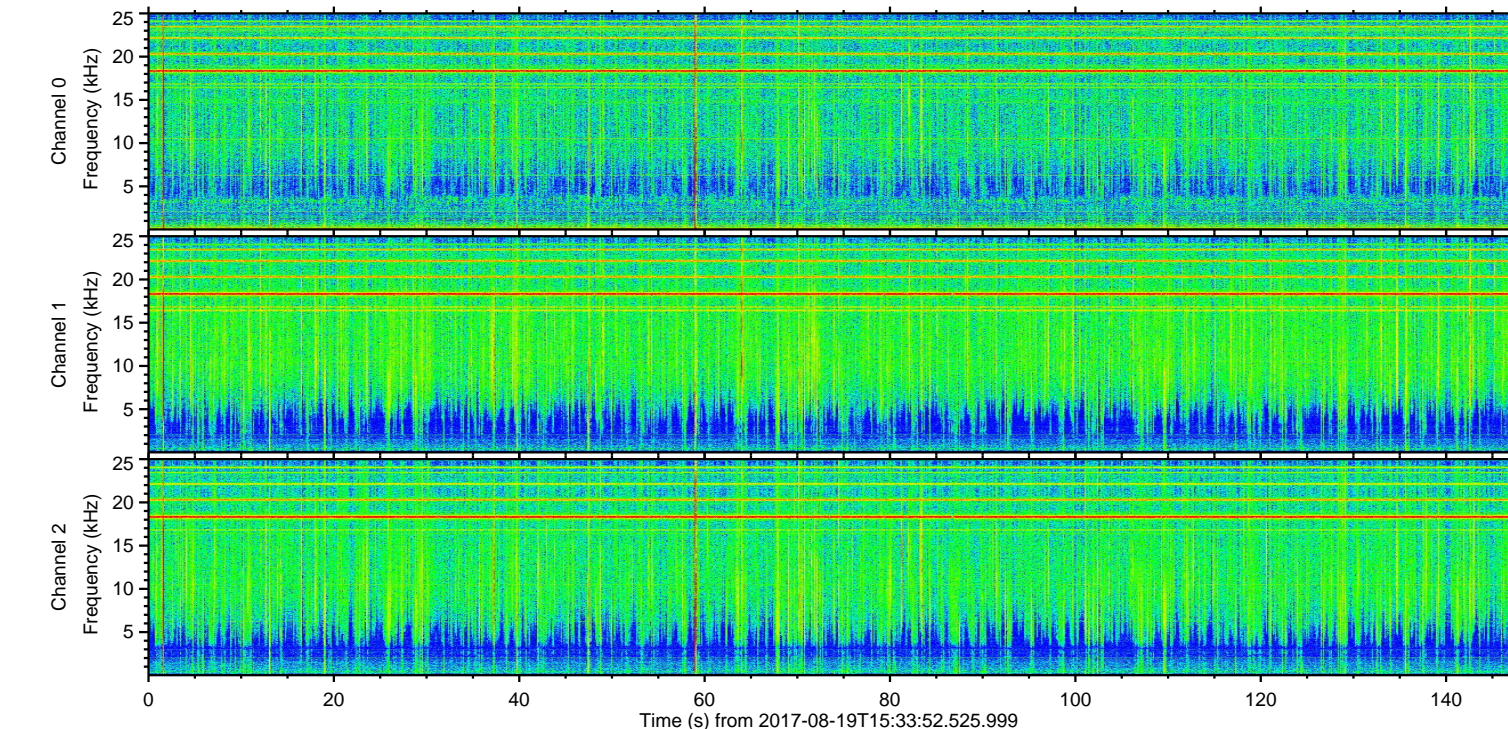
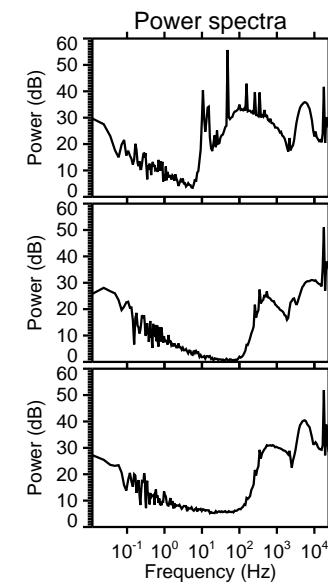
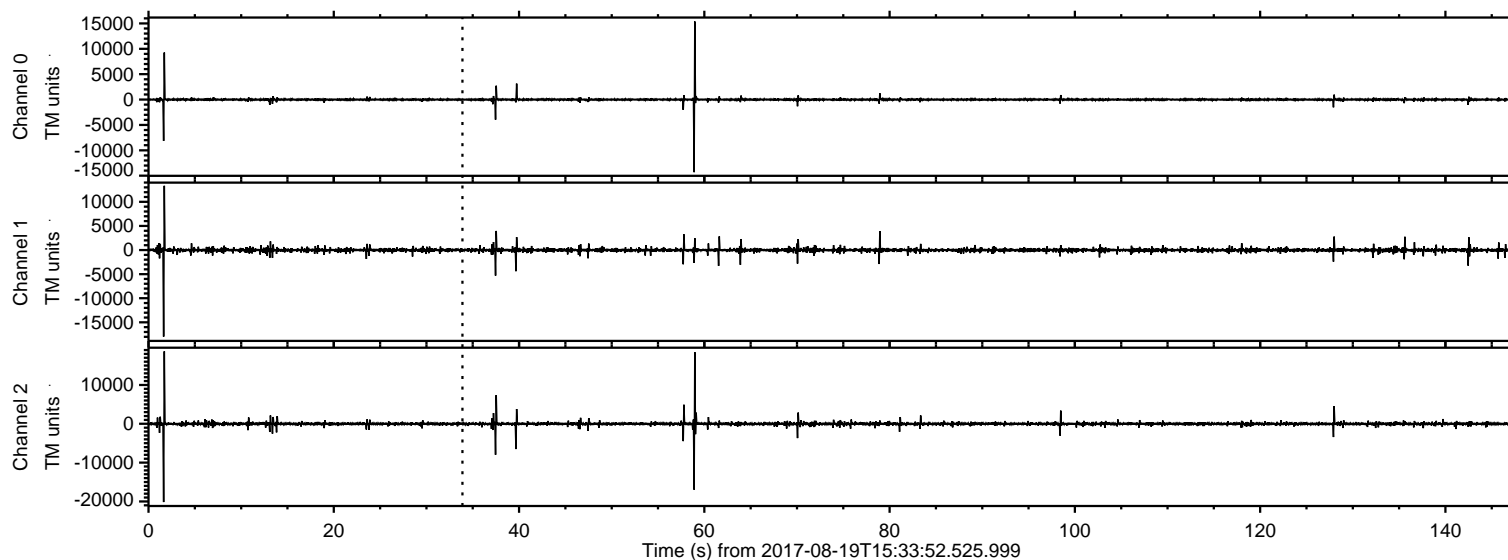


# ELMAVAN 3D WAVEFORMS (Measured data sampled at 50 kHz) 50999 packets of 144 samples from 2017-08-19T15:33:52.525.999.

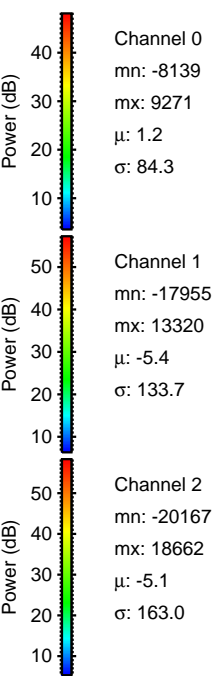
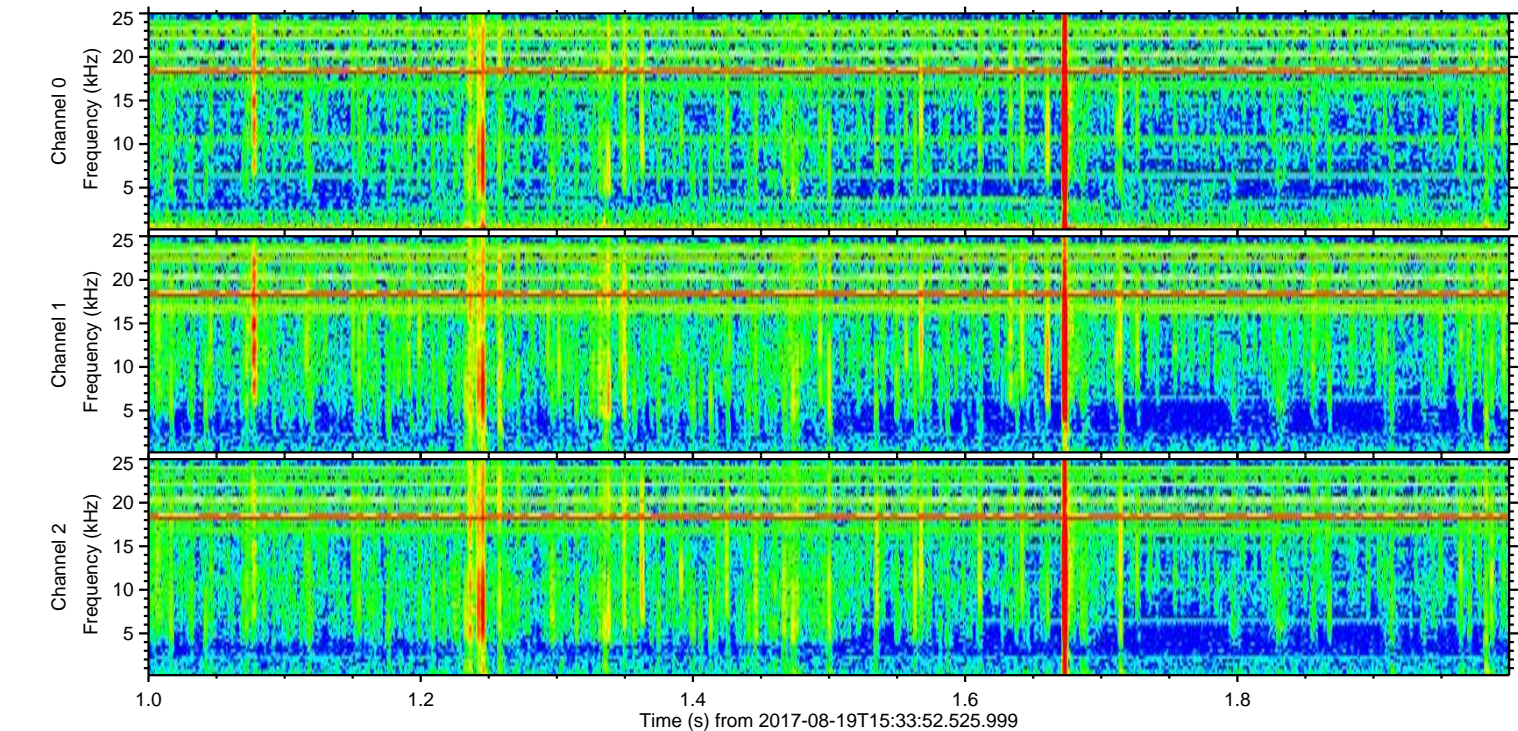
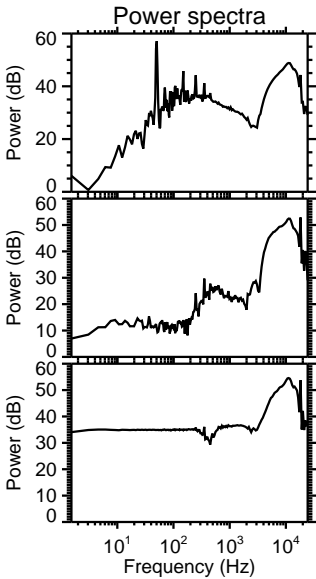
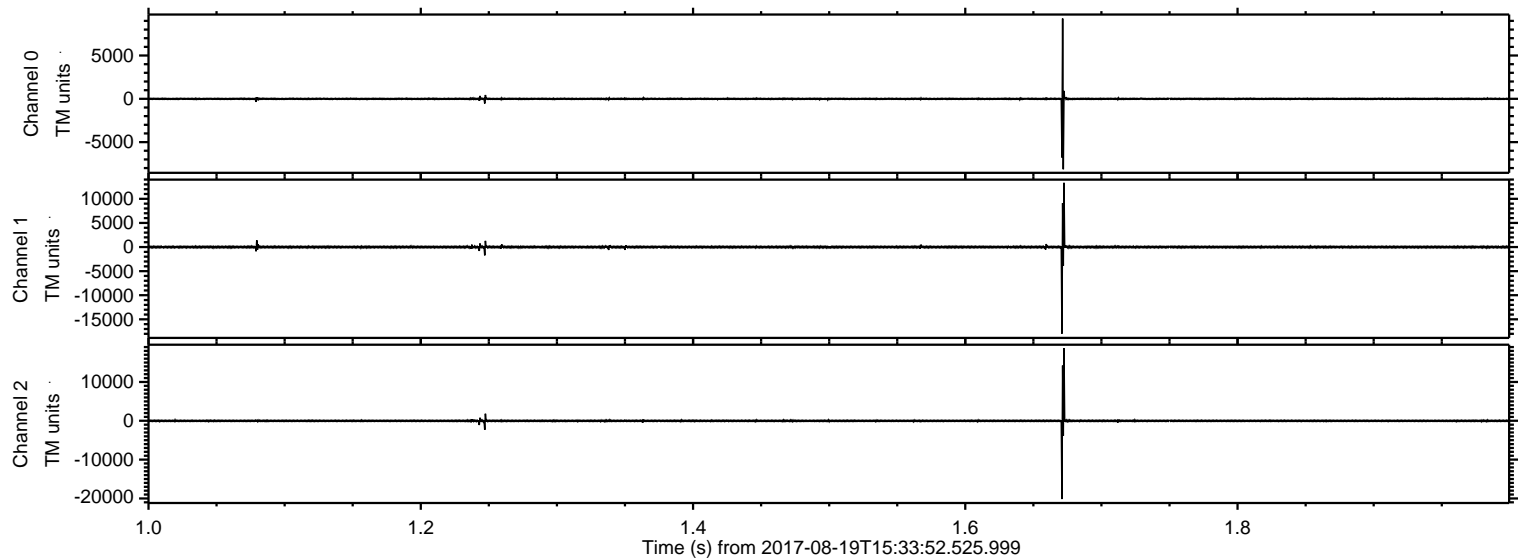
Processed Sat Aug 19 17:41:31 2017 by ELM ver.2012-10-06 from 001\_\_elm20170819\_153351\_\_dat00.bin





ELMAVAN 3D WAVEFORMS (Measured data sampled at 50 kHz) 50999 packets of 144 samples from 2017-08-19T15:33:52.525.999. Part 2/147

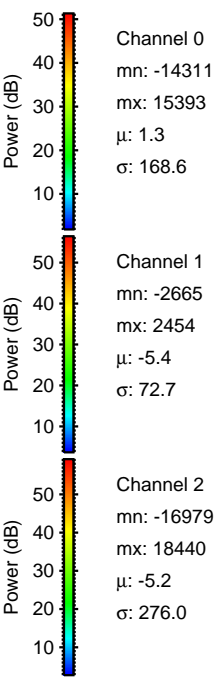
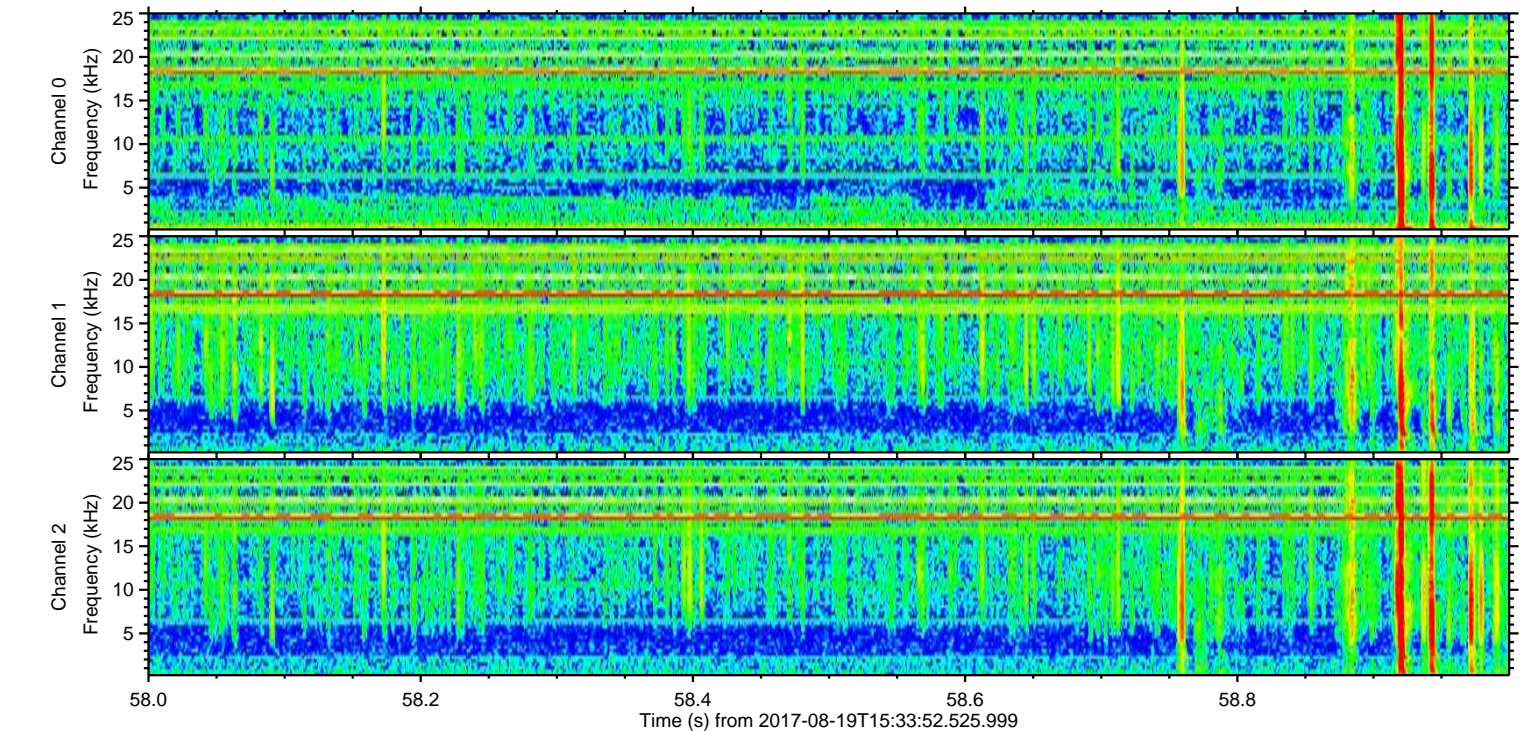
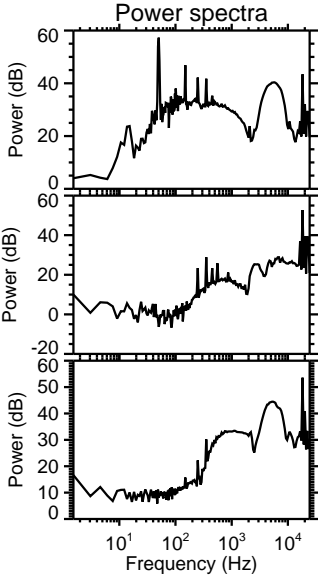
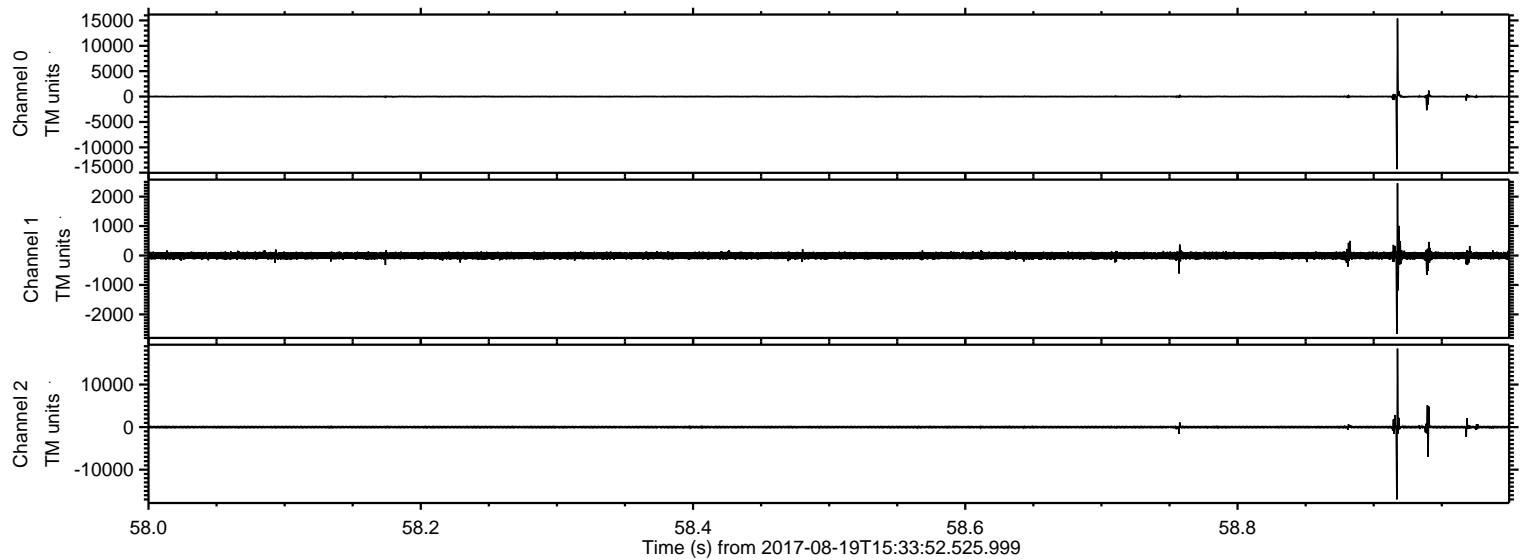
Processed Sat Aug 19 17:41:38 2017 by ELM ver.2012-10-06 from 001\_\_elm20170819\_153351\_\_dat00.bin





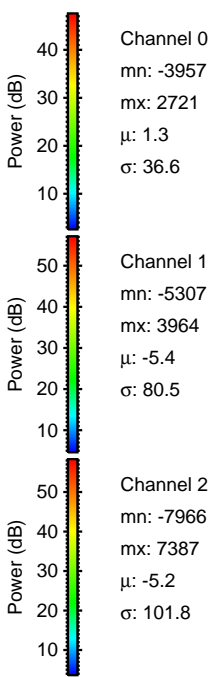
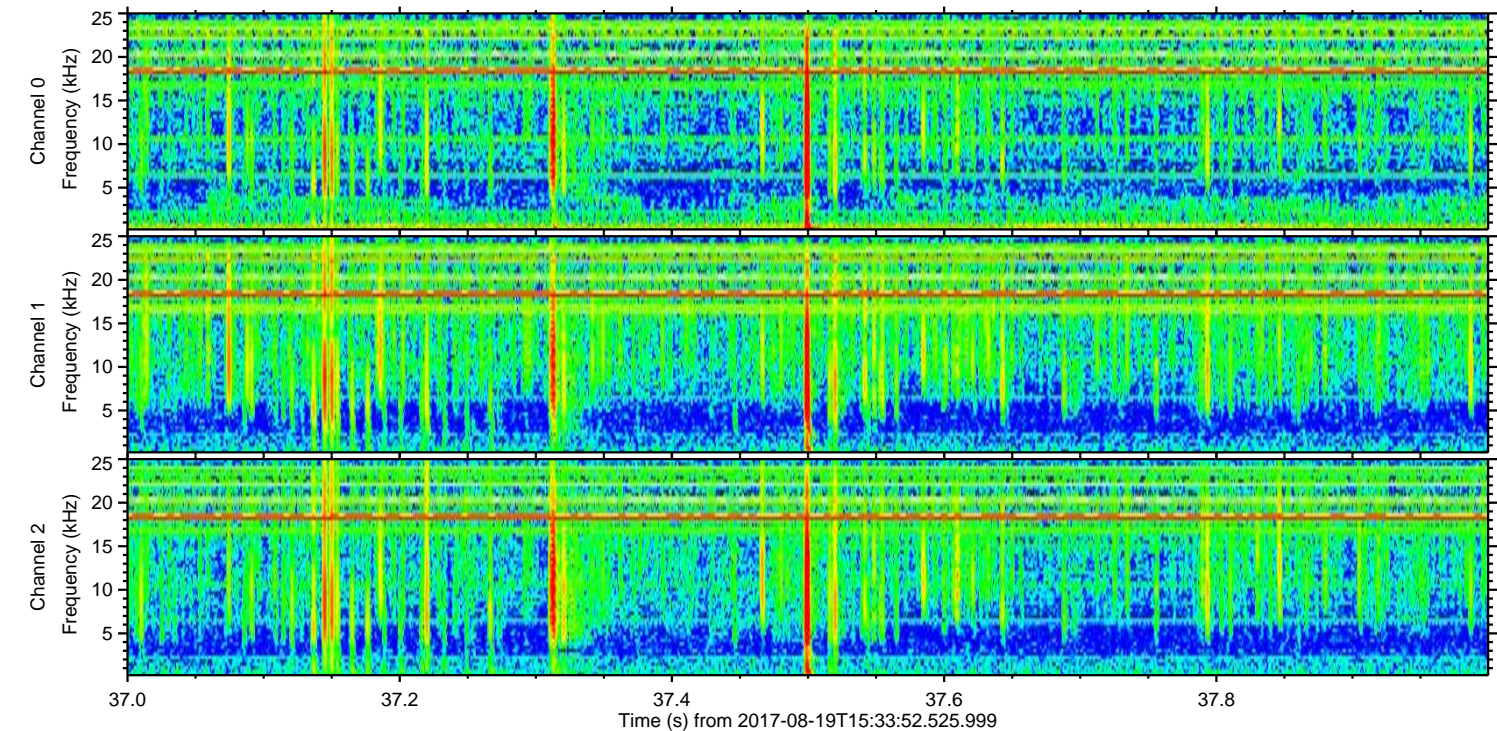
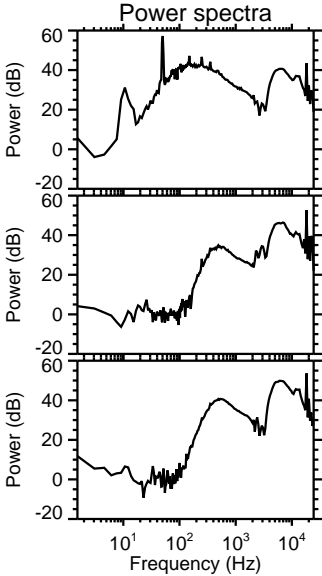
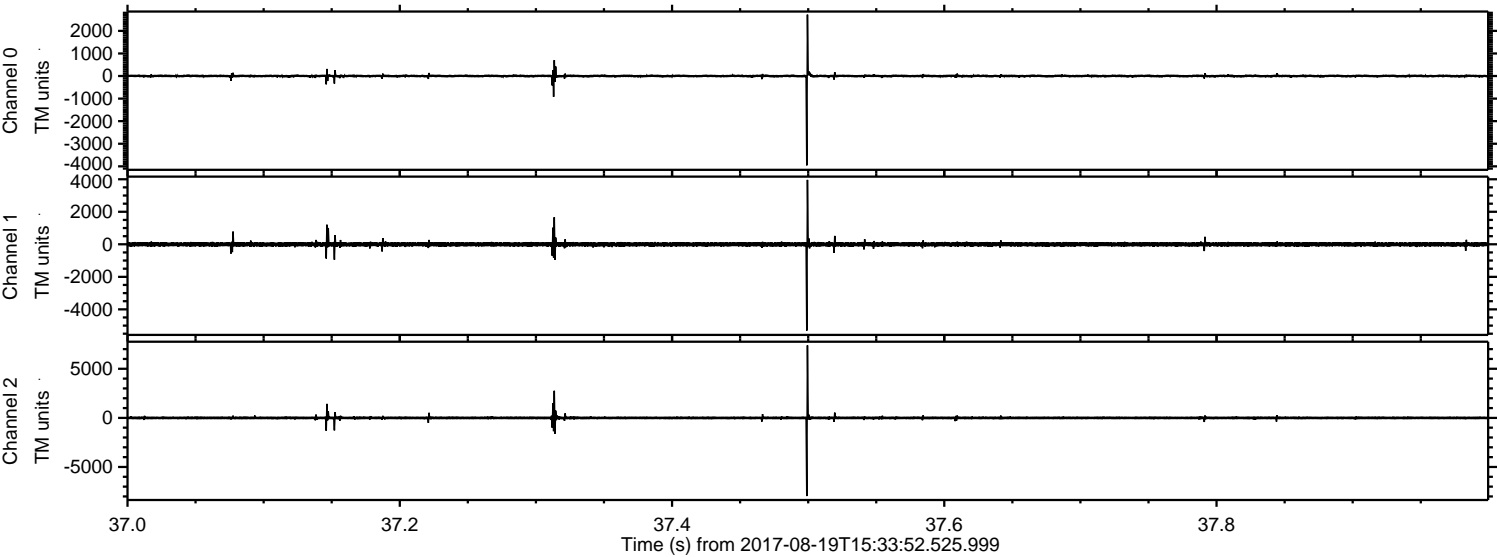
ELMAVAN 3D WAVEFORMS (Measured data sampled at 50 kHz) 50999 packets of 144 samples from 2017-08-19T15:33:52.525.999. Part 59/147

Processed Sat Aug 19 17:41:38 2017 by ELM ver.2012-10-06 from 001\_\_elm20170819\_153351\_\_dat00.bin



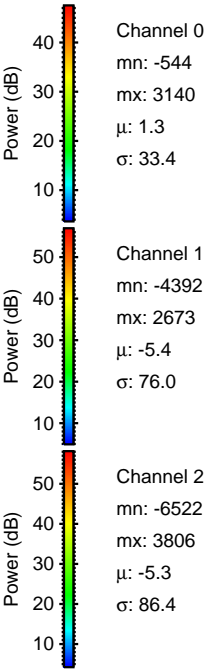
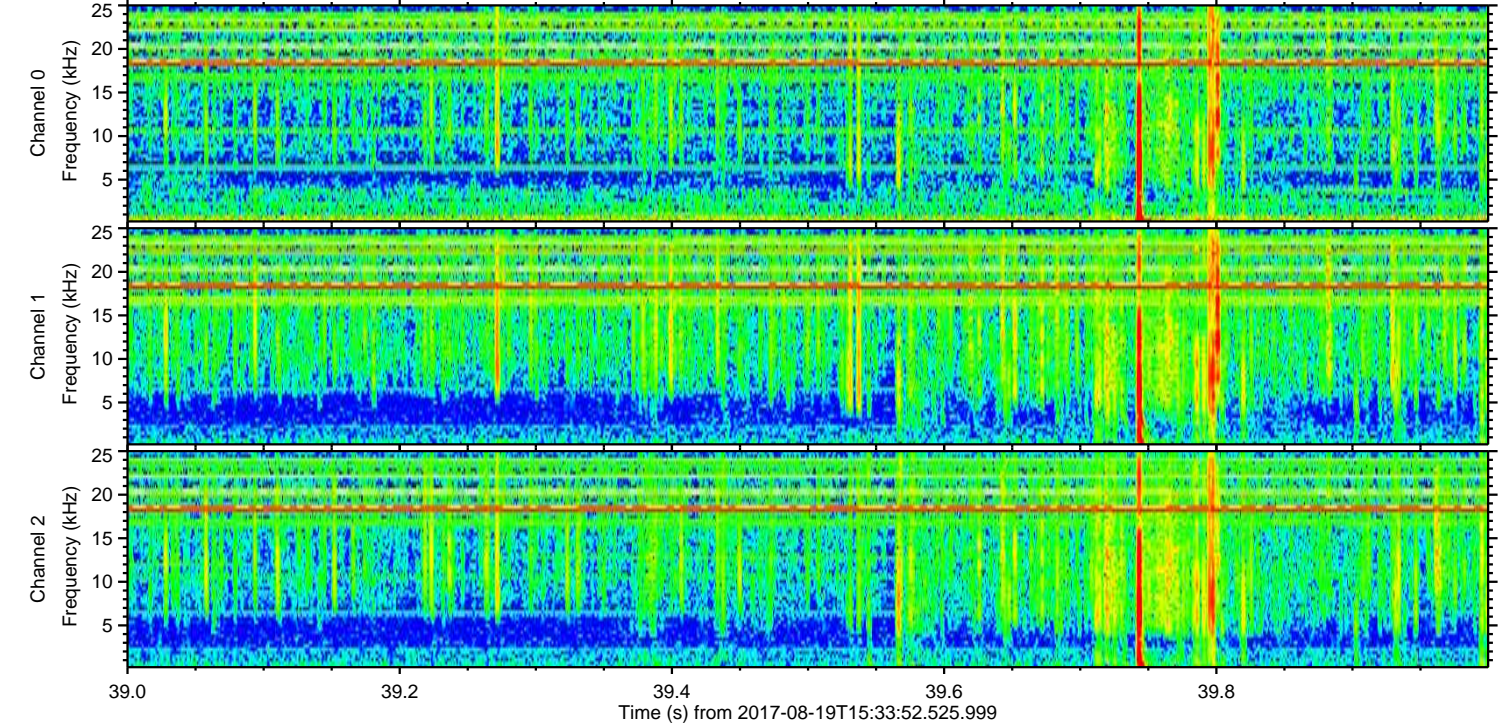
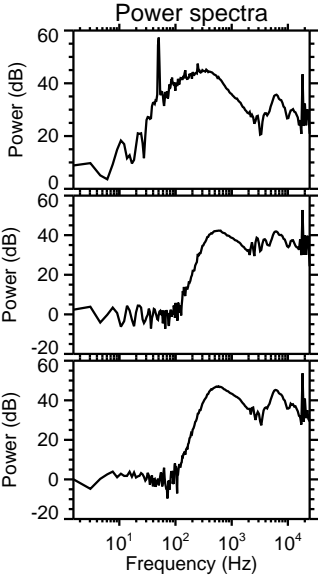
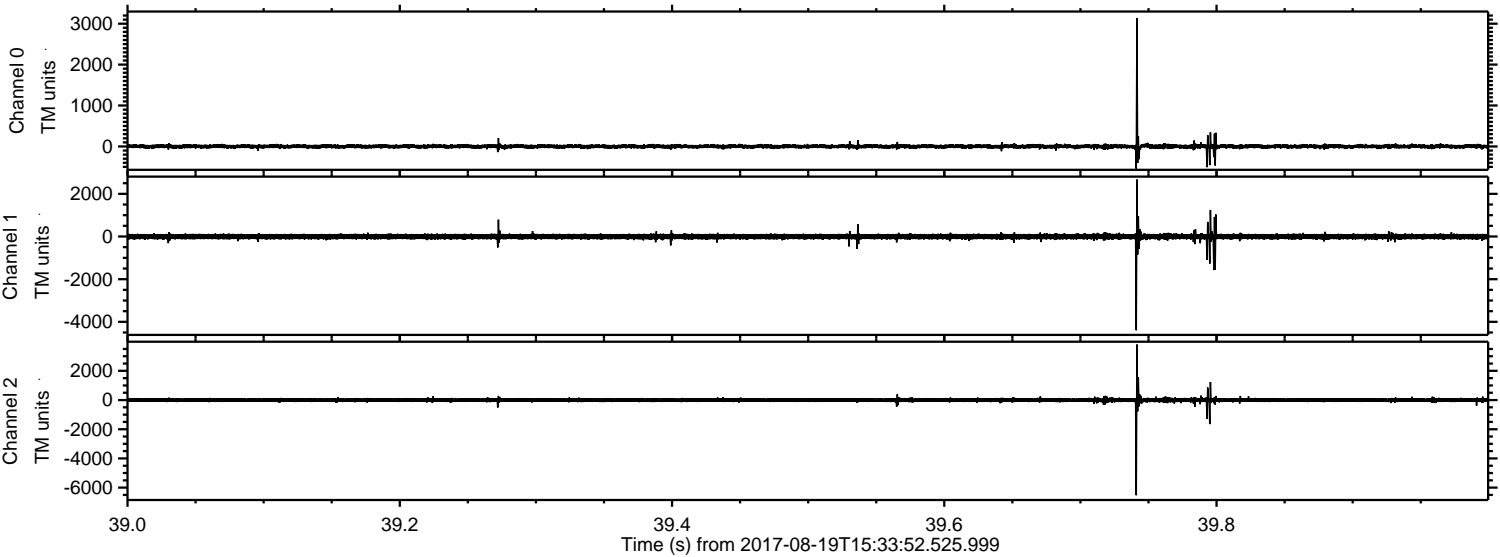


Processed Sat Aug 19 17:41:39 2017 by ELM ver.2012-10-06 from 001\_\_elm20170819\_153351\_\_dat00.bin



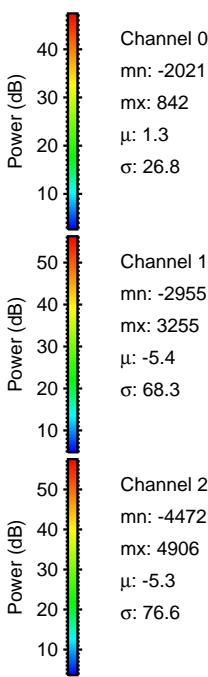
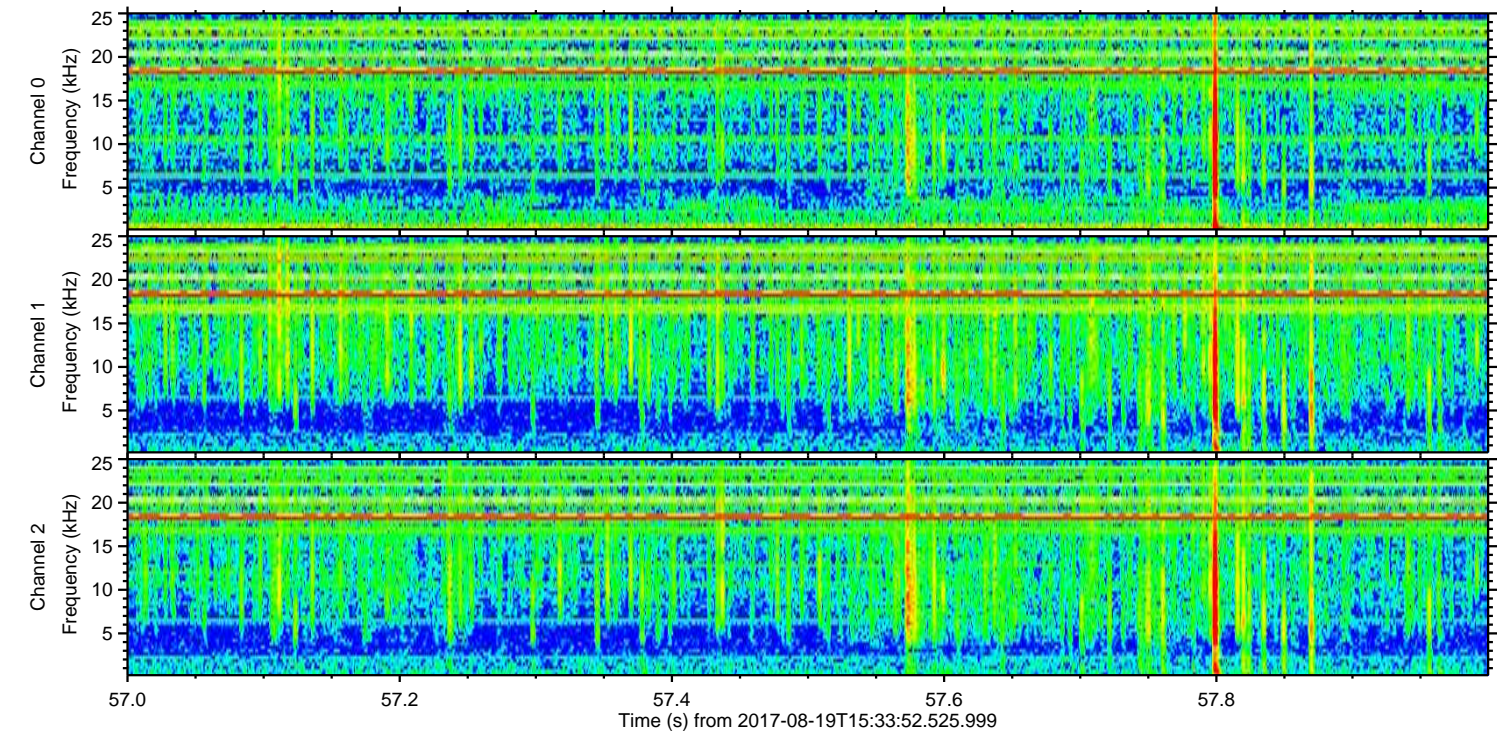
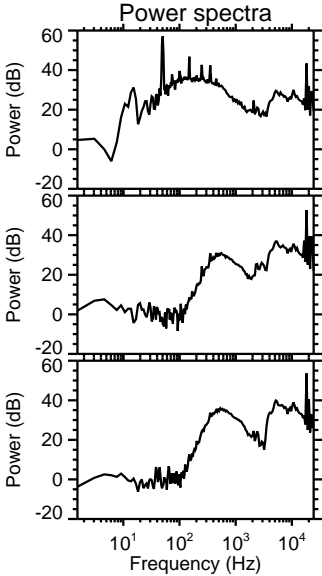
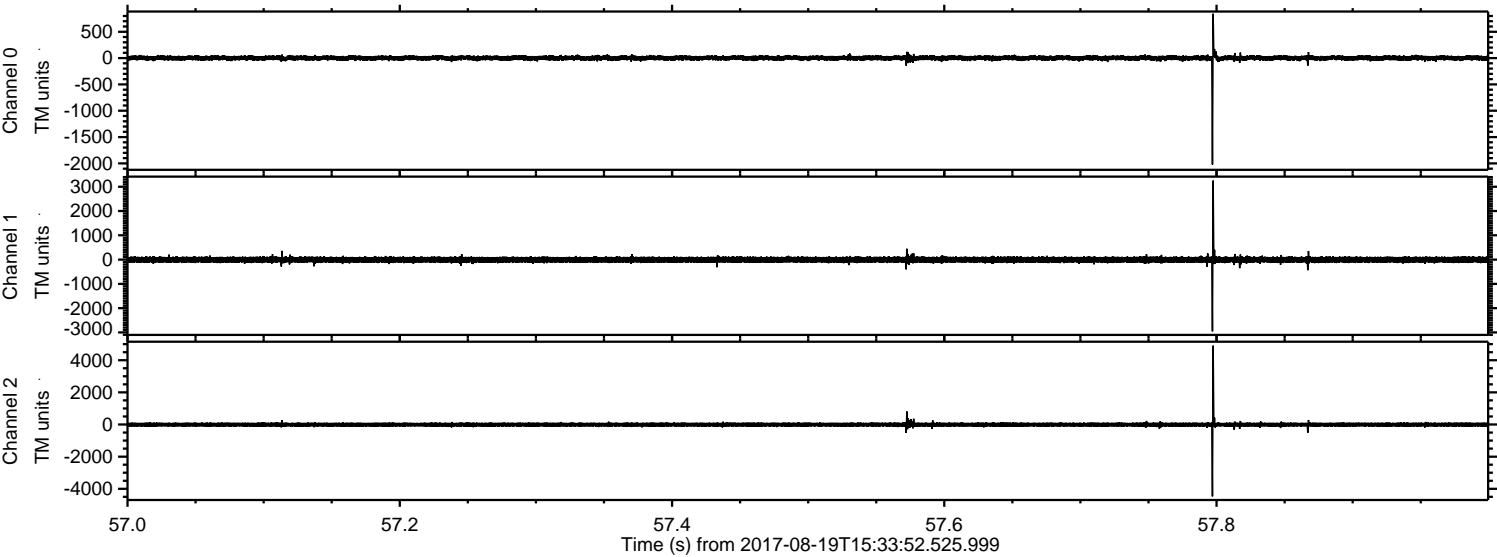


Processed Sat Aug 19 17:41:40 2017 by ELM ver.2012-10-06 from 001\_\_elm20170819\_153351\_\_dat00.bin





Processed Sat Aug 19 17:41:41 2017 by ELM ver.2012-10-06 from 001\_\_elm20170819\_153351\_\_dat00.bin



Channel 0  
mn: -2021  
mx: 842  
 $\mu$ : 1.3  
 $\sigma$ : 26.8

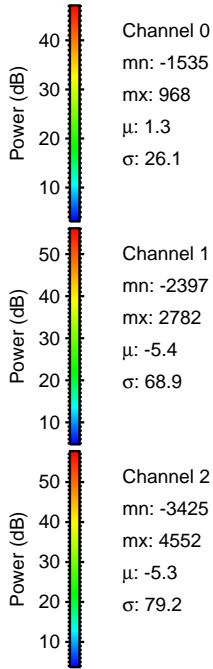
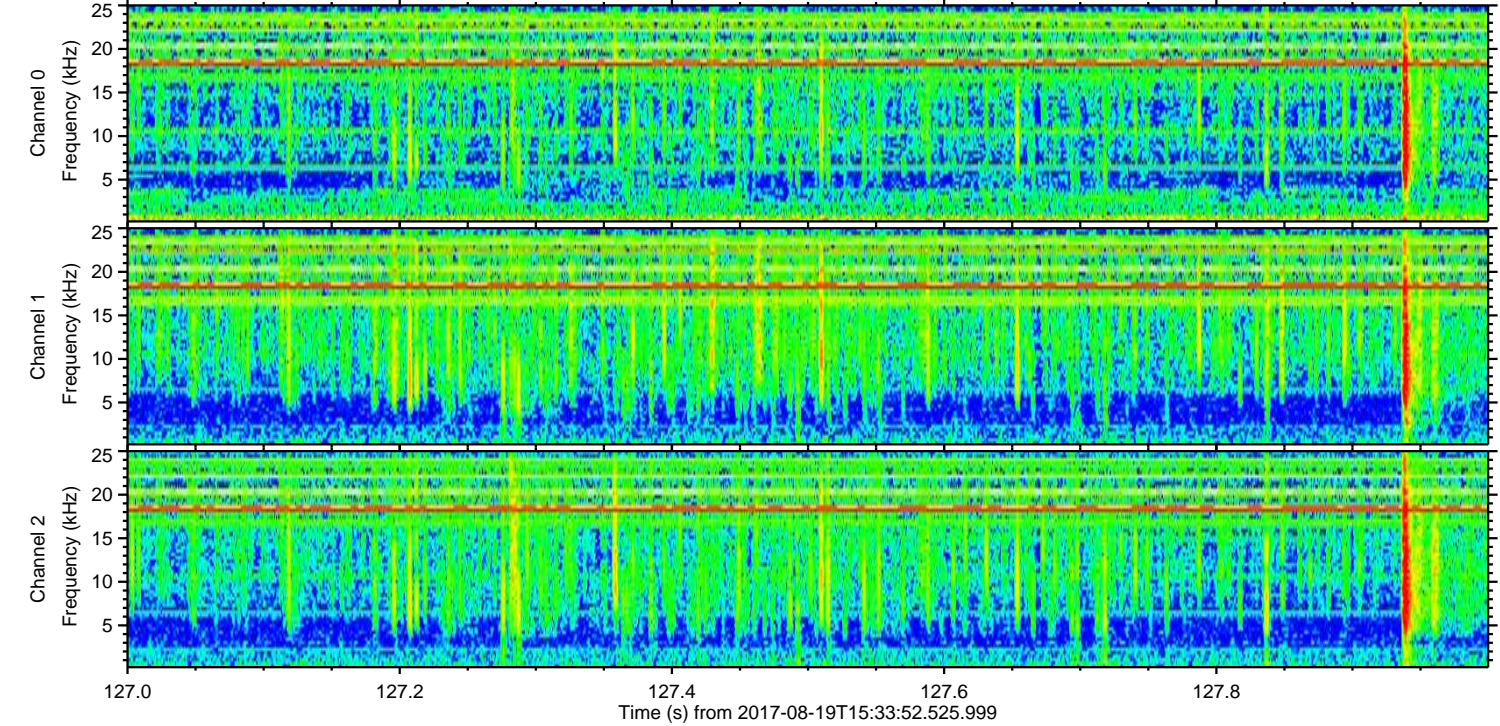
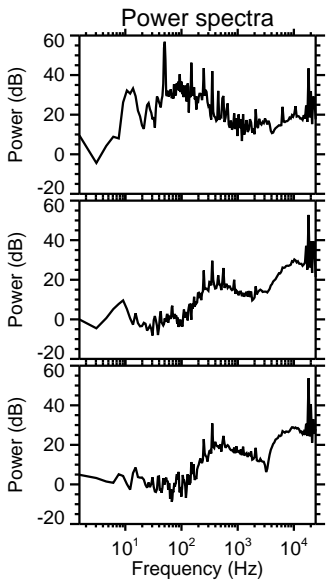
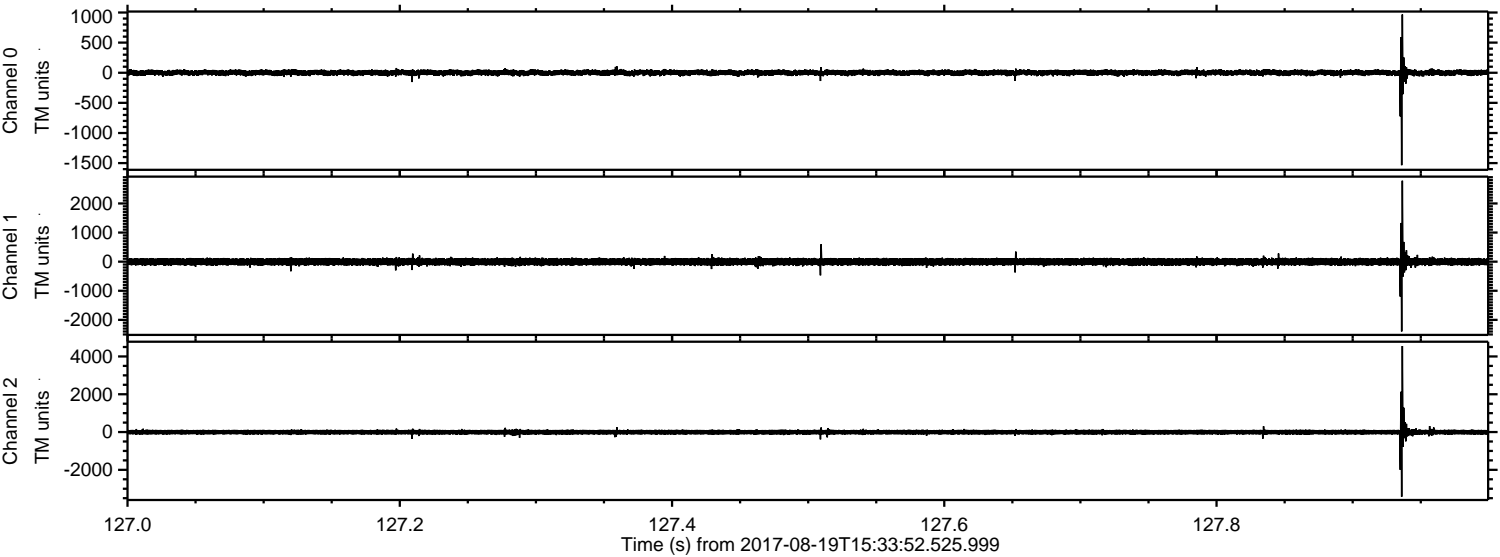
Channel 1  
mn: -2955  
mx: 3255  
 $\mu$ : -5.4  
 $\sigma$ : 68.3

Channel 2  
mn: -4472  
mx: 4906  
 $\mu$ : -5.3  
 $\sigma$ : 76.6



ELMAVAN 3D WAVEFORMS (Measured data sampled at 50 kHz) 50999 packets of 144 samples from 2017-08-19T15:33:52.525.999. Part 128/147

Processed Sat Aug 19 17:41:41 2017 by ELM ver.2012-10-06 from 001\_\_elm20170819\_153351\_\_dat00.bin



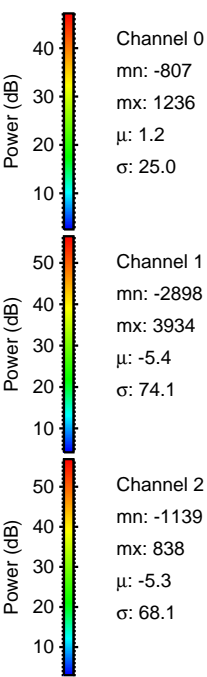
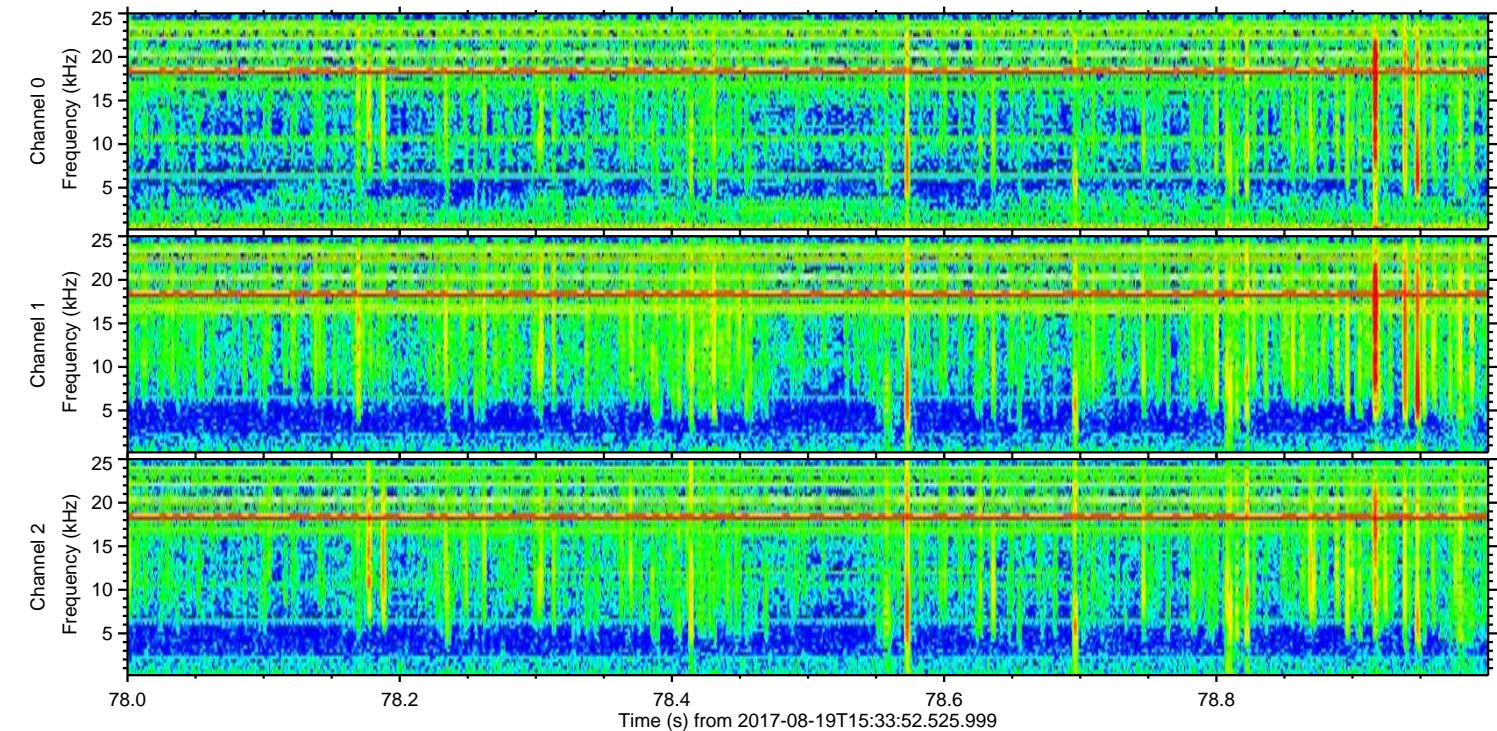
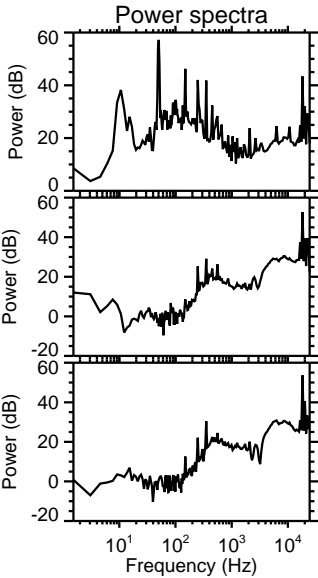
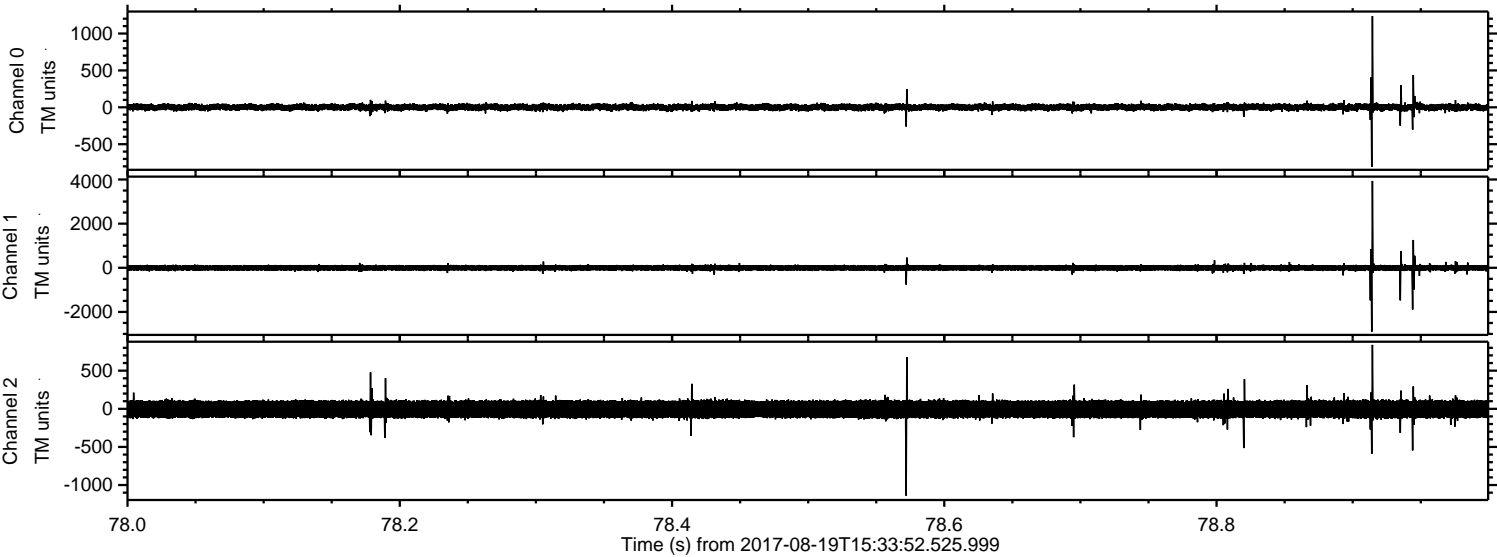
Channel 0  
mn: -1535  
mx: 968  
 $\mu$ : 1.3  
 $\sigma$ : 26.1

Channel 1  
mn: -2397  
mx: 2782  
 $\mu$ : -5.4  
 $\sigma$ : 68.9

Channel 2  
mn: -3425  
mx: 4552  
 $\mu$ : -5.3  
 $\sigma$ : 79.2

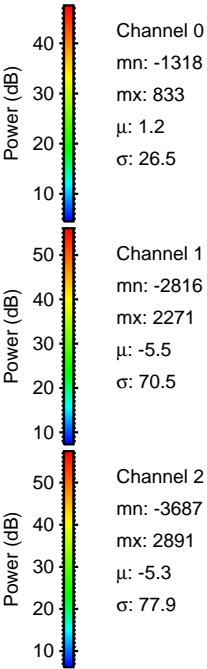
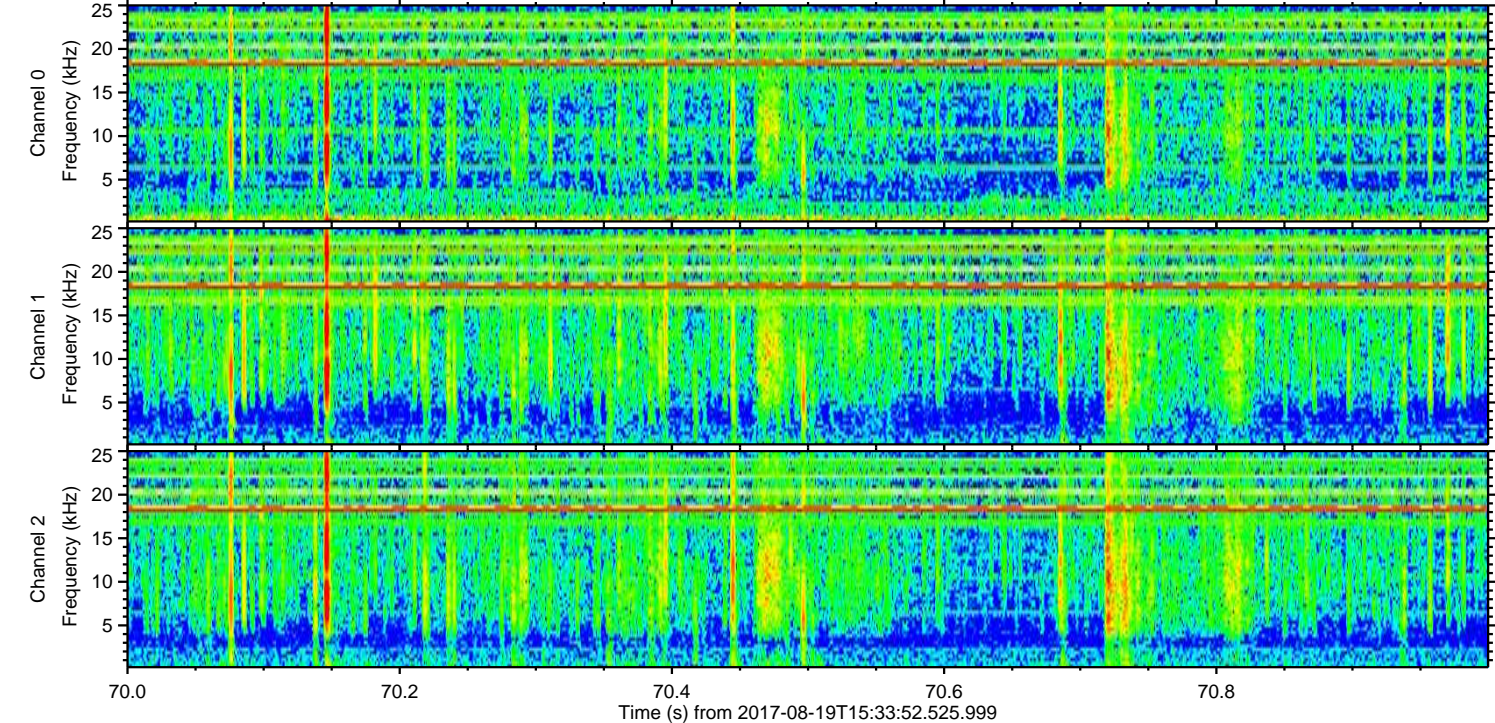
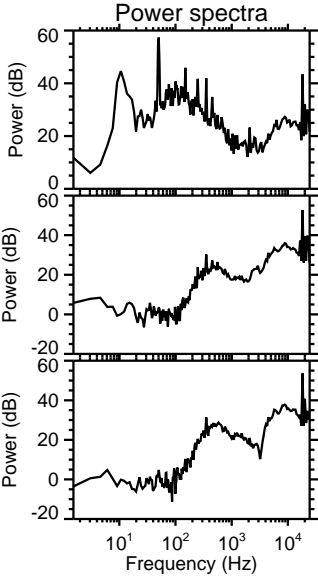
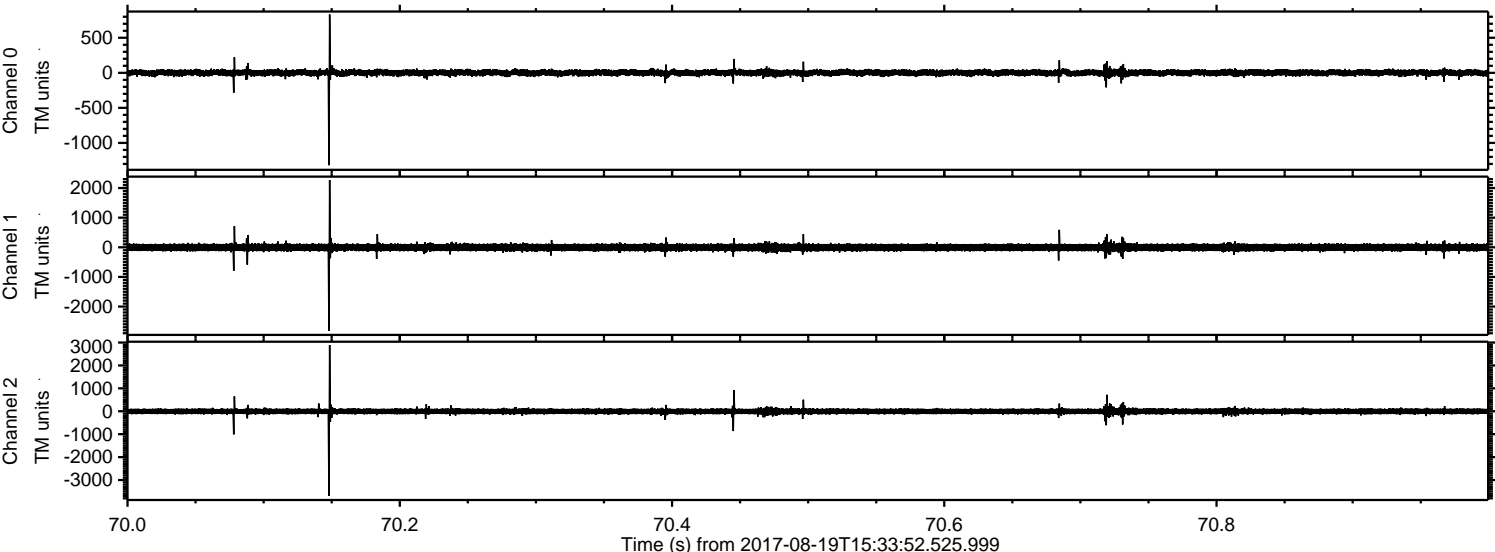


Processed Sat Aug 19 17:41:42 2017 by ELM ver.2012-10-06 from 001\_\_elm20170819\_153351\_\_dat00.bin



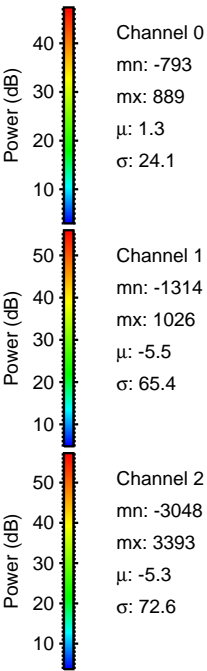
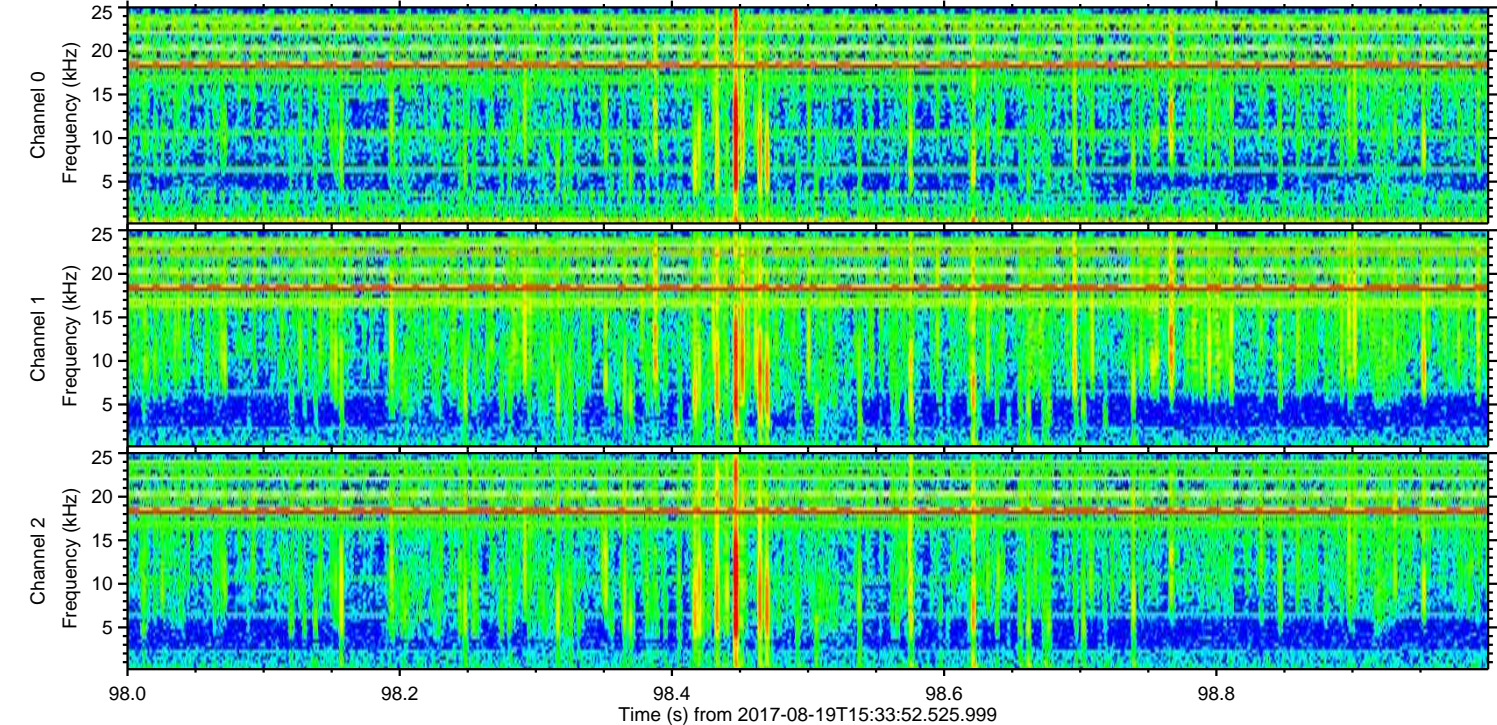
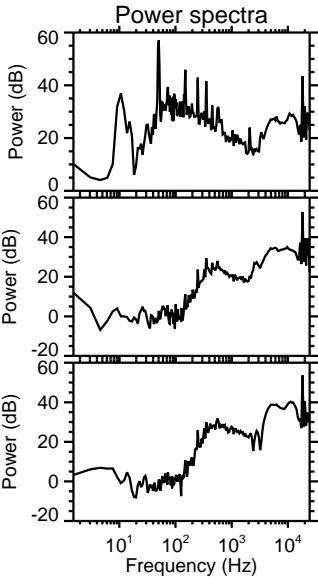
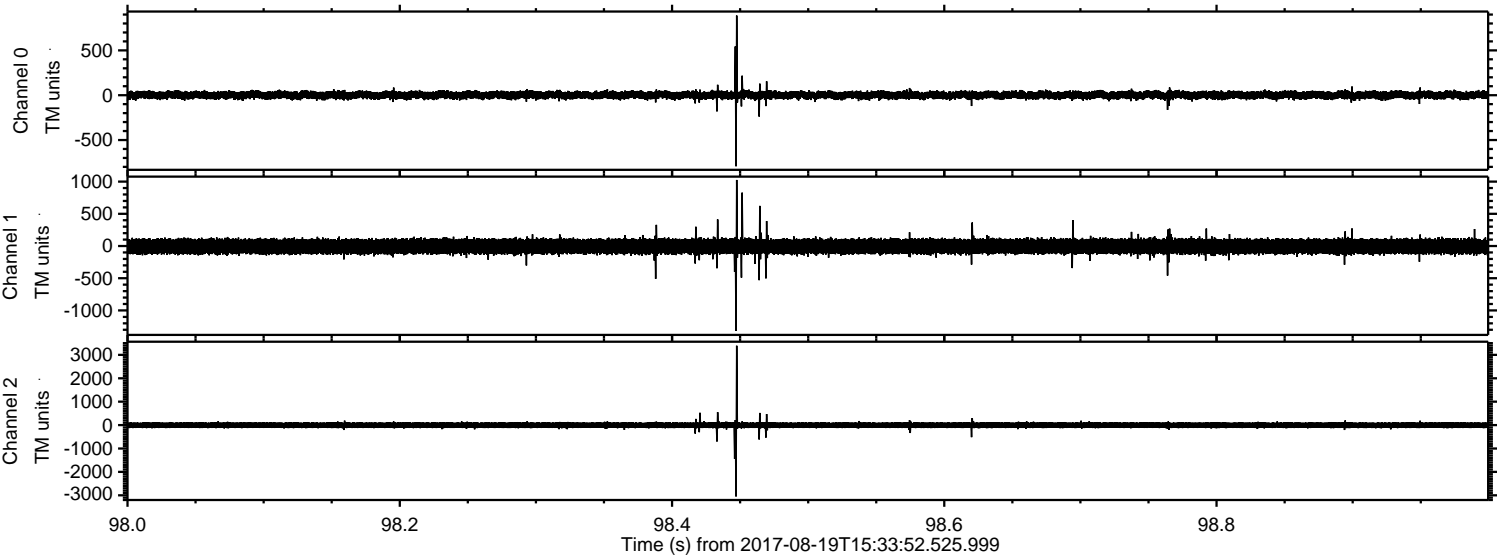


Processed Sat Aug 19 17:41:43 2017 by ELM ver.2012-10-06 from 001\_\_elm20170819\_153351\_\_dat00.bin





Processed Sat Aug 19 17:41:44 2017 by ELM ver.2012-10-06 from 001\_\_elm20170819\_153351\_\_dat00.bin



Channel 0  
mn: -793  
mx: 889  
 $\mu$ : 1.3  
 $\sigma$ : 24.1

Channel 1  
mn: -1314  
mx: 1026  
 $\mu$ : -5.5  
 $\sigma$ : 65.4

Channel 2  
mn: -3048  
mx: 3393  
 $\mu$ : -5.3  
 $\sigma$ : 72.6



Processed Sat Aug 19 17:41:44 2017 by ELM ver.2012-10-06 from 001\_\_elm20170819\_153351\_\_dat00.bin

