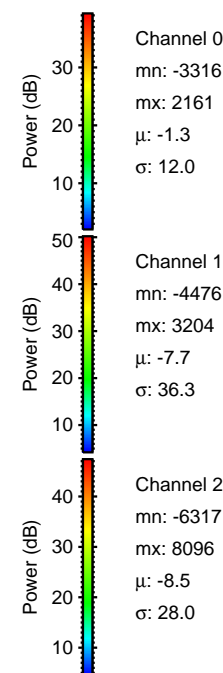
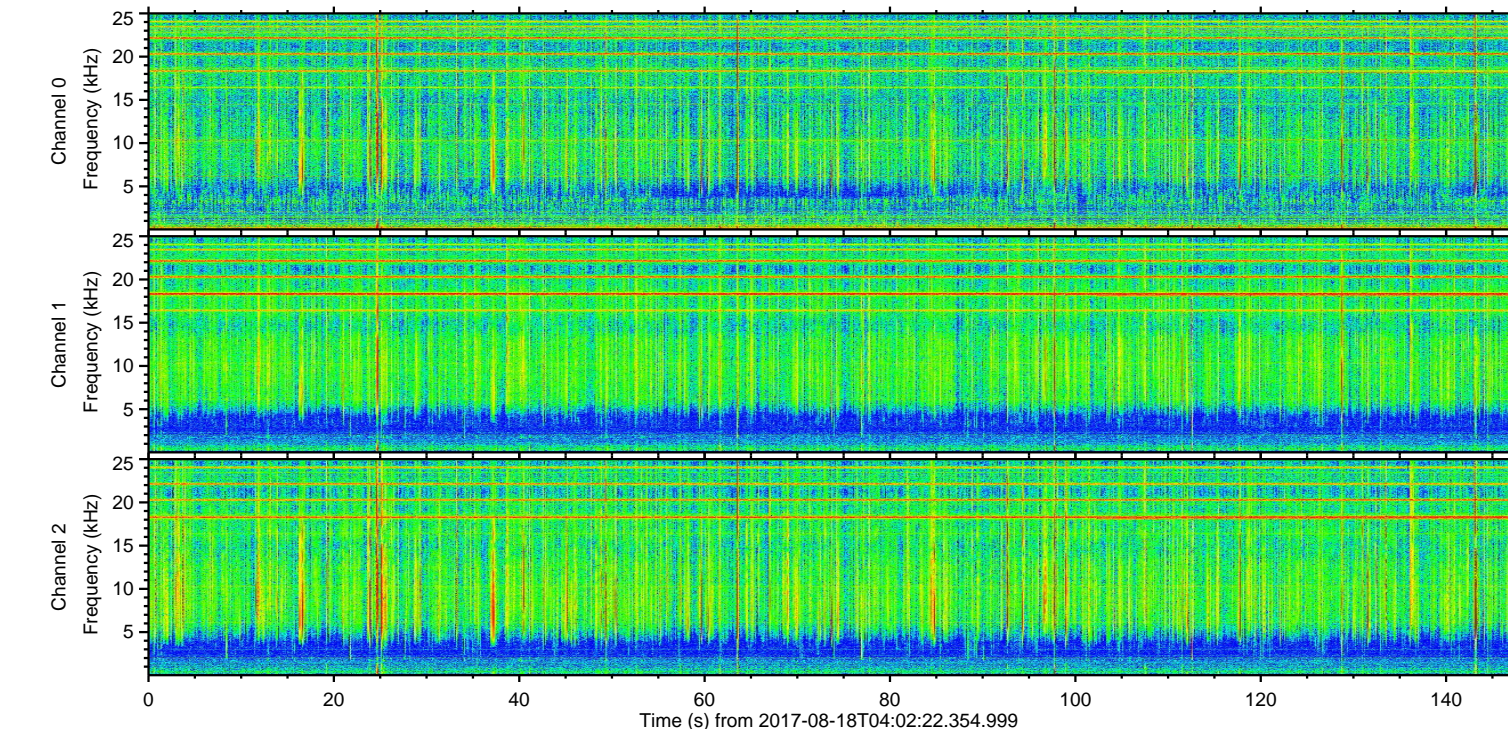
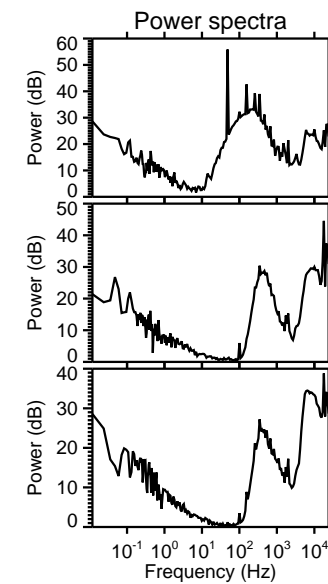
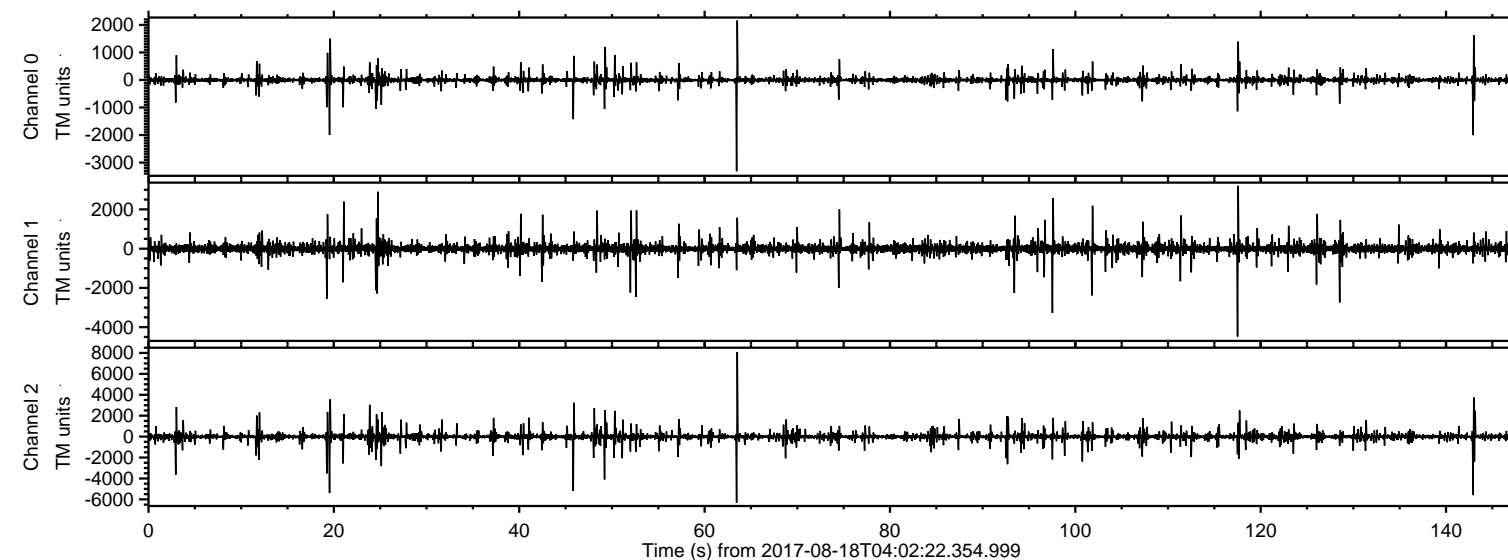


ELMAVAN 3D WAVEFORMS (Measured data sampled at 50 kHz) 51000 packets of 144 samples from 2017-08-18T04:02:22.354.999.

Processed Fri Aug 18 06:10:24 2017 by ELM ver.2012-10-06 from 001__elm20170818_040221__dat00.bin



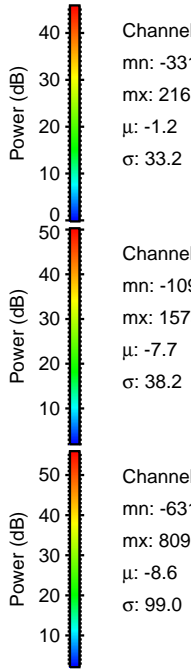
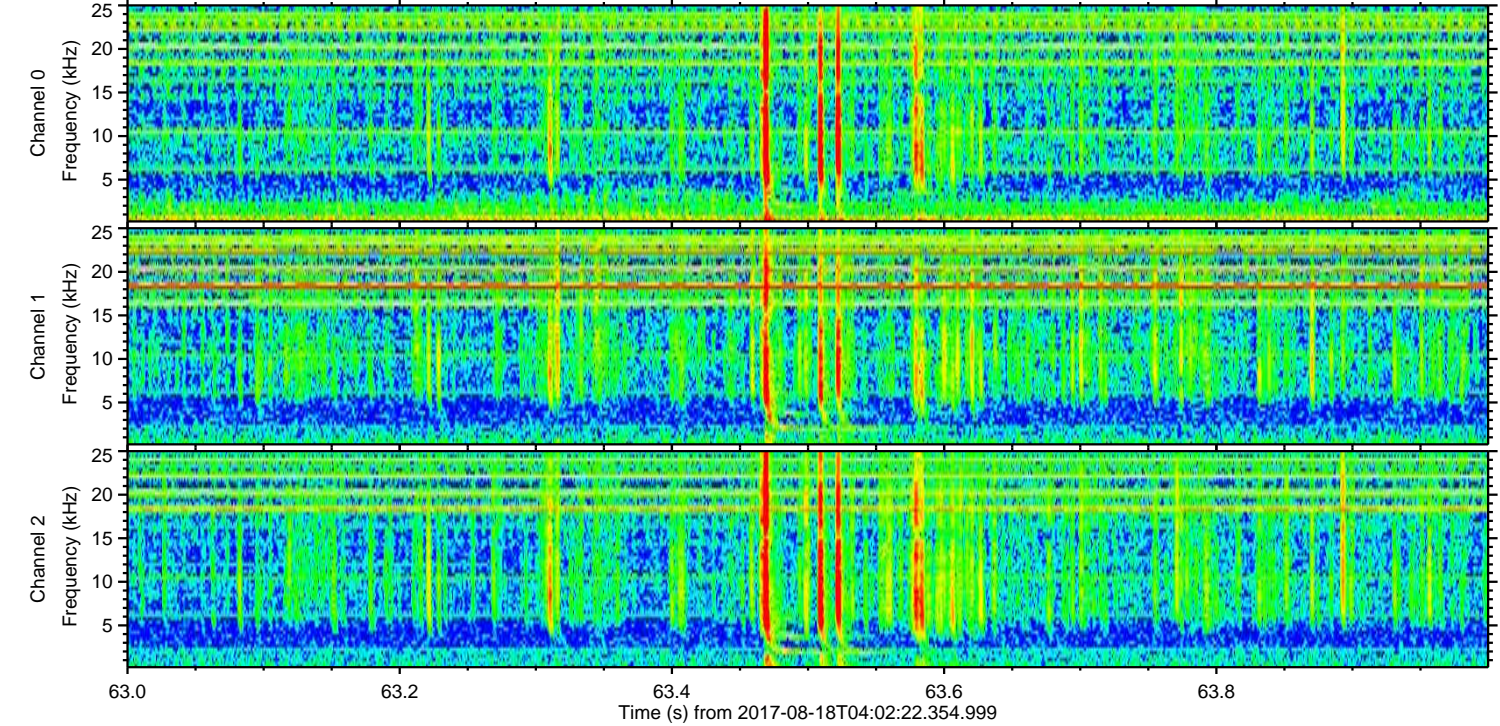
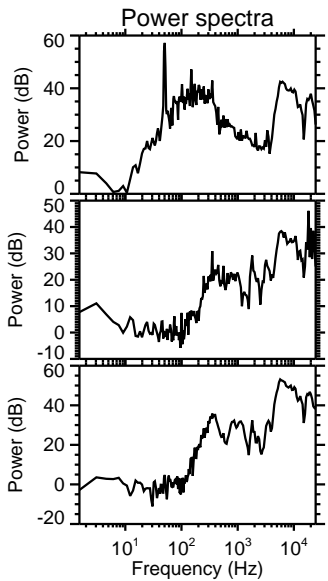
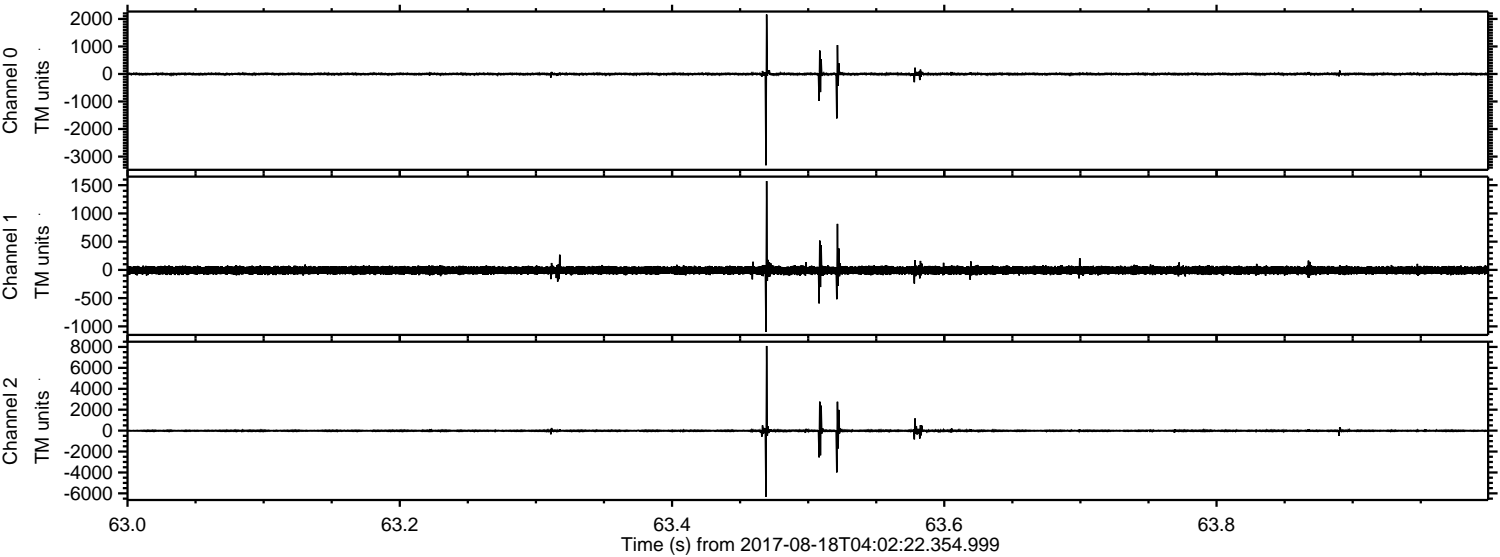
Channel 0
mn: -3316
mx: 2161
 μ : -1.3
 σ : 12.0

Channel 1
mn: -4476
mx: 3204
 μ : -7.7
 σ : 36.3

Channel 2
mn: -6317
mx: 8096
 μ : -8.5
 σ : 28.0

ELMAVAN 3D WAVEFORMS (Measured data sampled at 50 kHz) 51000 packets of 144 samples from 2017-08-18T04:02:22.354.999. Part 64/147

Processed Fri Aug 18 06:10:30 2017 by ELM ver.2012-10-06 from 001__elm20170818_040221__dat00.bin



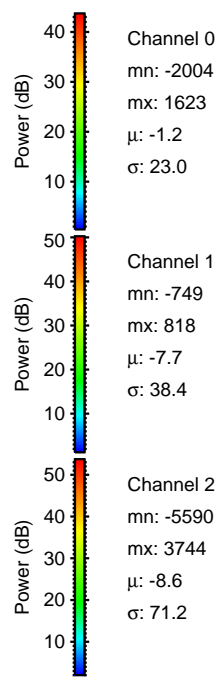
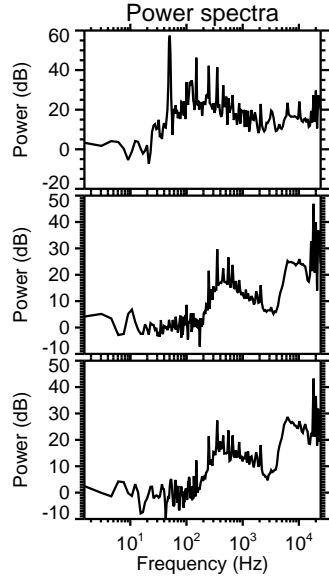
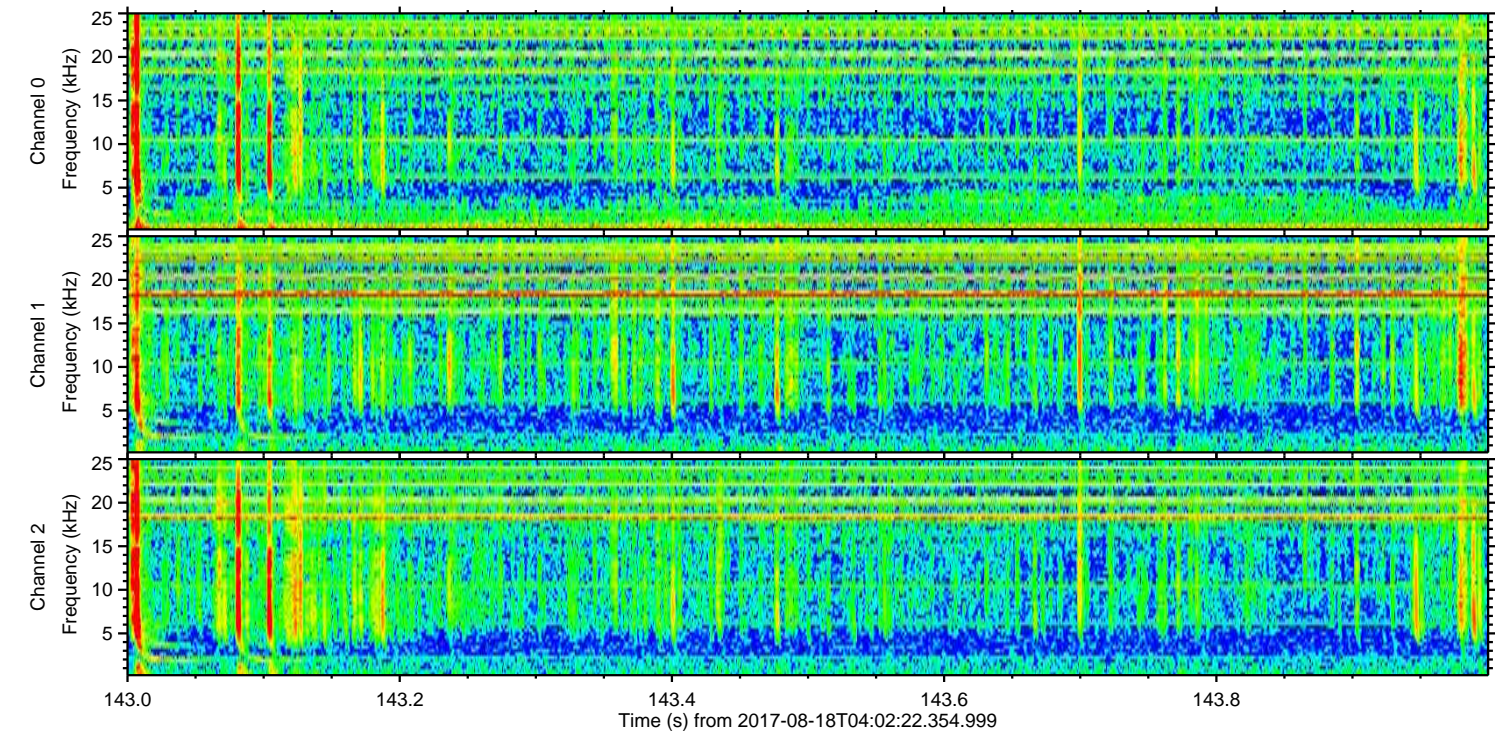
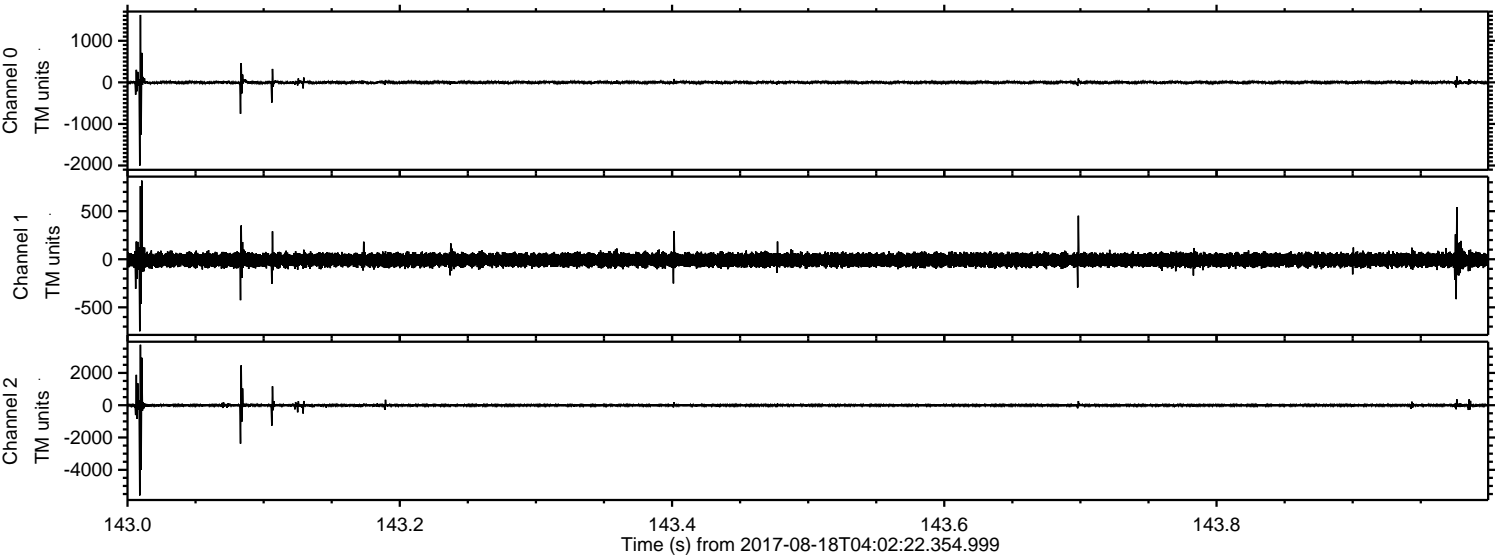
Channel 0
mn: -3316
mx: 2161
 μ : -1.2
 σ : 33.2

Channel 1
mn: -1097
mx: 1573
 μ : -7.7
 σ : 38.2

Channel 2
mn: -6317
mx: 8096
 μ : -8.6
 σ : 99.0

ELMAVAN 3D WAVEFORMS (Measured data sampled at 50 kHz) 51000 packets of 144 samples from 2017-08-18T04:02:22.354.999. Part 144/147

Processed Fri Aug 18 06:10:31 2017 by ELM ver.2012-10-06 from 001__elm20170818_040221__dat00.bin

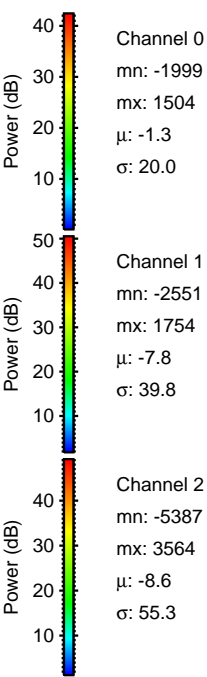
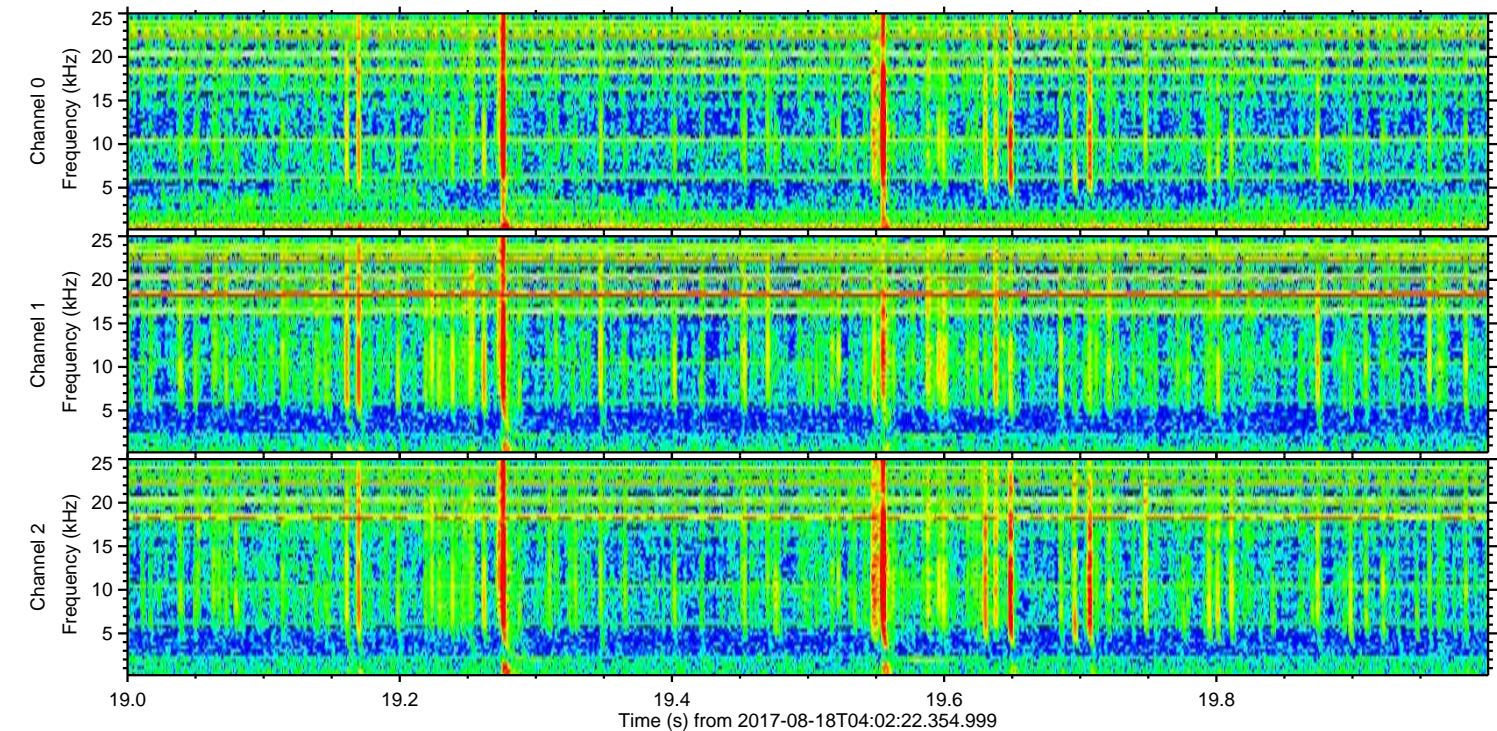
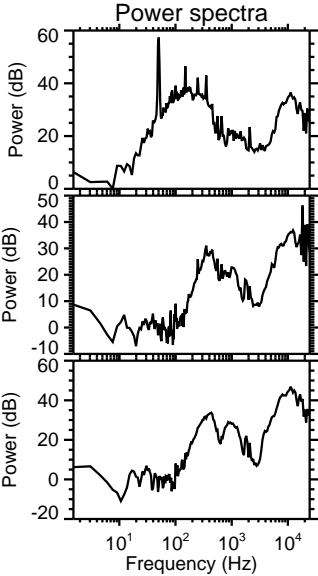
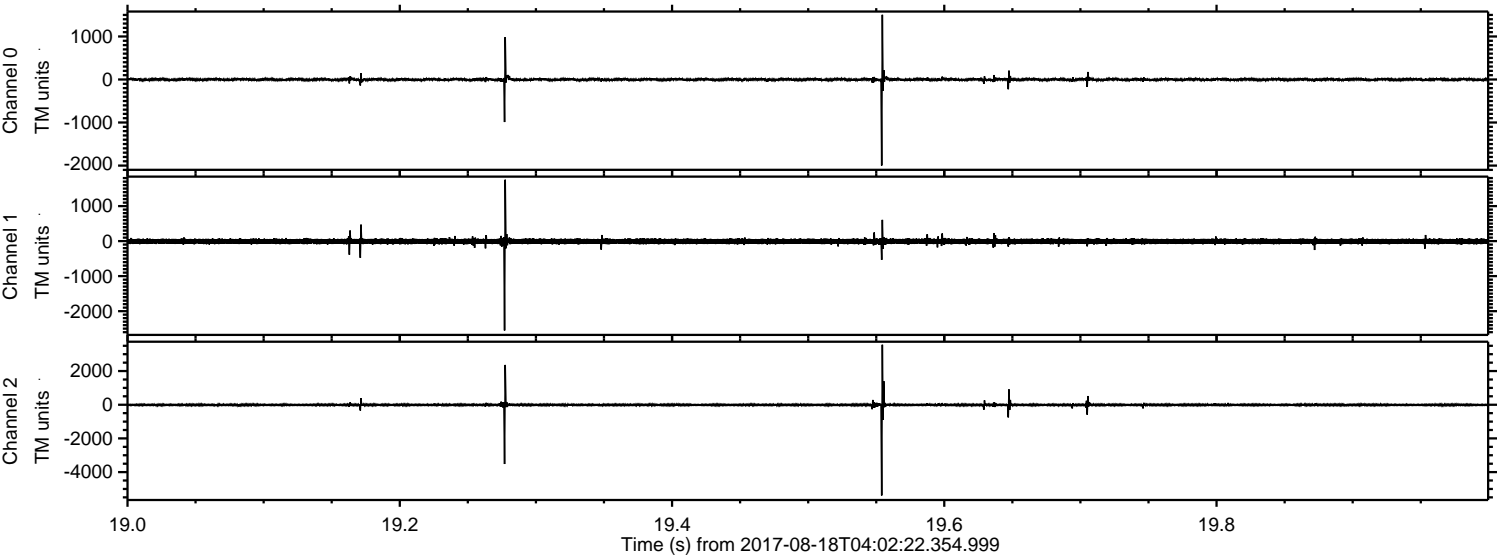


Channel 0
mn: -2004
mx: 1623
 μ : -1.2
 σ : 23.0

Channel 1
mn: -749
mx: 818
 μ : -7.7
 σ : 38.4

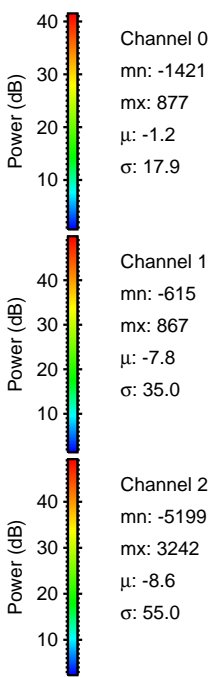
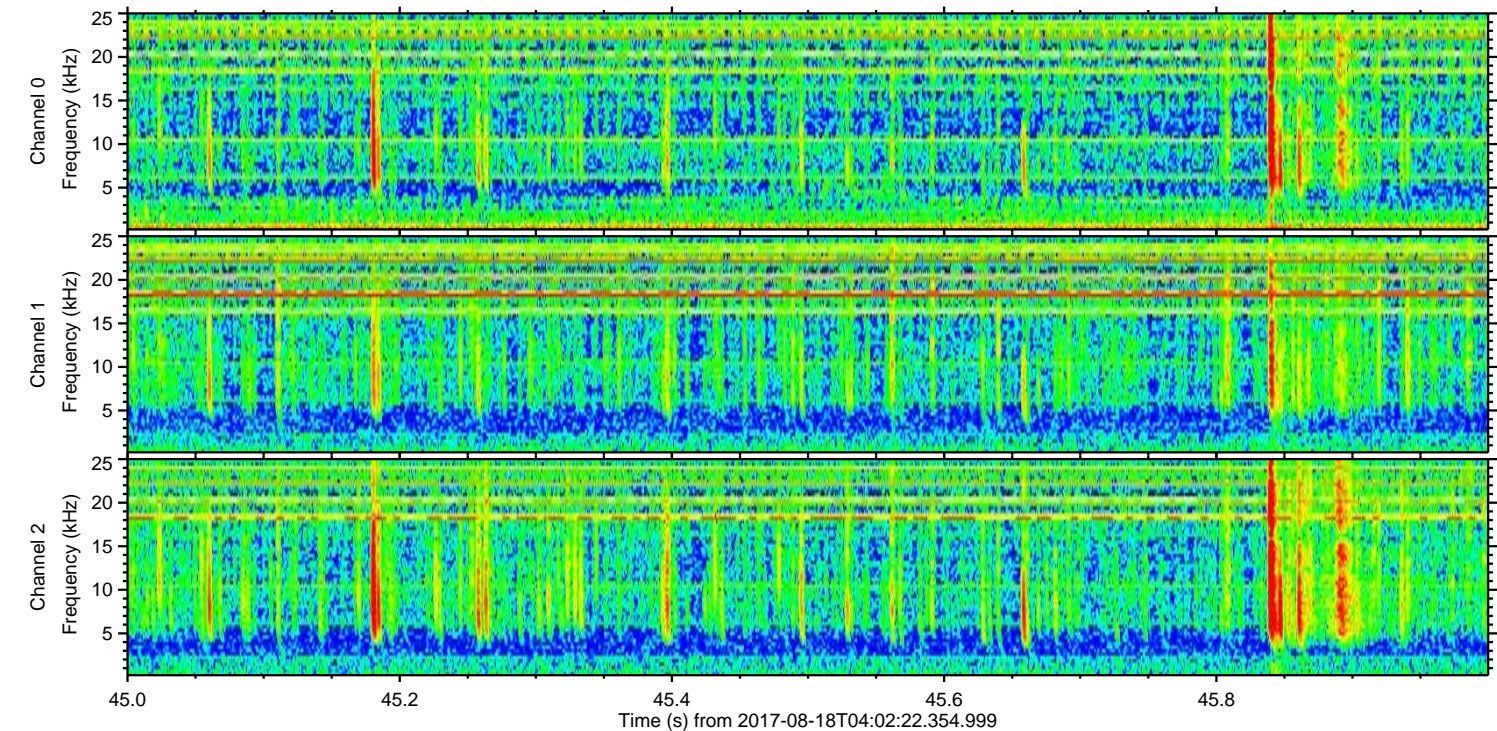
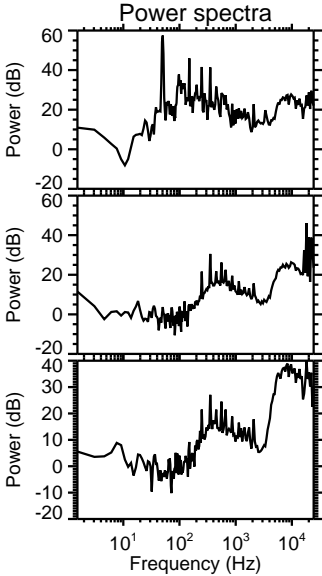
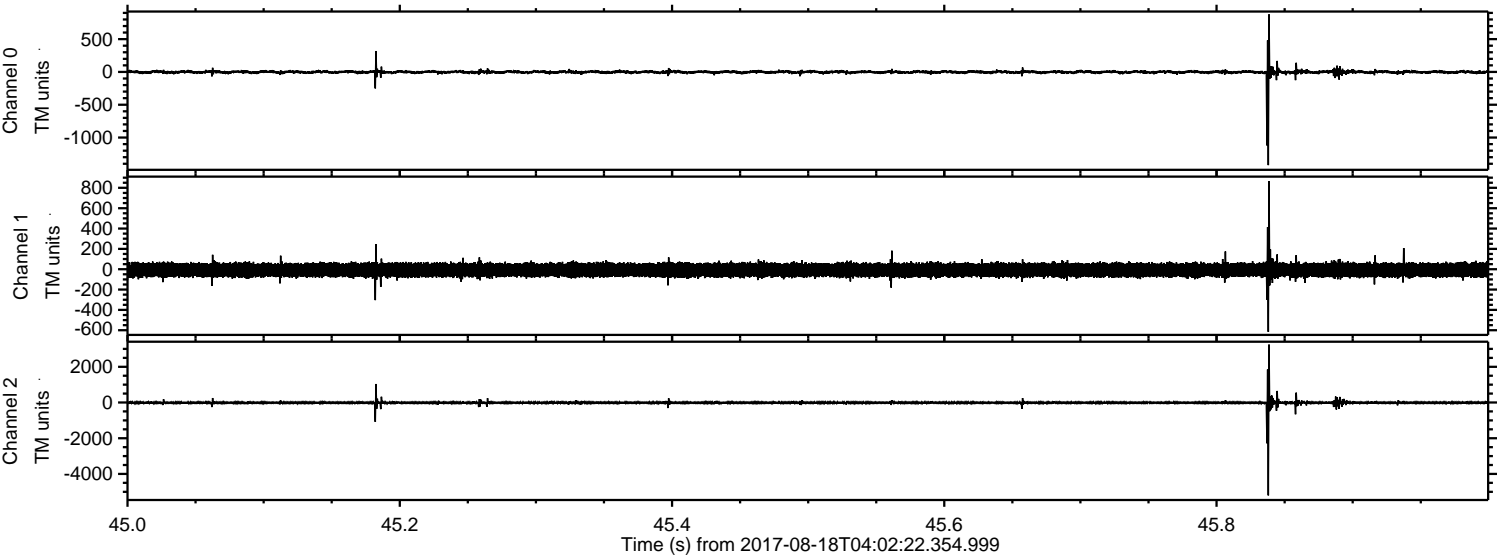
Channel 2
mn: -5590
mx: 3744
 μ : -8.6
 σ : 71.2

Processed Fri Aug 18 06:10:32 2017 by ELM ver.2012-10-06 from 001__elm20170818_040221__dat00.bin



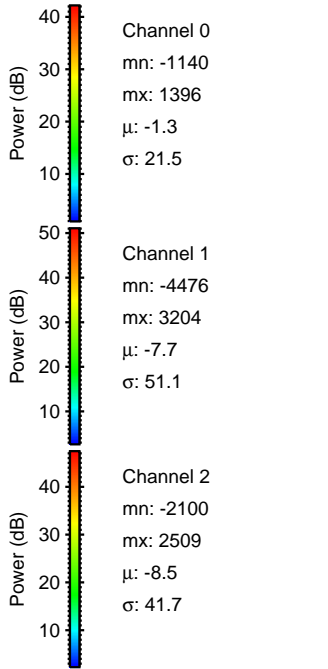
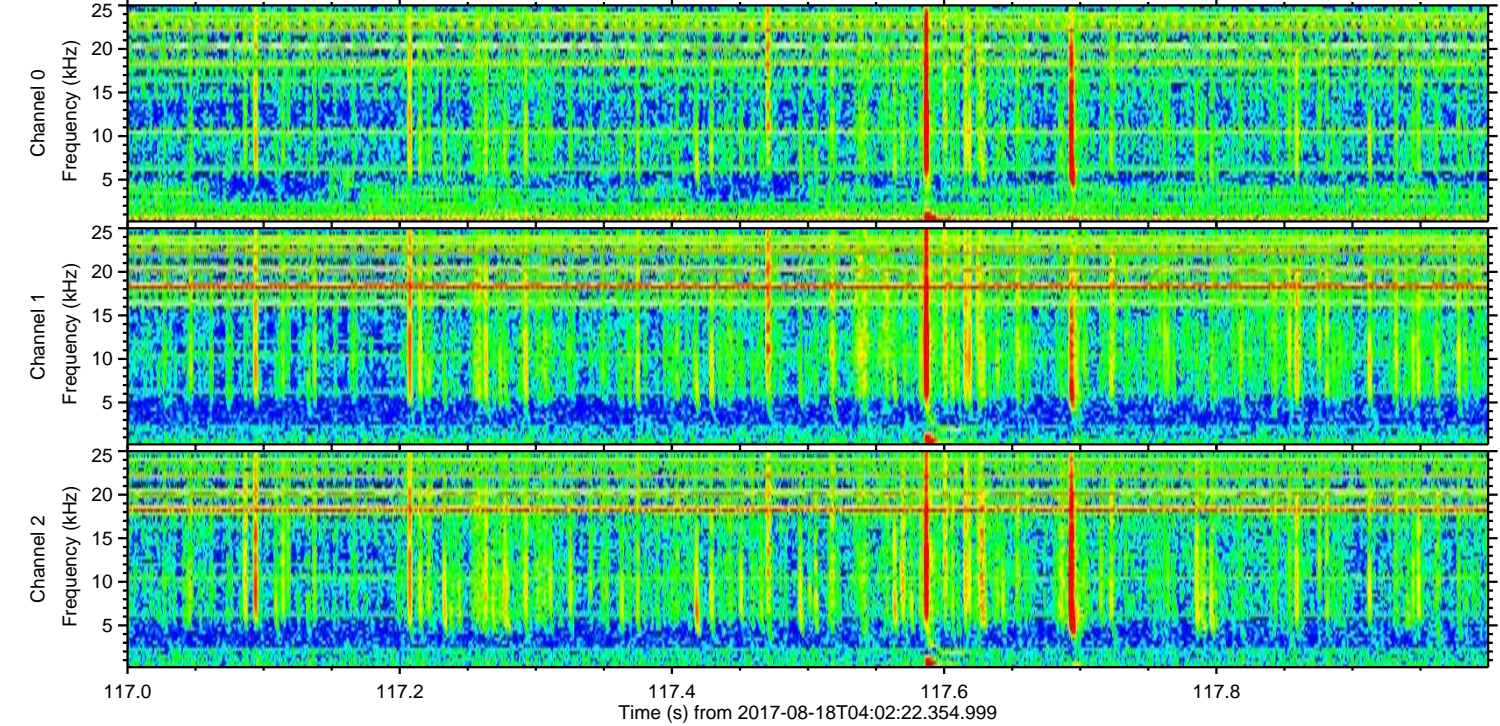
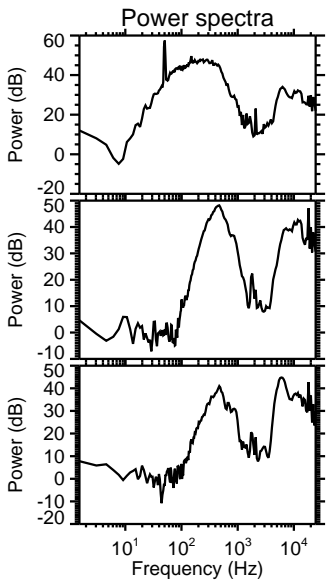
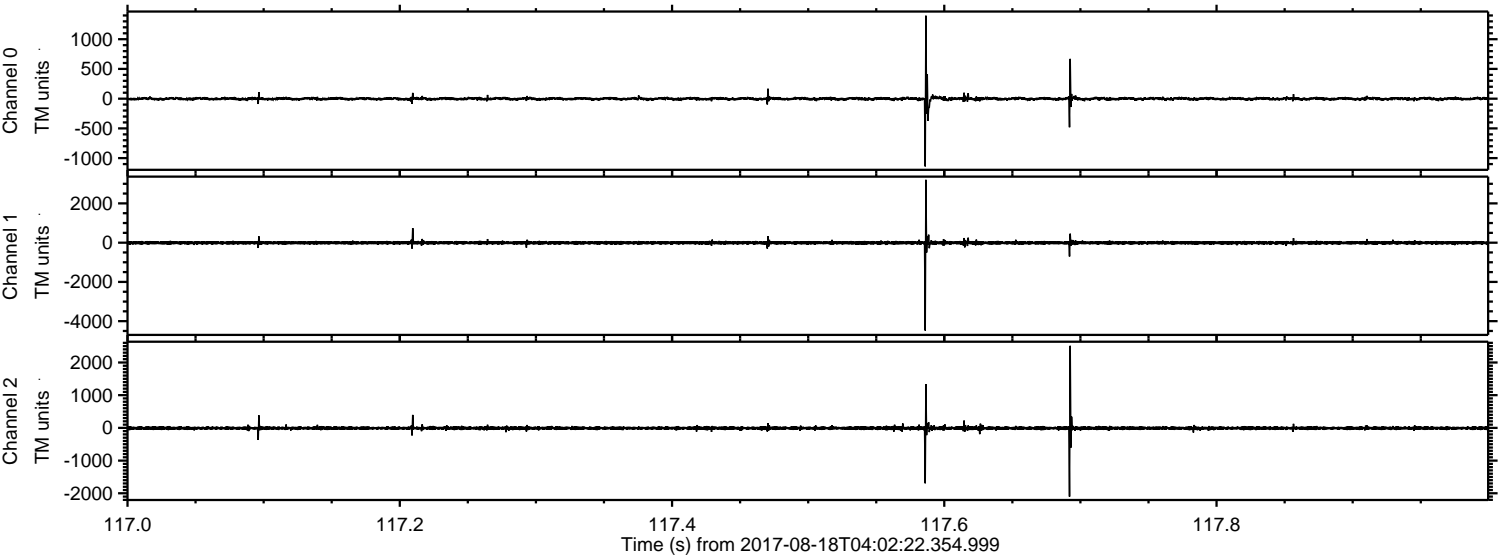
ELMAVAN 3D WAVEFORMS (Measured data sampled at 50 kHz) 51000 packets of 144 samples from 2017-08-18T04:02:22.354.999. Part 46/147

Processed Fri Aug 18 06:10:32 2017 by ELM ver.2012-10-06 from 001__elm20170818_040221__dat00.bin

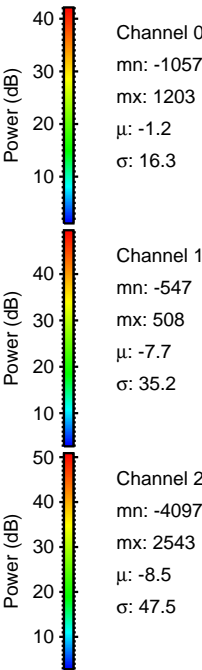
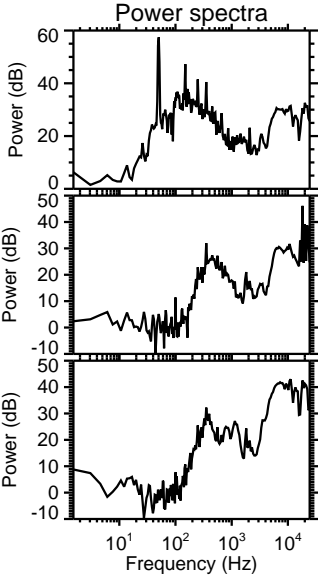
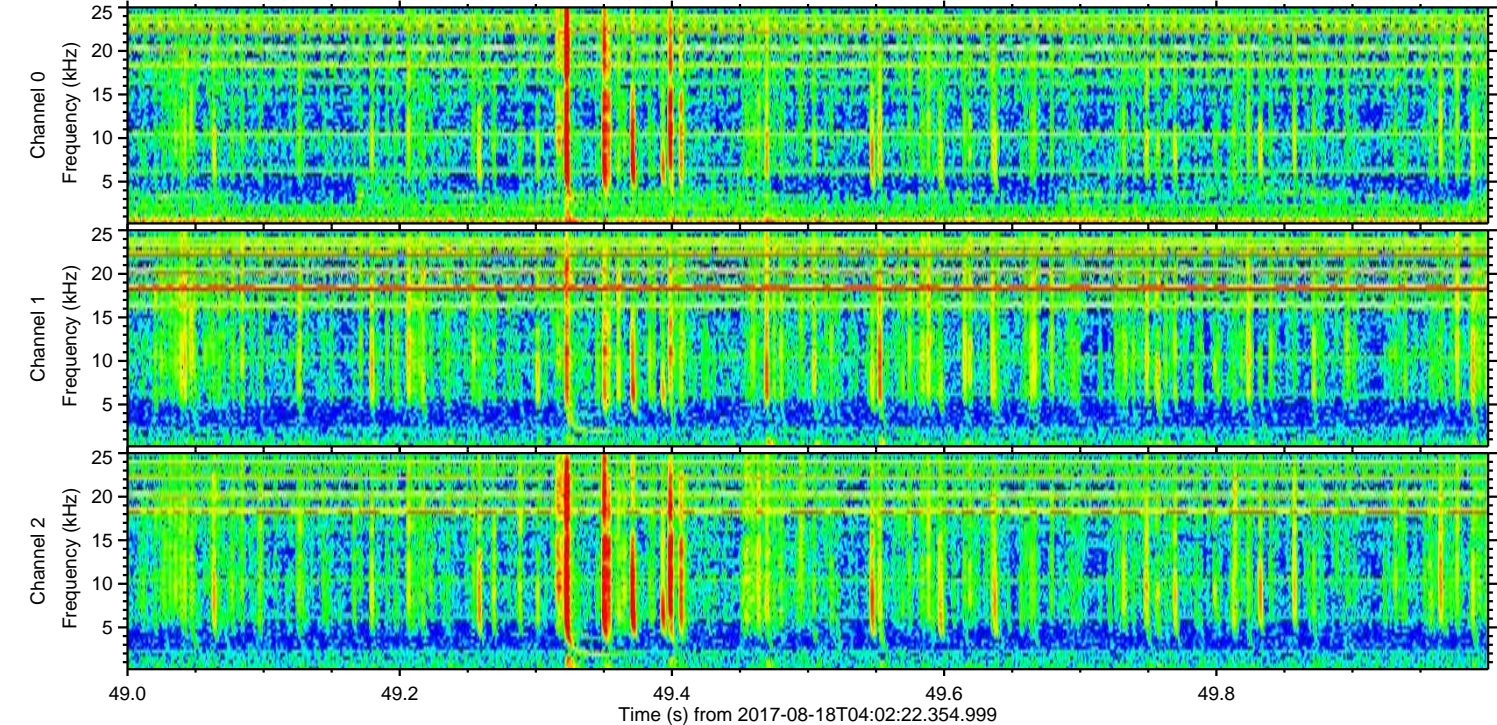
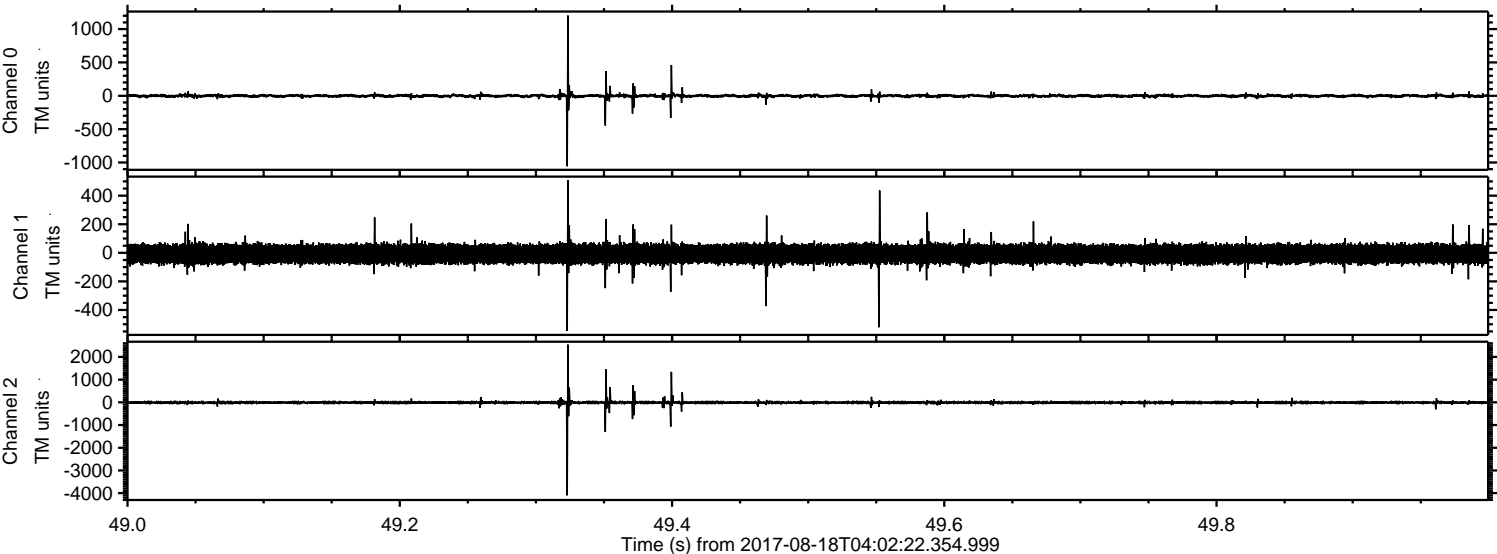


ELMAVAN 3D WAVEFORMS (Measured data sampled at 50 kHz) 51000 packets of 144 samples from 2017-08-18T04:02:22.354.999. Part 118/147

Processed Fri Aug 18 06:10:33 2017 by ELM ver.2012-10-06 from 001__elm20170818_040221__dat00.bin



Processed Fri Aug 18 06:10:34 2017 by ELM ver.2012-10-06 from 001__elm20170818_040221__dat00.bin

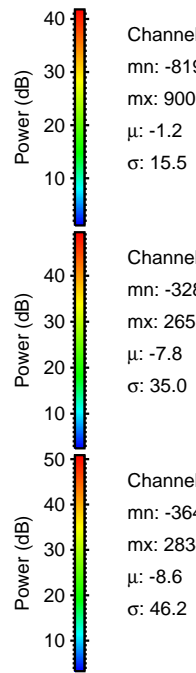
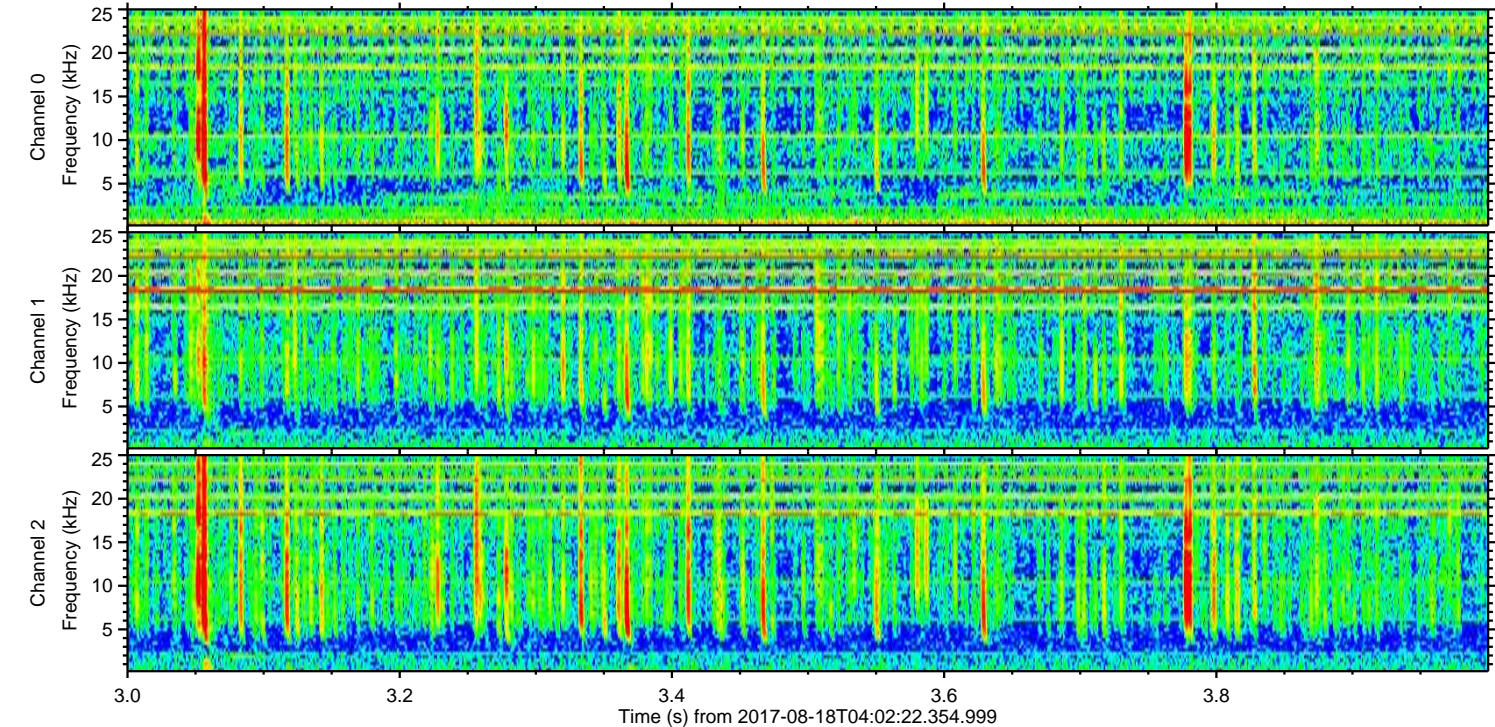
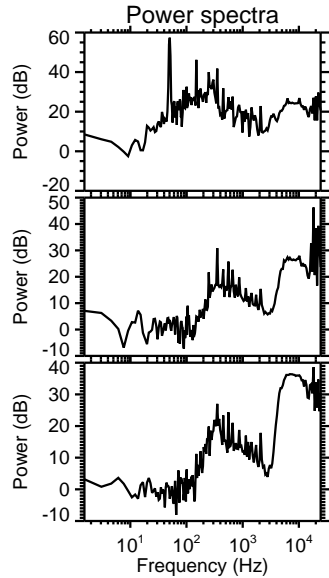
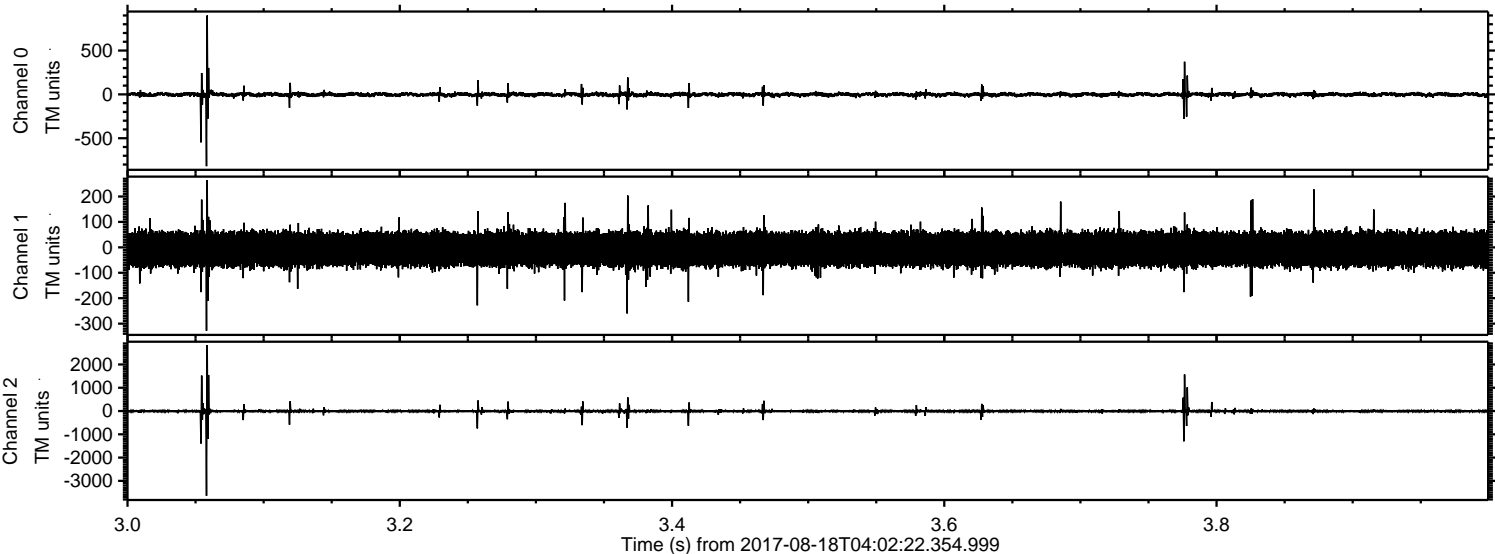


Channel 0
mn: -1057
mx: 1203
 μ : -1.2
 σ : 16.3

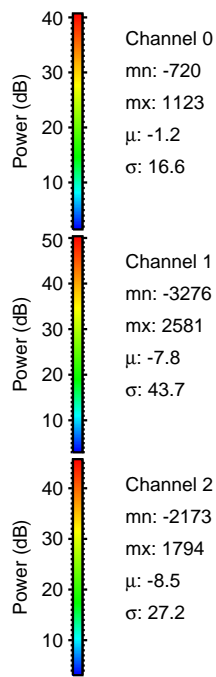
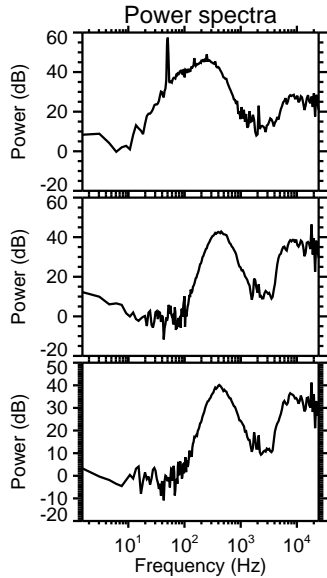
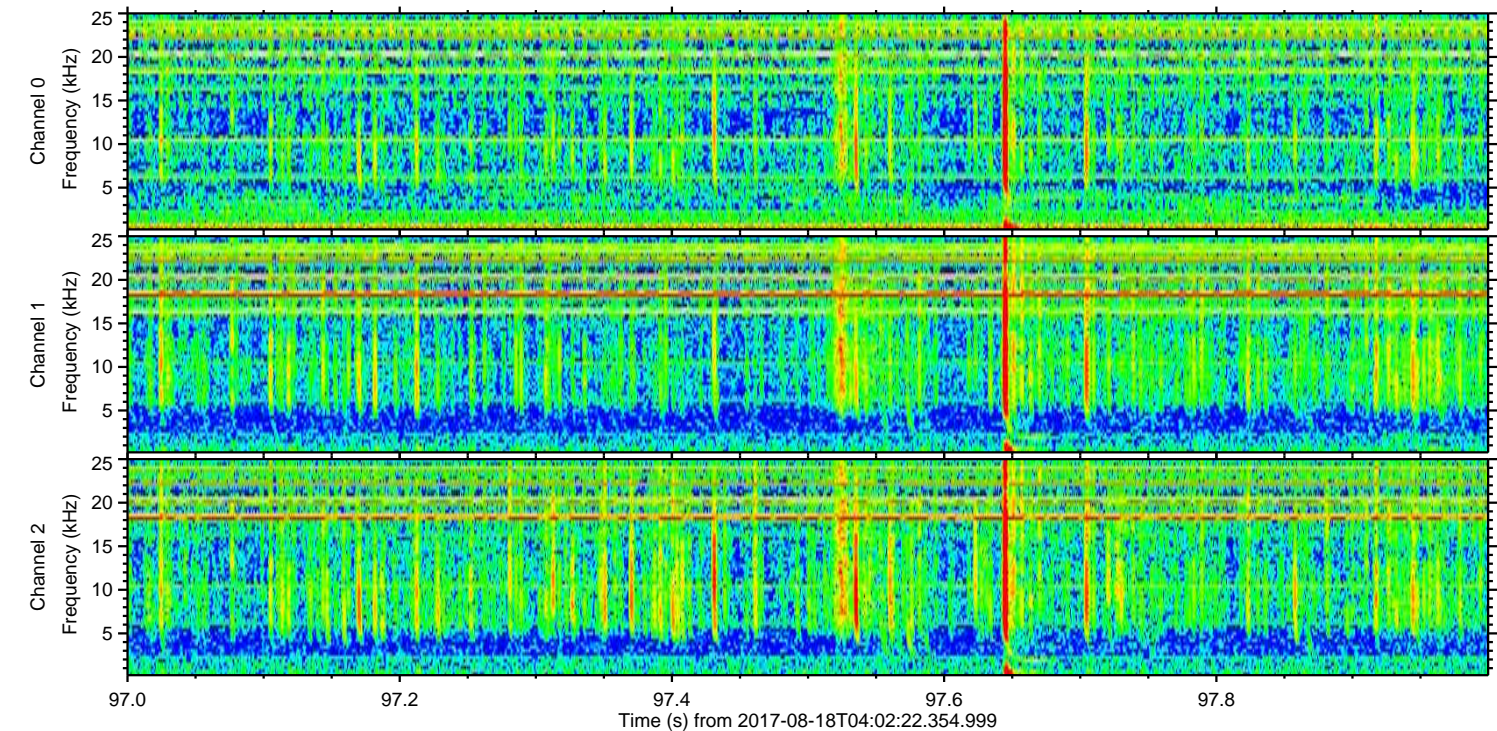
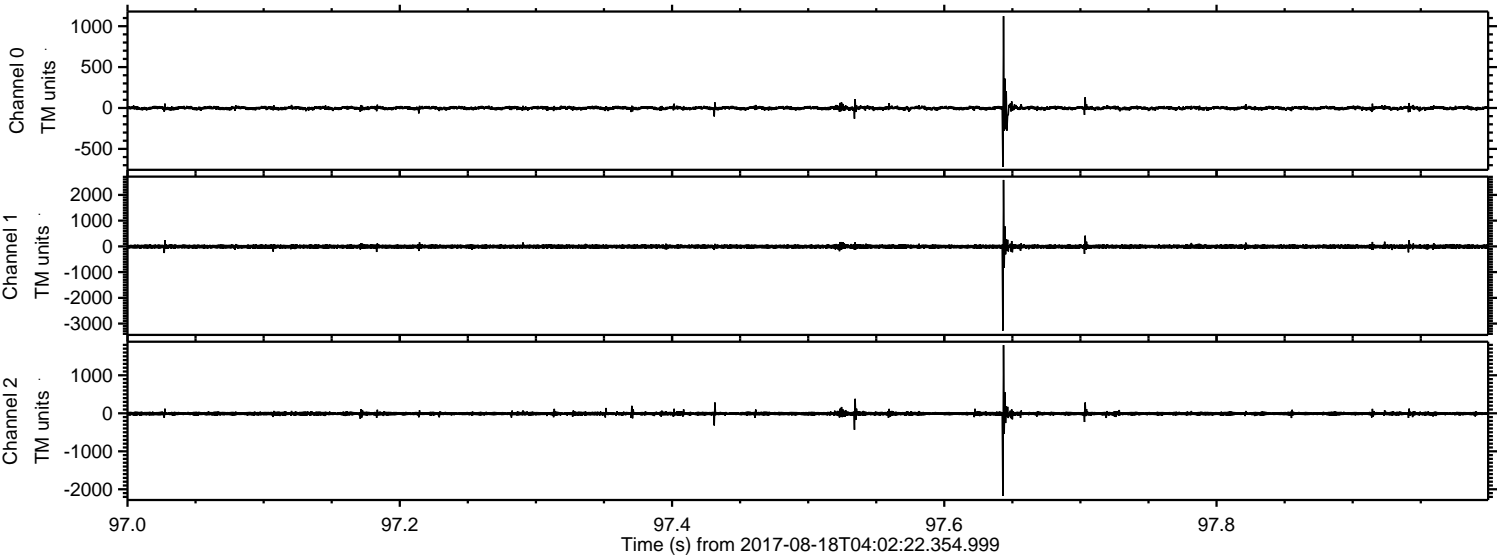
Channel 1
mn: -547
mx: 508
 μ : -7.7
 σ : 35.2

Channel 2
mn: -4097
mx: 2543
 μ : -8.5
 σ : 47.5

Processed Fri Aug 18 06:10:34 2017 by ELM ver.2012-10-06 from 001__elm20170818_040221__dat00.bin

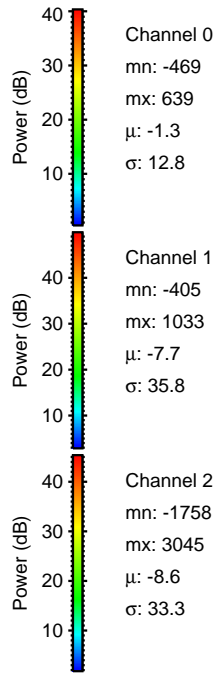
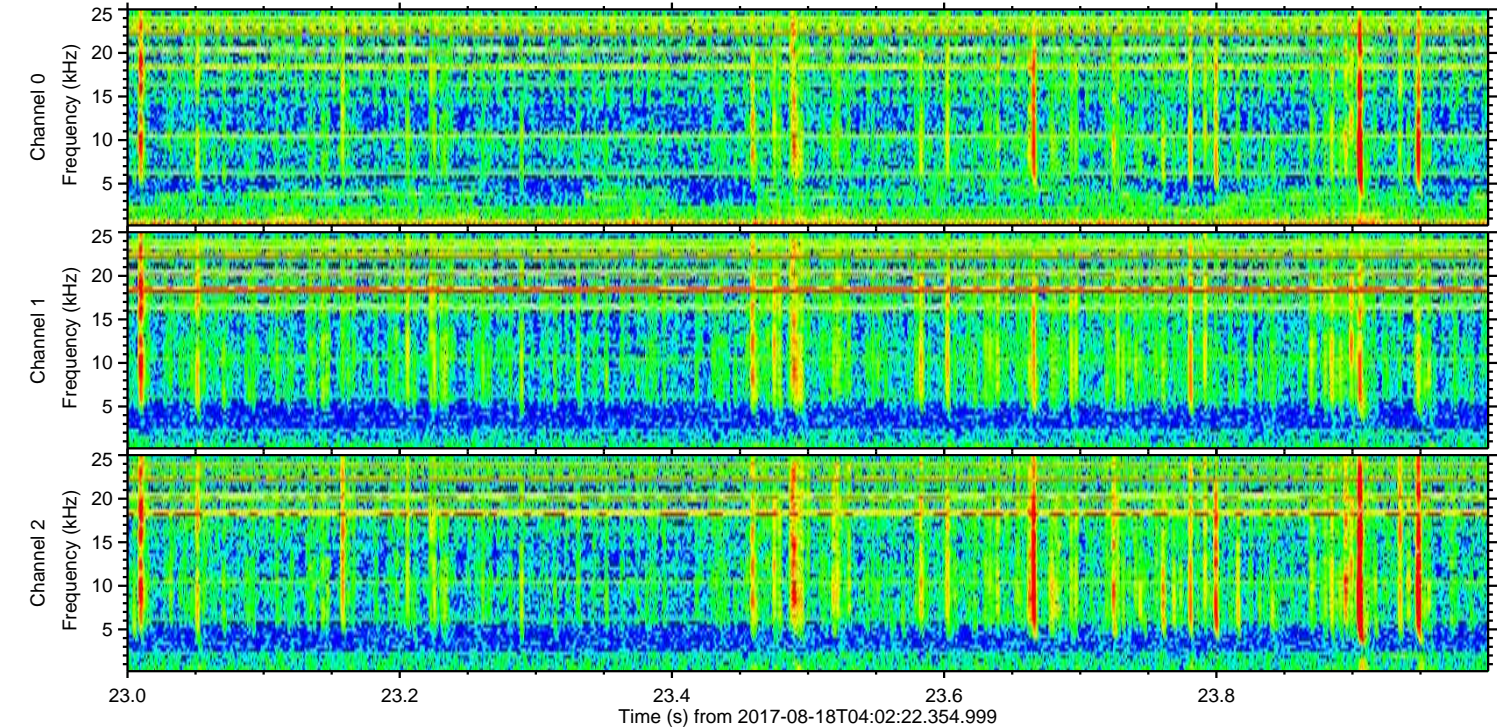
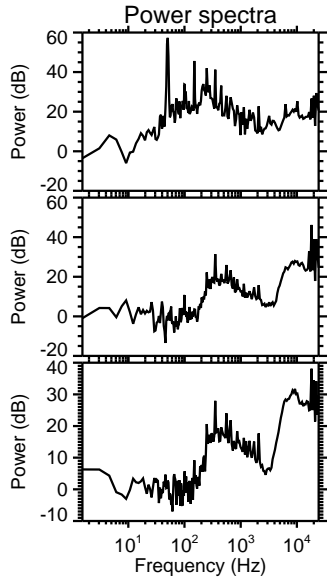
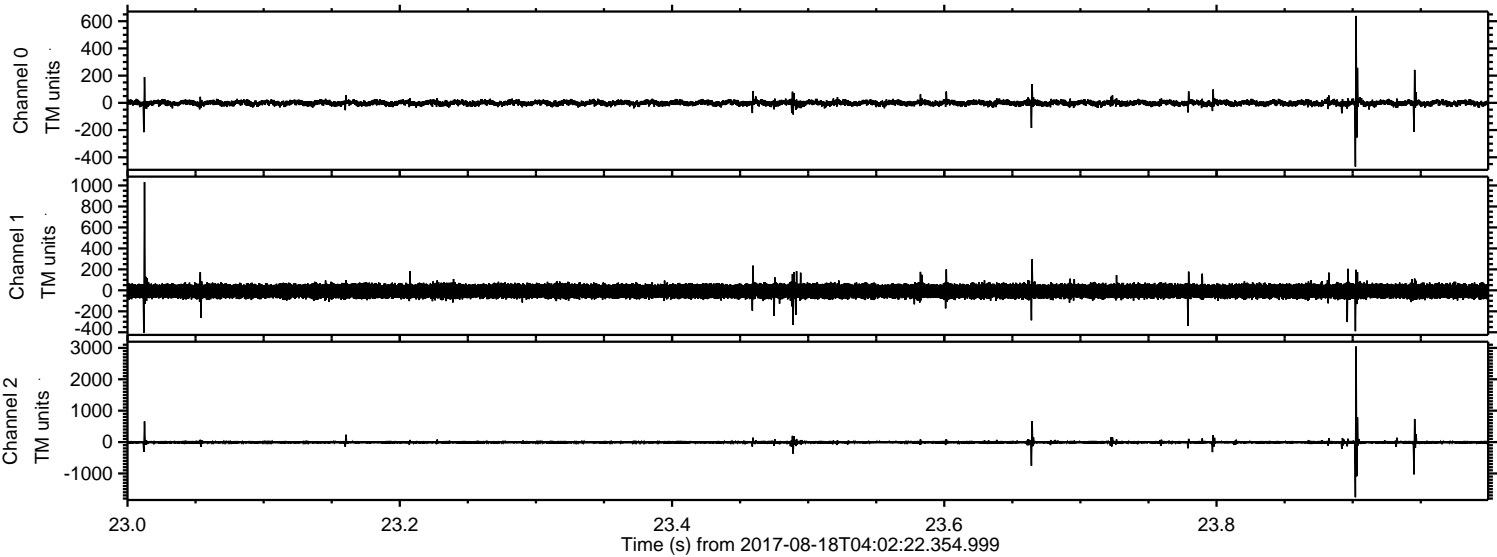


Processed Fri Aug 18 06:10:35 2017 by ELM ver.2012-10-06 from 001__elm20170818_040221__dat00.bin



ELMAVAN 3D WAVEFORMS (Measured data sampled at 50 kHz) 51000 packets of 144 samples from 2017-08-18T04:02:22.354.999. Part 24/147

Processed Fri Aug 18 06:10:35 2017 by ELM ver.2012-10-06 from 001__elm20170818_040221__dat00.bin



Processed Fri Aug 18 06:10:36 2017 by ELM ver.2012-10-06 from 001__elm20170818_040221__dat00.bin

