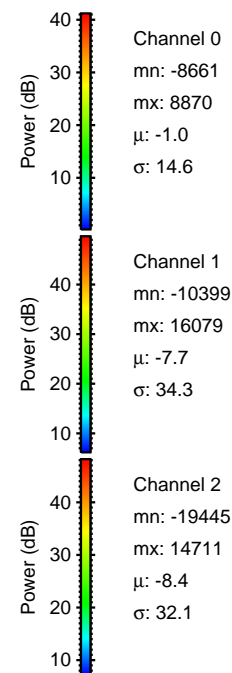
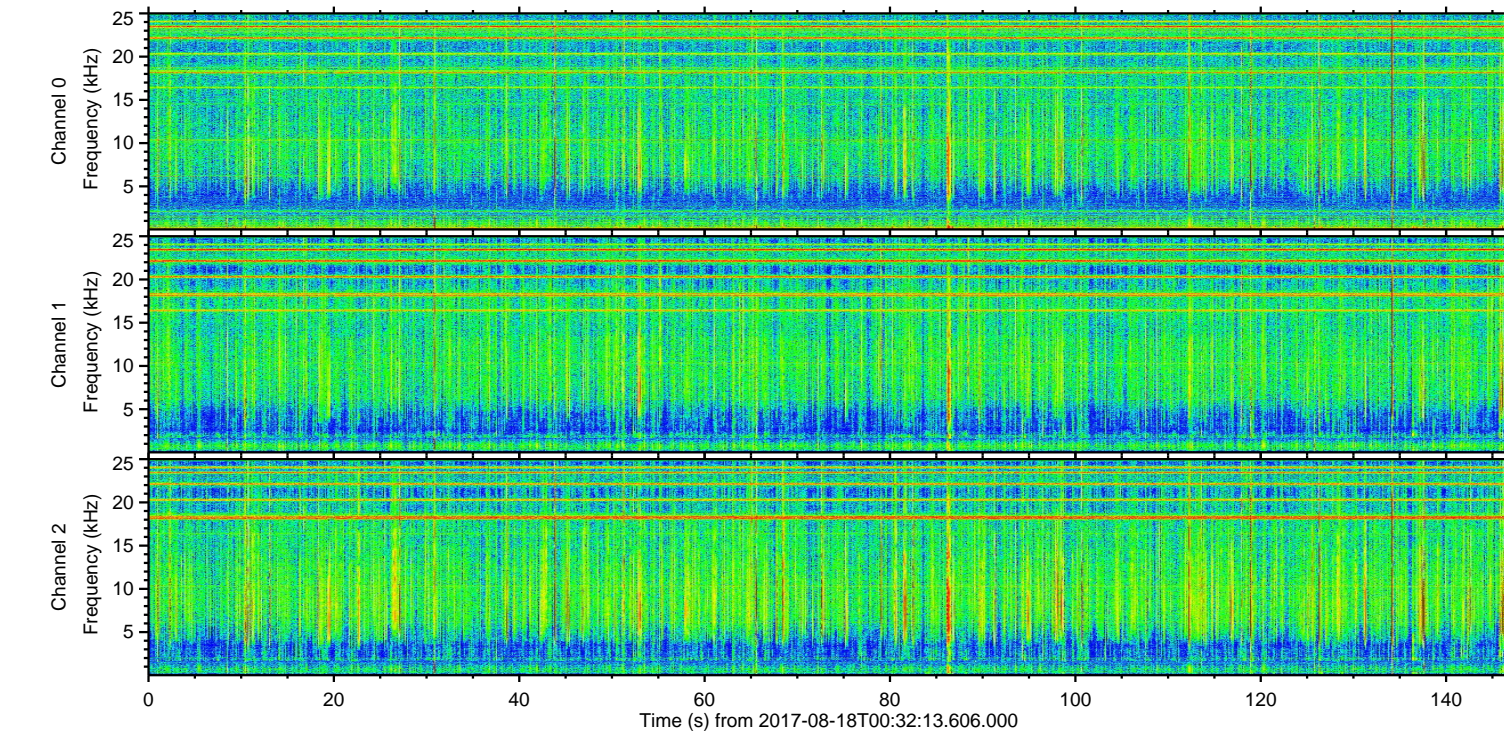
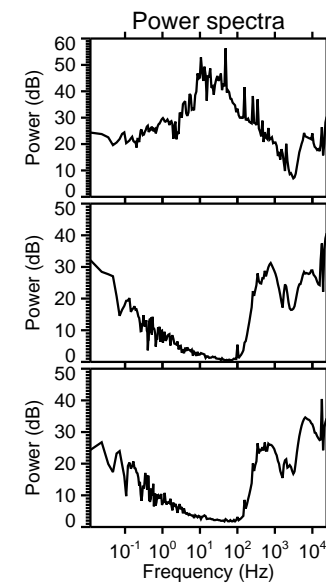
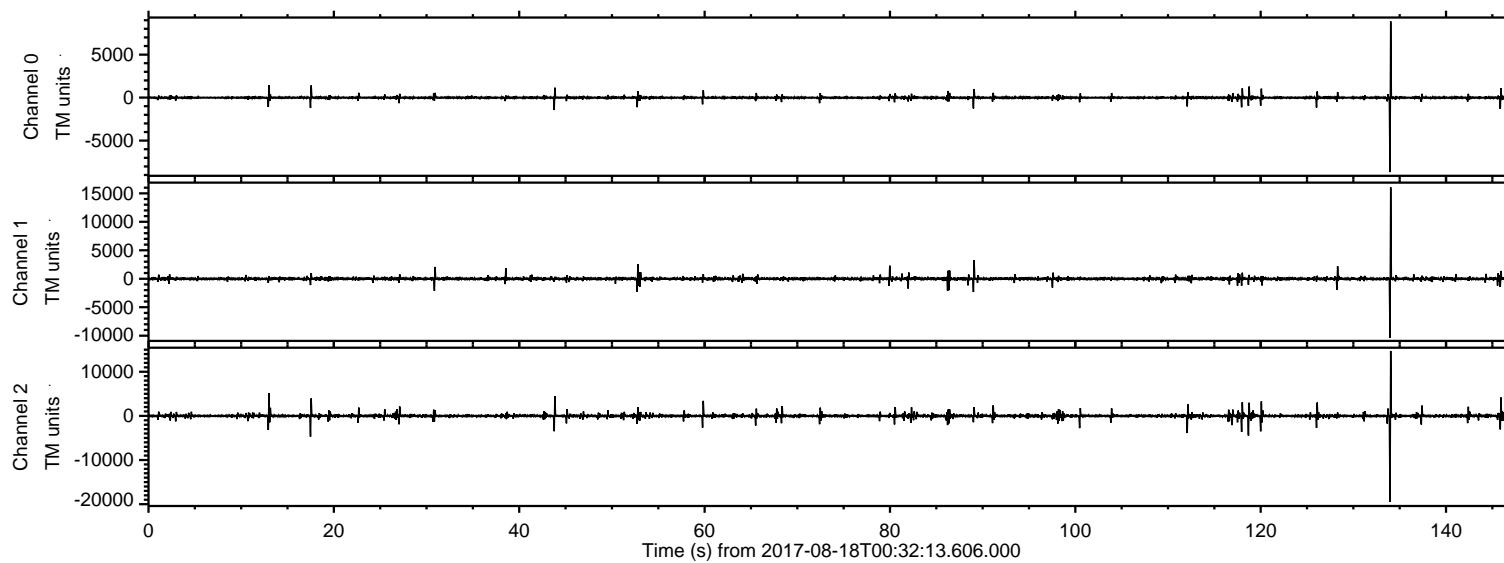


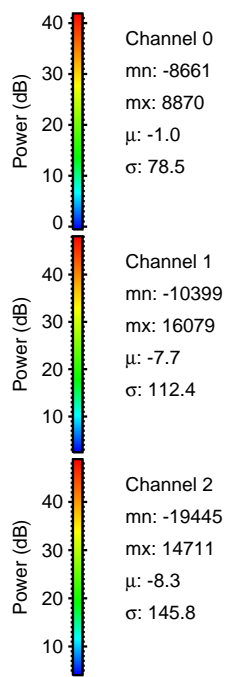
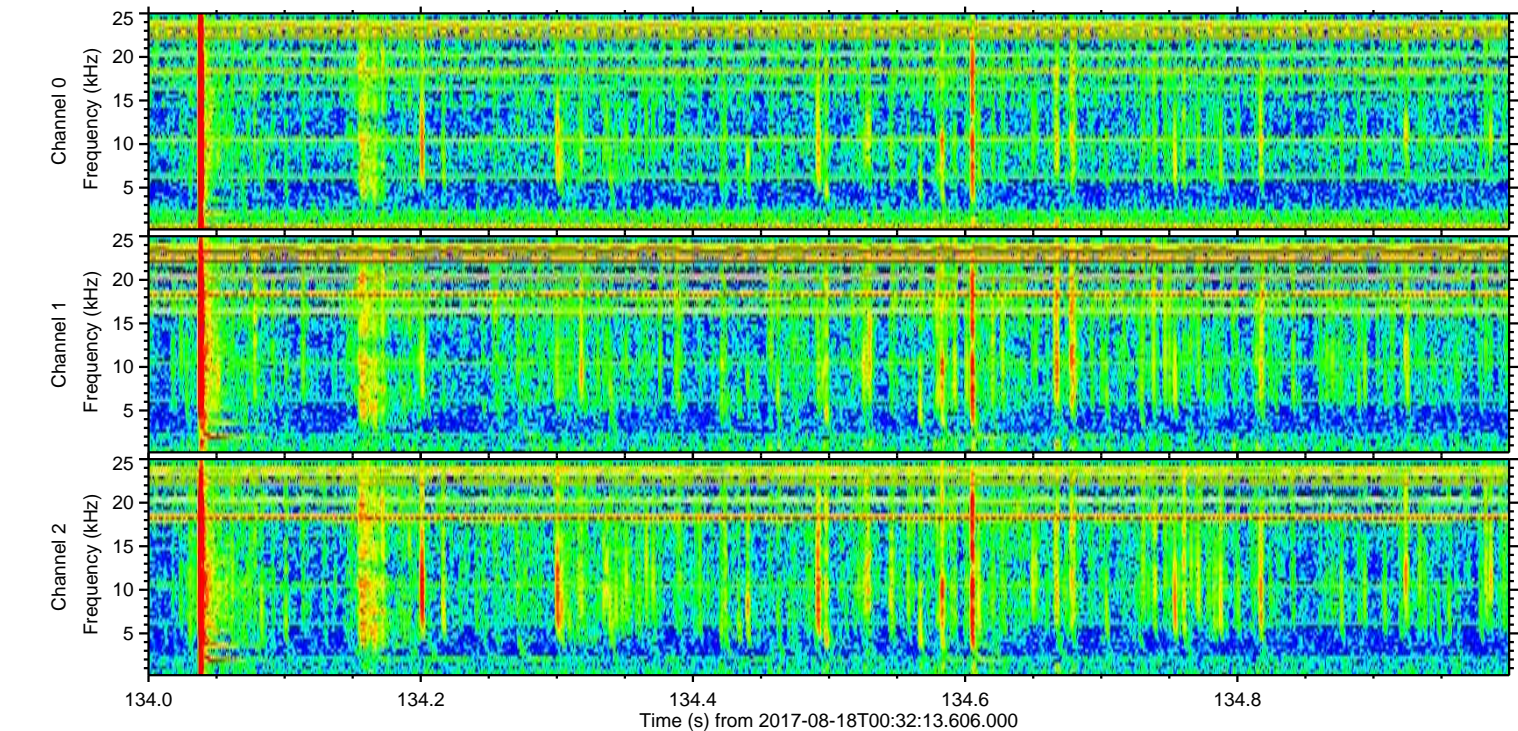
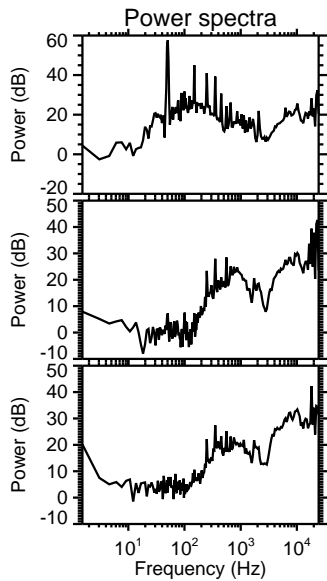
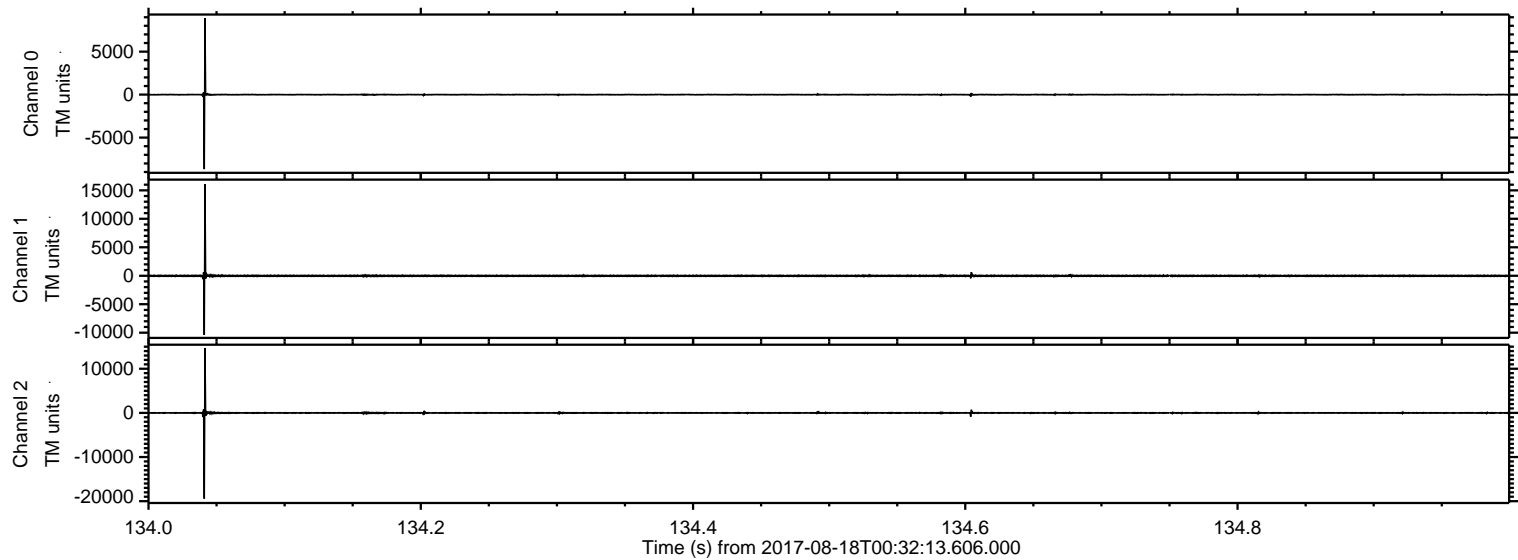
# ELMAVAN 3D WAVEFORMS (Measured data sampled at 50 kHz) 51000 packets of 144 samples from 2017-08-18T00:32:13.606.000.

Processed Fri Aug 18 02:40:08 2017 by ELM ver.2012-10-06 from 001\_\_elm20170818\_003212\_\_dat00.bin



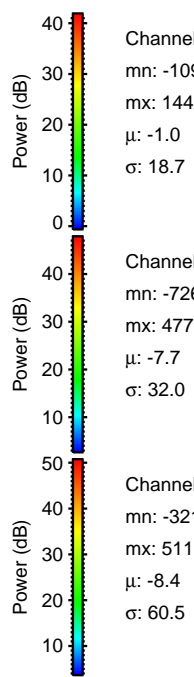
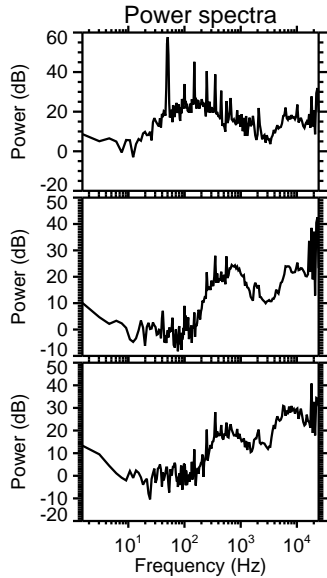
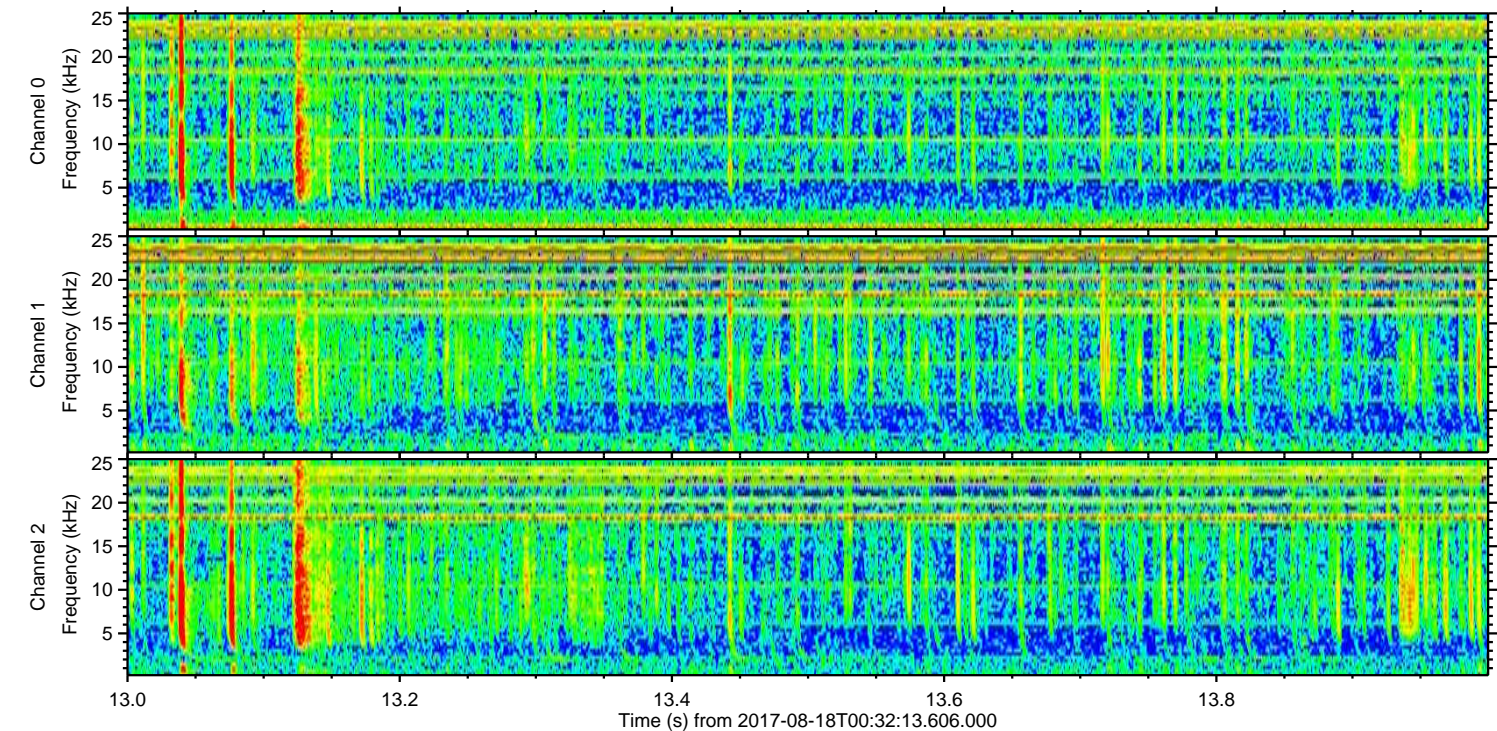
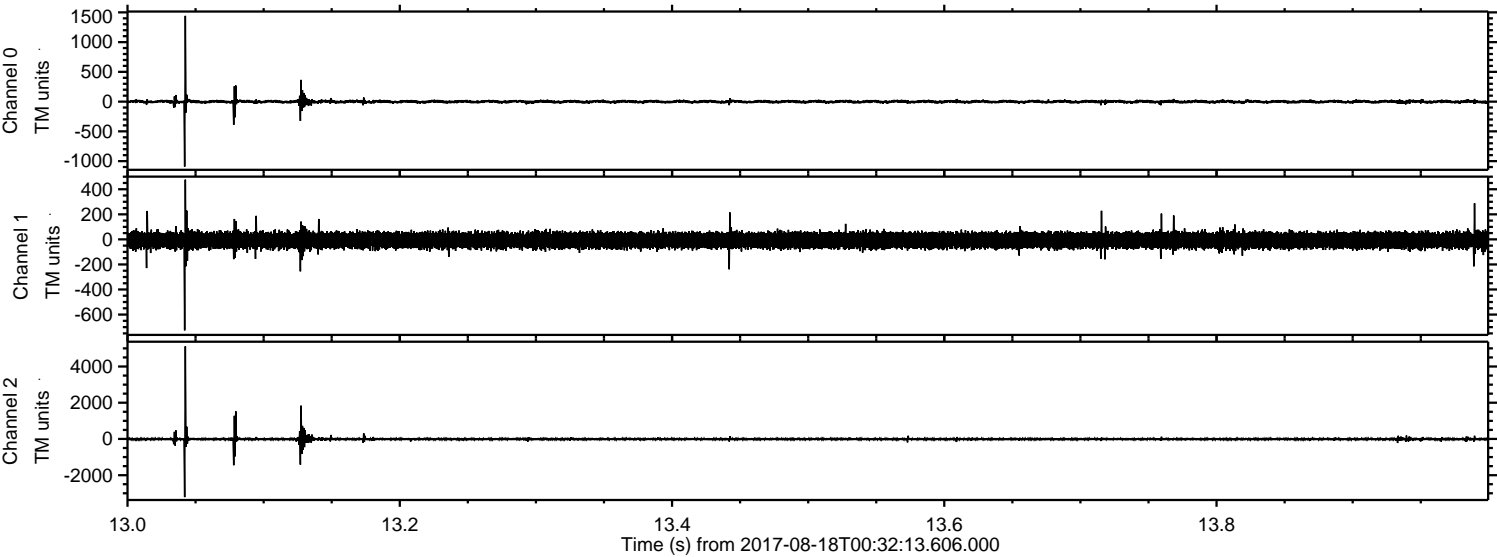
ELMAVAN 3D WAVEFORMS (Measured data sampled at 50 kHz) 51000 packets of 144 samples from 2017-08-18T00:32:13.606.000. Part 135/147

Processed Fri Aug 18 02:40:14 2017 by ELM ver.2012-10-06 from 001\_\_elm20170818\_003212\_\_dat00.bin



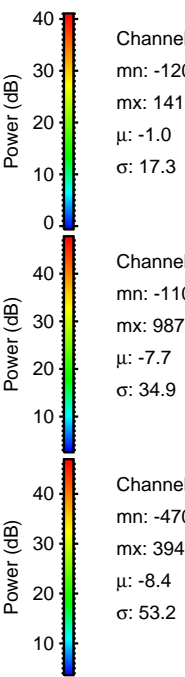
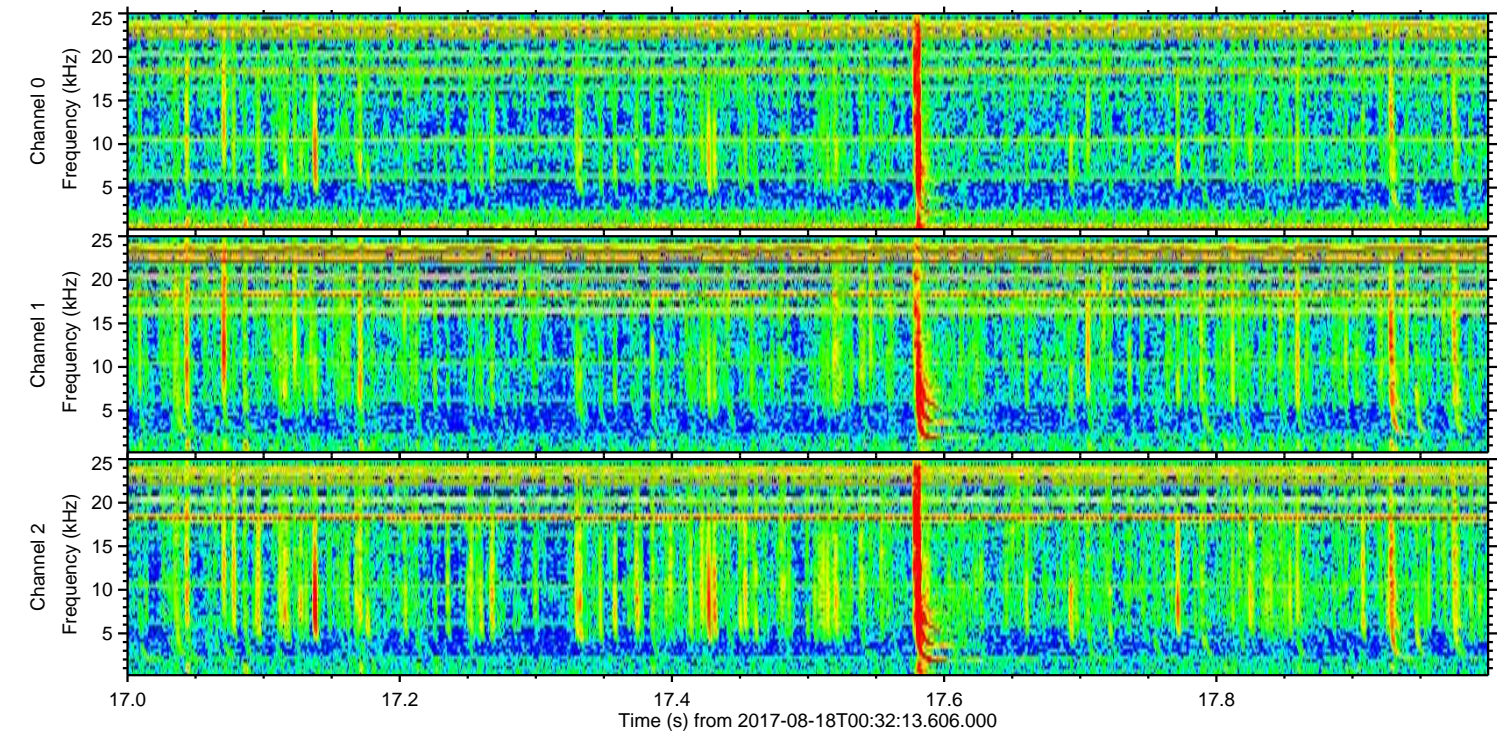
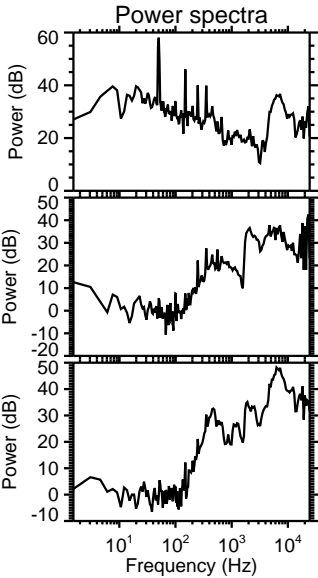
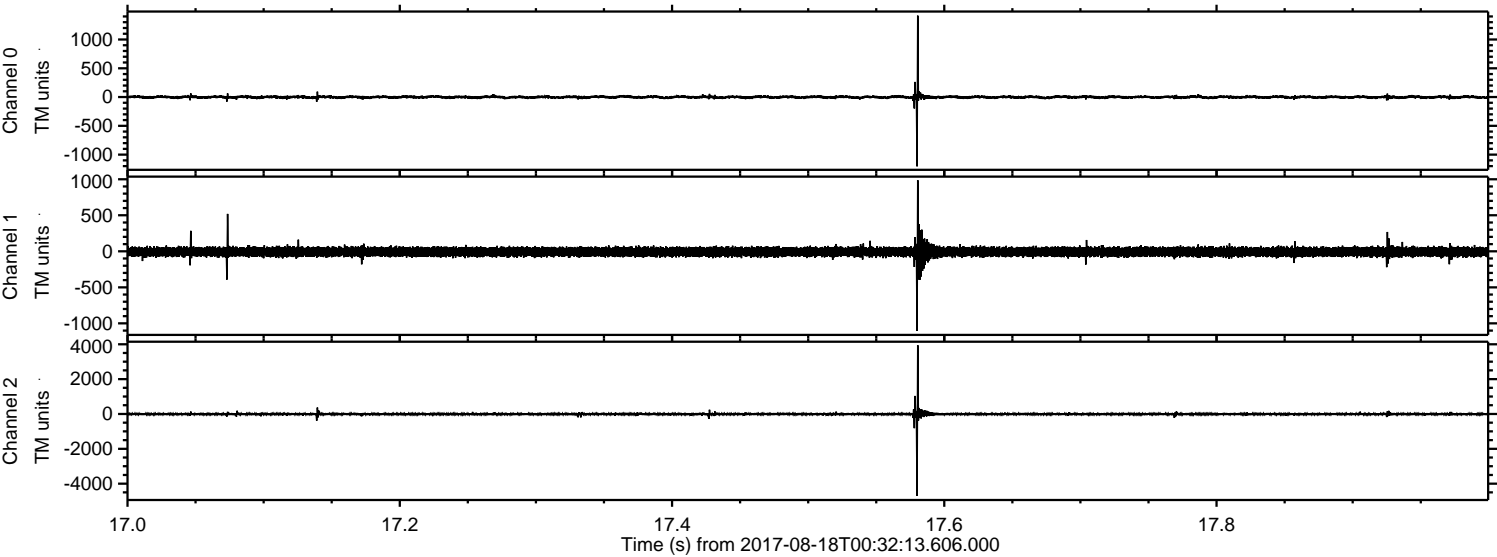
ELMAVAN 3D WAVEFORMS (Measured data sampled at 50 kHz) 51000 packets of 144 samples from 2017-08-18T00:32:13.606.000. Part 14/147

Processed Fri Aug 18 02:40:15 2017 by ELM ver.2012-10-06 from 001\_\_elm20170818\_003212\_\_dat00.bin



ELMAVAN 3D WAVEFORMS (Measured data sampled at 50 kHz) 51000 packets of 144 samples from 2017-08-18T00:32:13.606.000. Part 18/147

Processed Fri Aug 18 02:40:15 2017 by ELM ver.2012-10-06 from 001\_\_elm20170818\_003212\_\_dat00.bin



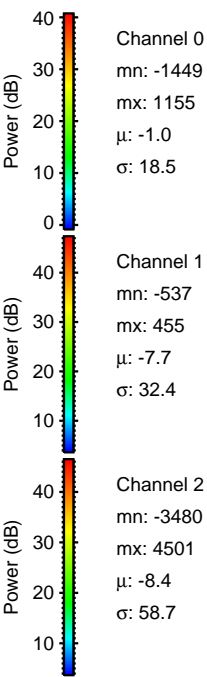
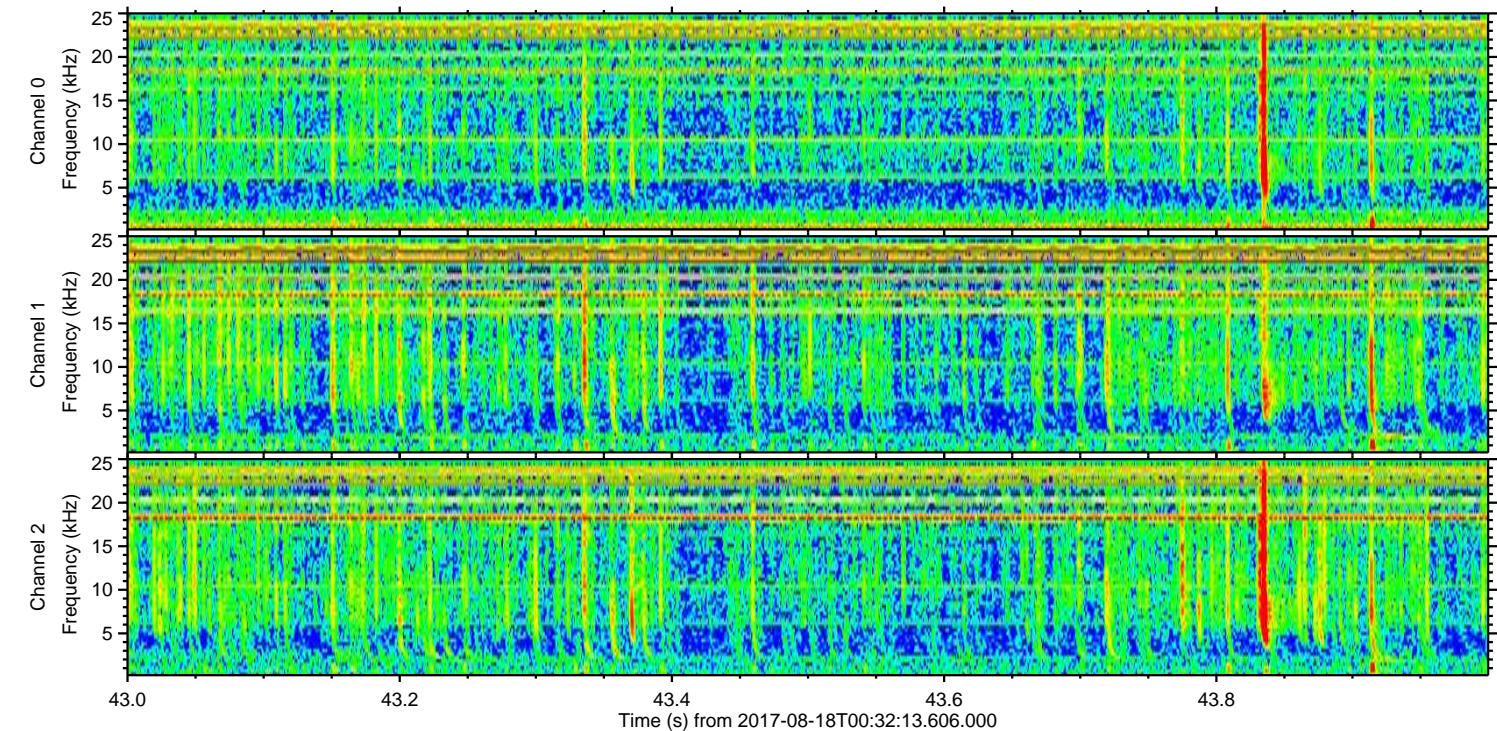
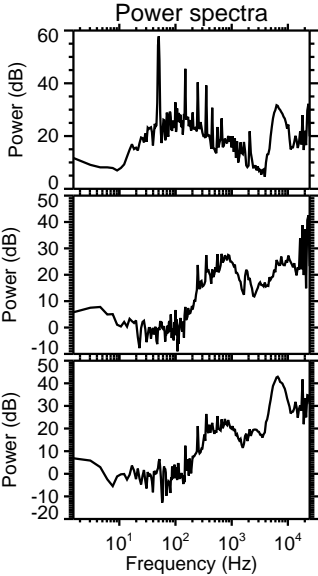
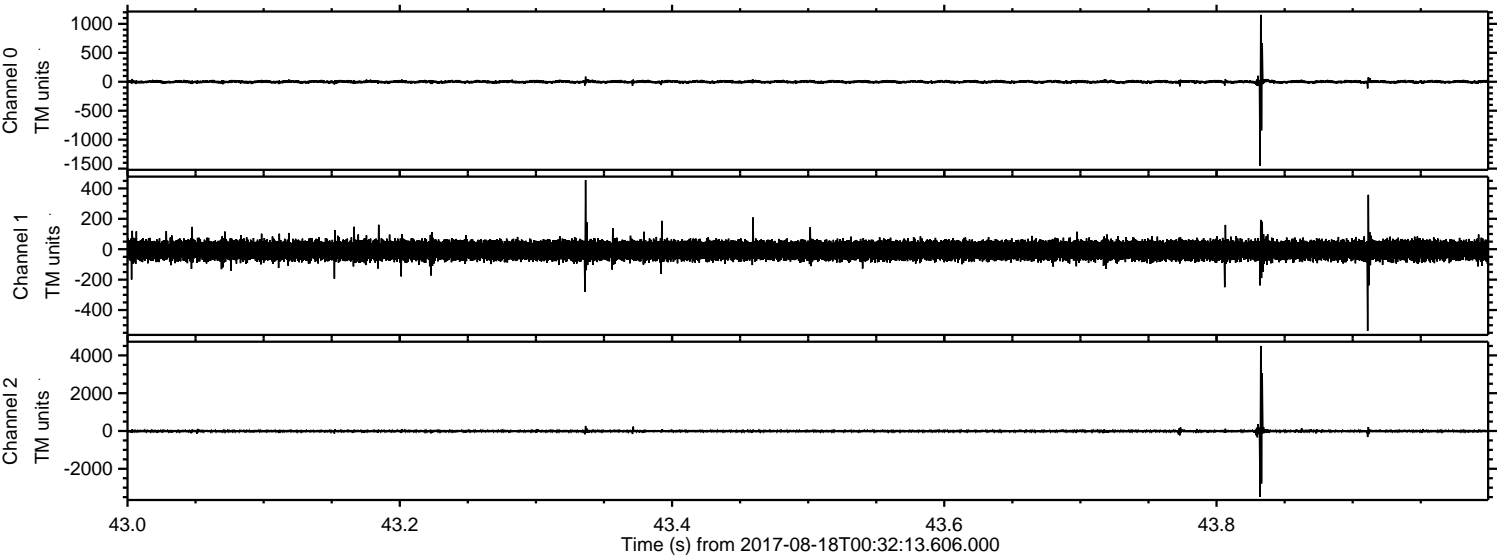
Channel 0  
mn: -1204  
mx: 1415  
 $\mu$ : -1.0  
 $\sigma$ : 17.3

Channel 1  
mn: -1105  
mx: 987  
 $\mu$ : -7.7  
 $\sigma$ : 34.9

Channel 2  
mn: -4702  
mx: 3948  
 $\mu$ : -8.4  
 $\sigma$ : 53.2

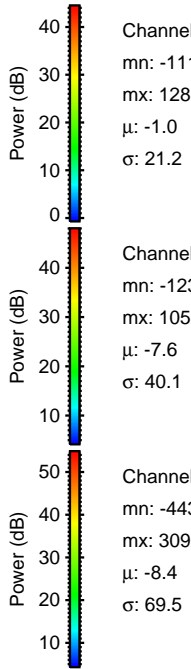
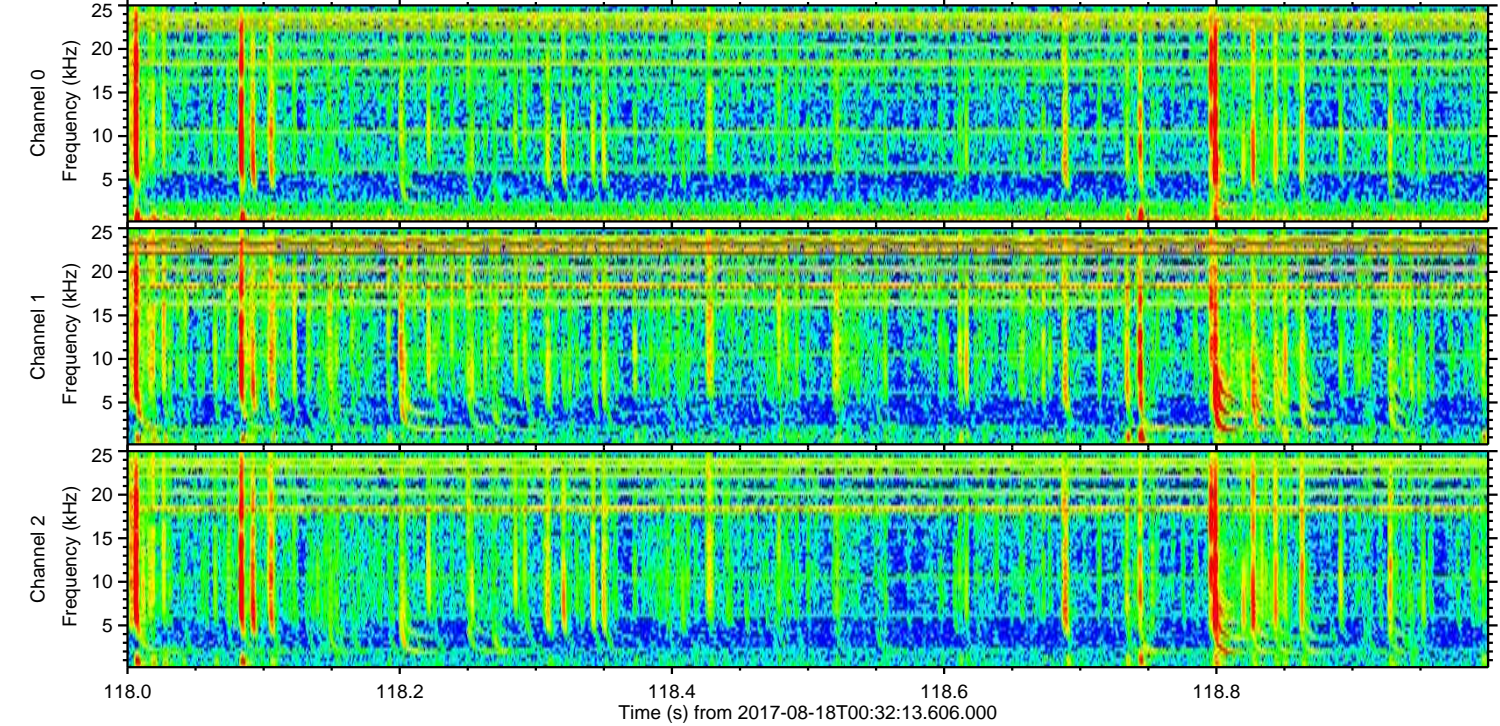
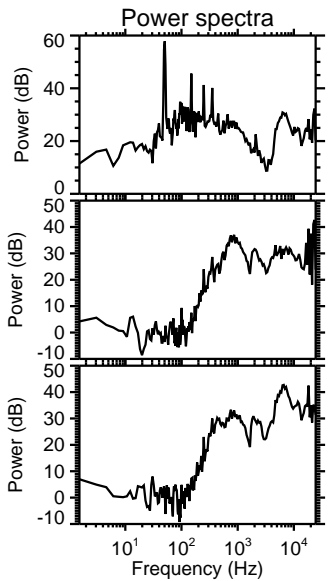
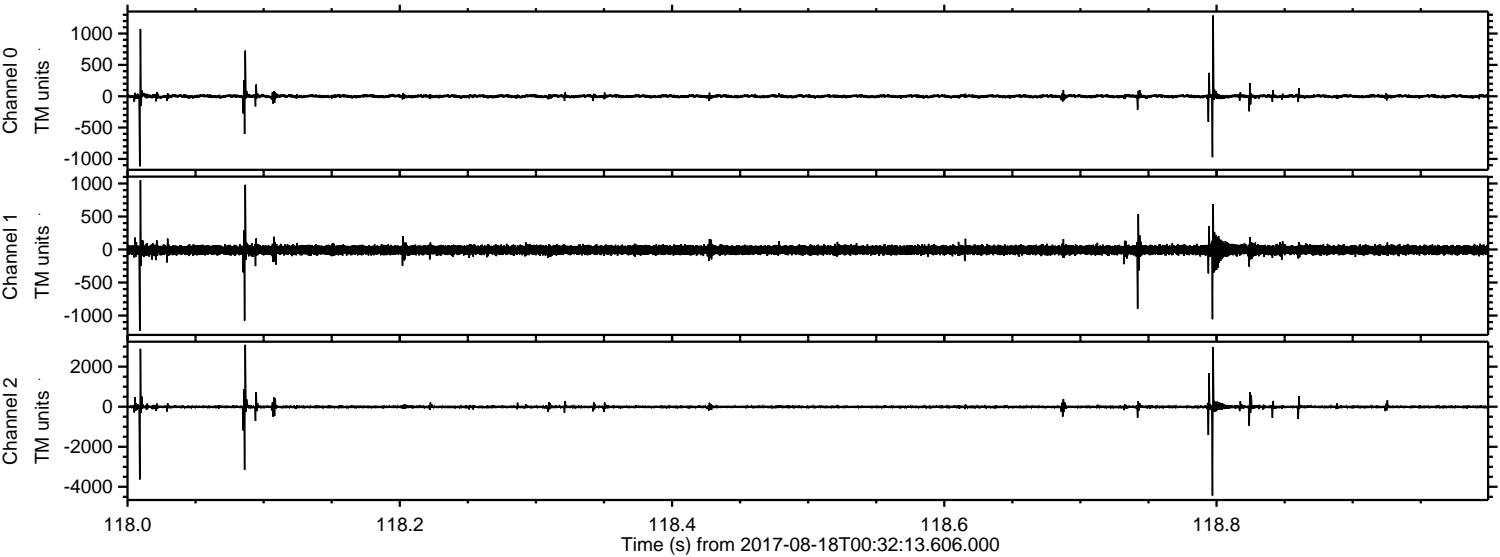
ELMAVAN 3D WAVEFORMS (Measured data sampled at 50 kHz) 51000 packets of 144 samples from 2017-08-18T00:32:13.606.000. Part 44/147

Processed Fri Aug 18 02:40:16 2017 by ELM ver.2012-10-06 from 001\_\_elm20170818\_003212\_\_dat00.bin



ELMAVAN 3D WAVEFORMS (Measured data sampled at 50 kHz) 51000 packets of 144 samples from 2017-08-18T00:32:13.606.000. Part 119/147

Processed Fri Aug 18 02:40:17 2017 by ELM ver.2012-10-06 from 001\_\_elm20170818\_003212\_\_dat00.bin



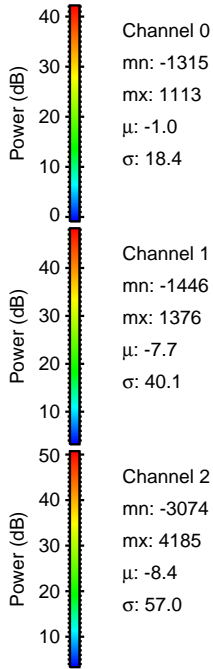
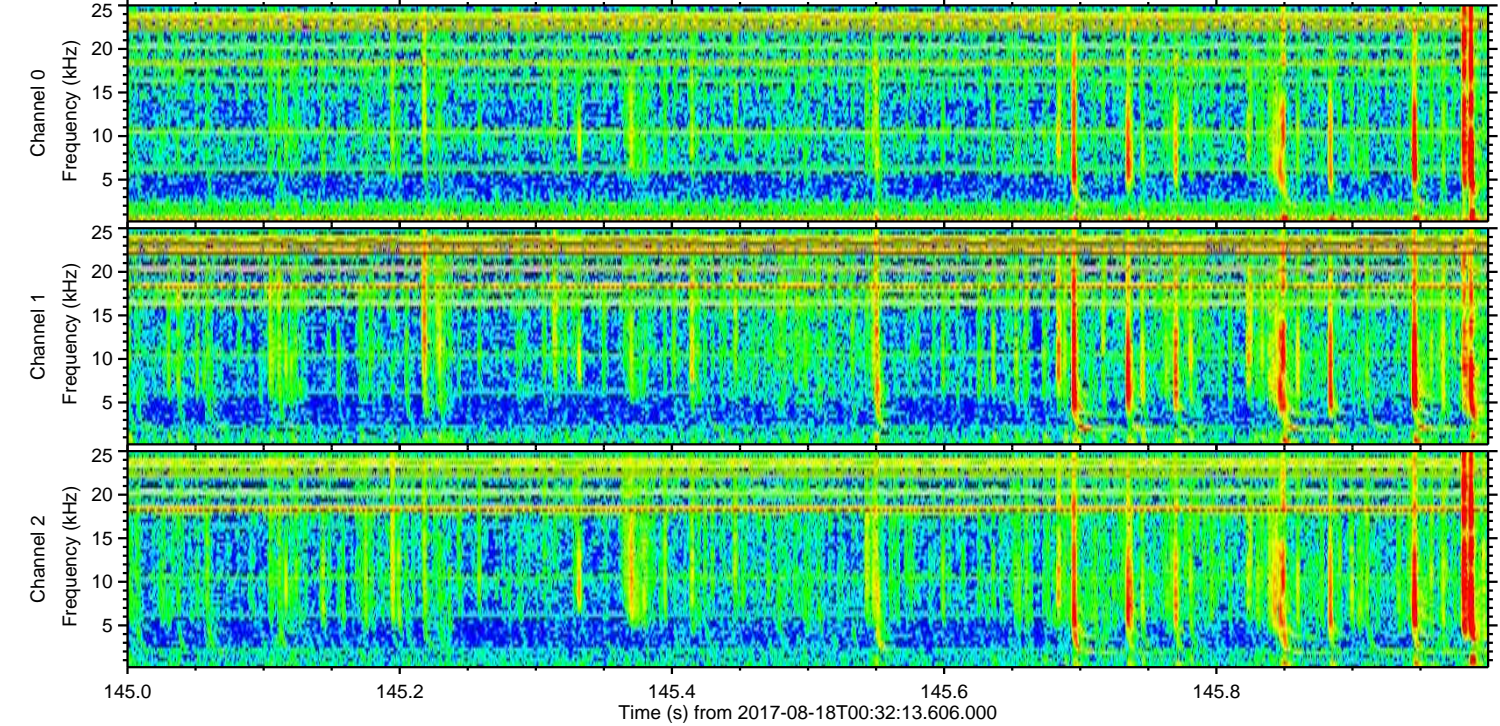
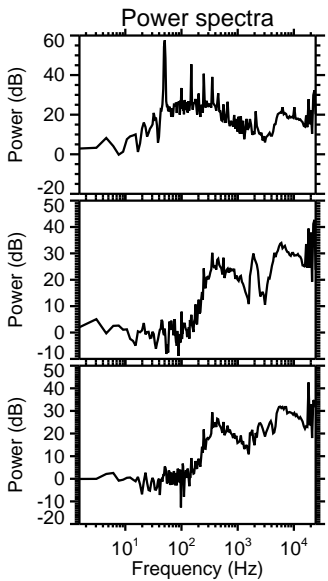
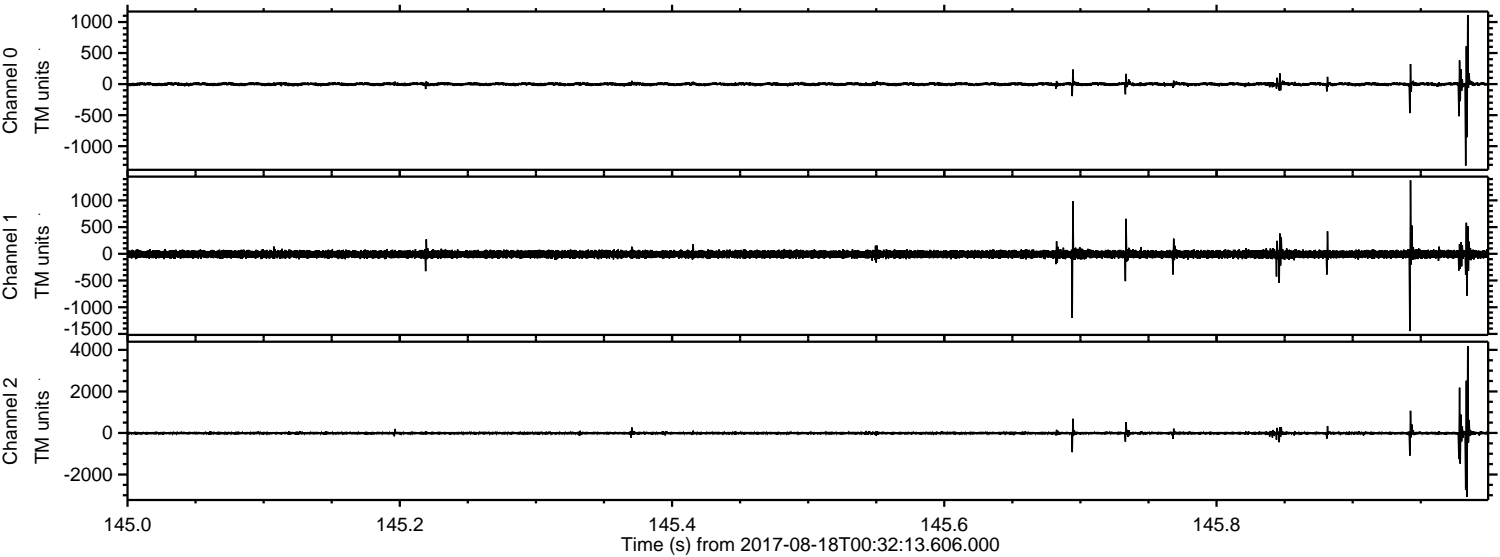
Channel 0  
mn: -1118  
mx: 1287  
 $\mu$ : -1.0  
 $\sigma$ : 21.2

Channel 1  
mn: -1232  
mx: 1052  
 $\mu$ : -7.6  
 $\sigma$ : 40.1

Channel 2  
mn: -4437  
mx: 3092  
 $\mu$ : -8.4  
 $\sigma$ : 69.5

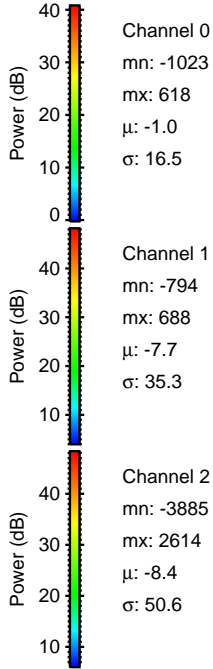
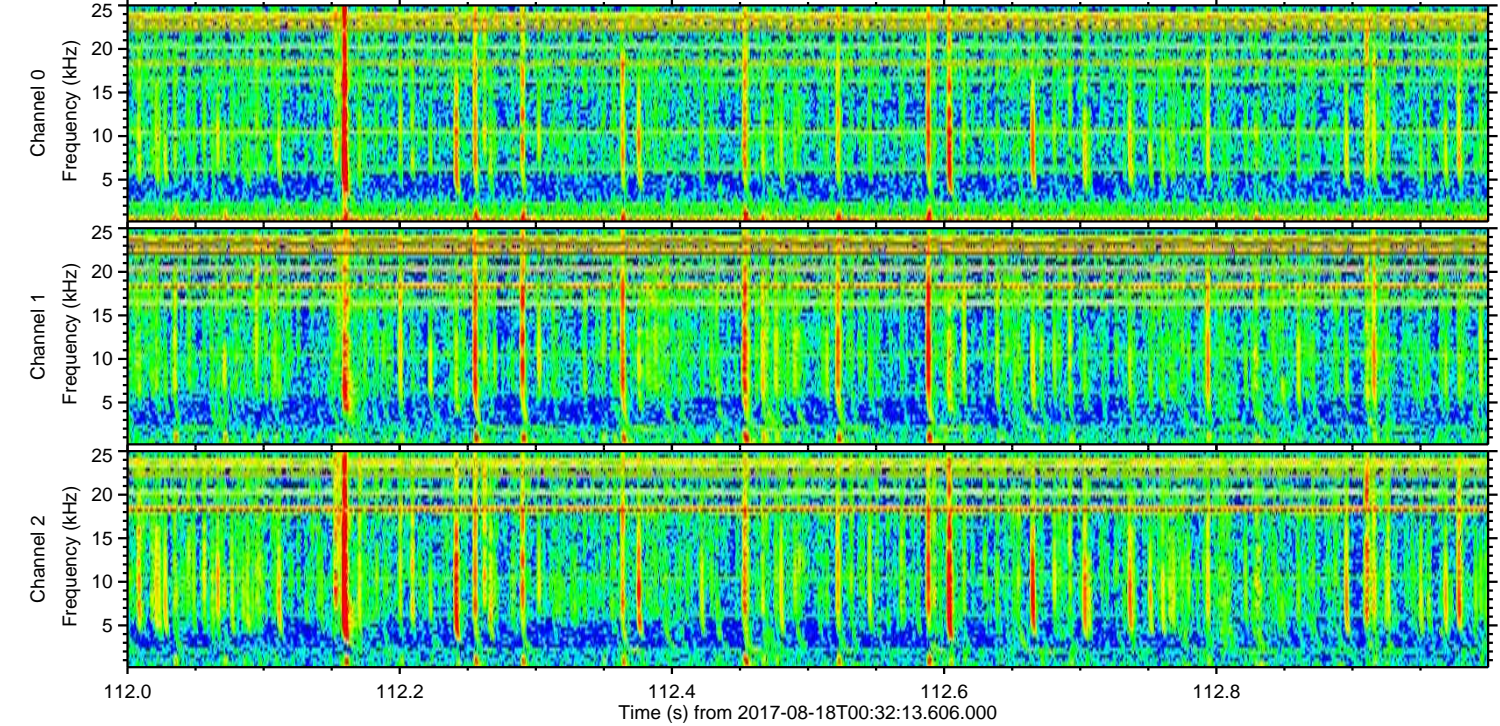
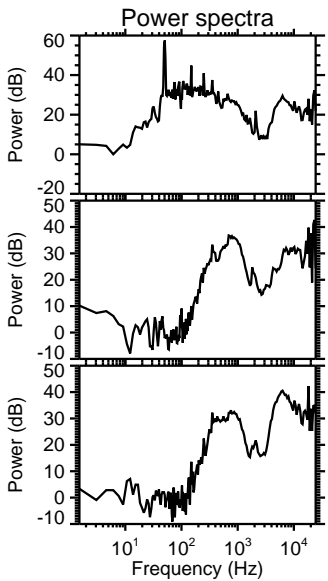
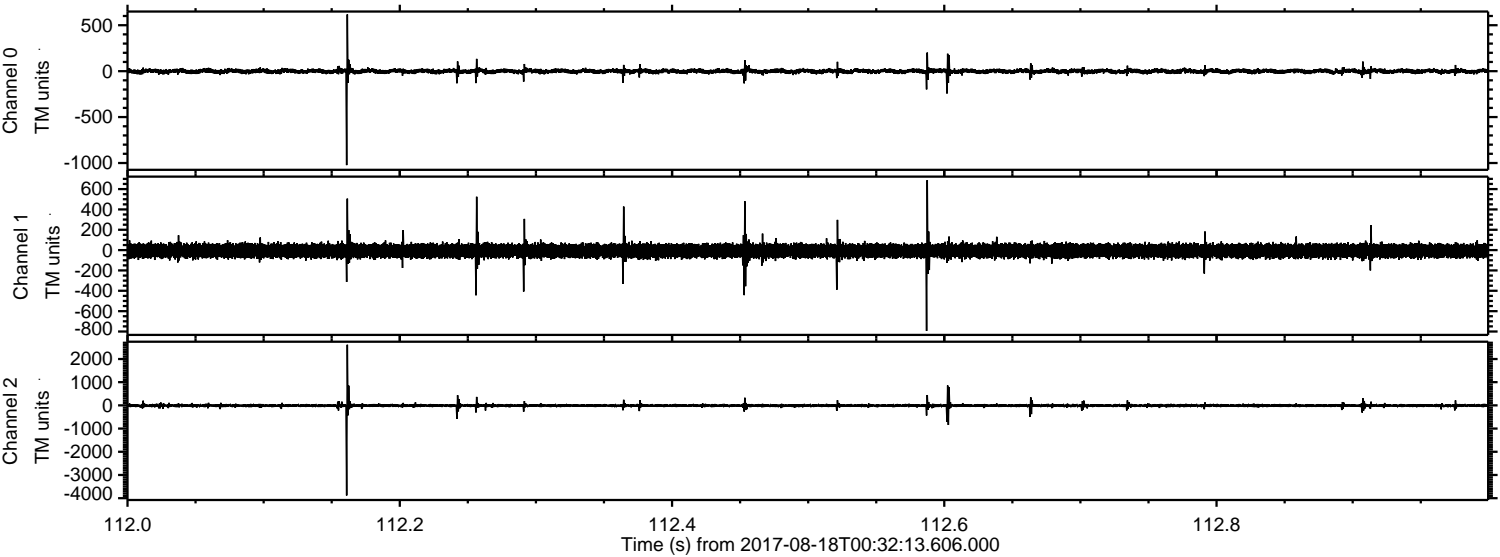
ELMAVAN 3D WAVEFORMS (Measured data sampled at 50 kHz) 51000 packets of 144 samples from 2017-08-18T00:32:13.606.000. Part 146/147

Processed Fri Aug 18 02:40:18 2017 by ELM ver.2012-10-06 from 001\_\_elm20170818\_003212\_\_dat00.bin



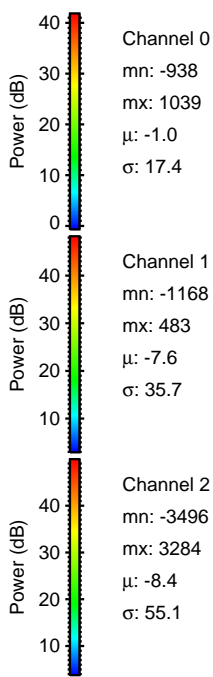
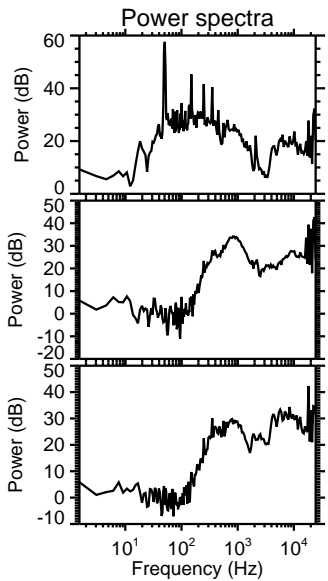
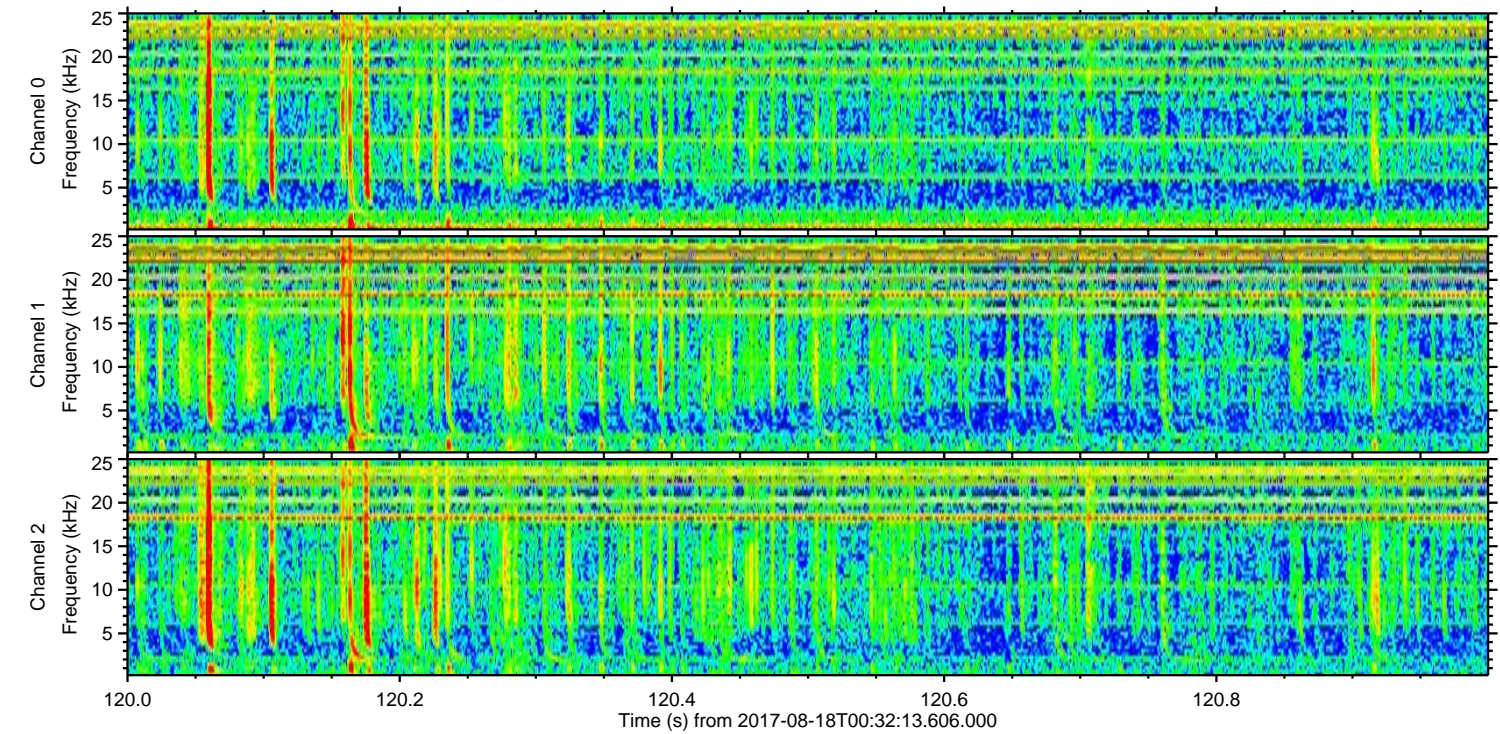
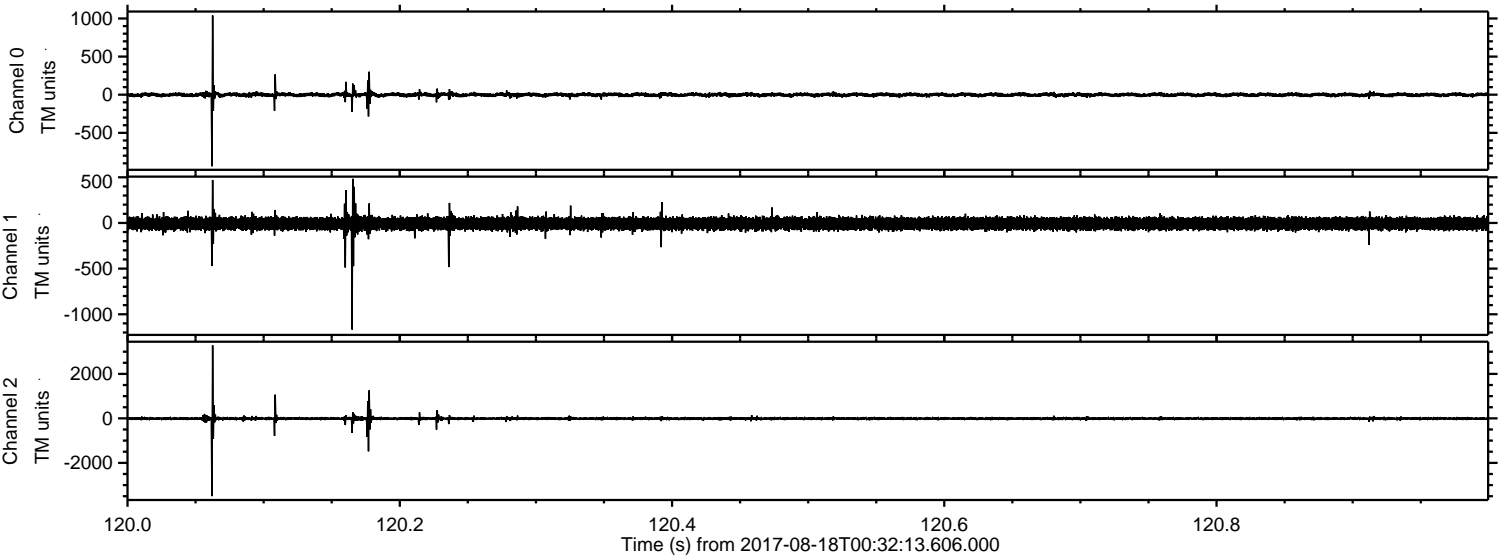
ELMAVAN 3D WAVEFORMS (Measured data sampled at 50 kHz) 51000 packets of 144 samples from 2017-08-18T00:32:13.606.000. Part 113/147

Processed Fri Aug 18 02:40:18 2017 by ELM ver.2012-10-06 from 001\_\_elm20170818\_003212\_\_dat00.bin

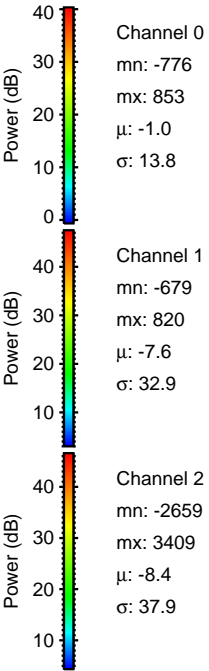
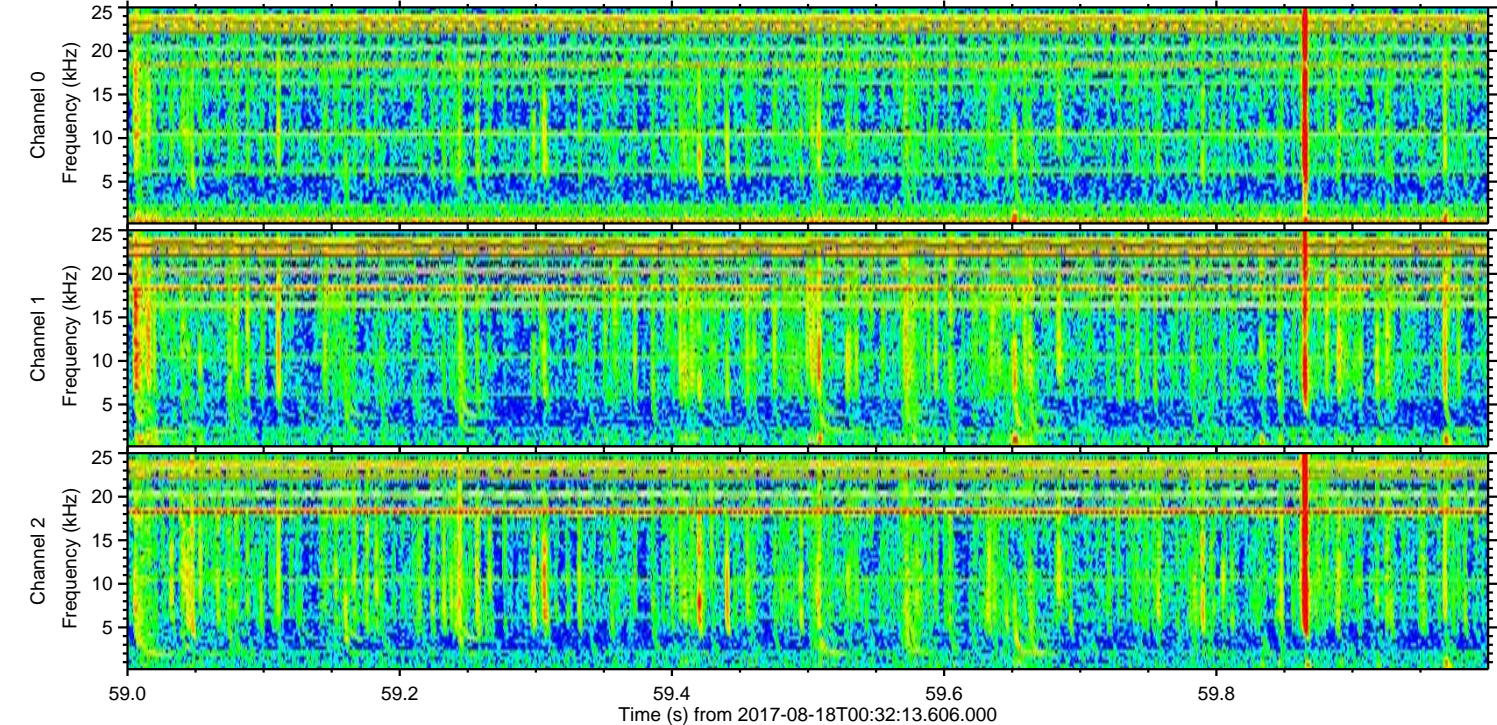
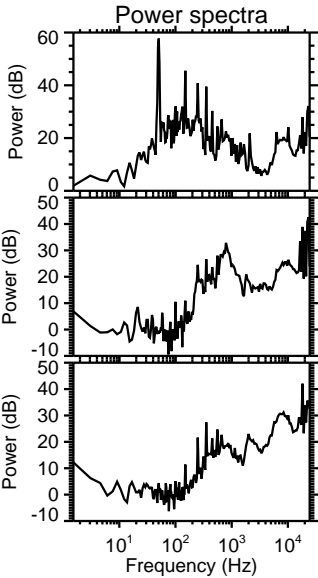
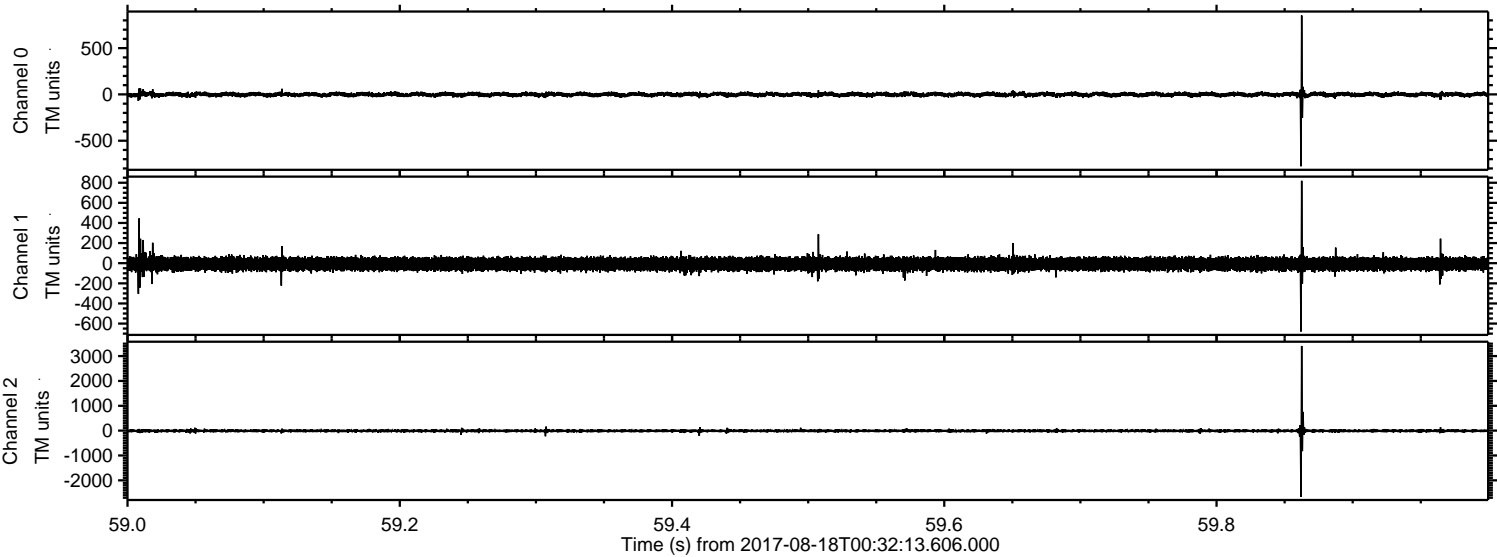


ELMAVAN 3D WAVEFORMS (Measured data sampled at 50 kHz) 51000 packets of 144 samples from 2017-08-18T00:32:13.606.000. Part 121/147

Processed Fri Aug 18 02:40:19 2017 by ELM ver.2012-10-06 from 001\_\_elm20170818\_003212\_\_dat00.bin



Processed Fri Aug 18 02:40:20 2017 by ELM ver.2012-10-06 from 001\_\_elm20170818\_003212\_\_dat00.bin



Processed Fri Aug 18 02:40:20 2017 by ELM ver.2012-10-06 from 001\_\_elm20170818\_003212\_\_dat00.bin

