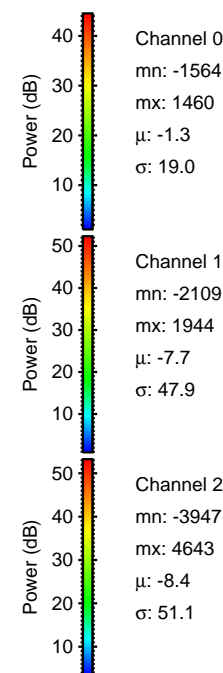
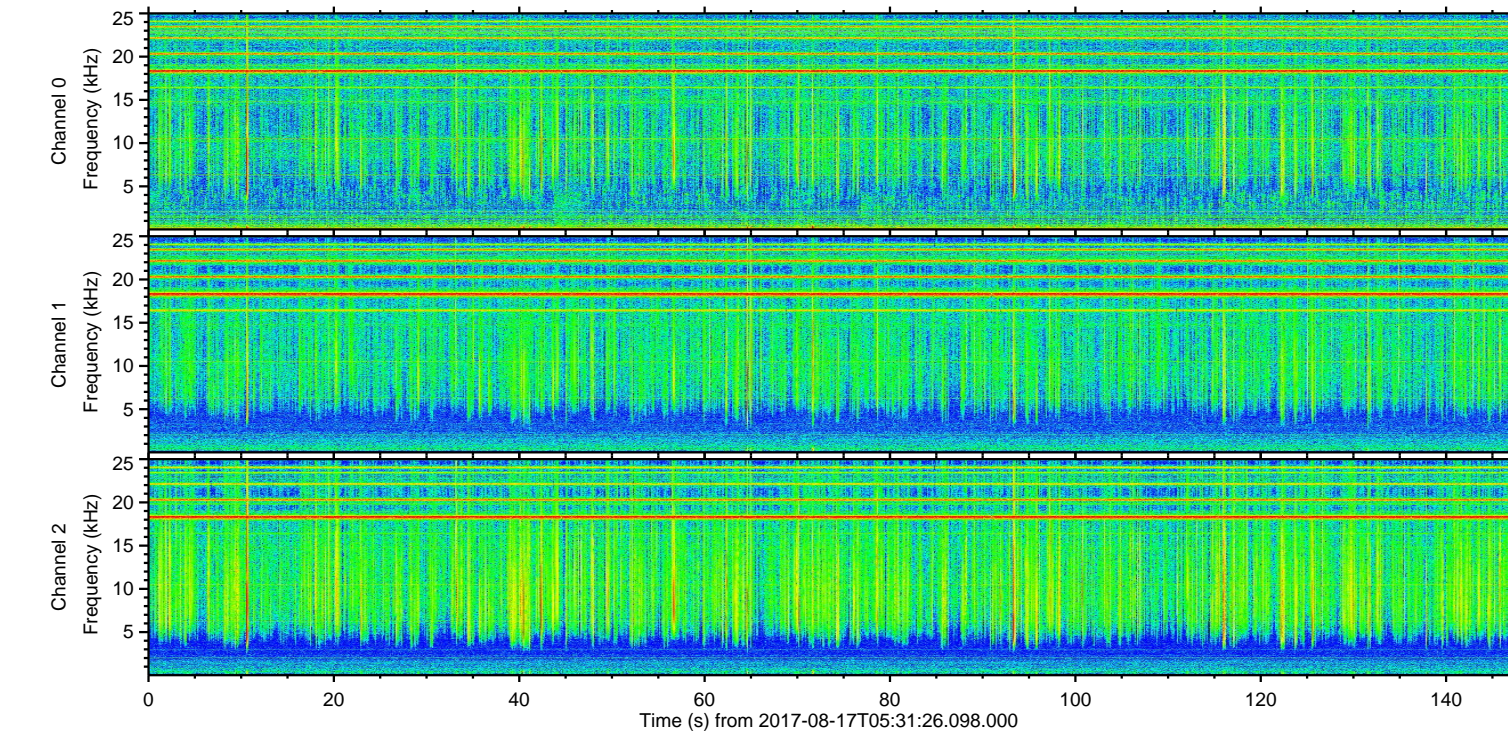
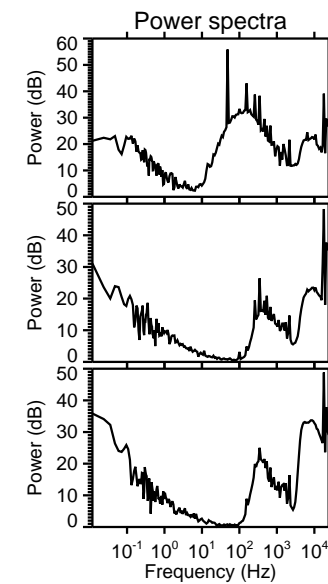
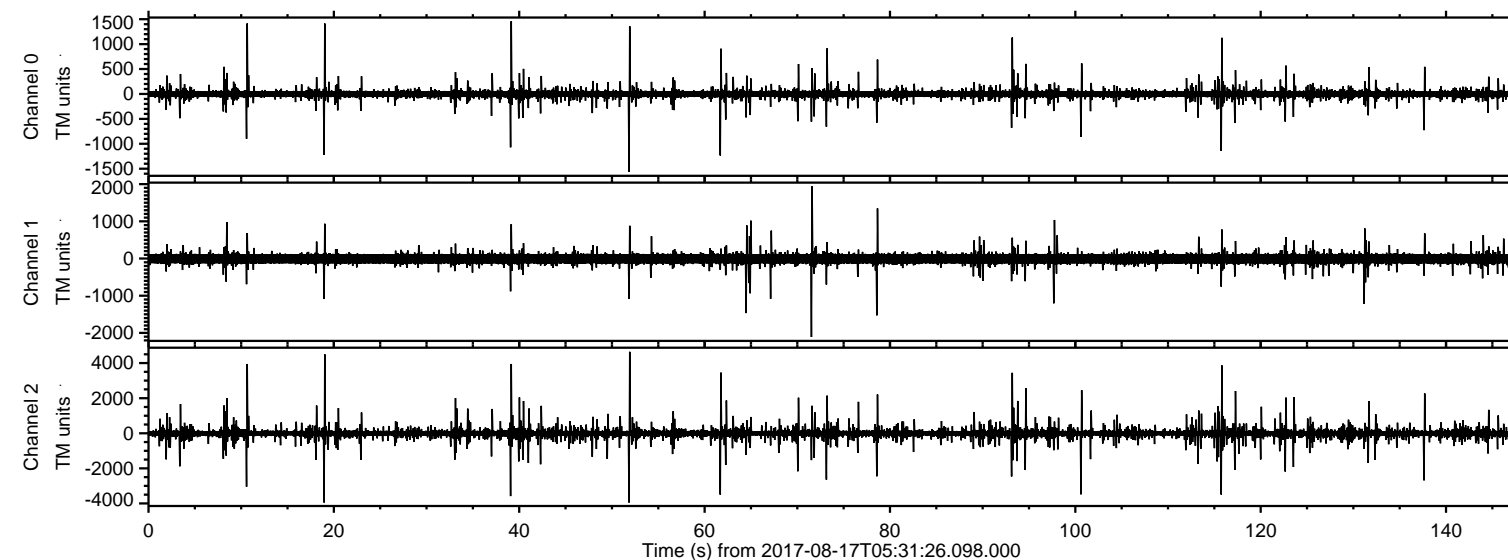


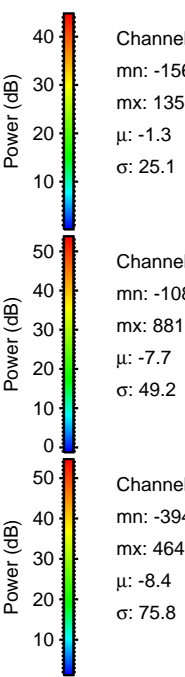
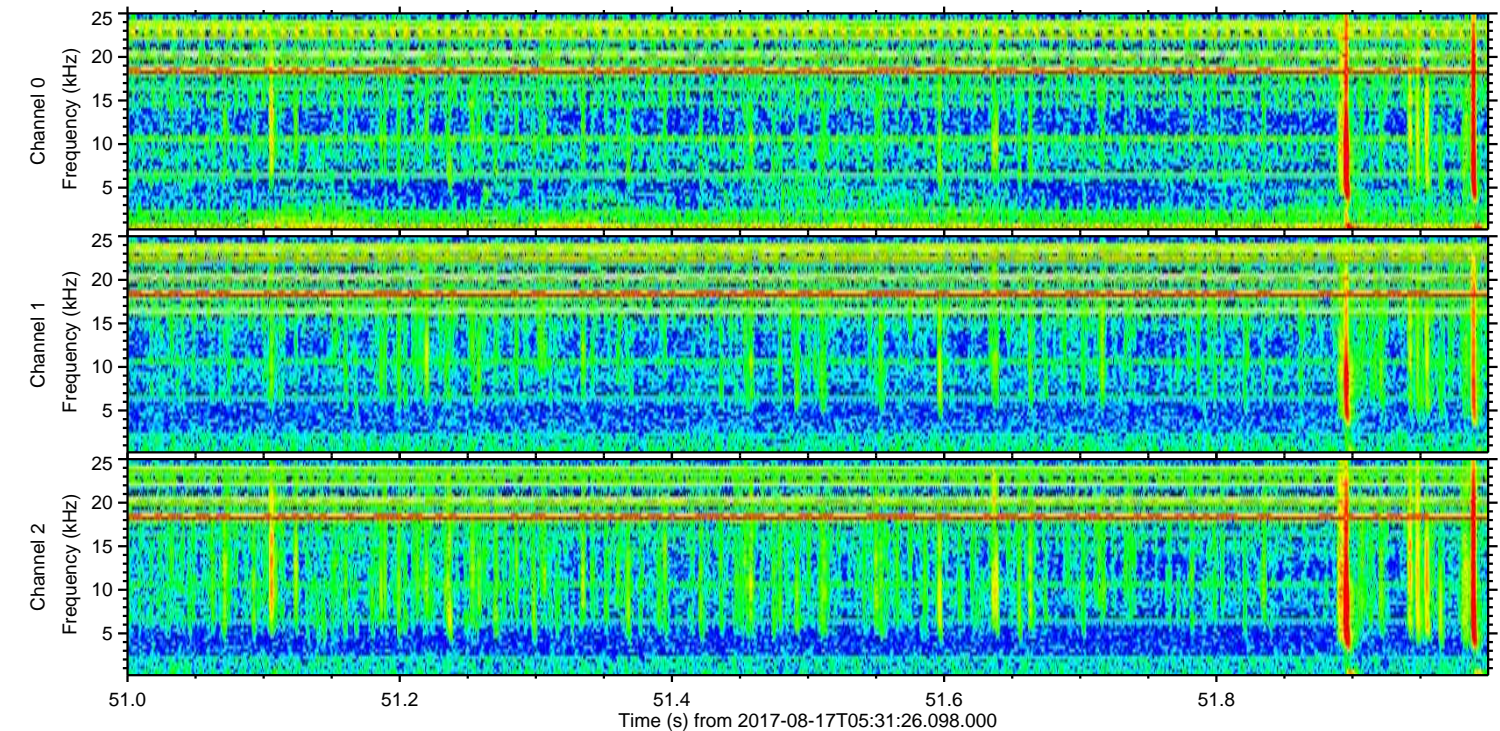
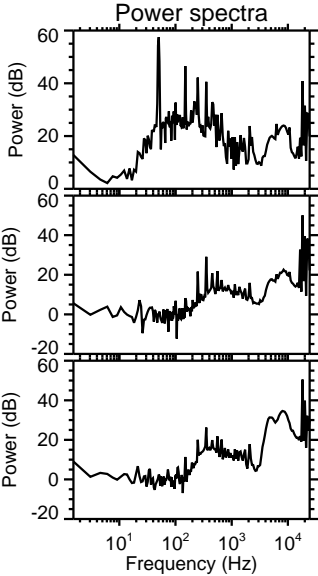
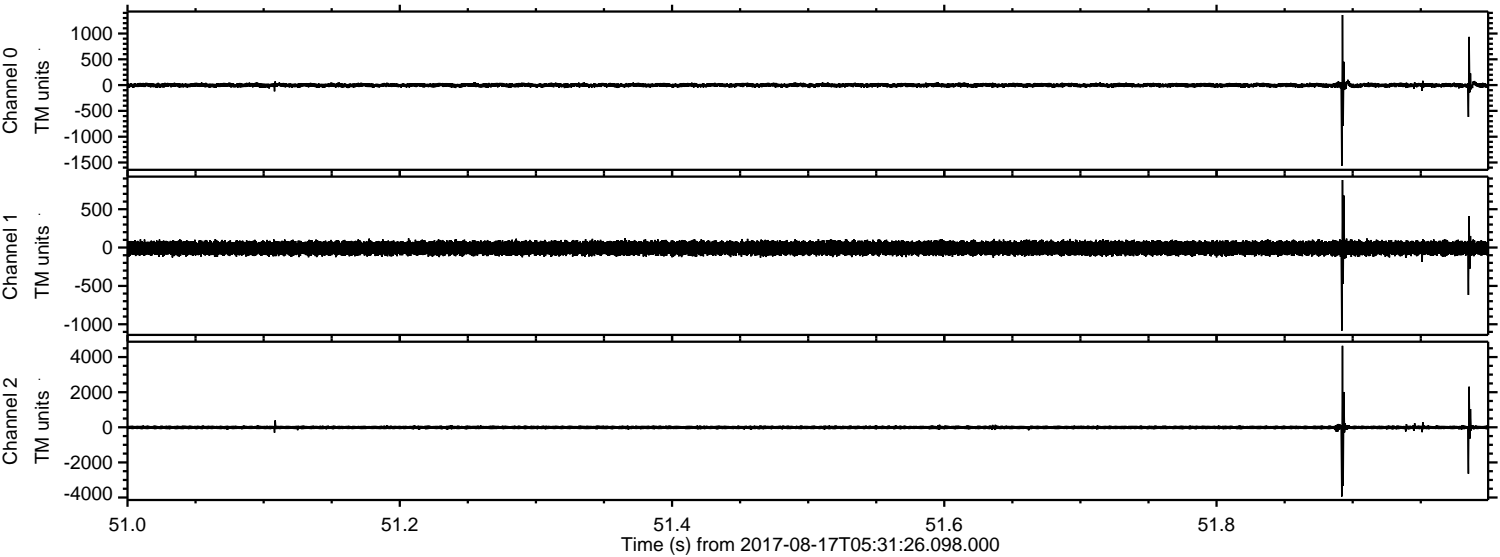
ELMAVAN 3D WAVEFORMS (Measured data sampled at 50 kHz) 51000 packets of 144 samples from 2017-08-17T05:31:26.098.000.

Processed Thu Aug 17 07:39:12 2017 by ELM ver.2012-10-06 from 001__elm20170817_053125__dat00.bin



ELMAVAN 3D WAVEFORMS (Measured data sampled at 50 kHz) 51000 packets of 144 samples from 2017-08-17T05:31:26.098.000. Part 52/147

Processed Thu Aug 17 07:39:20 2017 by ELM ver.2012-10-06 from 001__elm20170817_053125__dat00.bin



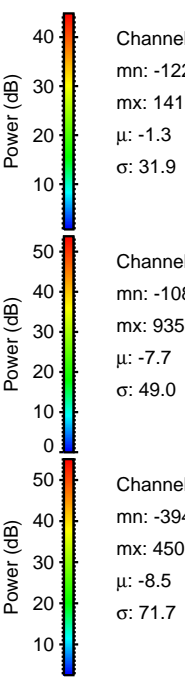
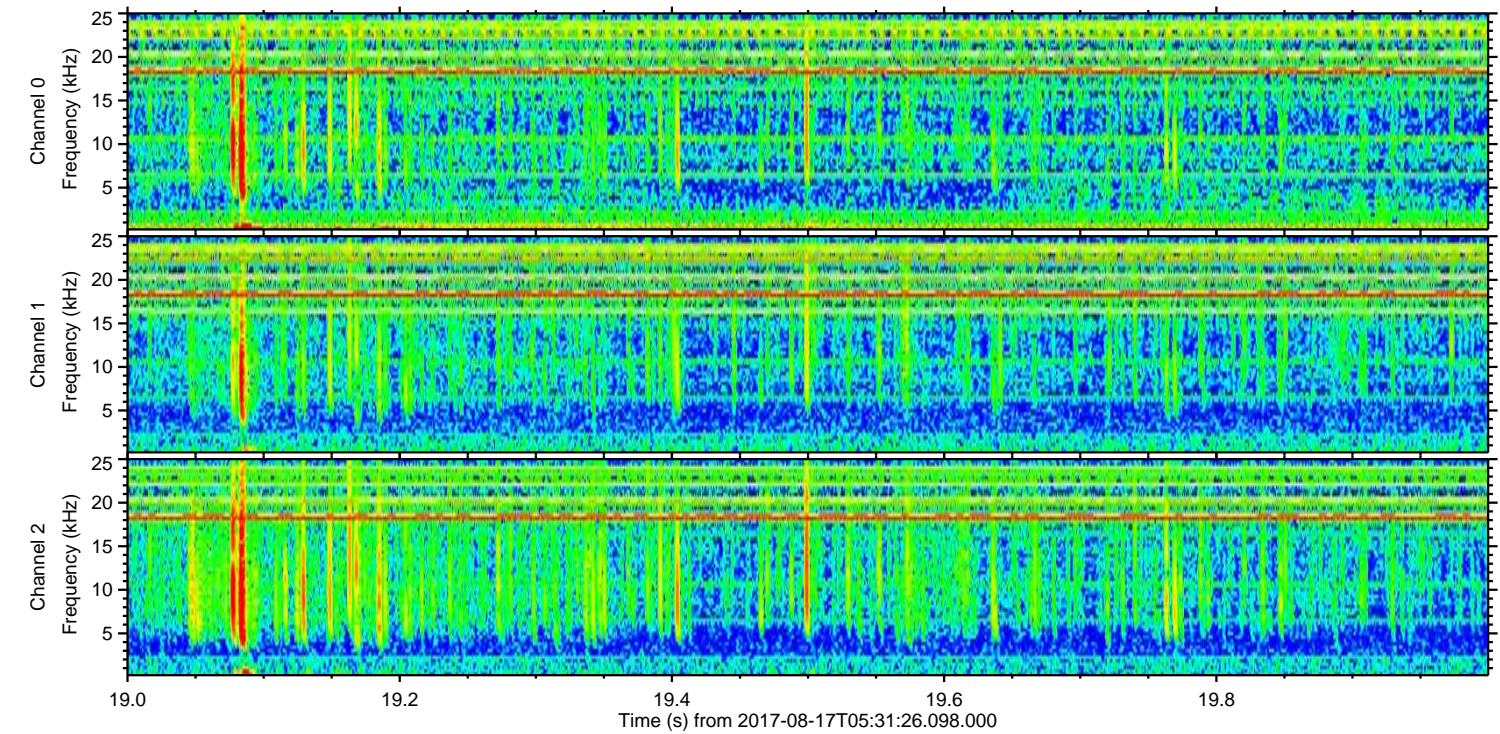
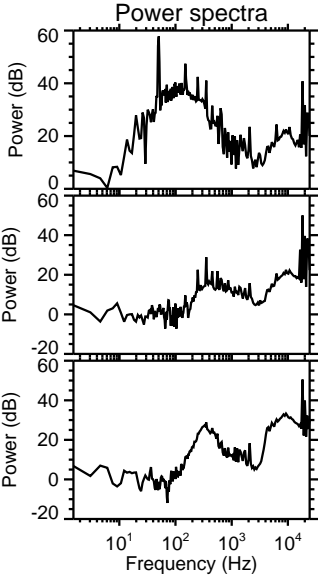
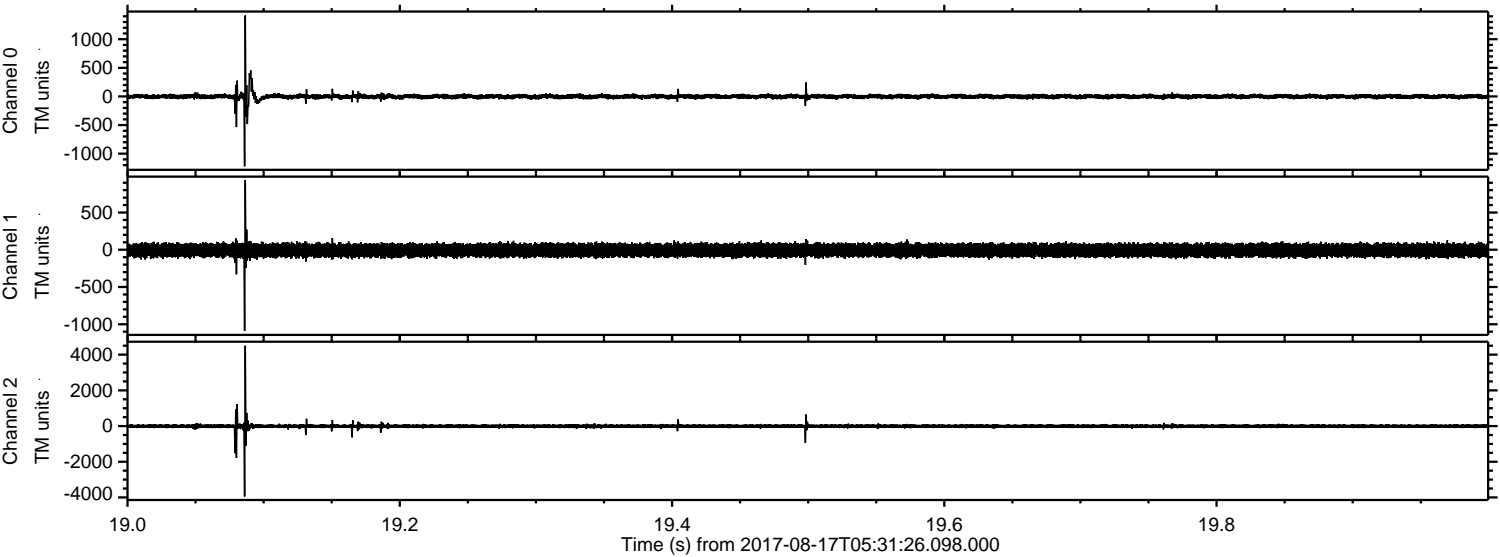
Channel 0
mn: -1564
mx: 1358
 μ : -1.3
 σ : 25.1

Channel 1
mn: -1085
mx: 881
 μ : -7.7
 σ : 49.2

Channel 2
mn: -3945
mx: 4643
 μ : -8.4
 σ : 75.8

ELMAVAN 3D WAVEFORMS (Measured data sampled at 50 kHz) 51000 packets of 144 samples from 2017-08-17T05:31:26.098.000. Part 20/147

Processed Thu Aug 17 07:39:21 2017 by ELM ver.2012-10-06 from 001__elm20170817_053125__dat00.bin



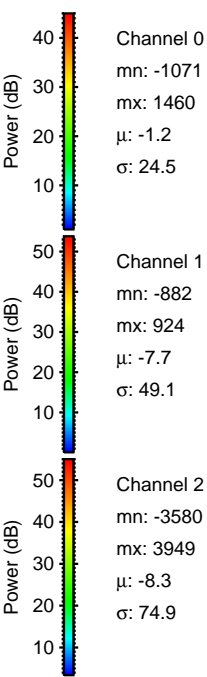
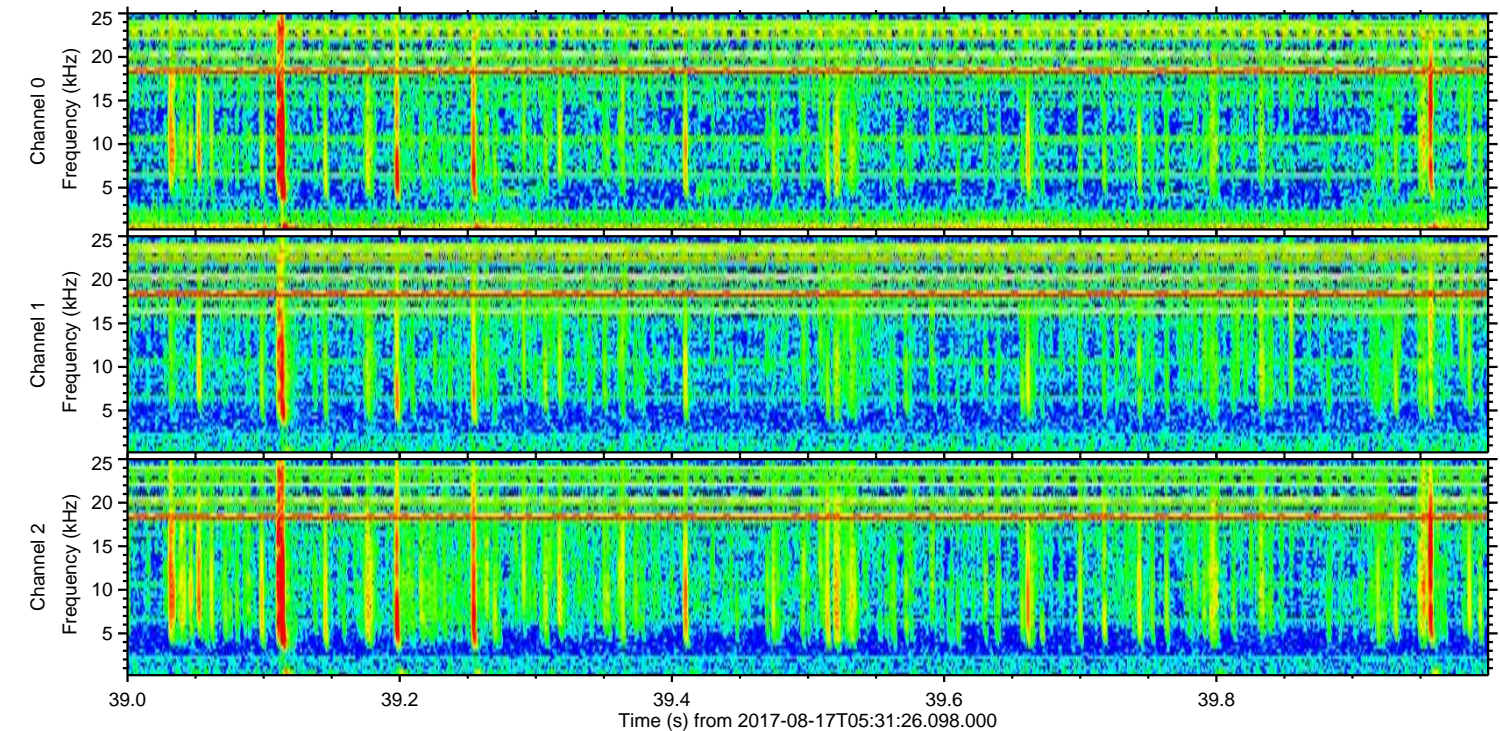
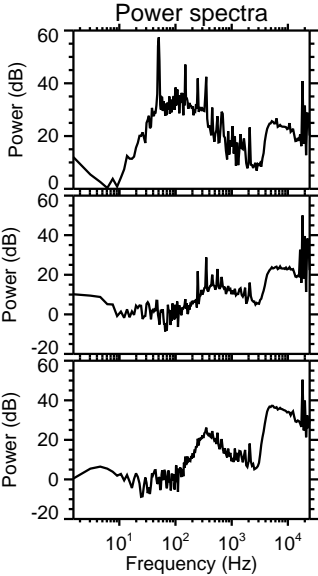
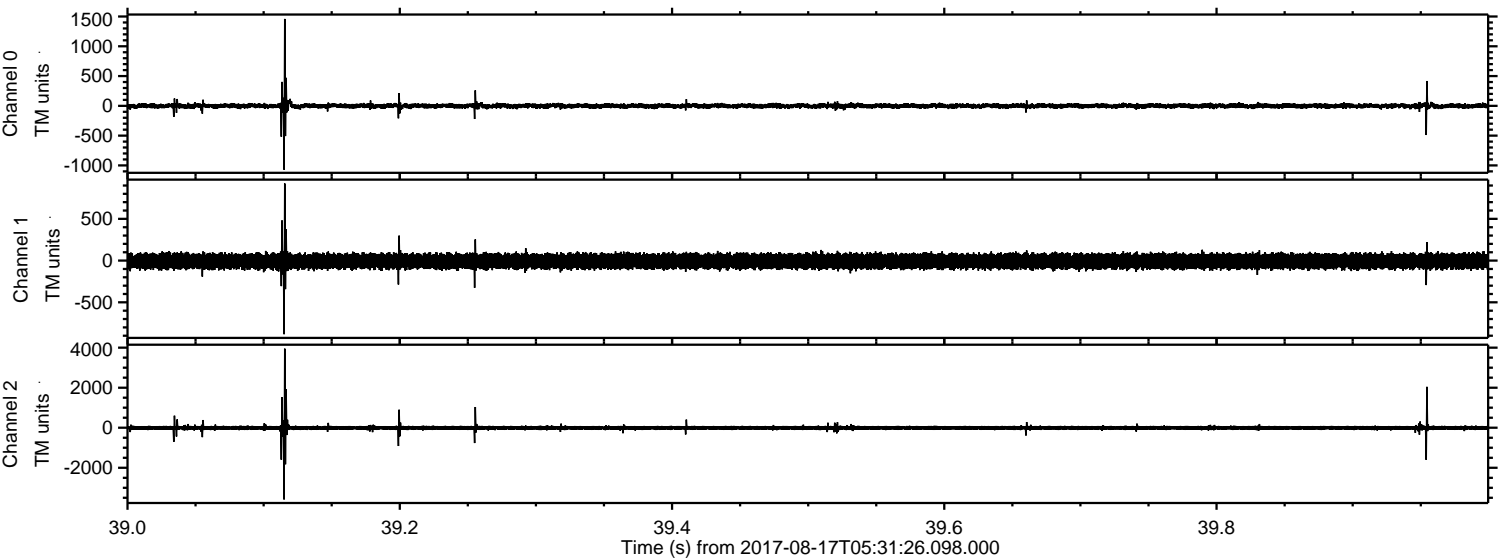
Channel 0
mn: -1221
mx: 1413
 μ : -1.3
 σ : 31.9

Channel 1
mn: -1089
mx: 935
 μ : -7.7
 σ : 49.0

Channel 2
mn: -3947
mx: 4501
 μ : -8.5
 σ : 71.7

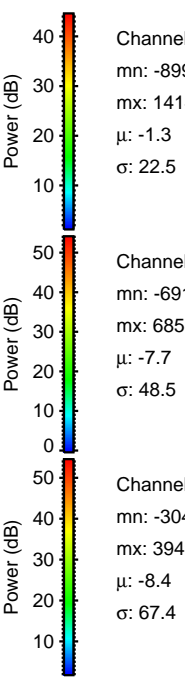
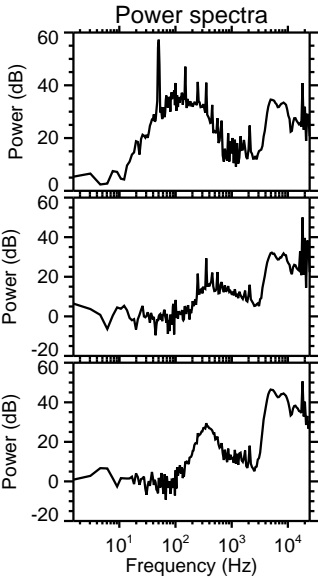
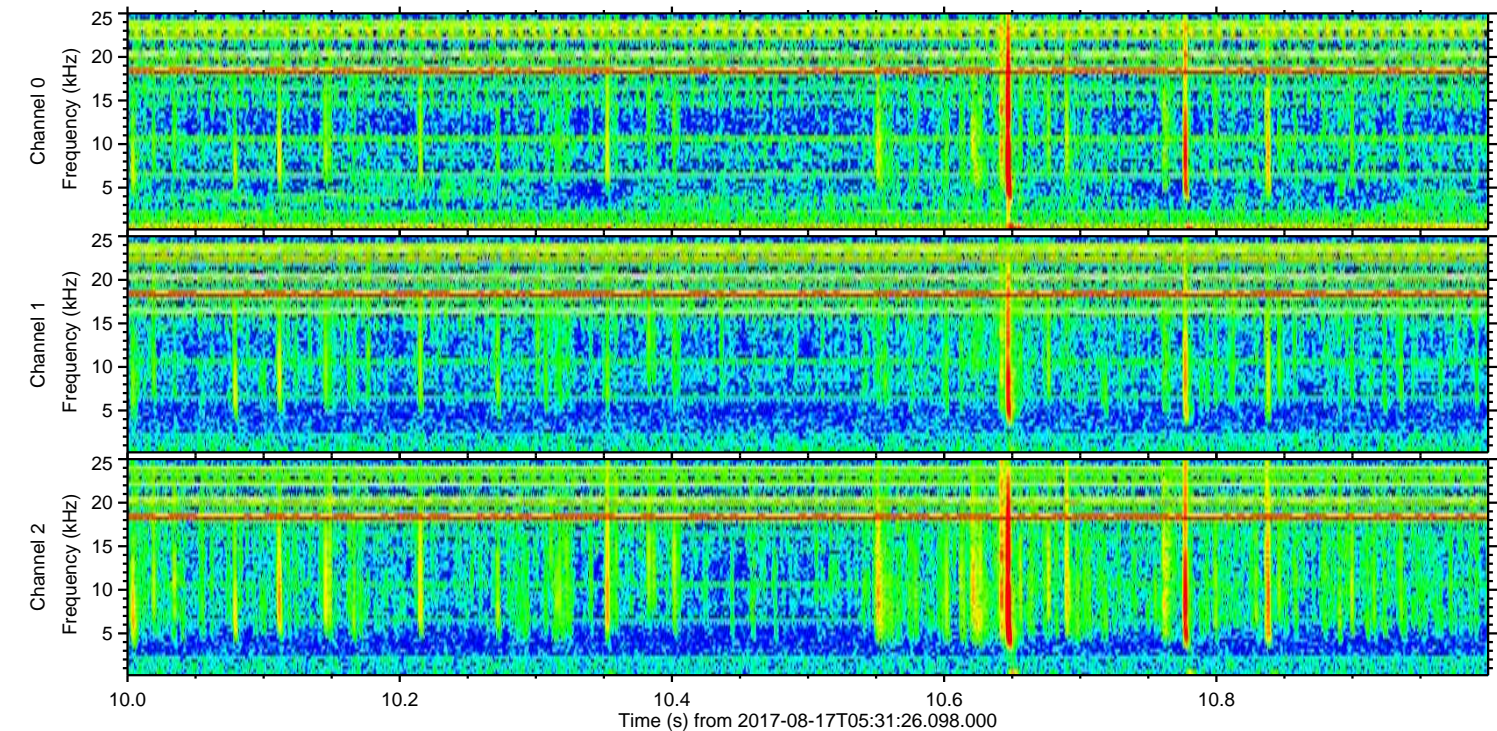
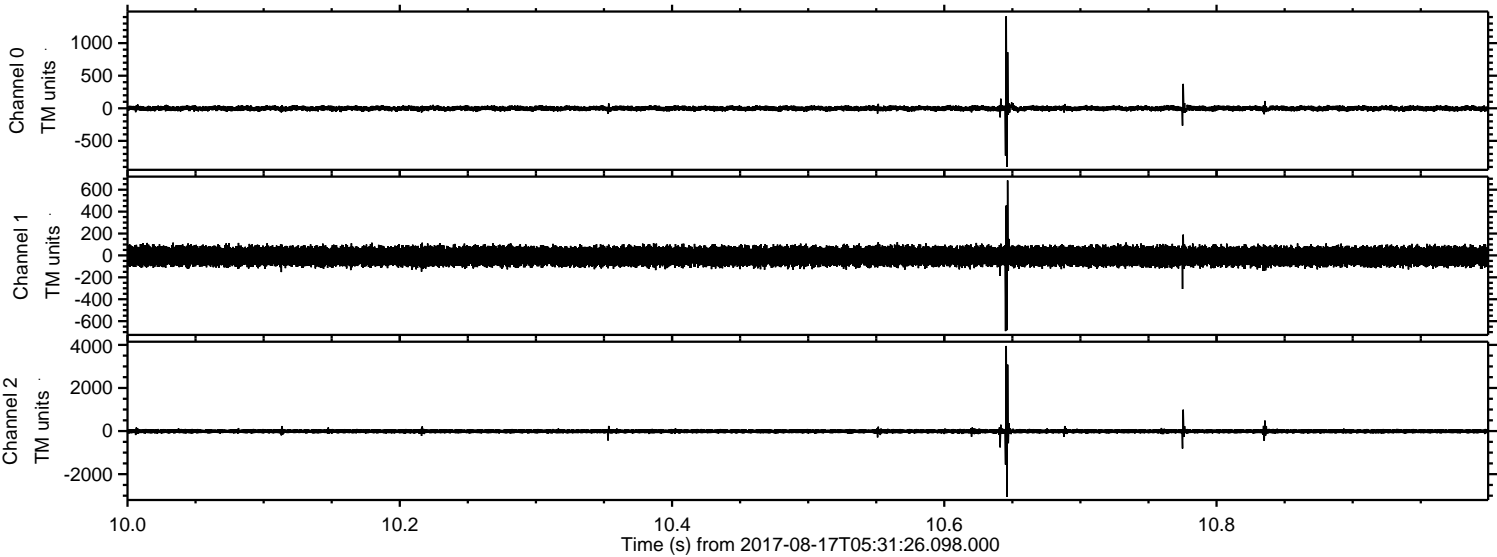
ELMAVAN 3D WAVEFORMS (Measured data sampled at 50 kHz) 51000 packets of 144 samples from 2017-08-17T05:31:26.098.000. Part 40/147

Processed Thu Aug 17 07:39:22 2017 by ELM ver.2012-10-06 from 001__elm20170817_053125__dat00.bin



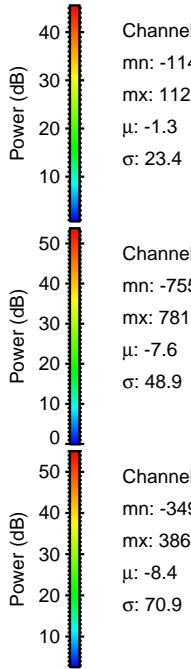
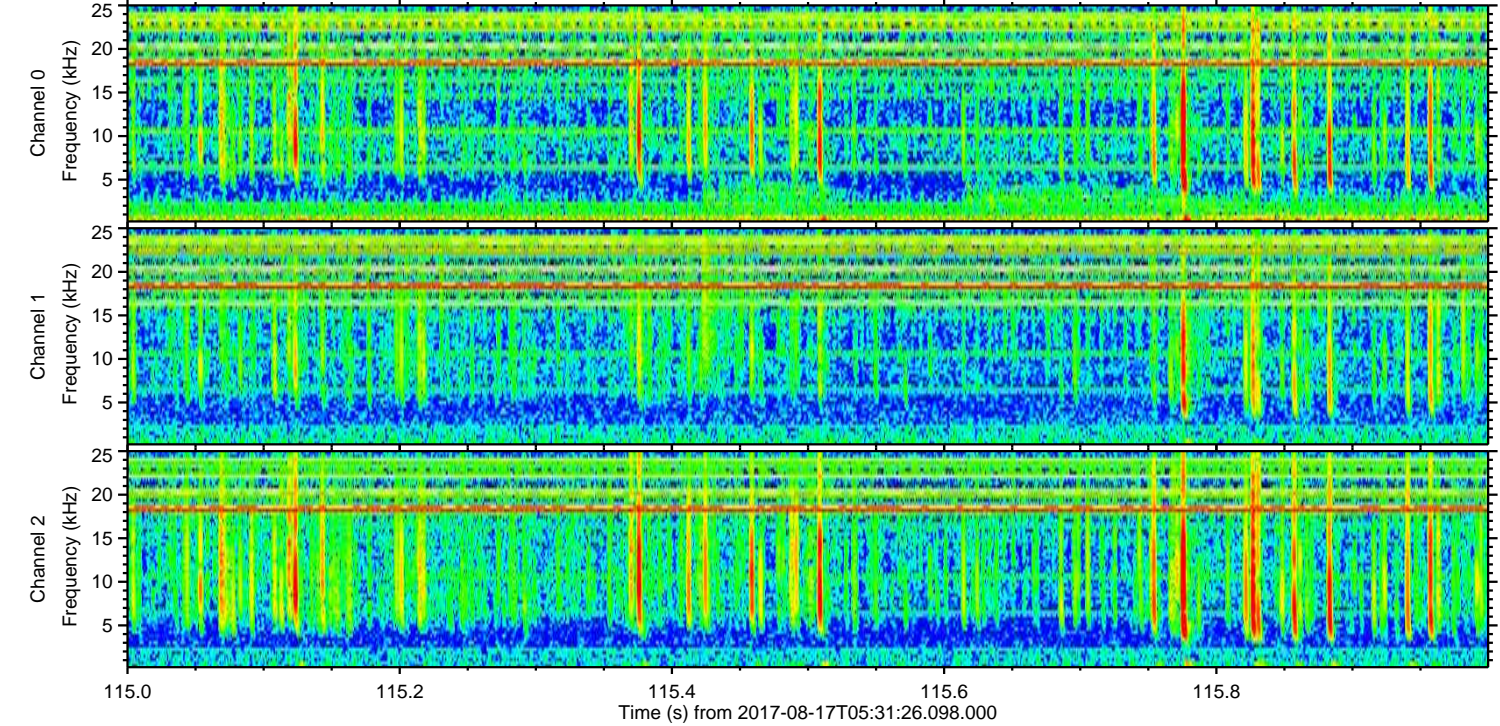
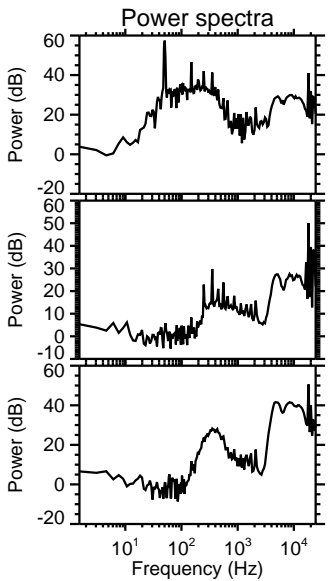
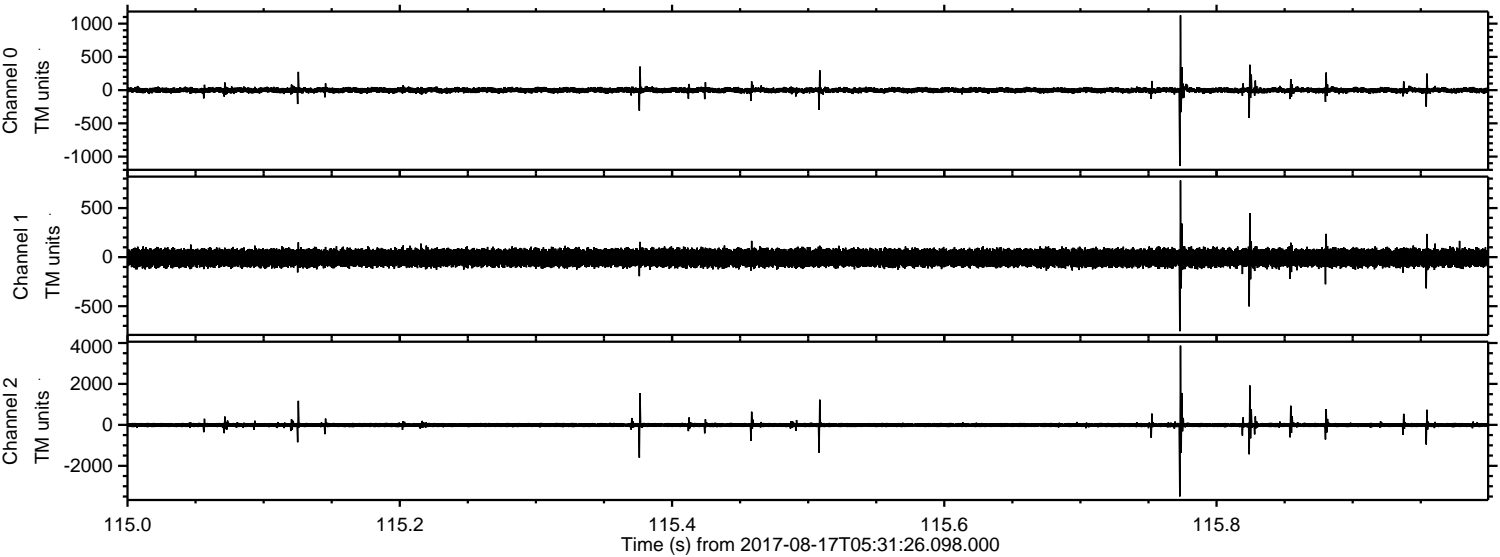
ELMAVAN 3D WAVEFORMS (Measured data sampled at 50 kHz) 51000 packets of 144 samples from 2017-08-17T05:31:26.098.000. Part 11/147

Processed Thu Aug 17 07:39:23 2017 by ELM ver.2012-10-06 from 001__elm20170817_053125__dat00.bin

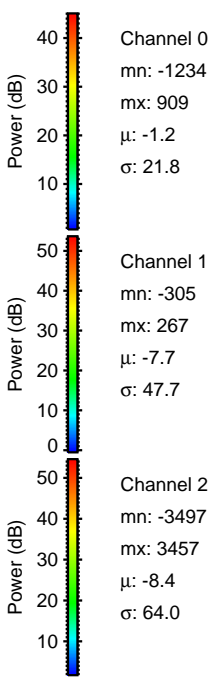
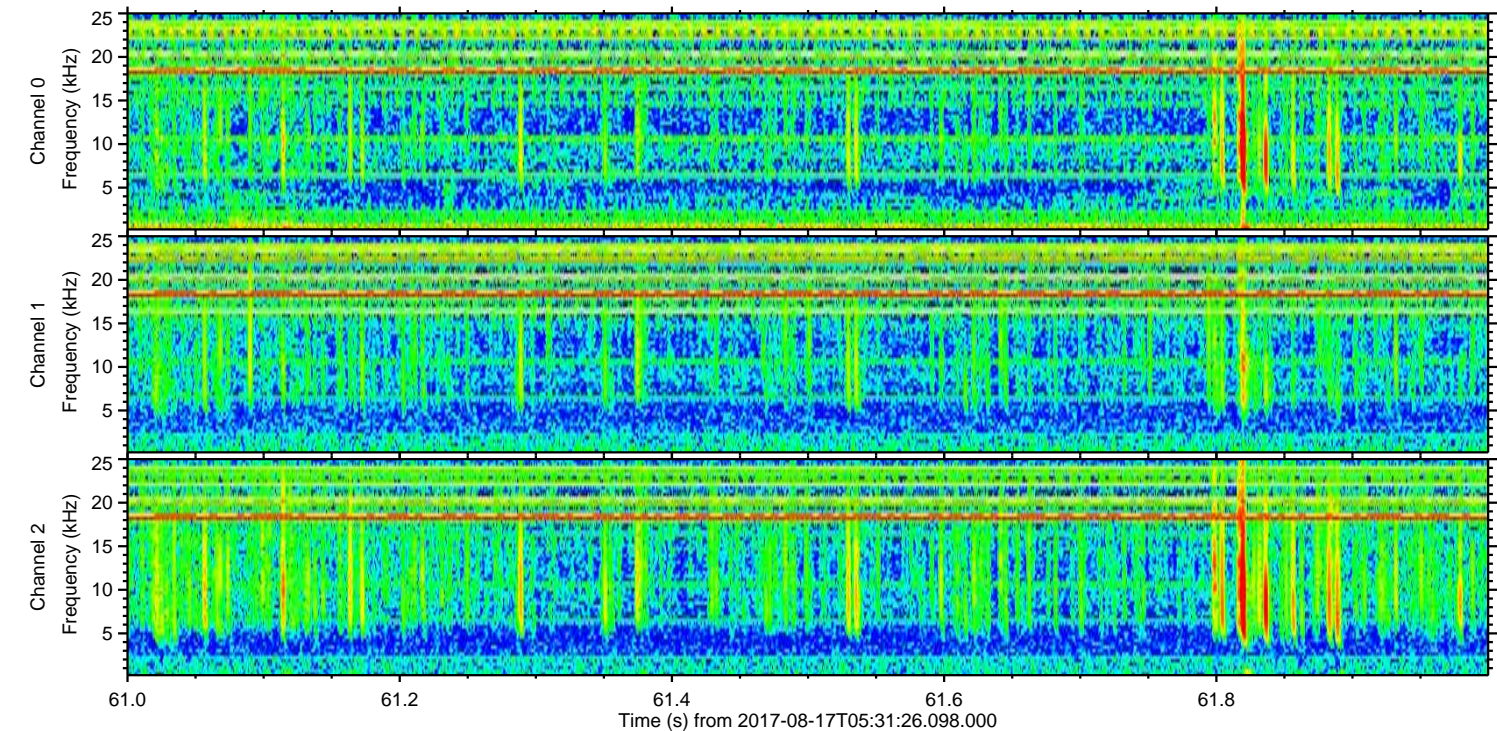
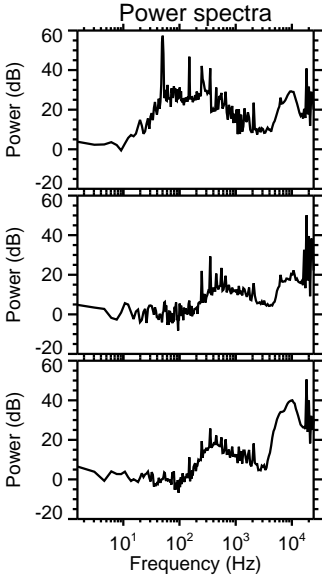
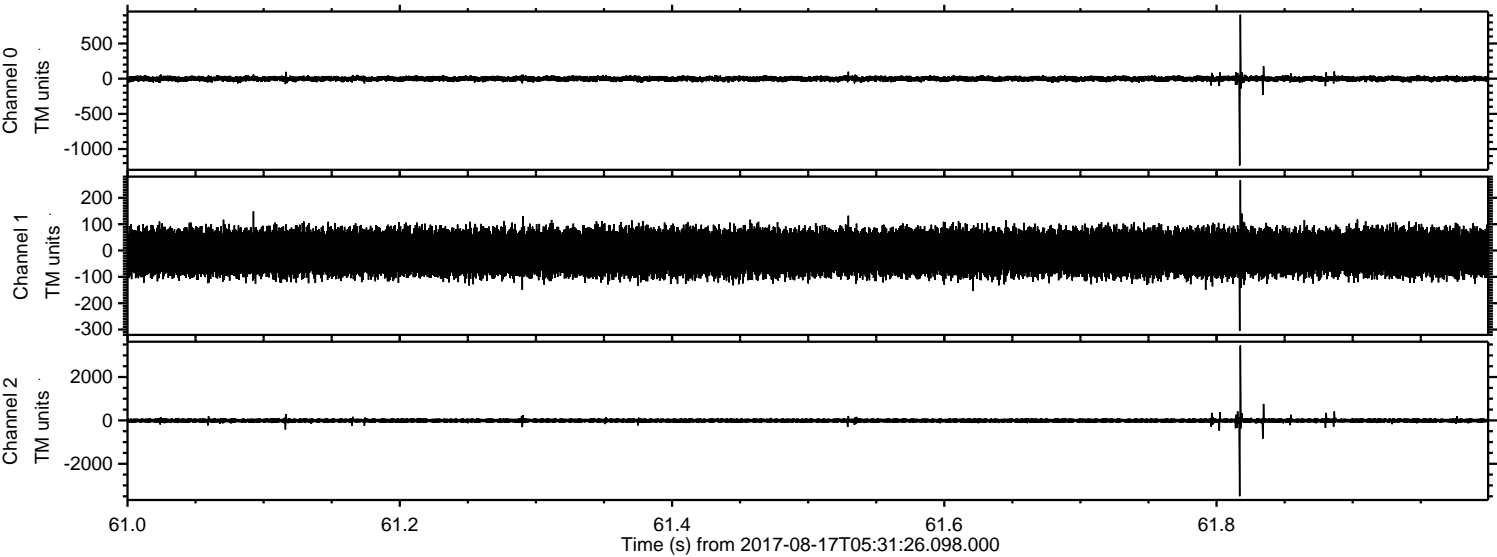


ELMAVAN 3D WAVEFORMS (Measured data sampled at 50 kHz) 51000 packets of 144 samples from 2017-08-17T05:31:26.098.000. Part 116/147

Processed Thu Aug 17 07:39:23 2017 by ELM ver.2012-10-06 from 001__elm20170817_053125__dat00.bin

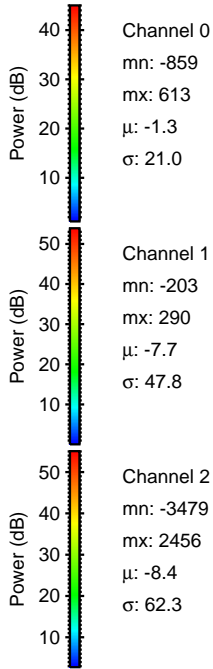
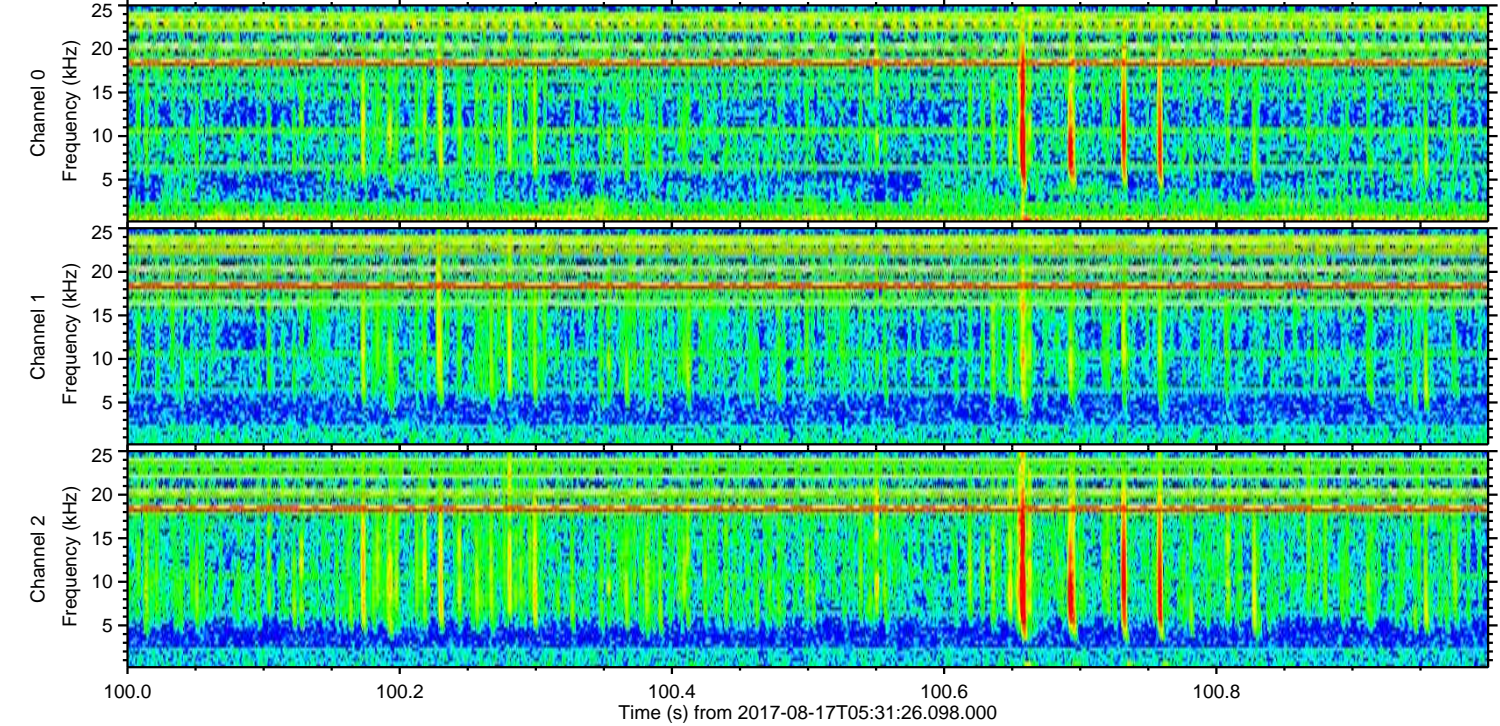
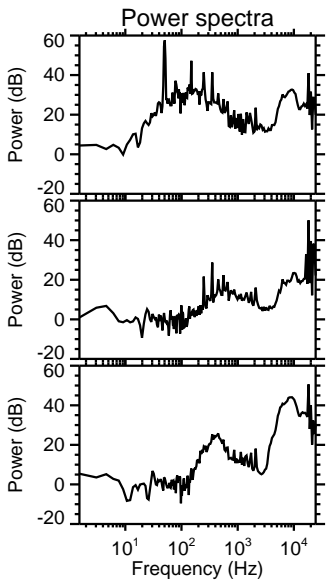
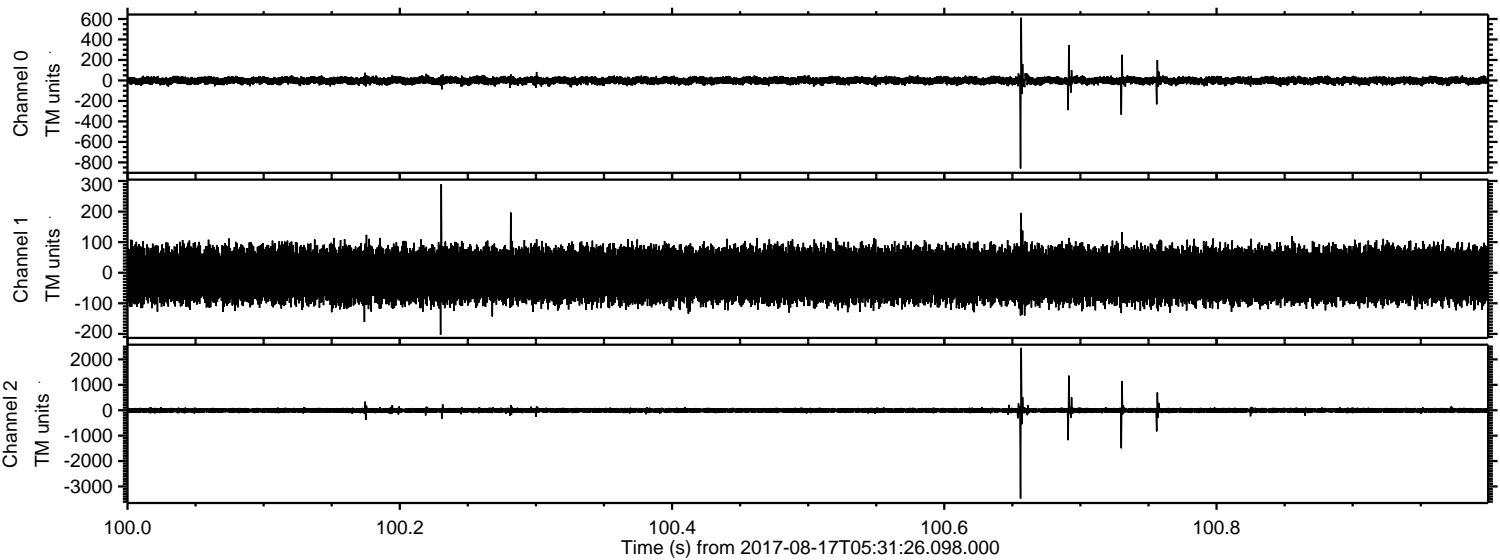


Processed Thu Aug 17 07:39:24 2017 by ELM ver.2012-10-06 from 001__elm20170817_053125__dat00.bin

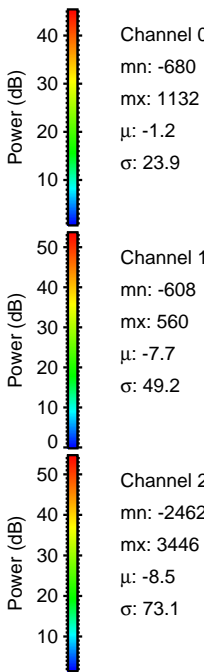
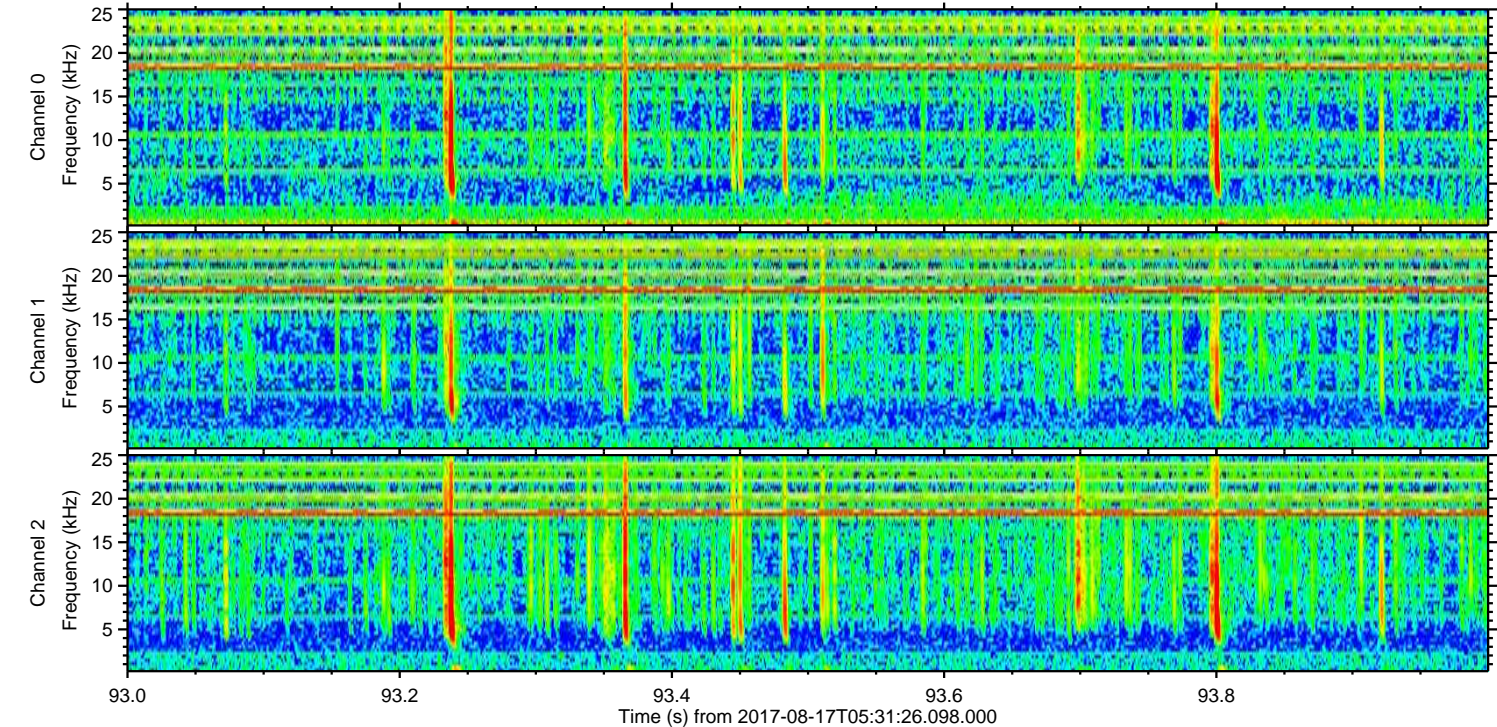
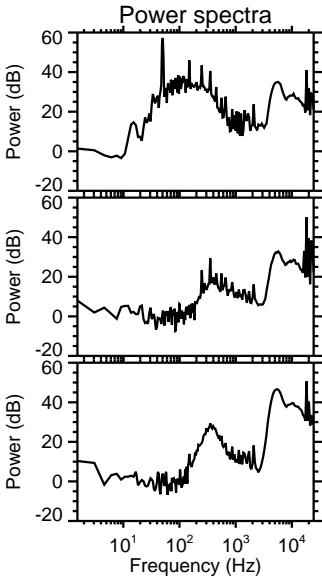
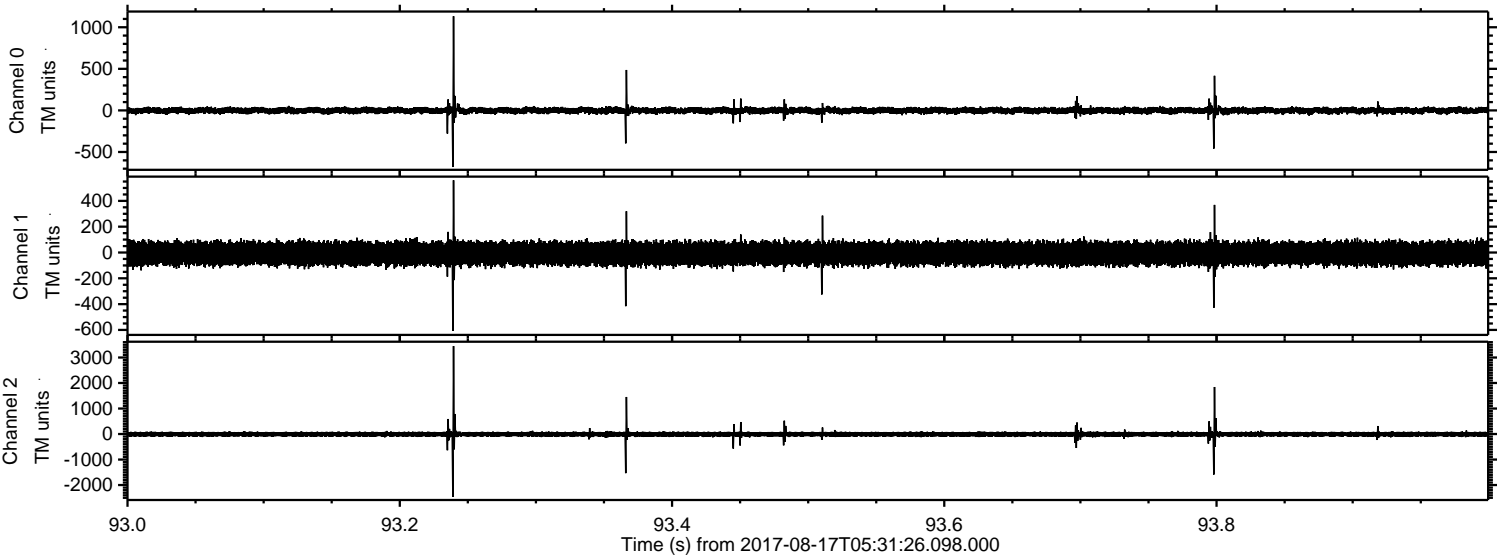


ELMAVAN 3D WAVEFORMS (Measured data sampled at 50 kHz) 51000 packets of 144 samples from 2017-08-17T05:31:26.098.000. Part 101/147

Processed Thu Aug 17 07:39:25 2017 by ELM ver.2012-10-06 from 001__elm20170817_053125__dat00.bin

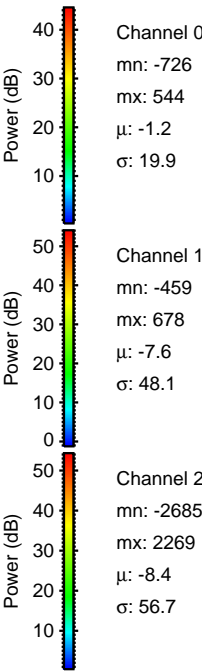
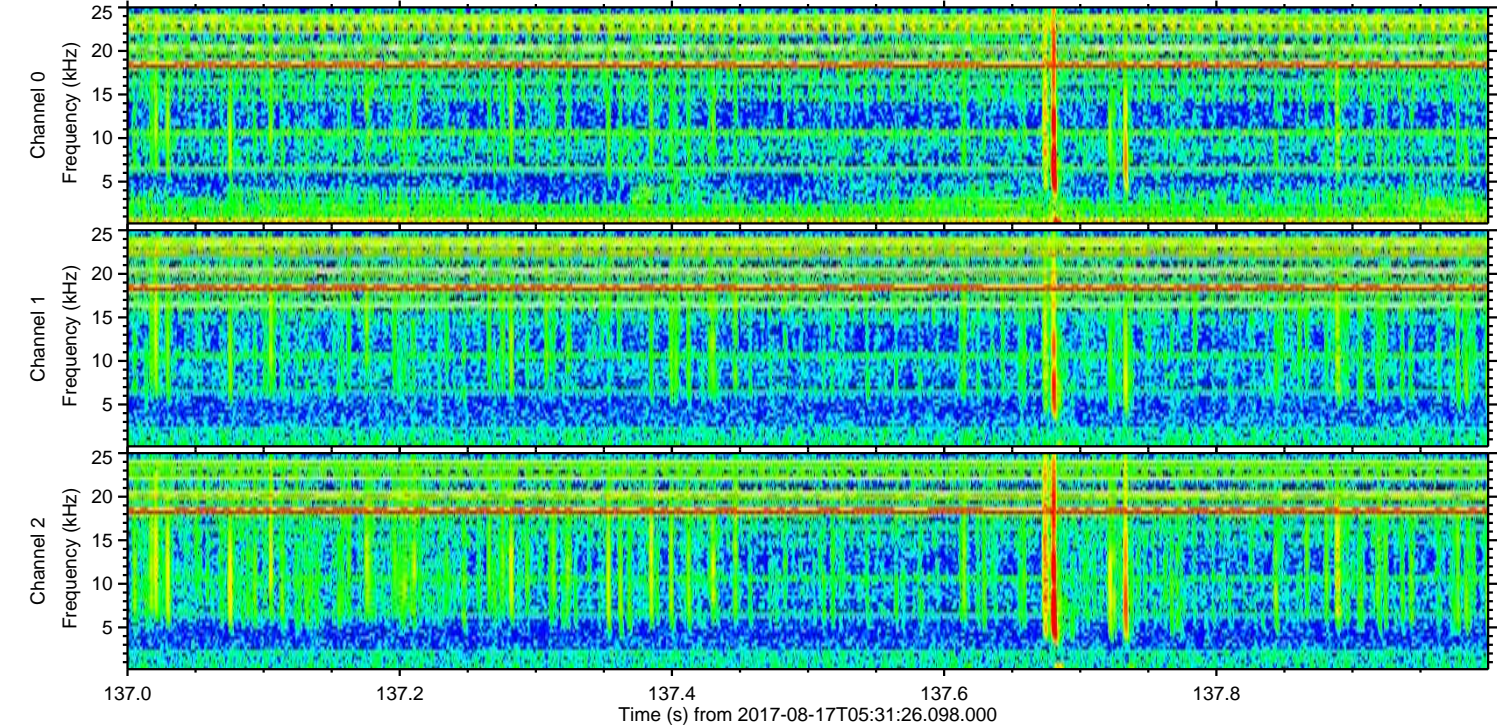
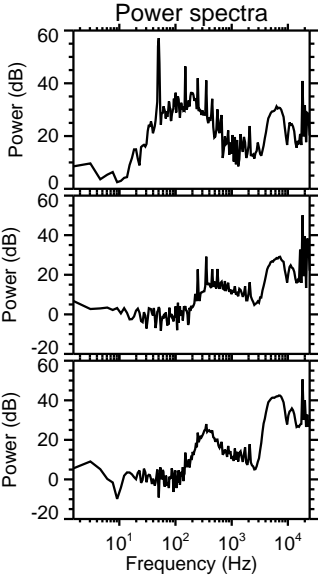
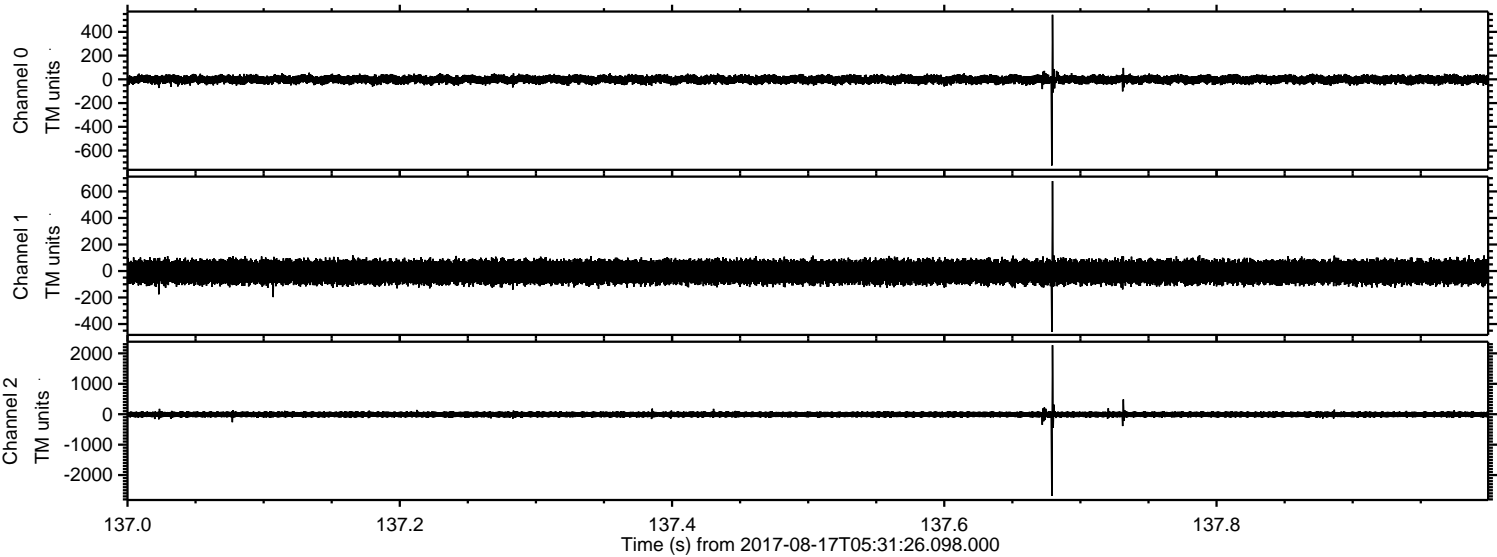


Processed Thu Aug 17 07:39:26 2017 by ELM ver.2012-10-06 from 001__elm20170817_053125__dat00.bin



ELMAVAN 3D WAVEFORMS (Measured data sampled at 50 kHz) 51000 packets of 144 samples from 2017-08-17T05:31:26.098.000. Part 138/147

Processed Thu Aug 17 07:39:26 2017 by ELM ver.2012-10-06 from 001__elm20170817_053125__dat00.bin



Channel 0
mn: -726
mx: 544
 μ : -1.2
 σ : 19.9

Channel 1
mn: -459
mx: 678
 μ : -7.6
 σ : 48.1

Channel 2
mn: -2685
mx: 2269
 μ : -8.4
 σ : 56.7

Processed Thu Aug 17 07:39:27 2017 by ELM ver.2012-10-06 from 001__elm20170817_053125__dat00.bin

