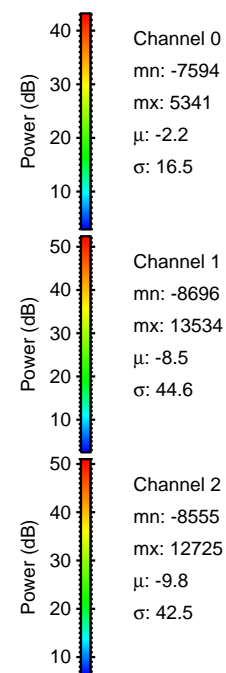
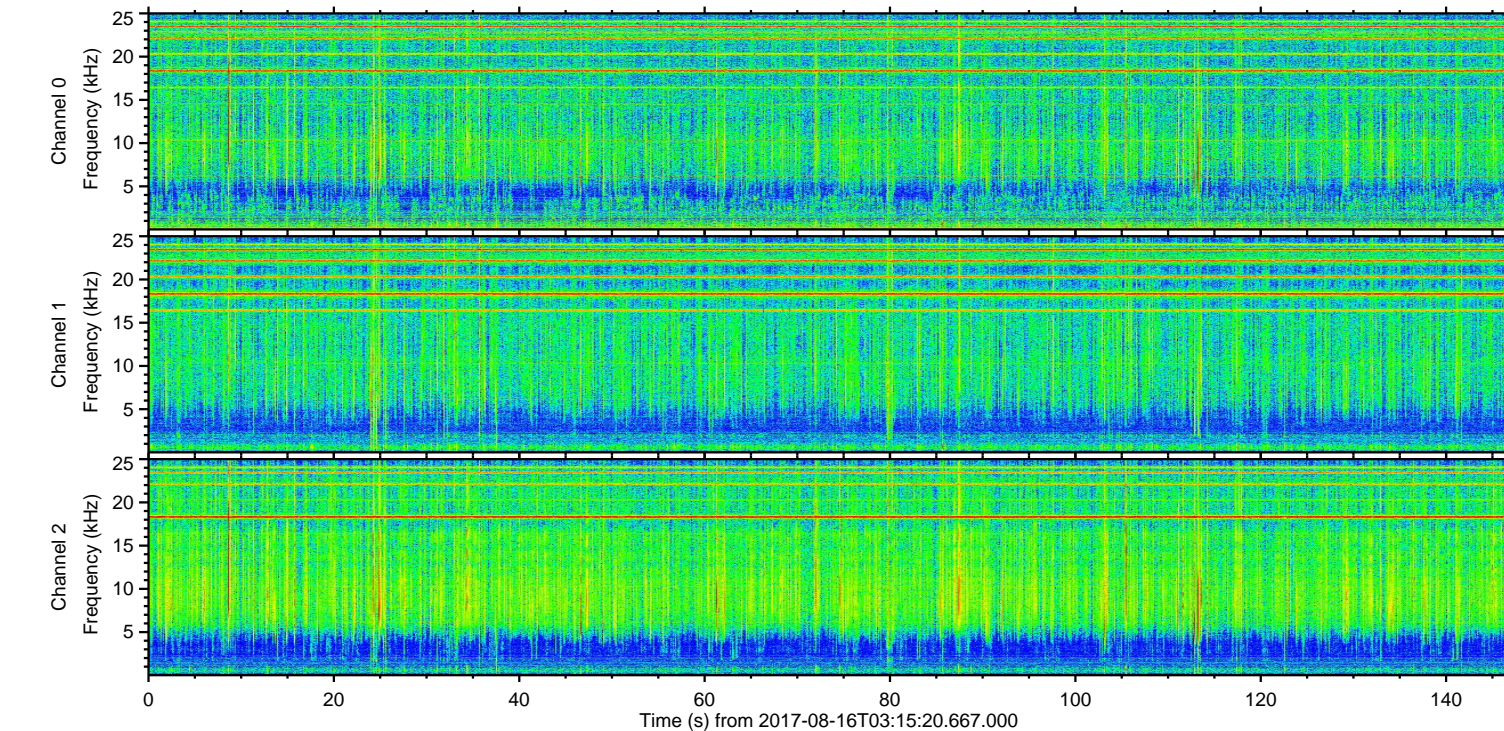
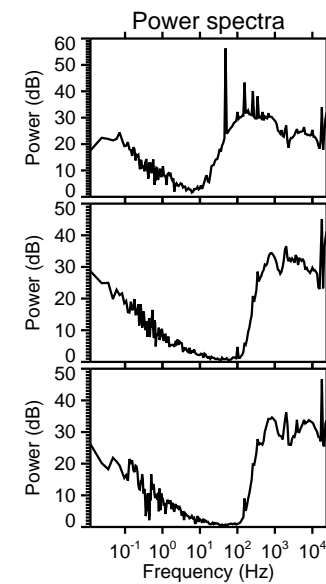
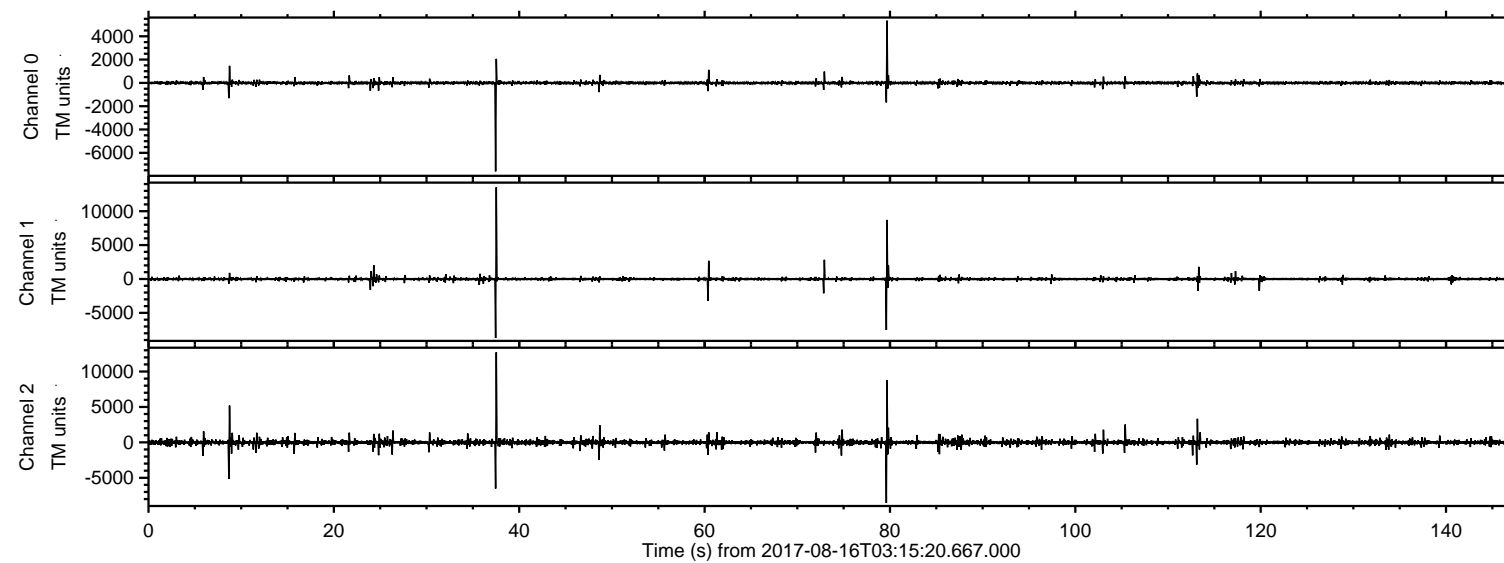


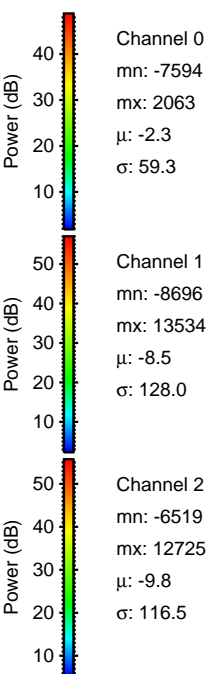
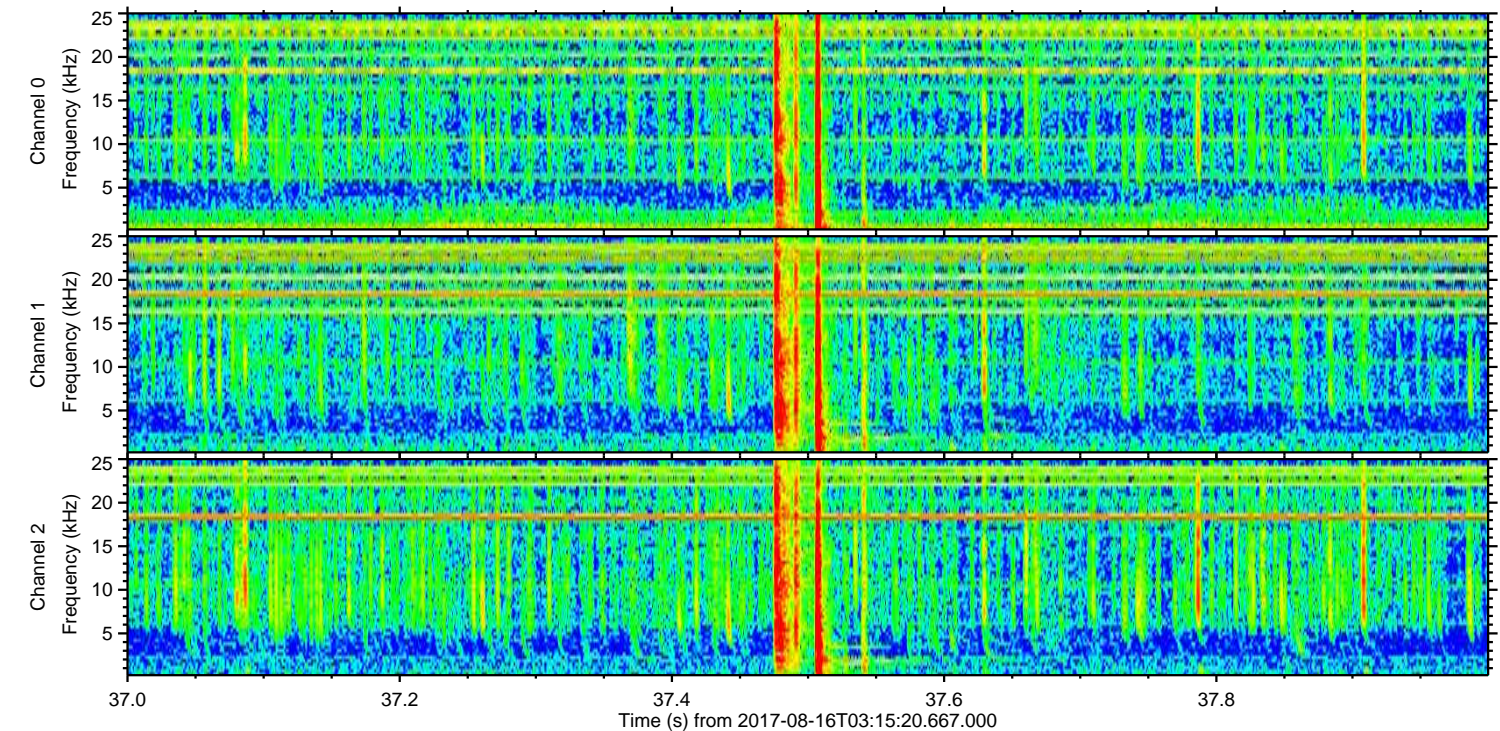
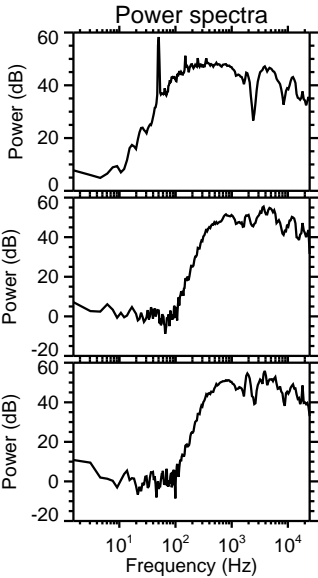
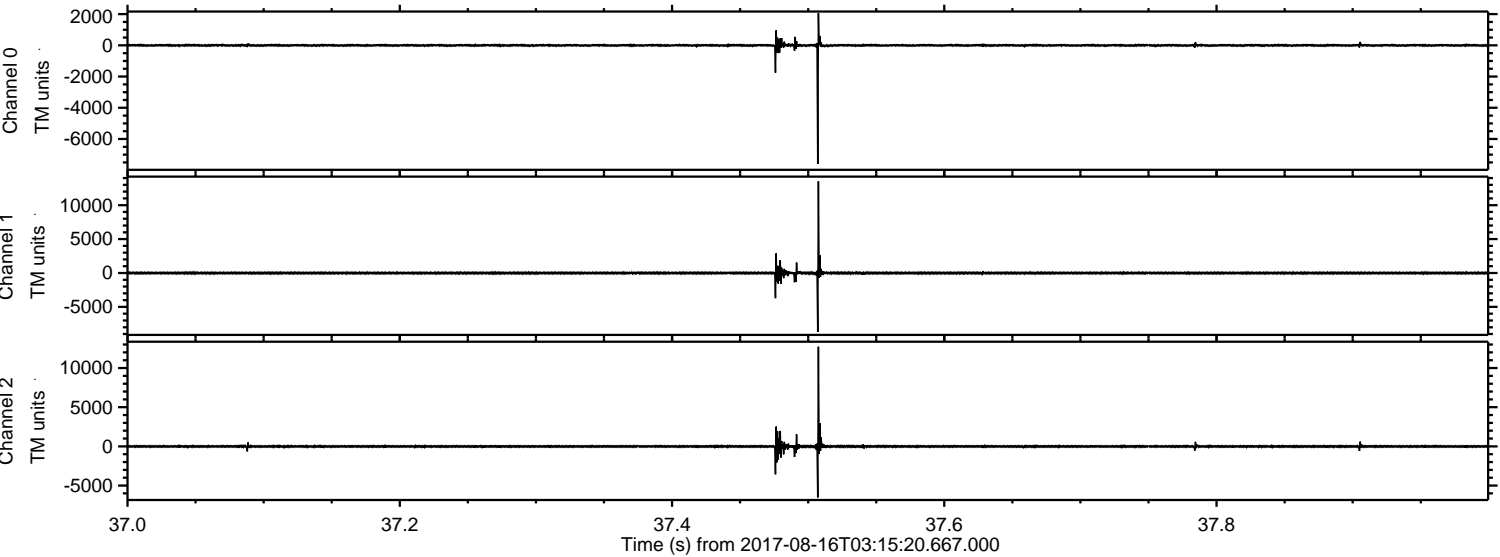
# ELMAVAN 3D WAVEFORMS (Measured data sampled at 50 kHz) 51000 packets of 144 samples from 2017-08-16T03:15:20.667.000.

Processed Wed Aug 16 05:22:55 2017 by ELM ver.2012-10-06 from 001\_\_elm20170816\_031519\_\_dat00.bin



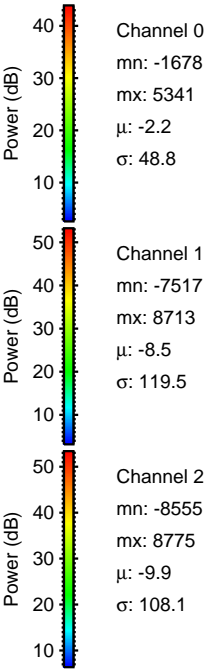
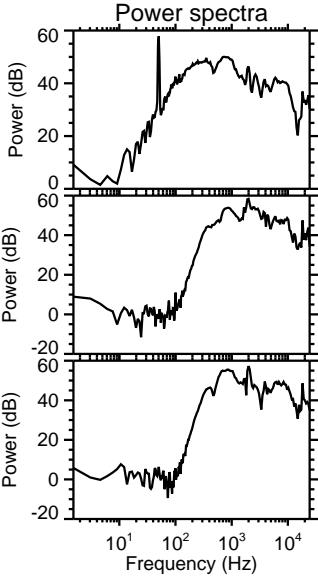
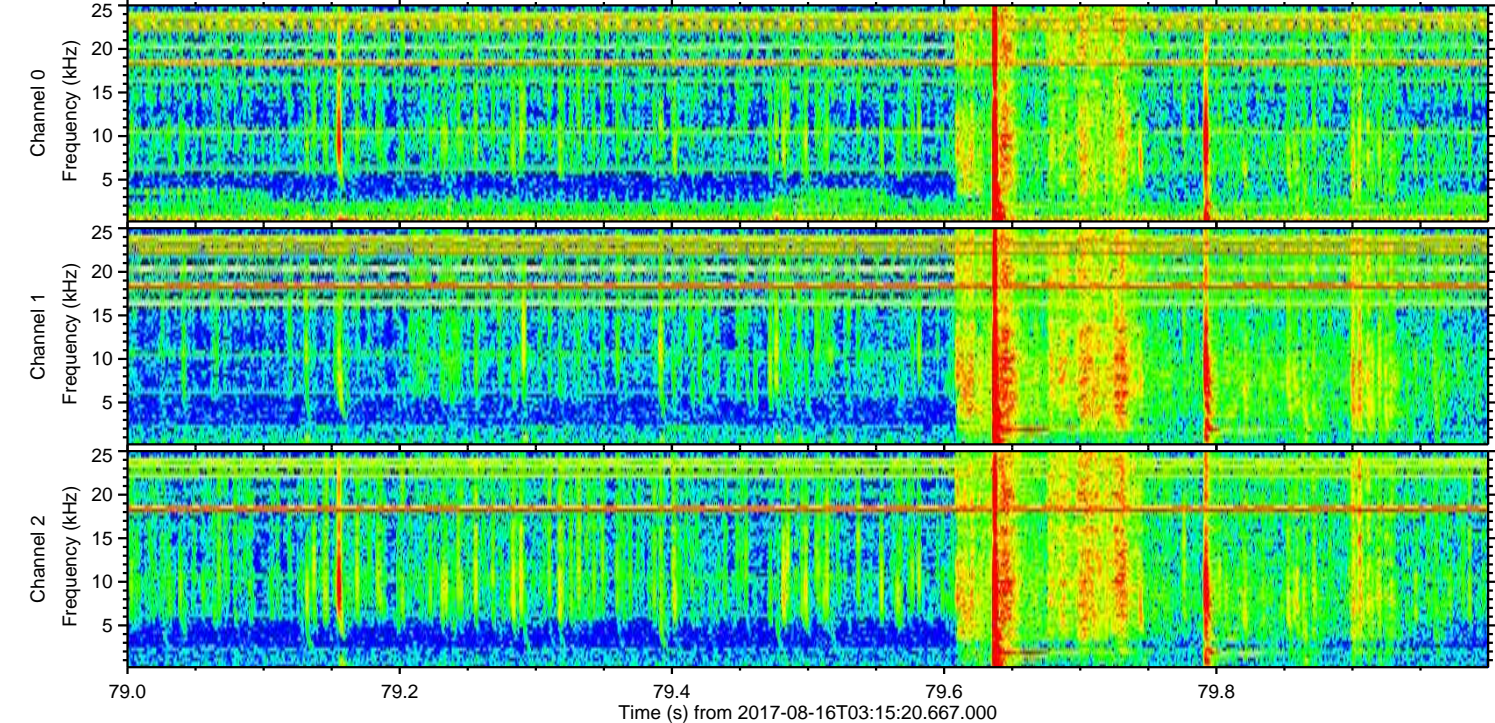
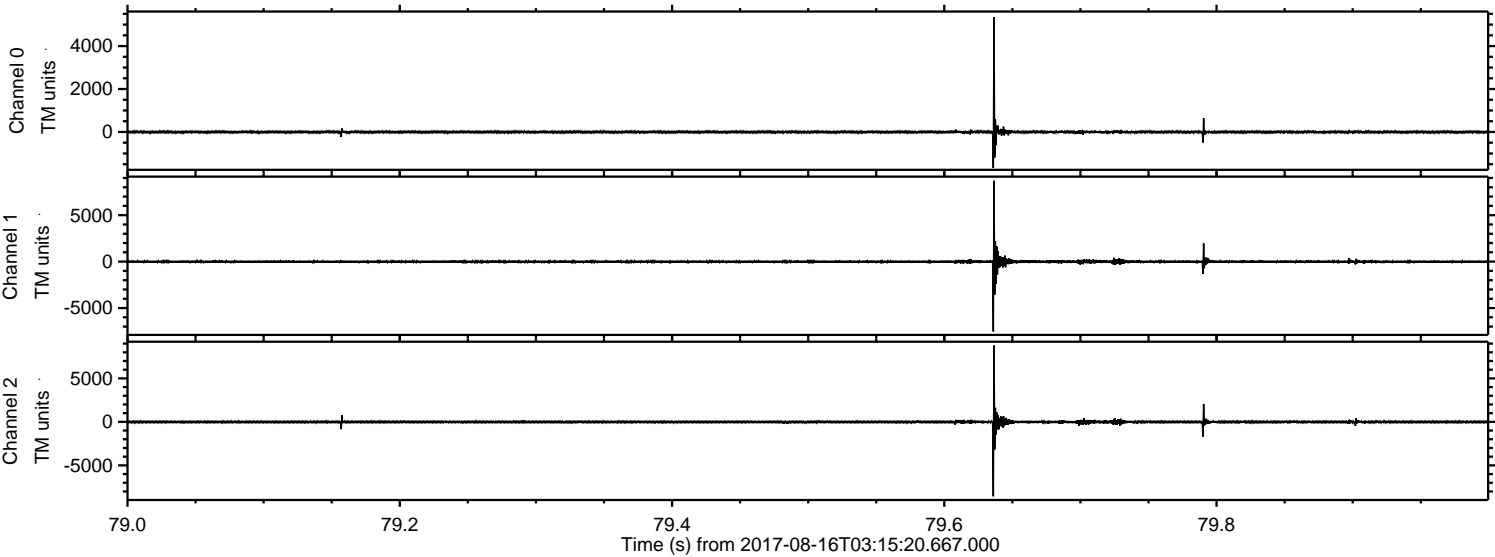


Processed Wed Aug 16 05:23:01 2017 by ELM ver.2012-10-06 from 001\_\_elm20170816\_031519\_\_dat00.bin



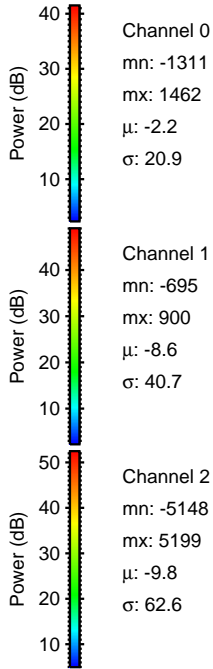
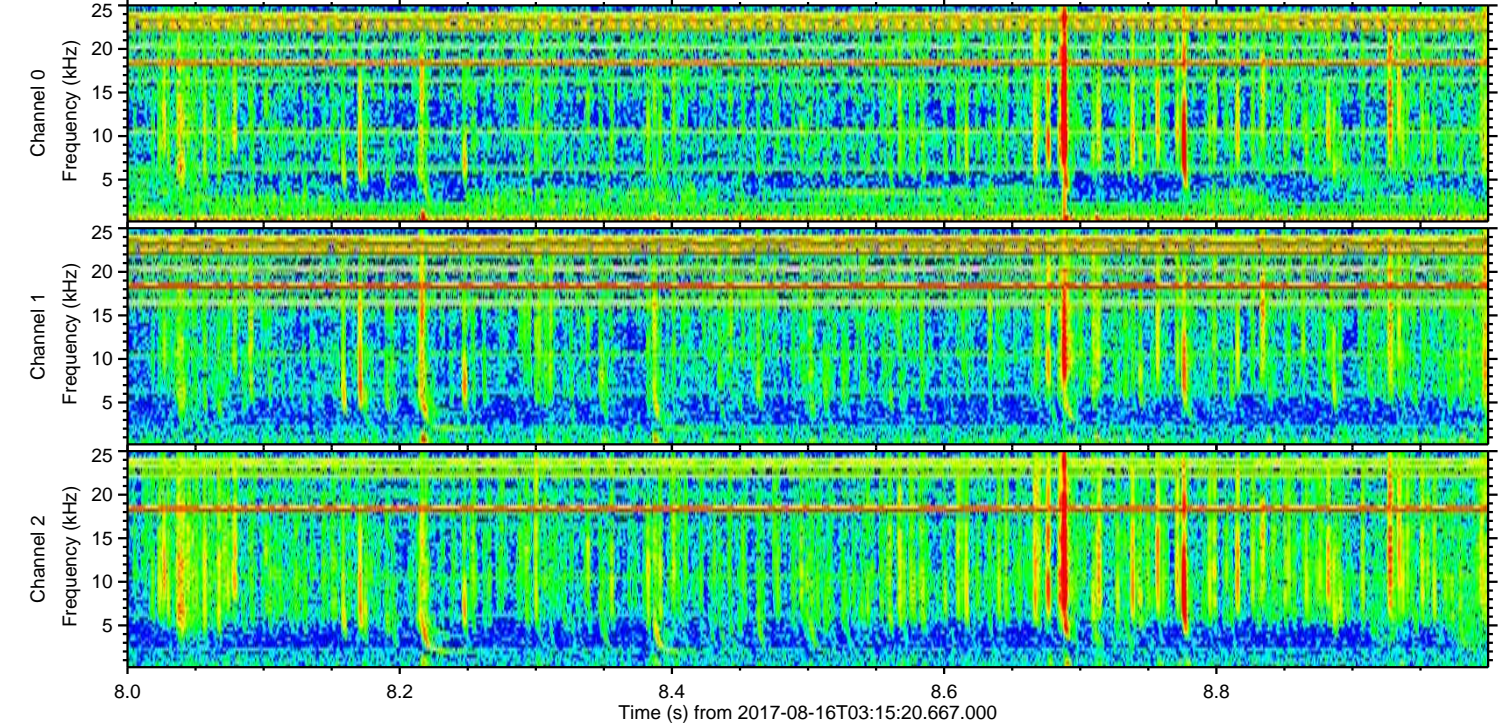
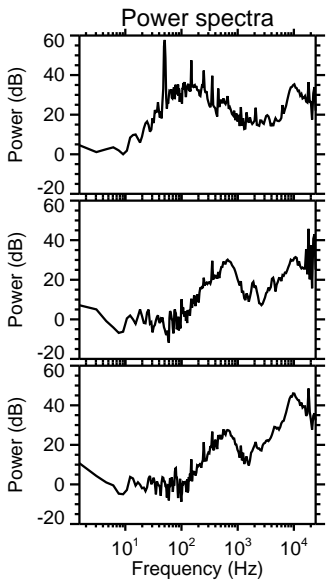
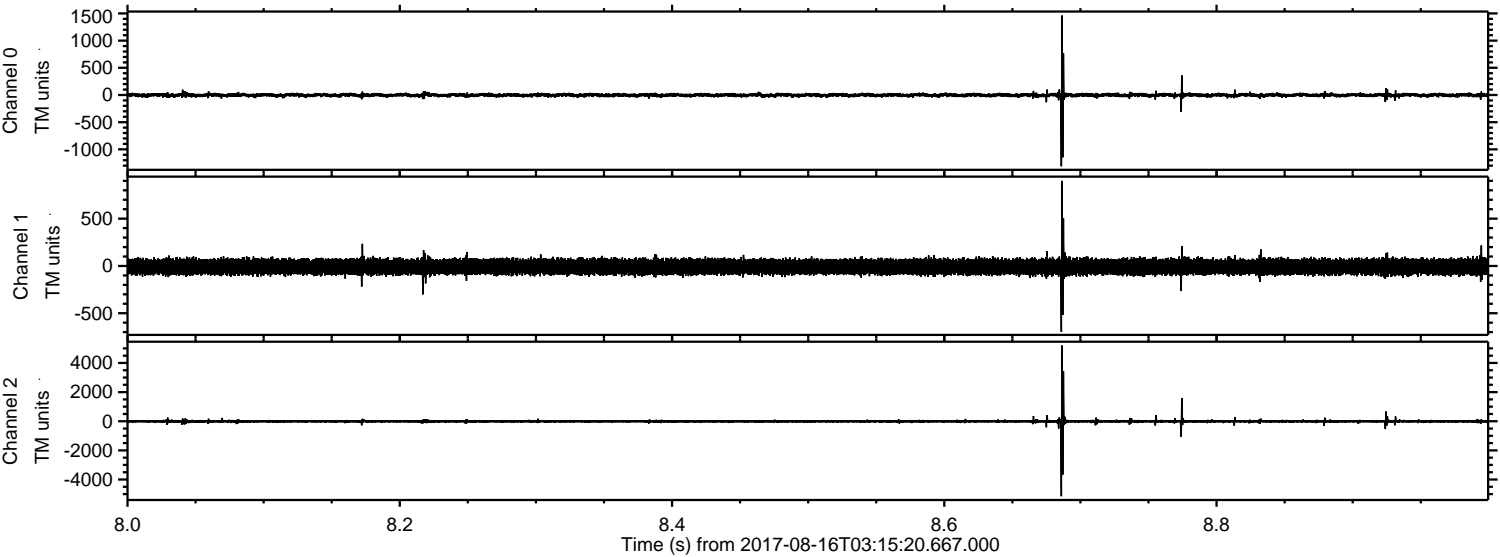


Processed Wed Aug 16 05:23:02 2017 by ELM ver.2012-10-06 from 001\_\_elm20170816\_031519\_\_dat00.bin





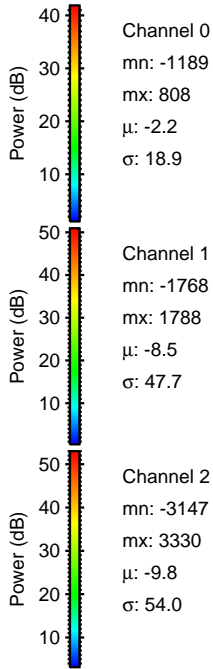
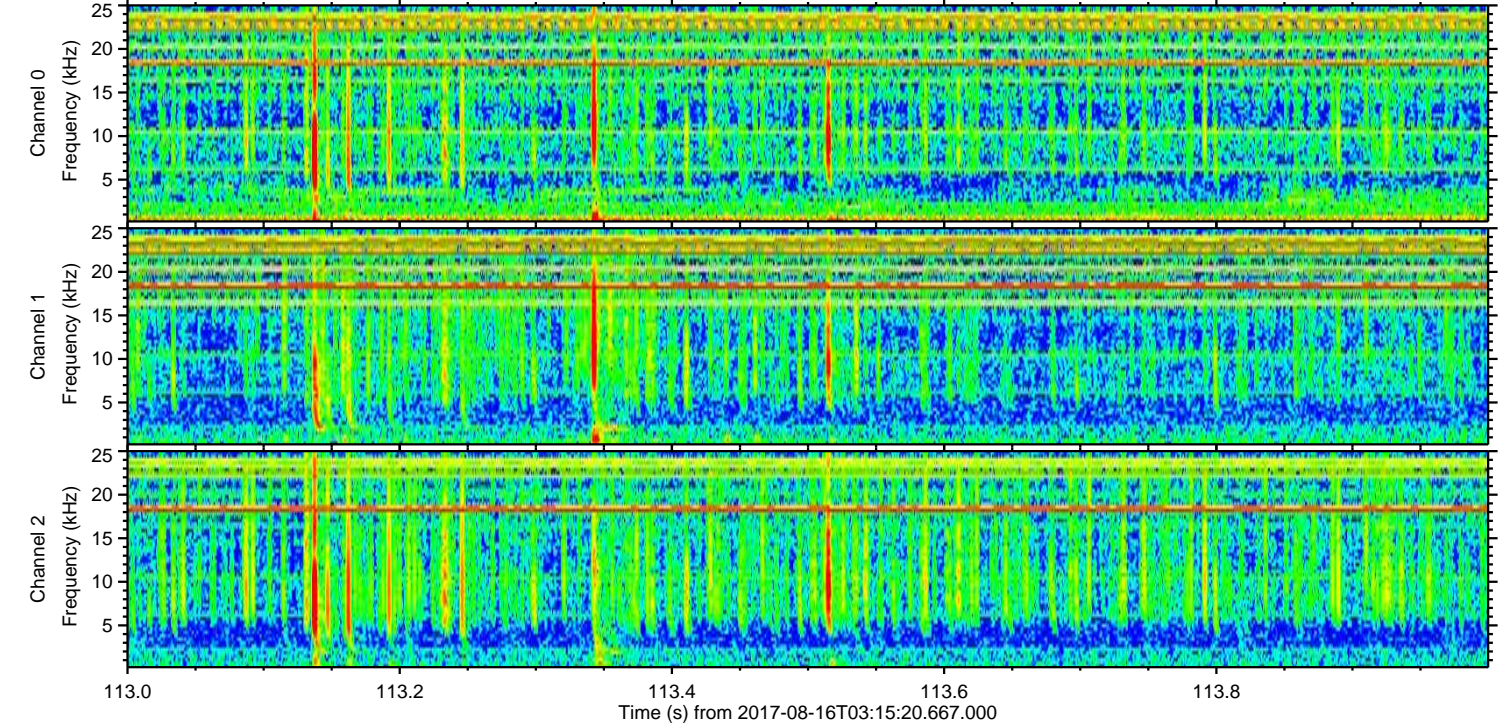
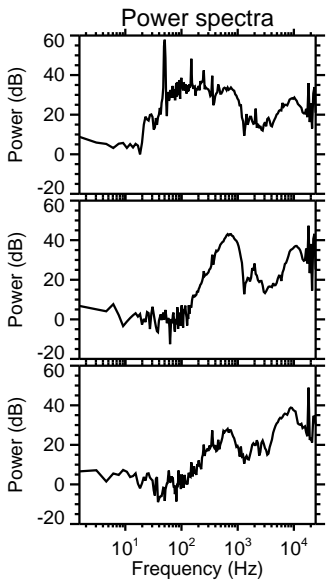
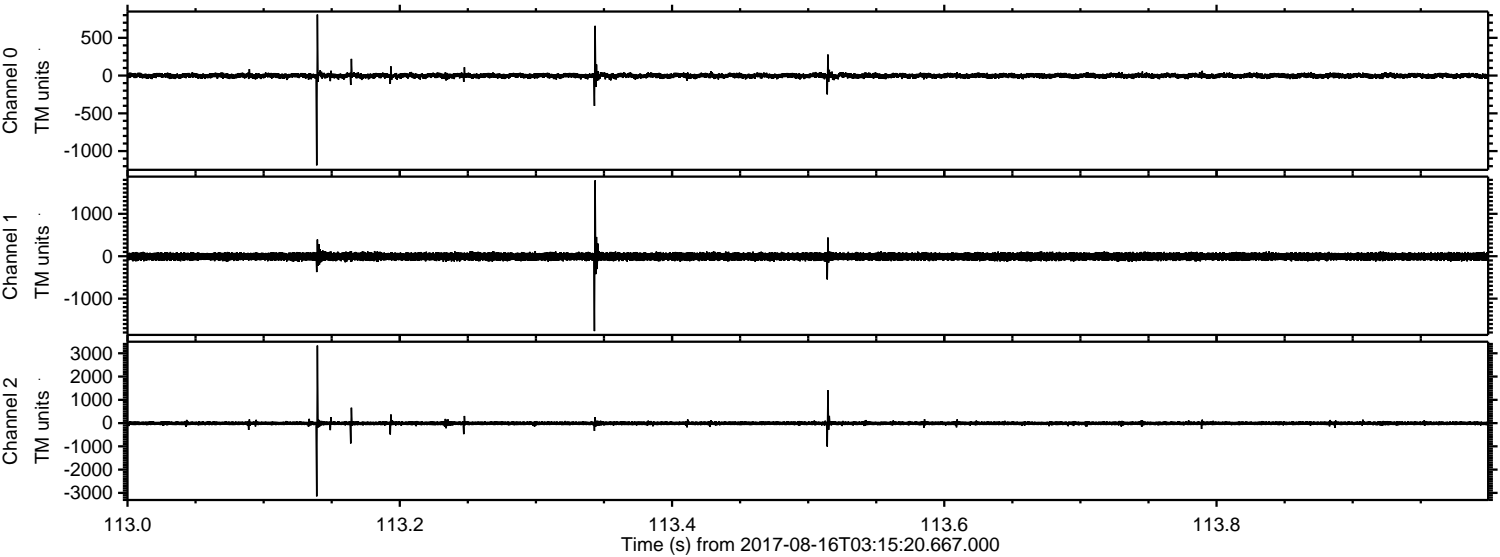
Processed Wed Aug 16 05:23:03 2017 by ELM ver.2012-10-06 from 001\_\_elm20170816\_031519\_\_dat00.bin





ELMAVAN 3D WAVEFORMS (Measured data sampled at 50 kHz) 51000 packets of 144 samples from 2017-08-16T03:15:20.667.000. Part 114/147

Processed Wed Aug 16 05:23:03 2017 by ELM ver.2012-10-06 from 001\_\_elm20170816\_031519\_\_dat00.bin



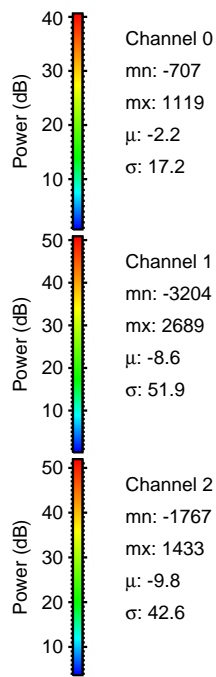
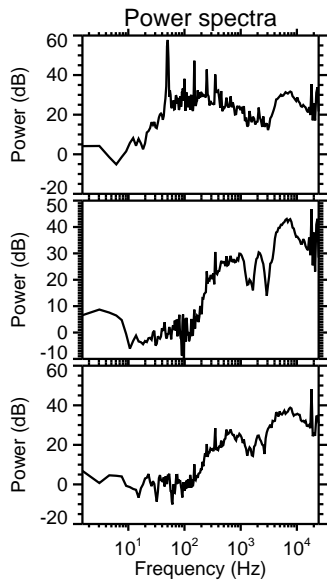
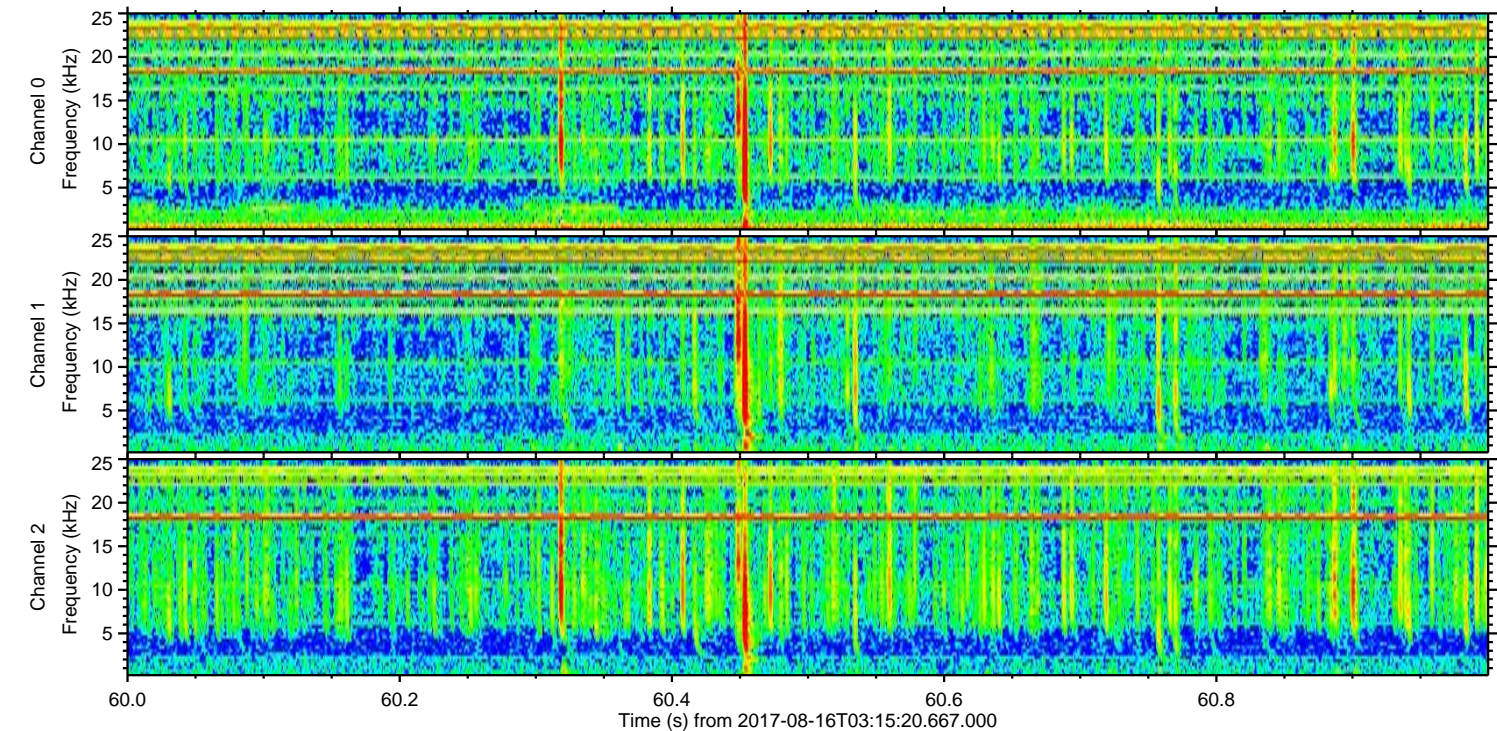
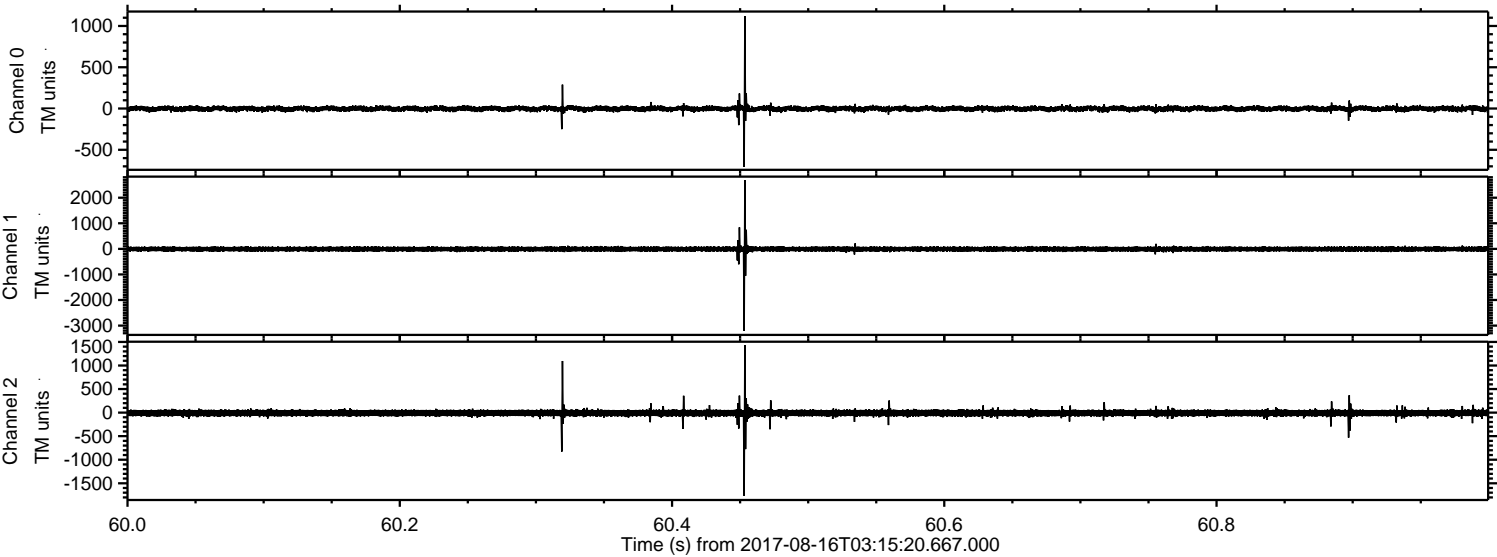
Channel 0  
mn: -1189  
mx: 808  
 $\mu$ : -2.2  
 $\sigma$ : 18.9

Channel 1  
mn: -1768  
mx: 1788  
 $\mu$ : -8.5  
 $\sigma$ : 47.7

Channel 2  
mn: -3147  
mx: 3330  
 $\mu$ : -9.8  
 $\sigma$ : 54.0

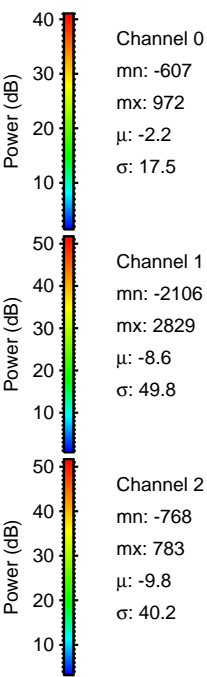
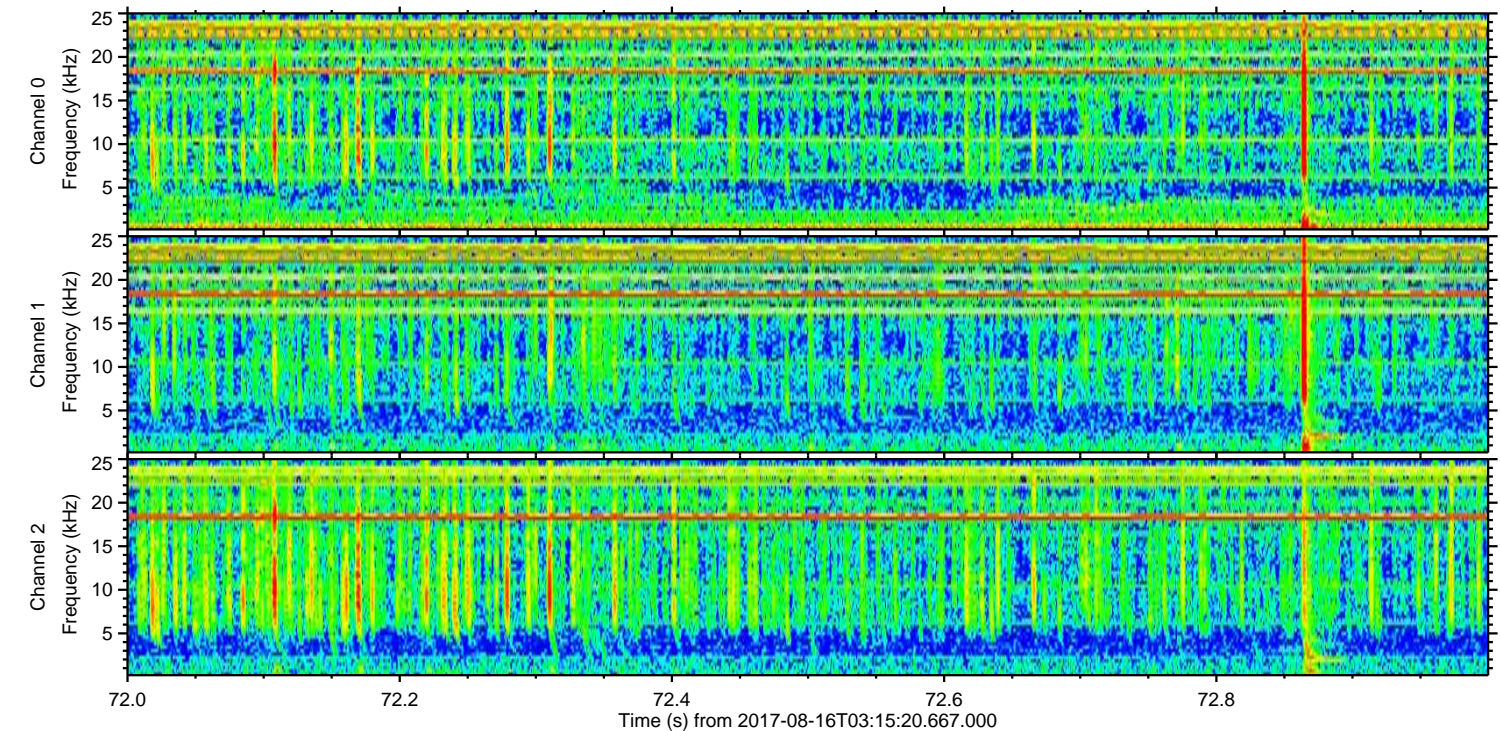
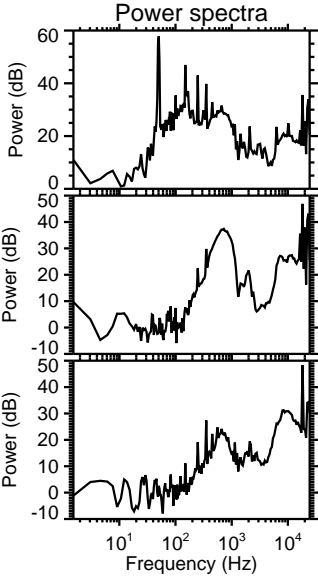
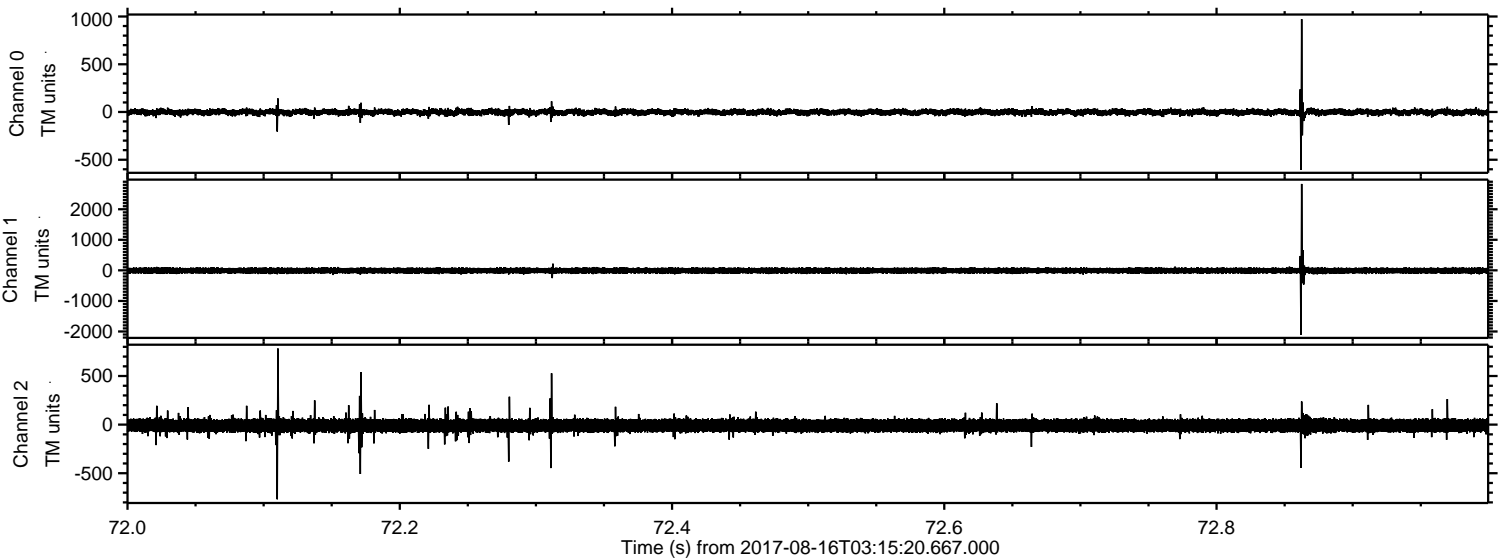


Processed Wed Aug 16 05:23:04 2017 by ELM ver.2012-10-06 from 001\_\_elm20170816\_031519\_\_dat00.bin





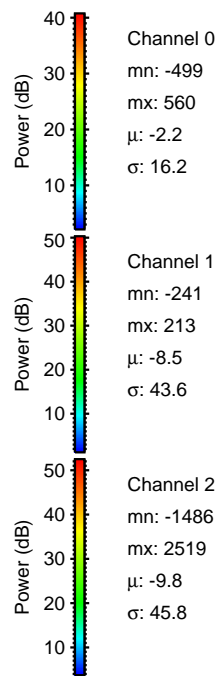
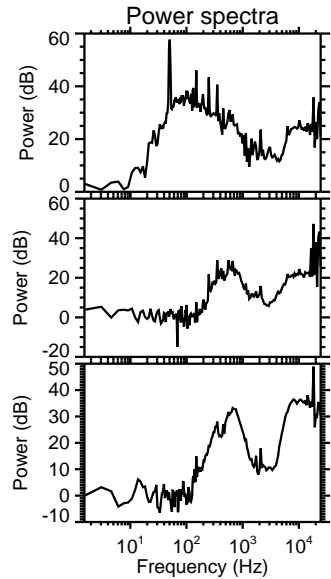
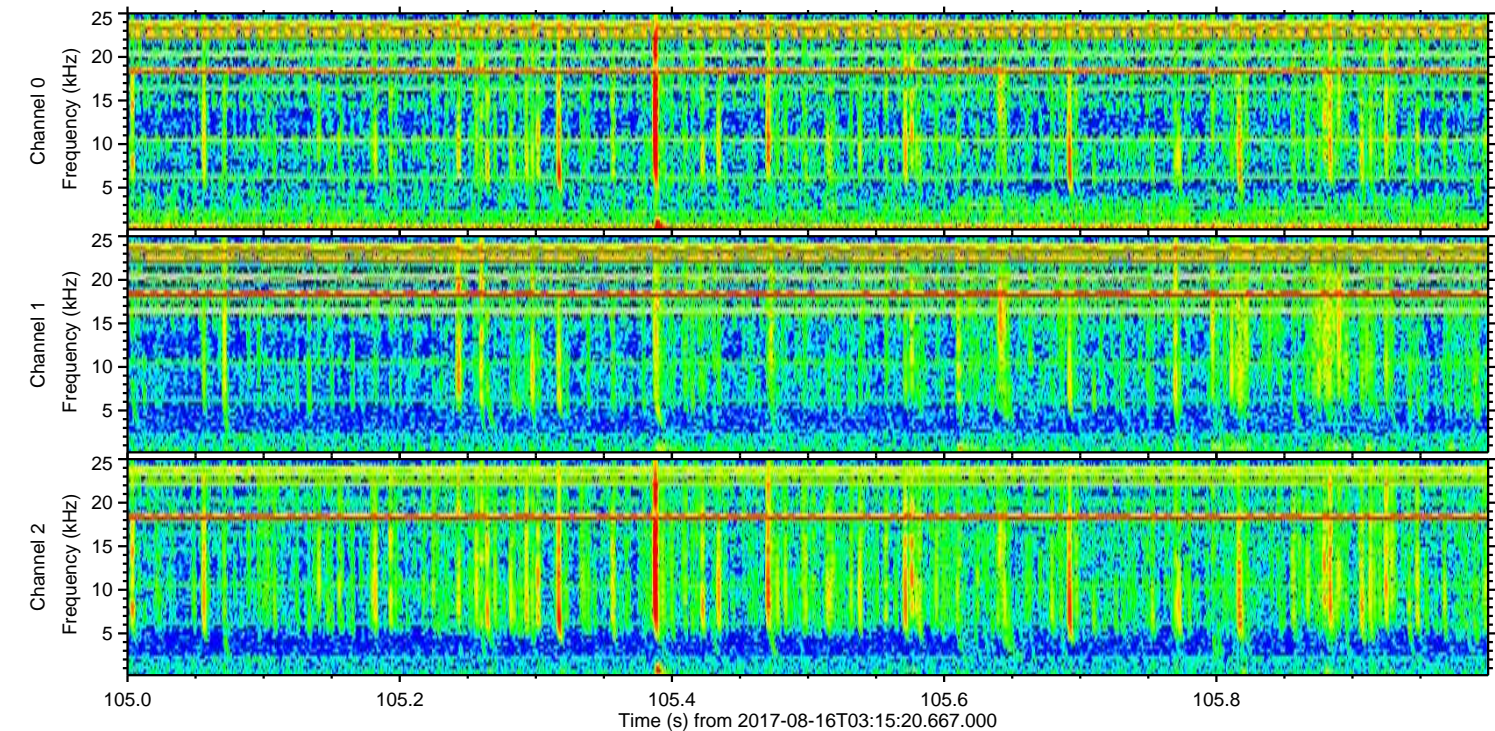
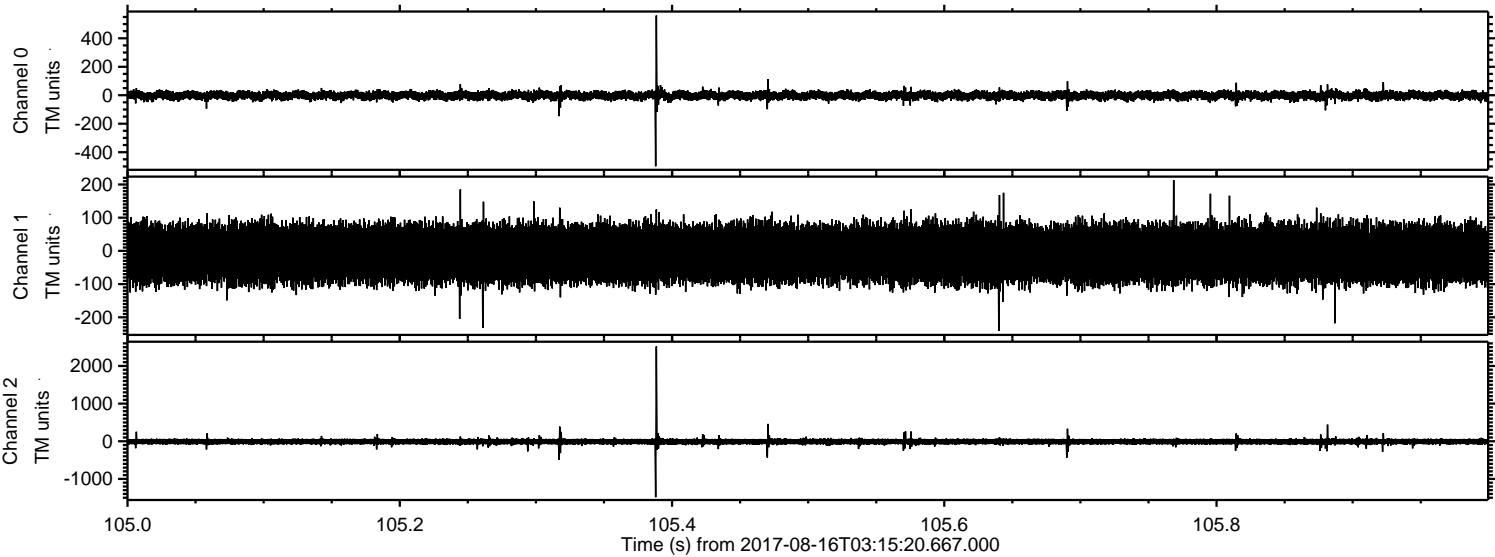
Processed Wed Aug 16 05:23:04 2017 by ELM ver.2012-10-06 from 001\_\_elm20170816\_031519\_\_dat00.bin





ELMAVAN 3D WAVEFORMS (Measured data sampled at 50 kHz) 51000 packets of 144 samples from 2017-08-16T03:15:20.667.000. Part 106/147

Processed Wed Aug 16 05:23:05 2017 by ELM ver.2012-10-06 from 001\_\_elm20170816\_031519\_\_dat00.bin



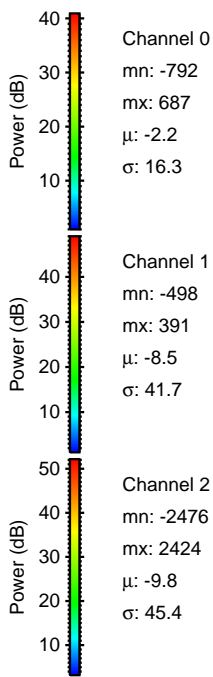
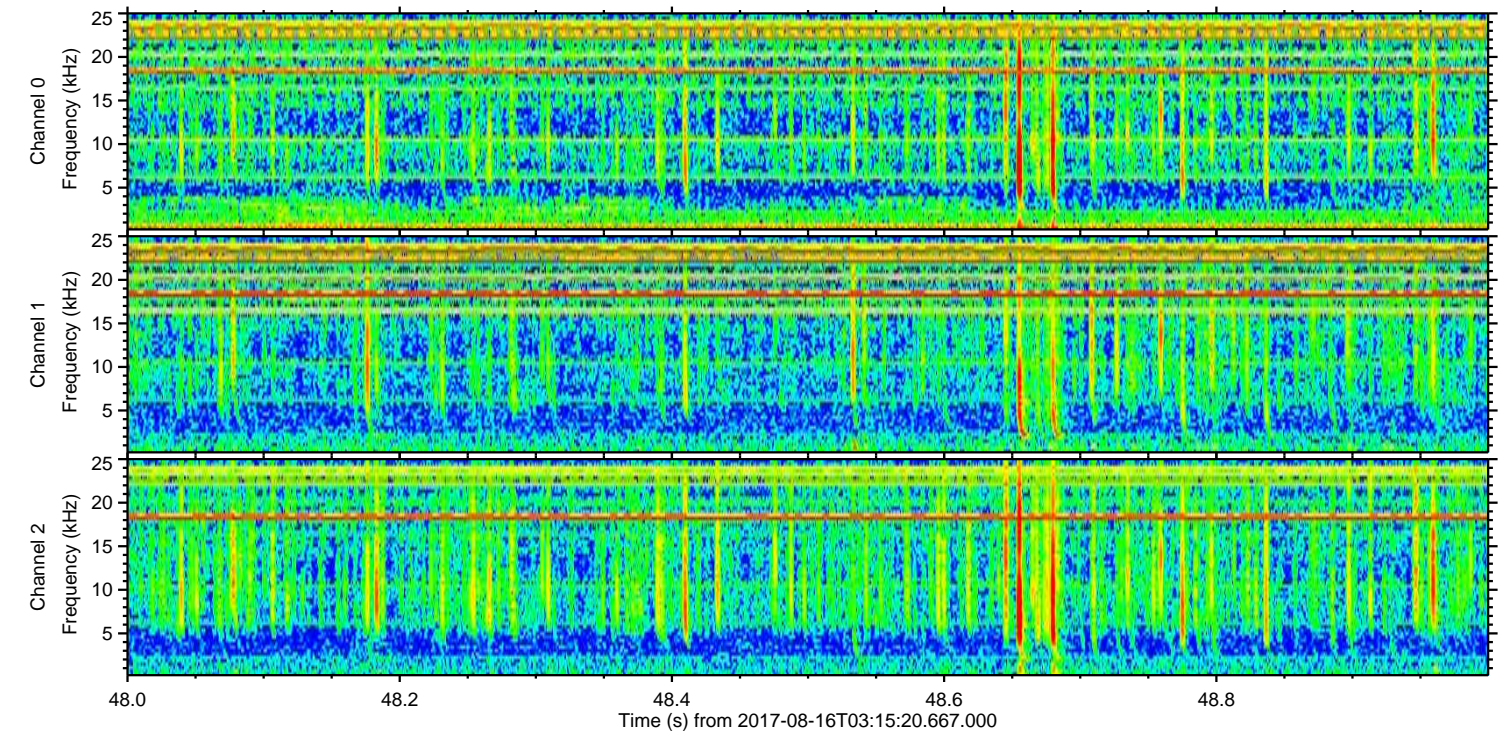
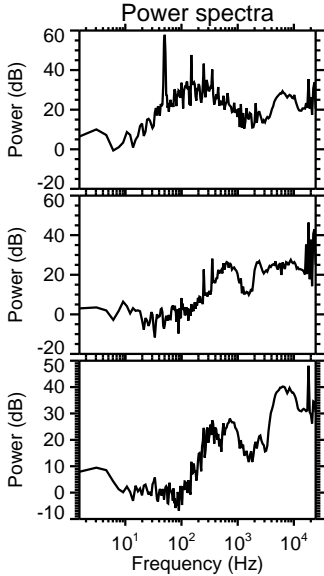
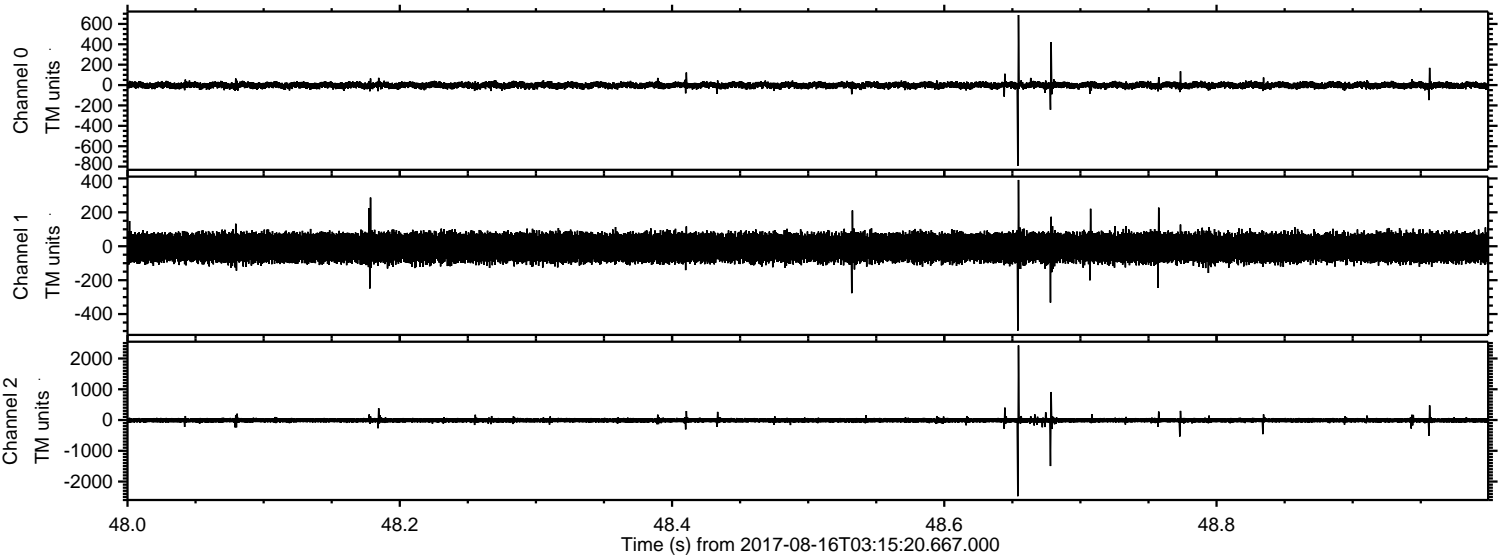
Channel 0  
mn: -499  
mx: 560  
 $\mu$ : -2.2  
 $\sigma$ : 16.2

Channel 1  
mn: -241  
mx: 213  
 $\mu$ : -8.5  
 $\sigma$ : 43.6

Channel 2  
mn: -1486  
mx: 2519  
 $\mu$ : -9.8  
 $\sigma$ : 45.8



Processed Wed Aug 16 05:23:06 2017 by ELM ver.2012-10-06 from 001\_\_elm20170816\_031519\_\_dat00.bin





Processed Wed Aug 16 05:23:07 2017 by ELM ver.2012-10-06 from 001\_\_elm20170816\_031519\_\_dat00.bin

