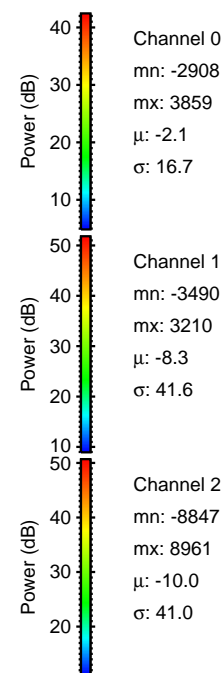
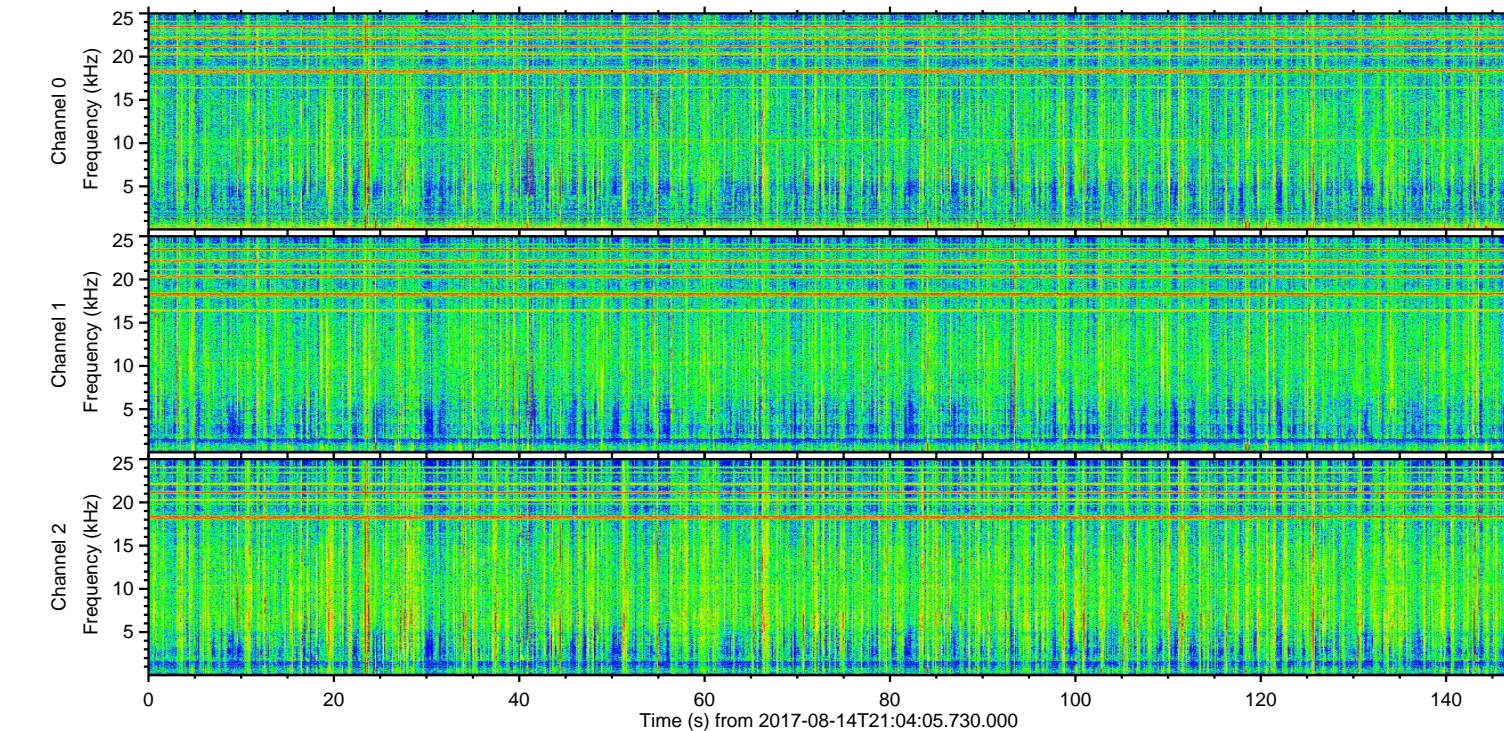
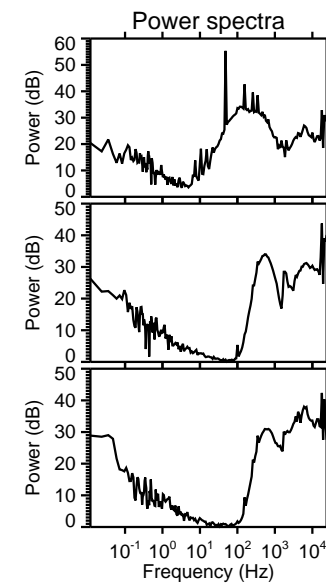
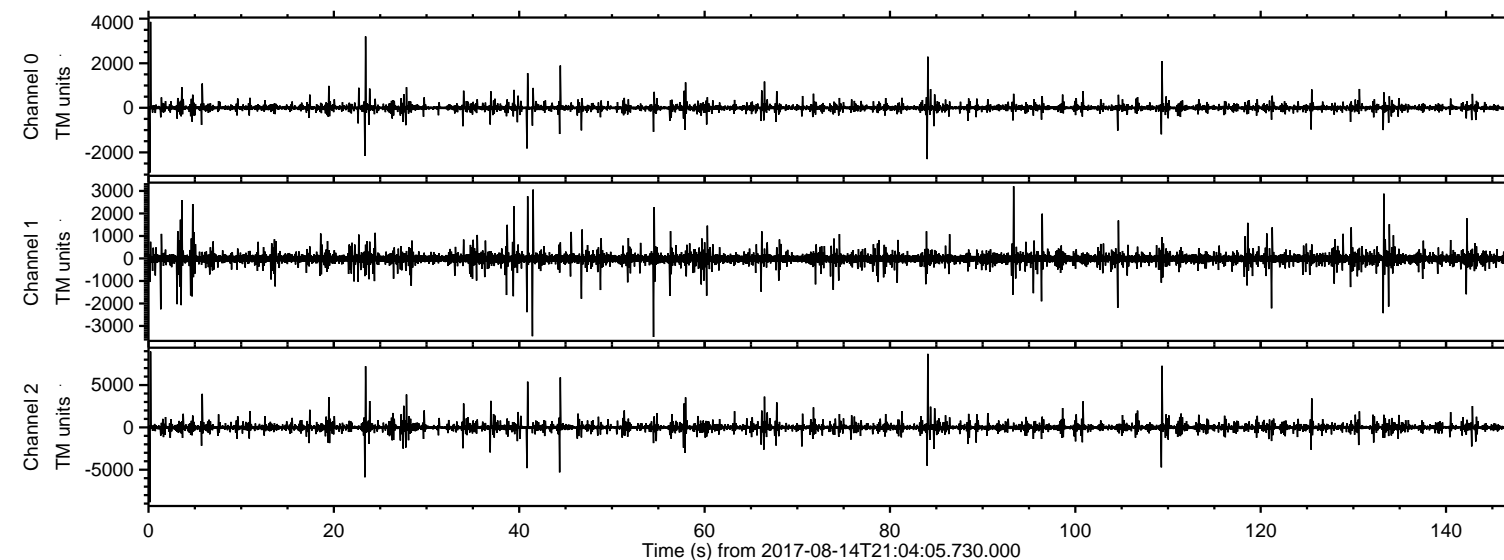


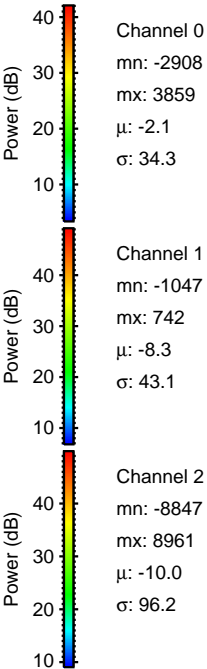
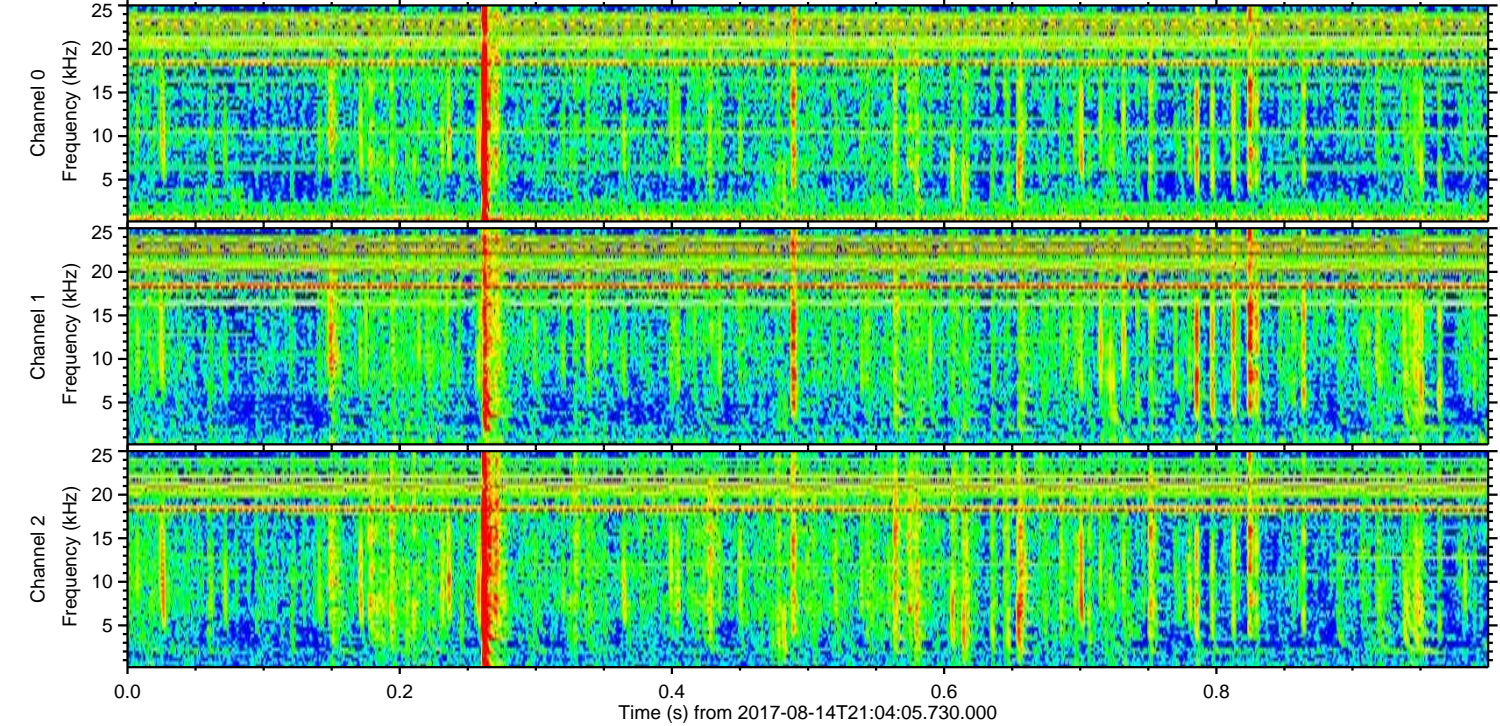
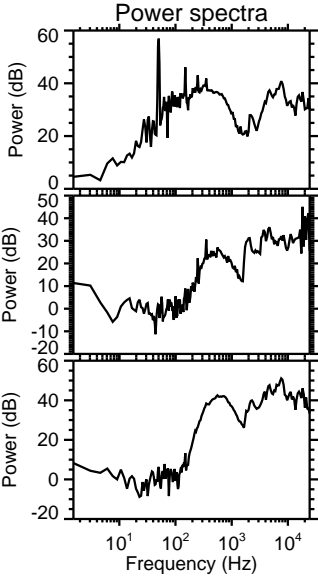
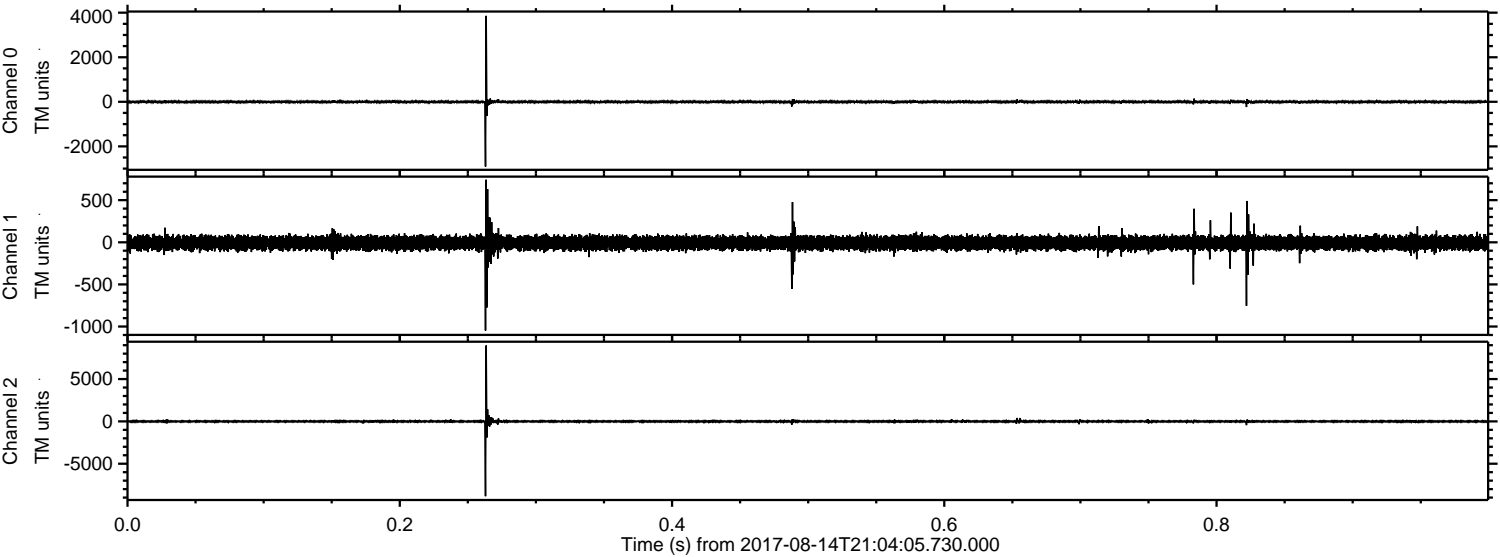
ELMAVAN 3D WAVEFORMS (Measured data sampled at 50 kHz) 51000 packets of 144 samples from 2017-08-14T21:04:05.730.000.

Processed Mon Aug 14 23:12:11 2017 by ELM ver.2012-10-06 from 001__elm20170814_210404__dat00.bin

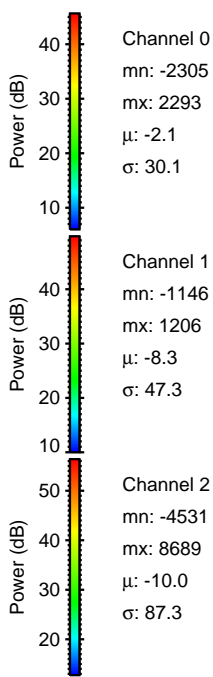
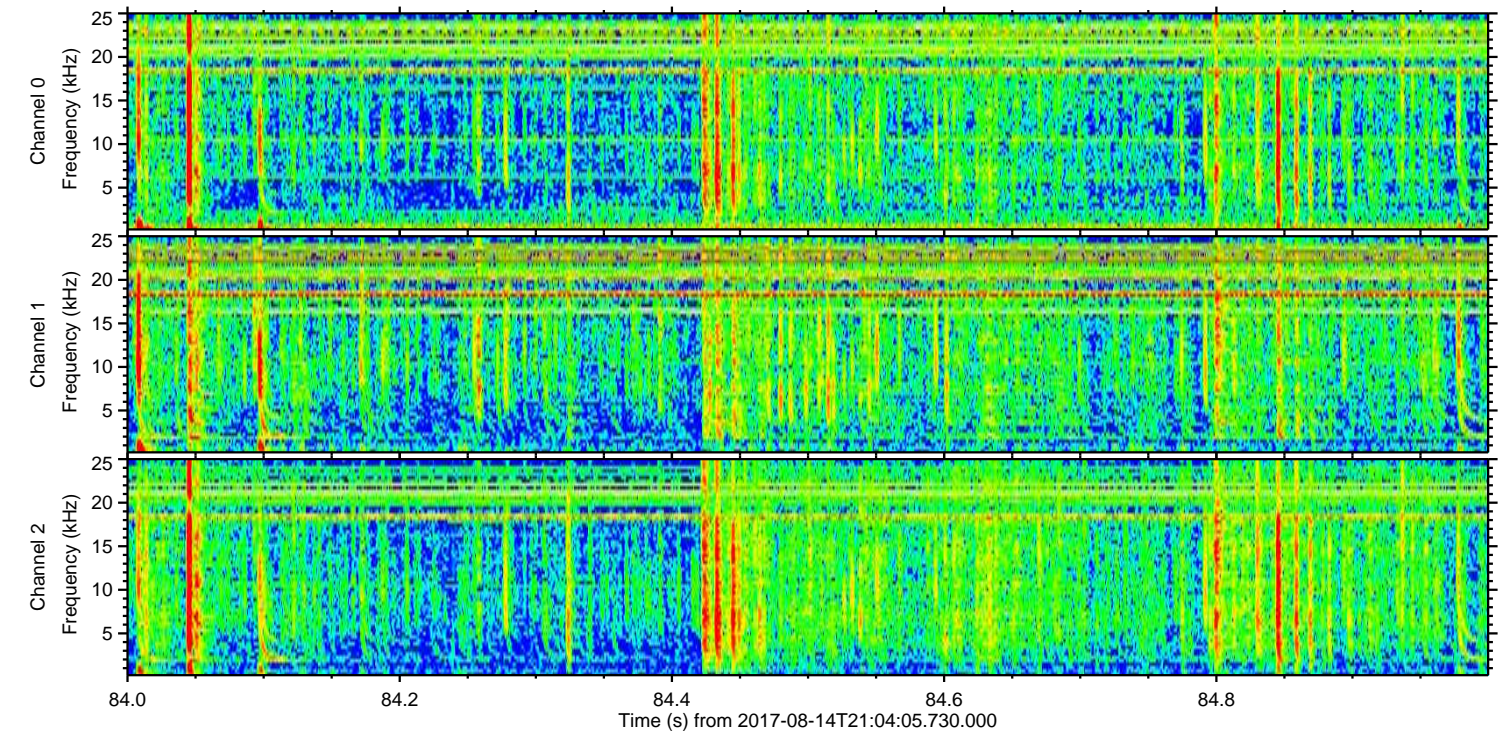
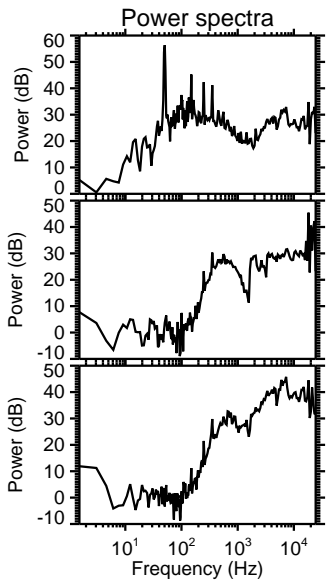
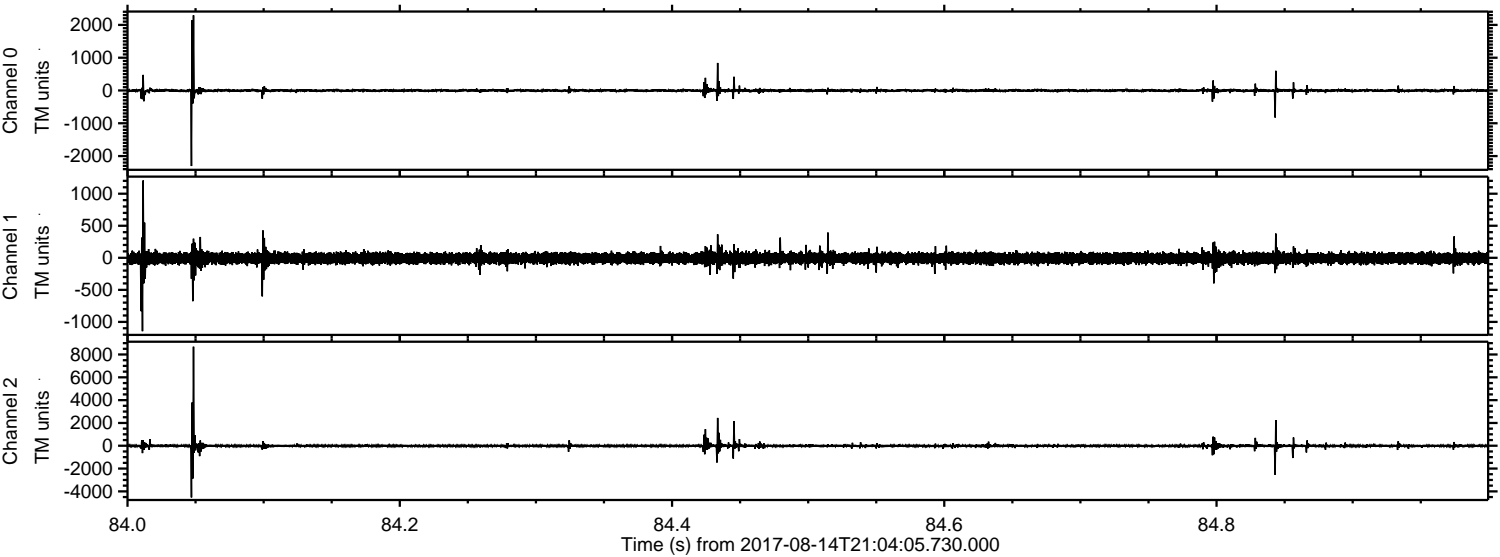


ELMAVAN 3D WAVEFORMS (Measured data sampled at 50 kHz) 51000 packets of 144 samples from 2017-08-14T21:04:05.730.000. Part 1/147

Processed Mon Aug 14 23:12:17 2017 by ELM ver.2012-10-06 from 001__elm20170814_210404__dat00.bin

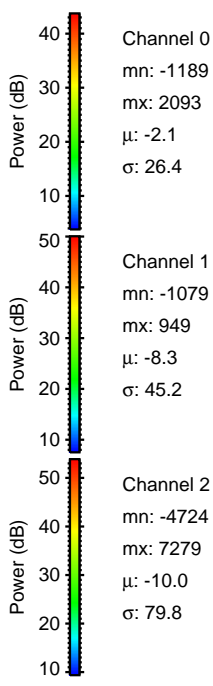
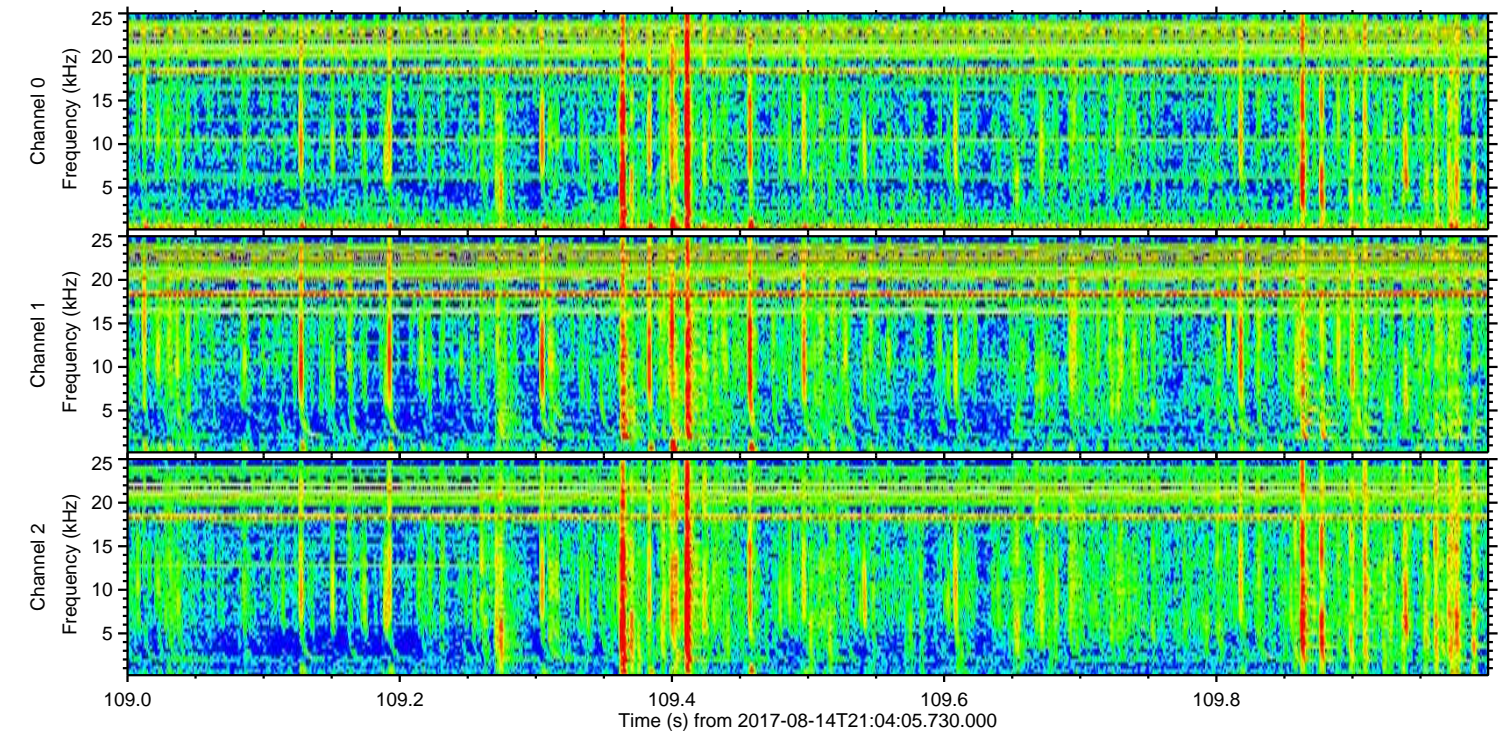
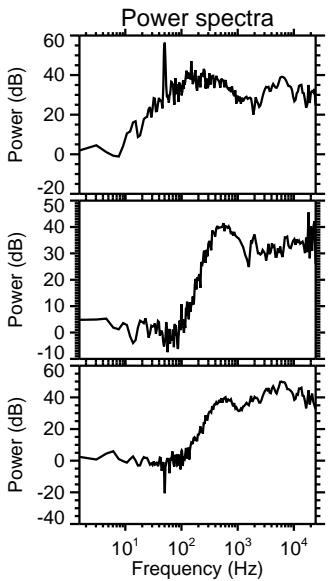
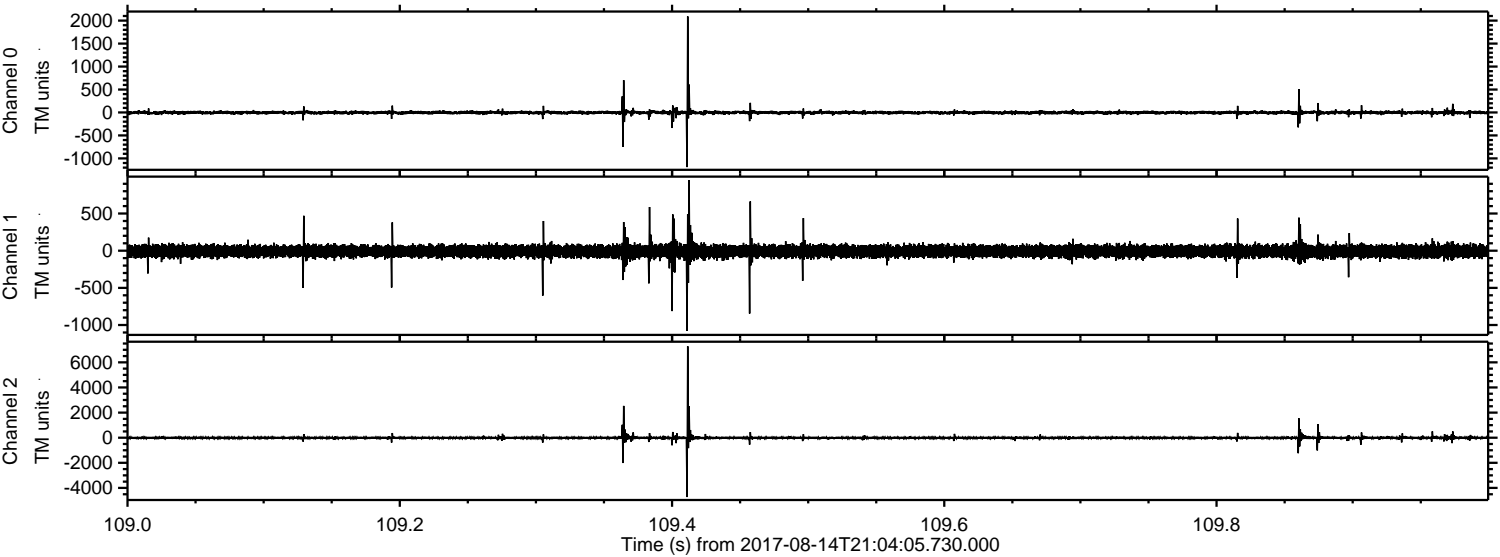


Processed Mon Aug 14 23:12:18 2017 by ELM ver.2012-10-06 from 001__elm20170814_210404__dat00.bin



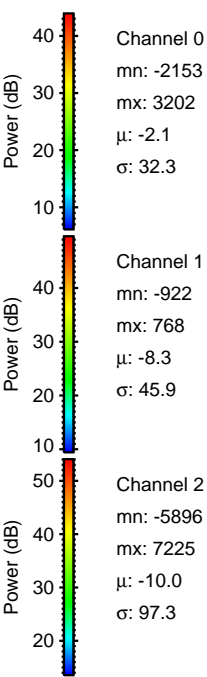
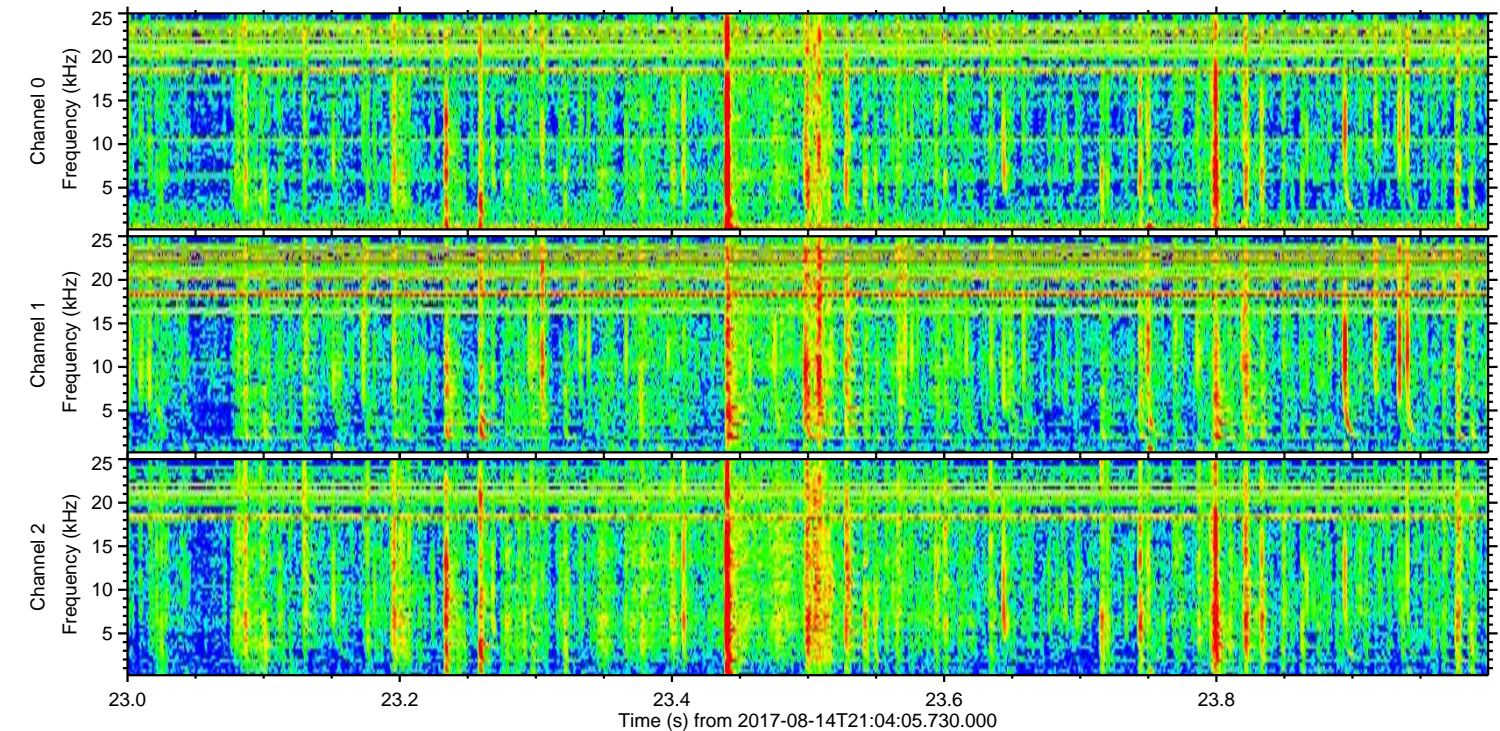
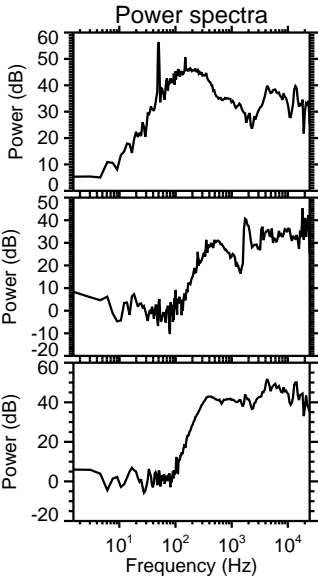
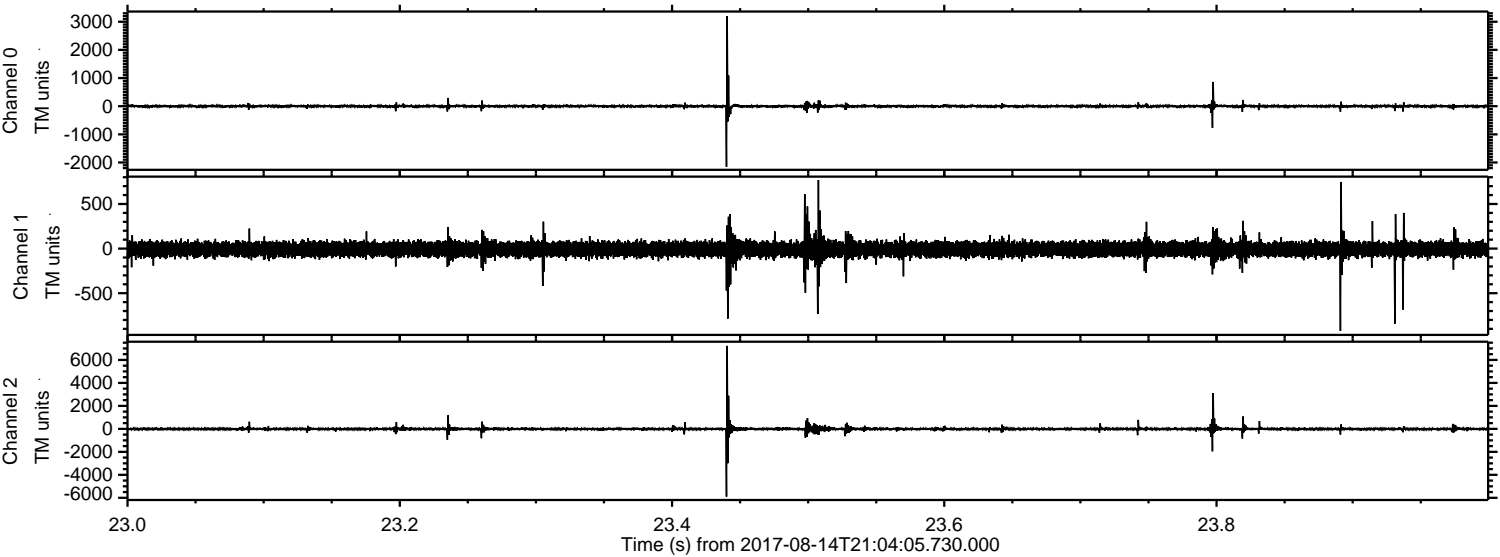
ELMAVAN 3D WAVEFORMS (Measured data sampled at 50 kHz) 51000 packets of 144 samples from 2017-08-14T21:04:05.730.000. Part 110/147

Processed Mon Aug 14 23:12:19 2017 by ELM ver.2012-10-06 from 001__elm20170814_210404__dat00.bin

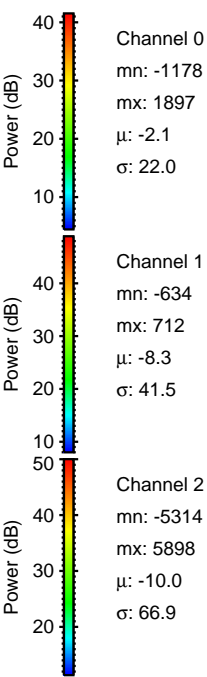
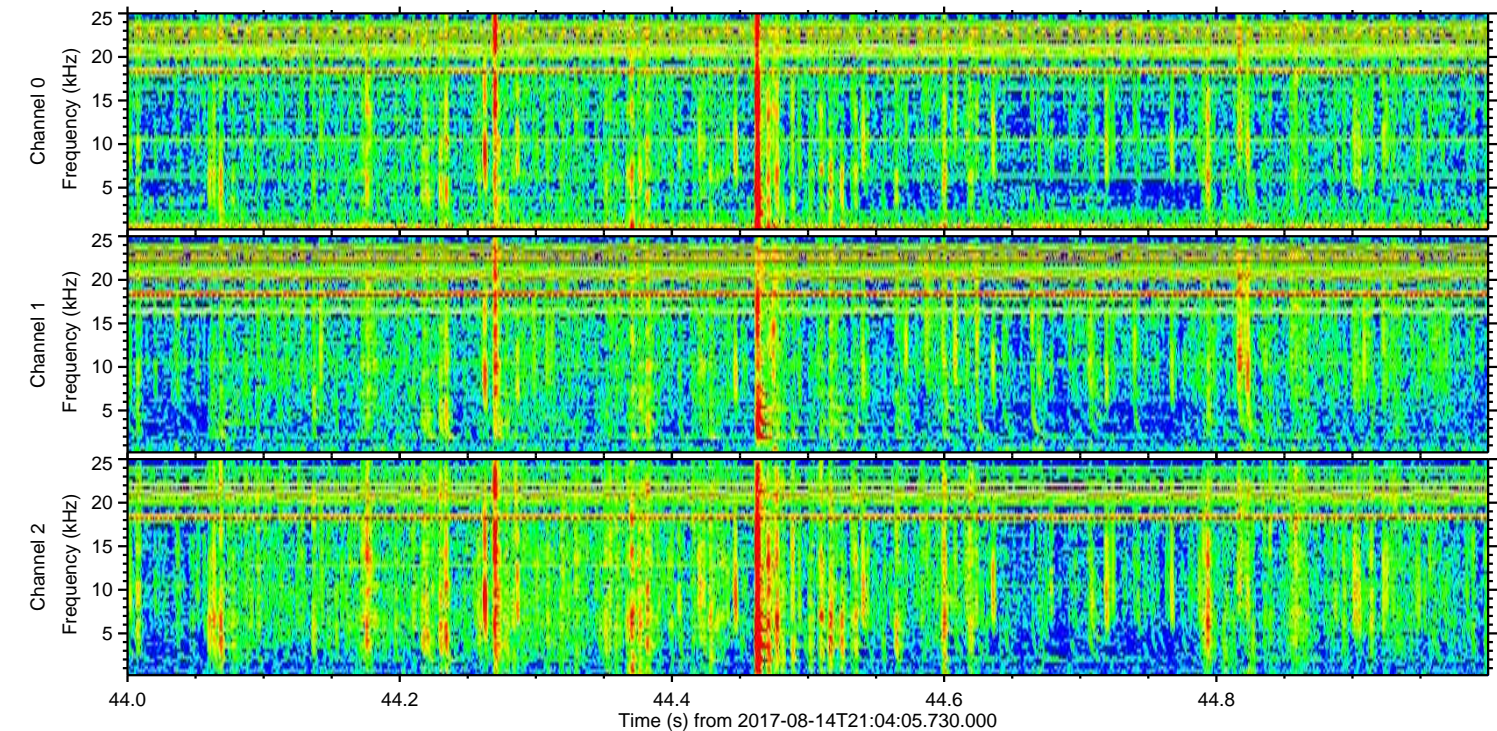
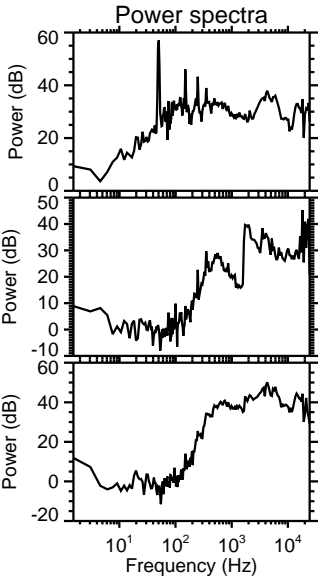
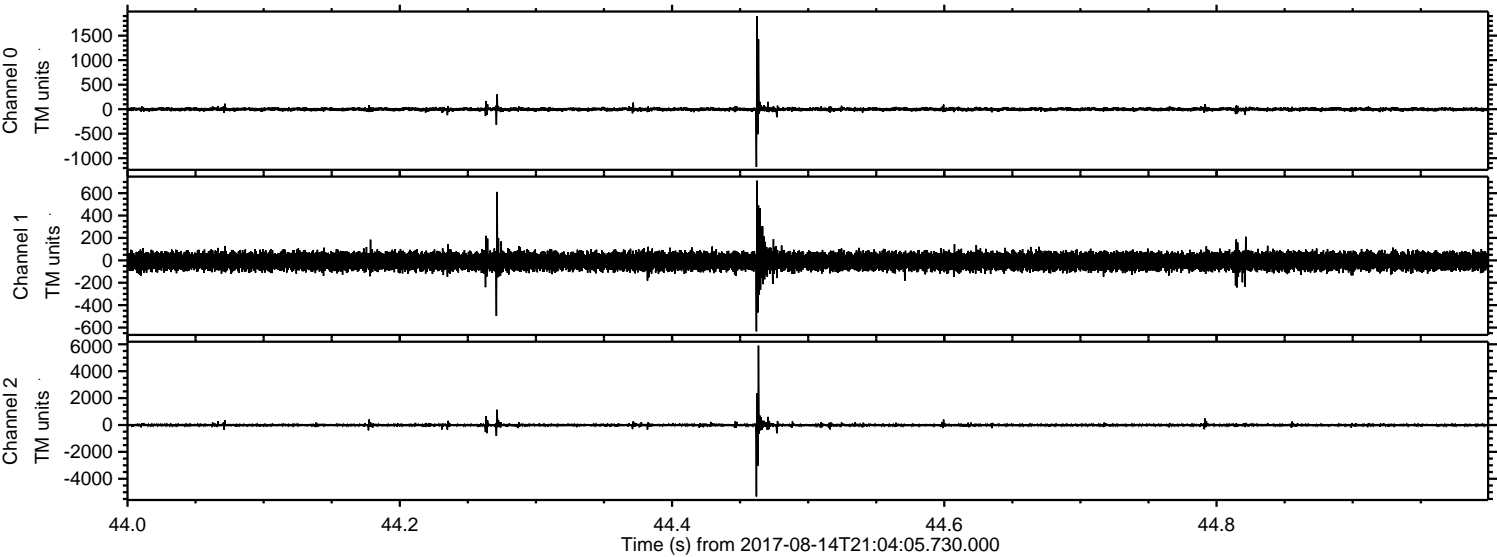


ELMAVAN 3D WAVEFORMS (Measured data sampled at 50 kHz) 51000 packets of 144 samples from 2017-08-14T21:04:05.730.000. Part 24/147

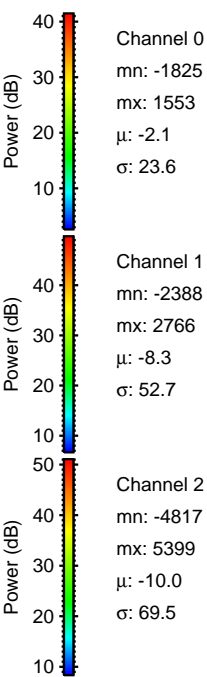
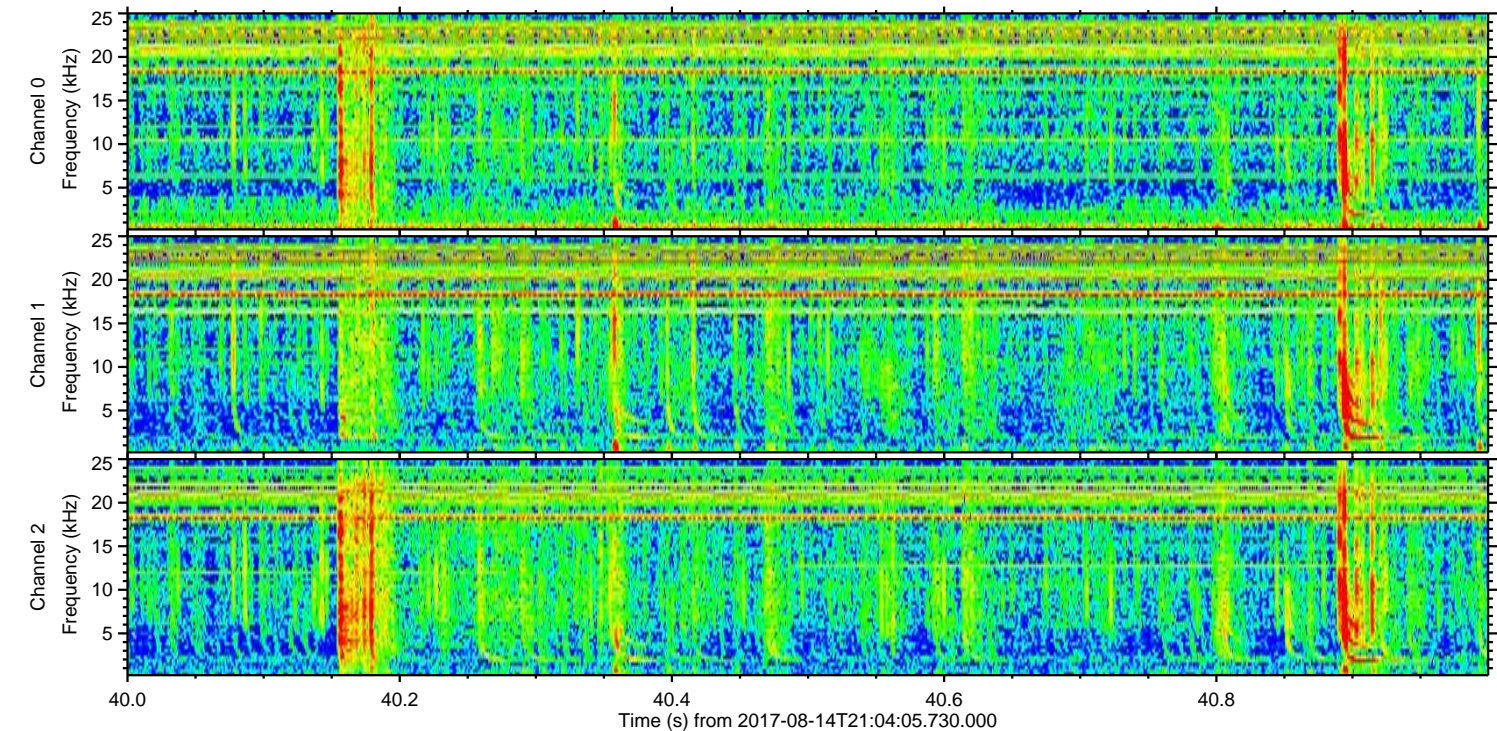
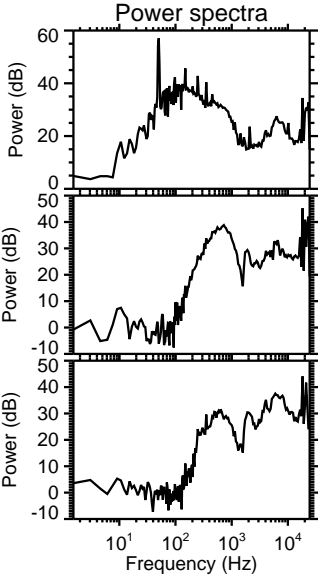
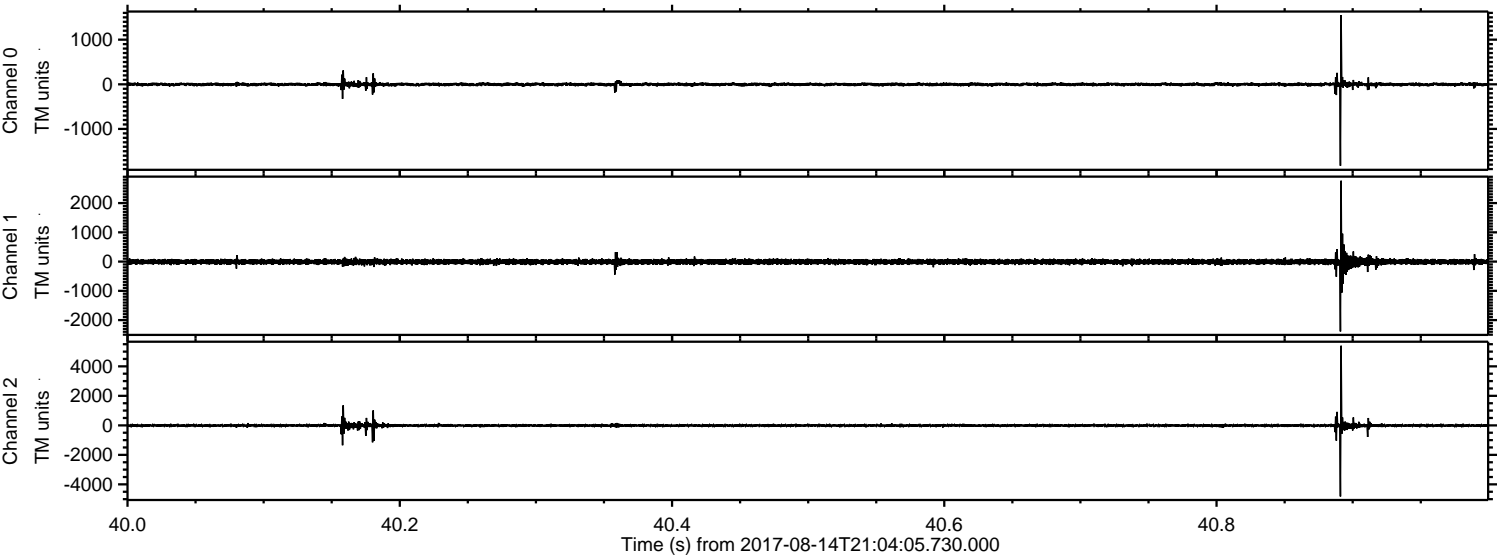
Processed Mon Aug 14 23:12:19 2017 by ELM ver.2012-10-06 from 001__elm20170814_210404__dat00.bin



Processed Mon Aug 14 23:12:20 2017 by ELM ver.2012-10-06 from 001__elm20170814_210404__dat00.bin

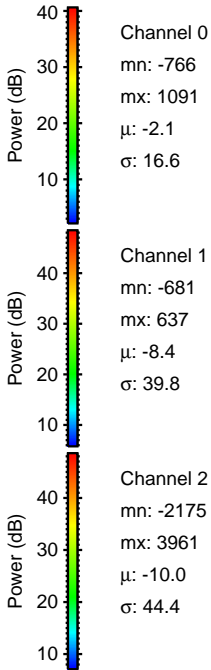
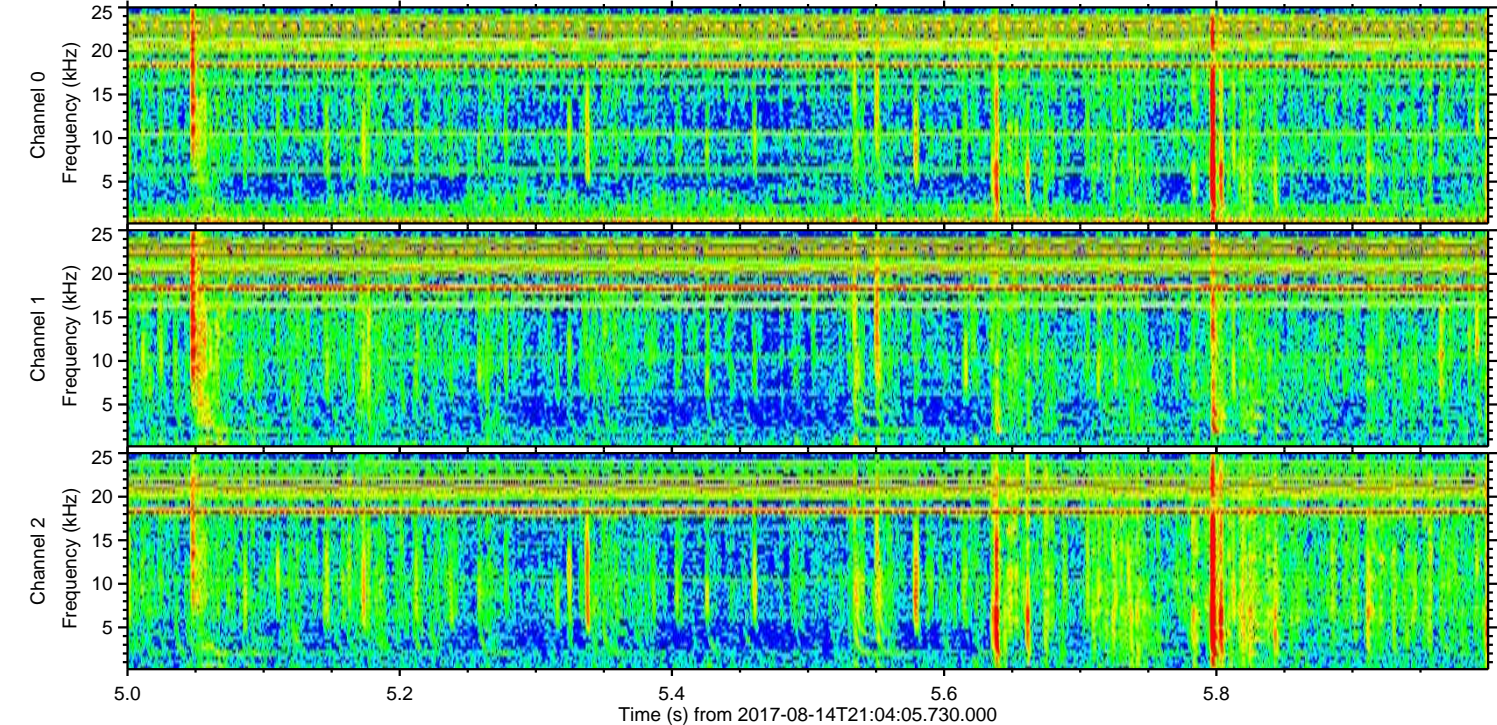
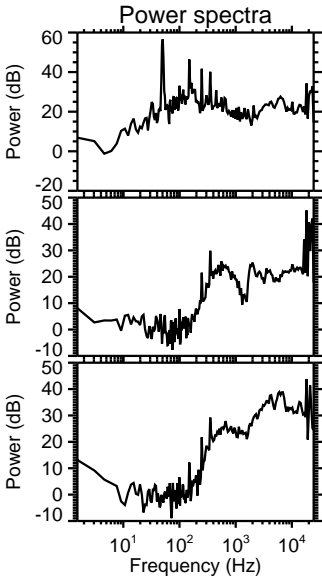
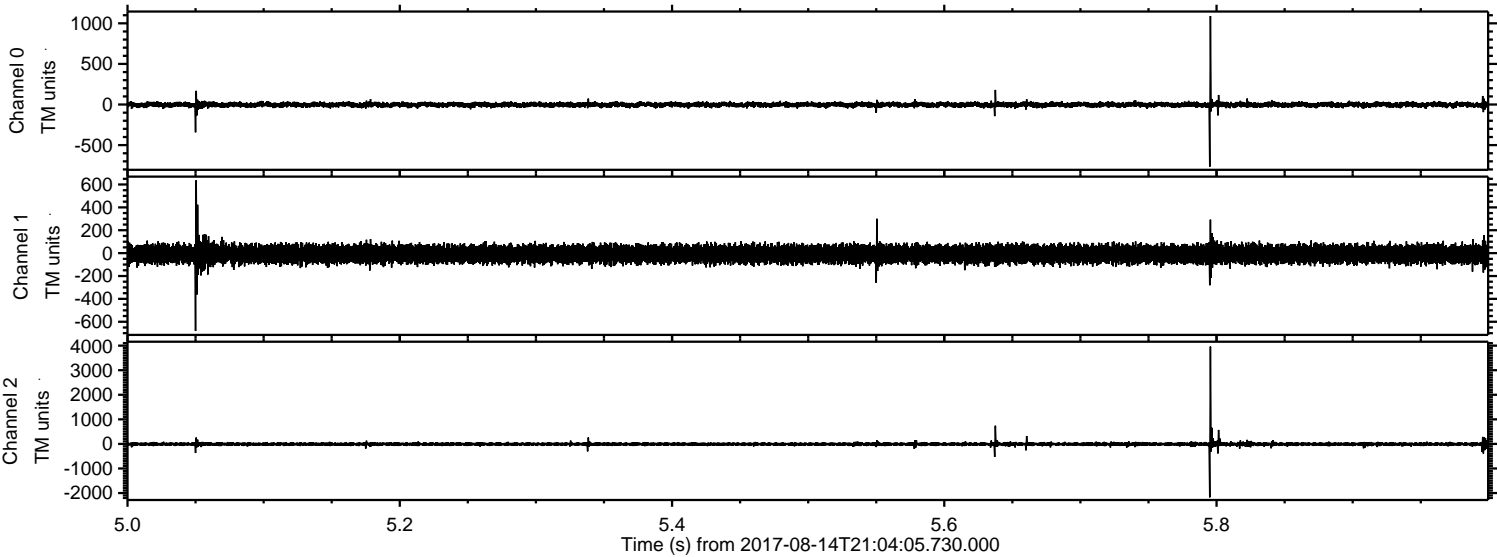


Processed Mon Aug 14 23:12:21 2017 by ELM ver.2012-10-06 from 001__elm20170814_210404__dat00.bin

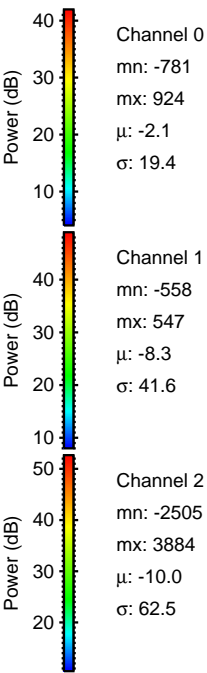
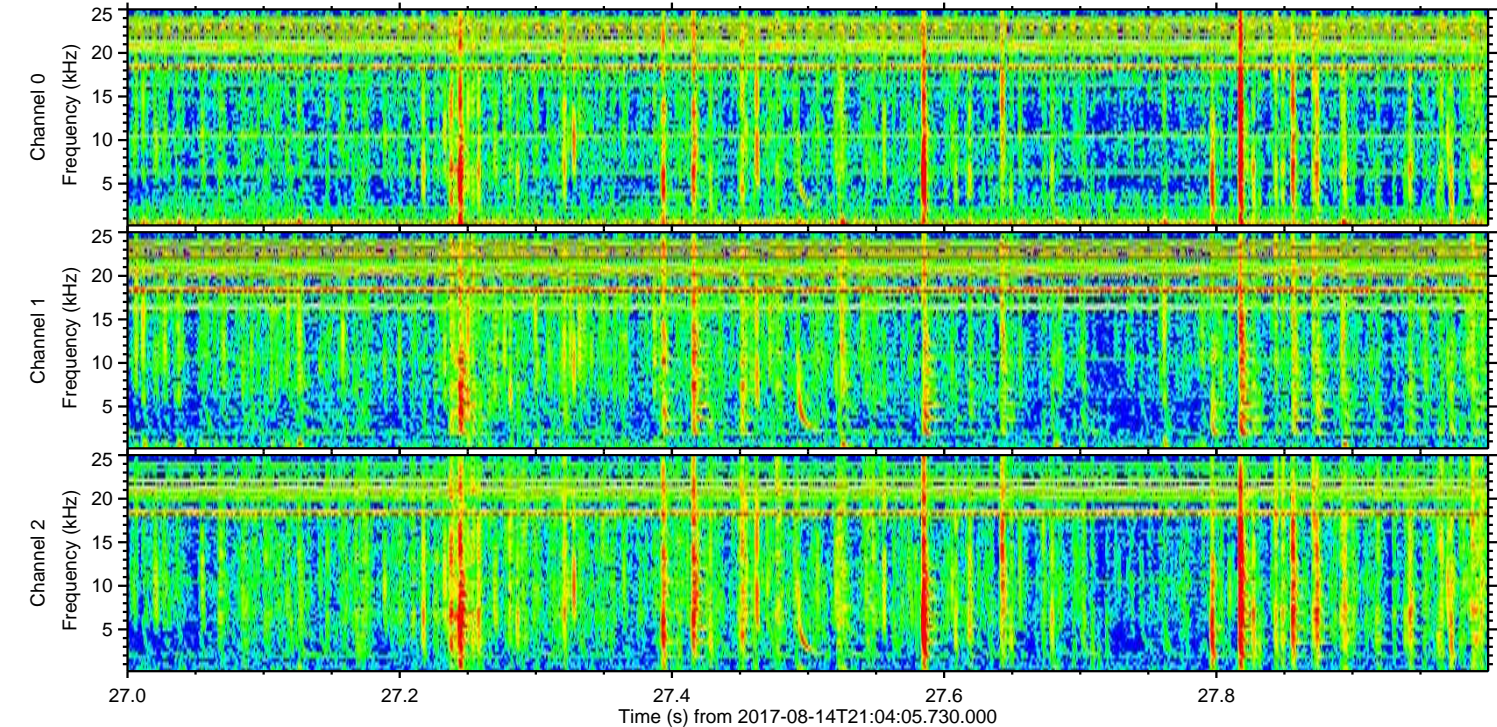
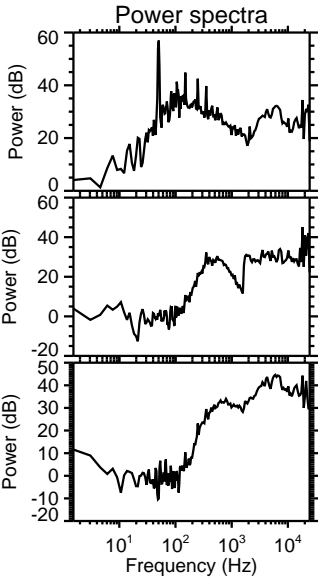
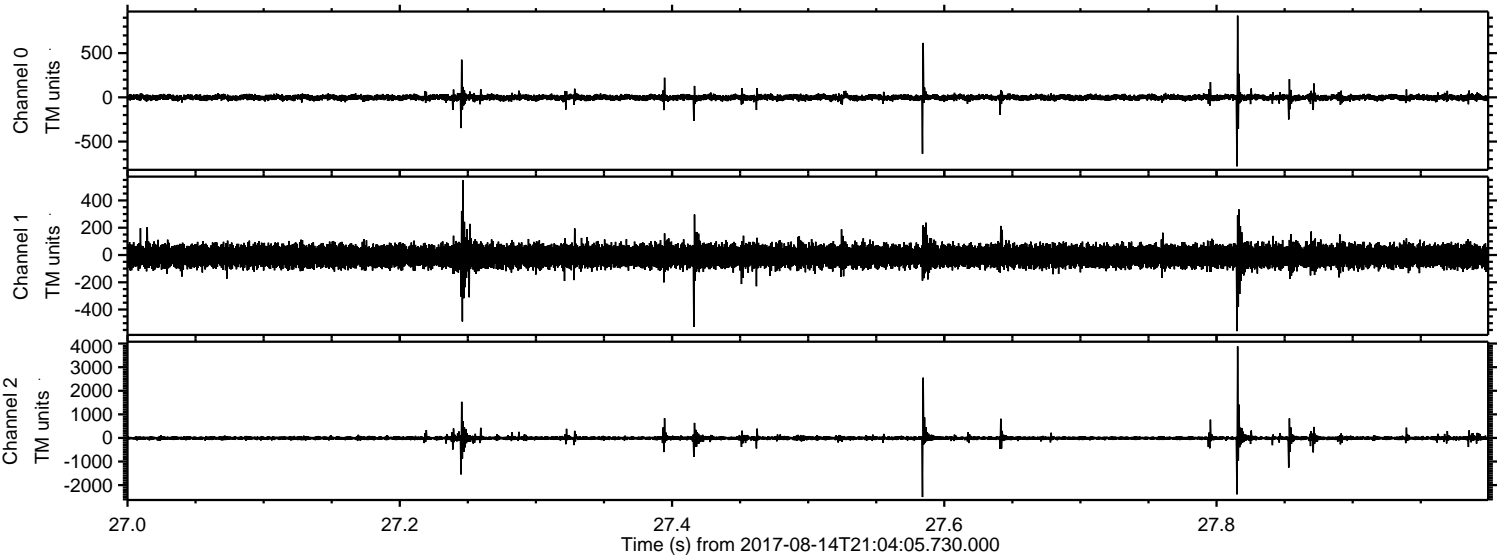


ELMAVAN 3D WAVEFORMS (Measured data sampled at 50 kHz) 51000 packets of 144 samples from 2017-08-14T21:04:05.730.000. Part 6/147

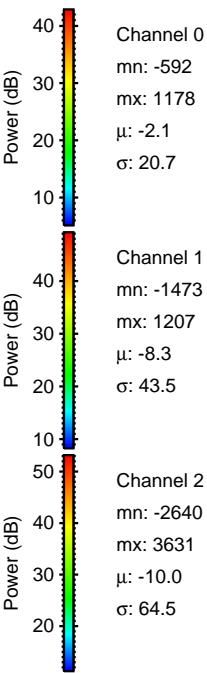
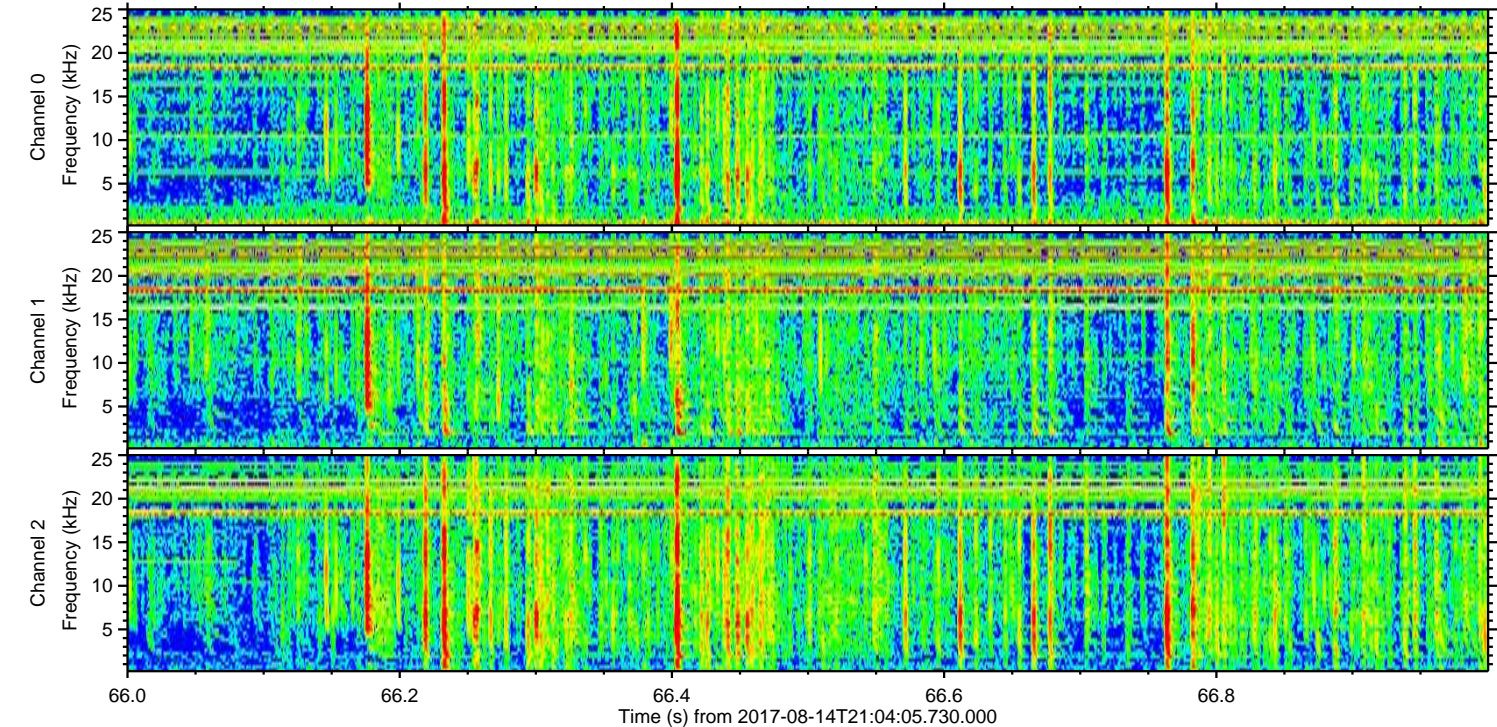
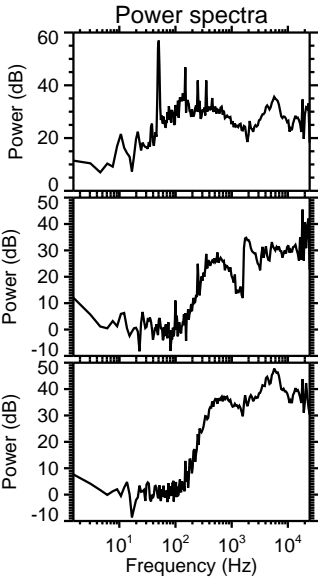
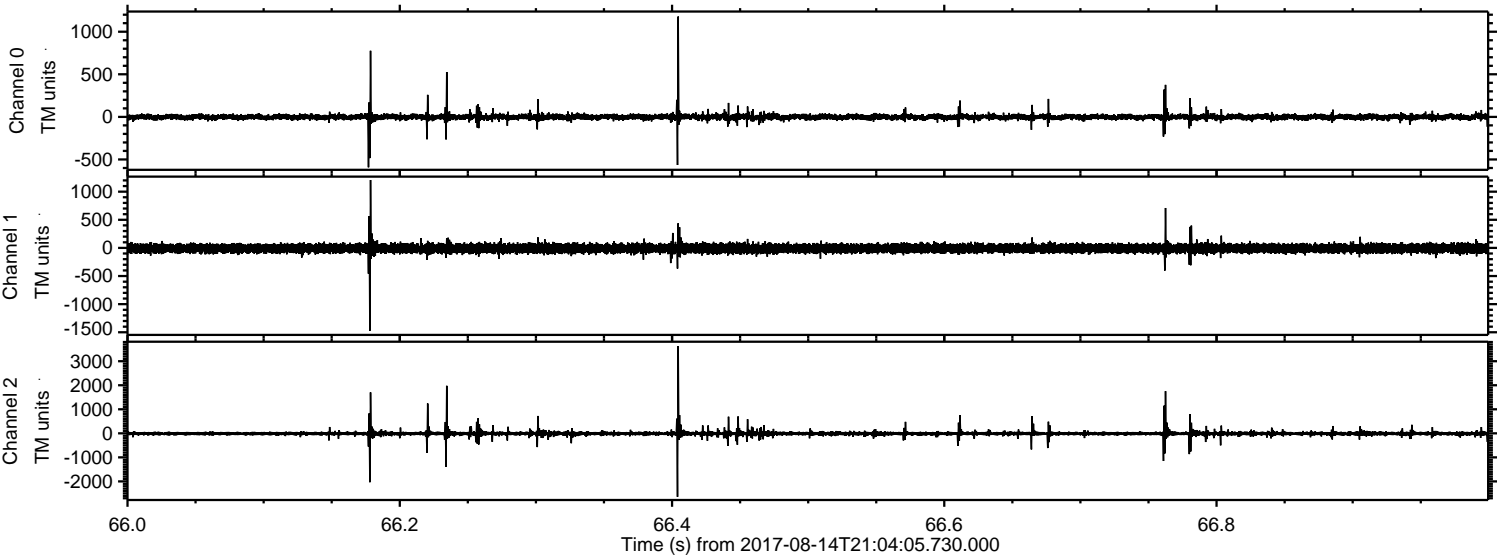
Processed Mon Aug 14 23:12:21 2017 by ELM ver.2012-10-06 from 001__elm20170814_210404__dat00.bin



Processed Mon Aug 14 23:12:22 2017 by ELM ver.2012-10-06 from 001__elm20170814_210404__dat00.bin



Processed Mon Aug 14 23:12:22 2017 by ELM ver.2012-10-06 from 001__elm20170814_210404__dat00.bin



Channel 0
mn: -592
mx: 1178
 μ : -2.1
 σ : 20.7

Channel 1
mn: -1473
mx: 1207
 μ : -8.3
 σ : 43.5

Channel 2
mn: -2640
mx: 3631
 μ : -10.0
 σ : 64.5

Processed Mon Aug 14 23:12:23 2017 by ELM ver.2012-10-06 from 001__elm20170814_210404__dat00.bin

