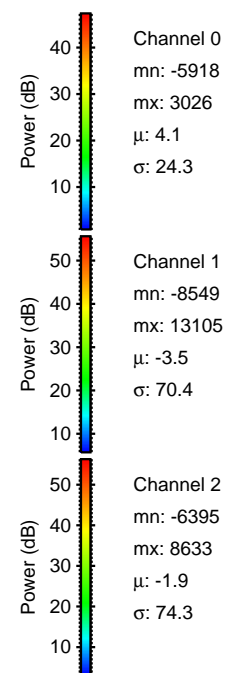
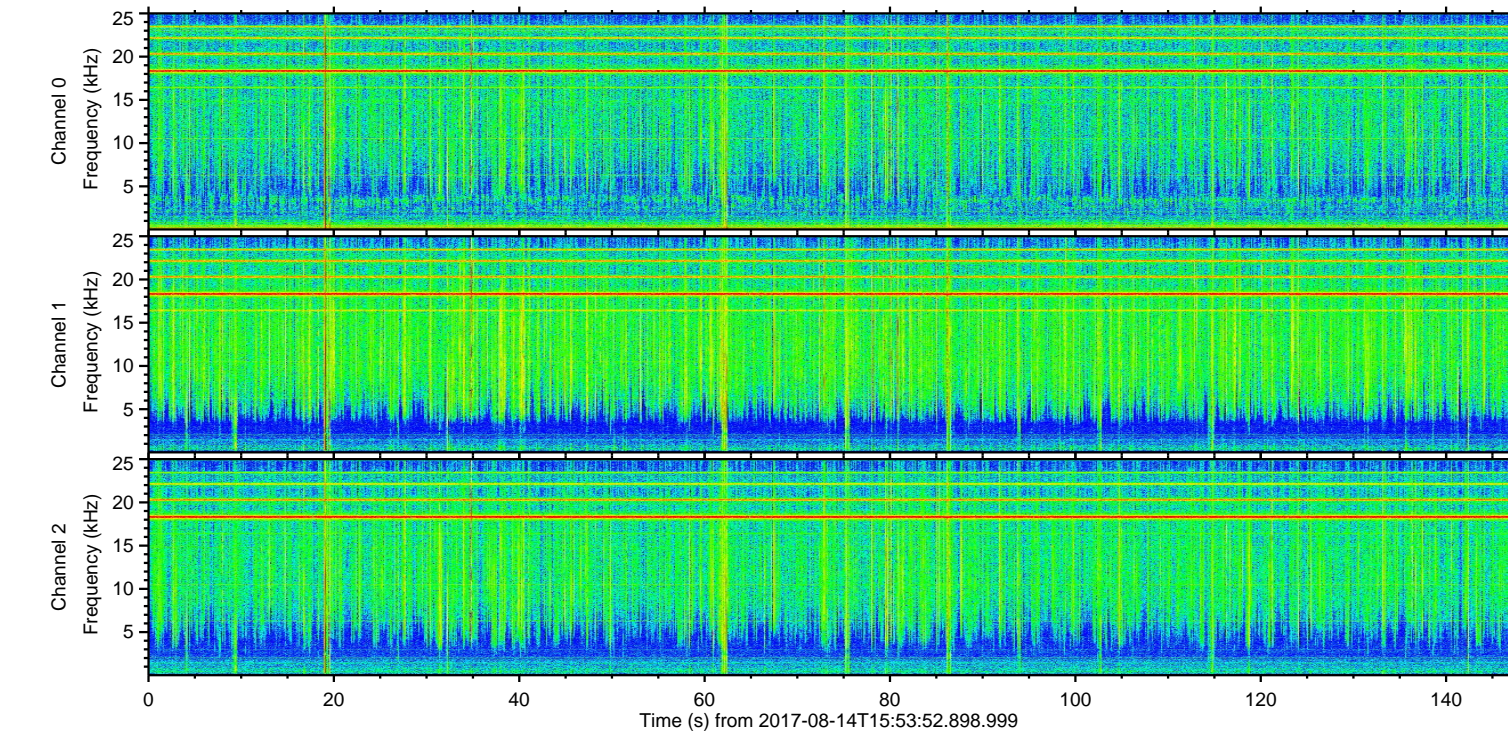
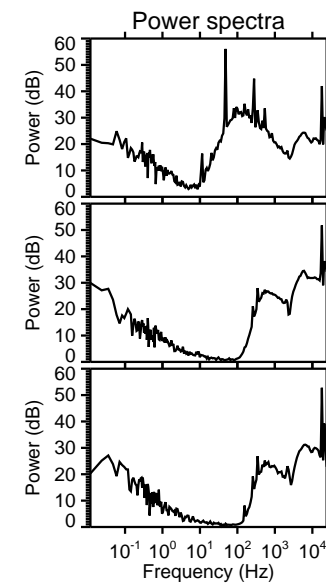
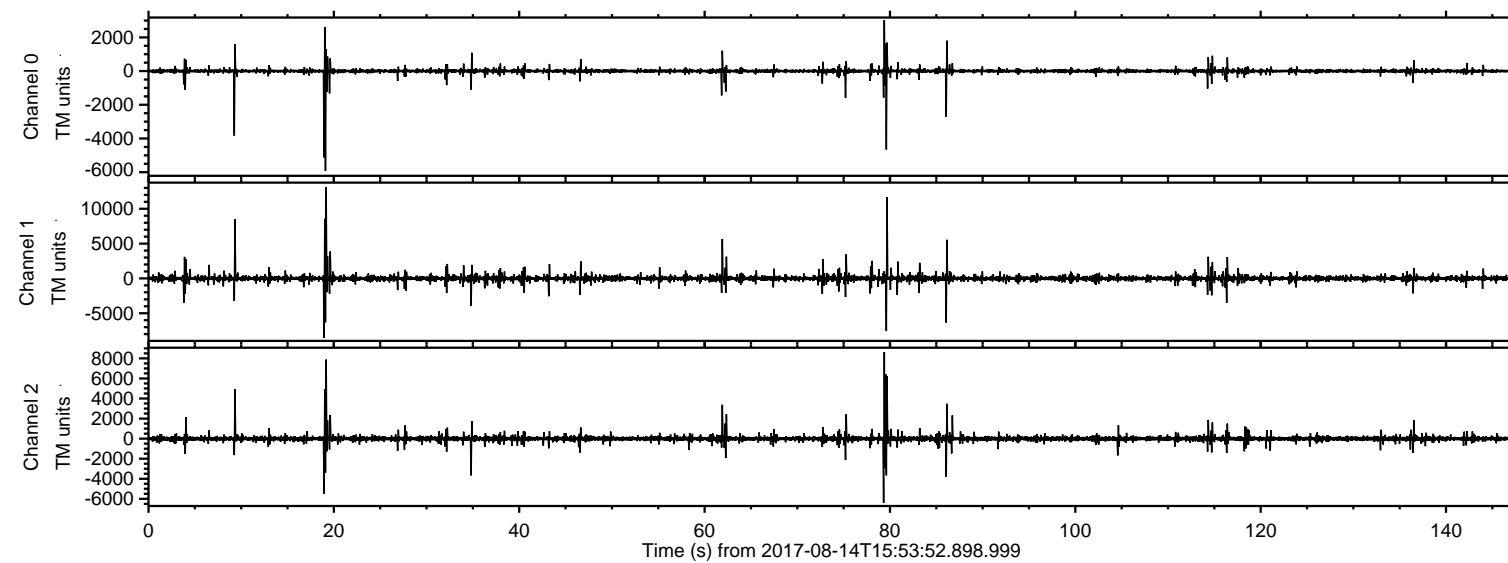
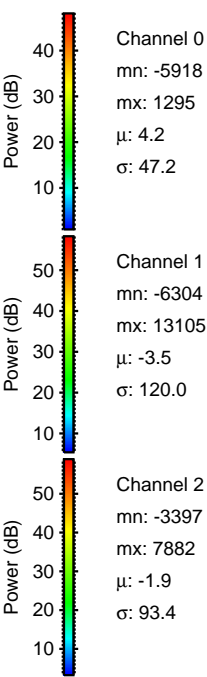
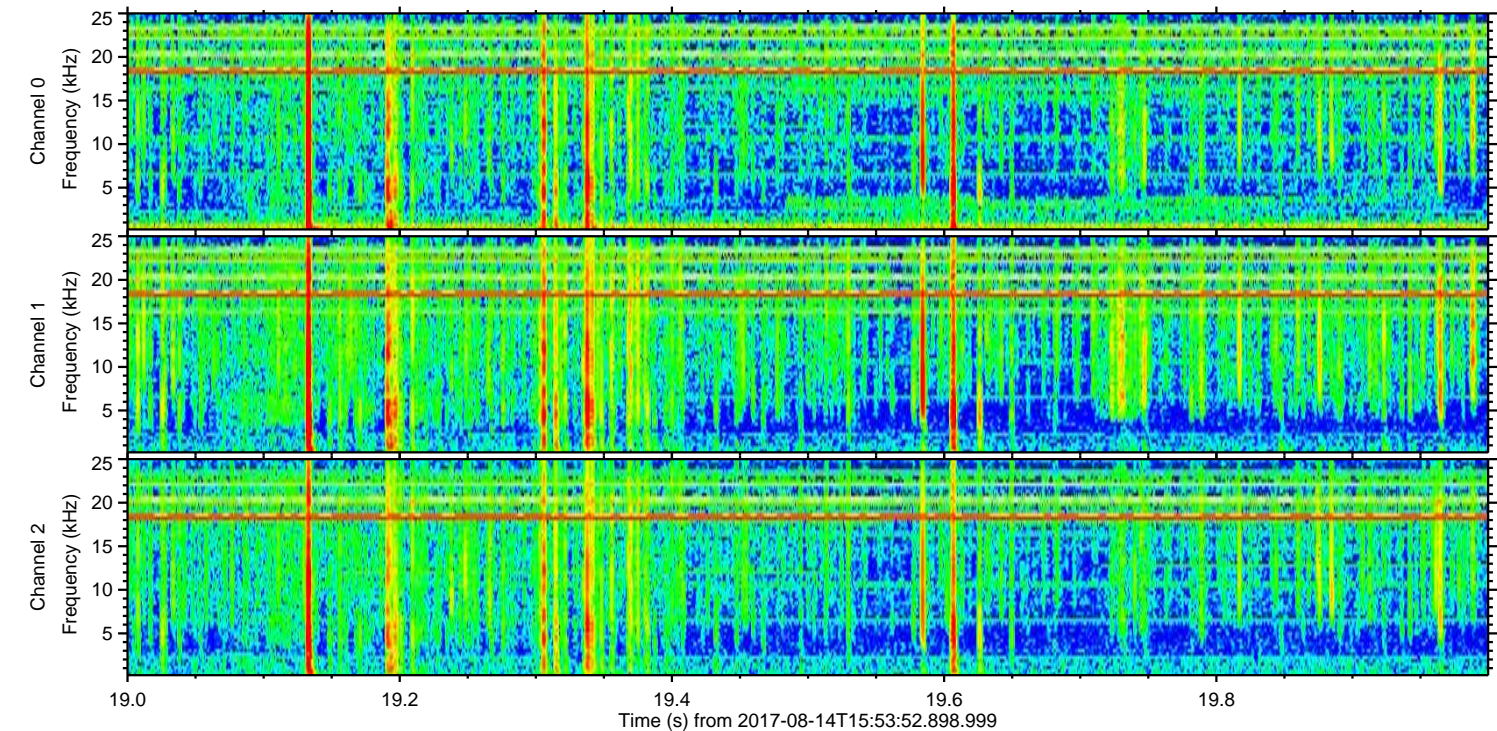
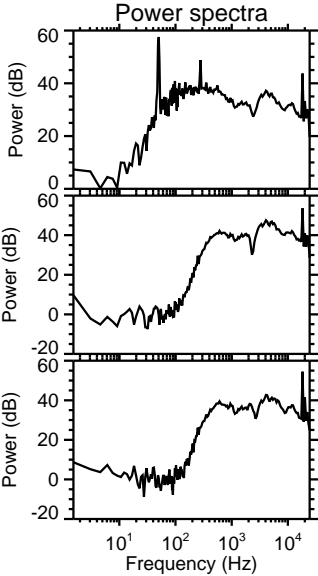
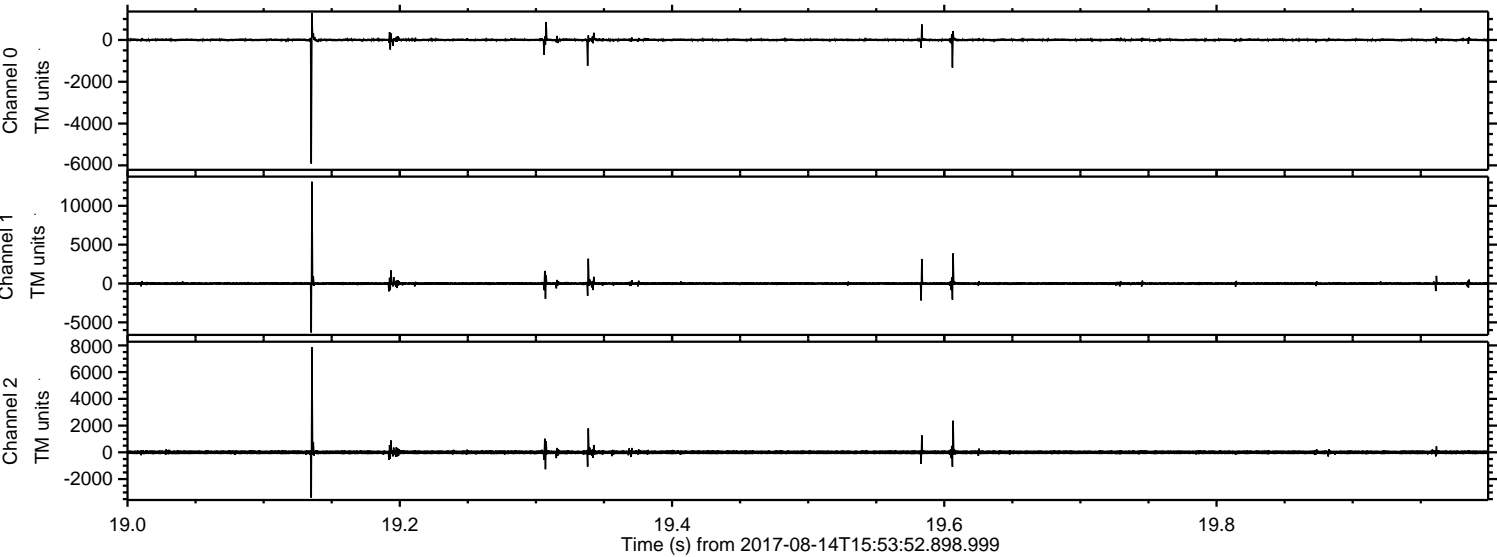


ELMAVAN 3D WAVEFORMS (Measured data sampled at 50 kHz) 51000 packets of 144 samples from 2017-08-14T15:53:52.898.999.

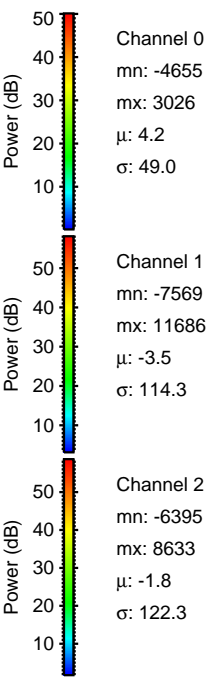
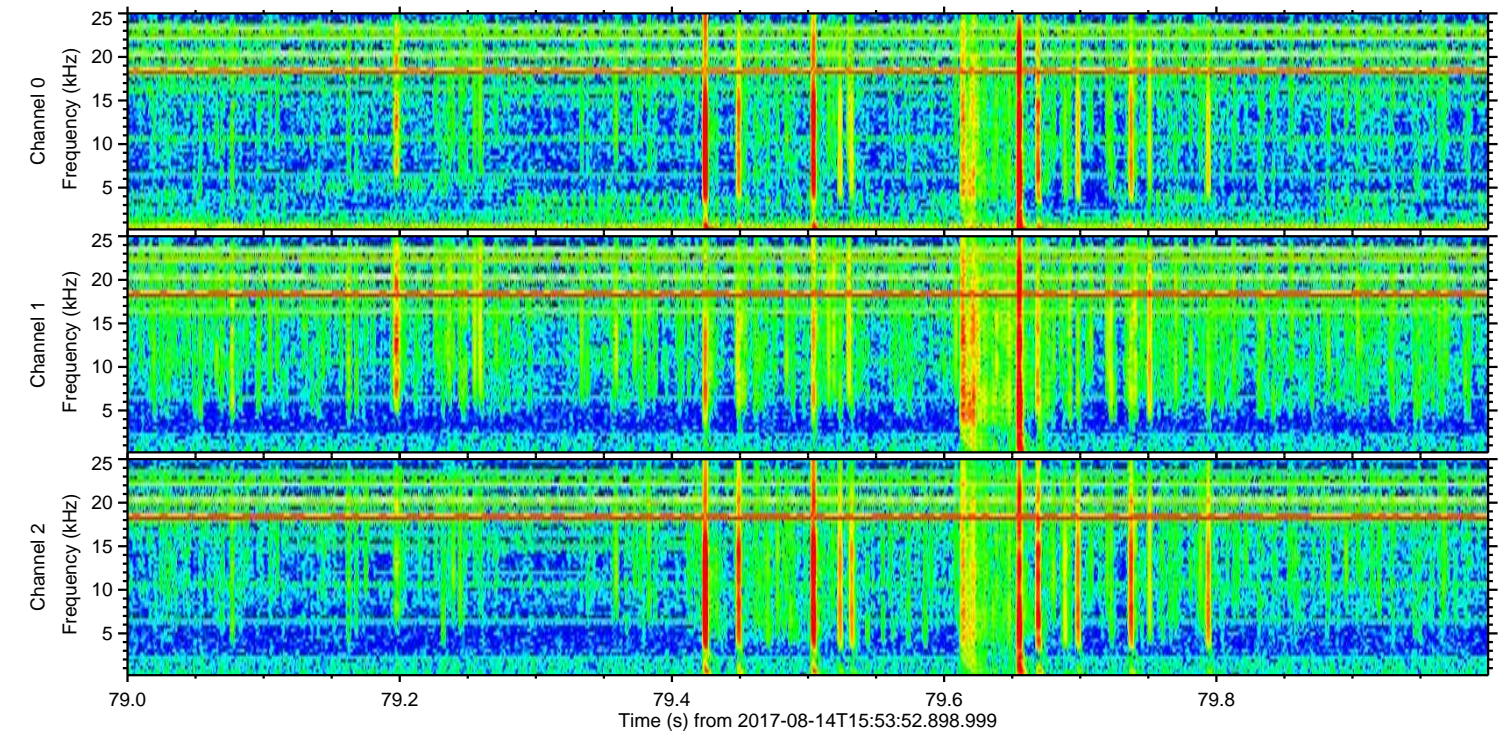
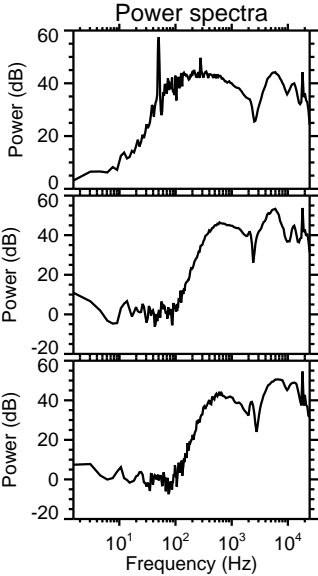
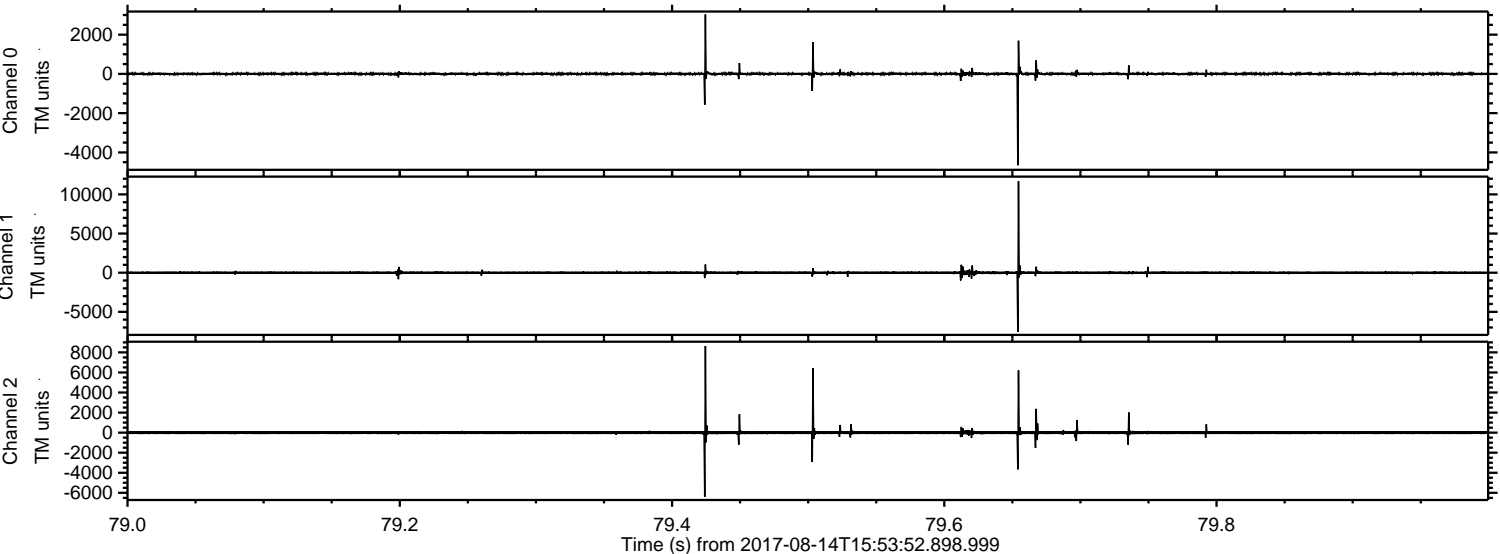
Processed Mon Aug 14 18:01:56 2017 by ELM ver.2012-10-06 from 001__elm20170814_155351__dat00.bin



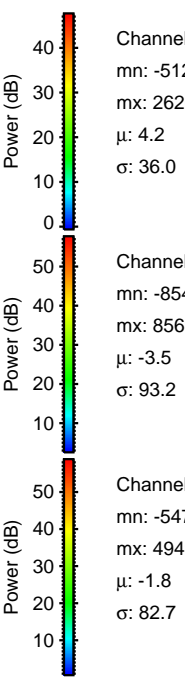
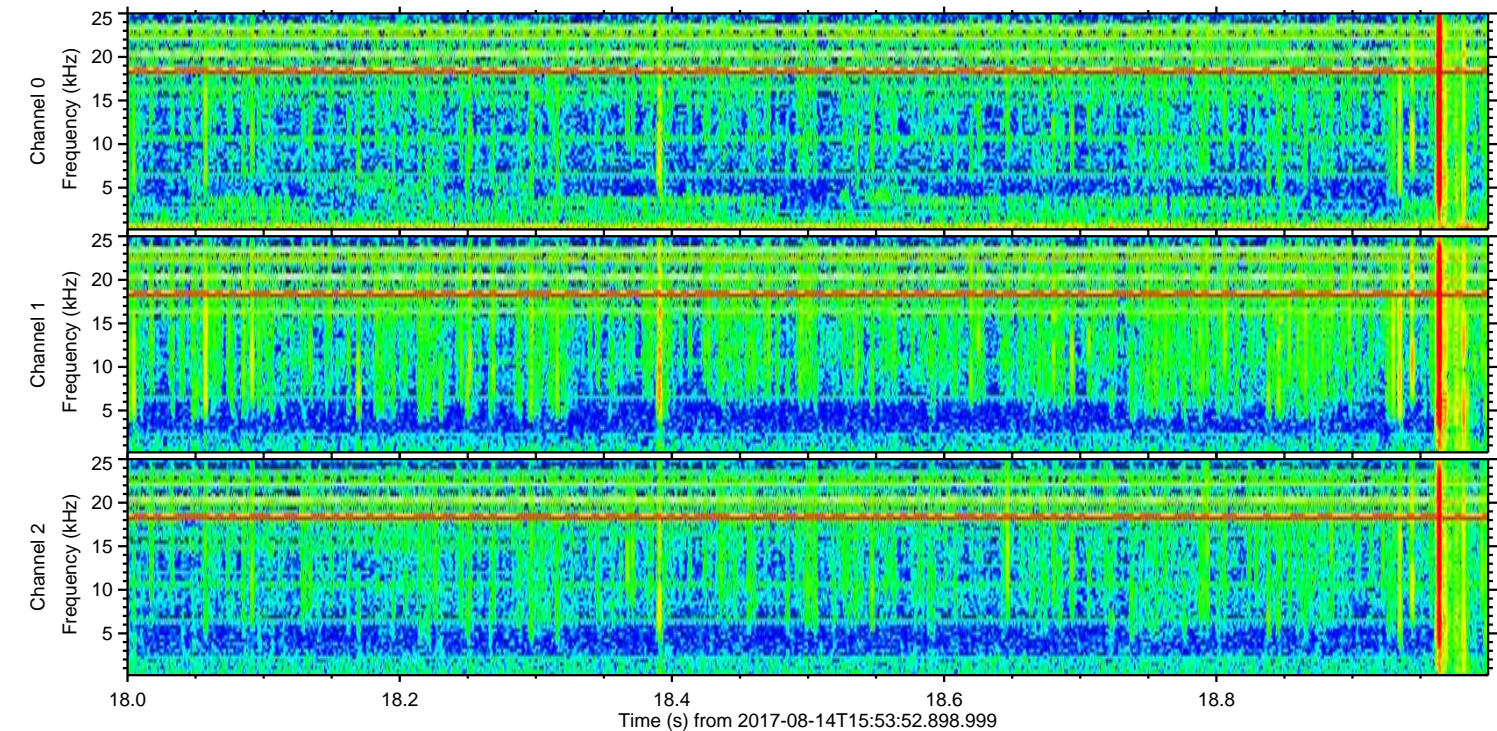
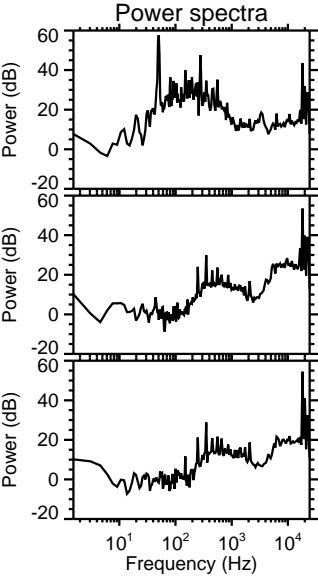
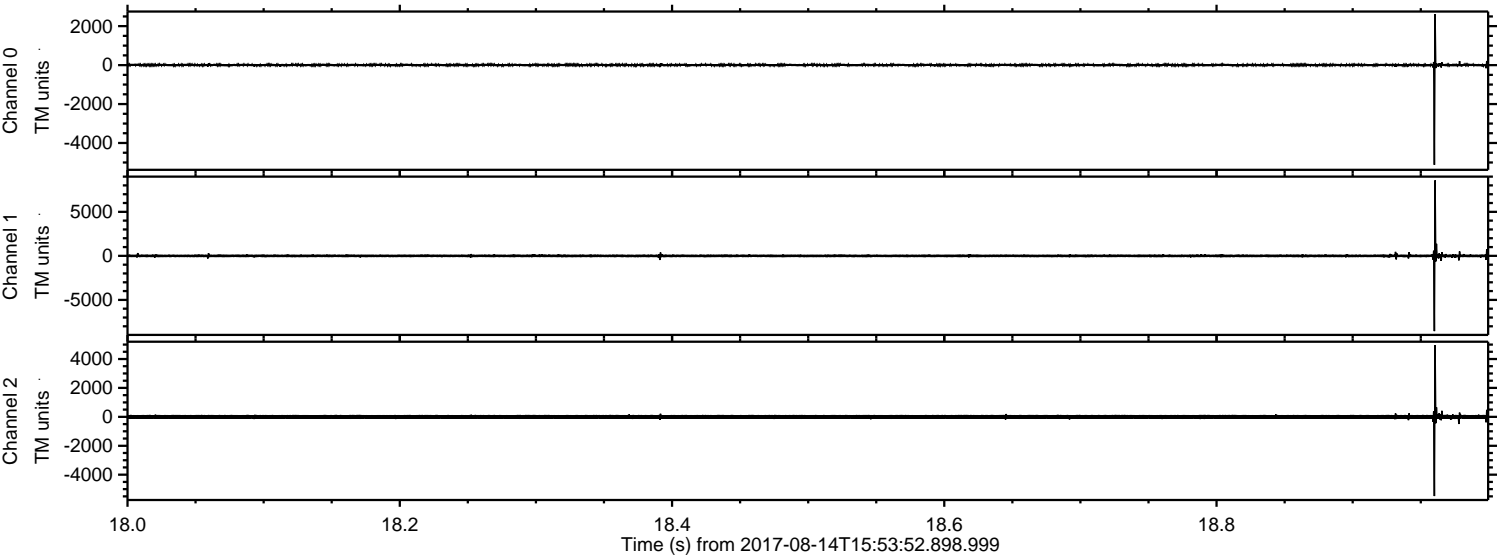
Processed Mon Aug 14 18:02:02 2017 by ELM ver.2012-10-06 from 001__elm20170814_155351__dat00.bin



Processed Mon Aug 14 18:02:02 2017 by ELM ver.2012-10-06 from 001__elm20170814_155351__dat00.bin

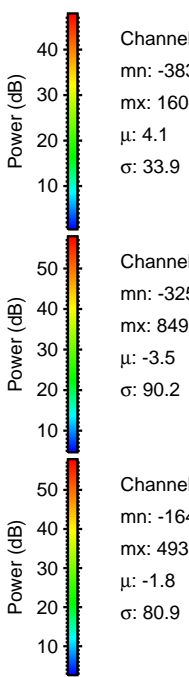
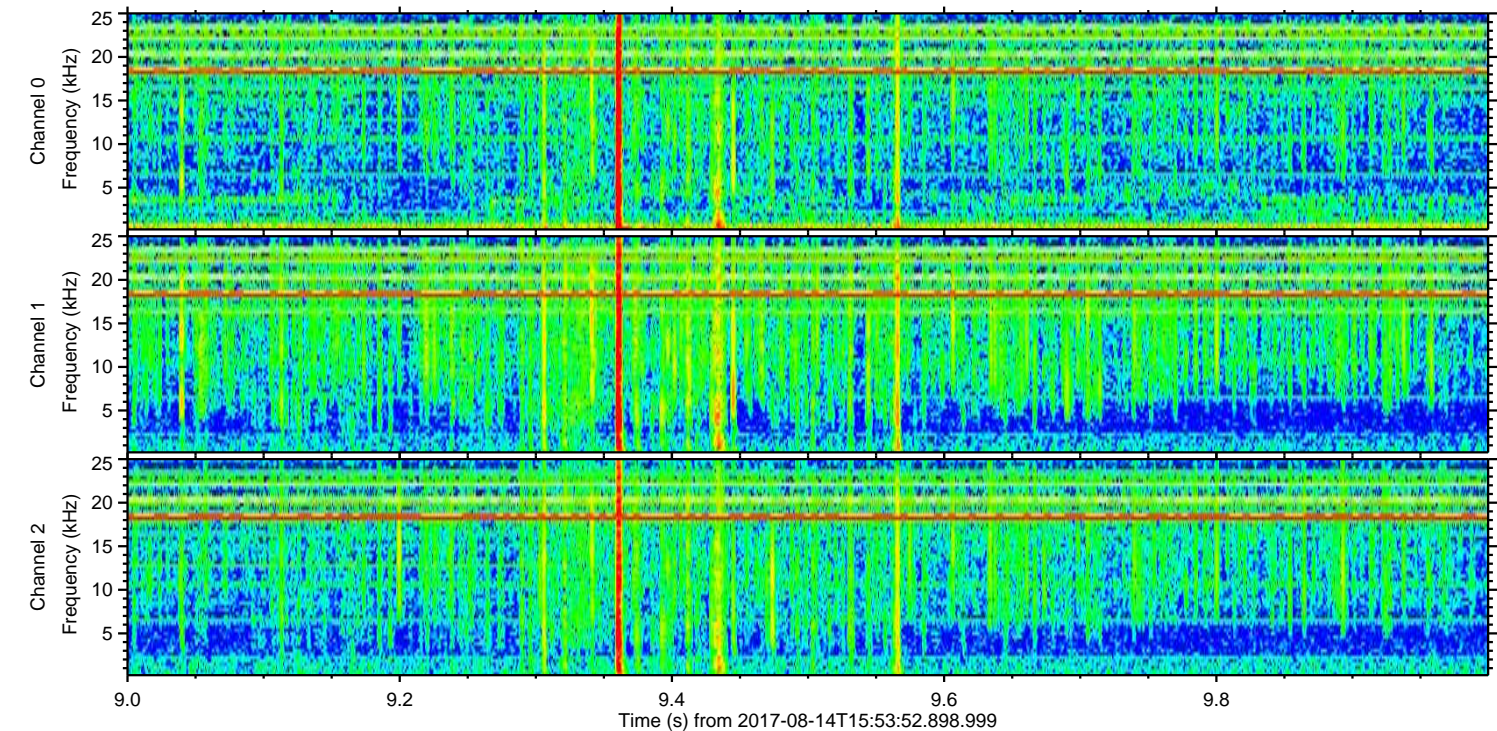
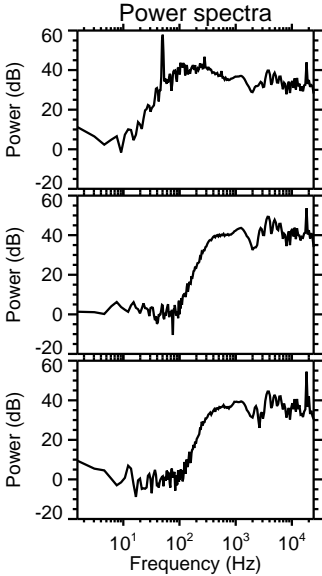
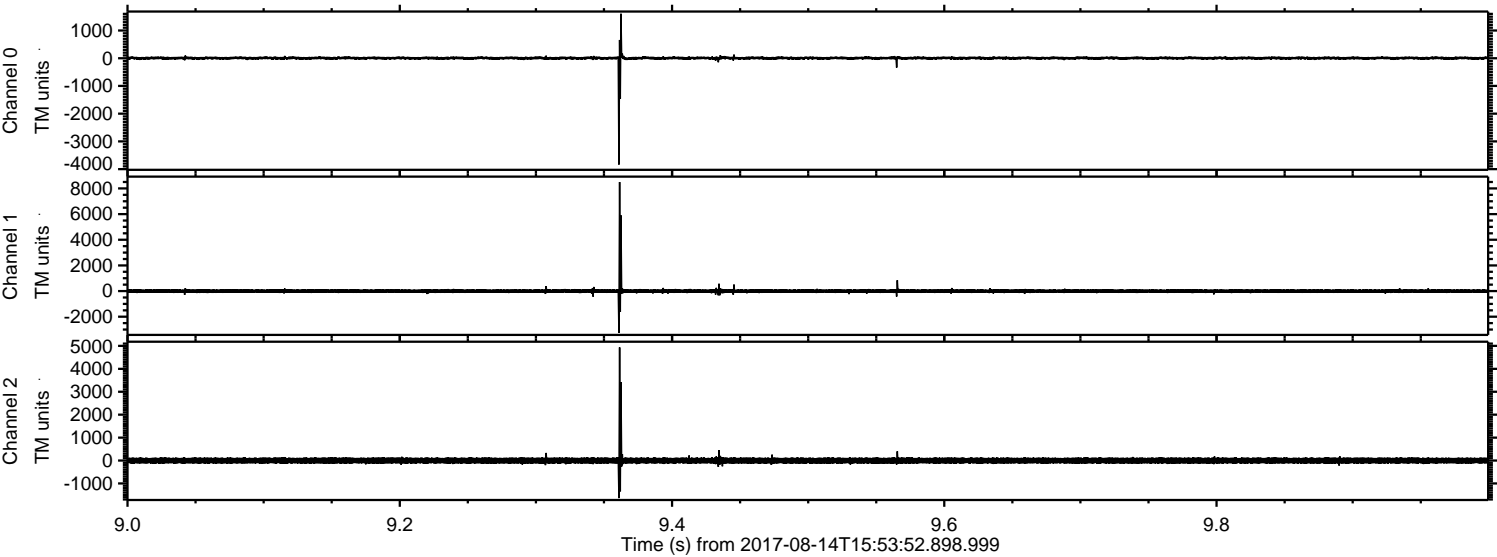


Processed Mon Aug 14 18:02:03 2017 by ELM ver.2012-10-06 from 001__elm20170814_155351__dat00.bin



ELMAVAN 3D WAVEFORMS (Measured data sampled at 50 kHz) 51000 packets of 144 samples from 2017-08-14T15:53:52.898.999. Part 10/147

Processed Mon Aug 14 18:02:04 2017 by ELM ver.2012-10-06 from 001__elm20170814_155351__dat00.bin

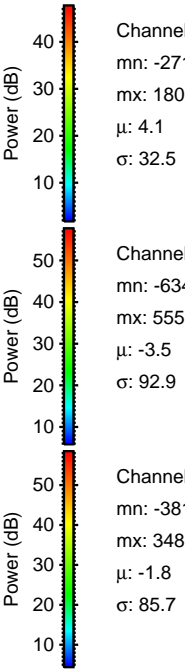
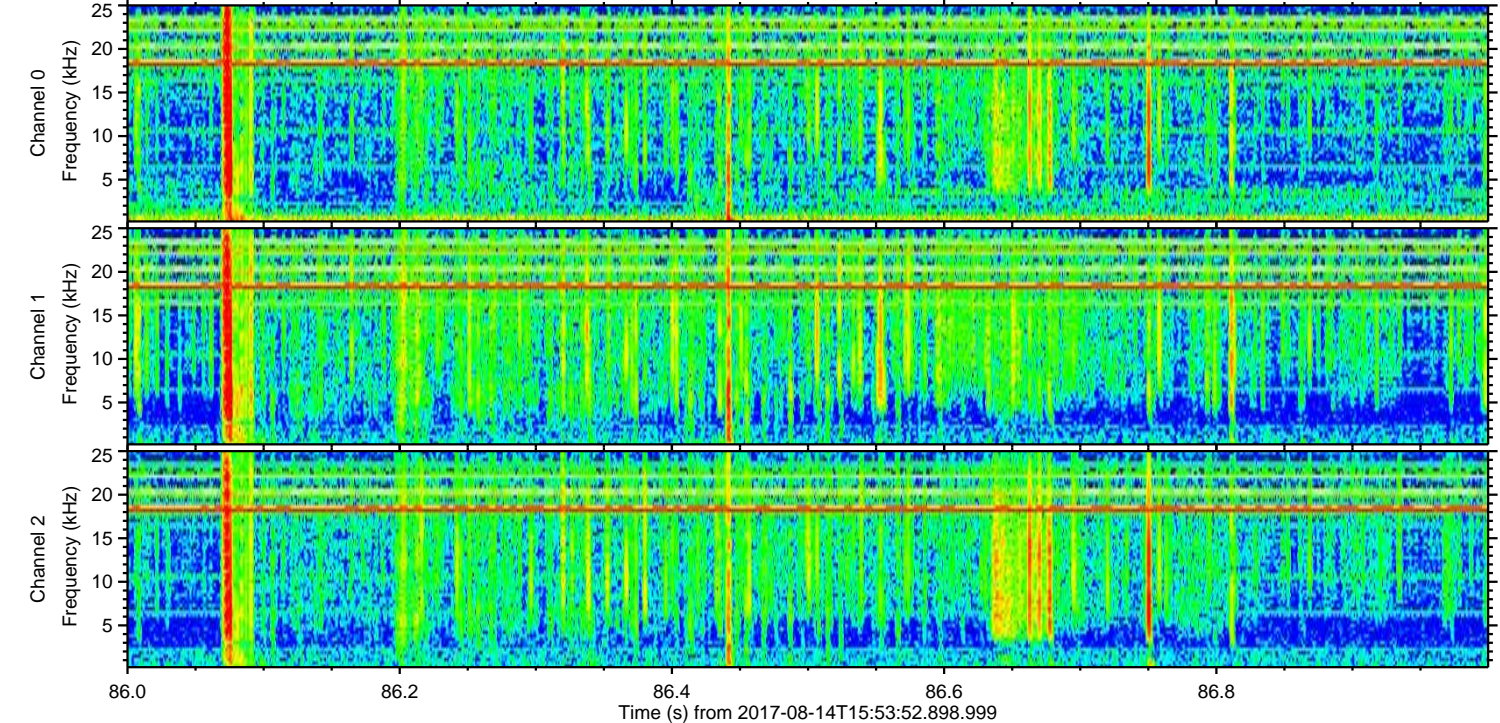
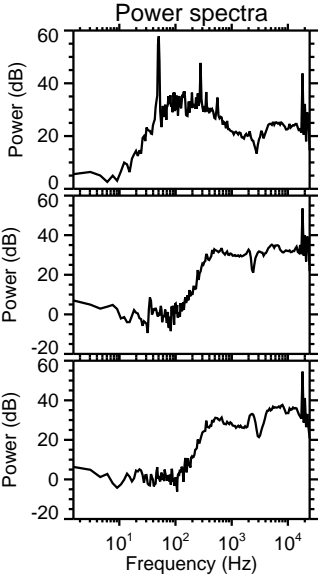
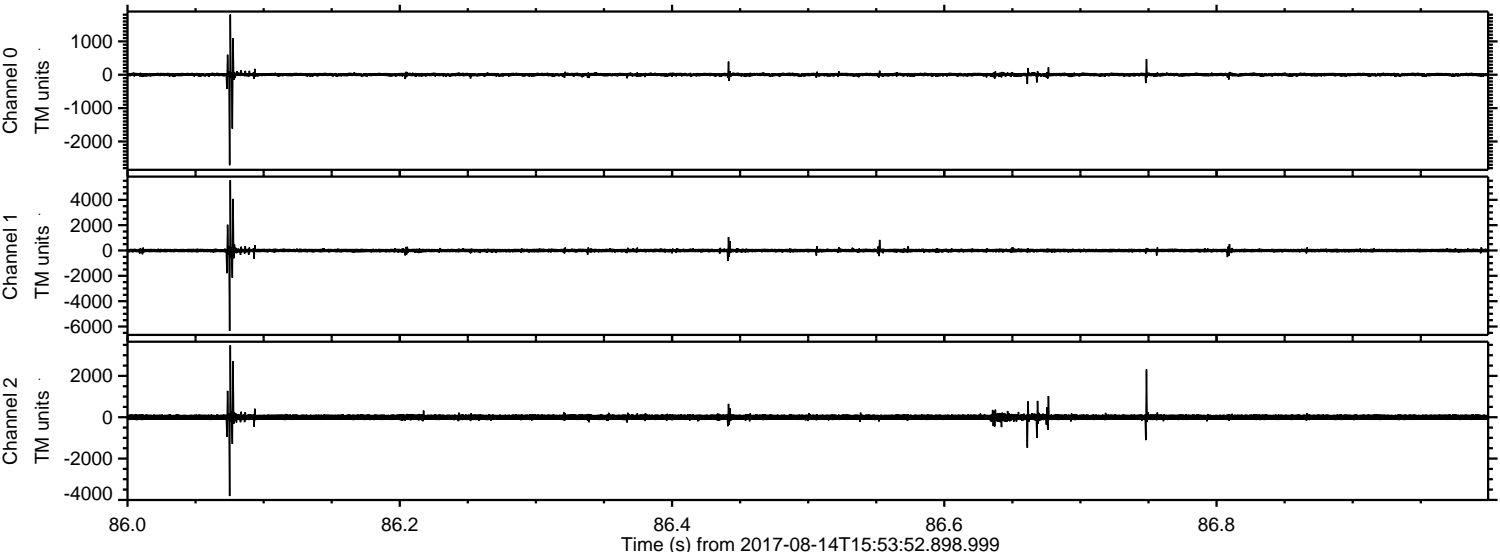


Channel 0
mn: -3834
mx: 1604
 μ : 4.1
 σ : 33.9

Channel 1
mn: -3255
mx: 8496
 μ : -3.5
 σ : 90.2

Channel 2
mn: -1640
mx: 4936
 μ : -1.8
 σ : 80.9

Processed Mon Aug 14 18:02:04 2017 by ELM ver.2012-10-06 from 001__elm20170814_155351__dat00.bin



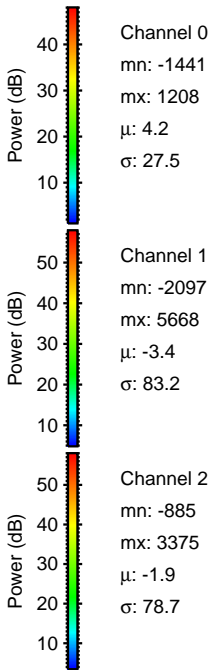
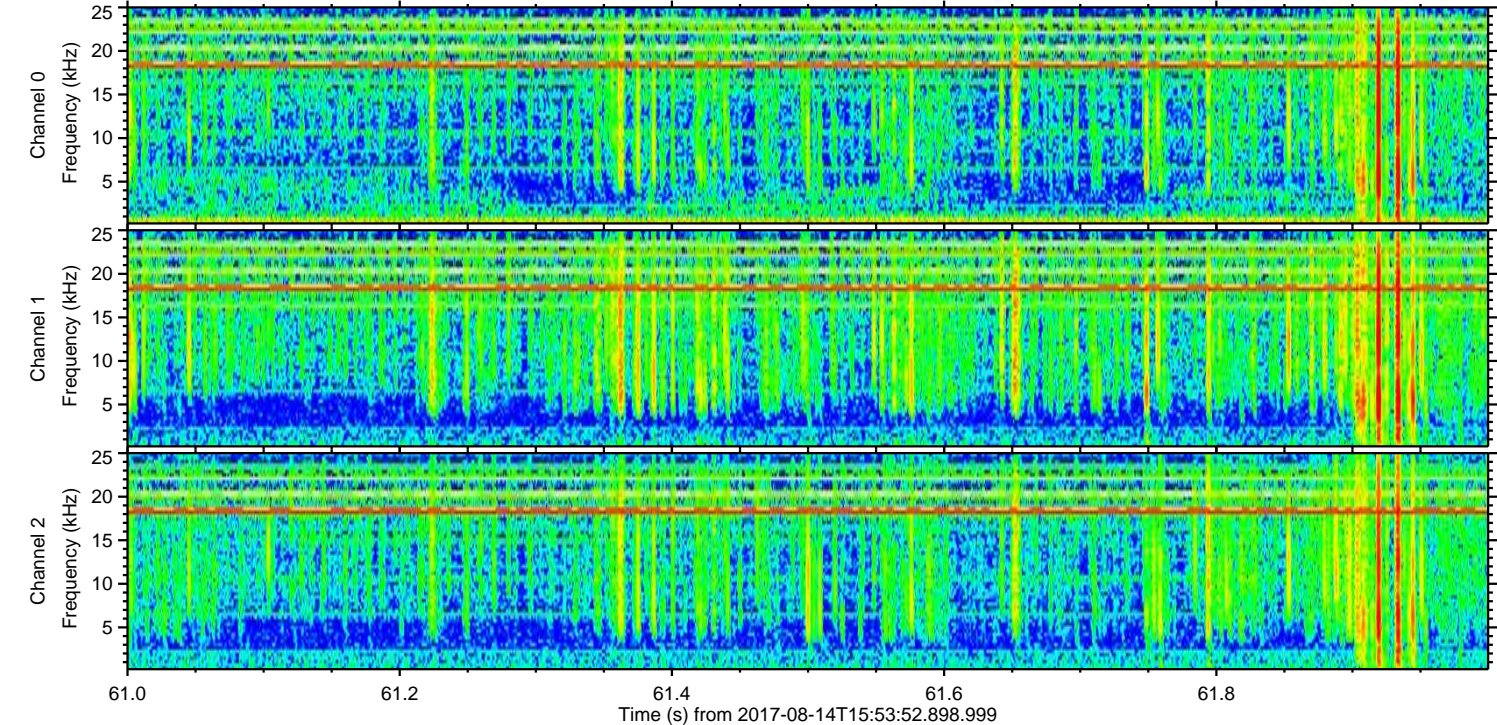
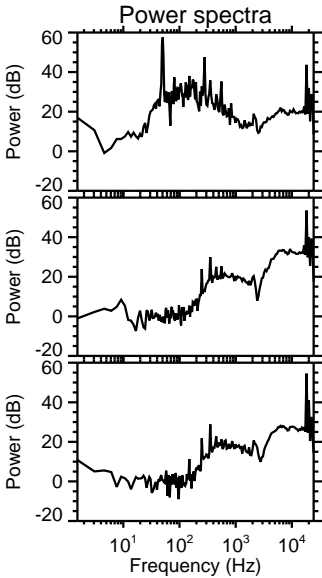
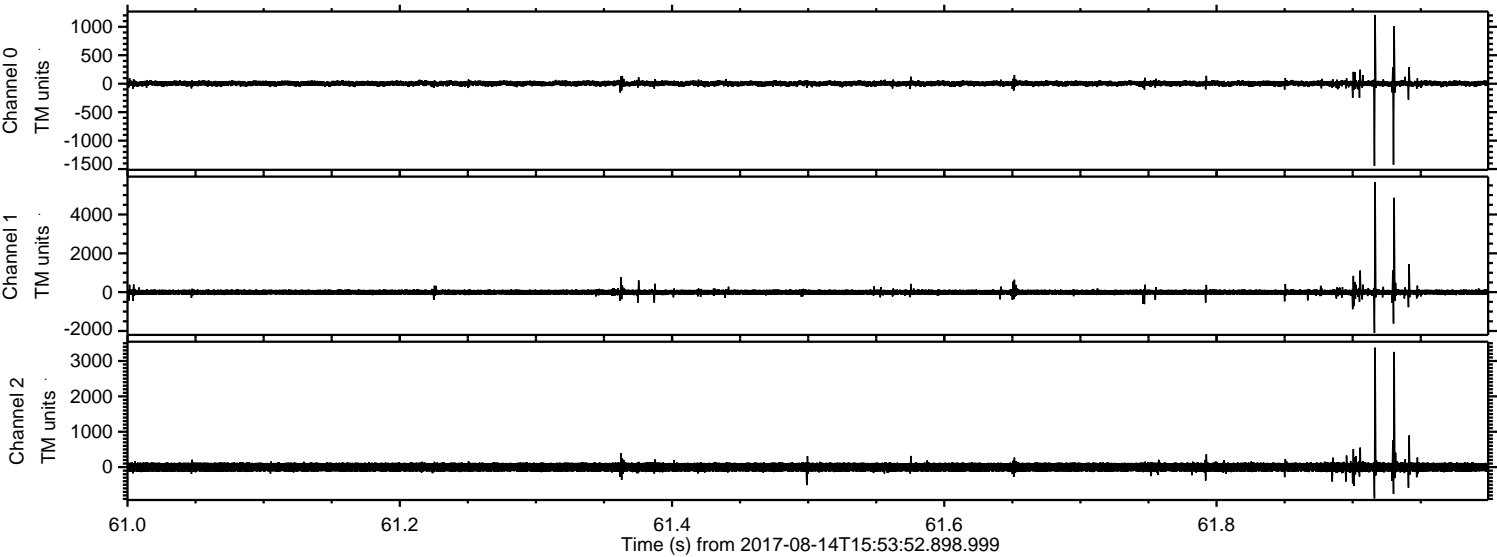
Channel 0
mn: -2715
mx: 1806
 μ : 4.1
 σ : 32.5

Channel 1
mn: -6346
mx: 5553
 μ : -3.5
 σ : 92.9

Channel 2
mn: -3814
mx: 3480
 μ : -1.8
 σ : 85.7

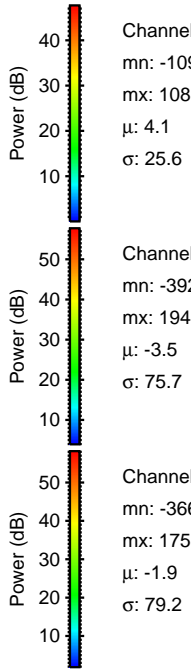
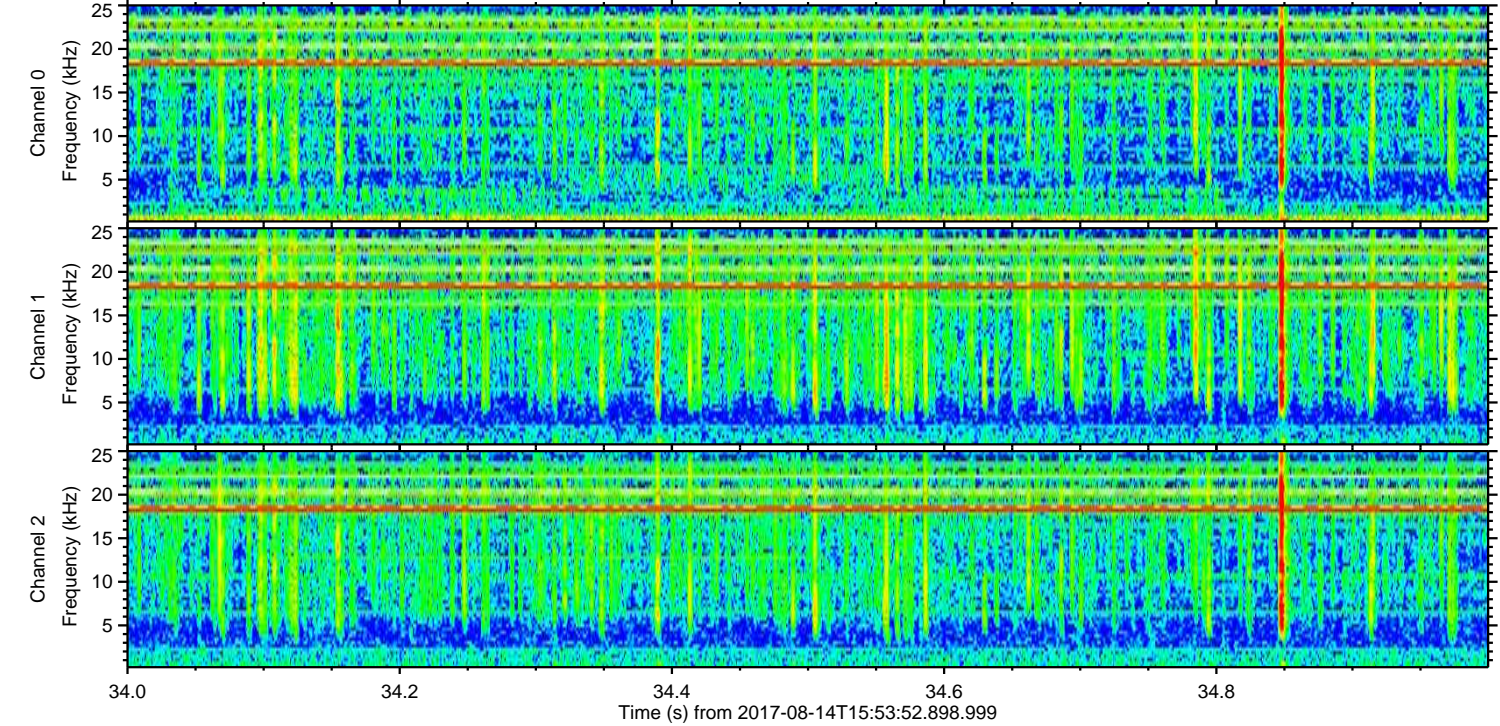
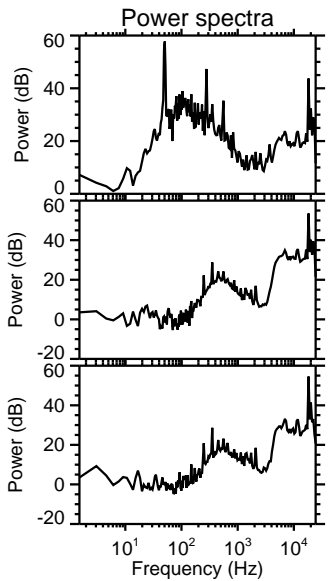
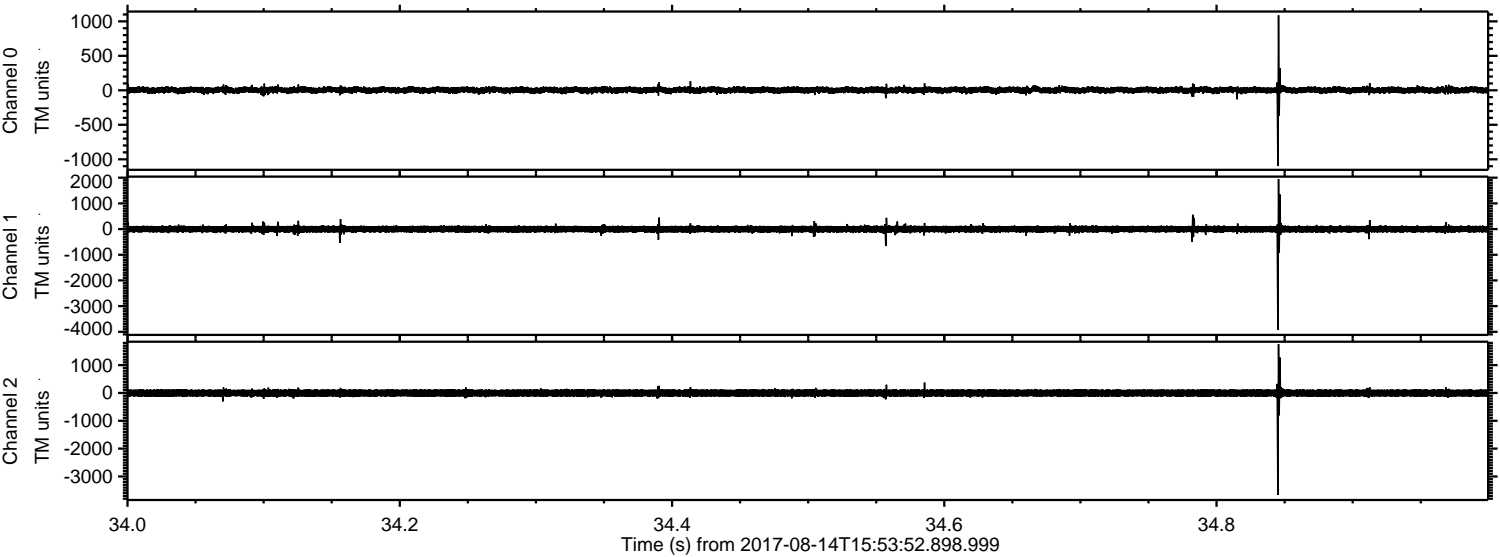
ELMAVAN 3D WAVEFORMS (Measured data sampled at 50 kHz) 51000 packets of 144 samples from 2017-08-14T15:53:52.898.999. Part 62/147

Processed Mon Aug 14 18:02:05 2017 by ELM ver.2012-10-06 from 001__elm20170814_155351__dat00.bin



ELMAVAN 3D WAVEFORMS (Measured data sampled at 50 kHz) 51000 packets of 144 samples from 2017-08-14T15:53:52.898.999. Part 35/147

Processed Mon Aug 14 18:02:06 2017 by ELM ver.2012-10-06 from 001__elm20170814_155351__dat00.bin



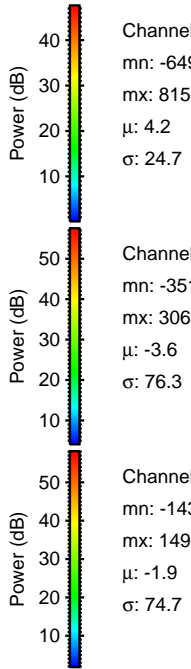
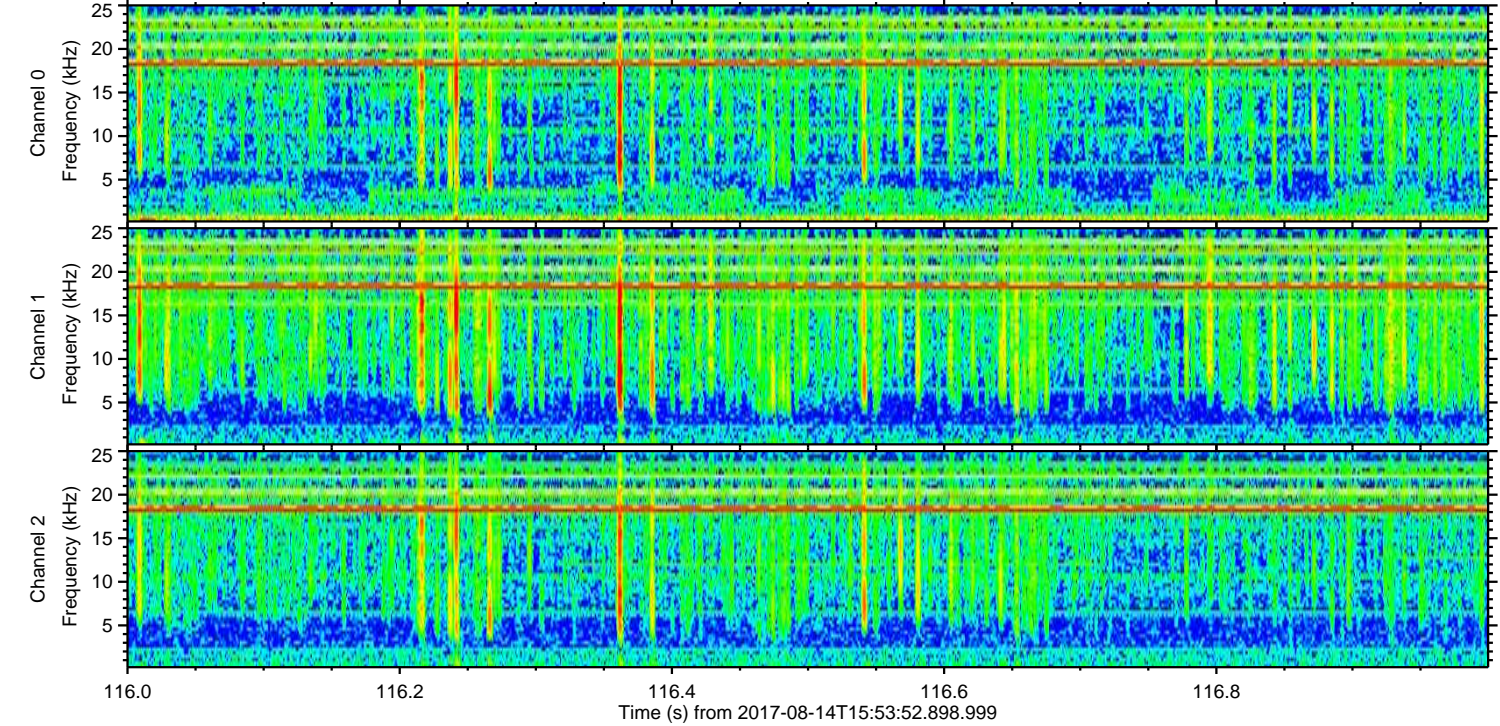
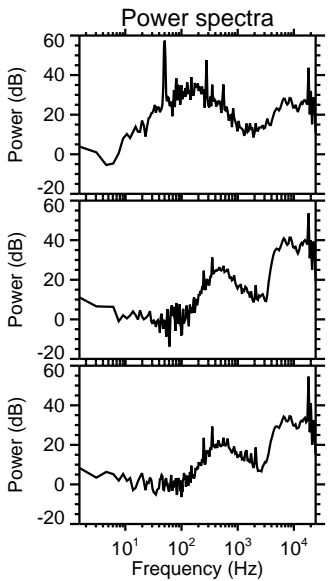
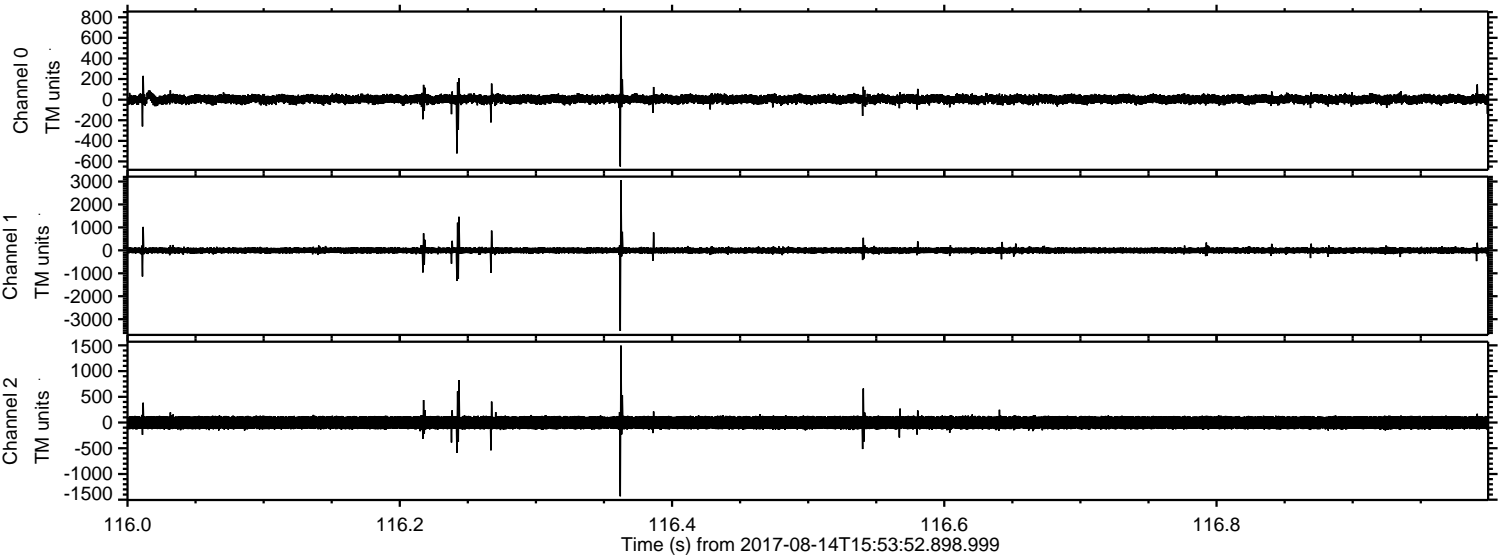
Channel 0
mn: -1098
mx: 1088
 μ : 4.1
 σ : 25.6

Channel 1
mn: -3924
mx: 1944
 μ : -3.5
 σ : 75.7

Channel 2
mn: -3663
mx: 1755
 μ : -1.9
 σ : 79.2

ELMAVAN 3D WAVEFORMS (Measured data sampled at 50 kHz) 51000 packets of 144 samples from 2017-08-14T15:53:52.898.999. Part 117/147

Processed Mon Aug 14 18:02:06 2017 by ELM ver.2012-10-06 from 001__elm20170814_155351__dat00.bin

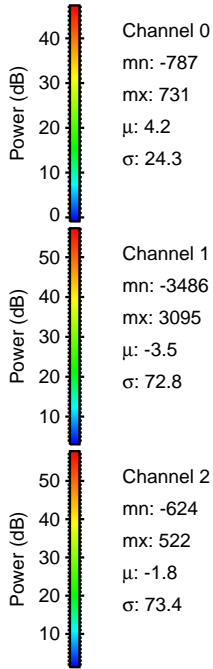
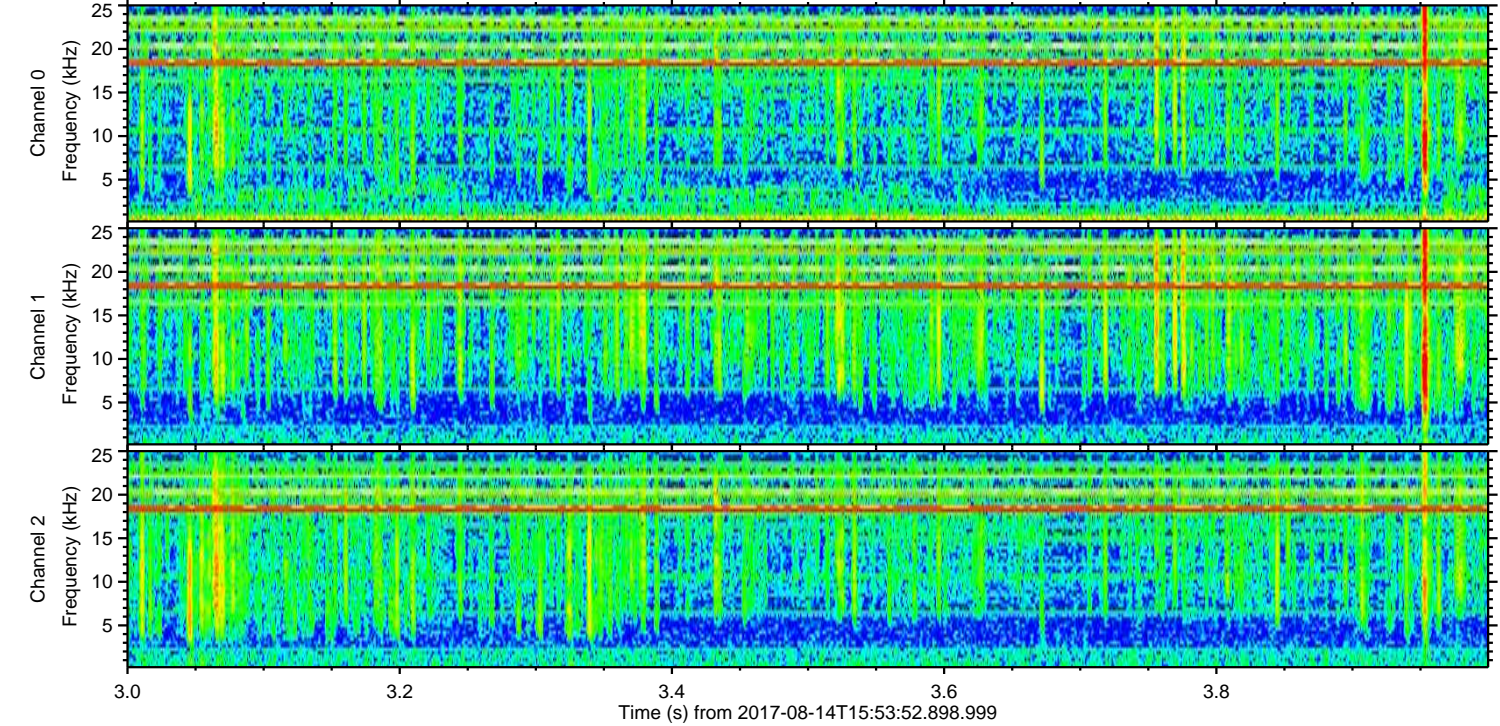
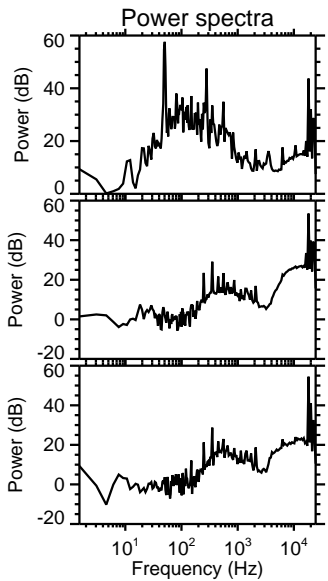
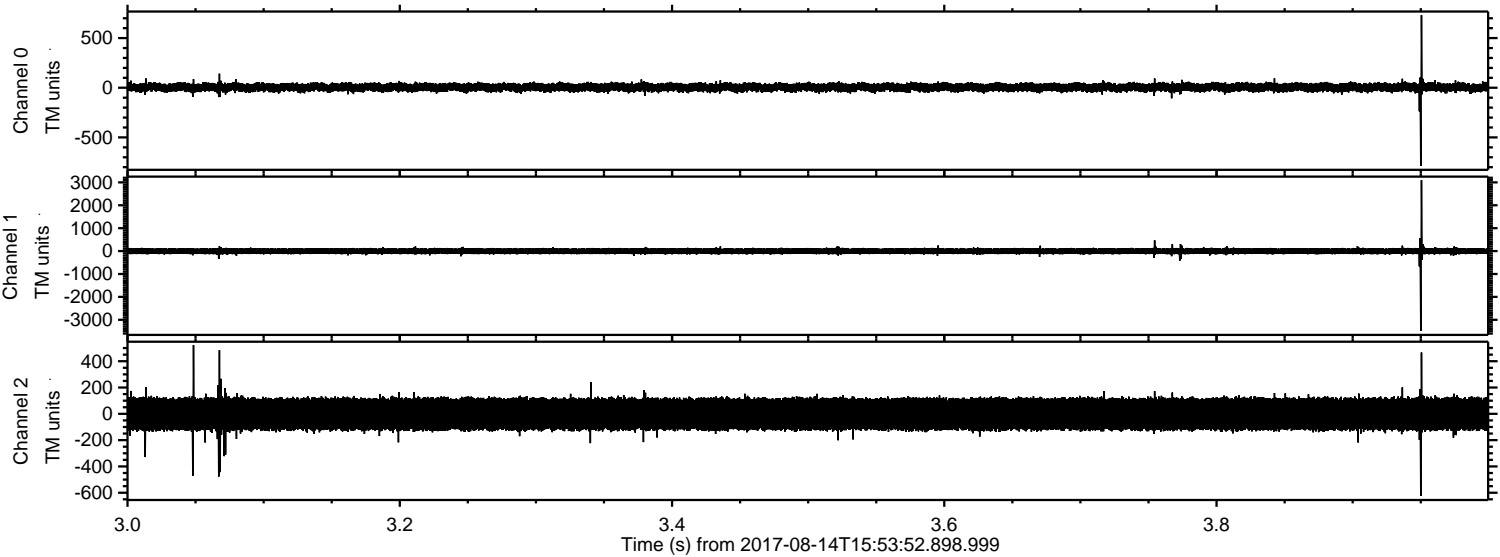


Channel 0
mn: -649
mx: 815
 μ : 4.2
 σ : 24.7

Channel 1
mn: -3510
mx: 3061
 μ : -3.6
 σ : 76.3

Channel 2
mn: -1434
mx: 1496
 μ : -1.9
 σ : 74.7

Processed Mon Aug 14 18:02:07 2017 by ELM ver.2012-10-06 from 001__elm20170814_155351__dat00.bin



Channel 0
mn: -787
mx: 731
 μ : 4.2
 σ : 24.3

Channel 1
mn: -3486
mx: 3095
 μ : -3.5
 σ : 72.8

Channel 2
mn: -624
mx: 522
 μ : -1.8
 σ : 73.4

ELMAVAN 3D WAVEFORMS (Measured data sampled at 50 kHz) 51000 packets of 144 samples from 2017-08-14T15:53:52.898.999. Part 123/147

