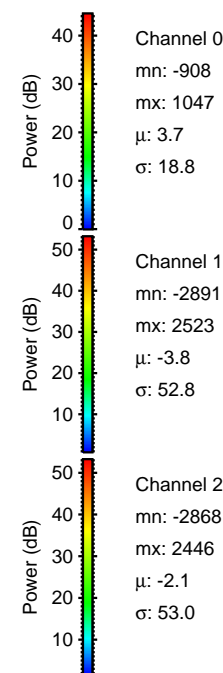
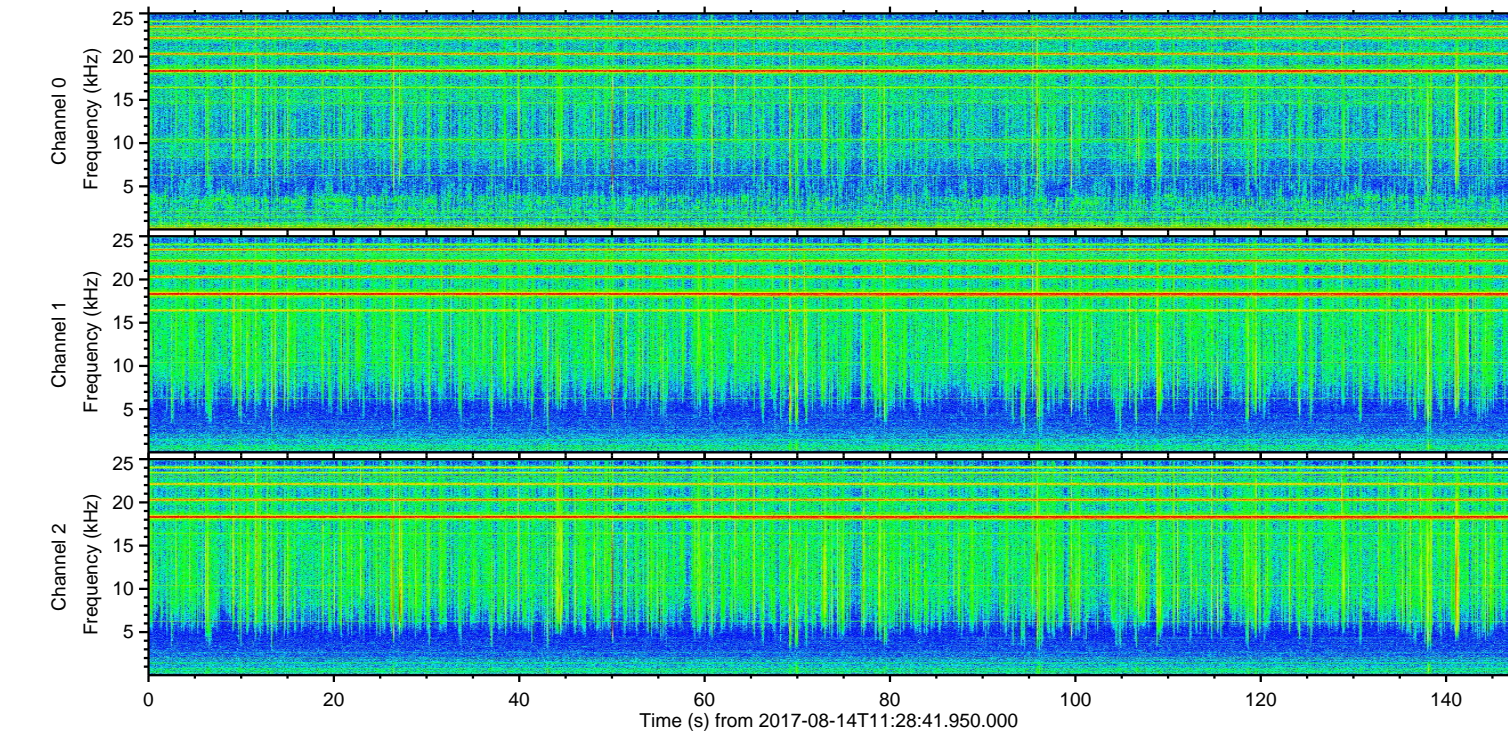
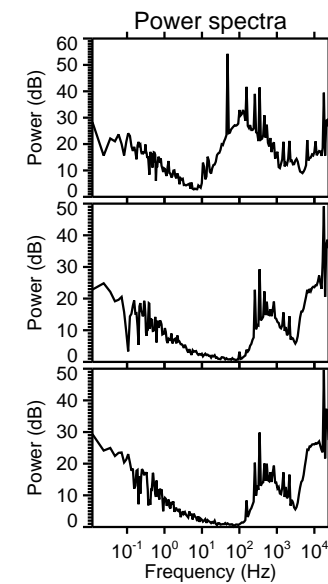
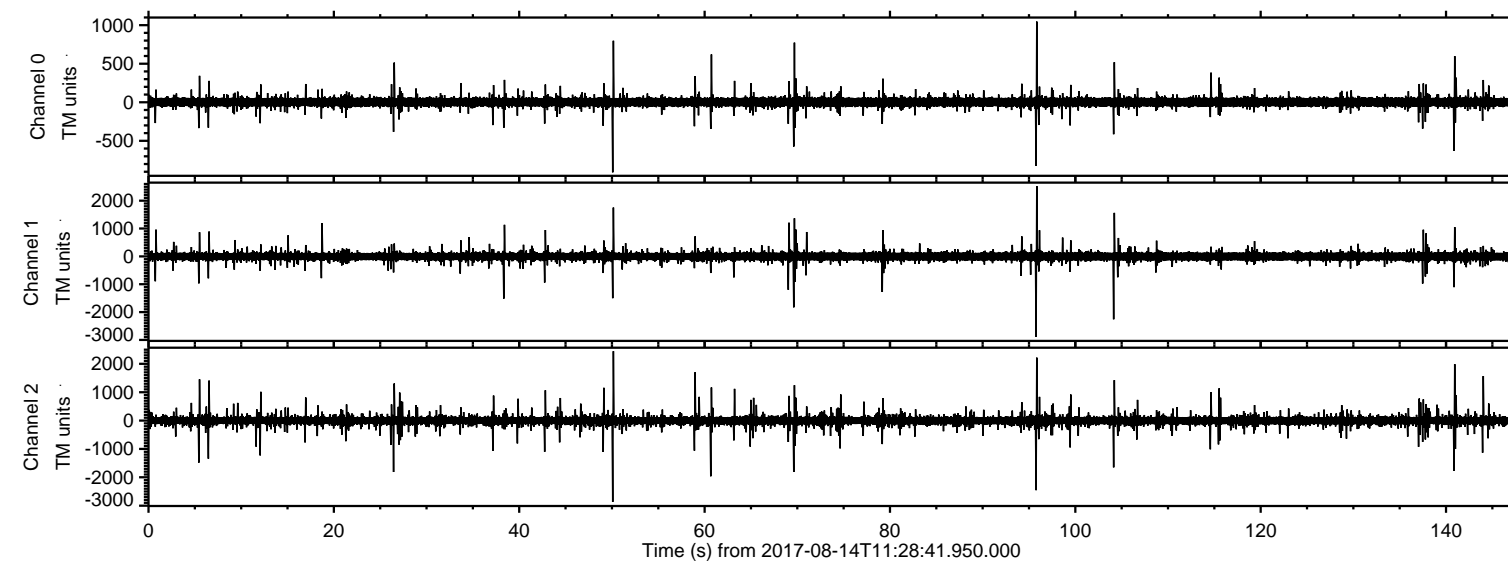


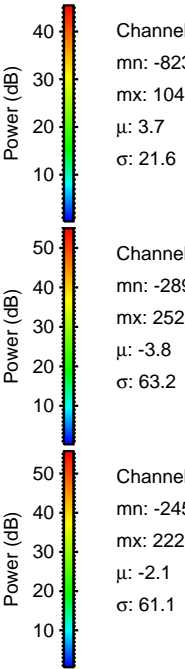
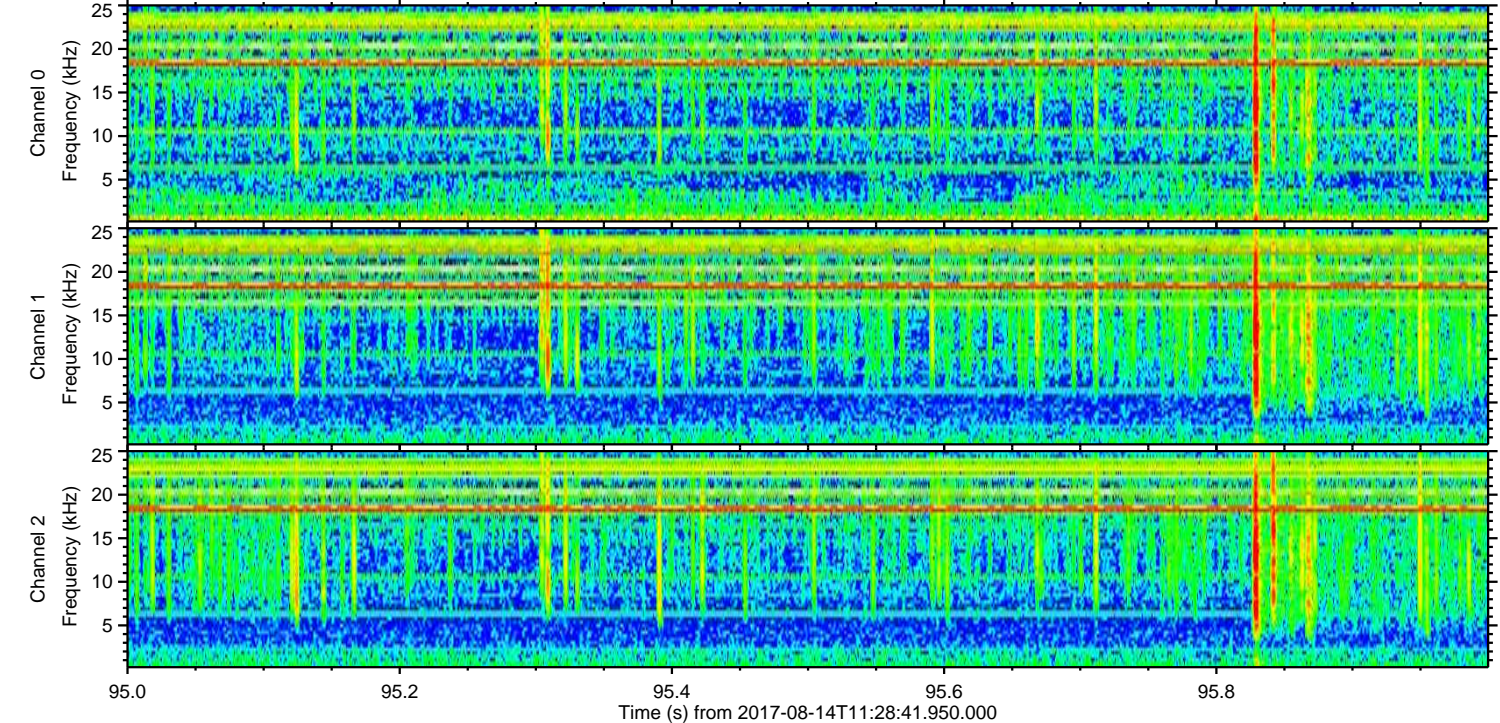
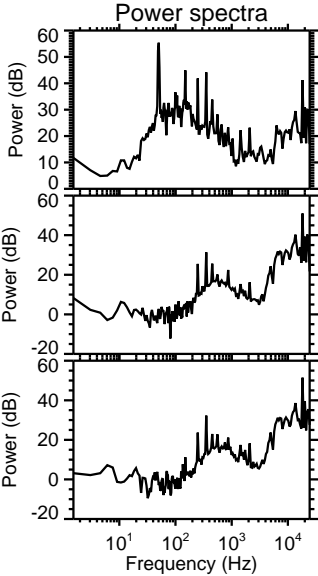
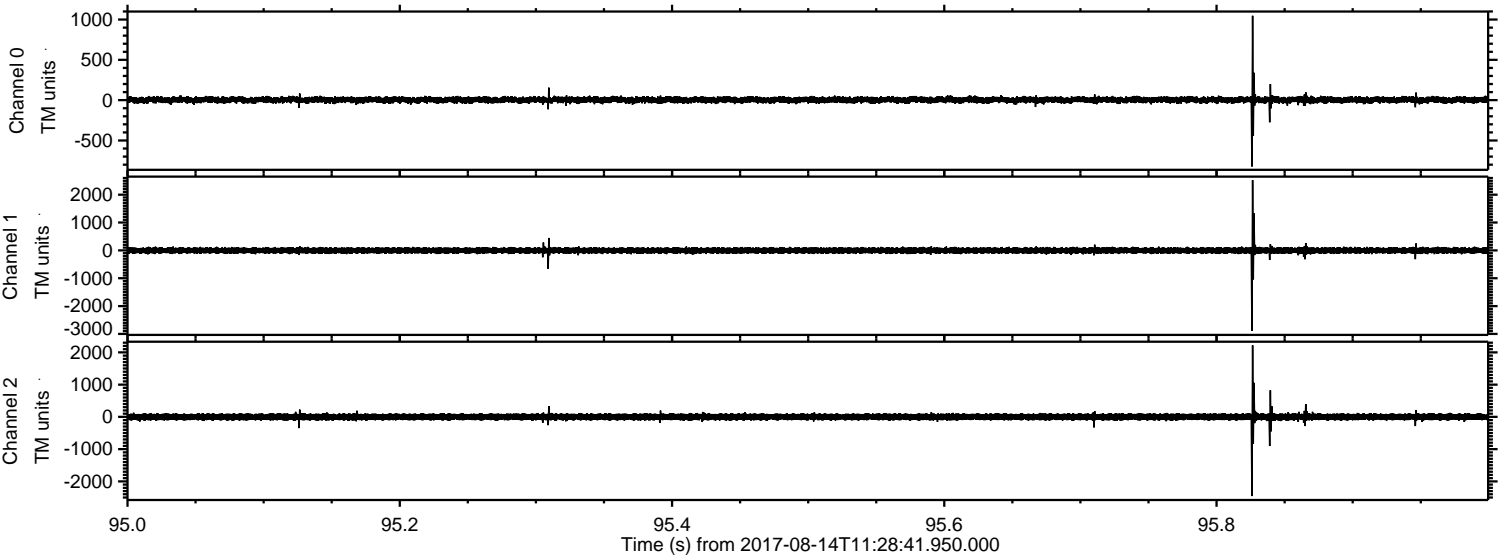
ELMAVAN 3D WAVEFORMS (Measured data sampled at 50 kHz) 51000 packets of 144 samples from 2017-08-14T11:28:41.950.000.

Processed Mon Aug 14 13:36:24 2017 by ELM ver.2012-10-06 from 001__elm20170814_112840__dat00.bin

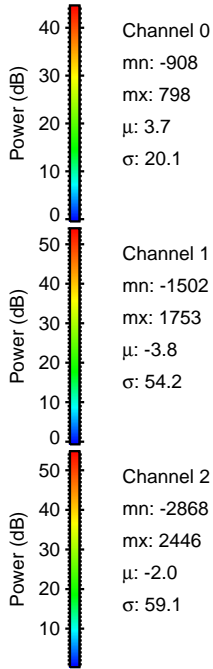
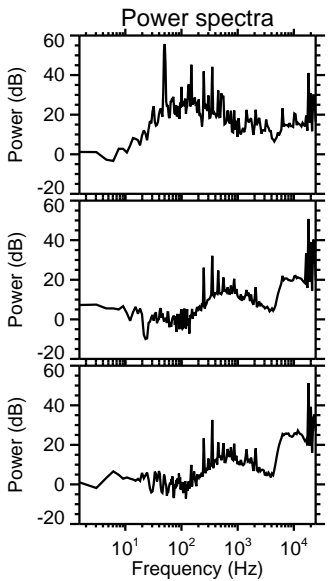
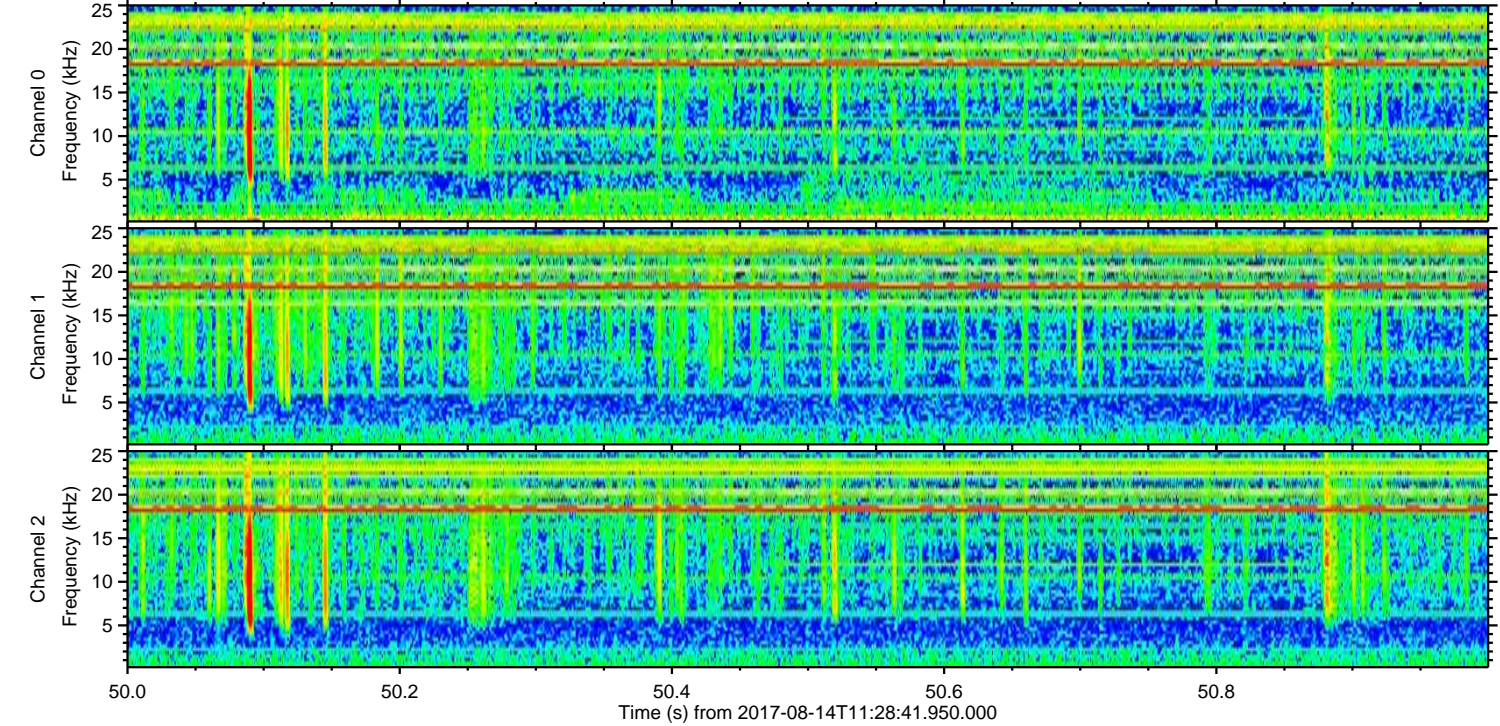
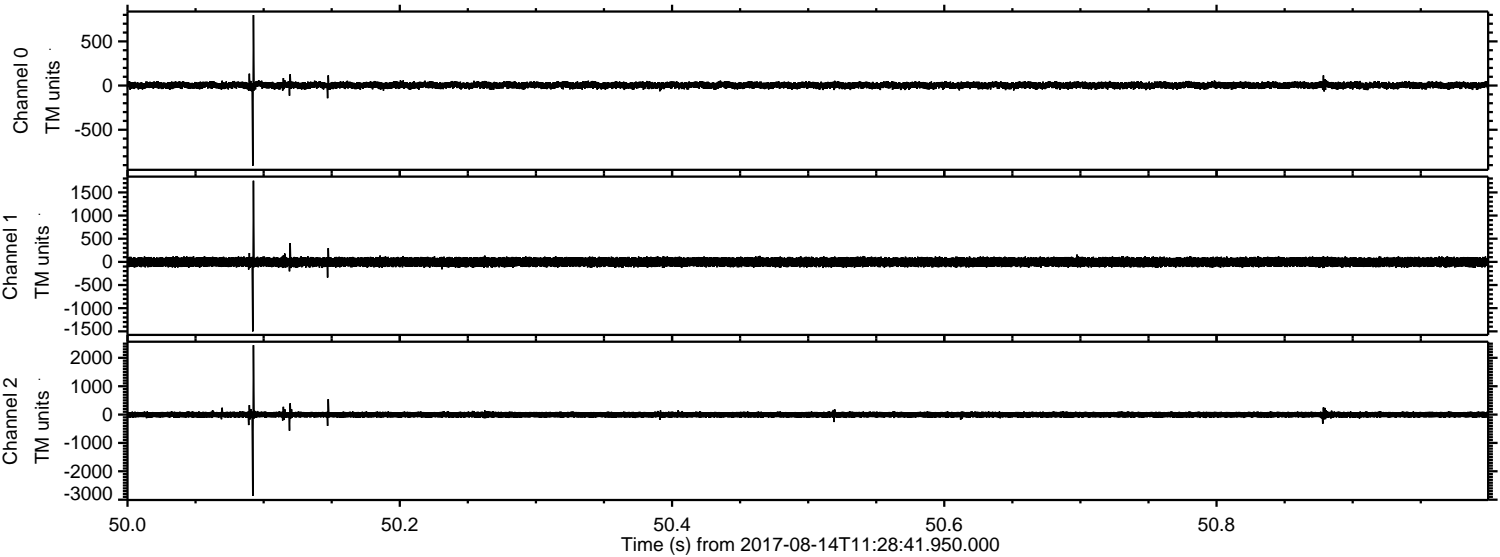


ELMAVAN 3D WAVEFORMS (Measured data sampled at 50 kHz) 51000 packets of 144 samples from 2017-08-14T11:28:41.950.000. Part 96/147

Processed Mon Aug 14 13:36:33 2017 by ELM ver.2012-10-06 from 001__elm20170814_112840__dat00.bin

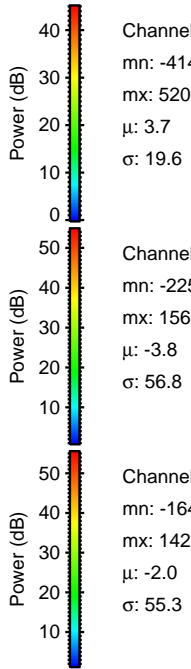
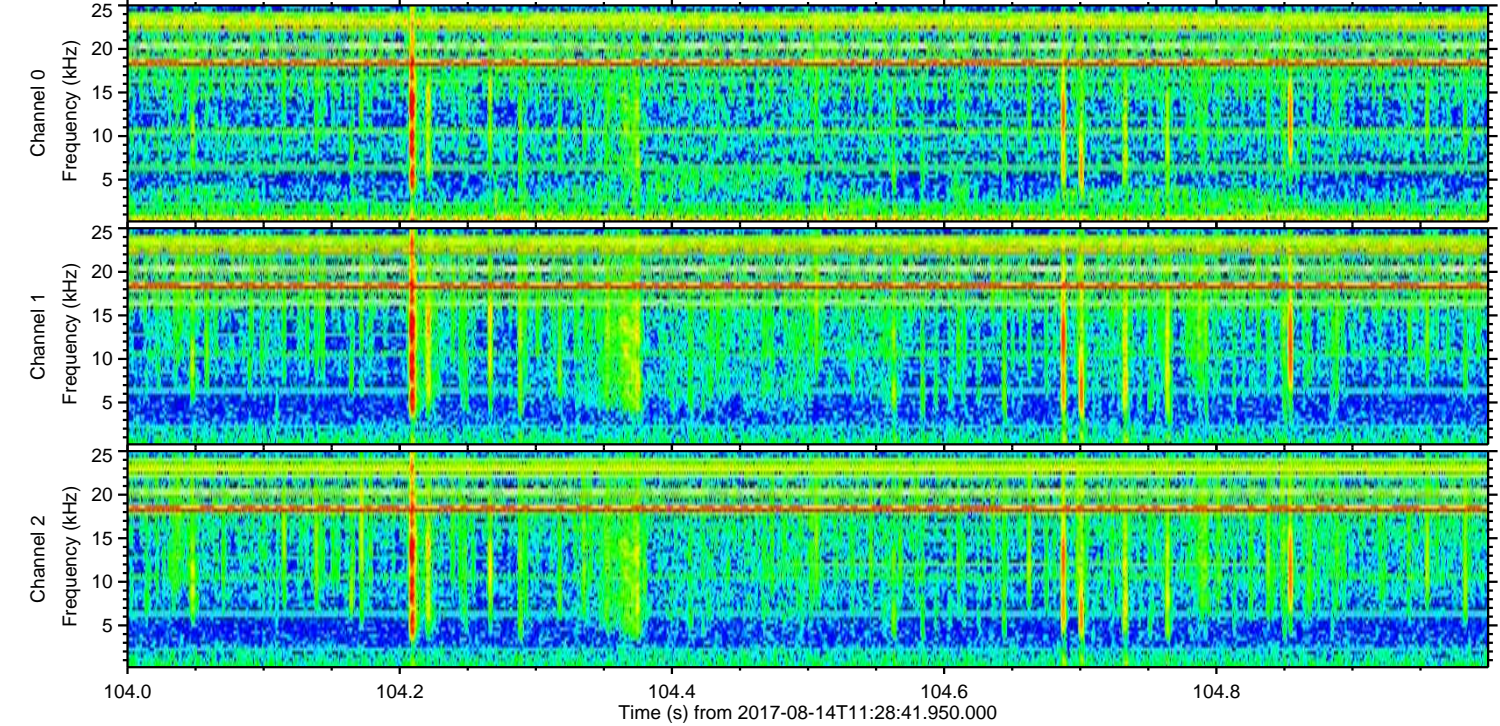
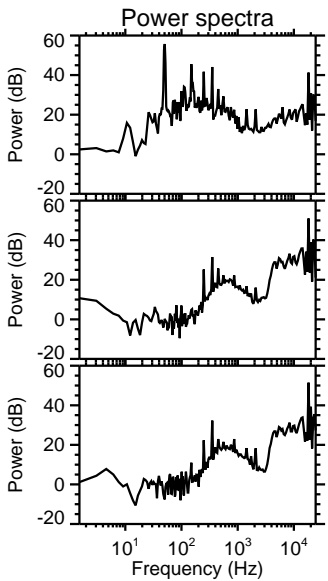
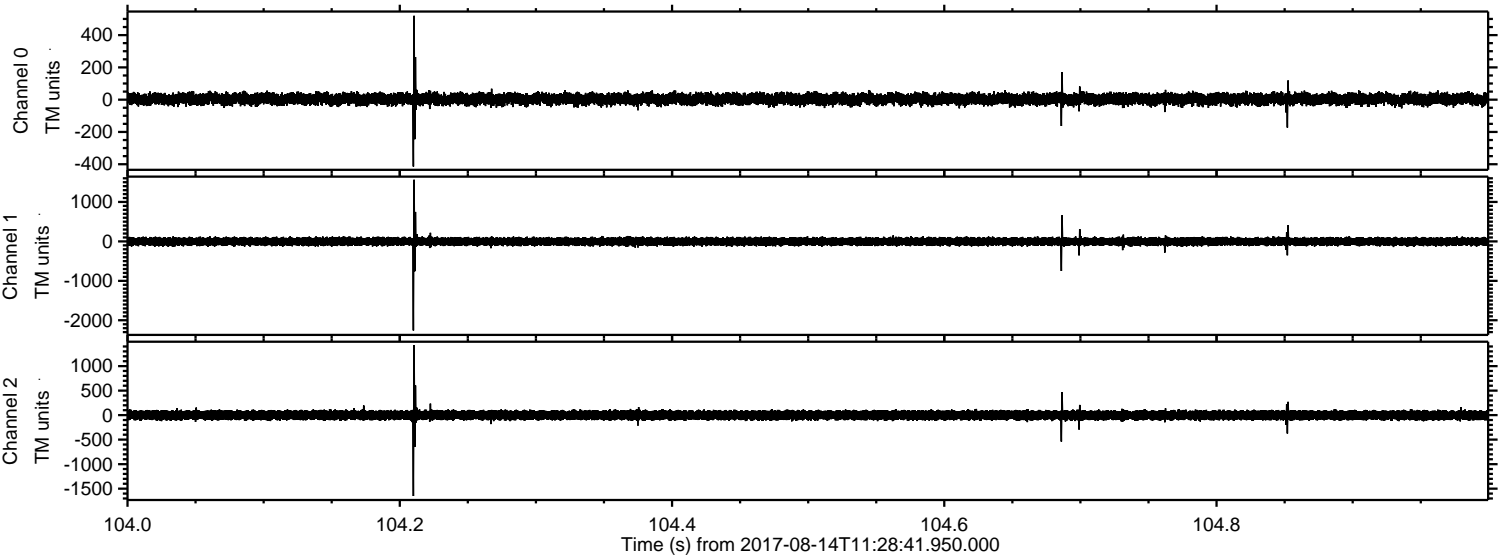


Processed Mon Aug 14 13:36:34 2017 by ELM ver.2012-10-06 from 001__elm20170814_112840__dat00.bin



ELMAVAN 3D WAVEFORMS (Measured data sampled at 50 kHz) 51000 packets of 144 samples from 2017-08-14T11:28:41.950.000. Part 105/147

Processed Mon Aug 14 13:36:34 2017 by ELM ver.2012-10-06 from 001__elm20170814_112840__dat00.bin



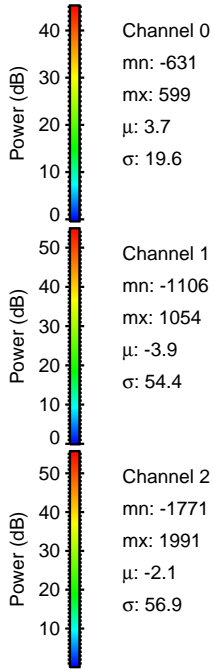
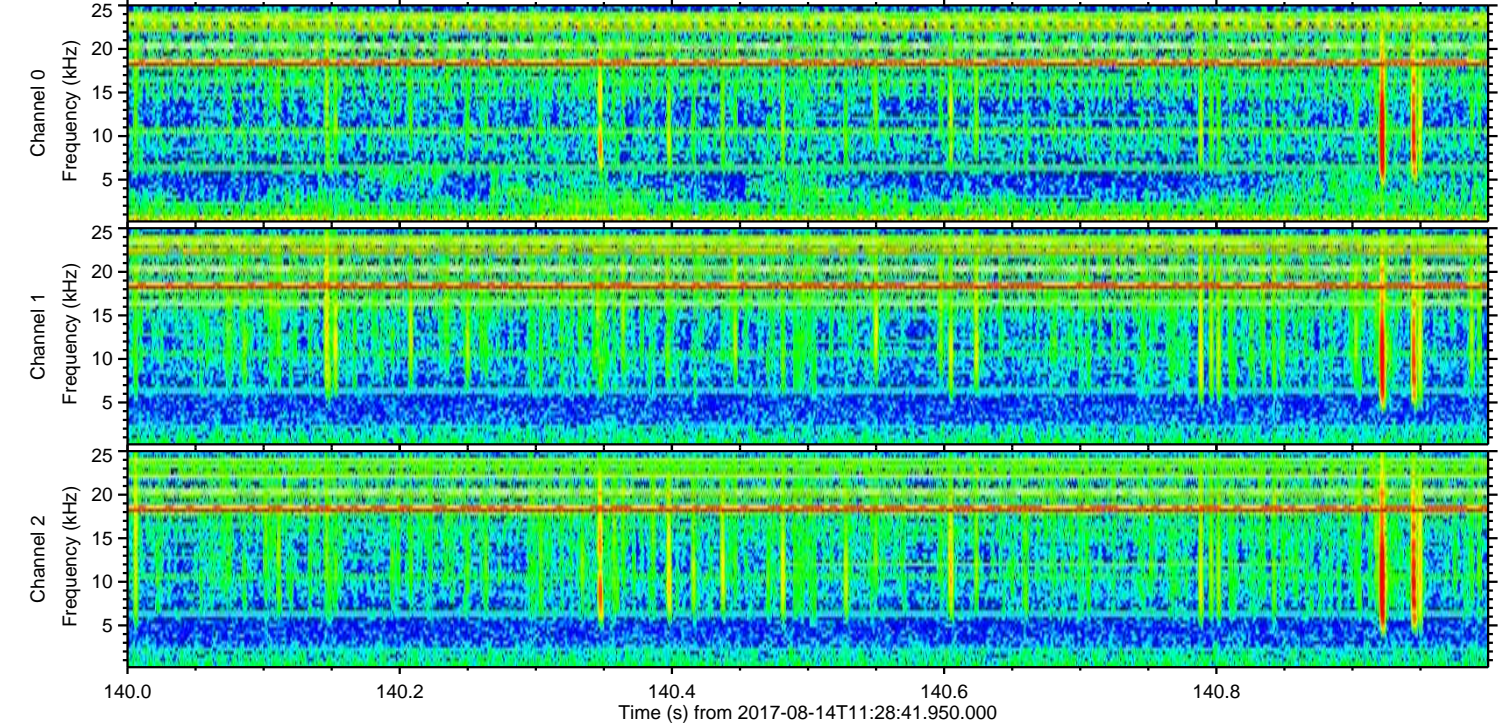
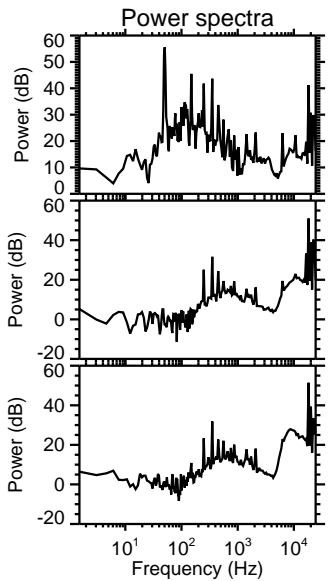
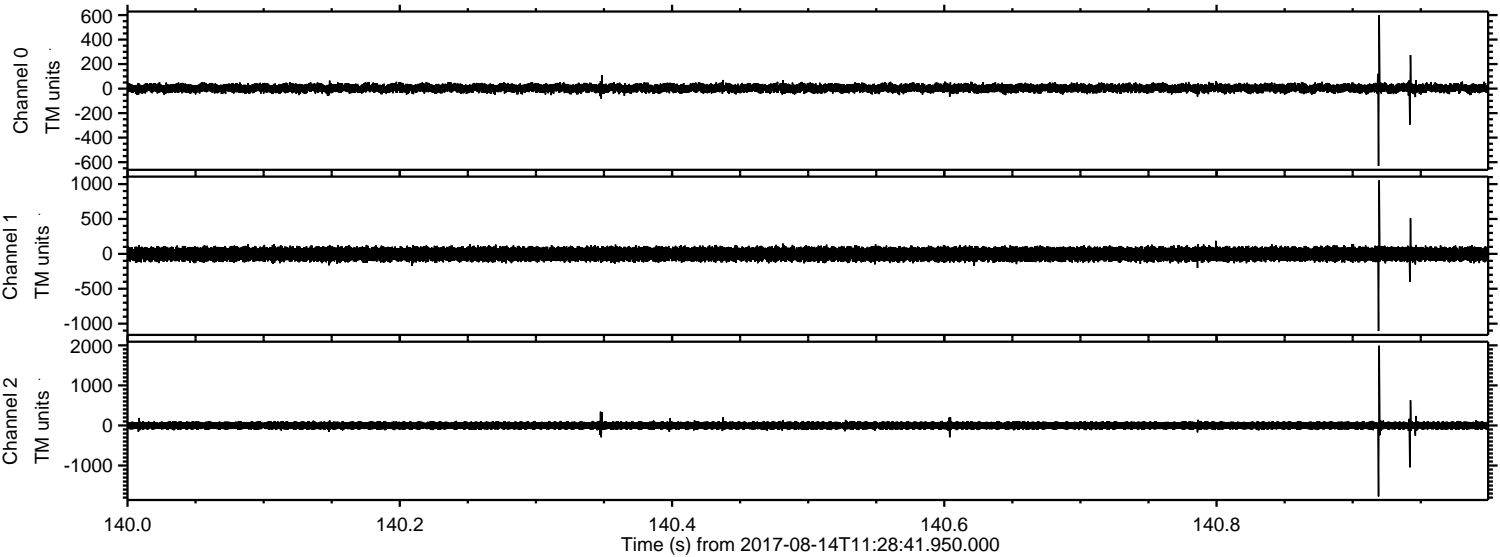
Channel 0
mn: -414
mx: 520
 μ : 3.7
 σ : 19.6

Channel 1
mn: -2258
mx: 1564
 μ : -3.8
 σ : 56.8

Channel 2
mn: -1649
mx: 1426
 μ : -2.0
 σ : 55.3

ELMAVAN 3D WAVEFORMS (Measured data sampled at 50 kHz) 51000 packets of 144 samples from 2017-08-14T11:28:41.950.000. Part 141/147

Processed Mon Aug 14 13:36:35 2017 by ELM ver.2012-10-06 from 001__elm20170814_112840__dat00.bin

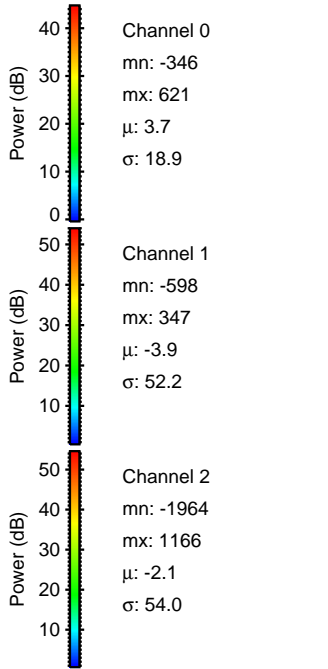
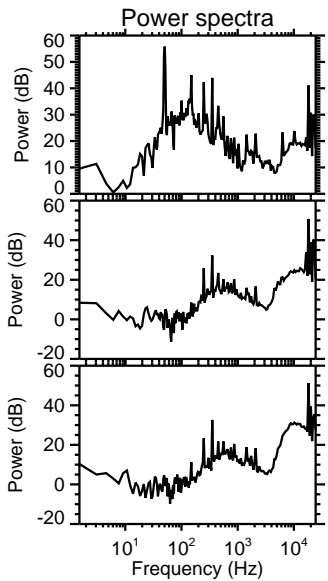
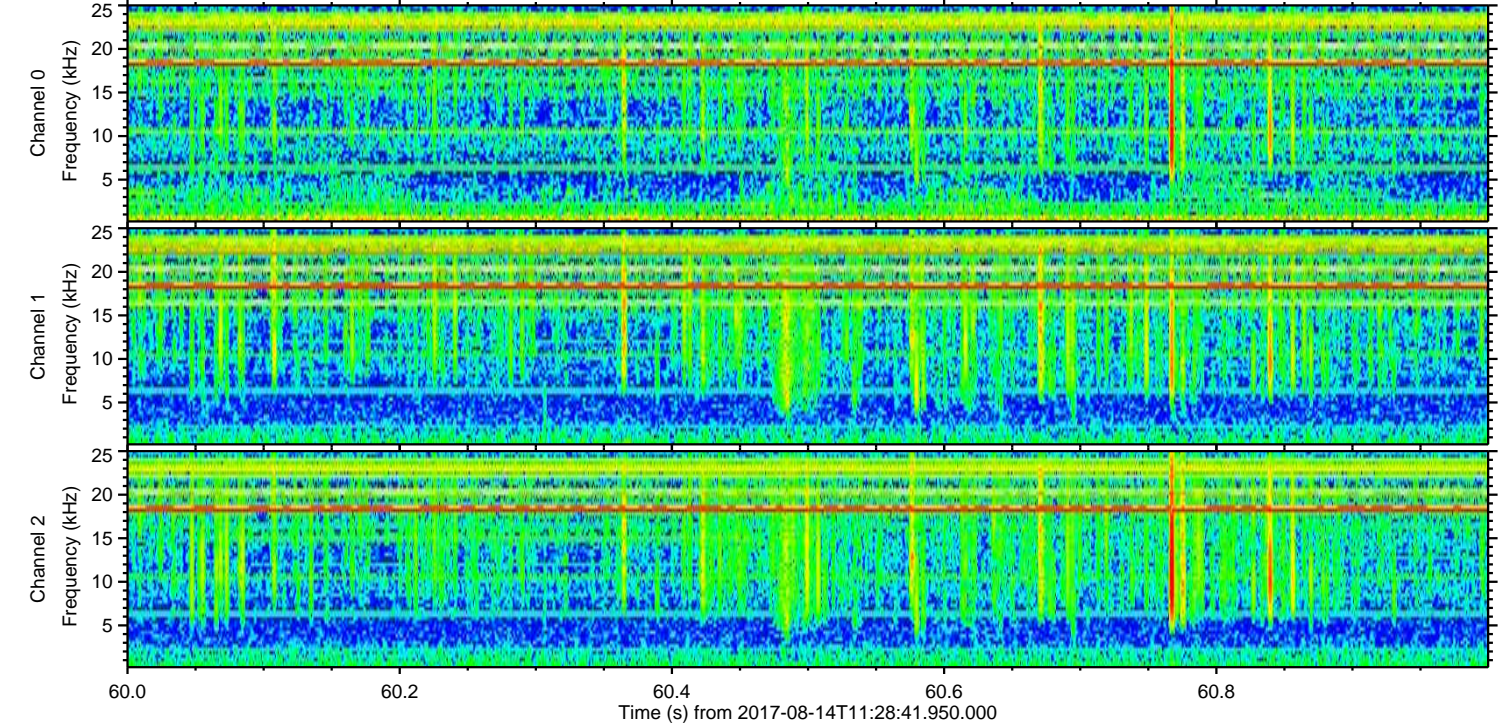
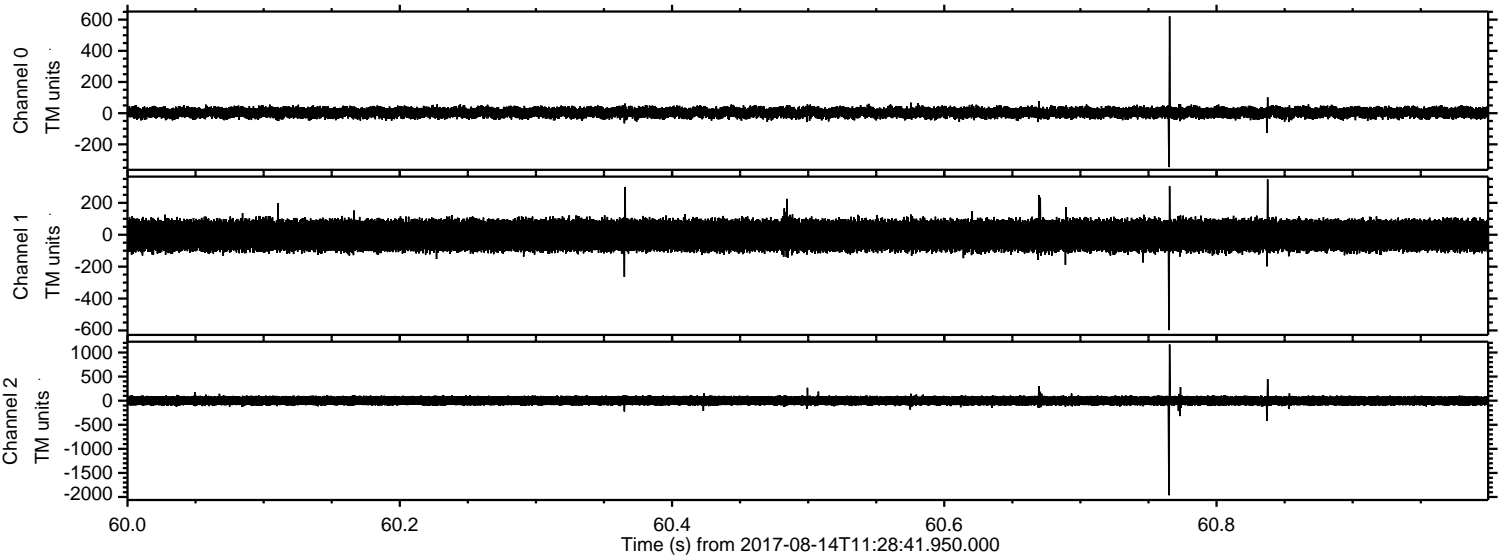


Channel 0
mn: -631
mx: 599
 μ : 3.7
 σ : 19.6

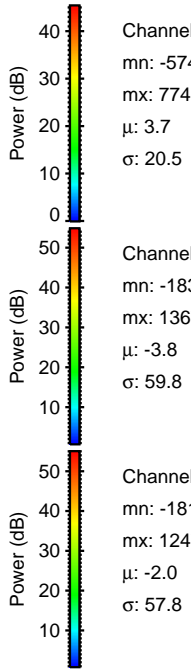
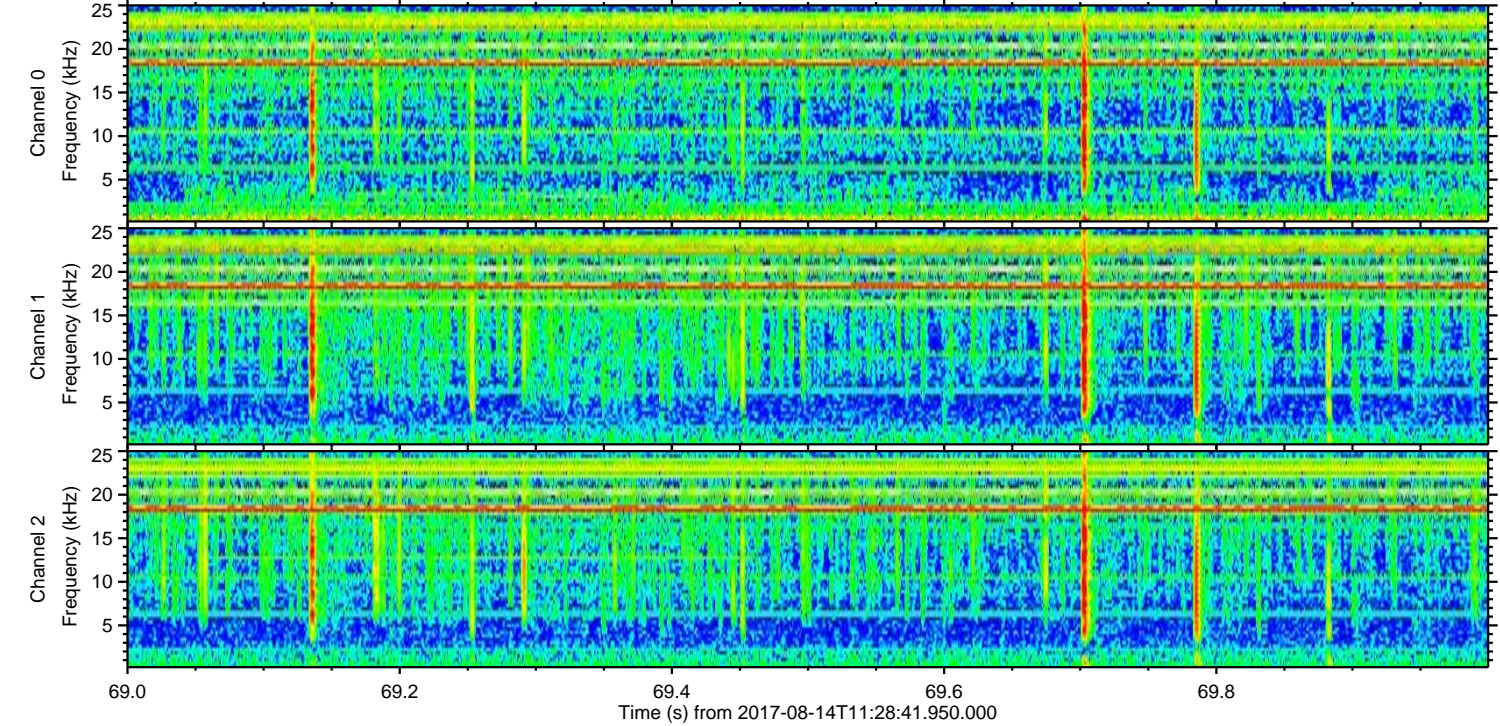
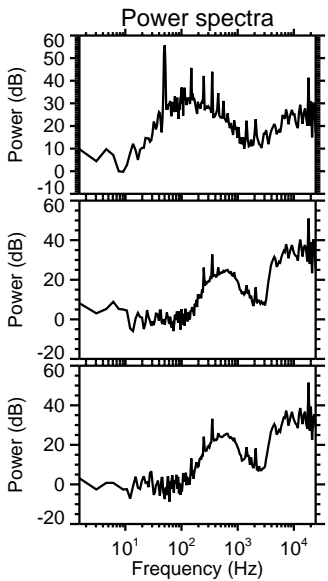
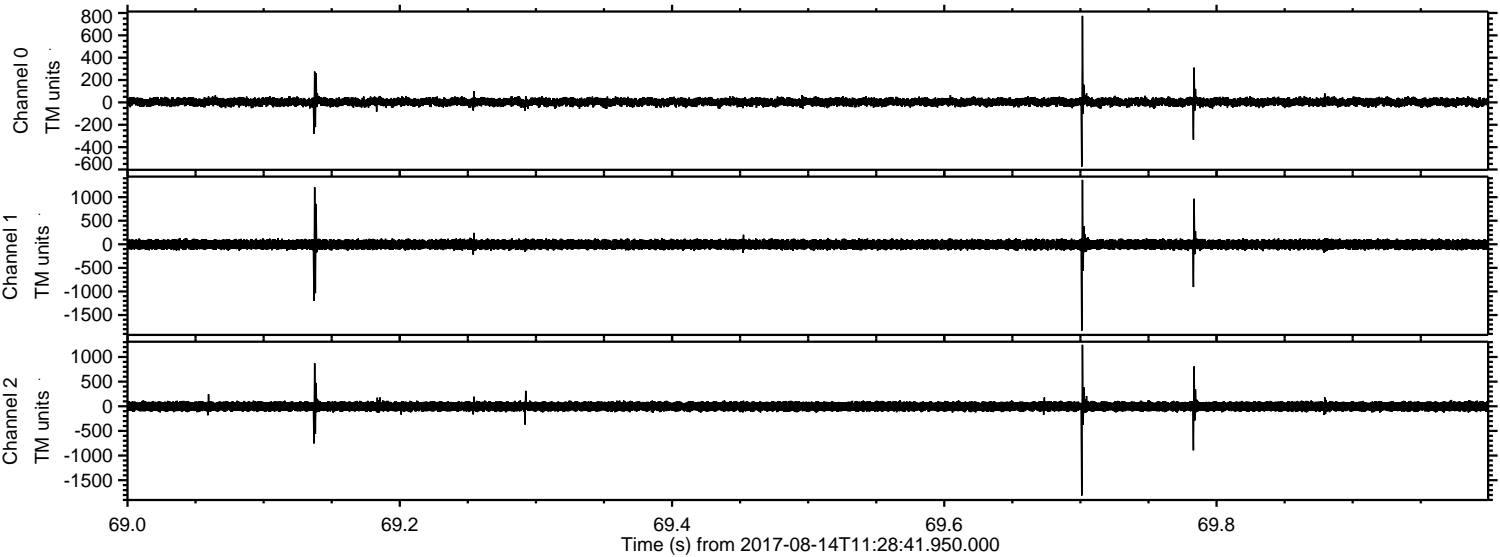
Channel 1
mn: -1106
mx: 1054
 μ : -3.9
 σ : 54.4

Channel 2
mn: -1771
mx: 1991
 μ : -2.1
 σ : 56.9

Processed Mon Aug 14 13:36:36 2017 by ELM ver.2012-10-06 from 001__elm20170814_112840__dat00.bin



Processed Mon Aug 14 13:36:36 2017 by ELM ver.2012-10-06 from 001__elm20170814_112840__dat00.bin

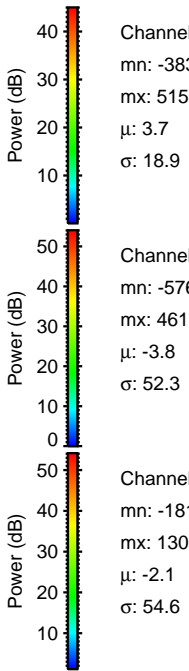
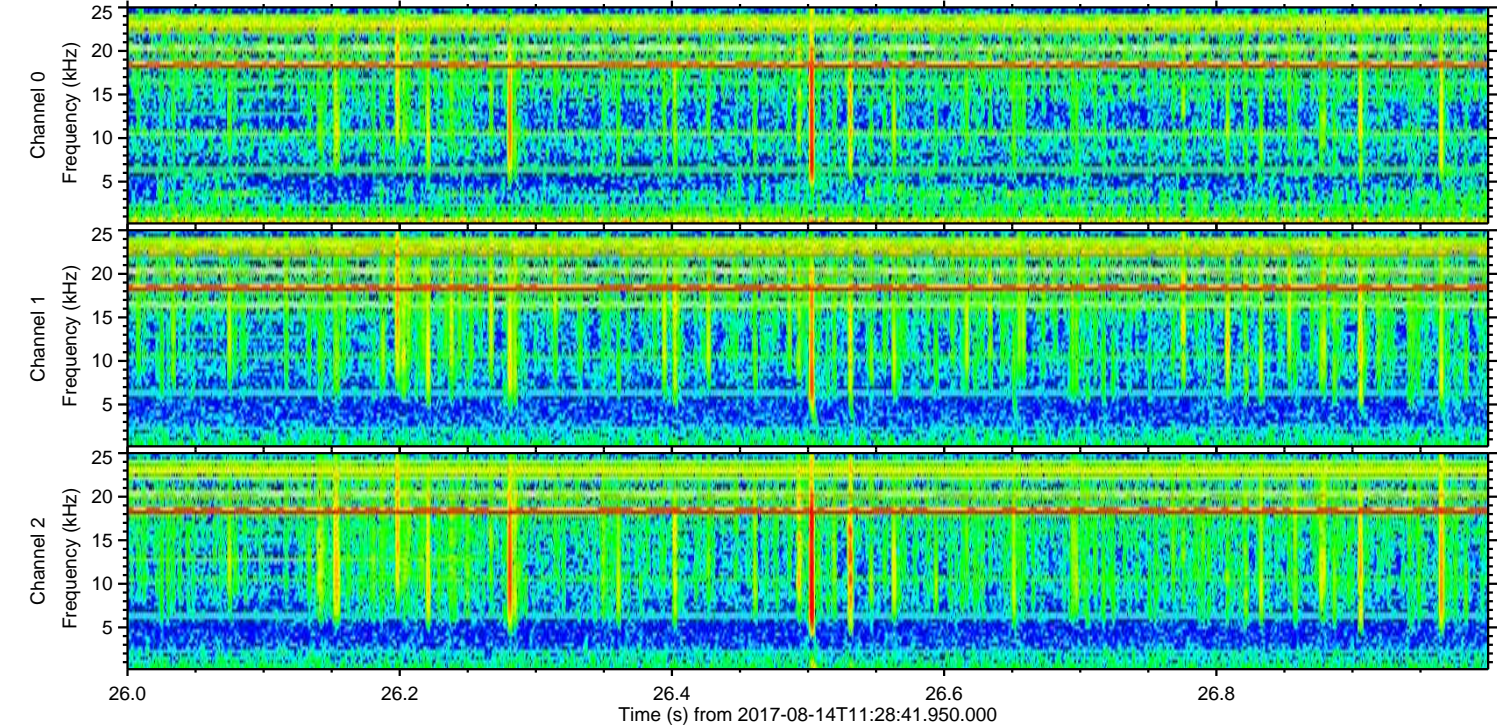
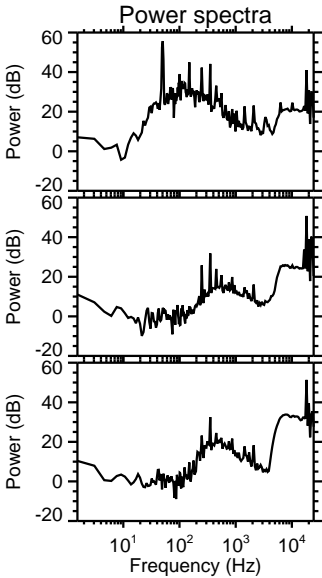
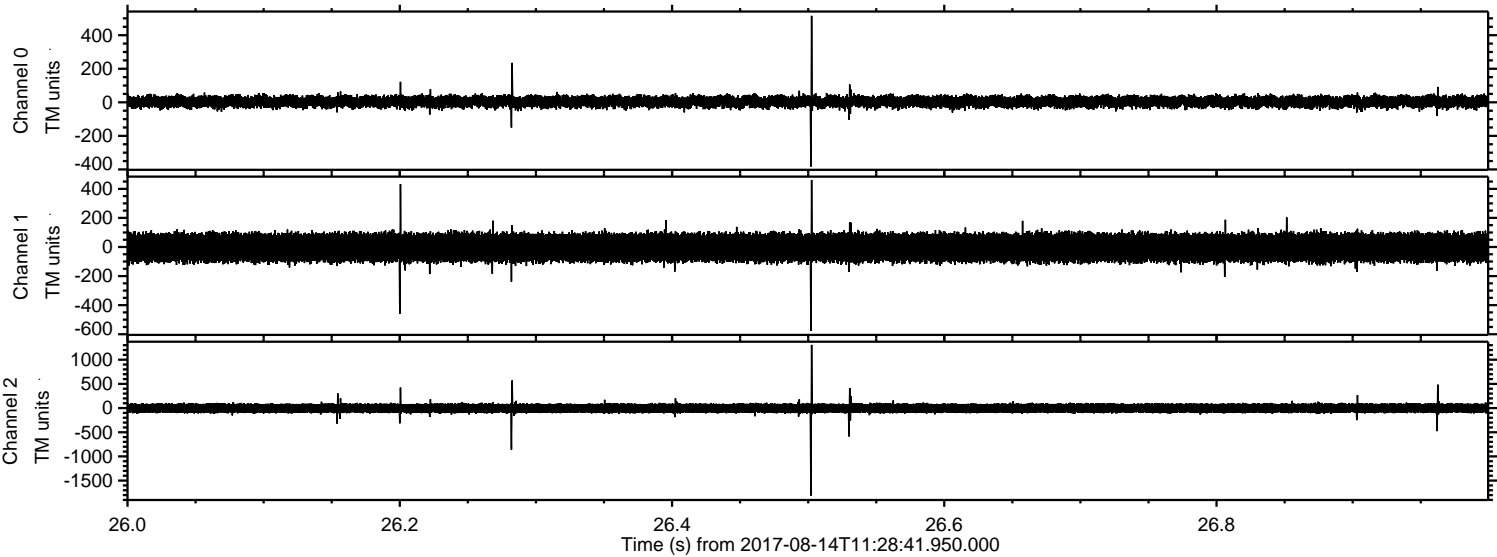


Channel 0
mn: -574
mx: 774
 μ : 3.7
 σ : 20.5

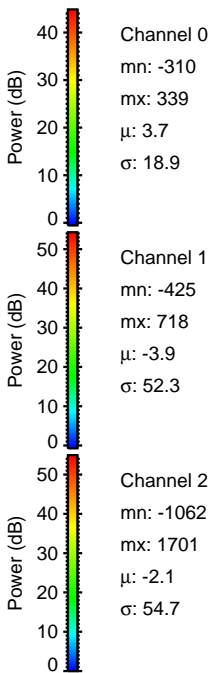
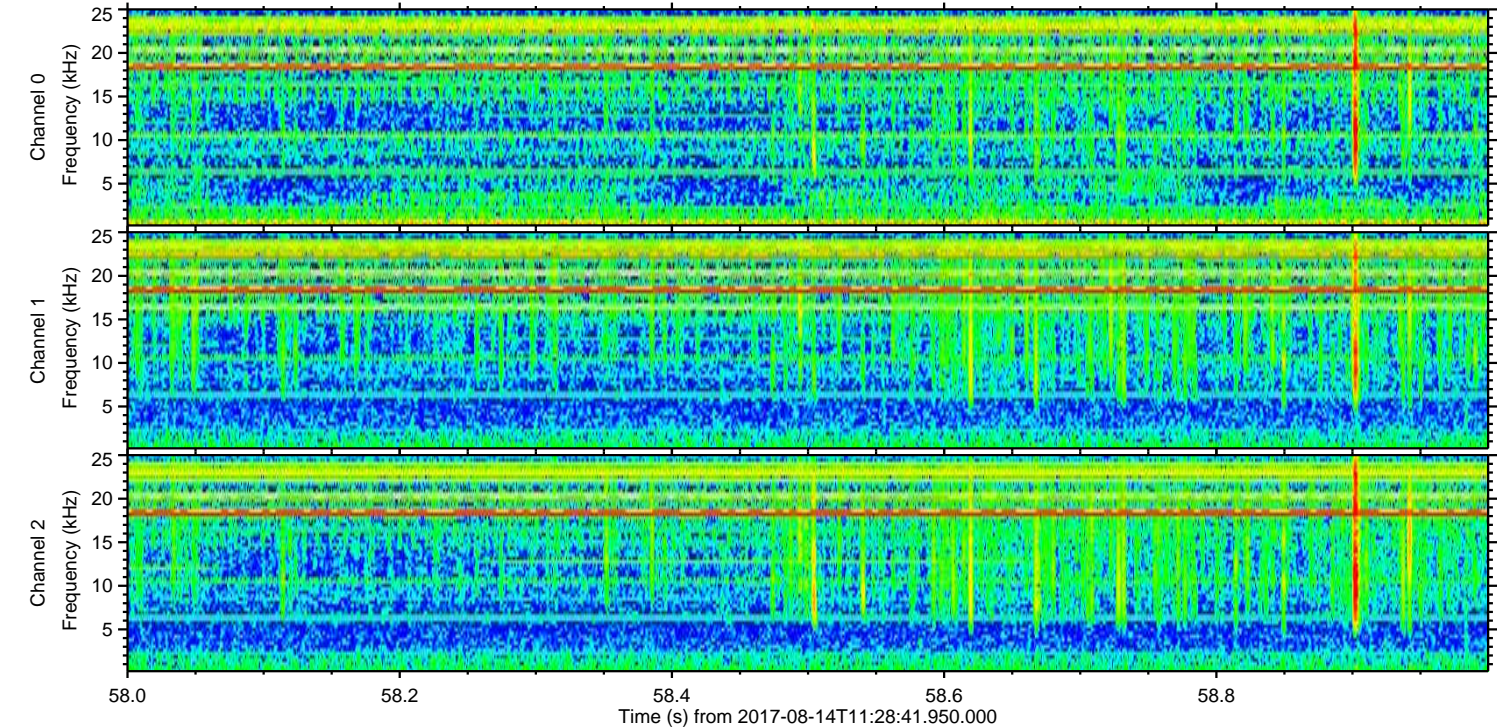
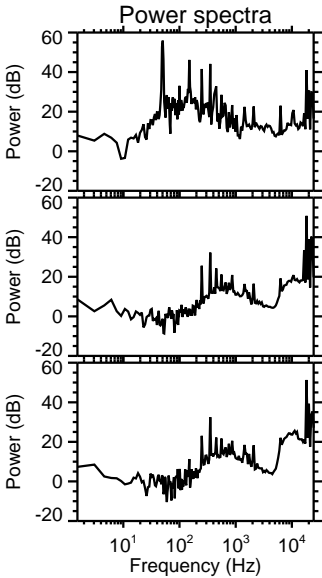
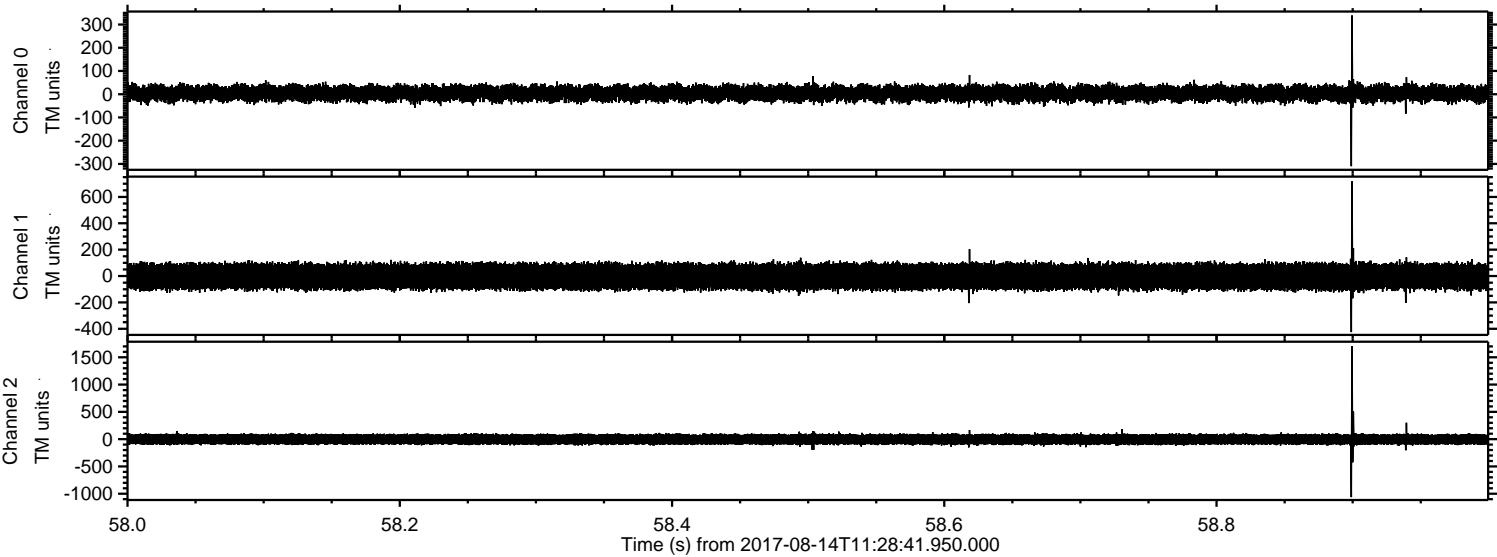
Channel 1
mn: -1830
mx: 1367
 μ : -3.8
 σ : 59.8

Channel 2
mn: -1811
mx: 1247
 μ : -2.0
 σ : 57.8

Processed Mon Aug 14 13:36:37 2017 by ELM ver.2012-10-06 from 001__elm20170814_112840__dat00.bin

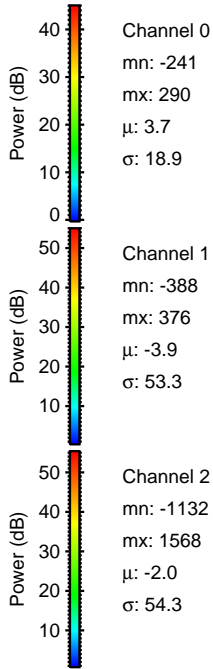
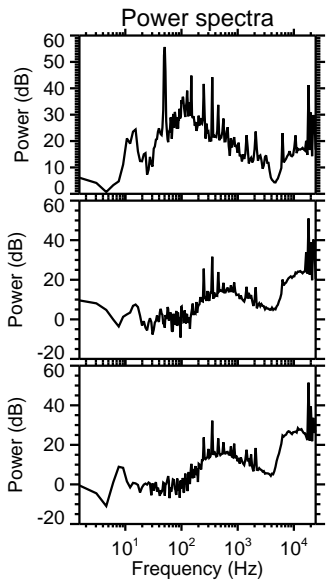
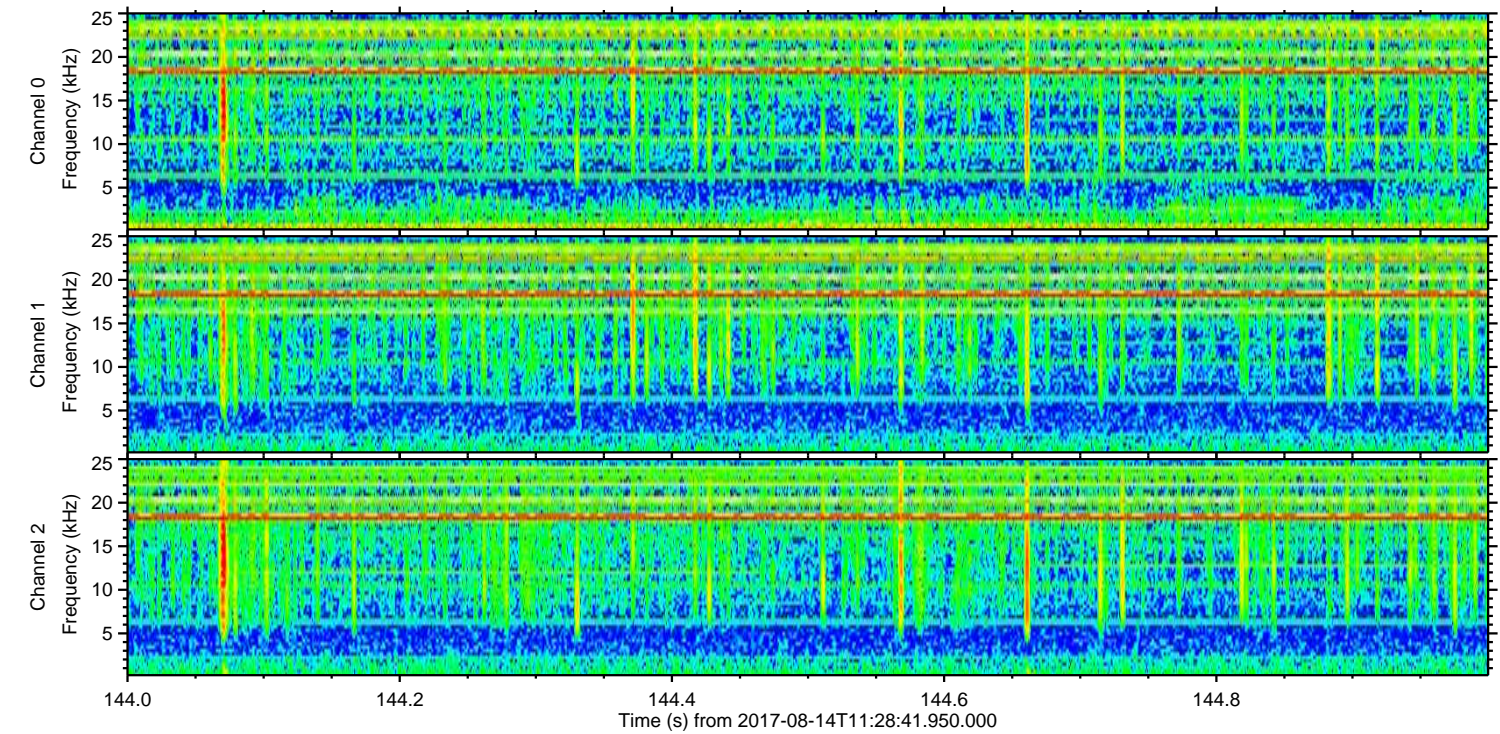
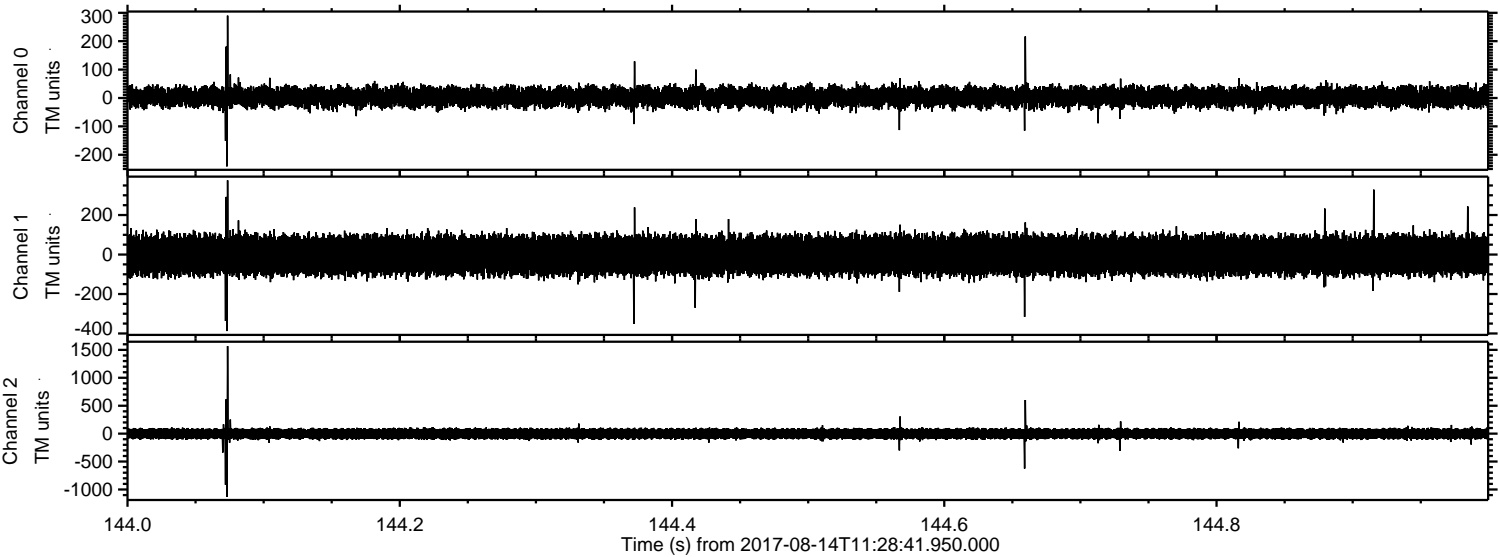


Processed Mon Aug 14 13:36:38 2017 by ELM ver.2012-10-06 from 001__elm20170814_112840__dat00.bin



ELMAVAN 3D WAVEFORMS (Measured data sampled at 50 kHz) 51000 packets of 144 samples from 2017-08-14T11:28:41.950.000. Part 145/147

Processed Mon Aug 14 13:36:38 2017 by ELM ver.2012-10-06 from 001__elm20170814_112840__dat00.bin



ELMAVAN 3D WAVEFORMS (Measured data sampled at 50 kHz) 51000 packets of 144 samples from 2017-08-14T11:28:41.950.000. Part 122/147

