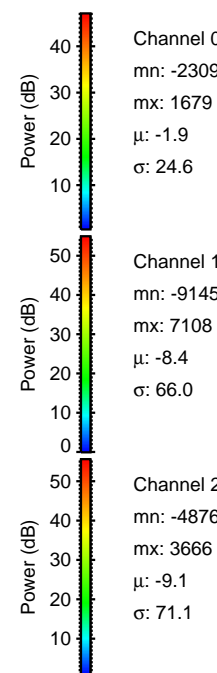
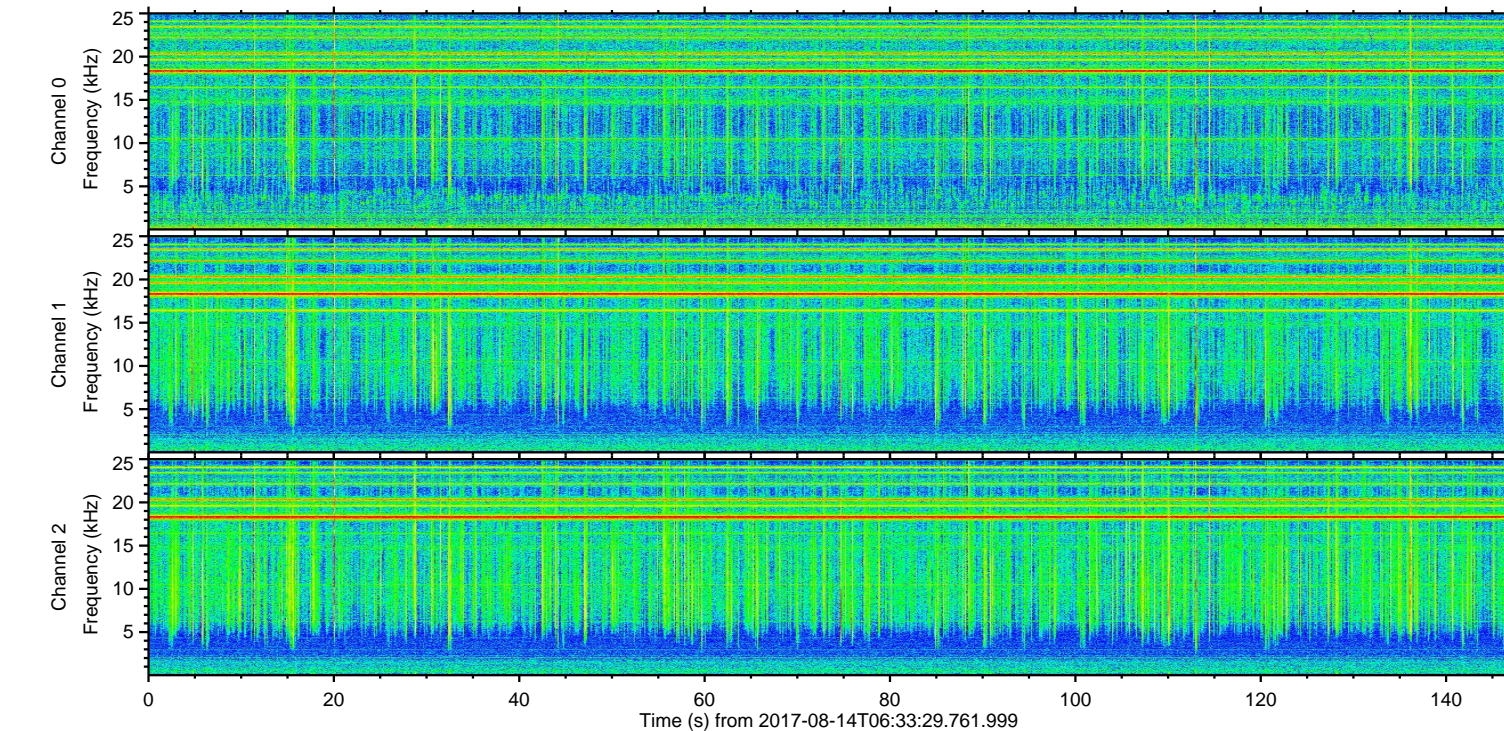
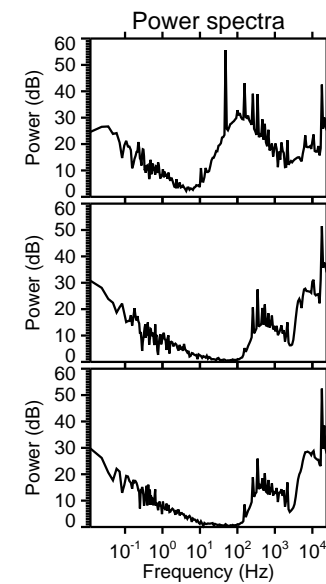
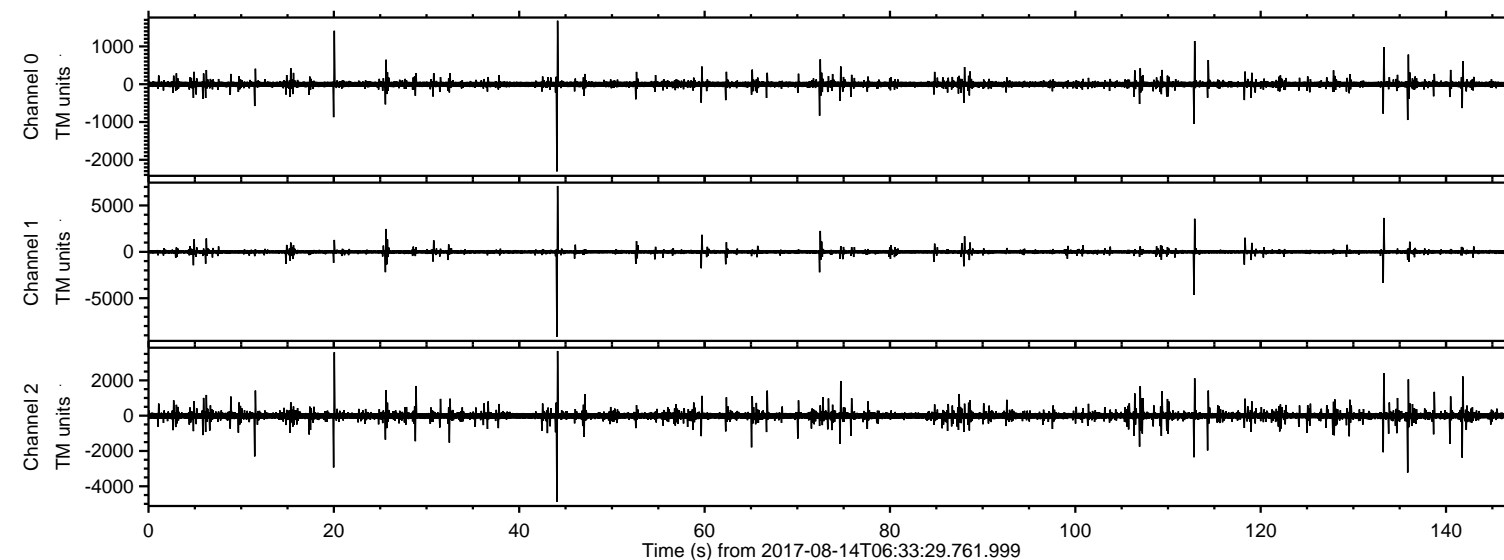


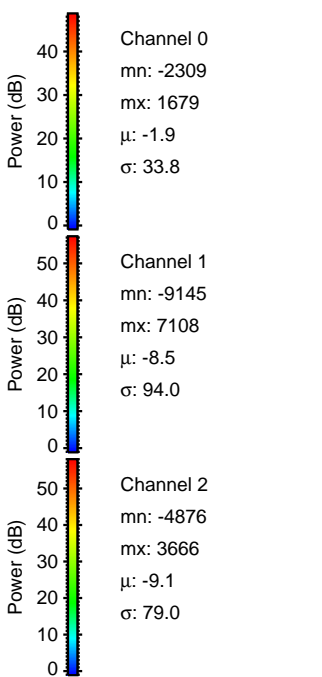
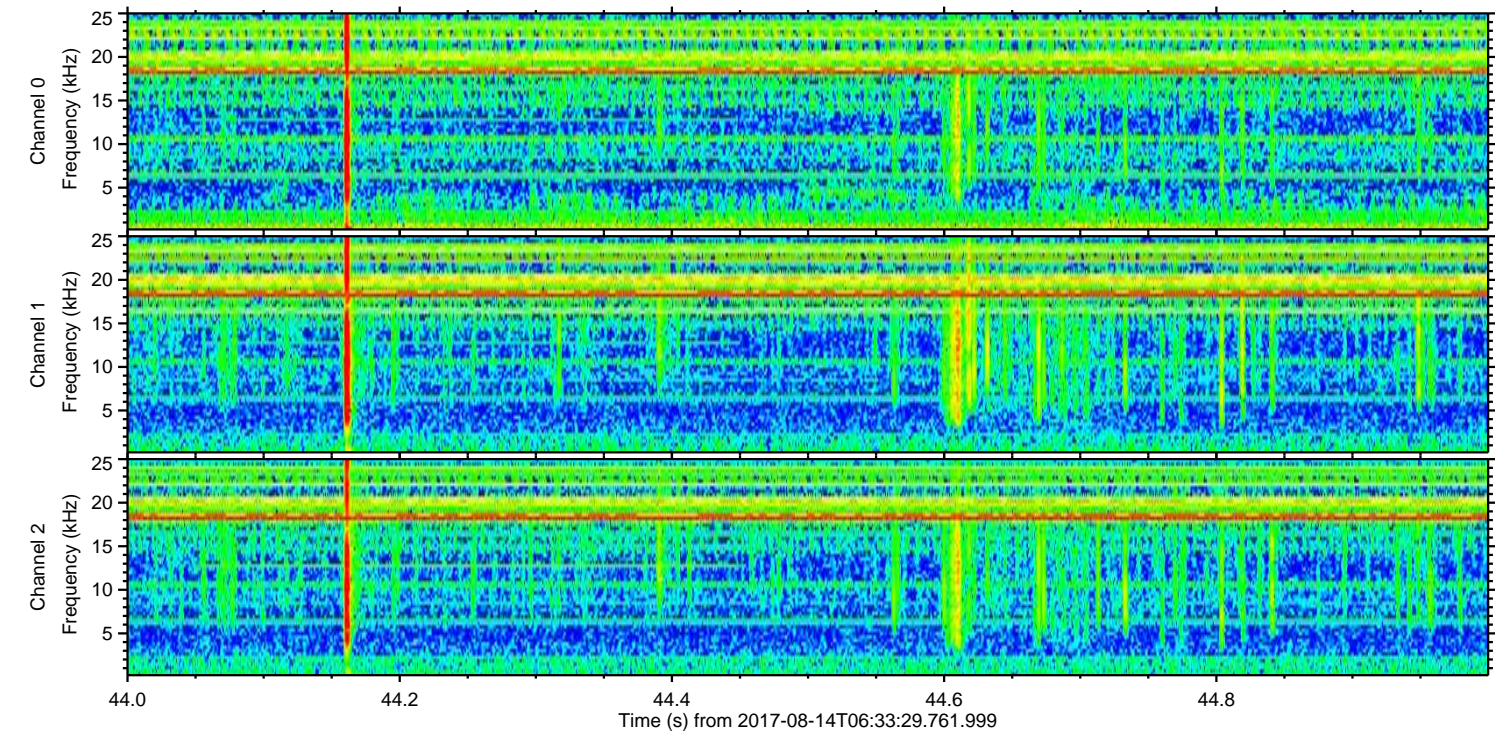
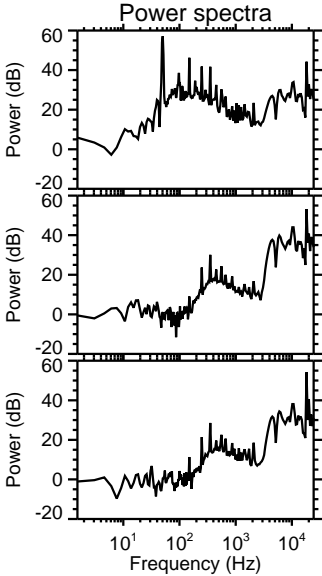
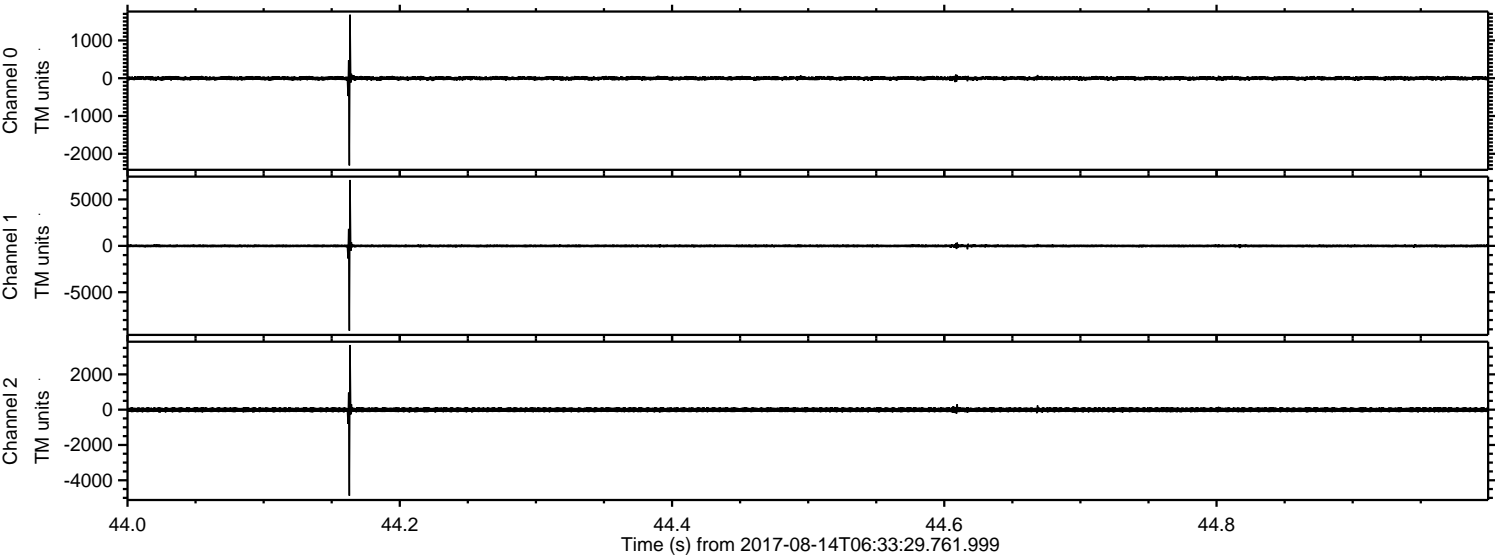
ELMAVAN 3D WAVEFORMS (Measured data sampled at 50 kHz) 51000 packets of 144 samples from 2017-08-14T06:33:29.761.999.

Processed Mon Aug 14 08:41:21 2017 by ELM ver.2012-10-06 from 001__elm20170814_063328__dat00.bin



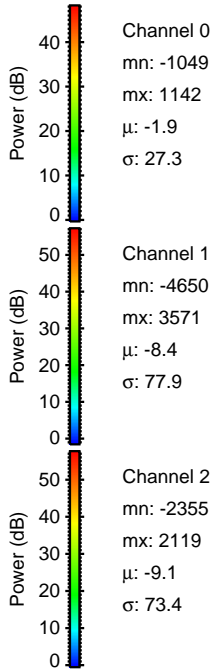
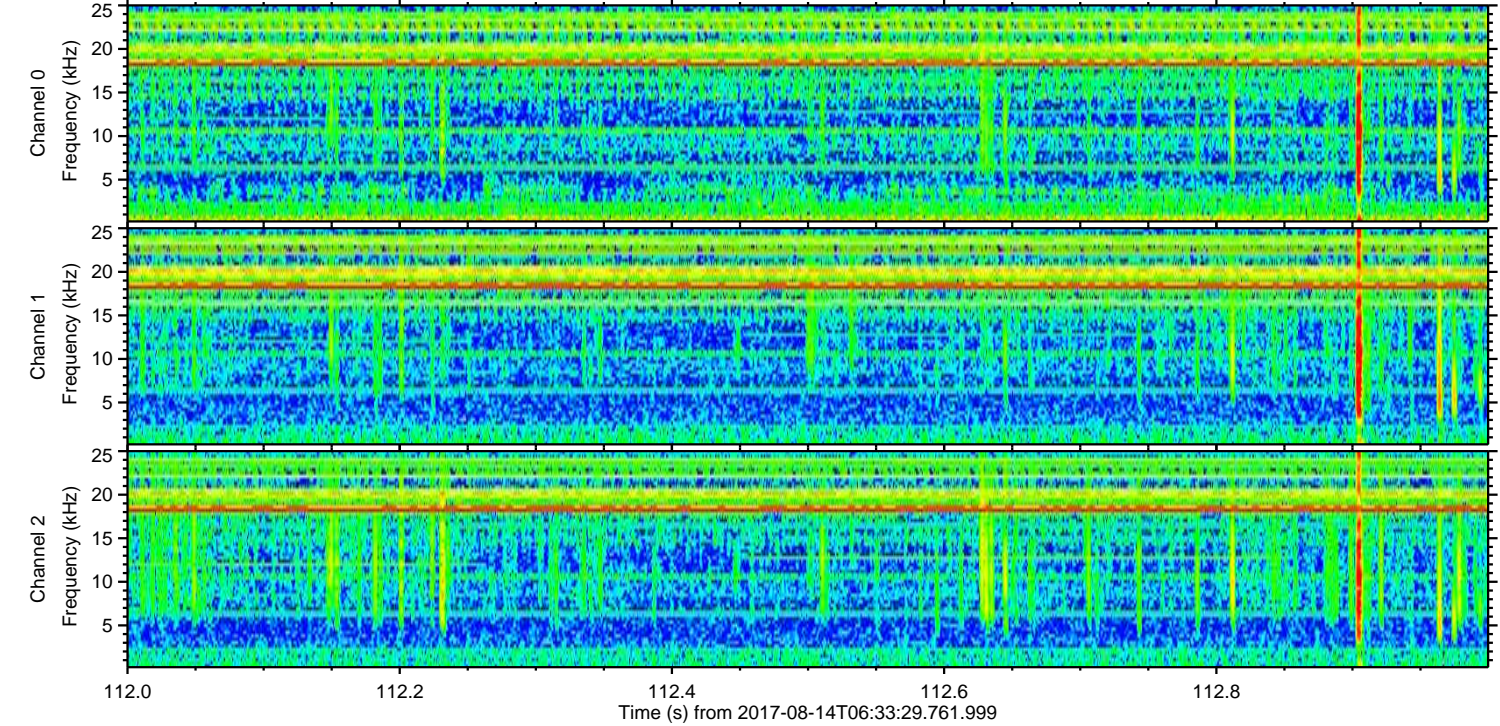
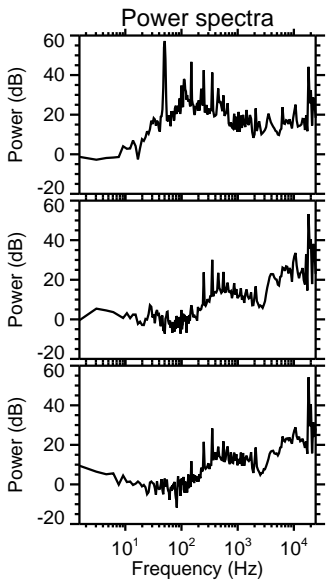
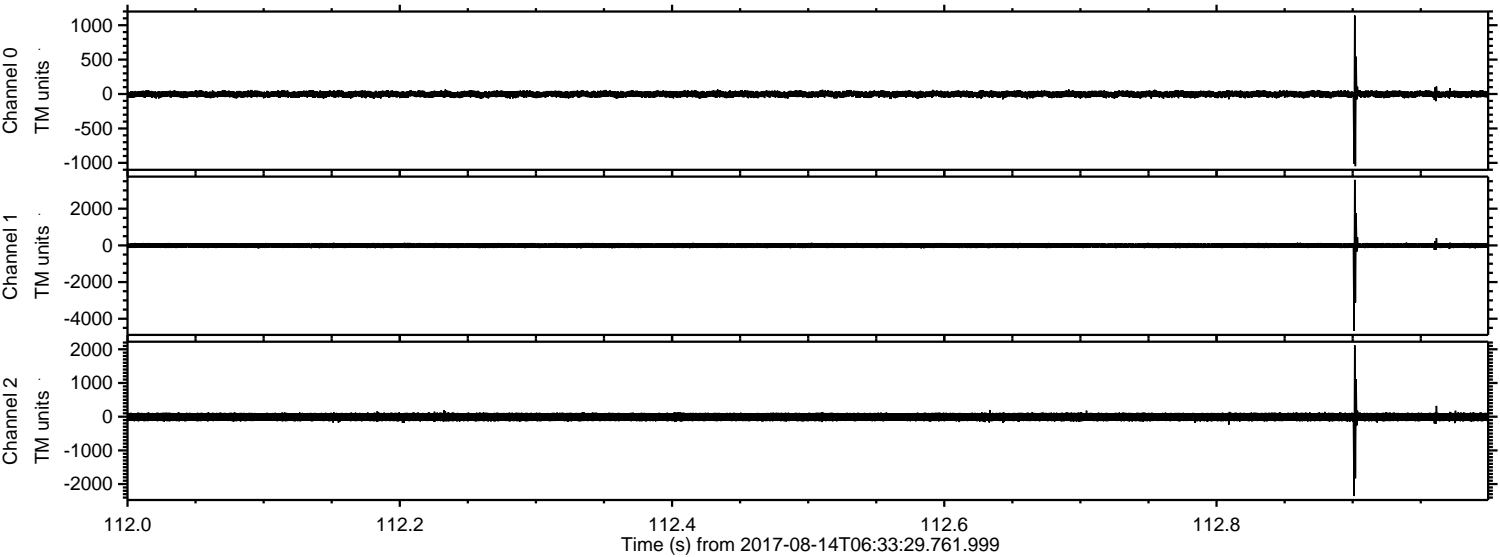
ELMAVAN 3D WAVEFORMS (Measured data sampled at 50 kHz) 51000 packets of 144 samples from 2017-08-14T06:33:29.761.999. Part 45/147

Processed Mon Aug 14 08:41:28 2017 by ELM ver.2012-10-06 from 001__elm20170814_063328__dat00.bin



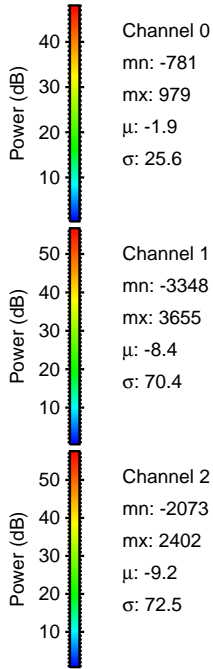
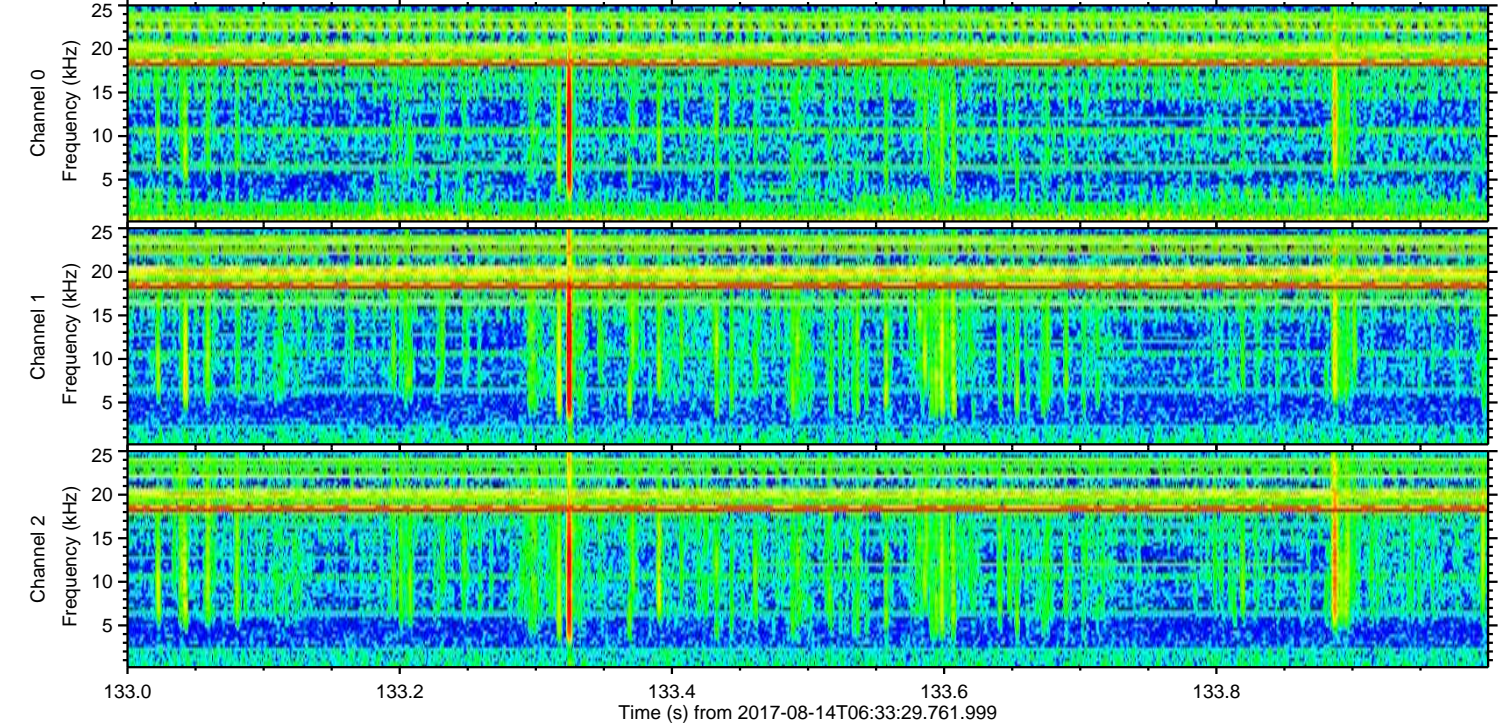
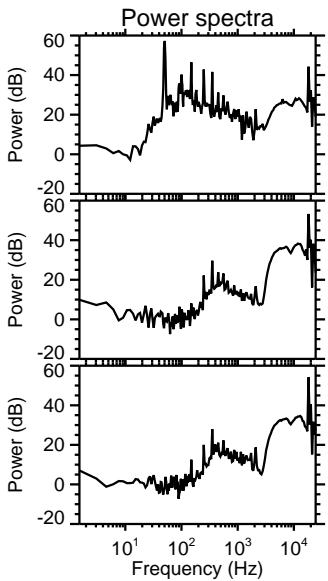
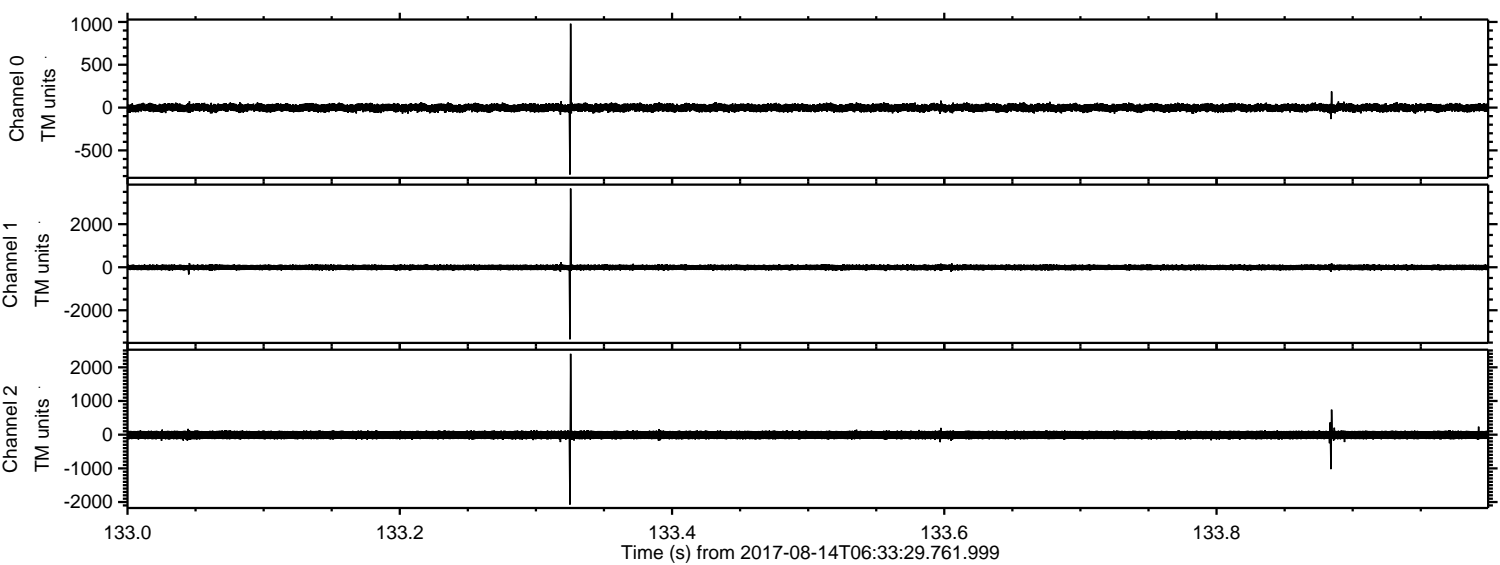
ELMAVAN 3D WAVEFORMS (Measured data sampled at 50 kHz) 51000 packets of 144 samples from 2017-08-14T06:33:29.761.999. Part 113/147

Processed Mon Aug 14 08:41:29 2017 by ELM ver.2012-10-06 from 001__elm20170814_063328__dat00.bin



ELMAVAN 3D WAVEFORMS (Measured data sampled at 50 kHz) 51000 packets of 144 samples from 2017-08-14T06:33:29.761.999. Part 134/147

Processed Mon Aug 14 08:41:29 2017 by ELM ver.2012-10-06 from 001__elm20170814_063328__dat00.bin



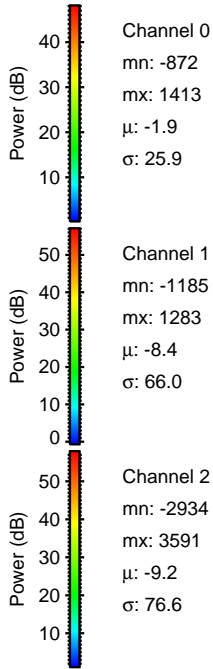
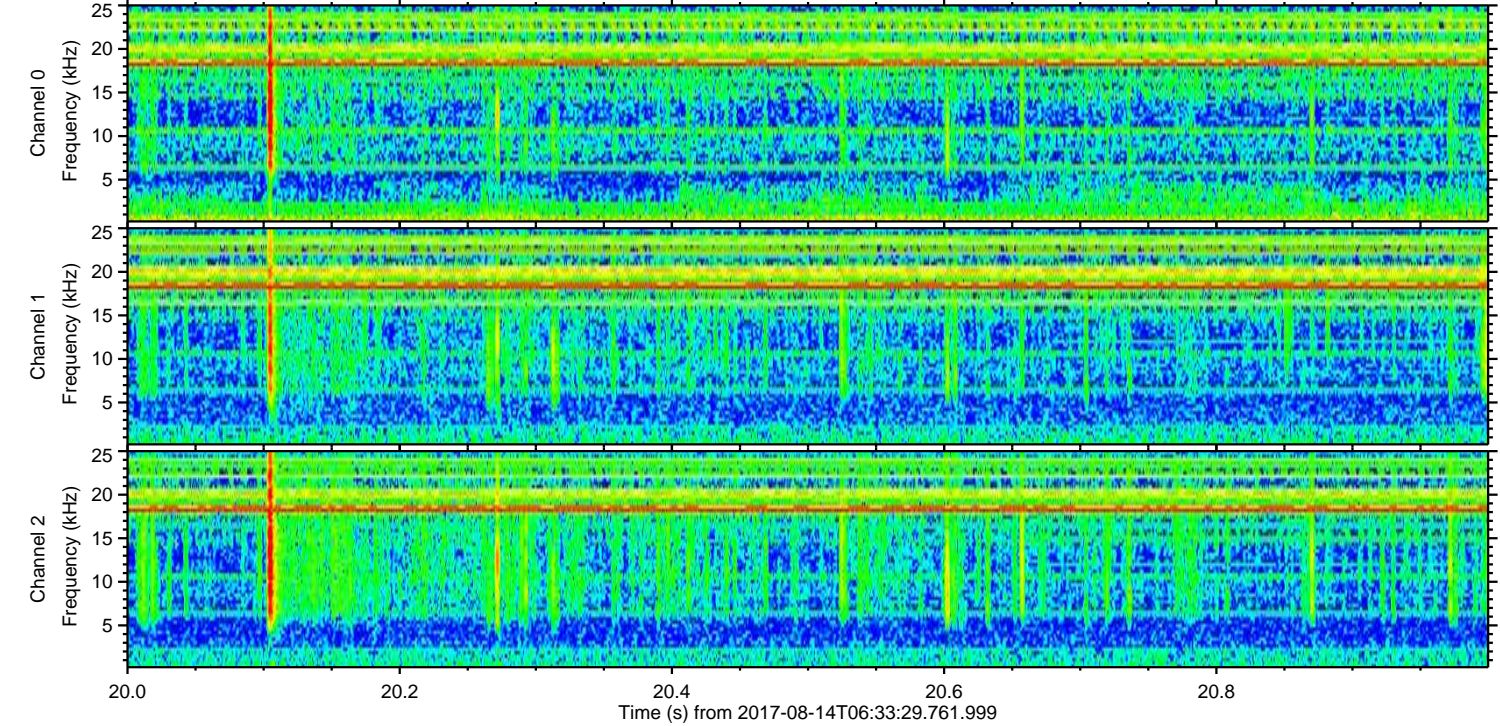
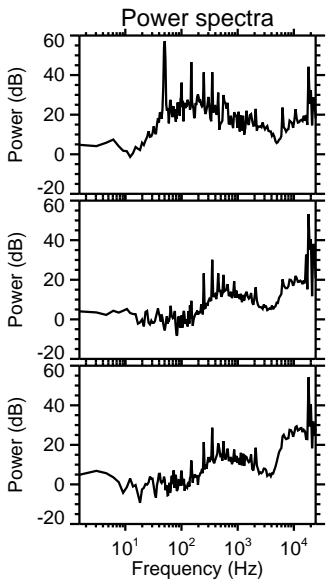
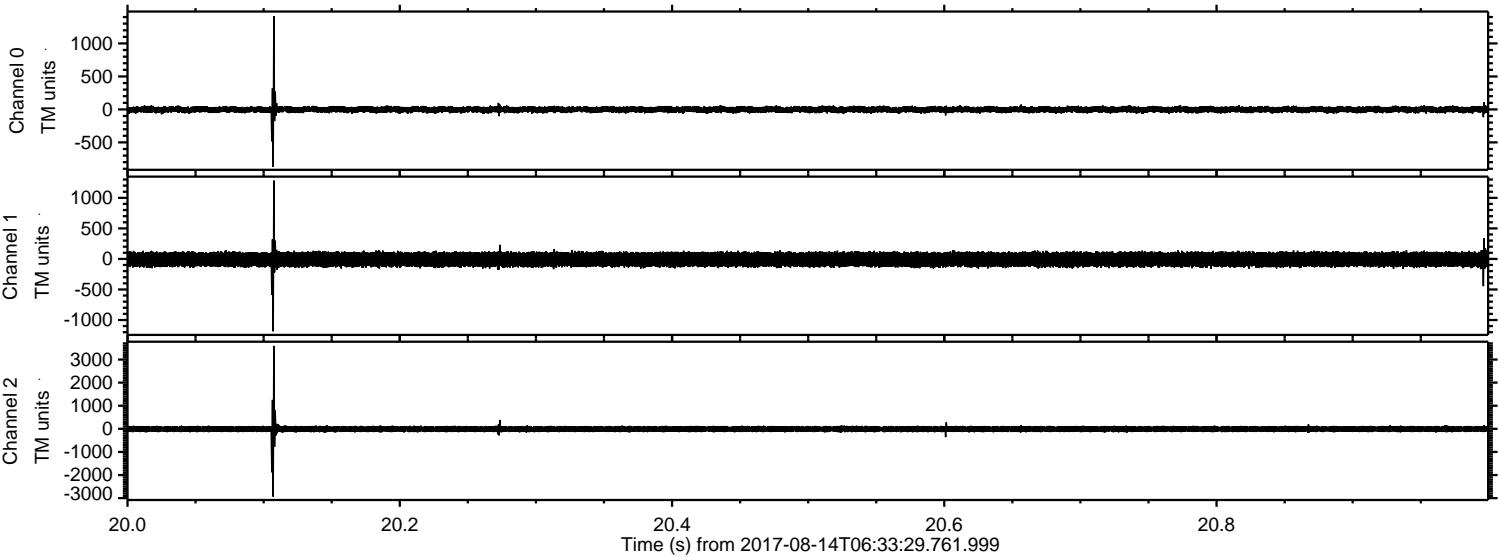
Channel 0
mn: -781
mx: 979
 μ : -1.9
 σ : 25.6

Channel 1
mn: -3348
mx: 3655
 μ : -8.4
 σ : 70.4

Channel 2
mn: -2073
mx: 2402
 μ : -9.2
 σ : 72.5

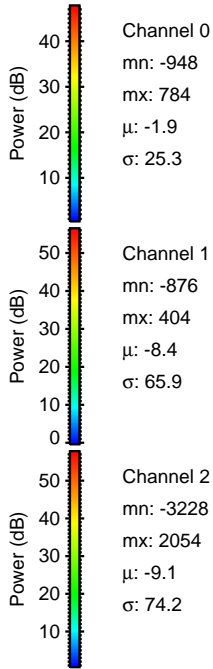
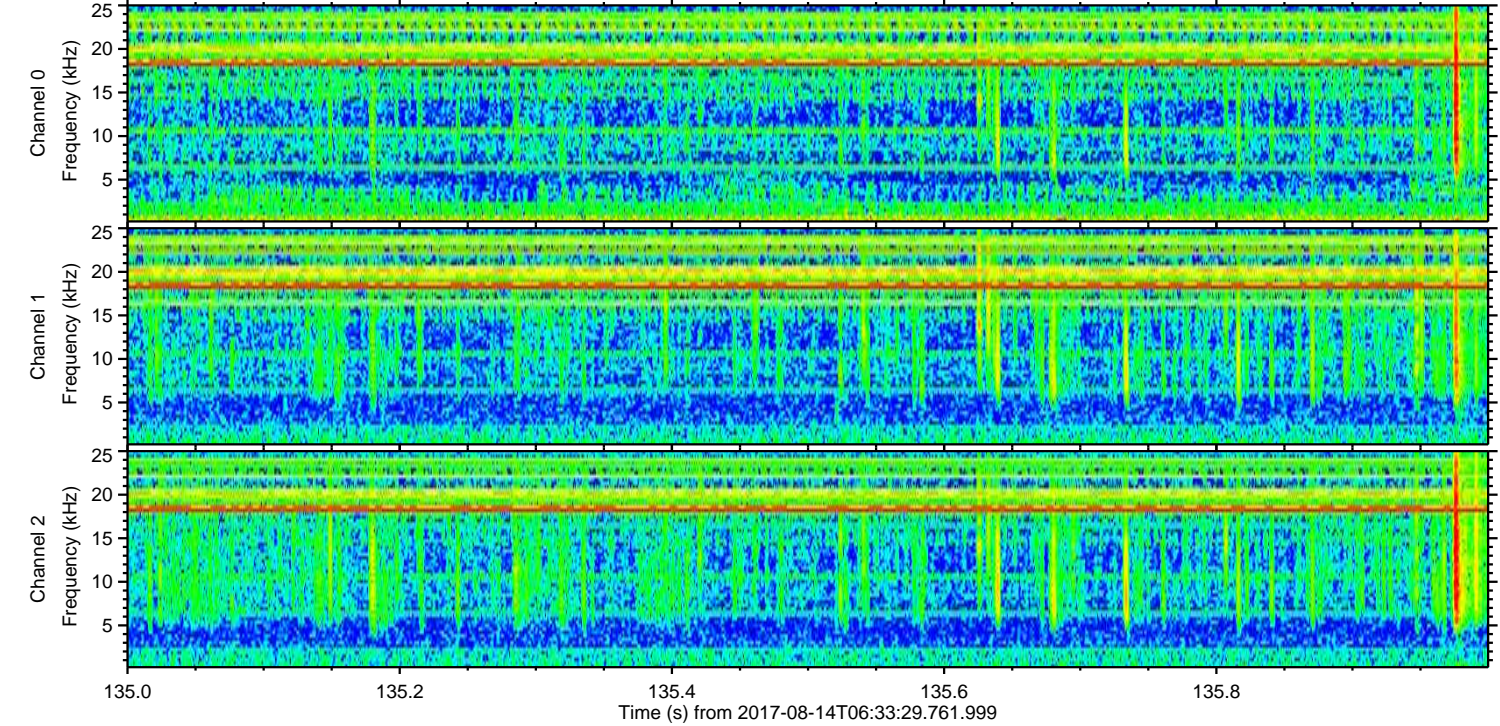
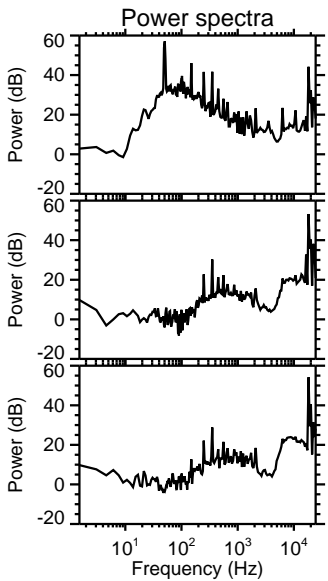
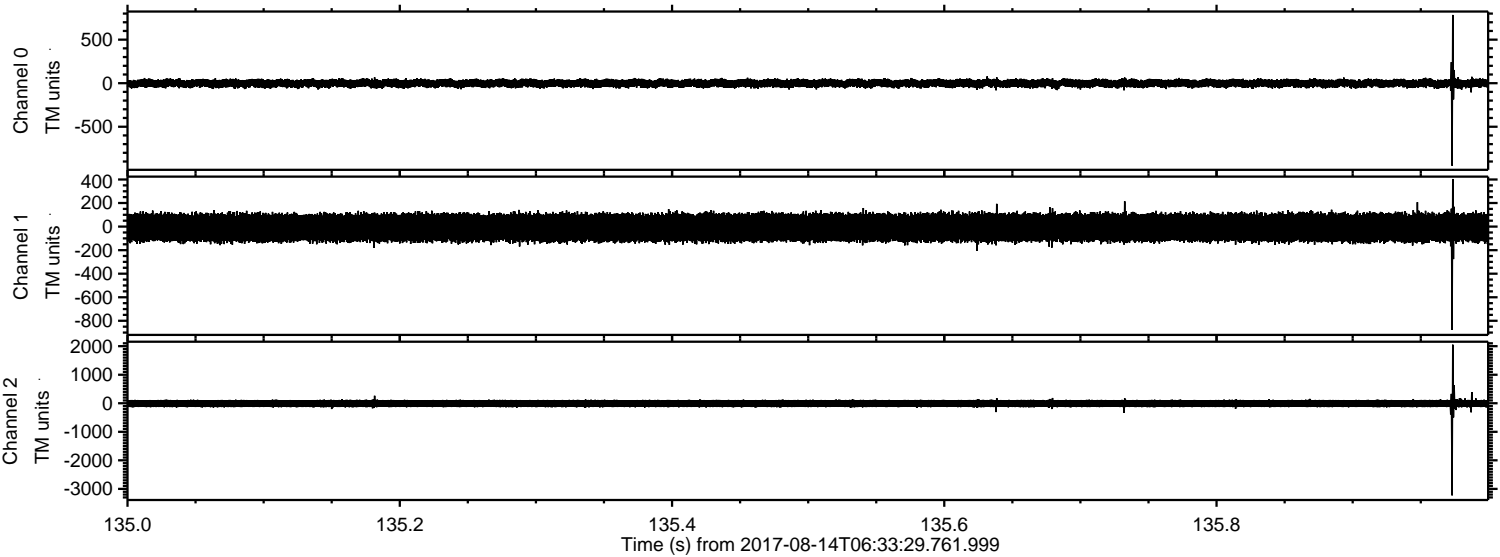
ELMAVAN 3D WAVEFORMS (Measured data sampled at 50 kHz) 51000 packets of 144 samples from 2017-08-14T06:33:29.761.999. Part 21/147

Processed Mon Aug 14 08:41:30 2017 by ELM ver.2012-10-06 from 001__elm20170814_063328__dat00.bin



ELMAVAN 3D WAVEFORMS (Measured data sampled at 50 kHz) 51000 packets of 144 samples from 2017-08-14T06:33:29.761.999. Part 136/147

Processed Mon Aug 14 08:41:31 2017 by ELM ver.2012-10-06 from 001__elm20170814_063328__dat00.bin



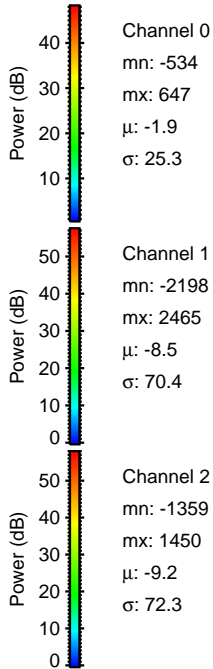
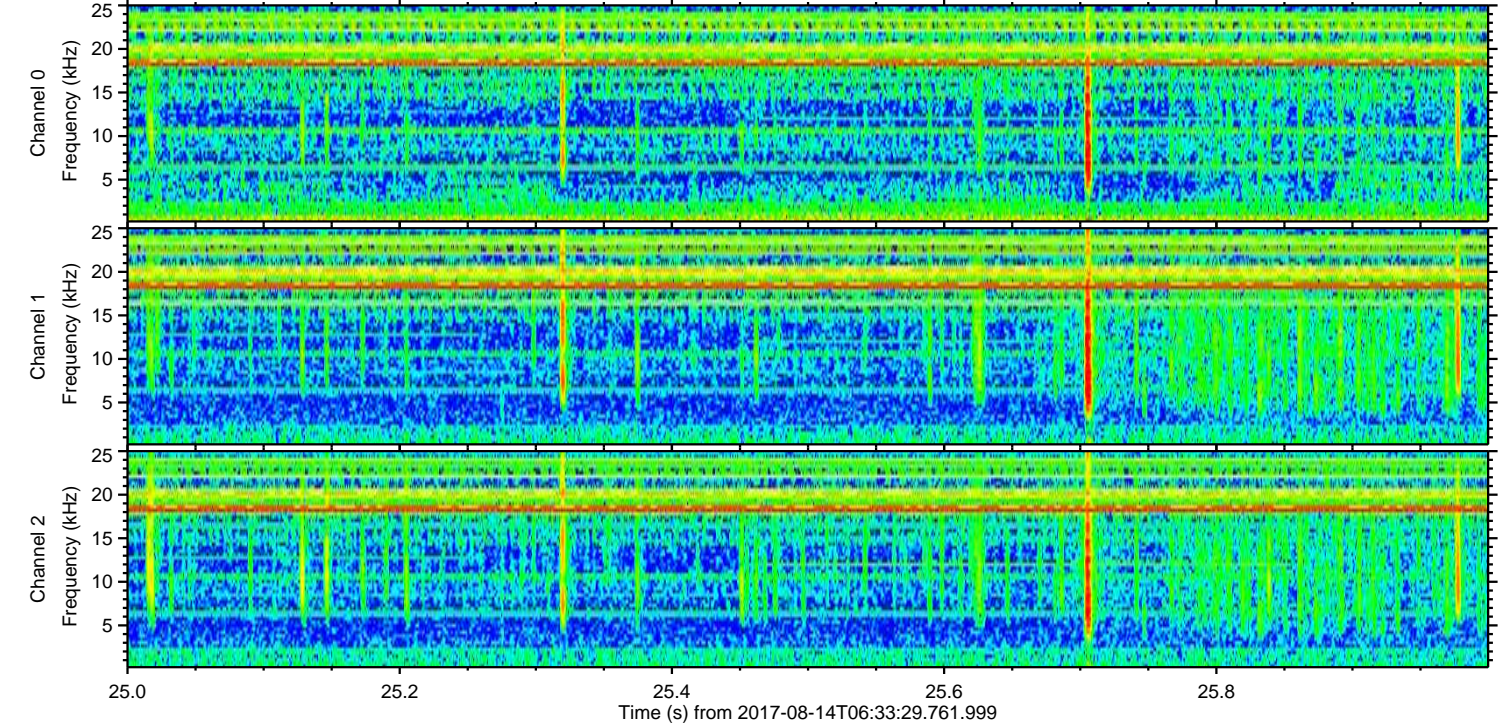
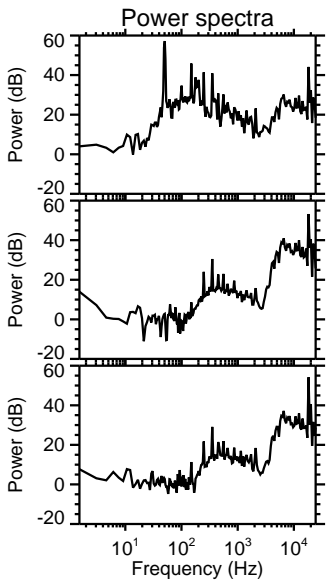
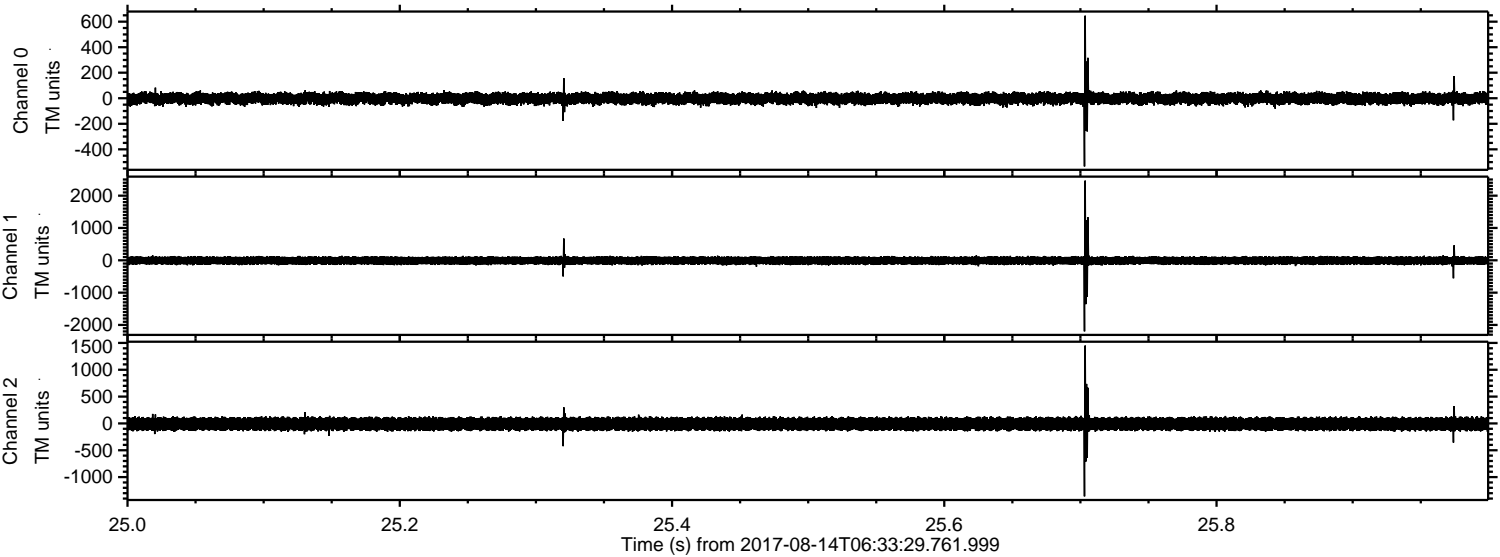
Channel 0
mn: -948
mx: 784
 μ : -1.9
 σ : 25.3

Channel 1
mn: -876
mx: 404
 μ : -8.4
 σ : 65.9

Channel 2
mn: -3228
mx: 2054
 μ : -9.1
 σ : 74.2

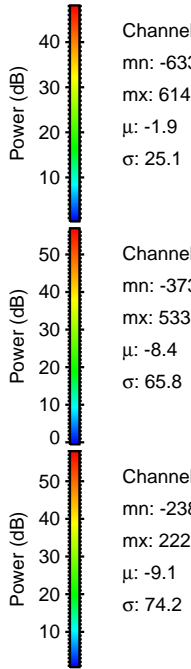
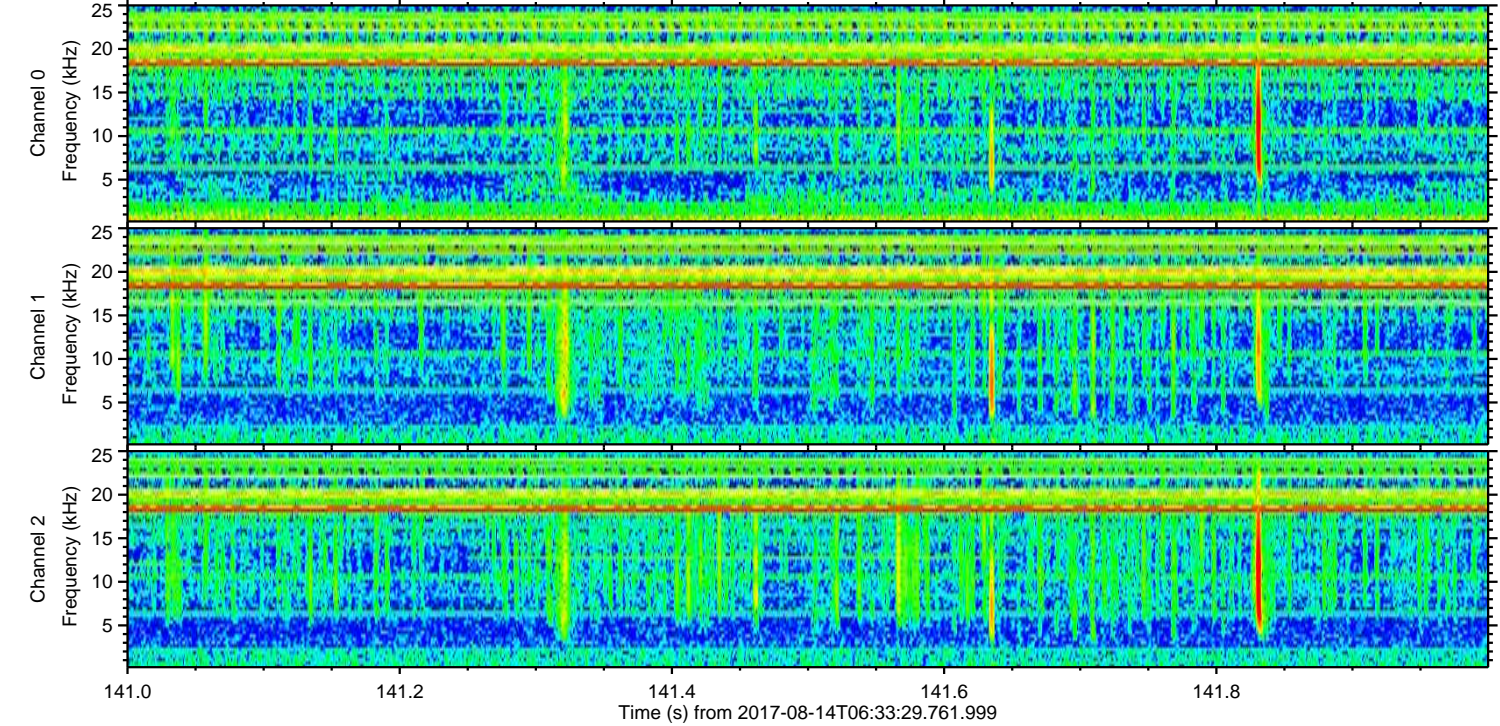
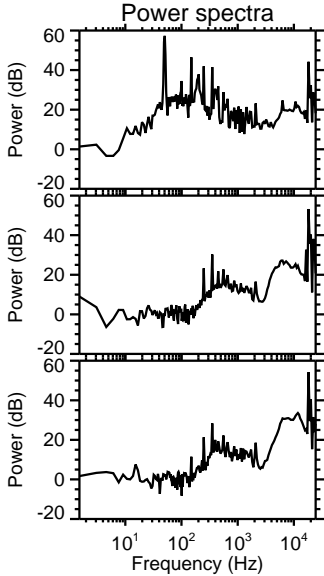
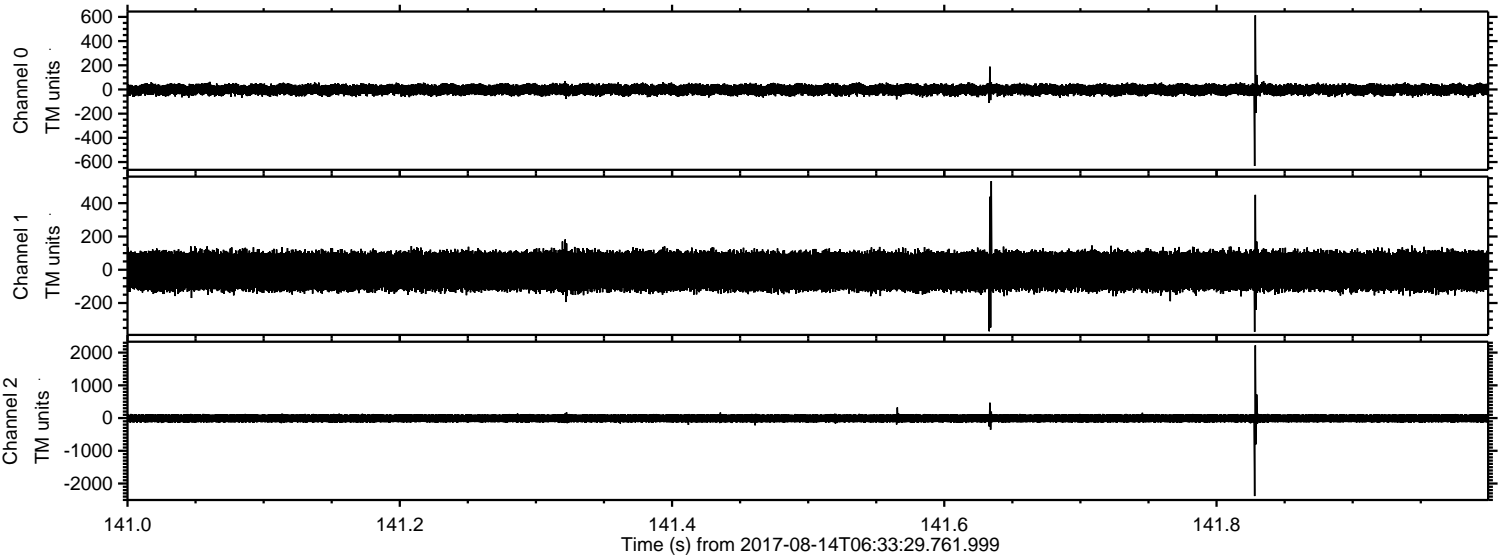
ELMAVAN 3D WAVEFORMS (Measured data sampled at 50 kHz) 51000 packets of 144 samples from 2017-08-14T06:33:29.761.999. Part 26/147

Processed Mon Aug 14 08:41:32 2017 by ELM ver.2012-10-06 from 001__elm20170814_063328__dat00.bin



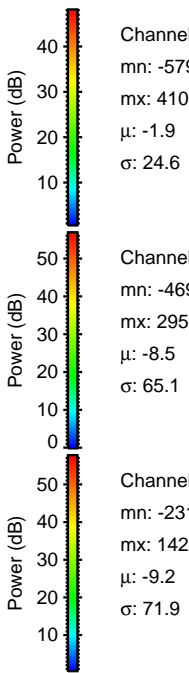
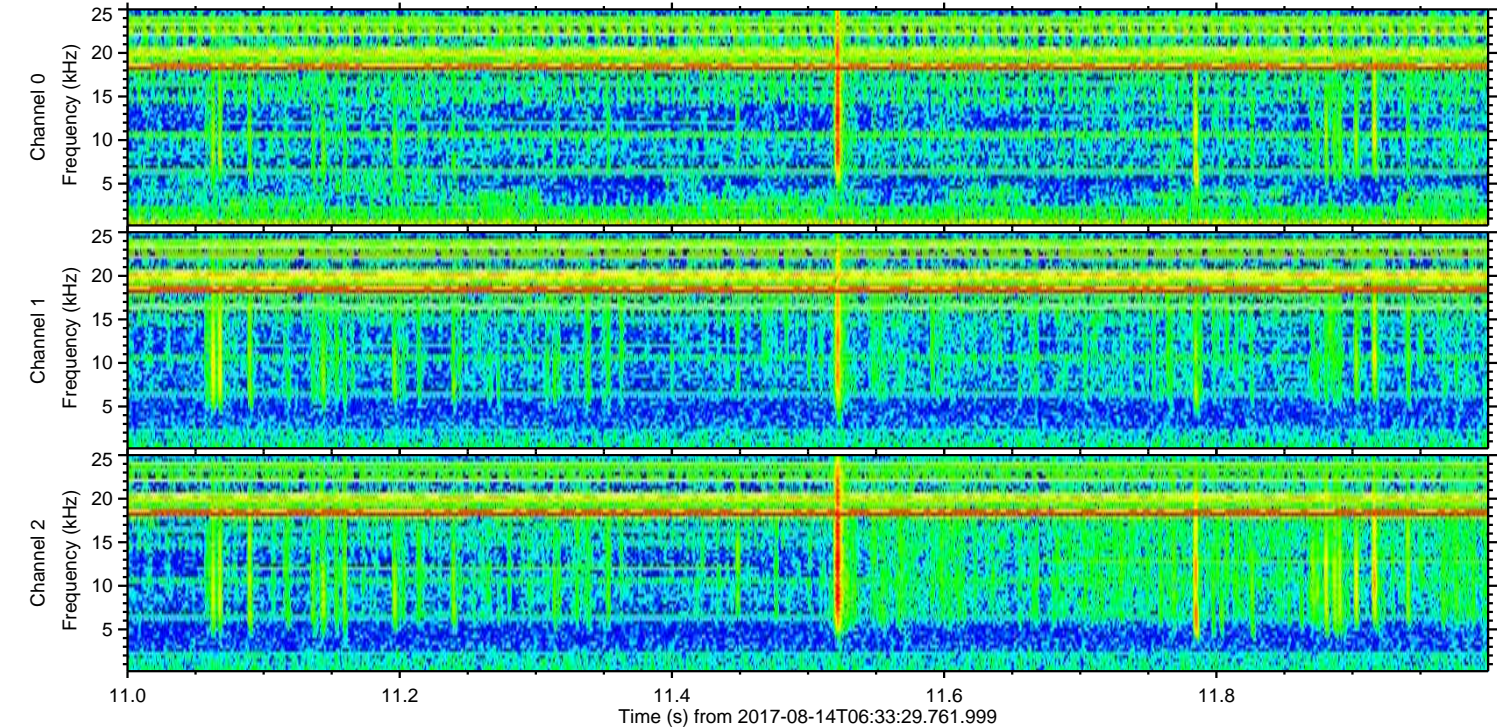
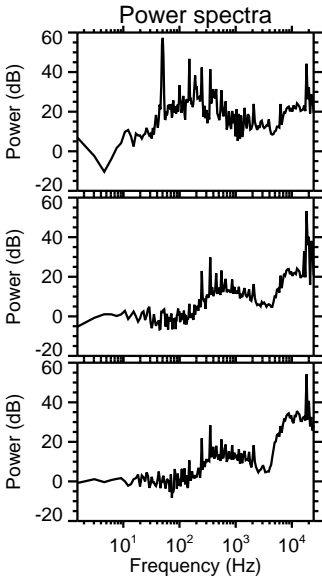
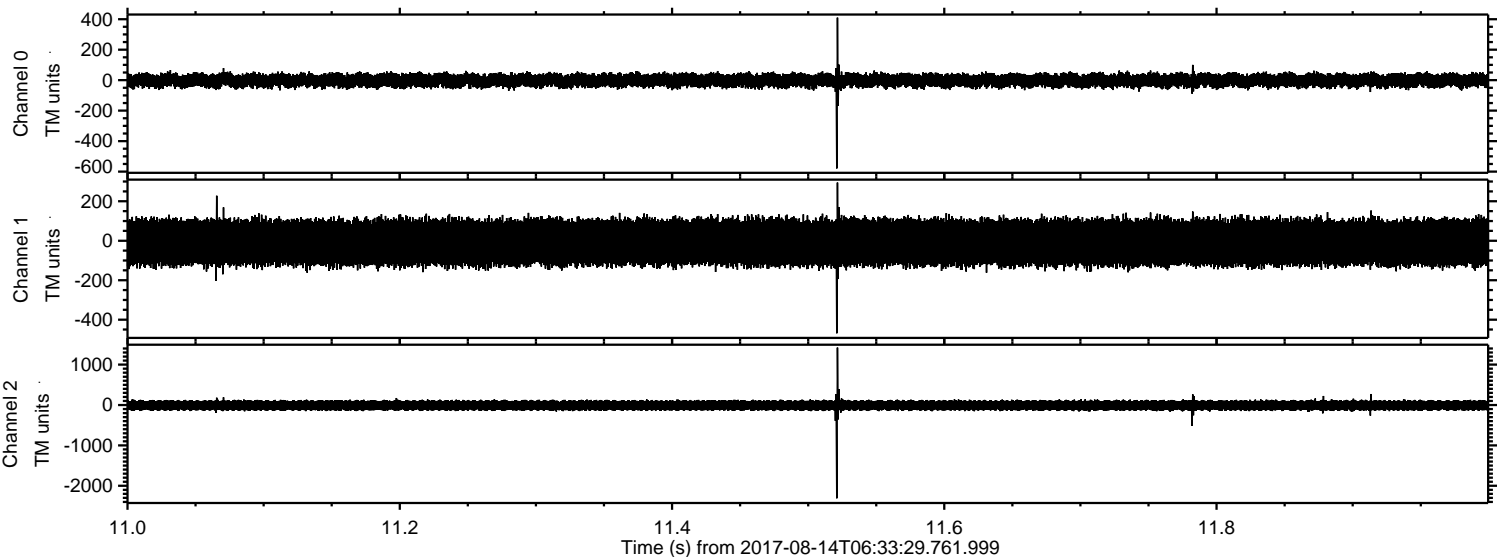
ELMAVAN 3D WAVEFORMS (Measured data sampled at 50 kHz) 51000 packets of 144 samples from 2017-08-14T06:33:29.761.999. Part 142/147

Processed Mon Aug 14 08:41:32 2017 by ELM ver.2012-10-06 from 001__elm20170814_063328__dat00.bin



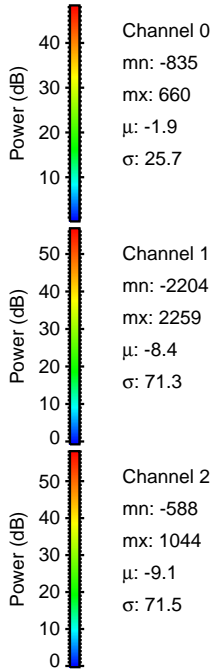
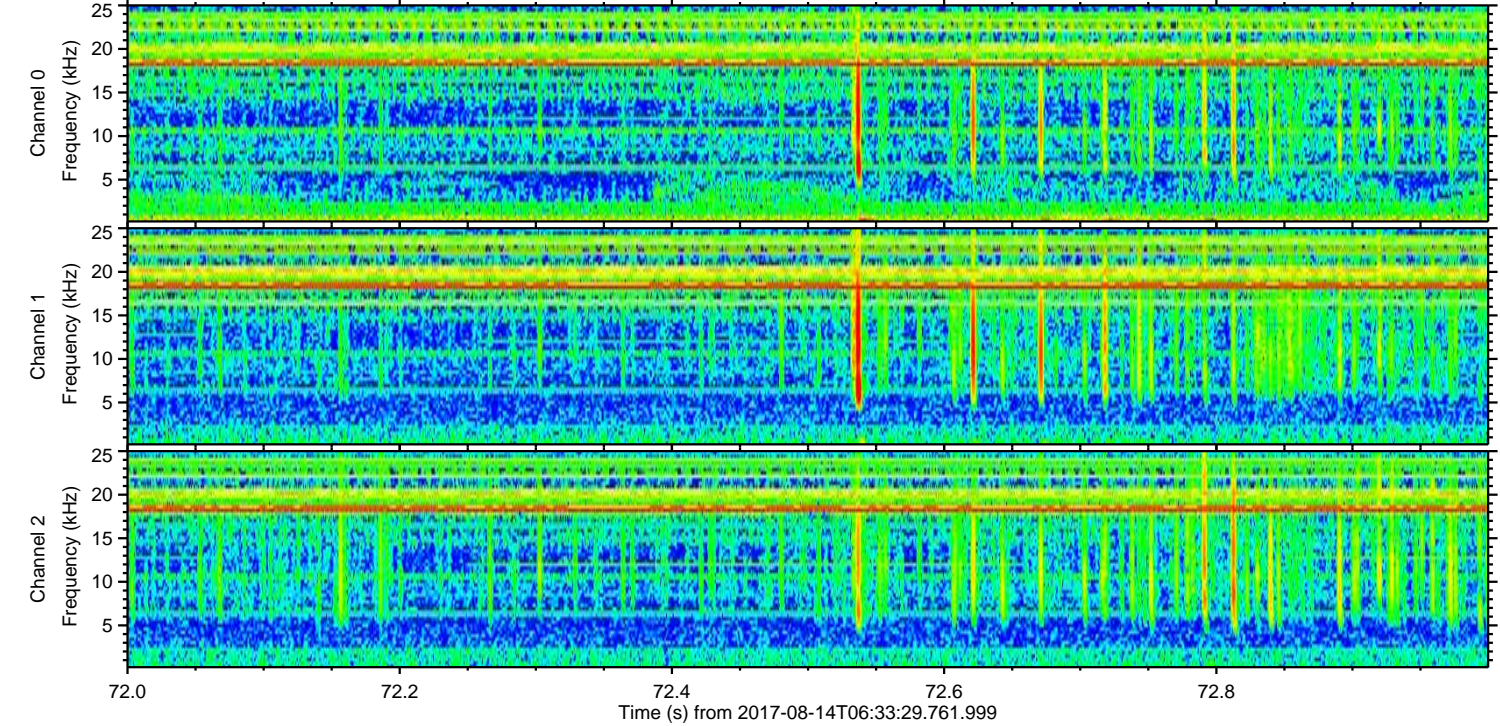
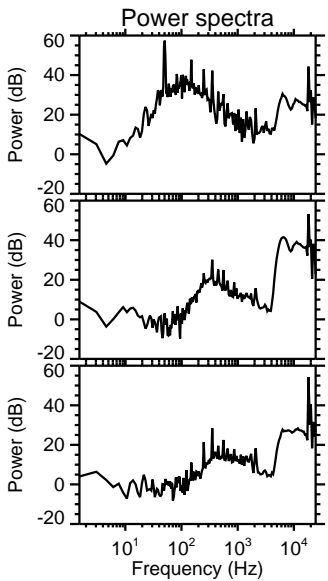
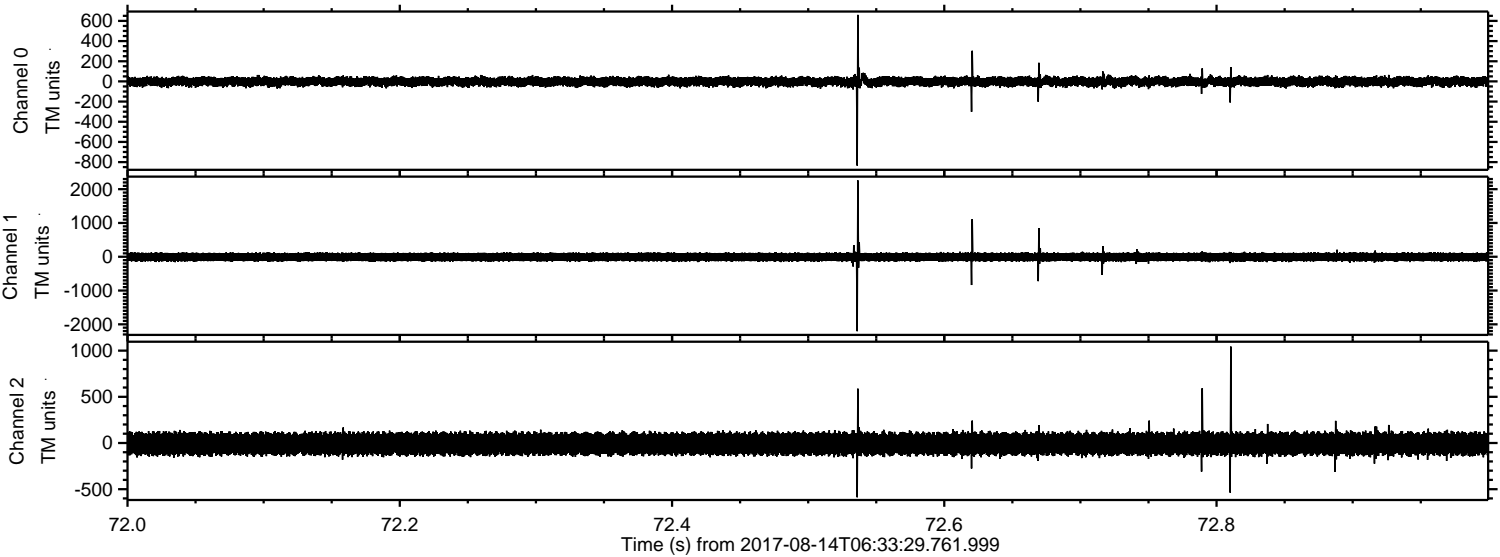
ELMAVAN 3D WAVEFORMS (Measured data sampled at 50 kHz) 51000 packets of 144 samples from 2017-08-14T06:33:29.761.999. Part 12/147

Processed Mon Aug 14 08:41:33 2017 by ELM ver.2012-10-06 from 001__elm20170814_063328__dat00.bin



ELMAVAN 3D WAVEFORMS (Measured data sampled at 50 kHz) 51000 packets of 144 samples from 2017-08-14T06:33:29.761.999. Part 73/147

Processed Mon Aug 14 08:41:34 2017 by ELM ver.2012-10-06 from 001__elm20170814_063328__dat00.bin



Channel 0
mn: -835
mx: 660
 μ : -1.9
 σ : 25.7

Channel 1
mn: -2204
mx: 2259
 μ : -8.4
 σ : 71.3

Channel 2
mn: -588
mx: 1044
 μ : -9.1
 σ : 71.5

ELMAVAN 3D WAVEFORMS (Measured data sampled at 50 kHz) 51000 packets of 144 samples from 2017-08-14T06:33:29.761.999. Part 83/147

Processed Mon Aug 14 08:41:35 2017 by ELM ver.2012-10-06 from 001__elm20170814_063328__dat00.bin

