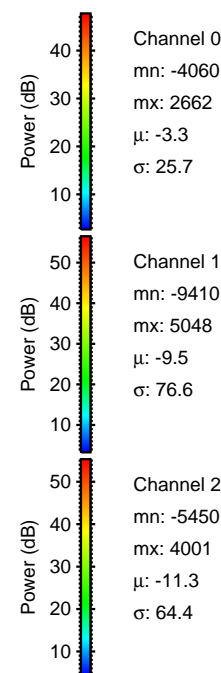
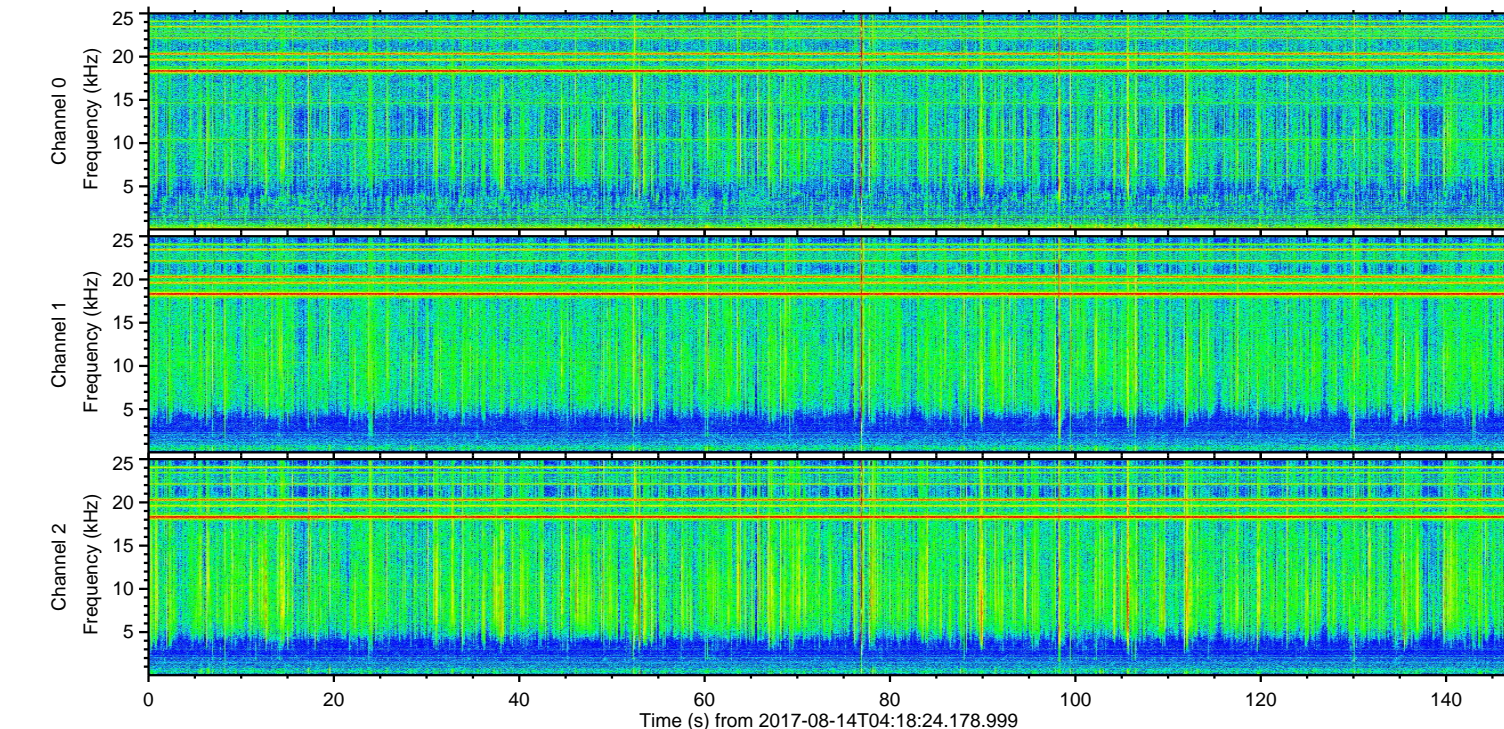
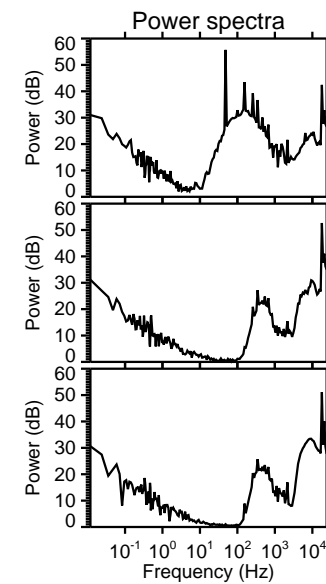
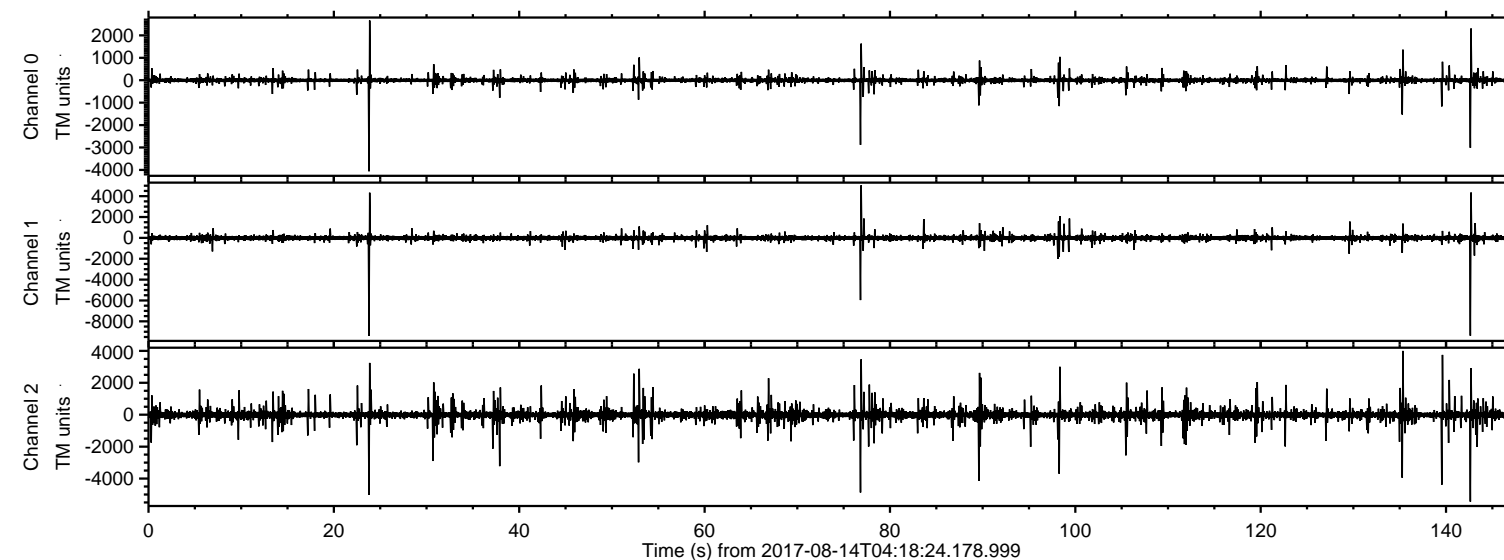


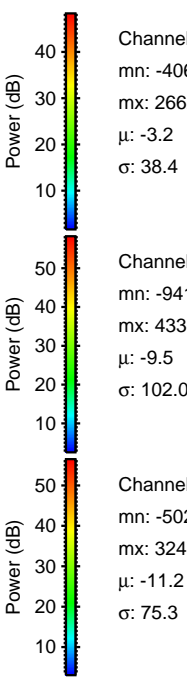
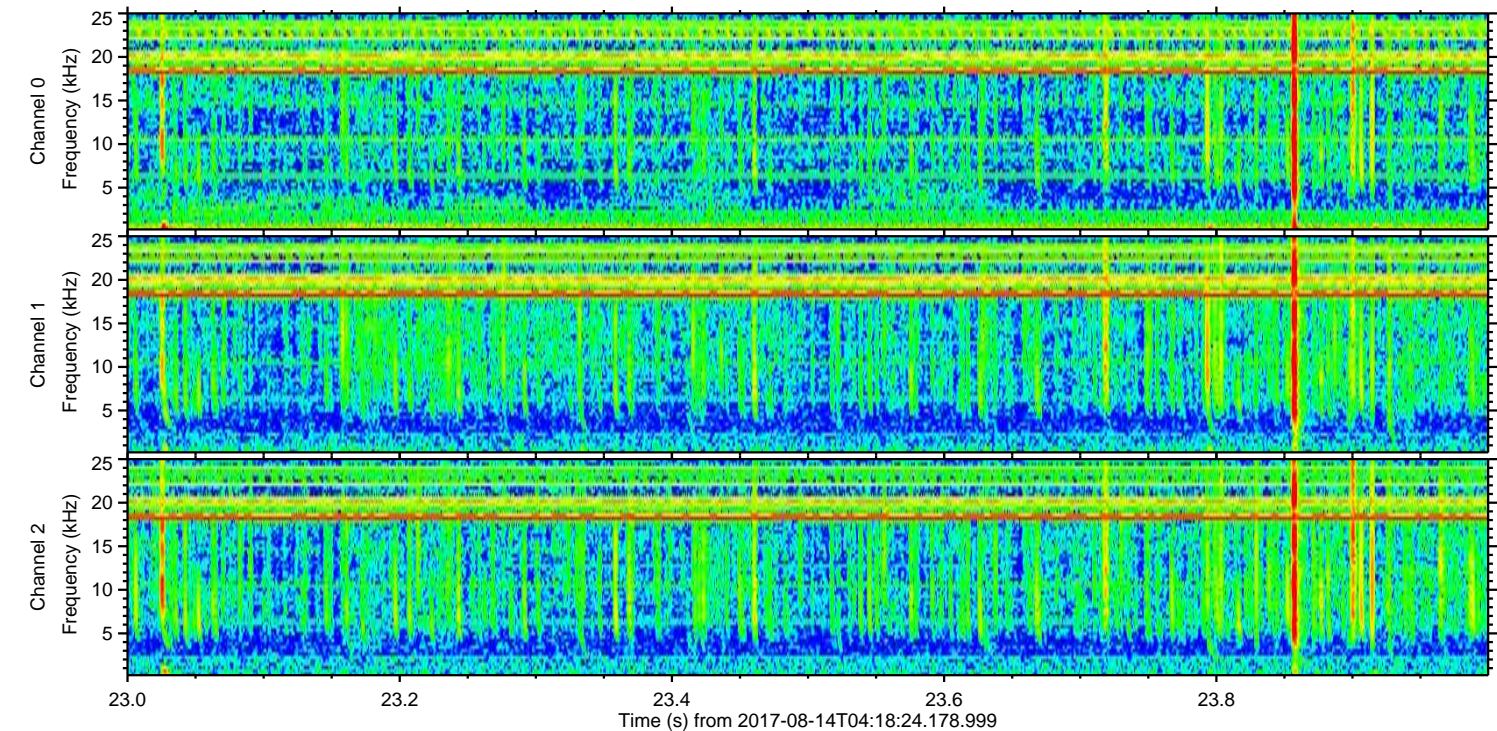
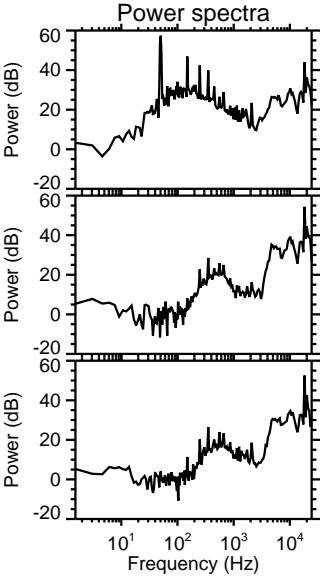
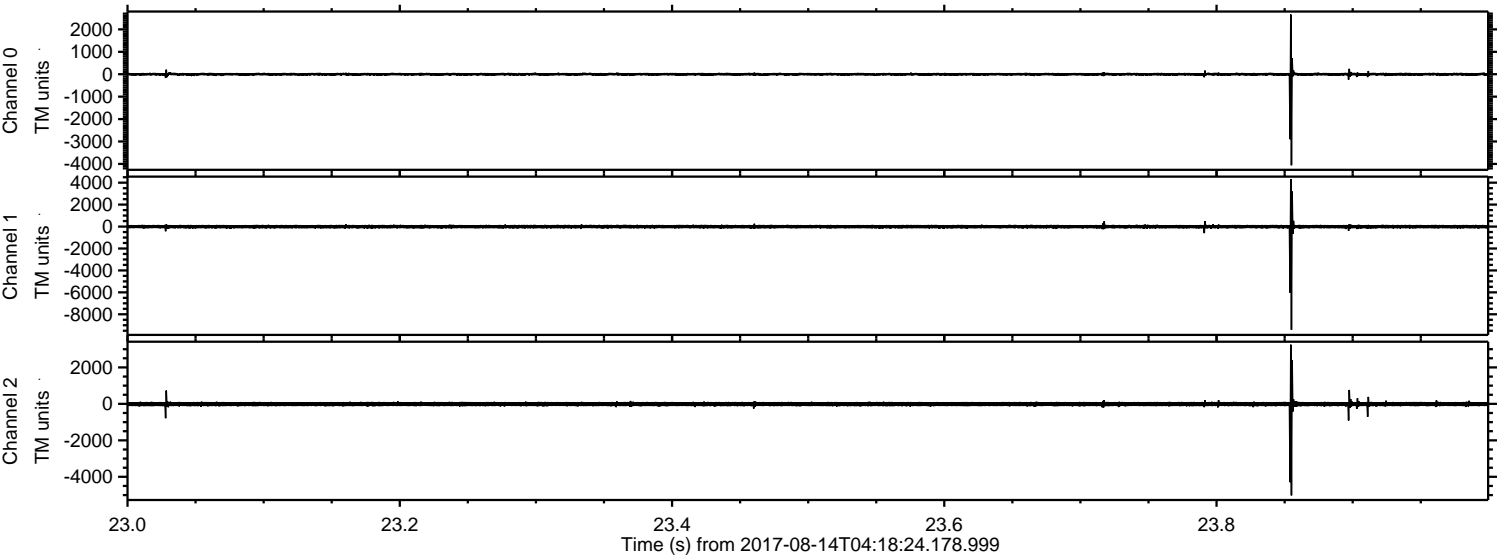
ELMAVAN 3D WAVEFORMS (Measured data sampled at 50 kHz) 51000 packets of 144 samples from 2017-08-14T04:18:24.178.999.

Processed Mon Aug 14 06:25:45 2017 by ELM ver.2012-10-06 from 001__elm20170814_041823__dat00.bin



ELMAVAN 3D WAVEFORMS (Measured data sampled at 50 kHz) 51000 packets of 144 samples from 2017-08-14T04:18:24.178.999. Part 24/147

Processed Mon Aug 14 06:25:54 2017 by ELM ver.2012-10-06 from 001__elm20170814_041823__dat00.bin



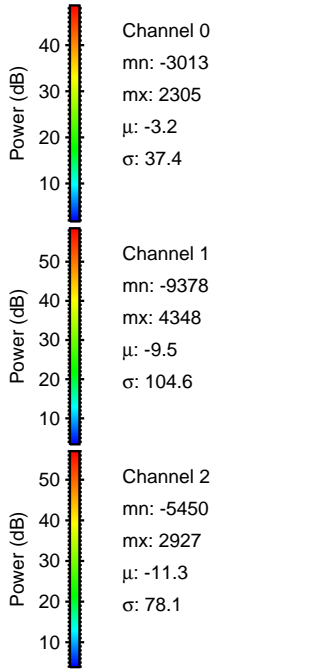
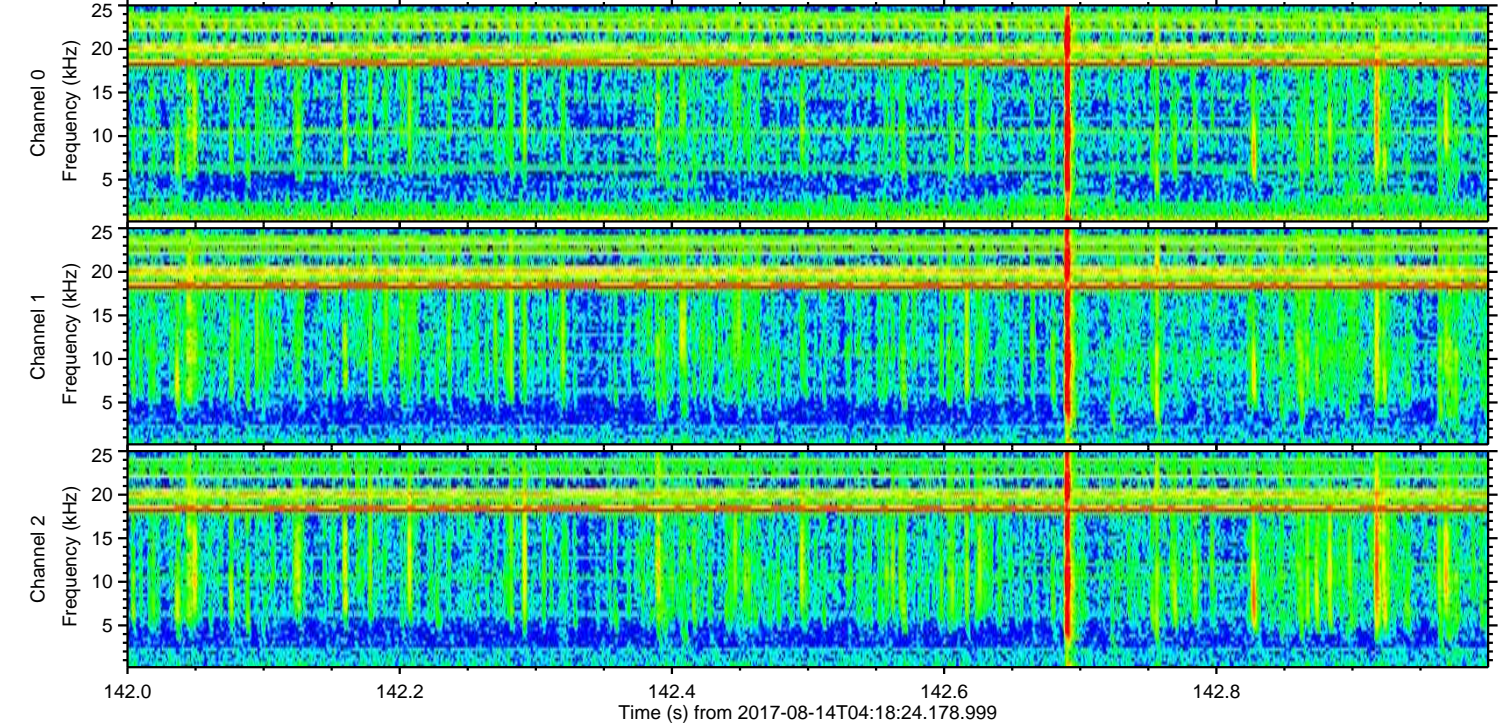
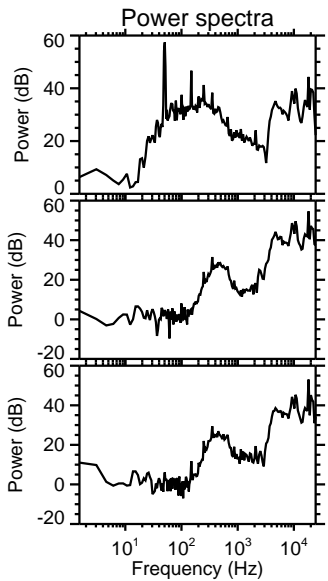
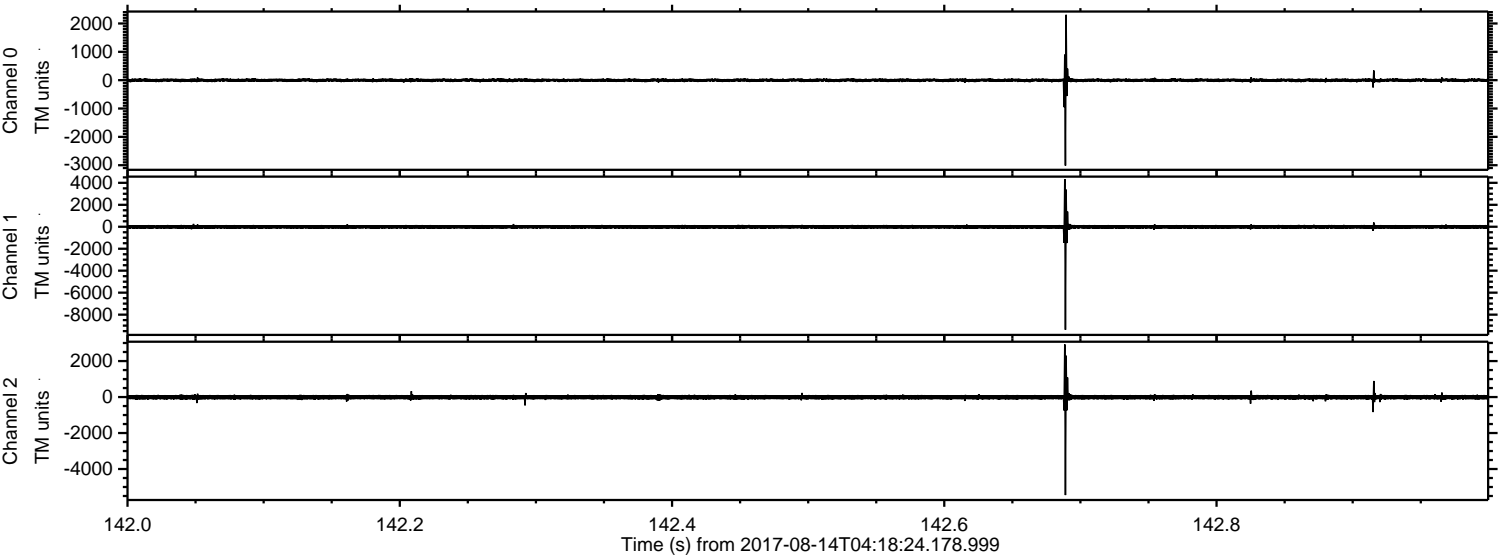
Channel 0
mn: -4060
mx: 2662
 μ : -3.2
 σ : 38.4

Channel 1
mn: -9410
mx: 4336
 μ : -9.5
 σ : 102.0

Channel 2
mn: -5020
mx: 3247
 μ : -11.2
 σ : 75.3

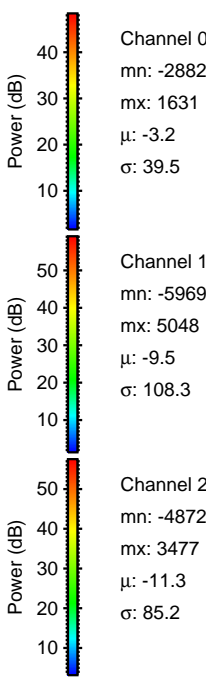
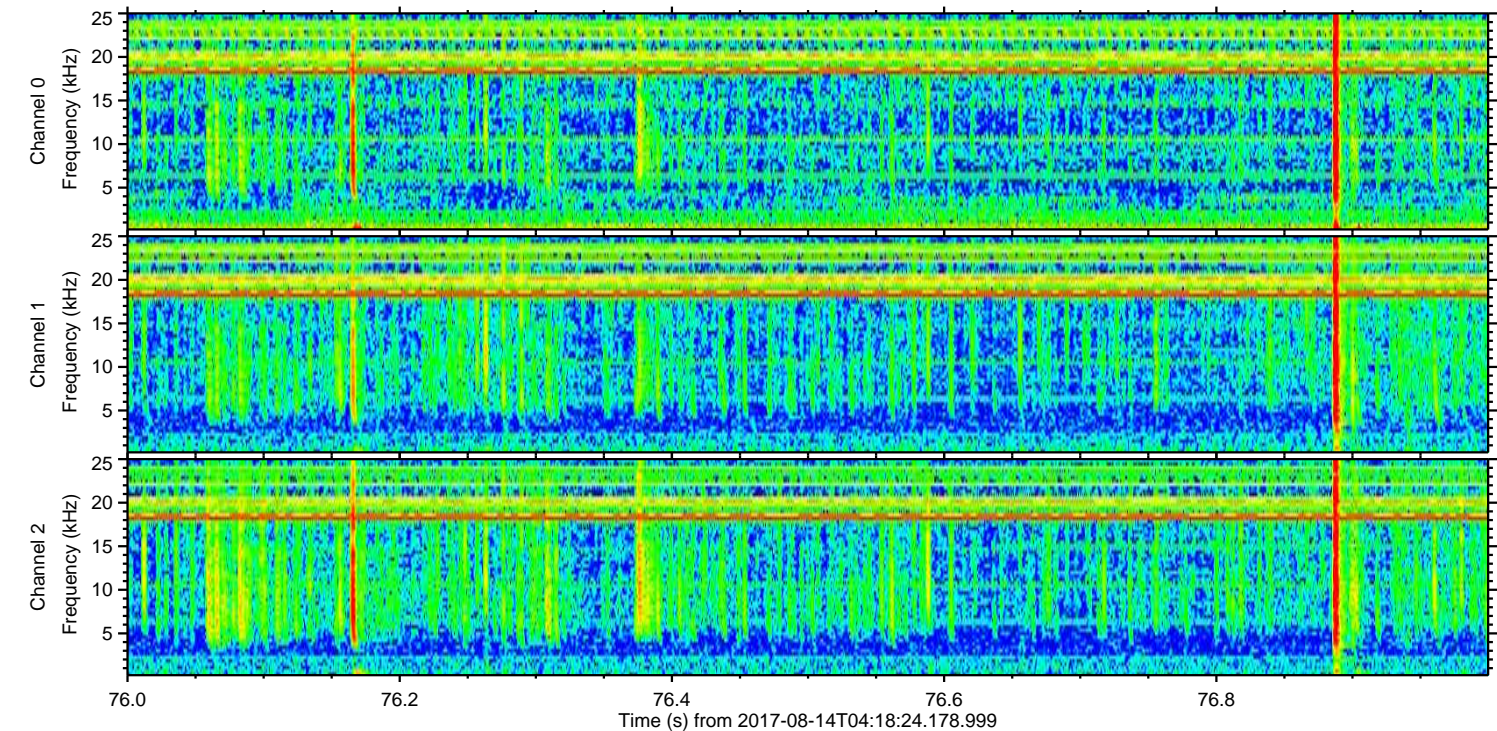
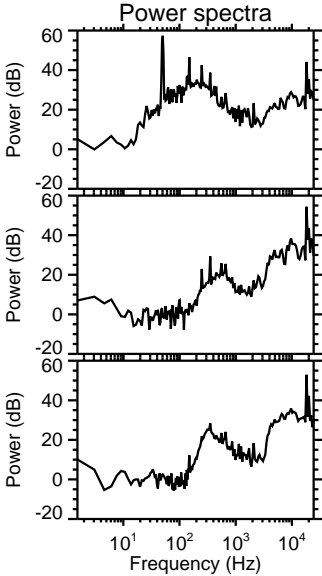
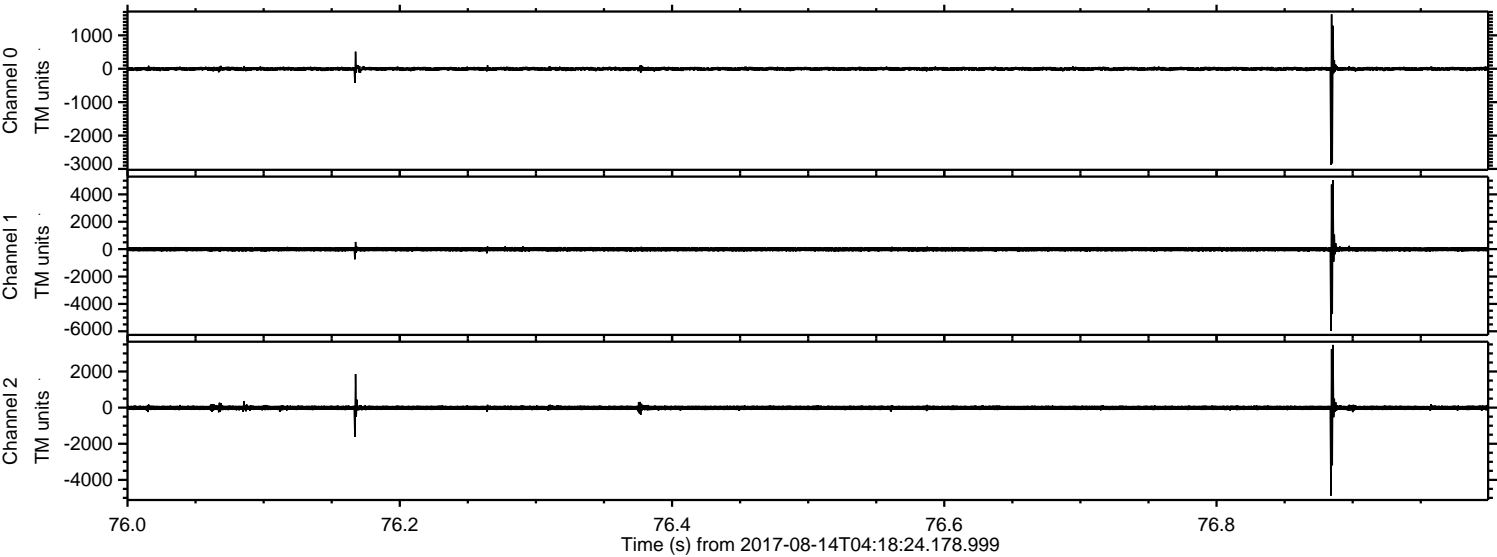
ELMAVAN 3D WAVEFORMS (Measured data sampled at 50 kHz) 51000 packets of 144 samples from 2017-08-14T04:18:24.178.999. Part 143/147

Processed Mon Aug 14 06:25:55 2017 by ELM ver.2012-10-06 from 001__elm20170814_041823__dat00.bin



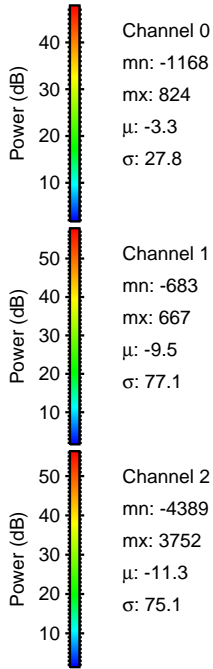
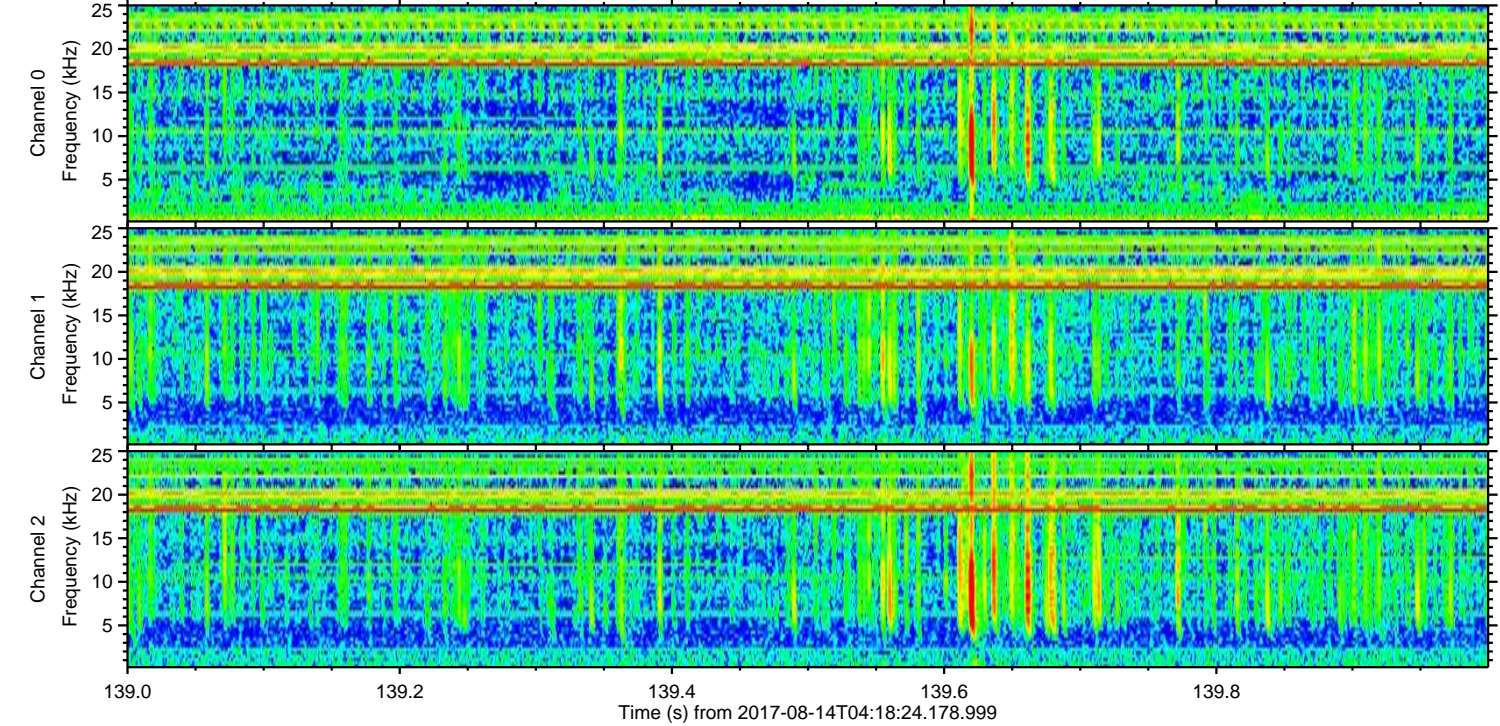
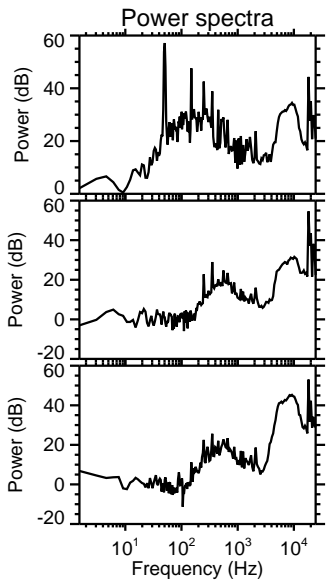
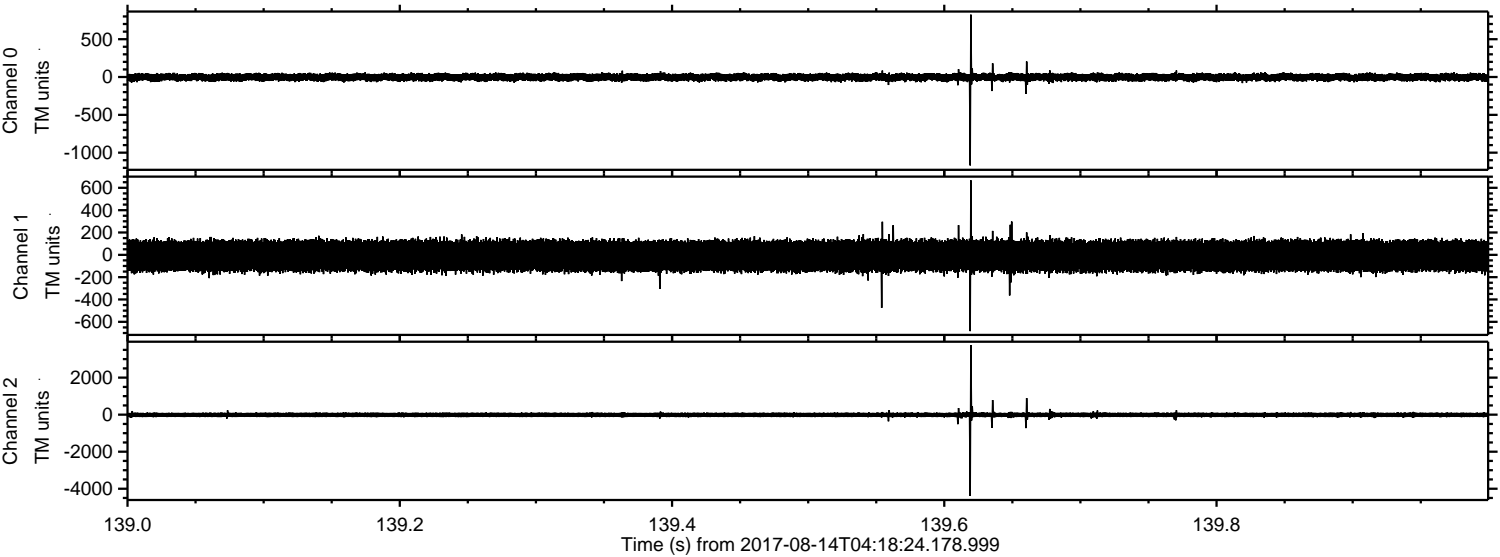
ELMAVAN 3D WAVEFORMS (Measured data sampled at 50 kHz) 51000 packets of 144 samples from 2017-08-14T04:18:24.178.999. Part 77/147

Processed Mon Aug 14 06:25:56 2017 by ELM ver.2012-10-06 from 001__elm20170814_041823__dat00.bin



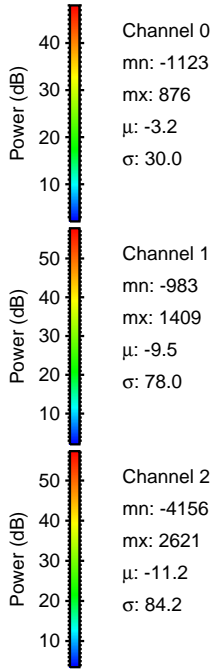
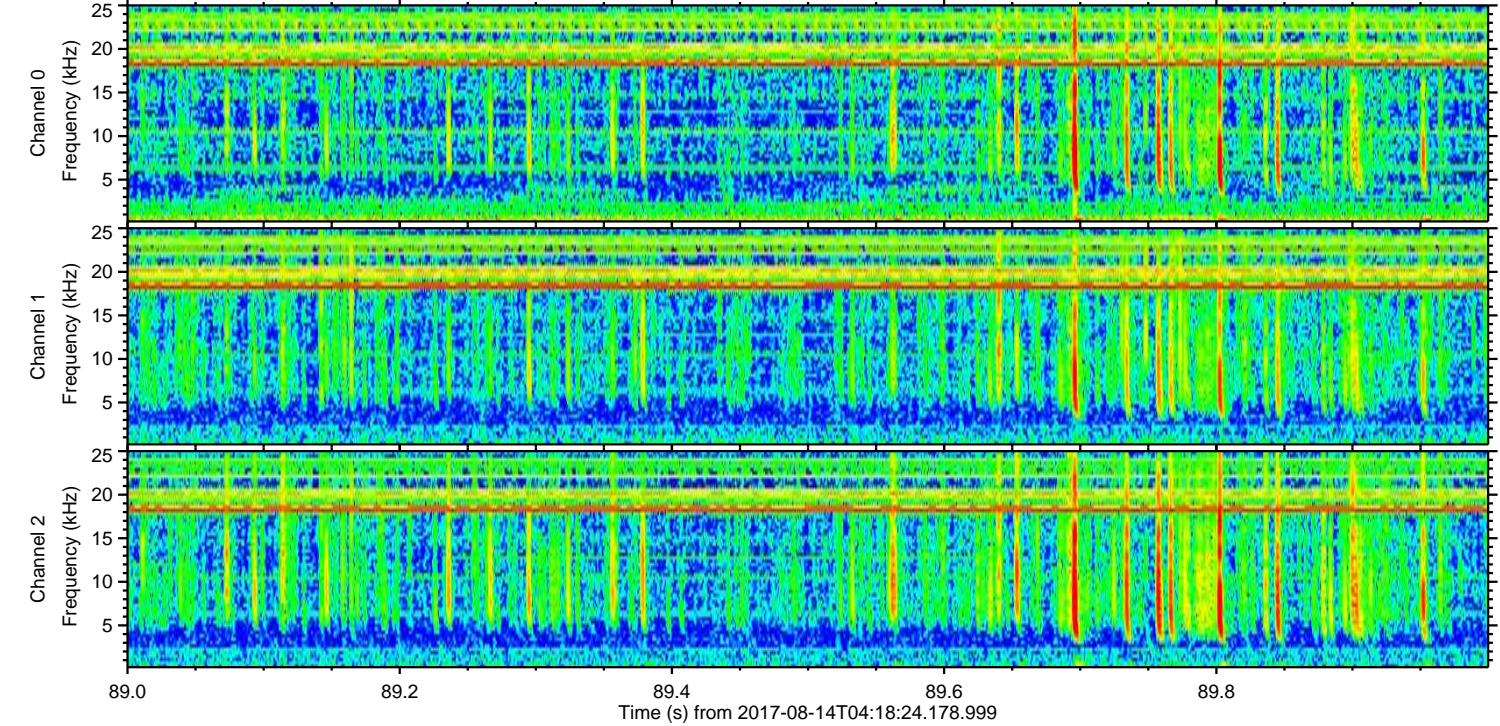
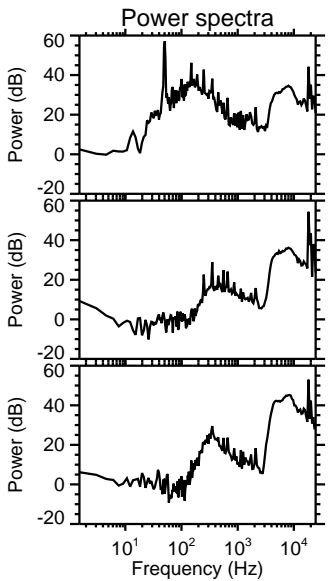
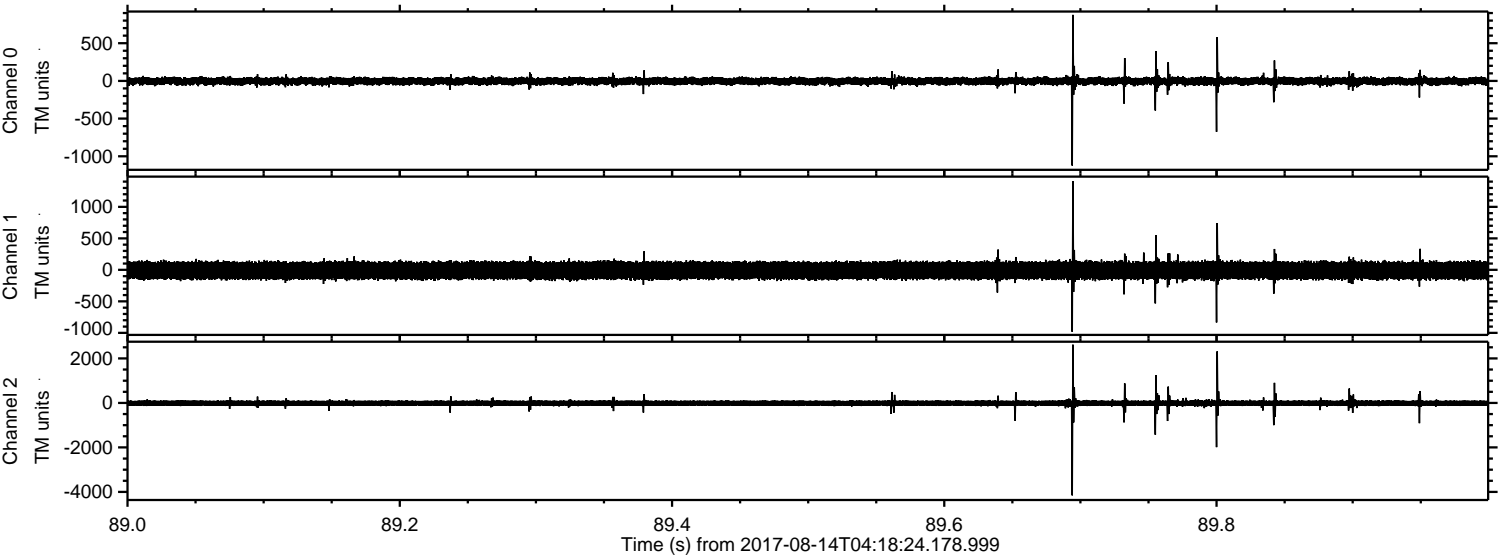
ELMAVAN 3D WAVEFORMS (Measured data sampled at 50 kHz) 51000 packets of 144 samples from 2017-08-14T04:18:24.178.999. Part 140/147

Processed Mon Aug 14 06:25:56 2017 by ELM ver.2012-10-06 from 001__elm20170814_041823__dat00.bin



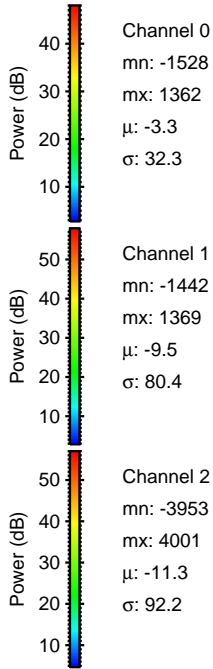
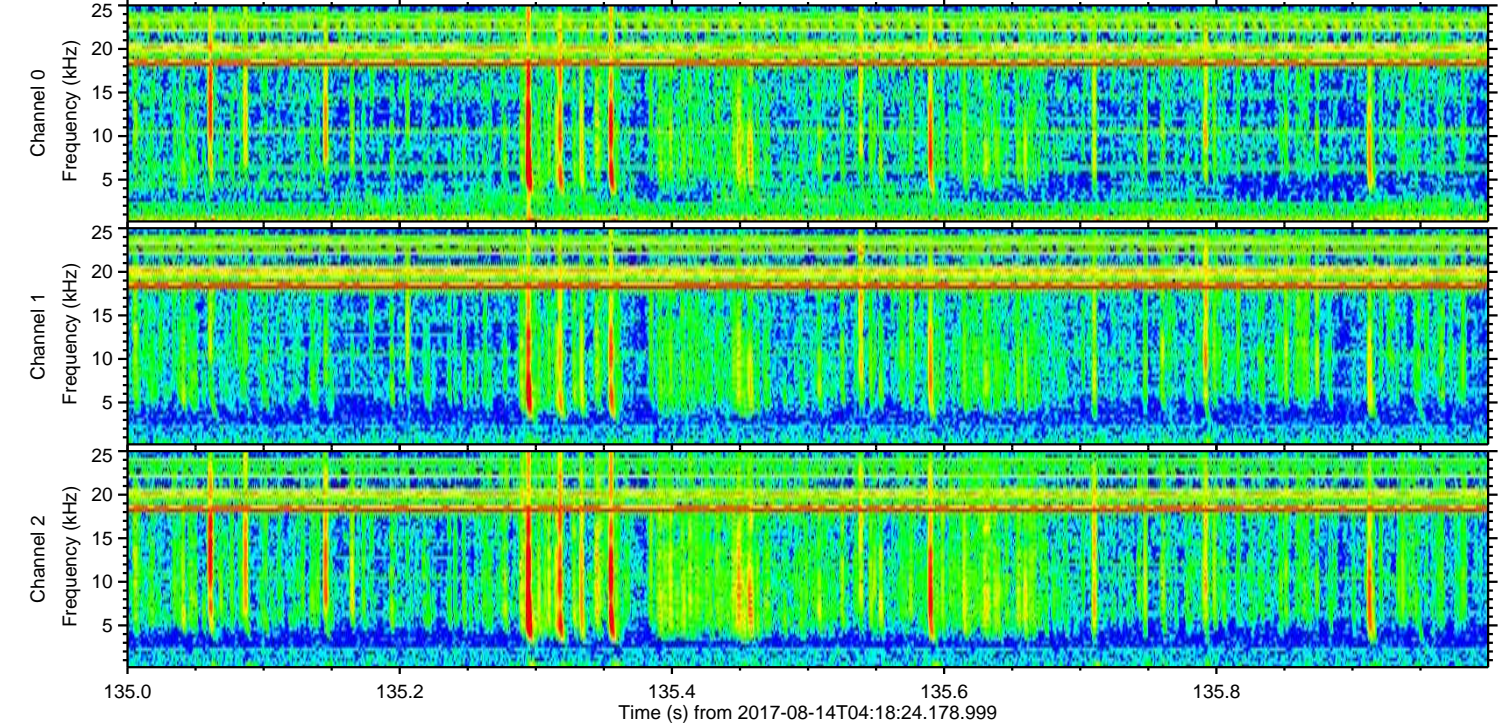
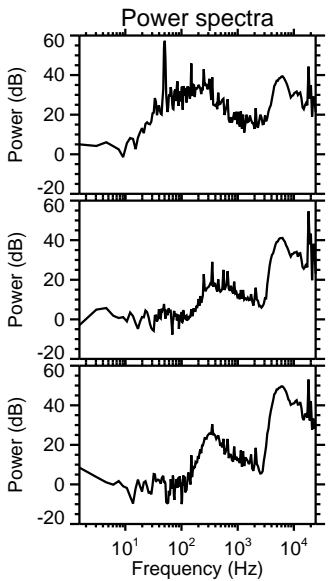
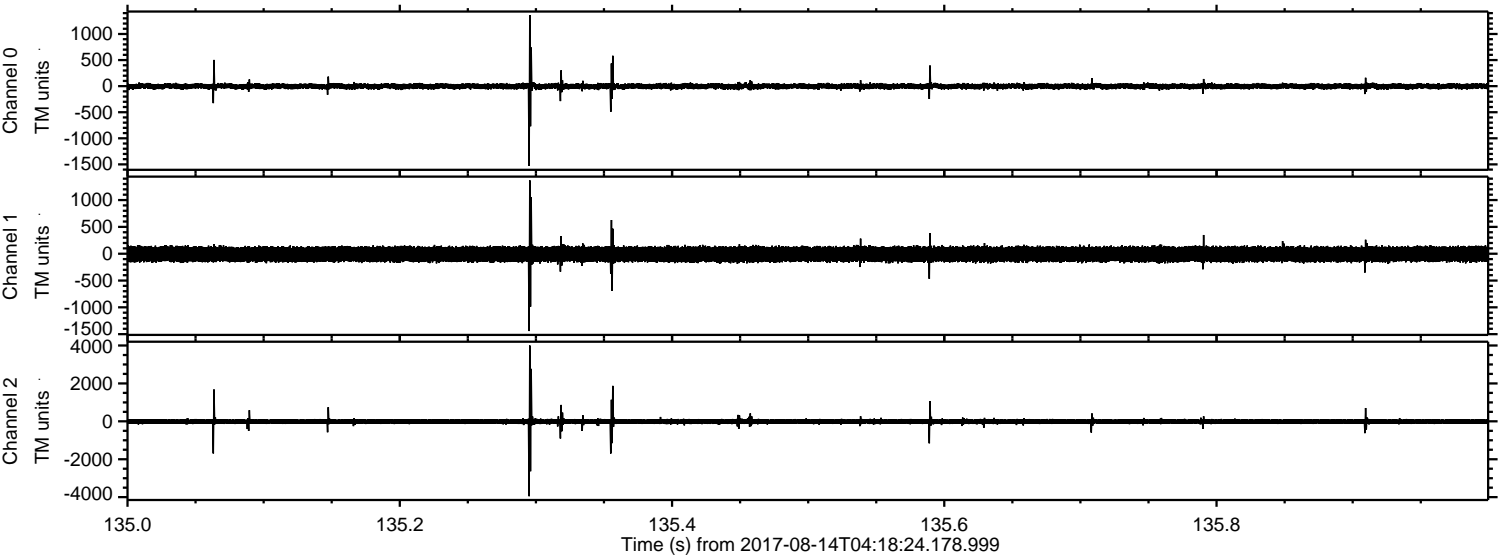
ELMAVAN 3D WAVEFORMS (Measured data sampled at 50 kHz) 51000 packets of 144 samples from 2017-08-14T04:18:24.178.999. Part 90/147

Processed Mon Aug 14 06:25:57 2017 by ELM ver.2012-10-06 from 001__elm20170814_041823__dat00.bin



ELMAVAN 3D WAVEFORMS (Measured data sampled at 50 kHz) 51000 packets of 144 samples from 2017-08-14T04:18:24.178.999. Part 136/147

Processed Mon Aug 14 06:25:58 2017 by ELM ver.2012-10-06 from 001__elm20170814_041823__dat00.bin



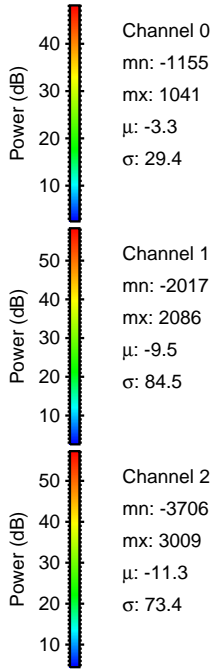
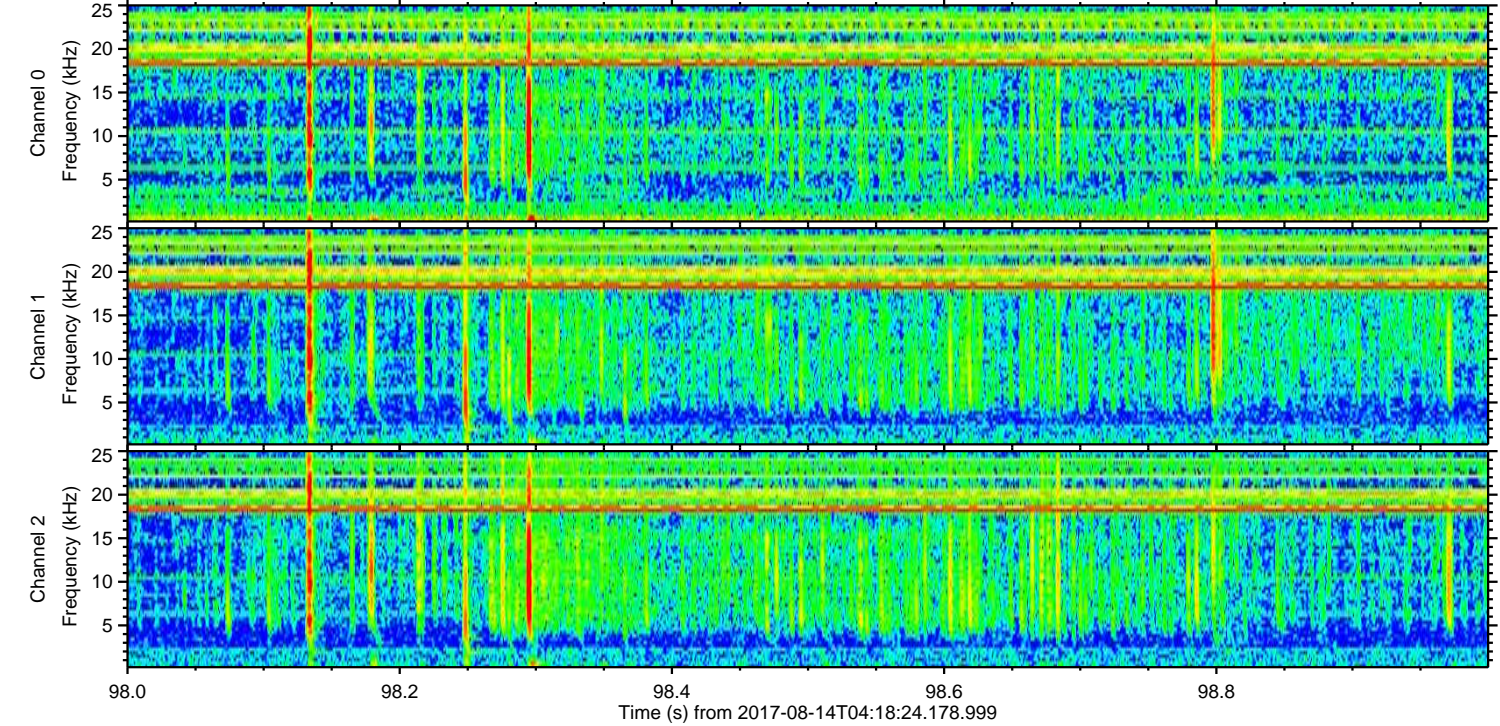
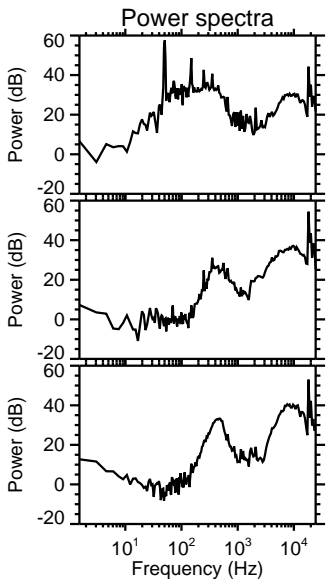
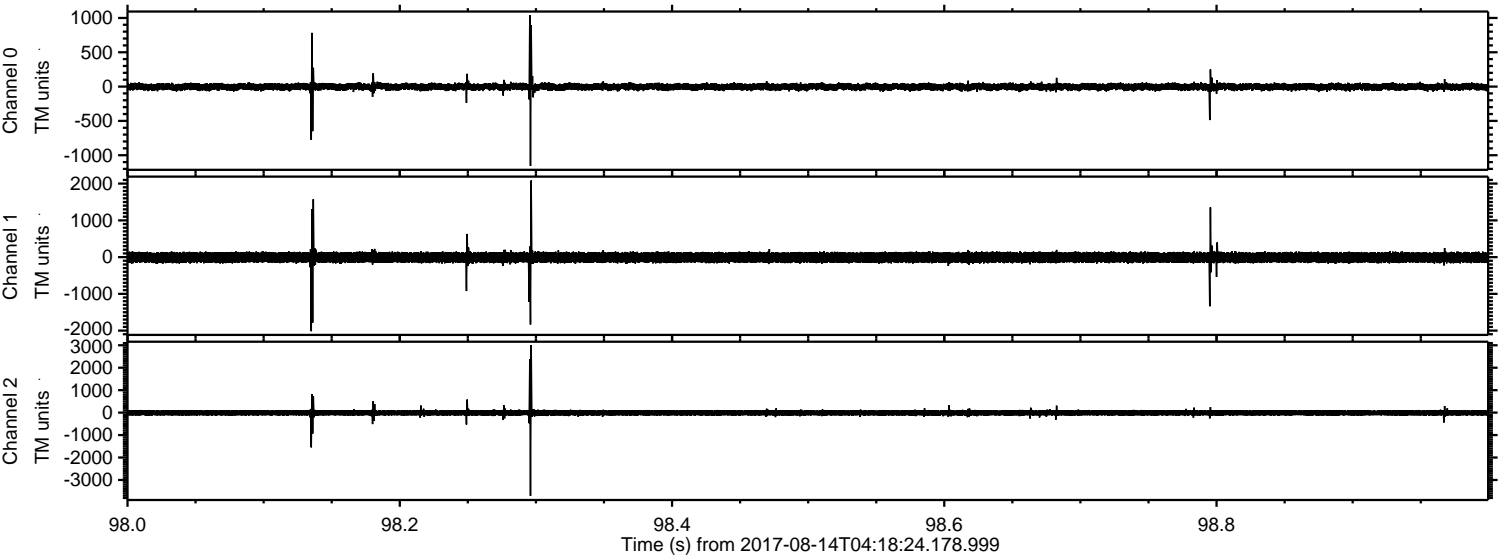
Channel 0
mn: -1528
mx: 1362
 μ : -3.3
 σ : 32.3

Channel 1
mn: -1442
mx: 1369
 μ : -9.5
 σ : 80.4

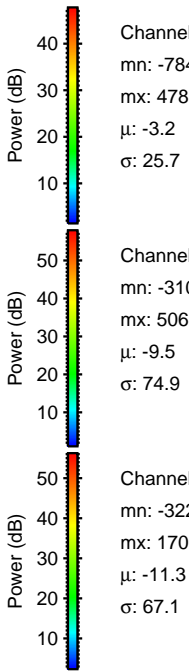
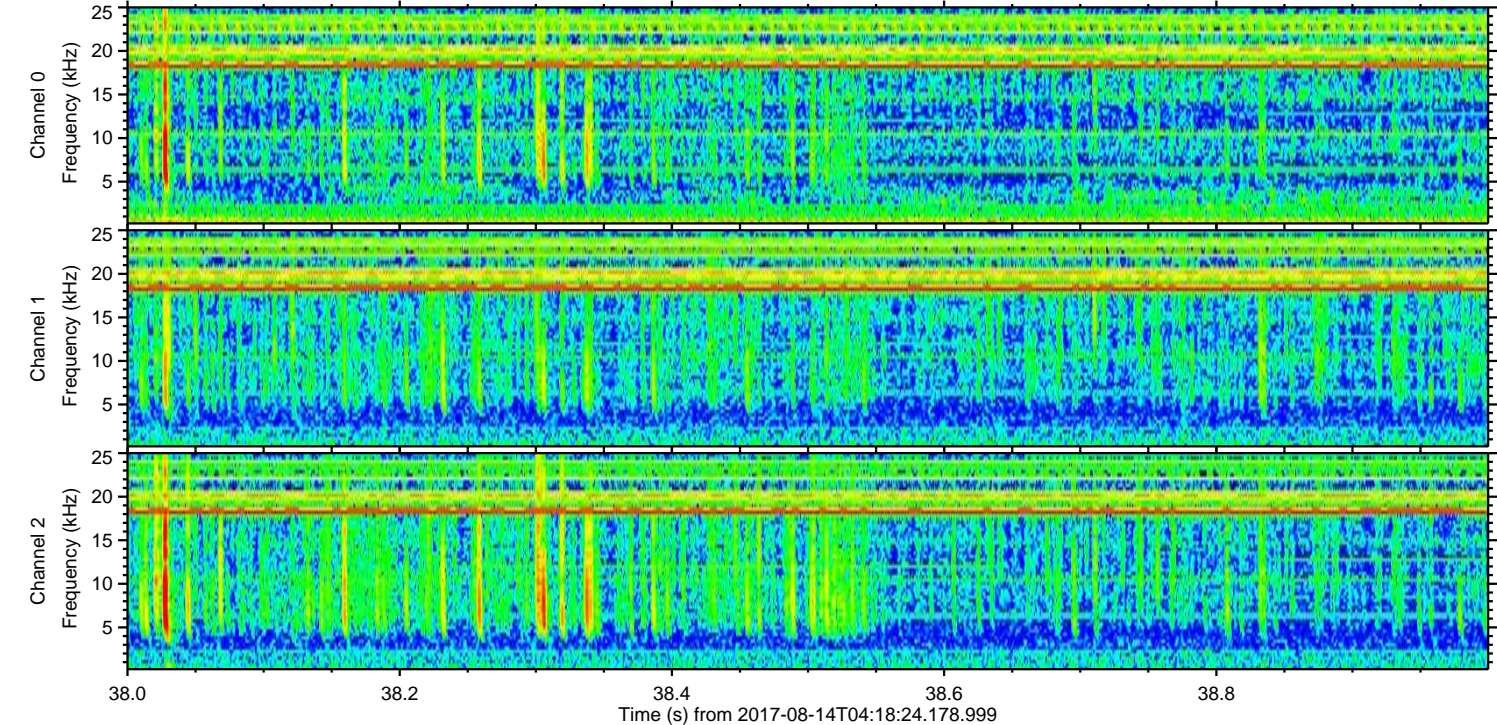
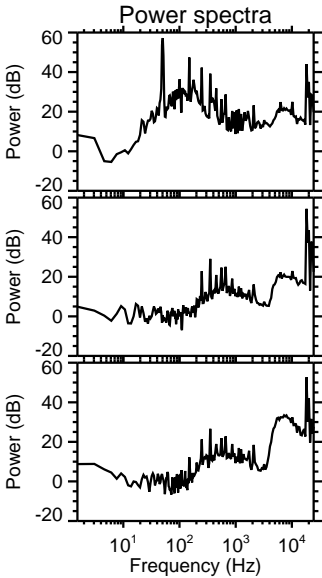
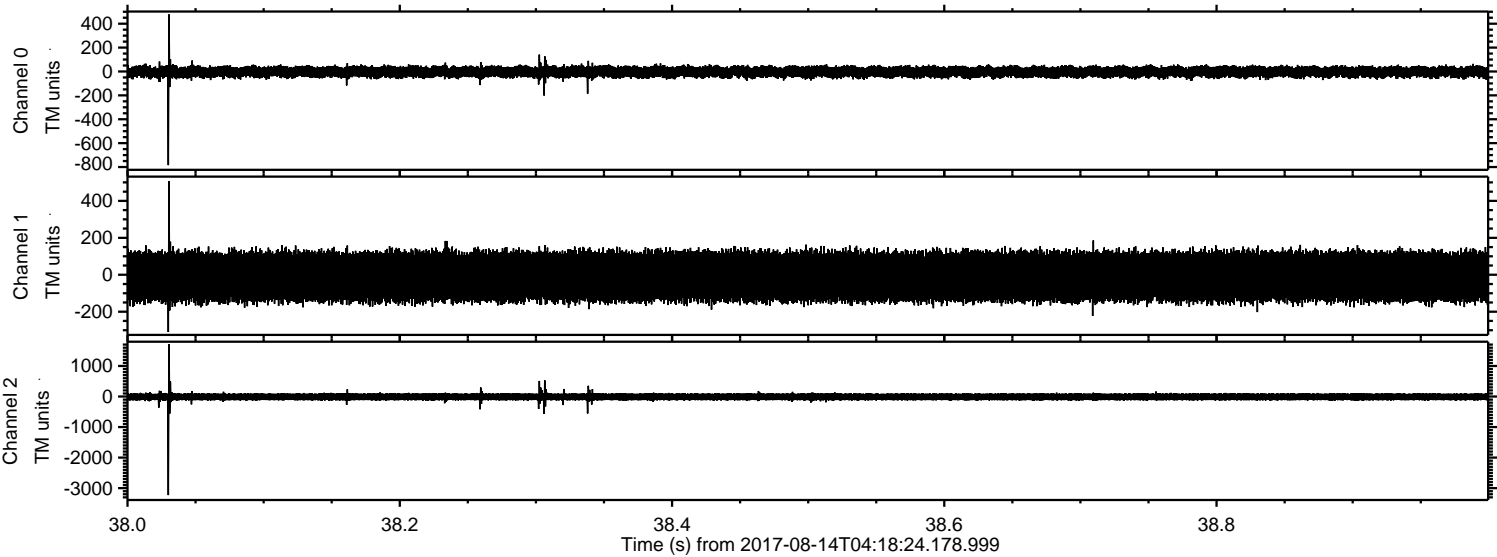
Channel 2
mn: -3953
mx: 4001
 μ : -11.3
 σ : 92.2

ELMAVAN 3D WAVEFORMS (Measured data sampled at 50 kHz) 51000 packets of 144 samples from 2017-08-14T04:18:24.178.999. Part 99/147

Processed Mon Aug 14 06:25:59 2017 by ELM ver.2012-10-06 from 001__elm20170814_041823__dat00.bin



Processed Mon Aug 14 06:26:00 2017 by ELM ver.2012-10-06 from 001__elm20170814_041823__dat00.bin



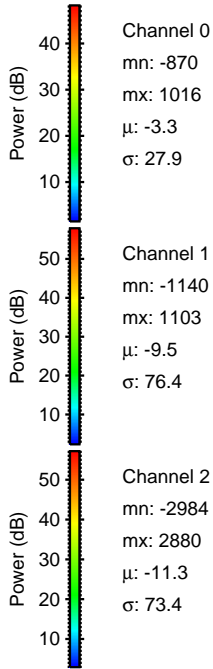
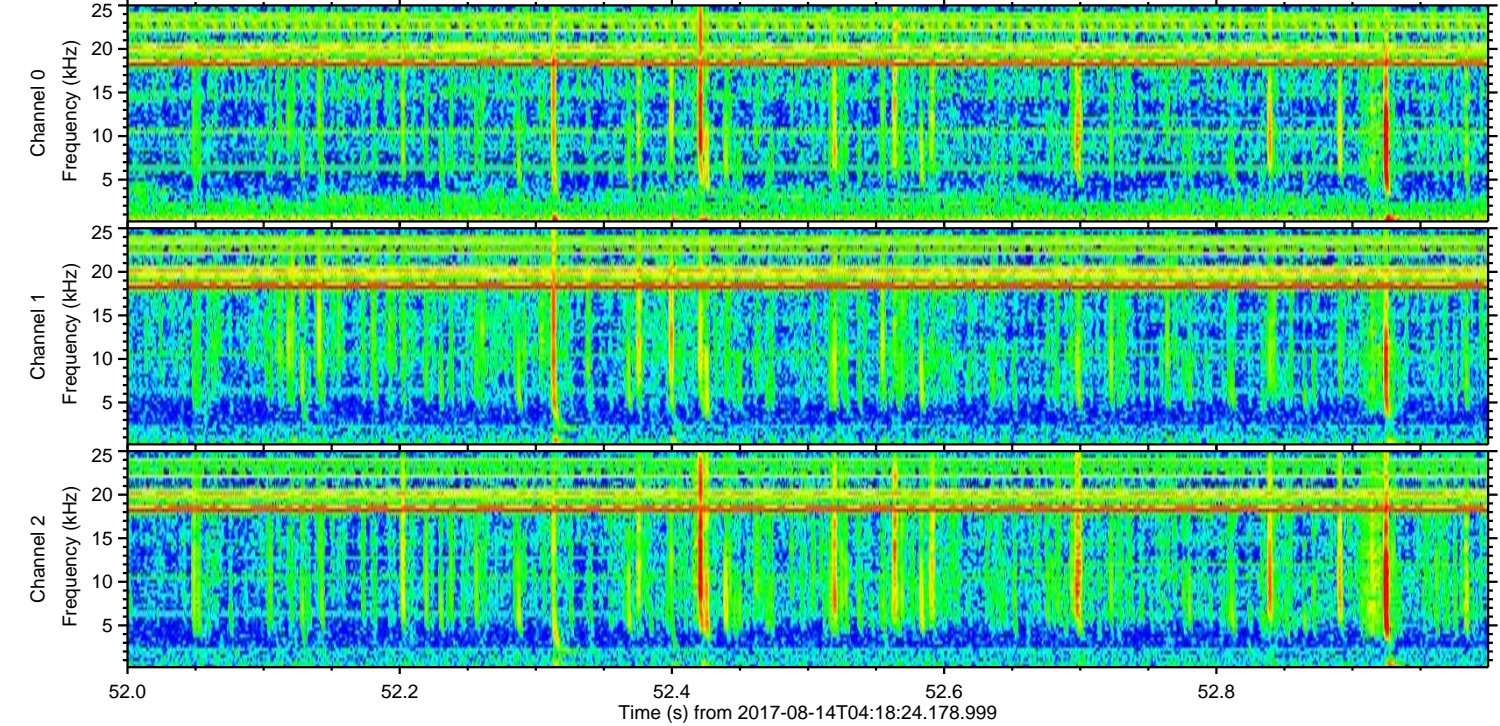
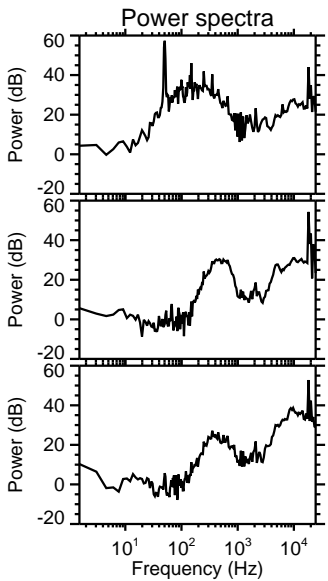
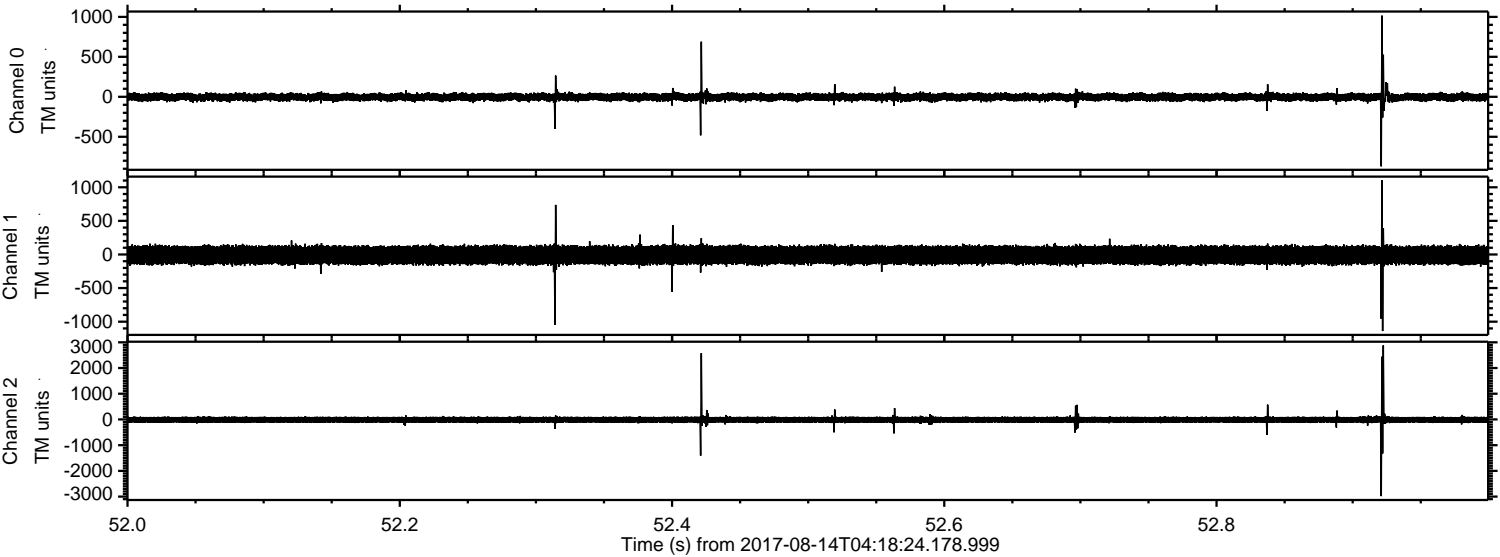
Channel 0
mn: -784
mx: 478
 μ : -3.2
 σ : 25.7

Channel 1
mn: -310
mx: 506
 μ : -9.5
 σ : 74.9

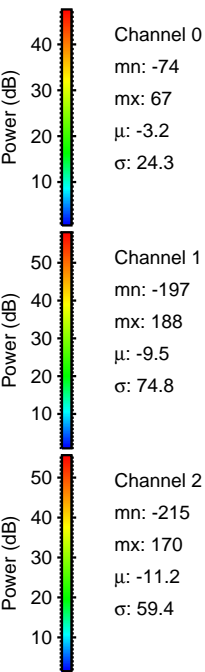
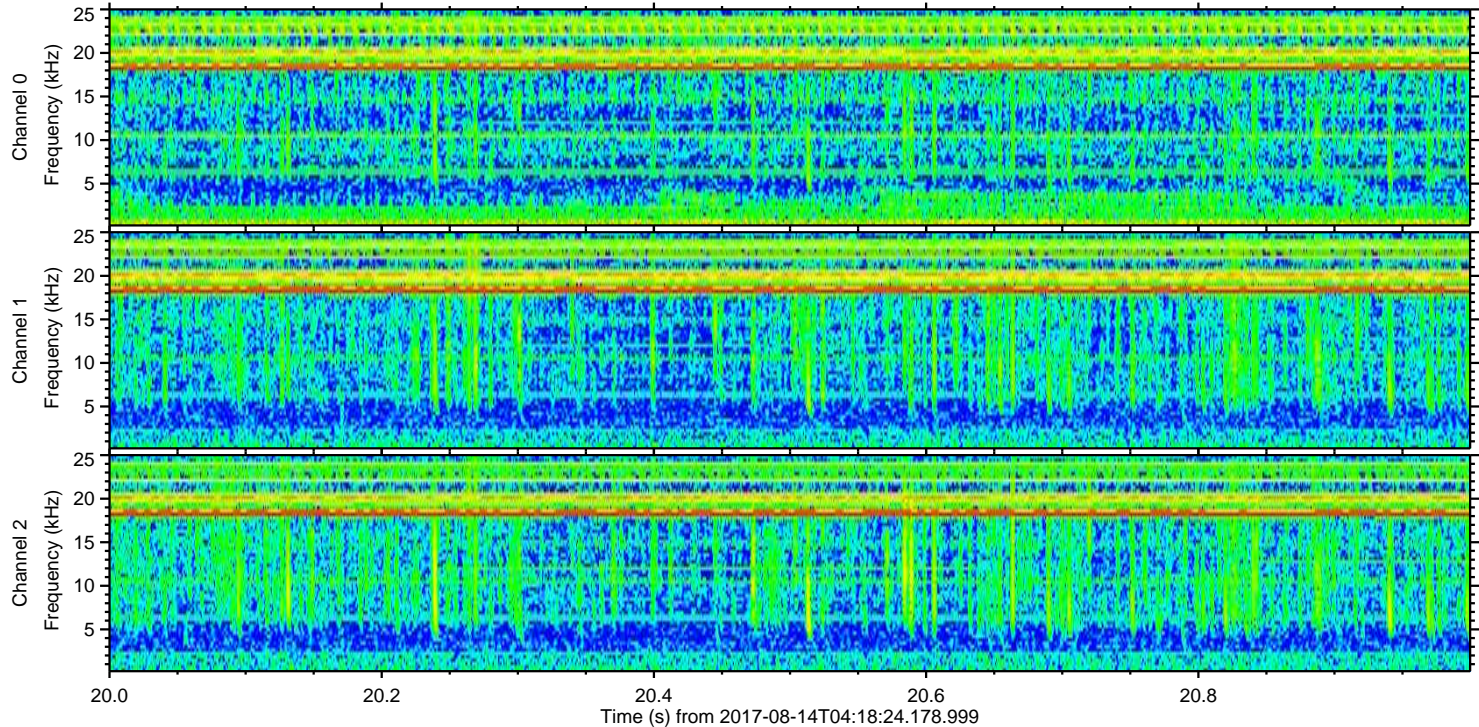
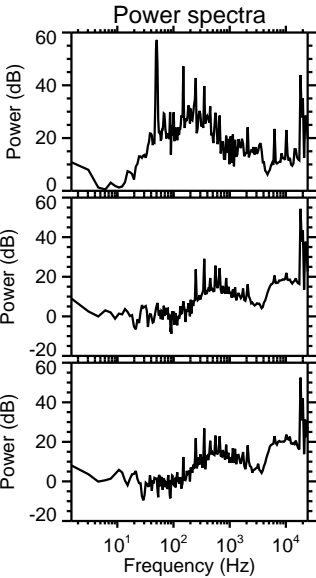
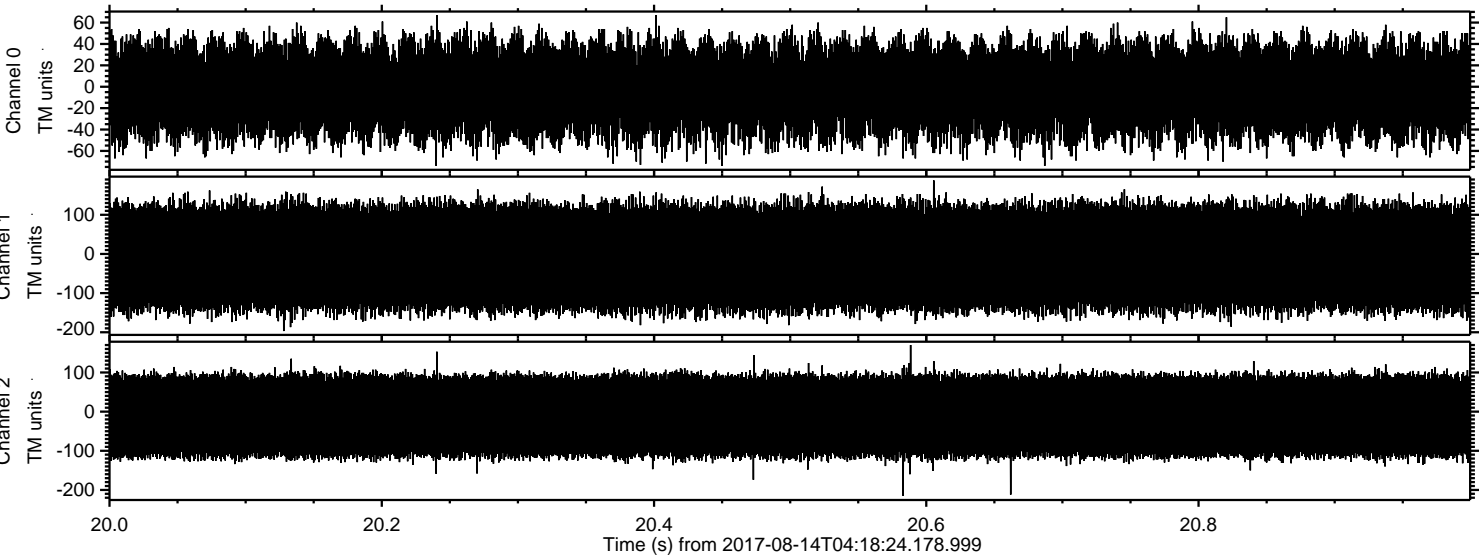
Channel 2
mn: -3226
mx: 1709
 μ : -11.3
 σ : 67.1

ELMAVAN 3D WAVEFORMS (Measured data sampled at 50 kHz) 51000 packets of 144 samples from 2017-08-14T04:18:24.178.999. Part 53/147

Processed Mon Aug 14 06:26:00 2017 by ELM ver.2012-10-06 from 001__elm20170814_041823__dat00.bin



Processed Mon Aug 14 06:26:01 2017 by ELM ver.2012-10-06 from 001__elm20170814_041823__dat00.bin



Channel 0
mn: -74
mx: 67
 μ : -3.2
 σ : 24.3

Channel 1
mn: -197
mx: 188
 μ : -9.5
 σ : 74.8

Channel 2
mn: -215
mx: 170
 μ : -11.2
 σ : 59.4