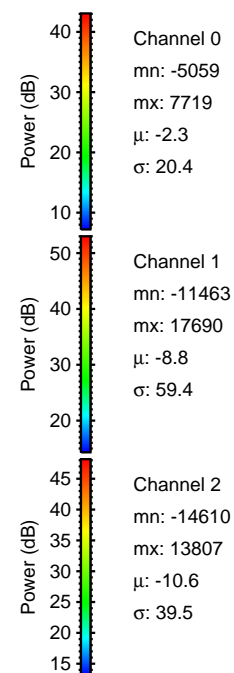
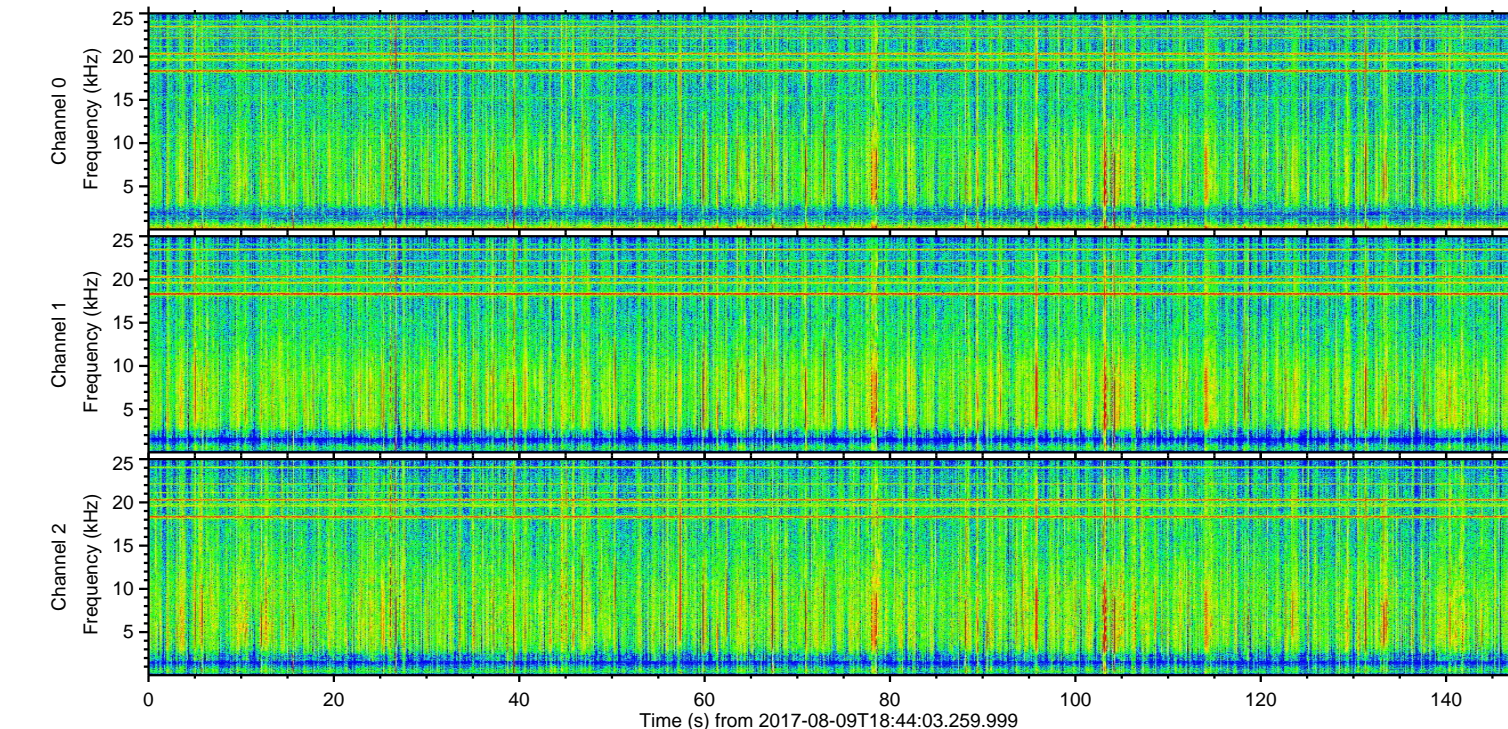
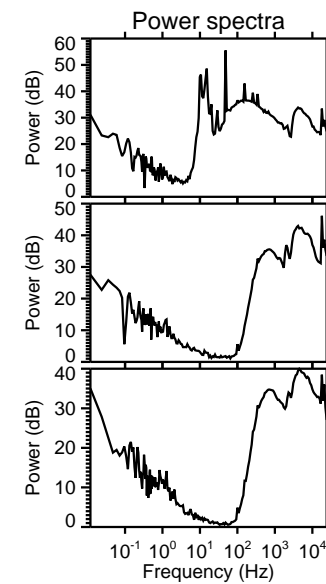
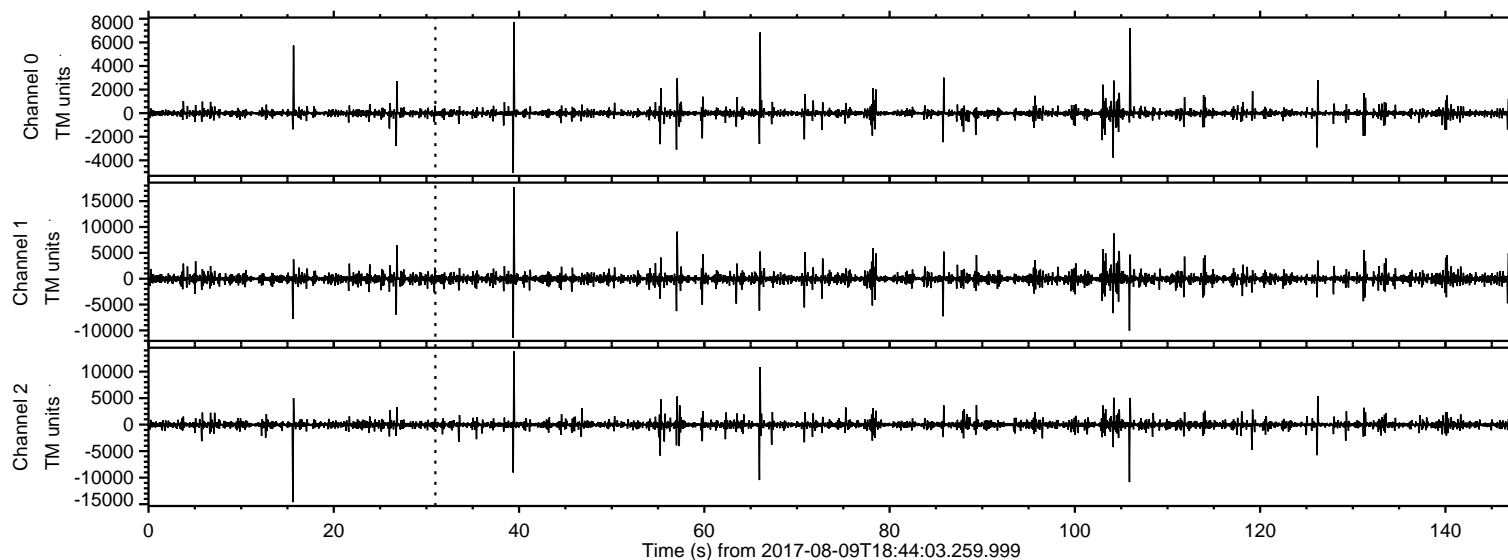


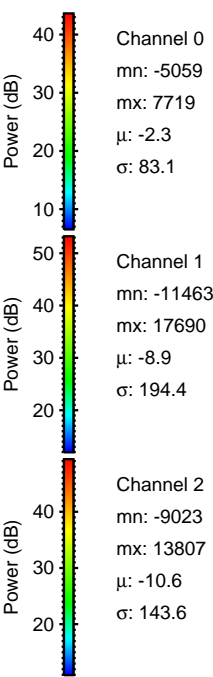
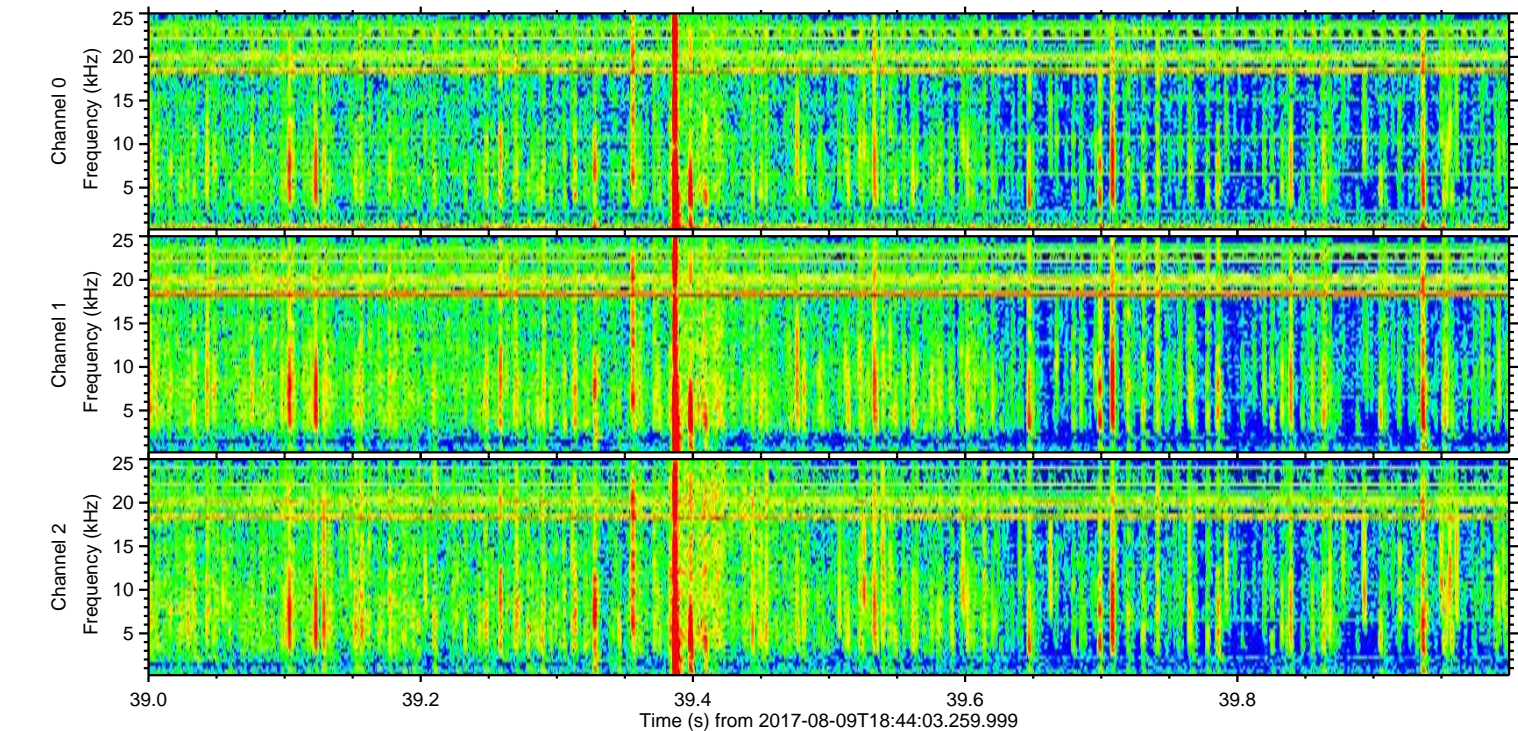
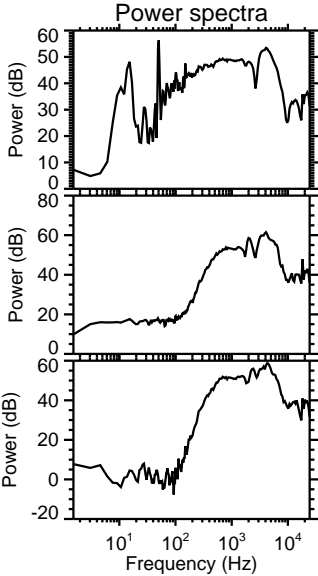
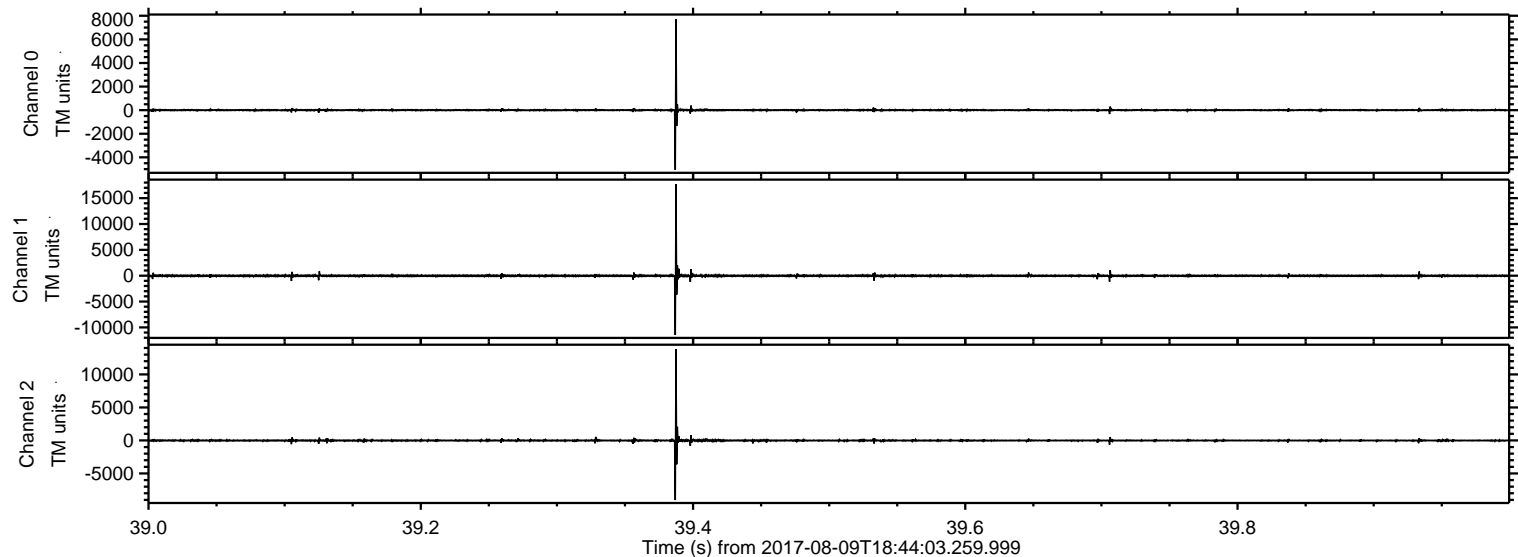
ELMAVAN 3D WAVEFORMS (Measured data sampled at 50 kHz) 50999 packets of 144 samples from 2017-08-09T18:44:03.259.999.

Processed Wed Aug 9 20:51:59 2017 by ELM ver.2012-10-06 from 001\_\_elm20170809\_184402\_\_dat00.bin



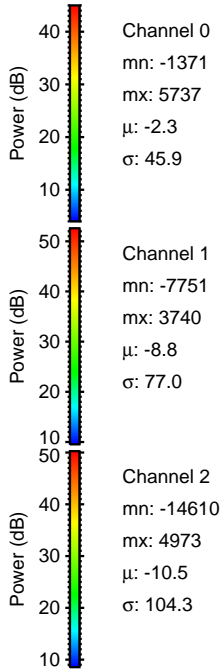
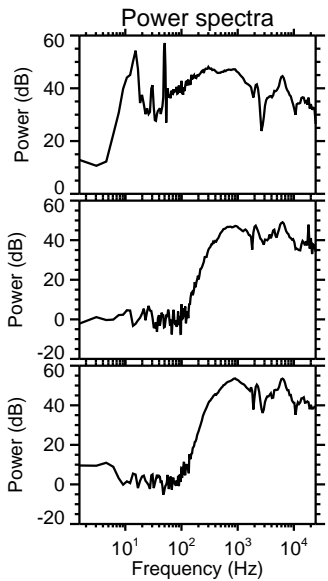
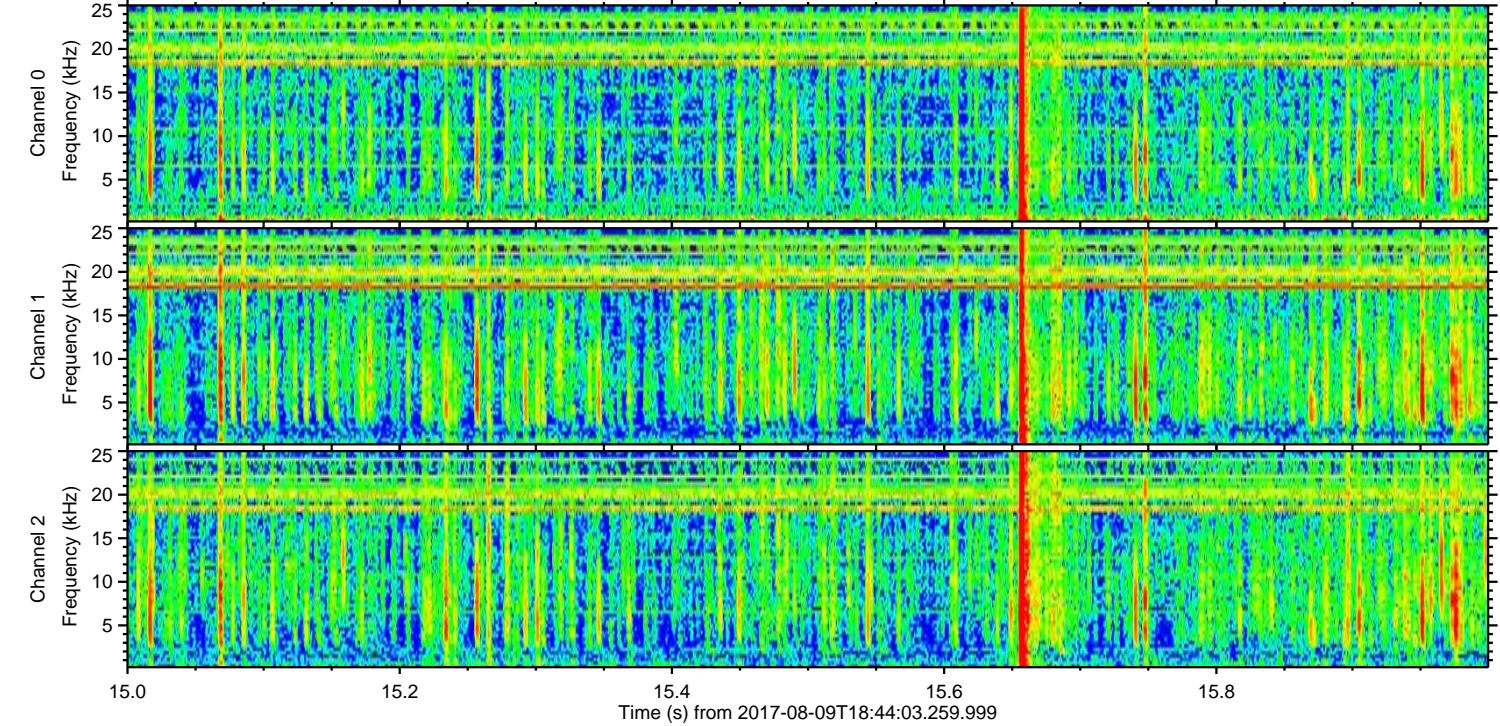
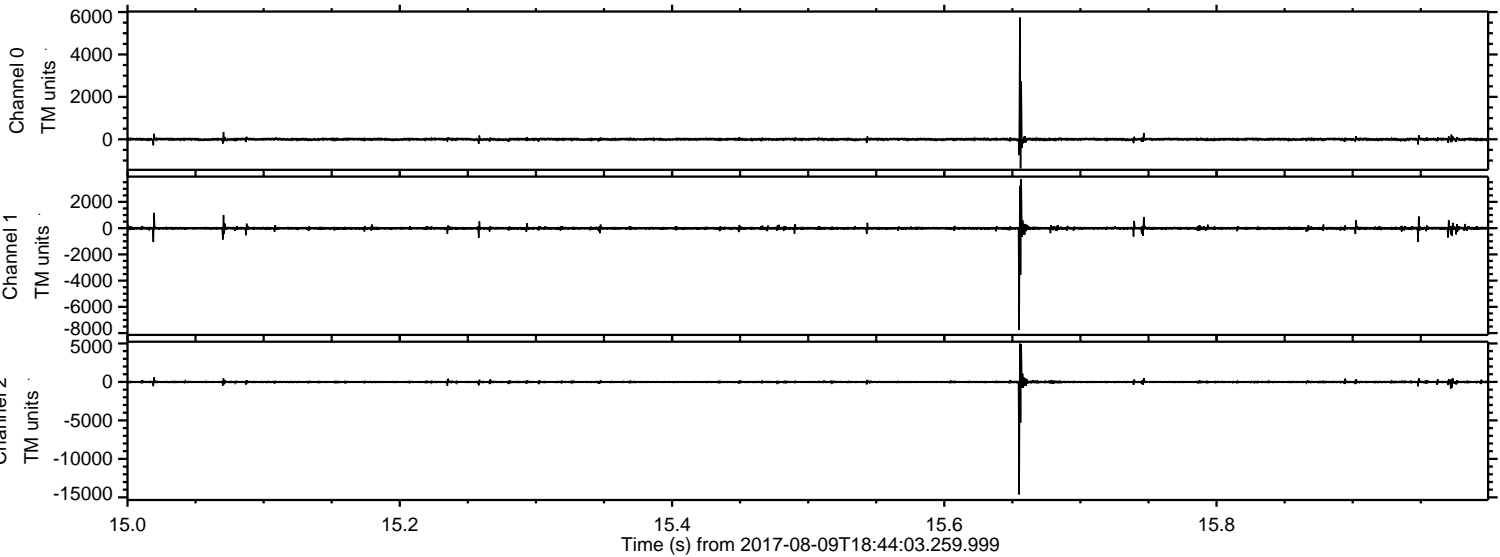


Processed Wed Aug 9 20:52:08 2017 by ELM ver.2012-10-06 from 001\_\_elm20170809\_184402\_\_dat00.bin





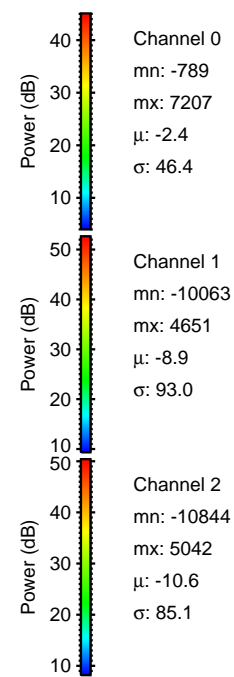
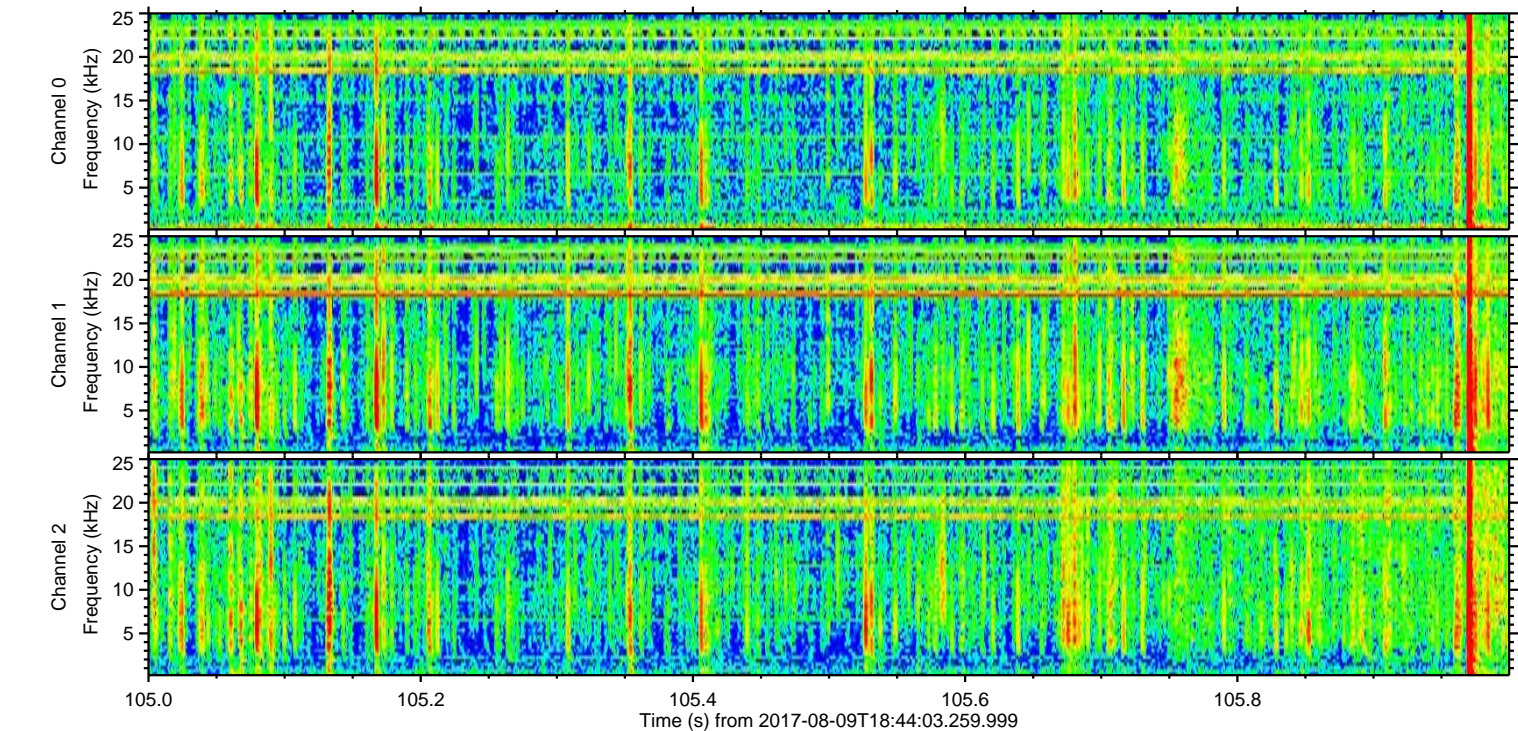
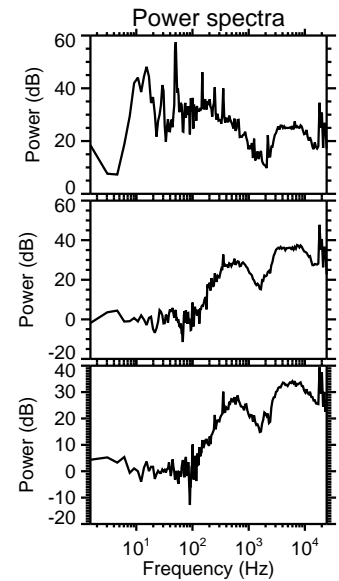
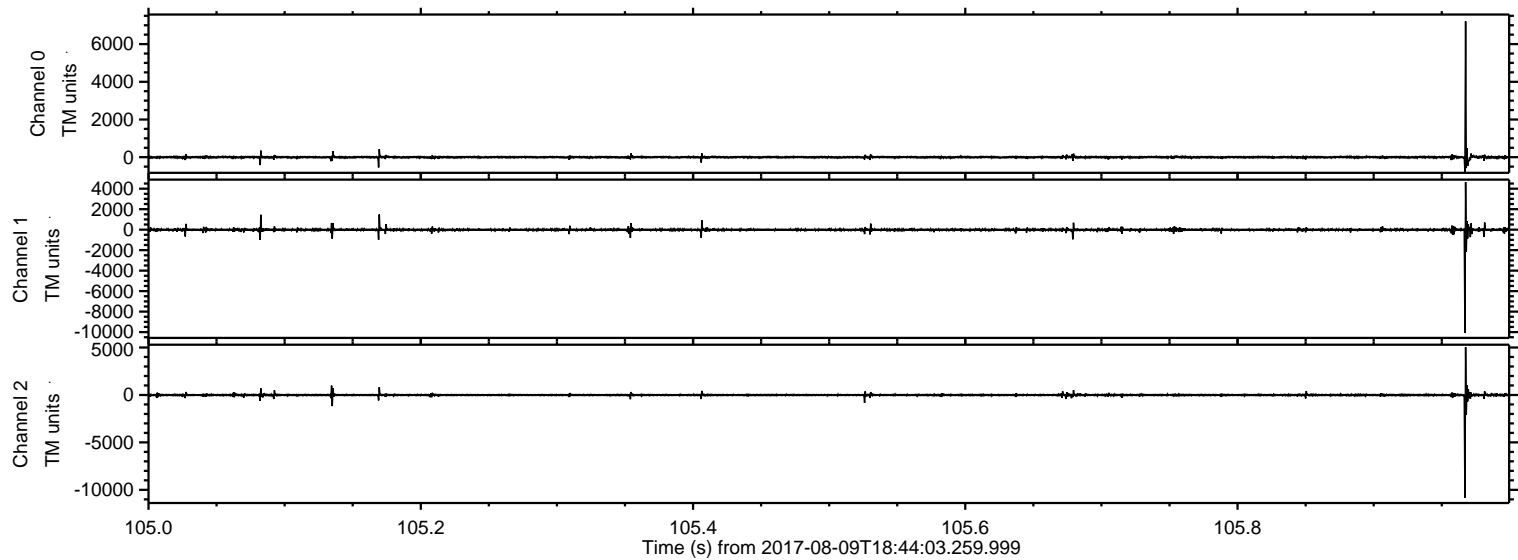
Processed Wed Aug 9 20:52:09 2017 by ELM ver.2012-10-06 from 001\_\_elm20170809\_184402\_\_dat00.bin





ELMAVAN 3D WAVEFORMS (Measured data sampled at 50 kHz) 50999 packets of 144 samples from 2017-08-09T18:44:03.259.999. Part 106/147

Processed Wed Aug 9 20:52:10 2017 by ELM ver.2012-10-06 from 001\_\_elm20170809\_184402\_\_dat00.bin



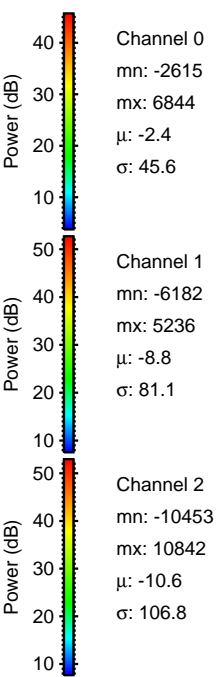
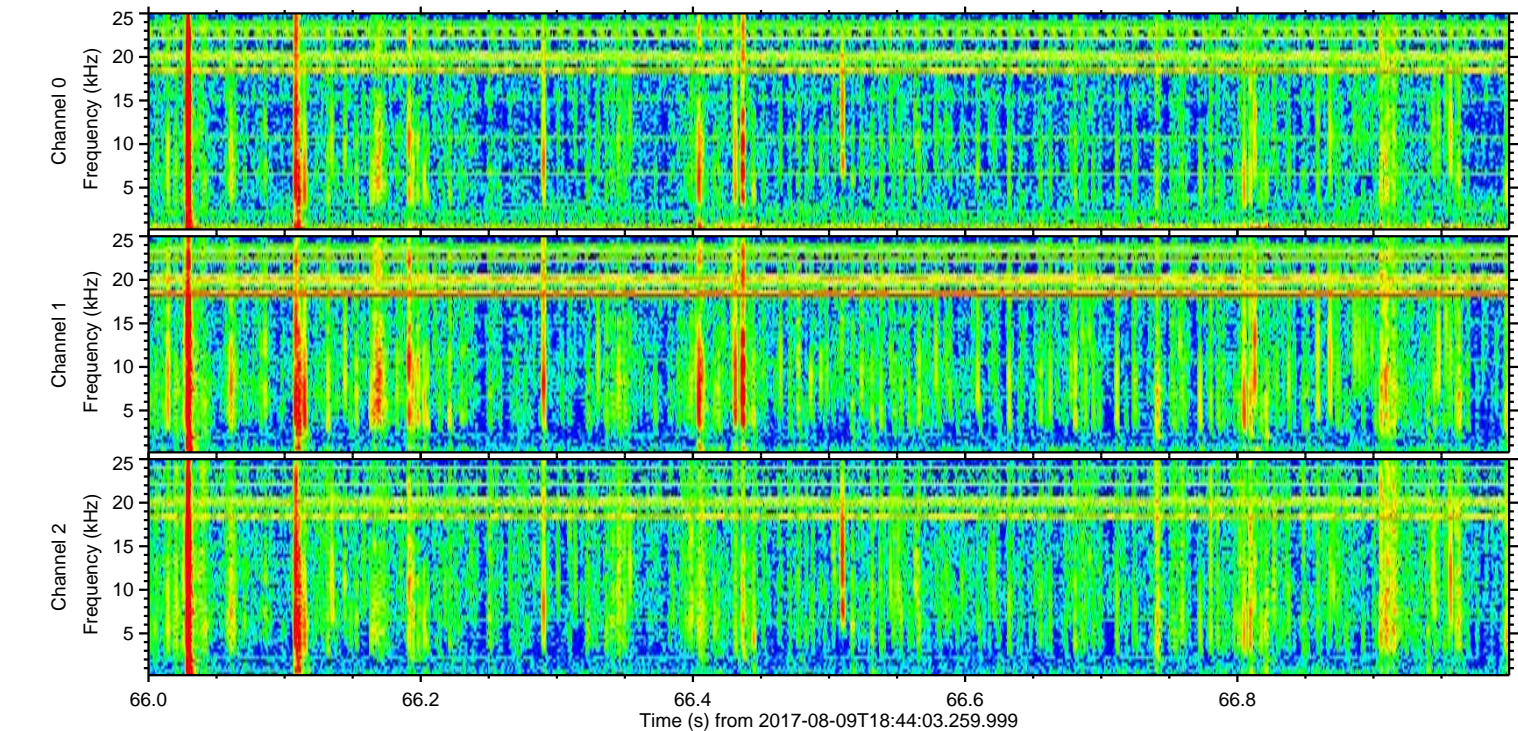
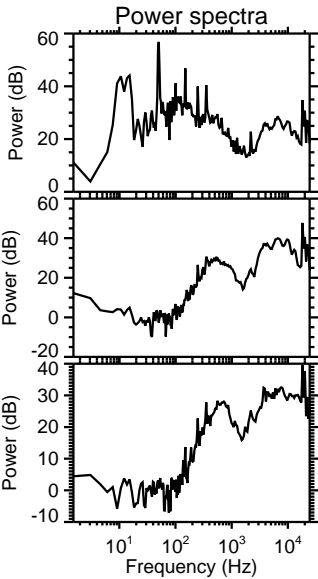
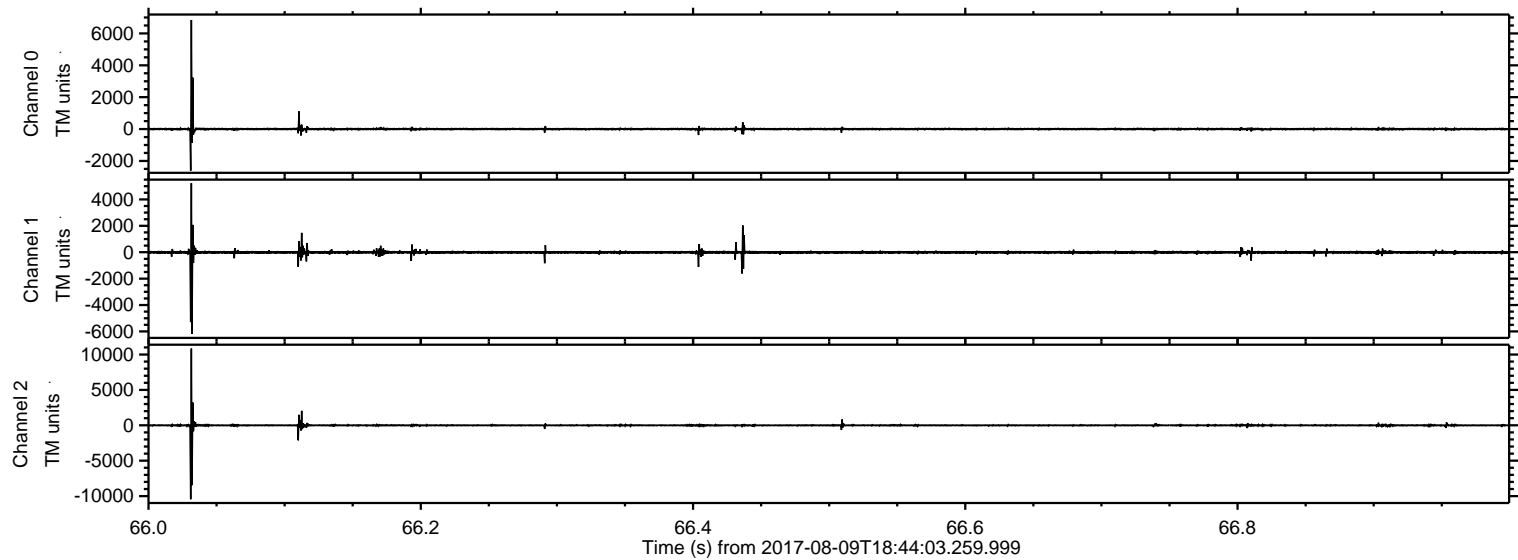
Channel 0  
mn: -789  
mx: 7207  
 $\mu$ : -2.4  
 $\sigma$ : 46.4

Channel 1  
mn: -10063  
mx: 4651  
 $\mu$ : -8.9  
 $\sigma$ : 93.0

Channel 2  
mn: -10844  
mx: 5042  
 $\mu$ : -10.6  
 $\sigma$ : 85.1

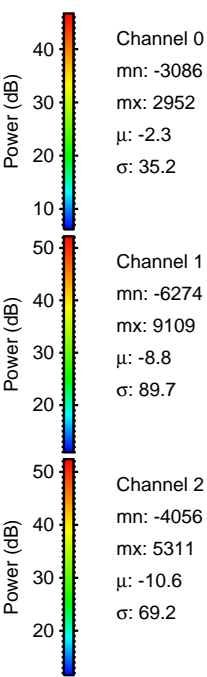
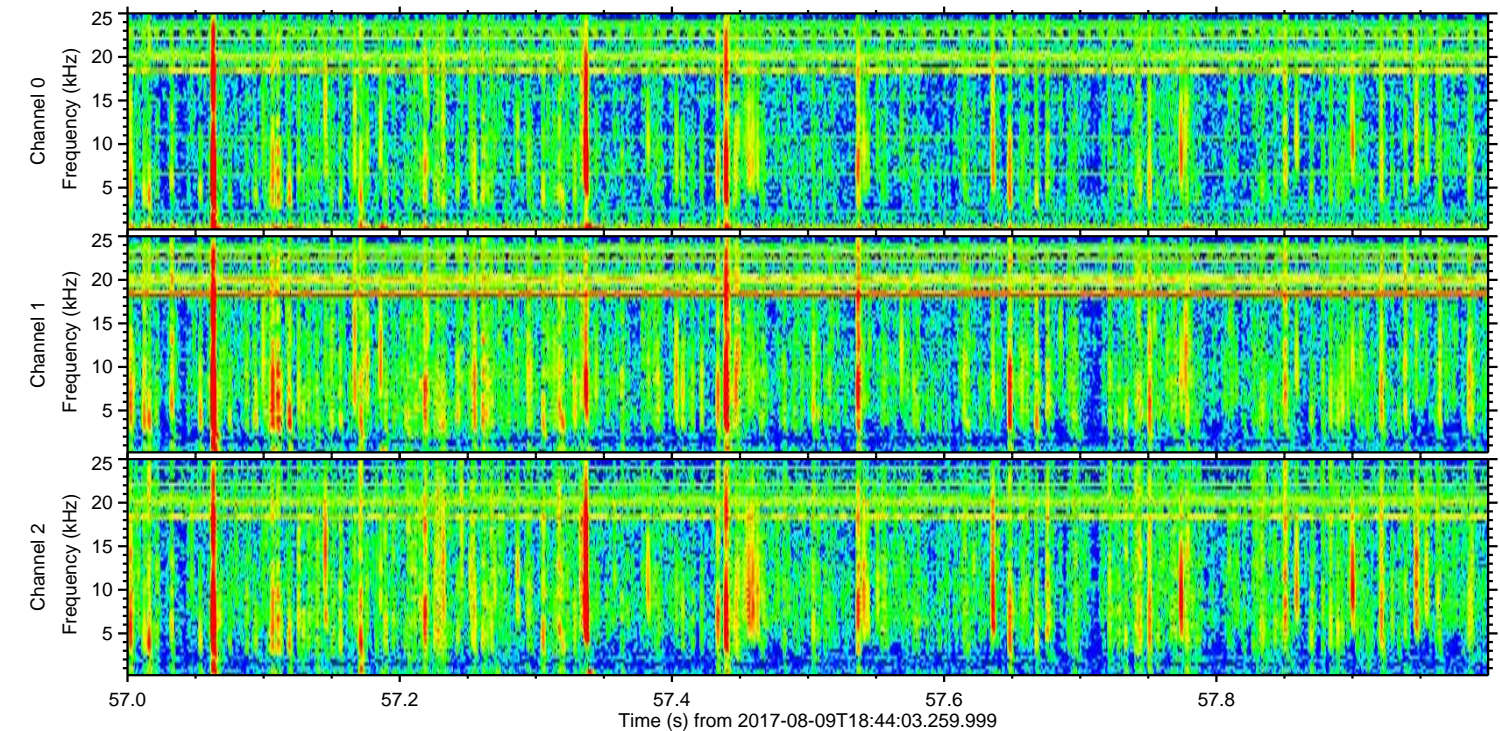
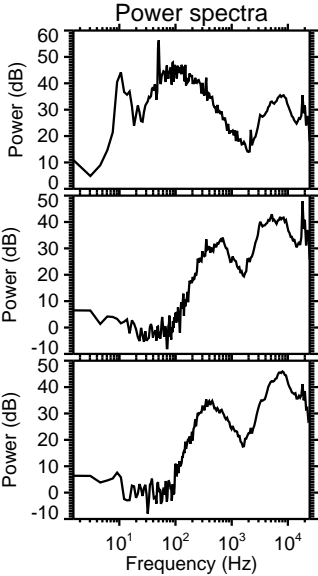
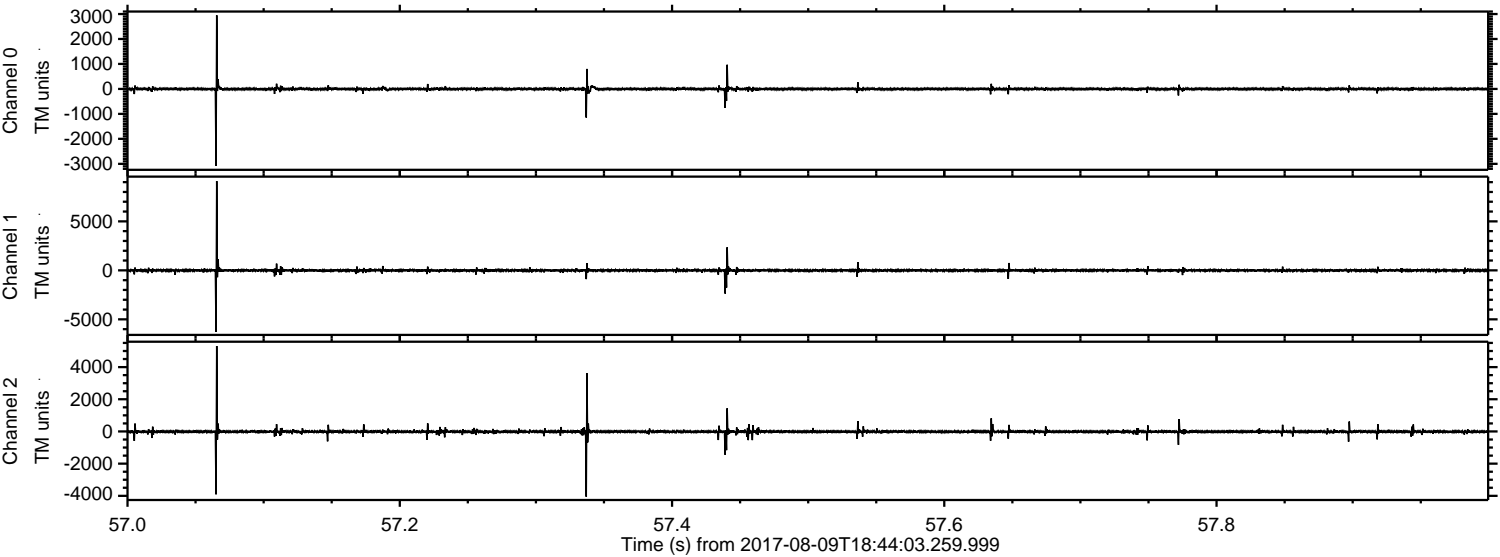


Processed Wed Aug 9 20:52:11 2017 by ELM ver.2012-10-06 from 001\_\_elm20170809\_184402\_\_dat00.bin





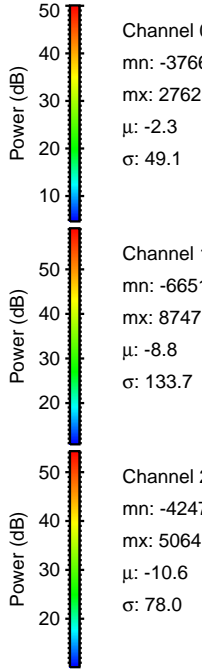
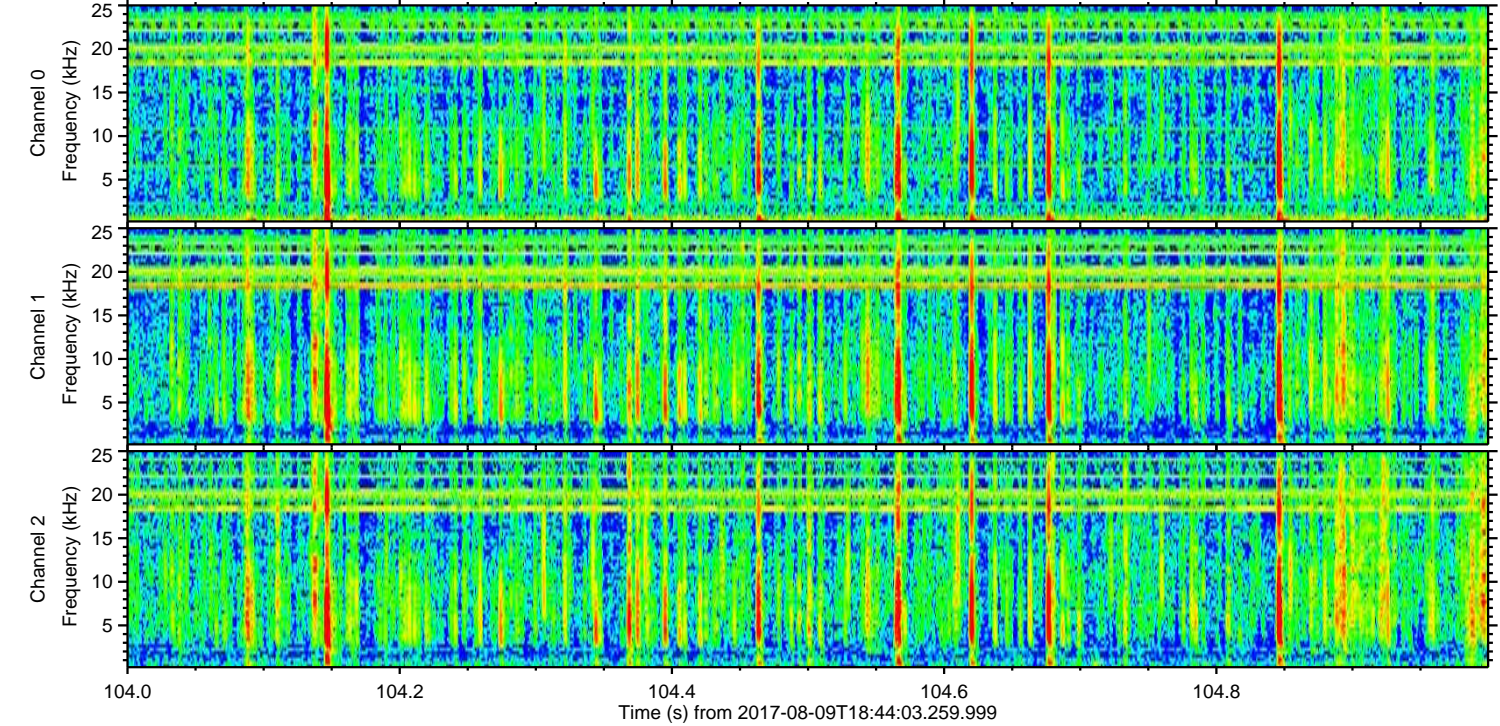
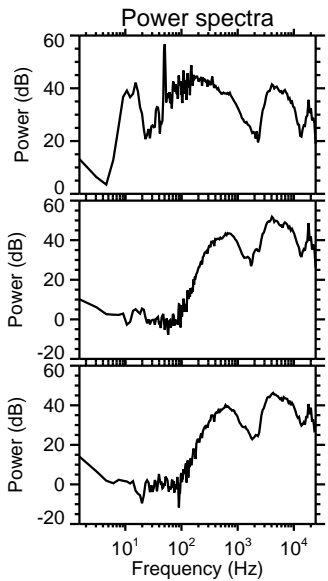
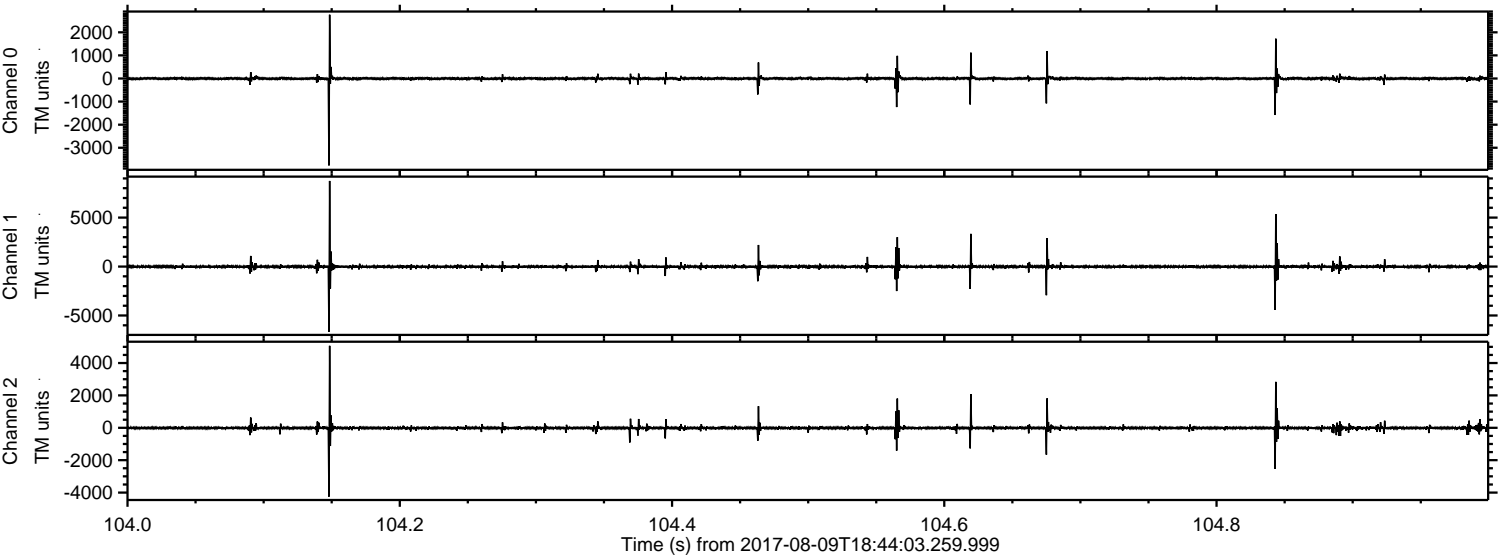
Processed Wed Aug 9 20:52:12 2017 by ELM ver.2012-10-06 from 001\_\_elm20170809\_184402\_\_dat00.bin





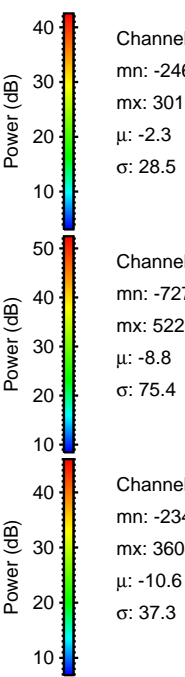
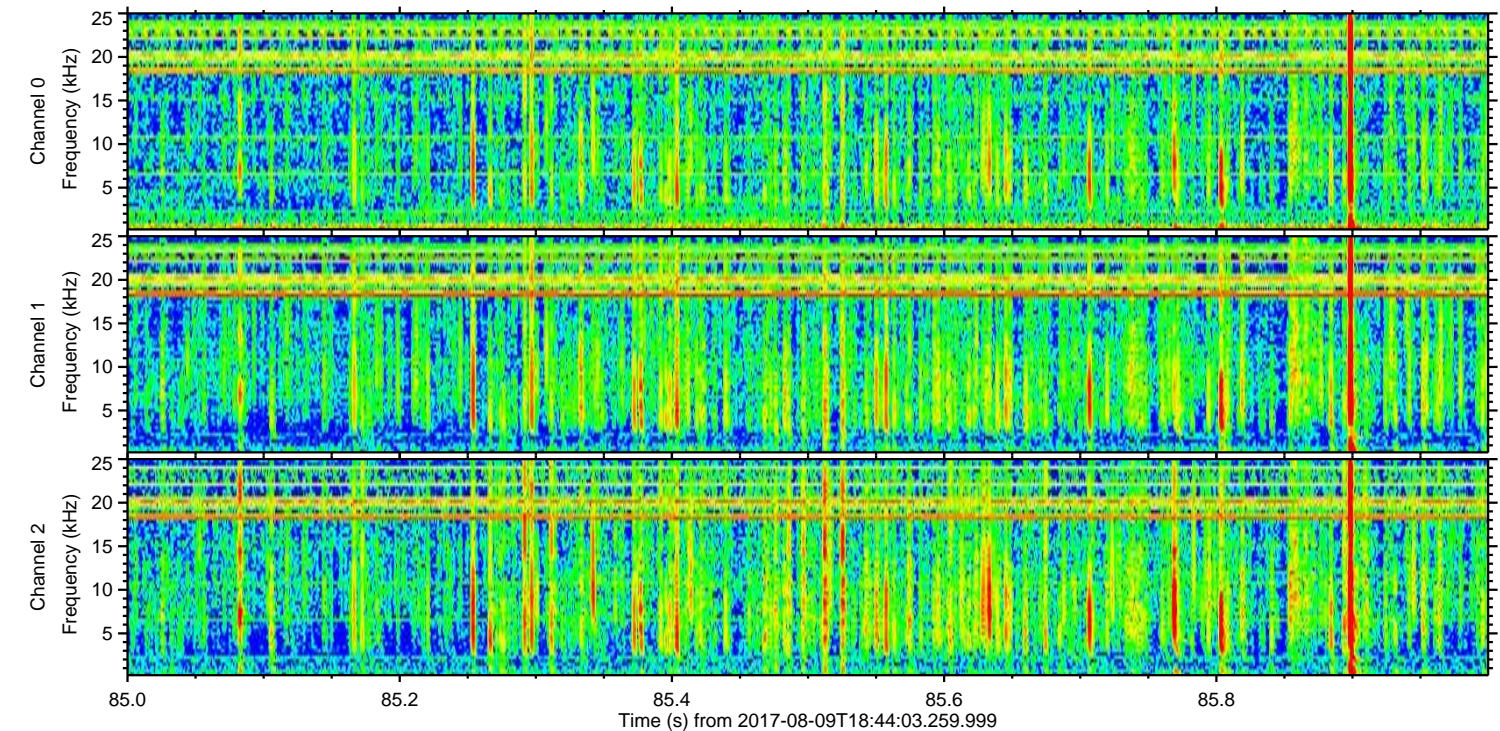
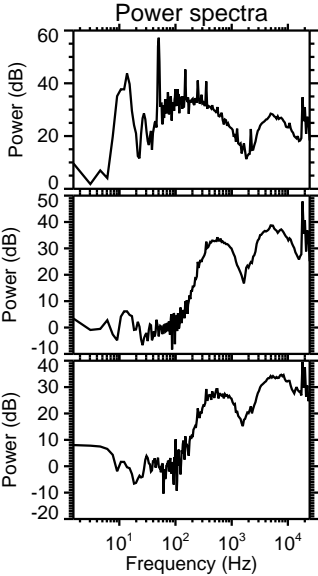
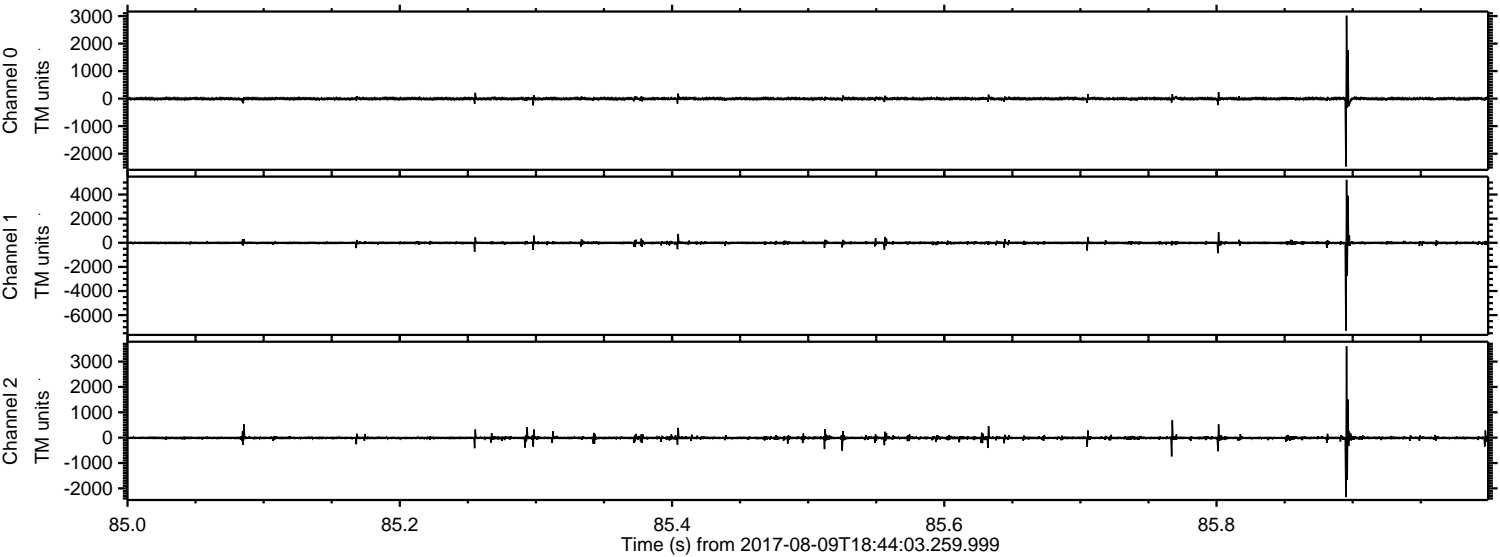
ELMAVAN 3D WAVEFORMS (Measured data sampled at 50 kHz) 50999 packets of 144 samples from 2017-08-09T18:44:03.259.999. Part 105/147

Processed Wed Aug 9 20:52:13 2017 by ELM ver.2012-10-06 from 001\_\_elm20170809\_184402\_\_dat00.bin





Processed Wed Aug 9 20:52:14 2017 by ELM ver.2012-10-06 from 001\_\_elm20170809\_184402\_\_dat00.bin



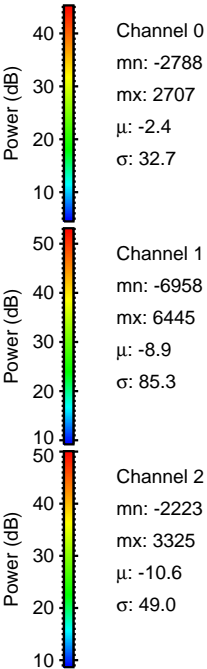
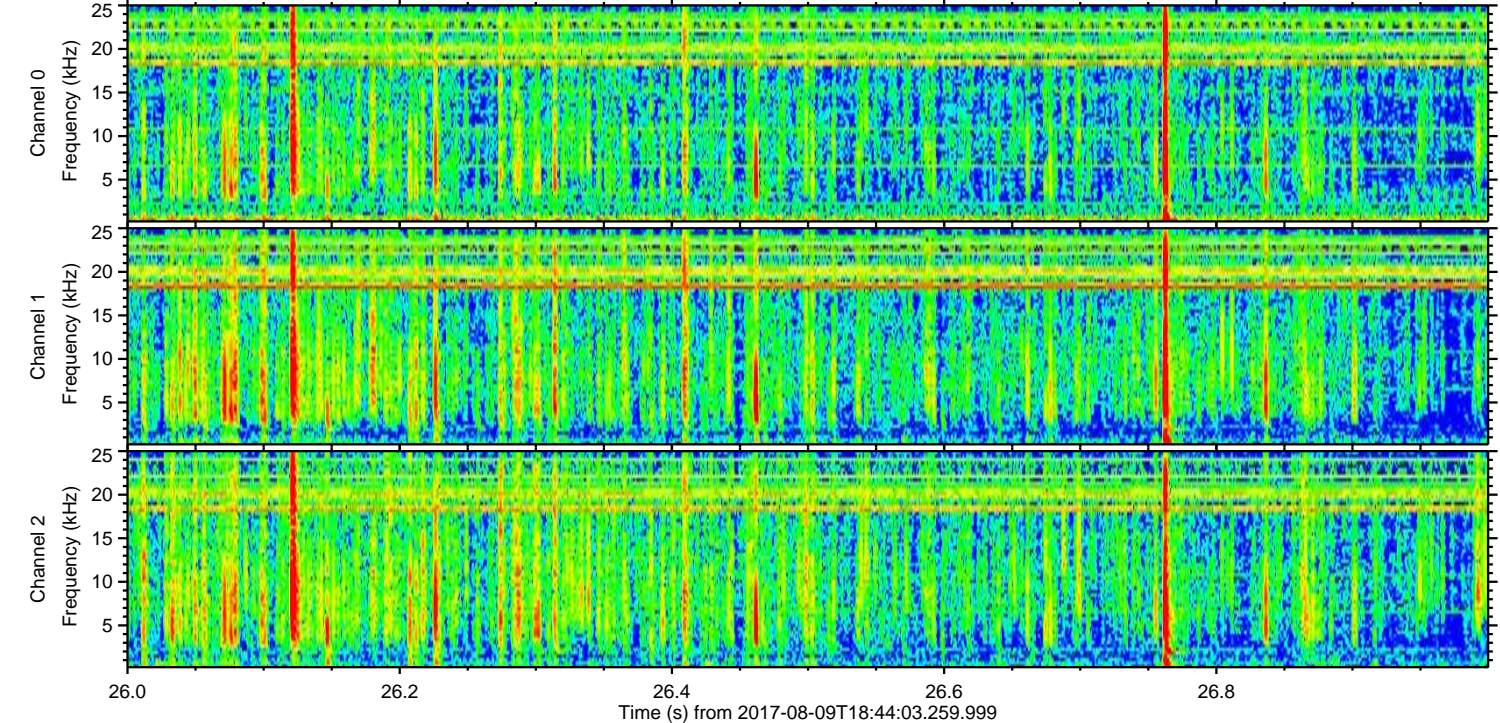
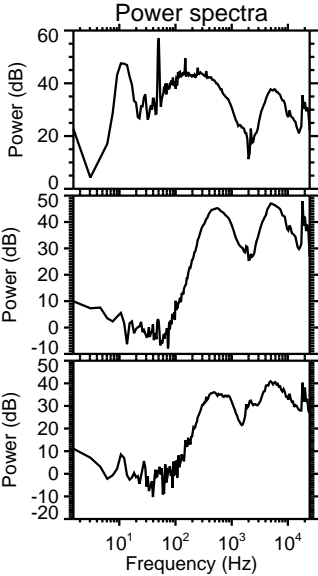
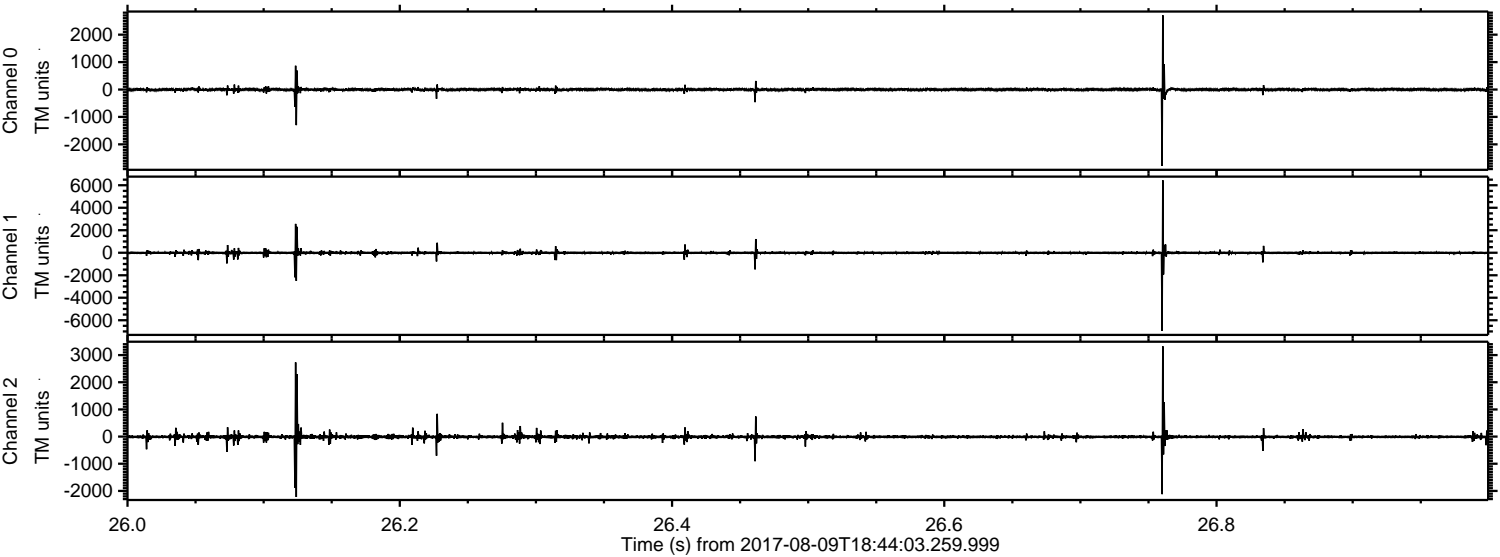
Channel 0  
mn: -2463  
mx: 3013  
 $\mu$ : -2.3  
 $\sigma$ : 28.5

Channel 1  
mn: -7277  
mx: 5226  
 $\mu$ : -8.8  
 $\sigma$ : 75.4

Channel 2  
mn: -2342  
mx: 3604  
 $\mu$ : -10.6  
 $\sigma$ : 37.3

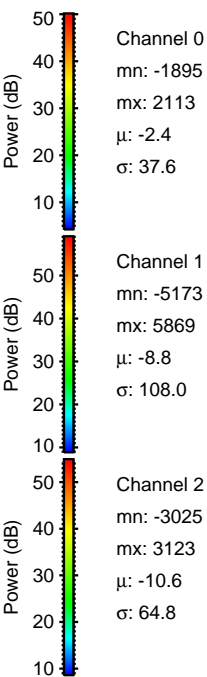
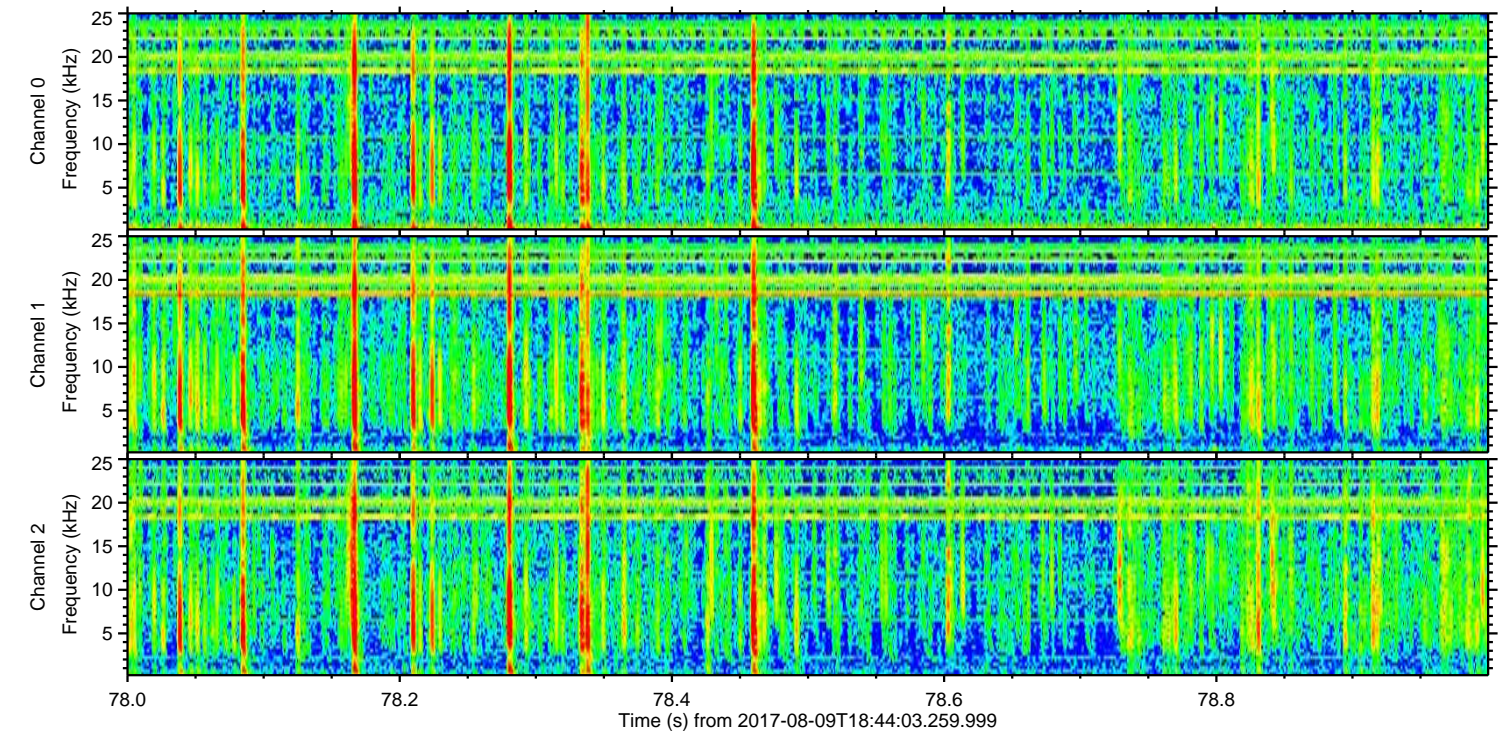
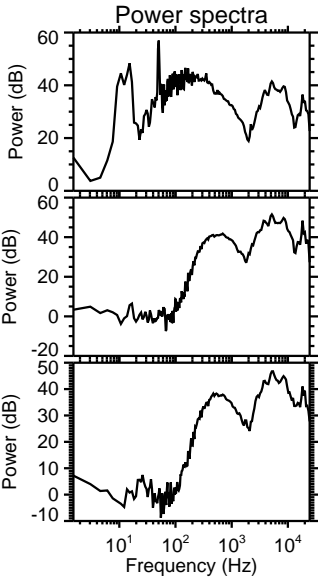
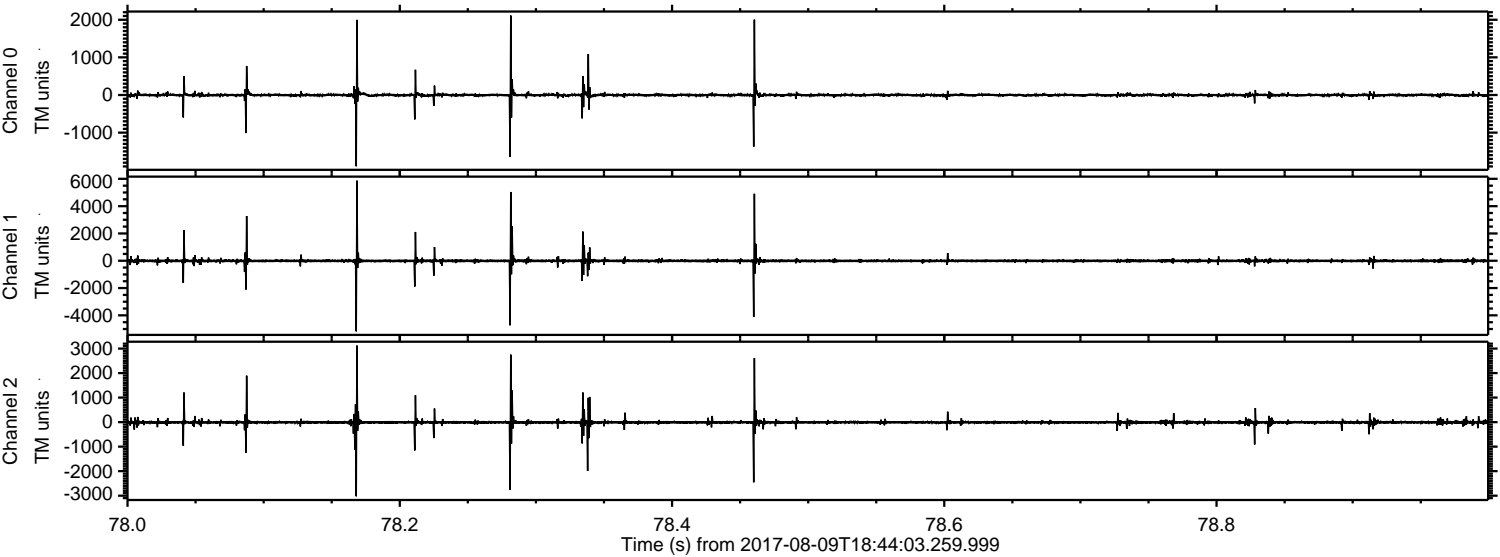


Processed Wed Aug 9 20:52:15 2017 by ELM ver.2012-10-06 from 001\_\_elm20170809\_184402\_\_dat00.bin





Processed Wed Aug 9 20:52:16 2017 by ELM ver.2012-10-06 from 001\_\_elm20170809\_184402\_\_dat00.bin





Processed Wed Aug 9 20:52:16 2017 by ELM ver.2012-10-06 from 001\_\_elm20170809\_184402\_\_dat00.bin

