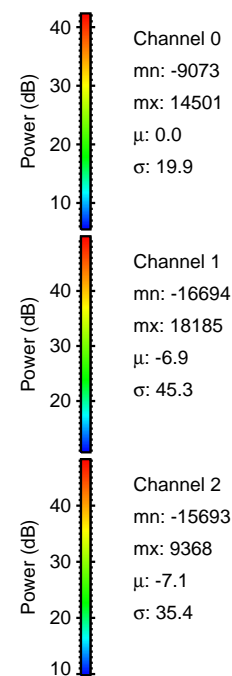
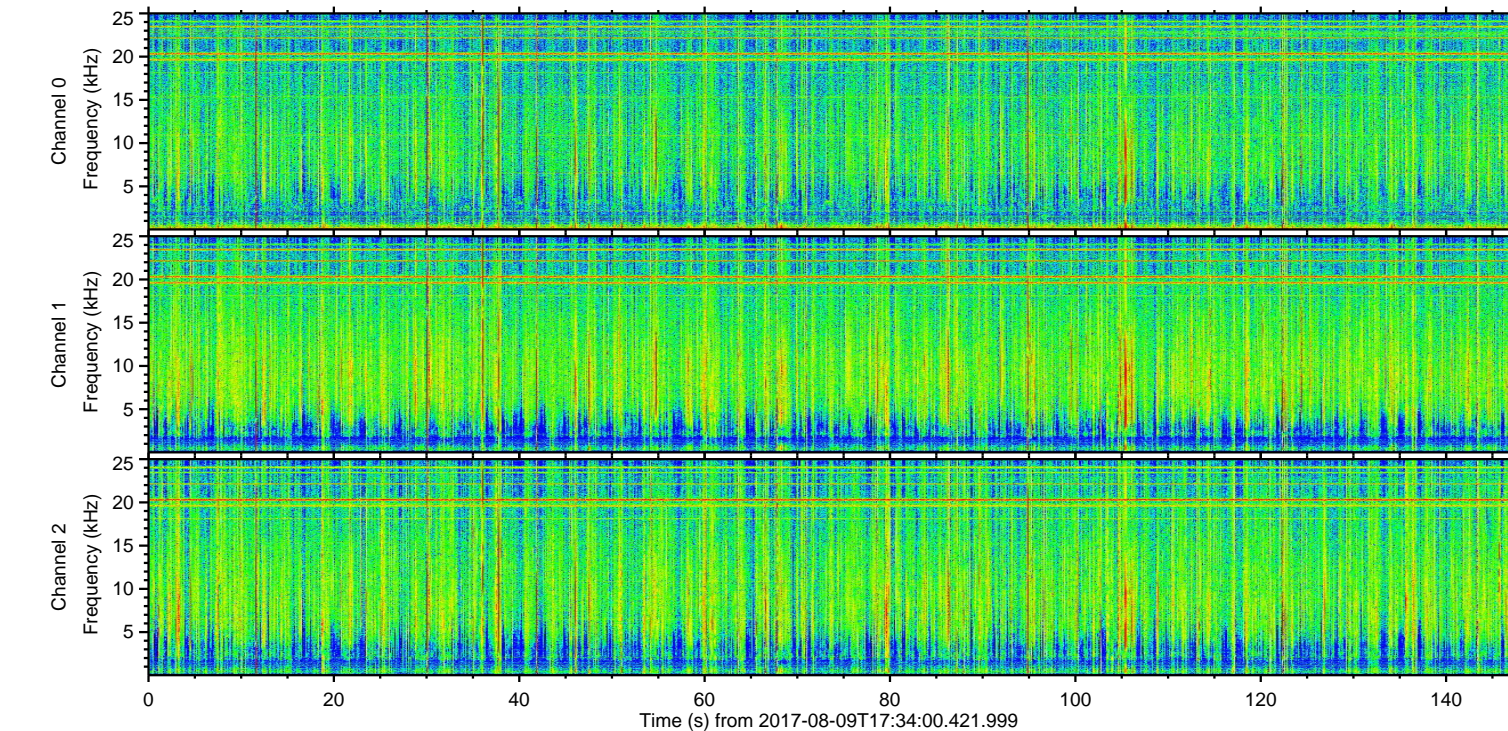
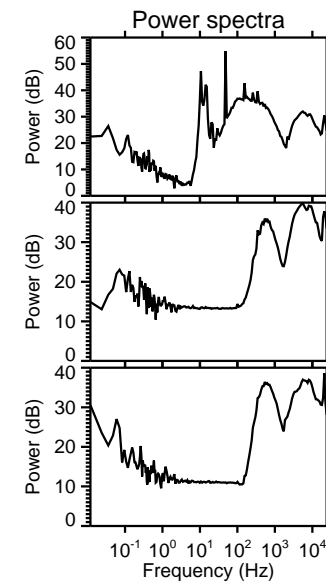
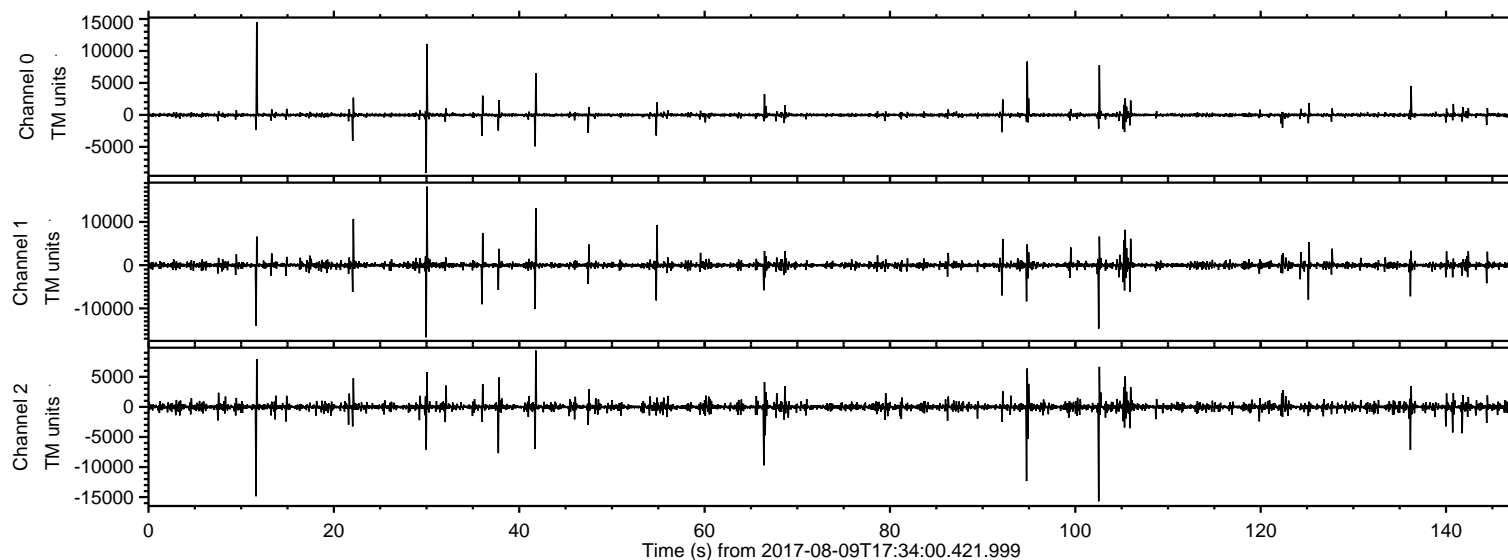


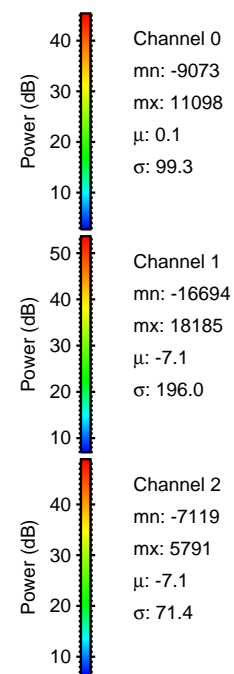
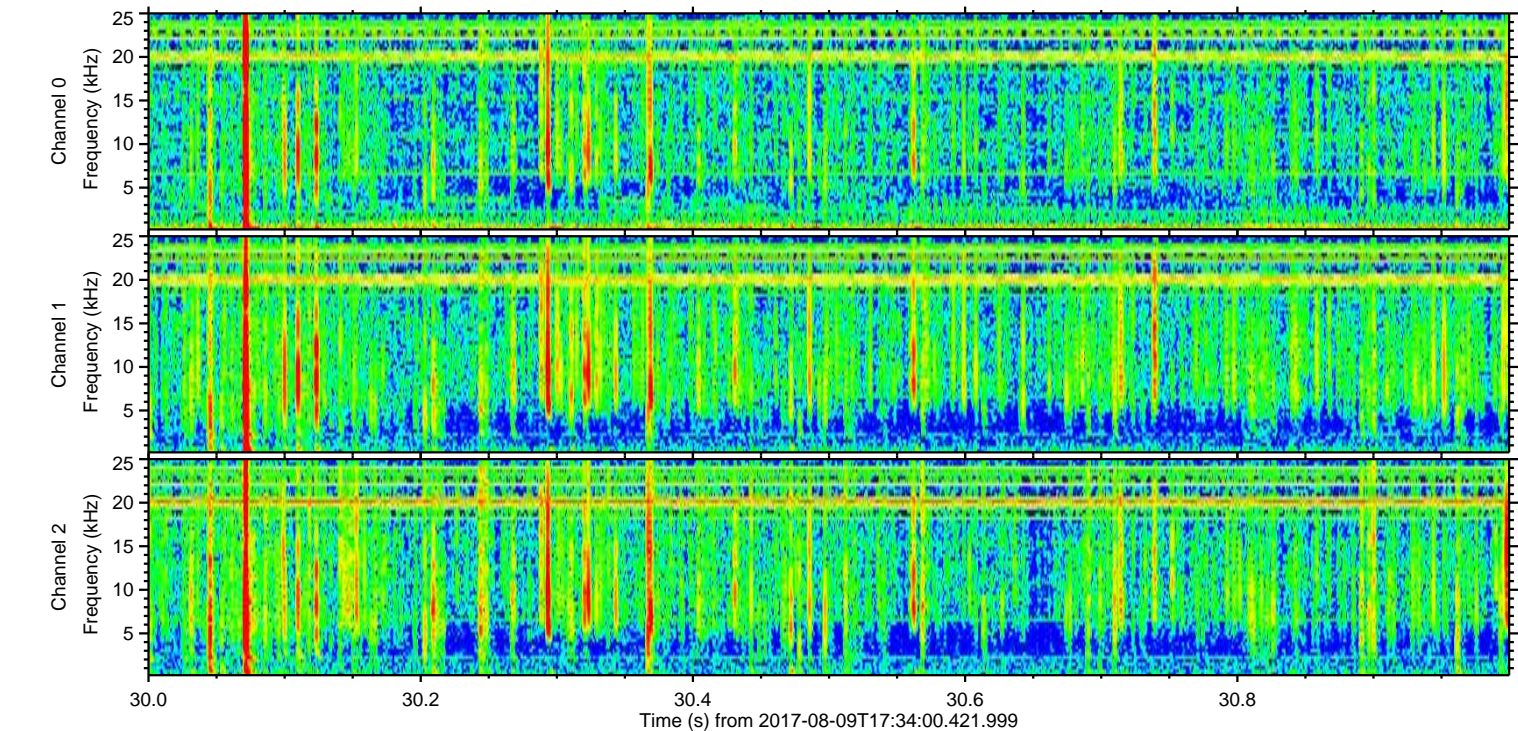
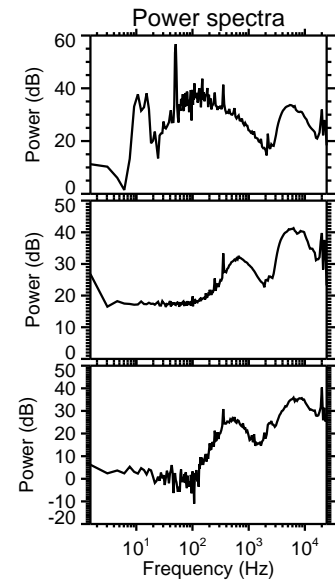
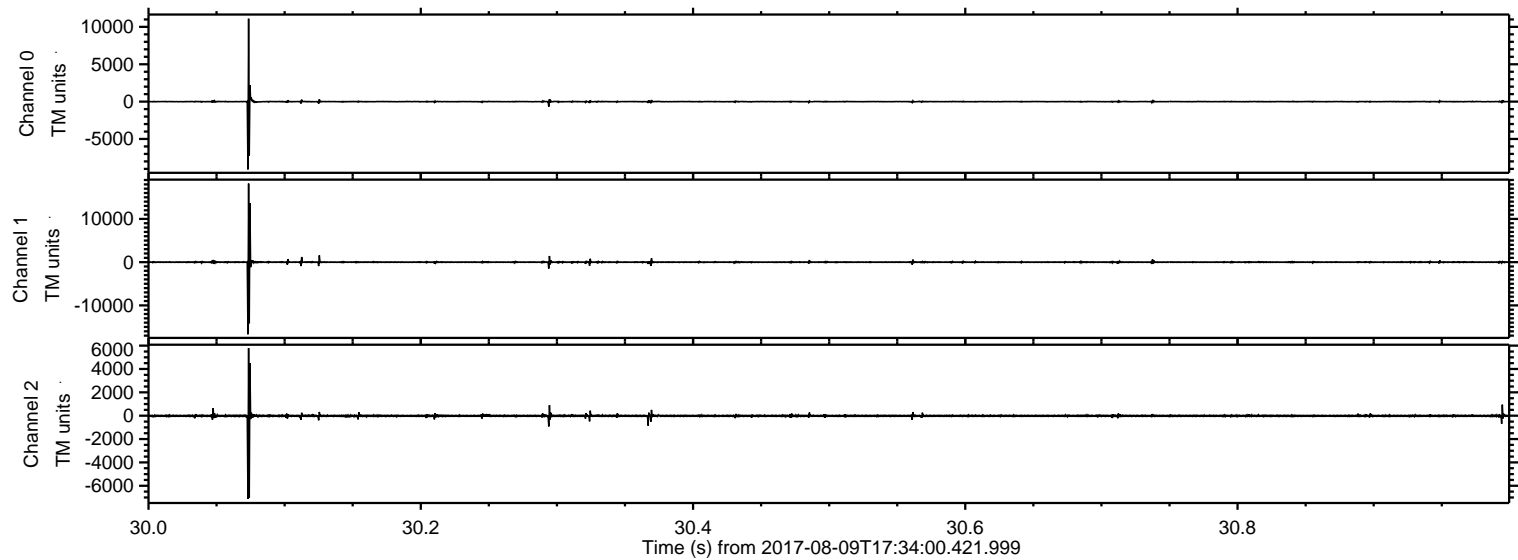
ELMAVAN 3D WAVEFORMS (Measured data sampled at 50 kHz) 51000 packets of 144 samples from 2017-08-09T17:34:00.421.999.

Processed Wed Aug 9 19:41:26 2017 by ELM ver.2012-10-06 from 001__elm20170809_173359__dat00.bin



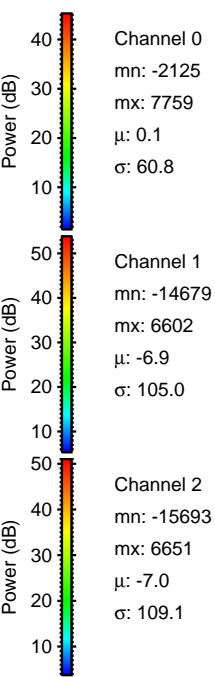
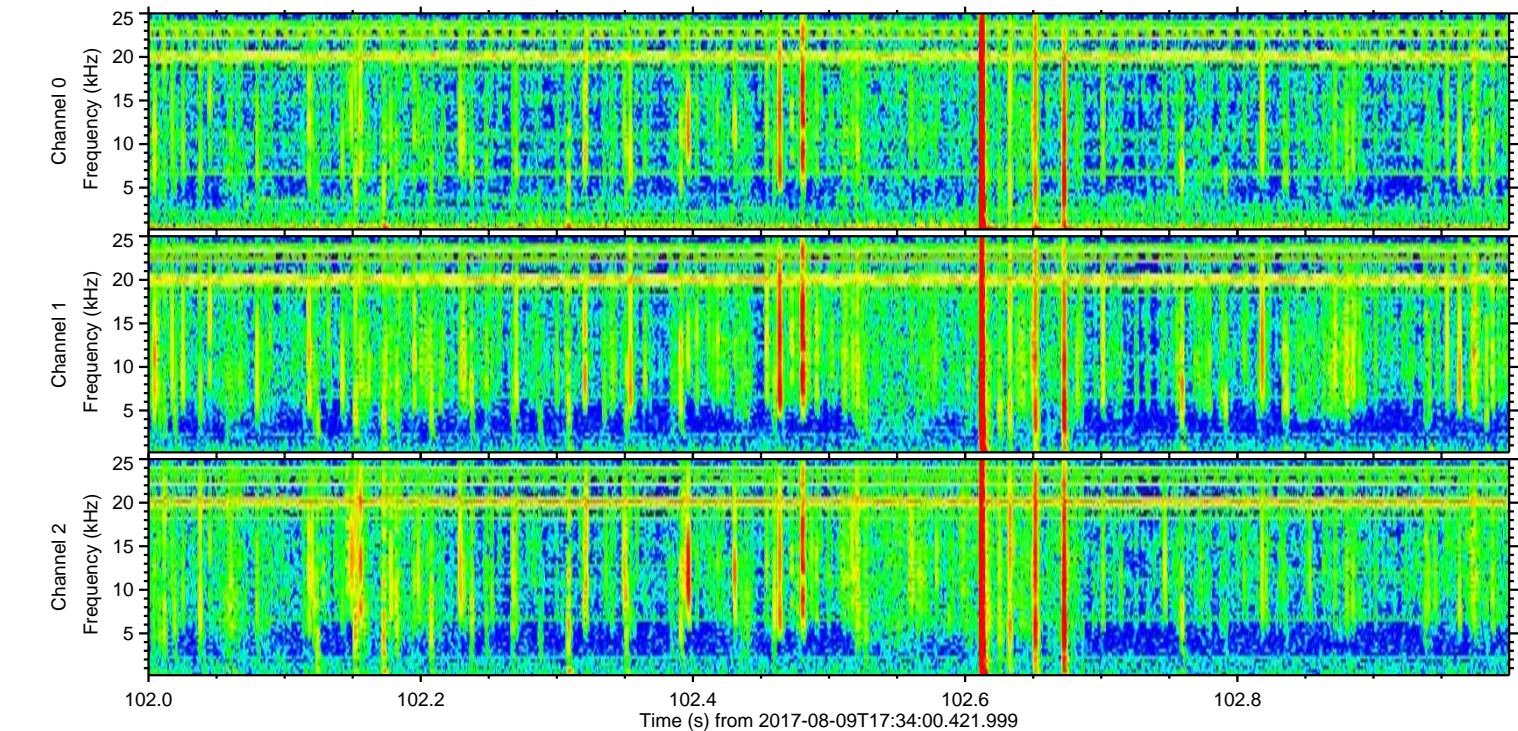
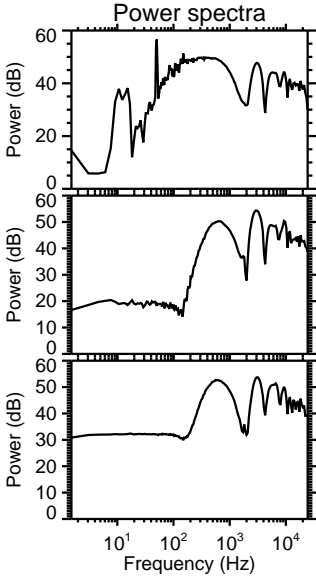
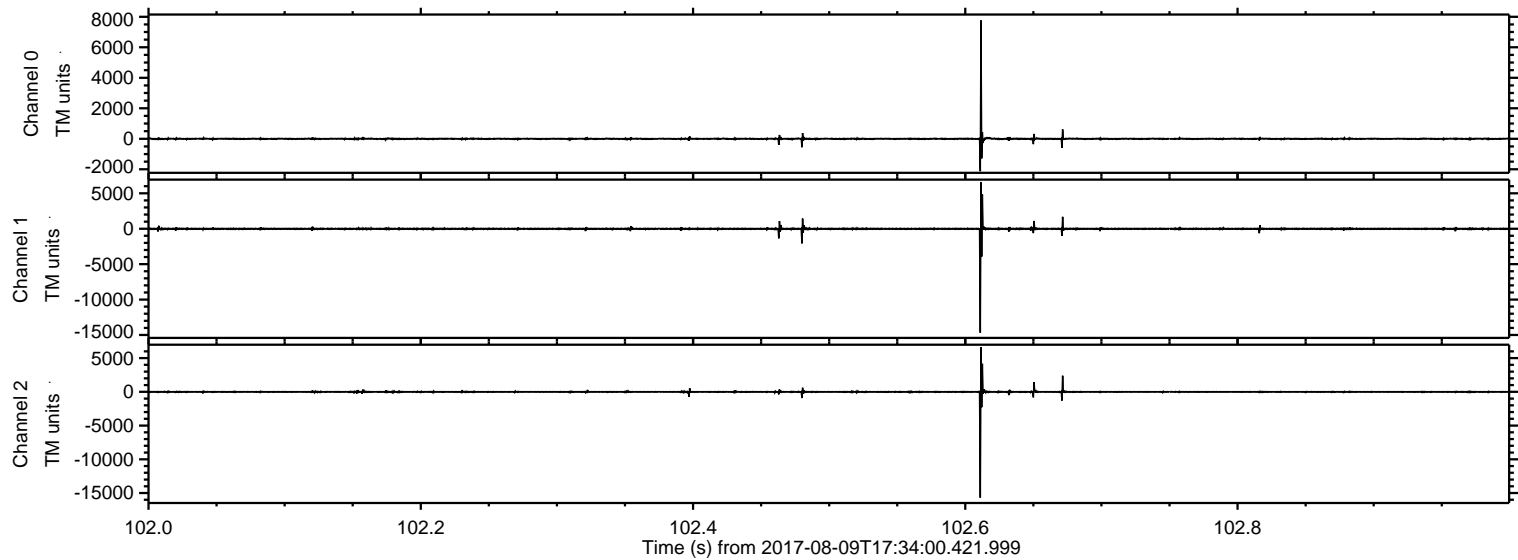
ELMAVAN 3D WAVEFORMS (Measured data sampled at 50 kHz) 51000 packets of 144 samples from 2017-08-09T17:34:00.421.999. Part 31/147

Processed Wed Aug 9 19:41:35 2017 by ELM ver.2012-10-06 from 001__elm20170809_173359__dat00.bin

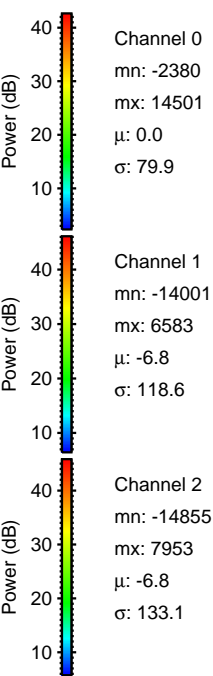
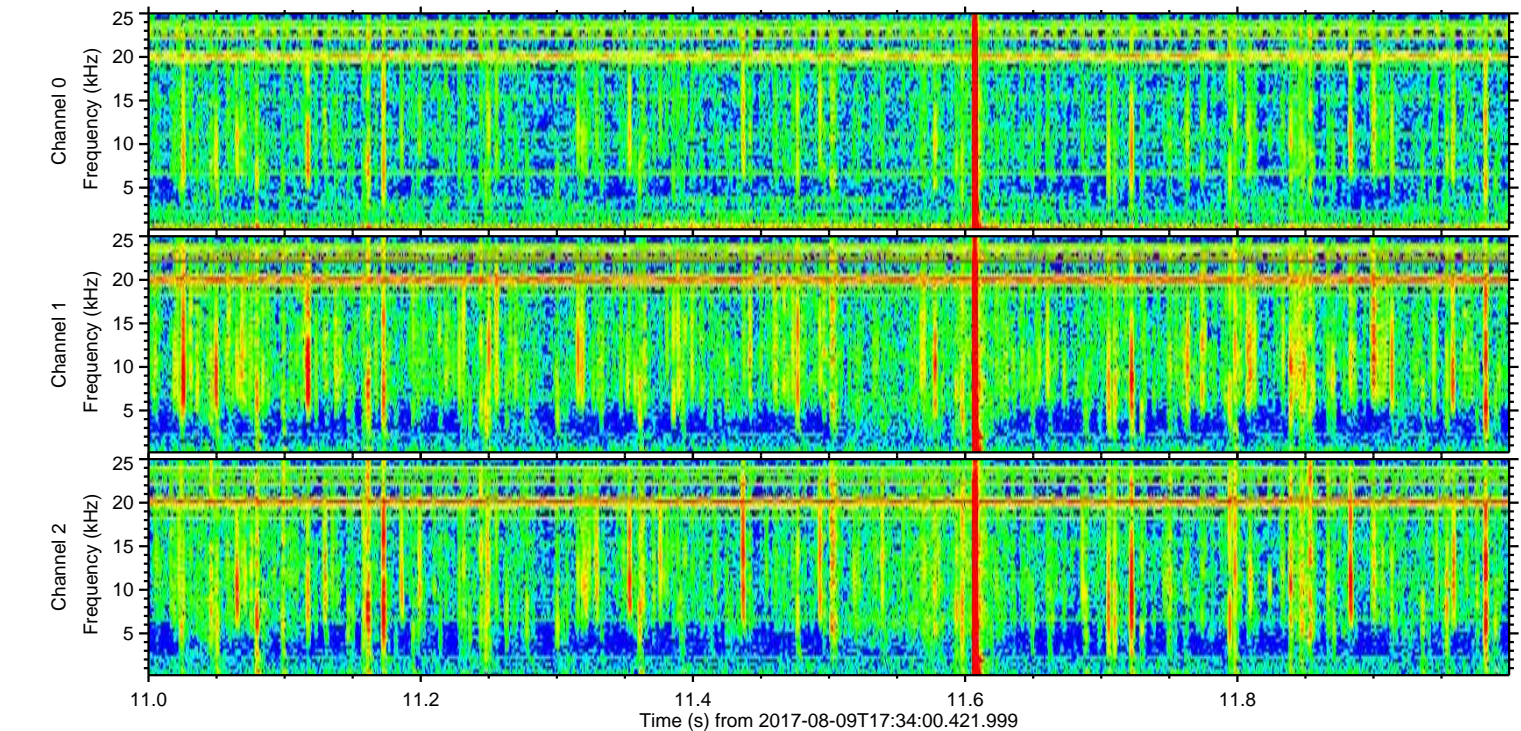
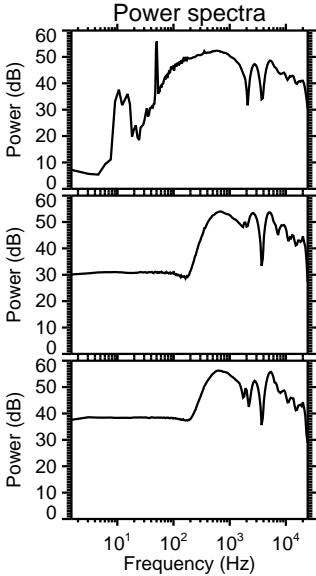
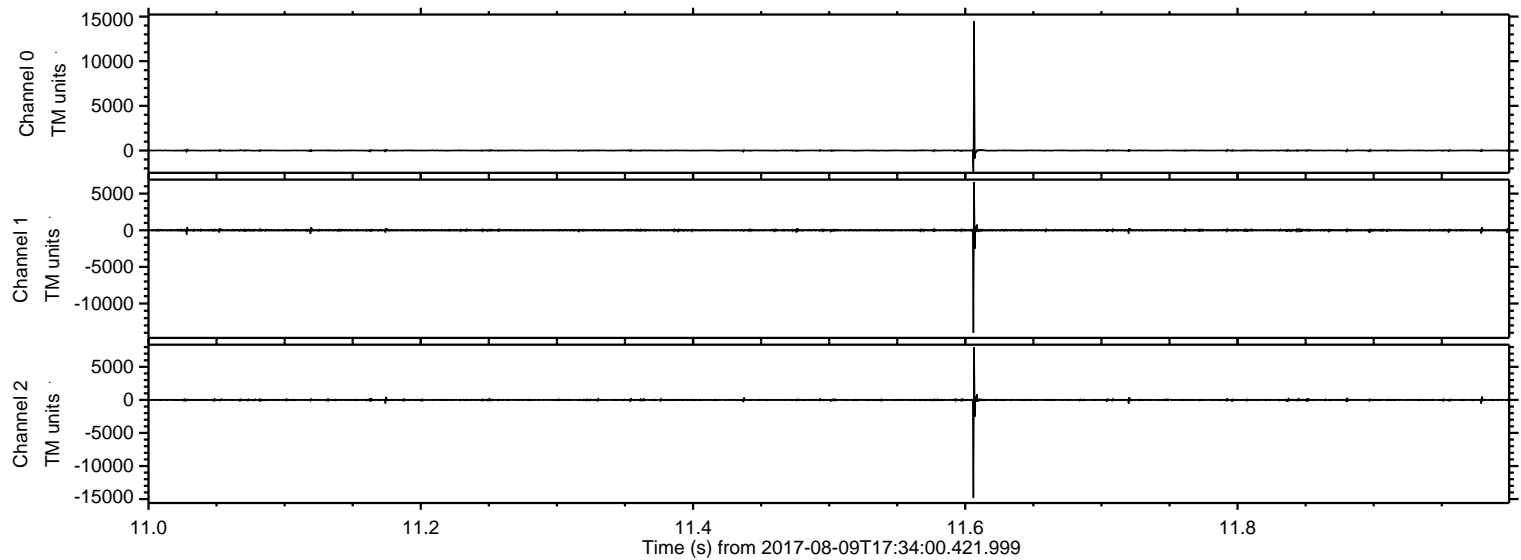


ELMAVAN 3D WAVEFORMS (Measured data sampled at 50 kHz) 51000 packets of 144 samples from 2017-08-09T17:34:00.421.999. Part 103/147

Processed Wed Aug 9 19:41:37 2017 by ELM ver.2012-10-06 from 001__elm20170809_173359__dat00.bin

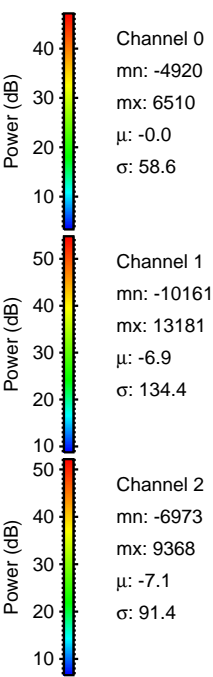
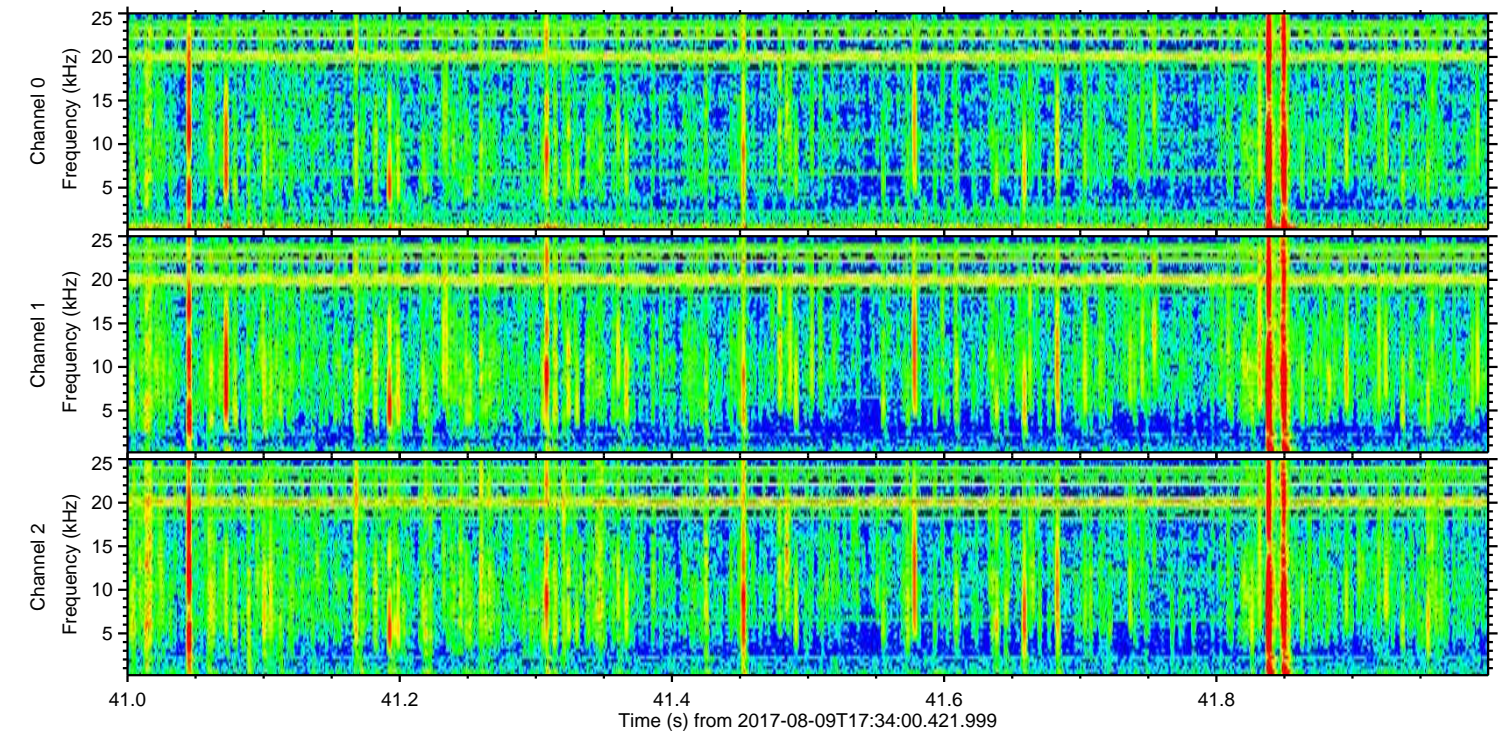
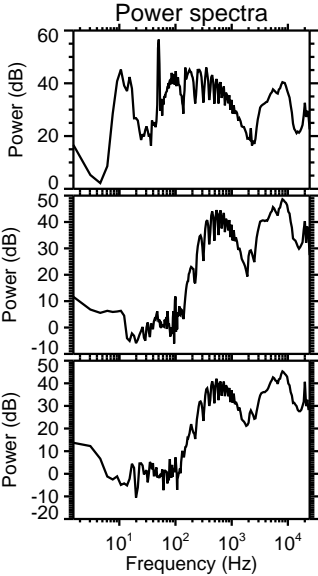
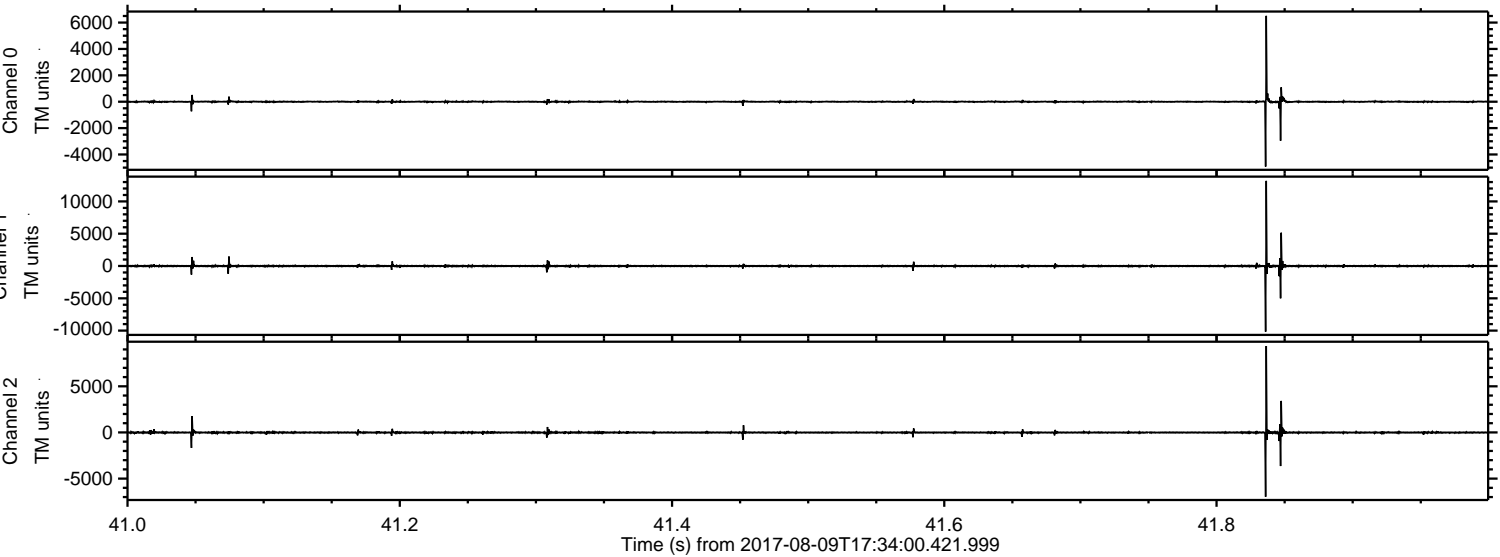


Processed Wed Aug 9 19:41:38 2017 by ELM ver.2012-10-06 from 001__elm20170809_173359__dat00.bin

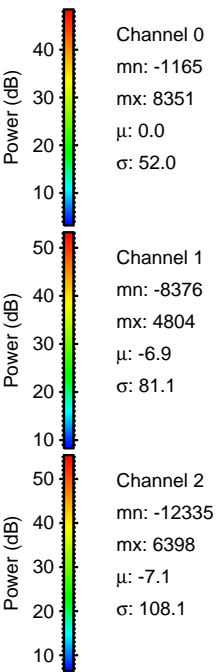
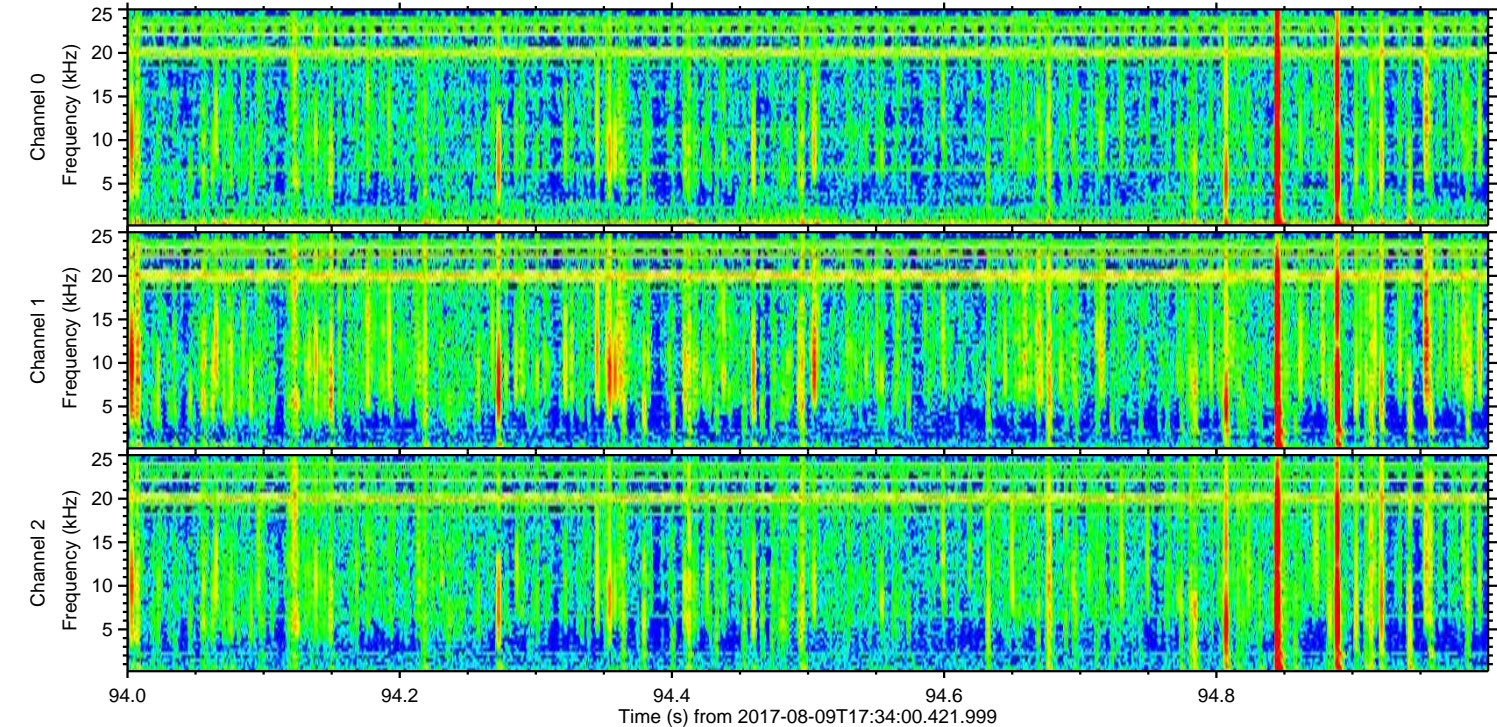
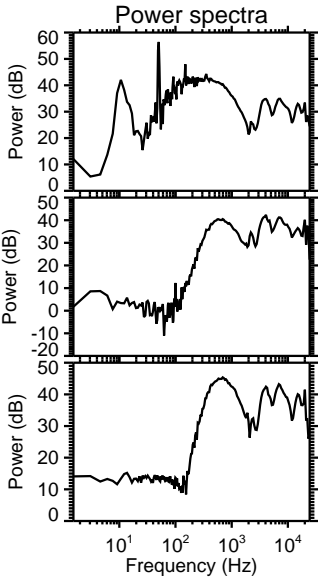
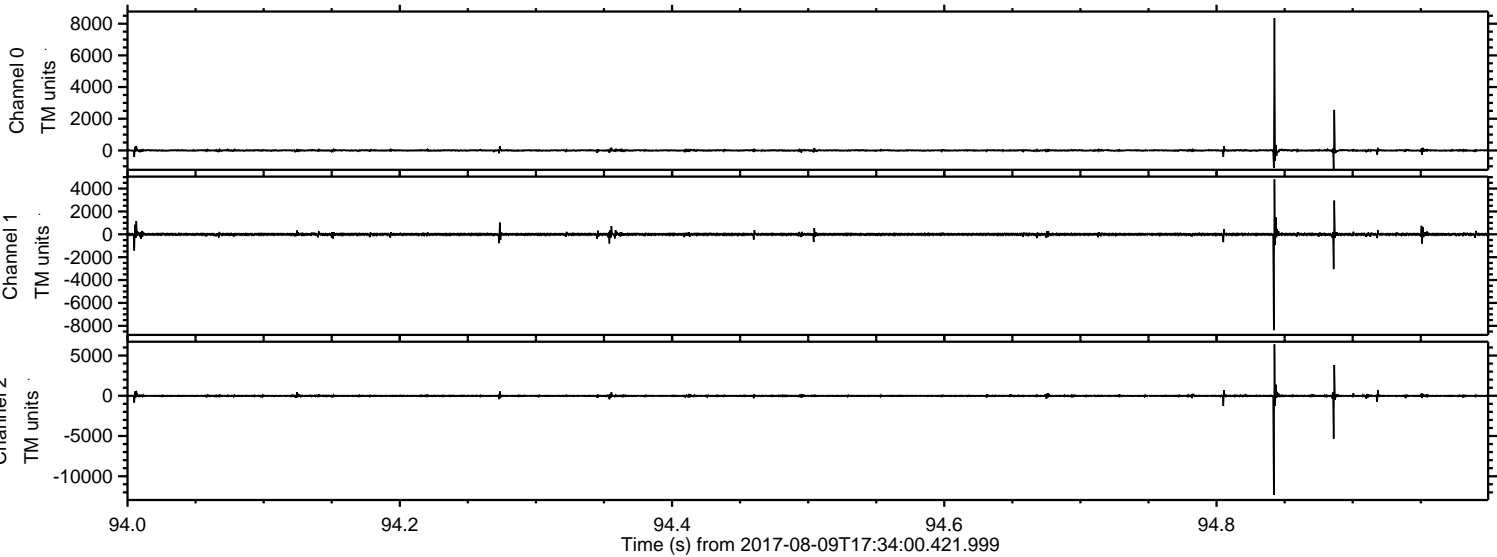


ELMAVAN 3D WAVEFORMS (Measured data sampled at 50 kHz) 51000 packets of 144 samples from 2017-08-09T17:34:00.421.999. Part 42/147

Processed Wed Aug 9 19:41:39 2017 by ELM ver.2012-10-06 from 001__elm20170809_173359__dat00.bin

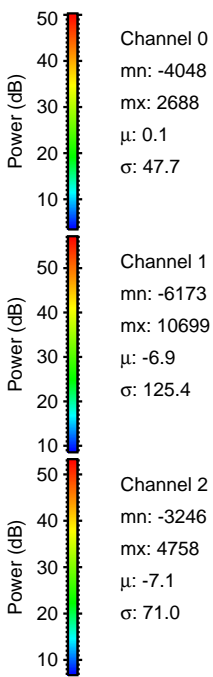
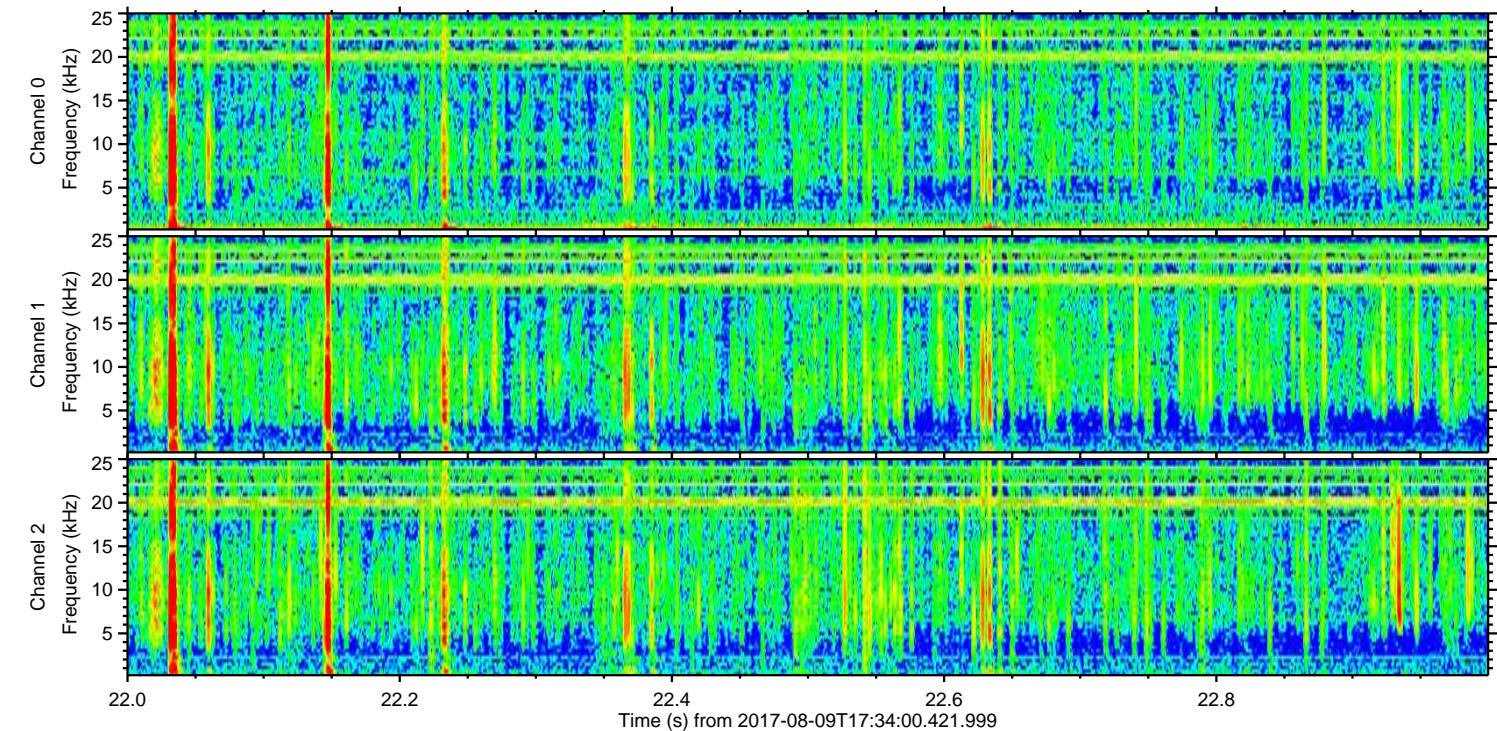
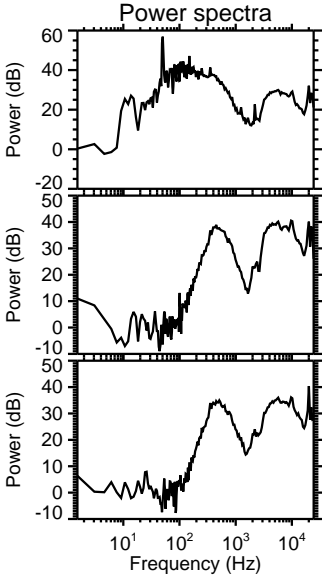
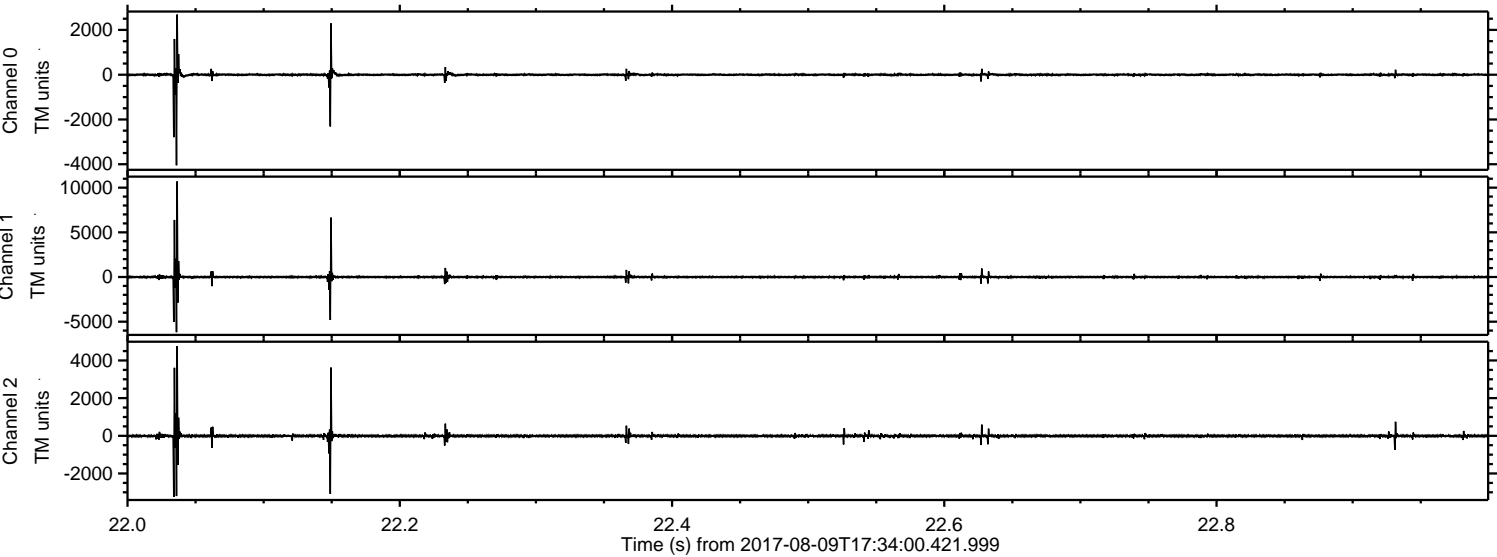


Processed Wed Aug 9 19:41:39 2017 by ELM ver.2012-10-06 from 001__elm20170809_173359__dat00.bin

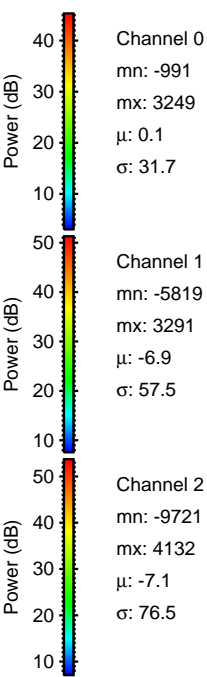
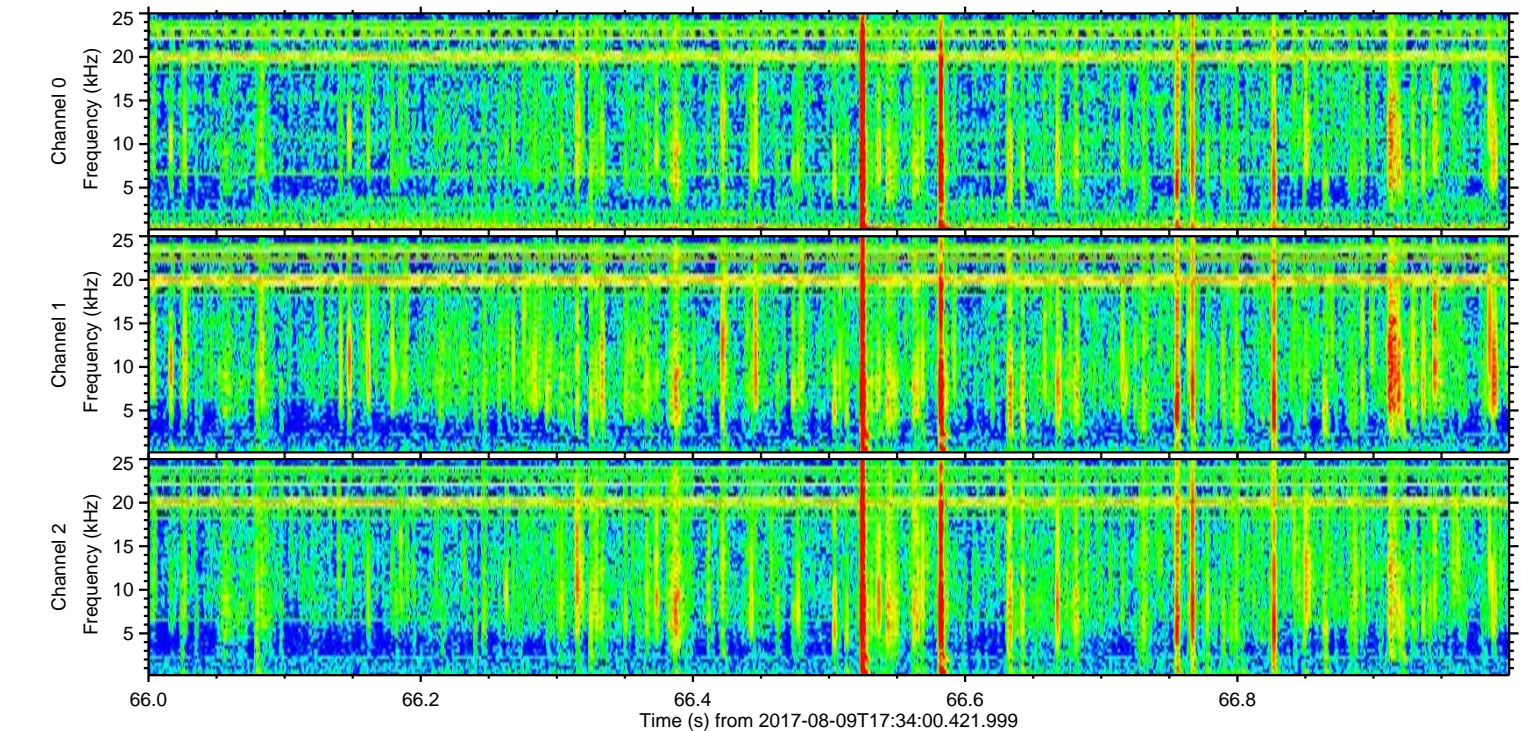
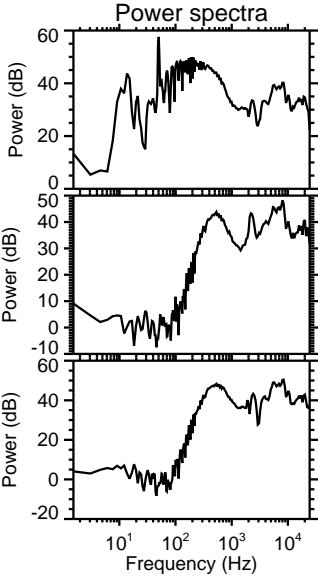
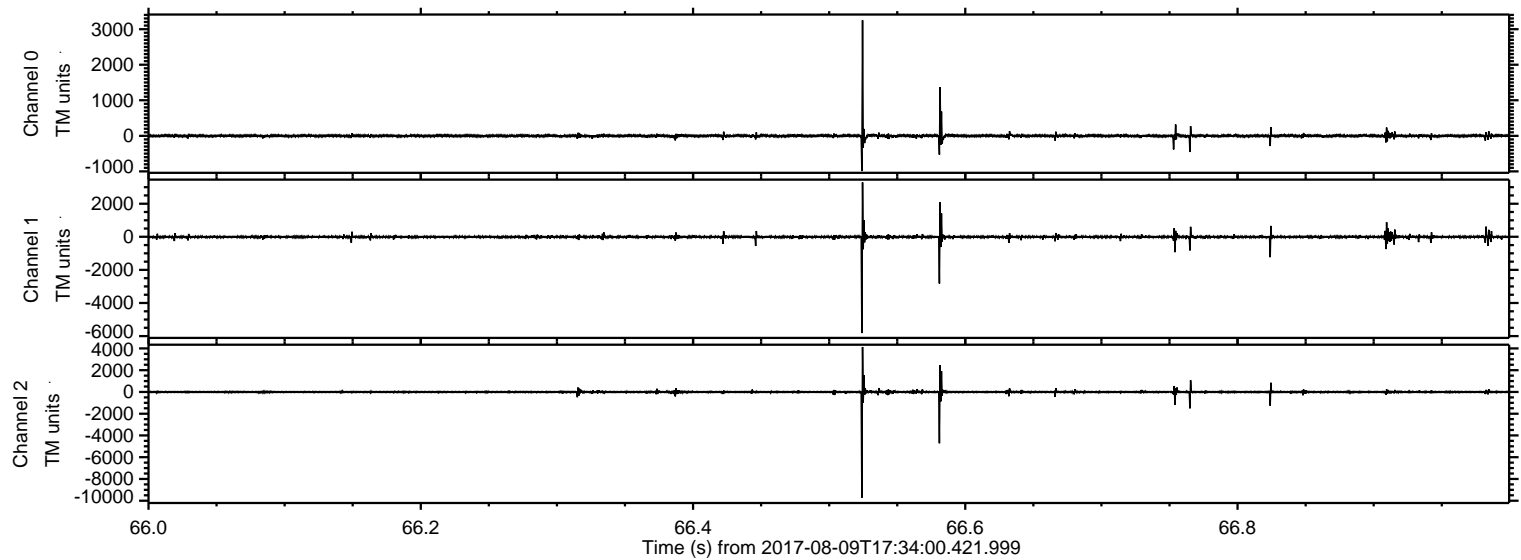


ELMAVAN 3D WAVEFORMS (Measured data sampled at 50 kHz) 51000 packets of 144 samples from 2017-08-09T17:34:00.421.999. Part 23/147

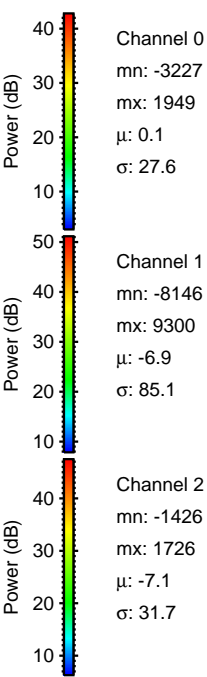
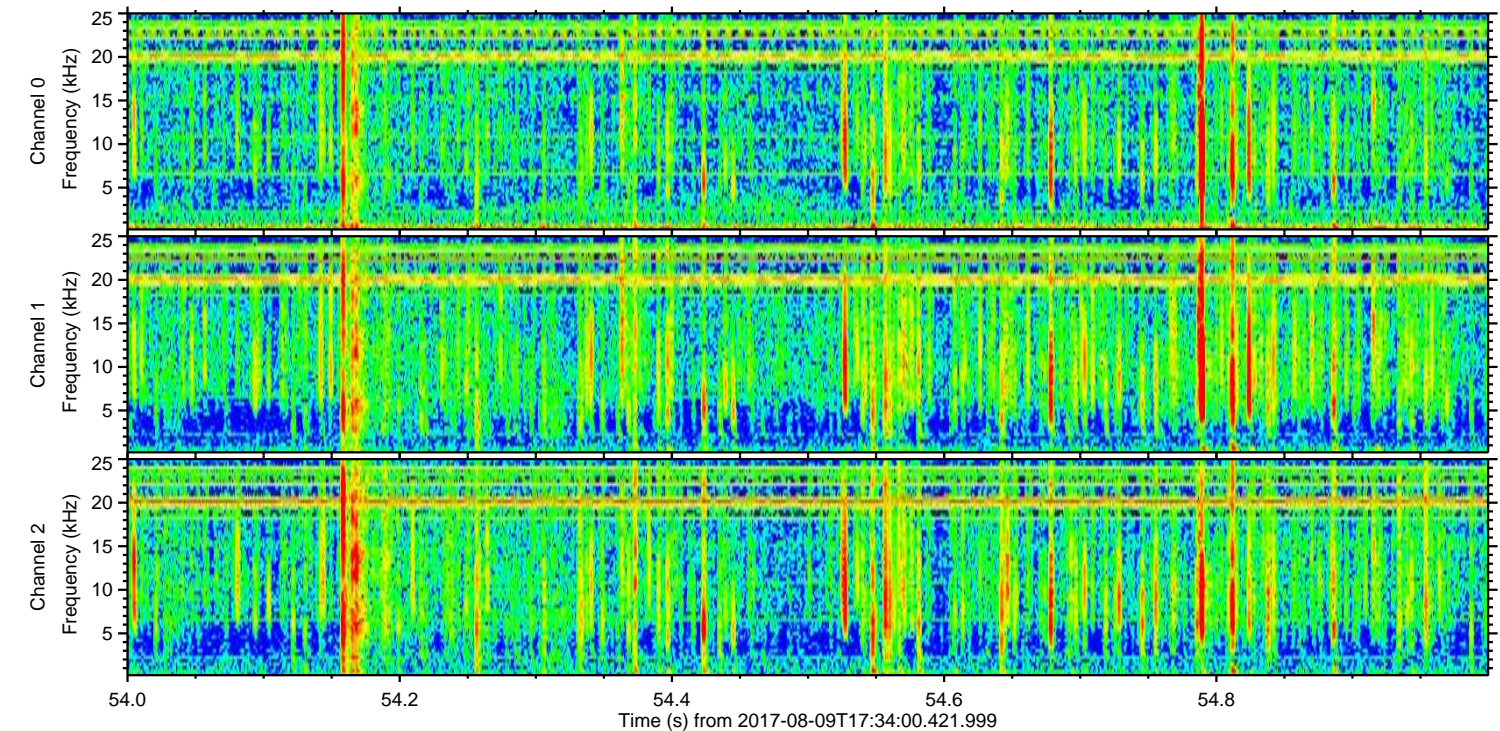
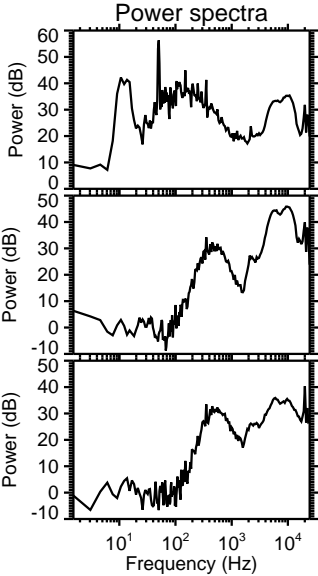
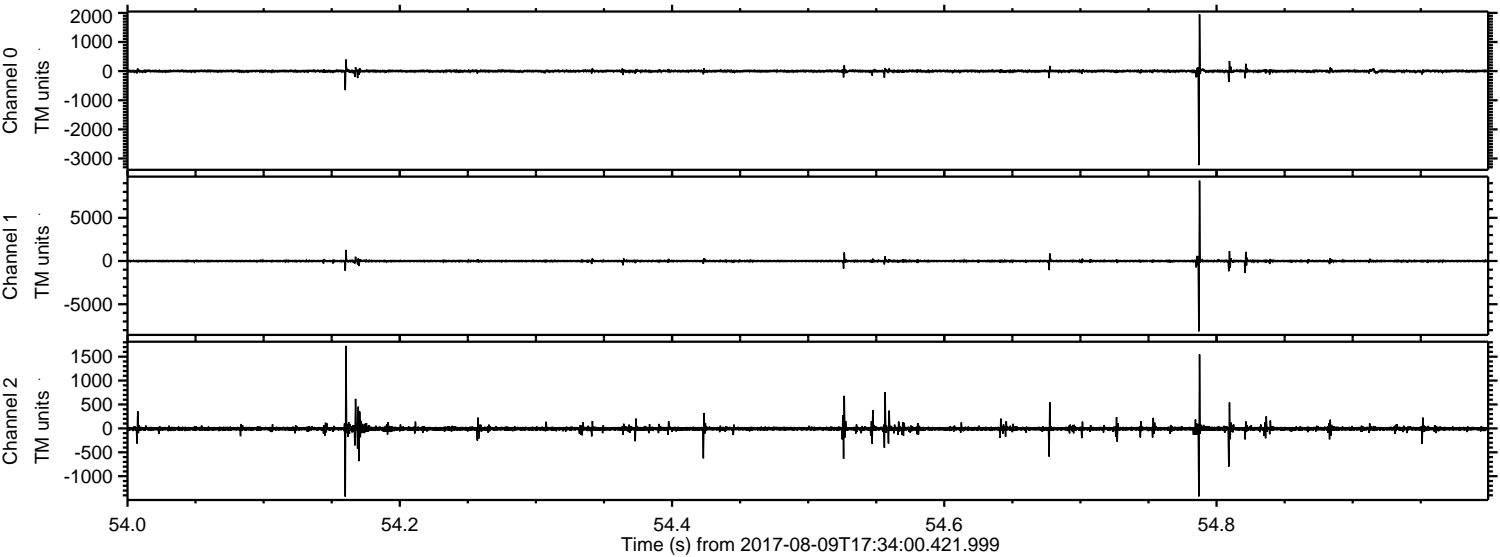
Processed Wed Aug 9 19:41:40 2017 by ELM ver.2012-10-06 from 001__elm20170809_173359__dat00.bin



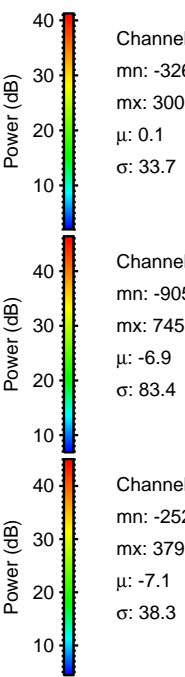
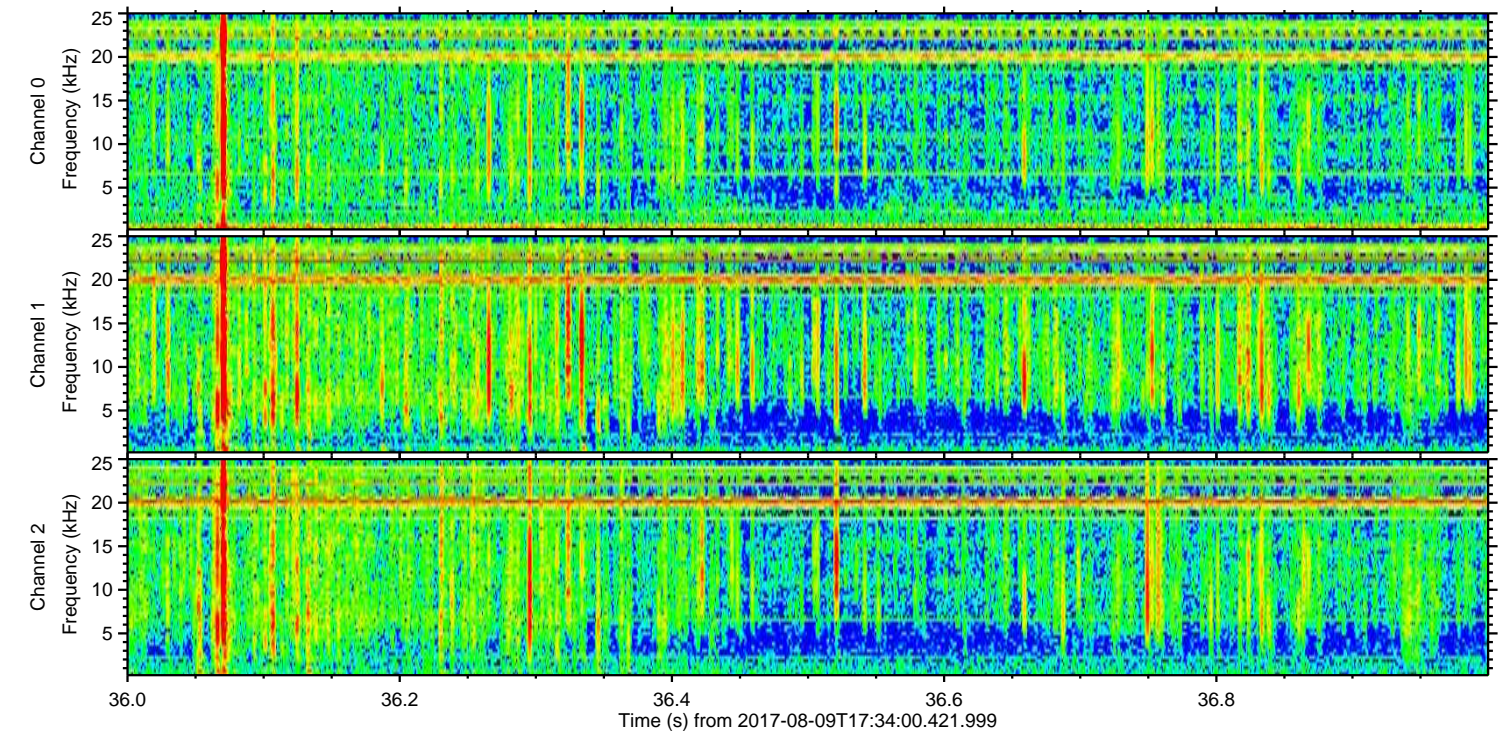
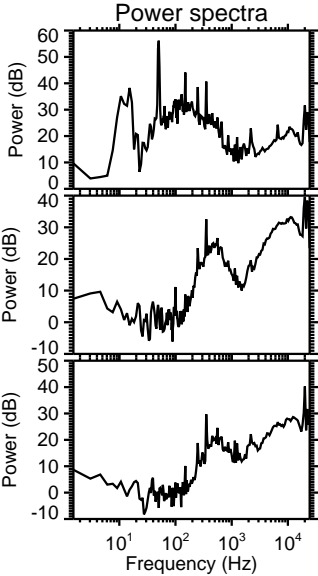
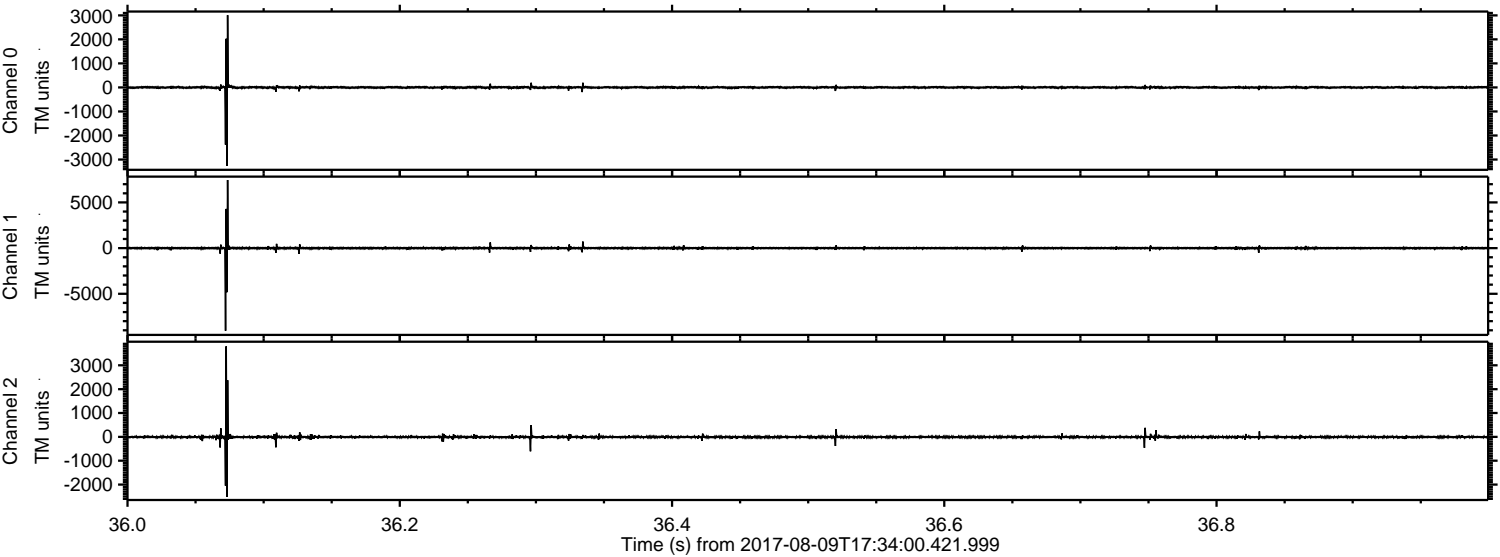
Processed Wed Aug 9 19:41:41 2017 by ELM ver.2012-10-06 from 001__elm20170809_173359__dat00.bin



Processed Wed Aug 9 19:41:42 2017 by ELM ver.2012-10-06 from 001__elm20170809_173359__dat00.bin



Processed Wed Aug 9 19:41:43 2017 by ELM ver.2012-10-06 from 001__elm20170809_173359__dat00.bin



Channel 0
mn: -3266
mx: 3009
 μ : 0.1
 σ : 33.7

Channel 1
mn: -9050
mx: 7453
 μ : -6.9
 σ : 83.4

Channel 2
mn: -2521
mx: 3799
 μ : -7.1
 σ : 38.3

Processed Wed Aug 9 19:41:44 2017 by ELM ver.2012-10-06 from 001__elm20170809_173359__dat00.bin

