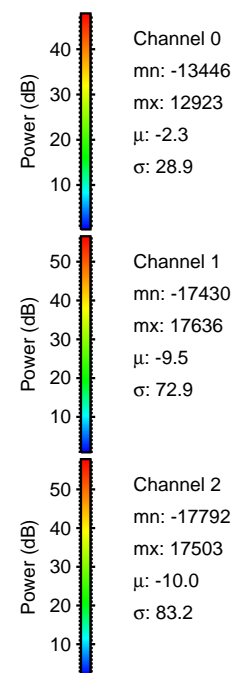
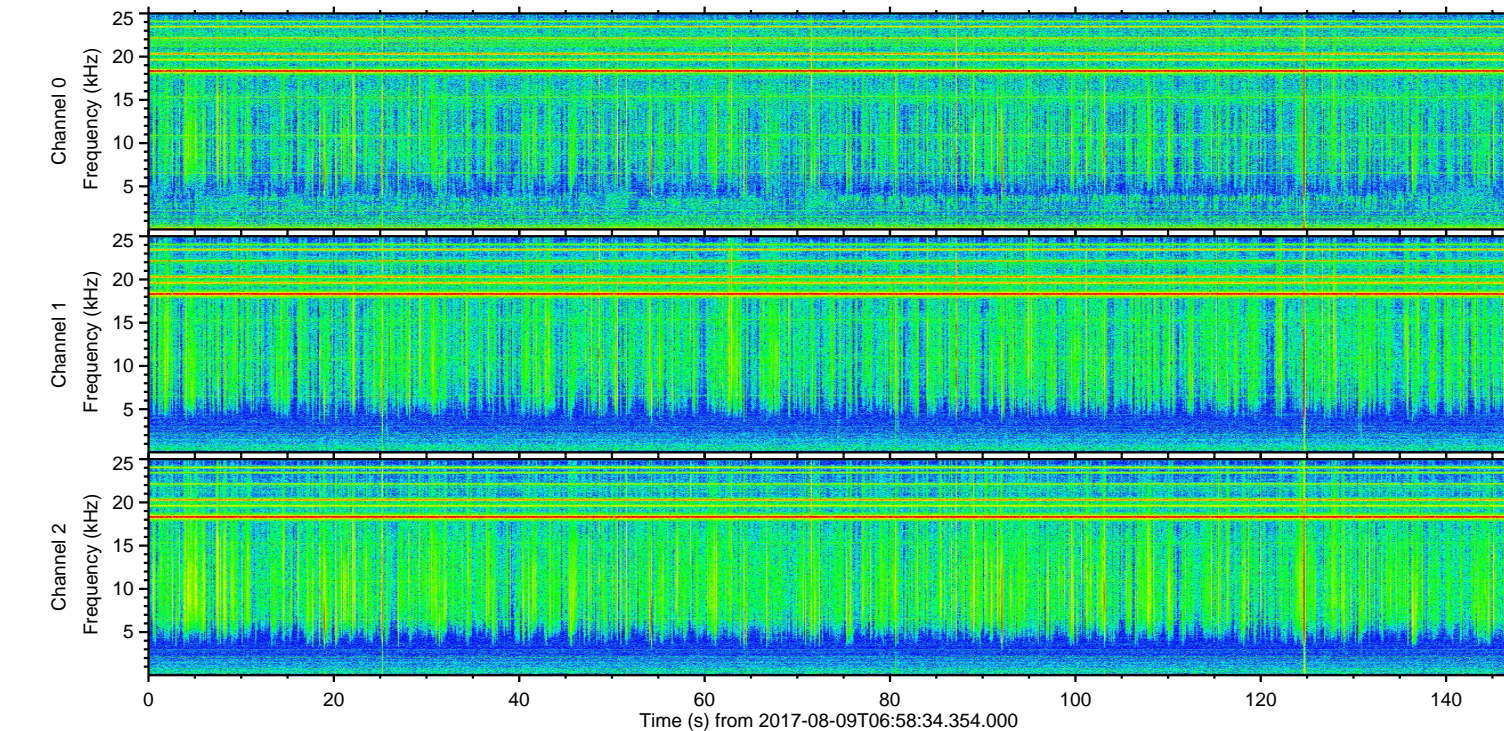
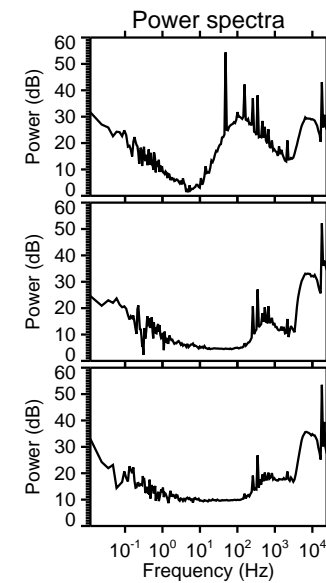
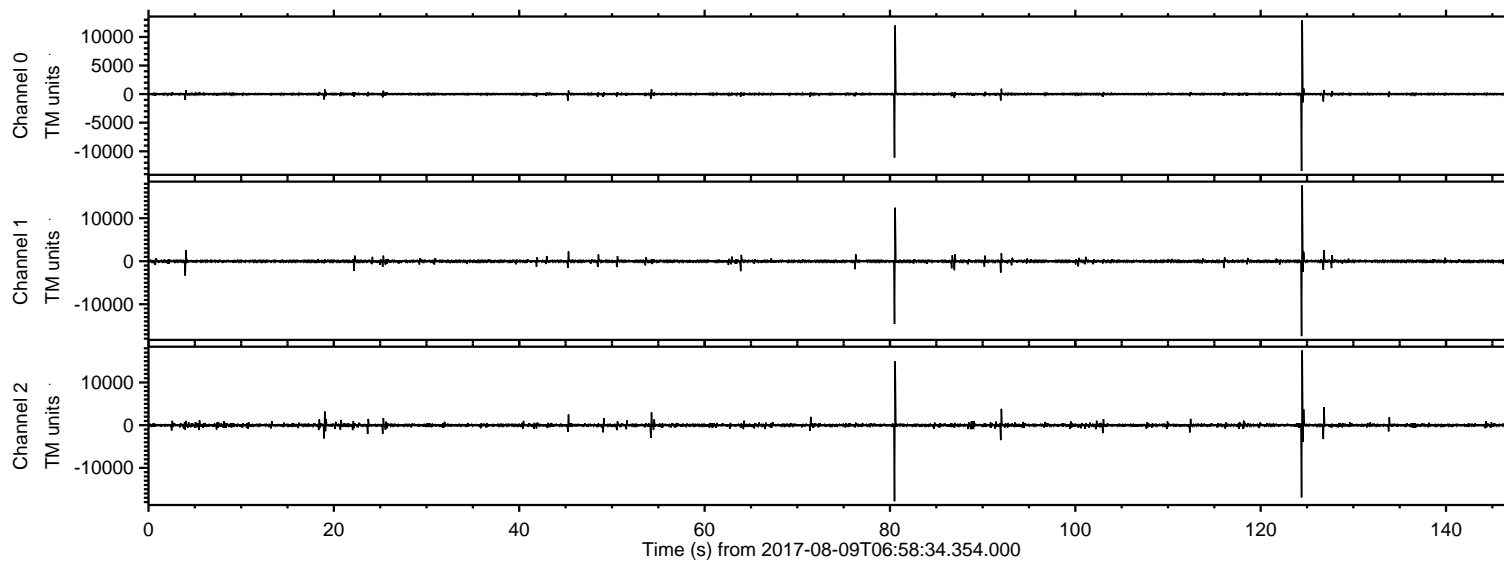


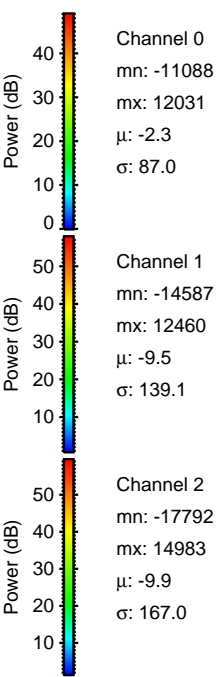
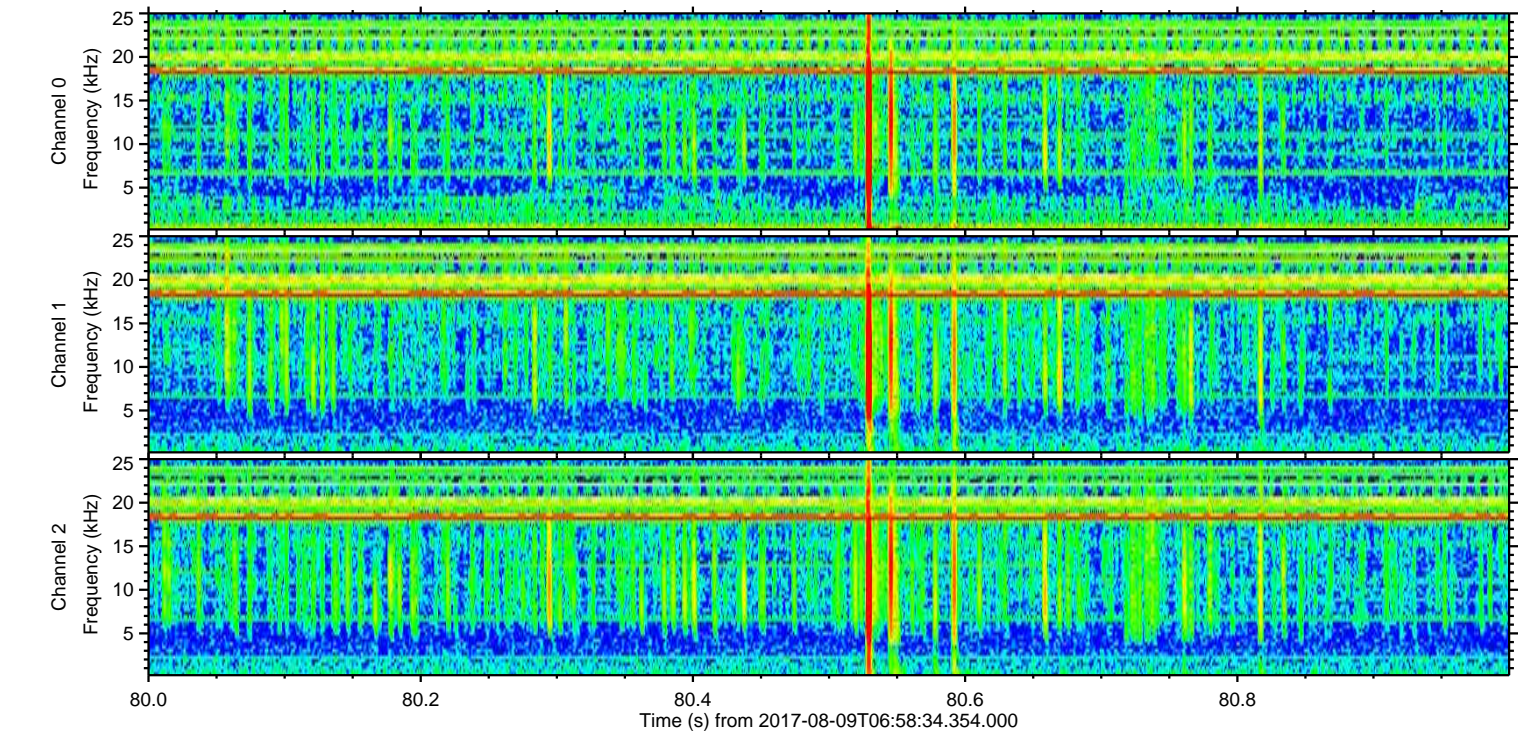
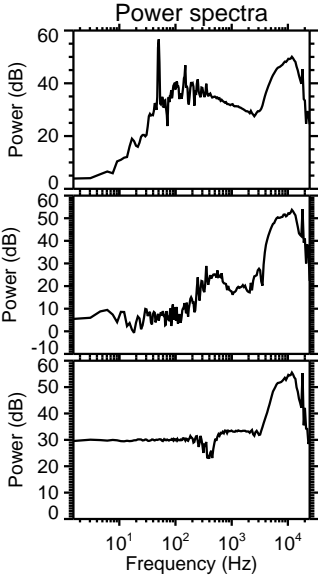
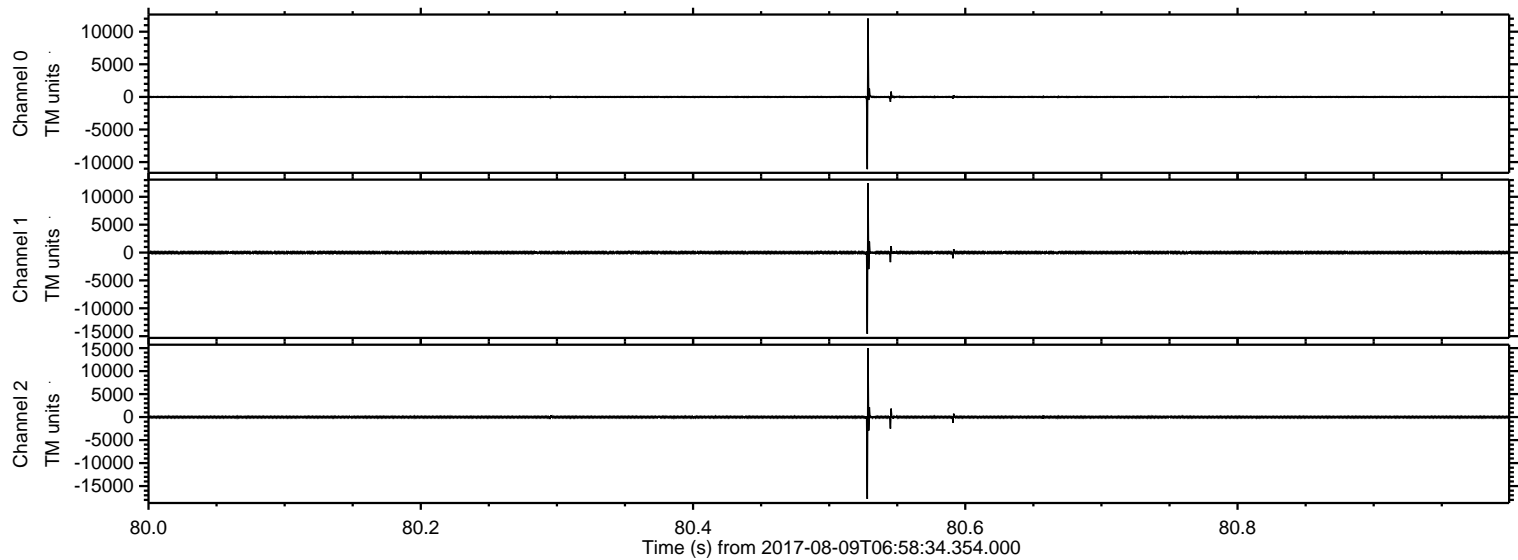
ELMAVAN 3D WAVEFORMS (Measured data sampled at 50 kHz) 51000 packets of 144 samples from 2017-08-09T06:58:34.354.000.

Processed Wed Aug 9 09:06:24 2017 by ELM ver.2012-10-06 from 001__elm20170809_065833__dat00.bin



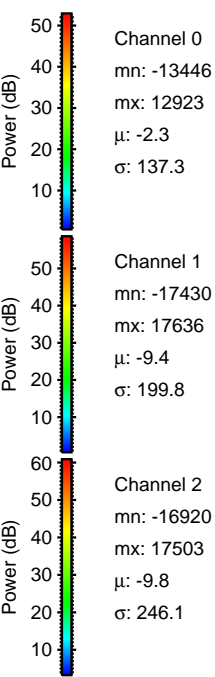
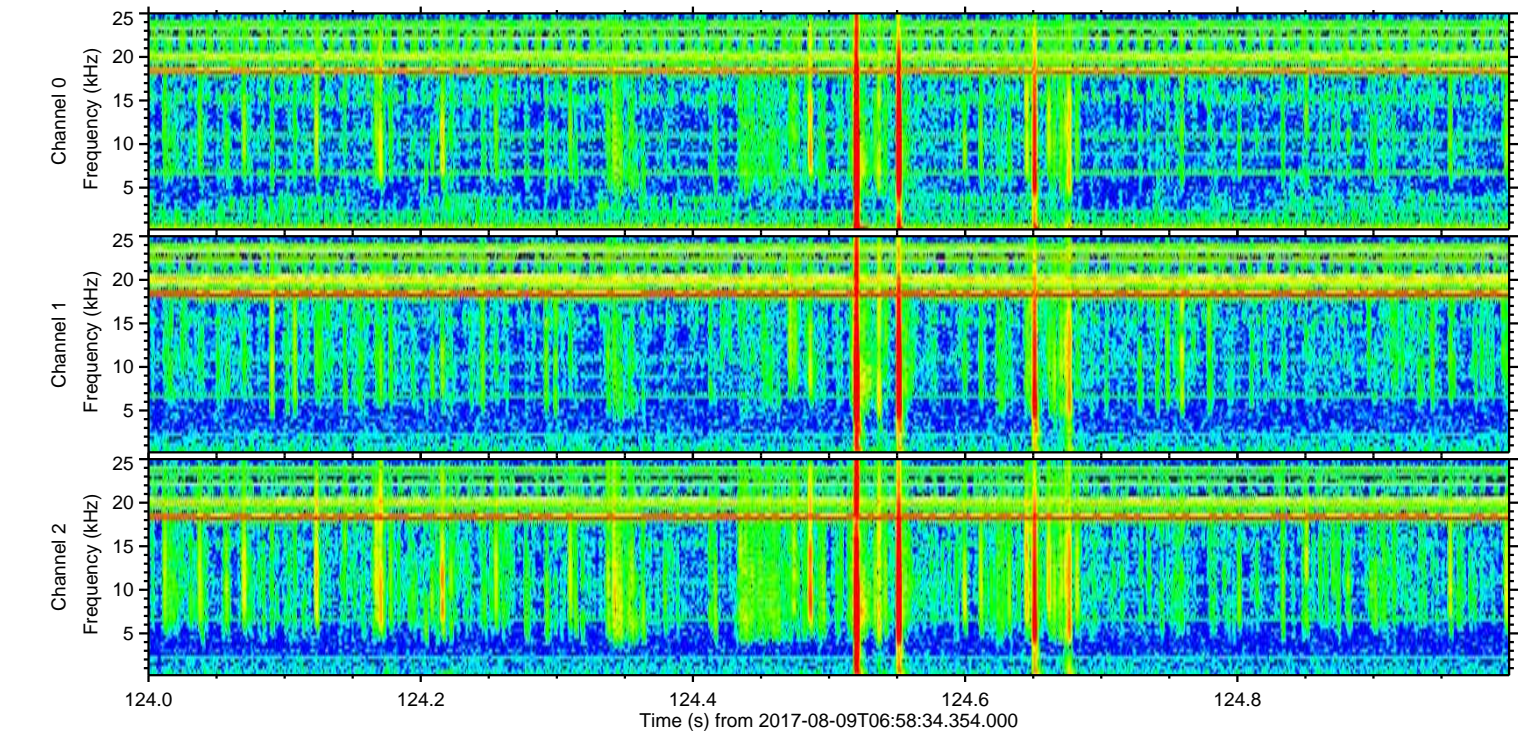
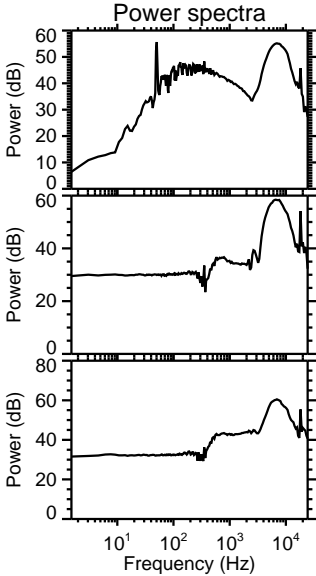
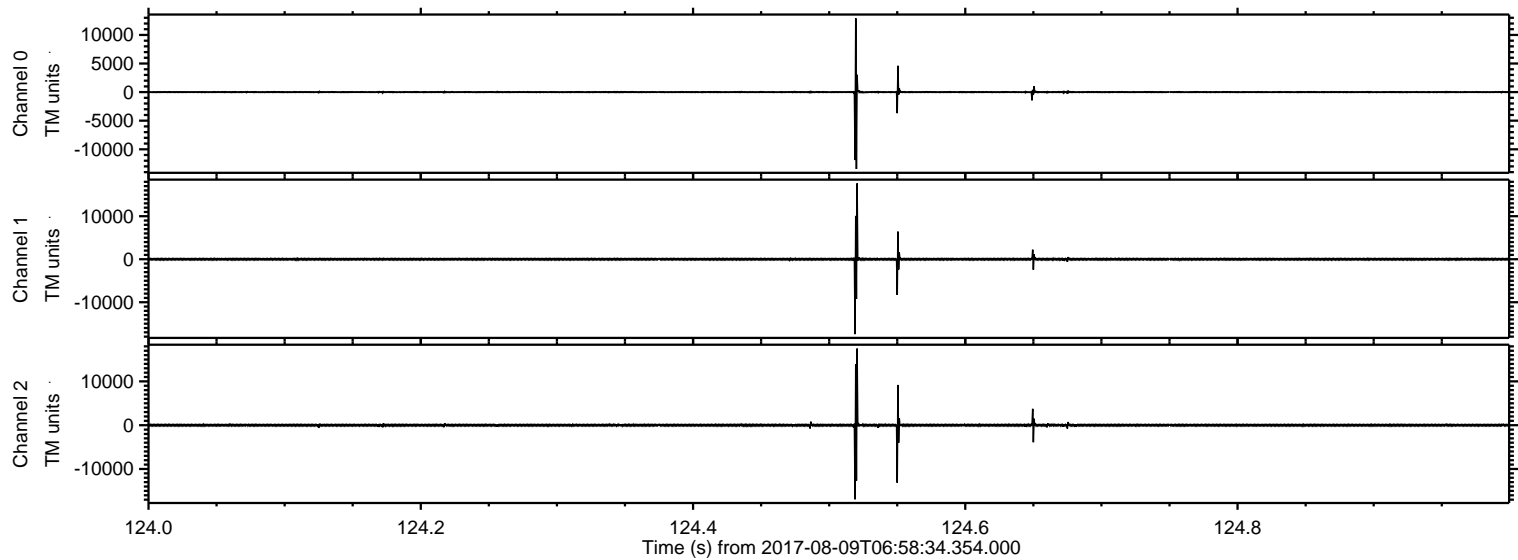
ELMAVAN 3D WAVEFORMS (Measured data sampled at 50 kHz) 51000 packets of 144 samples from 2017-08-09T06:58:34.354.000. Part 81/147

Processed Wed Aug 9 09:06:32 2017 by ELM ver.2012-10-06 from 001__elm20170809_065833__dat00.bin



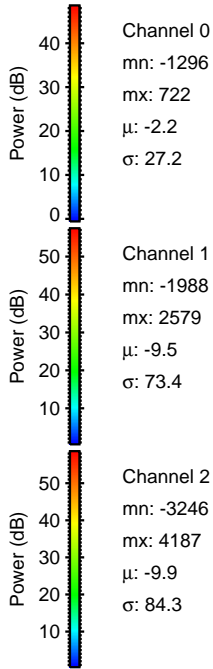
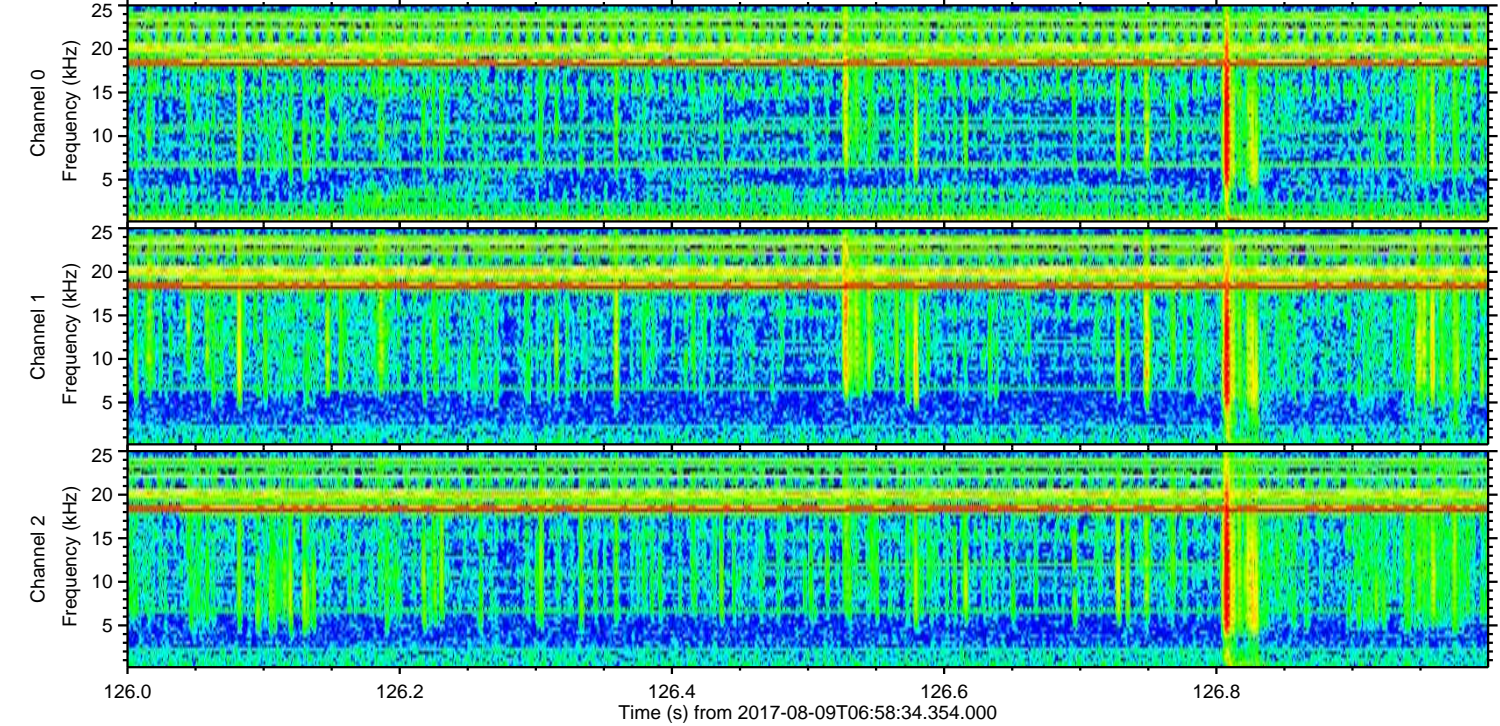
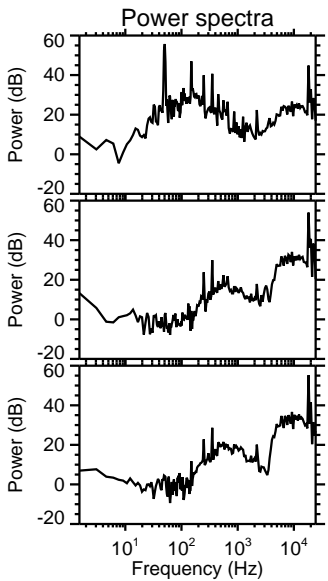
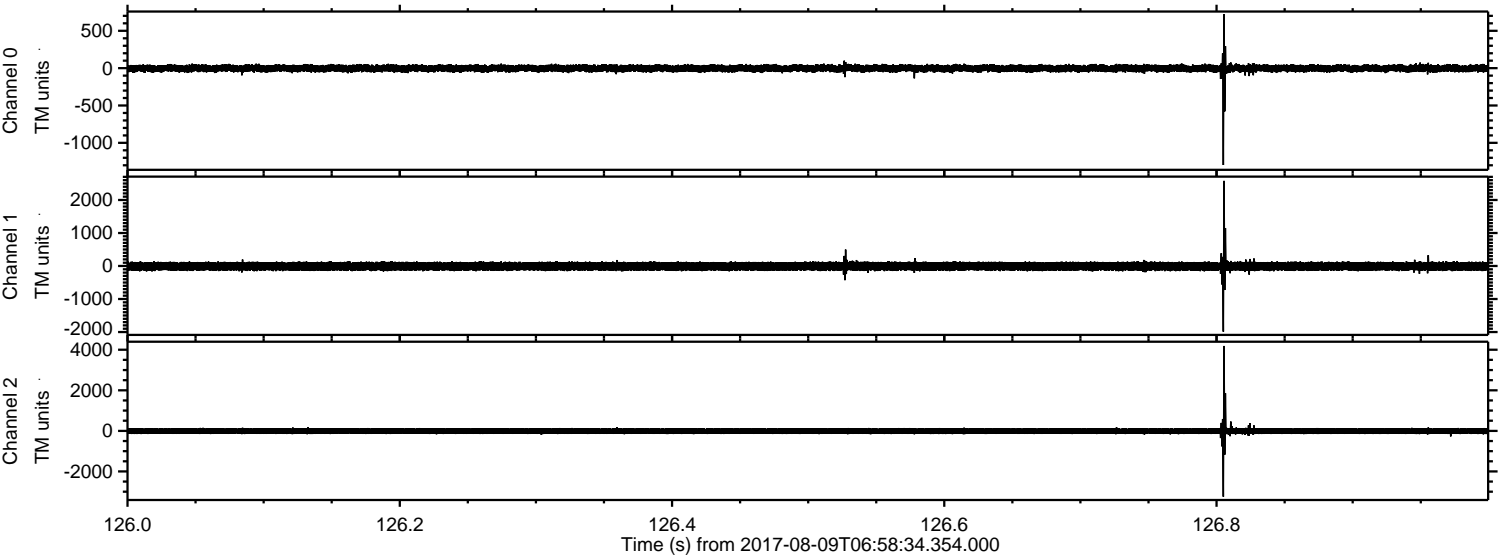
ELMAVAN 3D WAVEFORMS (Measured data sampled at 50 kHz) 51000 packets of 144 samples from 2017-08-09T06:58:34.354.000. Part 125/147

Processed Wed Aug 9 09:06:33 2017 by ELM ver.2012-10-06 from 001__elm20170809_065833__dat00.bin

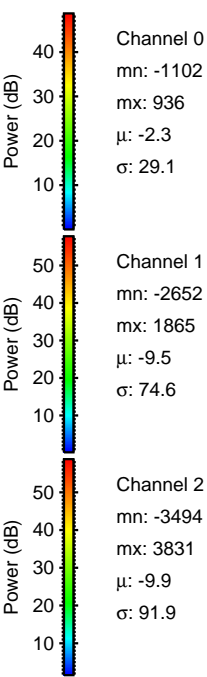
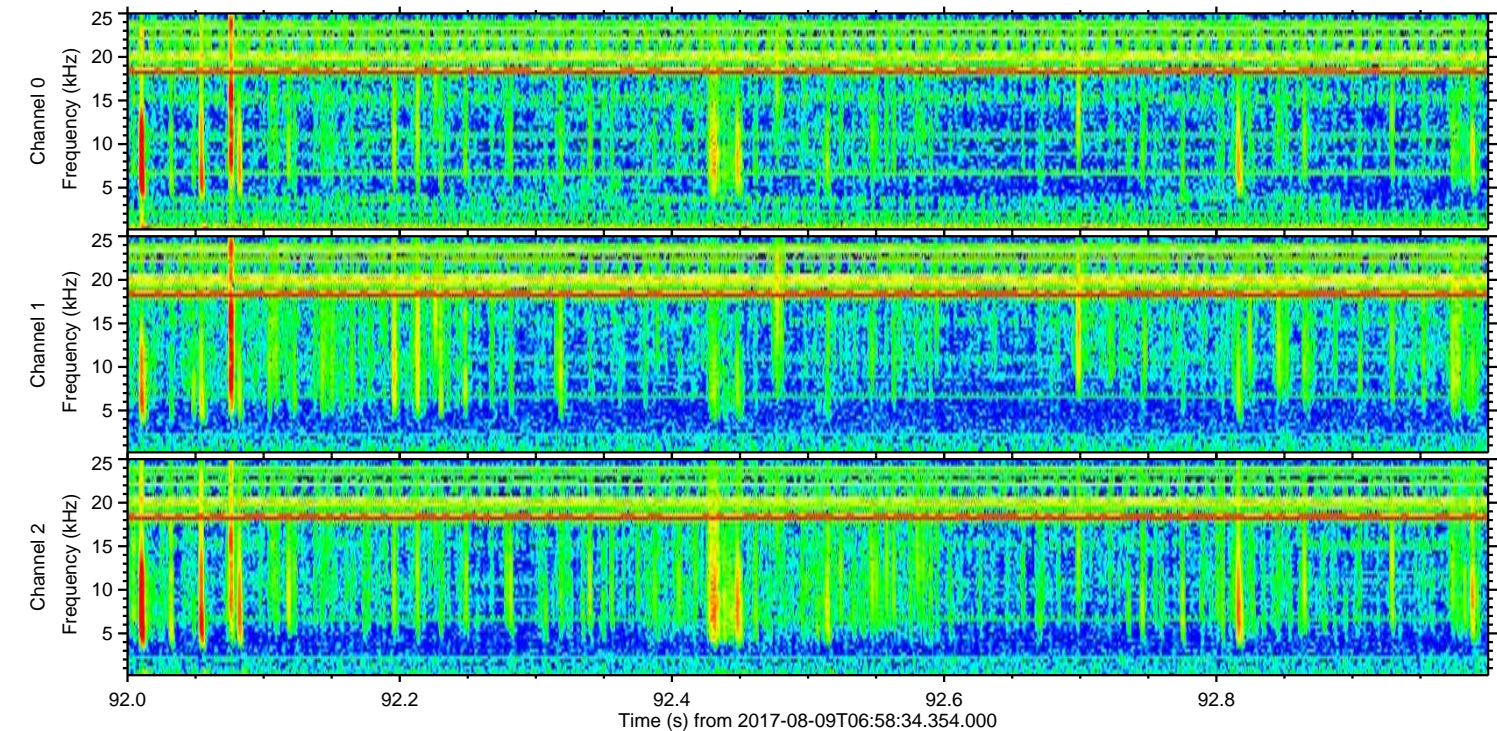
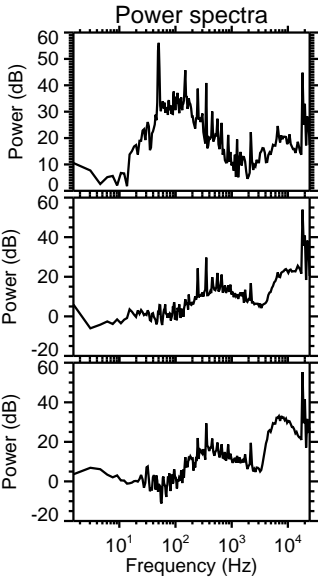
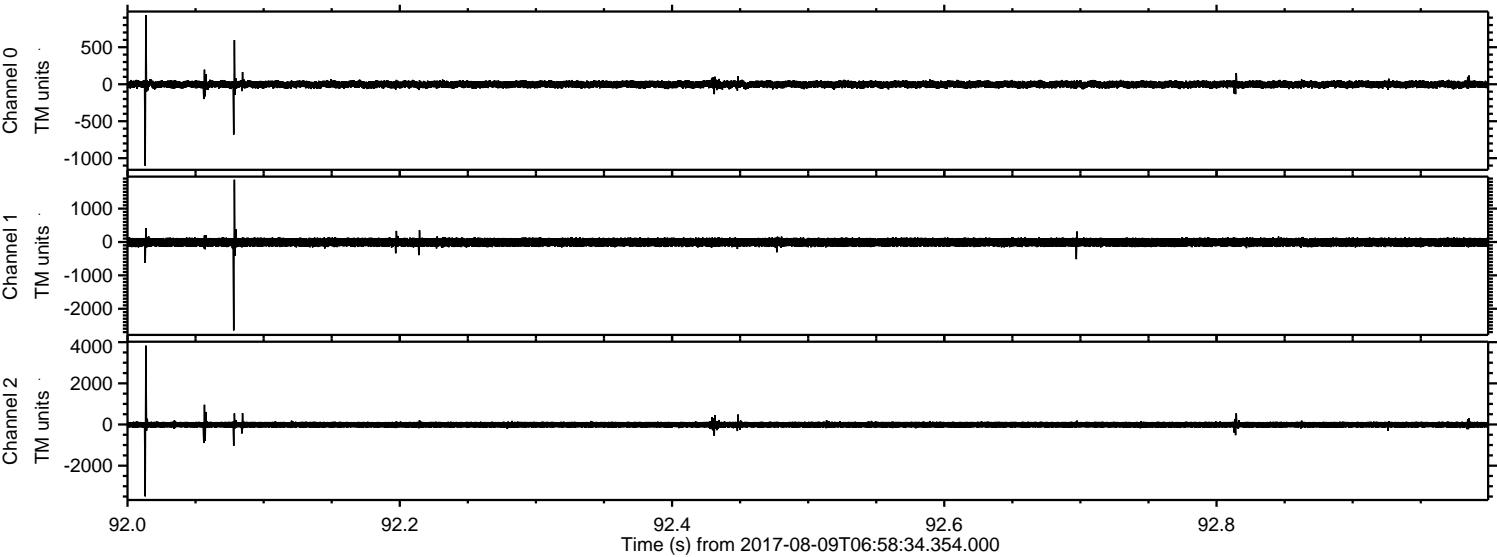


ELMAVAN 3D WAVEFORMS (Measured data sampled at 50 kHz) 51000 packets of 144 samples from 2017-08-09T06:58:34.354.000. Part 127/147

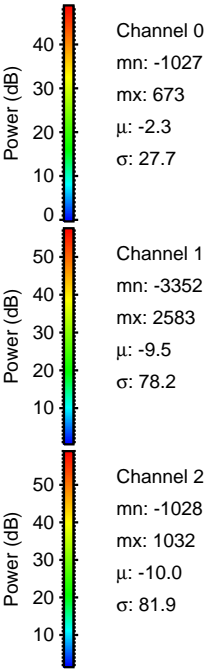
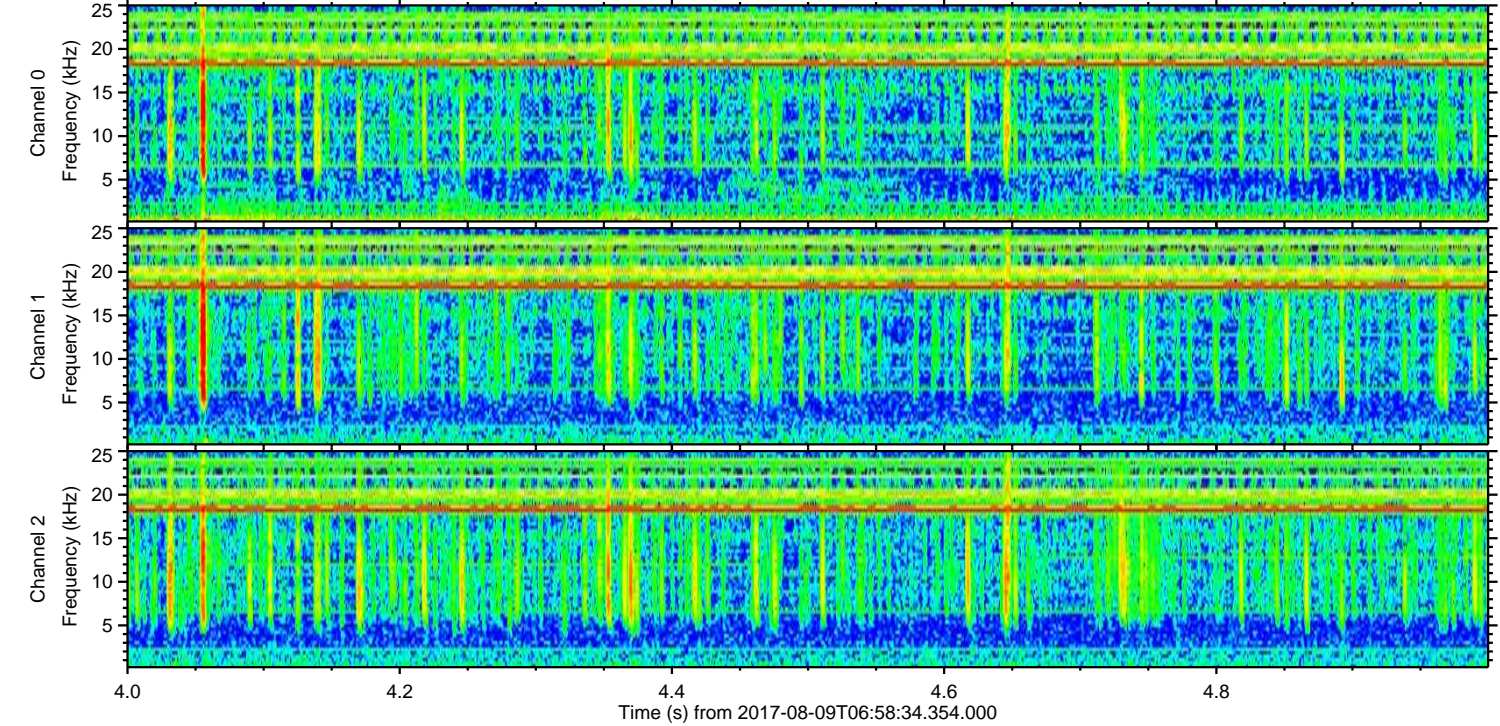
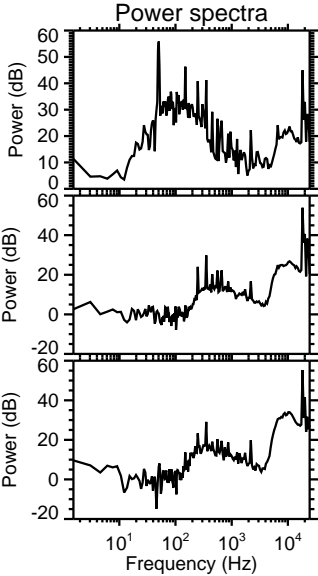
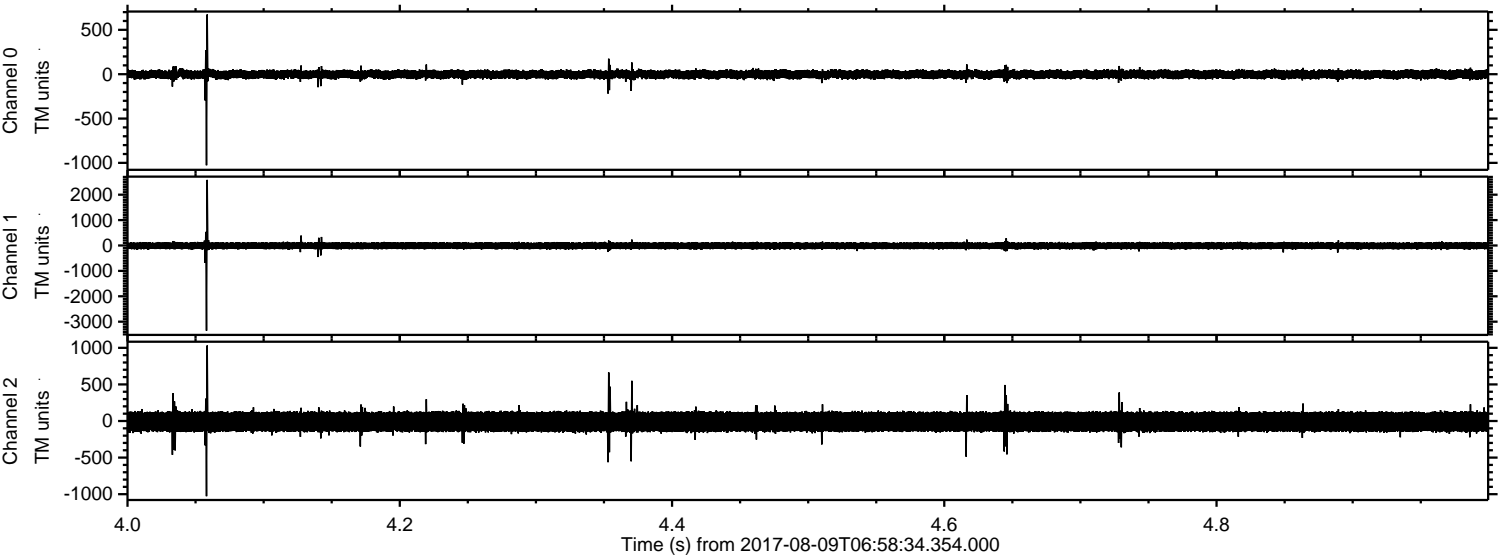
Processed Wed Aug 9 09:06:34 2017 by ELM ver.2012-10-06 from 001__elm20170809_065833__dat00.bin



Processed Wed Aug 9 09:06:35 2017 by ELM ver.2012-10-06 from 001__elm20170809_065833__dat00.bin



Processed Wed Aug 9 09:06:35 2017 by ELM ver.2012-10-06 from 001__elm20170809_065833__dat00.bin



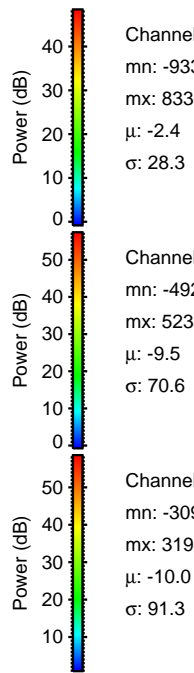
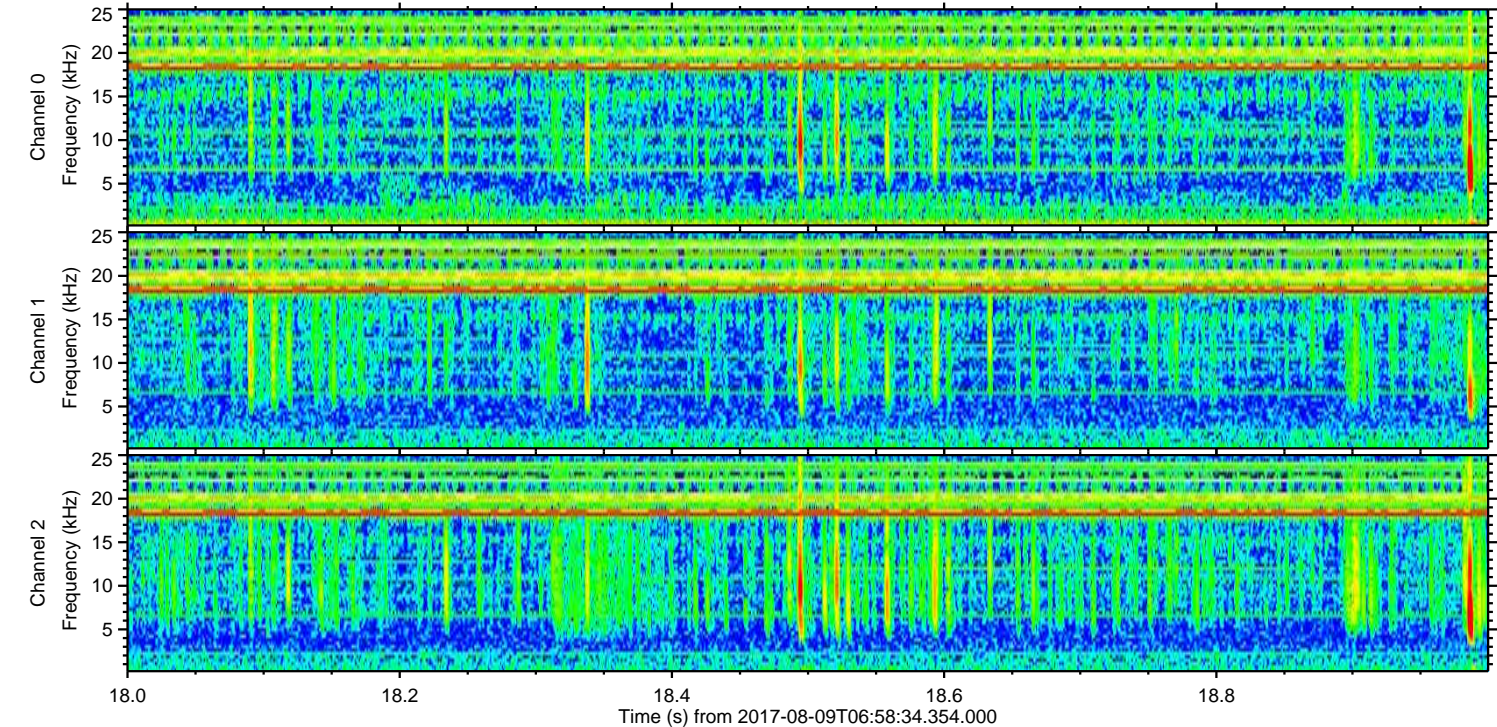
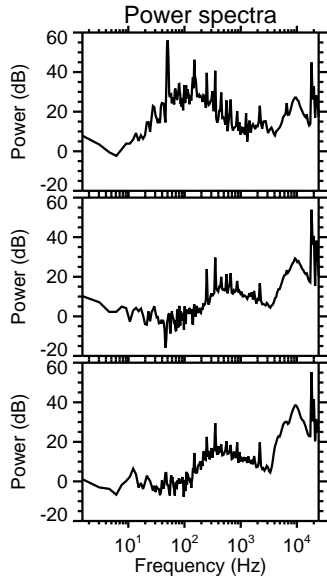
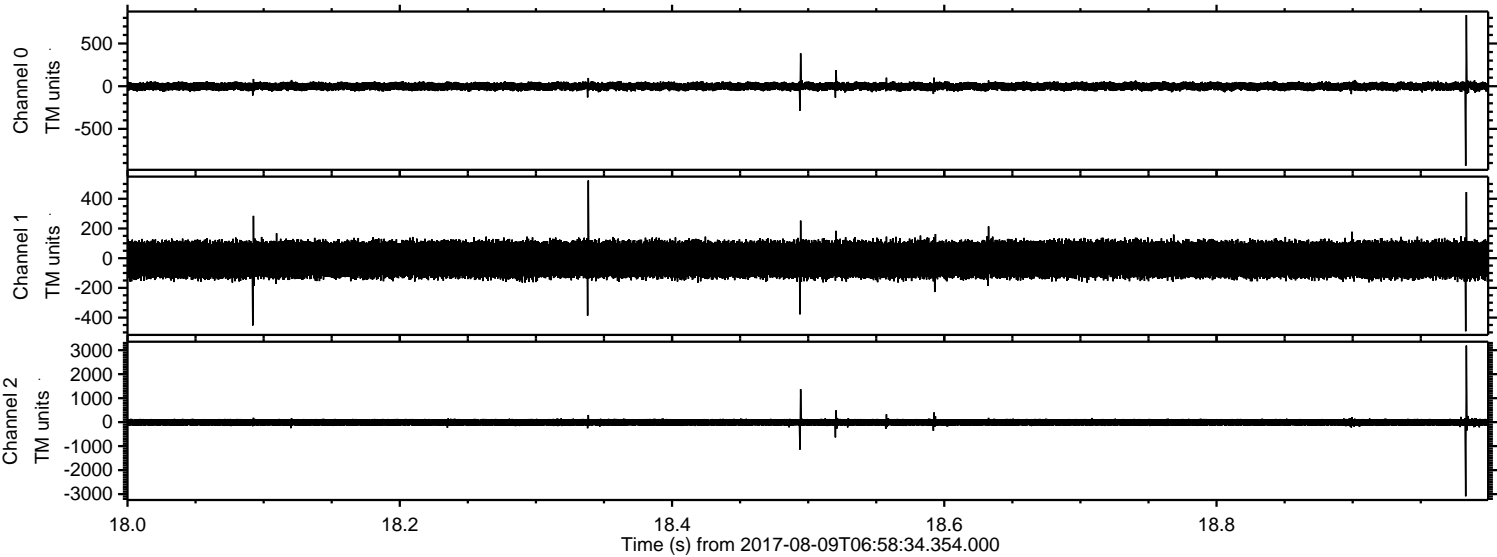
Channel 0
mn: -1027
mx: 673
 μ : -2.3
 σ : 27.7

Channel 1
mn: -3352
mx: 2583
 μ : -9.5
 σ : 78.2

Channel 2
mn: -1028
mx: 1032
 μ : -10.0
 σ : 81.9

ELMAVAN 3D WAVEFORMS (Measured data sampled at 50 kHz) 51000 packets of 144 samples from 2017-08-09T06:58:34.354.000. Part 19/147

Processed Wed Aug 9 09:06:36 2017 by ELM ver.2012-10-06 from 001__elm20170809_065833__dat00.bin

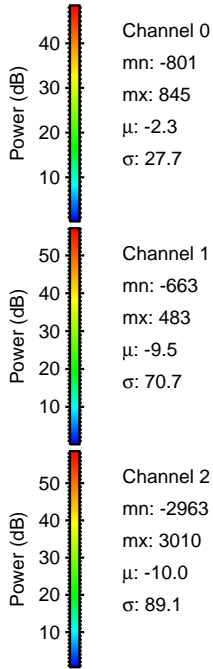
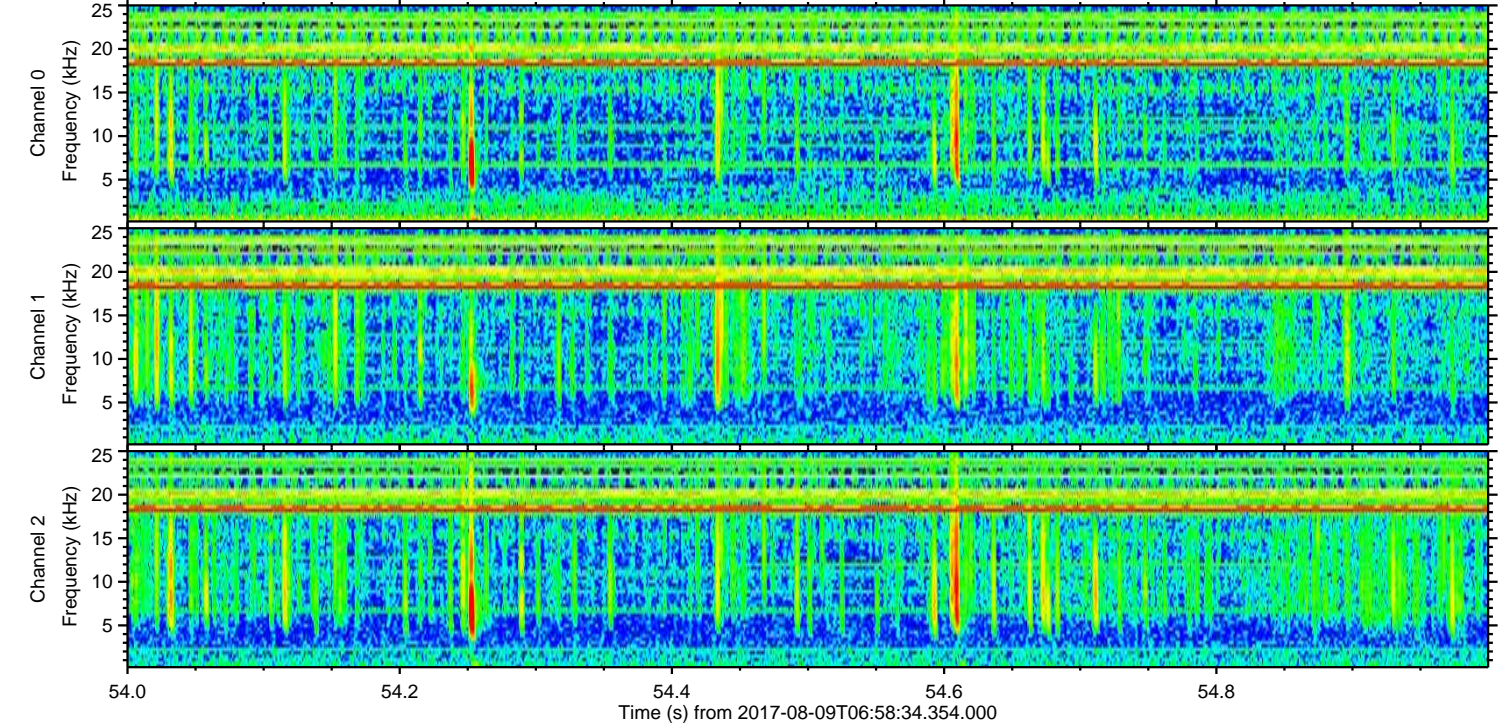
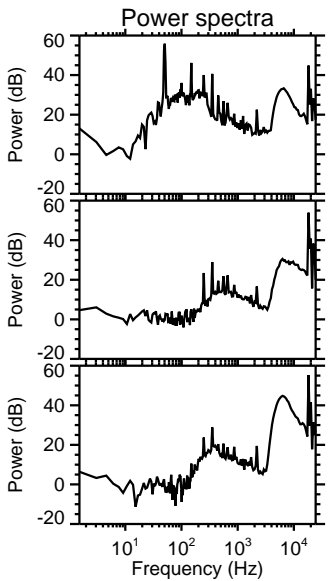
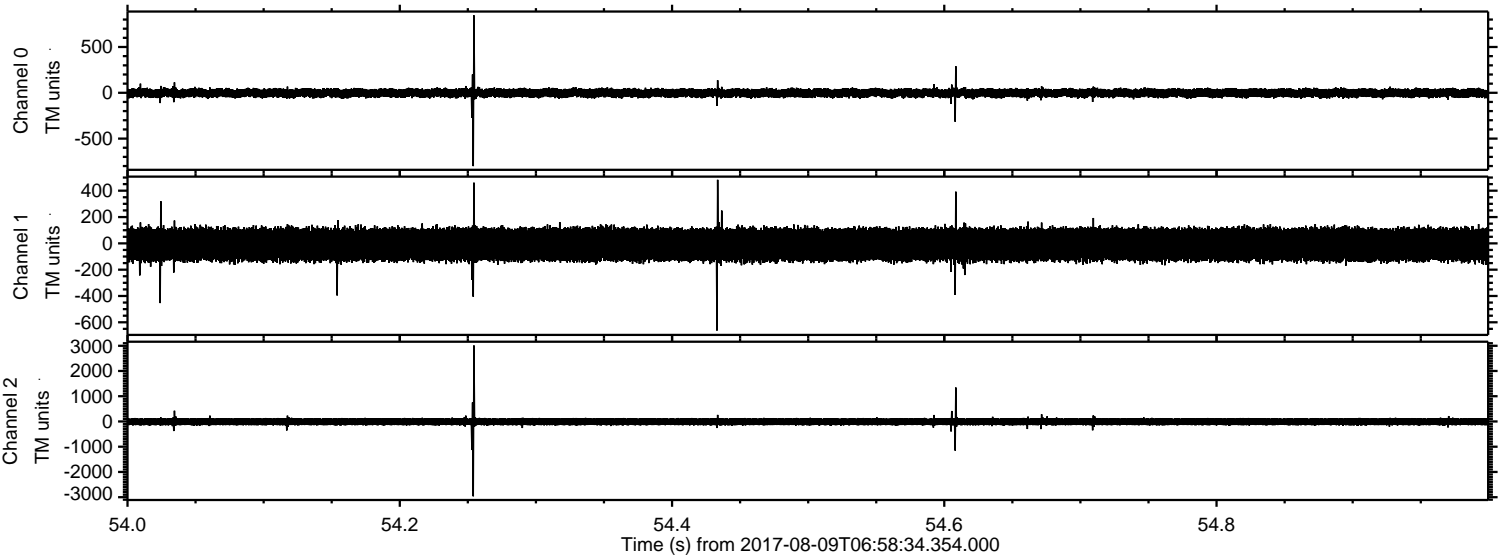


Channel 0
mn: -933
mx: 833
 μ : -2.4
 σ : 28.3

Channel 1
mn: -492
mx: 523
 μ : -9.5
 σ : 70.6

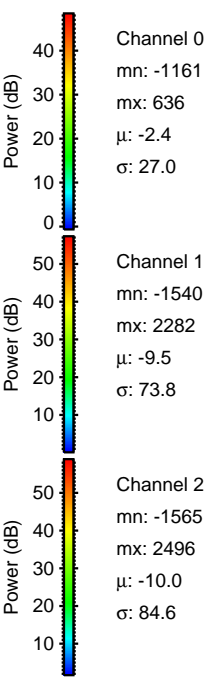
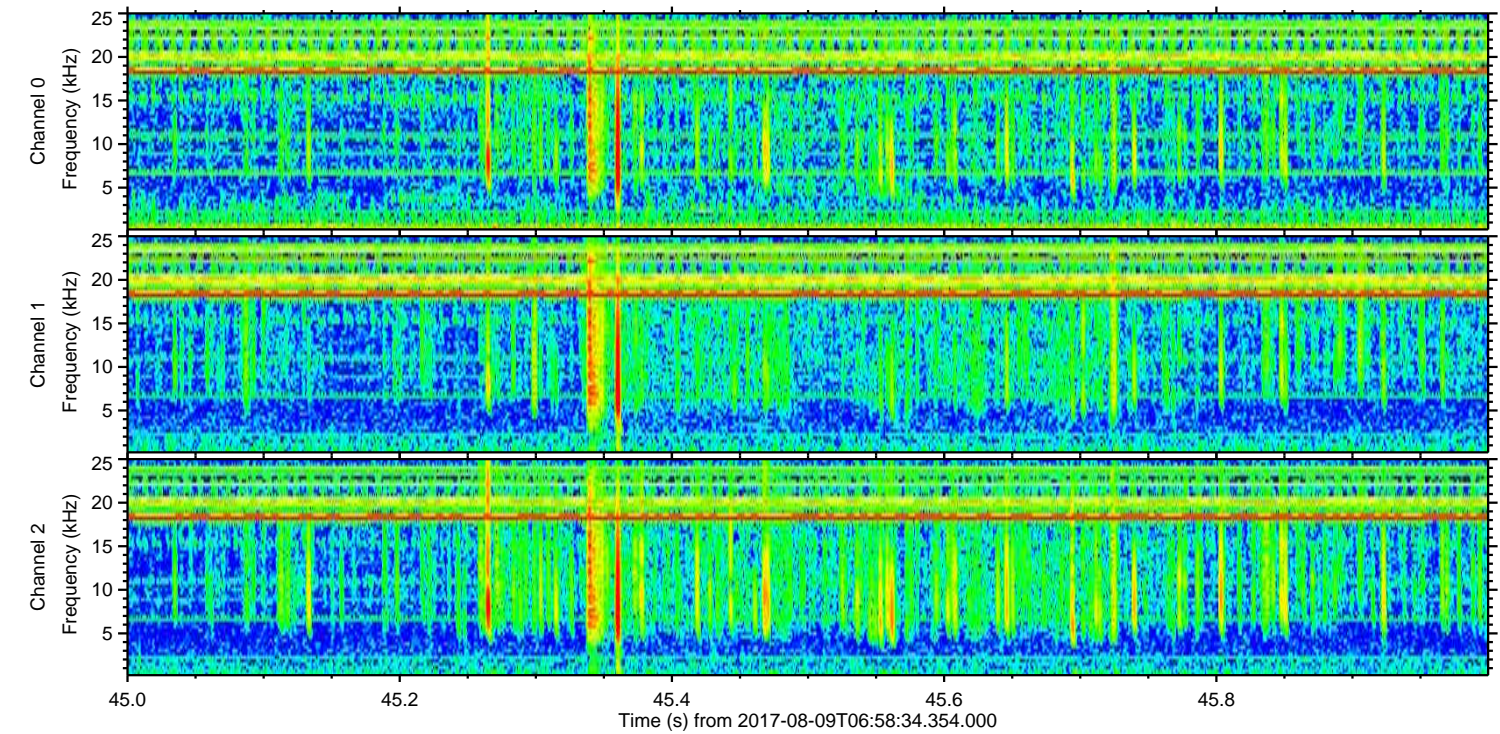
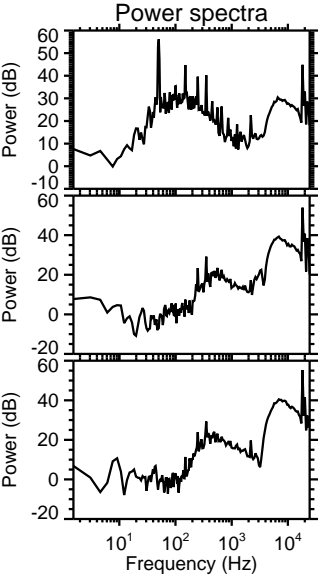
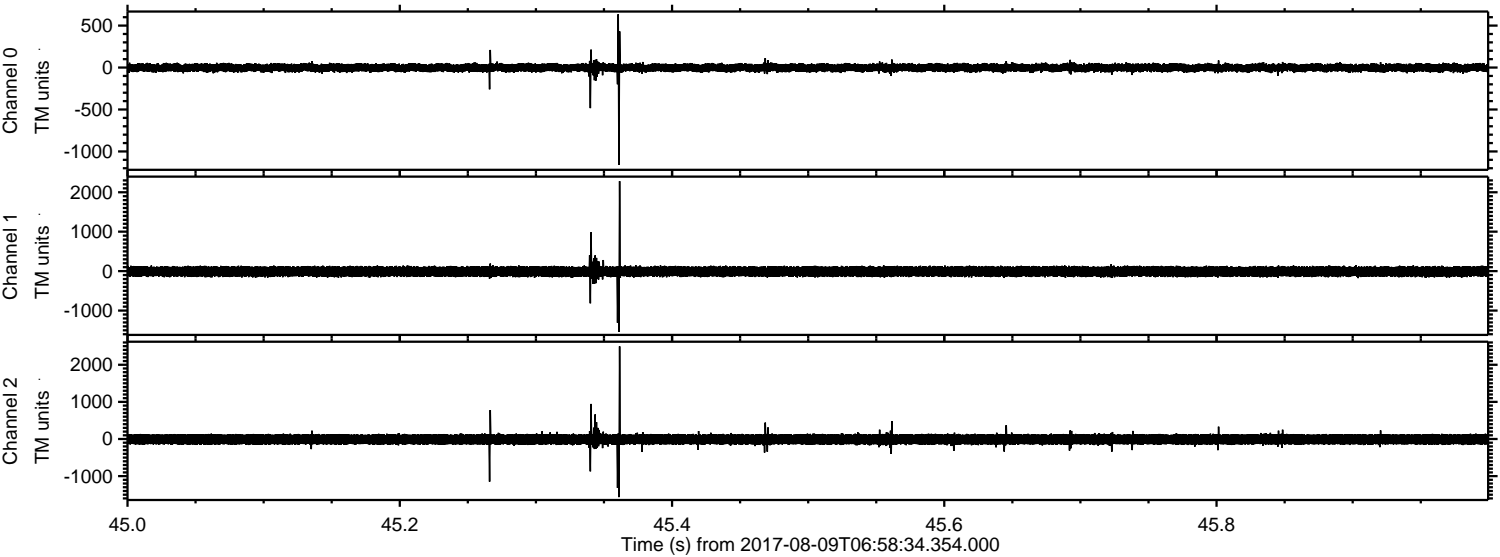
Channel 2
mn: -3092
mx: 3194
 μ : -10.0
 σ : 91.3

Processed Wed Aug 9 09:06:37 2017 by ELM ver.2012-10-06 from 001__elm20170809_065833__dat00.bin



ELMAVAN 3D WAVEFORMS (Measured data sampled at 50 kHz) 51000 packets of 144 samples from 2017-08-09T06:58:34.354.000. Part 46/147

Processed Wed Aug 9 09:06:37 2017 by ELM ver.2012-10-06 from 001__elm20170809_065833__dat00.bin



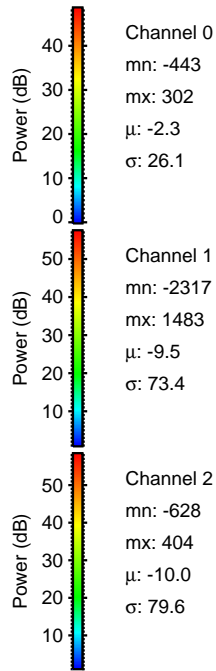
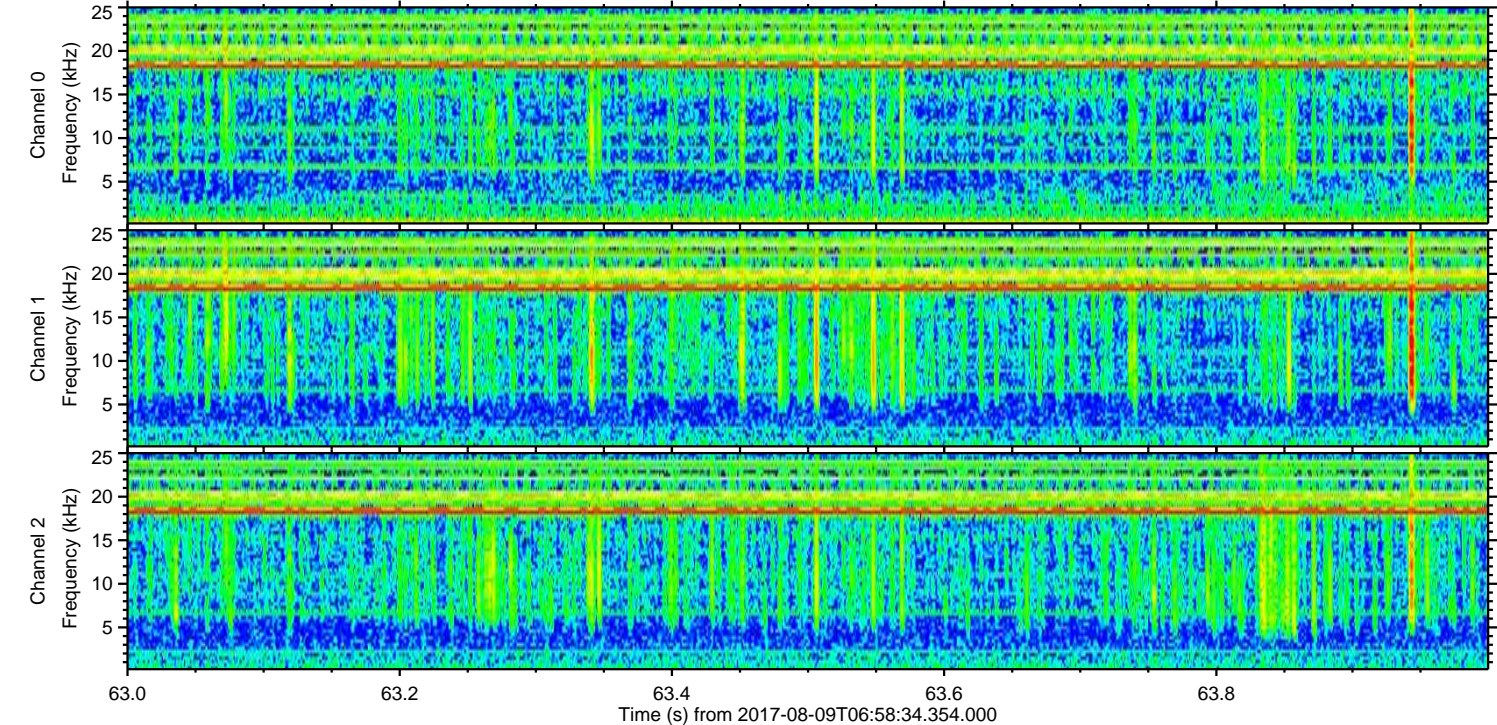
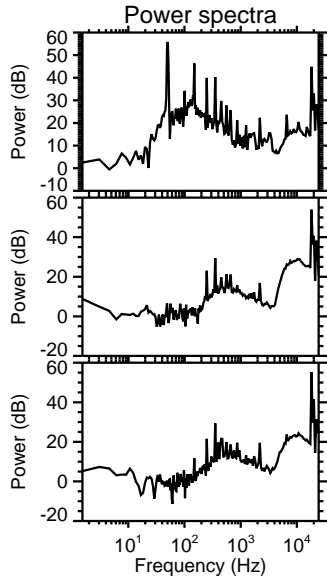
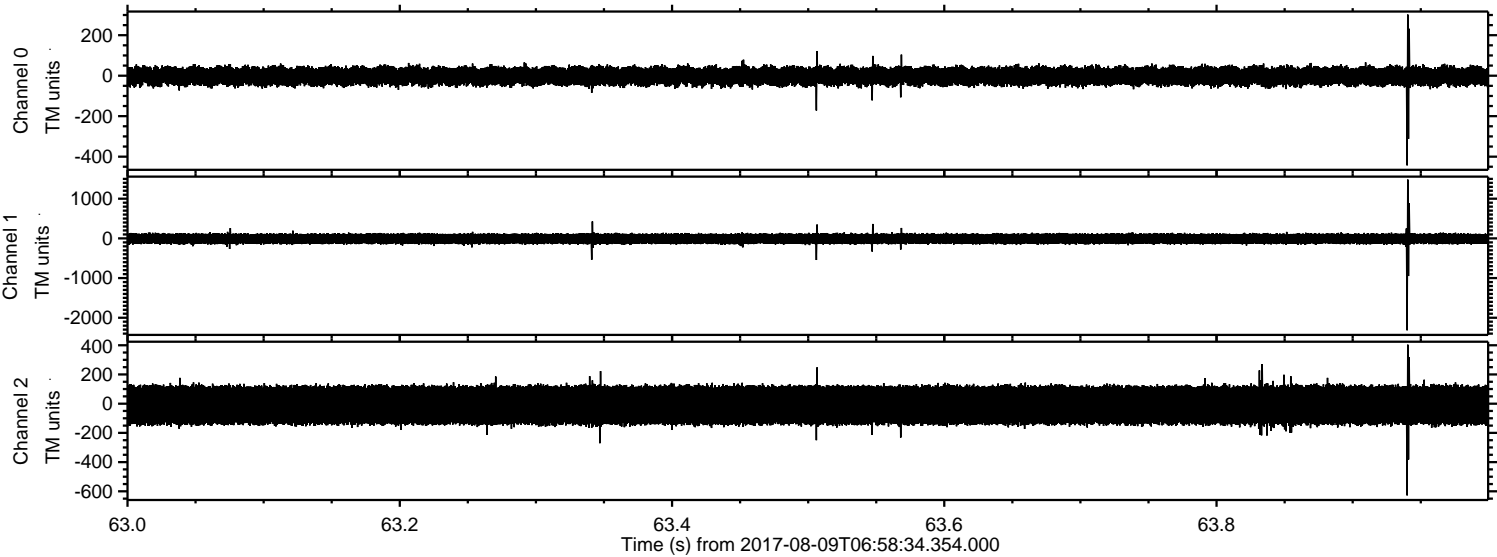
Channel 0
mn: -1161
mx: 636
 μ : -2.4
 σ : 27.0

Channel 1
mn: -1540
mx: 2282
 μ : -9.5
 σ : 73.8

Channel 2
mn: -1565
mx: 2496
 μ : -10.0
 σ : 84.6

ELMAVAN 3D WAVEFORMS (Measured data sampled at 50 kHz) 51000 packets of 144 samples from 2017-08-09T06:58:34.354.000. Part 64/147

Processed Wed Aug 9 09:06:38 2017 by ELM ver.2012-10-06 from 001__elm20170809_065833__dat00.bin



ELMAVAN 3D WAVEFORMS (Measured data sampled at 50 kHz) 51000 packets of 144 samples from 2017-08-09T06:58:34.354.000. Part 13/147

Processed Wed Aug 9 09:06:39 2017 by ELM ver.2012-10-06 from 001__elm20170809_065833__dat00.bin

