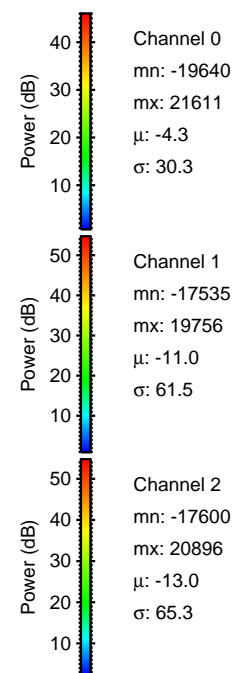
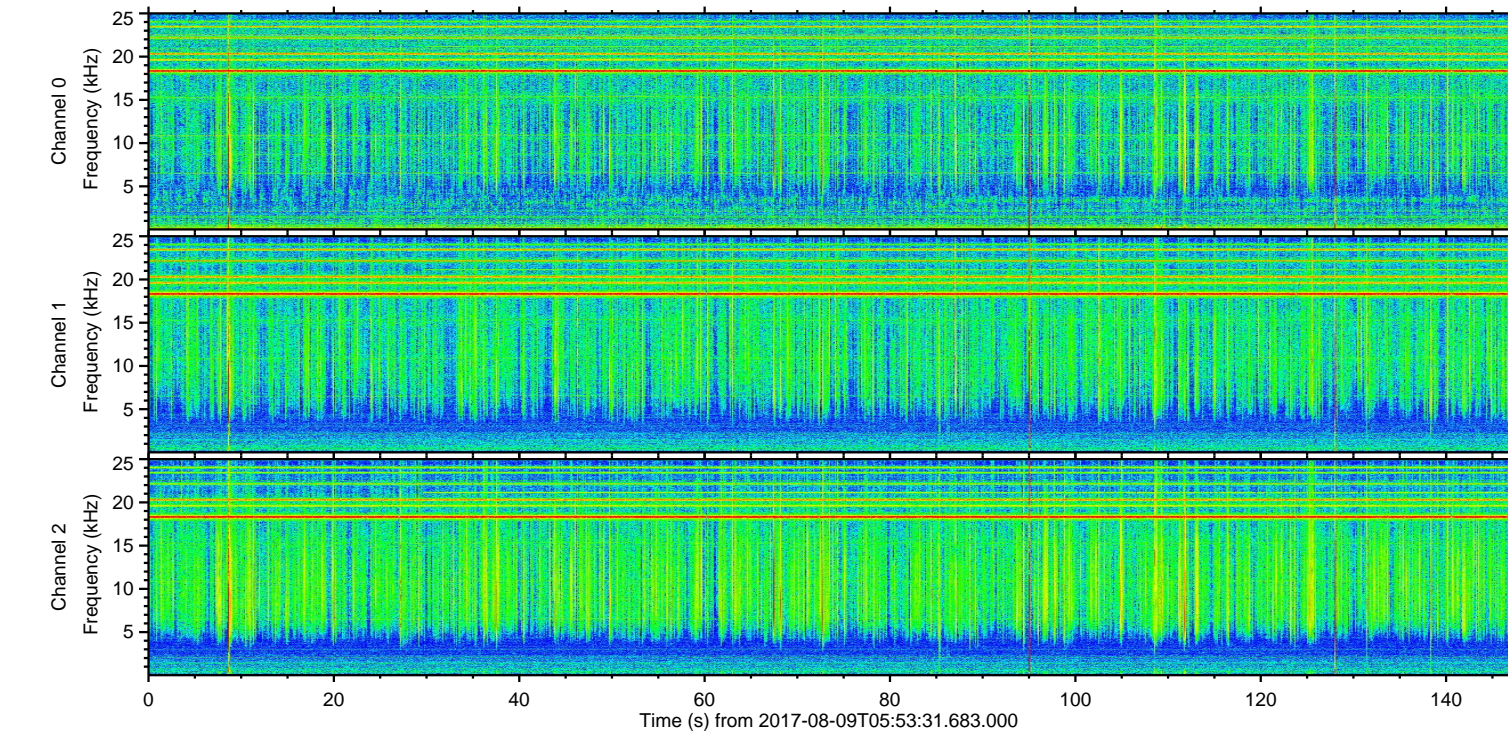
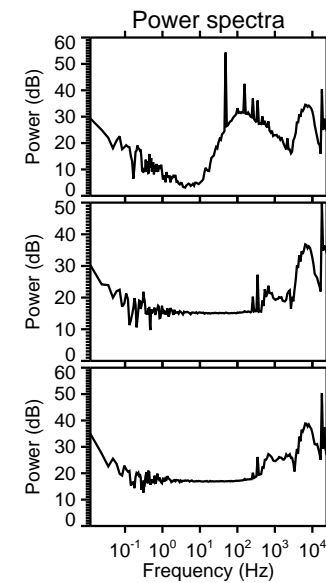
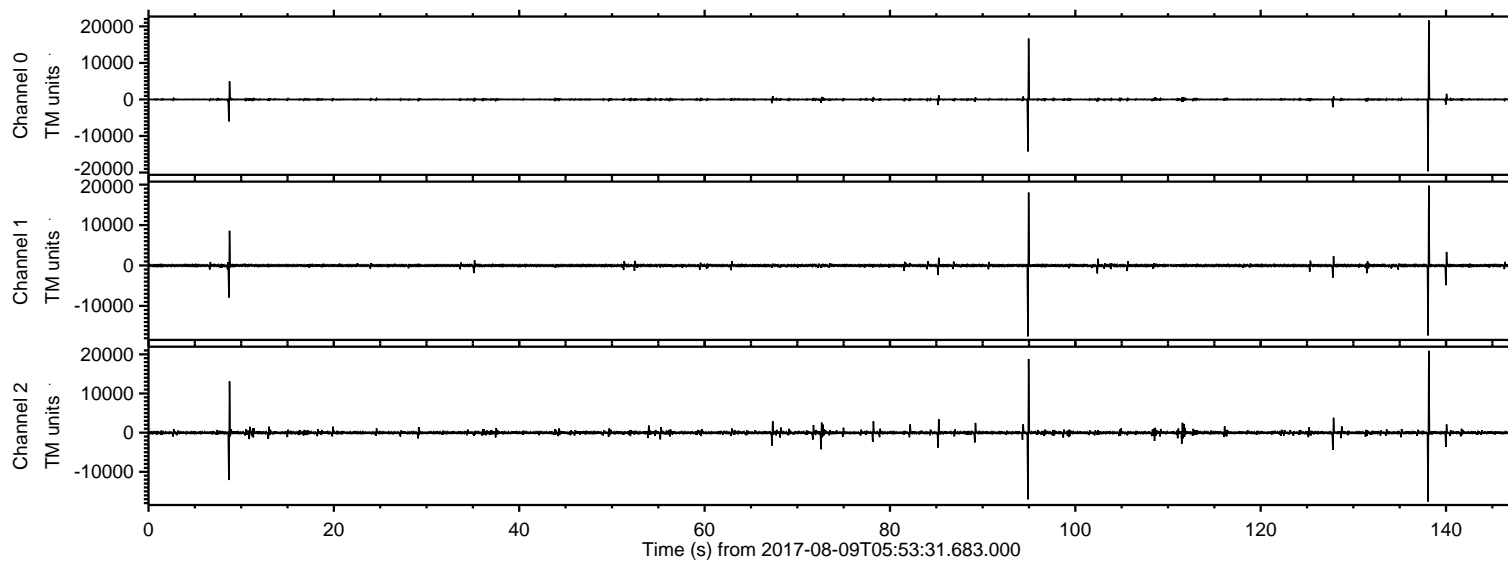


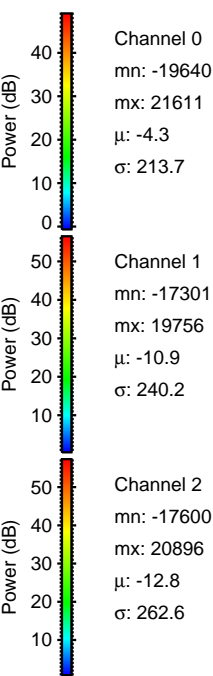
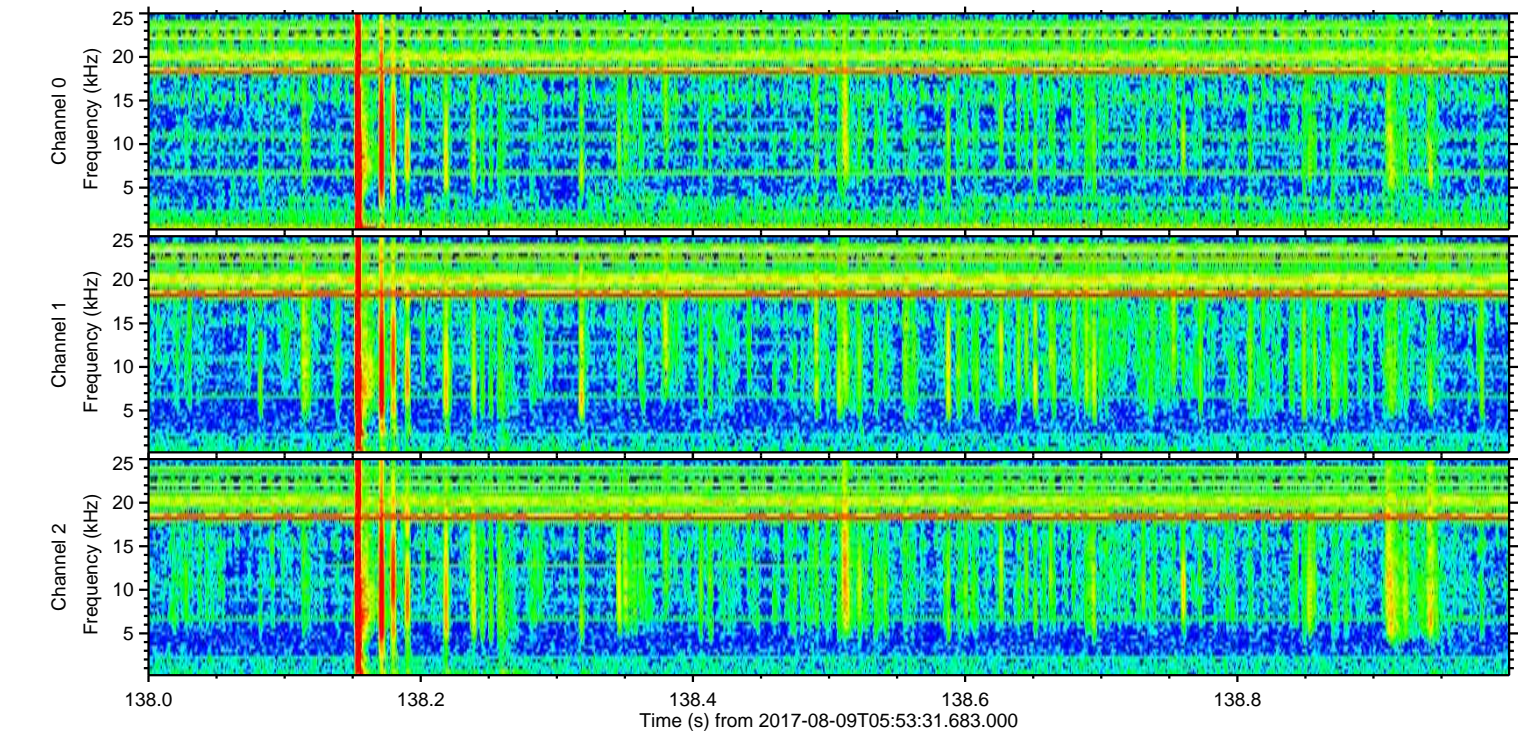
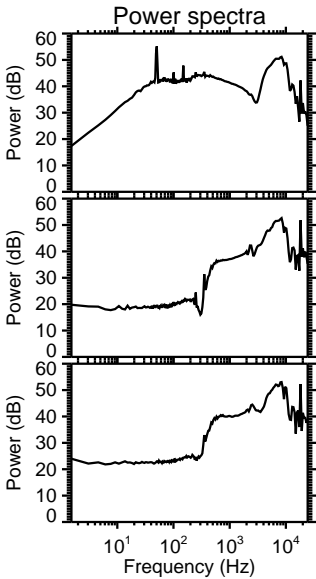
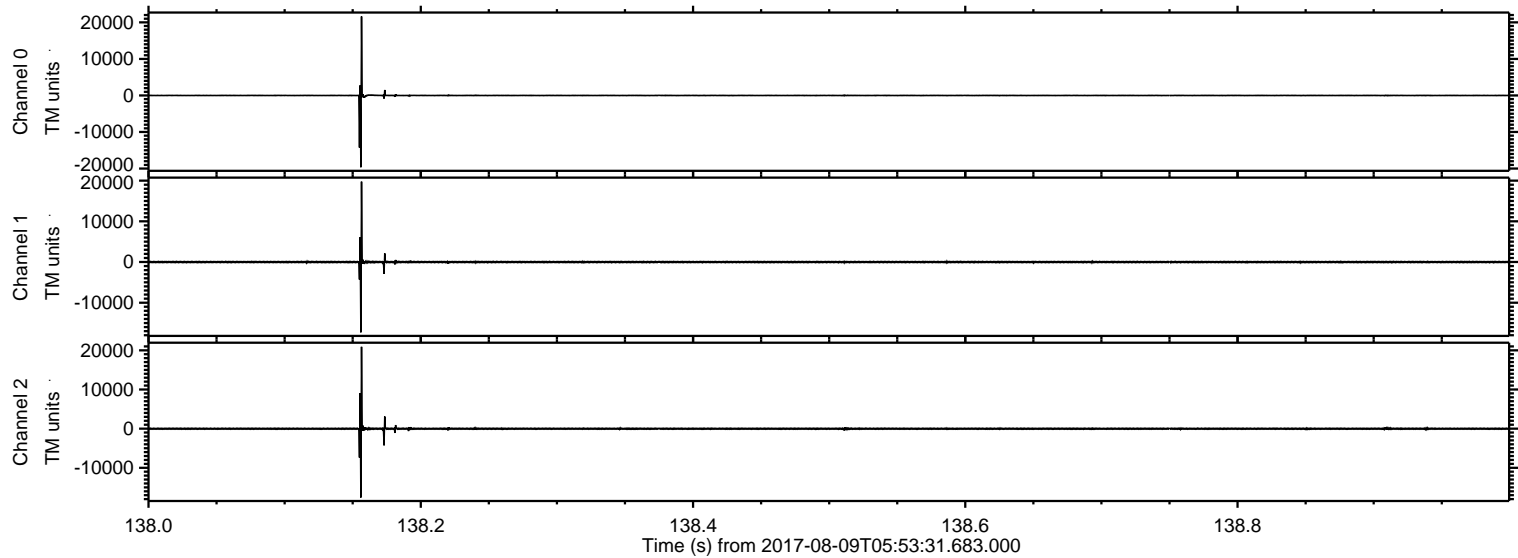
ELMAVAN 3D WAVEFORMS (Measured data sampled at 50 kHz) 51000 packets of 144 samples from 2017-08-09T05:53:31.683.000.

Processed Wed Aug 9 08:01:29 2017 by ELM ver.2012-10-06 from 001__elm20170809_055330__dat00.bin

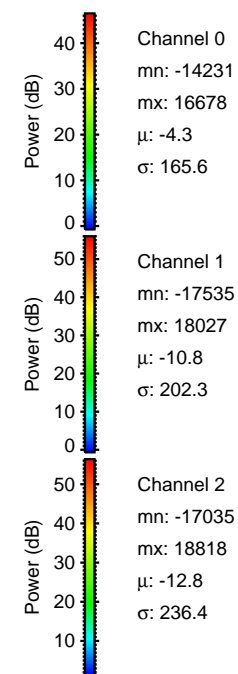
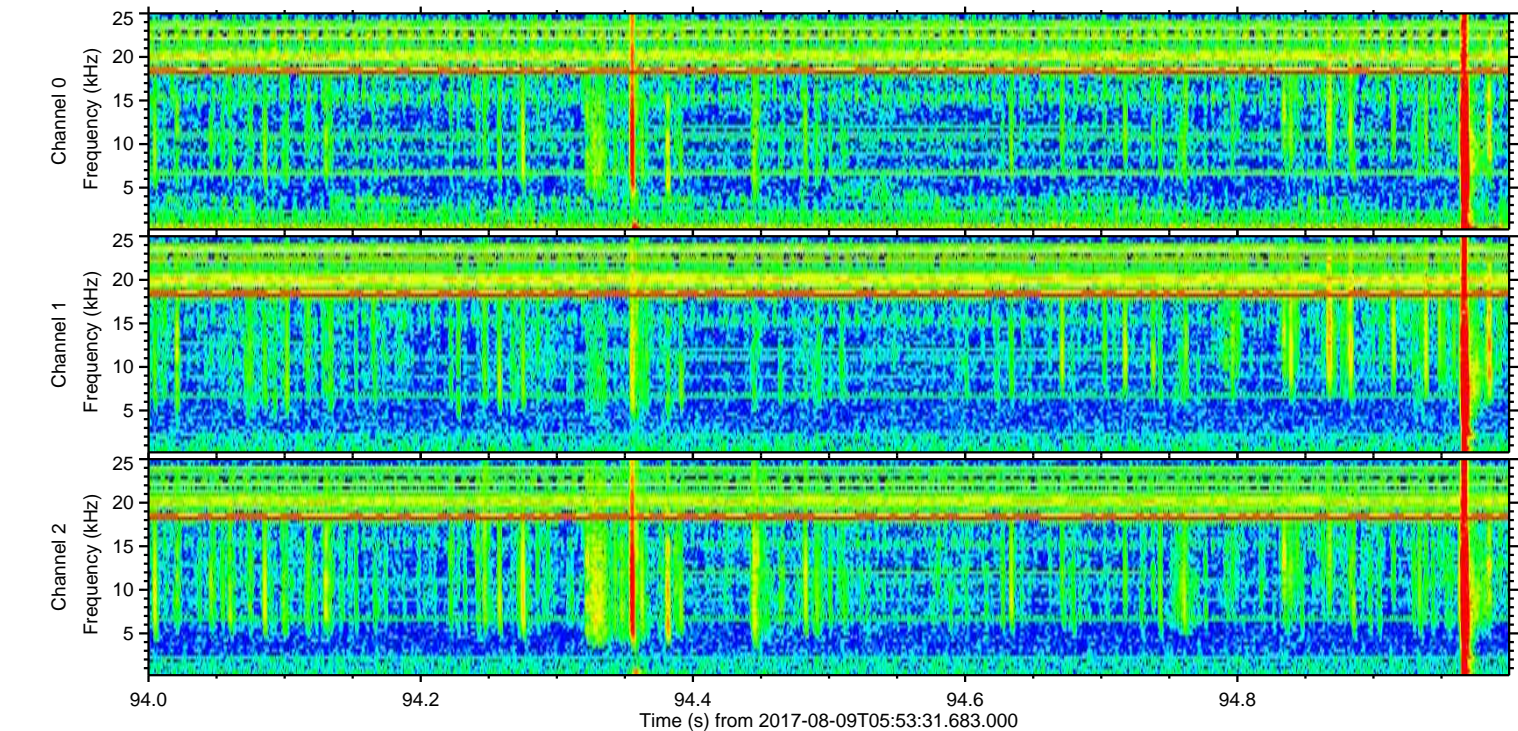
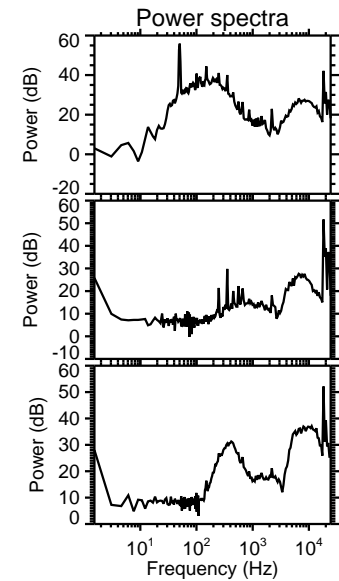
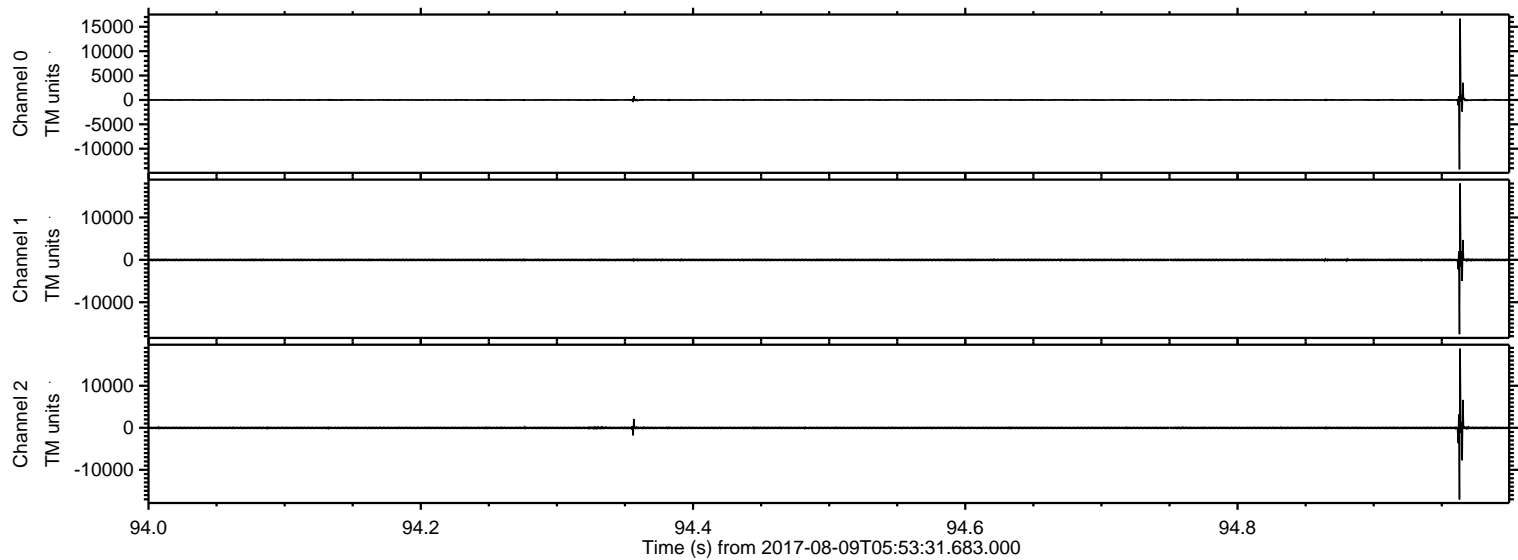


ELMAVAN 3D WAVEFORMS (Measured data sampled at 50 kHz) 51000 packets of 144 samples from 2017-08-09T05:53:31.683.000. Part 139/147

Processed Wed Aug 9 08:01:37 2017 by ELM ver.2012-10-06 from 001__elm20170809_055330__dat00.bin

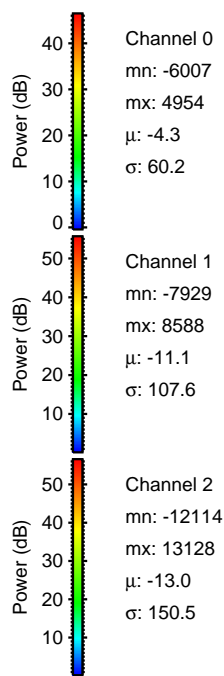
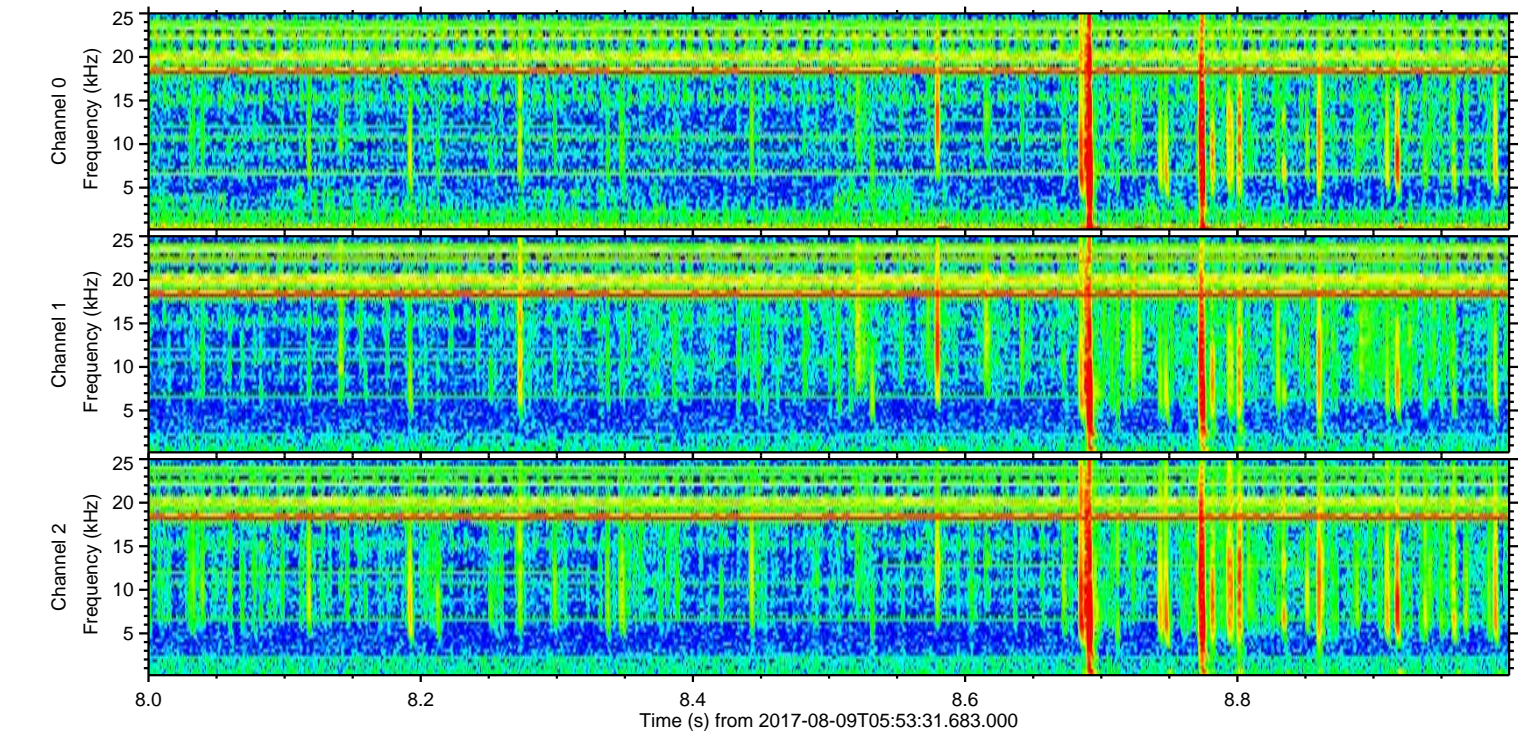
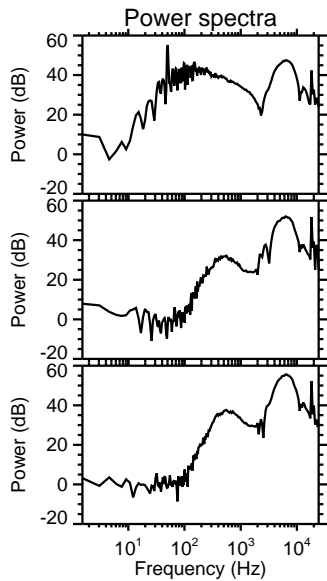
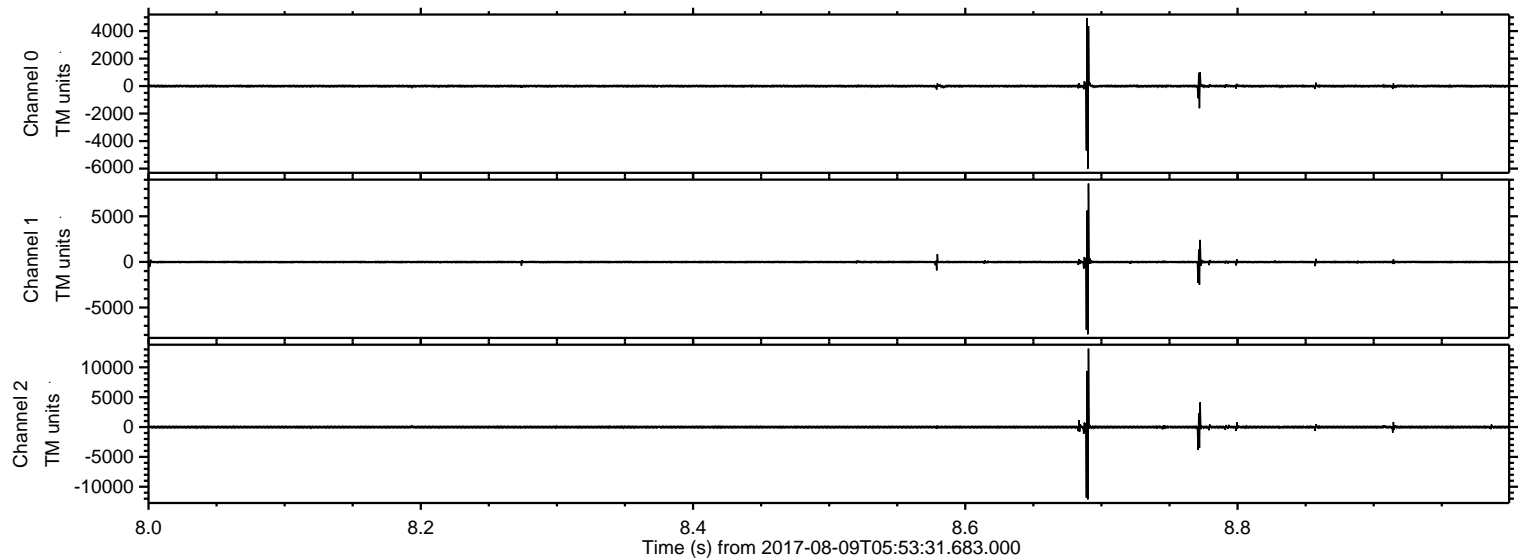


Processed Wed Aug 9 08:01:38 2017 by ELM ver.2012-10-06 from 001__elm20170809_055330__dat00.bin



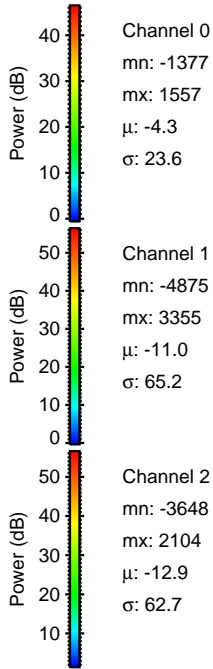
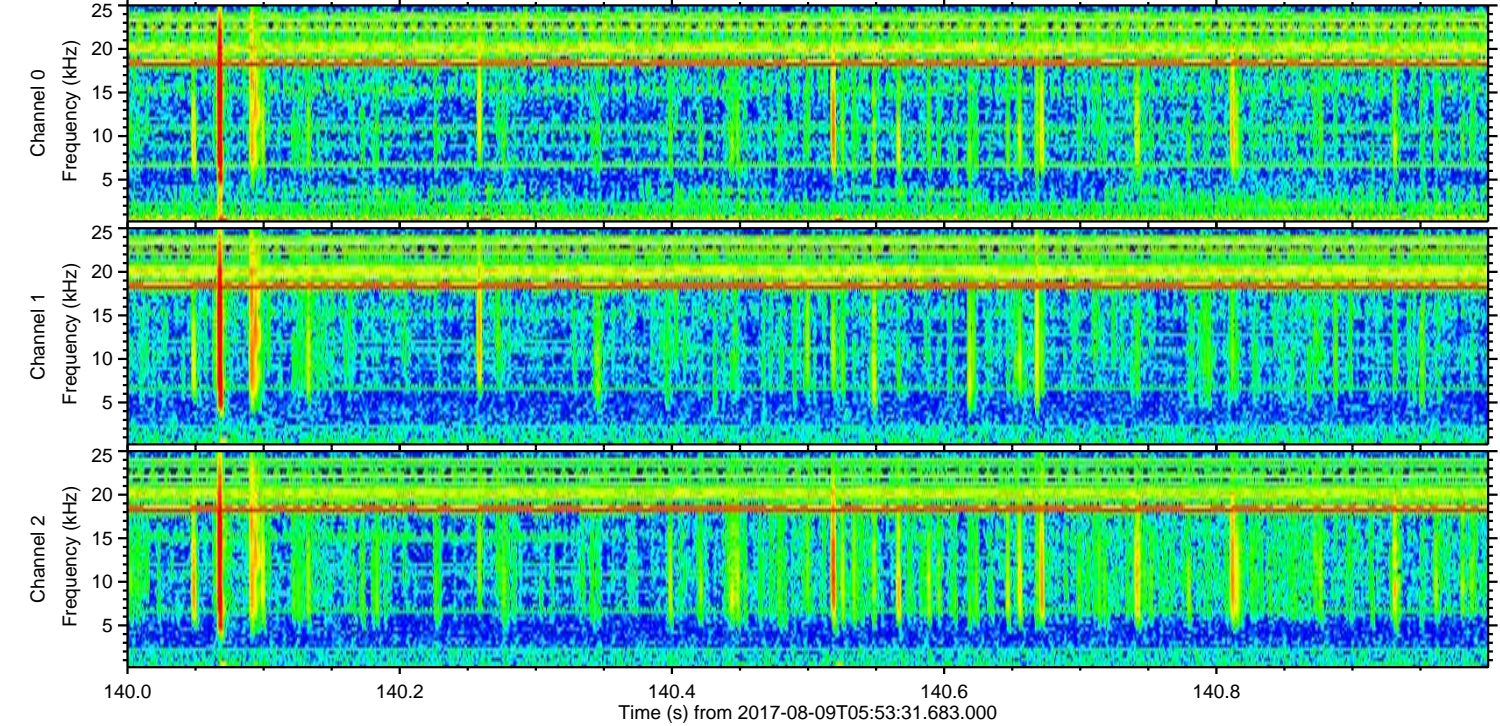
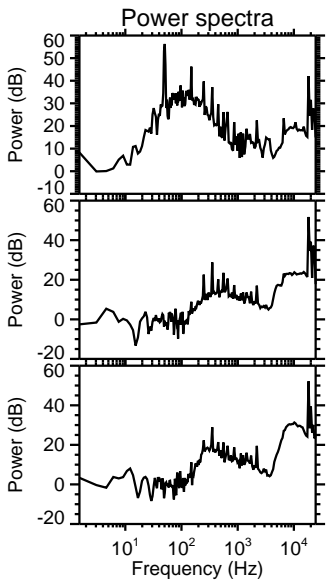
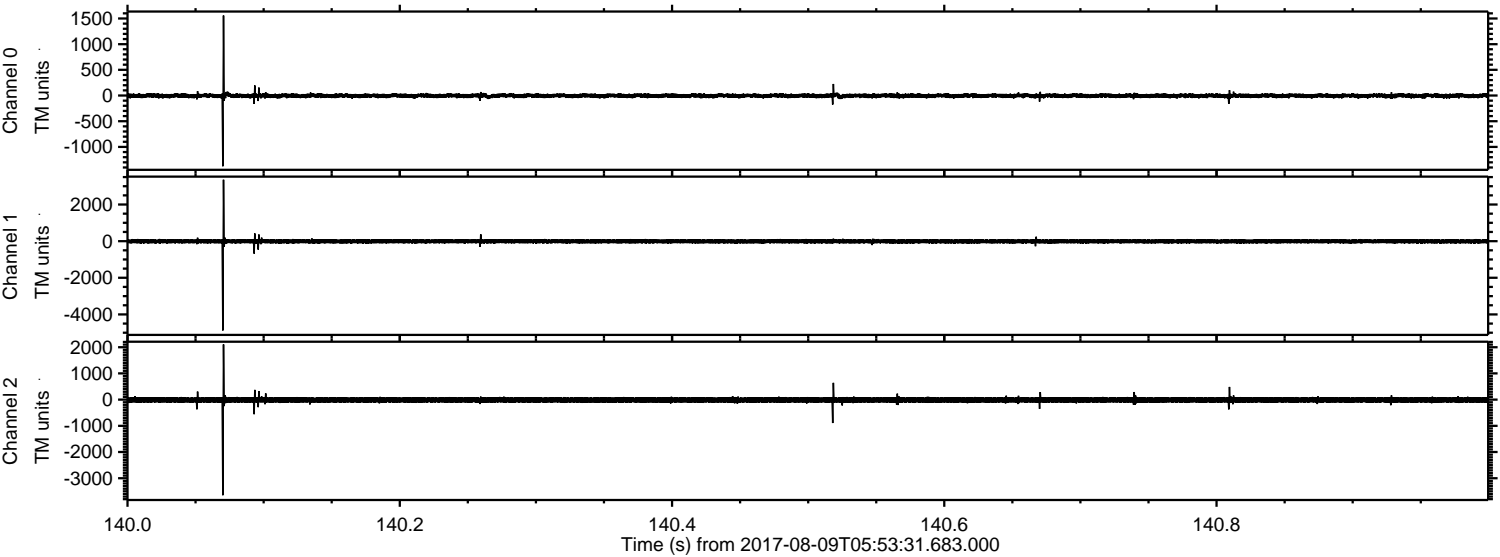
ELMAVAN 3D WAVEFORMS (Measured data sampled at 50 kHz) 51000 packets of 144 samples from 2017-08-09T05:53:31.683.000. Part 9/147

Processed Wed Aug 9 08:01:38 2017 by ELM ver.2012-10-06 from 001__elm20170809_055330__dat00.bin



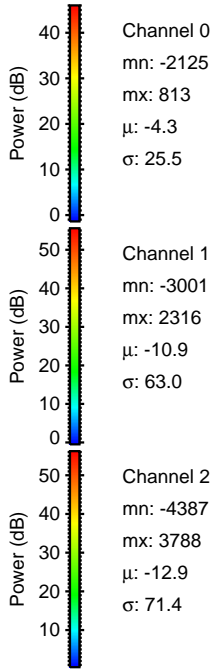
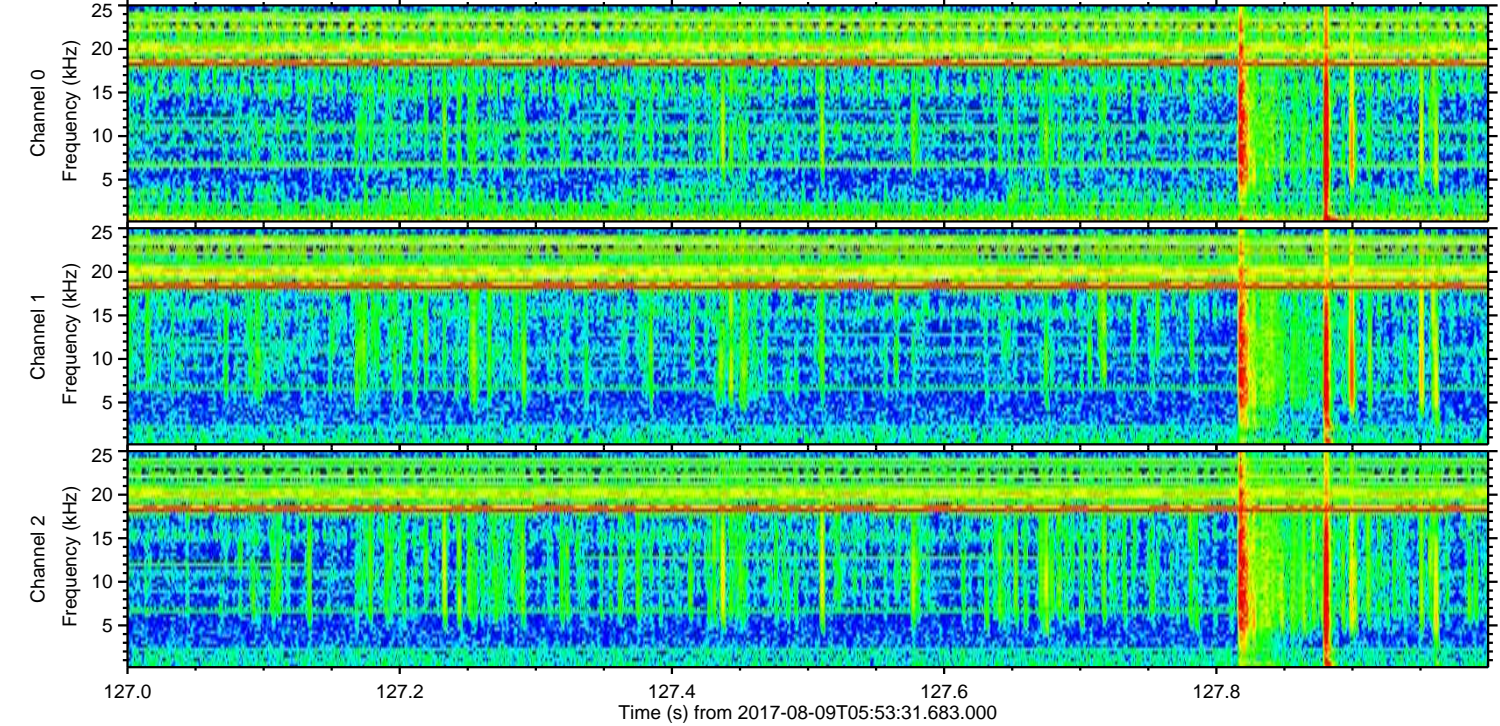
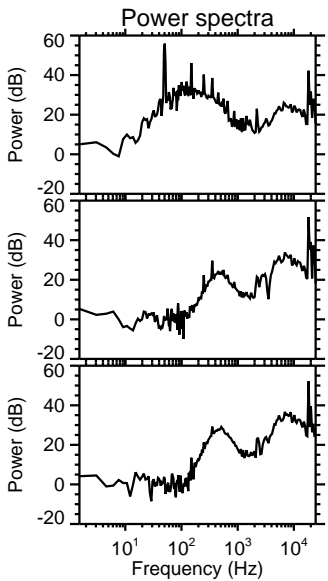
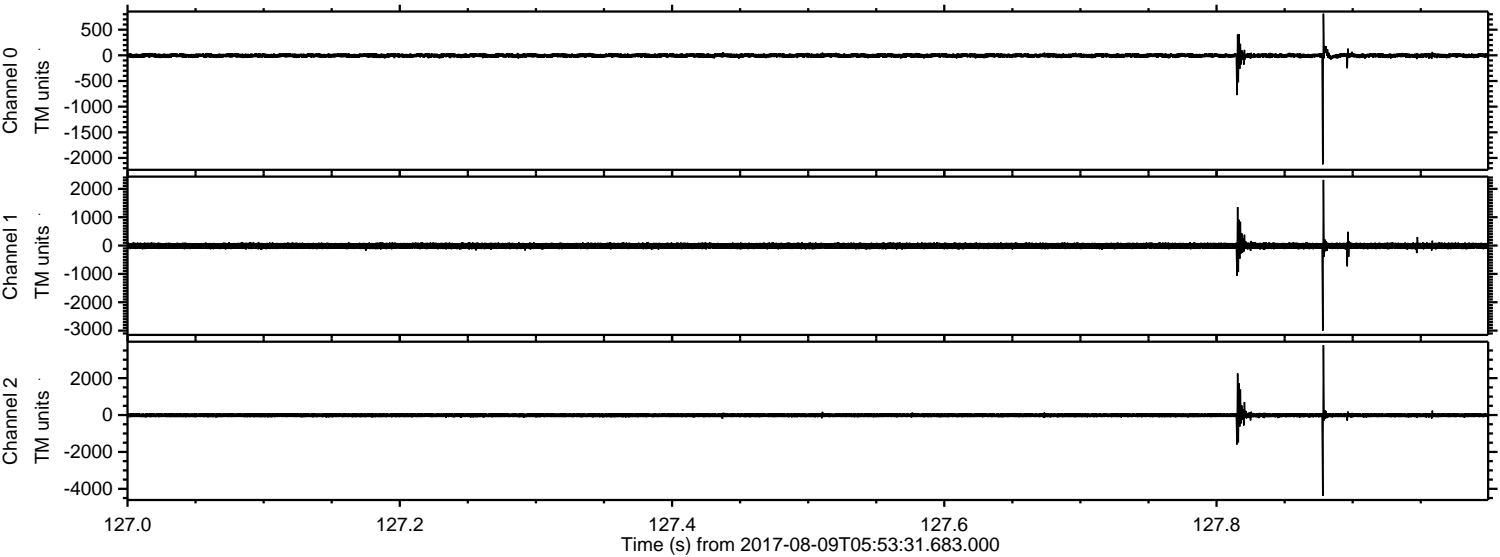
ELMAVAN 3D WAVEFORMS (Measured data sampled at 50 kHz) 51000 packets of 144 samples from 2017-08-09T05:53:31.683.000. Part 141/147

Processed Wed Aug 9 08:01:39 2017 by ELM ver.2012-10-06 from 001__elm20170809_055330__dat00.bin

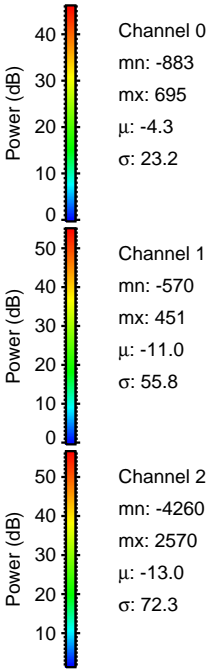
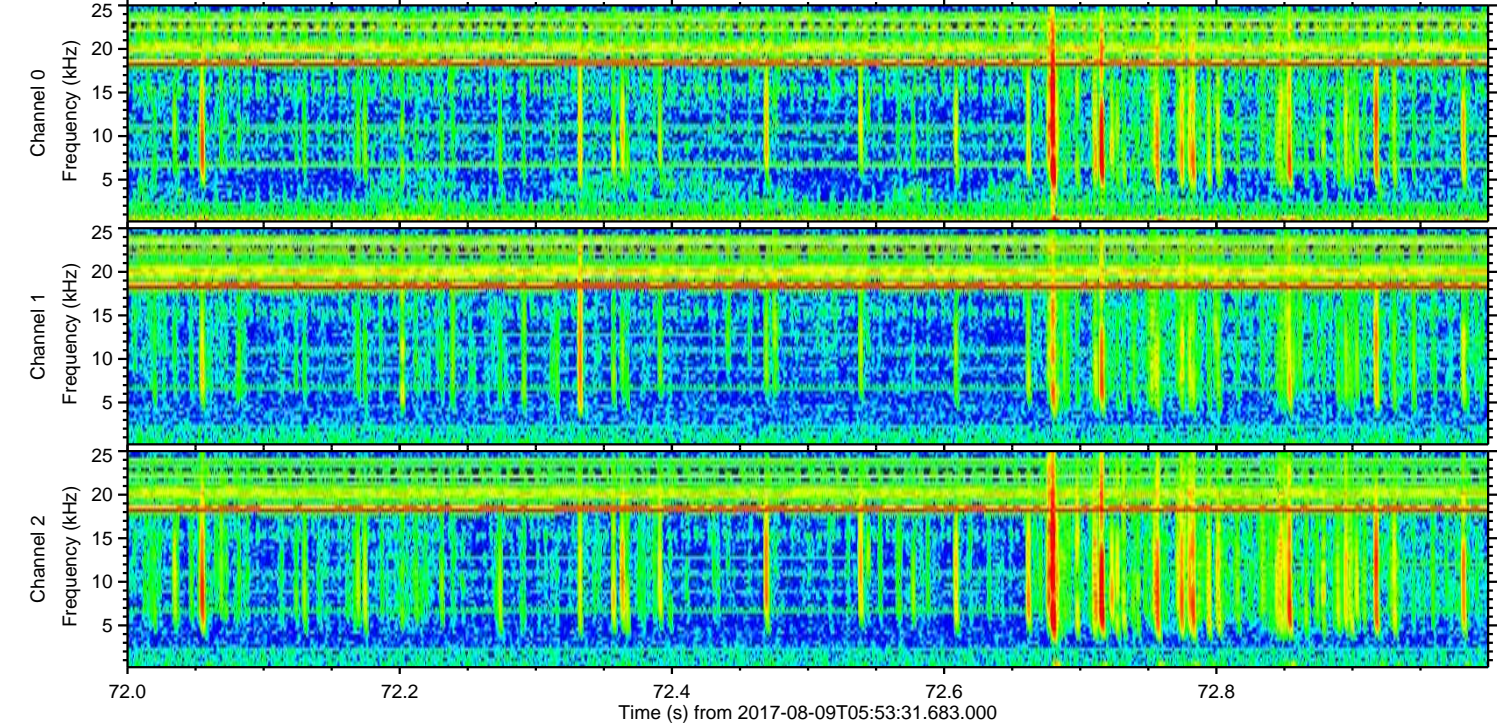
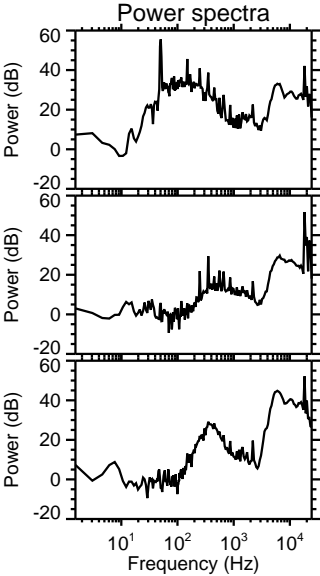
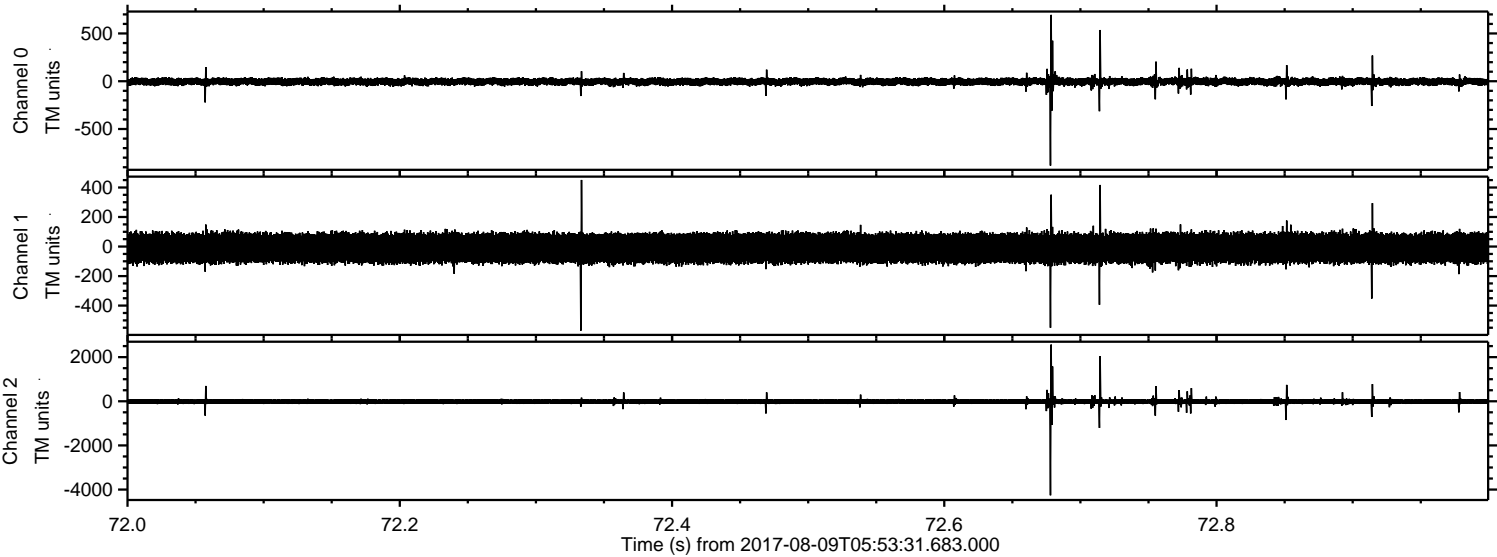


ELMAVAN 3D WAVEFORMS (Measured data sampled at 50 kHz) 51000 packets of 144 samples from 2017-08-09T05:53:31.683.000. Part 128/147

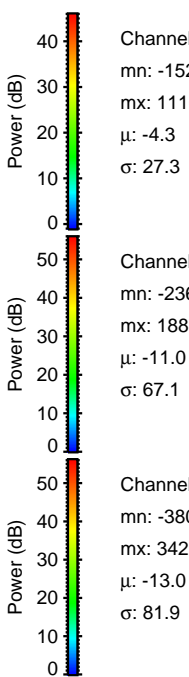
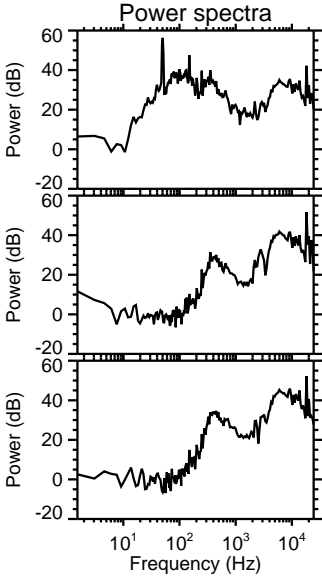
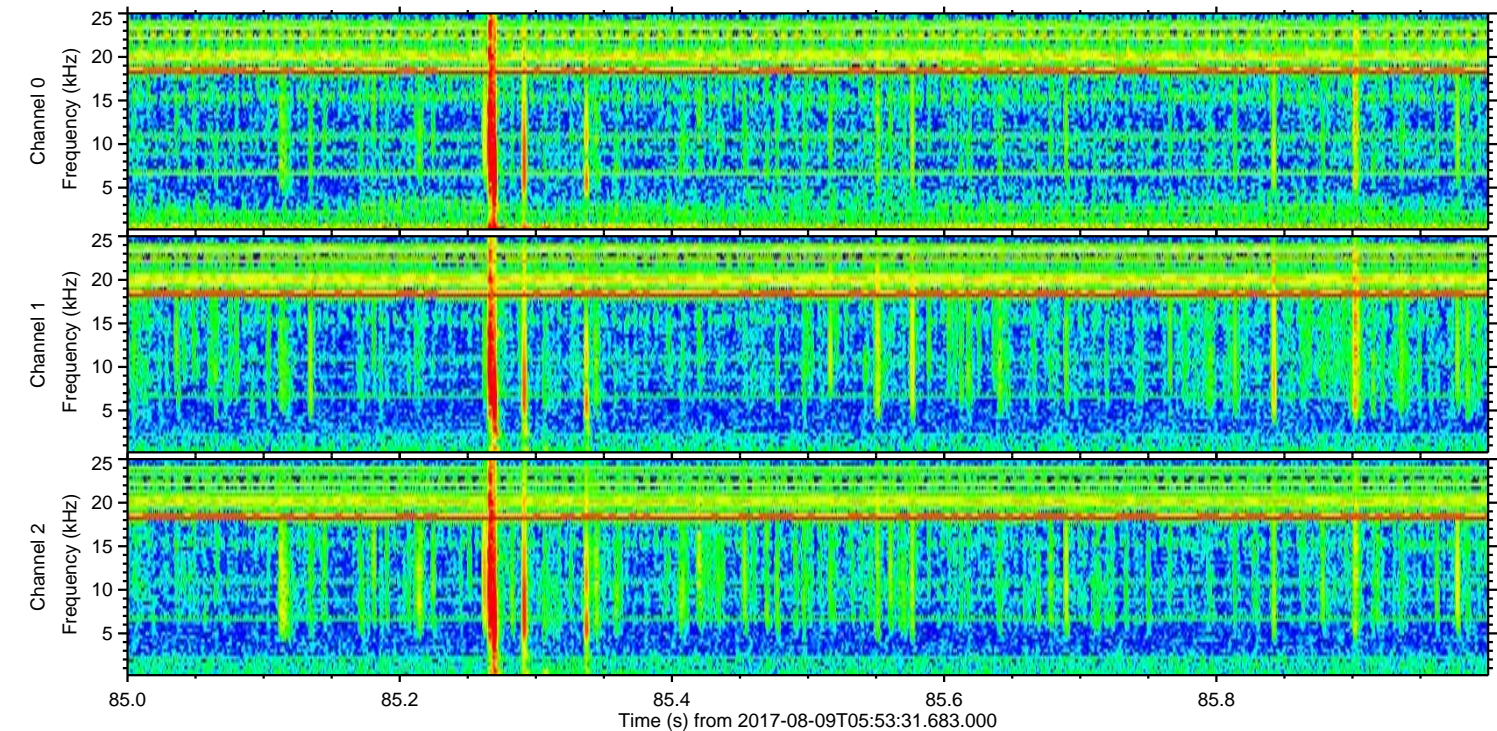
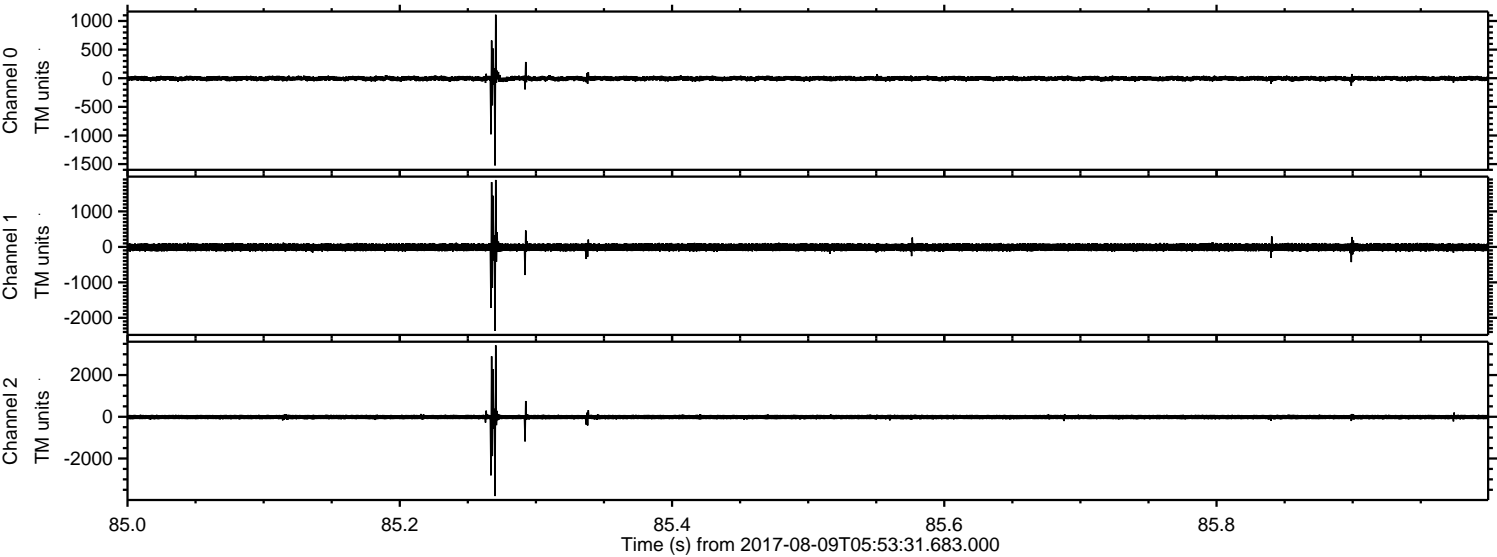
Processed Wed Aug 9 08:01:40 2017 by ELM ver.2012-10-06 from 001__elm20170809_055330__dat00.bin



Processed Wed Aug 9 08:01:40 2017 by ELM ver.2012-10-06 from 001__elm20170809_055330__dat00.bin



Processed Wed Aug 9 08:01:41 2017 by ELM ver.2012-10-06 from 001__elm20170809_055330__dat00.bin

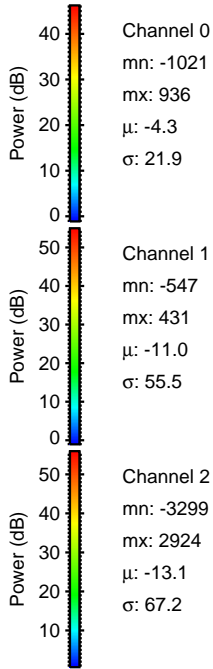
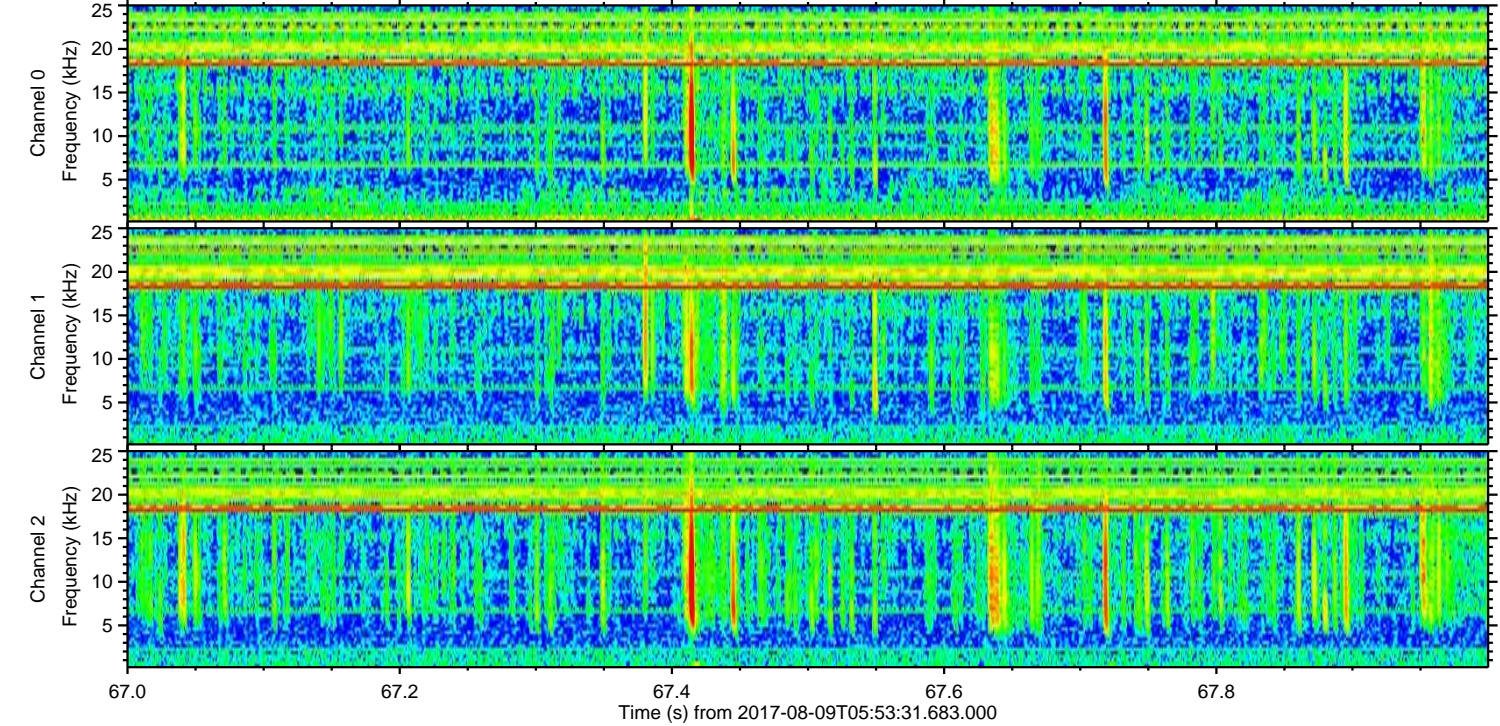
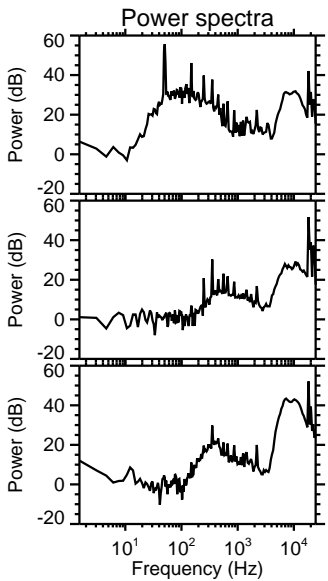
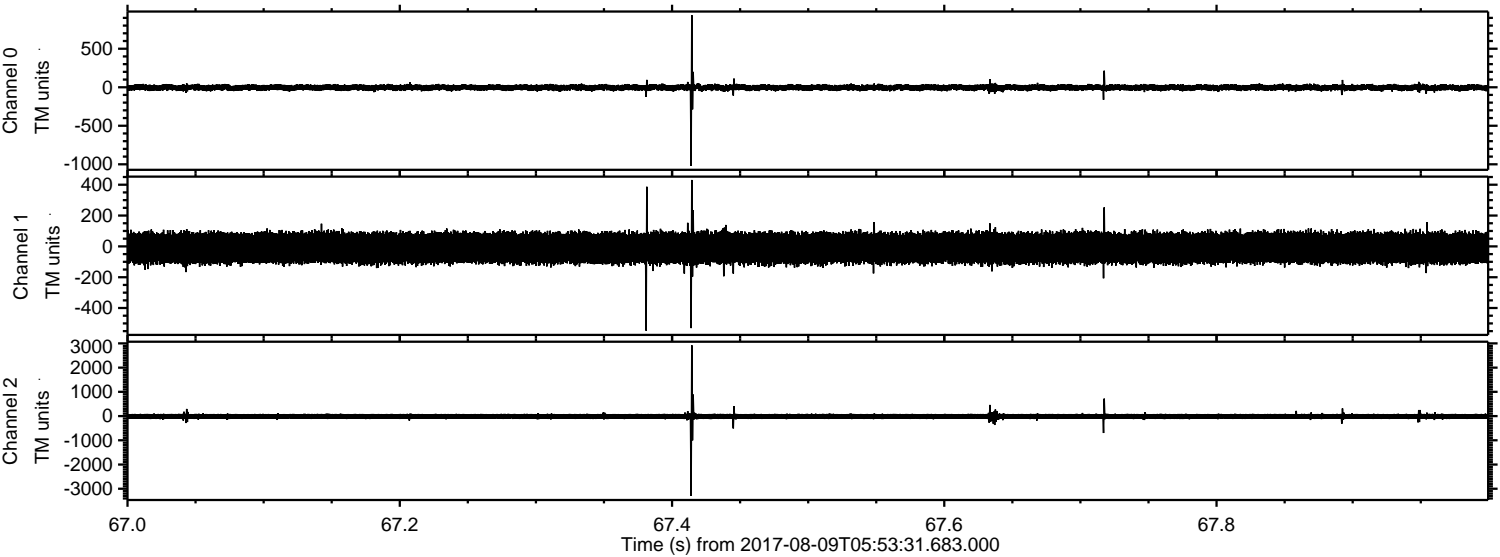


Channel 0
mn: -1524
mx: 1110
 μ : -4.3
 σ : 27.3

Channel 1
mn: -2364
mx: 1887
 μ : -11.0
 σ : 67.1

Channel 2
mn: -3801
mx: 3429
 μ : -13.0
 σ : 81.9

Processed Wed Aug 9 08:01:41 2017 by ELM ver.2012-10-06 from 001__elm20170809_055330__dat00.bin



Channel 0
mn: -1021
mx: 936
 μ : -4.3
 σ : 21.9

Channel 1
mn: -547
mx: 431
 μ : -11.0
 σ : 55.5

Channel 2
mn: -3299
mx: 2924
 μ : -13.1
 σ : 67.2

Processed Wed Aug 9 08:01:42 2017 by ELM ver.2012-10-06 from 001__elm20170809_055330__dat00.bin

