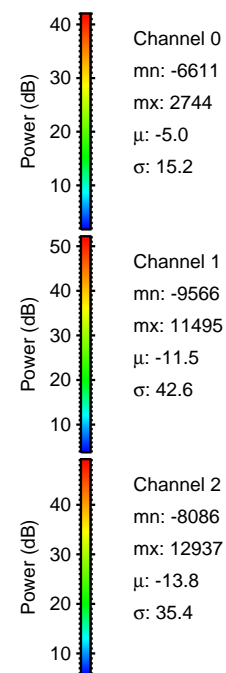
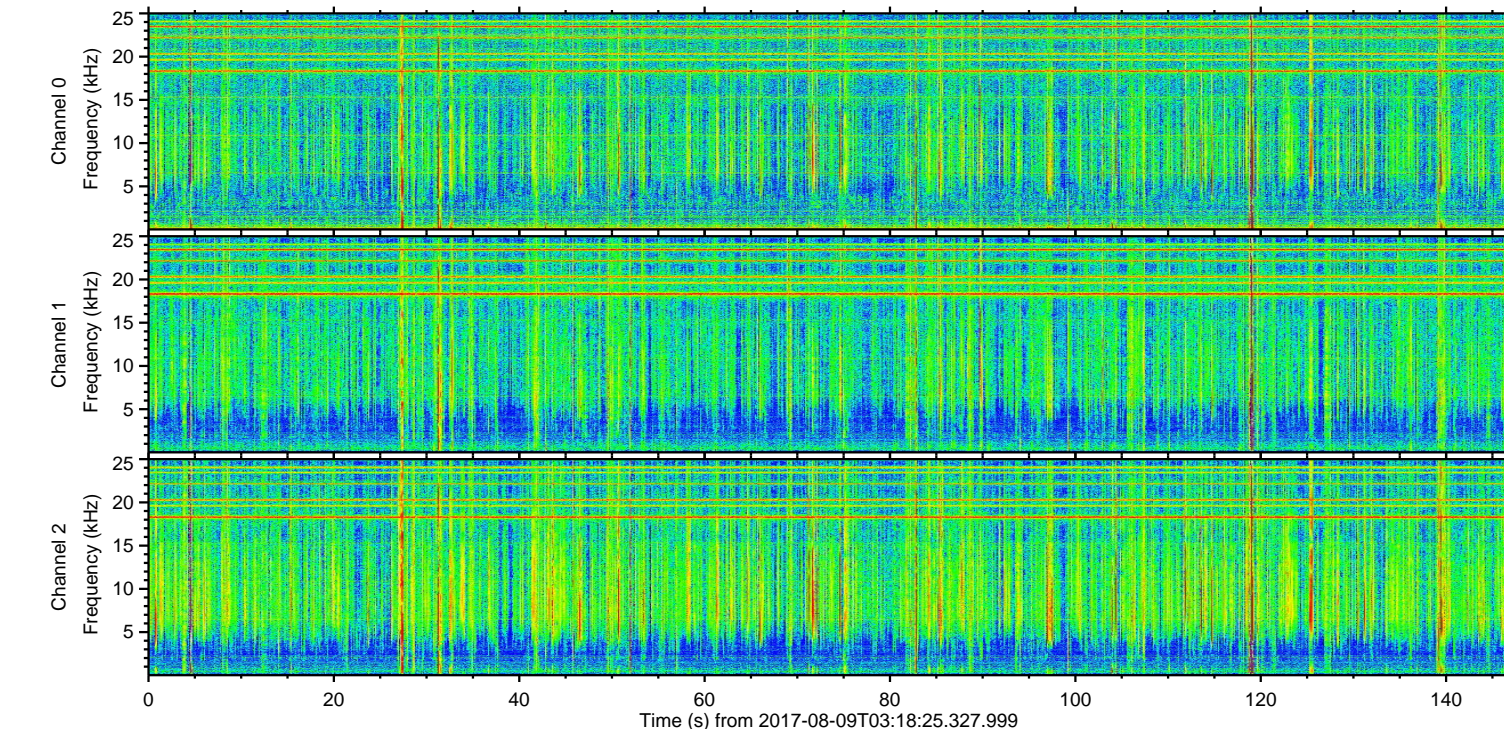
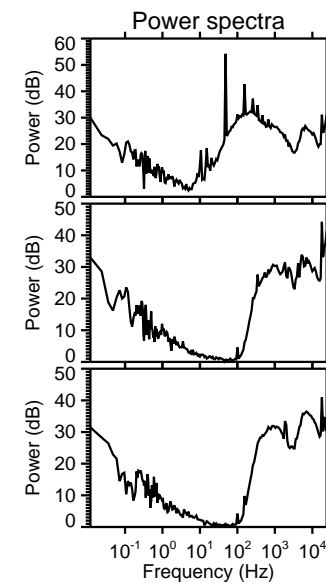
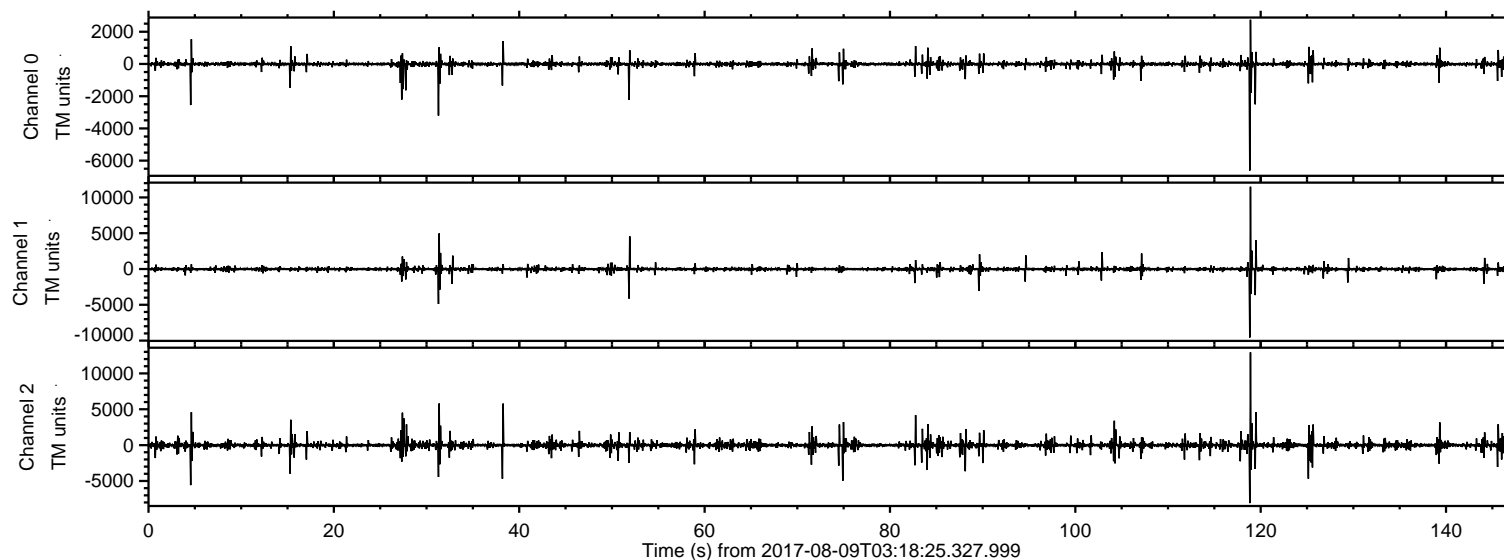


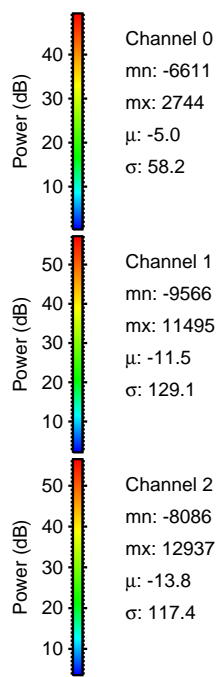
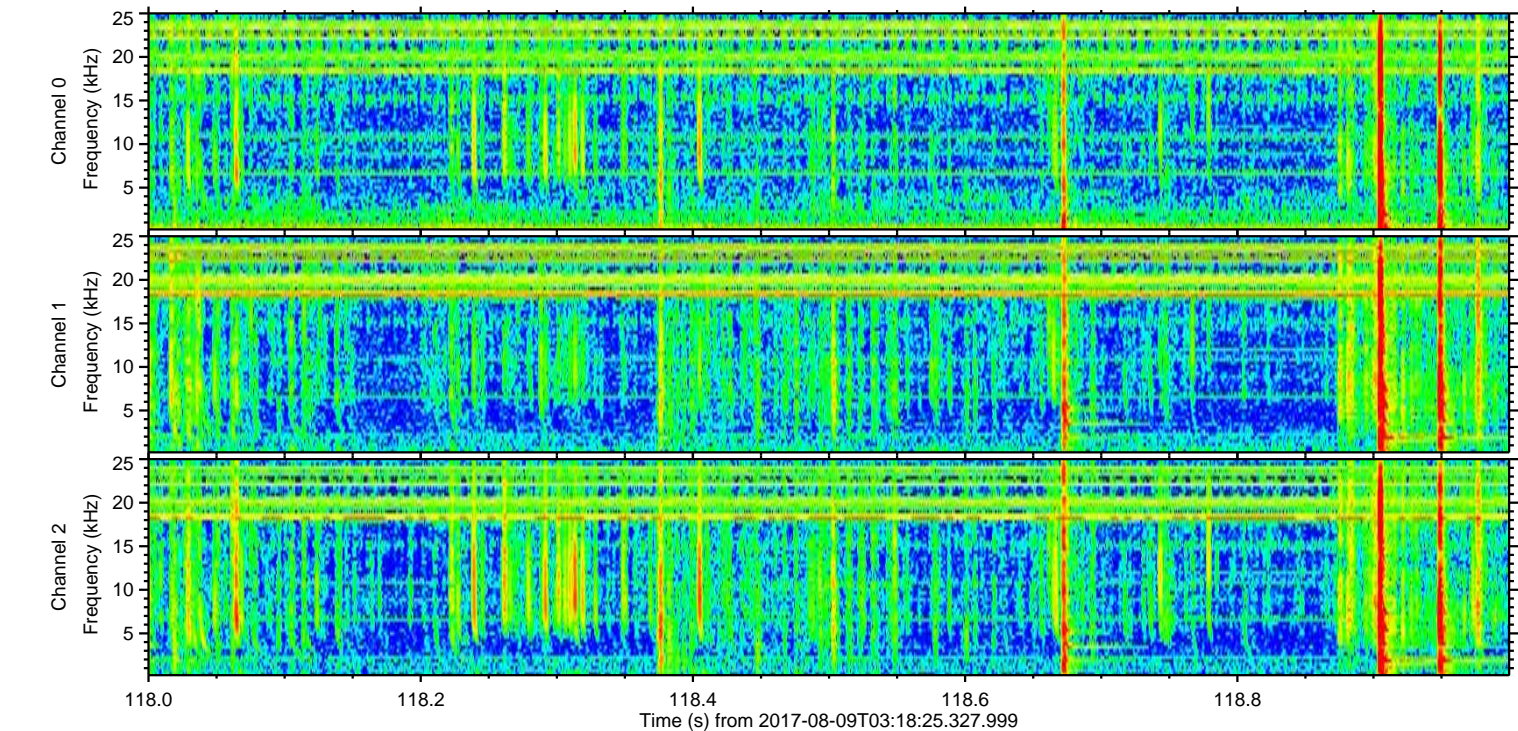
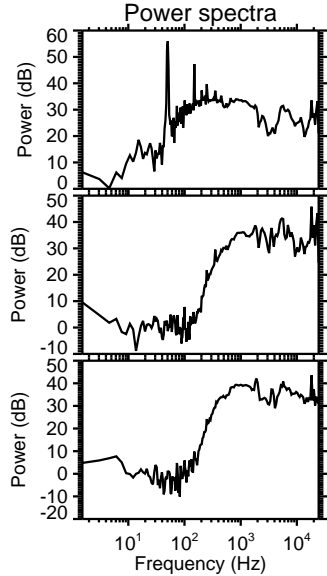
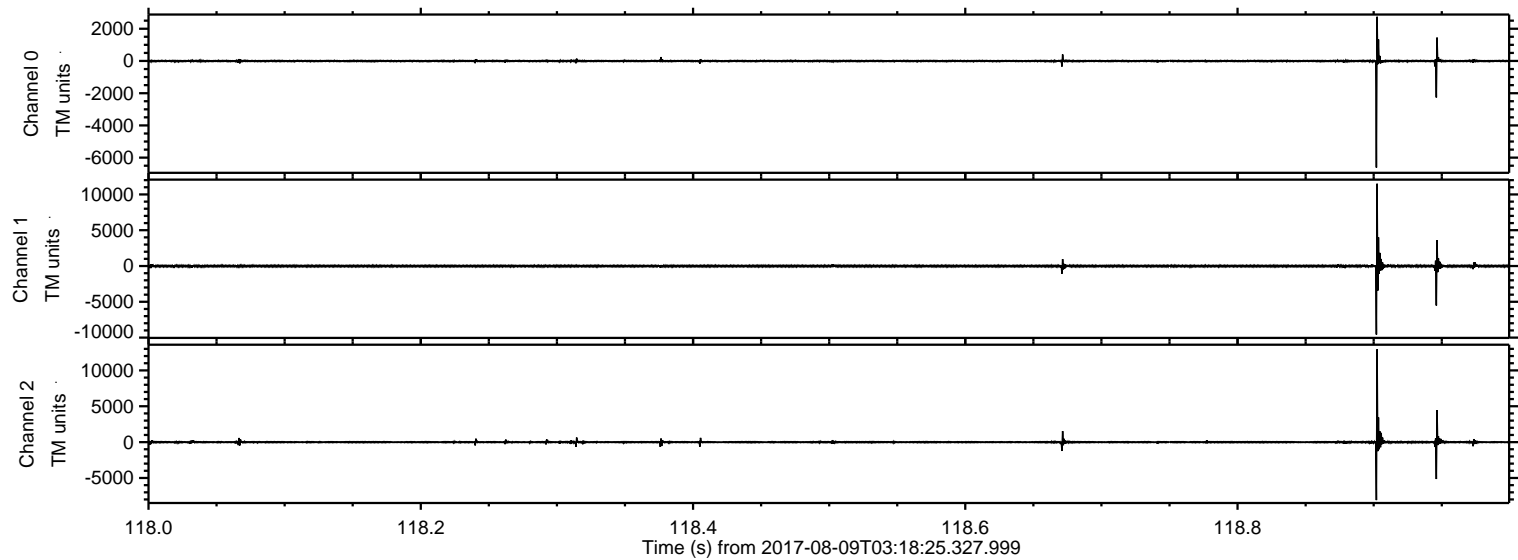
ELMAVAN 3D WAVEFORMS (Measured data sampled at 50 kHz) 51000 packets of 144 samples from 2017-08-09T03:18:25.327.999.

Processed Wed Aug 9 05:26:10 2017 by ELM ver.2012-10-06 from 001__elm20170809_031824__dat00.bin



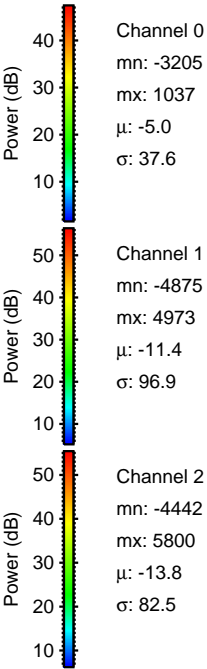
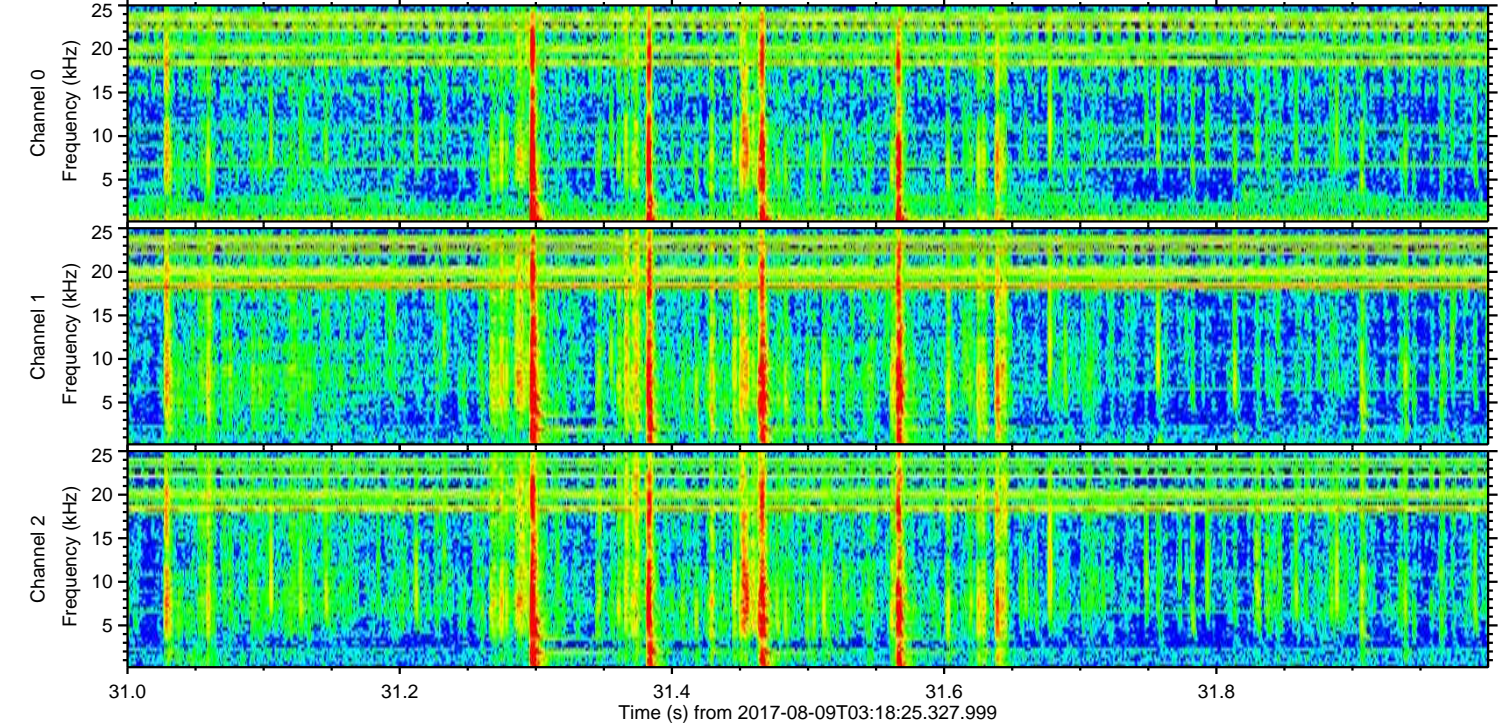
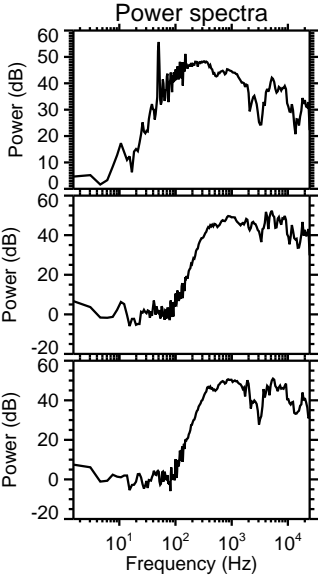
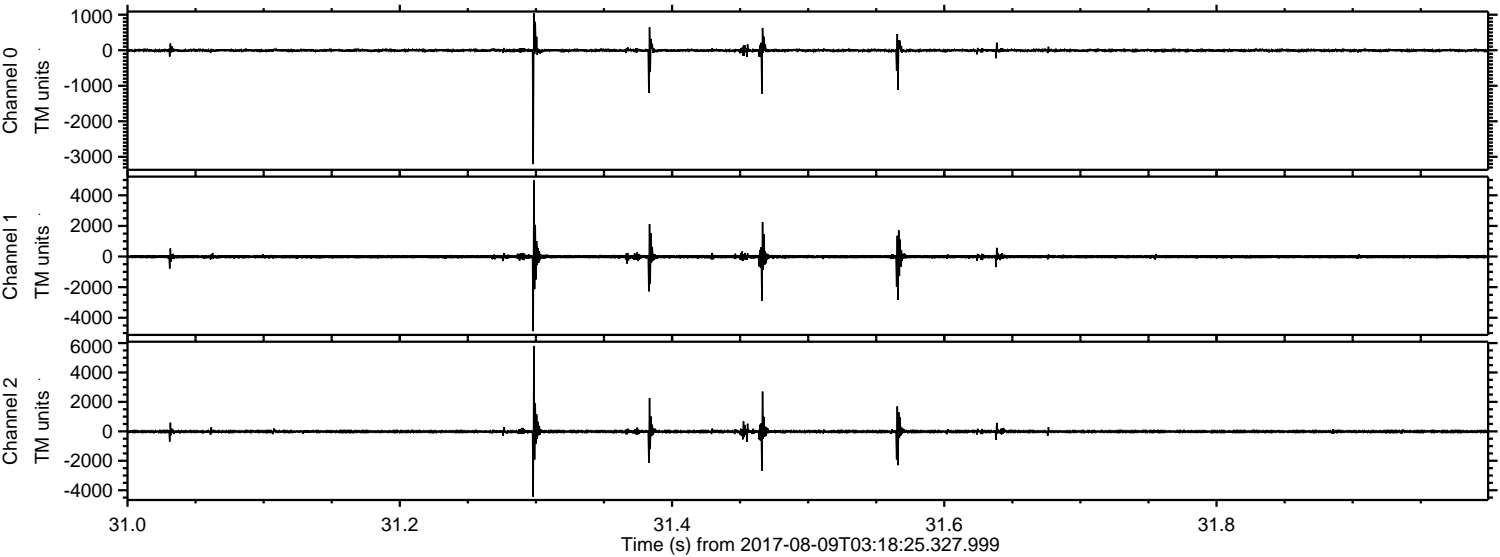
ELMAVAN 3D WAVEFORMS (Measured data sampled at 50 kHz) 51000 packets of 144 samples from 2017-08-09T03:18:25.327.999. Part 119/147

Processed Wed Aug 9 05:26:16 2017 by ELM ver.2012-10-06 from 001__elm20170809_031824__dat00.bin

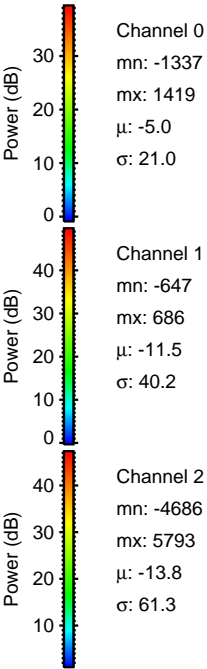
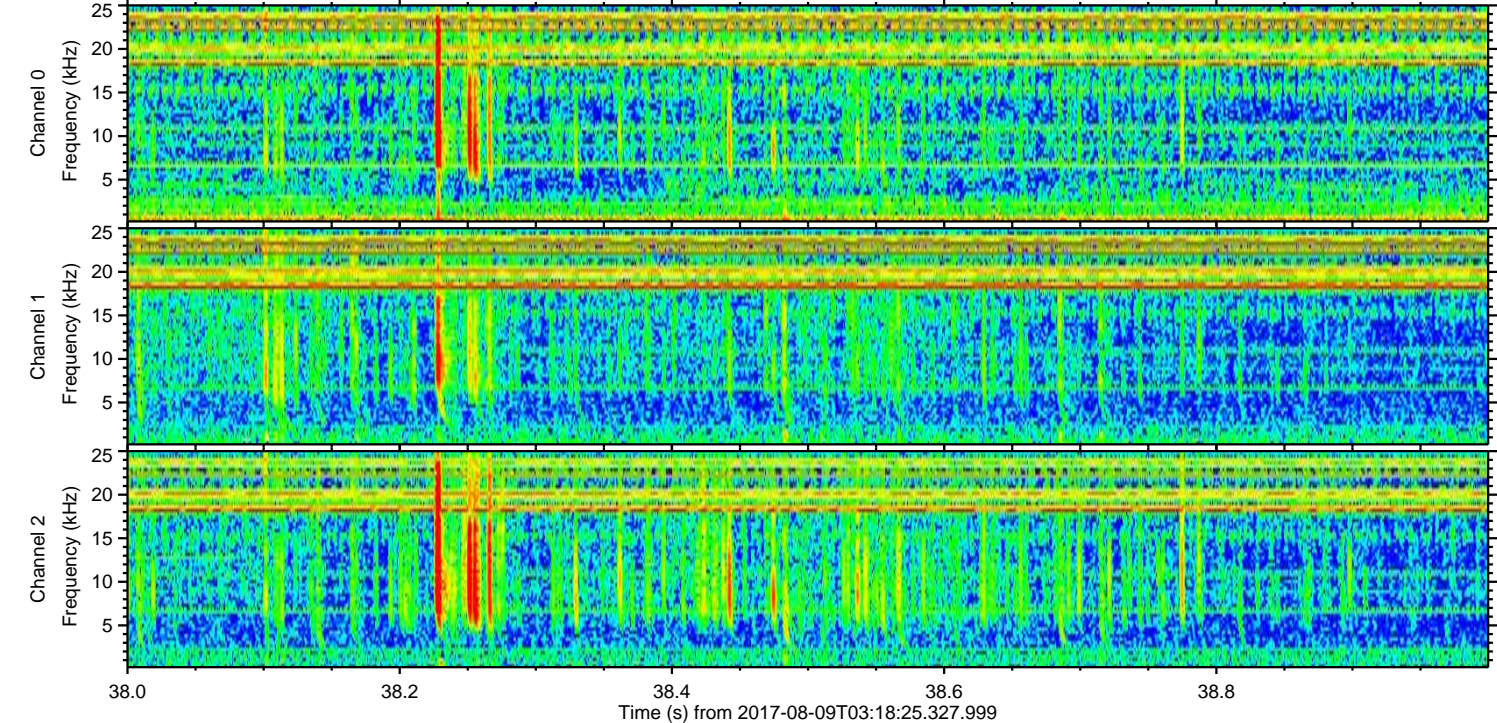
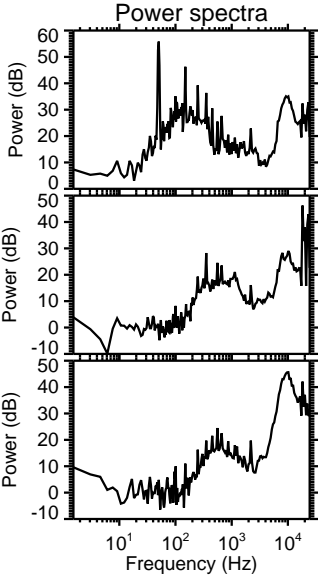
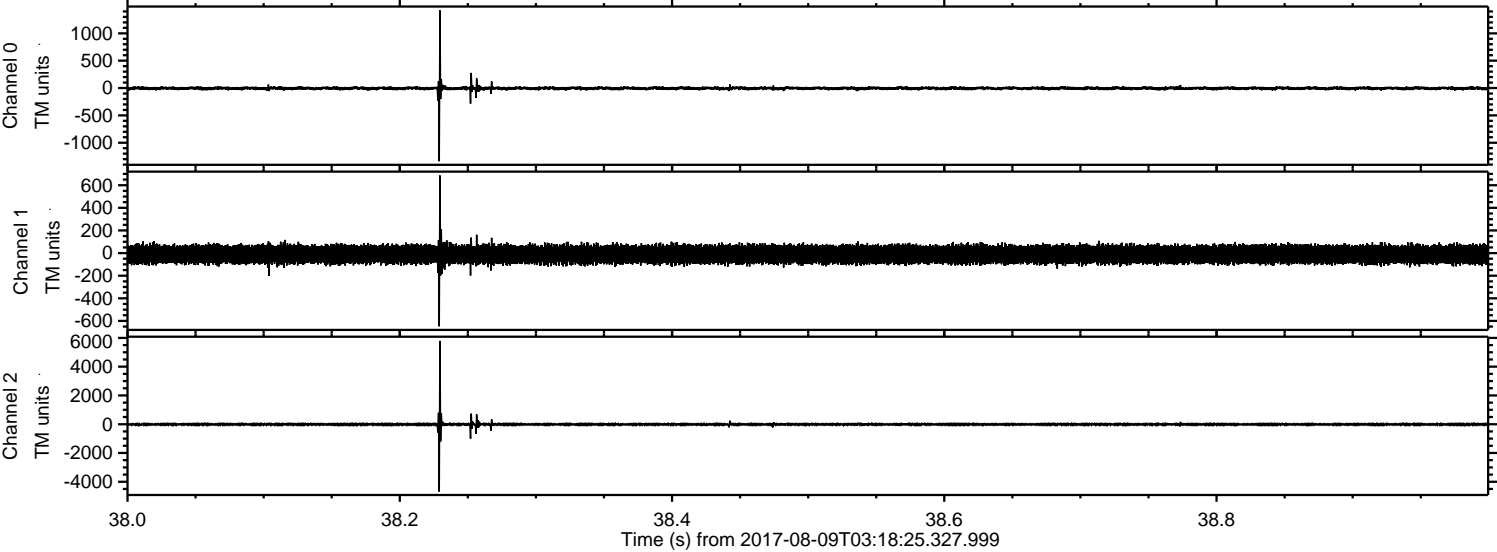


ELMAVAN 3D WAVEFORMS (Measured data sampled at 50 kHz) 51000 packets of 144 samples from 2017-08-09T03:18:25.327.999. Part 32/147

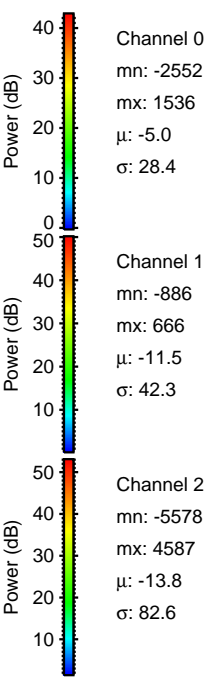
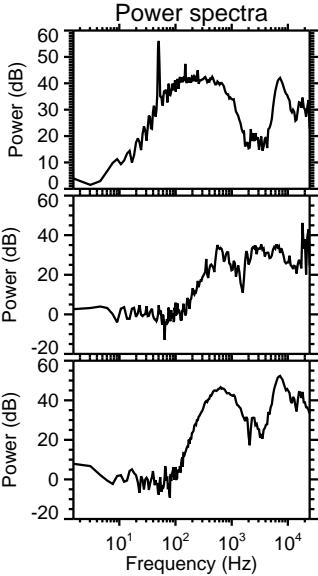
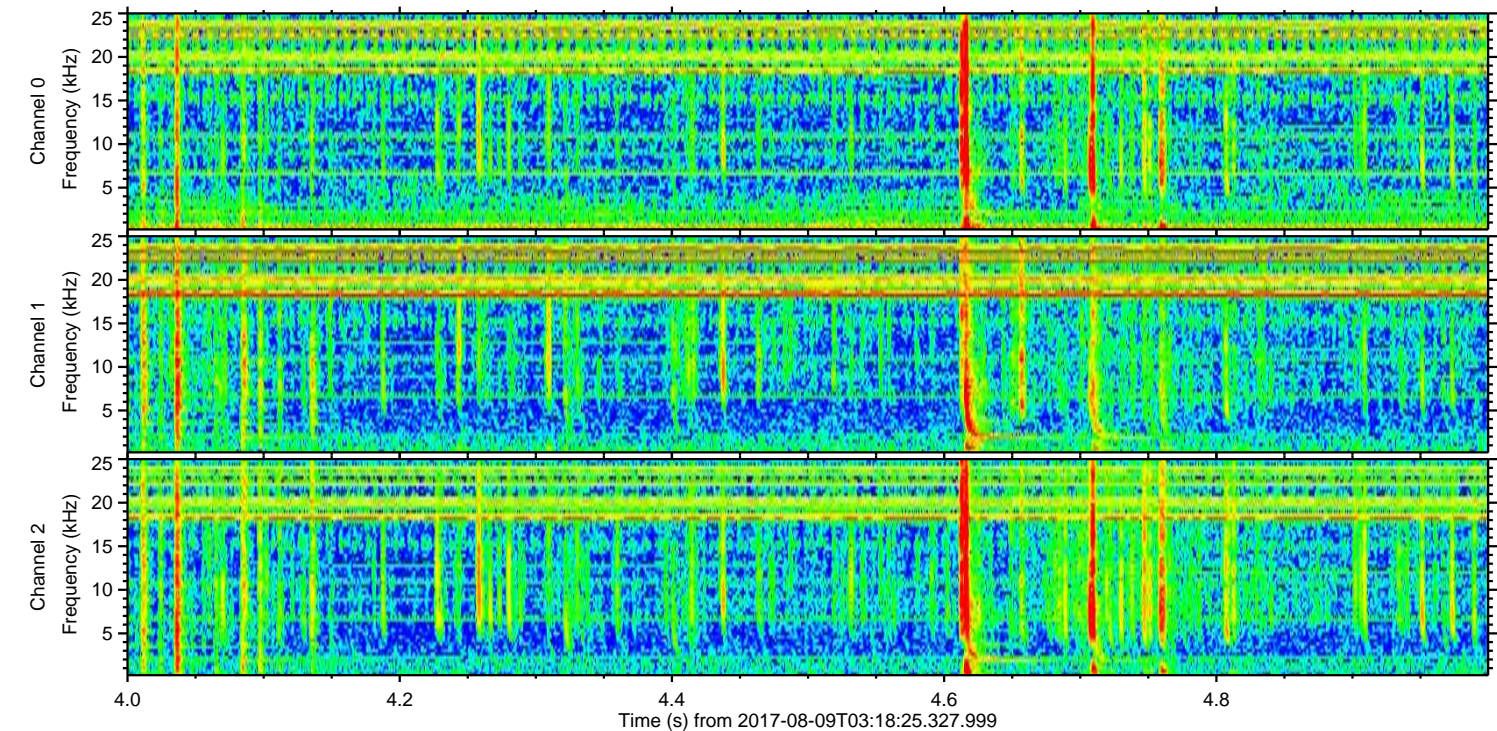
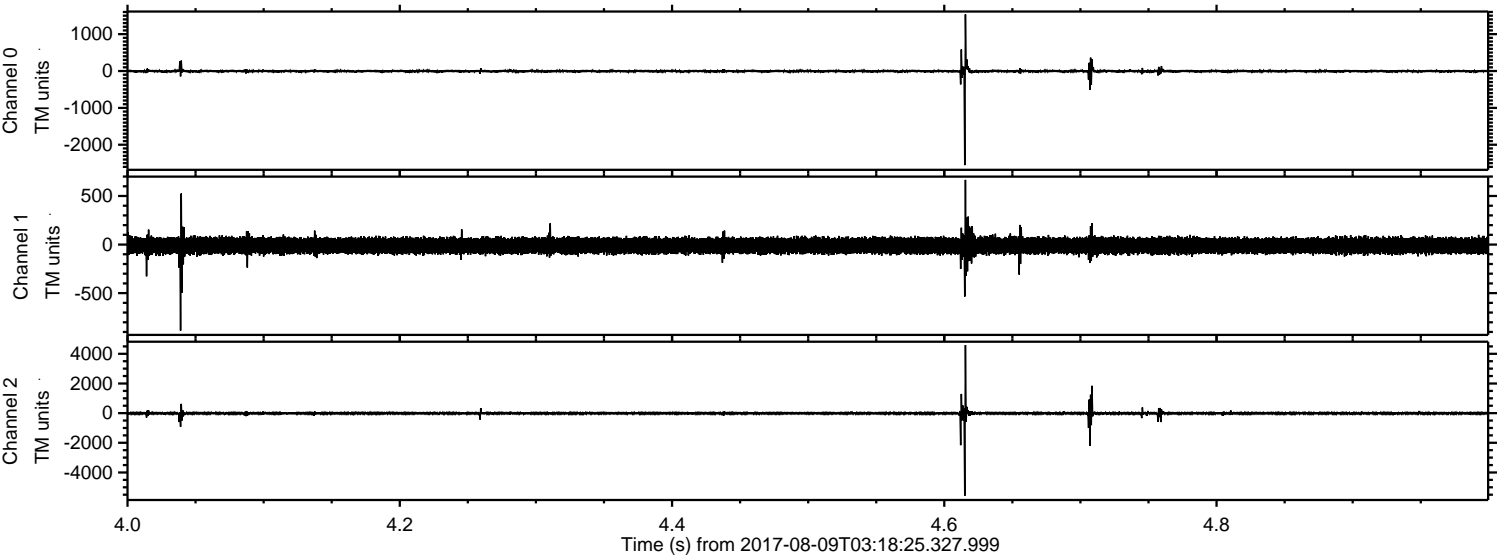
Processed Wed Aug 9 05:26:17 2017 by ELM ver.2012-10-06 from 001__elm20170809_031824__dat00.bin



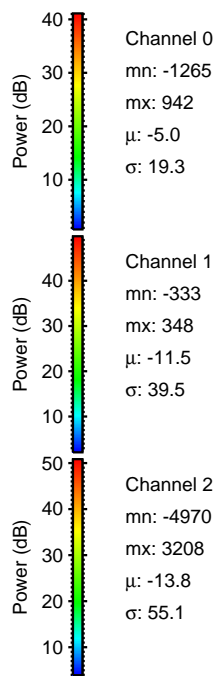
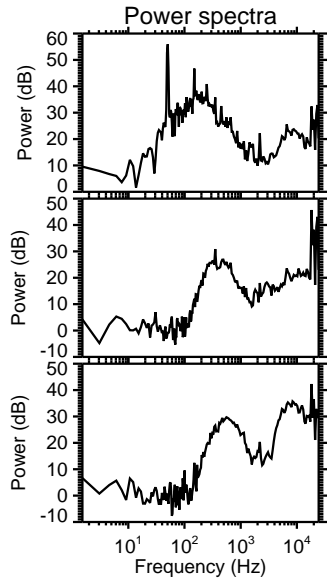
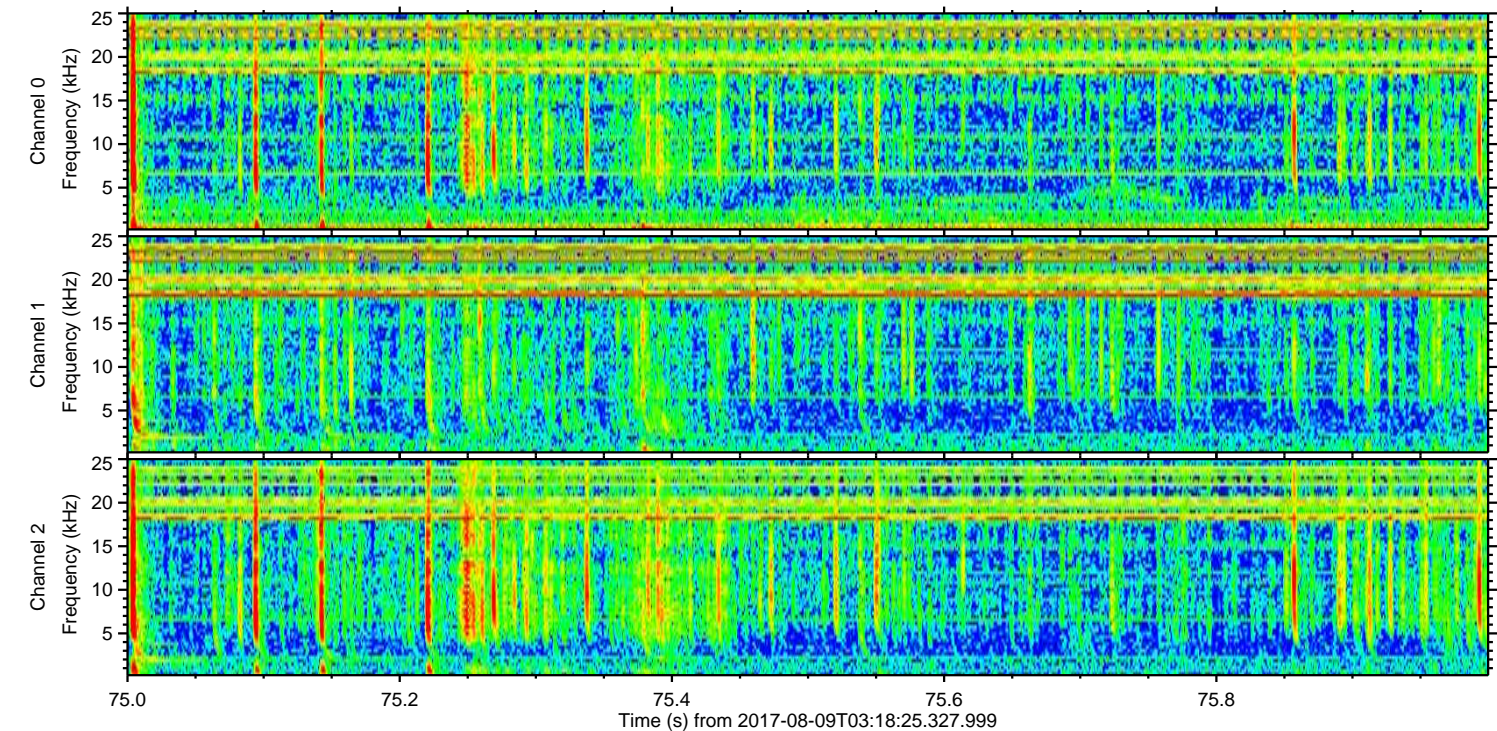
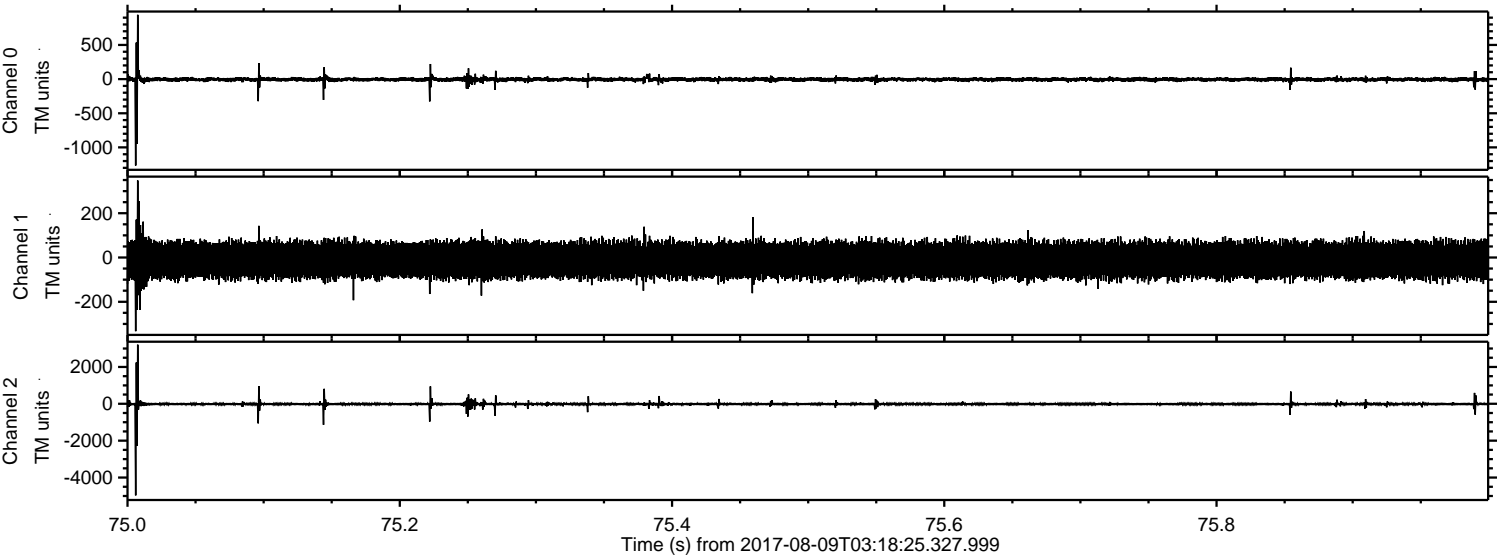
Processed Wed Aug 9 05:26:17 2017 by ELM ver.2012-10-06 from 001__elm20170809_031824__dat00.bin



Processed Wed Aug 9 05:26:18 2017 by ELM ver.2012-10-06 from 001__elm20170809_031824__dat00.bin

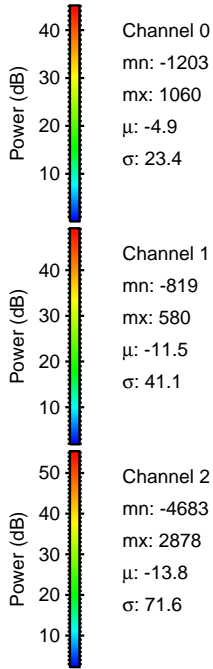
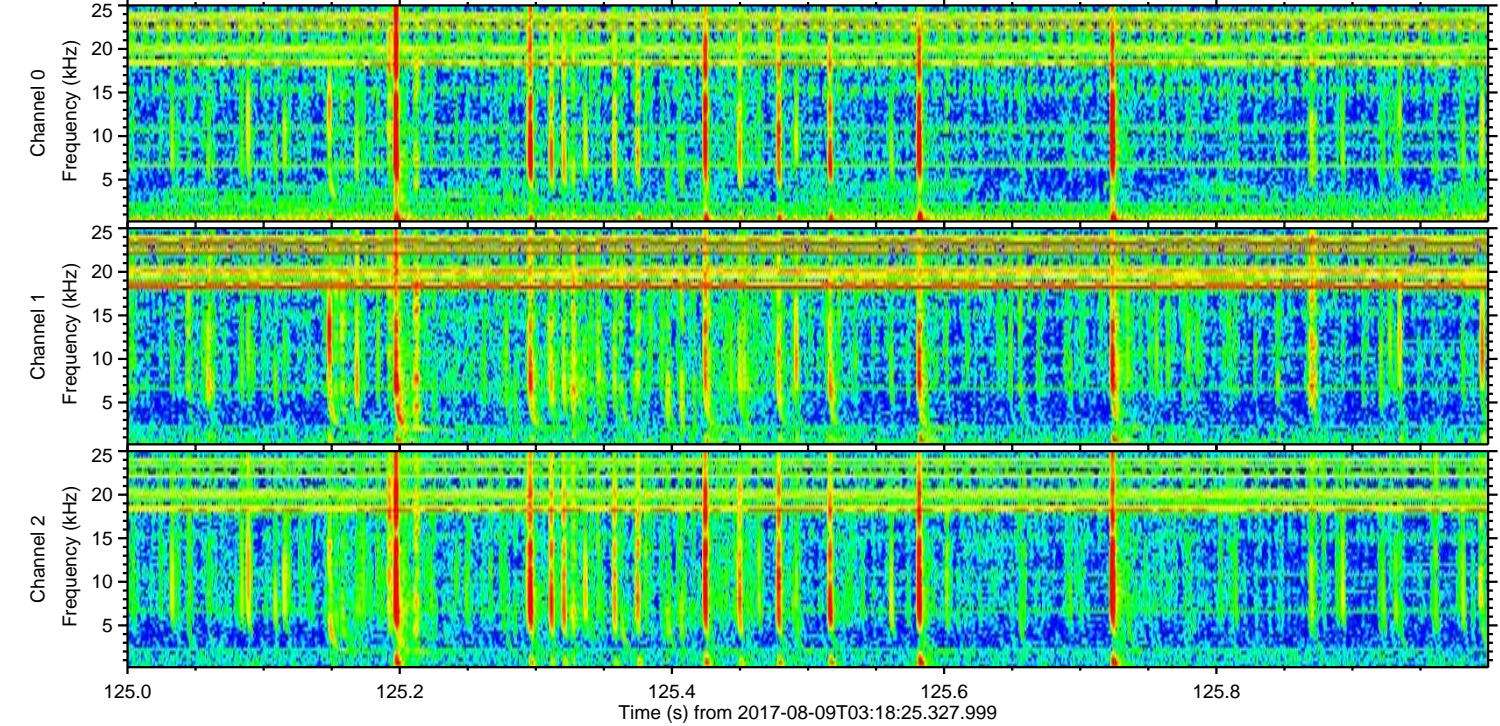
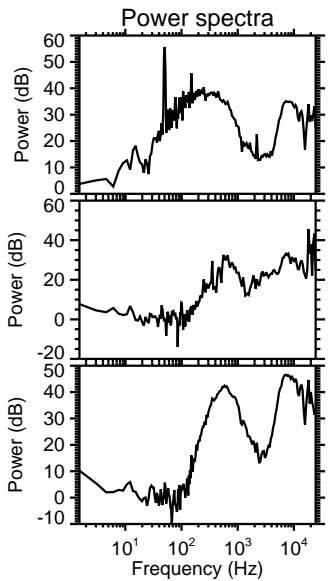
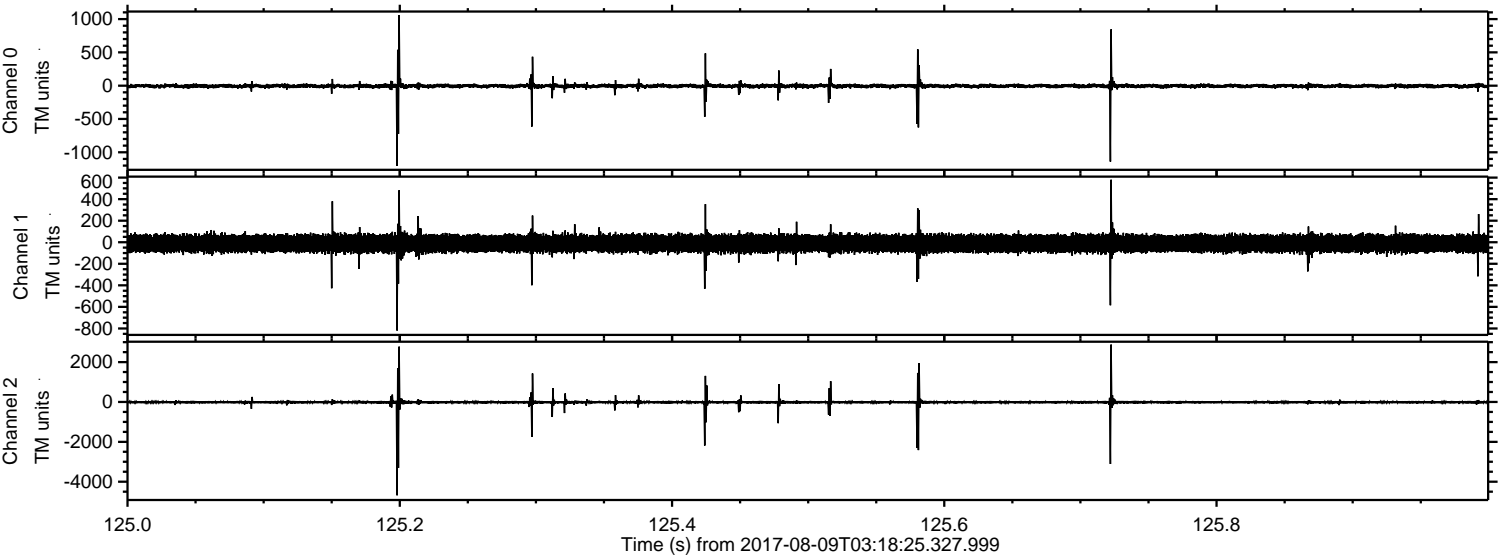


Processed Wed Aug 9 05:26:19 2017 by ELM ver.2012-10-06 from 001__elm20170809_031824__dat00.bin



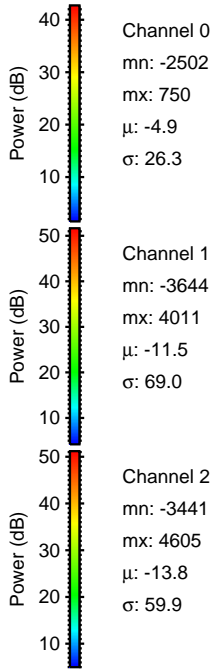
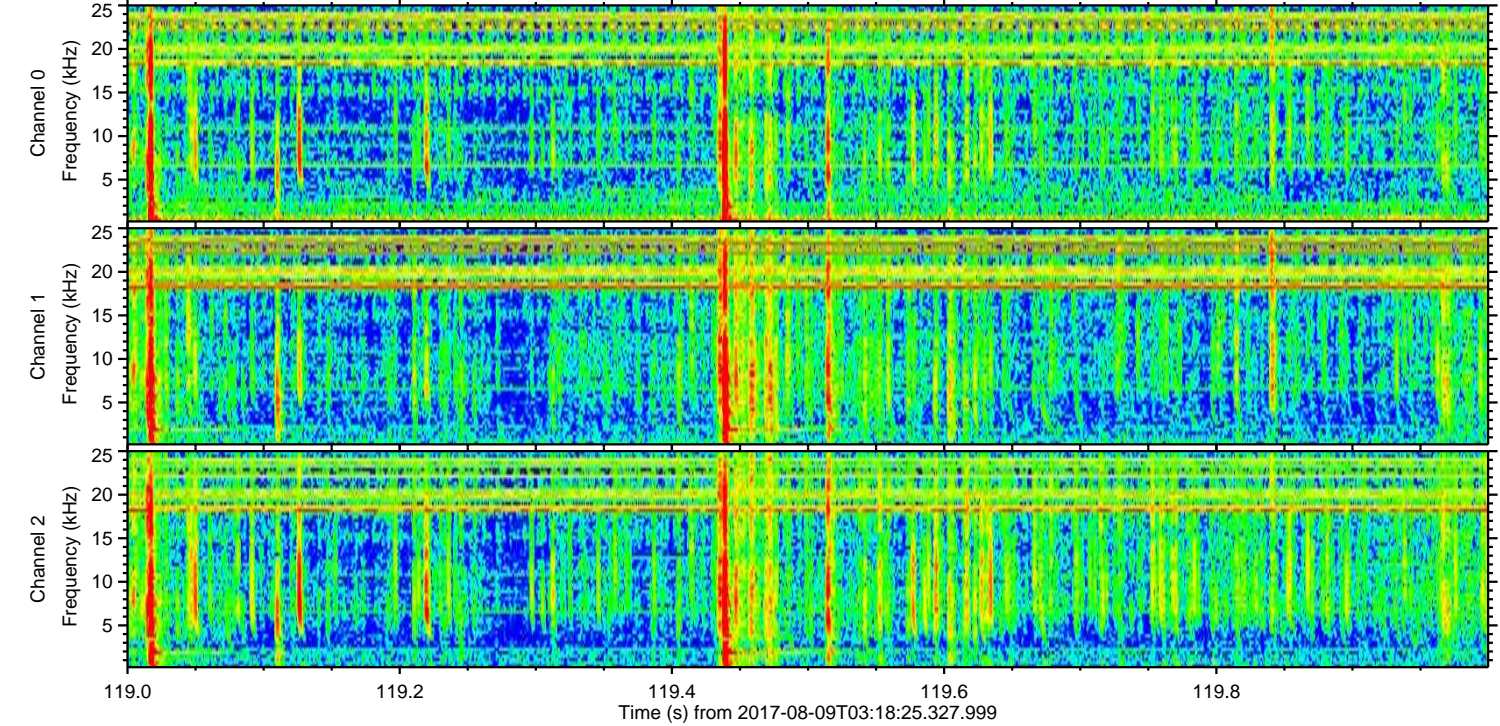
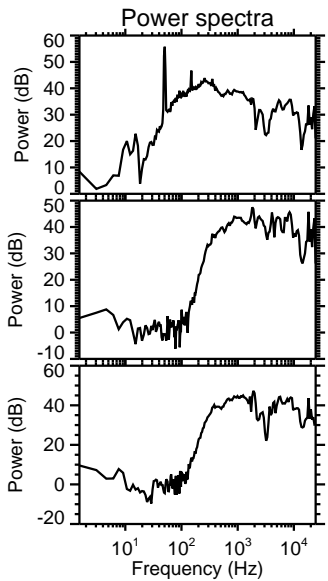
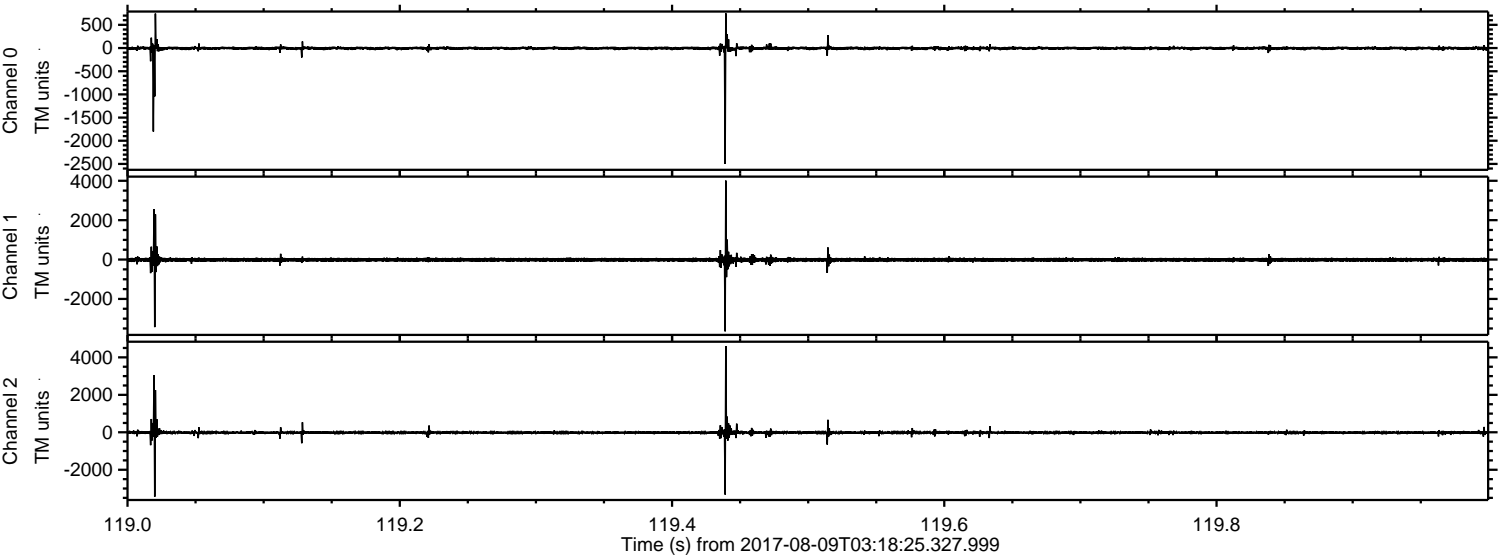
ELMAVAN 3D WAVEFORMS (Measured data sampled at 50 kHz) 51000 packets of 144 samples from 2017-08-09T03:18:25.327.999. Part 126/147

Processed Wed Aug 9 05:26:19 2017 by ELM ver.2012-10-06 from 001__elm20170809_031824__dat00.bin



ELMAVAN 3D WAVEFORMS (Measured data sampled at 50 kHz) 51000 packets of 144 samples from 2017-08-09T03:18:25.327.999. Part 120/147

Processed Wed Aug 9 05:26:20 2017 by ELM ver.2012-10-06 from 001__elm20170809_031824__dat00.bin

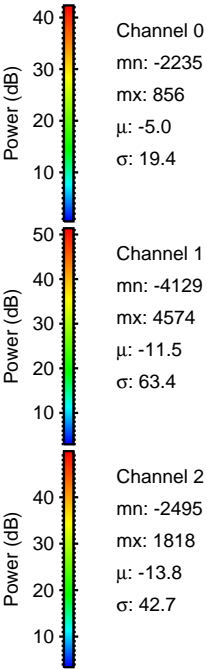
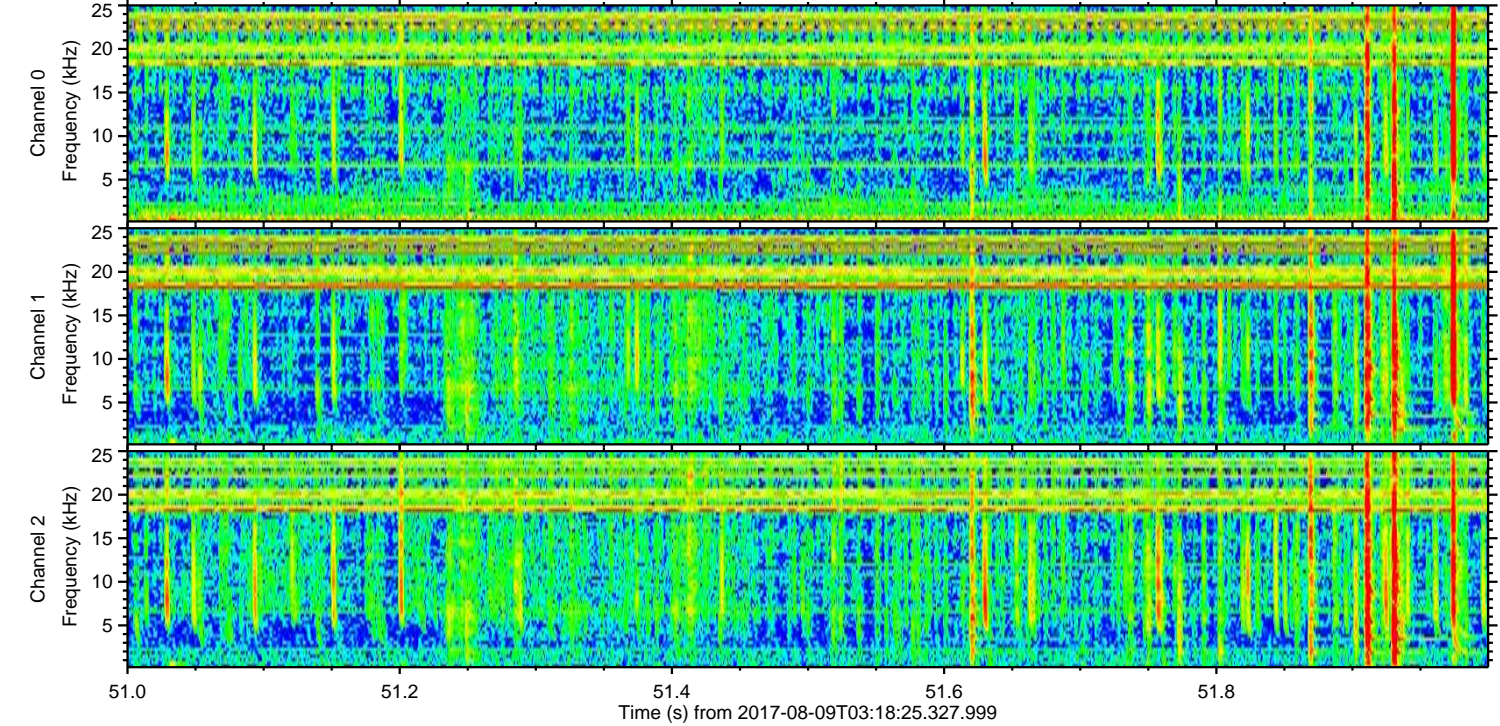
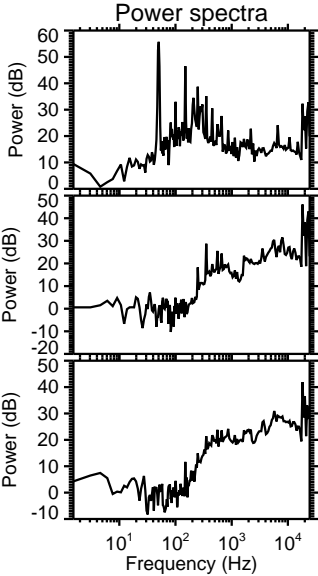
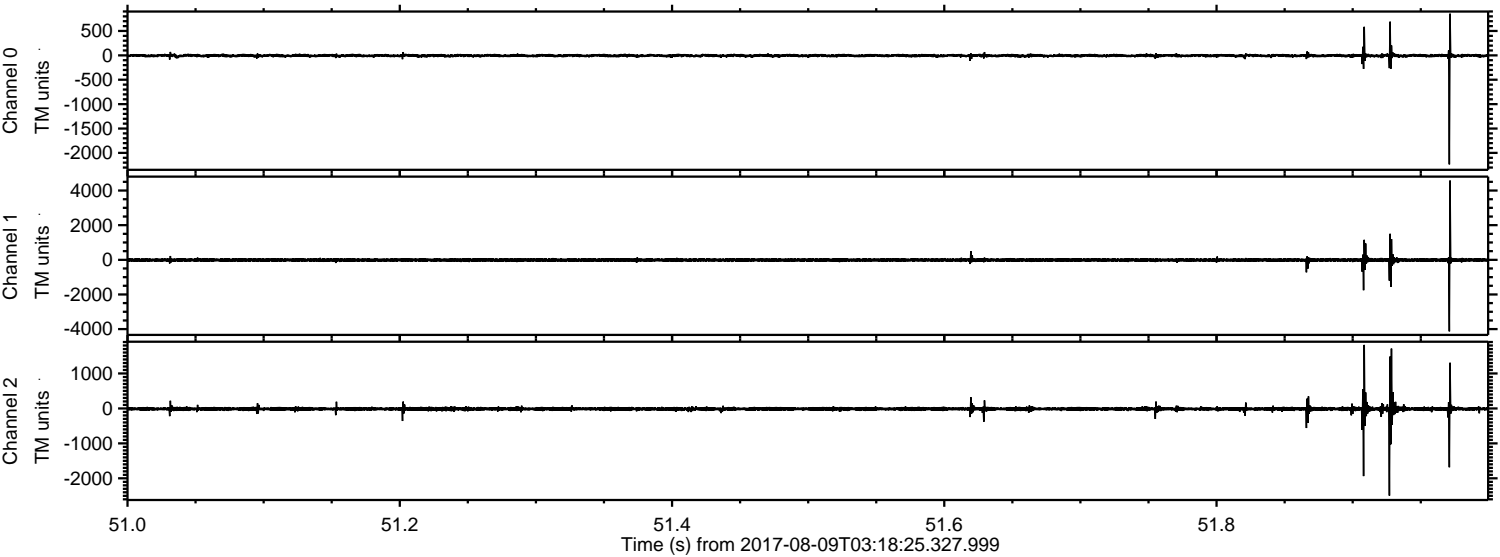


Channel 0
mn: -2502
mx: 750
 μ : -4.9
 σ : 26.3

Channel 1
mn: -3644
mx: 4011
 μ : -11.5
 σ : 69.0

Channel 2
mn: -3441
mx: 4605
 μ : -13.8
 σ : 59.9

Processed Wed Aug 9 05:26:20 2017 by ELM ver.2012-10-06 from 001__elm20170809_031824__dat00.bin



Channel 0
mn: -2235
mx: 856
 μ : -5.0
 σ : 19.4

Channel 1
mn: -4129
mx: 4574
 μ : -11.5
 σ : 63.4

Channel 2
mn: -2495
mx: 1818
 μ : -13.8
 σ : 42.7

Processed Wed Aug 9 05:26:21 2017 by ELM ver.2012-10-06 from 001__elm20170809_031824__dat00.bin

