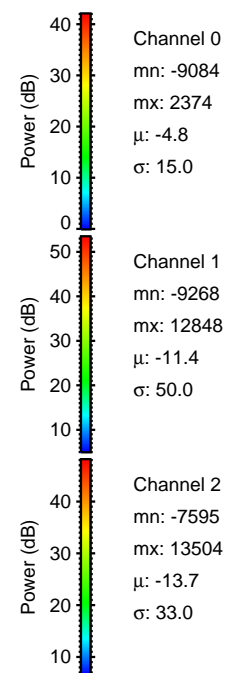
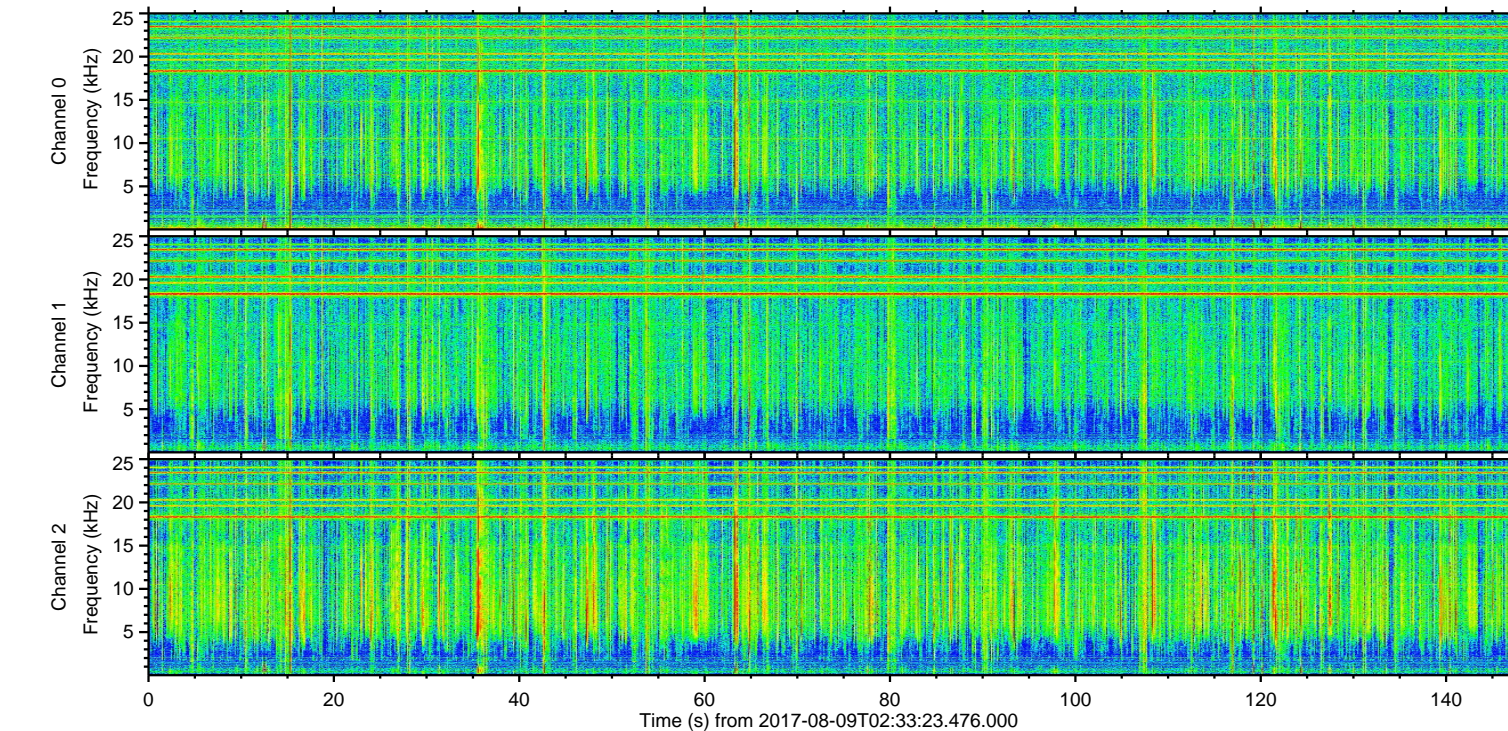
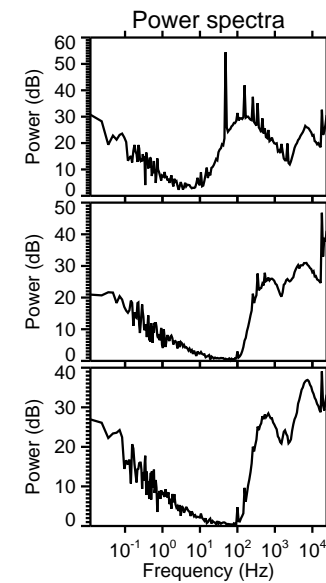
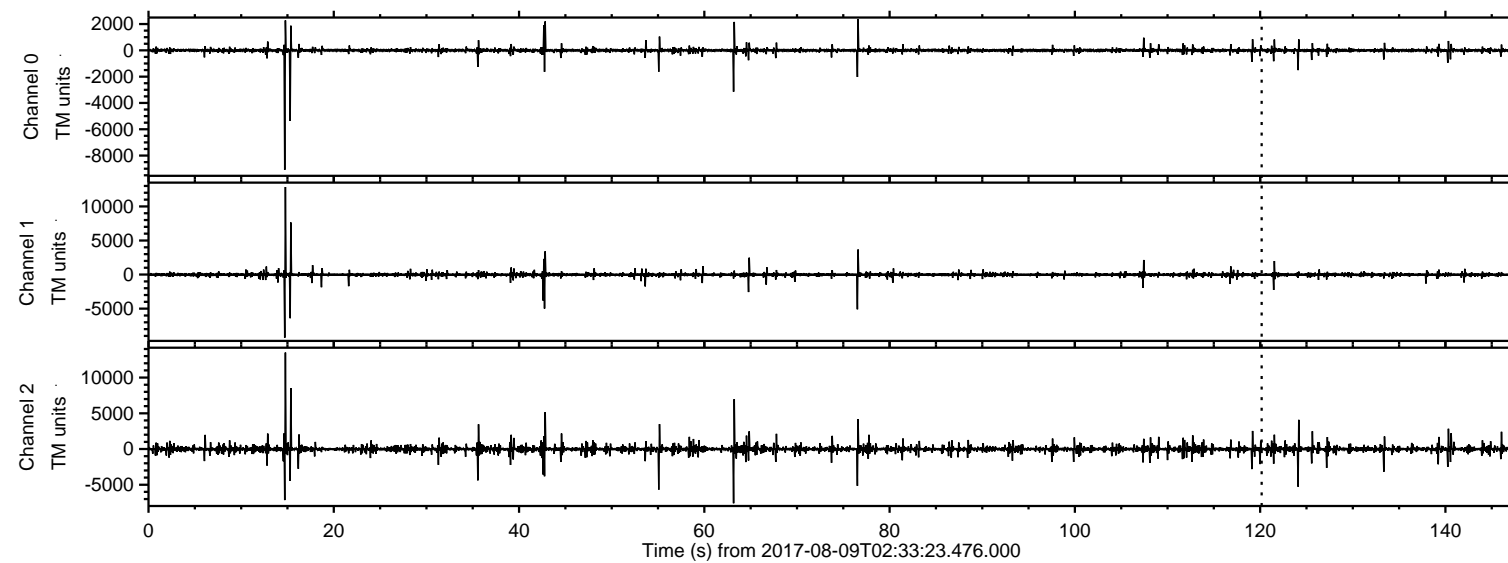
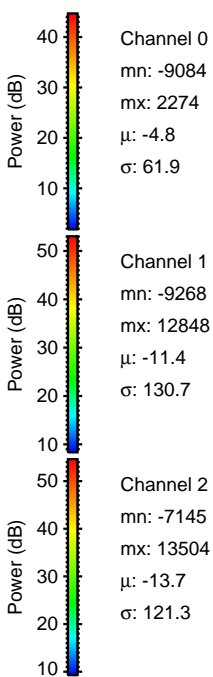
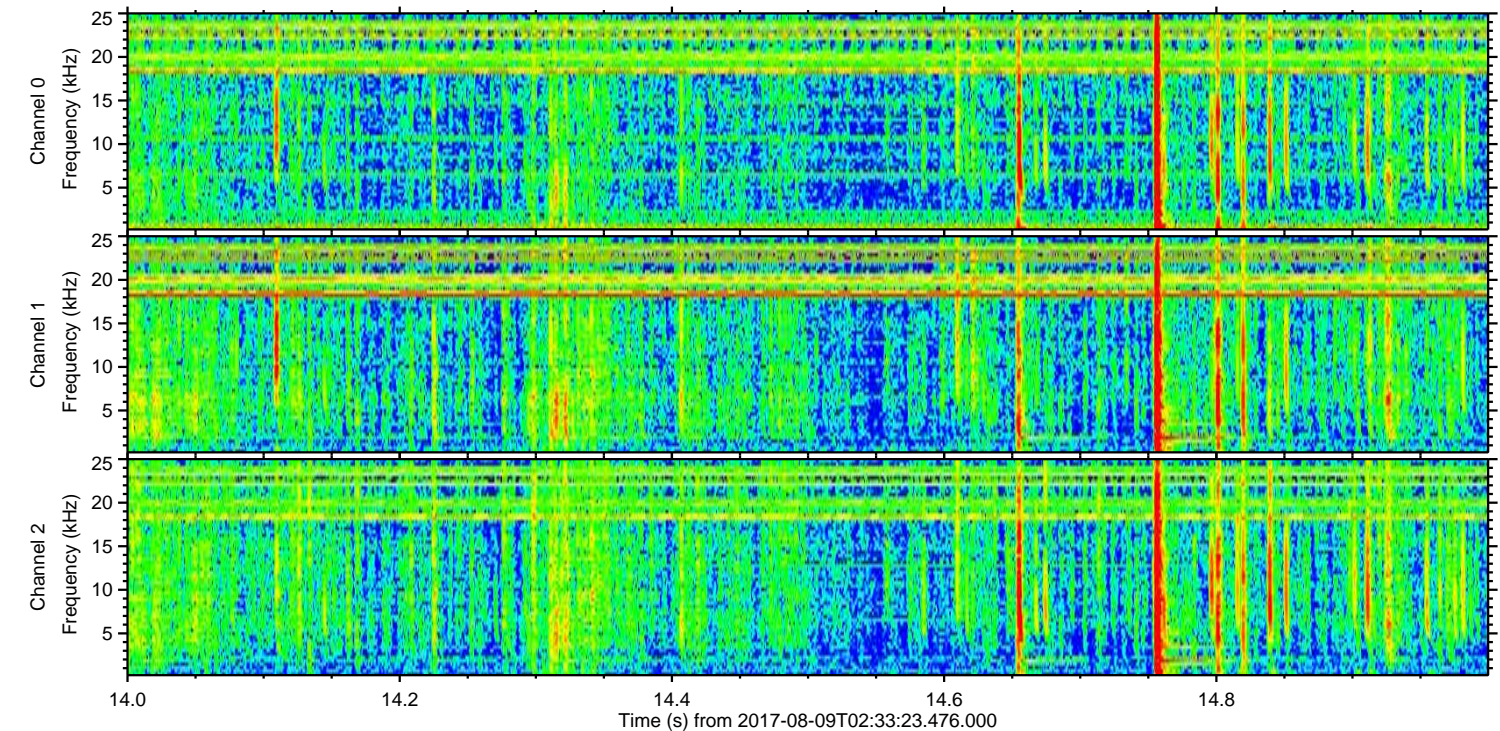
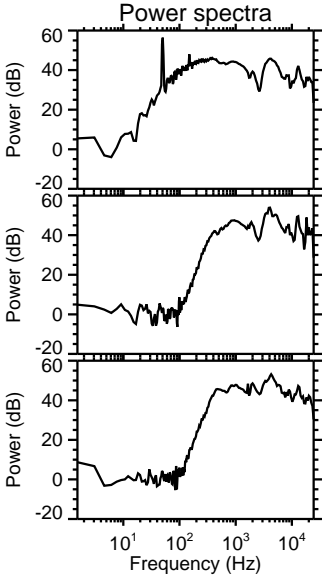
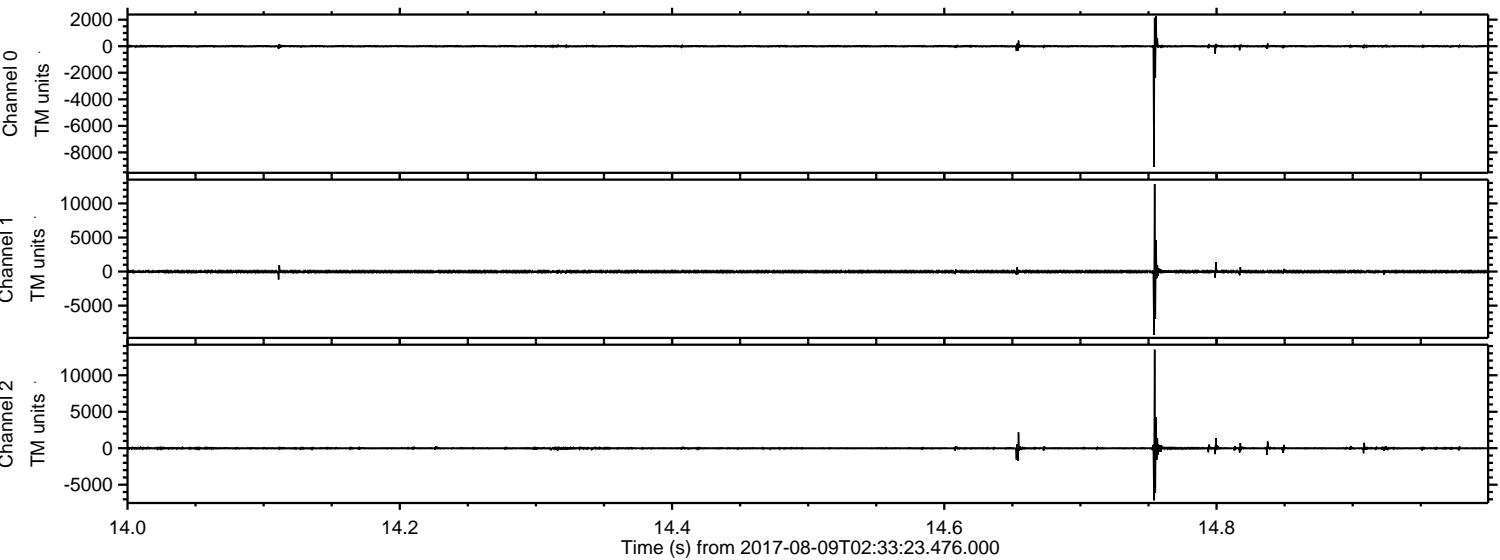


ELMAVAN 3D WAVEFORMS (Measured data sampled at 50 kHz) 50999 packets of 144 samples from 2017-08-09T02:33:23.476.000.

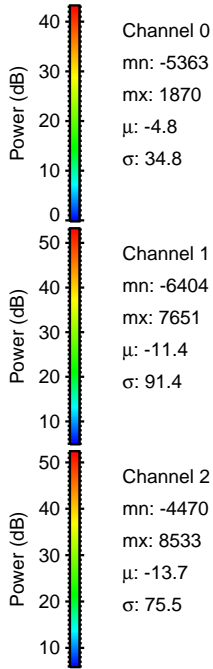
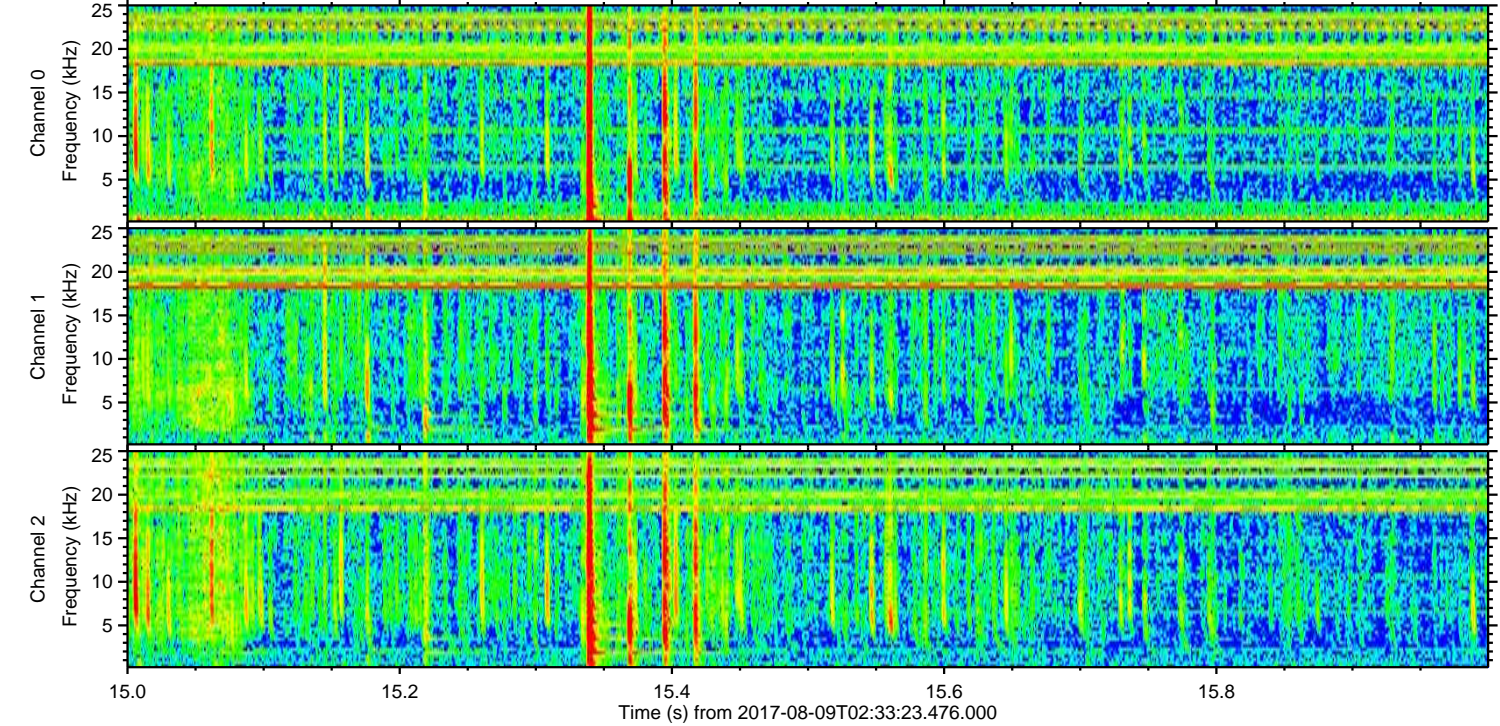
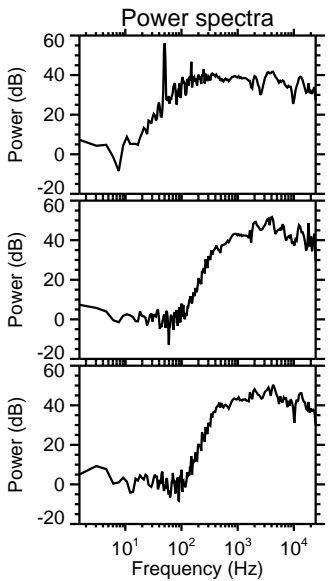
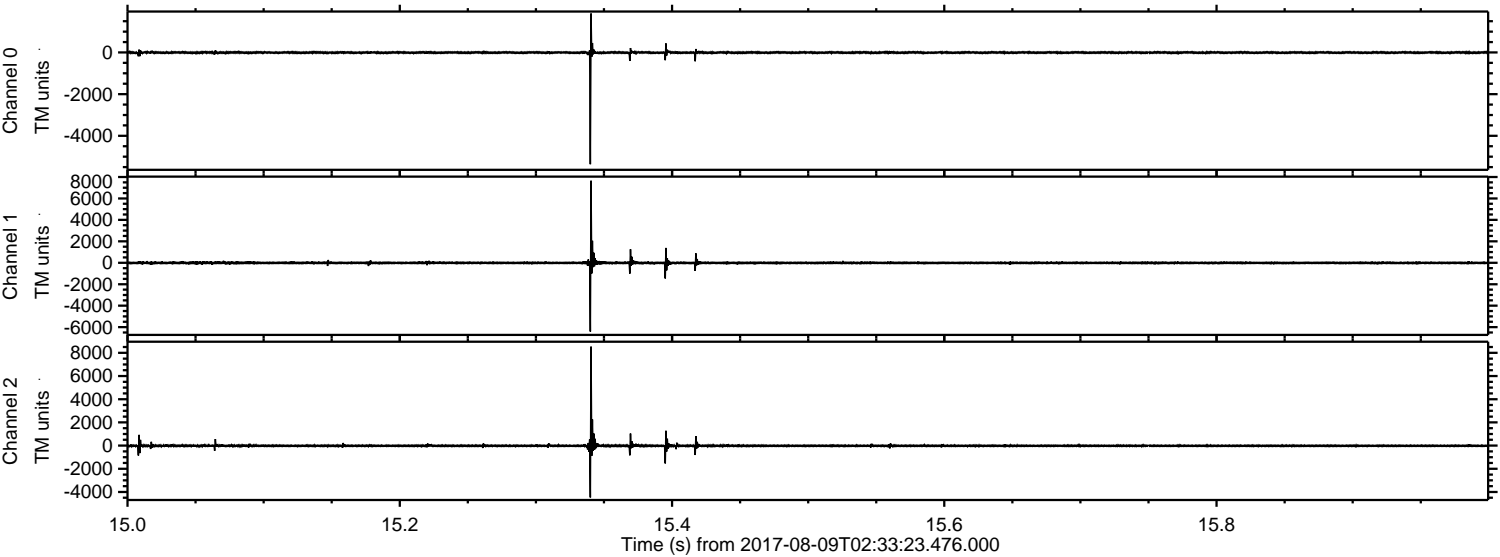
Processed Wed Aug 9 04:41:20 2017 by ELM ver.2012-10-06 from 001__elm20170809_023322__dat00.bin



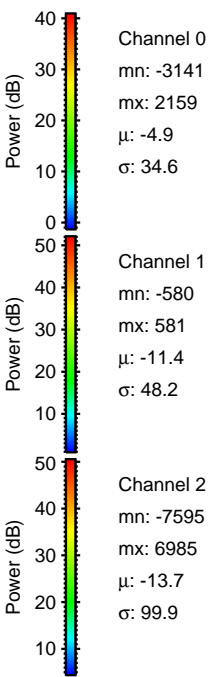
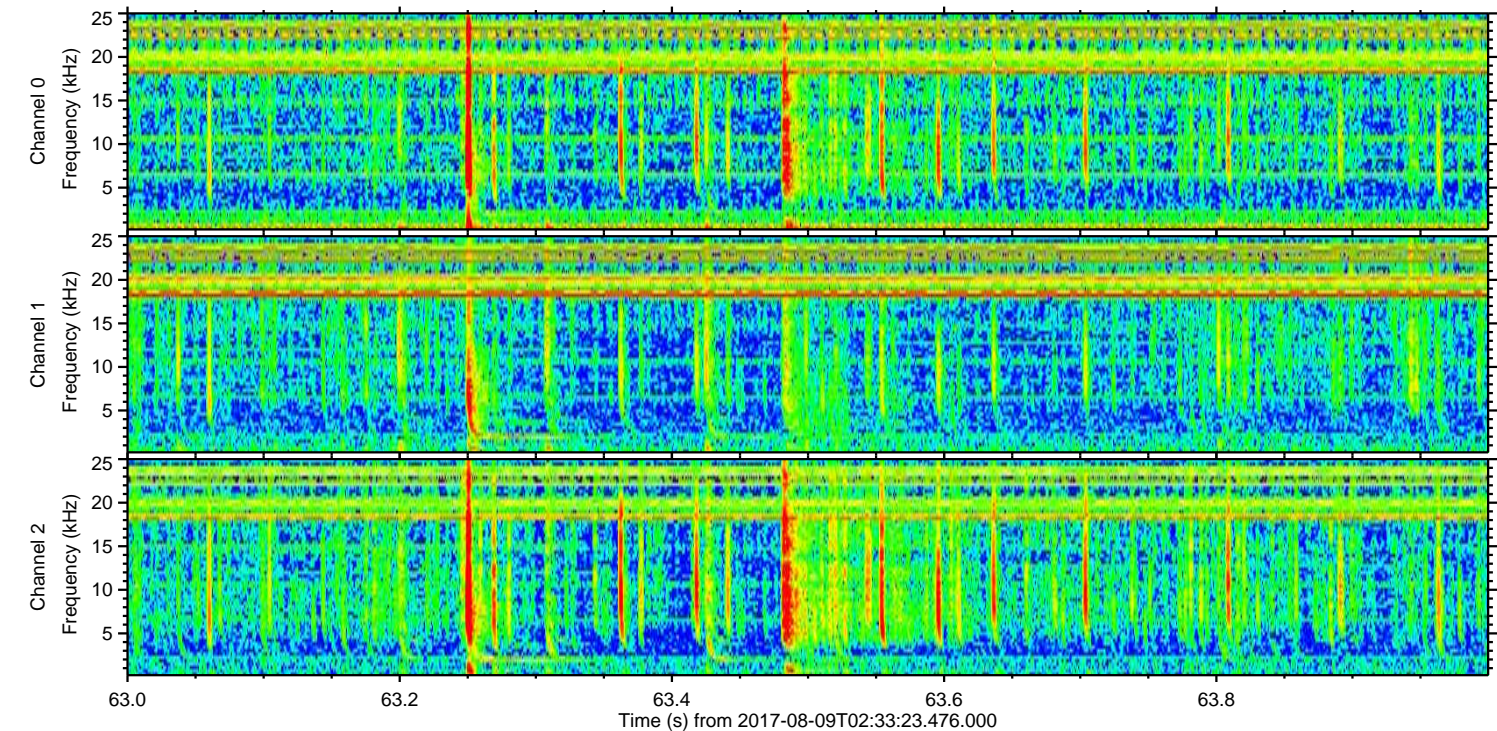
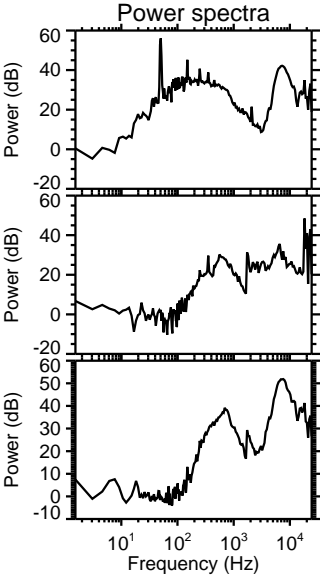
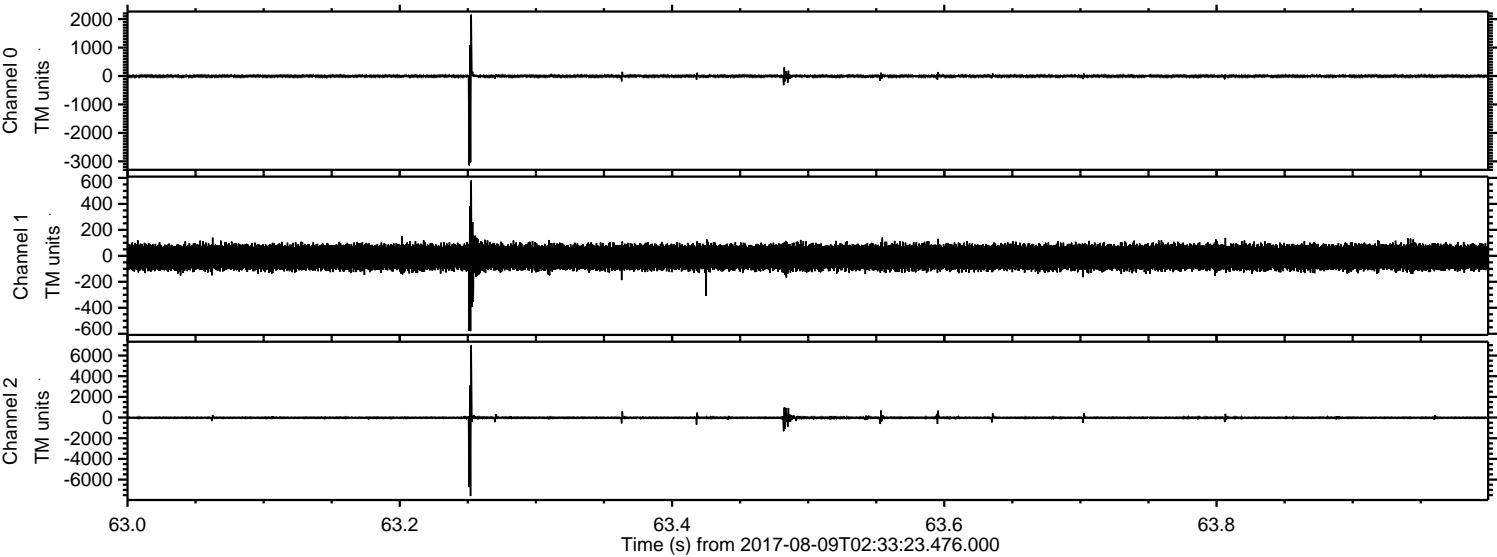
Processed Wed Aug 9 04:41:27 2017 by ELM ver.2012-10-06 from 001__elm20170809_023322__dat00.bin



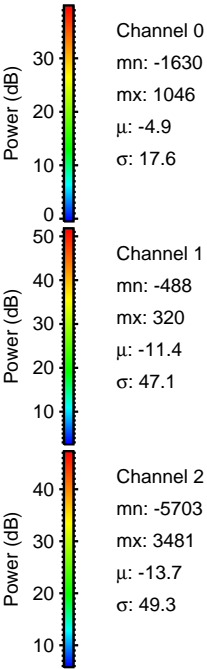
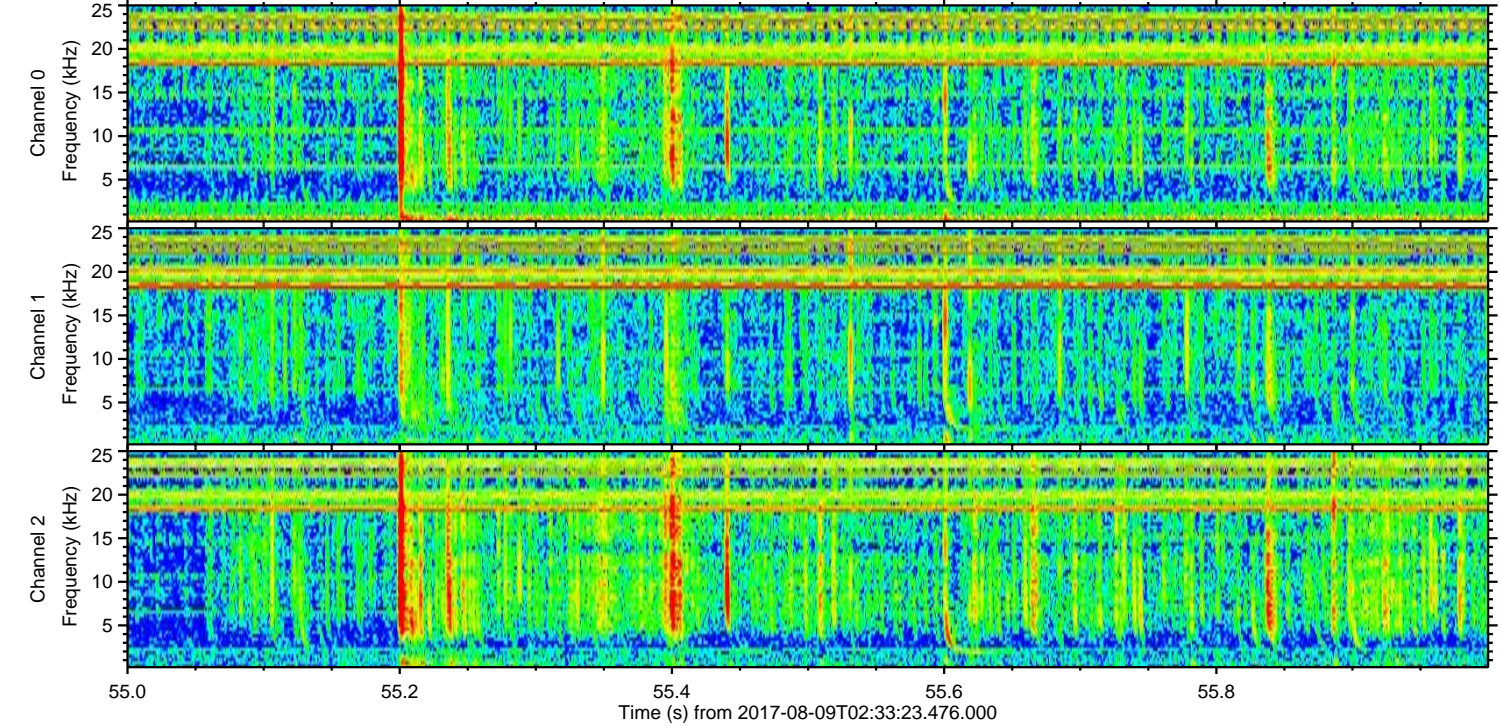
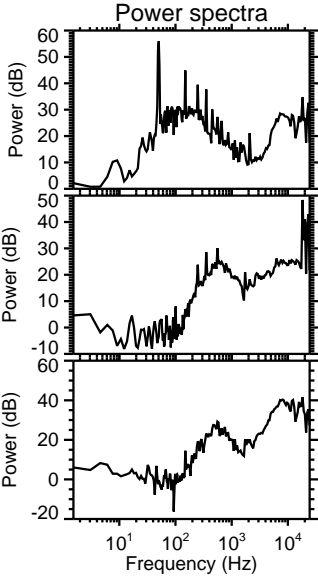
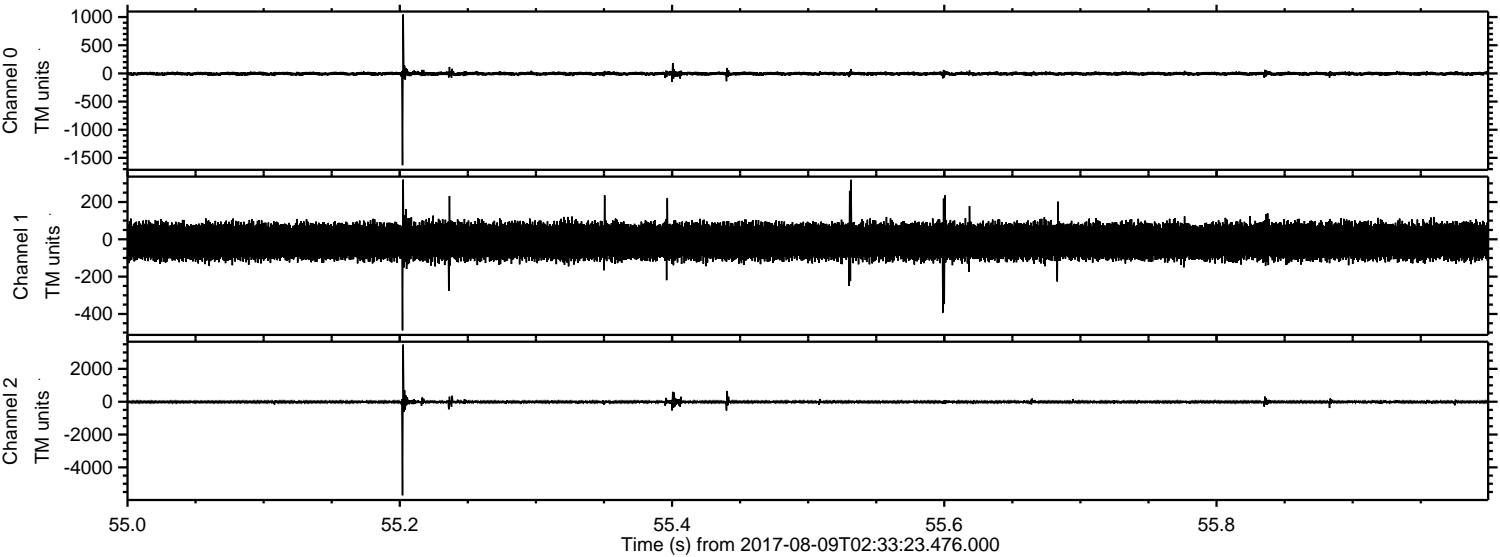
Processed Wed Aug 9 04:41:28 2017 by ELM ver.2012-10-06 from 001__elm20170809_023322__dat00.bin



Processed Wed Aug 9 04:41:29 2017 by ELM ver.2012-10-06 from 001__elm20170809_023322__dat00.bin

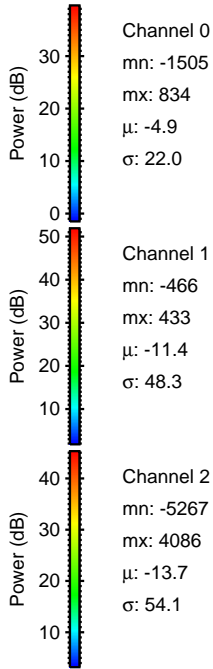
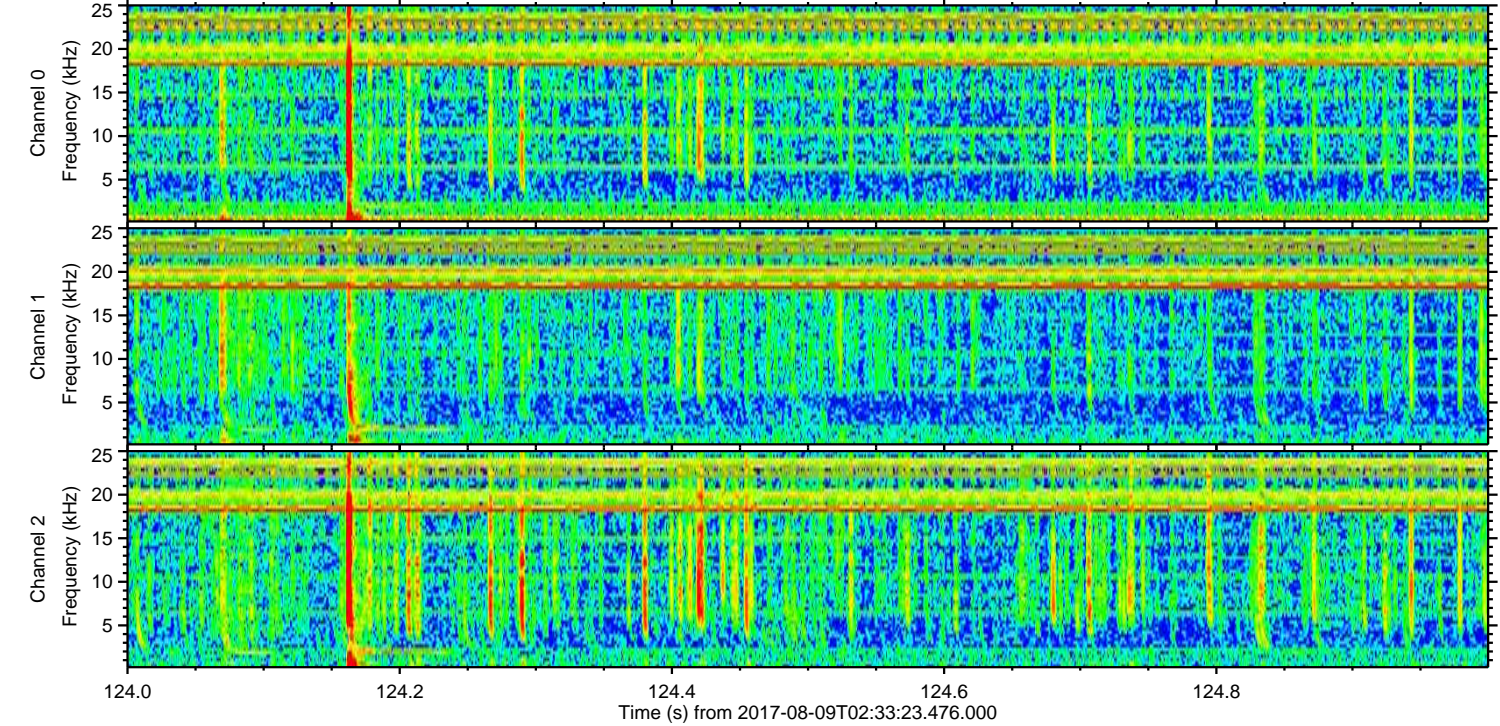
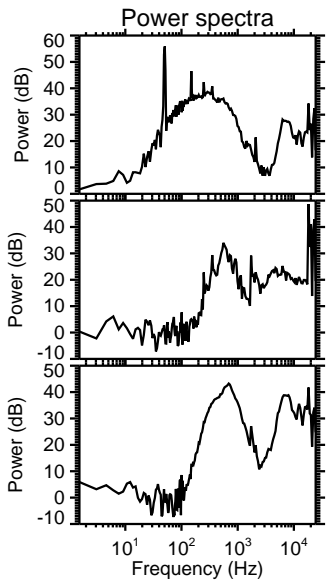
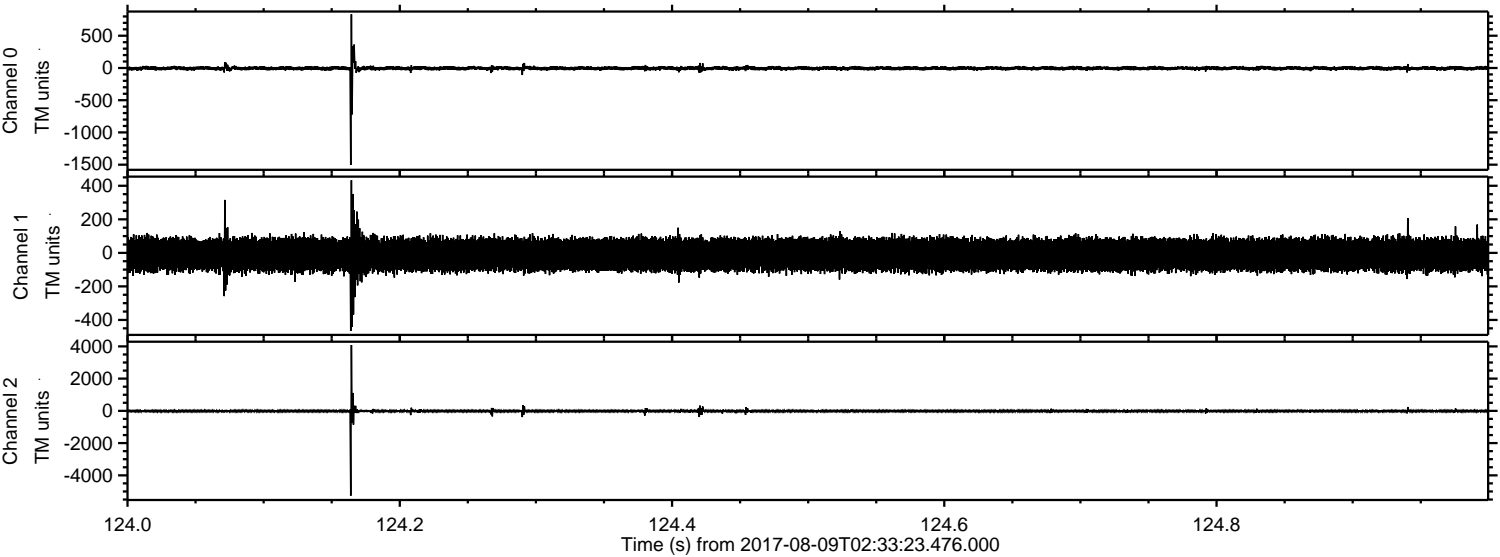


Processed Wed Aug 9 04:41:29 2017 by ELM ver.2012-10-06 from 001__elm20170809_023322__dat00.bin

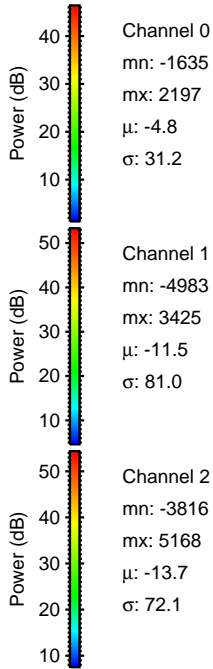
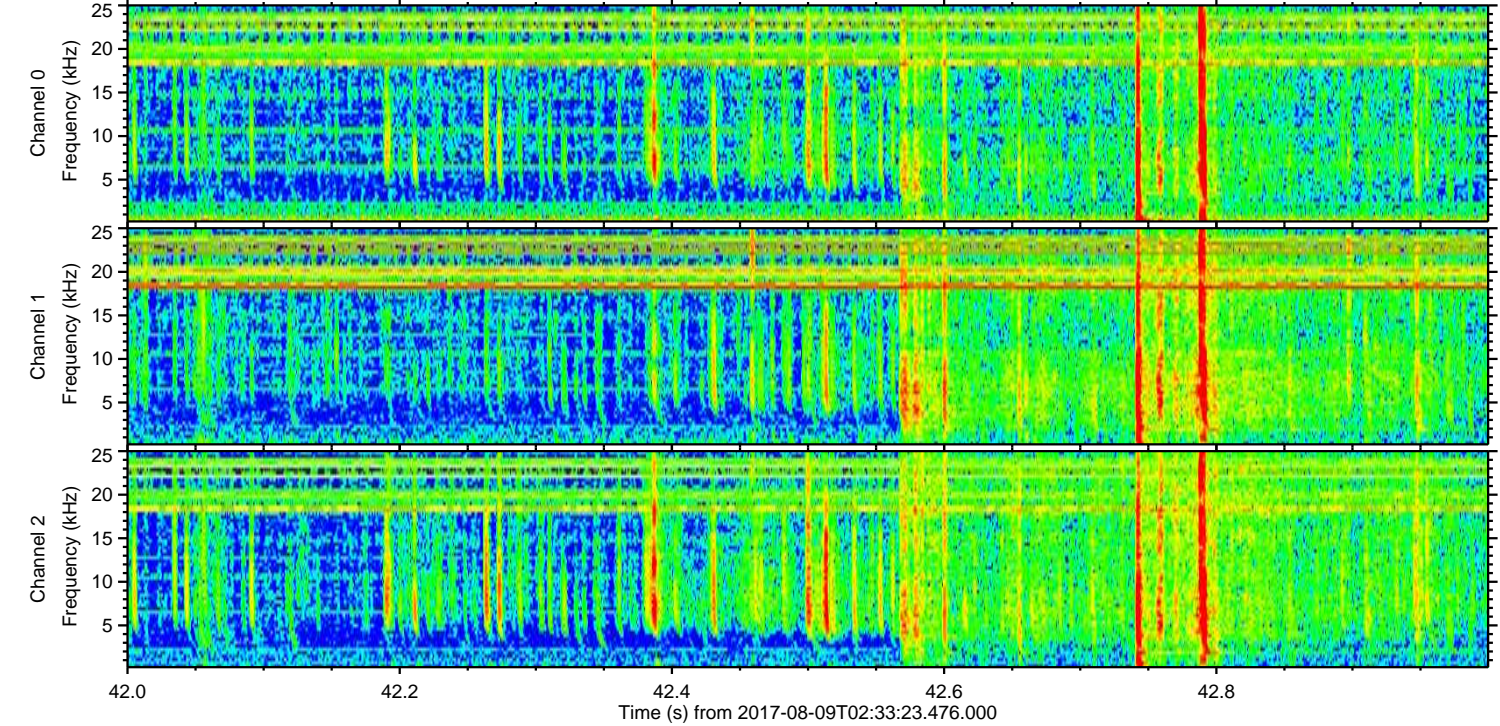
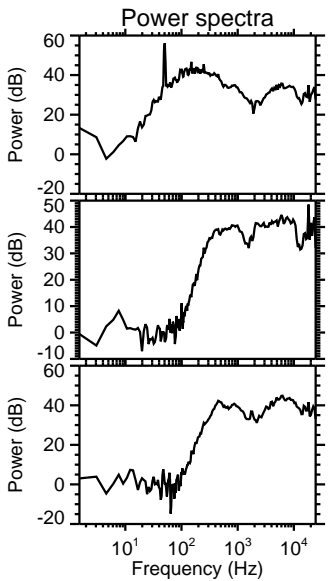
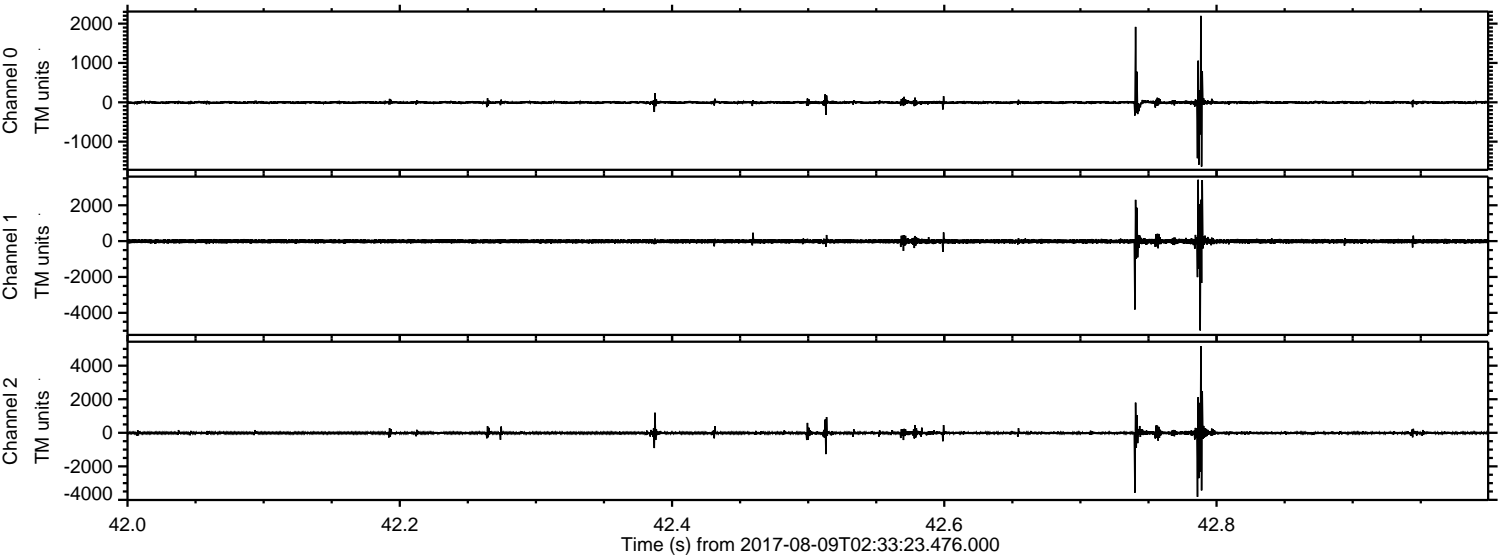


ELMAVAN 3D WAVEFORMS (Measured data sampled at 50 kHz) 50999 packets of 144 samples from 2017-08-09T02:33:23.476.000. Part 125/147

Processed Wed Aug 9 04:41:30 2017 by ELM ver.2012-10-06 from 001__elm20170809_023322__dat00.bin

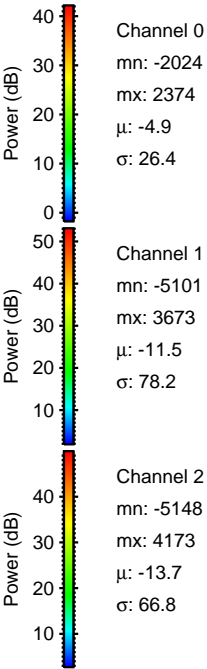
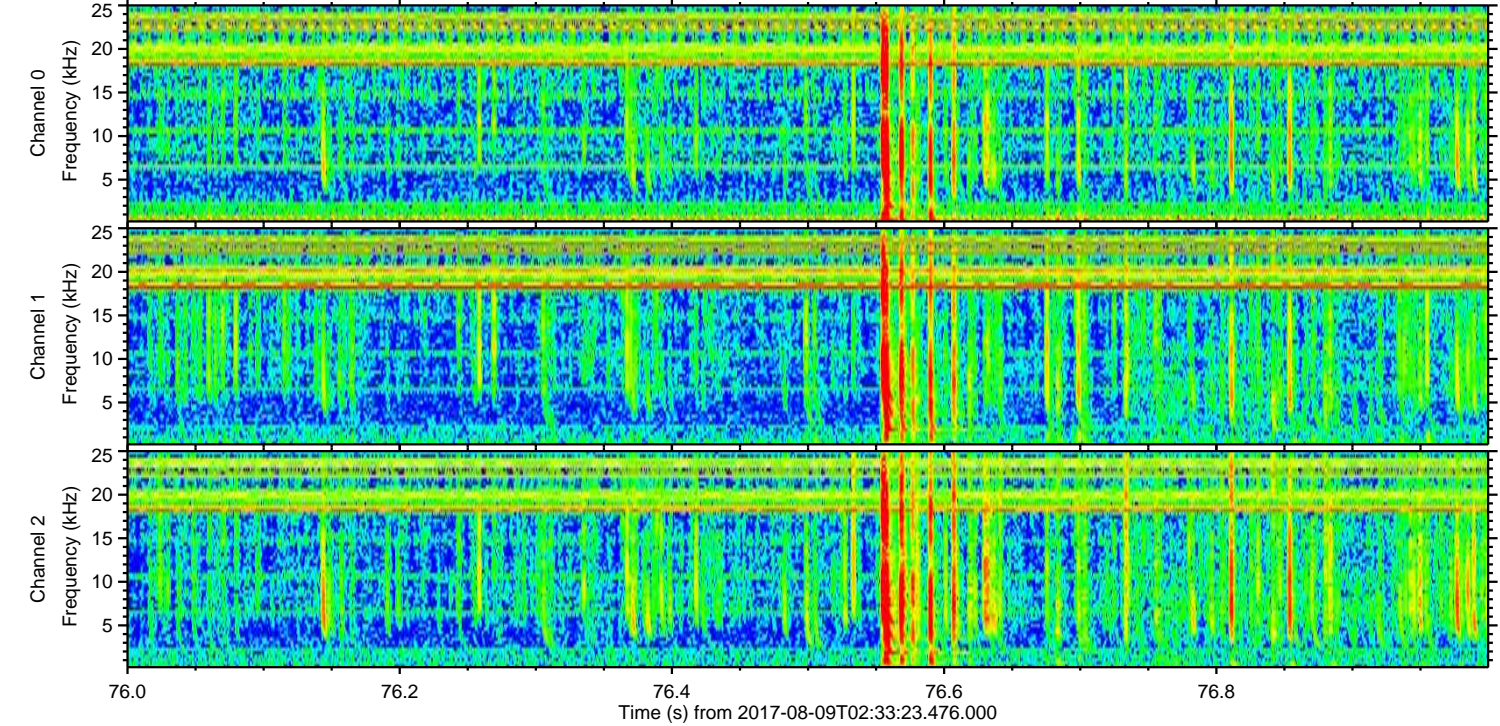
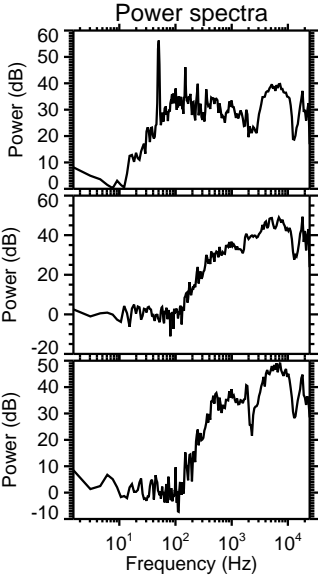
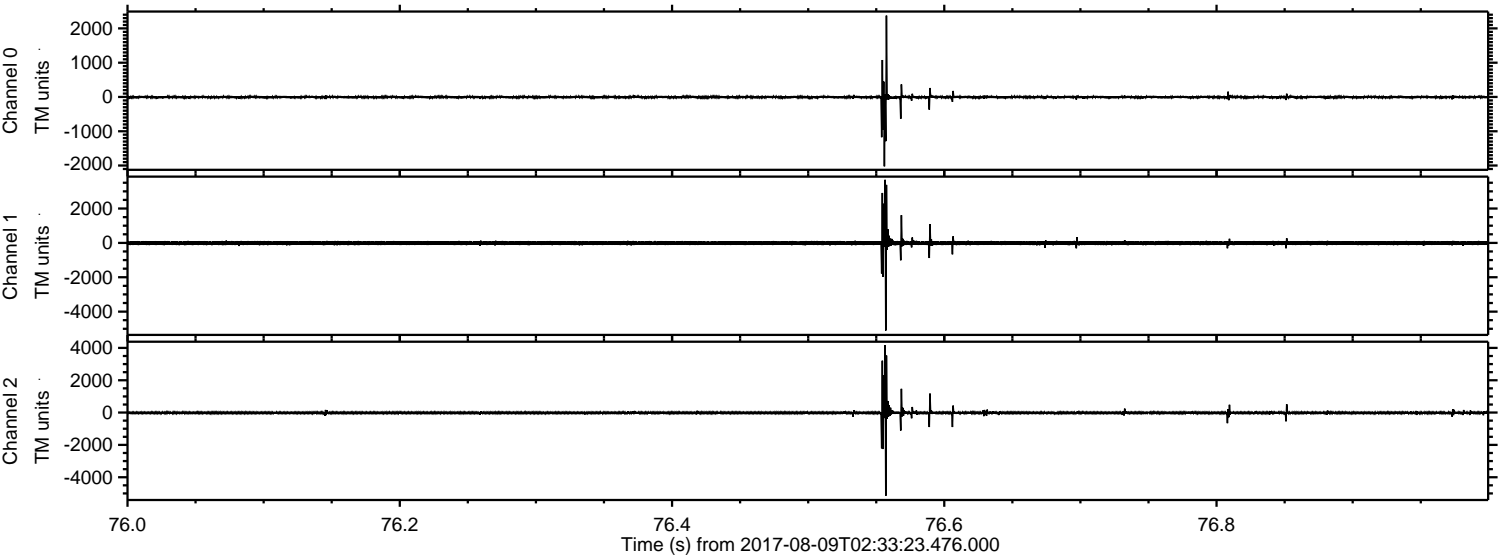


Processed Wed Aug 9 04:41:31 2017 by ELM ver.2012-10-06 from 001__elm20170809_023322__dat00.bin

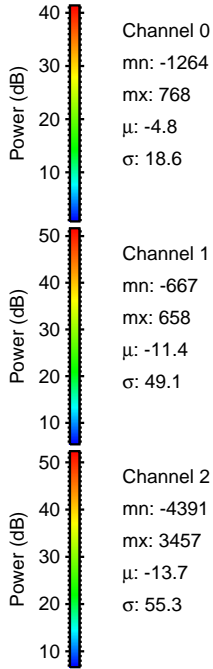
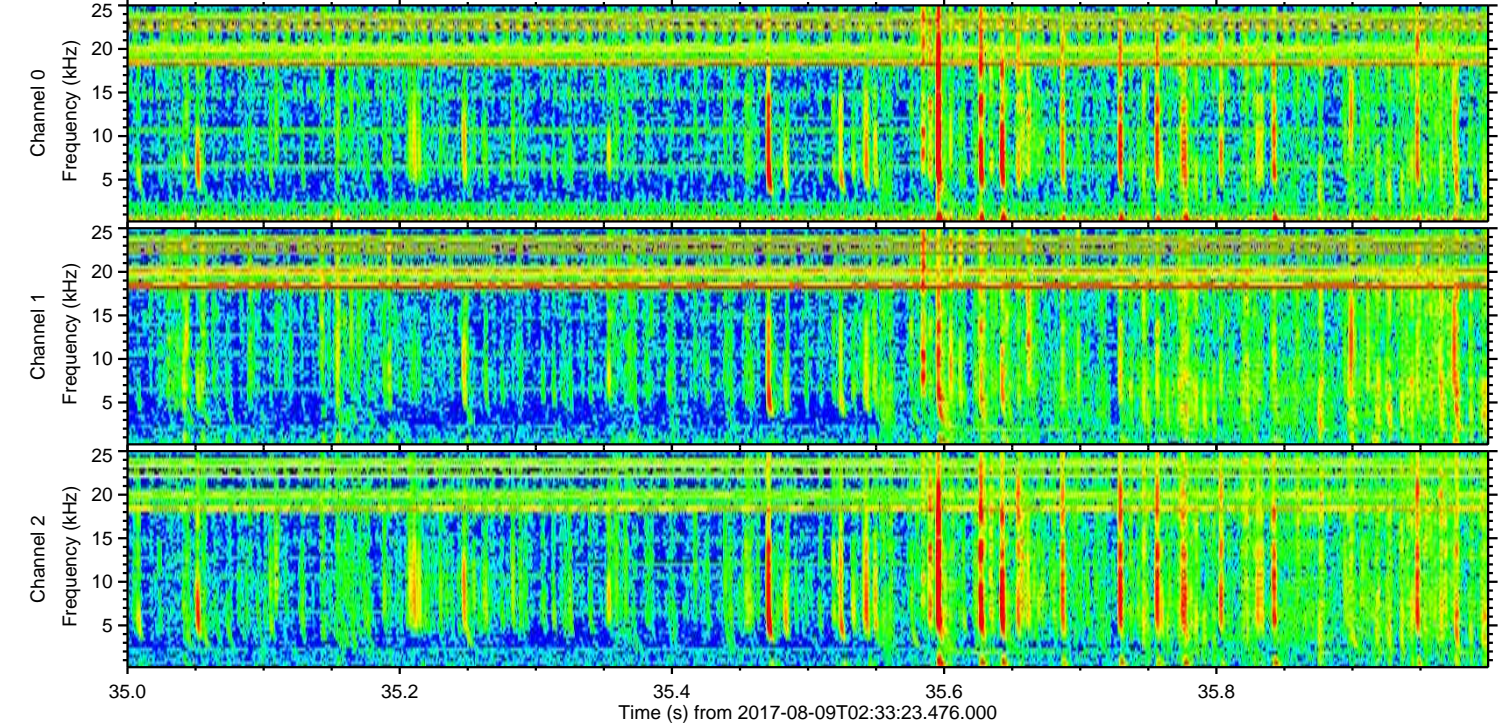
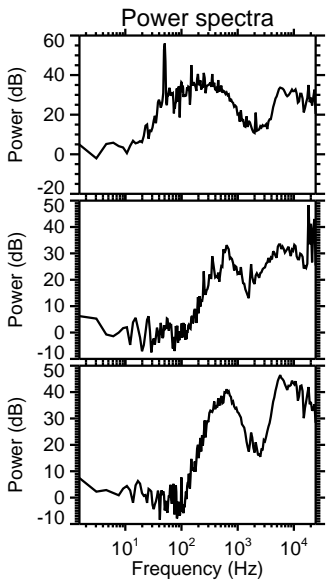
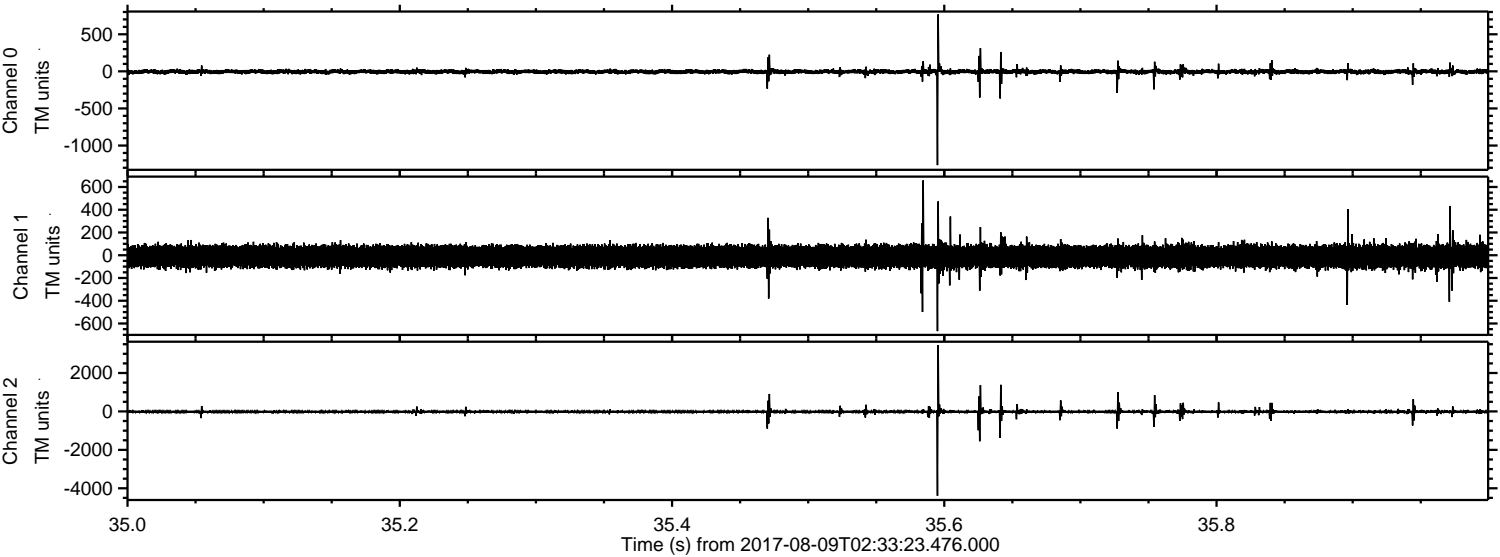


ELMAVAN 3D WAVEFORMS (Measured data sampled at 50 kHz) 50999 packets of 144 samples from 2017-08-09T02:33:23.476.000. Part 77/147

Processed Wed Aug 9 04:41:32 2017 by ELM ver.2012-10-06 from 001__elm20170809_023322__dat00.bin

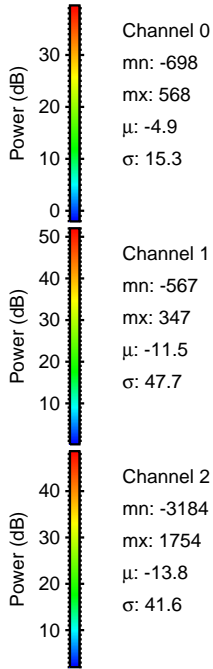
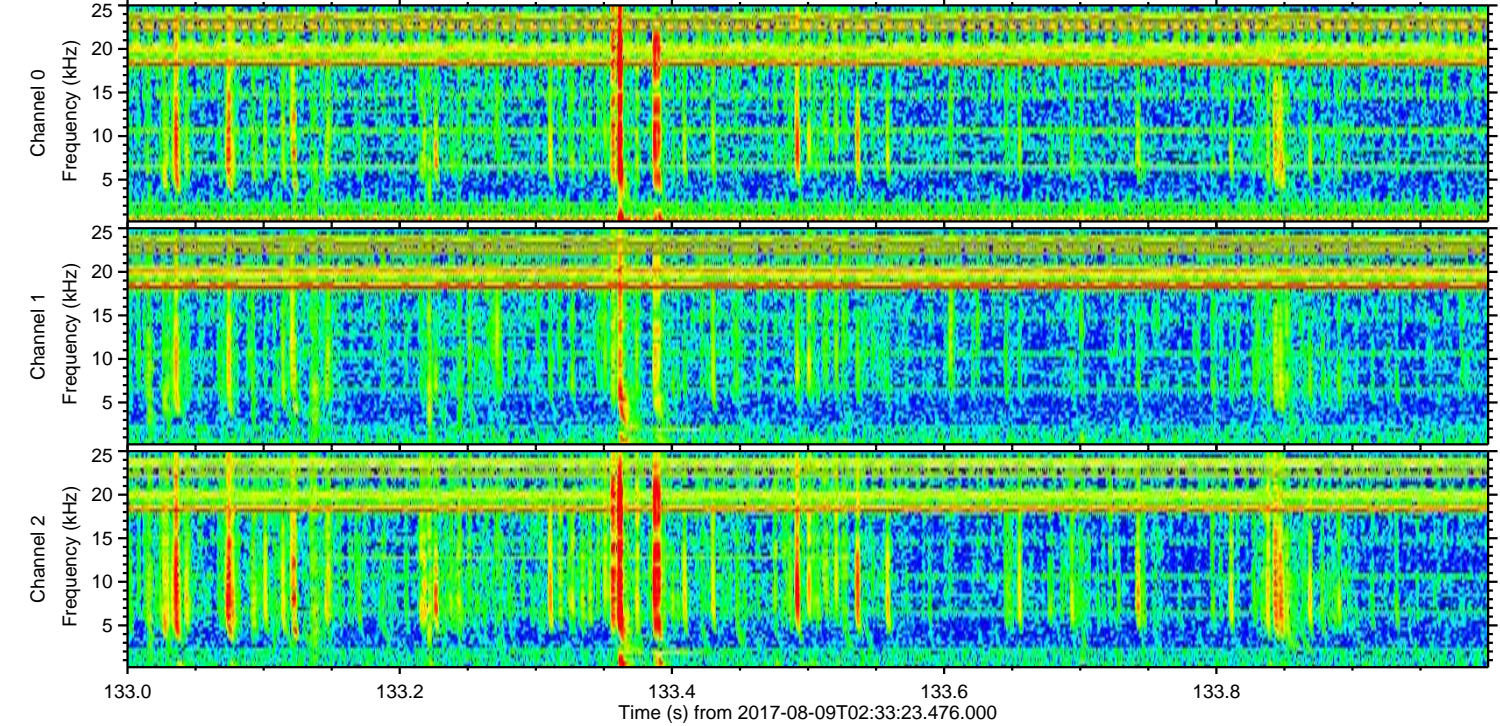
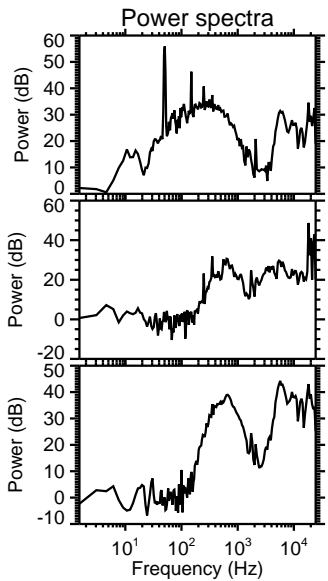
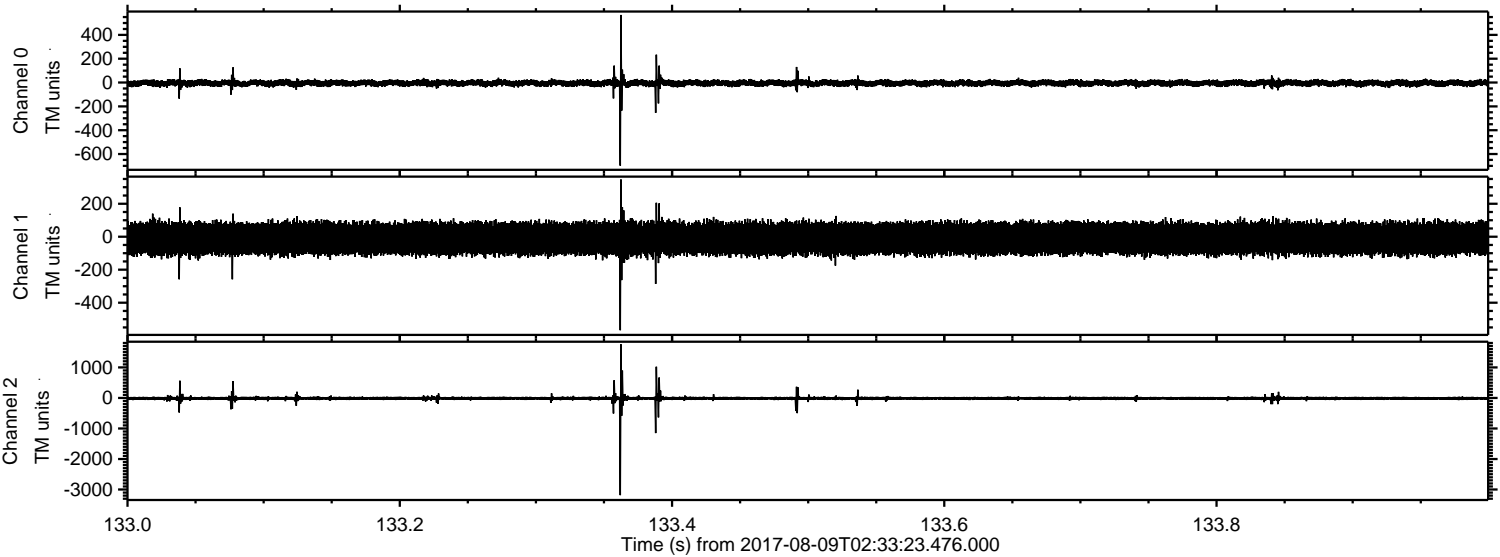


Processed Wed Aug 9 04:41:33 2017 by ELM ver.2012-10-06 from 001__elm20170809_023322__dat00.bin



ELMAVAN 3D WAVEFORMS (Measured data sampled at 50 kHz) 50999 packets of 144 samples from 2017-08-09T02:33:23.476.000. Part 134/147

Processed Wed Aug 9 04:41:33 2017 by ELM ver.2012-10-06 from 001__elm20170809_023322__dat00.bin



Channel 0
mn: -698
mx: 568
 μ : -4.9
 σ : 15.3

Channel 1
mn: -567
mx: 347
 μ : -11.5
 σ : 47.7

Channel 2
mn: -3184
mx: 1754
 μ : -13.8
 σ : 41.6

Processed Wed Aug 9 04:41:34 2017 by ELM ver.2012-10-06 from 001__elm20170809_023322__dat00.bin

