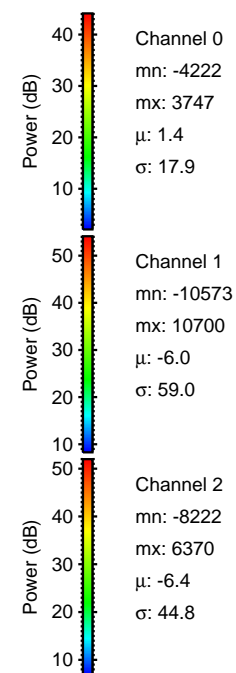
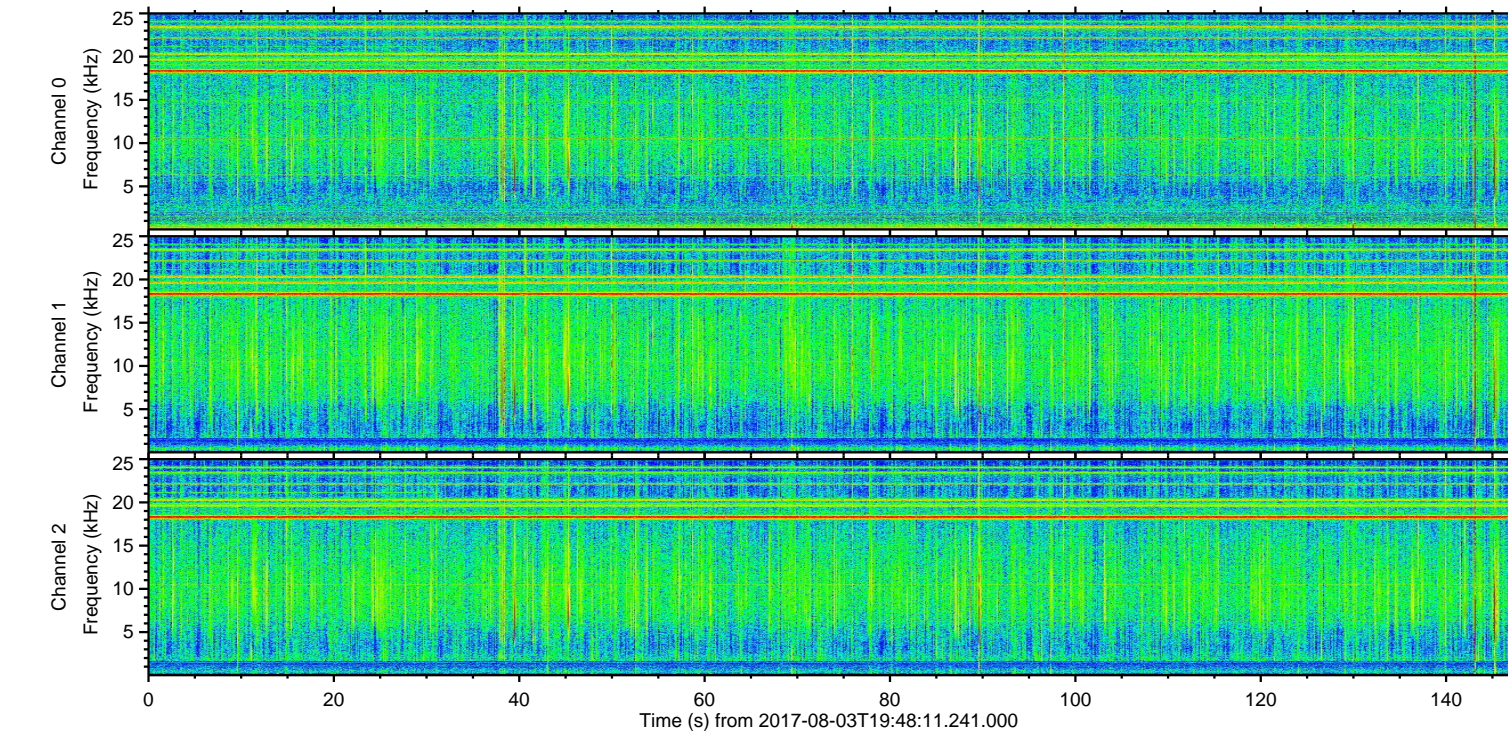
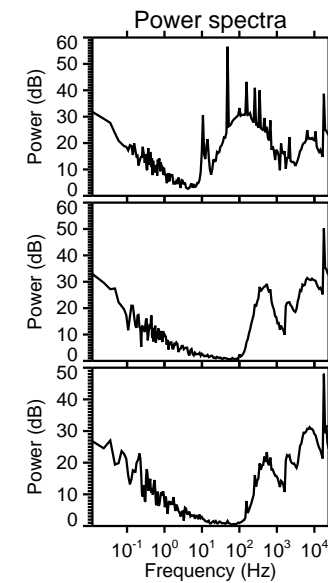
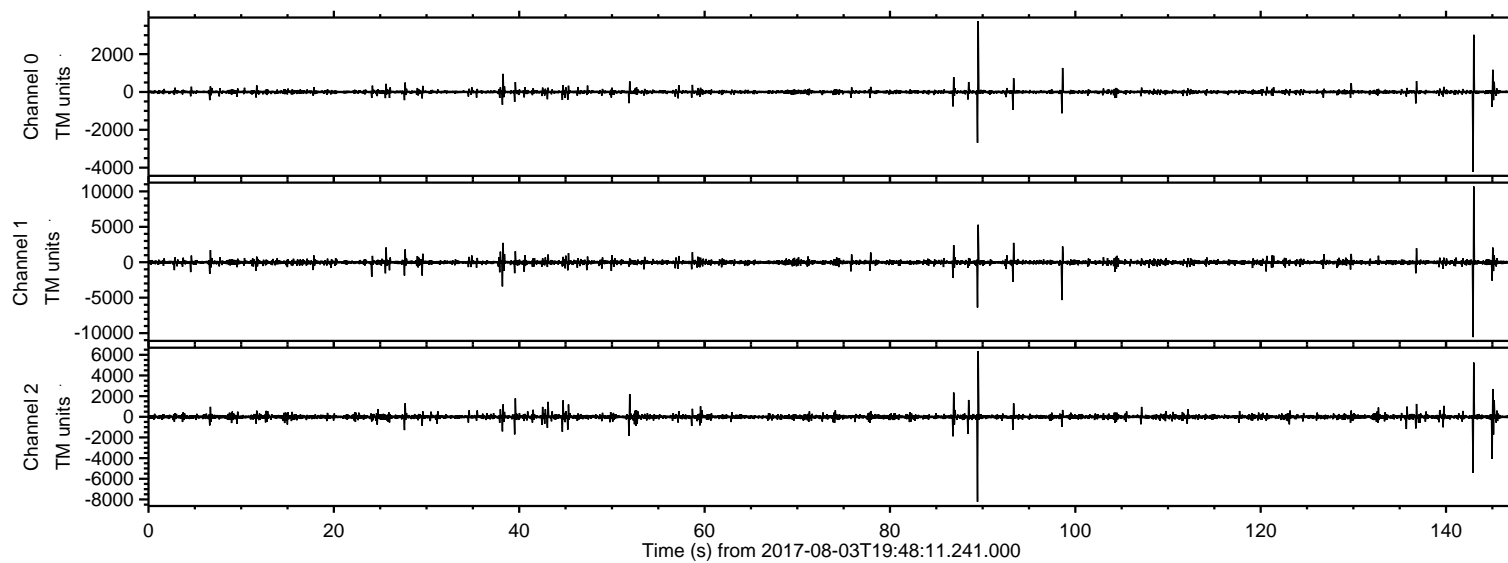


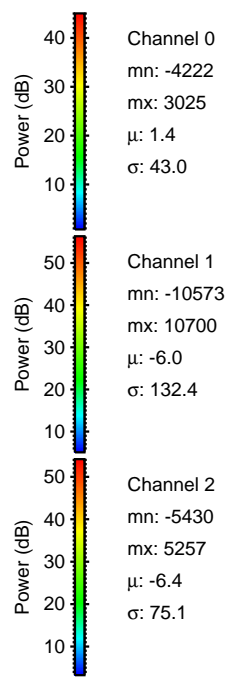
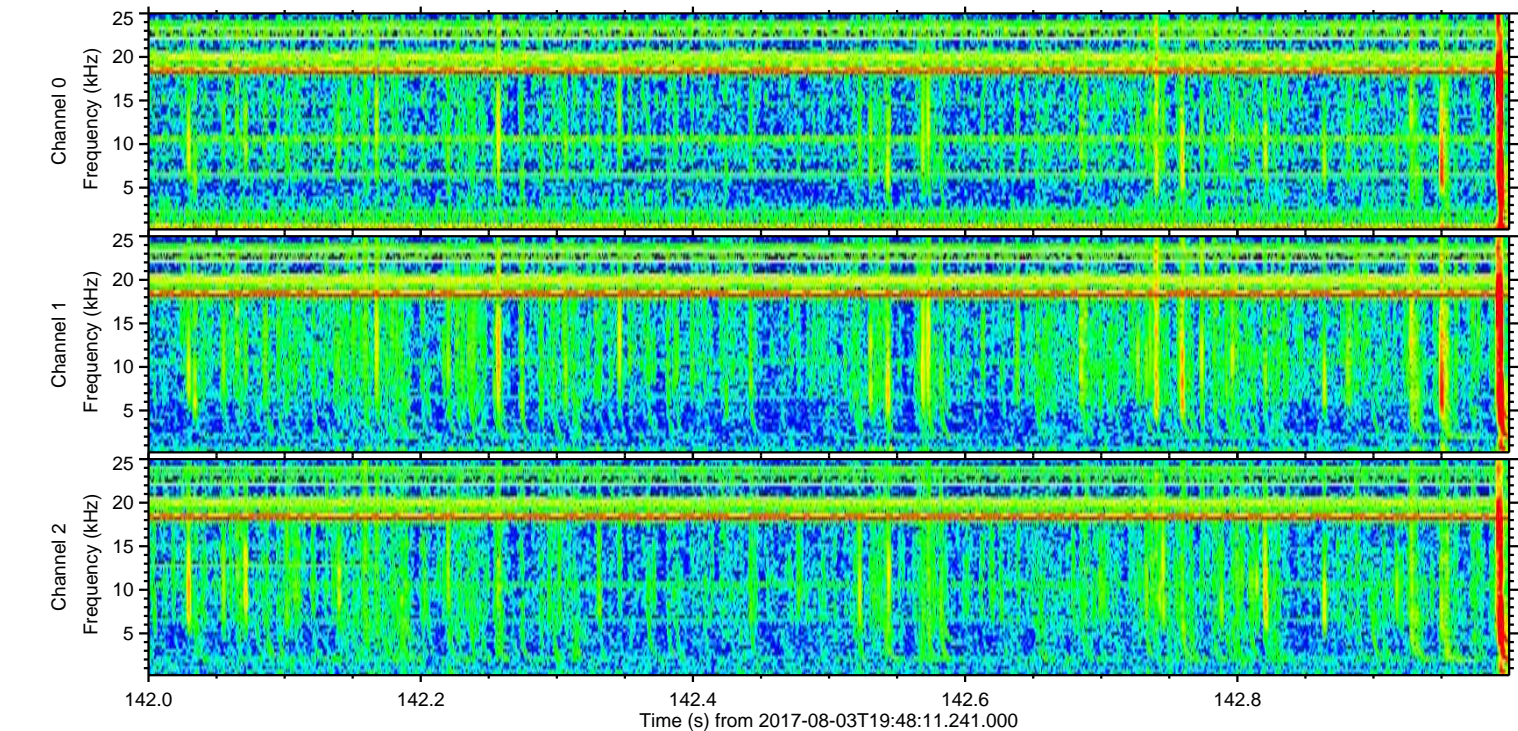
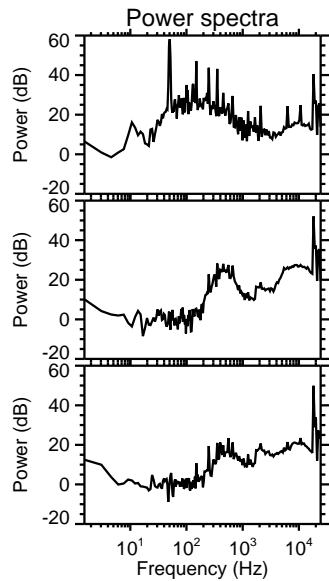
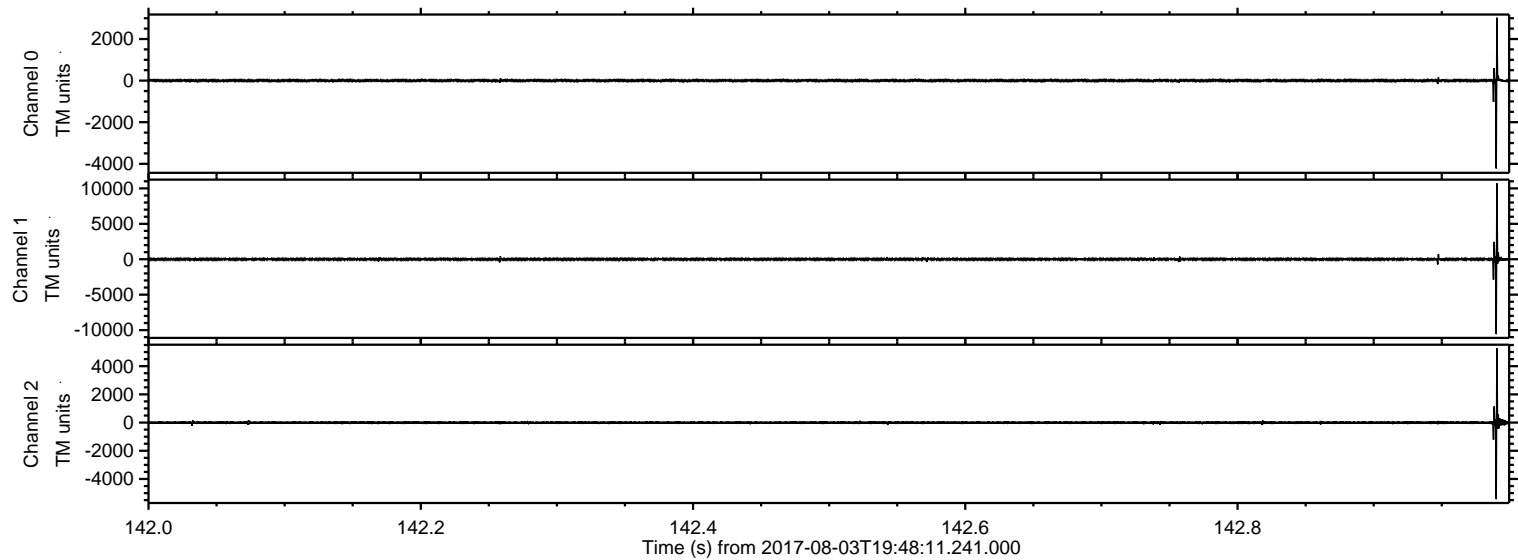
ELMAVAN 3D WAVEFORMS (Measured data sampled at 50 kHz) 51000 packets of 144 samples from 2017-08-03T19:48:11.241.000.

Processed Thu Aug 3 21:55:50 2017 by ELM ver.2012-10-06 from 001__elm20170803_194810__dat00.bin

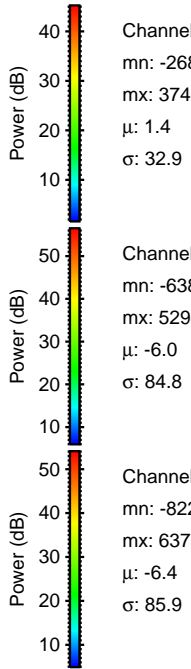
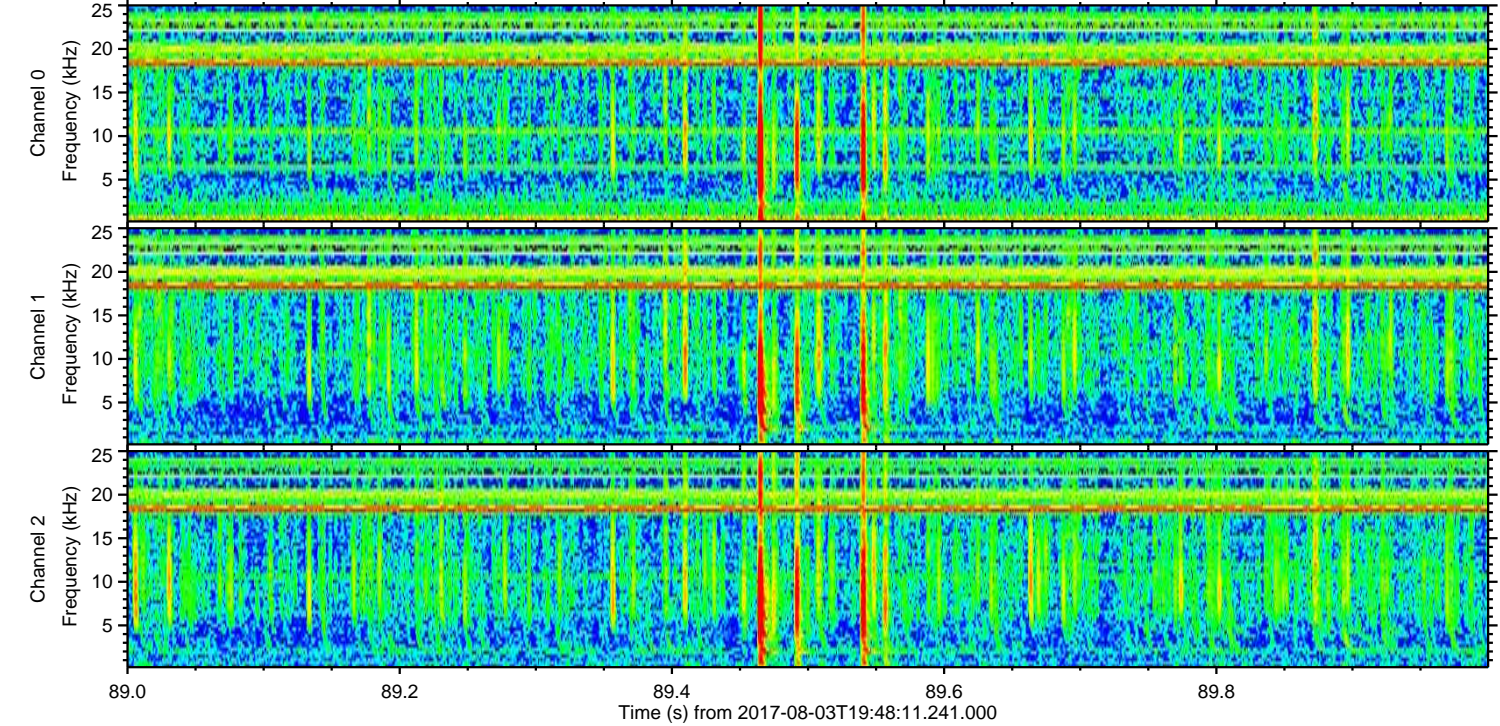
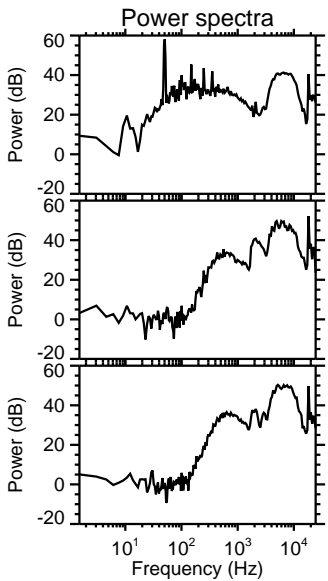
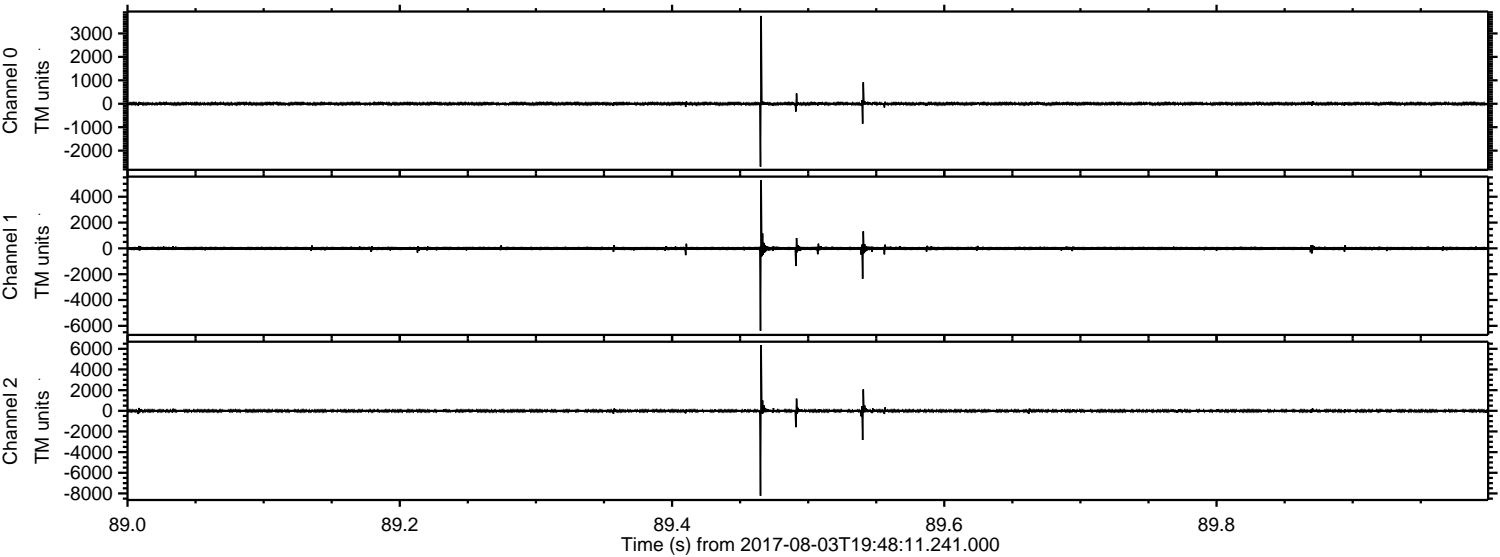


ELMAVAN 3D WAVEFORMS (Measured data sampled at 50 kHz) 51000 packets of 144 samples from 2017-08-03T19:48:11.241.000. Part 143/147

Processed Thu Aug 3 21:55:56 2017 by ELM ver.2012-10-06 from 001__elm20170803_194810__dat00.bin



Processed Thu Aug 3 21:55:57 2017 by ELM ver.2012-10-06 from 001__elm20170803_194810__dat00.bin

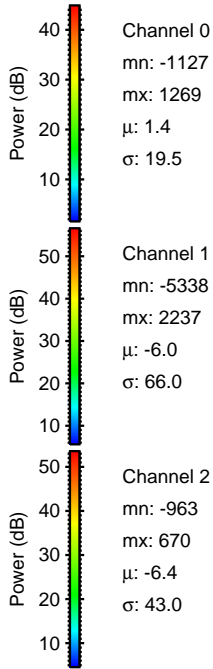
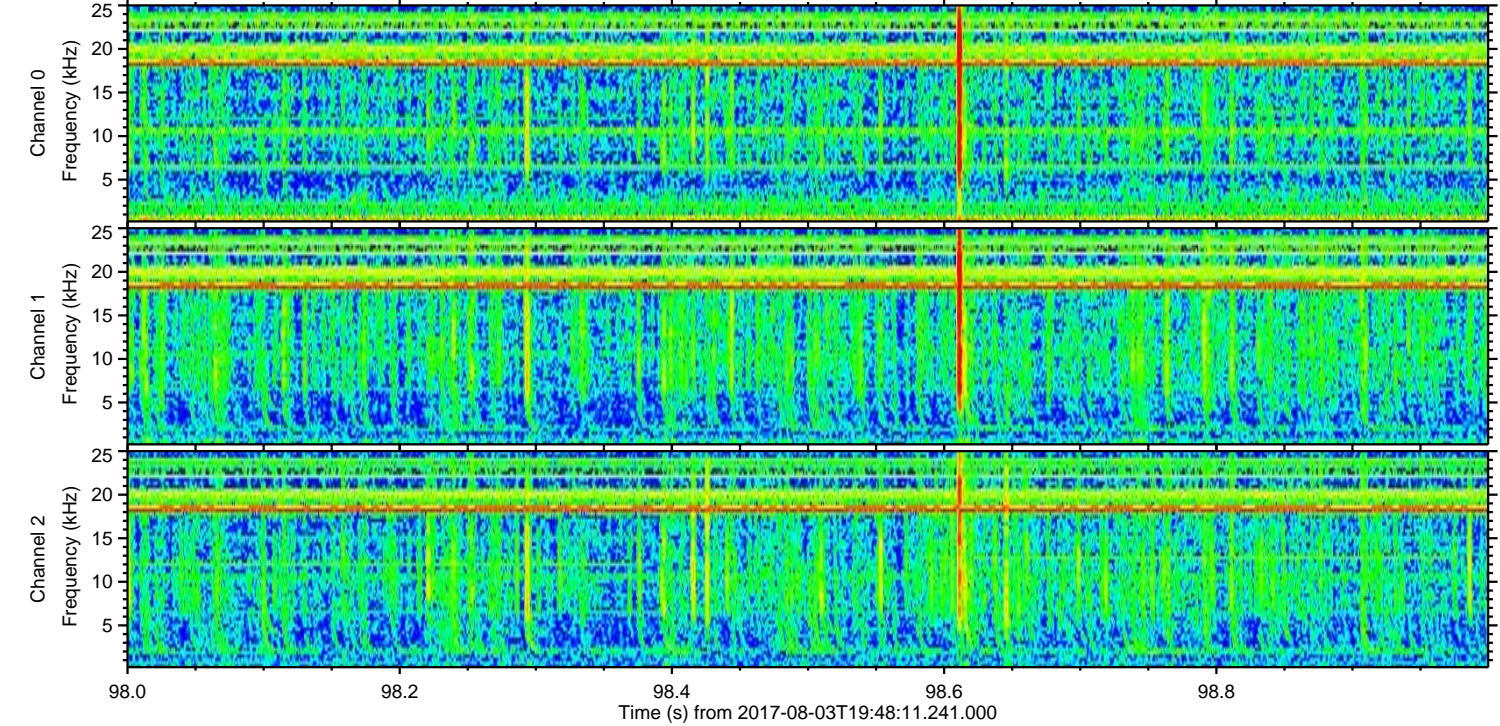
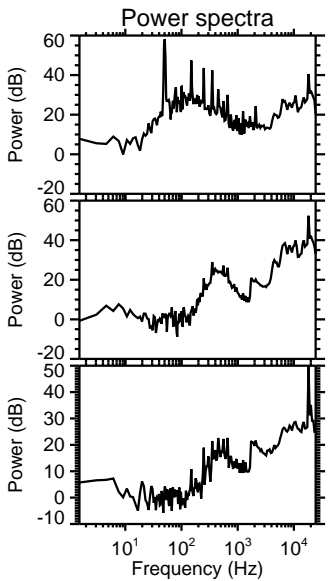
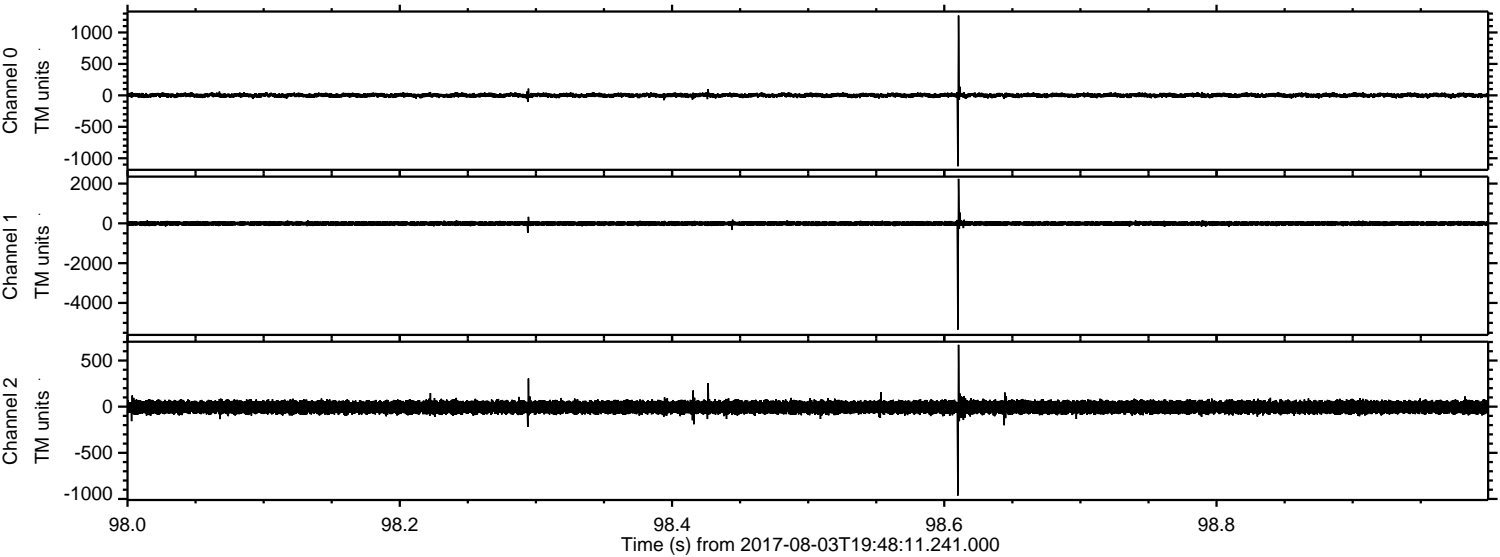


Channel 0
mn: -2685
mx: 3747
 μ : 1.4
 σ : 32.9

Channel 1
mn: -6386
mx: 5294
 μ : -6.0
 σ : 84.8

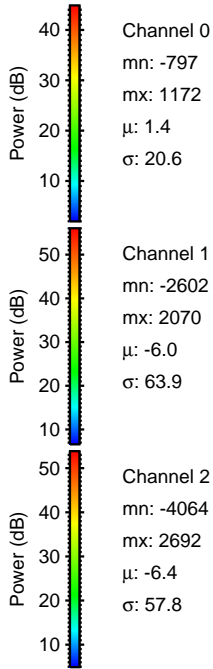
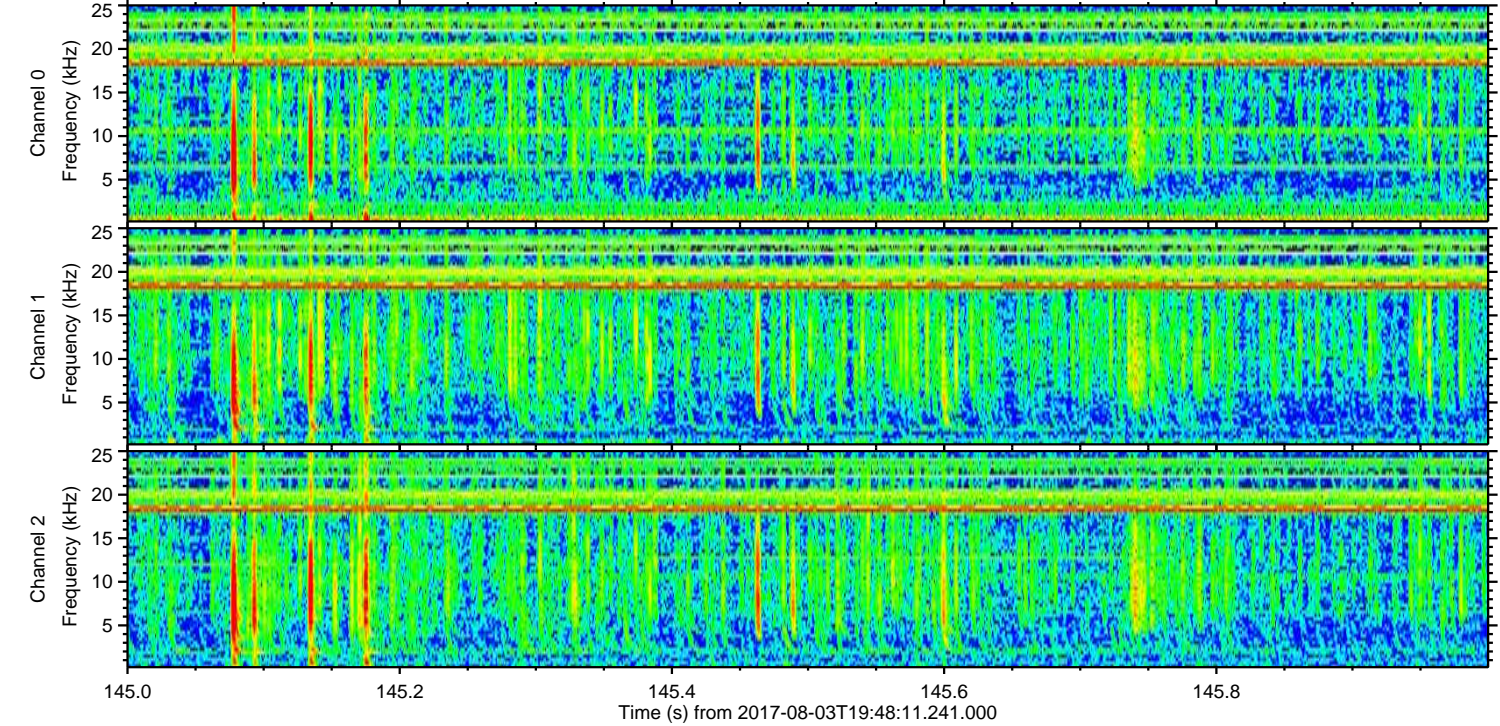
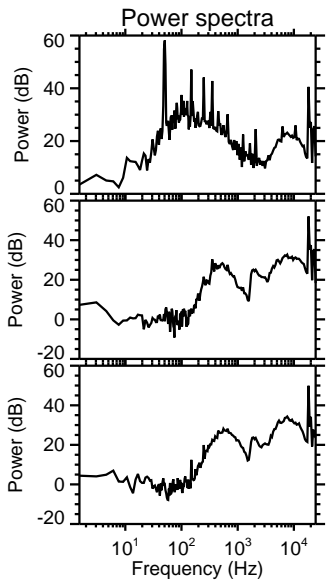
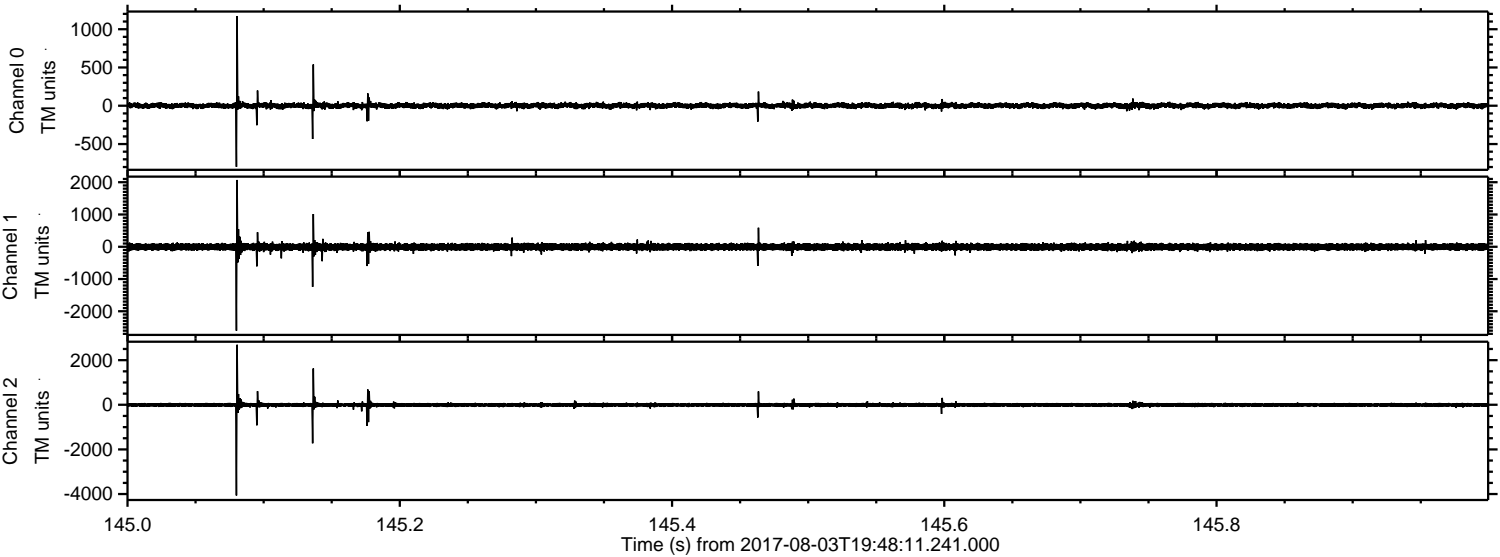
Channel 2
mn: -8222
mx: 6370
 μ : -6.4
 σ : 85.9

Processed Thu Aug 3 21:55:57 2017 by ELM ver.2012-10-06 from 001__elm20170803_194810__dat00.bin

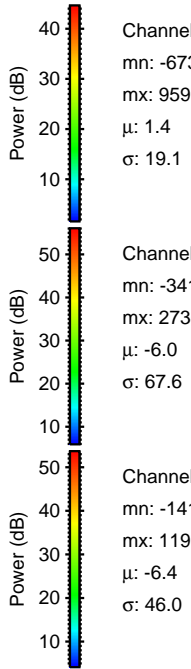
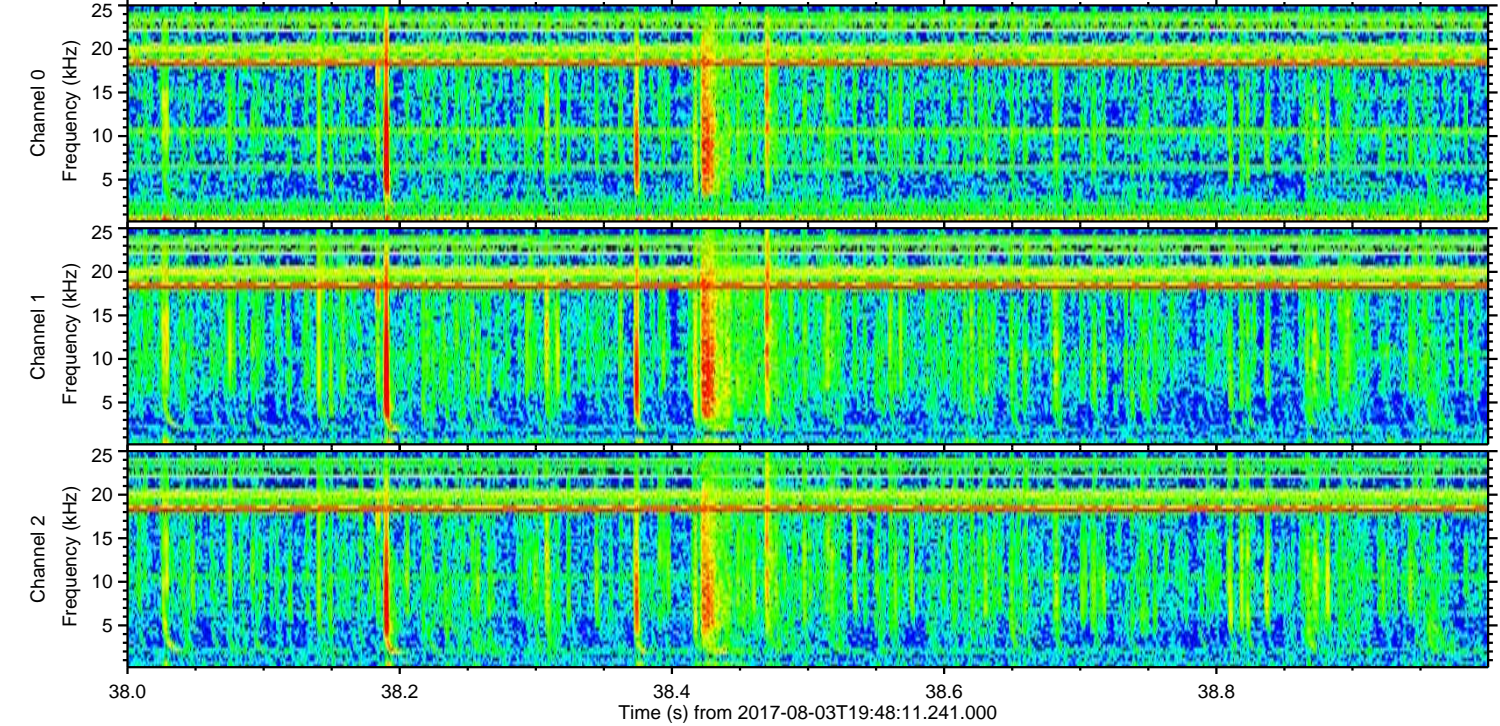
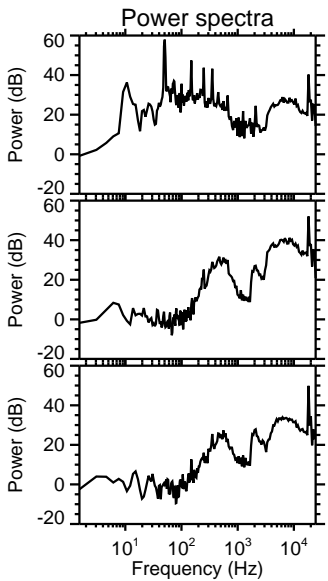
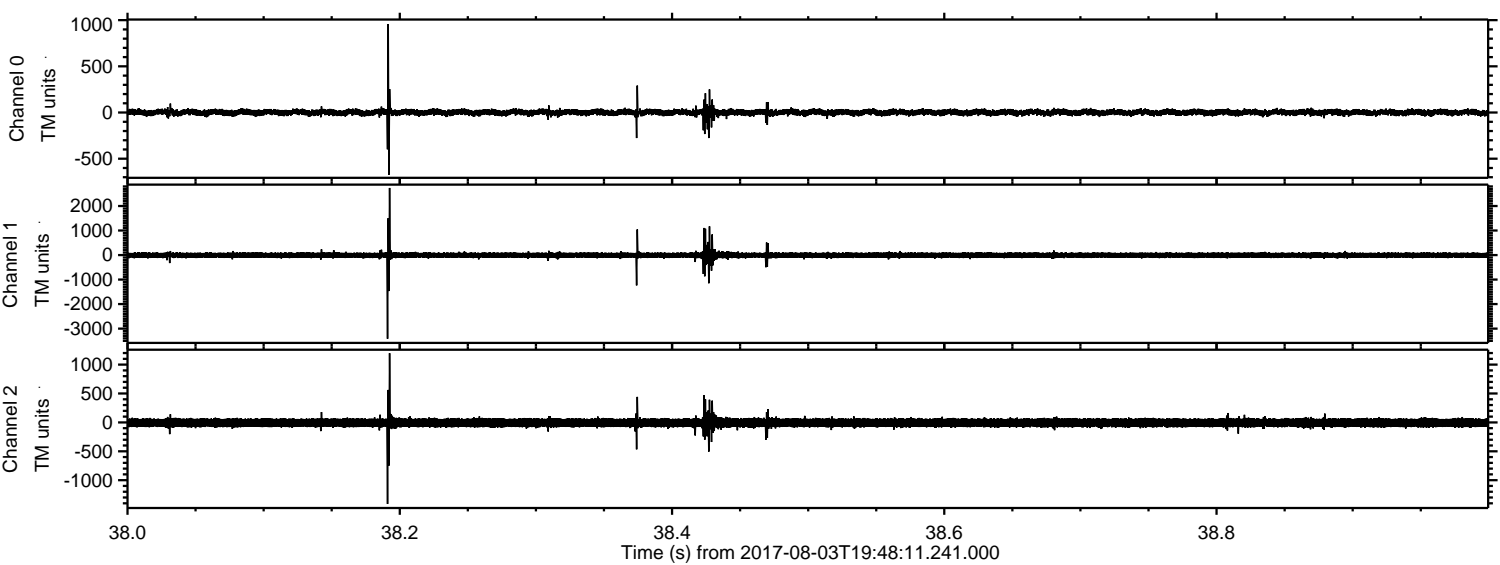


ELMAVAN 3D WAVEFORMS (Measured data sampled at 50 kHz) 51000 packets of 144 samples from 2017-08-03T19:48:11.241.000. Part 146/147

Processed Thu Aug 3 21:55:58 2017 by ELM ver.2012-10-06 from 001__elm20170803_194810__dat00.bin



Processed Thu Aug 3 21:55:58 2017 by ELM ver.2012-10-06 from 001__elm20170803_194810__dat00.bin

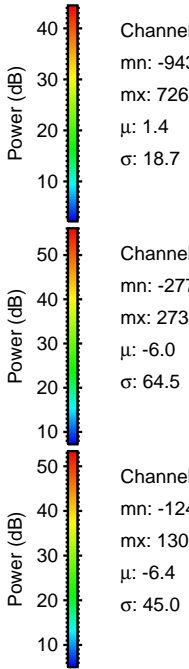
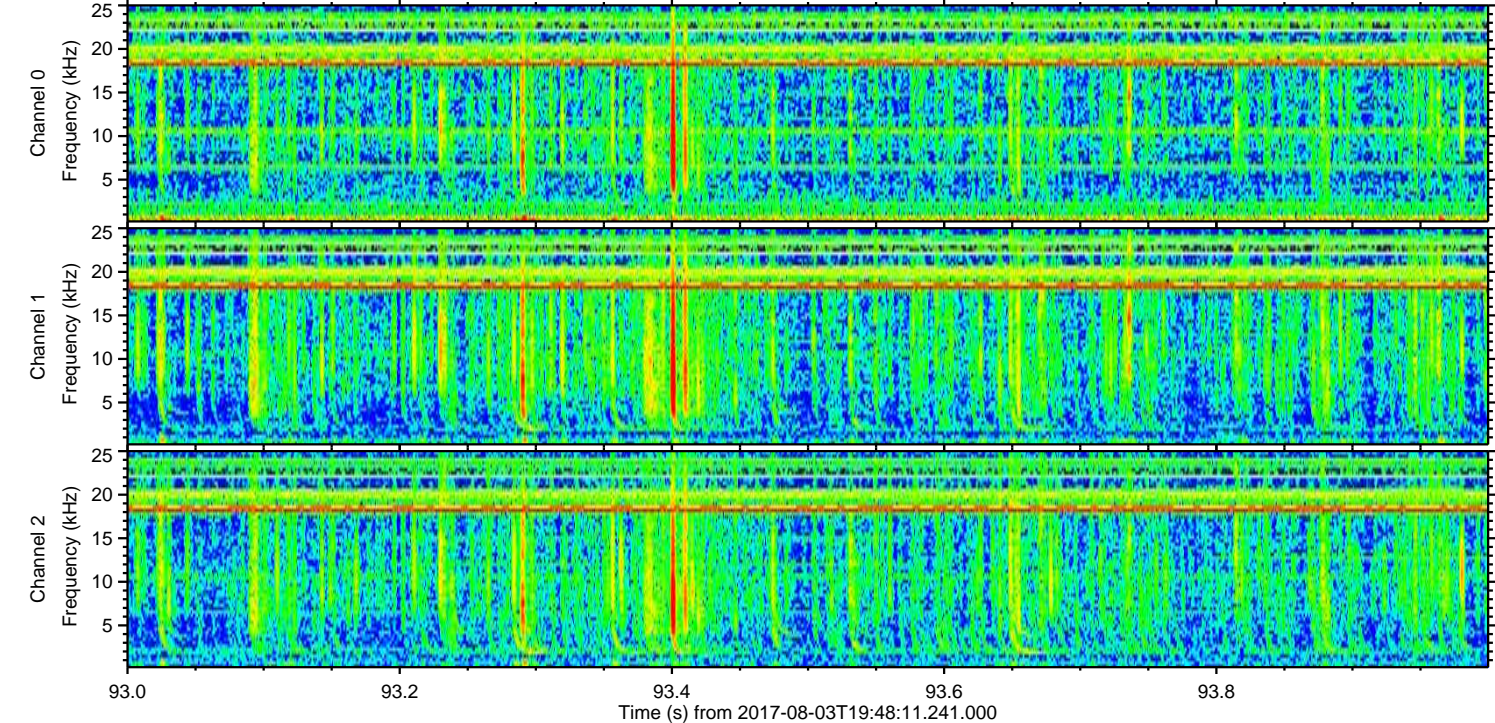
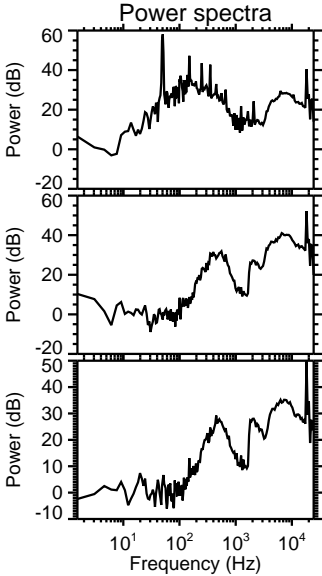
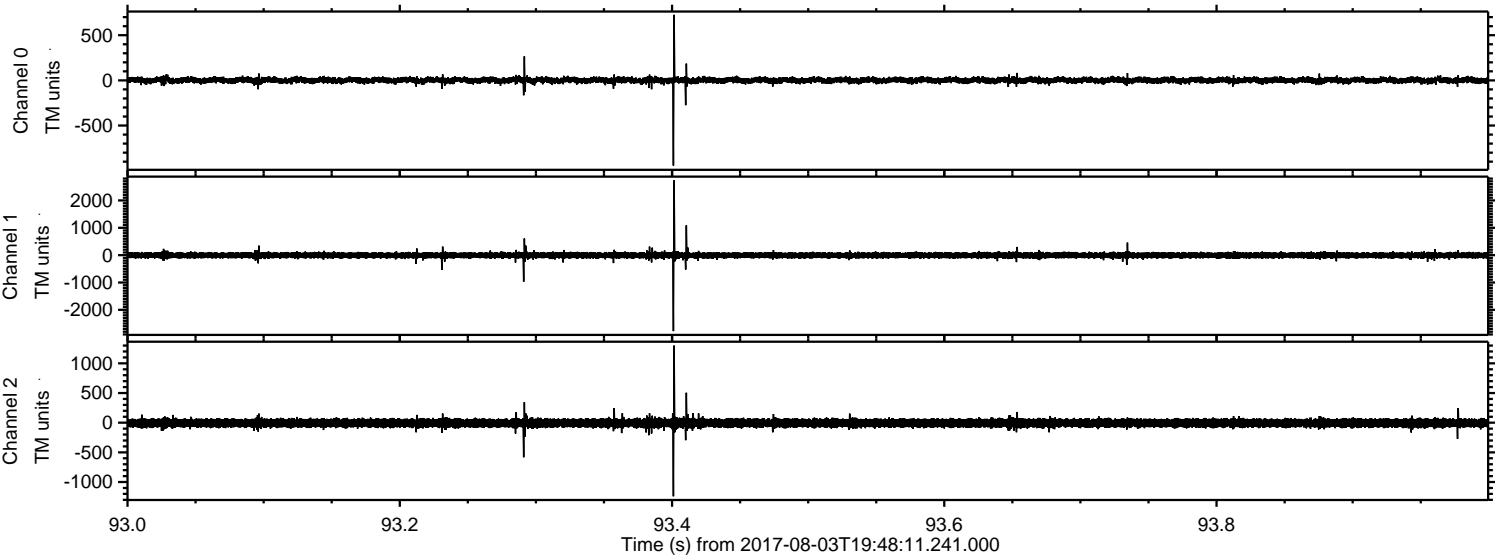


Channel 0
mn: -673
mx: 959
 μ : 1.4
 σ : 19.1

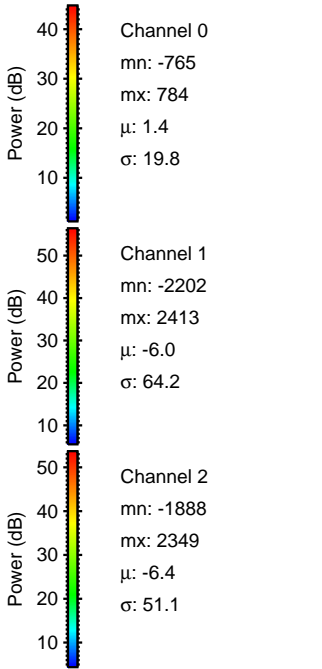
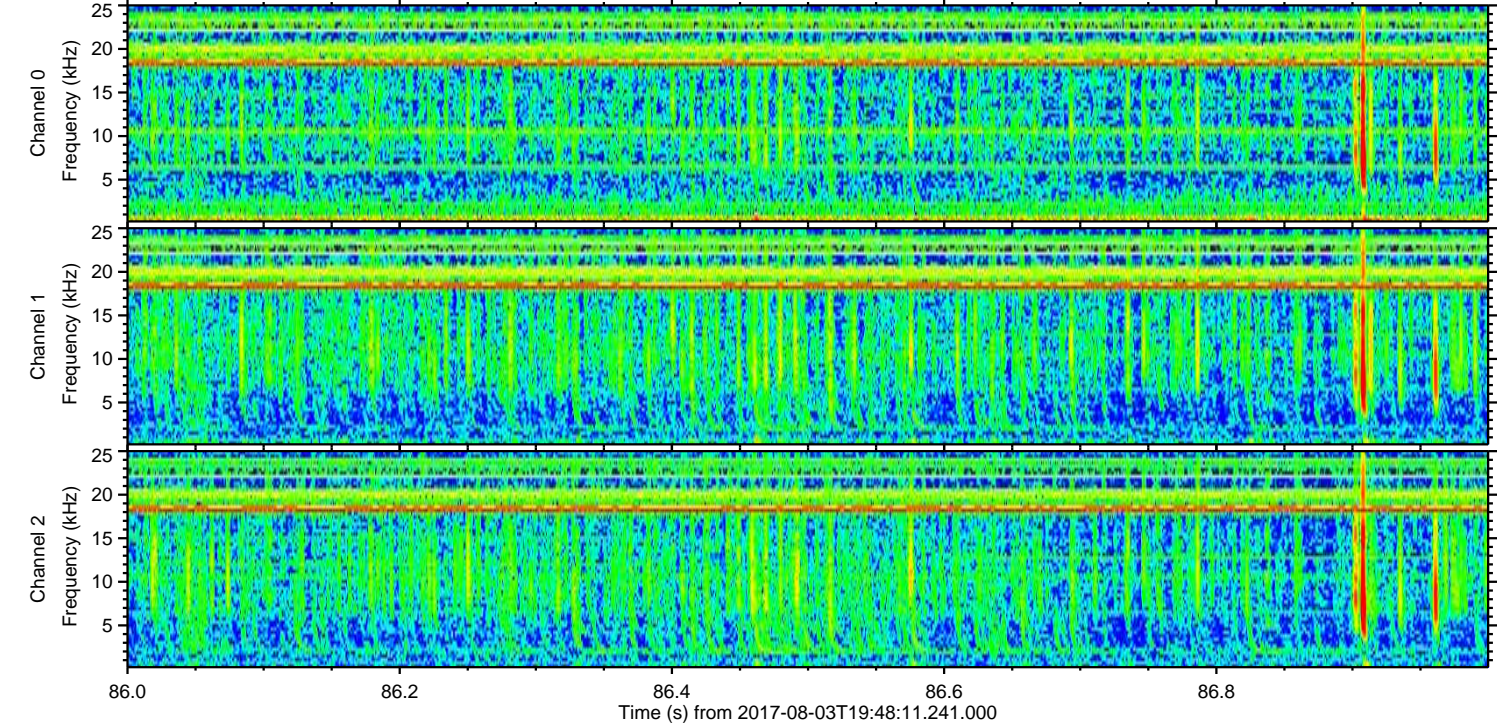
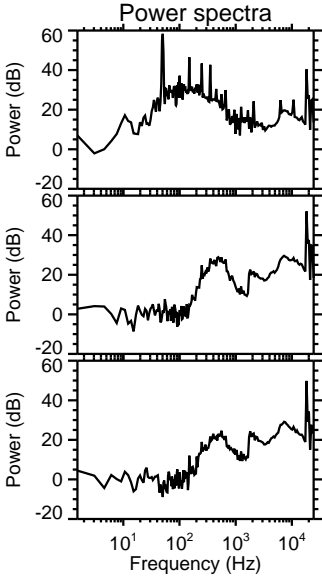
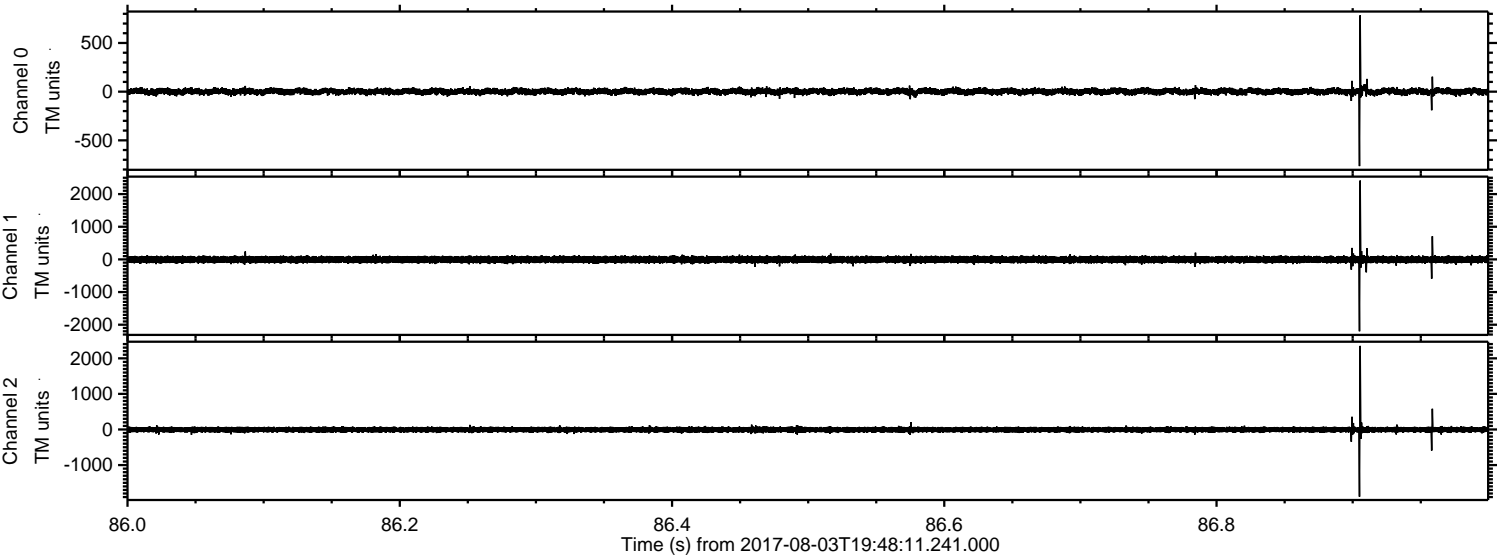
Channel 1
mn: -3413
mx: 2736
 μ : -6.0
 σ : 67.6

Channel 2
mn: -1411
mx: 1198
 μ : -6.4
 σ : 46.0

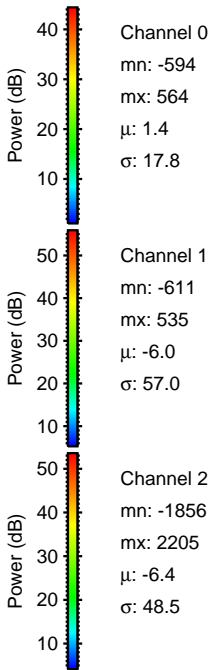
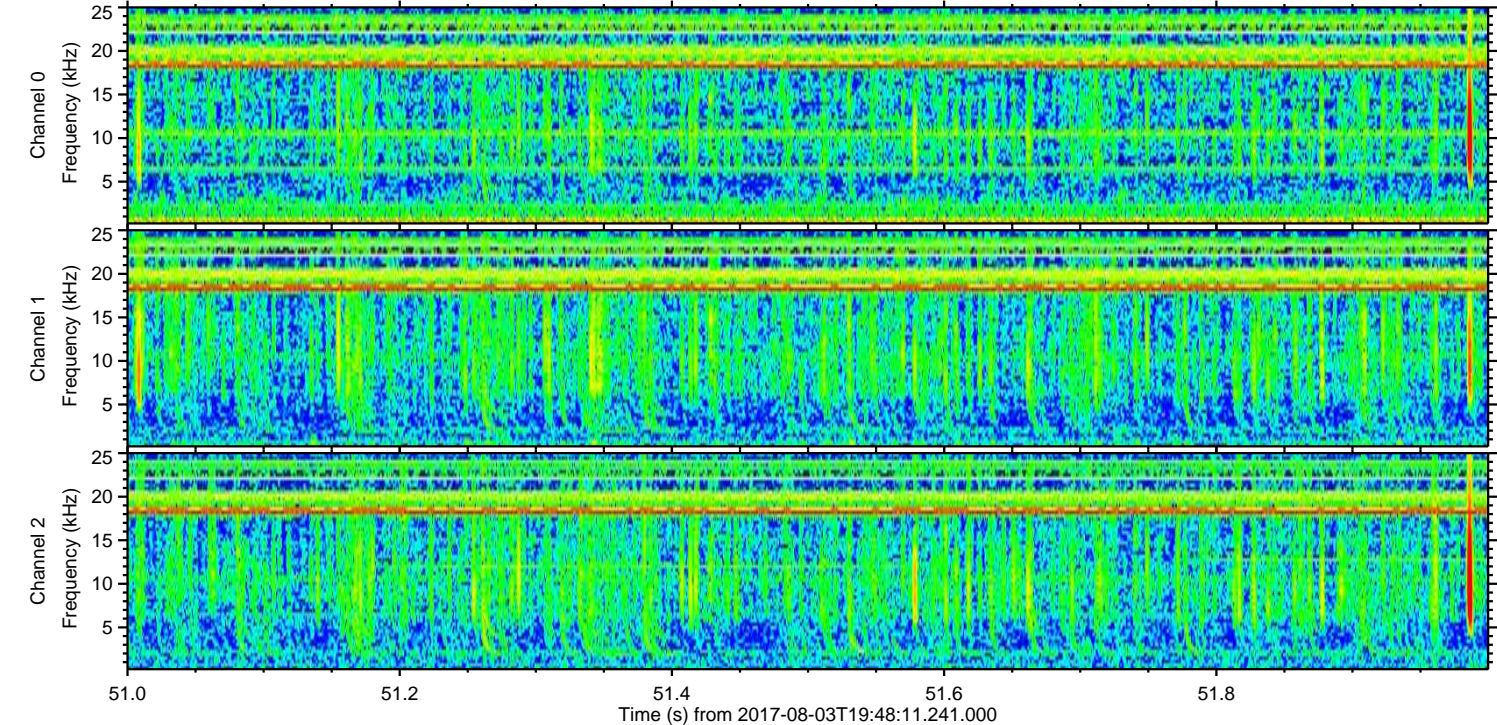
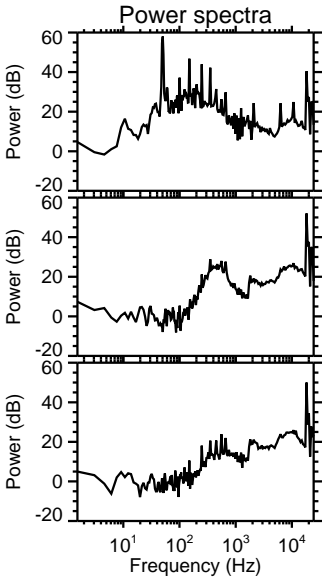
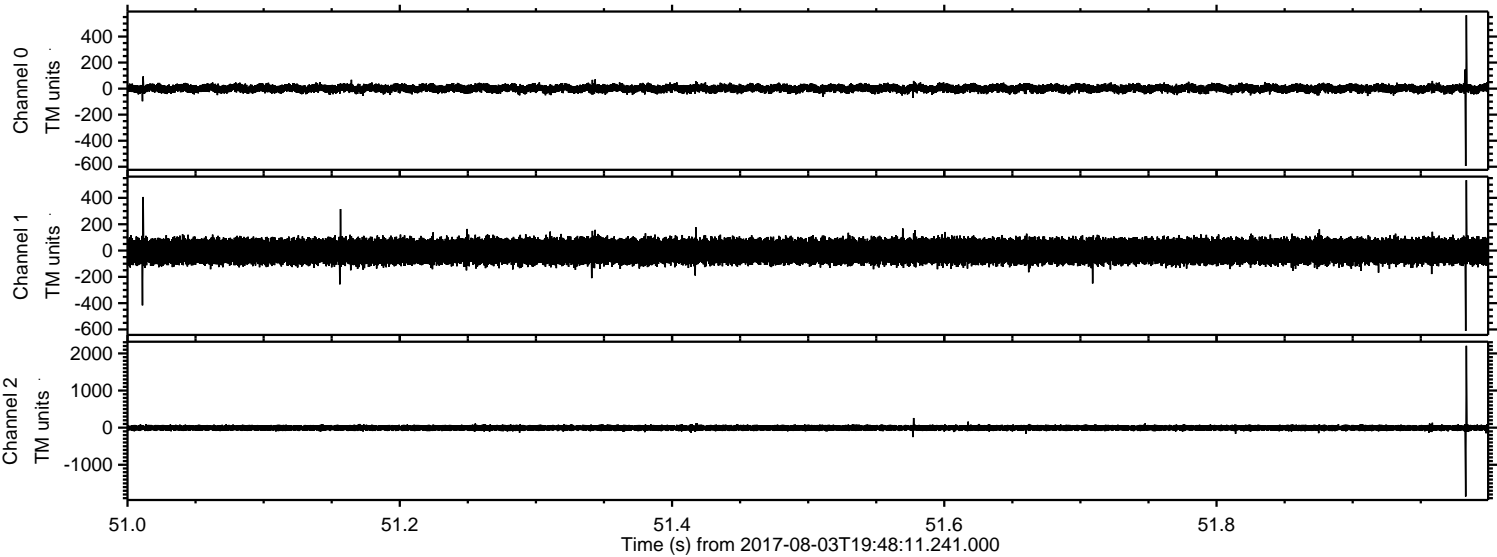
Processed Thu Aug 3 21:55:59 2017 by ELM ver.2012-10-06 from 001__elm20170803_194810__dat00.bin



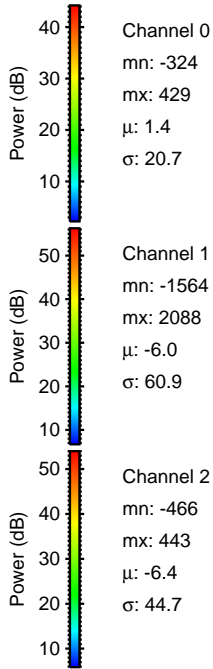
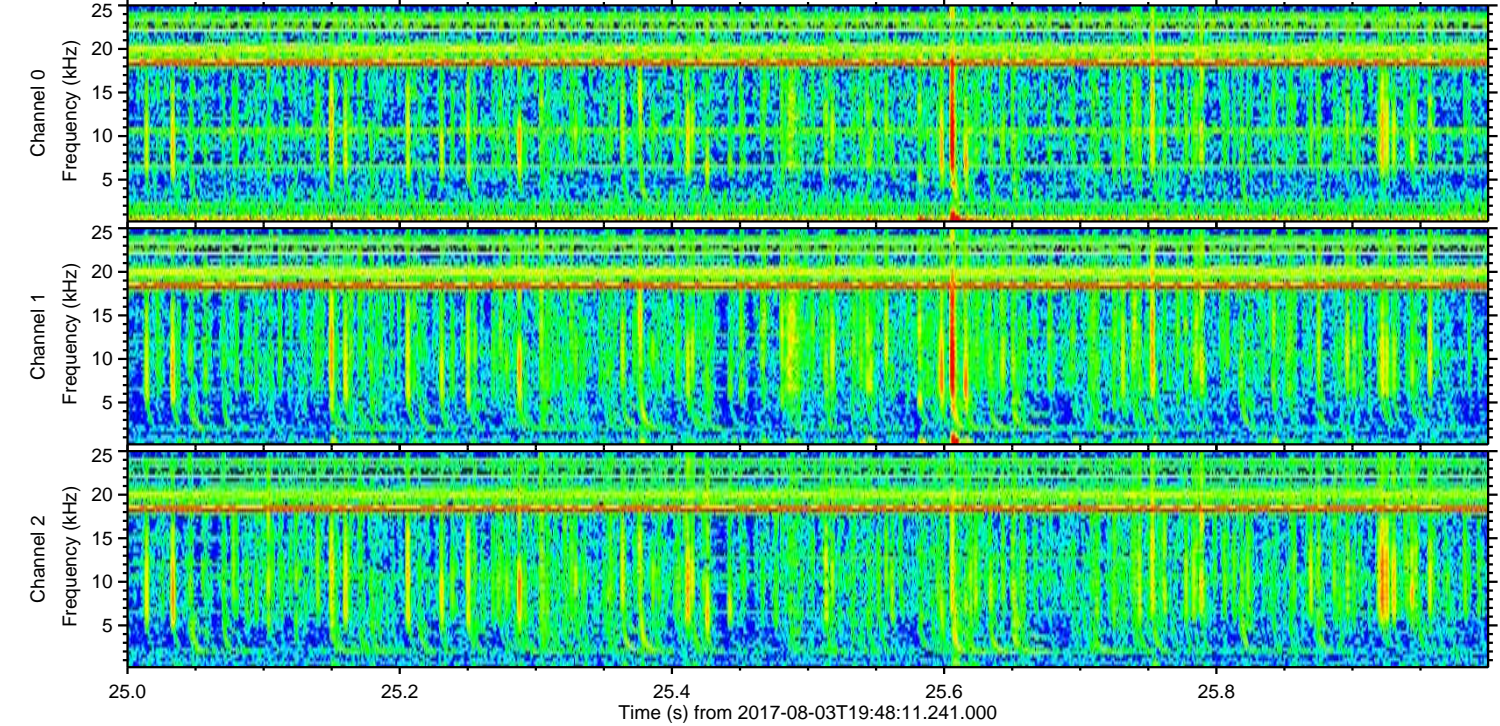
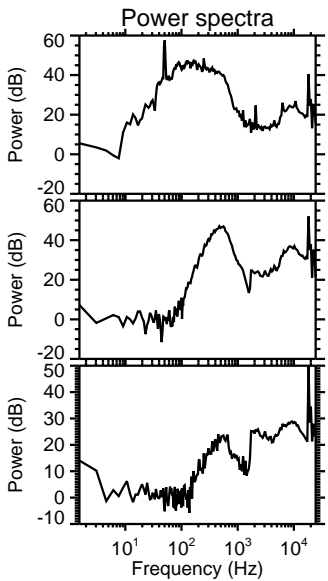
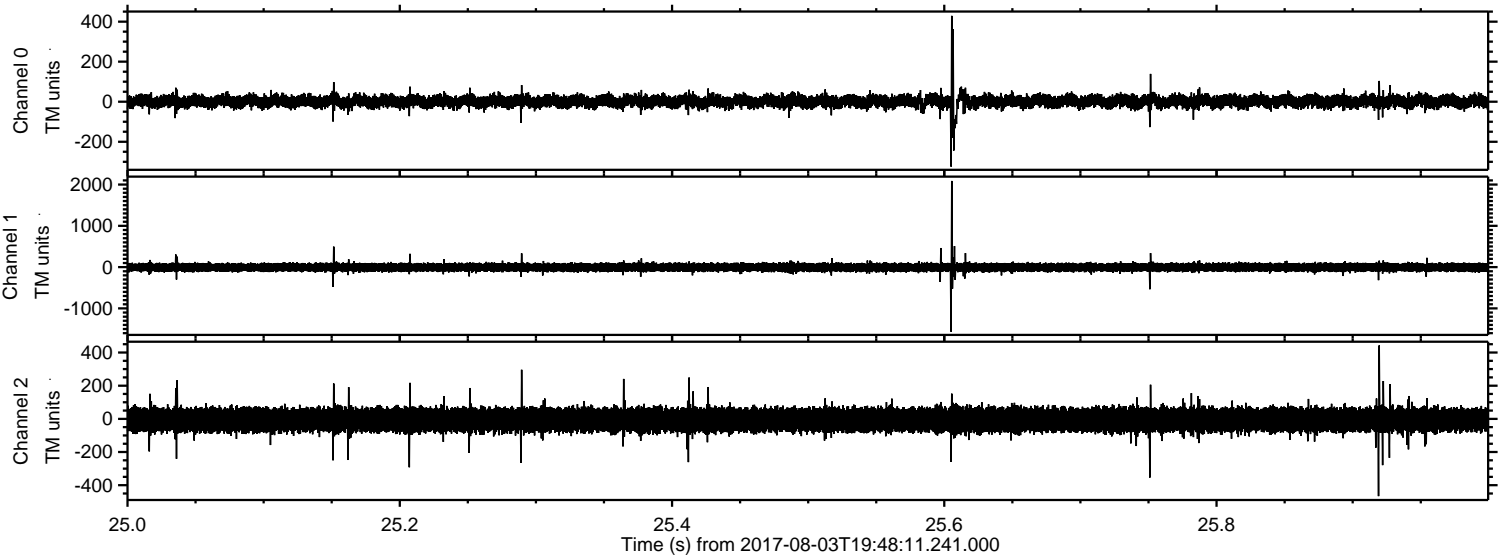
Processed Thu Aug 3 21:56:00 2017 by ELM ver.2012-10-06 from 001__elm20170803_194810__dat00.bin



Processed Thu Aug 3 21:56:01 2017 by ELM ver.2012-10-06 from 001__elm20170803_194810__dat00.bin



Processed Thu Aug 3 21:56:01 2017 by ELM ver.2012-10-06 from 001__elm20170803_194810__dat00.bin



Channel 0
mn: -324
mx: 429
 μ : 1.4
 σ : 20.7

Channel 1
mn: -1564
mx: 2088
 μ : -6.0
 σ : 60.9

Channel 2
mn: -466
mx: 443
 μ : -6.4
 σ : 44.7

Processed Thu Aug 3 21:56:02 2017 by ELM ver.2012-10-06 from 001__elm20170803_194810__dat00.bin

