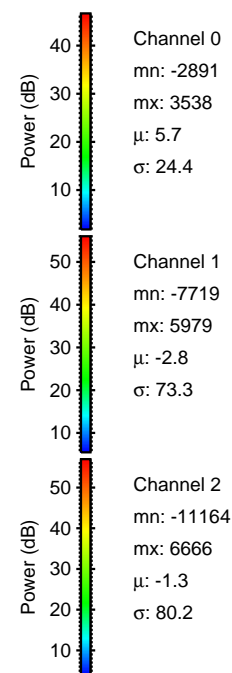
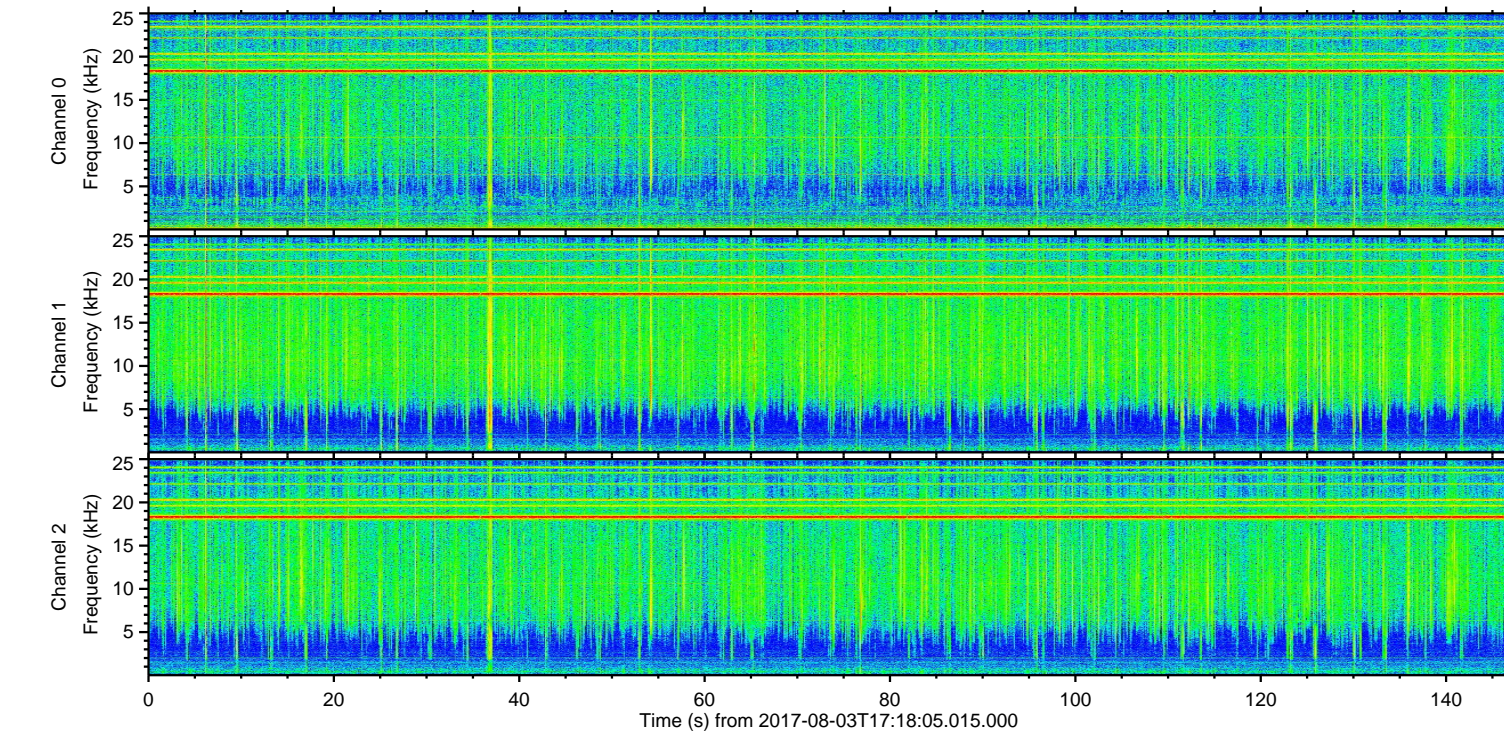
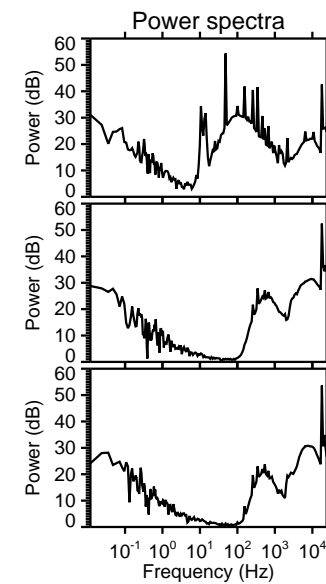
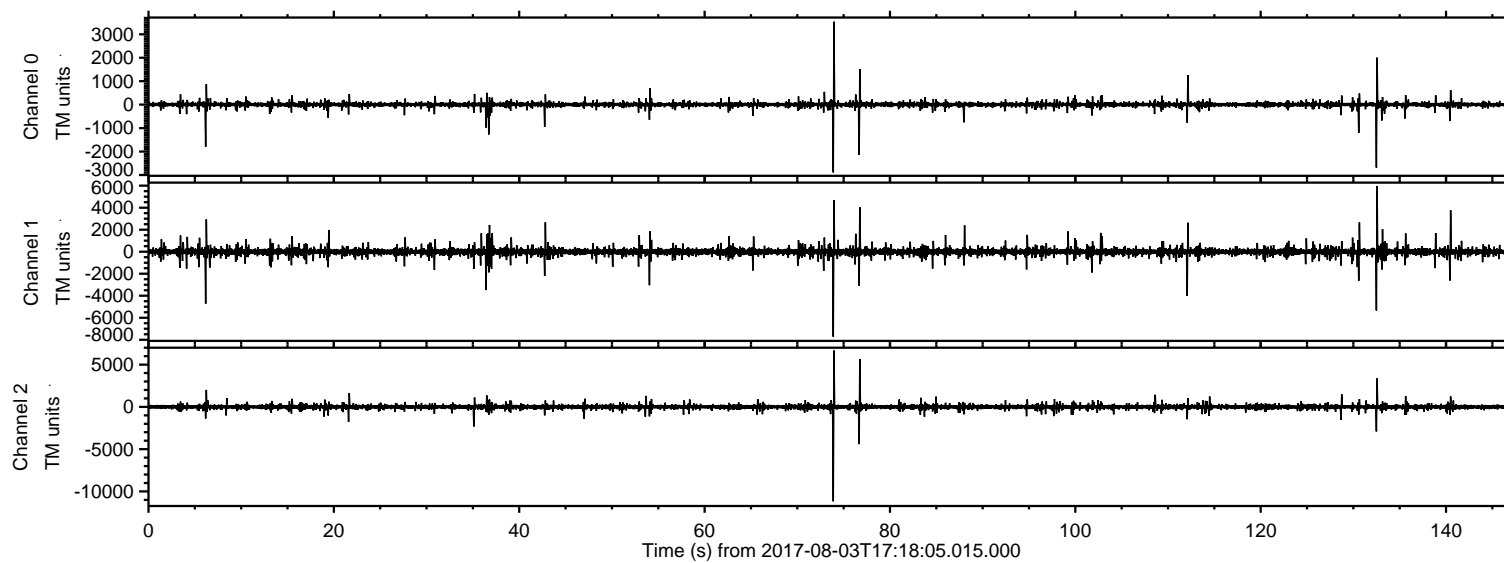
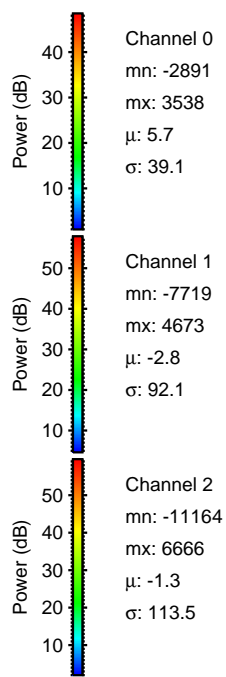
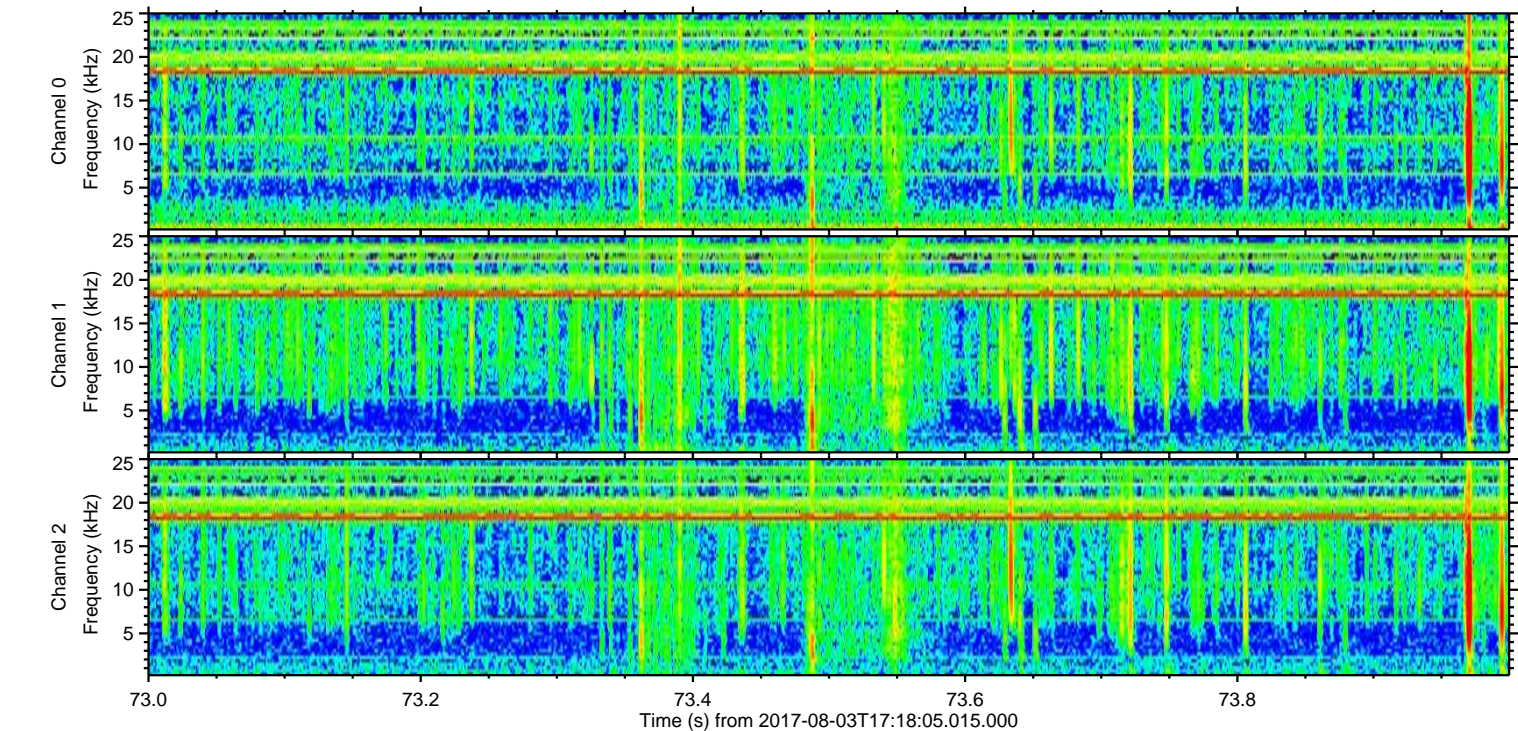
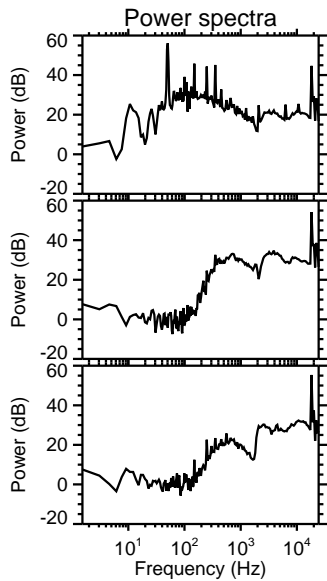
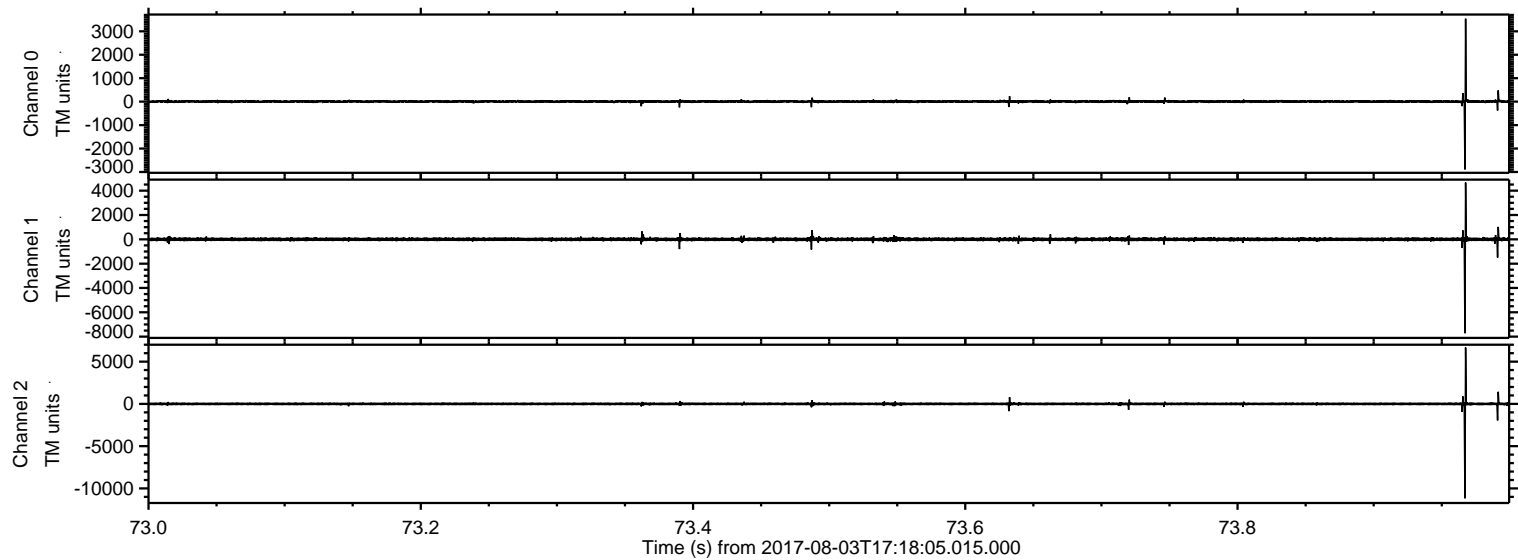


ELMAVAN 3D WAVEFORMS (Measured data sampled at 50 kHz) 51000 packets of 144 samples from 2017-08-03T17:18:05.015.000.

Processed Thu Aug 3 19:25:54 2017 by ELM ver.2012-10-06 from 001__elm20170803_171804__dat00.bin

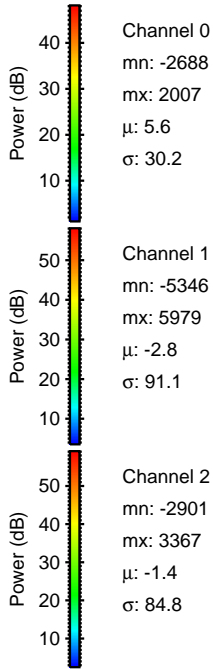
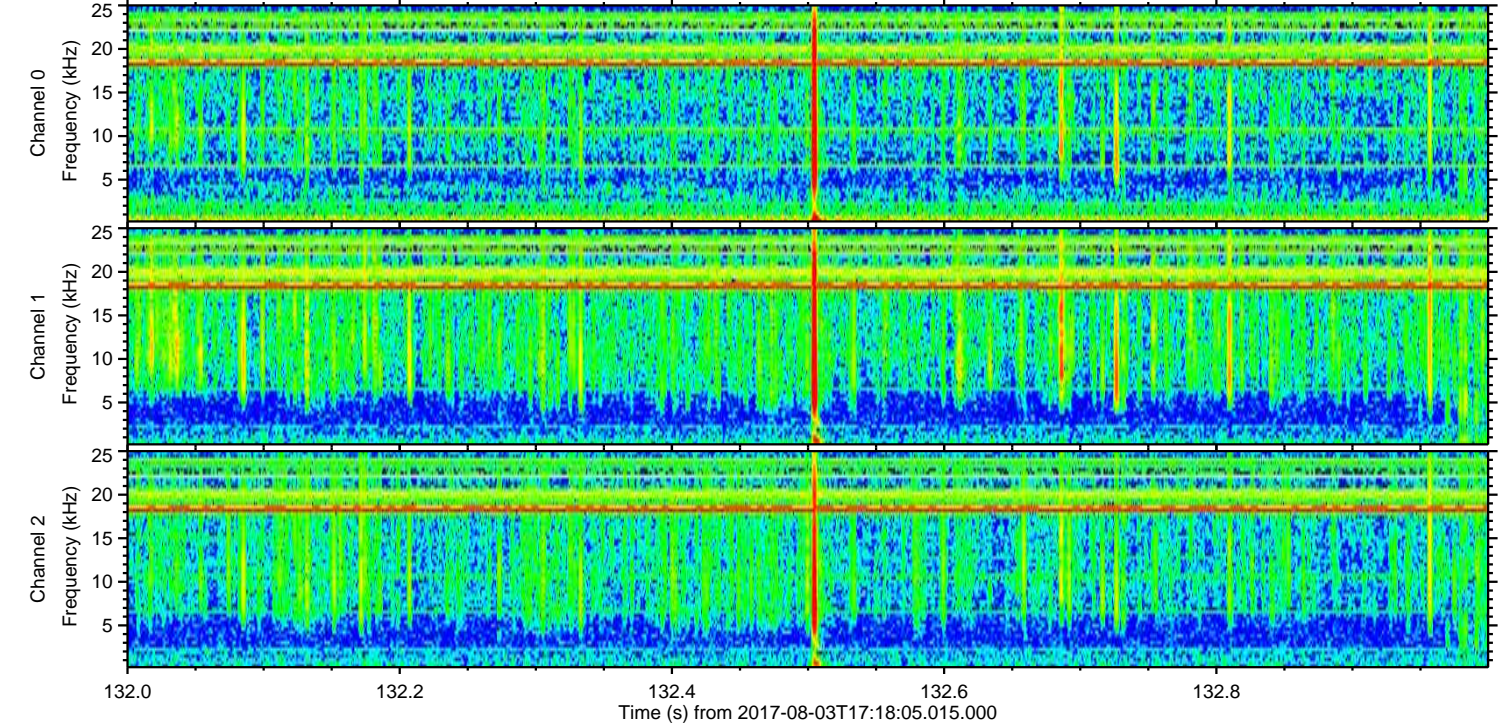
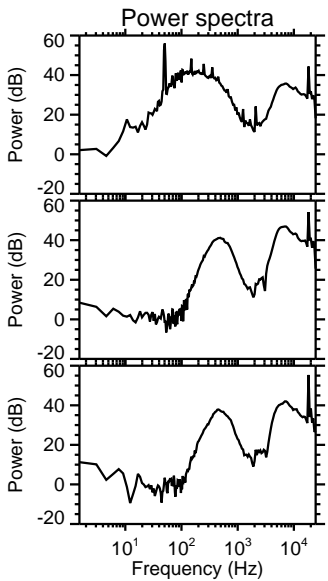
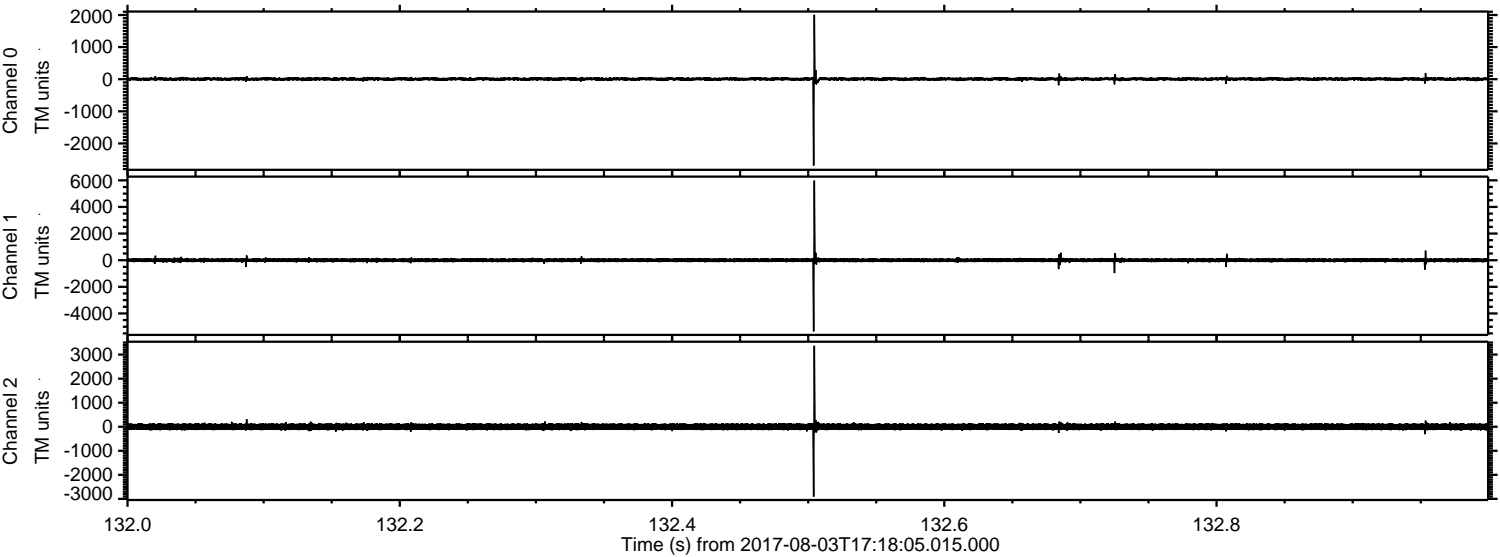


Processed Thu Aug 3 19:26:00 2017 by ELM ver.2012-10-06 from 001__elm20170803_171804__dat00.bin

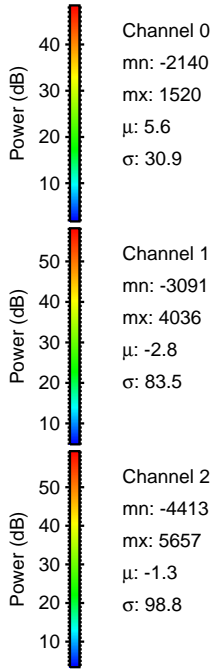
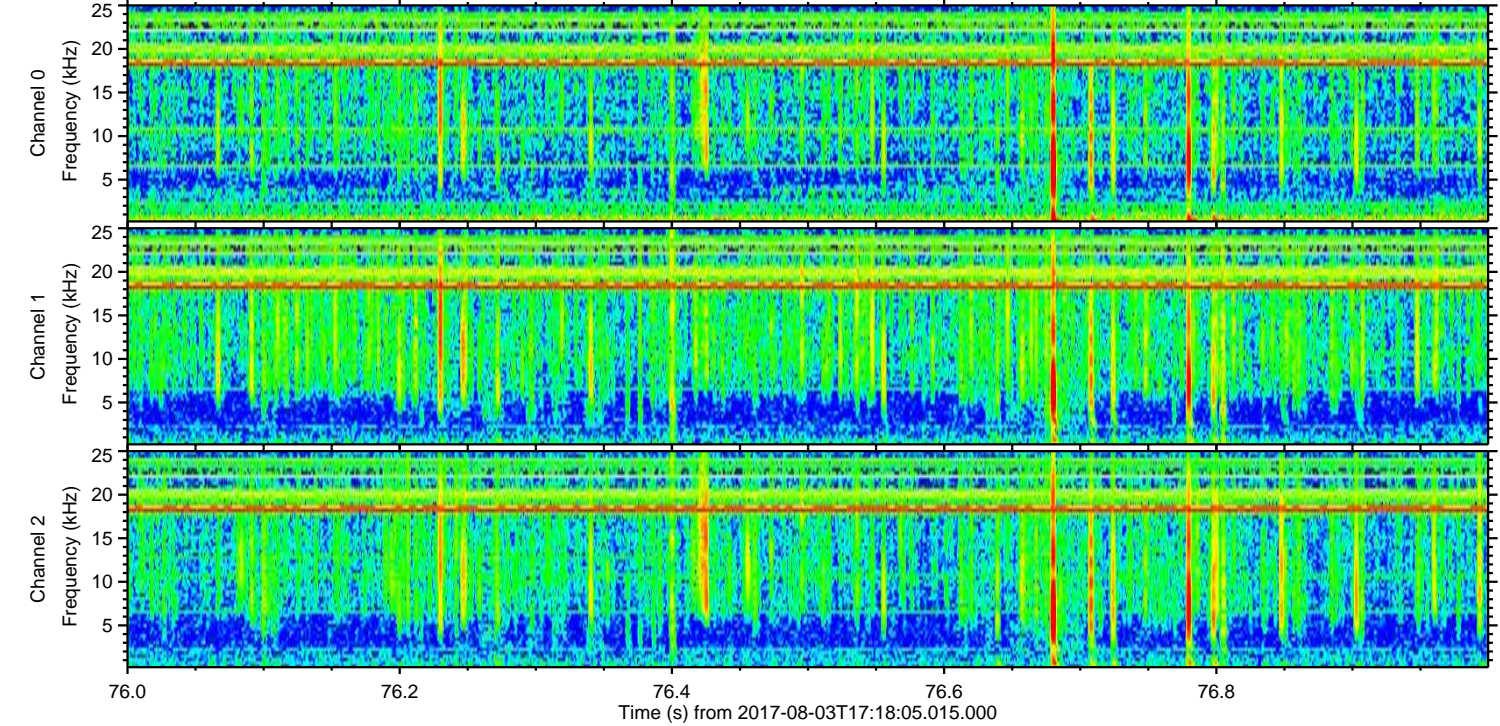
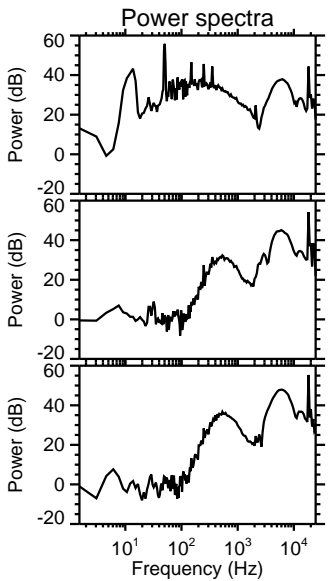
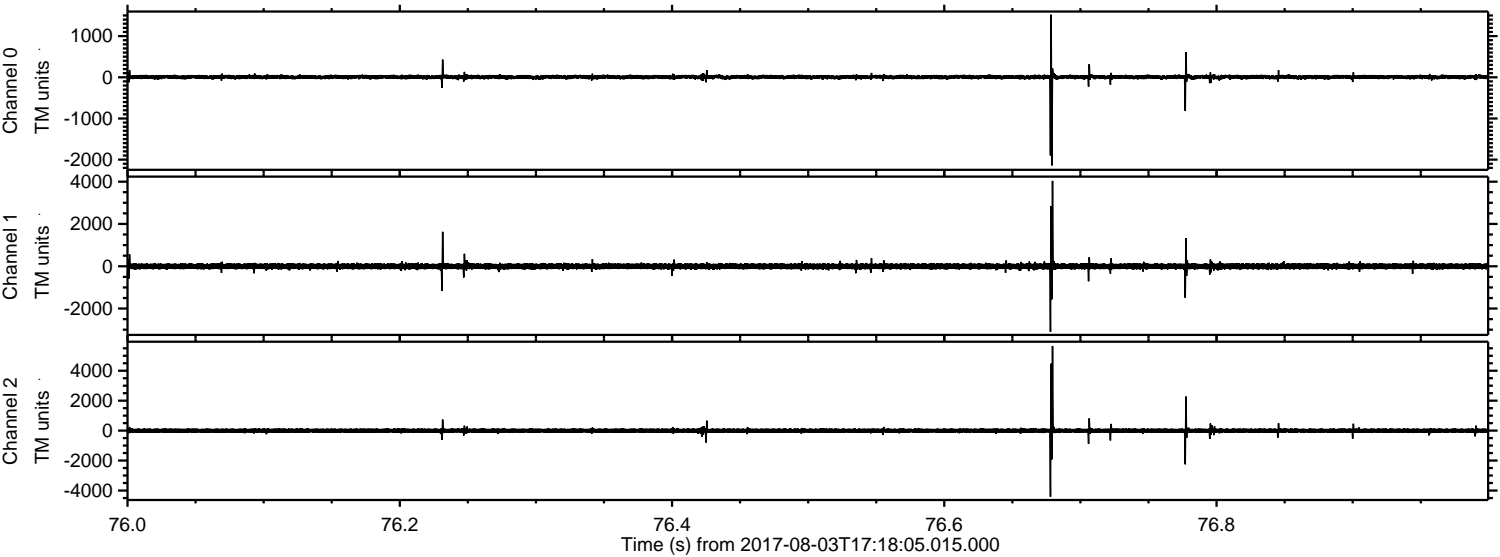


ELMAVAN 3D WAVEFORMS (Measured data sampled at 50 kHz) 51000 packets of 144 samples from 2017-08-03T17:18:05.015.000. Part 133/147

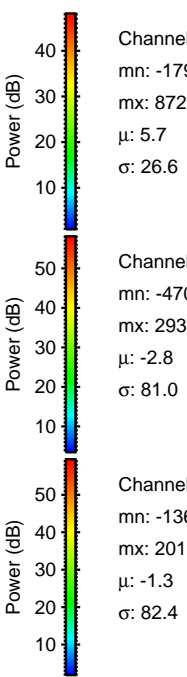
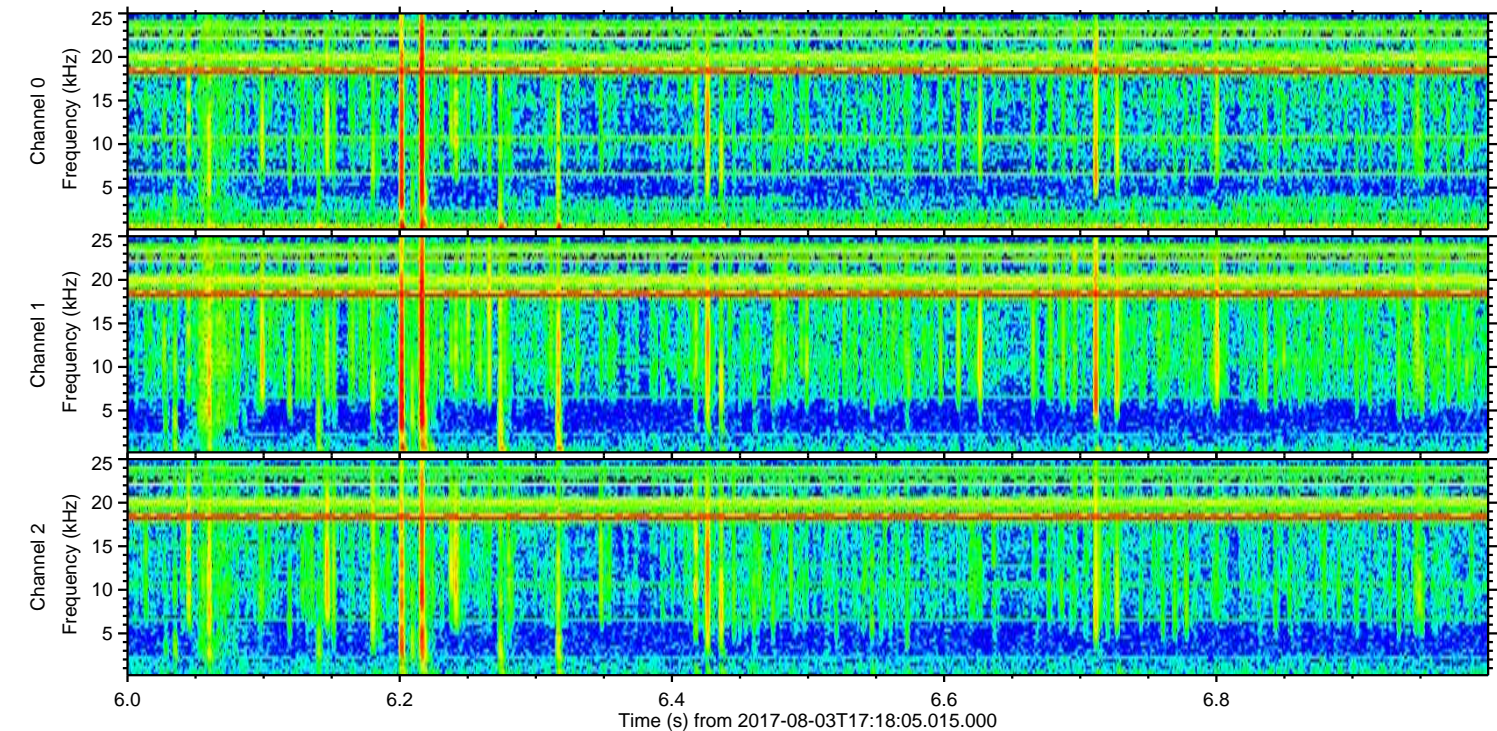
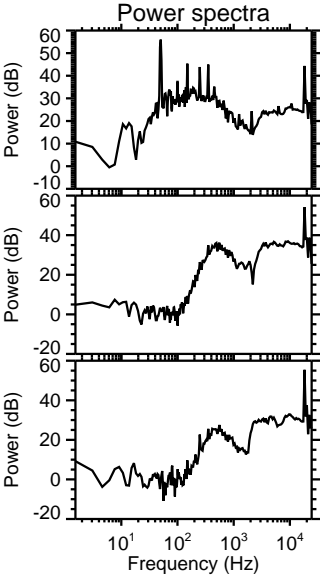
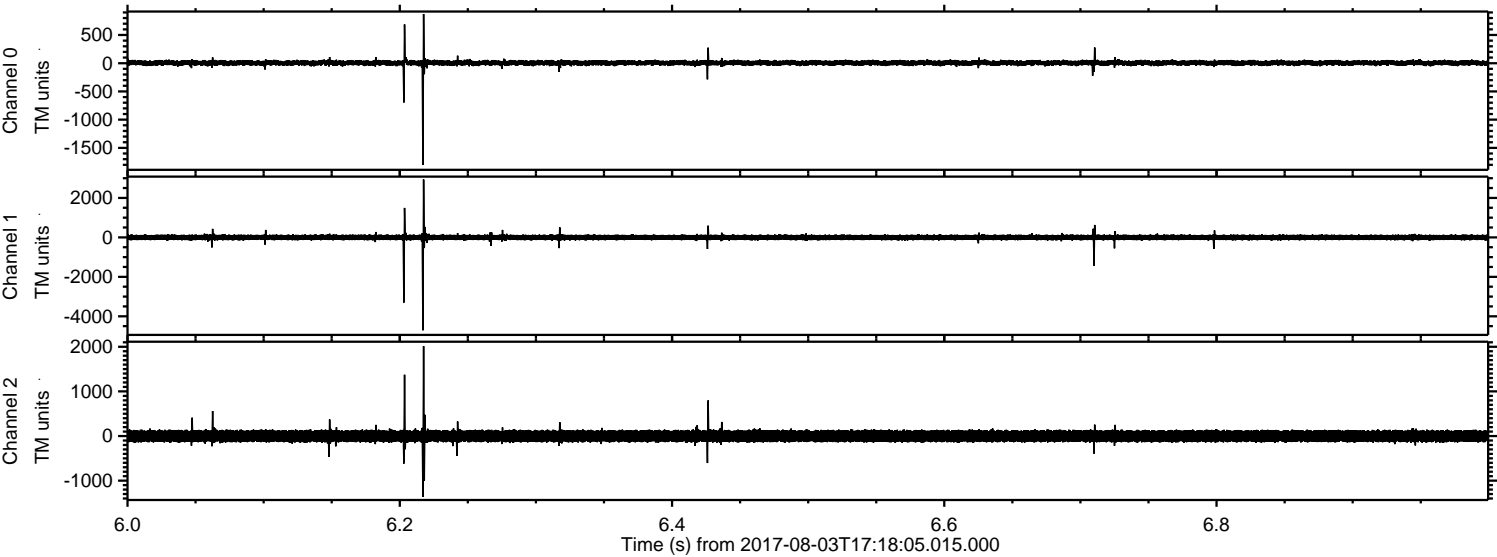
Processed Thu Aug 3 19:26:01 2017 by ELM ver.2012-10-06 from 001__elm20170803_171804__dat00.bin



Processed Thu Aug 3 19:26:02 2017 by ELM ver.2012-10-06 from 001__elm20170803_171804__dat00.bin



Processed Thu Aug 3 19:26:02 2017 by ELM ver.2012-10-06 from 001__elm20170803_171804__dat00.bin



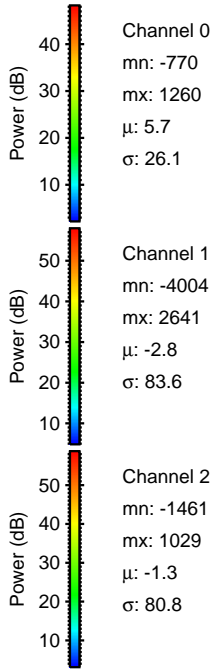
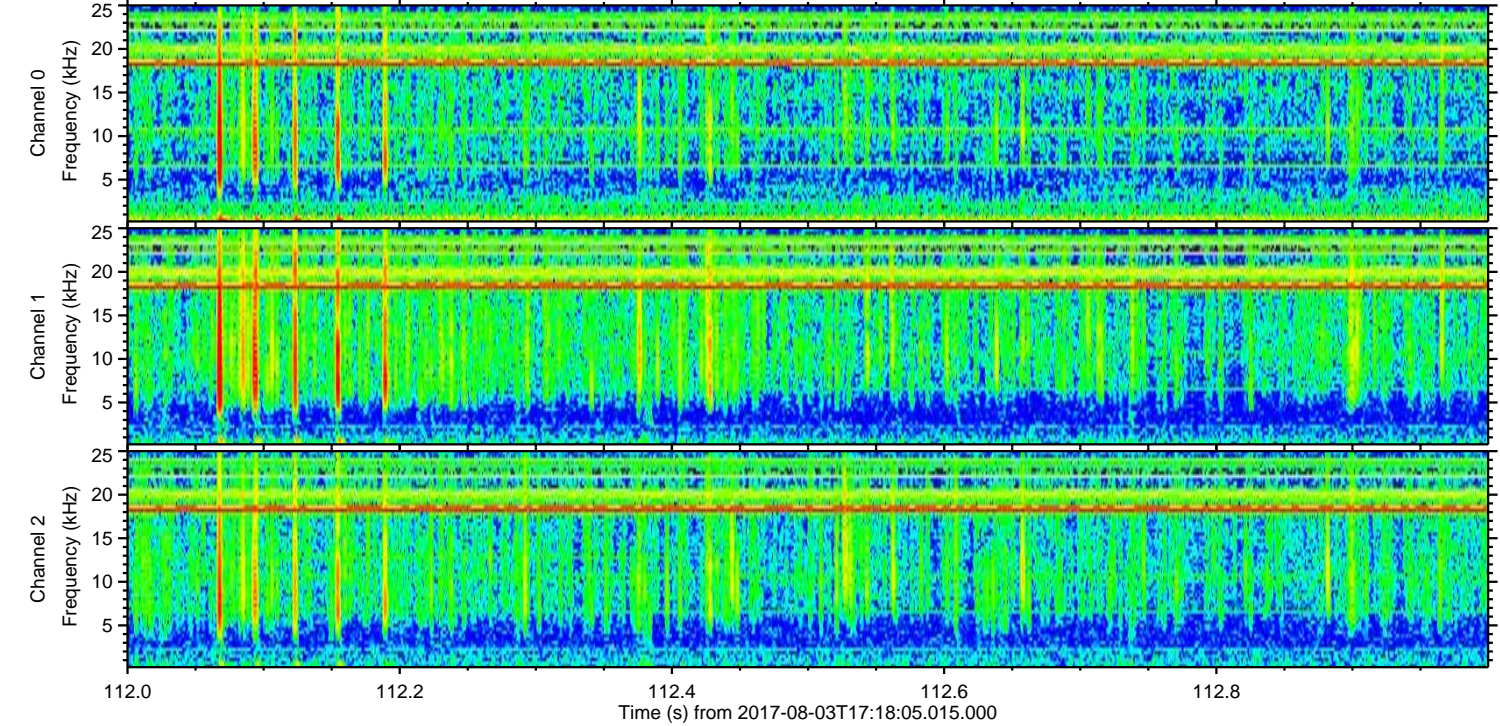
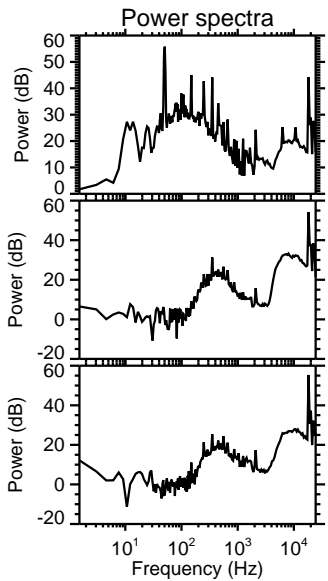
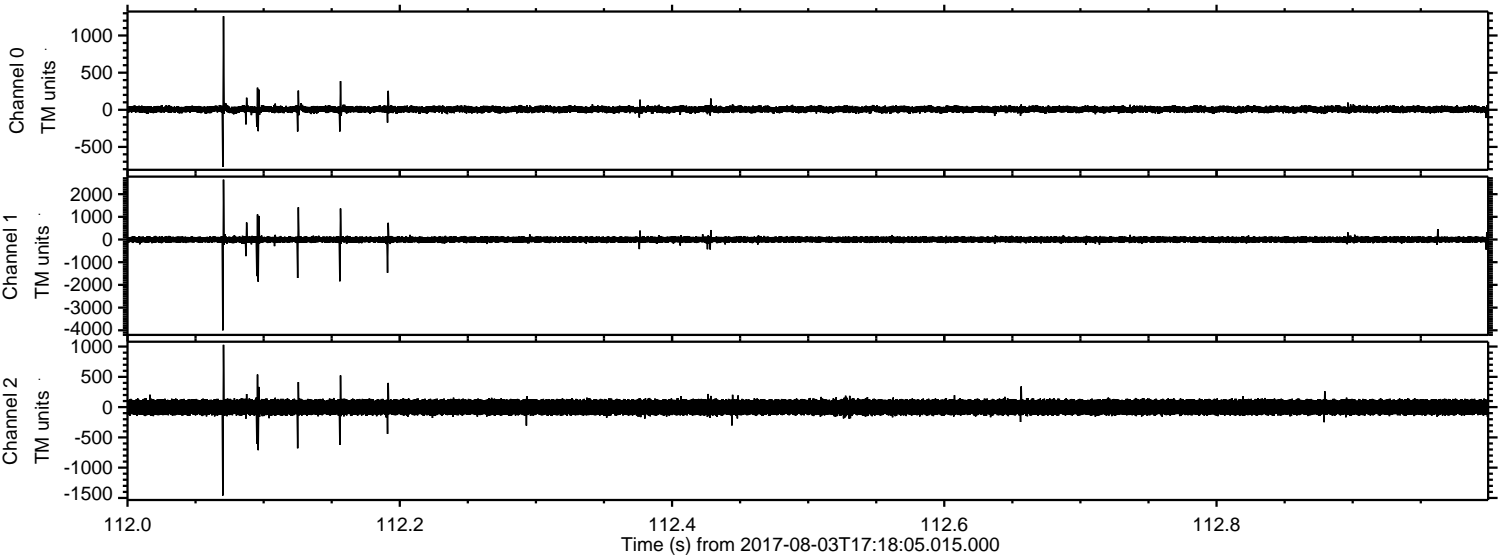
Channel 0
mn: -1799
mx: 872
 μ : 5.7
 σ : 26.6

Channel 1
mn: -4709
mx: 2933
 μ : -2.8
 σ : 81.0

Channel 2
mn: -1365
mx: 2013
 μ : -1.3
 σ : 82.4

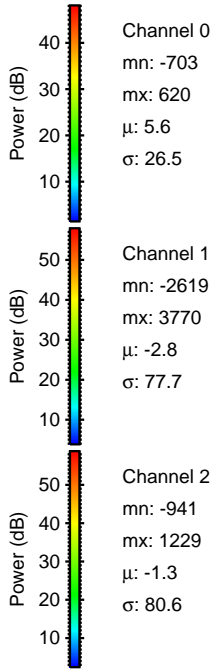
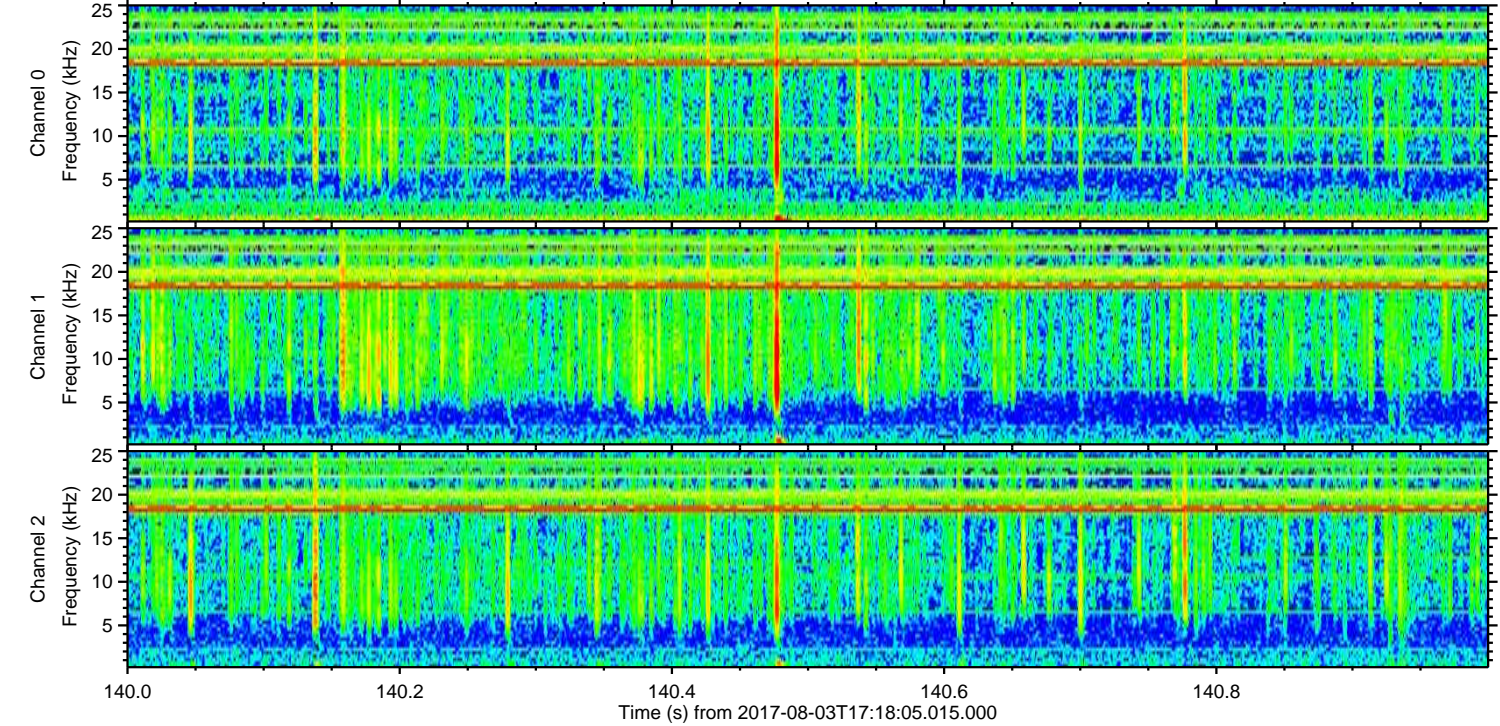
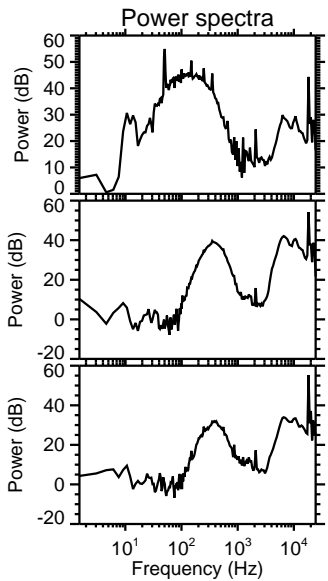
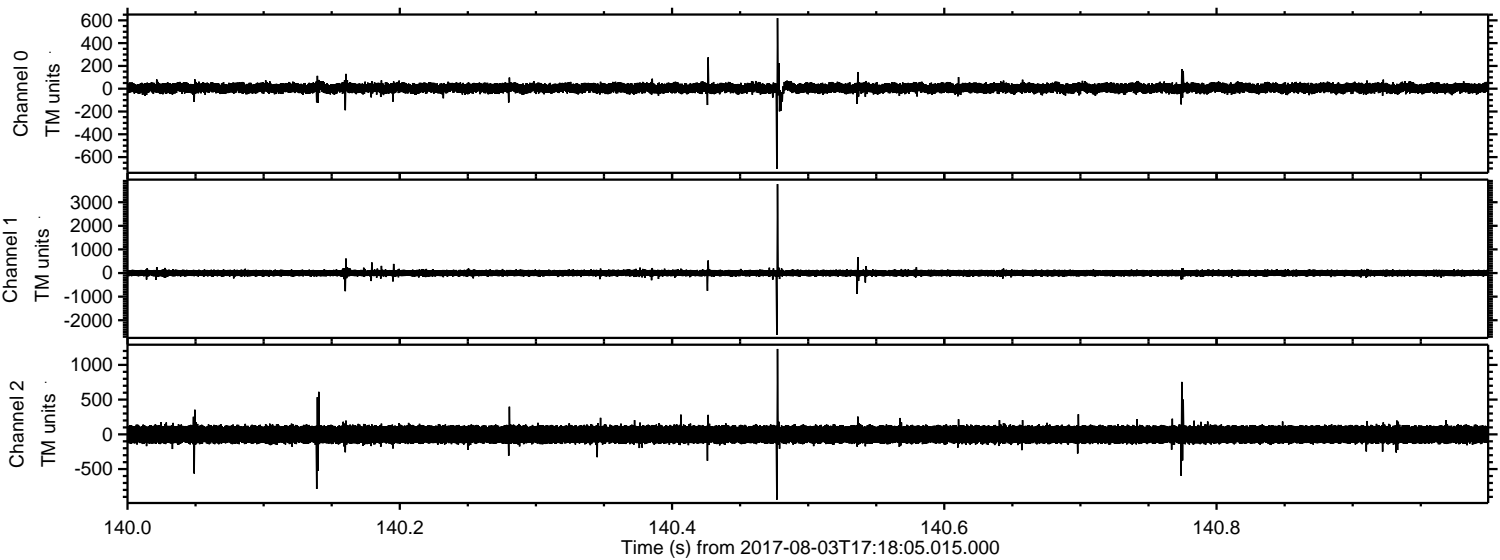
ELMAVAN 3D WAVEFORMS (Measured data sampled at 50 kHz) 51000 packets of 144 samples from 2017-08-03T17:18:05.015.000. Part 113/147

Processed Thu Aug 3 19:26:03 2017 by ELM ver.2012-10-06 from 001__elm20170803_171804__dat00.bin

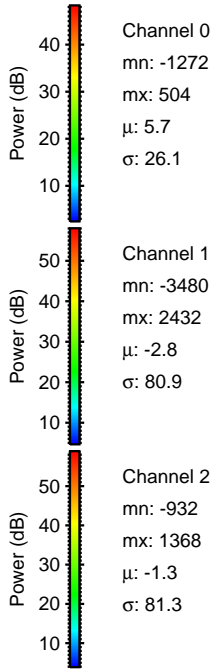
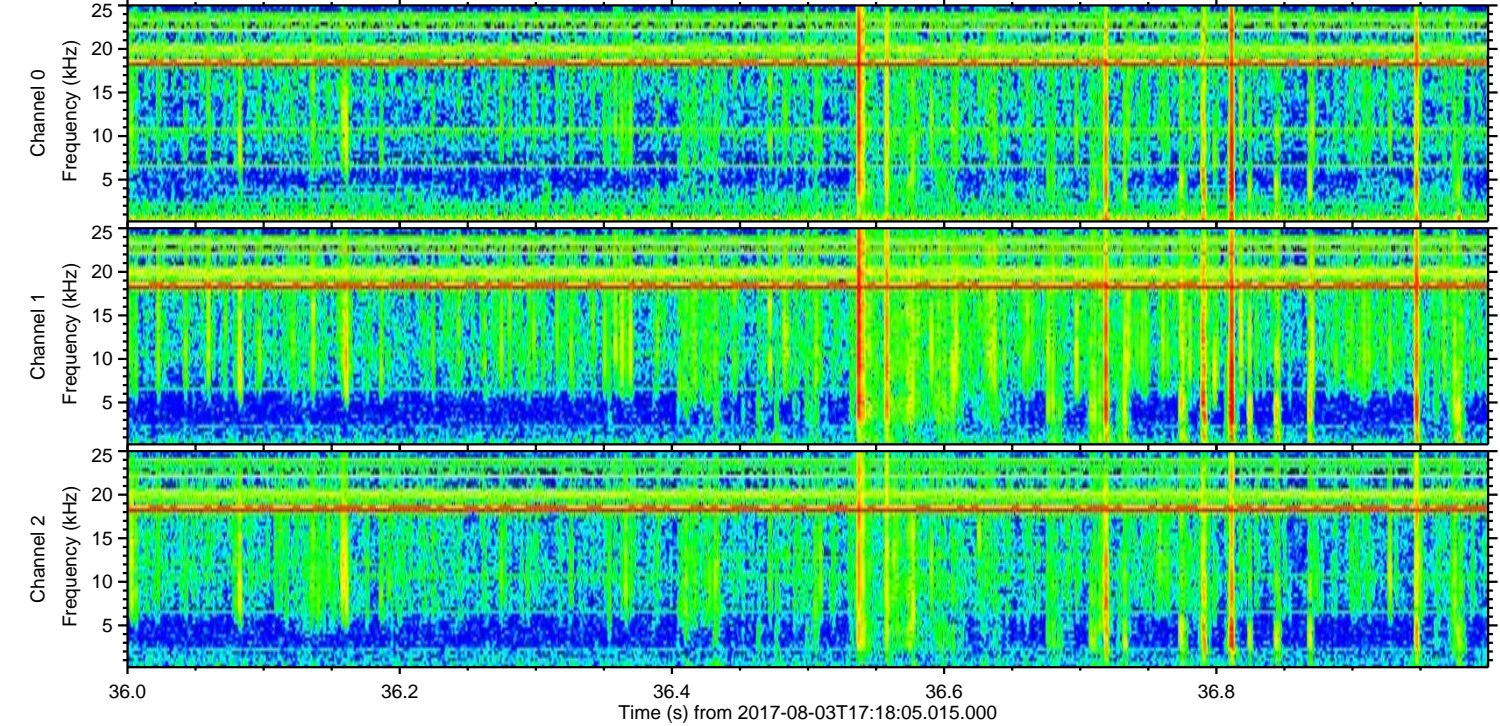
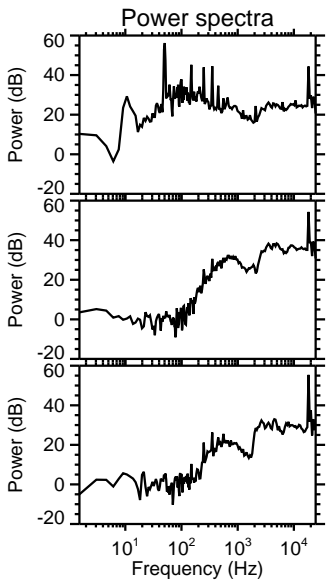
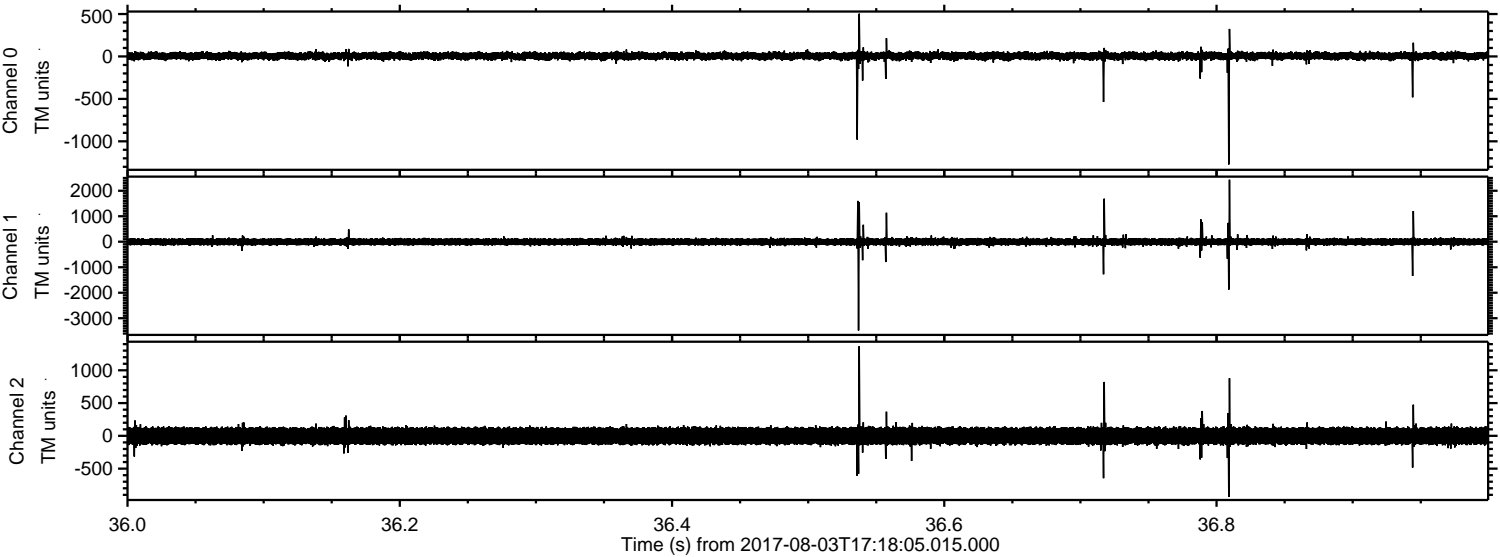


ELMAVAN 3D WAVEFORMS (Measured data sampled at 50 kHz) 51000 packets of 144 samples from 2017-08-03T17:18:05.015.000. Part 141/147

Processed Thu Aug 3 19:26:03 2017 by ELM ver.2012-10-06 from 001__elm20170803_171804__dat00.bin



Processed Thu Aug 3 19:26:04 2017 by ELM ver.2012-10-06 from 001__elm20170803_171804__dat00.bin

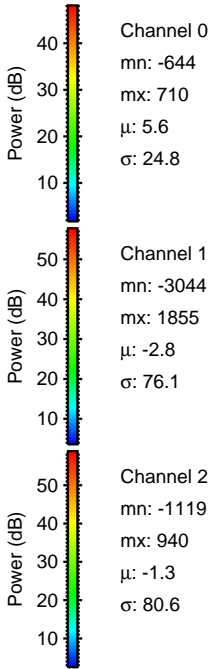
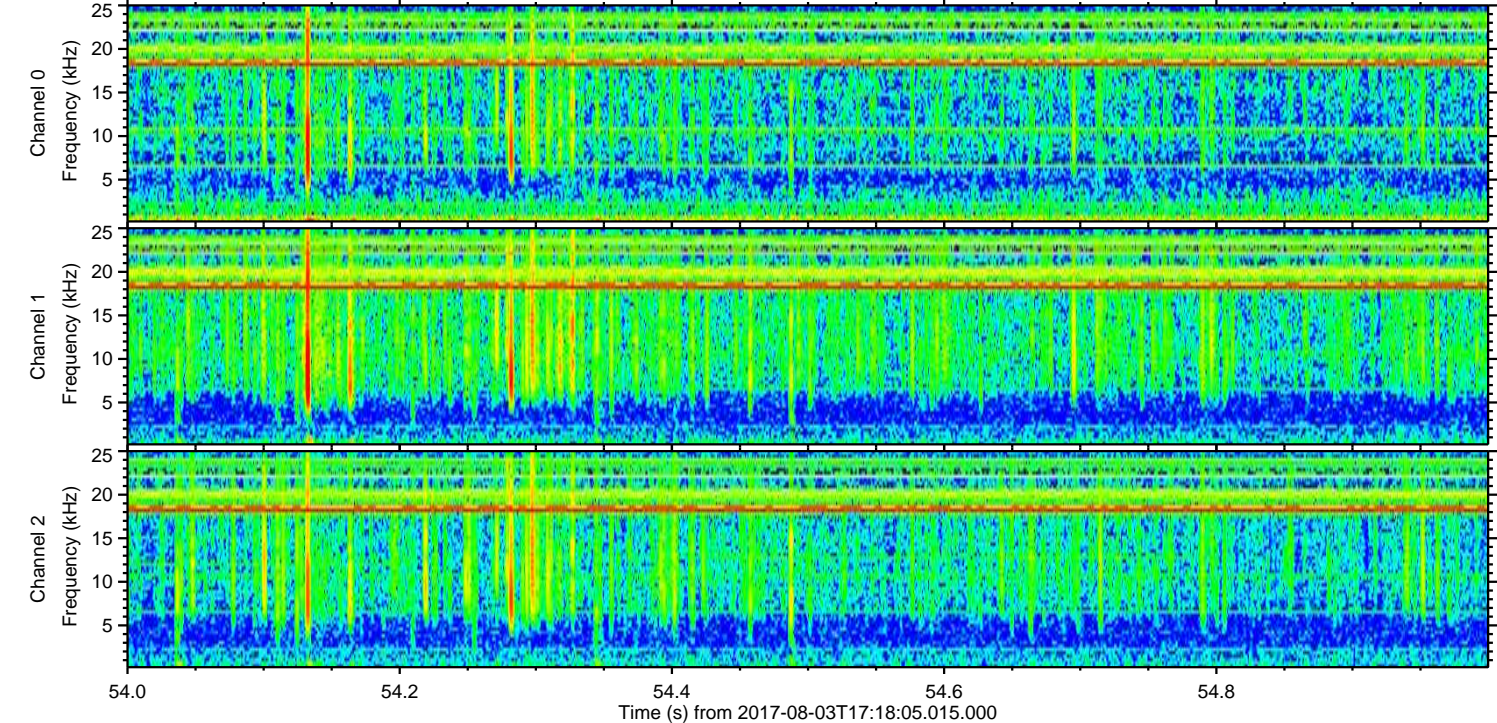
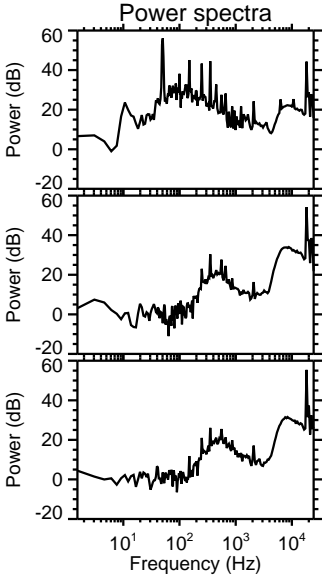
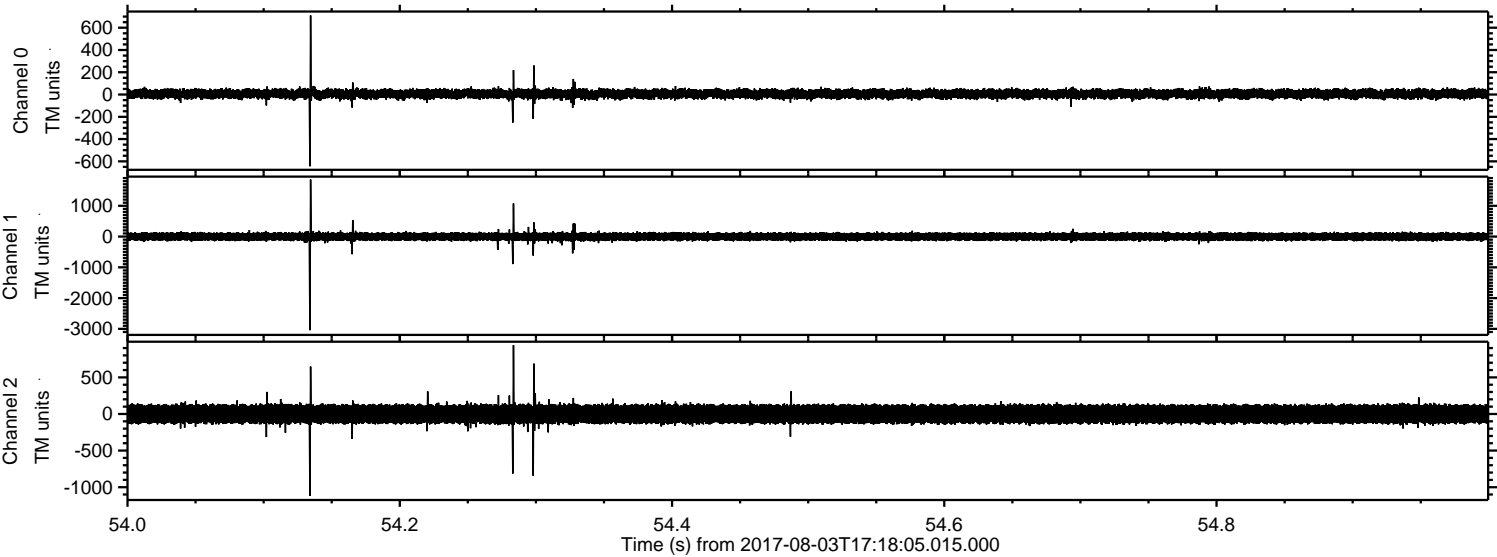


Channel 0
mn: -1272
mx: 504
 μ : 5.7
 σ : 26.1

Channel 1
mn: -3480
mx: 2432
 μ : -2.8
 σ : 80.9

Channel 2
mn: -932
mx: 1368
 μ : -1.3
 σ : 81.3

Processed Thu Aug 3 19:26:05 2017 by ELM ver.2012-10-06 from 001__elm20170803_171804__dat00.bin



Processed Thu Aug 3 19:26:05 2017 by ELM ver.2012-10-06 from 001__elm20170803_171804__dat00.bin

