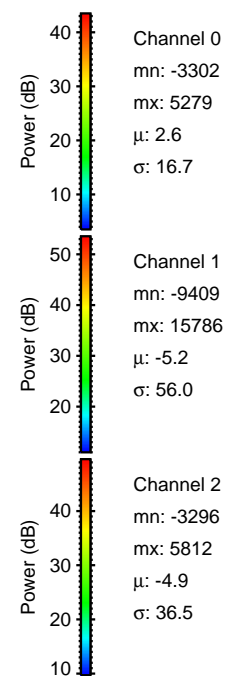
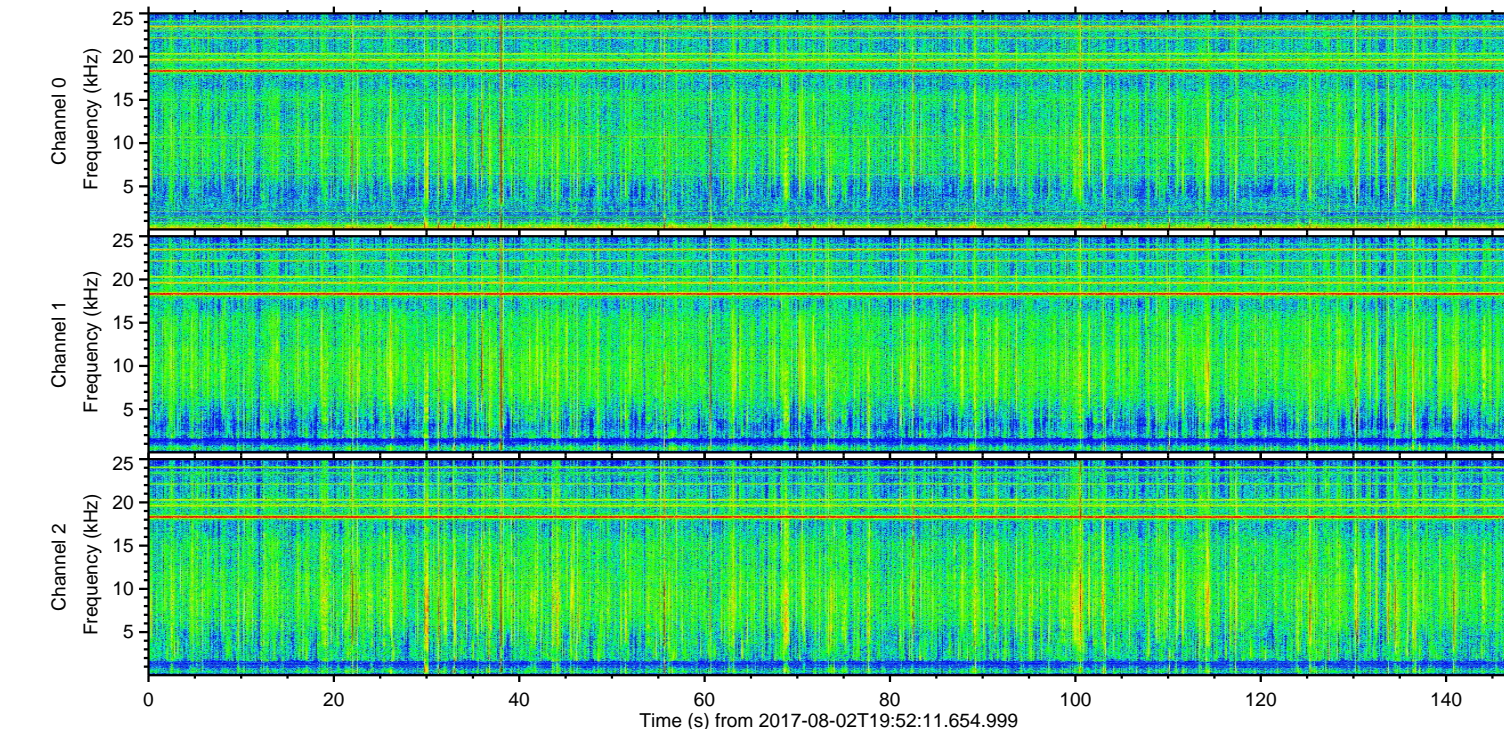
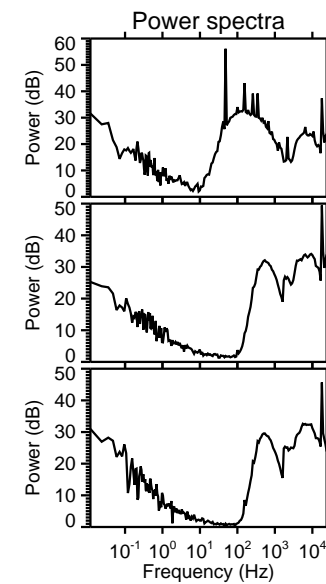
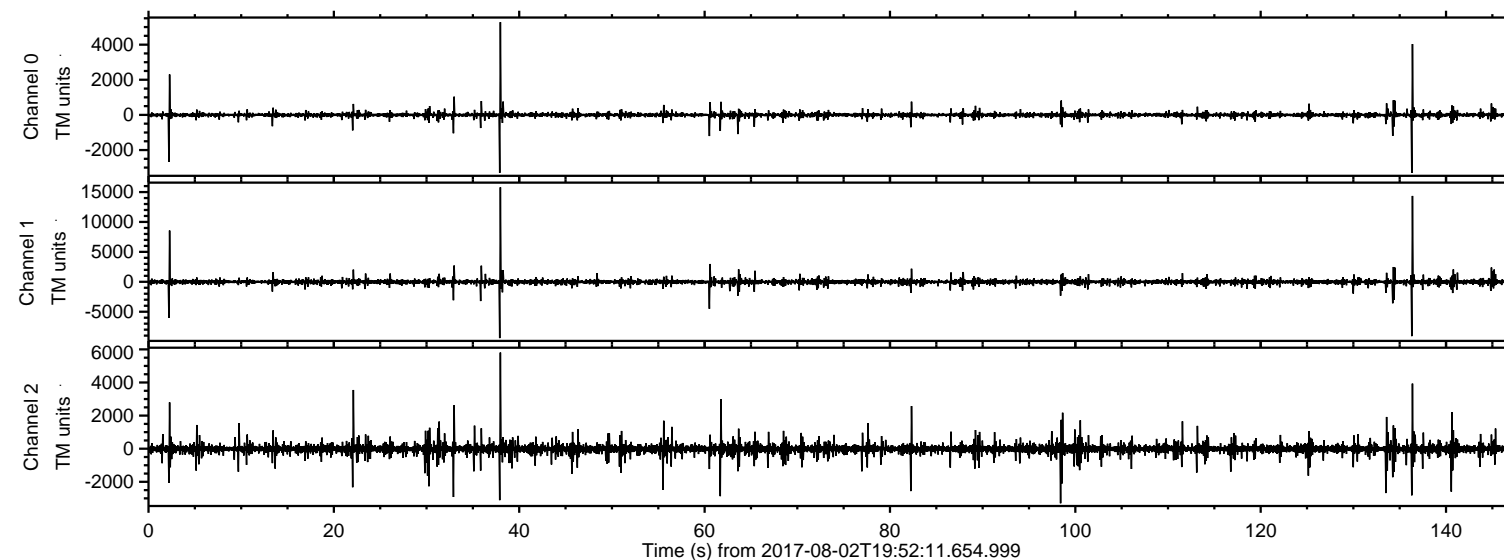
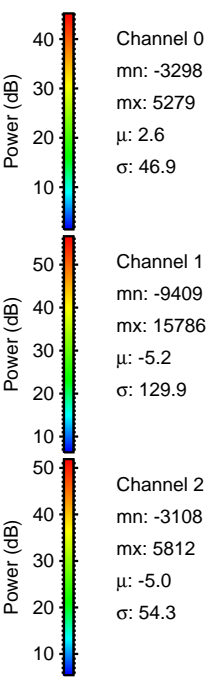
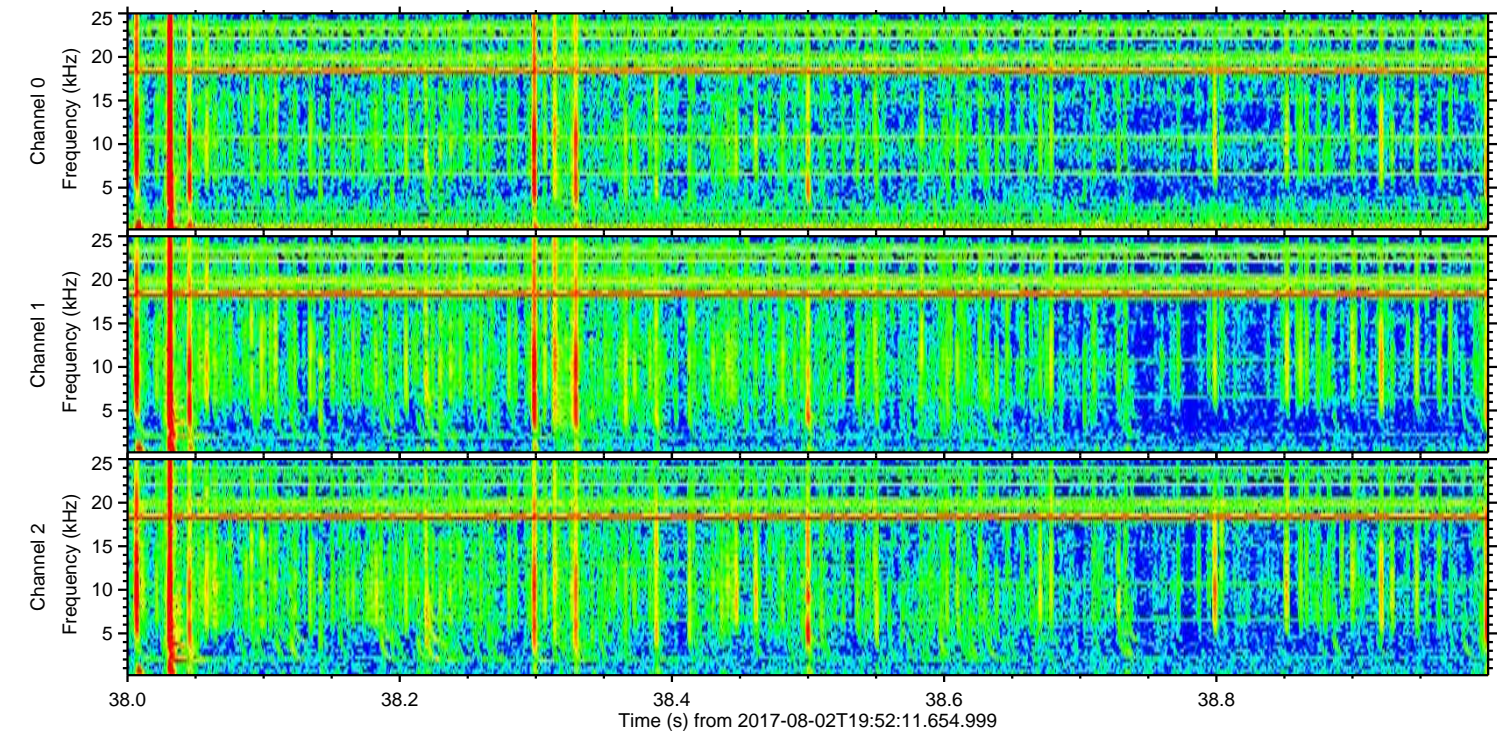
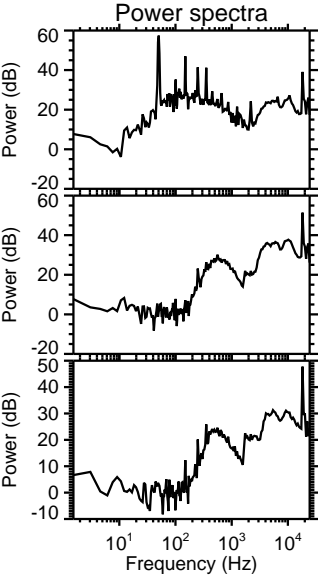
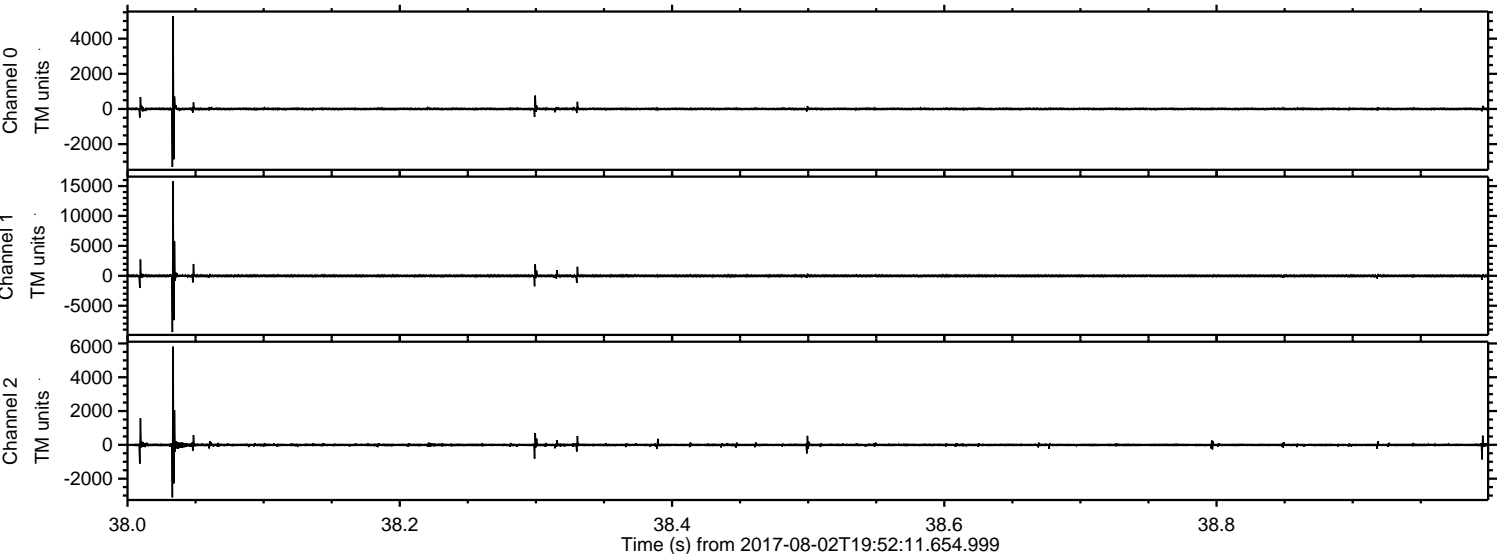


ELMAVAN 3D WAVEFORMS (Measured data sampled at 50 kHz) 51000 packets of 144 samples from 2017-08-02T19:52:11.654.999.

Processed Wed Aug 2 22:00:20 2017 by ELM ver.2012-10-06 from 001__elm20170802_195210__dat00.bin

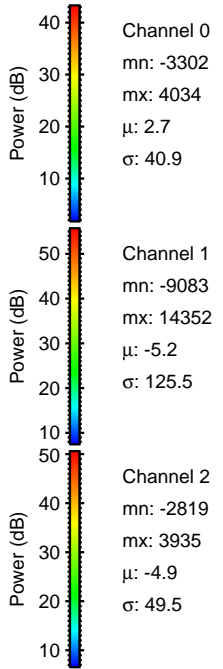
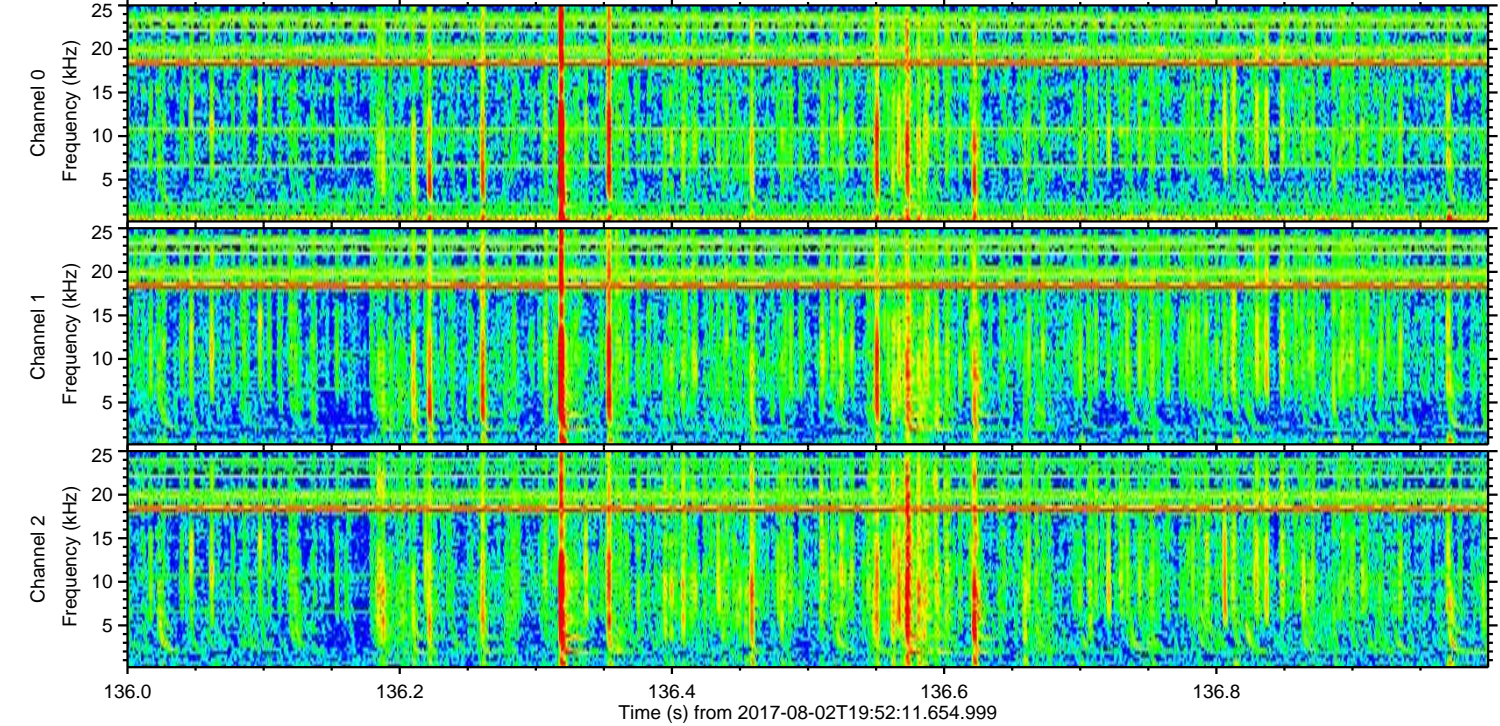
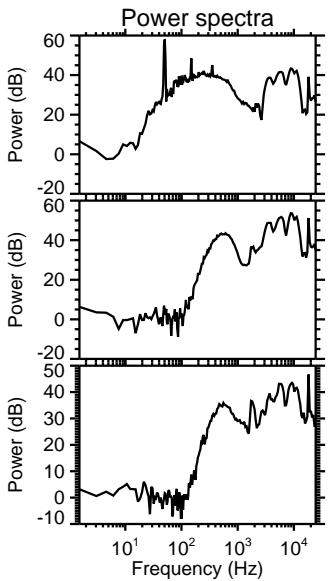
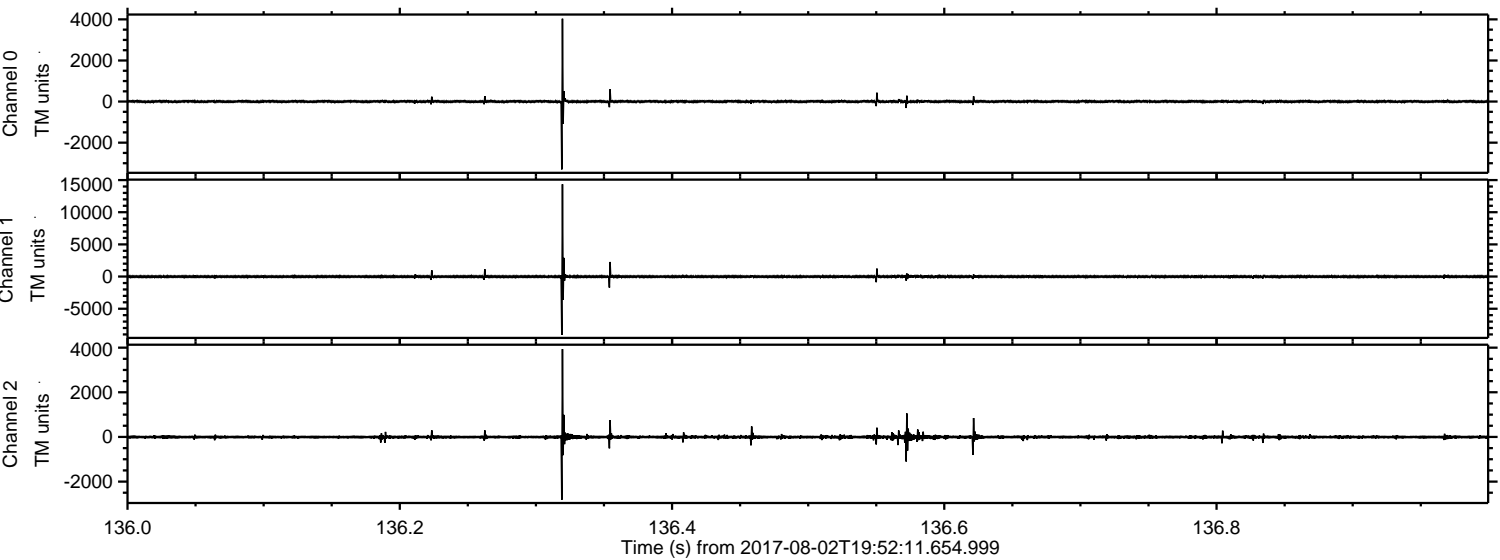


Processed Wed Aug 2 22:00:26 2017 by ELM ver.2012-10-06 from 001__elm20170802_195210__dat00.bin

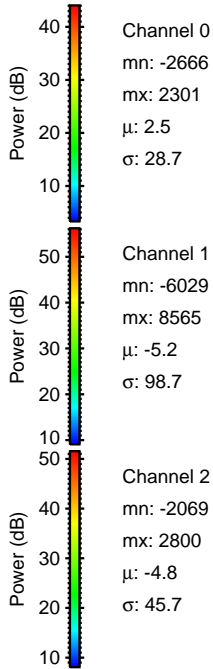
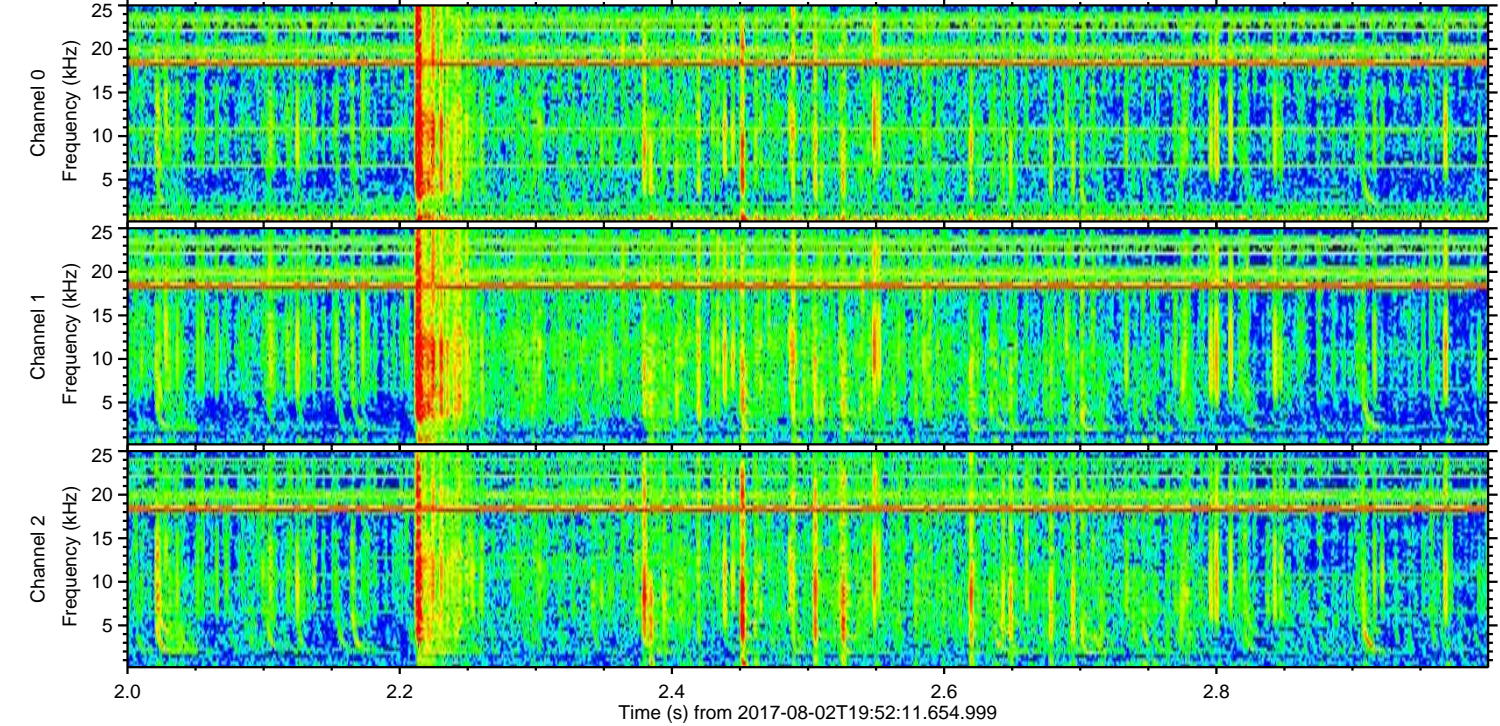
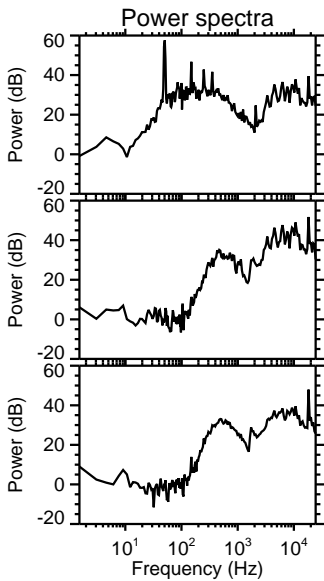
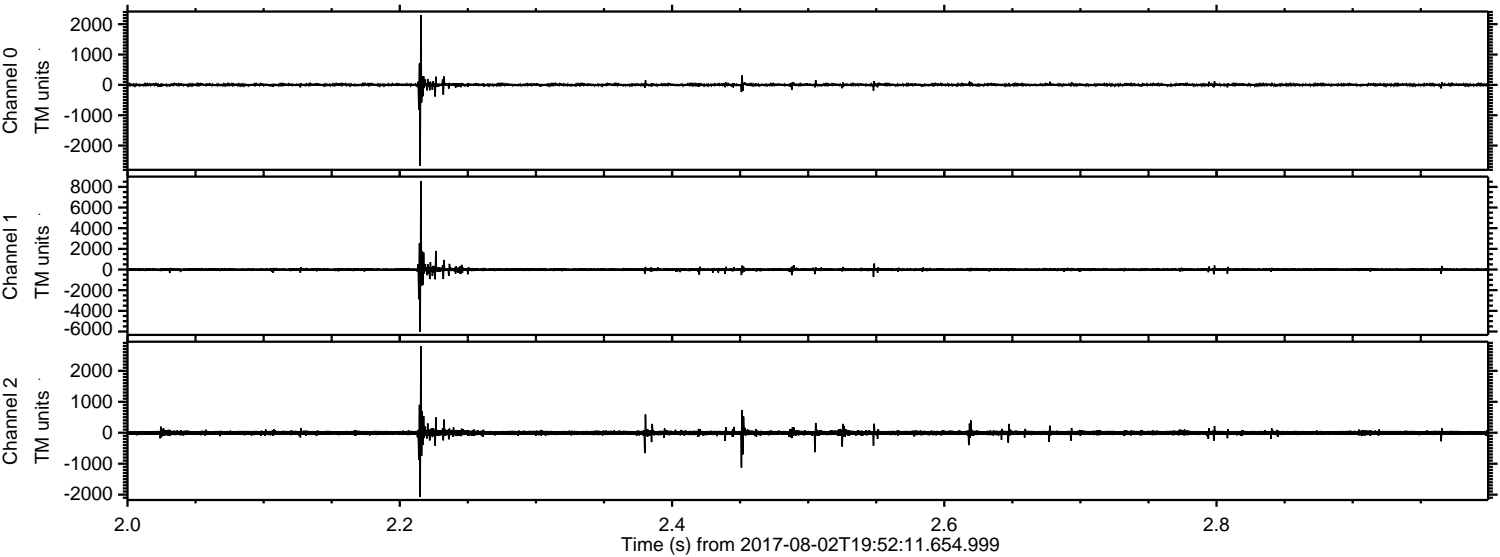


ELMAVAN 3D WAVEFORMS (Measured data sampled at 50 kHz) 51000 packets of 144 samples from 2017-08-02T19:52:11.654.999. Part 137/147

Processed Wed Aug 2 22:00:27 2017 by ELM ver.2012-10-06 from 001__elm20170802_195210__dat00.bin

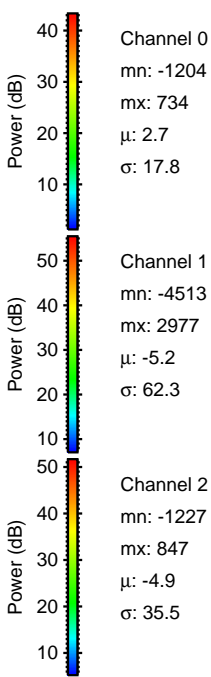
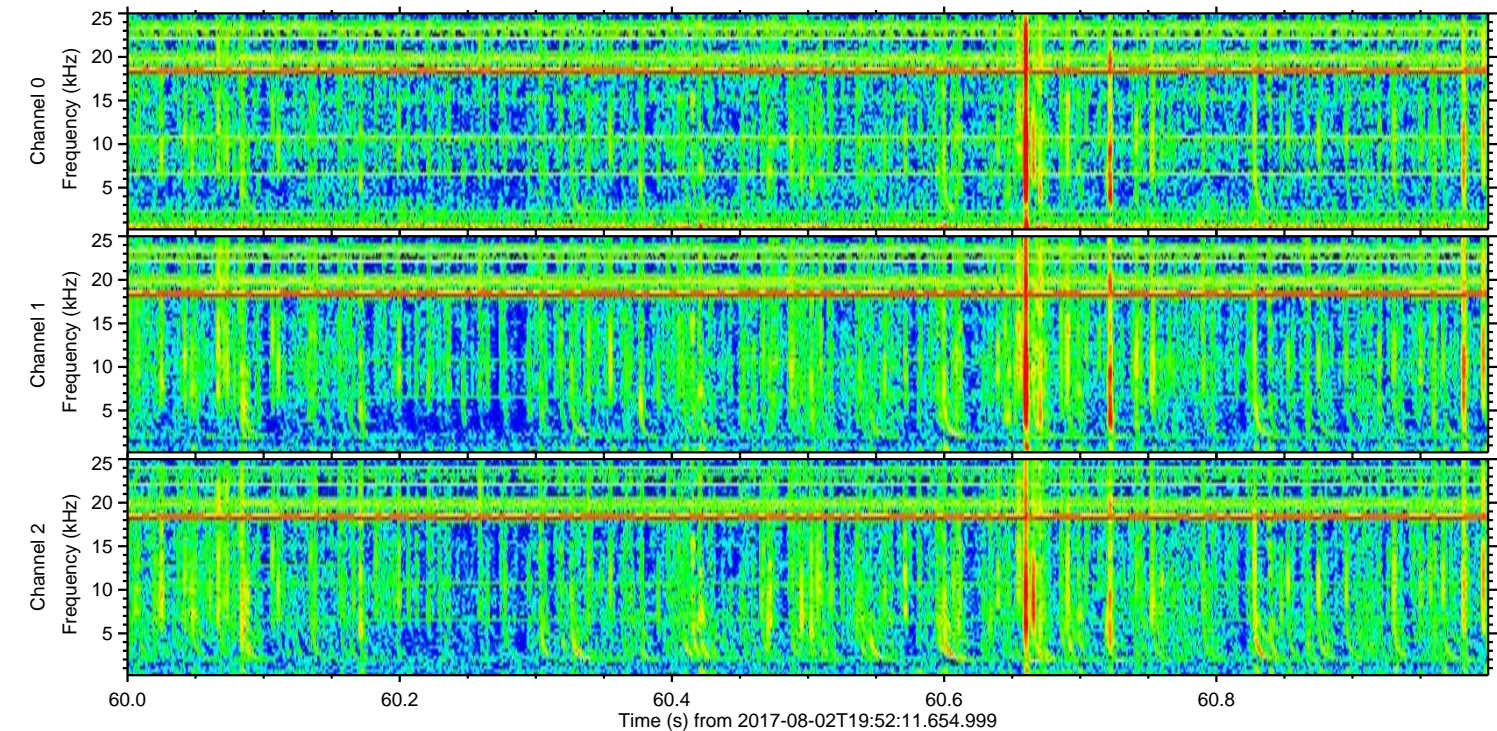
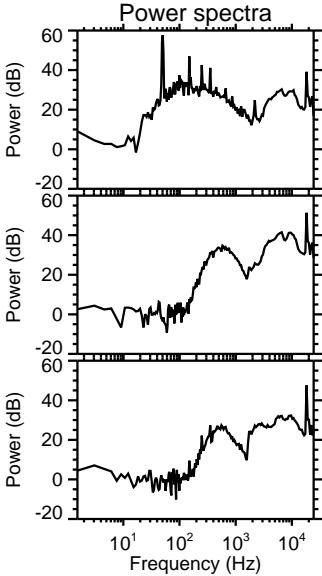
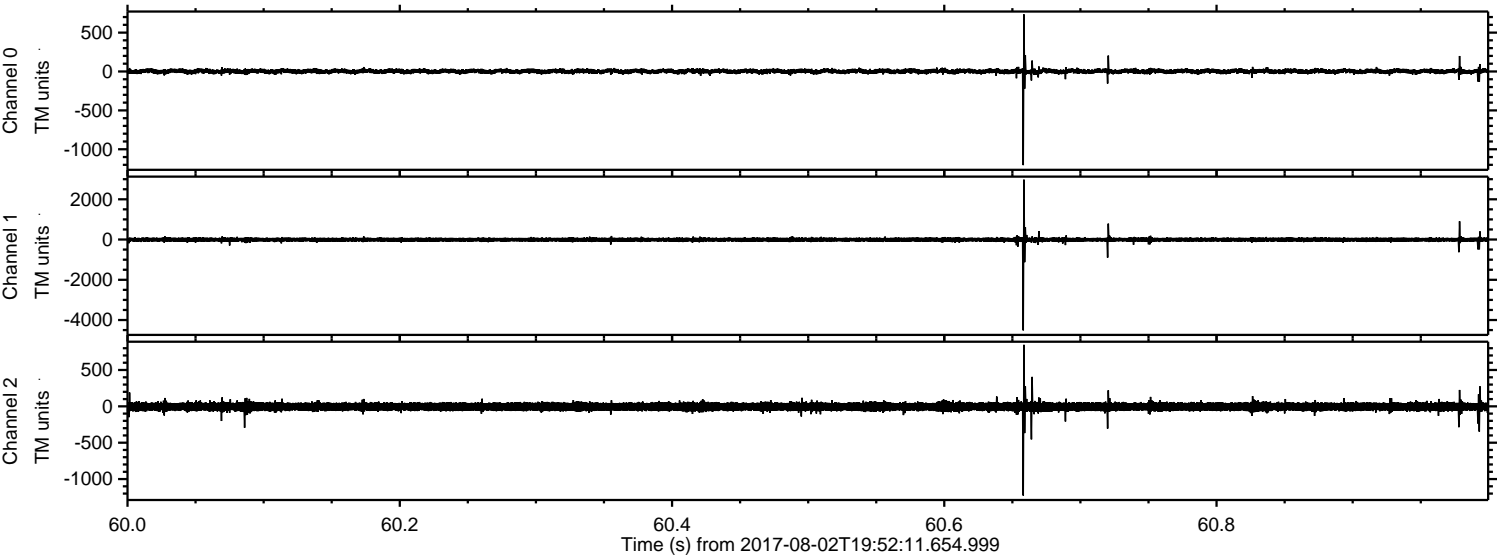


Processed Wed Aug 2 22:00:28 2017 by ELM ver.2012-10-06 from 001__elm20170802_195210__dat00.bin



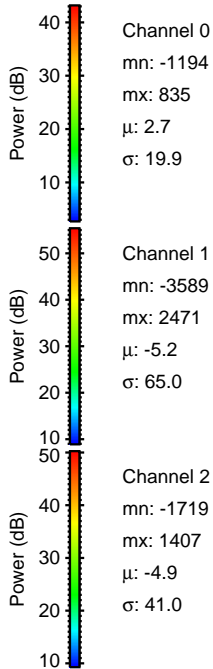
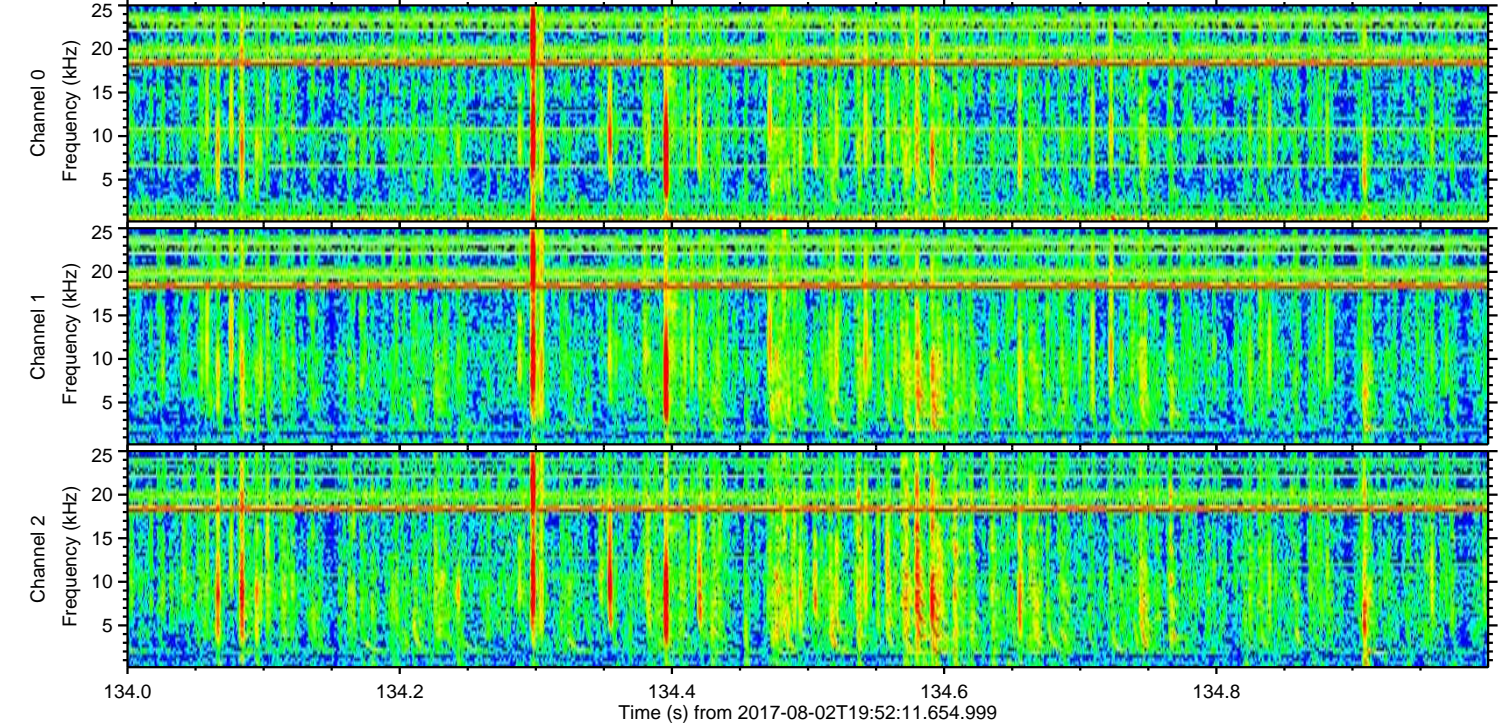
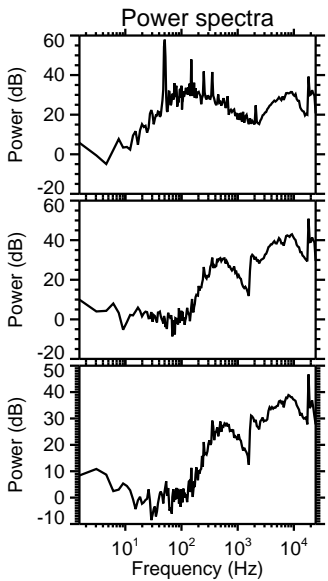
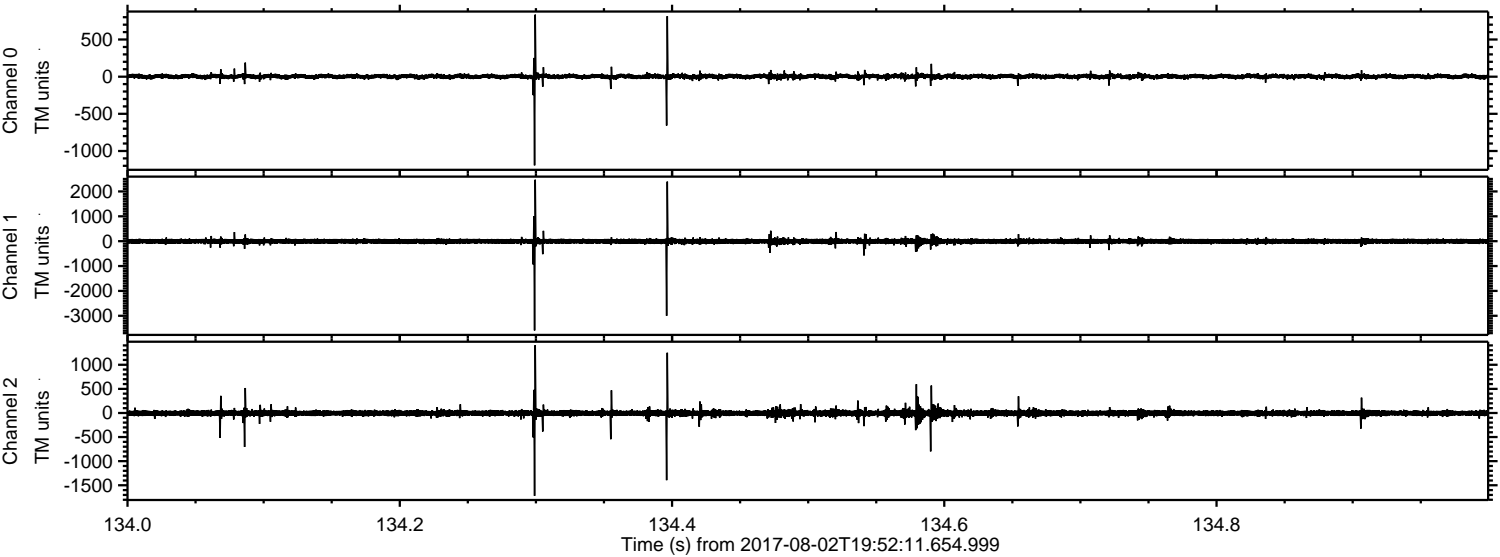
ELMAVAN 3D WAVEFORMS (Measured data sampled at 50 kHz) 51000 packets of 144 samples from 2017-08-02T19:52:11.654.999. Part 61/147

Processed Wed Aug 2 22:00:29 2017 by ELM ver.2012-10-06 from 001__elm20170802_195210__dat00.bin

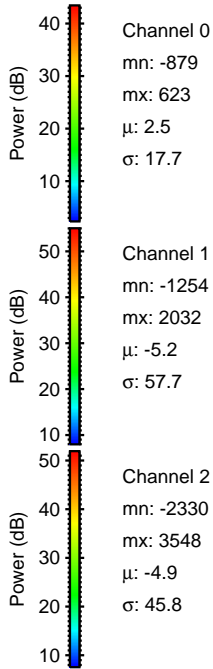
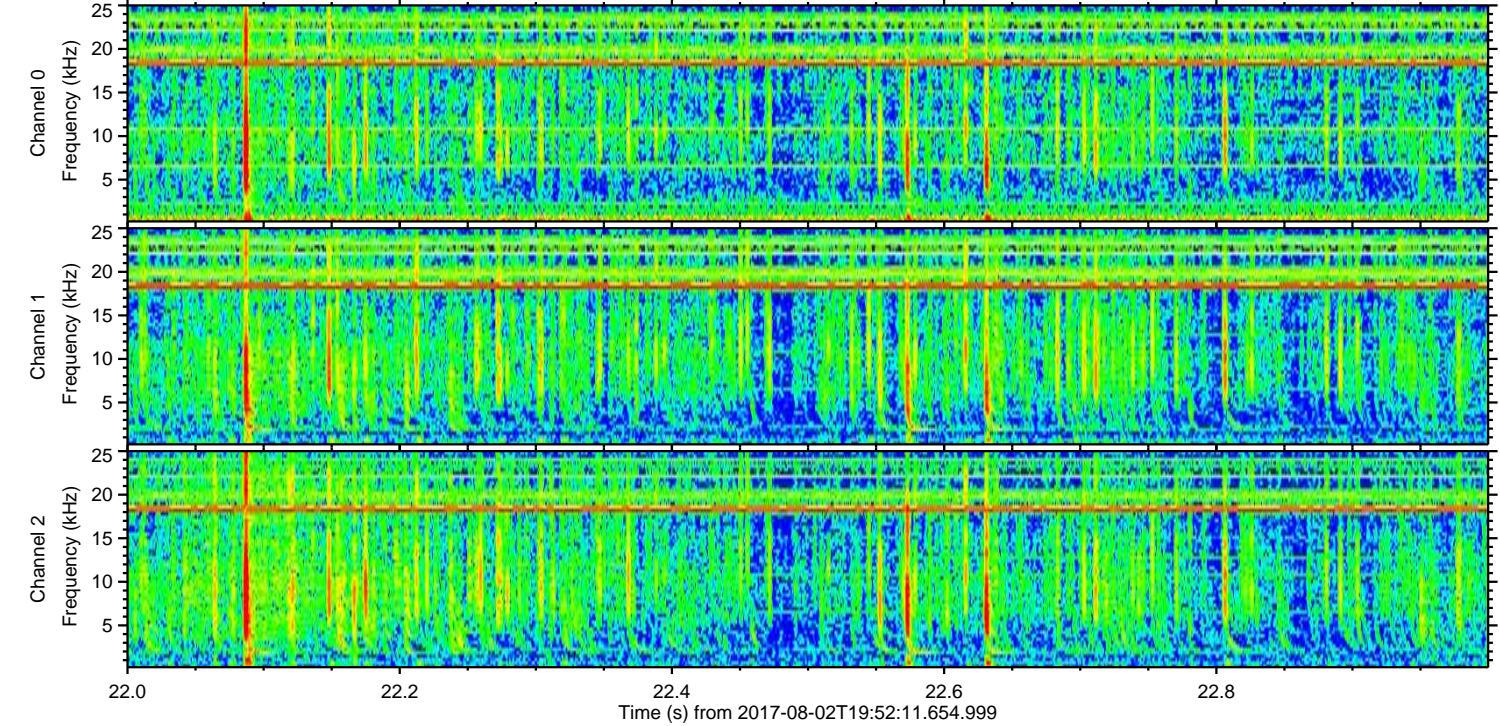
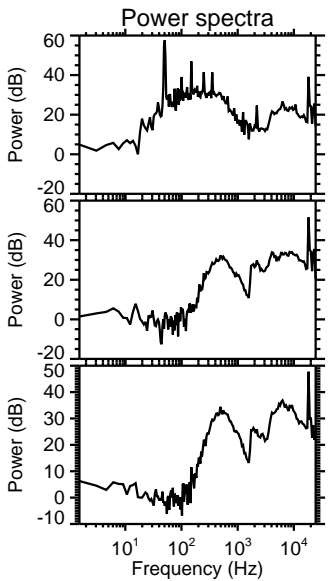
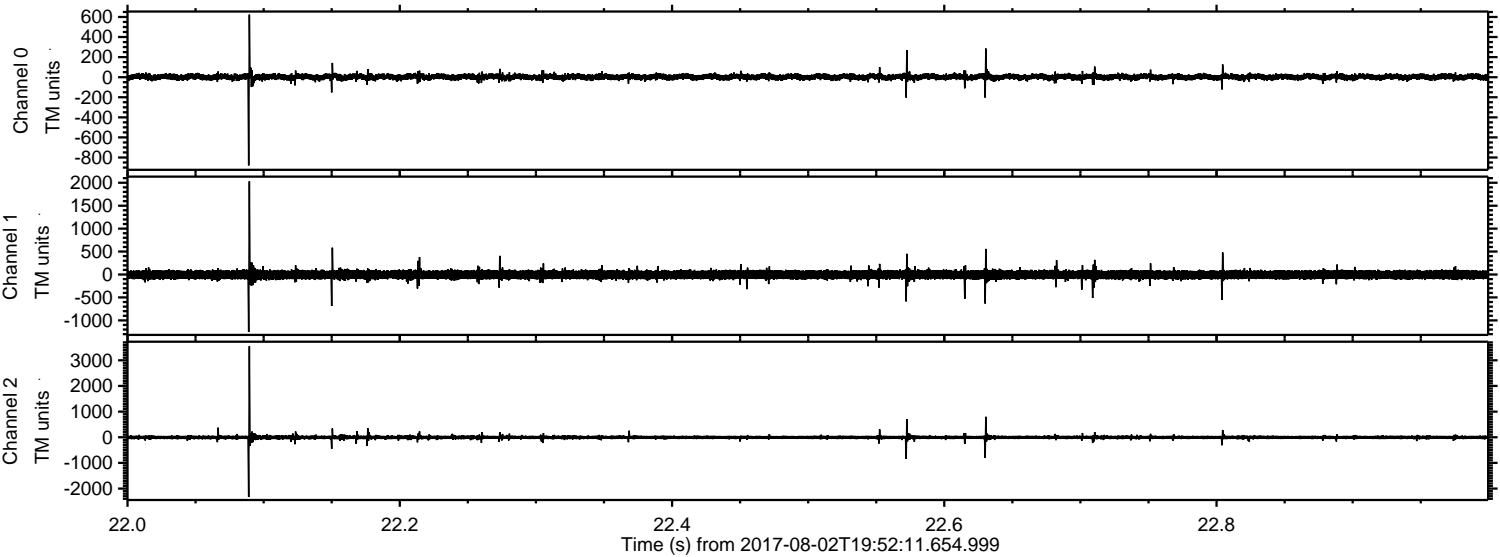


ELMAVAN 3D WAVEFORMS (Measured data sampled at 50 kHz) 51000 packets of 144 samples from 2017-08-02T19:52:11.654.999. Part 135/147

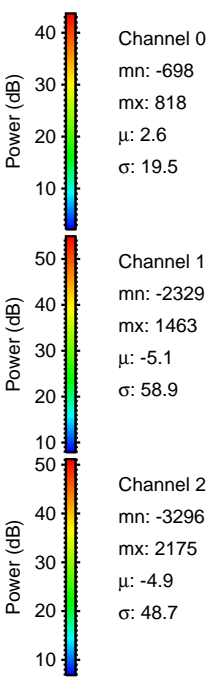
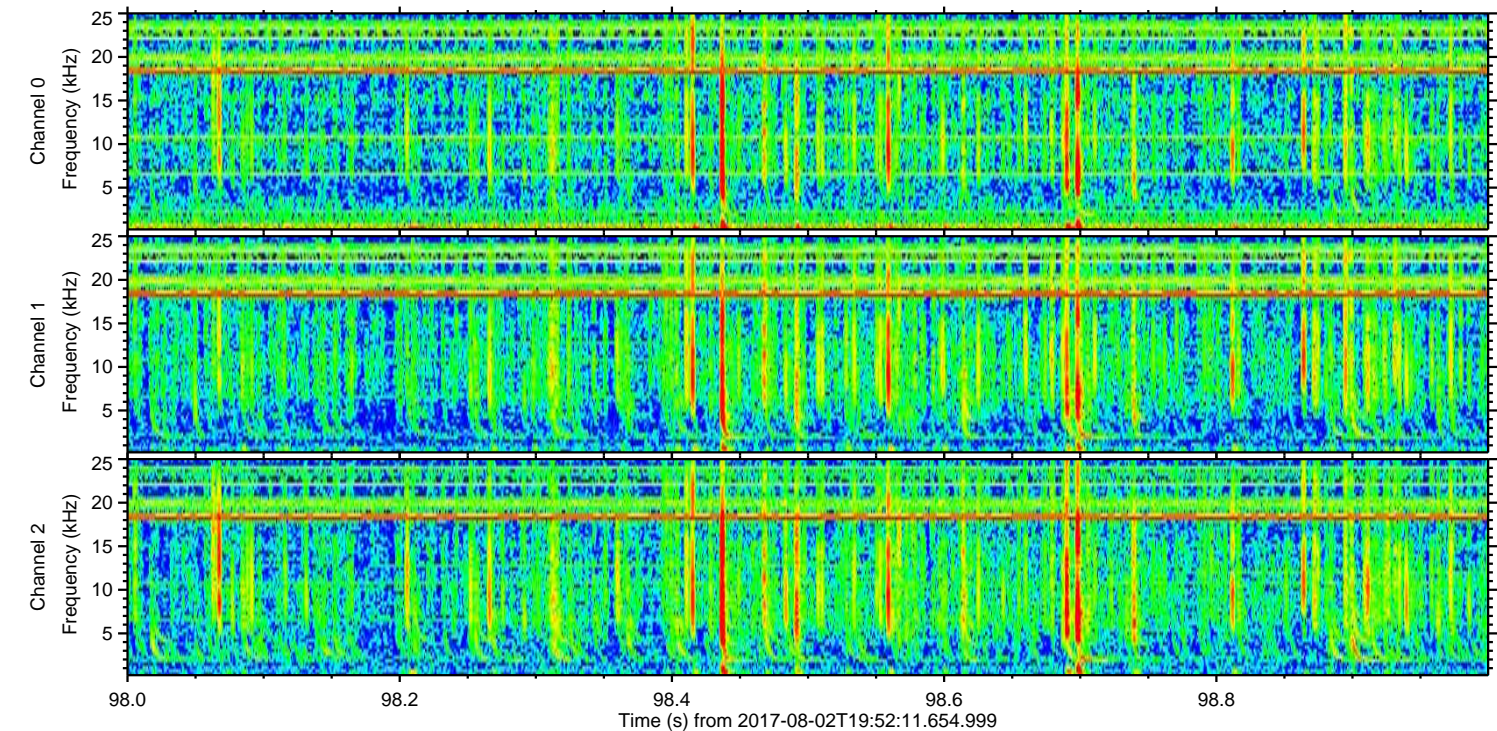
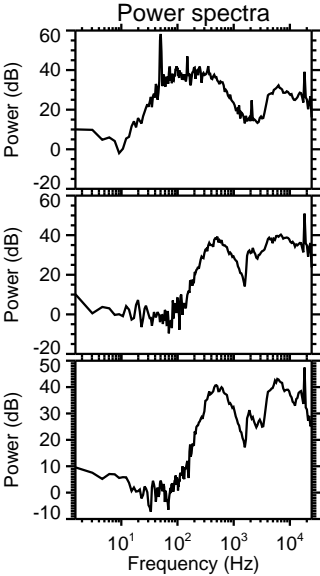
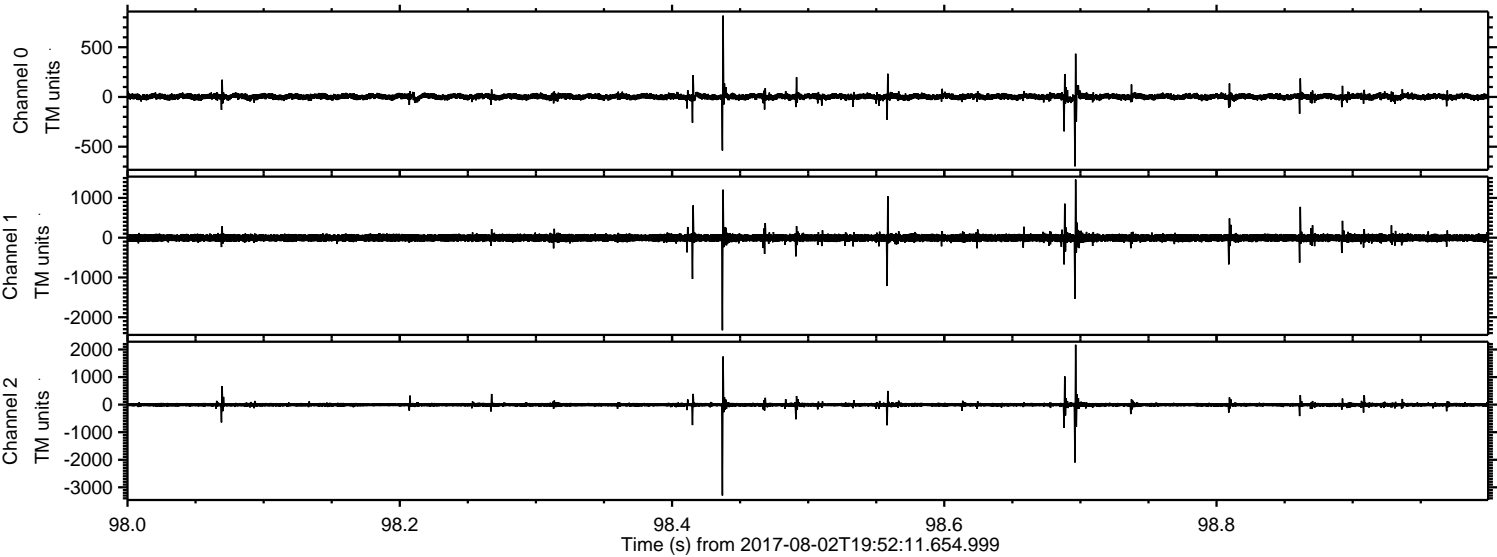
Processed Wed Aug 2 22:00:29 2017 by ELM ver.2012-10-06 from 001__elm20170802_195210__dat00.bin



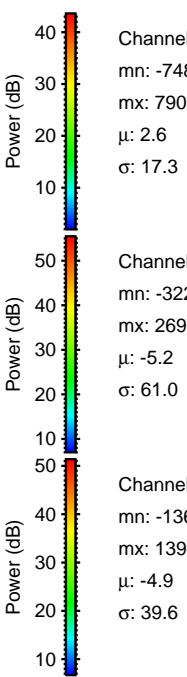
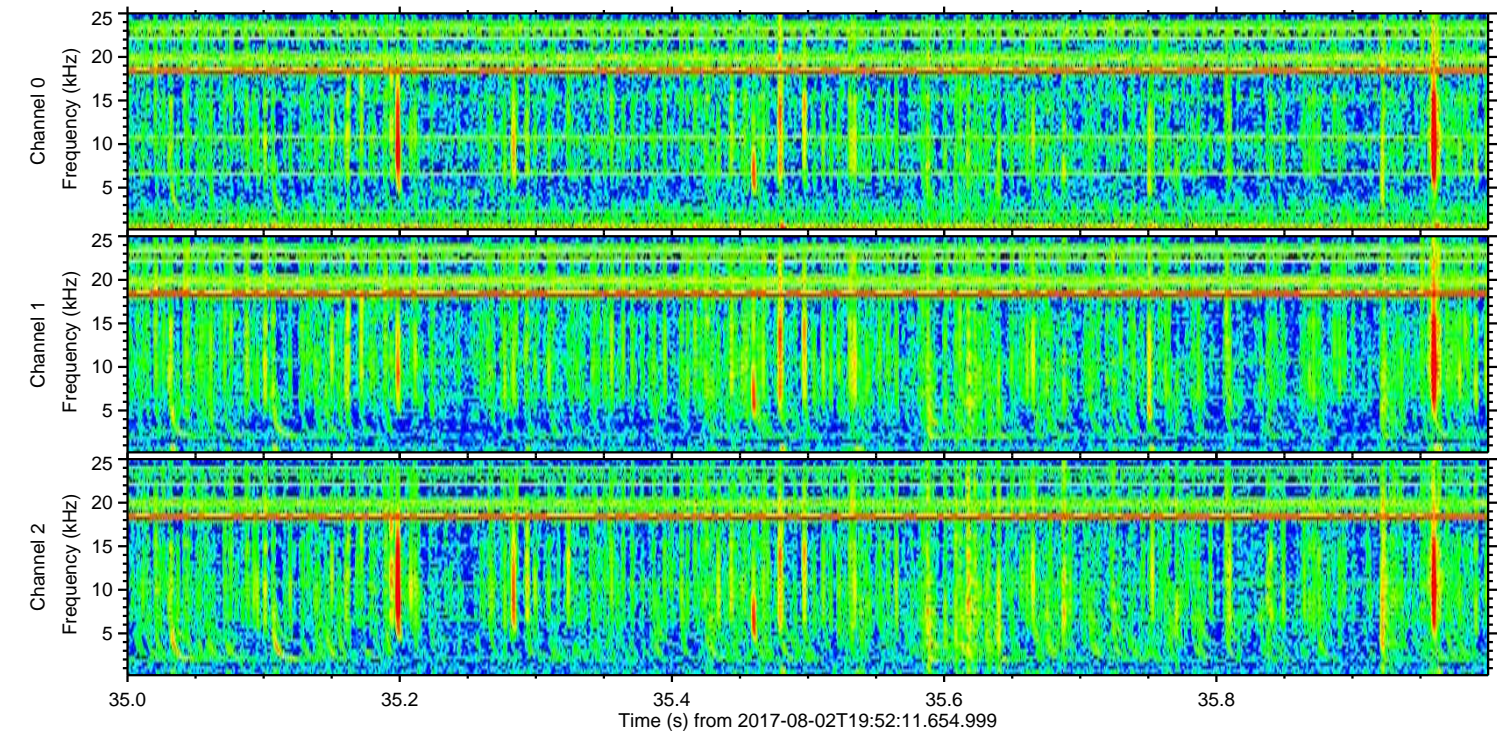
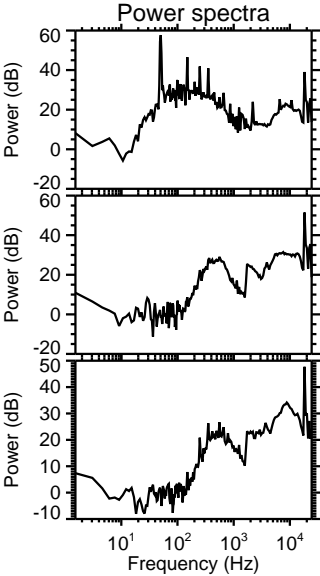
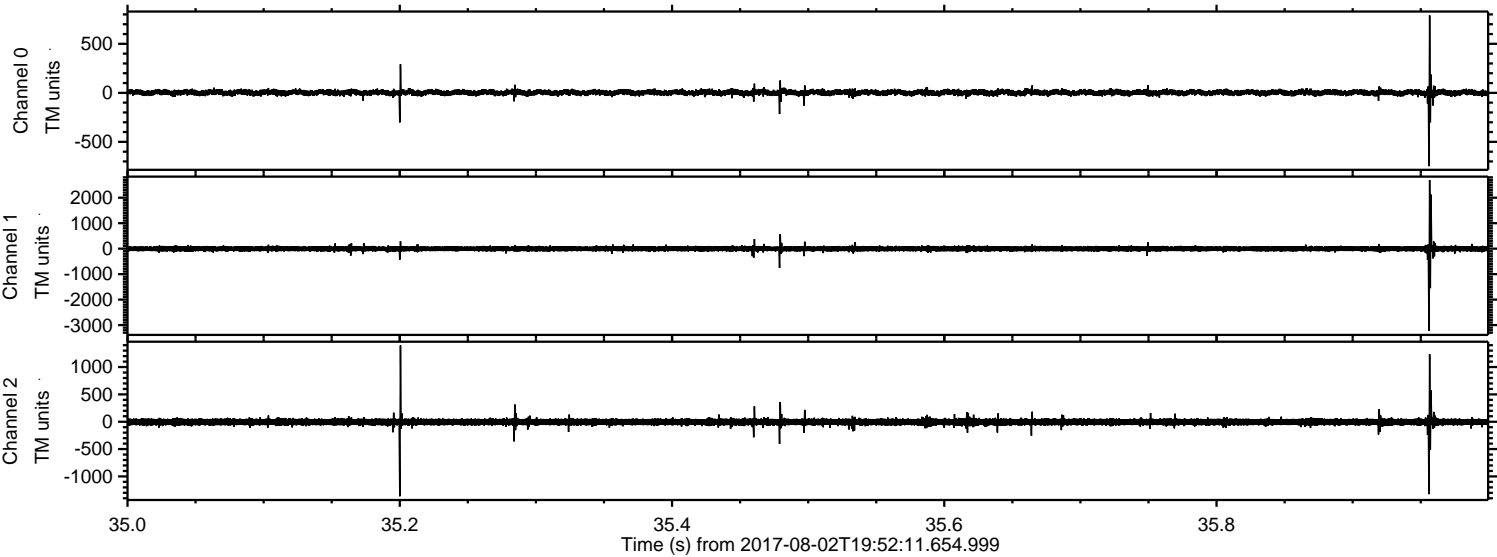
Processed Wed Aug 2 22:00:30 2017 by ELM ver.2012-10-06 from 001__elm20170802_195210__dat00.bin



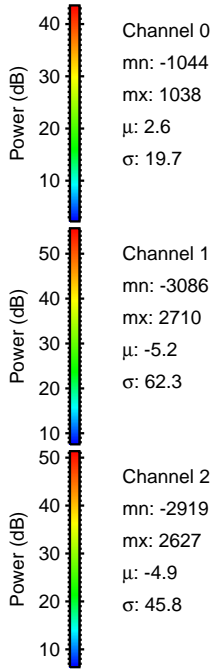
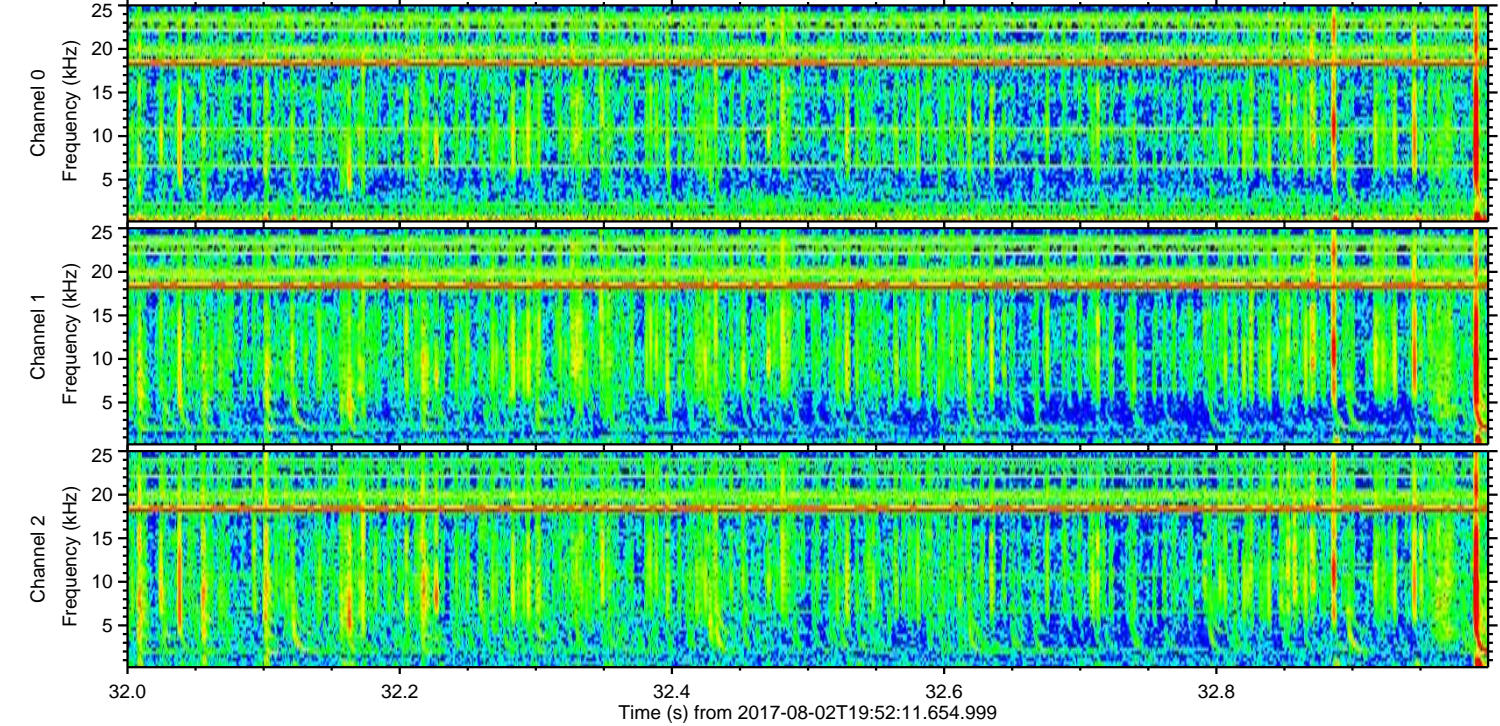
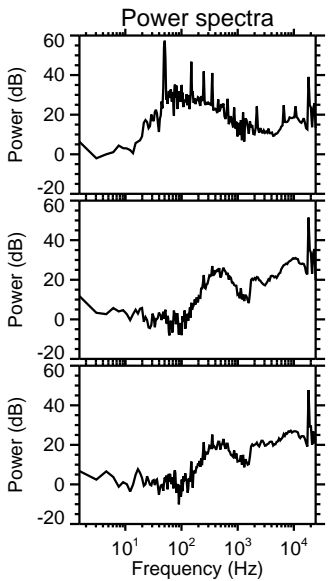
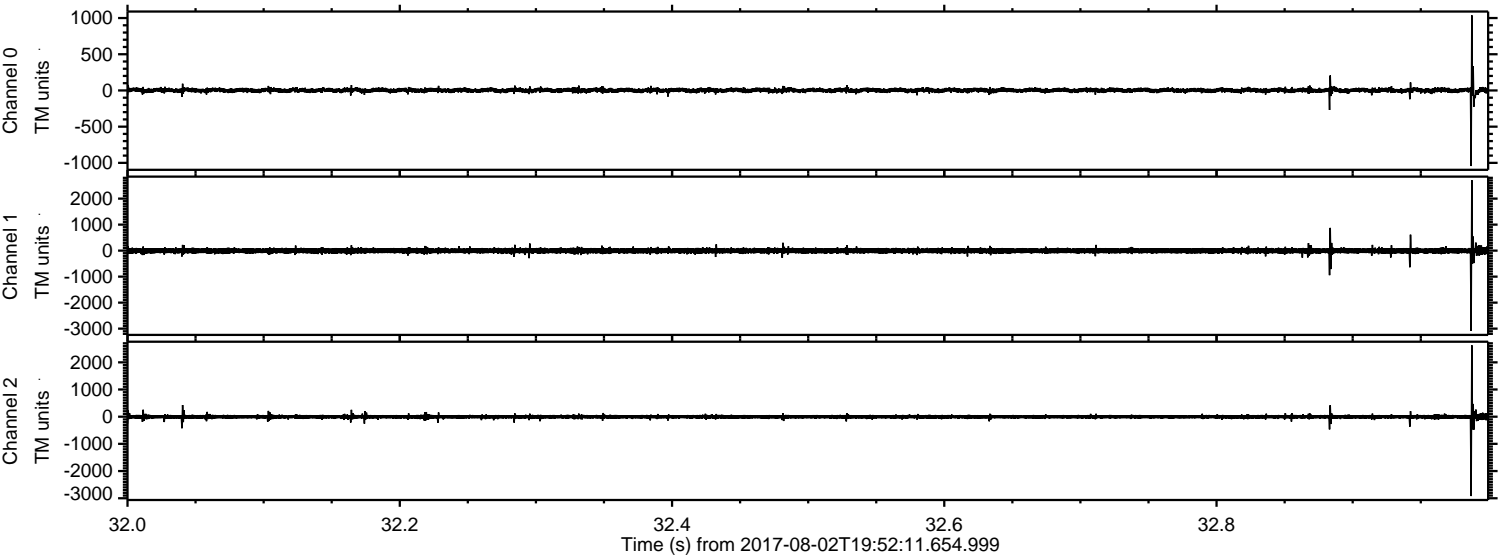
Processed Wed Aug 2 22:00:31 2017 by ELM ver.2012-10-06 from 001__elm20170802_195210__dat00.bin



Processed Wed Aug 2 22:00:32 2017 by ELM ver.2012-10-06 from 001__elm20170802_195210__dat00.bin



Processed Wed Aug 2 22:00:32 2017 by ELM ver.2012-10-06 from 001__elm20170802_195210__dat00.bin



Channel 0
mn: -1044
mx: 1038
 μ : 2.6
 σ : 19.7

Channel 1
mn: -3086
mx: 2710
 μ : -5.2
 σ : 62.3

Channel 2
mn: -2919
mx: 2627
 μ : -4.9
 σ : 45.8

Processed Wed Aug 2 22:00:33 2017 by ELM ver.2012-10-06 from 001__elm20170802_195210__dat00.bin

