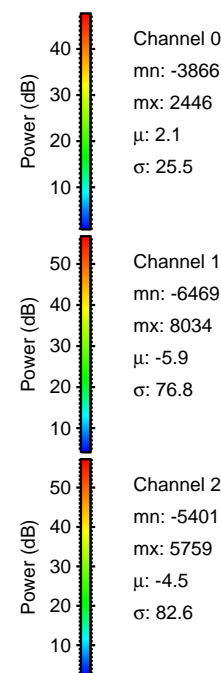
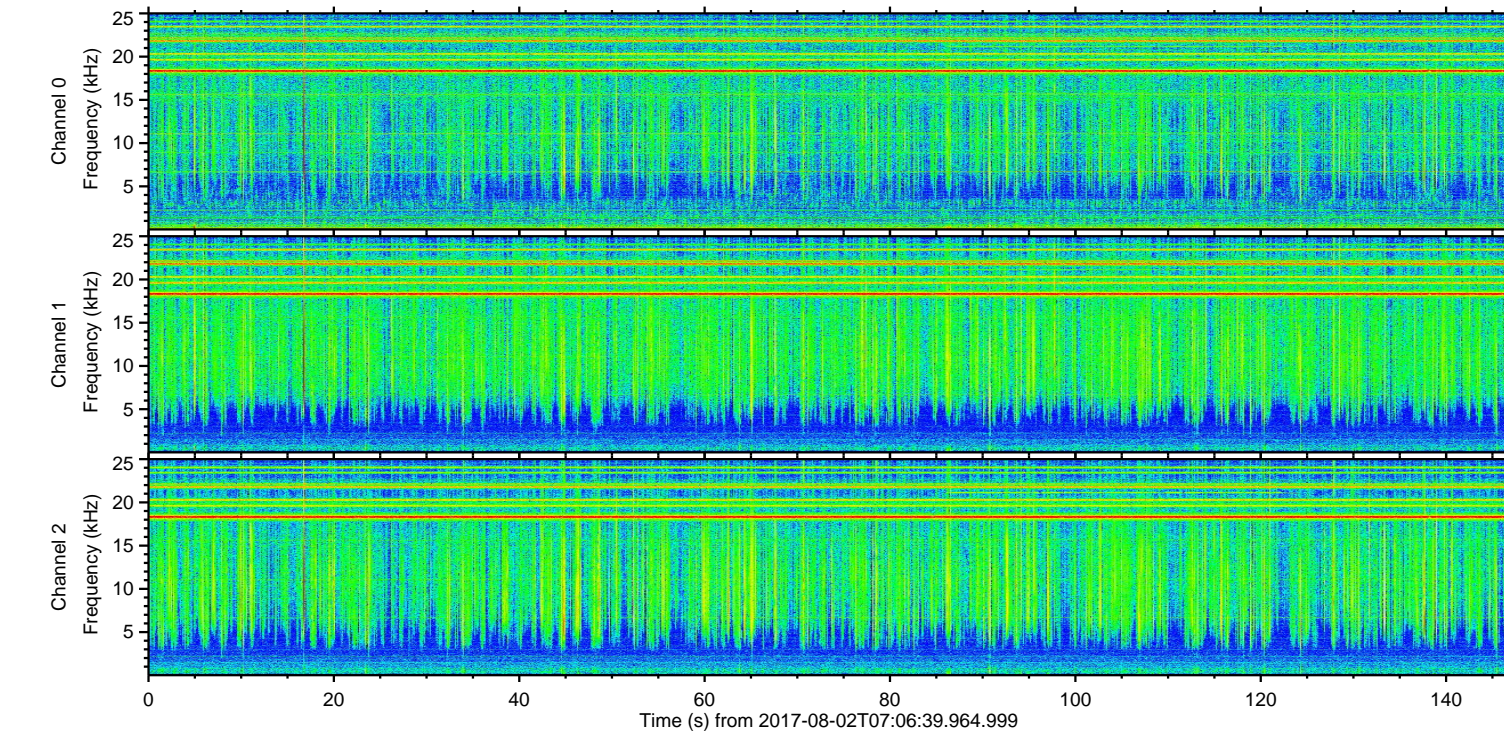
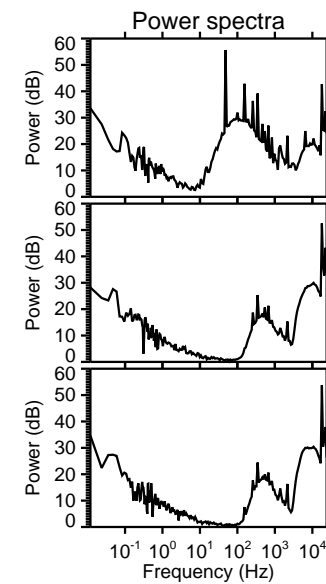
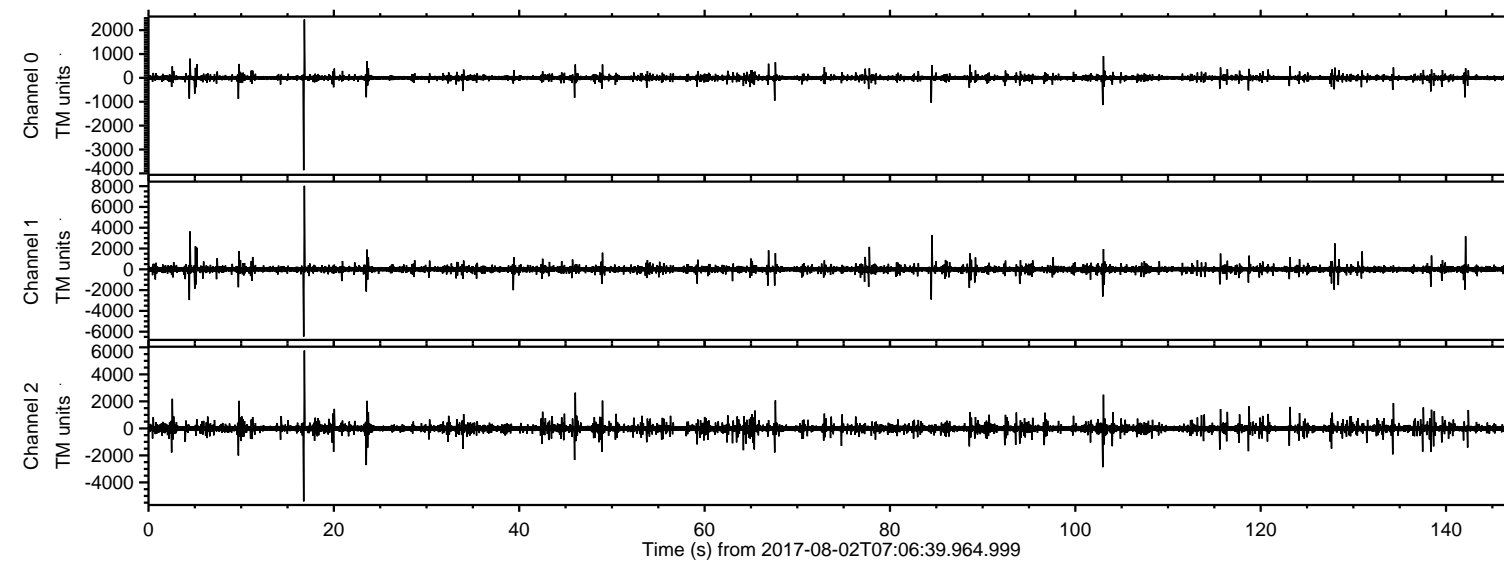


ELMAVAN 3D WAVEFORMS (Measured data sampled at 50 kHz) 51000 packets of 144 samples from 2017-08-02T07:06:39.964.999.

Processed Wed Aug 2 09:14:49 2017 by ELM ver.2012-10-06 from 001\_\_elm20170802\_070638\_\_dat00.bin



Channel 0  
mn: -3866  
mx: 2446  
 $\mu$ : 2.1  
 $\sigma$ : 25.5

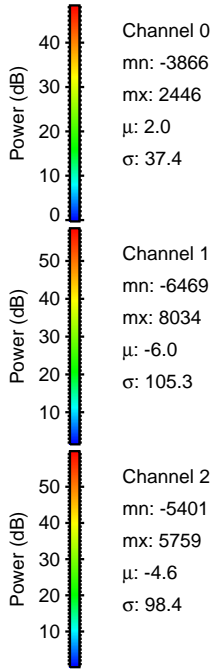
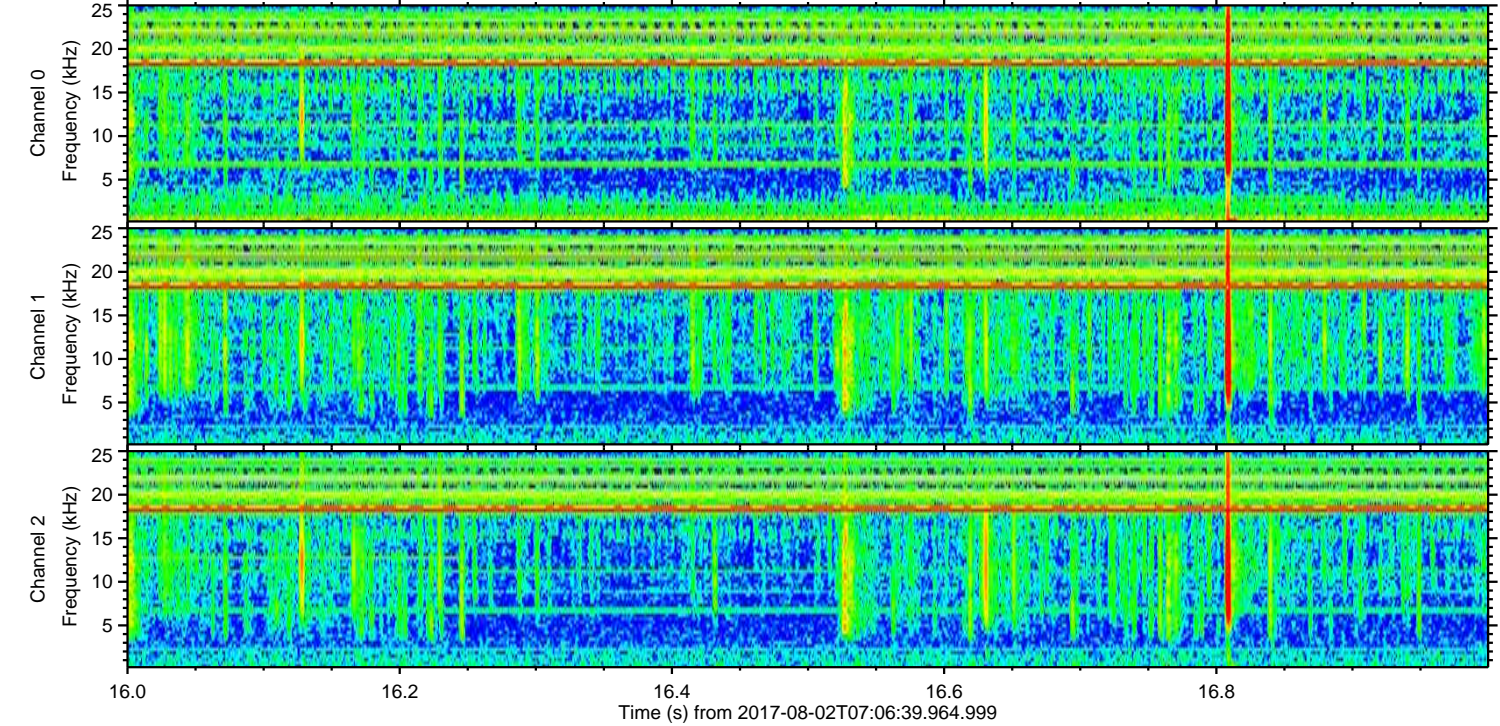
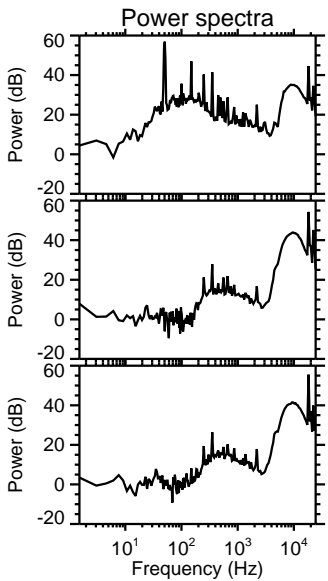
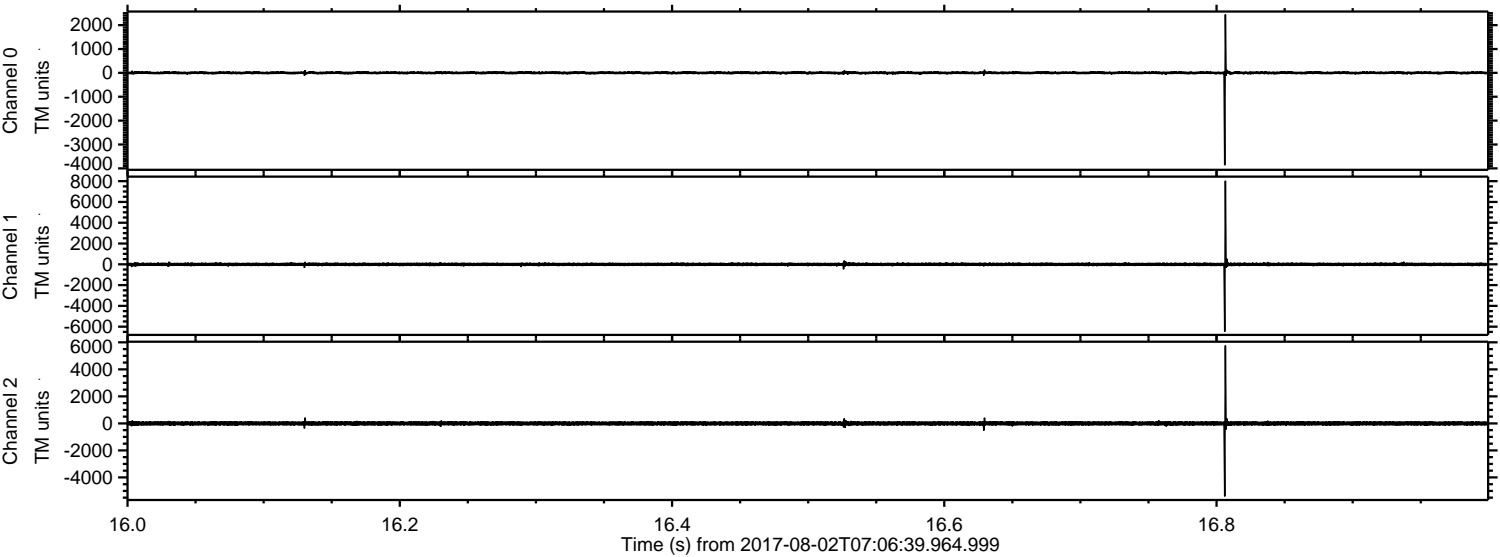
Channel 1  
mn: -6469  
mx: 8034  
 $\mu$ : -5.9  
 $\sigma$ : 76.8

Channel 2  
mn: -5401  
mx: 5759  
 $\mu$ : -4.5  
 $\sigma$ : 82.6



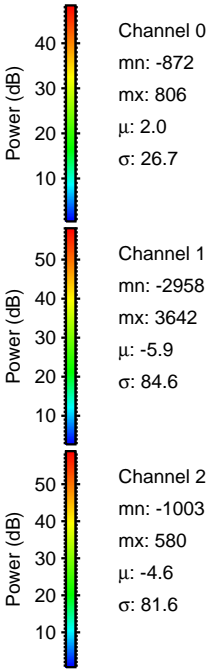
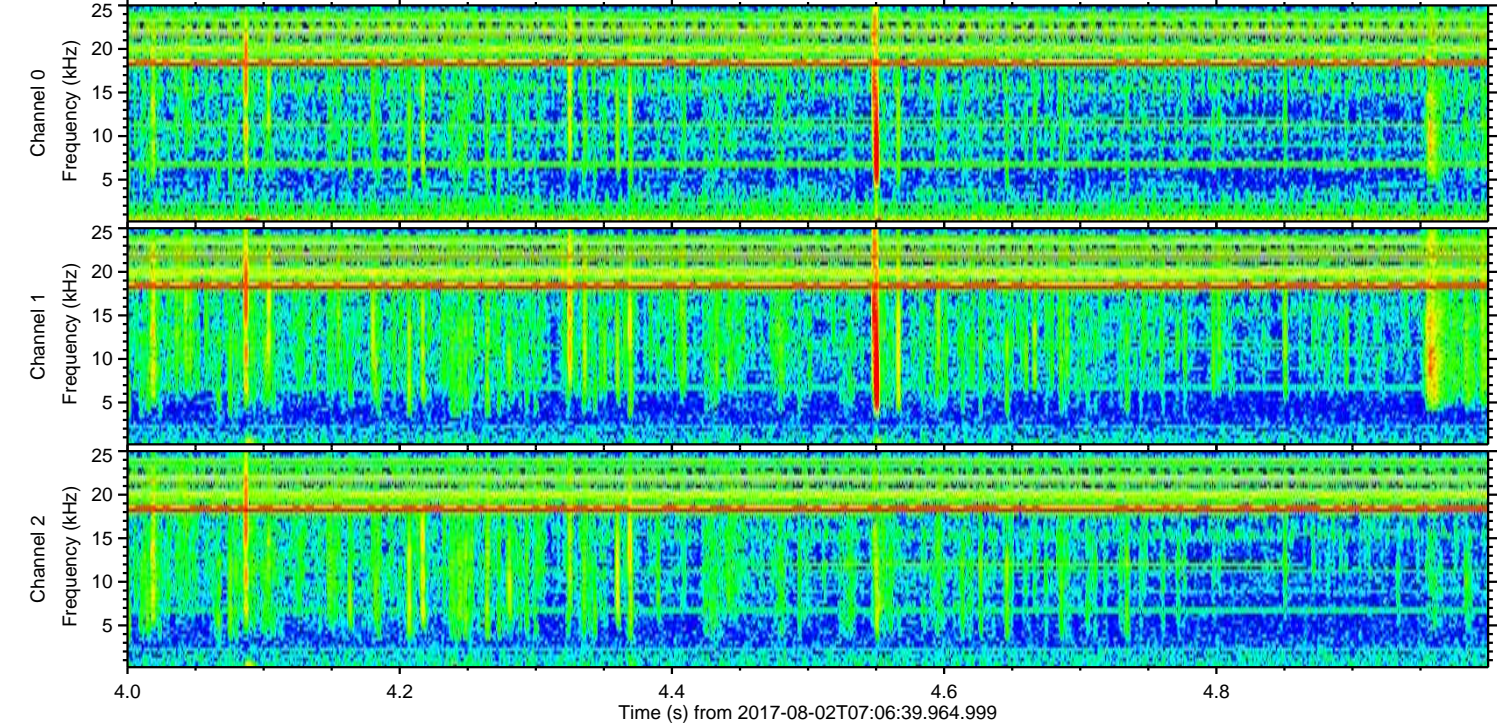
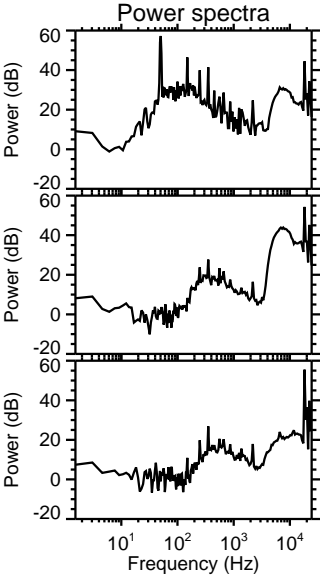
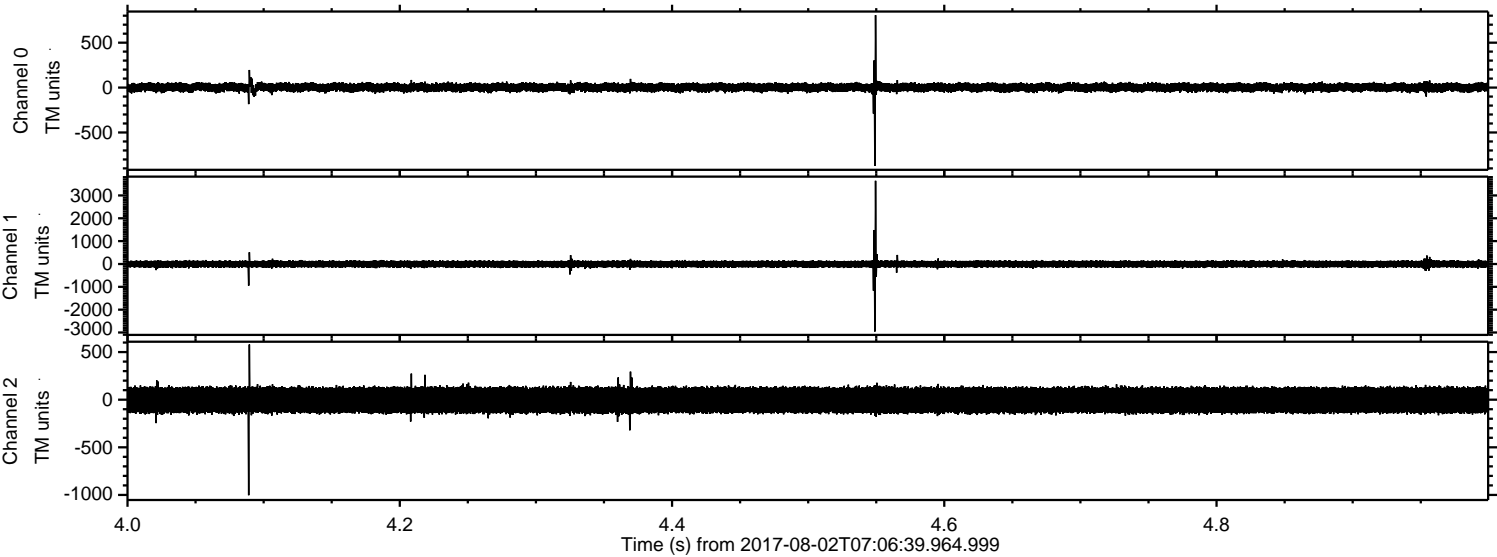
ELMAVAN 3D WAVEFORMS (Measured data sampled at 50 kHz) 51000 packets of 144 samples from 2017-08-02T07:06:39.964.999. Part 17/147

Processed Wed Aug 2 09:14:56 2017 by ELM ver.2012-10-06 from 001\_\_elm20170802\_070638\_\_dat00.bin



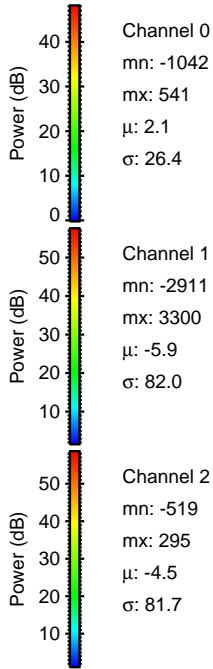
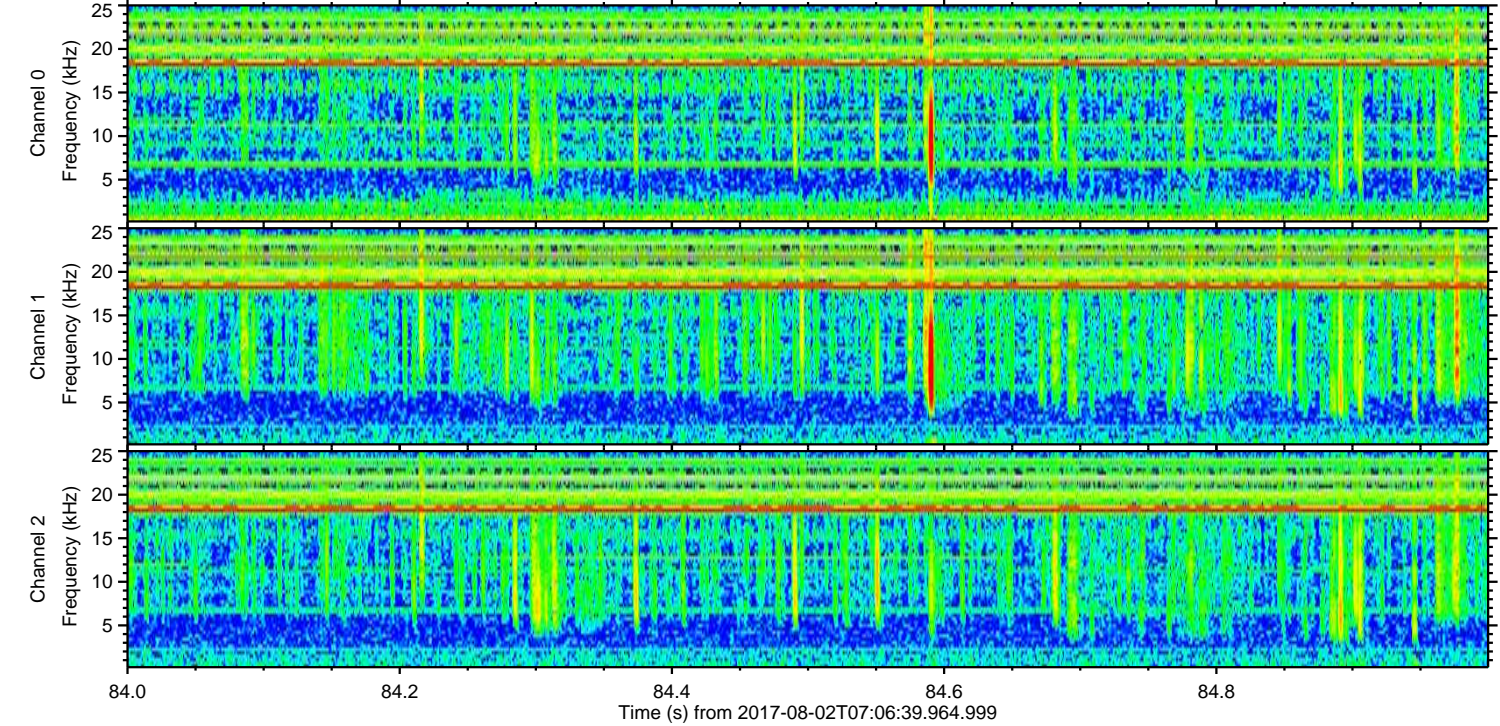
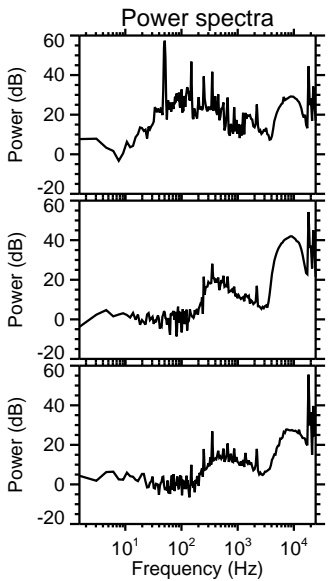
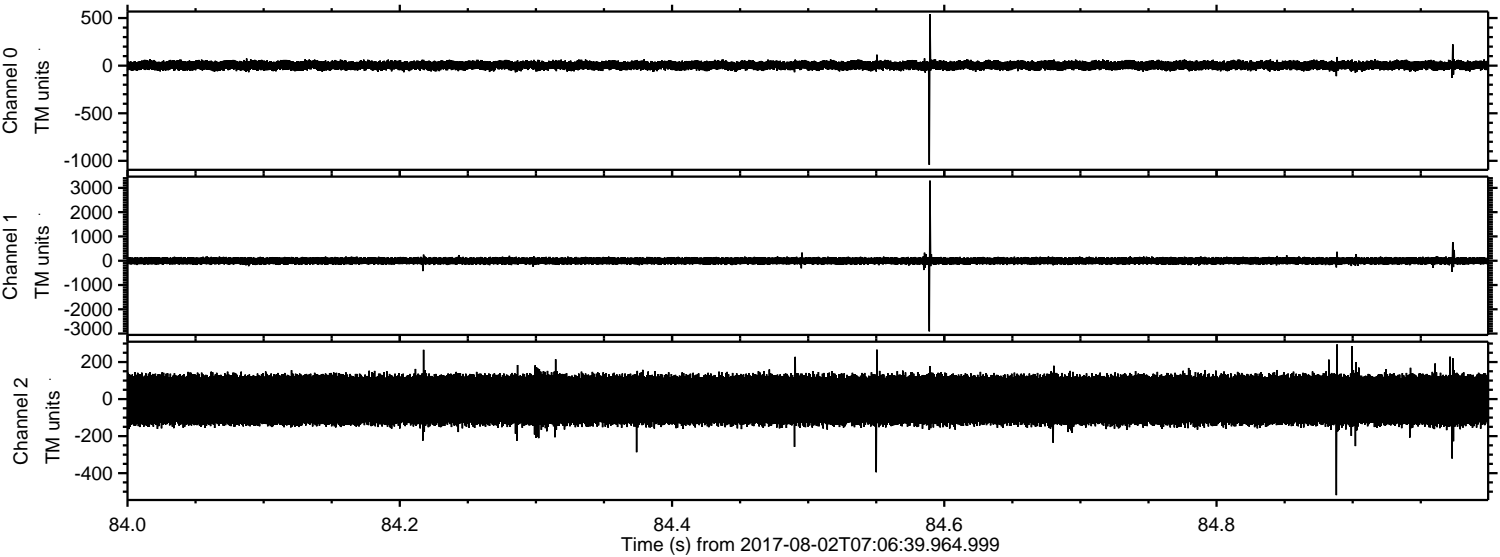


Processed Wed Aug 2 09:14:57 2017 by ELM ver.2012-10-06 from 001\_\_elm20170802\_070638\_\_dat00.bin





Processed Wed Aug 2 09:14:57 2017 by ELM ver.2012-10-06 from 001\_\_elm20170802\_070638\_\_dat00.bin



Channel 0  
mn: -1042  
mx: 541  
 $\mu$ : 2.1  
 $\sigma$ : 26.4

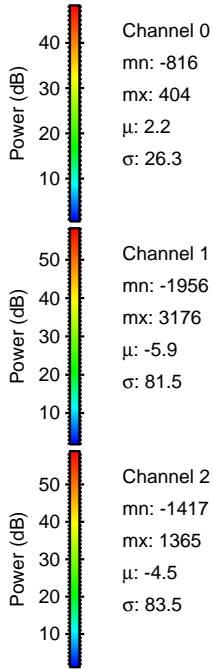
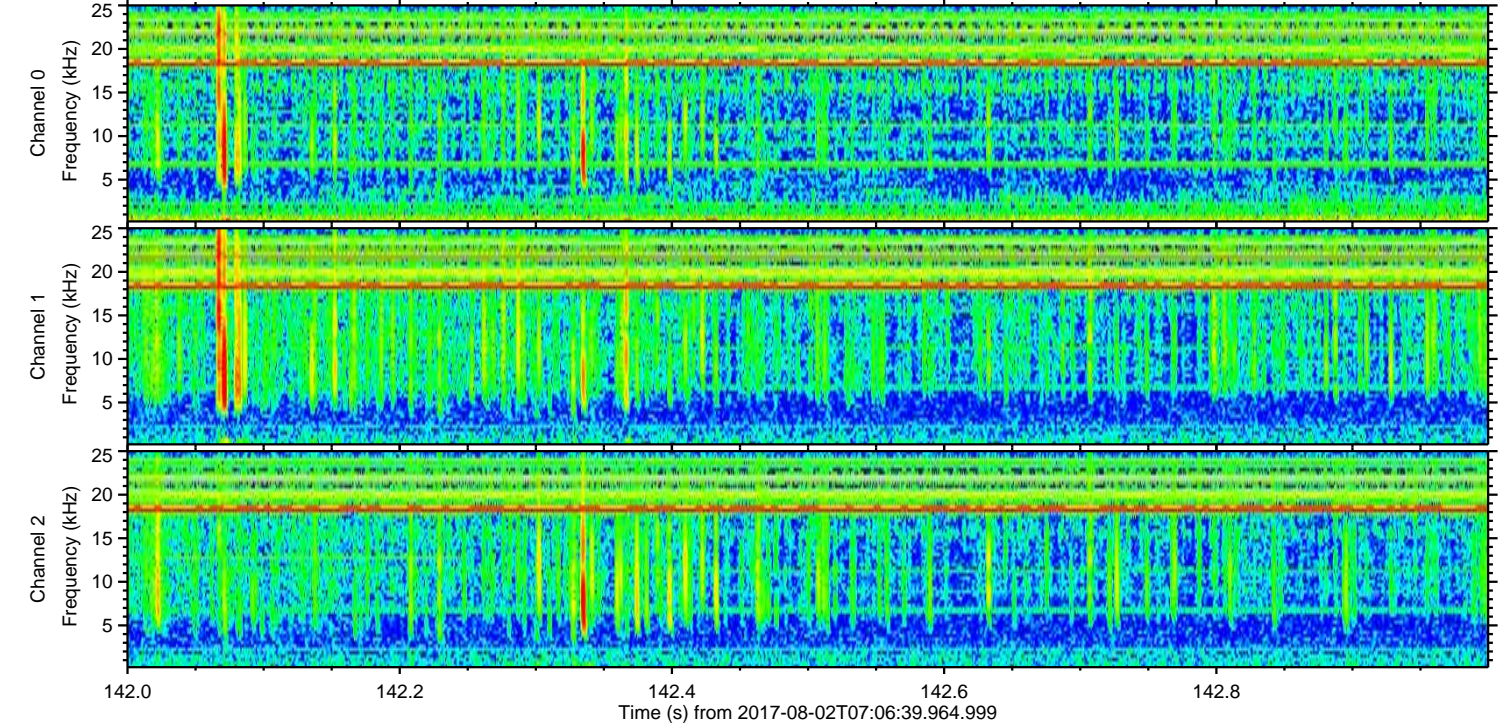
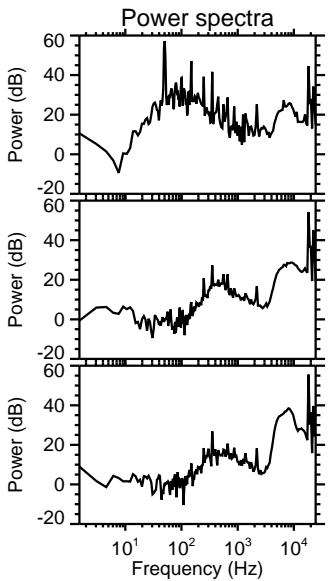
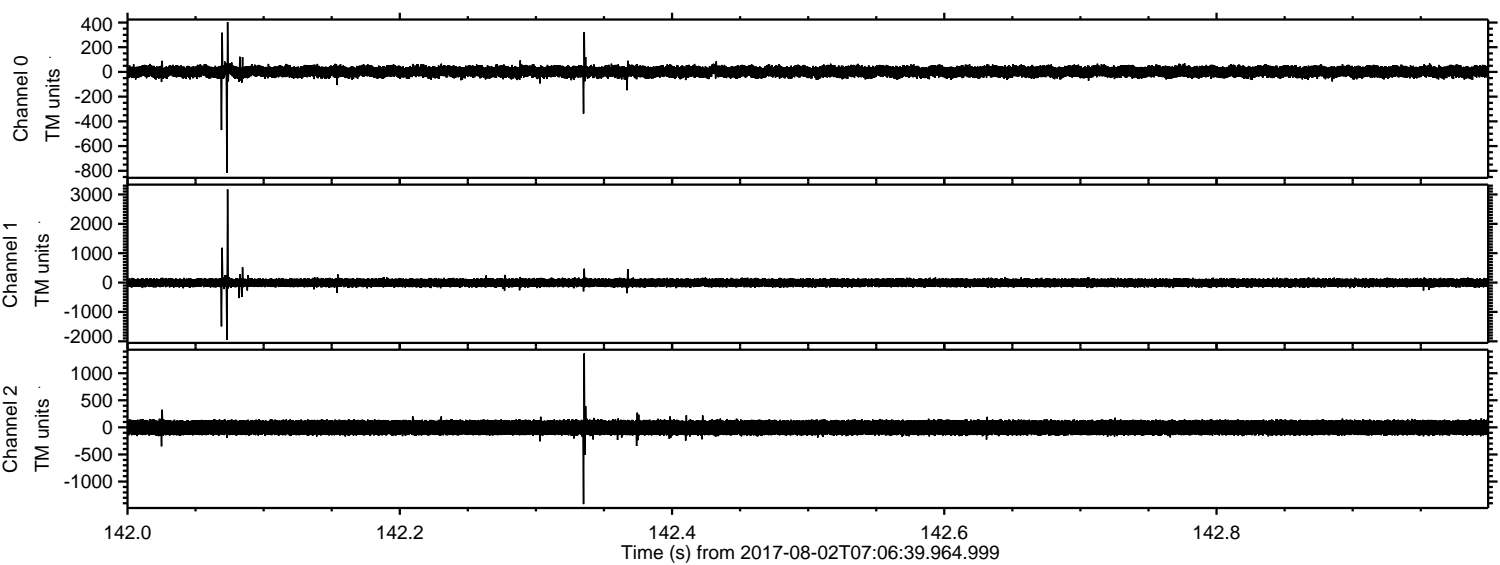
Channel 1  
mn: -2911  
mx: 3300  
 $\mu$ : -5.9  
 $\sigma$ : 82.0

Channel 2  
mn: -519  
mx: 295  
 $\mu$ : -4.5  
 $\sigma$ : 81.7



ELMAVAN 3D WAVEFORMS (Measured data sampled at 50 kHz) 51000 packets of 144 samples from 2017-08-02T07:06:39.964.999. Part 143/147

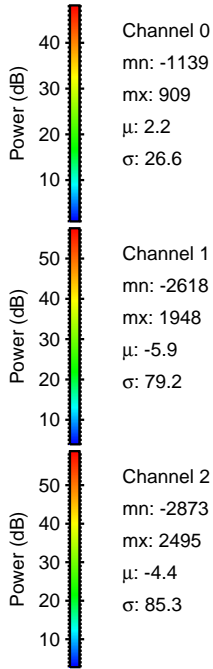
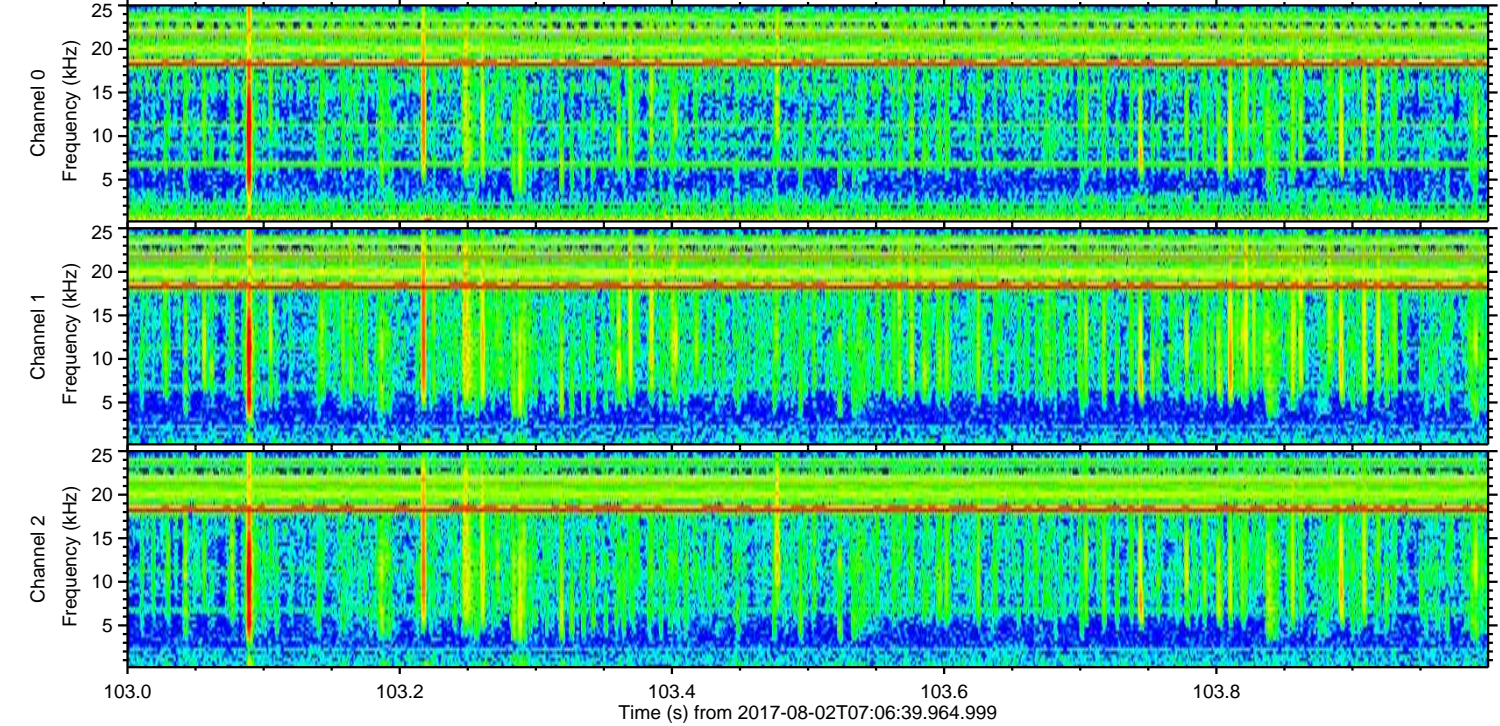
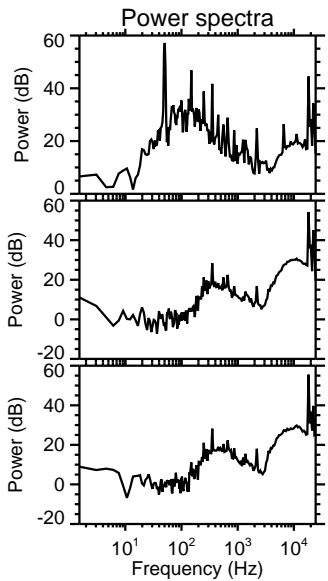
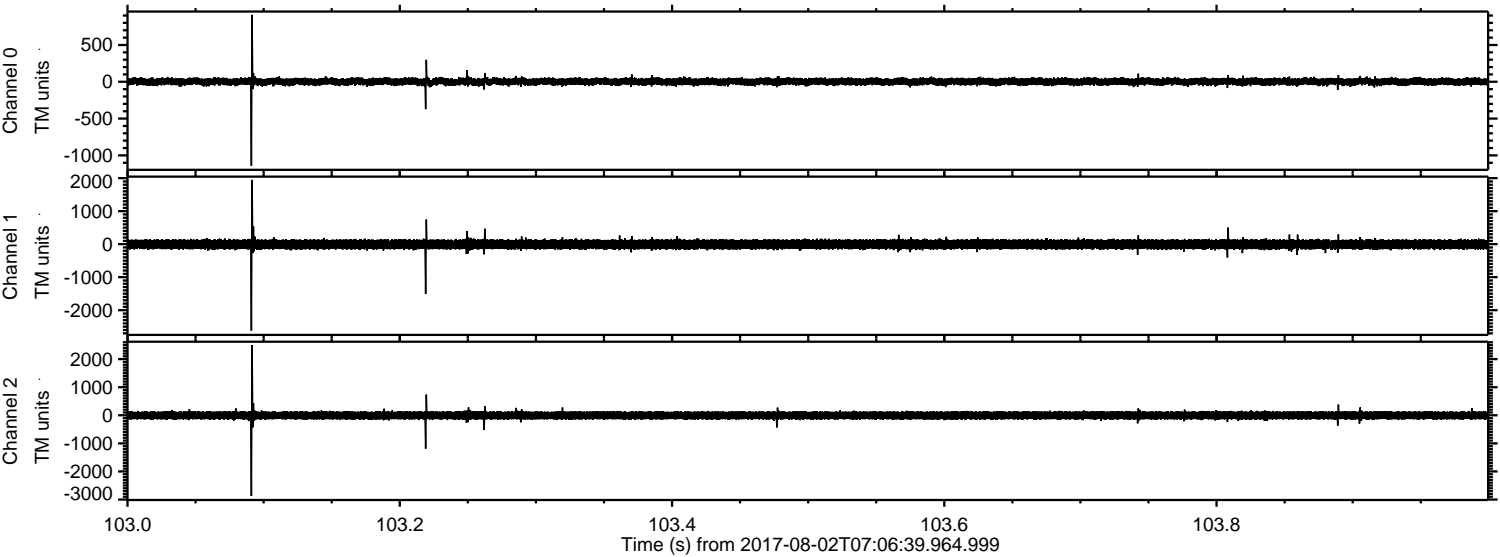
Processed Wed Aug 2 09:14:58 2017 by ELM ver.2012-10-06 from 001\_\_elm20170802\_070638\_\_dat00.bin





ELMAVAN 3D WAVEFORMS (Measured data sampled at 50 kHz) 51000 packets of 144 samples from 2017-08-02T07:06:39.964.999. Part 104/147

Processed Wed Aug 2 09:14:59 2017 by ELM ver.2012-10-06 from 001\_\_elm20170802\_070638\_\_dat00.bin



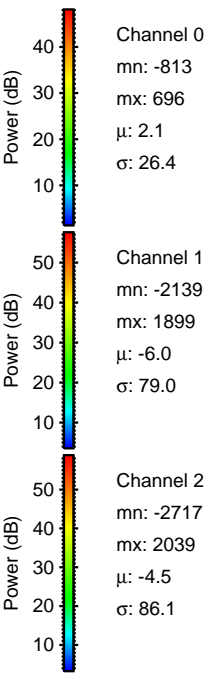
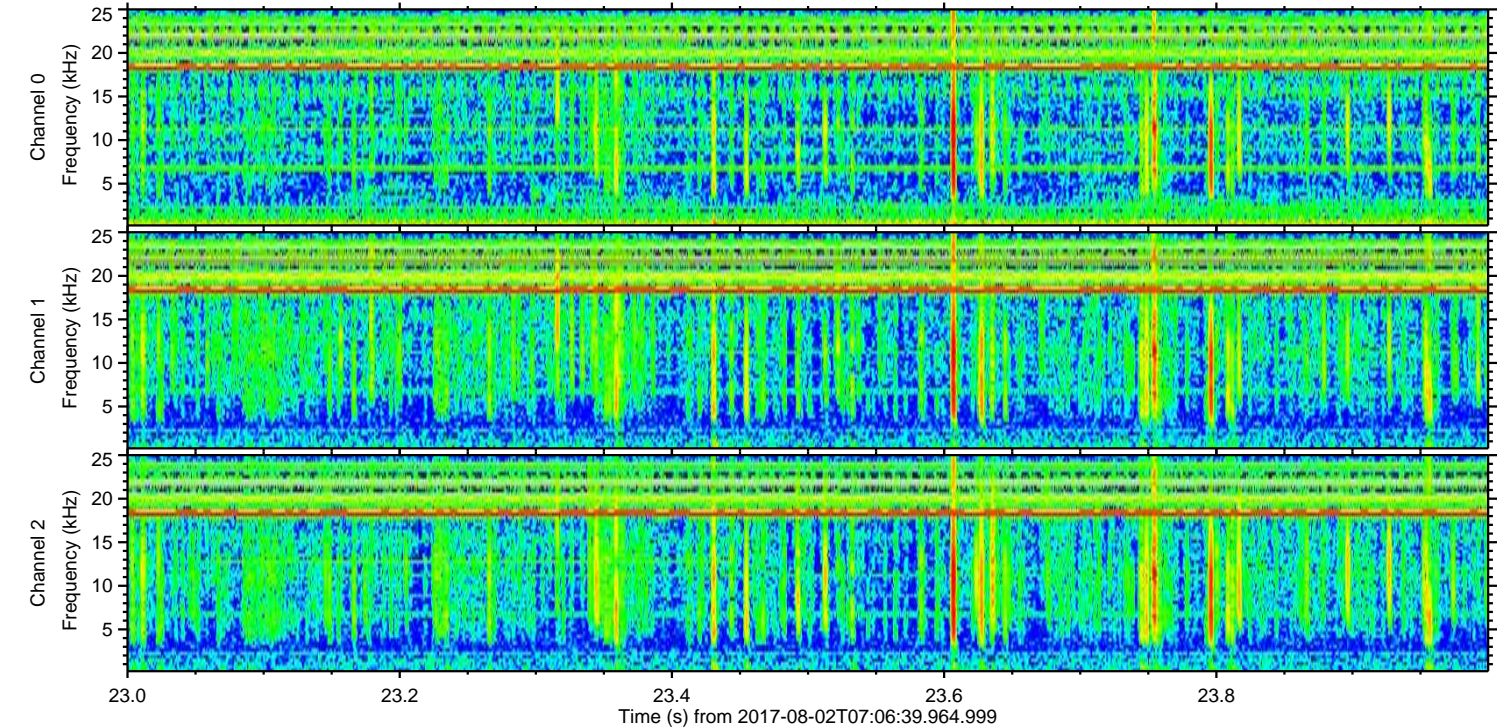
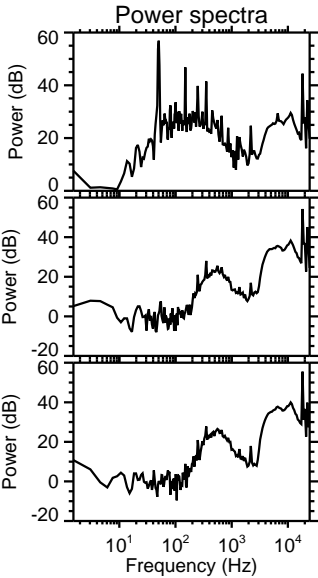
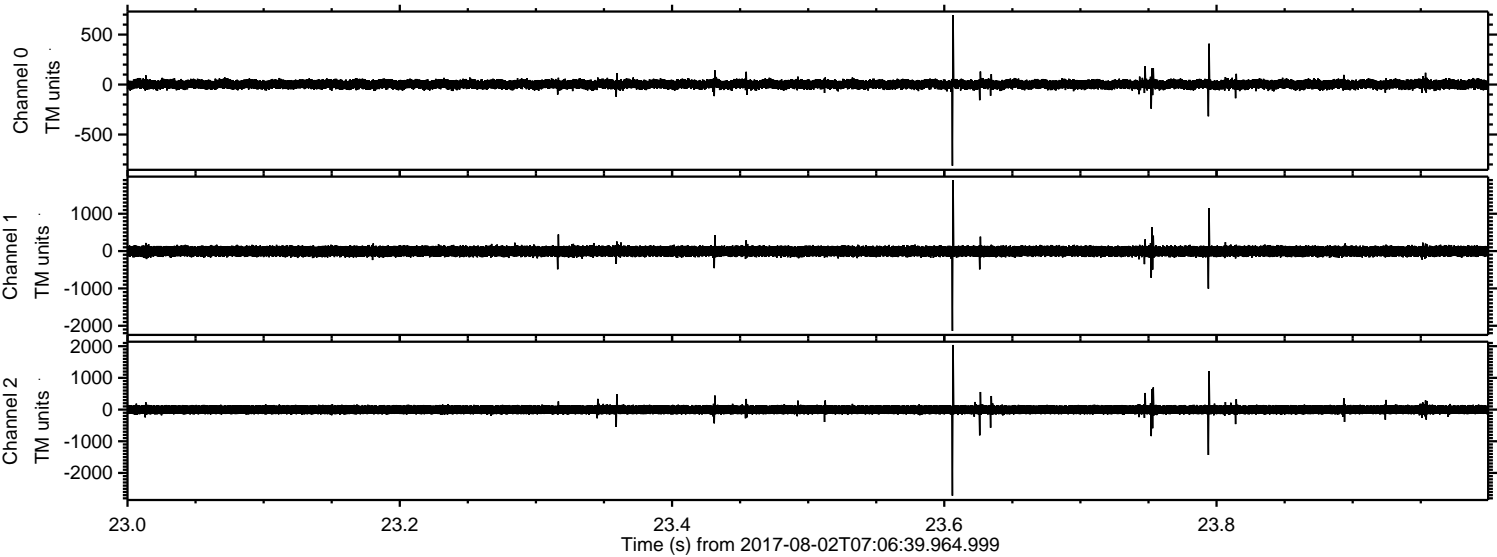
Channel 0  
mn: -1139  
mx: 909  
 $\mu$ : 2.2  
 $\sigma$ : 26.6

Channel 1  
mn: -2618  
mx: 1948  
 $\mu$ : -5.9  
 $\sigma$ : 79.2

Channel 2  
mn: -2873  
mx: 2495  
 $\mu$ : -4.4  
 $\sigma$ : 85.3

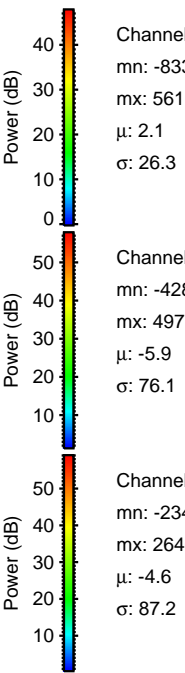
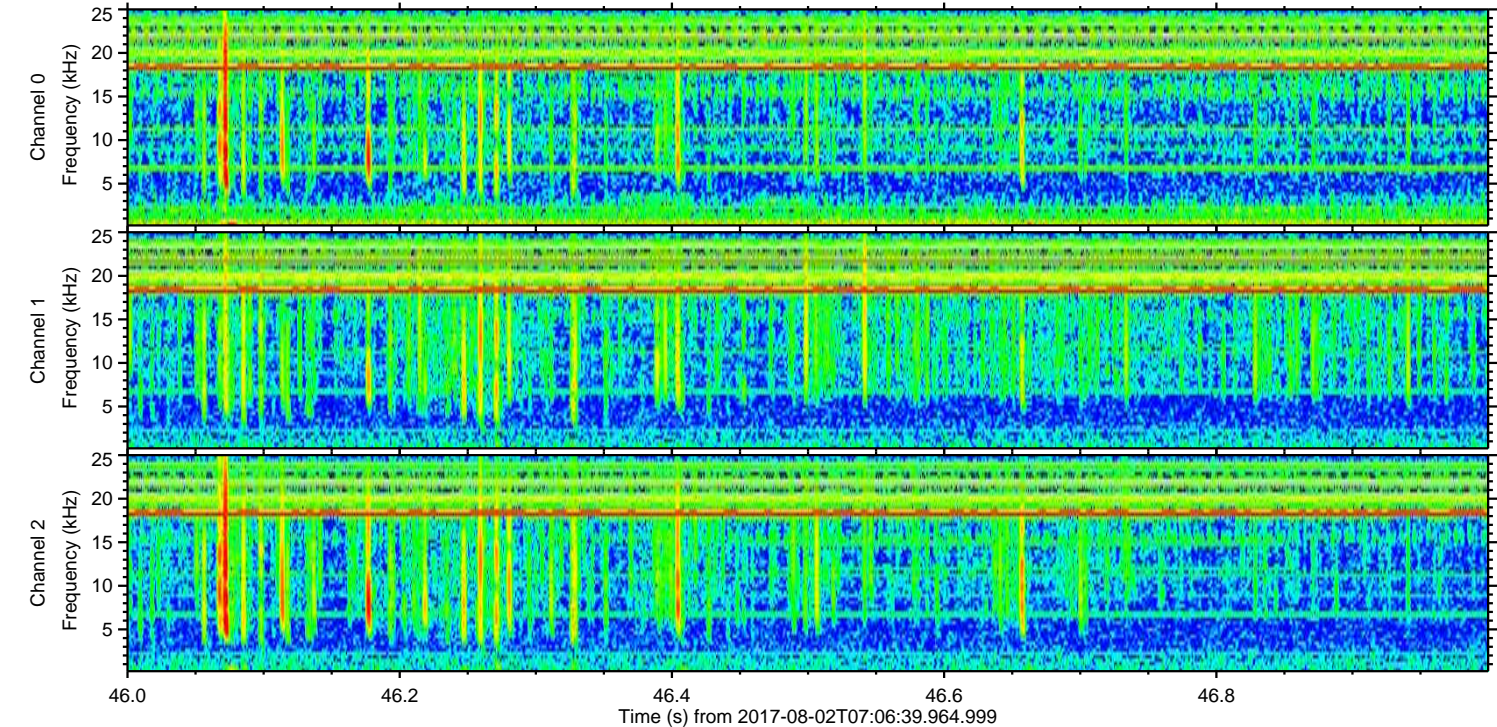
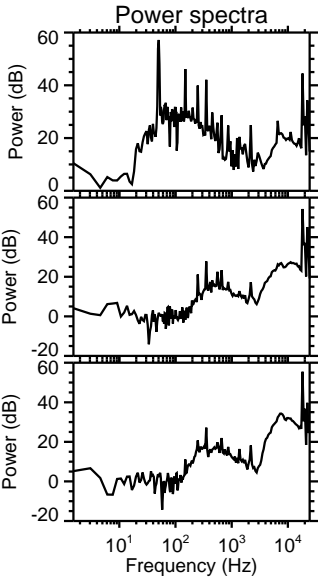
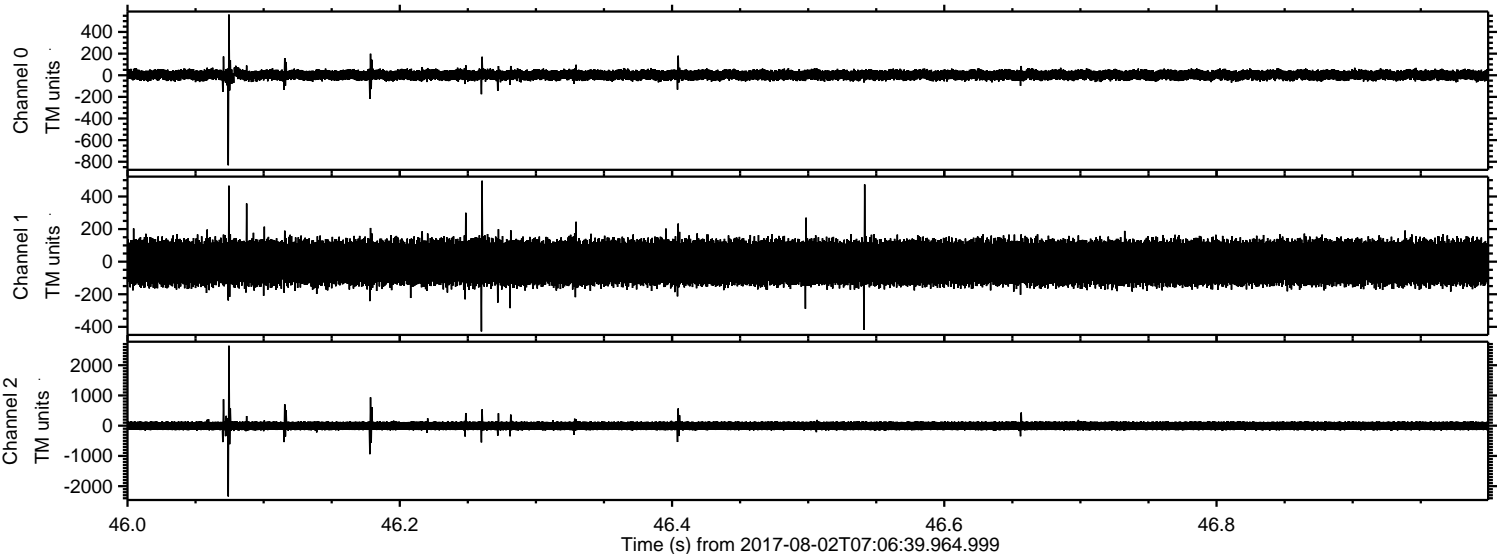


Processed Wed Aug 2 09:15:00 2017 by ELM ver.2012-10-06 from 001\_\_elm20170802\_070638\_\_dat00.bin





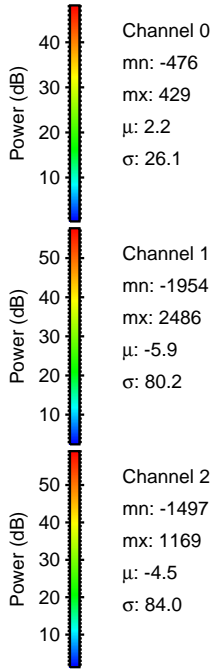
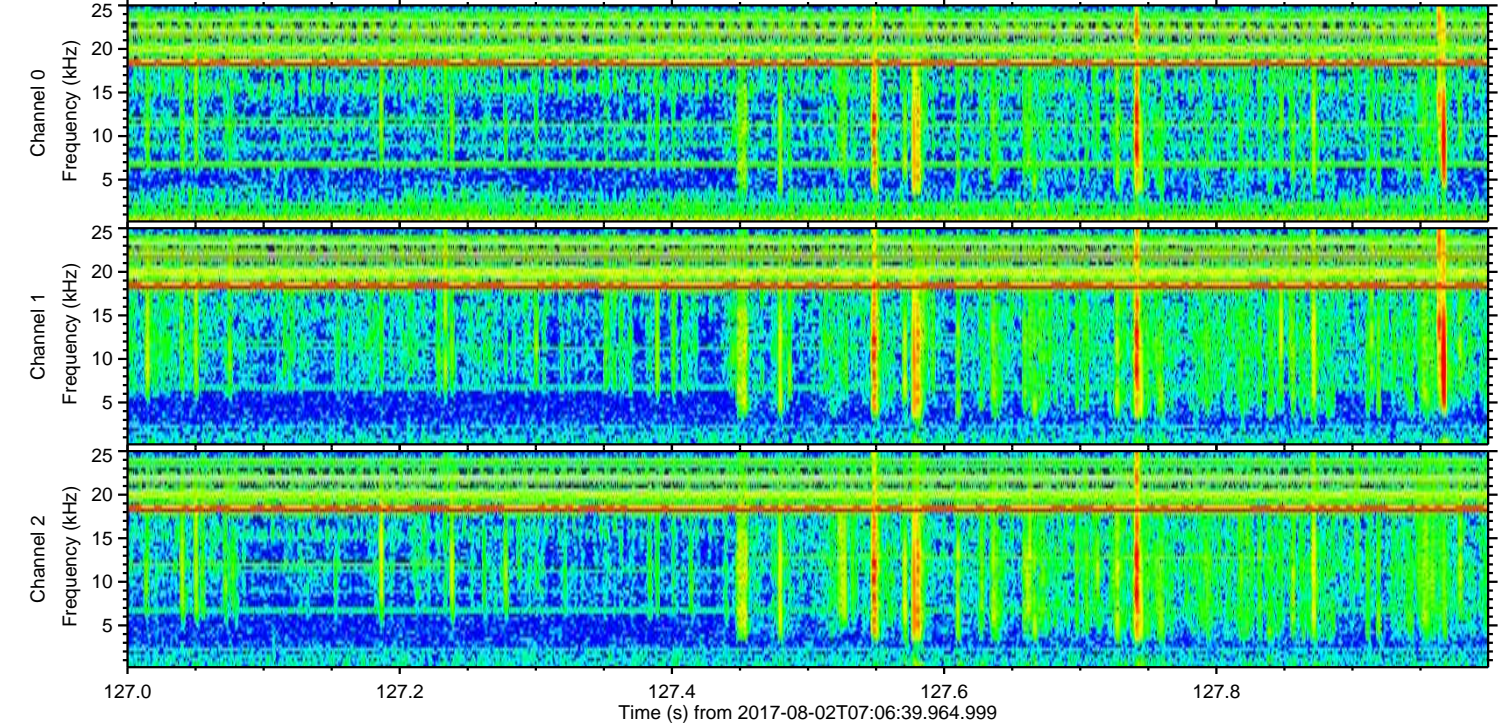
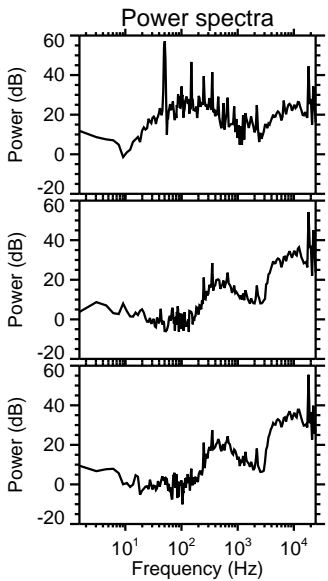
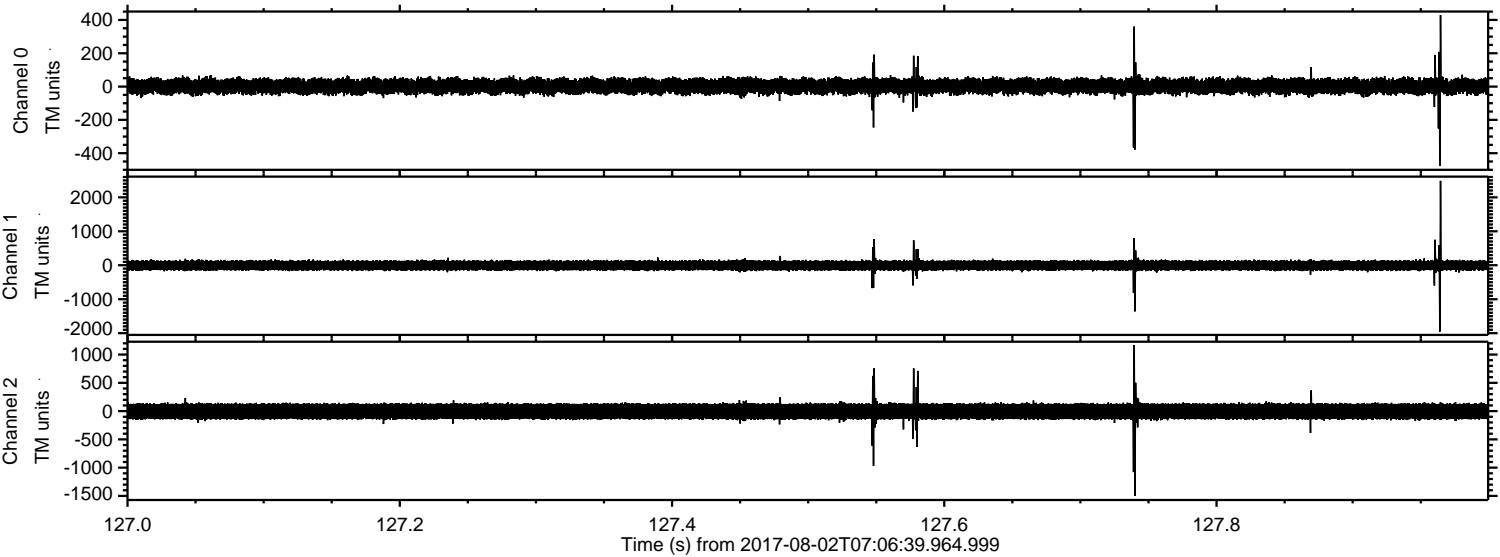
Processed Wed Aug 2 09:15:01 2017 by ELM ver.2012-10-06 from 001\_\_elm20170802\_070638\_\_dat00.bin





ELMAVAN 3D WAVEFORMS (Measured data sampled at 50 kHz) 51000 packets of 144 samples from 2017-08-02T07:06:39.964.999. Part 128/147

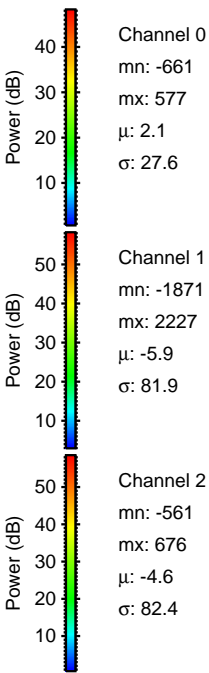
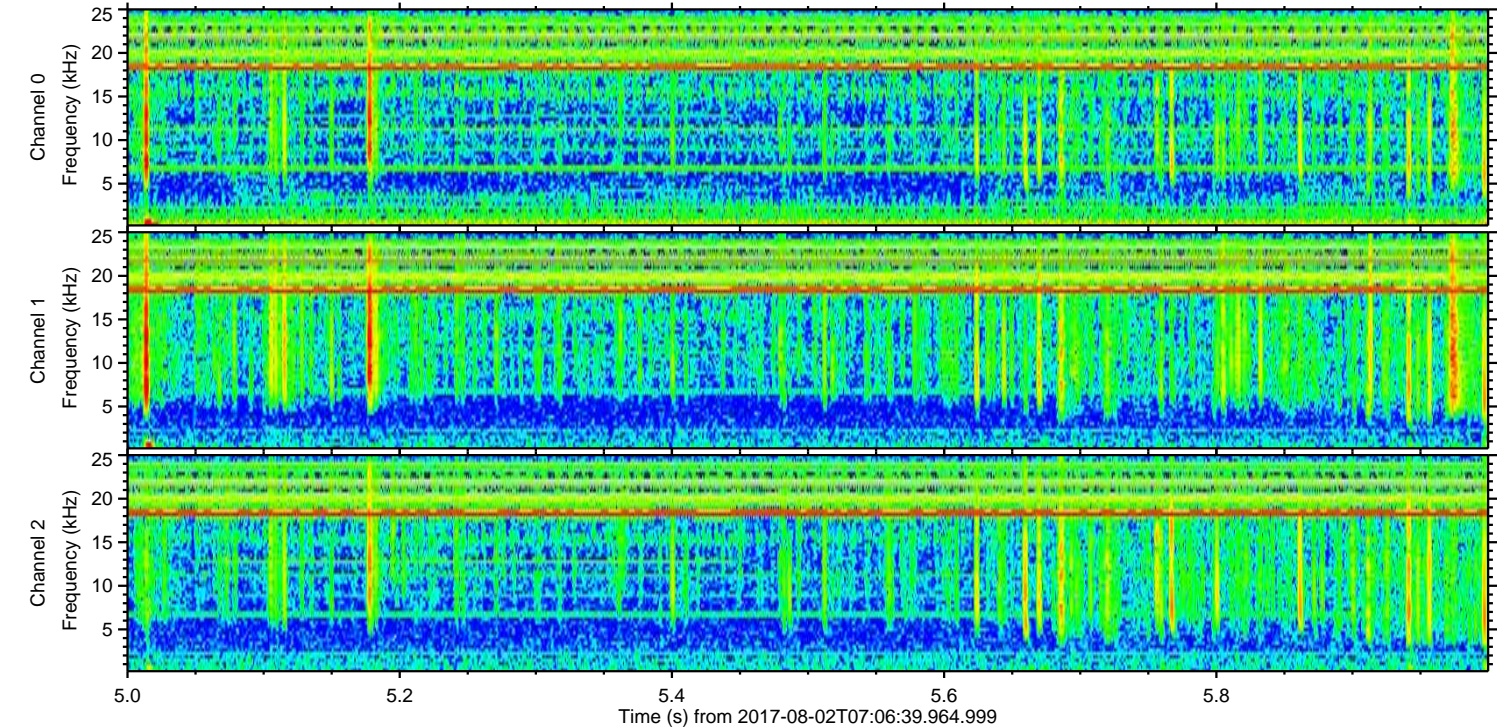
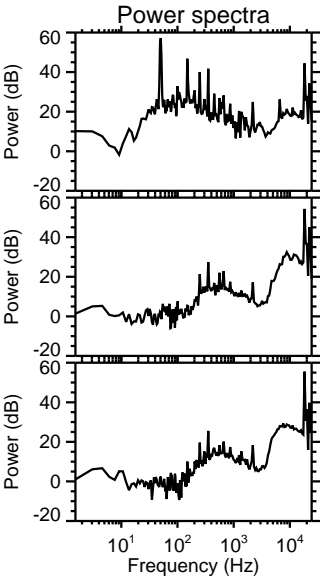
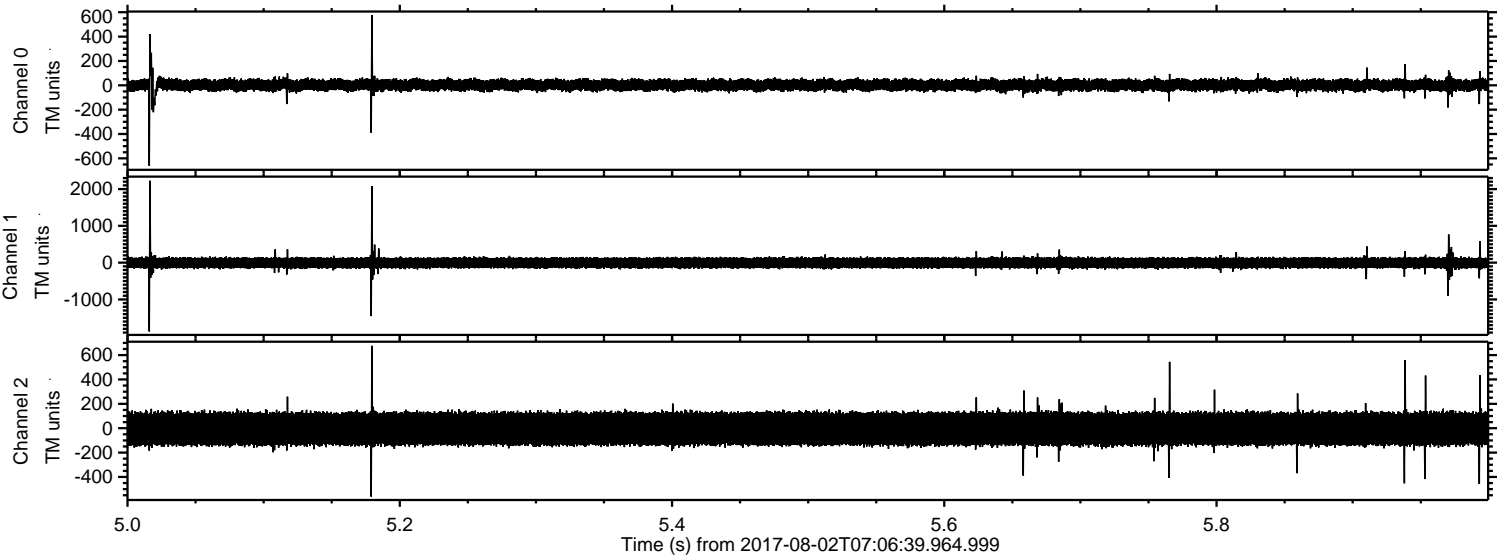
Processed Wed Aug 2 09:15:01 2017 by ELM ver.2012-10-06 from 001\_\_elm20170802\_070638\_\_dat00.bin





ELMAVAN 3D WAVEFORMS (Measured data sampled at 50 kHz) 51000 packets of 144 samples from 2017-08-02T07:06:39.964.999. Part 6/147

Processed Wed Aug 2 09:15:02 2017 by ELM ver.2012-10-06 from 001\_\_elm20170802\_070638\_\_dat00.bin



Channel 0  
mn: -661  
mx: 577  
 $\mu$ : 2.1  
 $\sigma$ : 27.6

Channel 1  
mn: -1871  
mx: 2227  
 $\mu$ : -5.9  
 $\sigma$ : 81.9

Channel 2  
mn: -561  
mx: 676  
 $\mu$ : -4.6  
 $\sigma$ : 82.4



Processed Wed Aug 2 09:15:03 2017 by ELM ver.2012-10-06 from 001\_\_elm20170802\_070638\_\_dat00.bin

