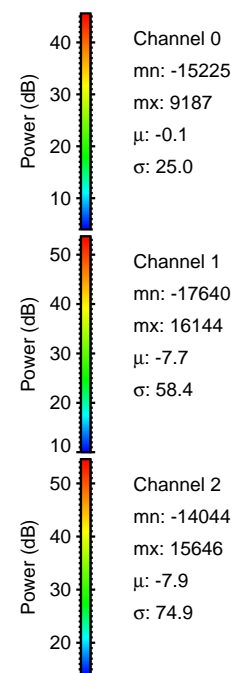
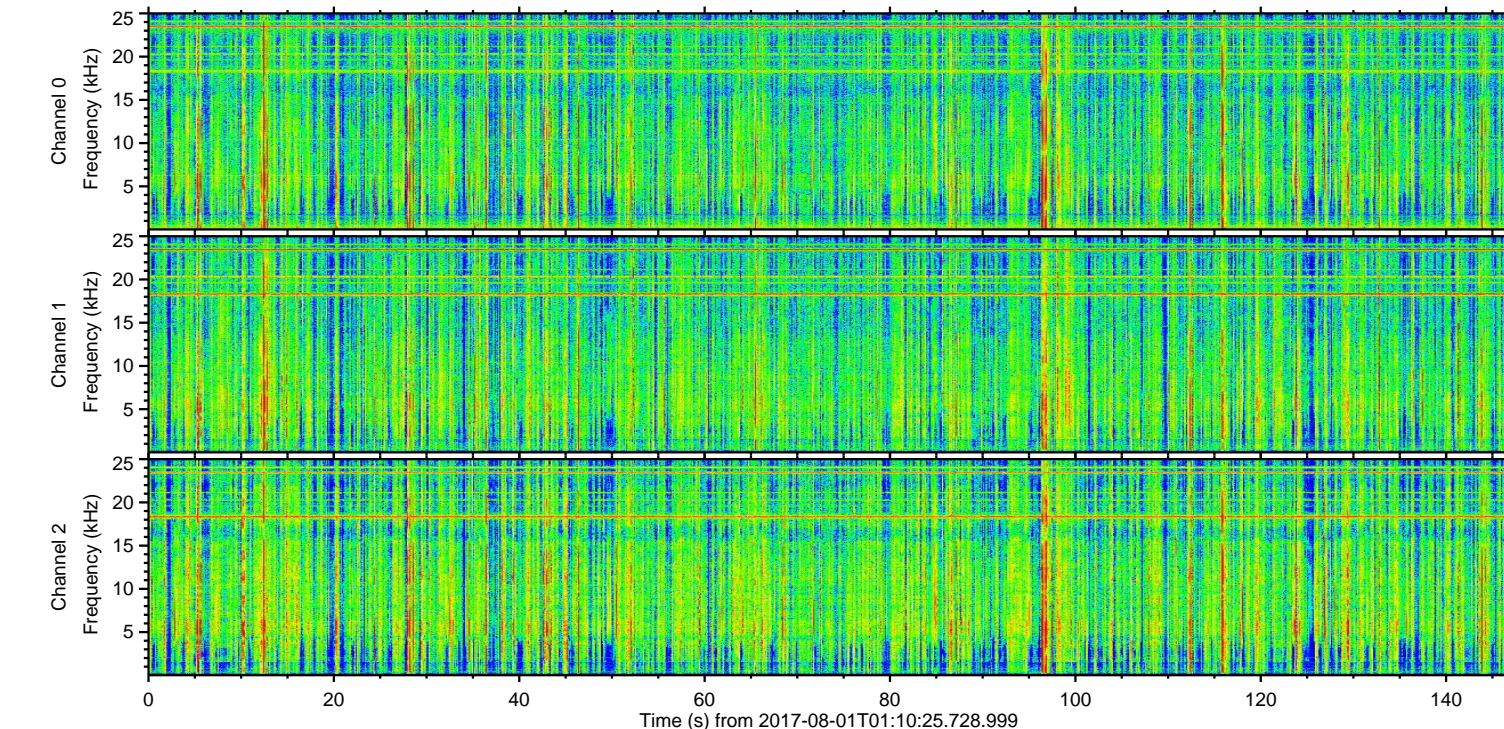
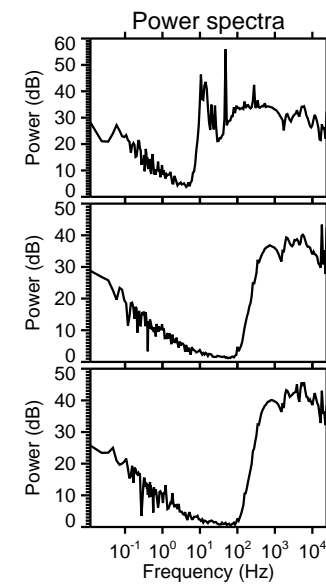
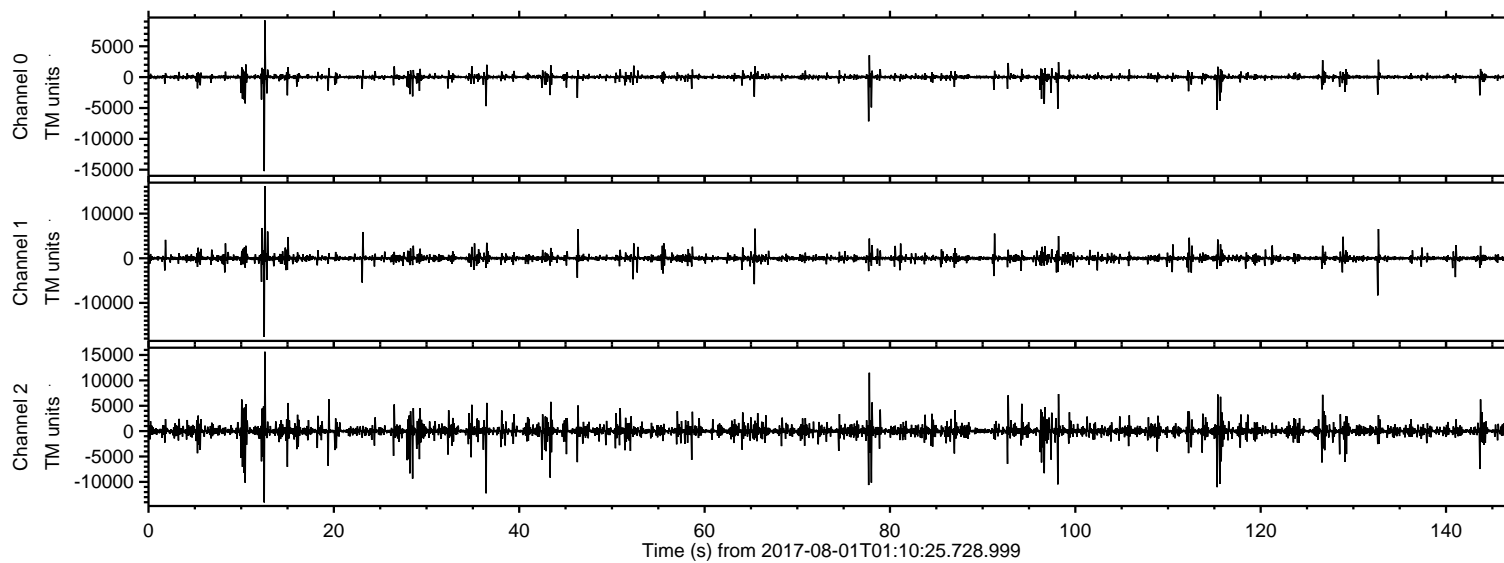
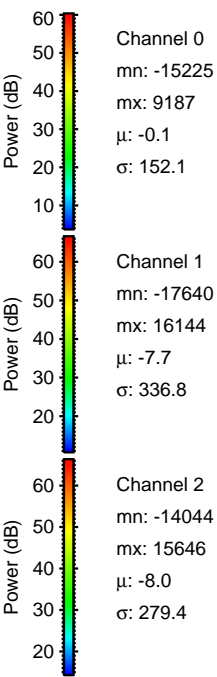
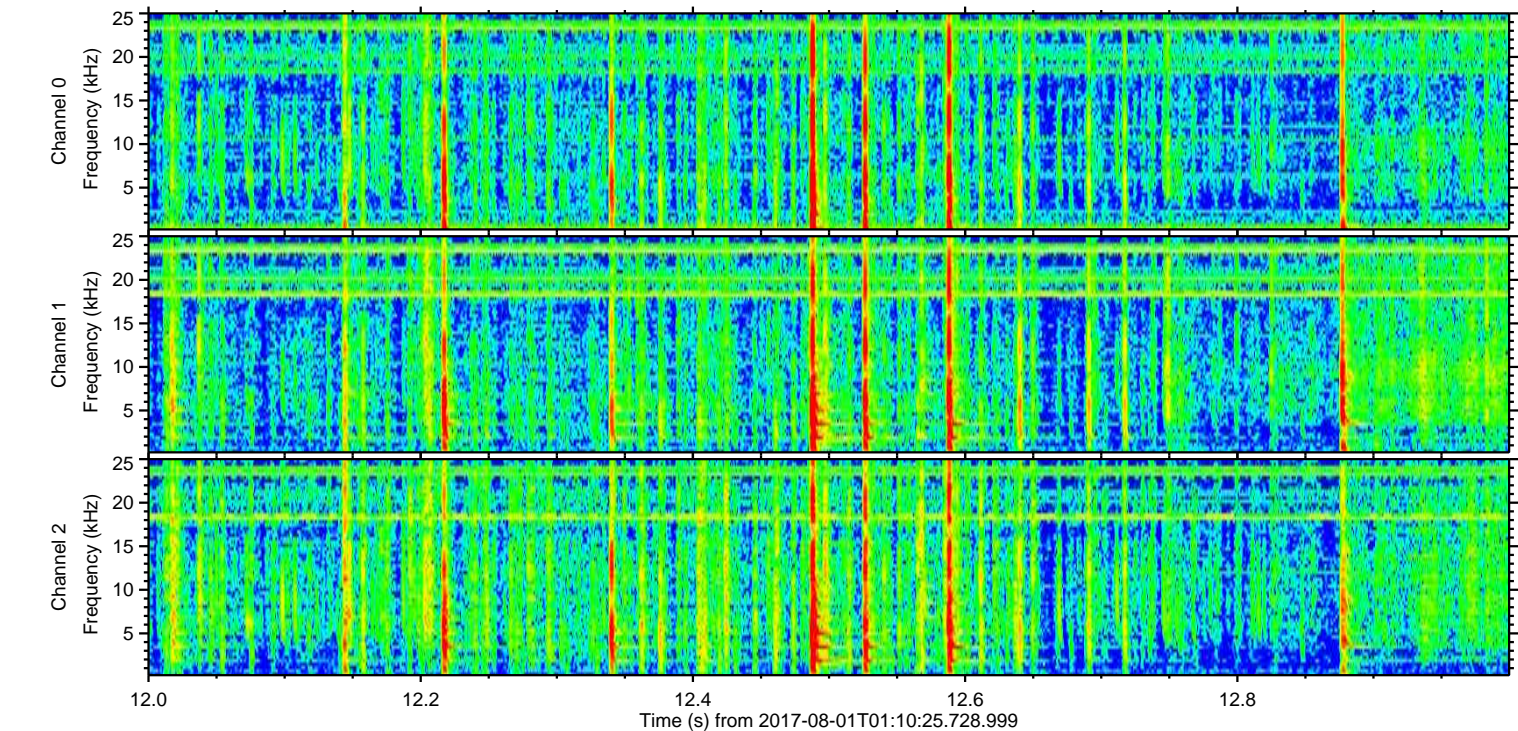
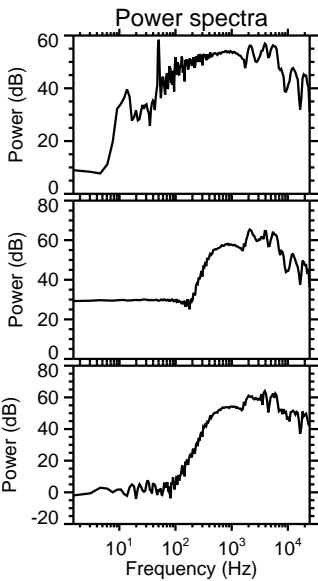
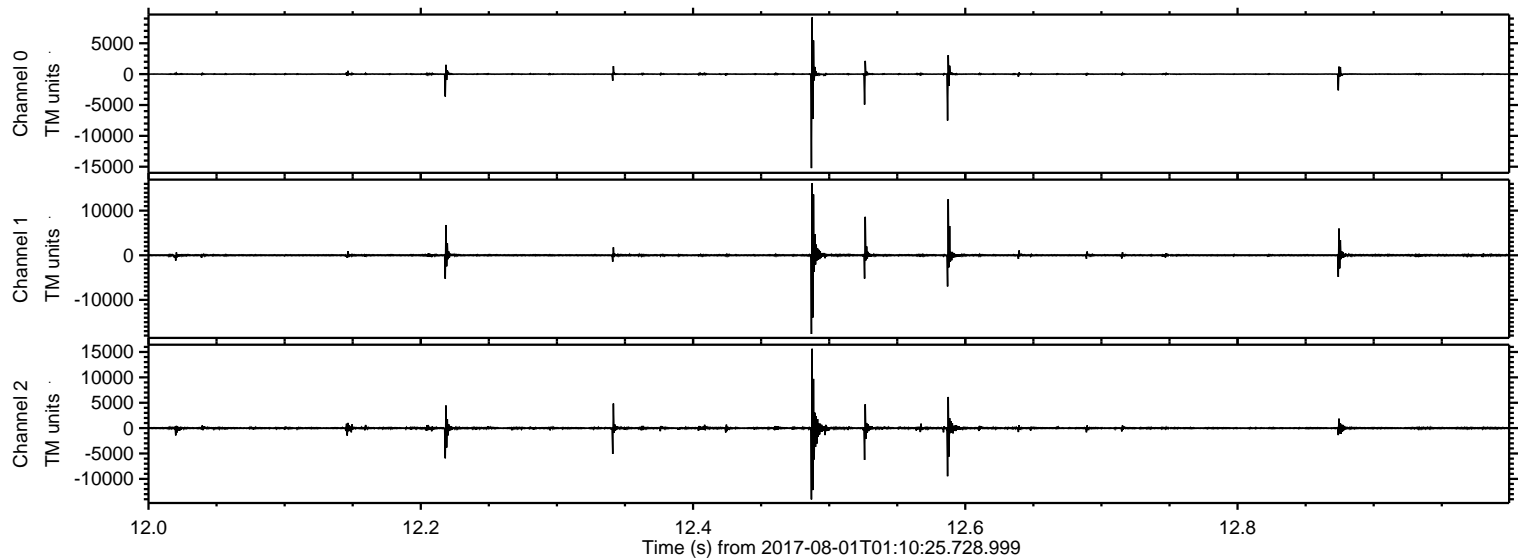


ELMAVAN 3D WAVEFORMS (Measured data sampled at 50 kHz) 51000 packets of 144 samples from 2017-08-01T01:10:25.728.999.

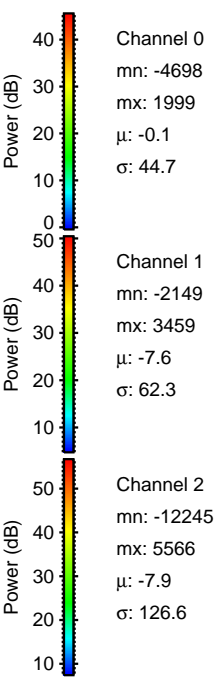
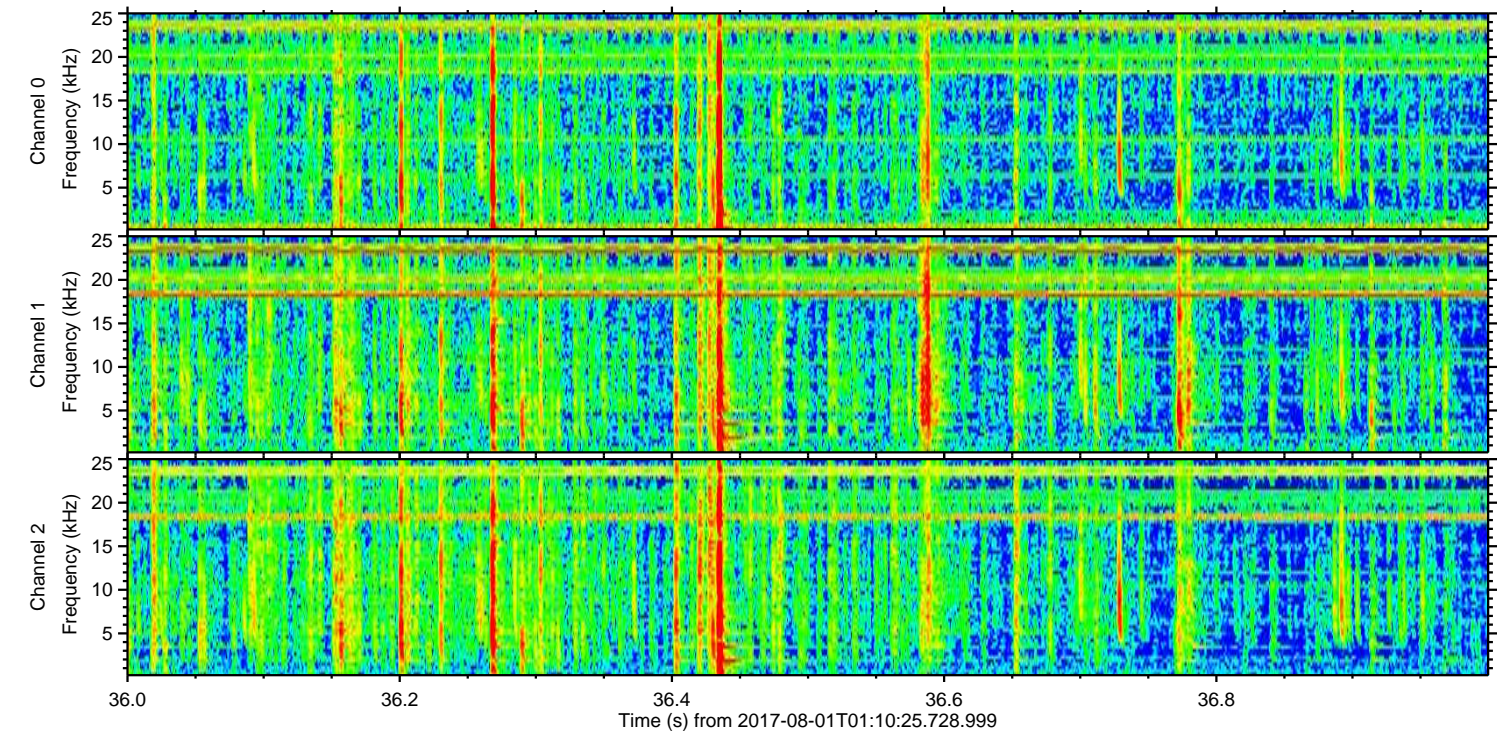
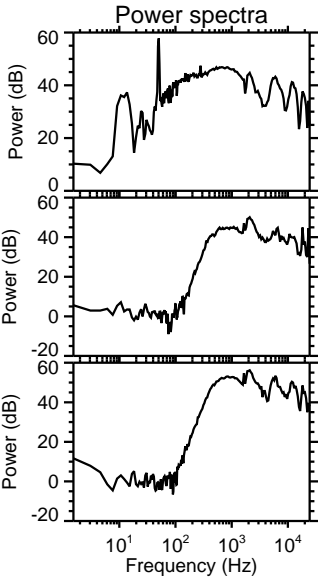
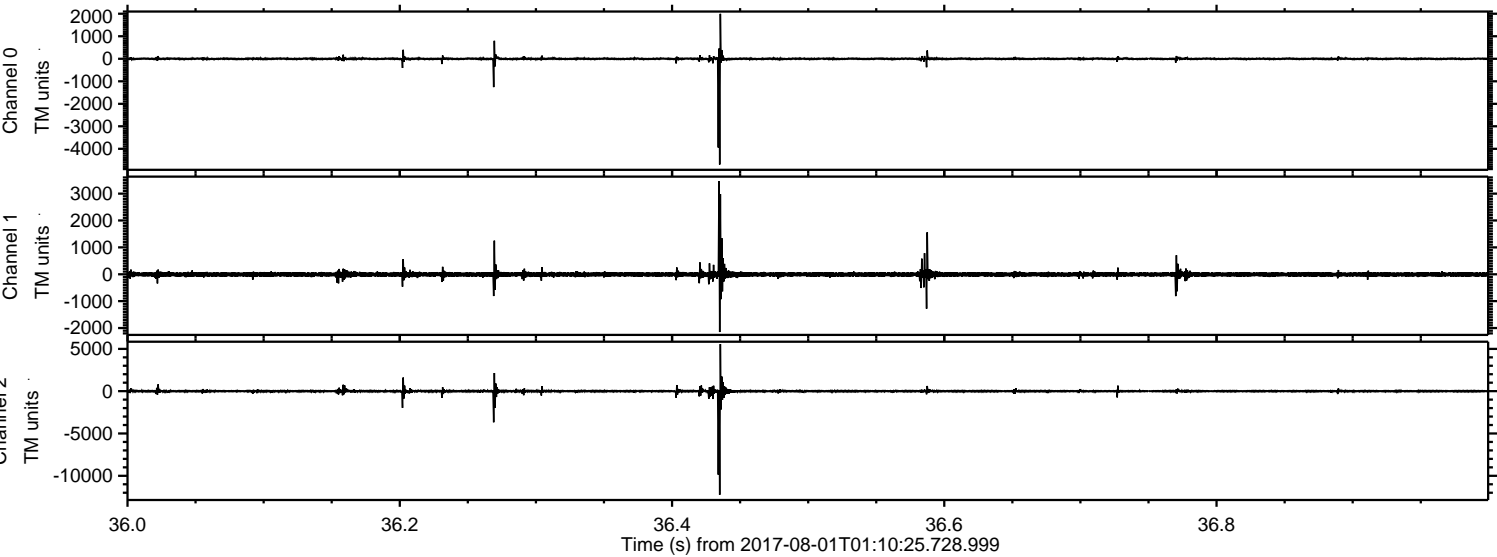
Processed Tue Aug 1 03:17:52 2017 by ELM ver.2012-10-06 from 001__elm20170801_011024__dat00.bin



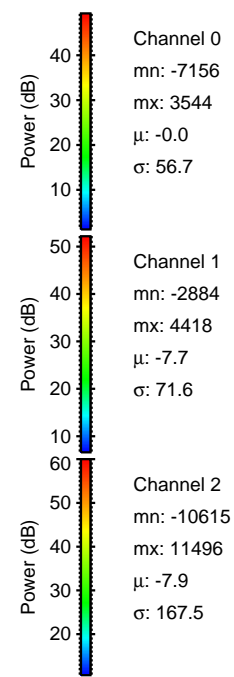
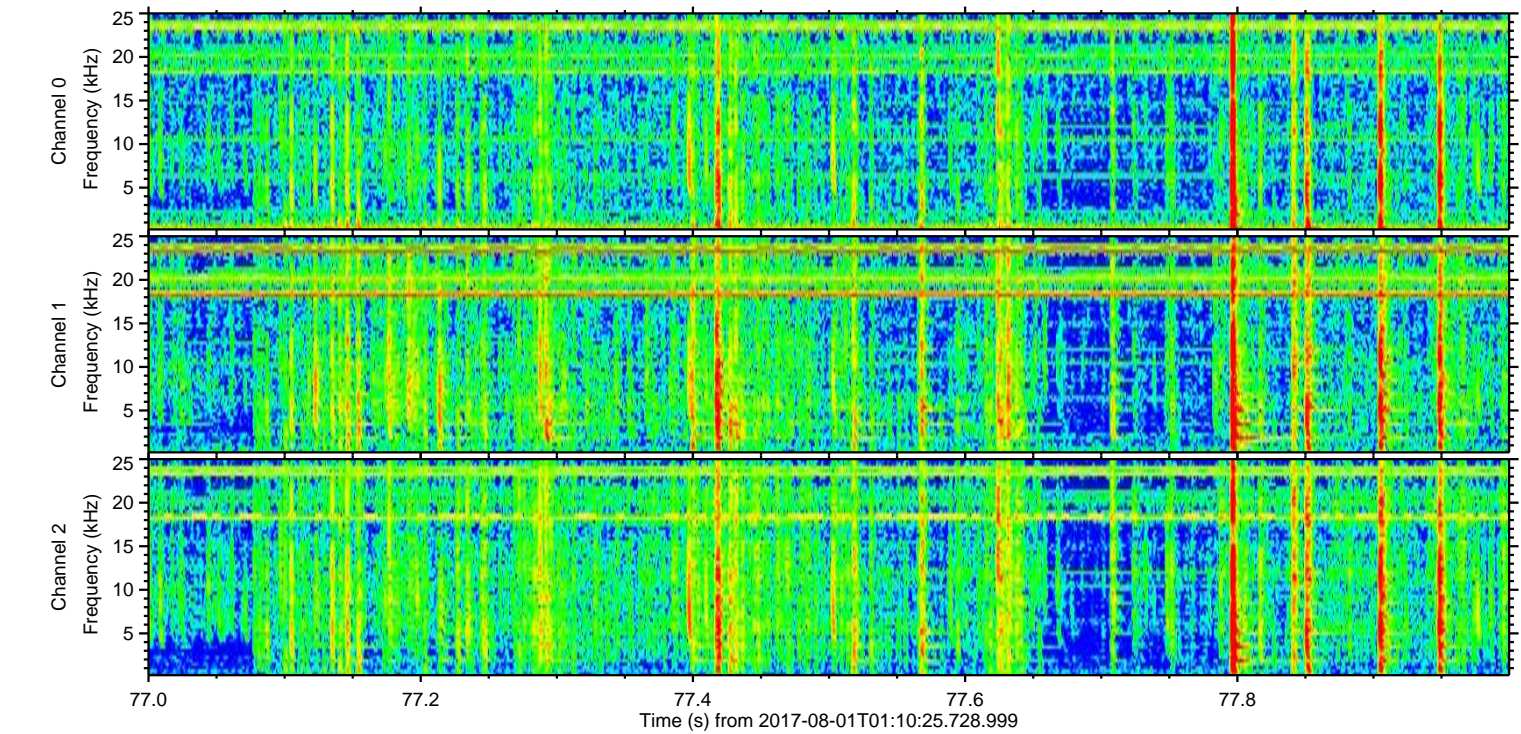
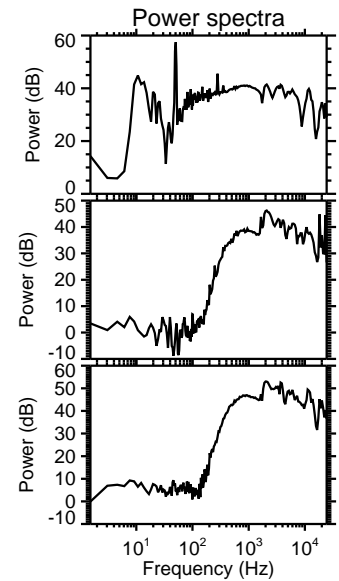
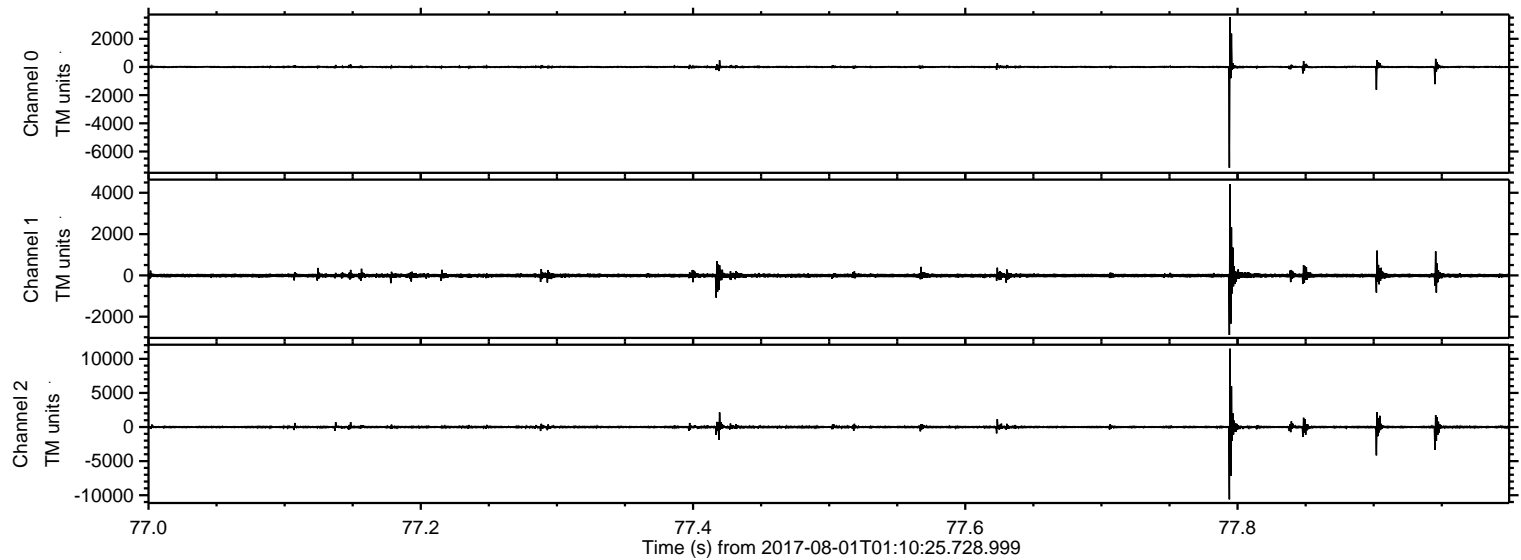
Processed Tue Aug 1 03:17:57 2017 by ELM ver.2012-10-06 from 001__elm20170801_011024__dat00.bin



Processed Tue Aug 1 03:17:58 2017 by ELM ver.2012-10-06 from 001__elm20170801_011024__dat00.bin

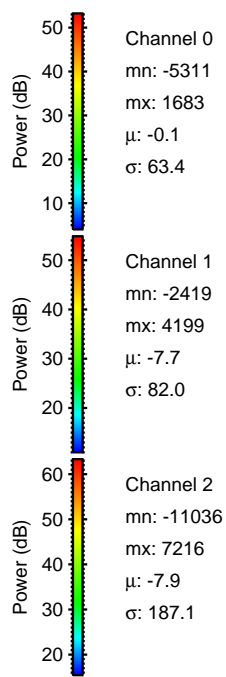
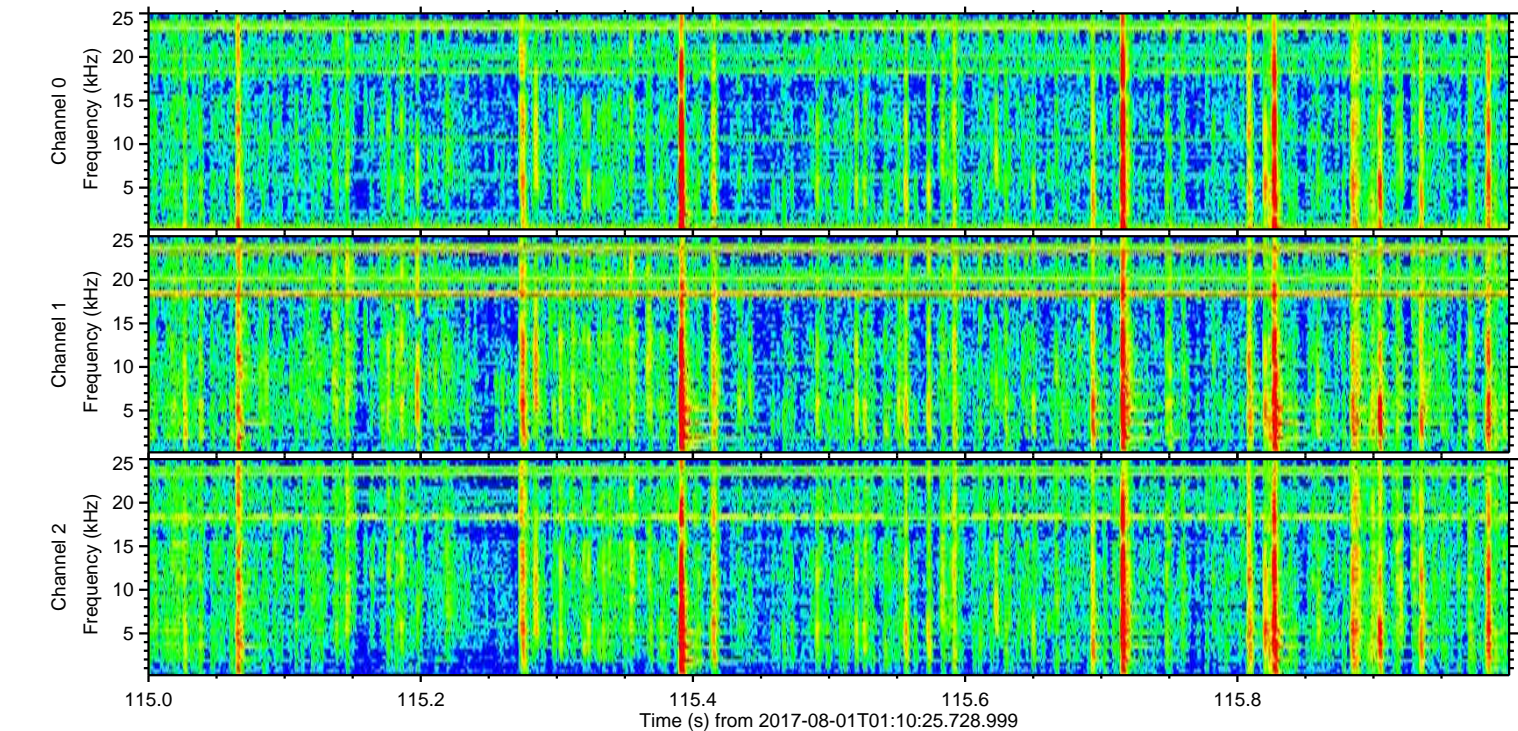
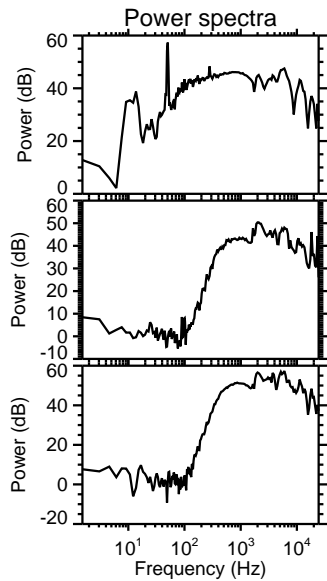
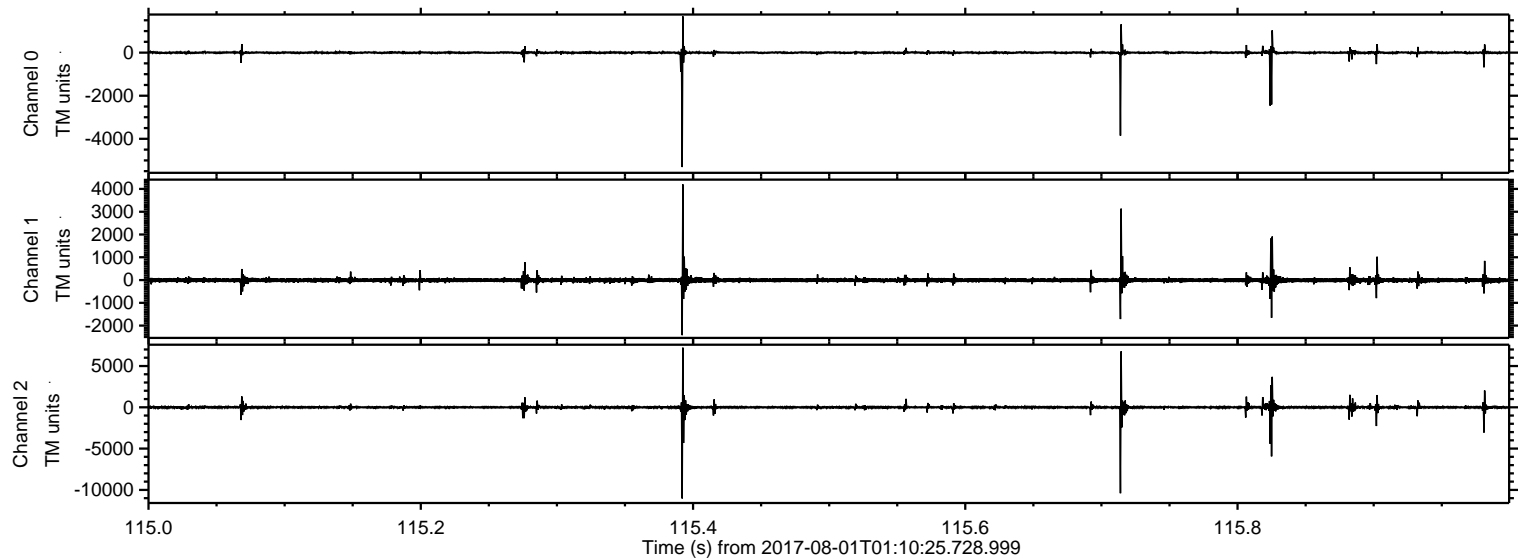


Processed Tue Aug 1 03:17:59 2017 by ELM ver.2012-10-06 from 001__elm20170801_011024__dat00.bin

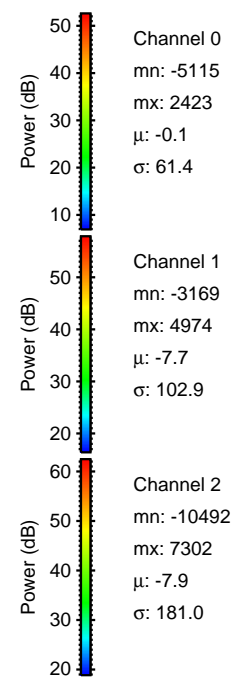
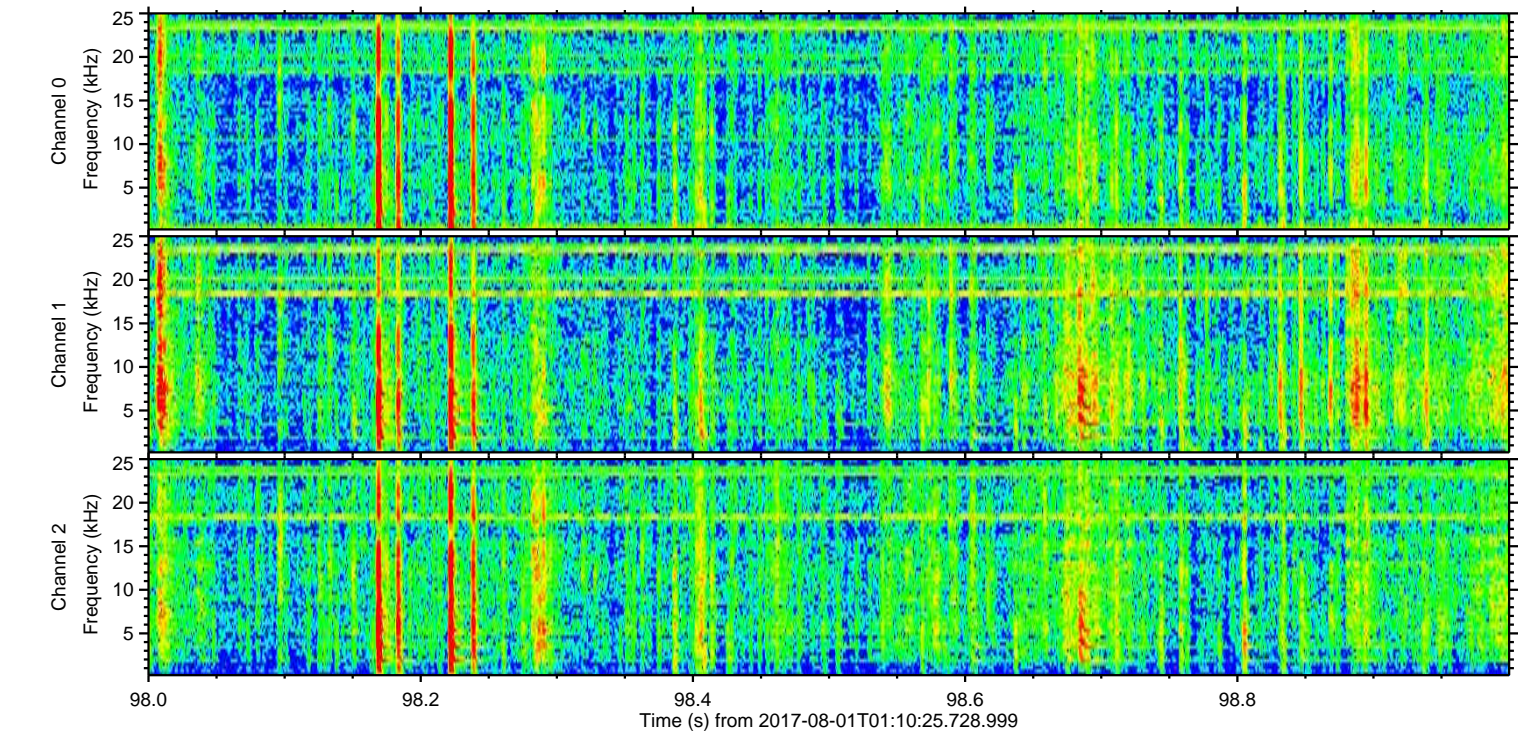
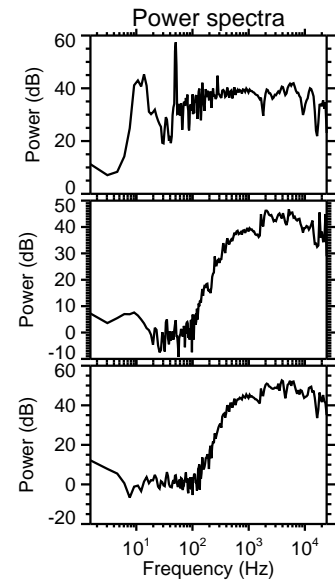
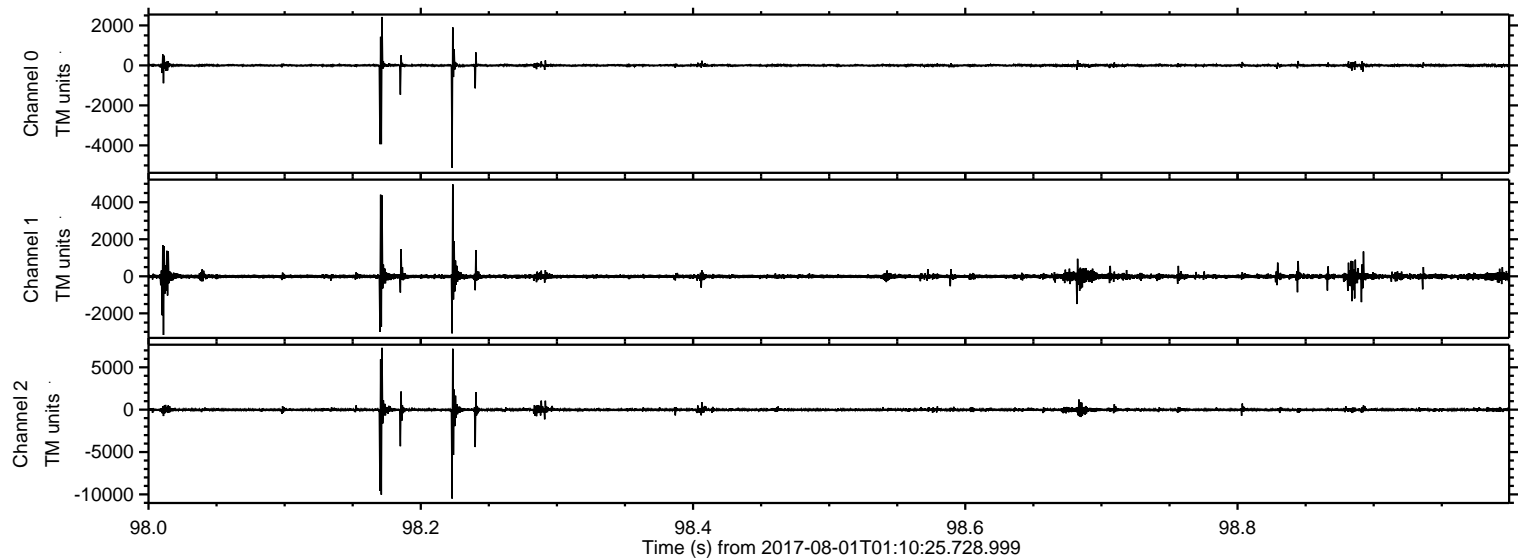


ELMAVAN 3D WAVEFORMS (Measured data sampled at 50 kHz) 51000 packets of 144 samples from 2017-08-01T01:10:25.728.999. Part 116/147

Processed Tue Aug 1 03:18:00 2017 by ELM ver.2012-10-06 from 001__elm20170801_011024__dat00.bin

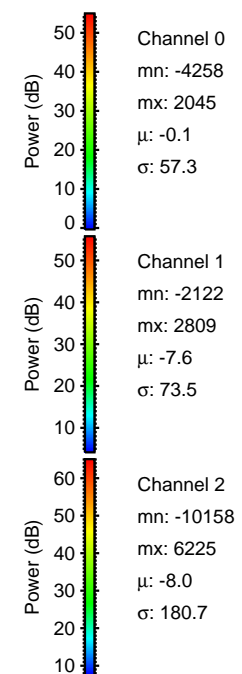
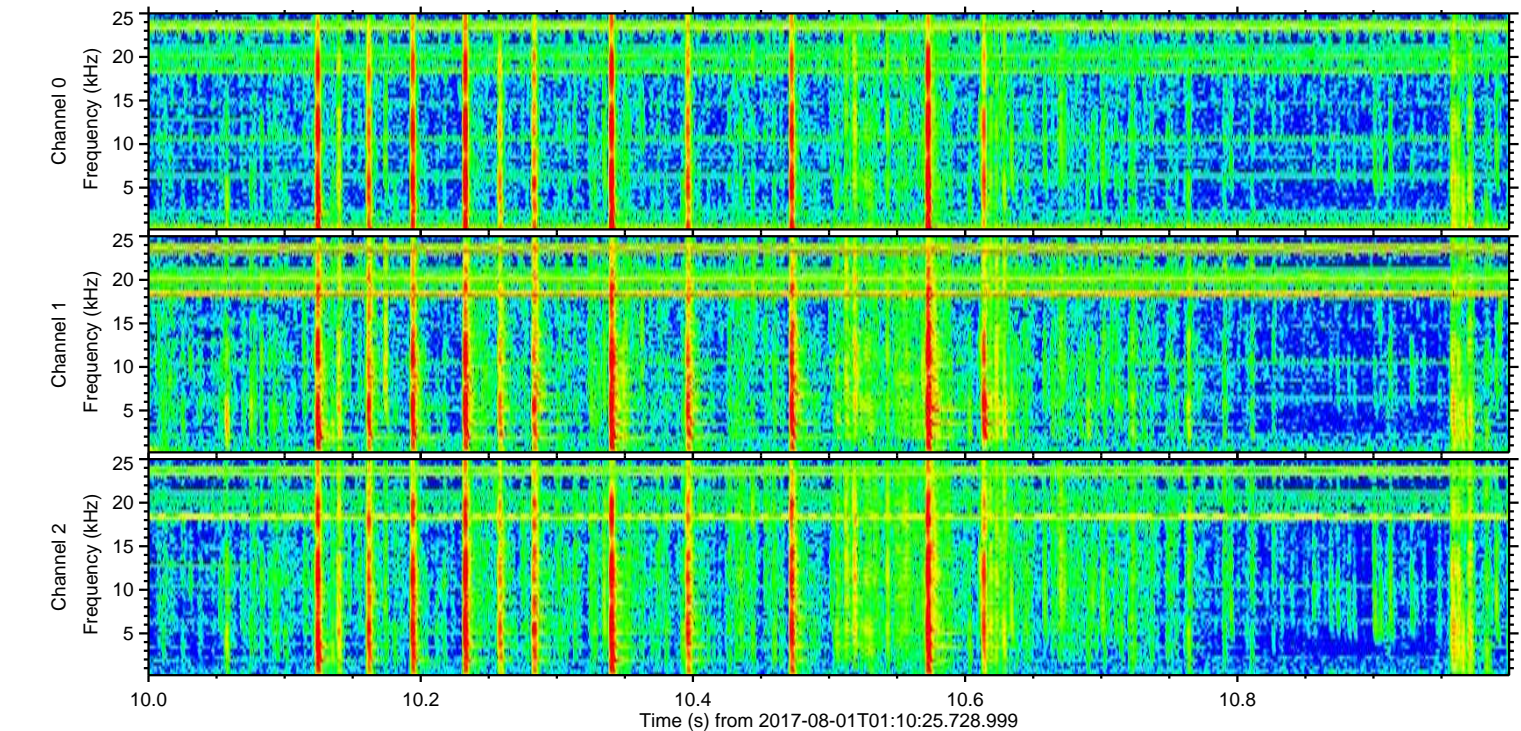
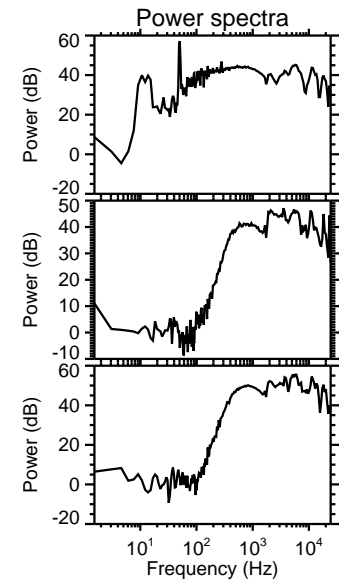
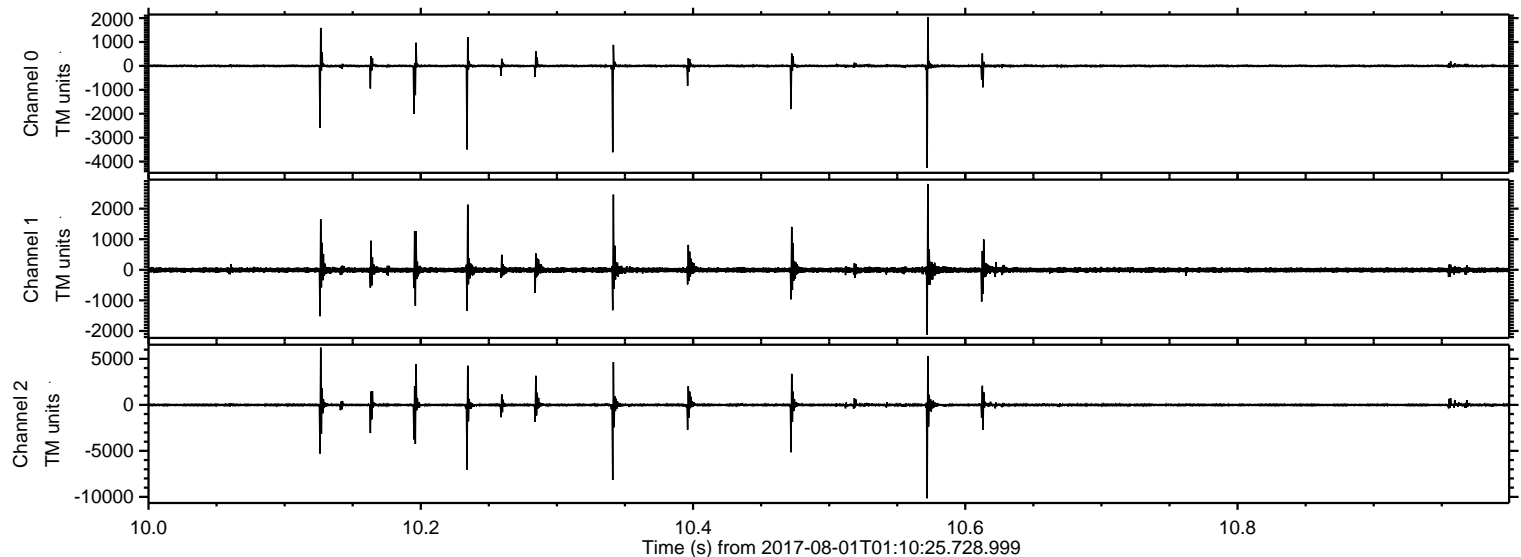


Processed Tue Aug 1 03:18:00 2017 by ELM ver.2012-10-06 from 001__elm20170801_011024__dat00.bin

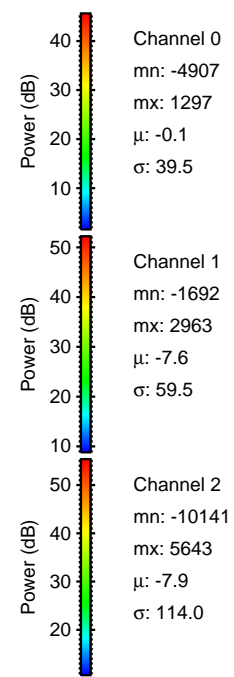
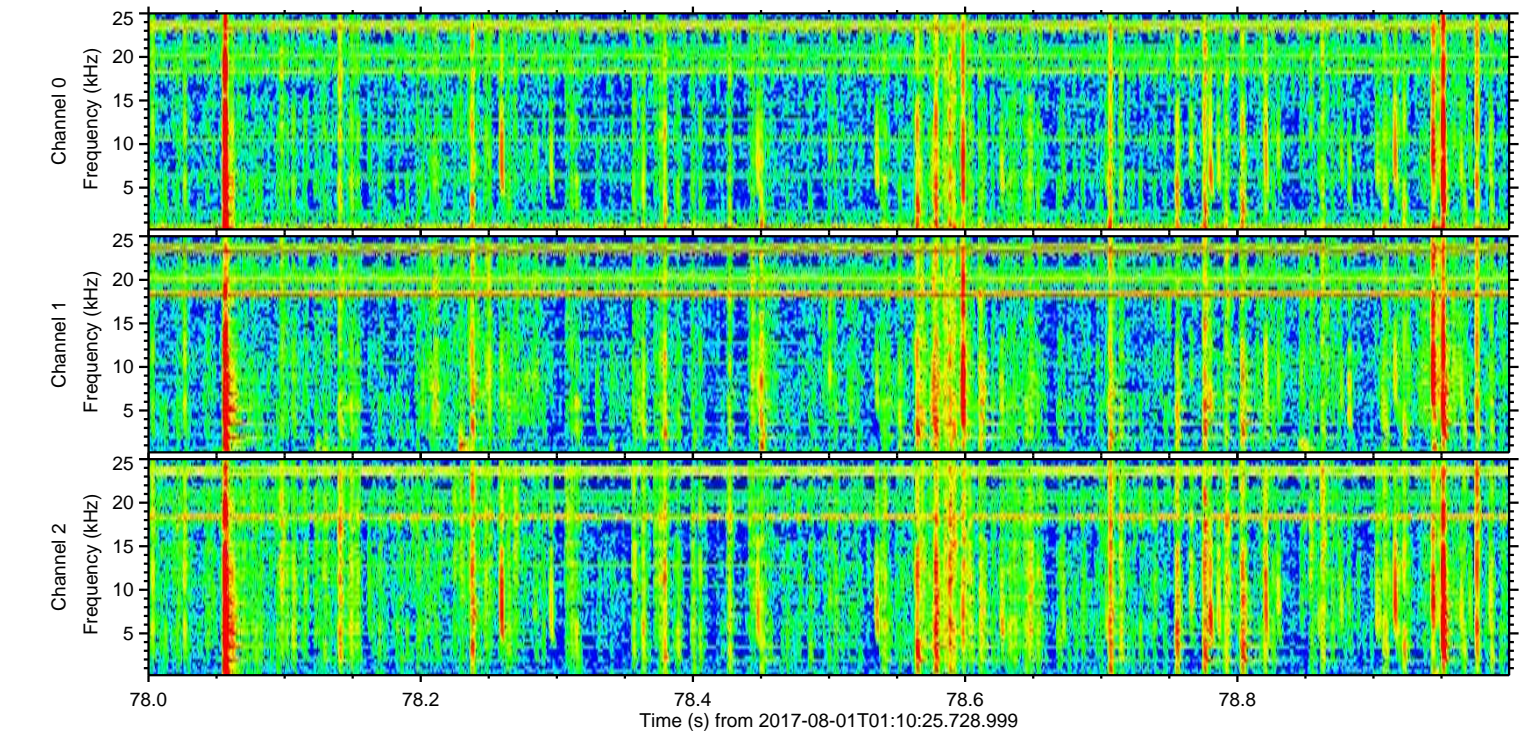
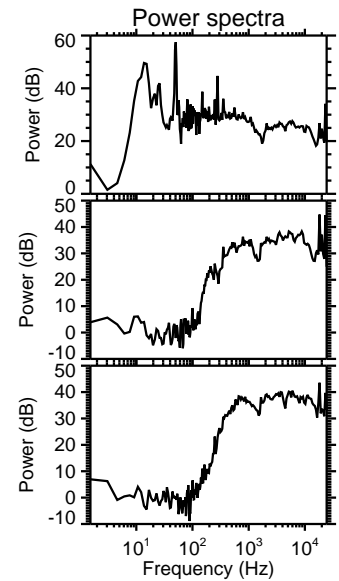
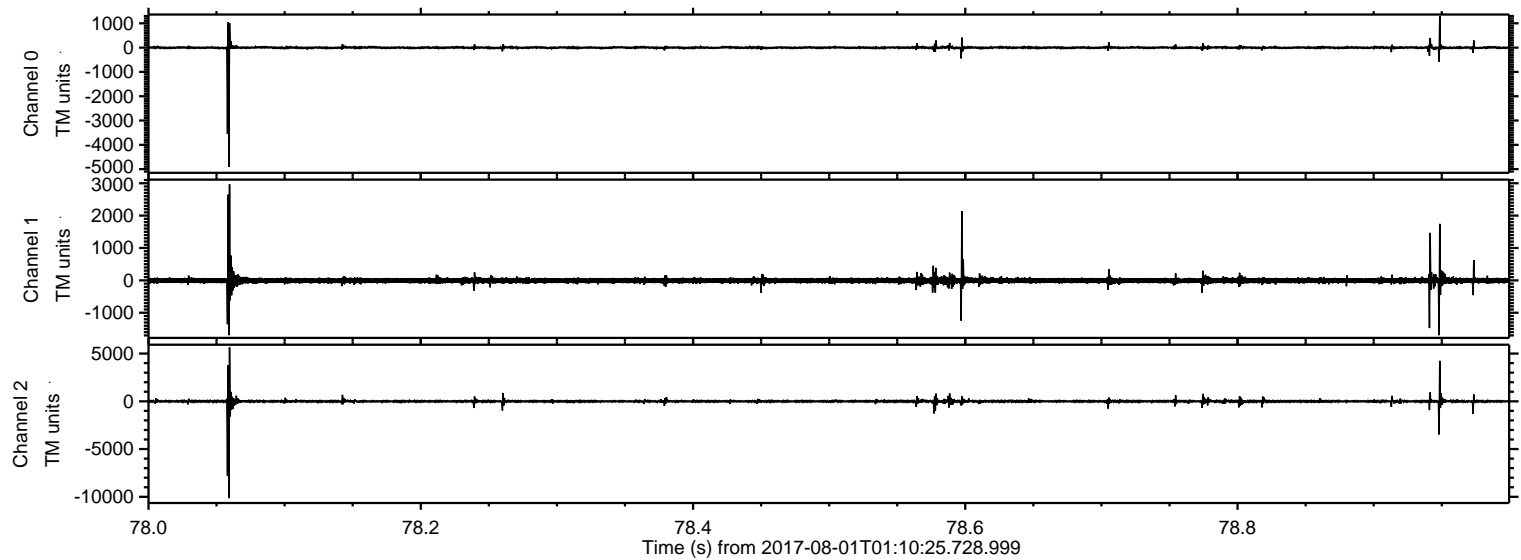


ELMAVAN 3D WAVEFORMS (Measured data sampled at 50 kHz) 51000 packets of 144 samples from 2017-08-01T01:10:25.728.999. Part 11/147

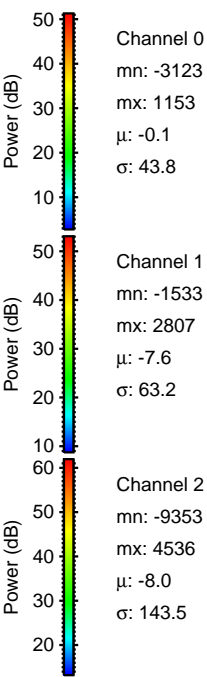
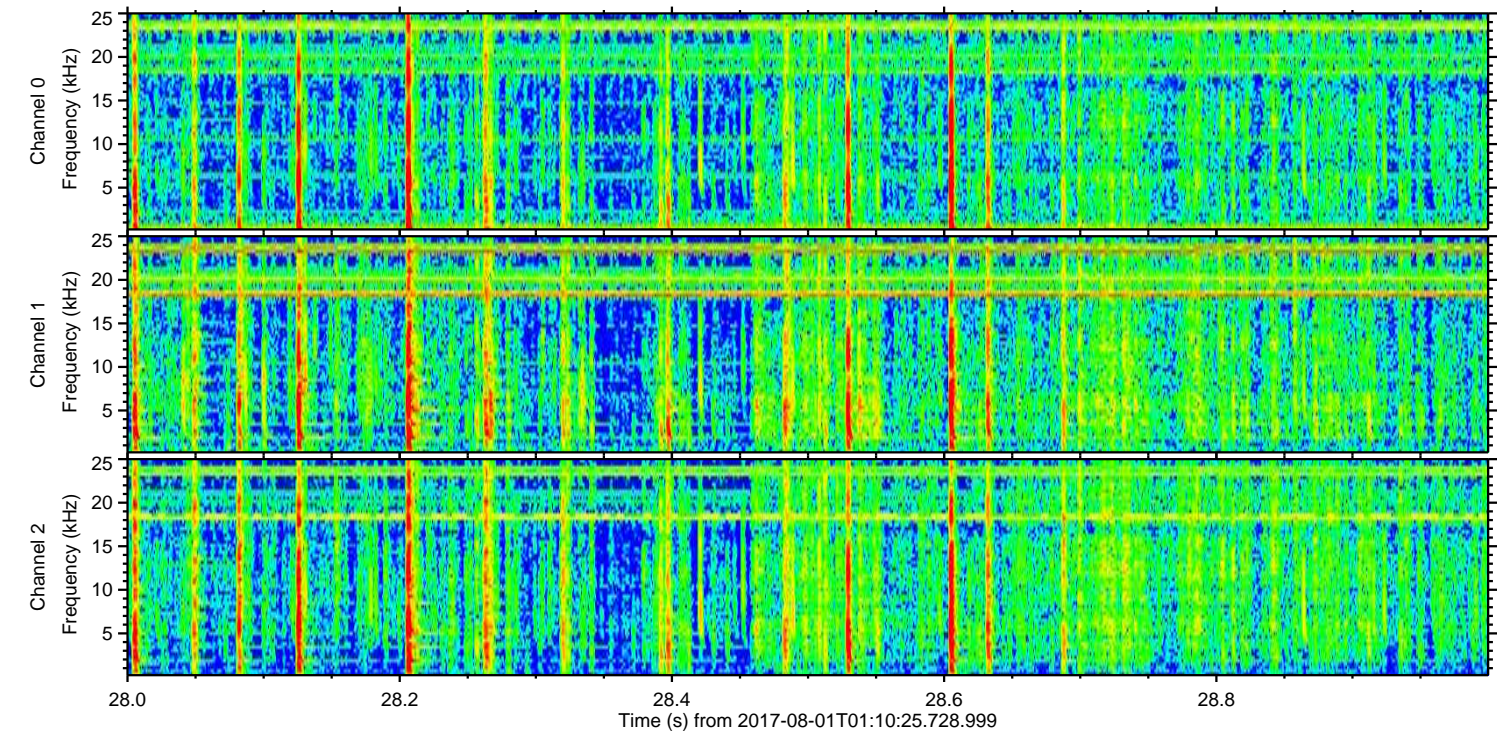
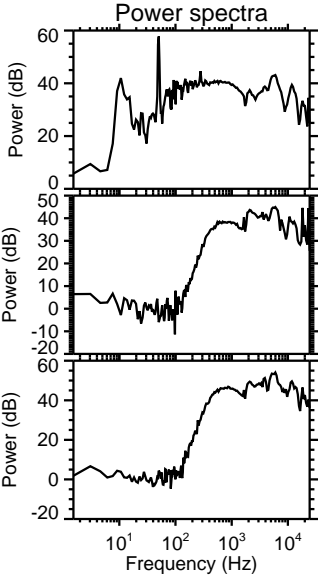
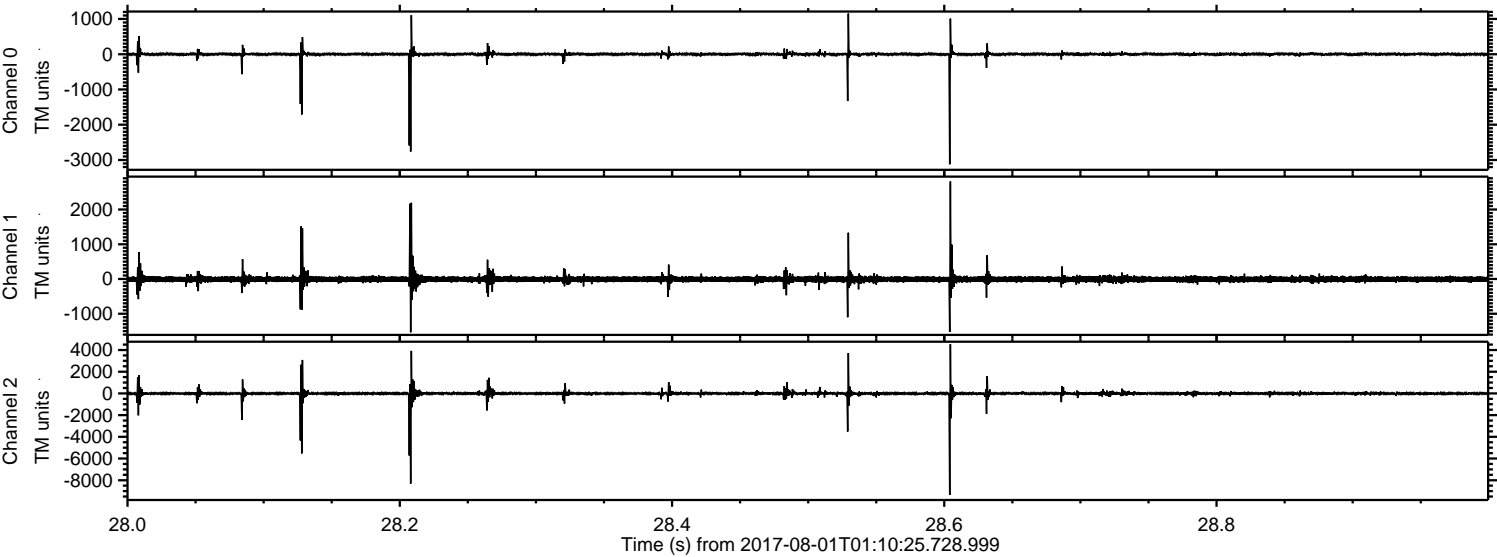
Processed Tue Aug 1 03:18:01 2017 by ELM ver.2012-10-06 from 001__elm20170801_011024__dat00.bin



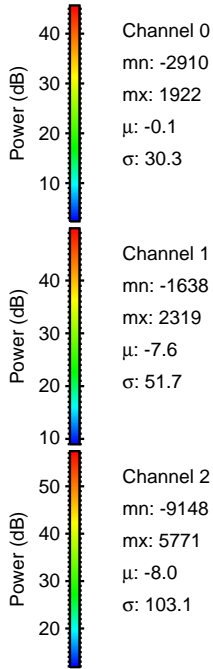
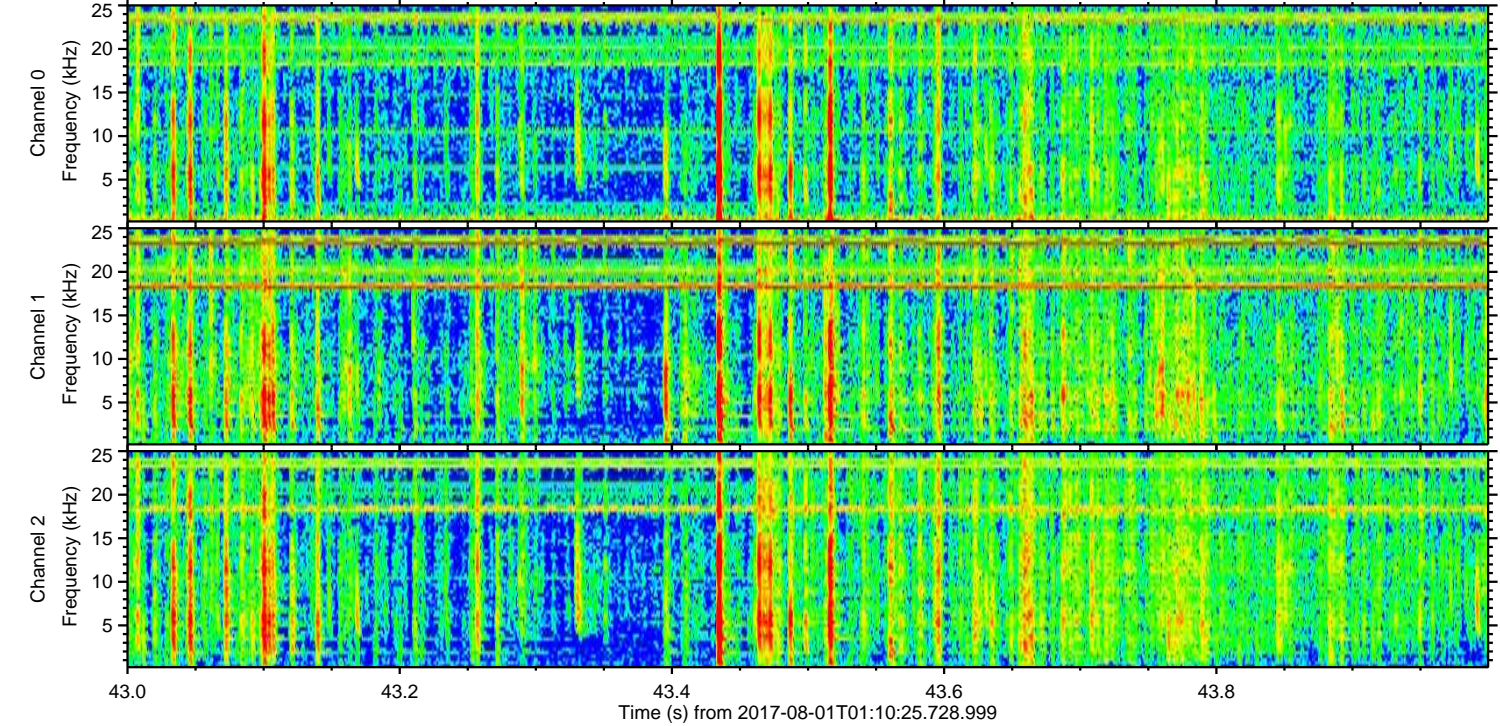
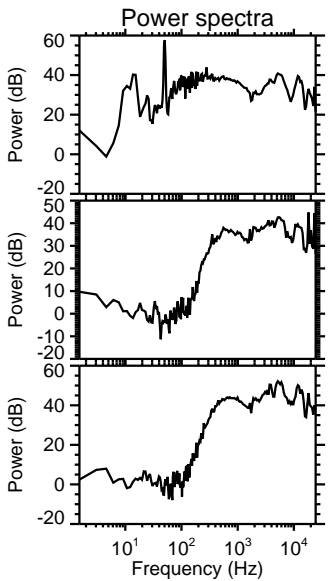
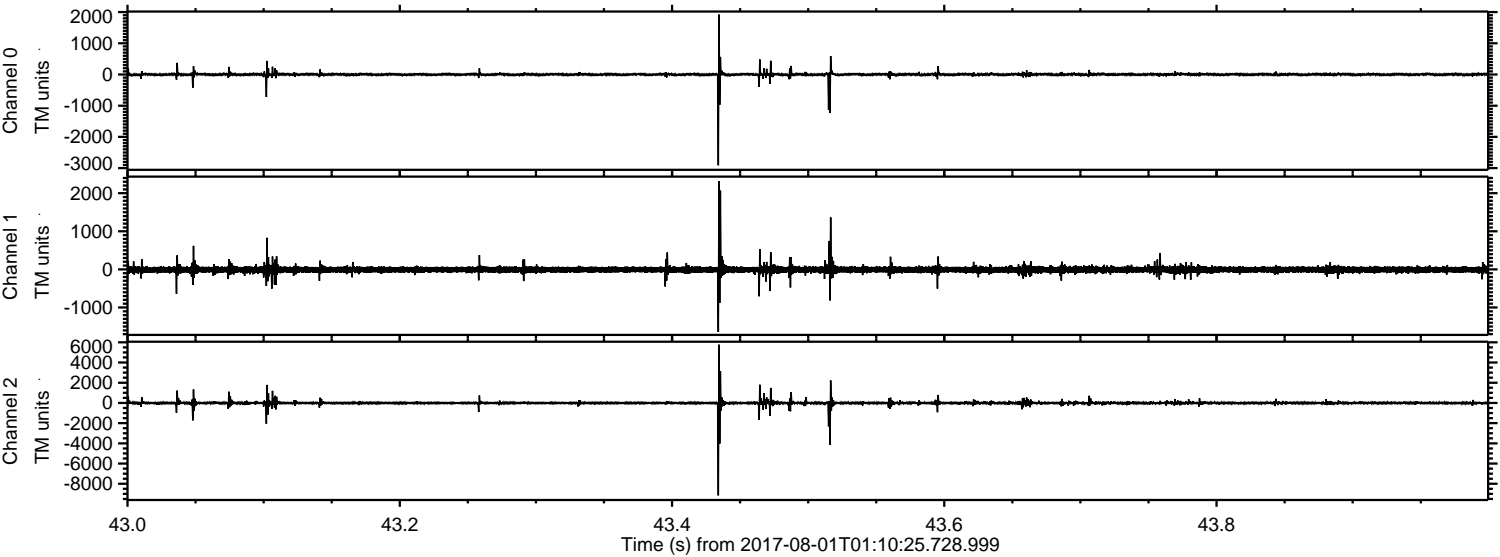
Processed Tue Aug 1 03:18:02 2017 by ELM ver.2012-10-06 from 001__elm20170801_011024__dat00.bin



Processed Tue Aug 1 03:18:02 2017 by ELM ver.2012-10-06 from 001__elm20170801_011024__dat00.bin



Processed Tue Aug 1 03:18:03 2017 by ELM ver.2012-10-06 from 001__elm20170801_011024__dat00.bin



Channel 0
mn: -2910
mx: 1922
 μ : -0.1
 σ : 30.3

Channel 1
mn: -1638
mx: 2319
 μ : -7.6
 σ : 51.7

Channel 2
mn: -9148
mx: 5771
 μ : -8.0
 σ : 103.1

Processed Tue Aug 1 03:18:03 2017 by ELM ver.2012-10-06 from 001__elm20170801_011024__dat00.bin

