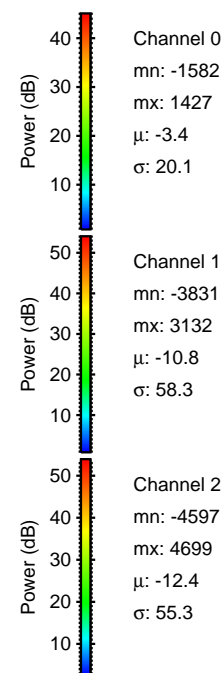
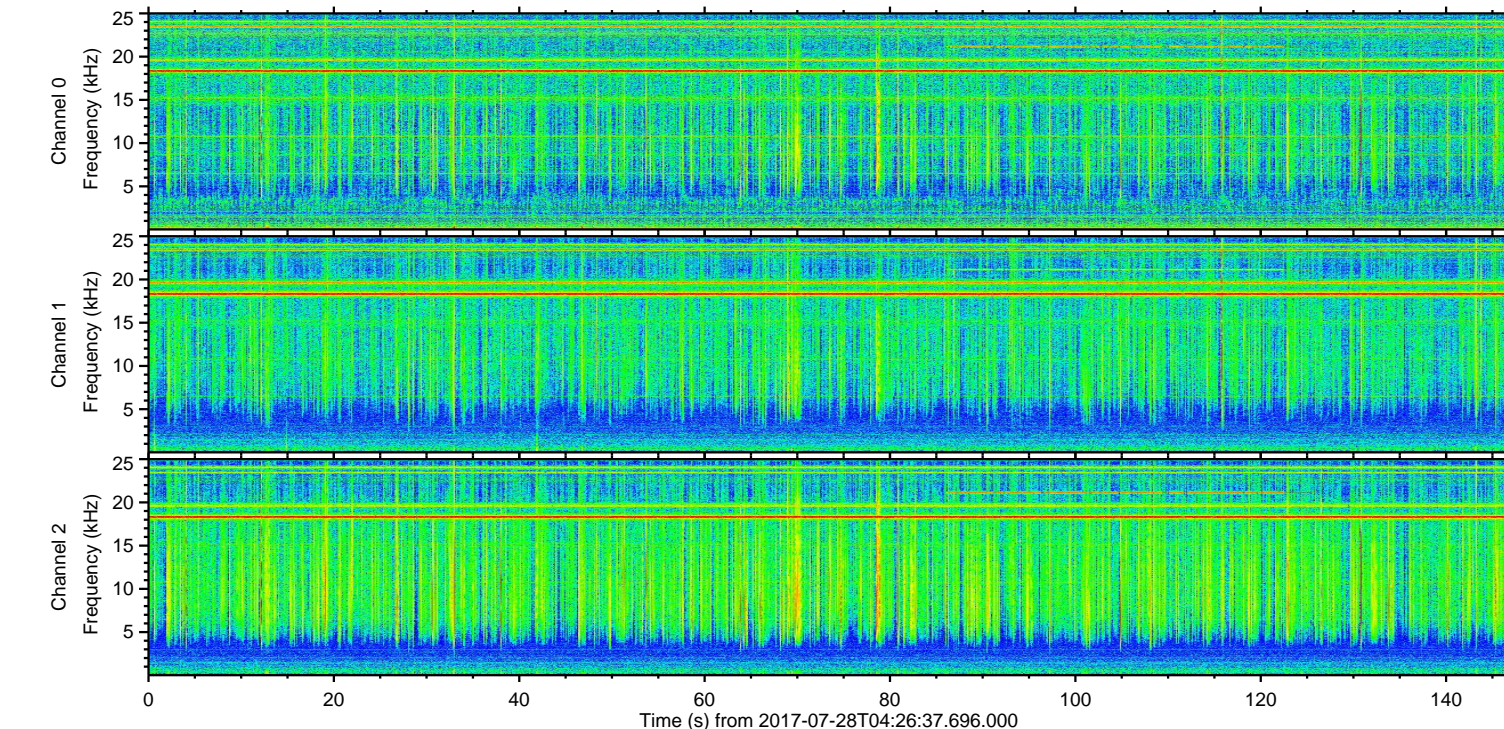
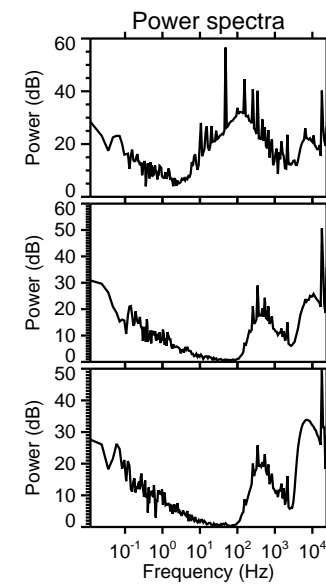
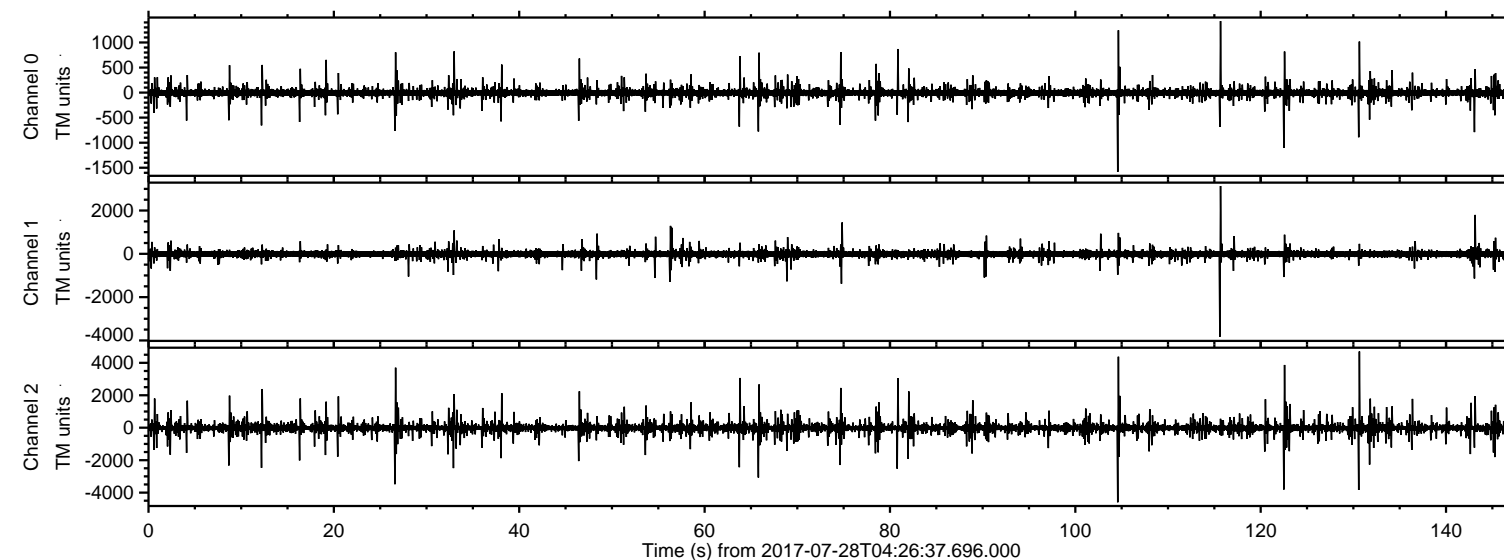


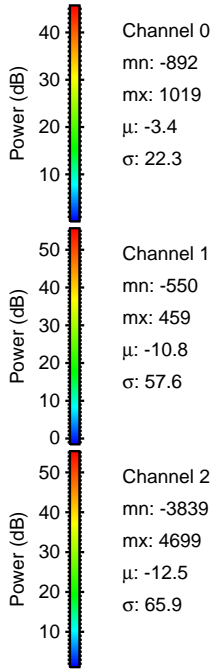
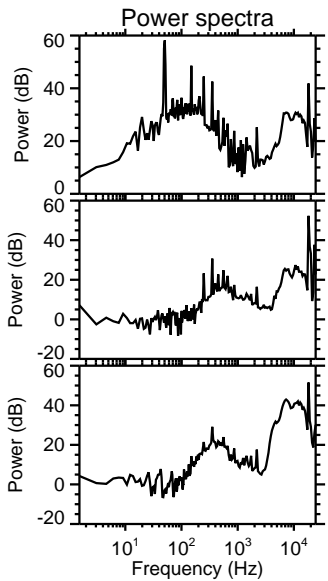
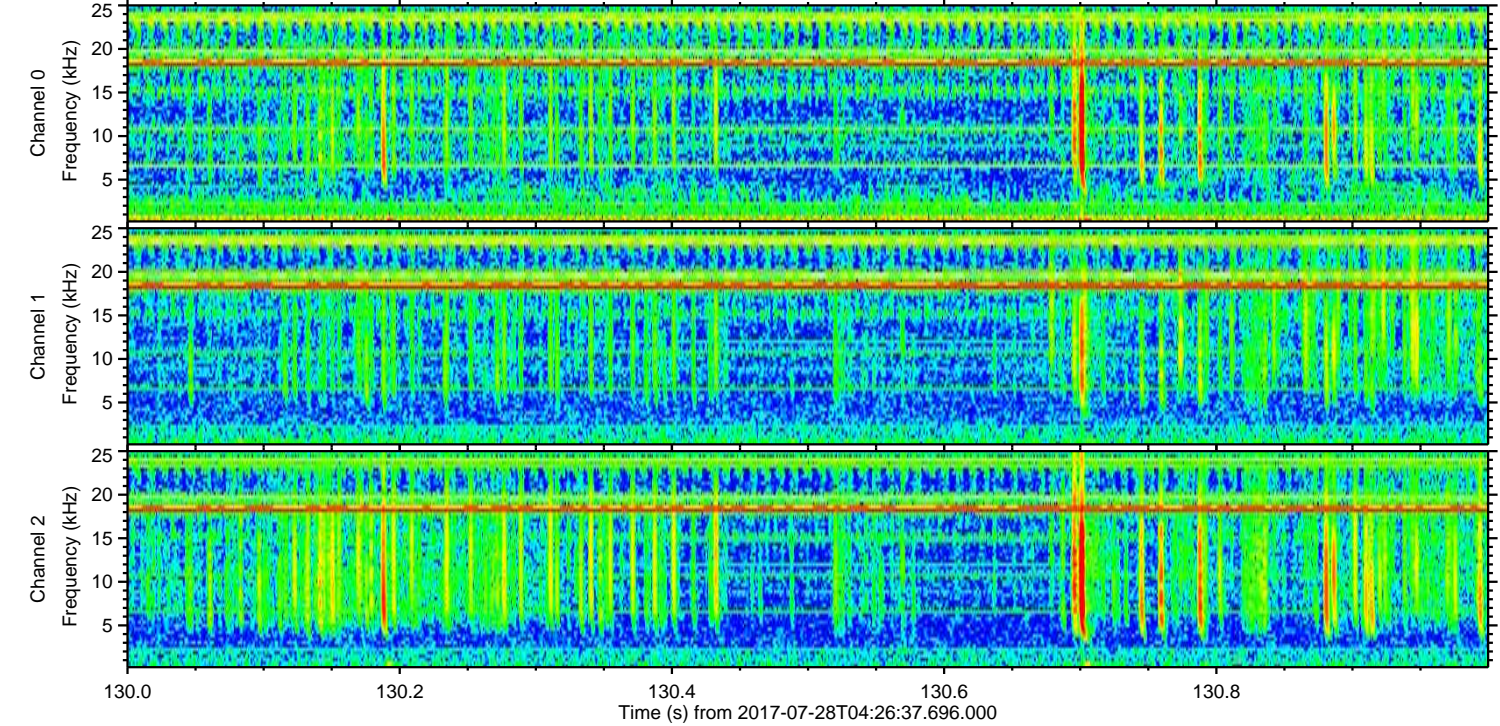
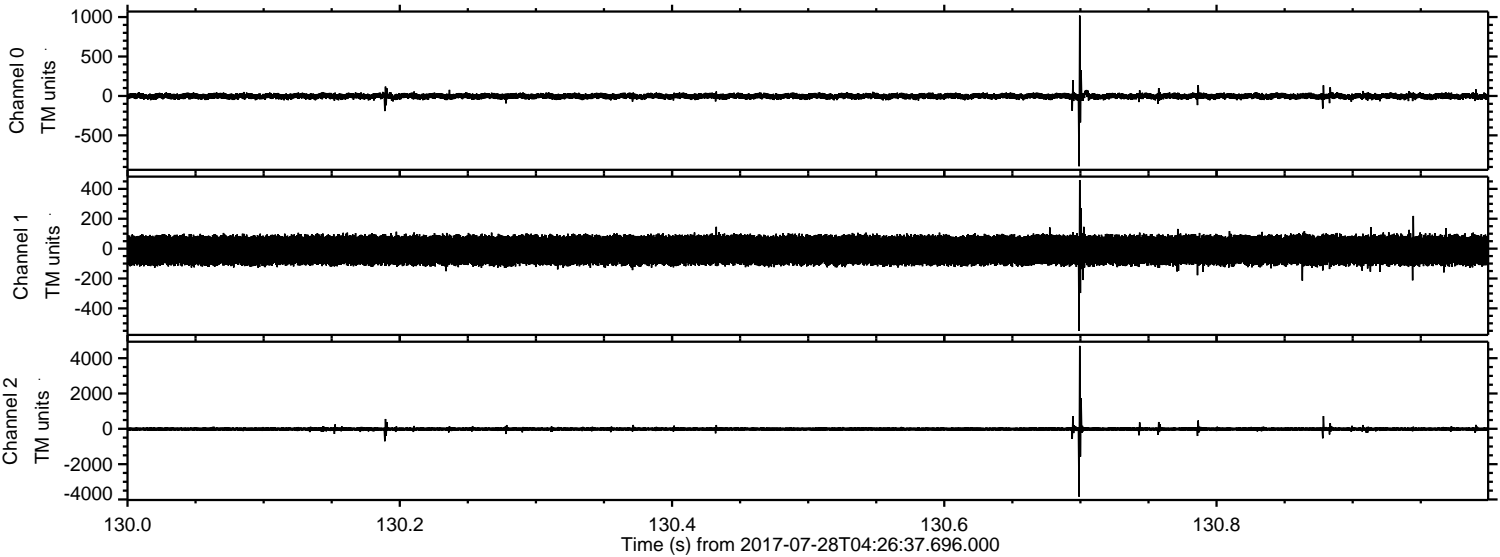
ELMAVAN 3D WAVEFORMS (Measured data sampled at 50 kHz) 51000 packets of 144 samples from 2017-07-28T04:26:37.696.000.

Processed Fri Jul 28 06:34:03 2017 by ELM ver.2012-10-06 from 001__elm20170728_042636__dat00.bin



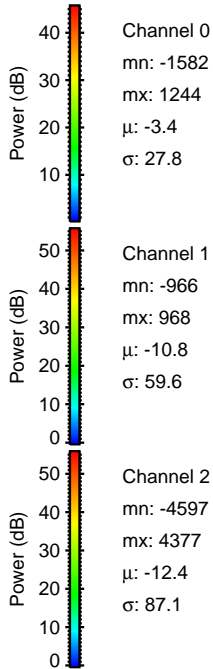
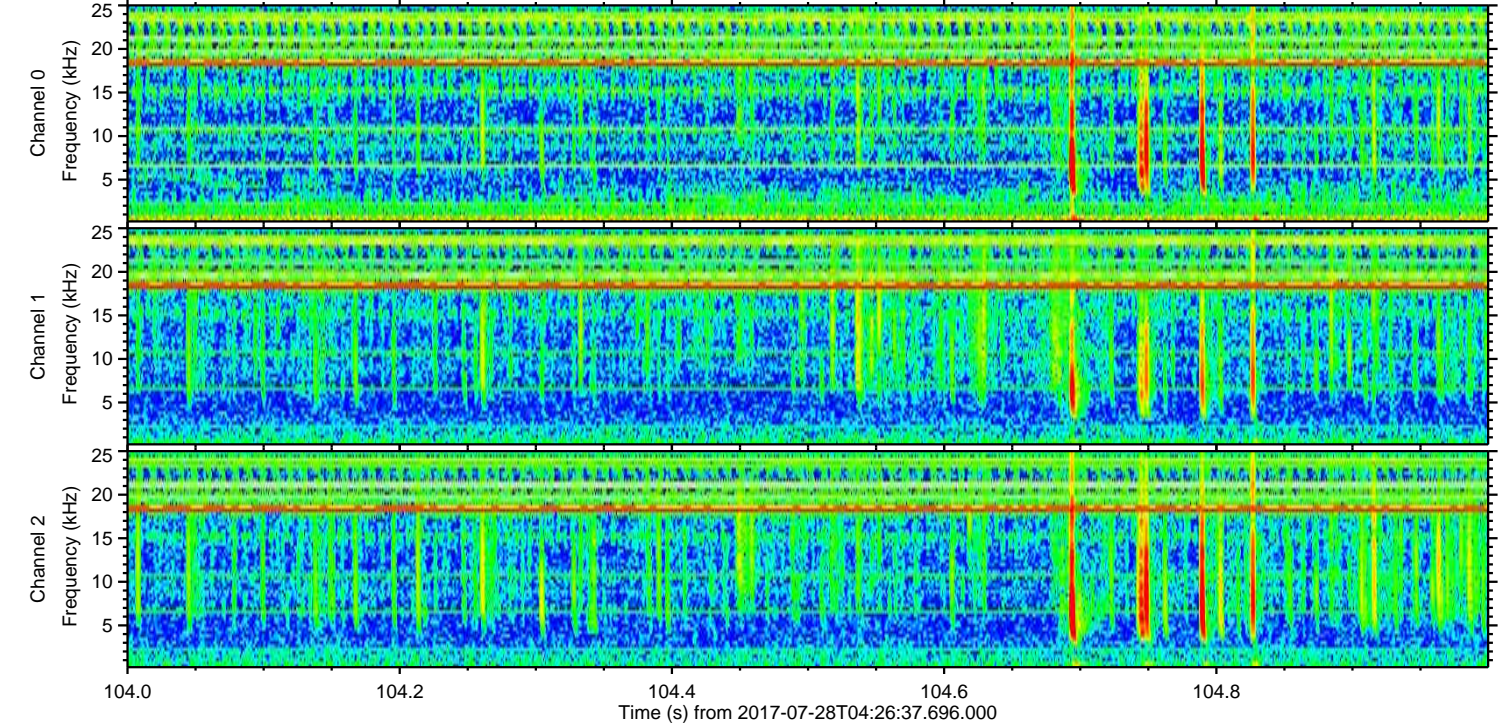
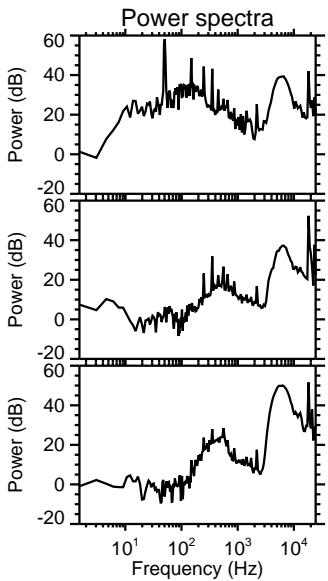
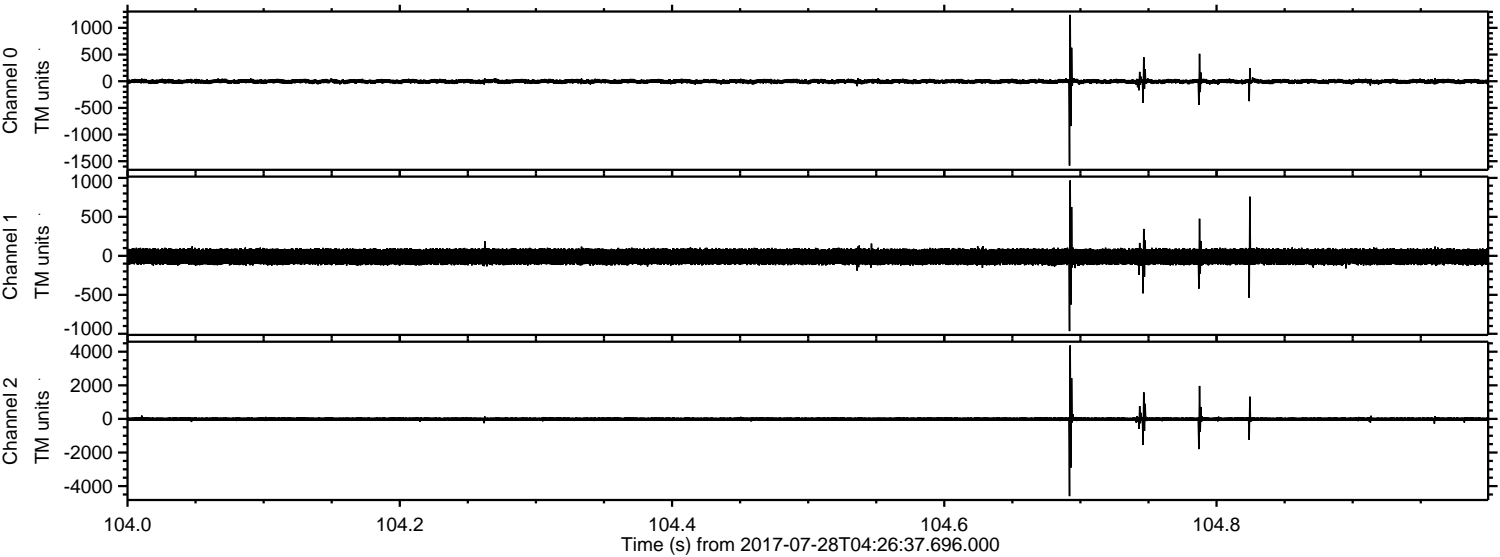
ELMAVAN 3D WAVEFORMS (Measured data sampled at 50 kHz) 51000 packets of 144 samples from 2017-07-28T04:26:37.696.000. Part 131/147

Processed Fri Jul 28 06:34:08 2017 by ELM ver.2012-10-06 from 001__elm20170728_042636__dat00.bin



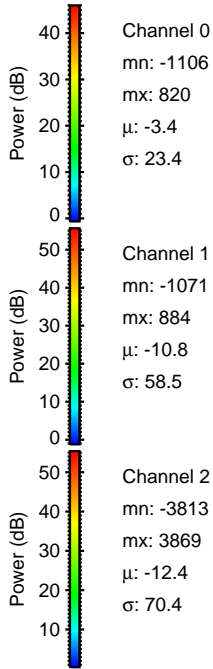
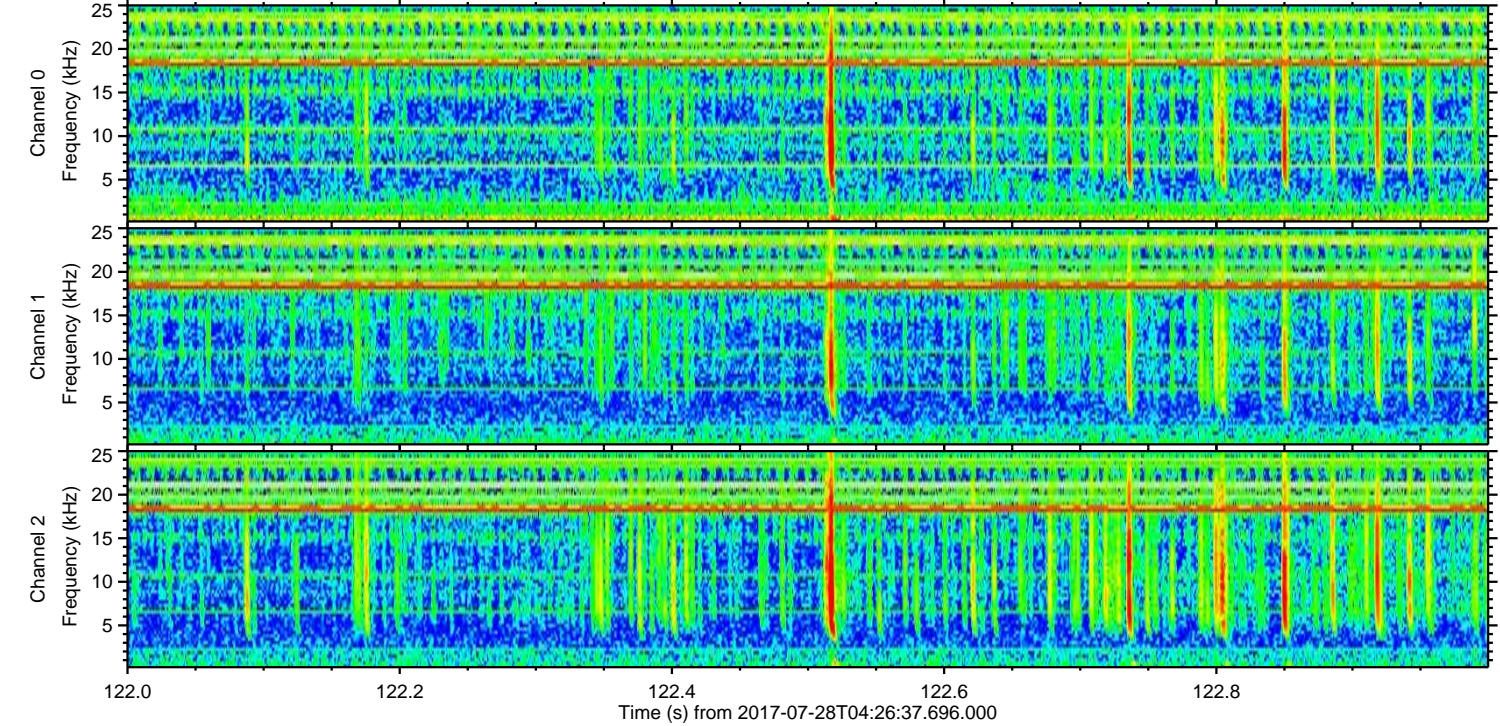
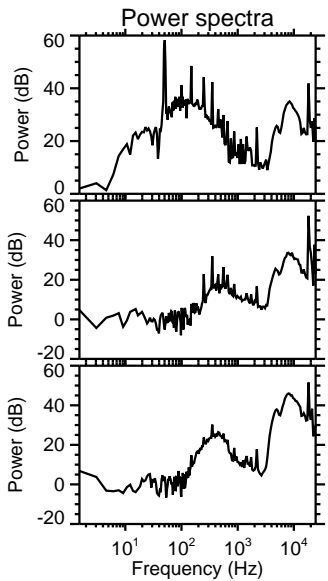
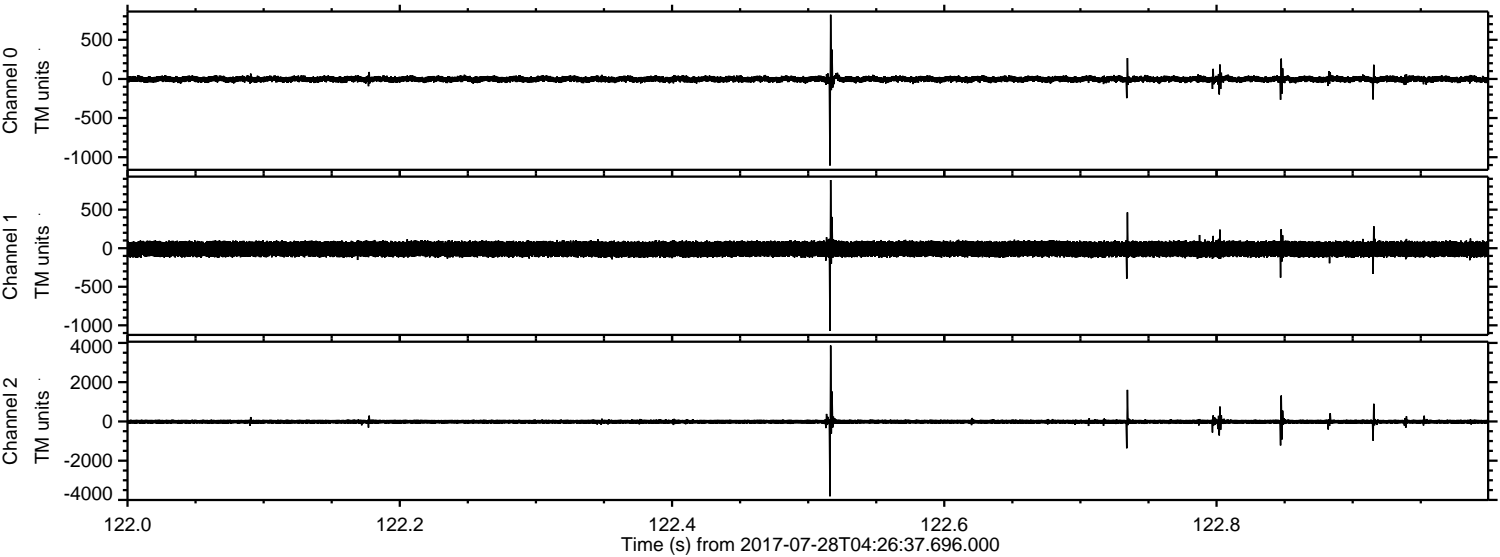
ELMAVAN 3D WAVEFORMS (Measured data sampled at 50 kHz) 51000 packets of 144 samples from 2017-07-28T04:26:37.696.000. Part 105/147

Processed Fri Jul 28 06:34:09 2017 by ELM ver.2012-10-06 from 001__elm20170728_042636__dat00.bin



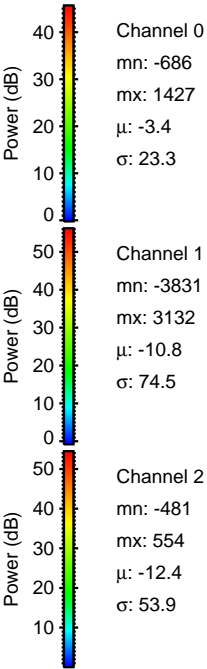
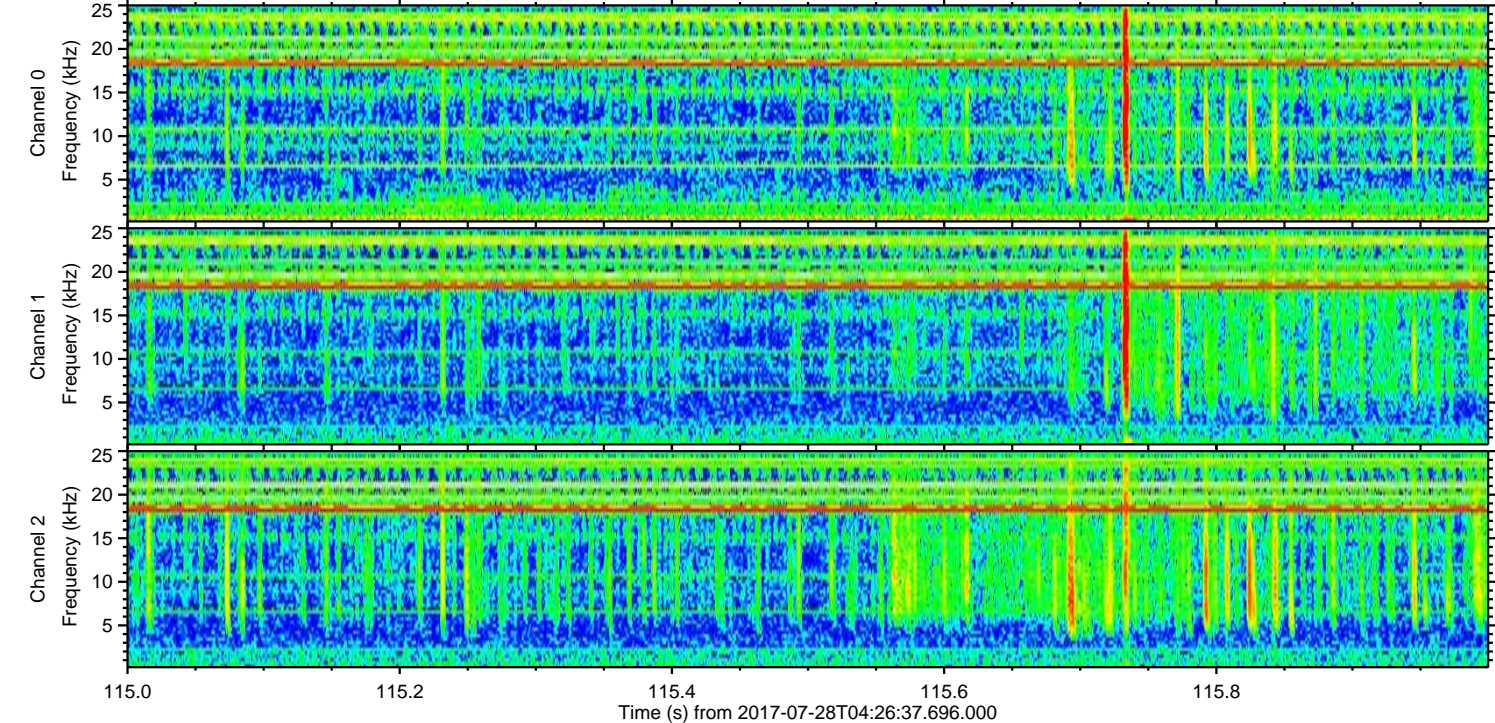
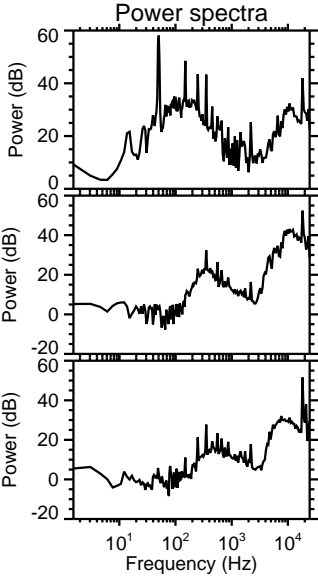
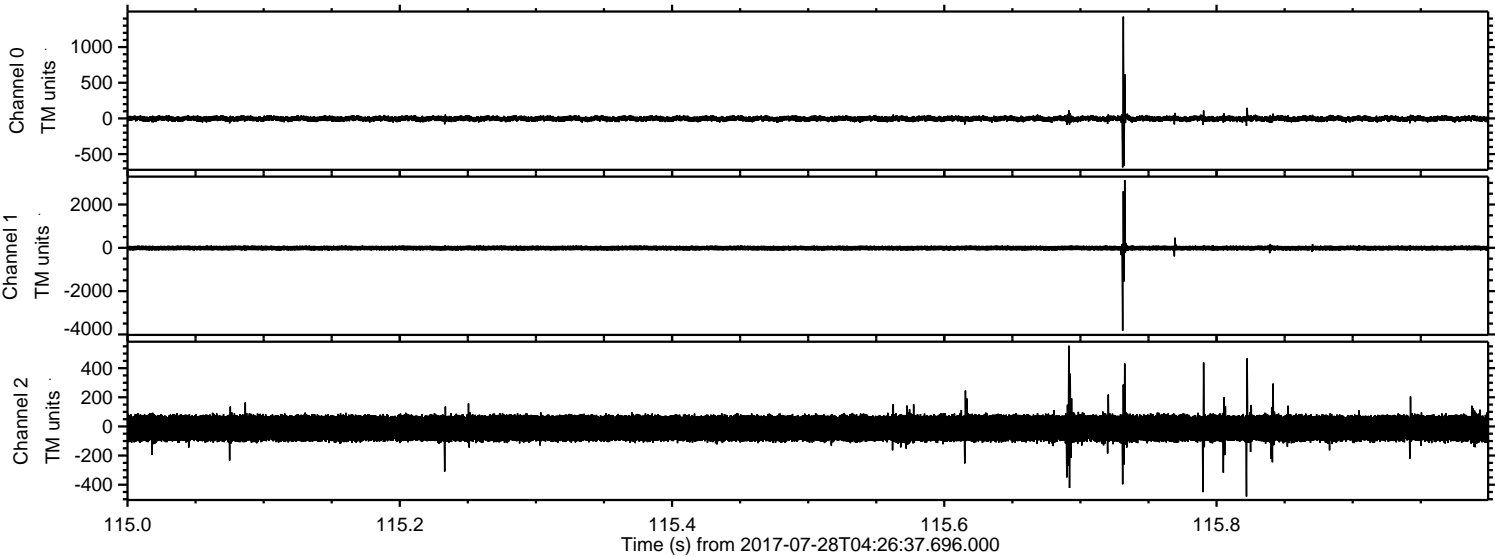
ELMAVAN 3D WAVEFORMS (Measured data sampled at 50 kHz) 51000 packets of 144 samples from 2017-07-28T04:26:37.696.000. Part 123/147

Processed Fri Jul 28 06:34:10 2017 by ELM ver.2012-10-06 from 001__elm20170728_042636__dat00.bin



ELMAVAN 3D WAVEFORMS (Measured data sampled at 50 kHz) 51000 packets of 144 samples from 2017-07-28T04:26:37.696.000. Part 116/147

Processed Fri Jul 28 06:34:10 2017 by ELM ver.2012-10-06 from 001__elm20170728_042636__dat00.bin

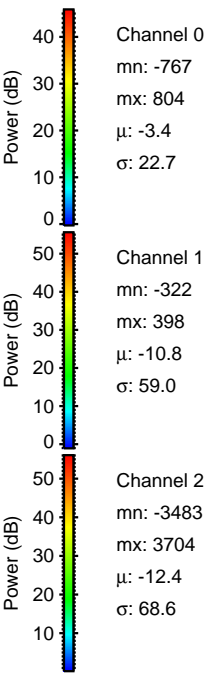
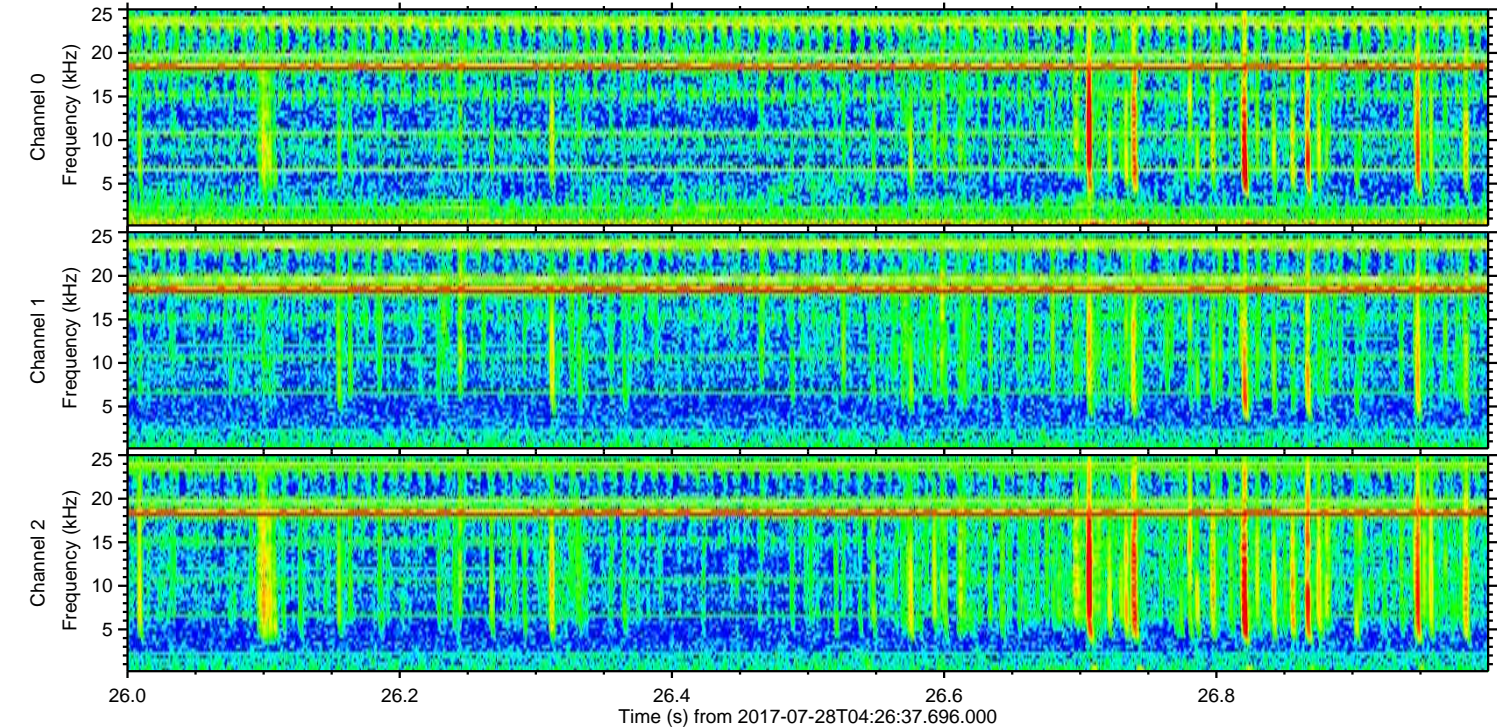
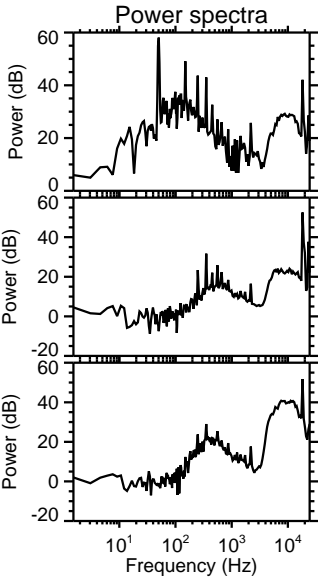
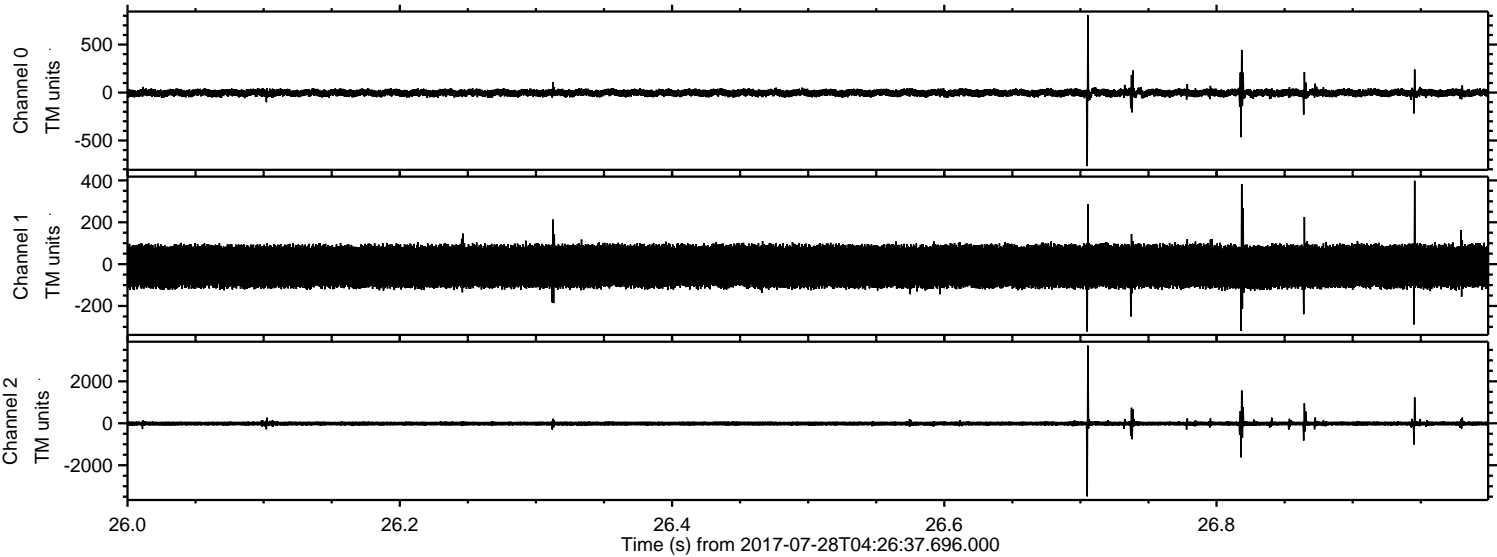


Channel 0
mn: -686
mx: 1427
 μ : -3.4
 σ : 23.3

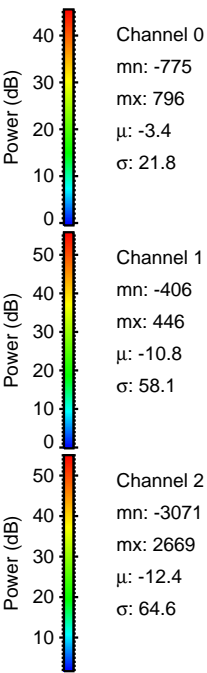
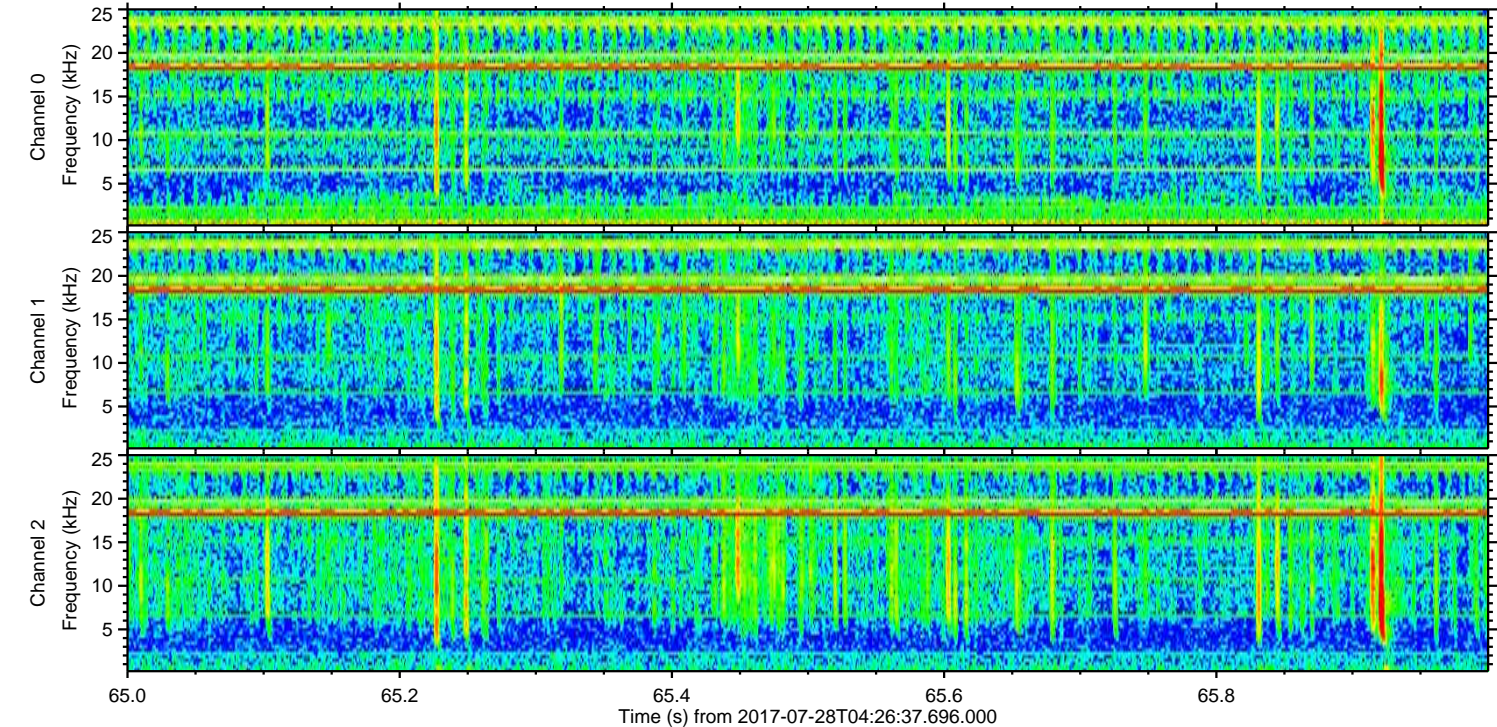
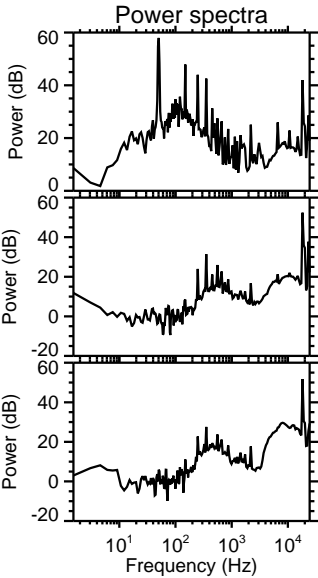
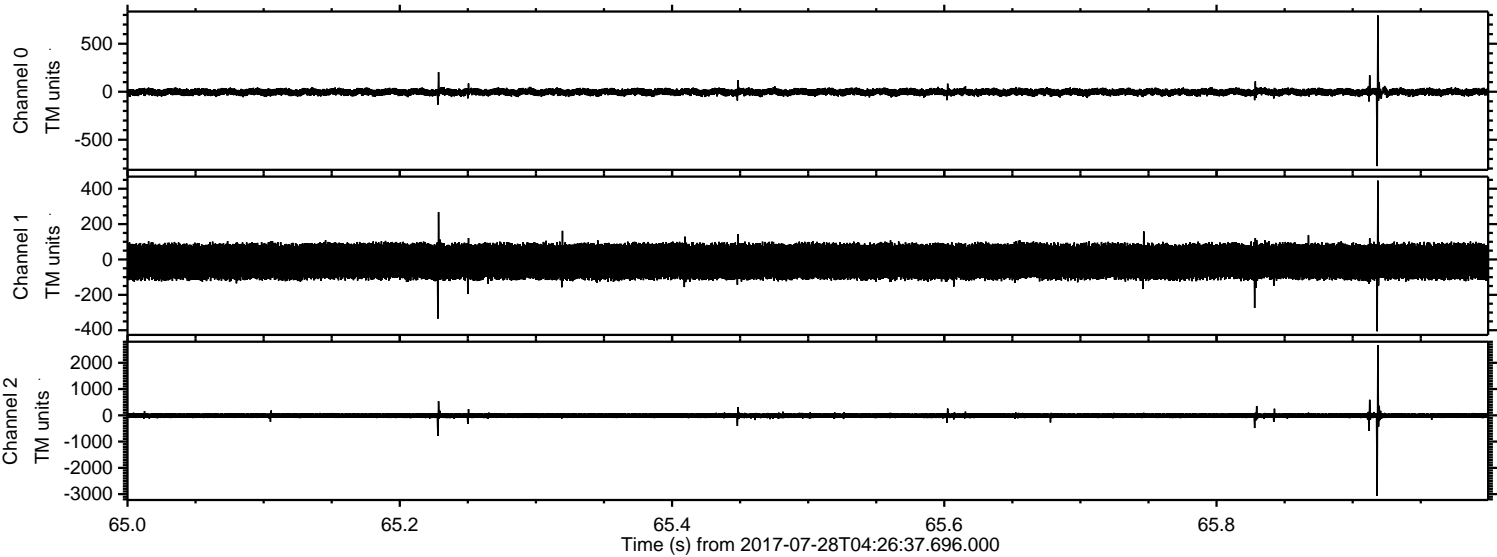
Channel 1
mn: -3831
mx: 3132
 μ : -10.8
 σ : 74.5

Channel 2
mn: -481
mx: 554
 μ : -12.4
 σ : 53.9

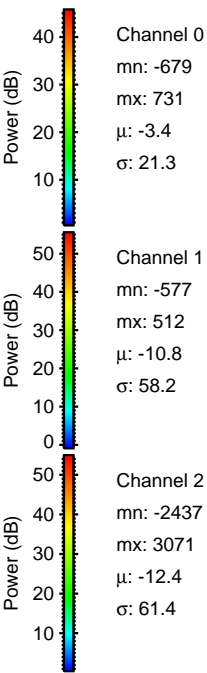
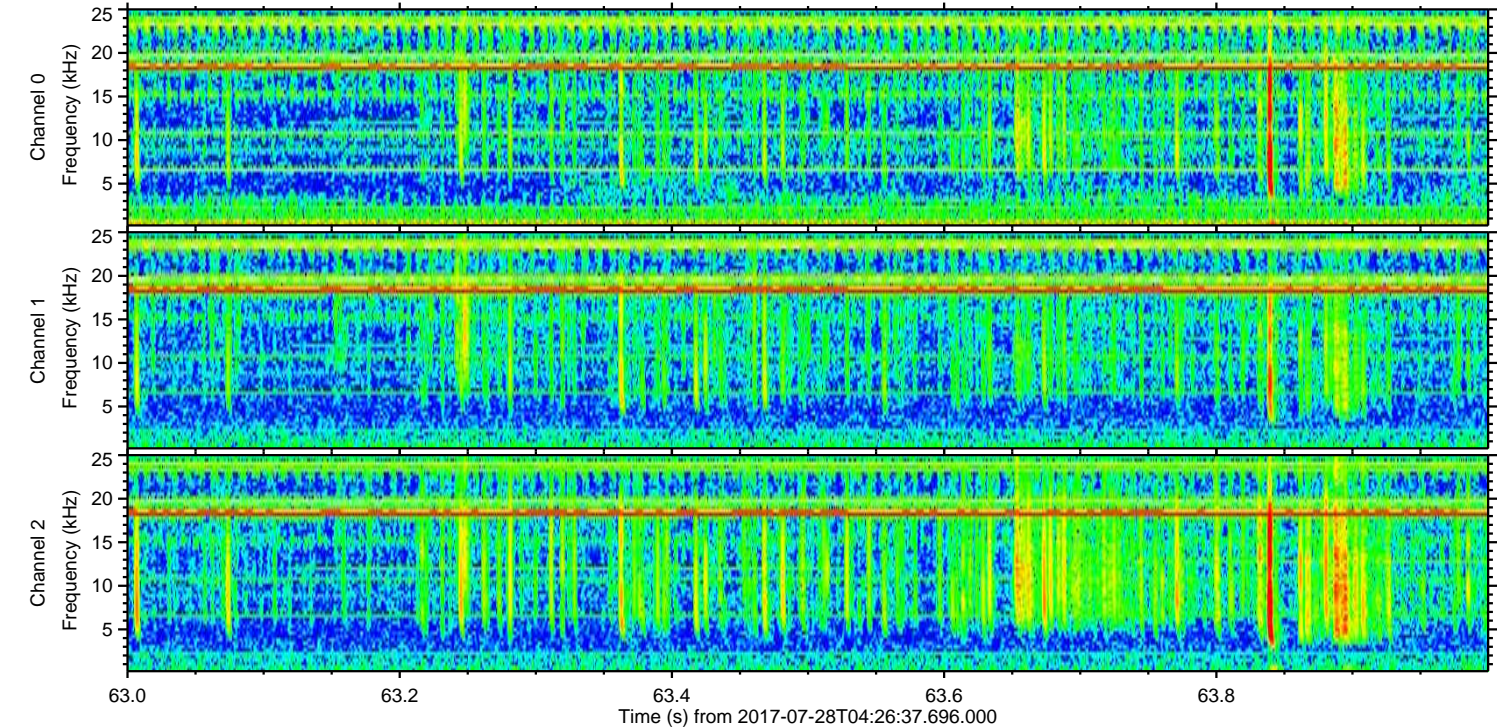
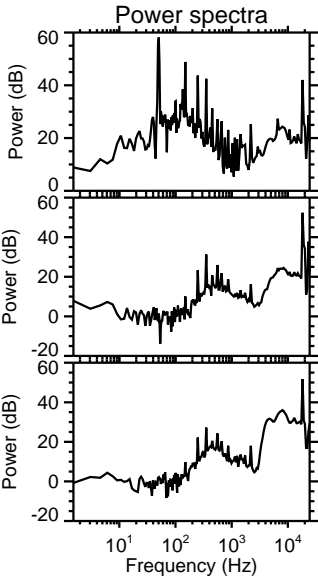
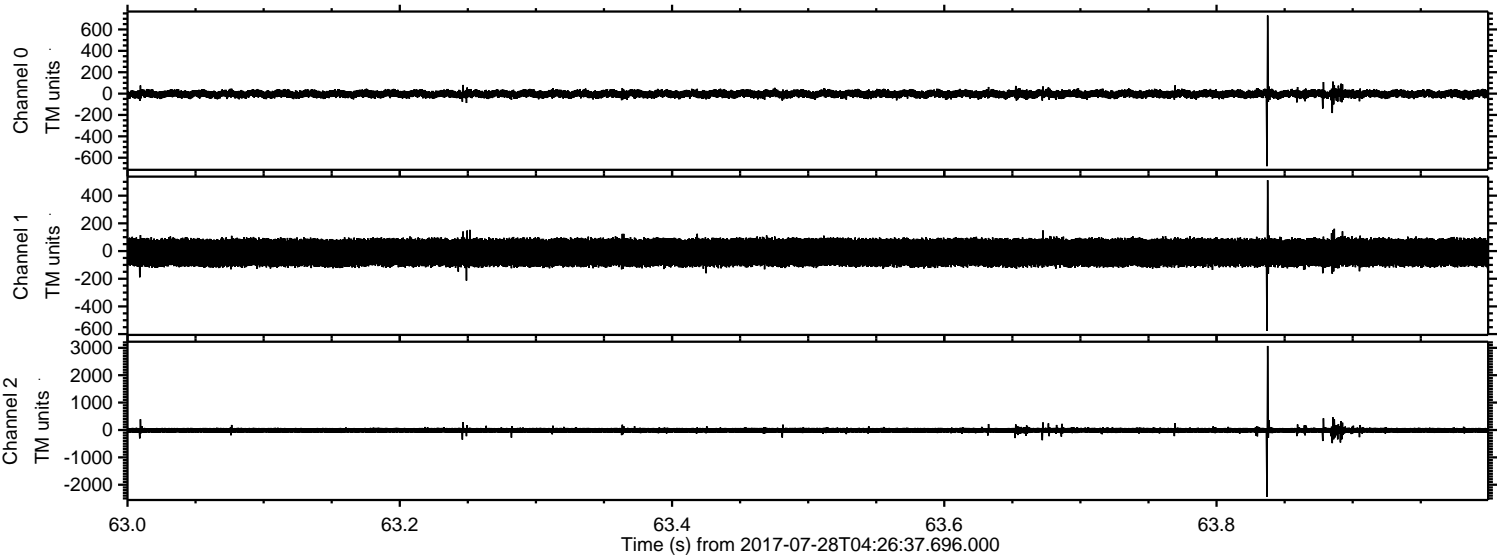
Processed Fri Jul 28 06:34:11 2017 by ELM ver.2012-10-06 from 001__elm20170728_042636__dat00.bin



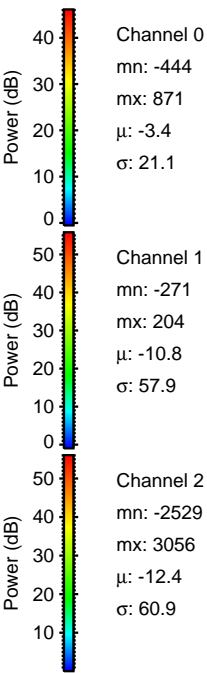
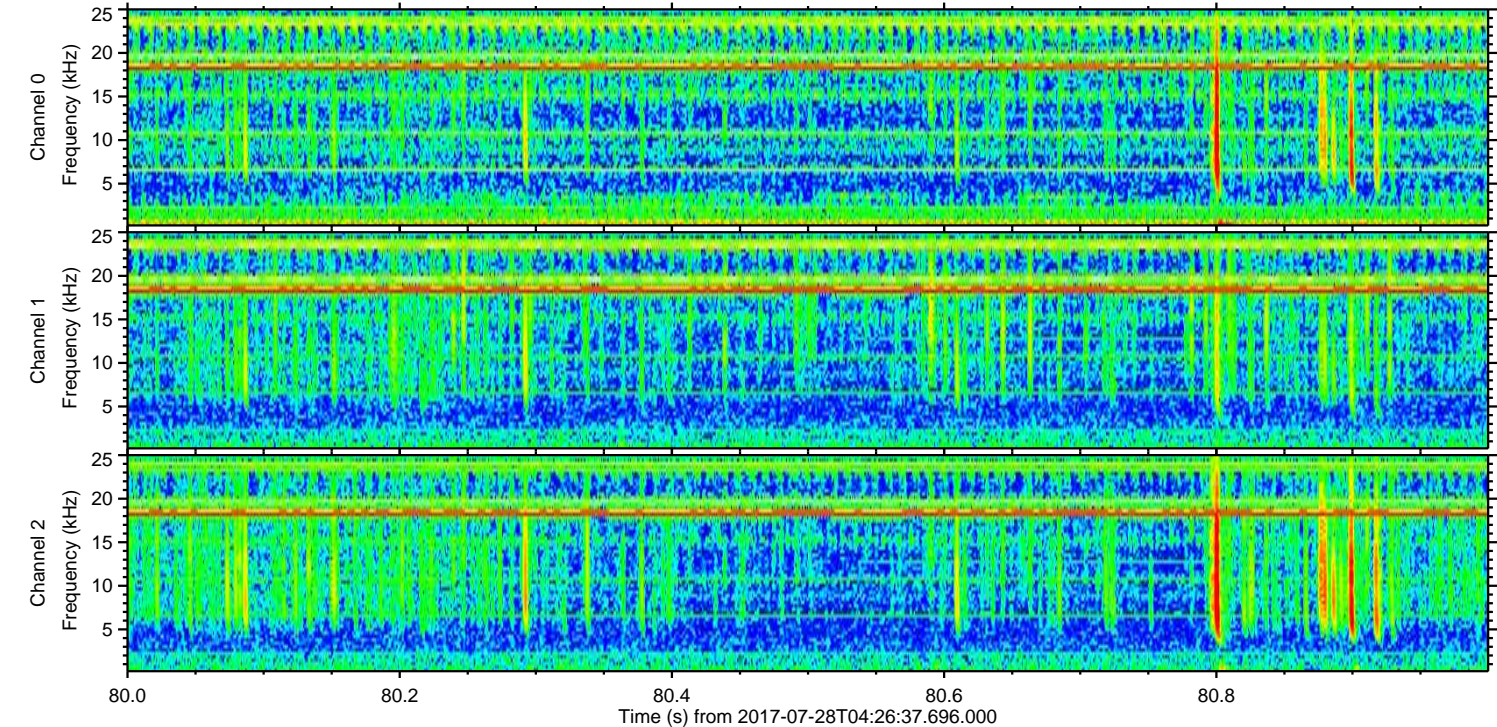
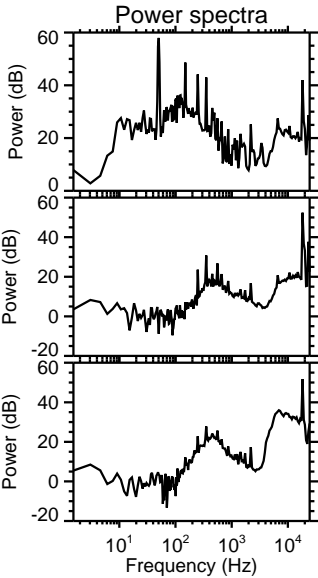
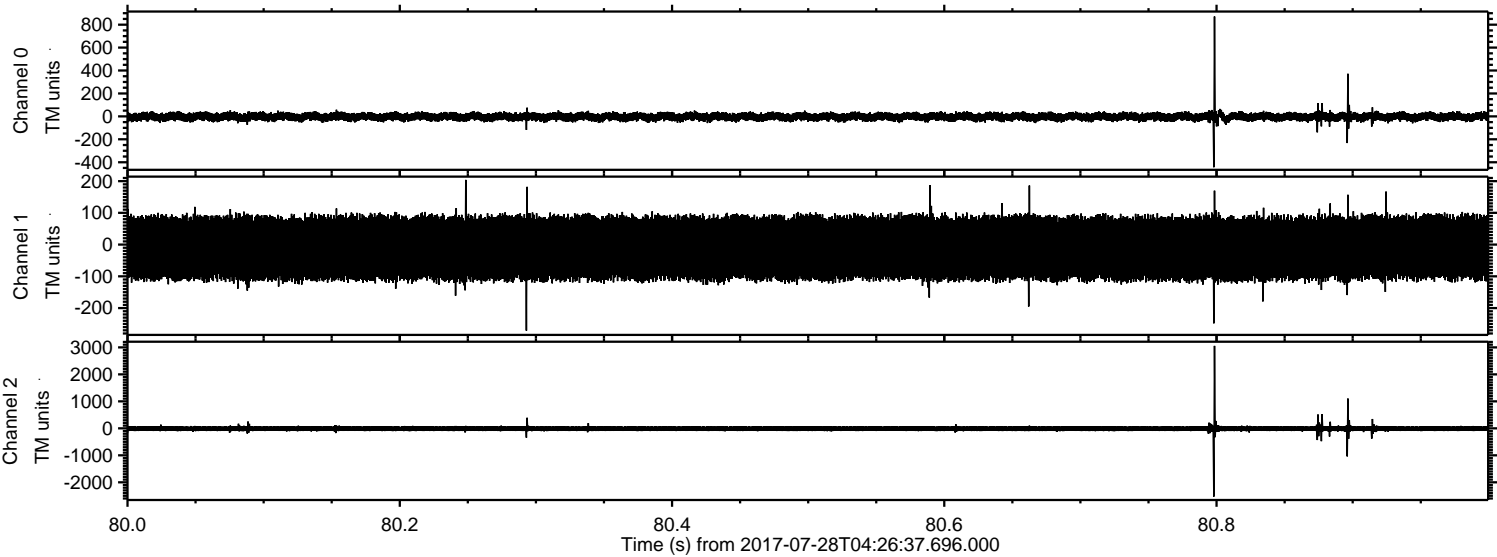
Processed Fri Jul 28 06:34:11 2017 by ELM ver.2012-10-06 from 001__elm20170728_042636__dat00.bin



Processed Fri Jul 28 06:34:12 2017 by ELM ver.2012-10-06 from 001__elm20170728_042636__dat00.bin



Processed Fri Jul 28 06:34:13 2017 by ELM ver.2012-10-06 from 001__elm20170728_042636__dat00.bin

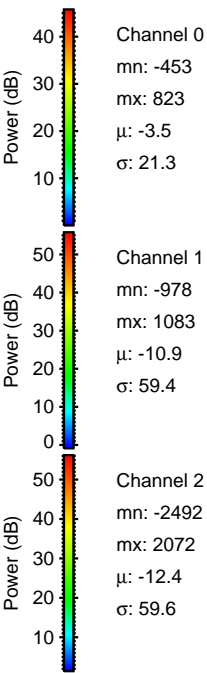
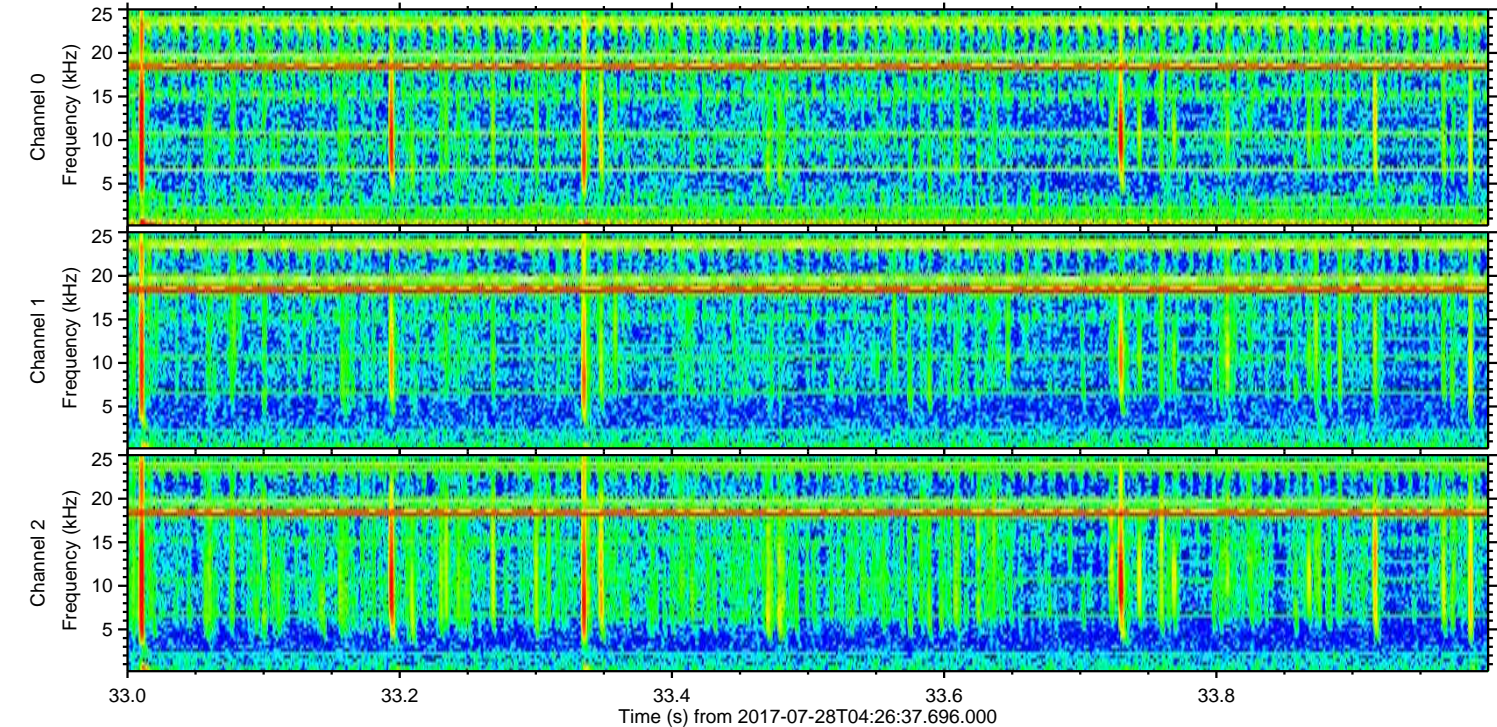
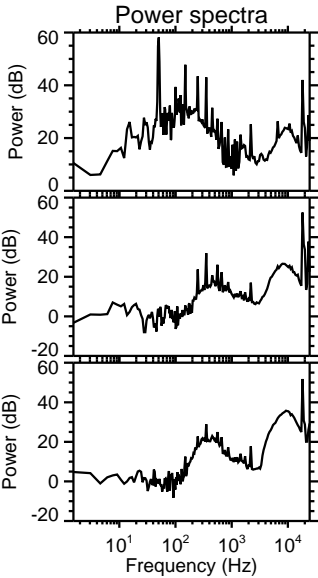
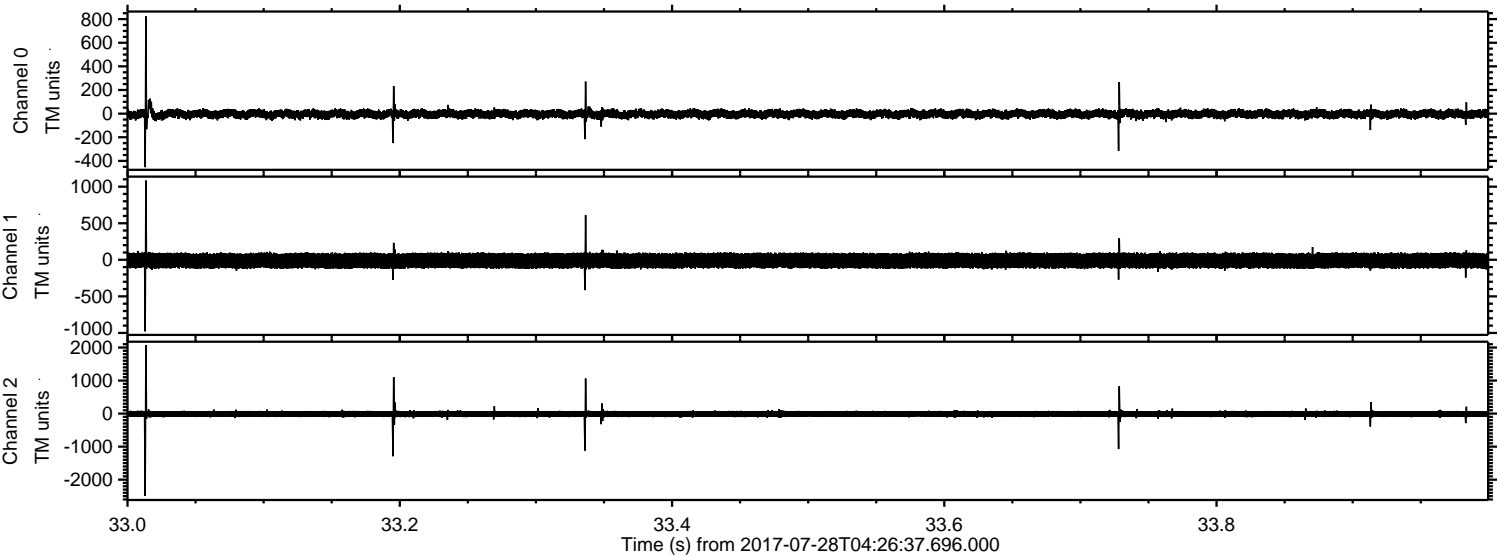


Channel 0
mn: -444
mx: 871
 μ : -3.4
 σ : 21.1

Channel 1
mn: -271
mx: 204
 μ : -10.8
 σ : 57.9

Channel 2
mn: -2529
mx: 3056
 μ : -12.4
 σ : 60.9

Processed Fri Jul 28 06:34:13 2017 by ELM ver.2012-10-06 from 001__elm20170728_042636__dat00.bin



Channel 0
mn: -453
mx: 823
 μ : -3.5
 σ : 21.3

Channel 1
mn: -978
mx: 1083
 μ : -10.9
 σ : 59.4

Channel 2
mn: -2492
mx: 2072
 μ : -12.4
 σ : 59.6

Processed Fri Jul 28 06:34:14 2017 by ELM ver.2012-10-06 from 001__elm20170728_042636__dat00.bin

