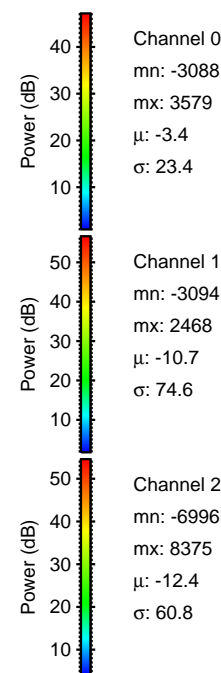
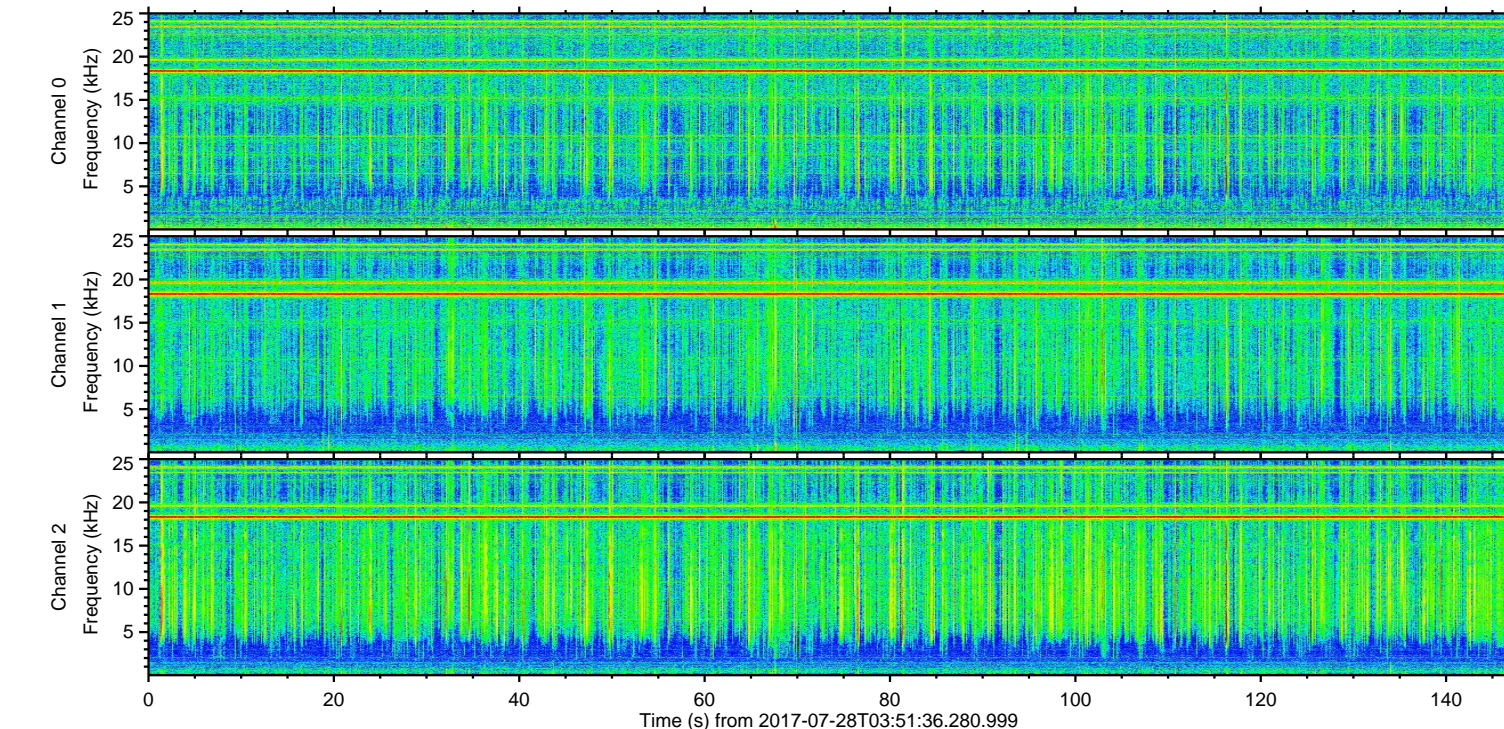
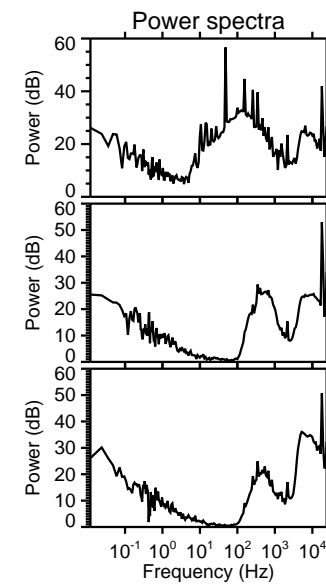
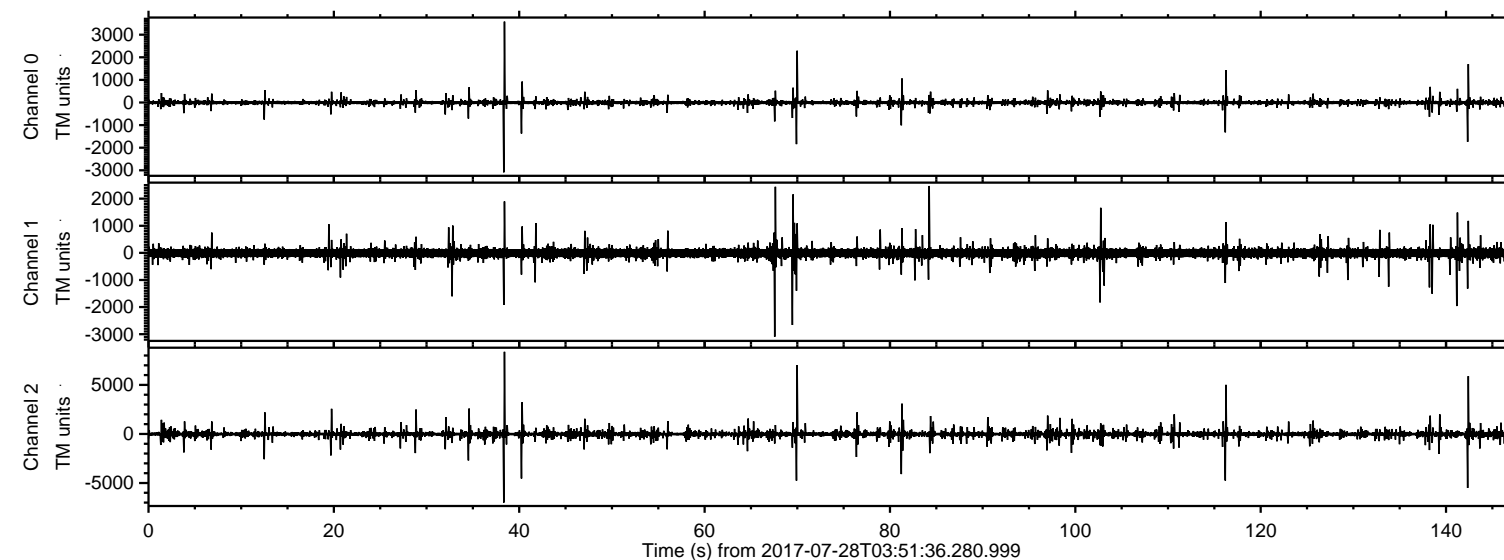
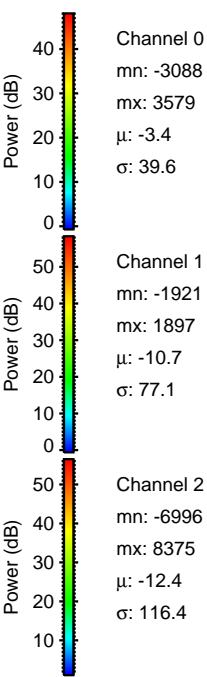
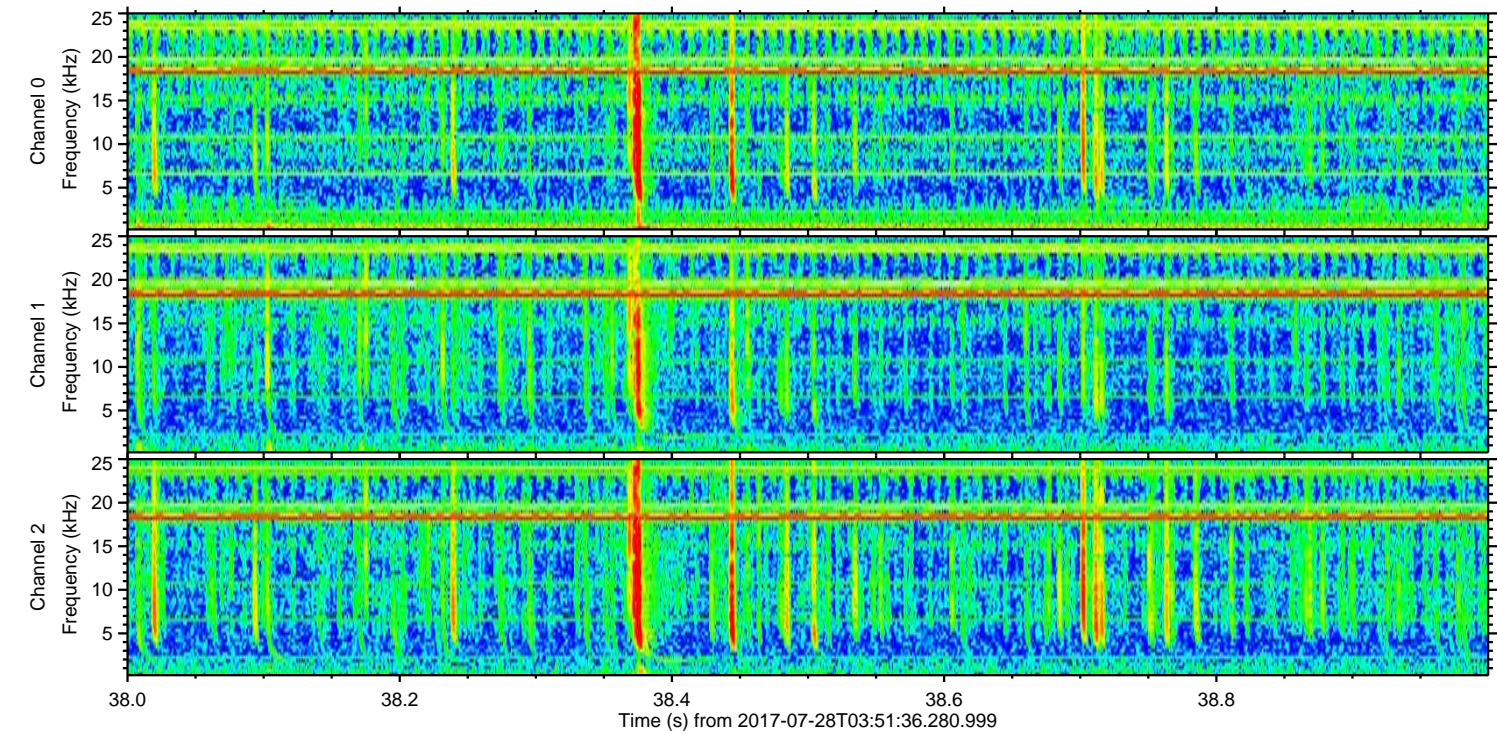
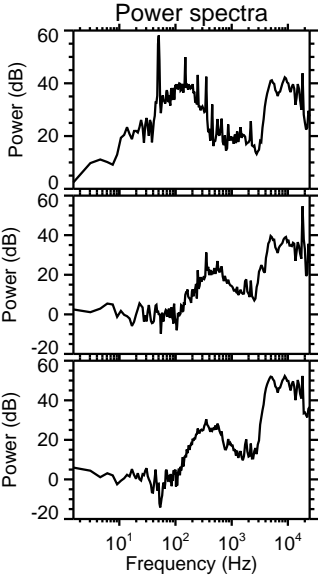
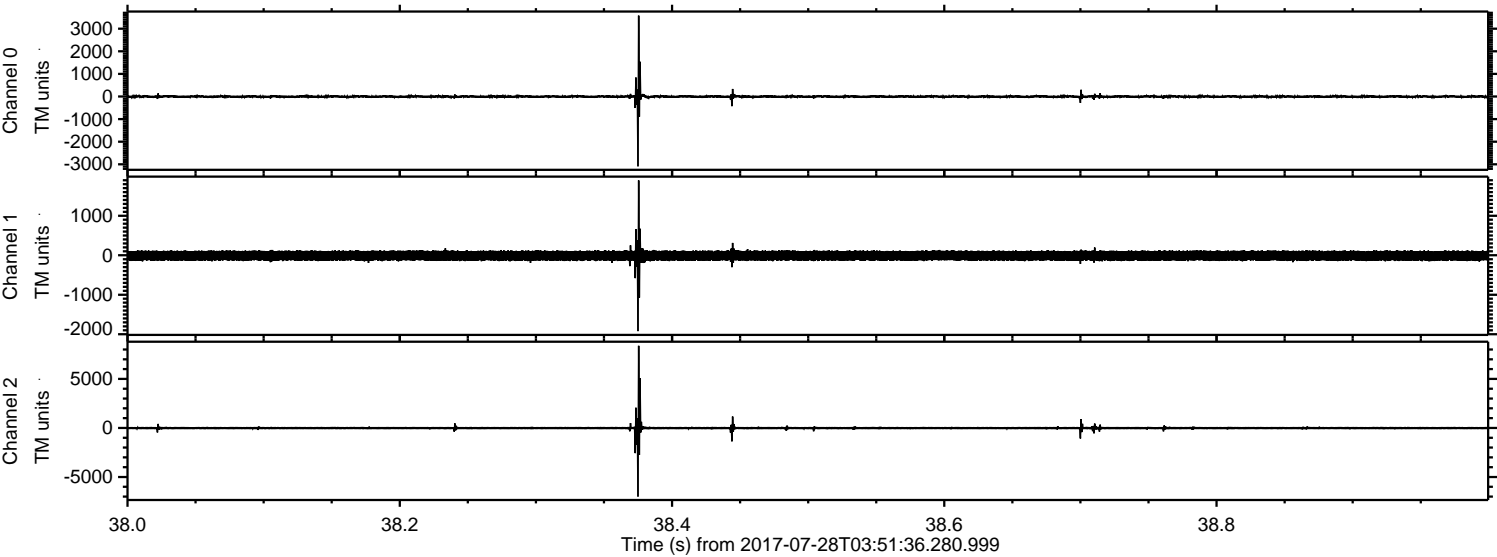


ELMAVAN 3D WAVEFORMS (Measured data sampled at 50 kHz) 51000 packets of 144 samples from 2017-07-28T03:51:36.280.999.

Processed Fri Jul 28 05:59:29 2017 by ELM ver.2012-10-06 from 001__elm20170728_035135__dat00.bin

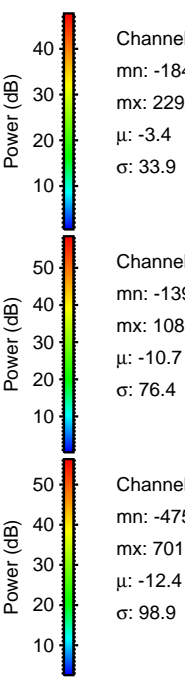
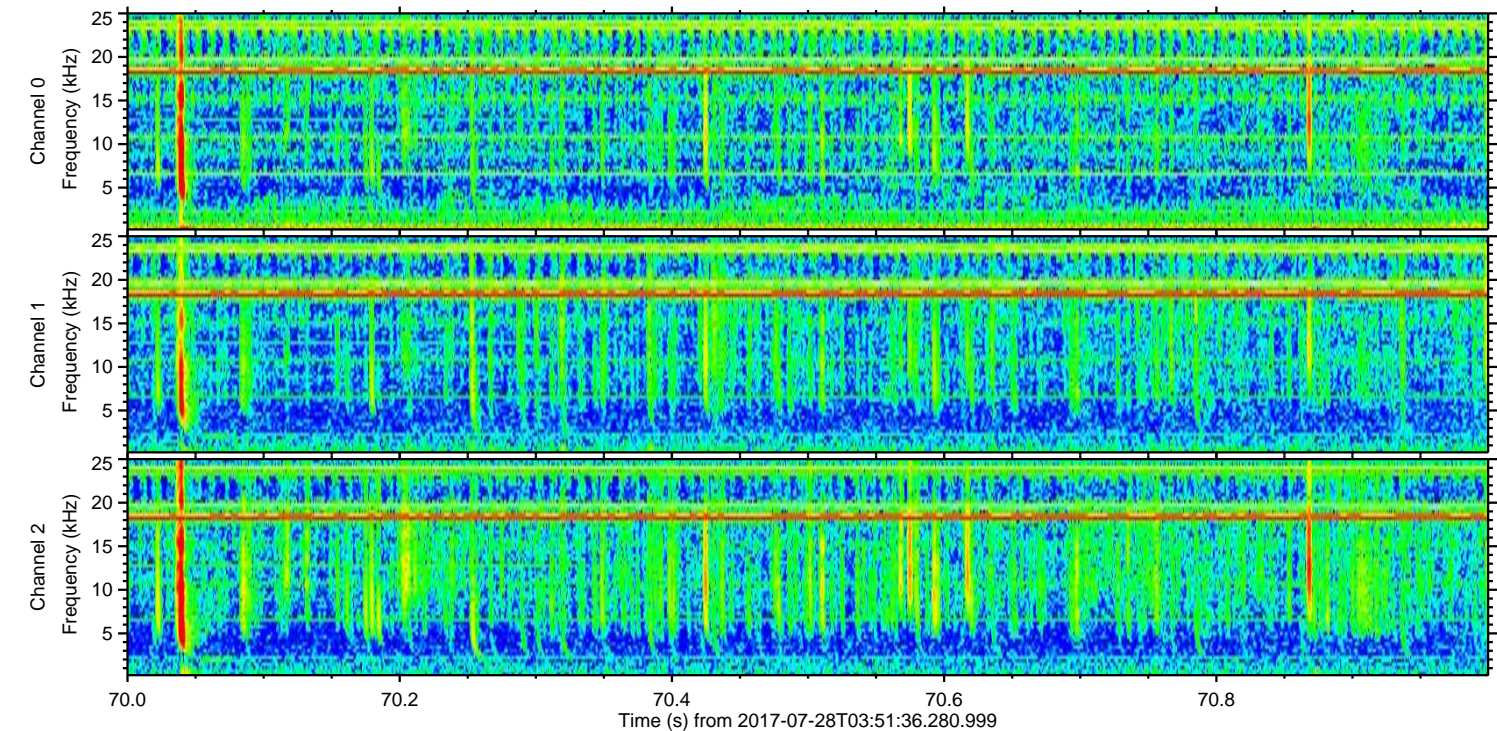
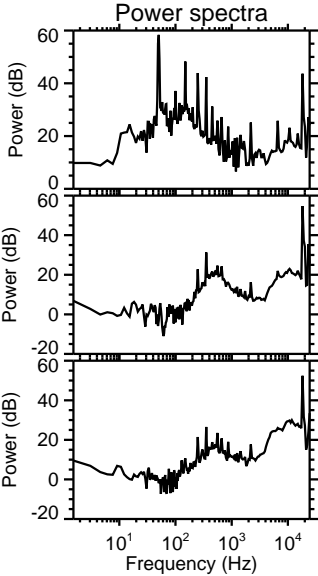
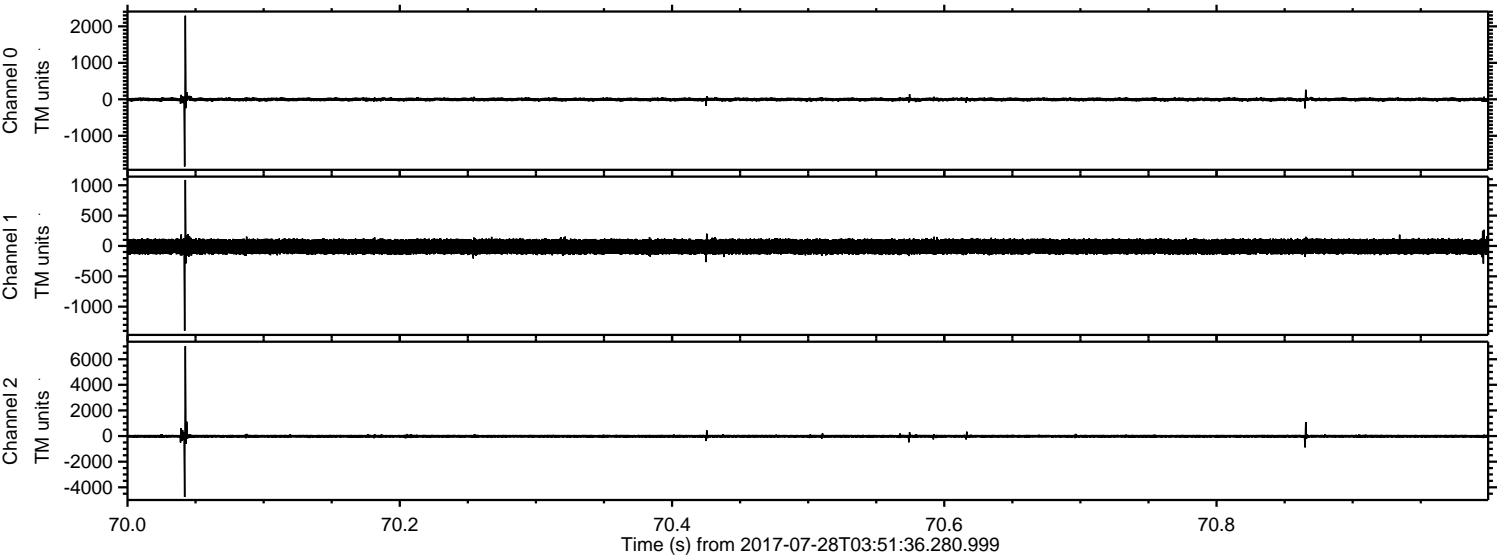


Processed Fri Jul 28 05:59:35 2017 by ELM ver.2012-10-06 from 001__elm20170728_035135__dat00.bin



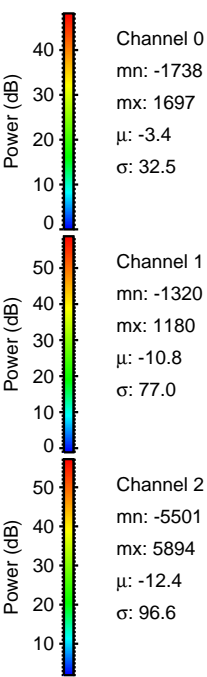
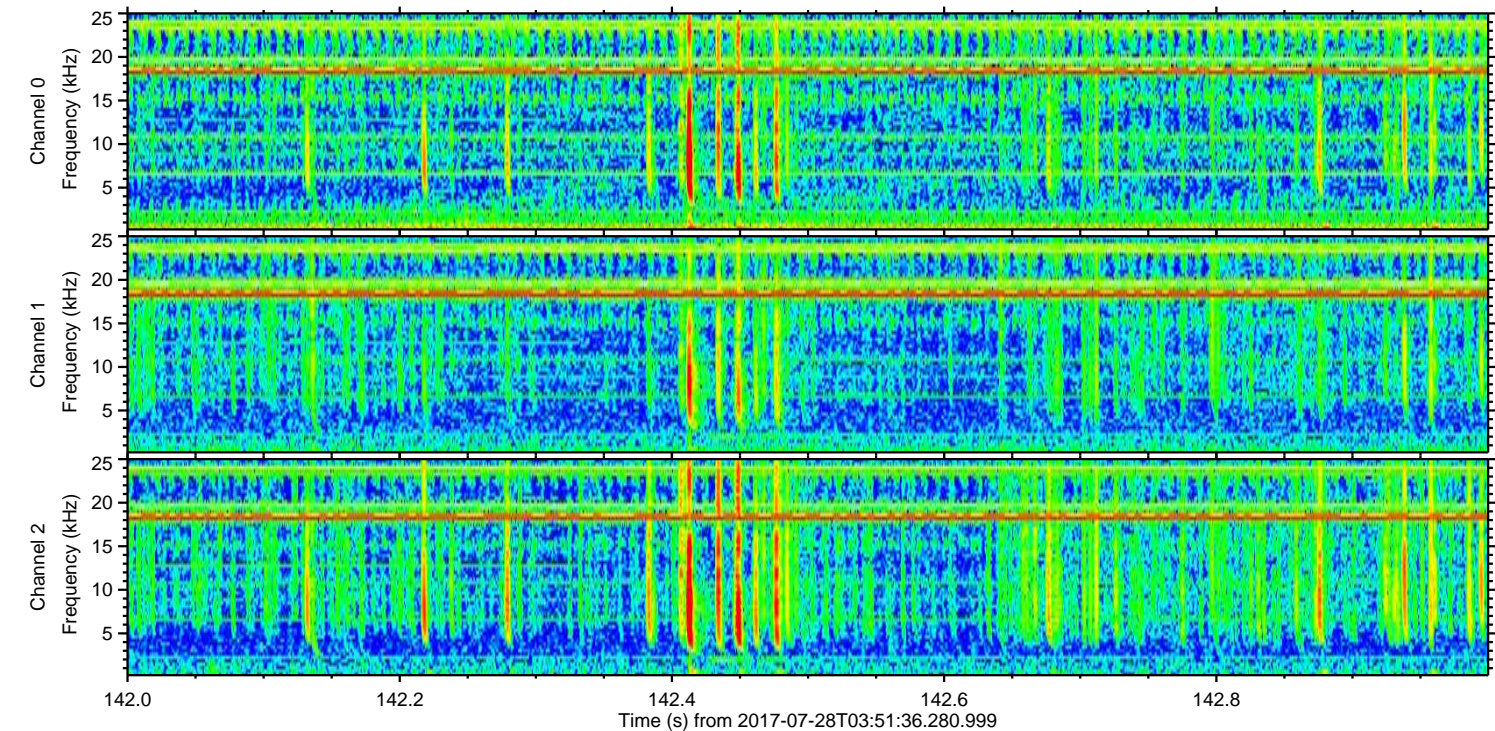
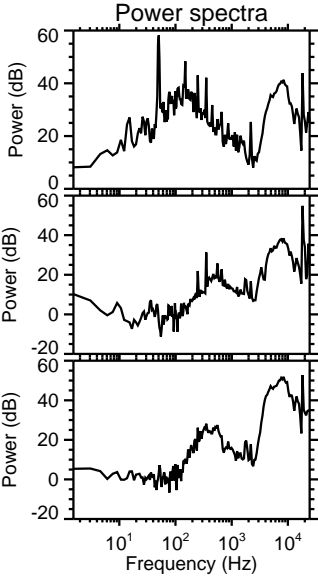
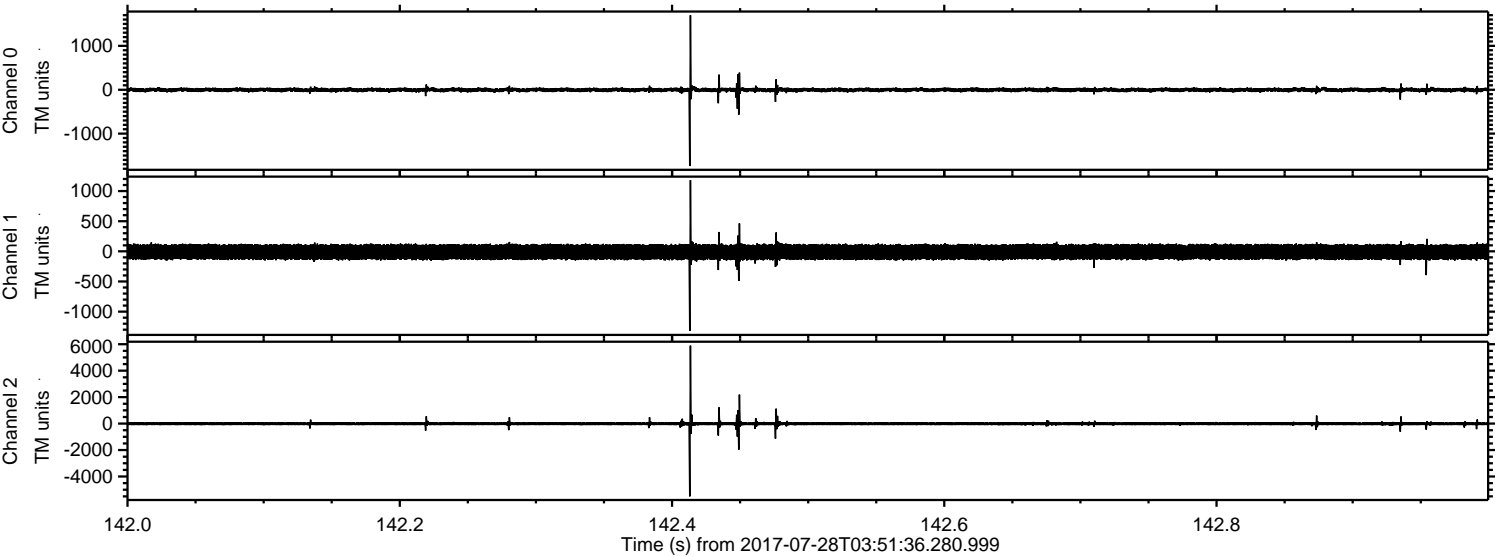
ELMAVAN 3D WAVEFORMS (Measured data sampled at 50 kHz) 51000 packets of 144 samples from 2017-07-28T03:51:36.280.999. Part 71/147

Processed Fri Jul 28 05:59:36 2017 by ELM ver.2012-10-06 from 001__elm20170728_035135__dat00.bin



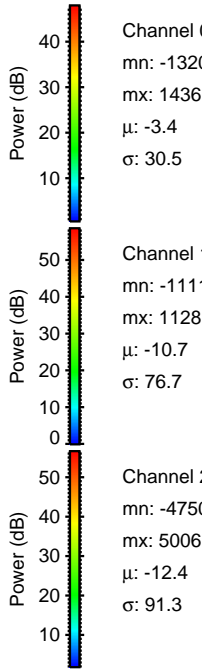
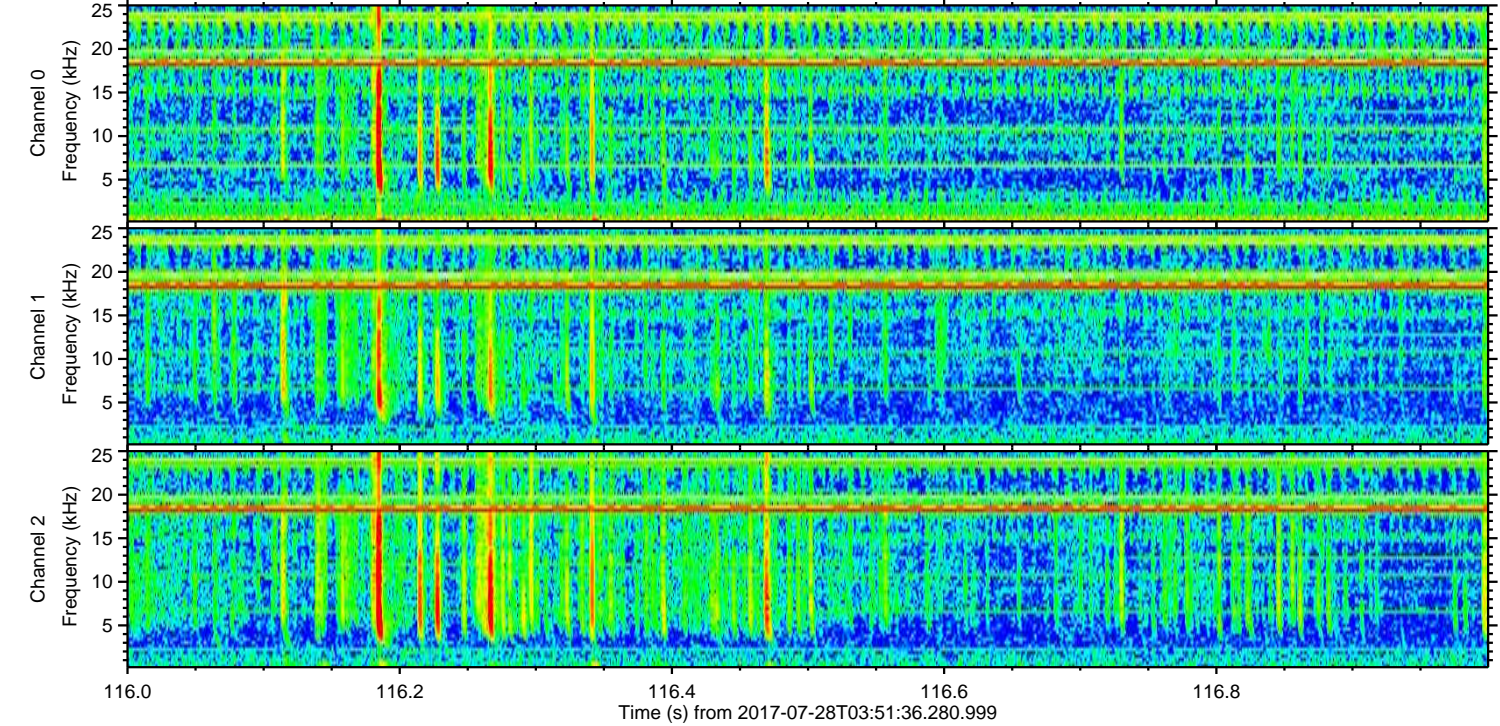
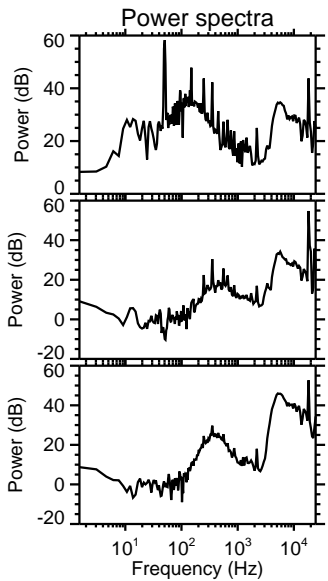
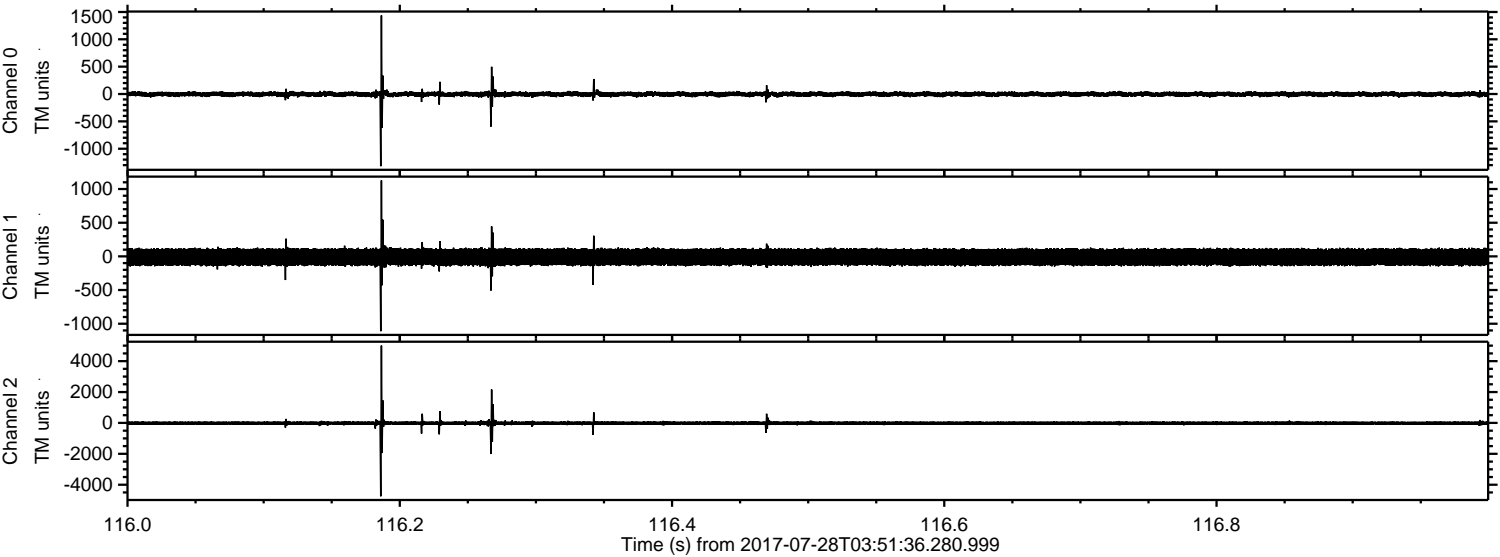
ELMAVAN 3D WAVEFORMS (Measured data sampled at 50 kHz) 51000 packets of 144 samples from 2017-07-28T03:51:36.280.999. Part 143/147

Processed Fri Jul 28 05:59:36 2017 by ELM ver.2012-10-06 from 001__elm20170728_035135__dat00.bin

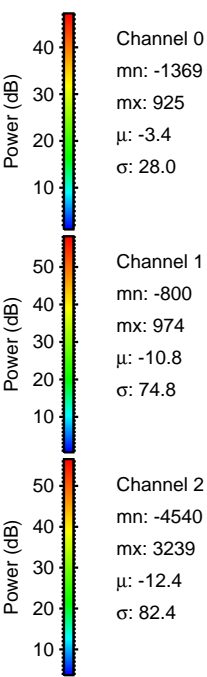
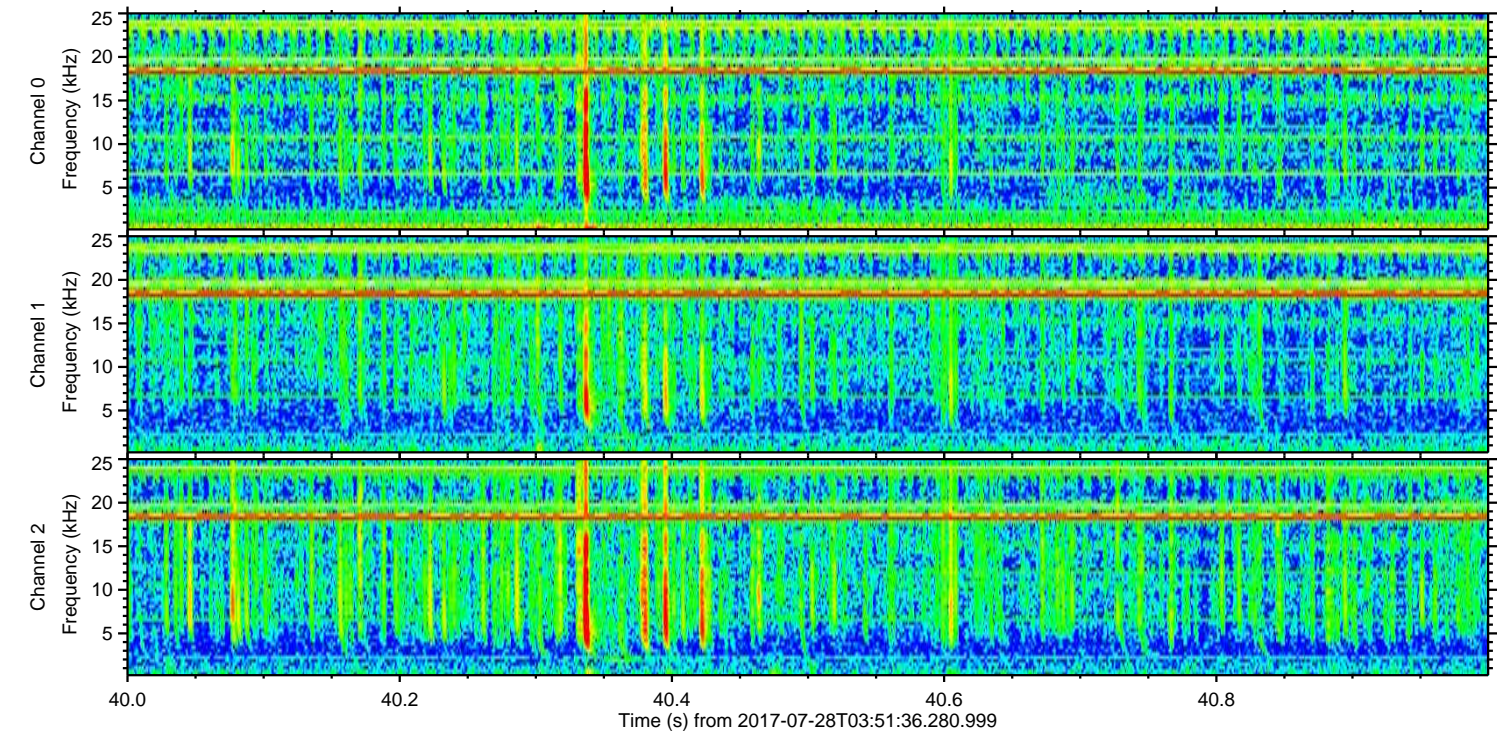
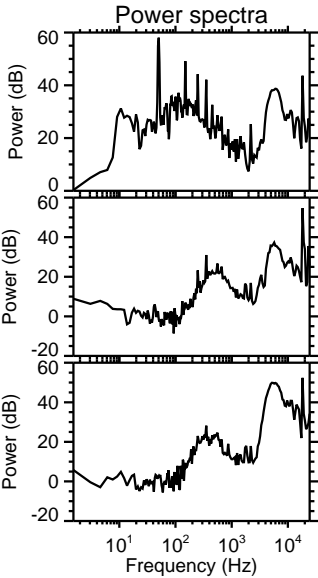
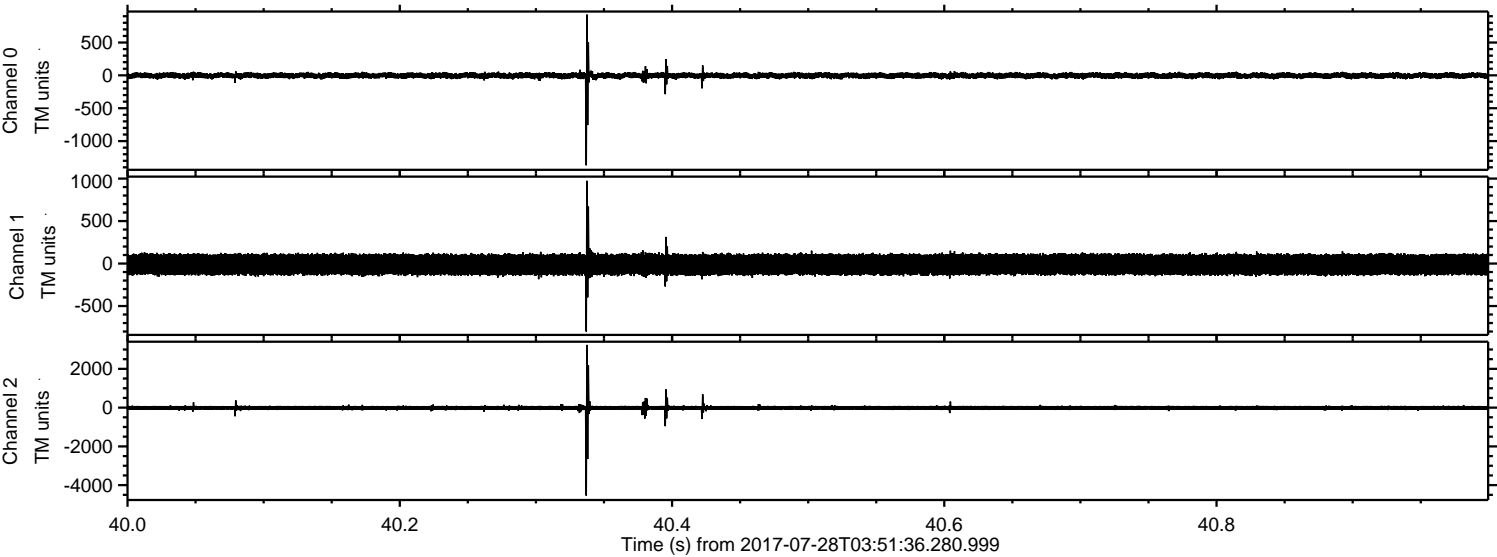


ELMAVAN 3D WAVEFORMS (Measured data sampled at 50 kHz) 51000 packets of 144 samples from 2017-07-28T03:51:36.280.999. Part 117/147

Processed Fri Jul 28 05:59:37 2017 by ELM ver.2012-10-06 from 001__elm20170728_035135__dat00.bin

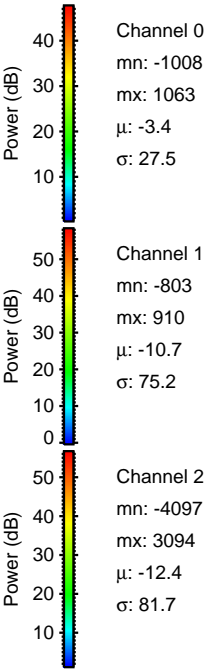
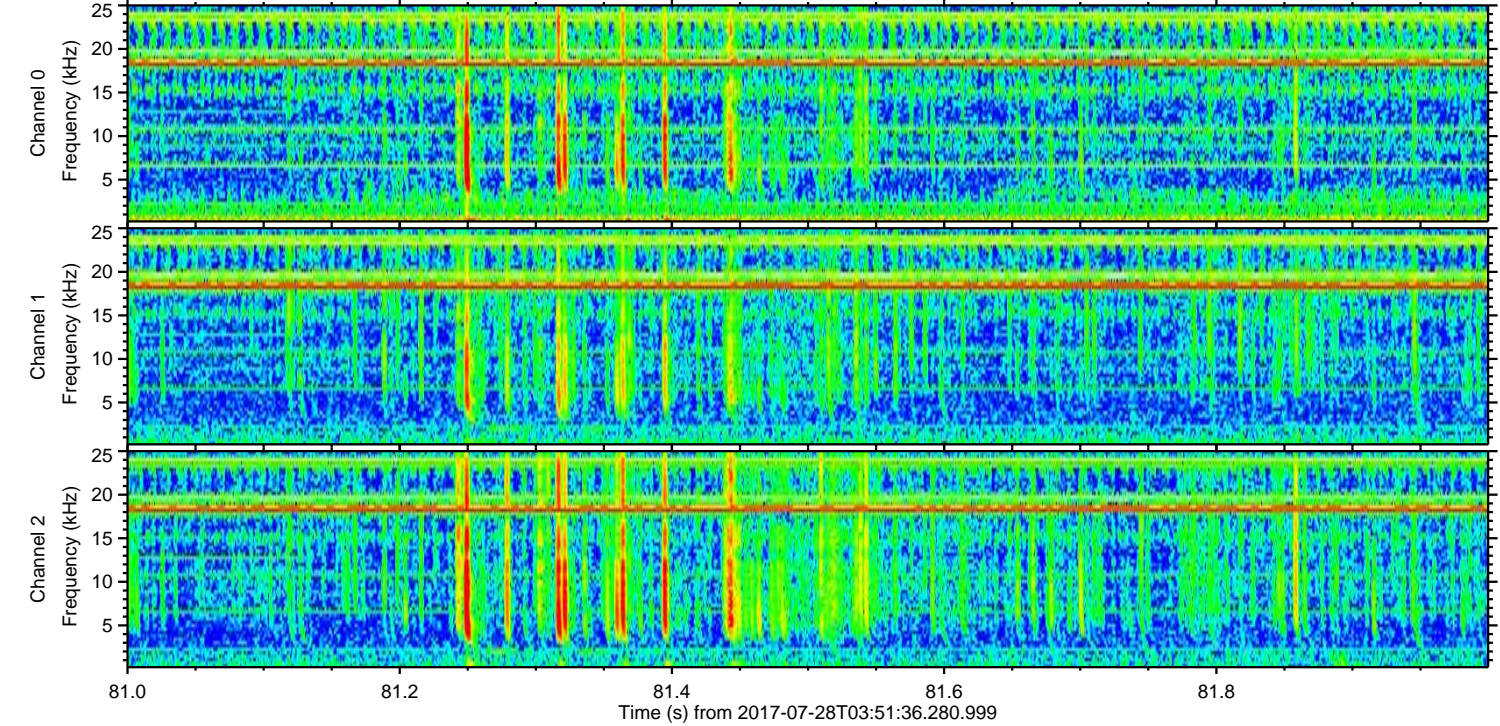
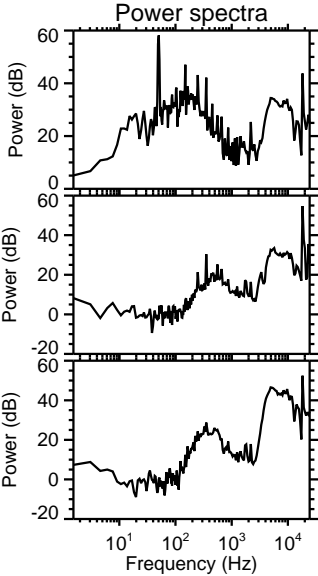
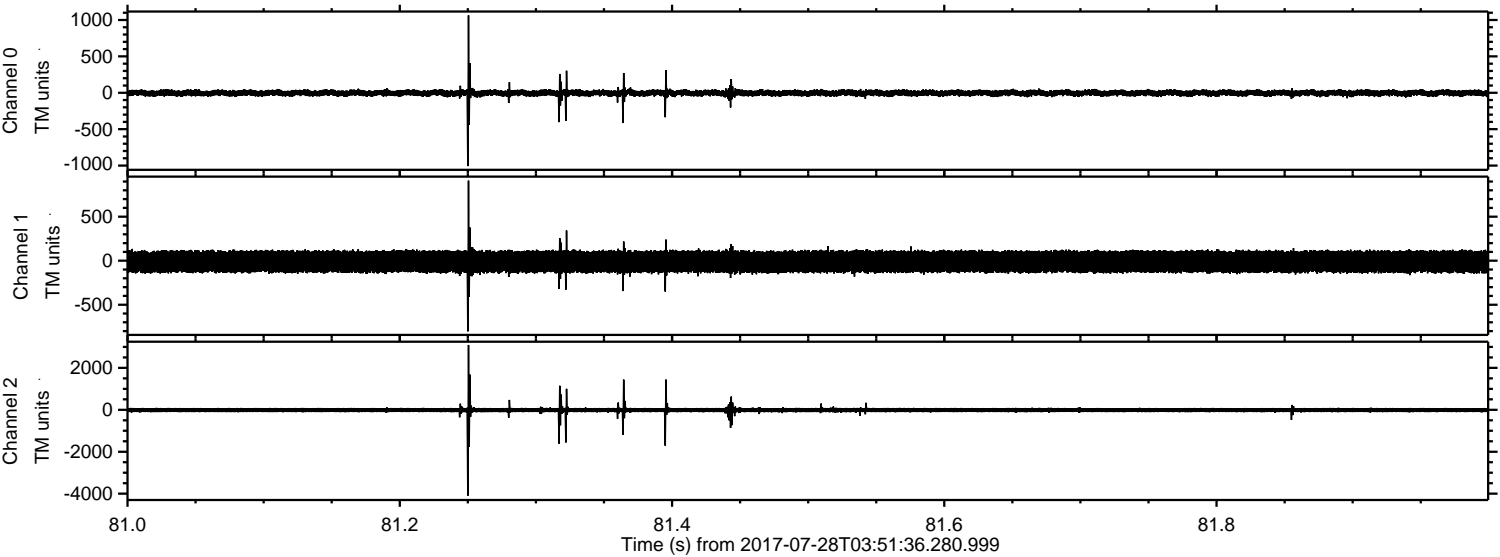


Processed Fri Jul 28 05:59:38 2017 by ELM ver.2012-10-06 from 001__elm20170728_035135__dat00.bin



ELMAVAN 3D WAVEFORMS (Measured data sampled at 50 kHz) 51000 packets of 144 samples from 2017-07-28T03:51:36.280.999. Part 82/147

Processed Fri Jul 28 05:59:38 2017 by ELM ver.2012-10-06 from 001__elm20170728_035135__dat00.bin

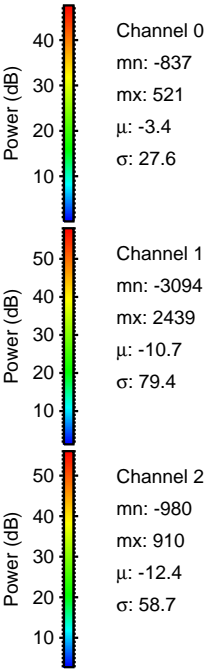
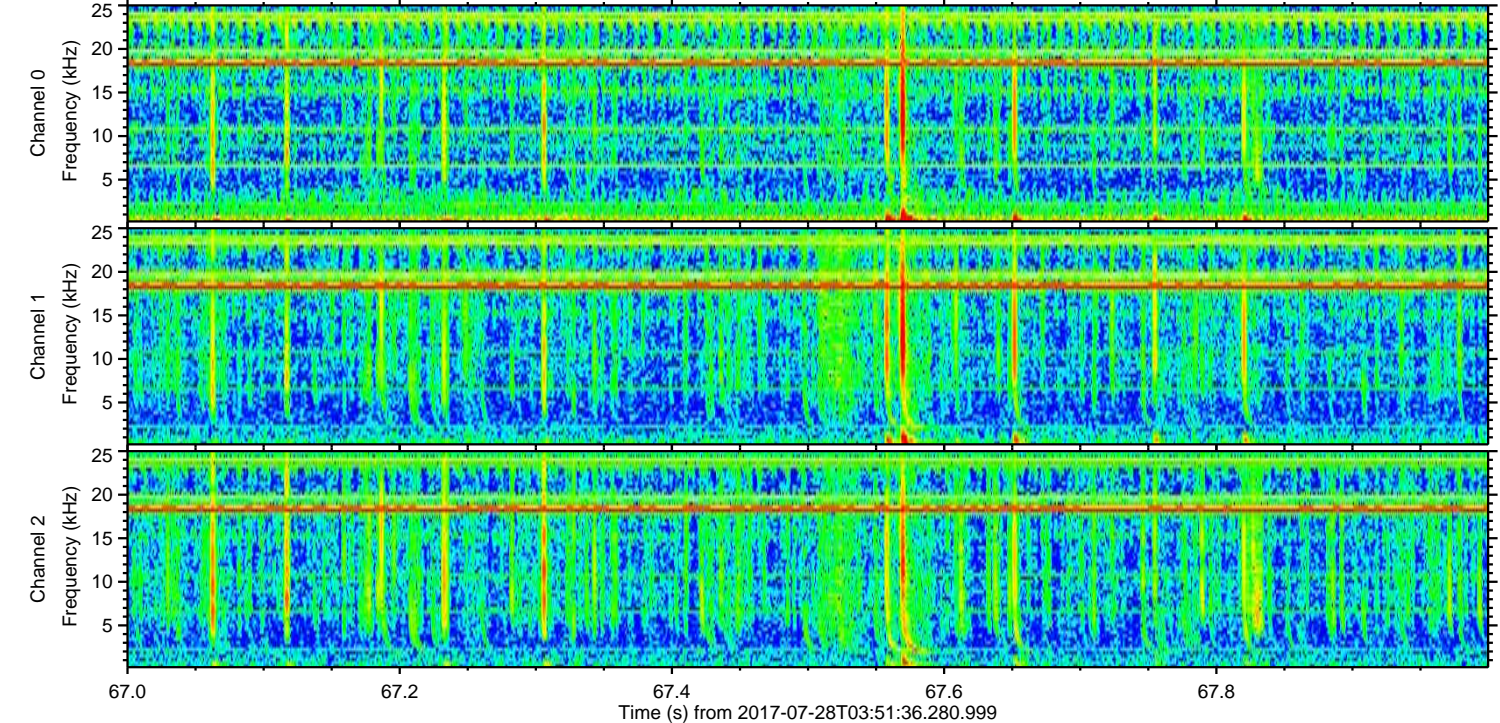
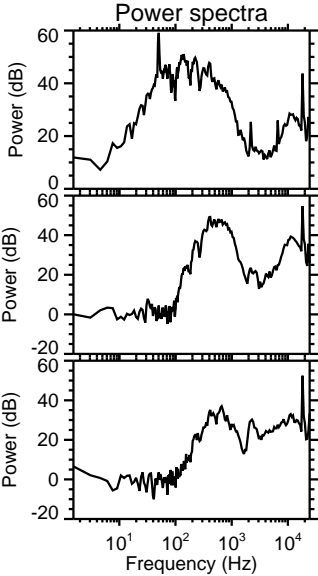
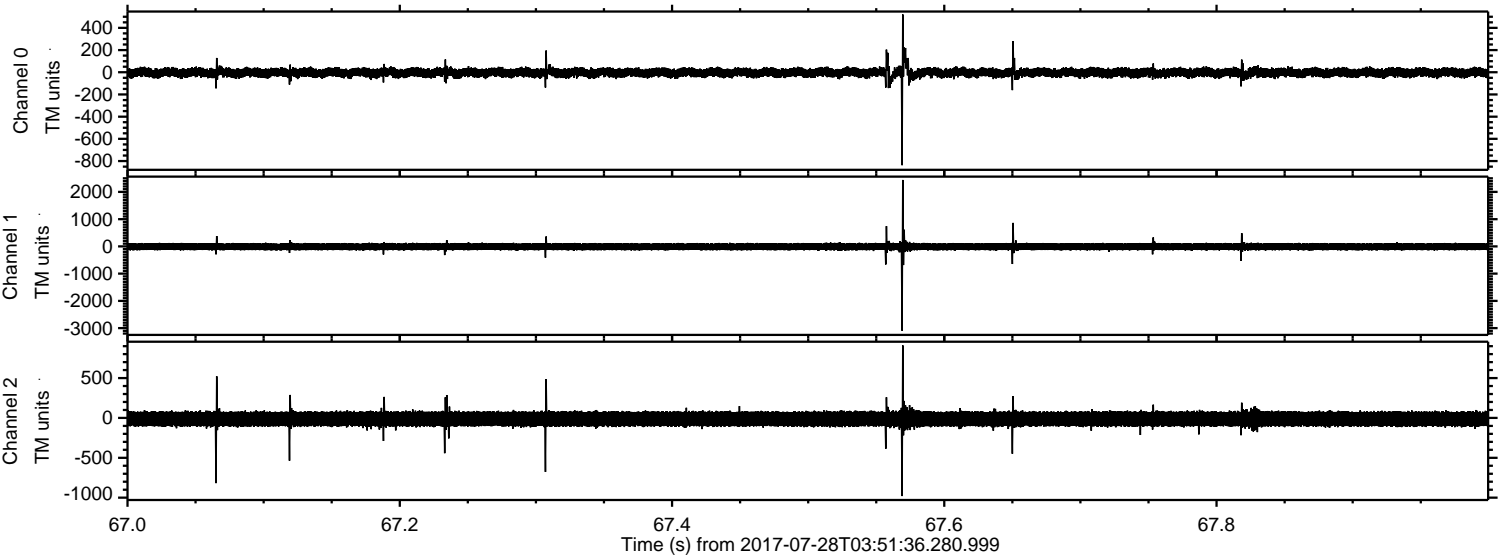


Channel 0
mn: -1008
mx: 1063
 μ : -3.4
 σ : 27.5

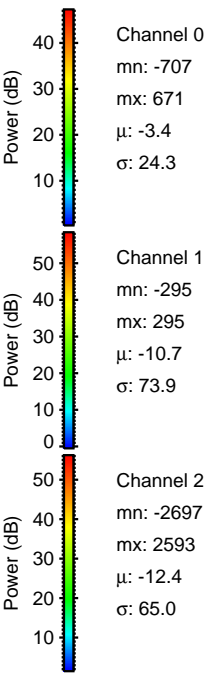
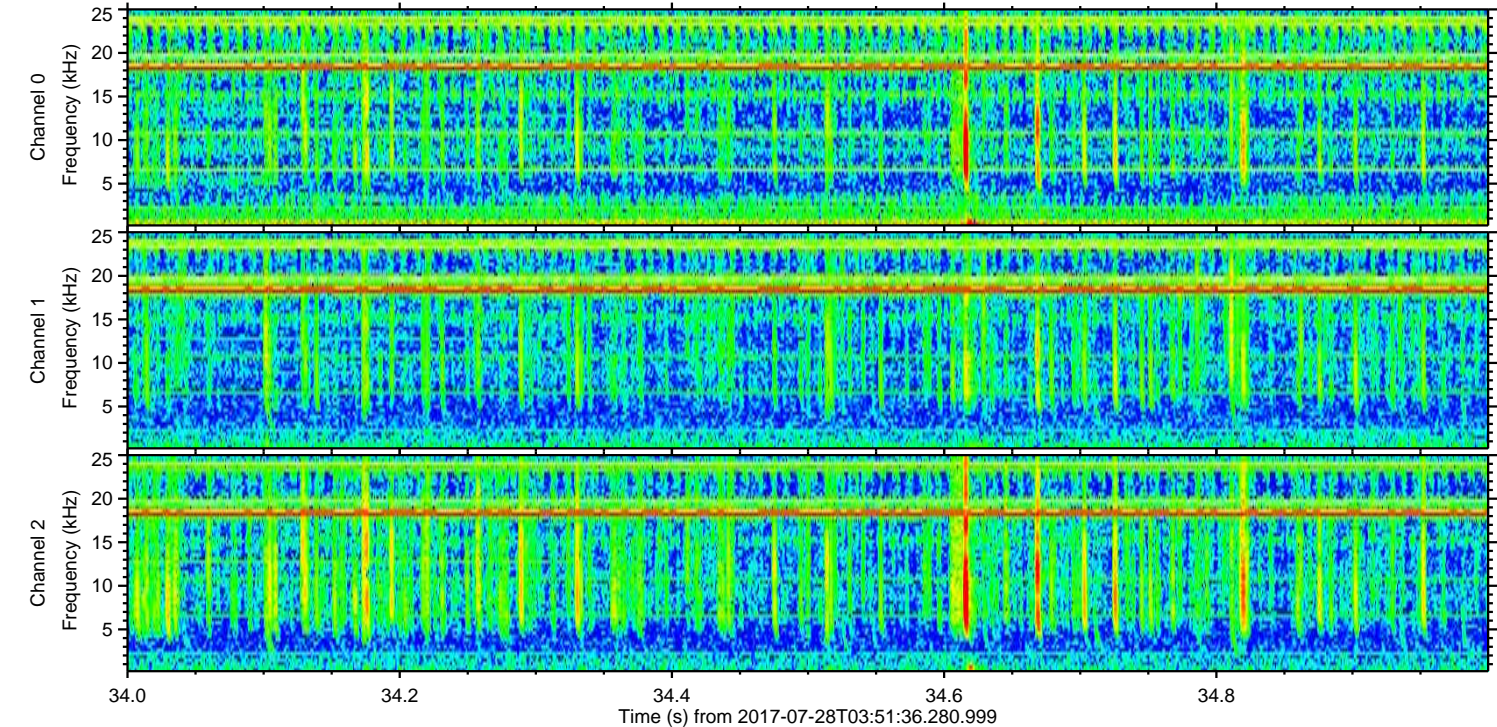
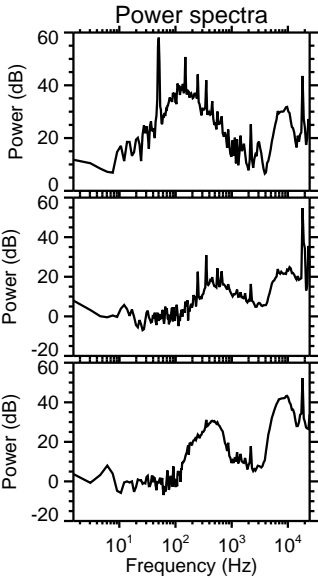
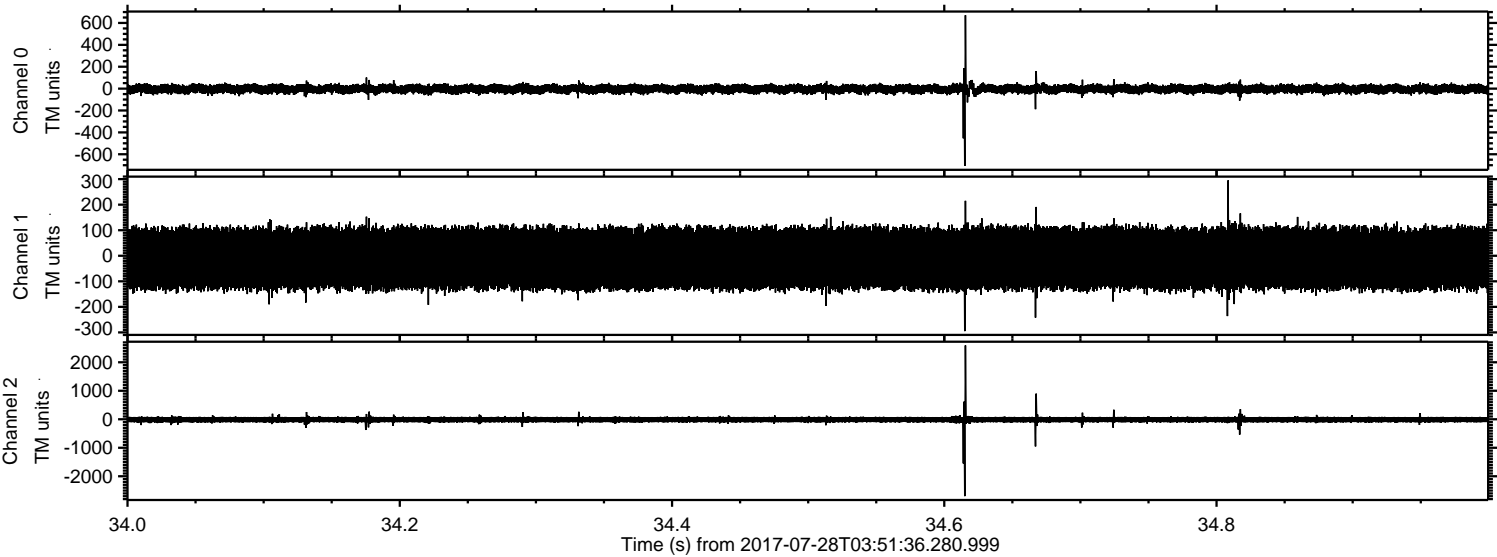
Channel 1
mn: -803
mx: 910
 μ : -10.7
 σ : 75.2

Channel 2
mn: -4097
mx: 3094
 μ : -12.4
 σ : 81.7

Processed Fri Jul 28 05:59:39 2017 by ELM ver.2012-10-06 from 001__elm20170728_035135__dat00.bin



Processed Fri Jul 28 05:59:40 2017 by ELM ver.2012-10-06 from 001__elm20170728_035135__dat00.bin



Processed Fri Jul 28 05:59:40 2017 by ELM ver.2012-10-06 from 001__elm20170728_035135__dat00.bin

