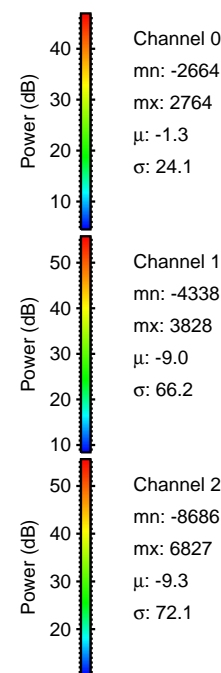
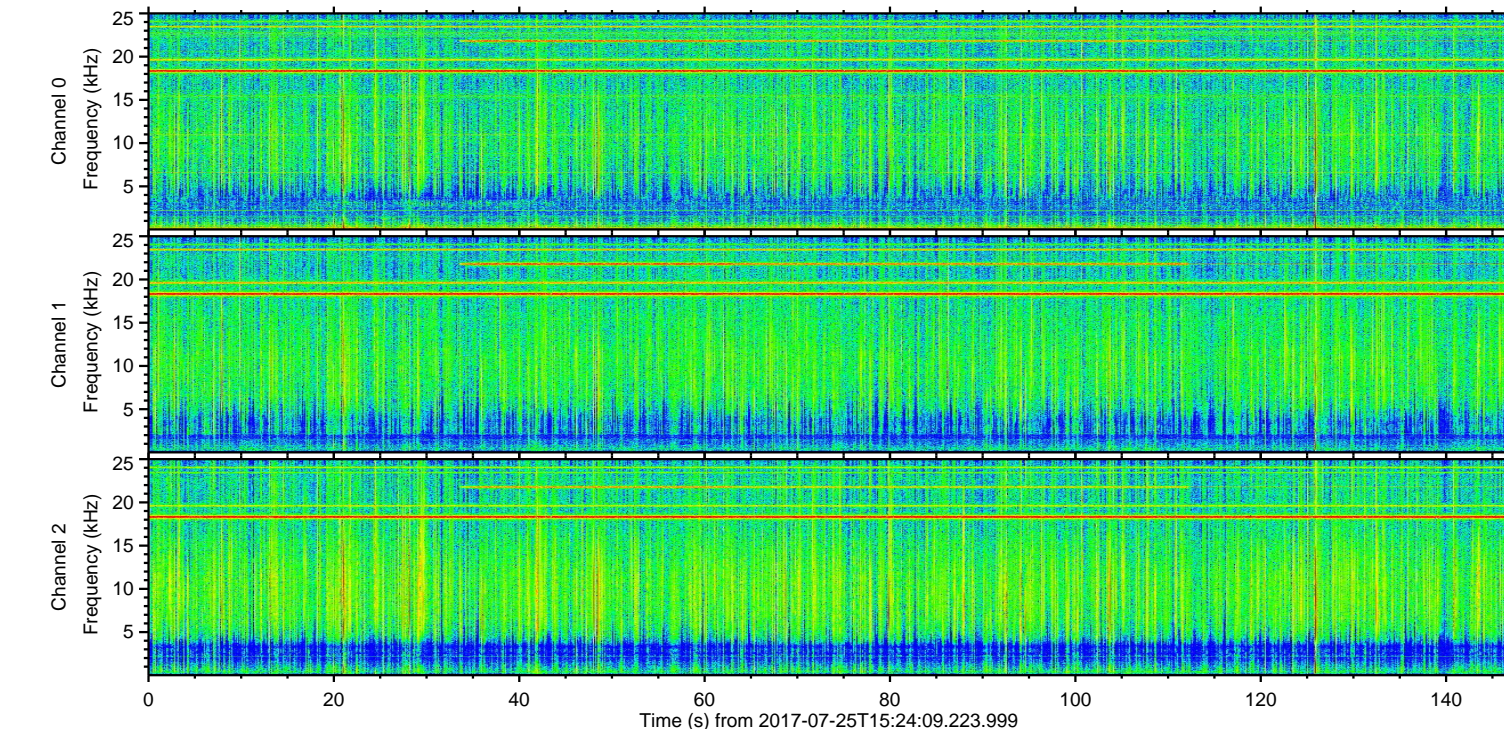
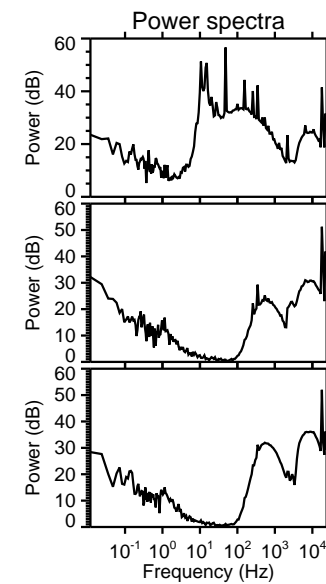
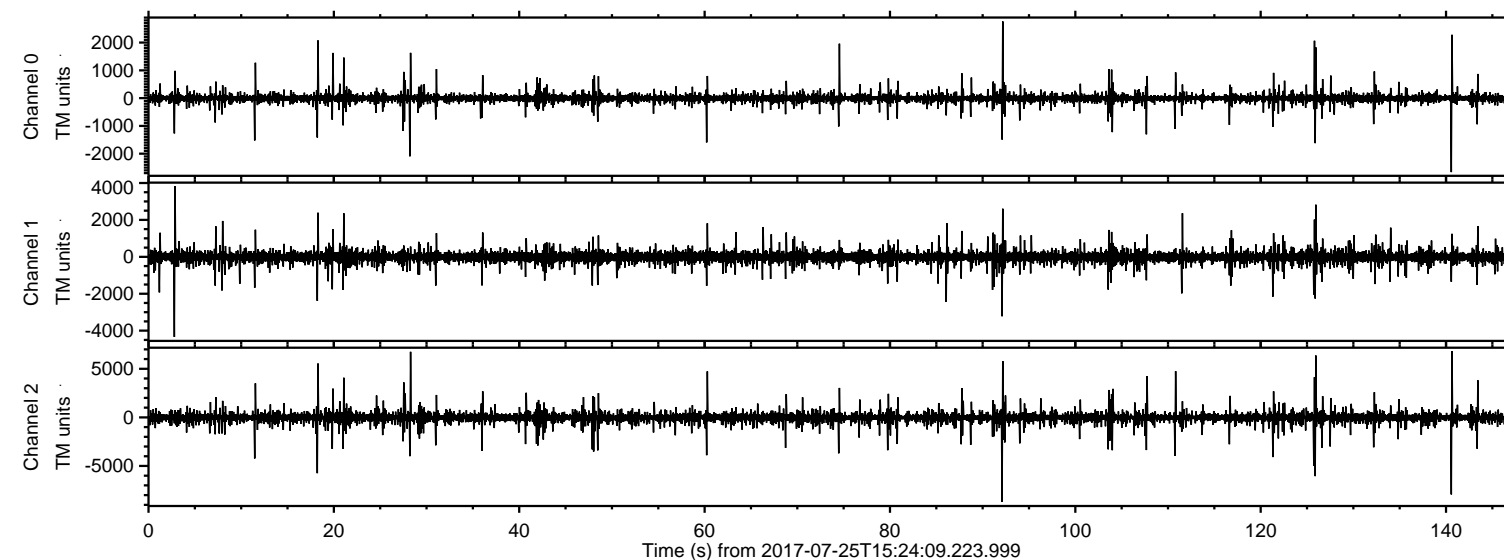
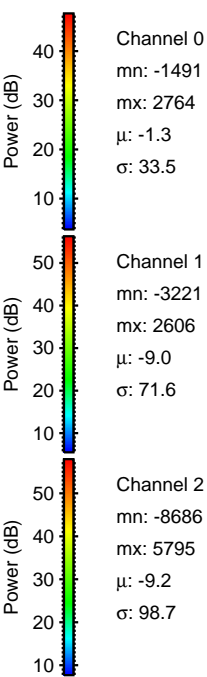
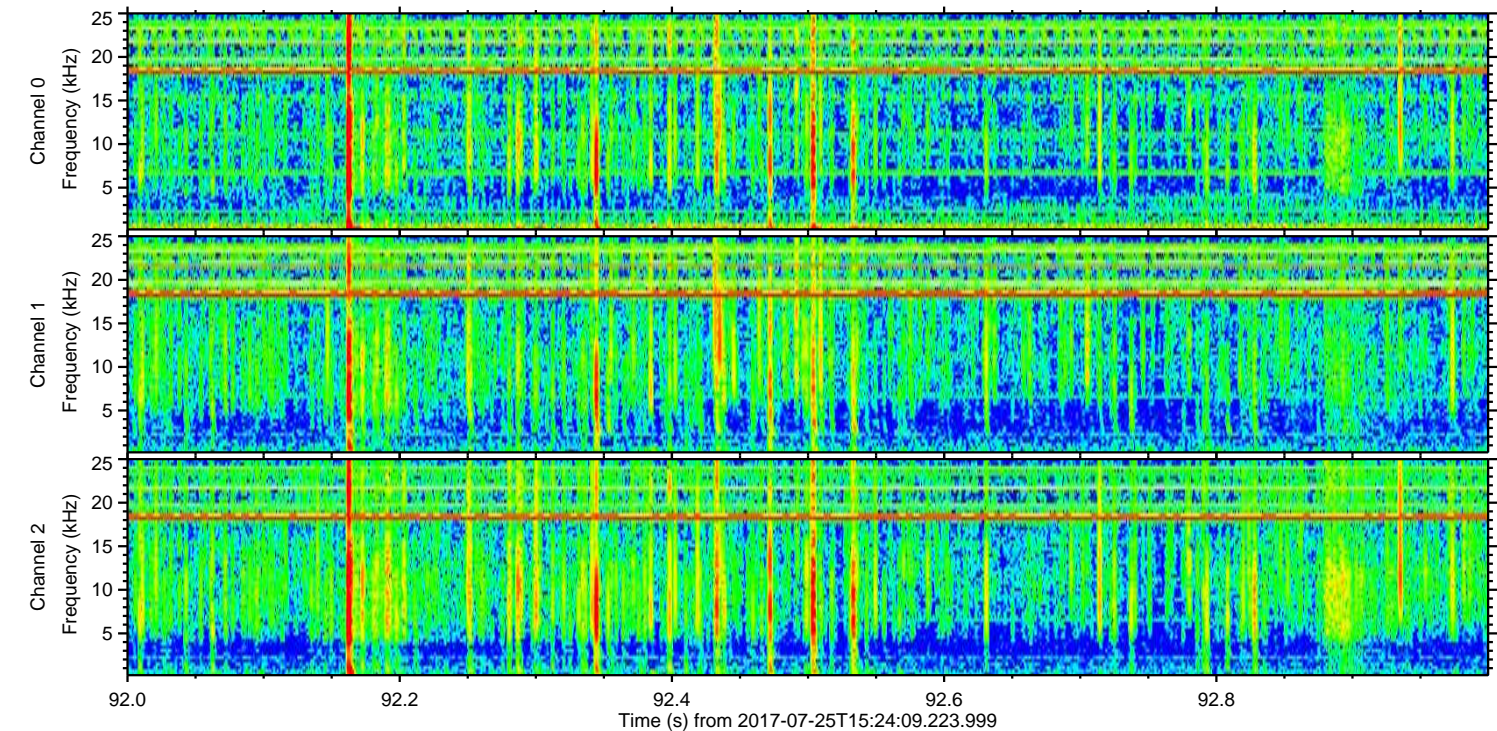
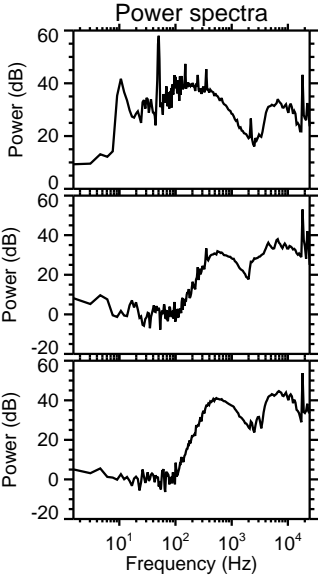
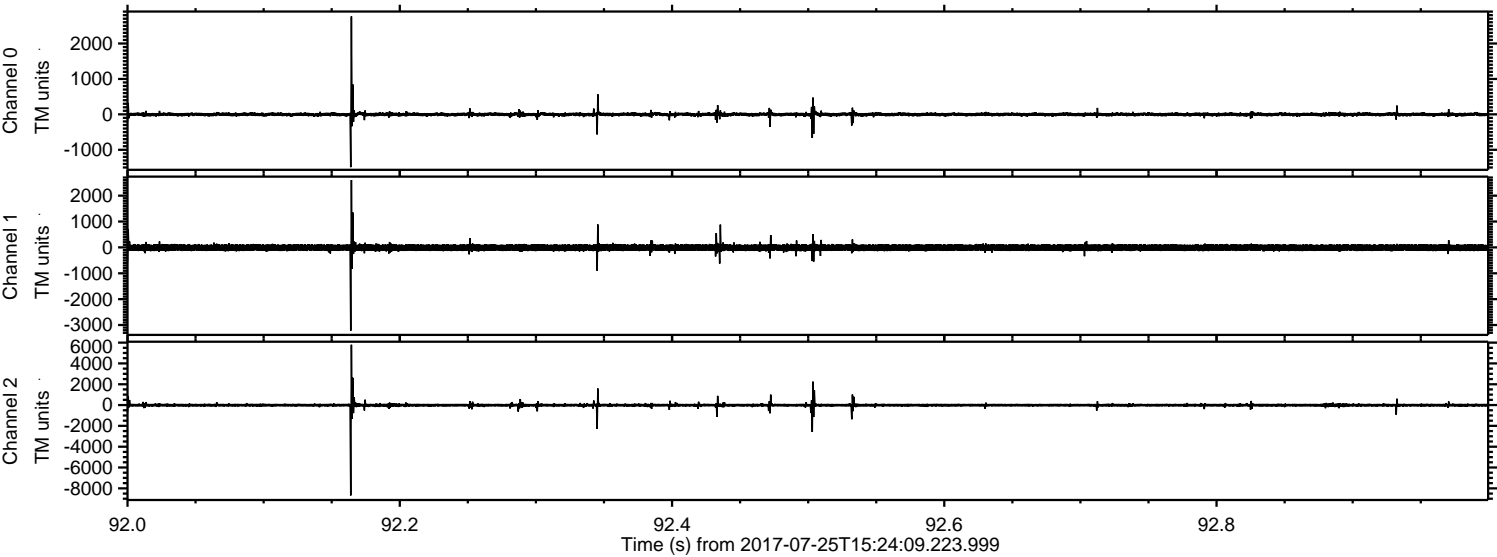


ELMAVAN 3D WAVEFORMS (Measured data sampled at 50 kHz) 51000 packets of 144 samples from 2017-07-25T15:24:09.223.999.

Processed Tue Jul 25 17:32:05 2017 by ELM ver.2012-10-06 from 001__elm20170725_152408__dat00.bin

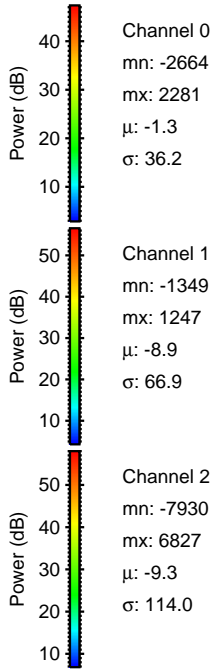
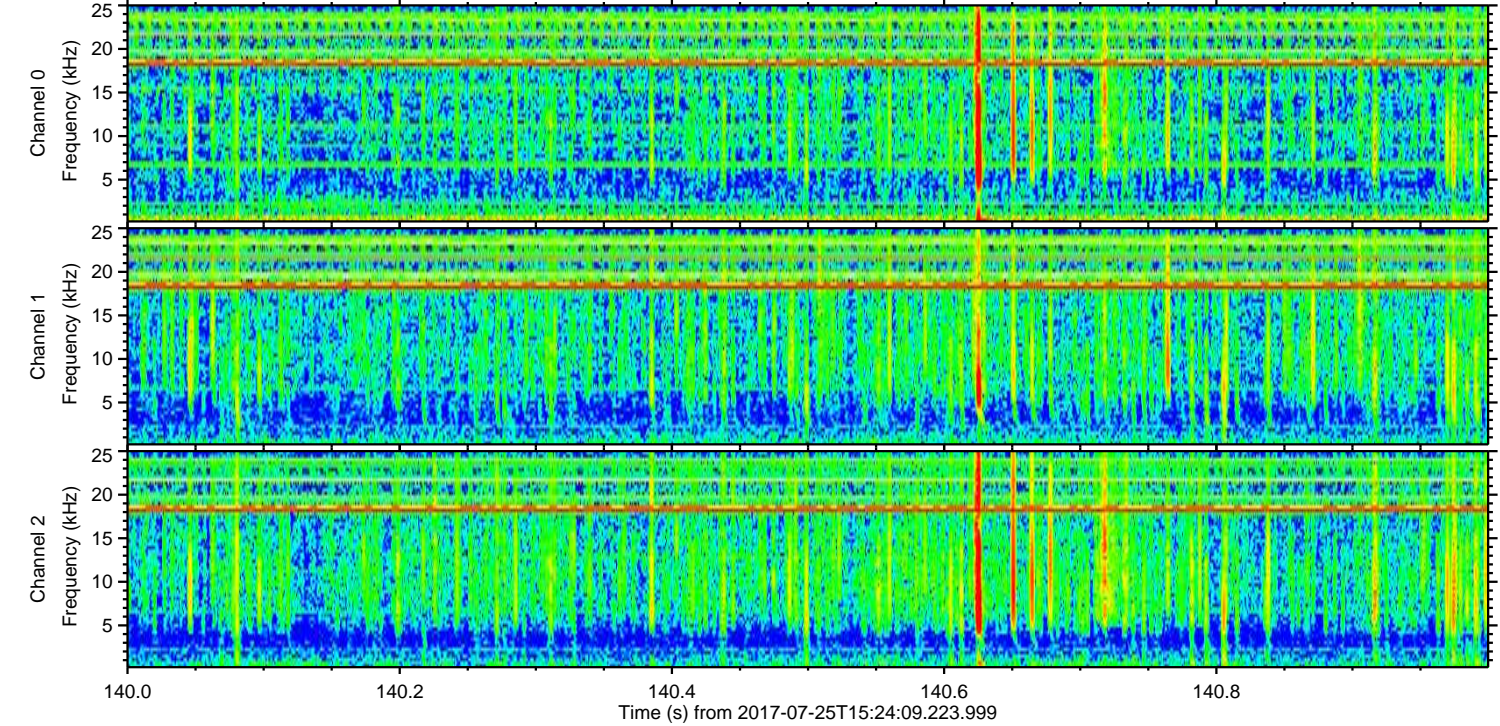
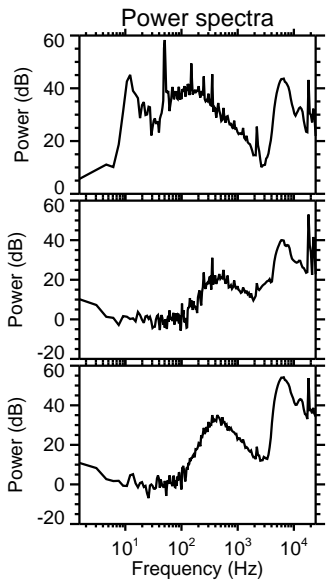
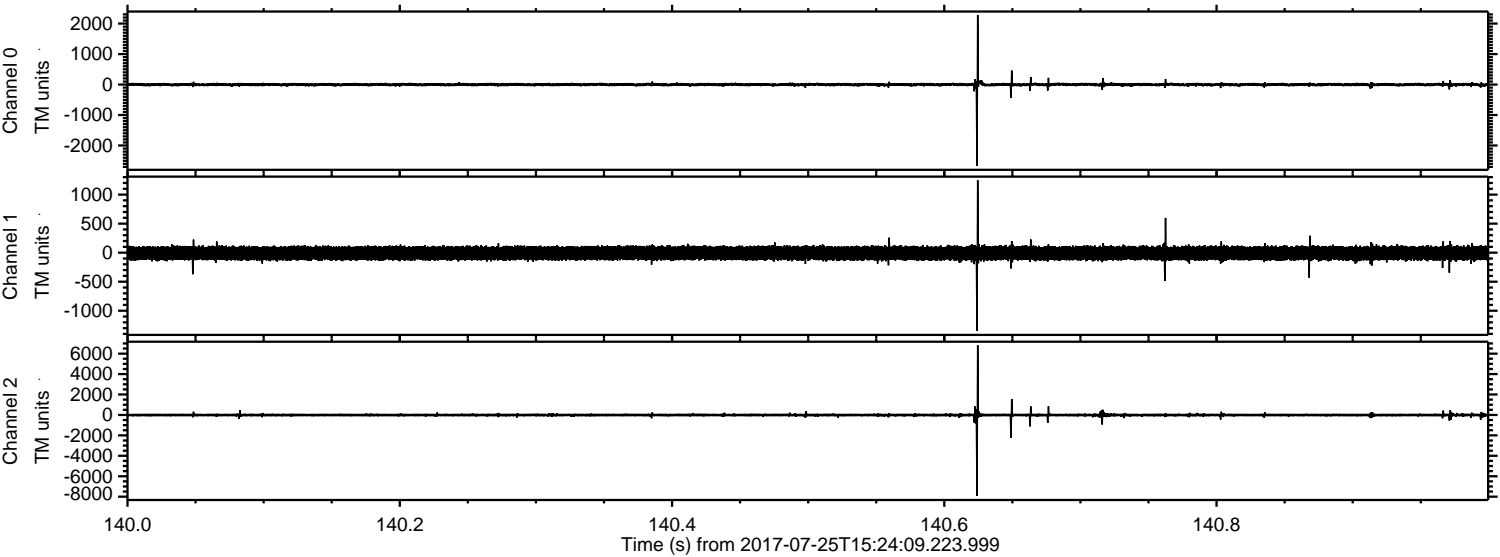


Processed Tue Jul 25 17:32:11 2017 by ELM ver.2012-10-06 from 001__elm20170725_152408__dat00.bin

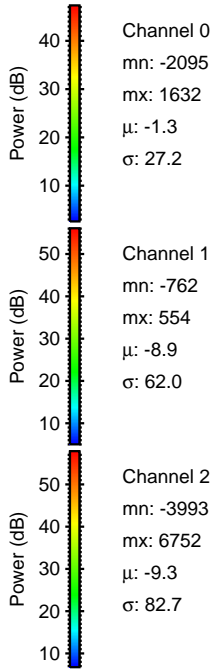
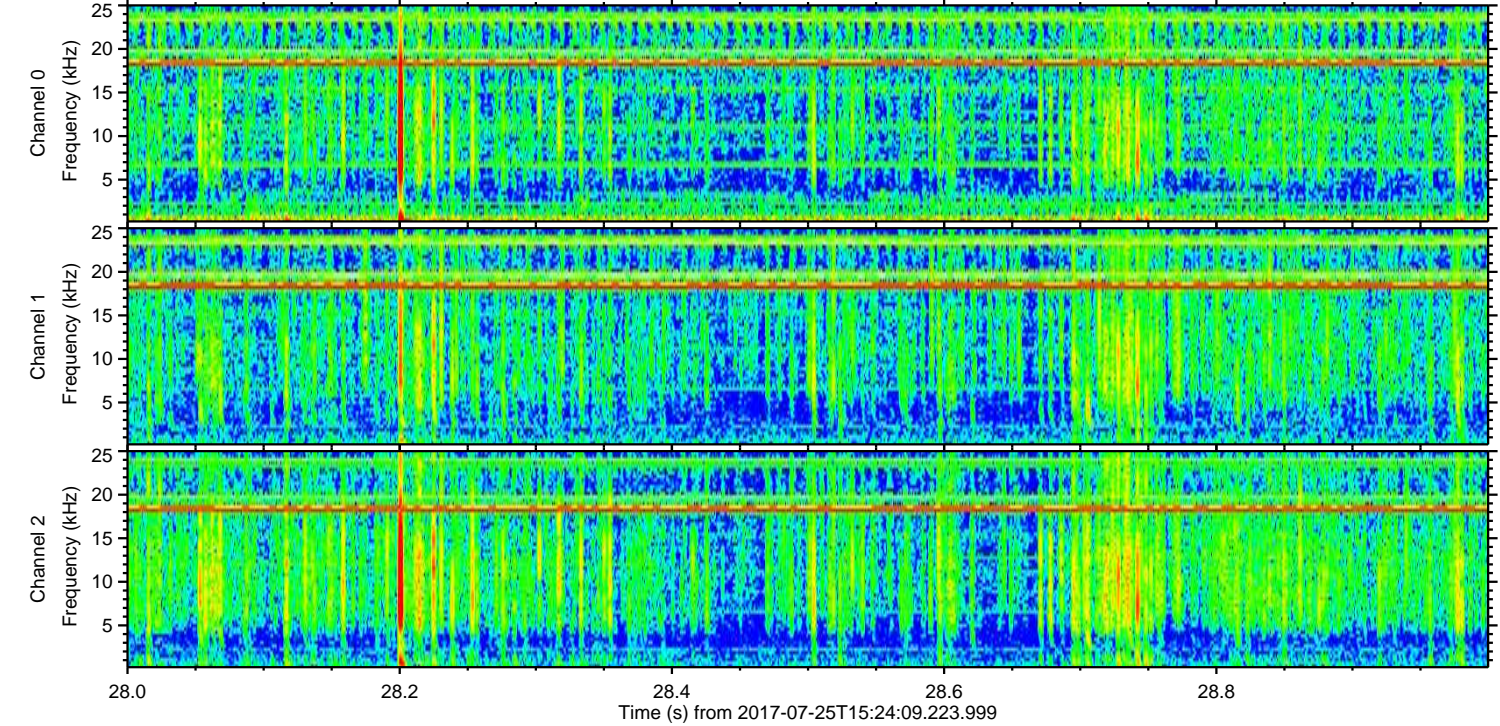
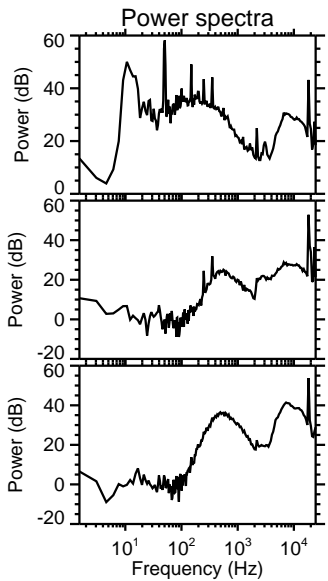
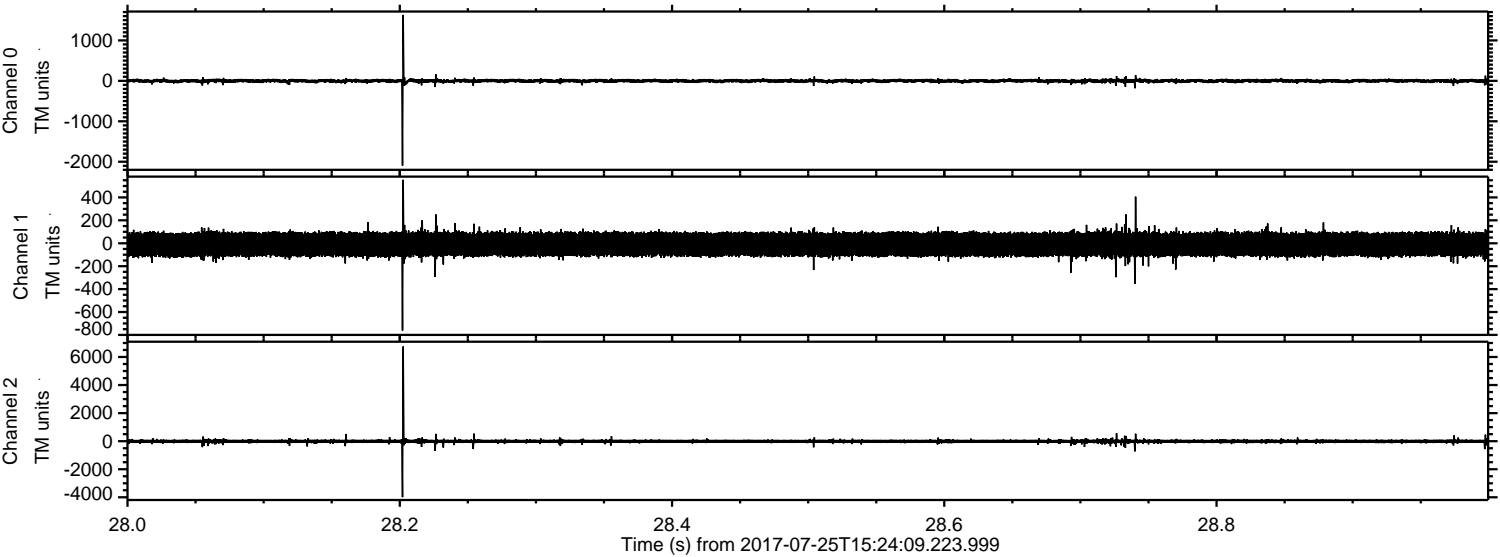


ELMAVAN 3D WAVEFORMS (Measured data sampled at 50 kHz) 51000 packets of 144 samples from 2017-07-25T15:24:09.223.999. Part 141/147

Processed Tue Jul 25 17:32:12 2017 by ELM ver.2012-10-06 from 001__elm20170725_152408__dat00.bin



Processed Tue Jul 25 17:32:12 2017 by ELM ver.2012-10-06 from 001__elm20170725_152408__dat00.bin



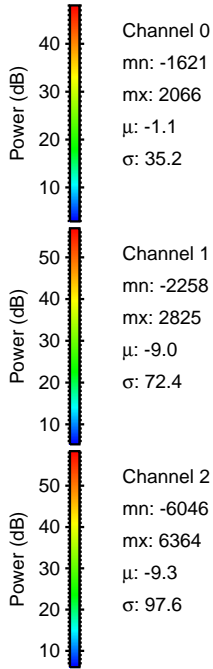
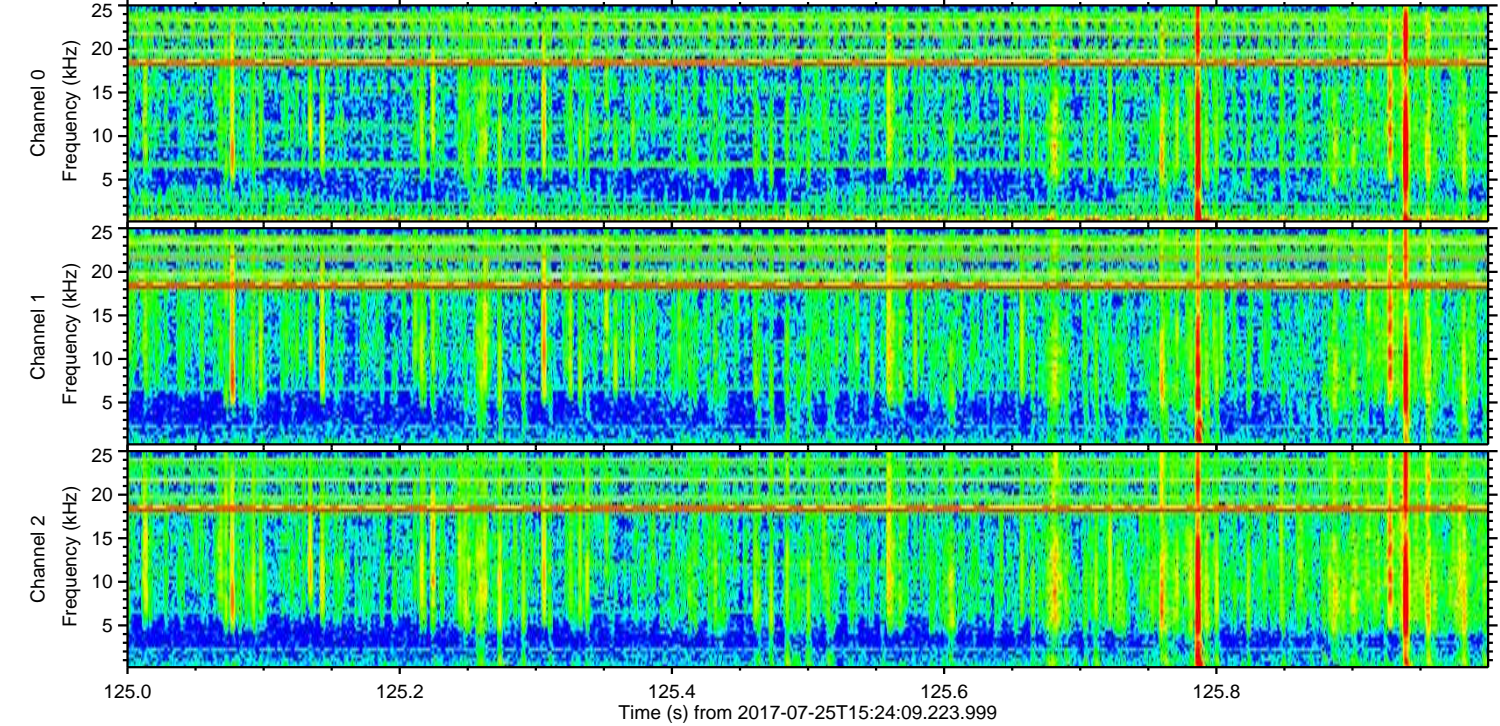
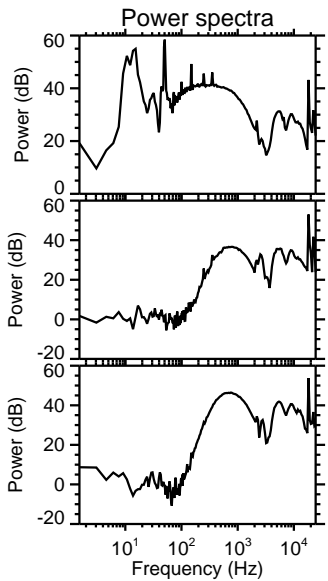
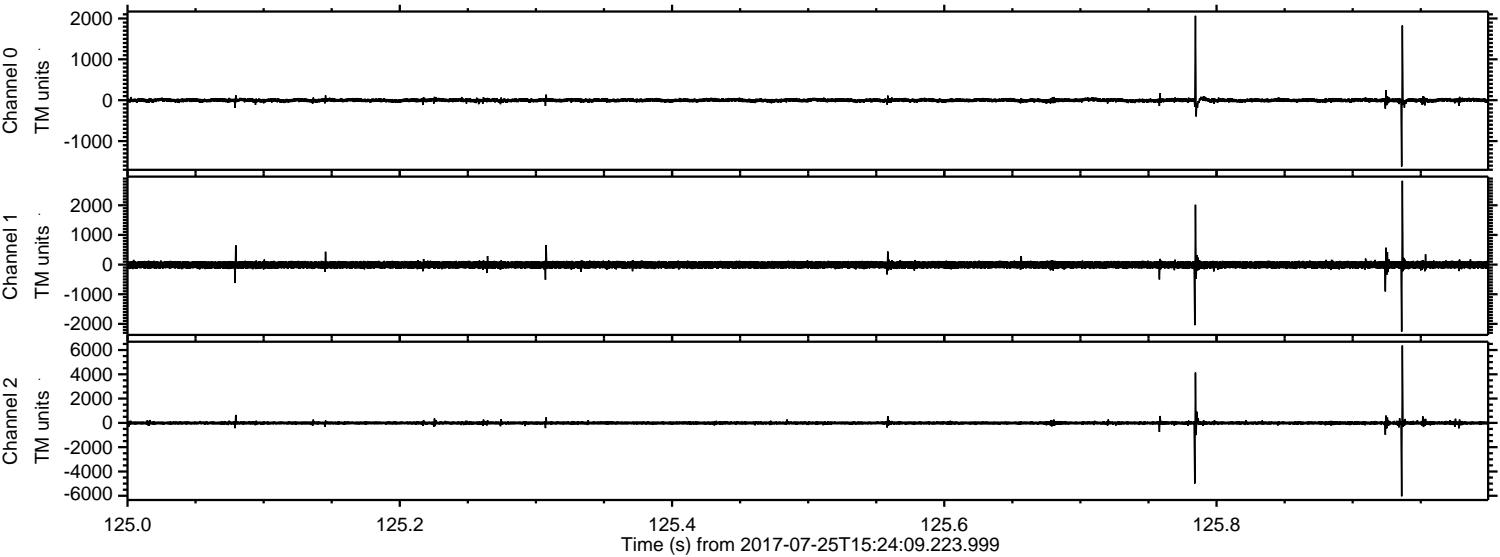
Channel 0
mn: -2095
mx: 1632
 μ : -1.3
 σ : 27.2

Channel 1
mn: -762
mx: 554
 μ : -8.9
 σ : 62.0

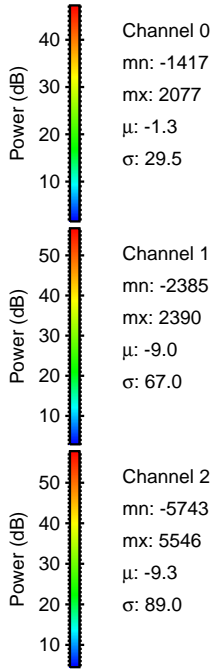
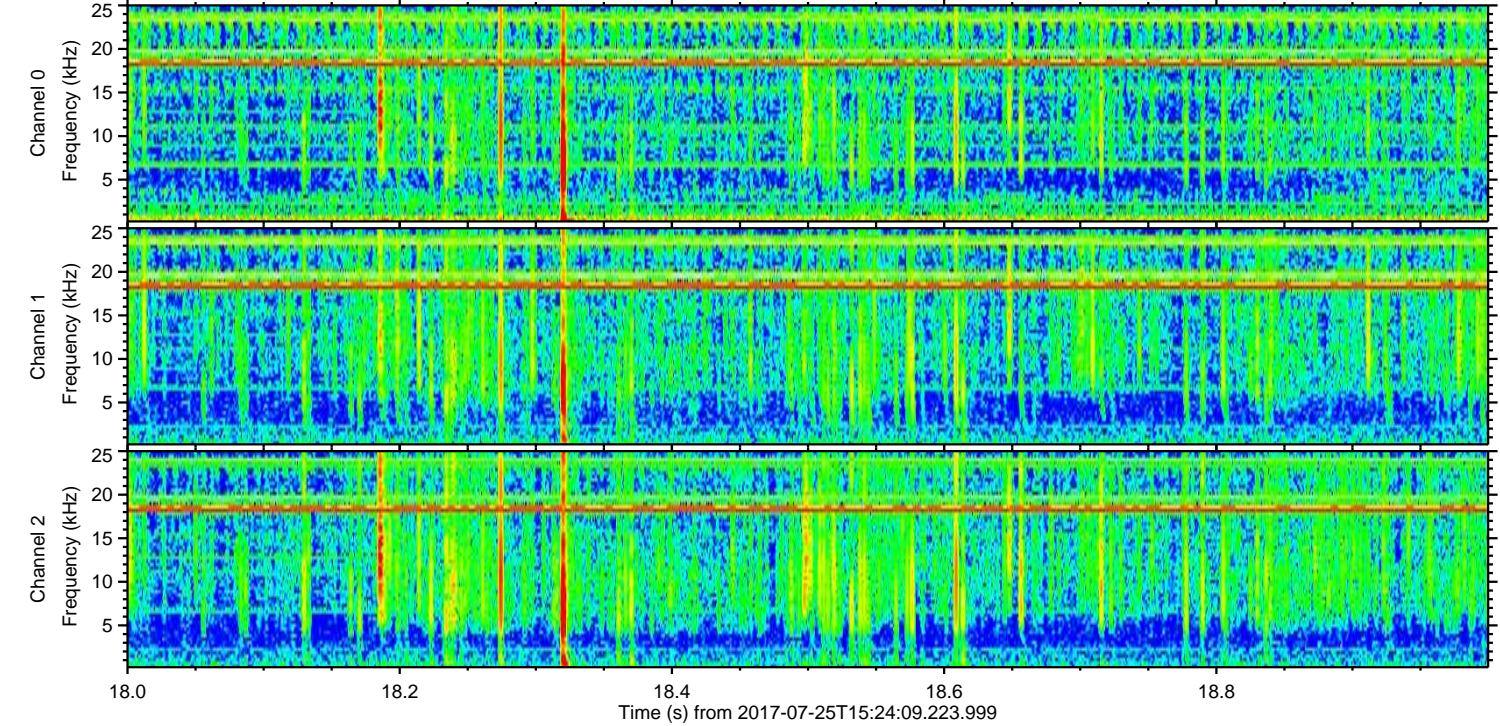
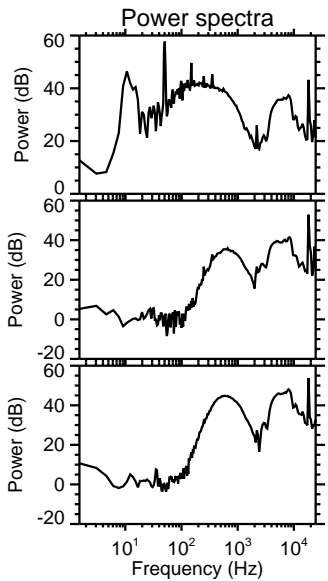
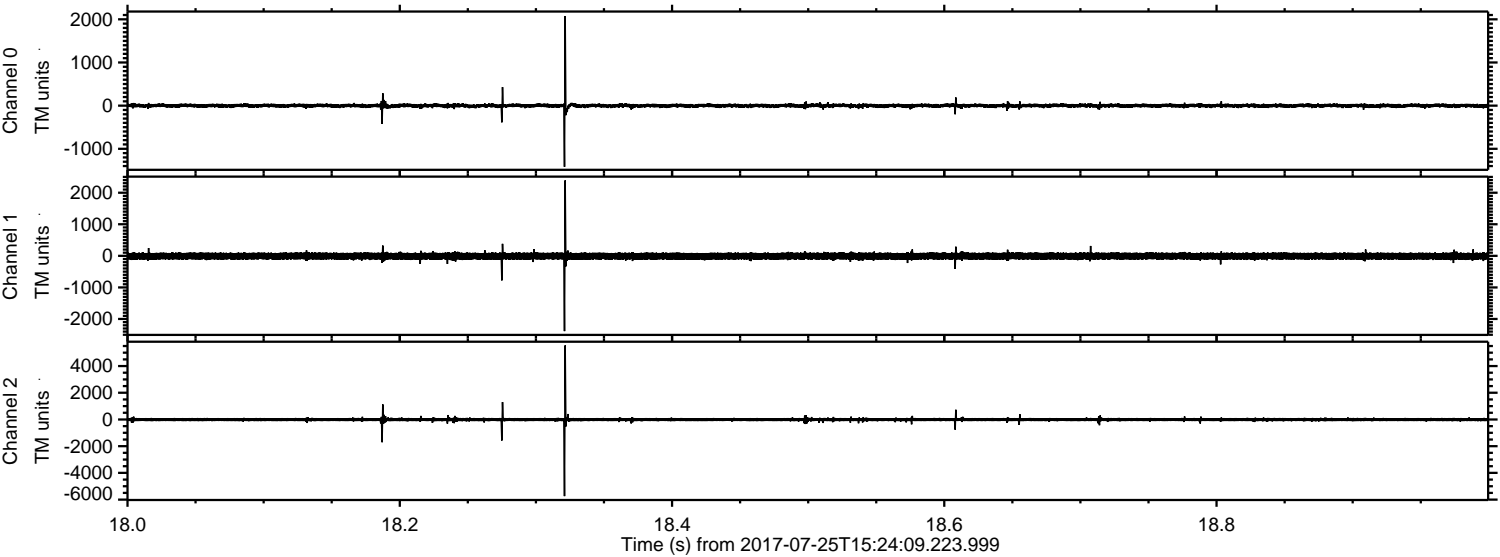
Channel 2
mn: -3993
mx: 6752
 μ : -9.3
 σ : 82.7

ELMAVAN 3D WAVEFORMS (Measured data sampled at 50 kHz) 51000 packets of 144 samples from 2017-07-25T15:24:09.223.999. Part 126/147

Processed Tue Jul 25 17:32:13 2017 by ELM ver.2012-10-06 from 001__elm20170725_152408__dat00.bin



Processed Tue Jul 25 17:32:14 2017 by ELM ver.2012-10-06 from 001__elm20170725_152408__dat00.bin



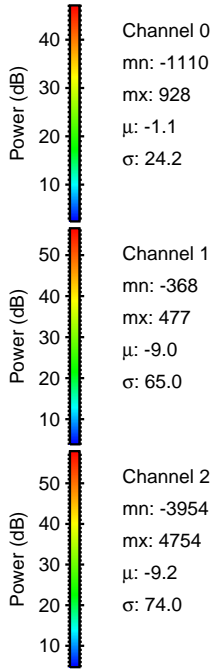
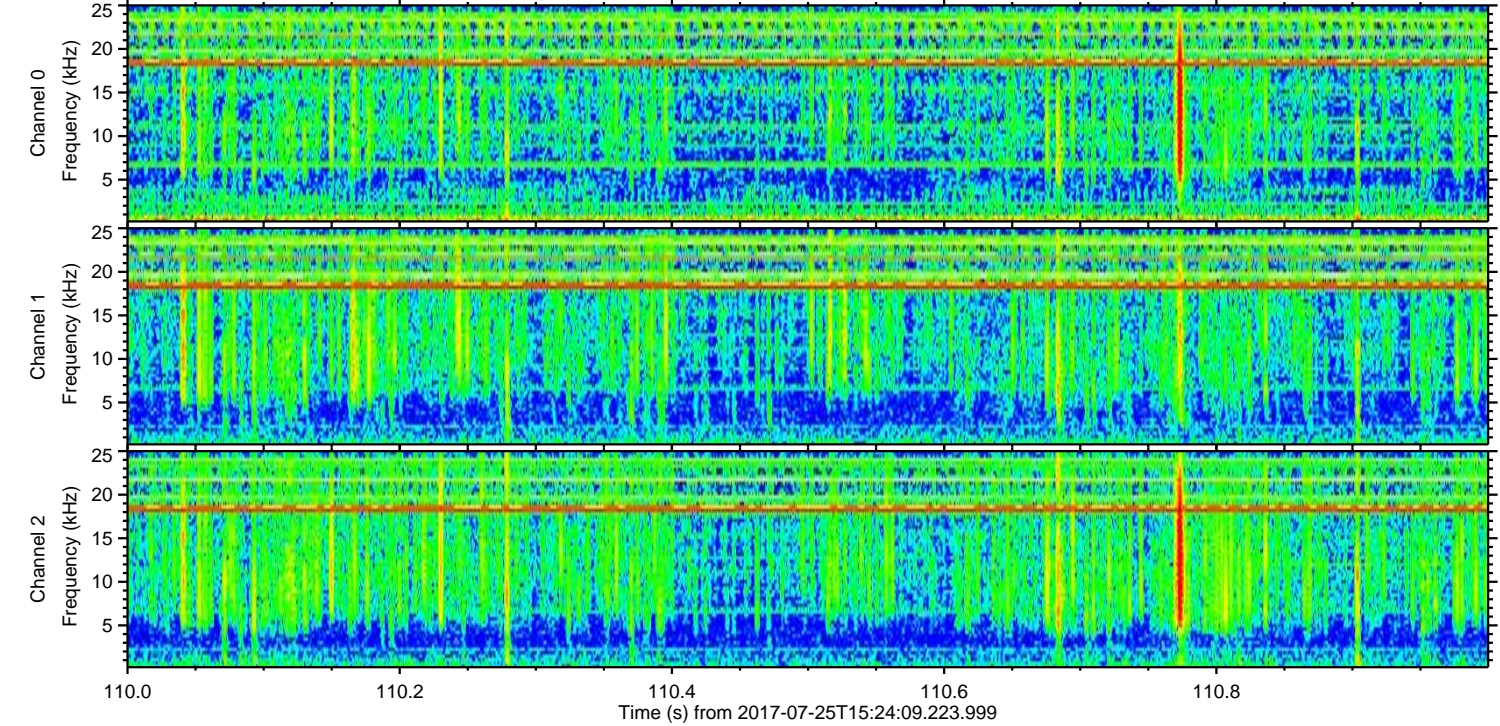
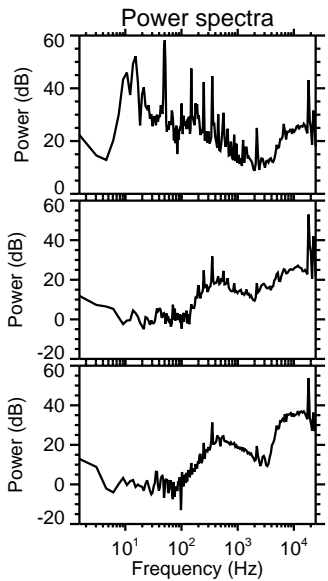
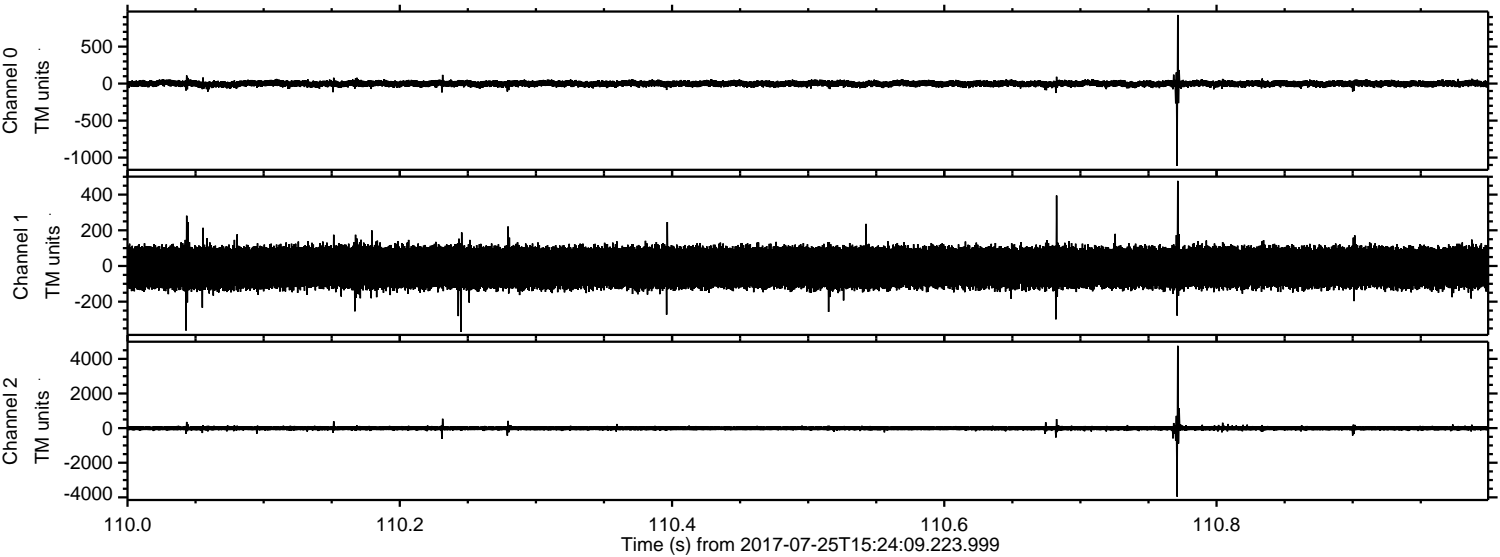
Channel 0
mn: -1417
mx: 2077
 μ : -1.3
 σ : 29.5

Channel 1
mn: -2385
mx: 2390
 μ : -9.0
 σ : 67.0

Channel 2
mn: -5743
mx: 5546
 μ : -9.3
 σ : 89.0

ELMAVAN 3D WAVEFORMS (Measured data sampled at 50 kHz) 51000 packets of 144 samples from 2017-07-25T15:24:09.223.999. Part 111/147

Processed Tue Jul 25 17:32:14 2017 by ELM ver.2012-10-06 from 001__elm20170725_152408__dat00.bin

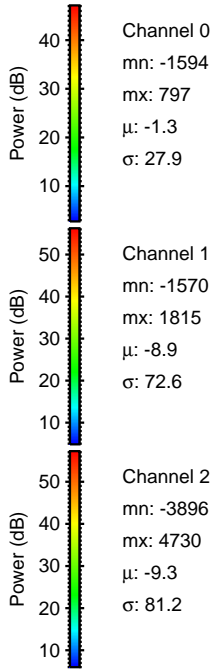
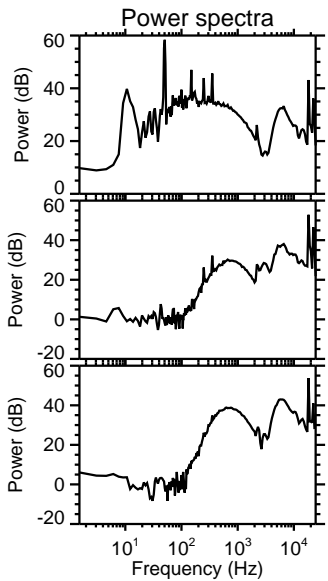
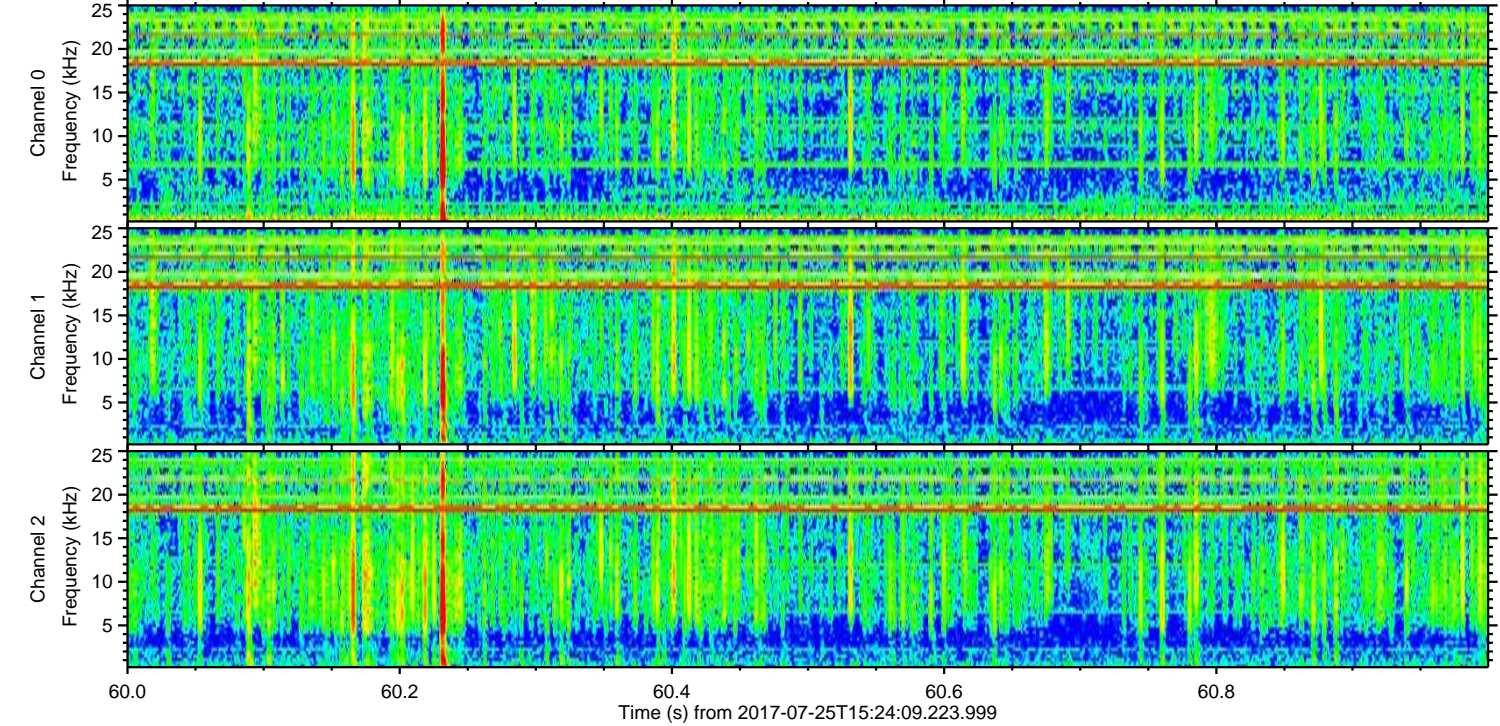
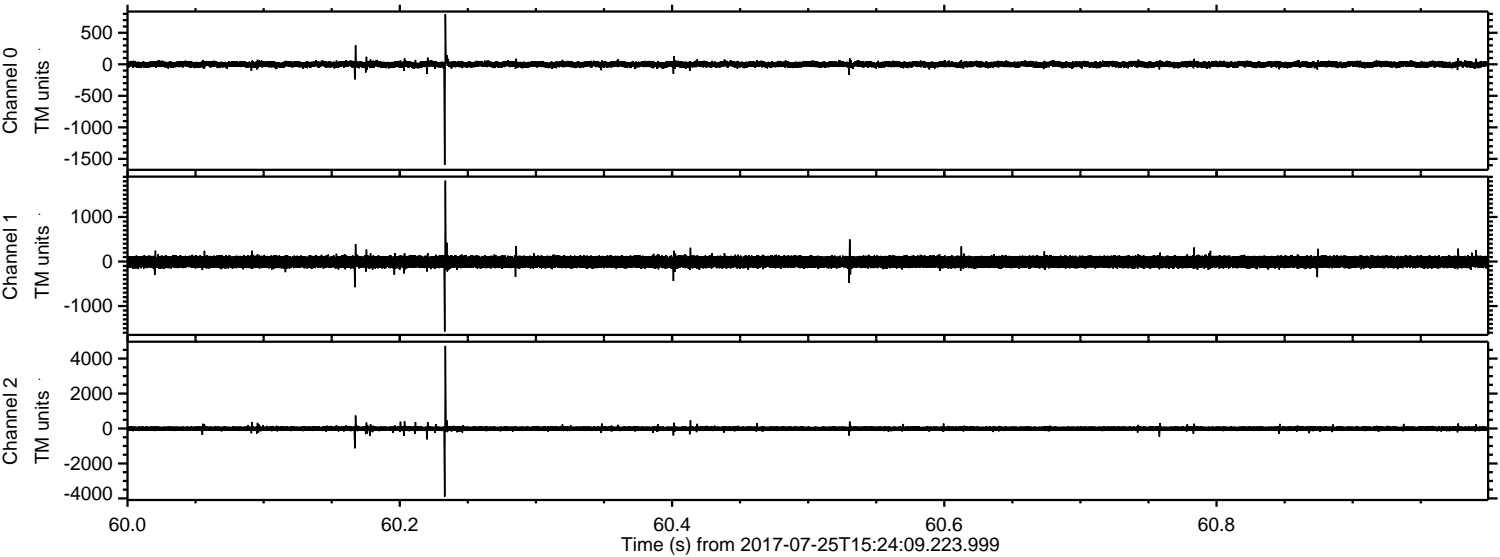


Channel 0
mn: -1110
mx: 928
 μ : -1.1
 σ : 24.2

Channel 1
mn: -368
mx: 477
 μ : -9.0
 σ : 65.0

Channel 2
mn: -3954
mx: 4754
 μ : -9.2
 σ : 74.0

Processed Tue Jul 25 17:32:15 2017 by ELM ver.2012-10-06 from 001__elm20170725_152408__dat00.bin



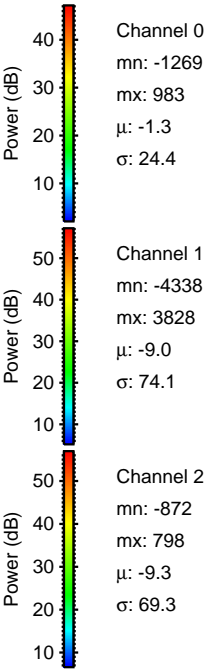
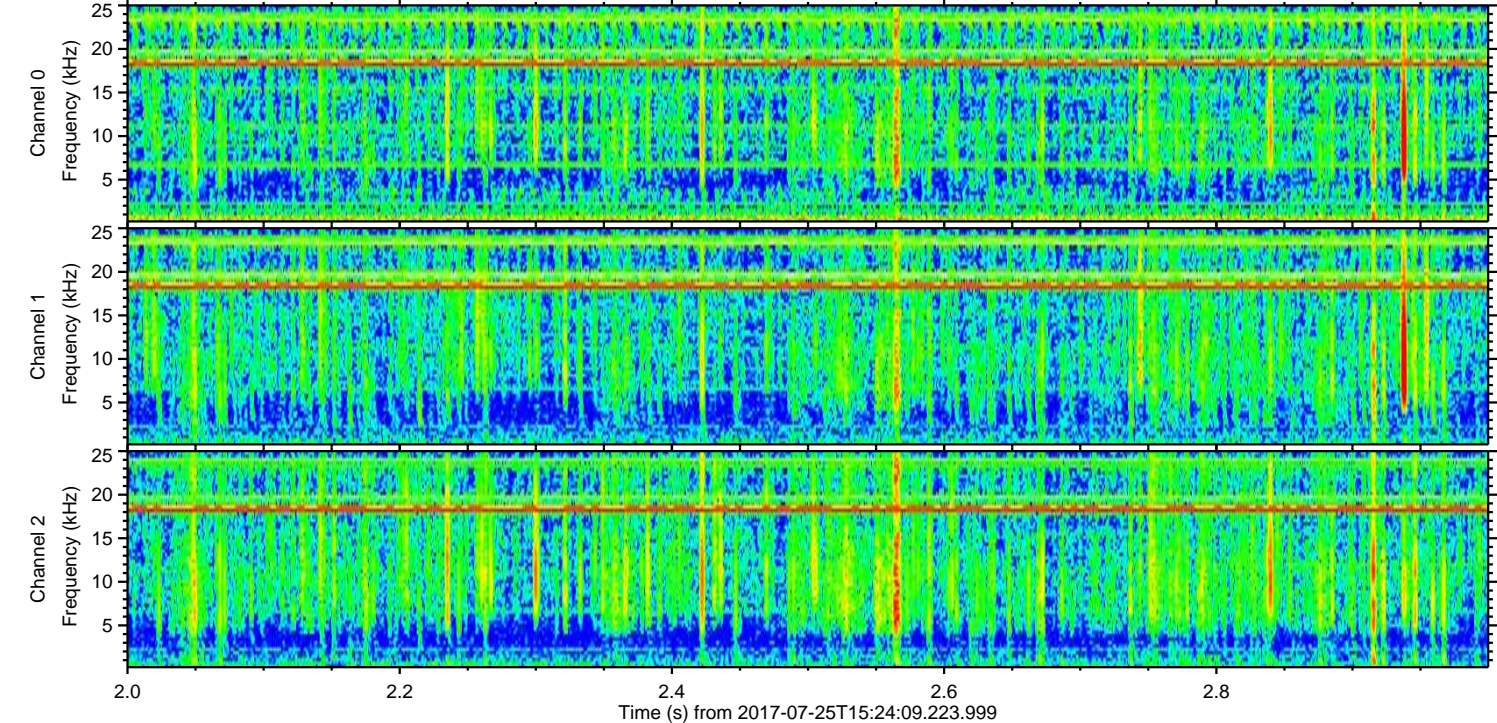
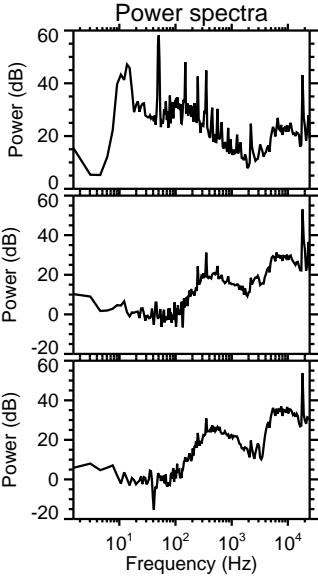
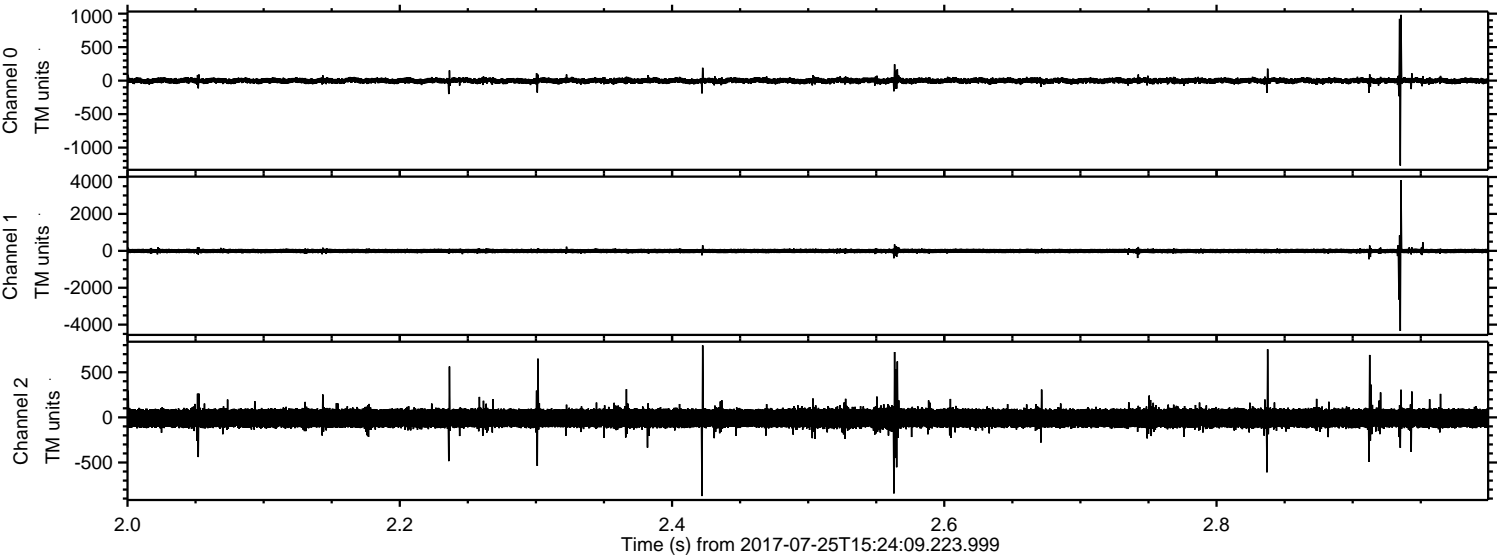
Channel 0
mn: -1594
mx: 797
 μ : -1.3
 σ : 27.9

Channel 1
mn: -1570
mx: 1815
 μ : -8.9
 σ : 72.6

Channel 2
mn: -3896
mx: 4730
 μ : -9.3
 σ : 81.2

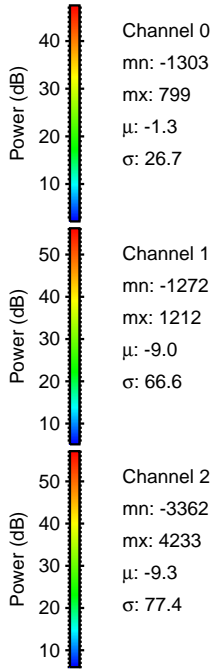
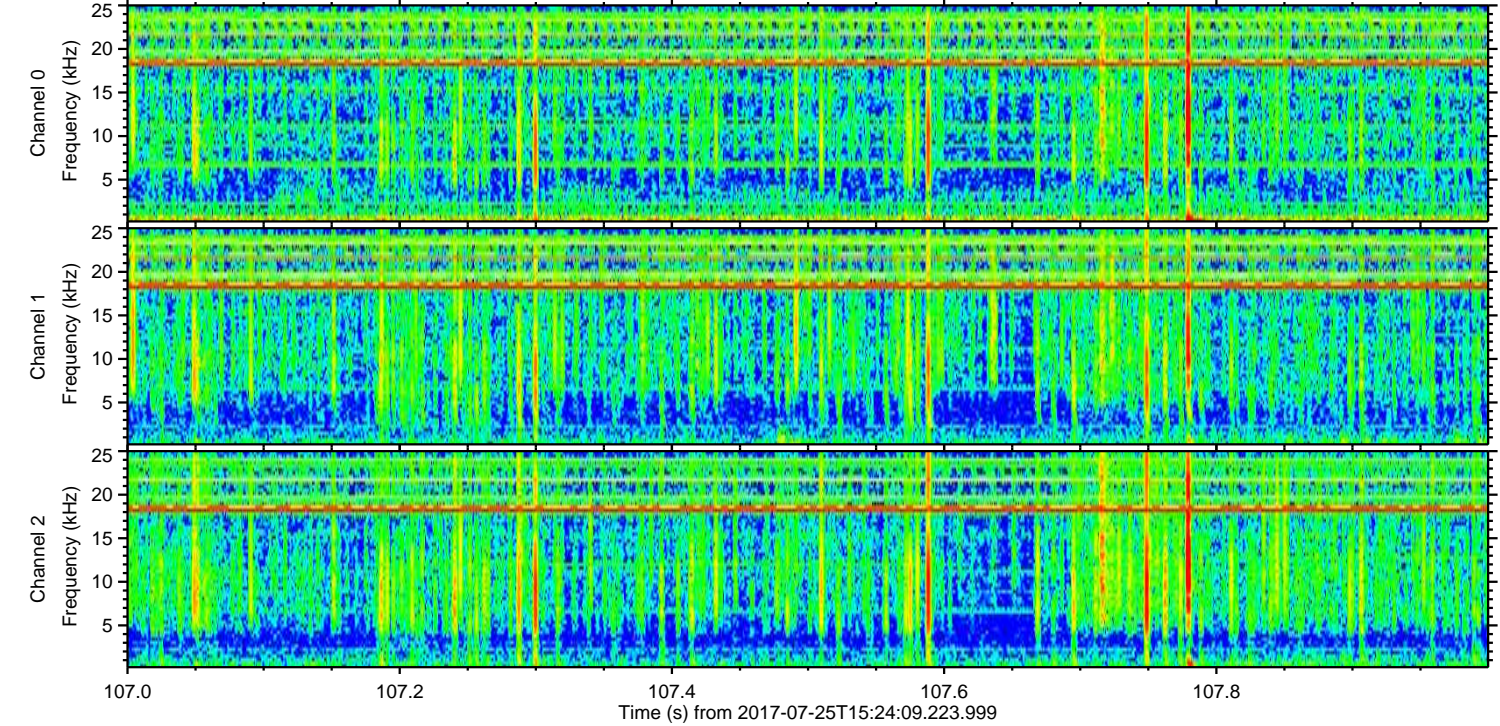
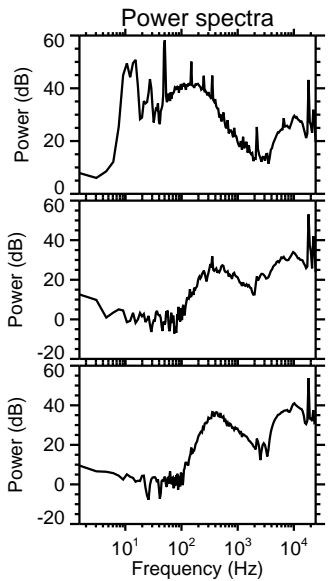
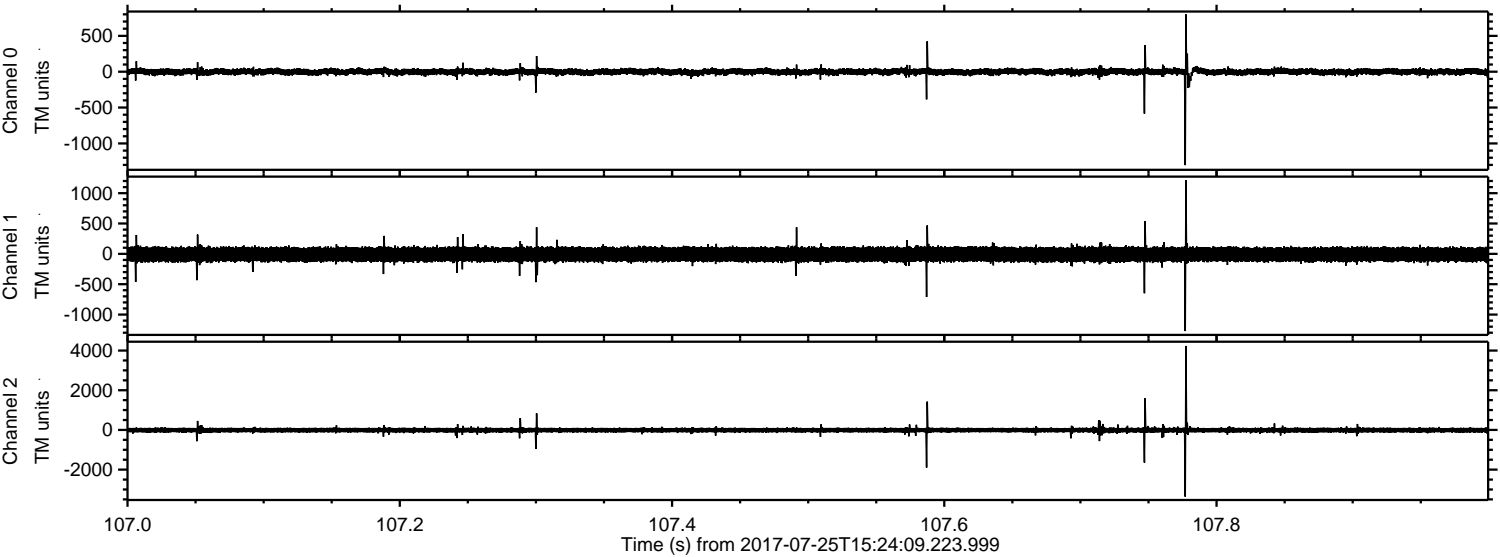
ELMAVAN 3D WAVEFORMS (Measured data sampled at 50 kHz) 51000 packets of 144 samples from 2017-07-25T15:24:09.223.999. Part 3/147

Processed Tue Jul 25 17:32:16 2017 by ELM ver.2012-10-06 from 001__elm20170725_152408__dat00.bin



ELMAVAN 3D WAVEFORMS (Measured data sampled at 50 kHz) 51000 packets of 144 samples from 2017-07-25T15:24:09.223.999. Part 108/147

Processed Tue Jul 25 17:32:16 2017 by ELM ver.2012-10-06 from 001__elm20170725_152408__dat00.bin



Processed Tue Jul 25 17:32:17 2017 by ELM ver.2012-10-06 from 001__elm20170725_152408__dat00.bin

