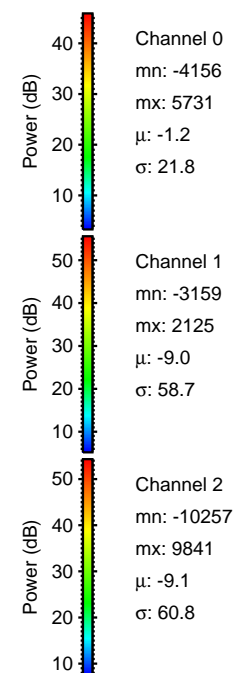
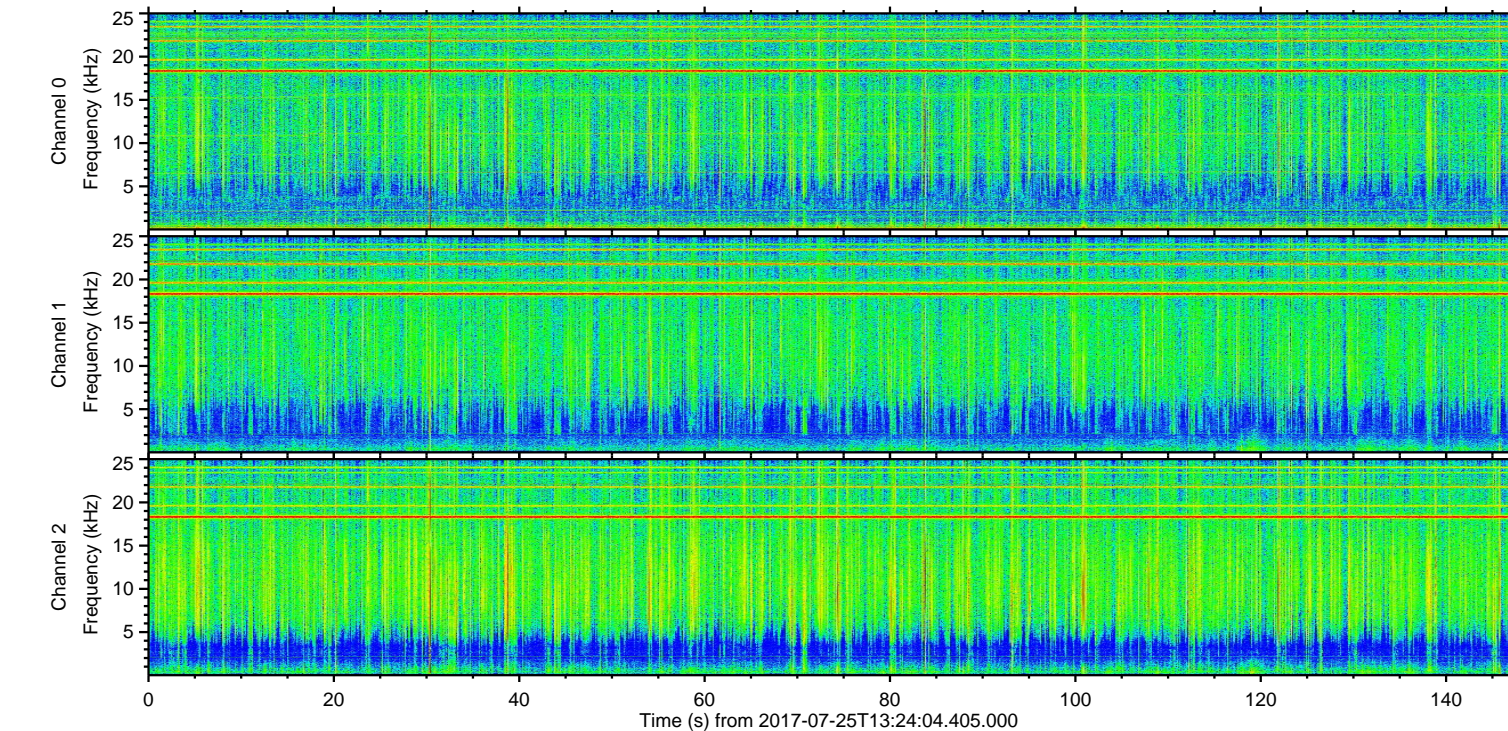
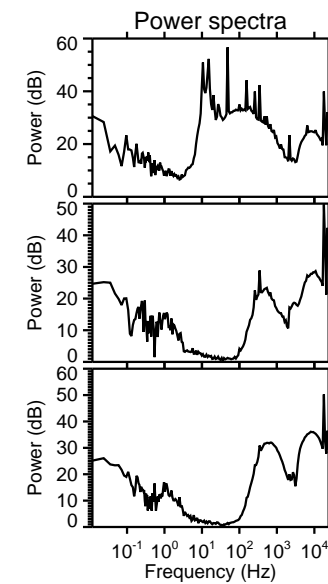
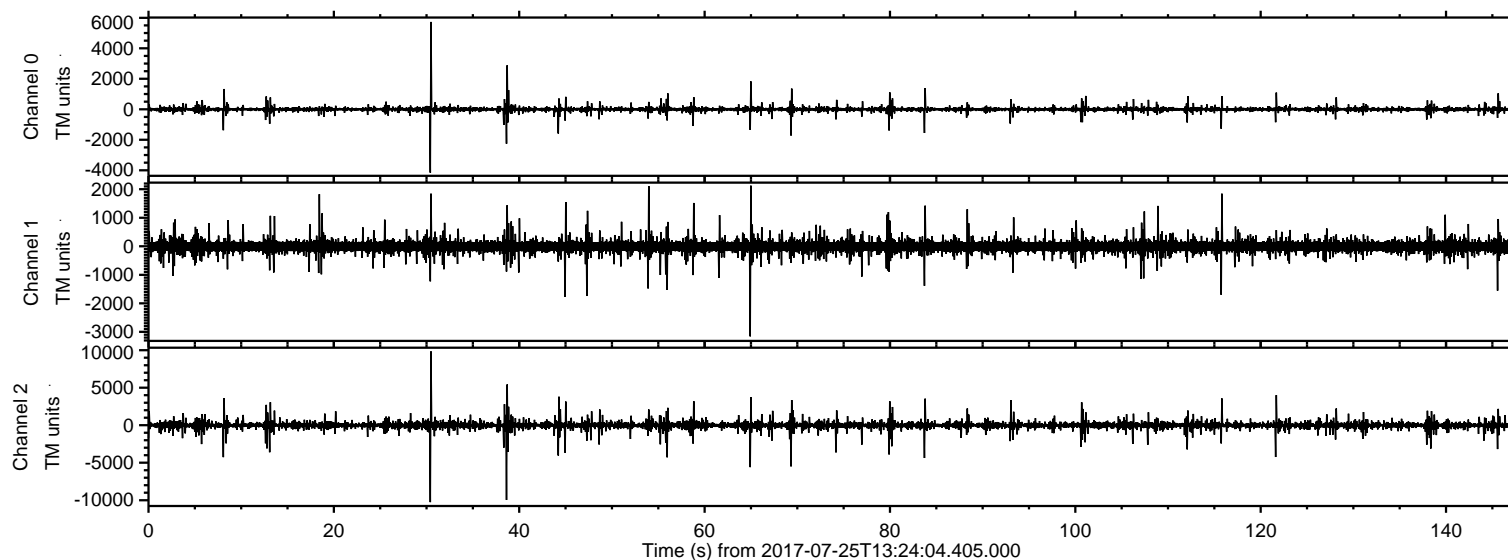


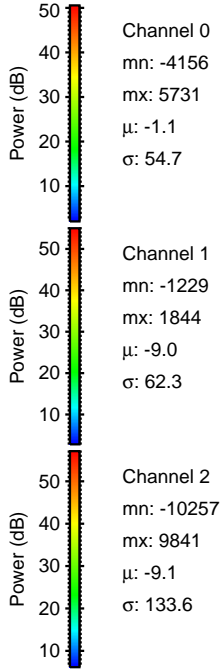
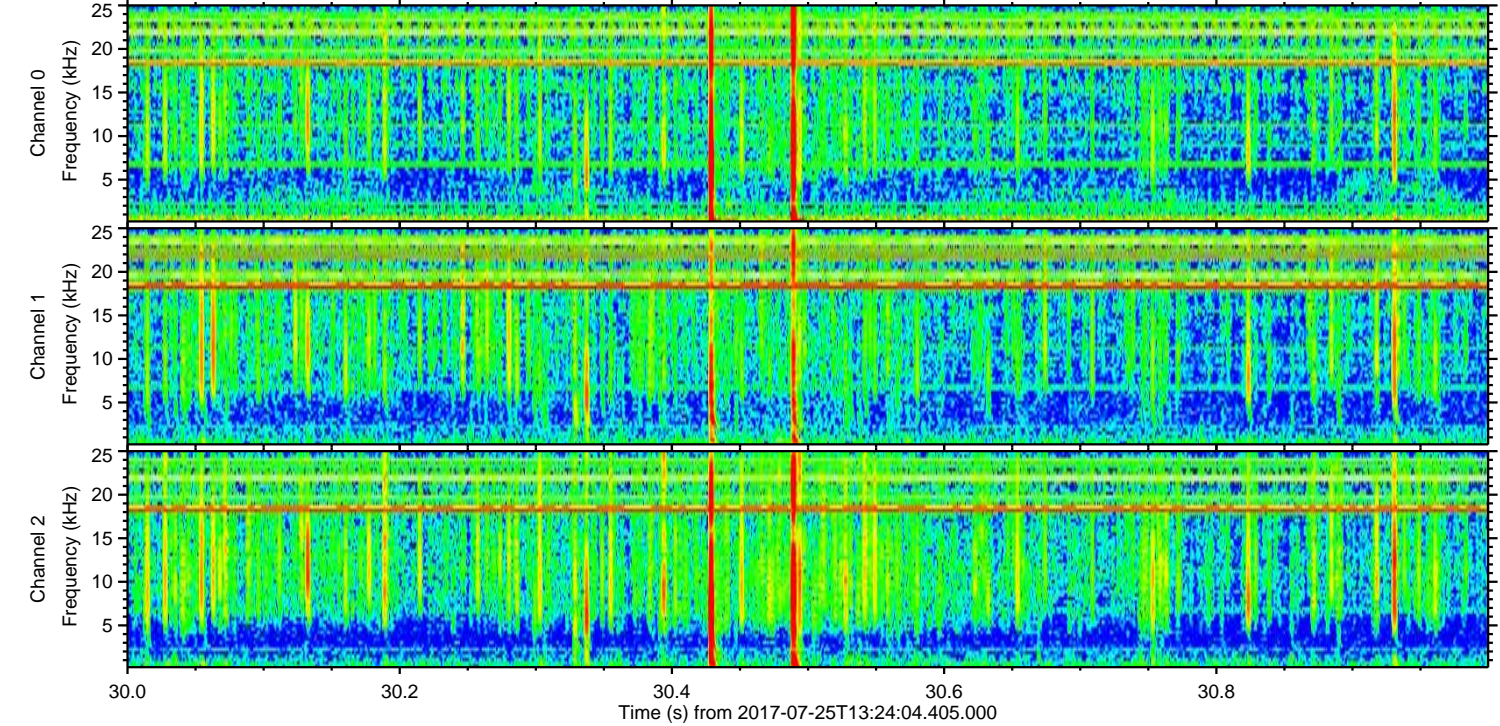
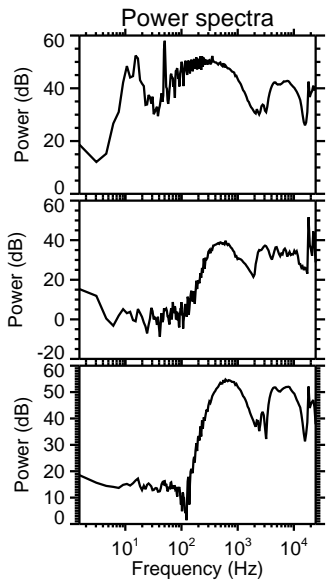
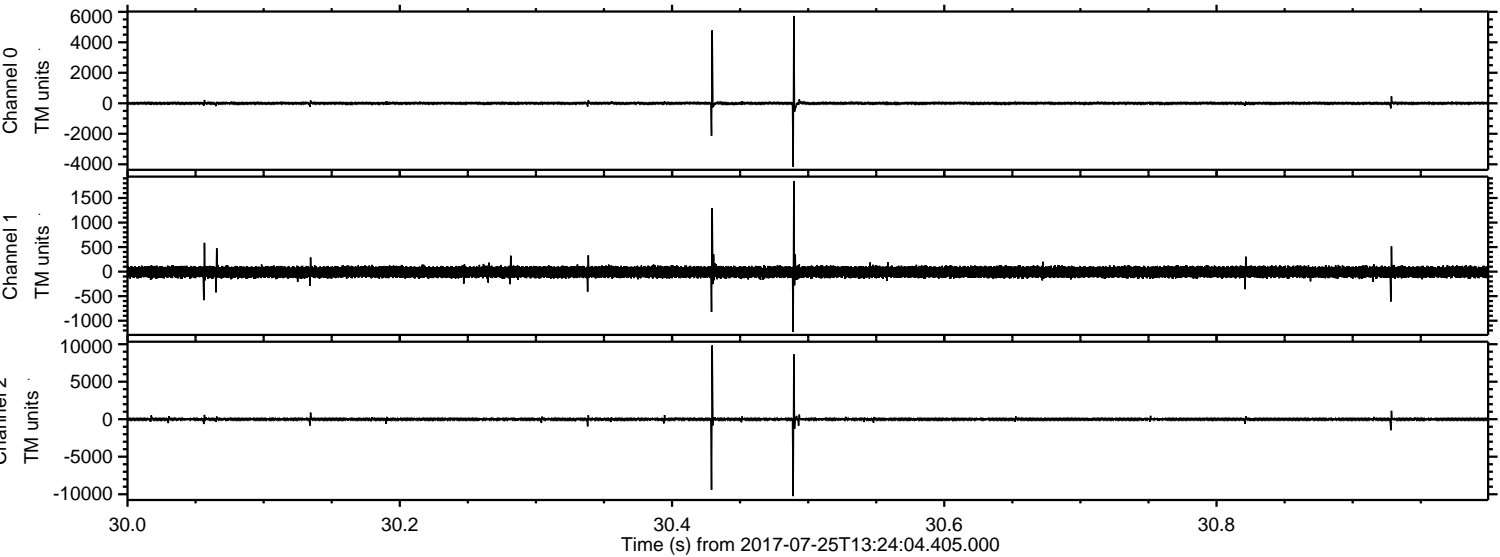
# ELMAVAN 3D WAVEFORMS (Measured data sampled at 50 kHz) 51000 packets of 144 samples from 2017-07-25T13:24:04.405.000.

Processed Tue Jul 25 15:31:39 2017 by ELM ver.2012-10-06 from 001\_\_elm20170725\_132403\_\_dat00.bin



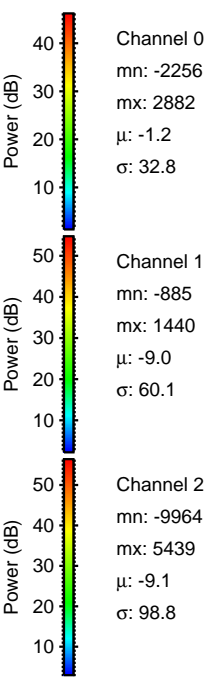
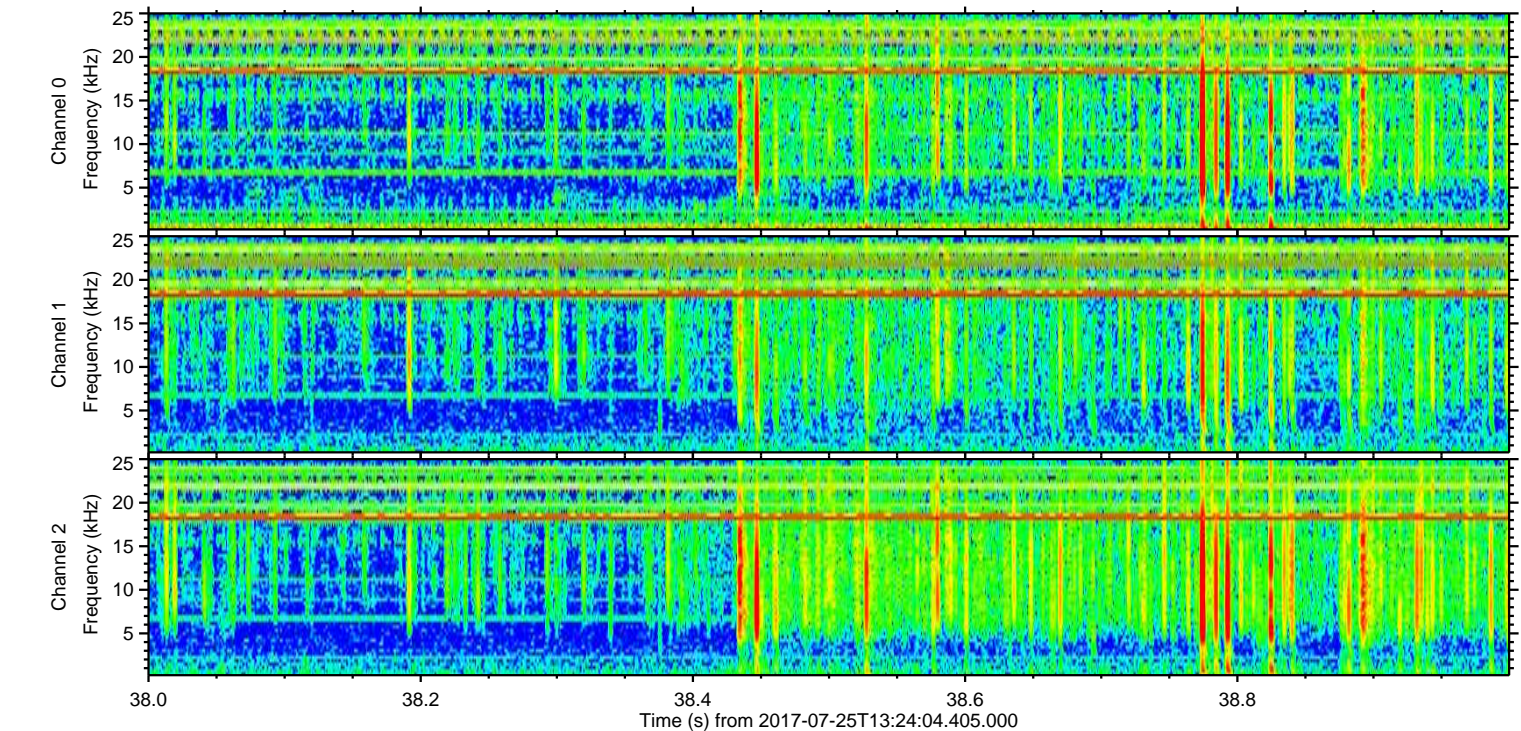
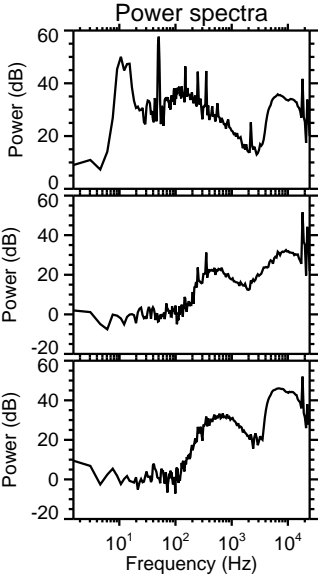
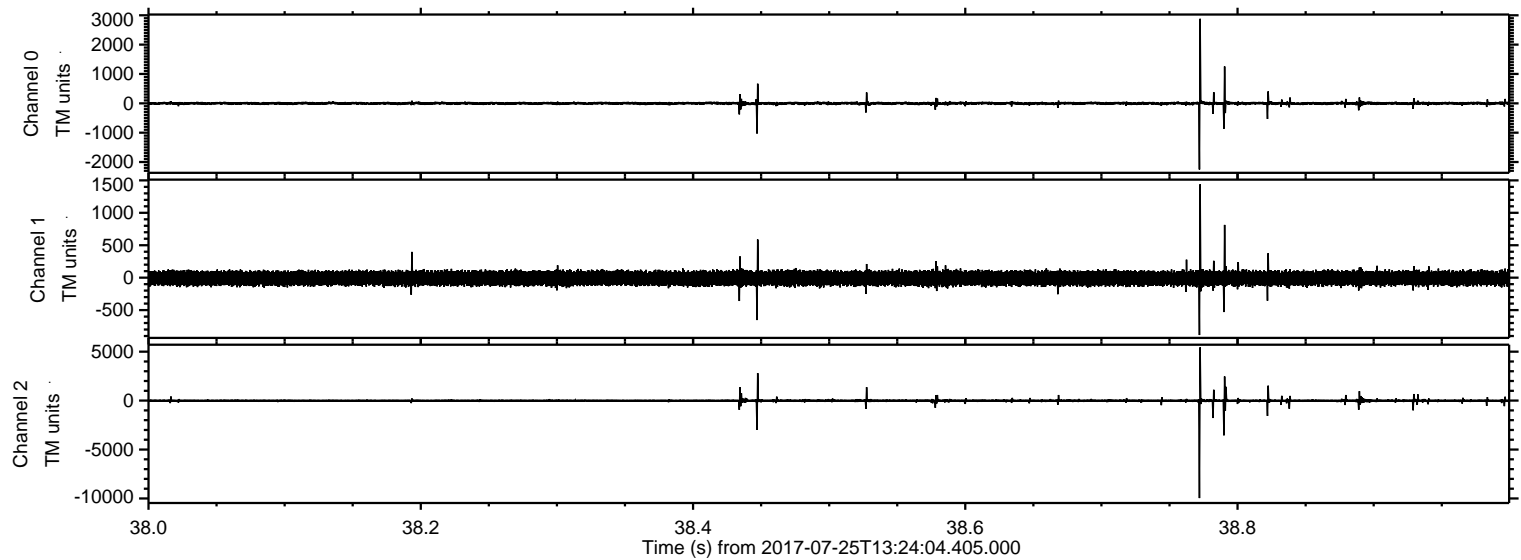


Processed Tue Jul 25 15:31:44 2017 by ELM ver.2012-10-06 from 001\_\_elm20170725\_132403\_\_dat00.bin



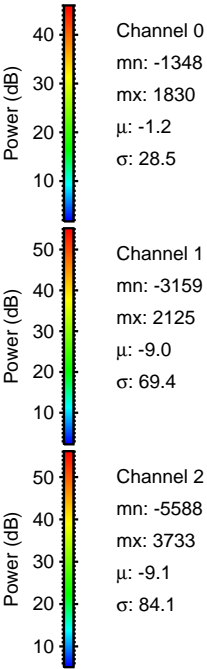
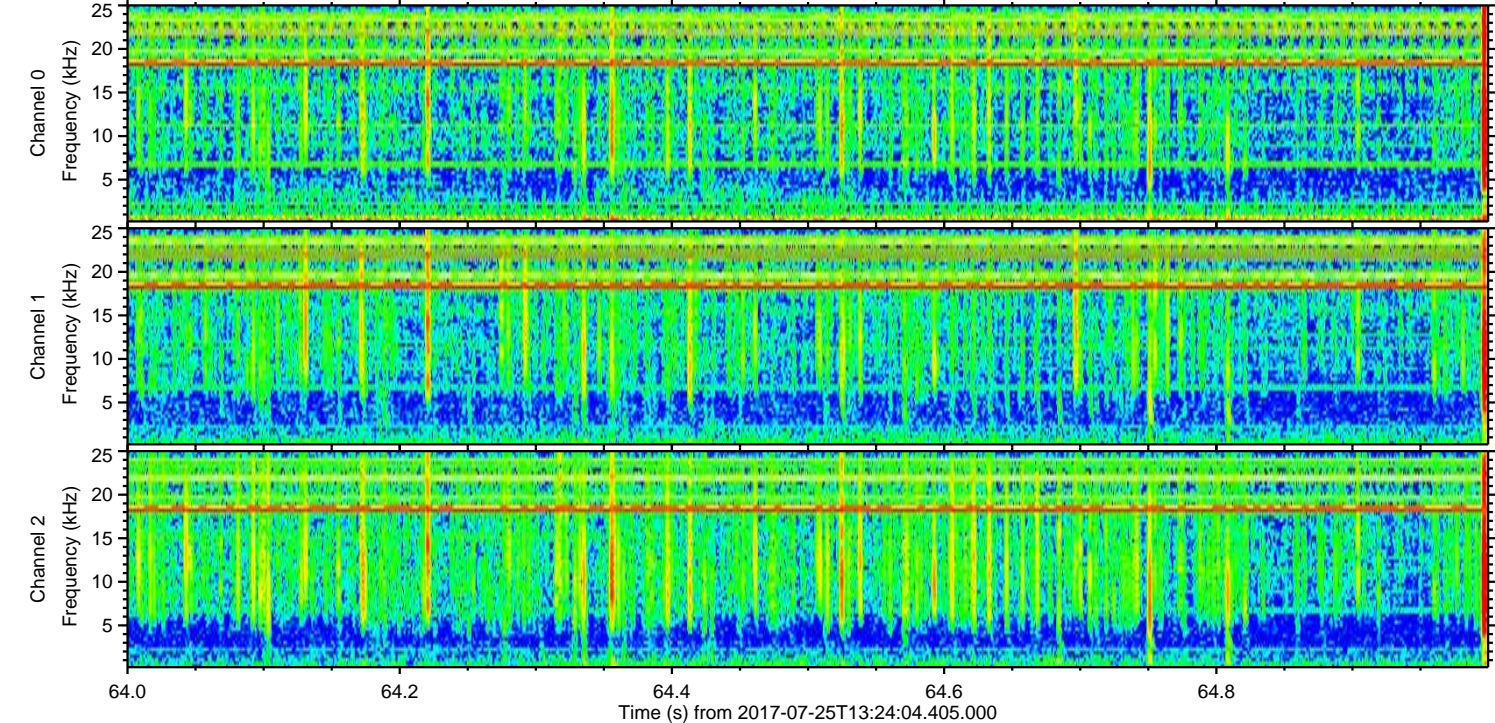
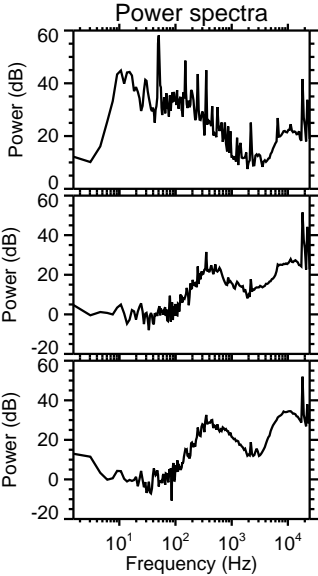
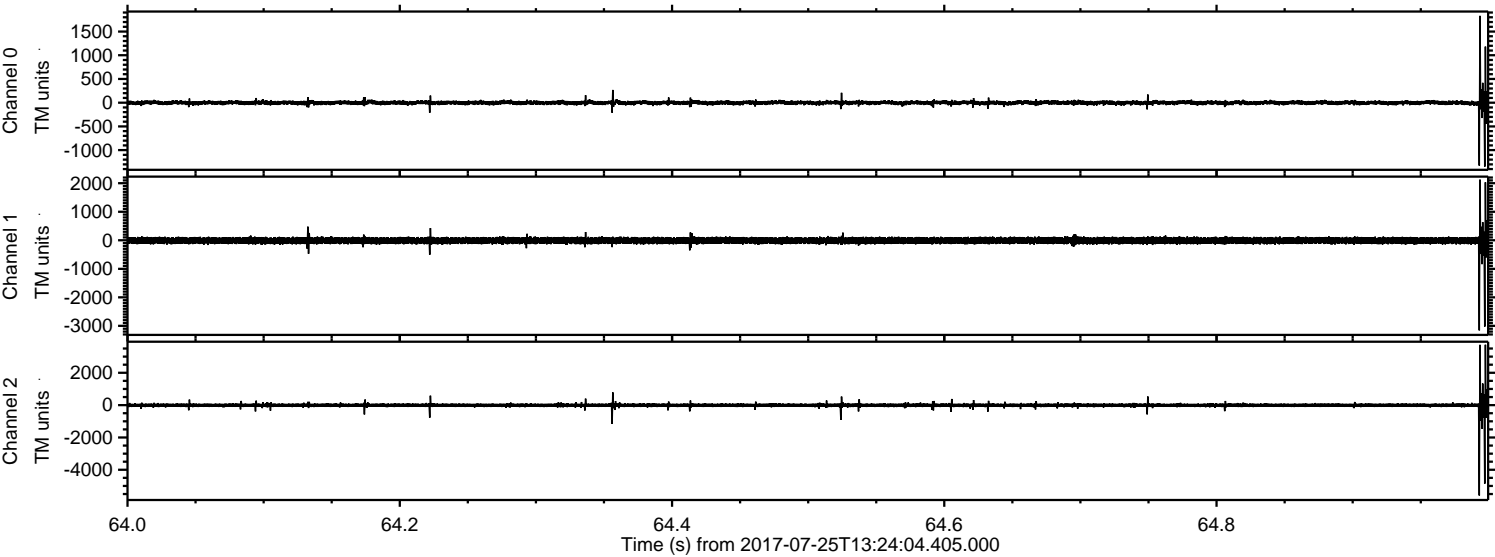


Processed Tue Jul 25 15:31:45 2017 by ELM ver.2012-10-06 from 001\_\_elm20170725\_132403\_\_dat00.bin



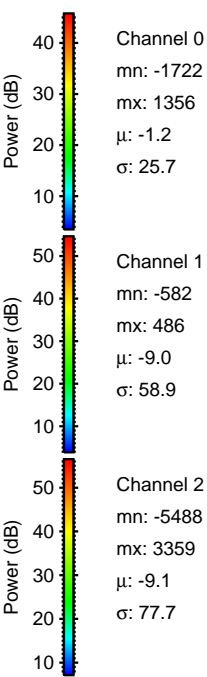
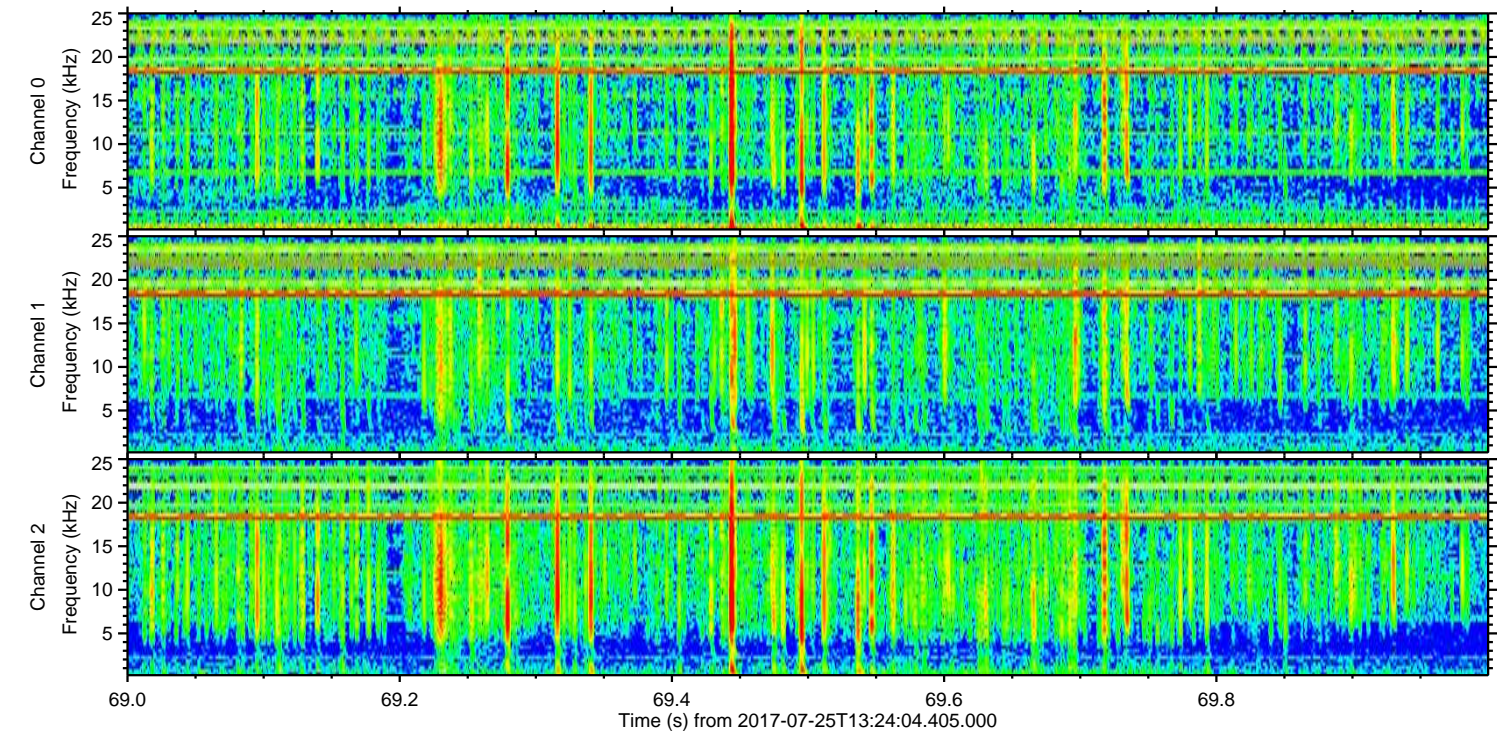
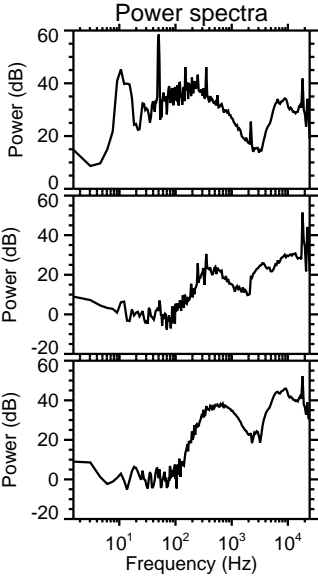
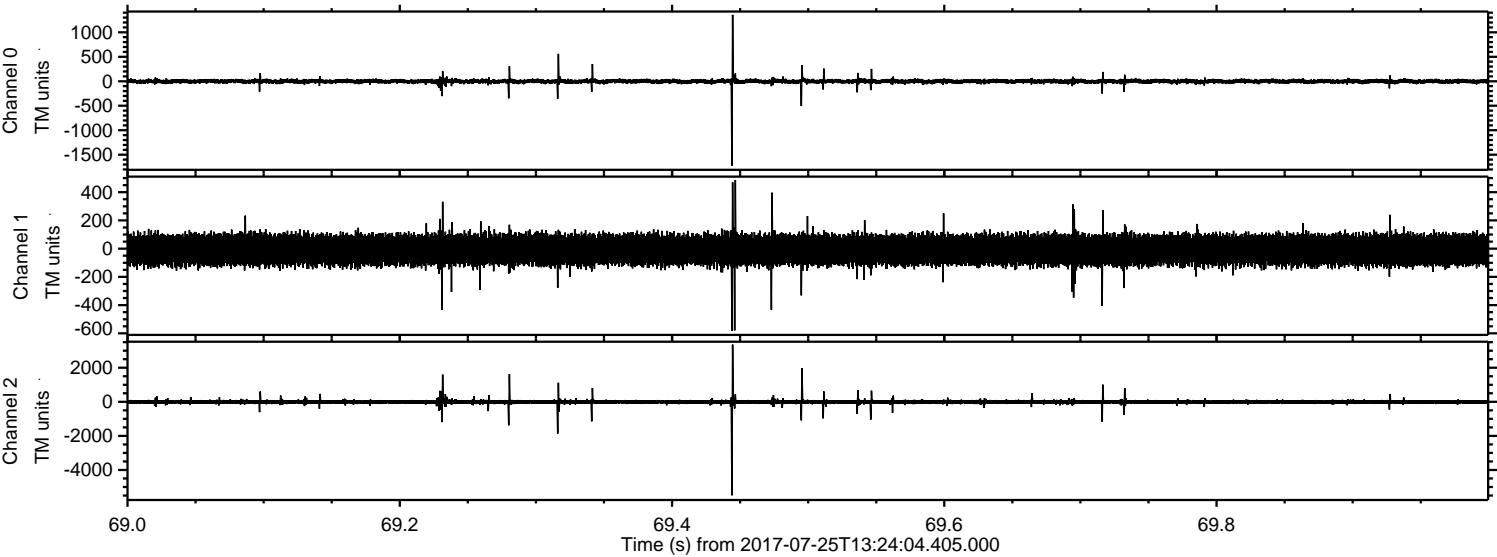


Processed Tue Jul 25 15:31:46 2017 by ELM ver.2012-10-06 from 001\_\_elm20170725\_132403\_\_dat00.bin





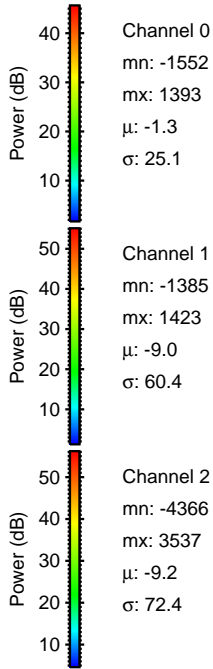
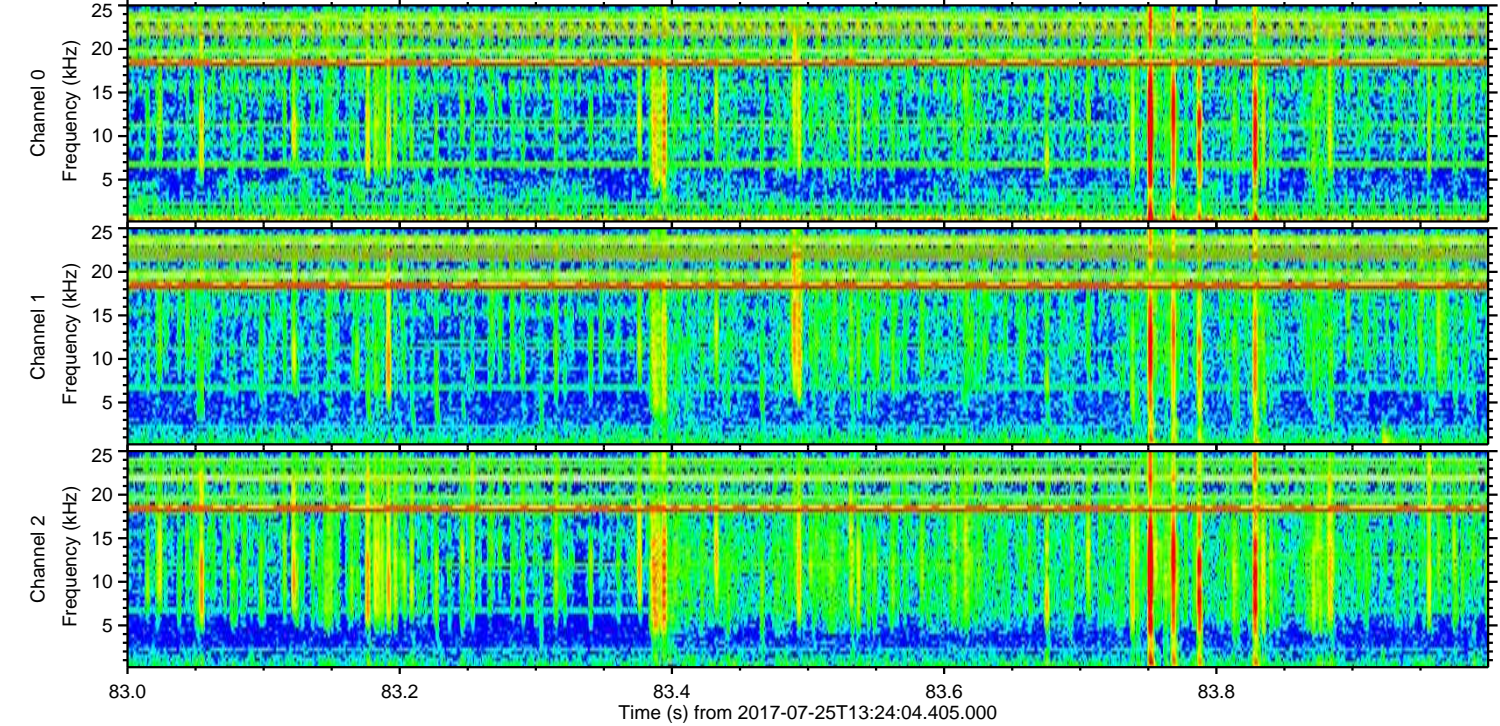
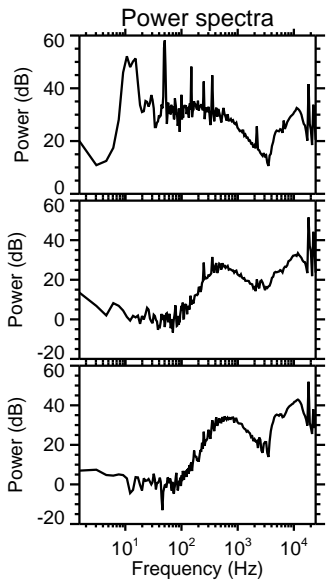
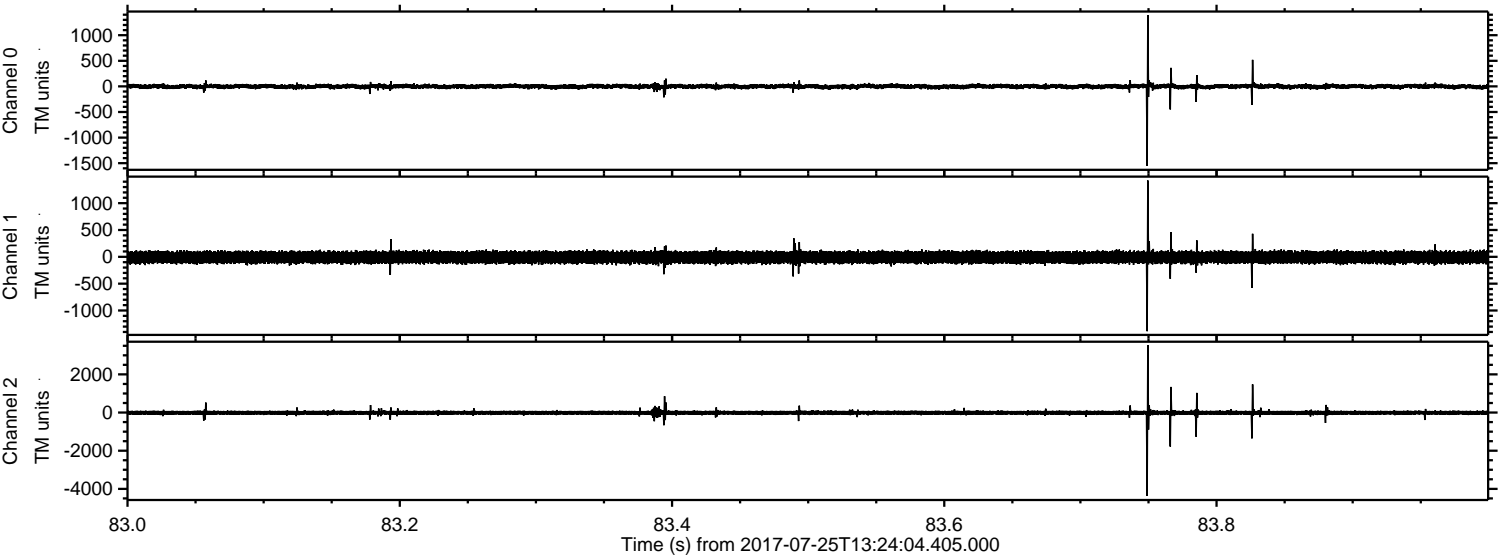
Processed Tue Jul 25 15:31:46 2017 by ELM ver.2012-10-06 from 001\_\_elm20170725\_132403\_\_dat00.bin





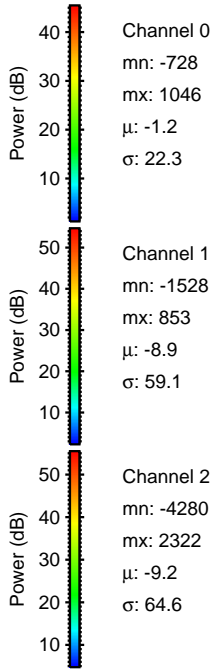
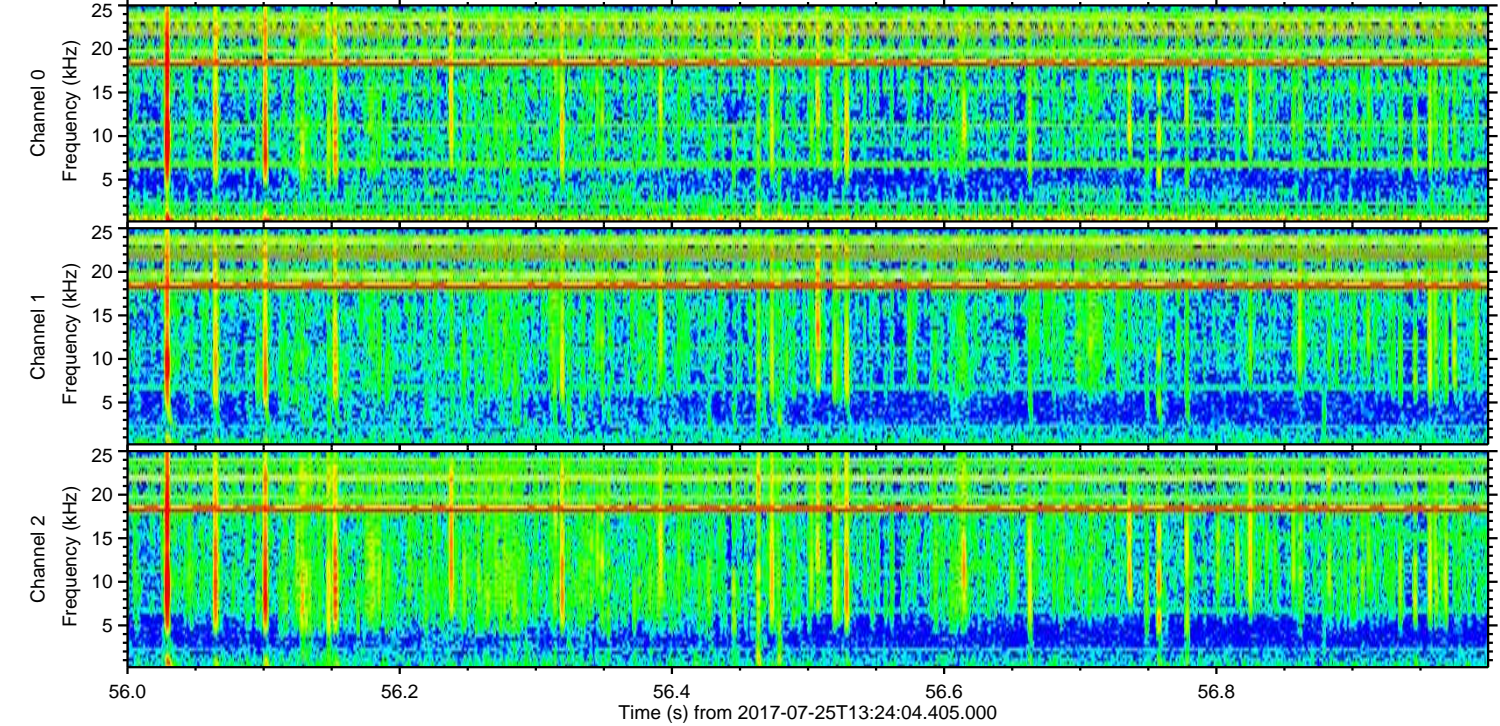
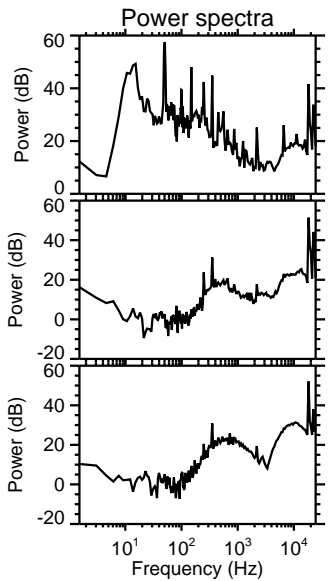
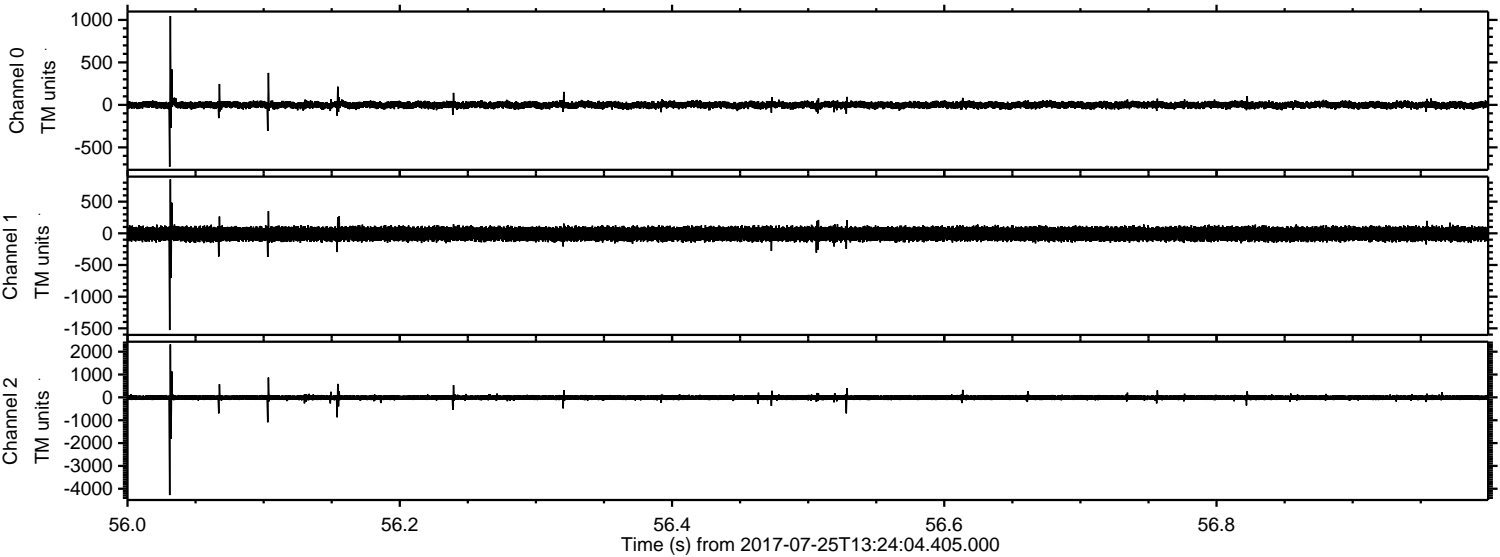
ELMAVAN 3D WAVEFORMS (Measured data sampled at 50 kHz) 51000 packets of 144 samples from 2017-07-25T13:24:04.405.000. Part 84/147

Processed Tue Jul 25 15:31:47 2017 by ELM ver.2012-10-06 from 001\_\_elm20170725\_132403\_\_dat00.bin



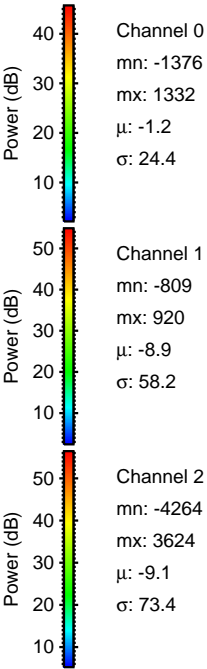
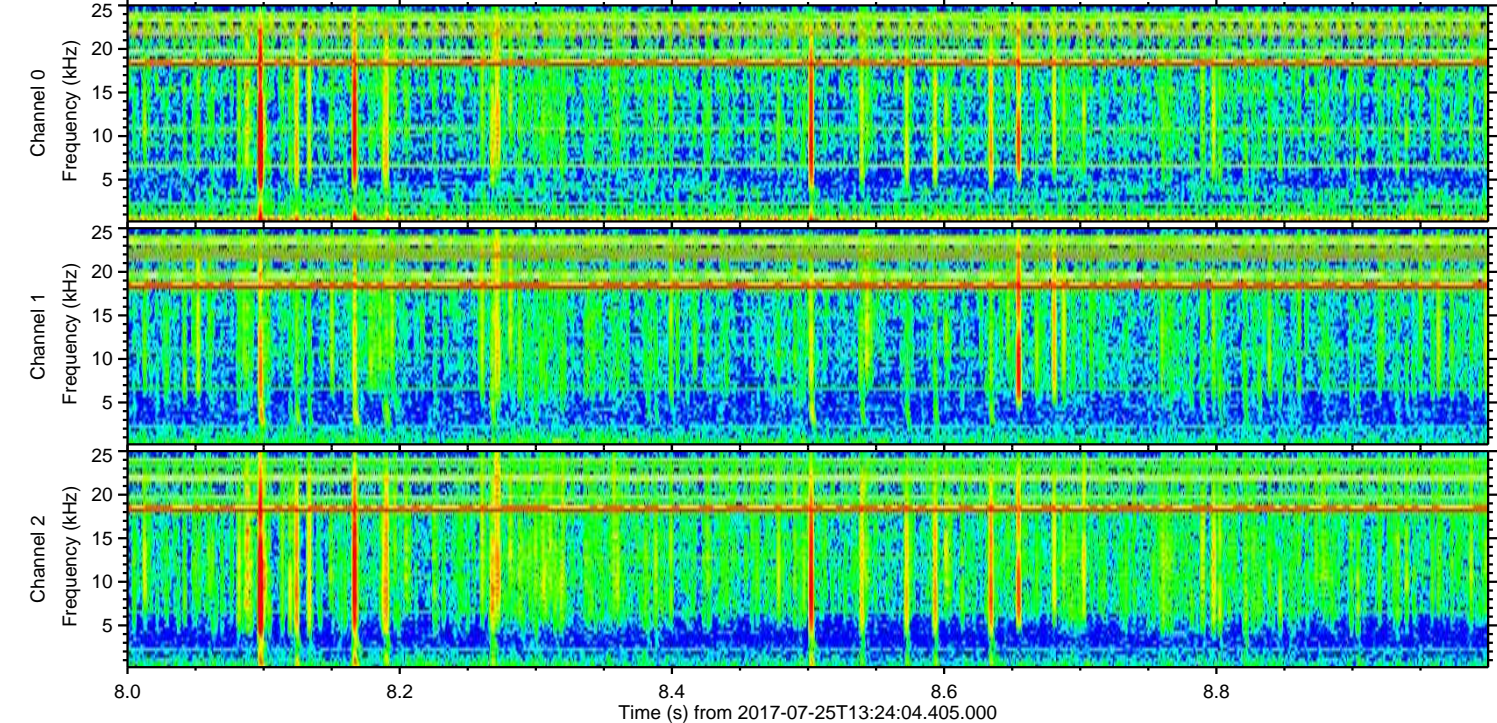
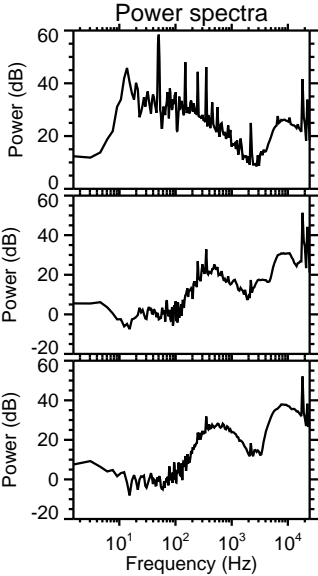
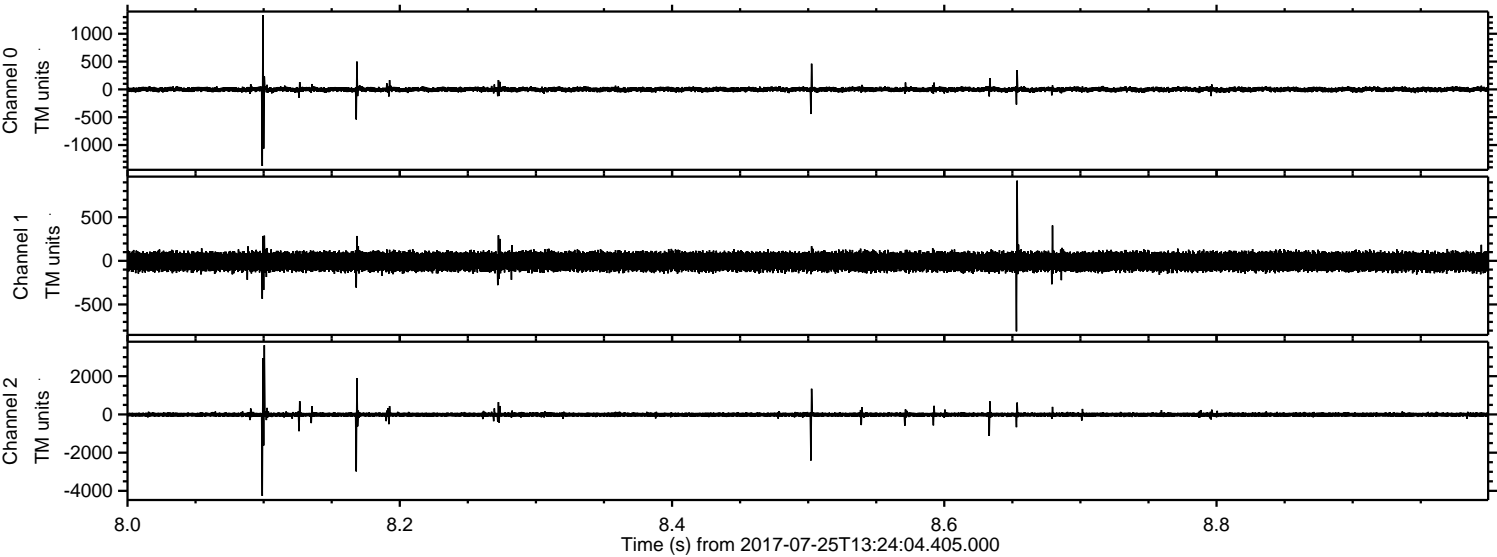


Processed Tue Jul 25 15:31:47 2017 by ELM ver.2012-10-06 from 001\_\_elm20170725\_132403\_\_dat00.bin





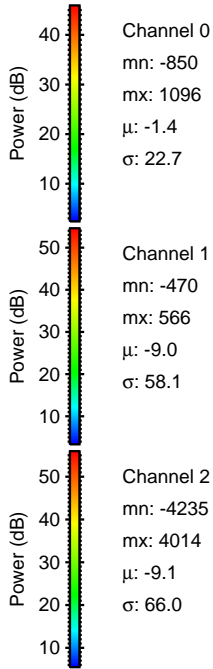
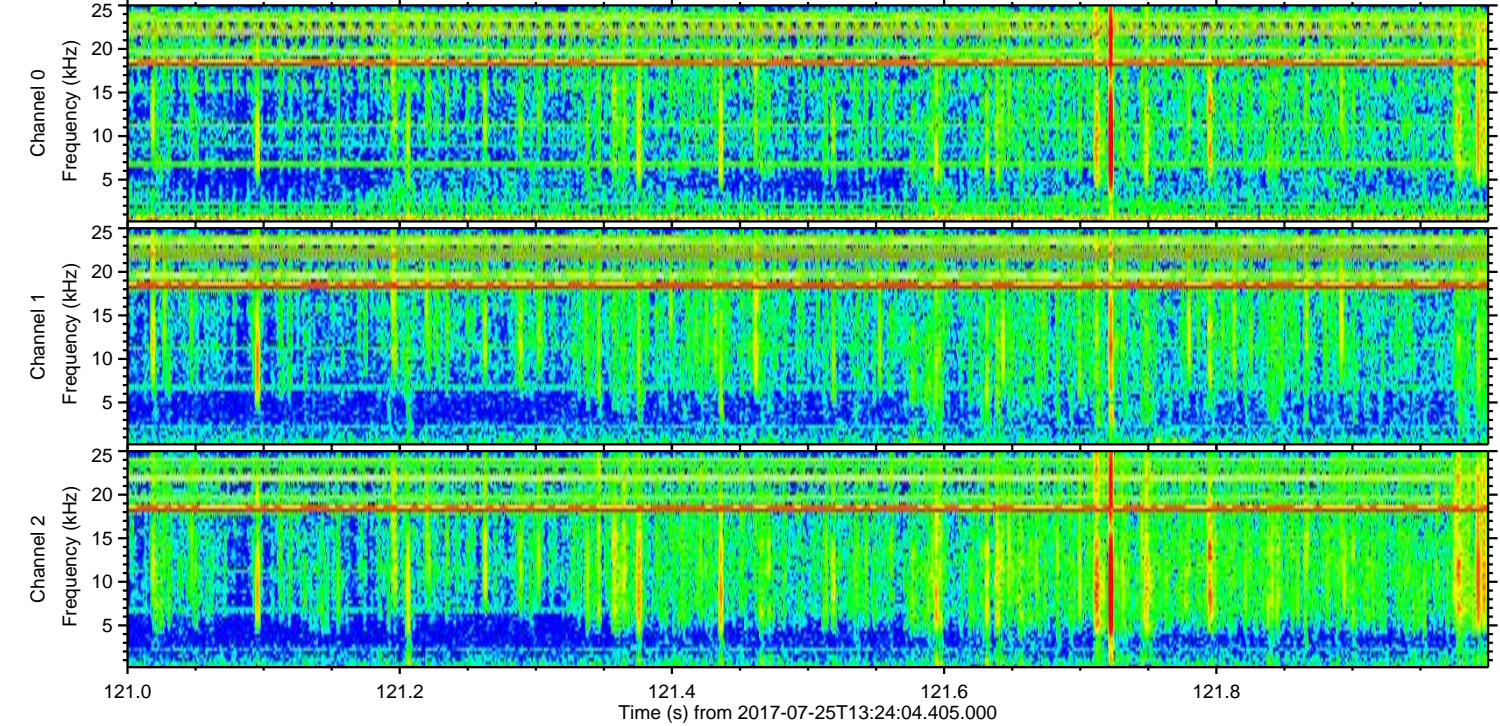
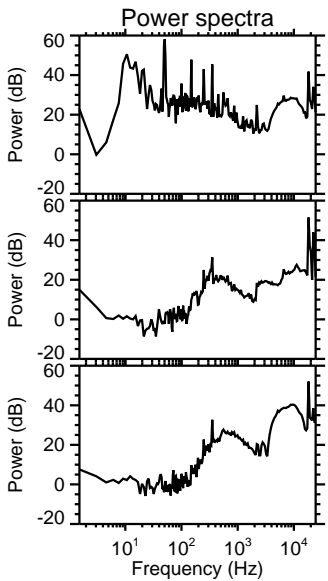
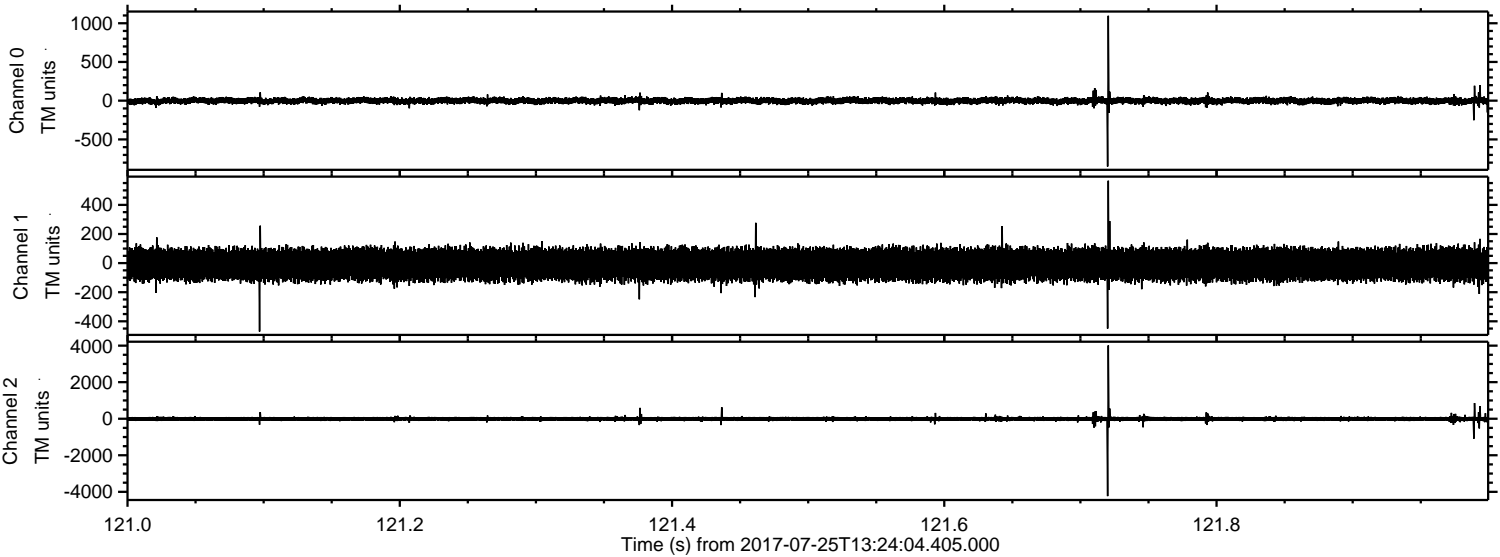
Processed Tue Jul 25 15:31:48 2017 by ELM ver.2012-10-06 from 001\_\_elm20170725\_132403\_\_dat00.bin





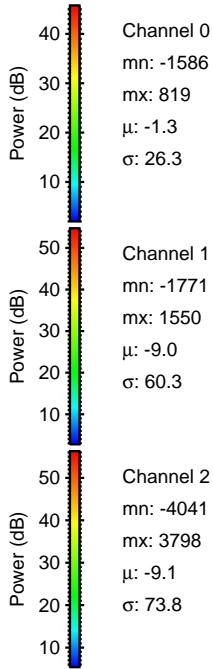
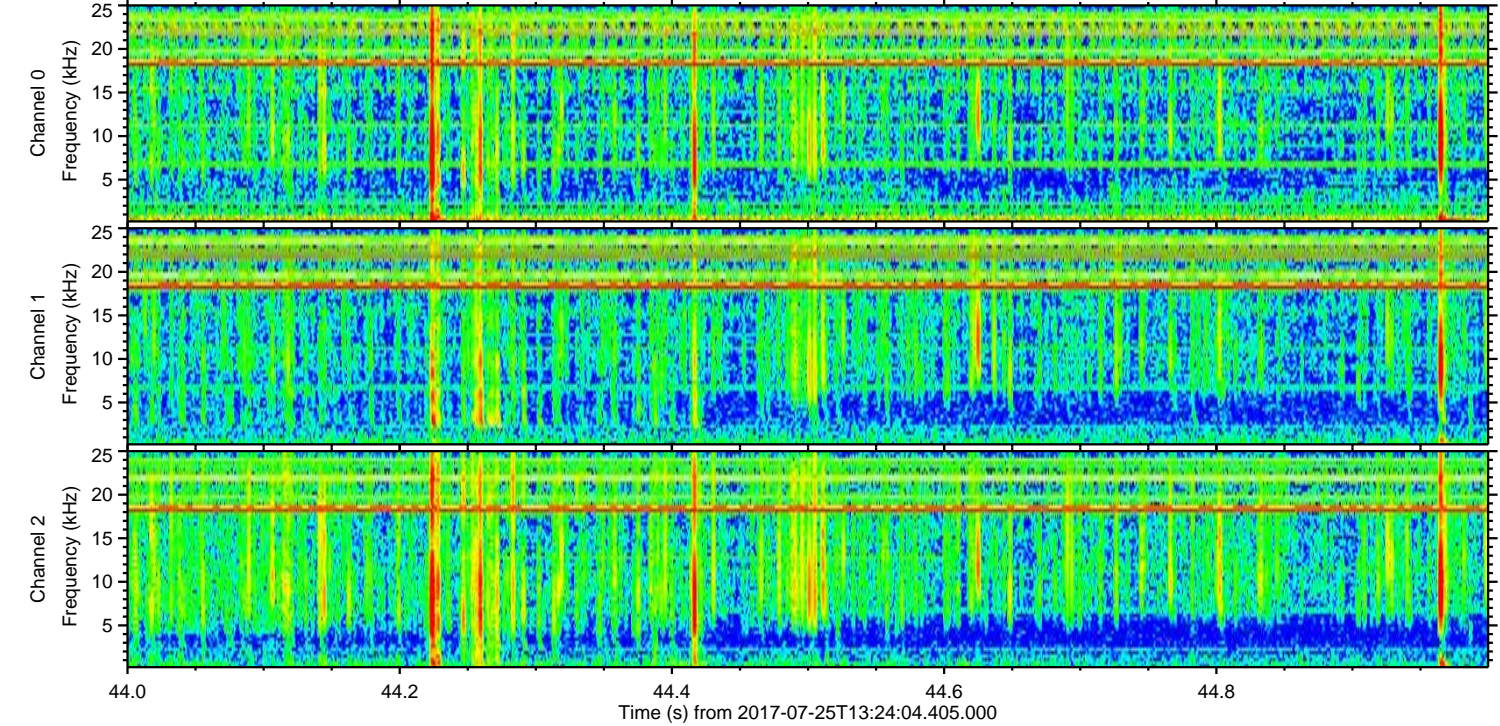
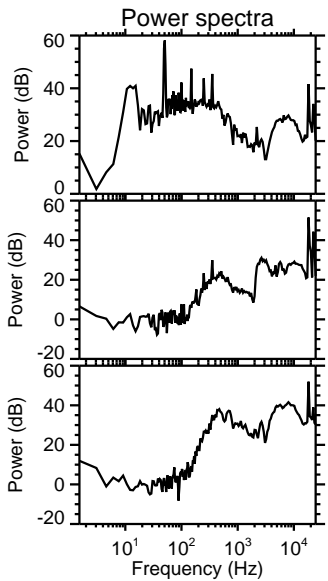
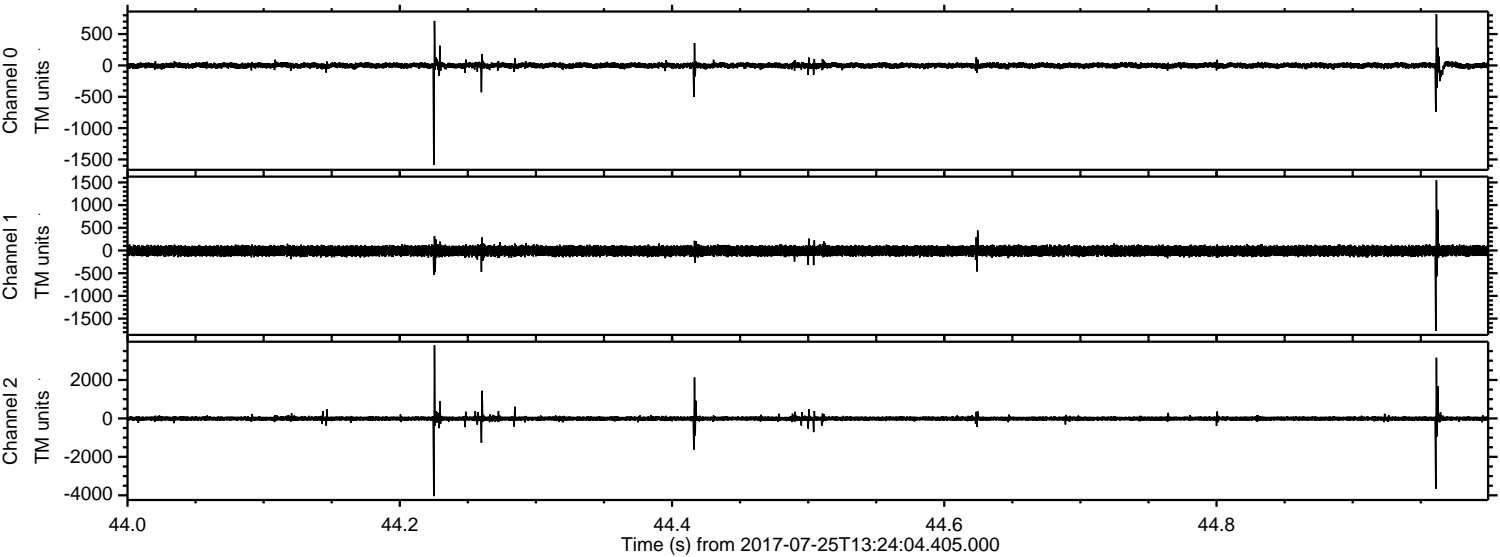
ELMAVAN 3D WAVEFORMS (Measured data sampled at 50 kHz) 51000 packets of 144 samples from 2017-07-25T13:24:04.405.000. Part 122/147

Processed Tue Jul 25 15:31:49 2017 by ELM ver.2012-10-06 from 001\_\_elm20170725\_132403\_\_dat00.bin





Processed Tue Jul 25 15:31:49 2017 by ELM ver.2012-10-06 from 001\_\_elm20170725\_132403\_\_dat00.bin



Channel 0  
mn: -1586  
mx: 819  
μ: -1.3  
σ: 26.3

Channel 1  
mn: -1771  
mx: 1550  
μ: -9.0  
σ: 60.3

Channel 2  
mn: -4041  
mx: 3798  
μ: -9.1  
σ: 73.8



Processed Tue Jul 25 15:31:50 2017 by ELM ver.2012-10-06 from 001\_\_elm20170725\_132403\_\_dat00.bin

