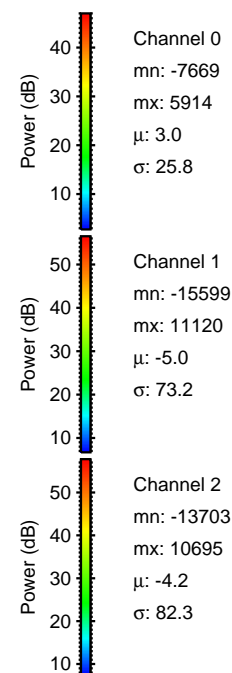
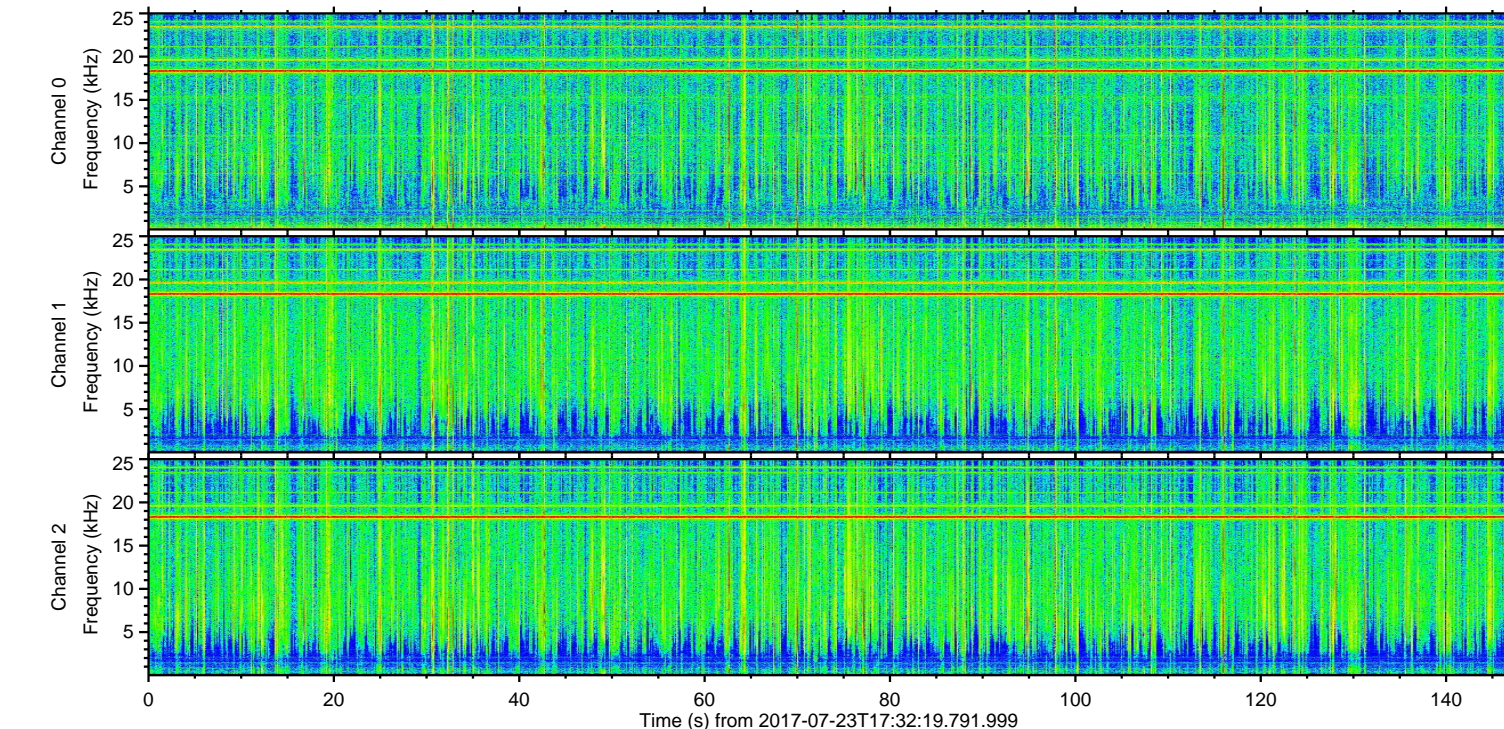
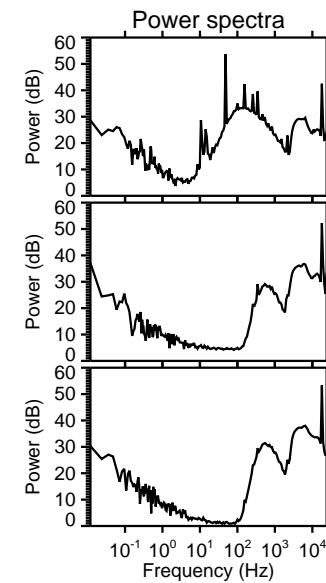
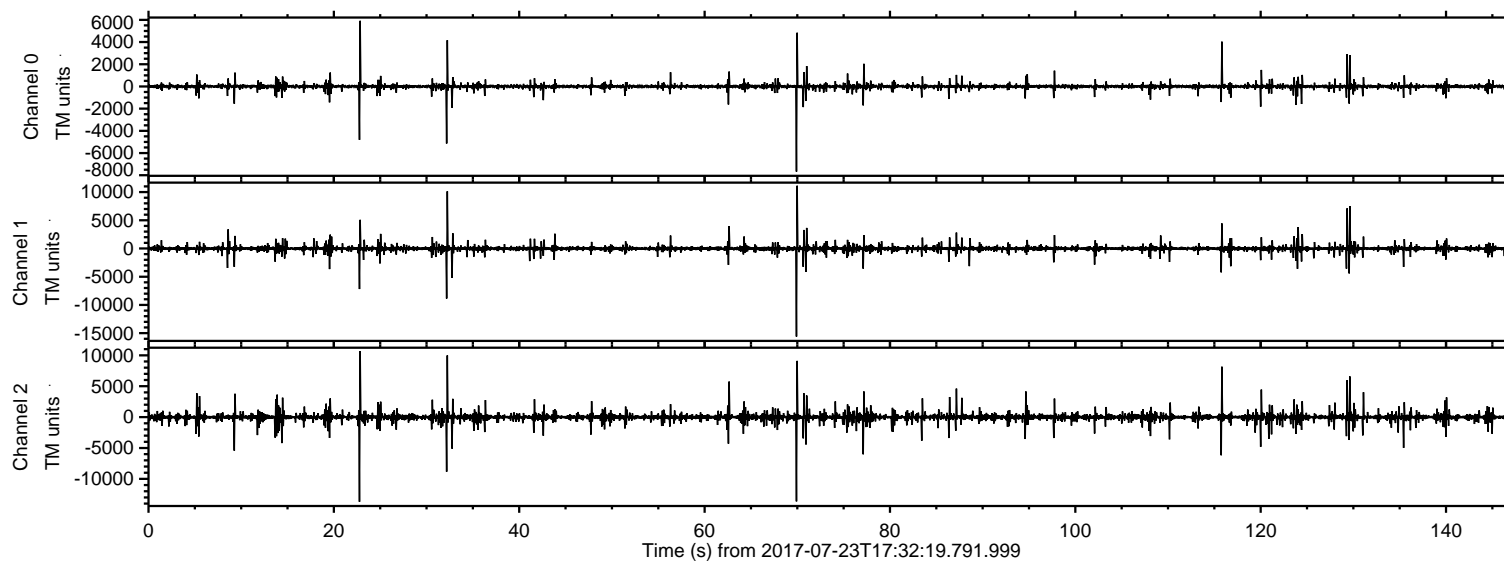


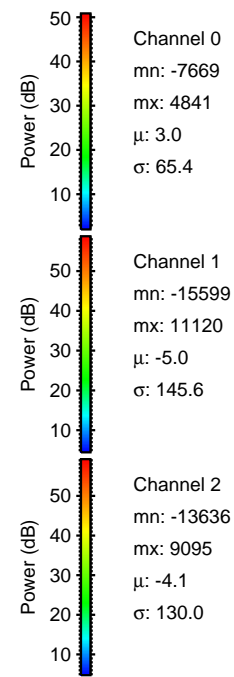
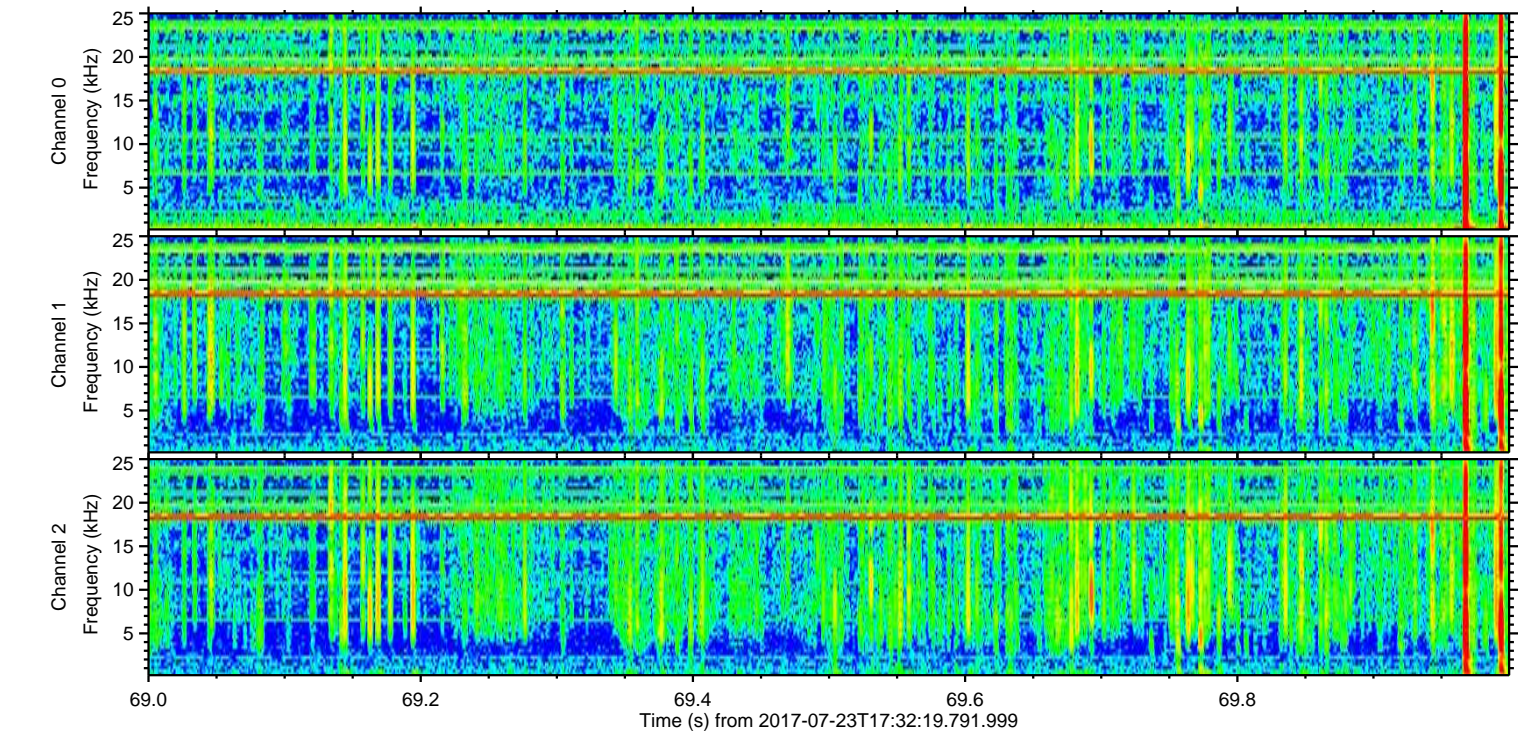
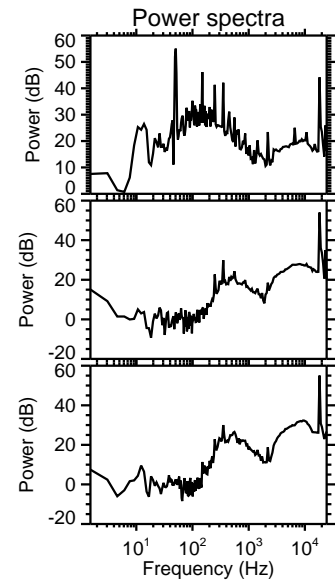
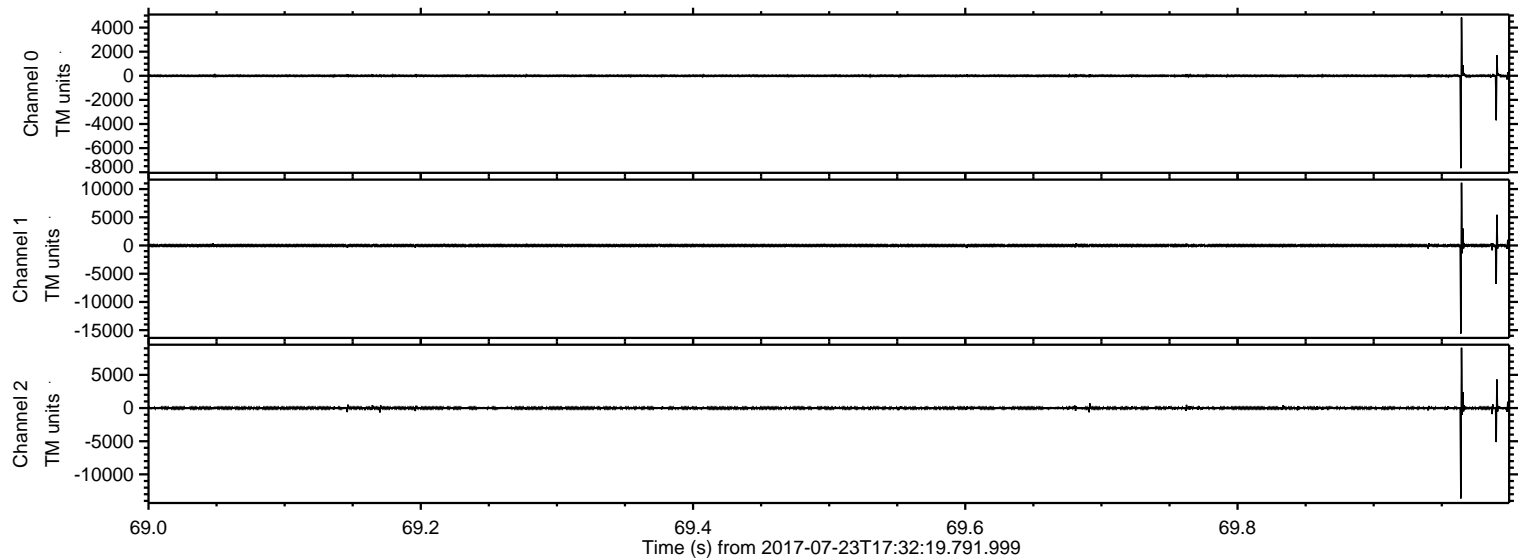
ELMAVAN 3D WAVEFORMS (Measured data sampled at 50 kHz) 51000 packets of 144 samples from 2017-07-23T17:32:19.791.999.

Processed Sun Jul 23 19:39:58 2017 by ELM ver.2012-10-06 from 001__elm20170723_173218__dat00.bin



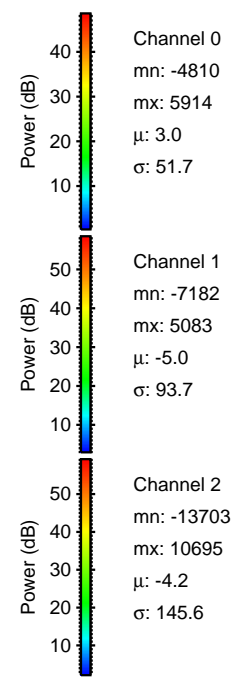
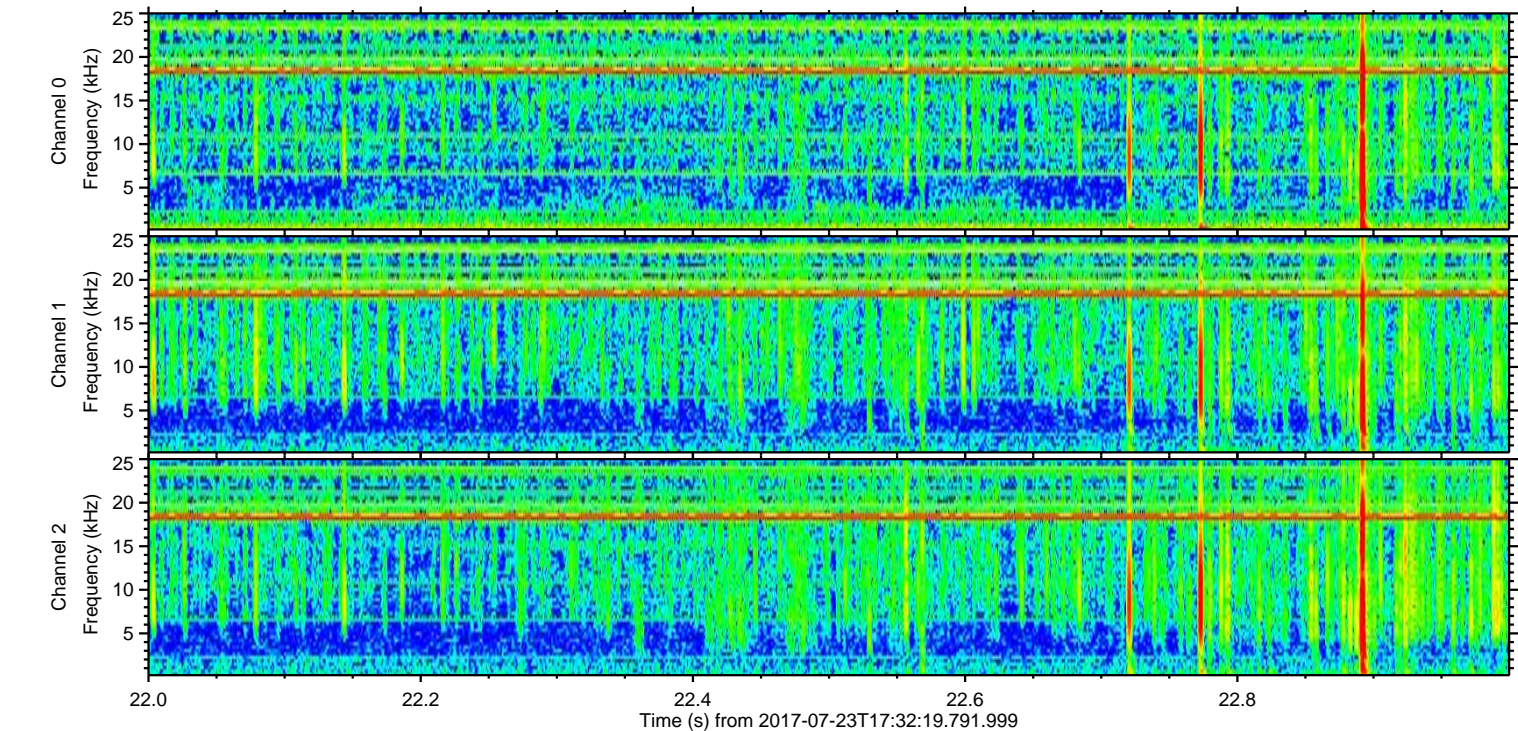
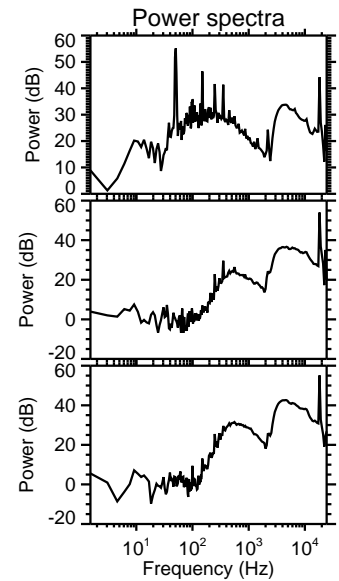
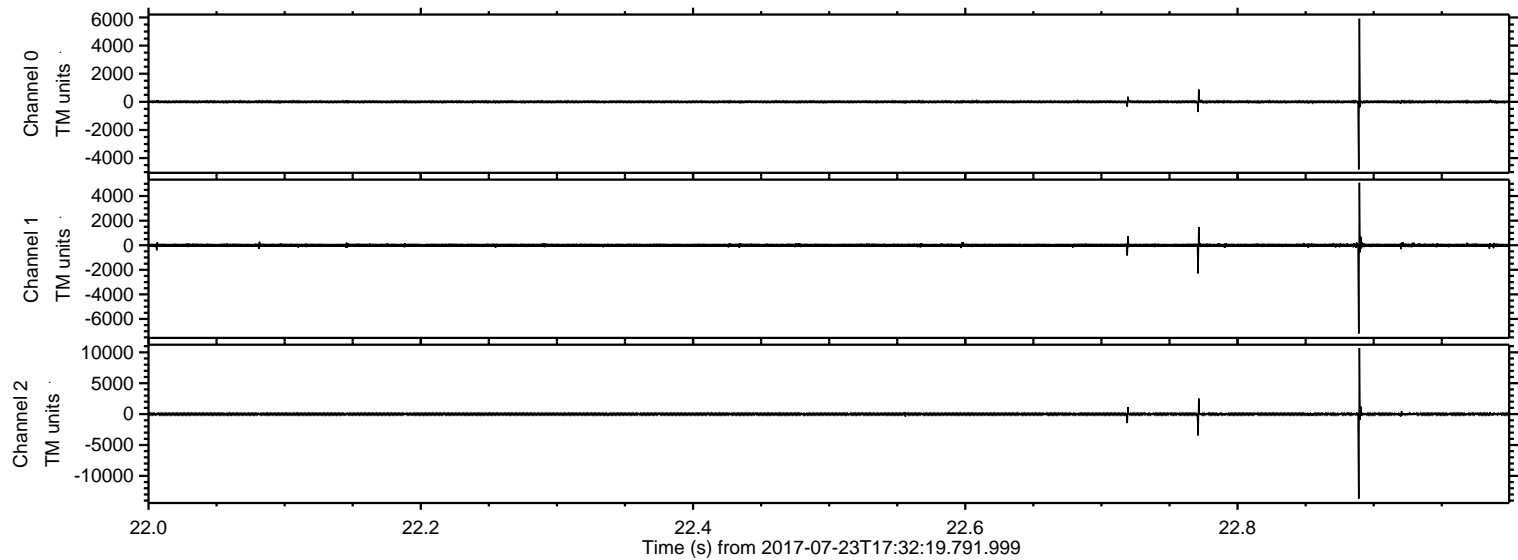
ELMAVAN 3D WAVEFORMS (Measured data sampled at 50 kHz) 51000 packets of 144 samples from 2017-07-23T17:32:19.791.999. Part 70/147

Processed Sun Jul 23 19:40:06 2017 by ELM ver.2012-10-06 from 001__elm20170723_173218__dat00.bin



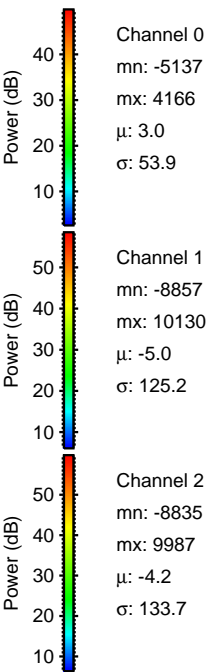
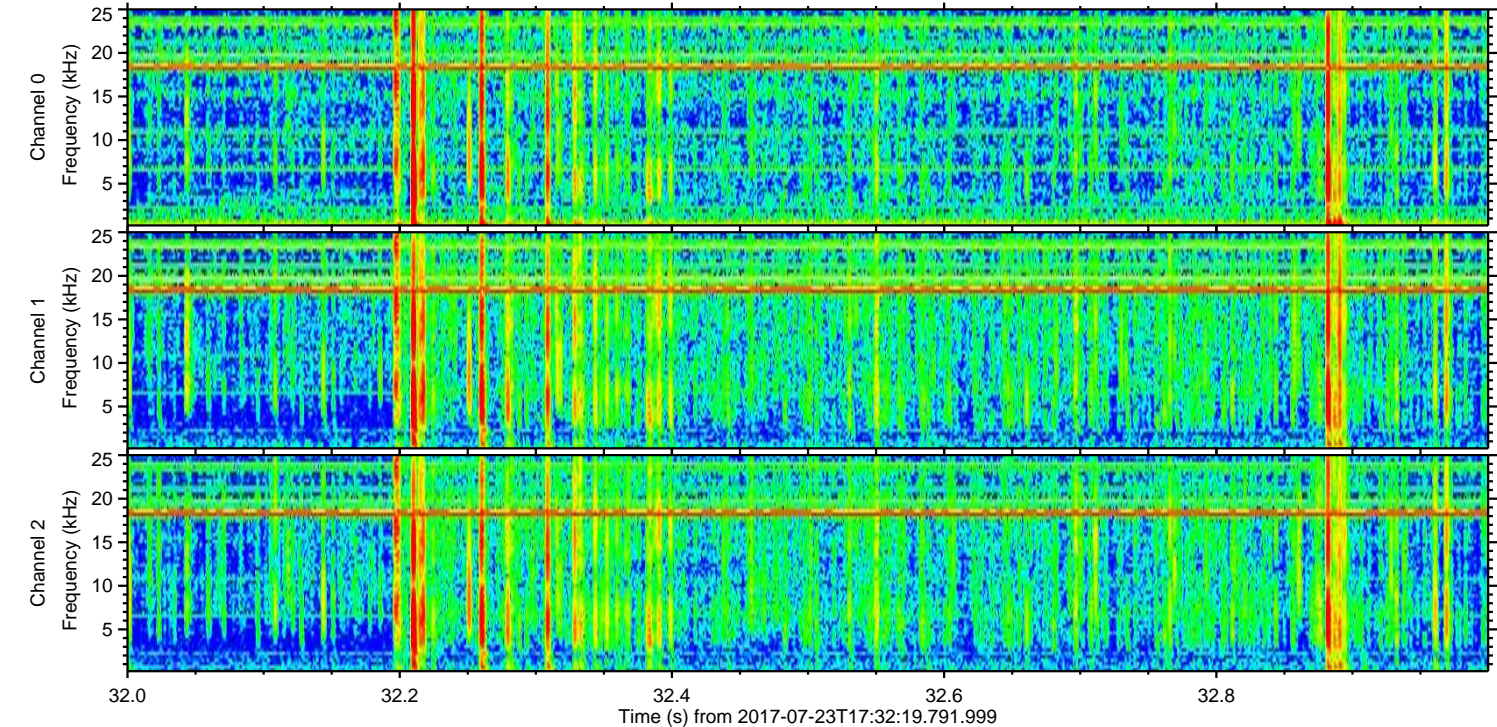
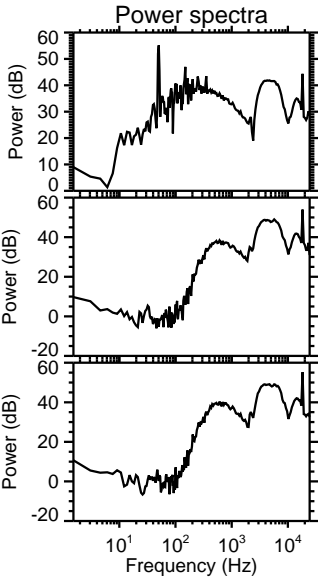
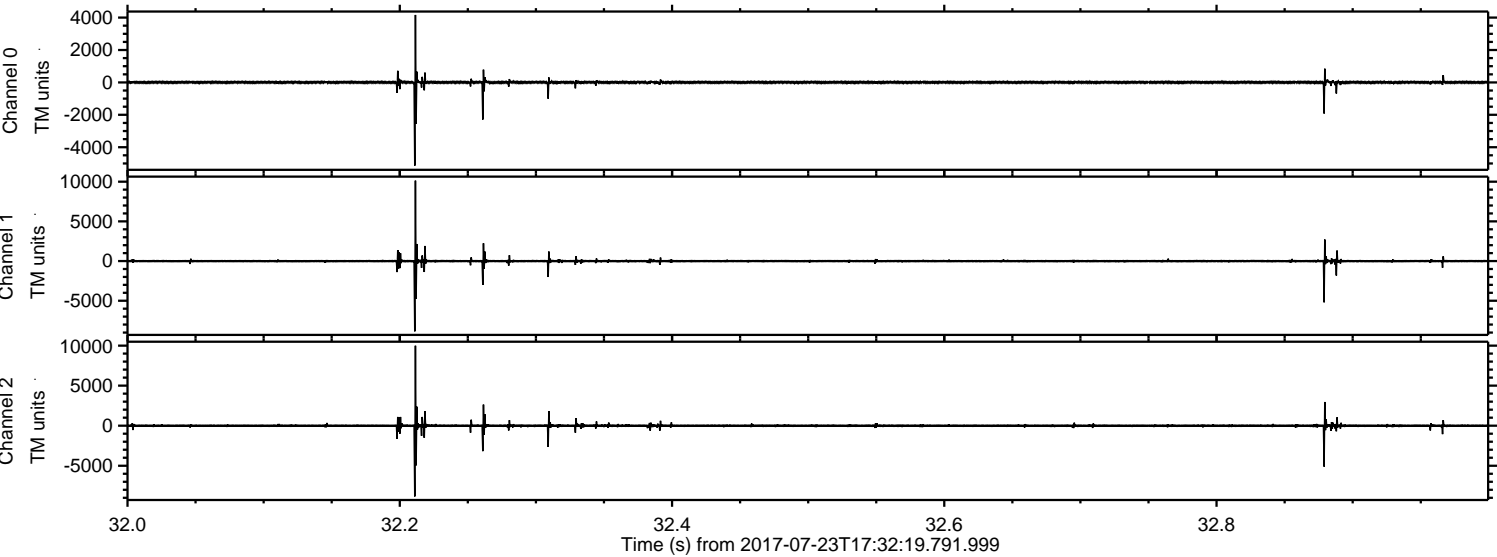
ELMAVAN 3D WAVEFORMS (Measured data sampled at 50 kHz) 51000 packets of 144 samples from 2017-07-23T17:32:19.791.999. Part 23/147

Processed Sun Jul 23 19:40:07 2017 by ELM ver.2012-10-06 from 001__elm20170723_173218__dat00.bin



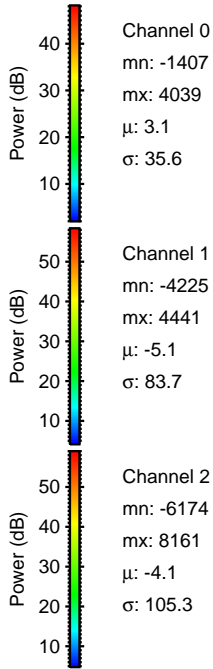
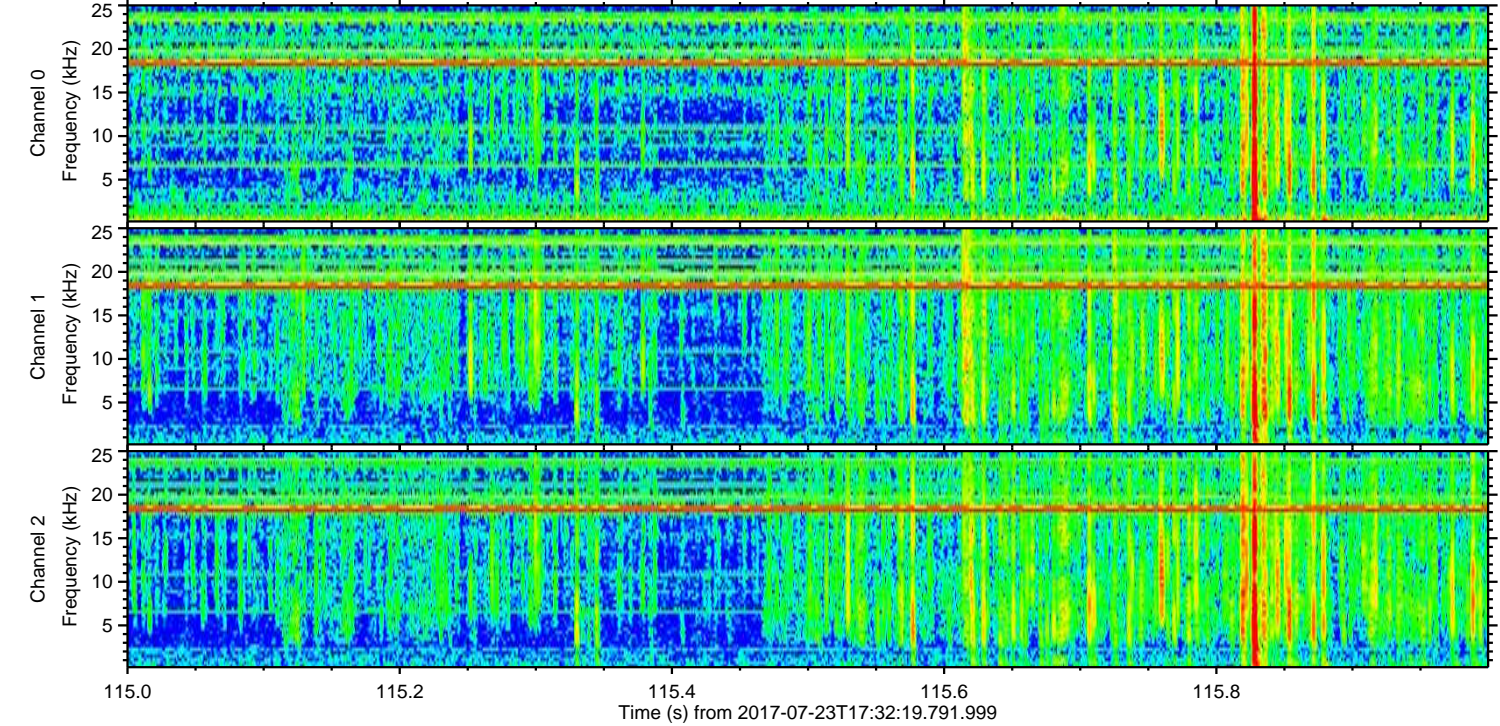
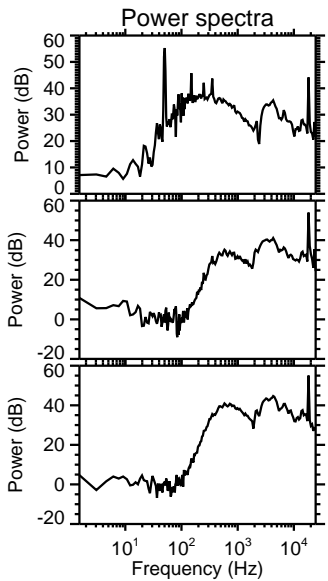
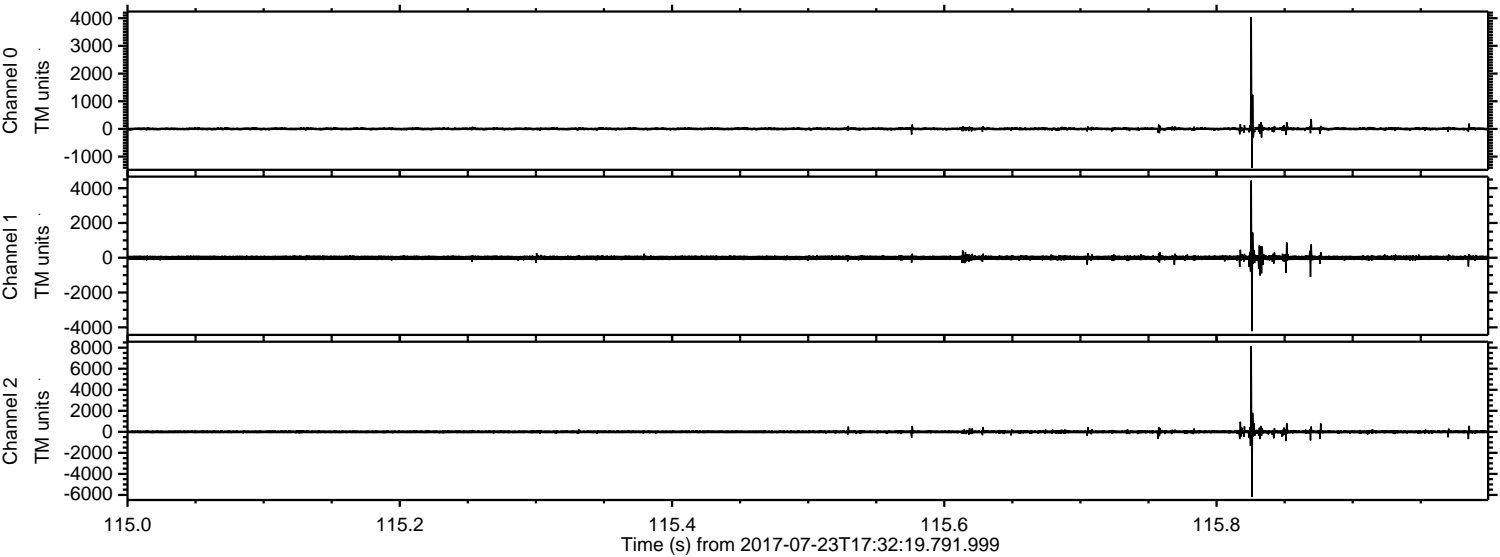
ELMAVAN 3D WAVEFORMS (Measured data sampled at 50 kHz) 51000 packets of 144 samples from 2017-07-23T17:32:19.791.999. Part 33/147

Processed Sun Jul 23 19:40:08 2017 by ELM ver.2012-10-06 from 001__elm20170723_173218__dat00.bin



ELMAVAN 3D WAVEFORMS (Measured data sampled at 50 kHz) 51000 packets of 144 samples from 2017-07-23T17:32:19.791.999. Part 116/147

Processed Sun Jul 23 19:40:09 2017 by ELM ver.2012-10-06 from 001__elm20170723_173218__dat00.bin



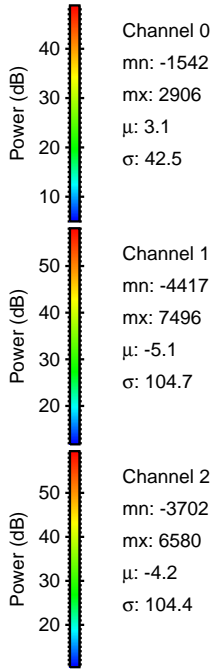
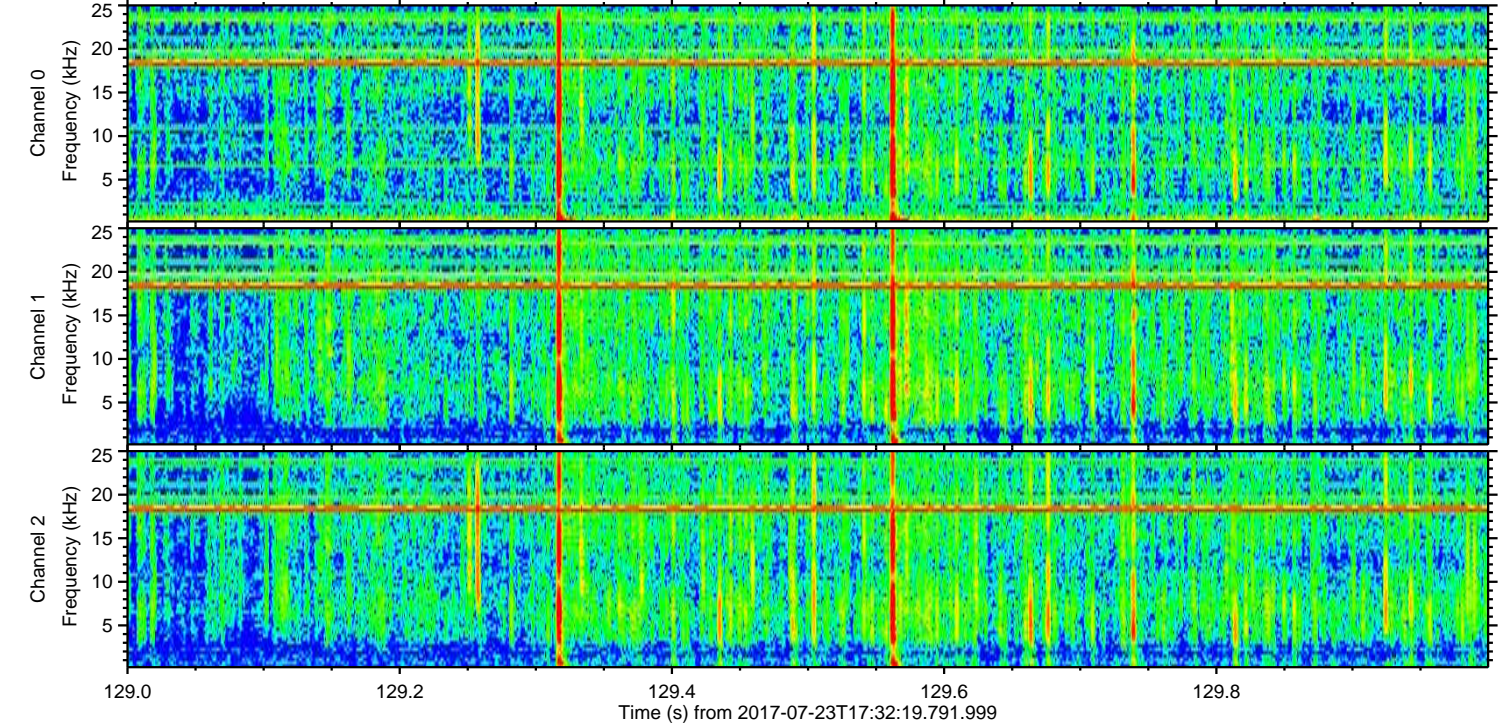
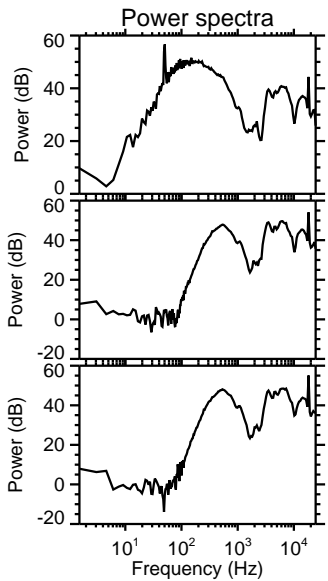
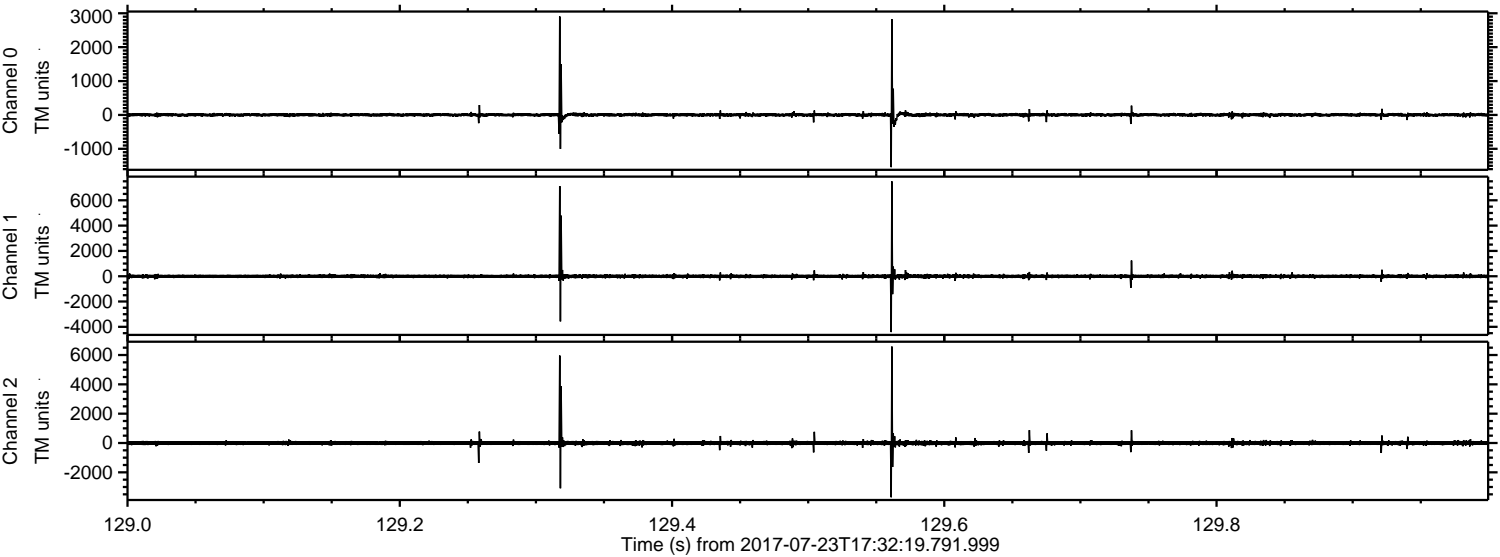
Channel 0
mn: -1407
mx: 4039
 μ : 3.1
 σ : 35.6

Channel 1
mn: -4225
mx: 4441
 μ : -5.1
 σ : 83.7

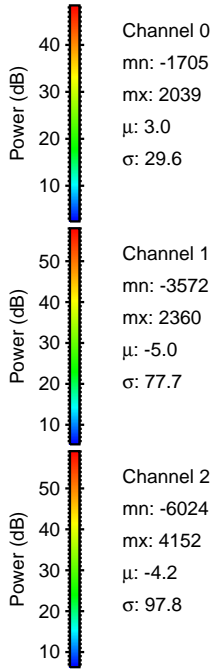
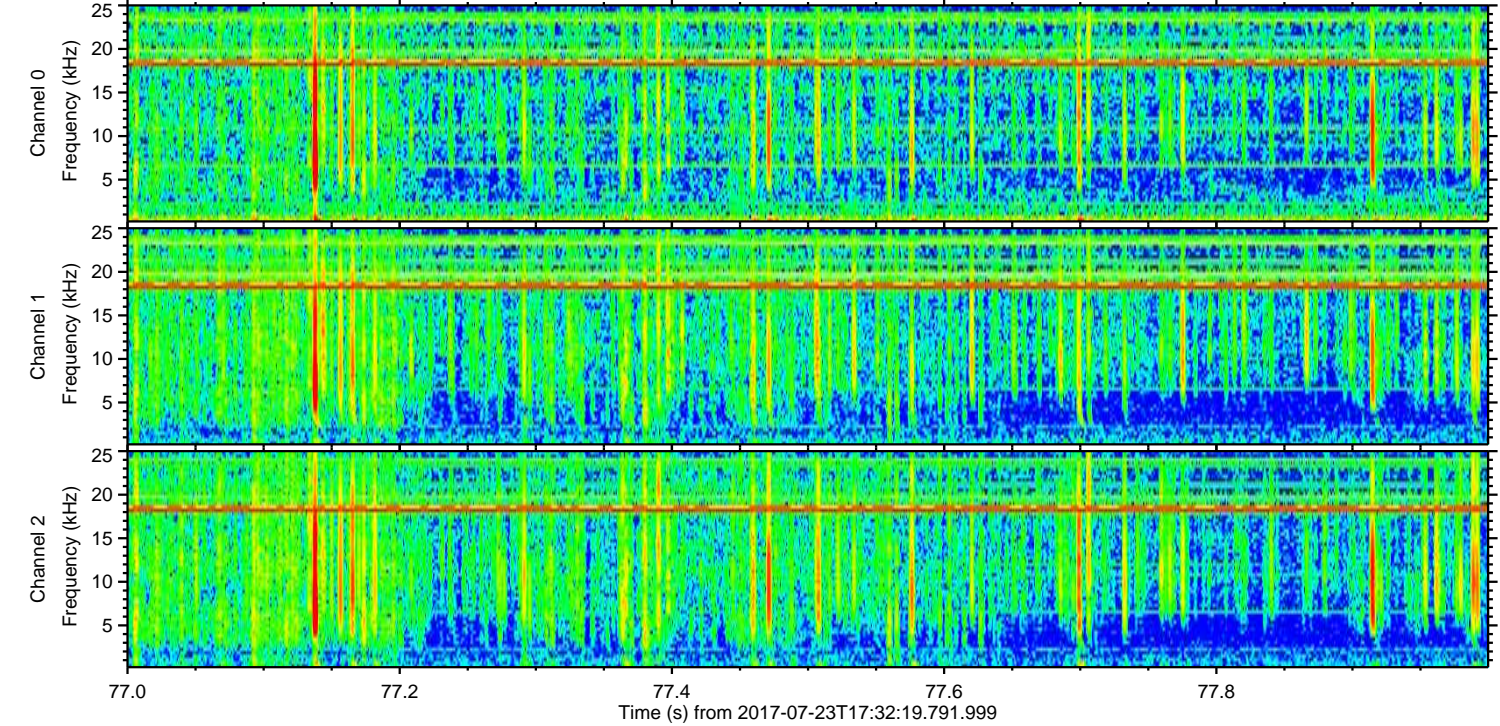
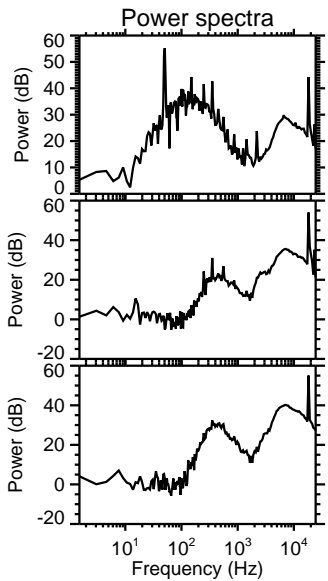
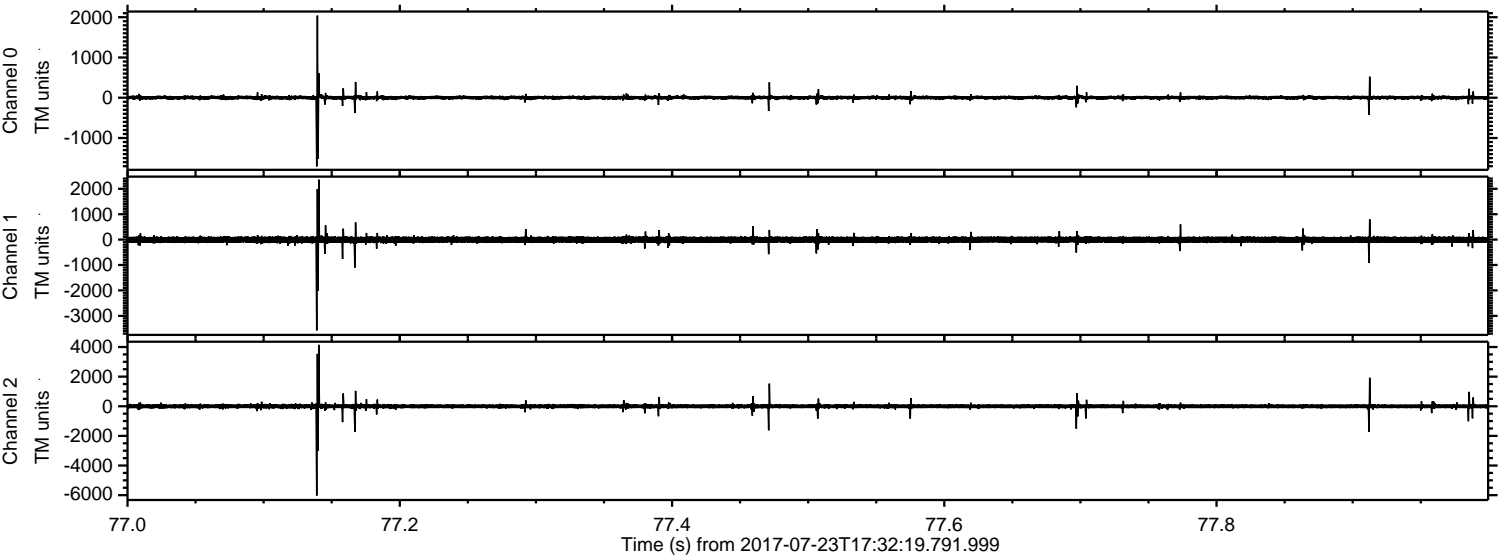
Channel 2
mn: -6174
mx: 8161
 μ : -4.1
 σ : 105.3

ELMAVAN 3D WAVEFORMS (Measured data sampled at 50 kHz) 51000 packets of 144 samples from 2017-07-23T17:32:19.791.999. Part 130/147

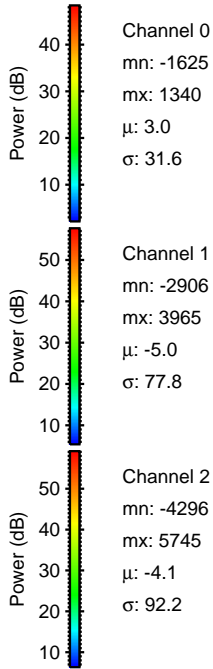
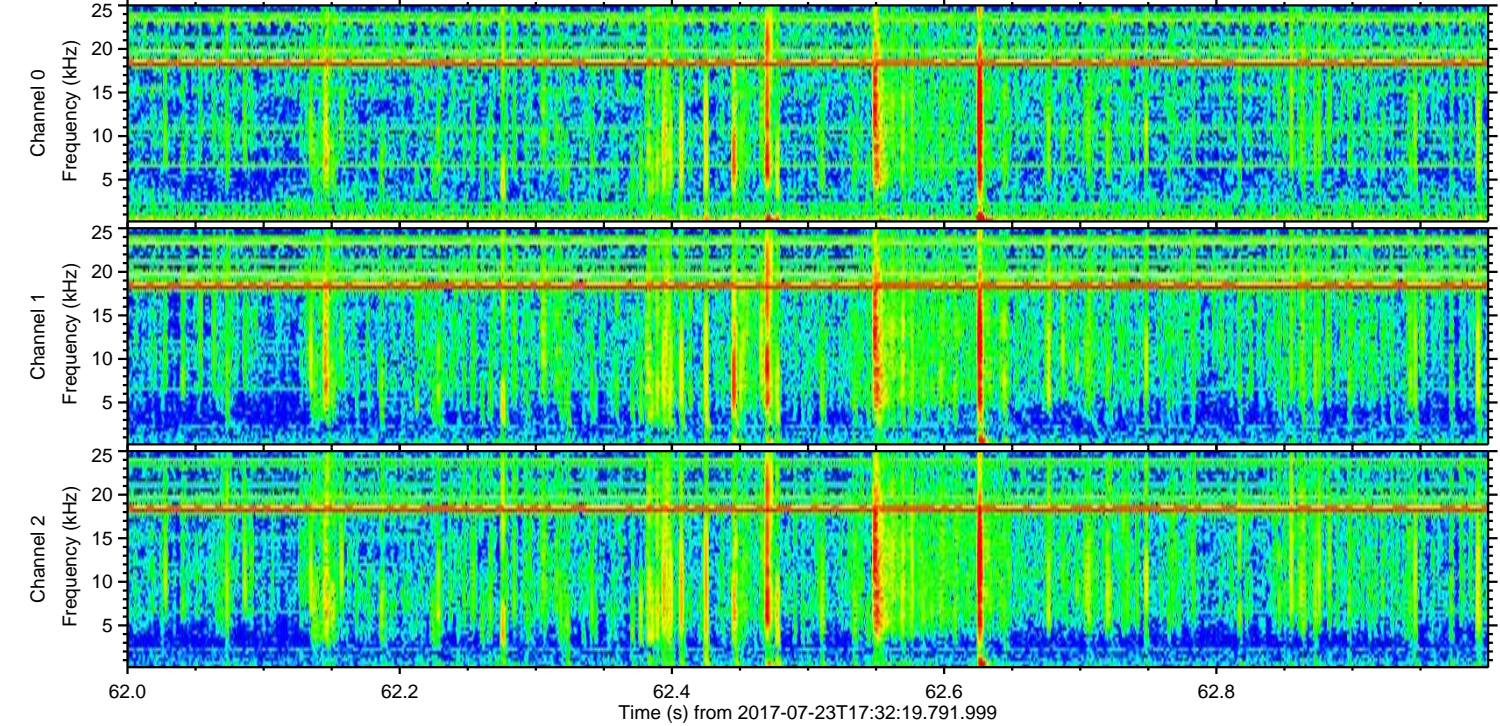
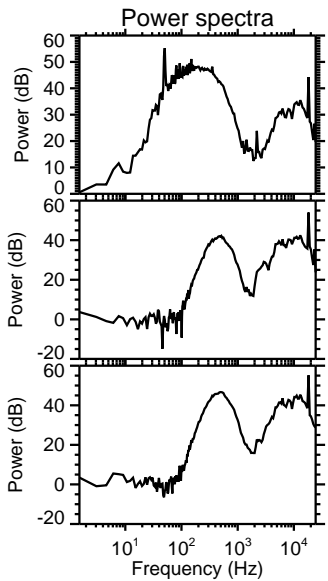
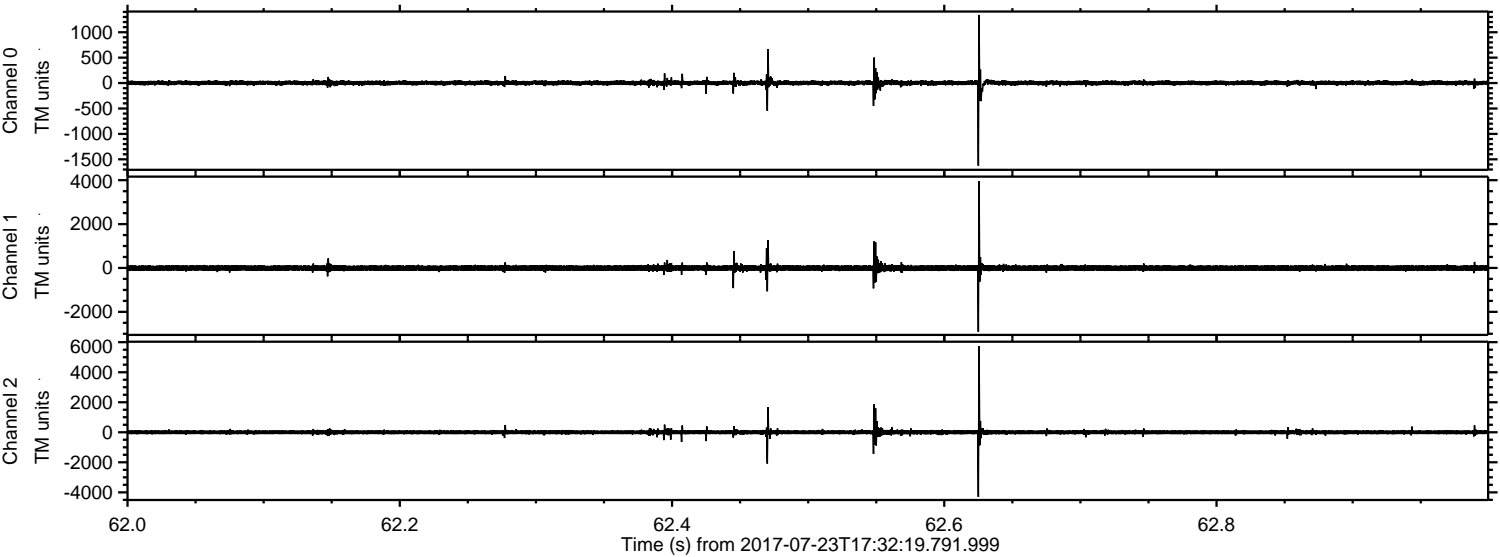
Processed Sun Jul 23 19:40:09 2017 by ELM ver.2012-10-06 from 001__elm20170723_173218__dat00.bin



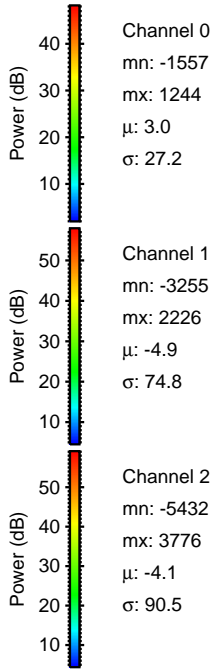
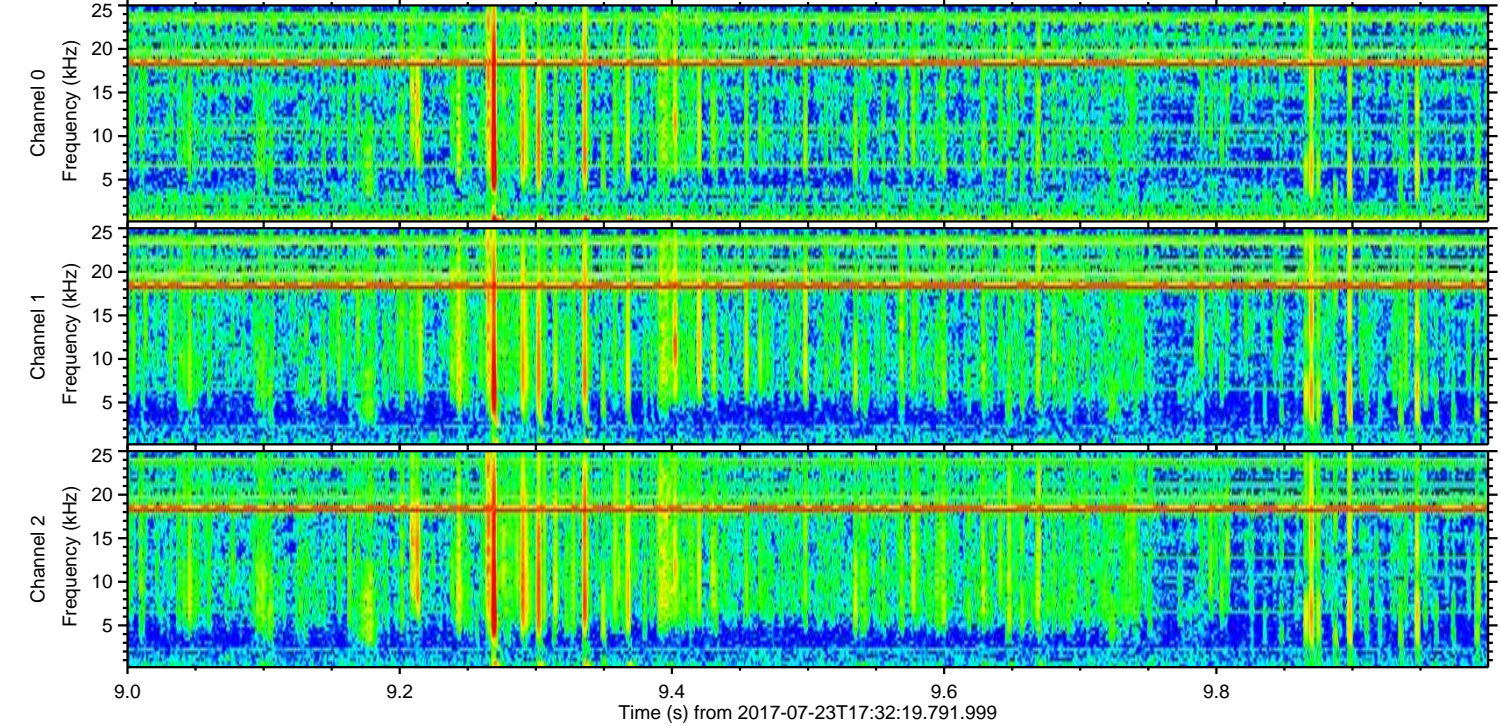
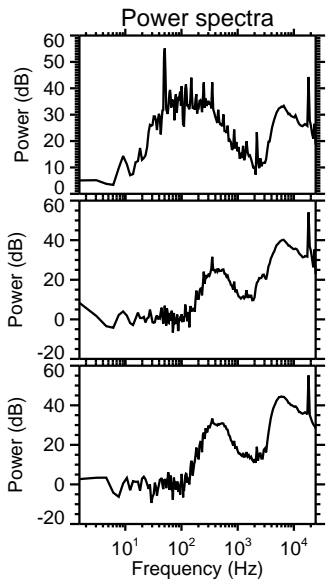
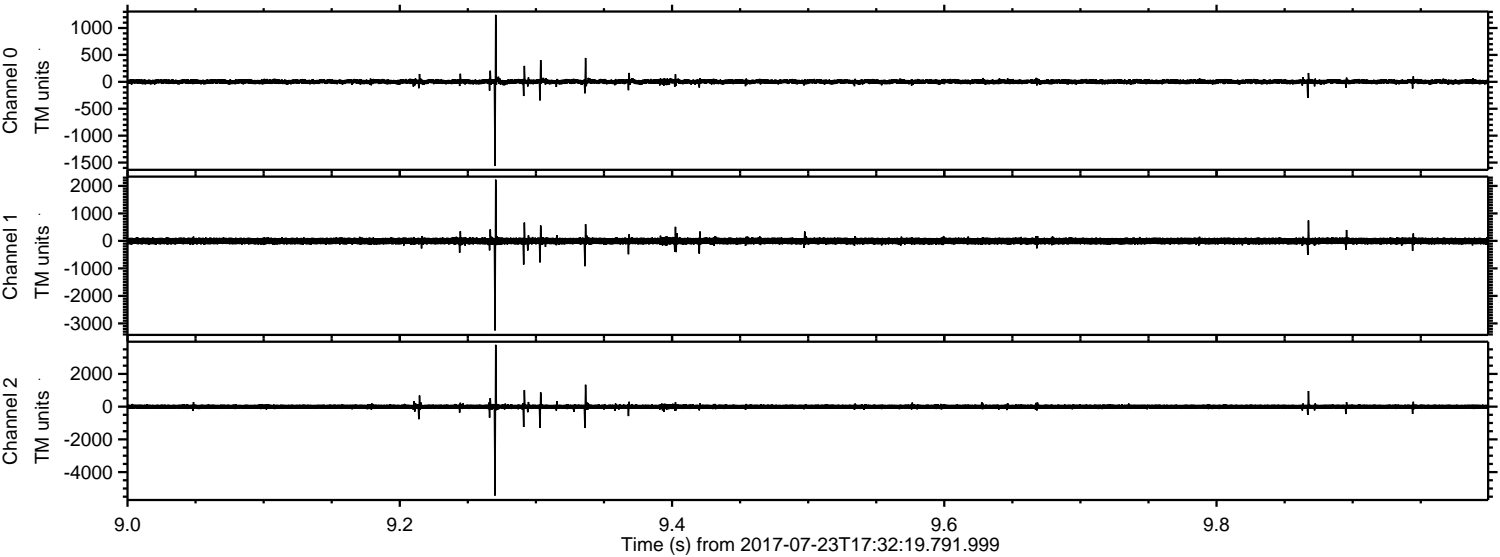
Processed Sun Jul 23 19:40:10 2017 by ELM ver.2012-10-06 from 001__elm20170723_173218__dat00.bin



Processed Sun Jul 23 19:40:11 2017 by ELM ver.2012-10-06 from 001__elm20170723_173218__dat00.bin



Processed Sun Jul 23 19:40:12 2017 by ELM ver.2012-10-06 from 001__elm20170723_173218__dat00.bin



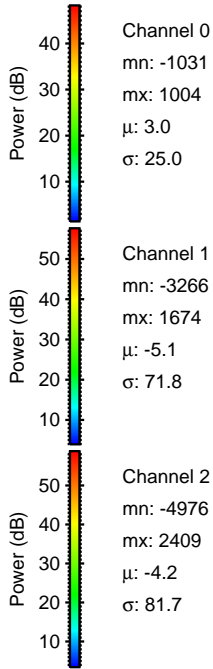
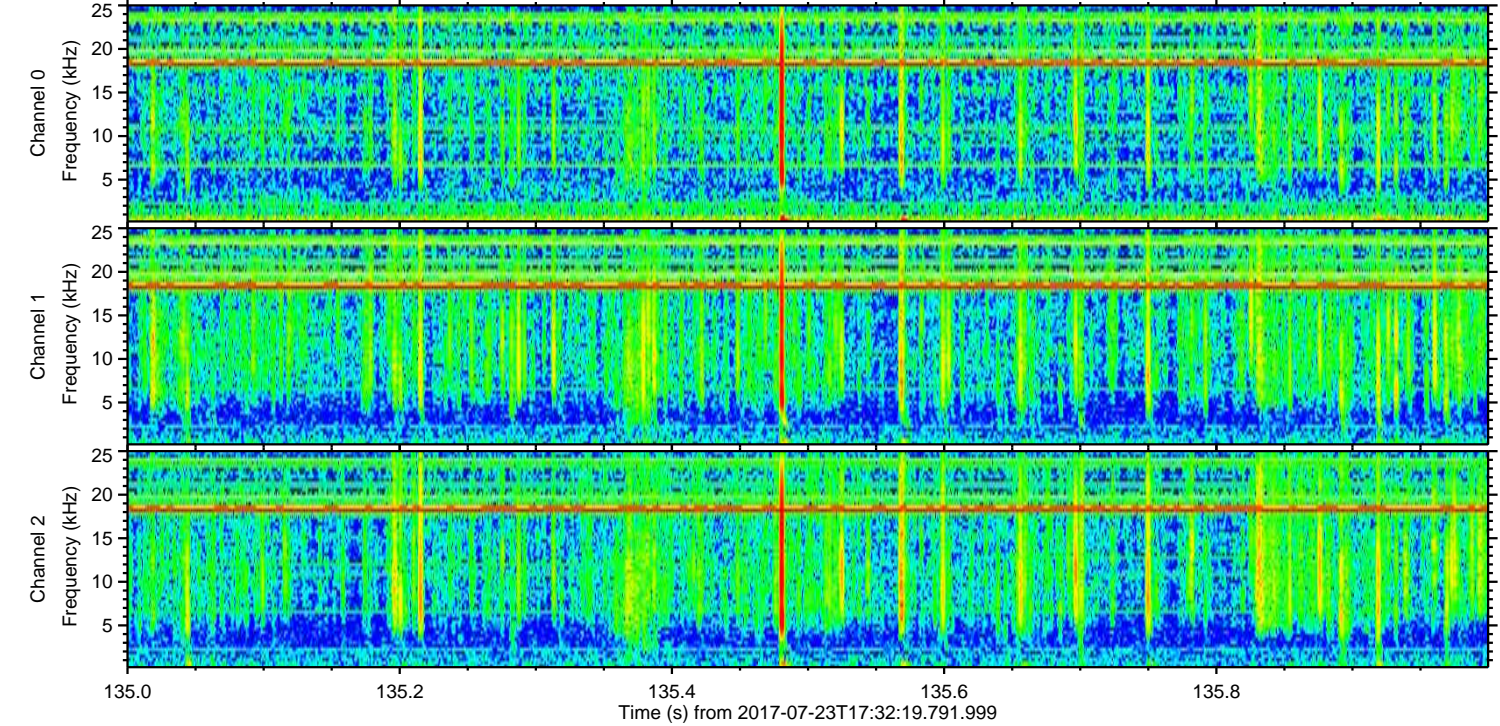
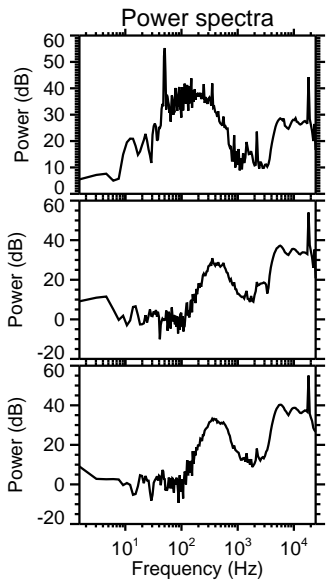
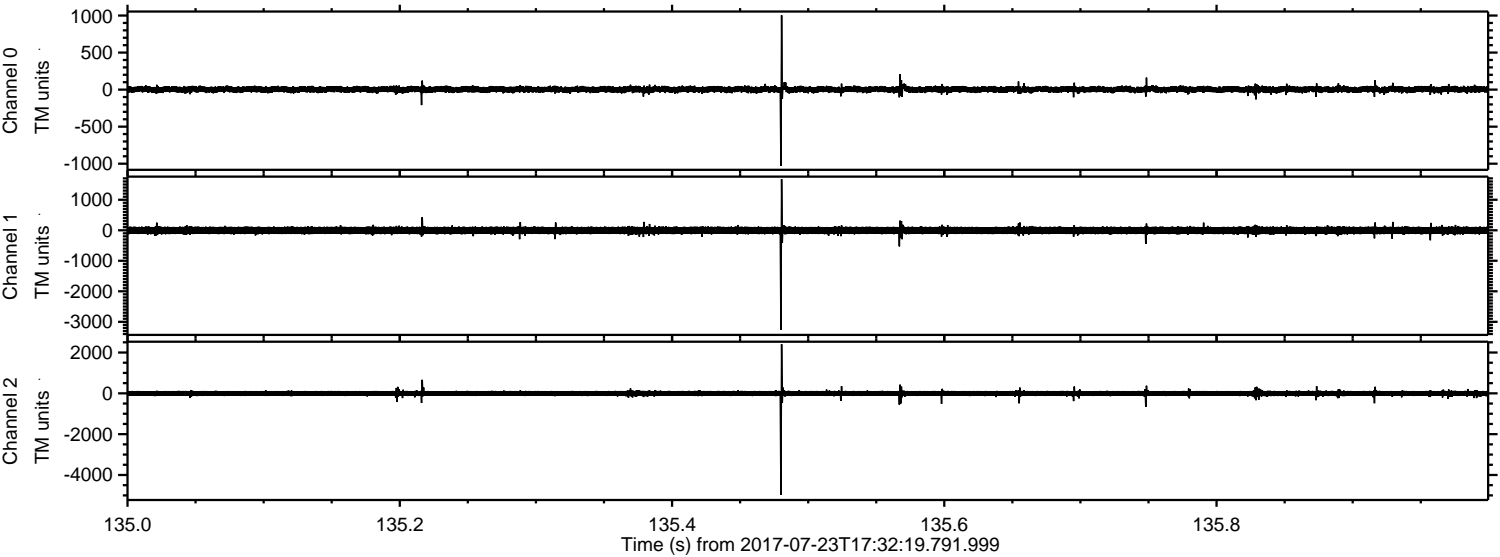
Channel 0
mn: -1557
mx: 1244
 μ : 3.0
 σ : 27.2

Channel 1
mn: -3255
mx: 2226
 μ : -4.9
 σ : 74.8

Channel 2
mn: -5432
mx: 3776
 μ : -4.1
 σ : 90.5

ELMAVAN 3D WAVEFORMS (Measured data sampled at 50 kHz) 51000 packets of 144 samples from 2017-07-23T17:32:19.791.999. Part 136/147

Processed Sun Jul 23 19:40:13 2017 by ELM ver.2012-10-06 from 001__elm20170723_173218__dat00.bin



Channel 0
mn: -1031
mx: 1004
 μ : 3.0
 σ : 25.0

Channel 1
mn: -3266
mx: 1674
 μ : -5.1
 σ : 71.8

Channel 2
mn: -4976
mx: 2409
 μ : -4.2
 σ : 81.7

ELMAVAN 3D WAVEFORMS (Measured data sampled at 50 kHz) 51000 packets of 144 samples from 2017-07-23T17:32:19.791.999. Part 112/147

