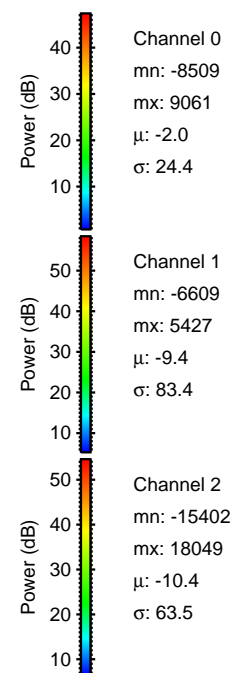
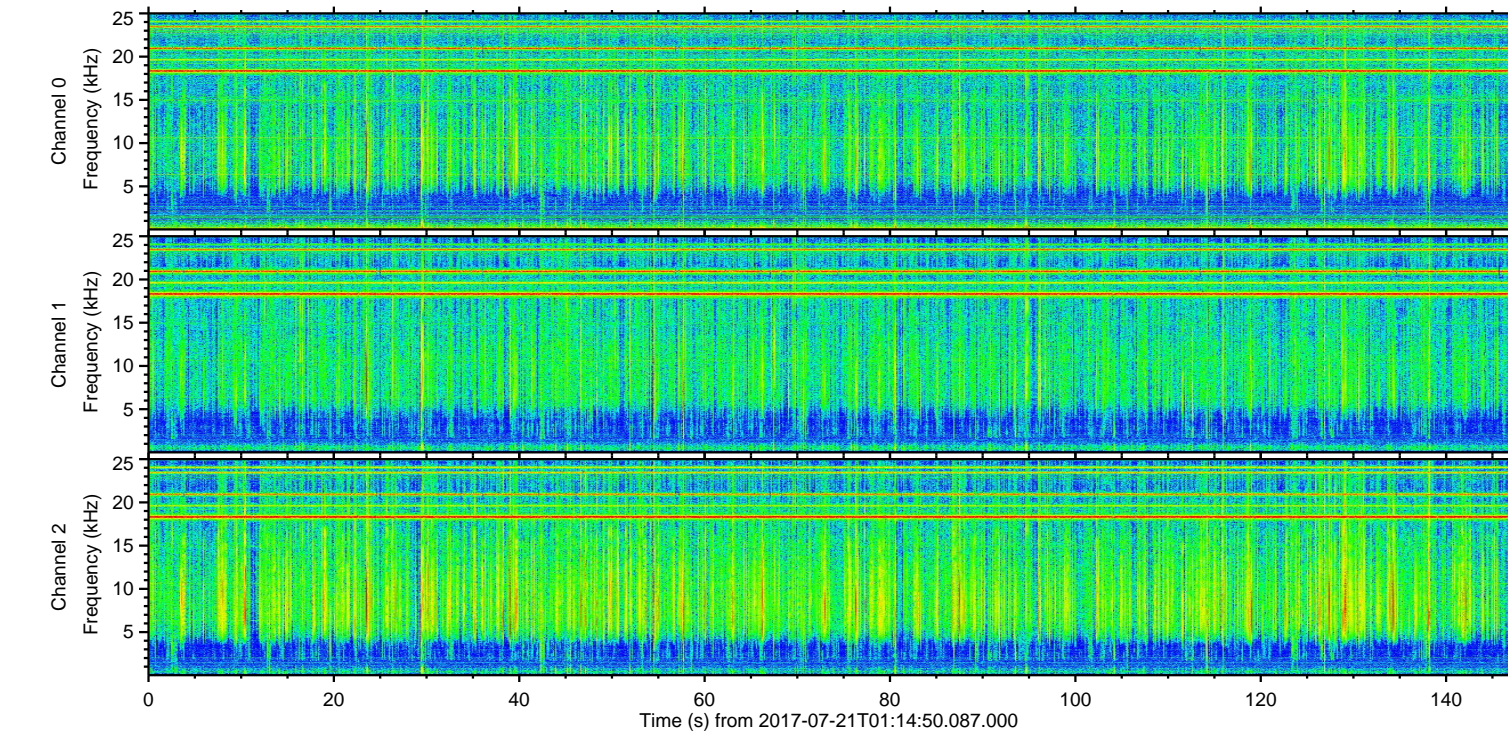
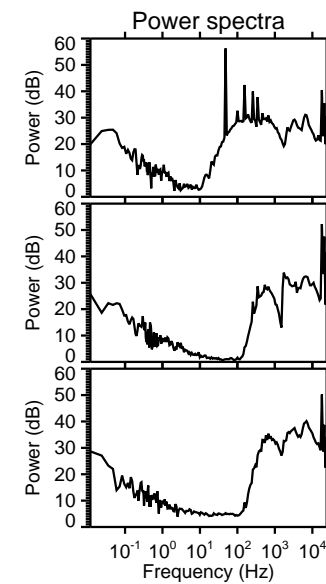
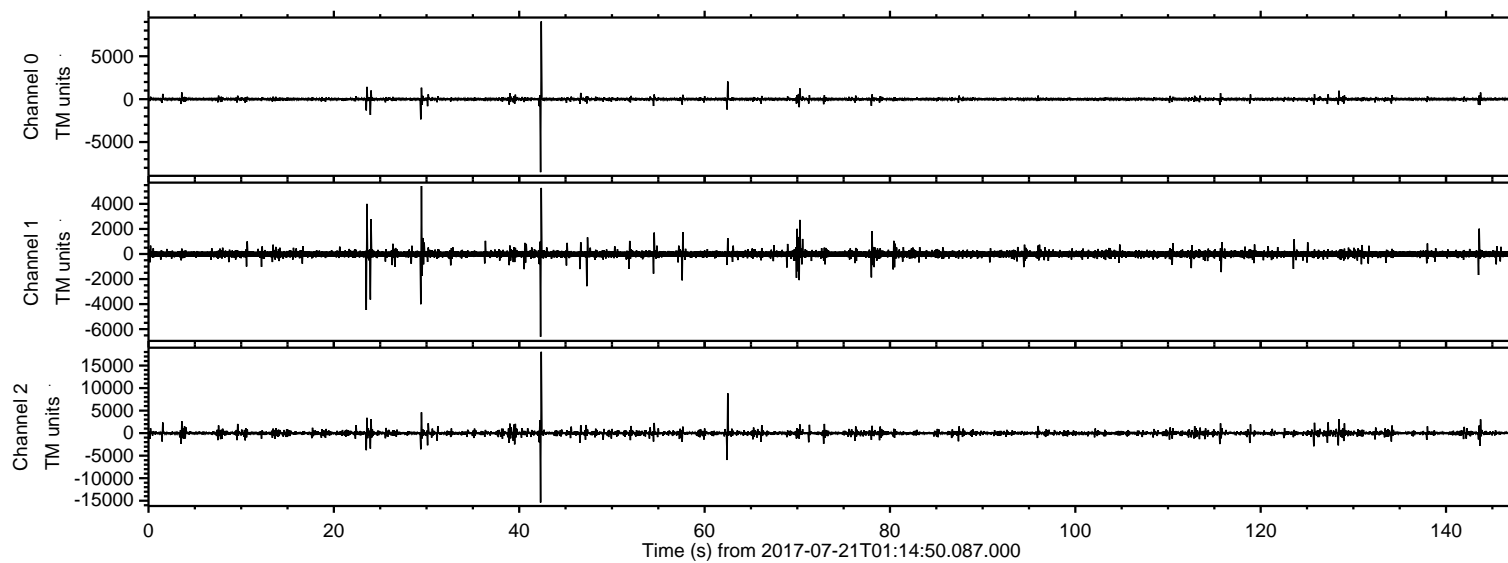
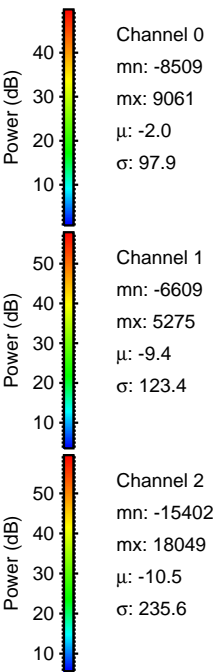
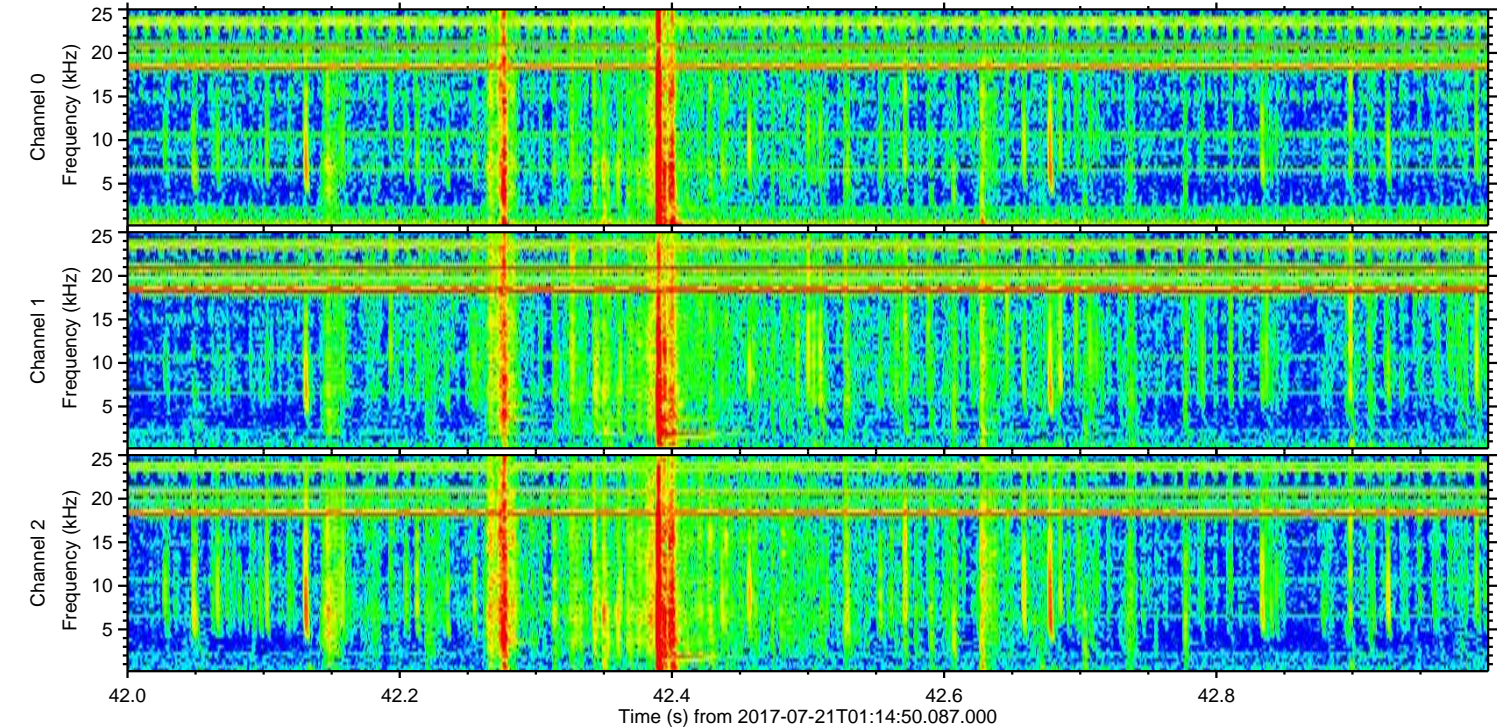
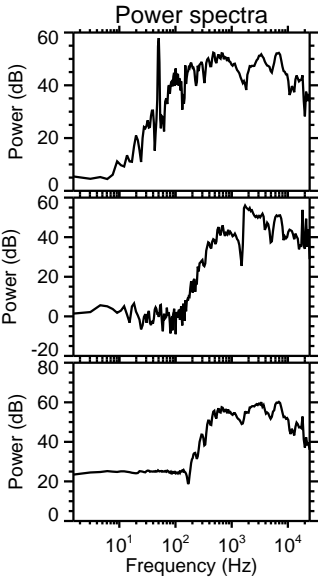
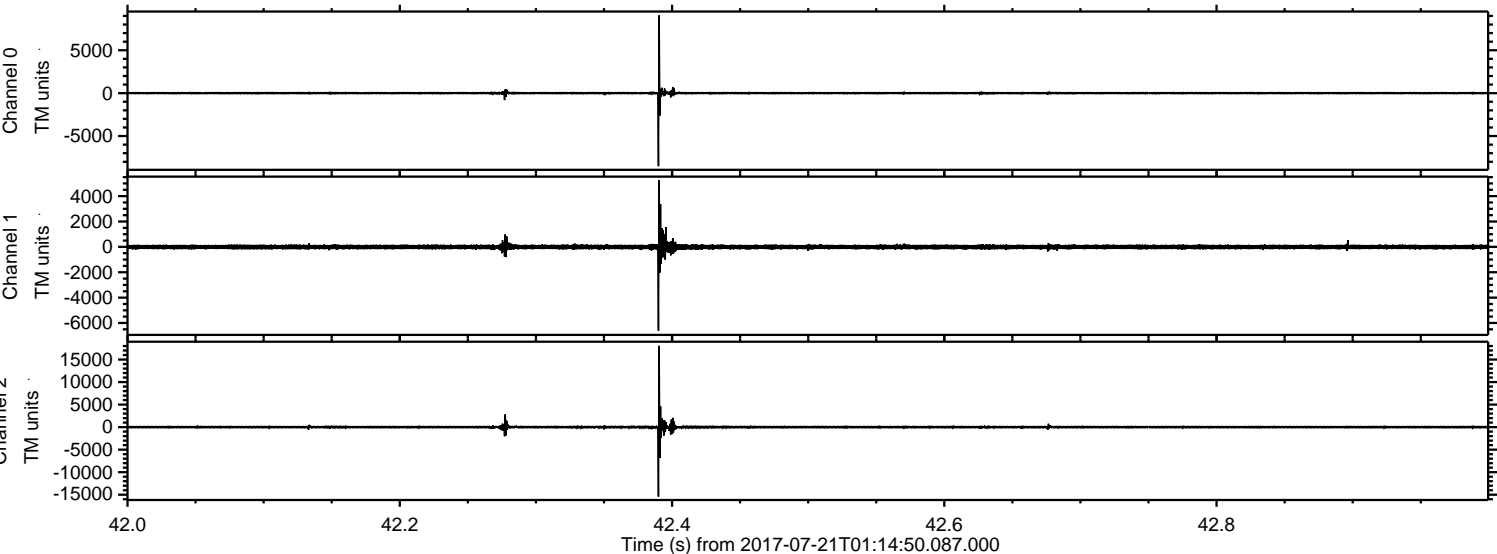


ELMAVAN 3D WAVEFORMS (Measured data sampled at 50 kHz) 51000 packets of 144 samples from 2017-07-21T01:14:50.087.000.

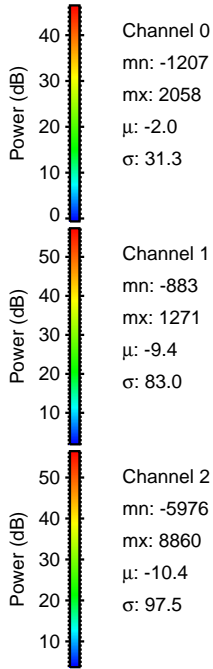
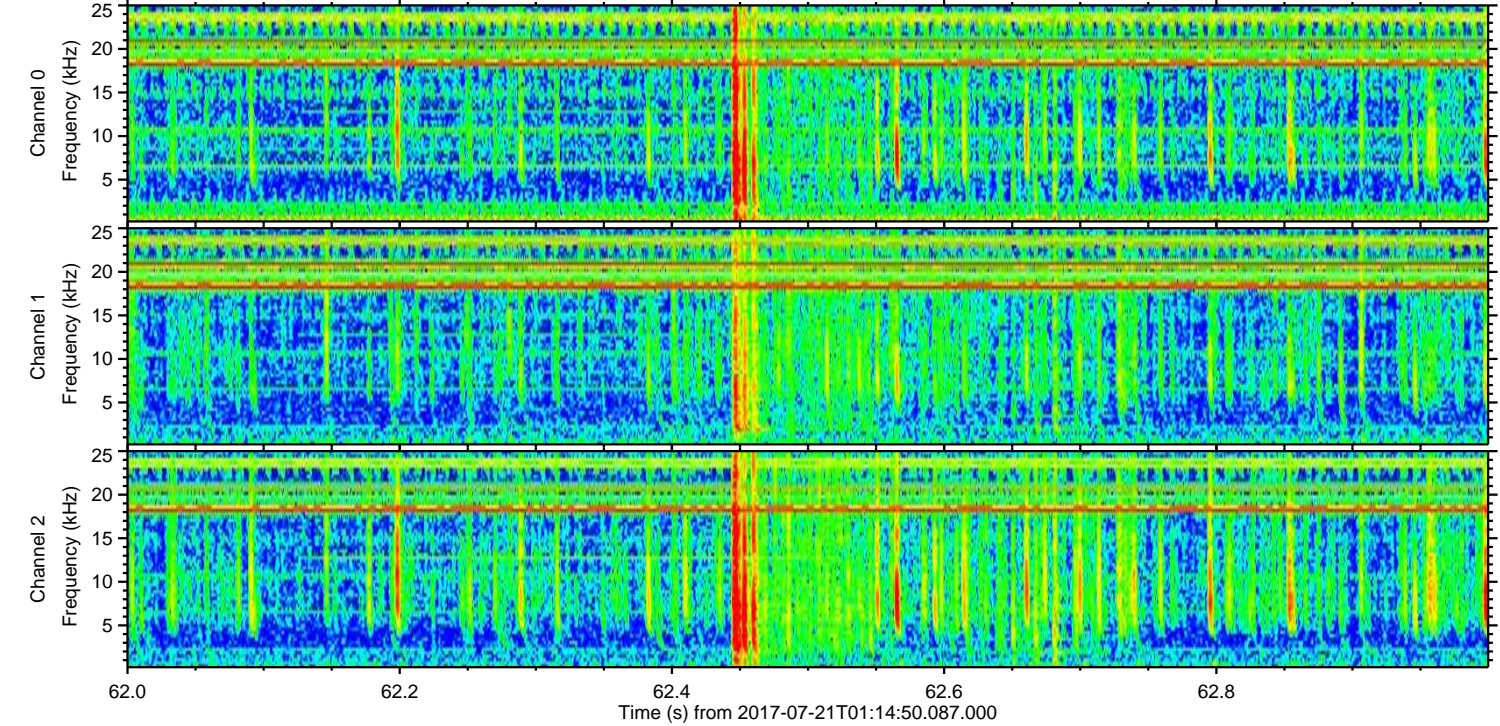
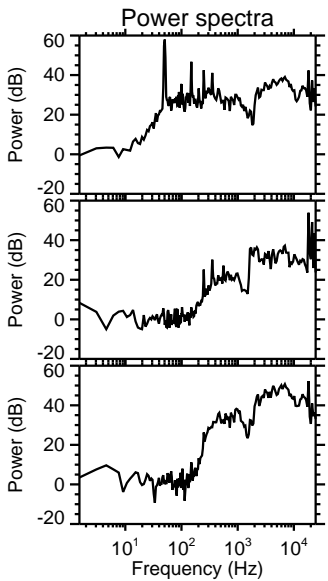
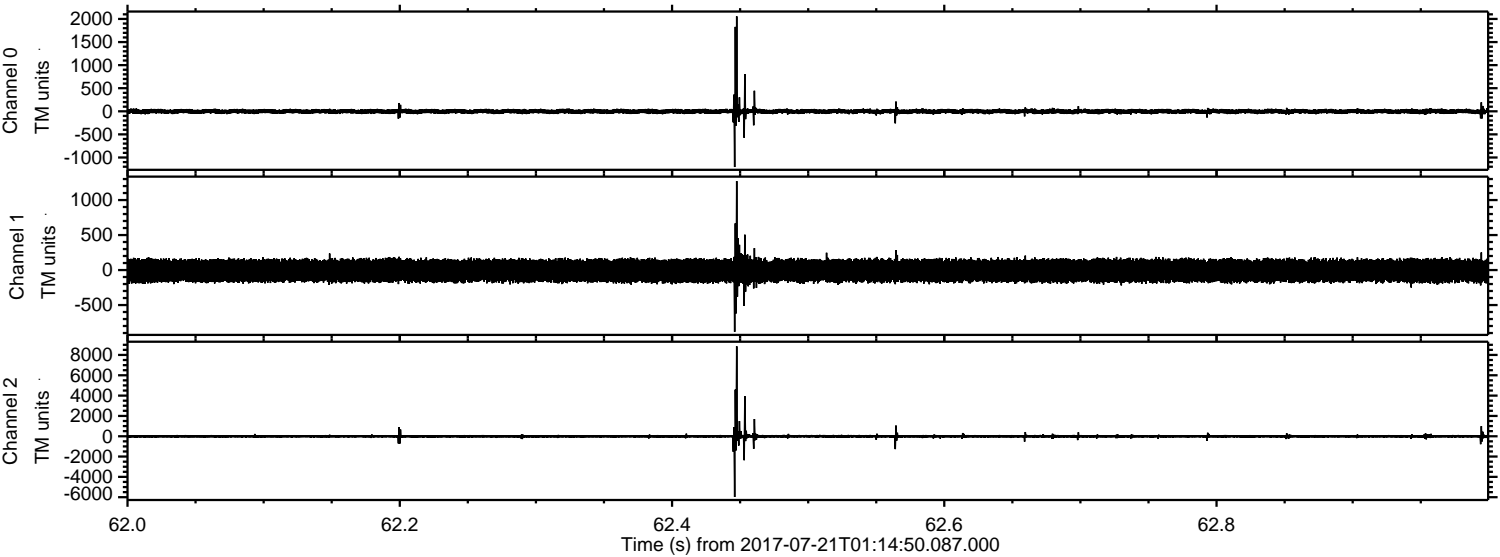
Processed Fri Jul 21 06:48:40 2017 by ELM ver.2012-10-06 from 001__elm20170721_011449__dat00.bin



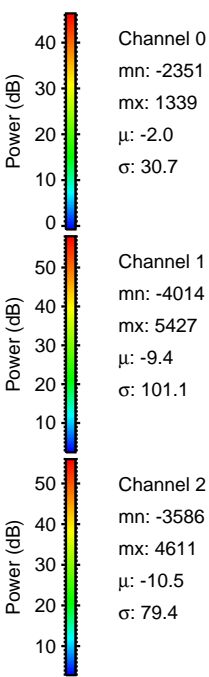
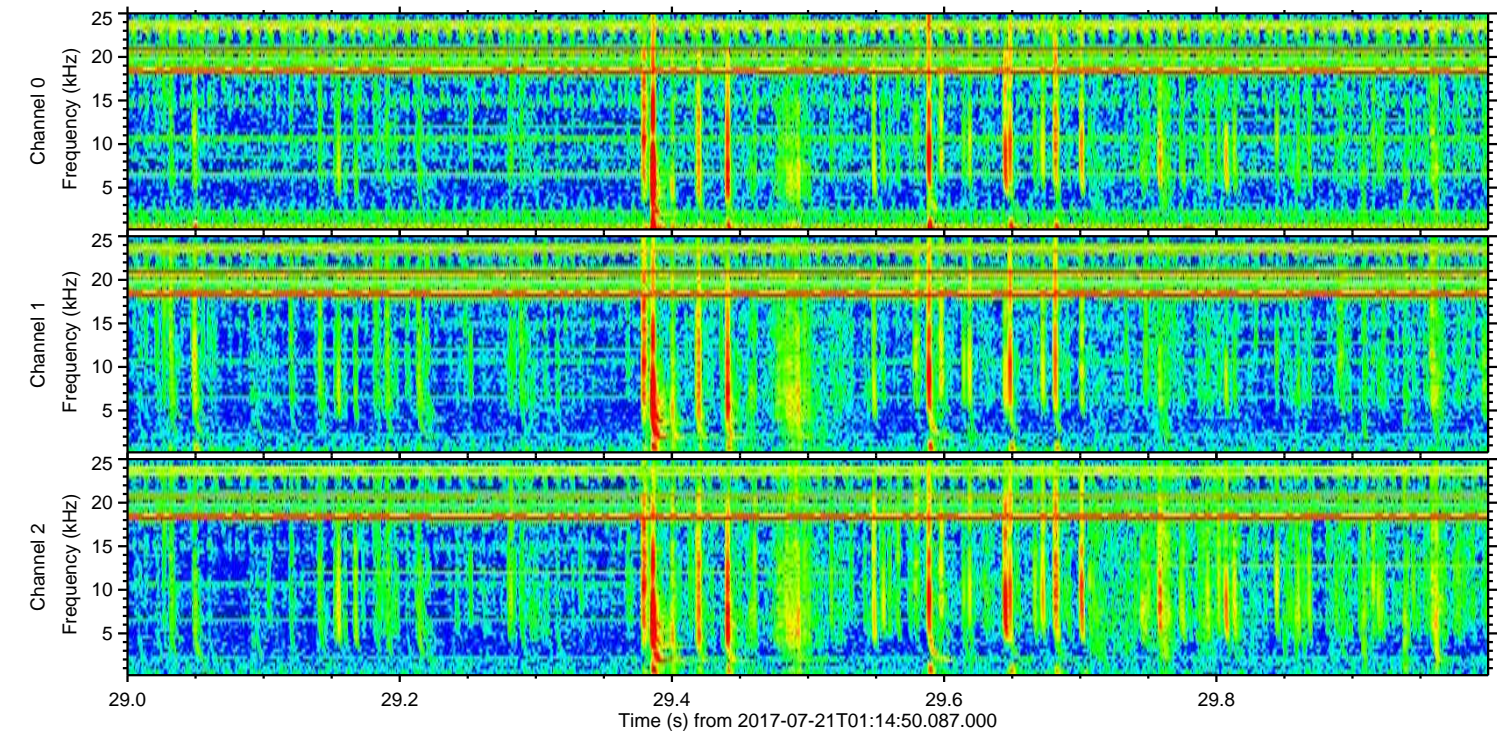
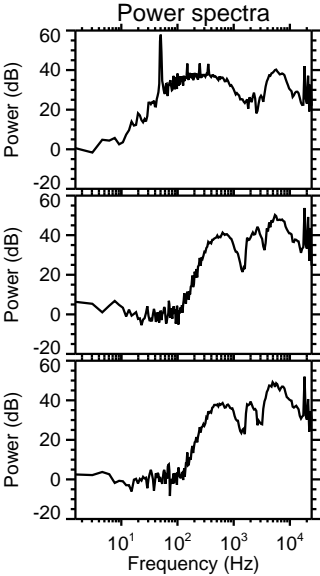
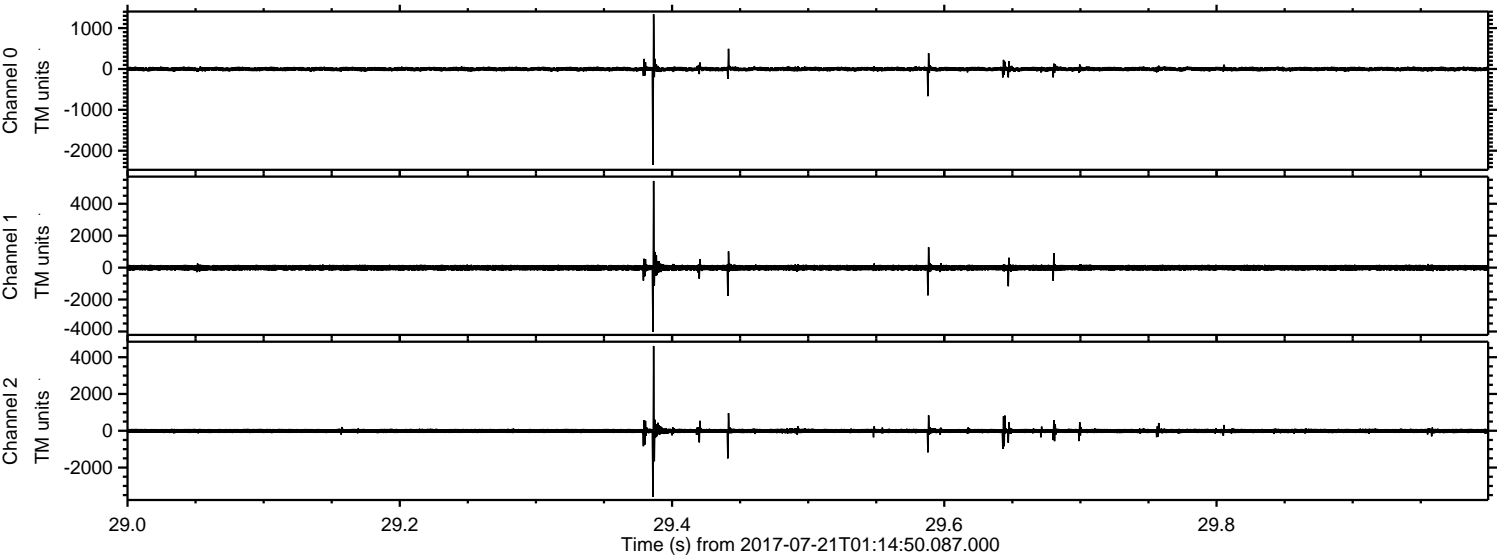
Processed Fri Jul 21 06:48:47 2017 by ELM ver.2012-10-06 from 001__elm20170721_011449__dat00.bin



Processed Fri Jul 21 06:48:48 2017 by ELM ver.2012-10-06 from 001__elm20170721_011449__dat00.bin

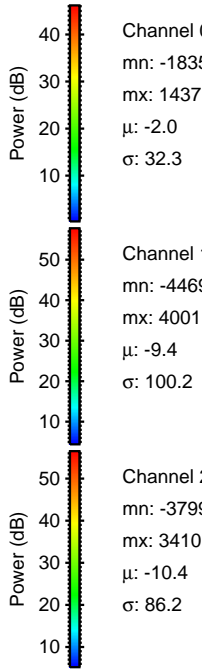
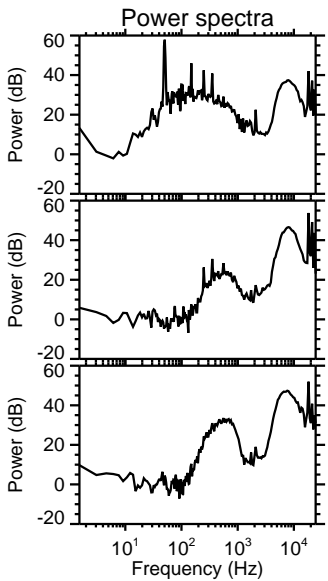
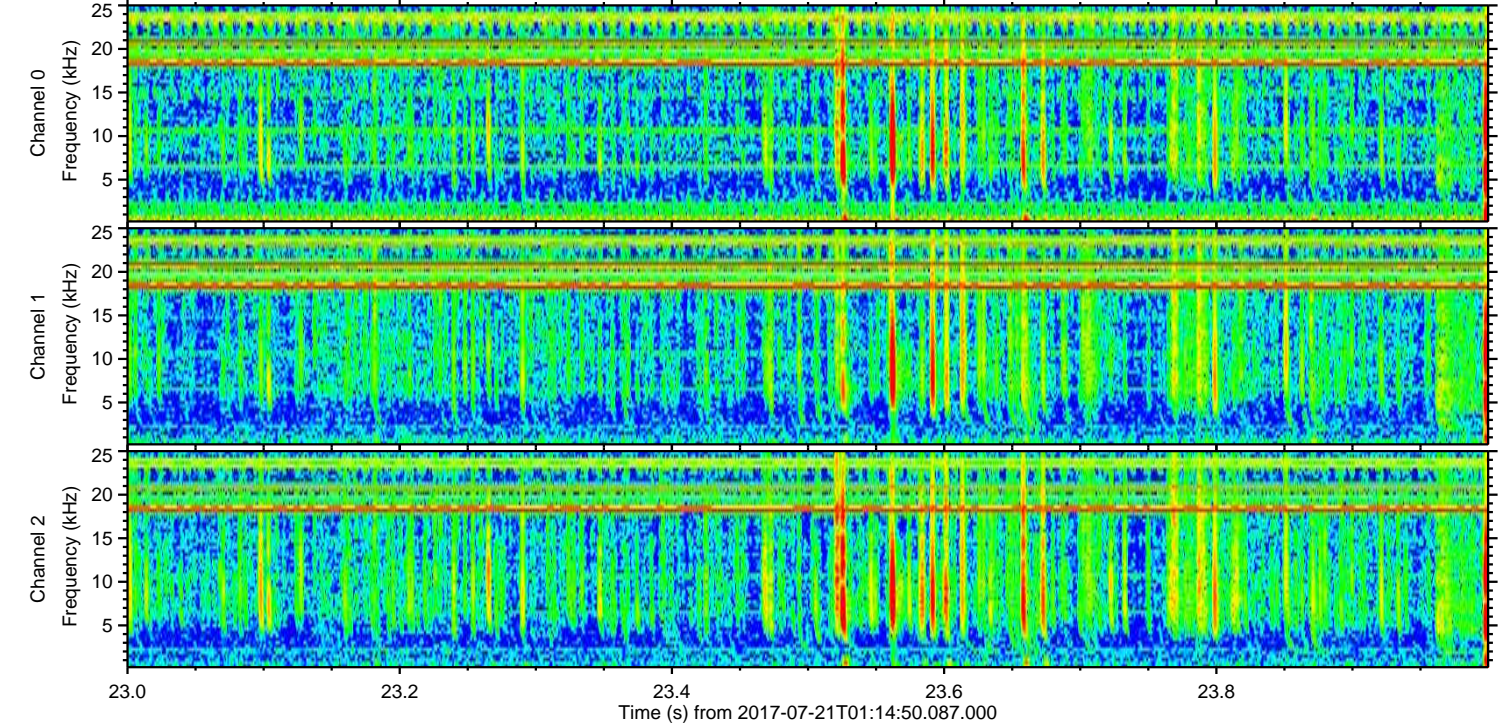
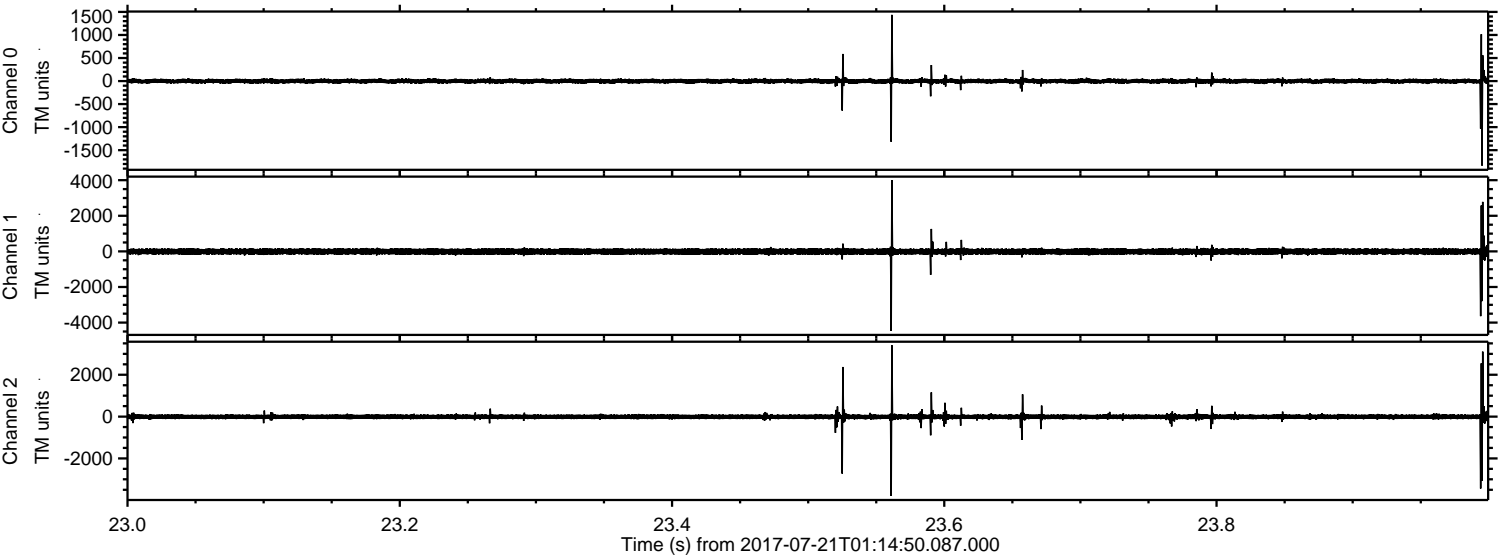


Processed Fri Jul 21 06:48:49 2017 by ELM ver.2012-10-06 from 001__elm20170721_011449__dat00.bin



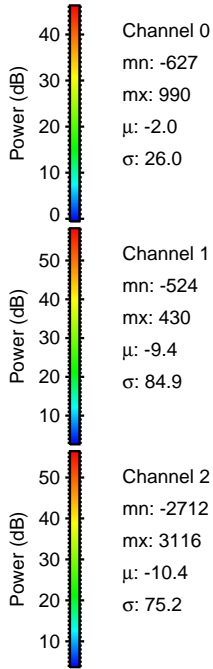
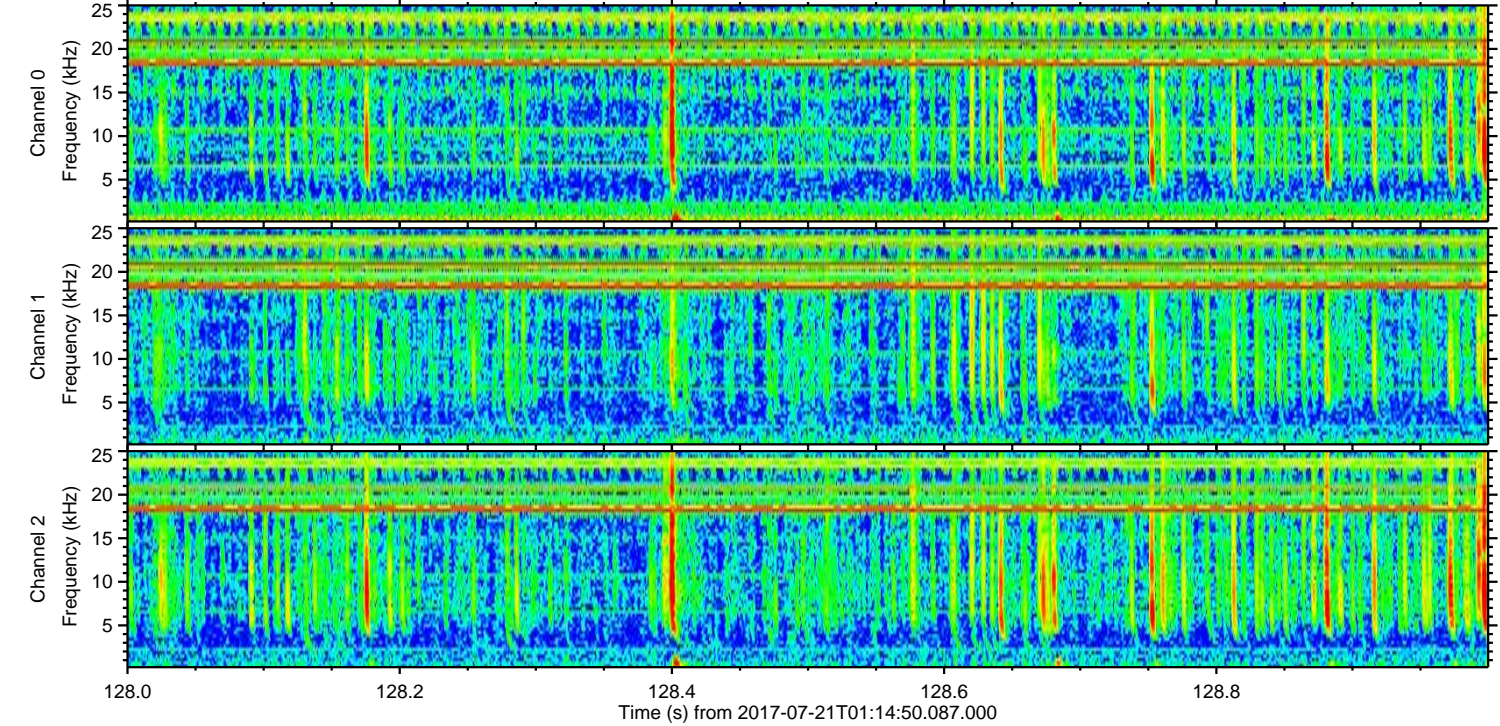
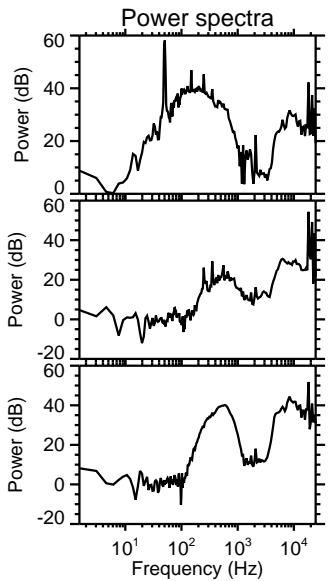
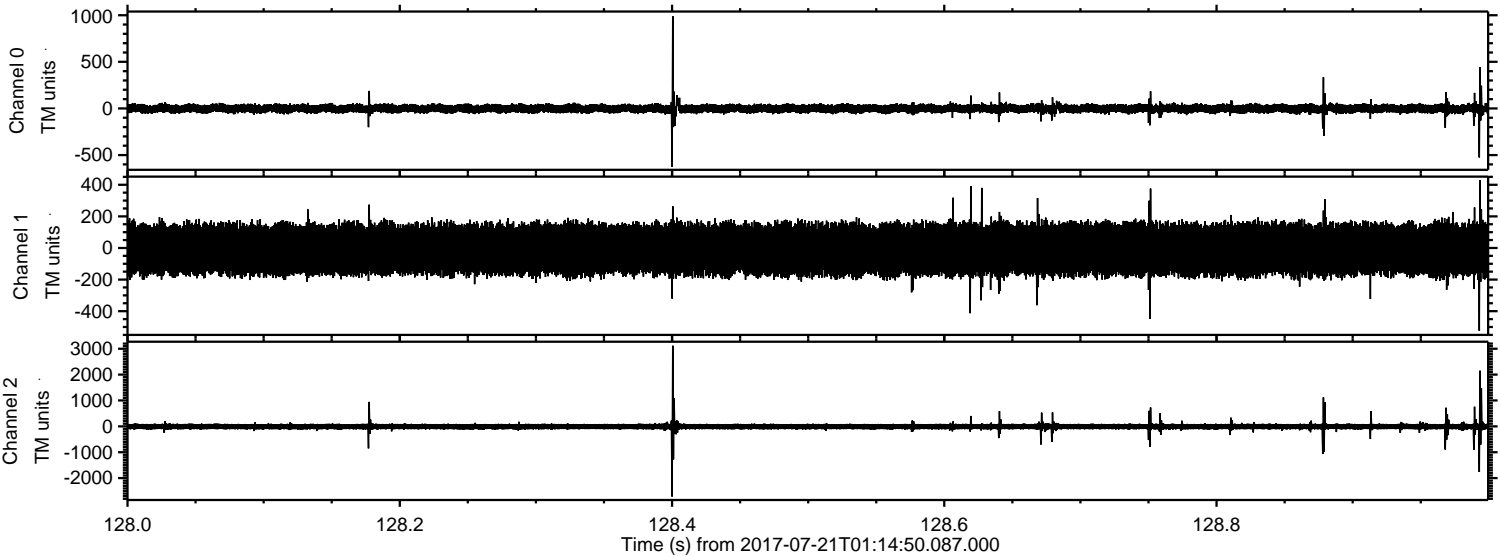
ELMAVAN 3D WAVEFORMS (Measured data sampled at 50 kHz) 51000 packets of 144 samples from 2017-07-21T01:14:50.087.000. Part 24/147

Processed Fri Jul 21 06:48:50 2017 by ELM ver.2012-10-06 from 001__elm20170721_011449__dat00.bin



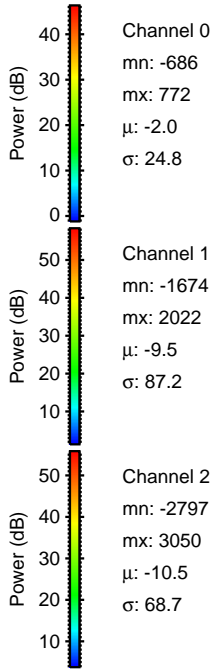
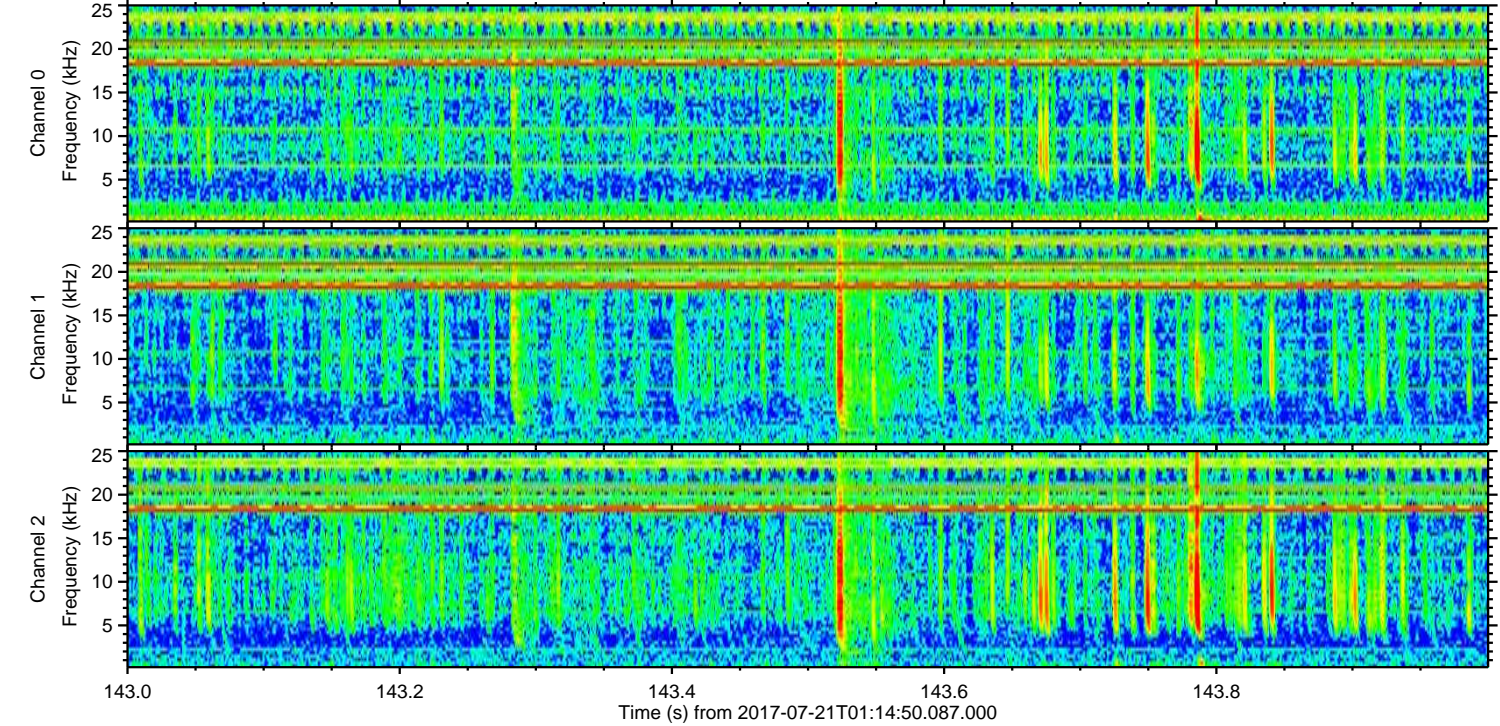
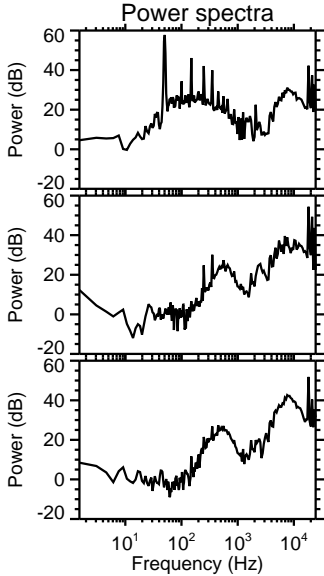
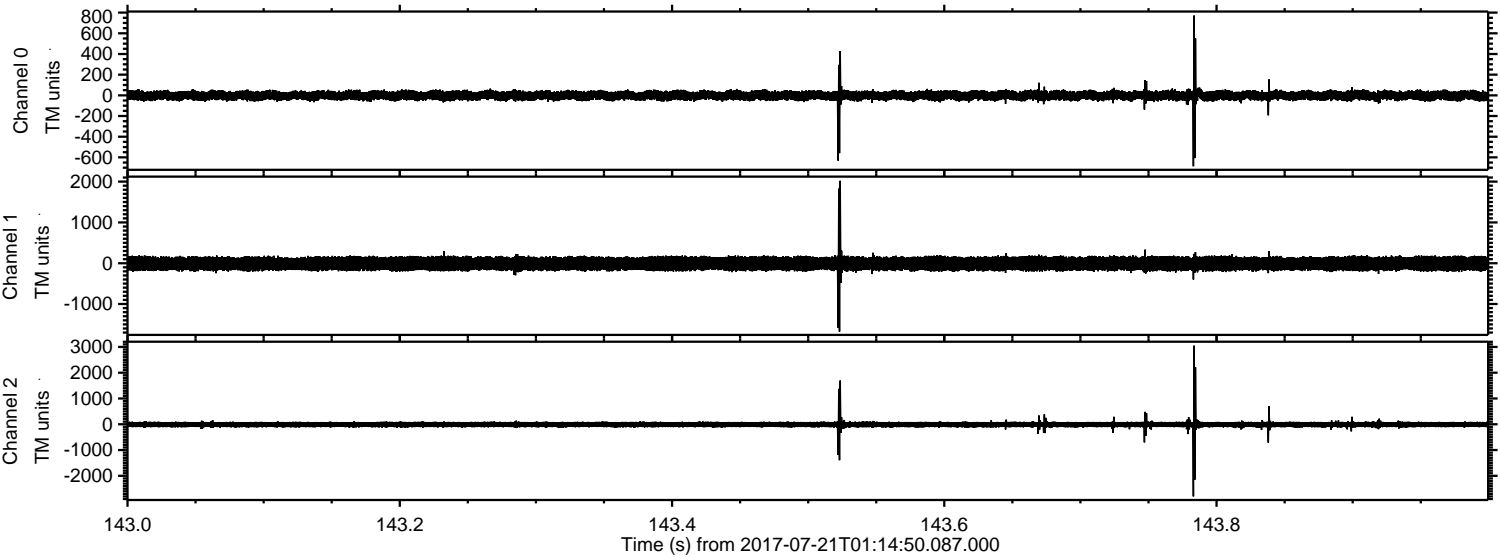
ELMAVAN 3D WAVEFORMS (Measured data sampled at 50 kHz) 51000 packets of 144 samples from 2017-07-21T01:14:50.087.000. Part 129/147

Processed Fri Jul 21 06:48:50 2017 by ELM ver.2012-10-06 from 001__elm20170721_011449__dat00.bin



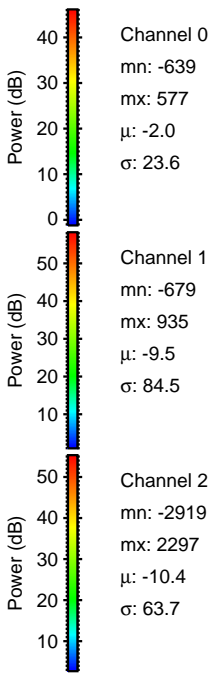
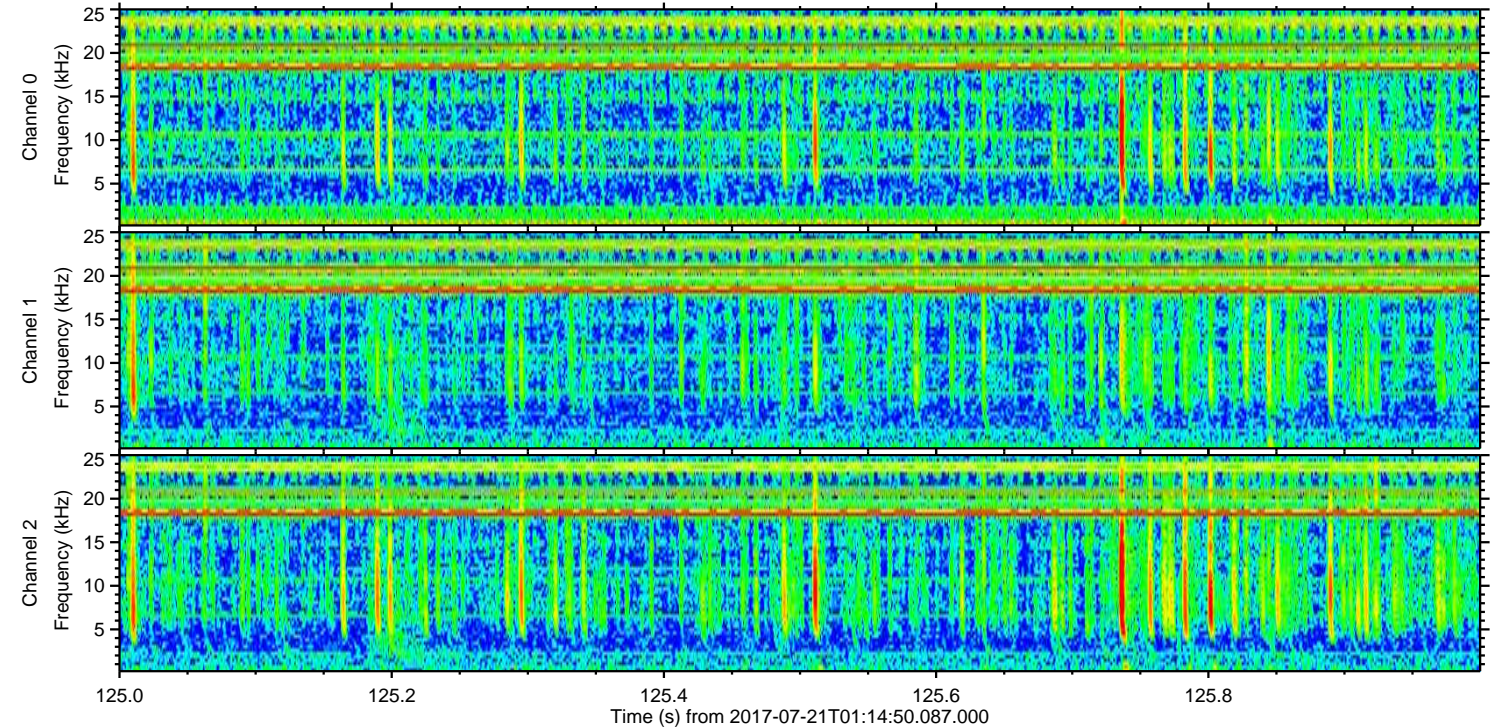
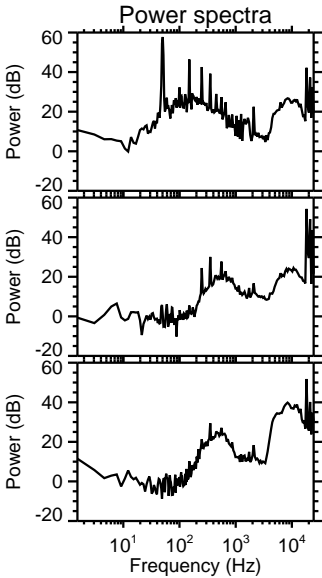
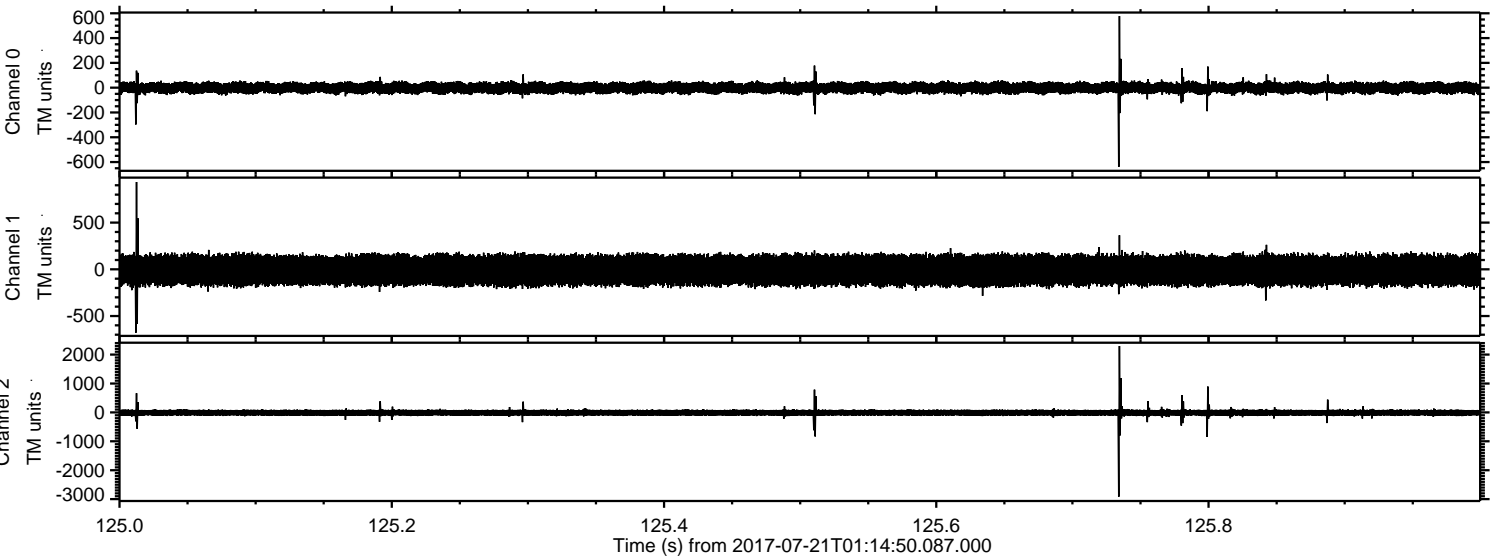
ELMAVAN 3D WAVEFORMS (Measured data sampled at 50 kHz) 51000 packets of 144 samples from 2017-07-21T01:14:50.087.000. Part 144/147

Processed Fri Jul 21 06:48:51 2017 by ELM ver.2012-10-06 from 001__elm20170721_011449__dat00.bin

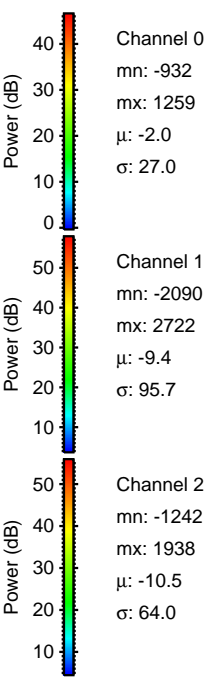
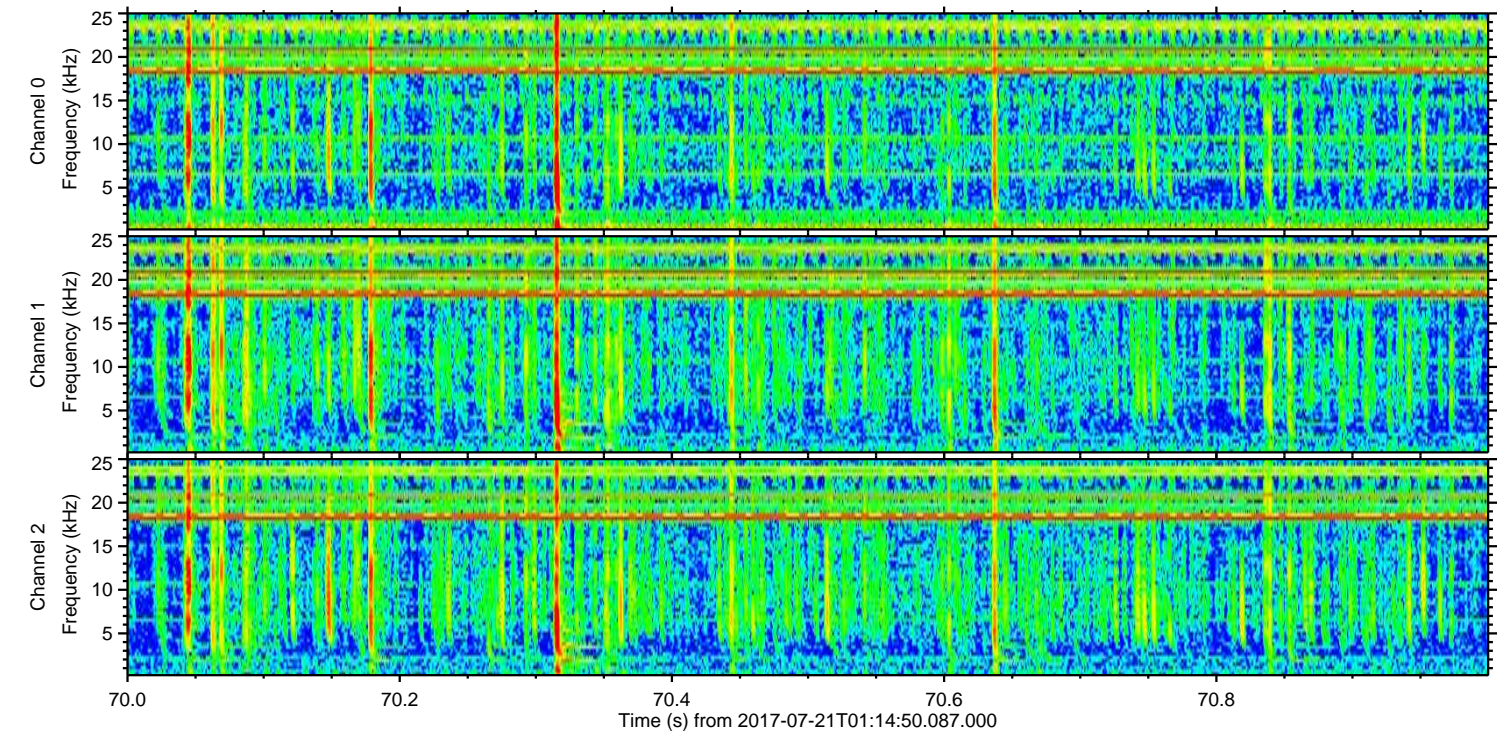
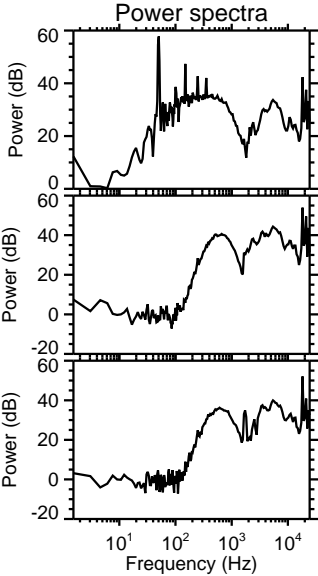
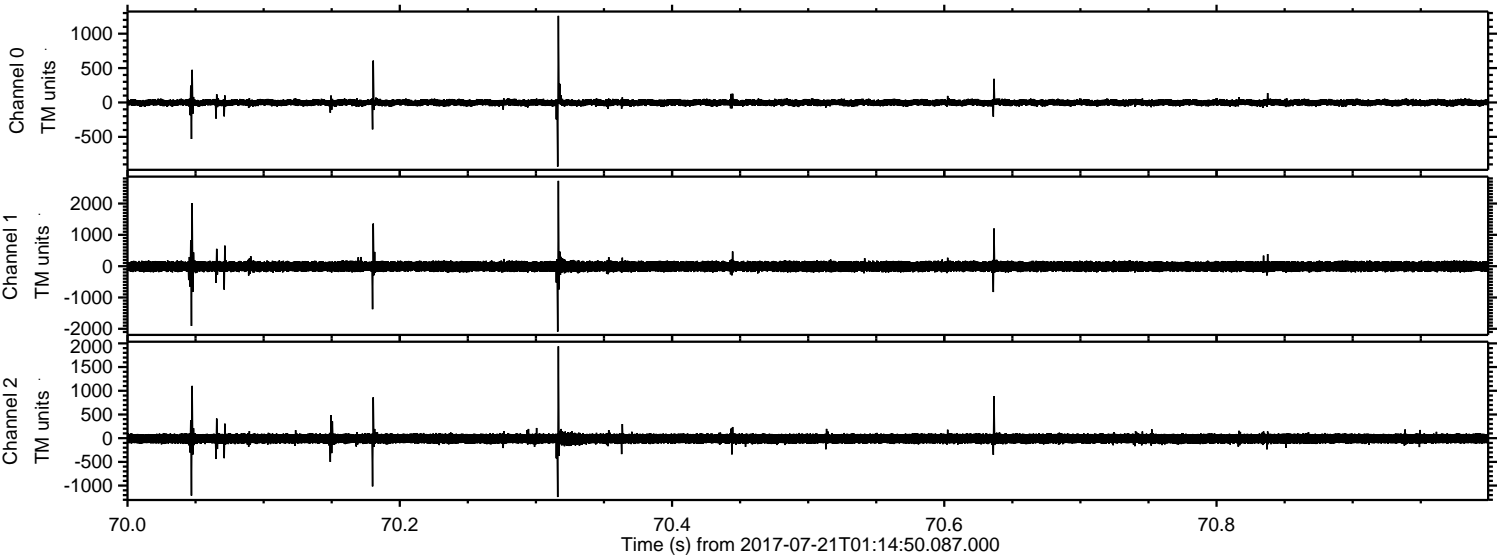


ELMAVAN 3D WAVEFORMS (Measured data sampled at 50 kHz) 51000 packets of 144 samples from 2017-07-21T01:14:50.087.000. Part 126/147

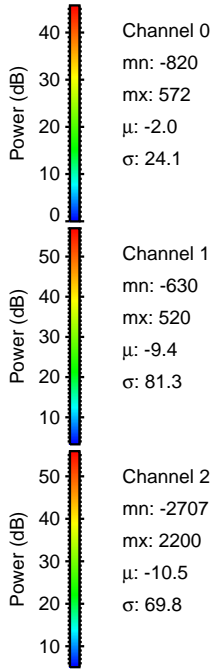
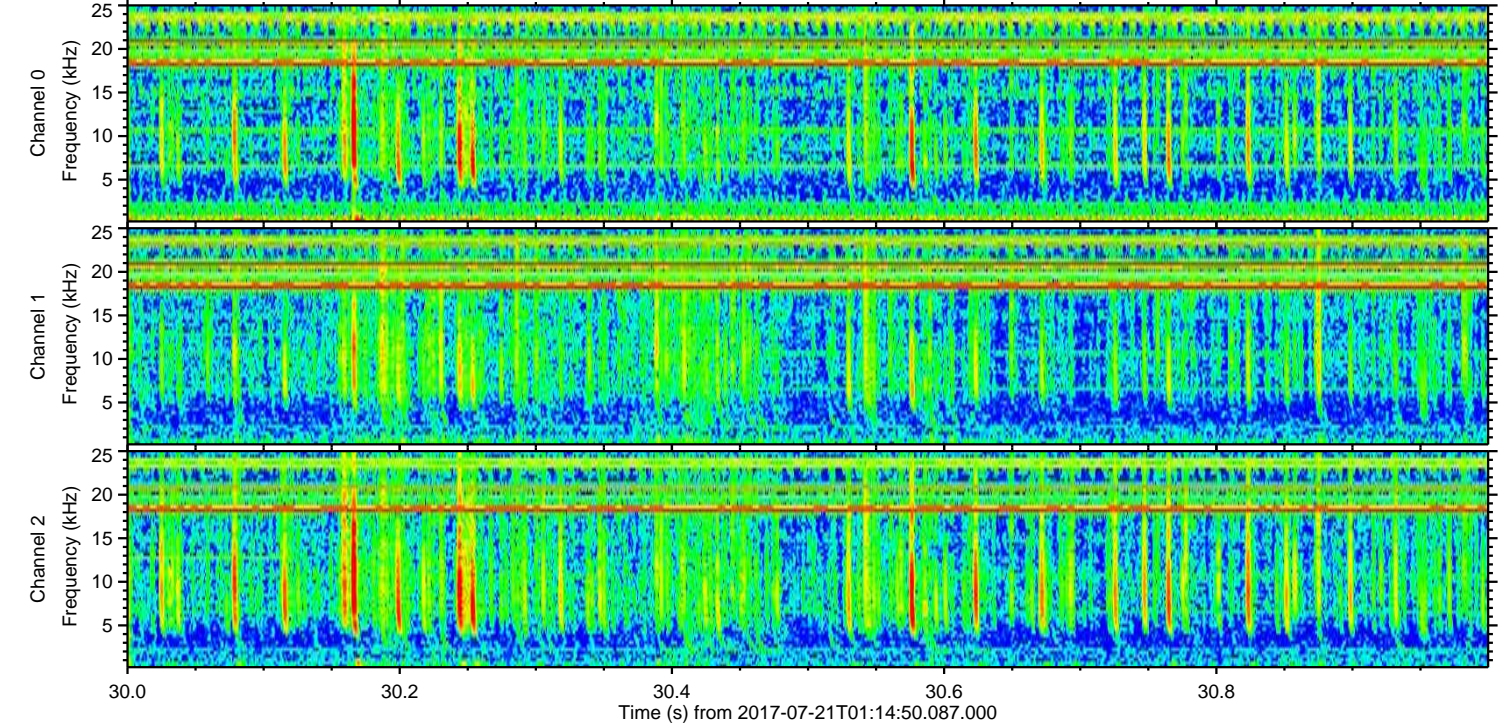
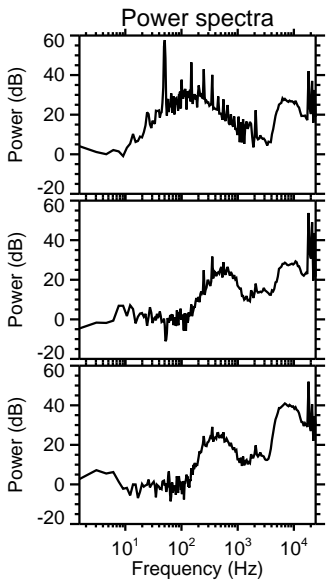
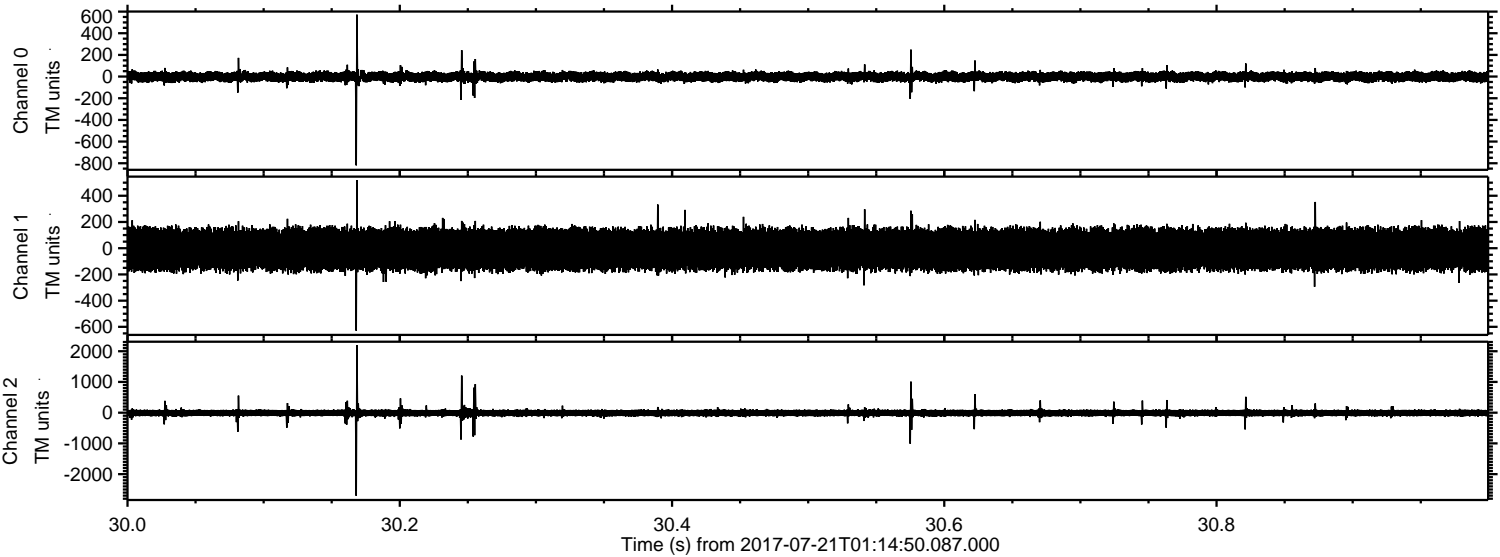
Processed Fri Jul 21 06:48:52 2017 by ELM ver.2012-10-06 from 001__elm20170721_011449__dat00.bin



Processed Fri Jul 21 06:48:53 2017 by ELM ver.2012-10-06 from 001__elm20170721_011449__dat00.bin



Processed Fri Jul 21 06:48:54 2017 by ELM ver.2012-10-06 from 001__elm20170721_011449__dat00.bin



Channel 0
mn: -820
mx: 572
 μ : -2.0
 σ : 24.1

Channel 1
mn: -630
mx: 520
 μ : -9.4
 σ : 81.3

Channel 2
mn: -2707
mx: 2200
 μ : -10.5
 σ : 69.8

