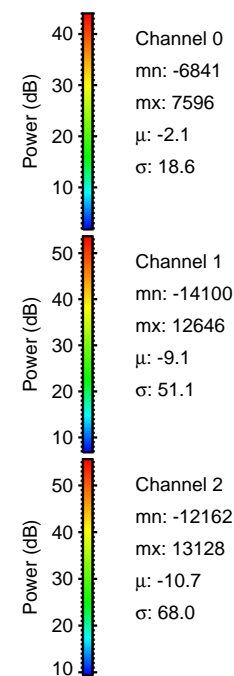
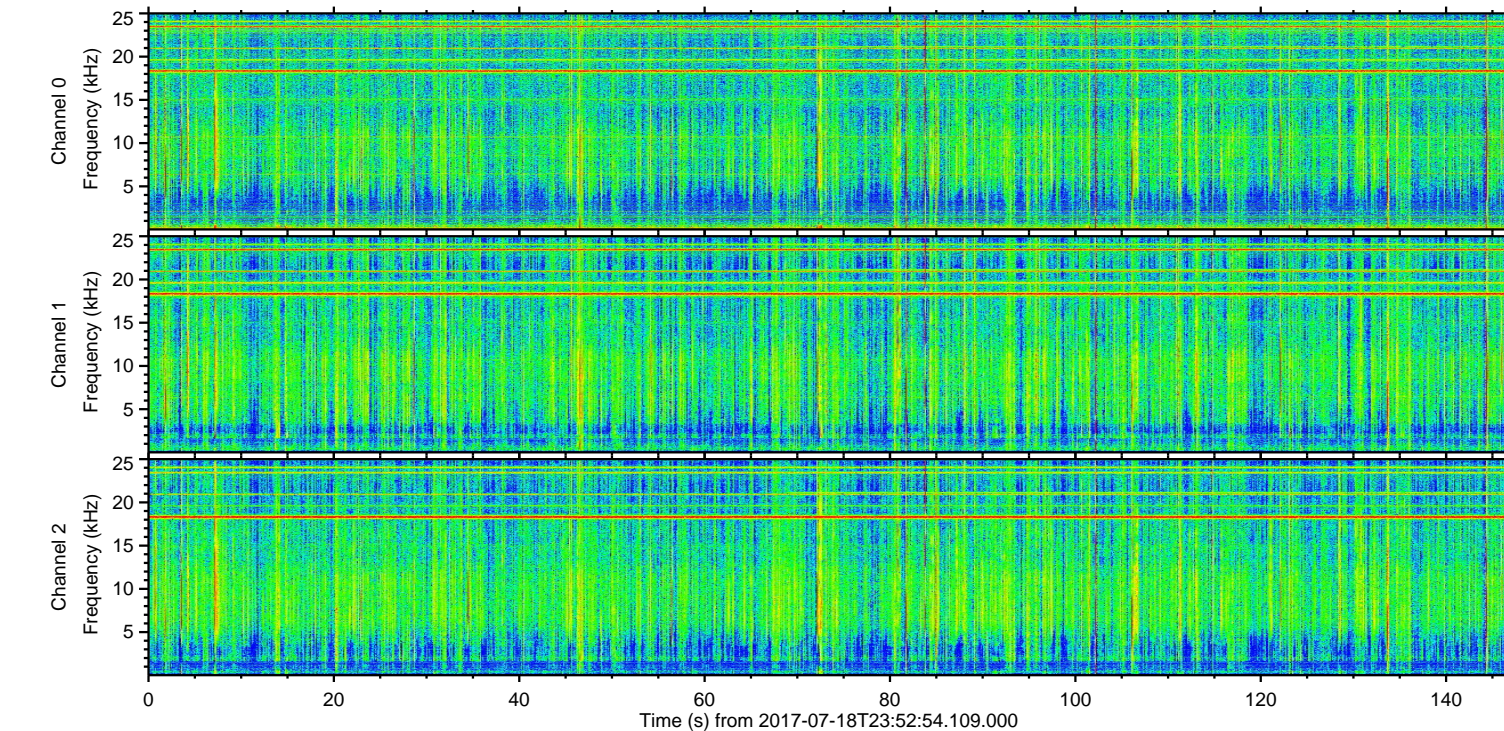
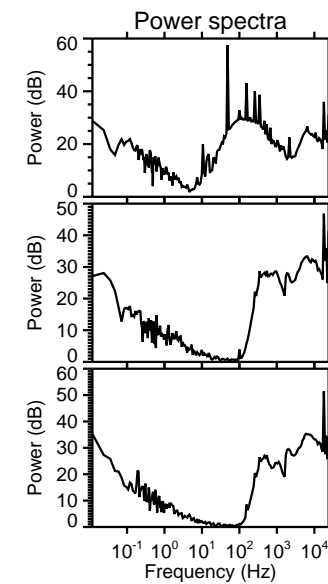
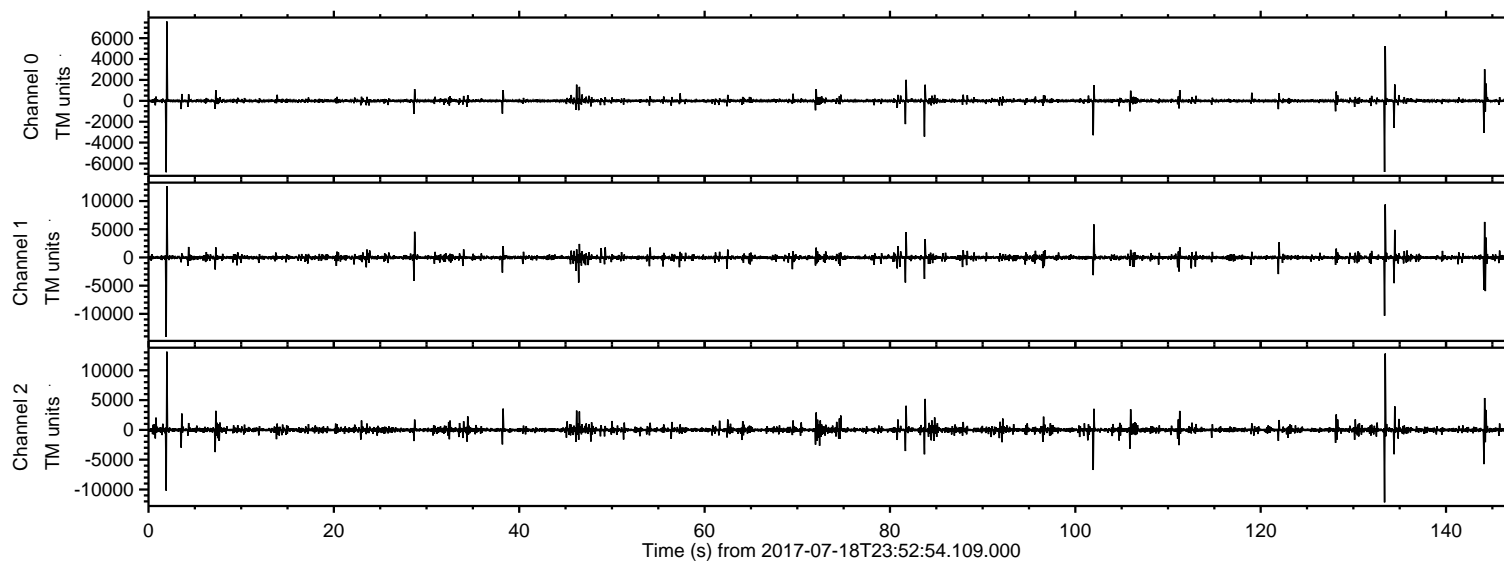
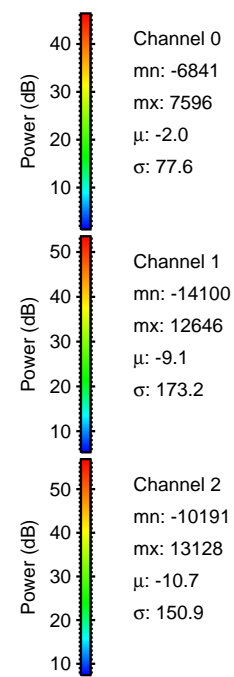
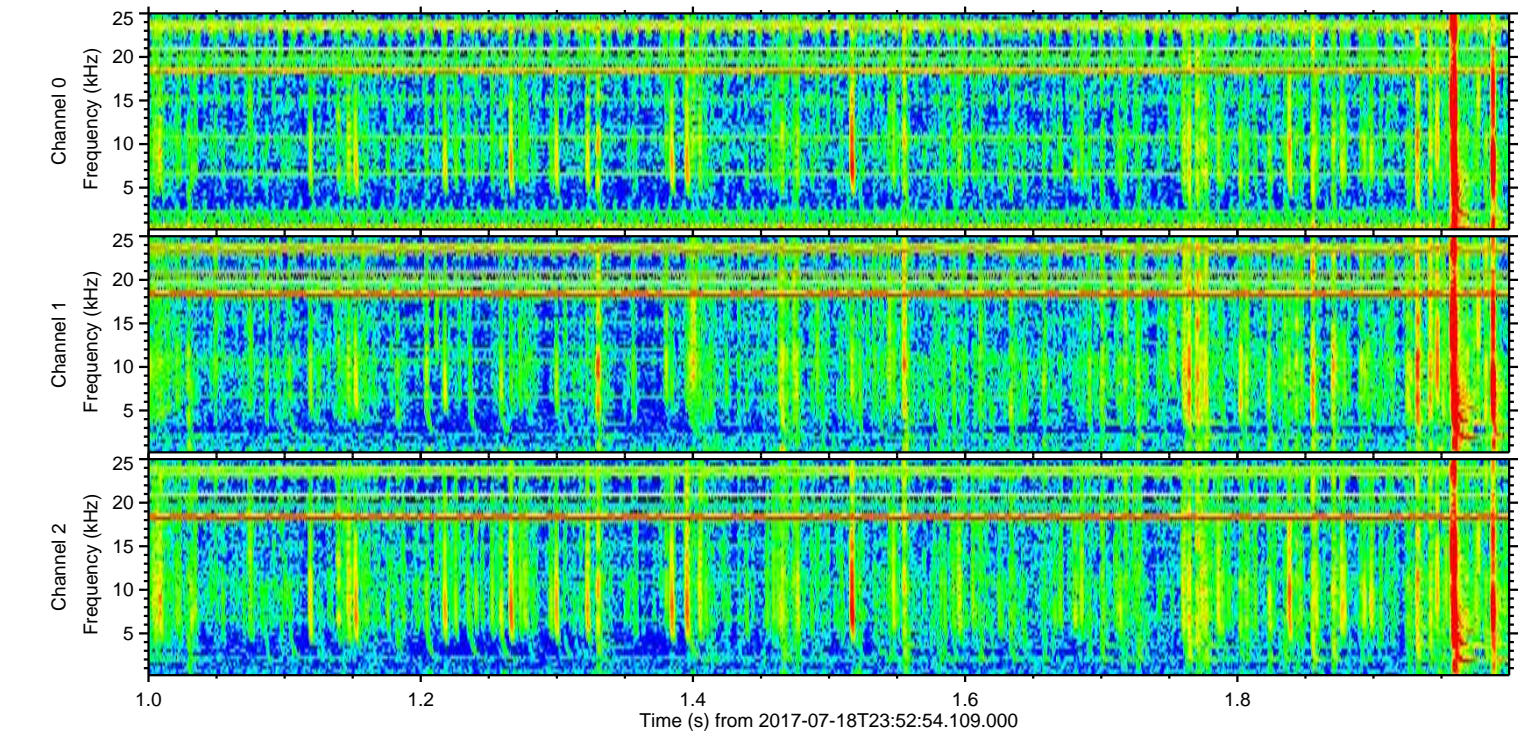
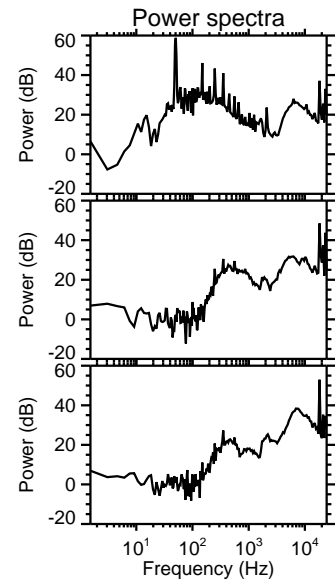
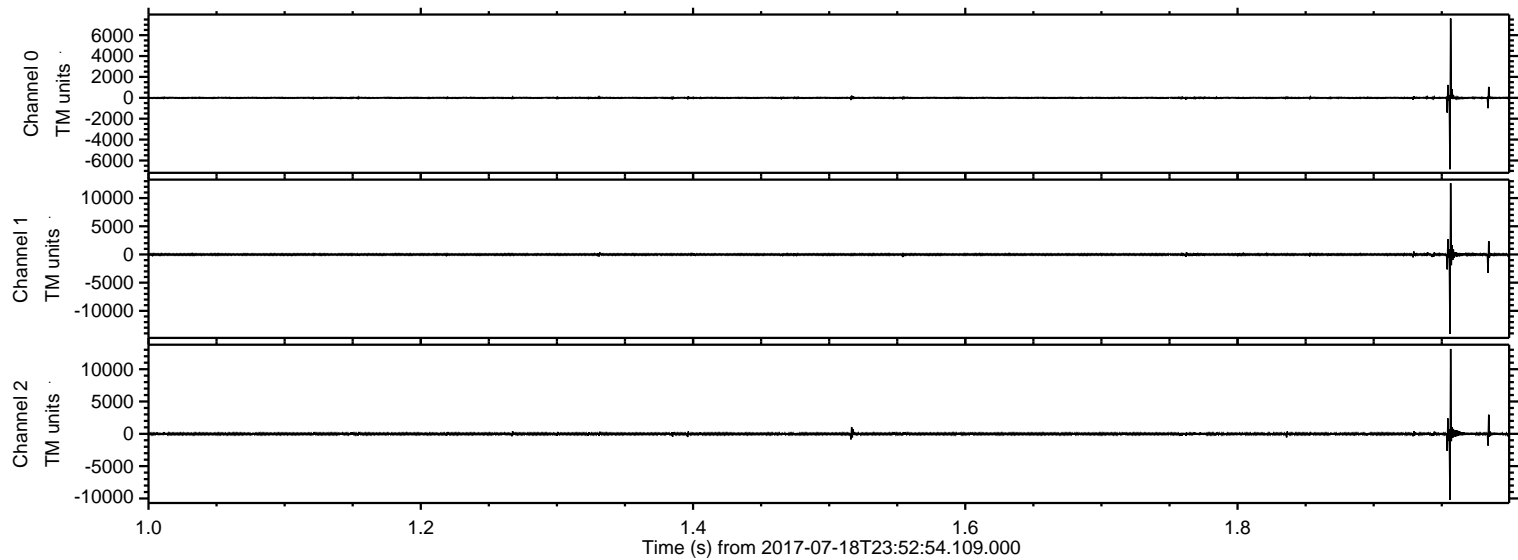


ELMAVAN 3D WAVEFORMS (Measured data sampled at 50 kHz) 51000 packets of 144 samples from 2017-07-18T23:52:54.109.000.

Processed Thu Jul 20 23:34:54 2017 by ELM ver.2012-10-06 from 001__elm20170718_235253__dat00.bin

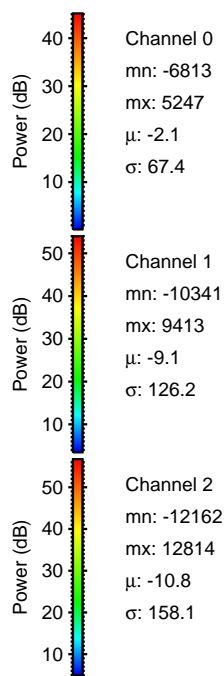
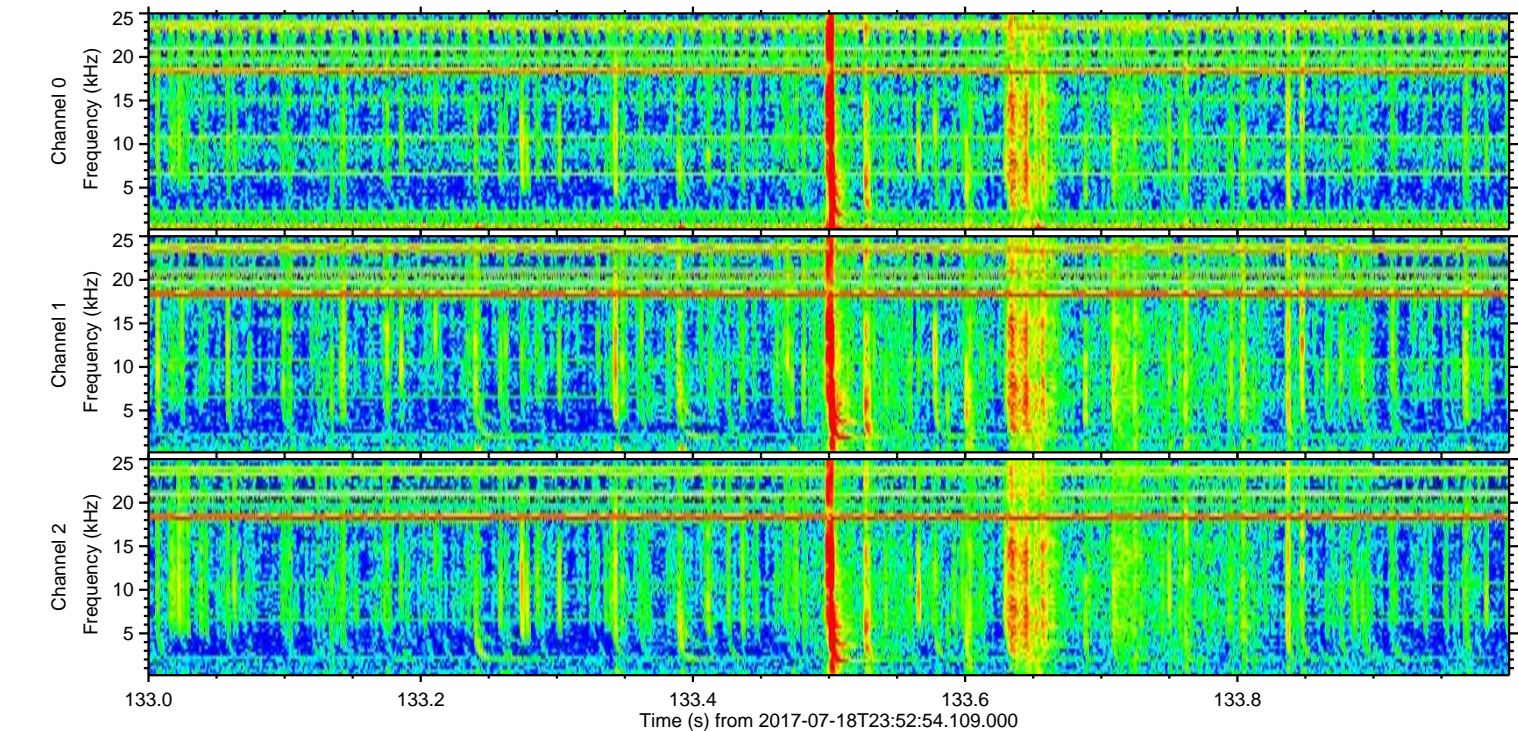
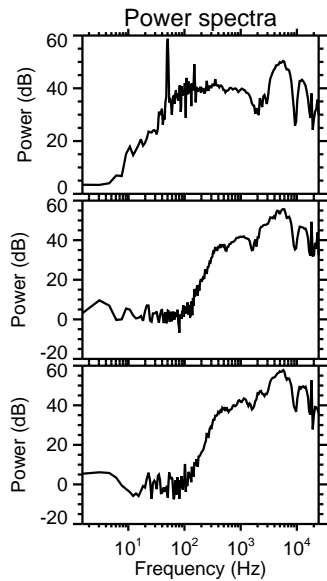
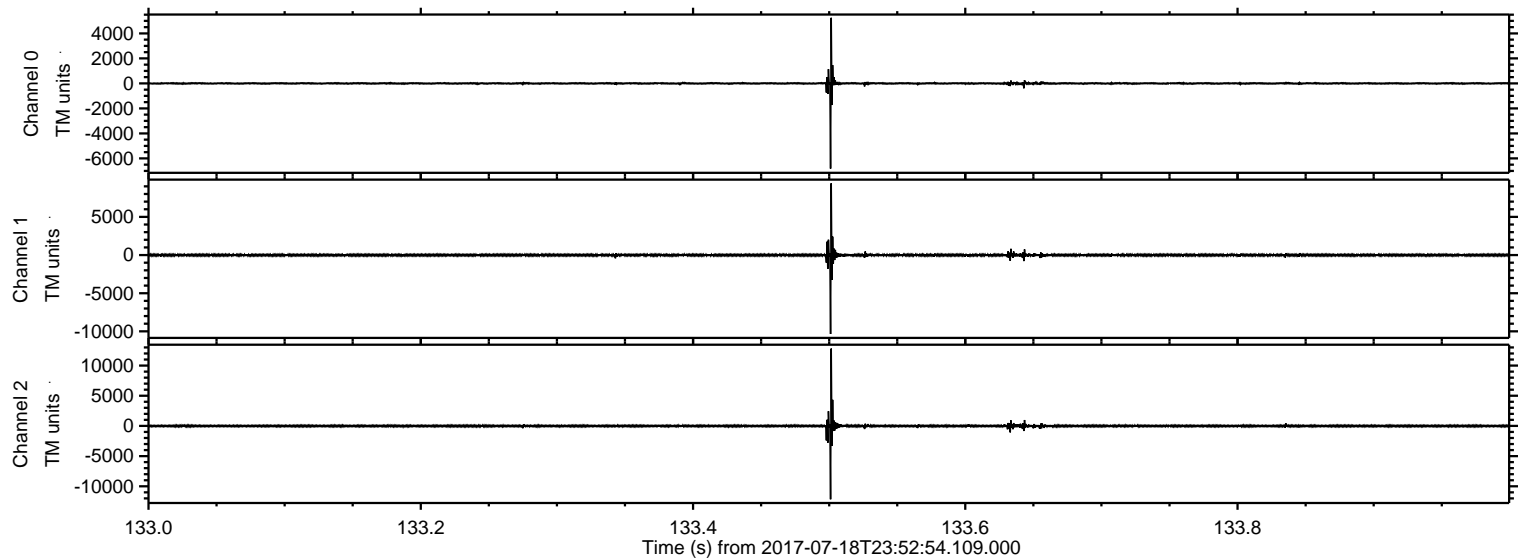


Processed Thu Jul 20 23:35:02 2017 by ELM ver.2012-10-06 from 001__elm20170718_235253__dat00.bin



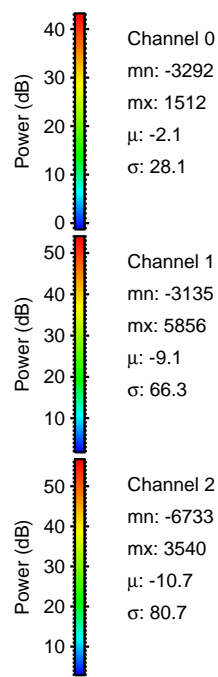
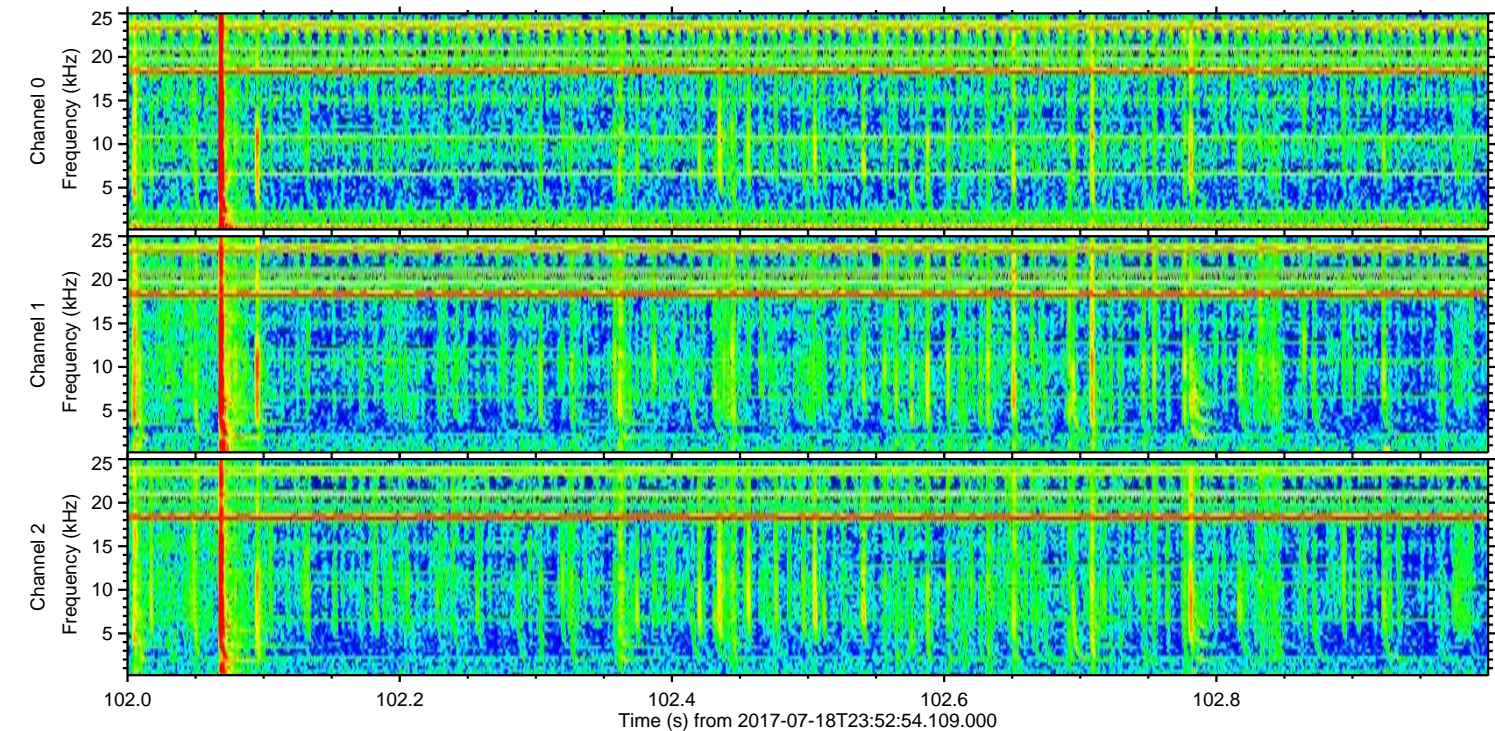
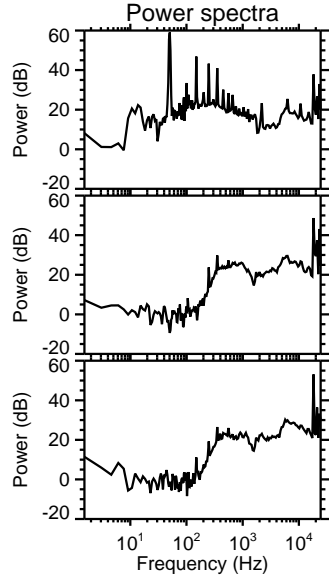
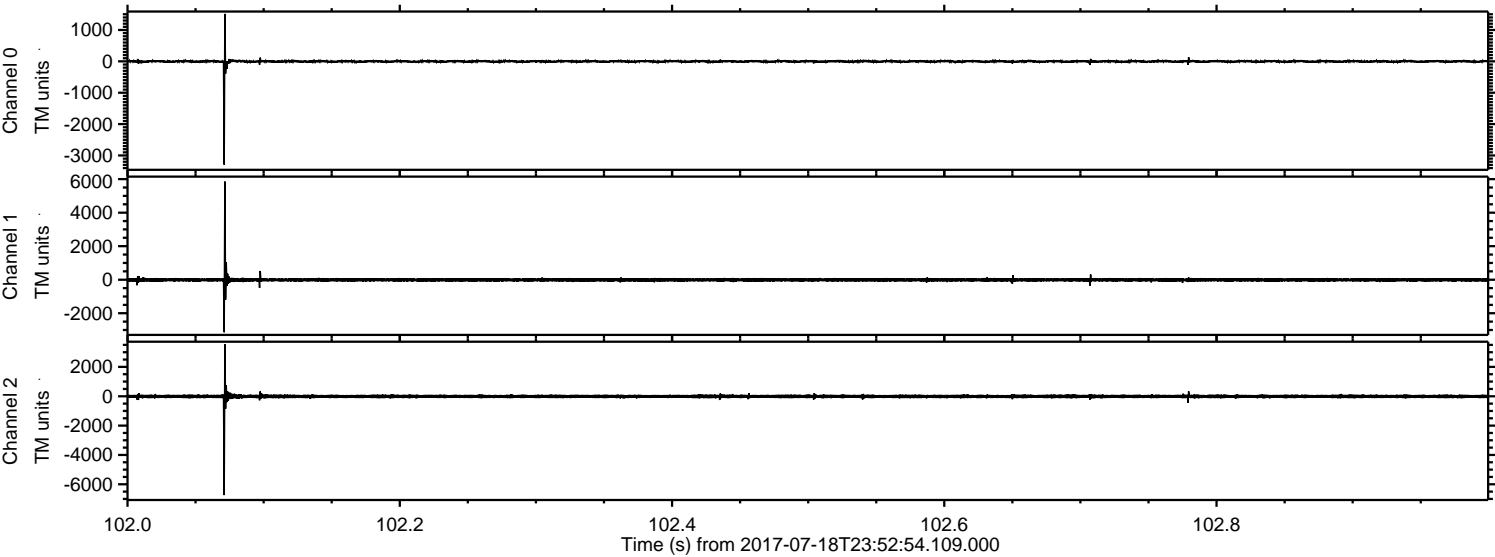
ELMAVAN 3D WAVEFORMS (Measured data sampled at 50 kHz) 51000 packets of 144 samples from 2017-07-18T23:52:54.109.000. Part 134/147

Processed Thu Jul 20 23:35:02 2017 by ELM ver.2012-10-06 from 001__elm20170718_235253__dat00.bin



ELMAVAN 3D WAVEFORMS (Measured data sampled at 50 kHz) 51000 packets of 144 samples from 2017-07-18T23:52:54.109.000. Part 103/147

Processed Thu Jul 20 23:35:03 2017 by ELM ver.2012-10-06 from 001__elm20170718_235253__dat00.bin



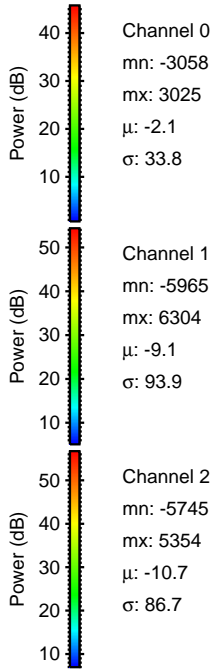
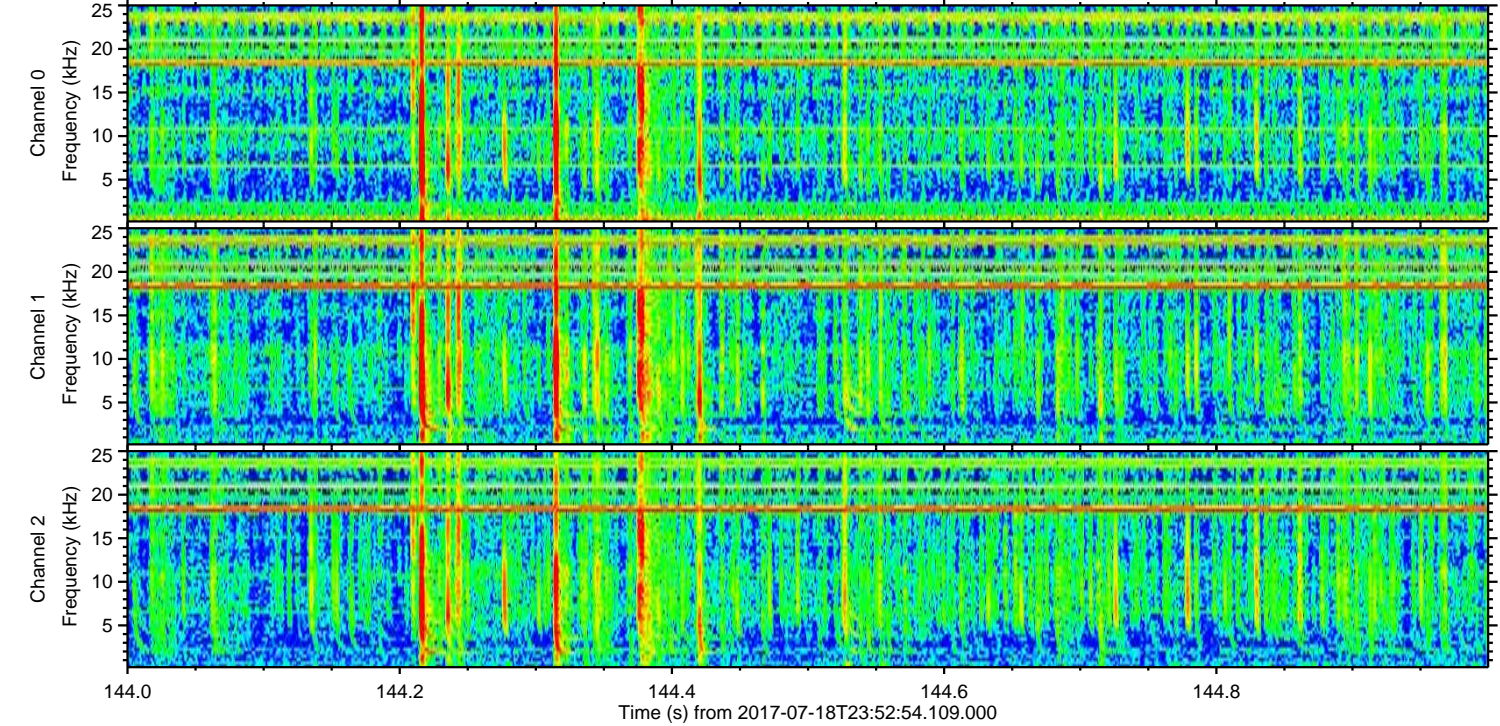
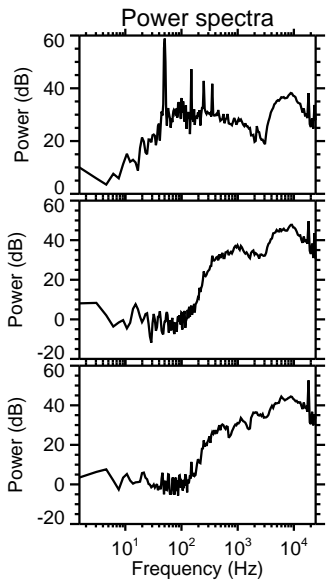
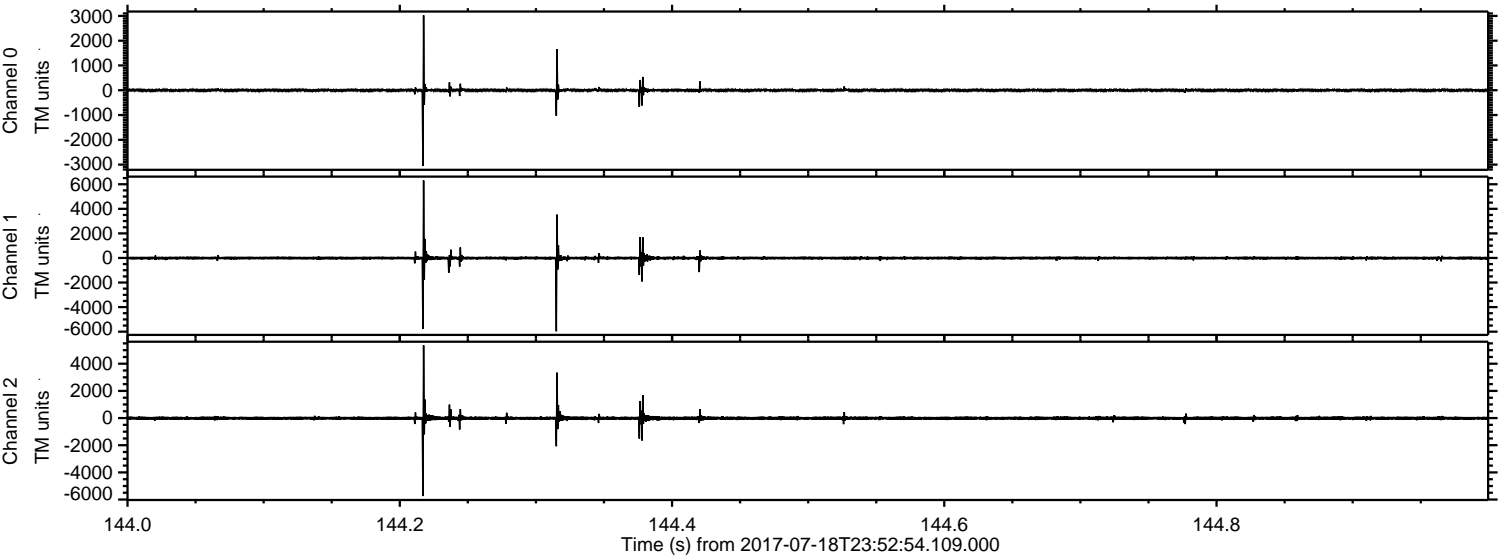
Channel 0
mn: -3292
mx: 1512
 μ : -2.1
 σ : 28.1

Channel 1
mn: -3135
mx: 5856
 μ : -9.1
 σ : 66.3

Channel 2
mn: -6733
mx: 3540
 μ : -10.7
 σ : 80.7

ELMAVAN 3D WAVEFORMS (Measured data sampled at 50 kHz) 51000 packets of 144 samples from 2017-07-18T23:52:54.109.000. Part 145/147

Processed Thu Jul 20 23:35:04 2017 by ELM ver.2012-10-06 from 001__elm20170718_235253__dat00.bin

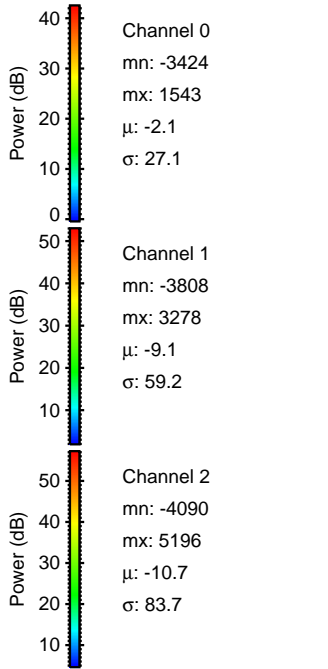
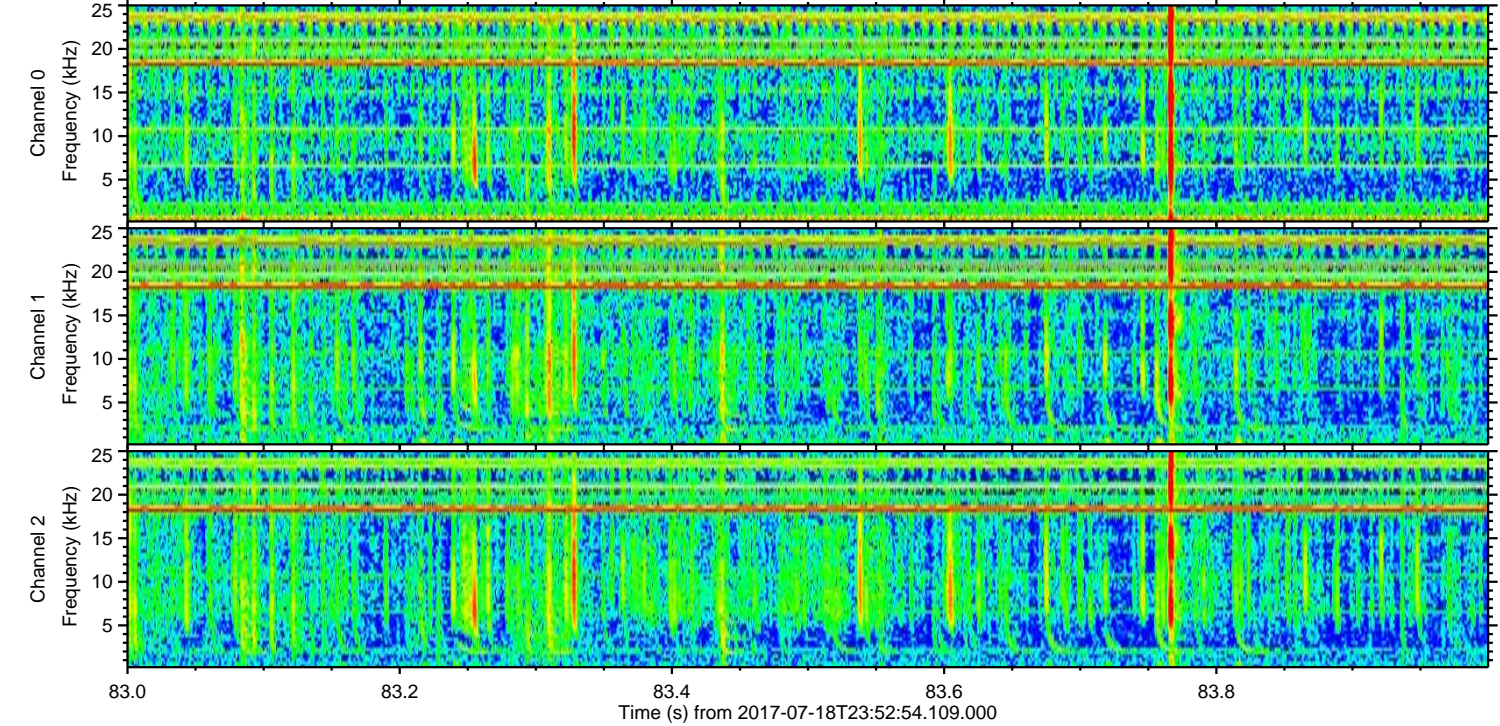
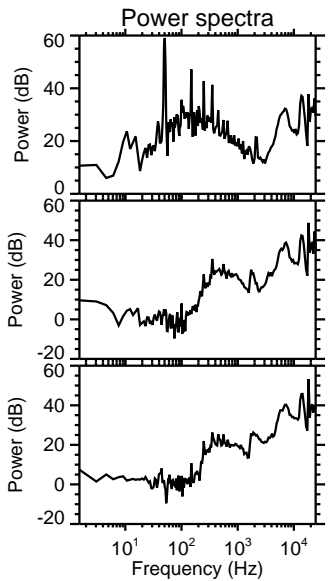
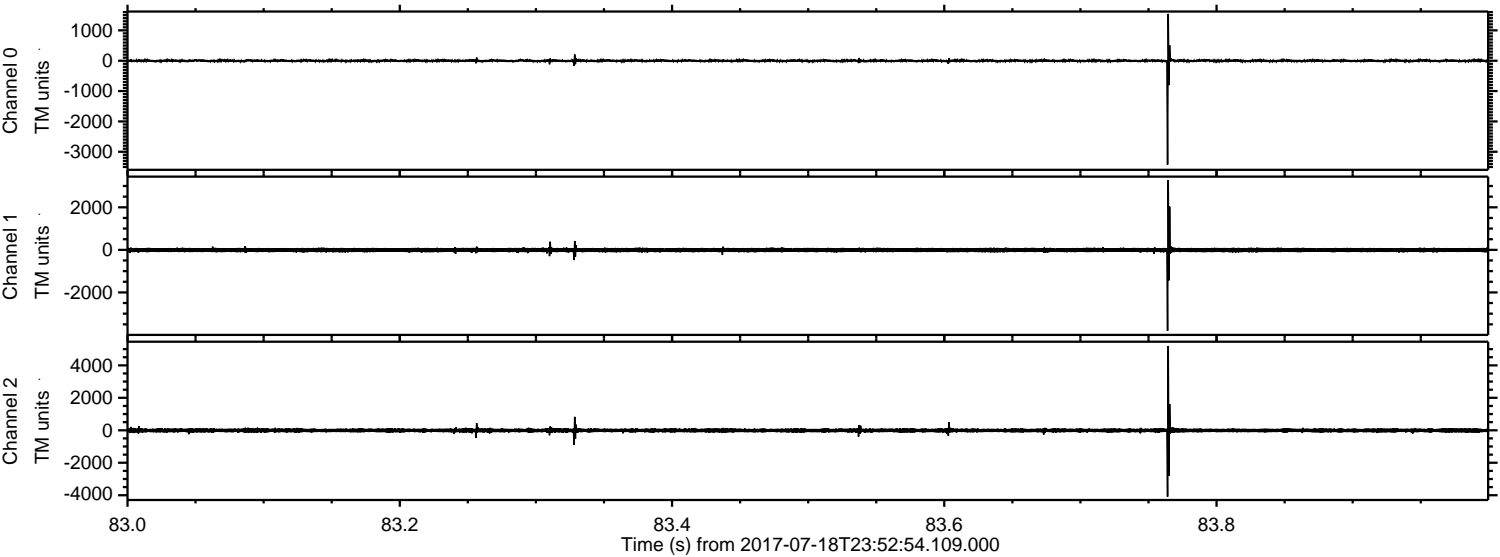


Channel 0
mn: -3058
mx: 3025
 μ : -2.1
 σ : 33.8

Channel 1
mn: -5965
mx: 6304
 μ : -9.1
 σ : 93.9

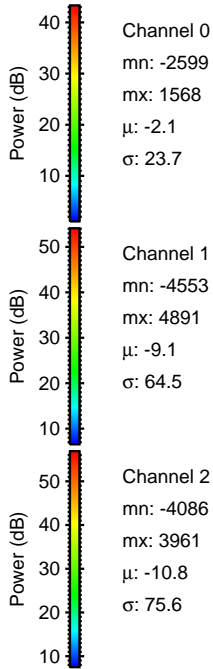
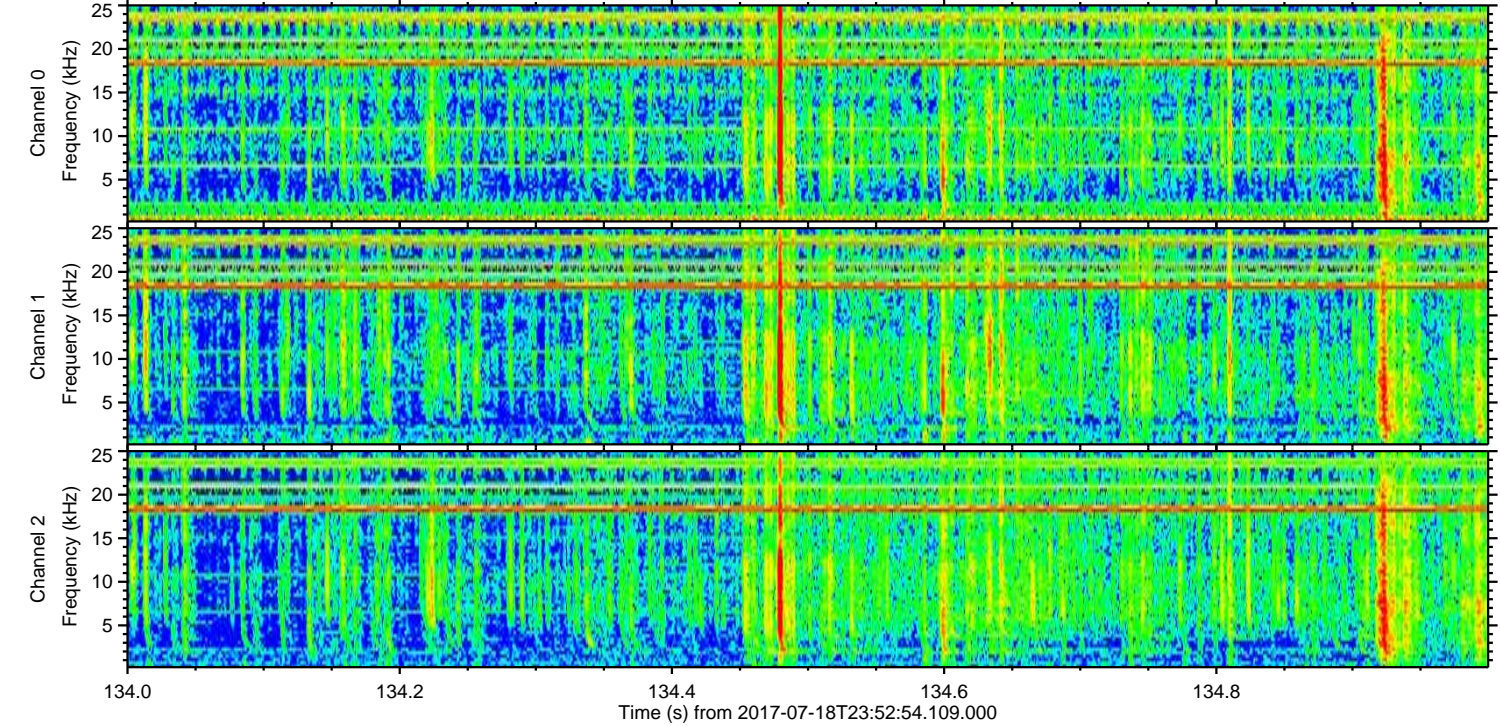
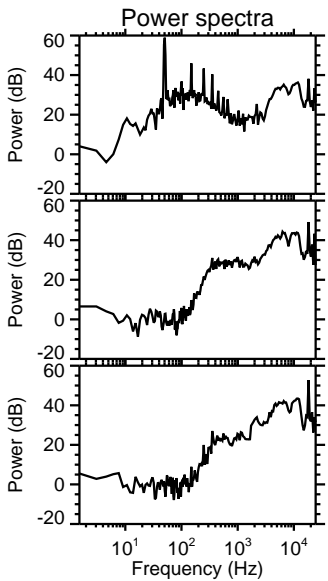
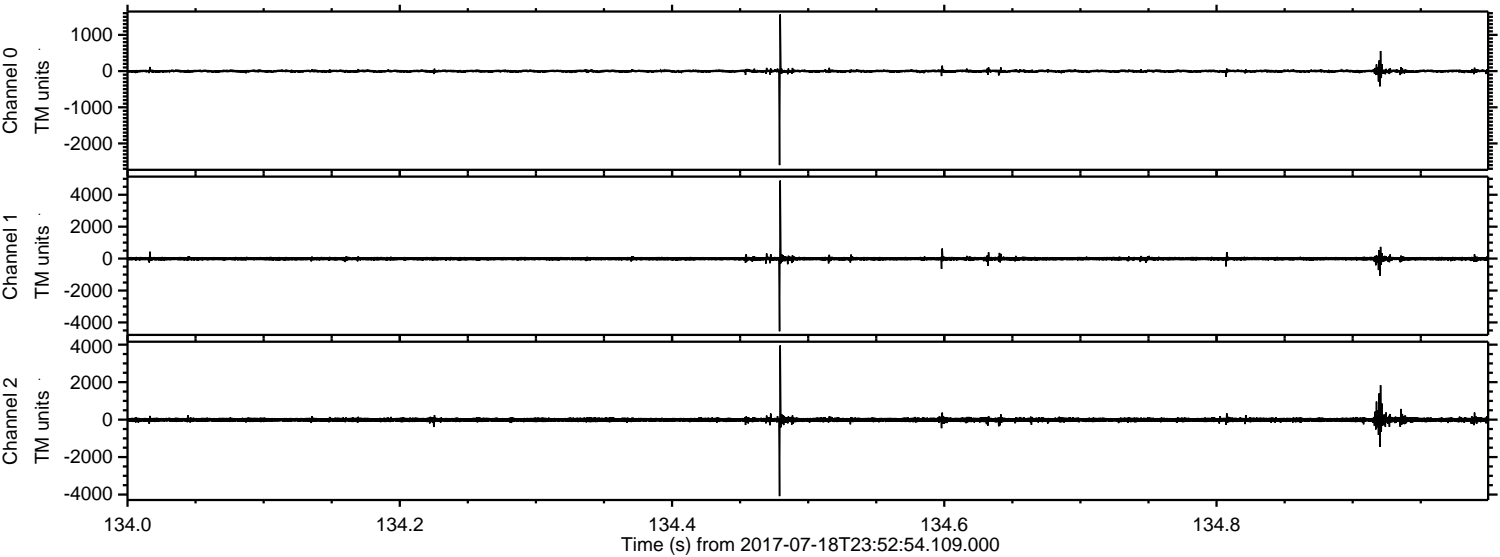
Channel 2
mn: -5745
mx: 5354
 μ : -10.7
 σ : 86.7

Processed Thu Jul 20 23:35:05 2017 by ELM ver.2012-10-06 from 001__elm20170718_235253__dat00.bin



ELMAVAN 3D WAVEFORMS (Measured data sampled at 50 kHz) 51000 packets of 144 samples from 2017-07-18T23:52:54.109.000. Part 135/147

Processed Thu Jul 20 23:35:06 2017 by ELM ver.2012-10-06 from 001__elm20170718_235253__dat00.bin

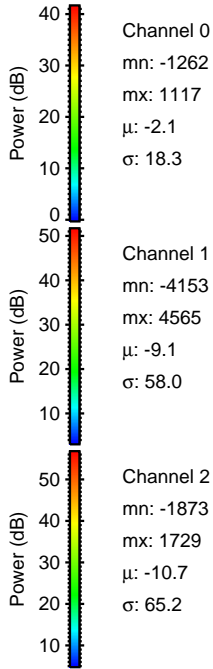
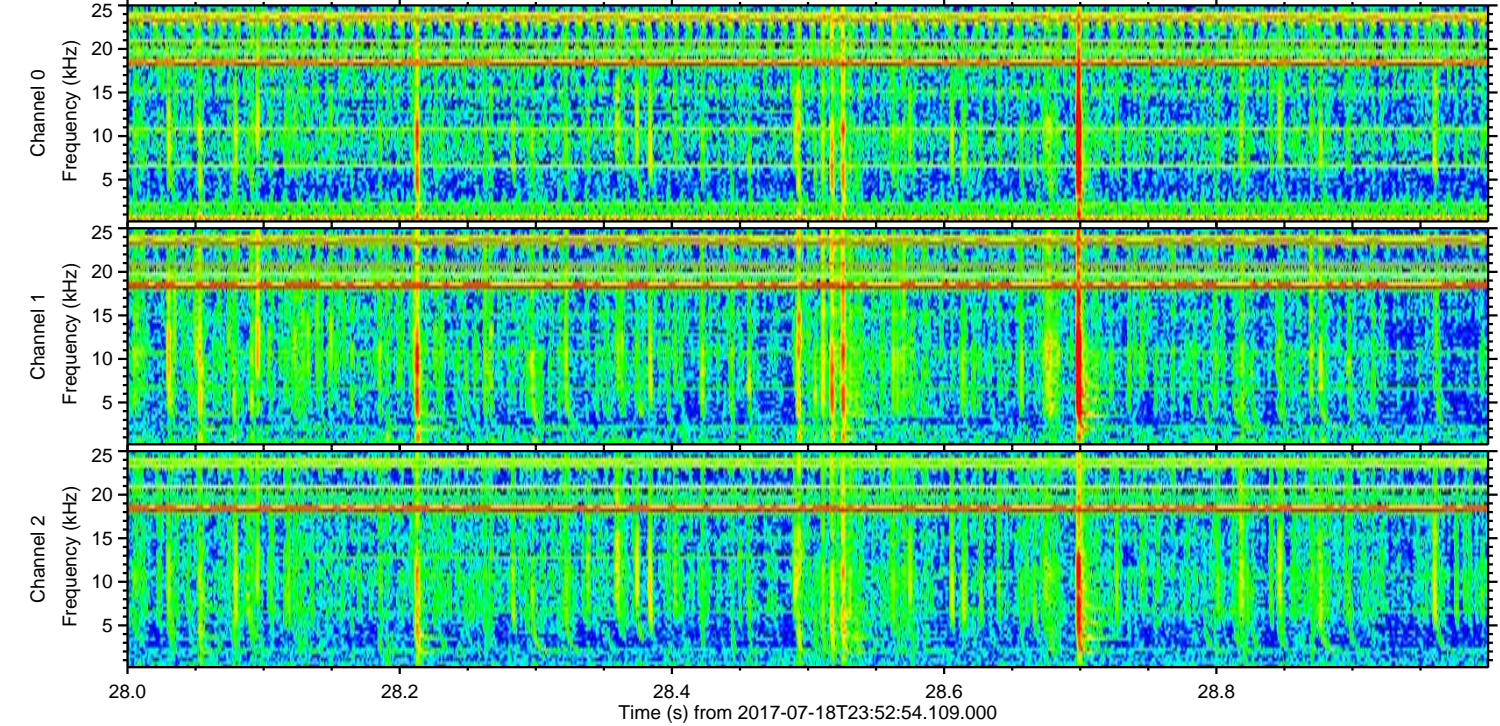
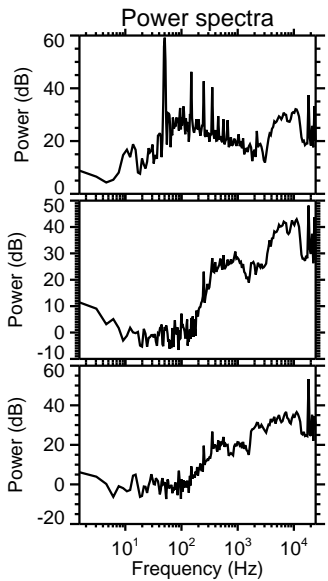
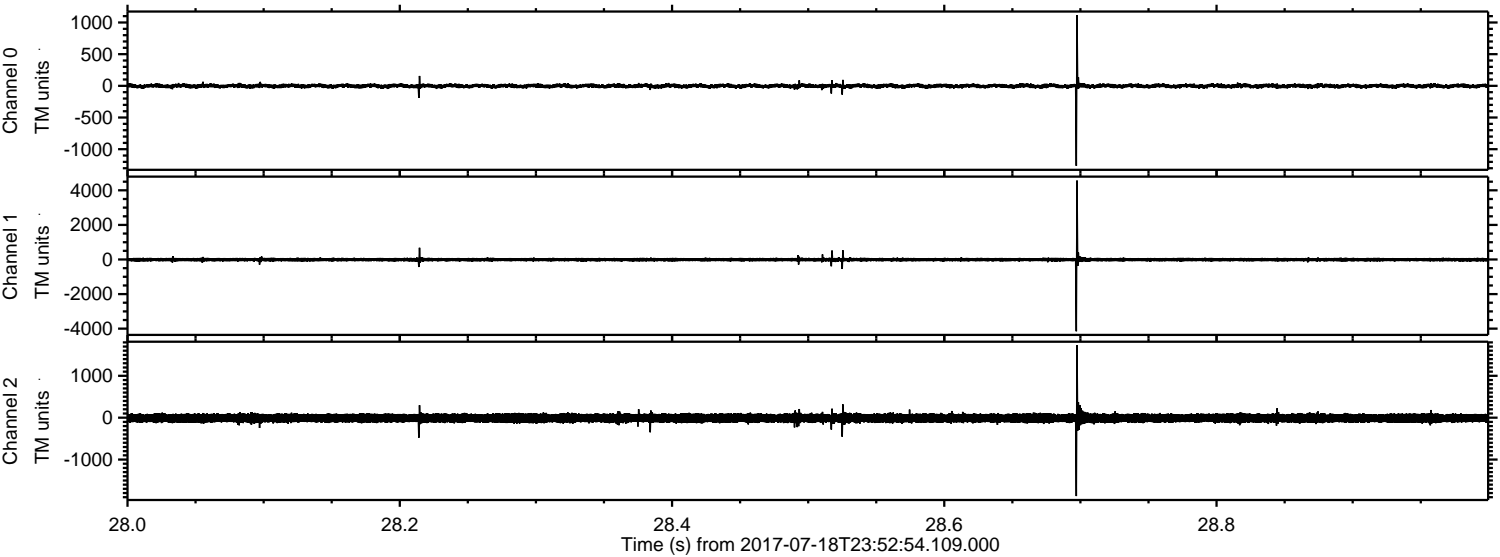


Channel 0
mn: -2599
mx: 1568
 μ : -2.1
 σ : 23.7

Channel 1
mn: -4553
mx: 4891
 μ : -9.1
 σ : 64.5

Channel 2
mn: -4086
mx: 3961
 μ : -10.8
 σ : 75.6

Processed Thu Jul 20 23:35:07 2017 by ELM ver.2012-10-06 from 001__elm20170718_235253__dat00.bin

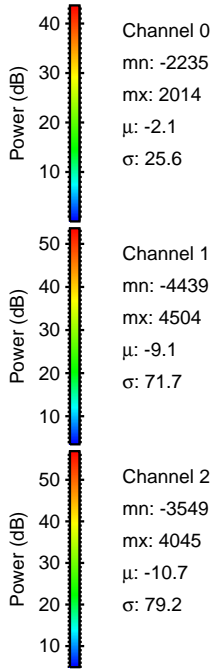
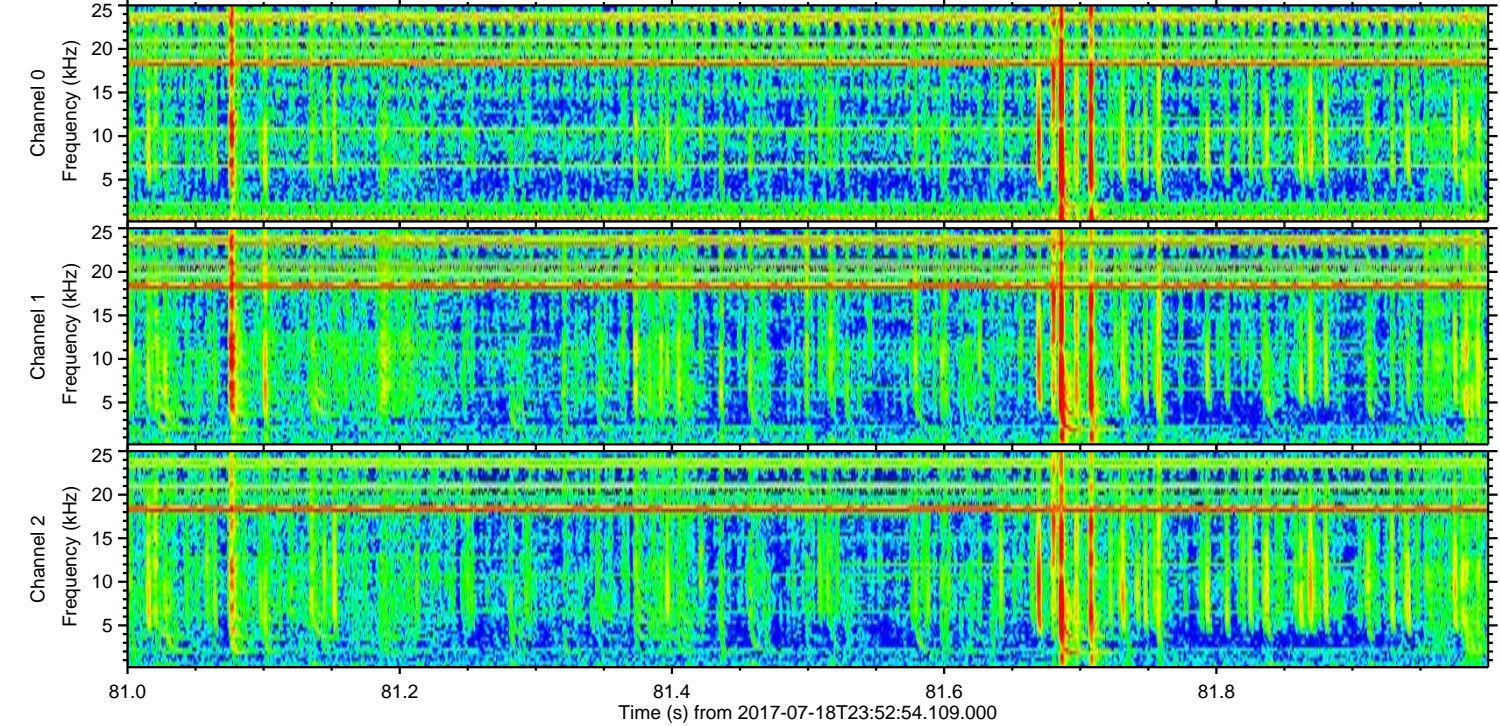
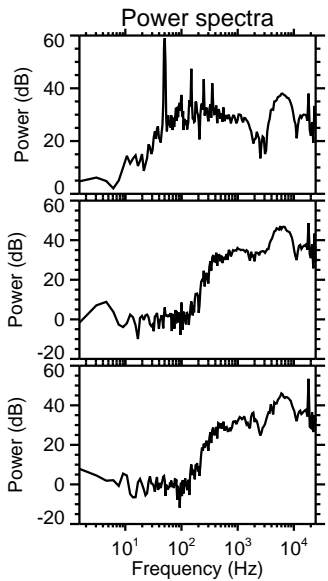
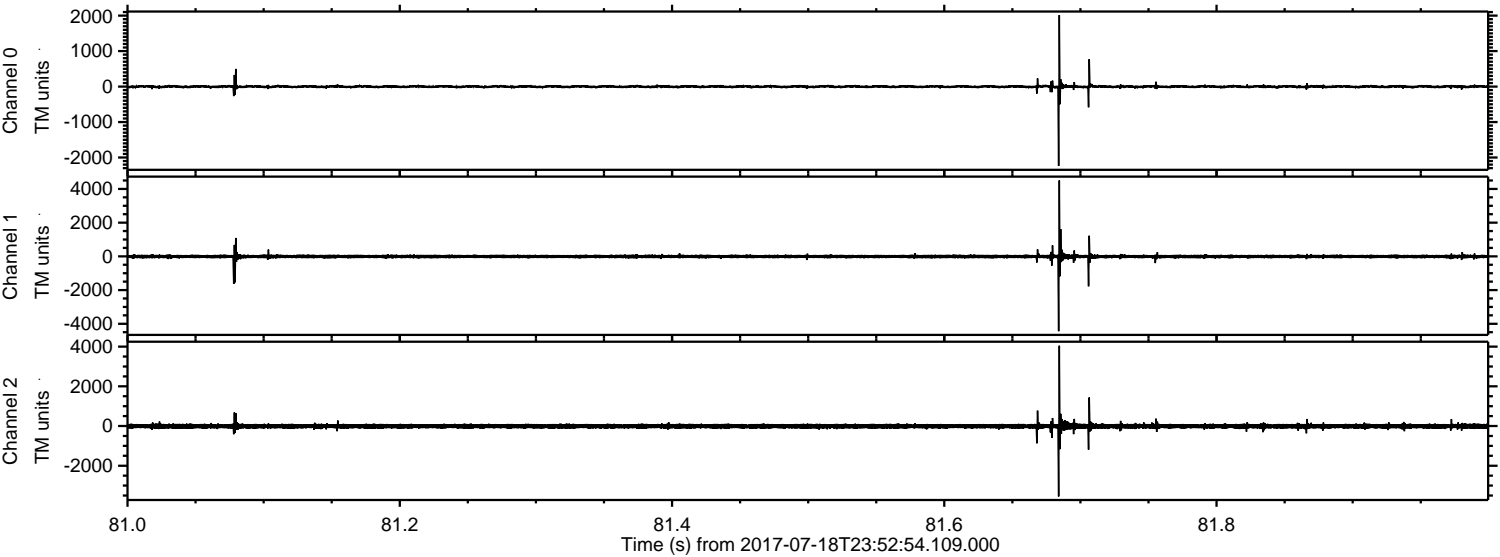


Channel 0
mn: -1262
mx: 1117
 μ : -2.1
 σ : 18.3

Channel 1
mn: -4153
mx: 4565
 μ : -9.1
 σ : 58.0

Channel 2
mn: -1873
mx: 1729
 μ : -10.7
 σ : 65.2

Processed Thu Jul 20 23:35:08 2017 by ELM ver.2012-10-06 from 001__elm20170718_235253__dat00.bin



Processed Thu Jul 20 23:35:08 2017 by ELM ver.2012-10-06 from 001__elm20170718_235253__dat00.bin

