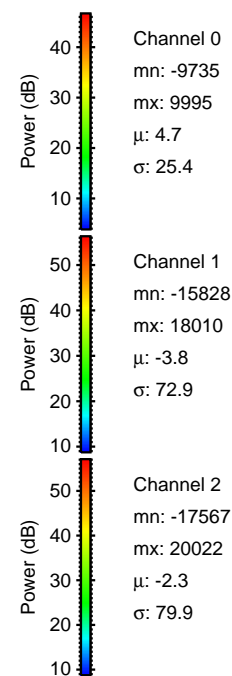
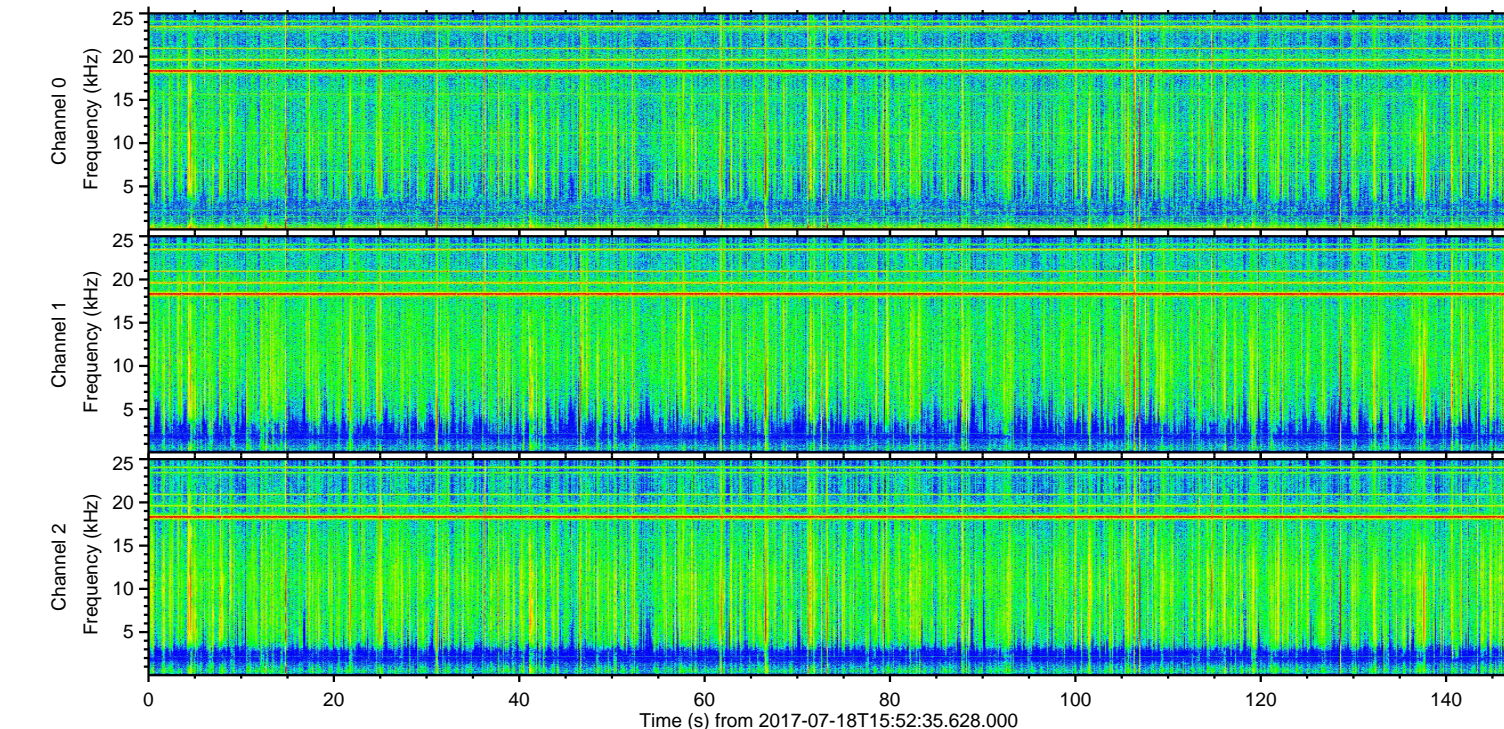
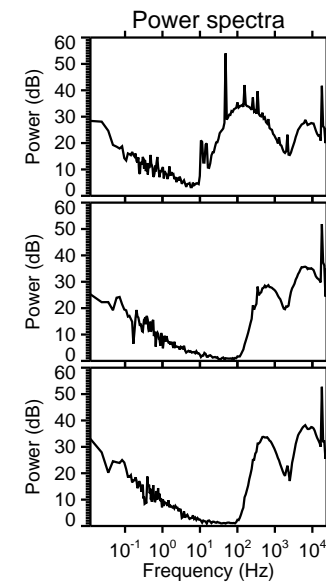
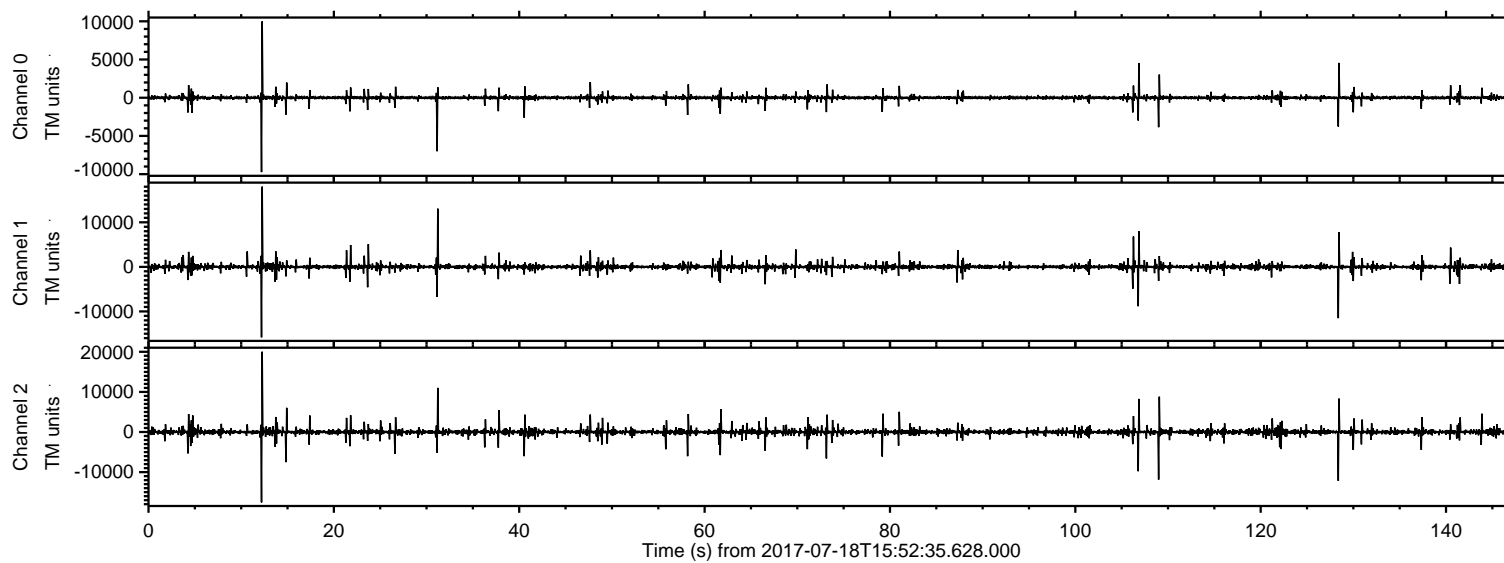


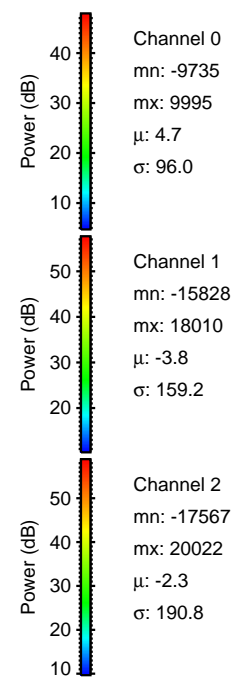
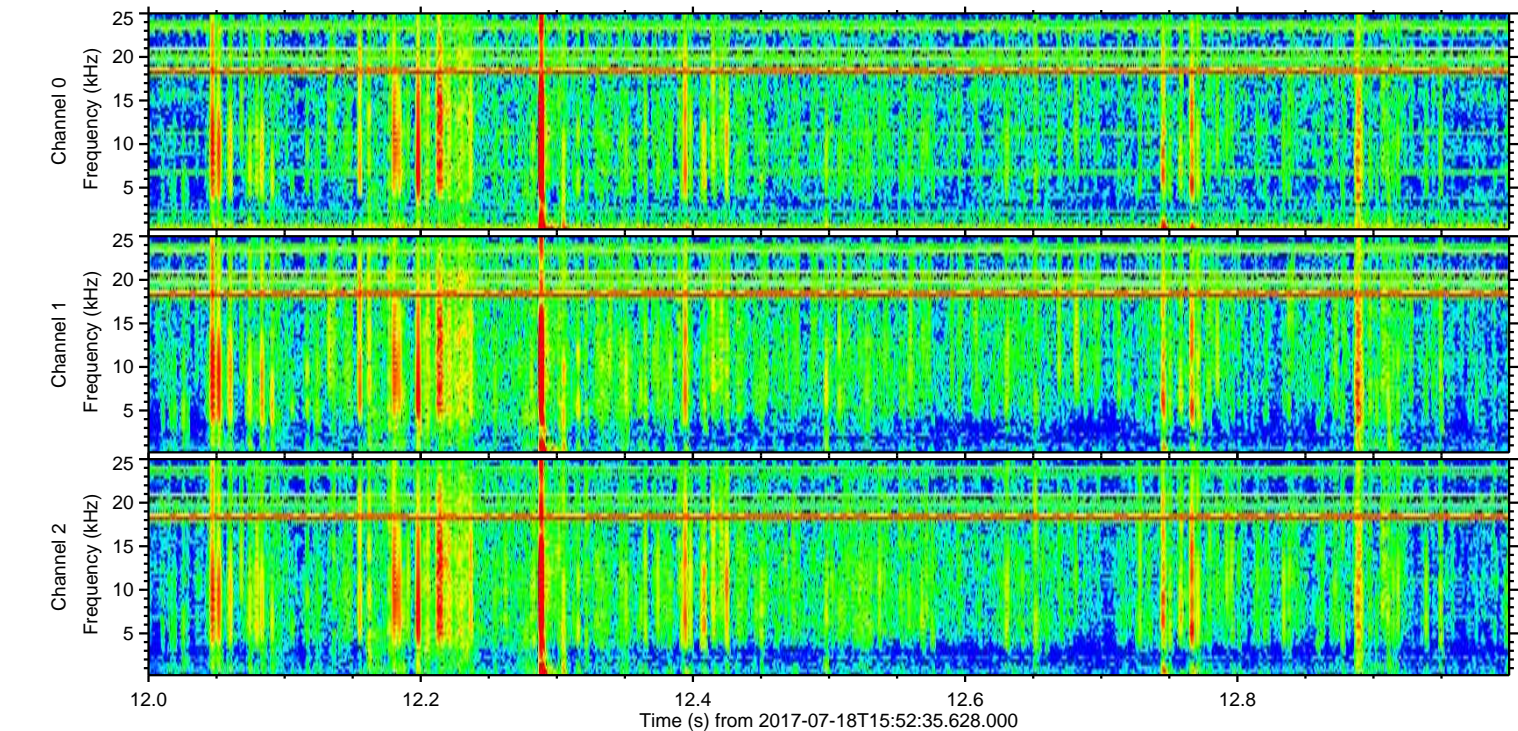
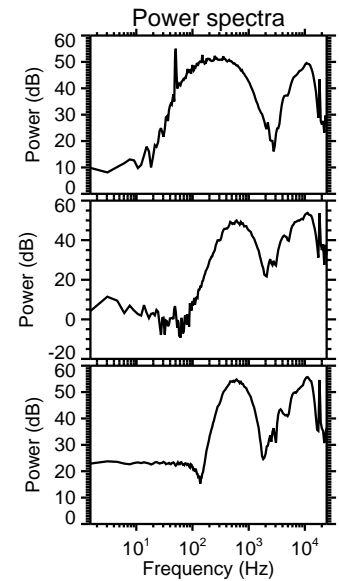
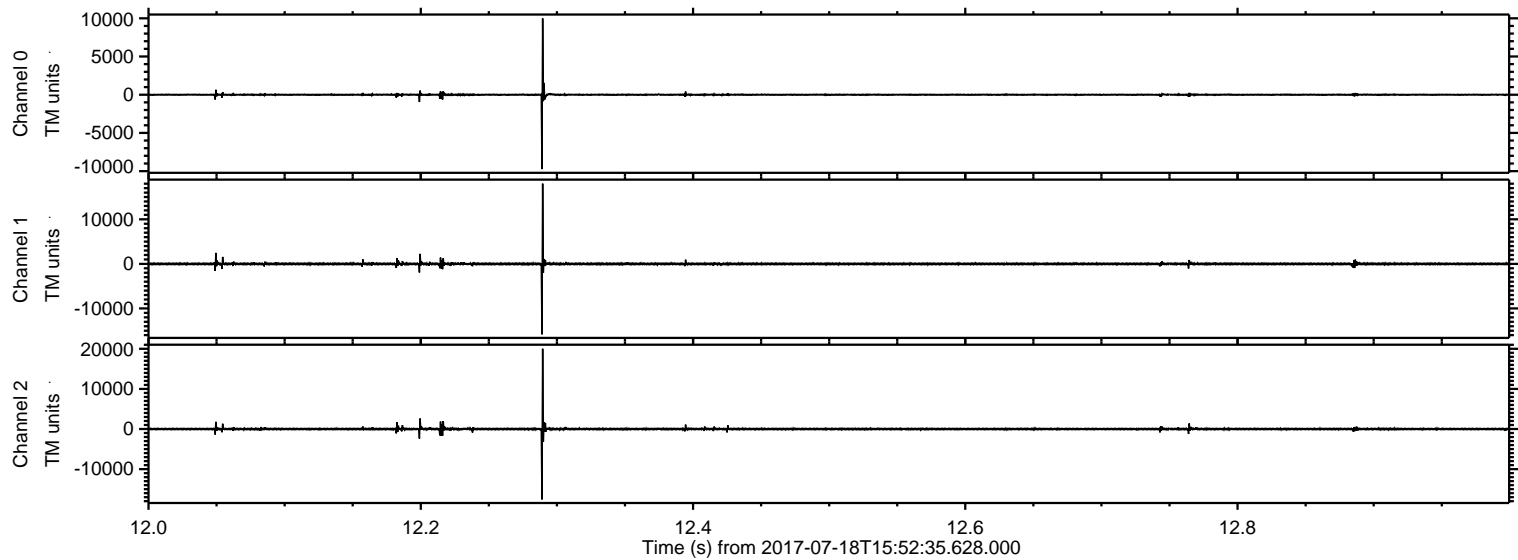
# ELMAVAN 3D WAVEFORMS (Measured data sampled at 50 kHz) 51000 packets of 144 samples from 2017-07-18T15:52:35.628.000.

Processed Thu Jul 20 22:20:32 2017 by ELM ver.2012-10-06 from 001\_\_elm20170718\_155234\_\_dat00.bin



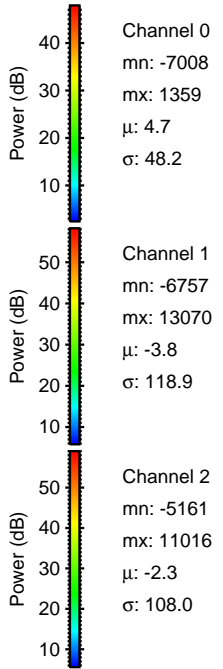
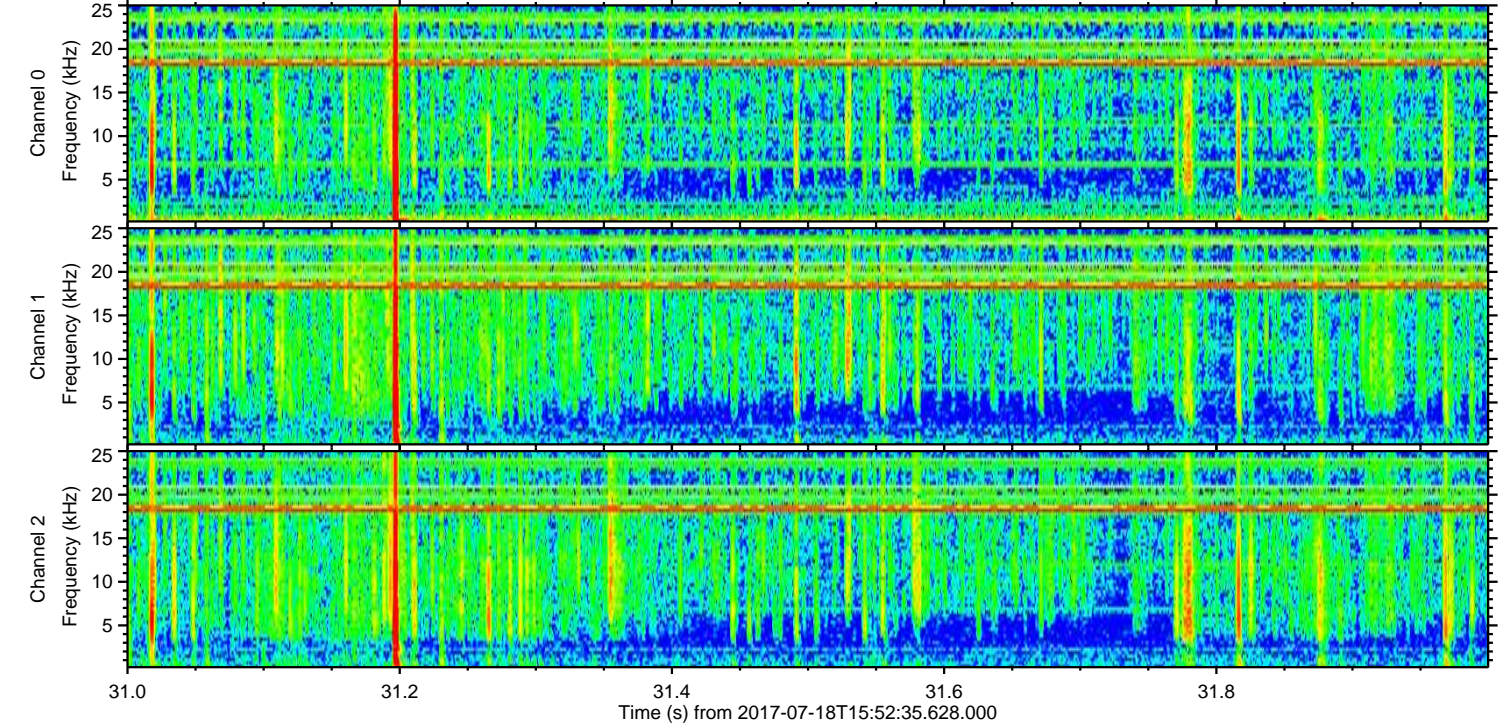
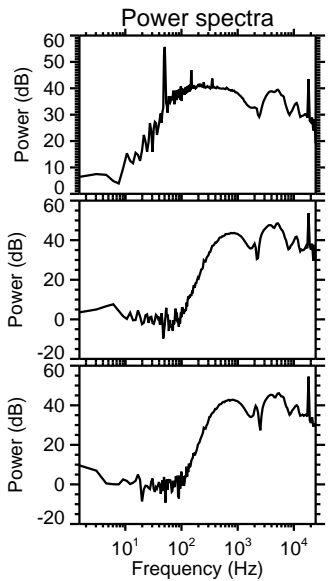
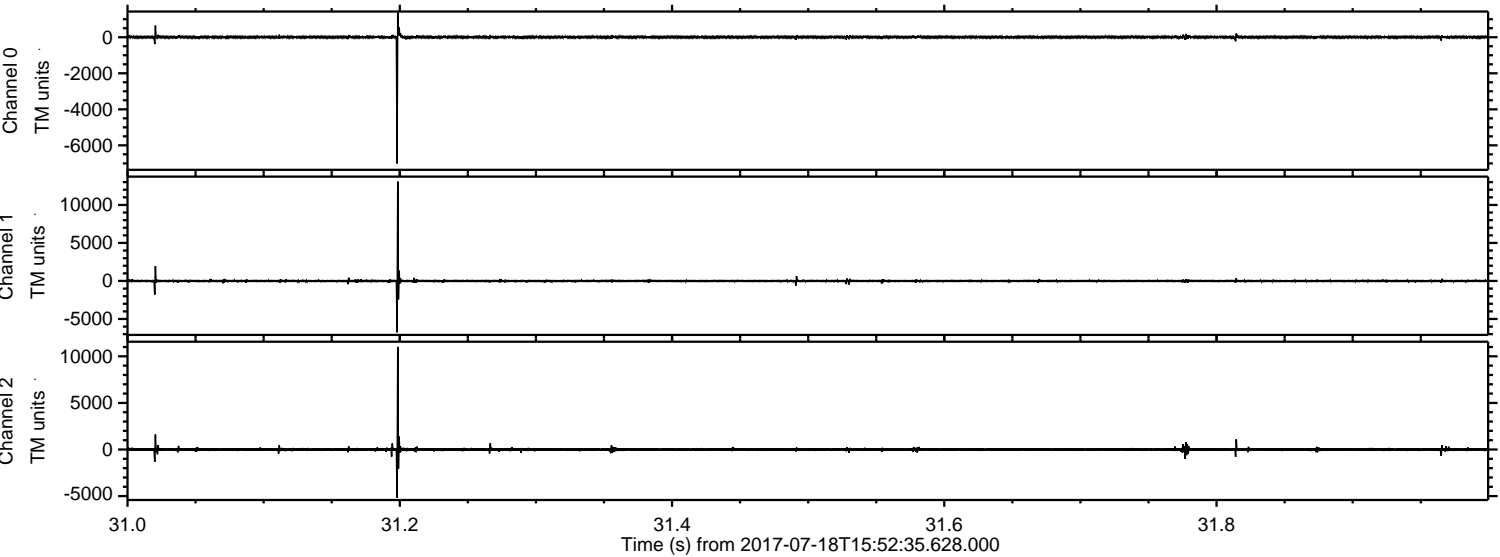


Processed Thu Jul 20 22:20:40 2017 by ELM ver.2012-10-06 from 001\_\_elm20170718\_155234\_\_dat00.bin





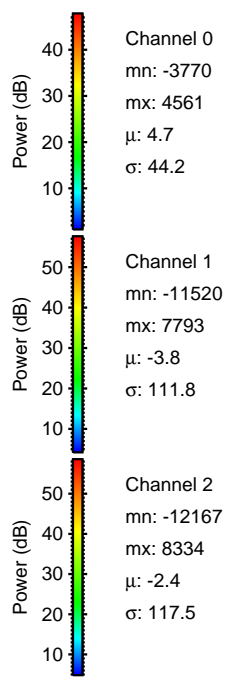
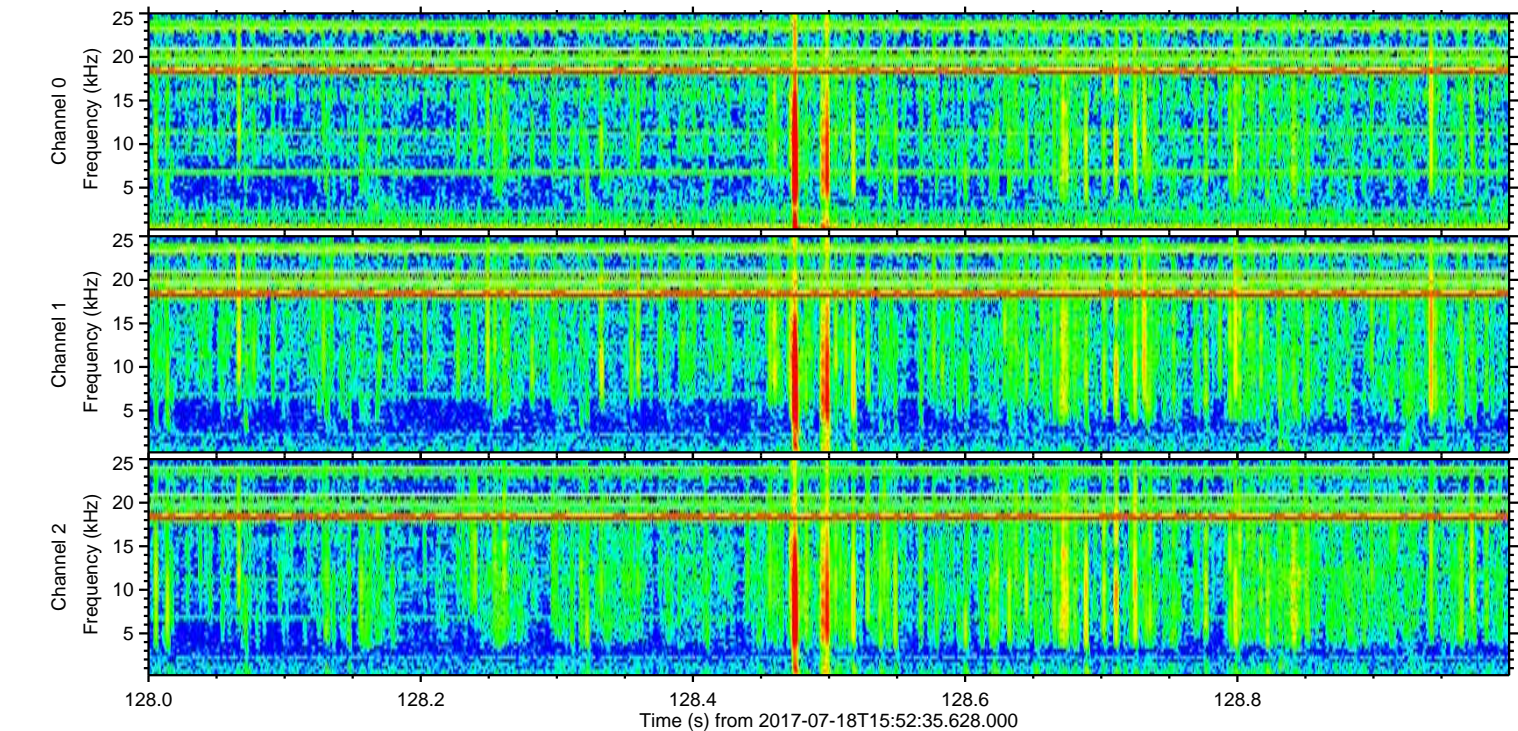
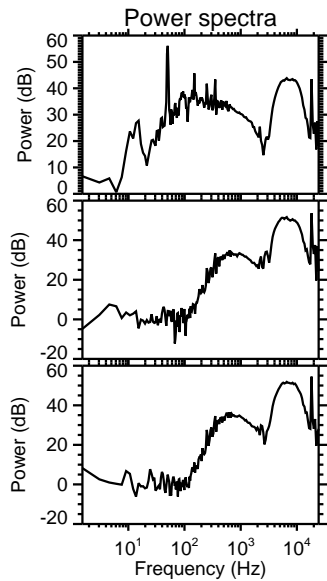
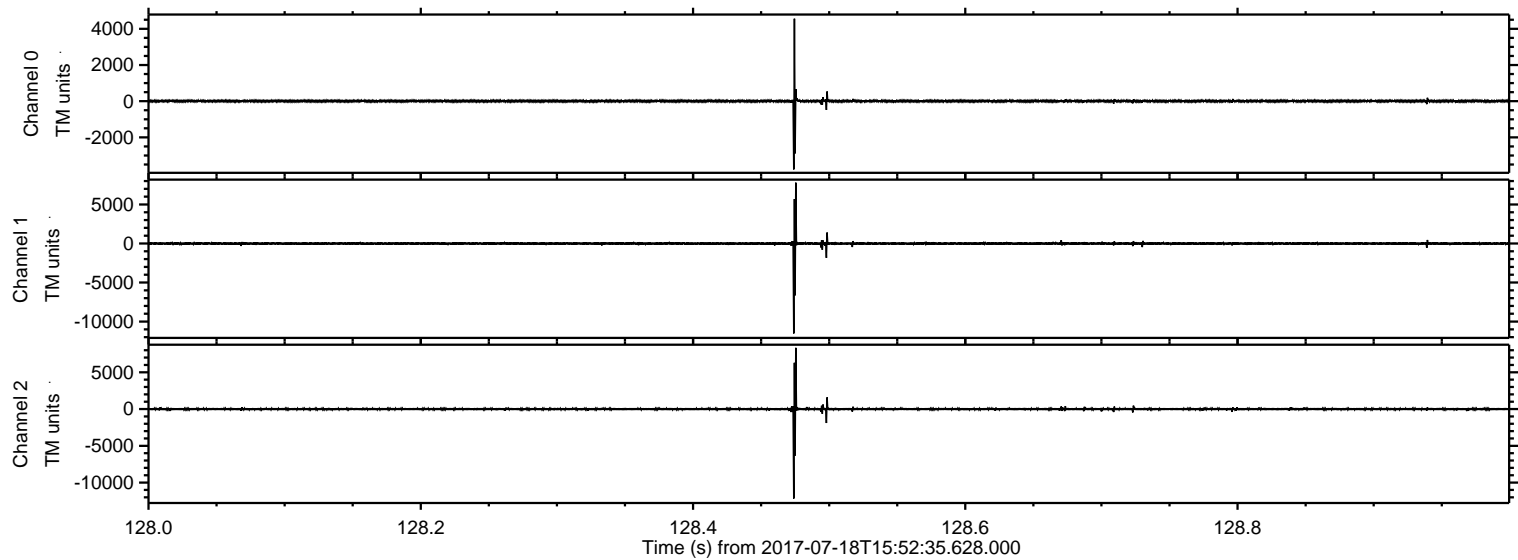
Processed Thu Jul 20 22:20:41 2017 by ELM ver.2012-10-06 from 001\_\_elm20170718\_155234\_\_dat00.bin





ELMAVAN 3D WAVEFORMS (Measured data sampled at 50 kHz) 51000 packets of 144 samples from 2017-07-18T15:52:35.628.000. Part 129/147

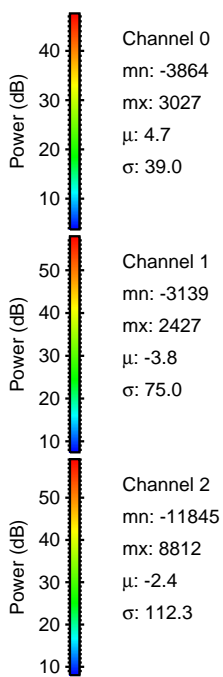
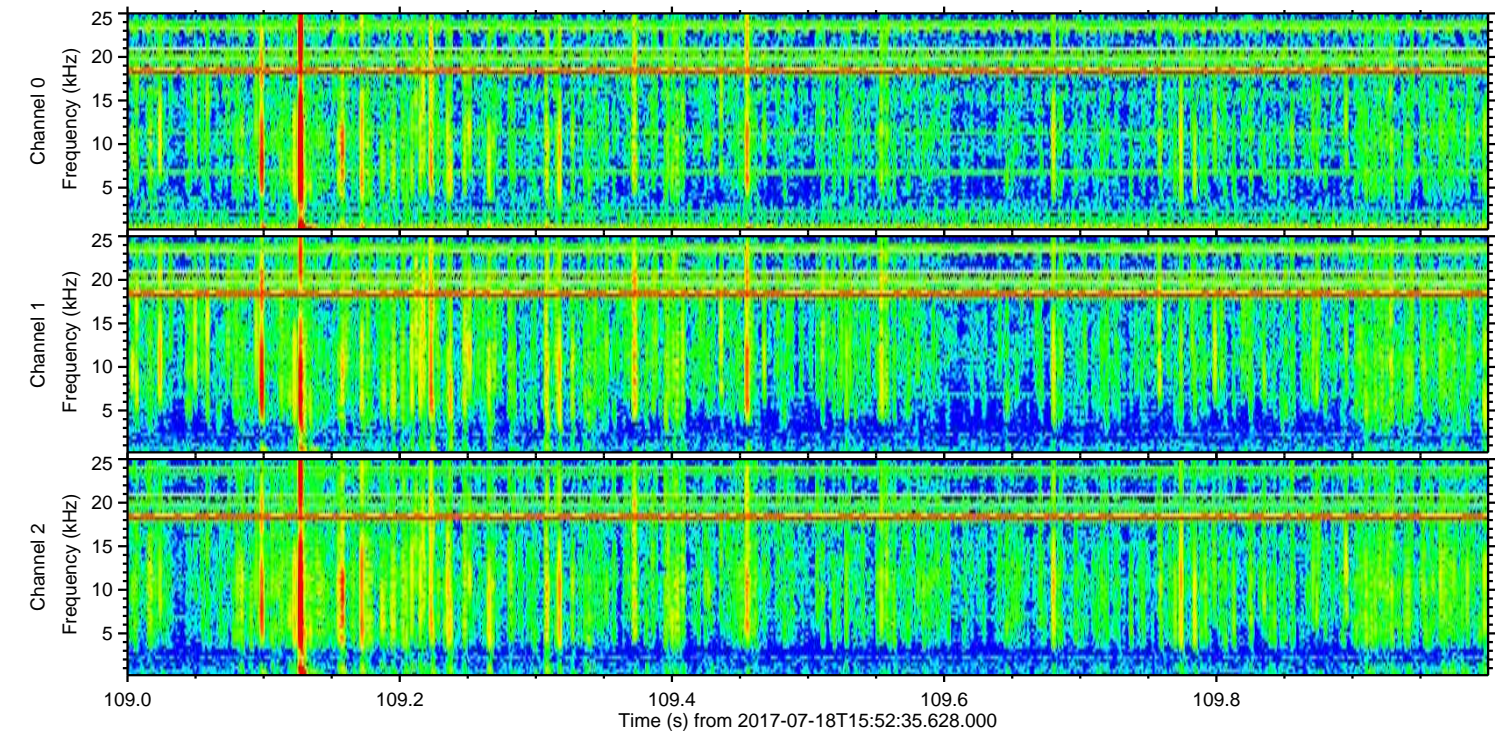
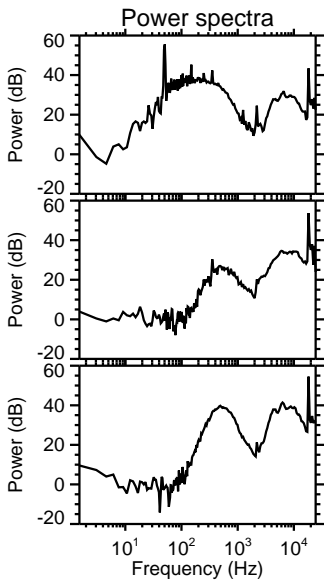
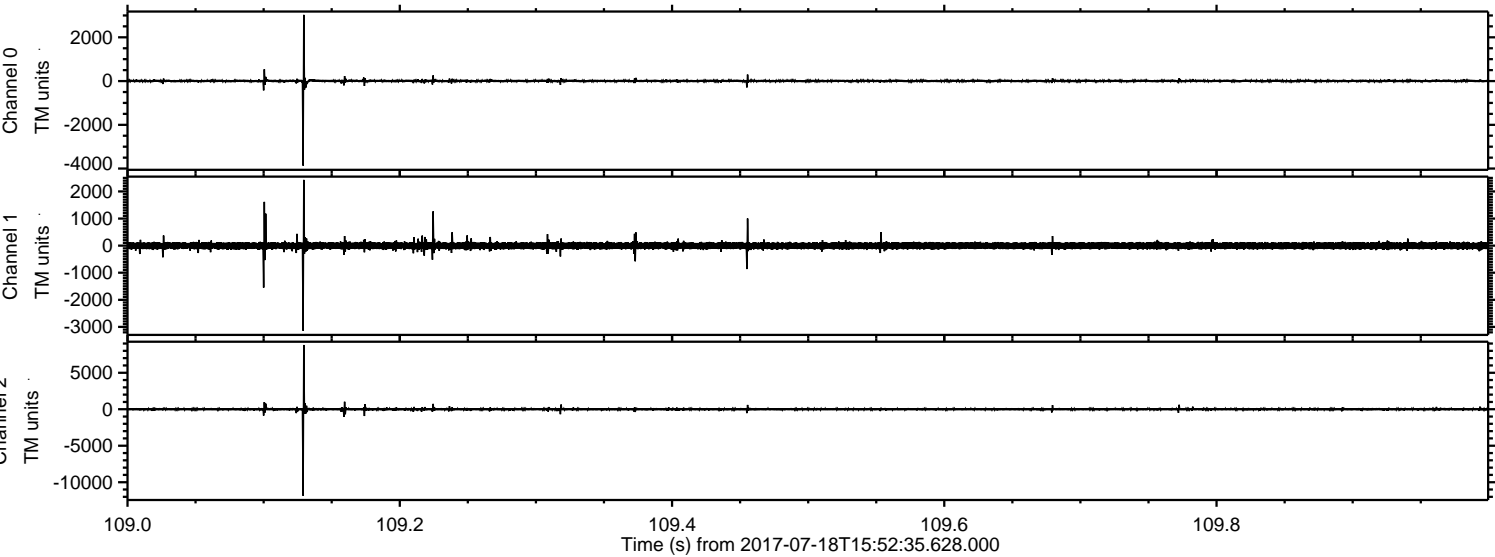
Processed Thu Jul 20 22:20:42 2017 by ELM ver.2012-10-06 from 001\_\_elm20170718\_155234\_\_dat00.bin





ELMAVAN 3D WAVEFORMS (Measured data sampled at 50 kHz) 51000 packets of 144 samples from 2017-07-18T15:52:35.628.000. Part 110/147

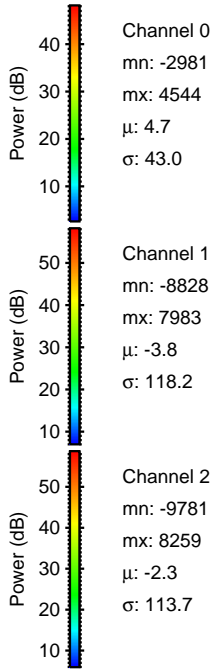
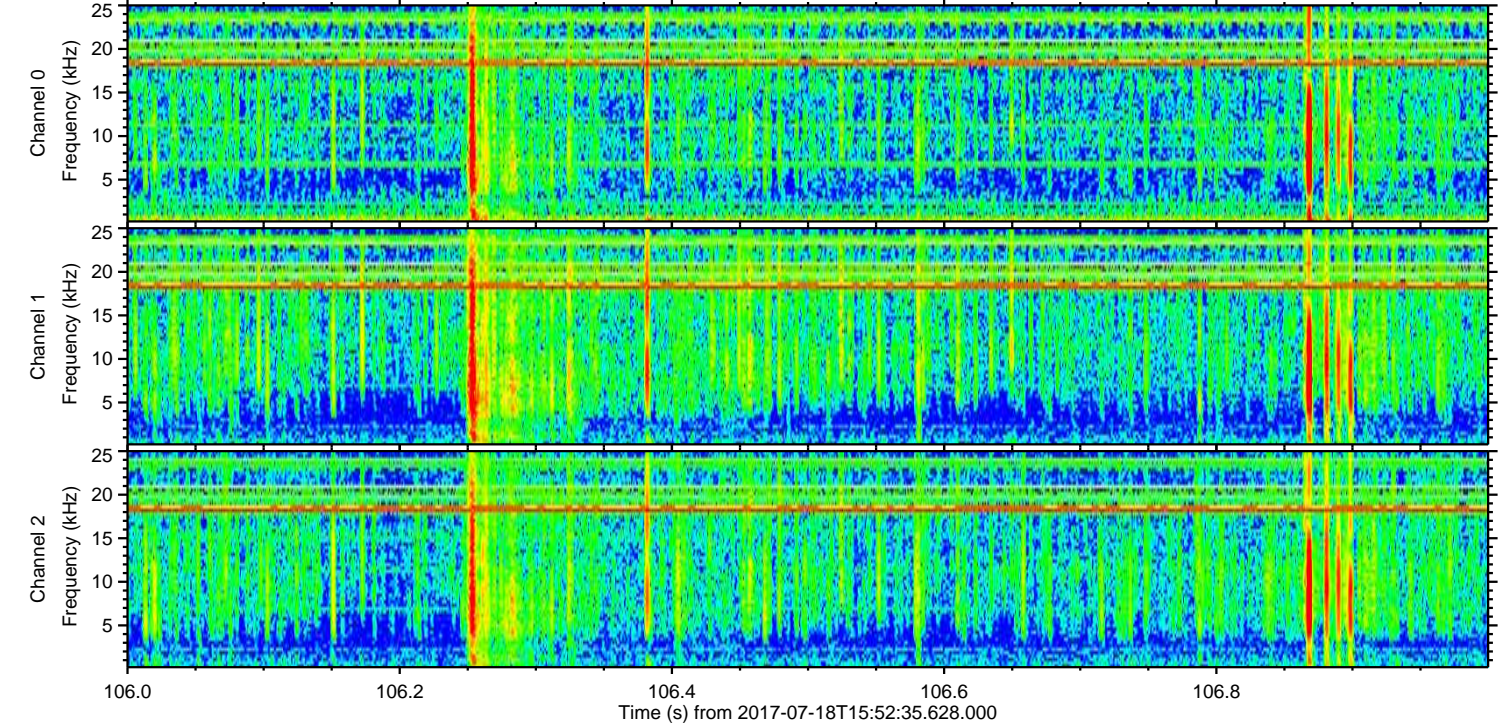
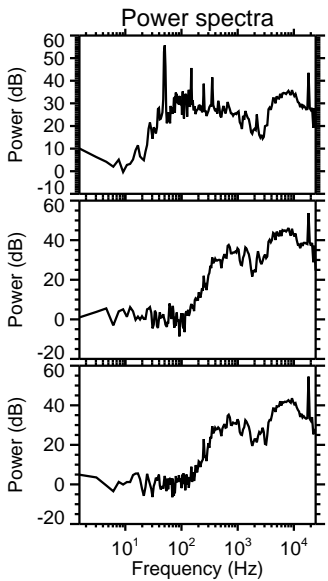
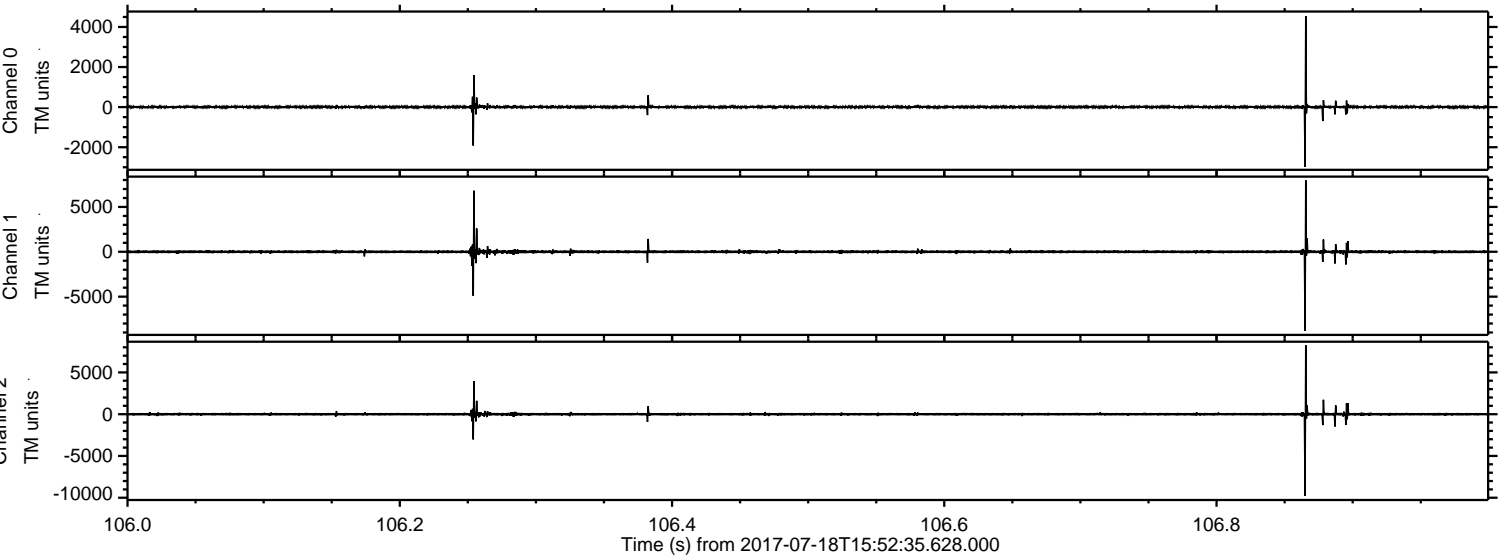
Processed Thu Jul 20 22:20:43 2017 by ELM ver.2012-10-06 from 001\_\_elm20170718\_155234\_\_dat00.bin





ELMAVAN 3D WAVEFORMS (Measured data sampled at 50 kHz) 51000 packets of 144 samples from 2017-07-18T15:52:35.628.000. Part 107/147

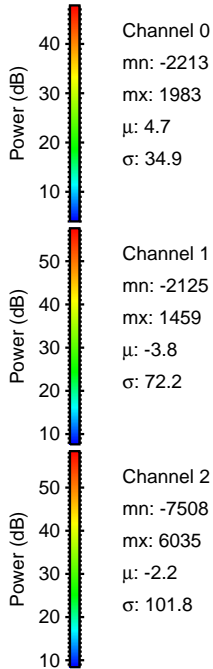
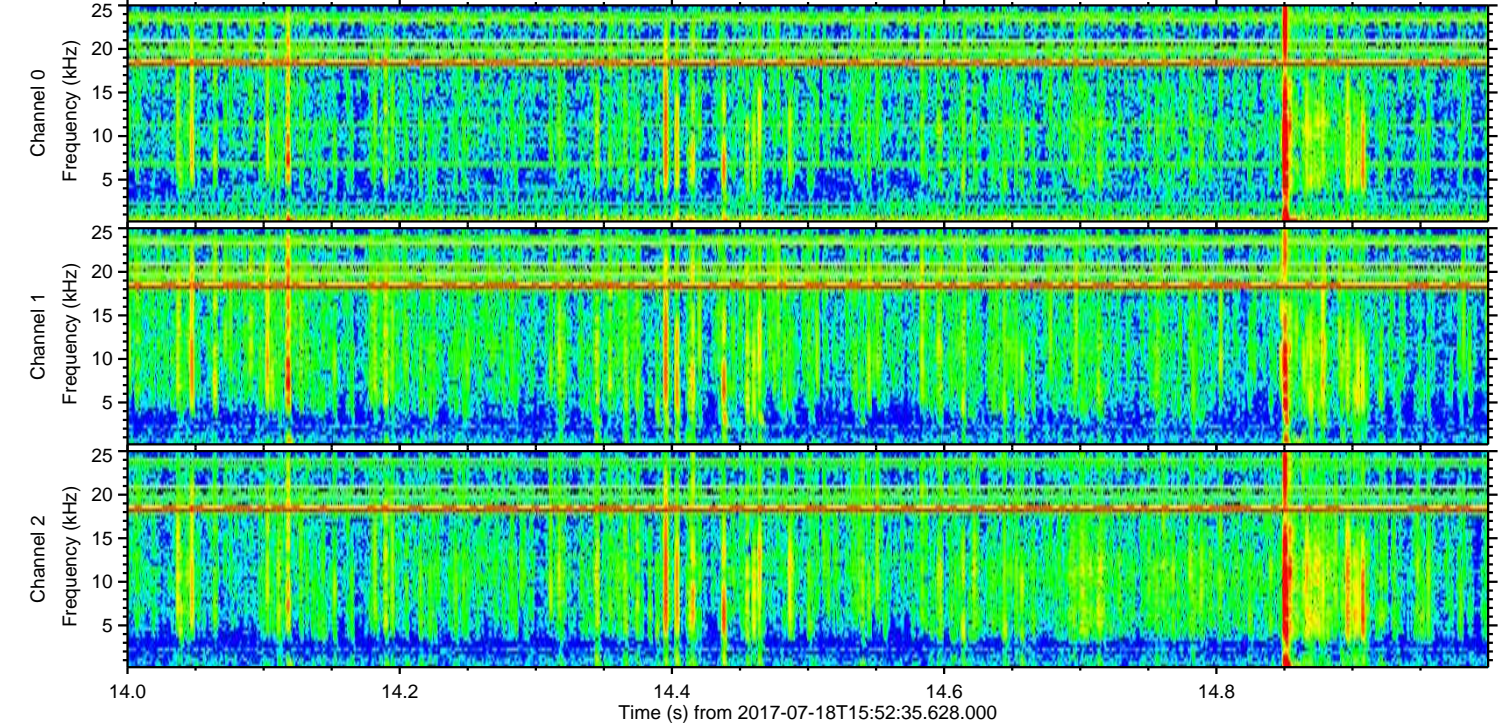
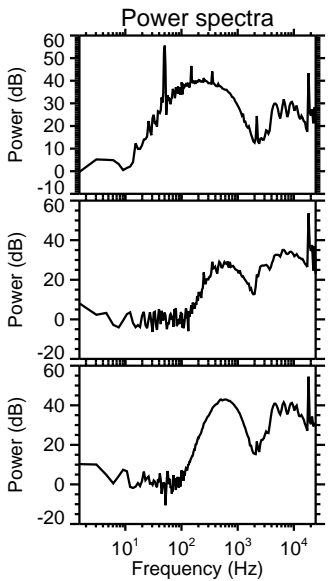
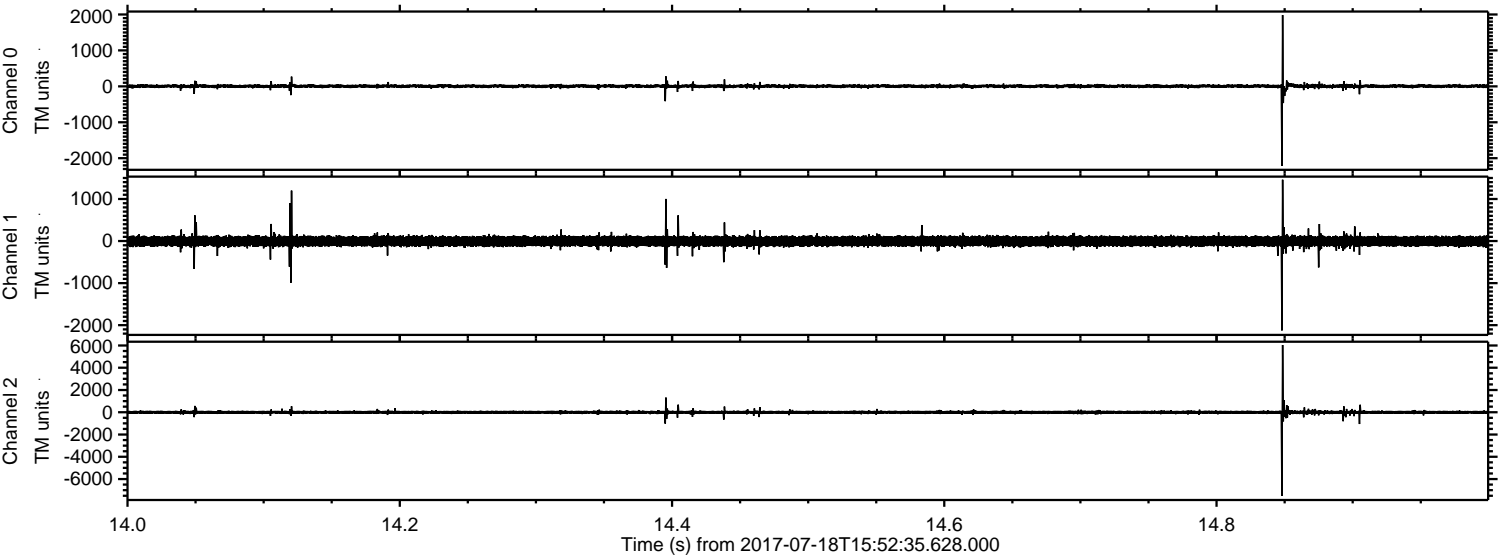
Processed Thu Jul 20 22:20:43 2017 by ELM ver.2012-10-06 from 001\_\_elm20170718\_155234\_\_dat00.bin





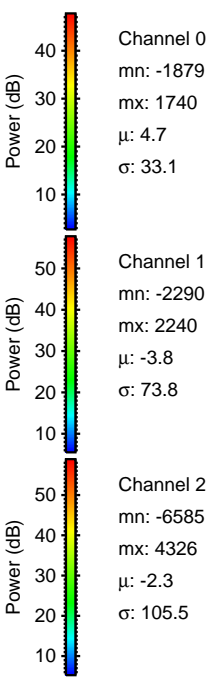
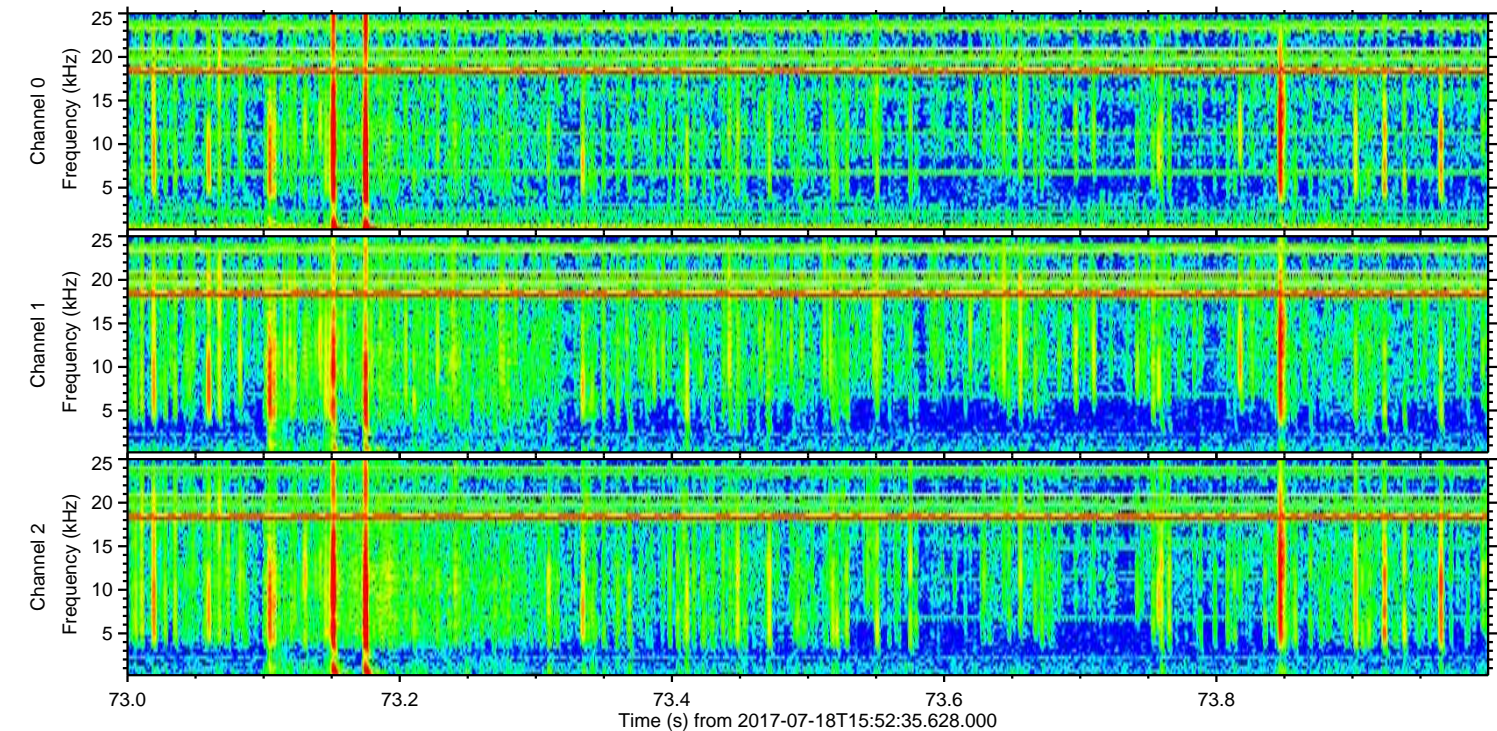
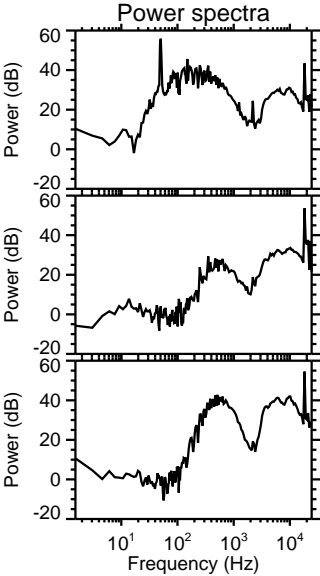
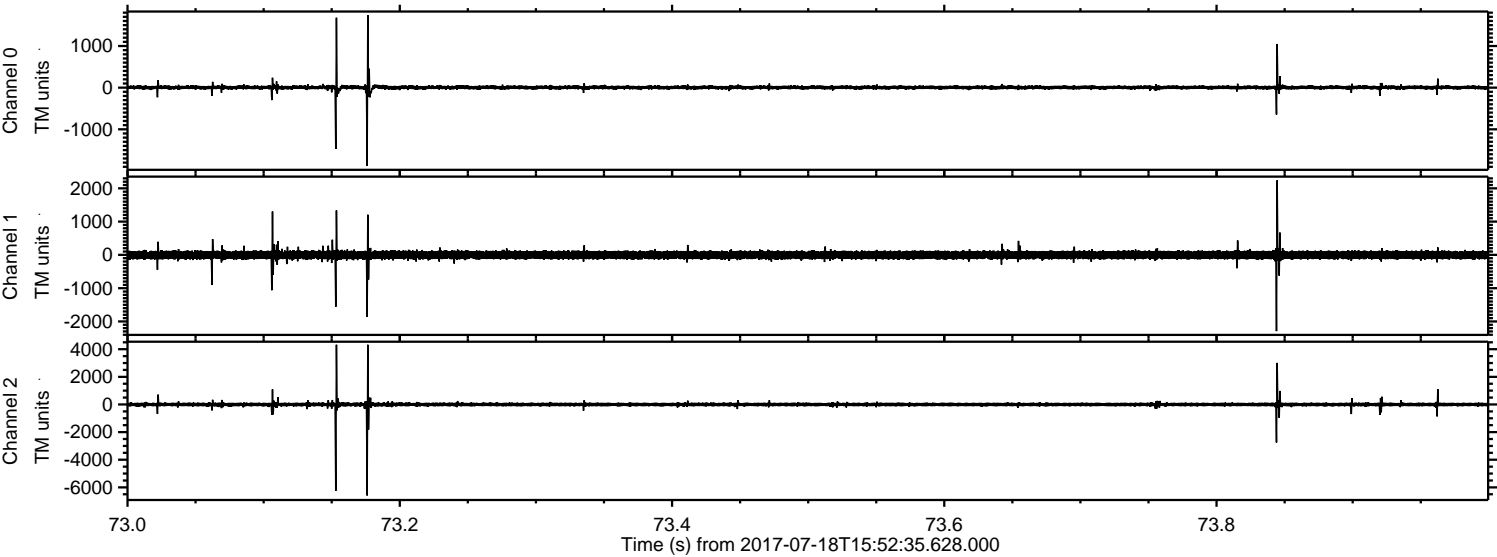
ELMAVAN 3D WAVEFORMS (Measured data sampled at 50 kHz) 51000 packets of 144 samples from 2017-07-18T15:52:35.628.000. Part 15/147

Processed Thu Jul 20 22:20:44 2017 by ELM ver.2012-10-06 from 001\_\_elm20170718\_155234\_\_dat00.bin





Processed Thu Jul 20 22:20:45 2017 by ELM ver.2012-10-06 from 001\_\_elm20170718\_155234\_\_dat00.bin



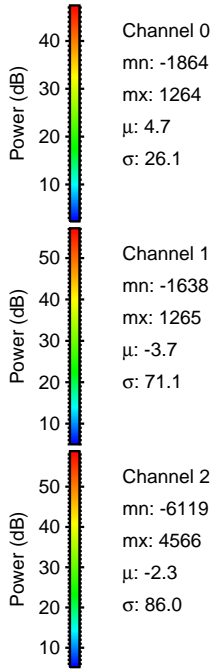
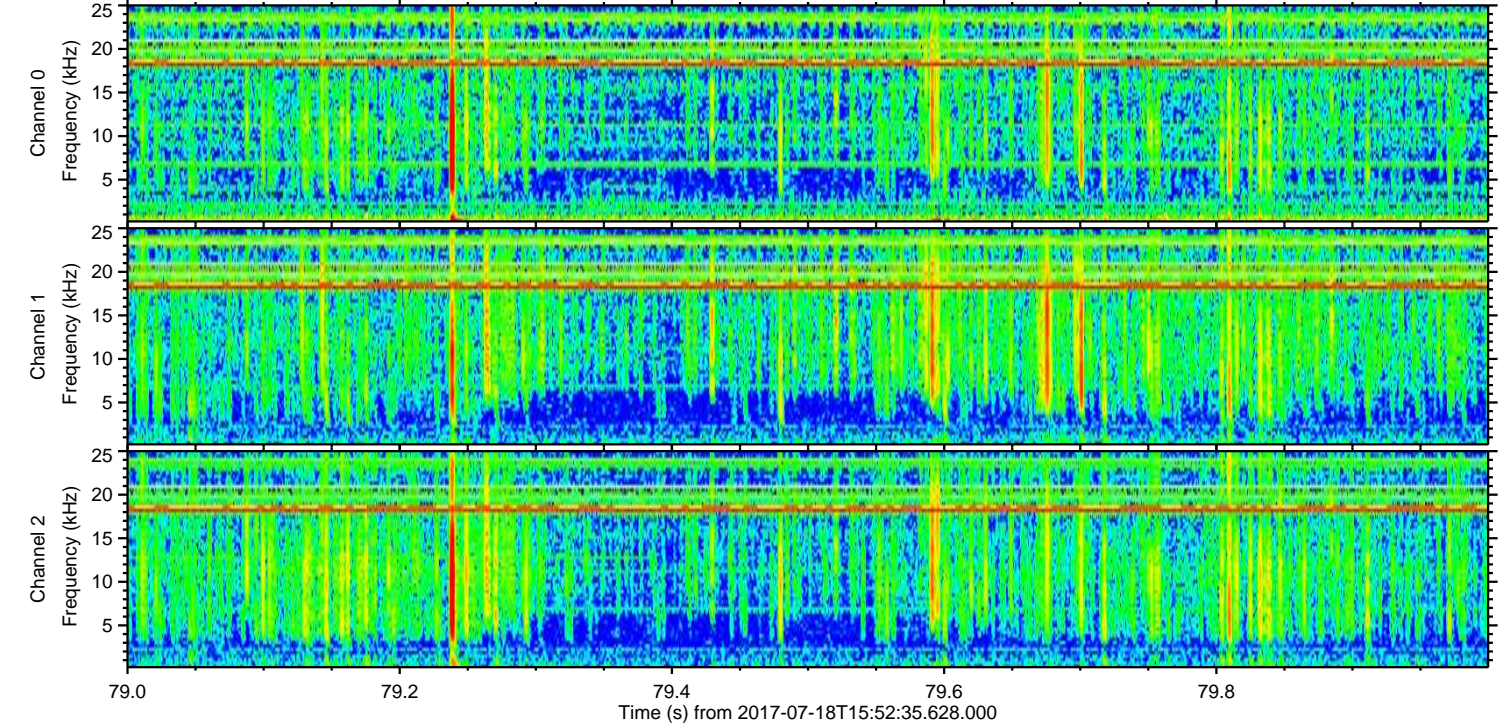
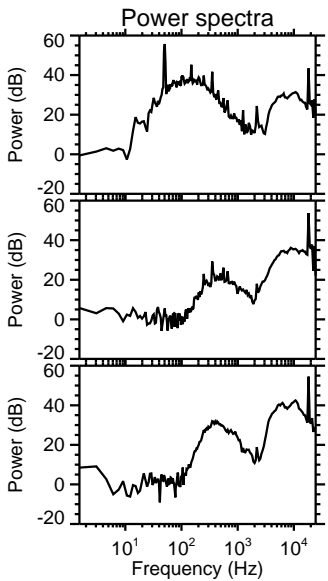
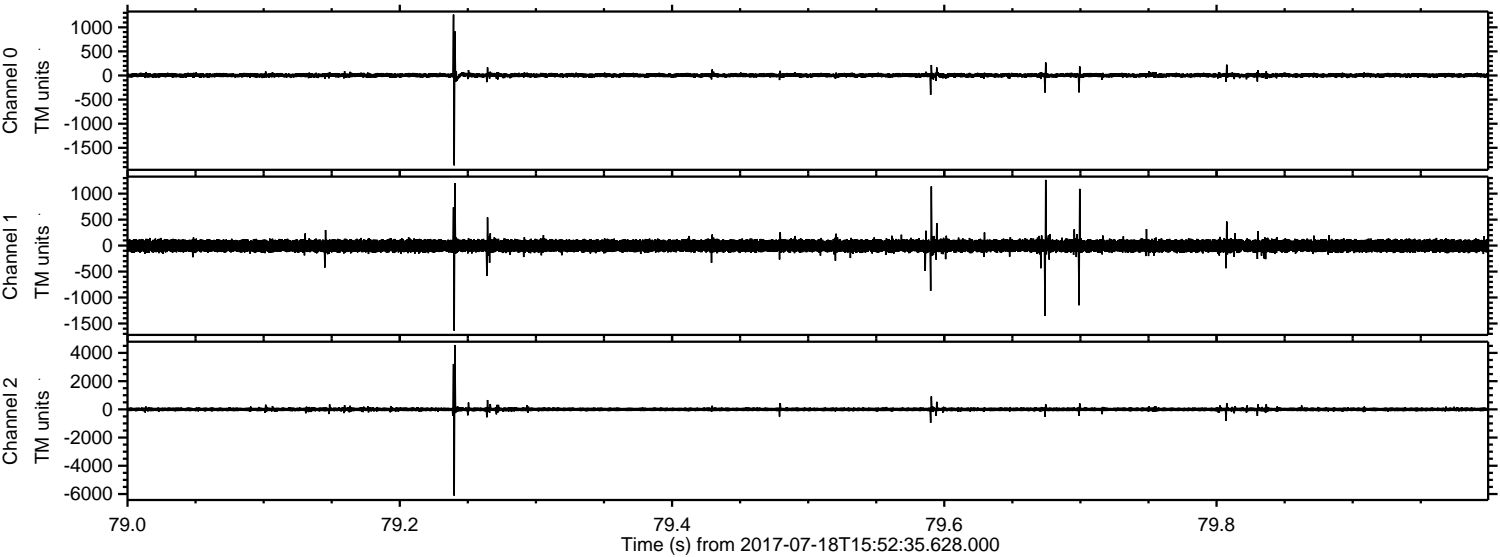
Channel 0  
mn: -1879  
mx: 1740  
 $\mu$ : 4.7  
 $\sigma$ : 33.1

Channel 1  
mn: -2290  
mx: 2240  
 $\mu$ : -3.8  
 $\sigma$ : 73.8

Channel 2  
mn: -6585  
mx: 4326  
 $\mu$ : -2.3  
 $\sigma$ : 105.5



Processed Thu Jul 20 22:20:46 2017 by ELM ver.2012-10-06 from 001\_\_elm20170718\_155234\_\_dat00.bin



Channel 0  
mn: -1864  
mx: 1264  
 $\mu$ : 4.7  
 $\sigma$ : 26.1

Channel 1  
mn: -1638  
mx: 1265  
 $\mu$ : -3.7  
 $\sigma$ : 71.1

Channel 2  
mn: -6119  
mx: 4566  
 $\mu$ : -2.3  
 $\sigma$ : 86.0



Processed Thu Jul 20 22:20:46 2017 by ELM ver.2012-10-06 from 001\_\_elm20170718\_155234\_\_dat00.bin

