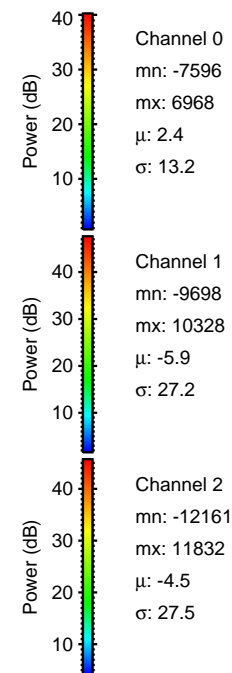
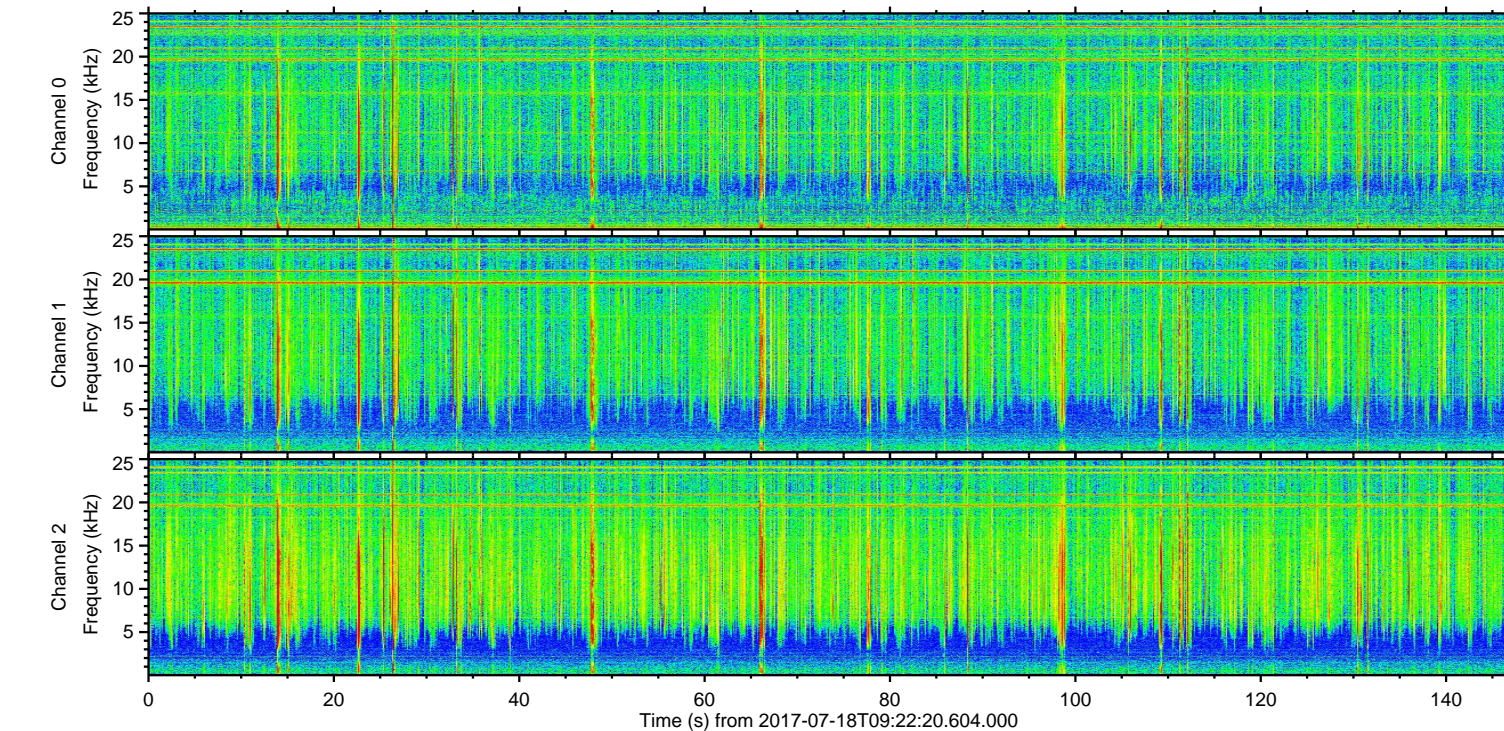
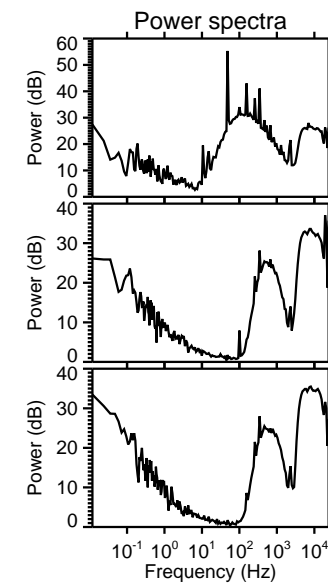
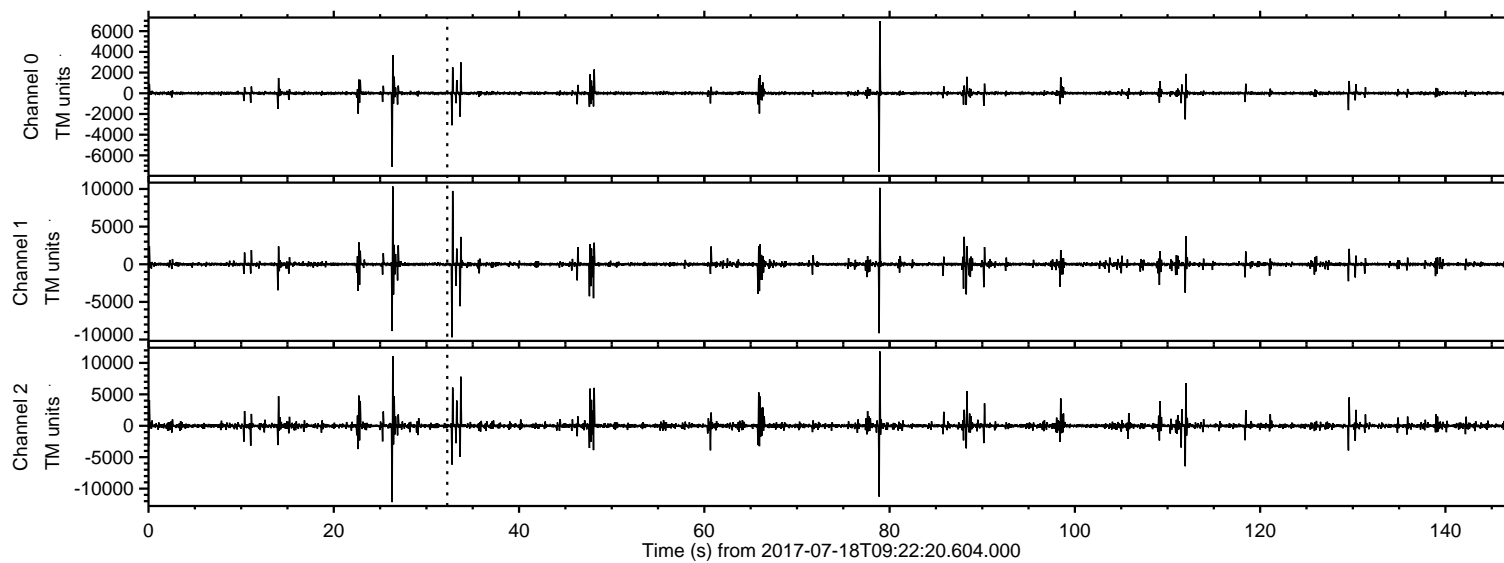
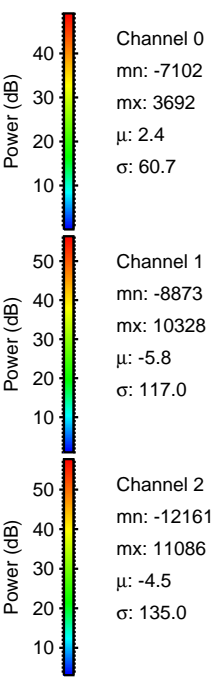
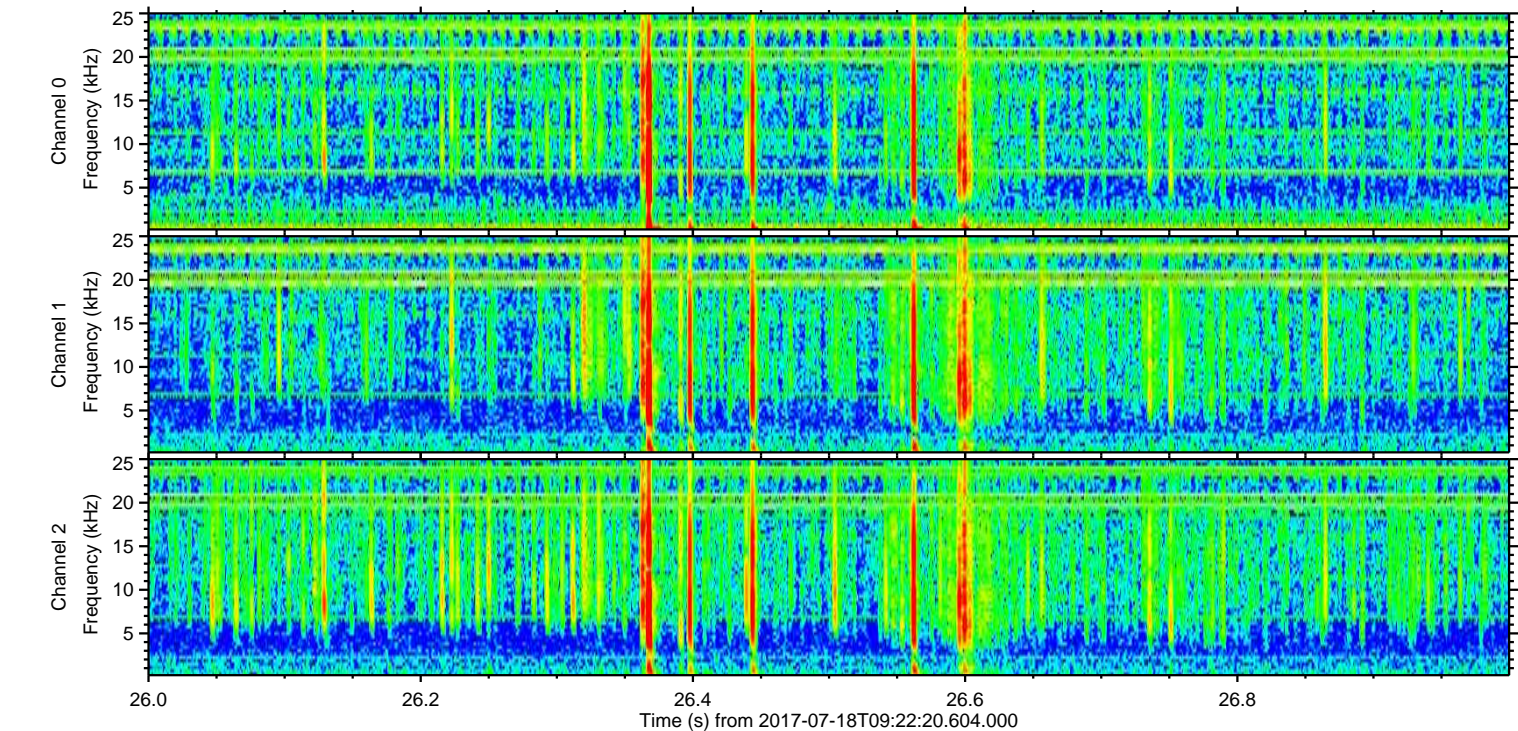
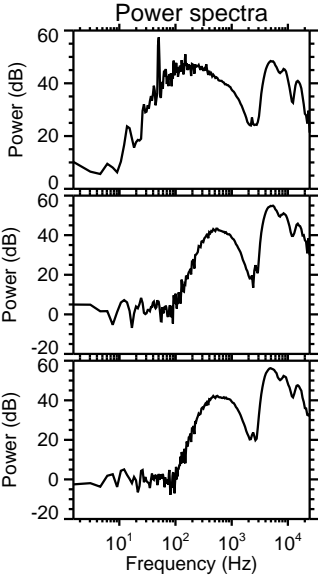
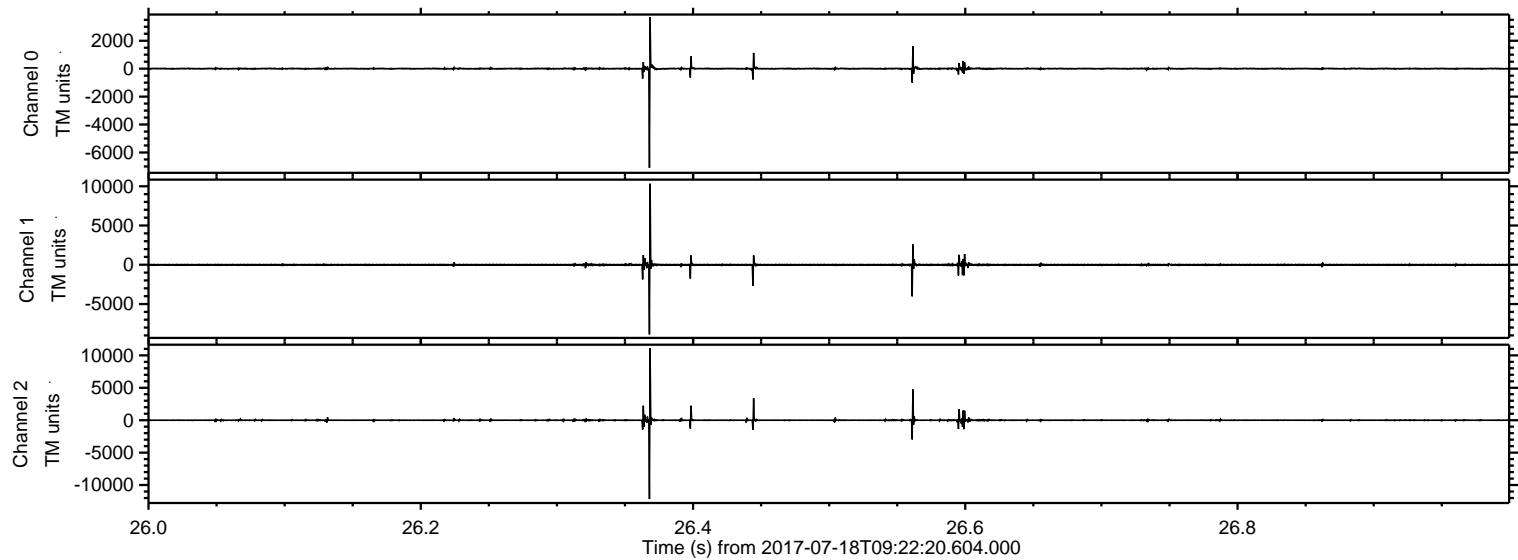


ELMAVAN 3D WAVEFORMS (Measured data sampled at 50 kHz) 50999 packets of 144 samples from 2017-07-18T09:22:20.604.000.

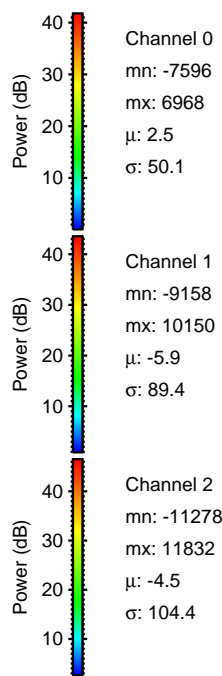
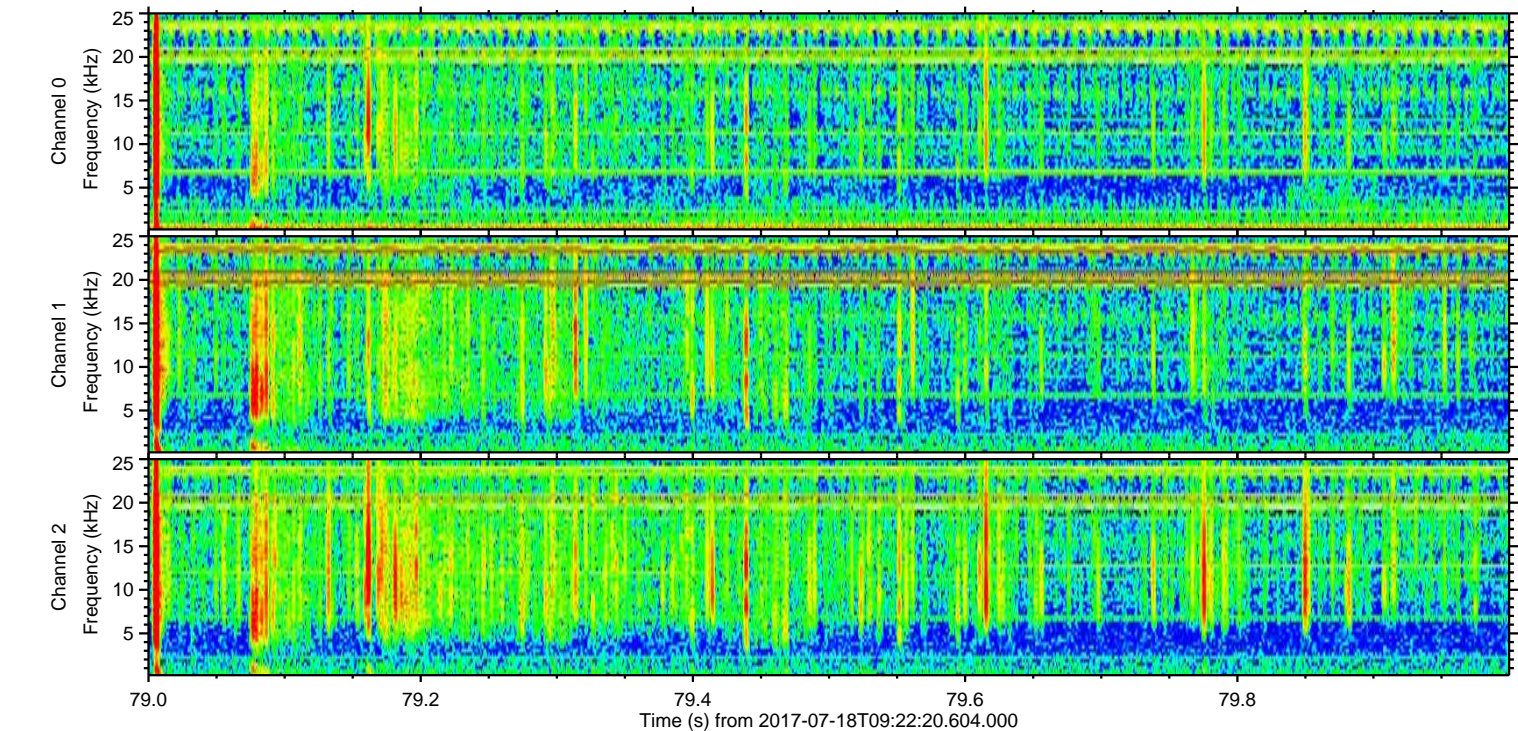
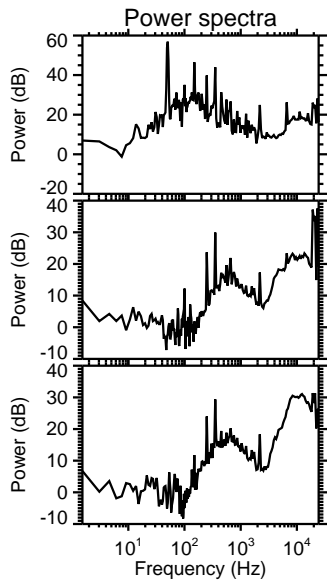
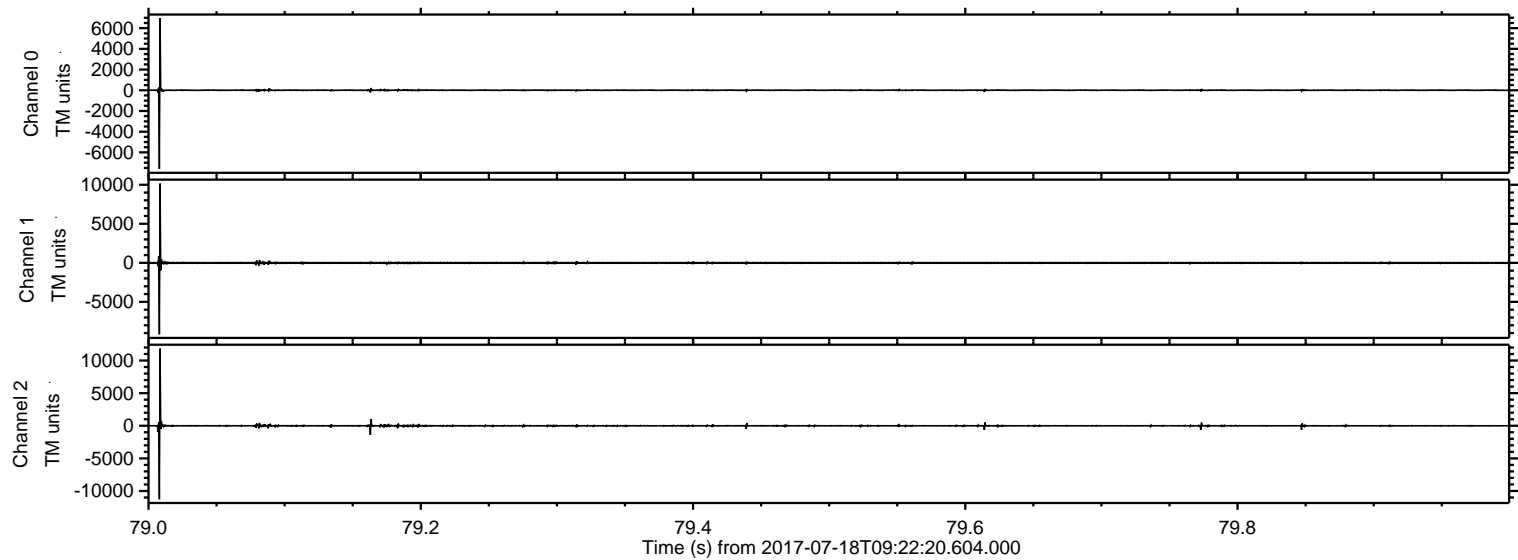
Processed Thu Jul 20 21:20:59 2017 by ELM ver.2012-10-06 from 001__elm20170718_092219__dat00.bin



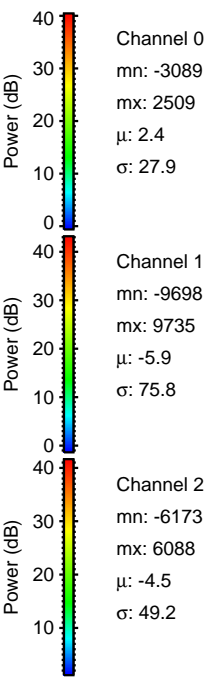
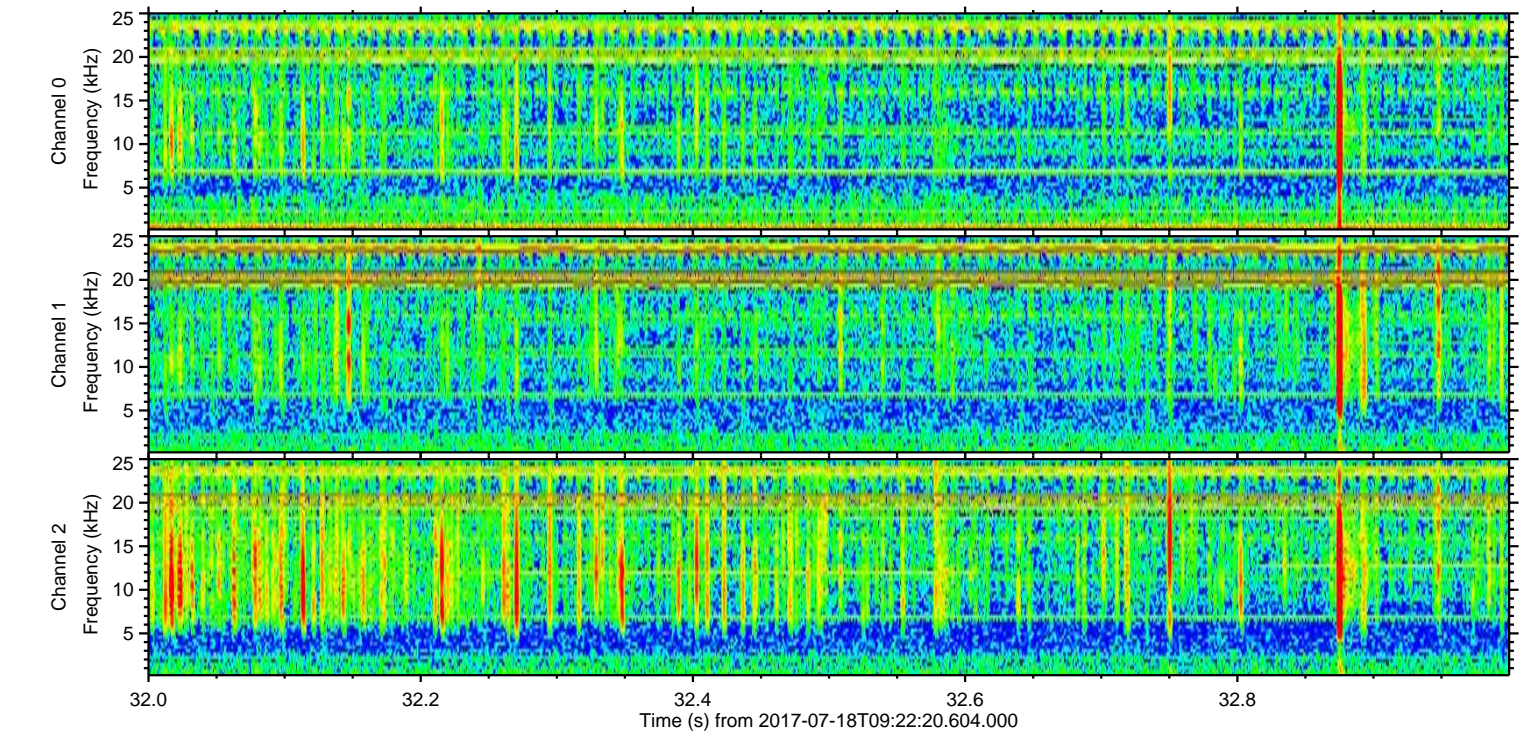
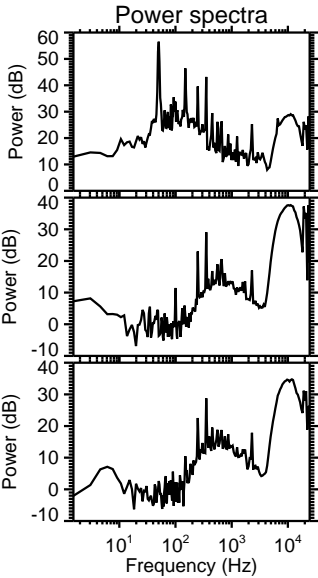
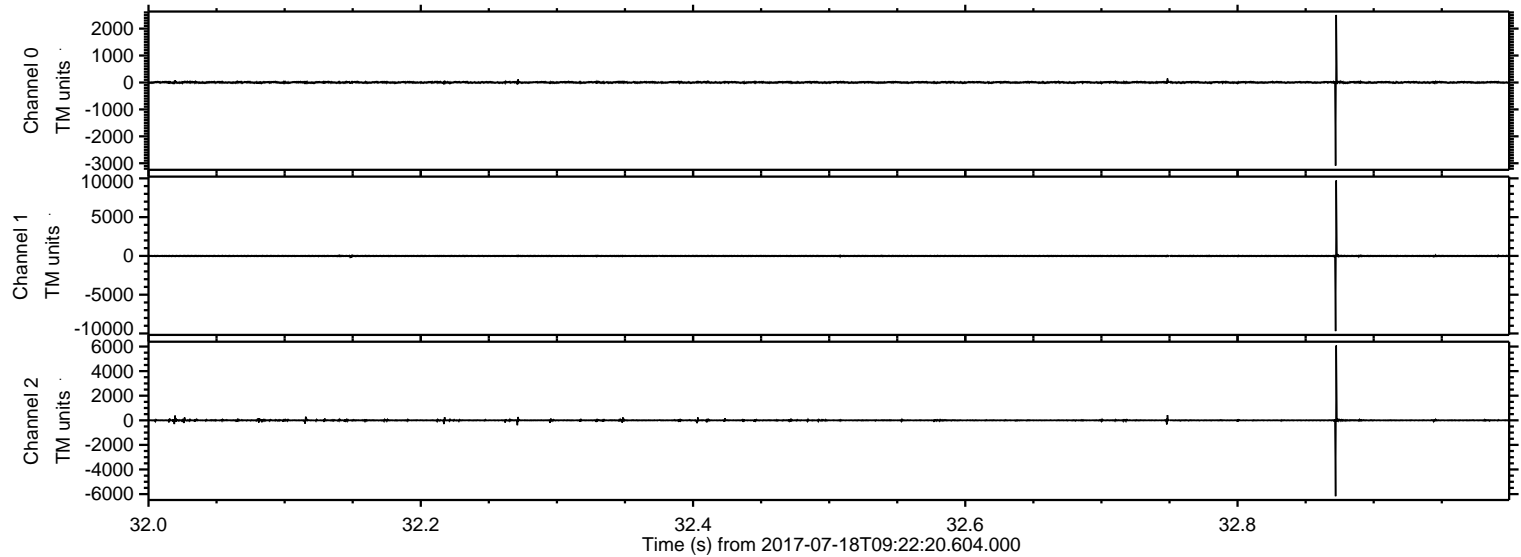
Processed Thu Jul 20 21:21:07 2017 by ELM ver.2012-10-06 from 001__elm20170718_092219__dat00.bin



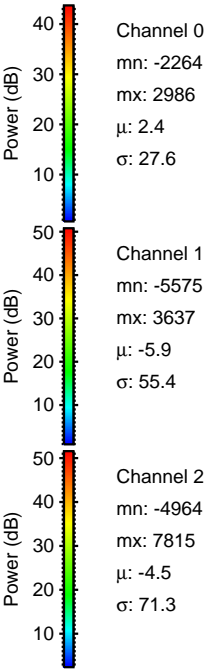
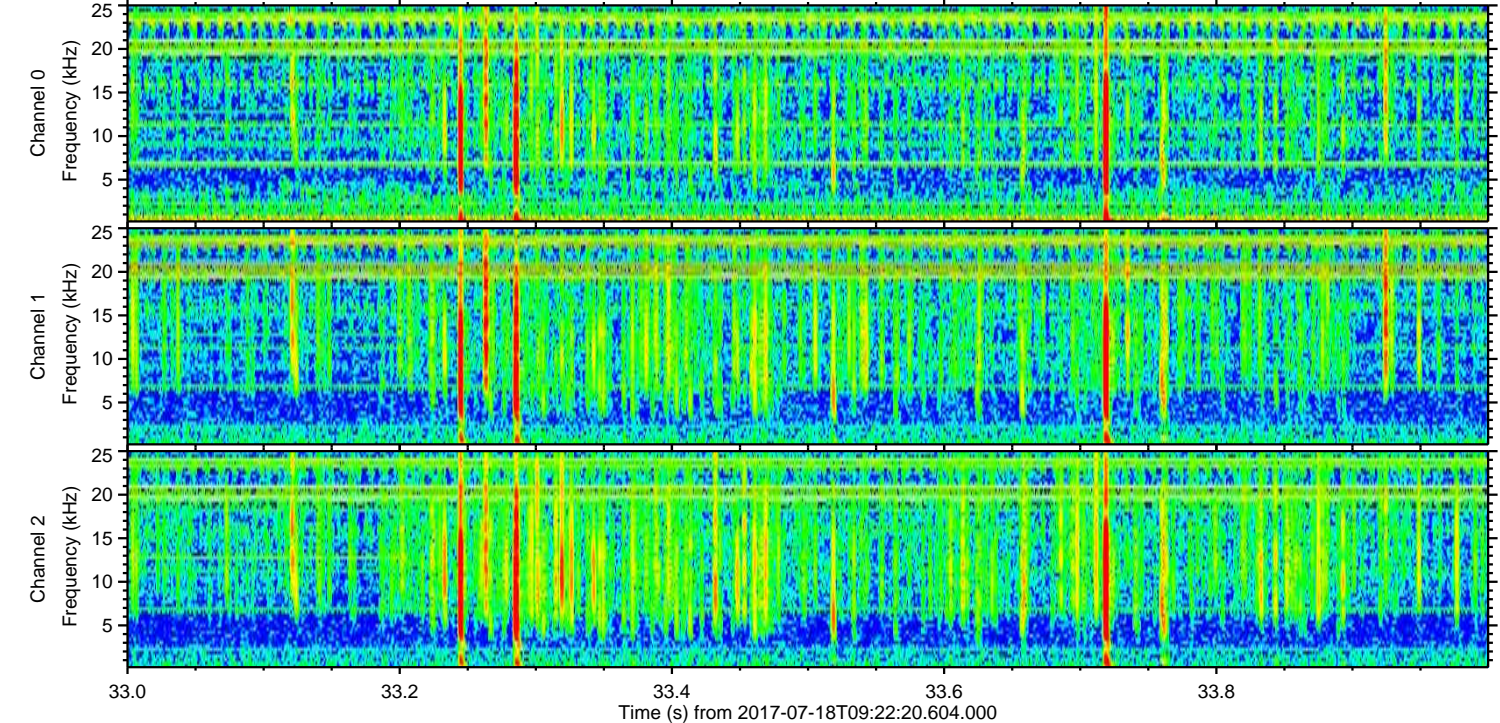
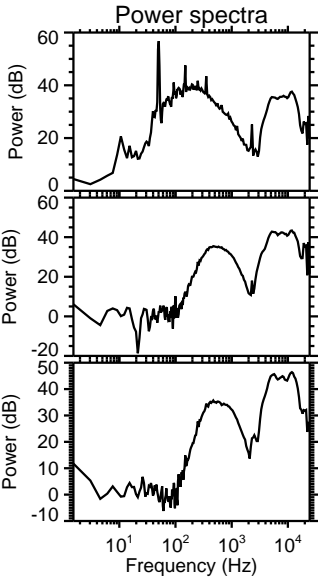
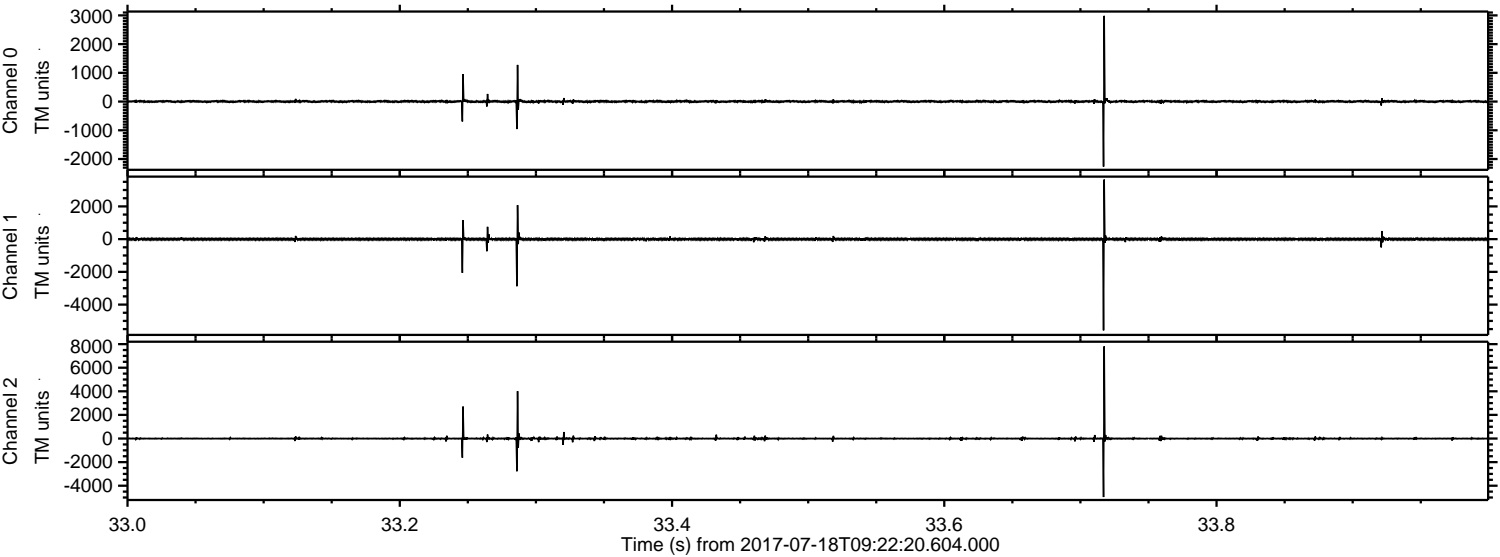
Processed Thu Jul 20 21:21:08 2017 by ELM ver.2012-10-06 from 001__elm20170718_092219__dat00.bin



Processed Thu Jul 20 21:21:08 2017 by ELM ver.2012-10-06 from 001__elm20170718_092219__dat00.bin

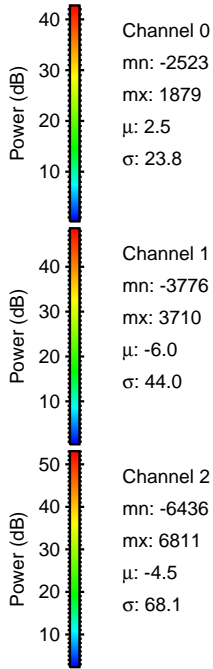
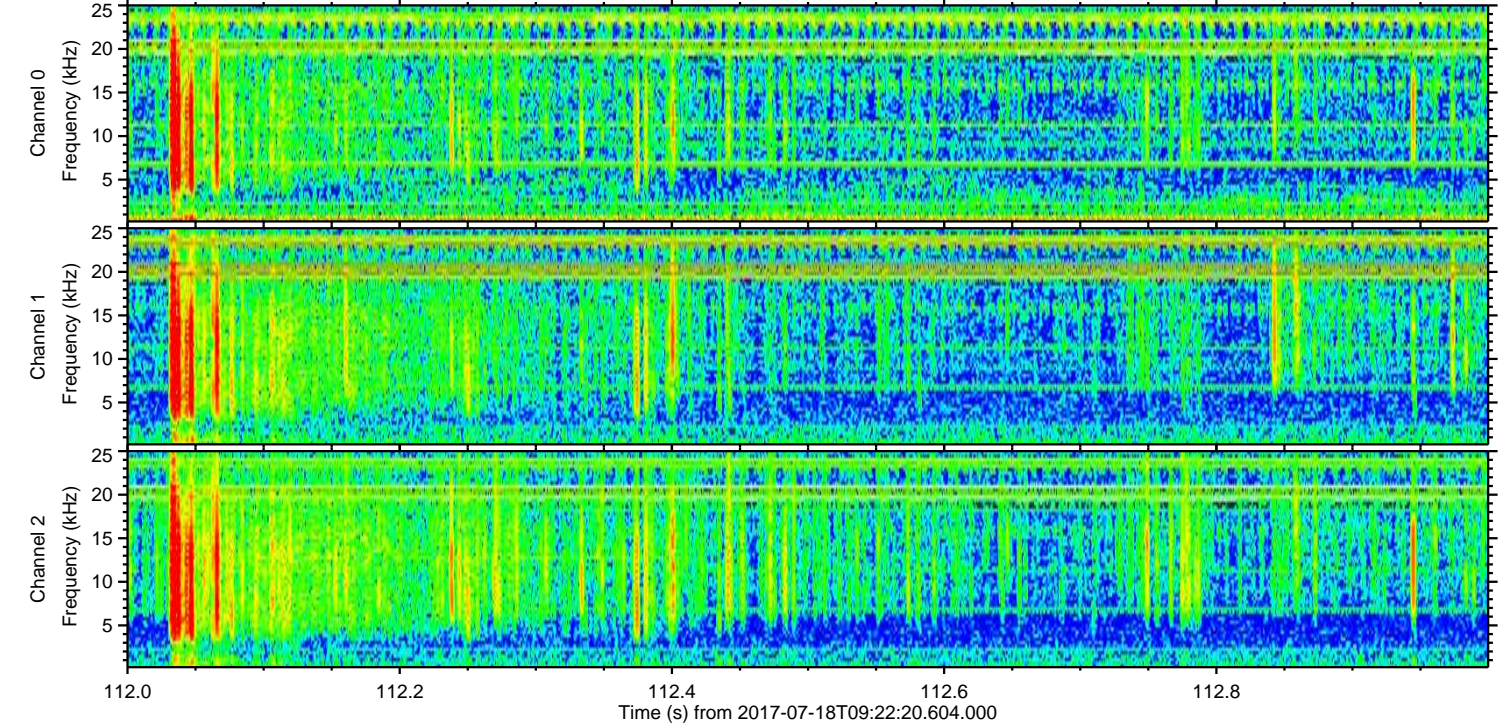
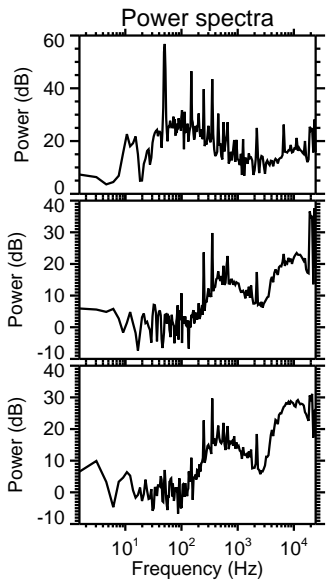
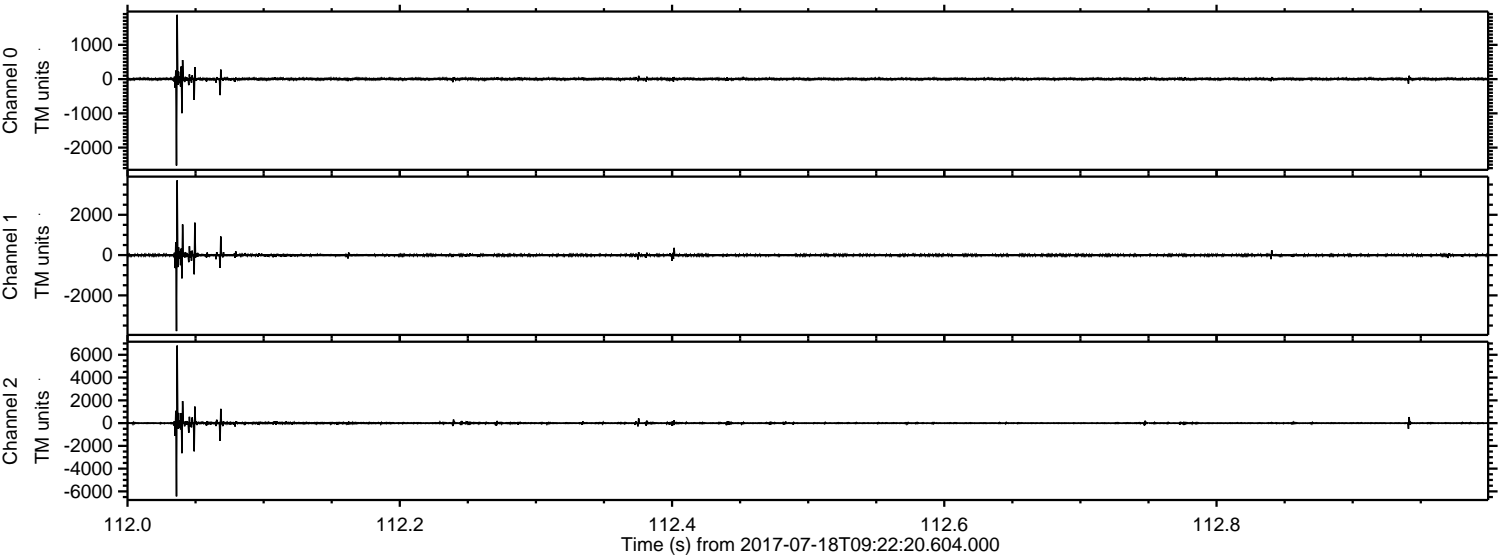


Processed Thu Jul 20 21:21:09 2017 by ELM ver.2012-10-06 from 001__elm20170718_092219__dat00.bin

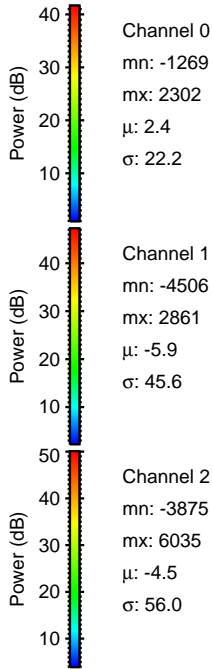
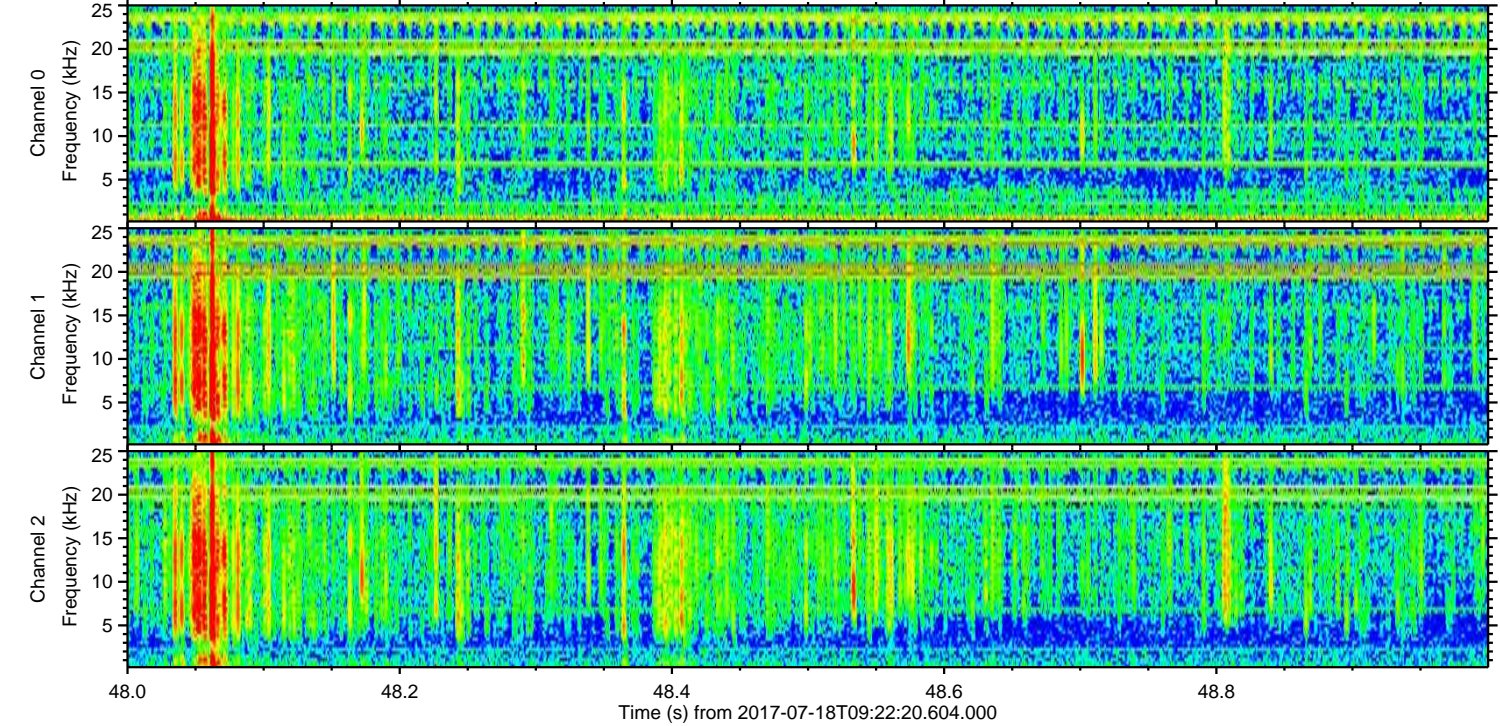
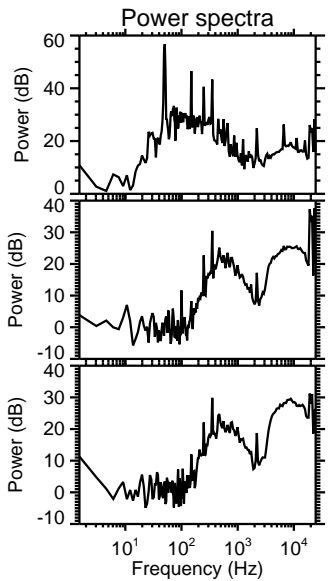
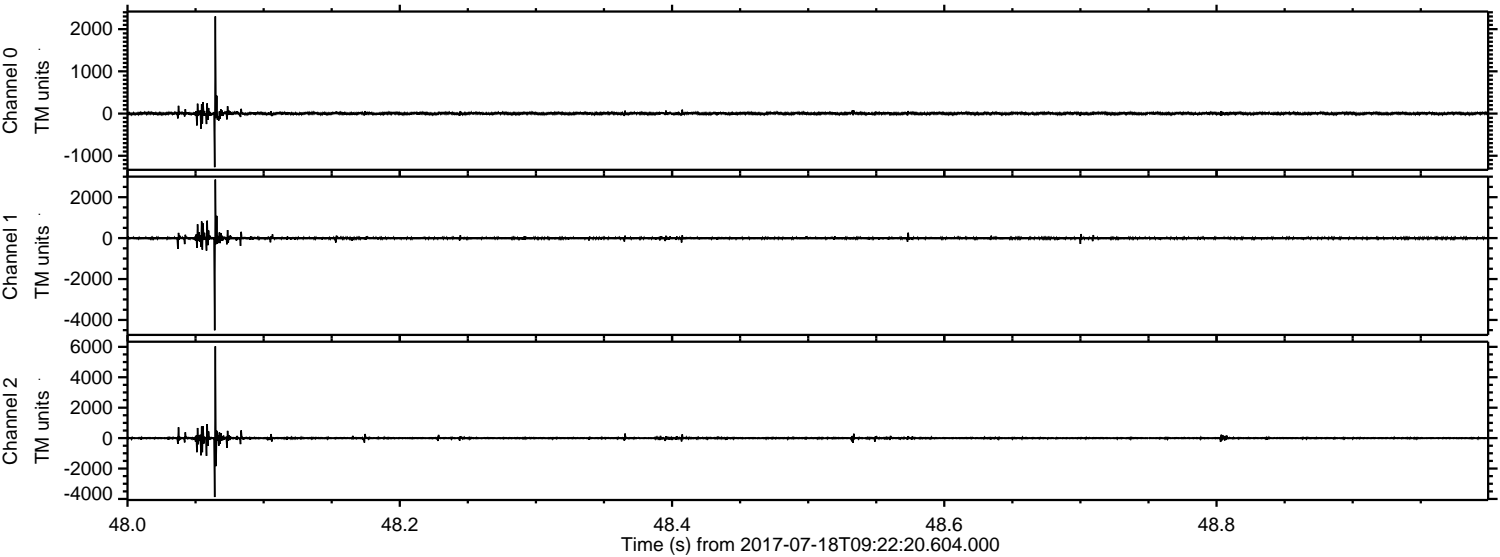


ELMAVAN 3D WAVEFORMS (Measured data sampled at 50 kHz) 50999 packets of 144 samples from 2017-07-18T09:22:20.604.000. Part 113/147

Processed Thu Jul 20 21:21:10 2017 by ELM ver.2012-10-06 from 001__elm20170718_092219__dat00.bin

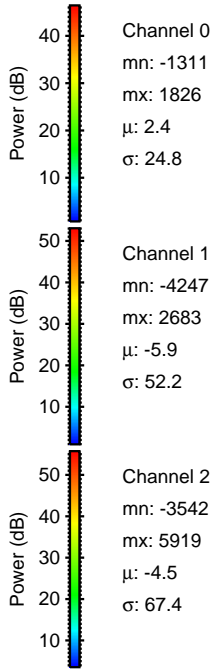
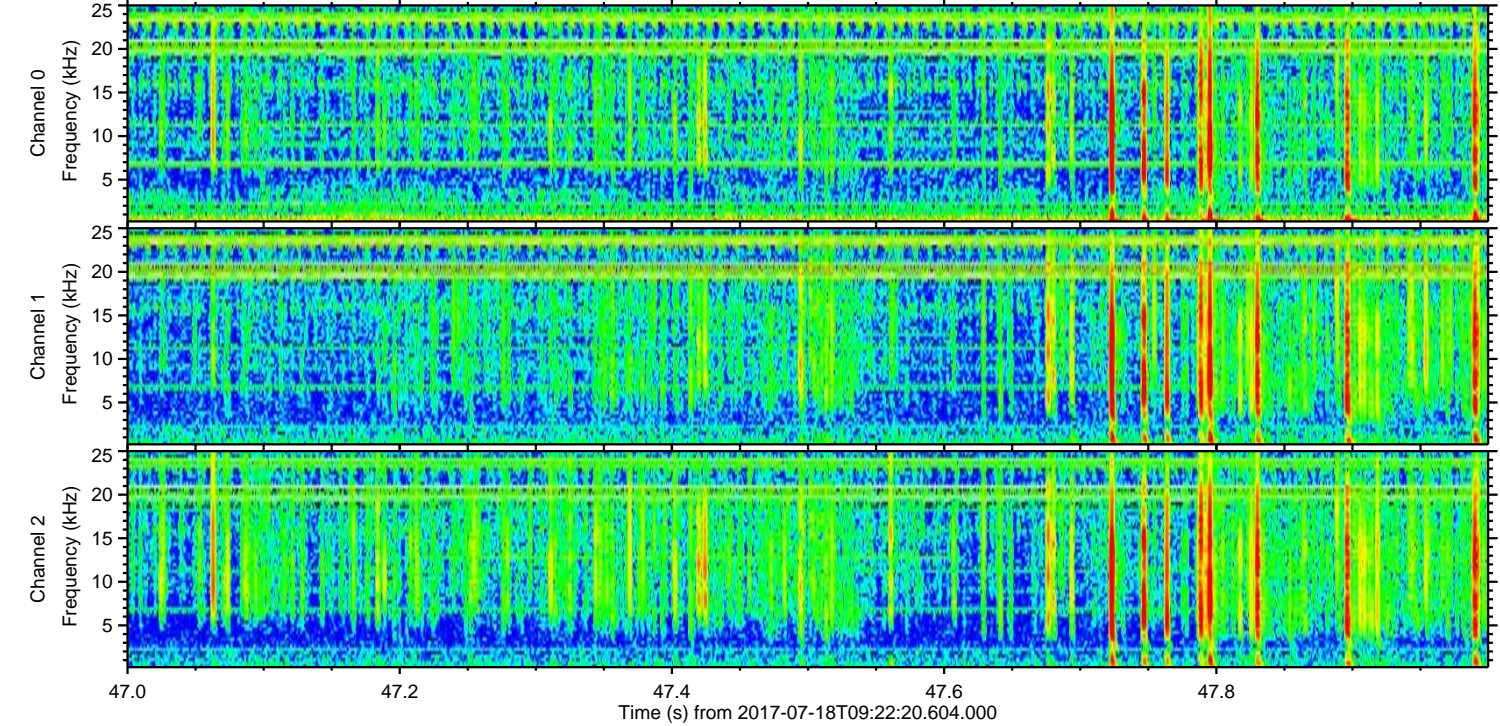
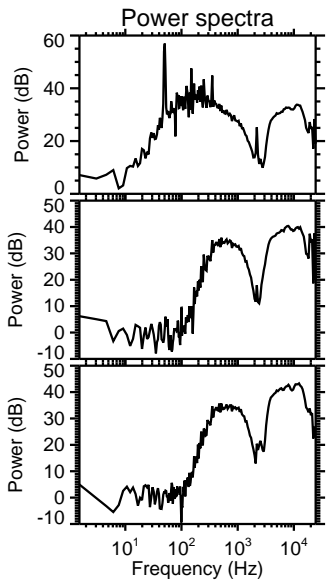
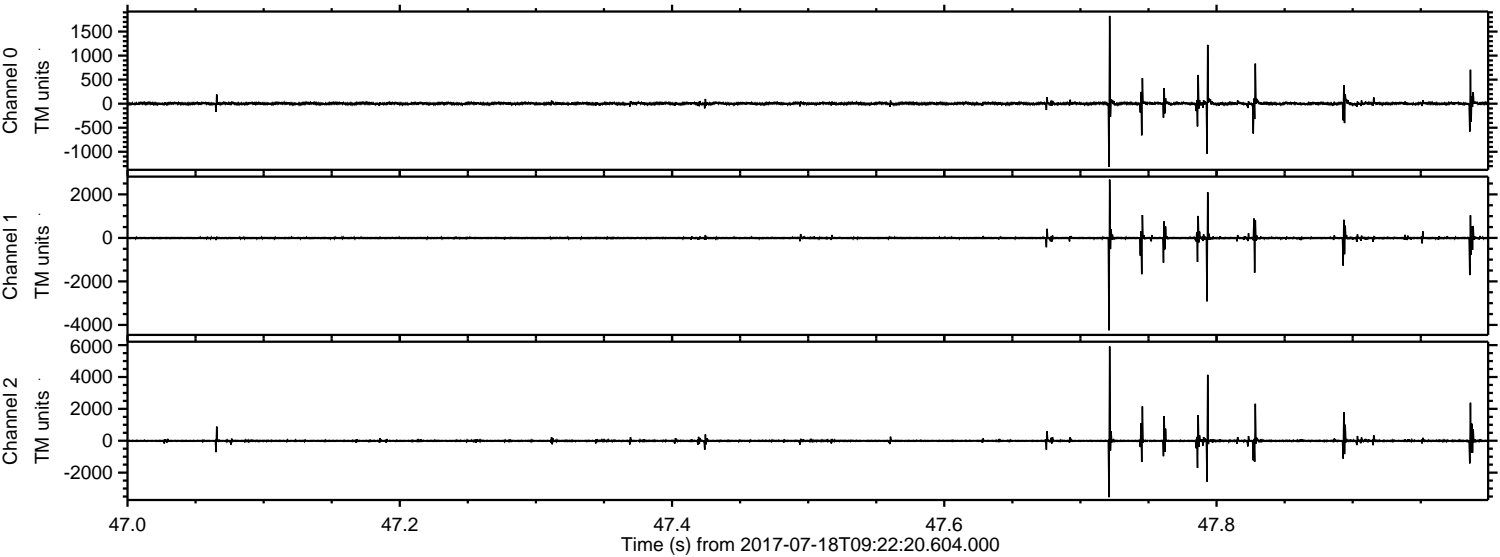


Processed Thu Jul 20 21:21:11 2017 by ELM ver.2012-10-06 from 001__elm20170718_092219__dat00.bin



ELMAVAN 3D WAVEFORMS (Measured data sampled at 50 kHz) 50999 packets of 144 samples from 2017-07-18T09:22:20.604.000. Part 48/147

Processed Thu Jul 20 21:21:12 2017 by ELM ver.2012-10-06 from 001__elm20170718_092219__dat00.bin

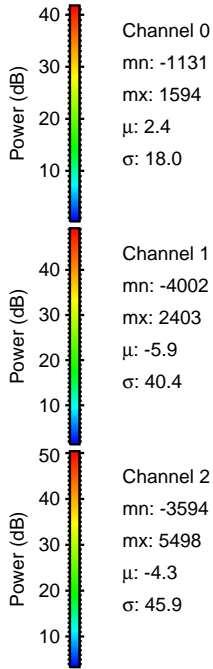
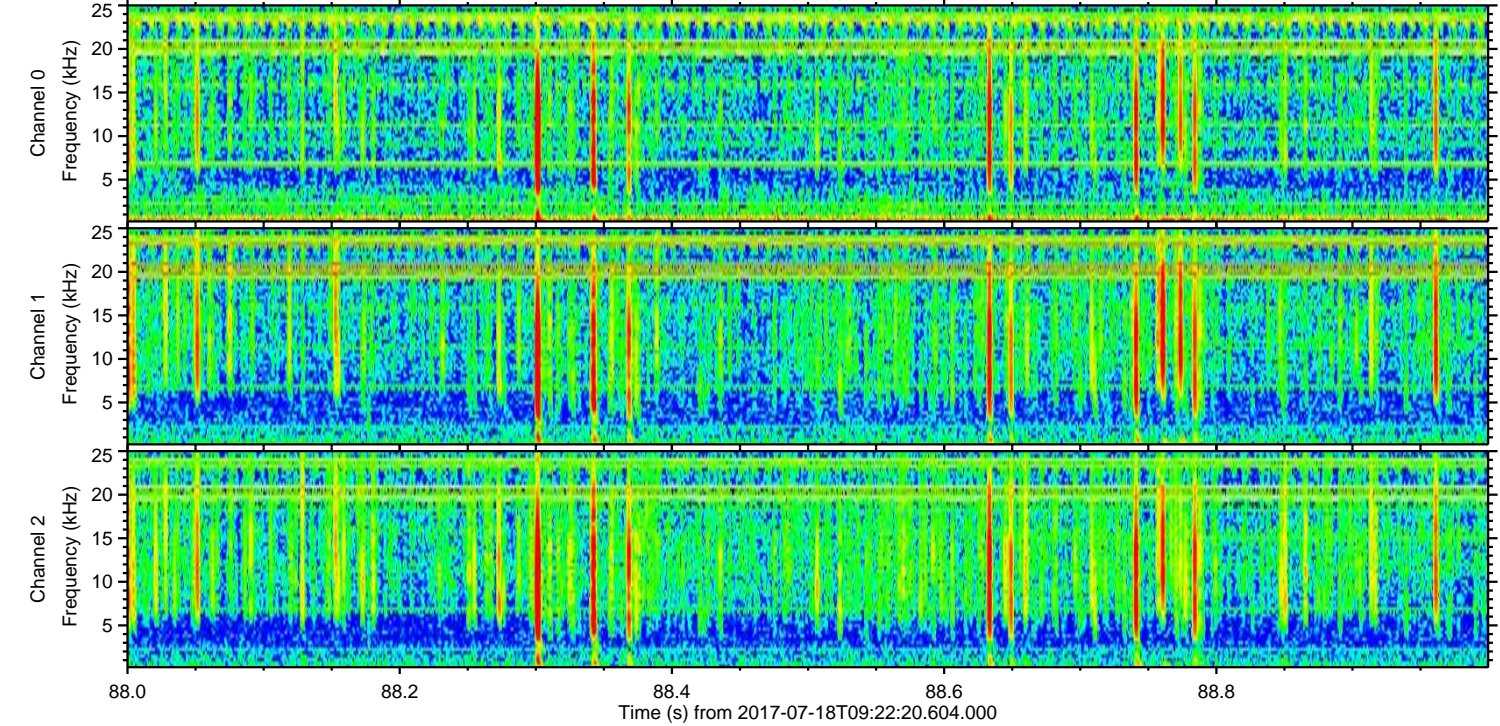
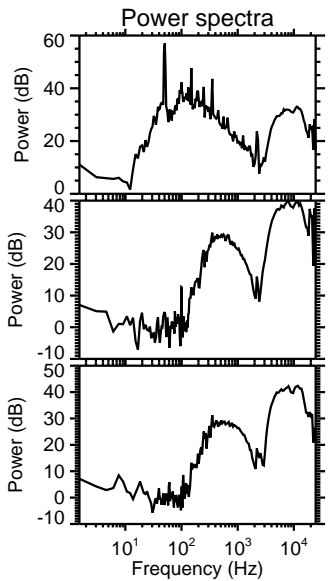
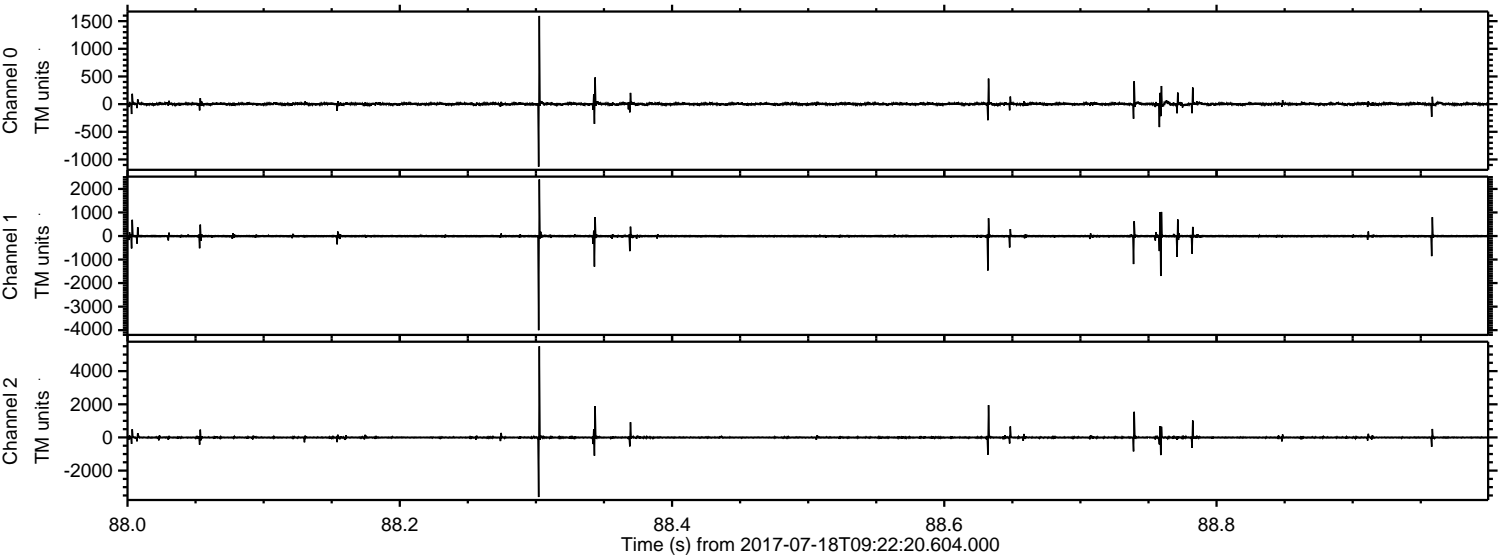


Channel 0
mn: -1311
mx: 1826
 μ : 2.4
 σ : 24.8

Channel 1
mn: -4247
mx: 2683
 μ : -5.9
 σ : 52.2

Channel 2
mn: -3542
mx: 5919
 μ : -4.5
 σ : 67.4

Processed Thu Jul 20 21:21:13 2017 by ELM ver.2012-10-06 from 001__elm20170718_092219__dat00.bin



Channel 0
mn: -1131
mx: 1594
 μ : 2.4
 σ : 18.0

Channel 1
mn: -4002
mx: 2403
 μ : -5.9
 σ : 40.4

Channel 2
mn: -3594
mx: 5498
 μ : -4.3
 σ : 45.9

Processed Thu Jul 20 21:21:13 2017 by ELM ver.2012-10-06 from 001__elm20170718_092219__dat00.bin

