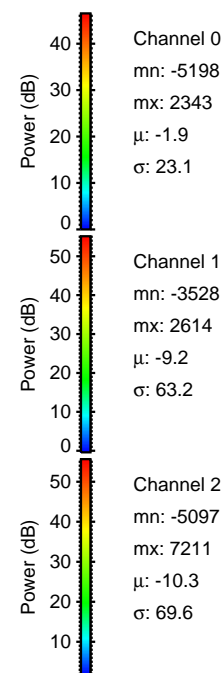
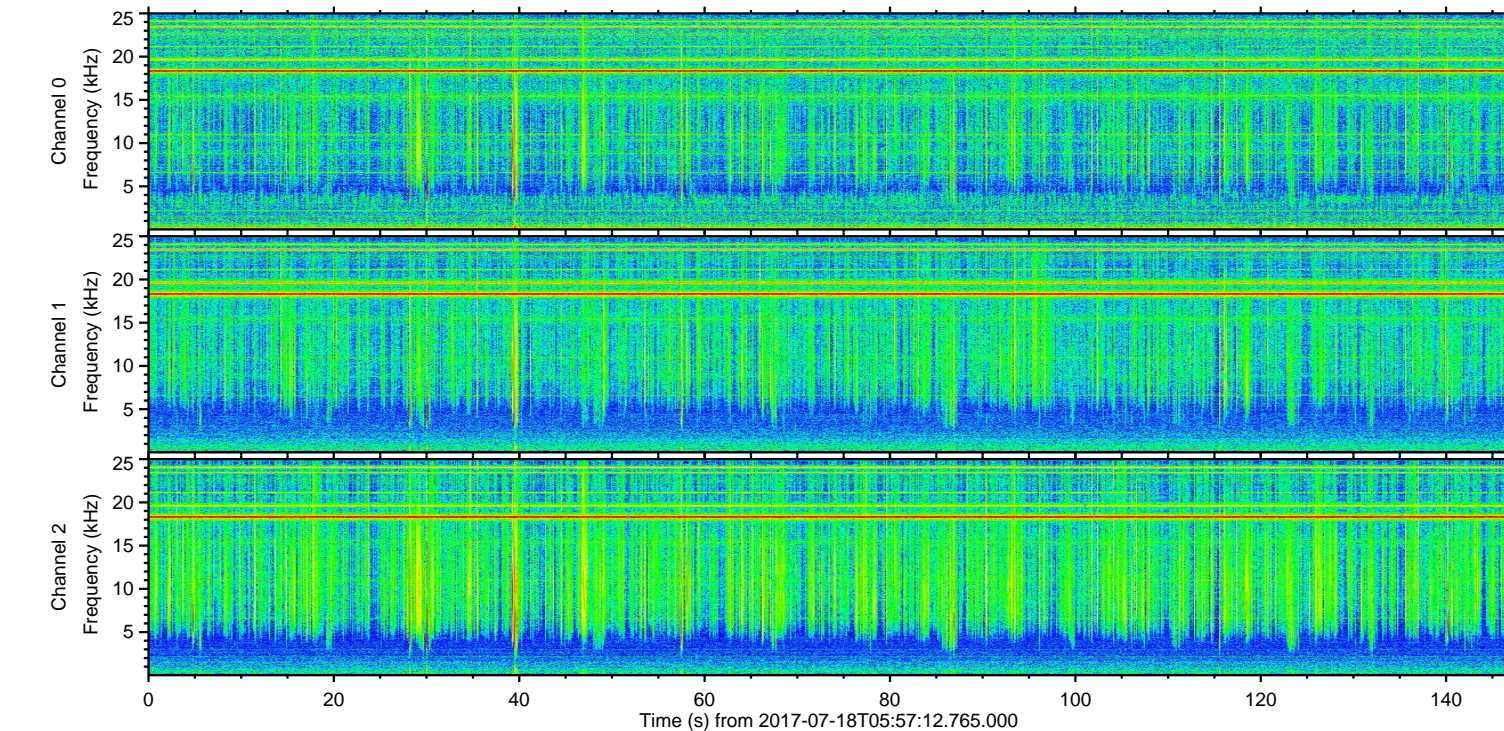
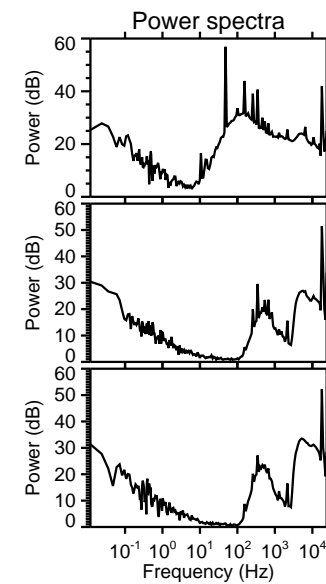
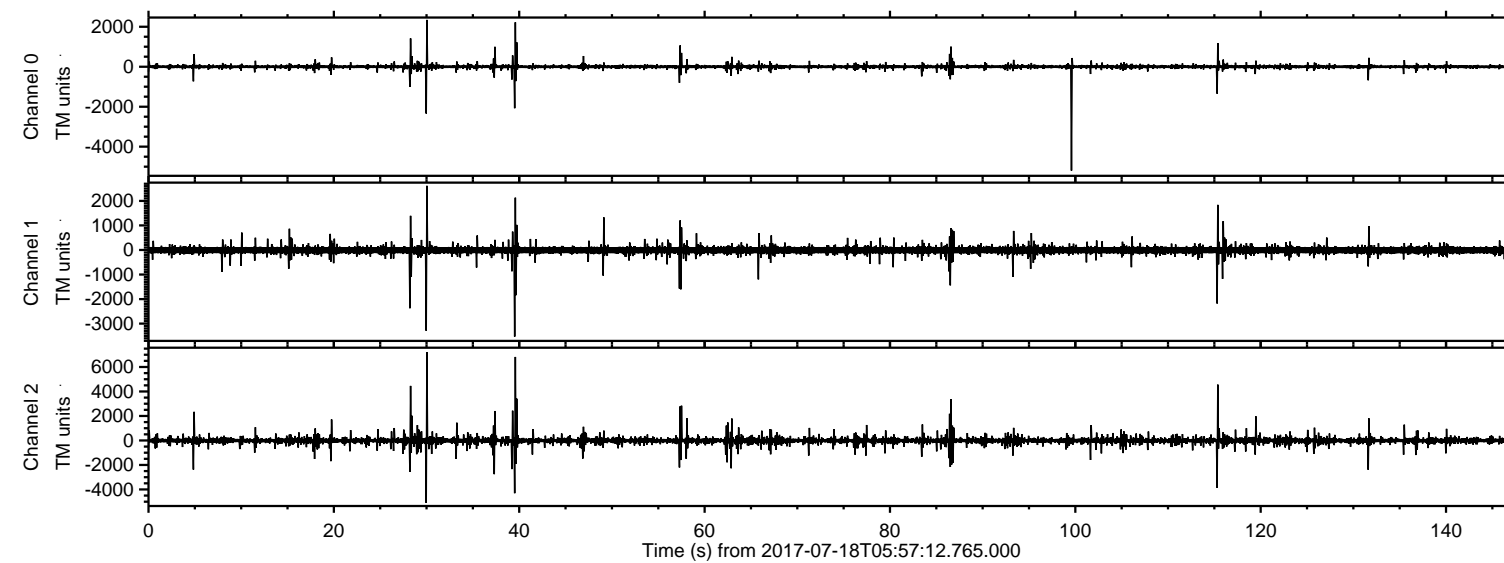


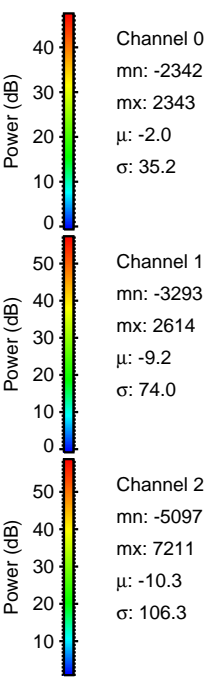
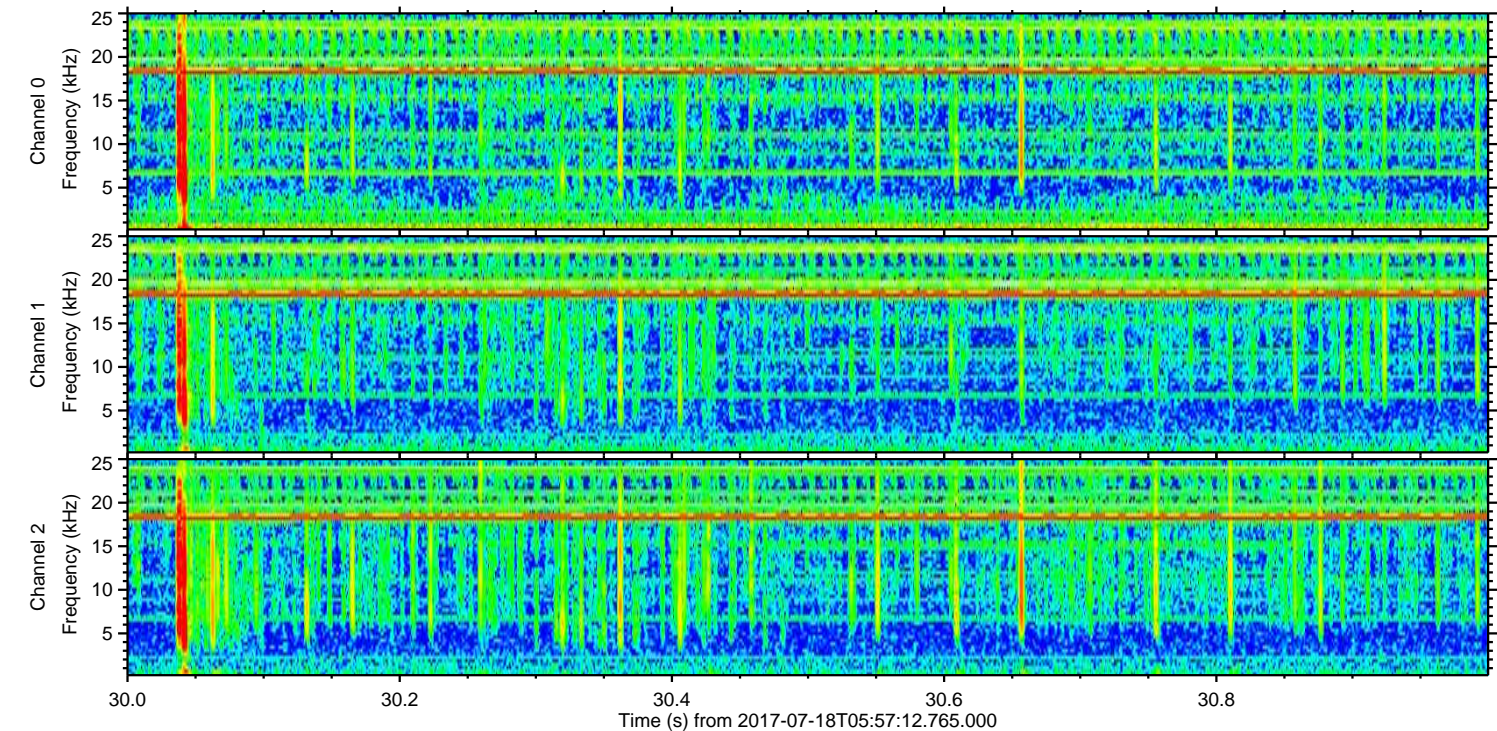
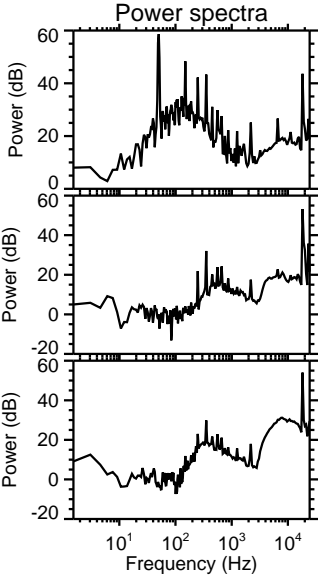
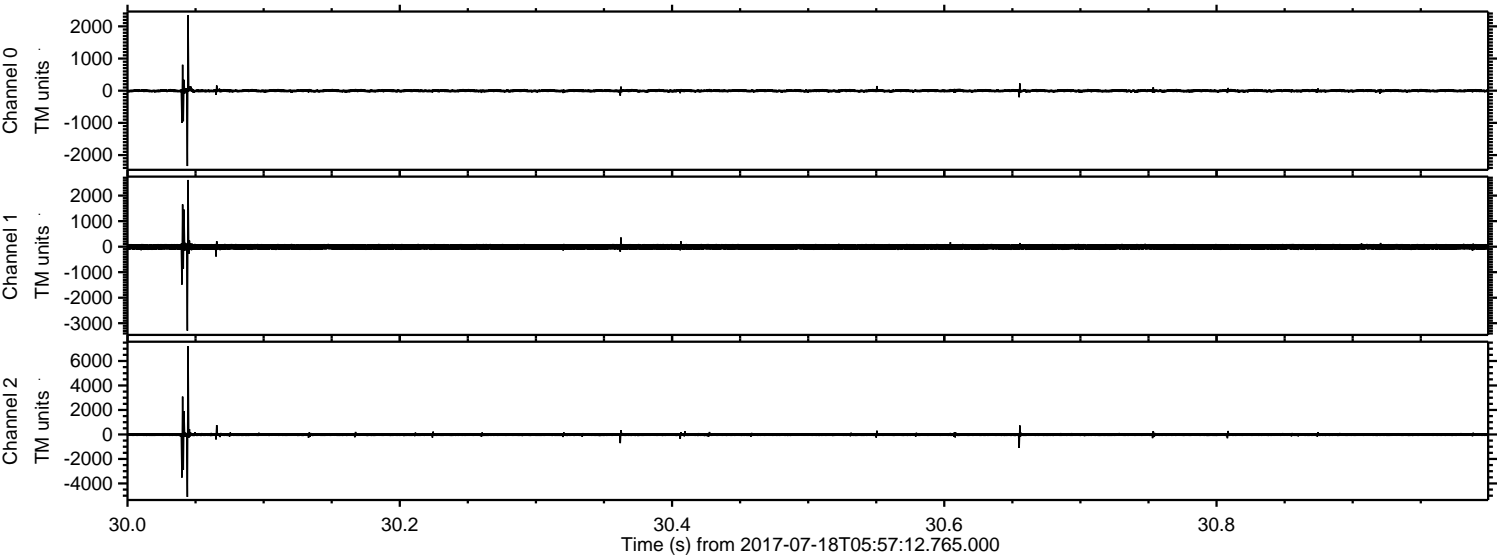
ELMAVAN 3D WAVEFORMS (Measured data sampled at 50 kHz) 51000 packets of 144 samples from 2017-07-18T05:57:12.765.000.

Processed Thu Jul 20 20:50:09 2017 by ELM ver.2012-10-06 from 001__elm20170718_055711__dat00.bin



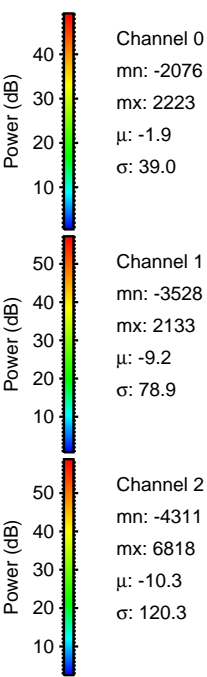
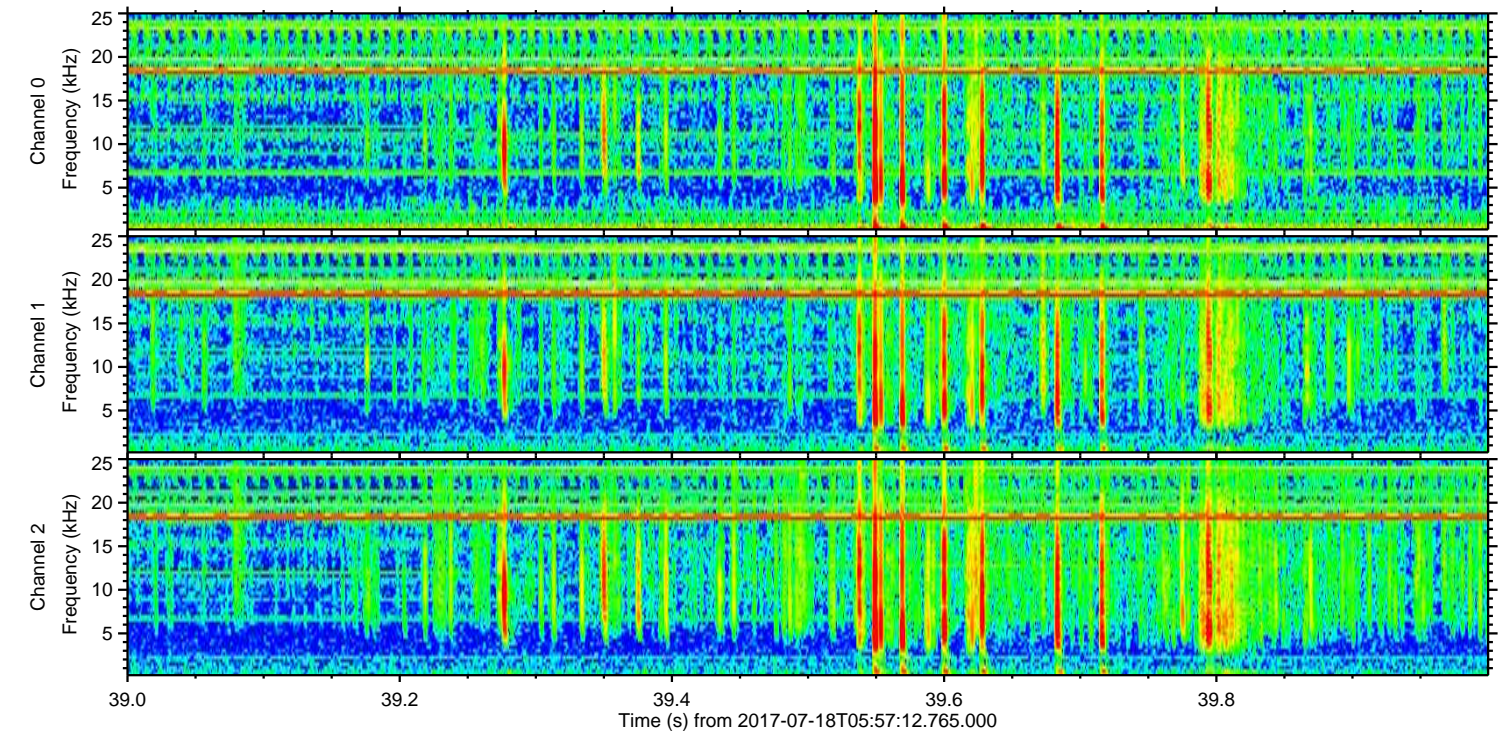
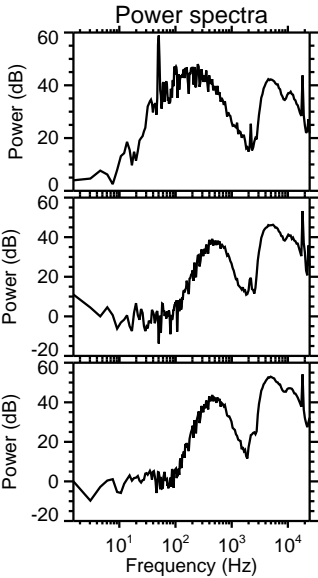
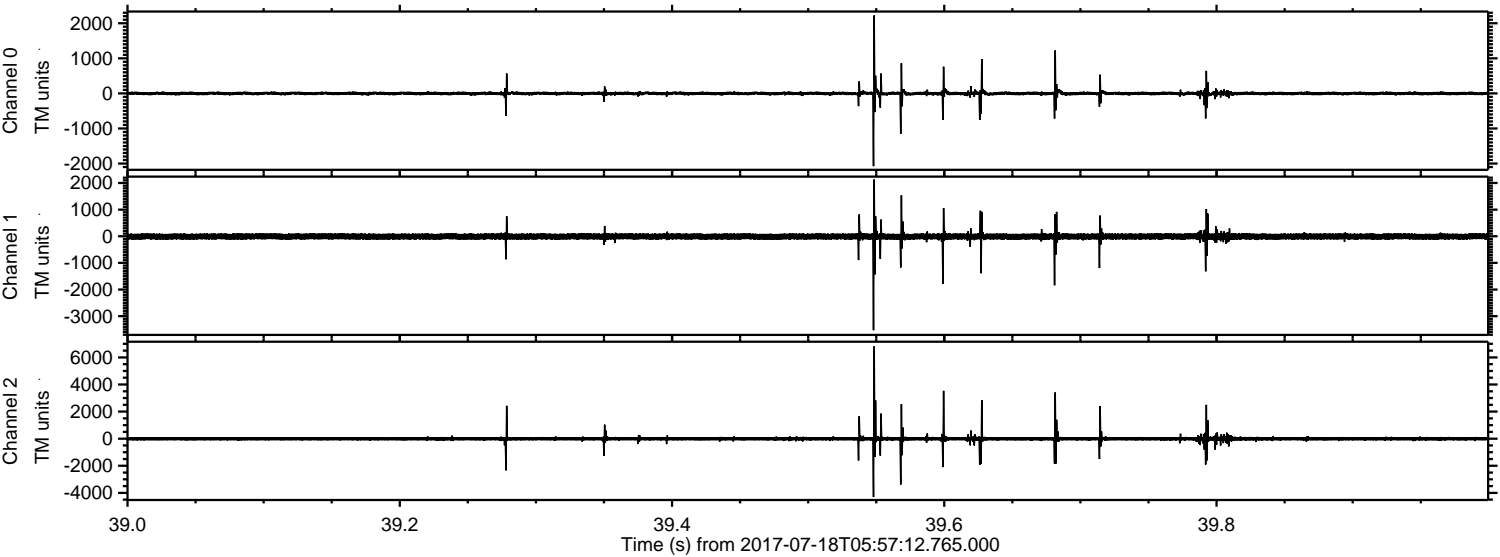
ELMAVAN 3D WAVEFORMS (Measured data sampled at 50 kHz) 51000 packets of 144 samples from 2017-07-18T05:57:12.765.000. Part 31/147

Processed Thu Jul 20 20:50:16 2017 by ELM ver.2012-10-06 from 001__elm20170718_055711__dat00.bin



ELMAVAN 3D WAVEFORMS (Measured data sampled at 50 kHz) 51000 packets of 144 samples from 2017-07-18T05:57:12.765.000. Part 40/147

Processed Thu Jul 20 20:50:16 2017 by ELM ver.2012-10-06 from 001__elm20170718_055711__dat00.bin



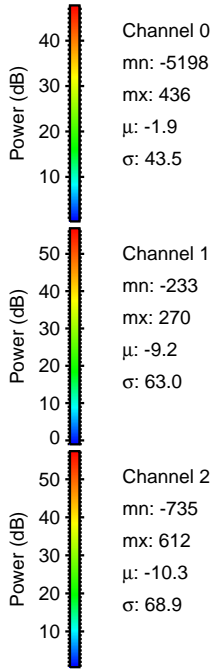
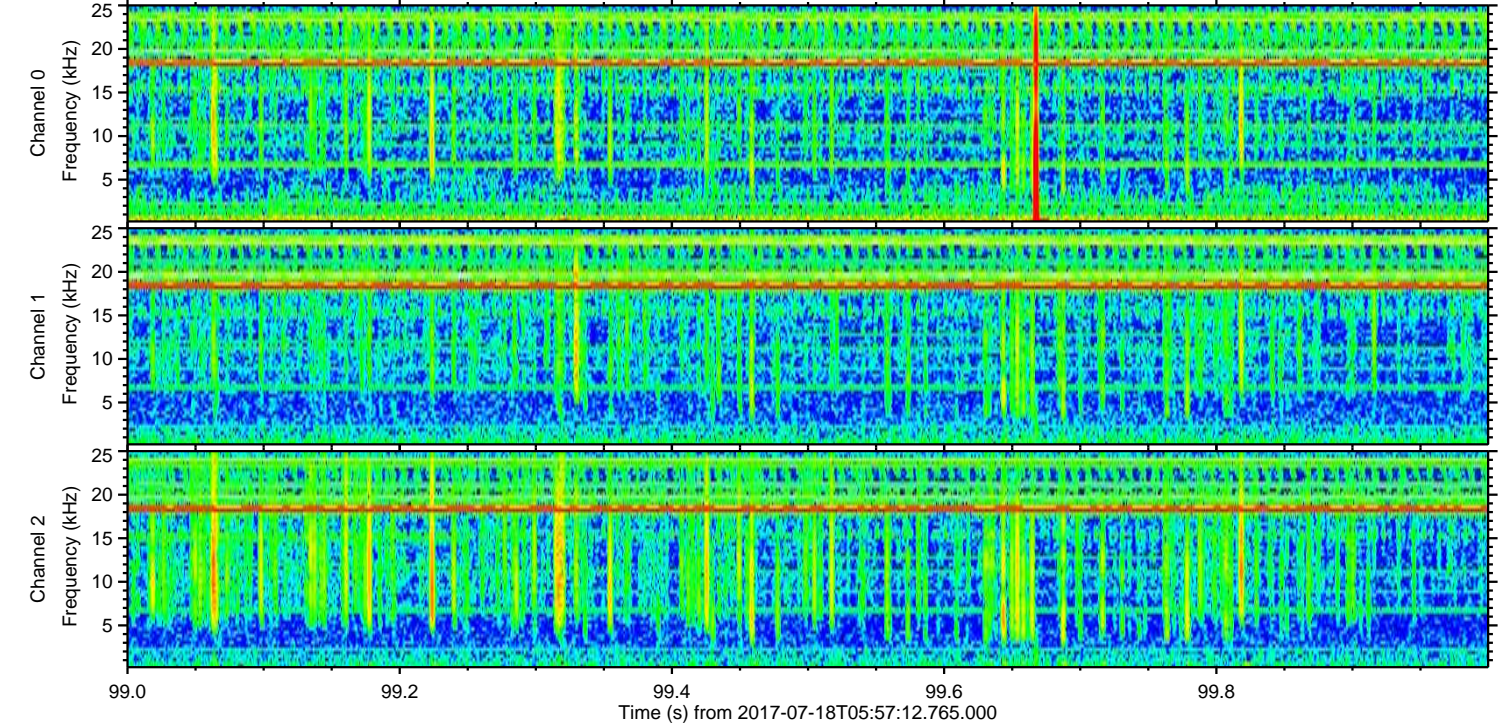
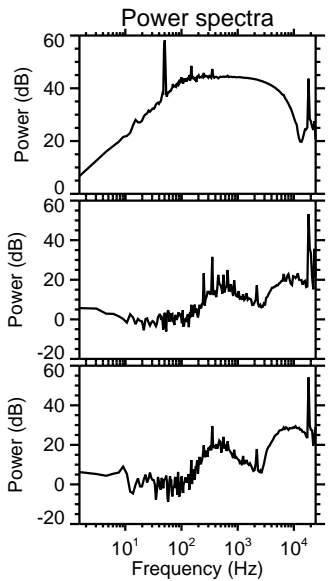
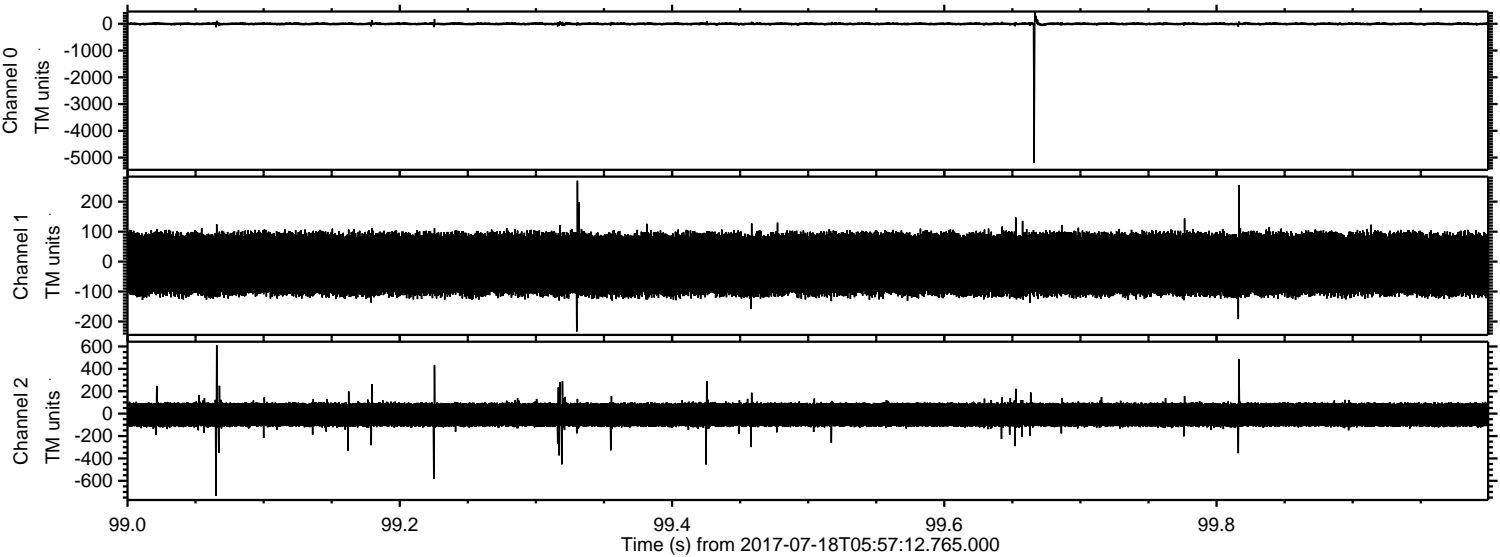
Channel 0
mn: -2076
mx: 2223
 μ : -1.9
 σ : 39.0

Channel 1
mn: -3528
mx: 2133
 μ : -9.2
 σ : 78.9

Channel 2
mn: -4311
mx: 6818
 μ : -10.3
 σ : 120.3

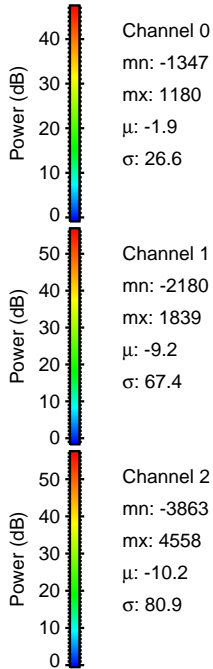
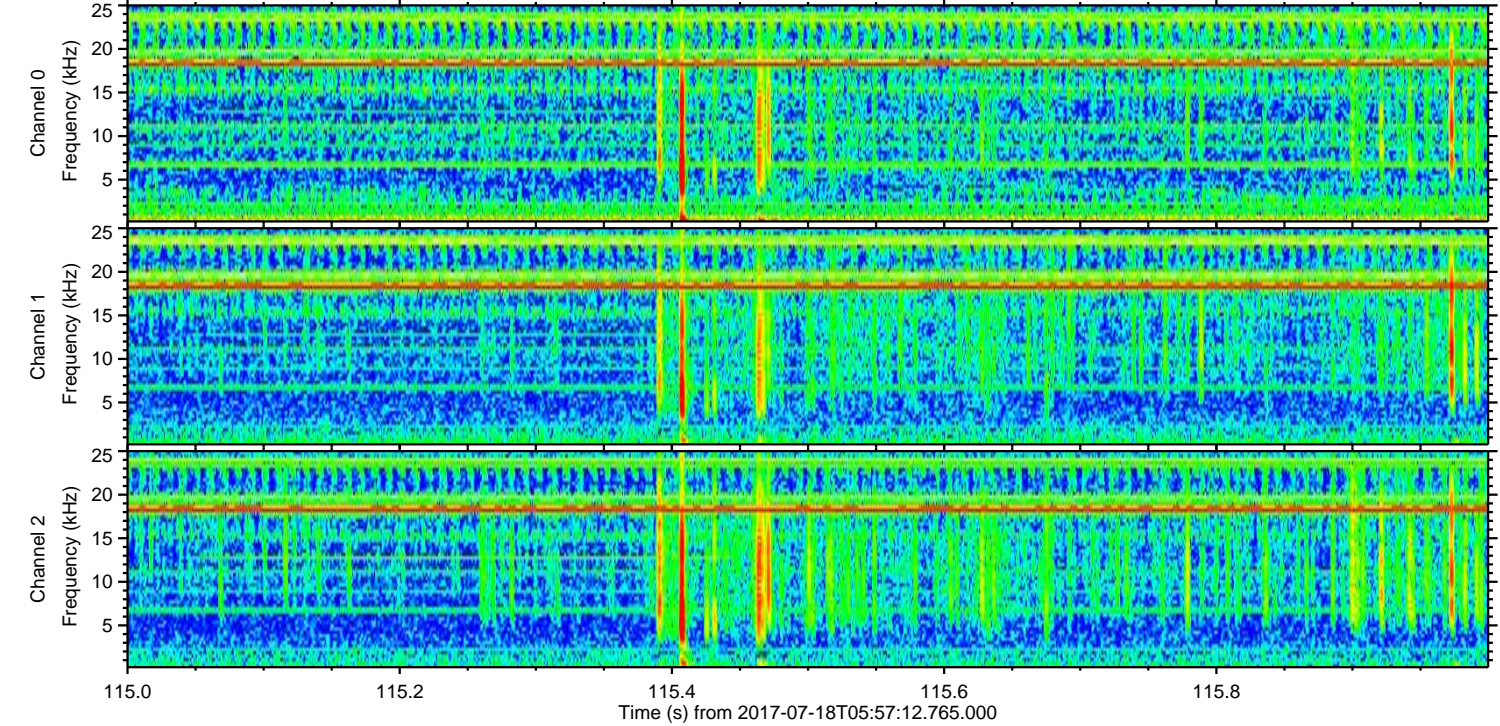
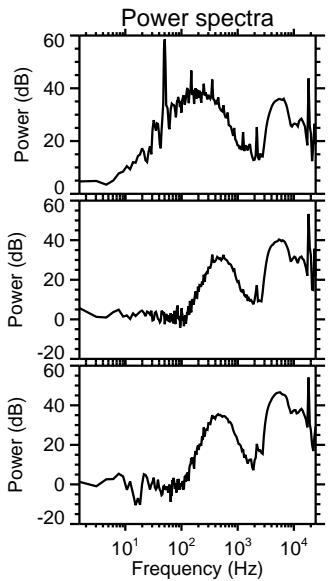
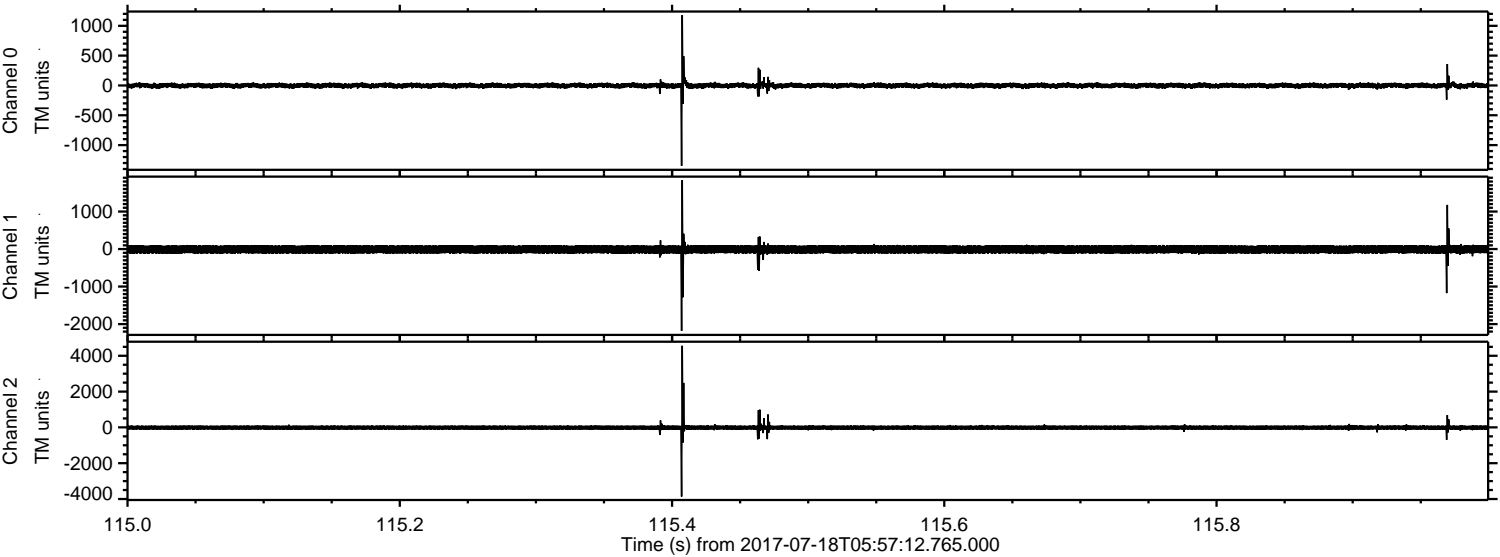
ELMAVAN 3D WAVEFORMS (Measured data sampled at 50 kHz) 51000 packets of 144 samples from 2017-07-18T05:57:12.765.000. Part 100/147

Processed Thu Jul 20 20:50:17 2017 by ELM ver.2012-10-06 from 001__elm20170718_055711__dat00.bin



ELMAVAN 3D WAVEFORMS (Measured data sampled at 50 kHz) 51000 packets of 144 samples from 2017-07-18T05:57:12.765.000. Part 116/147

Processed Thu Jul 20 20:50:18 2017 by ELM ver.2012-10-06 from 001__elm20170718_055711__dat00.bin

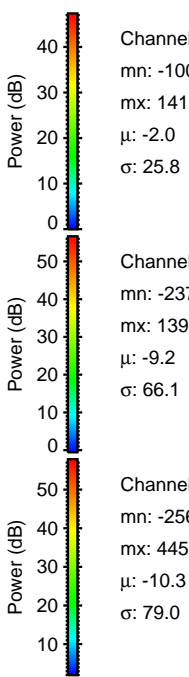
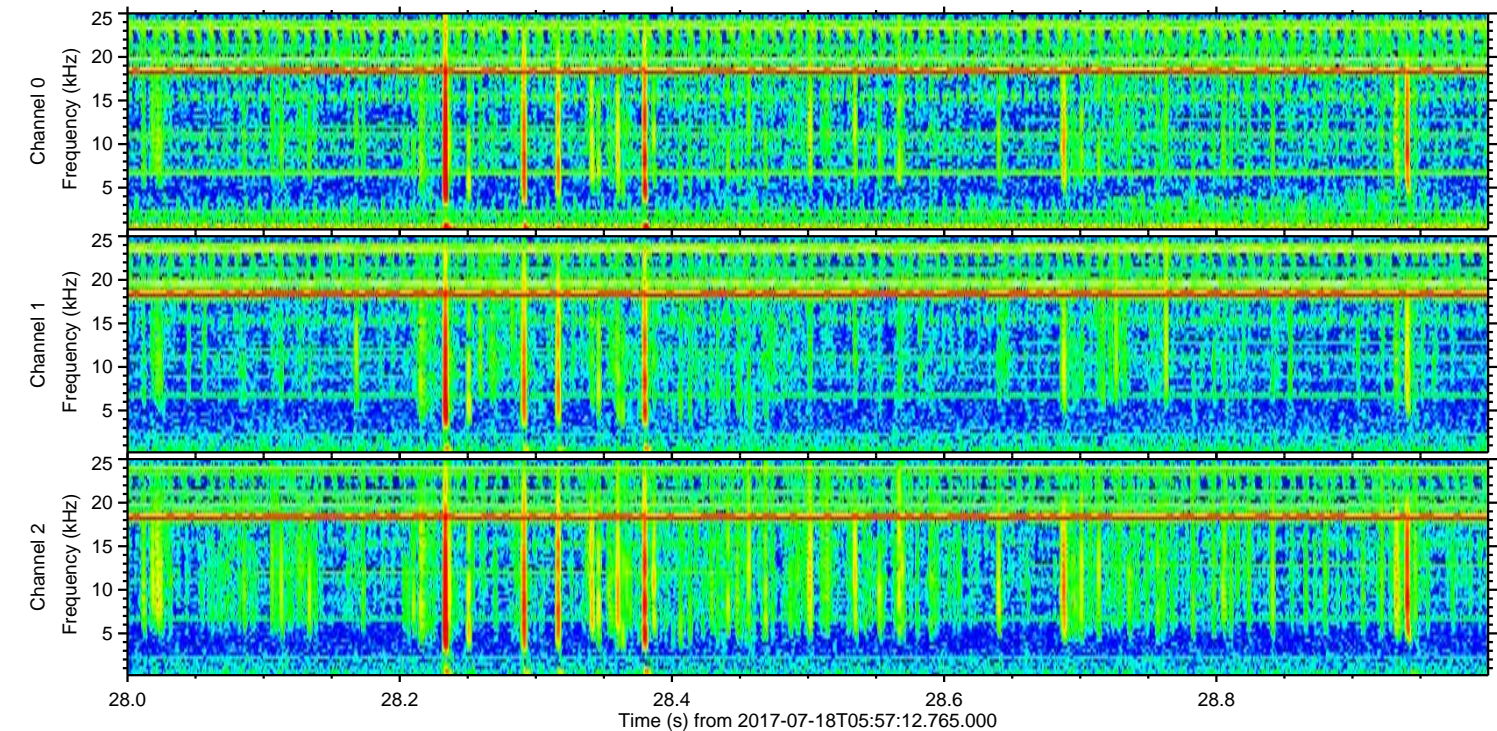
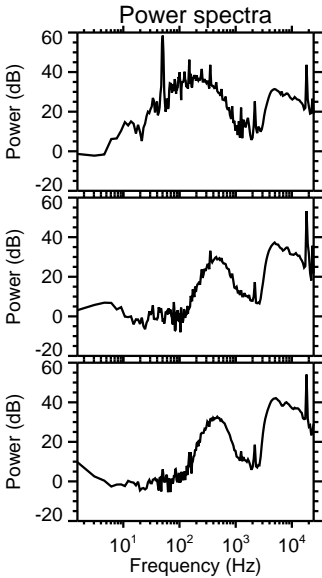
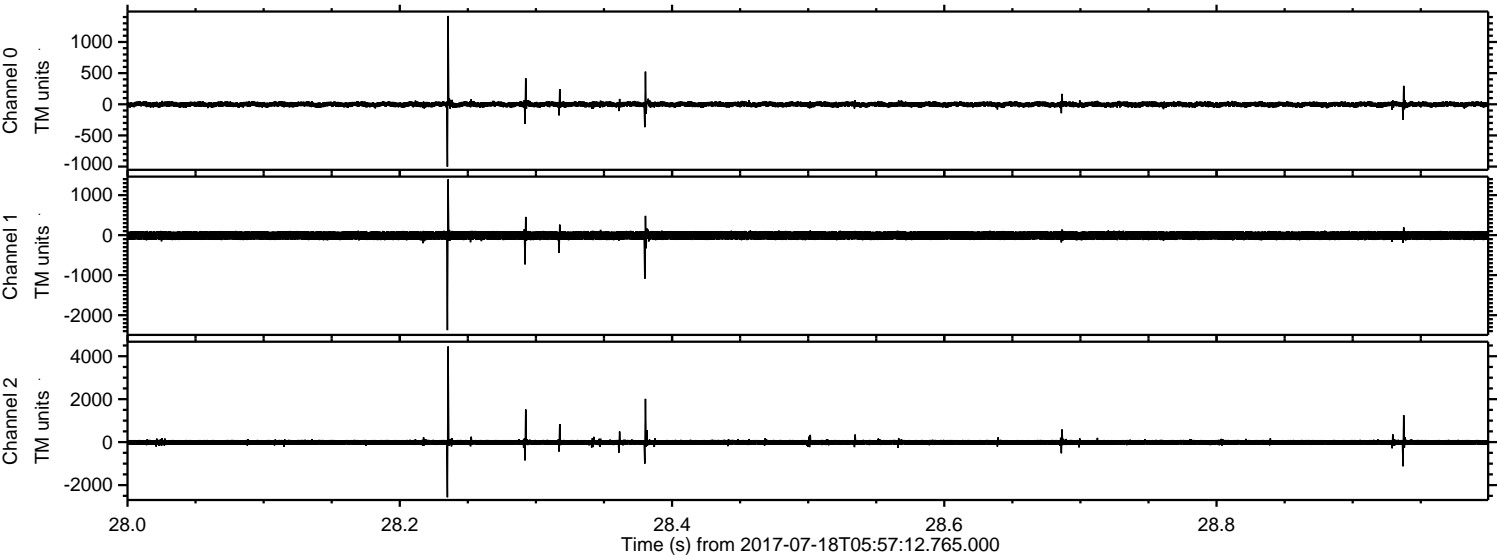


Channel 0
mn: -1347
mx: 1180
 μ : -1.9
 σ : 26.6

Channel 1
mn: -2180
mx: 1839
 μ : -9.2
 σ : 67.4

Channel 2
mn: -3863
mx: 4558
 μ : -10.2
 σ : 80.9

Processed Thu Jul 20 20:50:19 2017 by ELM ver.2012-10-06 from 001__elm20170718_055711__dat00.bin

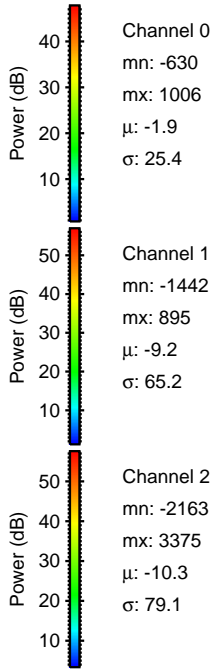
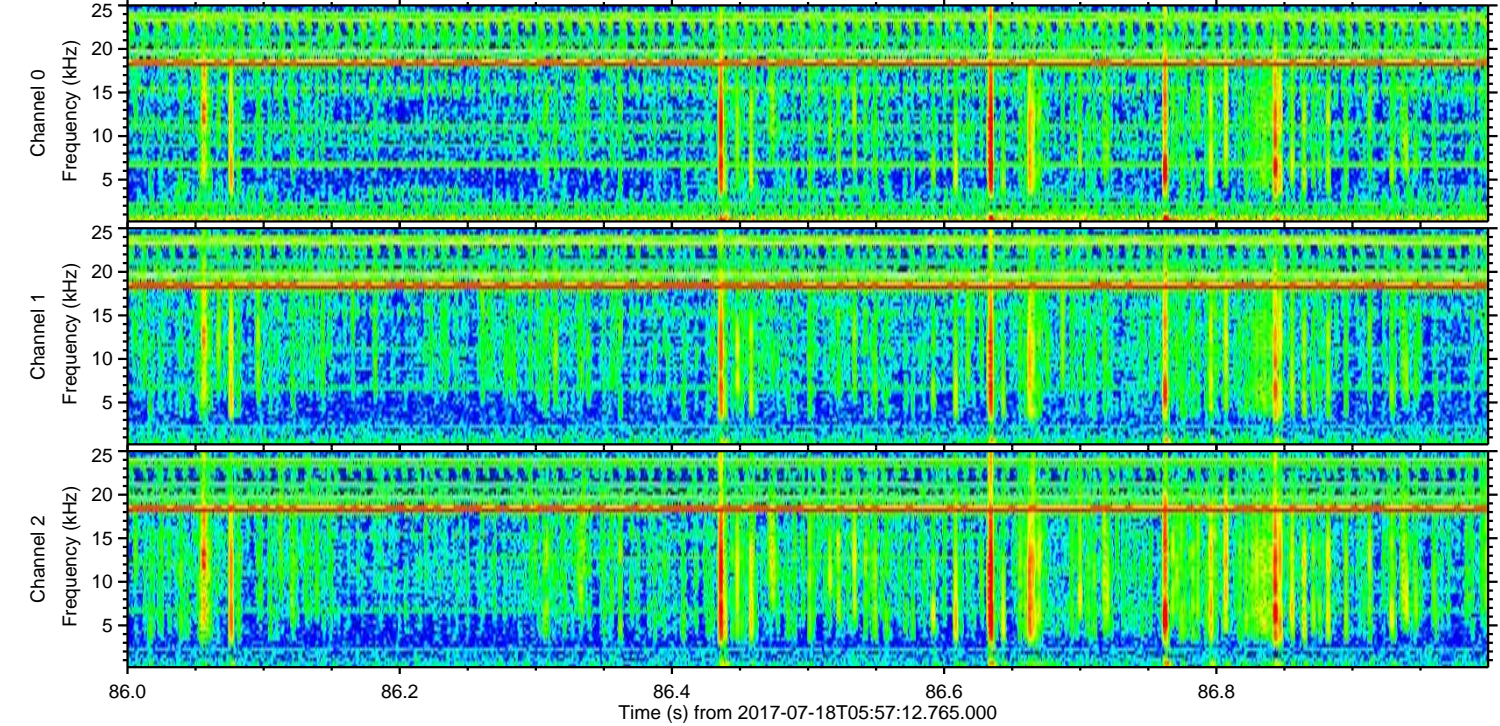
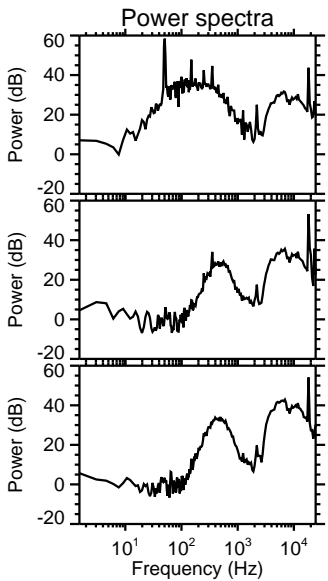
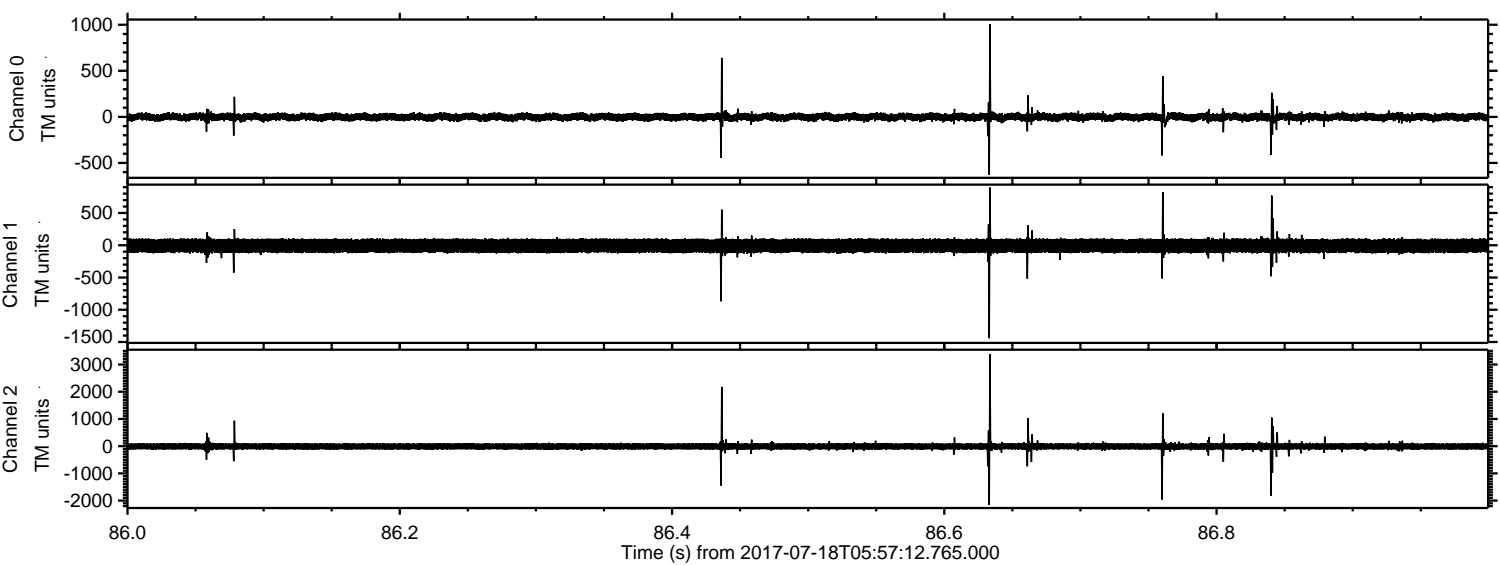


Channel 0
mn: -1002
mx: 1418
 μ : -2.0
 σ : 25.8

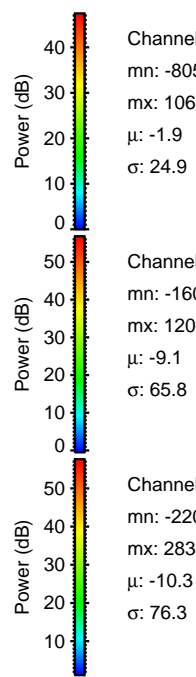
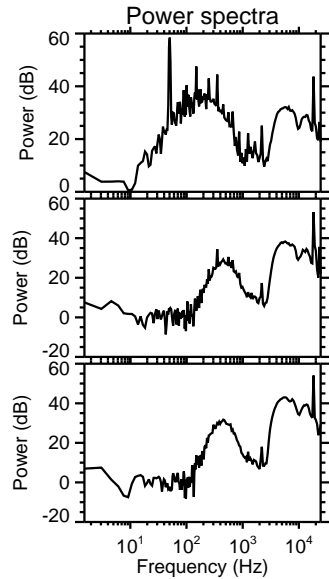
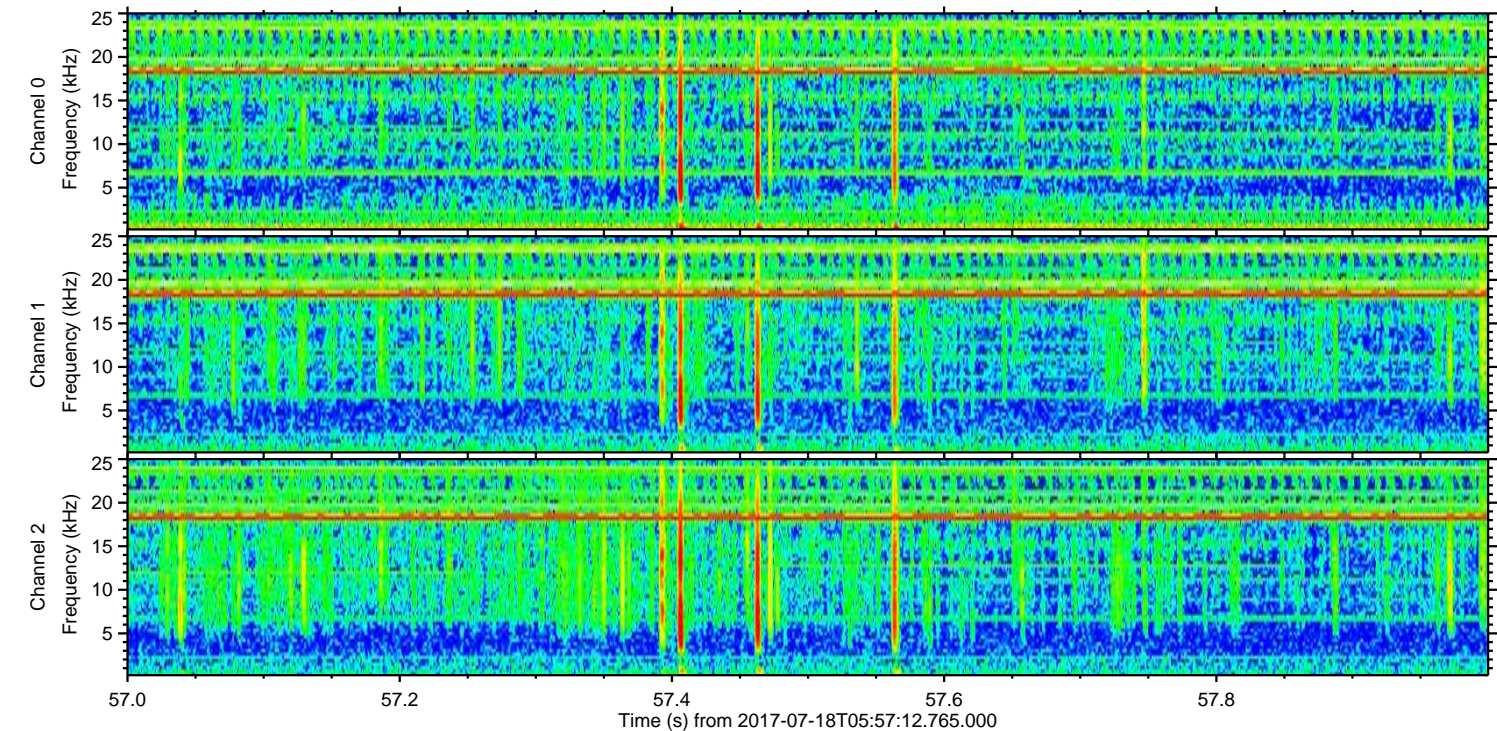
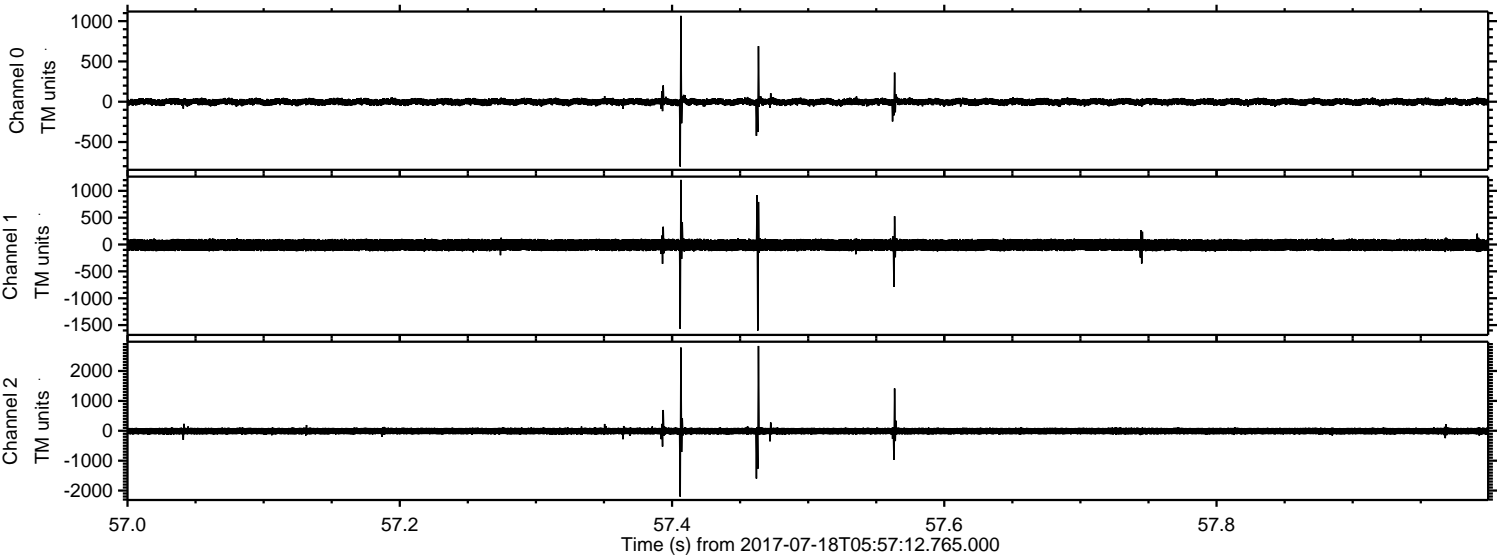
Channel 1
mn: -2375
mx: 1393
 μ : -9.2
 σ : 66.1

Channel 2
mn: -2566
mx: 4452
 μ : -10.3
 σ : 79.0

Processed Thu Jul 20 20:50:20 2017 by ELM ver.2012-10-06 from 001__elm20170718_055711__dat00.bin



Processed Thu Jul 20 20:50:20 2017 by ELM ver.2012-10-06 from 001__elm20170718_055711__dat00.bin

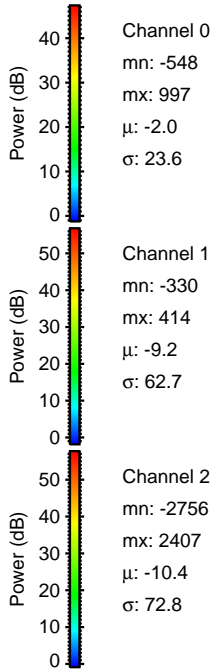
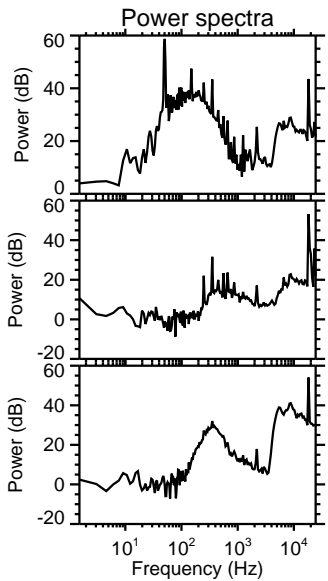
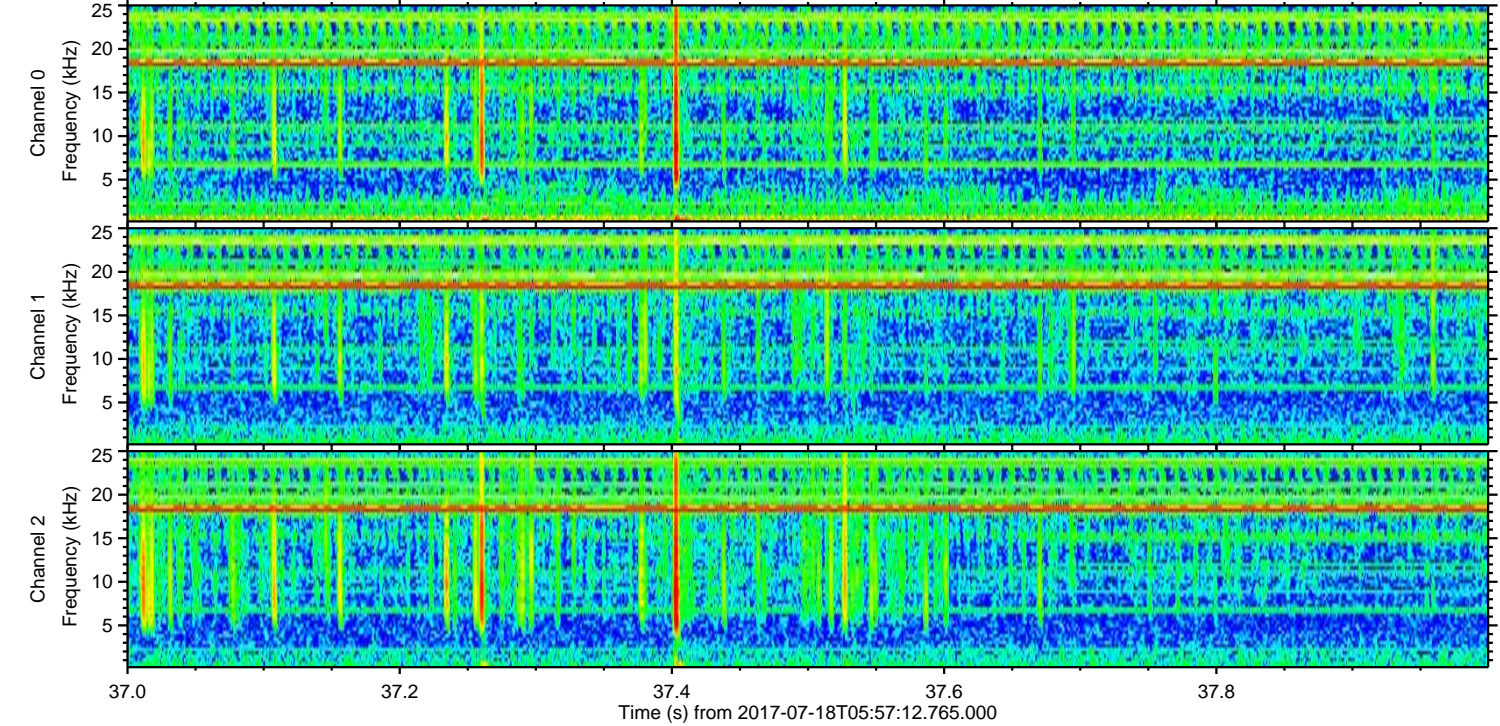
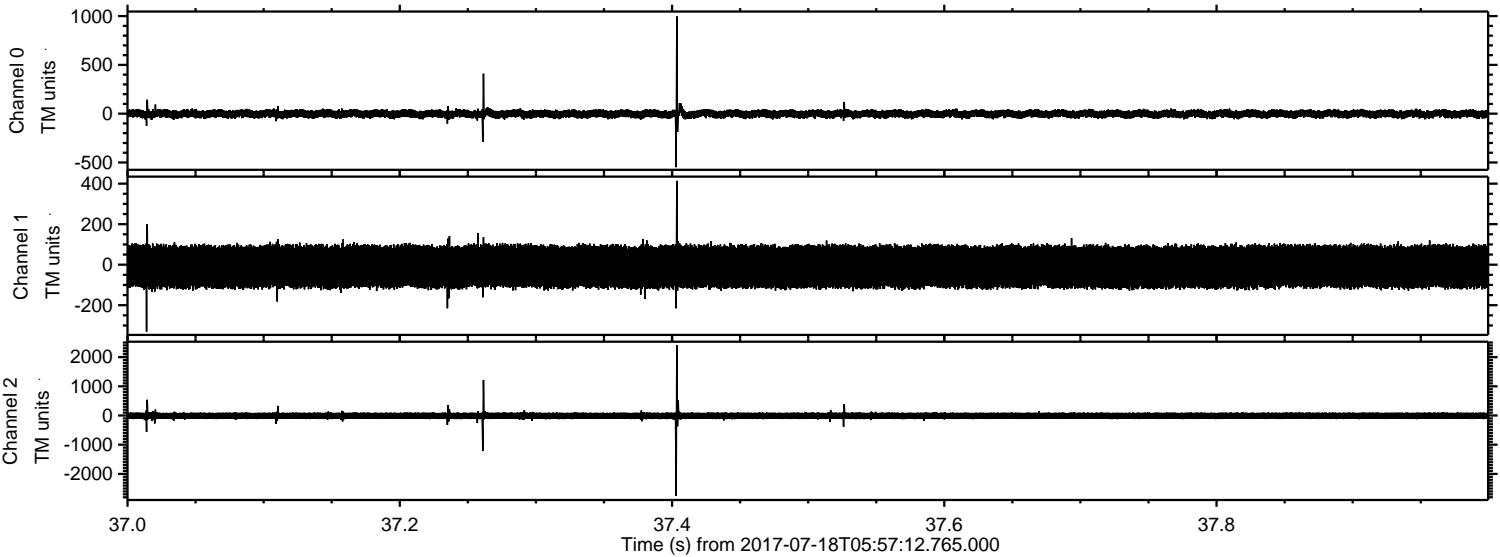


Channel 0
mn: -805
mx: 1066
 μ : -1.9
 σ : 24.9

Channel 1
mn: -1603
mx: 1204
 μ : -9.1
 σ : 65.8

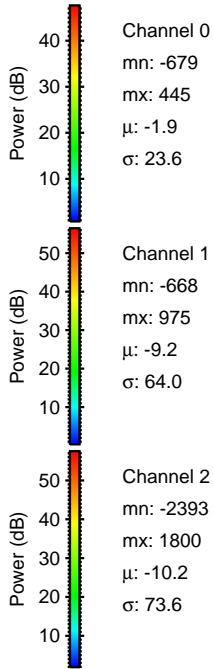
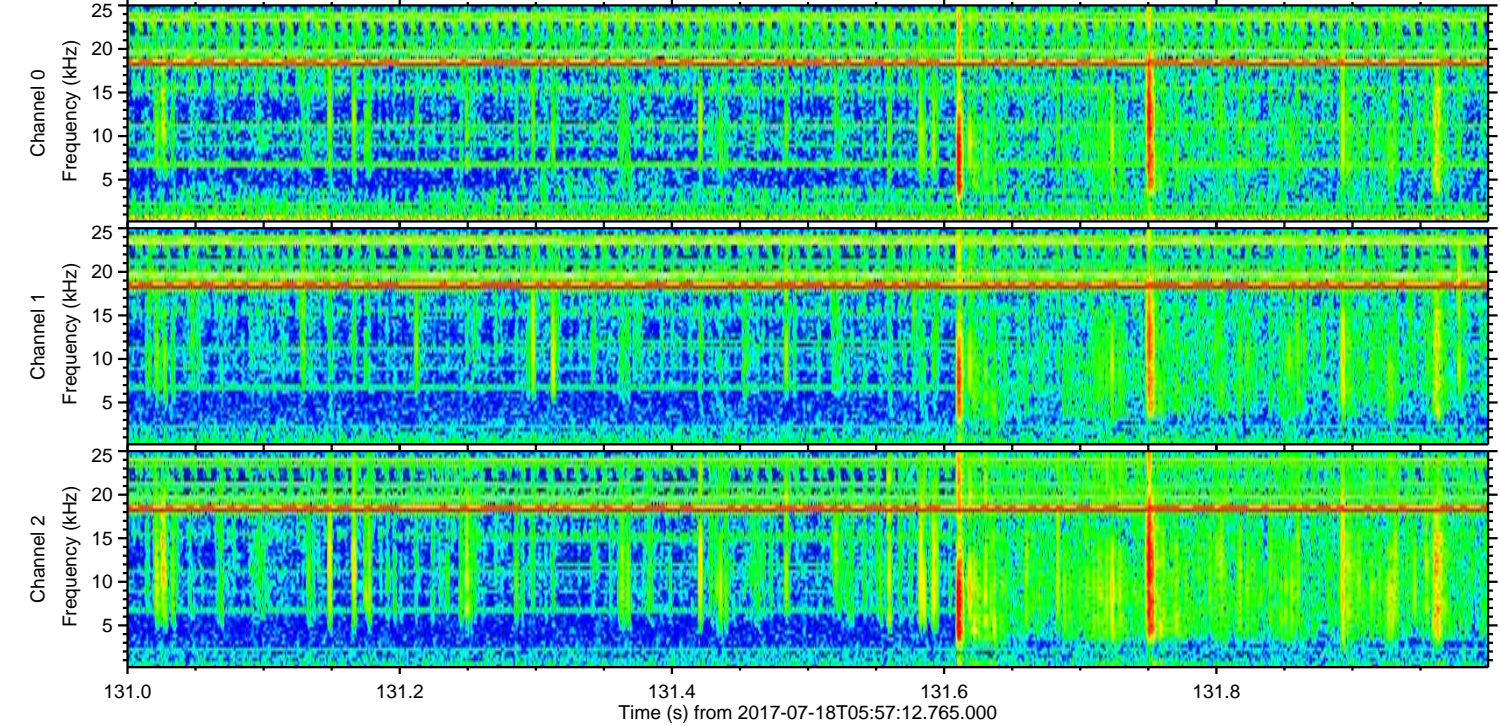
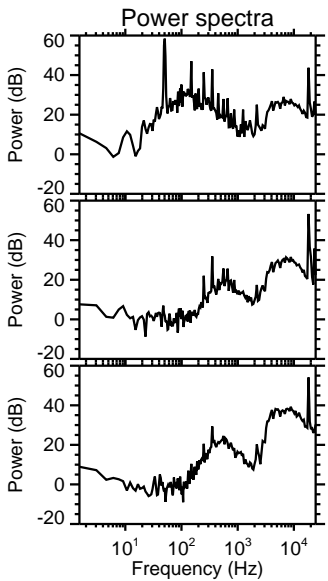
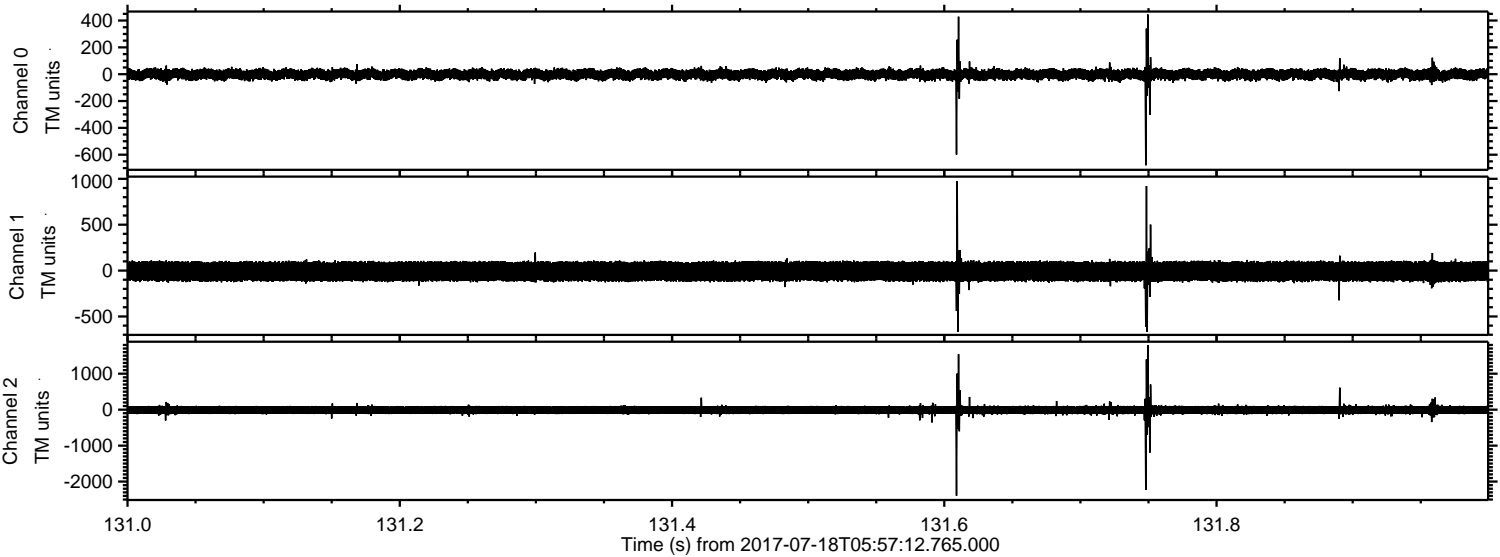
Channel 2
mn: -2206
mx: 2838
 μ : -10.3
 σ : 76.3

Processed Thu Jul 20 20:50:21 2017 by ELM ver.2012-10-06 from 001__elm20170718_055711__dat00.bin



ELMAVAN 3D WAVEFORMS (Measured data sampled at 50 kHz) 51000 packets of 144 samples from 2017-07-18T05:57:12.765.000. Part 132/147

Processed Thu Jul 20 20:50:22 2017 by ELM ver.2012-10-06 from 001__elm20170718_055711__dat00.bin



Processed Thu Jul 20 20:50:23 2017 by ELM ver.2012-10-06 from 001__elm20170718_055711__dat00.bin

