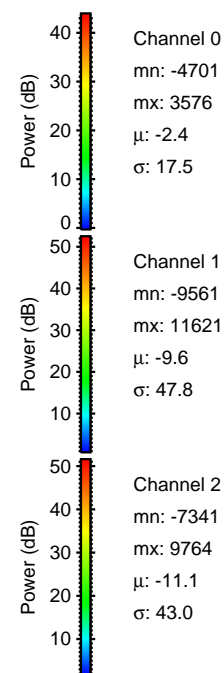
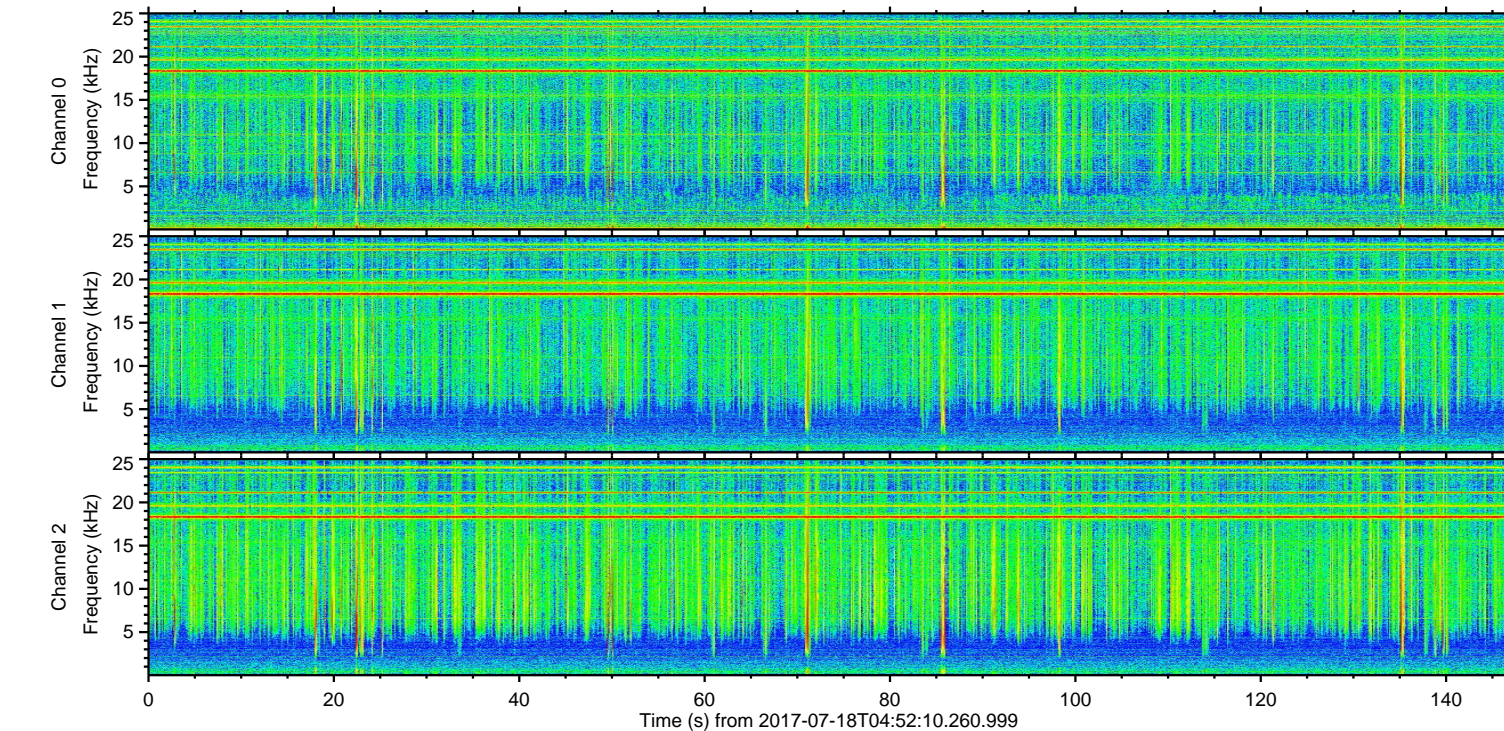
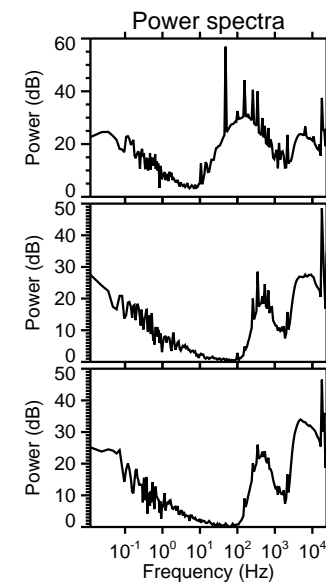
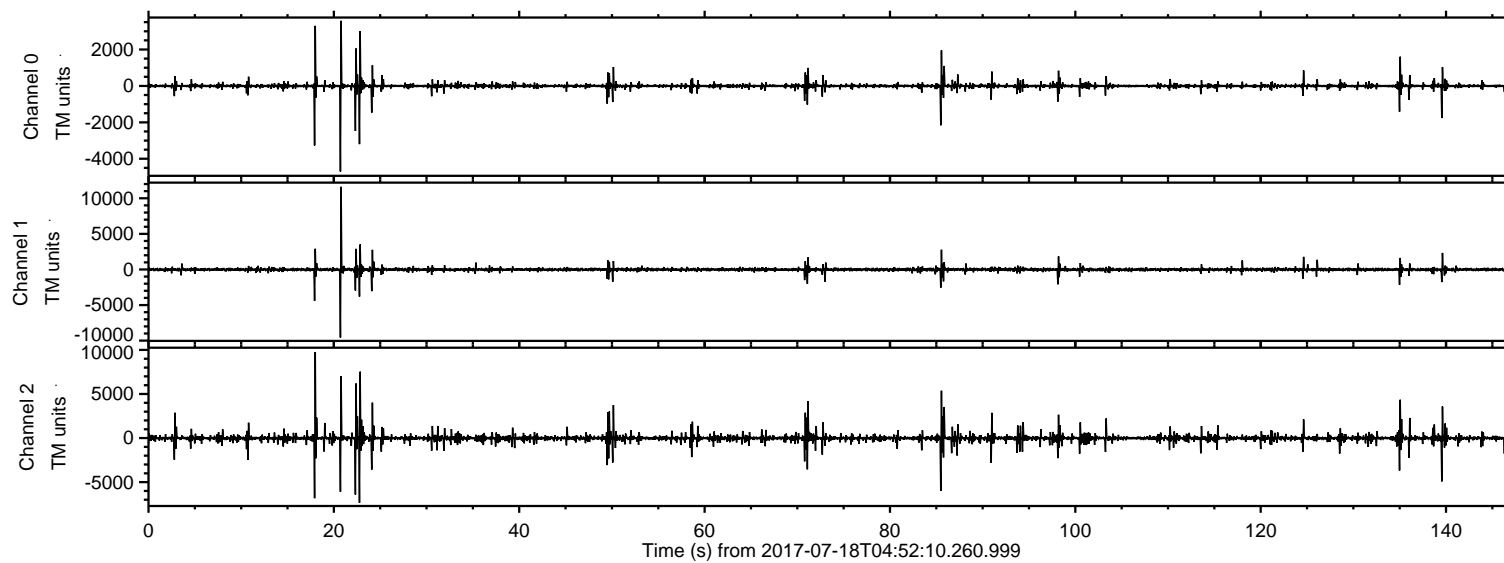


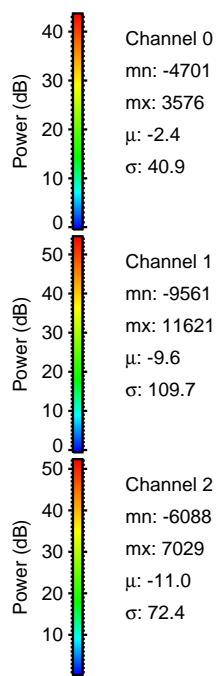
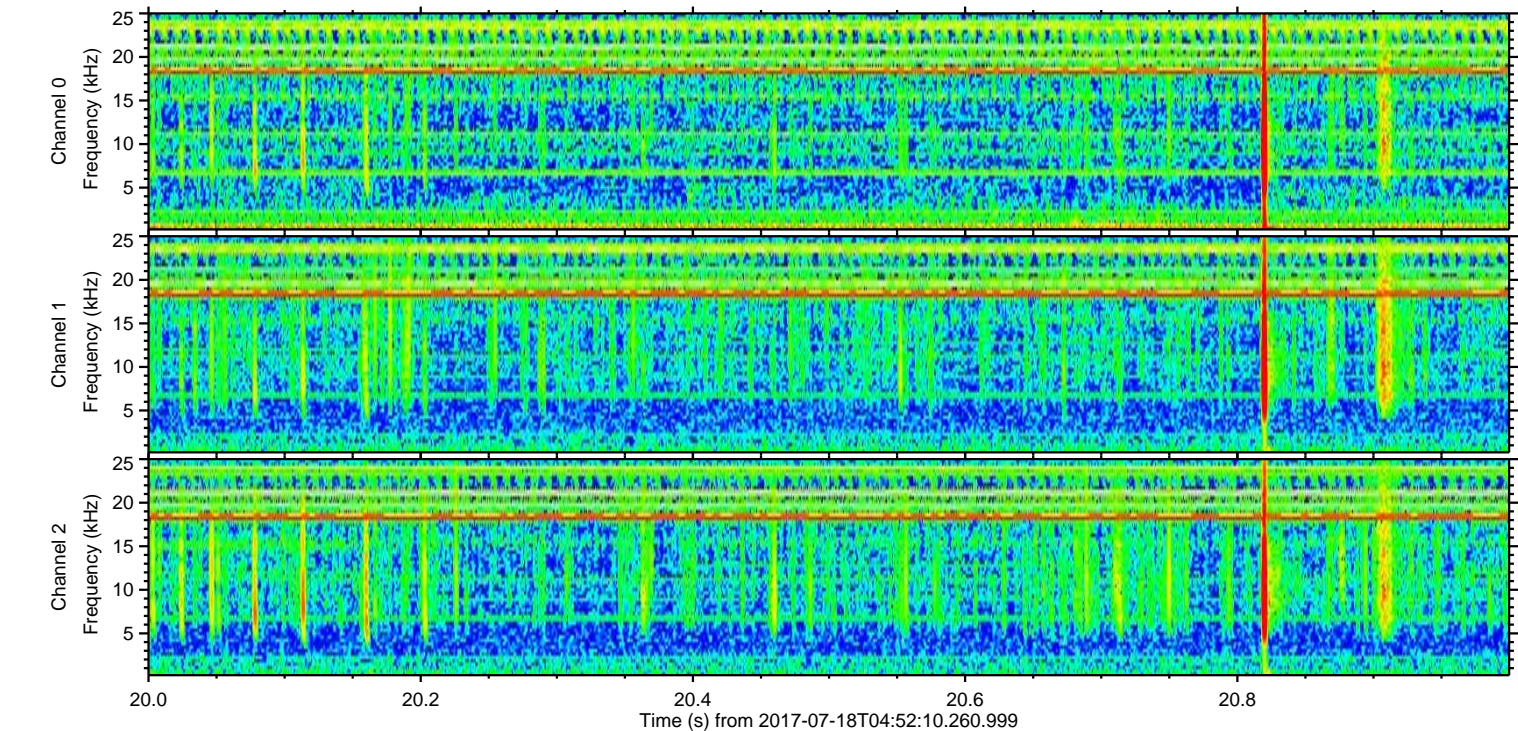
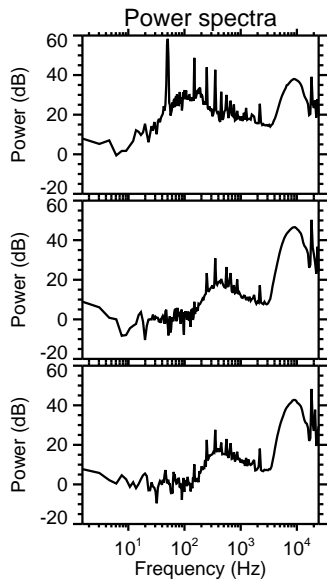
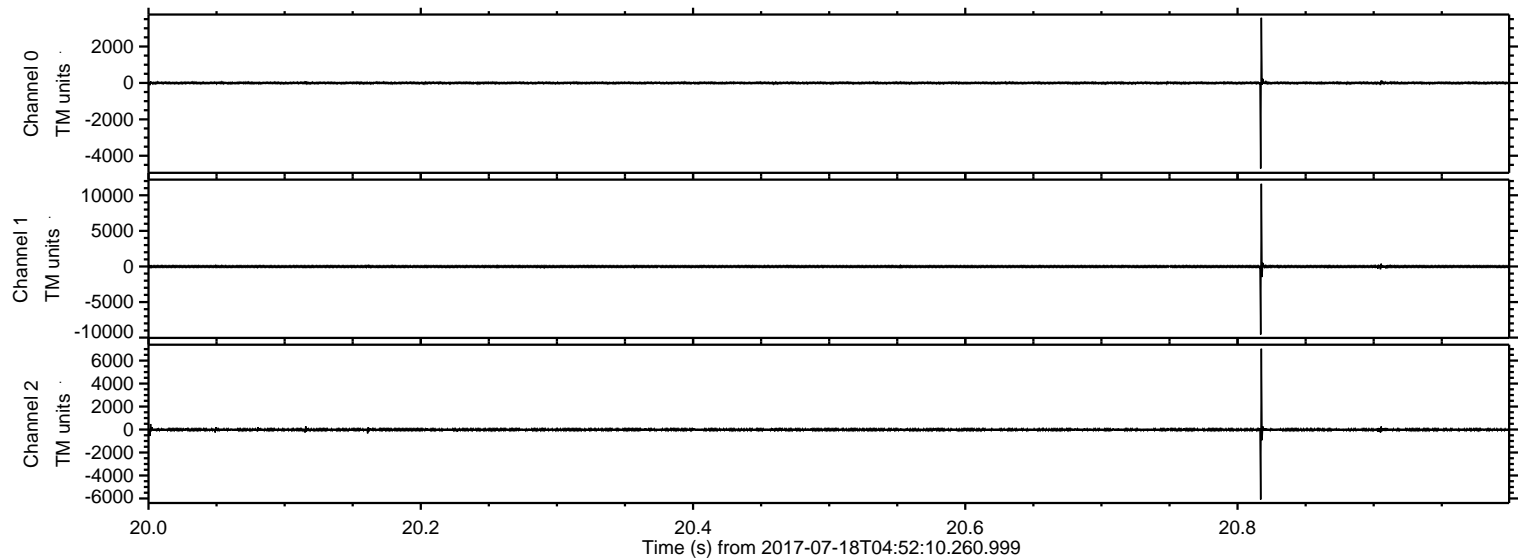
# ELMAVAN 3D WAVEFORMS (Measured data sampled at 50 kHz) 51000 packets of 144 samples from 2017-07-18T04:52:10.260.999.

Processed Thu Jul 20 20:40:25 2017 by ELM ver.2012-10-06 from 001\_\_elm20170718\_045209\_\_dat00.bin



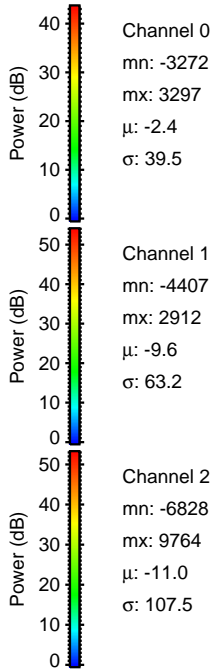
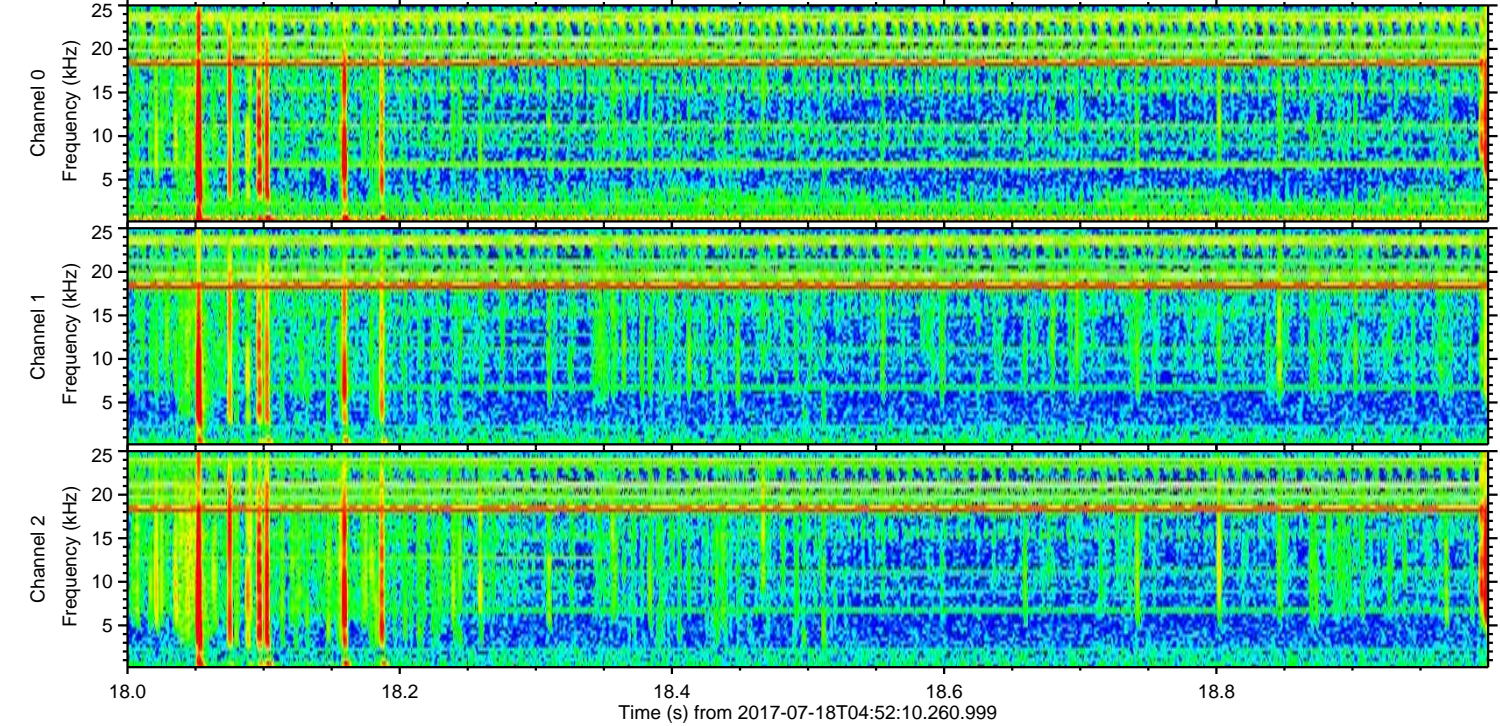
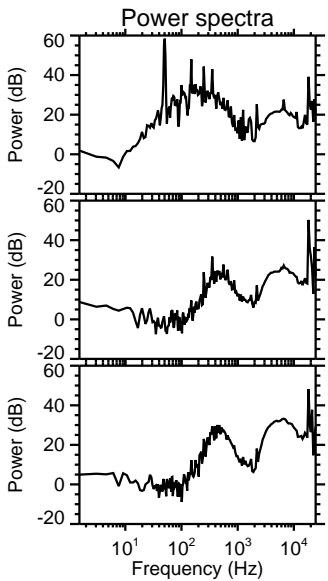
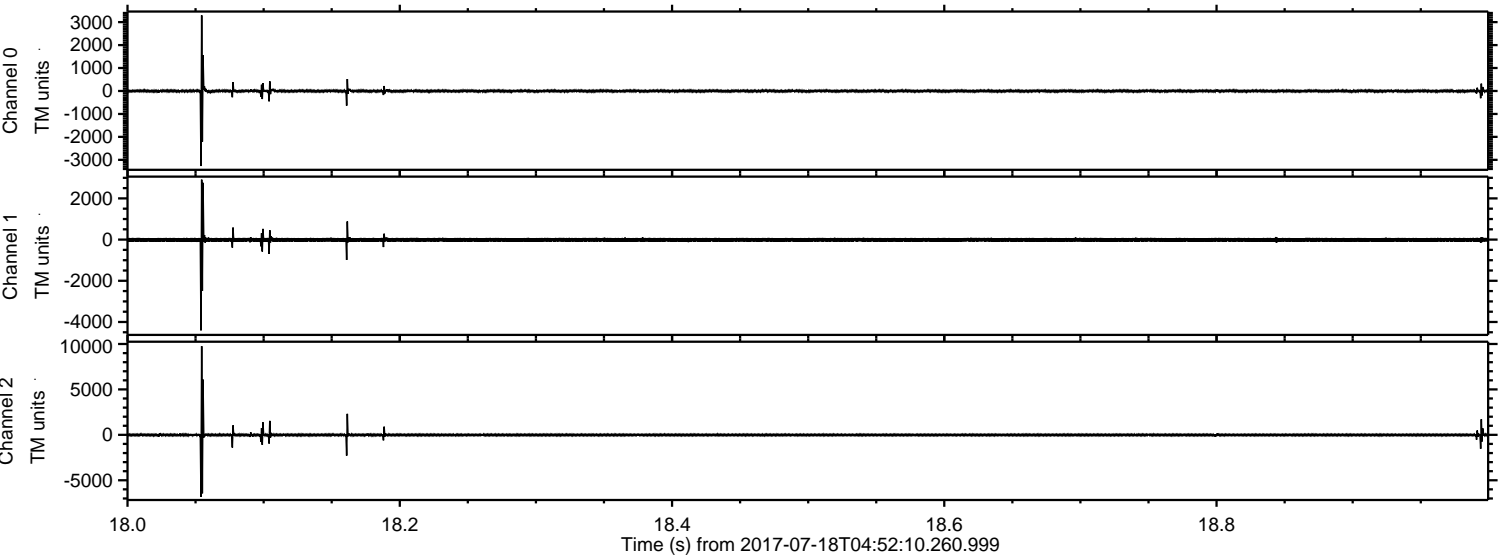


Processed Thu Jul 20 20:40:33 2017 by ELM ver.2012-10-06 from 001\_\_elm20170718\_045209\_\_dat00.bin





Processed Thu Jul 20 20:40:34 2017 by ELM ver.2012-10-06 from 001\_\_elm20170718\_045209\_\_dat00.bin



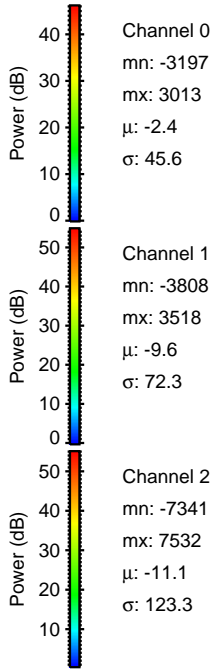
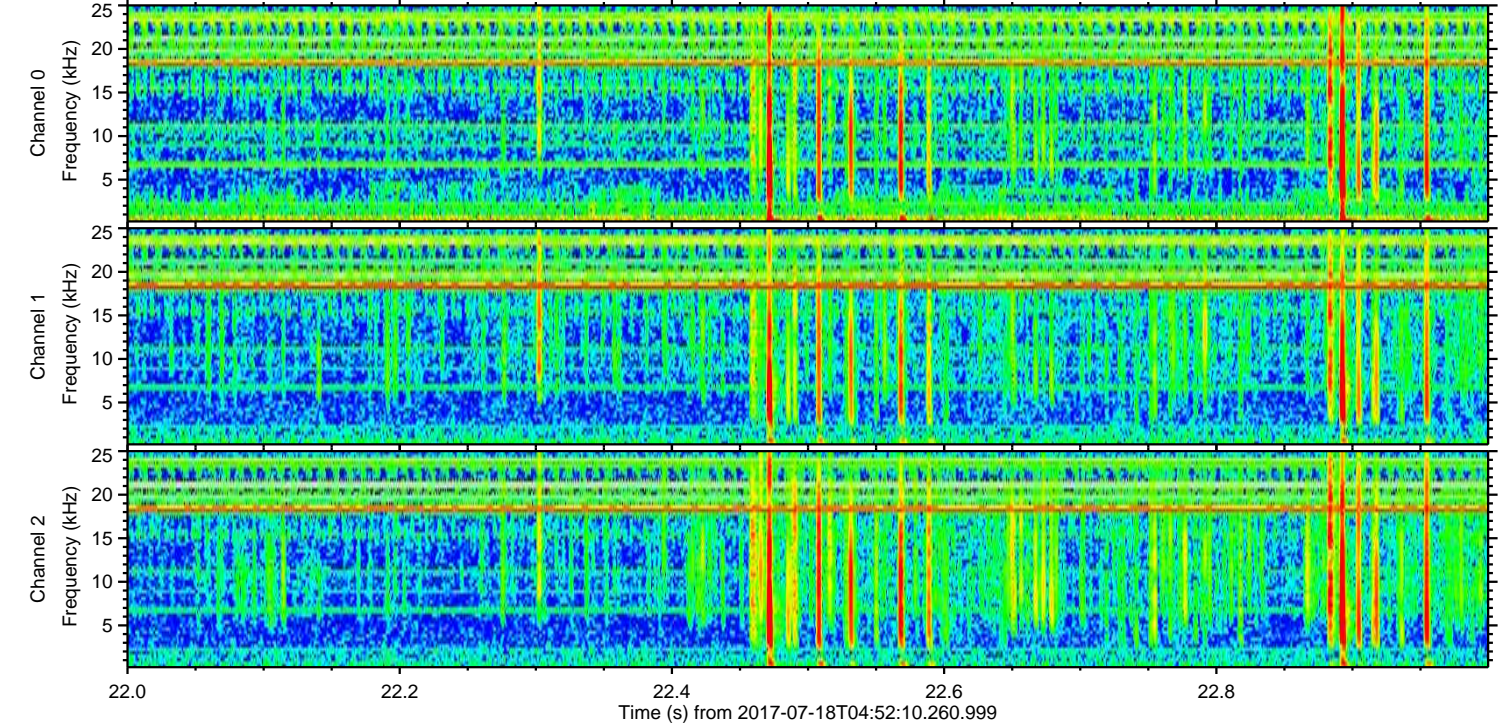
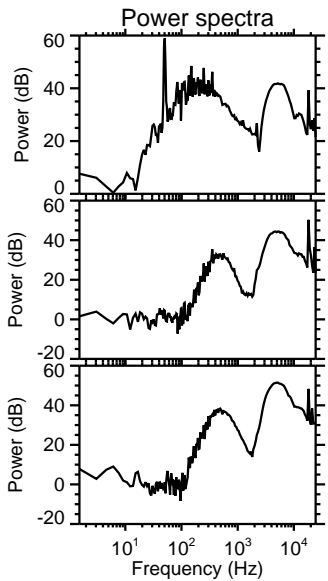
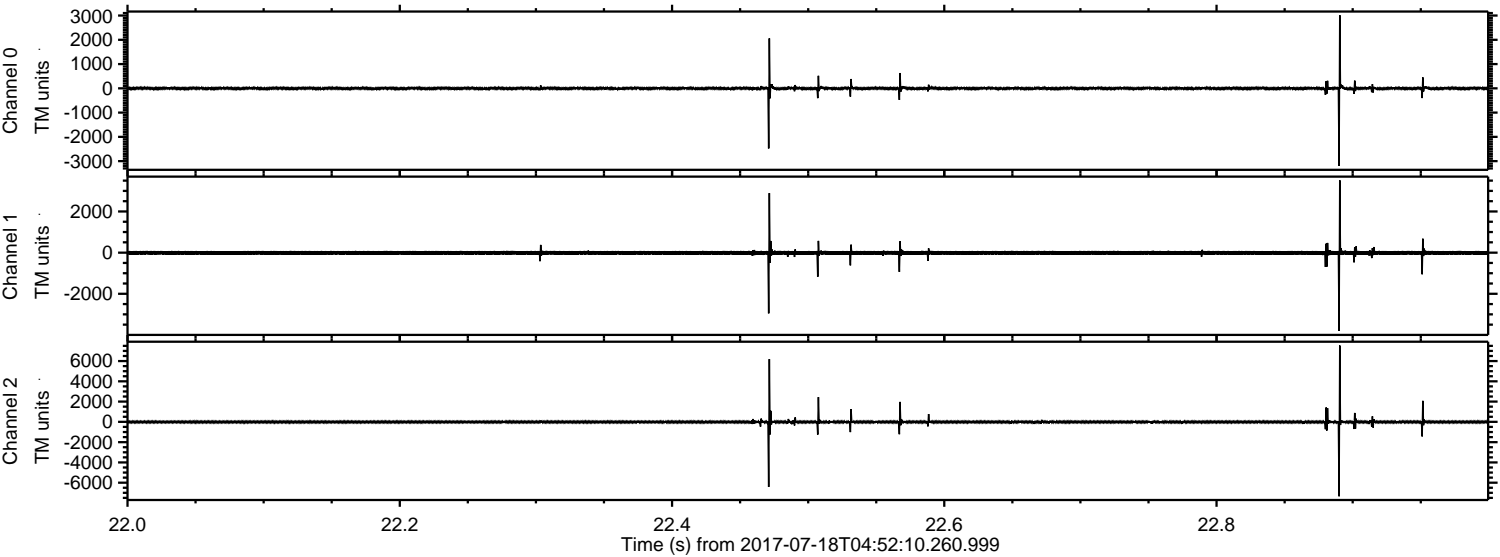
Channel 0  
mn: -3272  
mx: 3297  
 $\mu$ : -2.4  
 $\sigma$ : 39.5

Channel 1  
mn: -4407  
mx: 2912  
 $\mu$ : -9.6  
 $\sigma$ : 63.2

Channel 2  
mn: -6828  
mx: 9764  
 $\mu$ : -11.0  
 $\sigma$ : 107.5



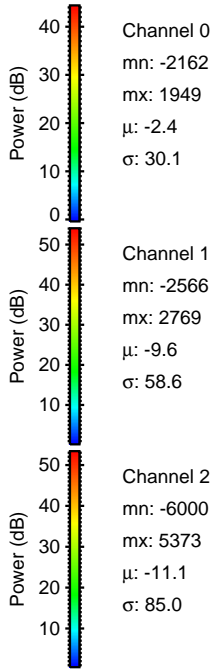
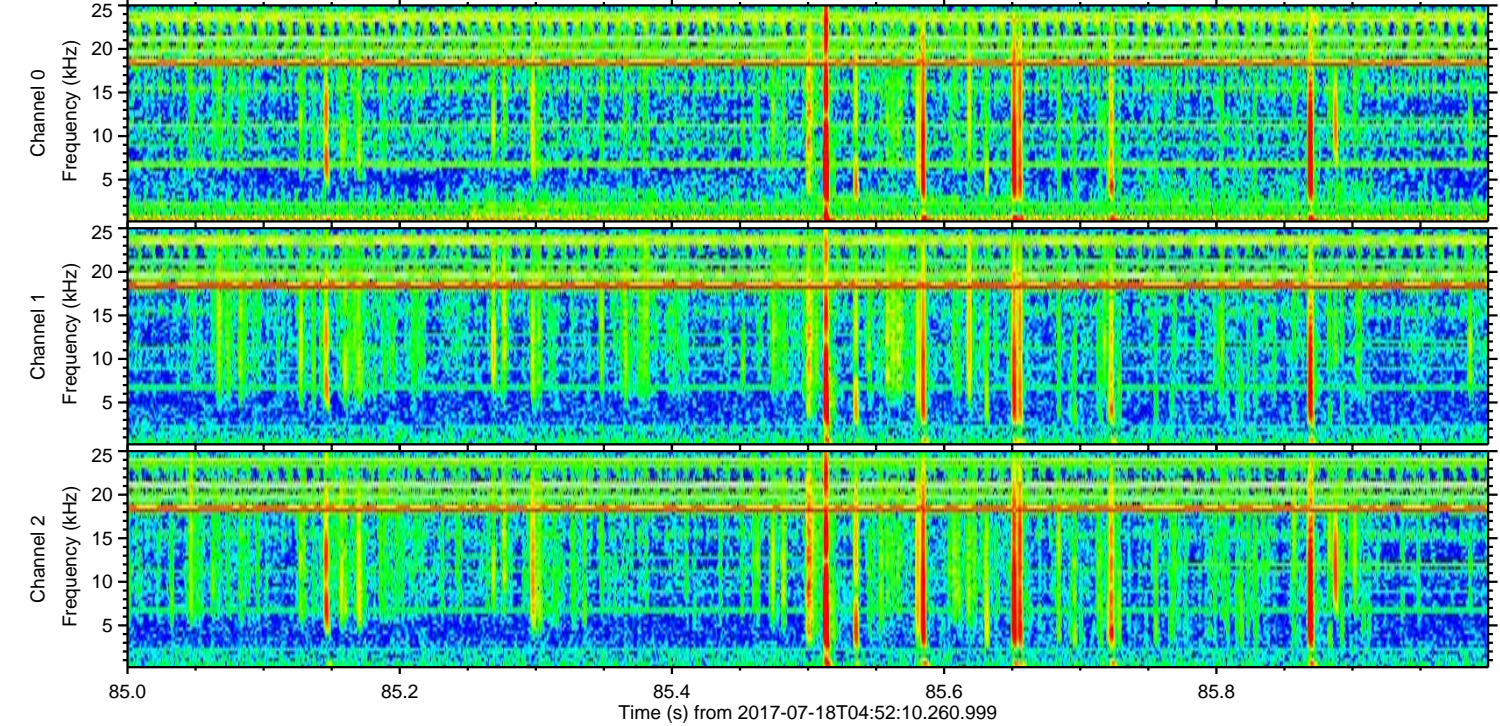
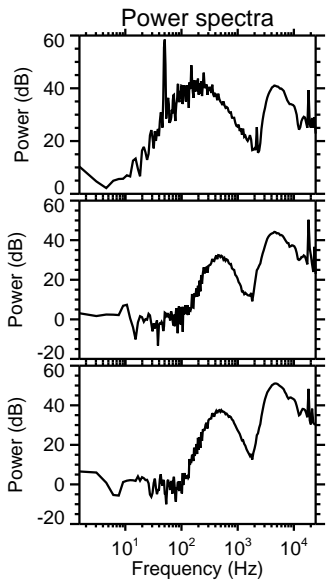
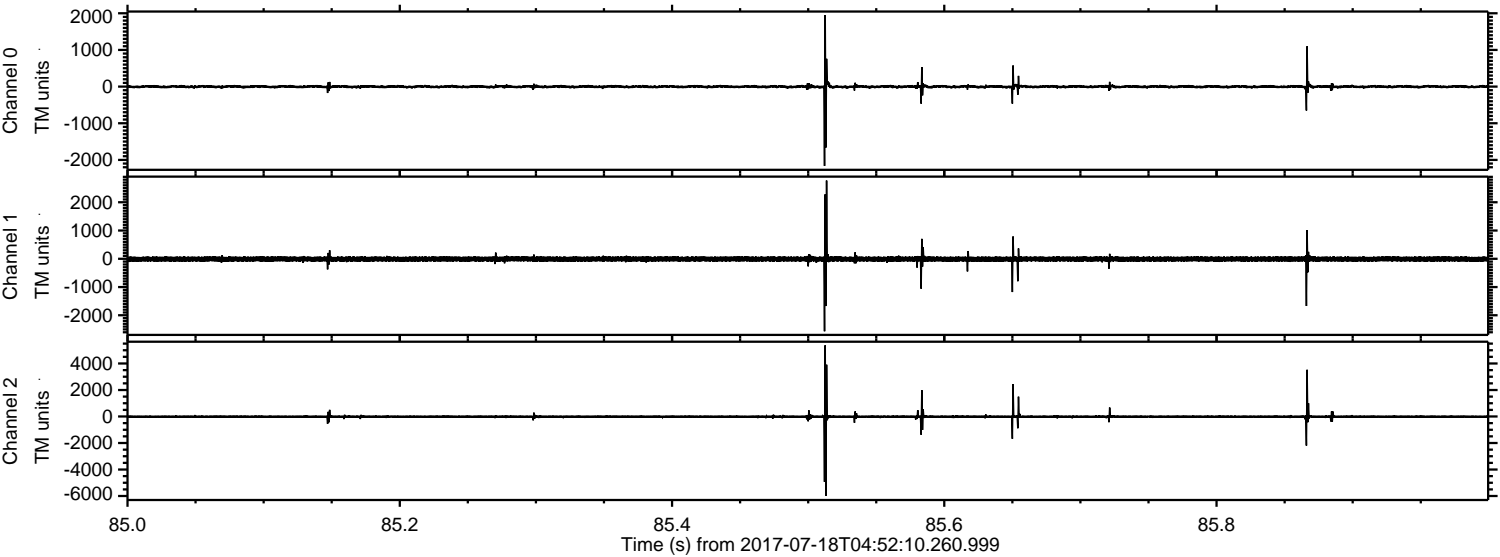
Processed Thu Jul 20 20:40:35 2017 by ELM ver.2012-10-06 from 001\_\_elm20170718\_045209\_\_dat00.bin





ELMAVAN 3D WAVEFORMS (Measured data sampled at 50 kHz) 51000 packets of 144 samples from 2017-07-18T04:52:10.260.999. Part 86/147

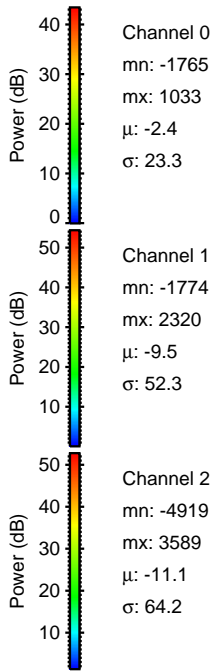
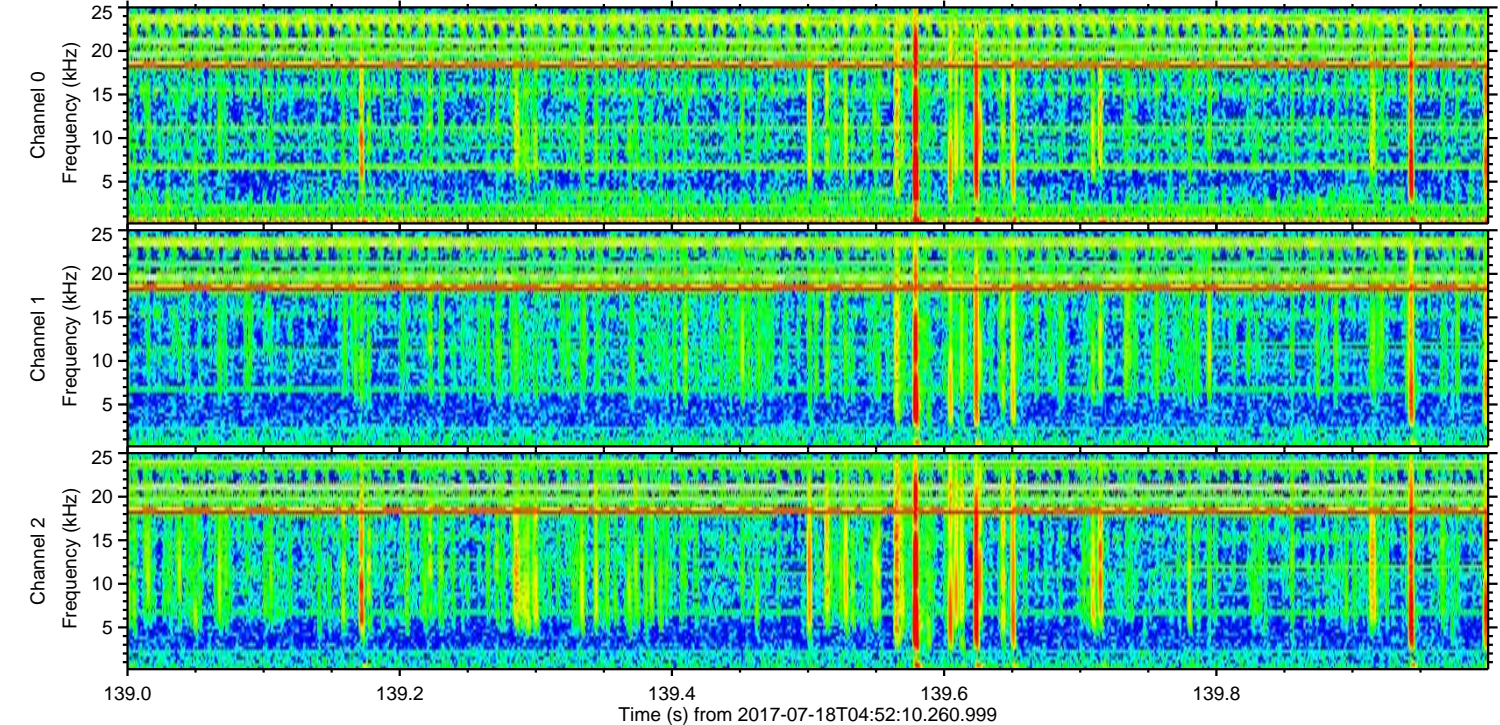
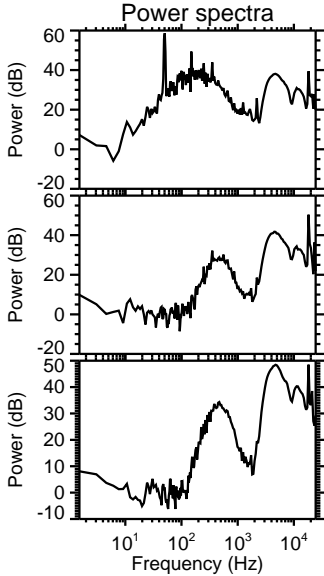
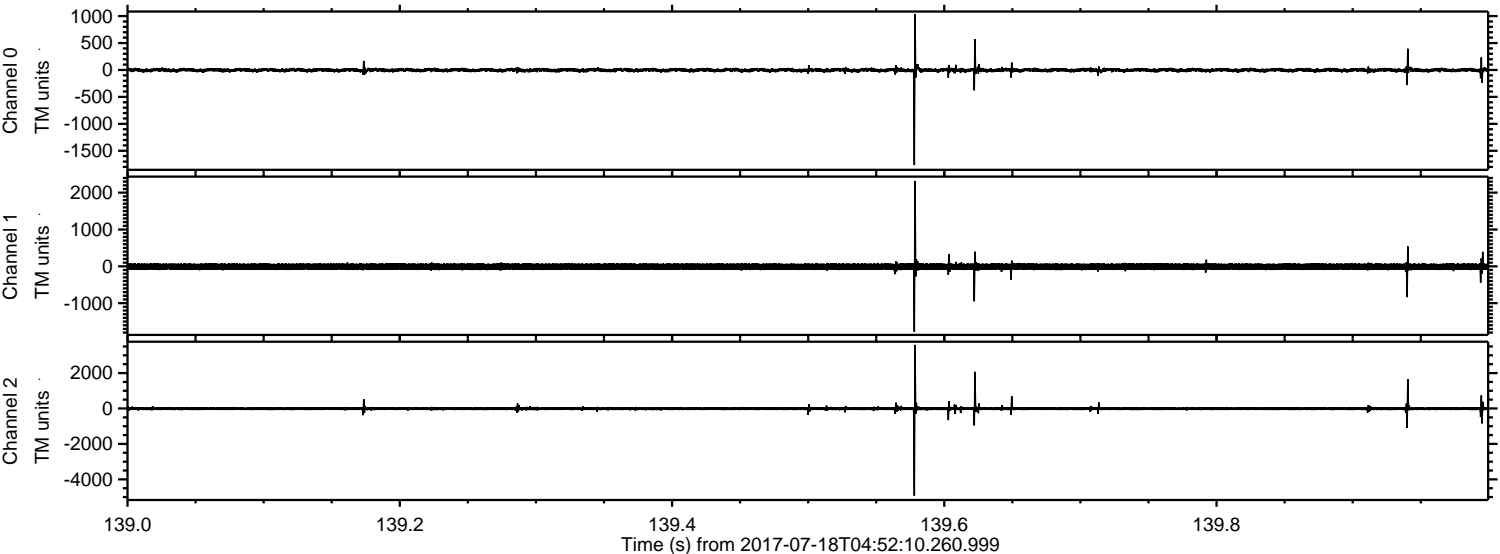
Processed Thu Jul 20 20:40:35 2017 by ELM ver.2012-10-06 from 001\_\_elm20170718\_045209\_\_dat00.bin





ELMAVAN 3D WAVEFORMS (Measured data sampled at 50 kHz) 51000 packets of 144 samples from 2017-07-18T04:52:10.260.999. Part 140/147

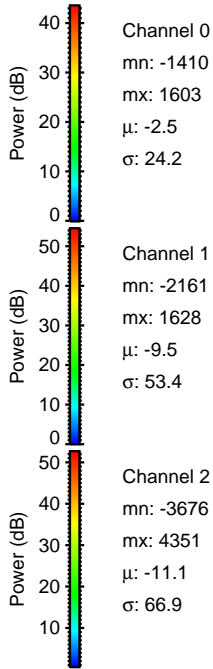
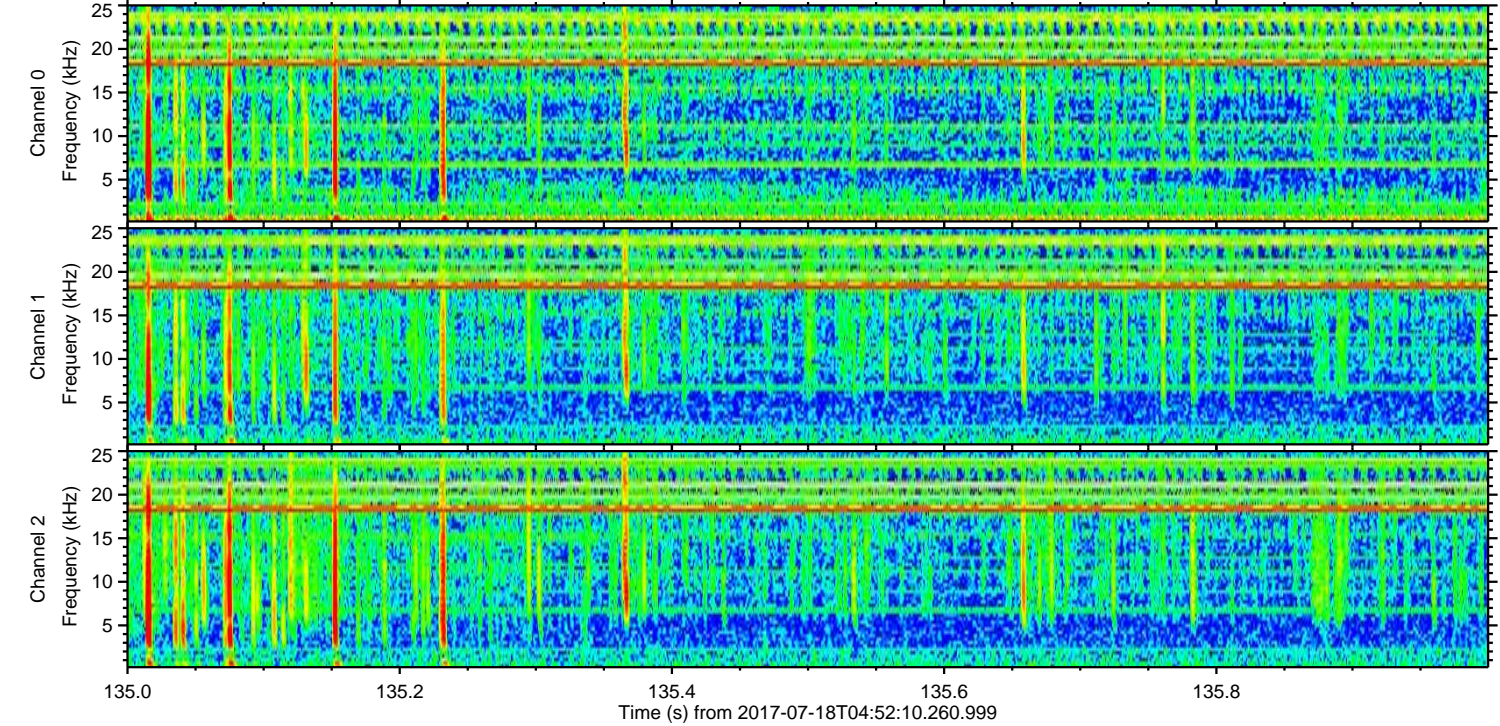
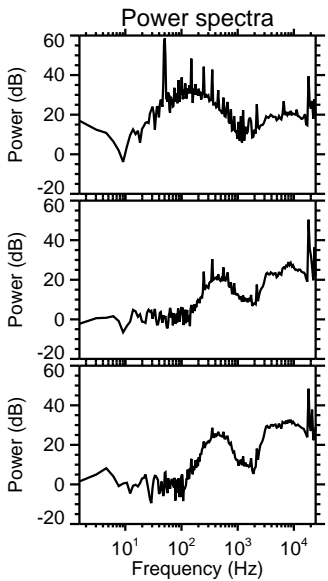
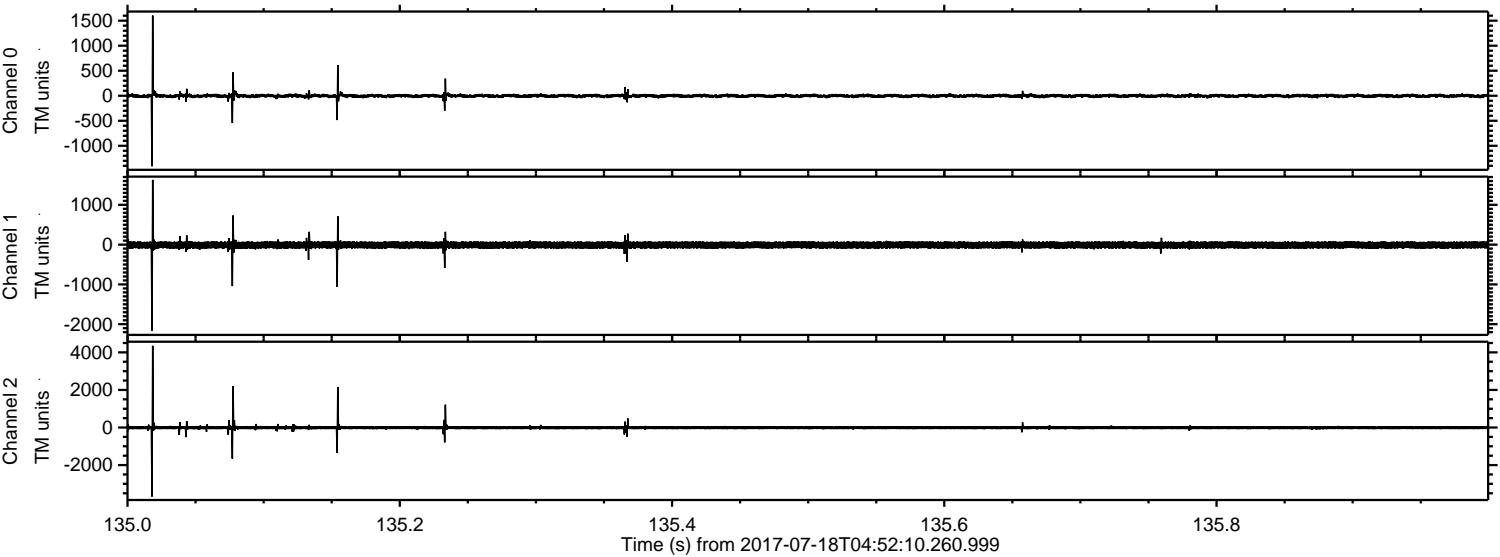
Processed Thu Jul 20 20:40:36 2017 by ELM ver.2012-10-06 from 001\_\_elm20170718\_045209\_\_dat00.bin





ELMAVAN 3D WAVEFORMS (Measured data sampled at 50 kHz) 51000 packets of 144 samples from 2017-07-18T04:52:10.260.999. Part 136/147

Processed Thu Jul 20 20:40:37 2017 by ELM ver.2012-10-06 from 001\_\_elm20170718\_045209\_\_dat00.bin



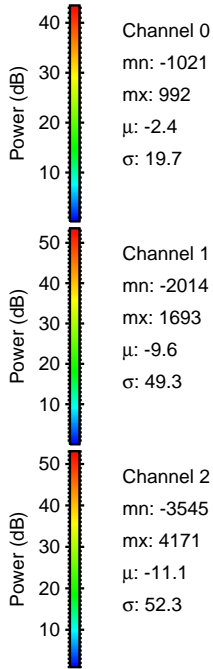
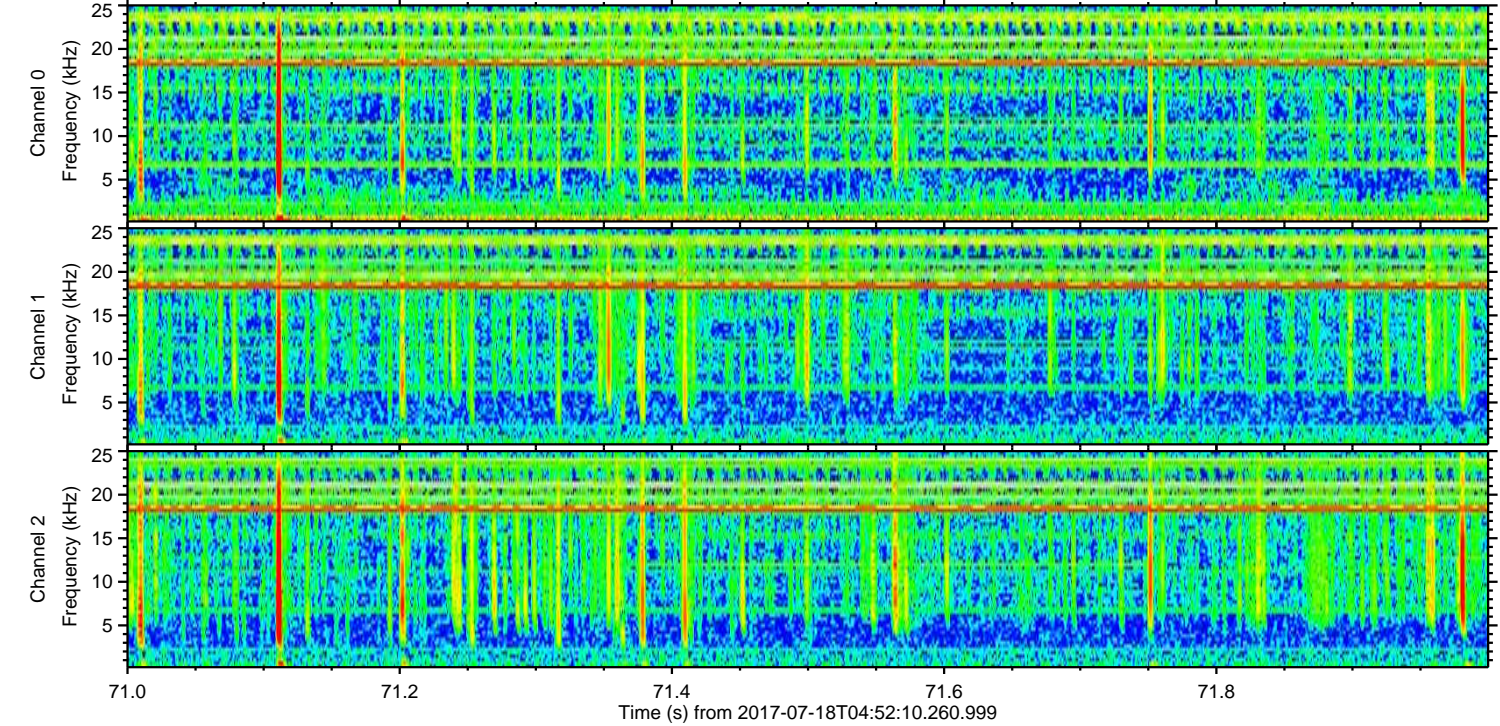
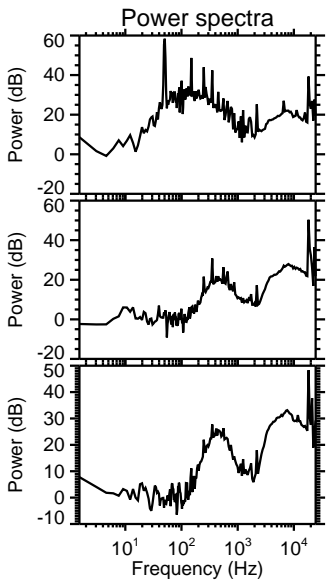
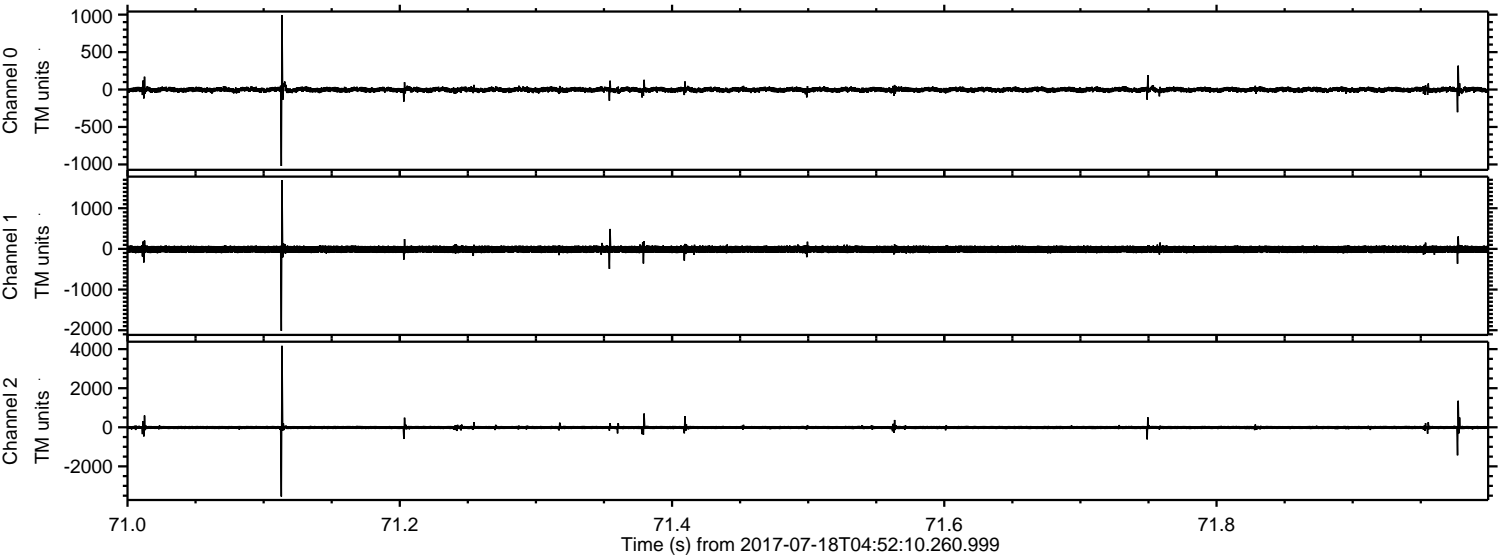
Channel 0  
mn: -1410  
mx: 1603  
 $\mu$ : -2.5  
 $\sigma$ : 24.2

Channel 1  
mn: -2161  
mx: 1628  
 $\mu$ : -9.5  
 $\sigma$ : 53.4

Channel 2  
mn: -3676  
mx: 4351  
 $\mu$ : -11.1  
 $\sigma$ : 66.9



Processed Thu Jul 20 20:40:38 2017 by ELM ver.2012-10-06 from 001\_\_elm20170718\_045209\_\_dat00.bin



Channel 0  
mn: -1021  
mx: 992  
 $\mu$ : -2.4  
 $\sigma$ : 19.7

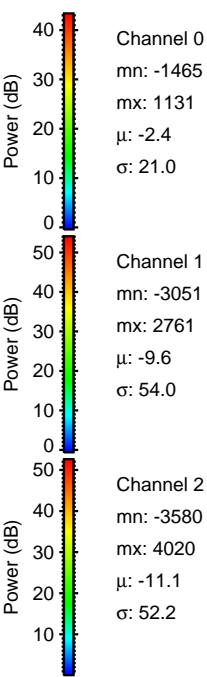
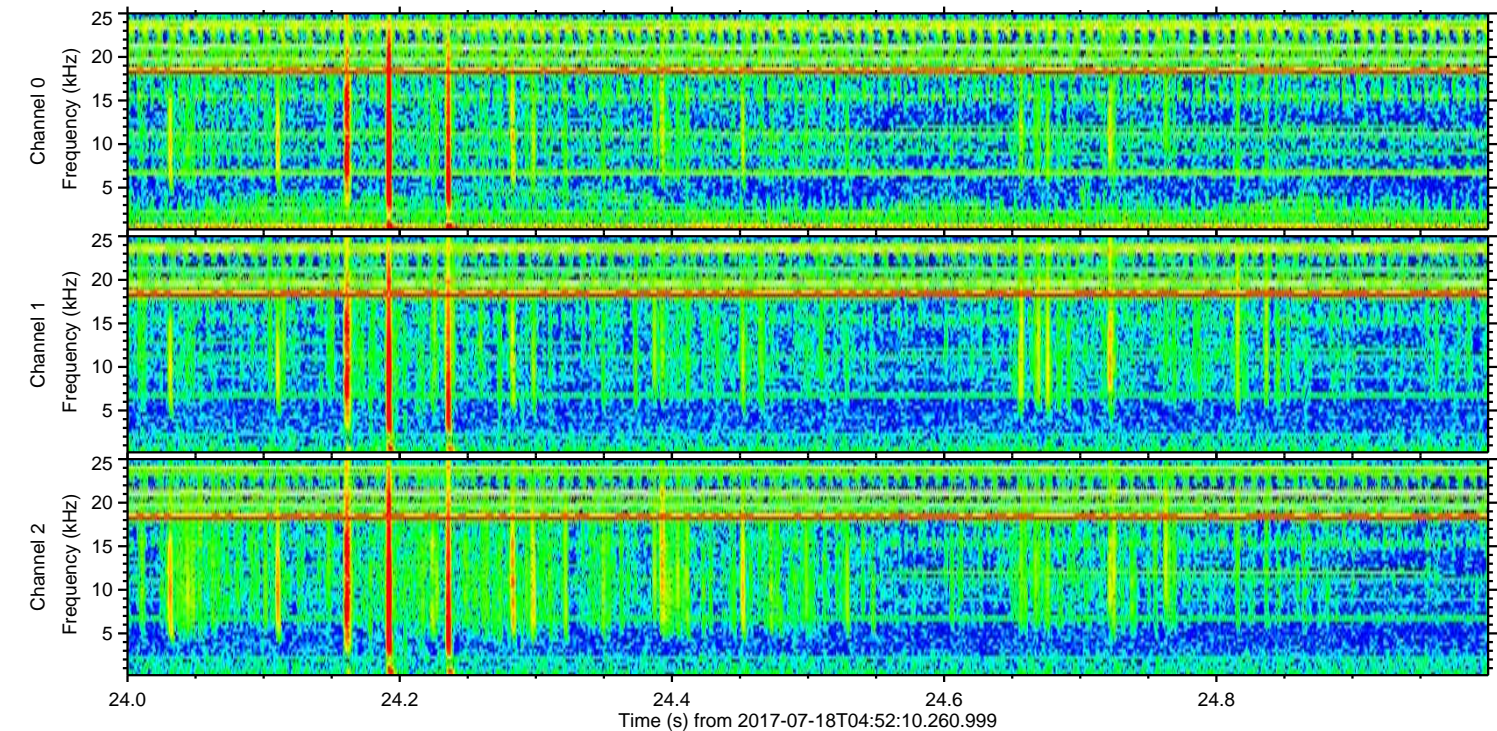
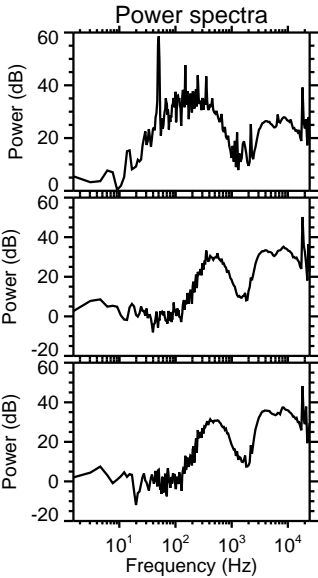
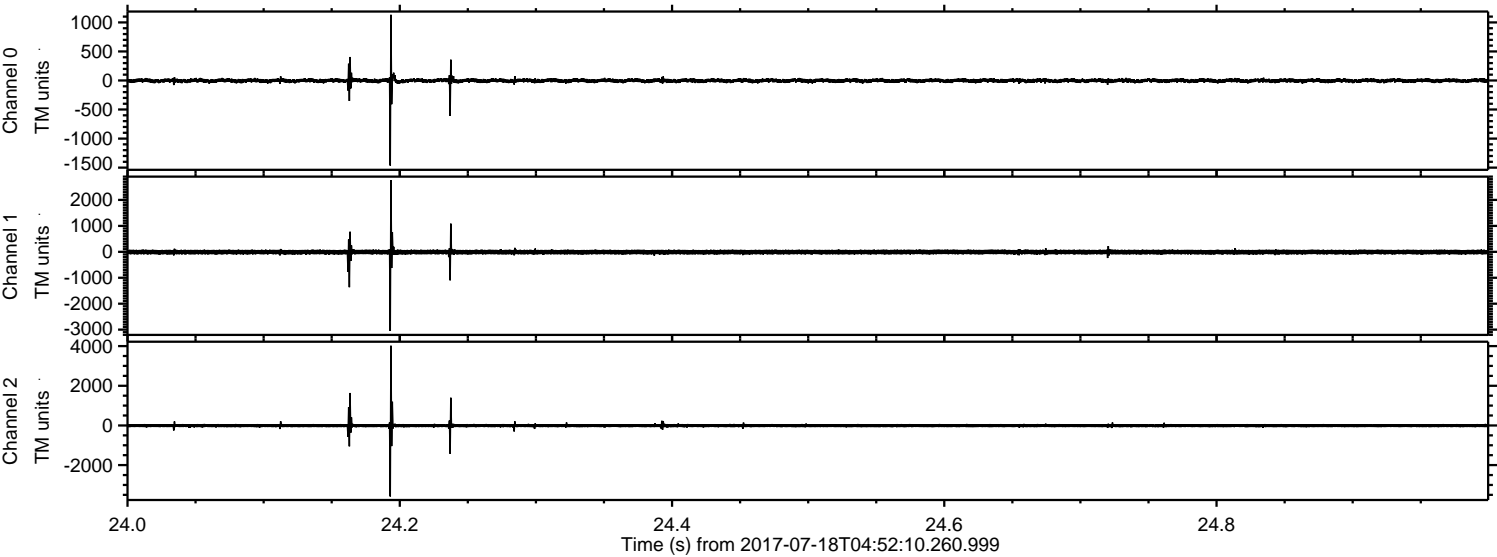
Channel 1  
mn: -2014  
mx: 1693  
 $\mu$ : -9.6  
 $\sigma$ : 49.3

Channel 2  
mn: -3545  
mx: 4171  
 $\mu$ : -11.1  
 $\sigma$ : 52.3



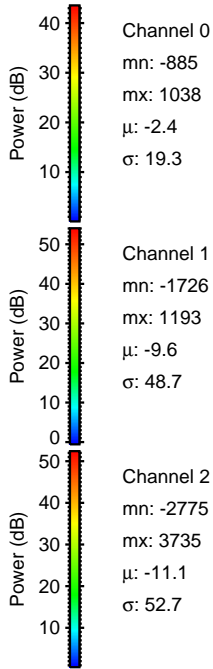
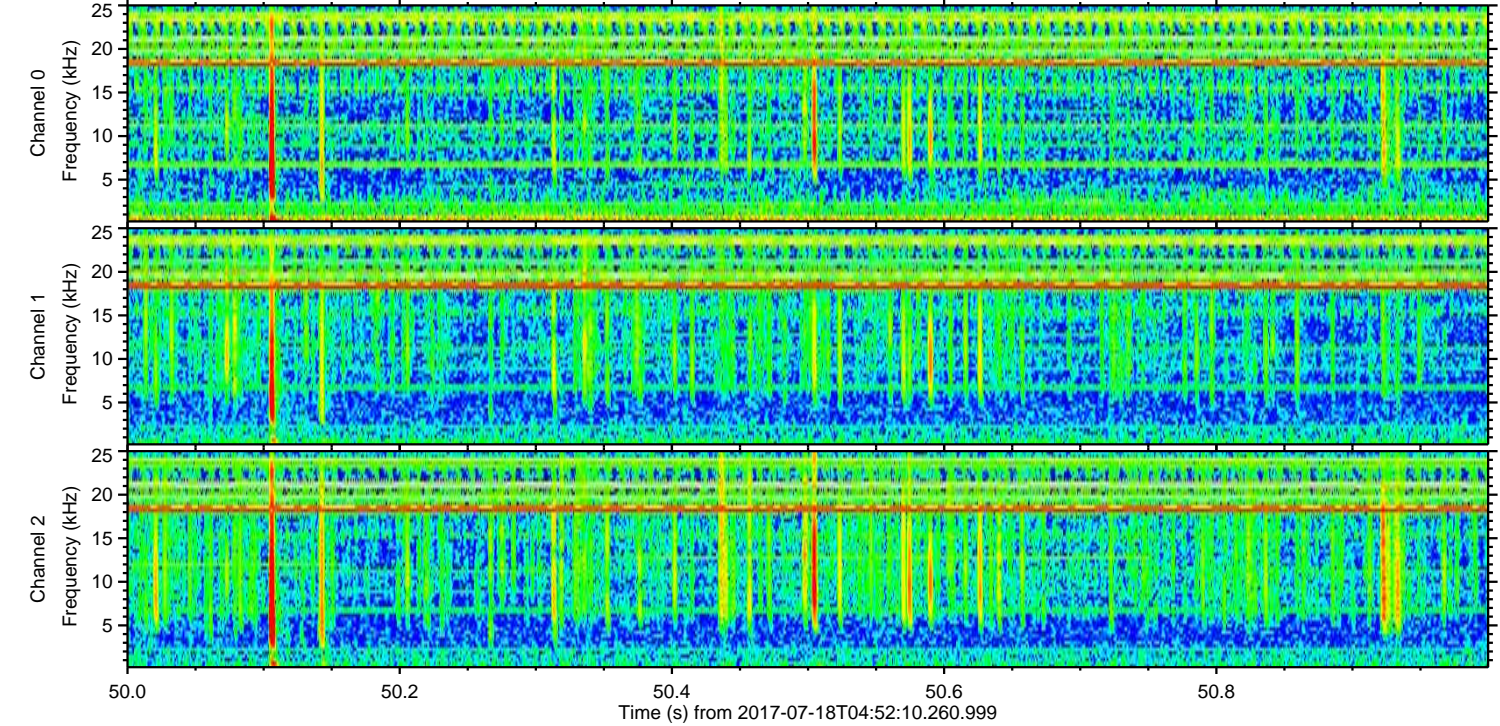
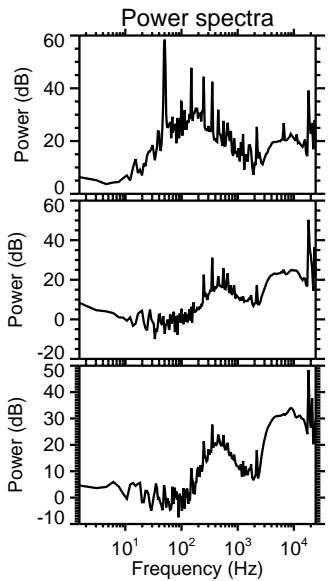
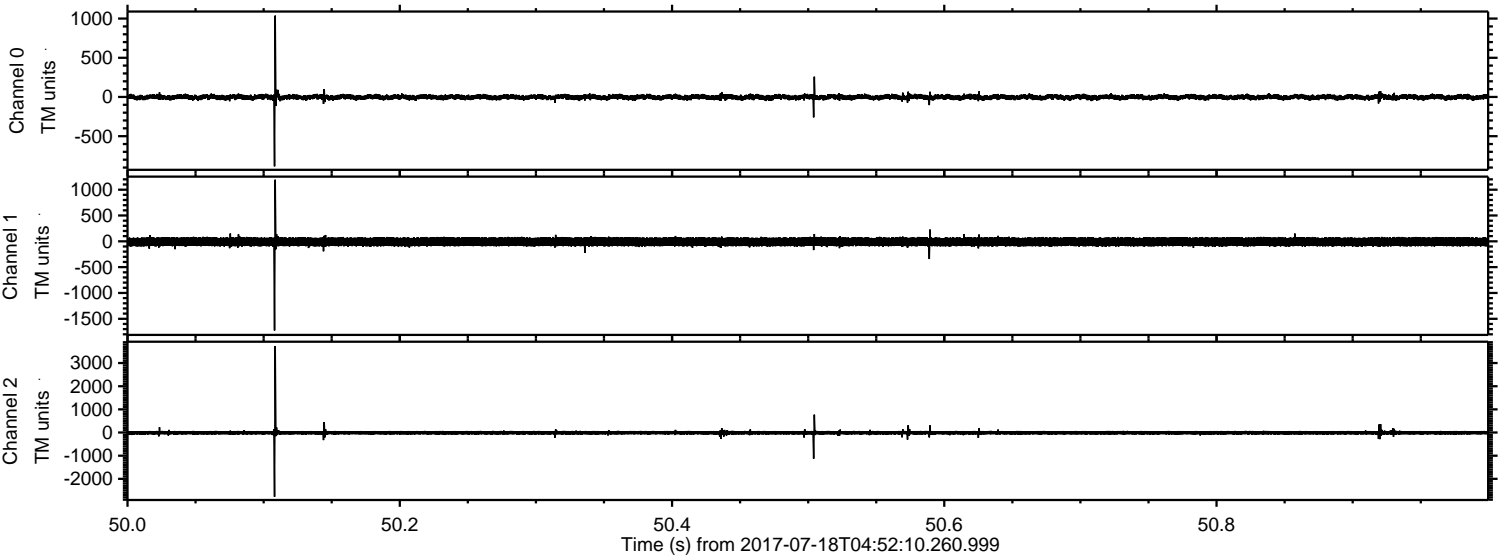
ELMAVAN 3D WAVEFORMS (Measured data sampled at 50 kHz) 51000 packets of 144 samples from 2017-07-18T04:52:10.260.999. Part 25/147

Processed Thu Jul 20 20:40:38 2017 by ELM ver.2012-10-06 from 001\_\_elm20170718\_045209\_\_dat00.bin





Processed Thu Jul 20 20:40:39 2017 by ELM ver.2012-10-06 from 001\_\_elm20170718\_045209\_\_dat00.bin





ELMAVAN 3D WAVEFORMS (Measured data sampled at 50 kHz) 51000 packets of 144 samples from 2017-07-18T04:52:10.260.999. Part 134/147

